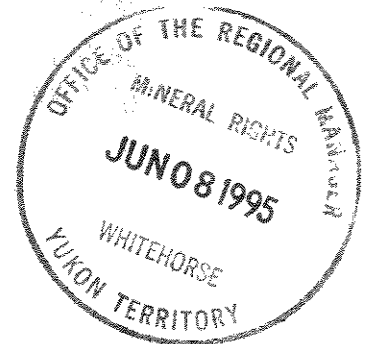




093295

1994 GEOLOGICAL
REPORT
ON THE
REIN CLAIMS



Located in the Ogilvie Mountains
Mayo Mining District
NTS 116B/9
64° 42' North Latitude
138° 13' West Longitude

-prepared for-
PENDISLE RESOURCES LTD

-prepared by-
Mark E. Baknes, P.Geo.

WORK PERFORMED: July, 1994
DATE OF REPORT: February, 1995

1994 GEOLOGICAL REPORT ON THE REIN CLAIMS

TABLE OF CONTENTS

		<u>Page</u>
1.0	INTRODUCTION	.1.
2.0	LIST OF CLAIMS	.1.
3.0	LOCATION, ACCESS AND PHYSIOGRAPHY	.1.
4.0	PROPERTY EXPLORATION HISTORY AND 1994 EXPLORATION PROGRAM	
4.1	Property Exploration History	.2.
4.2	1994 Exploration Program	.2.
5.0	REGIONAL GEOLOGY	.3.
6.0	PROPERTY GEOLOGY AND MINERALIZATION	
6.1	Property Geology	.4.
6.2	Mineralization	.4.
7.0	SOIL GEOCHEMISTRY	.4.
8.0	CONCLUSIONS AND RECOMMENDATIONS	.5.

APPENDICES

Appendix A	Bibliography
Appendix B	List of Personnel
Appendix C	Statement of Expenditures
Appendix D	Rock Sample Descriptions
Appendix E	Certificates of Analysis
Appendix F	Geologist's Certificate

LIST OF TABLES

		<u>Page</u>
Table 2.0.1	Claim Data	.1.

LIST OF FIGURES

		<u>Following Page</u>
Figure 1	Location Map	.1.
Figure 2	Claim Map	.1.
Figure 3	Regional Geology	.3.
Figure 4	Geology and Geochemistry	-Pocket-

1.0 INTRODUCTION

The Rein property, comprising the Rein 9,11,12,27,29,35-40,49,50,60,62,76 claims, is located in the Ogilvie Mountains of the west-central Yukon, approximately 95 kilometres northeast of Dawson and 8 kilometres east of the Dempster highway (Figure 1).

A program of geological mapping, prospecting and geochemical sampling was carried out on the Rein property during July of 1994. This work program was conducted by Equity Engineering Ltd. for Pendisle Resources Limited. Equity Engineering has been retained to report on the results of fieldwork.

2.0 LIST OF CLAIMS

The Rein property comprises 15 quartz mineral claims and 1 fractional claim, located in the Mayo Mining District (Figure 2). Government records indicate that the following claims are owned by Major General Resources Ltd. of Vancouver, British Columbia.

TABLE 2.0.1
CLAIM DATA

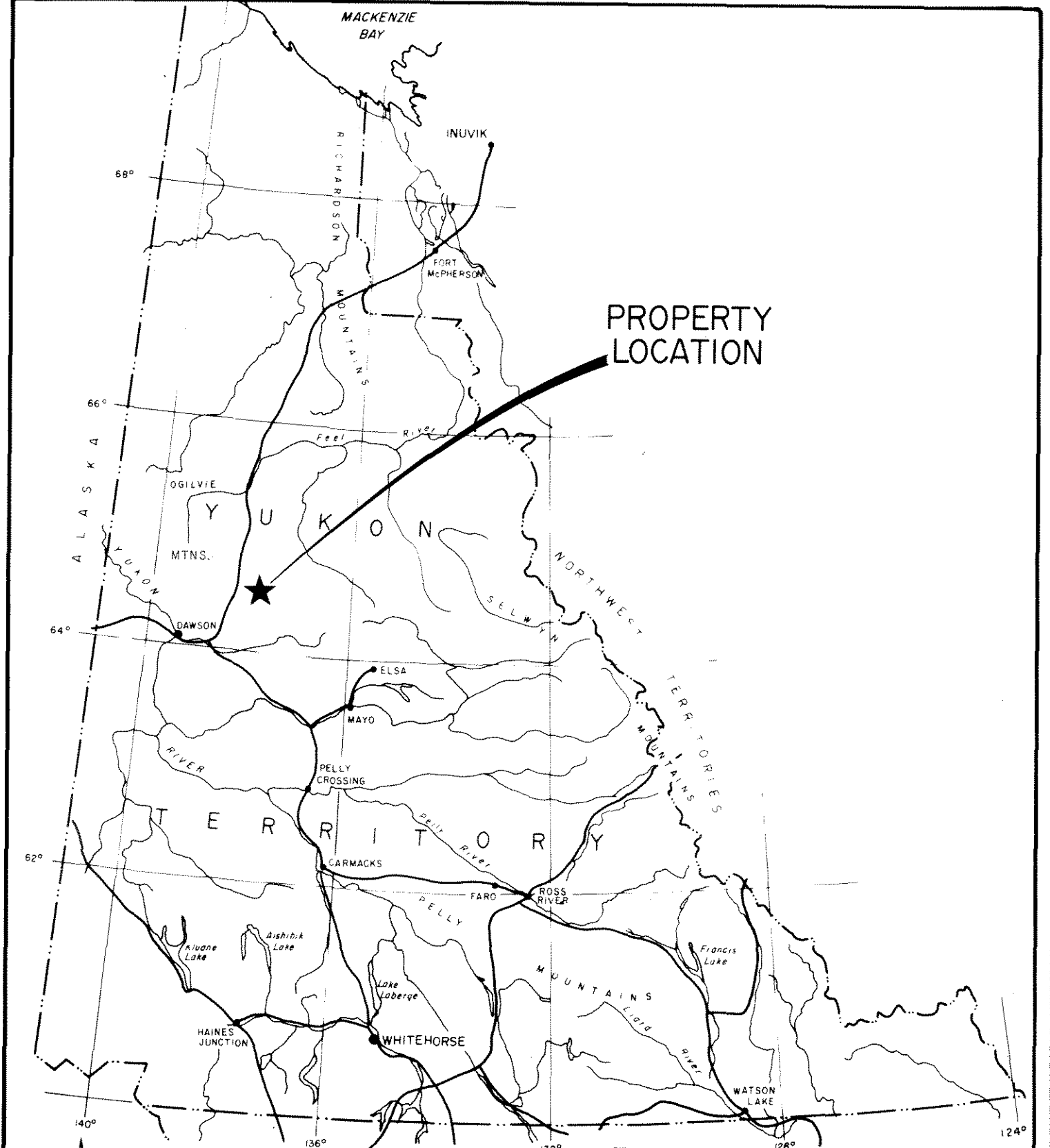
Claim Name	Record Numbers	Record Date	Expiry Date
Rein 9	YA05733	July 14, 1976	December 31, 1997*
Rein 11-12	YA05735-05736	July 14, 1976	December 31, 1997*
Rein 27	YA05751	July 14, 1976	December 31, 1997*
Rein 29	YA05753	July 14, 1976	December 31, 1997*
Rein 35-40	YA05759-05764	July 14, 1976	December 31, 1995*
Rein 49-50	YA05773-05774	July 14, 1976	December 31, 1995*
Rein 60	YA06488	August 27, 1976	December 31, 1995*
Rein 62	YA37922	August 14, 1978	December 31, 1995*
Rein 76	YA37920	August 14, 1978	December 31, 1995*

* Subject to approval of assessment work covered by this report.

3.0 LOCATION, ACCESS AND PHYSIOGRAPHY

The Rein property is located in the Ogilvie Mountains of west central Yukon, approximately 95 kilometres northeast of Dawson (Figure 1). The claims are situated between 7 and 11 kilometres east of the Dempster Highway. The claims fall within the Mayo Mining District, centered at 64° 42' north latitude and 138° 13' west longitude.

The property lies in rounded mountainous terrain, with elevations ranging from 1219 metres (4,000') to 1448 metres (4,750'). The area is above tree line and is covered by alpine grasses and shrubs. During the 1994 field program the property



PROPERTY
LOCATION



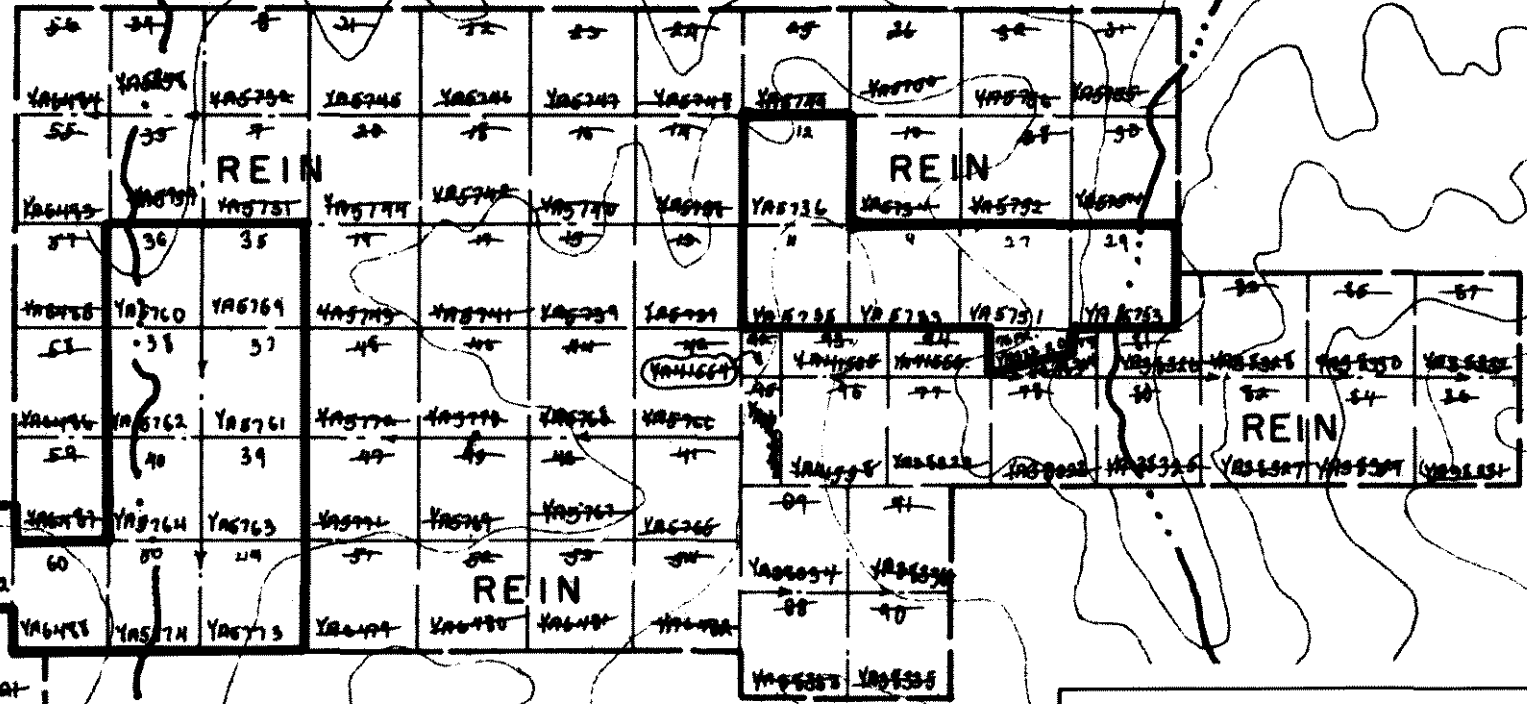
PENDISLE RESOURCES LTD.		
REIN CLAIMS LOCATION MAP		
YUKON TERRITORY		
— PAMICON DEVELOPMENTS LTD. — — EQUITY ENGINEERING LTD. —		
DRAWN: J.W./R.F.	MINING DIST.: MAYO	FIGURE 1
N.T.S.: 116 B/9	SCALE: 1:500,000	
DATE: NOV. 1994	REVISED:	

138°10' W

64°44' N

LOMOND

CREEK

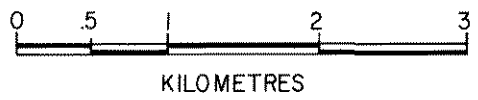


PENDISLE RESOURCES LTD.

REIN CLAIMS
CLAIM MAP
 YUKON TERRITORY

PAMICON DEVELOPMENTS LTD.
 EQUITY ENGINEERING LTD.

DRAWN: J.W.	MINING DIST: DAWSON	FIGURE 2
N.T.S.: 116 8/9	SCALE: AS SHOWN	
DATE: NOV. 1994	REVISED:	



was accessed by helicopter from Dawson.

4.0 PROPERTY EXPLORATION HISTORY AND 1994 EXPLORATION PROGRAM

4.1 Property Exploration History

The Rein property was staked as a result of a regional exploration program (1976 Blackstone Joint Venture) conducted in the Taiga Basin by Union Miniere Explorations and Mining Corporation Limited and Shell Canada Resources Ltd. This work was targeted at shale-hosted sedimentary exhalative deposits in the Paleozoic strata of the Taiga Shale Basin. The properties were explored by soil and rock sampling and mapping programs were in 1976-1978. The soil surveys outlined large areas of anomalous zinc and to a lesser extent, lead values. The zinc anomalies were attributed to secondary, hydrozincite occurrences. Additionally, VLF-EM and CEM surveys were conducted in the 1977. Although the early focus was for the base metal (Pb-Zn-Ag) potential, this potential was ruled out in 1977 and the emphasis shifted towards the barite occurrences as a potential source for drilling muds. Initial studies on the grade and marketability of the barite were carried out in 1977. Following trenching and detailed sampling programs in 1978, the property was optioned to Milchem Incorporated of Houston, Texas. In late 1979 and early 1980, Milchem did trenching, road building and percussion drilling (21 holes-905.9 m) on the barite showings before terminating their option at the end of 1980. In 1981, the barite showings were re-examined and sampled by Dome Petroleum Limited. No further work has been conducted since and a number of the original claims have lapsed.

The East Barite and part of the Cliff Barite showing (Figure 4) were staked by Getty Mining Pacific Limited in 1976 to cover areas of zinc, copper and uranium anomalous stream sediments. Getty performed soil and rock geochemical sampling in conjunction with geological mapping in 1976 and 1977. Their work did not result in the discovery of economic mineralization and claims were allowed to lapse.

The Rein property and database were acquired by Major General Resources Ltd. in 1989 and subsequently have been optioned to Pendisle Resources Ltd..

4.2 1994 Exploration Program

During July of 1994 an exploration program, consisting of geological mapping, prospecting and geochemical sampling, was carried out on the Rein property. The program was designed to sample previously identified barite occurrences and to assess the base metal potential. Geological mapping was carried out on a scale of 1:10,000 (Figure 4). A total of 30 rock samples and 9 soil samples were taken during the field program (Figure 4). All

rock samples are described in Appendix D, and analytical certificates are attached in Appendix E. Rock samples were analyzed geochemically for gold and by ICP for 24 other elements. Samples exceeding 10,000 ppm barium, zinc and nickel were assayed. In the field, sample locations were marked by a metal tag and a combination of pink and blue flagging.

Soil samples were collected, where possible, from "B" horizon material at depths ranging from 10 to 40 cm and placed in labelled kraft envelopes. The sample site was marked in the field with plastic flagging and the sampler recorded notes pertaining to sample horizon, colour, texture, vegetation, and local physiography. Samples were partially dried in camp and then shipped to Chemex Labs of North Vancouver, B.C. for sample preparation and analysis. Analytical procedures and a complete set of results for gold and 24 elements by ICP geochemistry may be found in the appendices.

5.0 REGIONAL GEOLOGY

The Dawson 1:250,000 map sheet (116B) was reconnaissance mapped by the Geological Survey of Canada in 1961 by Roddick and Green (1962). The property lies on the southern edge of the east-trending Taiga-Nahoni Foldbelt on the northern fringe of the Selwyn Basin (Figure 3).

The oldest stratigraphic units are Proterozoic Wernecke Supergroup strata consisting of dolomite-dominant lithologies (Unit 2) of the Gillespie Lake Group and siliciclastics (Unit 1) of the Quartet Group. These units have been penetrated by mineralized specular hematite-bearing breccias and cut by mafic sills and dykes. Exposures of these rock types are found 10 kilometres north and in a larger belt, the Coal Creel Inlier, located east of the Rein property. Younger Proterozoic lithologies, including shallow clastic and carbonate rocks of the Fifteenmile Group (Unit 3) and volcanic units of the Harper Group (Unit 4), are positioned between the Coal Creek Inlier and the Tintina Fault.

The Taiga Shale Basin consists of Paleozoic sediments and subordinate volcanic units that have been folded and thrust imbricated in a north-south compressional regime of the Laramide Orogeny (Cretaceous age). The oldest formations are Ordovician to Silurian dolostone (Unit 8) and Road River Formation black argillite and interbedded chert (Unit 9). Unit 8 forms resistant competent outcrops whereas the graptolite-bearing Road River Formation does not outcrop well. Conformably overlying the Road River Formation are thin-bedded shale, argillite, limestone, chert and minor conglomerate and quartzite (Unit 13). Fossil collections by Geological Survey of Canada (Green, 1972) suggest a lower Middle to Late Devonian age which indicates this package of rocks may be correlative with the Earn Group found within the Selwyn Basin in

rein regional

LEGEND

(to accompany Figure 3)

LITHOLOGY

QUATERNARY

26 unconsolidated glacial and alluvial deposits

PALEOZOIC

CARBONIFEROUS TO PERMIAN

14 limestone, shale, chert, chert pebble conglomerate

DEVONIAN TO CARBONIFEROUS

13 shale, argillite, slate, limestone, chert, conglomerate, quartzite

ORDOVICIAN AND SILURIAN

9 Road River Formation
mainly interbedded black chert and argillite

8 dolostone and limestone

PRECAMBRIAN AND/OR LATER

4 volcanic rocks, commonly amygdaloidal

PRECAMBRIAN AND/OR CAMBRIAN

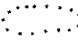



3 mainly quartzite, sandstone, chert pebble conglomerate

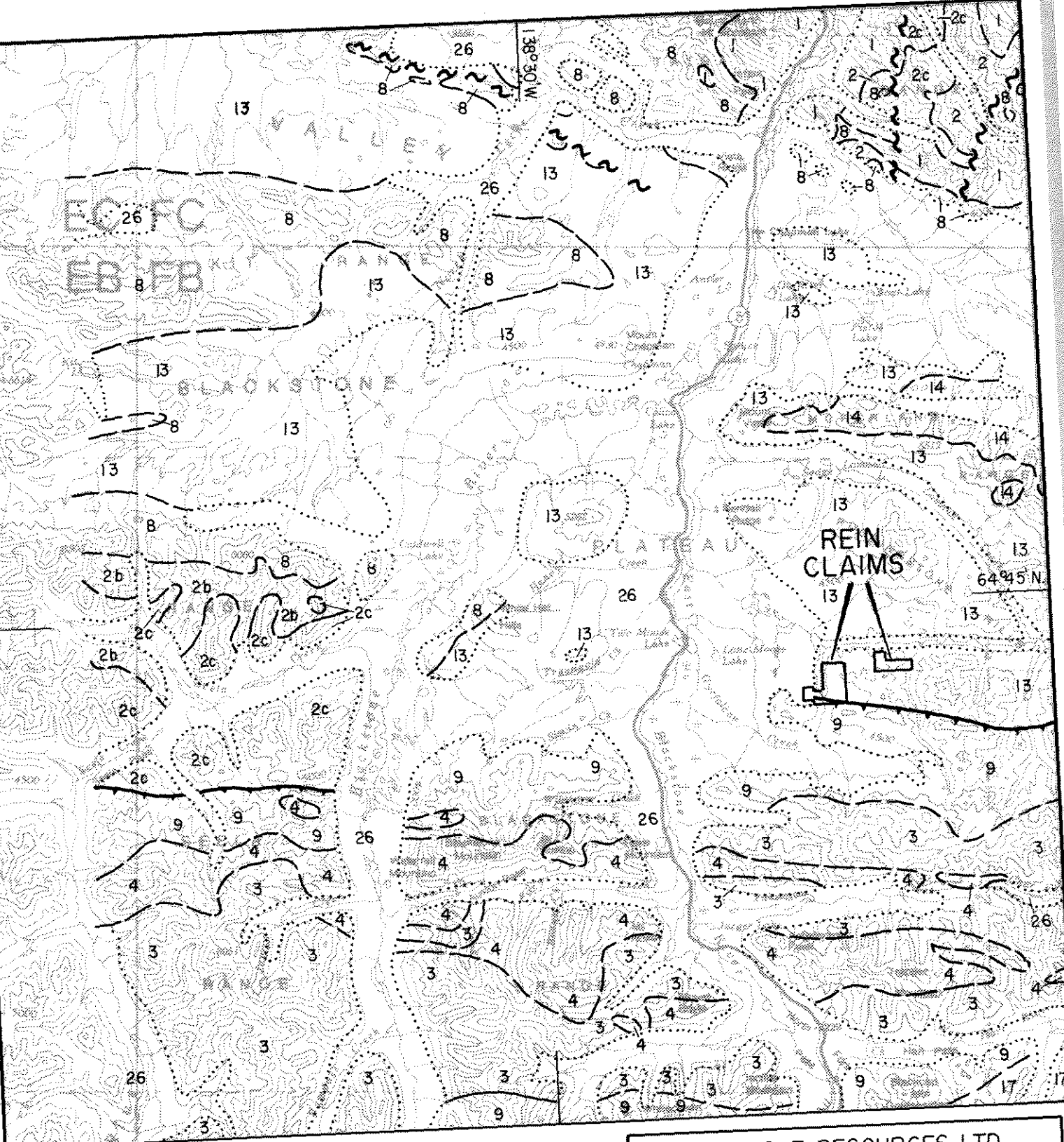
PROTEROZOIC

2 dolomite, slate, phyllite, quartzite
2b buff and orange dolomite, shale, quartzite,
limestone, conglomerate
2c cherty dolomite, dolomite, shale, quartzite

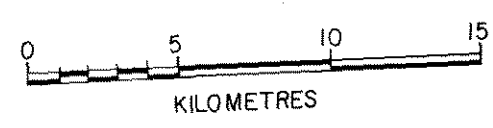
1 mainly argillite, slate, phyllite

SYMBOLS

	quaternary boundary
	geological contact (defined, approximate)
	fault
	thrust fault (teeth indicate dip direction)



Geology by: Green and Roddick, 1961
 Legend on following page



PENDISLE RESOURCES LTD.		
REIN CLAIMS		
REGIONAL GEOLOGY		
YUKON TERRITORY		
PAMICON DEVELOPMENTS LTD. EQUITY ENGINEERING LTD.		
DRAWN:	J.W.	MINING DIST.: MAYO
N.T.S.:	116 8/9	SCALE: 1:250,000
DATE:	NOV. 1994	REVISED:
		FIGURE 3

east-central Yukon. These units have a characteristic dark grey to black colouration "but with bright splashes of yellow, red and silvery grey" (Green, 1972). Capping Unit 13 are limestone, shale, chert and chert pebble conglomerate (Unit 14) of Carboniferous to Permian age.

6.0 PROPERTY GEOLOGY AND MINERALIZATION

6.1 Property Geology

The Rein claims are underlain by conformable black shale (Unit 13s), cherty argillite (Unit 13c) and baritic sediments (Unit 13b) (Figure 4). Fossil determinations by the Geological Survey of Canada indicate a Devonian age for these rock units (Green, 1972). To the south of the two claim groups, the Road River Formation (Unit 9) is thrust over Unit 13 along an east-west trending thrust. Folding is prominent as indicated by the variable dip directions on the east-west striking strata and tight minor folds. The Rein claims are situated on the southern limb of a west-northwest trending syncline.

6.2 Mineralization

The West Creek, Ridge, Cliff and East Barite showings were examined and sampled (Figure 4). Where examined, the bedded barite lenses are 15-30 metres wide, locally carbonaceous (distinct fetid smell) and limy. The barite may be lensey and contain 0.5 to 1.0 metre thick, siliceous interbeds. The barite beds are positioned at the contact where black, rhythmically bedded shale is overlain by silicious argillite and chert. Sampling of the barite lenses returned values up to 54.2% barium (#596905).

Hydrozincite coatings were noted in the hanging wall cherty argillites (#596725-1462 ppm Zn) and to a lesser extent, in the barite lenses (#596728-1402 ppm Zn), but no primary zinc sulphides were positively identified. No lead minerals were noted; this observation is substantiated by the low rock geochemistry.

The highest zinc value (#596658-4.19% Zn) was obtained from a single piece of quartz-calcite veined shale float. A metallic mineral was identified as specular hematite in the field; from the resulting assay, it is very conceivable that this mineral was sphalerite.

7.0 SOIL GEOCHEMISTRY

Nine soil samples were taken at or below the base of the barite to determine whether lead-zinc mineralization is associated with the bedded barite. The samples are all very anomalous in zinc and silver with four of the samples returning >10,000 ppm zinc and


a similar number of samples contained >5.0 ppm silver. Whether the metal values are restricted only to this stratigraphic horizon is not known due to the paucity of samples.

8.0 CONCLUSIONS AND RECOMMENDATIONS

The geologic setting of the Rein claims is considered highly favourable for hosting sedimentary exhalative deposits (SEDEX). The property is situated in the Taiga Shale Basin of Ordovician to Devonian-Mississippian strata which include the Road River Formation and younger units correlative to the Earn Group. Both of these sequences host stratiform lead-zinc mineralization elsewhere in the Selwyn Basin. High organic content within the underlying shales is consistent with an anoxic, starved sedimentary basin. The presence of bedded barite is an indicator that an exhalative system has been operative. Bedded barite deposits typically occur distal with respect to vent areas where massive sulphide mineralization may be found. The extensive base metal soil geochemical anomalies outlined by earlier exploration programs has further highlighted this potential.

The current exploration program failed to locate any primary base metal sulphide mineralization although hydrozincite coatings were identified. Secondary zinc mineralization was identified over an extensive area by previous workers in the footwall unit to the barite beds. They interpreted that this mineralization and therefore, soil geochemical anomalies are caused by a "hydrogeological phenomenon where circulatory groundwaters leach zinc from background shales and deposit it at the surface groundwater interface." The lack of lead values in rock samples supports their interpretation that SEDEX lead-zinc mineralization is not the source of these anomalies. In spite of these earlier interpretations, the permissive geology and very anomalous zinc and silver soil geochemistry encountered in the current program, are encouragement enough to warrant further work. Future geochemical samples should include results for both total and soluble zinc, to help locate areas of primary sulphide mineralization.

Respectfully submitted,


Mark E. Baknes, P.Geo.
EQUITY ENGINEERING LTD.



Vancouver, British Columbia
February, 1995

APPENDIX A

BIBLIOGRAPHY

BIBLIOGRAPHY

- Delaney, G.D. (1985): The Middle Proterozoic Wernecke Supergroup, Wernecke Mountains, Yukon Territory; Unpublished Ph.D. Thesis, University of Western Ontario, 373 pp.
- Friske, P.W.B., Hornbrook, E.H.W., Lynch, J.J., McCurdy, M.W., Gross, H., Galletta, A.C. and Durham, C.C. (1991): National Geochemical Reconnaissance Stream Sediment and Water Data, West Central Yukon, (NTS 116B; parts of 116C, 116F and 116G) Geological Survey of Canada Open File 2365.
- Green, L.H. (1972): Geology of Nash Creek, Larsen Creek and Dawson map-areas, Yukon Territory; Geological Survey of Canada, Memoir 364, 157 pp.
- Lane R.A. (1990): Geologic Setting and Petrology of the Proterozoic Ogilvie Mountains Breccia of the Coal Creek Inlier, Southern Ogilvie Mountains, Yukon Territory; Unpublished Masters Thesis, University of British Columbia, 223 pp.
- Lane, R.A. and Godwin, C.I. (1992): Geology of the Ogilvie Mountains Breccias, Coal Creek Inlier, (NTS 116B/11, 13, 14); Department of Indian and Northern Affairs, Open File 1992-1
- UMEX-Shell Internal Reports (1976-1982): Blackstone Joint Venture
Yukon Assessment Reports: 090207

APPENDIX B

LIST OF PERSONNEL

LIST OF PERSONNEL

Tom Bell (Prospector)
207, 675 West Hastings Street
Vancouver, B.C. V6B 1N2

Robert Falls (Geologist)
207, 675 West Hastings Street
Vancouver, B.C. V6B 1N2

Mark J. Malfair (Geologist)
207, 675 West Hastings Street
Vancouver, B.C. V6B 1N2

Mark E. Baknes (Professional Geologist)
207, 675 West Hastings Street
Vancouver, B.C. V6B 1N2

APPENDIX C

STATEMENT OF EXPENDITURES

GST:

7% on subtotal

301.38

TOTAL:

\$ 4606.83
=====

Notes:

1. General expenses (all other costs) are prorated according to mandays allocated to each property.

And I make this solemn declaration conscientiously believing it to be true and knowing that it is of the same force and effect as if made under oath and by virtue of the Canada Evidence Act.

Declared before me at Vancouver in the
Province of British Columbia this
3rd day of MAY, 1995

) Mark Baknes
Mark Baknes

Ken J. Felt

Notary Public for the Province of
British Columbia



APPENDIX D

ROCK SAMPLE DESCRIPTIONS

MINERALS AND ALTERATION TYPES

BA	barite	CA	calcite
CB	Fe-carbonate	GE	goethite
GR	graphite	HE	earthy hematite
HS	specular hematite	HZ	hydrozincite
JA	jarosite	PY	pyrite
QZ	quartz	SI	silica
SM	smithsonite	SP	sphalerite

ALTERATION INTENSITIES

m	medium	s	strong	tr	trace
vs	very strong	vw	very weak	w	weak

Property : REIN

NTS : 1168/9

Date : February 22, 1995

Sample No.	UTM :		Type :	Alteration :	Au	Ag	Ba	Cu	Pb	Zn
					(ppb)	(ppm)	(ppm)	(ppm)	(ppm)	(ppm)
596656	7181127 N	632552 E	Grab	sCB	35	7.8	410.	589.	26.	254.
	Elevation:	3810 ft	Strike Length Exp. : >25 m	Metallics : 1-2%PY						
	Bedding :	105 / 20 SW	Sample Width : 50 cm	Secondaries: sJA						
			True Width : 50 cm	Host : Black shale						

Comments : Sample of 50 cm wide shear zone??, very fine sulphides in massive bands, shattered, friable, possible CB altered.

Sample No.	UTM :		Type :	Alteration :	Au	Ag	Ba	Cu	Pb	Zn
					(ppb)	(ppm)	(ppm)	(ppm)	(ppm)	(ppm)
596657	7181139 N	632522 E	Float	sCB,sSI	<5	0.2	1310.	68.	6.	68.
	Elevation:	1820 m	Strike Length Exp. : m	Metallics :						
	Orientation:	/	Sample Width : m	Secondaries: sJA						
			True Width : m	Host : Sediments						

Comments : 15-20 m from 596656, black shattered shales, sample of rubble at base of cliff. CB altered and QZ stringers, unidentified dark brown glassy mineral.

Sample No.	UTM :		Type :	Alteration :	Au	Ag	Ba	Cu	Pb	Zn
					(ppb)	(ppm)	(ppm)	(ppm)	(ppm)	(ppm)
596658	7180903 N	632428 E	Float	sCB,sQZ	<5	<0.2	1490.	100.	<2	4.19%
	Elevation:	3875 ft	Strike Length Exp. : m	Metallics : 2-3%HS						
	Orientation:	/	Sample Width : m	Secondaries: WHE,WJA						
			True Width : m	Host : Black shale						

Comments : Float on east branch, QZ-CA veins with HS?

Sample No.	UTM :		Type :	Alteration :	Au	Ag	Ba	Cu	Pb	Zn
					(ppb)	(ppm)	(ppm)	(ppm)	(ppm)	(ppm)
596659	7180693 N	633096 E	Grab	sQZ	<5	0.8	2960.	103.	6.	3150.
	Elevation:	4025 ft	Strike Length Exp. : 10 m	Metallics :						
	Orientation:	040 / 30 SE	Sample Width : 3 m	Secondaries: WHE,WJA						
			True Width : 3 m	Host : Graphitic shales						

Comments : Strong QZ stockwork in graphitic black shales, possibly parallel to bedding, grab over three metres.

Sample No.	UTM :		Type :	Alteration :	Au	Ag	Ba	Cu	Pb	Zn
					(ppb)	(ppm)	(ppm)	(ppm)	(ppm)	(ppm)
596660	7180845 N	633050 E	Float		<5	<0.2	2.6%	2.	4.	90.
	Elevation:	3925 ft	Strike Length Exp. : m	Metallics :						
	Orientation:	/	Sample Width : m	Secondaries:						
			True Width : m	Host : Barite						

Comments : Common in float.

Sample No.	UTM :		Type :	Alteration :	Au	Ag	Ba	Cu	Pb	Zn
					(ppb)	(ppm)	(ppm)	(ppm)	(ppm)	(ppm)
596722	7179541 N	636277 E	Chip	wCB	<5	2.0	390.	82.	8.	1994.
	Elevation:	1100 m	Strike Length Exp. : 20 m	Metallics : None						
	Bedding :	160 / 20 S	Sample Width : 4 m	Secondaries: wGE						
			True Width : 4 m	Host : Interbedded shale and argillite						

Comments : Character sample of footwall of barite deposit.

Property : REIN

NTS : 1168/9

Date : February 22, 1995

Sample No. UTM : 7179629 N Type : Grab Alteration : None Au Ag Ba Cu Pb Zn
 636076 E Strike Length Exp. : >50 m Metallics : trPY (ppb) (ppm) (ppm) (ppm) (ppm) (ppm)
 596723 Elevation: 1175 m Sample Width : 2 m Secondaries: wGE <5 0.2 4280. 23. 6. 258.
 Bedding : 050 / 20 SE True Width : 2 m Host : Laminated black, cherty argillite
 Comments : Probable hanging wall to barite deposit.

Sample No. UTM : 7179754 N Type : Grab Alteration : wCB Au Ag Ba Cu Pb Zn
 636227 E Strike Length Exp. : >10 m Metallics : None (ppb) (ppm) (ppm) (ppm) (ppm) (ppm)
 596724 Elevation: 1130 m Sample Width : m Secondaries: None <5 1.8 15.6% 53. 4. 2912.
 Bedding : 058 / 20 SW True Width : m Host : Black argillite and barite
 Comments : Discontinuous lenses of barite in argillite. Sample consists of 10-30% crystalline barite fragments in an argillaceous matrix.

Sample No. UTM : 7179818 N Type : Grab Alteration : wCB Au Ag Ba Cu Pb Zn
 636175 E Strike Length Exp. : >25 m Metallics : None (ppb) (ppm) (ppm) (ppm) (ppm) (ppm)
 596725 Elevation: 1135 m Sample Width : m Secondaries: mSM, mHZ <5 1.0 1580. 40. <2 1462.
 Bedding : 115 / 40 S True Width : m Host : Footwall shales and argillites
 Comments : Random grab of footwall to barite deposit. Sample includes some hydrozincite and smithsonite.

Sample No. UTM : 7179857 N Type : Float Alteration : None Au Ag Ba Cu Pb Zn
 636151 E Strike Length Exp. : >100 m Metallics : None (ppb) (ppm) (ppm) (ppm) (ppm) (ppm)
 596726 Elevation: 1170 m Sample Width : m Secondaries: wHZ <5 <0.2 49.6% 3. <2 180.
 Bedding : 125 / 35 S True Width : m Host : Massive, laminated barite
 Comments : Random sample from talus below an outcrop of massive, laminated barite at least 30 metres thick. Very minor hydrozincite was not included in the sample.

Sample No. UTM : 7180161 N Type : Float Alteration : wCB Au Ag Ba Cu Pb Zn
 635552 E Strike Length Exp. : 25 m Metallics : None (ppb) (ppm) (ppm) (ppm) (ppm) (ppm)
 596727 Elevation: 1235 m Sample Width : m Secondaries: None <5 <0.2 43.8% 15. <2 290.
 Bedding : 072 / 82 N True Width : m Host : Massive barite
 Comments : Some sparry barite veins. Well laminated with carbonaceous beds and fragments.

Sample No. UTM : 7180193 N Type : Float Alteration : wCB Au Ag Ba Cu Pb Zn
 635528 E Strike Length Exp. : m Metallics : None (ppb) (ppm) (ppm) (ppm) (ppm) (ppm)
 596728 Elevation: 1260 m Sample Width : m Secondaries: wHZ <5 <0.2 14.8% 51. <2 1402.
 Orientation: 072 / 80 N True Width : m Host : Semi-massive, nodular barite
 Comments : Semi-massive barite. Common in trench material. Minor hydrozincite.

Property : REIN

NTS : 1168/9

Date : February 22, 1995

Sample No.	UTM :		Type :	Alteration :		Au	Ag	Ba	Cu	Pb	Zn
						(ppb)	(ppm)	(ppm)	(ppm)	(ppm)	(ppm)
	7178917 N	632160 E	Grab	None							
			Strike Length Exp. : 25 m	Metallics : BA							
596758	Elevation: 1210 m		Sample Width : 10 cm	Secondaries: None		<5	<0.2	5930.	15.	<20.	102.
	Bedding : 063 / 61 SE		True Width : 15-20 m	Host : Barite bearing sediments							

Comments : Black, well bedded barite bearing sediments. Very fine-grained. Barite showing, Rein property.

Sample No.	UTM :		Type :	Alteration :		Au	Ag	Ba	Cu	Pb	Zn
						(ppb)	(ppm)	(ppm)	(ppm)	(ppm)	(ppm)
	7178917 N	632160 E	Float	None							
			Strike Length Exp. : m	Metallics : 80%BA							
596759	Elevation: 1210 m		Sample Width : 5 cm	Secondaries: None		<5	<0.2	45.8%	10.	<20.	286.
	Orientation: /		True Width : 5 cm	Host : Crystalline barite float							

Comments : Crystalline, white barite mixed with quartz. From talus below an outcrop of barite-bearing sediments. Probably from a crystalline lense within the sediments. Barite showing, Rein claims.

Sample No.	UTM :		Type :	Alteration :		Au	Ag	Ba	Cu	Pb	Zn
						(ppb)	(ppm)	(ppm)	(ppm)	(ppm)	(ppm)
	7179172 N	632274 E	Grab	None							
			Strike Length Exp. : m	Metallics : >50%BA							
596760	Elevation: 1215 m		Sample Width : 10 cm	Secondaries: None		<5	0.4	49.0%	41.	<2	2764.
	Bedding : 181 / 18 E		True Width : 10 cm	Host : Shale							

Comments : Black, barite-rich pod within shale. Barite showing, Rein property.

Sample No.	UTM :		Type :	Alteration :		Au	Ag	Ba	Cu	Pb	Zn
						(ppb)	(ppm)	(ppm)	(ppm)	(ppm)	(ppm)
	7179113 N	632424 E	Grab	None							
			Strike Length Exp. : 15 m	Metallics : >50%BA							
596761	Elevation: 1225 m		Sample Width : 10 cm	Secondaries: None		<5	0.6	38.7%	28.	<2	372.
	Bedding : 043 / 40 SE		True Width : 5 m	Host : Barite-bearing, black sediments							

Comments : Well bedded, black sediments. High specific gravity suggests that barite is present. Unusual texture - looks oolitic. Barite showing, Rein property.

Sample No.	UTM :		Type :	Alteration :		Au	Ag	Ba	Cu	Pb	Zn
						(ppb)	(ppm)	(ppm)	(ppm)	(ppm)	(ppm)
	7179720 N	633639 E	Grab	None							
			Strike Length Exp. : 10 m	Metallics : None observed							
596762	Elevation: 1415 m		Sample Width : 10 cm	Secondaries: wGE		<5	<0.2	3500.	10.	<5	28.
	Bedding : 109 / 48 S		True Width : 5 m	Host : Grey chert							

Comments : Character sample to determine the source of lead-zinc soil anomalies.

Sample No.	UTM :		Type :	Alteration :		Au	Ag	Ba	Cu	Pb	Zn
						(ppb)	(ppm)	(ppm)	(ppm)	(ppm)	(ppm)
	7180082 N	634204 E	Grab	None							
			Strike Length Exp. : 25 m	Metallics : None observed							
596763	Elevation: 1390 m		Sample Width : 10 cm	Secondaries: None		<5	<0.2	4440.	15.	4.	12.
	Orientation: /		True Width : >10 m	Host : Black chert							

Comments : Character sample to determine the source of anomalous lead and zinc values in soils.

Property : REIN

NTS : 116B/9

Date : February 22, 1995

Sample No.	UTM :	7179874 N 637729 E	Type : Grab	Alteration : None	Au	Ag	Ba	Cu	Pb	Zn
			Strike Length Exp. : 30 m	Metallics : None	(ppb)	(ppm)	(ppm)	(ppm)	(ppm)	(ppm)
596905	Elevation:		Sample Width : 10 m	Secondaries: None	<5	<0.2	54.2%	1.	<2	26.
	Orientation:	/	True Width : m	Host : Shale and chert						

Comments : Barite rich outcrop within black shales and chert.

Sample No.	UTM :	7179782 N 637911 E	Type : Grab	Alteration : None	Au	Ag	Ba	Cu	Pb	Zn
			Strike Length Exp. : 3 m	Metallics : trPY	(ppb)	(ppm)	(ppm)	(ppm)	(ppm)	(ppm)
596906	Elevation:		Sample Width : 1 m	Secondaries: mHE	<5	1.2	580.	56.	<2	188.
	Bedding :	110 / 34 S	True Width : 1 m	Host : Black shale						

Comments : Chert and black shale.

Sample No.	UTM :	7179441 N 638044 E	Type : Grab	Alteration : mQZ	Au	Ag	Ba	Cu	Pb	Zn
			Strike Length Exp. : 20 m	Metallics : None	(ppb)	(ppm)	(ppm)	(ppm)	(ppm)	(ppm)
596907	Elevation:		Sample Width : 10 m	Secondaries: mHE	<5	1.4	380.	65.	4.	110.
	Bedding :	078 / 29 S	True Width : 10 m	Host : Black chert and shale						

Comments : Small barite crystals in quartz vein.

Sample No.	UTM :	7179734 N 638077 E	Type :	Alteration : None	Au	Ag	Ba	Cu	Pb	Zn
			Strike Length Exp. : 5 m	Metallics : None	(ppb)	(ppm)	(ppm)	(ppm)	(ppm)	(ppm)
596908	Elevation:		Sample Width : m	Secondaries: mHE	<5	1.0	930.	37.	<2	18.
	Bedding :	101 / 37 S	True Width : 4 m	Host : Black shale and chert						

Comments :

Sample No.	UTM :	7180119 N 637822 E	Type : Float	Alteration : None	Au	Ag	Ba	Cu	Pb	Zn
			Strike Length Exp. : m	Metallics : None	(ppb)	(ppm)	(ppm)	(ppm)	(ppm)	(ppm)
596909	Elevation:		Sample Width : m	Secondaries: None	<5	2.4	4200.	72.	<2	1414.
	Orientation:	/	True Width : m	Host :						

Comments : Grey weathering black shale sampled at base of a talus slope.

Sample No.	UTM :	7180379 N 637630 E	Type : Float	Alteration : None	Au	Ag	Ba	Cu	Pb	Zn
			Strike Length Exp. : m	Metallics : None	(ppb)	(ppm)	(ppm)	(ppm)	(ppm)	(ppm)
596910	Elevation:		Sample Width : m	Secondaries: None	<5	1.4	2430.	42.	<20.	1238.
	Orientation:	/	True Width : m	Host : Grey weathering black shale						

Comments : Sampled at foot of talus slope.

Property : REIN

NTS : 116B/9

Date : February 22, 1995

Sample No.	UTM :		Type :	Grab	Alteration :	None	Au	Ag	Ba	Cu	Pb	Zn
			Strike Length Exp. :	m	Metallics :	None	(ppb)	(ppm)	(ppm)	(ppm)	(ppm)	(ppm)
596911	7179880 N	637397 E	Sample Width :	m	Secondaries:	None	<5	<0.2	6.8%	1.	<2	410.
	Elevation:		Sample Width :	m	Host :	Shale						
	Orientation:	/	True Width :	m								

Comments : Barite rich outcrop, on strike with previously mapped barite zone.

Sample No.	UTM :		Type :	Float	Alteration :	None	Au	Ag	Ba	Cu	Pb	Zn
			Strike Length Exp. :	m	Metallics :	None	(ppb)	(ppm)	(ppm)	(ppm)	(ppm)	(ppm)
596912	7179847 N	637389 E	Sample Width :	m	Secondaries:	None	<5	0.4	660.	78.	8.	56.
	Elevation:		Sample Width :	m	Host :	Dark brown shale						
	Orientation:	/	True Width :	m								

Comments : Subcrop of headwall above sample 596911.

Sample No.	UTM :		Type :	Grab	Alteration :	None	Au	Ag	Ba	Cu	Pb	Zn
			Strike Length Exp. :	m	Metallics :	None	(ppb)	(ppm)	(ppm)	(ppm)	(ppm)	(ppm)
596913	7179882 N	637341 E	Sample Width :	m	Secondaries:	None	<5	<0.2	38.7%	1.	<2	16.
	Elevation:		Sample Width :	m	Host :	Black shale and chert						
	Orientation:	/	True Width :	m								

Comments : Barite rich outcrop on strike with known showing.

Sample No.	UTM :		Type :	Grab	Alteration :	None	Au	Ag	Ba	Cu	Pb	Zn
			Strike Length Exp. :	m	Metallics :	None	(ppb)	(ppm)	(ppm)	(ppm)	(ppm)	(ppm)
596914	7179899 N	637293 E	Sample Width :	m	Secondaries:	None	<5	0.6	6630.	259.	<2	1844.
	Elevation:		Sample Width :	m	Host :	Black shale with chert						
	Orientation:	/	True Width :	m								

Comments : Shale in footwall below barite outcrop sample #596913.

Sample No.	UTM :		Type :	Vein	Alteration :	None	Au	Ag	Ba	Cu	Pb	Zn
			Strike Length Exp. :	m	Metallics :	None	(ppb)	(ppm)	(ppm)	(ppm)	(ppm)	(ppm)
596915	7179899 N	637293 E	Sample Width :	m	Secondaries:	None	<5	<0.2	32.2%	2.	<2	54.
	Elevation:		Sample Width :	m	Host :							
	Orientation:	/	True Width :	m								

Comments : Barite rich outcrop on strike with those previously mapped.

Sample No.	UTM :		Type :	Float	Alteration :	wCB	Au	Ag	Ba	Cu	Pb	Zn
			Strike Length Exp. :	m	Metallics :		(ppb)	(ppm)	(ppm)	(ppm)	(ppm)	(ppm)
729		N	Sample Width :	m	Secondaries:	wGE,wSM,wHZ	<5	<0.2	35.2%	32.	<2	658.
	Elevation:	1260 m	Sample Width :	m	Host :	Massive barite						
	Orientation:	/	True Width :	m								

Comments : Random grab of angular barite from trench face. Moderate amount of hydrozincite and smithsonite. ***NOTE*** sample no. should be 596729 but there is a sample with the same number from another property.

APPENDIX E

CERTIFICATES OF ANALYSIS



Chemex Labs Ltd.

Analytical Chemists * Geochemists * Registered Assayers
212 Brooksbank Ave., North Vancouver
British Columbia, Canada V7J 2C1
PHONE: 604-984-0221

To: EQUITY ENGINEERING LTD.

207 - 675 W. HASTINGS ST.
VANCOUVER, BC
V6B 1N2

A9422851

Comments: ATTN: M. BAKNES

CERTIFICATE

A9422851

EQUITY ENGINEERING LTD.

Project: JR94-02 REIN
P.O. #:

Samples submitted to our lab in Vancouver, BC.
This report was printed on 23-AUG-94.

SAMPLE PREPARATION

CHEMEX CODE	NUMBER SAMPLES	DESCRIPTION
201 285	9 9	Dry, sieve to -80 mesh ICP - HF digestion charge

ANALYTICAL PROCEDURES

CHEMEX CODE	NUMBER SAMPLES	DESCRIPTION	METHOD	DETECTION LIMIT	UPPER LIMIT
578	9	Ag ppm: 24 element, rock & core	AAS	0.2	200
573	9	Al %: 24 element, rock & core	ICP-AES	0.01	25.0
565	9	Ba ppm: 24 element, rock & core	ICP-AES	10	10000
575	9	Be ppm: 24 element, rock & core	ICP-AES	0.5	1000
561	9	Bi ppm: 24 element, rock & core	ICP-AES	2	10000
576	9	Ca %: 24 element, rock & core	ICP-AES	0.01	25.0
562	9	Cd ppm: 24 element, rock & core	ICP-AES	0.5	500
563	9	Co ppm: 24 element, rock & core	ICP-AES	1	10000
569	9	Cr ppm: 24 element, rock & core	ICP-AES	1	10000
577	9	Cu ppm: 24 element, rock & core	ICP-AES	1	10000
566	9	Fe %: 24 element, rock & core	ICP-AES	0.01	25.0
584	9	K %: 24 element, rock & core	ICP-AES	0.01	10.00
570	9	Mg %: 24 element, rock & core	ICP-AES	0.01	15.00
568	9	Mn ppm: 24 element, rock & core	ICP-AES	5	10000
554	9	Mo ppm: 24 element, rock & core	ICP-AES	1	10000
583	9	Na %: 24 element, rock & core	ICP-AES	0.01	10.00
564	9	Ni ppm: 24 element, rock & core	ICP-AES	1	10000
559	9	P ppm: 24 element, rock & core	ICP-AES	10	10000
560	9	Pb ppm: 24 element, rock & core	AAS	2	10000
582	9	Sr ppm: 24 element, rock & core	ICP-AES	1	10000
579	9	Ti %: 24 element, rock & core	ICP-AES	0.01	10.00
572	9	V ppm: 24 element, rock & core	ICP-AES	1	10000
556	9	W ppm: 24 element, rock & core	ICP-AES	10	10000
558	9	Zn ppm: 24 element, rock & core	ICP-AES	2	10000



Chemex Labs Ltd.

Analytical Chemists * Geochemists * Registered Assayers
 212 Brooksbank Ave., North Vancouver
 British Columbia, Canada V7J 2C1
 PHONE: 604-984-0221

To: EQUITY ENGINEERING LTD.

207 - 675 W. HASTINGS ST.
 VANCOUVER, BC
 V6B 1N2

Project: JR94-02 REIN
 Comments: ATTN: M. BAKNES

Page Number : 1-A
 Total Pages : 1
 Certificate Date: 23-AUG-94
 Invoice No. : I9422851
 P.O. Number :
 Account : EIA

CERTIFICATE OF ANALYSIS A9422851

SAMPLE	PREP CODE	Au ppb FA+AA	Ag ppm AAS	Al % (ICP)	Ba ppm (ICP)	Be ppm (ICP)	Bi ppm (ICP)	Ca % (ICP)	Cd ppm (ICP)	Co ppm (ICP)	Cr ppm (ICP)	Cu ppm (ICP)	Fe % (ICP)	K % (ICP)	Mg % (ICP)
REIN 94MBS-16	201 285	< 5	5.2	2.91	930	1.0	< 2	8.47	129.5	31	279	370	2.62	0.83	2.28
REIN 94MBS-17	201 285	< 5	7.0	3.10	1250	1.0	< 2	6.31	106.5	20	320	342	2.76	1.05	0.90
REIN 94MBS-18	201 285	< 5	11.0	3.62	7580	1.5	< 2	1.62	169.5	29	295	426	3.18	0.96	0.67
REIN 94MBS-19	201 285	< 5	2.4	2.78	6050	0.5	< 2	0.68	27.5	7	141	141	2.10	0.80	0.21
REIN 94MMS-21	201 285	< 5	7.2	3.85	970	1.0	< 2	1.78	115.5	25	261	342	3.11	0.92	1.19
REIN 94MMS-22	201 285	< 5	2.4	3.36	790	1.0	< 2	3.22	24.0	18	179	222	2.87	1.03	1.25
REIN 94MMS-23	201 285	< 5	5.4	3.47	3440	0.5	< 2	3.45	38.0	10	232	173	1.99	1.35	1.41
REIN 94MMS-24	201 285	< 5	3.2	4.57	340	1.5	< 2	0.40	17.5	38	86	109	11.35	0.73	0.53
REIN 94MMS-25	201 285	< 5	1.6	2.15	>10000	< 0.5	< 2	3.78	16.0	21	95	84	2.01	0.68	0.48

CERTIFICATION:

Walter Beckler



Chemex Labs Ltd.

Analytical Chemists * Geochemists * Registered Assayers
 212 Brooksbank Ave., North Vancouver
 British Columbia, Canada V7J 2C1
 PHONE: 604-984-0221

To: EQUITY ENGINEERING LTD.

207 - 675 W. HASTINGS ST.
 VANCOUVER, BC
 V6B 1N2

Project : JR94-02 REIN
 Comments: ATTN: M. BAKNES

Page Number : 1-B
 Total Pages : 1
 Certificate Date: 23-AUG-94
 Invoice No. : I9422851
 P.O. Number :
 Account : EIA

CERTIFICATE OF ANALYSIS A9422851

SAMPLE	PREP CODE		Mn ppm (ICP)	Mo ppm (ICP)	Na % (ICP)	Ni ppm (ICP)	P ppm (ICP)	Pb ppm AAS	Sr ppm (ICP)	Ti % (ICP)	V ppm (ICP)	W ppm (ICP)	Zn ppm (ICP)			
REIN 94MBS-16	201	285	465	215	0.03	1095	2980	24	932	0.30	5730	< 10	>10000			
REIN 94MBS-17	201	285	320	224	0.03	836	3830	16	786	0.34	6900	< 10	>10000			
REIN 94MBS-18	201	285	660	136	0.30	858	3200	16	679	0.34	6950	< 10	>10000			
REIN 94MBS-19	201	285	145	40	0.13	208	2940	6	639	0.18	1810	< 10	1265			
REIN 94MBS-21	201	285	490	196	0.20	1220	3320	20	369	0.34	5920	< 10	>10000			
REIN 94MMS-22	201	285	220	122	0.08	1090	3160	20	430	0.27	2580	< 10	3270			
REIN 94MMS-23	201	285	160	64	0.18	399	2040	16	352	0.21	2690	< 10	3580			
REIN 94MMS-24	201	285	1020	204	0.06	1410	2910	6	707	0.18	1700	< 10	5300			
REIN 94MMS-25	201	285	230	106	0.06	1120	1820	8	1130	0.15	2000	< 10	2310			

CERTIFICATION: Hart Bickler



Chemex Labs Ltd.

Analytical Chemists * Geochemists * Registered Assayers
 212 Brooksbank Ave., North Vancouver
 British Columbia, Canada V7J 2C1
 PHONE: 604-984-0221

To: EQUITY ENGINEERING LTD.

207 - 675 W. HASTINGS ST.
 VANCOUVER, BC
 V6B 1N2

Project : JR94-02 REIN
 Comments: ATTN: MARK BAKNES

Page Number : 1
 Total Pages : 1
 Certificate Date: 24-NOV-94
 Invoice No. : I9431017
 P.O. Number :
 Account : EIA

CERTIFICATE OF ANALYSIS

A9431017

SAMPLE	PREP CODE	Au ppb AFS	Pt ppb AFS	Pd ppb AFS							
REIN 94MBS-16	244 --	4	25	28							
REIN 94MBS-17	244 --	< 4	10	20							
REIN 94MBS-18	244 --	12	< 10	32							
REIN 94MBS-19	244 --	< 2	5	10							
REIN 94MMS-21	244 --	5	5	22							
REIN 94MMS-22	244 --	< 6	15	12							
REIN 94MMS-23	244 --	< 4	< 10	24							
REIN 94MMS-24	244 --	5	15	16							
REIN 94MMS-25	244 --	< 2	< 5	6							

CERTIFICATION: _____

Walter Beckler



Chemex Labs Ltd.

Analytical Chemists * Geochemists * Registered Assayers
 212 Brooksbank Ave., North Vancouver
 British Columbia, Canada V7J 2C1
 PHONE: 604-984-0221

To: EQUITY ENGINEERING LTD.

207 - 675 W. HASTINGS ST.
 VANCOUVER, BC
 V6B 1N2

A9422852

Comments: ATTN: M. BAKNES

CERTIFICATE

A9422852

EQUITY ENGINEERING LTD.

Project: JR94-02 REIN
 P.O. #:

Samples submitted to our lab in Vancouver, BC.
 This report was printed on 18-AUG-94.

SAMPLE PREPARATION

CHEMEX CODE	NUMBER SAMPLES	DESCRIPTION
205	30	Geochem ring to approx 150 mesh
294	30	Crush and split (6-10 pounds)
285	30	ICP - HF digestion charge

ANALYTICAL PROCEDURES

CHEMEX CODE	NUMBER SAMPLES	DESCRIPTION	METHOD	DETECTION LIMIT	UPPER LIMIT
578	30	Ag ppm: 24 element, rock & core	AAS	0.2	200
573	30	Al %: 24 element, rock & core	ICP-AES	0.01	25.0
565	30	Ba ppm: 24 element, rock & core	ICP-AES	10	10000
575	30	Be ppm: 24 element, rock & core	ICP-AES	0.5	1000
561	30	Bi ppm: 24 element, rock & core	ICP-AES	2	10000
576	30	Ca %: 24 element, rock & core	ICP-AES	0.01	25.0
562	30	Cd ppm: 24 element, rock & core	ICP-AES	0.5	500
563	30	Co ppm: 24 element, rock & core	ICP-AES	1	10000
569	30	Cr ppm: 24 element, rock & core	ICP-AES	1	10000
577	30	Cu ppm: 24 element, rock & core	ICP-AES	1	10000
566	30	Fe %: 24 element, rock & core	ICP-AES	0.01	25.0
584	30	K %: 24 element, rock & core	ICP-AES	0.01	10.00
570	30	Mg %: 24 element, rock & core	ICP-AES	0.01	15.00
568	30	Mn ppm: 24 element, rock & core	ICP-AES	5	10000
554	30	Mo ppm: 24 element, rock & core	ICP-AES	1	10000
583	30	Na %: 24 element, rock & core	ICP-AES	0.01	10.00
564	30	Ni ppm: 24 element, rock & core	ICP-AES	1	10000
559	30	P ppm: 24 element, rock & core	ICP-AES	10	10000
560	30	Pb ppm: 24 element, rock & core	AAS	2	10000
582	30	Sr ppm: 24 element, rock & core	ICP-AES	1	10000
579	30	Ti %: 24 element, rock & core	ICP-AES	0.01	10.00
572	30	V ppm: 24 element, rock & core	ICP-AES	1	10000
556	30	W ppm: 24 element, rock & core	ICP-AES	10	10000
558	30	Zn ppm: 24 element, rock & core	ICP-AES	2	10000



Chemex Labs Ltd.

Analytical Chemists * Geochemists * Registered Assayers
212 Brooksbank Ave., North Vancouver
British Columbia, Canada V7J 2C1
PHONE: 604-984-0221

To: EQUITY ENGINEERING LTD.

207 - 675 W. HASTINGS ST.
VANCOUVER, BC
V6B 1N2

Project : JR94-02 REIN
Comments: ATTN: M. BAKNES

Page Number : 1-A
Total Pages : 1
Certificate Date: 18-AUG-94
Invoice No. : I9422852
P.O. Number :
Account : EIA

CERTIFICATE OF ANALYSIS

A9422852

SAMPLE	PREP CODE	Au ppb FA+AA	Ag ppm AAS	Al % (ICP)	Ba ppm (ICP)	Be ppm (ICP)	Bi ppm (ICP)	Ca % (ICP)	Cd ppm (ICP)	Co ppm (ICP)	Cr ppm (ICP)	Cu ppm (ICP)	Fe % (ICP)	K % (ICP)	Mg % (ICP)
596656	205 294	35	7.8	2.88	410	1.0	8	5.28	11.5	83	139	589	7.36	0.44	0.08
596657	205 294	< 5	0.2	0.80	1310	< 0.5	4	13.80	1.0	3	132	68	0.57	0.27	0.35
596658	205 294	< 5	< 0.2	2.31	1490	2.5	2	0.17	443	136	186	100	13.80	0.02	0.04
596659	205 294	< 5	0.8	0.80	2960	< 0.5	2	0.68	46.5	6	536	103	0.92	0.20	0.12
596660	205 294	< 5	< 0.2	0.05	>10000	< 0.5	2	>25.0	1.0	6	12	2	0.07	0.03	0.90
596722	205 294	< 5	2.0	2.12	390	< 0.5	6	9.68	31.0	8	178	82	1.07	0.86	0.63
596723	205 294	< 5	0.2	1.23	4280	< 0.5	2	0.17	5.0	3	275	23	0.74	0.40	0.10
596724	205 294	< 5	1.8	0.67	>10000	< 0.5	10	8.84	54.0	14	128	53	0.46	0.21	0.27
596725	205 294	< 5	1.0	0.38	1580	< 0.5	< 2	0.53	26.0	2	313	40	0.46	0.10	0.04
596726	205 294	< 5	< 0.2	0.18	>10000	< 0.5	8	2.26	1.0	16	12	3	0.18	0.07	0.08
596727	205 294	< 5	< 0.2	0.18	>10000	< 0.5	28	4.34	5.0	56	26	15	0.09	0.06	0.14
596728	205 294	< 5	< 0.2	0.33	>10000	< 0.5	6	15.00	28.0	15	36	51	0.79	0.07	0.63
596729	205 294	< 5	< 0.2	0.44	>10000	< 0.5	18	2.95	10.5	32	39	32	0.26	0.13	0.23
596758	205 294	< 5	< 0.2	0.25	5930	< 0.5	2	0.15	1.0	2	7	15	0.13	0.09	< 0.01
596759	205 294	< 5	< 0.2	0.12	>10000	< 0.5	4	0.47	5.5	9	31	10	0.32	0.01	0.13
596760	205 294	< 5	0.4	0.79	>10000	< 0.5	12	0.71	31.0	33	13	41	2.85	0.11	0.02
596761	205 294	< 5	0.6	0.47	>10000	< 0.5	6	2.19	6.0	10	22	28	0.38	0.15	0.07
596762	205 294	< 5	< 0.2	0.45	3500	< 0.5	2	0.04	< 0.5	2	449	10	0.54	0.16	0.03
596763	205 294	< 5	< 0.2	1.16	4440	< 0.5	< 2	0.02	< 0.5	1	277	15	0.48	0.43	0.09
596905	205 294	< 5	< 0.2	0.07	>10000	< 0.5	34	3.13	< 0.5	76	10	1	0.05	0.02	0.14
596906	205 294	< 5	1.2	1.69	580	< 0.5	2	0.29	3.0	2	256	56	0.94	0.68	0.12
596907	205 294	< 5	1.4	1.77	380	< 0.5	< 2	0.17	1.5	1	193	65	2.30	0.47	0.09
596908	205 294	< 5	1.0	1.74	930	< 0.5	2	0.04	0.5	2	270	37	0.80	0.73	0.10
596909	205 294	< 5	2.4	1.48	4200	< 0.5	8	2.62	23.5	3	254	72	0.82	0.56	0.19
596910	205 294	< 5	1.4	1.12	2430	< 0.5	4	2.38	13.0	2	330	42	0.67	0.42	0.13
596911	205 294	< 5	< 0.2	0.09	>10000	< 0.5	8	>25.0	5.5	15	8	1	0.30	0.03	0.90
596912	205 294	< 5	0.4	2.39	660	< 0.5	< 2	0.13	2.5	1	290	78	1.33	0.79	0.08
596913	205 294	< 5	< 0.2	0.06	>10000	< 0.5	24	14.25	< 0.5	64	3	1	0.04	0.03	0.14
596914	205 294	< 5	0.6	0.91	6630	< 0.5	2	2.87	34.5	4	394	259	0.54	0.38	0.12
596915	205 294	< 5	< 0.2	0.10	>10000	< 0.5	22	16.45	0.5	57	6	2	0.06	0.03	0.18

CERTIFICATION: *David Seckler*



Chemex Labs Ltd.

Analytical Chemists * Geochemists * Registered Assayers
 212 Brooksbank Ave., North Vancouver
 British Columbia, Canada V7J 2C1
 PHONE: 604-984-0221

To: EQUITY ENGINEERING LTD.

207 - 675 W. HASTINGS ST.
 VANCOUVER, BC
 V6B 1N2

Project : JR94-02 REIN
 Comments: ATTN: M. BAKNES

Page Number : 1-B
 Total Pages : 1
 Certificate Date: 18-AUG-94
 Invoice No. : 19422852
 P.O. Number :
 Account : EIA

CERTIFICATE OF ANALYSIS A9422852

SAMPLE	PREP CODE	Mn ppm (ICP)	Mo ppm (ICP)	Na % (ICP)	Ni ppm (ICP)	P ppm (ICP)	Pb ppm AAS	Sr ppm (ICP)	Ti % (ICP)	V ppm (ICP)	W ppm (ICP)	Zn ppm (ICP)			
596656	205 294	35	454	0.07	>10000	>10000	26	929	0.12	785	< 10	254			
596657	205 294	155	30	0.02	190	330	6	713	0.04	663	< 10	68			
596658	205 294	5110	39	< 0.01	2250	410	< 2	48	< 0.01	271	< 10	>10000			
596659	205 294	185	28	< 0.01	110	1740	6	221	0.02	859	< 10	3150			
596660	205 294	75	1	0.01	10	110	4	1365	< 0.01	39	< 10	90			
596722	205 294	115	67	0.04	246	1960	8	831	0.11	2000	< 10	1995			
596723	205 294	40	30	0.03	52	240	6	82	0.06	831	< 10	258			
596724	205 294	160	21	0.03	133	760	4	2000	0.03	1890	< 10	2910			
596725	205 294	50	30	0.01	76	170	< 2	144	0.02	1100	< 10	1460			
596726	205 294	30	6	0.01	43	140	< 2	1065	< 0.01	87	< 10	180			
596727	205 294	15	4	0.04	24	760	< 2	4520	< 0.01	217	< 10	290			
596728	205 294	140	13	0.08	97	980	< 2	3780	0.01	162	< 10	1400			
596729	205 294	20	11	0.04	40	690	< 2	2280	0.02	358	< 10	658			
596758	205 294	5	4	0.01	10	300	< 2	575	0.01	168	< 10	102			
596759	205 294	100	2	0.01	20	150	< 2	932	< 0.01	66	< 10	286			
596760	205 294	195	138	0.01	1615	960	< 2	2000	0.02	292	< 10	2760			
596761	205 294	45	9	0.07	47	330	< 2	629	0.02	150	< 10	372			
596762	205 294	20	27	0.01	31	40	< 2	37	0.02	225	< 10	28			
596763	205 294	15	26	0.02	21	40	4	41	0.06	505	< 10	12			
596905	205 294	5	1	0.01	14	280	< 2	5440	< 0.01	24	< 10	26			
596906	205 294	20	42	0.04	152	1160	< 2	139	0.10	1095	< 10	188			
596907	205 294	10	39	0.03	125	1770	4	318	0.08	1105	< 10	110			
596908	205 294	15	67	0.04	56	230	< 2	25	0.09	1115	< 10	18			
596909	205 294	45	51	0.02	117	270	< 2	344	0.08	2620	< 10	1415			
596910	205 294	50	39	0.02	93	510	< 2	269	0.06	1605	< 10	1240			
596911	205 294	80	3	0.02	77	260	< 2	1255	< 0.01	50	< 10	410			
596912	205 294	15	28	0.06	38	1840	8	122	0.07	771	< 10	56			
596913	205 294	15	< 1	0.02	12	360	< 2	5270	< 0.01	58	< 10	16			
596914	205 294	55	23	0.01	89	620	< 2	600	0.04	779	< 10	1845			
596915	205 294	20	3	0.04	37	400	< 2	4150	< 0.01	82	< 10	54			

CERTIFICATION: Stuart S. S. S. S.



Chemex Labs Ltd.

Analytical Chemists * Geochemists * Registered Assayers
212 Brooksbank Ave., North Vancouver
British Columbia, Canada V7J 2C1
PHONE: 604-984-0221

To: EQUITY ENGINEERING LTD.

207 - 675 W. HASTINGS ST.
VANCOUVER, BC
V6B 1N2

A9424044

Comments: ATTN: M. BAKNES & H. AWMACK

CERTIFICATE

A9424044

(EIA) - EQUITY ENGINEERING LTD.

Project: JR94-02 REIN
P.O. #:

Samples submitted to our lab in Vancouver, BC.
This report was printed on 6-SEP-94.

SAMPLE PREPARATION

CHEMEX CODE	NUMBER SAMPLES	DESCRIPTION
244	30	Pulp; prev. prepared at Chemex

ANALYTICAL PROCEDURES

CHEMEX CODE	NUMBER SAMPLES	DESCRIPTION	METHOD	DETECTION LIMIT	UPPER LIMIT
100	30	Au ppb: Fuse 10 g sample	FA-AAS	5	10000
316	1	Zn %: Reverse Aqua-Regia digest	AAS	0.01	100.0
321	1	Ni %: HClO ₄ -HNO ₃ digestion	AAS	0.01	100.0
351	13	Ba %: Carbonate fusion	GRAVIMETRIC	0.1	100.0



Chemex Labs Ltd.

Analytical Chemists * Geochemists * Registered Assayers
212 Brooksbank Ave., North Vancouver
British Columbia, Canada V7J 2C1
PHONE: 604-984-0221

To: EQUITY ENGINEERING LTD.

207 - 675 W. HASTINGS ST.
VANCOUVER, BC
V6B 1N2

Project : JR94-02 REIN
Comments: ATTN: M. BAKNES & H. AWMACK

Page Number : 1
Total Pages : 1
Certificate Date: 06-SEP-94
Invoice No. : 19424044
P.O. Number :
Account : EIA

CERTIFICATE OF ANALYSIS A9424044

SAMPLE	PREP CODE	Zn %	Ni %	Ba %							
596656	244 --	-----	2.06	-----							
596658	244 --	4.19	-----	-----							
596660	244 --	-----	-----	2.6							
596724	244 --	-----	-----	15.6							
596726	244 --	-----	-----	49.6							
596727	244 --	-----	-----	43.8							
596728	244 --	-----	-----	14.8							
596729	244 --	-----	-----	35.2							
596759	244 --	-----	-----	45.8							
596760	244 --	-----	-----	49.0							
596761	244 --	-----	-----	38.7							
596905	244 --	-----	-----	54.2							
596911	244 --	-----	-----	6.8							
596913	244 --	-----	-----	38.7							
596915	244 --	-----	-----	32.2							

CERTIFICATION:

APPENDIX F

GEOLOGIST'S CERTIFICATE

GEOLOGIST'S CERTIFICATE

I, MARK E. BAKNES, of 4355 St. Catherines Street, Vancouver, in the Province of British Columbia, DO HEREBY CERTIFY:

1. THAT I am a Consulting Geologist with offices at Suite 207, 675 West Hastings Street, Vancouver, British Columbia.
2. THAT I am a graduate of the University of British Columbia with a Bachelor of Science degree in Geology.
3. THAT I am a Professional Geoscientist registered in good standing with the Association of Professional Engineers and Geoscientists of the Province of British Columbia.
4. THAT this report is based on fieldwork carried out under my direction in July 1994, government publications and assessment reports filed with the Yukon. I have examined the property in the field.

DATED at Vancouver, British Columbia, this 15th day of March, 1995.



Mark E. Baknes, P.Ge.



STATEMENT OF EXPENDITURES
REIN 9,11,12,27,29,35-40,49,50,60,62,76 CLAIMS

CANADA) In the matter of an evaluation program on the
) Rein 9,11,12,27,29,35-40,49,50,60,62,76 Mineral
 Claims

I, Mark Baknes for Equity Engineering Ltd., 207, 675 West Hastings Street, Vancouver, B.C. do solemnly declare that a program consisting of geochemical sampling, geological mapping, and prospecting was carried out on the Rein 9,11,12,27,29,35-40,49,50,60,62,76 Mineral Claims on July 30, 1994.

The following expenses, directly related to the physical costs of collecting rock and soil samples, were incurred during the course of this work:

PROFESSIONAL FEES AND WAGES:

Mark E. Baknes, P. Geo.			
1.0 day @ \$400/day	\$	400.00	
Robert B. Falls, Geologist			
1.0 day @ \$350/day		350.00	
Mark Malfair, Sampler			
1.0 day @ \$225/day		225.00	
Tom Bell, Prospector			
1.0 day @ \$275/day		<u>275.00</u>	\$ 1250.00

093295

EXPENSES:

Aircraft Charters	\$	16.96	
Auto Feul		4.45	
Camp Food		17.01	
Courier and Telefax		10.98	
Freight		43.53	
Helicopter Charters		2075.69	
Materials and Supplies		40.79	
Meals		93.04	
Telephone Distance Charges		15.87	
Travel		<u>.87</u>	2319.19

JOINT MOBILIZATION COSTS: 281.11

EQUIPMENT RENTAL:

4WD Equity	\$	10.65	
Handheld Radios		20.00	
Fly Camp		<u>76.62</u>	107.27

MANAGEMENT FEES:

15% on expenses only 347.88

SUBTOTAL: \$ 4305.45

GST:

7% on subtotal

301.38

TOTAL:

\$ 4606.83
=====

Notes:

1. General expenses (all other costs) are prorated according to mandays allocated to each property.

And I make this solemn declaration conscientiously believing it to be true and knowing that it is of the same force and effect as if made under oath and by virtue of the Canada Evidence Act.

Declared before me at Vancouver in the)
Province of British Columbia this)
24th day of May, 1995)


Mark Baknes



Notary Public for the Province of
British Columbia

093295



LEGEND
(adapted from Green and Roddick, 1961)

- LITHOLOGY**
- MIDDLE DEVONIAN TO CARBONIFEROUS**
- 13 Black shale, argillite, slate, black platy limestone, chert, chert-pebble conglomerate, quartzite
 - 13b Barite-rich sediments
 - 13c Black, cherty argillite
 - 13s Black shale
- ORDOVICIAN AND SILURIAN**
- 9 Road River Formation
Interbedded black chert and argillite, grey-green chert and argillite, quartzite, chert-pebble conglomerate

SYMBOLS

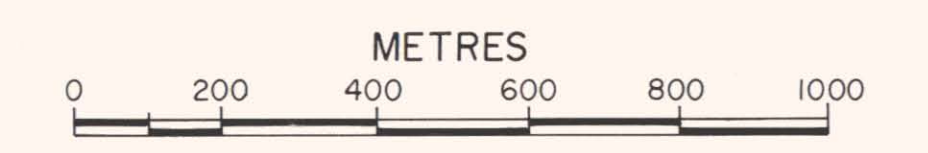
- outcrop boundary
- geological contact (approximate)
- thrust fault (teeth indicate dip direction)
- bedding
- rock sample (outcrop, float)
- soil sample
- trench
- barite
- pyrite

1994 Rock Geochemical Analyses

Sample	Ag (ppm)	Ba (ppm)	Pb (ppm)	Zn (ppm)
596656	7.8	410	56	254
596657	0.2	1330	6	68
596658	<0.2	1490	<2	4194
596659	0.8	2960	6	3150
596660	<0.2	2.48	4	90
596722	2.0	390	8	1994
596723	0.2	4280	6	208
596724	1.8	15.48	4	2912
596725	1.0	1580	<2	1402
596726	<0.2	49.68	<2	180
596727	<0.2	43.88	<2	293
596728	<0.2	14.88	<2	1402
596729	<0.2	35.28	<2	68
596758	<0.2	9930	<2	102
596759	<0.2	45.88	<2	286
596760	0.4	49.48	<2	2764
596761	0.6	38.78	<2	372
596762	<0.2	3500	<2	28
596763	<0.2	4440	4	12
596905	<0.2	34.28	<2	26
596906	1.2	580	<2	188
596907	1.4	380	<2	110
596908	1.0	930	<2	18
596909	2.4	4200	<2	124
596910	1.4	2430	<2	1238
596911	<0.2	38.78	<2	16
596912	0.4	660	8	56
596913	<0.2	38.78	<2	16
596914	0.6	6630	<2	1844
596915	<0.2	32.28	<2	54

1994 Soil Geochemical Analyses

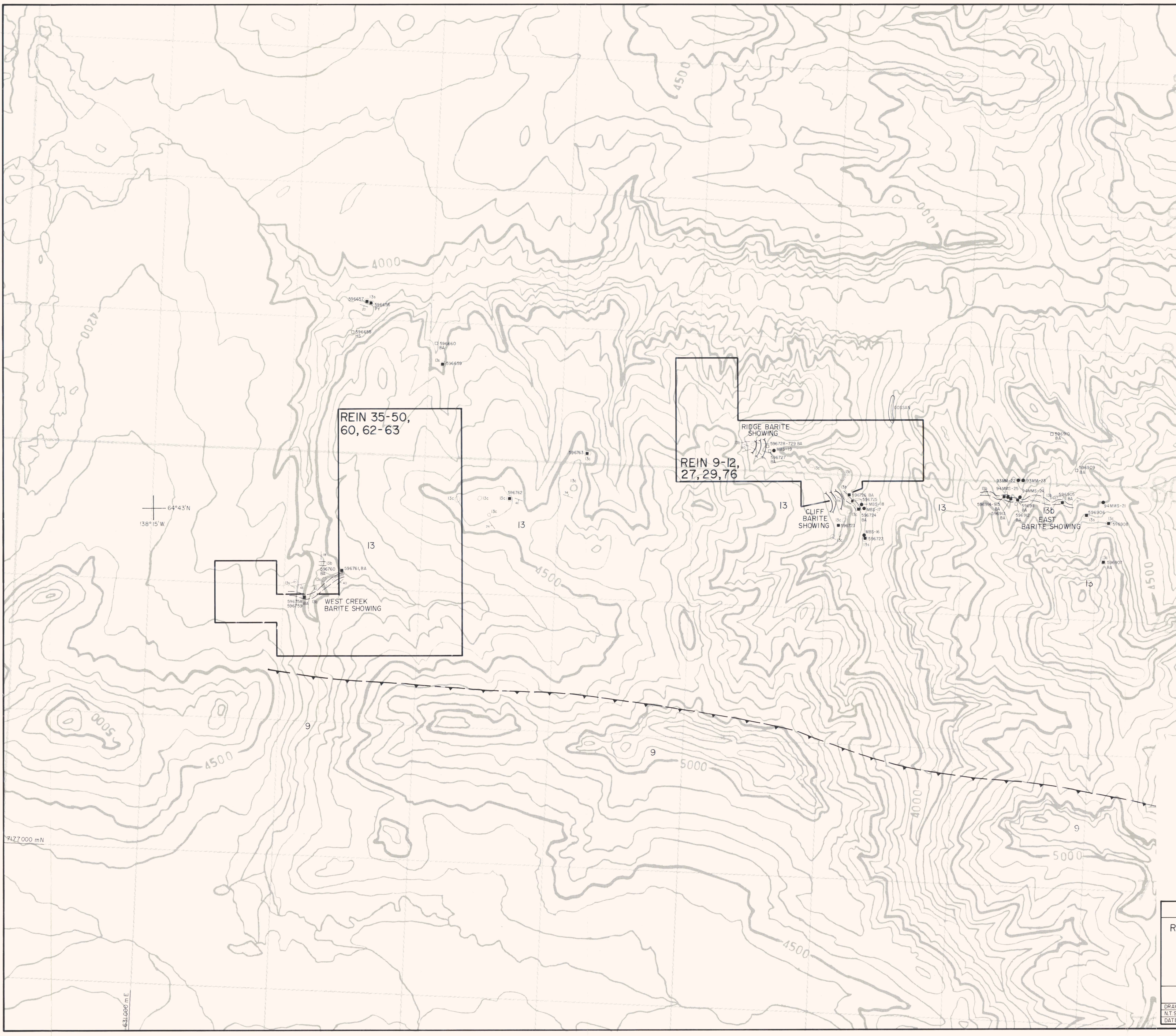
Sample	Ag (ppm)	Ba (ppm)	Pb (ppm)	Zn (ppm)
94MBS-16	5.2	1930	24	>10000
94MBS-17	1.0	1530	16	>10000
94MBS-18	11.0	7880	19	>10000
94MBS-19	2.4	6050	20	1265
94MBS-21	7.2	370	20	>10000
94MBS-22	2.4	790	20	3270
94MBS-23	2.4	3440	16	3840
94MBS-24	3.2	340	6	5300
94MBS-25	1.6	>10000	8	3310



PENDISLE RESOURCES LTD.
 REIN 6, 9-12, 27, 29, 35-50, 60, 62-63, 76
GEOLOGY & GEOCHEMISTRY
 YUKON TERRITORY

EQUITY ENGINEERING LTD.

DRAWN: J.W./R.F.	MINING DISTRICT: MAYO	FIGURE
N.T.S.: 1:10,000	SCALE: 1:10,000	4
DATE: JAN. 1995	REVISED:	



64°43'N
138°15'W

7427 000 mN

63,000 m E.

093255

DWG 1