

MAP NO: 115⁶GG/1

ASSESSMENT REPORT: X

DOCUMENT NO: 093258

PROSPECTUS:

MINING DISTRICT: Dawson

CONFIDENTIAL: X

TYPE OF

OPEN FILE:

WORK: Geological, geochemical

REPORT FILED UNDER: Monster Joint Venture

DATE PERFORMED: July 16, 1993

DATE FILED: July 8, 1994

LATITUDE: 65 03

AREA: Blackstone River

LONGITUDE: 138 08

VALUE: \$2781

CLAIM NAME AND #: Devil 1-24

WORK DONE BY: Henry J. Awmack

WORK DONE FOR: Equity Engineering Ltd., Pamicon Developments Ltd.

DATE TO GOOD STANDING	

REMARKS: Copper mineralization was discovered within a hematitic breccia east of the Blackstone River and zinc mineralization was found within a dolomitic breccia west of the river.

116 G-1

093258

1993 GEOLOGICAL
REPORT
ON THE
DEVIL 1-24 CLAIMS

Located in the Ogilvie Mountains
Dawson Mining District
NTS 116G/1
65° 03' North Latitude
138° 08' West Longitude

-prepared for-
MONSTER JOINT VENTURE

-prepared by-
Henry J. Awmack, P.Eng.

DATE OF WORK PERFORMED: July 16, 1993

DATE OF REPORT: June, 1994

1993 GEOLOGICAL REPORT ON THE DEVIL 1-24 CLAIMS

TABLE OF CONTENTS

		<u>Page</u>
1.0	INTRODUCTION	.1.
2.0	LIST OF CLAIMS	.1.
3.0	LOCATION, ACCESS AND PHYSIOGRAPHY	.1.
4.0	PREVIOUS WORK	.2.
5.0	1993 EXPLORATION PROGRAM	.2.
6.0	GEOLOGY	.2.
7.0	SOIL GEOCHEMISTRY	.3.
8.0	CONCLUSIONS AND RECOMMENDATIONS	.4.

APPENDICES

Appendix A	Bibliography
Appendix B	List of Personnel
Appendix C	Statement of Expenditures
Appendix D	Rock Sample Descriptions
Appendix E	Certificates of Analysis
Appendix F	Engineer's Certificate

LIST OF TABLES

		<u>Page</u>
Table 2.0.1	Claim Data	.1.

LIST OF FIGURES

		<u>Following Page</u>
Figure 1	Location Map	.1.
Figure 2	Claim Map	.1.
Figure 3	Geology and Geochemistry	.2.
Figure 4	Cu in Soils	.3.

1.0 INTRODUCTION

The Devil 1-24 claims ("Devil property") are located in the Ogilvie Mountains, approximately 130 kilometres north-northeast of Dawson in north central Yukon (Figure 1). The claims cover a hematite breccia within Proterozoic sedimentary rocks. The geological setting of this breccia is thought to be permissive for hosting Olympic Dam copper-uranium-gold-silver breccia type deposits and the Devil property was acquired on this basis.

Limited geological mapping, prospecting and soil geochemical sampling were carried out during and immediately following the staking of the property in July 1993. This work program was conducted jointly by Pamicon Developments Ltd. and Equity Engineering Ltd. for the Monster Joint Venture. The same companies have been retained to report on the fieldwork.

2.0 LIST OF CLAIMS

The Devil property comprises 24 contiguous quartz mineral claims, located in the Dawson Mining District (Figure 2). Government records indicate that the following claims are owned equally by Equity Engineering Ltd. and Pamicon Developments Ltd. of Vancouver, British Columbia. Separate documents indicate that they are held under option by the Monster Joint Venture.

TABLE 2.0.1
CLAIM DATA

Claim Name	Record Numbers	Record Date	Expiry Date
Devil 1-24	YB45039-45062	July 16, 1993	July 16, 1994

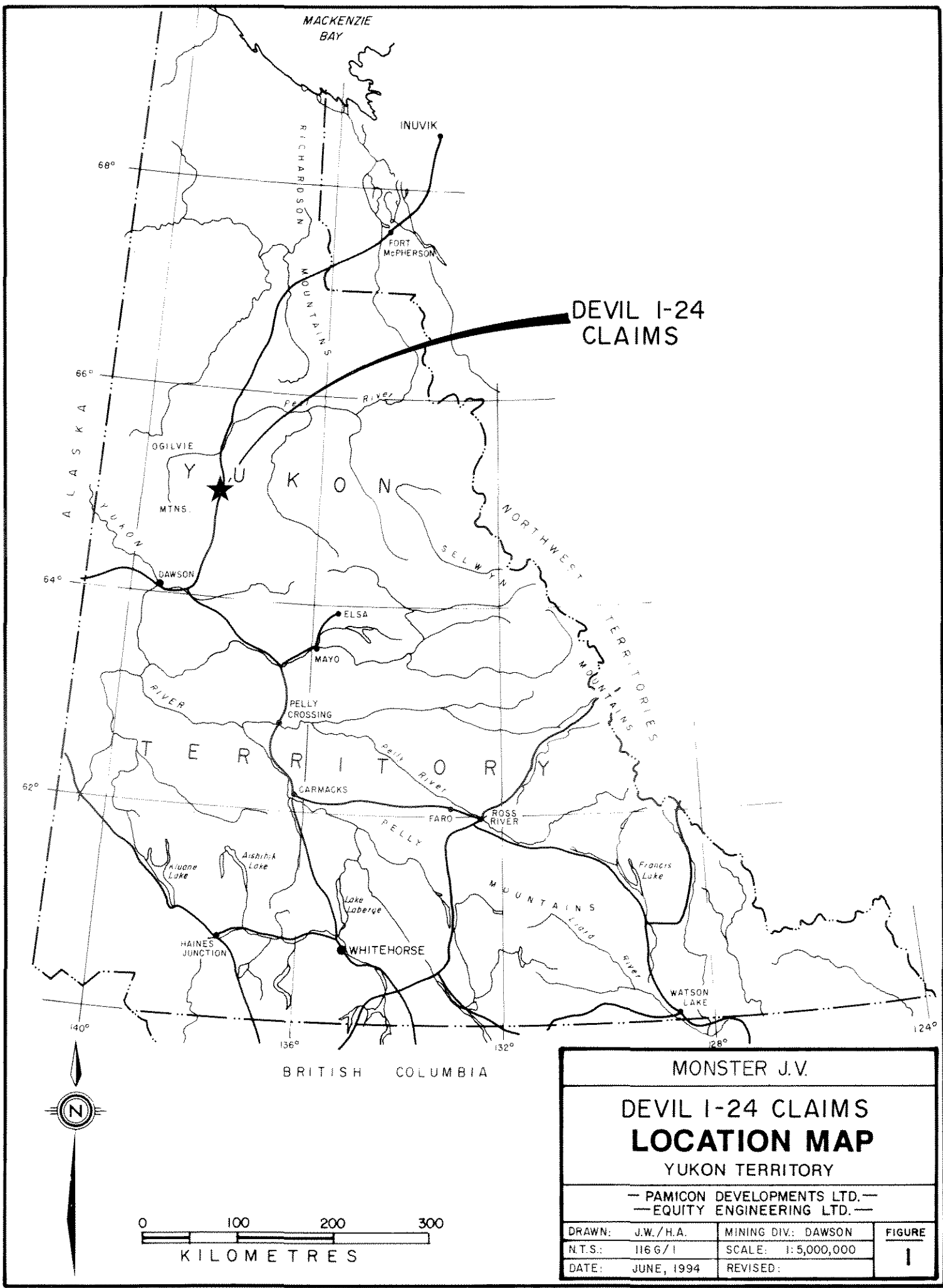
The Devil claims lie within the Dempster Highway Area Development Plan, which may restrict their future development.

3.0 LOCATION, ACCESS AND PHYSIOGRAPHY

The Devil property is located in the Ogilvie Mountains of north central Yukon, approximately 130 kilometres north-northeast of Dawson (Figure 1). The claims are centred at 65° 03' north latitude and 138° 08' west longitude.

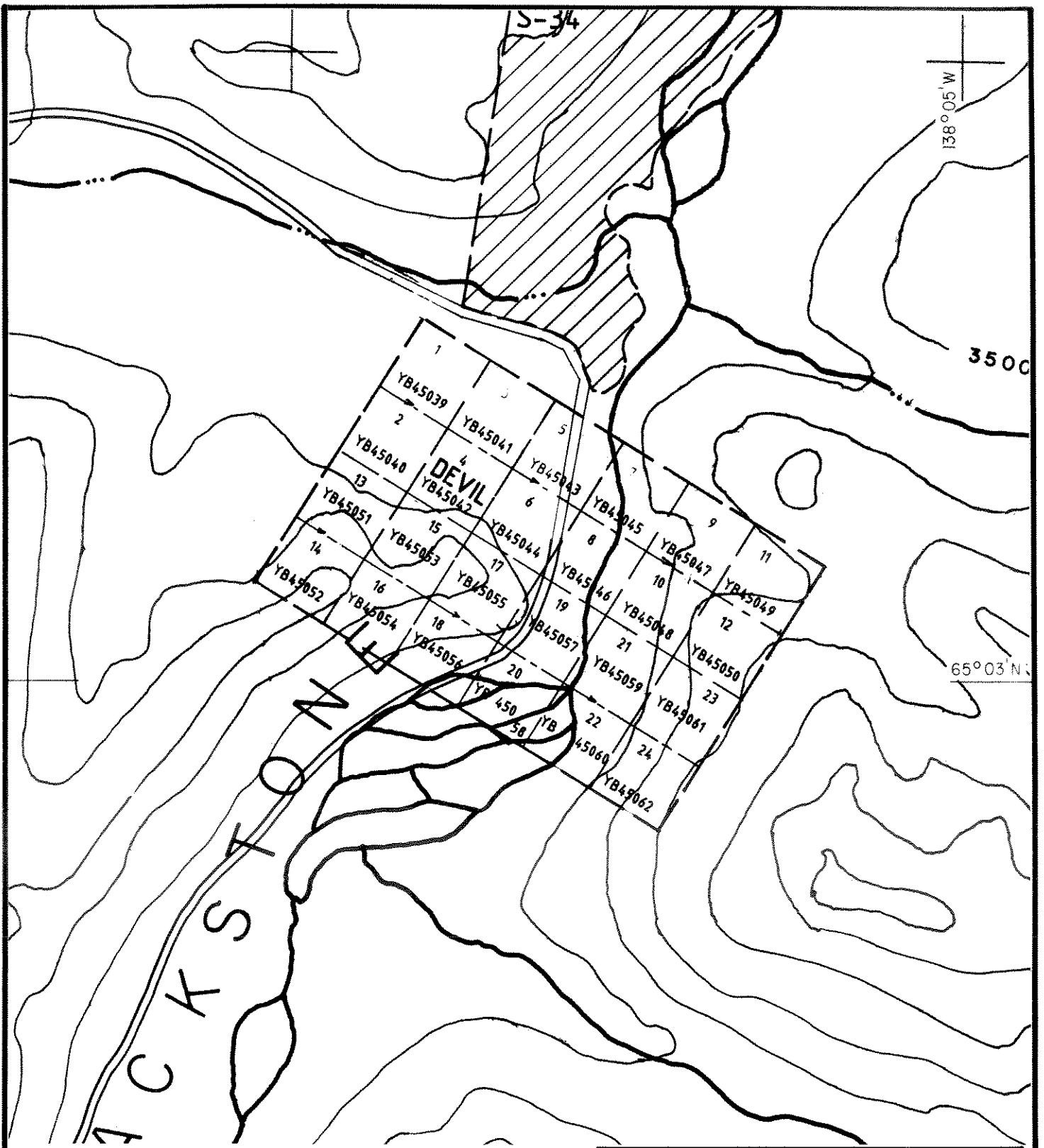
The claims straddle the Blackstone River; elevations range from approximately 850 metres at river level to 1,320 metres on a ridge at the southeastern end of the property. Most of the claim area is above tree line.

The Dempster Highway runs through the centre of the Devil property, providing excellent road access west of the Blackstone



DEVIL I-24 CLAIMS

MONSTER J.V.		
DEVIL I-24 CLAIMS		
LOCATION MAP		
YUKON TERRITORY		
— PAMICON DEVELOPMENTS LTD. —		
— EQUITY ENGINEERING LTD. —		
DRAWN:	J.W./H.A.	MINING DIV.: DAWSON
N.T.S.:	116 G/1	SCALE: 1:5,000,000
DATE:	JUNE, 1994	REVISED:
		FIGURE
		1



MONSTER J.V.		
DEVIL 1-24 CLAIMS CLAIM MAP YUKON TERRITORY		
— PAMICON DEVELOPMENTS LTD. — — EQUITY ENGINEERING LTD. —		
DRAWN:	J.W./H.A.	MINING DIV.: DAWSON
N.T.S.:	116 G/1	SCALE: 1:31680
DATE:	JUNE, 1994	REVISED:
		FIGURE 2

River. During the 1993 exploration program, the eastern part of the property was reached by wading across the Blackstone River.

4.0 PREVIOUS WORK

There has been no previous work recorded in the vicinity of the Devil 1-24 claims.

5.0 1993 EXPLORATION PROGRAM

Reconnaissance exploration was carried out on the Devil claims during staking and on the following day. This program consisted of mapping, rock sampling and soil geochemistry. The program was designed to determine the potential for an Olympic Dam copper-uranium-gold-silver breccia type deposit. A total of 21 rock samples and 32 soil samples were taken (Figure 4).

Lithogeochemical and soil sampling was carried out along claim lines (Devil N.CL, Devil S.CL and Devil L-1) and contour lines (Devil CL880 and Devil CL980). Soil samples were collected at 100 metre intervals along the claim and contour lines, interspersed with lithogeochemical samples (Figures 3 and 4). Soil samples were collected, where possible, from "B" horizon material at depths ranging from 10 to 40 cm and placed in numbered kraft envelopes. The sample site was marked in the field with flagging and the sampler recorded notes pertaining to sample horizon, colour, texture, vegetation, and local physiography. Samples were partially dried in camp and then shipped to Chemex Labs of North Vancouver, B.C. for sample preparation and analysis. Analytical procedures and a complete set of results for gold and lanthanum and 24-elements by ICP geochemistry form Appendix E.

Nineteen lithogeochemical samples were systematically taken at 100 metre intervals along claim and contour lines from talus or outcrop to define geochemical trends within the hematite breccias and the nearby dykes and sedimentary rocks (Figure 3). Two grab samples (#546620 and #546621) were taken from areas of visible copper mineralization. All rock samples are described in Appendix D, and analytical certificates are attached in Appendix E. Rock samples were analyzed geochemically for gold, lanthanum, uranium and by ICP for 24 other elements. In the field, sample locations were marked by a metal tag and a combination of pink and blue flagging.

6.0 GEOLOGY

The Ogilvie River 1:250,000 map sheet (116F and 116G) was reconnaissance mapped by the Geological Survey of Canada (Norris, 1979). The Devil claims cover the oldest rocks exposed in the map

sheet, within the core of the easterly-trending Chapman Anticline.

Reconnaissance mapping during the 1993 exploration program revealed Proterozoic Quartet Group shale and siltstone intruded by gabbro and hematite breccia bodies (Figure 3). Mapping was confined to an area measuring 400 x 900 metres on the west side of the Dempster Highway. The westernmost and northernmost exposures consist of folded and contorted Quartet Group shale and siltstone (Unit Pq). Heading east down the ridgeline from the westernmost outcrops of Quartet Group sediments is a rusty, locally chloritic, fragmental mapped as Gillespie Lake Group lithic lapilli tuff (Unit Pgf). However, ambiguous textures suggest that this may actually be a mylonite or squeezed breccia.

The majority of the mapped area is underlain by hematite breccia (Unit Bx). Homolithic breccia (Unit Bx₂) consists of dolomite fragments, commonly in a sparry carbonate matrix. Heterolithic breccia (Unit Bx₁), with mixed fragment lithologies, outcrops along the highway, where it is strongly altered to potassium feldspar, sericite and silica and weathers to a tan colour. Further south, the breccia is maroon to burgundy in colour. A gabbro dyke (Unit Gb) trends northwesterly through the mapped area.

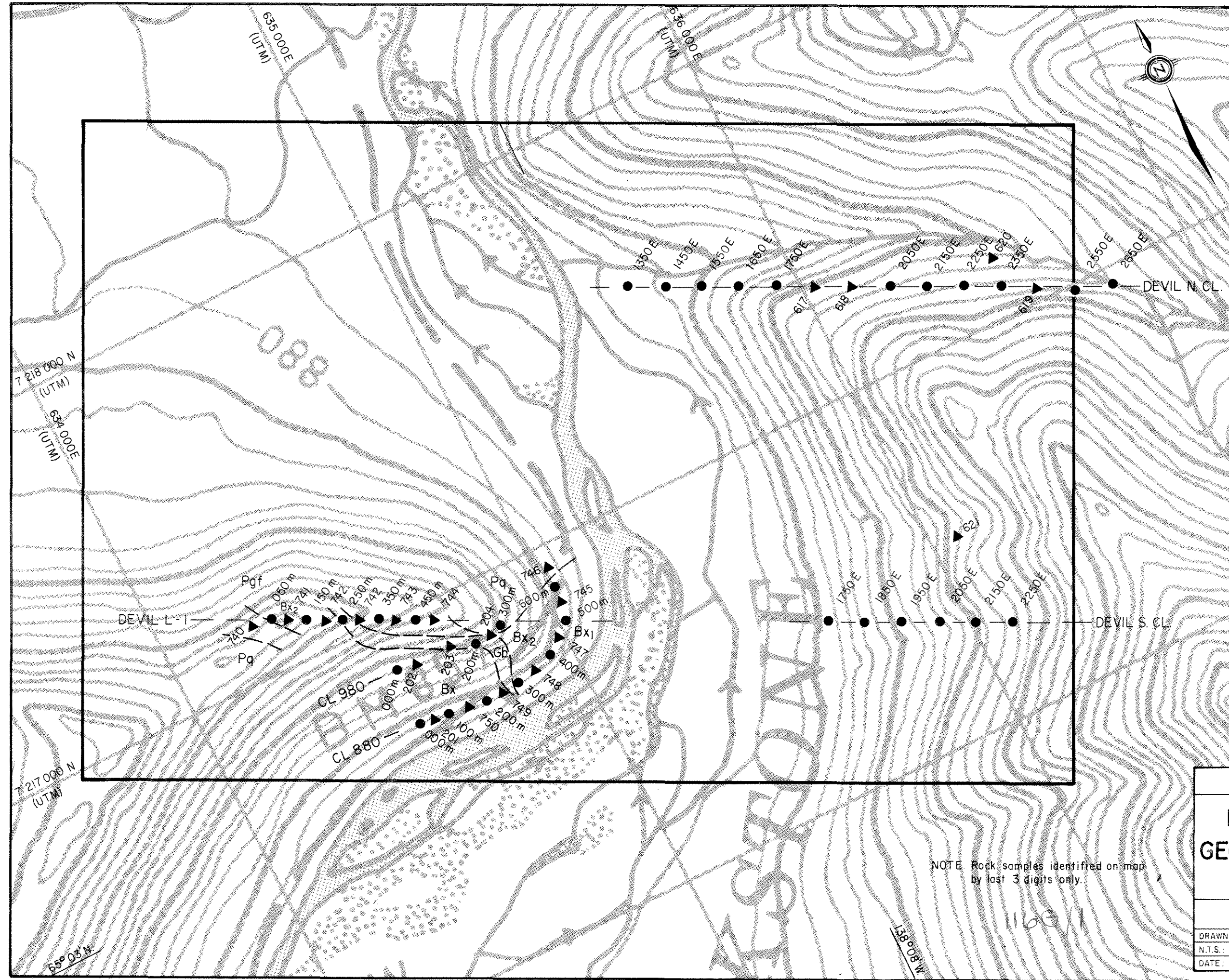
Nineteen lithogeochemical samples and two grab samples from mineralization were taken from various lithologies on the Devil property (Figure 3). Only two samples contained more than 200 ppm Cu. Grab sample #546620 was taken from weakly carbonate-altered breccia with 4% fracture-controlled specular hematite. This sample, taken east of the Blackstone River, contained 1005 ppm Cu. Lithogeochemical sample #546203, which was taken from chloritized gabbro float west of the highway, contained 553 ppm Cu.

Two lithogeochemical samples on the ridgeline west of the highway returned elevated zinc values. Samples #546739 (814 ppm Zn) and #546741 (2550 ppm Zn) were taken 100 metres apart from talus of dolomitic homolithic breccia with only traces of specularite or sulphides.

7.0 SOIL GEOCHEMISTRY

The five orientation soil lines were designed to test the response of copper and other elements in soils. Given the relatively small sample set, no statistical manipulation of the soil values has been performed.

Only two samples exceeded 100 ppm Cu, both in areas underlain by maroon breccia near the western ends of lines CL880 and CL980. Sample CL880 100m had the highest copper (236 ppm), cobalt (33 ppm), silver (1.2 ppm) and lead (46 ppm) values out of the 32 soil samples taken. The other copper-anomalous sample, CL980 000m,



LEGEND

LITHOLOGIES

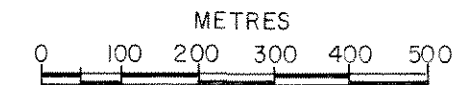
- PROTEROZOIC**
- Gb Gabbro, diorite
 - Bx Hematite breccia
 - Bx₁ Heterolithic breccia
 - Bx₂ Homolithic breccia
- WERNECKE SUPERGROUP**
- Pg Gillespie Lake Group:
 - Pgf mafic lapilli tuff(?)
 - Pq Quartet Group: Shale and siltstone

SYMBOLS

- Geological contact (approximate)
- ▲ Rock sample
- Soil sample

1993 Rock Geochemical Analyses

Sample Number	Au (ppb)	Ag (ppm)	Co (ppm)	Cu (ppm)
546201	<5	<0.2	13	104
546202	<5	<0.2	12	9
546203	15	<0.2	44	553
546204	<5	<0.2	50	91
546617	<5	<0.2	19	7
546618	<5	<0.2	59	87
546619	<5	<0.2	12	10
546620	<5	<0.2	28	1004
546621	<5	<0.2	42	67
546739	<5	0.4	13	35
546740	<5	<0.2	23	12
546741	<5	0.6	22	26
546742	<5	<0.2	14	4
546743	<5	<0.2	13	24
546744	<5	<0.2	18	124
546745	<5	<0.2	29	17
546746	<5	<0.2	29	8
546747	<5	<0.2	16	4
546748	<5	<0.2	9	5
546749	15	<0.2	49	196
546750	<5	<0.2	15	12



MONSTER J.V.

DEVIL 1-24 CLAIMS

GEOLOGY & GEOCHEMISTRY

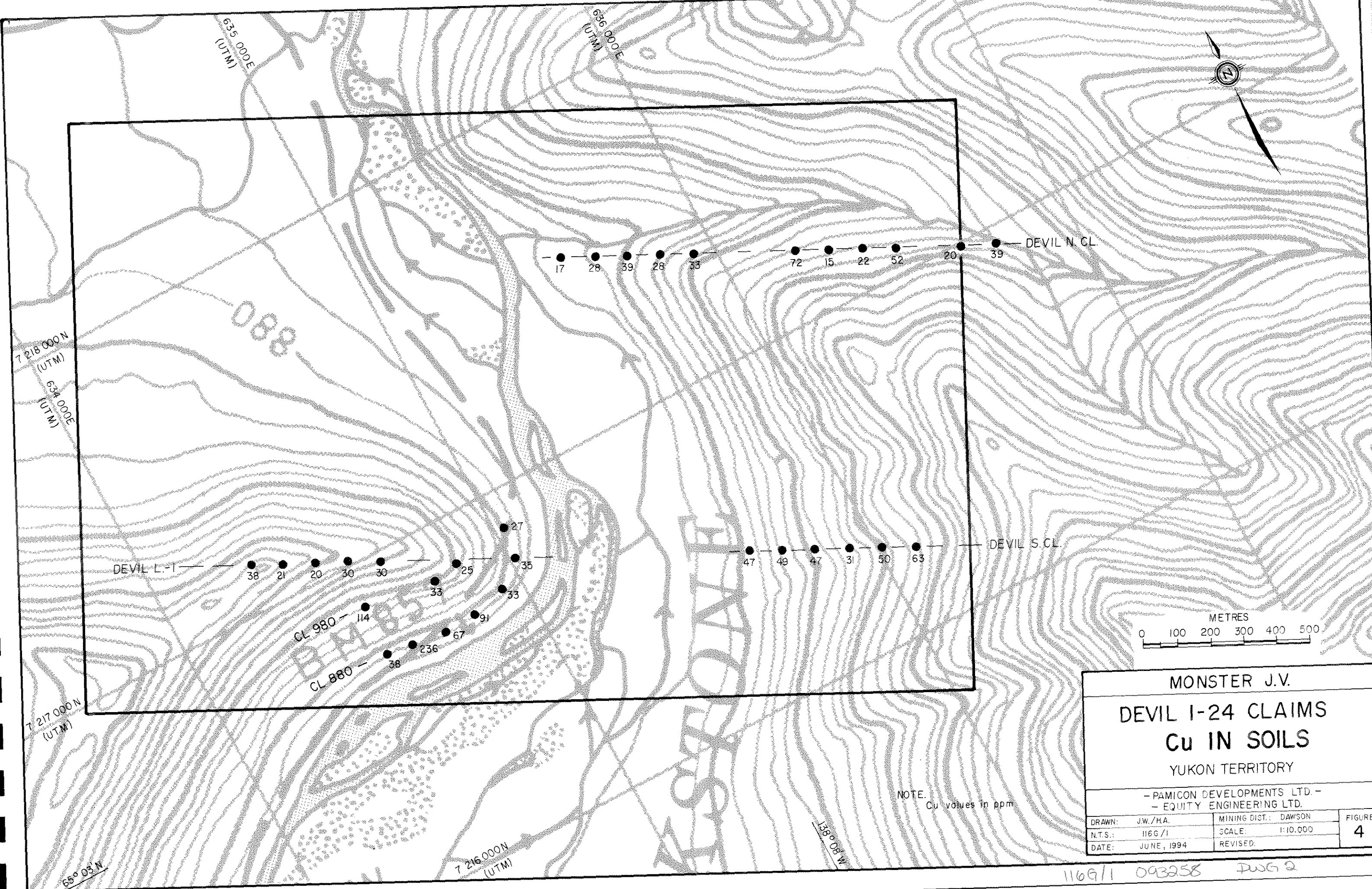
YUKON TERRITORY

- PAMICON DEVELOPMENTS LTD. -
- EQUITY ENGINEERING LTD. -

DRAWN: J.W./H.A.	MINING DIST.: DAWSON	FIGURE 3
N.T.S.: 1:16 G/1	SCALE: 1:10,000	
DATE: JUNE, 1994	REVISED:	

NOTE: Rock samples identified on map by last 3 digits only.

116G/1 093258 DWG①



NOTE:
Cu values in ppm

MONSTER J.V.			FIGURE 4
DEVIL I-24 CLAIMS			
Cu IN SOILS			
YUKON TERRITORY			
- PAMICON DEVELOPMENTS LTD. - - EQUITY ENGINEERING LTD.			
DRAWN:	JW./H.A.	MINING DIST.:	DAWSON
N.T.S.:	1:16 G/1	SCALE:	1:10,000
DATE:	JUNE, 1994	REVISED:	

1169/1 093258 DWG 2

taken further uphill and to the west, returned 114 ppm Cu, 23 ppm Co and 20 ppb Au. No mineralization has been found to explain the high soil values in this area.

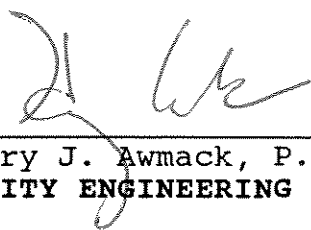
Soil sample L-1 150m, with 356 ppm Zn, was taken between two zinc-bearing lithochemical samples in an area underlain by dolomitic heterolithic breccia. Sample 546741, with 2550 ppm Zn, was taken just 50 metres west, uphill along the ridgeline. The anomalous soil sample marks the dolomitic breccia and downslope dispersion from zinc mineralization hosted by it.

8.0 CONCLUSIONS AND RECOMMENDATIONS

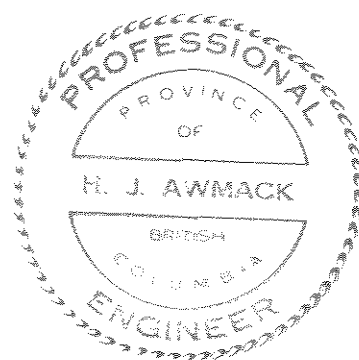
No previous exploration has been reported on the area now covered by the Devil claims. Limited exploration in 1993 revealed copper mineralization within a hematitic breccia east of the Blackstone River and zinc mineralization within a dolomitic breccia west of the river. A copper-cobalt soil geochemical anomaly in an area underlain by maroon hematitic breccia remains unexplained.

The exploration results from the 1993 program are encouraging and warrant further work on the Devil property. Property-wide reconnaissance mapping and prospecting will be necessary to determine the extent and economic potential of the breccia bodies. The next stage of exploration should focus on detailed mapping and soil grid sampling of the breccia and contact rocks on lines spaced 100 metres apart with samples every 50 metres. Areas returning concentrations of significant copper values in soils should be trenched if possible and infill soil geochemistry conducted in specific areas to better define anomalous trends.

Respectfully submitted,



Henry J. Awmack, P.Eng.
EQUITY ENGINEERING LTD.



Vancouver, British Columbia
June, 1994

APPENDIX A

BIBLIOGRAPHY

BIBLIOGRAPHY

Norris, D.K. (1979): Geology, Ogilvie River map-area, Yukon-Northwest Territories; Geological Survey of Canada, Map 1526A.

APPENDIX B

LIST OF PERSONNEL

LIST OF PERSONNEL

Barry Girling (Prospector)
711, 675 West Hastings Street
Vancouver, B.C. V6B 1N4

Michael Stammers (Geologist)
711, 675 West Hastings Street
Vancouver, B.C. V6B 1N4

APPENDIX C

STATEMENT OF EXPENDITURES

**STATEMENT OF EXPENDITURES
DEVIL 1-24 CLAIMS**

CANADA) In the matter of an evaluation program on the
) Devil 1-24 Mineral Claims

I, Henry J. Awmack for Equity Engineering Ltd., Suite 207, 675 West Hastings Street, Vancouver, B.C. do solemnly declare that a program consisting of lithogeochemical sampling, geological mapping, and prospecting was carried out on the Devil 1-24 Mineral Claims on July 16, 1993.

The following expenses were incurred during the course of this work and in the compilation and reporting of the results:

PROFESSIONAL FEES AND WAGES:

Michael A. Stammers, P.Geo.			
1 day @ \$375/day	\$	375.00	
Barry Girling, Prospector			
1 day @ \$250/day		250.00	
	\$		625.00

ASSAYS:

32 soils (@ \$18.80)			
	\$	601.60	
21 rocks (@ \$22.04)		462.84	
	\$		1,064.44

REPORT: (estimated) 750.00

MANAGEMENT FEES:

15% on expenses only 159.67

SUBTOTAL: \$ 2,599.11

GST:

7% on subtotal 181.94

\$ 2,781.05

=====

Notes:

1. Fieldwork carried out prior to the recording of the Devil 1-24 claims has not been included in this Statement of Expenditures.
2. Assay charges are based on actual numbers of samples from the property.

And I make this solemn declaration conscientiously believing it to be true and knowing that it is of the same force and effect as if made under oath and by virtue of the Canada Evidence Act.

Declared before me at Vancouver in the)
Province of British Columbia this)
4 day of July, 1994)

A Commissioner for Oaths for, or
Notary Public for the Yukon Territory

GORDON J. BITNEY
1100 WEST HASTINGS ST.
VANCOUVER, B.C.
SOLICITOR

APPENDIX D

ROCK SAMPLE DESCRIPTIONS

MINERALS AND ALTERATION TYPES

AB	albite	AD	adularia
AK	ankerite	AS	arsenopyrite
AZ	azurite	BA	barite
BI	biotite	BO	bornite
BR	brannerite	CA	calcite
CB	Fe-carbonate	CC	chalcocite
CL	chlorite	CO	cobaltite
CP	chalcopyrite	CY	clay
DI	diopside	DO	dolomite
EP	epidote	ER	erythrite
GA	garnet	GE	goethite
GL	galena	GR	graphite
HE	earthy hematite	HS	specularite
JA	jarosite	KF	potassium feldspar
MC	malachite	MG	magnetite
MN	Mn-oxides	MR	mariposite
MS	muscovite/sericite	NE	neotocite
PO	pyrrhotite	PY	pyrite
QZ	quartz	SI	silica
SP	sphalerite	TT	tetrahedrite

ALTERATION INTENSITIES

m	medium	s	strong	tr	trace
vs	very strong	vw	very weak	w	weak

Property : Devil 1-24 Claims

NTS : 116G/1, Yukon

Date : July 15-16, 1993

Sample No.	UTM :	7216 710 N	Type :	Float/talus	Alteration :	wCB, wCL, wKF, sMS, mSI	Au	Ag	Co	Cu	Pb	Zn
		634 570 E	Strike Length Exp. :	m	Metallics :	<1%HS, <1%PY	(ppb)	(ppm)	(ppm)	(ppm)	(ppm)	(ppm)
546201	Elevation:	891 m	Sample Width :	m	Secondaries:	None	<5	<0.2	13.	104.	2.	28.
	Orientation:	/	True Width :	m	Host :	Heterolithic/homolithic breccia						

Comments : Lithogeochemical sample from CL 880, 050m. In disturbed area. Last sample on this line.

Sample No.	UTM :	7216 860 N	Type :	Float/talus	Alteration :	wCB, mKF, wSI	Au	Ag	Co	Cu	Pb	Zn
		634 600 E	Strike Length Exp. :	m	Metallics :	<1%HS	(ppb)	(ppm)	(ppm)	(ppm)	(ppm)	(ppm)
546202	Elevation:	980 m	Sample Width :	m	Secondaries:	None	<5	<0.2	12.	9.	<2	24.
	Orientation:	/	True Width :	m	Host :	Homolithic breccia						

Comments : Lithogeochemical sample from CL980, 050m. Directly above corner of scar (940m).

Sample No.	UTM :	7216 860 N	Type :	Float	Alteration :	sCL, wMS, wSI	Au	Ag	Co	Cu	Pb	Zn
		634 710 E	Strike Length Exp. :	m	Metallics :	trCP, 15%HS	(ppb)	(ppm)	(ppm)	(ppm)	(ppm)	(ppm)
546203	Elevation:	1000 m	Sample Width :	m	Secondaries:	None	15.	<0.2	44.	553.	<2	58.
	Orientation:	/	True Width :	m	Host :	Altered gabbro						

Comments : Lithogeochemical sample from CL980, 150m. Lots of breccia in between 546203 and 546204.

Sample No.	UTM :	7216 840 N	Type :	Grab	Alteration :	wCL, wMS	Au	Ag	Co	Cu	Pb	Zn
		634 820 E	Strike Length Exp. :	m	Metallics :	None	(ppb)	(ppm)	(ppm)	(ppm)	(ppm)	(ppm)
546204	Elevation:	995 m	Sample Width :	m	Secondaries:	None	<5	<0.2	50.	91.	<2	162.
	Contact :	275 /	True Width :	m	Host :	Gabbro						

Comments : Lithogeochemical sample at CL980, 250m. Gabbro outcrops, non-magnetic. Contact between sediments and breccia/gabbro trends 275.

Sample No.	UTM :	7217 300 N	Type :	Float	Alteration :	mCB	Au	Ag	Co	Cu	Pb	Zn
		636 030 E	Strike Length Exp. :	m	Metallics :	1-2%HS	(ppb)	(ppm)	(ppm)	(ppm)	(ppm)	(ppm)
546617	Elevation:		Sample Width :	m	Secondaries:	None	<5	<0.2	19.	7.	<2	24.
	Orientation:	/	True Width :	m	Host :	Maroon sediment						

Comments : Lithogeochemical sample.

Sample No.	UTM :	7217 260 N	Type :	Float	Alteration :	mCB	Au	Ag	Co	Cu	Pb	Zn
		636 120 E	Strike Length Exp. :	m	Metallics :	10%HS	(ppb)	(ppm)	(ppm)	(ppm)	(ppm)	(ppm)
546618	Elevation:		Sample Width :	m	Secondaries:	wHE	<5	<0.2	59.	87.	<2	116.
	Orientation:	/	True Width :	m	Host :	Diorite						

Comments : Lithogeochemical sample.

Property : Devil 1-24 Claims

NTS : 1166/1, Yukon

Date : July 15-16, 1993

Sample No.	UTM :	7217 030 N	Type :	Float	Alteration :	mCB	Au	Ag	Co	Cu	Pb	Zn
		636 570 E	Strike Length Exp. :	m	Metallics :	7%HS	(ppb)	(ppm)	(ppm)	(ppm)	(ppm)	(ppm)
546619	Elevation:		Sample Width :	m	Secondaries:	WHE	<5	<0.2	12.	10.	<2	14.
	Orientation:	/	True Width :	m	Host :							

Comments : Lithogeochemical sample.

Sample No.	UTM :	7217 160 N	Type :	Select	Alteration :	wCB	Au	Ag	Co	Cu	Pb	Zn
		636 490 E	Strike Length Exp. :	m	Metallics :	4%HS	(ppb)	(ppm)	(ppm)	(ppm)	(ppm)	(ppm)
546620	Elevation:		Sample Width :	m	Secondaries:	mMC	<5	<0.2	28.	1004.	<2	52.
	Orientation:	/	True Width :	m	Host :	Breccia						

Comments : Mineralization appears fracture controlled in breccia over 5m.

Sample No.	UTM :	7216 520 N	Type :	Float	Alteration :	wCB	Au	Ag	Co	Cu	Pb	Zn
		636 070 E	Strike Length Exp. :	m	Metallics :	trCP, 5%HS	(ppb)	(ppm)	(ppm)	(ppm)	(ppm)	(ppm)
546621	Elevation:		Sample Width :	m	Secondaries:	WHE	<5	<0.2	42.	67.	<2	80.
	Orientation:	/	True Width :	m	Host :	Diorite						

Comments : Quartz stringers; massive hematite veinlets. Bleb chalcopyrite.

Sample No.	UTM :	7217 070 N	Type :	Float	Alteration :	wCB, wCL, mKF, wMS, mSI	Au	Ag	Co	Cu	Pb	Zn
		634 420 E	Strike Length Exp. :	m	Metallics :	trHS, trPY	(ppb)	(ppm)	(ppm)	(ppm)	(ppm)	(ppm)
546739	Elevation:	1115 m	Sample Width :	m	Secondaries:	mHE	<5	0.4	13.	35.	6.	814.
	Orientation:	/	True Width :	m	Host :	Homolithic (dolomite) breccia						

Comments : Lithogeochemical sample at L-1 200m.

Sample No.	UTM :	7217 150 N	Type :	Float	Alteration :	mCA, wCB, wCL, wCY, mMS	Au	Ag	Co	Cu	Pb	Zn
		634 240 E	Strike Length Exp. :	m	Metallics :	<1%HS, <1%PY	(ppb)	(ppm)	(ppm)	(ppm)	(ppm)	(ppm)
546740	Elevation:	1125 m	Sample Width :	m	Secondaries:	GE	<5	<0.2	23.	12.	<2	118.
	Orientation:	/	True Width :	m	Host :	Heterolithic metabreccia? Lithic lapilli tuff?						

Comments : Lithogeochemical sample at L-1, 000m.

Sample No.	UTM :	7217 120 N	Type :	Float	Alteration :	mCB, wCL, mKF, mSI	Au	Ag	Co	Cu	Pb	Zn
		634 330 E	Strike Length Exp. :	m	Metallics :	trHS, <1%PY	(ppb)	(ppm)	(ppm)	(ppm)	(ppm)	(ppm)
546741	Elevation:	1030 m	Sample Width :	m	Secondaries:	None	<5	0.6	22.	26.	16.	2552.
	Orientation:	/	True Width :	m	Host :	Homolithic (dolomite) breccia						

Comments : Lithogeochemical sample at Devil L-1, 100m.

Property : Devil 1-24 Claims

NTS : 116G/1, Yukon

Date : July 15-16, 1993

Sample No.	UTM :	7217 040 N	Type :	Float/talus	Alteration :	wCB, wCL, mKF, wSI	Au	Ag	Co	Cu	Pb	Zn
		634 500 E	Strike Length Exp. :	m	Metallics :	trHS	(ppb)	(ppm)	(ppm)	(ppm)	(ppm)	(ppm)
546742	Elevation:	1090 m	Sample Width :	m	Secondaries:	mHE	<5	<0.2	14.	4.	<2	70.
	Orientation:	/	True Width :	m	Host :	Homolithic breccia						

Comments : Lithogeochemical sample at Devil L-1, 300m.

Sample No.	UTM :	7216 990 N	Type :	Float/talus	Alteration :	mCB, mKF, wSI	Au	Ag	Co	Cu	Pb	Zn
		634 590 E	Strike Length Exp. :	m	Metallics :	trHS	(ppb)	(ppm)	(ppm)	(ppm)	(ppm)	(ppm)
546743	Elevation:	1070 m	Sample Width :	m	Secondaries:	mHE	<5	<0.2	13.	24.	<2	72.
	Orientation:	/	True Width :	m	Host :	Altered dolomite						

Comments : Lithogeochemical sample at Devil L-1, 400m.

Sample No.	UTM :	7216 950 N	Type :	Grab	Alteration :	mCB, mCL, mKF	Au	Ag	Co	Cu	Pb	Zn
		634 690 E	Strike Length Exp. :	m	Metallics :	HS	(ppb)	(ppm)	(ppm)	(ppm)	(ppm)	(ppm)
546744	Elevation:	1050 m	Sample Width :	m	Secondaries:	None	<5	<0.2	18.	124.	<2	34.
	Orientation:	/	True Width :	m	Host :	Sheared breccia						

Comments : Lithogeochemical sample at Devil L-1, 500m.

Sample No.	UTM :	7216 840 N	Type :	Grab	Alteration :	mCB, sSI	Au	Ag	Co	Cu	Pb	Zn
		635 030 E	Strike Length Exp. :	m	Metallics :	trCP, 2%HS, <1%PY	(ppb)	(ppm)	(ppm)	(ppm)	(ppm)	(ppm)
546745	Elevation:	880 m	Sample Width :	m	Secondaries:	mGE	<5	<0.2	29.	17.	4.	44.
	Orientation:	/	True Width :	m	Host :	Heterolithic/homolithic breccia						

Comments : Lithogeochemical sample at CL880, 550m. Bleached white with rusty stains, some shear fabric.

Sample No.	UTM :	7216 940 N	Type :	Float/talus	Alteration :	wCB, mCL, wKF, sSI	Au	Ag	Co	Cu	Pb	Zn
		635 030 E	Strike Length Exp. :	m	Metallics :	None	(ppb)	(ppm)	(ppm)	(ppm)	(ppm)	(ppm)
546746	Elevation:	883 m	Sample Width :	m	Secondaries:	None	<5	<0.2	29.	8.	<2	68.
	Orientation:	/	True Width :	m	Host :	Heterolithic breccia						

Comments : Lithogeochemical sample at CL880, 650m. Note: may have travelled long way down from top of hill. Possibly underlain by shale here.

Sample No.	UTM :	7216 750 N	Type :	Float	Alteration :	wCB, sCL, sKF, wSI	Au	Ag	Co	Cu	Pb	Zn
		634 970 E	Strike Length Exp. :	m	Metallics :	None	(ppb)	(ppm)	(ppm)	(ppm)	(ppm)	(ppm)
546747	Elevation:	880 m	Sample Width :	m	Secondaries:	None	<5	<0.2	16.	4.	<2	56.
	Orientation:	/	True Width :	m	Host :	Homolithic breccia						

Comments : Lithogeochemical sample at CL880m 450m.

Property : Devil 1-24 Claims

NTS : 116G/1, Yukon

Date : July 15-16, 1993

Sample No.	UTM :	7216 700 N	Type :	Float/talus	Alteration :	wKF, wMS	Au	Ag	Co	Cu	Pb	Zn
		634 880 E		Strike Length Exp. : m		Metallics :	(ppb)	(ppm)	(ppm)	(ppm)	(ppm)	(ppm)
546748	Elevation:	885 m		Sample Width : m		Secondaries:	<5	<0.2	9.	5.	<2	28.
	Orientation:	/		True Width : m		Host :	Homolithic breccia/altered dolomite					

Comments : Lithochemical sample at CL880, 350m.

Sample No.	UTM :	7216 690 N	Type :	Float/talus	Alteration :	wCB, sCL, wKF, wMS	Au	Ag	Co	Cu	Pb	Zn
		634 770 E		Strike Length Exp. : m		Metallics :	(ppb)	(ppm)	(ppm)	(ppm)	(ppm)	(ppm)
546749	Elevation:	890 m		Sample Width : m		Secondaries:	15.	<0.2	49.	196.	<2	74.
	Orientation:	/		True Width : m		Host :	Homolithic/heterolithic breccia					

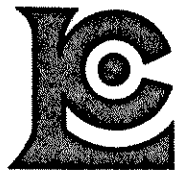
Comments : Lithochemical sample at CL880, 250m. Trace chalcopyrite in quartz veinlets.

Sample No.	UTM :	7216 690 N	Type :	Grab	Alteration :	wCB, mCL, wKF, sMS, sSI	Au	Ag	Co	Cu	Pb	Zn
		634 670 E		Strike Length Exp. : m		Metallics :	(ppb)	(ppm)	(ppm)	(ppm)	(ppm)	(ppm)
546750	Elevation:	880 m		Sample Width : m		Secondaries:	<5	<0.2	15.	12.	4.	26.
	Orientation:	/		True Width : m		Host :	Homolithic/creackle breccia					

Comments : Lithochemical sample at CL880, 150m. Outcrop above disturbed area.

APPENDIX E

CERTIFICATES OF ANALYSIS



Chemex Labs Ltd.

Analytical Chemists * Geochemists * Registered Assayers
212 Brooksbank Ave., North Vancouver
British Columbia, Canada V7J 2C1
PHONE: 604-984-0221

To: EQUITY ENGINEERING LTD.

207 - 675 W. HASTINGS ST.
VANCOUVER, BC
V6B 1N2

A9317866

Comments: CC: MIKE STAMMERS

CERTIFICATE

A9317866

EQUITY ENGINEERING LTD.

Project: DEVIL
P.O. #:

Samples submitted to our lab in Vancouver, BC.
This report was printed on 31-JUL-93.

SAMPLE PREPARATION

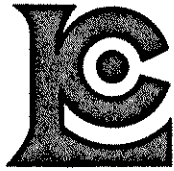
CHEMEX CODE	NUMBER SAMPLES	DESCRIPTION
205	21	Geochem ring to approx 150 mesh
274	21	0-15 lb crush and split
285	21	ICP - HF digestion charge

* NOTE 1:

The 32 element ICP package is suitable for trace metals in soil and rock samples. Elements for which the nitric-aqua regia digestion is possibly incomplete are: Al, Ba, Be, Ca, Cr, Ga, K, La, Mg, Na, Sr, Ti, Tl, W.

ANALYTICAL PROCEDURES

CHEMEX CODE	NUMBER SAMPLES	DESCRIPTION	METHOD	DETECTION LIMIT	UPPER LIMIT
100	21	Au ppb: Fuse 10 g sample	FA-AAS	5	10000
578	21	Ag ppm: 24 element, rock & core	AAS	0.5	200
573	21	Al %: 24 element, rock & core	ICP-AES	0.01	25.0
565	21	Ba ppm: 24 element, rock & core	ICP-AES	10	10000
575	21	Be ppm: 24 element, rock & core	ICP-AES	0.5	10000
561	21	Bi ppm: 24 element, rock & core	ICP-AES	2	10000
576	21	Ca %: 24 element, rock & core	ICP-AES	0.01	25.0
562	21	Cd ppm: 24 element, rock & core	ICP-AES	0.5	10000
563	21	Co ppm: 24 element, rock & core	ICP-AES	1	10000
569	21	Cr ppm: 24 element, rock & core	ICP-AES	1	10000
577	21	Cu ppm: 24 element, rock & core	ICP-AES	1	10000
566	21	Fe %: 24 element, rock & core	ICP-AES	0.01	25.0
584	21	K %: 24 element, rock & core	ICP-AES	0.01	20.0
570	21	Mg %: 24 element, rock & core	ICP-AES	0.01	20.0
568	21	Mn ppm: 24 element, rock & core	ICP-AES	5	10000
554	21	Mo ppm: 24 element, rock & core	ICP-AES	1	10000
583	21	Na %: 24 element, rock & core	ICP-AES	0.01	5.00
564	21	Ni ppm: 24 element, rock & core	ICP-AES	1	10000
559	21	P ppm: 24 element, rock & core	ICP-AES	10	10000
560	21	Pb ppm: 24 element, rock & core	AAS	2	10000
582	21	Sr ppm: 24 element, rock & core	ICP-AES	1	10000
579	21	Ti %: 24 element, rock & core	ICP-AES	0.01	10.00
572	21	V ppm: 24 element, rock & core	ICP-AES	1	10000
556	21	W ppm: 24 element, rock & core	ICP-AES	10	10000
558	21	Zn ppm: 24 element, rock & core	ICP-AES	2	10000
1006	21	La ppm: 20 element, rock ID	ICP-AES	10	10000



Chemex Labs Ltd.

Analytical Chemists * Geochemists * Registered Assayers
 212 Brooksbank Ave., North Vancouver
 British Columbia, Canada V7J 2C1
 PHONE: 604-984-0221

To: EQUITY ENGINEERING LTD.

207 - 675 W. HASTINGS ST.
 VANCOUVER, BC
 V6B 1N2

Page Number : 1-A
 Total Pages : 1
 Certificate Date: 31-JUL-93
 Invoice No. : 19317866
 P.O. Number :
 Account : EIA

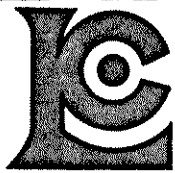
Project : DEVIL
 Comments : CC: MIKE STAMMERS

CERTIFICATE OF ANALYSIS A9317866

SAMPLE	PREP CODE	Au ppb FA+AA	Ag ppm AAS	Al % (ICP)	Ba ppm (ICP)	Be ppm (ICP)	Bi ppm (ICP)	Ca % (ICP)	Cd ppm (ICP)	Co ppm (ICP)	Cr ppm (ICP)	Cu ppm (ICP)	Fe % (ICP)	K % (ICP)	Mg % (ICP)
546201	205 274	< 5	< 0.2	6.23	1460	< 0.5	< 2	4.38	0.5	13	61	104	3.80	5.53	2.40
546202	205 274	< 5	< 0.2	5.05	1060	< 0.5	< 2	5.98	< 0.5	12	74	9	2.85	3.83	3.68
546203	205 274	15	< 0.2	7.32	760	< 0.5	< 2	0.39	1.0	44	48	553	13.50	2.49	4.01
546204	205 274	< 5	< 0.2	8.24	510	< 0.5	< 2	0.39	0.5	50	209	91	9.39	2.01	6.00
546617	205 274	< 5	< 0.2	6.44	640	< 0.5	< 2	1.21	< 0.5	19	108	7	6.79	3.14	2.23
546618	205 274	< 5	< 0.2	5.94	170	< 0.5	< 2	0.31	1.0	59	115	87	18.55	0.34	3.67
546619	205 274	< 5	< 0.2	5.92	4360	< 0.5	< 2	2.75	< 0.5	12	96	10	4.76	4.26	2.44
546620	205 274	< 5	< 0.2	7.69	1130	< 0.5	< 2	0.23	< 0.5	28	110	1005	7.99	4.10	3.87
546621	205 274	< 5	< 0.2	6.23	1180	< 0.5	< 2	0.14	1.0	42	61	67	11.95	1.28	5.33
546739	205 274	< 5	0.4	6.94	7910	0.5	< 2	2.62	2.5	13	79	35	3.01	6.61	1.75
546740	205 274	< 5	< 0.2	6.90	1350	< 0.5	< 2	0.30	< 0.5	23	169	12	7.17	3.50	3.63
546741	205 274	< 5	0.6	4.34	2390	< 0.5	< 2	5.06	6.0	22	88	26	2.98	3.84	3.05
546742	205 274	< 5	< 0.2	6.79	4880	1.0	< 2	2.10	< 0.5	14	85	4	4.38	5.86	1.99
546743	205 274	< 5	< 0.2	5.63	790	< 0.5	< 2	5.92	< 0.5	13	65	24	2.46	3.46	3.84
546744	205 274	< 5	< 0.2	5.70	1030	< 0.5	< 2	4.89	0.5	18	96	124	2.21	4.91	3.26
546745	205 274	< 5	< 0.2	5.05	430	0.5	< 2	7.10	< 0.5	29	71	17	3.15	3.54	4.80
546746	205 274	< 5	< 0.2	4.60	330	< 0.5	< 2	3.05	0.5	29	166	8	6.26	2.68	3.81
546747	205 274	< 5	< 0.2	6.06	1820	< 0.5	< 2	2.22	< 0.5	16	146	4	3.83	4.32	4.03
546748	205 274	< 5	< 0.2	4.23	960	< 0.5	< 2	5.12	< 0.5	9	83	5	1.79	4.31	3.36
546749	205 274	15	< 0.2	6.77	2250	< 0.5	< 2	0.69	0.5	49	106	196	10.95	2.50	4.20
546750	205 274	< 5	< 0.2	6.92	1620	2.0	< 2	4.41	< 0.5	15	80	12	2.51	5.45	2.76

CERTIFICATION: *Hart Buchler*

Barium results may be low due to precipitation



Chemex Labs Ltd.

Analytical Chemists * Geochemists * Registered Assayers
 212 Brooksbank Ave., North Vancouver
 British Columbia, Canada V7J 2C1
 PHONE: 604-984-0221

To: EQUITY ENGINEERING LTD.

207 - 675 W. HASTINGS ST.
 VANCOUVER, BC
 V6B 1N2

Project : DEVIL
 Comments: CC: MIKE STAMMERS

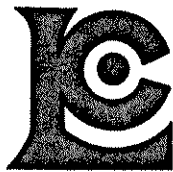
Page Number : 1-B
 Total Pages : 1
 Certificate Date: 31-JUL-93
 Invoice No. : 19317866
 P.O. Number :
 Account : EIA

CERTIFICATE OF ANALYSIS A9317866

SAMPLE	PREP CODE	Mn ppm (ICP)	Mo ppm (ICP)	Na % (ICP)	Ni ppm (ICP)	P ppm (ICP)	Pb ppm AAS	Sr ppm (ICP)	Ti % (ICP)	V ppm (ICP)	W ppm (ICP)	Zn ppm (ICP)	La ppm ICP		
546201	205 274	3080	< 1	0.15	14	680	< 2	90	0.21	65	< 10	28	10		
546202	205 274	3080	< 1	0.14	20	830	< 2	42	0.24	59	< 10	24	< 10		
546203	205 274	680	< 1	0.21	47	820	< 2	13	0.81	454	< 10	58	90		
546204	205 274	880	< 1	0.68	85	650	< 2	15	1.05	408	< 10	162	10		
546617	205 274	705	< 1	0.11	21	610	< 2	14	0.27	76	< 10	24	20		
546618	205 274	1385	< 1	0.17	27	200	< 2	5	0.22	253	< 10	116	30		
546619	205 274	1490	1	0.14	21	680	< 2	335	0.24	65	< 10	14	30		
546620	205 274	730	< 1	0.22	30	780	< 2	21	0.33	128	< 10	52	20		
546621	205 274	1115	< 1	0.19	35	530	< 2	18	0.70	402	< 10	80	30		
546739	205 274	3120	1	0.19	17	790	6	95	0.25	73	< 10	814	50		
546740	205 274	1150	< 1	0.23	58	470	< 2	18	0.34	162	< 10	118	10		
546741	205 274	4240	< 1	0.11	23	850	16	46	0.21	48	< 10	2550	< 10		
546742	205 274	1815	< 1	0.17	19	650	< 2	153	0.29	72	< 10	70	20		
546743	205 274	3630	1	0.19	22	740	< 2	38	0.21	57	< 10	72	< 10		
546744	205 274	2830	< 1	0.17	13	1150	< 2	35	0.28	68	< 10	34	10		
546745	205 274	4990	< 1	0.13	14	700	4	34	0.21	61	< 10	44	< 10		
546746	205 274	3350	< 1	0.13	29	990	< 2	21	0.28	167	< 10	68	150		
546747	205 274	1175	< 1	0.13	26	1030	< 2	44	0.30	68	< 10	56	40		
546748	205 274	2410	< 1	0.11	7	670	< 2	37	0.20	38	< 10	28	< 10		
546749	205 274	1070	< 1	0.14	64	740	< 2	38	0.67	324	< 10	74	10		
546750	205 274	2600	< 1	0.15	17	680	4	48	0.23	78	< 10	26	40		

CERTIFICATION: *Jan A. Buchler*

Barium results may be low due to precipitation



Chemex Labs Ltd.

Analytical Chemists * Geochemists * Registered Assayers
212 Brooksbank Ave., North Vancouver
British Columbia, Canada V7J 2C1
PHONE: 604-984-0221

To: EQUITY ENGINEERING LTD.

207 - 675 W. HASTINGS ST.
VANCOUVER, BC
V6B 1N2

A9317867

Comments: CC: MIKE STAMMERS

CERTIFICATE

A9317867

EQUITY ENGINEERING LTD.

Project: DEVIL
P.O. #:

Samples submitted to our lab in Vancouver, BC.
This report was printed on 31-JUL-93.

SAMPLE PREPARATION

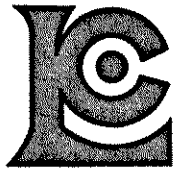
CHEMEX CODE	NUMBER SAMPLES	DESCRIPTION
201	32	Dry, sieve to -80 mesh
285	32	ICP - HF digestion charge

* NOTE 1:

The 32 element ICP package is suitable for trace metals in soil and rock samples. Elements for which the nitric-aqua regia digestion is possibly incomplete are: Al, Ba, Be, Ca, Cr, Ga, K, La, Mg, Na, Sr, Ti, Tl, W.

ANALYTICAL PROCEDURES

CHEMEX CODE	NUMBER SAMPLES	DESCRIPTION	METHOD	DETECTION LIMIT	UPPER LIMIT
100	32	Au ppb: Fuse 10 g sample	FA-AAS	5	10000
578	32	Ag ppm: 24 element, rock & core	AAS	0.5	200
573	32	Al %: 24 element, rock & core	ICP-AES	0.01	25.0
565	32	Ba ppm: 24 element, rock & core	ICP-AES	10	10000
575	32	Be ppm: 24 element, rock & core	ICP-AES	0.5	10000
561	32	Bi ppm: 24 element, rock & core	ICP-AES	2	10000
576	32	Ca %: 24 element, rock & core	ICP-AES	0.01	25.0
562	32	Cd ppm: 24 element, rock & core	ICP-AES	0.5	10000
563	32	Co ppm: 24 element, rock & core	ICP-AES	1	10000
569	32	Cr ppm: 24 element, rock & core	ICP-AES	1	10000
577	32	Cu ppm: 24 element, rock & core	ICP-AES	1	10000
566	32	Fe %: 24 element, rock & core	ICP-AES	0.01	25.0
584	32	K %: 24 element, rock & core	ICP-AES	0.01	20.0
570	32	Mg %: 24 element, rock & core	ICP-AES	0.01	20.0
568	32	Mn ppm: 24 element, rock & core	ICP-AES	5	10000
554	32	Mo ppm: 24 element, rock & core	ICP-AES	1	10000
583	32	Na %: 24 element, rock & core	ICP-AES	0.01	5.00
564	32	Ni ppm: 24 element, rock & core	ICP-AES	1	10000
559	32	P ppm: 24 element, rock & core	ICP-AES	10	10000
560	32	Pb ppm: 24 element, rock & core	AAS	2	10000
582	32	Sr ppm: 24 element, rock & core	ICP-AES	1	10000
579	32	Ti %: 24 element, rock & core	ICP-AES	0.01	10.00
572	32	V ppm: 24 element, rock & core	ICP-AES	1	10000
556	32	W ppm: 24 element, rock & core	ICP-AES	10	10000
558	32	Zn ppm: 24 element, rock & core	ICP-AES	2	10000
1006	32	La ppm: 20 element, rock ID	ICP-AES	10	10000



Chemex Labs Ltd.

Analytical Chemists * Geochemists * Registered Assayers
 212 Brooksbank Ave., North Vancouver
 British Columbia, Canada V7J 2C1
 PHONE: 604-984-0221

To: EQUITY ENGINEERING LTD.

207 - 675 W. HASTINGS ST.
 VANCOUVER, BC
 V6B 1N2

Project: DEVIL
 Comments: CC: MIKE STAMMERS

Page Number : 1-A
 Total Pages : 1
 Certificate Date: 31-JUL-93
 Invoice No. : 19317867
 P.O. Number :
 Account : EIA

CERTIFICATE OF ANALYSIS A9317867

SAMPLE	PREP CODE	Au ppb FA+AA	Ag ppm AAS	Al % (ICP)	Ba ppm (ICP)	Be ppm (ICP)	Bi ppm (ICP)	Ca % (ICP)	Cd ppm (ICP)	Co ppm (ICP)	Cr ppm (ICP)	Cu ppm (ICP)	Fe % (ICP)	K % (ICP)	Mg % (ICP)
DEVIL N.CL 1350E	201 285	< 5	< 0.2	5.46	2700	< 0.5	< 2	0.56	< 0.5	18	48	17	3.78	3.36	1.03
DEVIL N.CL 1450E	201 285	< 5	< 0.2	5.20	1720	1.0	< 2	0.58	< 0.5	20	47	28	3.70	3.13	0.95
DEVIL N.CL 1550E	201 285	< 5	< 0.2	5.06	1680	0.5	< 2	1.35	< 0.5	15	56	39	3.33	2.55	1.17
DEVIL N.CL 1650E	201 285	< 5	< 0.2	5.74	1520	0.5	< 2	1.33	< 0.5	16	69	28	2.82	1.51	0.94
DEVIL N.CL 1750E	201 285	< 5	< 0.2	3.94	1220	1.0	< 2	1.83	< 0.5	14	48	33	3.06	1.96	0.93
DEVIL N.CL 2050E	201 285	< 5	< 0.2	3.70	1620	0.5	< 2	2.13	< 0.5	14	53	72	2.70	1.06	0.93
DEVIL N.CL 2150E	201 285	< 5	< 0.2	4.83	1780	0.5	2	1.56	< 0.5	13	57	15	2.43	1.43	0.90
DEVIL N.CL 2250E	201 285	< 5	< 0.2	4.24	1640	0.5	< 2	1.66	< 0.5	15	46	22	3.18	1.49	0.95
DEVIL N.CL 2350E	201 285	< 5	< 0.2	5.62	3100	1.0	< 2	1.26	0.5	19	71	52	3.96	1.74	1.33
DEVIL N.CL 2550E	201 285	< 5	< 0.2	4.69	1700	< 0.5	2	1.60	< 0.5	14	51	20	3.05	1.38	0.91
DEVIL N.CL 2650E	201 285	< 5	< 0.2	5.99	1410	1.5	< 2	1.36	< 0.5	16	73	39	3.21	2.07	1.29
DEVIL S.CL 1750E	201 285	< 5	< 0.2	5.16	1920	0.5	< 2	1.48	0.5	17	73	47	3.02	1.97	1.10
DEVIL S.CL 1850E	201 285	< 5	< 0.2	4.68	1960	0.5	< 2	1.70	< 0.5	15	72	49	2.78	1.74	1.09
DEVIL S.CL 1950E	201 285	< 5	< 0.2	4.77	3620	< 0.5	< 2	1.59	< 0.5	16	57	47	2.87	2.25	1.05
DEVIL S.CL 2050E	201 285	< 5	< 0.2	4.88	2140	1.0	< 2	1.52	< 0.5	13	57	31	2.45	1.77	1.06
DEVIL S.CL 2150E	201 285	< 5	< 0.2	4.58	3330	1.0	< 2	1.54	< 0.5	15	63	50	2.72	1.97	1.04
DEVIL S.CL 2250E	201 285	< 5	< 0.2	4.94	4110	1.0	< 2	1.31	0.5	19	93	63	3.23	2.13	1.27
DEVIL L-1 050M	201 285	< 5	< 0.2	5.22	4460	0.5	< 2	0.97	< 0.5	24	55	38	3.84	1.69	0.65
DEVIL L-1 150M	201 285	< 5	< 0.2	6.05	3510	1.0	4	1.24	0.5	19	78	21	3.38	1.33	0.86
DEVIL L-1 250M	201 285	< 5	< 0.2	5.07	5040	0.5	< 2	2.72	< 0.5	19	49	20	4.63	3.12	1.94
DEVIL L-1 350M	201 285	< 5	< 0.2	6.15	4790	< 0.5	< 2	1.15	< 0.5	17	76	30	3.86	1.38	0.98
DEVIL L-1 450M	201 285	< 5	< 0.2	6.47	2130	0.5	< 2	1.22	< 0.5	20	88	30	3.92	1.68	1.38
DEVIL CL880 000M	201 285	< 5	< 0.2	2.44	1820	< 0.5	< 2	4.90	1.0	16	35	38	1.63	0.79	1.24
DEVIL CL880 100M	201 285	< 5	1.2	5.25	2290	< 0.5	< 2	2.10	< 0.5	33	68	236	4.67	2.43	1.88
DEVIL CL880 200M	201 285	< 5	< 0.2	6.05	5020	< 0.5	< 2	2.24	1.0	19	78	67	3.89	2.20	1.71
DEVIL CL880 300M	201 285	< 5	< 0.2	6.52	1880	1.0	< 2	2.09	0.5	19	96	91	3.81	2.03	1.72
DEVIL CL880 400M	201 285	< 5	< 0.2	4.58	1650	1.0	< 2	2.06	< 0.5	12	65	33	2.28	1.51	1.05
DEVIL CL880 500M	201 285	< 5	< 0.2	4.22	760	< 0.5	< 2	1.97	< 0.5	16	58	35	2.31	1.47	0.96
DEVIL CL880 600M	201 285	< 5	< 0.2	5.61	890	1.0	< 2	1.33	< 0.5	18	81	27	2.95	2.09	1.17
DEVIL CL980 000M	201 285	20	0.4	6.23	4200	0.5	< 2	2.13	0.5	23	82	114	4.10	2.39	1.67
DEVIL CL980 200M	201 285	< 5	< 0.2	5.61	2040	0.5	< 2	1.45	< 0.5	18	82	33	3.40	1.84	1.30
DEVIL CL980 300M	201 285	< 5	< 0.2	6.64	1090	0.5	< 2	0.78	< 0.5	16	83	25	3.74	1.85	0.88

CERTIFICATION: *Hart Buchler*



Chemex Labs Ltd.

Analytical Chemists * Geochemists * Registered Assayers
 212 Brooksbank Ave., North Vancouver
 British Columbia, Canada V7J 2C1
 PHONE: 604-984-0221

To: EQUITY ENGINEERING LTD.

207 - 675 W. HASTINGS ST.
 VANCOUVER, BC
 V6B 1N2

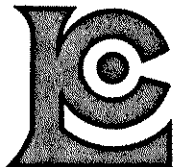
Project : DEVIL
 Comments: CC: MIKE STAMMERS

Page Number : 1-B
 Total Pages : 1
 Certificate Date: 31-JUL-93
 Invoice No. : 19317867
 P.O. Number :
 Account : EIA

CERTIFICATE OF ANALYSIS A9317867

SAMPLE	PREP CODE	Mn ppm (ICP)	Mo ppm (ICP)	Na % (ICP)	Ni ppm (ICP)	P ppm (ICP)	Pb ppm AAS	Sr ppm (ICP)	Ti % (ICP)	V ppm (ICP)	W ppm (ICP)	Zn ppm (ICP)	La ppm ICP		
DEVIL N.CL 1350E	201 285	1980	< 1	0.31	19	960	6	77	0.24	86	< 10	44	30		
DEVIL N.CL 1450E	201 285	2980	< 1	0.31	21	900	8	64	0.22	80	< 10	58	30		
DEVIL N.CL 1550E	201 285	1670	1	0.54	21	1140	4	93	0.24	92	< 10	62	30		
DEVIL N.CL 1650E	201 285	1075	1	1.06	24	940	8	166	0.34	117	< 10	90	30		
DEVIL N.CL 1750E	201 285	3230	< 1	0.47	17	1390	4	125	0.24	79	< 10	54	20		
DEVIL N.CL 2050E	201 285	3290	< 1	0.47	20	1470	6	92	0.20	76	< 10	72	10		
DEVIL N.CL 2150E	201 285	1430	< 1	0.74	17	1340	6	125	0.31	94	< 10	62	30		
DEVIL N.CL 2250E	201 285	3340	1	0.50	18	1370	6	91	0.24	82	< 10	68	20		
DEVIL N.CL 2350E	201 285	2800	< 1	0.67	25	1290	4	123	0.32	106	< 10	72	30		
DEVIL N.CL 2550E	201 285	2190	< 1	0.66	15	1240	4	120	0.28	85	< 10	58	30		
DEVIL N.CL 2650E	201 285	1065	< 1	0.87	26	860	4	136	0.33	106	< 10	72	30		
DEVIL S.CL 1750E	201 285	2060	< 1	0.73	24	1290	6	116	0.28	95	< 10	68	30		
DEVIL S.CL 1850E	201 285	2210	< 1	0.60	26	1400	4	104	0.24	88	< 10	72	20		
DEVIL S.CL 1950E	201 285	1660	1	0.69	21	1000	6	131	0.31	93	< 10	64	30		
DEVIL S.CL 2050E	201 285	765	< 1	0.69	20	1180	6	118	0.29	90	< 10	64	30		
DEVIL S.CL 2150E	201 285	1635	1	0.60	22	1150	4	119	0.28	84	< 10	56	30		
DEVIL S.CL 2250E	201 285	2220	1	0.51	34	1180	4	107	0.27	92	< 10	64	40		
DEVIL L-1 050M	201 285	4330	3	0.79	19	1110	12	146	0.31	102	< 10	134	30		
DEVIL L-1 150M	201 285	1250	1	1.07	25	940	12	179	0.41	134	< 10	356	30		
DEVIL L-1 250M	201 285	7580	1	0.25	23	910	< 2	65	0.20	66	< 10	90	30		
DEVIL L-1 350M	201 285	1910	< 1	1.06	32	810	8	187	0.39	130	< 10	94	30		
DEVIL L-1 450M	201 285	1585	< 1	1.16	34	1000	10	181	0.45	148	< 10	152	40		
DEVIL CL880 000M	201 285	1480	1	0.35	13	1510	< 2	111	0.14	59	< 10	86	< 10		
DEVIL CL880 100M	201 285	2270	5	0.70	31	940	46	182	0.36	99	< 10	106	30		
DEVIL CL880 200M	201 285	2170	1	0.83	31	1010	8	191	0.39	124	< 10	82	30		
DEVIL CL880 300M	201 285	1105	1	1.01	36	720	10	184	0.43	151	< 10	96	30		
DEVIL CL880 400M	201 285	840	< 1	0.92	23	790	6	164	0.33	97	< 10	68	20		
DEVIL CL880 500M	201 285	1300	1	0.64	18	850	16	117	0.29	89	< 10	188	20		
DEVIL CL880 600M	201 285	1150	1	0.89	24	720	14	148	0.43	117	< 10	100	30		
DEVIL CL980 000M	201 285	2120	< 1	0.91	27	950	8	184	0.41	119	< 10	86	40		
DEVIL CL980 200M	201 285	1240	< 1	0.94	28	850	6	183	0.44	121	< 10	78	30		
DEVIL CL980 300M	201 285	545	1	1.13	26	490	18	176	0.47	148	< 10	104	30		

CERTIFICATION: *Kevin Buchanan*



Chemex Labs Ltd.

Analytical Chemists * Geochemists * Registered Assayers
212 Brooksbank Ave., North Vancouver
British Columbia, Canada V7J 2C1
PHONE: 604-984-0221

To: EQUITY ENGINEERING LTD.

207 - 675 W. HASTINGS ST.
VANCOUVER, BC
V6B 1N2

A9319815

Comments: CC: MIKE STAMMERS

CERTIFICATE

A9319815

EQUITY ENGINEERING LTD.

Project: DEVIL
P.O. #:

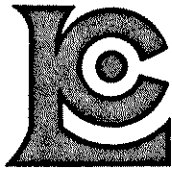
Samples submitted to our lab in Vancouver, BC.
This report was printed on 30-AUG-93.

SAMPLE PREPARATION

CHEMEX CODE	NUMBER SAMPLES	DESCRIPTION
244	53	Pulp; prev. prepared at Chemex

ANALYTICAL PROCEDURES

CHEMEX CODE	NUMBER SAMPLES	DESCRIPTION	METHOD	DETECTION LIMIT	UPPER LIMIT
152	53	U ppm: Trace rock, soil	NAA	0.2	10000



Chemex Labs Ltd.

Analytical Chemists * Geochemists * Registered Assayers
 212 Brooksbank Ave., North Vancouver
 British Columbia, Canada V7J 2C1
 PHONE: 604-984-0221

To: EQUITY ENGINEERING LTD.

207 - 675 W. HASTINGS ST.
 VANCOUVER, BC
 V6B 1N2

Project : DEVIL
 Comments: CC: MIKE STAMMERS

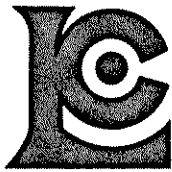
Page Number : 1
 Total Pages : 2
 Certificate Date: 30-AUG-93
 Invoice No. : I9319815
 P.O. Number :
 Account : EIA

CERTIFICATE OF ANALYSIS

A9319815

SAMPLE	PREP CODE	U NAA ppm										
546201	244 --	4.8										
546202	244 --	3.0										
546203	244 --	3.0										
546204	244 --	1.2										
546617	244 --	3.4										
546618	244 --	1.6										
546619	244 --	3.4										
546620	244 --	2.8										
546621	244 --	1.0										
546739	244 --	4.6										
546740	244 --	1.4										
546741	244 --	3.6										
546742	244 --	3.6										
546743	244 --	3.0										
546744	244 --	3.0										
546745	244 --	3.8										
546746	244 --	9.8										
546747	244 --	3.2										
546748	244 --	2.2										
546749	244 --	3.6										
546750	244 --	5.4										
DEVIL N.CL 1350E	244 --	4.0										
DEVIL N.CL 1450E	244 --	3.8										
DEVIL N.CL 1550E	244 --	3.4										
DEVIL N.CL 1650E	244 --	3.2										
DEVIL N.CL 1750E	244 --	5.6										
DEVIL N.CL 2050E	244 --	4.2										
DEVIL N.CL 2150E	244 --	5.8										
DEVIL N.CL 2250E	244 --	4.4										
DEVIL N.CL 2350E	244 --	7.8										
DEVIL N.CL 2550E	244 --	6.0										
DEVIL N.CL 2650E	244 --	3.8										
DEVIL S.CL 1750E	244 --	7.2										
DEVIL S.CL 1850E	244 --	6.0										
DEVIL S.CL 1950E	244 --	4.8										
DEVIL S.CL 2050E	244 --	5.4										
DEVIL S.CL 2150E	244 --	5.4										
DEVIL S.CL 2250E	244 --	4.8										
DEVIL L-1 050M	244 --	3.8										
DEVIL L-1 150M	244 --	3.4										

CERTIFICATION: *[Signature]*



Chemex Labs Ltd.

Analytical Chemists * Geochemists * Registered Assayers
212 Brooksbank Ave., North Vancouver
British Columbia, Canada V7J 2C1
PHONE: 604-984-0221

To: EQUITY ENGINEERING LTD.

207 - 675 W. HASTINGS ST.
VANCOUVER, BC
V6B 1N2

Project : DEVIL
Comments: CC: MIKE STAMMERS

Page Number : 2
Total Pages : 2
Certificate Date: 30-AUG-93
Invoice No. : 19319815
P.O. Number :
Account : EIA

CERTIFICATE OF ANALYSIS

A9319815

SAMPLE	PREP CODE	U NAA ppm										
DEVIL L-1 250M	244 --	2.8										
DEVIL L-1 350M	244 --	3.0										
DEVIL L-1 450M	244 --	4.4										
DEVIL CL880 000M	244 --	2.0										
DEVIL CL880 100M	244 --	4.8										
DEVIL CL880 200M	244 --	3.0										
DEVIL CL880 300M	244 --	3.0										
DEVIL CL880 400M	244 --	4.4										
DEVIL CL880 500M	244 --	3.2										
DEVIL CL880 600M	244 --	5.6										
DEVIL CL980 000M	244 --	4.4										
DEVIL CL980 200M	244 --	3.6										
DEVIL CL980 300M	244 --	2.8										

CERTIFICATION: *Adriana Alexander*

APPENDIX F

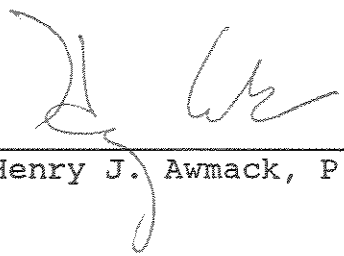
ENGINEER'S CERTIFICATE

ENGINEER'S CERTIFICATE

I, HENRY J. AWMACK, of 12-1348 Nelson Street, Vancouver, in the Province of British Columbia, DO HEREBY CERTIFY:

1. THAT I am a Consulting Geological Engineer with offices at Suite 207, 675 West Hastings Street, Vancouver, British Columbia.
2. THAT I am a graduate of the University of British Columbia with an honours degree in Geological Engineering.
3. THAT I am a member in good standing of the Association of Professional Engineers and Geoscientists of British Columbia.
4. THAT this report is based on fieldwork carried out under the direction of Michael Stammers. I have known Mr. Stammers professionally for four years and have every confidence in the quality of his fieldwork.

DATED at Vancouver, British Columbia, this 30 day of June, 1994.


Henry J. Awmack, P.Eng.

