

MAP NO:115I/6

ASSESSMENT REPORT: X

DOCUMENT NO: 093248

PROSPECTUS:

MINING DISTRICT: Whitehorse

CONFIDENTIAL: X

TYPE OF WORK:Geology,
Geochemistry

OPEN FILE:

REPORT FILED UNDER: Richlode Investments Corp.

DATE PERFORMED:October 10-November 28, 1993

DATE FILED:June 8, 1994

LATITUDE:62 16

AREA:Freegold Mountain

LONGITUDE:137 02

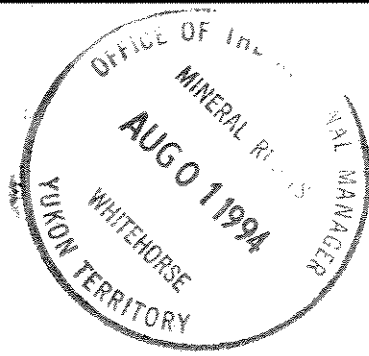
VALUE:\$2700

CLAIM NAME AND #:Ant 1-24, 31-40

WORK DONE BY:G.S. Davidson

WORK DONE FOR:Richlode Investments Corp.

DATE TO GOOD STANDING	REMARKS:134 soil and 6 rock samples were collected. A 250 meter long soil anomaly on the Ant 16 claim had values ranging from 40-291 ppb Au with one sample assaying >6667 ppb Au, 1.7 to 12.0 ppm Ag, and 444 to 2338 ppm As. This soil line adjoins the Antoniuk property to the south and may indicate an extension of known mineralization onto the Ant claims. Bedrock in the area of the anomaly consists of felsic breccia and rhyolite.

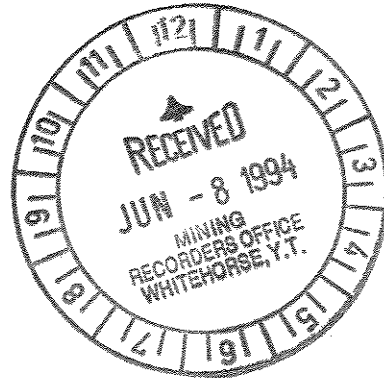


EXPLORATION REPORT
on the

ANT PROPERTY
Freegold Mountain Area

NTS 115 I-6
Lat. 62° 16' N, Long. 137° 02' W
Whitehorse Mining District

093248



EXPLORATION REPORT
on the

ANT PROPERTY
Freegold Mountain Area

NTS 115 I-6
Lat.62° 16' N, Long.137° 02'W
Whitehorse Mining District

For: Richlode Investments Corp.
601 - 2695 Granville St.
Vancouver, B.C.
V6H 3H4

By: G.S. DAVIDSON, P.Geol.
January, 1994

TABLE OF CONTENTS

	Page
INTRODUCTION	1
LOCATION AND ACCESS	1
PHYSIOGRAPHY	1
PROPERTY	3
REGIONAL GEOLOGY	5
HISTORY	5
1993 EXPLORATION PROGRAM.....	8
INTRODUCTION	8
PROPERTY GEOLOGY	8
MINERALIZATION.....	9
GEOCHEMISTRY	10
DISCUSSION.....	14
RECOMMENDATIONS.....	14
CERTIFICATE	15
STATEMENT OF COSTS	16
REFERENCES.....	17

LIST OF FIGURES

	Page
Figure 1 - Location Map.....	2
Figure 2 - Claim Plan	4
Figure 3 - Geology	6
Figure 4 - Property Plan.....	(in pocket)
Figure 5 - Ant Soil Line	9
Figure 6 - Grizzly Gulch Soil Line	10
Figure 7 - Freegold Road Soil Line	11
 Table 1 - Claim Data.....	 3

APPENDIX - Sample Descriptions

APPENDIX - Certificates of Analysis

INTRODUCTION

The ANT claims lie to the east of Freegold Mountain and adjoin the Antoniuk property where a low grade gold deposit contains 3.5 million tonnes grading 1.23 g/t gold. Antoniuk mineralization occurs in a sub-volcanic felsic breccia that was outlined by a gold-arsenic soil anomaly. The Freegold area also hosts higher grade quartz veins at Laforma and Caribou properties, which were first mined in the 1930's. At Caribou Creek, twelve tons of quartz carrying visible gold was hand mined and processed in a stamp mill, producing eighty ounces of gold.

In 1993 Richlode Investments Corp. acquired the ANT property, consisting of 34 claims, from prospectors G. Harris and B. Harris.

This report describes the results of an exploration program completed by Harris & Assoc. Exploration between Oct. 10 and Nov.28, 1993. B. Harris supervised the exploration work. The writer's last visit to the property was in 1992.

LOCATION AND ACCESS

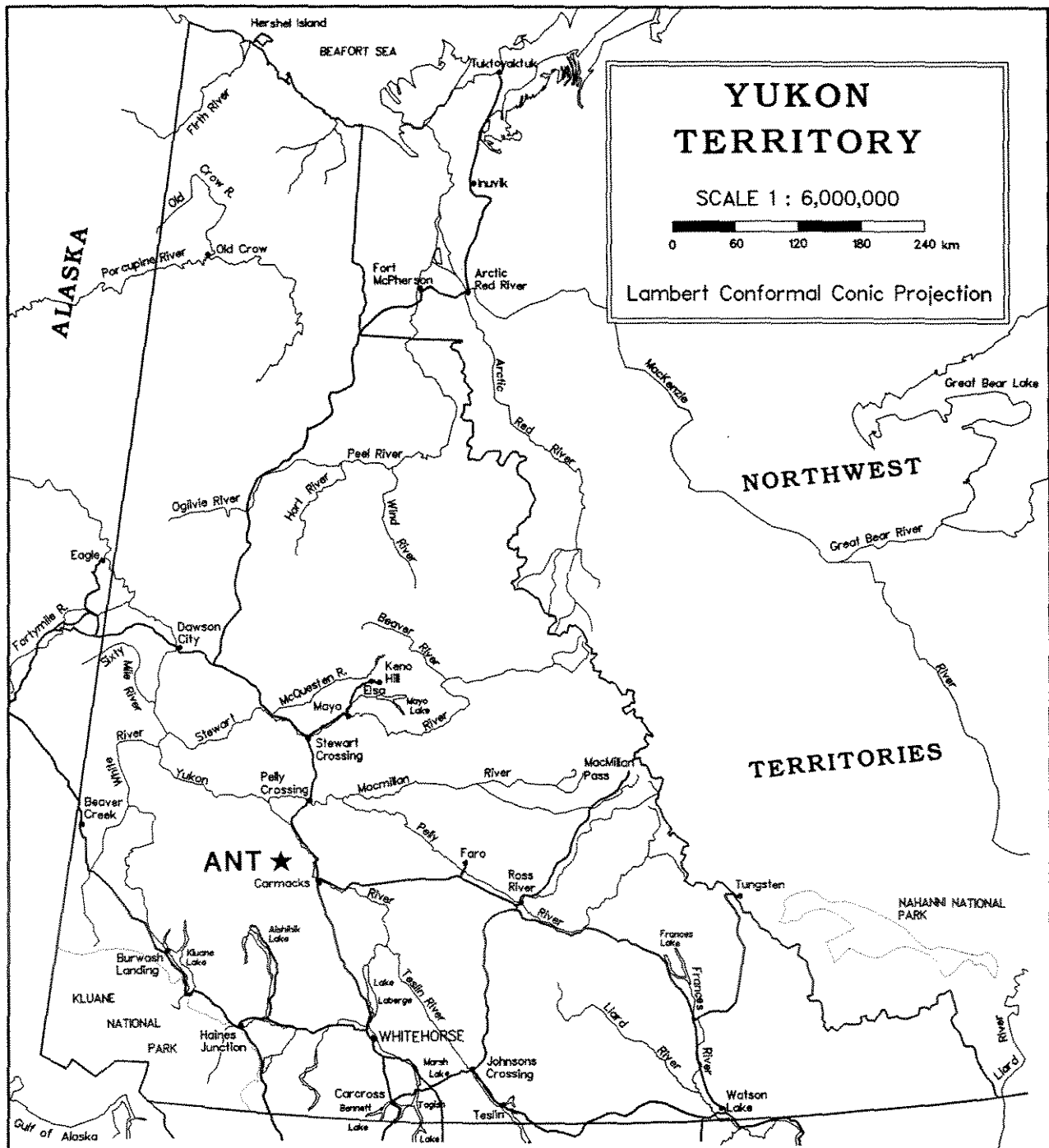
The property is located in the Dawson Range near Freegold Mountain, approximately 65 km northwest of Carmacks on NTS Map Sheets 115 I-6 at latitude 62° 18'N and longitude 137° 06'W. Figure 1 shows the property location.

The claims are accessible via the Freegold Road, a government maintained gravel road. The property is situated several hundred meters south of the Freegold Road and several tote roads cross the area. The total road distance from Carmacks to the property is 67 km.

PHYSIOGRAPHY

The Freegold Mountain area features large, well rounded hills and ridges of the Dawson Range of the Coast Mountains. Valley floors are flat and swampy, and valley walls rise sharply to the upland areas. Elevations range from 750 m in the Seymour Creek valley to the summit of Freegold Mountain at 1450 m.

Glaciation has had a limited effect; most of the area remained ice-free during the last Ice Age. The Seymour Creek valley formed a spillway for meltwater originating in the southeast.



**YUKON
TERRITORY**

SCALE 1 : 6,000,000

0 60 120 180 240 km

Lambert Conformal Conic Projection

LOCATION MAP
RICHLUDE INVESTMENTS CORP.
ANT CLAIMS

N.T.S. 115 I/6

FIGURE 1

The property covers a wide gently sloping ridge between Seymour and Stoddart Creeks. The majority of the claims cover a north facing slope above Stoddart Creek. A strip of single claims covers the steeper south-facing side of the Seymour Creek valley. Outcrop is sparse and is restricted to ridge crests and the steepest slopes. The Freegold area has a northern interior climate with long cold winters and moderate precipitation. Summers in the last four years have been wet and cool with daytime temperatures averaging 12 C.

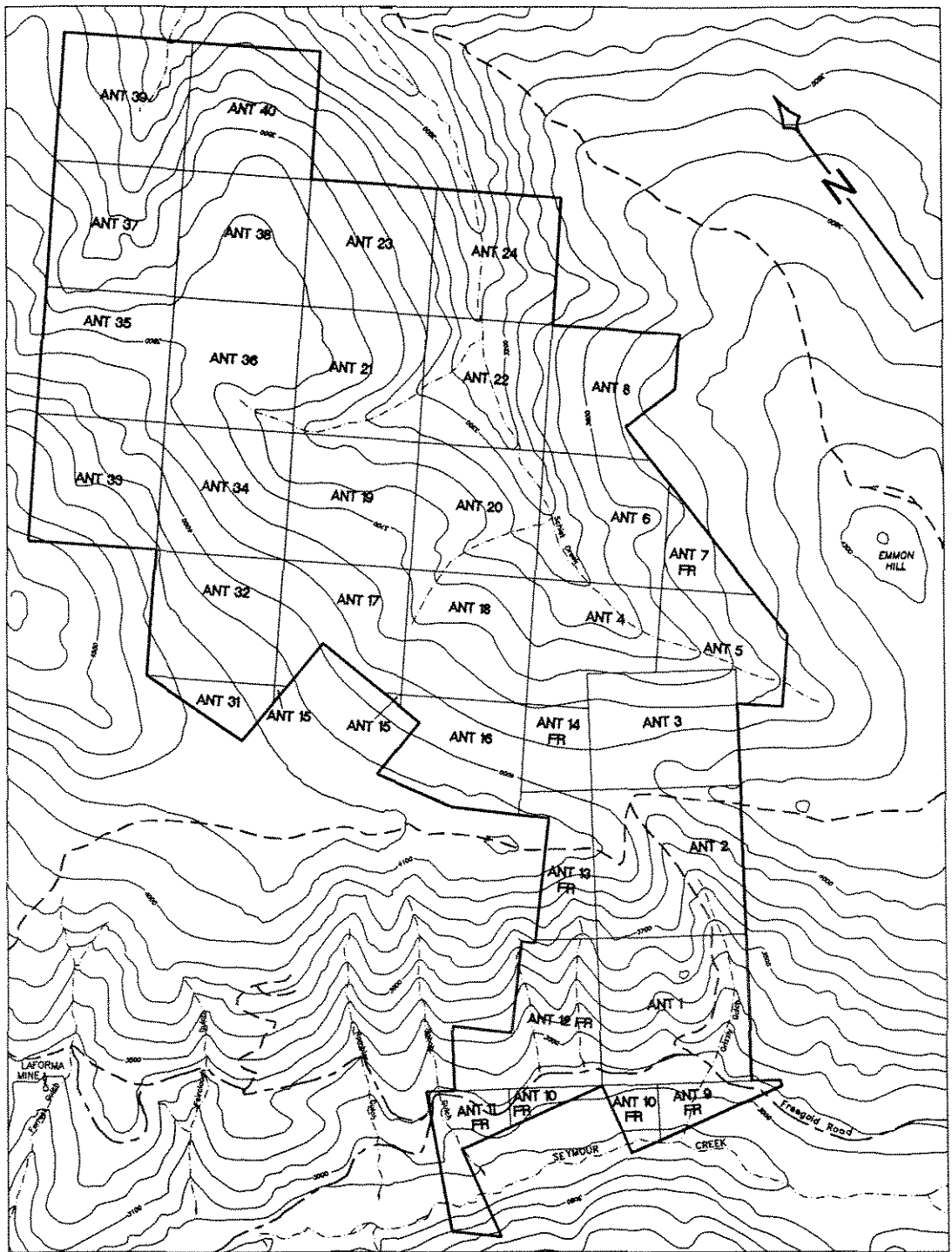
Vegetation in the district consists of white and black spruce forest, and poplar groves below 1200 m of elevation. At higher levels stunted trees and buck brush form a thick ground cover. This vegetation thins out on the highest ridge tops to alpine grasses and moss. Northerly facing slopes and valley floors are often underlain by permafrost, which hinders trenching and road building.

PROPERTY

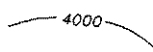
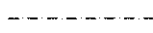


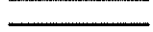

The property is located in the Whitehorse Mining District and is composed of 27 mineral claims and 7 fractional claims (see Figure 2). The claims are registered under Richlode Investment Corp. at the Whitehorse Mining Records office. Table 1 lists the claim data.

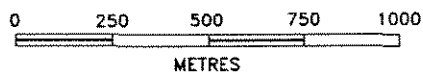
TABLE 1 - CLAIM DATA

<u>Claim Name</u>	<u>Record Number</u>	<u>Expiry Date</u>
ANT 1-6	YB38142-4727	July 1994
ANT 7 Fraction	YB 46568	
ANT 8	YB3814827	July 1994
ANT 9-14 Fraction	YB 46569-6574	
ANT 15-24	YB38149-5827	July 1994
ANT 31-40	YB38159-6827	July 1994



SYMBOLS

-  elevation contour interval, (100 feet)
-  stream, creek
-  4-wheel drive road
-  all-weather road
-  claim line
-  approximate claim group boundary



RICHLUDE INVESTMENTS CORP.

**ANT CLAIMS
CLAIM MAP**

Graham Davidson, Consulting Geologist

SCALE: 1 : 20,000

DATE: January 1994

N.T.S.: 115 1/8

DRAWN: R.S.

FIGURE 2

REGIONAL GEOLOGY

The Freegold Mountain area overlies a major suture dividing Yukon Cataclastic Terrain and Yukon Crystalline Terrain. The northwest bearing Big Creek Fault separates older schists and gneisses of the Crystalline Terrain to the south from foliated plutonic rocks of the Cataclastic Terrain to the north. Younger intrusions of granitic composition and volcanics are common along the suture.

The area is primarily underlain by syenite and monzonite of the Early Jurassic Mount Freegold Meta-Plutonic Suite and by Casino granodiorite of the Early Cretaceous Dawson Range Plutonic Suite (see Figure 3). Volcanic flows, breccias and dykes of the Eocene Mount Nansen Volcanics intrude and overlie the older plutonic rocks. Gold mineralization occurs in quartz-chalcedony veining associated with intrusive breccias and quartz stockworks.

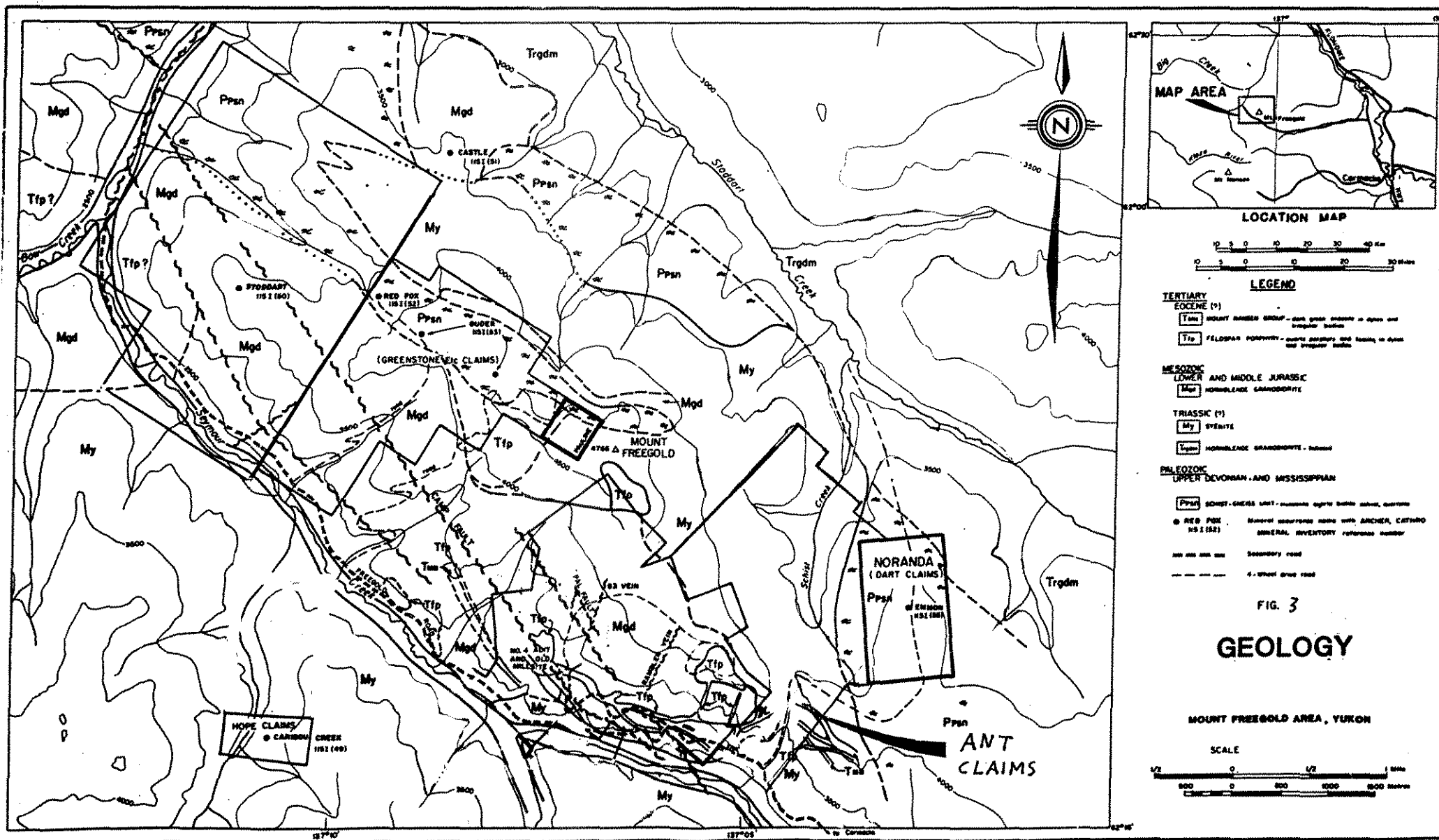
HISTORY

Prospector P.F. Guder first discovered gold bearing rock on the west side of Freegold Mountain in 1930. He located the Augusta claim over an auriferous magnetite showing and proceeded to dig hand pits and shafts along the structure. On hearing of the find, prospectors rushed into the region, staking over 100 claims in the autumn and winter of 1930-1931.

The Laforma quartz vein was discovered on the southeast side of Freegold Mountain and was developed by the N. A. Timmins Corporation from 1934-1935. In 1935 the Yukon Consolidated Gold Corporation acquired the Laforma property and continued the underground development.

Seymour, Cabin and Caribou Creeks were first prospected for placer gold in 1931 by Guder and associates. They sunk numerous shafts along the narrow steep sided valleys. On finding boulders of quartz containing visible gold at the bottom of a small gulch (Rabbit Gulch) they began trenching the side hill. The bedrock source was located on Caribou Creek and staked in 1937 by W. Teare. A gravity fed stamp mill was constructed to process hand picked ore from an open cut and adit. In 1938 twelve tons of high grade quartz was milled, producing 88 ounces of gold.

In the winter of 1938-1939 the milling equipment was moved from Caribou Creek to the Laforma property. Development at Laforma continued through the 1940's and 1950's with periodic production. In 1965-1966, Ormsby Mines Ltd. redeveloped the



Laforma mine and processed 5,938 tons of ore grading 0.27 oz/ton gold and 0.96 oz/ton silver. Published reserves at Laforma are 180,000 tons grading 11 g/t (0.39 oz/ton) gold. Quartz veins similar to the Laforma vein were explored in trenches and adits on the area covered by the Antoniuk property starting in the 1930's.

In the late 1960's exploration focused on porphyry copper occurrences in the Dawson Range. Well developed leached caps were recognized, overlying highly fractured porphyry copper deposits. These leached caps became exploration targets in the 1980's when the Antoniuk low grade gold deposit was outlined on Freegold Mountain. The Antoniuk deposit was identified in 1974 by a strong Cu-Ag-As-Pb-Zn soil geochemical anomaly over a 500 by 300 m area. In 1986 the deposit was delineated by diamond drilling.

Mineral claims (Gnat, Nat, and Free) have covered the present ANT property since the 1960's. Previous work consists of geochemical surveys which outlined several arsenic-zinc anomalies that extend from the Antoniuk onto the ANT claims. Also several spot gold geochemical anomalies were detected within the present ANT claims (see Figure 4)

1993 EXPLORATION PROGRAM

INTRODUCTION

Harris & Assoc. Exploration mobilized onto the property in early October to perform reconnaissance geochemistry. B. Harris and T. Morgan spent ten mandays completing the work. A cabin at Gudar Junction was used for accommodations

A total of 140 soil and rock samples were collected on reconnaissance traverses across the property. Also, several fractional claims were staked between the Antoniuk and the ANT claims.

PROPERTY GEOLOGY

The ANT property is underlain by Mesozoic plutonic rocks of the Yukon Crystalline Terrain intruded and overlain by Cretaceous and Eocene igneous rocks of the Mount Nansen Group. The property geology is shown in Figure 5 and the individual rock units are described as follows.

CRETACEOUS TO PALEOCENE

Mount Nansen Group

Tmn -Felsic volcanic plugs and dykes

Unit Tmn consists of dark green andesite and andesite breccia. Unit Tfp is a fine-grained flow banded rhyolite and fine-grained pink felsite to felsite breccia which exhibits sharp unaltered contacts in syenite. Both units outcrop at the Antoniuk deposit and to the northwest on several ridge crests.

Black sediments and volcanics

This unit is mainly graphitic siltstone with very minor silty sandstone; intercalated with and intruded by a number of highly altered porphyritic volcanic bodies composed of quartz and feldspar phenocrysts in a muscovite matrix. In places sericite mats replace the feldspar. The graphitic siltstone contains terrestrial fossils including grasses, stems, twigs and leaves.

TRIASSIC (?)

Mount Freegold Meta-Plutonic Suite

Tgdm - Hornblende Granodiorite

Medium-grained equigranular granitic rock containing 10-15% hornblende.

My-Syenite and quartz monzonite

The most common unit on the property is a fresh, coarse-grained syenite, Unit My, which generally contains large phenocrysts of pink orthoclase in a coarse matrix of hornblende and plagioclase feldspar. Accessory minerals include quartz, magnetite, epidote and chlorite. Lenses of amphibolite and gneiss occur within the syenite. Quartz monzonite, Unit Mqm is less common than the syenite. It consists of equigranular medium-grained plagioclase, hornblende and quartz and is weakly to strongly foliated.

Sericite, kaolinite and chlorite alteration zones are present in the quartz monzonite.

A major northwest trending fault is mapped as crossing the property at the headwaters of Schist Creek. This is a branch of the Big Creek Fault that trends northwest through the Dawson Range.

The Dawson Range is covered by a layer of light gray ash anywhere from several centimeters to a meter thick. This layer effectively blocks surface enrichment in precious or base metals. Soil samples must be taken below the ash layer to be meaningful.

MINERALIZATION

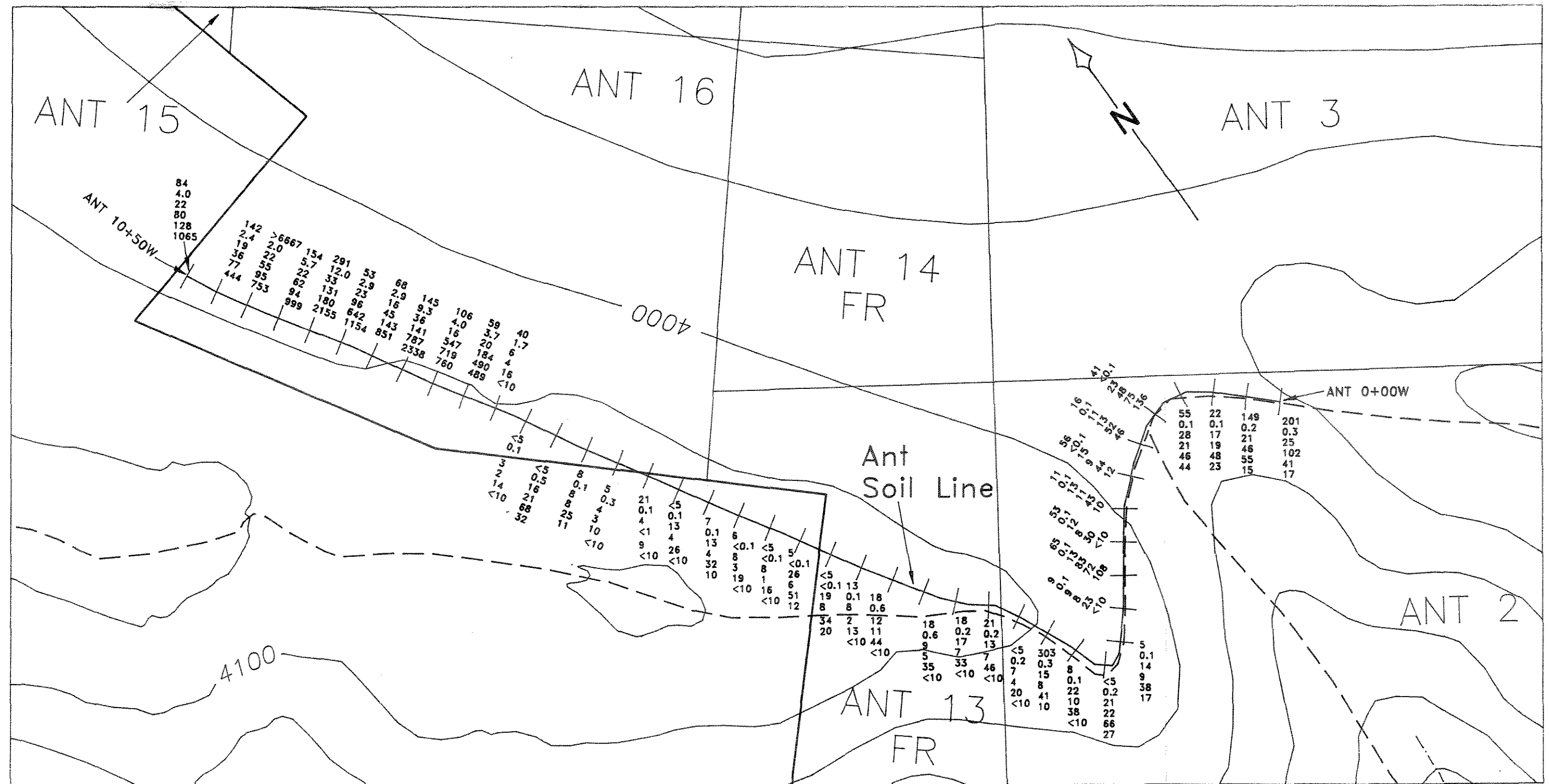
At Antoniuk gold mineralization occurs in a felsic breccia body within Mount Nansen Group igneous rocks. The breccia is altered containing 1-2% pyrite as disseminations and in thin quartz veinlets. Silver values in the breccia are up to 90 g/t.

Six rock samples collected from ANT 5 and 7F claims assayed from 6-222 ppb Au and 0.2-18.6 ppm Ag with moderately high lead, zinc and arsenic values (see Figure 4).

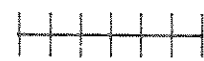
GEOCHEMISTRY

Three soil sample lines were run in the southeastern portion of the property. The samples were collected at 25 m intervals from B horizon soil. The sample locations and Au-As-Ag-Pb-Zn results are shown in Figures 5, 6 & 7. The strongest anomaly is on the ridge top northeast of the Antoniuk property boundary from Sample No. ANT 8+00W to ANT 10+50W. The 250 m wide anomaly ranges in gold from 40-291 ppb with a peak value of >6667 Au at 10+00W. A check of this analysis was not possible due to a lack of sample material. Silver values range from 1.7 to 12.0 ppm and arsenic values assay 444 to 2338 ppm over the 250 meter interval. Bedrock in this area consists of felsic breccia and rhyolite. This is a significant anomaly and a soil grid should be established over the area to define it's limits.

Soil lines above the Freegold Road and beside the Grizzly Gulch Road produced a few weak Au-As anomalies. Follow-up prospecting at sample sites GG 2+00S to GG 3+25S and at GG 4+50S to GG 6+00S is suggested.

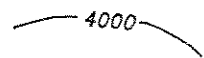


SYMBOLS

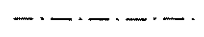


soil sample line,
location

- 6 Au ppb
- <0.1 Ag ppm
- 23 Cu ppm
- 18 Pb ppm
- 55 Zn ppm
- 32 As ppm



elevation contour
interval, (100 feet)



stream, creek



4-wheel drive road



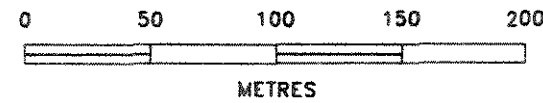
all-weather road



claim line



claim group boundary



RICHLODE INVESTMENTS CORP.

**ANT CLAIMS
ANT SOIL LINE**

Graham Davidson, Consulting Geologist

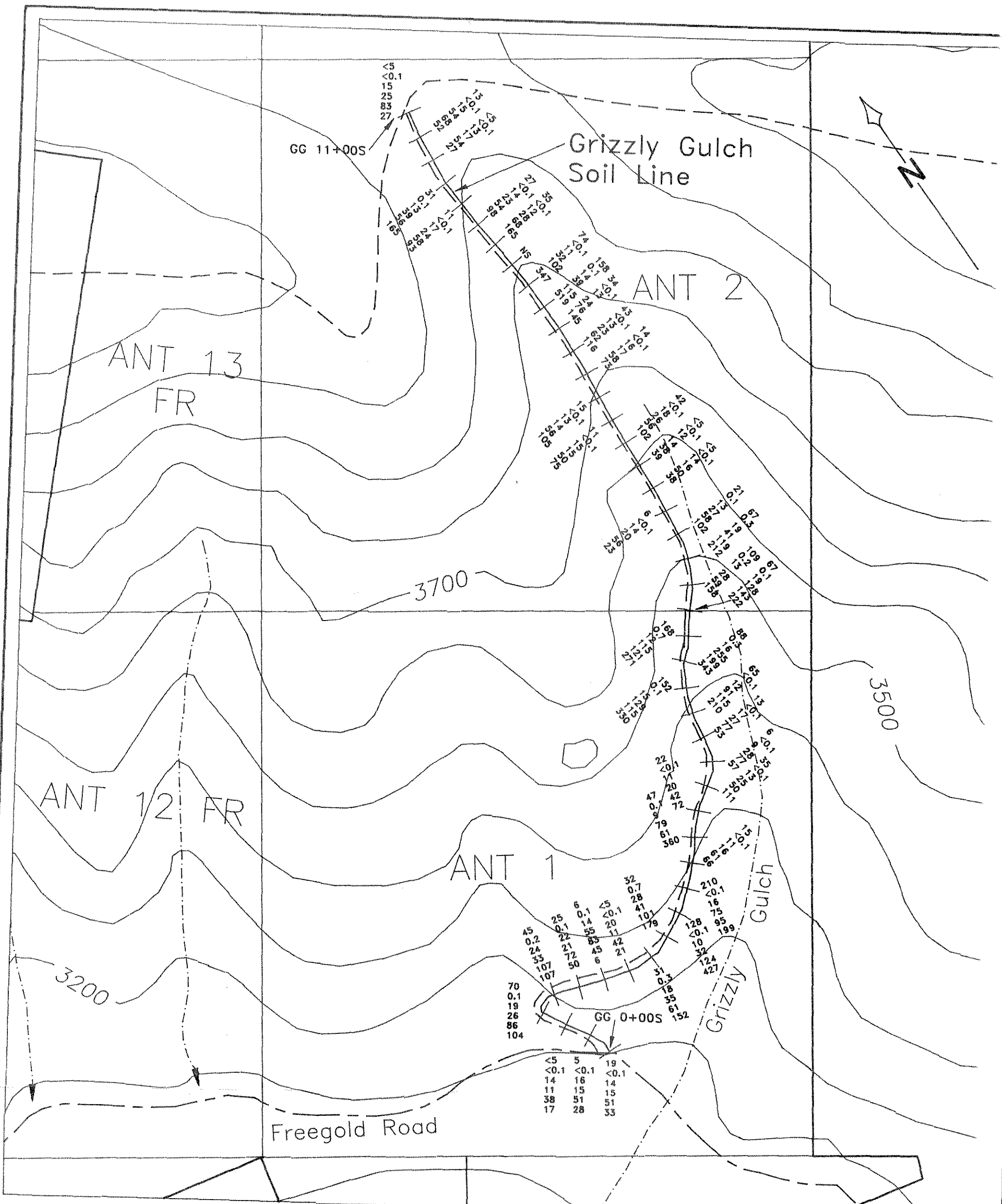
SCALE: 1 : 3,000

DATE: January 1994

N.T.S.: 115 1/6

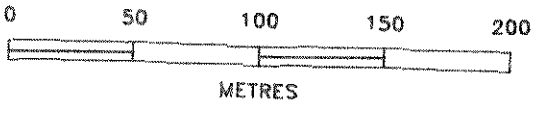
DRAWN: R.S.

FIGURE 5



SYMBOLS

- | | | | |
|------|----------------------------|--|--|
| | soil sample line, location | | elevation contour interval, (100 feet) |
| 6 | Au ppb | | stream, creek |
| <0.1 | Ag ppm | | 4-wheel drive road |
| 23 | Cu ppm | | all-weather road |
| 18 | Pb ppm | | claim line |
| 55 | Zn ppm | | claim group boundary |
| 32 | As ppm | | |



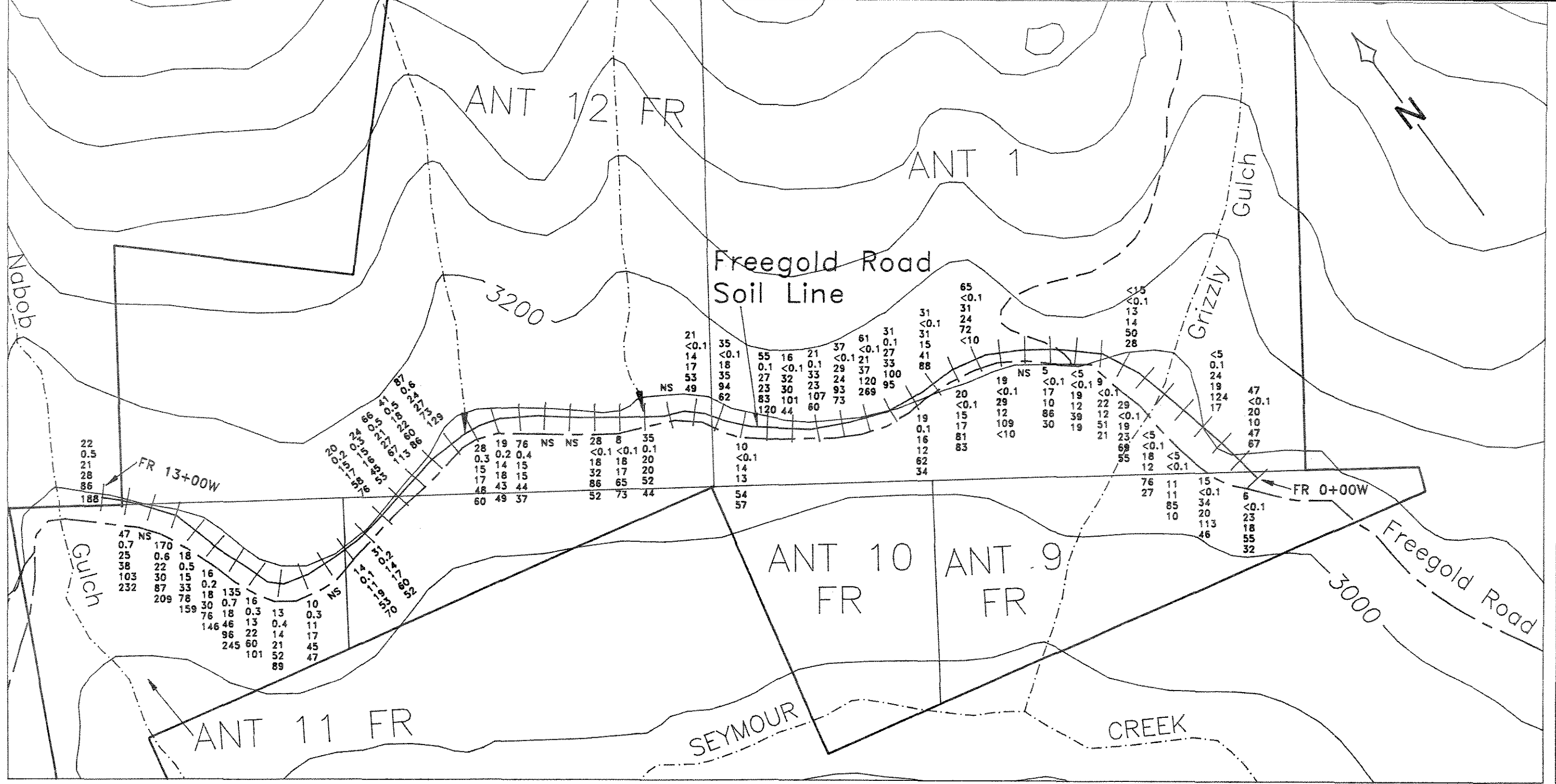
RICHLIDE INVESTMENTS CORP.

ANT CLAIMS

GRIZZLY GULCH SOIL LINE

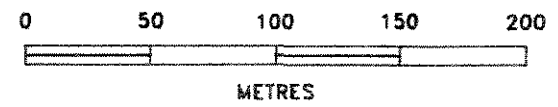
Graham Davidson, Consulting Geologist

SCALE: 1 : 3,000	DATE: January 1994
N.T.S.: 115 1/6	DRAWN: R.S. FIGURE 6



SYMBOLS

- | | | | |
|--|----------------------------|--|--|
| | soil sample line, location | | elevation contour interval, (100 feet) |
| | Au ppb | | stream, creek |
| | Ag ppm | | 4-wheel drive road |
| | Cu ppm | | all-weather road |
| | Pb ppm | | claim line |
| | Zn ppm | | claim group boundary |
| | As ppm | | |



RICHLÖDE INVESTMENTS CORP.

**ANT CLAIMS
FREEGOLD ROAD SOIL LINE**

Graham Davidson, Consulting Geologist

SCALE: 1 : 3,000	DATE: January 1994
N.T.S.: 115 1/6	DRAWN: R.S. FIGURE 7

DISCUSSION

The 1993 exploration work on the ANT property has outlined an intriguing geochemical anomaly that requires follow-up exploration. Two lesser anomalies were located along the Grizzly Gulch geochem line. Geological and geochemical surveys from the Antoniuk property boundary to the northeast are recommended to delineate areas for trenching or drilling.

RECOMMENDATIONS

The primary targets on the property are auriferous volcanic breccia bodies and quartz veins. Portions of the property adjoining the Antoniuk have been soil sampled with anomalous results. The geochemical coverage should be increased over this area and the northwesterly trending fault zone which crosses the property. To be effective, soil samples must be collected from beneath the ash layer. Sampling with a power auger may be the best method to penetrate the volcanic ash, especially on north facing slopes where it is often frozen.

It is recommended that a \$45,000 surface exploration program be performed on the ANT claims. A grid should be established to the north and east, soil sampled and surveyed using the VLF-EM technique. Any strong geochem and/or VLF anomalies should be trenched using a backhoe.

The following program is proposed:

Grid development 20 km	\$ 6,500
Geophysical surveys VLF-EM and magnetometer surveys	6,000
Geological mapping and supervision	3,500
Geochemistry and trench sampling	10,000
Backhoe trenching and road construction	10,000
Camp and supplies	4,500
Report and assessment	<u>4,500</u>
TOTAL	\$45,000

CERTIFICATE

I, GRAHAM DAVIDSON, of the City of Whitehorse, in the Yukon Territory,
HEREBY CERTIFY:

1. That I am a consulting geologist and that I worked on the subject property in 1992.
2. That I am a graduate of the University of Western Ontario (H. BSc., Geology, 1981).
3. That I am registered as a Professional Geologist by the Association of Professional Engineers, Geologists & Geophysicists of Alberta (No. 42038).
4. That I have been engaged in mineral exploration on a full time basis for eleven years in the Yukon and Northwest Territories, and British Columbia.

SIGNED at Whitehorse, Yukon this 31st day of January, 1993.

G.S. DAVIDSON, P.Geol.



STATEMENT OF COSTS

PERIOD: Nov.19 - Dec.8, 1993

PERSONNEL:

B. Harris, 5 days	1,125
T. Morgan, 5 days	1,125
G. Harris, 5 days	<u>1,125</u>
	\$3,375

ANALYTICAL COSTS: (NAL)

134 soil samples	2,509
6 rock samples	<u>152</u>
	2,661

TRANSPORTATION: Truck, fuel, mileage at \$100/day	500
---	-----

CAMP AND SUPPLIES: 15 mandays at \$50/day	750
---	-----

REPORT: Preparation, drafting, printing	<u>2,400</u>
---	--------------

TOTAL COSTS	\$9,686
-------------	---------

REFERENCES

Archer, A.R., 1981; Freegold Project Geochemical Report Gnat 1-94, 96-102 Claims.

Bostock, H.S., 1939; GSC Memoir 189, Carmacks district, Yukon.

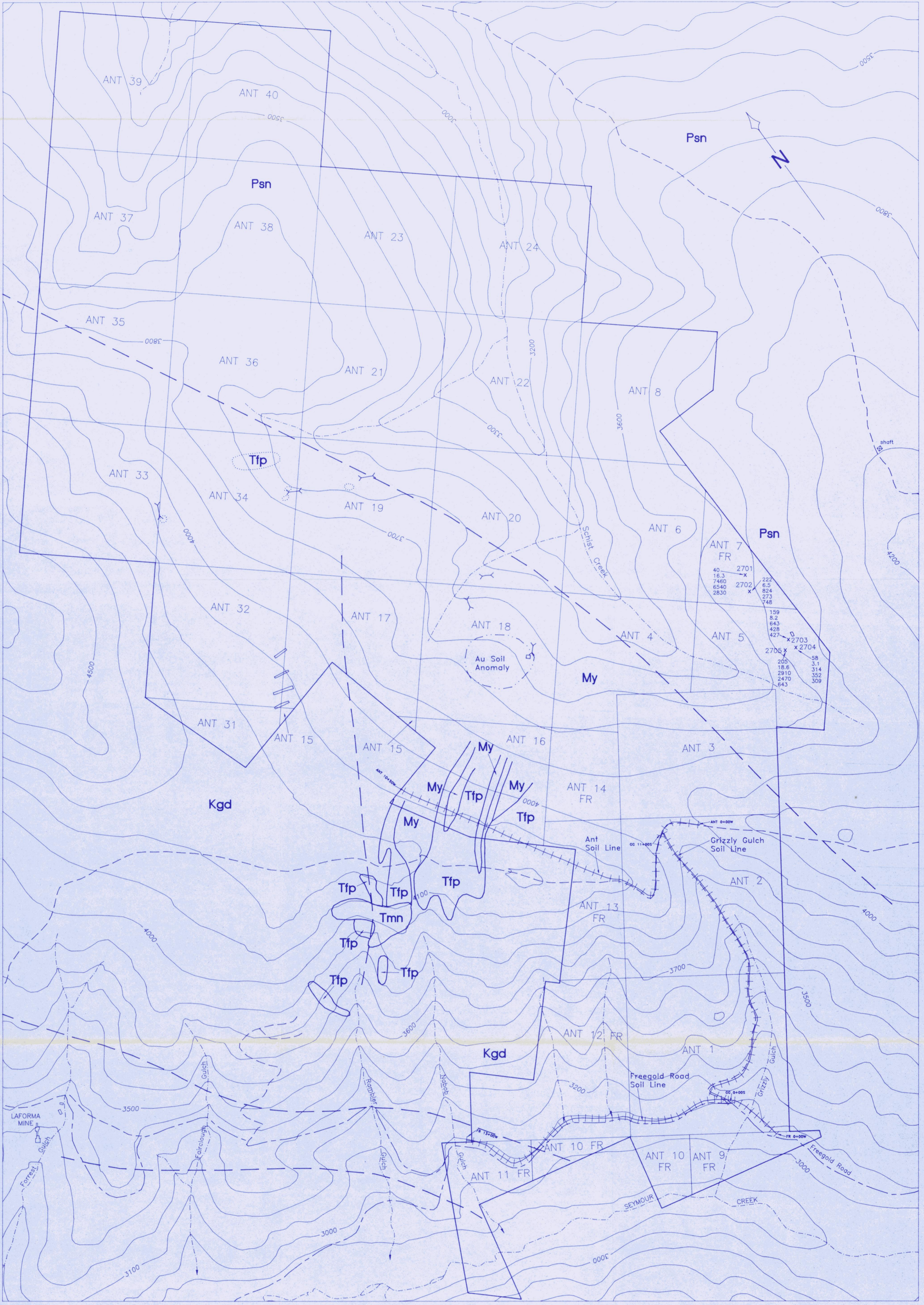
Carlson, G., 1987; Geology of the Mount Nansen and Stoddart Creek Map Areas, Open File 1987-2.

DIAND, 1981-1988; Yukon Exploration and Geology Reports for 1979-1987, Dept. of Indian and Northern Affairs, Geological Services Division Publications.

Eaton, W.D. and Main, C., 1986; Potential for Heap Leach Mining in Dawson Range, Yukon, Archer-Cathro & Assoc. Ltd.

Main, C.A., 1988; Report on Drilling Program Antoniuk Property for the Big Creek Joint Venture.

Sinclair, W.D. et al, 1976; Mineral Industry Report 1975, Yukon Territory, DIAND, Report 1976-15.



SYMBOLS

	bulldozer trench (to bedrock)		elevation contour interval, (100 feet)
	soil sample line, sample location		stream, creek
	hand trench, pit		4-wheel drive road
	geological boundary		all-weather road
	fault		claim line
	rock sample number, location - Au ppb, Ag ppm, Pb ppm, Zn ppm, As ppm		claim group boundary
	limit of outcrop		0 100 200 300 400 METRES

GEOLOGY

CENOZOIC & EOCENE(?)		UPPER TRIASSIC(?)
Mount Nansen Group		Tgdm Granite Mountain Batholith: foliated biotite-hornblende granodiorite
Tmn	Heterolithic breccia and tuff contains fragments of Tfp, Kgd and My	My Syenite, undivided
Tfp	Quartz-feldspar porphyry (rhyodacite composition)	PALEOZOIC(?)
MEZOZOIC & CRETACEOUS		Psn Undifferentiated schists, gneisses, amphibolites, marbles and/or quartzites
Kgd	Porphyritic granodiorite: porphyritic biotite granodiorite	

RICHLODE INVESTMENTS CORP.

ANT CLAIMS 093248

PROPERTY MAP

DWG @

Graham Davidson, Consulting Geologist

SCALE: 1 : 5,000	DATE: January 1994
N.T.S.: 115 1/6	DRAWN: R.S. FIGURE 4

APPENDIX 1 - SAMPLE DESCRIPTIONS

SAMPLE NUMBER	DESCRIPTION	AU PPB	AG PPM	PB PPM	ZN PPM	AS PPM
2701	Felsite porphyry, pyrite	40	6.3	7460	6540	2830
2702	Breccia, minor quartz veining	222	6.5	824	273	748
2703	Felsic breccia, pyrite	159	8.2	643	428	427
2704	Brecciated syenite, pyrite	58	3.1	314	352	309
2705	Brecciated syenite, quartz veins	205	18.6	2910	2470	643
2706	Quartz syenite, fractured	6	0.2	13	14	14

APPENDIX 2-CERTIFICATES OF ANALYSIS

12/20/93

Assay Certificate

Page 1

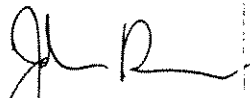
Harris & Associates

WO#00416

Sample #	<u>Au</u> ppb	<u>Ag</u> ppm	Cu ppm	<u>Pb</u> ppm	<u>Zn</u> ppm	<u>As</u> ppm	Sb ppm
ANT 2701							
Splits	68	3.7	24	775	418	968	116
2701	40	16.3	35	7460	6540	2830	992
2702	222	6.5	21	824	273	748	45
2703	159	8.2	18	643	428	427	33
2704	58	3.1	12	314	352	309	30
2705	205	18.6	39	2910	2470	643	68
2706	6	0.2	10	13	14	14	2

6 rock

Certified by




12/17/93

Assay Certificate


Page 1

Harris & Associates 44 57

WO#00414

Sample #	Au ppb	Ag ppm	Cu ppm	Pb ppm	Zn ppm	As ppm	Sb ppm
GG 0+00S	19	<0.1	14	15	51	33	3
GG 0+25S	5	<0.1	16	15	51	28	6
GG 0+50S	<5	<0.1	14	11	38	17	<2
GG 0+75S	70	0.1	19	26	86	104	6
GG 1+00S	45	0.2	24	33	107	107	17
GG 1+25S	25	0.1	22	21	72	50	22
GG 1+50S	6	0.1	14	55	83	45	6
GG 1+75S	<5	<0.1	20	11	42	21	5
GG 2+00S	31	0.3	18	35	61	152	24
GG 2+25S	32	0.7	28	41	101	179	100
GG 2+50S	128	<0.1	10	32	124	427	217
GG 2+75S	210	<0.1	16	75	95	199	159
GG 3+00S	15	<0.1	11	16	61	66	13
GG 3+25S	47	0.1	9	79	61	360	8
GG 3+50S	22	<0.1	11	20	42	72	2
GG 3+75S	35	<0.1	13	25	50	111	5
GG 4+00S	6	<0.1	9	28	77	57	15
GG 4+25S	13	<0.1	17	27	77	53	6
GG 4+50S	65	<0.1	12	91	115	210	11
GG 4+75S	152	0.1	15	129	115	330	5
GG 5+00S	88	0.3	16	255	199	343	6
GG 5+25S	168	0.7	12	115	121	271	5
GG 5+50S	67	0.1	19	128	143	222	6
GG 5+75S	109	0.2	13	28	59	158	3
GG 6+00S	67	0.3	19	41	119	212	14
GG 6+25S	21	0.1	13	27	58	102	10
GG 6+50S	6	<0.1	14	20	56	23	5
GG 6+75S	<5	<0.1	14	16	50	38	3
GG 7+00S	<5	<0.1	12	14	38	39	<2
GG 7+25S	42	<0.1	18	26	56	102	7
GG 7+50S	11	<0.1	15	15	50	75	3
GG 7+75S	15	<0.1	13	14	56	105	9
GG 8+00S	14	<0.1	16	17	58	73	5
GG 8+25S	43	<0.1	13	23	62	116	14
GG 8+50S	34	<0.1	13	24	76	145	13

Certified by




12/17/93

Assay Certificate

Page 3

Harris & Associates

WO#00414

Sample #	Au ppb	Ag ppm	Cu ppm	Pb ppm	Zn ppm	As ppm	Sb ppm
ANT 6+50W	<5	0.1	13	4	26	<10	<2
ANT 6+75W	21	0.1	4	<1	9	<10	<2
ANT 7+00W	5	0.3	4	3	10	<10	<2
ANT 7+25W	8	0.1	8	8	25	11	<2
ANT 7+50W	<5	0.5	16	21	68	32	<2
ANT 7+75W	<5	<0.1	3	2	14	<10	<2
ANT 8+00W	40	1.7	6	4	16	<10	<2
ANT 8+25W	59	3.7	20	184	490	489	14
ANT 8+50W	106	4.0	16	547	719	760	28
ANT 8+75W	145	9.3	36	141	787	2338	29
ANT 9+00W	68	2.9	16	45	143	851	9
ANT 9+25W ^{250m}	53	2.9	23	96	642	1154	10
ANT 9+50W	291	12.0	33	131	180	2155	34
ANT 9+75W	154	5.7	22	62	94	999	12
ANT 10+00W	>6667	2.0	22	55	95	753	7
ANT 10+25W	142	2.4	19	36	77	444	5
ANT 10+50W	84	4.0	22	80	128	1065	15

43 soil

Certified by 



12/20/93

Assay Certificate

Page 2

Harris & Associates

WO#00413

Sample #	Au ppb	Ag ppm	Cu ppm	Pb ppm	Zn ppm	As ppm	Sb ppm
FR 9+75W	20	0.2	15	17	58	76	2
FR 10+00W	31	0.2	14	17	60	52	2
FR 10+25W	14	0.1	11	19	53	70	2
FR 10+75W	10	0.3	11	17	45	47	<2
FR 11+00W	13	0.4	14	21	52	89	<2
FR 11+25W	16	0.3	13	22	60	101	2
FR 11+50W	135	0.7	18	46	96	245	3
FR 11+75W	16	0.2	18	30	76	146	<2
FR 12+00W	18	0.5	15	33	78	159	<2
FR 12+25W	170	0.6	22	30	87	209	2
FR 12+75W	47	0.7	25	38	103	232	4
FR 13+00W	22	0.5	21	28	86	188	2

Note: Au detection limit of 5ppb is based on 15 grams of sample. Where smaller amount of sample was analysed (due to insufficient fine material in soils) the detection limit was increased proportionally.

Certified by

