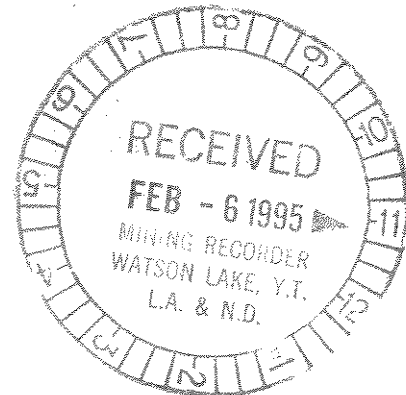


093241

GEOLOGICAL AND GEOCHEMICAL REPORT
ON THE COX CLAIMS

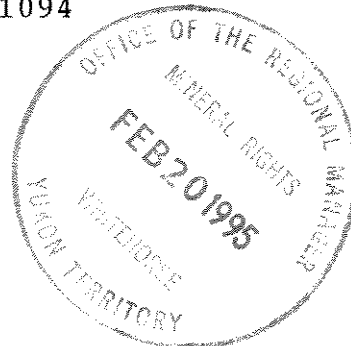
Watson Lake Mining District, Y.T.
NTS 105H-2
(61°07'N, 128°43'W)

for



SNOWDRIFT MINERALS INC.
201 - 1512 Yew Street
Vancouver, B.C. V6K 3E4
(604)731-1094

by



CARL G. VERLEY, P.Geo.
Amerlin Exploration Services Ltd.
2150 - 1851 Savage Road
Richmond, B.C. V6V 1R1
(604)821-1088

December 1994

CLAIMS: COX 1 - 16
LOCATION: 78 miles (126 km) north of Watson Lake, Y.T.
DATE: September 5, 1994.

TABLE OF CONTENTS

	Page
SUMMARY	2
INTRODUCTION	3
Location	3
Access	3
History	4
PROPERTY	5
GEOLOGY	7
Regional	7
Property	7
Mineralization	8
GEOCHEMISTRY	9
CONCLUSIONS & RECOMMENDATIONS11
REFERENCES12

APPENDICES:	A. Statutory Declaration
	B. Assay and Analytical Data from Pioneer Laboratories Inc.
	C. Personnel
	D. Writer's Certificate

Figures

		Page
Figure:		
1	Property Location Map.1
2	Claim Map.6

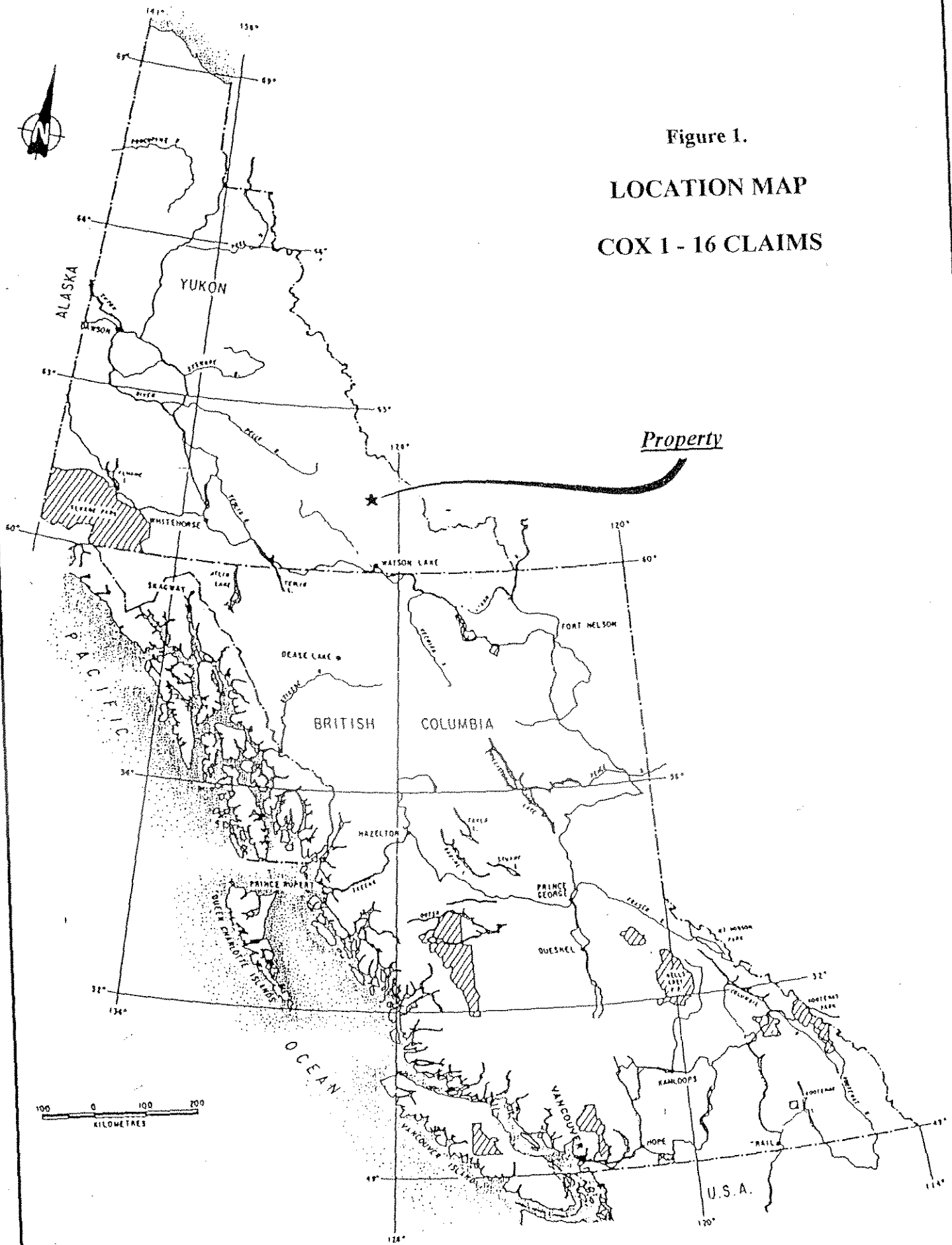
Tables

Table:		
1	Mineral Claims5
2	Interpretation of Geochemical Data9

Plates

Plate:		
1	Geologyin pocket

Figure 1.
LOCATION MAP
COX 1 - 16 CLAIMS



SUMMARY

Snowdrift Minerals Inc. has an option on the COX 1 - 16 mineral claims. The claims are situated in one contiguous block centered 126 kilometres north of Watson Lake, in the Logan Mountains, Watson Lake Mining District (105H/2), Yukon Territory. The property is accessible by helicopter.

The ground is situated in an area underlain by meta-sediments believed to be Upper Devonian to Mississippian or older in age.

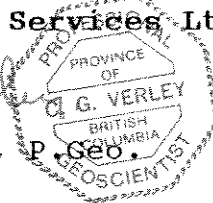
Preliminary prospecting and reconnaissance soil sampling on the claims outlined an area where silver-lead-zinc bearing quartz vein float was located.

Further work is warranted to delineate the extent of this mineralization and prospect in detail other areas on the claims.

The estimated cost of this work is \$15,000.

Respectfully submitted,
Amerlin Exploration Services Ltd.

Carl G. Verley
 Carl G. Verley, P. Geo.



December 27, 1994.
 Richmond, B.C.

INTRODUCTION

This report compiles results of work conducted on the COX 1 - 16 mineral claims under the supervision of the writer for Snowdrift Minerals Inc. on September 5, 1994. The object of this work was to examine the known showings on the property and investigate the mineral potential of the rest of the claims.

Location

The COX 1 - 16 are centered 126 kilometres north of Watson Lake in the Logan Mountains, Watson Lake Mining District, Y.T. at latitude $61^{\circ}07'N$ and longitude $128^{\circ}43'W$. The property is situated on map-sheet 105H/2. The ground straddles a portion of the western side of Dolly Varden creek valley. It consists of pine forested terraces that are incised by spruce covered creek gullies. Elevations range from about 900 to 1100 metres (2000 to 3600 feet) above sea level.

Access

The property is best accessed by helicopter from Watson Lake. A staging point, found where the Cantung highway crosses Dolly Varden creek, is 20 kilometres south of the claims and is suitable for slinging gear to the property.

History

The COX claims were originally staked in 1970 by W.R. Cox, however no records of work conducted on the property were recorded. The claims consequently lapsed. The area was restaked as the COX 1 - 16 by Mr. Alex Black in July, 1994.

PROPERTY

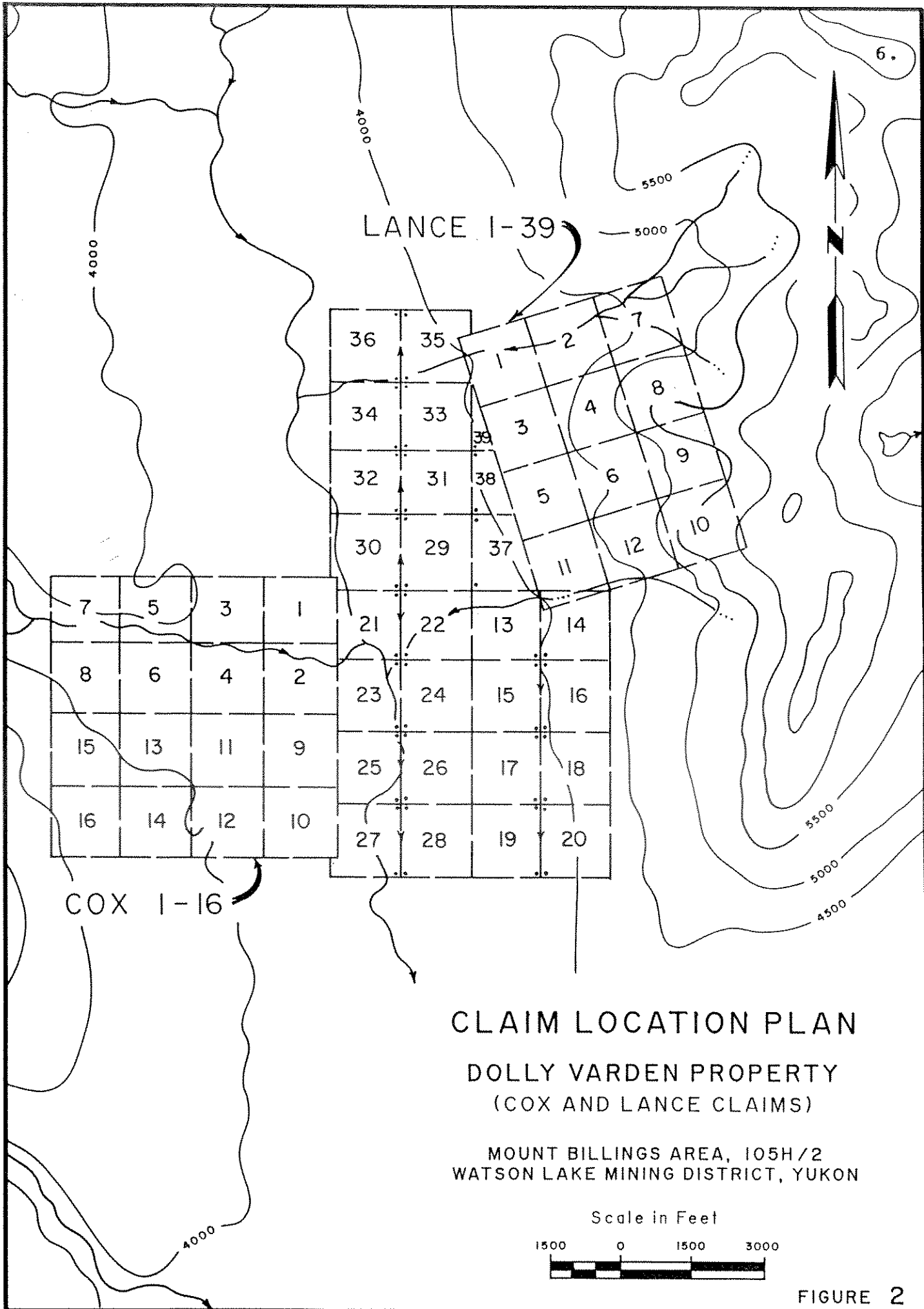
The property consists of a total of 16 contiguous, full sized mineral claims as tabulated below and illustrated on Figure 2. The claims are located in the Mount Billings area, Watson Lake Mining District, Y.T. (NTS 105H/2).

The Cox 1 - 16 claims are subject to an option agreement between the Snowdrift Minerals Inc. and Messrs. Alex Black and Lance Steigenberger.

Table 1. MINERAL CLAIMS

<u>Claims</u>	<u>Grant Numbers</u>	<u>Expiry Date</u> *
COX 1 - 16	YB51272-YB51287	July 19, 1996

*Pending acceptance of assessment work.



LANCE 1-39

COX 1-16

CLAIM LOCATION PLAN
 DOLLY VARDEN PROPERTY
 (COX AND LANCE CLAIMS)

MOUNT BILLINGS AREA, 105H/2
 WATSON LAKE MINING DISTRICT, YUKON

Scale in Feet



FIGURE 2

GEOLOGY

Regional:

The property is situated in the northern extension of the Omineca belt east of the Tintina fault zone (Gabrielse, 1985). Regionally, the area is characterized by a succession of Paleozoic sediments - fine clastics and carbonates - that were probably derived from and deposited onto ancestral North America. Numerous post accretionary, Cretaceous to Tertiary age, plutons intrude this succession (Wheeler et al., 1989). This plutonism has produced variable degrees of regional and contact metamorphism through out the area, resulting in the development of a variety of mineral deposits.

Property:

The property is underlain by a variably deformed succession of presumably Devonian-Mississippian aged metasediments. However, southerly and westerly dipping exposures of phyllite (uDMs) on the claims may be older. In particular, very carbonaceous, black phyllite containing quartz-carbonate veinlets and breccia veins at the Cox zone may be Silurian in age.

Outcrops of southerly dipping, grey weathering, thin to medium bedded quartzite to dolomitic quartzite (uDMq) occur on the southern part of the property along Dolly Varden creek. What appear to be fossil bivalve fragments were found in outcroppings of the unit at the point where the creek draining the Cox zone

flows into Dolly Varden creek. The quartzite unit presumably overlies the phyllite unit (uDMs).

Mineralization

Several cobble-size float fragments of quartz vein material were found in the south side of a gully bank on the COX 4 claim. The cobbles consist of coarse-grained, white quartz with traces of pyrite, galena and sphalerite. Analyses of selected grab samples of this material returned values of up to 3073 ppm Pb, 1826 ppm Zn and 11.5 ppm Ag (sample 640).

GEOCHEMISTRY

Soil sampling was conducted along a reconnaissance sample line extending east and west from the COX zone. A total of 22 soils were collected at 10 metre intervals. Sample sites were flagged. Most of these being from an area where mineralized quartz vein float had been found (COX zone). Silt samples (2) were collected from streams draining the property (Figure 3).

All samples were placed in numbered bags and delivered to Pioneer Laboratories Ltd. in New Westminster, B.C. These samples were dried and sieved to -80 mesh. A 0.5 gram portion of each sieved sample was digested in 3 ML of a 3:1:2 solution of HCl, HNO₃ and H₂O at 95°C for one hour, then diluted with water to a 10 ML solution. Gold analysis was by atomic absorption from a 10 gram sample. Inductively coupled argon plasma (ICP) technique was used to analyze 0.5 grams samples for Mo, Cu, Pb, Zn, Ag, Ni, Co, Mn, Fe, As, U, Th, Sr, Cd, Sb, Bi, V, Ca, P, La, Cr, Mg, Ba, Al, Na, K, and W.

Table 2. Interpretation of Geochemical Data

	Copper (ppm)	Lead (ppm)	Zinc (ppm)	Silver (ppm)	Gold (ppb)	Arsenic (ppm)
Range	2-264	2-180	31-1439	0.1-5.6	1- 55	2-542
Background*	2- 49	2- 49	31- 199	0.1- 0.3	1- 6	2-19
Anomalous*	50+	50+	200+	0.4+	7+	20+

*Based on writer's visual estimates.

Values in soils along the sampled lines range up to 264 ppm Cu, 180 ppm Pb, 1439 ppm Zn, 5.6 ppm Ag, 55 ppb Au and 542 ppm As. High copper, lead, zinc and silver values coincide with mineralization found in float at the COX zone, and form an anomalous zone approximately 20 metres long. The relatively high copper and vanadium (up to 150 ppm) values may indicate the presence of sulvanite (Cu_3VFe_4) in veins. Despite a thin veneer of glacial till or outwash that overlies terraces in the area, soil sampling appears to be effective in delineating the extent of the mineralized float and possibly useful in locating its bedrock source.

CONCLUSIONS & RECOMMENDATIONS

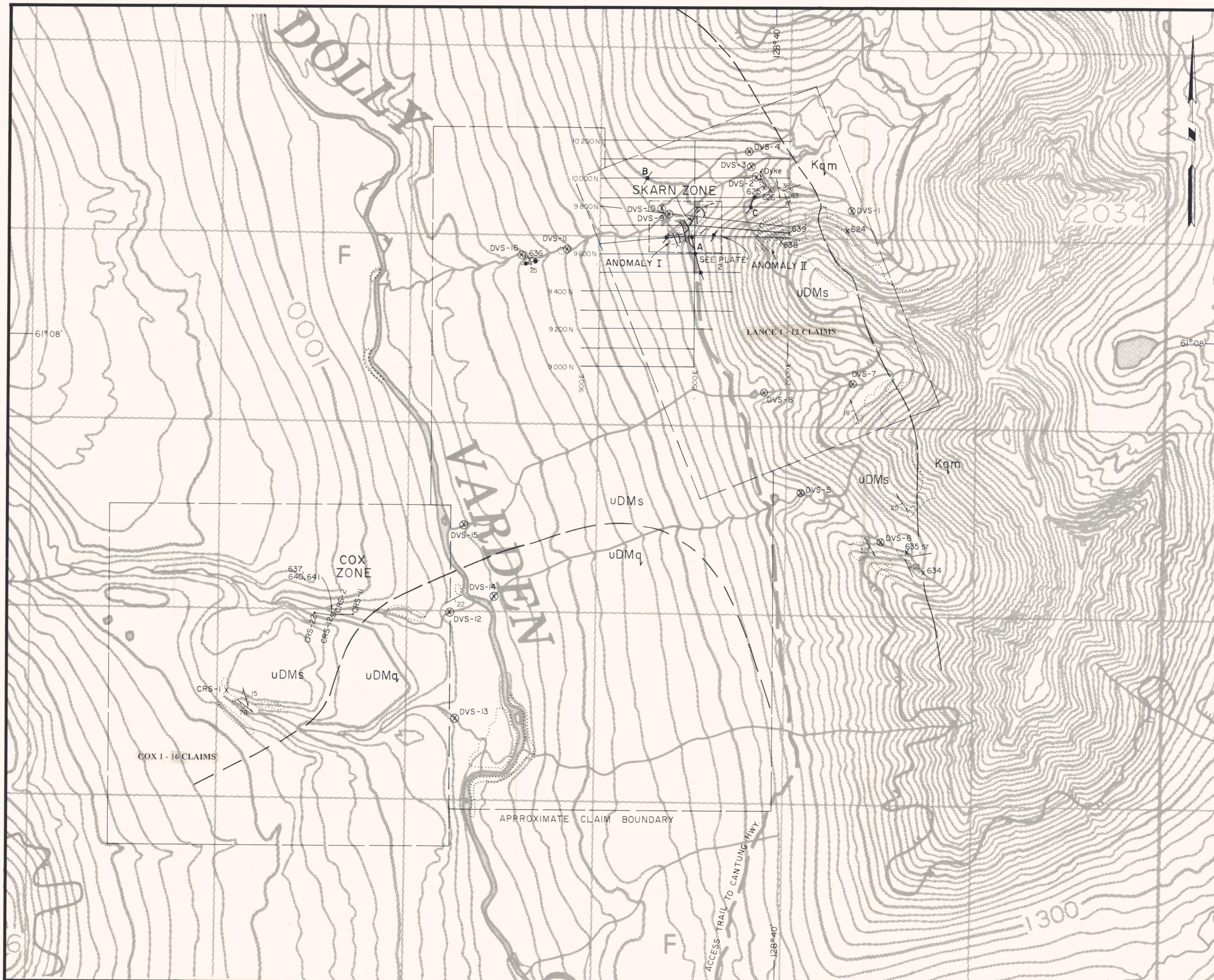
Snowdrift Minerals Inc. has an interest in 55 mineral claims located in the Mount Billings area, Watson Lake Mining District, Yukon. The claims are situated 126 kilometres north of Watson Lake. Access is by helicopter.

The property is underlain by a succession of Devonian-Mississippian or older (?) metapelites. Silver-lead-zinc mineralization occurs in cobble-size float fragments on the COX 4 claim. Soil geochemistry appears to be effective in this environment for tracing out mineralization.

A program of further work, consisting of additional soil sampling and detailed prospecting is recommended to further evaluate the COX zone. The estimated cost of this work is \$15,000.

REFERENCES

- Gabrielse, H., 1985: Major transcurrent displacements along the northern Rocky Mountain trench and related lineaments in north-central B.C., Geol. Soc. Am. Bull., Vol. 96, p. 1-14.
- Wheeler, J.O. and A.J. Brookfield, H. Gabrielse, J.W.H. Monger, H.W. Tipper, G.J. Woodsworth, 1989: Terrane Map of the Canadian Cordillera, Geol. Survey of Canada, O.F. 1894.



LEGEND

- CRETACEOUS (?)
- Kqm MEDIUM-GRAINED BIOTITE-QUARTZ MONZONITE
- UPPER DEVONIAN-MISSISSIPPIAN
- uDMq QUARTZITE AND DOLOMITIC QUARTZITE LOCALLY FOSSILIFEROUS.
 - uDMs PHYLLITE: GREENISH GREY TO DARK GREY AND CARBONACEOUS. LOCALLY HORNFELS, WITH QUARTZ VEINS AND DISSEMINATED PYRITE NEAR INTRUSIVE CONTACTS. CONTAINS QUARTZITE AND LIMESTONE AT SKARN ZONE. SEE PLATE 2 FOR DETAILS. SUBDIVIDED INTO UNITS 1, 2, 3 AND 4 AT SKARN ZONE.
- LITHOLOGIC CONTACT
 - OUTCROP DISTRIBUTION
 - BEDDING
 - FRACTURES
 - FOLIATION
 - QUARTZ VEIN
 - X 636 ROCK SAMPLE LOCATION REFER TO APPENDIX C FOR ANALYTICAL DATA
 - DVS-1 STREAM SEDIMENT SAMPLE REFER TO APPENDIX C FOR ANALYTICAL DATA
 - RECONNAISSANCE SOIL LINE COX CLAIMS REFER TO APPENDIX C FOR ANALYTICAL DATA
 - ANOMALY I, II SOIL GEOCHEMICAL ANOMALIES REFER TO APPENDIX C FOR PLOTS AND ANALYTICAL DATA
 - HLEM CONDUCTORS REFER TO APPENDIX D
 - FOREST COVERED AREAS

NOTE:
 TOPOGRAPHY FROM ENERGY, MINES AND RESOURCES MAP 105H/2
 -CONTOUR INTERVAL 20 METERS
 -MAGNETIC DECLINATIONS 29°46' (1994)

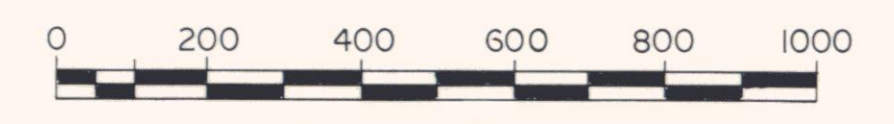
093241

SNOWDRIFT MINERALS INC.

GEOLOGY

DOLLY VARDEN PROPERTY

MOUNT BILLINGS AREA, 105H/2
 WATSON LAKE MINING DISTRICT, YUKON



Scale in Metres
 By DWG
 AMERLIN EXPLORATION SERVICES LTD. PLATE 1

APPENDIX A
STATUTORY DECLARATION

STATUTORY DECLARATION

CANADA)
) In the matter of a geological and geochemical
) report on behalf of Snowdrift Minerals Inc.
TO WIT:)

I, Carl G. Verley, agent for Snowdrift Minerals Inc.
of 201 - 1512 Yew Street, Vancouver, B.C. V6K 3E4

do solemnly declare, - that geological and geochemical work was
conducted on the COX 1 - 16 mineral claims, Watson Lake Mining
District, Yukon, on September 5, 1994. Expenditures for this work
include:

Salaries, management fees, consulting. . . .	\$625.00
Assay and analytical369.79
Food	40.00
Helicopter charter986.97
Hotel.110.18
 Total.	 \$2,131.94

And I make this declaration conscientiously believing it to
be true and knowing that it is of the same force and effect as if
made under oath and by virtue of The Canada Evidence Act.

Declared before me at VANCOUVER)
))
in the Province of B.C. this)
))
3rd day of January 1995.)

Carl G. Verley

[Signature]
Notary Public.

APPENDIX B
GEOCHEMICAL DATA

ROCK SAMPLE DESCRIPTIONS

Sample	Location	Description
637	COX	Chip sample of quartz-carbonate veinlets and breccia veins in carbonaceous phyllite = "COX zone"?
640	COX	Chips of quartz vein float from Cox zone. Sample contains traces of PbS & FeS ₂ .
641	COX	Chips of quartz vein float from Cox zone. Sample contains traces of PbS & FeS ₂ .

GEOCHEMICAL ANALYSIS CERTIFICATE

SNOWDRIFT MINERALS INC.

Project: Dolly Varden

Report No. 9411096

Sample type: Soils

Date: October 03, 1994

Multi-element ICP Analysis - .500 gram sample is digested with 3 ml of aqua regia, diluted to 10 ml with Water. This leach is partial for Mn, Fe, Ca, P, La, Cr, Mg, Ba, Ti, B, W and limited for Na, K and Al. Detection Limit for Au is 3 ppm.
 *Au Analysis- 10 gram sample is digested with aqua regia, MIBK extracted, graphite furnace AA finished to 1 ppb detection.

ELEMENT SAMPLE	Cu ppm	Pb ppm	Zn ppm	Cd ppm	Ag ppm	Au ppb	As ppm	Sb ppm	Bi ppm	Mo ppm	W ppm	Mn ppm	Fe %	Ti %	Cr ppm	Ni ppm	Co ppm	V ppm	U ppm	Th ppm	Sr ppm	La ppm	Ba ppm	B ppm	Ca %	Al %	Na %	K %	Mg %	P %	
COX ZONE - SOILS:																															
CRS 1	18	28	63	0.2	0.1	1	43	2	2	1	1	464	2.72	0.06	14	19	15	24	5	10	7	26	56	2	0.08	1.83	0.01	0.13	0.35	0.033	
CRS 2	264	130	1439	20.0	5.6	46	397	27	2	37	1	565	7.42	0.01	16	161	28	150	10	16	63	15	197	2	1.33	0.64	0.01	0.12	0.60	0.260	
CRS 3	35	180	305	1.3	0.8	55	542	5	2	3	1	2395	6.57	0.01	12	52	24	15	5	9	20	30	142	2	0.27	0.98	0.01	0.08	0.57	0.050	
CRS 4	7	15	79	0.4	0.1	1	14	2	2	1	2	179	1.55	0.05	10	11	4	19	5	4	27	19	61	2	0.39	1.09	0.01	0.15	0.27	0.058	
CRS 5	8	16	81	0.3	0.3	1	14	2	2	1	2	223	1.48	0.05	10	9	4	21	7	4	26	19	61	3	0.39	1.05	0.02	0.16	0.25	0.061	
CRS 6	6	12	77	0.6	0.1	1	10	3	2	1	2	220	1.30	0.04	7	10	4	18	5	5	25	17	42	2	0.35	0.72	0.02	0.12	0.20	0.057	
CRS 7	7	26	92	0.8	0.1	6	17	2	2	2	1	186	1.29	0.04	6	11	4	24	5	8	19	22	39	2	0.31	0.58	0.01	0.08	0.16	0.067	
CRS 8	2	3	34	0.2	0.1	1	4	2	2	1	1	109	0.92	0.04	3	2	1	13	5	3	3	6	19	2	0.04	0.48	0.01	0.08	0.13	0.014	
CRS 9	3	5	38	0.2	0.2	2	4	3	2	1	3	128	1.14	0.03	5	3	2	21	6	3	5	14	21	2	0.03	0.70	0.01	0.07	0.14	0.016	
CRS 10	2	2	42	0.2	0.1	1	5	3	2	1	1	164	1.19	0.05	4	3	2	17	5	3	11	7	33	2	0.15	0.62	0.01	0.07	0.19	0.018	
CRS 11	3	7	55	0.3	0.1	1	6	3	2	1	1	211	1.16	0.04	4	3	3	16	5	2	20	9	42	2	0.28	0.79	0.02	0.09	0.15	0.037	
CRS 12	16	34	223	1.2	0.3	1	29	2	2	1	1	396	2.16	0.06	8	21	7	34	5	5	23	17	77	2	0.38	1.26	0.01	0.19	0.27	0.063	
CRS 13	6	9	49	0.2	0.2	1	5	3	2	1	3	189	1.33	0.04	8	8	4	16	5	7	21	19	37	2	0.29	0.78	0.01	0.13	0.23	0.054	
CRS 14	6	9	44	0.2	0.1	1	4	2	2	1	1	209	1.49	0.04	9	9	5	16	5	7	17	23	32	2	0.24	0.81	0.01	0.12	0.24	0.056	
CRS 15	8	13	57	0.2	0.1	1	5	2	2	1	1	238	1.76	0.04	9	9	4	21	5	5	9	18	40	2	0.13	0.92	0.01	0.14	0.22	0.041	
CRS 16	9	11	66	0.2	0.1	1	8	2	2	1	1	195	1.90	0.05	10	10	4	24	5	4	7	16	50	2	0.09	1.17	0.01	0.18	0.26	0.029	
CRS 17	10	12	64	0.2	0.1	1	5	2	2	1	1	393	1.91	0.06	9	11	6	21	5	8	16	20	50	2	0.27	1.00	0.01	0.16	0.29	0.058	
CRS 18	10	18	79	0.2	0.1	1	12	2	2	1	1	291	2.06	0.04	11	15	6	22	5	6	12	21	54	2	0.17	1.29	0.01	0.13	0.30	0.051	
CRS 19	2	4	35	0.2	0.1	1	2	3	2	1	1	140	1.40	0.05	4	3	2	22	5	2	5	12	27	2	0.04	0.81	0.01	0.09	0.17	0.019	
CRS 20	4	10	43	0.2	0.1	1	2	2	2	1	3	107	1.10	0.03	5	5	3	13	5	2	5	11	25	2	0.06	0.70	0.01	0.05	0.15	0.026	
CRS 21	5	9	42	0.2	0.1	1	7	2	2	1	1	115	1.16	0.02	8	6	3	13	5	2	6	15	29	2	0.07	0.85	0.01	0.07	0.18	0.031	
CRS 22	2	4	31	0.2	0.1	1	2	2	2	1	2	49	0.48	0.01	3	1	1	9	5	2	5	12	18	2	0.02	0.62	0.01	0.03	0.04	0.018	
SILTS:																															
DVS 12	7	11	48	0.4	0.1	1	4	2	2	1	1	245	1.63	0.07	11	6	4	17	5	3	14	10	44	2	0.23	0.91	0.01	0.17	0.31	0.028	
DVS 13	18	29	234	1.6	0.2	4	90	2	2	8	1	292	1.68	0.01	5	33	5	24	5	2	22	21	59	2	0.50	0.47	0.01	0.05	0.20	0.081	
ROCKS:																															
637	7	40	56	0.5	0.5	4	19	2	2	7	1	537	2.33	0.01	50	32	3	52	5	2	260	2	154	2	11.24	0.09	0.01	0.03	9.42	0.014	
640	25	3073	1826	12.5	11.5	57	10	2	24	1	17	23343	9.62	0.01	12	4	4	10	17	2	278	14	16	2	15.48	0.65	0.01	0.01	0.37	0.001	
641	7	175	135	1.0	0.2	2	5	2	2	9	5	1143	1.11	0.01	197	5	2	2	5	2	48	2	7	2	1.61	0.09	0.01	0.01	0.30	0.003	

APPENDIX C

PERSONNEL

PERSONNEL

C.G. Verley
8191 Osler Street
Vancouver, B.C. V6P 4E3

Geologist

Gregory Sinitzin
C/O 13241 - 82nd Ave
Surrey, B.C.

Field Technician

APPENDIX D
WRITER'S CERTIFICATE

AMERLIN EXPLORATION SERVICES LTD.

2150 - 1851 Savage Road, Richmond, B.C. V6V 1R1 Tel/Fax (604) 821-1088

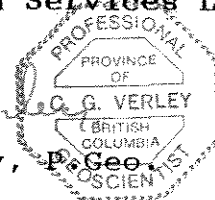
WRITER'S CERTIFICATE

I, Carl G. Verley of Vancouver, British Columbia hereby certify that:

1. I am a geologist residing at 8191 Osler Street, Vancouver B.C.
2. I am a graduate of the University of British Columbia, B.Sc. in 1974, and have practised my profession since that time.
3. I am a registered member of the Association of Professional Engineers and Geoscientists of the Province of B.C.
4. I am the author of this report which is based on work supervised by me on the COX 1-16 mineral claims and conducted on September 5, 1994.
5. I have no direct or indirect interest in the securities of Snowdrift Minerals Inc. nor do I expect to receive any.

Amerlin Exploration Services Ltd.

Carl G. Verley
Carl G. Verley,



December 27, 1994.
Richmond, B.C.