

093213
093218



**1994 GEOLOGICAL AND GEOCHEMICAL
ASSESSMENT REPORT
ON THE
OTTER 1-40 CLAIMS
SLAB 209-212 CLAIMS**

Located in the Fairchild Lake Area
Mayo Mining District
Yukon Territory, Canada
NTS 106C/13
64° 58' North Latitude
134° 53' West Longitude

-prepared for-
NEWMONT EXPLORATION LIMITED
DENVER, COLORADO

-prepared by-
EQUITY ENGINEERING LTD.

Kelly A. Owerko, Geologist
David A. Caulfield, P. Geo.

DATES OF WORK PERFORMED: June 22,27 and 30, 1994
DATE OF REPORT: December 1994

1994 GEOLOGICAL AND GEOCHEMICAL ASSESSMENT REPORT ON THE
 OTTER 1-40 AND SLAB 209-212

TABLE OF CONTENTS

		<u>Page</u>
1.0	CONCLUSIONS AND RECOMMENDATIONS	1
2.0	INTRODUCTION	1
3.0	LIST OF CLAIMS	2
4.0	LOCATION, ACCESS AND PHYSIOGRAPHY	2
5.0	AREA AND PROPERTY EXPLORATION HISTORY	
5.1	Area Exploration History	3
5.2	Property Exploration History	4
5.3	1993 Exploration Program	4
6.0	1994 EXPLORATION PROGRAM	4
7.0	REGIONAL GEOLOGY	5
8.0	PROPERTY GEOLOGY AND MINERALIZATION	6
9.0	SOIL GEOCHEMISTRY	6
10.0	STREAM SEDIMENT GEOCHEMISTRY	7

APPENDICES

Appendix A	Bibliography
Appendix B	List of Personnel
Appendix C	Statements of Expenditures
Appendix D	Rock Sample Descriptions
Appendix E	Analytical Procedures and Certificates of Analyses
Appendix F	Stream Sediment Sampling Procedures
Appendix G	Geologist's Certificate

LIST OF TABLES

		<u>Page</u>
Table 3.0.1	Claim Data	2
Table 9.0.1	Soil Geochemical Thresholds	6
Table 10.0.1	Stream Sediment Geochemical Thresholds	7

LIST OF FIGURES

		<u>Following Page</u>
Figure 1	Claim Map	1
Figure 2	Location Map	2
Figure 3	Regional Geology	5

LIST OF PLATES

Plate 1	Otter 1-40 Claims, Simplified Geology Map	-pocket-
Plate 2	Otter 1-40 Claims, Cu in Rocks, Soils and Stream Sediments	-pocket-
Plate 3	Otter 1-40 Claims, Au in Rocks, Soils and Stream Sediments	-pocket-
Plate 4	Slab 209-212 Claims, Simplified Geology Map	-pocket-
Plate 5	Slab 209-212 Claims, Cu in Rocks and Soils	-pocket-
Plate 6	Slab 209-212 Claims, Au in Rocks and Soils	-pocket-

1.0 CONCLUSIONS AND RECOMMENDATIONS

The Slab 209-212 claims were staked to cover an area on trend with the Eagle showing mineralization. The 1994 exploration program consisted of soil and rock geochemistry, prospecting and limited geological mapping. Results indicate that mineralization is very isolated with minor copper mineralization found in diorite float near the northern boundary of the Slab 209 claim. Soil geochemical results returned low concentrations of copper and gold. Results from this years work were not encouraging and no further work is recommended.

Previous work in the Wernecke Mountains has determined a possible uranium-gold association. Based on this the Otter 1-40 claims were staked to cover a uranium anomaly detected by the 1993 airborne geophysical survey conducted by Newmont Exploration Limited (Wiles, 1993). The 1994 exploration program consisted of a geochemical survey, prospecting and preliminary geological mapping.

Mineralization on the Otter claims ranges from trace to 4% disseminated magnetite in Fairchild Lake Group sediments and semi-massive specular hematite, trace pyrite and malachite associated with quartz and quartz-siderite veins. The latter occurrence of mineralization is the source of an isolated high copper soil value of 271 ppm (#O-1-2000). The stream sediment survey generated anomalous copper values of 99 ppm (#94-DC-5) and 102 ppm (#94-DC-6) and one gold value of 90 ppb (#94-DC-7). The source of these anomalies is not explained and therefore one or two mandays is recommended to soil sample and prospect the drainages located upstream of these samples. Uranium mineralization was not observed on the Otter 1-40 claims.

2.0 INTRODUCTION

The Slab 209-212 and Otter 1-40 quartz claims (referred to as the Otter claim group in this report) are located in the Wernecke Mountains, approximately 180 kilometres northeast of Mayo in east central Yukon (Figure 1). The property is situated just north of the Bonnet Plume River valley in the vicinity of Fairchild Lake. The claims are underlain by a weakly metamorphosed, faulted and folded sequence of Proterozoic Wernecke Supergroup sedimentary strata that has been intruded by hematite breccias and cut by mafic sills and dykes.

Recent publication of data on the giant Olympic Dam copper-gold- silver-uranium deposit in Australia lead to the application of this deposit model to the Wernecke Supergroup strata and related hematite breccia complexes with its widely documented copper-uranium-gold-cobalt occurrences. Based on these similarities and the presence of copper-cobalt-gold mineralization at the Eagle occurrence immediately to the northwest, it was decided to acquire by staking the Slab 209-212 in July 1993. In October 1993, the Otter 1-40 claims were staked to cover a uranium anomaly detected by the 1993 airborne geophysical survey.

Work in 1994 consisted of preliminary geological mapping, prospecting, contour soil geochemical sampling and stream sediment sampling. This work program was jointly conducted by Pamicon Developments Limited and Equity Engineering Ltd. on behalf of the Fairchild Joint Venture

NEWMONT EXPLORATION LTD.
 WESTMIN RESOURCES, PAMICON DEVELOPMENTS, EQUITY ENGR.
 FAIRCHILD PROJECT, YUKON TERRITORY, CANADA
 MAYO MINING DISTRICT

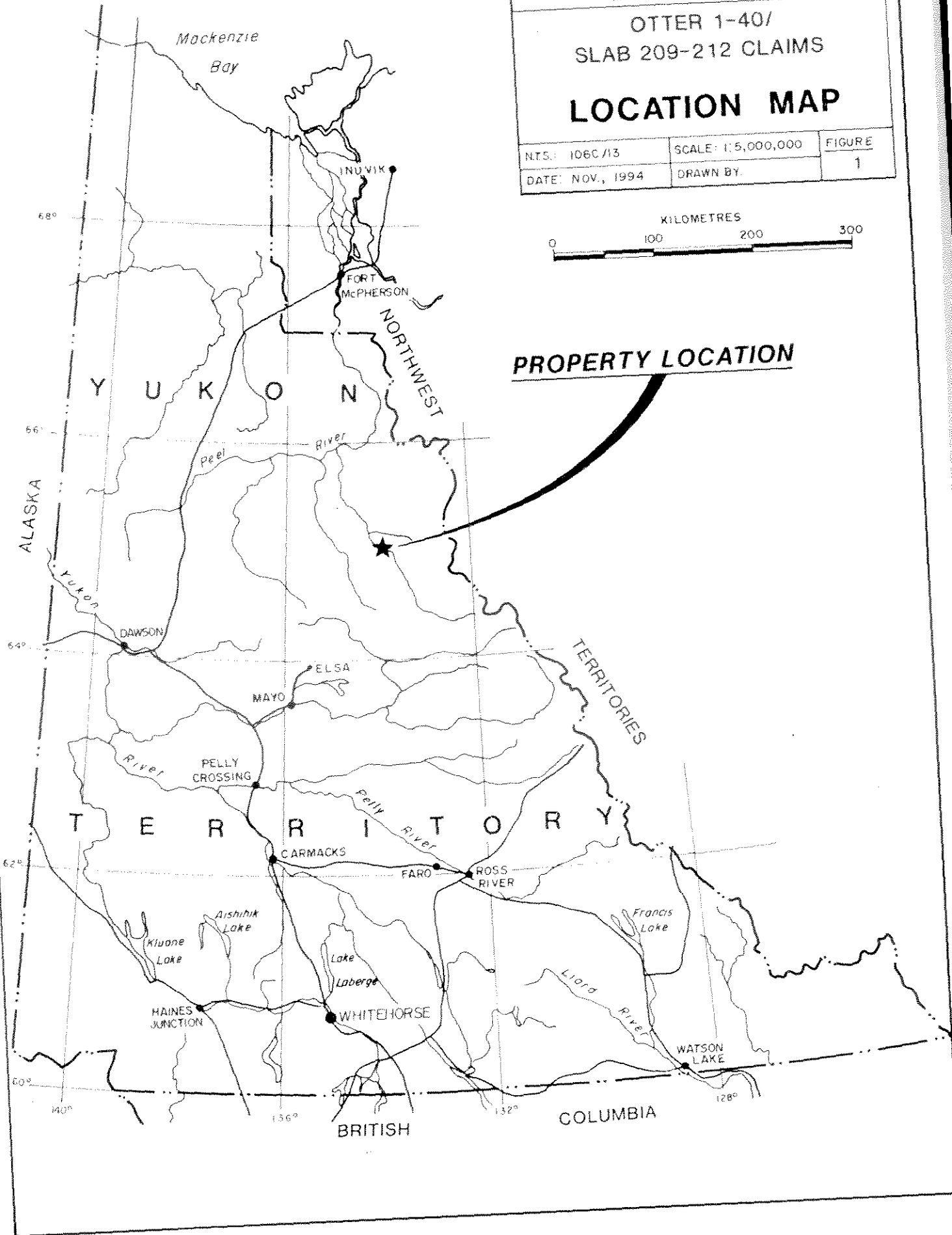
OTTER 1-40/
 SLAB 209-212 CLAIMS

LOCATION MAP

NTS: 106C/13	SCALE: 1:5,000,000	FIGURE
DATE: NOV., 1994	DRAWN BY:	1



PROPERTY LOCATION



(Newmont Exploration Limited and Westmin Resources Limited). Pamicon and Equity have been retained to report on the field work activities.

3.0 LIST OF CLAIMS

The Otter claim group covered by this report comprises the Slab 209-212 claims and the Otter 1-40 claims. The Otter claim group is one contiguous block located in the Mayo Mining district (Figure 2). Government records indicate that the claims are owned 100% by Westmin Resources Limited of Vancouver, B.C. Separate documents indicate that they are under option to Newmont Exploration Limited of Denver, Colorado. The following tables list the claims by name, number record date, expiry date and map sheet designation.

Table 3.0.1
Claim Data

<u>Claim Name</u>	<u>Claim Numbers</u>	<u>Record Numbers</u>	<u>Record Date</u>	<u>Expiry Date</u>	<u>NTS</u>	<u>No. of Claims</u>
Otter	1 - 40	YB42249-288	10/12/93	12/31/96*	106C13	40
Slab	209 - 212	YB22343-346	07/09/93	12/31/96*	106C13	4

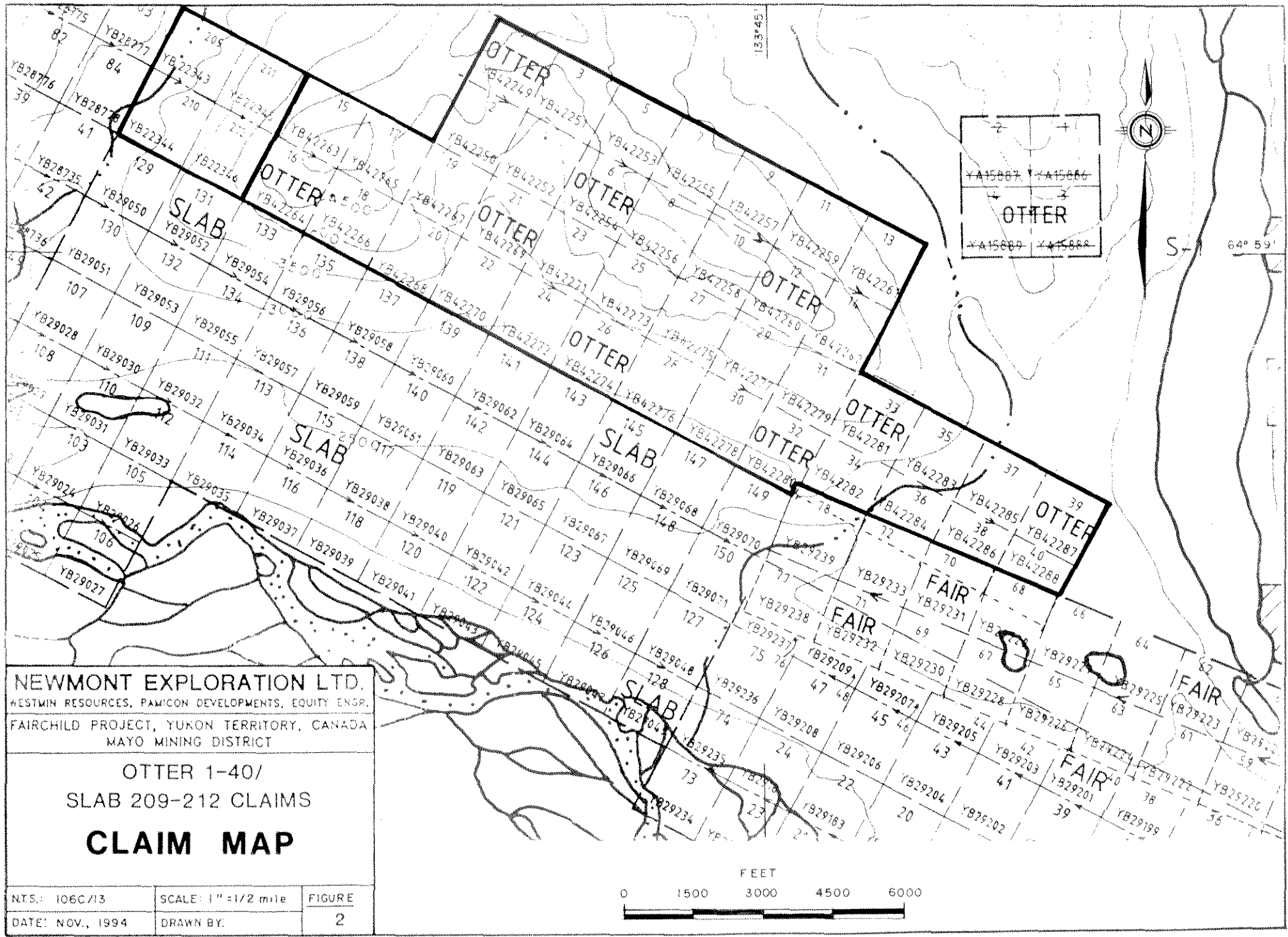
*Subject to approval of assessment work covered by this report.

4.0 LOCATION, ACCESS AND PHYSIOGRAPHY

The Otter claim group is located in the Wernecke Mountains of east central Yukon, approximately 180 kilometres north-northeast of Mayo (Figure 1). The claim group is situated west of Fairchild Lake along the north side of the Bonnet Plume River valley. Coordinates for the property are 64°58' north latitude and 134°53' west longitude.

The project area is accessible from Mayo by float plane to Fairchild Lake or by wheeled aircraft to a new 885 metre long, gravel airstrip at Copper Point located in the Bonnet Plume River valley, 15 kilometres downstream from Fairchild Lake. Several other airstrips in the area including Bear River, Wind River, Dolores Creek and Bonnet Plume River Mines are either no longer serviceable or are unsafe for aircraft utilized by mineral exploration companies.

Access during the 1994 field program was by fixed wing aircraft to Copper Point airstrip and base camp. The property was then reached by helicopter, a distance of 9 kilometres east from the airstrip.



YA15887 YA15886
 OTTER
 YA15889 YA15888

NEWMONT EXPLORATION LTD.
 WESTMIN RESOURCES, PAMICON DEVELOPMENTS, EQUITY ENGR.
 FAIRCHILD PROJECT, YUKON TERRITORY, CANADA
 MAYO MINING DISTRICT

OTTER 1-40/
 SLAB 209-212 CLAIMS

CLAIM MAP

NTS: 106C/13	SCALE: 1" = 1/2 mile	FIGURE
DATE: NOV., 1994	DRAWN BY:	2



The Wind River winter tote road, originating near Elsa, was built through the project area during the 1950's to access oil and gas exploration sites to the north and in the 1960's was utilized again during work on the Snake River (Crest) iron deposit. In the late 1960's, several spur trails and airstrips were constructed providing access to the Dolores Creek, Wind River, and Bonnet Plume (Hoover) copper prospects and to the Bear River iron deposit. The winter road was used by Pan Ocean Oil during their coal and uranium exploration program near Kiwi Lake in 1979 and 1980. In 1994, Westmin Resources Limited utilized the trail to mobilize equipment to construct the airstrip at Copper Point.

Elevations on the Otter claim group range from 810 to 1740 metres above sea level and relief varies from moderate to extreme. The Otter claim group straddles a southeast trending ridge and the Slab claim group drapes a northwest facing slope. Most of the property lies above tree line with the exception of the lower slopes and the valley bottom where the vegetation consists of stunted spruce, wild rose, arctic sage, dwarf alder and willow. Climate in the area is characterized by six months of cold winter and three to four months of warm to hot summer with May through September as the best months for exploration. The average daily January and July temperatures for Mayo are -29°C and 15.2°C respectively with annual precipitation of 306.3 millimetres, of which 40% is snow.

5.0 PREVIOUS WORK

5.1 Area Exploration History

The first copper occurrences were noted by trappers working in the area at the turn of the century. The Slab mineral showing, located down the Bonnet Plume River valley a short distance, was first staked in 1910. In 1935, the McClusky copper occurrences were staked and the Bonnet Plume and Wind River area received sporadic exploration for copper over the next twenty years. Exploration activity was stimulated in the early 1960s when California Standard Company through their subsidiary, Crest Exploration Limited, worked on their banded iron deposit in the Snake River area. Drilling outlined 18.6 billion tonnes averaging 47% iron in the Hadrynian Rapitan Group (Yeo, 1986).

In the early 1960s, the first copper showing was found at Dolores Creek by L. Brown. Bonnet Plume River Mines Ltd. conducted exploration from 1967 to 1969, at which time limited diamond drilling was completed (Laznicka and Edwards, 1979).

In 1971, the discovery of zinc-lead showings in the MacKenzie Mountains to the east brought exploration activity to the southeastern portion of the Wernecke Mountains. Continued lead-zinc exploration in the Proterozoic basin led to the discovery of uranium mineralization in 1974 by Archer, Cathro and Associates Ltd. In the period 1975 to 1980, a number of major companies (Urangesellschaft, Noranda) and joint ventures (Wernecke Joint Venture, Mountaineer Mines-Pan Ocean Oil Limited, Prism Joint Venture) were involved in exploration of breccia-related uranium mineralization. Also at this time, Pan Ocean drilled coal reserves on their lower Bonnet Plume leases to outline in excess of 500 million tonnes of low sulphur, high volatile bituminous coal in Cretaceous strata.

The 1980s saw very limited work throughout the project area. Archer-Cathro, Texaco and Cyprus Gold embarked on limited exploration to test the gold potential of some of the known uranium or copper occurrences.

Recent exploration work in the 1990s has been conducted by BHP Minerals, Kennecott Canada, International Prism Exploration and Fairchild Joint Venture on both copper-gold and zinc-lead targets. At present there are over 2000 quartz claims recorded in the Bonnet Plume River area.

5.2 Property Exploration History

The Otter claim group borders Minfile occurrences 106C/13-006 (Eagle) and -076 (Otter) which lie south and west of the Otter group. The Otter claims were staked in 1976 by Mountaineer Mines, briefly explored for their uranium potential with geological mapping, prospecting and stream geochemistry in 1977 and were allowed to lapse the same year. In 1980, Pan Ocean Oil shifted its exploration focus from uranium to cobalt and staked the large Eagle and Otter claim blocks to protect significant cobalt+copper showings. Trenching and diamond drilling work the same year centred on the main showings and did not encompass any of the present Otter group.

5.3 1993 Exploration Program

In July 1993, the Slab 209-212 claims were staked on the east side of Eagle Creek to protect open ground located southeast of the of the main Eagle showing.

In September 1993, an airborne geophysical survey was completed over the present claims area by Newmont Exploration Limited. Survey data collected included magnetometer and radiometric (U, K and Th) data at 1000 metre line spacings on the northeast part of the property and the remainder at 250 metre line spacings. In October 1993, acquisition of the Otter 1 to 40 mineral claims was completed by staking to cover a uranium anomaly returned from the airborne geophysical survey.

6.0 1994 EXPLORATION PROGRAM

On June 22 and June 27, 1994 six mandays were spent on geological and geochemical surveys on the Otter 3, 5-14, 31, 33 and 37 quartz claims. Geological mapping was initiated at 1:10000 scale. A 3000 metre reconnaissance soil line with a sample spacing of 100 metres was flagged and belt-chained along an east south-east trending ridge. One rock grab, 6 stream silt and 30 soil samples were collected.

On June 30, 1994, two mandays were spent completing contour soil geochemical surveys and preliminary geological mapping on the Slab 209-212 claims. Soil samples were collected at 100 metre spacings on 2 contour lines at elevations of 950 and 1050 metres. A total of 38 soils and 1 rock float sample were collected on the Slab 209-212 claims.

All sample sites were marked in the field by flagging tape and an inscribed aluminum tag. Soil samples were collected from either "B" or "C" horizon material at depths ranging from 5 to 25 centimetres and placed in numbered kraft envelopes. The sampler recorded notes pertaining to sample horizon, colour, texture, vegetation, and local physiography. A detailed description of stream sediment sampling procedures is appended. Samples were partially dried in camp and then shipped to Chemex Labs of North Vancouver, B.C. Soil samples were analyzed for gold, lanthanum and 24-element ICP geochemistry. Stream sediment samples were also analyzed for arsenic.

7.0 REGIONAL GEOLOGY

This summary of the regional geology is based on work by Delaney (1985), Thorkelson and Wallace (1994) and by Pamicon Developments Limited (Unpublished 1977). References to earlier work are cited by Delaney. Work by Thorkelson and Wallace is based on 1:50000 mapping of NTS sheet 106C/13 published jointly by the Yukon and Canadian governments. A complete table of formations including lithologies is presented on the legend following Figure 3. This map is a copy of a portion of Thorkelson and Wallace's 1994 publication.

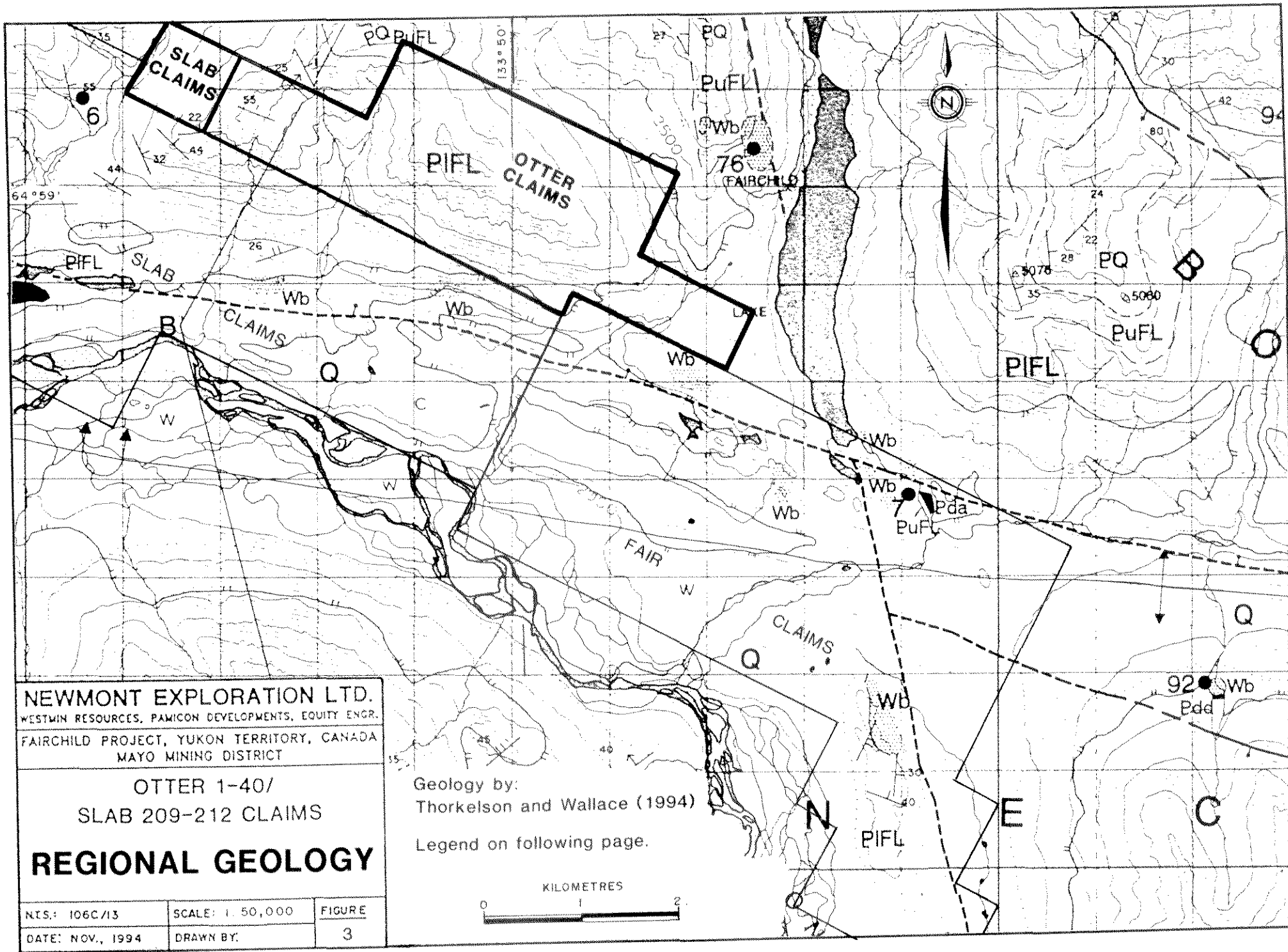
The Wernecke Mountains are cored by at least 14,000 metres of generally fine-grained terrigenous and carbonate rocks of Helikian age that have been penetrated by hematite breccias and cut by mafic sills and dykes. The entire succession has been named the Wernecke Supergroup and has been divided into three groups (oldest to youngest): Fairchild Lake Group, Quartet Group and Gillespie Lake Group. To the east and south, the Hadrynian Pinguicula Group unconformably overlies the Wernecke Supergroup. Paleozoic strata bound the western margin and Cretaceous and Tertiary sediments fill the area to the north in the Bonnet Plume Basin.

The main structural components of the Wernecke terrane are the southeast trending fault splays (Deslauriers, Knorr, and Snake River faults) of the Richardson Fault array. These faults are interpreted to be deep-seated, long-lived, vertical structures which have undergone considerable right lateral and vertical movement. These faults separate the Wernecke Supergroup from younger Proterozoic rocks to the east. In the western part of the area, Lower Paleozoic rocks unconformably overlie the Wernecke Supergroup, forming spectacular angular unconformities. On a regional scale, sediments dip away from the Bonnet Plume valley causing the Proterozoic rock units to be exposed in a northwest trending anticlinal structure.

8.0 PROPERTY GEOLOGY AND MINERALIZATION

The Otter claim group is underlain by a sequence of folded and faulted Helikian Wernecke Supergroup sedimentary rocks that have been cut by minor mafic intrusives (Plates 1 and 4). Wernecke Supergroup sediments observed on the property include the Fairchild Lake (FL) and Quartet (Q) groups.

Members of the Fairchild Lake Group, are exposed in all areas of the Otter claim group except in the north-west corner of Otter 1, which is underlain by Quartet Group siliciclastics. The Fairchild



NEWMONT EXPLORATION LTD.
 WESTMIN RESOURCES, PAMICON DEVELOPMENTS, EQUITY ENGR.
 FAIRCHILD PROJECT, YUKON TERRITORY, CANADA
 MAYO MINING DISTRICT

OTTER 1-40/
 SLAB 209-212 CLAIMS

REGIONAL GEOLOGY

NTS: 106C/13	SCALE: 1:50,000	FIGURE
DATE: NOV., 1994	DRAWN BY:	3

Geology by:
 Thorkelson and Wallace (1994)
 Legend on following page.



LEGEND
(to follow Figure 3)

STRATIFIED ROCKS

Quaternary

Q Alluvium, colluvium and glacial deposits

Middle to Late Proterozoic

Pinguicula Group

PP Maroon and green weathering siltstone; orange and grey weathering dolostone with minor interbeds of maroon to black siltstone; minor basal greenish grey quartzose sandstone with lenses of conglomerate.

Middle Proterozoic

Gillespie Lake Group

PGL Undivided Gillespie Lake Group: orange, brown and grey weathering dolostone and silty dolostone, locally stromatolitic, locally hosting chert nodules and sparry karst infillings, interbedded with subordinate black weathering siltstone and shale, green, grey and brown weathering laminated mudstone, and grey to white weathering quartzose sandstone. Locally developed slaty cleavage in shaley beds. Hosts sedimentary exhalative Zn, Pb, Cu and Ag.

PGLs Black weathering siltstone and shale

PGLb Basal Gillespie Lake Group: cross laminated, orange weathering silty to sandy dolostone interbedded with black weathering shale and grey to white weathering, quartzose, fine grained sandstone

Quartet Group

PQ Black weathering shale, finely laminated dark grey weathering siltstone, and planar to cross laminated light grey weathering siltstone and fine grained sandstone. In upper part of succession, siltstone and fine grained sandstone interbedded with subordinate orange weathering dolostone grades upward into basal Gillespie Lake Group. Slaty cleavage, crenulation cleavage, and microfolds locally present in shaly units

Fairchild Lake Group

PFL Undivided Fairchild Lake Group: siltstone, fine grained sandstone, laminated limy siltstone, and minor carbonate

PuFL Upper Fairchild Lake Group: black weathering siltstone, buff to light grey weathering dolomitic siltstone, orange to brown weathering dolostone, and white weathering dolostone; locally cleaved and crenulated; grades upward into black shale and siltstone of Quartet Group, and downward into lower Fairchild Lake Group

PiFL Lower Fairchild Lake Group: Greenish grey to pink and green weathering calcareous laminated siltstone, grey weathering fine grained sandstone, and minor brown weathering carbonate. Siltstone and sandstone are commonly cross-laminated; siltstone is locally cleaved, crenulated and kinked; base not exposed

INTRUSIVE ROCKS

Middle Proterozoic

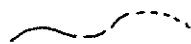
Wernecke breccia

Wb Mottled red, green and grey weathering hematitic and dolomitic breccia, and related metasomatized country rock. Breccia contains variably metasomatized clasts of Wernecke Supergroup, and minor dyke rock. Breccia and metasomatites are locally enriched in copper, cobalt, uranium, silver and gold

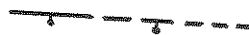
Igneous dykes

Pd Fine to medium grained, mafic to intermediate dykes. **Pdd**, greenish grey weathering, fine to medium grained diorite to gabbro; **Pda**, grey weathering, biotitic andesite to basalt, locally spherulitic and amygdaloidal

SYMBOLS



stratigraphic or intrusive contact
known, approximate, assumed



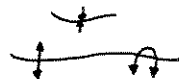
normal or strike-slip fault (pegs on downthrown side)
known, approximate, assumed



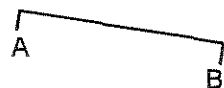
bedding
inclined, overturned, vertical,
horizontal, facing unknown
estimate from airphoto or distant sighting



cleavage
inclined, vertical



fold
syncline
anticline: inclined; overturned



line of cross section

GEOLOGY

106C/13

After Derek J. Thorkelson and Carol A. Wallace, OPEN FILE 1994-6 (G)
Exploration and Geological Services Division, Yukon, Indian and Northern
Affairs Canada.

Lake Group stratigraphy can be subdivided into units of phyllite (**Unit ph**) and siltstone (**Unit slts**).

Unit **ph** consists of thin-bedded, grey to green phyllites. This unit is variably hornfelsed hosting chloritoid porphyroblasts and traces of fine disseminated magnetite. Pyrite occurs as weakly disseminated euhedral crystals and blebs along isolated fractures. Grab sample #937377 (Otter 1-40), taken from a quartz-sericite-pyrite vein with weak malachite staining, returned 271 ppm Cu and <5 ppb Au. Specular hematite was found in a 1 metre diameter float boulder of quartz and quartz-siderite veins as massive 2-3 centimetre wide stringers. Thin-bedded dark-grey to black weathering locally calcareous siltstone (**Unit slts**) is found conformably overlying unit **ph** in the north-west corner of Otter 1 and Slab 209 claims. This unit locally contains weakly disseminated pyrite.

Unit **mdst** of the Quartet Group is found conformably overlying older Fairchild Lake Group sediments in the northwest corner of Otter 1 claim. This unit is a thin-bedded mudstone that weathers dull, dark grey to black.

Angular diorite float (#937310 Cu 491 ppm, Au <5 ppb), representing approximately 1% of the float in the area, was found on the northern part of Slab 209 claim. The fine to medium-grained brown weathering intrusive contains trace amounts of pyrite and chalcopyrite and 1% magnetite.

9.0 SOIL GEOCHEMISTRY

Table 9.0.1 lists statistical levels for Soil results from the 1993 and 1994 work programs on the Otter 1-40 and Slab 209-212 have been represented with proportional symbols on plates 2, 3, 5 and 6. the Fairchild Project for all soil samples (n=4317) taken since 1992. Thresholds based on 75th, 90th, 99th and 97th percentiles were used to determine anomalous areas for copper cobalt and gold

TABLE 9.0.1
SOIL GEOCHEMICAL THRESHOLDS-FAIRCHILD PROJECT

PERCENTILE	COPPER (ppm)	COBALT (ppm)	GOLD (ppb)	RATING
				Background
75th	200(40, 75)	40(11, 24)	5(5,5)	High values
90th	500	80	20	Moderately anomalous
97th	1500	175	65	Definitely anomalous
99th	3000	300	135	Highly anomalous

(,) - Comparative values from Otter 1-40 and Slab 209-212 data set (n=31, 38).

The Otter 1-40 soil geochemical survey consisted of 30 samples collected at 100 metre intervals along an east south-east trending ridge through the property (Plate 2 and 3). One high copper soil (#0-1-2000) returned a value of 271 ppm, coinciding with rock sample #937377 (297 ppm Cu) of a quartz vein with trace pyrite and weak malachite. Gold values without exception are below detection limit.

The soil geochemical survey conducted on the Slab 209-212 consisted of 38 samples taken at 50 metre intervals on two 900 metre long contour lines, one at an elevation of 950 metres and the other at 1050 metres (Plates 5 and 6). Rock and soil geochemical data from the 1993 Eagle grid are also present on the above mentioned plates. All copper and geochemistry returned below the 75th percentile, with the highest copper value of 115 ppm (#SBCL-950-050). All gold values were below the detection limit.

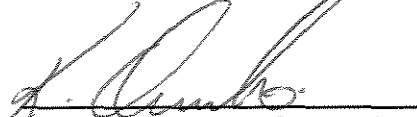
10.0 STREAM SEDIMENT SURVEY

A total of six stream sediment samples were taken in 1994 on the creek located north of the Otter 1-40 claims. Of these; five 1994 and 1 RGS (Geological Survey of Canada regional stream sampling survey, Open File 518) stream sediment samples fall within the map area and have been displayed with proportional symbols. Stream sediment samples 94-DC-5 and 94-DC-6 returned values of 99ppm and 102 ppm copper, both of which would be considered possibly anomalous. Sample 94-DC-7 was definitely anomalous in gold with a value of 90 ppb. Table 10.0.1 lists statistical levels for the RGS survey (n=628).

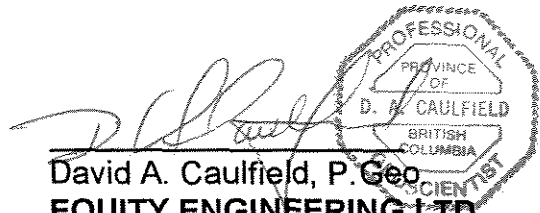
TABLE 10.0.1
STREAM SEDIMENT GEOCHEMICAL THRESHOLDS-RGS SURVEY

PERCENTILE	COPPER (ppm)	COBALT (ppm)	GOLD (ppb)	RATING
				Background
50th	50	15	5	
				High background
75th	75	25	10	
				Possibly anomalous
90th	120	30	15	
				Probably anomalous
97th	180	50	20	
				Definitely anomalous

Respectfully submitted



Kelly A. Owerko, Geologist
EQUITY ENGINEERING LTD.
Vancouver, British Columbia
December, 1994



The seal is a circular emblem with a scalloped border. The text inside the seal reads: "PROFESSIONAL" at the top, "PROVINCE OF" below it, "D. A. CAULFIELD" in the center, "BRITISH COLUMBIA" below that, and "GEOLOGIST" at the bottom.

David A. Caulfield, P. Geo
EQUITY ENGINEERING LTD.
Vancouver, British Columbia
December, 1994

APPENDIX A

BIBLIOGRAPHY

BIBLIOGRAPHY

- Archer, A. Bell, R.T. and Thorpe R. (1986): Age Relationships from U-Th-Pb isotope studies of uranium mineralization in Wernecke breccias; in Current Research, Part A, Geological Survey of Canada, Paper 86-1A, p. 385-391.
- Archer, A.R. and Schmidt, U. (1978): Mineralized Breccias of Early Proterozoic Age, Bonnet Plume River District, Yukon Territory; CIM Bulletin, vol. 71, p. 53-58.
- Baknes, M.E., Caulfield, D.A. and Stammers, M.A. (1993): 1993 Summary Report on the Slab Claims; Report submitted for assessment credits.
- Bell, R.T. (1978): Breccias and uranium mineralization in the Wernecke Mountains, Yukon - a progress report ; in Current Research, Part A, Geological Survey of Canada, Paper 78-1A. p. 317-322.
- Bell, R.T. (1982): Comments on the geology and uraniferous mineral occurrences of the Wernecke Mountains , Yukon and District of MacKenzie; in Current Research, Geological Survey of Canada, Paper 82-1B. p. 279-284.
- Bell, R.T. (1986): Geological map of northeastern Wernecke Mountains, Yukon Territory; Geological Survey of Canada, Open File 1027.
- Bell, R.T. (1986): Megabreccias in northeastern Wernecke Mountains, Yukon Territory; in Current Research, Part A, Geological Survey of Canada, Paper 86-1A. p. 375-384.
- Bell, R.T. and Delaney, G.D. (1977): Geology of some uranium occurrences in Yukon Territory; in Current Research, Part A, Geological Survey of Canada, Paper 77-1A. p. 33-37.
- Bell, R.T. and Jones, L.D. (1979): Geology of some Uranium Occurrences in Western Canada; in Current Research, Part A, Geological Survey of Canada, Paper 79-1A. p. 397-340.
- Carriere, J.J., Sinclair, W.D. and Kirkham, R.V. (1981): Copper Deposits and Occurrences in Yukon Territory; Geological Survey of Canada, Paper 81-12, 10 pp.
- Delaney, G.D. (1981): The Mid-Proterozoic Wernecke Supergroup, Wernecke Mountains, Yukon Territory; in Proterozoic Basins of Canada, Geological Survey of Canada, Paper 81-10, p. 1-23.
- Delaney, G.D. (1985): The Middle Proterozoic Wernecke Supergroup, Wernecke Mountains, Yukon Territory; Unpublished Ph.D. Thesis, University of Western Ontario, 373 pp.
- Dick, D.L. and Harmeson, B. (1981): Eagle 1-161, Otter 1-124 and Vole 1-43 Mineral Claims; Report submitted for assessment credits.

- Eisbacher, G.H. (1978): The Major Proterozoic Unconformities, Northern Cordillera; in Current Research, Part A, Geological Survey of Canada, Paper 78-1A, p. 53-58.
- Goodfellow, W.D. (1979): Geochemistry of copper, lead, and zinc mineralization in Proterozoic rocks near Gillespie Lake, Yukon; in Current Research, Part A, Geological Survey of Canada, Paper 79-1A. p. 333-338.
- Green, L.H. (1972): Geology of Nash Creek, Larsen Creek and Dawson map-areas, Yukon Territory; Geological Survey of Canada, Memoir 364, 157 pp.
- Laznicka, P. and Edwards, R.J. (1979): Dolores Creek, Yukon - a Disseminated Copper Mineralization in Sodic Metasomatites; in Economic Geology, vol. 74, p. 1352-1370.
- Stammers, M.A. (1993): Bonnet Plume Corridor Compilation Summary; Private report prepared for Fairchild Joint Venture.
- Thorkelson, D.A. and Wallace C.A. (1994): Open File 1994-6 (F), Geological Map of Fairchild Lake Map Area, (106C/13), Wernecke Mountains, Yukon, 1:50,000 Scale, Exploration and Geological Services Division, Yukon, Indian and Northern Affairs Canada.
- Wiles, C.J. (1993): Airborne Geophysical Survey September 1993; Private report prepared for Fairchild Joint Venture.
- Yeo, G.M. (1986): Iron-Formation in the late Proterozoic Rapitan Group, Yukon and Northwest Territories; in Mineral Deposits of the Northern Cordillera, Canadian Institute of Mining and Metallurgy Special Vol. 37, p. 142-153.
- Young, G.M., Jefferson, C.W., Delaney, G.D. and Yeo, G.M. (1979): Middle and late Proterozoic evolution of the northern Canadian Cordillera and Shield; in Geology, vol. 7, p. 329-330.

APPENDIX B

LIST OF PERSONNEL

LIST OF PERSONNEL

Roy Buyck (Sampler)
Box 64
Mayo, Yukon Y0B 1M0

David Caulfield (Sr. Geologist)
207, 675 West Hastings Street
Vancouver, B.C. V6B 1N2

Billy Germaine (Sampler)
Box 220
Mayo, Yukon Y0B 1M0

Cyndi Lisson (Cook)
163 Dalton Terrace
Whitehorse, Yukon Y1A 3G2

Kelly Owerko (Sr. Geologist)
207-675 West Hastings Street
Vancouver, B.C. V6B 1N2

Melanie Rose (Bull cook)
Box 92
Carcross, Yukon Y0B 1B0

Michael Stammers (Sr. Geologist)
711, 675 West Hastings Street
Vancouver, B.C. V6B 1N2

APPENDIX C

STATEMENT OF EXPENDITURES

**STATEMENT OF EXPENDITURES
OTTER 1 - 40 MINERAL CLAIMS**

CANADA -- In the matter of geological and geochemical assessment work filed on the
Otter 1 - 40 Mineral Claims

I, Michael A. Stammers agent for Westmin Resources Limited, 904, 1055 Dunsmuir Street,
Vancouver, B.C. do solemnly declare that a program consisting of geological mapping and
geochemical survey work was carried out on the Otter 3, 5-14,31,33 and 37 Mineral Claims during
the period June 1 to 30, 1994.

The following expenses were incurred during the course of this work and in the compilation and
reporting of the results:

PROFESSIONAL FEES AND WAGES:

Michael A. Stammers, P. Geo.		
1.5 days @ \$375/day	\$	562.50
David A. Caulfield, P. Geo.		
2.0 days @ \$375/day		750.00
Kelly Owerko, Geologist		
2.0 days @ \$300/day		600.00
Billy Germaine, Sampler		
1.0 day @ \$200/day		200.00
Roy Bycke, Sampler		
1.0 day @ \$200/day		200.00
Prorated Wages		<u>547.53</u>
		\$2860.03

EXPENSES:

Rentals - Base Camp	\$	62.22
Rentals - Truck		8.35
Rentals - Gen. Set Small		2.09
Rentals - Gen. Set Large		36.17
Rentals - 2 x Base Radio		8.77
Rentals - 2 x Hand Radio		1.57
Rentals - Office		10.43
Rentals - ATV		18.09
Rentals - Chain Saw		2.99
Rentals - Const. Tools		1.22
Electrical - L & L Electrical		9.24
Photocopies		.66
Reproductions		.29

Maps & Photos	106.11	
Ortho Photos	22.82	
Materials & Supplies	24.41	
Expediting	36.76	
Telephone - Long Distance	11.18	
Telephone - Space Tel	127.71	
Camp Expendibles	6.42	
Camp Building Materials	95.29	
Camp Food	146.91	
Camp Propane	4.18	
Camp Fuel - Oil	3.17	
Camp Fuel - Gas	.93	
Field Expendibles	144.10	
Truck Rental - K. Milledge	6.46	
Radio Rental - Motorola	10.61	
Travel - Hotel	34.96	
Travel - Meals	7.79	
Travel - Airfare	63.05	
Travel - Auto	6.46	
Travel - Misc.	1.31	
Freight - Air	17.79	
Freight - Truck	88.25	
Freight - Courier	2.77	
Fuel - Cat	58.44	
Fuel - Helicopter	146.13	
Drum Deposit	97.95	
Licenses - Radio	.64	
Legals - Notary	.87	
Misc. Expense - Summit Air	<u>41.86</u>	\$1,477.39

INDIRECT CHARGE:

Assays - Chemex Storage	6.09	
Assays - Chemex Lab	600.00	
Helicopter - Prorated	137.51	
Helicopter 1.7 Hrs @ \$540	918.00	
Fixed Wing	692.59	
Cat Charges	45.91	
Report	<u>1500.00</u>	\$3,900.10
Management Fees:		
Direct Charges @ 15%	650.61	
Direct Charges @ 7%	<u>273.00</u>	<u>\$ 924.61</u>

TOTAL: **\$9,162.13**

Notes:

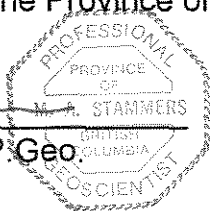
1. Wages are based on actual man days spent on the property.
2. Helicopter charges are based on actual hours flown.
3. Assay charges are based on actual numbers of samples from the property.
4. General expenses (all other costs) are prorated according to man days allocated to each property.

And I make this solemn declaration conscientiously believing it to be true and knowing that it is of the same force and effect as if made under oath and by virtue of the Canada Evidence Act.

Dated at Vancouver in the Province of British Columbia this 7 day of December, 1994.



Michael A. Stammers, P. Geo.



**STATEMENT OF EXPENDITURES
SLAB 209 - 212 MINERAL CLAIMS**

CANADA -- In the matter of geological and geochemical assessment work filed on the
Slab 209 - 212 Mineral Claims

I, Michael A. Stammers agent for Westmin Resources Limited, 904, 1055 Dunsmuir Street, Vancouver, B.C. do solemnly declare that a program consisting of geological mapping and geochemical survey work was carried out on the Slab 209 - 211 Mineral Claims during the period June 1 to 30, 1994.

The following expenses were incurred during the course of this work and in the compilation and reporting of the results:

PROFESSIONAL FEES AND WAGES:

Kelly Owerko, Geologist			
1.0 day @ \$300/day	\$	300.00	
Roy Bycke, Sampler			
1.0 day @ \$200/day		200.00	
Prorated Wages		<u>182.51</u>	\$ 682.51

EXPENSES:

Rentals - Base Camp	\$	20.74	
Rentals - Truck		2.78	
Rentals - Gen. Set Small		0.70	
Rentals - Gen. Set Large		12.06	
Rentals - 2 x Base Radio		2.92	
Rentals - 2 x Hand Radio		.52	
Rentals - Office		3.48	
Rentals - ATV		6.03	
Rentals - Chain Saw		1.00	
Rentals - Const. Tools		.41	
Electrical - L & L Electrical		3.08	
Photocopies		.22	
Reproductions		.10	
Maps & Photos		35.37	
Ortho Photos		7.61	
Materials & Supplies		8.14	
Expediting		12.25	
Telephone - Long Distance		3.73	

Telephone - Space Tel	42.57	
Camp Expendibles	2.14	
Camp Building Materials	31.76	
Camp Food	48.97	
Camp Propane	1.39	
Camp Fuel - Oil	1.06	
Camp Fuel - Gas	.31	
Field Expendibles	48.03	
Truck Rental - K. Milledge	2.15	
Radio Rental - Motorola	3.54	
Travel - Hotel	11.65	
Travel - Meals	2.60	
Travel - Airfare	21.02	
Travel - Auto	2.15	
Travel - Misc.	.44	
Freight - Air	5.93	
Freight - Truck	29.42	
Freight - Courier	.92	
Fuel - Cat	19.48	
Fuel - Helicopter	48.71	
Drum Deposit	32.65	
Licenses - Radio	.21	
Legals - Notary	.29	
Misc. Expense - Summit Air	<u>13.95</u>	\$ 492.46

INDIRECT CHARGE:

Assays - Chemex Storage	2.03	
Assays - Chemex Labs	586.00	
Helicopter - Prorated	45.84	
Helicopter .4 Hr @ \$540.00	216.00	
Fixed Wing	230.86	
Cat Charges	15.30	
Report	<u>500.00</u>	\$1,586.03
Management Fees:		
Direct Charges @ 15%	176.24	
Direct Charges @ 7%	<u>111.02</u>	<u>\$ 287.26</u>

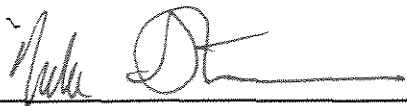
TOTAL: \$3,048.26

Notes:

1. Wages are based on actual man days spent on the property.
2. Helicopter charges are based on actual hours flown.
3. Assay charges are based on actual numbers of samples from the property.
4. General expenses (all other costs) are prorated according to man days allocated to each property.

And I make this solemn declaration conscientiously believing it to be true and knowing that it is of the same force and effect as if made under oath and by virtue of the Canada Evidence Act.

Dated at Vancouver in the Province of British Columbia this 7 day of December, 1994.



Michael A. Stammers, P. Geo.



APPENDIX D

ROCK SAMPLE DESCRIPTIONS

MINERALS AND ALTERATION TYPES

AB	albite	AD	adularia	AK	ankerite
AS	arsenopyrite	AZ	azurite	BA	barite
BI	biotite	BO	bornite	BR	brannerite
CA	calcite	CB	Fe-carbonate	CC	chalcocite
CL	chlorite	CO	cobaltite	CP	chalcopyrite
CY	clay	DI	diopside	DO	dolomite
EP	epidote	ER	erythrite	GA	garnet
GE	goethite	GL	galena	GR	graphite
HE	hematite	HS	specularite	JA	jarosite
KF	potassium feldspar	MC	malachite	MG	magnetite
MN	Mn-oxides	MR	mariposite	MS	muscovite/sericite
NE	neotocite	PO	pyrrhotite	PY	pyrite
QZ	quartz	SI	silica	SP	sphalerite
TT	tetrahedrite				

ALTERATION INTENSITIES

m	medium	s	strong	tr	trace
vs	very strong	vw	very weak	w	weak

EQUITY ENGINEERING LTD.

ROCK SAMPLE DESCRIPTIONS

Page-1-

Property : Otter

NTS : 106C/13

Date : 12/06/94

Sample No.	UTM :	7207 627 N	Type :	Float	Alteration :	wMS	Au	Ag	Co	Cu	Pb	Zn
		554 320 E	Strike Length Exp. :	m	Metallics :	trPY	(ppb)	(ppm)	(ppm)	(ppm)	(ppm)	(ppm)
937377	Elevation:	1590 m	Sample Width :	2 cm	Secondaries:	wJA, mMC	<5	0.2	6	297	18	48
	Orientation:	/	True Width :	2 cm	Host :	Quartz vein cutting green phyllite						

Comments : Float taken at soil sample 0-1-2000. Malachite on fractures.

EQUITY ENGINEERING LTD.

Property : Slab 209-212

ROCK SAMPLE DESCRIPTIONS

NTS : 106C/13

Date : 12/06/94

Page-1-

Sample No.	UTM :	7208 519 N	Type :	Float	Alteration :	None	Au	Ag	Co	Cu	Pb	Zn
		551 484 E	Strike Length Exp. :	m	Metallics :	trAS, trCP, 1%MG, trPY	(ppb)	(ppm)	(ppm)	(ppm)	(ppm)	(ppm)
937310	Elevation:	940 m	Sample Width :	3 m	Secondaries:	None	<5	0.4	46	491	10	134
	Orientation:	/	True Width :	? m	Host :	Diorite						

Comments : Found float 50m north of SBCL 950 in creek, approximately 1% of float. Angular.

APPENDIX E

ANALYTICAL PROCEDURES
AND
CERTIFICATES OF ANALYSES



Chemex Labs Ltd.

Analytical Chemists

Geochemists

Registered Assayers

212 Brooksbank Ave.
North Vancouver, B.C.
Canada V7J 2C1

Phone: (604) 984-0221
Telex: 043-52597

CHEMEX LABS LTD ANALYTICAL PROCEDURES

1. TRACE ANALYSIS

Gold

Fire Assay Collection/ Atomic Absorption Spectroscopy (FA-AA)

Chemex Code: 983

A 30g sample is fused with a neutral lead oxide flux inquarted with 6mg of gold-free silver and then cupelled to yield a precious metal bead.

These beads are digested for 30 mins in 0.5ml concentrated nitric acid, then 1.5ml of concentrated hydrochloric acid are added and the mixture is digested for 1 hr. The samples are cooled, diluted to a final volume of 5ml, homogenized and analyzed by atomic absorption spectroscopy.

Detection limit: 5 ppb

Upper Limit: 10,000 ppb

Arsenic ppm - Chemex Code 13

A 1.0 gram sample is digested with HNO_3 - aqua regia acids for approximately 2 hours. The digested solution is diluted to volume and mixed. An aliquot of the digest is acidified and reduced with NaBH_4 and arsenic content determined using flameless atomic absorption.

Detection limit: 1 ppm



Chemex Labs Ltd.

Analytical Chemists

Geochemists

Registered Assayers

212 Brookspank Ave.
North Vancouver, B.C.
Canada V7J 2C1

Phone: (604) 984-0221

Telex: 04-352597

Fax: (604) 984-0218

24-Element Geochemistry Package (24-ICP)

Inductively-Coupled Plasma Atomic Emission Spectroscopy (ICP-AES)

The 24 element rock geochemistry package provides quantitative analysis of all major elements (except silicon) as well as most important trace elements.

A prepared sample (0.50g) is digested with perchloric, nitric and hydrofluoric acids to dryness. The residue is taken up in a volume of 25ml of 10% hydrochloric acid and the resulting solution is analyzed by inductively-coupled plasma atomic emission spectroscopy. Results are corrected for spectral interelement interferences.

For this project only uranium and lanthanum were also analyzed.

Chemex Code	Element	Detection Limit	Upper Limit
573	Aluminum	0.01 %	15 %
565	Barium	10 ppm	1 %
575	Beryllium	0.5 ppm	0.01 %
561	Bismuth	2 ppm	1 %
576	Calcium	0.01 %	25 %
562	Cadmium	0.5 ppm	0.05 %
569	Chromium	1 ppm	1 %
563	Cobalt	1 ppm	1 %
577	Copper	1 ppm	1 %
566	Iron	0.01 %	15 %
560	Lead	2 ppm	1 %
570	Magnesium	0.01 %	15 %
568	Manganese	5 ppm	1 %
554	Molybdenum	1 ppm	1 %
564	Nickel	1 ppm	1 %
559	Phosphorus	10 ppm	1 %
584	Potassium	0.01 %	10 %
578	Silver	0.5 ppm	0.02 %
583	Sodium	0.01 %	10 %
582	Strontium	1 ppm	1 %
579	Titanium	0.01 %	10 %
556	Tungsten	10 ppm	1 %
572	Vanadium	1 ppm	1 %
558	Zinc	2 ppm	1 %
	Uranium	10 ppm	1 %
	Lanthanum	10 ppm	1 %



Chemex Labs Ltd.

Analytical Chemists

Geochemists

Registered Assayers

212 Brooksbank Ave.
North Vancouver, B.C.
Canada V7J 2C1

Phone: (604) 984-0221

Telex: 043-52597

PREPARATION METHODS

201 - DRY, SIEVE TO -80 MESH

a) Geochemical soil/silt samples are usually received in High/wet-strength 4x6 soil gusset bags. Sample sets are ordered, and dried for 12 to 24 hours at 50 deg. C.

b) The dried sample is hammered, to desegregate the soil particles, and then poured from the gusset bag into an 8 inch dia. 80 mesh stainless steel screen.

c) The sieve is shaken horizontally over a large clean piece of paper, where the -80 mesh fraction accumulates. When all the -80 fraction has passed through the sieve the +80 portion is discarded.

d) The -80 fraction is poured into a 2x3 coin envelope, which contains the exact same number as the submitted sample, for distribution to the analytical lab.

202 - DRY, SIEVE TO -80 MESH, SAVE +80 FRACTION

a) and b) see sections a) and b) of 201 c) The sieve is shaken horizontally over a large clean piece of paper, where the -80 mesh fraction accumulates. When all the -80 fraction has passed through the sieve the +80 portion is poured into a new 4x6 gusset bag (which contains the same number as the submitted sample), boxed, and filed. d) The -80 fraction is poured into a 2x3 coin envelope, which contains the exact same number as the submitted sample, for distribution to the analytical lab.

203 - DRY, SIEVE TO -35 MESH

a) Geochemical soil/silt samples are usually received in High/wet-strength 4x6 soil gusset bags. Sample sets are ordered, and dried for 12 to 24 hours at 50 deg. C.

b) The dried sample is hammered, to desegregate the soil particles, and then poured from the gusset bag into an 8 inch dia. 35 mesh stainless steel screen.

c) The sieve is shaken horizontally over a large clean piece of paper, where the -35 mesh fraction accumulates. When all the -35 fraction has passed through the sieve the +35 portion is discarded.

d) The -35 fraction is put into a ring grinder and rung to approximately 150 mesh. The pulp is put into a 2x3 coin envelope (same sample numbered envelope) for distribution to the analytical lab.



Chemex Labs Ltd.

Analytical Chemists

Geochemists

Registered Assayers

212 Brooksbank Ave.
North Vancouver, B.C.
Canada V7J 2C1

Phone: (604) 984-0221

Telex: 043-52597

PREPARATION METHODS - ROCK/ORE

205 - GEOCHEM RING

- a) Samples arrive in poly or olefin rock bags. Samples are ordered prior to crushing.
- b) The sample is poured into a primary jaw, and crushed to approximately 1/4 inch. This is secondary crushed in a roll crusher to approximately 10 mesh.
- c) The crushed sample is then split using a Jones Riffle splitter to approximately 200 to 250 grams. The reject is poured into the original bag for storage, or return to client.
- d) The sample split is put into a Rocklabs (large ring) ring mill, and rung to approximately 150 mesh. The pulped sample is poured into a 4x6 tin-top bag, (which has been labeled with the original number), for distribution to the analytical lab.

217 - GEOCHEM RING - ENTIRE SAMPLE (Used for samples 200 grams or less)

- a) The entire sample is put into a Rocklabs (large ring) ring mill, and rung to approximately 150 mesh. The pulped sample is poured into a 4x6 tin-top bag (correctly labeled), for distribution to the analytical lab.

208 - ASSAY RING

- a) Samples arrive in poly or olefin rock bags. Samples are ordered prior to crushing.
- b) The sample is poured into a primary jaw, and crushed to approximately 1/4 inch. This is secondary crushed in a roll or cone crusher to approximately 10 mesh.
- c) The crushed sample is then split using a Jones Riffle splitter to approximately 200 to 250 grams. The reject is poured into the original bag for storage, or return to client.

d) The sample split is put into a Rocklabs (large ring) ring mill, and rung to approximately 150 mesh. The pulped sample is poured into a 4x6 tin-top bag, (which has been labeled with the original number), sealed prior to being distributed to the analytical lab.

207 - ASSAY ROTARY PULVERIZE

a) and b) - see sections a) and b) under 208 c) The crushed sample is then split using a Jones Riffle splitter to approximately 250 to 350 grams. The reject is poured into the original bag for storage, or return to client. d) The sample split is ground in a Bico rotary pulverizer and screened to 140 mesh. The +140 material is visually inspected for metallics. e) If NO metallics are found, then the +140 fraction is hand ground to -140. The entire sample is then homogenized (by rolling). f) IF metallics are found, they are put into a separate coin envelope, kept with the original sample, and fused separately. The entire -140 fraction is homogenized.



Chemex Labs Ltd.

Analytical Chemists * Geochemists * Registered Assayers
212 Brooksbank Ave., North Vancouver
British Columbia, Canada V7J 2C1
PHONE: 604-984-0221

To: PAMICON DEVELOPMENTS LIMITED
WESTMIN PROJECT
711 - 675 W. HASTINGS ST.
VANCOUVER, BC
V6B 1N4

Page Number :1-A
Total Pages :1
Certificate Date: 14-JUL-94
Invoice No. :19419967
P.O. Number :
Account :BM W

Project : FAIRCHILD-OTTER
Comments: CC: PAMICON CC: D. CAULFIELD CC: M. JONES CC: R. VANCE

CERTIFICATE OF ANALYSIS A9419967

SAMPLE	PREP CODE	Au ppb FA+AA	Ag ppm AAS	Al % (ICP)	Ba ppm (ICP)	Be ppm (ICP)	Bi ppm (ICP)	Ca % (ICP)	Cd ppm (ICP)	Co ppm (ICP)	Cr ppm (ICP)	Cu ppm (ICP)	Fe % (ICP)	K % (ICP)	Mg % (ICP)
937377	205 294	< 5	0.2	3.78	140	< 0.5	< 2	1.96	0.5	6	204	297	2.00	0.45	0.44

CERTIFICATION:

Hart Buchler



Chemex Labs Ltd.

Analytical Chemists * Geochemists * Registered Assayers
212 Brooksbank Ave., North Vancouver
British Columbia, Canada V7J 2C1
PHONE: 604-984-0221

To: PAMICON DEVELOPMENTS LIMITED
WESTMIN PROJECT
711 - 675 W. HASTINGS ST.
VANCOUVER, BC
V6B 1N4

Page Number : 1-B
Total Pages : 1
Certificate Date: 14-JUL-94
Invoice No. : 19419967
P.O. Number :
Account : BM W

Project : FAIRCHILD-OTTER
Comments: CC: PAMICON CC: D. CAULFIELD CC: M. JONES CC: R. VANCE

CERTIFICATE OF ANALYSIS

A9419967

SAMPLE	PREP CODE	Mn ppm (ICP)	Mo ppm (ICP)	Na % (ICP)	Ni ppm (ICP)	P ppm (ICP)	Pb ppm AAS	Sr ppm (ICP)	Ti % (ICP)	V ppm (ICP)	W ppm (ICP)	Zn ppm (ICP)	La ppm ICP		
937377	205 294	3880	< 1	0.23	12	190	18	97	0.13	35	< 10	48	30		

CERTIFICATION:

Hart Buchler



Chemex Labs Ltd.

Analytical Chemists * Geochemists * Registered Assayers
 212 Brooksbank Ave., North Vancouver
 British Columbia, Canada V7J 2C1
 PHONE: 604-984-0221

To: PAMICON DEVELOPMENTS LIMITED
 WESTMIN PROJECT
 711 - 675 W. HASTINGS ST.
 VANCOUVER, BC
 V6B 1N4

Page Number : 1-A
 Total Pages : 1
 Certificate Date: 16-JUL-94
 Invoice No. : I9419966
 P.O. Number :
 Account : BM W

Project : FAIRCHILD-OTTER
 Comments: CC: PAMICON CC: D. CAULFIELD CC: M. JONES CC: R. VANCE

CERTIFICATE OF ANALYSIS A9419966

SAMPLE	PREP CODE	Au ppb FA+AA	Ag ppm AAS	Al % (ICP)	Ba ppm (ICP)	Be ppm (ICP)	Bi ppm (ICP)	Ca % (ICP)	Cd ppm (ICP)	Co ppm (ICP)	Cr ppm (ICP)	Cu ppm (ICP)	Fe % (ICP)	K % (ICP)	Mg % (ICP)
0-1-000	201 285	< 5	< 0.2	6.25	660	0.5	< 2	0.52	< 0.5	9	60	17	4.61	2.01	0.73
0-1-100	201 285	< 5	< 0.2	8.34	820	2.0	< 2	0.48	< 0.5	13	69	16	3.97	2.91	0.90
0-1-200	201 285	< 5	< 0.2	7.40	740	1.5	< 2	0.43	< 0.5	13	67	44	3.88	2.33	0.61
0-1-300	201 285	< 5	< 0.2	6.30	620	0.5	< 2	0.31	< 0.5	8	64	34	4.10	1.96	0.49
0-1-400	201 285	< 5	< 0.2	5.19	520	0.5	< 2	0.37	< 0.5	6	54	25	4.03	1.74	0.39
0-1-500	201 285	< 5	< 0.2	8.31	740	1.5	< 2	0.36	< 0.5	17	67	49	4.60	2.41	0.65
0-1-600	201 285	< 5	< 0.2	5.84	590	0.5	< 2	0.54	< 0.5	11	62	37	3.92	1.55	0.62
0-1-700	201 285	< 5	< 0.2	5.77	540	< 0.5	< 2	0.36	< 0.5	7	58	18	4.30	1.53	0.58
0-1-800	201 285	< 5	< 0.2	5.96	620	0.5	< 2	0.61	< 0.5	25	66	40	3.74	1.73	0.73
0-1-900	201 285	< 5	< 0.2	5.94	570	0.5	< 2	0.47	< 0.5	9	66	25	4.90	1.79	0.69
0-1-1000	201 285	< 5	< 0.2	7.82	730	1.5	< 2	0.41	< 0.5	11	67	47	4.42	1.95	0.64
0-1-1100	201 285	< 5	< 0.2	6.15	640	0.5	< 2	0.60	< 0.5	9	68	50	3.92	1.56	0.71
0-1-1200	201 285	< 5	< 0.2	6.06	620	0.5	< 2	0.49	< 0.5	8	65	15	3.82	1.65	0.51
0-1-1300	201 285	< 5	< 0.2	5.79	610	0.5	< 2	0.39	< 0.5	8	58	21	3.90	1.50	0.63
0-1-1400	201 285	< 5	< 0.2	6.46	640	1.0	< 2	0.51	< 0.5	9	65	17	3.95	1.62	0.62
0-1-1500	201 285	< 5	< 0.2	6.77	710	1.0	< 2	0.42	< 0.5	8	62	12	3.50	1.76	0.58
0-1-1600	201 285	< 5	< 0.2	5.90	600	0.5	< 2	0.29	< 0.5	8	61	17	4.24	1.54	0.63
0-1-1700	201 285	< 5	< 0.2	5.88	570	0.5	< 2	0.38	< 0.5	6	63	15	3.93	1.57	0.57
0-1-1800	201 285	< 5	< 0.2	8.75	630	2.0	< 2	0.41	< 0.5	10	69	22	4.67	1.73	0.60
0-1-1900	201 285	< 5	< 0.2	7.45	730	1.0	< 2	0.39	< 0.5	9	66	28	4.02	2.00	0.54
0-1-2000	201 285	< 5	< 0.2	8.68	770	1.5	< 2	0.84	< 0.5	18	69	271	3.99	2.28	1.07
0-1-2100	201 285	< 5	< 0.2	7.49	670	1.5	< 2	0.74	< 0.5	10	60	30	3.20	2.03	0.72
0-1-2200	201 285	< 5	< 0.2	6.04	610	1.0	< 2	0.39	< 0.5	6	56	11	2.77	1.78	0.37
0-1-2300	201 285	< 5	< 0.2	7.32	720	1.5	< 2	0.45	< 0.5	8	61	62	3.14	2.23	0.50
0-1-2400	201 285	< 5	< 0.2	6.98	680	1.0	< 2	0.63	< 0.5	8	68	40	3.96	1.99	0.66
0-1-2500	201 285	< 5	< 0.2	7.01	750	1.0	< 2	0.34	< 0.5	7	65	15	3.71	2.01	0.46
0-1-2600	201 285	< 5	< 0.2	5.51	580	< 0.5	< 2	0.32	< 0.5	6	70	14	3.72	1.45	0.59
0-1-2700	201 285	< 5	< 0.2	9.65	830	3.0	< 2	0.34	< 0.5	9	104	20	5.03	3.09	0.61
0-1-2800	201 285	< 5	< 0.2	10.90	920	3.0	< 2	0.42	< 0.5	14	111	< 1	4.05	3.34	0.97
0-1-2900	201 285	< 5	< 0.2	9.69	700	2.0	< 2	0.35	< 0.5	7	106	82	4.82	2.72	0.74
0-1-3000	201 285	< 5	< 0.2	6.48	730	1.0	< 2	0.31	< 0.5	13	57	25	3.31	2.07	0.49

CERTIFICATION:

Hart Buchler



Chemex Labs Ltd.

Analytical Chemists * Geochemists * Registered Assayers

212 Brooksbank Ave., North Vancouver
British Columbia, Canada V7J 2C1
PHONE: 604-984-0221

To: PAMICON DEVELOPMENTS LIMITED
WESTMIN PROJECT
711 - 675 W. HASTINGS ST.
VANCOUVER, BC
V6B 1N4

Page Number :1-B
Total Pages :1
Certificate Date: 16-JUL-94
Invoice No. : I9419966
P.O. Number :
Account : BM W

Project : FAIRCHILD-OTTER
Comments : CC: PAMICON CC: D. CAULFIELD CC: M. JONES CC: R. VANCE

CERTIFICATE OF ANALYSIS A9419966

SAMPLE	PREP CODE	Mn ppm (ICP)	Mo ppm (ICP)	Na % (ICP)	Ni ppm (ICP)	P ppm (ICP)	Pb ppm AAS	Sr ppm (ICP)	Ti % (ICP)	V ppm (ICP)	W ppm (ICP)	Zn ppm (ICP)	La ppm ICP		
0-1-000	201 285	530	1	0.86	22	400	22	116	0.35	106	< 10	94	30		
0-1-100	201 285	990	1	0.96	26	580	26	160	0.31	88	< 10	124	30		
0-1-200	201 285	1010	2	0.78	20	770	42	118	0.29	111	< 10	120	30		
0-1-300	201 285	375	2	0.59	19	400	30	87	0.34	133	< 10	106	30		
0-1-400	201 285	340	< 1	0.59	14	490	20	75	0.33	113	< 10	94	30		
0-1-500	201 285	1215	3	0.76	22	1150	36	117	0.24	92	< 10	162	30		
0-1-600	201 285	580	1	0.87	18	790	54	105	0.35	112	< 10	180	30		
0-1-700	201 285	395	2	0.63	17	500	28	76	0.39	122	< 10	134	30		
0-1-800	201 285	755	2	0.94	27	820	60	116	0.38	105	< 10	310	30		
0-1-900	201 285	510	1	0.73	21	630	28	103	0.34	102	< 10	108	30		
0-1-1000	201 285	915	1	0.63	24	940	38	125	0.21	107	< 10	134	40		
0-1-1100	201 285	705	1	0.84	23	590	26	125	0.32	108	< 10	120	30		
0-1-1200	201 285	670	1	0.68	20	480	24	108	0.33	111	< 10	90	30		
0-1-1300	201 285	555	2	0.70	21	390	24	93	0.30	109	< 10	96	20		
0-1-1400	201 285	915	1	0.75	22	810	24	115	0.29	97	< 10	98	30		
0-1-1500	201 285	930	< 1	0.74	20	370	20	109	0.30	110	< 10	102	20		
0-1-1600	201 285	500	1	0.60	21	450	26	76	0.36	127	< 10	100	30		
0-1-1700	201 285	485	< 1	0.66	17	360	22	87	0.35	114	< 10	82	30		
0-1-1800	201 285	1055	1	0.65	27	970	32	124	0.14	90	< 10	94	10		
0-1-1900	201 285	930	< 1	0.62	22	1150	24	106	0.20	101	< 10	102	20		
0-1-2000	201 285	1940	< 1	0.71	25	860	38	110	0.18	76	< 10	134	70		
0-1-2100	201 285	1340	1	0.70	19	1070	34	97	0.23	78	< 10	106	30		
0-1-2200	201 285	430	2	0.56	11	940	16	87	0.26	96	< 10	58	20		
0-1-2300	201 285	555	3	0.71	15	710	28	116	0.24	102	< 10	72	30		
0-1-2400	201 285	845	< 1	0.71	17	440	24	98	0.33	98	< 10	82	30		
0-1-2500	201 285	640	< 1	0.65	17	480	20	120	0.31	130	< 10	78	20		
0-1-2600	201 285	390	1	0.56	20	790	26	75	0.37	124	< 10	80	30		
0-1-2700	201 285	725	2	0.59	36	230	12	89	0.21	117	< 10	78	20		
0-1-2800	201 285	605	< 1	0.62	40	500	10	117	0.11	96	< 10	66	40		
0-1-2900	201 285	745	< 1	0.73	23	590	38	126	0.37	102	< 10	106	10		
0-1-3000	201 285	2820	2	1.01	18	1080	46	72	0.28	89	< 10	198	20		

CERTIFICATION:

Hart Buchler



Chemex Labs Ltd.

Analytical Chemists * Geochemists * Registered Assayers
 212 Brooksbank Ave., North Vancouver
 British Columbia, Canada V7J 2C1
 PHONE: 604-984-0221

To: PAMICON DEVELOPMENTS LIMITED
 WESTMIN PROJECT
 711 - 675 W. HASTINGS ST.
 VANCOUVER, BC
 V6B 1N4

Page Number : 1-A
 Total Pages : 1
 Certificate Date: 11-JUL-94
 Invoice No. : I9419286
 P.O. Number :
 Account : BM W

Project : FAIRCHILD-REID
 Comments : CC: PAMICON CC: D. CAULFIELD CC: M. JONES CC: R. VANCE

CERTIFICATE OF ANALYSIS A9419286

SAMPLE	PREP CODE	Au ppb FA+AA	Ag ppm AAS	Al % (ICP)	Ba ppm (ICP)	Be ppm (ICP)	Bi ppm (ICP)	Ca % (ICP)	Cd ppm (ICP)	Co ppm (ICP)	Cr ppm (ICP)	Cu ppm (ICP)	Fe % (ICP)	K % (ICP)	Mg % (ICP)
HK94006	201 285	< 5	< 0.2	2.65	130	1.0	< 2	11.40	< 0.5	10	32	52	4.09	0.97	8.34
HK94007	201 285	< 5	< 0.2	4.08	270	1.0	< 2	6.52	< 0.5	27	39	147	4.96	1.74	4.96
HK94008	201 285	< 5	< 0.2	3.96	270	1.0	< 2	7.37	< 0.5	27	40	200	4.52	1.40	5.67
HK94009	201 285	< 5	< 0.2	4.48	300	1.0	< 2	6.18	< 0.5	33	46	192	4.60	1.60	4.71
HK94010	201 285	< 5	< 0.2	4.42	340	1.0	< 2	6.74	< 0.5	23	46	134	4.16	1.72	4.90
HK94011	201 285	< 5	< 0.2	3.71	300	1.5	< 2	8.71	< 0.5	15	40	64	3.86	1.88	5.37
HK94012	201 285	< 5	< 0.2	6.92	570	1.5	< 2	2.88	< 0.5	67	101	300	6.80	1.87	2.54
94DC-01	201 285	< 5	< 0.2	6.47	540	2.5	< 2	0.79	< 0.5	145	62	300	6.12	2.26	1.27
94DC-02	201 285	< 5	< 0.2	6.55	560	1.5	4	0.68	< 0.5	25	68	140	5.38	1.98	1.01
94DC-03	201 285	< 5	< 0.2	6.10	380	2.0	< 2	3.27	< 0.5	52	51	257	5.85	1.88	3.71
94DC-04	201 285	< 5	< 0.2	8.47	600	2.0	< 2	0.53	< 0.5	19	71	37	5.31	1.84	0.91
94DC-05	201 285	< 5	< 0.2	9.22	650	2.0	< 2	0.58	< 0.5	19	66	99	4.75	1.76	0.81
94DC-06	201 285	< 5	< 0.2	6.12	640	1.5	< 2	1.06	< 0.5	29	40	102	4.30	2.53	0.88
94DC-07	201 285	90	< 0.2	8.85	600	2.0	< 2	0.53	< 0.5	18	72	48	5.19	1.69	0.83
94DC-08	201 285	< 5	< 0.2	7.46	630	2.0	< 2	0.68	< 0.5	21	57	66	4.90	1.94	0.78
94DC-09	201 285	< 5	< 0.2	7.19	650	1.5	< 2	0.78	< 0.5	23	59	50	6.00	1.93	0.88

CERTIFICATION:

Hart Bickler



Chemex Labs Ltd.

Analytical Chemists * Geochemists * Registered Assayers
 212 Brooksbank Ave., North Vancouver
 British Columbia, Canada V7J 2C1
 PHONE: 604-984-0221

To: PAMICON DEVELOPMENTS LIMITED
 WESTMIN PROJECT
 711 - 675 W. HASTINGS ST.
 VANCOUVER, BC
 V6B 1N4

Page Number : 1-B
 Total Pages : 1
 Certificate Date: 11-JUL-94
 Invoice No. : 19419286
 P.O. Number :
 Account : BM W

Project : FAIRCHILD-REID
 Comments : CC: PAMICON CC: D. CAULFIELD CC: M. JONES CC: R. VANCE

CERTIFICATE OF ANALYSIS A9419286

SAMPLE	PREP CODE	Mn ppm (ICP)	Mo ppm (ICP)	Na % (ICP)	Ni ppm (ICP)	P ppm (ICP)	Pb ppm AAS	Sr ppm (ICP)	Ti % (ICP)	V ppm (ICP)	W ppm (ICP)	Zn ppm (ICP)	La ppm ICP		
HK94006	201 285	2810	< 1	0.13	22	550	30	27	0.10	55	< 10	28	< 10		
HK94007	201 285	4180	2	0.47	37	780	32	36	0.14	62	< 10	160	< 10		
HK94008	201 285	3150	2	0.64	35	700	24	42	0.13	62	10	112	< 10		
HK94009	201 285	2500	2	0.87	34	680	22	44	0.16	64	< 10	110	< 10		
HK94010	201 285	2420	1	0.77	28	630	24	53	0.16	64	< 10	96	< 10		
HK94011	201 285	2380	< 1	0.51	23	490	36	47	0.09	55	< 10	136	< 10		
HK94012	201 285	2040	1	1.28	59	880	12	66	0.28	91	< 10	90	40		
94DC-01	201 285	3070	3	0.83	61	900	26	53	0.26	72	< 10	162	100		
94DC-02	201 285	1730	2	1.13	41	640	16	79	0.38	77	< 10	104	80		
94DC-03	201 285	4090	4	0.84	59	840	18	45	0.19	83	< 10	154	30		
94DC-04	201 285	1700	1	1.07	33	660	10	100	0.29	88	< 10	90	70		
94DC-05	201 285	2520	< 1	0.73	32	590	20	128	0.32	78	< 10	166	70		
94DC-06	201 285	2160	1	0.75	37	780	28	64	0.17	61	< 10	238	70		
94DC-07	201 285	2740	1	0.86	35	630	16	103	0.19	77	< 10	146	90		
94DC-08	201 285	1875	< 1	1.01	29	720	14	88	0.19	68	< 10	144	110		
94DC-09	201 285	2460	< 1	1.00	34	630	18	104	0.22	70	< 10	144	90		

CERTIFICATION:

Hart Buchler



Chemex Labs Ltd.

Analytical Chemists * Geochemists * Registered Assayers
212 Brooksbank Ave., North Vancouver
British Columbia, Canada V7J 2C1
PHONE: 604-984-0221

To: PAMICON DEVELOPMENTS LIMITED
WESTMIN PROJECT
711 - 675 W. HASTINGS ST.
VANCOUVER, BC
V6B 1N4

Page Number :1-A
Total Pages :1
Certificate Date: 20-JUL-94
Invoice No. :19420248
P.O. Number :
Account :BM W

Project : FAIRCHILD-SLAB EWE
Comments : CC: PAMICON CC: D. CAULFIELD CC: M. JONES CC: R. VANCE

CERTIFICATE OF ANALYSIS A9420248

SAMPLE	PREP CODE	Au ppb FA+AA	Ag ppm AAS	Al % (ICP)	Ba ppm (ICP)	Be ppm (ICP)	Bi ppm (ICP)	Ca % (ICP)	Cd ppm (ICP)	Co ppm (ICP)	Cr ppm (ICP)	Cu ppm (ICP)	Fe % (ICP)	K % (ICP)	Mg % (ICP)
937310	205 294	< 5	0.4	6.55	160	< 0.5	< 2	5.92	< 0.5	46	103	491	9.47	0.55	3.08
937311	205 294	< 5	< 0.2	3.97	330	1.0	< 2	4.22	< 0.5	26	67	43	1.77	2.61	2.07
937312	205 294	< 5	0.2	1.88	240	< 0.5	4	0.14	< 0.5	3	208	25	2.75	1.14	0.11
937313	205 294	< 5	< 0.2	7.34	3450	< 0.5	< 2	1.00	< 0.5	13	70	12	5.81	1.26	1.70
937314	205 294	585	61.0	7.33	180	0.5	< 2	0.25	< 0.5	135	104	>10000	2.84	0.42	0.32
937315	205 294	< 5	< 0.2	5.58	3120	0.5	8	10.50	< 0.5	8	71	50	2.52	3.90	0.73
937316	205 294	< 5	< 0.2	7.01	270	1.5	4	2.07	< 0.5	55	126	620	1.62	1.36	1.22

CERTIFICATION: Haut Buchler



Chemex Labs Ltd.

Analytical Chemists * Geochemists * Registered Assayers
 212 Brooksbank Ave., North Vancouver
 British Columbia, Canada V7J 2C1
 PHONE: 604-984-0221

To: PAMICON DEVELOPMENTS LIMITED
 WESTMIN PROJECT
 711 - 675 W. HASTINGS ST.
 VANCOUVER, BC
 V6B 1N4

Page Number : 1-B
 Total Pages : 1
 Certificate Date: 20-JUL-94
 Invoice No. : 19420248
 P.O. Number :
 Account : BM W

Project : FAIRCHILD-SLAB EWE
 Comments : CC: PAMICON CC: D. CAULFIELD CC: M. JONES CC: R. VANCE

CERTIFICATE OF ANALYSIS A9420248

SAMPLE	PREP CODE		Mn ppm (ICP)	Mo ppm (ICP)	Na % (ICP)	Ni ppm (ICP)	P ppm (ICP)	Pb ppm AAS	Sr ppm (ICP)	Ti % (ICP)	V ppm (ICP)	W ppm (ICP)	Zn ppm (ICP)	La ppm ICP		
937310	205	294	2190	< 1	2.07	62	870	10	289	1.20	374	< 10	134	< 10		
937311	205	294	2780	< 1	0.27	13	880	< 2	33	0.13	37	< 10	6	20		
937312	205	294	95	2	0.48	2	160	12	12	0.03	12	< 10	22	10		
937313	205	294	910	1	5.13	74	740	< 2	898	0.21	59	< 10	8	70		
937314	205	294	85	10	5.21	47	510	136	41	0.06	38	< 10	28	60		
937315	205	294	1715	< 1	0.61	20	900	< 2	124	0.19	61	< 10	2	< 10		
937316	205	294	815	3	3.51	28	650	< 2	48	0.13	59	< 10	4	60		

CERTIFICATION:

Hart Buchler



Chemex Labs Ltd.

Analytical Chemists * Geochemists * Registered Assayers
 212 Brooksbank Ave., North Vancouver
 British Columbia, Canada V7J 2C1
 PHONE: 604-984-0221

To: PAMICON DEVELOPMENTS LIMITED
 WESTMIN PROJECT
 711 - 675 W. HASTINGS ST.
 VANCOUVER, BC
 V6B 1N4

Page Number : 1-A
 Total Pages : 1
 Certificate Date: 20-JUL-94
 Invoice No. : I9420312
 P.O. Number :
 Account : BM W

Project : FAIRCHILD-SLAB-EAST
 Comments: CC: PAMICON CC: D. CAULFIELD CC: M. JONES CC: R. VANCE

CERTIFICATE OF ANALYSIS A9420312

SAMPLE	PREP CODE	Au ppb FA+AA	Ag ppm AAS	Al % (ICP)	Ba ppm (ICP)	Be ppm (ICP)	Bi ppm (ICP)	Ca % (ICP)	Cd ppm (ICP)	Co ppm (ICP)	Cr ppm (ICP)	Cu ppm (ICP)	Fe % (ICP)	K % (ICP)	Mg % (ICP)
SBCL950-000	201 285	< 5	< 0.2	7.26	630	1.5	< 2	1.06	< 0.5	27	56	46	4.02	2.11	1.13
SBCL950-050	201 285	< 5	< 0.2	7.73	660	1.5	2	1.29	< 0.5	24	61	115	3.66	2.43	1.17
SBCL950-100	201 285	< 5	< 0.2	7.70	870	1.5	< 2	1.22	< 0.5	23	62	78	3.55	2.46	1.15
SBCL950-150	201 285	< 5	< 0.2	7.22	640	1.0	2	1.11	< 0.5	24	58	60	3.90	2.12	1.11
SBCL950-200	201 285	< 5	< 0.2	6.71	610	1.0	2	1.40	0.5	26	54	59	3.67	1.92	1.03
SBCL950-250	201 285	< 5	< 0.2	6.74	630	1.0	< 2	1.14	< 0.5	24	54	57	4.40	1.70	1.11
SBCL950-300	203 205	< 5	< 0.2	7.04	630	1.0	< 2	1.38	< 0.5	18	56	46	3.64	2.10	1.19
SBCL950-350	201 285	< 5	< 0.2	5.96	610	1.0	< 2	1.59	< 0.5	21	57	54	3.67	1.73	1.14
SBCL950-400	201 285	< 5	< 0.2	6.51	750	1.0	< 2	1.84	< 0.5	19	61	76	3.96	2.02	1.52
SBCL950-450	201 285	< 5	< 0.2	6.79	710	1.0	< 2	2.32	< 0.5	19	57	62	3.66	2.01	1.73
SBCL950-500	201 285	< 5	< 0.2	7.34	780	1.0	< 2	1.43	< 0.5	19	60	77	3.84	2.13	1.27
SBCL950-550	201 285	< 5	< 0.2	6.96	680	1.0	< 2	1.58	< 0.5	16	62	89	3.84	2.00	1.21
SBCL950-600	201 285	< 5	< 0.2	6.53	720	1.0	< 2	1.47	< 0.5	16	54	64	3.49	1.89	1.05
SBCL950-650	201 285	< 5	< 0.2	6.82	790	1.0	2	1.79	< 0.5	18	61	44	3.60	2.05	1.43
SBCL950-700	201 285	< 5	< 0.2	7.21	770	1.0	< 2	1.34	< 0.5	20	67	48	4.09	2.19	1.21
SBCL950-750	201 285	< 5	< 0.2	7.17	780	1.0	2	1.17	< 0.5	19	66	66	3.74	2.08	1.11
SBCL950-800	201 285	< 5	< 0.2	6.83	760	1.0	< 2	1.13	< 0.5	19	62	72	3.81	1.89	1.06
SBCL950-850	201 285	< 5	< 0.2	7.70	800	1.5	2	1.12	< 0.5	21	65	90	3.73	2.11	1.09
SBCL950-900	201 285	< 5	< 0.2	7.69	800	1.5	< 2	0.98	< 0.5	20	64	82	3.59	2.02	0.96
SBCL1050-000	-- --	miss.	miss.	miss.	miss.	miss.	miss.	miss.	miss.	miss.	miss.	miss.	miss.	miss.	miss.
SBCL1050-050	-- --	miss.	miss.	miss.	miss.	miss.	miss.	miss.	miss.	miss.	miss.	miss.	miss.	miss.	miss.
SBCL1050-100	-- --	miss.	miss.	miss.	miss.	miss.	miss.	miss.	miss.	miss.	miss.	miss.	miss.	miss.	miss.
SBCL1050-150	-- --	miss.	miss.	miss.	miss.	miss.	miss.	miss.	miss.	miss.	miss.	miss.	miss.	miss.	miss.
SBCL1050-200	-- --	miss.	miss.	miss.	miss.	miss.	miss.	miss.	miss.	miss.	miss.	miss.	miss.	miss.	miss.
SBCL1050-250	-- --	miss.	miss.	miss.	miss.	miss.	miss.	miss.	miss.	miss.	miss.	miss.	miss.	miss.	miss.
SBCL1050-300	-- --	miss.	miss.	miss.	miss.	miss.	miss.	miss.	miss.	miss.	miss.	miss.	miss.	miss.	miss.
SBCL1050-350	-- --	miss.	miss.	miss.	miss.	miss.	miss.	miss.	miss.	miss.	miss.	miss.	miss.	miss.	miss.
SBCL1050-400	-- --	miss.	miss.	miss.	miss.	miss.	miss.	miss.	miss.	miss.	miss.	miss.	miss.	miss.	miss.
SBCL1050-450	-- --	miss.	miss.	miss.	miss.	miss.	miss.	miss.	miss.	miss.	miss.	miss.	miss.	miss.	miss.
SBCL1050-500	-- --	miss.	miss.	miss.	miss.	miss.	miss.	miss.	miss.	miss.	miss.	miss.	miss.	miss.	miss.
SBCL1050-550	-- --	miss.	miss.	miss.	miss.	miss.	miss.	miss.	miss.	miss.	miss.	miss.	miss.	miss.	miss.
SBCL1050-600	-- --	miss.	miss.	miss.	miss.	miss.	miss.	miss.	miss.	miss.	miss.	miss.	miss.	miss.	miss.
SBCL1050-650	-- --	miss.	miss.	miss.	miss.	miss.	miss.	miss.	miss.	miss.	miss.	miss.	miss.	miss.	miss.
SBCL1050-700	-- --	miss.	miss.	miss.	miss.	miss.	miss.	miss.	miss.	miss.	miss.	miss.	miss.	miss.	miss.
SBCL1050-750	-- --	miss.	miss.	miss.	miss.	miss.	miss.	miss.	miss.	miss.	miss.	miss.	miss.	miss.	miss.
SBCL1050-800	-- --	miss.	miss.	miss.	miss.	miss.	miss.	miss.	miss.	miss.	miss.	miss.	miss.	miss.	miss.
SBCL1050-850	-- --	miss.	miss.	miss.	miss.	miss.	miss.	miss.	miss.	miss.	miss.	miss.	miss.	miss.	miss.
SBCL1050-900	-- --	miss.	miss.	miss.	miss.	miss.	miss.	miss.	miss.	miss.	miss.	miss.	miss.	miss.	miss.

CERTIFICATION: *Hart Buchler*



Chemex Labs Ltd.

Analytical Chemists * Geochemists * Registered Assayers
 212 Brooksbank Ave., North Vancouver
 British Columbia, Canada V7J 2C1
 PHONE: 604-984-0221

To: PAMICON DEVELOPMENTS LIMITED
 WESTMIN PROJECT
 711 - 675 W. HASTINGS ST.
 VANCOUVER, BC
 V6B 1N4

Page Number :1-B
 Total Pages :1
 Certificate Date: 20-JUL-94
 Invoice No. :I9420312
 P.O. Number :
 Account :BM W

Project : FAIRCHILD-SLAB-EAST
 Comments: CC: PAMICON CC: D. CAULFIELD CC: M. JONES CC: R. VANCE

CERTIFICATE OF ANALYSIS A9420312

SAMPLE	PREP CODE	Mn ppm (ICP)	Mo ppm (ICP)	Na % (ICP)	Ni ppm (ICP)	P ppm (ICP)	Pb ppm AAS	Sr ppm (ICP)	Ti % (ICP)	V ppm (ICP)	W ppm (ICP)	Zn ppm (ICP)	La ppm ICP		
SBCL950-000	201 285	1810	1	1.29	31	570	16	158	0.34	81	< 10	304	60		
SBCL950-050	201 285	1170	< 1	1.11	35	760	16	131	0.29	81	< 10	220	70		
SBCL950-100	201 285	1195	< 1	1.10	28	700	12	129	0.28	78	< 10	200	80		
SBCL950-150	201 285	1575	< 1	1.15	26	610	14	140	0.32	81	< 10	206	70		
SBCL950-200	201 285	1600	< 1	1.13	30	710	16	144	0.30	75	< 10	292	70		
SBCL950-250	201 285	1345	1	1.17	33	440	20	115	0.32	94	< 10	128	70		
SBCL950-300	203 205	1445	< 1	1.12	27	570	16	133	0.27	78	< 10	148	60		
SBCL950-350	201 285	1245	< 1	1.05	27	710	16	128	0.30	86	< 10	158	70		
SBCL950-400	201 285	1205	< 1	1.12	30	790	16	164	0.35	100	< 10	152	70		
SBCL950-450	201 285	1200	< 1	1.16	29	700	12	147	0.30	92	< 10	132	60		
SBCL950-500	201 285	1185	< 1	1.10	32	670	14	147	0.30	94	< 10	126	70		
SBCL950-550	201 285	1015	< 1	1.14	27	730	16	163	0.31	88	< 10	144	70		
SBCL950-600	201 285	1070	< 1	1.06	24	600	16	151	0.29	80	< 10	124	60		
SBCL950-650	201 285	1100	< 1	1.21	29	710	18	163	0.33	90	< 10	146	60		
SBCL950-700	201 285	1215	< 1	1.22	30	700	16	174	0.34	96	< 10	156	70		
SBCL950-750	201 285	955	< 1	1.23	33	640	20	174	0.33	91	< 10	200	70		
SBCL950-800	201 285	1065	< 1	1.23	32	620	16	174	0.35	96	< 10	164	60		
SBCL950-850	201 285	910	< 1	1.12	33	740	20	167	0.29	90	< 10	274	80		
SBCL950-900	201 285	950	< 1	1.02	30	650	20	161	0.27	84	< 10	376	70		
SBCL1050-000	-- --	miss.	miss.	miss.	miss.	miss.	miss.	miss.	miss.	miss.	miss.	miss.	miss.		
SBCL1050-050	-- --	miss.	miss.	miss.	miss.	miss.	miss.	miss.	miss.	miss.	miss.	miss.	miss.		
SBCL1050-100	-- --	miss.	miss.	miss.	miss.	miss.	miss.	miss.	miss.	miss.	miss.	miss.	miss.		
SBCL1050-150	-- --	miss.	miss.	miss.	miss.	miss.	miss.	miss.	miss.	miss.	miss.	miss.	miss.		
SBCL1050-200	-- --	miss.	miss.	miss.	miss.	miss.	miss.	miss.	miss.	miss.	miss.	miss.	miss.		
SBCL1050-250	-- --	miss.	miss.	miss.	miss.	miss.	miss.	miss.	miss.	miss.	miss.	miss.	miss.		
SBCL1050-300	-- --	miss.	miss.	miss.	miss.	miss.	miss.	miss.	miss.	miss.	miss.	miss.	miss.		
SBCL1050-350	-- --	miss.	miss.	miss.	miss.	miss.	miss.	miss.	miss.	miss.	miss.	miss.	miss.		
SBCL1050-400	-- --	miss.	miss.	miss.	miss.	miss.	miss.	miss.	miss.	miss.	miss.	miss.	miss.		
SBCL1050-450	-- --	miss.	miss.	miss.	miss.	miss.	miss.	miss.	miss.	miss.	miss.	miss.	miss.		
SBCL1050-500	-- --	miss.	miss.	miss.	miss.	miss.	miss.	miss.	miss.	miss.	miss.	miss.	miss.		
SBCL1050-550	-- --	miss.	miss.	miss.	miss.	miss.	miss.	miss.	miss.	miss.	miss.	miss.	miss.		
SBCL1050-600	-- --	miss.	miss.	miss.	miss.	miss.	miss.	miss.	miss.	miss.	miss.	miss.	miss.		
SBCL1050-650	-- --	miss.	miss.	miss.	miss.	miss.	miss.	miss.	miss.	miss.	miss.	miss.	miss.		
SBCL1050-700	-- --	miss.	miss.	miss.	miss.	miss.	miss.	miss.	miss.	miss.	miss.	miss.	miss.		
SBCL1050-750	-- --	miss.	miss.	miss.	miss.	miss.	miss.	miss.	miss.	miss.	miss.	miss.	miss.		
SBCL1050-800	-- --	miss.	miss.	miss.	miss.	miss.	miss.	miss.	miss.	miss.	miss.	miss.	miss.		
SBCL1050-850	-- --	miss.	miss.	miss.	miss.	miss.	miss.	miss.	miss.	miss.	miss.	miss.	miss.		
SBCL1050-900	-- --	miss.	miss.	miss.	miss.	miss.	miss.	miss.	miss.	miss.	miss.	miss.	miss.		

CERTIFICATION: *Hart Buchler*



Chemex Labs Ltd.

Analytical Chemists * Geochemists * Registered Assayers

212 Brooksbank Ave., North Vancouver
British Columbia, Canada V7J 2C1
PHONE: 604-984-0221

To: PAMICON DEVELOPMENTS LIMITED
WESTMIN PROJECT
711 - 675 W. HASTINGS ST.
VANCOUVER, BC
V6B 1N4

Page Number :1-A
Total Pages :2
Certificate Date: 08-AUG-94
Invoice No. :I9421652
P.O. Number :
Account :BM W

Project : FAIRCHILD-SB
Comments: CC: PAMICON CC: D. CAULFIELD CC: M. JONES CC: R. VANCE

CERTIFICATE OF ANALYSIS A9421652

SAMPLE	PREP CODE	Au ppb FA+AA	Ag ppm AAS	Al % (ICP)	Ba ppm (ICP)	Be ppm (ICP)	Bi ppm (ICP)	Ca % (ICP)	Cd ppm (ICP)	Co ppm (ICP)	Cr ppm (ICP)	Cu ppm (ICP)	Fe % (ICP)	K % (ICP)	Mg % (ICP)
SBCL 1050 000M	201 285	< 5	< 0.2	4.73	450	1.0	< 2	0.43	< 0.5	4	39	40	1.47	1.35	0.35
SBCL 1050 050M	201 285	< 5	< 0.2	6.30	610	1.5	< 2	0.75	< 0.5	35	53	91	3.22	1.73	0.77
SBCL 1050 100M	201 285	< 5	< 0.2	6.89	580	2.0	< 2	0.82	< 0.5	27	61	48	4.43	2.01	1.02
SBCL 1050 150M	201 285	< 5	< 0.2	6.97	690	2.0	< 2	1.03	< 0.5	18	63	53	3.09	2.26	1.04
SBCL 1050 200M	201 285	< 5	< 0.2	7.09	590	2.0	< 2	1.09	< 0.5	26	60	54	4.12	2.11	1.07
SBCL 1050 250M	201 285	< 5	< 0.2	6.80	580	2.0	< 2	1.06	< 0.5	24	62	56	3.90	1.97	1.06
SBCL 1050 300M	201 285	< 5	< 0.2	6.40	510	2.0	< 2	1.28	< 0.5	24	57	75	3.93	1.87	1.03
SBCL 1050 350M	201 285	< 5	< 0.2	7.23	680	2.0	< 2	1.24	< 0.5	22	71	54	4.18	2.26	1.16
SBCL 1050 400M	201 285	< 5	< 0.2	7.40	710	2.0	< 2	0.92	< 0.5	22	64	60	3.64	2.11	1.10
SBCL 1050 450M	201 285	< 5	< 0.2	6.75	630	2.0	< 2	1.22	< 0.5	21	59	66	3.61	1.97	1.10
SBCL 1050 500M	201 285	< 5	< 0.2	7.67	720	2.0	< 2	1.06	< 0.5	21	65	33	3.90	2.19	1.15
SBCL 1050 550M	201 285	< 5	< 0.2	6.73	610	2.0	< 2	1.19	< 0.5	19	61	54	3.68	1.93	1.08
SBCL 1050 600M	201 285	< 5	< 0.2	6.89	650	2.0	< 2	1.10	< 0.5	19	59	43	3.57	2.02	1.08
SBCL 1050 650M	201 285	< 5	< 0.2	7.10	700	2.0	< 2	1.05	< 0.5	21	64	52	3.87	2.10	1.13
SBCL 1050 700M	201 285	< 5	< 0.2	7.96	750	2.0	< 2	0.78	< 0.5	23	61	81	4.04	1.99	1.08
SBCL 1050 750M	201 285	< 5	< 0.2	6.70	660	2.0	< 2	0.88	< 0.5	15	57	50	2.84	1.99	0.76
SBCL 1050 800M	201 285	< 5	< 0.2	7.28	660	2.0	< 2	0.66	< 0.5	15	66	37	4.26	2.05	0.89
SBCL 1050 850M	201 285	< 5	< 0.2	7.60	670	2.0	< 2	0.68	< 0.5	16	67	38	4.25	2.10	0.92
SBCL 1050 900M	201 285	< 5	< 0.2	7.31	690	2.0	< 2	1.18	< 0.5	21	61	66	3.71	2.12	1.15
SB 4200N 1550E	201 285	< 5	0.6	5.67	360	2.0	< 2	2.85	< 0.5	31	34	164	5.69	2.70	1.56
SB 4200N 1600E	201 285	< 5	0.4	5.70	430	2.0	< 2	1.78	< 0.5	31	45	117	5.18	2.33	1.20
SB 4200N 1650E	201 285	< 5	0.2	5.17	420	2.0	< 2	1.84	< 0.5	29	43	101	4.85	2.02	0.94
SB 4200N 1700E	201 285	< 5	0.6	5.19	340	2.0	< 2	6.38	< 0.5	21	34	81	3.78	2.64	1.85
SB 4200N 1750E	201 285	< 5	0.4	6.17	1250	2.0	< 2	2.30	< 0.5	45	56	120	4.42	1.90	1.27
SB 4200N 1800E	201 285	< 5	0.6	6.65	1580	2.0	< 2	3.42	< 0.5	51	251	322	5.45	2.57	2.68
SB 4200N 1850E	201 285	< 5	0.6	6.14	1170	2.0	< 2	3.64	< 0.5	44	256	148	5.70	2.43	3.77
SB 4200N 1900E	201 285	< 5	< 0.2	6.81	1010	3.0	< 2	2.32	< 0.5	56	133	264	5.51	2.67	2.15
SB 4200N 1950E	201 285	< 5	0.4	7.99	1810	4.0	< 2	3.85	< 0.5	24	55	47	6.18	3.91	1.57
SB 4200N 2000E	201 285	< 5	< 0.2	6.43	1390	1.5	< 2	4.66	< 0.5	60	62	306	5.40	2.54	1.22
SB 4200N 2050E	201 285	< 5	1.0	5.70	670	2.0	< 2	3.32	< 0.5	72	165	580	5.77	2.37	2.80
SB 4200N 2100E	201 285	35	1.8	7.29	700	1.5	< 2	1.84	< 0.5	175	47	2190	4.53	1.23	0.80
SB 4200N 2150E	201 285	< 5	< 0.2	6.12	2290	1.5	< 2	2.70	< 0.5	37	48	146	2.75	3.66	0.64
SB 4200N 2200E	201 285	< 5	< 0.2	6.56	1600	1.5	< 2	0.98	< 0.5	38	41	294	3.55	1.99	0.64
SB 4200N 2250E	201 285	< 5	< 0.2	6.25	1760	1.5	< 2	0.58	< 0.5	29	48	46	5.42	1.73	0.66
SB 4200N 2300E	201 285	< 5	0.6	5.51	2150	1.5	< 2	1.53	0.5	36	48	206	4.05	1.46	0.91
SB 4200N 2350E	201 285	< 5	0.2	7.05	3980	1.5	< 2	0.43	< 0.5	25	54	56	5.59	1.53	0.86
SB 4200N 2400E	201 285	< 5	0.4	6.24	2540	1.5	< 2	0.78	< 0.5	30	46	104	7.36	1.91	0.77
SB 4200N 2450E	201 285	< 5	2.6	6.52	2330	1.5	< 2	1.65	< 0.5	27	50	182	5.49	2.49	1.31
SB 4200N 2500E	201 285	< 5	0.8	6.40	1420	2.0	< 2	0.89	< 0.5	27	52	258	5.34	2.30	0.86
SB 4300N 1500E	201 285	< 5	0.6	5.12	350	1.5	< 2	3.62	0.5	71	37	254	6.67	2.26	1.87

CERTIFICATION:

Hart Bichler



Chemex Labs Ltd.

Analytical Chemists * Geochemists * Registered Assayers
 212 Brooksbank Ave., North Vancouver
 British Columbia, Canada V7J 2C1
 PHONE: 604-984-0221

To: PAMICON DEVELOPMENTS LIMITED
 WESTMIN PROJECT
 711 - 675 W. HASTINGS ST.
 VANCOUVER, BC
 V6B 1N4

Page Number : 1-B
 Total Pages : 2
 Certificate Date: 08-AUG-94
 Invoice No. : 19421652
 P.O. Number :
 Account : BM W

Project : FAIRCHILD-SB
 Comments : CC: PAMICON CC: D. CAULFIELD CC: M. JONES CC: R. VANCE

CERTIFICATE OF ANALYSIS A9421652

SAMPLE	PREP CODE	Mn ppm (ICP)	Mo ppm (ICP)	Na % (ICP)	Ni ppm (ICP)	P ppm (ICP)	Pb ppm AAS	Sr ppm (ICP)	Ti % (ICP)	V ppm (ICP)	W ppm (ICP)	Zn ppm (ICP)	La ppm ICP		
SBCL 1050 000M	201 285	220	1	0.71	8	550	16	106	0.19	57	< 10	80	20		
SBCL 1050 050M	201 285	1475	2	0.92	21	1090	30	135	0.27	78	< 10	282	60		
SBCL 1050 100M	201 285	1220	1	1.10	25	410	26	154	0.33	84	< 10	352	40		
SBCL 1050 150M	201 285	1205	< 1	1.02	25	910	14	207	0.29	72	< 10	158	70		
SBCL 1050 200M	201 285	1275	2	1.04	32	720	32	144	0.30	84	< 10	568	50		
SBCL 1050 250M	201 285	1140	1	1.06	27	630	20	146	0.32	82	< 10	308	70		
SBCL 1050 300M	201 285	1200	2	1.05	28	700	24	158	0.32	75	< 10	332	80		
SBCL 1050 350M	201 285	1155	2	1.24	31	600	20	202	0.34	82	< 10	254	70		
SBCL 1050 400M	201 285	1150	1	1.18	31	770	24	161	0.30	83	< 10	276	80		
SBCL 1050 450M	201 285	1245	1	1.09	27	760	24	154	0.28	78	< 10	224	80		
SBCL 1050 500M	201 285	1240	< 1	1.23	26	600	22	194	0.33	83	< 10	234	40		
SBCL 1050 550M	201 285	880	2	1.19	25	360	18	174	0.34	82	< 10	204	60		
SBCL 1050 600M	201 285	1225	1	1.15	26	880	20	166	0.29	78	< 10	212	50		
SBCL 1050 650M	201 285	1380	< 1	1.16	27	780	24	166	0.30	83	< 10	200	70		
SBCL 1050 700M	201 285	1960	2	1.17	32	860	36	164	0.27	77	< 10	330	90		
SBCL 1050 750M	201 285	895	< 1	1.06	19	730	18	159	0.28	77	< 10	140	70		
SBCL 1050 800M	201 285	905	2	1.01	22	490	24	153	0.34	90	< 10	184	30		
SBCL 1050 850M	201 285	890	1	1.05	23	550	26	156	0.33	92	< 10	188	40		
SBCL 1050 900M	201 285	1215	1	1.15	27	660	20	171	0.32	84	< 10	192	60		
SB 4200N 1550E	201 285	3840	6	0.31	47	740	32	41	0.17	47	< 10	110	40		
SB 4200N 1600E	201 285	4430	6	0.67	50	800	44	55	0.20	57	< 10	142	50		
SB 4200N 1650E	201 285	4720	3	0.61	39	630	28	52	0.18	50	< 10	106	50		
SB 4200N 1700E	201 285	4310	2	0.42	28	560	24	48	0.16	40	< 10	70	30		
SB 4200N 1750E	201 285	2870	4	1.77	48	840	22	55	0.23	54	< 10	62	130		
SB 4200N 1800E	201 285	2860	4	1.78	198	1510	124	188	1.03	113	< 10	144	90		
SB 4200N 1850E	201 285	1990	2	1.83	179	1620	14	203	1.04	112	< 10	68	80		
SB 4200N 1900E	201 285	2970	3	1.44	105	1230	20	122	0.57	99	< 10	76	100		
SB 4200N 1950E	201 285	1930	1	0.94	52	730	2	65	0.17	57	< 10	34	40		
SB 4200N 2000E	201 285	4060	3	2.12	42	760	14	89	0.24	60	< 10	34	40		
SB 4200N 2050E	201 285	2580	3	1.02	121	1250	36	142	0.64	88	< 10	120	80		
SB 4200N 2100E	201 285	2140	3	3.99	60	750	8	61	0.12	55	< 10	32	70		
SB 4200N 2150E	201 285	2440	< 1	1.20	28	910	4	73	0.14	45	< 10	34	50		
SB 4200N 2200E	201 285	1095	2	2.25	25	630	4	78	0.12	49	< 10	38	50		
SB 4200N 2250E	201 285	2160	4	1.68	24	970	22	74	0.22	73	< 10	130	40		
SB 4200N 2300E	201 285	4070	3	1.14	38	2000	24	92	0.16	55	< 10	260	70		
SB 4200N 2350E	201 285	2010	2	2.84	28	480	14	123	0.20	75	< 10	76	60		
SB 4200N 2400E	201 285	2160	5	2.10	31	620	12	82	0.14	67	< 10	62	70		
SB 4200N 2450E	201 285	3060	2	1.47	30	690	20	85	0.18	66	< 10	64	60		
SB 4200N 2500E	201 285	3440	3	1.49	28	560	14	70	0.19	67	< 10	60	60		
SB 4300N 1500E	201 285	4230	13	0.79	61	850	28	45	0.13	51	< 10	214	60		

CERTIFICATION:

Hart Buchler

APPENDIX F

STREAM SEDIMENT SAMPLING PROCEDURES

STREAM SEDIMENT SAMPLING PROCEDURES

Introduction

The focus of the 1994 exploration program was to explore for gold and copper mineralization. Stream sediment samples can be an efficient and relatively low cost way of evaluating drainage basins for mineralization if they are representative of the basin and are collected in such a way that the elements sought are detectable in a reproducible manner. Copper and gold have dissimilar weathering and dispersion characteristics based on chemical, mechanical and density characteristics. To be effective, the stream sediment survey must reliably detect anomalous values. The particulate nature of gold makes anomaly reproducibility erratic in samples that are too small and/or too coarse grained. An orientation survey is the best way to design a sampling program for a particular region.

The 1994 survey used stream sediment samples to augment other exploration information and provide guidance for future exploration. In order to evaluate and optimise the stream geochemical survey's effectiveness an orientation survey was conducted early in the season. Based on the results of the orientation survey it was determined that all fractions less than 80 mesh exhibited relatively similar anomaly length and contrast characteristics. The finest fraction (< 200 mesh) was marginally better than the others, but given the difficulty in acquiring sufficient < 200 mesh material and the marginal improvement that it provided, the < 80 mesh fraction was selected. In order to collect sufficient < 80 mesh material, and not loose a sizable component of the very fine grained material in the wash water, special procedures must be adopted. The method used to collect most of the stream sediment samples in 1994 was a modification of the method routinely used by Newmont, and is hereafter referred to as the "Newmont method".

Procedure

A regular silt sample is collected by hand or a trowel and placed into a numbered paper bag. Typically the larger pebbles are rejected and an effort is made to select from the finer grained sediments in a stream.

The Newmont method requires some equipment:

- a large woven fibre bag to carry the equipment in.
- squirt bottle to spray water into a bucket to wash out the fines.
- a 5 to 7m long hose to provide a gravity feed water supply.
- several large plastic sample bags to collect sediment in.
- garden trowel to excavate sediment with.
- rubber gloves to protect hands against cold water and abrasive sediments.
- a piece of nylon 30 or 40 mesh screen about 1 x 1m size.
- two nesting 30cm diameter plastic buckets one with a 2cm size hole about half way up the side of the bucket, the other with the bottom two thirds cut off and used as an inner frame to hang the nylon mesh above the outlet hole.

Other supplies that are used at each site are plastic flagging tape, metal tags and double-stitched millipore cloth bags.

A stream sediment sample collected using the Newmont method would proceed as follows:

1. As supplies were being unpacked from the fibre bag the buckets, trowel, plastic sample bags and screen were inspected for cleanliness and if dirty they were washed.
2. One person would start to hunt for and dig up fine grained stream sediments from among boulders while the other would work on setting up the screening and washing apparatus.
3. The hose would be placed to provide a steady but low volume of water for washing the sediment through the screen.
4. The screen would be pulled tight over the bucket with a hole in its side and held in place by the inner bucket ring.
5. Small quantities of the coarse stream sediment would be placed on the screen and washed down by the hose. In order to break up any clay or root-bound lumps the sediment would be rubbed on the screen or the side of the bucket.
6. After most of the fine grained-material had been washed through the screen, the remaining coarse reject material was lifted out by hand and discarded.
7. After 10 to 30 kg of coarse stream sediment had been screened, depending on the amount of fines in the coarse stream sediment, the screen was lifted out and the level of sediment in the bottom of the bucket was checked to see if there is sufficient material for a sample, about 3cm depth in the bottom of the bucket was considered sufficient.
8. The muddy water was allowed to stand for several minutes then the supernatant liquid was carefully poured off leaving the sieved silt in the bottom of the bucket.
9. A numbered millipore cloth bag was then used to collect silt washed out of the sample bucket by the squirt bottle.
10. The bag of wet sediment was carried or hung to drain until most of the water had drained, then it was packed in a plastic bag for transport back to camp where the samples are exposed to the air for further drying before shipment to a laboratory for analysis.

Field notes collected at each site record the sample number; creek name; elevation; the sample type; regular silt, or field sieved with mesh size; width of the stream and depth; slope of the stream in degrees; the downstream direction of flow; colour of the sediment; texture of the sediment; bedrock and/or type of rock found as float in the stream; and any other notes about the site. The UTM location was determined from a map back in camp.

A numbered two colour ribbon along with a metal tag inscribed with the sample number was tied to a nearby bush or stone to mark the sample site.

Results

Based on a statistical evaluation of the RGS regional geochemical survey data by Owen Lavin, Senior Geochemist for Newmont Exploration Limited, the following anomalous ranges and anomaly classifications are presented in Table 1.

Table 1

Percentile	Classification	Thresholds		
		Au ppb	Cu ppm	Co ppm
97	definitely anomalous	20	180	50
90	probably anomalous	15	120	30
75	possibly anomalous	10	75	25
50	high background	5	50	15
	background			

APPENDIX G

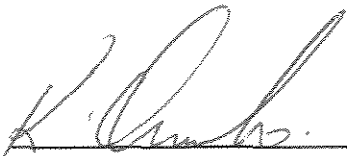
GEOLOGISTS' CERTIFICATE

GEOLOGIST'S CERTIFICATE

I, Kelly A. Owerko, of 5740 Hyde Street, Burnaby, in the Province of British Columbia, DO HEREBY CERTIFY:

1. THAT I am a Consulting Geologist with offices at Suite 207, 675 West Hastings Street, Vancouver, British Columbia.
2. THAT I am a graduate of the University of Saskatchewan with a Bachelor of Science degree in Geology.
3. THAT this report is based in part on property work I personally completed and/or directly supervised, government publications and assessment reports filed with the Department of Indian and Northern Affairs, Yukon.

DATED at Vancouver, British Columbia, this 7 day of December, 1994.




Kelly A. Owerko, Geologist

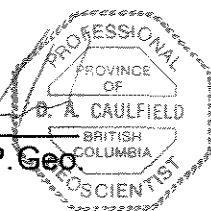
GEOLOGIST'S CERTIFICATE

I, DAVID A. CAULFIELD, of 3142 Gambier Street, Coquitlam, in the Province of British Columbia, DO HEREBY CERTIFY:

1. THAT I am a Consulting Geologist with offices at Suite 207, 675 West Hastings Street, Vancouver, British Columbia.
2. THAT I am a graduate of the University of British Columbia with a Bachelor of Science degree in Geology.
3. THAT I am a Professional Geoscientist registered in good standing with the Association of Professional Engineers and Geoscientists of the Province of British Columbia.
4. THAT this report is based in part on property work I personally completed and/or directly supervised, government publications and assessment reports filed with the Department of Indian and Northern Affairs, Yukon.

DATED at Vancouver, British Columbia, this 7th day of December, 1994.


David A. Caulfield, P. Geo.



The seal is a circular emblem with a double-line border. The outer ring contains the text 'PROFESSIONAL' at the top, 'PROVINCE OF' at the top-left, 'BRITISH COLUMBIA' at the bottom-left, and 'GEOSCIENTIST' at the bottom. The center of the seal contains the name 'D. A. CAULFIELD' in a bold, sans-serif font.

MAP NO:
106C/13

ASSESSMENT REPORT X
PROSPECTUS
CONFIDENTIAL X
OPEN FILE

DOCUMENT NO: 093218
MINING DISTRICT: MAYO
TYPE OF WORK: GEOLOGICAL, GEOCHEMICAL

REPORT FILED UNDER: EQUITY ENGINEERING

DATE PERFORMED: JUNE 22,27,30, 1994

DATE FILED: DECEMBER 1994

LOCATION: LAT.: 64°58'

AREA: FAIRCHILD LAKE

LONG.: 134°53'

VALUE \$: 1800

CLAIM NAME & NO.: OTTER 1-40, SLAB 209-212

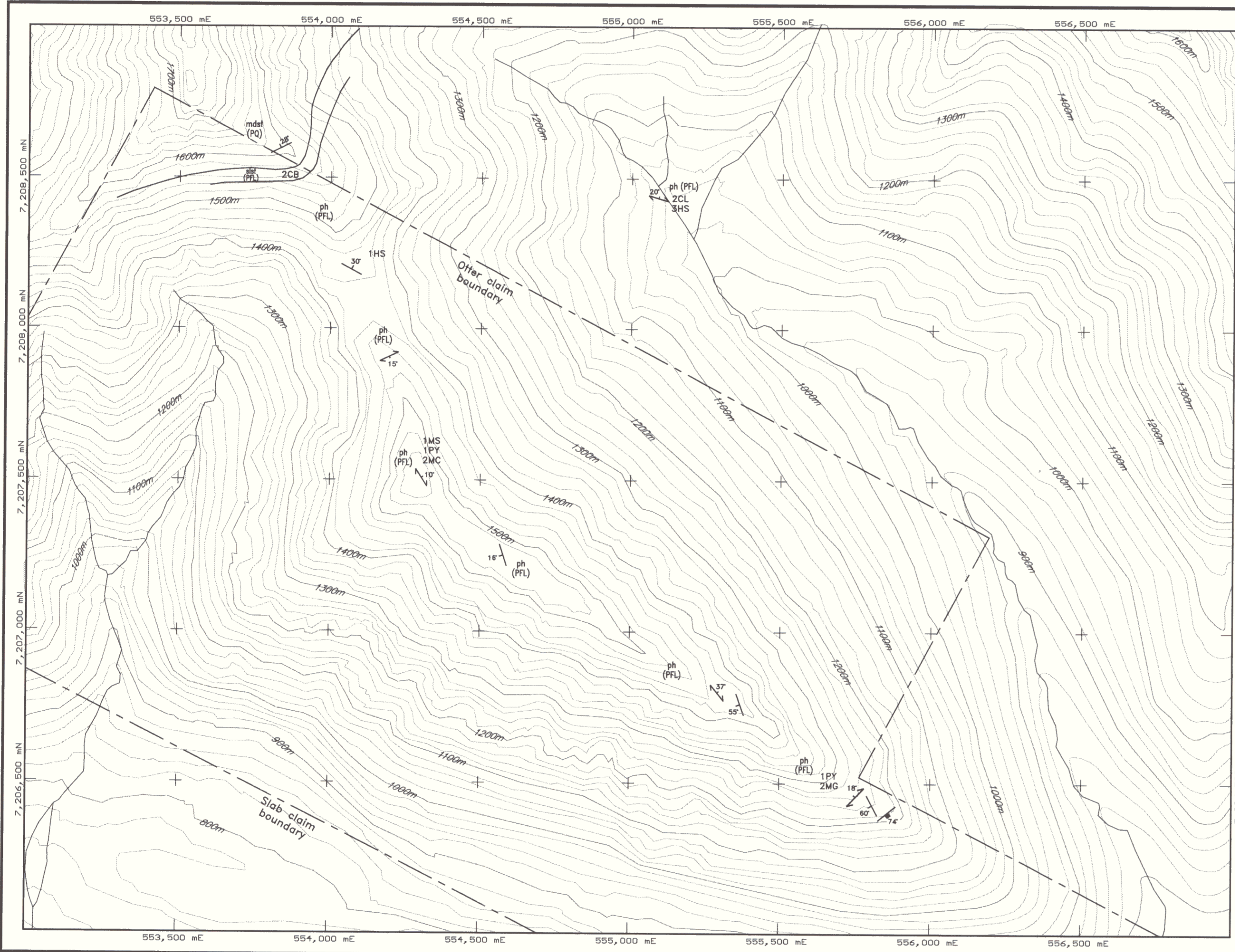
WORK DONE BY: KELLY A. OWERKO, DAVID A. CAULFIELD

WORK DONE FOR: NEWMONT EXPLORATION LIMITED

DATE TO GOOD STANDING:

REMARKS:

Exploration of Wernecke Breccia's for Olympic Dam type occurrences. The Slab claims returned no significant results. The claims were staked an airborne uranium anomaly. A soil anomaly of 271 ppm Cu is associated with traces of pyrite and malachite associated with quartz and quartz-siderite veins in Fairchild Lake Group sediments. Stream sediment anomalies on the Otter claims include 99 and 102 ppm Cu, and 90 ppb Au.



EXPLANATION

GEOLOGY

- BEDDING
- FOLIATION
- JOINT
- CONTACT

LITHOLOGY

- silt Siltstone
- ph Phyllite
- mdst Mudstone

INTERPRETED GEOLOGY

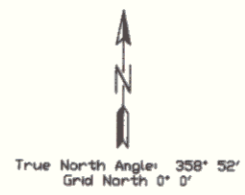
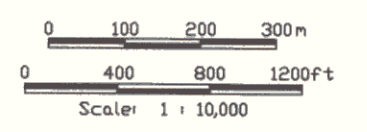
- PQ QUARTET GROUP (MIDDLE PROTEROZOIC)
DARK GREY TO BLACK WEATHERING MUDSTONE.
- PFL FAIRCHILD LAKE GROUP (MIDDLE PROTEROZOIC)
LIGHT BROWN WEATHERING CALCAREOUS SILTSTONE
AND GREENISH GREY PHYLLITE.

ALTERATION

- Breccia**
- HS Specularite
 - CB Carbonate
 - MG Magnetite
 - CL Chlorite
- Oxides and Sulfates**
- MC Malachite
- 1 - Weak (w)
2 - Moderate (m)
3 - Strong (s)

093218

DWG ①

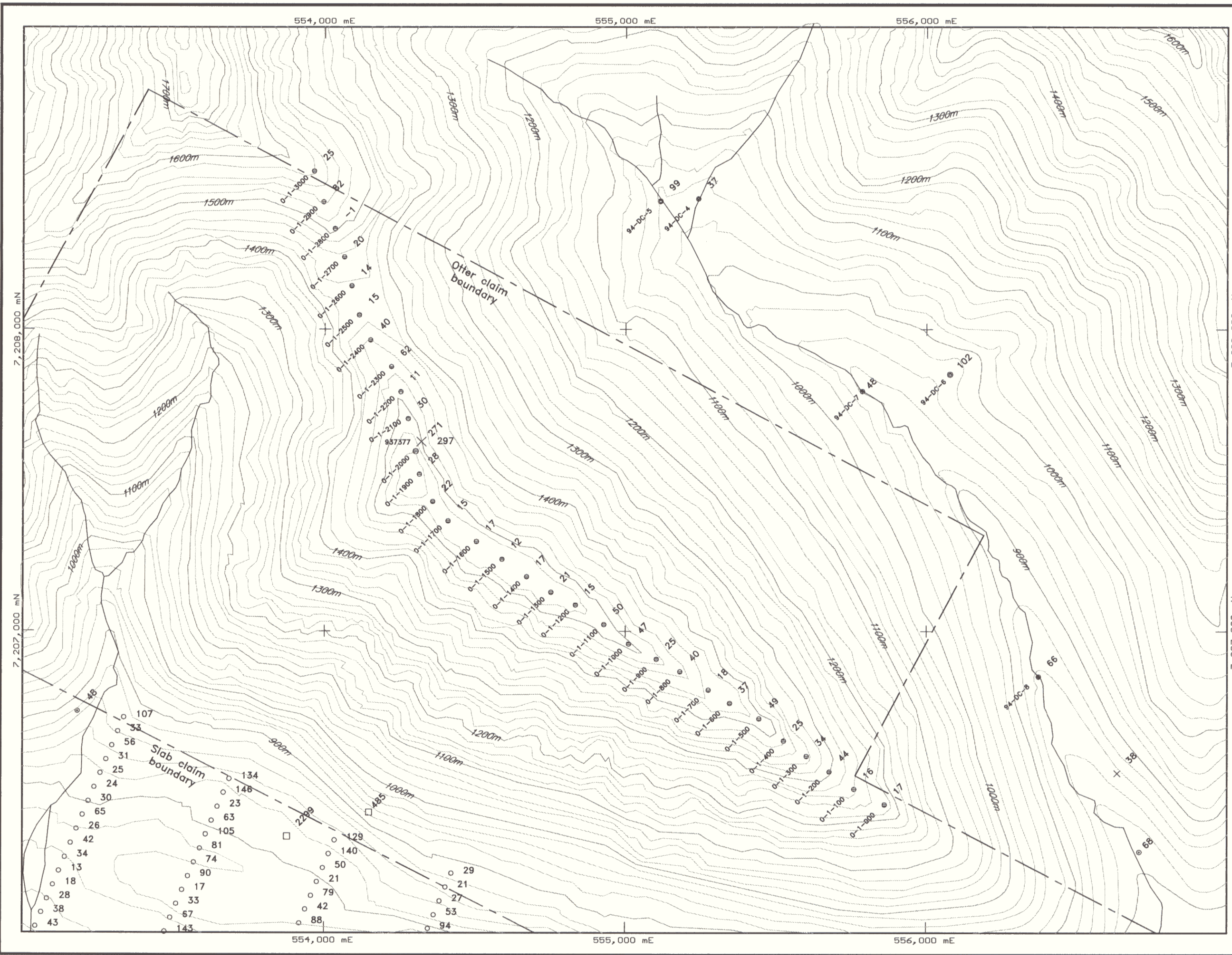


MAP AREA:
X: 553000 - 557000
Y: 7206000 - 7209000
Z: 0 - 10000
Units are meters.

NEWMONT EXPLORATION LTD.
WESTMIN RESOURCES, PAMICON DEVELOPMENTS, EQUITY ENGR.
FAIRCHILD PROJECT, YUKON TERRITORY, CANADA
MAYO MINING DISTRICT

**PLATE 1
OTTER 1-40 CLAIMS
SIMPLIFIED GEOLOGY MAP**

Compiled By: K. OWERKO	Date Drafted: 11/94	Coordinate System: UTM ZONE 8
Drafted By: JRG	File Name: XOTT-TP.DWG	Contour Interval: 20M



Cu Geochemistry

Pre 94 | 1994 Samples

float	
X value	Sample No. X value (ppm)
grab	
□ value	Sample No. □ value
chip	
▣ value	Sample No. ▣ value
channel	
■ value	Sample No. ■ value

Rocks

○ value	Sample No. ○ value	● value (ppm)	● value (ppm)
>1500	>1500	>1500	>1500
1500	1500	1500	1500
1000	1000	1000	1000
500	500	500	500
100	100	100	100
<50	<50	<50	<50

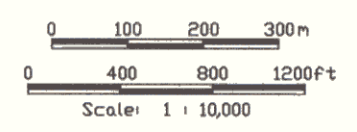
Soils

○ value	Sample No. ○ value	● value (ppm)	● value (ppm)
>400	>400	>400	>400
400	400	400	400
300	300	300	300
200	200	200	200
100	100	100	100
<50	<50	<50	<50

Stream Sediments

093218

DWG ②



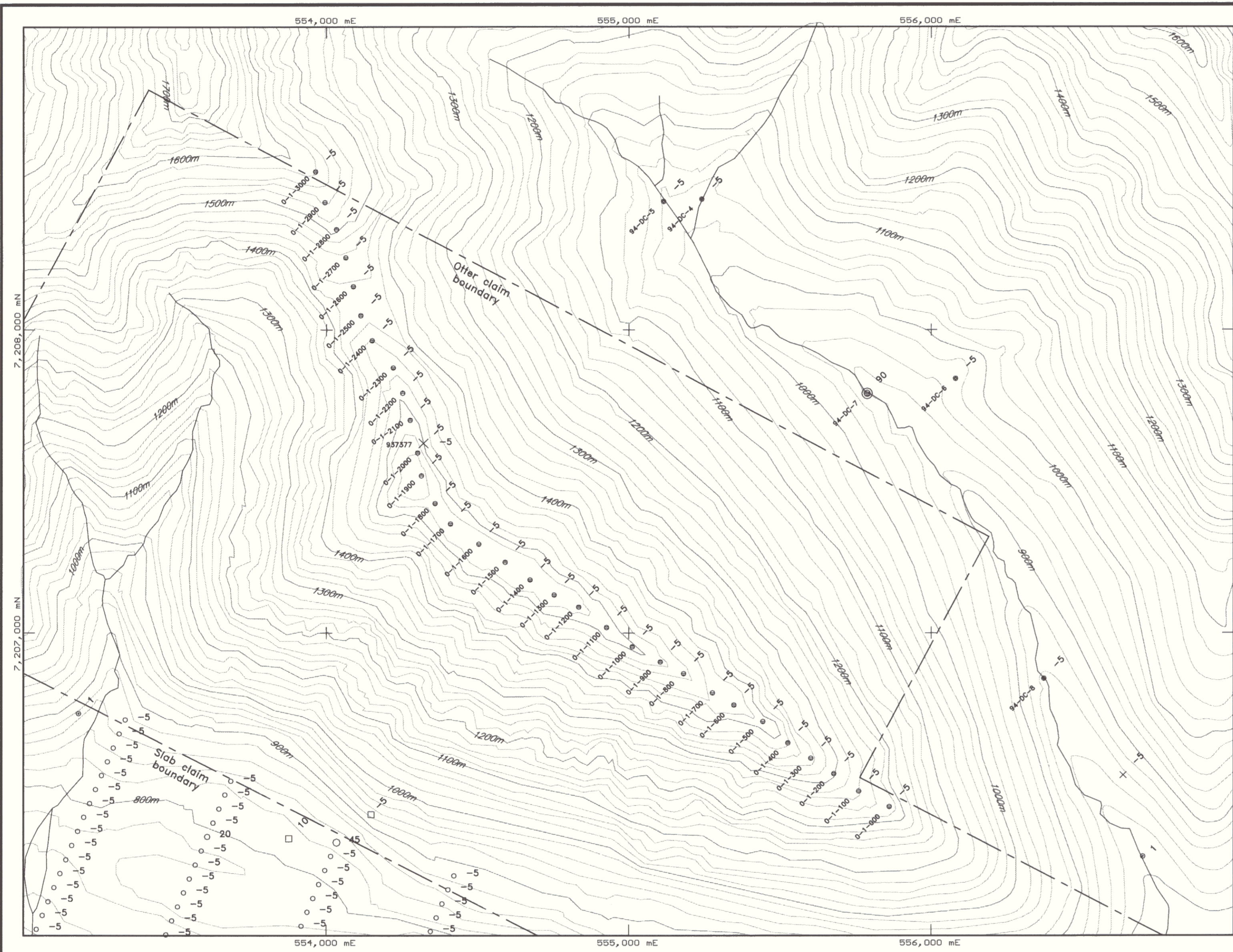
True North Angle: 358° 52'
Grid North: 0° 0'

MAP AREA:
X: 883000 - 887000
Y: 7206000 - 7208000
Z: 0 - 10000
Units are meters.

NEWMONT EXPLORATION LTD.
WESTMIN RESOURCES, PAMICON DEVELOPMENTS, EQUITY ENGR.
FAIRCHILD PROJECT, YUKON TERRITORY, CANADA
MAYO MINING DISTRICT

PLATE 2
OTTER 1-40 CLAIMS
Cu IN ROCKS, SOILS
AND STREAM SEDIMENTS

Compiled By: K. OWERKO	Date Drafted: 11/94	Coordinate System: UTM_ZONE 8
Drafted By: JRG	File Name: X01T20A.DWG	Contour Interval: 20M



Au Geochemistry

Pre 94	1994 Samples
float	
X value	Sample No. X value (ppb)
grab	
□ value	Sample No. □ value
chip	
▣ value	Sample No. ▣ value
channel	
■ value	Sample No. ■ value
 >90 90 50 30 10 <5	Sample No. >90 ppb 90 50 30 10 <5
Soils	
 >50 50 30 10 <5	Sample No. >50 ppb 50 30 10 <5
Stream Sediments	
 >50 50 30 10 <5	Sample No. >50 ppb 50 30 10 <5

093218

DWG (3)

Scale: 1 : 10,000

N

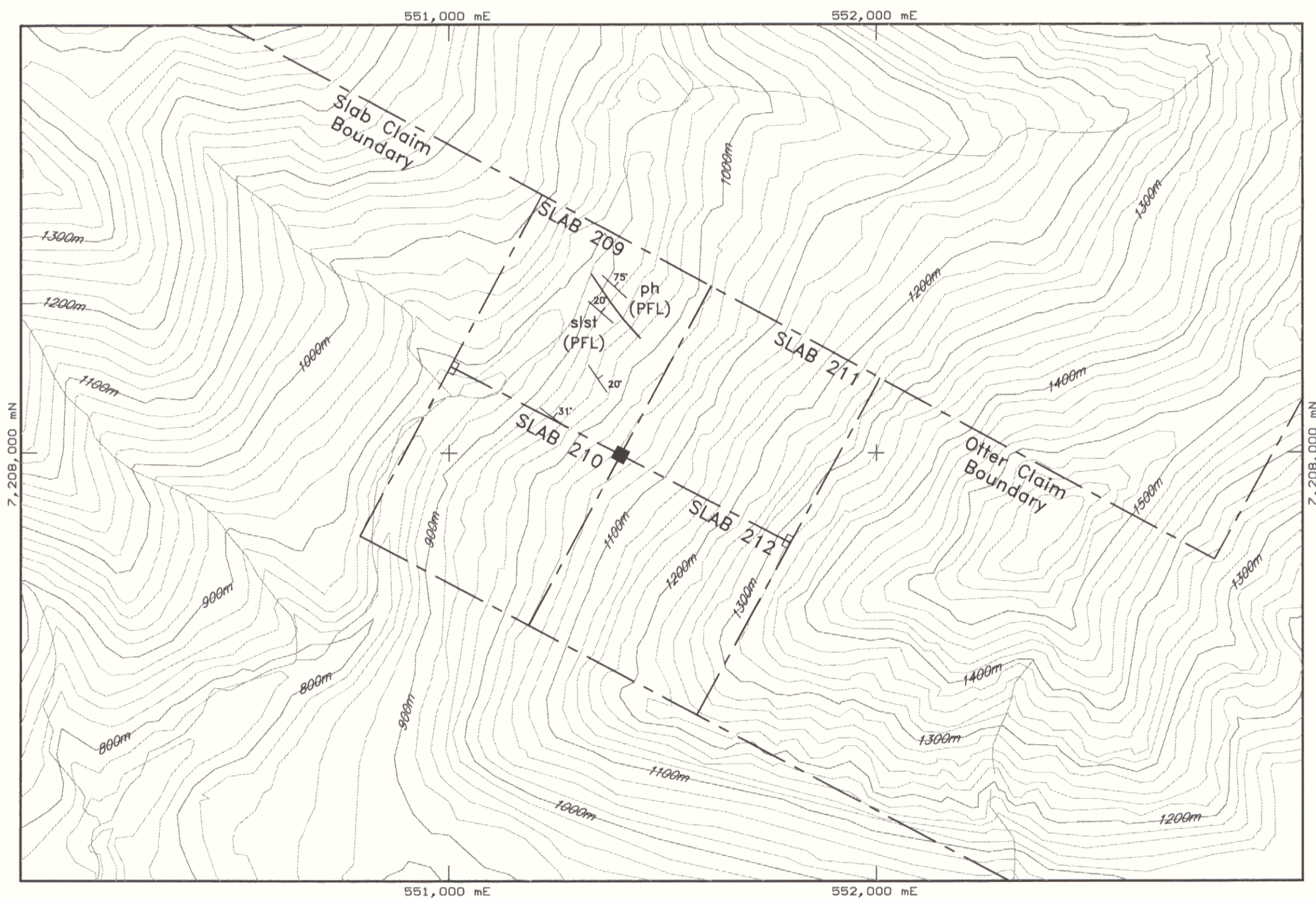
True North Angle: 358° 52'
Grid North: 0° 0'

MAP AREA:
X: 883000 - 887000
Y: 7206000 - 7208000
Z: 0 - 10000
Units are meters.

NEWMONT EXPLORATION LTD.
WESTMIN RESOURCES, PAMICON DEVELOPMENTS, EQUITY ENGR.
FAIRCHILD PROJECT, YUKON TERRITORY, CANADA
MAYO MINING DISTRICT

**PLATE 3
OTTER 1-40 CLAIMS
Au IN ROCKS, SOILS
AND STREAM SEDIMENTS**

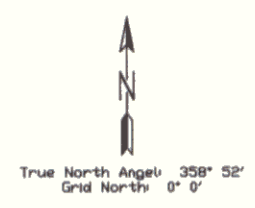
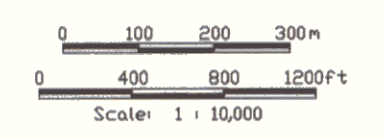
Compiled By: K. OWERKO	Date Drafted: 11/94	Coordinate System: UTM ZONE 8
Drafted By: Jrg	File Name: XOTT208.DWG	Contour Interval: 20M



- EXPLANATION**
- GEOLOGY**
- BEDDING
 - CONTACT
- CLAIM POSTS**
- LOCATED CLAIMPOST
 - ENDPOST
- LITHOLOGY**
- silst Siltstone
 - ph Phyllite
- INTERPRETED GEOLOGY**
- PFL FAIRCHILD LAKE GROUP (MIDDLE PROTEROZOIC)
GREEN PHYLLITE AND BLACK WEATHERING
PYRITIC SILTSTONE.

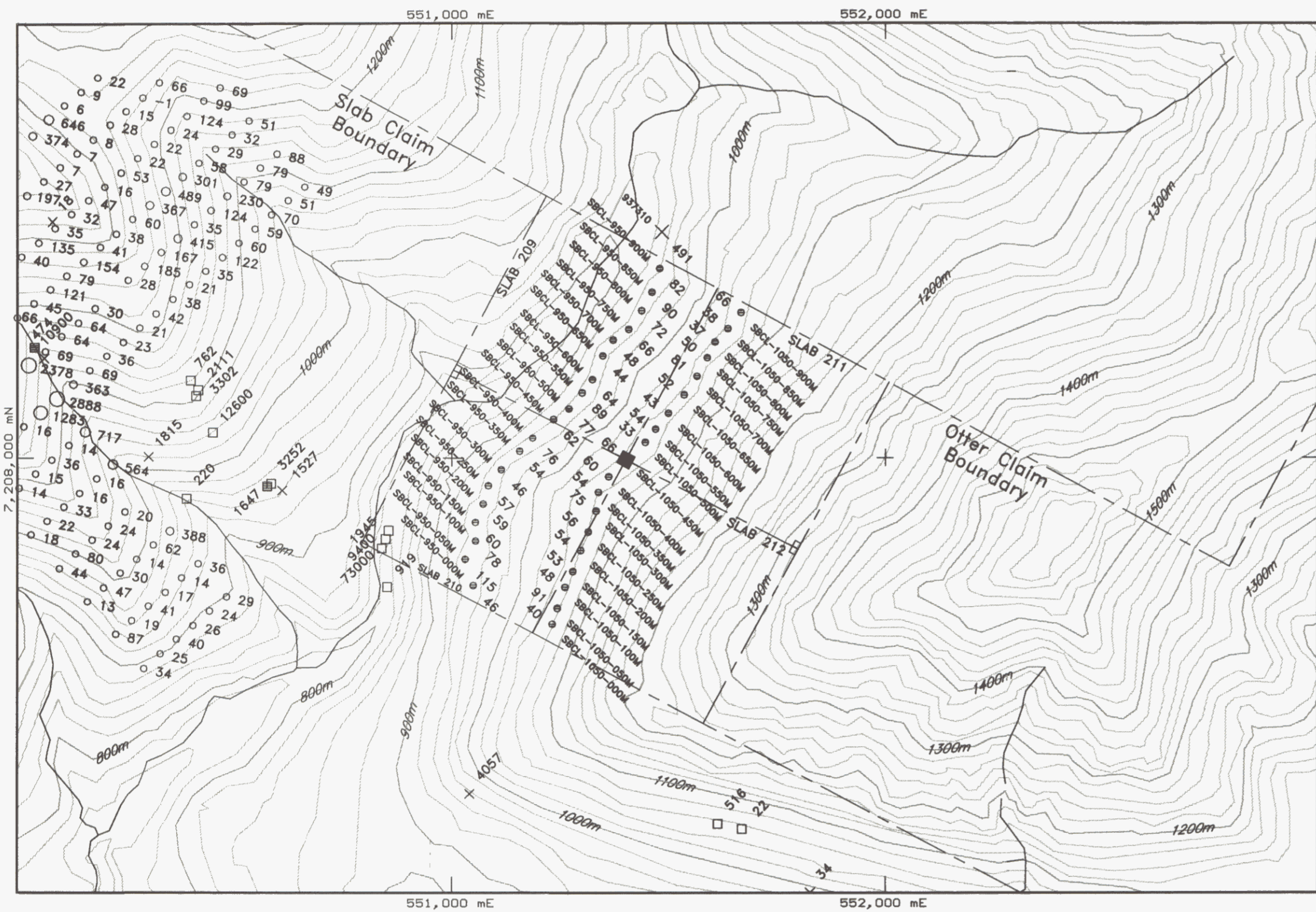
098211

DWG (4)



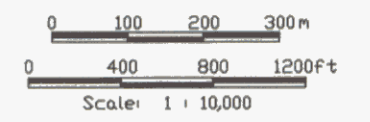
MAP AREA:
 X: 880000 - 883000
 Y: 7207000 - 7209000
 Z: 0 - 10000
 Units are meters.

NEWMONT EXPLORATION LTD.		
WESTMIN RESOURCES, PAMICON DEVELOPMENTS, EQUITY ENGR.		
FAIRCHILD PROJECT, YUKON TERRITORY, CANADA MAYO MINING DISTRICT		
PLATE 4		
SLAB 209-212 CLAIMS		
SIMPLIFIED GEOLOGY MAP		
Compiled By: K. OWERKO	Date Drafted: 11/94	Coordinate System: UTM ZONE 8
Drafted By: JRG	File Name: SB20-GEO.DWG	Contour Interval: 20M



Cu Geochemistry		
Pre 94	1994 Samples	
float		
X value	Sample No.	X value (ppm)
grab		
□ value	Sample No.	□ value
chip		Rocks
▣ value	Sample No.	▣ value
channel		
■ value	Sample No.	■ value
○ >1500	Sample No.	○ >1500 ppm
○ 1500		○ 1500
○ 1000		○ 1000
○ 500		○ 500
○ 100		○ 100
○ <50		○ <50
		Soils

093218
DWG 5



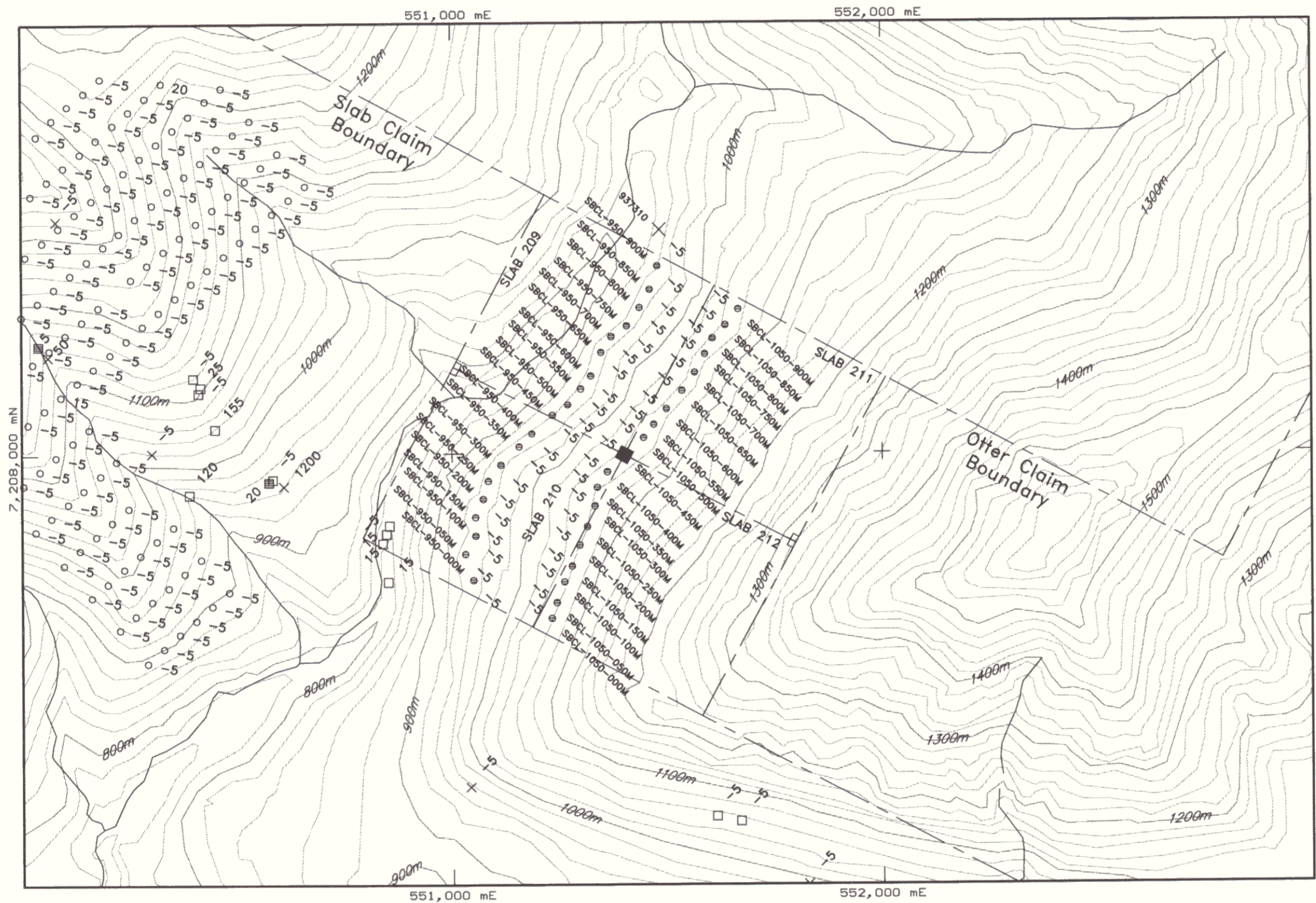
True North Angle: 358° 52'
Grid North: 0° 0'

MAP AREA:
X: 550000 - 559000
Y: 7207000 - 7208000
Z: 0 - 10000
Units are meters.

NEWMONT EXPLORATION LTD.
WESTMIN RESOURCES, PAMICON DEVELOPMENTS, EQUITY ENGR.
FAIRCHILD PROJECT, YUKON TERRITORY, CANADA
MAYO MINING DISTRICT

PLATE 5
SLAB 209-212 CLAIMS
Cu IN ROCKS AND SOILS

Compiled By: K. OWERKO	Date Drafted: 11/94	Coordinate System: UTM ZONE 8
Drafted By: JRG	File Name: SB2021A.DWG	Contour Interval: 20M



Au Geochemistry	
Pre 94	1994 Samples
float	
X value	Sample No. X value (ppb)
grab	
□ value	Sample No. □ value
chip	
▣ value	Sample No. ▣ value
channel	
■ value	Sample No. ■ value

093218 DWG 6

0 100 200 300m

0 400 800 1200ft

Scale: 1 : 10,000

True North angle: 358° 52'

Grid North: 0° 0'

MAP AREA:

X: 580000 - 583000

Y: 7207000 - 7209000

Z: 0 - 10000

Units are meters.

NEWMONT EXPLORATION LTD.
 WESTMIN RESOURCES, PAMICON DEVELOPMENTS, EQUITY ENGR.

FAIRCHILD PROJECT, YUKON TERRITORY, CANADA
 MAYO MINING DISTRICT

PLATE 6
SLAB 209-212 CLAIMS
 Au IN ROCKS AND SOILS

Compiled By: K. OWERKO	Date Drafted: 11/94	Coordinate System: UTM ZONE 8
Drafted By: JRG	File Name: SB2021B.DWG	Contour Interval: 20M