

MAP NO:115P/15

ASSESSMENT REPORT: X

DOCUMENT NO: 093213

PROSPECTUS:

MINING DISTRICT: Dawson

CONFIDENTIAL: X

TYPE OF WORK:Geology,  
geochemistry

OPEN FILE:

REPORT FILED UNDER: Regent Ventures Ltd.

DATE PERFORMED:August 1993

DATE FILED:June 8, 1994

LATITUDE:63 59

AREA:Red Mountain

LONGITUDE:136 43

VALUE:\$20,800

CLAIM NAME AND #:BX 1-8, 13-68

WORK DONE BY:B.A. Lueck

WORK DONE FOR: Regent Ventures Ltd.

DATE TO GOOD STANDING	REMARKS
	550 soil samples collected and 13 rocks. The property was staked based on a government Au, As geochemistry result on Hobo Creek. Fractured and altered shale with minor oxidized quartz and tourmaline veinlets assayed 2.13 g/T Au, 106 g/T Ag. Quartz rich graphitic shale with minor pyrite selvages on quartz lenses assayed 17.7 g/T Au. Quartz-biotite porphyry slightly altered with small veinlets of oxidized quartz and tourmaline with relect pyrite and arsenopyrite assayed 1.5 g/T Au, 23.6 g/T Ag.

**Report on the 1993 Exploration Program**

on the

**B X Claims**

**115 P 15**

**Dawson Mining Division**

**Yukon Territory**

for

**Regent Ventures Ltd.**

by

**B.A. Lueck**

**B. Sc. (honours)**

**Geologist**



0932123

-----  
-----

## Table of Contents

Introduction	3
Summary	3
Location Access and Physiography	4
Regional Geology and Mineralization	5
Previous Work	6
Local Geology	6
Current Program	6
Soil Geochemistry	6
Rock Geochemistry	7
Trenching	8
Discussion	8
Conclusions and Recommendations	9
Expenditures	10
Appendix (assay sheets)	

## Table of Figures

(in pocket)

- Fig. 1 Location Map, 10
- Fig. 2 Local Geology
- Fig. 3 Grid Geochemistry
- Fig. 4 Rock Sample Locations, Trench Locations

## List of Tables

<u>Table 1.</u> Rock Sample Descriptions	12
--	----

## INTRODUCTION

The B X 1-8, and B X 13 - 68 Claims, record numbers YB41142 - YB41149, and YB42139 - YB42194 are located in the Dawson Mining Division, on the boundary between the Dawson and Mayo Mining Divisions, north of Red Mountain on map sheet 115 P 15. The claims are owned by Brian Lueck (50%) and Bob Wondga (50%). Regent Ventures Ltd. has acquired an option to earn a 100 % interest in the property. The claims cover a region underlain by Paleozoic shales, carbonaceous shales, and quartzite. These sedimentary rocks are intruded by stocks, dykes and volcanic breccia. Hydrothermal brecciation and quartz-tourmaline stockwork veining are well developed. Sulphide mineralization is largely oxidized with minor remnant pyrite and arsenopyrite.

Exploration focused on defining gold in soil anomalies, which were later trenched if accessible. Deep frozen talus hindered proper evaluation of the trenched areas.

## SUMMARY

The 1993 exploration program on the B X Claims succeeded in defining a strong gold in soil anomaly. A total of 550 soil samples were assayed for gold to a detection limit of 5 ppb. Elevated gold values occurred over large areas of the grid, and the anomalous zones extend off the edges of the grid, to the northwest and southeast. Rock sampling has succeeded in identifying three types of mineralization which assay over 1 g/T Au.

Rock sampling and analyses have determined that the intensely veined and brecciated quartzite with preserved sulphides does not contain the greatest gold values. Initially uninteresting, sulphide poor, altered shale and slightly altered intrusive rock, has been shown to host economically significant amounts of gold.

Fractured and altered shale, with minor oxidized quartz and tourmaline veinlets, assayed 2.13 g / T Au and 106 g / T Ag. This sample is average material from one of the trenched areas, and this type of fracturing and mineralization is considered by the writer to be common and widespread surrounding the contact area of the shale with a micaceous

granodioritic stock. A grab sample of quartz rich graphitic shale with minor pyrite selvages on the quartz lenses assayed .567 opt Au.

Adjacent to the gold bearing shale, a quartz biotite porphyry is slightly altered and cut by small veinlets of oxidized quartz and tourmaline with relict pyrite and arsenopyrite. This zone assayed 1.5 g/T Au and 23.6 g/T Ag. This type of altered intrusive is abundant, and like the gold bearing shale unit, poorly sampled due to its inconspicuous nature.

A more localized area of brecciation and veining in another exposure of quartz-biotite porphyry assayed 1.29 g/T Au and 18 g/T Ag while another sample from nearby assayed .365 g/T Au and >200 g/T Ag. The first sample is more representative of average material at this outcrop, while the latter is the more local and intensely altered material. The extent of this mineralization is unknown due to heavy talus.

Breccia zones are often well developed within the quartzites and intense stockwork quartz veining with erratic arsenopyrite is common and widespread. Gold values are poor and have consistently assayed below 1 g/T from this unit, even in spectacularly mineralized breccias. Future work should focus on carefully delineating the intrusive bodies beneath the soil anomaly, and any zones of shale, as these two units host gold values in excess of 1 g/T. Grids are to be extended to delineate the limits of the gold in soil anomaly, and magnetic geophysical surveys carried out over the extended grid to help delineate the more magnetic intrusive rock. Coincident geochemical and geophysical anomalies which coincide with subsurface shale or intrusive rock would warrant drilling.

The sample of quartz veining in shale which assayed .567 OPT Au and >50 g/T Ag indicates that higher grade mineralization exists on the property. Exploration targets include high grade shear zones containing quartz veins in shale, and low grade disseminated and stockwork mineralization in altered shale and intrusive rock.

A check silt sample of the pup draining the known mineralized area re-assayed 1.3 g/T, which is consistent with previous results. Gold in soil anomalies attain values greater

than 6.7 g/T Au. This high concentration of gold in silt and soil also suggests the presence of high grade gold mineralization beneath the surface .

#### LOCATION , ACCESS and PHYSIOGRAPHY

The property is located at the headwaters of Hobo Creek , north of Red Mountain on map sheet 115 P 15 . The center of the known mineralization is located at approximately 136 43'W and 63 59'N. The claim block can be accessed by very rough 4x4 trail which heads over the Clear Creek pass, down Josephine Creek and up Hobo Creek. A useable airstrip is located 4 miles from the property. Access is currently being improved by local placer mining activity .

The claim block covers a sparsely timbered upland region of the Yukon Plateau . The region is unglaciated, but recently uplifted, as evidenced by the numerous, extensive bench gravel deposits in the area. Some deeply weathered gravels on Hobo Creek are completely oxidized and cemented into a concrete-like deposit.

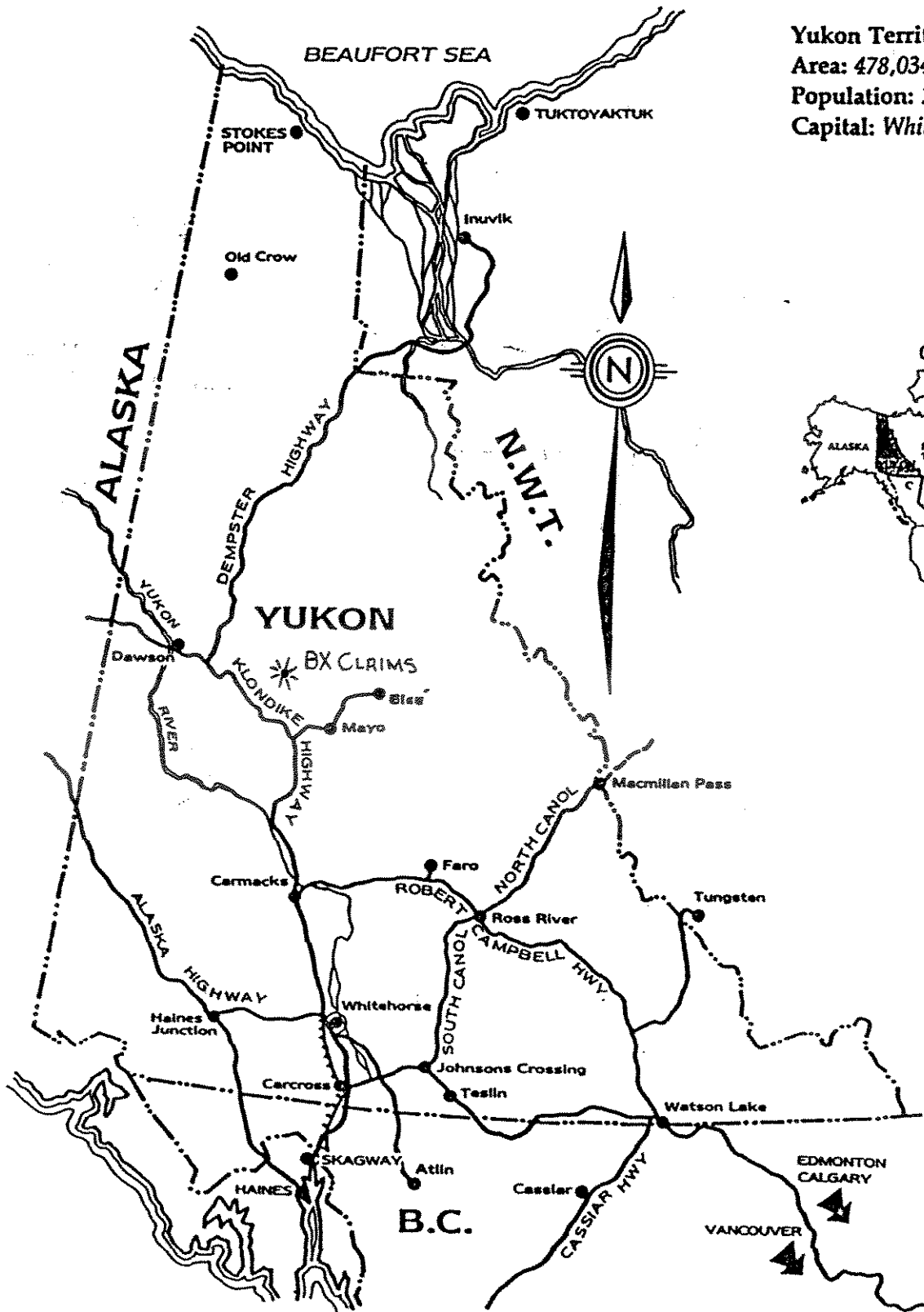
Mountain slopes are steep but do not outcrop well, except on ridges. Blocky talus of unknown depth covers 90% of the area .

#### REGIONAL GEOLOGY and MINERALIZATION

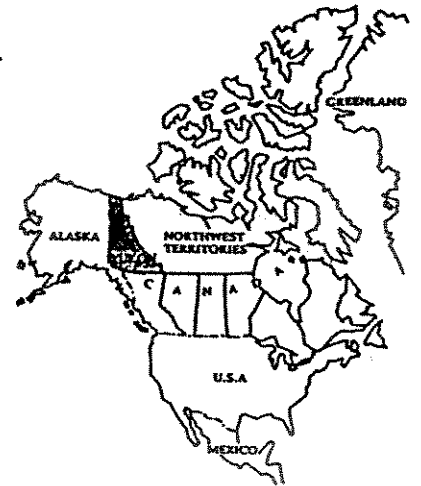
The claim block is located within the heart of the Selwyn Basin . The Selwyn Basin consists of a Paleozoic assemblage of shales, cherts and quartzite which formed off the continental margin of North America.

This basin hosts the Fort Knox deposit, an intrusive hosted gold deposit of large tonnage and low grade. This deposit occurs in Alaska within a region of the Selwyn Basin that has been offset to the northwest by the Tintina Trench.

Intrusive bodies occur throughout the Selwyn Basin in the Yukon, and stocks are often associated with gold mineralization. The Brewery Creek deposit, 25 miles to the northwest, is largely intrusive hosted and hosts in excess of 17 million tons of .056 opt Au. Another significant intrusive hosted deposit occurs at Dublin Gulch, some 25 miles to the

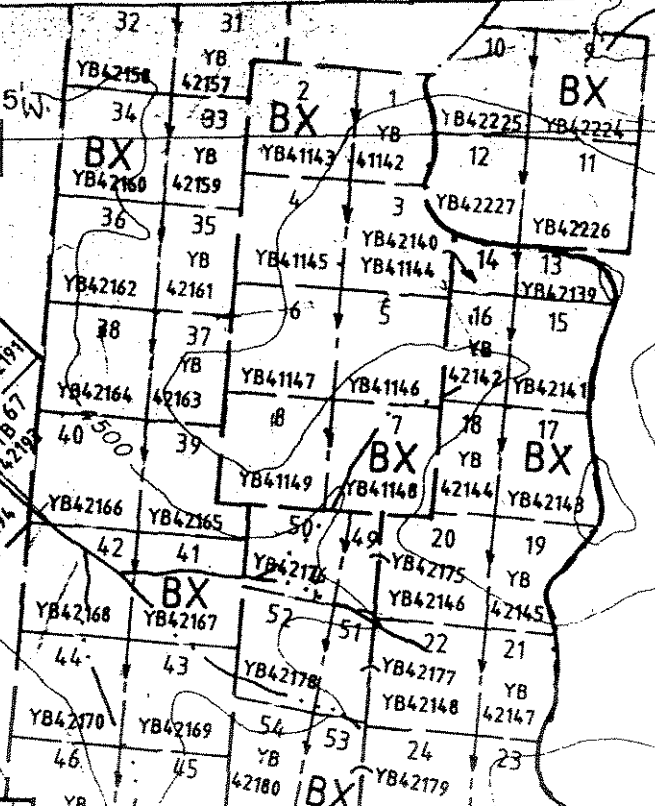
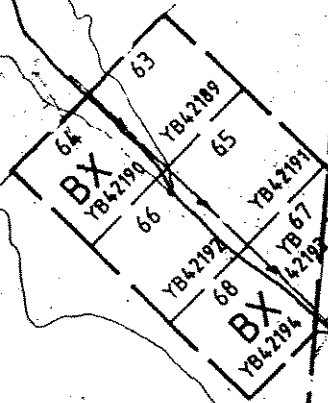


**Yukon Territory**  
 Area: 478,034 sq. km.  
 Population: 25,000  
 Capital: Whitehorse



136° 45' W

4000



4000

50	48	46	44	RED 28	42	40	38	36	34	32	30	28	26	24	22	20	18	16	14	12	10	8	6	4	2
YB28370	YB28368	YB28366	YB28364	YB28362	YB28360	YB28358	YB28356	YB28354	YB28352	YB28350	YB28348	YB28346	YB28344	YB28342	YB28340	YB28338	YB28336	YB28334	YB28332	YB28330	YB28328	YB28326	YB28324	YB28322	YB28320
49	47	45	43	41	39	37	35	33	31	29	27	25	23	21	19	17	15	13	11	9	7	5	3	1	
YB28369	YB28367	YB28365	YB28363	YB28361	YB28359	YB28357	YB28355	YB28353	YB28351	YB28349	YB28347	YB28345	YB28343	YB28341	YB28339	YB28337	YB28335	YB28333	YB28331	YB28329	YB28327	YB28325	YB28323	YB28321	
40	38	36	34	32	30	28	26	24	22	20	18	16	14	12	10	8	6	4	2	RED	RED	RED	RED	RED	
YB28360	YB28358	YB28356	YB28354	YB28352	YB28350	YB28348	YB28346	YB28344	YB28342	YB28340	YB28338	YB28336	YB28334	YB28332	YB28330	YB28328	YB28326	YB28324	YB28322	YB28320	YB28318	YB28316	YB28314	YB28312	
39	37	35	33	31	29	27	25	23	21	19	17	15	13	11	9	7	5	3	1	RED	RED	RED	RED	RED	
YB28359	YB28357	YB28355	YB28353	YB28351	YB28349	YB28347	YB28345	YB28343	YB28341	YB28339	YB28337	YB28335	YB28333	YB28331	YB28329	YB28327	YB28325	YB28323	YB28321	YB28319	YB28317	YB28315	YB28313		
20	18	16	14	12	10	8	6	4	2	RED	RED	RED	RED	RED	RED	RED	RED	RED	RED	RED	RED	RED	RED		
YB28341	YB28339	YB28337	YB28335	YB28333	YB28331	YB28329	YB28327	YB28325	YB28323	YB28321	YB28319	YB28317	YB28315	YB28313	YB28311	YB28309	YB28307	YB28305	YB28303	YB28301	YB28299	YB28297	YB28295		
19	17	15	13	11	9	7	5	3	1	RED	RED	RED	RED	RED	RED	RED	RED	RED	RED	RED	RED	RED	RED		
YB28340	YB28338	YB28336	YB28334	YB28332	YB28330	YB28328	YB28326	YB28324	YB28322	YB28320	YB28318	YB28316	YB28314	YB28312	YB28310	YB28308	YB28306	YB28304	YB28302	YB28300	YB28298	YB28296	YB28294		

RED MOUNTAIN  
Δ 5782

CREEK

RED

RED

CLAIM LOCATION MAP  
BX 1-68 CLAIMS  
115 P 15

3000

3000

northeast. Starmin Resources (T.S.E.) recently announced reserves of 100,000,000 tons of 1 to 1.3 grams/ton Au. This deposit is also intrusive hosted and contains in excess of 3 million ounces of gold. As well, a strong gold in soil anomaly, accompanied by extensive surface gold mineralization, occurs at Clear Creek 10 miles southwest of the property.

### PREVIOUS WORK

Mineralization in this area was unknown prior to discovery of gold mineralization on the BX claims in 1992 by B. Lueck and B. Wondga. Previously known showings of gold mineralization occur to the southwest but these are unrelated to this new discovery.

Interest in this area was sparked by a regional gold and arsenic in silt anomaly on Hobo Creek, shown on the government geochemical surveys. Detailed sampling of silts in the area localized the anomaly to the region of the original BX 1-8 claims.

Prospecting and geologic mapping was done in 1992, but no rock samples were collected which assayed over 1 g/T Au. A strong gold in silt anomaly, however, indicated that further work was required.

### LOCAL GEOLOGY

The claim block is underlain by Paleozoic sediments of the Selwyn Basin, consisting of graphitic shale, carbonaceous shale, chert and quartzite. Sometime during the Mesozoic, these sediments were intruded by porphyritic subvolcanic stocks and dykes of granodiorite and granite. This intrusive zone was later cut by more recent subvolcanic dykes and volcanic breccias. Intense alteration, brecciation and veining are widespread. Vein and breccia infilling are dominated by quartz and tourmaline. Sulphide mineralization consists of pyrite, arsenopyrite, chalcopyrite, and minor galena and stibnite. Veining and brecciation is pervasive throughout the various rock types, although shale and granodiorite are the only rock types which have been shown to host economic concentrations of Au.

## THE 1993 WORK PROGRAM

### Geochemistry

The initial stage of the 1993 work program consisted of grid establishment, soil sampling, and further prospecting of the original BX claims. Additional staking was also undertaken in order to establish a better ground position.

A north-northeast trending baseline was established and lines were run every 100 m along the length of the 1700 m baseline. Individual lines were 800 m or longer in length and samples were collected at 25 m spacings along each line.

The soil samples were dried, screened and pulverized, and fire assayed for gold to a detection unit of 5 ppb. A compilation of the gold in soil anomaly is shown in figure 3. A widespread gold in soil anomaly is indicated by the sampling, even though geochemical response may be significantly hampered by extensive frozen talus. Several zones show gold in soil values in excess of 1 g/T Au, with one sample assaying off the scale (>6.7 g/T), even on repeat analyses.

The grid gold in soil geochemical response indicates a north-west trending zone of widespread gold mineralization. A strong response is localized to the west on the grid and coincides with an intrusive and shale contact region. Steep slopes and extensive talus made trenching of this area impossible.

### Rock Geochemistry

Rock samples taken from zones of trenching, and gold in soil anomalies, were analyzed for Au and 32 elements, in order to see which other elements were associated with the gold. Gold and silver show good correlation, although the highest silver values do not necessarily contain the highest gold values.

Other elements statistically associated with gold on this property are: arsenic, bismuth, cadmium, copper, molybdenum, lead and antimony. This geochemical suite is typical of intrusive hosted deposits. Future geochemical surveys should use multi-element analyses to help define mineralized zones, as the geochemical dispersion patterns of gold

are often erratic, due to the fact that gold occurs as discrete particles in the soil. Multi-element anomalies are more useful for defining sub-surface mineralization because the associated base metal anomalies are often better defined than the gold anomalies.

### Trenching Program

Cat trenching was undertaken on the property in August of 1993. A D-6 Cat was mobilized to the property from Whitehorse via truck to Clear Creek, and then walked in over existing cat trails. Steep topography hindered trenching of many of the stronger gold in soil anomalies. Accessible anomalies were usually covered with deep talus, frozen a few feet below the surface.

Trenched areas were sampled for both average material and select sampled for intensely altered, veined, or sulphide mineralized rock. Select grab samples invariably show discouraging gold values, but average, slightly altered and mineralized shale and intrusive rock contains gold values greater than 1 g/T and up to 2.13 g/T Au. A grab sample of conformable quartz lenses and stringers in shale, with minor euhedral pyrite on the selvages, assayed .567 O.P.T. Au.

Overall, the trenching failed to expose significant amounts of bedrock and therefore proper sampling of bedrock regions was not accomplished. Given the extensive land disturbance required to expose bedrock in this area, further trenching is not recommended. Multi-element geochemical surveys, geophysical surveys, and detailed bedrock and talus mapping will readily delineate zones of mineralization. Drilling of these targets is recommended to evaluate the grade, occurrence, and extent of the identified gold bearing rocks on the BX claims.

### **DISCUSSION**

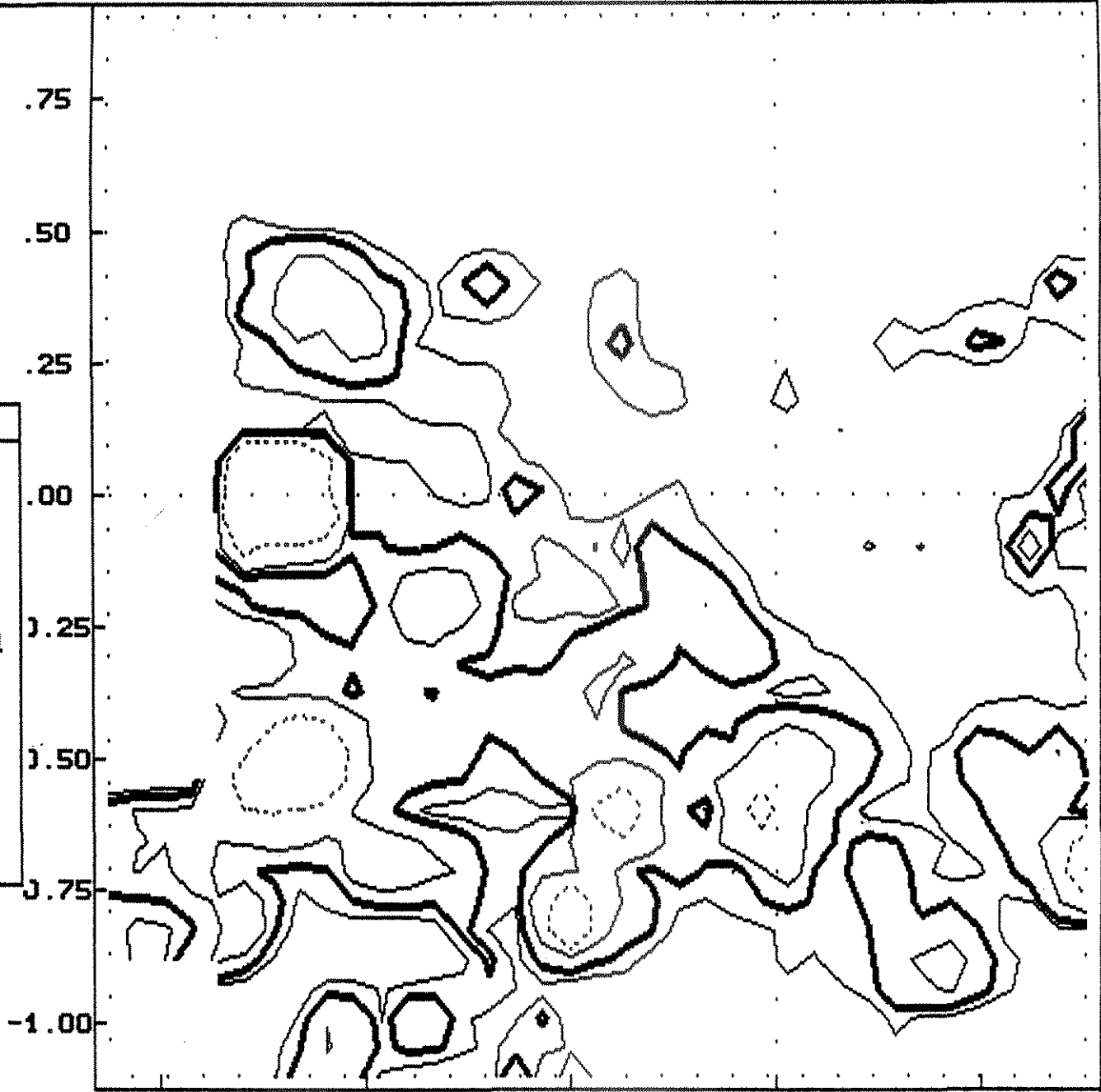
The BX claims host poorly explored gold mineralization, which has been partially delineated by soil geochemistry, rock sampling and prospecting. The target is a large, low grade, disseminated or stockwork gold deposit hosted by both the intrusive rocks, and the altered and veined shales adjacent to the intrusives.

**Binary Diagram**

3rd Val Stats .75  
Name = AU\_PPB  
arithmetic  
N = 541  
Max = 6.67E+3 .50  
Mean = 68.0  
Min = 2.00 .25  
Stdv = 314.0

**Contours**

Grid spacing:  
X = 26.4  
Y = 55.6  
Influence = 4  
Exponent = 2.00  
Contour interval  
= 0.750 Stdv  
○ ..... 300.0  
□ ——— 100.0  
△ ——— 50.0  
\* ——— 30.0  
+ .....



93/11/01  
17:13:49

Hydrothermal brecciation and silica-tourmaline flooding are pervasive and intense over large areas of the property. There is so much veining and brecciation that it is difficult to know what to sample. Exploration efforts were frustrated by the fact that the 'best looking' rocks do not contain economic gold values.

The nature of the gold occurrence has been determined through this season's work, and this will greatly aid the future exploration of this area. Gold occurs associated with slightly altered, quartz-tourmaline veined intrusive rock and shale. Higher grade gold occurrences are related to quartz-pyrite segregations in shale, and the only sample assayed .567 O.P.T. Au. The property hosts excellent potential for the discovery of significant reserves of gold.

#### **CONCLUSIONS and RECOMMENDATIONS**

The 1993 exploration program on the BX claims has delineated a strong gold in soil anomaly, accompanied by a strong creek silt gold anomaly. Preliminary sampling of bedrock material underlying the geochemical anomaly shows that gold is present in economically significant amounts in shale and granodiorite on this property.

Bulk tonnage potential for rock grading  $> 1$  g/T Au has been shown to exist in slightly altered, extensive igneous and sedimentary units. High grade gold mineralization has also been shown to exist in quartz veins and stringers in shale.

It is recommended that future programs use the techniques of multi-element soil sampling programs, coupled with ground geophysical surveys, to delineate potential ore zones. Careful mapping of the distribution of intrusive rock and shale, in outcrop and in talus, will help define the best sub-surface target area. It is recommended that several drill holes, moderately spaced (75-100 m) and drilled at a 45 degree angle, are required to evaluate the occurrence. Contact zones between intrusive and shale hold the best potential for ore. Holes should be drilled to at least 500' to get a good section through the geology, and to penetrate into unoxidized bedrock. Vein and breccia zones are several hundred feet

wide on the surface and long holes are required to thoroughly sample the mineralized zones. The following specific program is recommended for this property.

**Phase 1**

A) A new grid is required with the baseline striking at 125 degrees, as this is the defined strike of the soil anomaly. The new baseline is to be 4 km. in length and centered at sample site H.T. 4. Crosslines are to be one kilometer in length and spaced every 100 meters, with a sample spacing of 25 meters. A total of 1600 soil samples are required for this grid. These samples are to be assayed for gold and silver as well as As, Sb, Bi, Cu, Pb, Zn, Sn, Mo, and W.

B) Magnetometer surveys are to be done on this same grid in order to delineate the intrusive bodies where they are covered by overburden.

C) Careful prospecting and rock sampling, coupled with geological and structural mapping of the property, will proceed at the same time as the grid surveys. Rock samples are to be carefully selected and split so that representative samples of gold bearing material can be thoroughly studied and then mapped in the field. This mineralization is very inconspicuous and will otherwise be difficult to track.

D) Based on the previous work done in 1993, the property currently warrants drilling. An initial program of 4000 feet of N.Q. diamond drilling is recommended, once proper control on the mineralization has been achieved by the above listed work program. These holes are to be drilled at a 45 degree angle across the mineralized zones.

E) If results of the initial drilling are favourable, and enough geological control has been provided by the diamond drilling, then a **second phase of rotary drilling** is recommended to increase the sample size and decrease the drilling cost.

**Projected Costs**

A) Grid establishment, soil sampling, geophysical surveys, mapping	\$50,000.00
B) Assays, report	\$30,000.00
C) Drilling - Phase 1) 4000' at \$30.00/ft.	\$120,000.00

**Projected costs...**

D) Drillcore assays	\$20,000.00
E) Phase 2 drilling - 10,000 feet (6" rotary) at \$20.00/ft.	\$200,000.00
F) Drillcore assays, report	\$50,000.00

---

---

<b>TOTAL</b>	<b>\$470,000.00</b>
--------------	---------------------

*Statement of Qualifications:*

I, Brian A. Lueck, of the City of Whitehorse, Yukon Territory do hereby certify that:

1. I am a graduate fo the University of British Columbia and posses a B. Sc. (honours) in Geology.
2. I have been employed as a consulting geologist or a government geologist since June of 1985.
3. I am currently enrolled in a M. Sc. program in geology at U. B. C.
4. I have applied for status as a professional geologist in *The Association of Professional Engineers and Geoscientists of the Province of British Columbia*, and have passesd all of the required entrance examinations.
5. I have been present on the property and have reviewed the data and inspected the field work and I believe this report to be an accurate reflection of the work performed on the property during <sup>AUGUST</sup> ~~July~~ of 1993 and prior to <sup>SEPT.</sup> ~~July~~ 22, 1993.



-----

Brian A. Lueck

Geologist

### Rock Sample Descriptions

**3-Zone-** Stockwork quartz-tourmaline stringers in fractured quartzite. Arsenopyrite can be seen on some fresh surfaces.

**HT-1-** Altered sedimentary and volcanic rock adjacent to the intrusive. Secondary biotite growth occurs on fractures. Typical "skarn" texture and mineralogy.

**HT-2-** Best grab sample of massive arsenopyrite in brecciated quartzite.

**HT-3-** Fractured intrusive rock from trenched zone. Minor quartz-tourmaline stringers in poorly altered biotite bearing porphyry.

**HT-4-** Fractured and altered shale from trenched zone adjacent to the intrusive rock. Minor quartz crystals on oxidized fractures.

**HT-QTZ.-** Quartz veined quartzite from highly anomalous zone underlain by shale and quartzite. Stringers lack sulphides of any kind.

**N-1-** A sample of sulphide bearing dyke material from near the north end of the grid. The dyke crosscuts carbonaceous shale in an area of high gold in soil response.

**OSV-** Highly oxidized and limonitic breccia with quartz-tourmaline veinlets, in quartzite adjacent to the intrusive body.

**S-4-** Minor pyrite in altered quartzite from a trenched area of high gold in soil response. Bedrock is largely shale.

**S-5-** Slightly altered biotite-quartz porphyry with quartz-tourmaline and minor scorodite in fracture fillings.

**S-6-** Spectacularly brecciated and mineralized quartzite from adjacent to the intrusive porphyry. Arsenopyrite is abundant.

**S-7-** Quartz-arsenopyrite veins in quartzite.

**7+00S 3+00E -** Quartz-tourmaline stockwork and quartz stockwork veining in brecciated quartzite.

...

Yukon Mining Incentives Program

Statement of Expenditures: BX Claims Target Evaluation Program

For: Brian Lueck

Description of Program: May 25 to Aug. 30, 1993

Phase 1: Prospecting, Grid Establishment, Geochemical Soil Sampling (550 samples)

Phase 2: Cat Trenching, Rock Sampling, Report Preparation

Itemized Expenditures:

Mobilization: B. Lueck (Van.-Whse.) 3000 km. @ 36.5/km	1095.00
1 Hotel	86.36
2 Hipchains and compass	258.89
3 Maps	17.54
4 Flagging. Hipchain thread	125.12
Mobilization: B. Lueck, B. Wodga, D. Trudeau, D. McLeod ( Whse.-Daw.-Clear Creek) 600 km @ 36.5/ km	219.00
5 Hotel	78.11
6 Helicopter	2685.10
7 Helicopter	2899.97
8 Wages D. Trudeau (20 days @ \$150/day)	3000.00
9 Wages D. McLeod (20 days @ \$150/day)	3000.00
10 Wages B. Wondga (25 days @ \$200/day)	5000.00
11 Cat Rental	5000.00
12 Truck Rental (with camper)	4337.40
13 Damage to Fuel Tank and Skid	550.00
14 Trucking Cat (Whse.-C.Creek), Fuel	3393.77
15 Trucking of Cat (C.Creek-Whse.)	1575.00
16 Cat Operator Wages	1650.00
17 Flagging, thread and markers	161.18
Camp Costs: D. Trudeau, D. McLeod (2 x 20days x 52.85/day)	2114.00
B. Lueck, B. Wondga (2 x 25days x 52.85/day)	2642.50
Cat Operator ( 15days x 52.85/day )	792.75
<del>18 Assay costs (to date)</del>	<del>          </del>

Total to date

40,681.69

Yukon Mining Incentives GRANT  
(confirmed K. Pelletier 31 MAY 94)

\$ 19,900.00

\$ 20,781.69



# Chemex Labs Ltd.

Analytical Chemists \* Geochemists \* Registered Assayers  
 212 Brooksbank Ave., North Vancouver  
 British Columbia, Canada V7J 2C1  
 PHONE: 604-984-0221

To: LUECK, BRIAN

6876 BROOKS ST.  
 VANCOUVER, BC  
 V6T 3J7

Project: BX CLAIMS  
 Comments:

Page Number :1-A  
 Total Pages :1  
 Certificate Date: 08-SEP-93  
 Invoice No. :19319953  
 P.O. Number :  
 Account :KIS

## CERTIFICATE OF ANALYSIS A9319953

SAMPLE	PREP CODE	Au ppb FA+AA	Ag ppm	Al %	As ppm	Ba ppm	Be ppm	Bi ppm	Ca %	Cd ppm	Co ppm	Cr ppm	Cu ppm	Fe %	Ga ppm	Hg ppm	K %	La ppm	Mg %	Mn ppm
ASP	205 274	< 5	0.8	0.33	748	60	< 0.5	16	0.36	< 0.5	5	101	260	1.42	< 10	< 1	0.21	< 10	0.18	60
BX 3-ZONE	205 274	< 5	0.6	0.21	4040	50	< 0.5	< 2	0.01	< 0.5	1	287	17	0.90	< 10	< 1	0.10	20	0.01	30
BT-1	205 274	50	< 0.2	1.20	90	190	< 0.5	8	1.23	< 0.5	32	88	71	2.62	10	< 1	0.36	40	0.95	160
BT-2	205 274	490	2.6	0.15	>10000	180	< 0.5	28	0.03	0.5	39	150	74	2.71	< 10	< 1	0.02	< 10	0.02	40
BT-3	205 274	1500	23.6	0.68	>10000	2020	0.5	138	0.01	1.0	1	103	69	2.28	10	< 1	0.28	60	0.04	30
BT-4	205 274	2130	106.0	1.48	>10000	150	< 0.5	64	0.11	7.5	9	72	765	>15.00	50	2	0.36	360	0.02	110
BT-QTZ	205 274	20	1.6	0.30	800	70	< 0.5	4	0.01	0.5	1	226	119	2.13	< 10	< 1	0.11	20	0.02	20
N-1	205 274	45	0.2	2.83	196	60	0.5	2	1.95	< 0.5	30	77	69	4.41	10	< 1	0.24	10	1.13	155
OSV	205 274	365	>200	0.22	>10000	210	< 0.5	334	0.17	94.0	< 1	98	359	7.46	10	3	0.45	30	0.01	10
S-4	205 274	< 5	1.4	0.28	88	30	< 0.5	< 2	0.04	< 0.5	7	326	10	1.33	< 10	< 1	0.02	10	0.07	275
S-5	205 274	1290	18.0	0.28	>10000	210	< 0.5	42	0.01	2.5	4	126	536	2.94	< 10	< 1	0.12	20	0.01	10
S-6	205 274	125	8.0	0.51	5410	110	< 0.5	12	0.01	1.0	< 1	136	141	2.17	< 10	< 1	0.14	40	0.01	10
S-7	205 274	240	11.4	0.10	>10000	90	< 0.5	46	0.01	1.0	43	209	61	4.45	< 10	< 1	0.03	20	< 0.01	15
7+008 3+00E	205 274	15	0.6	0.21	260	20	< 0.5	2	0.01	< 0.5	< 1	308	31	1.12	< 10	< 1	0.07	10	0.01	30

CERTIFICATION:

*Hart Bickler*



# Chemex Labs Ltd.

Analytical Chemists \* Geochemists \* Registered Assayers  
 212 Brooksbank Ave., North Vancouver  
 British Columbia, Canada V7J 2C1  
 PHONE: 604-984-0221

To: LUECK, BRIAN  
 6876 BROOKS ST.  
 VANCOUVER, BC  
 V6T 3J7

Page Number :1-B  
 Total Pages :1  
 Certificate Date: 08-SEP-93  
 Invoice No. : 19319953  
 P.O. Number :  
 Account : KIS

Project: BX CLAIMS  
 Comments:

## CERTIFICATE OF ANALYSIS

### A9319953

SAMPLE	PREP CODE	Mo ppm	Na %	Ni ppm	P ppm	Pb ppm	Sb ppm	Sc ppm	Sr ppm	Ti %	Tl ppm	U ppm	V ppm	W ppm	Zn ppm
ASP	205 274	1	0.04	9	820	6	< 2	1	32	0.06	< 10	< 10	15	< 10	16
EX 3-ZONE	205 274	2	< 0.01	3	290	48	18	< 1	3	< 0.01	< 10	< 10	2	< 10	6
HT-1	205 274	< 1	0.17	135	1510	2	4	5	98	0.19	< 10	< 10	85	< 10	40
HT-2	205 274	2	0.01	14	380	162	12	< 1	16	< 0.01	< 10	< 10	4	< 10	12
HT-3	205 274	7	< 0.01	2	740	3510	204	2	20	< 0.01	< 10	< 10	7	< 10	48
HT-4	205 274	7	0.02	3	8100	>10000	2310	15	433	< 0.01	< 10	< 10	53	< 10	66
HT-QTZ	205 274	1	< 0.01	5	140	70	30	< 1	3	< 0.01	< 10	< 10	2	< 10	24
N-1	205 274	3	0.40	56	2060	22	2	3	124	0.28	< 10	< 10	104	10	28
OSV	205 274	1	0.02	4	380	>10000	>10000	4	55	< 0.01	< 10	< 10	3	20	6
S-4	205 274	1	< 0.01	10	150	180	156	< 1	2	< 0.01	< 10	< 10	4	< 10	24
S-5	205 274	2	< 0.01	4	280	1605	1270	2	15	< 0.01	< 10	< 10	1	< 10	2
S-6	205 274	9	< 0.01	1	300	2420	104	< 1	27	< 0.01	< 10	< 10	2	< 10	6
S-7	205 274	1	< 0.01	4	130	198	560	< 1	5	< 0.01	< 10	< 10	1	< 10	12
7+00S 3+00E	205 274	1	< 0.01	3	120	26	10	< 1	2	< 0.01	< 10	< 10	2	< 10	8


CERTIFICATION: *Hautzschler*

Regent Ventures

WO 13980

Sample	Au ppb	Ag ppm
HC-1	355	4.5
HC-2	>6667	>50.0
HC-3	58	2.7
HC-4	179	5.3
HC-5	13	1.7
HC-6	17	1.1
HC-7	13	3.4
HC-8	25	1.6
HC-9	15	1.0
HC-10	193	0.8
HC-11	305	3.7
HC-12	660	10.1
HC- (no number)	2605	47.4
L00 0+00	11	
L00 0+25W	8	
L00 0+50W	24	
L00 0+75W	11	
L00 1+00W	39	
L00 1+25W	26	
L00 1+50W	22	
L00 1+75W	13	
L00 2+00W	17	
L00 2+25W	53	
L00 2+50W	75	
L00 2+75W	22	
L00 3+00W	21	
L00 3+25W	21	
L00 3+50W	51	
L00 3+75W	34	
L00 4+00W	63	
L00 4+25W	30	
L00 4+50W	32	
L00 4+75W	>6667	
L00 5+00W	36	
L00 0+25E	13	
L00 0+50E	10	
L00 0+75E	18	
L00 1+00E	19	
L00 1+25E	16	
L00 1+50E	15	
L00 1+75E	9	
L00 2+00E	17	

Certified by





Aug-93date

Assay Certificate

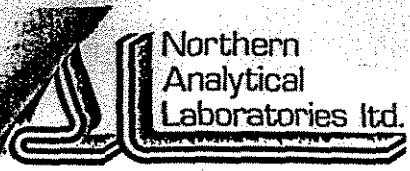
Regent Ventures

WO 13980

Sample	Au ppb	Ag ppm
L00 2+25E	29	
L00 2+50E	20	
L00 2+75E	75	
L00 3+00E	12	
L100S 0+00E	11	
L100S 0+25E	18	
L100S 0+50E	20	
L100S 0+75E	17	
L100S 1+00E	50	
L100S 1+25E	17	
L100S 1+50E	39	
L100S 1+75E	14	
L100S 2+00E	16	
L100S 2+25E	31	
L100S 2+50E	157	
L100S 2+75E	16	
L100S 3+00E	18	
L100S 0+25W	15	
L100S 0+50W	25	
L100S 0+75W	41	
L100S 1+00W	51	
L100S 1+25W	96	
L100S 1+50W	15	
L100S 1+75W	51	
L100S 2+00W	31	
L100S 2+25W	23	
L100S 2+50W	40	
L100S 2+75W	44	
L100S 3+00W	61	
L100S 3+25W	46	
L100S 3+50W	24	
L100S 3+75W	51	
L100S 4+00W	49	
L100S 4+25W	63	
L100S 4+50W	37	
L100S 4+75W	40	
L100S 5+00W	74	
L100N 0+00W	21	
L100N 0+25W	14	
L100N 0+50W	14	
L100N 0+75W	27	
L100N 1+00W	8	

Certified by





Northern Analytical Laboratories Ltd.

Aug-93date

Assay Certificate

Page3

Regent Ventures

WO 13980

Sample	Au ppb	Ag ppm
L100N 1+25W	10	
L100N 1+50W	17	
L100N 1+75W	25	
L100N 2+00W	13	
L100N 2+25W	11	
L100N 2+50W	26	
L100N 2+75W	35	
L100N 3+00W	22	
L100N 3+25W	26	
L100N 3+50W	21	
L100N 3+75W	30	
L100N 4+00W	16	
L100N 4+25W	33	
L100N 4+50W	38	
L100N 4+75W	29	
L100N 5+00W	16	
L100N 0+25E	34	
L100N 0+75E	36	
L100N 1+00E	18	
L100N 1+25E	16	
L100N 1+50E	14	
L100N 1+75E	12	
L100N 2+00E	10	
L100N 2+25E	23	
L100N 2+50E	14	
L100N 2+75E	13	
☉ L100N 3+00E	95	
☉ L200N 0+00W	50	
L200N 0+25W	23	
L200N 0+50W	14	
L200N 0+75W	18	
L200N 1+00W	45	
☉ L200N 1+25W	53	
L200N 1+75W	29	
L200N 2+00W	27	
L200N 2+25W	22	
L200N 2+50W	22	
☉ L200N 2+75W	50	
L200N 3+00W	38	
L200N 3+25W	44	
L200N 3+50W	41	
L200N 3+75W	30	

Certified by



Northern Analytical Laboratories Ltd.

Aug-93date

Assay Certificate

Page 4

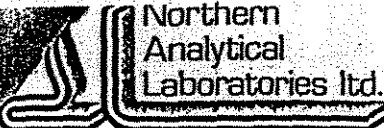
Regent Ventures

WO 13980

Sample	Au ppb	Ag ppm
L200N 4+00W	21	
L200N 4+25W	34	
L200N 4+50W	26	
L200N 4+75W	21	
L200N 5+00W	26	
L200N 0+25E	17	
L200N 0+50E	28	
L200N 0+75E	24	
L200N 1+00E	18	
L200N 1+25E	35	
L200N 1+50E	15	
L200N 1+75E	9	
L200N 2+00E	16	
L200N 2+25E	11	
L200N 2+50E	6	
L200N 2+75E	13	
L200N 3+00E	9	
L200S 0+00	16	
L200S 0+25E	15	
L200S 0+50E	7	
L200S 0+75E	7	
L200S 1+00E	10	
L200S 1+25E	9	
L200S 1+50E	10	
L200S 1+75E	9	
L200S 2+00E	11	
L200S 2+25E	12	
L200S 2+50E	23	
L200S 2+75E	20	
L200S 3+00E	40	
L200S 0+25W	26	
L200S 0+50W	68	
L200S 0+75W	115	
L200S 1+00W	44	
L200S 1+25W	53	
L200S 1+50W	31	
L200S 1+75W	7	
L200S 2+00W	24	
L200S 2+25W	24	
L200S 2+50W	16	
L200S 2+75W	68	
L200S 3+00W	163	

Certified by

AA



Northern Analytical Laboratories Ltd.

Aug-93date

Assay Certificate

Page5

Regent Ventures

WO 13980

Sample	Au ppb	Ag ppm
--------	--------	--------

● L200S 3+25W	140	
● L200S 3+50W	313	
● L200S 3+75W	11	
● L200S 4+00W	68	
● L200S 4+25W	20	
● L200S 4+50W	28	
● L200S 4+75W	39	
● L200S 5+00W	17	
● L300N 0+00	30	
● L300N 0+25W	14	
● L300N 0+50W	27	
● L300N 0+75W	9	
● L300N 1+00W	7	
● L300N 1+25W	14	
● L300N 1+50W	71	
● L300N 1+75W	28	
● L300N 2+00W	15	
● L300N 2+25W	6	
● L300N 2+50W	13	
● L300N 2+75W	15	
● L300N 3+00W	14	
● L300N 3+25W	33	
● L300N 3+50W	14	
● L300N 3+75W	13	
● L300N 4+00W	371	
● L300N 4+25W	21	
● L300N 4+50W	71	
● L300N 4+75W	139	
● L300N 5+00W	12	
● L300N 0+25E	18	
● L300N 0+50E	12	
● L300N 0+75E	9	
● L300N 1+00E	35	
● L300N 1+25E	51	
● L300N 1+50E	28	
● L300N 1+75E	36	
● L300N 2+00E	64	
● L300N 2+25E	54	
● L300N 2+50E	21	
● L300N 2+75E	22	
● L300N 3+00E	31	
● L300S 0+00	45	

Certified by



Aug-93date

Assay Certificate

Page6

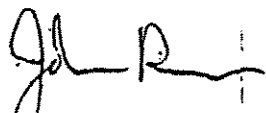
Regent Ventures

WO 13980

Sample Au ppb Ag ppm

L300S 0+25E	36	
L300S 0+50E	30	
L300S 0+75E	36	
L300S 1+00E	9	
L300S 1+25E	8	
L300S 1+50E	10	
L300S 1+75E	9	
L300S 2+00E	11	
L300S 2+25E	7	
L300S 2+50E	22	
L300S 2+75E	16	
L300S 3+00E	39	
L300S 0+25W	84	
L300S 0+50W	102	
L300S 0+75W	49	
L300S 1+00W	32	
L300S 1+25W	106	
L300S 1+50W	133	
L300S 1+75W	75	
L300S 2+00W	57	
L300S 2+25W	33	
L300S 2+50W	34	
L300S 2+75W	43	
L300S 3+00W	21	
L300S 3+25W	95	
L300S 3+50W	91	
L300S 3+75W	88	
L300S 4+00W	34	
L300S 4+25W	64	
L300S 4+50W	50	
L300S 4+75W	80	
L300S 5+00W	298	
L400N 0+00	25	
L400N 0+25E	19	
L400N 0+50E	17	
L400N 0+75E	18	
L400N 1+00E	11	
L400N 1+25E	10	
L400N 1+50E	10	
L400N 1+75E	12	
L400N 2+00E	13	
L400N 2+25E	22	

Certified by





Northern Analytical Laboratories Ltd.

ug-93date

Assay Certificate

Page 7

Regent Ventures

WO 13980

Sample	Au ppb	Ag ppm
L400N 2+50E	22	
L400N 2+75E	67	
L400N 3+00E	41	
L400N 0+25W	15	
L400N 0+50W	26	
L400N 1+00W	10	
L400N 1+25W	24	
L400N 1+50W	38	
L400N 1+75W	30	
L400N 2+00W	29	
L400N 2+25W	29	
L400N 2+50W	42	
L400N 2+75W	92	
L400N 3+00W	50	
L400N 3+25W	21	
L400N 3+50W	49	
L400N 3+75W	46	
L400N 4+00W	75	
L400N 4+25W	175	
L400N 4+50W	302	
L400N 4+75W	222	
L400N 5+00W	15	
L400S 0+00	13	
L400S 0+25E	19	
L400S 0+50E	29	
L400S 0+75E	42	
L400S 1+00E	36	
L400S 1+25E	15	
L400S 1+50E	10	
L400S 1+75E	20	
L400S 2+00E	31	
L400S 2+25E	29	
L400S 2+50E	31	
L400S 2+75E	21	
L400S 3+00E	27	
L400S 0+25W	31	
L400S 0+50W	24	
L400S 0+75W	36	
L400S 1+00W	24	
L400S 1+25W	14	
L400S 1+50W	15	
L400S 1+75W	165	

Certified by

Aug-93date

Assay Certificate

Page8

Regent Ventures

WO 13980

Sample Au ppb Ag ppm

L400S 2+00W	71	
L400S 2+25W	77	
L400S 2+50W	122	
L400S 2+75W	35	
L400S 3+00W	112	
L400S 3+25W	39	
L400S 3+50W	14	
L400S 3+75W	102	
L400S 4+00W	45	
L400S 4+25W	7	
L400S 4+50W	133	
L400S 4+75W	59	
L400S 5+00W	21	
L500N 0+50E	19	
L500N 0+75E	9	
L500N 1+00E	9	
L500N 1+25E	21	
L500N 1+50E	11	
L500N 1+75E	19	
L500N 2+00E	9	
L500N 2+25E	14	
L500N 2+50E	10	
L500N 2+75E	8	
L500N 3+00E	13	
L500N 0+25W	17	
L500N 0+50W	6	
L500N 0+75W	21	
L500N 1+00W	28	
L500N 1+25W	8	
L500N 1+50W	18	
L500N 1+75W	9	
L500N 2+00W	10	
L500N 2+25W	25	
L500N 2+50W	9	
L500N 2+75W	7	
L500N 3+00W	11	
L500N 3+25W	19	
L500N 3+50W	<5	
L500N 3+75W	6	
L500N 4+00W	<5	
L500N 4+25W	10	
L500N 4+50W	<5	

Certified by





Northern Analytical Laboratories Ltd.

Aug-93date

Assay Certificate

Page9

Regent Ventures

WO 13980

Sample	Au ppb	Ag ppm
--------	--------	--------

L500N 4+75W	6	
L500N 5+00W	28	
L500S 0+00	430	
L500S 0+25E	229	
L500S 0+50E	81	
L500S 0+75E	65	
L500S 1+00E	84	
L500S 1+25E	10	
L500S 1+50E	32	
L500S 1+75E	33	
L500S 2+00E	107	
L500S 2+25E	63	
L500S 2+50E	46	
L500S 2+75E	113	
L500S 3+00E	37	
L500S 0+25W	31	
L500S 0+50W	27	
L500S 0+75W	95	
L500S 1+00W	37	
L500S 1+25W	50	
L500S 1+50W	61	
L500S 1+75W	57	
L500S 2+00W	57	
L500S 2+25W	95	
L500S 2+50W	50	
L500S 2+75W	16	
L500S 3+00W	110	
L500S 3+25W	43	
L500S 3+50W	120	
L500S 3+75W	73	
L500S 4+00W	38	
L500S 4+25W	138	
L500S 4+50W	1647	
L500S 4+75W	1467	
L500S 5+00W	105	
L600S 0+00	210	
L600S 0+25E	70	
L600S 0+50E	33	
L600S 1+00E	7	
L600S 1+25E	15	
L600S 1+50E	24	
L600S 1+75E	52	

Certified by



Aug-93date

Assay Certificate

Page10

Regent Ventures

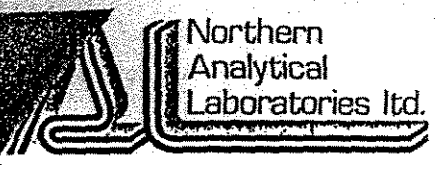
WO 13980

Sample Au ppb Ag ppm

L600S 2+00E	.38	
L600S 2+25E	.91	
L600S 2+50E	.83	
L600S 2+75E	.71	
L600S 3+00E	.22	
L600S 0+25W	579	
L600S 0+50W	.90	
L600S 0+75W	.11	
L600S 1+00W	.65	
L600S 1+25W	.114	
L600S 1+50W	790	
L600S 1+75W	341	
L600S 2+00W	8	
L600S 2+25W	27	
L600S 2+50W	.16	
L600S 2+75W	12	
L600S 3+00W	.16	
L600S 3+25W	.11	
L600S 3+50W	.10	
L600S 3+75W	.44	
L600S 4+00W	.66	
L600S 4+25W	.61	
L600S 4+50W	.157	
L600S 5+00W	.339	
L700S 0+00	237	
L700S 0+25E	.43	
L700S 0+50E	37	
L700S 0+75E	21	
L700S 1+00E	165	
L700S 1+25E	.87	
L700S 1+50E	25	
L700S 1+75E	17	
L700S 2+00E	26	
L700S 2+25E	.41	
L700S 2+50E	75	
L700S 2+75E	91	
L700S 3+00E	989	
L700S 0+25W	.46	
L700S 0+50W	17	
L700S 0+75W	49	
L700S 1+00W	73	
L700S 1+25W	41	

Certified by





Northern Analytical Laboratories Ltd.

Aug-93date

Assay Certificate

Page 11

Regent Ventures

WO 13980

Sample	Au ppb	Ag ppm
L700S 1+50W	43	
Ⓢ L700S 1+75W	189	
L700S 2+00W	45	
Ⓢ L700S 2+25W	72	
L700S 2+50W	40	
L700S 2+75W	32	
Ⓢ L700S 3+00W	99	
Ⓢ L700S 3+25W	105	
Ⓢ L700S 3+50W	176	
Ⓢ L700S 3+75W	190	
Ⓢ L700S 4+00W	229	
Ⓢ L700S 4+25W	66	
L700S 4+50W	21	
Ⓢ L700S 4+75W	54	
L700S 5+00W	31	
Ⓢ L700S 5+25W	50	
Ⓢ L700S 5+50W	52	
Ⓢ L700S 5+75W	243	
Ⓢ L700S 6+00W	51	
Ⓢ L700S 6+25W	111	
Ⓢ L700S 6+50W	54	
L800S 0+00	26	
Ⓢ L800S 0+25E	49	
L800S 0+50E	30	
L800S 0+75E	34	
L800S 1+00E	60	
L800S 1+25E	54	
L800S 1+50E	27	
L800S 1+75E	81	
L800S 2+00E	38	
L800S 2+25E	13	
L800S 2+50E	13	
L800S 2+75E	27	
L800S 3+00E	49	
L800S 0+25W	26	
L800S 0+50W	24	
L800S 0+75W	23	
L800S 1+00W	16	
Ⓢ L800S 1+25W	74	
L800S 1+50W	27	
L800S 1+75W	17	
Ⓢ L800S 2+00W	1322	

Certified by



Northern Analytical Laboratories Ltd.

Aug-93date

Assay Certificate

Page12

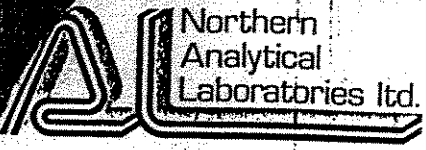
Regent Ventures

WO 13980

Sample	Au ppb	Ag ppm
L800S 2+25W	28	
L800S 2+50W	20	
L800S 2+75W	10	
L800S 3+00W	93	
L800S 3+25W	9	
L800S 3+50W	15	
L800S 3+75W	7	
L800S 4+00W	7	
L800S 4+25W	24	
L800S 4+50W	20	
L800S 4+75W	9	
L800S 5+00W	46	
L800S 5+25W	367	
L800S 5+50W	32	
L800S 5+75W	31	
L800S 6+00W	24	
L800S 6+25W	17	
L800S 6+50W	49	
L900S 0+00	49	
L900S 0+25E	16	
L900S 0+75E	53	
L900S 1+00E	10	
L900S 1+25E	161	
L900S 1+50E	100	
L900S 1+75E	187	
L900S 2+00E	52	
L900S 2+25E	30	
L900S 2+50E	24	
L900S 2+75E	9	
L900S 3+00E	7	
L900S 0+25W	12	
L900S 0+50W	14	
L900S 0+75W	25	
L900S 1+00W	7	
L900S 1+25W	18	
L900S 1+50W	22	
L900S 1+75W	7	
L900S 2+00W	11	
L900S 2+25W	12	
L900S 2+50W	14	
L900S 2+75W	81	
L900S 3+00W	17	

Certified by





Northern Analytical Laboratories Ltd.

Aug-93date

Assay Certificate

Regent Ventures

WO 13990

Sample	Au ppb	Ag ppm
L1100S 2+25W	8	
L1100S 2+50W	95	
L1100S 2+75W	9	
L1100S 3+00W	13	
L1100S 3+25W	<5	
L1100S 3+50W	<5	
L1100S 3+75W	19	
Z-1 #1	21	
Z-1 #2	25	
Z-1 #3	11	
Z-1 #4	24	
Z-2 #1	45	
Z-2 #2	53	
Z-2 #3	160	
Z-2 #4	70	

Certified by



06-Oct-93date

Assay Certificate

Page1

Regent Ventures

WO 13980b

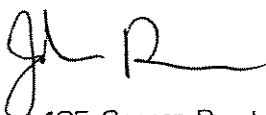
Sample

Au oz/ton

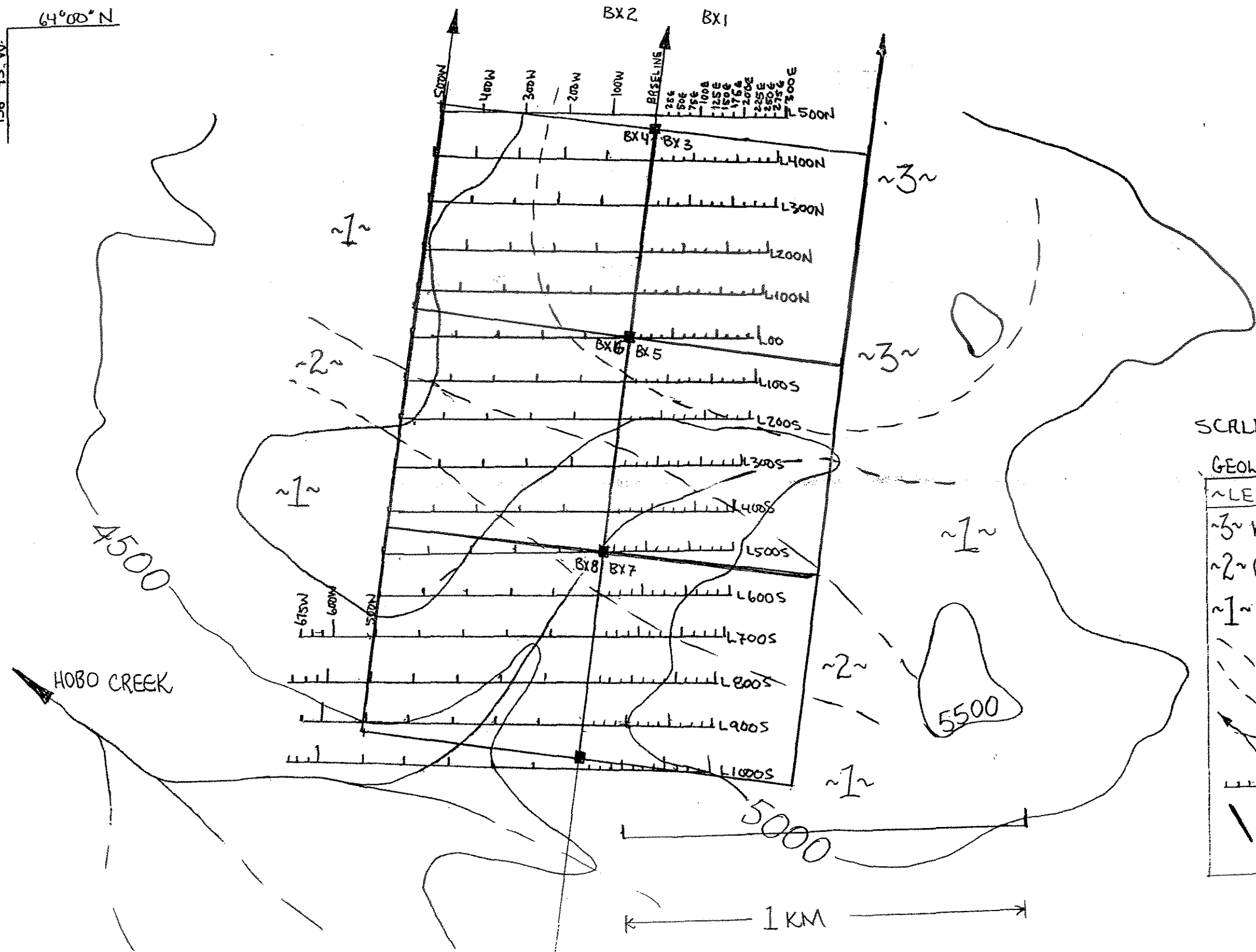
HC-2

0.578

Certified by



136°45' W  
64°00' N

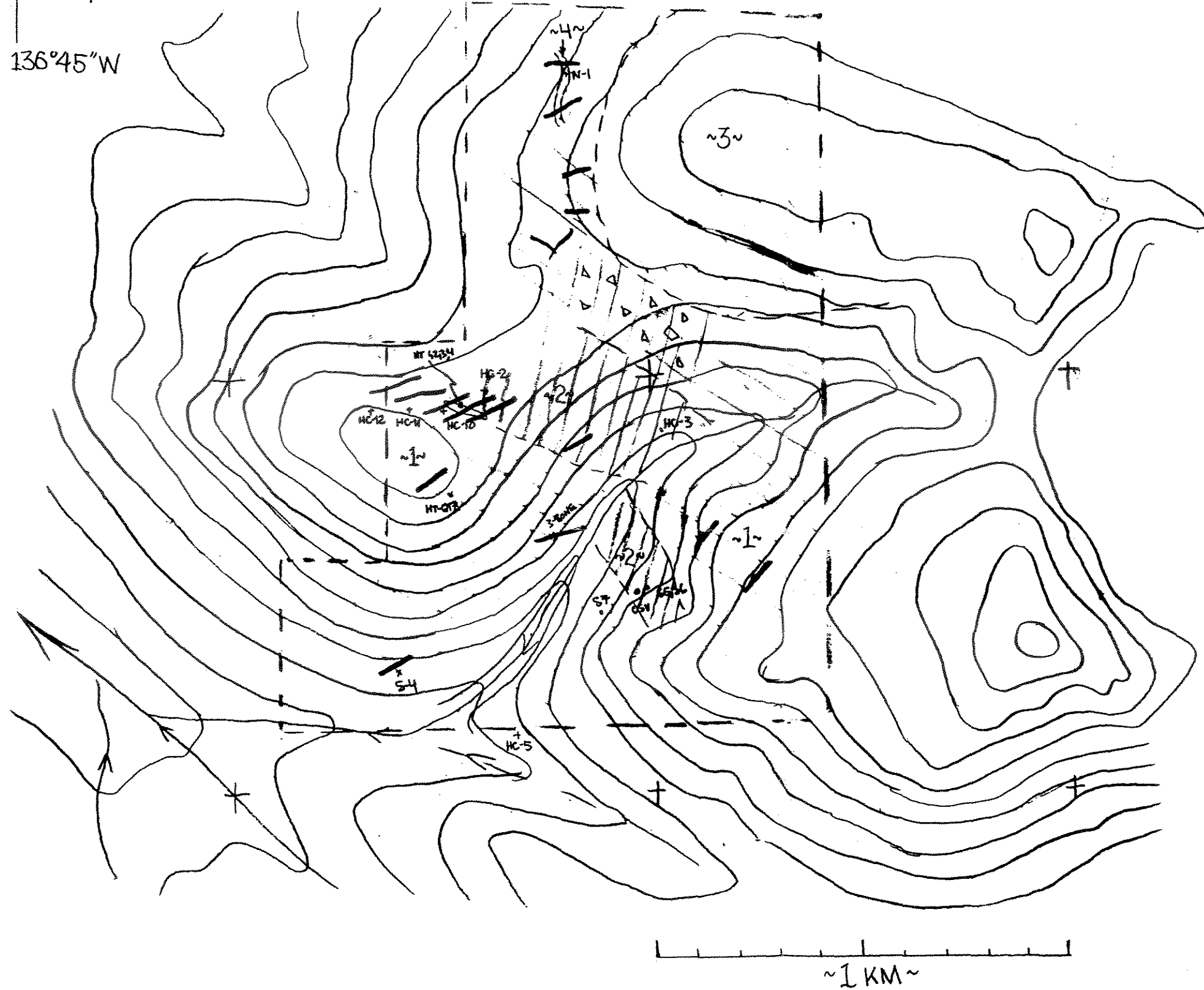


SCALE = 1:10,000

GEOLOGY AND GRID  
~ LEGEND ~ BX CLAIMS

- ~3~ VOLCANIC BRECCIA
- ~2~ GRANODIORITE
- ~1~ SHALE, QUARTZITE
- - - - - GEOLOGIC CONTACT
- ↙ STREAM
- ||| GRID LINES
- ▬ CLAIM BOUNDARY

64°00"N  
136°45"W



N  
BX CLAIMS  
COMPILATION  
PLAN MAP

LEGEND

- 1~ QUARTZITE, SHALE
- ~2~ GRANODIORITE
- ~3~ VOLCANIC BRECCIA
- ( ) GEOLOGIC CONTACT
- △△ BRECCIA ZONE
- / TRENCH
- + SAMPLE LOCATION
- + GRID CENTER (00N, 00W)
- ~4~ DYKE (ANDESITE)
- | GRID BOUNDARY