

MAP NO.:
105 ~~1~~

ASSESSMENT REPORT
PROSPECTUS
CONFIDENTIAL X
OPEN FILE

DOCUMENT NO: 093179
MINING DISTRICT: WATSON LAKE *May 1993*
TYPE OF WORK: GEOLOGICAL, GEOCHEMICAL

REPORT FILED UNDER: AURUM GEOLOGICAL

DATE PERFORMED: SEPTEMBER 17, 1993 DATE FILED: MARCH 3, 1994

LOCATION: LAT.: 63°17'N AREA: KEELE PEAK

 LONG.: 130°33'W VALUE \$: 2,500

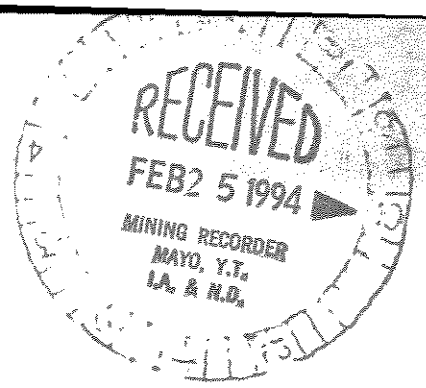
CLAIM NAME & NO.: CATHY 5-9 (YB03923-27), CATHY 10 (YB22574), ARD 1-6 (YB22563-568)

WORK DONE BY: J.A. VANRANDEN

WORK DONE FOR: JIM COYNE

DATE TO GOOD STANDING:

REMARKS: 5 BULK SAMPLES AND MAPPING COMPLETED



093179

**REPORT ON THE 1993
GEOLOGICAL AND GEOCHEMICAL
ASSESSMENT WORK ON THE
CATHY PROPERTY**

Mayo Mining District, Yukon
September 17, 1993



Claims: Cathy 5-9, 10 (YB03923-27, YB22574)
ARD 1-6 (YB22563-68)

Location: 1. 375 km NE of Whitehorse, Yukon
2. 105 O/7
3. Latitude: 63° 17'N
Longitude: 130° 33'W

For: JIM COYNE
14 MacDonald Road
Whitehorse, Y.T.,
Y1A 4L2

By: J. A. vanRanden, B.Sc.,
Aurum Geological Consultants Inc.
205-100 Main Street
P.O. Box 4367
Whitehorse, Yukon
Y1A 3T5

February 07, 1994

Aurum Geological Consultants Inc.

TABLE OF CONTENTS

	Page
TABLE OF CONTENTS	i
INTRODUCTION	1
LOCATION AND ACCESS	1
PHYSIOGRAPHY, CLIMATE AND VEGETATION	3
PROPERTY	3
HISTORY	4
GEOLOGY	6
Regional Geology	6
Property Geology	7
MINERALIZATION	9
1993 Results	9
CONCLUSIONS AND RECOMMENDATIONS	10
REFERENCES	11
STATEMENT OF QUALIFICATIONS (JvR)	13
STATEMENT OF COSTS	14
<u>LIST OF FIGURES</u>	
Figure 1: Location Map;	2
Figure 2: Claim Map;	5
Figure 3: Geology & Sample Locations;	8
<u>LIST OF TABLES</u>	
Table 1: Cathy Claim Data	4
<u>LIST OF APPENDICES</u>	
Appendix A - Analytical Reports	
Appendix B - Cathy Claims Drill Logs	

INTRODUCTION

This report was prepared at the request of the Jim Coyne, owner of the Cathy 5-10 and ARD 1-6 claims, herein after called the *Cathy property*. Its purpose is to satisfy assessment requirements through a description of exploration work carried out in 1993.

The property is located approximately 375 kilometres NE of Whitehorse, Yukon, (Figure 1) in the Mayo Mining District, and is accessible by helicopter.

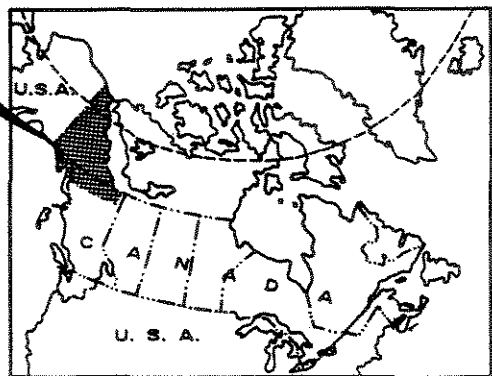
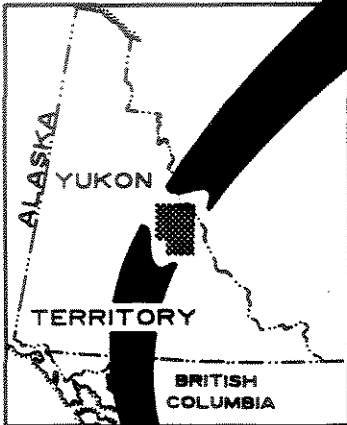
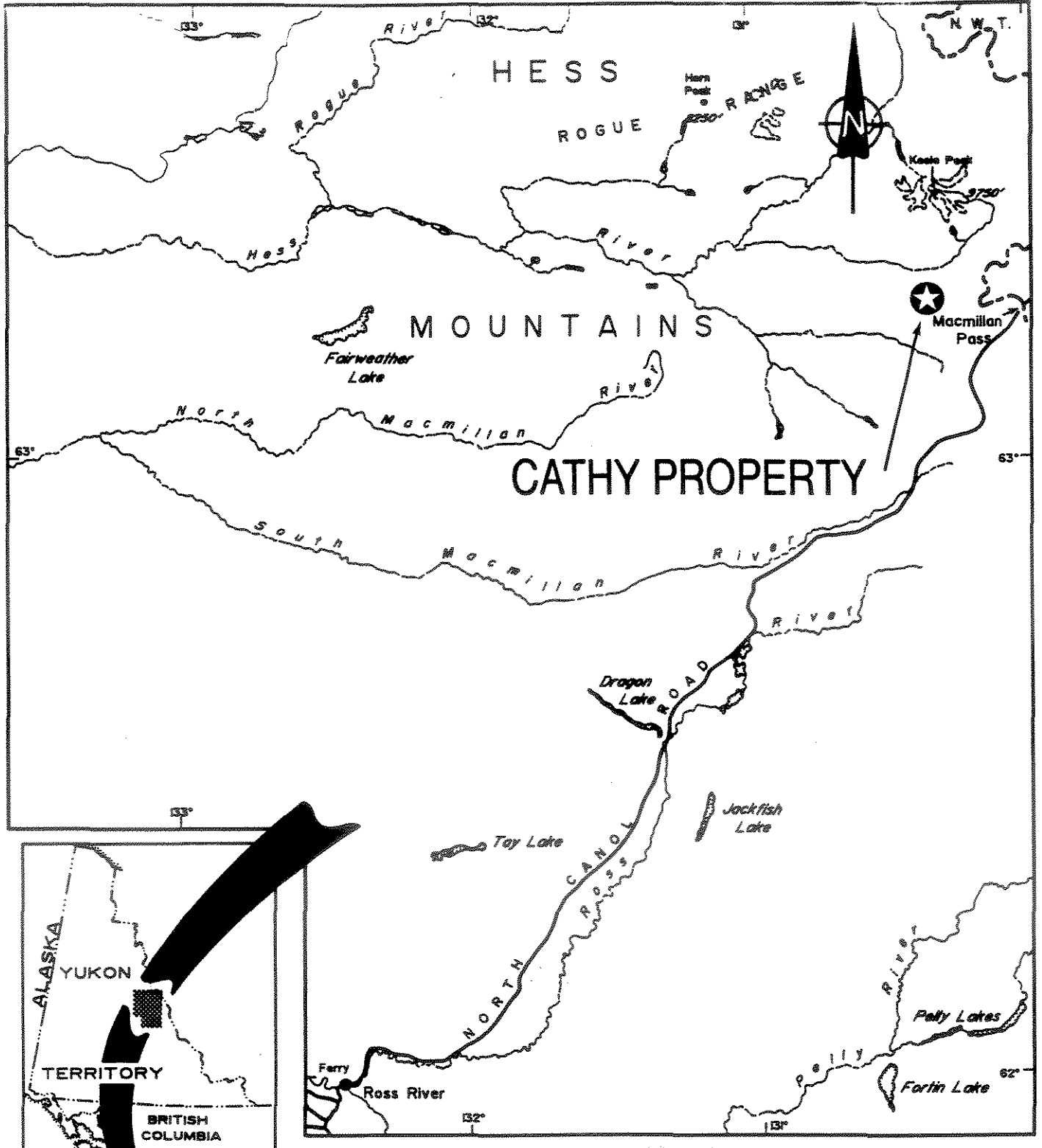
Exploration work carried out in 1993 consisted of confirming previous geological mapping and the collection of bulk sample for the purpose of testing the reported grade of ore. This work was carried out on September 17, 1993 by; A. Doherty, B. Sc., P.Geo., J. vanRanden, B.Sc., and C. Fox of Aurum Geological Consultants Inc. Work in September was hindered by winter weather and time constraints.

Previous work is summarized from assessment reports by D.P. Simon & B. Johnson and L.M. Tyrala & D.B. Simon for Baroid of Canada Ltd in 1977, and published reports and maps.

LOCATION AND ACCESS

The claims are located 375 km northeast of Whitehorse, Yukon (Figure 1). The North Canal Road leading to Macmillan Pass, Yukon, from the town of Ross River passes approximately ten kilometres east of the property. The claims are centred at approximately 63° 17' N latitude and 130° 33' W longitude within NTS map area 105 O/7. The Yukon-Northwest Territories border lies approximately twelve kilometres northeast of the property.

Access to the property in September 1993 was from the Macmillan Pass airstrip by helicopter based in Ross River 235 km to the southwest. A tote road leading from Macmillan Pass to Cominco's Nidd claims ends less than two kilometres from the ARD claims which adjoin the Cathy claims proper.



JIM COYNE	
CATHY PROPERTY	
LOCATION	

AURUM GEOLOGICAL CONSULTANTS INC. DATE: FEB 1994
 INTS: 105/07 DRAWN BY: JVR SCALE: FIGURE: 1

PHYSIOGRAPHY, CLIMATE AND VEGETATION

The Cathy 5-10 claims cover a east-west trending razor-back ridge of the Hess Mountains. Elevations on the property range up to 1735 m, with a 300 m change in relief to the adjacent valley floors. Steep ridges, cliffs and, peaks are flanked by slopes of talus and felsenmeer. The ARD 1-6 claims are contiguous with the Cathy 5-10 claims and cover the valley bottom from the southeast corner of Cathy 5 claim towards Cominco's Nidd claims.

An interior continental climate with moderate to high precipitation of 450 cm annually, warm summers and cold, harsh winters typifies the area. Permafrost is fairly continuous, especially on the steeper north and east facing slopes and lower forested areas.

Most of the property is above treeline. Only incised creek valleys below 1500 m elevation have ground cover consisting of sparse spruce forest, dwarf willow and, birch. The area above treeline is mostly bare or lichen covered rock with sparse moss and alpine plant cover.

Recent Pleistocene glaciation scoured the property resulting in the development of steep slopes, U-shaped valleys, hanging valleys and aretes. Outcrop exposure is good (approximately 20%) except on lower ridge slopes and forested areas. A large portion of the property is covered by glacial debris, felsenmeer and talus fines.

PROPERTY

The property consists of 12 contiguous unsurveyed two post quartz claims covering approximately 620 acres (250 hectares) staked in accordance with the Yukon Quartz Mining Act (Figure 2). The Cathy 10 and ARD 1-6 claims were staked by Aurum Geological Consultants Inc. for Jim Coyne on September 17, 1993 and recorded on September 22, 1993. Current claim status is shown on Yukon Quartz and Placer Sheets 105 O-7. Claim data are summarized in Table 1.

TABLE 1 Cathy Property Claim Data			
CLAIM NAME	GRANT No.	No. CLAIMS	EXPIRY DATE
Cathy 5-9	YB03923-927	5	Sept 20, 1994*
Cathy 10	YB22574	1	Sept 22, 1994
ARD 1-6	YB22563-568	6	Sept 22, 1994

*subject to approval of 1993 assessment work.

Due to time constraints and winter conditions during the September 17, 1993 property visit, few claim posts were located. While staking the Cathy #10 claim, all claim posts located, (of claims still in good standing) were secured in an upright position and the metal tags were nailed to the appropriate posts.

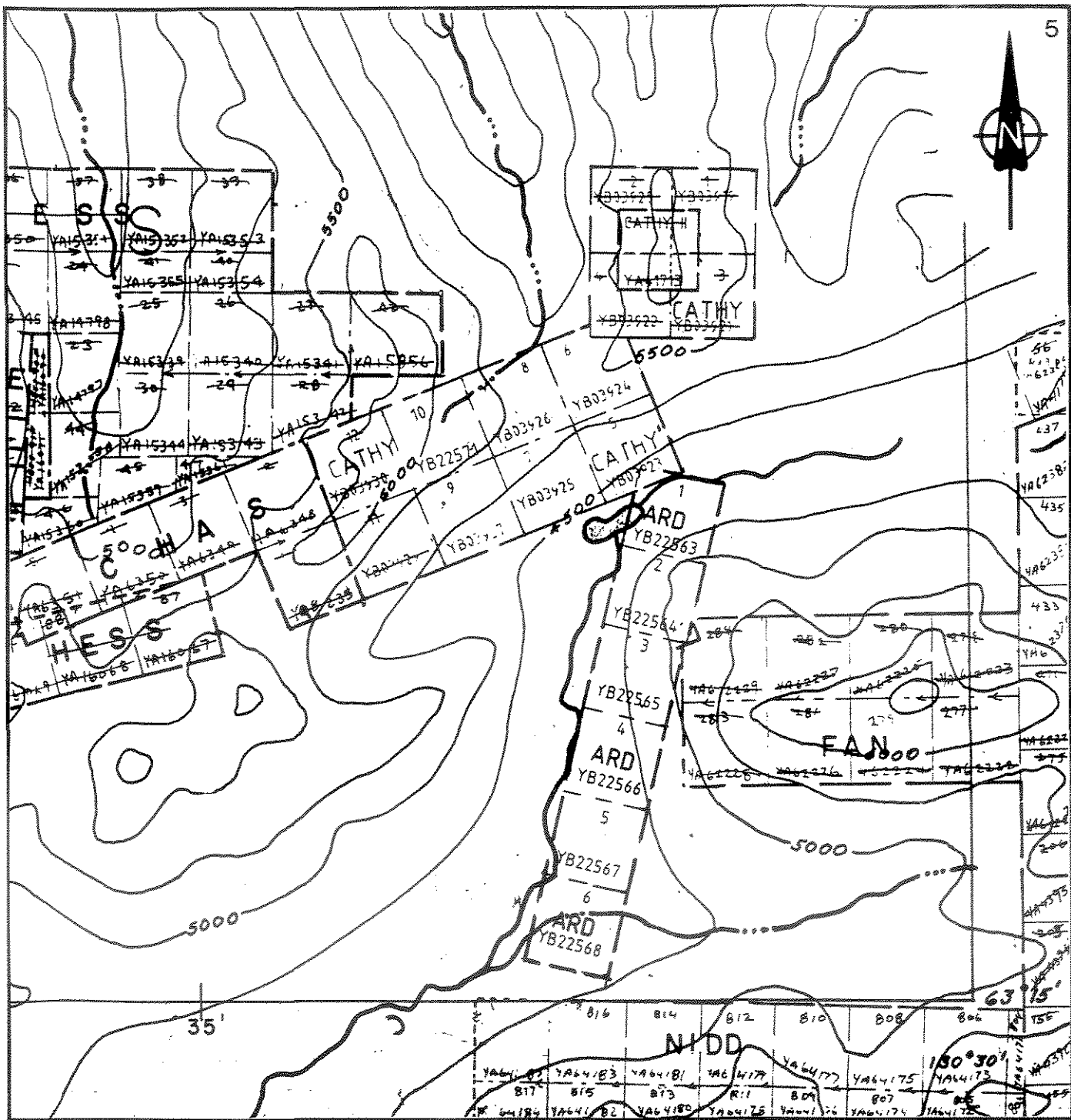
HISTORY

Exploration in eastern Yukon has been active since the 1952 discovery of the Tom Pb-Zn-Ag deposit at Macmillan Pass (Hulstein and Wegenast, 1989). In 1962, the Mactung tungsten deposit was discovered by J.F. Allan for Southwest Potash Corporation on the Yukon-Northwest territories border. Exploration during the mid-seventies concentrated on the search for sedimentary-exhalative Pb-Zn-Ag deposits in the shales of the Selwyn Basin. This culminated in the discovery of the Howards Pass camp in 1972, the Jason deposit in 1975 and the Tea barite deposit, also found in 1975 (Hulstein and Wegenast, 1989).

According to Yukon Minfile (DIAND, 1993), the *Cathy property* area was not staked prior to 1973 when J.R. Woodcock held four claims. Due to exploration activity and the favourable geological environment of the Macmillan Pass area, Baroid of Canada Ltd. acquired, and added to, Woodcock's ground in 1975.

Baroid of Canada Ltd mapped and sampled the property during the 1975 and 1976 exploration seasons. A total of 14 samples are reported to be analyzed for metal content (Zn, Pb, and Cu) and specific gravity from random chip sampling over the current *Cathy property* (Simon and Johnson, 1977). Approximately 450,000 tonnes of barite ore with a specific gravity of at least 4.25 was outlined in 1980 when Baroid drilled ten holes (> 950 m) on the *Cathy property* (Abbott, 1981).

The present owner, Jim Coyne, restaked the current property in March, 1991.



LEGEND

- claim boundary
- claim number
- tag number
- 4WD trail
- creek, lake
- 5500 elevation contour; interval 500 ft.

Note: adapted from D.I.A.N.D. map sheet

500m 0 500 1000 1500m
SCALE IN METRES

JIM COYNE	
CATHY PROPERTY	
CLAIM MAP	
<small>AURUM GEOLOGICAL CONSULTANTS INC. DATE: FEB 1994</small>	
<small>NTS: 105/07</small>	<small>DRAWN BY: JVR</small>
<small>SCALE:</small>	<small>FIGURE: 2</small>

GEOLOGY

Regional Geology

The *Cathy property* is situated within the eastern margin of the Selwyn Basin, (Wheeler and McFeely, 1991). The Selwyn Basin is imperfectly defined (Abbott et al, 1986) and is used here to describe the part of the cordilleran miogeocline comprised of a prism of sedimentary rocks, of Precambrian to Jurassic age, deposited along the western margin of ancient North America. The eastern margin of the basin is marked by the Paleozoic shale-carbonate contact while the western margin is defined by the Teslin fault or suture. The sedimentary basin was active from the late Proterozoic to Middle Jurassic time (Abbott et al, 1986). Widespread thin mafic volcanic flows, breccias, and tuffs are found throughout the basin. All of the large strata-bound, sediment hosted lead-zinc deposits in the northern Canadian Cordillera are found within the Selwyn Basin.

Sedimentation ceased in the Middle Jurassic in the outer miogeocline with the collision of a Mesozoic island-arc, the Yukon-Tanana Terrane (Tempelman-Kluit, 1979). The Teslin fault or suture is believed to define the boundary between the North American miogeocline and the Yukon-Tanana Terrane. The collision spread eastward with the miogeocline being over thrust by oceanic rocks and the entire package being deformed.

The oldest rocks in the area are Proterozoic to Cambrian clastic sediments of the 'Grit Unit' deposited on an unknown basement (Hulstein and Wegenast, 1989). Ordovician, Silurian and Devonian shales, cherts and minor limestone comprise the Road River Group which represents the Selwyn Basin succession (Tempelman-Kluit, 1979). Shale chert pebble conglomerate, and sandstone of the Devonian to Mississippian Earn Group overlie the Road River Group and represent a period of rifting or extensional faulting. Uplift of the basin centre caused the formation of horst and grabens. The grabens were subsequently infilled with clastic sediments derived by erosion of the uplifted areas (Abbott et al, 1986). The Earn Group is overlain by Permian chert and shale, and Triassic sandstone and shale. All of the sedimentary units are deformed and intruded by 'S'-type, Cretaceous intermediate stocks, plutons and batholiths (Tempelman-Kluit, 1979).

A major period of regional folding and faulting resulting from compressional tectonics during the Cretaceous caused uplift and east-west shortening.

Property Geology

The geology of the *Cathy property* has been recently mapped and studied by R.J. Turner and W.D. Goodfellow at a scale of 1:1500 in July of 1989. Due to time constraints and winter weather during the 1993 property visit by Aurum Geological Consultants staff, little geological mapping was conducted over the property. Outcrops that were examined, did however, agreed with previous mapping. The following information is drawn largely from Turner and Goodfellow (1990).

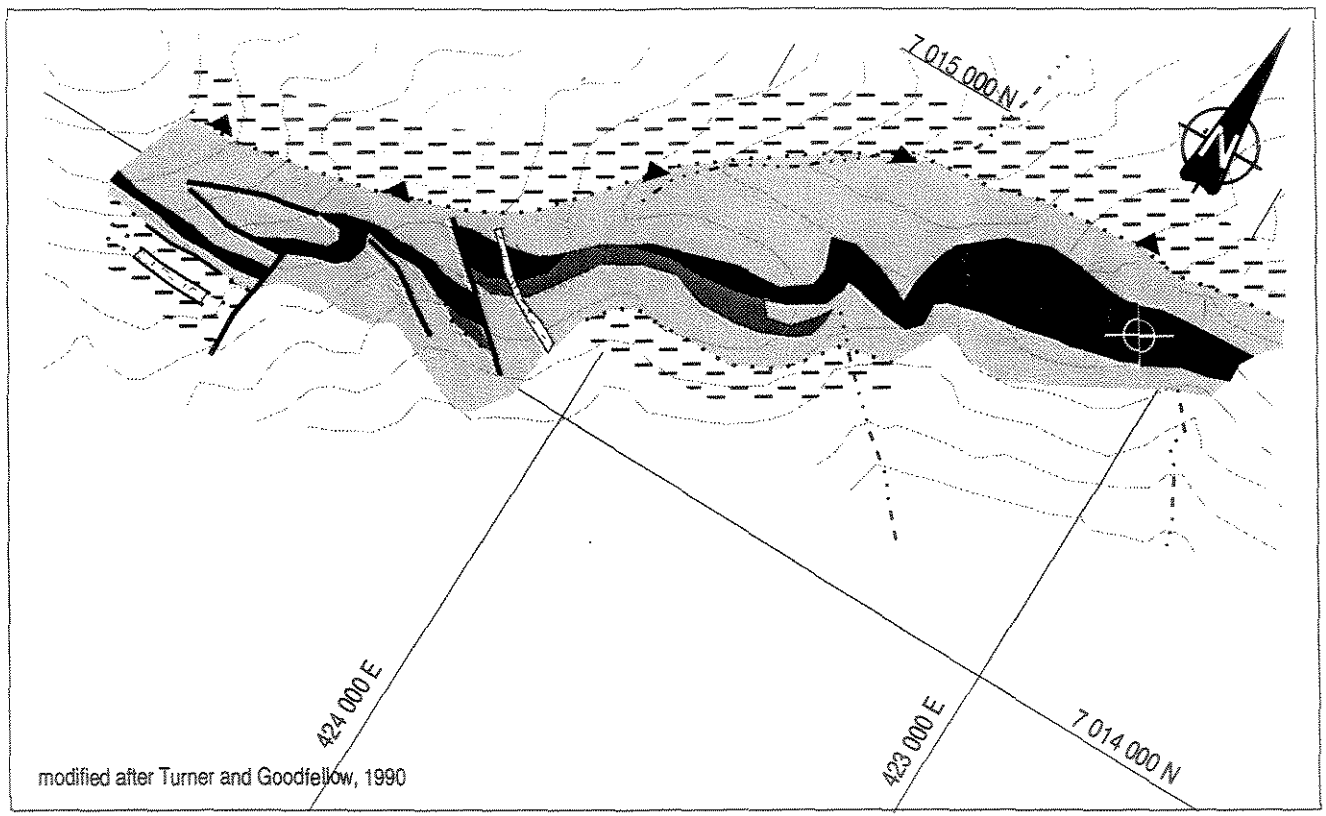
As shown on Figure 3, (modified in part from Turner and Goodfellow, 1990) the Cathy (Walt) barite deposit occurs within Lower Earn Group. Strata hosting the barite deposit generally form a northwest-dipping homoclinal sequence which is locally folded into steep west-northwest plunging folds. These steep folds are overturned to the southwest of the barite occurrence giving an en echelon map distribution to the Cathy claims barite deposit.

The Lower Earn Group member, which hosts the deposit, has been described as black, 2-10 cm thick chert layers interbedded with grey weathering black siliceous shale (Turner and Goodfellow, 1990). The chert sequence overlies a recessive sequence of platy limestone, calcareous shale and massive limestone, with chert granules, which form scree slopes below the deposit.

The barite structure itself is a 075/65° NW striking concordant body up to 60 m thick and continuous over at least 2 km (Tyrala and Simon, 1976). The north slope of the northeast-trending ridge formed by the deposit is a dip-slope the barite beds. Dawson and Orchard identified (using XRD methods) barite, barytocalcite, witherite, calcite and gypsum from samples taken within the deposit (Turner and Goodfellow, 1990).

The Cathy claims barite deposit can be subdivided into two distinct facies based on composition and into eight subfacies using textural criteria according to Turner and Goodfellow (1990). The barite facies hosts the economically important laminated barite subfacies. The barite facies is laterally extensive and concordant in nature with sharp contacts between it and the interbedded chert and shale units which suggests the barite of a sedimentary origin. The black colour, lack of bioturbation, and black chert/shale host indicate sedimentation occurred below a reduced water column in a clastic poor basin (Turner and Goodfellow, 1990).

A less extensive barium carbonate facies is considered to be a vent related replacement product of the barite facies by carbonate-rich hydrothermal fluids (Turner and Goodfellow, 1990).



LEGEND

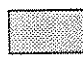
CRETACEOUS

 Quartz-monzonite

EARLY TO MIDDLE DEVONIAN

 Barium carbonate

 Barite

 Chert

CAMBRIAN TO EARLY DEVONIAN

 Shale, limestone, chert

 Baroid drill hole 501-80-1
(1993 sample location)

 Lithologic contact
(defined, assumed)

 Thrust fault

 Fault



JIM COYNE
CATHY PROPERTY
GEOLOGY & SAMPLE LOCATION
AURUM GEOLOGICAL CONSULTANTS INC. DATE: FEB 1994
NTS: 105/07 DRAWN BY: JvR SCALE: FIGURE: 3

MINERALIZATION

Significant mineralization discovered by Baroid of Canada Ltd. in 1980 consisted of a 30 m thick by 150 m long zone outlining 450 000 tonnes of barite ore with a specific gravity above 4.25 (Abbott, 1981). Chip samples taken prior to the 1980 drilling were tested for concentrations of the base metals: copper, lead, and zinc. The highest reported values from samples taken on the Cathy claims, are 2.73 weight percent Zn, 0.22 % Pb and below the detection limit for copper (Simon and Johnson, 1977).

Baroid drilled a total of 10 (ten), mostly vertical, diamond drill holes, between 50 to 129 m long, into the barite structure (Baroid, 1980). Hole number 501-80-1 intersected 27.3 metres of a medium-dark grey, thinly laminated to massive, barite bed (Baroid, 1980). The weighted-average over that interval is a specific gravity of 4.33 which is the highest grade reported for barite found at the top of the diamond drill holes. Complete Baroid of Canada Ltd. drill logs are located in Appendix B, (assessment report # 090768).

1993 Results

After a review of the published data (including the Baroid drill logs), sampling during the 1993 property visit was concentrated around the 501-80-1 drill hole collar and pad. This hole is reported to be on the 1980 Cathy #3 claim which now corresponds to the 1993 Cathy #8 claim (figure 2).

A 160 kg (351 lb) shipment of hand picked barite samples were collected on September 17, 1993 in 5 (five) large rice bags near the 501-80-1 drill hole collar. The samples were hand sorted on site using colour and texture as selection criteria. The blackest more finely-laminated, or massive, barite with as little chert or shale interbeds as possible were taken. If carbonate was discovered in a specimen, it was not selected as part of the bulk sample. The 5 (five) bags were transported to Macmillan Pass and later shipped to Lakefield Research Laboratory, in Lakefield Ontario, for metallurgical testing. The weighted average for the 5 bags (a total of 130.4 kilograms) yields a specific gravity of 4.19.

The barite sample was collected of broken and loose rock from around the drill pad. The high grade barite is reported from a below a depth of 3.7 m in the vertical 501-80-1 drill hole and therefore the bulk sample taken was likely downgraded due to dilution by lesser grade barite from an up-slope source. Complete Lakefield Research results are listed in Appendix A.

CONCLUSIONS AND RECOMMENDATIONS

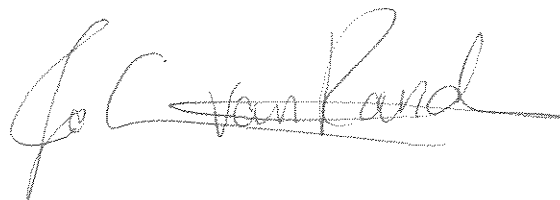
The *Cathy property* covers a previously defined barite ore-body consisting of 450 000 tonnes grading above 4.25 specific gravity. The deposit occurs within the MacMillan Fold Belt (part of the Selwyn Basin) and is hosted by Middle Devonian, Lower Earn Group, chert and shale.

A 160 kg bulk sample was collected from barite units near the collar to the 1980 drill hole # 501- 80-1, in 1993. The weighted average for the sample collected reported a 4.19 specific gravity value.

Based on results of surface exploration carried out on the *Cathy property* in 1993, further work is warranted. The following is recommended:

1. Compile a 1:500 scale map of the *Cathy property* incorporating all available geological, geochemical and diamond drill data to better identify potential exploration targets.
2. Further exploration consisting of systematic re-sampling of reported high-grade barite units, in outcrop, to verify published results should be carried out during the summer field season when snow cover is at a minimum.
3. Claim tagging is recommended to determine possible claim fractions.
4. Any further work (trenching, etc.) is contingent on results of the above work.

Respectfully submitted;
Aurum Geological Consultants Inc.



February 07, 1994

Jo-Anne vanRanden, B.Sc.

Aurum Geological Consultants Inc.

REFERENCES

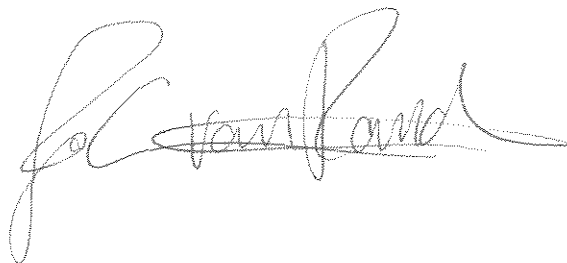
- Abbott, J.G., 1981. Walt Property; *in* Yukon Geology and Exploration 1979-1980, Department of Indian and Northern Development, Geology Section, Whitehorse, Yukon.
- Abbott, J.G., Gordey, S.P., and Tempelman-Kluit, D.J., 1986. Setting of strati-form, sediment-hosted lead-zinc deposits in Yukon and Northeastern British Columbia; *in* Mineral Deposits of Northern Cordillera, ed. J.A. Morin, The Canadian Institute of Mining and Metallurgy, Special volume 37, p.1-18.
- Archer, Cathro & Associates (1981) Limited, 1990. Northern Cordilleran Mineral Inventory; Mineral Inventory published annually (to 1990) by Archer, Cathro & Associates (1981) Limited, Vancouver, B.C.
- Baroid of Canada Limited, 1980. Assessment Report # 090768: [Diamond drill logs for ten holes drilled on the Cathy #3 claim (Macmillan Pass Area)]
- DIAND, 1993. Yukon Minfile, WP 5.1 Version, 15 Feb/93; Exploration and Geological Services, Department of Indian and Northern Affairs, Whitehorse Yukon.
- Hulstein, R.W. and Wegenast, J., 1989. Report on the 1988 Exploration Program on the Brick Property; for Agip Resources Ltd. by Aurum Geological Consultants Inc.
- Lydon, J.W., et al, 1985. The Distribution of Gold in the TEA Barite Deposit, Y.T.; *in* Current Research, Part A, Geological Survey of Canada, Paper 85-1A.
- Simon, D.B. and Johnson, B., 1977. A Geological and Geochemical Evaluation of the Cathy 1-5, 7-10, Lorraine 1-6, Chas 1-5, Kam 1-6, Fat and City Claims, Y.T.; for Baroid of Canada Ltd., Assessment Report # 090206.
- Tempelman-Kluit D.J., 1979. Transported Cataclasite, Ophiolite and Granodiorite in Yukon: Evidence of Arc-Continent Collision; Geological Survey of Canada, Paper 79-14.
- Tempelman-Kluit, 1981. Geology and Mineral Deposits of Southern Yukon: *in* Yukon Geology and Exploration 1979-80; Geology Section, Department of Indian and Northern Affairs, Whitehorse Yukon.

- Turner, R.J. and Goodfellow, W.D., 1990. Barium carbonate bodies associated with the Walt (Cathy) stratiform barium deposit, Selwyn Basin Yukon; *in* Current Research, Part E, Geological Survey of Canada, Paper 90-1E.
- Tyrala, L.M. and Simon, D.B., 1976. A Geological and Geochemical Evaluation of the Cathy 1-6, Lorraine 1-6, Chas, Kam 1-2, Les, Walt, Fat and City Claims, Y.T.; for Baroid of Canada Ltd., Assessment Report # 090872.
- Wheeler J.O. and McFeely P., 1991. Tectonic Assemblage Map of the Canadian Cordilleras and Adjacent parts of the United States of America; Geological Survey of Canada, Map 1712A, scale 1:2,000,000.

STATEMENT OF QUALIFICATIONS (JvR)

I, Jo-Anne vanRanden, hereby certify that:

1. I am a geologist with AURUM GEOLOGICAL CONSULTANTS INC., 205 - 100 Main Street, P.O. Box 4367, Whitehorse, Yukon, Y1A 3T5.
2. I am a graduate of the University of British Columbia, with a degree in geology (B.Sc., 1989). I have been involved in mineral exploration continuously since 1982.
3. I am author of this report on the *Cathy Property* owned by Jim Coyne, which is based on my examination of the property (September 17, 1993) and on referenced sources.
4. I have no direct or indirect interest in the properties or securities owned by Jim Coyne.
5. I consent to the use of this report by Jim Coyne provided that no portion is used out of context in such a manner as to convey a meaning differing materially from that set out in the whole.



February 07, 1994

Jo-Anne vanRanden, B.Sc.

STATEMENT OF COSTS

1993 Assessment Work Valuation: Cathy Property (Cathy 5-9 Claims)

1. Geological and Geochemical

A. Fieldwork

R.A. Doherty, P.Geo., of Whitehorse, Yukon.
September 17, 1993; 3.0 day @ \$350.00/day: 1,050.00

J.A. vanRanden, B.Sc., of Whitehorse, Yukon
September 17, 1993; 3.0 day @ \$280.00/day: 840.00

C. Fox, Geological Assistant, Aurum Geological Consultants Inc.
September 17, 1993; 3.0 day @ \$200.00/day: 600.00

B. Geochemical Analysis

5 bulk samples @ \$65.40 ea plus shipping: 477.00

C. Support Costs

Meals & Accommodation: 180.00

Field Expenses: 98.00

4WD Truck Rental: 300.00

Radio and phone charges: 120.00

Helicopter: 1,617.18

Fuel (JP4): 146.17

D. Research and Report Preparation

J. vanRanden, B.Sc.
3 days @ \$300.00/day: 1,500.00

Photocopies (81 @ \$0.15) 23.25

Laser Printing 25.00

Report Materials 50.00

Computer Drafting 255.00

Goods and Service Tax (@ 7%) on \$7,281.60: 509.71

Total Valuation of 1993 Assessment Work: \$7,791.31

APPENDIX A
Analytical Reports

LAKEFIELD RESEARCH

185 Concession Street
Lakefield, Ontario
K0L 2H0

Tel: (705) 652-2042

Fax: (705) 652-6365

To: **Joanne Vanranden**
Aurum Geological

Fax: 1-403-668-2021

From: Steve Williams
Manager - Mineral Processing (Interim)

Date: January 13, 1994

Re: 4370-057

BARTITE CONCENTRATES

Sample No.	Weight, kg	S.G.
1	24.8	4.00
2	27.3	4.25
3	25.8	4.13
4	29.0	4.39
5	23.5	4.16

APPENDIX B

Cathy Claims Drill Logs

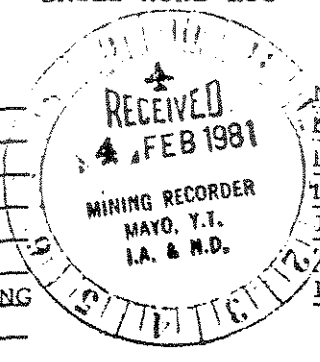
MAP No.

TYPE OF WORK: Diamond Drilling

REPORT FILED UNDER	Baroid of Canada Ltd.		090768
DATE PERFORMED	June 30 - Sept. 1, '80	DATE FILED: March 5, 1981	
LOCATION - LAT.	63° 17' N	MacMillan Pass area, Yukon	
LONG.	130° 32' W		
CLAIM Nos.	Cathy #3 claim		
WORK DONE BY	Arctic Diamond Drilling	T. Jenkins, P. Opperman	
WORK DONE FOR	Baroid of Canada Ltd.		
REMARKS	Baroid explored the property in 1980 with mapping and diamond drilling. Ten holes totalling 956.2m were drilled on Cathy 3 claim. More than 450,000 tonnes of material with a specific gravity above 4.25 were outlined.		

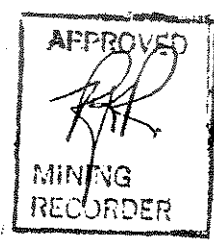
090768

Project: MACHILLAN PASS
 Hole No.: 501-80-1
 Location: Cathy #3 Claim
 Hole Type(s)/Size(s) DDH BQ
 Begun: June 30, 1980
 Completed: July 2, 1980
 Drilling Co.: ARCTIC DIAMOND DRILLING
 Driller: P. OPPERMAN



Northing: 7019694.27
 Easting: 422536.42
 Elevation: 1668.37
 Bearing: S45W
 Inclination: -53° (from horizontal)
 Total Depth: 166 feet (50.6 M)
 Logged by: Tom Jenkins

Core Rec.	Ore Int.	Bdgn Any.	Rock Unit	Scale 1"=20'	Description	Assay/Geochem. Data			
						Sample	S.G.		
			TALUS	0	0-12; TALUS: li gry barite, no sample recovered, casing set				
0%									
			↑		12-101.7; BARITE: med-dk gry thinly laminated to massive	3.7-6	4.34	-	
72%		5°		20		6-8	4.35	-	
						8-10	4.34	-	
						10-12	4.33	-	
94%				40		12-14	4.20	-	
			↓			14-16	4.24	-	
						16-18	4.33	-	
87%				60		18-20	4.36	-	
			↑			20-22	4.28	-	
		15°				22-24	4.35	-	
						24-26	4.38	-	
93%				80		26-28	4.37	-	
		30°				28-30	4.37	-	
			↓			30-31	4.37	-	
				100	101.7-104; CHERT: blk argillaceous	31-31.7	2.64	-	
88%			↑		104-126.3; BARITE li-dk gry laminated	31.7-34	3.84	-	
						34-36	4.32	-	
		18°		120		36-38	4.34	-	
			↑		126.3-150.3 CHERT-SHALE blk argillaceous blocky to shaly	38-38.6	2.70	-	
85%						38.5-39.6	2.63	-	
			↑			no spl	-	-	
			↓						
55%			CHERT SHALE	140					
				150.3		408-45.8	2.69	-	



AVERAGE = 27.3 M @ 4.33
WEIGHTED

Core Rec.	Ore Int.	Bdgn Ang.	Rock Unit	Scale 1"=20'	Description	Meters	Assay/Geochem. Data				
							Sample	S.G.			
43%			BARITE SHALE BA		150.3-153.8 BARITE: gry-blck, alt. shale laminae, calcareous		458-469	3.85			
				160	153.8-166 BARITE SHALE: alt. lam. of blk shale and gry garite, calcareous	50	469-483	3.15			
								483-486	3.99		
								486-506	3.78		
				180							
				200							
				220							
				240							
				260							
				280							
				300							
				320							

NL BAROID
DRILL HOLE LOG

Project: MACMILLAN PASS
 Hole No.: 501-80-2
 Location: Cathy #3 Claim
 Hole Type(s)/Size(s) DDH BQ
 Begun: July 2, 1980
 Completed: July 4, 1980
 Drilling Co.: ARCTIC DIAMOND DRILLING
 Driller: P. OPPERMAN

Northing: 7019695.00 N
 Easting: 422537.74 E
 Elevation: 1668.05 Meters.
 Bearing: NA
 Inclination: Vertical
 Total Depth: 246 ft. (74.98 M)
 Logged by: Tom Jenkins

Core Rec.	Ore Int.	Bdgn Ang.	Rock Unit	Scale 1"=20'	Description	Meters	Assay/Geochem. Data			
							Sample	S.G.		
			TALUS	0	0-12 TALUS: li gry barite no sample recovery, casing set	0				
0%										
		48°		20	12-130.1; BARITE: med-dk gry thinly laminated to massive slightly calcareous		3.66-6	4.24	/	
97%							6-8	4.35	/	
						10	8-10	4.28	/	
				40			10-12	4.30	/	
							12-14	4.40	/	
100%				60			14-16	4.31	/	
							16-18	4.29	/	
				80		20	18-20	4.32	/	
95%							20-22	4.33	/	
							22-24	4.26	/	
							24-26	4.29	/	
95%		48°		100		30	26-28	4.13		
							28-30	4.33	/	
							30-32	4.33	/	
93%				120			32-34	4.37	/	
							34-36	4.37	/	
							36-38	4.37	/	
95%		51°		130.1	130.1-151 CHERT: blk argillaceous	40	38-39.62	4.29	/	
							39.62-42	2.62		
				140			42-44	2.65		
100%				151			44-46.02	2.66		

Core Rec.	Ore Int.	Bdgn Ang.	Rock Unit	Scale 1"=20'	Description	Assay/Geochem. Data			
						Meters	Sample	S.G.	
							46-48	4.40	/
96%				160		50	48-50	4.39	/
							50.52	4.39	/
		47°	BARITE				52-54	4.41	/
100%		37°		180			54-56	4.41	/
							56-58	4.41	/
				200		60	58-60	4.31	/
							60-62	4.20	/
98%					209.5-216.5; SHALE: gry-blck baritic		62-63.86	4.18	
			SH		216.5-229; BARITE - SHALE: gry blck interlaminated		63.86-66	3.13	
			BA SH	220			66-68.31	3.30	
					229-234; BARITE: gry-blck argillaceous laminated		68.31-69.8	2.77	
90%			BA		234-259 SHALE: gry-blck carbonaceous	70	69.8-71.32	3.82	
				240			71.32-74	2.66	
			SHALE				74-76	2.54	
90%							76-78.94	2.71	
				260	BTM @ 259 (78.94 M)				
						80			
				280					
				300		90			
				320					

Core Rec.	Ore Int.	Bdgn Ang.	Rock Unit	Scale 1"=20'	Description	Assay/Geochem. Data			
						Meters	Sample	S.G.	
					151-186; BARITE: med-dk gry thinly laminated to massive				
96%		40°	↑ BARITE	160		46.02-48	4.34	-	
						48-50	4.25	-	
						50-52	4.35	-	
						52-54	4.34	-	
100%		60°	↓ SH	180	186-190; SHALE: black, carbonaceous, friable	54-56	4.32	-	
						56-58	2.90		
			↑ CHERT	200	190-216; CHERT: gry-blck argillaceous	58-60	2.68		
83%						60-62	2.61		
						62-64	2.60		
			↓ BARITE	220	216-236; BARITE: dk gry-blck laminated calcareous	64-65.84	2.61		
50%						65.84-68	3.58		
						68-70	3.21		
75%			↑ SH	240	236-246; SHALE: blk carbonaceous	70-72	3.64		
21%						72-74.98	2.74		
					BTM @ 246 ft (74.98 M)				
					Hole bottomed due to loss of circulation and caving.				
				260					
				280					
				300					
				320					

JL BAROID
DRILL HOLE LOG

Project: MACMILLAN PASS
 Hole No.: 501-80-3
 Location: Cathy #3 Claim
 Hole Type(s)/Size(s) DDH BQ
 Begun: July 6, 1980
 Completed: July 9, 1980
 Drilling Co.: ARCTIC DIAMOND DRILLING
 Driller: P. OPPERMAN

Northing: 7019716.07
 Easting: 422513.79
 Elevation: 1685.31
 Bearing: S45W
 Inclination: - 50° (from Horizontal)
 Total Depth: 259 ft. (78.94 M)
 Logged by: Tom Jenkins

Core Rec.	Ore Int.	Bdgn Ang.	Rock Unit	Scale 1"=20'	Description	Meters	Assay/Geochem. Data			
							Sample	S.G.		
0%			F	0	0-4; TALUS: li gry barite no sample recovered, casing set	0				
			↑				1.22-2	4.21	-	
56%		35°	↑		4-43 BARITE: gry-blck laminated shaly		2-4	4.13		
			↓	20			4-6	4.28	-	
			↑				6-8	4.31	-	
98%			↓				8-9.14	4.15		
			↑			10				
			↓	40	43-62 CHERT: blk, argillaceous		9.14-12	4.13		
			↑				12-13.14	3.90		
87%			↓				13.14-16	2.66		
			↑							
			↓	60	62-81 SHALE: gry-blck, friable		16-18	2.60		
			↑			20	18-20	2.61		
75%			↓				20-22	2.66		
			↑				22-24.69	2.60		
		25°	↓	80	81-209.5 BARITE: gry-blck thinly laminated to massive		24.69-26	3.16		
70%			↑				26-28	4.27	-	
			↓				28-30	4.26	-	
		30°	↑	100		30	30-32	4.32	-	
			↓				32-34	4.29	-	
82%			↑				34-36	4.26	-	
			↓	120			36-38	4.31	-	
		30°	↑				38-40	4.34	-	
			↓			40	40-42	4.15		
82%			↑				42-44	4.35	-	
		25°	↓	140			44-46	4.36	-	
90%			↑							

NL BAROID
DRILL HOLE LOG

Project: MACMILLAN PASS
 Hole No.: 501-80-4
 Location: Cathy #3 Claim
 Hole Type(s)/Size(s) DDH
 Begun: July 10, 1980
 Completed: July 16, 1980
 Drilling Co.: ARCTIC DIAMOND DRILLING
 Driller: P. OPPERMAN

Northing: 7019717.01
 Easting: 422514.78
 Elevation: 1685.22
 Bearing: NA
 Inclination: Vertical
 Total Depth: 407 ft (124.05 M)
 Logged by: Tom Jenkins

Core Rec.	Ore Int.	Bdgn Ang.	Rock Unit	Scale 1"=20'	Description	Meters	Assay/Geochem. Data				
							Sample	S.G.			
0%			↑	0	0-6; TALUS: li gry barite no sample recovered, casing set	0					
85%			↑		6-60.7; BARITE: med-dk gry laminated to massive, occasionally argillaceous		1.82-4	4.11			
		32°	↑	20				4-6	4.13		
85%			↑					6-8	4.27	✓	
		40°	↑				10	8-10	4.32	✓	
			↑	40				10-12	4.33	✓	
			↑					12-13.72	4.14		
93%			↓		60.7-80.5; CHERT: blk argillaceous		13.72-16	4.25	✓		
		55°	↓	60				16-18.5	4.22	✓	
86%			↓				20	18.5-20	2.63		
			↓	80				20-22	2.59		
			↑		80.5-217; BARITE: med-dk gry massive to thinly laminated		22-24.5	2.66			
			↑					24.5-26	4.13		
81%		25°	↑					26-28	4.36	✓	
			↑	100			30	28-30	4.39	✓	
			↑					30-32	4.29	✓	
58%			↑					32-34	4.34	✓	
		50°	↑	120				34-36	4.34	✓	
			↑					36-38	4.25	✓	
70%			↑			40	38-40	4.35	✓		
			↑				40-42	4.17			
			↑	140			42-44	4.38	✓		
62%			↓				44-45.4	4.34	✓		

Core Rec.	Ore Int.	Bdgn Ang.	Rock Unit	Scale 1"=20'	Description	Meters	Assay/Geochem. Data				
							Sample	S.G.			
							45.4-46.02	NS			
80%		45°	↑ BARITE	160		50	46.02-48	4.30	✓		
								48-50	4.28	✓	
97%		50°						50.52-52	4.21	✓	
								52.12-54	4.20	✓	
		62°			180			54-56	4.38	✓	
81%							60	56-58	4.37	✓	
								58-60	4.39	✓	
					200			60-62	4.38	✓	
44%								62-64	4.31	✓	
						217-231; SHALE: blk carbonaceous; contains dissem. pyrite		64-66.14	4.37	✓	
			SHALE	220			66.14-70.41	2.72			
45%			SHALE		231-232.3; BARITE: gry-blck argillaceous	70	70.41-70.81	3.89			
			SHALE		232.3-233; SHALE: blk, pynitic		70.81-71.02	2.84			
		40°	SHALE		233-259.5; BARITE: gry-blck argillaceous		71.02-74	3.80			
87%			↑ BARITE				74-76.8	3.93			
							76.8-77.2	3.16			
		85°	↓ BARITE		259.5-268.2; CHERT: blk, pyritic		77.2-79.16	4.12			
			CH	260		80	79.16-81.76	2.62			
88%			↓ BARITE		268.2-269.7; BARITE: gry-blck argillaceous		81.76-82.21	3.88			
			↑ BARITE		269.7-294.7; ARGILLITE: blk		82.21-84	2.61			
			↑ ARGILLITE	280			84-86	2.62			
			↓ ARGILLITE		294.7-299.9; BARITE: dk gry laminated		86-88	2.67			
89%			↓ BARITE				88-89.8	2.64			
			↓ BARITE		299.9-300.9; ARGILLITE: blk	90	89.8-91.4	4.22	✓		
			↓ BARITE	300	300.9-305.6; BARIE: dk gry laminated		91.4-91.74	3.73			
			↓ BARITE		305.6-310.5; CHERT: blk carbonaceous pyritic		91.74-93.15	4.32	✓		
			↓ BARITE				93.15-94.64	2.82			
95%			↓ BARITE				94.64-96	4.14			
			↓ BARITE	320			96-98	4.19			

Core Rec.	Ore Int.	Bdgn Ang.	Rock Unit	Scale 1"=20'	Description	Assay/Geochem. Data			
						Meters	Sample	S.G.	
				320	310.5-347.9; BARITE: dk gry-blck laminated				
74%		33°	BARITE			100	98-100	4.18	
							100-102	4.23	
				340			102-104	4.01	
					347.9-349.6; CHERT: blk argillaceous		104-106.03	3.86	
85%			B/C		349.6-352; BARITE: dk gry-blck laminated		106.03-106.57	2.69	
							106.57-107.57	3.74	
					352-384.2; CHERT: blk argillaceous				
		63°	CHERT	360		110	107.29-110	2.61	
95%							110-112	2.65	
							112-114	2.65	
							114-116	2.61	
				380	384.2-384.6; BARITE: dk gry stringers		116-117.09	2.62	
					384.6-393.7; CHERT: blk, argillaceous		117.09-117.2	3.88	
91%		56°	CH-B		393.7-395; CHERT: with barite stringers		117.2-120	2.82	
					395-407; CHERT: blk argillaceous	120	120-120.4	3.19	
		64°	CH	400			120.4-122	2.76	
					BTM @ 407 ft (124.05 M)		122-124.05	2.66	
				420					
						130			
				440					
				460		140			
				480					

NL BAROID
DRILL HOLE LOG

Project: MACMILLAN PASS
 Hole No.: 501-80-6
 Location: Cathy #3 Claim
 Hole Type(s)/Size(s) DDH BQ
 Begun: July 24, 1980
 Completed: July 27, 1980
 Drilling Co.: ARCTIC DIAMOND DRILLING
 Driller: P. OPPERMAN

Northing: 7019738.79 N
 Easting: 422495.97 E
 Elevation: 1671.75 Meters.
 Bearing: NA
 Inclination: Vertical
 Total Depth: 292 ft.
 Logged by: Tom Jenkins

Core Rec.	Ore Int.	Bdgn Ang.	Rock Unit	Scale 1"=20'	Description	Meters	Assay/Geochem. Data			
							Sample	S.G.		
0%			Tn/us	0	0-8 TALUS: li gry barite, no sample recovered, casing set	0				
		45°					2.44-4	4.05		
83%				20	8-170.6; BARITE: dk gry-blck thinly laminated		4-6	4.19		
							6-8	4.00		
87%		42°		40		10	8-10	4.01		
							10-12	4.08		
83%		42°		60			12-14	4.18		
							14-16	4.30	✓	
		42°		80			16-18	4.34	✓	
100%		39°	BARITE	100		20	18-20	4.05		
							20-22	4.36	✓	
							22-24	4.35	✓	
							24-26	4.31	✓	
92%		50°		120			26-28	4.09		
						30	28-30	4.31	✓	
							30-32	4.32	✓	
90%				140			32-34	4.32	✓	
							34-36	4.32	✓	
							36-38	4.33	✓	
93%		45°				40	38-40	4.32	✓	
							40-42	4.19		
							42-44	4.24	✓	
88%							44-46	4.38	✓	


NL BAROID
DRILL HOLE LOG

Project: MACMILLAN PASS
 Hole No.: 501-80-7
 Location: Cathy #3 Claim
 Hole Type(s)/Size(s) DDH NQ
 Begun: August 2, 1980
 Completed: August 5, 1980
 Drilling Co.: ARCTIC DIAMOND DRILLING
 Driller: P. OPPERMAN

Northing: 7019759.19
 Easting: 422516.75
 Elevation: 1661.79 Meters
 Bearing: NA
 Inclination: Vertical
 Total Depth: 342 Feet (104.24 M)
 Logged by: Ray Dickerson

Core Rec.	Ore Int.	Bdgn Ang.	Rock Unit	Scale 1"=20'	Description	Assay/Geochem. Data				
						Meters	Sample	S.G.		
0%			MSR	0	0-6; BARITE; no sample recovery, set casing	0				
82%		35°	↑ BARITE ↓				1.8-4	4.36	✓	
								4-6	4.37	✓
					20	6-286.5; BARITE; li-dk gry laminated to massive varieties; occasional lower grade sections have high content of inter-laminated blk shale		6-8	4.34	✓
95%		50°					10	8-10	3.96	✓
								10-12	4.03	
100%		69°			40	6-98.5 well laminated alt dk shale and barite		12-14	3.91	
								14-16	3.52	
					60			16-18	3.83	
98%		60°					20	18-20	3.97	
								20-22	3.80	
					80			22-24	3.58	
100%		60°						24-26	3.59	
								26-28	3.60	
					100	98.5-286.5 li gry massive to thinly laminated barite	30	28-30	3.99	
95%		62°					30-32	4.27	✓	
							32-34	4.40	✓	
				120			34-36	4.32	✓	
							36-38	4.36	✓	
90%		70°				40	38-40	4.21	✓	
							40-42	4.13		
				140			42-44	4.13		
91%		65°					44-46.8	4.30	✓	

Core Rec.	Ore Int.	Bdgn Ang.	Rock Unit	Scale 1"=20'	Description	Meters	Assay/Geochem. Data			
							Sample	S.G.		
			BA		153.5-154.5; BARITE SHALE: blk carbonaceous		46.8-47.1	3.91		
85%		55°					47.1-48	4.34	/	
				160	154.5-267.5; BARITE: li-med gry massive to thinly laminated	50	48-50	4.35	/	
							50-52	4.36	/	
71%		58°		180			52-54	4.31	/	
							54-56	4.35	/	
100%							56-58	4.31	/	
		55°		200		60	58-60	4.34	/	
							60-62	4.36	/	
100%							62-64	4.26	/	
		60°		220			64-66	4.33	/	
							66-68	4.31	/	
100%						70	68-70	4.29	/	
		62°		240			70-72	4.30	/	
							72-74	4.22	/	
75%							74-76	4.22	/	
		53°		260			76-78	4.41	/	
						80	78-80	4.42	/	
					267.5-269; BARITE SHALE: Blk carbonaceous		80-81.5	4.40	/	
97%		56°			269-286.5 BARITE: li-med gry		81.5-81.9	3.61		
				280	286.5-291; SHALE AND CHERT: Blk carbonaceous		84-86	4.31	/	
							86-87.3	4.33	/	
95%		42°			291-297.8; BARITE li. gry		87.3-88.7	2.92		
					297.8-311.5 SHALE: silicious blk	90	88.7-90.8	4.31	/	
				300			90.8-92	2.61		
					311.5-324.5 SHALE AND BARITE: alt. blk shale and dk gry barite laminae highly calcareous		92-94.9	2.72		
100%		62°					94.9-97	3.20		
				320			97-98.9	3.10		

Core Rec.	Ore Int.	Bdgn. Ang.	Rock Unit	Scale 1"=20'	Description	Meters	Assay/Geochem. Data			
							Sample	S.G.		
988		55°		320	324.5-325.8 BARITE: li-med gry					
					325.8-342 SHALE: dk gry-blck carbonaceous	100	98.9-99.3	4.05		
							99.3-102	2.72		
		43°		340	BTM @ 342 ft (104.24 M)		102-104.2	2.65		
				360		110				
				380						
				400		120				
				420						
				440		130				
				460		140				
				480						

Core Rec.%	Ore Int.	Bdgn Ang.	Rock Unit	Scale 1"=20'	Description	Meters	Assay/Geochem. Data	
							Sample	S.G.
75		65°	SHALE CHERT	160	151.5-180.9 SHALE and CHERT: dk gry-blck shaly to blocky			
							46.18-47.57	2.96
							47.57-47.85	4.29
85		65°		180	156.2-157.2 BARITE: li-med gry	50	47.85-50	3.31
							50-52	2.96
							52-54	2.62
92		48°	BARITE	200	180.9-232.5 BARITE: li-med gry massive to faintly laminated moderate carbonate content	60	54-55.14	2.82
							55.14-58	4.31
							58-60	4.21
95		40°		220			60-62	4.37
							62-64	4.35
							64-66	4.36
95		48°	CHERT	240	232.5-286 CHERT: blk carbonaceous blocky	70	66-68	4.38
							68-70	4.38
							70-70.87	4.29
100		58°		260			70.87-74	2.69
							74-76	2.93
							76-78	2.66
100		42°		280		80	78-80	2.84
							80-82	2.67
							82-84	2.62
80		62°	BARITE	300	286-312 BARITE: med-dk gry thinly laminated alt. blk shale laminae		84-86	2.57
							86-87.17	2.66
							87.17-90	4.08
72		65°	CH	320	312-354.5 CHERT: dk gry-blck carbonaceous blocky	90	90-92	4.01
							92-94	3.72
							94-95.1	3.64
							95.1-98	2.66

NL BAROID
DRILL HOLE LOG

Project: MACMILLAN PASS
 Hole No.: 501-80-9
 Location: Cathy #3 Claim
 Hole Type(s)/Size(s) DDH NQ - BX
 Begun: August 16, 1980
 Completed: August 22, 1980
 Drilling Co.: ARCTIC DIAMOND DRILLING
 Driller: P. OPPERMAN

Northing: 7019719.51
 Easting: 42258.65
 Elevation: 1658.81
 Bearing: NA
 Inclination: Vertical
 Total Depth: 421 ft (128.32 M)
 Logged by: Ray Dickerson

Core Rec.	Ore Int.	Bdgn Ang. (from vert.)	Rock Unit	Scale 1"=20'	Description	Meters	Assay/Geochem. Data			
							Sample	S.G.		
				0	0-12; OVERBURDEN: subrounded li gry barite and blk shale	0				
5%			OB							
37%				20	12-81.5; SHALE: dk gry-blck friable pourous					
0%		29°	SHALE							
66%				40						
		43°		60						
82%				80	81.5-237.8 BARITE li-med gry massive to laminated					
100%		43°				20	20-22	2.55		
							22-24.8	2.58		
							24.8-26	3.62		
100%					81.5-98 laminated barite		26-28	3.98		
		45°		100		30	28-30	4.32	/	
							30-32	4.38	/	
100%					98.-237.8 li gry massive non-calcareous barite		32-34	4.40	/	
		44°		120			34-36	4.33	/	
							36-38	4.27	/	
100%						40	38-40	4.34	/	
		43°		140			40-42	4.27	/	
							42-44	4.21	/	
100%							44-46	4.27	/	

Core Rec.	Ore Int.	Bdgn Ang.	Rock Unit	Scale 1"=20'	Description	Meters	Assay/Geochem. Data							
							Sample	S.G.						
					BARITE (same)									
		47°	↑ BARITE ↓	160			46-48	4.38	✓					
				180			50	48-50	4.42	✓				
100%								50-52	4.42	✓				
		44°						52-54	4.42	✓				
								54-56	4.44	✓				
100%								56-58	4.36	✓				
		43°					60	58-60	4.41	✓				
								60-62	4.40	✓				
85%								62-64	4.38	✓				
		38°						64-66	4.40	✓				
							66-68	4.34	✓					
100%						70	68-70	4.40	✓					
		30°	↑ BARITE SHALE ↓	240	237.8-273; BARITE SHALE: alt laminae of med-gry barite, dk gry baritic shale and blk shale		70-72.5	4.38	✓					
								72.5-74	4.34	✓				
85%								74-76	4.01					
		33°						76-78.3	3.80					
							80	78.3-80	3.42					
95%					273-290.8; CHERT: blk carbonaceous blocky		80-82	3.05						
		36°	↑ CHERT ↓	280			82-83.2	3.22						
								83.2-86	2.69					
95%					290.8-366.2; BARITE: li-med gry thinly laminated to massive		86-88.6	2.65						
		62°	↑ BARITE ↓	300		90	88.6-90	4.35	✓					
								90-92	4.42	✓				
100%								92-94	4.41	✓				
								94-96	4.40	✓				
								96-98	4.38	✓				

NE BAROID
DRILL HOLE LOG

Project: MACMILLAN PASS
 Hole No.: 501-80-10
 Location: Cathy #3 Claim
 Hole Type(s)/Size(s) DDH NO
 Begun: August 26, 1980
 Completed: September 1, 1980
 Drilling Co.: ARCTIC DIAMOND DRILLING
 Driller: P. OPPERMAN

Northing: 7019695.44
 Easting: 422578.10
 Elevation: 1648.99 Meters
 Bearing: NA
 Inclination: Vertical
 Total Depth: 331 feet (100.89 M)
 Logged by: Ray Dickerson

Core Rec.	Ore Int.	Bdgn Ang.	Rock Unit	Scale 1"=20'	Description	Meters	Assay/Geochem. Data			
							Sample	S.G.		
				0	0-10.5 OVERBURDEN: blk shale w/minor barite	0				
0%										
60%		40°		20	10.5-170.7 BARITE: li-med gry massive to thinly laminated, very fine grained low carbonate content		3-7.9	4.32	/	
100%						10	7.9-10	4.20	/	
72%		35°		40			10-12	4.23	/	
							12-14	4.42	/	
100%							14-16	4.42	/	
		35°		60			16-18	4.41	/	
						20	18-20	4.36	/	
100%							20-22	4.35	/	
		63°		80			22-24	4.42	/	
							24-26	4.44	/	
100%							26-28	4.44	/	
		54°		100		30	28-30	4.44	/	
							30-32	4.41	/	
100%							32-34	4.39	/	
		52°		120			34-36	4.43	/	
							36-38	4.42	/	
100%						40	38-40	4.41	/	
		42°		140	138-157.3 Similar BARITE, brt increasing • blk shale laminae		40-42	4.38	/	
							42-44	4.18	/	
100%							44-46	3.99		

Core Rec.	Ore Int.	Bdgn Ang.	Rock Unit	Scale 1"=20'	Description	Meters	Assay/Geochem. Data				
							Sample	S.G.			
					157.3-170.7; less laminated, massive BARITE						
100%		37°	BARITE	160			46-48	4.10			
							50	48-50	4.43	✓	
0%		36°	CHERT	180	170.7-331; CHERT dk gry-blck massive carbonaceous blocky		50-52.1	4.43	✓		
82%								52.1-54	2.72		
								54-56	2.55		
100%					200	197; trace sphalerite blebs along carbonate seam	60	59.4-60.9			
80%				220							
100%				240		70					
83%				260							
75%				280		80					
100%		45°		300							
100%				320		90					

Core Rec.	Ore Int.	Bdgn Ang.	Rock Unit	Scale 1"=20'	Description	Meters	Assay/Geochem. Data			
							Sample	S.G.		
100%			CHERT	320		100				
					BTM @ 331 ft (100.89 M)					
					340					
					360		110			
					380					
					400		120			
					420					
					440		130			
					460		140			
					480					

LOCATION OF DRILL CORE

CATHY 3 MINERAL CLAIM



Drill Core for holes number 501-80-1 through 501-80-10 which were drilled between June 30, 1980 and September 1, 1980, are located at Baroid of Canada's Onoway Plant at the following address:

Onoway Plant
P. O. Box 250
Onoway, Alberta, Canada

The Superintendent at the plant is Mr. Tommy Vaughn.

Signed:

A handwritten signature in black ink, appearing to read "Robert J. Quinn".

Agent for:

BAROID OF CANADA, LTD.