

ARCHER, CATHRO

& ASSOCIATES (1981) LIMITED

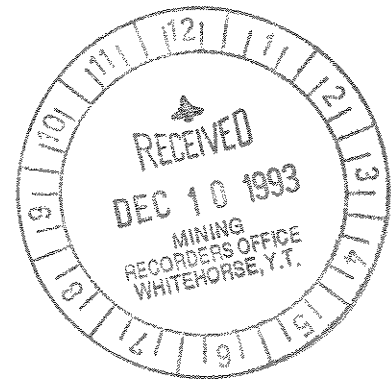
CONSULTING GEOLOGICAL ENGINEERS

1016 - 510 WEST HASTINGS STREET, VANCOUVER, B.C. V6B 1L8 TEL (604) 688 - 2568 • FAX (604) 688 - 2578



DIAMOND DRILL REPORT
CASH RESOURCES LTD.

LOON 1-16 CLAIMS
(YA94059-YA94074)



WHITEHORSE MINING DISTRICT
NTS 105E/1
LATITUDE 61°12'N/LONGITUDE 134°12'W

093151

SEPTEMBER, 1993

W.D. Eaton, B.A., B.Sc.

Work done between May 22 and July 29, 1993

TABLE OF CONTENTS

	<u>PAGE</u>
1993 Exploration Summary	1

FIGURES

<u>No.</u>	<u>Figure</u>	<u>Location</u>
1	Claim Location	Following Page 1
2	Drill Hole Location	Following Page 2
3	Section DDH 93-1 and 93-2	Following Page 2

APPENDICES

Appendix I	Author's Statement of Qualifications
Appendix II	Drill Logs
Appendix III	Certificates of Analysis

1993 EXPLORATION SUMMARY

The Loon 1-16 claims (YA94059-YA94074) are owned 100% by Cash Resources Ltd. and are located in the Whitehorse Mining District at latitude 61°12'N and longitude 134°12'W on NTS map sheet 105E/1, as shown on Figure 1. The claims are accessible by helicopter from Whitehorse, 69 km to the southwest, or float plane using Loon Lakes which adjoin the property to the south.

Exploration in 1993 consisted of two diamond drill holes totalling 116.43 m. The holes were drilled by E. Caron Diamond Drilling Ltd. with a Craelius 260 drill using thin wall BQ equipment. A Trans North Air Bell 206B helicopter moved the drill onto the property and provided daily transportation for the drill crew to and from Whitehorse, while a Venture Helicopters (M.K.C.) Incorporated Bell 204 was used to demobilize the drill. The following is a brief chronology of the drill program.

May 22	First drill site built by hand.
June 14-15	Drill mobilized.
June 16-19	Hole 93-1 drilled.
June 22	Second drill site built.
June 23-25	Hole 93-2 drilled.
July 29	Drill demobilized.

The holes tested beneath a prominent kill zone centered on a 30 m wide zone of malachite- and limonite-stained quartz veining and silica replacement developed in metasedimentary rocks. Figure 2 shows the location of the holes relative to soil and rock samples taken at surface. The drilling yielded generally acceptable recoveries within the silicified zone but poor recoveries in the strongly sheared and clay altered metasediments adjacent to it. The main minerals in the silicified zone are disseminated to blebby chalcopyrite with minor pyrite and traces of galena plus abundant malachite, neotocite and azurite

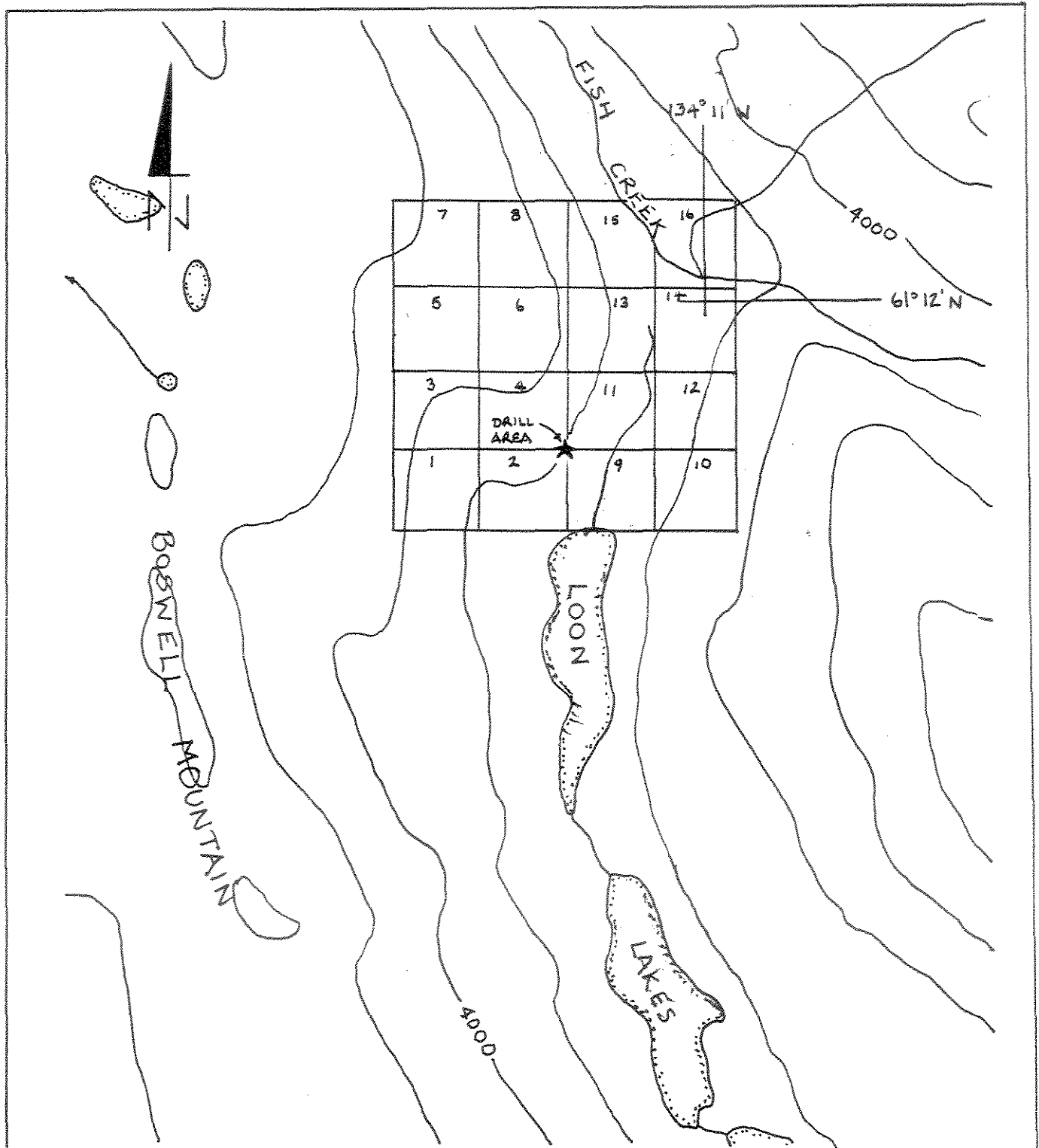


FIGURE 1

ARCHER, CATHRO & ASSOCIATES (1991) LIMITED

CLAIM LOCATION

LOON PROPERTY

CASH RESOURCES LTD.

SCALE 1:31,680

0 500 1000 1500 2000 m

on fractures. Some fracture mineralization was definitely lost during drilling. Hole 93-1 did not intersect the silicified zone and was abandoned in bad ground. Hole 93-2 was collared in the zone and cut 24.06 m of intensely silica-flooded rock that averaged 0.49% copper and 0.16 g/t gold. Although malachite-stained schist was discovered on surface, the wallrocks in the drill holes were unmineralized.

The core was flown to Whitehorse where it was logged and split. One-half was sent to Chemex Labs in North Vancouver where it was assayed for copper and gold and geochemically analyzed for 32 elements by the ICP method. The core was logged by geologist G. Duso under the author's supervision. Appendix I contains the Author's Statement of Qualifications, Appendix II the drill logs and Appendix III the Certificates of Analysis. The drill holes and geology are shown diagrammatically in cross-section on Figure 3. The remaining core is currently stored at the Archer, Cathro office in Whitehorse but will be transferred to the H.S. Bostock Core Library.

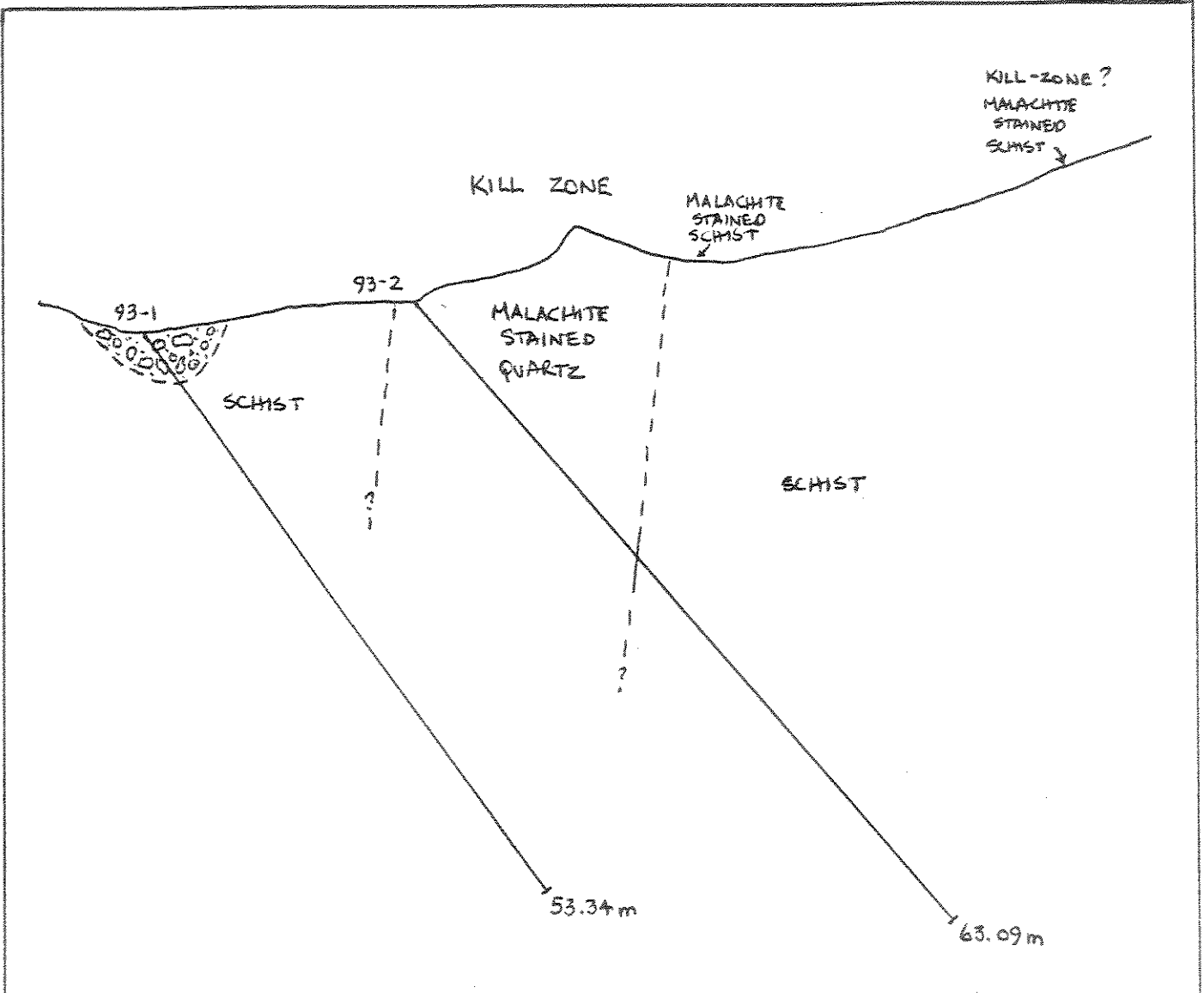
Respectfully submitted,

ARCHER, CATHRO & ASSOCIATES (1981) LIMITED



W.D. Eaton, B.A., B.Sc.

/mc



SECTION FACING SOUTH

SCALE 1:500



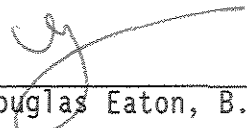
FIGURE 3
 ARCHER, CATHER & ASSOCIATES (1981) LIMITED
 SECTION DDH 93-1 & 93-2
 LOON PROPERTY
 CASH RESOURCES LTD.

APPENDIX I
AUTHOR'S STATEMENT OF QUALIFICATIONS

STATEMENT OF QUALIFICATIONS

I, W. Douglas Eaton, geologist, with business addresses in Whitehorse, Yukon Territory and Vancouver, British Columbia and residential address in North Vancouver, British Columbia, do hereby declare that:

1. I graduated from the University of British Columbia in 1980 with a B.Sc. majoring in Geological Sciences.
2. From 1971 to present, I have been actively engaged in mineral exploration in British Columbia and Yukon Territory and on June 1, 1981, I became a partner in Archer, Cathro & Associates (1981) Limited.
3. I have personally participated in or supervised the field work reported herein and have interpreted all data resulting from this work.



W. Douglas Eaton, B.A., B.Sc.

APPENDIX II

DRILL LOGS

Elevation —
 Coordinates —
 Dip - 50°
 Azimuth 270°

Drill contractor E. CARON DIAMOND DRILLING
 Logged by G. DUSO
 Hole started JUNE 23/93 completed JUNE 25/93
 Target COPPER-GOLD MINERALIZATION IN QUARTZ VEIN

Total depth 63.09 METERS
 Core size BQ

Depth METERS	% Recov	Visual Log	Struct	Lithology	Alteration	Sulphide & Alteration Mineralogy							Sample Number	Assay Interval	Assay Results	
						Py	Cp	Cc	Ma	Az	Ne	Li			Cu%	Avg/t
0				CASING - NO CORE												
2	25	1.22		SILICIFIED SCHIST - INTENSE REPLACEMENT HAS DESTROYED MOST ORIGINAL TEXTURES. LOCALLY BRECCIATED SCHIST FRAGMENTS IN QUARTZ MATRIX. SILICIFICATION INCREASES WITH DEPTH. DISSEMINATED CHALCOPYRITE AND TRACES OF PYRITE. MALACHITE AND NEOTOCITE VISIBLE ALONG FRACTURES. TRACE OF AZURITE.									H529525	2.44	0.47	0.05
4	60	3.16											H529526	0.76	0.09	0.05
	30	4.42											H529527	0.76	0.48	0.09
6	5	5.15											H529528	1.52	0.11	0.03
8	5	6.71											H529529	1.52	0.16	-
	50	8.23											H529530	0.61	0.16	-
	50	8.64											H529531	0.91	0.16	-
10	30	9.15											H529532	1.22	0.25	0.03
	50	10.67											H529533	0.13	0.44	0.28
	60	11.13											H529534	0.30	0.40	0.22
12	15	11.43		BARREN BULL QUARTZ									H529535	0.30	0.21	0.15
	25	12.10											H529536	0.91	0.08	-
	50	12.25		INTENSELY SILICIFIED SCHIST - ONLY FAINT GHOSTS OF ORIGINAL TEXTURE.									H529537	0.13	0.17	-
14	15	13.26		1 TO 2% DISSEMINATED CHALCOPYRITE THROUGHOUT WITH STRONG MALACHITE, NEOTOCITE AND MINOR AZURITE ALONG FRACTURES. TRACES OF GALENA AROUND 14.5 M.									H529538	0.46	0.45	0.29
	65	13.72											H529539	0.46	0.12	0.50
	95	14.17											H529540	0.46		0.43
16	95	15.24											H529541	1.68	0.70	0.70
	50	15.85											H529542	0.61	0.65	0.48
	95	16.46											H529543	1.22	1.28	0.75
18	95	17.22		20CM QUARTZ VEIN 30° TO CA									H529544	0.30	0.57	
	70	17.40		5% CHALCOPYRITE									H529545	1.68	0.69	0.86
	95	17.98											H529546	0.61	0.75	-
	75	18.44														

Elevation	Drill contractor	Logged by	Total depth
Coordinates	Hole started	completed	Core size
Dip	Target		
Azimuth			

Depth METERS	% Recov	Visual Log	Struct	Lithology	Alteration	Sulphide & Alteration Mineralogy							Sample Number	Assay Interval	Assay Results						
						Py	Cp	Cc	Ma	Az	Ne	Li			Cu%	Ag/g/t					
40.23 80 40.54				GREENISH WHITE SCHIST WITH MINOR QUARTZ STRINGERS NEAR BOTTOM OF INTERVAL. MODERATE CLAY ALTERATION AND CALCIFICATION.									H524557	1.83	0.004	-					
41.76 75 42.58 60		???		DARK GREY-GREEN, CRUMBLY SCHIST. MODERATE CLAY ALTERATION AND SILICIFICATION.										H524560	1.52	0.014	-				
43.48 20				GREENISH-WHITE TO GREY SCHIST. WEAK CALCIFICATION. PATCHY SILICIFICATION 49.38 TO 61.57M.										H524562	1.98	0.030	-				
45.26 10 46.33 5		---	F											H524563	1.98	0.010	-				
47.24 25 47.55 20		---	A U L T											H524564	2.13	0.018	-				
49.26 60 49.99 20		---												H524565	0.61	0.002	-				
50.90 51.21 20 51.52 50 51.82 50 52.75 60														H524566	1.83	0.004	-				
53.04 30 53.64 15 54.11 20														H524568	2.44	0.004	-				
55.47 40 56.26 40 56.54 20 60.50														H524569	1.67	0.003	-				
58.15 30 58.61 10 58.52 40 58.63				TRACE CHALCOPYRITE										H524570	2.29	0.007	0.09				
59.45 20 60.24 40														H524571	1.83	0.005	-				

APPENDIX III
CERTIFICATES OF ANALYSIS



Chemex Labs Ltd.

Analytical Chemists * Geochemists * Registered Assayers
 212 Brooksbank Ave., North Vancouver
 British Columbia, Canada V7J 2C1
 PHONE: 604-984-0221

ARCHER CATHRO & ASSOC. (1981) LTD.

P.O. BOX 4127
 WHITEHORSE, YT
 Y1A 3S9

Page Number : 1-A
 Total Pages : 1
 Certificate Date: 14-JUL-93
 Invoice No. : I9316839
 P.O. Number :
 Account : F

Project : L00N-93-1
 Comments:

CERTIFICATE OF ANALYSIS A9316839

SAMPLE	PREP CODE		Au ppb	Ag ppm	Al %	As ppm	Ba ppm	Be ppm	Bi ppm	Ca %	Cd ppm	Co ppm	Cr ppm	Cu ppm	Fe %	Ga ppm	Hg ppm	K %	La ppm	Mg %	Mn ppm
	FA+AA																				
H529501	208	274	< 5	< 0.2	0.69	4	50	< 0.5	< 2	2.67	< 0.5	4	70	96	1.19	< 10	< 1	0.19	10	0.38	365
H529502	208	274	< 5	0.4	2.49	16	60	0.5	< 2	4.09	< 0.5	14	49	38	4.40	10	< 1	0.22	10	1.75	885
H529503	208	274	< 5	< 0.2	1.36	6	50	< 0.5	< 2	5.65	< 0.5	10	57	184	2.58	< 10	< 1	0.19	< 10	1.11	760
H529504	208	274	< 5	< 0.2	1.57	20	60	< 0.5	< 2	0.59	< 0.5	12	53	244	3.41	10	< 1	0.21	20	0.92	365
H529505	208	274	< 5	< 0.2	1.55	12	70	< 0.5	2	0.43	< 0.5	11	48	32	3.34	10	< 1	0.23	20	0.90	330
H529506	208	274	< 5	< 0.2	0.59	2	50	< 0.5	< 2	1.10	< 0.5	4	85	15	1.08	< 10	< 1	0.21	20	0.30	185
H529507	208	274	< 5	< 0.2	3.18	30	30	< 0.5	< 2	5.15	< 0.5	20	224	11	4.57	10	< 1	0.11	< 10	2.96	1020
H529508	208	274	< 5	< 0.2	0.69	2	20	< 0.5	< 2	6.65	< 0.5	4	78	17	1.57	< 10	< 1	0.08	< 10	0.37	890
H529509	208	274	< 5	< 0.2	0.43	4	40	< 0.5	< 2	1.80	< 0.5	3	88	19	0.76	< 10	< 1	0.20	10	0.17	290
H529510	208	274	< 5	< 0.2	0.93	6	70	< 0.5	< 2	3.57	< 0.5	7	82	58	1.70	< 10	< 1	0.26	< 10	0.45	520
H529511	208	274	< 5	< 0.2	1.08	2	50	< 0.5	< 2	3.84	< 0.5	6	86	25	2.01	< 10	< 1	0.22	< 10	0.60	530
H529512	208	274	< 5	< 0.2	0.69	6	100	< 0.5	< 2	5.09	< 0.5	3	110	19	1.09	< 10	< 1	0.17	< 10	0.37	390
H529513	208	274	< 5	2.6	0.62	8	150	< 0.5	< 2	9.91	< 0.5	5	65	88	1.14	< 10	< 1	0.14	< 10	0.40	555
H529514	208	274	< 5	< 0.2	0.22	4	30	< 0.5	< 2	>15.00	< 0.5	6	17	11	0.51	< 10	< 1	0.08	10	0.19	750
H529515	208	274	< 5	< 0.2	0.49	8	30	< 0.5	< 2	>15.00	< 0.5	5	23	15	0.94	< 10	< 1	0.11	< 10	0.33	590
H529516	208	274	< 5	< 0.2	0.52	6	20	< 0.5	< 2	6.80	< 0.5	6	50	18	1.06	< 10	< 1	0.07	< 10	0.30	650
H529517	208	274	< 5	0.2	1.16	6	40	< 0.5	< 2	4.17	< 0.5	11	116	41	1.92	< 10	< 1	0.20	< 10	0.78	690
H529518	208	274	< 5	< 0.2	1.14	16	70	< 0.5	< 2	1.82	< 0.5	19	78	28	1.99	< 10	< 1	0.32	20	0.62	355
H529519	208	274	< 5	< 0.2	1.43	10	60	< 0.5	< 2	1.59	< 0.5	9	83	30	2.73	10	< 1	0.24	20	0.79	365
H529520	208	274	< 5	< 0.2	0.62	< 2	50	< 0.5	< 2	5.75	< 0.5	3	66	28	1.30	< 10	< 1	0.03	< 10	0.43	480
H529521	208	274	< 5	< 0.2	1.74	8	70	< 0.5	< 2	3.51	< 0.5	14	90	37	3.01	< 10	< 1	0.17	< 10	1.26	730
H529522	208	274	< 5	< 0.2	3.39	24	20	< 0.5	< 2	9.10	< 0.5	30	552	70	3.92	< 10	< 1	0.13	< 10	3.52	1085
H529523	208	274	< 5	< 0.2	0.42	4	110	< 0.5	< 2	>15.00	< 0.5	4	47	26	0.72	< 10	< 1	0.10	< 10	0.35	780
H529524	208	274	< 5	2.2	1.34	4	90	< 0.5	< 2	8.37	< 0.5	15	162	68	2.11	< 10	< 1	0.13	< 10	1.35	970

CERTIFICATION:

Hart Buehler



Chemex Labs Ltd.

Analytical Chemists * Geochemists * Registered Assayers
 212 Brooksbank Ave., North Vancouver
 British Columbia, Canada V7J 2C1
 PHONE: 604-984-0221

ARCHER CATHRO & ASSOC. (1981) LTD.

P.O. BOX 4127
 WHITEHORSE, YT
 Y1A 3S9

Project : L00N-93-1
 Comments:

Page Number : 1-B
 Total Pages : 1
 Certificate Date: 14-JUL-93
 Invoice No. : I9316839
 P.O. Number :
 Account : F

CERTIFICATE OF ANALYSIS A9316839

SAMPLE	PREP CODE	Mo ppm	Na %	Ni ppm	P ppm	Pb ppm	Sb ppm	Sc ppm	Sr ppm	Ti %	Tl ppm	U ppm	V ppm	W ppm	Zn ppm
H529501	208 274	< 1	0.01	9	270	8	< 2	1	84	< 0.01	10	< 10	7	< 10	42
H529502	208 274	< 1	< 0.01	25	680	8	2	5	204	< 0.01	< 10	< 10	49	< 10	118
H529503	208 274	< 1	0.01	16	470	2	< 2	4	169	< 0.01	< 10	< 10	39	< 10	38
H529504	208 274	1	0.01	24	210	4	< 2	1	30	< 0.01	< 10	< 10	12	< 10	74
H529505	208 274	1	0.01	22	220	4	2	1	30	< 0.01	10	< 10	8	< 10	68
H529506	208 274	< 1	0.01	9	120	4	< 2	< 1	69	< 0.01	< 10	< 10	3	< 10	24
H529507	208 274	< 1	0.01	40	520	6	4	14	303	< 0.01	< 10	< 10	119	10	76
H529508	208 274	< 1	0.01	6	1270	14	< 2	1	271	< 0.01	< 10	< 10	7	< 10	48
H529509	208 274	1	0.01	9	110	6	< 2	< 1	74	< 0.01	< 10	< 10	2	< 10	30
H529510	208 274	< 1	0.01	17	620	14	< 2	1	234	< 0.01	< 10	< 10	5	< 10	62
H529511	208 274	< 1	0.01	15	160	14	< 2	1	150	< 0.01	< 10	< 10	9	< 10	110
H529512	208 274	< 1	0.04	8	150	4	2	2	195	< 0.01	< 10	< 10	8	< 10	38
H529513	208 274	< 1	0.01	11	200	8	2	2	279	< 0.01	< 10	< 10	7	10	56
H529514	208 274	< 1	0.01	6	100	8	2	2	21	< 0.01	< 10	< 10	1	< 10	30
H529515	208 274	< 1	0.01	9	220	12	2	2	605	< 0.01	< 10	< 10	2	< 10	50
H529516	208 274	< 1	0.04	11	170	8	2	2	321	< 0.01	< 10	< 10	7	< 10	90
H529517	208 274	1	0.02	19	340	14	< 2	4	89	< 0.01	< 10	< 10	22	< 10	82
H529518	208 274	2	0.01	30	230	16	2	1	57	< 0.01	< 10	< 10	7	< 10	64
H529519	208 274	< 1	0.01	19	210	12	< 2	2	66	< 0.01	10	< 10	10	< 10	38
H529520	208 274	< 1	0.01	9	270	4	2	3	158	< 0.01	< 10	< 10	13	< 10	26
H529521	208 274	< 1	0.02	21	280	12	< 2	4	72	< 0.01	< 10	< 10	36	< 10	58
H529522	208 274	< 1	< 0.01	90	340	12	2	23	287	< 0.01	< 10	< 10	113	30	72
H529523	208 274	< 1	0.01	7	140	14	< 2	2	410	< 0.01	< 10	< 10	7	10	34
H529524	208 274	< 1	0.03	38	380	24	2	8	211	< 0.01	< 10	< 10	36	90	80

CERTIFICATION:

Hart Bichler



Chemex Labs Ltd.

Analytical Chemists * Geochemists * Registered Assayers
 212 Brooksbank Ave., North Vancouver
 British Columbia, Canada V7J 2C1
 PHONE: 604-984-0221

ARCHER CATHRO & ASSOC. (1981) LTD.

P.O. BOX 4127
 WHITEHORSE, YT
 Y1A 3S9

Project : LOON-93-2
 Comments:

Page Number : 1-A
 Total Pages : 1
 Certificate Date: 20-JUL-93
 Invoice No. : 19316842
 P.O. Number :
 Account : F

CERTIFICATE OF ANALYSIS

A9316842

SAMPLE	PREP		Au oz/T	Cu	Ag	Al	As	Ba	Be	Bi	Ca	Cd	Co	Cr	Cu	Fe	Ga	Hg	K	La	Mg
	CODE		FA+AA	%	ppm	%	ppm	ppm	ppm	ppm	%	ppm	ppm	ppm	ppm	%	ppm	ppm	%	ppm	%
R529525	208	274	0.0015	0.47	2.6	0.59	4	30	< 0.5	6	0.64	2.0	5	201	5100	1.85	< 10	2	0.19	10	0.20
R529526	208	274	0.0015	0.69	3.8	0.44	8	20	< 0.5	8	0.20	1.0	7	182	7380	2.20	< 10	< 1	0.11	10	0.14
R529527	208	274	0.0025	0.98	6.4	0.62	24	40	< 0.5	18	0.10	< 0.5	4	261	>10000	2.77	10	< 1	0.18	10	0.09
R529528	208	274	0.0010	0.11	0.6	0.44	< 2	30	< 0.5	< 2	0.07	12.0	6	312	1205	1.22	< 10	1	0.14	10	0.07
R529529	208	274	<0.0005	0.16	0.8	0.47	12	20	< 0.5	4	0.05	2.5	4	328	1685	1.33	< 10	< 1	0.15	10	0.09
R529530	208	274	<0.0005	0.16	0.6	0.24	< 2	20	< 0.5	2	0.13	6.5	3	232	1775	0.75	< 10	< 1	0.11	< 10	0.04
R529531	208	274	<0.0005	0.16	0.6	0.18	4	10	< 0.5	< 2	0.03	1.5	3	219	1680	0.67	< 10	< 1	0.08	< 10	0.02
R529532	208	274	0.0010	0.25	1.6	0.25	8	10	< 0.5	2	0.02	0.5	3	173	2720	0.94	< 10	< 1	0.11	< 10	0.02
R529533	208	274	0.0110	0.44	3.6	0.13	4	10	< 0.5	2	0.02	0.5	4	241	4920	1.17	< 10	< 1	0.09	< 10	0.01
R529534	208	274	0.0065	0.40	2.6	0.13	2	10	< 0.5	4	0.02	0.5	3	194	4210	0.97	< 10	< 1	0.09	< 10	0.01
R529535	208	274	0.0015	0.21	1.0	0.10	< 2	< 10	< 0.5	2	0.03	1.5	3	262	1870	0.69	< 10	< 1	0.06	< 10	0.01
R529536	208	274	<0.0005	0.08	0.4	0.03	2	10	< 0.5	< 2	0.03	2.0	1	165	710	0.39	< 10	< 1	0.01	< 10	< 0.01
R529537	208	274	<0.0005	0.17	1.2	0.07	< 2	< 10	< 0.5	< 2	0.01	0.5	2	232	2160	0.55	< 10	< 1	0.04	< 10	0.01
R529538	208	274	0.0085	0.45	2.0	0.07	6	< 10	< 0.5	10	0.02	7.0	3	181	4910	0.76	< 10	1	0.04	< 10	< 0.01
R529539	208	274	0.0145	0.32	1.8	0.20	12	20	< 0.5	< 2	0.02	1.0	2	271	3470	0.79	< 10	< 1	0.16	< 10	0.01
R529540	208	274	0.0125	0.41	2.2	0.08	6	10	< 0.5	2	0.01	< 0.5	2	208	4470	0.73	< 10	< 1	0.08	< 10	< 0.01
R529541	208	274	0.0205	0.70	2.6	0.11	10	10	< 0.5	6	0.16	0.5	4	190	7970	0.97	< 10	1	0.08	< 10	0.06
R529542	208	274	0.0140	0.65	4.0	0.13	16	10	< 0.5	12	0.55	1.5	10	202	6770	1.31	< 10	1	0.06	10	0.23
R529543	208	274	0.0220	1.28	5.2	0.09	< 2	< 10	< 0.5	6	0.12	1.0	10	175	>10000	1.55	< 10	< 1	0.04	< 10	0.04
R529544	208	274	0.0250	3.27	14.6	0.10	20	< 10	< 0.5	20	0.01	< 0.5	11	136	>10000	4.20	< 10	< 1	0.04	< 10	0.01
R529545	208	274	0.0025	0.85	2.6	0.18	< 2	20	< 0.5	6	0.17	0.5	11	193	9060	1.04	< 10	< 1	0.10	< 10	0.07
R529546	208	274	<0.0005	0.33	0.2	0.06	6	< 10	< 0.5	< 2	0.20	0.5	5	240	3670	0.59	< 10	< 1	0.02	< 10	0.07
R529547	208	274	<0.0005	0.38	< 0.2	0.03	< 2	< 10	< 0.5	4	0.04	0.5	3	241	4160	0.41	< 10	< 1	0.02	< 10	0.01
R529548	208	274	<0.0005	0.61	0.2	0.03	2	< 10	< 0.5	2	0.06	3.5	2	242	6600	0.44	< 10	< 1	0.01	< 10	0.02
R529549	208	274	<0.0005	0.33	0.2	0.02	< 2	< 10	< 0.5	2	0.03	< 0.5	1	156	3550	0.44	< 10	< 1	0.01	< 10	0.01
R529550	208	274	<0.0005	0.21	0.2	0.02	2	< 10	< 0.5	2	0.12	0.5	1	138	2290	0.38	< 10	1	0.01	< 10	0.03
R529551	208	274	<0.0005	0.24	0.4	0.06	2	< 10	< 0.5	< 2	0.03	0.5	3	186	2880	0.42	< 10	< 1	0.04	< 10	0.01
R529552	208	274	<0.0005	0.04	< 0.2	0.22	< 2	40	< 0.5	< 2	0.30	< 0.5	4	145	395	0.71	< 10	< 1	0.02	< 10	0.17

CERTIFICATION: _____



Chemex Labs Ltd.

Analytical Chemists * Geochemists * Registered Assayers
 212 Brooksbank Ave., North Vancouver
 British Columbia, Canada V7J 2C1
 PHONE: 604-984-0221

ARCHER CATHRO & ASSOC. (1981) LTD.

P.O. BOX 4127
 WHITEHORSE, YT
 Y1A 3S9

Project : LOON-93-2
 Comments:

Page Number : 1-B
 Total Pages : 1
 Certificate Date: 20-JUL-93
 Invoice No. : I9316842
 P.O. Number :
 Account : F

CERTIFICATE OF ANALYSIS A9316842

SAMPLE	PREP		Mn	Mo	Na	Ni	P	Pb	Sb	Sc	Sr	Ti	Tl	-U	V	W	Zn
	CODE		ppm	ppm	%	ppm	ppm	ppm	ppm	ppm	ppm	%	ppm	ppm	ppm	ppm	ppm
H529525	208	274	205	< 1	0.03	12	260	1530	< 2	1	10	< 0.01	10	< 10	16	< 10	860
H529526	208	274	110	< 1	0.03	16	160	938	2	1	7	< 0.01	10	< 10	10	< 10	444
H529527	208	274	75	2	0.03	9	200	292	< 2	1	13	< 0.01	30	< 10	12	< 10	170
H529528	208	274	65	1	0.03	9	110	456	< 2	< 1	8	< 0.01	20	< 10	10	< 10	3860
H529529	208	274	50	1	0.03	12	110	66	< 2	< 1	4	< 0.01	20	< 10	10	< 10	838
H529530	208	274	80	< 1	0.02	6	50	88	< 2	< 1	4	< 0.01	20	< 10	4	< 10	1545
H529531	208	274	60	< 1	0.02	8	30	170	< 2	< 1	2	< 0.01	20	< 10	2	< 10	714
H529532	208	274	35	1	0.02	2	30	336	< 2	< 1	2	< 0.01	20	< 10	2	< 10	358
H529533	208	274	30	1	0.02	5	40	252	< 2	< 1	2	< 0.01	20	< 10	3	< 10	348
H529534	208	274	35	< 1	0.02	4	30	180	< 2	< 1	2	< 0.01	20	< 10	2	< 10	454
H529535	208	274	30	1	0.02	6	20	98	< 2	< 1	1	< 0.01	20	< 10	2	< 10	710
H529536	208	274	25	< 1	0.02	2	< 10	194	< 2	< 1	1	< 0.01	10	< 10	< 1	< 10	768
H529537	208	274	25	1	0.02	3	< 10	76	< 2	< 1	1	< 0.01	30	< 10	4	< 10	294
H529538	208	274	40	1	0.02	4	30	352	< 2	< 1	1	< 0.01	20	< 10	< 1	< 10	2590
H529539	208	274	20	1	0.02	6	30	124	< 2	< 1	2	< 0.01	20	< 10	4	< 10	576
H529540	208	274	10	< 1	0.01	3	20	50	< 2	< 1	1	< 0.01	20	< 10	< 1	< 10	96
H529541	208	274	90	< 1	0.02	4	40	244	< 2	< 1	5	< 0.01	10	< 10	3	< 10	266
H529542	208	274	315	< 1	0.01	7	50	4080	< 2	1	15	< 0.01	20	< 10	4	< 10	380
H529543	208	274	175	1	0.02	6	50	318	< 2	< 1	4	< 0.01	20	< 10	4	20	236
H529544	208	274	45	2	0.01	13	100	160	< 2	1	1	< 0.01	< 10	< 10	3	< 10	248
H529545	208	274	130	1	0.02	7	70	64	< 2	< 1	7	< 0.01	20	< 10	8	< 10	164
H529546	208	274	85	< 1	0.02	2	20	46	< 2	< 1	7	< 0.01	20	< 10	< 1	< 10	176
H529547	208	274	35	< 1	0.02	3	< 10	34	< 2	< 1	2	< 0.01	10	< 10	1	< 10	138
H529548	208	274	30	< 1	0.02	2	20	36	< 2	< 1	2	< 0.01	20	< 10	1	< 10	1220
H529549	208	274	20	< 1	0.01	2	10	34	< 2	< 1	1	< 0.01	10	< 10	< 1	< 10	118
H529550	208	274	35	< 1	0.02	4	< 10	20	< 2	< 1	3	< 0.01	10	< 10	< 1	< 10	120
H529551	208	274	20	< 1	0.01	3	10	42	< 2	< 1	2	< 0.01	20	< 10	< 1	< 10	252
H529552	208	274	80	< 1	0.02	7	110	10	< 2	< 1	15	< 0.01	< 10	< 10	3	< 10	66

CERTIFICATION: _____

Thomson



Chemex Labs Ltd.

Analytical Chemists * Geochemists * Registered Assayers
 212 Brooksbank Ave., North Vancouver
 British Columbia, Canada V7J 2C1
 PHONE: 604-984-0221

ARCHER CATHRO & ASSOC. (1981) LTD.

P.O. BOX 4127
 WHITEHORSE, YT
 Y1A 3S9

Project : LOON-93-2
 Comments:

Page Number : 1-A
 Total Pages : 1
 Certificate Date: 15-JUL-93
 Invoice No. : I9316844
 P.O. Number :
 Account : F

CERTIFICATE OF ANALYSIS

A9316844

SAMPLE	PREP		Au ppb	Ag	Al	As	Ba	Be	Bi	Ca	Cd	Co	Cr	Cu	Fe	Ga	Hg	K	La	Mg	Mn
	CODE		FA+AA	ppm	%	ppm	ppm	ppm	ppm	%	ppm	ppm	ppm	ppm	%	ppm	ppm	%	ppm	%	ppm
H529553	208	274	15 < 0.2	1.96	14	80 < 0.5	< 2	1.53	0.5	21	121	67	3.47	< 10	< 1	0.08	20	1.17	350		
H529554	208	274	< 5 < 0.2	4.11	< 2	270	0.5	< 2	2.19	< 0.5	11	17	56	6.44	20	< 1	0.18	60	2.01	395	
H529555	208	274	< 5 < 0.2	2.41	< 2	400	0.5	< 2	2.74	< 0.5	13	66	20	3.83	10	< 1	0.27	20	1.40	520	
H529556	208	274	< 5 < 0.2	1.20	< 2	20	< 0.5	< 2	2.99	< 0.5	8	104	10	2.13	< 10	< 1	0.03	< 10	1.29	635	
H529557	208	274	< 5 < 0.2	2.42	< 2	40	0.5	< 2	1.36	0.5	20	103	11	3.57	10	< 1	0.15	10	1.90	560	
H529558	208	274	< 5	8.2	1.42	< 2	70	< 0.5	< 2	2.45	0.5	12	120	54	2.20	< 10	< 1	0.08	10	1.10	510
H529559	208	274	< 5 < 0.2	3.48	< 2	810	0.5	< 2	4.24	0.5	13	12	42	4.16	10	< 1	0.53	70	2.05	775	
H529560	208	274	< 5 < 0.2	0.78	12	100	< 0.5	< 2	4.29	< 0.5	14	81	139	1.40	< 10	< 1	0.15	10	0.75	955	
H529561	208	274	< 5 < 0.2	3.21	14	900	0.5	< 2	2.95	< 0.5	12	11	65	4.27	10	< 1	0.56	70	1.81	570	
H529562	208	274	< 5 < 0.2	1.23	12	80	0.5	< 2	0.78	< 0.5	9	136	303	2.08	< 10	< 1	0.22	10	0.85	210	
H529563	208	274	< 5	1.4	1.51	< 2	130	0.5	< 2	1.06	< 0.5	10	92	99	3.42	< 10	< 1	0.23	10	0.86	320
H529564	208	274	< 5	1.8	1.48	6	150	< 0.5	< 2	1.43	< 0.5	14	64	180	3.11	< 10	< 1	0.21	10	0.96	400
H529565	208	274	< 5 < 0.2	1.38	< 2	130	< 0.5	< 2	0.49	< 0.5	6	178	22	1.53	< 10	< 1	0.48	10	0.37	140	
H529566	208	274	< 5 < 0.2	0.90	< 2	110	< 0.5	< 2	0.76	< 0.5	4	149	39	1.46	< 10	< 1	0.18	10	0.45	195	
H529567	208	274	< 5 < 0.2	0.80	6	20	< 0.5	< 2	0.36	< 0.5	4	81	21	1.85	< 10	< 1	0.10	10	0.42	140	
H529568	208	274	< 5	1.2	1.24	< 2	50	< 0.5	< 2	0.39	< 0.5	5	106	37	2.95	< 10	< 1	0.15	< 10	0.60	175
H529569	208	274	< 5 < 0.2	0.44	< 2	20	< 0.5	< 2	0.23	< 0.5	2	97	25	1.13	< 10	< 1	0.10	< 10	0.22	80	
H529570	208	274	90	0.2	0.62	8	20	< 0.5	< 2	0.37	< 0.5	14	126	68	2.23	< 10	< 1	0.12	< 10	0.29	105
H529571	208	274	< 5 < 0.2	0.76	2	40	< 0.5	< 2	0.60	< 0.5	3	250	46	1.61	< 10	< 1	0.18	< 10	0.33	180	
H529572	208	274	< 5 < 0.2	0.92	2	20	< 0.5	< 2	1.32	14.0	12	95	184	2.93	< 10	< 1	0.12	< 10	0.74	385	

CERTIFICATION:

Hart Bickler



Chemex Labs Ltd.

Analytical Chemists * Geochemists * Registered Assayers
212 Brooksbank Ave., North Vancouver
British Columbia, Canada V7J 2C1
PHONE: 604-984-0221

ARCHER CATHRO & ASSOC. (1981) LTD.

P.O. BOX 4127
WHITEHORSE, YT
Y1A 3S9

Project : LOON-93-2
Comments:

Page Number : 1-B
Total Pages : 1
Certificate Date: 15-JUL-93
Invoice No. : I9316844
P.O. Number :
Account : F

CERTIFICATE OF ANALYSIS A9316844

SAMPLE	PREP CODE	Mo ppm	Na %	Ni ppm	P ppm	Pb ppm	Sb ppm	Sc ppm	Sr ppm	Ti %	Tl ppm	U ppm	-V ppm	W ppm	Zn ppm
H529553	208 274	3	0.04	26	1010	14	4	6	124	< 0.01	< 10	< 10	35	10	82
H529554	208 274	1	0.03	17	2650	< 2	2	10	250	0.01	< 10	< 10	73	10	94
H529555	208 274	< 1	0.08	13	2010	12	4	8	164	0.11	< 10	< 10	80	10	104
H529556	208 274	1	0.01	20	300	< 2	4	3	71	< 0.01	< 10	< 10	21	< 10	48
H529557	208 274	< 1	0.02	40	340	4	< 2	3	36	< 0.01	< 10	< 10	24	10	48
H529558	208 274	< 1	0.02	39	510	4	2	2	75	< 0.01	< 10	< 10	16	30	34
H529559	208 274	< 1	0.09	13	3060	6	< 2	9	372	0.08	< 10	< 10	79	20	62
H529560	208 274	1	0.02	14	480	< 2	2	3	118	< 0.01	< 10	< 10	12	< 10	42
H529561	208 274	1	0.09	12	3060	14	4	8	337	0.10	< 10	< 10	71	10	62
H529562	208 274	1	0.01	32	350	14	< 2	5	49	< 0.01	< 10	< 10	28	< 10	52
H529563	208 274	1	0.02	32	480	1010	2	2	56	< 0.01	< 10	< 10	18	< 10	44
H529564	208 274	1	0.02	34	660	20	2	3	71	0.01	< 10	< 10	21	10	44
H529565	208 274	< 1	0.03	14	150	2	2	1	18	< 0.01	< 10	< 10	9	< 10	14
H529566	208 274	< 1	0.02	14	330	6	< 2	1	40	< 0.01	< 10	< 10	13	< 10	22
H529567	208 274	1	< 0.01	17	190	< 2	< 2	1	13	< 0.01	< 10	< 10	6	< 10	20
H529568	208 274	< 1	0.01	23	250	< 2	< 2	1	22	< 0.01	< 10	< 10	10	< 10	34
H529569	208 274	< 1	0.01	10	90	4	< 2	< 1	9	< 0.01	< 10	< 10	3	< 10	16
H529570	208 274	< 1	0.01	16	100	16	2	< 1	15	< 0.01	< 10	< 10	4	< 10	20
H529571	208 274	< 1	0.04	8	100	< 2	< 2	1	22	< 0.01	< 10	< 10	5	< 10	10
H529572	208 274	1	0.01	23	260	4	< 2	2	50	< 0.01	< 10	< 10	22	20	4650

CERTIFICATION:

Hart Bichler

ARCHER, CATHRO

& ASSOCIATES LIMITED

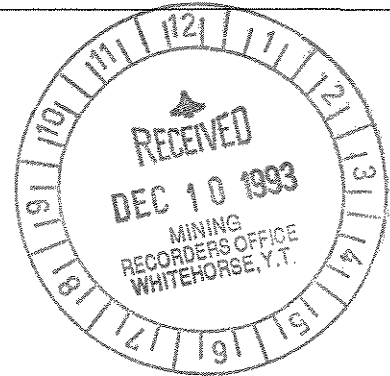
CONSULTING GEOLOGICAL ENGINEERS

093151

VANCOUVER, B.C. (604) 688-2568

BOX 4127, WHITEHORSE, Y.T. Y1A 3S9 (403) 667-4415

1016 - 510 WEST HASTINGS STREET
VANCOUVER, B.C. V6B 1L8



AFFIDAVIT

I, Joan Mariacher, of Whitehorse, Yukon make oath and say:

That to the best of my knowledge the attached Statement of Expenditures for exploration work on the Loon 1-16 mineral claims on Claim Sheet 105E/1 is accurate.

Joan Mariacher

Sworn before me at Whitehorse, Yukon

this 10th day of

December, 1993.

Notary, Yukon Territory

Statement of Expenditures
Loon 1-16 Mineral Claims
December 9, 1993

Contract Diamond Drilling

E. Caron Diamond Drilling Ltd.

\$19,032.35



June 30, 1993
Invoice #3072
Drill #Craelius

IN ACCOUNT WITH

Archer, Cathro & Associates (1981) Ltd.,
2054 2nd. Avenue,
Box 4127,
Whitehorse, Yukon
Y1A 3S9

Drilling Charges June 15 to 25, 1993: (Loon)

Hole: 93-1/-55/BTW

Moving

48 man hrs. @ \$33.00 per hr. = \$ 1,584.00

Reaming Cave

2 man hrs. @ \$33.00 per hr. = \$ 66.00

1 machine hrs. @ \$21.00 per hr. = \$ 21.00 \$ 87.00

Mud Time

8 man hrs. @ \$33.00 per hr. = \$ 264.00

4 machine hrs. @ \$21.00 per hr. = \$ 84.00 \$ 348.00

Travelling Time

14 man hrs. @ \$33.00 per hr. = \$ 462.00

Casing

0 - 10 = 10 ft. @ \$23.00 per ft. = \$ 230.00

Coring

10 - 175 = 165 ft. @ \$23.00 per ft. = \$ 3,795.00 \$ 6,506.00

Hole: 93-2/-50/BTW

Moving

55.5 man hrs. @ \$33.00 per hr. = \$ 1,831.50

Drilling Anchor

4 man hrs. @ \$33.00 per hr. = \$ 132.00

2 machine hrs. @ \$21.00 per hr. = \$ 42.00 \$ 174.00

Mud

8 man hrs. @ \$33.00 per hr. = \$ 264.00

4 machine hrs. @ \$21.00 per hr. = \$ 84.00 \$ 348.00

Travelling Time

12 man hrs. @ \$33.00 per hr. = \$ 396.00

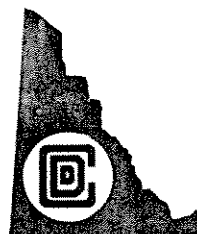
Casing

0 - 4 = 4 ft. @ \$23.00 per ft. = \$ 92.00

Coring

4 - 207 = 203 ft. @ \$23.00 per ft. = \$ 4,669.00 \$ 7,510.50

*John Inupia 1/93
#108*





E. CARON DIAMOND DRILLING LTD.

7 Roundel Road Whitehorse, Yukon Y1A 3H3

Phone (403) 668-2424 FAX (403) 668-4520

Items Consumed & Chargeable			
1 pail Matex	@ \$130.00 each	= \$	130.00
26 bags Quik Gel	@ \$11.50 each	= \$	299.00
18 bags Super Poly	@ \$10.00 each	= \$	180.00
1 pail rod grease	@ \$66.25 each	= \$	66.25
5 BTW bits (hobic)	@ \$388.00 each	= \$	1,940.00
1 BQ bit (LY)	@ \$408.00 each	= \$	408.00
2 BQ bits (WC)	@ \$373.75 each	= \$	<u>747.50</u>
			\$ <u>3,770.75</u>
Sub Total			\$17,787.25
G.S.T. R101557122 @ 7%			\$ <u>1,245.10</u>
Total Invoice			<u>\$19,032.35</u>

