

MOUNTAIN HIGHGRADE MINES LTD.
GEOPHYSICAL SURVEY AND TRENCHING
PROGRAM ON THE TYCON PROPERTY,
WHEATON RIVER DISTRICT,
SOUTHERN YUKON TERRITORY

093147

M.A. Power M.Sc.



QUARTZ CLAIMS

NICK 1-6 YB36900-905
NICK 7-9 YB38071-073
NICK 10-13 YB38116-119

YMIP No.: 93-116
Work performed: June 21, 1993 to August 3, 1993
Mining District: Whitehorse
NTS: 105 D 3
Location: 60° 12' N 135° 08' W
December 15, 1993



Summary

An exploration program consisting of a VLF-EM survey, a ground conductivity (EM-31) survey and excavator trenching was carried out on the Tycon Property between June 21, 1993 and August 3, 1993. Approximately 32 line-km of picketed grid was established and surveyed with an EM-16. Three major east-trending anomalies were detected. The conductor axes of the northernmost and middle anomalies were surveyed along their length with the EM-31 to detect areas of anomalously high conductivity associated with extensive hydrothermal alteration. Follow-up trenching exposed a zone of quartz veining, 300 m long with individual quartz veins up to 2 m wide. Sampling returned low gold and silver assays.

Table of Contents

A. Introduction	1
B. Property	1
C. Location and access	1
D. Physiography	2
E. Regional Geology	2
F. Previous exploration	7
G. Property geology	8
H. VLF-EM survey	8
I. Conductivity survey	9
J. Trenching	11
K. Conclusions	12
L. Recommendations	12
References cited	13
APPENDIX A. STATEMENT OF QUALIFICATIONS	A-1
APPENDIX B. PROJECT LOG	B-1
APPENDIX C. STATEMENT OF EXPENSES	C-1
APPENDIX D. ASSAY CERTIFICATES	D-1

A. Introduction

An exploration program consisting of a VLF-EM survey, a follow-up EM-31 survey and an excavator trenching program was conducted on the Tycon Property between June 21, 1993 and August 3, 1993. This report describes the geophysical surveys and trenching program.

B. Property

The Tycon Property consists of the following claims staked and recorded under the Yukon Quartz Mining Act:

<u>Claims</u>	<u>Grant Number</u>	<u>Expiry Date</u> ¹
NICK 1-6	YB36900-905	26 JUN 94
NICK 7-9	YB38071-073	28 JUN 94
NICK 10-13	YB38116-119	14 JUL 94

The claims are owned by the following parties:

<u>Name / address</u>	<u>Percentage ownership</u>
Mountain Highgrade Mines Ltd. Box 5709 Whitehorse, Y.T. Y1A 5L5	55%
Gary Lee Box 5348 Whitehorse, Y.T. Y1A 5L5	45%

C. Location and access

The Tycon Property is located at 60° 12' N 135° 08' W in the southwest Yukon Territory (Figure 1). The property is approximately 70 km from Whitehorse by air and 84 km by road. The route to the property is as follows:

¹Expiry dates based on acceptance of the work described herein for assessment credit

<u>Section</u>	<u>Distance (Km)</u>
Alaska Highway to Carcross Cutoff	20
Carcross Cutoff to Annie Lake Road	17
Annie Lake Road to Wheaton River Bridge	26
Wheaton River Bridge to Mt. Anderson Road	11
Mt. Anderson Road to Property	10

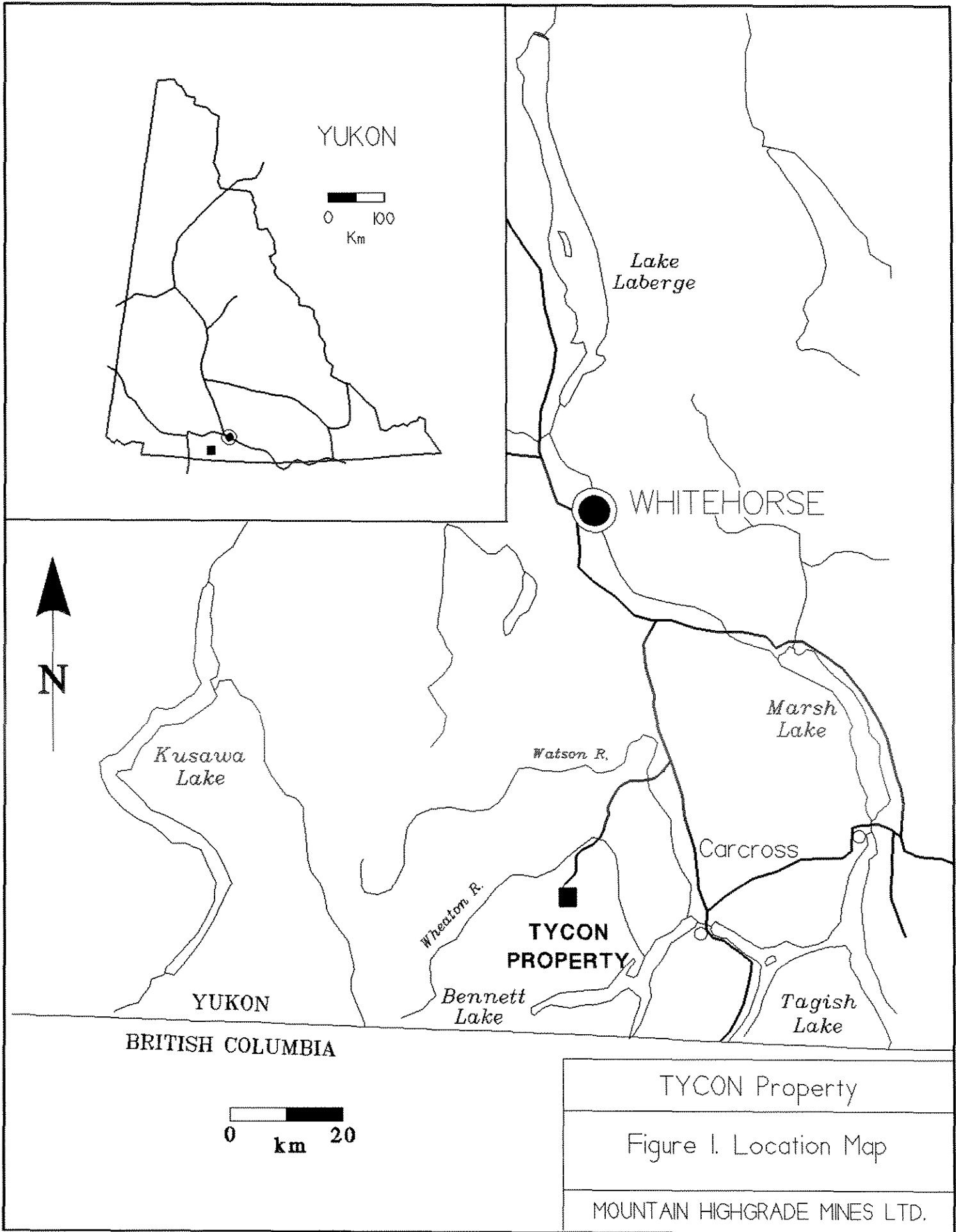
A four wheel drive vehicle is required on the Mt. Anderson Road. During the winter months, the route is ploughed from Whitehorse to the Wheaton River Bridge.

D. Physiography

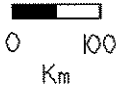
The Tycon Property is in the Boundary Ranges of the Coast Mountain Range. In this area, the topography is transitional between the rugged mountains of the Coast Range and the dissected uplands of the Yukon Plateau. The local topography (Figure 2) is best described as a gently rolling plateau above approximately 4800 feet dissected by steep walled, U-shaped drainages at lower elevations. The Tycon Property is bounded to the east and west by Partridge and Becker Creeks, both of which drain north into the Wheaton River. Tree cover consisting of lodgepole pine and spruce extend to roughly 4400 feet; dwarf birch, willow and alder extend to approximately 5200 feet and vegetation above this level consists of grass and moss. Snowfields on north facing slopes persist until the end of July. Despite this, permafrost is not extensive, perhaps due to a low concentration of clay in the overburden.

E. Regional Geology

The geology of the Wheaton River district is well documented by Doherty and Hart (1989). The region lies near the boundary between the Nisling Terrane and the Whitehorse Trough. The Nisling Terrane is a belt of metamorphic and intrusive rocks that includes the Coast Plutonic Complex and the Yukon Crystalline Terrane (Wheeler and McFeely 1987). The Whitehorse Trough is a relict fore-arc basin with clastic sediments derived from an uplifted core (LaBerge Group) being deposited over older andesitic volcanic rocks flooring the basin (Lewes River Volcanics). The Tally Ho Shear Zone forms the boundary between the Whitehorse Trough and the Nisling Terrane. Following the mid-Jurassic amalgamation of the Nisling Terrane with the Whitehorse Trough, an overlap succession of clastic rocks was deposited and the region was affected by a later episode of Eocene volcanism. During this latter event, high level alaskite and bimodal calc-alkaline felsic to intermediate volcanic rocks were emplaced throughout the Wheaton River District.



YUKON



Lake Laberge

WHITEHORSE



Kusawa Lake

Watson R.

Marsh Lake

Carcross

**TYCON
PROPERTY**

Wheaton R.

YUKON

Bennett Lake

Tagish Lake

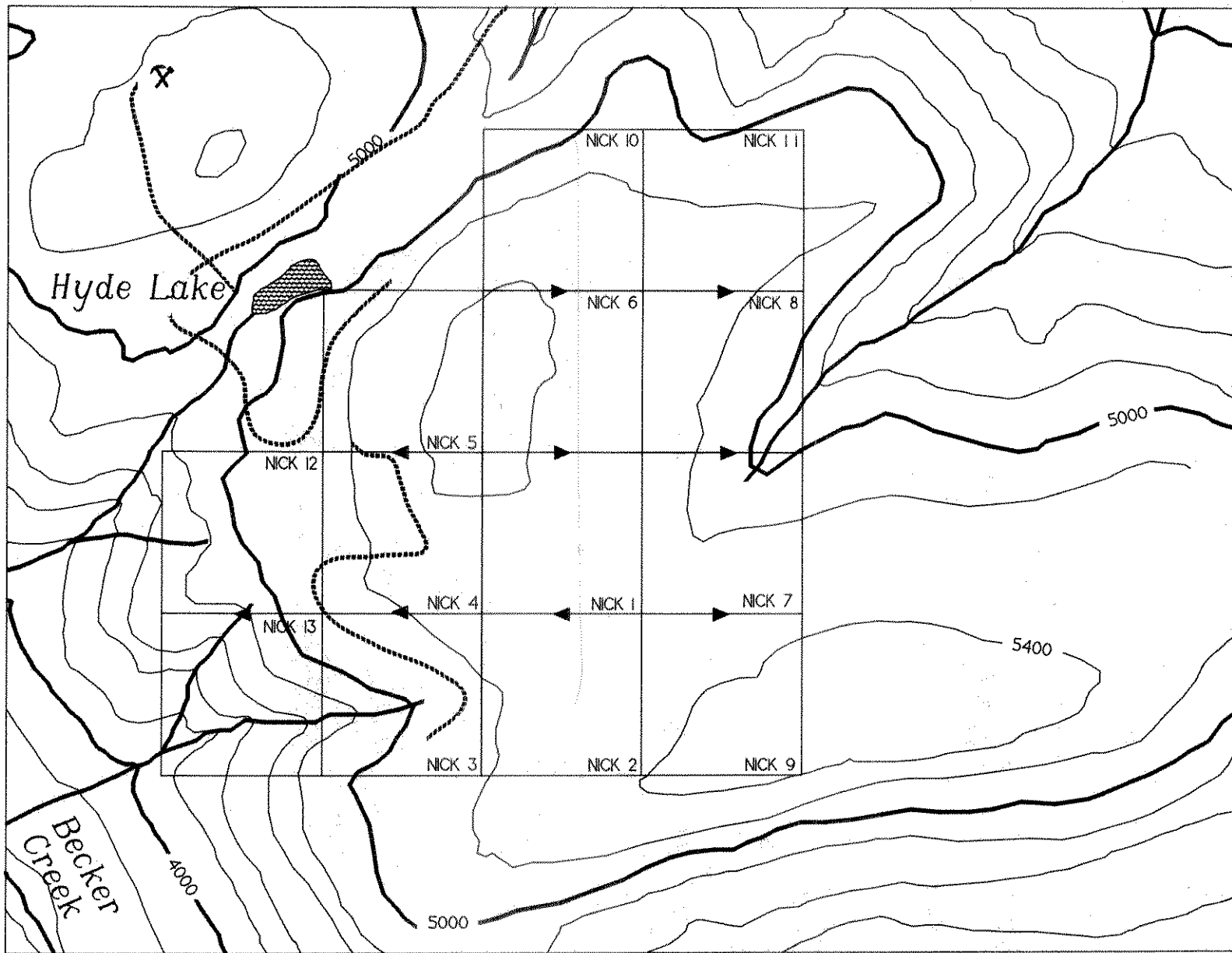
BRITISH COLUMBIA



TYCON Property

Figure 1. Location Map

MOUNTAIN HIGHGRADE MINES LTD.



- Access trails

X - Mt. Anderson Mine



TYCON PROPERTY		Claims: NICK 1-3	
NICK Claims - Location Map		Mining District: Whitehorse	
		NTS: 105 D 3	Scale: 1:16,500
MOUNTAIN HIGHGRADE MINES LTD.		Drawn by: M. Power	
		DATE: 28 NOV 93 Figure: 2	

The geology in the area surrounding the Tycon Property is shown in Figure 3 and the local stratigraphy is listed in Table 1. The property is adjacent to the west edge of the Tally Ho Shear Zone which bounds the Nisling Terrane to the west and the Whitehorse Trough to the East. The contact is inferred to follow Partridge Creek north to the Wheaton River Valley.

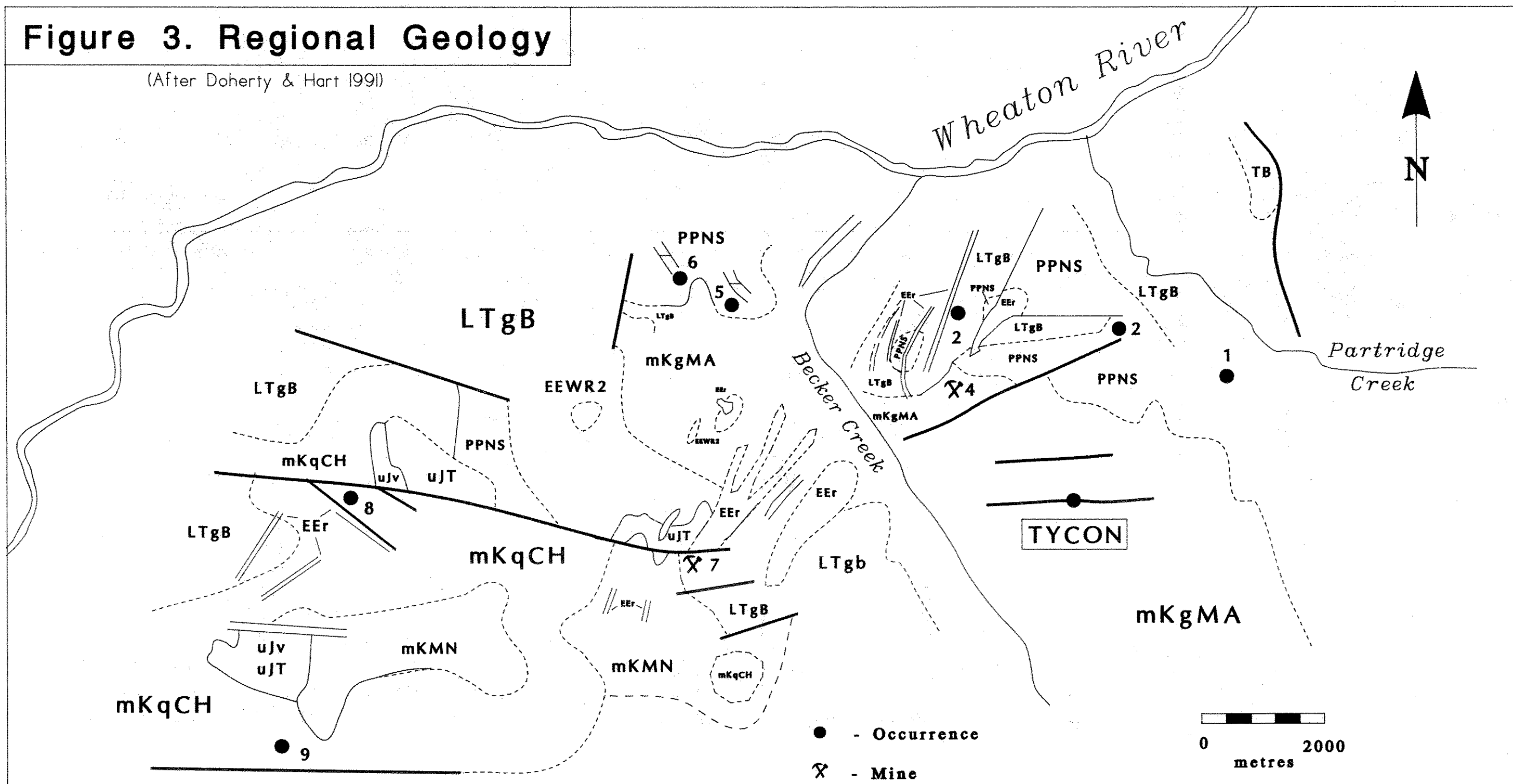
The local structure is dominated by the aforementioned Tally Ho Shear Zone and by Early Eocene structures related to the formation of the Bennett Lake Caldera Complex.

Table 1. Stratigraphy - Mt. Anderson area

Age	Formation	Lithology
Early Eocene	Mount Skukum Complex	Felsic dykes, laccoliths or plugs; mostly aphanitic, rarely porphyritic rhyolite
Early Eocene	Watson River Formation	Massive, columnar jointed andesite and andesite porphyry
Mid-Cretaceous	Carbon Hill Plug	Quartz monzonite plug with quartz, calcite and fluorite stockworks
Mid-Cretaceous	Mount Anderson Pluton	Massive white to light grey coarse crystalline hornblende granodiorite
Upper Jurassic	Tantalus Formation	Massive to thick bedded chert pebble conglomerate
Late Triassic	Bennett Granite	Pink Kspar-hornblende granite to granodiorite
Triassic	Tally Ho Leucogabbro	Dark green foliated coarse crystalline gabbroic orthogneiss
Proterozoic to Permian	Nisling Schist	Biotite-feldspar-quartz-muscovite schist

Figure 3. Regional Geology

(After Doherty & Hart 1991)



● - Occurrence
 X - Mine

0 2000
 metres

EEr - Mt. Skukum Complex: rhyolite	uJT/uJV - Tantalus Fm: conglomerate
EEWR2 - Watson River Fm: andesite	LTgB - Bennett Granite
mKqCH - Carbon Hill Plug: qtz monzonite	Tb - Tally Ho Leucogabbro
mKgMA - Mt. Anderson Pluton: granodiorite	PPNS - Nisling Assemblage: schist

MINERAL SHOWINGS

1 - FOXMO (Mo)	3 - ROB WEST (Au,Ag)	7 - BECKER COCHRANE (Sb, Au, Ag)
2 - ROB (Au,Ag)	4 - MT. ANDERSON (Au)	8 - GODDELL (Au, Sb)
	5 - FLEMING (Cu, Fe)	9 - PORTER (Sb,Ag,Pb)
	6 - FLEMING WEST	10 - TYCON (Au)

The Tally Ho Shear Zone is a deep crustal structure extending from Lake Bennett 40 km north to the Mt. McIntyre area. Near the Tycon Property, the zone is up to 4 km wide, strikes 145° and dips 40° to 70° southwest. Early ductile deformation resulted in development of a penetrative fabric as the entrained rocks were metamorphosed to greenschist facies. During a later (Late Cretaceous - Early Tertiary) stage of brittle deformation, quartz veins developed in extensional fractures. Later Eocene deformation resulted from doming and subsequent crustal collapse in the Bennett Lake Caldera Complex. East trending normal faults developed parallel to a major ring dyke near Bennett Lake. These structures served as conduits for significant hydrothermal flows and extensive alteration haloes are centred on them. The most significant of these faults in the area of the Tycon Property are several kilometres to the west on Carbon Hill and to the north on Mount Anderson.

The majority of the known mineral occurrences near the Tycon Property are antimony-silver veins in east-trending Early Eocene structures. The most significant local occurrences are the Goddell, Becker-Cochrane and Mt. Anderson showings. These veins contain argentiferous galena, jamesonite, gold, arsenopyrite and pyrite. They probably predate Early Eocene epithermal veins developed during the Mt. Skukum volcanic episode.

F. Previous exploration

Mining exploration in the Mt. Wheaton district began in the 1890's with the arrival of prospectors from the Alaska panhandle. Mining near Juneau attracted many prospectors and small miners and provided them an opportunity to earn a grubstake through winter employment in the mines. A number of these individuals began to move north into the Yukon and found the first hardrock and placer occurrences in the southern Yukon. Frank Corwin and Thomas Rickman were the first recorded prospectors in the region; they reportedly staked ground on Carbon Hill, Chieftain Hill and Idaho Mountain before returning to Juneau with high-grade gold samples. Probably because of uncertainties related to mineral tenure, they died without disclosing the location of their claims. Another prospector, Thomas Kerwin, reportedly staked near Idaho Hill in 1893 and returned with high grade gold samples; he too refused to disclose his claim location. During the Klondike Gold Rush, several occurrences were staked and recorded in Dawson but the first big rush to the area occurred in 1906 with the discovery of high grade gold at Tally Ho and Mt. Anderson. Both of these properties became small producers and numerous other showings were staked and explored. Activity in the area declined to a virtual standstill by the 1950's and the area remained dormant until the discovery of a bonanza epithermal gold-silver deposit at Mt. Skukum in the early 1980's. The district was restaked and extensively explored through the late 1980's. With the rescission of favourable tax incentives for mineral exploration in 1989 and a decline in the gold price, exploration activity in the area has once again declined.

The Tycon Property was first staked in March 1981 by Mr. W. Hyde as the TYCON 1-16 claims. A soil geochemistry grid was established and magnetometer and VLF-EM surveys using an EM-16 and Sabre total field receiver were conducted over it in 1982. Three parallel east-trending VLF anomalies were located south of Hyde Lake and the northernmost pair were trenched with a bulldozer. In 1985, six drill holes (359.4 m total footage) were drilled on these anomalies. Aside from some minor additional bulldozer trenching, no further work was undertaken and the claims lapsed in 1992. They were restaked by Mr. R. Hulstein in June 1992 and transferred to Mountain Highgrade Mines Ltd. in June 1993.

Previous exploration located two high level discontinuous epithermal vein systems within east-trending fault systems. Mineralization consists of quartz-chalcedony veins with limonite and silicified granodiorite clasts in extensively clay-altered granodiorite. The best assays on the property were encountered in the fault zone defined by the middle anomaly. Here, samples of limonitic quartz and chalcedonic quartz returned assays of 3.255 OPT Au and 2.86 OPT Au (Rogers, 1982). Unfortunately, these high grade assays were the exception and most assays of vein material from this zone have failed to return values above the detection limit. The best drill intersection on the property to date has been 406 ppb Au and 24 ppm Ag over 2.9 m in a hole on the northernmost anomaly (Dodge 1986).

G. Property geology

Bedrock exposure on the Tycon Property is poor, consisting largely of felsenmeer and talus in a few localities. Most of the property is covered by a thin blanket of coarse glacial till and colluvium. Trenching and limited outcrop mapping indicates that the property is underlain by granodiorite mapped regionally as the Mid-Cretaceous Mt. Anderson Pluton. In outcrop this rock is white weathering light grey, massive, resistant and has an average composition of roughly 30% amphibole (occasionally altered to biotite), 50% plagioclase, 10% potassium feldspar and 10% quartz. This unit is cut by dykes of dark green, chloritized, phenocrystic andesite or basalt tentatively assigned to the Watson River Formation. It is found in the trenches near 5000E and in felsenmeer on south side of the hill on NICK 5-6. Where cut by east-trending faults, the granodiorite is altered to white clay with bands of chlorite near andesite dykes and with bright orange limonitic gouge near quartz veins. Relict quartz gives the altered granodiorite the texture of sand and unaltered blocks of relatively fresh granodiorite up to 30 cm in diameter are found within an altered matrix near the margins of the alteration zones. Alteration varies from nil on the eastern end of the faults to over 50 m wide on the western edge of the property.

H. VLF-EM survey

A geophysical survey grid was established on the property and a VLF-EM survey conducted over it prior to trenching (Figure 4). The grid origin is at [5000E, 5000N] at the boundary between claims NICK 1-4. A 1.2 km base line trending 90° extends from

4400E to 5600E. Primary survey lines were turned at 50 m intervals along the base line and extend from 4700N to 5900N. Cross lines were put in as required during the VLF survey to control the survey line location and to permit detection of cross structures. A total of 26 line-km of primary survey line and 5.6 line-km of cross and base line were established. All lines are marked with half-length survey lathe and metal tags at 25 m intervals. Following the VLF survey, conductor axes were picketed, marked with an " X " symbol and flagged with yellow ribbon.

The VLF survey was conducted with a Geonics EM-16 VLF receiver using the NAA (Cutler, Ma), NLK (Jim Creek, Wa) and NPM (Lualualei, Ha) transmitters. NSS (Annapolis, Md) was used as an alternate to NAA on occasion since both stations have the same apparent station azimuth. The EM-16 measures the inclination and ellipticity of the VLF-EM field in percent. At small values of the secondary field, these are equivalent to the in-phase and quadrature components of the vertical field (Paterson and Ronka 1970). Measurements were taken with the operator facing 90° to the right of the station azimuth. NAA (apparent azimuth approximately 95-100°) was selected as the primary station and used in surveying the primary survey lines. To locate cross structures, surveys were conducted along the base, tie and cross lines using the NLK and NPM transmitters. Only the NPM data is shown for the cross, tie and base line survey because this transmitter is best coupled with the conductors and produced the strongest responses.

The data is plotted in stacked profile format in Figure 4. Using the aforementioned measurement procedure, the expected response over a moderate to steeply-dipping bedrock conductor will be a positive to negative cross-over in the in-phase component with a similar or reverse polarity cross-over in the quadrature response. In the NAA (Maine) data, an anomalous response consists of a positive in-phase tilt north of the conductor axis and a negative in-phase tilt south of the axis. In the NPM (Hawaii) data, a conductor response is a positive in-phase tilt east of the conductor axis and a negative in-phase response west of it. In both cases, the conductor axis is located at the point of maximum inflection in the response and not the zero cross-over point.

Three major east-trending anomalies (A, B, C) and three subsidiary northeast trending anomalies (D, E, F) were detected. The east trending anomalies appear to offset the northeast trending anomalies; this is consistent with the regional structural geology described by Doherty and Hart (1989). The results of the survey served to confirm the 1982 geophysical survey and to pinpoint the conductor axes prior to trenching.

I. Conductivity survey

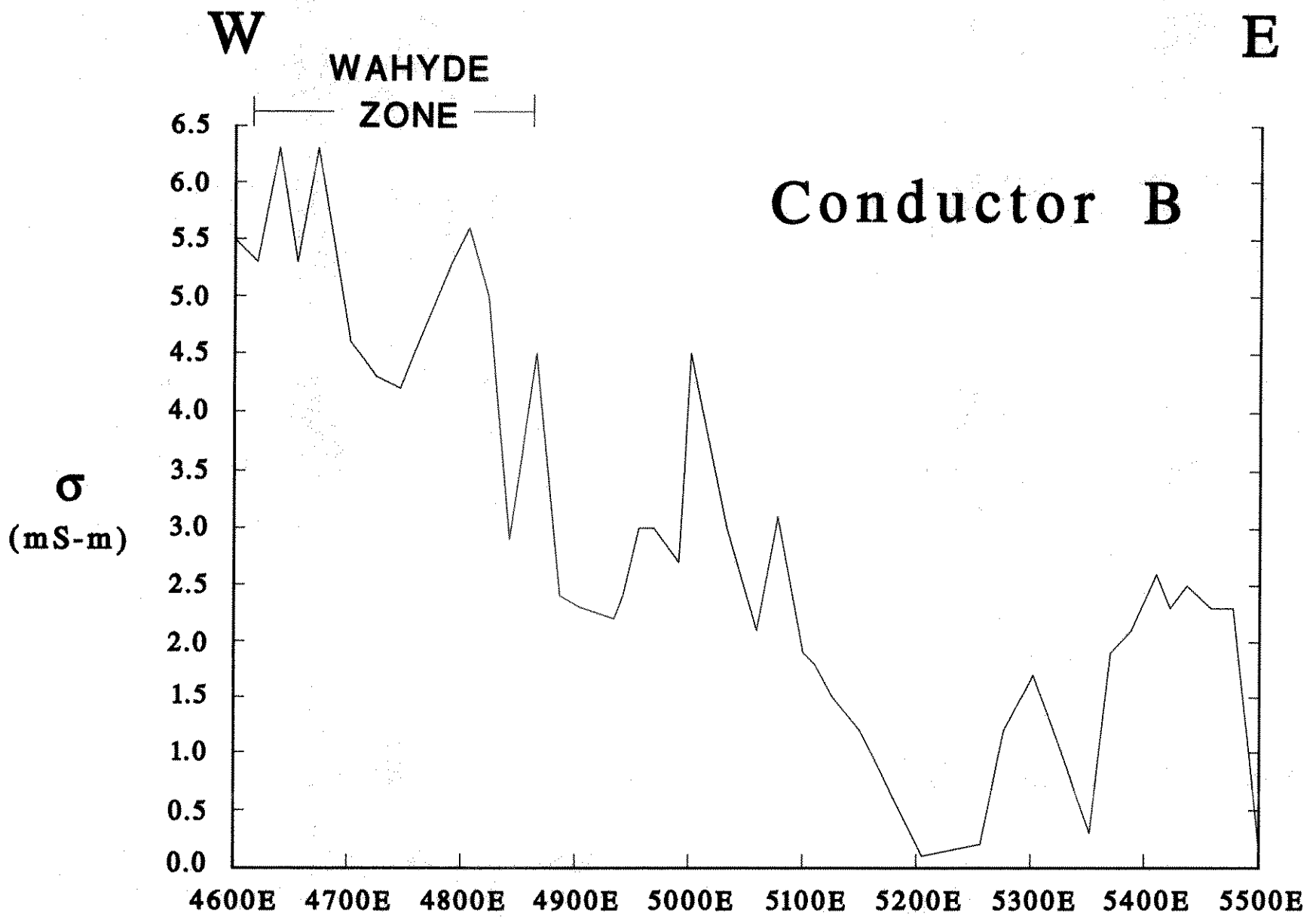
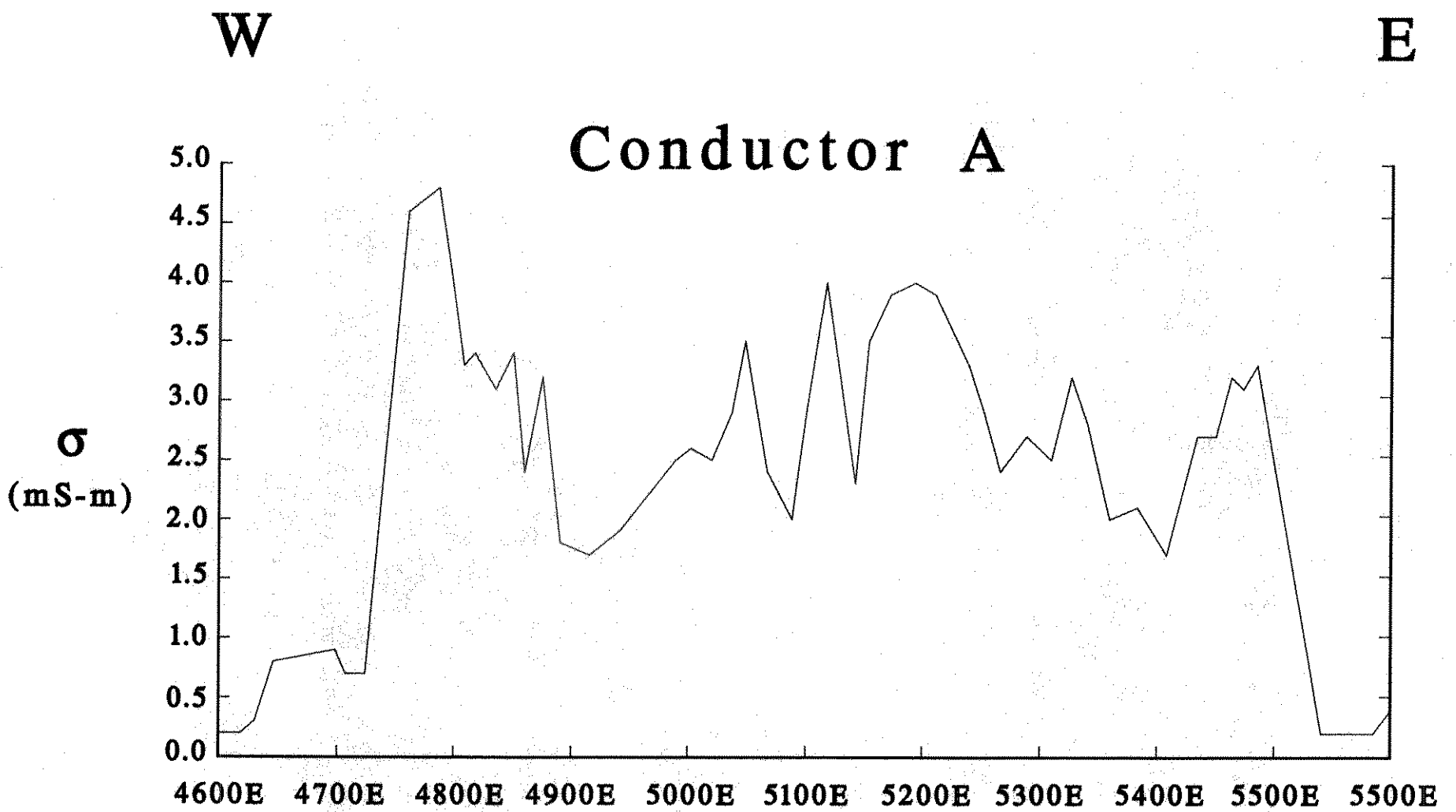
It was appreciated from the outset that an economic target on any of the known structures might be easily missed in a geophysical survey run with widely spaced survey lines. In order to locate smaller targets along the main conductors, a conductivity survey using a Geonics EM-31 was conducted along the axes of anomalies A and B. The EM-31 is a horizontal loop electromagnetic system designed to measure conductivity to a depth of 6.0 m. Instrument design principles, operation and interpretation are described in McNeill (1980). The instrument provides a direct digital readout of the ground conductivity (σ) in milli-Siemens per metre (mS/m). Readings were taken at 10 m

intervals along the conductor axes with a larger station spacing in regions of low conductivity. Conductivity profiles along the two conductor axes are shown in Figure 5. Figure 6 is a composite conductor map integrating the results of the VLF-EM and EM-31 surveys. The EM-31 survey located a zone of intense alteration on conductor **B** where the apparent conductivity was as high as 6 mS (apparent resistivity - 170 ohm-m). This zone (Wahyde Zone) is coincident with the locations where previous sampling returned high gold assays (Rogers 1984).

J. Trenching

Following the geophysical surveys, a trenching program was conducted using a Kubota KH-101 tracked excavator. Approximately 550 m of trench was excavated at 18 sites with trenches varying from 8 to 50 m. Trenches averaged 0.5 m wide, and 1.8 m deep and approximately 500 m³ of material was excavated during the course of the program. Excavator trenches within existing bulldozer trenches were not backfilled because of the difficulty and expense involved. Trenches in undisturbed ground were backfilled after logging except at quartz vein intersections. Trench locations and logs are shown in Figure 7. Three abandoned trenches are not shown. Quartz veins were chip sampled and the grid coordinates were used as the sample number. A total of 37 samples were taken and sent to Acme Laboratories in Vancouver B.C. where one assay ton samples were fire assayed with a gravimetric finish. Assay certificates are in Appendix D.

Trenching delineated a 350 m long alteration zone containing persistent quartz veins up to 2 m wide. The Wahyde Zone extends from trench T-5 to T-1 and is centred on a zone of alteration up to 50 m wide. Quartz veins occur in zones of limonitic alteration within the wider argillic alteration envelope. The wider veins are banded with chalcedonic quartz, limonite and quartz cemented breccia. Quartz lined vugs within breccia zones were common. The average orientation of the quartz veins is approximately 80° 70° N. In trench T93-1, very fine crystalline pyrite was noted in hand specimen; other samples were free of sulphides. Assays throughout this zone were uniformly low with only a few above the detection limit. The best sample was taken in trench T 93-3 at the north end and ran 0.028 OPT Au and 0.64 OPT Ag. The high grade samples taken in previous programs came from trench T-2.



0 100
metres

TYCON PROPERTY		Claims: NICK 1-3	
EM-31 Survey		Mining District: Whitehorse	
Conductivity Profiles		NTS: 105 D 3	Scale: 1:5,000
MOUNTAIN HIGHGRADE MINES LTD.		OPERATOR: G. Lee / M. Power	
		DATE: 15 NOV 93	Figure: 5

K. Conclusions

Exploration to date on the Tycon Property has located three major east-trending conductors, two of which appear to be fault zones (Conductors **A** and **B**). Within a wide zone of extensive alteration centred on Conductor **B**, persistent quartz veins ranging from 10 cm to 2m in width have developed. The veins are composed of quartz, chalcedony and limonite with abundant breccia and quartz-lined vugs and cavities. Sulphides minerals are largely absent. Gold grades are very spotty and are difficult to correlate with the hand specimen mineralogy. The fault zone within which the veins are located is on strike with a major east-trending fault containing the Goddell and Becker-Cochrane gold-silver showings. Taken together, these findings suggest that the Wahyde Zone is the partially eroded cap of an auriferous epithermal vein.

L. Recommendations

The Wahyde Zone should be tested to a depth of at least 400 feet by diamond drilling. The best location for a drill hole might be in the vicinity of trench T 93-2 where the widest vein intersections have been encountered at surface.

Respectfully Submitted,



M.A. Power M.Sc.

References cited

- Dodge, J. (1986) Report on diamond drilling - Tycon 1-52 Claim Group. Assessment Report AR 091898. Whitehorse Mining Recorder
- Doherty, R.A. and C.J.R. Hart (1989) Preliminary geology of Fenwick Creek (105D/3) and Alligator Lake (105D6) map areas. INAC Open File 1988-2, Indian and Northern Affairs Canada.
- McNeill, J.D. (1980) Electromagnetic Terrain Conductivity Measurement at Low Induction Numbers (Technical Note TN-6). Mississauga: Geonics Ltd.
- Paterson, N.R. and V. Ronka (1970) Five years of surveying with the VLF-EM method. Paper presented at the 1969 Annual International Meeting of the Society of Exploration Geophysicists.
- Rogers, R.S. (1984) Summary Report of Exploration, Tycon 1-52 Claim Group. Assessment Report AR 091579. Whitehorse Mining Recorder
- Wheeler, J. O. and P. McFeely (1987) Tectonic Assemblage Map of the Canadian Cordillera, Geological Survey of Canada, Open File 1565.

APPENDIX A. STATEMENT OF QUALIFICATIONS

I, Michael Allan Power of Whitehorse, Yukon Territory, certify that:

1. I obtained a Bachelor of Science Degree with First Class Honors in Geology from the University of Alberta in 1986 and a Masters Degree in Geophysics from the University of Alberta in 1988.
2. I have been employed in mineral exploration and geophysical research since 1984.
3. I performed or supervised all of the work described in this report.
4. I am President and majority shareholder of Mountain Highgrade Mines Ltd., the majority owner of the Tycon Property.



Michael A. Power M.Sc.

Whitehorse, Yukon Territory
December 10, 1993

APPENDIX B. PROJECT LOG

<u>Date (1993)</u>	<u>Activity</u>
June 21	M. Power began mobilization of equipment from Whitehorse to Tycon Property
June 23	G. Lee and M. Power move last of equipment into Tycon Property
June 24 to July 08	Grid installation, VLF-EM survey. [M. Power (6 days) / G. Lee (10 days)]
July 09 - July 11	Grid installation, mobilize EM-31, EM-31 survey, picket conductor trench locations [M. Power / G. Lee (3 days ea.)]
July 16 - Aug 01	Excavator trenching, mapping and sampling [M. Power (16 days) / G. Lee (13 days)]
Aug 02 - Aug 03	Final trenching, blast trenching, sampling, camp removal, demobe excavator [M. Power / G. Lee / W. Purves (2 days ea.)]
Nov 11 - Dec 8	Report preparation [M. Power (6 days)]

Personnel

Mike Power
Box 5709
Whitehorse, Y.T.
Y1A 5L5

Gary Lee
Box 5348
Whitehorse, Y.T.
Y1A 5L5

William Purves
28 Donjek
Whitehorse, Y.T.
Y1A 3Z2

Total Man Days:

M. Power	35 days
G. Lee	29 days
W. Purves	2 days

APPENDIX C. STATEMENT OF EXPENSES

Personnel

M. Power (35 days @ \$250)	\$8,750
G. Lee (29 days @ \$250)	7,250
W. Purves (2 days @ \$150)	300

Other expenses

Kubota excavator (1 mo.)	\$3,317
Diesel fuel	200
Transport: Kubota	220
Explosives	262
Assays (37 @ \$16)	592
EM-31 rental	164
Air freight (assays/EM-31)	162
Groceries (60 man-days @ \$22)	<u>1,320</u>

Total	\$22,537
-------	----------

Expenses incurred to June 26, 1993: (Applied to NICK 1-6)	\$2,448
--	---------

Expenses incurred after June 26, 1993: (Applied to NICK 1-13)	\$20,089
--	----------

APPENDIX D. ASSAY CERTIFICATES



ASSAY CERTIFICATE



Mountain Highgrade Mines Ltd. PROJECT TYCON File # 93-1841

Box 5709, Whitehorse YT Y1A 5L5 Submitted by: Mike Power

SAMPLE#	Ag** oz/t	Au** oz/t
4300 5300	.01	.001
4450 5308	<.01	.003
4625 5289	<.01	<.001
4650 5288	<.01	.001
4780 5320	<.01	<.001
4800 5300 S	<.01	<.001
4808 5305 A	<.01	<.001
4808 5305 B	<.01	<.001
4808 5305 C	<.01	<.001
RE 4808 5305 C	<.01	<.001
4808 5305 D	<.01	.001
4808 5305 E	<.01	<.001
4808 5305 S	<.01	.001
4830 5300 A	<.01	<.001
4830 5300 B	<.01	.001
4830 5301 A	<.01	.001
4830 5301 B	.01	<.001
4830 5302 A	<.01	<.001
4830 5302 B	<.01	<.001
5200 5275	<.01	<.001
5400 5260	<.01	<.001
STANDARD AG-1/AU-1	.98	.099

AG** AND AU** BY FIRE ASSAY FROM 1 A.T. SAMPLE.

- SAMPLE TYPE: ROCK

Samples beginning 'RE' are duplicate samples.

DATE RECEIVED: AUG 6 1993

DATE REPORT MAILED: Aug 11/93.

SIGNED BY: *C. Leong* D.TOYE, C.LEONG, J.WANG; CERTIFIED B.C. ASSAYERS

*does
not
need approval*

MINFILE: 105D 029
PAGE NO: 1 of 3
UPDATED: 07/18/94

**YUKON MINFILE
STANDARD REPORT
EXPLORATION AND GEOLOGICAL SERVICES DIVISION, DIAND
WHITEHORSE**

NAME(S): Mt Anderson	NTS MAP SHEET: 105 D 3
MINFILE #: 105D 029	LATITUDE: 60°12'25"N
MAJOR COMMODITIES: Au, Ag, Pb	LONGITUDE: 135°09'15"W
MINOR COMMODITIES: Zn	DEPOSIT TYPE: Vein
TECTONIC ELEMENT: Coast Plutonic Complex	STATUS: Drilled Prospect

CLAIMS (PREVIOUS AND CURRENT)

RIP, MTN, SHEEP, WHIRLWIND, FLORA, MOUNTAIN SHEEP, GOLD COIN, RHSM, STAR, SKINNER, JAX, EAGLE, DL, HL, AU, RUSH, BLUE SKY, TAM, TYCON, ROB, NICK, ADD.

WORK HISTORY

Staked in Aug/06 as Rip, Mtn Sheep & Whirlwind (9519) by McGraw, Becker & Cochran. Two short adits (27 m and 12 m long) were driven by 1909 on the Whirlwind (or lower) Vein. By 1915, the lower (No. 1) adit had advanced 98 m (46 m drifted on vein), the upper (No. 2) adit was in about 107 m (all on vein) and elsewhere on the property, a 10.7 m x-cut and 22.9 m of drift had been completed on a different vein and a fourth adit had failed to intersect a vein. Ore was being sacked in 1912 and a small mill was built shortly after but no production is recorded. The claims were taken to lease in 1918. E. Butterfield recorded some rock trenching in 1926 on the Flora and Mountain Sheep Extension claims, and H. Beatty did similar work in 1934-35 on the Gold Coin group (19085).

Restaked as Mountain Sheep, etc cl (4405) in May/44 by J. Johns and W. McAlister, who did more rock trenching. The RHSM cl (57335) staked in Aug/47 by T.C. Richards, W. McAlister and G. Simmons, were examined by Keno Hill Mg CL later that year. The owners made a test shipment to the Trail Smelter in 1947 and did extensive bulldozer trenching in 1948.

Restaked as Mt Sheep cl (60201) in Apr/51 by J. Johns; as Star, etc cl (73145) in Aug/57 by L. Laroche; as Skinner, etc cl (73186) in Oct/57; as Jax, etc cl (74871) in Jun/60 by L. Russell; as Eagle, etc cl (92035) in Oct/62 by G. Caldwell; as DL cl (91543) in Dec/64 by Yukon Antimony Corp L, which did minor bulldozer trenching in 1965, and as HL cl (Y12963) in Apr/67 by W. Hyde. Hyde optioned the property to Silgold ML from June to Nov/67, and to Adanac Mg & EL in Jun/68. Adanac conducted more bulldozer trenching in 1968 and dropped its option in Jan/70. In May-Jun/73, Adonis ML optioned the property briefly and carried out a short bulldozing and sampling program.

Restaked by D. Waugh as Au cl (Y79290) in Jun/74 and Rush cl (YA3785) in Oct/75; by D. Bernier as Blue Sky cl (YA8899) in Apr/77; and as Tam cl (YA22726) in Jul/78 by W. Kuhn, who performed a geophysical survey in 1979 and trenching in 1979 and 1980. W. Hyde tied on Tycon cl (YA59654) in Mar/81 and trenched in 1981 and 1982. Hyde performed trenching and 167.6 m of drilling on the Tycon claims in 1986. The Tam group was transferred in 1983 to Sanfred Res L and trenched in 1984 under an option to Noranda ECL which performed soil sampling, IP, VLF-EM, and magnetic surveys, bulldozer trenching and diamond drilled 7 holes totalling 528.7 m in 1985 and performed geological mapping and geochem in 1986. Total Erickson Res L sub-optioned the Tam claims in Aug/88 and resampled the underground workings and drilled two diamond drill holes totalling 318 m before dropping the option.

Walhala EL staked, then transferred the Rob cl (YA82113) to Anina Res Inc in Jun/84 and performed mapping in 1985, 1986 and 1987, VLF/EM surveys in 1985 and geochem sampling in 1986. JBD Management Services acquired the Rob claims from Anina Resources Inc. in 1987 and subsequently transferred them to Adda Minerals Co. Ltd in 1989. Adda carried out mapping, sampling and trenching in 1989. Adda Minerals trenched mineralized skarn on the Rob 28 and 32 claims in 1991, and performed linecutting and further trenching in 1992.

WORK HISTORY (CONTINUED)

R. Hulstein staked 4 Mosquito cl (YB36900) 1.5 km to the southeast in Jun/92. Mountain Highgrade Mines Ltd staked the Nick 1-6 cl (YB36900) in May/93 and the Nick 7-9 cl (YB38071) in June/93. These claims were later transferred to G. Lee. G.C. Lee tied on the Nick 10-13 cl (YB38119) in Jul/93, which were transferred to Mountain Highgrades Mines Ltd in Dec/93.

The Add 1-5 cl (YB46511) were staked northwest of the Nick cl in Oct/93 by Adda Minerals Ltd, who conducted a program of trenching, geochemical sampling and geophysical surveying on the adjacent Rob claims.

Mountain Highgrade Mines Ltd and G. Lee conducted VLF-EM and ground conductivity surveys, followed by excavator trenching on the Nick cl in 1993.

GEOLOGY

The Whirlwind Vein ranges in width from 10 cm to 1.8 m, averaging about 45.7 cm. It cuts Cretaceous granodiorite and is locally intruded by basalt dykes. Galena and pyrite are erratically distributed in lenses of vuggy quartz.

The 1947 test shipment assayed 34.3 g/t Au, 432.0 g/t Ag 11.6% Pb and 5.2% Zn. Adanac's trenching exposed a mineralized shoot 15 m long and 0.9 m wide averaging about 62.2 g/t Au and 171.1 g/t Ag. MacLean sampled 33 m of No. 1 adit in 1912 which averaged 2.7 g/t Au and 219.4 g/t Ag over a width of 0.45 m and a length of 23.8 m.

Noranda's 1975 drilling, which tested geochemical and geophysical targets on the Tam claims, did not produce significant precious metal values, but the 1986 trenching, which explored a 150 m long EM anomaly, encountered pyrite-galena-chalcopyrite float assaying up to 111.6 g/t Au and 9.6 g/t Ag. Total Erickson's underground sampling outlined 15 mineralized shoots averaging 7.5 g/t Au, 83 g/t Ag, 3.3% Pb and 0.03% Zn over 1.3 m. The 1988 drill holes cut quartz veins that contain minor pyrite, galena and sphalerite but no significant gold or silver values were obtained.

Hyde's 1986 drilling on the Tycon claims cut altered and silicified structures but only returned values up to 0.4 g/t Au and 24 g/t Ag over 2.9 m.

On the Rob claims, Eocene rhyolite intrudes and overlies Cretaceous granodiorite and Paleozoic? schist, gneiss, quartzite and marble. The Anina Resources work outlined widespread soil anomalies and located limonite-stained, vuggy quartz float containing traces of pyrite and galena, which assayed up to 215 g/t Au and 521.5 g/t Ag. In 1989, Anina trenched a skarn showing on the Rob 28 and 32 claims. Calc-silicate rock from the trench contained sphalerite, pyrite, pyrrhotite, molybdenite, chalcopyrite and bismuthinite, and returned values up to 7068 ppb Au, 64.9 ppb Ag, 4.5% Zn, 1.1% Cu, 0.4% Bi and 0.14% WO₃.

Further trenching by Adda Minerals in 1991 and 1992 along the granodiorite-metasedimentary contact exposed several thin skarn lenses. A band of garnet-actinolite skarn in trench 1992-1 assayed 2023 ppb Au, 40.4 g/t Ag over 40 cm, and another chip sample returned 2.91% Zn and 1224 ppb Au over 3.2 m.

REFERENCES

ADANAC MINING AND EXPLORATION LTD, 1968. Report by D.D. Campbell in George Cross Newsletter, 21 Jan/69.

ADDA MINERALS LTD, Aug/90. Assessment Report #092874 by H. Keyser.

ADDA MINERALS LTD, Aug/91. Assessment Report #092975 by R. Hulstein.

ADDA MINERALS LTD, Sep/92. Assessment Report #093038 by R. Hulstein.

ADDA MINERALS LTD, Feb/93. Assessment Report #093082 by G.F. Smith.

ADDA MINERALS LTD., Dec/93. Assessment Report #093164 by R.A. Doherty.

GEOLOGICAL SURVEY OF CANADA, 1910. Summary Report 1909, p. 53.

GEOLOGICAL SURVEY OF CANADA, 1916. Summary Report 1915, p. 45-46.

GEOLOGICAL SURVEY OF CANADA, Memoir 312, p. 124-125.

GEORGE CROSS NEWSLETTER, 12 Aug, 28 Nov/88.

MACLEAN, T.A., 1914. Lode Mining in Yukon. Mines Branch Publication 222, p. 182-187.

WESTERN MINER, Dec/47, p. 35; Jan/48.

YUKON EXPLORATION 1985-86, p. 180; 1987, p. 161-162.

YUKON EXPLORATION AND GEOLOGY 1992, p. 5.

YUKON GEOLOGY AND EXPLORATION, 1979-80, p. 166; 1984, p. 72.

does not need approval

MINFILE: 105D 029
PAGE NO: 1 of 3
UPDATED: 07/18/94

**YUKON MINFILE
STANDARD REPORT
EXPLORATION AND GEOLOGICAL SERVICES DIVISION, DIAND
WHITEHORSE**

NAME(S): Mt Anderson
MINFILE #: 105D 029
MAJOR COMMODITIES: Au, Ag, Pb
MINOR COMMODITIES: Zn
TECTONIC ELEMENT: Coast Plutonic Complex
NTS MAP SHEET: 105 D 3
LATITUDE: 60°12'25"N
LONGITUDE: 135°09'15"W
DEPOSIT TYPE: Vein
STATUS: Drilled Prospect

CLAIMS (PREVIOUS AND CURRENT)

RIP, MTN, SHEEP, WHIRLWIND, FLORA, MOUNTAIN SHEEP, GOLD COIN, RHSM, STAR, SKINNER, JAX, EAGLE, DL, HL, AU, RUSH, BLUE SKY, TAM, TYCON, ROB, NICK, ADD.

WORK HISTORY

Staked in Aug/06 as Rip, Mtn Sheep & Whirlwind (9519) by McGraw, Becker & Cochran. Two short adits (27 m and 12 m long) were driven by 1909 on the Whirlwind (or lower) Vein. By 1915, the lower (No. 1) adit had advanced 98 m (46 m drifted on vein), the upper (No. 2) adit was in about 107 m (all on vein) and elsewhere on the property, a 10.7 m x-cut and 22.9 m of drift had been completed on a different vein and a fourth adit had failed to intersect a vein. Ore was being sacked in 1912 and a small mill was built shortly after but no production is recorded. The claims were taken to lease in 1918. E. Butterfield recorded some rock trenching in 1926 on the Flora and Mountain Sheep Extension claims, and H. Beatty did similar work in 1934-35 on the Gold Coin group (19085).

Restaked as Mountain Sheep, etc cl (4405) in May/44 by J. Johns and W. McAlister, who did more rock trenching. The RHSM cl (57335) staked in Aug/47 by T.C. Richards, W. McAlister and G. Simmons, were examined by Keno Hill Mg CL later that year. The owners made a test shipment to the Trail Smelter in 1947 and did extensive bulldozer trenching in 1948.

Restaked as Mt Sheep cl (60201) in Apr/51 by J. Johns; as Star, etc cl (73145) in Aug/57 by L. Laroche; as Skinner, etc cl (73186) in Oct/57; as Jax, etc cl (74871) in Jun/60 by L. Russell; as Eagle, etc cl (92035) in Oct/62 by G. Caldwell; as DL cl (91543) in Dec/64 by Yukon Antimony Corp L, which did minor bulldozer trenching in 1965, and as HL cl (Y12963) in Apr/67 by W. Hyde. Hyde optioned the property to Silgold ML from June to Nov/67, and to Adanac Mg & EL in Jun/68. Adanac conducted more bulldozer trenching in 1968 and dropped its option in Jan/70. In May-Jun/73, Adonis ML optioned the property briefly and carried out a short bulldozing and sampling program.

Restaked by D. Waugh as Au cl (Y79290) in Jun/74 and Rush cl (YA3785) in Oct/75; by D. Bernier as Blue Sky cl (YA8899) in Apr/77; and as Tam cl (YA22726) in Jul/78 by W. Kuhn, who performed a geophysical survey in 1979 and trenching in 1979 and 1980. W. Hyde tied on Tycon cl (YA59654) in Mar/81 and trenched in 1981 and 1982. Hyde performed trenching and 167.6 m of drilling on the Tycon claims in 1986. The Tam group was transferred in 1983 to Sanfred Res L and trenched in 1984 under an option to Noranda ECL which performed soil sampling, IP, VLF-EM, and magnetic surveys, bulldozer trenching and diamond drilled 7 holes totalling 528.7 m in 1985 and performed geological mapping and geochem in 1986. Total Erickson Res L sub-optioned the Tam claims in Aug/88 and resampled the underground workings and drilled two diamond drill holes totalling 318 m before dropping the option.

Walhala EL staked, then transferred the Rob cl (YA82113) to Anina Res Inc in Jun/84 and performed mapping in 1985, 1986 and 1987, VLF/EM surveys in 1985 and geochem sampling in 1986. JBD Management Services acquired the Rob claims from Anina Resources Inc. in 1987 and subsequently transferred them to Adda Minerals Co. Ltd in 1989. Adda carried out mapping, sampling and trenching in 1989. Adda Minerals trenched mineralized skarn on the Rob 28 and 32 claims in 1991, and performed linecutting and further trenching in 1992.

WORK HISTORY (CONTINUED)

R. Hulstein staked 4 Mosquito cl (YB36900) 1.5 km to the southeast in Jun/92. Mountain Highgrade Mines Ltd staked the Nick 1-6 cl (YB36900) in May/93 and the Nick 7-9 cl (YB38071) in June/93. These claims were later transferred to G. Lee. G.C. Lee tied on the Nick 10-13 cl (YB38119) in Jul/93, which were transferred to Mountain Highgrades Mines Ltd in Dec/93.

The Add 1-5 cl (YB46511) were staked northwest of the Nick cl in Oct/93 by Adda Minerals Ltd, who conducted a program of trenching, geochemical sampling and geophysical surveying on the adjacent Rob claims.

Mountain Highgrade Mines Ltd and G. Lee conducted VLF-EM and ground conductivity surveys, followed by excavator trenching on the Nick cl in 1993.

GEOLOGY

The Whirlwind Vein ranges in width from 10 cm to 1.8 m, averaging about 45.7 cm. It cuts Cretaceous granodiorite and is locally intruded by basalt dykes. Galena and pyrite are erratically distributed in lenses of vuggy quartz.

The 1947 test shipment assayed 34.3 g/t Au, 432.0 g/t Ag 11.6% Pb and 5.2% Zn. Adanac's trenching exposed a mineralized shoot 15 m long and 0.9 m wide averaging about 62.2 g/t Au and 171.1 g/t Ag. MacLean sampled 33 m of No. 1 adit in 1912 which averaged 2.7 g/t Au and 219.4 g/t Ag over a width of 0.45 m and a length of 23.8 m.

Noranda's 1975 drilling, which tested geochemical and geophysical targets on the Tam claims, did not produce significant precious metal values, but the 1986 trenching, which explored a 150 m long EM anomaly, encountered pyrite-galena-chalcopyrite float assaying up to 111.6 g/t Au and 9.6 g/t Ag. Total Erickson's underground sampling outlined 15 mineralized shoots averaging 7.5 g/t Au, 83 g/t Ag, 3.3% Pb and 0.03% Zn over 1.3 m. The 1988 drill holes cut quartz veins that contain minor pyrite, galena and sphalerite but no significant gold or silver values were obtained.

Hyde's 1986 drilling on the Tycon claims cut altered and silicified structures but only returned values up to 0.4 g/t Au and 24 g/t Ag over 2.9 m.

On the Rob claims, Eocene rhyolite intrudes and overlies Cretaceous granodiorite and Paleozoic? schist, gneiss, quartzite and marble. The Anina Resources work outlined widespread soil anomalies and located limonite-stained, vuggy quartz float containing traces of pyrite and galena, which assayed up to 215 g/t Au and 521.5 g/t Ag. In 1989, Anina trenched a skarn showing on the Rob 28 and 32 claims. Calc-silicate rock from the trench contained sphalerite, pyrite, pyrrhotite, molybdenite, chalcopyrite and bismuthinite, and returned values up to 7068 ppb Au, 64.9 ppb Ag, 4.5% Zn, 1.1% Cu, 0.4% Bi and 0.14% WO₃.

Further trenching by Adda Minerals in 1991 and 1992 along the granodiorite-metasedimentary contact exposed several thin skarn lenses. A band of garnet-actinolite skarn in trench 1992-1 assayed 2023 ppb Au, 40.4 g/t Ag over 40 cm, and another chip sample returned 2.91% Zn and 1224 ppb Au over 3.2 m.

REFERENCES

ADANAC MINING AND EXPLORATION LTD, 1968. Report by D.D. Campbell in George Cross Newsletter, 21 Jan/69.

ADDA MINERALS LTD, Aug/90. Assessment Report #092874 by H. Keyser.

ADDA MINERALS LTD, Aug/91. Assessment Report #092975 by R. Hulstein.

ADDA MINERALS LTD, Sep/92. Assessment Report #093038 by R. Hulstein.

ADDA MINERALS LTD, Feb/93. Assessment Report #093082 by G.F. Smith.

ADDA MINERALS LTD., Dec/93. Assessment Report #093164 by R.A. Doherty.

GEOLOGICAL SURVEY OF CANADA, 1910. Summary Report 1909, p. 53.

GEOLOGICAL SURVEY OF CANADA, 1916. Summary Report 1915, p. 45-46.

GEOLOGICAL SURVEY OF CANADA, Memoir 312, p. 124-125.

GEORGE CROSS NEWSLETTER, 12 Aug, 28 Nov/88.

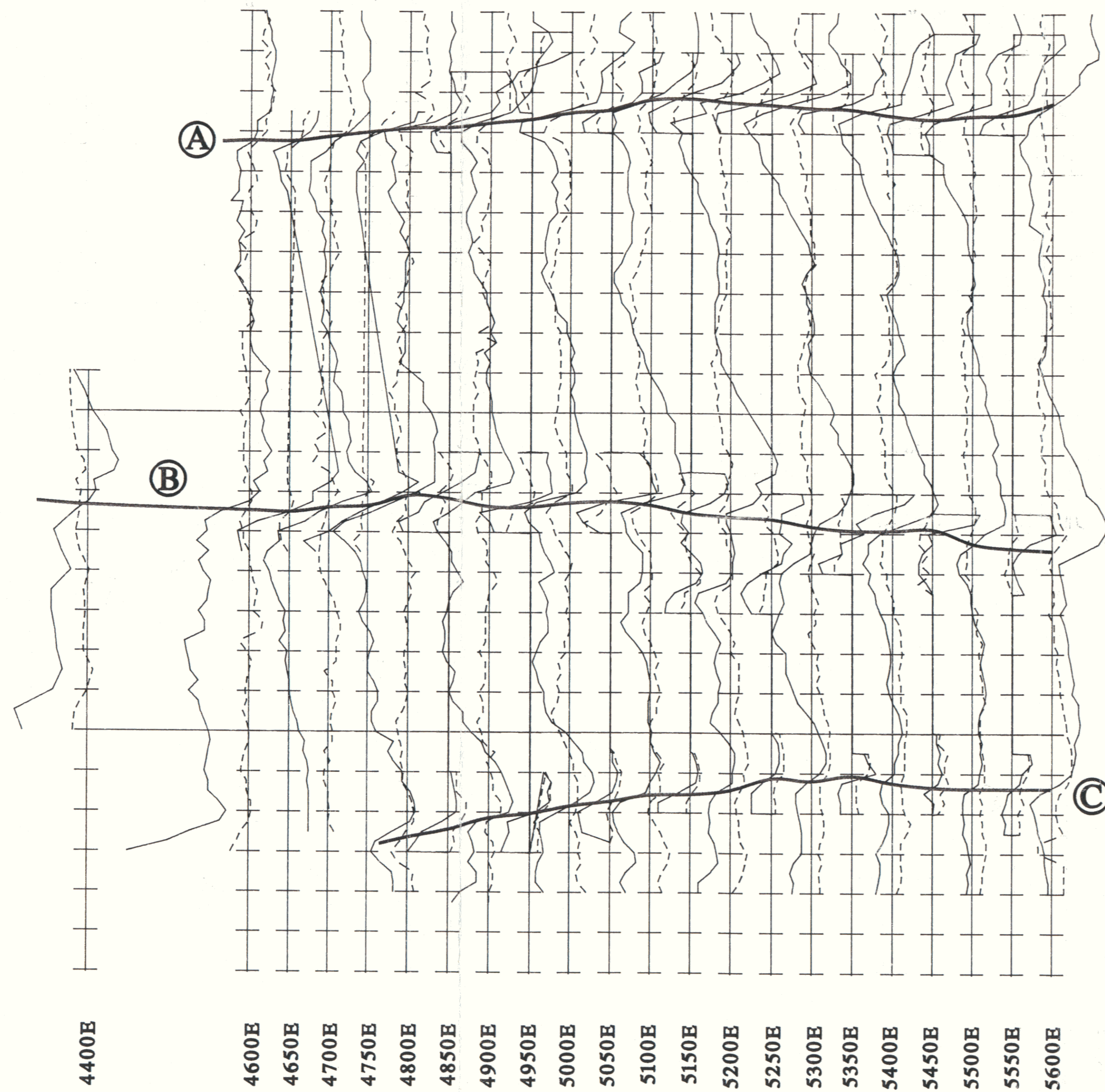
MACLEAN, T.A., 1914. Lode Mining in Yukon. Mines Branch Publication 222, p. 182-187.

WESTERN MINER, Dec/47, p. 35; Jan/48.

YUKON EXPLORATION 1985-86, p. 180; 1987, p. 161-162.

YUKON EXPLORATION AND GEOLOGY 1992, p. 5.

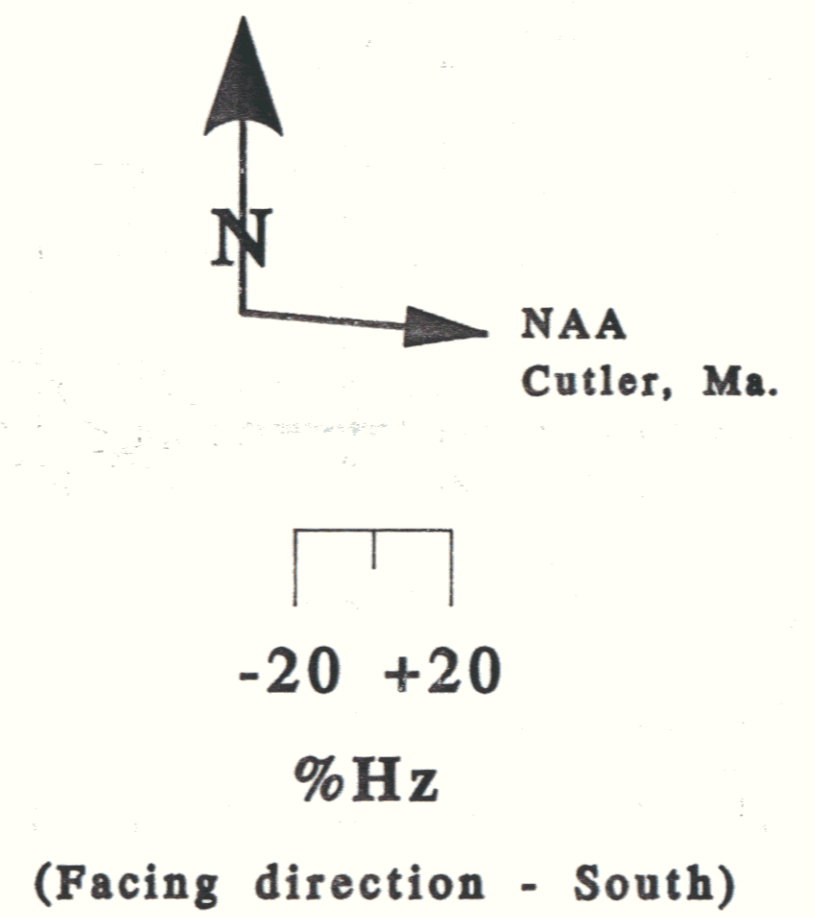
YUKON GEOLOGY AND EXPLORATION, 1979-80, p. 166; 1984, p. 72.



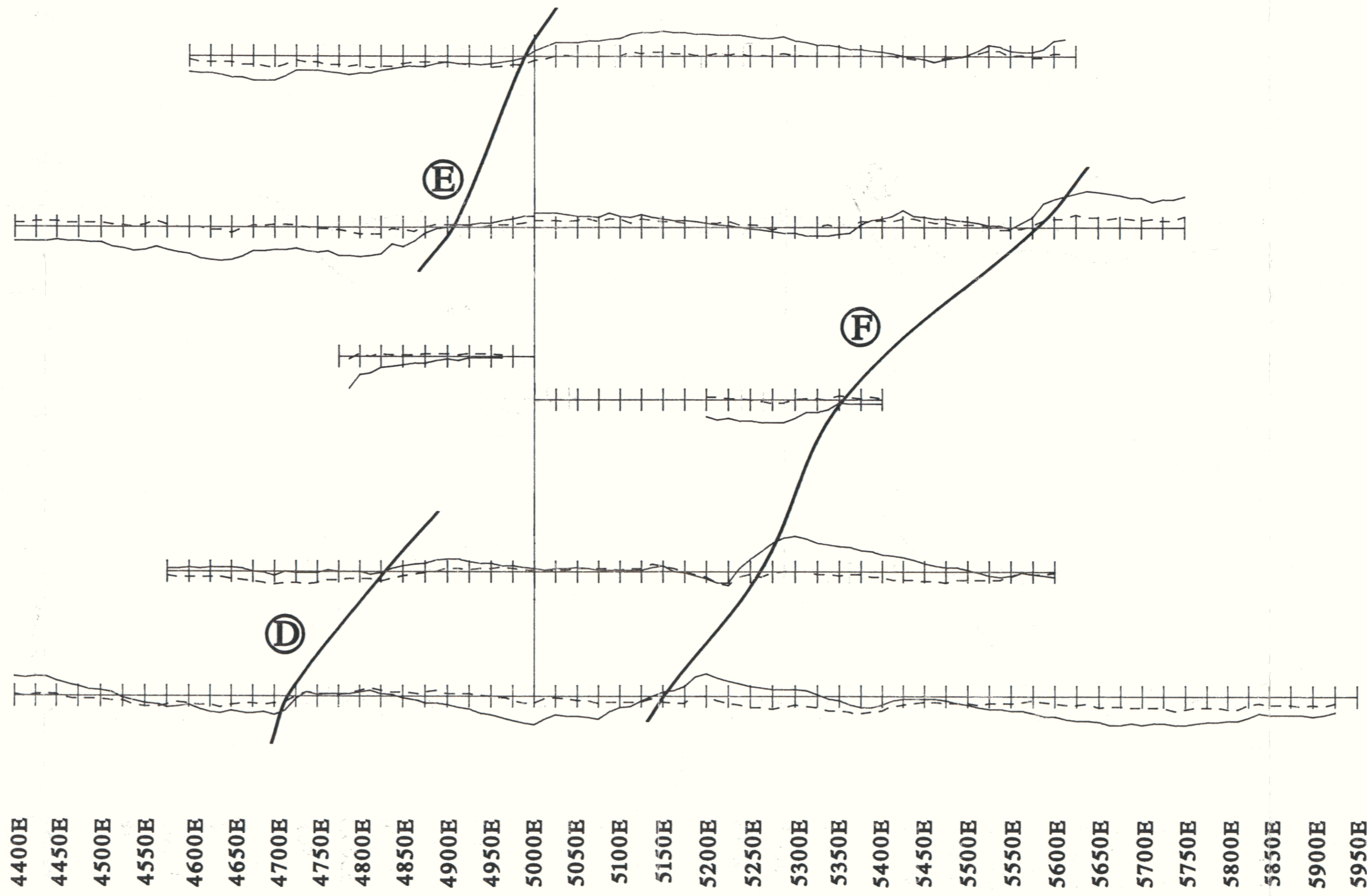
MAINE

5900.0N
5850.0N
5800.0N
5750.0N
5700.0N
5650.0N
5600.0N
5550.0N
5500.0N
5450.0N
5400.0N
5350.0N
5300.0N
5250.0N
5200.0N
5150.0N
5100.0N
5050.0N
5000.0N
4950.0N
4900.0N
4850.0N
4800.0N
4750.0N
4700.0N

4400E
4600E
4650E
4700E
4750E
4800E
4850E
4900E
4950E
5000E
5050E
5100E
5150E
5200E
5250E
5300E
5350E
5400E
5450E
5500E
5550E
5600E



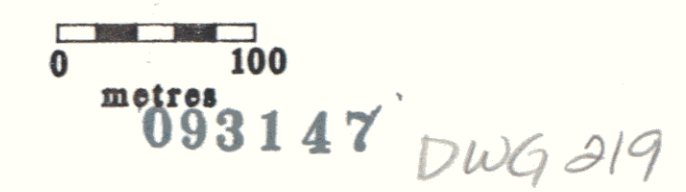
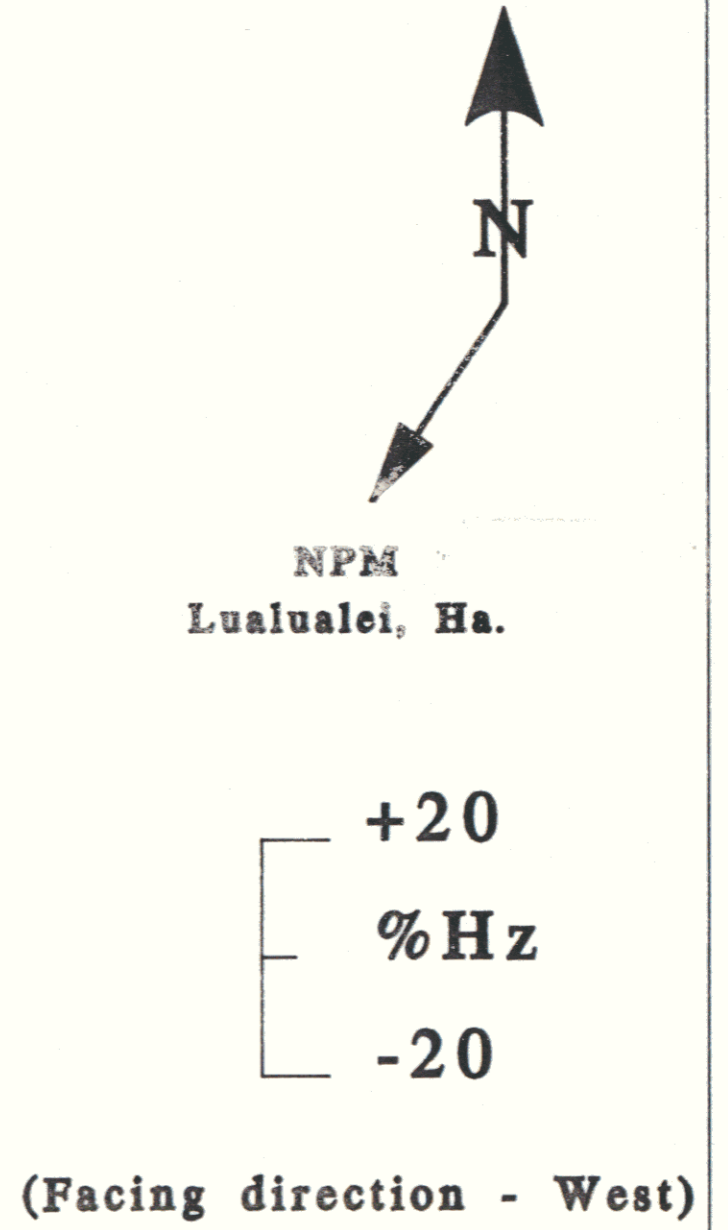
A ——— - Conductor axis



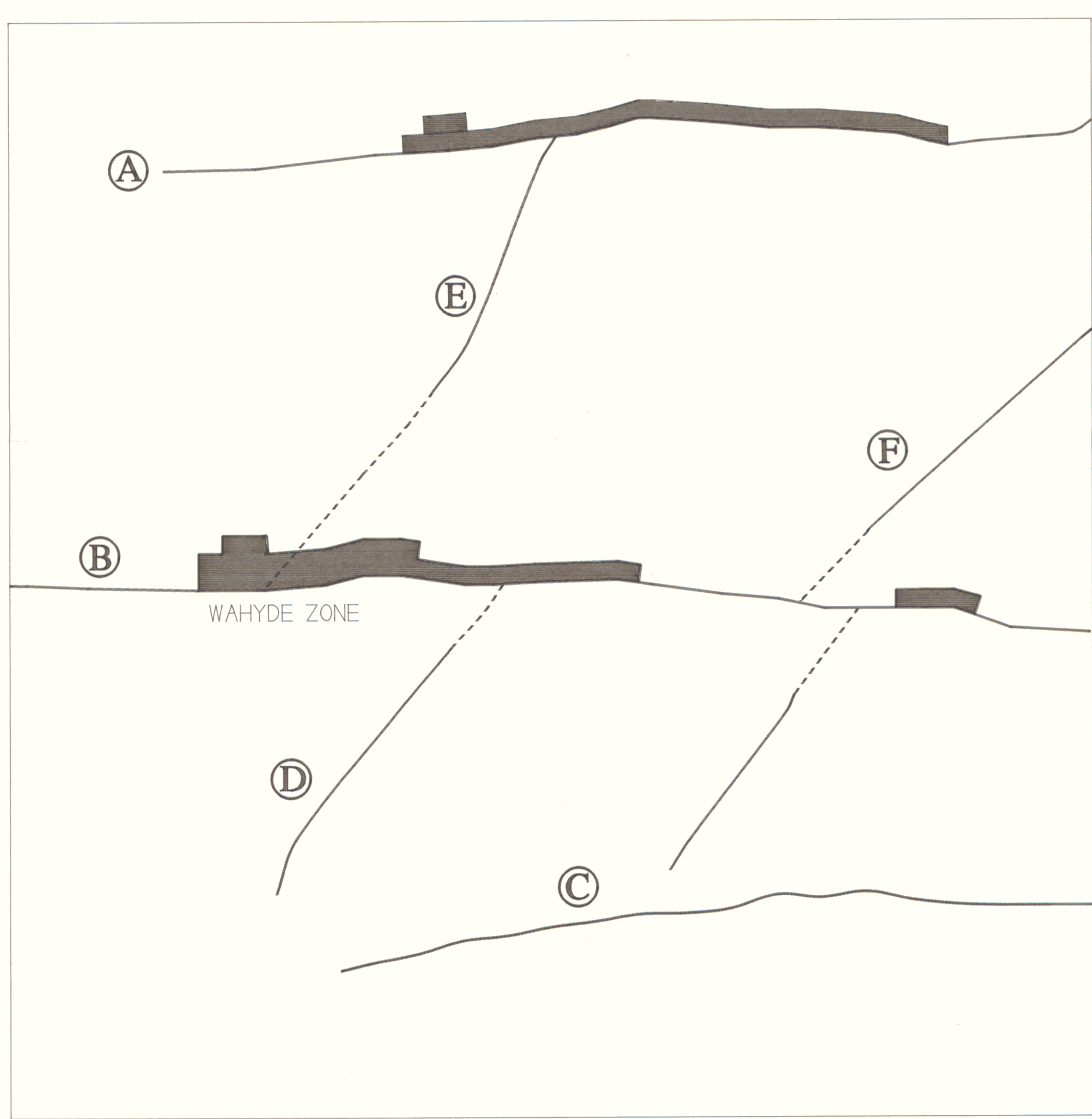
HAWAII

5900.0N
5850.0N
5800.0N
5750.0N
5700.0N
5650.0N
5600.0N
5550.0N
5500.0N
5450.0N
5400.0N
5350.0N
5300.0N
5250.0N
5200.0N
5150.0N
5100.0N
5050.0N
5000.0N
4950.0N
4900.0N

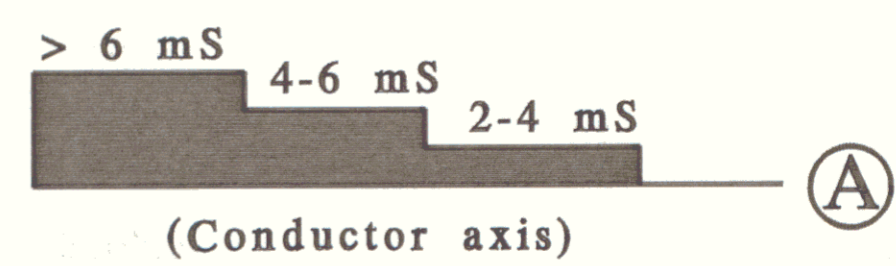
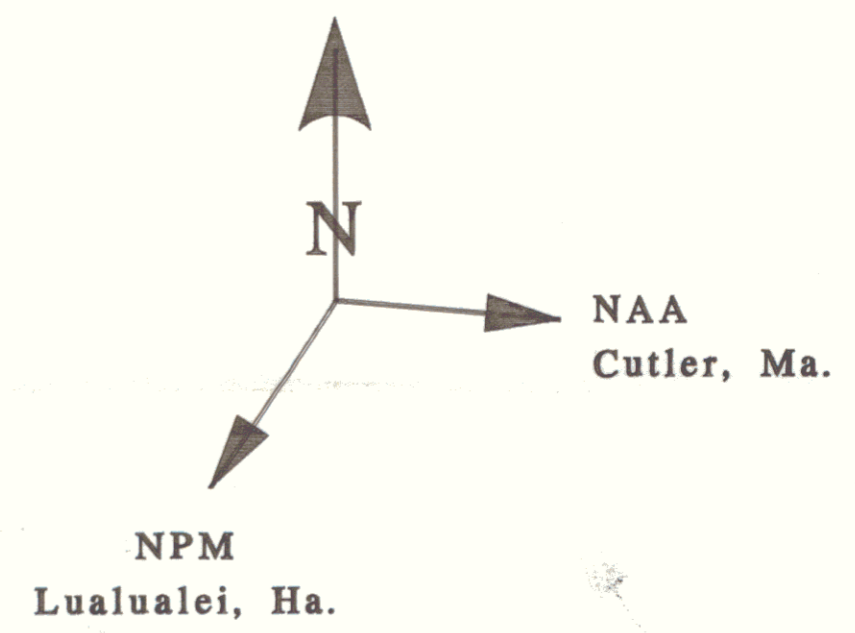
4400E
4450E
4500E
4550E
4600E
4650E
4700E
4750E
4800E
4850E
4900E
4950E
5000E
5050E
5100E
5150E
5200E
5250E
5300E
5350E
5400E
5450E
5500E
5550E
5600E
5650E
5700E
5750E
5800E
5850E
5900E
5950E



TYCON PROPERTY		Claims: NICK H3
VLF-EM Survey		Mining District: Whitehorse
Stacked Profile Map		NTS: 105 D 3
MOUNTAIN HIGH-GRADE MINES LTD.		OPERATOR: G. Lee / M. Power
		DATE: 15 NOV 93 Figure: 4



5900.0N
 5850.0N
 5800.0N
 5750.0N
 5700.0N
 5650.0N
 5600.0N
 5550.0N
 5500.0N
 5450.0N
 5400.0N
 5350.0N
 5300.0N
 5250.0N
 5200.0N
 5150.0N
 5100.0N
 5050.0N
 5000.0N
 4950.0N
 4900.0N
 4850.0N
 4800.0N
 4750.0N
 4700.0N



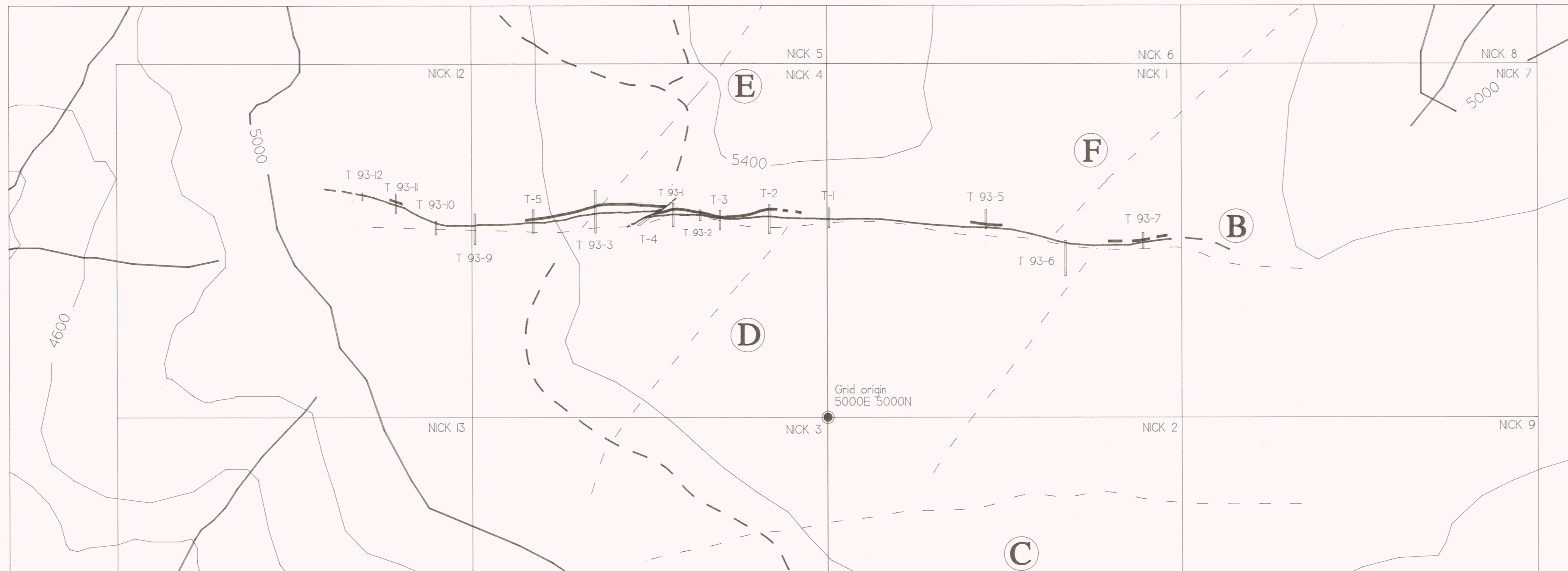
4400E 4450E 4500E 4550E 4600E 4650E 4700E 4750E 4800E 4850E 4900E 4950E 5000E 5050E 5100E 5150E 5200E 5250E 5300E 5350E 5400E 5450E 5500E 5550E 5600E



093147

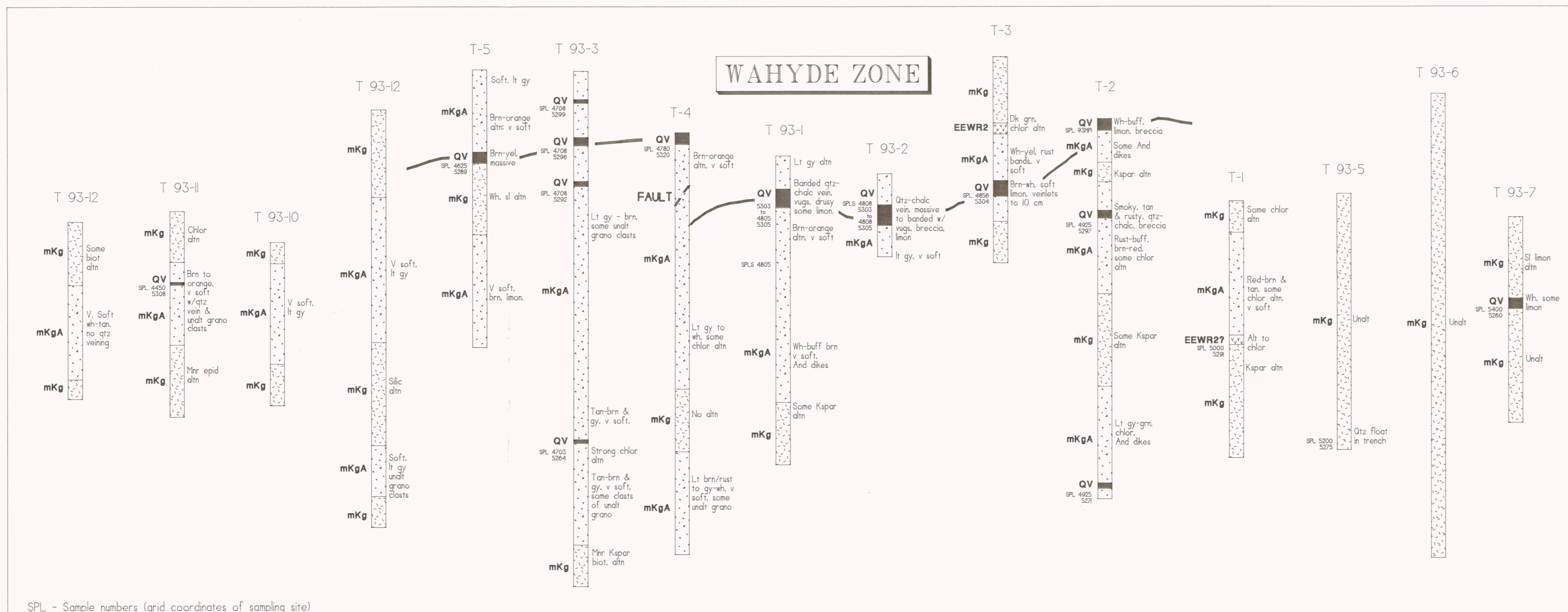
DWG 220

TYCON PROPERTY	Claims: NICK H-3
EM-31 & VLF-EM SURVEYS	Mining District: Whitehorse
Conductor Map	NTS: 105 D 3 Scale: 1: 4,000
MOUNTAIN HIGHGRADE MINES LTD.	OPERATOR: G. Lee / M. Power
	DATE: 15 NOV 93 Figure: 6

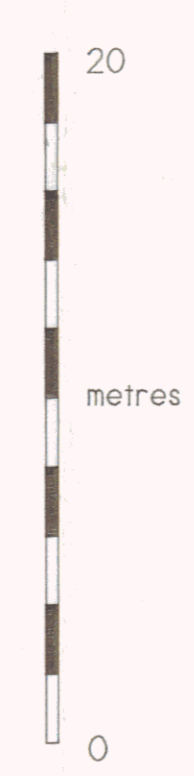


LEGEND

- T 93-6 | Excavator Trench
- (C) - - - - - VLF-EM Conductor axis
- ~ ~ ~ ~ ~ Approximate fault zone axis
- Quartz vein
- - - - - CAT Trail
- NICK 2 | Claim boundary



STRATIGRAPHY



- EEWR2** Watson River Formation: Dark green chloritized andesite in thin dikes.
- QV** White to yellow or rust, massive to thin (6 cm) banded quartz chalcodony veins and veinlets with limonite and chlorite gouge, brecciated silicified granodiorite clasts up to 10 cm. vugs and cockscomb structures common, occasional very fine crystalline pyrite, brown-buff clay gouge.
- mKgA** Altered Mt. Anderson granodiorite: predominantly white to light gray with brown-red to orange near quartz veins; mostly clay with unaltered quartz crystals with relict bedrock textures. Near trenches T-1 to T-3 intruded by andesite dikes and altered to dark green chloritized gouge. Less altered zones have clasts up to 20 cm of unaltered granodiorite.
- mKg** Mt. Anderson Granodiorite: leucocratic to (rarely) melanocratic massive granodiorite and (?) diorite. Averaging 30% amphibole, 40% plagioclase, 20% quartz, 10% Kspar with abundant pink Kspar and biotite near contacts.

093147 DWG 221

SPL - Sample numbers (grid coordinates of sampling site)

TYCON PROPERTY	Claims: NICK 1-3
PROPERTY GEOLOGY	Mining District: Whitehorse NTS: 105 D 3 Scale: 1:3,000
Mountain Highgrade Mines Ltd.	Drawn By: M. Power DATE: 1 DEC 93 Figure: 7