

MAP NO.: 1150 10  
ASSESSMENT REPORT  
PROSPECTUS  
CONFIDENTIAL X  
OPEN FILE

DOCUMENT NO: 093127  
MINING DISTRICT: DAWSON  
TYPE OF WORK: GEOCHEMISTRY

REPORT FILED UNDER: JAMES S. CHRISTIE

DATE PERFORMED: AUGUST 21-24, 1992

DATE FILED: AUGUST 2, 1993

LOCATION: LAT.: 63°40'30"N

AREA: GYPPO CREEK

LONG.: 138°34'30"W

VALUE \$: 6,800

CLAIM NAME & NO.: GO 50-79 (YB41150-181)

WORK DONE BY: JAMES S. CHRISTIE

WORK DONE FOR: JAMES S. CHRISTIE

DATE TO GOOD STANDING:


REMARKS: 184 SOIL & SILT SAMPLES COLLECTED ALONG WITH 4 ROCK SAMPLES. SOME FOLLOW-UP BACKHOE TRENCHING WAS ALSO COMPLETED.



THE GO CLAIMS

GYPPO CREEK

YUKON

115-0-10

RECONNAISSANCE GEOLOGY

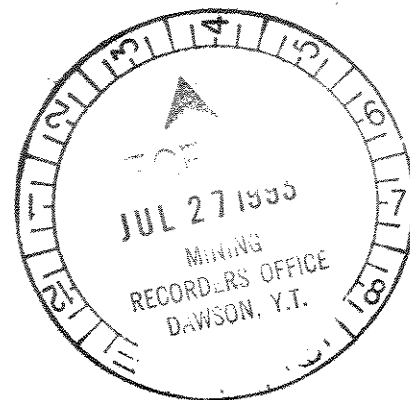
and

GEOCHEMISTRY

November 15, 1992

Prepared by James S. Christie, Ph.D.

Geologist



## TABLE OF CONTENTS

	PAGE
INTRODUCTION	2
LOCATION AND ACCESS	2
TOPOGRAPHY AND VEGETATION	2
PROPERTY LOCATION MAP	2a
CLAIMS	3
GEOLOGY	3
CLAIM MAP	3a
GEOCHEMISTRY	4
FIG. 3 MINERALIZED PIT	4a
FIG. 4 GOLD ANOMALY IN SOIL	4b
GOLD	5
CHROMIUM NICKEL IRON	6
CONCLUSIONS	7
RECOMMENDATIONS	7
STAKING	8
RECONNAISSANCE GEOCHEMISTRY	8
GRID GEOCHEMISTRY	8
BACKHOE TRENCHING	8
GO CLAIMS 1993 BUDGET	9
COST STATEMENT - 1992 WORK	10
STATEMENT OF QUALIFICATIONS	11
APPENDIX	
GEOCHEMICAL DATA	12
MAP IN POCKET	
RECONNAISSANCE GEOCHEMISTRY	POCKET

## INTRODUCTION

The GO quartz claims cover the entire drainage basin of a small unnamed left limit tributary of Dominion Creek which enters Dominion about 0.5 km below its confluence with Rob Roy Creek and Gold Run Creeks. This Creek is about 3 km in length and the area of the drainage basin is about 7 sq km, and is referred to as Gyppo Creek in this report. Gyppo Mines discovered significant placer gold deposits by drilling this creek in 1991, and started a small placer mining operation in 1992. Prior to that, the only apparent mining activity dated back to the turn of the century when some test shafting was done but no mining ensued.

Placer gold recovered during drilling and the early production of Gyppo Mines was of considerable interest because of diversity of texture and high purity (900 fine). It is not at all like Dominion Creek gold, and it is easy to speculate that Gyppo Creek gold may have been derived from a separate local source. Gyppo Creek drainage basin is relatively small and a reconnaissance traverse indicated that slope, soil and permafrost conditions were amenable to soil based geochemical exploration. The GO claims, 32 in number were staked covering the target area and the initial sampling and mapping was carried out in August 1992. Results were received in late September and some follow-up sampling was completed, but the early snowfall and freezing conditions were such that not as much could be done as was warranted.

Results from initial and follow-up soil sampling have outlined a good quality gold anomaly of significant size that is open in 2 directions. Several weaker gold anomalies were also indicated and a backhoe trench near one of these hit mineralized bedrock while digging a follow-up soil sample. Rock chip samples are in the 200 -1000 ppb range. It is clear that gold mineralization is present in the bedrock of Gyppo Creek basin and that considerably more exploration work is required.

## LOCATION AND ACCESS

Gyppo Creek is located about 70 km by road southeast of Dawson City Yukon as shown on the accompanying Property Location Map. The road is gravel beyond the Hunker Creek turnoff but is maintained by the Yukon Government and is usually in good condition. Access to the property is through Ross Mining's camp on lower Dominion and Gyppo Mining's camp. Driving time from Dawson is about 1.5 hours.

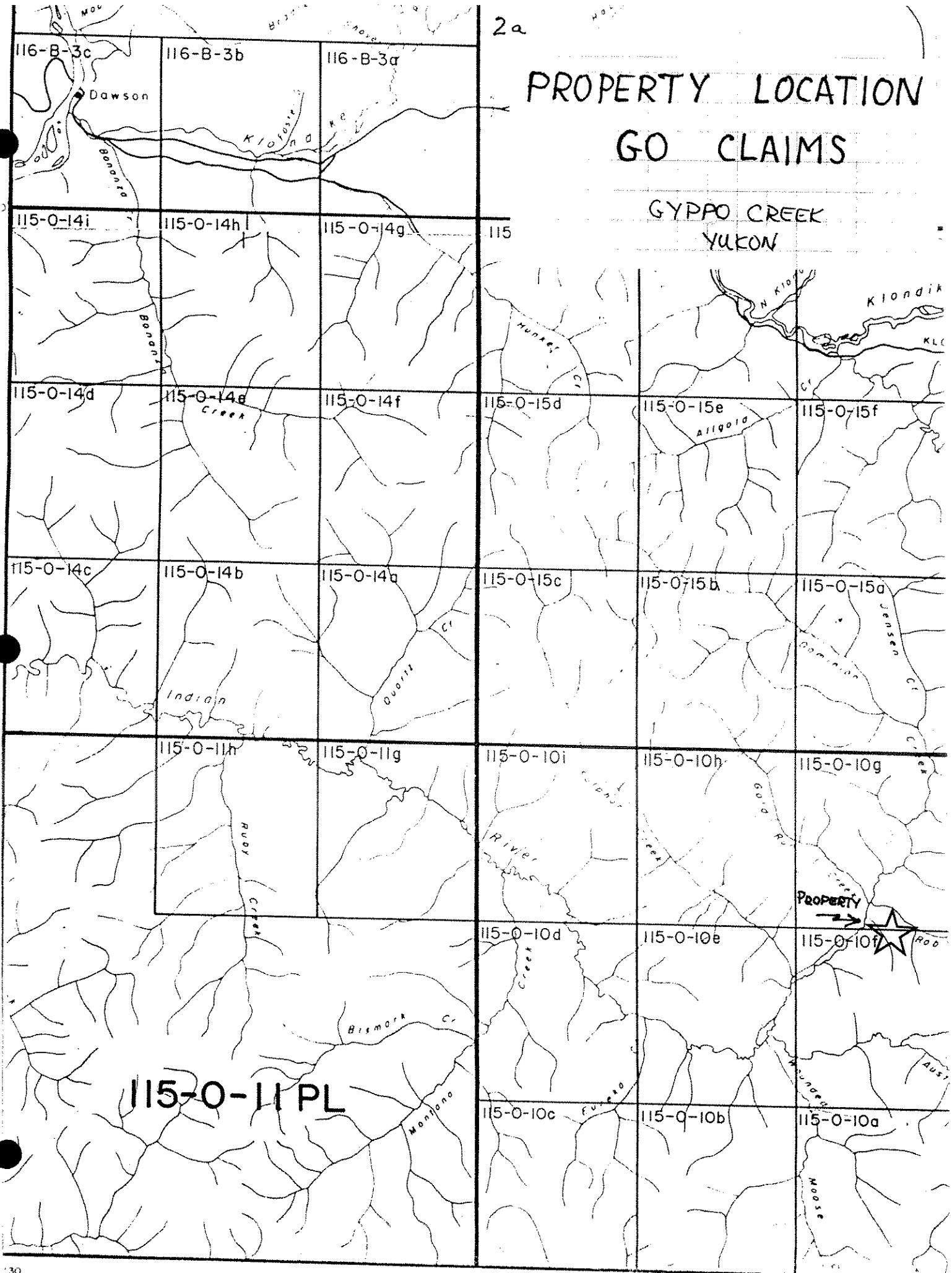
## TOPOGRAPHY AND VEGETATION

Gyppo Creek is a north flowing tributary of Dominion which drains a ridge of rounded hills separating Dominion and Australia Creeks. The ridgeline and headwater of Gyppo are about 1000 feet higher

2a

# PROPERTY LOCATION GO CLAIMS

## GYPPO CREEK YUKON



115-0-11 PL

than the mouth of the creek, and the area of Gyppo basin is about 7 sq km. Landforms are smooth and well rounded except for parts of the uppermost slopes and ridgelines where a few bedrock outcrops occur. There is no evidence of glaciation in this drainage and the weathering and erosional processes have gone on for a long time without interruption. Rob Roy Creek flows subparallel to Gyppo about 1-2 km to the northeast and the south fork of Rob Roy appears to have captured about 4 sq km of the original drainage of Gyppo Creek by breaching the ridge between the two creeks. A flat bench area at elevation 2000 feet between Gyppo and Rob Roy was found to be underlain by quartz rich ( White Channel ?) gravels which were deposited in an ancient channel of Dominion Creek.

Vegetation is variable on the claims. The floor of Gyppo Creek is flat with moss bunch grass and patchy willow cover. Spruce groves appear on wet parts of the lower slopes. Spruce persists on the northeast facing slope of the valley and around the headwaters and all of these areas tend to have near surface permafrost. The ridge and bench between Gyppo and Rob Roy is drier and poplar birch and willow groves are characteristic. Permafrost is present but at much deeper levels.

#### CLAIMS

The property consist of 32 quartz claims as shown below and on the accompanying claim map. The GO claims were staked by James S. Christie in July, 1992.

GO 48 -79

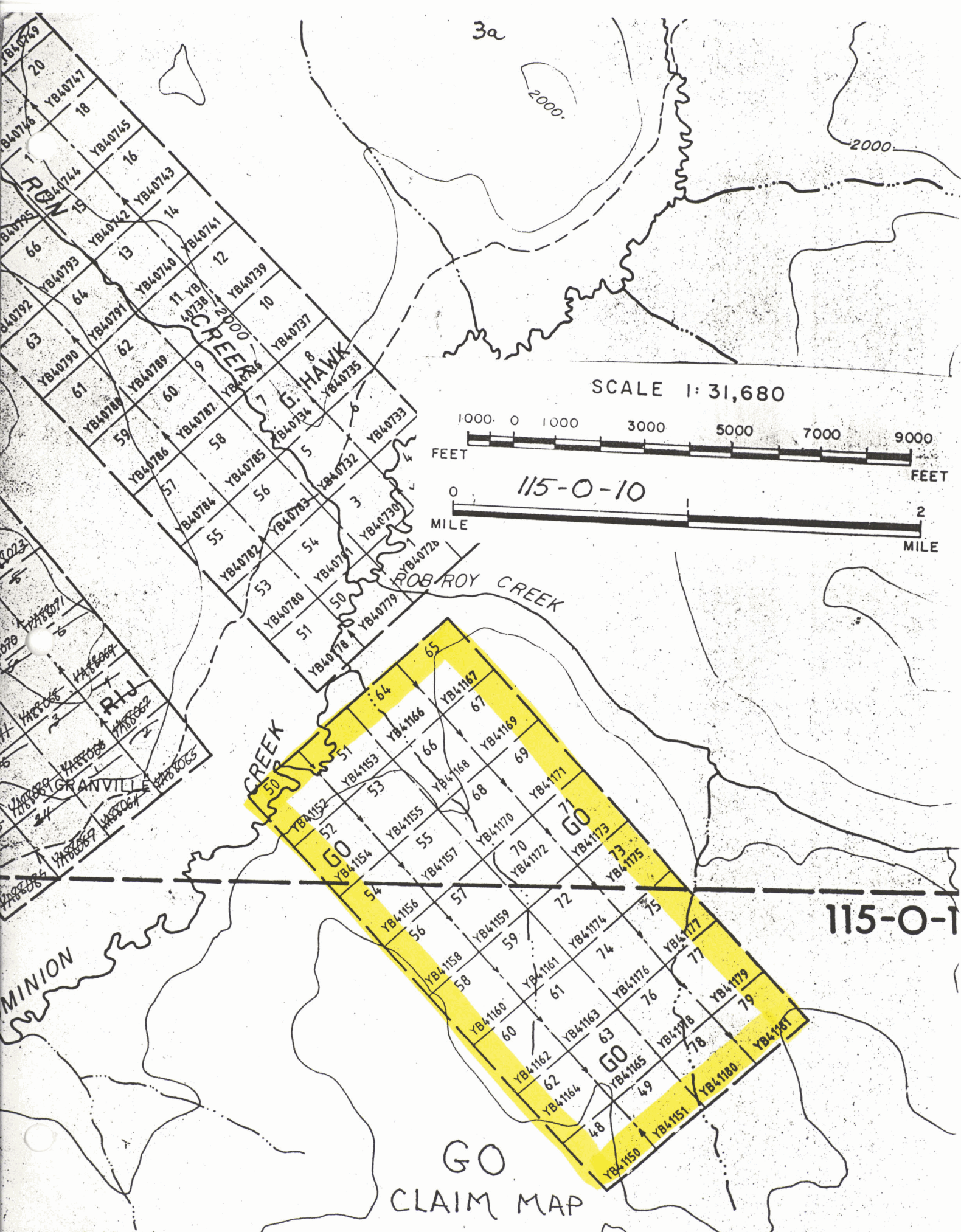
YB41150 - 81

#### GEOLOGY

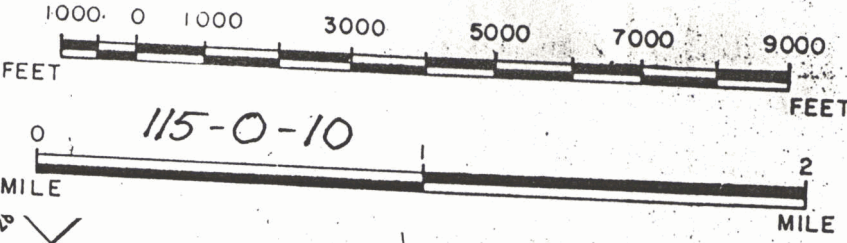
Bostock, 1935-37, produced a map of the Regional Geology showing the area to be underlain by rocks of the Yukon Group of Precambrian and Later age, and present work has confirmed this. Yukon Group rocks are predominately schists and gneisses with lesser quartzite, slate and limestone. No outcrops were seen on the lower slopes in the areas covered by soil sampling but a few outcrops of gneiss, and felsensmeer of schist and gneiss were seen near ridgetops during prospecting and staking. Rock chips from soil sample holes were predominately schist ( mica and chlorite ), gneissic schist and angular white quartz and minor quartzite?. No granitic rocks were seen.

Quartz rich gravel deposits were found on a bench between Rob Roy and Gyppo Creeks in the course of prospecting on the GO claims. These and similar gravels found further north between Rob Roy and Eagle Creeks represent relicts of an ancient course of Dominion Creek about 150 feet higher than at present. Backhoe trenching of both these areas during 1992 showed that the gravels exceed 24 feet in thickness, and contain a high percentage of quartz pebbles and boulders ( up to 4 feet in diameter ), and are in many

3a



SCALE 1:31,680



115-O-10

115-O-1

GO CLAIM MAP

respects similar to White Channel gravels found in the area. Placer gold was found to occur from top to bottom in the gravel sections sampled in 1992 but only a few samples gave results that would be economic at current gold prices. The significance of these gravel deposits with respect to the GO claims is that they project across the lower part of Gyppo Creek valley above that part of the stream being placer mined, and the erosion of this gravel bench probably contributed to the placer gold found in Gyppo Creek. Additionally, a bedrock source of gold may be possible as well, based on the soil results and the new gold showing in a backhoe pit.

The mineralized backhoe pit is located centrally on GO 66 about 300 feet southwest of the claim line as shown on Figure 3. The mineralized rock in this soil sample hole is very rusty weathering, highly fractured to brecciated thoroughly oxidized rock. It has been recrystallized probably as part of an alteration phenomena rather than the weathering processes. In a hand specimen small grains of white green and brown mica and quartz occur in a soft greasy matrix of clay-carbonate?-limonite. Under a binocular microscope limonitic pseudomorphs of fine pyrite are evident, but are totally oxidized.

#### GEOCHEMISTRY

Soil sampling was used as the basic tool to try to evaluate the soil covered slopes of Gyppo Creek. Reconnaissance sample lines were run at or near the base of slope where soil conditions permitted an acceptable sample to be obtained and sample intervals of 100 - 150 feet were used. Silt samples were taken at all locations where a good sample was available.

Soil samples were dug with a narrow blade track shovel to depths of 12-24 inches or to well below all organic layers. Material was sought that contained small angular rock chips derived from the breakdown of bedrock on the slopes above. Preference was given to rusty brown soils where obtainable, and to damp soils in areas of seepage, off the slopes above. Permafrost was avoided as much as possible by altering the sample site, but in several instances it was necessary to collect samples directly off frost. Most of the samples were of high clay content and dried to hard blocks. These had to be broken up at the lab prior to sieving.

All samples were prepared and analyzed by Chemex Labs Ltd. of Vancouver, B.C. Gold analysis was by fusion of a 10 g sample (fire assay) with an AA finish. A few 30 g samples of the mineralized material were run by the same procedure for comparison. A 32 element ICP package was also run for all samples utilizing a nitric aqua-regia digestion. The analytical procedures and total analyses for each sample are given in the appendix. Results considered to be anomalous are plotted on the accompanying map. In total 184 soils and silts, and 4 rock chip samples were submitted for analysis.

# GO CLAIMS MINERALIZED PIT

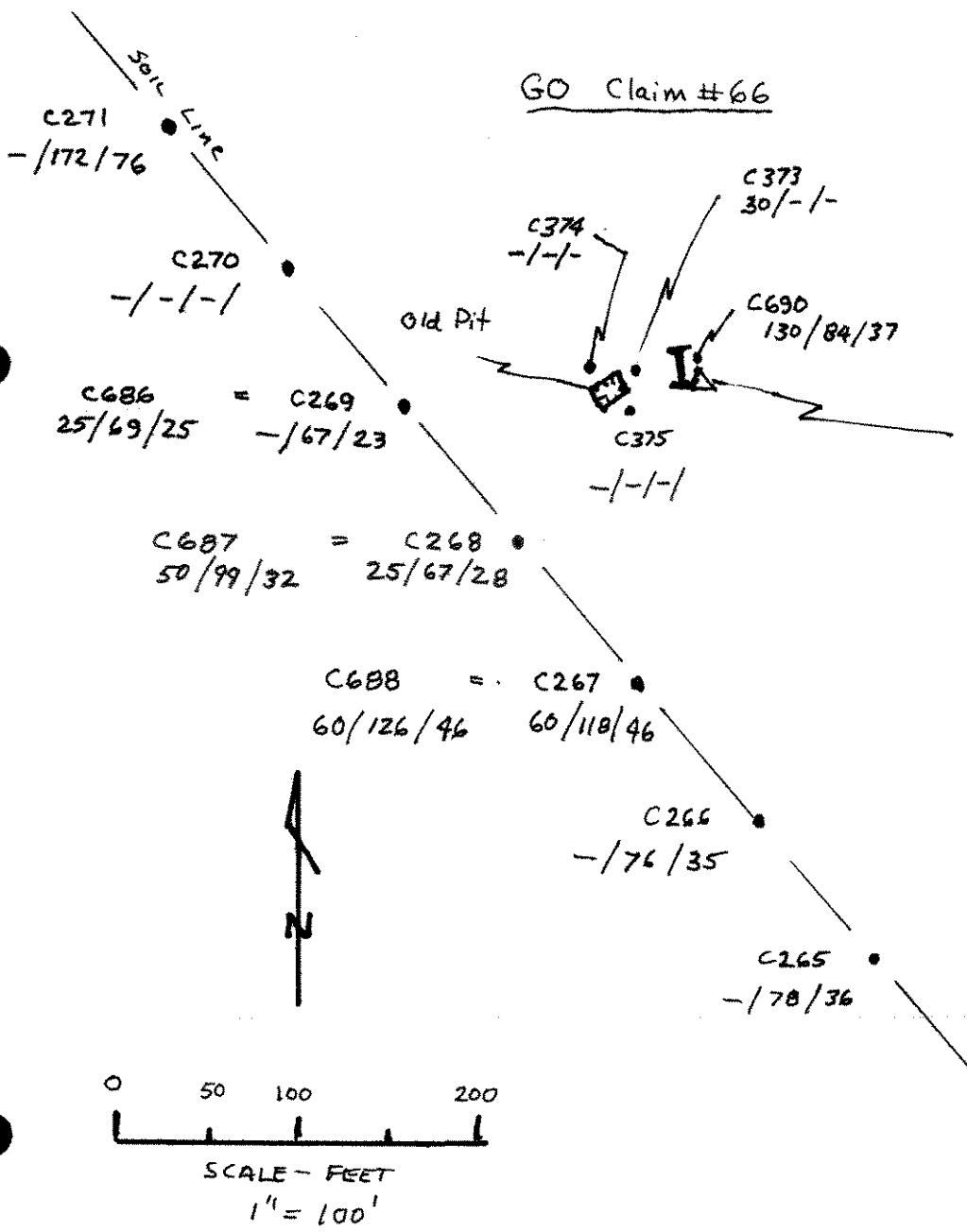
GYPPO - CREEK  
YUKON

NOTE

C-200 series are original soil samples

C600 series are follow-up by backhoe

- note very good repetition of values except gold.



Backhoe Pit Samples

C689 - 1 lb chip	180 / 120 / 20
C692 - COARSE	355 / 400 / 260 / 213
C693 - FINE	985 / 1080 / 347 / 233
C694 - +4 WASHED	785 / 830 / 295 / 202

Panning Result 5/lbs

- 1 - big colour
- 3 - small colours

Legend

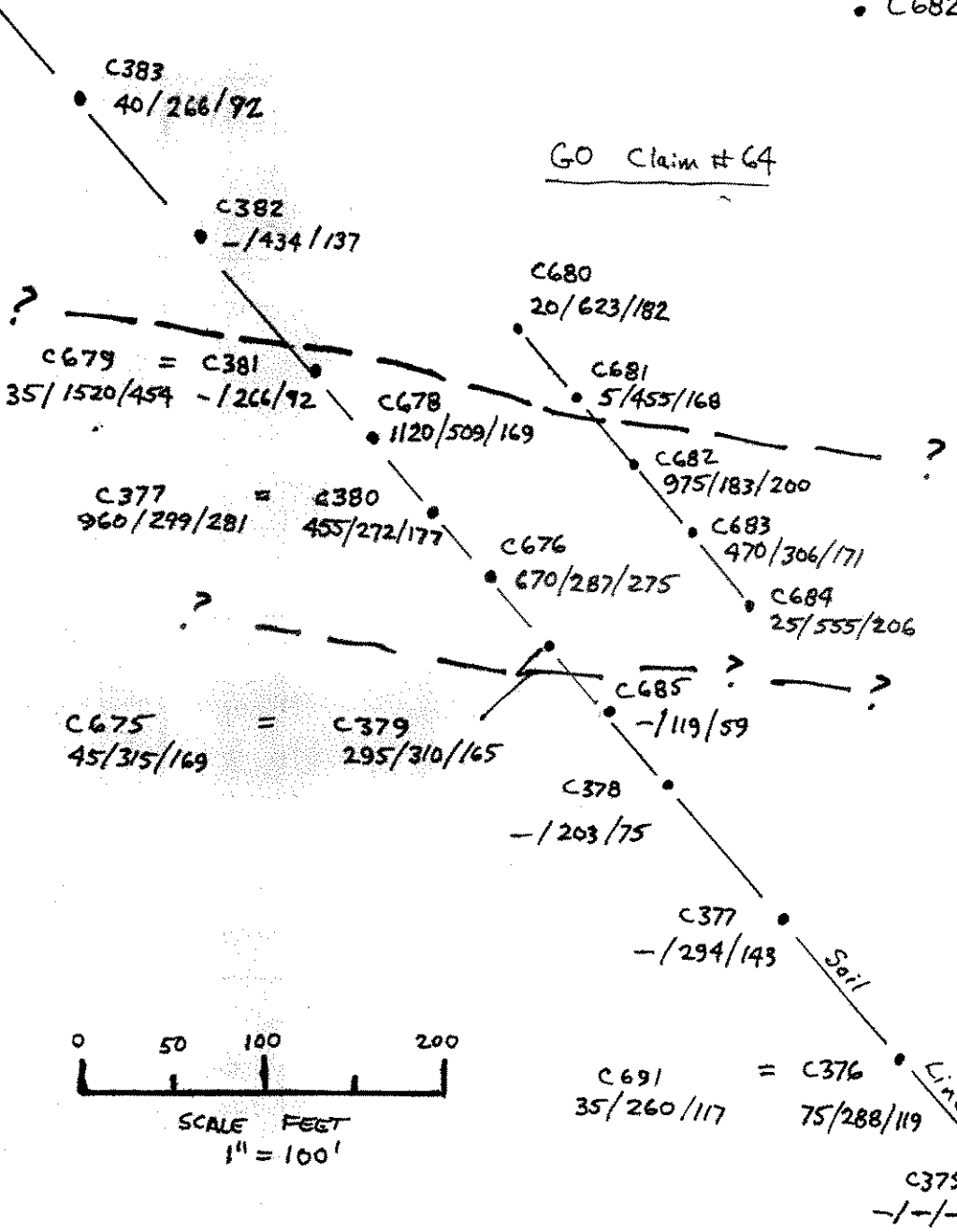
- Soil Sample
- ⌈ Backhoe Pit
- C686  
Aa 10g / Cr / Ni  
Aa 30g
- ⌈ Oldtimers pit
- Δ - Rock Sample

FIGURE - 3

# GO CLAIMS GOLD ANOMALY in SOIL GYPPO CREEK YUKON

• C682 975/183/200  
Au/Cr/Al  
- means not  
anomalous

GO Claim #64



NOTE  
C300 Series soils  
are original  
samples  
C600 Series are  
follow-up  
by backhoe

FIGURE 4

GOLD

Background values returned from most of the samples are below the 5ppb detection limit of the analytical technique. Anomalous values of 10-1120 ppb were obtained from 28 soils and silts and values of 180-1080 ppb from 4 rock chips from one site. A significant gold anomaly in soil was found on claim GO 64 and is shown in detail on Figure 4. It appears to be an E-W oriented feature over 100 feet in width and is open in both directions. Bedrock was not encountered in this area and slopes are gentle. Sampling notes show clearly that the highest values are related to bright orange brown and yellow brown soils indicating oxidized sulfides are likely involved. Values decrease through a range of soil colours from rusty dark brown to brown and greenish brown.

A second area of more weakly anomalous soils ( 25-130 ppb) was identified on GO 66 about 1000 feet upstream of the main anomaly. In this area follow-up sampling was being done with a backhoe because the surface layers had frozen hard. The soil pit that yielded the 130 ppb value in soil gave higher values in mineralized bedrock that was encountered 2 feet deeper in the pit. Results from this area are shown on Figure 3, as described below.

A small 1 lb rock chip sample C689 was collected in a soil bag for analysis at the site but since the rusty bedrock looked interesting a 10 lb sample was taken for further examination. From this material 5 lbs was taken and crushed by hand in a crude fashion, sieved and panned. One big colour and 3 small colours resulted. From the remaining 5 lbs a sample of the fines and of the more competent coarse rock chunks were taken for analysis. Finally to ensure that the gold obtained from panning was not just placer gold hung up in the upper bedrock a sample of the sieved and well washed +4 mesh crushed material was taken for analysis. As a check on the accuracy of the analytical technique 10 and 30 gram samples were run for all 4 samples and results are as follows.

SAMPLE NO	DESCRIPTION	10g ppb	30g ppb
C689	1 LB CHIP	180	185
C692	COARSE	355	400
C693	FINE	985	1080
C694	+4-WASHED	785	830

The strongly anomalous gold in the crushed and washed sample demonstrates that the gold is in the bedrock and is not of placer origin. Higher values from the fine compared to coarse suggests that some of the gold probably occurs along fractures.

At this site the soil pit was 5 feet wide, and the entire pit appeared to be uniformly mineralized. A good size channel sample would be useful to get an idea of actual grade as would a deeper hole to try and get below the strong oxidation. Backhoe trenching

should be able to give some dimensions to this gold mineralization and some idea of continuity as bedrock is not deeply buried.

Single sample gold kicks were obtained in four other areas and in view of the result obtained from following up the relatively weak gold anomalies above a bit more sampling is in order. Trenching would likely be a second stage if the single sample sites are confirmed or expanded.

#### CHROMIUM NICKEL IRON

Background values for Cr - Ni - Fe are about [20-30ppm] - [15-20ppm] - [2.0 %] respectively as determined by inspection of the data sheets. Much higher values for all three of these metals were obtained from both soils and rocks and there is a strong correlation between all three and gold. Samples having Cr values over 100ppm or Ni values over 40ppm are highlighted on the enclosed map and values are plotted. The strong coincidence with gold is obvious and Cr-Ni actually forms soil anomalies larger than gold itself and they appear to be of use in this instance as pathfinder metals. Iron is very similar to Cr-Ni but forms even larger anomalies at the 3-4% level.

The significance of the Cr-Ni-Fe soil anomalies is that there are 4 other occurrences of the suite without gold and some are worthy of more sampling. The strongest of these is on the west side of the creek about 2/3 of the way up where a 500 foot long anomaly is defined by samples C293 - C296. Next best is C241 - C243 a weaker 300 foot long anomaly. Single sample weaker anomalies C 280 and C 325 should be ignored for now but not forgotten.

This metal association with gold in a hydrothermal environment is unusual and one normally thought to be associated with ultra mafic rocks and/or platinum group metals. Its occurrence without such other metals as arsenic, tungsten, and silver is unexpected but despite that it is hard to deny the numbers obtained. Inspection of the results shown on Fig. 4 show that the anomalous values are repeatable in duplicate samples analyzed in separate batches.

Chromium substitutes for aluminum in the lattice of Muscovite giving rise to the green coloured micas mariposite and fuchsite. Fuchsite has been reported from numerous gold deposits in the Superior Province of the Canadian Shield but most of these deposits are in greenstone belts and have some close association with basic or ultra basic rocks. Whether or not the green mica (or chlorite?) associated with the gold on the GO claims is actually fuchsite is unknown at present.

Nickel is readily transported in groundwater and forms laterite deposits in areas of deep oxidation in warmer climatic zones. Possibly nickel has been concentrated slightly in this manner in this unglaciated part of the Yukon, but then if it is not related

to the mineralization, why would it only be enriched at the same sites as the other metals ( Cr-Ni-Au)?

The high levels of iron in soils associated with the mineralization are explainable in terms of pyrite (pseudomorphs present) and ankerite (siderite?) in the alteration.

## CONCLUSIONS

Placer deposits currently being mined near the mouth of Gyppo Creek contain gold that is of higher purity and unlike Dominion Creek gold suggesting that a gold source may exist in the drainage of Gyppo Creek. Current work has shown that an ancient channel of Dominion Creek contains considerable volumes of gold bearing gravel probably passed about 150 feet above the lower valley of Gyppo Creek. The erosion of this bench by Gyppo Creek may have contributed substantially to the gold in Gyppo Creek placer deposits.

Reconnaissance geochemistry has resulted in the discovery of bedrock gold mineralization in a single backhoe pit demonstrating that a hardrock source may also exist. This discovery was made accidentally while digging a follow-up soil sample in a weak soil anomaly. The size and extent of neither the soil anomaly nor the mineralization is known. Another gold anomaly in soils was discovered that is much larger and stronger than the one containing mineralization. No trenching has been done on this anomaly and more sampling is needed to define its extent. The possibility of finding economic grades at this site is quite good.

An unusual suite of metals, chromium, nickel and iron are associated with the gold mineralization and form distinct soil anomalies, with and without gold. Those with gold clearly warrant follow-up. Two of the stronger anomalies without gold also need more sampling as the pathfinder elements are probably more mobile than gold itself.

## RECOMMENDATIONS

Results of the initial reconnaissance geochemistry in Gyppo Creek valley are sufficiently encouraging to warrant a lot more work. The first phase of work should be expansion of the claim block in all directions, followed by more reconnaissance soil sampling and grid soil sampling of the known anomalies to give size and definition. Backhoe trenching of the soil anomalies and channel sampling for assay would follow. Details are as follows.

## RECOMMENDATIONS

STAKING

Staking should be undertaken as soon as possible on account of competition in the area. All open ground to the northwest in Dominion Creek Valley should be tied up and a double row of claims should be staked northeast and southwest of the existing block. The southeastern boundary should be extended three claim lengths to cover the ancestral headwaters of Gyppo Creek now captured by Rob Roy Creek. In total 60 claims are needed.

RECONNAISSANCE GEOCHEMISTRY

Reconnaissance soil lines similar to those just described in Gyppo valley are needed higher on the southwest slope and headwaters of Gyppo Creek. The survey should be extended around the north end of Gyppo bench to and then up the base of the southwest slope of Rob Roy Creek and on up the south fork to the headwaters. A second line higher on the headwater slopes of Rob Roy (captured Gyppo) is advisable while in the area. In total 400 samples are needed.

GRID GEOCHEMISTRY

A.	Mineralized trench and main anomaly area. 2500 x 1600 grid with 9 lines 200 feet apart sample interval on lines --100 feet yields	234 samples
B.	Cr-Ni-Fe best anomaly west side creek 3 lines 400 feet apart 10 samples per line	30
C.	Other anomalies	36
	TOTAL	<u>300</u>

BACKHOE TRENCHING

Contingent on results up to 7 days of trenching could be needed in the area of the known anomalies alone. Trenching beyond that would probably require a new budget involving more geochem etc.

## REQUIREMENT

Caterpillar 235 backhoe with frost bucket 7 days - 12 hrs per day  
Samples for assay 20 per day total 140

## RECOMMENDATIONS

## GO CLAIMS 1993 BUDGET

## STAKING

60 claims @ \$125	\$ 7500
-------------------	---------

## GEOCHEMISTRY

Geologist 14 days @ \$350	4900
Sampler 14 days @ \$200	2800
Travel	2000
Meals & Accom 28 mandays @ \$55	1540
Truck 4x4 14 days @ \$75	1050
Geochem 700 samples @ \$15	10500
Freight	500
Field Supplies -bags string flagging	250
Maps and Report	3000

## TRENCHING

Mob demob travel	2500
Cat 253 backhoe 84 hrs @ \$150	12600
Geologist 7 days @ \$350	2450
Meals & Accom 7 days @ \$55	770
Field Supplies bags etc.	150
Assays 140 @ \$20	2800
Freight	500
Report	1500

---

subtotal	\$ 57835
----------	----------

Contingency	7165
-------------	------


---

TOTAL	\$ 65000
-------	----------

## COST STATEMENT -- GO CLAIMS -- 1992 WORK

J.S. Christie Ph.D. Geologist		
Aug 21-24, Sept 29, Oct 29'		
Nov 14, 15	8 days @ \$350	\$ 2800.00
T.M. Christie, Field Asst.		
Aug 21-24	4 days @ \$150	600.00
Chemex Labs geochem analyses		2667.00
Sample bags flagging string		75.00
Meals & Accom 9 mandays @ \$52.85		475.65
Milage 4x4 250k @ \$.385		96.25
Map enlargements drafting duplication		150.00
		<hr/>
	TOTAL	\$ 6864.60

Respectfully submitted this 15 th day  
of November 1992




---

James S. Christie

## STATEMENT OF QUALIFICATIONS

I, James S. Christie of Dawson City, Yukon and Vancouver, British Columbia, do hereby certify that:

1. I am a professional Geologist residing at 25 Callison Way, Dawson City, Yukon, Y0B 1G0, or 3921 West 31 st Avenue, Vancouver, B.C. V6S 1Y4.
2. I am a graduate of the University of British Columbia, B.Sc. Honours Geology, 1965; Ph.D. Geology, 1973.
3. I have practised my profession as a mining exploration geologist, continuously since 1965.
4. I am a Fellow of the Geological Association of Canada.
5. This report is based on my knowledge of the district, and personally soil sampling the property and observing the geology.
6. I am the staker and recorded owner of the GO Claims.

In Vancouver, B.C. this 15th day of  
November, 1992.

  
\_\_\_\_\_  
James. S. Christie

APPENDIX

Geochemical Data



# Chemex Labs Ltd.

Analytical Chemists \* Geochemists \* Registered Assayers  
 212 Brooksbank Ave., North Vancouver  
 British Columbia, Canada V7J 2C1  
 PHONE: 604-984-0221

To: GIMLEX ENTERPRISES LTD. (604) 270-2111  
 ATTN: JIM CHRISTIE  
 3921 W. 31ST AVE.  
 VANCOUVER, BC  
 V6S 1Y4

Page Number : 1-A  
 Total Pages : 10  
 Certificate Date: 23-SEP-92  
 Invoice No. : 19221274  
 P.O. Number :  
 Account : FGF

Project : YUKON  
 Comments : CC: J.S. CHRISTIE

## CERTIFICATE OF ANALYSIS

### A9221274

SAMPLE	PREP CODE	Au ppb FA+AA	Ag ppm	Al %	As ppm	Ba ppm	Be ppm	Bi ppm	Ca %	Cd ppm	Co ppm	Cr ppm	Cu ppm	Fe %	Ga ppm	Hg ppm	K %	La ppm	Mg %	Mn ppm
92C 225	201 229	< 5	< 0.2	1.31	4	340	< 0.5	< 2	0.36	< 0.5	7	24	14	1.96	< 10	< 1	0.07	10	0.44	210
92C 226	201 229	< 5	< 0.2	1.62	14	210	< 0.5	< 2	0.31	< 0.5	7	24	13	2.21	< 10	< 1	0.06	10	0.46	150
92C 227	201 229	< 5	< 0.2	1.74	8	320	< 0.5	< 2	0.44	< 0.5	8	28	25	2.61	< 10	< 1	0.06	20	0.64	250
92C 228	201 229	< 5	< 0.2	1.68	8	140	< 0.5	< 2	0.27	< 0.5	8	14	14	2.70	< 10	< 1	0.03	10	0.86	320
92C 229	201 229	10	< 0.2	1.30	6	190	< 0.5	< 2	0.27	< 0.5	7	23	13	2.19	< 10	< 1	0.03	10	0.52	220
92C 230	201 229	< 5	< 0.2	1.22	2	160	< 0.5	< 2	0.24	< 0.5	6	21	11	2.01	< 10	< 1	0.03	10	0.58	210
92C 231	201 229	< 5	< 0.2	1.69	6	240	< 0.5	< 2	0.30	< 0.5	9	26	15	2.73	< 10	< 1	0.03	10	0.76	310
92C 232	201 229	< 5	< 0.2	2.21	6	210	< 0.5	< 2	0.42	< 0.5	11	41	19	3.20	10	< 1	0.05	10	1.16	395
92C 233	201 229	< 5	< 0.2	2.13	8	180	< 0.5	< 2	0.45	< 0.5	11	34	21	3.28	10	1	0.04	10	1.09	380
92C 234	201 229	< 5	< 0.2	2.24	4	190	< 0.5	< 2	0.49	< 0.5	12	38	50	3.42	10	< 1	0.06	10	1.15	470
92C 235	201 229	< 5	< 0.2	2.68	4	260	< 0.5	< 2	0.77	< 0.5	14	52	44	3.49	10	< 1	0.05	10	1.34	500
92C 236	201 229	< 5	< 0.2	1.80	4	140	< 0.5	< 2	0.43	< 0.5	11	41	27	2.67	< 10	< 1	0.03	10	1.08	355
92C 237	201 229	< 5	< 0.2	2.02	2	200	< 0.5	< 2	0.38	< 0.5	10	34	22	3.06	10	< 1	0.04	10	0.87	365
92C 238	201 229	< 5	< 0.2	2.34	4	210	< 0.5	< 2	0.56	< 0.5	13	76	39	3.30	10	< 1	0.04	10	1.40	445
92C 239	201 229	< 5	< 0.2	2.27	6	250	< 0.5	< 2	0.50	< 0.5	13	59	40	3.00	10	< 1	0.05	10	1.09	660
92C 240	201 229	< 5	< 0.2	2.27	4	220	< 0.5	< 2	0.48	< 0.5	11	64	40	2.88	10	< 1	0.06	10	1.14	420
92C 241	201 229	< 5	< 0.2	2.47	< 2	300	< 0.5	< 2	0.39	< 0.5	15	68	50	3.37	10	< 1	0.07	10	1.13	570
92C 242	201 229	< 5	< 0.2	2.42	6	170	< 0.5	< 2	0.45	< 0.5	14	110	72	3.42	10	< 1	0.04	10	1.53	530
92C 243	201 229	< 5	< 0.2	2.31	4	250	< 0.5	< 2	0.33	< 0.5	12	51	28	3.07	10	< 1	0.06	10	1.02	595
92C 244	201 229	< 5	< 0.2	1.99	< 2	260	< 0.5	< 2	0.37	< 0.5	9	41	39	2.79	10	< 1	0.05	10	0.91	330
92C 245	201 229	< 5	< 0.2	2.34	< 2	270	< 0.5	< 2	0.40	< 0.5	10	43	39	2.94	10	< 1	0.06	10	1.04	445
92C 246	201 229	< 5	< 0.2	1.86	< 2	160	< 0.5	< 2	0.27	< 0.5	8	34	30	2.57	< 10	< 1	0.04	10	0.94	295
92C 247	201 229	< 5	< 0.2	2.13	2	220	< 0.5	< 2	0.40	< 0.5	10	51	37	2.83	10	< 1	0.05	10	1.11	375
92C 248	201 229	< 5	< 0.2	2.47	< 2	200	< 0.5	< 2	0.47	< 0.5	13	76	32	3.08	10	< 1	0.05	10	1.42	545
92C 249	201 229	< 5	< 0.2	2.07	2	250	< 0.5	< 2	0.32	< 0.5	10	53	23	2.73	< 10	< 1	0.04	10	1.01	390
92C 250	201 229	< 5	< 0.2	2.16	< 2	260	< 0.5	< 2	0.71	< 0.5	11	40	33	3.09	< 10	< 1	0.04	10	1.12	420
92C 251	201 229	< 5	< 0.2	1.48	4	880	< 0.5	< 2	0.27	< 0.5	5	26	14	2.06	< 10	< 1	0.11	20	0.48	140
92C 252	201 229	< 5	< 0.2	0.86	< 2	860	< 0.5	< 2	0.19	< 0.5	3	13	10	1.19	< 10	< 1	0.14	30	0.31	125
92C 253	201 229	< 5	< 0.2	1.25	< 2	720	< 0.5	< 2	0.25	< 0.5	4	20	11	1.70	< 10	< 1	0.13	20	0.42	140
92C 254	201 229	< 5	< 0.2	1.09	< 2	910	< 0.5	< 2	0.28	< 0.5	4	16	24	1.47	10	< 1	0.15	50	0.36	140
92C 255	201 229	< 5	< 0.2	1.84	< 2	730	< 0.5	< 2	0.61	< 0.5	11	73	22	2.61	< 10	< 1	0.11	20	1.16	240
92C 256	201 229	< 5	< 0.2	1.40	< 2	540	< 0.5	< 2	0.22	< 0.5	5	21	13	1.94	< 10	< 1	0.11	20	0.46	160
92C 257	201 229	< 5	< 0.2	1.32	2	450	< 0.5	< 2	0.20	< 0.5	3	16	13	1.58	< 10	< 1	0.10	20	0.51	110
92C 258	201 229	< 5	< 0.2	1.09	< 2	510	< 0.5	< 2	0.25	< 0.5	3	17	13	1.43	< 10	< 1	0.11	40	0.48	85
92C 259	201 229	< 5	< 0.2	1.12	< 2	960	< 0.5	< 2	0.22	< 0.5	2	13	18	1.18	< 10	< 1	0.09	40	0.63	140
92C 260	201 229	< 5	< 0.2	1.69	2	880	< 0.5	< 2	0.59	< 0.5	9	45	26	2.46	< 10	< 1	0.29	20	0.75	280
92C 261	201 229	< 5	< 0.2	0.74	< 2	320	< 0.5	< 2	0.14	< 0.5	2	10	16	0.98	< 10	< 1	0.15	40	0.23	95
92C 262	201 229	< 5	< 0.2	1.43	< 2	360	< 0.5	< 2	0.14	< 0.5	3	15	9	1.69	10	< 1	0.11	70	0.64	190
92C 263	201 229	< 5	< 0.2	1.51	< 2	300	< 0.5	< 2	0.36	< 0.5	8	50	16	2.19	< 10	< 1	0.11	10	0.89	325
92C 264	201 229	< 5	< 0.2	2.37	< 2	360	< 0.5	< 2	0.58	< 0.5	16	96	29	3.22	10	< 1	0.07	10	1.64	710

CERTIFICATION: *Jhai D Ma*



# Chemex Labs Ltd.

Analytical Chemists \* Geochemists \* Registered Assayers  
 212 Brooksbank Ave., North Vancouver  
 British Columbia, Canada V7J 2C1  
 PHONE: 604-984-0221

To: GIMLEX ENTERPRISES LTD. GC-07707-0215-0215  
 ATTN: JIM CHRISTIE  
 3921 W. 31ST AVE.  
 VANCOUVER, BC  
 V6S 1Y4

Page Number : 1-B  
 Total Pages : 10  
 Certificate Date: 23-SEP-92  
 Invoice No. : I9221274  
 P.O. Number :  
 Account : FGF

Project : YUKON  
 Comments : CC: J.S. CHRISTIE

## CERTIFICATE OF ANALYSIS

### A9221274

SAMPLE	PREP CODE	Mo ppm	Na %	Ni ppm	P ppm	Pb ppm	Sb ppm	Sc ppm	Sr ppm	Ti %	Tl ppm	U ppm	V ppm	W ppm	Zn ppm
92C 225	201 229	< 1	0.01	15	550	8	< 2	3	26	0.06	< 10	< 10	38	< 10	44
92C 226	201 229	< 1	< 0.01	14	440	8	2	3	22	0.06	< 10	< 10	42	< 10	44
92C 227	201 229	< 1	0.01	17	540	8	< 2	5	28	0.06	< 10	< 10	43	< 10	58
92C 228	201 229	< 1	< 0.01	9	570	4	2	3	14	0.02	< 10	< 10	34	< 10	64
92C 229	201 229	< 1	< 0.01	12	480	4	< 2	3	18	0.05	< 10	< 10	37	< 10	44
92C 230	201 229	< 1	< 0.01	12	440	4	< 2	2	15	0.04	< 10	< 10	33	< 10	44
92C 231	201 229	< 1	< 0.01	15	470	6	2	4	21	0.04	< 10	< 10	47	< 10	54
92C 232	201 229	< 1	< 0.01	17	490	6	2	6	30	0.07	< 10	< 10	60	< 10	62
92C 233	201 229	< 1	< 0.01	19	610	6	4	6	31	0.08	< 10	< 10	56	< 10	64
92C 234	201 229	< 1	< 0.01	20	640	4	2	7	31	0.09	< 10	< 10	62	< 10	70
92C 235	201 229	< 1	< 0.01	28	540	4	4	8	39	0.12	< 10	< 10	60	< 10	76
92C 236	201 229	< 1	< 0.01	21	540	< 2	2	4	25	0.09	< 10	< 10	45	< 10	70
92C 237	201 229	< 1	< 0.01	17	580	6	< 2	4	25	0.07	< 10	< 10	52	< 10	58
92C 238	201 229	< 1	< 0.01	34	560	4	2	7	32	0.10	< 10	< 10	58	< 10	80
92C 239	201 229	< 1	0.01	29	610	2	4	7	35	0.08	< 10	< 10	52	< 10	66
92C 240	201 229	< 1	0.01	30	500	6	2	7	40	0.10	< 10	< 10	54	< 10	68
92C 241	201 229	< 1	0.01	34	450	4	2	9	37	0.06	< 10	< 10	62	< 10	74
92C 242	201 229	< 1	0.01	44	520	6	2	8	31	0.08	< 10	< 10	59	< 10	86
92C 243	201 229	< 1	< 0.01	25	450	6	2	6	28	0.06	< 10	< 10	53	< 10	70
92C 244	201 229	< 1	0.01	22	340	4	2	6	31	0.07	< 10	< 10	48	< 10	62
92C 245	201 229	< 1	< 0.01	22	360	8	< 2	7	44	0.07	< 10	< 10	50	< 10	68
92C 246	201 229	< 1	< 0.01	17	300	4	< 2	5	23	0.06	< 10	< 10	40	< 10	70
92C 247	201 229	< 1	< 0.01	22	350	6	2	6	34	0.08	< 10	< 10	49	< 10	78
92C 248	201 229	< 1	< 0.01	31	390	6	2	7	42	0.09	< 10	< 10	56	< 10	80
92C 249	201 229	< 1	< 0.01	22	350	4	< 2	6	29	0.06	< 10	< 10	49	< 10	68
92C 250	201 229	< 1	0.01	23	690	4	2	6	49	0.10	< 10	< 10	53	< 10	72
92C 251	201 229	< 1	0.01	15	340	16	2	3	24	0.06	< 10	< 10	36	< 10	44
92C 252	201 229	< 1	< 0.01	8	140	10	2	2	21	0.04	< 10	< 10	16	< 10	34
92C 253	201 229	< 1	< 0.01	10	230	18	< 2	3	25	0.06	< 10	< 10	27	< 10	44
92C 254	201 229	< 1	< 0.01	14	540	20	< 2	3	23	0.02	10	< 10	21	< 10	42
92C 255	201 229	< 1	< 0.01	27	560	14	2	7	37	0.18	< 10	< 10	53	< 10	70
92C 256	201 229	< 1	< 0.01	11	250	18	< 2	3	19	0.05	< 10	< 10	36	< 10	52
92C 257	201 229	< 1	< 0.01	7	230	16	< 2	3	16	0.06	< 10	< 10	25	< 10	58
92C 258	201 229	< 1	< 0.01	8	390	18	< 2	2	19	0.05	< 10	< 10	22	< 10	54
92C 259	201 229	< 1	< 0.01	4	270	36	< 2	2	16	0.03	< 10	< 10	14	< 10	142
92C 260	201 229	< 1	0.01	22	620	16	2	6	42	0.10	< 10	< 10	46	< 10	60
92C 261	201 229	< 1	< 0.01	6	130	16	< 2	2	13	0.03	< 10	< 10	13	< 10	48
92C 262	201 229	< 1	< 0.01	7	150	16	< 2	2	14	0.01	10	< 10	11	< 10	82
92C 263	201 229	< 1	< 0.01	21	650	6	2	5	22	0.03	< 10	< 10	39	< 10	46
92C 264	201 229	< 1	< 0.01	43	600	6	2	8	31	0.04	< 10	< 10	55	< 10	72

CERTIFICATION:

*Jhai D Ma*



# Chemex Labs Ltd.

Analytical Chemists \* Geochemists \* Registered Assayers  
 212 Brooksbank Ave., North Vancouver  
 British Columbia, Canada V7J 2C1  
 PHONE: 604-984-0221

To: GIMLEX ENTERPRISES LTD. (604) 276-3333 (3167)  
 ATTN: JIM CHRISTIE  
 3921 W. 31ST AVE.  
 VANCOUVER, BC  
 V6S 1Y4

Page Number : 2-A  
 Total Pages : 10  
 Certificate Date: 23-SEP-92  
 Invoice No. : 19221274  
 P.O. Number :  
 Account : FGF

Project : YUKON  
 Comments : CC: J.S. CHRISTIE

## CERTIFICATE OF ANALYSIS A9221274

SAMPLE	PREP CODE	Au ppb FA+AA	Ag ppm	Al %	As ppm	Ba ppm	Be ppm	Bi ppm	Ca %	Cd ppm	Co ppm	Cr ppm	Cu ppm	Fe %	Ga ppm	Hg ppm	K %	La ppm	Mg %	Mn ppm
92C 265	201 229	< 5	< 0.2	2.49	< 2	230	< 0.5	< 2	0.72	< 0.5	13	78	34	3.39	< 10	< 1	0.07	< 10	1.64	575
92C 266	201 229	< 5	< 0.2	2.23	2	220	< 0.5	< 2	0.38	< 0.5	13	76	22	3.18	< 10	< 1	0.04	10	1.29	375
92C 267	201 229	60	< 0.2	1.97	< 2	260	< 0.5	< 2	0.43	< 0.5	12	118	26	2.82	< 10	< 1	0.03	10	1.27	340
92C 268	201 229	25	< 0.2	2.21	< 2	240	< 0.5	< 2	0.35	< 0.5	16	67	33	3.48	< 10	< 1	0.04	10	1.34	415
92C 269	201 229	< 5	< 0.2	2.47	< 2	160	< 0.5	< 2	0.49	< 0.5	18	67	27	3.77	< 10	< 1	0.03	< 10	1.76	495
92C 270	201 229	< 5	< 0.2	2.16	< 2	190	< 0.5	< 2	0.41	< 0.5	12	83	27	2.80	< 10	< 1	0.05	10	1.24	340
92C 271	201 229	< 5	< 0.2	2.79	< 2	140	< 0.5	< 2	0.76	< 0.5	20	172	56	3.53	< 10	< 1	0.03	< 10	2.24	510
92C 272	201 229	< 5	< 0.2	2.12	< 2	140	< 0.5	< 2	0.58	< 0.5	15	134	31	2.58	< 10	< 1	0.04	< 10	1.71	345
92C 273	201 229	< 5	< 0.2	1.65	< 2	250	< 0.5	< 2	0.42	< 0.5	8	54	16	2.15	< 10	< 1	0.06	20	0.78	220
92C 274	201 229	< 5	< 0.2	1.48	< 2	110	< 0.5	< 2	0.45	< 0.5	9	67	23	1.85	< 10	< 1	0.03	< 10	1.06	210
92C 275	201 229	< 5	< 0.2	1.91	< 2	190	< 0.5	< 2	0.59	< 0.5	13	103	31	2.56	< 10	< 1	0.04	10	1.40	320
92C 276	201 229	< 5	< 0.2	1.72	2	360	< 0.5	< 2	0.50	< 0.5	6	24	13	2.02	< 10	< 1	0.06	20	0.53	195
92C 277	201 229	< 5	< 0.2	1.56	4	360	< 0.5	< 2	0.49	< 0.5	7	27	21	2.47	< 10	< 1	0.06	20	0.54	250
92C 278	201 229	< 5	< 0.2	1.85	4	280	< 0.5	< 2	0.57	< 0.5	8	25	15	2.75	< 10	< 1	0.06	10	0.61	255
92C 279	201 229	< 5	< 0.2	1.92	6	290	< 0.5	< 2	0.55	< 0.5	6	26	12	2.52	< 10	< 1	0.06	10	0.60	215
92C 280	201 229	< 5	< 0.2	2.24	< 2	200	< 0.5	< 2	0.68	< 0.5	11	96	13	3.03	< 10	< 1	0.03	10	1.26	415
92C 281	201 229	< 5	< 0.2	1.83	< 2	240	< 0.5	< 2	0.53	< 0.5	9	44	14	2.74	< 10	< 1	0.04	10	0.76	285
92C 282	201 229	< 5	< 0.2	1.79	< 2	270	< 0.5	< 2	0.50	< 0.5	7	30	14	2.64	< 10	< 1	0.04	10	0.69	220
92C 283	201 229	< 5	< 0.2	1.69	< 2	220	< 0.5	< 2	0.55	< 0.5	8	50	11	2.63	< 10	< 1	0.03	10	0.86	290
92C 284	201 229	< 5	< 0.2	1.80	< 2	270	< 0.5	< 2	0.44	< 0.5	8	27	15	2.85	< 10	< 1	0.03	10	0.77	240
92C 285	201 229	< 5	< 0.2	1.81	< 2	270	< 0.5	< 2	0.48	< 0.5	8	22	12	2.91	10	< 1	0.04	10	0.76	240
92C 286	201 229	< 5	< 0.2	1.79	2	190	< 0.5	< 2	0.39	< 0.5	8	33	11	2.69	< 10	< 1	0.04	10	0.75	250
92C 287	201 229	< 5	< 0.2	1.45	< 2	190	< 0.5	< 2	0.49	< 0.5	7	39	11	2.22	< 10	< 1	0.03	10	0.71	230
92C 288	201 229	< 5	< 0.2	1.46	< 2	310	< 0.5	< 2	0.58	< 0.5	8	16	9	2.54	10	< 1	0.06	20	0.45	225
92C 289	201 229	< 5	< 0.2	1.27	2	260	< 0.5	< 2	0.43	< 0.5	4	16	10	1.76	< 10	< 1	0.05	10	0.38	145
92C 290	201 229	< 5	< 0.2	1.50	< 2	100	< 0.5	< 2	0.36	< 0.5	7	20	9	2.31	< 10	< 1	0.02	< 10	0.76	235
92C 291	201 229	< 5	< 0.2	1.46	< 2	190	< 0.5	< 2	0.38	< 0.5	9	37	15	2.34	< 10	< 1	0.02	10	0.80	260
92C 292	201 229	< 5	< 0.2	1.65	2	190	< 0.5	< 2	0.37	< 0.5	8	25	11	2.48	< 10	< 1	0.02	10	0.74	260
92C 293	201 229	< 5	< 0.2	2.52	< 2	180	< 0.5	< 2	0.51	< 0.5	19	271	59	3.15	< 10	< 1	< 0.01	10	1.98	485
92C 294	201 229	< 5	< 0.2	2.59	< 2	270	< 0.5	< 2	0.49	< 0.5	14	120	27	3.43	10	< 1	0.02	10	1.62	415
92C 295	201 229	< 5	< 0.2	3.22	< 2	170	< 0.5	< 2	0.50	< 0.5	19	216	37	4.32	10	< 1	0.01	< 10	2.58	620
92C 296	201 229	< 5	< 0.2	2.50	< 2	280	< 0.5	< 2	0.46	< 0.5	13	101	17	3.39	10	< 1	0.04	10	1.46	410
92C 297	201 229	< 5	< 0.2	1.66	8	420	< 0.5	< 2	0.57	< 0.5	7	52	14	2.43	< 10	< 1	0.12	20	0.96	235
92C 298	201 229	< 5	< 0.2	0.94	< 2	310	< 0.5	< 2	0.24	< 0.5	4	18	7	1.38	< 10	< 1	0.10	20	0.40	115
92C 299	201 229	< 5	< 0.2	1.35	< 2	320	< 0.5	< 2	0.46	< 0.5	7	22	10	2.27	< 10	< 1	0.27	20	0.75	190
92C 300	201 229	< 5	< 0.2	1.52	< 2	550	< 0.5	< 2	0.34	< 0.5	7	26	12	2.15	10	< 1	0.14	30	0.72	205
92C 301	201 229	< 5	< 0.2	1.52	2	370	< 0.5	< 2	0.36	< 0.5	6	21	11	2.06	< 10	< 1	0.12	20	0.56	185
92C 302	201 229	< 5	< 0.2	1.33	< 2	510	< 0.5	< 2	0.43	< 0.5	4	25	16	1.71	< 10	< 1	0.17	30	0.61	230
92C 303	201 229	< 5	< 0.2	1.79	< 2	260	< 0.5	< 2	0.48	< 0.5	7	15	8	2.60	< 10	< 1	0.11	10	0.70	305
92C 304	201 229	< 5	< 0.2	1.04	8	120	< 0.5	< 2	0.50	< 0.5	4	14	6	2.22	< 10	< 1	0.04	20	0.36	195

CERTIFICATION: *Jhai D Ma*



# Chemex Labs Ltd.

Analytical Chemists \* Geochemists \* Registered Assayers  
 212 Brooksbank Ave., North Vancouver  
 British Columbia, Canada V7J 2C1  
 PHONE: 604-984-0221

To: GIMLEX ENTERPRISES LTD. 60-6776 - 5025 - 11475  
 ATTN: JIM CHRISTIE  
 3921 W. 31ST AVE.  
 VANCOUVER, BC  
 V6S 1Y4

Page Number : 2-B  
 Total Pages : 10  
 Certificate Date: 23-SEP-92  
 Invoice No. : 19221274  
 P.O. Number :  
 Account : FGF

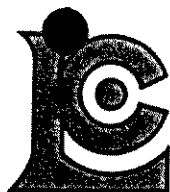
Project : YUKON  
 Comments : CC: J.S. CHRISTIE

## CERTIFICATE OF ANALYSIS

### A9221274

SAMPLE	PREP CODE	Mo ppm	Na %	Ni ppm	P ppm	Pb ppm	Sb ppm	Sc ppm	Sr ppm	Ti %	Tl ppm	U ppm	V ppm	W ppm	Zn ppm
92C 265	201 229	< 1	< 0.01	36	530	6	2	7	44	0.09	< 10	< 10	51	< 10	72
92C 266	201 229	< 1	< 0.01	35	360	8	2	7	25	0.07	< 10	< 10	57	< 10	58
92C 267	201 229	< 1	< 0.01	46	340	8	< 2	7	26	0.11	< 10	< 10	57	< 10	50
92C 268	201 229	< 1	< 0.01	28	240	4	2	8	24	0.09	< 10	< 10	63	< 10	64
92C 269	201 229	< 1	< 0.01	23	340	4	2	7	31	0.12	< 10	< 10	71	< 10	68
92C 270	201 229	< 1	< 0.01	33	290	6	2	6	28	0.12	< 10	< 10	55	< 10	56
92C 271	201 229	< 1	< 0.01	76	310	4	4	8	57	0.21	< 10	< 10	64	< 10	68
92C 272	201 229	< 1	< 0.01	63	440	6	2	4	37	0.15	< 10	< 10	45	< 10	54
92C 273	201 229	< 1	0.01	24	560	4	< 2	4	29	0.07	< 10	< 10	41	< 10	46
92C 274	201 229	< 1	< 0.01	34	190	2	2	3	29	0.12	< 10	< 10	35	< 10	38
92C 275	201 229	< 1	0.01	49	470	6	2	4	37	0.14	< 10	< 10	47	< 10	54
92C 276	201 229	< 1	0.01	11	730	6	2	5	30	0.04	< 10	< 10	43	< 10	50
92C 277	201 229	< 1	0.01	18	620	8	< 2	5	30	0.06	< 10	< 10	44	< 10	52
92C 278	201 229	< 1	0.01	13	630	6	2	6	31	0.06	< 10	< 10	46	< 10	52
92C 279	201 229	< 1	0.01	11	570	10	2	5	30	0.06	< 10	< 10	50	< 10	48
92C 280	201 229	< 1	< 0.01	35	670	4	2	6	34	0.10	< 10	< 10	45	< 10	72
92C 281	201 229	< 1	< 0.01	18	540	8	< 2	5	28	0.06	< 10	< 10	45	< 10	54
92C 282	201 229	< 1	0.01	14	490	8	< 2	5	30	0.07	< 10	< 10	45	< 10	52
92C 283	201 229	< 1	< 0.01	22	660	6	< 2	4	29	0.06	< 10	< 10	42	< 10	62
92C 284	201 229	< 1	< 0.01	14	590	8	< 2	6	28	0.05	< 10	< 10	43	< 10	58
92C 285	201 229	< 1	< 0.01	11	580	6	< 2	6	33	0.02	< 10	< 10	40	< 10	58
92C 286	201 229	< 1	< 0.01	13	580	4	< 2	4	27	0.06	< 10	< 10	46	< 10	52
92C 287	201 229	< 1	< 0.01	16	600	6	< 2	4	28	0.05	< 10	< 10	38	< 10	48
92C 288	201 229	< 1	< 0.01	8	1060	8	< 2	4	32	0.02	< 10	< 10	33	< 10	44
92C 289	201 229	< 1	< 0.01	9	510	6	2	3	28	0.04	< 10	< 10	29	< 10	38
92C 290	201 229	< 1	< 0.01	10	640	6	< 2	3	19	0.03	< 10	< 10	30	< 10	48
92C 291	201 229	< 1	< 0.01	19	590	4	2	3	23	0.06	< 10	< 10	37	< 10	54
92C 292	201 229	< 1	< 0.01	12	600	4	2	3	24	0.04	< 10	< 10	36	< 10	54
92C 293	201 229	< 1	< 0.01	83	560	4	< 2	6	29	0.10	< 10	< 10	53	< 10	76
92C 294	201 229	< 1	< 0.01	50	560	2	< 2	9	31	0.05	< 10	< 10	62	< 10	80
92C 295	201 229	< 1	< 0.01	81	500	< 2	6	11	30	0.07	< 10	< 10	84	< 10	96
92C 296	201 229	< 1	< 0.01	36	590	8	2	8	29	0.04	< 10	< 10	65	< 10	70
92C 297	201 229	< 1	< 0.01	22	460	8	2	6	41	0.13	< 10	< 10	35	< 10	52
92C 298	201 229	< 1	< 0.01	12	230	14	< 2	3	20	0.02	< 10	< 10	15	< 10	32
92C 299	201 229	< 1	< 0.01	12	390	14	< 2	4	34	0.10	< 10	< 10	29	< 10	52
92C 300	201 229	< 1	< 0.01	15	170	12	< 2	4	22	0.02	< 10	< 10	26	< 10	46
92C 301	201 229	< 1	< 0.01	11	310	6	< 2	3	24	0.03	< 10	< 10	26	< 10	46
92C 302	201 229	< 1	< 0.01	14	330	8	2	4	37	0.04	< 10	< 10	16	< 10	40
92C 303	201 229	< 1	< 0.01	10	520	6	< 2	4	31	0.03	< 10	< 10	29	< 10	56
92C 304	201 229	< 1	< 0.01	8	990	2	2	3	21	0.03	< 10	< 10	27	< 10	38

CERTIFICATION: *Jhai D Ma*



# Chemex Labs Ltd.

Analytical Chemists \* Geochemists \* Registered Assayers  
 212 Brooksbank Ave., North Vancouver  
 British Columbia, Canada V7J 2C1  
 PHONE: 604-984-0221

To: GIMLEX ENTERPRISES LTD. 60-0776 210-5473  
 ATTN: JIM CHRISTIE  
 3921 W. 31ST AVE.  
 VANCOUVER, BC  
 V6S 1Y4

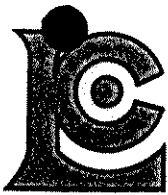
Page Number : 3-A  
 Total Pages : 10  
 Certificate Date: 23-SEP-92  
 Invoice No. : 19221274  
 P.O. Number :  
 Account : FGF

Project : YUKON  
 Comments : CC: J.S. CHRISTIE

## CERTIFICATE OF ANALYSIS A9221274

SAMPLE	PREP CODE	Au ppb FA+AA	Ag ppm	Al %	As ppm	Ba ppm	Be ppm	Bi ppm	Ca %	Cd ppm	Co ppm	Cr ppm	Cu ppm	Fe %	Ga ppm	Hg ppm	K %	La ppm	Mg %	Mn ppm
92C 305	201 229	< 5	< 0.2	1.67	2	340	< 0.5	< 2	0.37	< 0.5	4	25	31	2.71	10	< 1	0.08	20	0.46	160
92C 306	201 229	< 5	< 0.2	1.60	4	290	< 0.5	< 2	0.33	< 0.5	7	25	33	2.53	10	< 1	0.11	20	0.46	175
92C 307	201 229	< 5	< 0.2	1.46	4	290	< 0.5	< 2	0.33	< 0.5	5	23	24	2.22	10	< 1	0.10	20	0.45	180
92C 308	201 229	< 5	< 0.2	1.33	< 2	240	< 0.5	< 2	0.32	< 0.5	4	18	17	2.12	10	< 1	0.10	20	0.45	156
92C 309	201 229	< 5	< 0.2	1.24	2	260	< 0.5	< 2	0.29	< 0.5	4	21	16	2.44	10	< 1	0.06	10	0.36	135
92C 310	201 229	< 5	< 0.2	1.31	4	300	< 0.5	< 2	0.32	< 0.5	6	26	24	2.20	10	< 1	0.05	20	0.48	190
92C 311	201 229	< 5	< 0.2	1.41	4	330	< 0.5	< 2	0.34	< 0.5	4	26	23	1.89	10	< 1	0.06	20	0.47	145
92C 312	201 229	< 5	< 0.2	1.27	4	260	< 0.5	< 2	0.31	< 0.5	3	21	17	2.08	< 10	< 1	0.07	20	0.35	120
92C 313	201 229	< 5	< 0.2	1.18	8	180	< 0.5	< 2	0.32	< 0.5	3	21	15	1.98	< 10	< 1	0.13	20	0.45	180
92C 314	201 229	< 5	< 0.2	1.87	8	340	< 0.5	< 2	0.42	< 0.5	8	51	20	2.60	10	< 1	0.08	20	0.76	230
92C 315	201 229	< 5	< 0.2	1.49	6	270	< 0.5	< 2	0.32	< 0.5	4	25	20	2.39	10	< 1	0.08	20	0.39	120
92C 316	201 229	< 5	< 0.2	1.21	2	340	< 0.5	< 2	0.35	< 0.5	7	30	17	1.87	10	< 1	0.07	20	0.36	180
92C 317	201 229	< 5	< 0.2	1.41	< 2	360	< 0.5	< 2	0.54	0.5	6	28	14	1.68	10	< 1	0.08	20	0.50	160
92C 318	201 229	< 5	< 0.2	1.27	2	390	< 0.5	< 2	0.45	< 0.5	11	27	19	2.75	10	< 1	0.05	20	0.47	400
92C 319	201 229	< 5	< 0.2	1.19	16	310	< 0.5	< 2	0.47	< 0.5	9	23	19	2.61	< 10	< 1	0.05	20	0.45	300
92C 320	201 229	< 5	< 0.2	1.25	8	450	< 0.5	< 2	0.45	< 0.5	9	25	16	3.51	10	< 1	0.08	20	0.50	180
92C 321	201 229	< 5	< 0.2	1.49	< 2	530	< 0.5	< 2	0.45	< 0.5	9	28	19	2.00	< 10	< 1	0.08	20	0.55	495
92C 322	201 229	< 5	< 0.2	1.30	8	540	< 0.5	< 2	0.41	< 0.5	8	23	12	2.09	10	< 1	0.10	30	0.54	300
92C 323	201 229	< 5	< 0.2	1.30	2	560	< 0.5	< 2	0.45	< 0.5	12	23	16	1.53	< 10	< 1	0.10	30	0.51	395
92C 324	201 229	< 5	< 0.2	1.18	< 2	600	< 0.5	< 2	0.31	< 0.5	5	20	7	1.99	10	< 1	0.14	30	0.69	290
92C 325	201 229	< 5	< 0.2	1.44	4	360	< 0.5	< 2	0.31	< 0.5	10	120	22	2.06	< 10	< 1	0.05	20	0.91	220
92C 326	201 229	< 5	< 0.2	1.36	6	290	< 0.5	< 2	0.39	< 0.5	9	33	37	1.74	< 10	< 1	0.10	20	0.84	180
92C 327	201 229	< 5	< 0.2	1.38	8	500	< 0.5	< 2	0.42	< 0.5	8	27	26	2.41	< 10	< 1	0.08	20	0.53	240
92C 328	201 229	< 5	< 0.2	1.43	14	490	< 0.5	< 2	0.47	< 0.5	8	27	27	2.38	< 10	< 1	0.08	20	0.53	330
92C 329	201 229	< 5	< 0.2	1.51	14	530	< 0.5	< 2	0.82	< 0.5	9	27	27	2.48	< 10	< 1	0.09	20	0.56	340
92C 330	201 229	< 5	< 0.2	1.28	2	480	< 0.5	< 2	0.48	< 0.5	9	24	19	2.10	< 10	< 1	0.08	20	0.48	280
92C 331	201 229	< 5	< 0.2	1.26	2	470	< 0.5	< 2	0.44	< 0.5	8	24	21	2.17	< 10	< 1	0.05	20	0.44	300
92C 332	201 229	< 5	< 0.2	1.36	4	470	< 0.5	< 2	0.45	< 0.5	9	27	24	2.44	< 10	< 1	0.06	20	0.54	275
92C 333	201 229	< 5	< 0.2	1.30	8	410	< 0.5	< 2	0.43	< 0.5	8	24	18	2.07	< 10	< 1	0.04	10	0.47	260
92C 334	201 229	< 5	< 0.2	1.20	6	500	< 0.5	< 2	0.32	< 0.5	9	25	20	2.24	< 10	< 1	0.04	20	0.46	380
92C 335	201 229	< 5	< 0.2	0.94	14	260	< 0.5	< 2	0.42	< 0.5	8	23	22	2.06	< 10	< 1	0.06	10	0.46	355
92C 336	201 229	< 5	< 0.2	1.57	< 2	220	< 0.5	< 2	0.55	< 0.5	10	35	23	2.49	< 10	< 1	0.11	20	0.74	205
92C 337	201 229	< 5	< 0.2	1.60	< 2	300	< 0.5	< 2	0.41	< 0.5	10	35	34	2.45	< 10	< 1	0.11	20	0.81	205
92C 338	201 229	< 5	< 0.2	0.95	4	280	< 0.5	< 2	0.48	< 0.5	6	26	15	1.75	< 10	< 1	0.07	20	0.43	200
92C 339	201 229	< 5	< 0.2	1.35	2	370	< 0.5	< 2	0.51	< 0.5	8	27	21	2.18	< 10	< 1	0.07	20	0.49	270
92C 340	201 229	< 5	< 0.2	1.32	< 2	360	< 0.5	< 2	0.34	< 0.5	6	26	19	2.31	< 10	< 1	0.09	20	0.45	155
92C 341	201 229	< 5	< 0.2	1.26	8	500	< 0.5	< 2	0.78	< 0.5	8	26	23	2.12	< 10	< 1	0.06	10	0.49	285
92C 342	201 229	< 5	< 0.2	1.26	8	260	< 0.5	< 2	0.29	< 0.5	6	24	11	1.99	< 10	< 1	0.07	10	0.39	200
92C 343	201 229	< 5	< 0.2	0.97	6	280	< 0.5	< 2	0.43	< 0.5	6	21	17	1.90	< 10	< 1	0.05	20	0.38	240
92C 344	201 229	< 5	< 0.2	1.35	8	430	< 0.5	< 2	0.36	< 0.5	9	27	21	2.55	< 10	< 1	0.08	20	0.48	380

CERTIFICATION: *Jhai D Ma*



# Chemex Labs Ltd.

Analytical Chemists \* Geochemists \* Registered Assayers  
 212 Brooksbank Ave., North Vancouver  
 British Columbia, Canada V7J 2C1  
 PHONE: 604-984-0221

To: GIMLEX ENTERPRISES LTD. CC-7740-13-001-31-23  
 ATTN: JIM CHRISTIE  
 3921 W. 31ST AVE.  
 VANCOUVER, BC  
 V6S 1Y4

Page Number : 3-B  
 Total Pages : 10  
 Certificate Date: 23-SEP-92  
 Invoice No. : 19221274  
 P.O. Number :  
 Account : FGF

Project : YUKON  
 Comments : CC: J.S. CHRISTIE

## CERTIFICATE OF ANALYSIS

### A9221274

SAMPLE	PREP CODE	Mo ppm	Na %	Ni ppm	P ppm	Pb ppm	Sb ppm	Sc ppm	Sr ppm	Ti %	Tl ppm	U ppm	V ppm	W ppm	Zn ppm
92C 305	201 229	< 1	< 0.01	16	540	12	< 2	4	21	0.04	< 10	< 10	39	< 10	62
92C 306	201 229	< 1	< 0.01	17	650	14	< 2	4	22	0.06	< 10	< 10	39	< 10	64
92C 307	201 229	< 1	< 0.01	17	550	8	< 2	3	20	0.05	< 10	< 10	35	< 10	58
92C 308	201 229	< 1	< 0.01	13	590	6	< 2	3	19	0.04	< 10	< 10	30	< 10	54
92C 309	201 229	< 1	< 0.01	15	900	6	< 2	2	17	0.03	< 10	< 10	37	< 10	50
92C 310	201 229	< 1	< 0.01	17	610	8	< 2	3	20	0.05	< 10	< 10	36	< 10	56
92C 311	201 229	< 1	< 0.01	17	620	10	< 2	3	21	0.04	< 10	< 10	34	< 10	58
92C 312	201 229	< 1	< 0.01	14	780	8	< 2	3	20	0.05	< 10	< 10	38	< 10	56
92C 313	201 229	< 1	< 0.01	14	820	2	2	3	17	0.04	< 10	< 10	24	< 10	76
92C 314	201 229	< 1	< 0.01	21	840	8	2	6	24	0.06	< 10	< 10	49	< 10	74
92C 315	201 229	< 1	0.01	15	650	12	< 2	3	22	0.04	< 10	< 10	41	< 10	62
92C 316	201 229	< 1	< 0.01	16	950	12	< 2	3	21	0.04	< 10	< 10	33	< 10	70
92C 317	201 229	< 1	0.01	21	790	12	< 2	3	32	0.06	< 10	< 10	44	< 10	74
92C 318	201 229	< 1	0.01	19	790	10	< 2	4	27	0.03	< 10	< 10	43	< 10	72
92C 319	201 229	< 1	0.01	20	860	14	< 2	3	26	0.04	< 10	< 10	42	< 10	72
92C 320	201 229	< 1	0.01	22	930	18	< 2	3	26	0.06	< 10	< 10	45	< 10	70
92C 321	201 229	< 1	0.01	20	810	16	< 2	4	28	0.05	< 10	< 10	45	< 10	72
92C 322	201 229	< 1	0.01	17	870	18	2	4	26	0.06	< 10	< 10	36	< 10	70
92C 323	201 229	< 1	0.01	17	640	20	< 2	3	27	0.05	< 10	< 10	30	< 10	58
92C 324	201 229	< 1	< 0.01	9	760	38	< 2	3	18	0.05	< 10	< 10	24	< 10	62
92C 325	201 229	< 1	< 0.01	38	610	12	< 2	3	20	0.08	< 10	< 10	33	< 10	66
92C 326	201 229	< 1	< 0.01	18	460	12	2	3	23	0.12	< 10	< 10	30	< 10	52
92C 327	201 229	< 1	0.01	24	760	8	2	4	28	0.08	< 10	< 10	42	< 10	78
92C 328	201 229	< 1	0.01	24	650	16	2	5	31	0.08	< 10	< 10	42	< 10	72
92C 329	201 229	< 1	0.02	23	660	10	< 2	4	42	0.07	< 10	< 10	46	< 10	74
92C 330	201 229	< 1	0.01	19	650	12	< 2	4	30	0.06	< 10	< 10	41	< 10	60
92C 331	201 229	< 1	0.01	19	680	8	2	4	29	0.06	< 10	< 10	42	< 10	60
92C 332	201 229	< 1	0.01	24	710	14	2	4	27	0.06	< 10	< 10	44	< 10	68
92C 333	201 229	< 1	0.01	19	640	10	< 2	3	27	0.05	< 10	< 10	37	< 10	58
92C 334	201 229	< 1	0.01	18	700	10	2	3	22	0.04	< 10	< 10	38	< 10	60
92C 335	201 229	< 1	0.01	23	810	6	2	3	25	0.06	< 10	< 10	39	< 10	54
92C 336	201 229	< 1	0.01	22	580	12	< 2	4	29	0.08	< 10	< 10	49	< 10	68
92C 337	201 229	< 1	0.01	23	510	6	2	4	25	0.08	< 10	< 10	48	< 10	66
92C 338	201 229	< 1	0.01	15	750	4	< 2	3	30	0.08	< 10	< 10	41	< 10	40
92C 339	201 229	< 1	0.02	18	610	8	< 2	4	32	0.06	< 10	< 10	43	< 10	54
92C 340	201 229	< 1	0.01	17	610	10	< 2	3	25	0.06	< 10	< 10	41	< 10	62
92C 341	201 229	< 1	0.02	21	630	10	< 2	4	43	0.06	< 10	< 10	41	< 10	52
92C 342	201 229	< 1	0.01	13	440	6	< 2	3	20	0.06	< 10	< 10	43	< 10	44
92C 343	201 229	< 1	0.01	13	740	6	2	3	27	0.06	< 10	< 10	37	< 10	44
92C 344	201 229	< 1	0.01	19	670	14	4	4	26	0.06	< 10	< 10	41	< 10	68

CERTIFICATION:

*Jhai D Ma*



# Chemex Labs Ltd.

Analytical Chemists \* Geochemists \* Registered Assayers  
 212 Brooksbank Ave., North Vancouver  
 British Columbia, Canada V7J 2C1  
 PHONE: 604-984-0221

To: GIMLEX ENTERPRISES LTD. 60-67th Street - 51173  
 ATTN: JIM CHRISTIE  
 3921 W. 31ST AVE.  
 VANCOUVER, BC  
 V6S 1Y4

Page Number : 4-A  
 Total Pages : 10  
 Certificate Date: 23-SEP-92  
 Invoice No. : 19221274  
 P.O. Number :  
 Account : FGF

Project : YUKON  
 Comments : CC: J.S. CHRISTIE

## CERTIFICATE OF ANALYSIS A9221274

SAMPLE	PREP CODE	Au ppb FA+AA	Ag ppm	Al %	As ppm	Ba ppm	Be ppm	Bi ppm	Ca %	Cd ppm	Co ppm	Cr ppm	Cu ppm	Fe %	Ga ppm	Hg ppm	K %	La ppm	Mg %	Mn ppm
92C 345	201 229	< 5	< 0.2	0.98	< 2	300	< 0.5	< 2	0.43	< 0.5	7	21	17	1.81	< 10	< 1	0.05	10	0.39	245
92C 346	201 229	20	< 0.2	0.80	< 2	340	< 0.5	< 2	0.57	< 0.5	5	18	13	1.57	< 10	< 1	0.06	10	0.41	185
92C 347	201 229	< 5	< 0.2	1.04	4	230	< 0.5	< 2	0.35	< 0.5	7	27	18	2.08	< 10	< 1	0.08	20	0.45	230
92C 348	201 229	< 5	< 0.2	1.24	4	530	< 0.5	< 2	0.36	< 0.5	7	24	20	2.10	< 10	< 1	0.12	30	0.41	215
92C 349	201 229	< 5	< 0.2	1.20	6	580	< 0.5	< 2	0.28	< 0.5	3	17	10	1.78	< 10	< 1	0.08	40	0.45	120
92C 350	201 229	< 5	< 0.2	1.15	< 2	560	< 0.5	< 2	0.23	< 0.5	4	16	12	1.77	< 10	< 1	0.10	40	0.44	160
92C 351	201 229	< 5	< 0.2	1.30	< 2	930	< 0.5	< 2	0.36	< 0.5	7	27	25	1.91	< 10	< 1	0.12	30	0.45	215
92C 352	201 229	< 5	< 0.2	1.08	6	380	< 0.5	< 2	0.20	< 0.5	5	24	12	1.67	< 10	< 1	0.09	20	0.34	210
92C 353	201 229	< 5	< 0.2	0.79	4	350	< 0.5	< 2	0.15	< 0.5	4	19	10	1.42	< 10	< 1	0.07	30	0.32	145
92C 354	201 229	< 5	< 0.2	0.91	< 2	360	< 0.5	< 2	0.16	< 0.5	3	7	4	1.21	10	< 1	0.06	60	0.66	190
92C 355	201 229	< 5	< 0.2	1.12	4	830	< 0.5	< 2	0.20	< 0.5	4	17	15	1.63	< 10	< 1	0.15	30	0.40	120
92C 356	201 229	< 5	< 0.2	1.92	4	650	< 0.5	< 2	0.45	< 0.5	12	58	24	2.86	< 10	< 1	0.11	20	0.97	325
92C 357	201 229	< 5	< 0.2	0.84	4	610	< 0.5	< 2	0.18	< 0.5	4	15	11	1.24	< 10	< 1	0.11	30	0.29	185
92C 358	201 229	< 5	< 0.2	1.32	2	380	< 0.5	< 2	0.20	< 0.5	4	18	16	1.84	< 10	< 1	0.10	20	0.54	180
92C 359	201 229	< 5	< 0.2	0.56	2	330	< 0.5	< 2	0.15	< 0.5	4	8	11	1.10	< 10	< 1	0.13	40	0.27	355
92C 360	201 229	< 5	< 0.2	1.37	2	630	< 0.5	< 2	0.24	< 0.5	7	28	19	2.18	< 10	< 1	0.07	30	0.58	195
92C 361	201 229	< 5	< 0.2	1.44	4	410	< 0.5	< 2	0.46	< 0.5	11	47	17	2.16	< 10	< 1	0.37	30	1.01	385
92C 362	201 229	10	< 0.2	1.41	< 2	640	< 0.5	< 2	0.36	< 0.5	6	25	21	2.02	< 10	< 1	0.11	30	0.61	160
92C 363	201 229	< 5	< 0.2	1.18	4	690	< 0.5	< 2	0.40	< 0.5	6	19	27	1.65	< 10	< 1	0.11	40	0.47	200
92C 364	201 229	< 5	< 0.2	0.80	< 2	600	< 0.5	< 2	0.24	< 0.5	3	10	11	1.08	< 10	< 1	0.16	30	0.35	125
92C 365	201 229	< 5	< 0.2	0.93	< 2	780	< 0.5	< 2	0.33	< 0.5	4	30	15	1.35	< 10	< 1	0.16	40	0.65	210
92C 366	201 229	< 5	< 0.2	0.55	< 2	320	< 0.5	< 2	0.25	< 0.5	2	9	7	0.91	< 10	< 1	0.20	20	0.34	105
92C 367	201 229	< 5	< 0.2	1.15	6	680	< 0.5	< 2	0.38	< 0.5	6	26	17	1.78	< 10	< 1	0.12	30	0.62	160
92C 368	201 229	< 5	< 0.2	1.31	6	670	< 0.5	< 2	0.28	< 0.5	6	22	24	1.96	< 10	< 1	0.16	30	0.53	145
92C 369	201 229	20	< 0.2	1.04	< 2	610	< 0.5	< 2	0.33	< 0.5	4	23	18	1.52	< 10	< 1	0.18	30	0.56	130
92C 370	201 229	< 5	< 0.2	1.42	2	640	< 0.5	< 2	0.45	< 0.5	8	37	23	1.86	< 10	< 1	0.15	30	0.66	130
92C 371	201 229	< 5	< 0.2	1.54	2	1090	< 0.5	< 2	0.38	< 0.5	6	28	24	2.07	10	< 1	0.16	40	0.57	165
92C 372	201 229	15	< 0.2	1.42	2	720	< 0.5	< 2	0.31	< 0.5	6	26	17	1.92	< 10	< 1	0.15	30	0.50	145
92C 373	201 229	30	< 0.2	2.25	8	420	< 0.5	< 2	0.32	< 0.5	17	64	39	3.88	10	< 1	0.08	10	1.07	755
92C 374	201 229	< 5	< 0.2	2.01	6	280	< 0.5	< 2	0.35	< 0.5	11	49	18	2.71	< 10	< 1	0.07	10	0.99	300
92C 375	201 229	< 5	< 0.2	1.86	6	310	< 0.5	< 2	0.34	< 0.5	9	42	17	2.46	< 10	< 1	0.07	20	0.77	260
92C 376	201 229	75	< 0.2	2.38	< 2	200	< 0.5	< 2	0.48	< 0.5	21	288	28	3.35	< 10	< 1	0.01	10	1.91	355
92C 377	201 229	< 5	< 0.2	2.38	< 2	190	< 0.5	< 2	0.46	< 0.5	18	294	50	3.02	< 10	< 1	0.01	10	1.85	325
92C 378	201 229	< 5	< 0.2	1.68	2	180	< 0.5	< 2	0.46	< 0.5	13	203	26	2.29	< 10	< 1	0.01	10	1.29	245
92C 379	201 229	295	< 0.2	2.24	< 2	320	< 0.5	< 2	0.49	< 0.5	32	310	94	4.62	10	< 1	0.02	10	1.60	750
92C 380	201 229	455	< 0.2	1.82	8	230	< 0.5	< 2	0.42	< 0.5	33	272	76	4.99	< 10	< 1	0.01	< 10	1.38	1015
92C 381	201 229	< 5	< 0.2	1.87	< 2	120	< 0.5	< 2	0.40	< 0.5	16	266	49	2.41	< 10	< 1	< 0.01	< 10	1.62	280
92C 382	201 229	< 5	< 0.2	2.50	< 2	90	< 0.5	< 2	0.43	< 0.5	22	434	77	3.14	< 10	< 1	< 0.01	< 10	2.55	435
92C 383	201 229	40	< 0.2	2.24	4	190	< 0.5	< 2	0.33	< 0.5	16	212	33	3.03	< 10	< 1	0.03	10	1.54	275
92C 384	201 229	< 5	< 0.2	2.23	< 2	240	< 0.5	< 2	0.55	< 0.5	15	191	39	2.80	< 10	< 1	0.04	10	1.41	305

CERTIFICATION: *Jhai D Ma*



# Chemex Labs Ltd.

Analytical Chemists \* Geochemists \* Registered Assayers  
 212 Brooksbank Ave., North Vancouver  
 British Columbia, Canada V7J 2C1  
 PHONE: 604-984-0221

To: GIMLEX ENTERPRISES LTD.  
 ATTN: JIM CHRISTIE  
 3921 W. 31ST AVE.  
 VANCOUVER, BC  
 V6S 1Y4

Page Number : 4-B  
 Total Pages : 10  
 Certificate Date: 23-SEP-92  
 Invoice No. : 19221274  
 P.O. Number :  
 Account : FGF

Project : YUKON  
 Comments : CC: J.S. CHRISTIE

## CERTIFICATE OF ANALYSIS A9221274

SAMPLE	PREP CODE	Mo ppm	Na %	Ni ppm	P ppm	Pb ppm	Sb ppm	Sc ppm	Sr ppm	Ti %	Tl ppm	U ppm	V ppm	W ppm	Zn ppm
92C 345	201 229	< 1	0.01	17	640	10	< 2	3	27	0.04	< 10	< 10	32	< 10	50
92C 346	201 229	< 1	0.01	14	540	6	< 2	2	27	0.05	< 10	< 10	31	< 10	46
92C 347	201 229	< 1	0.01	19	740	4	< 2	3	26	0.07	< 10	< 10	41	< 10	60
92C 348	201 229	< 1	0.01	18	630	12	2	4	27	0.05	< 10	< 10	34	< 10	56
92C 349	201 229	< 1	0.01	8	230	14	< 2	2	19	0.04	< 10	< 10	23	< 10	52
92C 350	201 229	< 1	0.01	10	250	16	< 2	3	19	0.07	< 10	< 10	27	< 10	48
92C 351	201 229	< 1	0.01	21	540	14	< 2	4	26	0.07	< 10	< 10	31	< 10	46
92C 352	201 229	< 1	0.01	13	260	18	< 2	3	18	0.05	< 10	< 10	29	< 10	38
92C 353	201 229	< 1	< 0.01	9	230	8	< 2	2	12	0.04	< 10	< 10	21	< 10	44
92C 354	201 229	< 1	< 0.01	6	290	6	< 2	1	11	< 0.01	10	< 10	4	< 10	88
92C 355	201 229	< 1	< 0.01	11	210	14	< 2	3	19	0.06	< 10	< 10	26	< 10	42
92C 356	201 229	< 1	0.01	25	620	10	2	6	28	0.15	< 10	< 10	58	< 10	64
92C 357	201 229	< 1	< 0.01	8	390	14	< 2	2	16	0.04	< 10	< 10	19	< 10	32
92C 358	201 229	< 1	0.01	11	210	14	< 2	3	17	0.07	< 10	< 10	28	< 10	60
92C 359	201 229	< 1	< 0.01	7	480	16	< 2	2	14	0.02	< 10	< 10	7	< 10	34
92C 360	201 229	< 1	0.01	15	310	14	< 2	3	19	0.06	< 10	< 10	34	< 10	64
92C 361	201 229	< 1	< 0.01	22	1070	14	2	5	19	0.12	< 10	< 10	36	< 10	54
92C 362	201 229	< 1	0.01	14	440	18	2	4	25	0.07	< 10	< 10	34	< 10	54
92C 363	201 229	< 1	< 0.01	16	470	20	< 2	3	26	0.05	< 10	< 10	27	< 10	48
92C 364	201 229	< 1	< 0.01	7	250	12	< 2	2	19	0.06	< 10	< 10	10	< 10	38
92C 365	201 229	< 1	< 0.01	28	310	18	< 2	4	36	0.08	< 10	< 10	15	< 10	60
92C 366	201 229	< 1	< 0.01	6	770	10	< 2	1	14	0.04	< 10	< 10	6	< 10	34
92C 367	201 229	< 1	< 0.01	15	560	16	< 2	3	29	0.07	< 10	< 10	25	< 10	60
92C 368	201 229	< 1	0.01	14	430	22	< 2	4	21	0.07	< 10	< 10	29	< 10	54
92C 369	201 229	< 1	< 0.01	12	530	14	< 2	3	21	0.10	< 10	< 10	22	< 10	46
92C 370	201 229	< 1	0.01	18	480	18	2	4	33	0.11	< 10	< 10	36	< 10	56
92C 371	201 229	< 1	< 0.01	17	310	18	< 2	4	31	0.09	< 10	< 10	33	< 10	52
92C 372	201 229	< 1	< 0.01	15	240	16	< 2	3	32	0.07	< 10	< 10	30	< 10	50
92C 373	201 229	< 1	0.01	27	600	8	2	9	25	0.03	< 10	< 10	67	< 10	62
92C 374	201 229	< 1	0.01	21	380	8	< 2	5	27	0.06	< 10	< 10	56	< 10	54
92C 375	201 229	< 1	0.01	20	360	8	2	5	27	0.07	< 10	< 10	53	< 10	50
92C 376	201 229	< 1	< 0.01	119	470	4	< 2	8	27	0.09	< 10	< 10	58	< 10	66
92C 377	201 229	< 1	< 0.01	103	350	4	2	7	28	0.14	< 10	< 10	61	< 10	56
92C 378	201 229	< 1	< 0.01	75	480	4	2	4	26	0.11	< 10	< 10	43	< 10	48
92C 379	201 229	< 1	0.01	165	690	8	2	14	28	0.03	< 10	< 10	71	< 10	72
92C 380	201 229	< 1	0.01	177	780	2	< 2	13	38	0.06	< 10	< 10	74	< 10	70
92C 381	201 229	< 1	< 0.01	92	520	2	2	3	23	0.09	< 10	< 10	40	< 10	46
92C 382	201 229	< 1	< 0.01	137	630	2	2	6	18	0.09	< 10	< 10	47	< 10	60
92C 383	201 229	< 1	< 0.01	77	400	6	2	8	18	0.07	< 10	< 10	54	< 10	58
92C 384	201 229	< 1	0.01	69	430	6	2	6	35	0.09	< 10	< 10	54	< 10	66

CERTIFICATION: *Jhai D Ma*



# Chemex Labs Ltd.

Analytical Chemists \* Geochemists \* Registered Assayers  
 212 Brooksbank Ave., North Vancouver  
 British Columbia, Canada V7J 2C1  
 PHONE: 604-984-0221

To: GIMLEX ENTERPRISES LTD. 60-6720-2015-1741  
 ATTN: JIM CHRISTIE  
 3921 W. 31ST AVE.  
 VANCOUVER, BC  
 V6S 1Y4

Page Number : 5-A  
 Total Pages : 10  
 Certificate Date: 23-SEP-92  
 Invoice No. : 19221274  
 P.O. Number :  
 Account : FGF

Project : YUKON  
 Comments : CC: J.S. CHRISTIE

## CERTIFICATE OF ANALYSIS A9221274

SAMPLE	PREP CODE		Au ppb	Ag ppm	Al %	As ppm	Ba ppm	Be ppm	Bi ppm	Ca %	Cd ppm	Co ppm	Cr ppm	Cu ppm	Fe %	Ga ppm	Hg ppm	K %	La ppm	Mg %	Mn ppm
	FA+AA																				
92C 385	201	229	10	< 0.2	2.59	2	490	< 0.5	< 2	0.49	< 0.5	22	45	65	5.45	10	1	0.09	10	1.27	2640
92C 386	201	229	< 5	< 0.2	2.34	< 2	190	< 0.5	2	0.51	< 0.5	18	362	43	2.87	10	< 1	0.03	< 10	2.03	335
92C 387	201	229	< 5	< 0.2	1.16	< 2	300	< 0.5	< 2	0.39	< 0.5	7	21	23	2.01	< 10	< 1	0.05	20	0.48	240
92C 388	201	229	< 5	< 0.2	1.56	18	370	< 0.5	2	0.35	< 0.5	8	23	26	2.36	< 10	< 1	0.06	20	0.46	215
92C 389	201	229	35	< 0.2	1.57	14	450	< 0.5	< 2	0.43	< 0.5	8	24	28	2.51	< 10	< 1	0.05	10	0.50	255
92C 390	201	229	< 5	< 0.2	1.39	22	370	< 0.5	< 2	0.45	< 0.5	9	24	33	2.59	< 10	< 1	0.08	10	0.57	345
92C 391	201	229	< 5	< 0.2	1.51	12	430	< 0.5	2	0.53	< 0.5	10	24	33	2.69	< 10	< 1	0.06	10	0.58	280
92C 392	201	229	< 5	< 0.2	1.34	16	440	< 0.5	< 2	1.29	< 0.5	10	23	32	2.51	< 10	< 1	0.06	10	0.70	460
92C 393	201	229																			
92C 394	201	229																			
92C 395	201	229																			
92C 396	201	229																			
92C 397	201	229																			
92C 398	201	229																			
92C 400	201	229																			
92C 401	201	229																			
92C 402	201	229																			
92C 403	201	229																			
92C 404	201	229																			
92C 405	201	229																			
92C 406	201	229																			
92C 407	201	229																			
92C 408	201	229																			
92C 409	201	229																			
92C 410	201	229																			
92C 411	201	229																			
92C 412	201	229																			
92C 413	201	229																			
92C 414	201	229																			
92C 415	201	229																			
92C 416	201	229																			
92C 417	201	229																			
92C 418	201	229																			
92C 419	201	229																			
92C 420	201	229																			
92C 421	201	229																			
92C 422	201	229																			
92C 423	201	229																			
92C 424	201	229																			
92C 425	201	229																			

CERTIFICATION: \_\_\_\_\_

*J. S. Christie*



# Chemex Labs Ltd.

Analytical Chemists \* Geochemists \* Registered Assayers  
212 Brooksbank Ave., North Vancouver  
British Columbia, Canada V7J 2C1  
PHONE: 604-984-0221

To: GIMLEX ENTERPRISES LTD. (604) 984-5173  
ATTN: JIM CHRISTIE  
3921 W. 31ST AVE.  
VANCOUVER, BC  
V6S 1Y4

Page Number : 5-B  
Total Pages : 10  
Certificate Date: 23-SEP-92  
Invoice No. : 19221274  
P.O. Number :  
Account : FGF

Project : YUKON  
Comments : CC: J.S. CHRISTIE

## CERTIFICATE OF ANALYSIS A9221274

SAMPLE	PREP CODE	Mo ppm	Na %	Ni ppm	P ppm	Pb ppm	Sb ppm	Sc ppm	Sr ppm	Ti %	Tl ppm	U ppm	V ppm	W ppm	Zn ppm
92C 385	201 229	< 1	0.01	29	820	8	4	11	21	< 0.01	< 10	< 10	59	20	110
92C 386	201 229	< 1	0.01	121	540	2	< 2	4	26	0.13	< 10	< 10	58	20	42
92C 387	201 229	< 1	0.01	16	560	10	< 2	3	28	0.07	< 10	< 10	42	< 10	48
92C 388	201 229	< 1	0.01	15	530	12	< 2	5	26	0.07	< 10	< 10	45	< 10	52
92C 389	201 229	< 1	0.01	20	560	12	< 2	4	30	0.06	< 10	< 10	46	< 10	56
92C 390	201 229	< 1	0.01	19	710	16	< 2	4	34	0.06	< 10	< 10	49	10	66
92C 391	201 229	< 1	0.02	21	650	14	< 2	4	35	0.06	< 10	< 10	49	< 10	68
92C 392	201 229	< 1	0.02	20	760	10	< 2	4	39	0.06	< 10	< 10	49	10	66
92C 393	201 229														
92C 394	201 229														
92C 395	201 229														
92C 396	201 229														
92C 397	201 229														
92C 398	201 229														
92C 400	201 229														
92C 401	201 229														
92C 402	201 229														
92C 403	201 229														
92C 404	201 229														
92C 405	201 229														
92C 406	201 229														
92C 407	201 229														
92C 408	201 229														
92C 409	201 229														
92C 410	201 229														
92C 411	201 229														
92C 412	201 229														
92C 413	201 229														
92C 414	201 229														
92C 415	201 229														
92C 416	201 229														
92C 417	201 229														
92C 418	201 229														
92C 419	201 229														
92C 420	201 229														
92C 421	201 229														
92C 422	201 229														
92C 423	201 229														
92C 424	201 229														
92C 425	201 229														

CERTIFICATION:

*Jhas J'Ma*



# Chemex Labs Ltd.

Analytical Chemists \* Geochemists \* Registered Assayers  
212 Brooksbank Ave., North Vancouver  
British Columbia, Canada V7J 2C1  
PHONE: 604-984-0221

To: GIMLEX ENTERPRISES LTD. GO-0770-5013  
ATTN: JIM CHRISTIE  
3921 W. 31ST AVE.  
VANCOUVER, BC  
V6S 1Y4

Page Number : 2-A  
Total Pages : 2  
Certificate Date: 04-NOV-92  
Invoice No. : 19223720  
P.O. Number :  
Account : FGF

Project : YUKON  
Comments:

## CERTIFICATE OF ANALYSIS A9223720

SAMPLE	PREP CODE		Au ppb	Ag ppm	Al %	As ppm	Ba ppm	Be ppm	Bi ppm	Ca %	Cd ppm	Co ppm	Cr ppm	Cu ppm	Fe %	Ga ppm	Hg ppm	K %	La ppm	Mg %	Mn ppm
	FA+AA																				
92C 675	201	229	45 < 0.2	2.38	10	370 < 0.5	< 2	0.46 < 0.5	37	315	74	5.01 < 10	< 1	0.05 < 10	1.84	1580					
92C 676	201	229	670 < 0.2	1.63	14	220 < 0.5	< 2	0.37 < 0.5	58	287	103	6.53 < 10	< 1	0.03 < 10	1.08	1505					
92C 677	201	229	960 < 0.2	1.60	20	300 < 0.5	< 2	0.34 < 0.5	55	299	169	8.25 < 10	1	0.05 < 10	0.98	2390					
92C 678	201	229	1120 < 0.2	2.66	12	290 < 0.5	< 2	0.51 < 0.5	28	508	50	4.76 < 10	1	0.04 < 10	2.26	945					
92C 679	201	229	35 < 0.2	4.92	12	290 < 0.5	8	0.64 < 0.5	60	1520	55	8.47 < 10	< 1	0.02 < 10	4.96	1980					
92C 680	201	229	20 < 0.2	3.53	< 2	110 < 0.5	< 2	0.65 < 0.5	30	623	141	4.48 < 10	< 1	0.03 < 10	3.54	660					
92C 681	201	229	5 < 0.2	3.56	< 2	110 < 0.5	< 2	0.57 < 0.5	33	445	75	4.43 < 10	< 1	0.01 < 10	3.41	645					
92C 682	201	229	975 < 0.2	1.47	12	330 < 0.5	< 2	0.36 < 0.5	50	183	362	7.54 < 10	1	0.06 < 10	0.69	2440					
92C 683	201	229	470 < 0.2	2.18	6	180 < 0.5	< 2	0.43 < 0.5	37	306	114	5.29 < 10	< 1	0.04 < 10	1.50	475					
92C 684	201	229	25 < 0.2	3.49	8	260 < 0.5	< 2	0.61 < 0.5	38	554	53	5.06 < 10	2	0.02 < 10	3.26	995					
92C 685	201	229	< 5 < 0.2	2.05	< 2	40 < 0.5	< 2	0.65 < 0.5	19	119	101	2.78 < 10	< 1	0.01 < 10	1.98	425					
92C 686	201	229	25 < 0.2	2.31	2	200 < 0.5	< 2	0.48 < 0.5	15	69	39	3.40 < 10	< 1	0.06 < 10	1.50	415					
92C 687	201	229	50 < 0.2	2.79	< 2	230 < 0.5	< 2	0.50 < 0.5	23	99	43	4.38 < 10	< 1	0.05 < 10	2.06	815					
92C 688	201	229	60 < 0.2	2.03	< 2	240 < 0.5	< 2	0.39 < 0.5	13	126	28	2.98 < 10	< 1	0.04 < 10	1.37	360					
92C 690	201	229	130 < 0.2	2.53	< 2	440 < 0.5	< 2	0.43 < 0.5	44	84	57	6.97 < 10	< 1	0.11 < 10	1.45	2890					
92C 691	201	229	35 < 0.2	2.44	2	220 < 0.5	< 2	0.46 < 0.5	20	260	35	3.73 < 10	1	0.05 < 10	1.96	315					

CERTIFICATION: *John D. Mac*



# Chemex Labs Ltd.

Analytical Chemists \* Geochemists \* Registered Assayers  
212 Brooksbank Ave., North Vancouver  
British Columbia, Canada V7J 2C1  
PHONE: 604-984-0221

To: GIMLEX ENTERPRISES LTD. GYPO .501C3  
ATTN: JIM CHRISTIE  
3921 W. 31ST AVE.  
VANCOUVER, BC  
V6S 1Y4

Project : YUKON  
Comments:

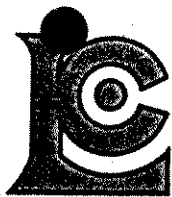
Page Number : 2-B  
Total Pages : 2  
Certificate Date: 04-NOV-92  
Invoice No. : 19223720  
P.O. Number :  
Account : FGF

## CERTIFICATE OF ANALYSIS A9223720

SAMPLE	PREP CODE		Mo	Na	Ni	P	Pb	Sb	Sc	Sr	Ti	Tl	U	V	W	Zn
			ppm	%	ppm	ppm	ppm	ppm	ppm	ppm	ppm	%	ppm	ppm	ppm	ppm
92C 675	201	229	< 1	< 0.01	169	750	2	4	15	23	0.02	< 10	< 10	88	10	76
92C 676	201	229	< 1	< 0.01	275	810	4	4	22	19	< 0.01	< 10	< 10	86	< 10	90
92C 677	201	229	< 1	0.01	281	940	4	2	23	20	0.01	10	< 10	98	< 10	108
92C 678	201	229	< 1	0.01	169	800	8	2	14	30	0.06	< 10	< 10	85	10	88
92C 679	201	229	< 1	0.01	454	790	4	< 2	37	31	< 0.01	20	< 10	155	40	112
92C 680	201	229	< 1	0.01	182	740	4	< 2	15	29	0.10	< 10	< 10	102	10	74
92C 681	201	229	< 1	0.01	168	630	8	< 2	20	25	0.08	10	< 10	116	< 10	74
92C 682	201	229	< 1	< 0.01	200	920	8	2	20	18	< 0.01	< 10	< 10	108	< 10	86
92C 683	201	229	< 1	< 0.01	171	740	2	2	15	20	0.01	< 10	< 10	71	< 10	72
92C 684	201	229	< 1	< 0.01	206	630	6	2	18	25	0.08	10	< 10	103	10	84
92C 685	201	229	< 1	< 0.01	59	720	< 2	2	3	43	0.17	< 10	< 10	56	< 10	56
92C 686	201	229	< 1	< 0.01	25	290	2	< 2	7	30	0.16	< 10	< 10	65	< 10	66
92C 687	201	229	< 1	< 0.01	32	320	2	2	10	29	0.14	< 10	< 10	83	< 10	76
92C 688	201	229	< 1	< 0.01	46	310	2	< 2	7	24	0.11	< 10	< 10	61	< 10	52
92C 690	201	229	< 1	< 0.01	37	570	8	2	15	20	0.03	< 10	< 10	79	< 10	98
92C 691	201	229	< 1	< 0.01	117	410	2	< 2	9	24	0.05	< 10	< 10	60	< 10	78

CERTIFICATION:

*Phai D Ma*



# Chemex Labs Ltd.

Analytical Chemists \* Geochemists \* Registered Assayers  
 212 Brooksbank Ave., North Vancouver  
 British Columbia, Canada V7J 2C1  
 PHONE: 604-984-0221

To: GIMLEX ENTERPRISES LTD. (GG-ROCK (203))  
 ATTN: JIM CHRISTIE  
 3921 W. 31ST AVE.  
 VANCOUVER, BC  
 V6S 1Y4

Page Number : 1-A  
 Total Pages : 1  
 Certificate Date: 04-NOV-92  
 Invoice No. : I9223721  
 P.O. Number :  
 Account : FGF

Project : YUKON  
 Comments:

## CERTIFICATE OF ANALYSIS A9223721

SAMPLE	PREP CODE		Au ppb	Au ppb	Ag	Al	As	Ba	Be	Bi	Ca	Cd	Co	Cr	Cu	Fe	Ga	Hg	K	La	Mg	
	FA+AA	FA+AA	ppm	%	ppm	ppm	ppm	ppm	ppm	ppm	%	ppm	ppm	ppm	ppm	%	ppm	ppm	%	ppm	%	
92C 641	205	226																				
92C 642	205	226																				
92C 643	205	226																				
92C 644	205	226																				
92C 645	205	226																				
92C 646	205	226																				
92C 647	205	226																				
92C 689	205	226	180	185	1.2	1.08	2	280	< 0.5	< 2	0.16	< 0.5	20	120	26	5.64	< 10	< 1	0.44	< 10	0.21	
92C 692	205	226	355	400	1.2	1.75	8	350	< 0.5	< 2	0.28	< 0.5	42	260	150	6.67	< 10	< 1	0.40	< 10	0.53	
92C 693	205	226	985	1080	0.6	2.03	4	200	< 0.5	< 2	0.31	< 0.5	39	347	223	6.09	< 10	< 1	0.14	< 10	1.38	
92C 694	205	226	785	830	1.0	1.45	2	160	< 0.5	< 2	0.25	< 0.5	30	295	150	5.12	< 10	< 1	0.25	< 10	0.82	

CERTIFICATION:

*John D. Ma*



# Chemex Labs Ltd.

Analytical Chemists \* Geochemists \* Registered Assayers  
212 Brooksbank Ave., North Vancouver  
British Columbia, Canada V7J 2C1  
PHONE: 604-984-0221

To: GIMLEX ENTERPRISES LTD.  
ATTN: JIM CHRISTIE  
3921 W. 31ST AVE.  
VANCOUVER, BC  
V6S 1Y4

GUM RUNS

Page Number : 1-B  
Total Pages : 1  
Certificate Date: 04-NOV-92  
Invoice No. : 19223721  
P.O. Number :  
Account : FGF

Project : YUKON  
Comments:

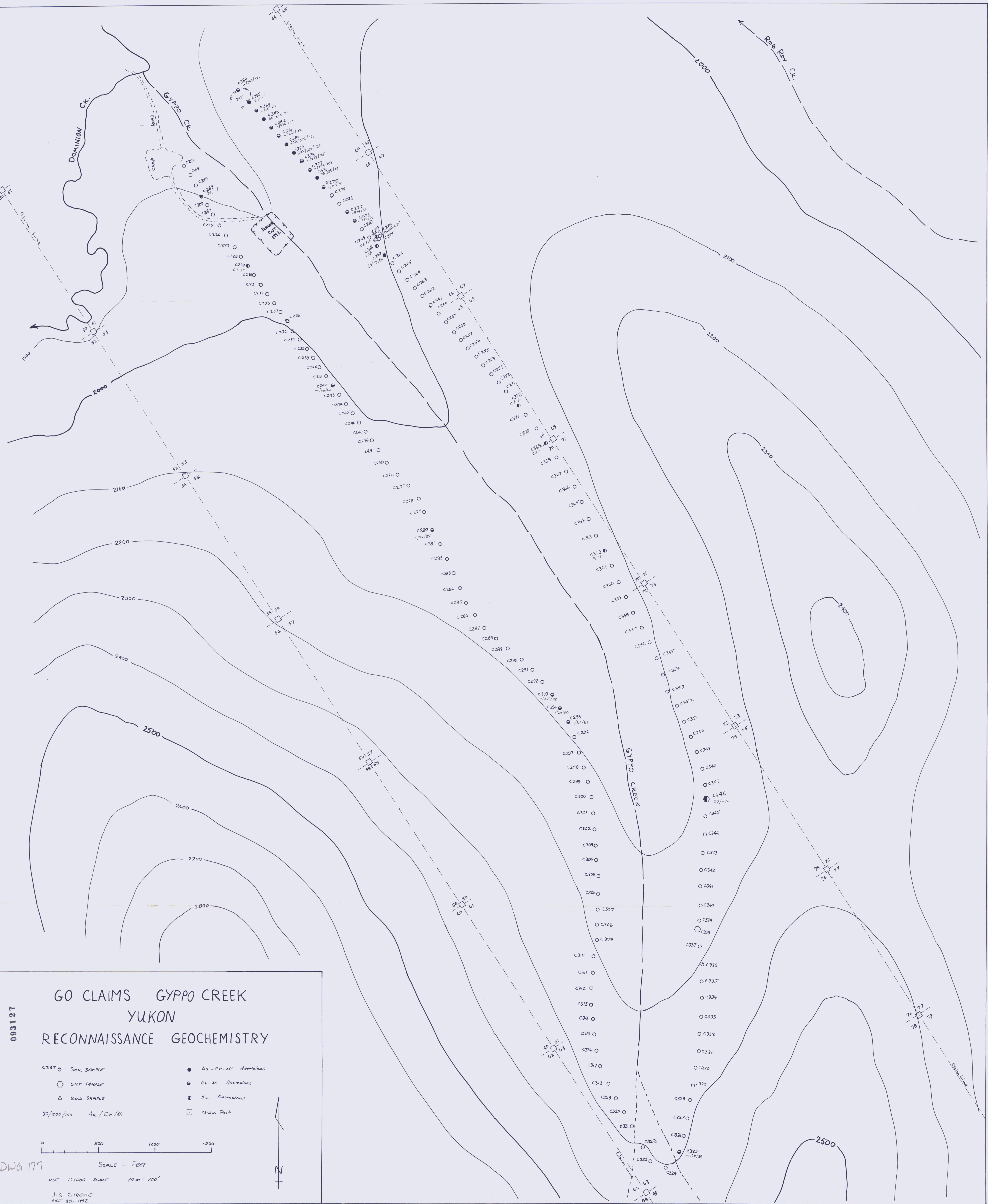
## CERTIFICATE OF ANALYSIS

A9223721

SAMPLE	PREP CODE		Mn	Mo	Na	Ni	P	Pb	Sb	Sc	Sr	Ti	Tl	U	V	W	Zn
			ppm	ppm	%	ppm	ppm	ppm	ppm	ppm	ppm	%	ppm	ppm	ppm	ppm	ppm
92C 641	205	226															
92C 642	205	226															
92C 643	205	226															
92C 644	205	226															
92C 645	205	226															
92C 646	205	226															
92C 647	205	226															
92C 689	205	226	1715	1	0.02	20	390	2	2	8	11	< 0.01	< 10	< 10	38	< 10	58
92C 692	205	226	1800	< 1	0.03	213	740	4	2	18	17	< 0.01	< 10	< 10	99	< 10	84
92C 693	205	226	1140	< 1	0.01	223	670	4	4	18	15	< 0.01	< 10	< 10	99	< 10	76
92C 694	205	226	645	< 1	0.02	202	640	2	4	13	12	< 0.01	< 10	< 10	81	< 10	74

CERTIFICATION:

*Jhai D Ma*



093127

# GO CLAIMS GYPPO CREEK YUKON RECONNAISSANCE GEOCHEMISTRY

- C337 ○ SOIL SAMPLE
- SILT SAMPLE
- △ ROCK SAMPLE
- 30/200/100 Au/Cr/Ni
- Au-Cr-Ni Anomalous
- Cr-Ni Anomalous
- Au Anomalous
- Claim Post

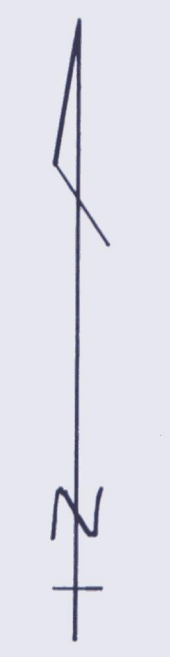


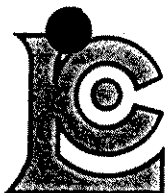
SCALE - FEET

USE 1:1000 SCALE 10 M = 100'

J. S. CHRISTIE  
OCT 30, 1992

DWG 177





# Chemex Labs Ltd.

Analytical Chemists \* Geochemists \* Registered Assayers  
212 Brooksbank Ave., North Vancouver  
British Columbia, Canada V7J 2C1  
PHONE: 604-984-0221

To: GIMLEX ENTERPRISES LTD.  
ATTN: JIM CHRISTIE  
3921 W. 31ST AVE.  
VANCOUVER, BC  
V6S 1Y4

INVOICE NUMBER

I 9 2 2 1 2 7 4

### BILLING INFORMATION

Date: 23-SEP-92  
Project: YUKON  
P.O. No.:  
Account: FGF

Comments:

Billing: For analysis performed on  
Certificate A9221274

Terms: Payment due on receipt of invoice  
1.25% per month (15% per annum)  
charged on overdue accounts

Please Remit Payments to:

**CHEMEX LABS LTD.**  
212 Brooksbank Ave.,  
North Vancouver, B.C.  
Canada V7J 2C1

# OF SAMPLES	ANALYSED FOR CODE - DESCRIPTION	UNIT PRICE	SAMPLE PRICE	AMOUNT
366	201 - Dry, sieve to -80 mesh ICP-32	1.00	5.95	
	100 - Au ppb FA+AA	7.50	14.45	5288.70
				Total Cost \$ 5288.70
				Client Discount ( 10%) \$ -528.87
				Net Cost \$ 4759.83
				(Reg# R100938885) GST \$ 333.19
				<b>TOTAL PAYABLE (CDN) \$ 5093.02</b>

108 Go CLAIMS # 2337.25  
198 CHILDS # 2755.24  
5093.02

Go TOTALS

4 ROCKS  
184 SOILS & SILTS  
# 2667.70



# Chemex Labs Ltd.

Analytical Chemists \* Geochemists \* Registered Assayers  
212 Brooksbank Ave., North Vancouver  
British Columbia, Canada V7J 2C1  
PHONE: 604-984-0221

To: GIMLEX ENTERPRISES LTD.  
ATTN: JIM CHRISTIE  
3921 W. 31ST AVE.  
VANCOUVER, BC  
V6S 1Y4

INVOICE NUMBER

I 9 2 2 3 7 2 1

## BILLING INFORMATION

Date: 4-NOV-92  
Project: YUKON  
P.O. No.:  
Account: FGF

Comments:

Billing: For analysis performed on  
Certificate A9223721

Terms: Payment due on receipt of invoice  
1.25% per month (15% per annum)  
charged on overdue accounts

Please Remit Payments to:

**CHEMEX LABS LTD.**  
212 Brooksbank Ave.,  
North Vancouver, B.C.  
Canada V7J 2C1

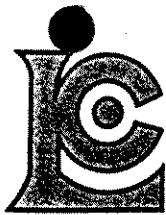
# OF SAMPLES	ANALYSED FOR CODE - DESCRIPTION	UNIT PRICE	SAMPLE PRICE	AMOUNT
7	205 - Geochem ring to approx 150 mesh	1.95		
	226 - 0-5 lb crush and split	1.95		
	ICP-32	5.95		
	100 - Au ppb FA+AA	7.50	17.35	121.45
4	205 - Geochem ring to approx 150 mesh	1.95		
	226 - 0-5 lb crush and split	1.95		
	ICP-32	5.95		
	100 - Au ppb FA+AA	7.50		
	983 - Au ppb FA+AA	9.00	26.35	105.40

Total Cost \$	226.85
Client Discount ( 10%) \$	-22.69
Net Cost \$	204.16
(Reg# R100938885 ) GST \$	14.29
<b>TOTAL PAYABLE (CDN) \$</b>	<b>218.45</b>

4 Go CLAIMS \$101.50  
7 CHILDS 116.95  

---

218.45



# Chemex Labs Ltd.

Analytical Chemists \* Geochemists \* Registered Assayers  
212 Brooksbank Ave., North Vancouver  
British Columbia, Canada V7J 2C1  
PHONE: 604-984-0221

TO: GIMLEX ENTERPRISES LTD.  
ATTN: JIM CHRISTIE  
3921 W. 31ST AVE.  
VANCOUVER, BC  
V6S 1Y4

INVOICE NUMBER

I 9 2 2 3 7 2 0

## BILLING INFORMATION

Date: 4-NOV-92  
Project: YUKON  
P.O. No.:  
Account: FGF

### Comments:

Billing: For analysis performed on  
Certificate A9223720

Terms: Payment due on receipt of invoice  
1.25% per month (15% per annum)  
charged on overdue accounts

Please Remit Payments to:

**CHEMEX LABS LTD.**  
212 Brooksbank Ave.,  
North Vancouver, B.C.  
Canada V7J 2C1

# OF SAMPLES	ANALYSED FOR CODE - DESCRIPTION	UNIT PRICE	SAMPLE PRICE	AMOUNT
56	201 - Dry, sieve to -80 mesh ICP-32	1.00 5.95		
	100 - Au ppb FA+AA	7.50	14.45	809.20
Total Cost \$				809.20
Client Discount ( 10%) \$				-80.92
Net Cost \$				728.28
(Reg# R100938885 ) GST \$				50.98
<b>TOTAL PAYABLE (CDN) \$</b>				<b>779.26</b>

16 GC CLAIMS \$ 222.65  
40 CHILDS 556.61  

---

779.26



# Chemex Labs Ltd.

Analytical Chemists \* Geochemists \* Registered Assayers

212 Brooksbank Ave., North Vancouver  
British Columbia, Canada V7J 2C1  
PHONE: 604-984-0221

To: GIMLEX ENTERPRISES LTD.  
ATTN: JIM CHRISTIE  
3921 W. 31ST AVE.  
VANCOUVER, BC  
V6S 1Y4

A9223721

Comments:

CERTIFICATE

A9223721

GIMLEX ENTERPRISES LTD.

Project: YUKON  
P.O. #:

Samples submitted to our lab in Vancouver, BC.  
This report was printed on 4-NOV-92.

## SAMPLE PREPARATION

CHEMEX CODE	NUMBER SAMPLES	DESCRIPTION
205	11	Geochem ring to approx 150 mesh
226	11	0-5 lb crush and split
229	11	ICP - AQ Digestion charge

\* NOTE 1:

The 32 element ICP package is suitable for trace metals in soil and rock samples. Elements for which the nitric-aqua regia digestion is possibly incomplete are: Al, Ba, Be, Ca, Cr, Ga, K, La, Mg, Na, Sr, Ti, Tl, W.

## ANALYTICAL PROCEDURES

CHEMEX CODE	NUMBER SAMPLES	DESCRIPTION	METHOD	DETECTION LIMIT	UPPER LIMIT
100	11	Au ppb: Fuse 10 g sample	FA-AAS	5	10000
983	4	Au ppb: Fuse 30 g sample	FA-AAS	5	10000
2118	11	Ag ppm: 32 element, soil & rock	ICP-AES	0.2	200
2119	11	Al %: 32 element, soil & rock	ICP-AES	0.01	15.00
2120	11	As ppm: 32 element, soil & rock	ICP-AES	2	10000
2121	11	Ba ppm: 32 element, soil & rock	ICP-AES	10	10000
2122	11	Be ppm: 32 element, soil & rock	ICP-AES	0.5	100.0
2123	11	Bi ppm: 32 element, soil & rock	ICP-AES	2	10000
2124	11	Ca %: 32 element, soil & rock	ICP-AES	0.01	15.00
2125	11	Cd ppm: 32 element, soil & rock	ICP-AES	0.5	100.0
2126	11	Co ppm: 32 element, soil & rock	ICP-AES	1	10000
2127	11	Cr ppm: 32 element, soil & rock	ICP-AES	1	10000
2128	11	Cu ppm: 32 element, soil & rock	ICP-AES	1	10000
2150	11	Fe %: 32 element, soil & rock	ICP-AES	0.01	15.00
2130	11	Ga ppm: 32 element, soil & rock	ICP-AES	10	10000
2131	11	Hg ppm: 32 element, soil & rock	ICP-AES	1	10000
2132	11	K %: 32 element, soil & rock	ICP-AES	0.01	10.00
2151	11	La ppm: 32 element, soil & rock	ICP-AES	10	10000
2134	11	Mg %: 32 element, soil & rock	ICP-AES	0.01	15.00
2135	11	Mn ppm: 32 element, soil & rock	ICP-AES	5	10000
2136	11	Mo ppm: 32 element, soil & rock	ICP-AES	1	10000
2137	11	Na %: 32 element, soil & rock	ICP-AES	0.01	5.00
2138	11	Ni ppm: 32 element, soil & rock	ICP-AES	1	10000
2139	11	P ppm: 32 element, soil & rock	ICP-AES	10	10000
2140	11	Pb ppm: 32 element, soil & rock	ICP-AES	2	10000
2141	11	Sb ppm: 32 element, soil & rock	ICP-AES	2	10000
2142	11	Sc ppm: 32 elements, soil & rock	ICP-AES	1	10000
2143	11	Sr ppm: 32 element, soil & rock	ICP-AES	1	10000
2144	11	Ti %: 32 element, soil & rock	ICP-AES	0.01	5.00
2145	11	Tl ppm: 32 element, soil & rock	ICP-AES	10	10000
2146	11	U ppm: 32 element, soil & rock	ICP-AES	10	10000
2147	11	V ppm: 32 element, soil & rock	ICP-AES	1	10000
2148	11	W ppm: 32 element, soil & rock	ICP-AES	10	10000
2149	11	Zn ppm: 32 element, soil & rock	ICP-AES	2	10000



# Chemex Labs Ltd.

Analytical Chemists \* Geochemists \* Registered Assayers  
212 Brooksbank Ave., North Vancouver  
British Columbia, Canada V7J 2C1  
PHONE: 604-984-0221

To: GIMLEX ENTERPRISES LTD.  
ATTN: JIM CHRISTIE  
3921 W. 31ST AVE.  
VANCOUVER, BC  
V6S 1Y4

A9221274

Comments: CC: J.S. CHRISTIE

CERTIFICATE

A9221274

GIMLEX ENTERPRISES LTD.

Project: YUKON  
P.O. #:

Samples submitted to our lab in Vancouver, BC.  
This report was printed on 23-SEP-92.

## SAMPLE PREPARATION

CHEMEX CODE	NUMBER SAMPLES	DESCRIPTION
201	366	Dry, sieve to -80 mesh
229	366	ICP - AQ Digestion charge

\* NOTE 1:

The 32 element ICP package is suitable for trace metals in soil and rock samples. Elements for which the nitric-aqua regia digestion is possibly incomplete are: Al, Ba, Be, Ca, Cr, Ga, K, La, Mg, Na, Sr, Ti, Tl, W.

## ANALYTICAL PROCEDURES

CHEMEX CODE	NUMBER SAMPLES	DESCRIPTION	METHOD	DETECTION LIMIT	UPPER LIMIT
100	366	Au ppb: Fuse 10 g sample	FA-AAS	5	10000
2118	366	Ag ppm: 32 element, soil & rock	ICP-AES	0.2	200
2119	366	Al %: 32 element, soil & rock	ICP-AES	0.01	15.00
2120	366	As ppm: 32 element, soil & rock	ICP-AES	2	10000
2121	366	Ba ppm: 32 element, soil & rock	ICP-AES	10	10000
2122	366	Be ppm: 32 element, soil & rock	ICP-AES	0.5	100.0
2123	366	Bi ppm: 32 element, soil & rock	ICP-AES	2	10000
2124	366	Ca %: 32 element, soil & rock	ICP-AES	0.01	15.00
2125	366	Cd ppm: 32 element, soil & rock	ICP-AES	0.5	100.0
2126	366	Co ppm: 32 element, soil & rock	ICP-AES	1	10000
2127	366	Cr ppm: 32 element, soil & rock	ICP-AES	1	10000
2128	366	Cu ppm: 32 element, soil & rock	ICP-AES	1	10000
2150	366	Fe %: 32 element, soil & rock	ICP-AES	0.01	15.00
2130	366	Ga ppm: 32 element, soil & rock	ICP-AES	10	10000
2131	366	Hg ppm: 32 element, soil & rock	ICP-AES	1	10000
2132	366	K %: 32 element, soil & rock	ICP-AES	0.01	10.00
2151	366	La ppm: 32 element, soil & rock	ICP-AES	10	10000
2134	366	Mg %: 32 element, soil & rock	ICP-AES	0.01	15.00
2135	366	Mn ppm: 32 element, soil & rock	ICP-AES	5	10000
2136	366	Mo ppm: 32 element, soil & rock	ICP-AES	1	10000
2137	366	Na %: 32 element, soil & rock	ICP-AES	0.01	5.00
2138	366	Ni ppm: 32 element, soil & rock	ICP-AES	1	10000
2139	366	P ppm: 32 element, soil & rock	ICP-AES	10	10000
2140	366	Pb ppm: 32 element, soil & rock	ICP-AES	2	10000
2141	366	Sb ppm: 32 element, soil & rock	ICP-AES	2	10000
2142	366	Sc ppm: 32 elements, soil & rock	ICP-AES	1	10000
2143	366	Sr ppm: 32 element, soil & rock	ICP-AES	1	10000
2144	366	Ti %: 32 element, soil & rock	ICP-AES	0.01	5.00
2145	366	Tl ppm: 32 element, soil & rock	ICP-AES	10	10000
2146	366	U ppm: 32 element, soil & rock	ICP-AES	10	10000
2147	366	V ppm: 32 element, soil & rock	ICP-AES	1	10000
2148	366	W ppm: 32 element, soil & rock	ICP-AES	10	10000
2149	366	Zn ppm: 32 element, soil & rock	ICP-AES	2	10000



# Chemex Labs Ltd.

Analytical Chemists \* Geochemists \* Registered Assayers  
212 Brooksbank Ave., North Vancouver  
British Columbia, Canada V7J 2C1  
PHONE: 604-984-0221

To: GIMLEX ENTERPRISES LTD.  
ATTN: JIM CHRISTIE  
3921 W. 31ST AVE.  
VANCOUVER, BC  
V6S 1Y4

JSE COPY

INVOICE NUMBER

I 9 2 2 1 2 7 4

### BILLING INFORMATION

Date: 23-SEP-92  
Project: YUKON  
P.O. No.:  
Account: FGF

Comments:

Billing: For analysis performed on  
Certificate A9221274

Terms: Payment due on receipt of invoice  
1.25% per month (15% per annum)  
charged on overdue accounts

Please Remit Payments to:

**CHEMEX LABS LTD.**  
212 Brooksbank Ave.,  
North Vancouver, B.C.  
Canada V7J 2C1

# OF SAMPLES	ANALYSED FOR CODE - DESCRIPTION	UNIT PRICE	SAMPLE PRICE	AMOUNT
366	201 - Dry, sieve to -80 mesh ICP-32	1.00		
	100 - Au ppb FA+AA	5.95	14.45	5288.70

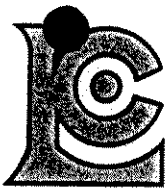
Total Cost \$	5288.70
Client Discount ( 10%) \$	-528.87
Net Cost \$	4759.83
(Reg# R100938885) GST \$	333.19

**TOTAL PAYABLE (CDN) \$ 5093.02**

168 GO CLAIMS \$ 2337.75  
198 CHILDS \$ 2755.24  
5093.02

PROJECT TOTALS

GO		CHILDS
Reeks - 4		17
Soils-SILTS - 184		238
\$	2667.70	3611.51



# Chemex Labs Ltd.

Analytical Chemists \* Geochemists \* Registered Assayers  
212 Brooksbank Ave., North Vancouver  
British Columbia, Canada V7J 2C1  
PHONE: 604-984-0221

To: GIMLEX ENTERPRISES LTD.  
ATTN: JIM CHRISTIE  
3921 W. 31ST AVE.  
VANCOUVER, BC  
V6S 1Y4

**INVOICE NUMBER**

**I 9 2 8 0 8 7 5**

## BILLING INFORMATION

Date: 12-OCT-92

Project:

P.O. No.:

Account: FGF

Comments:

Billing: For services regarding  
faxing

Terms: Payment due on receipt of invoice  
1.5% per month (18% per annum)  
charged on overdue accounts

Please Remit Payments to:

**CHEMEX LABS LTD.**  
212 Brooksbank Ave.,  
North Vancouver, B.C.  
Canada V7J-2C1

## DESCRIPTION OF SERVICES

\*  
AMOUNT

Re: Faxing Charges

Faxing charges for the month of September

22 pages @ \$0.50/page

11.00

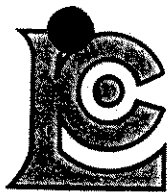
Total Cost \$ 11.00  
(Reg# R100938885) GST \$ 0.77

**TOTAL PAYABLE (CDN) \$ 11.77**

*GO CLAIMS \$ 5.77*  
*CHILDS 6.00*  

---

*11.77*



# Chemex Labs Ltd.

Analytical Chemists \* Geochemists \* Registered Assayers  
212 Brooksbank Ave., North Vancouver  
British Columbia, Canada V7J 2C1  
PHONE: 604-984-0221

TO: GIMLEX ENTERPRISES LTD.  
ATTN: JIM CHRISTIE  
3921 W. 31ST AVE.  
VANCOUVER, BC  
V6S 1Y4

INVOICE NUMBER

I 9 2 2 1 2 7 6

## BILLING INFORMATION

Date: 21-SEP-92  
Project: YUKON  
P.O. No.:  
Account: FGF

### Comments:

Billing: For analysis performed on  
Certificate A9221276

Terms: Payment due on receipt of invoice  
1.25% per month (15% per annum)  
charged on overdue accounts

Please Remit Payments to:

**CHEMEX LABS LTD.**  
212 Brooksbank Ave.,  
North Vancouver, B.C.  
Canada V7J 2C1

# OF SAMPLES	ANALYSED FOR CODE - DESCRIPTION	UNIT PRICE	SAMPLE PRICE	AMOUNT	
10	205 - Geochem ring to approx 150 mesh	1.95			
	274 - 0-15 lb crush and split	2.95			
	ICP-32	5.95			
	100 - Au ppb FA+AA	7.50	18.35	183.50	
				Total Cost \$	183.50
				Client Discount ( 10%) \$	-18.35
				Net Cost \$	165.15
				(Reg# R100938885) GST \$	11.56
				<b>TOTAL PAYABLE (CDN) \$</b>	<b>176.71</b>

10 CARDS # 176.71

pd. Oct 19/92  
#751  
5269.73



# Chemex Labs Ltd.

Analytical Chemists \* Geochemists \* Registered Assayers  
212 Brooksbank Ave., North Vancouver  
British Columbia, Canada V7J 2C1  
PHONE: 604-984-0221

To: GIMLEX ENTERPRISES LTD.  
ATTN: JIM CHRISTIE  
3921 W. 31ST AVE.  
VANCOUVER, BC  
V6S 1Y4

INVOICE NUMBER

I 9 2 2 3 7 2 1

## BILLING INFORMATION

Date: 4-NOV-92  
Project: YUKON  
P.O. No.:  
Account: FGF

Comments:

Billing: For analysis performed on  
Certificate A9223721

Terms: Payment due on receipt of invoice  
1.25% per month (15% per annum)  
charged on overdue accounts

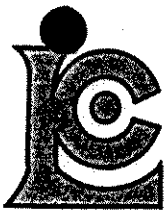
Please Remit Payments to:

**CHEMEX LABS LTD.**  
212 Brooksbank Ave.,  
North Vancouver, B.C.  
Canada V7J 2C1

# OF SAMPLES	ANALYSED FOR CODE - DESCRIPTION	UNIT PRICE	SAMPLE PRICE	AMOUNT
7	205 - Geochem ring to approx 150 mesh	1.95		
	226 - 0-5 lb crush and split	1.95		
	ICP-32	5.95		
	100 - Au ppb FA+AA	7.50	17.35	121.45
4	205 - Geochem ring to approx 150 mesh	1.95		
	226 - 0-5 lb crush and split	1.95		
	ICP-32	5.95		
	100 - Au ppb FA+AA	7.50		
	983 - Au ppb FA+AA	9.00	26.35	105.40

Total Cost \$	226.85
Client Discount ( 10%) \$	-22.69
Net Cost \$	204.16
(Reg# R100938885 ) GST \$	14.29
<b>TOTAL PAYABLE (CDN) \$</b>	<b>218.45</b>

4 Go CLAIMS \$101.50  
 7 CHILDS 116.95  
 -----  
 218.45



# Chemex Labs Ltd.

Analytical Chemists \* Geochemists \* Registered Assayers  
212 Brooksbank Ave., North Vancouver  
British Columbia, Canada V7J 2C1  
PHONE: 604-984-0221

To: GIMLEX ENTERPRISES LTD.  
ATTN: JIM CHRISTIE  
3921 W. 31ST AVE.  
VANCOUVER, BC  
V6S 1Y4

INVOICE NUMBER

I 9 2 2 3 7 2 0

### BILLING INFORMATION

Date: 4-NOV-92  
Project: YUKON  
P.O. No.:  
Account: FGF

#### Comments:

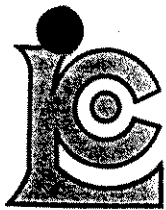
Billing: For analysis performed on  
Certificate A9223720

Terms: Payment due on receipt of invoice  
1.25% per month (15% per annum)  
charged on overdue accounts

Please Remit Payments to:

**CHEMEX LABS LTD.**  
212 Brooksbank Ave.,  
North Vancouver, B.C.  
Canada V7J 2C1

# OF SAMPLES	ANALYSED FOR CODE - DESCRIPTION	UNIT PRICE	SAMPLE PRICE	AMOUNT
56	201 - Dry, sieve to -80 mesh ICP-32	1.00 5.95		
	100 - Au ppb FA+AA	7.50	14.45	809.20
				Total Cost \$ 809.20
				Client Discount ( 10%) \$ -80.92
				Net Cost \$ 728.28
				(Reg# R100938885 ) GST \$ 50.98
				<b>TOTAL PAYABLE (CDN) \$ 779.26</b>
16	GC CLAIMS			222.65
40	CHILDS			556.61
				<u>779.26</u>



# Chemex Labs Ltd.

Analytical Chemists \* Geochemists \* Registered Assayers  
212 Brooksbank Ave., North Vancouver  
British Columbia, Canada V7J 2C1  
PHONE: 604-984-0221

To: GIMLEX ENTERPRISES LTD.  
ATTN: JIM CHRISTIE  
3921 W. 31ST AVE.  
VANCOUVER, BC  
V6S 1Y4

A9223721

Comments:

CERTIFICATE

A9223721

GIMLEX ENTERPRISES LTD.

Project: YUKON  
P.O. #:

Samples submitted to our lab in Vancouver, BC.  
This report was printed on 4-NOV-92.

## SAMPLE PREPARATION

CHEMEX CODE	NUMBER SAMPLES	DESCRIPTION
205	11	Geochem ring to approx 150 mesh
226	11	0-5 lb crush and split
229	11	ICP - AQ Digestion charge

\* NOTE 1:

The 32 element ICP package is suitable for trace metals in soil and rock samples. Elements for which the nitric-aqua regia digestion is possibly incomplete are: Al, Ba, Be, Ca, Cr, Ga, K, La, Mg, Na, Sr, Ti, Tl, W.

## ANALYTICAL PROCEDURES

CHEMEX CODE	NUMBER SAMPLES	DESCRIPTION	METHOD	DETECTION LIMIT	UPPER LIMIT
100	11	Au ppb: Fuse 10 g sample	FA-AAS	5	10000
983	4	Au ppb: Fuse 30 g sample	FA-AAS	5	10000
2118	11	Ag ppm: 32 element, soil & rock	ICP-AES	0.2	200
2119	11	Al %: 32 element, soil & rock	ICP-AES	0.01	15.00
2120	11	As ppm: 32 element, soil & rock	ICP-AES	2	10000
2121	11	Ba ppm: 32 element, soil & rock	ICP-AES	10	10000
2122	11	Be ppm: 32 element, soil & rock	ICP-AES	0.5	100.0
2123	11	Bi ppm: 32 element, soil & rock	ICP-AES	2	10000
2124	11	Ca %: 32 element, soil & rock	ICP-AES	0.01	15.00
2125	11	Cd ppm: 32 element, soil & rock	ICP-AES	0.5	100.0
2126	11	Co ppm: 32 element, soil & rock	ICP-AES	1	10000
2127	11	Cr ppm: 32 element, soil & rock	ICP-AES	1	10000
2128	11	Cu ppm: 32 element, soil & rock	ICP-AES	1	10000
2150	11	Fe %: 32 element, soil & rock	ICP-AES	0.01	15.00
2130	11	Ga ppm: 32 element, soil & rock	ICP-AES	10	10000
2131	11	Hg ppm: 32 element, soil & rock	ICP-AES	1	10000
2132	11	K %: 32 element, soil & rock	ICP-AES	0.01	10.00
2151	11	La ppm: 32 element, soil & rock	ICP-AES	10	10000
2134	11	Mg %: 32 element, soil & rock	ICP-AES	0.01	15.00
2135	11	Mn ppm: 32 element, soil & rock	ICP-AES	5	10000
2136	11	Mo ppm: 32 element, soil & rock	ICP-AES	1	10000
2137	11	Na %: 32 element, soil & rock	ICP-AES	0.01	5.00
2138	11	Ni ppm: 32 element, soil & rock	ICP-AES	1	10000
2139	11	P ppm: 32 element, soil & rock	ICP-AES	10	10000
2140	11	Pb ppm: 32 element, soil & rock	ICP-AES	2	10000
2141	11	Sb ppm: 32 element, soil & rock	ICP-AES	2	10000
2142	11	Sc ppm: 32 elements, soil & rock	ICP-AES	1	10000
2143	11	Sr ppm: 32 element, soil & rock	ICP-AES	1	10000
2144	11	Ti %: 32 element, soil & rock	ICP-AES	0.01	5.00
2145	11	Tl ppm: 32 element, soil & rock	ICP-AES	10	10000
2146	11	U ppm: 32 element, soil & rock	ICP-AES	10	10000
2147	11	V ppm: 32 element, soil & rock	ICP-AES	1	10000
2148	11	W ppm: 32 element, soil & rock	ICP-AES	10	10000
2149	11	Zn ppm: 32 element, soil & rock	ICP-AES	2	10000