

MAP NO.: ASSESSMENT REPORT  
106D 16 PROSPECTUS  
CONFIDENTIAL X  
OPEN FILE

DOCUMENT NO: 093121  
MINING DISTRICT: MAYO  
TYPE OF WORK: GEOCHEMICAL

---

REPORT FILED UNDER: PAMICON DEVELOPMENTS LTD

---

DATE PERFORMED: SEPT 1, 1992

DATE FILED: JUNE 11, 1993

---

LOCATION: LAT.: 64°56'N

AREA: GILLESPIE LAKE

---

LONG.: 134°19'W

VALUE \$: 2,700

---

CLAIM NAME & NO.: ARCTOS 1-6 (YB28574-579)

---

WORK DONE BY: MICHAEL A. STAMMERS

---

WORK DONE FOR: WESTMIN RESOURCES LTD.

---

DATE TO GOOD STANDING:

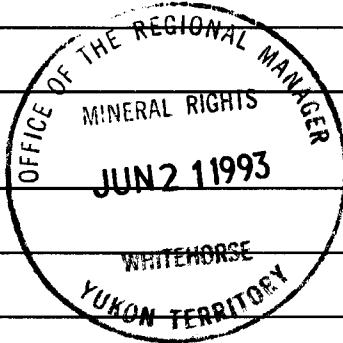

REMARKS: BRECCIAS BEING EVALUATED FOR OLYMPIC DAM TYPE CU  
U, AU, AG MINERALIZATION.



M.R. file no.
R.M.M.R. file no.
Date forwarded <b>JUN 15 1993</b>

### TRANSMITTAL FORM

From	▶ Mining Recorder at: <b>MAYO, YUKON</b>		
To	▶ Regional Manager, Mineral Rights at Whitehorse, Y.T.		
For action are:			
<input type="checkbox"/> NEW APPLICATION FOR PLACER LEASE TO PROSPECT	Name		
<input type="checkbox"/> RENEWAL APPLICATION PLACER LEASE TO PROSPECT	Name		Lease no.
<input type="checkbox"/> AFFIDAVIT OF EXPENDITURE ON PLACER LEASE	Name		Lease no.
<input type="checkbox"/> SECURITY DEPOSIT			
<input type="checkbox"/> FINANCIAL ABILITY			
<input type="checkbox"/> ASSIGNMENT OF PLACER LEASE NO.	From		To
<input type="checkbox"/> GROUPING APPLICATION UNDER SEC. 52(2) PLACER MINING ACT.	Owner		
<input type="checkbox"/> DIAMOND DRILL LOGS	Claims		Claim sheet no.
<input checked="" type="checkbox"/> QUARTZ ASSESSMENT REPORT	Claims	<i>Arctos 1-6</i>	Claim sheet no. <i>106-D-16</i>
	Type of report	<i>Geochemical</i>	Submitted by <i>Pamicon Developments Ltd / Michael A. Stammers</i>
	Cls. work performed on		\$ req. for ren. application <i>2700.00</i>
<i>Please return one numbered copy and index card for our files</i>		<i>Graham</i> Signature	



REPLY ACTION	Date returned
<p style="font-size: 2em; transform: rotate(-15deg);">093121</p>	
Signature	



1992 GEOCHEMICAL REPORT  
ON THE  
ARCTOS 1-6 MINERAL CLAIMS



Mayo Mining District  
Yukon Territory  
NTS 106D/16  
64°56' North Latitude  
134°19' West Longitude

093121

- Prepared for -  
WESTMIN RESOURCES LTD.

- Prepared by -  
MICHAEL A. STAMMERS, P.Geo.

DATE WORK PERFORMED: September 1, 1992

DATE OF REPORT: December, 1992



This report has been examined by  
the Geological Evaluation Unit  
under Section 53 (4) Yukon Quartz  
Mining Act and is allowed as  
representation work in the amount  
of \$ 2,700.

*Dennis A. Quilley*

Regional Manager, Exploration and  
Geological Services for Commissioner  
of Yukon Territory.

# 1992 GEOCHEMICAL REPORT ON THE ARCTOS 1-6 MINERAL CLAIMS

## TABLE OF CONTENTS

	<u>Page</u>
1.0 INTRODUCTION	1
2.0 LIST OF CLAIMS	1
3.0 LOCATION, ACCESS AND PHYSIOGRAPHY	2
4.0 AREA HISTORY	3
5.0 1992 EXPLORATION PROGRAM	4
6.0 REGIONAL GEOLOGY	5
7.0 PROPERTY GEOLOGY AND MINERALIZATION	6
8.0 ROCK GEOCHEMISTRY	7
9.0 CONCLUSIONS AND RECOMMENDATIONS	7

### **FIGURES**

	<u>Following Page</u>
Figure 1 Property Location Map	1
Figure 2 Claim Map	1
Figure 3 Regional Geology	5
Figure 4 Rock Geochemistry	7

### **APPENDICES**

Appendix I	Bibliography
Appendix II	List of Personnel
Appendix III	Cost Statement
Appendix IV	Rock Sample Descriptions
Appendix V	Analytical Procedures
Appendix VI	Certificates of Analysis
Appendix VII	Geologist's Certificate

## 1.0 INTRODUCTION

The Arctos 1-6 claims are located in the Wernecke Mountains, approximately 170 kilometres north-northeast of Mayo in east central Yukon (Figure 1). The Wernecke Mountains are cored by at least 14,000 metres of generally fine-grained terrigenous and carbonate rocks of Helikian age that have been penetrated by mineralized breccias and cut by mafic sills and dykes. Exploration to date in the Wernecke Mountains has been directed sporadically at copper from the early 1900s until the discovery of uranium mineralization associated with hematite breccias in 1974. Occurrences of copper and breccia-related copper-gold-cobalt mineralization have been noted in the basin, but were largely by-passed in the search for uranium and lead-zinc deposits between 1974 and 1980. The geological setting of the Wernecke Mountains is excellent for hosting Olympic Dam copper-uranium-gold-silver breccia type and the Arctos property was acquired on this basis.

Lithochemical sampling, prospecting and geological mapping work was carried out over the Arctos property on September 1, 1992. This work program was conducted jointly by Pamicon Developments Ltd. and Equity Engineering Ltd. for Westmin Resources Ltd. The same companies have been retained to report on the fieldwork.

## 2.0 LIST OF CLAIMS

The Arctos property comprises 6 contiguous quartz mineral claims, located in the Mayo Mining District (Figure 2). Government records indicate that the following claims are owned by M. Stammers of North Vancouver, B.C. Separate documents indicate that they are held under option by Westmin Resources Ltd.

### Claim Data

<u>Claim Name</u>	<u>Record Numbers</u>	<u>Record Date</u>	<u>Expiry Date*</u>
Arctos 1-6	YB28574-YB28579	July 5, 1992	December 31, 1997

\*Subject to approval of assessment work covered by this report.

WESTMIN RESOURCES LIMITED

FAIRCHILD LAKE PROJECT  
YUKON TERRITORY

ARCTOS 1 - 6 CLAIMS

LOCATION MAP

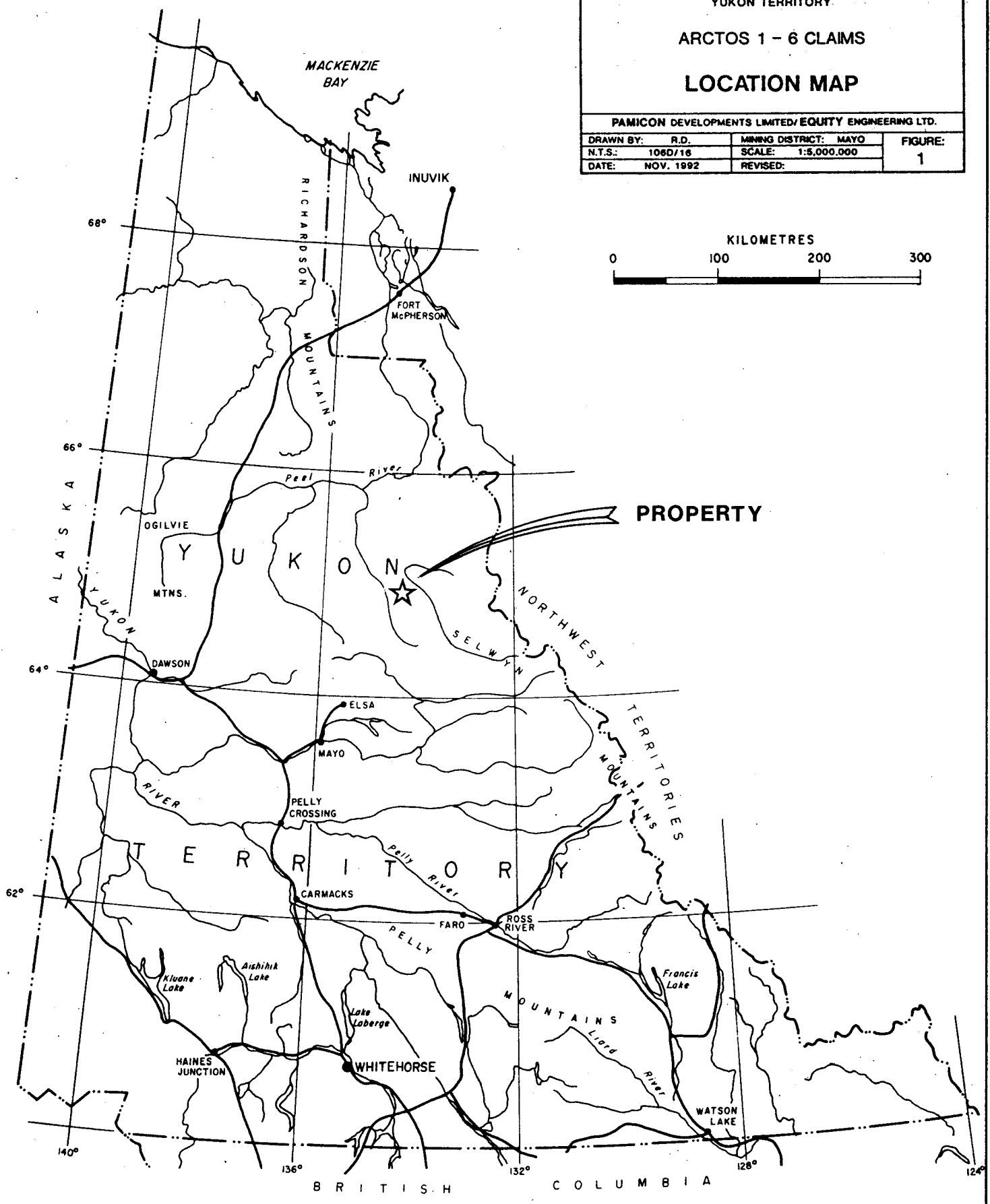
PAMICON DEVELOPMENTS LIMITED/EQUITY ENGINEERING LTD.

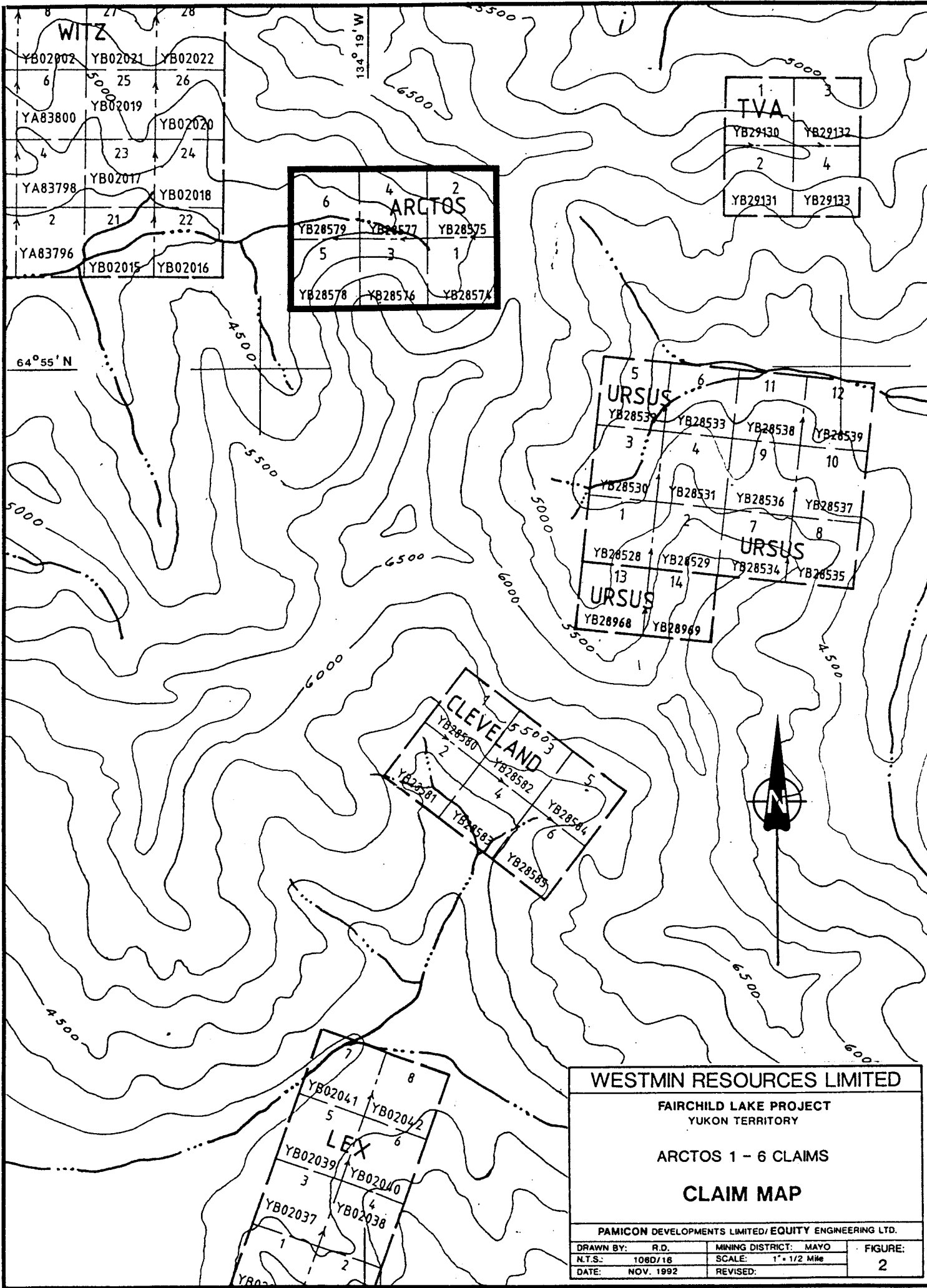
DRAWN BY:	R.D.	MINING DISTRICT:	MAYO	FIGURE:
N.T.S.:	106D/16	SCALE:	1:5,000,000	1
DATE:	NOV. 1992	REVISED:		

KILOMETRES



PROPERTY





<b>WESTMIN RESOURCES LIMITED</b>			
FAIRCHILD LAKE PROJECT YUKON TERRITORY			
ARCTOS 1 - 6 CLAIMS			
<b>CLAIM MAP</b>			
PAMICON DEVELOPMENTS LIMITED/EQUITY ENGINEERING LTD.			
DRAWN BY:	R.D.	MINING DISTRICT:	MAYO
N.T.S.:	1080/16	SCALE:	1" = 1/2 Mile
DATE:	NOV. 1992	REVISED:	
			FIGURE: 2

### 3.0 LOCATION, ACCESS AND PHYSIOGRAPHY

The Arctos property is located in the Wernecke Mountains of east central Yukon, approximately 170 kilometres north-northeast of Mayo (Figure 1). The claim group is located 25 kilometres west-southwest of Fairchild Lake at the headwaters of a southwest flowing tributary of Bear River. Coordinates are 64°56' north latitude and 134°19' west longitude.

The project area is accessible from Mayo by float plane to either Fairchild or Gillespie Lake and by wheeled aircraft to the 800 metre long, gravel airstrip at Bear River. Other airstrips in the area are no longer serviceable. The village of Mayo has scheduled air service from Whitehorse and is located on the Silver Trail Highway (#11), a branch of the Klondike Highway (#2).

Access during the 1992 field program was by DC3 aircraft from Mayo to the Bear River airstrip and thence by helicopter 7.5 kilometres northeast to a basecamp established on the company's Mica claims. The Arctos property lies 7.0 kilometres northwest of the basecamp.

The Wind River winter tote road originating near Elsa, was built through the project area during the 1950s to access oil and gas exploration sites to the north and in the early 1960s was utilized again during work on the Snake River (Crest) iron deposit. In the late 1960s several spur trails and airstrips were constructed providing access to the Dolores Creek, Wind River, and Bonnet Plume copper prospects and to the Bear River iron deposit. The winter road was used by Pan Ocean Oil during their coal and uranium exploration program in 1979 and 1980.

Elevations on the Arctos property range from 1325 to 1775 metres above sea level and relief is gentle in the main, U-shaped valley, becoming steep to extreme climbing to ridge crests. All of the property lies above tree line. Climate in the area is characterized by long, cold winters and short warm summers with June, July and August the best months for exploration.

#### 4.0 AREA HISTORY

The first copper occurrences were noted by trappers working in the region at the turn of the century. In 1935, the McCluskey Lake copper occurrences were staked and the Bonnet Plume and Wind River area received sporadic exploration for copper over the next 20 years. Exploration activity was stimulated in the early 1960s when California Standard Company through their subsidiary Crest Exploration Limited worked on their world class banded iron deposit in the Snake River area. Drilling outlined 18.6 billion tonnes averaging 47% iron in the Hadrynian Rapitan Group (Yeo, 1986).

In the early 1960s, the first copper showing was found at Dolores Creek by L. Brown. Bonnet Plume River Mines Ltd. conducted exploration from 1967 to 1969, at which time limited diamond drilling was completed (Laznicka and Edwards, 1979).

In 1971, the discovery of zinc-lead showings in the Mackenzie Mountains to the east brought exploration activity to the southeastern portion of the Wernecke Mountains. Continued lead-zinc exploration in the Proterozoic basin led to the discovery of uranium mineralization in 1974 by Archer, Cathro and Associates Ltd. In the period 1975 to 1980, a number of major companies (i.e. Urangesellschaft, Noranda) and joint ventures (i.e. Wernecke Joint Venture, Mountaineer Mines-Pan Ocean Oil Ltd.) were involved in exploration of breccia-related uranium mineralization. At this time, Pan Ocean drilled coal reserves on their leases to outline in excess of 500 million tonnes of low sulphur, high volatile bituminous coal in Cretaceous strata in the Bonnet Plume Basin located north of the Wernecke Mountain Range.

The 1980s saw very limited work throughout the project area. Archer Cathro, Texaco and Cyprus Gold embarked on limited exploration campaigns to test the gold potential of some of the known uranium or copper occurrences. The lack of recent exploration activity has allowed most of the staked areas to come open.

Previous work between 1977 and 1980 by Pan Ocean Oil Ltd. on their now lapsed Arctos 1-16 claims which were located immediately to the west of the present Arctos property included geological mapping, prospecting, silt geochemistry, and hand trenching (Yukon assessment reports 90289, 90422, 90587). This showing and others in the area were staked in 1987 as the Witz 1-40 claims (YA83795-800, YB02001-034). The Ursus 1-14 claims (YB28528-539, YB28968-969), also under option to Westmin Resources are located 1.5 km to the southeast. Refer to Figure 2 for present claim location.

#### 5.0 1992 EXPLORATION PROGRAM

On September 1, 1992, Westmin Resources Ltd. carried out a preliminary exploration program on the Arctos property, consisting of lithochemical sampling, prospecting and geological mapping. The program was designed to determine the potential for an Olympic Dam copper-uranium-gold-silver breccia type deposit. A total of 20 lithochemical and 5 prospector grab samples was taken.

Lithochemical samples were taken approximately 100 metres apart, generally along contours where outcrop exposures and talus slopes were accessible for sampling. The purpose of these samples was threefold: (1) to determine the tenure of copper mineralization as a bulk tonnage target, (2) to locate areas where chalcocite may be present, and (3) to define geochemical trends within the hematite breccias and into the surrounding sedimentary rocks. Rock sample descriptions and analytical certificates are found in the appendices. Rock samples were analyzed geochemically for gold, lanthanum, uranium and 24-element ICP. Samples exceeding 10,000 ppm copper were assayed. In the field, sample locations were marked by a metal tag and a combination of pink and blue flagging. Approximate UTM coordinates were derived from known topographical features combined with altimeter derived elevations and compass and hipchain measurements for each sample site.

Geological mapping was carried out on a scale of 1:10,000 and was generally limited to the lithogeochemical sample lines.

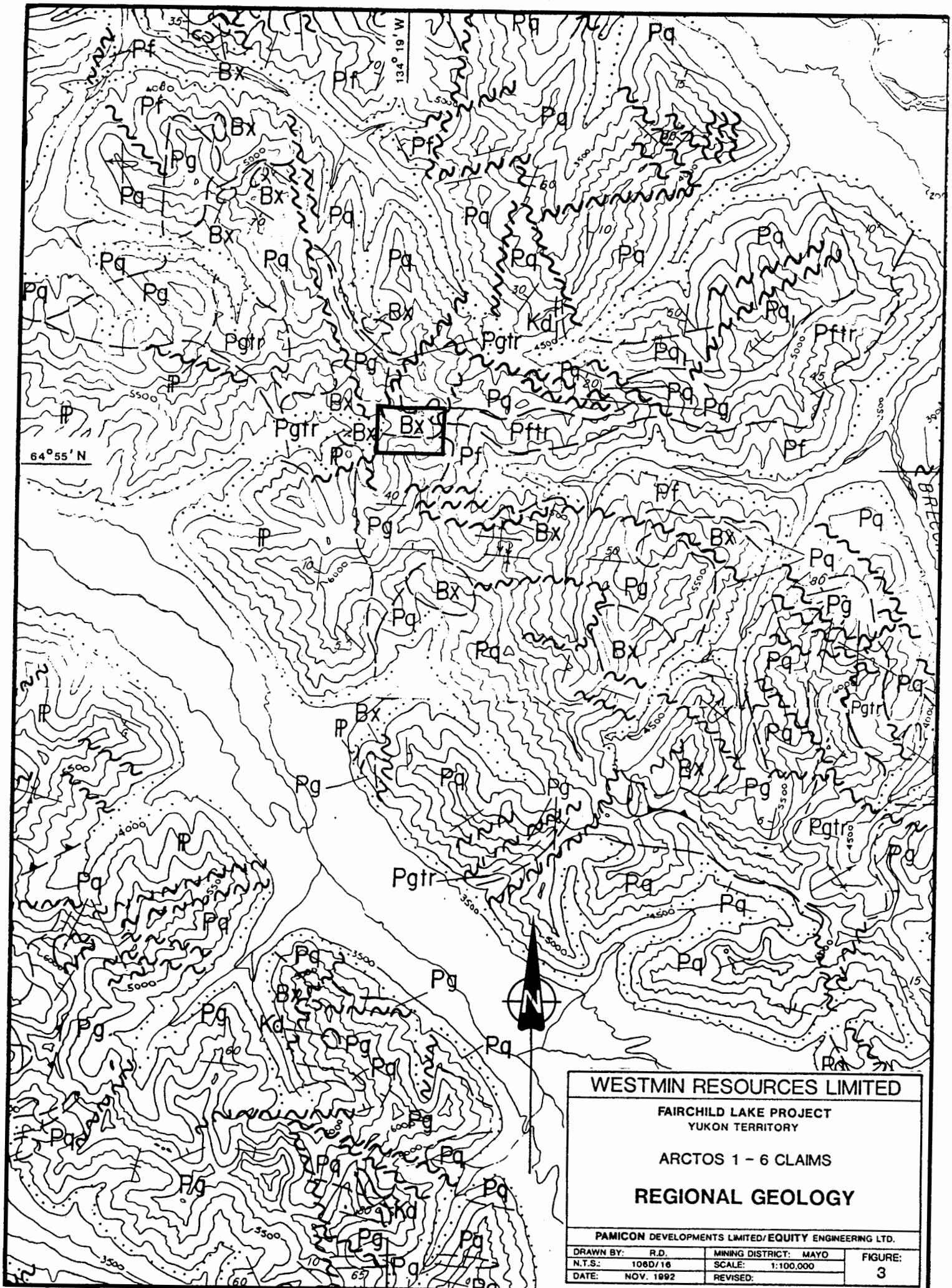
## 6.0 REGIONAL GEOLOGY (Figure 3)

This summary of the regional geology is based on work by Delaney (1985) and by Pamicon Developments Ltd. (unpublished, 1977). References to earlier work are cited by Delaney. Work in progress by Thorkelson for 1:50,000 mapping of NTS 106D/16 is expected to be published in 1993 jointly by Yukon and Canada governments.

The Wernecke Mountains are cored by at least 14,000 metres of generally fine-grained terrigenous and carbonate rocks of Helikian age that have been penetrated by hematite breccias and cut by mafic sills and dykes. The entire succession has been named the Wernecke Supergroup and has been divided into three groups (oldest to youngest): Fairchild Lake Group, Quartet Group and Gillespie Lake Group. To the east and south, the Hadrynian Pinguicula Group unconformably overlies the Wernecke Supergroup. Paleozoic strata bound the western margin and Cretaceous and Tertiary sediments fill the area to the north in the Bonnet Plume Basin.

A complete table of formations including lithologies is presented on the legend following Figure 3. This map is a portion of the 1:100,000 regional geology plan completed by Pamicon Developments Ltd. in 1977.

The main structural components of the Wernecke terrane are the southeast trending fault splays (Deslauriers, Knorr and Snake River Faults) of the Richardson Fault Array. These faults are interpreted to be deep-seated, long-lived, vertical structures which have undergone considerable right lateral and vertical movement.



**WESTMIN RESOURCES LIMITED**

FAIRCHILD LAKE PROJECT  
YUKON TERRITORY

ARCTOS 1 - 6 CLAIMS

**REGIONAL GEOLOGY**

PAMICON DEVELOPMENTS LIMITED/EQUITY ENGINEERING LTD.

DRAWN BY:	R.D.	MINING DISTRICT:	MAYO	FIGURE:
N.T.S.:	106D/16	SCALE:	1:100,000	3
DATE:	NOV. 1992	REVISED:		

# LEGEND

(to accompany Figure 3)

## LITHOLOGIES

### QUATERNARY

Q Unconsolidated glacial and alluvial deposits.

### CRETACEOUS (?)

Kd Diabase

Kdi Diorite

### PALEOZOIC

P Carbonate and siliciclastic sediments, undivided.

### PROTEROZOIC

Pp *Pinguicula Group*: Carbonate and siliciclastic sedimentary rocks and lesser volcanics.

Bx *Hematite breccia*

### WERNECKE SUPERGROUP

Pg *Gillespie Lake Group*: Buff-, orange-, grey-, and locally maroon-weathering dolomite, dolomite terrigenous admixtures, limestone, claystone, mudstone, siltstone and fine sandstone.

Pgtr Transitional Zone: Interbedded dolomite and dark siltstone/shale with characteristic striped appearance.

Pq *Quartet Group*: Dark grey- and grey-weathering siltstone, mudstone, claystone and fine sandstone (wavy bedded); locally quartzites.

Pq<sub>1</sub> Black shale with sandstone and shale interbeds, quartzite.

Pq<sub>2</sub> Pyritic quartzite.

Pf *Fairchild Lake Group*: Light grey-, greenish grey-, and locally dark grey-weathering shale, siltstone (80%), fine sandstone and limestone (20%); locally phyllites, schists and slates.

Pftr Transitional Zone: Shale and brown-weathering dolomite with limestone marker unit, pyritic black shale.

## SYMBOLS



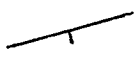
Geological contact (defined, approximate, assumed)



Thrust fault (defined, approximate)



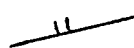
Fault (defined, assumed)



Bedding attitude defined (G-gentle, M-moderate, S-steep)



Bedding overturned



Bedding tops unknown



Anticlinal axis (arrow indicates plunge)



Synclinal axis (arrow indicates plunge)



Limits of unconsolidated glacial and alluvial deposits

## 7.0 PROPERTY GEOLOGY AND MINERALIZATION (Figure 4)

The Arctos claim group is underlain by Gillespie Lake Group dolomite and minor dark grey shale in contact with Quartet Group black shale, siltstone and quartzite. A hematite breccia complex occupies the contact zone between the two groups and was the focus of the 1992 lithogeochem sampling program.

In the southeast claims area the Gillespie Lake unit comprised shattered orange weathering, medium to massively bedded dolomite with minor dolomitic siltstone interbeds. The dolomite is heavily cross cut by veins, veinlets and fracture fillings of carbonate and blood red hematite.

Shale, siltstone and quartzite of the Quartet Group outcrop north of the property and were not mapped in any detail.

A large, irregular shaped body of hematite breccia is postulated to underlie the northern half of the property and ranges in width from 300 metres in the eastern claims to well over 700 metres by the western boundary. Several breccia types have been noted and include: heterolithic hematite breccia, homolithic carbonate breccia, heterolithic barite-hematite breccia and insipiently brecciated contact metasomatite. Contacts between breccia types are expected to be transitional and have not been shown on figure 4 due to the limited geological mapping. Fragments of dolomite and shale are pervasively altered to jasper (silicification and hematization) and albite. Carbonate and chlorite alteration is also present in varying amounts and with further study a zoning pattern may emerge.

Mineralization located to date is found within the breccia unit and includes abundant specular hematite, locally minor amounts of chalcopryrite, malachite, azurite, pyrite, barite and rare fluorite. Two chalcopryrite + pyrite showings found by the prospecting work returned values in the 1% or greater copper range from select grab samples. On the Arctos 6 claim, samples 547924 and 547925 respectively ran 9920 ppm Cu, 250 ppm Co and 1.65% Cu and 301 ppm Co. On the Arctos 5 claim, sample 547926, rich in chalcopryrite assayed 5.68% Cu.

## 8.0 ROCK GEOCHEMISTRY (Figure 4)

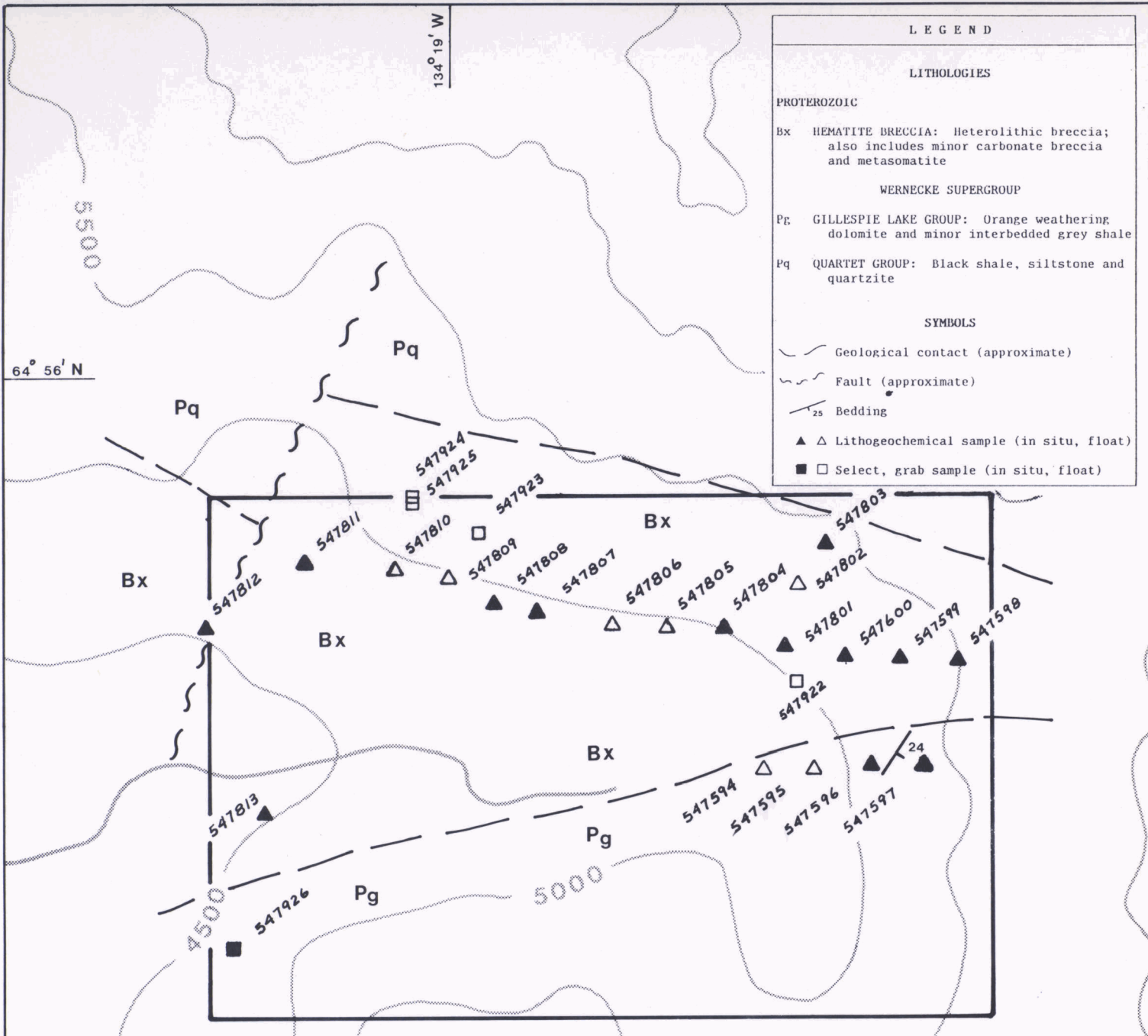
A total of 20 lithogeochemistry samples was collected from the Arctos claims. Where possible, bedrock was sampled every 100 metres and if absent coarse talus was substituted. Figure 4 gives sample type, tag number and a table of results including copper, and gold.

With the exception of two sample stations, results for all elements generally appear at background levels derived from previous work in the area. Copper values range from <1 to 1395 ppm with sixteen of twenty values less than 30 ppm Cu. Cobalt results vary between 6 and 40 ppm and all gold values but one (15 ppb) are less than 5 ppb Au.

Samples 547807 and 547808 located on the Arctos 4 claim and spaced 100 metres apart returned weakly and strongly anomalous values of 136 and 1395 ppm Cu respectively. Geologist's notes describe the area as being underlain by a barite + chalcopyrite + fluorite stockwork zone in hematite breccia. The close proximity of two prospector located copper showings in this area make this zone worthy of follow up investigation.

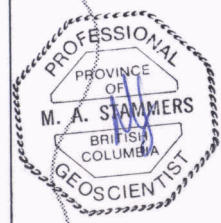
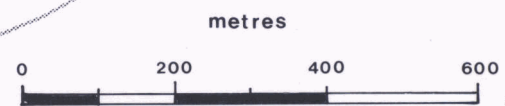
## 9.0 CONCLUSIONS AND RECOMMENDATIONS

The Arctos 1-6 mineral claims were staked in June 1992 to cover a hematite breccia body during the course of an acquisition program pursuing Olympic Dam type copper-gold-uranium-silver deposits. Total time spent on the property was limited to two man days, resulting in an incomplete evaluation. Results of the mapping, prospecting and lithogeochemistry sampling program located both anomalous and significant breccia hosted copper mineralization in the western claims area. Two prospector located showings returned copper values of 1.65% and 5.68% while mapping and lithogeochemical sampling outlined a hematite breccia hosted barite stockwork zone containing minor chalcopyrite and fluorite with a single station lithogeochemical value of 1395 ppm Cu.



**LITHOGEOCHEMICAL SAMPLE RESULTS**

Sample Number	Copper (ppm/%)	Gold (ppb)
547594	9	<5
547595	7	<5
547596	9	<5
547597	3	<5
547598	28	<5
547599	1	<5
547600	<1	<5
547801	16	<5
547802	17	<5
547803	4	<5
547804	2	<5
547805	62	<5
547806	6	<5
547807	136	<5
547808	1395	<5
547809	19	<5
547810	25	<5
547811	54	<5
547812	4	<5
547813	7	15
547922	276	<5
547923	2210	60
547924	9920	15
547925	1.65%	25
547926	5.68%	10



**WESTMIN RESOURCES LIMITED**

FAIRCHILD LAKE PROJECT  
YUKON TERRITORY

ARCTOS 1 - 6 CLAIMS

**ROCK GEOCHEMISTRY**

PAMICON DEVELOPMENTS LIMITED/EQUITY ENGINEERING LTD.

DRAWN BY: R.D.	MINING DISTRICT: MAYO	FIGURE: 4
N.T.S.: 106D/16	SCALE: 1:10,000	
DATE: NOV. 1992	REVISED:	

Retention of the entire Arctos claim group is recommended and a small follow up program comprising grid establishment, detailed mapping and additional lithogeochemical and chip sampling is advised. Acquisition of adjoining favourable ground to the west through an option agreement or staking is also recommended.

Respectfully submitted,

A handwritten signature in cursive script, appearing to read "Michael Stammers", written over a horizontal line.

Michael A. Stammers, P.Geo.

**APPENDIX I**

**BIBLIOGRAPHY**

## BIBLIOGRAPHY

- Delaney, G.D. (1981): The Mid-Proterozoic Wernecke Supergroup, Wernecke Mountains, Yukon Territory; in Proterozoic Basins of Canada, Geological Survey of Canada, Paper 81-10, p. 1-23.
- Delaney, G.D. (1985): The Middle Proterozoic Wernecke Supergroup, Wernecke Mountains, Yukon Territory; unpublished Ph.D. Thesis, University of Western Ontario, 373 pp.
- Laznicka, P. and R.J. Edwards (1979): Dolores Creek, Yukon - A Disseminated Copper Mineralization in Sodic Metasomatites; in Economic Geology, Vol. 74, p. 1352-1370.
- Pamicon Developments Ltd (1977) Unpublished Company Report
- Yeo, G.M. (1986): Iron-Formation in the Late Proterozoic Rapitan Group, Yukon and Northwest Territories; in Mineral Deposits of the Northern Cordillera, Canadian Institute of Mining and Metallurgy Special Vol. 37, p. 142-153.

**APPENDIX II**

**LIST OF PERSONNEL**

LIST OF PERSONNEL  
ARCTOS 1-6 MINERAL CLAIMS  
AUGUST 10 TO SEPTEMBER 10, 1992

M. Jones 904, 1055 Dunsmuir Street Vancouver, B.C. V7X 1C4	Geologist	1 day
E. Debock 711, 675 West Hastings Street Vancouver, B.C. V6B 1N4	Senior Prospector	1.5 days
K. Parsons c/o TNTA Carmacks, Yukon	Cook	.5 days

**APPENDIX III**

**COST STATEMENT**

CANADA ) In the matter of an evaluation program on the Arctos 1-6 Mineral  
 ) Claims

I, Mike Stammers for Pamicon Developments Ltd., 711, 675 West Hastings Street, Vancouver, B.C. do solemnly declare that a program consisting of lithogeochemical sampling, geological mapping, and prospecting was carried out on the Arctos Mineral Claims during the period August 10 to September 10, 1992.

The following expenses were incurred during the course of this work and in the compilation and reporting of the results:

**WAGES**

M. Jones (Geologist) - 1 day @ \$225.00	\$ 225.00	
904, 1055 Dunsmuir Street		
Vancouver, B.C. V7X 1C4		
E. Debock (Sr. Prospector) - 1.5 days @ \$250.00	375.00	
711, 675 West Hastings Street		
Vancouver, B.C. V6B 1N4		
K. Parsons (Cook) - .5 days @ \$250.00	125.00	
c/o TNTA		
Carmacks, Yukon		
	<hr/>	\$ 725.00

**HELICOPTER**

Flight Time - .6 hours @ \$600.00	\$ 360.00	
Fuel	<u>95.54</u>	
		455.54

**ASSAYS**

25 rock samples @ \$14.95	\$ 373.75	
2 Cu assays @ \$5.81	<u>11.62</u>	
		385.37

**GENERAL EXPENSES**

Travel, Accommodation and Meals	\$ 80.15	
Airfares	62.00	
Camp Food	79.06	
Camp Fuel	5.14	

Camp Rental	119.50	
Radio Rental	16.70	
Field Equipment Rental	9.80	
Equipment Fuel	2.88	
Truck Rental	42.01	
Field Equipment and Supplies	82.97	
Maps and Reproductions	15.56	
Expediting	20.79	
Telephone and Communications	14.35	
Fixed Wing	480.00	
Freight	16.73	
Legal Fees (notarizing claims forms)	1.27	
Clerical (UTM's, etc.)	45.90	
Report	1,057.89	
Management Fee	490.59	
		<u>2,523.29</u>
		4,209.20
		<u>294.64</u>
		<u>\$ 4,503.84</u>

GST

TOTAL THIS PROJECT

## Notes:

1. Wages are based on man days spent on the property and prep time charges.
2. Helicopter charges are based on actual hours flown.
3. Assay charges are based on actual numbers of samples from the property.
4. General expenses (all other costs) are pro rated according to man days allocated to each property, which in this case is 2% of the total budget.

And I make this solemn declaration conscientiously believing it to be true and knowing that it is of the same force and effect as if made under oath and by virtue of the Canada Evidence Act.

Declared before me at Vancouver in )  
 the Province of British Columbia this )  
27<sup>th</sup> day of JANUARY, 1993)




A Commissioner for Oaths for, or  
 Notary Public for the Yukon Territory

## APPENDIX IV

### ROCK SAMPLE DESCRIPTIONS

#### MINERALS AND ALTERATION TYPES

AS	arsenopyrite	BA	barite	BI	biotite
CA	calcite	CB	Fe-carbonate	CC	chalcocite
CL	chlorite	CP	chalcopyrite	CY	clay
DI	diopside	EP	epidote	GA	garnet
GE	goethite	GL	galena	HE	hematite
HS	specularite	JA	jarosite	MC	malachite
MG	magnetite	MN	Mn-oxides	MS	sericite
PO	pyrrhotite	PY	pyrite	QZ	quartz
SI	silica	SP	sphalerite	TT	tetrahedrite

#### ALTERATION INTENSITIES

s strong                      m medium                      w weak                      tr trace

NOTE: Copper values are shown in either parts per million (whole numbers) or as a percentage (decimal numbers)

Property : ARCTOS

NTS : 106D/16

Date : 12/05/92

Sample No.	Location :	7200 290 N	Type :	Talus	Alteration :	CA, DO, HE pervasive	Au	Co	Cu	La	U	W
		532 860 E	Strike Length Exp. :	m	Sulphides :	HS	(ppb)	(ppm)	(ppm)	(ppm)	(ppm)	(ppm)
547594	Elevation:	1480 m	Sample Width :	m	Oxides :	None	<5	13.	9.	0.	<10	10.
	Orientation:	/	True Width :	m	Host :	Breccia - hematite, carbonate						

Comments : Specularite in breccia. Homogenous talus - hematite breccia, minor carbonate breccia.

Sample No.	Location :	7200 290 N	Type :	Talus	Alteration :	DO, HE	Au	Co	Cu	La	U	W
		532 950 E	Strike Length Exp. :	m	Sulphides :	None	(ppb)	(ppm)	(ppm)	(ppm)	(ppm)	(ppm)
547595	Elevation:	1520 m	Sample Width :	m	Oxides :	None	<5	14.	7.	0.	<10	0.
	Orientation:	/	True Width :	m	Host :	Dolomitic sediments - lots of carbonate veining						

Comments : Pervasive hematite in some samples. Brecciation (carbonate matrix) common.

Sample No.	Location :	7200 300 N	Type :	Grab	Alteration :	CA, DO, HE	Au	Co	Cu	La	U	W
		533 040 E	Strike Length Exp. :	m	Sulphides :	None	(ppb)	(ppm)	(ppm)	(ppm)	(ppm)	(ppm)
547596	Elevation:	1590 m	Sample Width :	2x2 m	Oxides :	None	<5	16.	9.	0.	<10	10.
	Orientation:	/	True Width :	m	Host :	Dolomite						

Comments : Orange weathering dolomite with carbonate-hematite veins cutting through.

Sample No.	Location :	7200 300 N	Type :	Grab	Alteration :	None	Au	Co	Cu	La	U	W
		533 130 E	Strike Length Exp. :	m	Sulphides :	None	(ppb)	(ppm)	(ppm)	(ppm)	(ppm)	(ppm)
547597	Elevation:	150 m	Sample Width :	2x2 m	Oxides :	None	<5	12.	3.	0.	<10	0.
	Orientation:	/	True Width :	m	Host :	Orange weathering dolomite						

Comments :

Sample No.	Location :	7200 480 N	Type :	Grab	Alteration :	DO, HE	Au	Co	Cu	La	U	W
		533 190 E	Strike Length Exp. :	m	Sulphides :	HS	(ppb)	(ppm)	(ppm)	(ppm)	(ppm)	(ppm)
547598	Elevation:	1695 m	Sample Width :	2x2 m	Oxides :	None	<5	9.	28.	0.	<10	0.
	Orientation:	/	True Width :	m	Host :	Hematite breccia - hematized sediments						

Comments : Specularite in fractures.

Sample No.	Location :	7200 480 N	Type :		Alteration :	HE	Au	Co	Cu	La	U	W
		533 090 E	Strike Length Exp. :	100 m	Sulphides :	HS	(ppb)	(ppm)	(ppm)	(ppm)	(ppm)	(ppm)
547599	Elevation:	1650 m	Sample Width :	2x2 m	Oxides :	None	<5	8.	1.	40.	<10	20.
	Orientation:	/	True Width :	m	Host :	Hematite breccia						

Comments : Specularite.

Property : ARCTOS

NTS : 106D/16

Date : 12/05/92

Sample No.	Location :	7200 480 N	Type :	Grab	Alteration :	CB, QZ, HE	Au	Co	Cu	La	U	W
		532 995 E	Strike Length Exp. :	10 m	Sulphides :	HS	(ppb)	(ppm)	(ppm)	(ppm)	(ppm)	(ppm)
547600	Elevation:	1620 m	Sample Width :	2x2? m	Oxides :	None	<5	12.	<1	10.	<10	20.
	Orientation:	/	True Width :	m	Host :	Hematite sedimentary breccia						

Comments :

Sample No.	Location :	7200 500 N	Type :	Grab	Alteration :	CB, AB?, HE	Au	Co	Cu	La	U	W
		532 900 E	Strike Length Exp. :	5 m	Sulphides :	None	(ppb)	(ppm)	(ppm)	(ppm)	(ppm)	(ppm)
547801	Elevation:	1560 m	Sample Width :	2x2 m	Oxides :	None	<5	6.	16.	0.	<10	0.
	Orientation:	/	True Width :	m	Host :	Hematite breccia - albitized sediments?						

Comments :

Sample No.	Location :	7200 600 N	Type :	Grab	Alteration :	DO	Au	Co	Cu	La	U	W
		532 915 E	Strike Length Exp. :	m	Sulphides :	trPY	(ppb)	(ppm)	(ppm)	(ppm)	(ppm)	(ppm)
547802	Elevation:	1595 m	Sample Width :	2x2 m	Oxides :	None	<5	9.	17.	0.	<10	0.
	Orientation:	/	True Width :	m	Host :	Carbonate breccia - buff colour						

Comments : Pyrite occurs as large cubes in breccia.

Sample No.	Location :	7200 680 N	Type :	Grab	Alteration :	DO	Au	Co	Cu	La	U	W
		532 960 E	Strike Length Exp. :	m	Sulphides :	trPY	(ppb)	(ppm)	(ppm)	(ppm)	(ppm)	(ppm)
547803	Elevation:	1650 m	Sample Width :	2x2 m	Oxides :	None	<5	6.	4.	0.	<10	0.
	Orientation:	/	True Width :	m	Host :	Carbonate breccia						

Comments : As 547802.

Sample No.	Location :	7200 530 N	Type :	Grab	Alteration :	CL, HE	Au	Co	Cu	La	U	W
		532 790 E	Strike Length Exp. :	m	Sulphides :	None	(ppb)	(ppm)	(ppm)	(ppm)	(ppm)	(ppm)
547804	Elevation:	1530 m	Sample Width :	2x2 m	Oxides :	None	<5	11.	2.	70.	<10	10.
	Orientation:	/	True Width :	m	Host :	Hematite breccia						

Comments :

Sample No.	Location :	7200 530 N	Type :	Talus	Alteration :	None	Au	Co	Cu	La	U	W
		532 690 E	Strike Length Exp. :	m	Sulphides :	HS	(ppb)	(ppm)	(ppm)	(ppm)	(ppm)	(ppm)
547805	Elevation:	1515 m	Sample Width :	m	Oxides :	None	<5	29.	62.	10.	<10	20.
	Orientation:	/	True Width :	m	Host :	Hematite breccia						

Comments :

Property : ARCTOS

NTS : 1060/16

Date : 12/05/92

Sample No.	Location :	7200 530 N	Type :	Talus	Alteration :	None	Au	Co	Cu	La	U	W
		532 600 E	Strike Length Exp. :	m	Sulphides :	None	(ppb)	(ppm)	(ppm)	(ppm)	(ppm)	(ppm)
547806	Elevation:	1515 m	Sample Width :	m	Oxides :	None	<5	7.	6.	20.	<10	10.
	Orientation:	/	True Width :	m	Host :	Hematite breccia and sediments						

Comments :

Sample No.	Location :	7200 550 N	Type :	Grab	Alteration :	BA stockwork, FU	Au	Co	Cu	La	U	W
		532 470 E	Strike Length Exp. :	m	Sulphides :	trCP	(ppb)	(ppm)	(ppm)	(ppm)	(ppm)	(ppm)
547807	Elevation:	1480 m	Sample Width :	2x2 m	Oxides :	MC	<5	11.	136.	10.	<10	20.
	Orientation:	/	True Width :	m	Host :	Hematite breccia						

Comments : Stockwork extends over 10m.

Sample No.	Location :	7200 570 N	Type :	Grab	Alteration :	CL, DO, BA?, HE	Au	Co	Cu	La	U	W
		532 400 E	Strike Length Exp. :	m	Sulphides :	trCP	(ppb)	(ppm)	(ppm)	(ppm)	(ppm)	(ppm)
547808	Elevation:	1465 m	Sample Width :	2x2 m	Oxides :	None	<5	16.	1394.	80.	<10	20.
	Orientation:	/	True Width :	m	Host :	Hematite breccia						

Comments :

Sample No.	Location :	7200 610 N	Type :	Talus	Alteration :	CL, HE, BA?	Au	Co	Cu	La	U	W
		532 320 E	Strike Length Exp. :	m	Sulphides :	HS	(ppb)	(ppm)	(ppm)	(ppm)	(ppm)	(ppm)
547809	Elevation:	1480 m	Sample Width :	m	Oxides :	None	<5	14.	19.	50.	<10	20.
	Orientation:	/	True Width :	m	Host :	Hematite breccia						

Comments :

Sample No.	Location :	7200 630 N	Type :	Talus	Alteration :	CL, QZ, BA?	Au	Co	Cu	La	U	W
		532 220 E	Strike Length Exp. :	m	Sulphides :	None	(ppb)	(ppm)	(ppm)	(ppm)	(ppm)	(ppm)
547810	Elevation:	1455 m	Sample Width :	m	Oxides :	None	<5	13.	25.	0.	<10	30.
	Orientation:	/	True Width :	m	Host :	Hematite breccia						

Comments :

Sample No.	Location :	7200 640 N	Type :	Grab	Alteration :	HE	Au	Co	Cu	La	U	W
		532 070 E	Strike Length Exp. :	m	Sulphides :	HS	(ppb)	(ppm)	(ppm)	(ppm)	(ppm)	(ppm)
547811	Elevation:	1450 m	Sample Width :	2x2 m	Oxides :	None	<5	40.	54.	0.	<10	40.
	Orientation:	/	True Width :	m	Host :	Mafic dyke?						

Comments : Apparent medium-grained igneous rocks.

Property : ARCTOS

NTS : 106D/16

Date : 12/05/92

Sample No.	Location :	7200 530 N	Type :	Grab	Alteration :	CL, HE	Au	Co	Cu	La	U	W
		531 890 E	Strike Length Exp. :	m	Sulphides :	None	(ppb)	(ppm)	(ppm)	(ppm)	(ppm)	(ppm)
547812	Elevation:	1360 m	Sample Width :	2x2 m	Oxides :	None	<5	26.	4.	0.	<10	10.
	Orientation:	/	True Width :	m	Host :	Hematite breccia						

Comments :

Sample No.	Location :	7200 210 N	Type :	Grab	Alteration :	None	Au	Co	Cu	La	U	W
		532 010 E	Strike Length Exp. :	m	Sulphides :	trCP (not in sample), HS	(ppb)	(ppm)	(ppm)	(ppm)	(ppm)	(ppm)
547813	Elevation:	1340 m	Sample Width :	2x2 m	Oxides :	AZ, MC	15.	17.	7.	20.	30	10.
	Orientation:	/	True Width :	m	Host :	Hematitic breccia						

Comments : Azurite and malachite in outcrop.

Sample No.	Location :	7200 450 N	Type :	Float	Alteration :	None	Au	Co	Cu	La	U	W
		532 910 E	Strike Length Exp. :	m	Sulphides :	None	(ppb)	(ppm)	(ppm)	(ppm)	(ppm)	(ppm)
547922	Elevation:	1535 m	Sample Width :	m	Oxides :	None	<5	14.	276.	120.	<10	30.
	Orientation:	/	True Width :	m	Host :	Hematite breccia						

Comments : Hematite breccia, though widespread, it appears to have few, if any sulphides. Unusually red altered sediments.

Sample No.	Location :	7200 690 N	Type :	Float	Alteration :	None	Au	Co	Cu	La	U	W
		532 360 E	Strike Length Exp. :	m	Sulphides :	<1%CP	(ppb)	(ppm)	(ppm)	(ppm)	(ppm)	(ppm)
547923	Elevation:	1560 m	Sample Width :	m	Oxides :	MC	60.	17.	2209.	30.	<10	60.
	Orientation:	/	True Width :	m	Host :							

Comments : Mineralization very sparse in breccia.

Sample No.	Location :	7200 750 N	Type :	Float	Alteration :	None	Au	Co	Cu	La	U	W
		532 250 E	Strike Length Exp. :	m	Sulphides :	5%CP, PY	(ppb)	(ppm)	(ppm)	(ppm)	(ppm)	(ppm)
547924	Elevation:	1560 m	Sample Width :	m	Oxides :	MC	15.	250.	9917.	0.	30.	110.
	Orientation:	/	True Width :	m	Host :							

Comments : Chalcopyrite locally abundant; some pyrite also present.

Sample No.	Location :	7200 750 N	Type :	Float	Alteration :	None	Au	Co	Cu	La	U	W
		532 250 E	Strike Length Exp. :	m	Sulphides :	5%CP	(ppb)	(ppm)	(ppm)	(ppm)	(ppm)	(ppm)
547925	Elevation:	1565 m	Sample Width :	m	Oxides :	MC	25.	301.	1.65.	20.	<10	150.
	Orientation:	/	True Width :	m	Host :							

Comments : 25m from 574924.

EQUITY ENGINEERING LTD.

Property : ARCTOS

ROCK SAMPLE DESCRIPTIONS

NTS : 106D/16

Date : 12/05/92

Page-5-

Sample No.	Location :	7199 980 N	Type :	Select	Alteration :	None	Au	Co	Cu	La	U	W
		531 940 E	Strike Length Exp. :	1 m	Sulphides :	20%CP	(ppb)	(ppm)	(ppm)	(ppm)	(ppm)	(ppm)
547926	Elevation:	1400 m	Sample Width :	25 cm	Oxides :	AZ, MC	10.	32.	5.68.	10.	20.	450.
	Orientation:	187 / 90	True Width :	30 cm	Host :	Breccia						

Comments : Immediately below dolomite contact. Above No. 1 claim post.

-----

**APPENDIX V**

**ANALYTICAL PROCEDURES**



# Chemex Labs Ltd.

Analytical Chemists

Geochemists

Registered Assayers

212 Brooksbank Ave.  
North Vancouver, B.C.  
Canada V7J 2C1

Phone: (604) 984-0221

Telex: 04-352597

Fax: (604) 984-0218

## 24-Element Geochemistry Package (24-ICP)

### Inductively-Coupled Plasma Atomic Emission Spectroscopy (ICP-AES)

The 24 element rock geochemistry package provides quantitative analysis of all major elements (except silicon) as well as most important trace elements.

A prepared sample (0.50g) is digested with perchloric, nitric and hydrofluoric acids to dryness. The residue is taken up in a volume of 25ml of 10% hydrochloric acid and the resulting solution is analyzed by inductively-coupled plasma atomic emission spectroscopy. Results are corrected for spectral interelement interferences. For this project only uranium and lanthanum were also analyzed.

Chemex Code	Element	Detection Limit	Upper Limit
573	Aluminum	0.01 %	15 %
565	Barium	10 ppm	1 %
575	Beryllium	0.5 ppm	0.01 %
561	Bismuth	2 ppm	1 %
576	Calcium	0.01 %	25 %
562	Cadmium	0.5 ppm	0.05 %
569	Chromium	1 ppm	1 %
563	Cobalt	1 ppm	1 %
577	Copper	1 ppm	1 %
566	Iron	0.01 %	15 %
560	Lead	2 ppm	1 %
570	Magnesium	0.01 %	15 %
568	Manganese	5 ppm	1 %
554	Molybdenum	1 ppm	1 %
564	Nickel	1 ppm	1 %
559	Phosphorus	10 ppm	1 %
584	Potassium	0.01 %	10 %
578	Silver	0.5 ppm	0.02 %
583	Sodium	0.01 %	10 %
582	Strontium	1 ppm	1 %
579	Titanium	0.01 %	10 %
556	Tungsten	10 ppm	1 %
572	Vanadium	1 ppm	1 %
558	Zinc	2 ppm	1 %
	Uranium	10 ppm	1 %
	Lanthanum	10 ppm	1 %



# Chemex Labs Ltd.

Analytical Chemists

Geochemists

Registered Assayers

212 Brooksbank Ave.  
North Vancouver, B.C.  
Canada V7J 2C1

Phone: (604) 984-0221

Telex: 04-352597

Fax: (604) 984-0218

## Gold

### Fire Assay Collection/ Atomic Absorption Spectroscopy (FA-AA)

Chemex Code: 100

A 10g sample is fused with a neutral lead oxide flux inquarted with 6mg of gold-free silver and then cupelled to yield a precious metal bead.

These beads are digested for 30 mins in 0.5ml concentrated nitric acid, then 1.5ml of concentrated hydrochloric acid are added and the mixture is digested for 1 hr. The samples are cooled, diluted to a final volume of 5ml, homogenized and analyzed by atomic absorption spectroscopy.

Detection limit: 5 ppb

Upper Limit: 10,000 ppb

**APPENDIX VI**

**CERTIFICATES OF ANALYSIS**



# Chemex Labs Ltd.

Analytical Chemists \* Geochemists \* Registered Assayers  
 212 Brooksbank Ave., North Vancouver  
 British Columbia, Canada V7J 2C1  
 PHONE: 604-984-0221

To: PAMICON DEVELOPMENTS LIMITED

711 - 675 W. HASTINGS ST.  
 VANCOUVER, BC  
 V6B 1N4

Project: FAIRCHILD LAKE **ARCTOS**  
 Comments: CC: MURRAY JONES CC: DAVID CAULFIELD

Page 1 of 1  
 Total Pages: 2  
 Certificate Date: 29-SEP-92  
 Invoice No.:  
 P.O. Number:  
 Account: BM

	Au ppb	Ag ppm	Al %	Ba ppm	Be ppm	Bi ppm	Ca %	Cd ppm	Co ppm	Cr ppm	Cu ppm	Fe %	K %	Mg %
547594	<5	<0.2	3.14	380	<0.5	<2	12.10	0.5	13	46	9	3.07	1.88	9.55
547595	<5	<0.2	2.44	190	0.5	<2	14.13	<0.5	14	23	7	1.05	1.38	9.88
547596	<5	<0.2	1.03	2570	<0.5	<2	16.92	<0.5	16	14	9	2.48	0.21	11.69
547597	<5	<0.2	1.11	30	<0.5	<2	17.78	<0.5	12	11	3	0.75	0.39	12.71
547598	<5	<0.2	7.08	100	0.5	6	4.95	<0.5	9	61	28	1.48	0.41	2.67
547599	<5	<0.2	6.48	2330	<0.5	2	3.01	0.5	8	85	1	5.44	4.92	1.78
547600	<5	<0.2	5.54	1580	<0.5	6	6.29	0.5	12	59	<1	4.76	2.99	3.27
547801	<5	<0.2	6.77	3430	0.5	4	3.92	<0.5	6	69	16	1.43	0.33	1.87
547802	<5	<0.2	7.55	5220	0.5	10	5.70	0.5	9	81	17	1.62	0.41	2.66
547803	<5	<0.2	7.25	530	1.0	8	4.59	0.5	6	46	4	1.20	0.15	2.27
547804	<5	<0.2	6.33	4270	<0.5	4	4.66	<0.5	11	70	2	4.18	3.38	2.24
547805	<5	<0.2	7.26	3680	<0.5	<2	1.30	0.5	29	102	62	7.42	2.99	1.82
547806	<5	<0.2	6.04	1380	<0.5	2	1.28	0.5	7	71	6	5.35	1.57	0.90
547807	<5	<0.2	6.25	3420	<0.5	4	3.81	0.5	11	65	136	5.54	3.98	1.82
547808	<5	<0.2	6.36	2870	<0.5	10	2.31	1.0	16	71	1394	7.10	2.90	1.85
547809	<5	<0.2	7.18	4010	<0.5	12	3.85	0.5	14	72	19	5.38	5.99	1.63
547810	<5	<0.2	5.48	3420	<0.5	<2	4.61	<0.5	13	63	25	5.95	6.29	2.02
547811	<5	<0.2	7.03	1280	<0.5	<2	2.78	1.0	40	76	54	8.63	3.16	3.72
547812	<5	<0.2	7.54	780	0.5	<2	4.24	<0.5	26	245	4	5.98	5.58	3.58
547813	15	<0.2	6.77	7000	<0.5	8	3.34	<0.5	17	81	7	4.80	5.74	3.17
547922	<5	<0.2	6.77	6200	<0.5	14	4.25	<0.5	14	95	276	4.71	3.13	2.34
547923	60	1.6	6.31	3550	<0.5	12	3.51	<0.5	17	46	2209	6.12	2.77	1.32
547924	15	0.4	5.48	40	<0.5	22	5.69	<0.5	250	58	9917	7.59	0.56	2.79
547925	25	0.6	5.46	50	<0.5	<20	3.00	<0.5	301	110	>10000	10.96	0.72	1.67
547926	10	2.8	5.52	30	<0.5	<20	0.52	<0.5	32	103	>10000	10.37	3.81	0.94

CERTIFICATION: B. Caulfield



# Chemex Labs Ltd.

Analytical Chemists \* Geochemists \* Registered Assayers  
 212 Brooksbank Ave., North Vancouver  
 British Columbia, Canada V7J 2C1  
 PHONE: 604-984-0221

to: PAMICON DEVELOPMENTS LIMITED

711 - 675 W. HASTINGS ST.  
 VANCOUVER, BC  
 V6B 1N4

Page Number : 2  
 Total P : 2  
 Certificate Date: 29-SEP-92  
 Invoice No.  
 P.O. Number  
 Account : BM

Project : FAIRCHILD LAKE ARCTOS  
 Comments: CC: MURRAY JONES CC: DAVID CAULFIELD

	Mn ppm	Mo ppm	Na %	Ni ppm	P ppm	Pb ppm	Sr ppm	Ti %	V ppm	W ppm	Zn ppm	La ppm	U ppm
547594	2390	<1	0.47	9	290	<2	44	0.09	41	10	28	<10	<10
547595	1220	<1	0.02	13	240	<2	32	0.06	23	<10	14	<10	<10
547596	4605	<1	0.02	8	100	<2	75	0.02	17	10	26	<10	<10
547597	605	<1	0.02	3	70	<2	38	0.01	17	<10	10	<10	<10
547598	1990	<1	5.00	7	720	<2	29	0.15	58	<10	14	<10	<10
547599	2405	<1	1.33	11	710	<2	31	0.22	52	20	30	40	<10
547600	5345	<1	2.06	13	600	<2	37	0.15	49	20	20	10	<10
547801	2520	<1	5.35	7	940	<2	204	0.13	53	<10	8	<10	<10
547802	3070	<1	5.36	9	850	<2	105	0.19	50	<10	10	<10	<10
547803	1510	<1	5.70	3	640	<2	32	0.16	28	<10	2	<10	<10
547804	4955	<1	2.47	15	720	<2	241	0.18	49	10	24	70	<10
547805	1895	<1	2.18	43	560	<2	194	0.48	166	20	74	10	<10
547806	2570	<1	2.91	10	490	<2	38	0.15	39	10	24	20	<10
547807	4310	<1	1.75	11	660	4	744	0.19	59	20	74	10	<10
547808	2515	<1	1.67	79	4270	6	311	0.20	123	20	68	80	<10
547809	3630	1	1.02	15	840	2	52	0.20	64	20	64	50	<10
547810	3865	1	0.19	20	820	<2	72	0.24	48	30	20	<10	<10
547811	2040	<1	1.38	54	640	2	97	0.95	323	40	130	<10	<10
547812	1960	1	0.59	107	190	<2	46	0.26	188	10	96	<10	<10
547813	3350	1	0.21	60	650	8	122	0.24	134	10	48	20	30
547922	3895	1	2.95	12	750	<2	101	0.15	57	30	68	120	<10
547923	5540	<1	2.69	11	1970	<2	51	0.76	154	60	28	30	<10
547924	6040	2	3.55	44	710	<2	39	0.06	14	110	42	<10	30
547925	2550	10	3.21	65	800	<2	27	0.04	14	150	66	20	<10
547926	810	11	0.14	34	200	12	144	0.16	45	450	170	10	20

CERTIFICATION: B. Caulfield



# Chemex Labs Ltd.

Analytical Chemists \* Geochemists \* Registered Assayers  
212 Brooksbank Ave., North Vancouver  
British Columbia, Canada V7J 2C1  
PHONE: 604-984-0221

To: PAMICON DEVELOPMENTS LIMITED

711 - 675 W. HASTINGS ST.  
VANCOUVER, BC  
V6B 1N4

Project: FAIRCHILD LAKE - ARCTOS  
Comments: ATTN: M. JONES CC: D. CAULFIELD

Page Number :1  
Total Pages :3  
Certificate Date: 03-OCT-92  
Invoice No. :19222307  
P.O. Number :  
Account :BM

## CERTIFICATE OF ANALYSIS

A9222307

SAMPLE	PREP CODE	Cu %									
AM92-001	244	---									
547018	244	---									
547019	244	---									
547083	244	---									
547091	244	---									
547326	244	---									
547455	244	---									
547459	244	---									
547463	244	---									
547464	244	---									
547501	244	---									
547582	244	---									
547624	244	---									
547651	244	---									
547652	244	---									
547655	244	---									
547658	244	---									
547676	244	---									
547722	244	---									
547861	244	---									
547906	244	---									
547907	244	---									
547908	244	---									
547909	244	---									
547910	244	---									
547911	244	---									
547913	244	---									
547915	244	---									
547917	244	---									
547921	244	---									
547925	244	---	1.65								
547926	244	---	5.68								
547927	244	---									
547928	244	---									
547930	244	---									
547937	244	---									
547938	244	---									
547942	244	---									
547943	244	---									
547947	244	---									

CERTIFICATION:

*W. Santomini*

**APPENDIX VII**

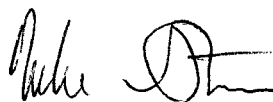
**GEOLOGIST'S CERTIFICATE**

**GEOLOGIST'S CERTIFICATE**

I, MICHAEL A. STAMMERS, of 941 Kennedy Avenue, North Vancouver, in the Province of British Columbia, DO HEREBY CERTIFY:

1. I am a graduate of McMaster University (1977) and hold a combined Honours B.A. in Geology and Geography.
2. I have practiced in my profession with various mining companies in Yukon, British Columbia and the Northwest Territories for 19 years.
3. I am duly registered as a Professional Geoscientist in the Province of British Columbia (#18883).
4. I am a Fellow of the Geological Association of Canada.
5. This report is based on property work completed under my direct supervision on September 1, 1992, a brief personal visit to the Arctos property the same date and field work completed in 1977 and 1978 for Pan Ocean Oil Ltd. on the previously staked Arctos 1-16 mineral claims that form part of and lie to the west of the presently defined property.
6. THAT I have no interest in the property described herein, nor in securities of any company associated with the property, nor do I expect to receive any such interest.
7. THAT I hereby grant permission to Westmin Resources Limited for the use of this report in any prospectus or other documentation required by any regulatory authority.

DATED at Vancouver, B.C., this 10 day of December, 1992.



Michael A. Stammers, Geologist, P. Geo., FGAC