

MAP NO.: ASSESSMENT REPORT X
105 N 09 PROSPECTUS
CONFIDENTIAL X
OPEN FILE

DOCUMENT NO: 093073
MINING DISTRICT: Mayo
TYPE OF WORK: Geological And
Geochemical Evaluation.

REPORT FILED UNDER: Kennecott Canada Inc.

DATE PERFORMED: July 23 - 28, 1992.

DATE FILED: February 8, 1993.

LOCATION: LAT.: 63°35'N
LONG.: 132°20'W

ARFA: Rogue River
VALUE \$: 19,200.00

CLAIM NAME & NO.:

Rogue 1 - 8, YB18413 - YB18420, Rogue 9 - 48, YB19844 - YB19883,
Wil 1 - 8, YB18421 - YB18428, Wil 21 - 28, YB18429 - YB18436.

WORK DONE BY: Gerald G. Carlson

WORK DONE FOR: Kennecott Canada Inc.

DATE TO GOOD STANDING:

REMARKS: # 105 N - Rogue River Area
The company carried out a follow up program to their 1991 program. The company carried out mapping, and collected 237 soil samples, 35 stream sediment samples and 16 rock samples. No sulfide mineralization was found but the soil samples revealed a Zn anomaly was centred over the contact between chert pebble conglomerate and sediments from the Lower Earn Group. It is possible the source of the anomaly is a buried stratabound base metal deposit. The company recommended more work be carried out especially geophysical surveys, in an attempt to uncover the source of the anomaly.



REPORT FOR ASSESSMENT

GEOLOGICAL AND GEOCHEMICAL EVALUATION

OF THE

ROGUE 1 TO 48 CLAIMS WILL 1 TO 8 AND 21 TO 28 CLAIMS

Rogue River Area
Mayo Mining District

NTS 105/09

63° 35' N; 132° 20' W

Prepared for:

Kennecott Canada Inc.
138-200 Granville St.
Vancouver, B.C.
V6C 1S4

15 January 1993

093 073

093 073

Prepared by:

Gerald G. Carlson
Mineral Exploration Geologist
1740 Orchard Way
West Vancouver, B.C.
V7V 4E8
Phone and FAX (604)925-9883

This report has been examined by
the Geological Evaluation Unit
under Section 53 (4) Yukon Quartz
Mining Act and is allowed as
representation work in the amount
of \$ 19,200.00.

for *Robert Dicklue*
Regional Manager, Exploration and
Geological Services for Commissioner
of Yukon Territory.

TABLE OF CONTENTS

INTRODUCTION	1
LOCATION AND ACCESS	1
LIST OF CLAIMS	3
GENERAL GEOLOGY	3
WORK COMPLETED	6
RESULTS	6
Geology	6
Geochemistry	7
CONCLUSIONS AND RECOMMENDATIONS	8
REFERENCES	9
CERTIFICATION	10
LIST OF PERSONNEL	11
STATEMENT OF EXPENDITURES	12
APPENDICES	13
Appendix A - ROGUE AND WILL Claims Soil Geochemistry	
Appendix B - ROGUE AND WILL Claims Silt Geochemistry	
Appendix C - ROGUE AND WILL Claims Rock Geochemistry	
Appendix D - Certificates of Analysis	

LIST OF FIGURES

Figure 1	Location Map	2
Figure 2	Claim Sketch	4
Figure 3	ROGUE AND WILL Claims Geology - 1:25,000 ...Pocket	
Figure 4	ROGUE AND WILL Claims Sample Numbers - 1:25,000 .	
Pocket	
Figure 5	ROGUE AND WILL Claims Pb-Zn-Ba - 1:25,000 ..Pocket	
Figure 6	ROGUE Grid Geology - 1:5,000	Pocket
Figure 7	ROGUE Grid Sample Numbers - 1:5,000	Pocket
Figure 8	ROGUE Grid Pb-Zn-Ba - 1:5,000	Pocket

INTRODUCTION

In early spring, 1991, a proposal was approved to carry out a data compilation on a relatively little known portion of Selwyn Basin, Yukon, on behalf of Kennecott Canada Inc. This area included the Lansing map sheet (105N) and adjacent parts of the Mayo (105M) map sheet. The initial program involved staking some known occurrences and carrying out a small baseline study in preparation for an announced government reconnaissance geochemical release over the proposed project area.

The original ROGUE claim group was staked to cover several strong ferricrete seeps which had been previously explored by the Hess Joint Venture in 1968. Additional ROGUE and the WILL claims were staked to cover strike extensions of the favourable stratigraphy.

A preliminary evaluation of these claims in 1991 involved stream sediment sampling, prospecting and regional geological mapping. The favourable Earn Group stratigraphy was confirmed and a broad area of anomalous geochemistry defined, mainly by stream sediment sampling.

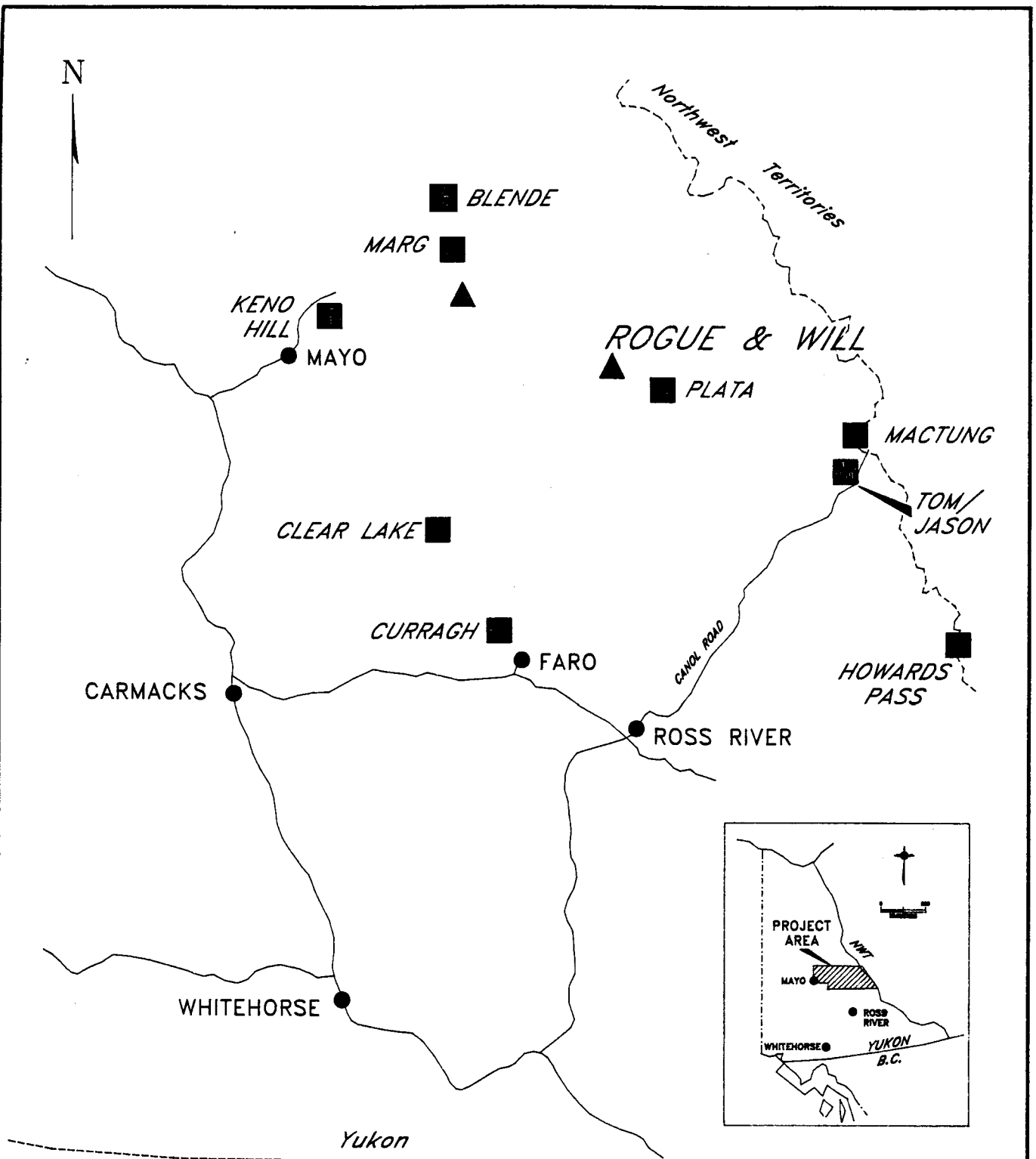
In 1992, a crew of four geologists, with helicopter support from Carmacks, established a fly camp on the ROGUE claim group for the purpose of detailed surface follow-up exploration work. This work involved 1:25,000 scale mapping and sampling efforts with local 1:5,000 mapping utilizing a slope corrected line grid over the ferricrete seeps.

It is the 1992 program, carried out during the period July 23 to 28, at a value of \$19,850, which is being applied for assessment on the ROGUE AND WILL claim groups and is reported on here.

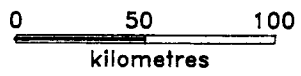
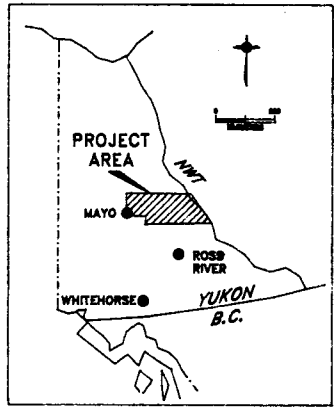
LOCATION AND ACCESS

The ROGUE AND WILL claims are located in east central Yukon (Figure 1), centred at 63° 35' N; 132° 20' W, NTS sheet 105N/09 in the Mayo Mining Division. The claims are located roughly 350 km north-northeast of Whitehorse and 150 north of the town of Faro.

Access is by helicopter from Mayo, 170 km to the west, Carmacks, 260 km southwest, Ross River, 180 km south, or by fixed wing aircraft to the Plata airstrip (Islander, Cessna 206, Twin Otter), 15 km southeast of the property.



- ▲ KENNECOTT PROPERTIES
- MINERAL DEPOSITS



© Kennecott Canada Inc.

FIGURE 1
LANSING PROJECT
ROGUE & WILL
CLAIMS
AREA LOCATION
YUKON

DATA	DEC 1992
DRAWN BY: A.M.	LANFLOC

LIST OF CLAIMS

The ^NROGUE AND WILL claim group is located in NTS sheet 105N/09, centred at 63° 35' N; 132° 20' W, as shown in Figure 2. The claims have been recorded in the Mayo Mining Division in the name of Kennecott Canada Inc.:

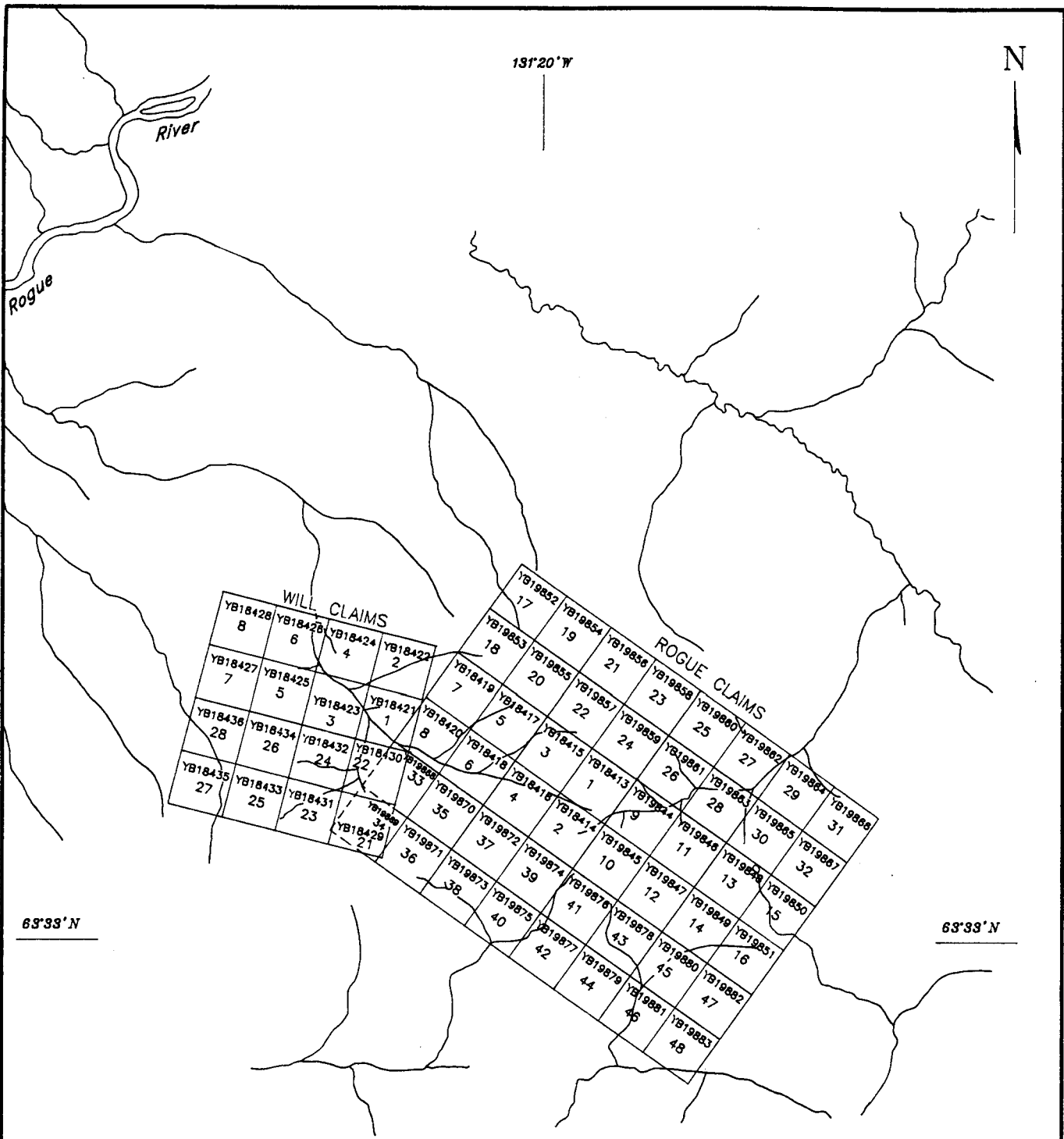
<u>Claim Name</u>	<u>Record No.</u>	<u>NTS</u>	<u>Expiry Date</u>
ROGUE 1-8	YB18413-420	105N/09	26 Jul. 1992
ROGUE 9-48	YB19844-883	105N/09	03 Oct. 1992
WILL 1-8	YB18421-428	105N/09	26 Jul. 1992
WILL 21-28	YB18429-436	105N/09	26 Jul. 1992

GENERAL GEOLOGY

The claims are underlain by the Selwyn Basin tectono-stratigraphic province. Selwyn Basin formed as a result of regional basin down warping of the passive North American continental margin in the early Paleozoic. In Devonian to Mississippian time, renewed tectonism is indicated by widespread graben formation throughout the basin. At least two ages of sediment hosted or SEDEX (Carne and Cathro, 1982) Pb-Zn+/-Ag deposits are known to occur within the basin.

The Proterozoic to early Cambrian basement rocks which underlie the entire area, informally known as the "Grit Unit", have been formally defined as the Hyland Group by Gordey (in press). These rocks are predominantly gritty quartzose sandstone and maroon, green and buff weathering shale. Minor bedded limestone is also present, while some of the clastic rocks are variably cemented with carbonate.

Earliest sedimentation within Selwyn Basin belongs to the Ordovician to Silurian Road River Group, a graptolitic unit typically consisting of calcareous black shale, argillaceous limestone and chert (Gabrielse, 1967). The top of the unit



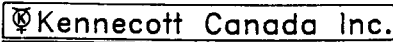


 FIGURE 2
 LANSING PROJECT
**ROGUE & WILL
 CLAIMS
 LOCATION**
 1:50,000
 NTS: 105N/9
 DATA BY: DEC. 1992
 DRAWN BY: MJD ROGCLAIM

is marked by an orange-weathering, bioturbated siltstone. To the southwest, in central Selwyn Basin, varicoloured basinal cherts predominate. Initial mapping in the Lansing map sheet by the GSC (Blusson, 1974) was of a reconnaissance nature, showing most of the project area to be underlain by Road River strata. More recent, detailed work in a few local areas suggests a significant portion of these rocks in fact belongs to the younger Earn Group.

One of the largest Pb-Zn accumulations in the world, the Howard's Pass deposit, occurs within Early Silurian pyritic and calcareous shales and mudstones, apparently localized in sub-basins along the main axis of Selwyn Basin at the time of deposition.

The Earn Group, originally defined by Campbell (1967), ranging in age from Devonian to mid-Mississippian, is widespread throughout Selwyn Basin (Gordey and others, 1982). Lower Earn Group, spanning most of the Devonian, is distinguished by gun-blue weathering siliceous shale and chert. Upper Earn Group is characterized by brown weathering shale. It is not siliceous and chert is uncommon. Locally derived submarine fan complexes, consisting of grey weathering chert pebble conglomerate with lesser quartz-chert sandstone occur in both Lower and Upper Earn. These accumulations are indicative of rifting during deposition, interrupting the otherwise passive basinal sedimentation.

Bedded barite deposits are observed throughout the Earn Group while baritic Pb-Zn-Ag sulphide deposits appear to be restricted to siliceous shale facies and turbiditic fan complexes of the Lower Earn Group.

A return to more passive margin sedimentation is indicated by Mississippian through to Triassic cherts and siltstones, with local intervals shallow water, coarser clastic deposition.

These strata have been intruded by the Cretaceous Selwyn Plutonic Suite, a northwest trending belt of equigranular, biotite quartz monzonite intrusions. These form numerous small to medium-sized stocks that are often surrounded by extensive and very distinctive rusty hornfels.

Regional structure is dominated by major basinal bounding faults. These faults, originally interpreted to be normal, are now observed as zones of thrusting, as in the Dawson Thrust and Robert Service thrust along the north boundary of the project area (Gordey, 1990; Abbott, 1990). Here, Paleozoic strata are thrust over "Grit Unit" and the Precambrian is in turn thrust over Paleozoic shelf assemblage. On the northeastern side of the project area, these relationships are more complex, with imbricate thrusting repeating the stratigraphy a number of times.

Within the basin, strata are variably deformed, from flat lying to vertical and tightly folded, apparently in response to the shortening event. Close to the thrusts, foliation is intense so as to have obscured original bedding (Gordey, 1990).

WORK COMPLETED

Work was supported from fixed-wing aircraft from Whitehorse to the Plata airstrip and thence by helicopter to a fly camp on the ROGUE AND WILL claims. The work included establishment of a slope-corrected line grid, with lines spaced from 100 to 150 m. These were mapped at 1:5,000 and lines were soil sampled at 25 m intervals. Some fill-in stream sediment sampling was completed and rock chip samples were taken to characterize the various lithologies. Mapping at 1:25,000 and contour soil sampling was carried out selectively peripheral to the grid area. In total, 237 soil samples, 35 stream sediment samples and 16 rock samples were collected.

Results of this work are shown in figures 3 through 8 in the pocket to this report. These figures also show the results of previous geochemical sampling on the claims.

RESULTS

Geology

The claims are underlain by Earn Group sediments. Earlier workers had investigated three Zn-enriched ferricrete seeps on the hillside above Stream R-4. Mapping showed the gossans to be derived from a chert pebble conglomerate unit within a monotonous sequence of black slate (A.R. 019034, 1968). This is overlain by a thick sequence of pyritic black shales and chert, with minor limestone, to the west of the gossan area.

Mapping in 1992 confirmed this interpretation. The claims are underlain by a thick, homoclinal succession of black, grey and brown weathering shales, with locally inter layered well-bedded chert and minor siltstone to wacke. The black shales are often siliceous and very often pyritic, with disseminated to laminated pyrite typically in the 1 to 3% range, but locally constituting up to 15% of the rock.

The succession strikes west-northwest and dips moderately to the southwest. The chert pebble conglomerate runs through the central part of the grid and appears to thicken, to in excess of 200 to 300 m, along the south side of the grid. The ferricrete seeps are derived from the upslope, lower contact of the conglomerate in an area of no outcrop exposure. Stratigraphically below this (assuming the beds are not overturned) on top of the ridge to the north, a succession of black shale and argillaceous black chert contains pyritic barite nodules. This may be a regional stratigraphic marker at the base of the Lower Earn Group as was observed in the KEG area.

Aside from the baritic and pyritic units, no primary mineralization was observed on the property. Sampling in 1991 showed the ferricrete seeps to be somewhat metal enriched (see below).

Geochemistry

Sediments from streams which drain the claims reflect the anomalous Zn emanating from the ferricrete zone, with accompanying high Cu, Ag and Fe values. Ba appears to be anomalous along the same horizon, farther to the east.

Sampling in 1991 showed the ferricrete to be readily defined by +50% Fe in samples. Of particular interest is the northernmost of the three zones, which contains the highest Zn (1,724 ppm), Mn (9,690 ppm), Ni (392 ppm) and Cd (24.7 ppm). Further analysis of the multi-element signatures may help identify the source of the anomaly. However, strongly anomalous Mo-As in some samples contrasting with anomalous Ni-Co in others suggests the sources may be diverse.

The soil grid showed a pattern of anomalous Zn values, ranging to 3600 ppm, which appears to be derived from the vicinity of the northern contact of the chert pebble conglomerate. Scattered, weakly anomalous Ba samples occur upslope, to the north.

Sampling outside the grid produced some weakly anomalous Pb values, in the 50 to 80 ppm range, with associated moderately anomalous Zn values, within a sequence of shale and chert southwest of the grid. It is impossible to relate these values to a specific stratigraphic horizon. Anomalous Zn and Ba values in the sampling east of the grid appear to be related to the chert pebble conglomerate and the nodular barite, respectively.

CONCLUSIONS AND RECOMMENDATIONS

The association of highly anomalous stream sediment geochemistry, metal enriched ferricrete seeps and favourable Lower Earn Group Stratigraphy combine to make the ROGUE and WILL claim groups highly prospective for the discovery of stratabound base metal sulphides. The concurrence of anomalous Zn in soils with the chert pebble conglomerate horizon and the nearby occurrence of baritic shale and chert further enhances the possibility.

However, the lack of any base metal mineralization and the absence of any significant Pb anomalies in the soil survey suggests that any mineralization, if present, must be buried and perhaps not even sub cropping.

Future work on the claims should consider extending the grid to the north and the east, to cover anomalous geology and geochemistry. Consideration should also be given to conducting geophysical surveys, such as mag, VLF and possibly gravity. Additional lithogeochemical sampling should also be carried out in an effort to identify distal mineralized horizons or related alteration.

REFERENCES

- Abbott, J.G., 1986, Geology of the Plata-Inca property, Yukon; in Yukon Geology, Volume 1, Indian and Northern Affairs Canada, pp. 109-112.
- Abbott, J.G., 1990, Preliminary results of the stratigraphy and structure of the Mt. Westman map area, central Yukon; in Current Research, Part E, Geol. Surv. Can.; Paper 90-1E, pp. 15-22.
- Blusson, S.L., 1974, Drafts of five geological maps of Operation Stewart (northern Selwyn Basin), Yukon and District of Mackenzie, N.W.T. (includes NTS 106A,B,C and 105N,O); Geol. Surv. Can., Open File 205.
- Campbell, R.B., 1967, Reconnaissance geology of Glenlyon map area, Yukon Territory; Geol. Surv. Can., Mem. 352.
- Carlson, Gerald G., 1992, 1991 Lansing Project Final Report; Report prepared for Kennecott Canada Inc., February, 1992, 31 p.
- Carne, R.C. and Cathro, R.J., 1982, Sedimentary exhalative (Sedex) zinc-lead-silver deposits, northern Canadian Cordillera; CIM Bull, Vol. 75, No. 840, pp.66-78.
- Friske, P.W.B, Hornbrook, E.H.W., Lynch, J.J., McCurdy, M.W., Gross, H., Galletta, A.C. and Durham, C.C., 1991A, Regional Stream Sediment and Water Geochemical Data, East-central Yukon, Lansing Map Sheet, 105N; Geological Survey of Canada Open File 2363.
- Gabrielse, H., 1967, Tectonic evolution of the Canadian Cordillera; Can. Jour. Earth Sci., Vol. 4, pp. 271-298.
- Gordey, S.P., 1990, Geology and Mineral Potential, Tiny Island Lake map area, Yukon; in Current Research, Part E, Geol. Surv. Can., Paper 90-1E, pp. 23-29.
- Gordey, S.P., Abbott, J.G. and Orchard, M.J., 1982, Devonian-Mississippian (Earn Group) and younger strata in east-central Yukon; in Current Research, Part B; Geol.Surv.Can., Paper 82-1B, pp. 93-100.

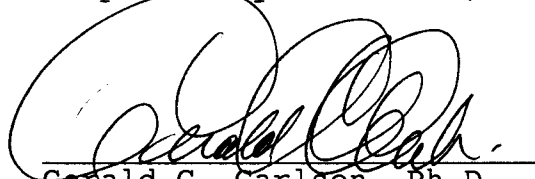
CERTIFICATION

I, Gerald G. Carlson, am employed as a Mineral Exploration Geologist with offices at 1740 Orchard Way, West Vancouver, B.C. I was directly involved in the work reported in this document and the associated costs incurred:

I further attest that:

1. I graduated with a B.A.Sc. in Geological Engineering from the University of Toronto in 1969.
2. I graduated with a M.Sc. in Economic Geology from Michigan Technological University, Houghton, Michigan in 1974.
3. I graduated with a Ph.D. in Economic Geology from Dartmouth College, Hanover, New Hampshire in 1978.
4. With the exception of time taken out for graduate studies, I have been practicing my profession continuously for the past 24 years.
5. I am a member in good standing of the Association of Professional Engineers of the Yukon Territory and of the Association of Professional Engineers and Geoscientists of British Columbia.

Respectfully submitted,

A handwritten signature in black ink, appearing to read "Gerald Carlson", written over a horizontal line.

Gerald G. Carlson, Ph.D., P.Eng.

LIST OF PERSONNEL

The following personnel were employed on the field portion of this project:

Gerald G. Carlson, Geologist
1740 Orchard Way
West Vancouver, B.C.
V7V 4E8

Roger Hulstein, Geologist
c/o Aurum Geological Consultants Inc.
P.O. Box 4367
Whitehorse, Yukon
Y1A 3T5

Greg Smith, Geologist
c/o Aurum Geological Consultants Inc.
P.O. Box 4367
Whitehorse, Yukon
Y1A 3T5

Mark Baknes
c/o Kennecott Canada Inc.
138 - 200 Granville Street
Vancouver, B.C.
V6C 1S4

STATEMENT OF EXPENDITURES

July 23 to July 28, 1992

Wages:	R. Hulstein	6 days @ \$350	2,100
	G. Smith	6 days @ \$320	1,920
	M. Baknes	6 days @ \$250	1,500
Helicopter		5.3 Hr. @ \$700	3,710
Share of mobilization & general expenses *		6 dys @ \$1,290/dy	7,740
Analytical		288 samples @ \$10.00	<u>2,880</u>
		TOTAL	<u>\$19,850</u>

* Note: All costs related to preparation for the field program, mobilization, rentals of camp and radio, costs of consumable supplies, including fuel, and demobilization were totaled and divided by the total number of days in the field during the actual field work portion of this program, July 4 to August 12, 1992, inclusive. Thus all general expenses are fairly distributed in proportion to the amount of work carried out on each claim group.

APPENDICES

ROGUE AND WILL CLAIMS

Geochemical Results

and

Geochemical Analysis Certificates

Soil Geochemistry

SAMPLE NUMBER	Pb ppm	Zn ppm	Ag ppm	Ba ppm	Cu ppm	Fe %	Mn ppm	Cd ppm	Ni ppm	Co ppm	V ppm	As ppm	Sb ppm	Bi ppm
GS2 S-209	23	84	2.3	4188	26	3.29	50	0.2	11	5	63	26	2	3
GS2 S-210	23	53	2.8	5603	32	1.56	67	0.6	15	3	59	22	2	2
GS2 S-211	23	141	1.4	5566	38	1.93	85	2.1	30	5	42	29	3	2
GS2 S-212	13	111	0.8	3205	25	1.35	37	0.3	14	3	65	20	3	2
GS2 S-213	12	80	1.2	1858	15	0.65	13	0.2	10	2	103	15	2	2
GS2 S-214	24	202	3.2	2089	32	1.47	15	0.3	31	3	121	16	4	2
GS2 S-215	23	239	5.6	1890	49	3.35	64	0.6	49	7	178	27	3	2
GS2 S-216	19	1122	9.9	2576	244	10.87	1170	7.6	278	31	339	85	34	2
GS2 S-217	13	361	5.6	1397	88	2.84	88	1.5	61	4	294	46	11	2
GS2 S-218	20	144	3.1	1816	29	1.77	56	0.8	24	3	184	22	3	2
GS2 S-219	23	201	5.2	1993	44	1.72	59	2.2	36	3	255	24	5	2
GS2 S-220	16	219	3.0	2040	26	1.23	40	1.2	28	3	205	19	3	2
GS2 S-221	20	2448	11.1	3475	150	3.47	1979	25.7	409	12	378	53	4	2
GS2 S-222	16	3667	9.4	3063	199	3.44	654	26.6	601	8	266	55	7	3
GS2 S-223	15	1216	4.4	2369	81	3.04	500	11.5	164	9	165	42	5	3
GS2 S-224	25	646	3.7	2616	141	3.82	272	5.7	109	15	125	59	8	2
GS2 S-225	10	123	0.4	693	8	3.83	84	0.3	32	8	35	23	2	2
GS2 S-226	23	318	4.2	6218	39	4.04	571	1.3	98	22	26	25	2	2
GS2 S-227	18	141	2.3	2084	51	4.84	213	0.5	29	10	66	19	2	6
GS2 S-228	20	106	1.7	5312	54	4.02	103	0.2	23	7	46	22	2	2
GS2 S-229	16	87	0.8	2739	21	2.15	93	0.3	16	5	60	17	2	2
GS2 S-230	20	119	3.1	3009	30	4.05	194	0.5	25	9	87	37	2	2
GS2 S-231	19	87	2.2	3200	23	3.43	91	0.2	17	5	92	32	2	4
GS2 S-232	20	99	2.7	3176	23	3.74	112	0.4	16	6	145	37	4	3
GS2 S-233	16	166	2.9	2930	45	4.61	98	0.5	31	8	115	44	3	2
GS2 S-234	21	79	2.4	2078	19	3.08	138	0.2	12	5	122	26	2	2
GS2 S-235	25	146	1.2	4646	60	3.78	123	0.2	35	8	64	29	2	2
GS2 S-236	19	119	0.9	3442	43	3.23	77	0.2	23	6	70	26	2	2
GS2 S-237	21	172	0.6	7763	80	6.27	141	0.2	32	8	38	28	2	2
GS2 S-238	30	97	1.2	8805	37	2.43	57	0.5	24	4	41	16	2	2
GS2 S-239	20	73	1.8	7947	26	1.31	49	0.5	21	2	40	12	2	2
GS2 S-240	18	74	1.1	3942	24	1.41	44	0.2	15	3	62	13	2	3
GS2 S-241	22	130	1.0	3874	28	2.66	175	0.2	27	8	71	54	2	2
GS2 S-242	16	118	3.4	3090	24	1.68	69	0.5	19	5	69	17	2	2
GS2 S-243	18	105	1.9	3129	23	1.65	92	0.3	19	5	69	17	2	2

ROGUE AND WILL CLAIMS
Soil Geochemistry

SAMPLE NUMBER	Pb ppm	Zn ppm	Ag ppm	Ba ppm	Cu ppm	Fe %	Mn ppm	Cd ppm	Ni ppm	Co ppm	V ppm	As ppm	Sb ppm	Bi ppm
GS2 S-244	26	112	1.4	3743	25	2.18	87	0.4	21	5	85	21	2	2
GS2 S-245	18	197	2.1	3737	39	3.05	154	0.8	32	9	76	24	3	2
GS2 S-246	16	259	2.3	3009	33	1.73	108	2.8	44	5	65	13	2	4
GS2 S-247	14	441	1.9	3461	32	2.46	1191	4.9	78	28	67	16	2	2
GS2 S-248	14	1224	1.2	3991	50	3.91	1624	10.4	195	25	102	25	2	4
GS2 S-249	9	828	2.1	2550	47	4.46	2150	5.6	140	23	107	27	2	2
GS2 S-250	15	670	1.8	2791	44	4.16	1710	4.3	111	31	99	28	2	2
GS2 S-251	13	500	1.6	2644	47	2.88	549	3.5	84	15	84	23	2	2
GS2 S-252	16	433	1.7	2317	45	2.80	461	3.6	67	13	112	28	2	2
GS2 S-253	25	147	1.7	2329	30	4.06	199	0.2	25	8	117	29	2	2
GS2 S-254	32	154	1.9	3195	46	3.79	148	0.5	37	9	112	39	2	2
GS2 S-255	18	144	1.2	1899	29	5.88	285	0.2	27	11	107	32	2	2
GS2 S-256	32	156	1.1	3144	30	4.62	239	0.5	35	13	68	36	2	2
GS2 S-257	27	228	1.0	2919	40	7.68	189	0.3	59	16	45	3	2	4
GS2 S-258	23	284	1.5	7089	107	3.85	507	2.5	152	14	31	68	2	2
GS2 S-259	26	261	0.8	7481	78	4.70	199	1.1	73	12	37	38	2	2
GS2 S-260	16	209	0.9	3806	28	3.76	388	1.2	32	16	46	70	9	2
GS2 S-261	17	200	0.9	3133	34	4.06	507	0.8	34	16	51	36	3	2
GS2 S-262	19	202	0.5	3601	38	3.77	1332	0.6	34	31	57	25	2	2
GS2 S-263	20	234	0.6	3817	29	4.12	709	0.4	38	16	55	41	3	2
GS2 S-264	29	189	1.8	4359	45	3.78	507	0.4	34	13	64	35	3	4
GS2 S-265	29	110	3.4	3515	39	2.56	175	0.7	25	7	72	32	2	2
GS2 S-266	19	143	1.9	2272	54	2.90	348	1.6	32	11	87	28	2	2
GS2 S-267	20	109	1.2	2174	47	2.81	182	0.6	26	9	67	25	2	3
GS2 S-268	14	256	0.7	2340	66	2.43	551	0.7	47	12	83	24	2	2
GS2 S-269	11	341	1.2	2405	83	4.27	1278	1.9	71	18	90	43	2	2
GS2 S-270	18	499	1.5	2559	99	4.58	1667	2.7	101	34	92	71	2	2
GS2 S-271	17	462	2.1	2857	80	4.21	1319	3.9	90	25	93	62	2	2
GS2 S-272	21	466	2.1	2656	80	4.56	2322	3.0	84	28	94	51	2	3
GS2 S-273	17	766	2.0	2622	75	3.22	1105	4.7	166	22	81	23	2	2
GS2 S-287	20	890	4.7	2940	194	3.47	376	7.5	111	15	65	47	21	4
GS2 S-288	20	822	8.7	2745	154	2.35	247	11.5	113	10	203	124	24	2
GS2 S-289	27	310	4.8	2282	85	3.29	103	1.6	48	8	50	70	5	5
GS2 S-290	51	497	2.6	2866	211	8.23	720	2.5	112	33	102	107	9	2
GS2 S-291	82	273	3.7	7157	165	14.21	5369	1.3	162	34	24	73	3	2

ROGUE AND WILL CLAIMS
Soil Geochemistry

SAMPLE NUMBER	Pb ppm	Zn ppm	Ag ppm	Ba ppm	Cu ppm	Fe %	Mn ppm	Cd ppm	Ni ppm	Co ppm	V ppm	As ppm	Sb ppm	Bi ppm
GS2 S-292	50	462	0.5	2830	184	8.50	2893	2.1	112	42	79	67	2	2
GS2 S-293	63	509	1.8	2769	191	8.92	2825	2.7	106	58	95	110	8	3
GS2 S-294	34	390	0.6	1891	113	5.32	454	0.6	83	14	105	289	5	2
GS2 S-295	22	777	2.1	3713	216	3.54	314	9.0	136	11	137	96	9	2
GS2 S-296	20	542	1.9	2522	115	3.68	368	4.2	87	11	98	136	9	2
GS2 S-297	37	794	23.9	4158	202	5.54	973	7.9	165	17	108	125	8	2
GS2 S-298	22	339	5.4	3089	95	3.85	202	1.4	70	6	134	79	8	2
GS2 S-299	17	469	9.2	3595	150	6.62	131	4.4	125	5	190	111	6	2
GS2 S-300	32	158	4.2	3834	48	3.54	238	2.3	31	4	80	98	3	2
GS2 S-307	25	204	2.8	5802	33	2.01	391	3.8	55	6	77	51	2	2
GS2 S-308	27	132	3.3	6382	41	1.96	112	1.1	37	3	80	72	4	2
GS2 S-309	22	34	3.6	6196	45	2.86	20	0.2	8	1	159	136	7	2
GS2 S-310	26	29	10.8	5470	45	2.88	89	0.5	8	1	195	110	25	2
GS2 S-311	13	256	3.5	2682	91	3.15	139	3.0	53	5	101	56	6	2
GS2 S-312	16	239	5.7	2422	77	3.67	225	1.7	54	4	183	65	6	2
GS2 S-313	20	318	8.7	3467	148	3.44	128	2.6	65	3	219	100	9	2
GS2 S-314	23	399	9.2	3513	66	2.68	535	4.4	62	4	197	59	5	2
GS2 S-315	19	461	4.6	2683	114	3.44	1037	5.6	73	9	213	54	5	2
GS2 S-316	21	331	6.9	2673	89	4.70	163	1.5	66	4	211	89	8	2
GS2 S-317	22	1679	6.6	3539	115	4.35	1630	4.1	211	8	244	57	3	2
GS2 S-318	25	375	4.9	1918	92	4.08	260	0.4	76	5	144	62	5	2
GS2 S-319	18	405	4.2	1879	81	4.18	457	0.9	82	9	155	61	5	2
GS2 S-320	23	642	4.0	2996	126	3.61	963	8.8	112	6	220	65	7	2
MB2 S-100	25	112	0.8	2320	28	5.00	239	0.2	26	6	69	31	3	2
MB2 S-101	21	139	0.8	4104	44	4.44	398	0.2	47	14	27	20	2	2
MB2 S-102	16	101	0.5	2265	19	3.13	295	0.2	24	7	55	18	2	2
MB2 S-103	27	194	1.7	4004	54	6.10	560	0.2	77	23	24	22	2	2
MB2 S-104	19	163	1.1	2806	32	5.29	205	0.2	38	7	49	26	2	2
MB2 S-105	18	115	1.4	3036	39	3.74	193	0.2	34	7	36	30	3	2
MB2 S-106	16	110	0.8	3391	29	3.89	188	0.2	28	6	37	25	2	2
MB2 S-107	23	94	0.9	3305	40	3.58	71	0.2	20	3	53	35	2	2
MB2 S-108	16	100	0.5	2534	20	3.85	164	0.2	27	4	39	30	2	2
MB2 S-109	15	114	0.7	3032	28	2.35	106	0.2	22	4	38	19	2	2
MB2 S-110	15	60	0.7	3060	20	1.94	98	0.2	14	3	44	21	2	2
MB2 S-111	19	108	1.3	3496	30	2.87	206	0.3	21	4	78	29	3	2

ROGUE AND WILL CLAIMS
Soil Geochemistry

SAMPLE NUMBER	Pb ppm	Zn ppm	Ag ppm	Ba ppm	Cu ppm	Fe %	Mn ppm	Cd ppm	Ni ppm	Co ppm	V ppm	As ppm	Sb ppm	Bi ppm
MB2 S-112	22	124	2.6	4482	42	2.55	98	0.6	24	4	68	31	2	2
MB2 S-113	24	177	2.9	4640	56	3.62	224	1.1	57	8	47	33	2	2
MB2 S-114	16	77	1.7	6004	50	1.64	27	0.4	14	1	74	34	3	2
MB2 S-115	19	178	2.4	3340	65	1.40	40	0.9	31	3	147	28	4	2
MB2 S-116	20	853	9.3	3157	156	3.24	1058	24.7	136	17	294	35	4	3
MB2 S-117	20	311	7.8	2400	74	2.24	112	7.2	52	5	369	39	6	2
MB2 S-118	16	517	4.9	2482	89	2.42	1431	9.5	95	9	349	34	4	2
MB2 S-119	18	1039	6.0	2607	141	2.64	784	22.7	189	8	314	272	9	7
MB2 S-120	10	397	2.6	1518	58	2.11	169	3.8	60	5	167	37	5	2
MB2 S-121	15	177	1.8	1886	37	1.69	57	1.3	33	3	155	24	3	2
MB2 S-122	10	182	1.9	1355	35	2.68	171	0.7	36	7	89	22	3	3
MB2 S-123	13	391	4.3	2111	97	3.28	459	4.3	83	9	166	44	7	2
MB2 S-124	22	272	3.7	2453	77	3.17	175	1.5	55	7	143	33	3	2
MB2 S-125	12	269	1.5	1445	55	2.74	421	1.6	52	13	75	21	2	2
MB2 S-126	19	349	2.2	1914	53	3.36	374	1.6	45	9	127	34	3	2
MB2 S-127	18	299	12.0	2338	54	2.17	118	2.0	47	4	131	16	2	2
MB2 S-128	35	139	0.7	6729	158	4.73	1120	0.2	44	21	42	4	2	2
MB2 S-129	56	255	1.1	5368	391	7.83	1004	0.2	83	50	32	30	2	2
MB2 S-130	45	192	0.7	8157	192	4.87	2182	0.2	68	45	33	19	2	2
MB2 S-131	37	135	0.4	2984	73	6.31	745	0.2	43	27	26	19	2	3
MB2 S-132	17	119	0.4	5198	91	5.16	613	0.2	40	18	43	6	2	2
MB2 S-133	122	313	0.5	6227	273	4.17	5737	0.2	74	69	33	2	2	2
MB2 S-134	53	607	2.1	2373	255	10.18	1244	1.0	164	49	26	44	3	5
MB2 S-135	34	293	4.9	2059	46	2.41	89	3.2	58	7	247	39	20	2
MB2 S-136	22	232	0.3	1877	48	3.57	194	0.4	49	11	90	24	2	2
MB2 S-137	36	452	3.9	4470	136	4.73	1063	4.2	106	17	91	115	26	4
MB2 S-138	59	216	0.7	2536	65	5.35	191	0.4	39	11	56	36	2	2
MB2 S-139	26	242	0.8	1591	91	5.53	747	1.8	42	15	63	25	3	2
MB2 S-140	21	90	0.9	4636	50	2.06	118	0.5	19	5	89	39	6	2
MB2 S-141	15	90	0.6	2994	26	2.78	223	0.6	21	7	69	21	2	2
MB2 S-142	16	136	0.9	3445	40	3.23	217	0.3	36	11	57	33	3	2
MB2 S-143	14	152	1.1	2776	36	3.59	175	0.3	36	9	97	39	5	2
MB2 S-144	21	86	0.5	1243	16	4.32	379	0.3	18	9	81	16	2	2
MB2 S-145	16	123	1.5	1633	33	3.52	333	0.6	28	10	74	19	2	2
MB2 S-146	24	202	1.9	5751	54	2.97	192	1.6	43	9	128	49	4	2

ROGUE AND WILL CLAIMS
Soil Geochemistry

SAMPLE NUMBER	Pb ppm	Zn ppm	Ag ppm	Ba ppm	Cu ppm	Fe %	Mn ppm	Cd ppm	Ni ppm	Co ppm	V ppm	As ppm	Sb ppm	Bi ppm
MB2 S-147	17	120	0.4	1500	20	3.82	416	0.6	25	11	70	14	2	2
MB2 S-148	13	98	1.4	1445	30	3.72	211	0.2	19	8	95	31	2	2
MB2 S-149	16	102	1.9	3058	31	3.12	87	0.2	18	5	89	52	7	2
MB2 S-150	21	1073	5.7	4495	163	2.78	230	7.3	147	6	163	49	5	3
MB2 S-151	14	172	2.7	2024	34	1.72	34	0.5	35	3	140	27	6	2
MB2 S-152	13	89	2.1	1291	17	3.02	207	0.2	17	3	96	20	3	2
MB2 S-153	19	469	2.5	1656	109	4.90	924	0.2	104	10	143	38	6	2
MB2 S-154	18	137	2.2	1426	31	4.84	261	0.2	28	5	180	54	4	2
MB2 S-155	23	374	5.8	2344	124	4.20	520	1.7	85	7	226	71	7	2
MB2 S-156	20	187	4.7	2114	43	3.17	104	0.2	38	2	160	44	5	2
MB2 S-157	21	162	3.2	1842	34	3.33	231	0.2	35	5	177	52	6	2
MB2 S-158	19	246	6.4	2016	61	3.24	255	0.6	55	6	159	55	8	2
MB2 S-159	17	180	1.9	1641	37	3.93	483	0.2	35	5	162	55	5	2
MB2 S-160	20	688	3.8	1228	103	4.69	766	0.9	170	6	326	140	15	2
MB2 S-161	19	146	3.7	1715	47	4.37	92	0.2	30	3	97	30	4	2
MB2 S-162	37	448	6.6	2043	108	4.44	206	0.6	97	6	201	94	11	2
MB2 S-163	26	388	3.9	2021	67	2.58	42	0.4	69	3	626	56	25	2
RH2 S-186	35	166	1.4	3455	45	4.71	457	0.2	58	16	34	28	2	2
RH2 S-187	33	158	0.2	3109	32	5.01	435	0.2	47	15	24	14	2	2
RH2 S-188	18	152	0.3	2129	21	4.47	328	0.2	41	8	34	20	2	2
RH2 S-189	18	131	0.2	2446	50	4.00	214	0.2	32	6	36	25	3	2
RH2 S-190	19	133	0.9	2594	35	3.24	207	0.2	34	7	41	24	4	2
RH2 S-191	20	132	0.8	4054	54	3.45	144	0.2	31	5	39	29	2	2
RH2 S-192	24	102	0.9	4815	31	3.28	62	0.2	17	3	34	30	3	2
RH2 S-193	23	102	1.1	4298	51	4.05	74	0.2	24	3	53	33	2	2
RH2 S-194	15	43	1.7	4659	18	1.82	80	0.2	9	2	69	24	4	2
RH2 S-195	18	740	0.4	5585	87	5.33	116	0.2	79	11	159	201	2	2
RH2 S-196	15	40	1.3	2319	21	0.94	13	0.2	5	1	81	24	5	2
RH2 S-197	19	130	2.8	3201	55	2.73	58	0.2	21	2	139	62	4	2
RH2 S-198	14	26	2.2	2951	9	0.76	9	0.2	3	1	29	19	4	2
RH2 S-199	19	49	4.9	3922	51	1.23	5	0.2	4	1	101	29	7	2
RH2 S-200	25	184	9.0	2229	50	4.72	85	0.3	40	2	238	43	6	2
RH2 S-201	24	854	5.2	2273	159	4.72	36	1.5	161	3	470	98	21	2
RH2 S-202	19	238	9.2	2179	64	3.70	54	0.8	43	2	246	39	10	2
RH2 S-203	15	287	5.3	1724	66	3.05	68	1.4	53	2	277	49	12	2

ROGUE AND WILL CLAIMS
Soil Geochemistry

SAMPLE NUMBER	Pb ppm	Zn ppm	Ag ppm	Ba ppm	Cu ppm	Fe %	Mn ppm	Cd ppm	Ni ppm	Co ppm	V ppm	As ppm	Sb ppm	Bi ppm
RH2 S-204	10	84	4.2	1576	79	1.24	36	2.4	18	1	174	23	8	2
RH2 S-205	16	151	5.2	1818	68	1.52	60	1.0	27	1	190	33	9	2
RH2 S-206	17	150	4.7	2159	69	1.58	23	0.9	21	1	141	30	5	2
RH2 S-207	27	704	7.8	2463	216	3.54	273	4.5	166	6	407	86	27	2
RH2 S-208	27	164	3.4	2611	66	3.35	298	1.7	35	5	145	40	6	2
RH2 S-209	19	328	3.7	2801	68	2.82	103	2.5	64	7	160	47	6	2
RH2 S-210	21	472	5.1	2999	118	3.21	191	3.7	95	7	193	50	8	6
RH2 S-211	17	926	2.4	2870	107	2.84	314	6.8	141	12	105	23	4	2
RH2 S-212	16	568	2.2	2338	71	2.86	337	2.4	85	12	101	32	5	2
RH2 S-213	21	565	3.5	2985	93	3.03	335	6.3	85	11	136	45	4	2
RH2 S-214	14	156	0.7	3339	42	2.94	310	0.7	38	10	53	16	3	2
RH2 S-215	16	139	1.3	5326	39	3.34	776	0.5	40	15	42	10	2	2
RH2 S-216	17	165	1.2	3067	44	3.24	558	0.4	45	16	44	13	2	2
RH2 S-217	17	230	1.2	2846	37	3.04	516	0.6	70	15	43	11	2	2
RH2 S-218	21	187	0.4	3172	36	3.10	648	0.8	55	15	44	8	2	4
RH2 S-219	11	162	0.4	2979	39	3.26	338	0.7	42	12	39	18	2	2
RH2 S-220	22	234	0.7	3486	45	4.43	738	1.3	63	21	48	29	2	2
RH2 S-221	18	153	0.6	3650	45	3.56	867	0.9	45	16	43	13	2	2
RH2 S-222	16	328	1.4	3771	42	4.58	1459	1.8	105	24	65	17	2	2
RH2 S-223	19	195	0.9	3654	40	4.45	951	0.9	54	17	57	20	2	2
RH2 S-224	15	258	1.2	2798	44	3.62	417	1.0	49	13	56	26	2	2
RH2 S-225	19	618	2.0	3049	72	4.57	554	3.2	108	18	74	65	6	2
RH2 S-226	19	1157	1.5	2368	142	14.43	741	5.4	144	26	93	101	9	2
RH2 S-227	17	460	0.7	2148	54	7.59	757	1.7	52	26	75	30	3	4
RH2 S-228	20	1009	3.4	3138	158	6.20	8569	19.3	330	92	110	50	3	2
RH2 S-229	17	388	2.3	2519	76	3.37	1086	3.3	92	18	81	39	3	2
RH2 S-230	23	906	3.9	3219	118	5.37	1510	6.9	180	39	99	56	3	5
RH2 S-231	19	380	6.8	2089	243	2.29	192	6.4	120	8	241	37	8	2
RH2 S-239	24	439	6.2	4291	194	3.90	151	3.0	95	11	80	186	19	2
RH2 S-240	25	572	4.8	2221	82	3.13	146	1.8	159	7	365	46	9	2
RH2 S-241	18	485	9.1	2011	145	3.29	276	3.2	104	10	212	48	7	3
RH2 S-242	27	242	5.6	2136	59	3.39	168	0.7	56	8	140	26	5	2
RH2 S-243	20	425	7.8	2213	104	3.58	235	2.2	84	10	491	65	16	4
RH2 S-244	27	367	10.6	1491	106	4.25	105	1.6	71	7	696	89	19	2
RH2 S-245	28	695	11.0	2365	116	4.70	772	6.9	106	16	177	77	8	2

ROGUE AND WILL CLAIMS
Soil Geochemistry

SAMPLE NUMBER	Pb ppm	Zn ppm	Ag ppm	Ba ppm	Cu ppm	Fe %	Mn ppm	Cd ppm	Ni ppm	Co ppm	V ppm	As ppm	Sb ppm	Bi ppm
RH2 S-246	21	430	6.9	1997	103	3.73	191	2.9	77	8	563	76	16	2
RH2 S-247	21	147	3.7	1474	31	2.00	122	1.0	28	5	144	30	4	3
RH2 S-248	42	142	12.2	2682	44	3.09	51	0.6	26	5	84	37	3	2
RH2 S-249	41	584	9.1	2637	135	4.62	623	2.0	130	24	113	70	18	3
RH2 S-250	19	417	5.3	1643	193	3.25	69	2.8	104	7	109	77	17	2
RH2 S-251	18	1595	9.3	2361	312	4.04	223	9.2	328	12	410	111	20	2
RH2 S-252	30	133	8.0	2577	41	2.49	9	1.1	16	1	121	24	2	2
RH2 S-253	28	95	4.6	2504	24	1.48	6	0.2	20	1	53	41	5	2
RH2 S-254	17	115	2.3	1541	22	1.79	86	0.7	21	2	104	22	2	2
RH2 S-255	19	249	4.7	2295	64	2.09	84	2.2	43	3	415	33	17	2
RH2 S-256	23	210	6.5	1563	64	2.24	67	2.3	33	3	409	42	7	2
RH2 S-257	17	271	8.4	1438	64	2.94	67	1.1	48	3	212	44	7	2
RH2 S-258	18	480	18.9	2397	144	4.63	101	2.9	84	5	243	63	9	2
RH2 S-259	15	1049	6.2	2211	165	4.86	2270	9.8	212	59	277	77	7	2
RH2 S-260	16	370	5.5	1667	97	3.18	170	1.6	70	6	128	43	7	2
RH2 S-261	24	582	10.2	2445	100	6.24	37	1.3	92	3	124	53	6	2
RH2 S-262	11	506	3.0	1806	112	2.67	488	7.5	90	12	91	32	6	2
RH2 S-263	11	485	7.1	1550	93	3.58	67	1.9	84	4	211	51	10	2
RH2 S-264	17	296	3.5	1330	53	2.59	71	0.8	50	4	168	37	5	2
RH2 S-265	15	407	3.0	1609	74	3.81	288	1.1	75	7	193	53	9	2
RH2 S-266	18	530	1.8	1586	60	3.82	581	2.5	84	12	98	33	2	2
RH2 S-267	19	366	2.6	1413	62	2.66	49	1.0	67	4	164	48	6	2
RH2 S-268	16	514	1.1	1692	121	4.90	117	3.2	84	7	53	30	4	2
RH2 S-269	18	672	3.7	2194	127	3.19	212	4.8	117	8	228	54	12	2
RH2 S-270	17	604	5.9	2166	82	3.13	225	7.1	97	5	116	60	6	2
RH2 S-271	18	340	2.9	1470	48	2.19	40	0.9	74	4	201	41	6	2
RH2 S-272	26	548	8.3	2525	143	3.94	239	3.9	138	9	131	70	7	2

ROGUE AND WILL CLAIMS
Silt Geochemistry

SAMPLE NUMBER	Pb ppm	Zn ppm	Ag ppm	Ba ppm	Cu ppm	Fe %	Mn ppm	Cd ppm	Ni ppm	Co ppm	V ppm	As ppm	Sb ppm	Bi ppm
GS2 L-015	31	537	5.5	2655	121	7.78	2266	7.7	284	38	262	177	8	2
GS2 L-016	20	263	4.2	2631	70	3.15	777	4.6	109	18	167	67	9	2
GS2 L-017	18	117	5.4	3066	62	2.37	229	1.6	48	7	105	44	8	2
GS2 L-018	19	80	4.8	2763	53	2.53	101	0.8	31	5	91	43	6	2
GS2 L-019	13	108	1.9	2579	56	2.04	192	0.8	26	6	64	34	6	2
GS2 L-020	16	103	1.8	2460	56	1.93	166	0.8	27	6	61	33	5	2
GS2 L-021	15	379	2.1	2721	74	2.13	351	3.3	84	9	69	37	6	2
GS2 L-022	13	307	1.8	2571	69	1.97	260	2.7	67	7	66	34	6	2
GS2 L-023	15	937	2.4	2713	107	2.29	233	7.8	143	8	83	33	5	2
GS2 L-024	15	1562	3.4	2666	125	2.19	256	11.6	232	8	91	31	6	2
GS2 L-025	13	440	1.7	2539	66	2.10	327	3.6	89	9	64	31	5	2
GS2 L-026	31	257	4.4	6261	72	2.17	139	3.5	82	6	77	43	3	2
GS2 L-027	21	96	0.7	5824	32	1.49	186	0.9	21	4	15	19	2	2
GS2 L-028	18	3218	2.3	2190	73	6.70	2805	8.6	549	44	76	33	2	2
GS2 L-029	34	339	3.4	4888	39	4.84	539	0.3	109	24	26	24	2	2
GS2 L-030	19	95	1.5	4325	25	2.03	193	1.2	27	7	61	36	4	2
GS2 L-031	17	290	1.5	5189	35	3.03	178	1.0	63	9	37	32	2	2
GS2 L-032	26	252	1.6	4404	55	3.76	448	0.2	99	18	26	19	2	3
RH2 L-047	23	1556	7.4	2165	963	4.31	886	14.5	197	24	134	117	11	4
RH2 L-048	16	2584	2.9	4375	118	7.70	1530	16.5	413	43	92	57	3	2
RH2 L-049	22	3515	2.4	4411	77	7.49	1083	19.5	457	34	66	53	2	3
RH2 L-050	17	5878	2.6	3765	66	16.85	2319	20.5	759	78	68	92	3	3
RH2 L-051	22	2137	2.7	4827	89	4.28	468	15.0	339	16	73	37	4	2
RH2 L-052	28	1252	2.1	5390	72	2.48	243	15.8	211	8	60	41	4	2
RH2 L-053	41	259	2.4	5825	72	4.93	681	0.9	81	28	32	28	2	2
RH2 L-054	34	252	1.9	4611	63	5.32	677	0.4	79	29	34	30	2	2
RH2 L-055	26	216	2.3	5005	57	4.53	475	0.6	62	20	44	31	2	2
RH2 L-056	27	1222	3.4	4979	84	4.60	734	7.5	278	29	56	42	2	7
RH2 L-057	17	4132	4.0	2936	107	3.29	1025	55.0	564	15	152	36	5	2
RH2 L-058	20	4240	4.0	4003	109	3.93	1081	40.3	603	24	112	38	2	2
RH2 L-059	21	423	1.5	3108	65	3.45	443	2.4	90	16	44	17	2	4
RH2 L-060	14	262	0.8	3292	42	2.97	325	0.4	90	14	37	18	2	2
RH2 L-061	20	288	1.0	2993	36	3.86	507	1.1	62	15	51	44	3	5
RH2 L-062	14	1690	1.8	2289	108	6.65	1420	17.8	301	35	110	30	2	4
RH2 L-063	21	2646	6.5	1847	151	3.98	992	28.4	386	24	240	54	8	2

ROGUE AND WILL CLAIMS
Rock Sample Descriptions and Results

Sample No.	Location	Description	Width (cm)	Pb (ppm)	Zn (ppm)	Ag (ppm)	Ba (ppm)	Cu (ppm)	Fe (%)	Mn (ppm)	Cd (ppm)	Ni (ppm)	V (ppm)	As (ppm)
GS2 R-19		Grey chert w/ 5% pyrite as medium to fine dissem. cubes, minor limonite stain on fractures.	1.0 m	88	64	0.8	6,507	25	16.95	79	0.2	47	16	2
MB2 R-18		Black, argillaceous, well-bedded chert w/ 1% fine dissem. pyrite, poss. trace fine sphalerite.	Grab	5	315	3.9	4,299	60	0.95	84	4.5	38	52	12
MB2 R-19		Up to 15% pyrite as 1-5 cm lenses of 0.5-1 mm cubes in qtz. matrix. Host is brown weathering greenish grey shale.	20 cm	17	17	0.7	1,665	10	1.32	32	0.2	7	7	10
MB2 R-20A		Angular float of white weathering, pale grey massive barite with no visible sulphides.	Grab	5	12	0.1	398,340	21	0.26	14	0.2	9	2	4
MB2 R-20B		As above.	Grab	6	13	0.2	398,997	15	0.19	12	0.2	7	2	7
MB2 R-21A		Green cherty unit with 10% 5-20 cm nodules of pyritic (3-5%) barite. Sample is nodules only.	Grab	18	98	0.2	434,655	45	1.31	90	0.2	33	2	23
MB2 R-21B		As above.	Grab	24	112	0.3	397,356	34	2.68	105	0.3	59	3	36
MB2 R-22		3 cm porous horizon, poss. vein, appears conformable, of leached pyrite boxwork in qtz. matrix. May extend up to 50 m along strike.	3 cm	318	170	0.5	11,837	367	17.01	28	0.2	14	34	105
MB2 R-23		5%+ fine dissem. pyrite in grey rusty weathering shale, local qtz. veining.	Grab	38	84	0.6	19,844	54	5.43	147	0.9	66	31	34
MB2 R-24		Black-grey weathering argillaceous chert w/ 3-4% pyrite, finely dissem., in lensoid, conformable concentrations.	Grab	6	39	1.5	2,806	10	1.33	34	0.3	9	7	6
MB2 R-26		2-3% dissem. pyrite in brown weathering grey shale.	Grab	9	31	0.2	3,415	50	2.07	55	0.2	13	19	8

ROGUE AND WILL CLAIMS
Rock Sample Descriptions and Results

Sample No.	Location	Description	Width (cm)	Pb (ppm)	Zn (ppm)	Ag (ppm)	Ba (ppm)	Cu (ppm)	Fe (%)	Mn (ppm)	Cd (ppm)	Ni (ppm)	V (ppm)	As (ppm)
MB2 R-27		Rusty brown weathering shale, weak Fe carb. alteration, <1% fine dissem. pyrite.	Grab	4	111	0.1	2,304	42	1.78	255	0.4	31	6	9
MB2 R-28		Rusty black weathering graphitic shale, no visible sulphides.	Grab	4	235	0.5	7,999	19	1.31	21	0.5	26	130	70
MB2 R-29		Black, graphitic, cherty argillite and argillaceous chert. No visible sulphides.	Grab	7	232	2.2	11,959	36	0.61	20	1.9	37	154	25
RH2 R-48		Intergrown qtz-carb. veining with tr. pyrite and minor malachite/azurite stain.	Float	2	32	0.3	3,700	66	2.11	1203	0.7	10	9	18
RH2 R-49		Brown, rusty weathering, pyritic, light grey shale with 1-2% fine grained dissem. pyrite and local 1x15 cm. pyrite lenses with quartz. Within 1 m thick horizon.	Grab	13	35	0.5	2,468	29	6.68	22	0.2	19	5	7



GEOCHEMICAL ANALYSIS CERTIFICATE



Kennecott Canada Inc. File # 92-2504 Page 1

138 - 200 Granville St., Vancouver BC V6C 1S4

SAMPLE#	Mo	Cu	Pb	Zn	Ag	Ni	Co	Mn	Fe	As	U	Au	Th	Sr	Cd	Sb	Bi	V	Ca	P	La	Cr	Mg	Ba	Ti	B	Al	Na	K	W	Ba*
	ppm	ppm	ppm	ppm	ppm	ppm	ppm	ppm	%	ppm	ppm	ppm	ppm	ppm	ppm	ppm	ppm	ppm	%	%	ppm	ppm	%	ppm	%	%	%	%	%	ppm	ppm
GS2 S-209	8	26	23	84	2.3	11	5	50	3.29	26	5	ND	3	39	.2	2	3	63	.02	.085	11	23	.04	262	.01	2	.77	.01	.07	1	4188
GS2 S-210	8	32	23	53	2.8	15	3	67	1.56	22	5	ND	1	45	.6	2	2	59	.08	.072	20	15	.04	693	.01	3	.69	.01	.10	1	5603
GS2 S-211	6	38	23	141	1.4	30	5	85	1.93	29	5	ND	1	53	2.1	3	2	42	.12	.064	16	13	.05	695	.01	6	.45	.01	.10	1	5566
GS2 S-212	10	25	13	111	.8	14	3	37	1.35	20	5	ND	1	18	.3	3	2	65	.02	.031	18	12	.02	141	.01	3	.25	.01	.06	1	3205
GS2 S-213	7	15	12	80	1.2	10	2	13	.65	15	5	ND	1	14	.2	2	2	103	.01	.027	24	19	.04	152	.01	3	.38	.01	.07	1	1858
GS2 S-214	19	32	24	202	3.2	31	3	15	1.47	16	5	ND	1	53	.3	4	2	121	.01	.054	24	22	.04	254	.01	3	.35	.01	.10	1	2089
GS2 S-215	18	49	23	239	5.6	49	7	64	3.35	27	5	ND	1	53	.6	3	2	178	.02	.096	16	34	.07	288	.01	3	.73	.01	.11	1	1890
GS2 S-216	63	244	19	1122	9.9	278	31	1170	10.87	85	28	ND	2	332	7.6	34	2	339	.23	.975	21	101	.09	692	.01	2	1.41	.01	.16	1	2576
GS2 S-217	35	88	13	361	5.6	61	4	88	2.84	46	13	ND	1	147	1.5	11	2	294	.19	.319	22	53	.10	464	.01	2	.65	.01	.14	1	1397
GS2 S-218	18	29	20	144	3.1	24	3	56	1.77	22	5	ND	1	66	.8	3	2	184	.04	.101	15	37	.09	342	.01	5	.69	.01	.12	1	1816
GS2 S-219	27	44	23	201	5.2	36	3	59	1.72	24	9	ND	1	86	2.2	5	2	255	.05	.099	16	47	.10	437	.01	6	.78	.01	.15	1	1993
GS2 S-220	14	26	16	219	3.0	28	3	40	1.23	19	8	ND	1	58	1.2	3	2	205	.04	.087	17	40	.09	364	.01	5	.68	.01	.12	1	2040
GS2 S-221	27	150	20	2448	11.1	409	12	1979	3.47	53	27	ND	1	145	25.7	4	2	378	1.11	.369	12	78	.33	853	.01	7	2.10	.01	.25	1	3475
GS2 S-222	25	199	16	3667	9.4	601	8	654	3.44	55	32	ND	1	130	26.6	7	3	266	.99	.301	11	60	.32	811	.01	8	1.56	.01	.20	1	3063
GS2 S-223	21	81	15	1216	4.4	164	9	500	3.04	42	11	ND	1	99	11.5	5	3	165	.65	.184	15	38	.20	646	.01	3	.90	.01	.15	1	2369
GS2 S-224	26	141	25	646	3.7	109	15	272	3.82	59	11	ND	1	118	5.7	8	2	125	.23	.125	20	27	.10	527	.01	3	.56	.01	.15	1	2616
GS2 S-225	2	8	10	123	.4	32	8	84	3.83	23	5	ND	1	7	.3	2	2	35	.03	.063	7	10	.02	50	.01	3	.36	.01	.02	1	693
GS2 S-226	2	39	23	318	4.2	98	22	571	4.04	25	5	ND	2	128	1.3	2	2	26	1.12	.171	12	27	.14	1208	.01	3	3.76	.01	.10	1	6218
GS2 S-227	3	51	18	141	2.3	29	10	213	4.84	19	5	ND	1	22	.5	2	6	66	.07	.068	11	31	.19	153	.03	2	1.54	.01	.08	1	2084
GS2 S-228	3	54	20	106	1.7	23	7	103	4.02	22	5	ND	3	32	.2	2	2	46	.05	.038	8	27	.14	182	.02	2	.97	.01	.08	1	5312
GS2 S-229	3	21	16	87	.8	16	5	93	2.15	17	5	ND	1	17	.3	2	2	60	.03	.042	13	17	.06	128	.01	2	.73	.01	.06	1	2739
GS2 S-230	8	30	20	119	3.1	25	9	194	4.05	37	5	ND	3	35	.5	2	2	87	.05	.051	13	36	.30	268	.02	3	1.70	.01	.10	1	3009
RE GS2 S-227	3	51	22	130	2.2	29	9	213	5.03	23	5	ND	1	20	.5	2	2	68	.05	.066	10	32	.21	134	.03	6	1.57	.01	.08	1	2011
GS2 S-231	10	23	19	87	2.2	17	5	91	3.43	32	5	ND	3	50	.2	2	4	92	.05	.105	17	27	.12	277	.01	2	.98	.01	.09	1	3200
GS2 S-232	14	23	20	99	2.7	16	6	112	3.74	37	5	ND	2	54	.4	4	3	145	.04	.152	14	32	.10	335	.02	2	.90	.01	.11	1	3176
GS2 S-233	10	45	16	166	2.9	31	8	98	4.61	44	5	ND	4	46	.5	3	2	115	.03	.143	12	29	.15	217	.01	2	.89	.01	.08	1	2930
GS2 S-234	7	19	21	79	2.4	12	5	138	3.08	26	5	ND	1	31	.2	2	2	122	.04	.087	15	23	.10	167	.02	4	.94	.01	.08	1	2078
GS2 S-235	6	60	25	146	1.2	35	8	123	3.78	29	5	ND	2	45	.2	2	2	64	.03	.085	10	26	.15	332	.01	2	1.14	.01	.06	1	4646
GS2 S-236	6	43	19	119	.9	23	6	77	3.23	26	5	ND	1	37	.2	2	2	70	.11	.074	10	23	.13	267	.01	4	.85	.01	.06	1	3442
GS2 S-237	5	80	21	172	.6	32	8	141	6.27	28	5	ND	2	14	.2	2	2	38	.02	.075	3	14	.04	181	.01	7	.60	.01	.04	1	7763
GS2 S-238	4	37	30	97	1.2	24	4	57	2.43	16	5	ND	1	30	.5	2	2	41	.06	.066	6	17	.07	651	.01	5	.88	.01	.07	1	8805
GS2 S-239	3	26	20	73	1.8	21	2	49	1.31	12	5	ND	1	45	.5	2	2	40	.21	.065	5	19	.09	792	.01	4	.80	.01	.08	1	7947
GS2 S-240	5	24	18	74	1.1	15	3	44	1.41	13	5	ND	1	35	.2	2	3	62	.06	.053	13	22	.09	344	.01	6	.81	.01	.07	1	3942
GS2 S-241	8	28	22	130	1.0	27	8	175	2.66	54	5	ND	1	57	.2	2	2	71	.12	.061	12	24	.23	399	.01	2	.92	.01	.08	1	3874
GS2 S-242	7	24	16	118	3.4	19	5	69	1.68	17	5	ND	1	49	.5	2	2	69	.13	.077	10	20	.09	456	.01	3	.91	.01	.09	1	3090
GS2 S-243	7	23	18	105	1.9	19	5	92	1.65	17	8	ND	1	42	.3	2	2	69	.12	.075	10	22	.09	322	.01	4	.91	.01	.09	1	3129
GS2 S-244	8	25	26	112	1.4	21	5	87	2.18	21	6	ND	1	49	.4	2	2	85	.05	.076	12	27	.17	324	.01	3	1.25	.01	.10	1	3743
STANDARD C/CB-1200	20	62	40	137	7.3	73	29	1069	3.96	41	23	7	39	53	19.4	14	21	61	.50	.088	40	61	.94	185	.09	34	1.95	.07	.14	11	2222

ROUTE + WILL

ICP - .500 GRAM SAMPLE IS DIGESTED WITH 3ML 3-1-2 HCL-HNO3-H2O AT 95 DEG. C FOR ONE HOUR AND IS DILUTED TO 10 ML WITH WATER.
 THIS LEACH IS PARTIAL FOR MN FE SR CA P LA CR MG BA TI B W AND LIMITED FOR NA K AND AL. AU DETECTION LIMIT BY ICP IS 3 PPM.
 - SAMPLE TYPE: PULP BA* .2 GM SAMPLE FUSED WITH 1.2 GM LIBO2, ANALYSIS BY ICP.
 Samples beginning 'RE' are duplicate samples.

DATE RECEIVED: AUG 12 1992 DATE REPORT MAILED: *Aug 19/92* SIGNED BY: *C. Long* .D.TOYE, C.LEONG, J.WANG; CERTIFIED B.C. ASSAYERS



ACHE ANALYTICAL



ACHE ANALYTICAL

SAMPLE#	Mo	Cu	Pb	Zn	Ag	Ni	Co	Mn	Fe	As	U	Au	Th	Sr	Cd	Sb	Bi	V	Ca	P	La	Cr	Mg	Ba	Ti	B	Al	Na	K	W	Ba*
	ppm	ppm	ppm	ppm	ppm	ppm	ppm	ppm	%	ppm	ppm	ppm	ppm	ppm	ppm	ppm	ppm	ppm	%	%	ppm	ppm	%	ppm	%	ppm	%	%	%	ppm	ppm
GS2 S-245	9	39	18	197	2.1	32	9	154	3.05	24	5	ND	5	62	.8	3	2	76	.09	.108	10	25	.17	377	.01	4	1.07	.01	.08	2	3737
GS2 S-246	6	33	16	259	2.3	44	5	108	1.73	13	5	ND	1	96	2.8	2	4	65	.49	.097	9	22	.16	544	.01	3	.85	.01	.10	1	3009
GS2 S-247	6	32	14	441	1.9	78	28	1191	2.46	16	5	ND	1	75	4.9	2	2	67	.37	.092	10	23	.22	470	.01	5	1.08	.01	.09	1	3461
RE GS2 S-252	11	44	17	416	1.8	64	13	461	2.70	24	5	ND	1	59	3.4	3	2	106	.16	.097	15	29	.18	314	.01	3	.98	.01	.10	1	2383
GS2 S-248	13	50	14	1224	1.2	195	25	1624	3.91	25	5	ND	1	103	10.4	2	4	102	.56	.121	11	32	.29	722	.01	4	1.63	.01	.11	1	3991
GS2 S-249	21	47	9	828	2.1	140	23	2150	4.46	27	5	ND	1	72	5.6	2	2	107	.23	.146	14	31	.20	449	.01	3	1.06	.01	.12	1	2550
GS2 S-250	16	44	15	670	1.8	111	31	1710	4.16	28	5	ND	1	62	4.3	2	2	99	.23	.144	12	30	.21	394	.01	4	1.11	.01	.10	1	2791
GS2 S-251	10	47	13	500	1.6	84	15	549	2.88	23	5	ND	1	76	3.5	2	2	84	.33	.101	16	28	.28	366	.01	4	1.06	.01	.09	1	2644
GS2 S-252	11	45	16	433	1.7	67	13	461	2.80	28	5	ND	1	60	3.6	2	2	112	.17	.099	16	30	.19	316	.01	4	1.02	.01	.10	1	2317
GS2 S-253	10	30	25	147	1.7	25	8	199	4.06	29	5	ND	1	49	.2	2	2	117	.05	.082	16	34	.18	234	.03	5	1.44	.01	.08	1	2329
GS2 S-254	8	46	32	154	1.9	37	9	148	3.79	39	5	ND	1	40	.5	2	2	112	.04	.114	14	31	.11	225	.02	2	1.12	.01	.09	1	3195
GS2 S-255	6	29	18	144	1.2	27	11	285	5.88	32	5	ND	4	29	.2	2	2	107	.07	.114	14	42	.41	201	.03	6	1.98	.01	.09	1	1899
GS2 S-256	6	30	32	156	1.1	35	13	239	4.62	36	5	ND	1	26	.5	2	2	68	.05	.122	11	28	.14	165	.01	3	.93	.01	.07	1	3144
GS2 S-257	3	40	27	228	1.0	59	16	189	7.68	3	5	ND	5	11	.3	2	4	45	.02	.134	29	37	.38	106	.01	3	2.17	.01	.03	1	2919
GS2 S-258	2	107	23	284	1.5	152	14	507	3.85	68	5	ND	1	183	2.5	2	2	31	1.24	.085	20	19	.35	1035	.01	3	1.60	.01	.05	1	7089
GS2 S-259	3	78	26	261	.8	73	12	199	4.70	38	5	ND	3	54	1.1	2	2	37	.18	.072	21	25	.20	478	.01	2	1.27	.01	.06	1	7481
GS2 S-260	15	28	16	209	.9	32	16	388	3.76	70	5	ND	4	41	1.2	9	2	46	.12	.106	11	21	.31	364	.01	3	.97	.01	.07	1	3806
GS2 S-261	12	34	17	200	.9	34	16	507	4.06	36	5	ND	2	40	.8	3	2	51	.11	.104	11	24	.35	316	.01	7	1.10	.01	.06	1	3133
GS2 S-262	11	38	19	202	.5	34	31	1332	3.77	25	5	ND	1	33	.6	2	2	57	.07	.077	11	27	.34	432	.01	5	1.43	.01	.08	1	3601
GS2 S-263	14	29	20	234	.6	38	16	709	4.12	41	5	ND	2	46	.4	3	2	55	.08	.110	11	26	.31	488	.01	5	1.24	.01	.08	1	3817
GS2 S-264	14	45	29	189	1.8	34	13	507	3.78	35	5	ND	1	52	.4	3	4	64	.08	.122	10	29	.26	478	.01	6	1.50	.01	.10	1	4359
GS2 S-265	9	39	29	110	3.4	25	7	175	2.56	32	5	ND	1	64	.7	2	2	72	.06	.125	10	33	.20	541	.01	5	1.45	.01	.10	1	3515
GS2 S-266	13	54	19	143	1.9	32	11	348	2.90	28	5	ND	2	45	1.6	2	2	87	.10	.089	16	32	.27	358	.02	2	1.22	.01	.09	1	2272
GS2 S-267	9	47	20	109	1.2	26	9	182	2.81	25	5	ND	1	32	.6	2	3	67	.05	.062	14	29	.20	247	.02	2	.91	.01	.07	1	2174
GS2 S-268	8	66	14	256	.7	47	12	551	2.43	24	5	ND	1	50	.7	2	2	83	.14	.086	17	28	.29	313	.02	3	1.06	.01	.08	1	2340
GS2 S-269	23	83	11	341	1.2	71	18	1278	4.27	43	5	ND	1	56	1.9	2	2	90	.14	.164	16	27	.18	332	.01	2	.92	.01	.09	1	2405
GS2 S-270	22	99	18	499	1.5	101	34	1667	4.58	71	5	ND	1	69	2.7	2	2	92	.12	.146	16	28	.24	425	.01	3	1.17	.01	.11	1	2559
GS2 S-271	17	80	17	462	2.1	90	25	1319	4.21	62	5	ND	1	66	3.9	2	2	93	.18	.134	15	31	.30	614	.01	2	1.30	.01	.13	1	2857
GS2 S-272	14	80	21	466	2.1	84	28	2322	4.56	51	5	ND	1	55	3.0	2	3	94	.12	.125	14	35	.31	546	.01	2	1.58	.01	.14	1	2656
GS2 S-273	8	75	17	766	2.0	166	22	1105	3.22	23	5	ND	1	57	4.7	2	2	81	.26	.095	14	31	.31	646	.01	3	1.52	.01	.11	1	2622
GS2 S-287	25	194	20	890	4.7	111	15	376	3.47	47	6	ND	8	78	7.5	21	4	65	.33	.089	16	19	.12	285	.01	6	.36	.01	.09	1	2940
GS2 S-288	41	154	20	822	8.7	113	10	247	2.35	124	9	ND	3	118	11.5	24	2	203	.54	.173	15	35	.09	901	.01	4	.38	.01	.10	1	2745
GS2 S-289	16	85	27	310	4.8	48	8	103	3.29	70	5	ND	1	191	1.6	5	5	50	.05	.115	12	16	.05	397	.01	3	.49	.01	.14	1	2282
GS2 S-290	25	211	51	497	2.6	112	33	720	8.23	107	7	ND	3	184	2.5	9	2	102	.18	.113	13	11	.10	146	.01	6	.81	.02	.19	1	2866
GS2 S-291	12	165	82	273	3.7	162	34	5369	14.21	73	5	ND	1	377	1.3	3	2	24	1.55	.058	11	10	.83	57	.01	5	.42	.01	.20	1	7157
GS2 S-292	20	184	50	462	.5	112	42	2893	8.50	67	5	ND	1	159	2.1	2	2	79	.15	.206	18	21	.23	426	.01	5	1.49	.01	.21	1	2830
GS2 S-293	29	191	63	509	1.8	106	58	2825	8.92	110	5	ND	1	127	2.7	8	3	95	.10	.225	19	20	.24	466	.01	3	1.26	.01	.19	1	2769
STANDARD C/CB-1200	20	63	41	136	7.4	71	32	1111	3.96	42	17	7	39	48	19.0	14	19	61	.49	.085	39	60	.93	187	.08	35	1.94	.07	.15	10	2193

ROGUE + WILC

Sample type: PULP. Samples beginning 'RE' are duplicate samples.



SAMPLE#	Mo	Cu	Pb	Zn	Ag	Ni	Co	Mn	Fe	As	U	Au	Th	Sr	Cd	Sb	Bi	V	Ca	P	La	Cr	Mg	Ba	Ti	B	Al	Na	K	W	Ba*
	ppm	ppm	ppm	ppm	ppm	ppm	ppm	ppm	%	ppm	ppm	ppm	ppm	ppm	ppm	ppm	ppm	ppm	%	%	ppm	ppm	%	ppm	%	ppm	%	%	%	ppm	ppm
GS2 S-294	15	113	34	390	.6	83	14	454	5.32	289	5	ND	3	49	.6	5	2	105	.03	.115	20	32	.24	390	.01	5	1.75	.01	.19	1	1891
GS2 S-295	30	216	22	777	2.1	136	11	314	3.54	96	5	ND	2	110	9.0	9	2	137	.21	.081	31	25	.19	780	.01	8	.91	.01	.18	1	3713
GS2 S-296	26	115	20	542	1.9	87	11	368	3.68	136	5	ND	1	75	4.2	9	2	98	.13	.104	24	17	.10	580	.01	6	.70	.01	.15	1	2522
GS2 S-297	19	202	37	794	23.9	165	17	973	5.54	125	11	ND	2	291	7.9	8	2	108	.48	.263	14	41	.11	71	.01	7	.86	.01	.38	1	4158
GS2 S-298	13	95	22	339	5.4	70	6	202	3.85	79	5	ND	1	125	1.4	8	2	134	.12	.180	18	55	.15	449	.01	9	1.24	.01	.22	1	3089
GS2 S-299	22	150	17	469	9.2	125	5	131	6.62	111	5	ND	3	185	4.4	6	2	190	.19	.380	19	60	.09	621	.01	7	.86	.01	.18	1	3595
GS2 S-300	21	48	32	158	4.2	31	4	238	3.54	98	5	ND	1	62	2.3	3	2	80	.10	.088	19	31	.07	522	.01	5	.56	.01	.21	1	3834
GS2 S-307	5	33	25	204	2.8	55	6	391	2.01	51	5	ND	1	74	3.8	2	2	77	.15	.104	9	20	.09	1017	.01	4	1.03	.01	.10	1	5802
GS2 S-308	7	41	27	132	3.3	37	3	112	1.96	72	5	ND	1	95	1.1	4	2	80	.18	.102	11	18	.08	792	.01	6	.77	.01	.11	1	6382
GS2 S-309	20	45	22	34	3.6	8	1	20	2.86	136	5	ND	1	71	.2	7	2	159	.03	.203	14	29	.07	743	.01	5	.80	.01	.10	1	6196
GS2 S-310	62	45	26	29	10.8	8	1	89	2.88	110	5	ND	1	55	.5	25	2	195	.02	.302	17	39	.02	471	.01	6	.50	.01	.14	1	5470
GS2 S-311	11	91	13	256	3.5	53	5	139	3.15	56	5	ND	1	93	3.0	6	2	101	.14	.147	16	32	.18	393	.01	5	.83	.01	.12	1	2682
GS2 S-312	20	77	16	239	5.7	54	4	225	3.67	65	5	ND	1	83	1.7	6	2	183	.15	.281	16	42	.08	483	.01	5	.68	.01	.18	1	2422
GS2 S-313	28	148	20	318	8.7	65	3	128	3.44	100	5	ND	1	174	2.6	9	2	219	.09	.257	14	57	.09	701	.01	4	.93	.01	.17	1	3467
GS2 S-314	24	66	23	399	9.2	62	4	535	2.68	59	5	ND	1	204	4.4	5	2	197	.23	.239	15	45	.14	783	.01	5	.98	.01	.16	1	3513
GS2 S-315	28	114	19	461	4.6	73	9	1037	3.44	54	5	ND	1	93	5.6	5	2	213	.20	.242	16	46	.17	657	.01	5	1.18	.01	.18	1	2683
GS2 S-316	31	89	21	331	6.9	66	4	163	4.70	89	5	ND	1	184	1.5	8	2	211	.09	.286	19	55	.11	578	.01	7	.92	.01	.23	1	2673
GS2 S-317	22	115	22	1679	6.6	211	8	1630	4.35	57	5	ND	1	122	4.1	3	2	244	.17	.300	19	80	.23	807	.01	10	1.96	.01	.31	1	3539
GS2 S-318	28	92	25	375	4.9	76	5	260	4.08	62	5	ND	1	86	.4	5	2	144	.02	.171	18	29	.06	278	.01	6	.63	.01	.18	1	1918
GS2 S-319	24	81	18	405	4.2	82	9	457	4.18	61	5	ND	1	72	.9	5	2	155	.05	.188	17	35	.08	284	.01	6	.67	.01	.15	1	1879
GS2 S-320	30	126	23	642	4.0	112	6	963	3.61	65	5	ND	1	157	8.8	7	2	220	.24	.217	16	40	.15	774	.01	8	1.13	.01	.22	1	2996
MB2 S-100	3	28	25	112	.8	26	6	239	5.00	31	5	ND	1	25	.2	3	2	69	.04	.088	11	29	.17	146	.02	5	1.14	.01	.09	1	2320
MB2 S-101	1	44	21	139	.8	47	14	398	4.44	20	5	ND	1	34	.2	2	2	27	.03	.085	6	29	.39	135	.01	3	1.41	.01	.06	1	4104
MB2 S-102	1	19	16	101	.5	24	7	295	3.13	18	5	ND	1	21	.2	2	2	55	.08	.055	14	29	.33	187	.02	4	1.81	.01	.10	1	2265
MB2 S-103	1	54	27	194	1.7	77	23	560	6.10	22	5	ND	2	33	.2	2	2	24	.01	.109	5	35	.46	149	.01	4	1.75	.01	.05	1	4004
MB2 S-104	2	32	19	163	1.1	38	7	205	5.29	26	5	ND	1	34	.2	2	2	49	.05	.087	11	32	.37	154	.02	3	1.63	.01	.09	1	2806
MB2 S-105	2	39	18	115	1.4	34	7	193	3.74	30	5	ND	3	27	.2	3	2	36	.07	.063	10	23	.24	157	.01	4	1.16	.01	.08	1	3036
MB2 S-106	1	29	16	110	.8	28	6	188	3.89	25	5	ND	2	30	.2	2	2	37	.05	.062	10	25	.25	171	.01	4	1.12	.01	.08	1	3391
MB2 S-107	3	40	23	94	.9	20	3	71	3.58	35	5	ND	1	34	.2	2	2	53	.01	.061	9	15	.02	232	.01	4	.41	.01	.11	1	3305
MB2 S-108	1	20	16	100	.5	27	4	164	3.85	30	5	ND	1	14	.2	2	2	39	.02	.094	11	20	.13	90	.01	4	.75	.01	.05	1	2534
MB2 S-109	2	28	15	114	.7	22	4	106	2.35	19	5	ND	1	19	.2	2	2	38	.04	.059	10	16	.08	112	.01	5	.63	.01	.06	1	3032
MB2 S-110	3	20	15	60	.7	14	3	98	1.94	21	5	ND	1	18	.2	2	2	44	.03	.051	11	14	.07	112	.01	5	.53	.01	.07	1	3060
MB2 S-111	5	30	19	108	1.3	21	4	206	2.87	29	5	ND	1	35	.3	3	2	78	.04	.067	12	24	.16	282	.01	6	1.10	.01	.11	1	3496
RE MB2 S-107	3	38	20	88	.9	18	3	67	3.39	33	5	ND	1	32	.2	2	2	49	.01	.058	8	15	.02	223	.01	5	.40	.01	.10	1	3704
MB2 S-112	6	42	22	124	2.6	24	4	98	2.55	31	5	ND	1	50	.6	2	2	68	.04	.083	9	21	.09	380	.01	5	.83	.01	.12	1	4482
MB2 S-113	4	56	24	177	2.9	57	8	224	3.62	33	5	ND	1	64	1.1	2	2	47	.13	.120	8	28	.24	352	.01	4	1.45	.01	.11	1	4640
MB2 S-114	13	50	16	77	1.7	14	1	27	1.64	34	5	ND	1	65	.4	3	2	74	.03	.079	19	14	.04	318	.01	4	.56	.01	.11	1	6004
STANDARD C/CB-1200	18	58	37	129	7.4	73	32	1038	3.96	41	17	7	37	52	19.3	15	19	55	.51	.083	38	59	.91	190	.08	35	2.02	.08	.17	10	2206

REGRE + WILL

Sample type: PULP. Samples beginning 'RE' are duplicate samples.



SAMPLE#	Mo	Cu	Pb	Zn	Ag	Ni	Co	Mn	Fe	As	U	Au	Th	Sr	Cd	Sb	Bi	V	Ca	P	La	Cr	Mg	Ba	Ti	B	Al	Na	K	W	Ba*
	ppm	ppm	ppm	ppm	ppm	ppm	ppm	ppm	%	ppm	ppm	ppm	ppm	ppm	ppm	ppm	ppm	ppm	%	%	ppm	ppm	%	ppm	%	ppm	%	%	%	ppm	ppm
MB2 S-115	15	65	19	178	2.4	31	3	40	1.40	28	7	2	4	134	.9	4	2	147	.05	.111	16	32	.07	372	.01	4	.80	.01	.12	2	3340
MB2 S-116	24	156	20	853	9.3	136	17	1058	3.24	35	5	ND	1	109	24.7	4	3	294	.23	.208	16	58	.13	786	.01	5	1.00	.01	.19	1	3157
MB2 S-117	24	74	20	311	7.8	52	5	112	2.24	39	12	ND	1	117	7.2	6	2	369	.08	.196	20	61	.11	497	.01	6	.95	.01	.16	1	2400
MB2 S-118	17	89	16	517	4.9	95	9	1431	2.42	34	5	ND	1	81	9.5	4	2	349	.17	.278	18	65	.15	561	.01	8	1.09	.01	.18	1	2482
MB2 S-119	18	141	18	1039	6.0	189	8	784	2.64	272	12	ND	1	121	22.7	9	7	314	.35	.264	18	61	.21	710	.01	8	1.18	.01	.19	1	2607
MB2 S-120	13	58	10	397	2.6	60	5	169	2.11	37	5	ND	1	67	3.8	5	2	167	.17	.141	18	32	.12	309	.01	4	.66	.01	.10	1	1518
MB2 S-121	15	37	15	177	1.8	33	3	57	1.69	24	5	ND	1	48	1.3	3	2	155	.03	.069	16	29	.07	251	.01	4	.55	.01	.10	1	1886
MB2 S-122	10	35	10	182	1.9	36	7	171	2.68	22	5	ND	2	37	.7	3	3	89	.10	.123	18	24	.14	167	.02	4	.71	.01	.08	1	1355
MB2 S-123	20	97	13	391	4.3	83	9	459	3.28	44	7	ND	2	98	4.3	7	2	166	.21	.203	18	35	.14	410	.01	6	.98	.01	.15	1	2111
MB2 S-124	13	77	22	272	3.7	55	7	175	3.17	33	5	ND	1	63	1.5	3	2	143	.16	.181	15	42	.24	423	.01	9	1.58	.01	.18	1	2453
MB2 S-125	10	55	12	269	1.5	52	13	421	2.74	21	5	ND	3	50	1.6	2	2	75	.24	.101	23	24	.24	243	.03	6	.92	.01	.08	1	1445
MB2 S-126	11	53	19	349	2.2	45	9	374	3.36	34	5	ND	1	39	1.6	3	2	127	.12	.167	19	31	.21	302	.02	5	1.15	.01	.13	1	1914
MB2 S-127	7	54	18	299	12.0	47	4	118	2.17	16	5	ND	1	41	2.0	2	2	131	.07	.225	9	40	.14	438	.01	3	1.53	.02	.14	1	2338
MB2 S-128	3	158	35	139	.7	44	21	1120	4.73	4	5	ND	2	18	.2	2	2	42	.03	.063	5	53	.62	282	.01	3	1.99	.01	.05	1	6729
MB2 S-129	11	391	56	255	1.1	83	50	1004	7.83	30	5	ND	5	70	.2	2	2	32	.10	.091	5	50	.67	196	.01	2	2.65	.01	.06	1	5368
MB2 S-130	3	192	45	192	.7	68	45	2182	4.87	19	5	ND	2	64	.2	2	2	33	.14	.063	10	42	.77	920	.01	6	2.19	.01	.07	1	8157
MB2 S-131	7	73	37	135	.4	43	27	745	6.31	19	5	ND	5	37	.2	2	3	26	.02	.090	4	39	.71	119	.01	2	1.83	.01	.06	1	2984
MB2 S-132	2	91	17	119	.4	40	18	613	5.16	6	5	ND	3	15	.2	2	2	43	.04	.042	6	48	.53	173	.01	9	2.03	.01	.06	1	5198
MB2 S-133	1	273	122	313	.5	74	69	5737	4.17	2	5	ND	1	67	.2	2	2	33	.19	.090	14	36	.85	1332	.01	4	2.03	.01	.07	1	6227
MB2 S-134	11	255	53	607	2.1	164	49	1244	10.18	44	5	ND	5	27	1.0	3	5	26	.05	.081	27	12	.10	367	.01	6	.97	.01	.16	1	2373
MB2 S-135	29	46	34	293	4.9	58	7	89	2.41	39	5	ND	2	34	3.2	20	2	247	.03	.054	21	39	.07	244	.01	5	.42	.01	.13	1	2059
MB2 S-136	12	48	22	232	.3	49	11	194	3.57	24	5	ND	2	17	.4	2	2	90	.02	.069	29	22	.12	233	.01	4	1.22	.01	.16	1	1877
RE MB2 S-133	2	308	144	359	.6	81	80	6620	4.59	3	5	ND	1	76	.2	2	2	38	.22	.103	15	40	.94	1451	.01	7	2.26	.01	.08	1	5996
MB2 S-137	20	136	36	452	3.9	106	17	1063	4.73	115	5	ND	8	162	4.2	26	4	91	.23	.123	24	18	.10	797	.01	4	.47	.01	.12	1	4470
MB2 S-138	17	65	59	216	.7	39	11	191	5.35	36	5	ND	5	238	.4	2	2	56	.02	.106	26	19	.12	512	.01	4	1.44	.01	.22	1	2536
MB2 S-139	10	91	26	242	.8	42	15	747	5.53	25	5	ND	1	50	1.8	3	2	63	.10	.098	15	18	.11	279	.01	2	.82	.01	.12	1	1591
MB2 S-140	10	50	21	90	.9	19	5	118	2.06	39	5	ND	1	30	.5	6	2	89	.03	.063	11	18	.05	635	.01	2	.42	.01	.06	1	4636
MB2 S-141	6	26	15	90	.6	21	7	223	2.78	21	5	ND	1	27	.6	2	2	69	.08	.061	15	26	.25	591	.02	2	1.18	.01	.08	1	2994
MB2 S-142	6	40	16	136	.9	36	11	217	3.23	33	5	ND	1	34	.3	3	2	57	.08	.080	14	27	.28	166	.01	4	1.14	.01	.06	1	3445
MB2 S-143	10	36	14	152	1.1	36	9	175	3.59	39	5	ND	1	39	.3	5	2	97	.04	.128	12	26	.12	166	.01	5	.80	.01	.07	1	2776
MB2 S-144	3	16	21	86	.5	18	9	379	4.32	16	5	ND	1	18	.3	2	2	81	.07	.049	16	35	.41	108	.04	2	1.82	.01	.07	1	1243
MB2 S-145	6	33	16	123	1.5	28	10	333	3.52	19	5	ND	1	29	.6	2	2	74	.15	.090	17	35	.45	180	.03	2	1.75	.01	.08	1	1633
MB2 S-146	13	54	24	202	1.9	43	9	192	2.97	49	5	ND	1	68	1.6	4	2	128	.32	.129	14	33	.25	1209	.01	5	1.46	.01	.13	1	5751
MB2 S-147	5	20	17	120	.4	25	11	416	3.82	14	5	ND	1	24	.6	2	2	70	.13	.075	16	37	.51	177	.03	4	1.92	.01	.09	1	1500
MB2 S-148	8	30	13	98	1.4	19	8	211	3.72	31	5	ND	1	26	.2	2	2	95	.08	.171	15	35	.31	165	.02	3	1.51	.01	.09	1	1445
MB2 S-149	18	31	16	102	1.9	18	5	87	3.12	52	5	ND	1	122	.2	7	2	89	.03	.132	11	20	.06	318	.01	2	.53	.01	.11	1	3058
MB2 S-150	15	163	21	1073	5.7	147	6	230	2.78	49	13	ND	1	121	7.3	5	3	163	.44	.173	13	39	.14	982	.01	7	1.09	.01	.15	1	4495
STANDARD C/CB-1200	19	62	39	137	7.6	72	32	1061	3.96	43	17	7	39	54	18.4	14	21	62	.49	.083	39	60	.93	188	.08	34	2.03	.07	.14	10	2287

ROGUE + WILC

Sample type: PULP. Samples beginning 'RE' are duplicate samples.

SAMPLE#	Mo	Cu	Pb	Zn	Ag	Ni	Co	Mn	Fe	As	U	Au	Th	Sr	Cd	Sb	Bi	V	Ca	P	La	Cr	Mg	Ba	Ti	B	Al	Na	K	W	Ba*
	ppm	ppm	ppm	ppm	ppm	ppm	ppm	ppm	%	ppm	ppm	ppm	ppm	ppm	ppm	ppm	ppm	ppm	%	%	ppm	ppm	%	ppm	%	%	%	%	%	ppm	ppm
MB2 S-151	19	34	14	172	2.7	35	3	34	1.72	27	5	ND	2	36	.5	6	2	140	.01	.084	16	26	.04	207	.01	5	.49	.01	.12	1	2024
MB2 S-152	9	17	13	89	2.1	17	3	207	3.02	20	5	ND	1	23	.2	3	2	96	.04	.103	14	26	.12	125	.01	3	.91	.01	.09	1	1291
MB2 S-153	17	109	19	469	2.5	104	10	924	4.90	38	5	ND	1	35	.2	6	2	143	.06	.277	15	42	.10	178	.01	5	.91	.01	.12	1	1656
MB2 S-154	14	31	18	137	2.2	28	5	261	4.84	54	5	ND	1	34	.2	4	2	180	.05	.193	15	45	.16	193	.01	3	1.10	.01	.11	2	1426
MB2 S-155	29	124	23	374	5.8	85	7	520	4.20	71	6	ND	1	97	1.7	7	2	226	.08	.263	16	53	.09	463	.01	6	.83	.01	.18	1	2344
MB2 S-156	20	43	20	187	4.7	38	2	104	3.17	44	5	ND	1	63	.2	5	2	160	.02	.180	15	40	.05	323	.01	7	.56	.01	.17	1	2114
MB2 S-157	17	34	21	162	3.2	35	5	231	3.33	52	5	ND	1	55	.2	6	2	177	.02	.140	14	31	.07	234	.01	4	.74	.01	.15	1	1842
MB2 S-158	24	61	19	246	6.4	55	6	255	3.24	55	5	ND	1	64	.6	8	2	159	.08	.187	17	33	.08	273	.01	5	.64	.01	.15	1	2016
MB2 S-159	14	37	17	180	1.9	35	5	483	3.93	55	5	ND	1	42	.2	5	2	162	.06	.210	15	36	.10	243	.01	4	.83	.01	.14	1	1641
MB2 S-160	37	103	20	688	3.8	170	6	766	4.69	140	6	ND	1	63	.9	15	2	326	.12	.255	17	67	.09	292	.01	5	1.00	.01	.14	1	1228
MB2 S-161	9	47	19	146	3.7	30	3	92	4.37	30	5	ND	1	39	.2	4	2	97	.02	.095	12	26	.05	228	.01	5	.62	.01	.17	1	1715
MB2 S-162	39	108	37	448	6.6	97	6	206	4.44	94	5	ND	1	193	.6	11	2	201	.04	.196	18	37	.05	376	.01	4	.65	.01	.15	1	2043
MB2 S-163	67	67	26	388	3.9	69	3	42	2.58	56	5	ND	1	87	.4	25	2	626	.02	.091	20	55	.07	368	.01	6	.56	.01	.21	1	2021
RH2 S-186	1	45	35	166	1.4	58	16	457	4.71	28	5	ND	1	74	.2	2	2	34	.03	.115	5	33	.25	241	.01	3	1.62	.01	.09	1	3455
RH2 S-187	1	32	33	158	.2	47	15	435	5.01	14	5	ND	1	14	.2	2	2	24	.04	.131	4	30	.26	99	.01	2	1.55	.01	.06	1	3109
RH2 S-188	1	21	18	152	.3	41	8	328	4.47	20	5	ND	1	25	.2	2	2	34	.15	.136	9	20	.16	127	.01	5	1.04	.01	.07	1	2129
RH2 S-189	1	50	18	131	.2	32	6	214	4.00	25	5	ND	1	20	.2	3	2	36	.05	.075	9	25	.19	118	.01	5	1.11	.01	.07	1	2446
RH2 S-190	3	35	19	133	.9	34	7	207	3.24	24	5	ND	1	34	.2	4	2	41	.07	.066	14	24	.25	152	.01	4	1.20	.01	.08	1	2594
RH2 S-191	2	54	20	132	.8	31	5	144	3.45	29	5	ND	1	35	.2	2	2	39	.06	.077	9	21	.16	180	.01	4	.92	.01	.07	1	4054
RH2 S-192	4	31	24	102	.9	17	3	62	3.28	30	5	ND	1	26	.2	3	2	34	.01	.081	6	16	.06	189	.01	3	.65	.01	.07	1	4815
RH2 S-193	5	51	23	102	1.1	24	3	74	4.05	33	5	ND	1	35	.2	2	2	53	.02	.110	7	26	.10	231	.01	3	.94	.01	.08	1	4298
RH2 S-194	9	18	15	43	1.7	9	2	80	1.82	24	5	ND	1	18	.2	4	2	69	.03	.087	14	14	.08	227	.01	5	.59	.01	.09	1	4659
RH2 S-195	57	87	18	740	.4	79	11	116	5.33	201	5	ND	4	117	.2	2	2	159	.01	.147	23	21	.02	366	.01	2	.80	.01	.11	1	5585
RH2 S-196	12	21	15	40	1.3	5	1	13	.94	24	5	ND	1	27	.2	5	2	81	.03	.025	28	11	.02	129	.01	4	.19	.01	.06	1	2319
RH2 S-197	17	55	19	130	2.8	21	2	58	2.73	62	5	ND	1	204	.2	4	2	139	.05	.139	18	30	.05	387	.01	4	.65	.01	.12	1	3201
RH2 S-198	5	9	14	26	2.2	3	1	9	.76	19	6	ND	2	14	.2	4	2	29	.01	.018	21	12	.03	89	.01	4	.40	.01	.10	2	2951
RH2 S-199	37	51	19	49	4.9	4	1	5	1.23	29	5	ND	1	12	.2	7	2	101	.01	.072	26	31	.03	201	.01	5	.41	.01	.11	1	3922
RH2 S-200	23	50	25	184	9.0	40	2	85	4.72	43	5	ND	1	210	.3	6	2	238	.07	.363	18	56	.12	472	.01	4	1.02	.01	.16	1	2229
RH2 S-201	61	159	24	854	5.2	161	3	36	4.72	98	5	ND	1	242	1.5	21	2	470	.07	.284	21	66	.09	532	.01	5	1.04	.01	.19	1	2273
RH2 S-202	27	64	19	238	9.2	43	2	54	3.70	39	5	ND	1	177	.8	10	2	246	.12	.384	20	63	.10	602	.01	5	.98	.01	.18	1	2179
RH2 S-203	28	66	15	287	5.3	53	2	68	3.05	49	6	ND	1	110	1.4	12	2	277	.08	.253	18	48	.10	415	.01	5	.78	.01	.15	1	1724
RH2 S-204	41	79	10	84	4.2	18	1	36	1.24	23	7	ND	1	77	2.4	8	2	174	.04	.124	14	23	.04	363	.01	3	.52	.01	.12	1	1576
RH2 S-205	20	68	16	151	5.2	27	1	60	1.52	33	8	ND	1	73	1.0	9	2	190	.07	.128	21	34	.04	284	.01	5	.46	.01	.12	1	1818
RE RH2 S-201	63	157	24	864	5.3	164	3	38	4.76	100	7	ND	2	239	1.7	22	2	470	.07	.287	21	67	.09	522	.01	5	1.03	.01	.18	1	2216
RH2 S-206	19	69	17	150	4.7	21	1	23	1.58	30	5	ND	1	63	.9	5	2	141	.04	.137	26	24	.05	308	.01	5	.46	.01	.13	1	2159
RH2 S-207	43	216	27	704	7.8	166	6	273	3.54	86	9	ND	3	192	4.5	27	2	407	.25	.306	23	59	.19	756	.01	6	1.22	.01	.22	1	2463
RH2 S-208	14	66	27	164	3.4	35	5	298	3.35	40	5	ND	1	66	1.7	6	2	145	.10	.208	17	38	.18	416	.02	6	1.41	.01	.14	1	2611
STANDARD C/CB-1200	18	62	42	135	7.5	78	32	1074	3.96	42	18	7	40	53	19.0	15	21	60	.50	.086	40	61	.94	184	.09	35	1.95	.08	.16	11	2175

ROGUE + WILL

Sample type: PULP. Samples beginning 'RE' are duplicate samples.



ACME ANALYTICAL



ACME ANALYTICAL

SAMPLE#	Mo	Cu	Pb	Zn	Ag	Ni	Co	Mn	Fe	As	U	Au	Th	Sr	Cd	Sb	Bi	V	Ca	P	La	Cr	Mg	Ba	Ti	B	Al	Na	K	W	Ba*
	ppm	ppm	ppm	ppm	ppm	ppm	ppm	ppm	%	ppm	ppm	ppm	ppm	ppm	ppm	ppm	ppm	ppm	%	%	ppm	ppm	%	ppm	%	%	%	%	%	ppm	ppb
RH2 S-209	23	68	19	328	3.7	64	7	103	2.82	47	7	3	6	89	2.5	6	2	160	.05	.129	17	37	.08	376	.01	7	.71	.01	.13	3	2801
RH2 S-210	23	118	21	472	5.1	95	7	191	3.21	50	6	ND	2	120	3.7	8	6	193	.17	.218	17	43	.12	490	.01	9	1.09	.01	.17	1	2999
RH2 S-211	11	107	17	926	2.4	141	12	314	2.84	23	5	ND	3	68	6.8	4	2	105	.26	.120	19	34	.31	611	.02	3	1.26	.01	.11	1	2870
RH2 S-212	14	71	16	568	2.2	85	12	337	2.86	32	6	ND	2	51	2.4	5	2	101	.16	.096	19	28	.23	365	.01	5	1.13	.01	.12	1	2338
RH2 S-213	15	93	21	565	3.5	85	11	335	3.03	45	5	ND	1	80	6.3	4	2	136	.23	.122	17	34	.15	771	.01	5	1.21	.01	.16	1	2985
RH2 S-214	4	42	14	156	.7	38	10	310	2.94	16	5	ND	1	43	.7	3	2	53	.16	.076	14	29	.40	484	.02	4	1.25	.01	.08	1	3339
RH2 S-215	3	39	16	139	1.3	40	15	776	3.34	10	5	ND	1	39	.5	2	2	42	.07	.076	8	32	.40	732	.01	5	1.38	.01	.07	1	5326
RH2 S-216	3	44	17	165	1.2	45	16	558	3.24	13	5	ND	1	58	.4	2	2	44	.24	.083	13	31	.44	526	.01	6	1.54	.01	.08	1	3067
RH2 S-217	3	37	17	230	1.2	70	15	516	3.04	11	5	ND	1	110	.6	2	2	43	.42	.079	11	29	.47	430	.01	7	1.49	.01	.09	1	2846
RH2 S-218	5	36	21	187	.4	55	15	648	3.10	8	5	ND	2	43	.8	2	4	44	.18	.070	12	26	.38	548	.02	2	1.17	.01	.07	1	3172
RH2 S-219	4	39	11	162	.4	42	12	338	3.26	18	5	ND	5	40	.7	2	2	39	.26	.077	14	26	.49	742	.03	8	1.18	.01	.06	1	2979
RH2 S-220	4	45	22	234	.7	63	21	738	4.43	29	5	ND	3	42	1.3	2	2	48	.20	.084	13	31	.47	628	.01	6	1.65	.01	.10	1	3486
RH2 S-221	4	45	18	153	.6	45	16	867	3.56	13	5	ND	2	39	.9	2	2	43	.21	.066	11	27	.41	722	.01	5	1.31	.01	.08	1	3650
RH2 S-222	5	42	16	328	1.4	105	24	1459	4.58	17	5	ND	2	47	1.8	2	2	65	.19	.094	11	32	.36	625	.01	7	1.85	.01	.11	1	3771
RH2 S-223	5	40	19	195	.9	54	17	951	4.45	20	5	ND	2	48	.9	2	2	57	.18	.099	10	30	.38	537	.01	5	1.62	.01	.09	1	3654
RH2 S-224	11	44	15	258	1.2	49	13	417	3.62	26	5	ND	2	71	1.0	2	2	56	.29	.097	15	27	.36	532	.01	7	1.13	.01	.09	1	2798
RH2 S-225	17	72	19	618	2.0	108	18	554	4.57	65	5	ND	2	94	3.2	6	2	74	.49	.135	12	31	.40	570	.01	6	1.44	.01	.12	1	3049
RH2 S-226	62	142	19	1157	1.5	144	26	741	14.43	101	10	ND	3	81	5.4	9	2	93	.53	.169	8	23	.34	442	.01	9	1.60	.01	.10	1	2368
RH2 S-227	22	54	17	460	.7	52	26	757	7.59	30	5	ND	2	48	1.7	3	4	75	.20	.105	11	26	.26	300	.01	10	1.19	.01	.09	1	2148
RH2 S-228	47	158	20	1009	3.4	330	92	8569	6.20	50	5	ND	1	92	19.3	3	2	110	.39	.186	13	33	.26	676	.01	11	1.58	.01	.14	1	3138
RH2 S-229	13	76	17	388	2.3	92	18	1086	3.37	39	5	ND	1	86	3.3	3	2	81	.43	.098	15	26	.24	424	.01	7	1.08	.01	.11	1	2519
RH2 S-230	22	118	23	906	3.9	180	39	1510	5.37	56	5	ND	1	89	6.9	3	5	99	.35	.135	12	31	.18	444	.01	11	1.20	.01	.16	1	3219
RH2 S-231	49	243	19	380	6.8	120	8	192	2.29	37	8	ND	2	192	6.4	8	2	241	.21	.146	30	46	.07	504	.01	10	.53	.01	.17	1	2089
RE RH2 S-227	19	59	16	400	1.0	47	27	790	7.32	27	5	ND	2	55	1.5	2	2	85	.18	.107	13	27	.27	318	.01	12	1.21	.01	.09	1	2184
RH2 S-239	22	194	24	439	6.2	95	11	151	3.90	186	5	ND	6	212	3.0	19	2	80	.20	.099	13	29	.08	375	.01	10	.48	.01	.20	1	4291
RH2 S-240	37	82	25	572	4.8	159	7	146	3.13	46	5	ND	1	101	1.8	9	2	365	.25	.156	21	84	.12	589	.01	6	1.00	.01	.20	1	2221
RH2 S-241	28	145	18	485	9.1	104	10	276	3.29	48	12	ND	3	127	3.2	7	3	212	.46	.348	19	70	.18	465	.02	7	1.01	.01	.18	1	2011
RH2 S-242	16	59	27	242	5.6	56	8	168	3.39	26	5	ND	1	85	.7	5	2	140	.11	.192	15	42	.12	382	.01	8	.91	.01	.16	1	2136
RH2 S-243	43	104	20	425	7.8	84	10	235	3.58	65	20	ND	2	101	2.2	16	4	491	.29	.256	19	69	.25	411	.02	11	1.19	.01	.21	1	2213
RH2 S-244	52	106	27	367	10.6	71	7	105	4.25	89	10	ND	1	92	1.6	19	2	696	.13	.359	17	107	.13	373	.01	5	1.00	.01	.22	1	1491
RH2 S-245	20	116	28	695	11.0	106	16	772	4.70	77	8	ND	2	179	6.9	8	2	177	.29	.255	14	48	.20	116	.01	10	1.18	.01	.32	1	2365
RH2 S-246	57	103	21	430	6.9	77	8	191	3.73	76	12	ND	1	137	2.9	16	2	563	.23	.232	19	68	.19	459	.01	8	1.11	.01	.21	1	1997
RH2 S-247	13	31	21	147	3.7	28	5	122	2.00	30	5	ND	1	41	1.0	4	3	144	.05	.090	15	36	.08	220	.01	4	.67	.01	.12	1	1474
RH2 S-248	12	44	42	142	12.2	26	5	51	3.09	37	5	ND	1	142	.6	3	2	84	.04	.096	13	26	.05	278	.01	9	.43	.01	.24	1	2682
RH2 S-249	10	135	41	584	9.1	130	24	623	4.62	70	5	ND	1	117	2.0	18	3	113	.10	.196	16	45	.09	459	.01	10	.98	.01	.15	1	2637
RH2 S-250	22	193	19	417	5.3	104	7	69	3.25	77	12	ND	1	117	2.8	17	2	109	.11	.126	17	38	.07	395	.01	9	.58	.01	.19	1	1643
RH2 S-251	42	312	18	1595	9.3	328	12	223	4.04	111	12	ND	1	102	9.2	20	2	410	.56	.308	33	107	.18	966	.01	14	1.17	.01	.18	1	2361
STANDARD C/CB-1200	21	63	39	133	7.3	72	32	1063	3.96	42	19	7	40	54	18.8	15	21	62	.50	.085	40	62	.94	190	.08	36	2.02	.07	.14	11	2245

Rogus + will

Sample type: PULP. Samples beginning 'RE' are duplicate samples.



AA ANALYTICAL



AA ANALYTICAL

SAMPLE#	Mo	Cu	Pb	Zn	Ag	Ni	Co	Mn	Fe	As	U	Au	Th	Sr	Cd	Sb	Bi	V	Ca	P	La	Cr	Mg	Ba	Ti	B	Al	Na	K	W	Ba*
	ppm	ppm	ppm	ppm	ppm	ppm	ppm	ppm	%	ppm	ppm	ppm	ppm	ppm	ppm	ppm	ppm	ppm	%	%	ppm	ppm	%	ppm	%	ppm	%	%	%	ppm	ppm
RH2 S-252	6	41	30	133	8.0	16	1	9	2.49	24	5	ND	2	265	1.1	2	2	121	.83	.566	34	73	.11	554	.01	12	.98	.01	.36	1	2577
RH2 S-253	10	24	28	95	4.6	20	1	6	1.48	41	5	ND	1	53	.2	5	2	53	.02	.052	9	35	.06	302	.01	6	.56	.01	.21	1	2504
RH2 S-254	6	22	17	115	2.3	21	2	86	1.79	22	5	ND	1	45	.7	2	2	104	.06	.095	18	27	.12	268	.01	4	.97	.01	.13	1	1541
RH2 S-255	40	64	19	249	4.7	43	3	84	2.09	33	5	ND	1	238	2.2	17	2	415	.24	.215	23	68	.12	895	.01	6	.93	.01	.18	1	2295
RH2 S-256	35	64	23	210	6.5	33	3	67	2.24	42	5	ND	1	88	2.3	7	2	409	.08	.134	21	69	.12	417	.01	8	.91	.01	.19	1	1563
RH2 S-257	19	64	17	271	8.4	48	3	67	2.94	44	5	ND	1	88	1.1	7	2	212	.15	.238	18	52	.07	385	.01	7	.69	.01	.17	1	1438
RH2 S-258	27	144	18	480	18.9	84	5	101	4.63	63	5	ND	1	373	2.9	9	2	243	.32	.378	22	91	.10	149	.01	7	1.09	.01	.30	1	2397
RH2 S-259	39	165	15	1049	6.2	212	59	2270	4.86	77	6	ND	1	149	9.8	7	2	277	.27	.310	17	65	.15	587	.01	7	1.44	.01	.25	1	2211
RH2 S-260	16	97	16	370	5.5	70	6	170	3.18	43	5	ND	1	123	1.6	7	2	128	.19	.224	20	35	.15	366	.01	6	.96	.01	.16	1	1667
RH2 S-261	15	100	24	582	10.2	92	3	37	6.24	53	5	ND	1	209	1.3	6	2	124	.02	.153	11	39	.06	55	.01	4	.55	.01	.43	1	2445
RH2 S-262	14	112	11	506	3.0	90	12	488	2.67	32	5	ND	4	94	7.5	6	2	91	.31	.148	21	25	.16	404	.02	5	.65	.01	.13	1	1806
RH2 S-263	22	93	11	485	7.1	84	4	67	3.58	51	5	ND	1	139	1.9	10	2	211	.21	.268	20	48	.12	419	.01	5	.93	.01	.16	1	1550
RH2 S-264	19	53	17	296	3.5	50	4	71	2.59	37	5	ND	1	72	.8	5	2	168	.03	.094	22	32	.07	320	.01	7	.66	.01	.15	1	1330
RH2 S-265	22	74	15	407	3.0	75	7	288	3.81	53	5	ND	1	91	1.1	9	2	193	.18	.236	20	41	.13	340	.01	5	.85	.01	.18	1	1609
RH2 S-266	8	60	18	530	1.8	84	12	581	3.82	33	5	ND	1	57	2.5	2	2	98	.25	.142	18	35	.38	394	.02	4	1.60	.01	.15	1	1586
RH2 S-267	21	62	19	366	2.6	67	4	49	2.66	48	5	ND	1	51	1.0	6	2	164	.03	.109	17	31	.07	299	.01	6	.63	.01	.13	1	1413
RH2 S-268	11	121	16	514	1.1	84	7	117	4.90	30	5	ND	1	52	3.2	4	2	53	.16	.105	14	15	.11	452	.01	6	.75	.01	.15	1	1692
RE RH2 S-264	20	52	17	283	3.3	50	3	68	2.50	34	5	ND	1	71	.4	3	2	163	.03	.090	21	32	.06	315	.01	5	.64	.01	.13	1	1356
RH2 S-269	34	127	18	672	3.7	117	8	212	3.19	54	5	ND	1	75	4.8	12	2	228	.27	.135	21	33	.21	730	.01	9	.98	.01	.18	1	2194
RH2 S-270	15	82	17	604	5.9	97	5	225	3.13	60	5	ND	1	82	7.1	6	2	116	.39	.159	15	31	.15	527	.01	6	.72	.01	.19	1	2166
RH2 S-271	22	48	18	340	2.9	74	4	40	2.19	41	5	ND	1	25	.9	6	2	201	.02	.053	19	36	.06	216	.01	6	.54	.01	.14	1	1470
RH2 S-272	22	143	26	548	8.3	138	9	239	3.94	70	5	ND	3	124	3.9	7	2	131	.61	.297	20	41	.15	601	.01	7	1.02	.01	.22	1	2525
STANDARD C/CB-1200	18	57	37	131	7.3	74	32	1048	3.96	43	18	7	37	52	19.3	15	21	56	.49	.084	38	60	.93	182	.08	35	1.93	.08	.16	10	2133

ROGUE + WILL

Sample type: PULP. Samples beginning 'RE' are duplicate samples.



ACME ANALYTICAL



ACME ANALYTICAL

SAMPLE#	Mo ppm	Cu ppm	Pb ppm	Zn ppm	Ag ppm	Ni ppm	Co ppm	Mn ppm	Fe %	As ppm	U ppm	Au ppm	Th ppm	Sr ppm	Cd ppm	Sb ppm	Bi ppm	V ppm	Ca %	P %	La ppm	Cr ppm	Mg %	Ba ppm	Ti %	B ppm	Al %	Na %	K %	H ppm	Ba* ppm
GS2 L-015	29	121	31	537	5.5	284	38	2266	7.78	177	5	ND	4	93	7.7	8	2	262	.54	.786	6	18	.10	651	.01	2	2.49	.01	.09	1	2655
GS2 L-016	23	70	20	263	4.2	109	18	777	3.15	67	5	ND	2	89	4.6	9	2	167	.18	.319	9	21	.05	609	.01	4	1.65	.01	.11	2	2631
GS2 L-017	20	62	18	117	5.4	48	7	229	2.37	44	5	ND	1	73	1.6	8	2	105	.10	.214	12	20	.05	501	.01	2	.87	.01	.10	1	3066
GS2 L-018	20	53	19	80	4.8	31	5	101	2.53	43	5	ND	1	75	.8	6	2	91	.08	.165	11	21	.06	426	.01	2	.61	.01	.11	1	2763
GS2 L-019	15	56	13	108	1.9	26	6	192	2.04	34	5	ND	1	67	.8	6	2	64	.11	.105	14	17	.09	383	.01	2	.47	.01	.08	1	2579
GS2 L-020	15	56	16	103	1.8	27	6	166	1.93	33	5	ND	1	63	.8	5	2	61	.11	.104	13	17	.09	407	.01	3	.47	.01	.07	1	2460
GS2 L-021	16	74	15	379	2.1	84	9	351	2.13	37	5	ND	1	76	3.3	6	2	69	.26	.133	14	19	.11	462	.01	2	.81	.01	.09	1	2721
GS2 L-022	14	69	13	307	1.8	67	7	260	1.97	34	5	ND	1	72	2.7	6	2	66	.23	.117	15	18	.11	449	.01	3	.68	.01	.08	1	2571
GS2 L-023	10	107	15	937	2.4	143	8	233	2.29	33	5	ND	1	103	7.8	5	2	83	.66	.129	17	24	.17	551	.01	2	.79	.01	.11	1	2713
GS2 L-024	12	125	15	1562	3.4	232	8	256	2.19	31	7	ND	1	115	11.6	6	2	91	.81	.126	18	24	.15	497	.01	2	.70	.01	.10	1	2666
GS2 L-025	11	66	13	440	1.7	89	9	327	2.10	31	5	ND	1	71	3.6	5	2	64	.33	.119	17	18	.14	443	.01	2	.76	.01	.08	1	2539
GS2 L-026	11	72	31	257	4.4	82	6	139	2.17	43	5	ND	1	72	3.5	3	2	77	.28	.128	12	21	.11	691	.01	5	.91	.01	.13	1	6261
GS2 L-027	4	32	21	96	.7	21	4	186	1.49	19	5	ND	1	18	.9	2	2	15	.11	.015	3	6	.04	387	.01	3	.22	.01	.04	1	5824
GS2 L-028	13	73	18	3218	2.3	549	44	2805	6.70	33	5	ND	1	68	8.6	2	2	76	.53	.106	13	24	.26	369	.01	3	1.14	.01	.10	1	2190
GS2 L-029	1	39	34	339	3.4	109	24	539	4.84	24	5	ND	1	92	.3	2	2	26	.48	.114	4	31	.41	399	.01	2	1.69	.01	.07	1	4888
GS2 L-030	6	25	19	95	1.5	27	7	193	2.03	36	5	ND	2	47	1.2	4	2	61	.26	.054	9	17	.15	475	.01	2	.75	.01	.07	1	4325
RE RH2 L-049	26	66	19	3443	2.3	434	31	1024	7.15	51	5	ND	1	68	18.3	5	2	63	.45	.136	9	16	.13	641	.01	2	.80	.01	.08	1	4567
GS2 L-031	6	35	17	290	1.5	63	9	178	3.03	32	5	ND	1	62	1.0	2	2	37	.24	.069	5	18	.15	405	.01	2	.73	.01	.06	1	5189
GS2 L-032	3	55	26	252	1.6	99	18	448	3.76	19	5	ND	1	79	.2	2	3	26	.30	.084	4	29	.33	239	.01	2	1.34	.01	.06	1	4404
RH2 L-047	24	963	23	1556	7.4	197	24	886	4.31	117	14	ND	3	128	14.5	11	4	134	.25	.181	19	33	.10	319	.01	9	1.84	.01	.16	1	2165
RH2 L-048	28	118	16	2584	2.9	413	43	1530	7.70	57	6	ND	1	76	16.5	3	2	92	.52	.174	11	22	.15	738	.01	5	.97	.01	.10	1	4375
RH2 L-049	27	77	22	3515	2.4	457	34	1083	7.49	53	5	ND	1	70	19.5	2	3	66	.47	.146	9	17	.13	646	.01	2	.82	.01	.08	1	4411
RH2 L-050	68	66	17	5878	2.6	759	78	2319	16.85	92	6	ND	1	62	20.5	3	3	68	.60	.182	5	15	.13	782	.01	2	.95	.01	.07	1	3765
RH2 L-051	13	89	22	2137	2.7	339	16	468	4.28	37	5	ND	1	77	15.0	4	2	73	.47	.138	10	25	.19	949	.01	2	.93	.01	.09	2	4827
RH2 L-052	8	72	28	1252	2.1	211	8	243	2.48	41	5	ND	1	76	15.8	4	2	60	.31	.099	18	19	.10	748	.01	3	.71	.01	.11	2	5390
RH2 L-053	2	72	41	259	2.4	81	28	681	4.93	28	5	ND	1	89	.9	2	2	32	.16	.124	5	39	.42	424	.01	2	1.92	.01	.09	1	5825
RH2 L-054	2	63	34	252	1.9	79	29	677	5.32	30	5	ND	1	55	.4	2	2	34	.11	.108	6	33	.38	266	.01	2	1.77	.01	.08	1	4611
RH2 L-055	5	57	26	216	2.3	62	20	475	4.53	31	5	ND	1	57	.6	2	2	44	.11	.111	8	31	.29	314	.01	2	1.59	.01	.08	1	5005
RH2 L-056	8	84	27	1222	3.4	278	29	734	4.60	42	9	ND	1	69	7.5	2	7	56	.31	.148	9	31	.25	439	.01	2	2.09	.01	.10	2	4979
RH2 L-057	14	107	17	4132	4.0	564	15	1025	3.29	36	5	ND	1	108	55.0	5	2	152	.64	.174	15	38	.22	458	.01	4	1.38	.01	.14	2	2936
RH2 L-058	12	109	20	4240	4.0	603	24	1081	3.93	38	8	ND	1	104	40.3	2	2	112	.63	.158	11	35	.25	519	.01	7	1.66	.01	.13	2	4003
RH2 L-059	3	65	21	423	1.5	90	16	443	3.45	17	5	ND	1	83	2.4	2	4	44	.31	.087	11	30	.44	416	.01	2	1.41	.01	.08	1	3108
RH2 L-060	2	42	14	262	.8	90	14	325	2.97	18	5	ND	2	72	.4	2	2	37	.31	.073	11	25	.40	495	.01	3	1.10	.01	.06	1	3292
RH2 L-061	10	36	20	288	1.0	62	15	507	3.86	44	5	ND	2	55	1.1	3	5	51	.33	.094	10	23	.32	488	.01	2	1.05	.01	.08	1	2993
RH2 L-062	20	108	14	1690	1.8	301	35	1420	6.65	30	11	ND	1	53	17.8	2	4	110	.45	.064	12	20	.15	321	.01	5	.77	.01	.11	2	2289
RH2 L-063	27	151	21	2646	6.5	386	24	992	3.98	54	5	ND	1	187	28.4	8	2	240	.58	.280	17	59	.23	535	.01	4	.99	.01	.18	4	1847
STANDARD C/CB-1200	20	63	39	133	7.5	73	32	1050	3.96	43	17	7	37	53	18.6	15	20	60	.52	.086	38	61	.90	186	.08	34	1.94	.06	.14	10	2244

ROGUE + WILL

Sample type: PULP. Samples beginning 'RE' are duplicate samples.

SAMPLE#	Mo ppm	Cu ppm	Pb ppm	Zn ppm	Ag ppm	Ni ppm	Co ppm	Mn ppm	Fe %	As ppm	U ppm	Au ppm	Th ppm	Sr ppm	Cd ppm	Sb ppm	Bi ppm	V ppm	Ca %	P %	La ppm	Cr ppm	Mg %	Ba ppm	Ti %	B ppm	Al %	Na %	K %	W ppm	Ba* ppm
GS2 R-19	1	25	88	64	.8	47	19	79	16.95	2	5	ND	3	13	.2	2	2	16	.01	.008	2	52	.41	1	.01	17	.89	.01	.14	1	6507
MB2 R-18	9	60	5	315	3.9	38	2	84	.95	12	5	ND	2	27	4.5	5	2	52	.29	.063	2	141	.11	148	.01	3	.20	.01	.08	1	4299
MB2 R-19	5	10	17	17	.7	7	2	32	1.32	10	5	ND	2	38	.2	2	2	7	.10	.005	5	107	.06	166	.01	3	.21	.01	.14	1	1665
MB2 R-20A	1	21	5	12	.1	9	2	14	.26	4	5	ND	1	199	.2	2	2	2	.01	.007	2	7	.04	685	.01	2	.29	.01	.01	1	398340
MB2 R-20B	1	15	6	13	.2	7	1	12	.19	7	5	ND	1	259	.2	2	3	2	.01	.008	2	6	.04	624	.01	2	.35	.01	.01	1	398997
MB2 R-21A	1	45	18	98	.2	33	10	90	1.31	23	5	ND	1	238	.2	2	2	2	.09	.007	2	5	.37	162	.01	2	.88	.01	.01	1	434656
MB2 R-21B	1	34	24	112	.3	59	23	105	2.68	36	7	ND	1	150	.3	2	2	3	.07	.007	2	10	.34	21	.01	7	.98	.01	.03	1	397356
MB2 R-22	32	367	318	170	.5	14	14	28	17.01	105	5	ND	3	36	.2	5	2	34	.02	.005	2	70	.05	30	.01	18	.84	.07	.16	1	11837
MB2 R-23	12	54	38	84	.6	66	19	147	5.43	34	5	ND	4	27	.9	2	2	31	.04	.029	3	48	.60	11	.01	12	1.71	.07	.25	1	19844
RE MB2 R-21A	1	47	15	103	.3	35	11	97	1.38	21	5	ND	1	260	.2	2	2	2	.09	.007	2	6	.39	151	.01	2	.94	.01	.02	1	428621
MB2 R-24	7	10	6	39	1.5	9	2	34	1.33	6	5	ND	1	7	.3	2	2	7	.01	.002	2	174	.02	52	.01	2	.12	.01	.09	1	2806
MB2 R-26	3	50	9	31	.2	13	5	55	2.07	8	6	ND	6	16	.2	2	3	19	.02	.017	21	45	.23	125	.01	13	1.00	.01	.42	1	3415
MB2 R-27	2	42	4	111	.1	31	7	255	1.78	9	6	ND	5	7	.4	2	2	6	.01	.013	19	41	.09	525	.01	9	.73	.01	.26	1	2304
MB2 R-28	14	19	4	235	.5	26	2	21	1.31	70	5	ND	1	30	.5	4	2	130	.02	.015	2	58	.07	1196	.01	6	.42	.01	.06	1	7999
MB2 R-29	29	36	7	232	2.2	37	2	20	.61	25	5	ND	2	34	1.9	3	2	154	.07	.031	8	83	.06	707	.01	7	.34	.01	.13	1	11959
RH2 R-048	1	66	2	32	.3	10	4	1203	2.11	18	5	ND	3	997	.7	12	2	9	18.36	.020	2	28	8.82	530	.01	2	.10	.01	.03	1	3700
RH2 R-049	2	29	13	35	.5	19	7	22	6.68	7	5	ND	2	15	.2	2	2	5	.18	.010	3	38	.12	8	.01	7	.28	.01	.16	1	2468
STANDARD C/CB-1200	19	62	39	134	7.6	73	32	1056	3.96	37	17	7	40	53	18.8	15	21	59	.49	.087	39	61	.94	183	.09	34	1.93	.07	.14	11	2160

ROGUE + WILL

Sample type: PULP. Samples beginning 'RE' are duplicate samples.



GEOLOGICAL LEGEND

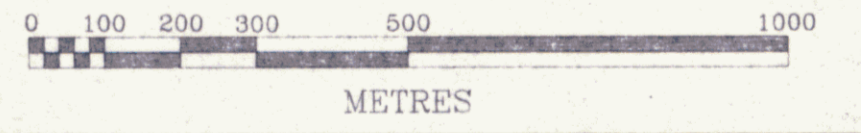
- CRETACEOUS
SELWYN PLUTONIC SUITE
- QM Quartz monzonite; QP-quartz porphyry
- DEVONIAN-MISSISSIPPIAN
- MS Mississippian(?) elastic sediments
- EARN GROUP
- SHb Brown weathering shale - Upper Earn(?)
- SHg Grey to black weathering black shale - Lower Earn(?)
- Q Quartzite; siltstone to wacke, locally calcareous
- CH Chert - massive to banded, grey to black
- CPC Chert pebble conglomerate
- BAm Massive to laminated barite
- BAn Chert with barite nodules
- PROTEROZOIC
- HYLAND GROUP
- HV Varicolored (green to maroon) shale
- HG Medium to coarse quartz-feldspar wacke
- Foliation, inclined, vertical.
- Bedding, inclined, vertical.
- Jointing, inclined, vertical.
- Fault.
- Scree.
- Outcrop
- Geological Contact; mapped, inferred.
- Gossan, ferricrete
- Fe Iron Oxide
- Py Pyrite
- Stkwk Quartz Stockwork
- bx Breccia
- Rock Sample Site
- Claim post and line

TOPOGRAPHIC LEGEND

- Ridge top.
- Creek.

DWG 103

SCALE 1:10000



Kennecott Canada Inc.
138-200 Granville St. Vancouver, B.C. V6C 1S4

LANSING PROPERTY
ROGUE and WILL CLAIMS

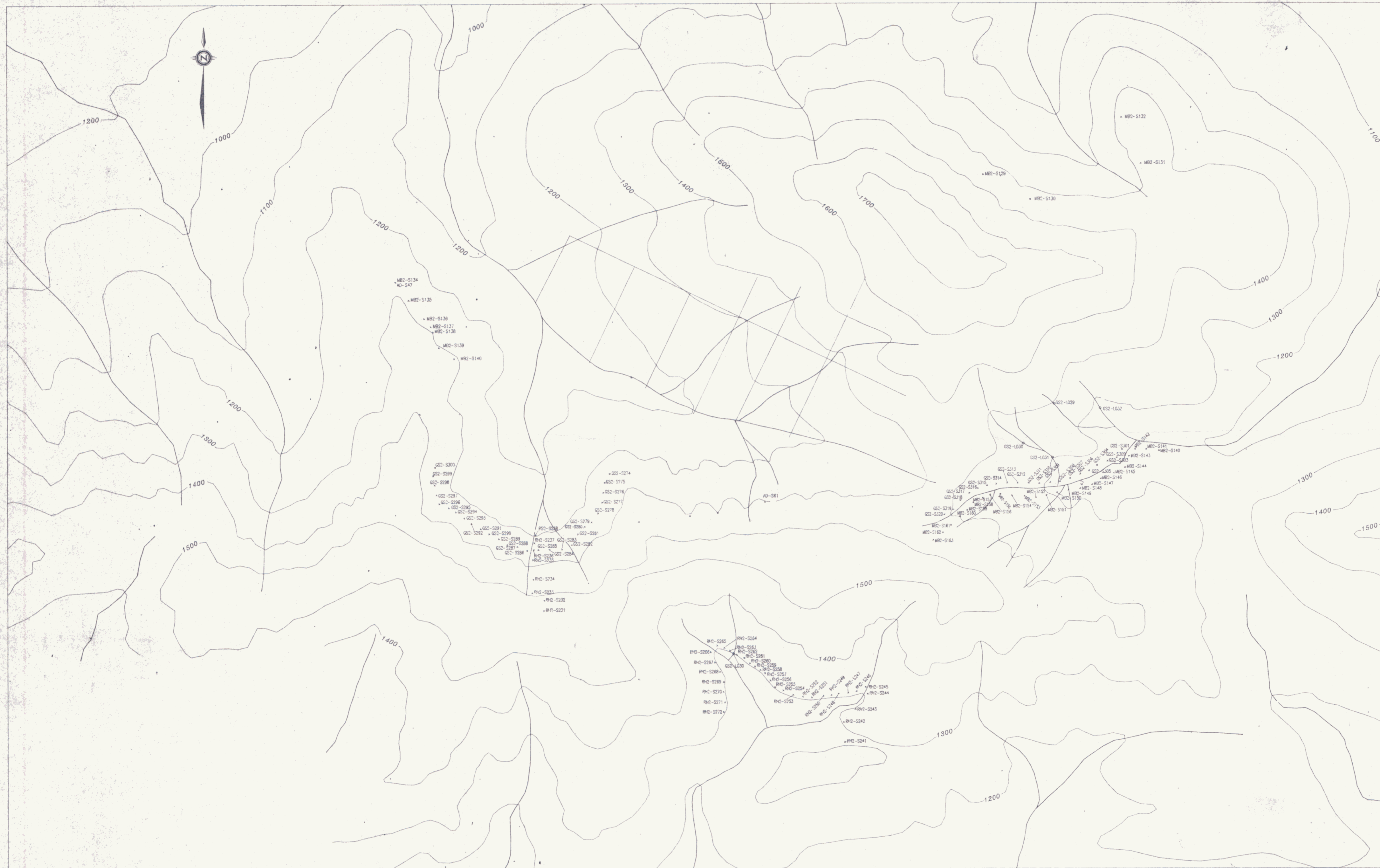
MAYO M.D. **093073**

GEOLOGY and
ROCK GEOCHEMISTRY

to accompany a report by: G. Carlson

Drawn by: KWS	NTS: .	Acad file: RGECEO
Date: DEC. 1992	Ref. No.:	Map No.:

Figure 3



TOPOGRAPHIC LEGEND

- Ridge top.
- Creek.

GEOCHEMISTRY LEGEND

- Grid Soil Sample Site
- Soil Sample Site
- Silt Sample Site

LEGEND

Pb(ppm), Zn(ppm), Ba(ppm)

DWG 104

SCALE 1:10000



Kennecott Canada Inc.
138-200 Granville St, Vancouver, B.C., V6C 1S4

**LANSING PROPERTY
ROGUE and WILL CLAIMS**
MAYO M.D.

093073 SAMPLE LOCATIONS

to accompany a report by G. Carlson		
Drawn by: KWS	WTS:	Acad file: RGECEO
Date: DEC. 1992	Ref. No.:	Map No.:

Figure 4



TOPOGRAPHIC LEGEND

- Ridge top.
- Creek.

GEOCHEMISTRY LEGEND

- Grid Soil Sample Site
- Soil Sample Site
- Silt Sample Site

LEGEND

Pb(ppm),Zn(ppm),Ba(ppm)

SCALE 1:10000



Kennecott Canada Inc.
138-200 Granville St. Vancouver, B.C. V6C 1S4

**LANSING PROPERTY
ROGUE and WILL CLAIMS**
MAYO M.D.

SOIL and SILT GEOCHEMISTRY

093073

to accompany a report by: G. Carlson

Drawn by: KWS NTS: Acad file: RGECEO

Date: DEC. 1992 Ref. No: Map No:

DWG 105

Figure 5

GEOLOGICAL LEGEND

CRETACEOUS

SELWYN PLUTONIC SUITE

QM Quartz monzonite; QP-quartz porphyry

DEVONIAN-MISSISSIPPIAN

MS Mississippian(?) clastic sediments

EARN GROUP

SHb Upper Earn - brown weathering shale

SHg Lower Earn - grey to black (SHb) weathering shale

Q Quartzite; siltstone to wacke, locally calcareous

CH Chert - massive to banded, grey to black

CPC Chert pebble conglomerate

BAm Massive to laminated barite

BAn Chert with barite nodules

PROTEROZOIC

HYLAND GROUP

HV Varicolored (green to maroon) shale

HG Medium to coarse quartz-feldspar wacke

Foliation, inclined, vertical.

Bedding, inclined, vertical.

Jointing, inclined, vertical.

Fault.

Scree.

Outcrop

Geological Contact; mapped, inferred.

Gossan, ferricrete

Fe Iron Oxide

Py Pyrite

Rock Sample Site

Claim post and line

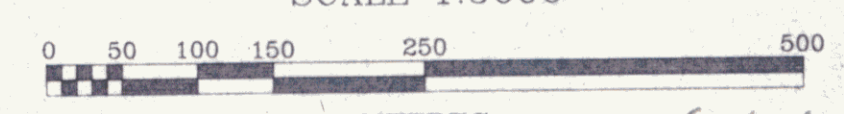
TOPOGRAPHIC LEGEND

Ridge top.

Creek.



SCALE 1:5000



METRES DWG 106

	Kennecott Canada Inc. 138-200 Granville St, Vancouver, B.C. V8C 1S4	
	LANSING PROJECT ROGUE and WILL CLAIMS MAYO M.D. ROGUE GRID 093073 GEOLOGY and ROCK GEOCHEMISTRY <small>to accompany a report by: G. Carlson</small>	
Drawn by: KWS	NTS:	Acad file: RGEGRID
Date: DEC. 1992	Ref. No:	Map No:

Figure 6



TOPOGRAPHIC LEGEND

- - - Ridge top.
- Creek.

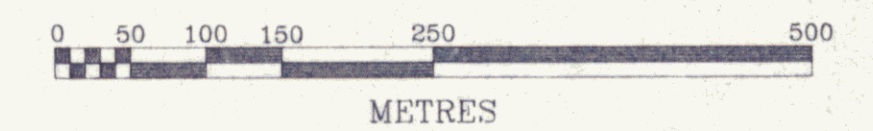
GEOCHEMISTRY LEGEND

- Grid Soil Sample Site
- Soil Sample Site
- Silt Sample Site

RESULTS

Pb(ppm), Zn(ppm), Bo(ppm)

SCALE 1:5000 DWG 107



 **Kennecott Canada Inc.**
138-200 Granville St, Vancouver, B.C., V6C 1S4

LANSING PROJECT
ROGUE and WILL CLAIMS
MAYO M.D.
ROGUE GRID 093073
SAMPLE LOCATIONS

to accompany a report by: G. Carlson

Drawn by: KWS	NTS: .	Acad file: RGEGRID
Date: DEC. 1992	Ref. No: .	Map No: .

Figure 7



TOPOGRAPHIC LEGEND

- Ridge top.
- Creek.

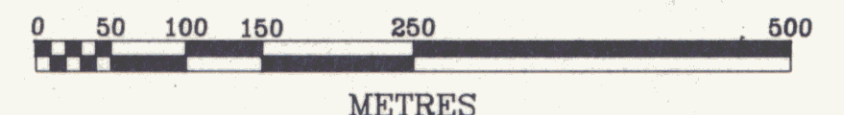
GEOCHEMISTRY LEGEND

- Grid Soil Sample Site
- x Soil Sample Site
- Silt Sample Site

RESULTS

Pb(ppm), Zn(ppm), Ba(ppm)

SCALE 1:5000



 Kennecott Canada Inc.
138-200 Granville St, Vancouver, B.C. V6C 1S4

LANSING PROJECT
ROGUE and WILL CLAIMS
MAYO M.D.
ROGUE GRID 093073
SOIL and SILT GEOCHEMISTRY

to accompany a report by: G. Carlson
Drawn by: KWS NTS: Acad file: RGEGRID
Date: DEC. 1992 Ref. No.: Map No.:

Figure 8