

MAP NO.: ASSESSMENT REPORT X
105 N 10 PROSPECTUS
CONFIDENTIAL X
OPEN FILE

DOCUMENT NO: 093071
MINING DISTRICT: Mayo
TYPE OF WORK: Geological And
Geochemical Evaluation.

REPORT FILED UNDER: Kennecott Canada Inc.

DATE PERFORMED: July 19 - 22, 1992.

DATE FILED: February 8, 1993.

LOCATION: LAT.: 63°35'N
LONG.: 132°35'W

AREA: Rogue River
VALUE \$: 14,000.00

CLAIM NAME & NO.: Rog 1 - 14, YB18437 - YB18450, Rog 21 - 76, YB18451 - YB14506.

WORK DONE BY: Gerald G. Carlson

WORK DONE FOR: Kennecott Canada Inc.

DATE TO GOOD STANDING:

REMARKS: # 105 N - Rogue River Area
The company carried out a follow up program to their 1991 program. The company collected 170 soil samples, 9 stream samples and 6 rock samples. The soil samples failed to detect any significant anomalies. The rock samples did not return any mineralization. Numerous occurrences of pyrite and two area of ferricrete precipitation were the only mineralization observed. The original stream sediment anomalies reported by the G.S.C. were not explained. A small follow up program aimed at tracing the contact between the Lower Earn Group sediments and a chert pebble conglomerate which separate the unit from the Upper Earn Group sediments is proposed for 1993. The company is exploring for Ba hosted Pb-Zn mineralization.



REPORT FOR ASSESSMENT

GEOLOGICAL AND GEOCHEMICAL EVALUATION

OF THE

ROG 1 to 14 and 21 to 76 CLAIMS

Rogue River Area
Mayo Mining District

NTS 1050/10
N

63° 35' N; 132° 35' W

Prepared for:

Kennecott Canada Inc.
138-200 Granville St.
Vancouver, B.C.
V6C 1S4

15 January 1993

093 071

Prepared by:

Gerald G. Carlson
Mineral Exploration Geologist
1740 Orchard Way
West Vancouver, B.C.
V7V 4E8
Phone and FAX (604)925-9883

This report has been examined by
the Geological Evaluation Unit
under Section 53 (4) Yukon Quartz
Mining Act, and is allowed as
representation work in the amount
of \$ 14,000.00.

Robert Dehler

for. Regional Manager, Exploration and
Geological Services for Commissioner
of Yukon Territory.

TABLE OF CONTENTS

INTRODUCTION	1
LOCATION AND ACCESS	1
LIST OF CLAIMS	3
GENERAL GEOLOGY	3
WORK COMPLETED	6
RESULTS	6
Geology	6
Geochemistry	7
CONCLUSIONS AND RECOMMENDATIONS	7
REFERENCES	8
CERTIFICATION	9
LIST OF PERSONNEL	10
STATEMENT OF EXPENDITURES	11
APPENDICES	12
Appendix A - ROG Claims Soil Geochemistry	
Appendix B - ROG Claims Silt Geochemistry	
Appendix C - ROG Claims Rock Geochemistry	
Appendix D - Certificates of Analysis	

LIST OF FIGURES

Figure 1	Location Map	2
Figure 2	Claim Sketch	4
Figure 3	ROG Claims Geology and Sample Numbers	Pocket
Figure 4	ROG Claims Pb-Zn-Ba - 1:25,000	Pocket
Figure 5	ROG Grid Geology - 1:5,000	Pocket
Figure 6	ROG Grid Sample Numbers - 1:5,000	Pocket
Figure 7	ROG Grid Pb-Zn-Ba - 1:5,000	Pocket

INTRODUCTION

In early spring, 1991, a proposal was approved to carry out a data compilation on a relatively little known portion of Selwyn Basin, Yukon, on behalf of Kennecott Canada Inc. This area included the Lansing map sheet (105N) and adjacent parts of the Mayo (105M) map sheet. The initial program involved staking some known occurrences and carrying out a small baseline study in preparation for an announced government reconnaissance geochemical release over the proposed project area.

In response to strongly anomalous geochemical values reported in the geochemical survey (Friske and others, 1991), including Zn to 3,900 ppm, Ba to 15,000 ppm, Hg to 510 ppm and Cu to 220 ppm, 70 ROG claims were staked in early July, 1991.

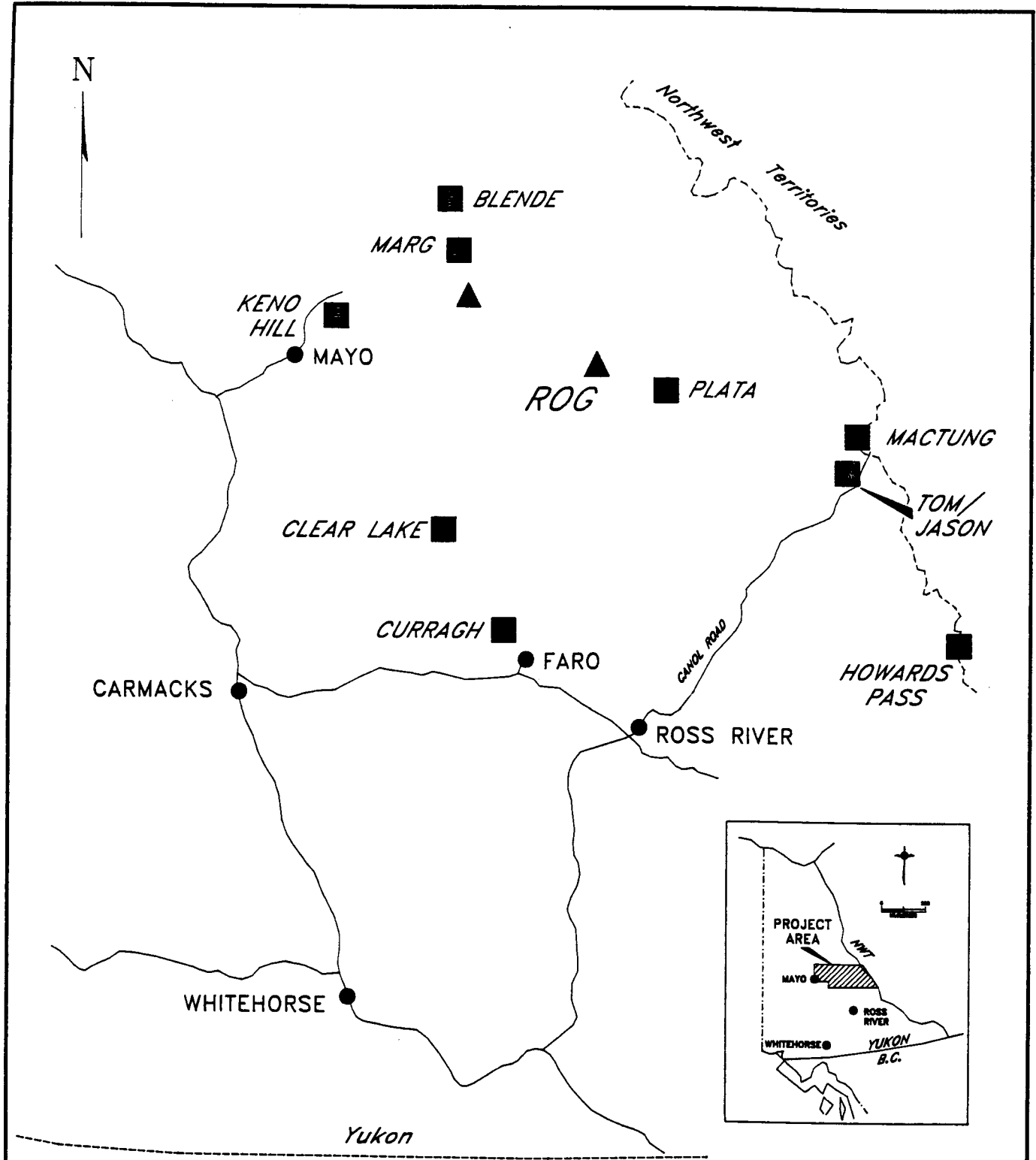
A preliminary evaluation of these claims in 1991 involved stream sediment sampling, prospecting and regional geological mapping. Within the ROG claim group, two areas of favourable stratigraphy with strongly anomalous base metal geochemistry were identified for follow-up exploration work.

In 1992, a crew of five geologists, with helicopter support from Carmacks, established fly camps on the ROG and other nearby claim groups for the purpose of detailed surface follow-up exploration work. This work involved 1:25,000 scale mapping and sampling efforts with local 1:5,000 mapping utilizing slope corrected line grids. On the ROG claims, a crew of three geologists spent 4 days mapping, sampling and prospecting.

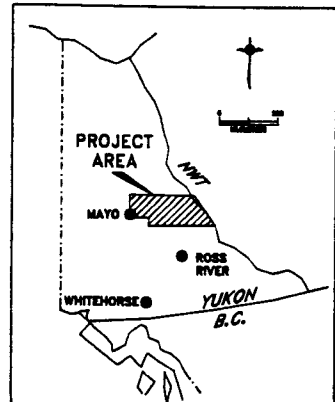
It is the 1992 program, carried out during the period July 19 to 22, at a value of \$14.430, which is being applied for assessment on the KEG 1-56 claim group and is reported on here.

LOCATION AND ACCESS

The ROG claims are located in east central Yukon (Figure 1), centred at 63° 35' N; 132° 35' W, NTS sheet 105N/10 in the Mayo Mining Division. The claims are located roughly 350 km north-northeast of Whitehorse and 150 north of the town of Faro.



- ▲ KENNECOTT PROPERTIES
- MINERAL DEPOSITS



© Kennecott Canada Inc.

FIGURE 1
 LANSING PROJECT
 ROG CLAIMS
 AREA LOCATION
 YUKON

DATA	DEC 1992
DRAWN BY: A.M.	LANPLOC

Access is by helicopter from Mayo, 160 km to the west, Carmacks, 260 km southwest, Ross River, 180 km south, or by fixed wing aircraft to the Plata airstrip (Islander, Cessna 206, Twin Otter), 25 km southeast of the property.

LIST OF CLAIMS

The ROG claim group is located in NTS sheet 105^{N/10}~~8/08~~, centred at 63° 40' ~~E~~; 132° 08' W, as shown in Figure 2. The claims have been recorded in the Mayo Mining Division in the name of Kennecott Canada Inc.:

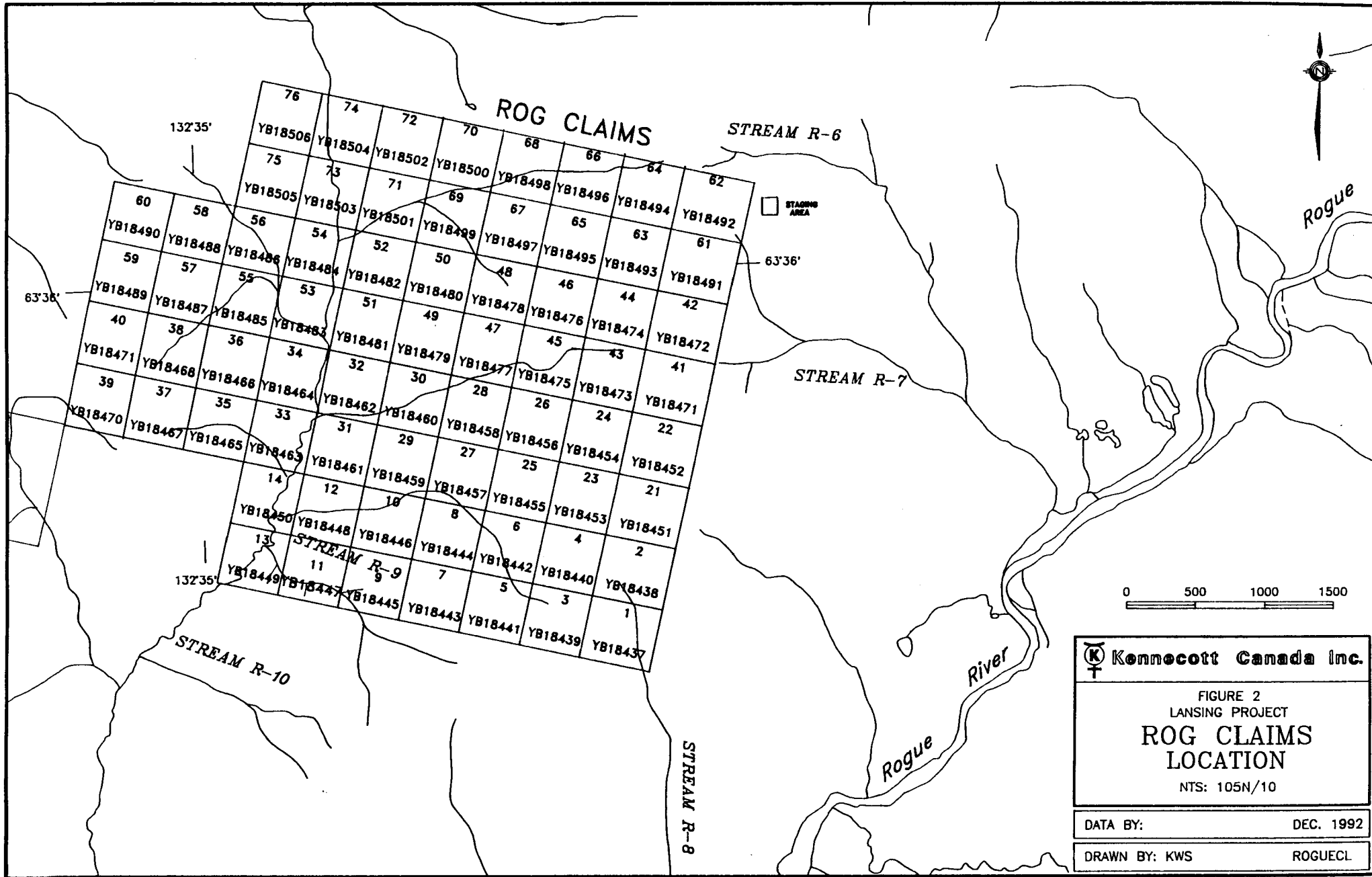
Claim Name	Record No.	NTS	Expiry Date
ROG 1- 4 ¹⁴	YB18 43 ^{37 450} - 72	105N/ 08 ¹⁰	09 Aug. 1992
ROG 4-5 ²¹⁻⁷⁶	YB 1843-83 ¹⁸⁴⁵¹⁻⁵⁰⁶	105N/ 08 ¹⁰	03 Oct. 1992


GENERAL GEOLOGY

The claims are underlain by the Selwyn Basin tectono-stratigraphic province. Selwyn Basin formed as a result of regional basin down warping of the passive North American continental margin in the early Paleozoic. In Devonian to Mississippian time, renewed tectonism is indicated by widespread graben formation throughout the basin. At least two ages of sediment hosted or SEDEX (Carne and Cathro, 1982) Pb-Zn+/-Ag deposits are known to occur within the basin.

The Proterozoic to early Cambrian basement rocks which underlie the entire area, informally known as the "Grit Unit", have been formally defined as the Hyland Group by Gordey (in press). These rocks are predominantly gritty quartzose sandstone and maroon, green and buff weathering shale. Minor bedded limestone is also present, while some of the clastic rocks are variably cemented with carbonate.

Earliest sedimentation within Selwyn Basin belongs to the Ordovician to Silurian Road River Group, a graptolitic unit typically consisting of calcareous black shale, argillaceous limestone and chert (Gabrielse, 1967). The top of the unit is marked by an orange-weathering, bioturbated siltstone. To the southwest, in central Selwyn Basin, varicoloured basinal cherts predominate. Initial mapping in the Lansing map sheet by the GSC (Blusson, 1974) was of a reconnaissance



 Kennecott Canada Inc.	
FIGURE 2 LANSING PROJECT ROG CLAIMS LOCATION NTS: 105N/10	
DATA BY:	DEC. 1992
DRAWN BY: KWS	ROGUECL

nature, showing most of the project area to be underlain by Road River strata. More recent, detailed work in a few local areas suggests a significant portion of these rocks in fact belongs to the younger Earn Group.

One of the largest Pb-Zn accumulations in the world, the Howard's Pass deposit, occurs within Early Silurian pyritic and calcareous shales and mudstones, apparently localized in sub-basins along the main axis of Selwyn Basin at the time of deposition.

The Earn Group, originally defined by Campbell (1967), ranging in age from Devonian to mid-Mississippian, is widespread throughout Selwyn Basin (Gordey and others, 1982). Lower Earn Group, spanning most of the Devonian, is distinguished by gun-blue weathering siliceous shale and chert. Upper Earn Group is characterized by brown weathering shale. It is not siliceous and chert is uncommon. Locally derived submarine fan complexes, consisting of grey weathering chert pebble conglomerate with lesser quartz-chert sandstone occur in both Lower and Upper Earn. These accumulations are indicative of rifting during deposition, interrupting the otherwise passive basinal sedimentation.

Bedded barite deposits are observed throughout the Earn Group while baritic Pb-Zn-Ag sulphide deposits appear to be restricted to siliceous shale facies and turbiditic fan complexes of the Lower Earn Group.

A return to more passive margin sedimentation is indicated by Mississippian through to Triassic cherts and siltstones, with local intervals shallow water, coarser clastic deposition..

These strata have been intruded by the Cretaceous Selwyn Plutonic Suite, a northwest trending belt of equigranular, biotite quartz monzonite intrusions. These form numerous small to medium-sized stocks that are often surrounded by extensive and very distinctive rusty hornfels.

Regional structure is dominated by major basinal bounding faults. These faults, originally interpreted to be normal, are now observed as zones of thrusting, as in the Dawson Thrust and Robert Service thrust along the north boundary of the project area (Gordey, 1990; Abbott, 1990). Here, Paleozoic strata are thrust over "Grit Unit" and the Precambrian is in turn thrust over Paleozoic shelf assemblage. On the northeastern side of the project area, these relationships are more complex, with imbricate thrusting repeating the stratigraphy a number of times. Within the basin, strata are variably deformed, from flat lying to vertical and tightly folded, apparently in response to the shortening event. Close to the thrusts, foliation is

intense so as to have obscured original bedding (Gordey, 1990).

WORK COMPLETED

Work was supported from fixed-wing aircraft from Whitehorse to the Plata airstrip and thence by helicopter to two fly camps on the ROG claims. The work included establishment of two slope-corrected line grids, with lines spaced from 250 to 500 m. These were mapped at 1:5,000 and lines were soil sampled at 25 m intervals. Some fill-in stream sediment sampling was completed and rock chip samples were taken to characterize the various lithologies. In total, 170 soil samples, 9 stream sediment samples and 6 rock samples were collected.

Results of this work are shown in Figures 3 through 6 in the pocket to this report.

RESULTS

Geology

The claims are underlain by sediments belonging to probable Lower Earn Group. These include predominantly dark weathering, black to grey shales with minor chert. In the northeastern part of the map area, the shales are interbedded with grey siltstone and silty shale. The central part of the grid area is cut by two layers of chert pebble conglomerate. These are each at least 50 m thick and of indeterminate strike length. Two areas of ferricrete precipitation are observed near the northerly of these two horizons along the north side of Creek R-6.

The stratigraphy trends northwesterly, with steep to moderate dips both northeast and southwest, suggesting the possibility of tight, isoclinal folding and repetition of some of the siltstone beds. No fold closures were observed, however.

Numerous occurrences of pyrite were noted, seldom exceeding one or two percent, as fine disseminations or as wisps and laminations in the fine grained sediments. No other mineralization was noted.

Geochemistry

The area was targeted for follow-up because of the ferricrete seeps and anomalous stream sediment geochemistry, including Zn values to 7,542 ppm with associated Ag, Cu and Ba.

The soil sampling program failed to detect a significant base metal anomaly. Weakly anomalous Ba and Pb values occur over the northern grid while the few anomalous Zn values, in the 500 to 1,000 ppm range, occur mainly in the southern part of the grid. High Ag values, in the 10 to 15 ppm range, occur in the central part of the area. None of the anomalies appear to represent a coherent, stratabound target, with the exception of the Ag. The high Ag values show a positive correlation with V and, to a lesser extent Sb and As, and form a trend which appears to parallel stratigraphy just south of the southerly chert pebble conglomerate.

None of the rock samples collected for analysis was anomalous in base metals.

CONCLUSIONS AND RECOMMENDATIONS

Neither the original geochemical anomalies nor the source of the ferricrete seeps were explained by the soil sampling, prospecting and mapping program. They were shown to be derived, however, from favourable Earn Group stratigraphy. A six to eight person-day follow-up program is proposed to trace the chert pebble conglomerate units along strike with mapping, prospecting and detailed soil sampling on 250 m spaced lines oriented normal to the strike of the units

REFERENCES

- Abbott, J.G., 1986, Geology of the Plata-Inca property, Yukon; in Yukon Geology, Volume 1, Indian and Northern Affairs Canada, pp. 109-112.
- Abbott, J.G., 1990, Preliminary results of the stratigraphy and structure of the Mt. Westman map area, central Yukon; in Current Research, Part E, Geol. Surv. Can.; Paper 90-1E, pp. 15-22.
- Blusson, S.L., 1974, Drafts of five geological maps of Operation Stewart (northern Selwyn Basin), Yukon and District of Mackenzie, N.W.T. (includes NTS 106A,B,C and 105N,O); Geol. Surv. Can., Open File 205.
- Campbell, R.B., 1967, Reconnaissance geology of Glenlyon map area, Yukon Territory; Geol. Surv. Can., Mem. 352.
- Carne, R.C. and Cathro, R.J., 1982, Sedimentary exhalative (Sedex) zinc-lead-silver deposits, northern Canadian Cordillera; CIM Bull., Vol. 75, No. 840, pp.66-78.
- Friske, P.W.B, Hornbrook, E.H.W., Lynch, J.J., McCurdy, M.W., Gross, H., Galletta, A.C. and Durham, C.C., 1991A, Regional Stream Sediment and Water Geochemical Data, East-central Yukon, Lansing Map Sheet, 105N; Geological Survey of Canada Open File 2363.
- Gabrielse, H., 1967, Tectonic evolution of the Canadian Cordillera; Can. Jour. Earth Sci., Vol. 4, pp. 271-298.
- Gordey, S.P., 1990, Geology and Mineral Potential, Tiny Island Lake map area, Yukon; in Current Research, Part E, Geol. Surv. Can., Paper 90-1E, pp. 23-29.
- Gordey, S.P., Abbott, J.G. and Orchard, M.J., 1982, Devonian-Mississippian (Earn Group) and younger strata in east-central Yukon; in Current Research, Part B; Geol.Surv.Can., Paper 82-1B, pp. 93-100.

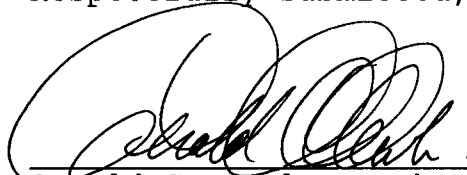
CERTIFICATION

I, Gerald G. Carlson, am employed as a Mineral Exploration Geologist with offices at 1740 Orchard Way, West Vancouver, B.C. I was directly involved in the work reported in this document and the associated costs incurred:

I further attest that:

1. I graduated with a B.A.Sc. in Geological Engineering from the University of Toronto in 1969.
2. I graduated with a M.Sc. in Economic Geology from Michigan Technological University, Houghton, Michigan in 1974.
3. I graduated with a Ph.D. in Economic Geology from Dartmouth College, Hanover, New Hampshire in 1978.
4. With the exception of time taken out for graduate studies, I have been practicing my profession continuously for the past 24 years.
5. I am a member in good standing of the Association of Professional Engineers of the Yukon Territory and of the Association of Professional Engineers and Geoscientists of British Columbia.

Respectfully submitted,



Gerald G. Carlson, Ph.D., P.Eng.

LIST OF PERSONNEL

The following personnel were employed on the field portion of this project:

Gerald G. Carlson, Geologist
1740 Orchard Way
West Vancouver, B.C.
V7V 4E8

Roger Hulstein, Geologist
c/o Aurum Geological Consultants Inc.
P.O. Box 4367
Whitehorse, Yukon
Y1A 3T5

Greg Smith, Geologist
c/o Aurum Geological Consultants Inc.
P.O. Box 4367
Whitehorse, Yukon
Y1A 3T5

Dave Strain, Geologist
c/o Aurum Geological Consultants Inc.
P.O. Box 4367
Whitehorse, Yukon
Y1A 3T5

STATEMENT OF EXPENDITURES

July 19 to July 22, 1992

Wages:	R. Hulstein	4 days @ \$350	1,400
	G. Smith	4 days @ \$320	1,280
	D. Strain	4 days @ \$240	960
Helicopter		5.4 Hr. @ \$700	3,780
Share of mobilization & general expenses *		4 dys @ \$1290/dy	5,160
Analytical		185 samples @ \$10.00	<u>1,850</u>
		TOTAL	<u>\$14,430</u>

* Note: All costs related to preparation for the field program, mobilization, rentals of camp and radio, costs of consumable supplies, including fuel, and demobilization were totaled and divided by the total number of days in the field during the actual field work portion of this program, July 4 to August 12, 1992, inclusive. Thus all general expenses are fairly distributed in proportion to the amount of work carried out on each claim group.

APPENDICES

ROG CLAIMS

Geochemical Results

and

Geochemical Analysis Certificates

ROG GRID
Soil Geochemistry

SAMPLE NUMBER	Pb ppm	Zn ppm	Ag ppm	Ba ppm	Cu ppm	Fe %	Mn ppm	Cd ppm	Ni ppm	Co ppm	V ppm	As ppm	Sb ppm	Bi ppm
DS2 S-173	23	81	0.3	2335	57	4.34	159	0.2	15	7	66	21	2	4
DS2 S-174	19	96	0.2	2298	41	4.69	382	0.2	20	9	55	18	2	2
DS2 S-175	21	122	0.8	2458	46	4.36	369	0.3	30	12	53	23	2	2
DS2 S-176	28	83	0.8	3769	40	4.28	227	0.2	19	8	64	24	2	2
DS2 S-177	20	100	3.5	8689	76	3.54	103	0.2	20	6	48	35	2	2
DS2 S-178	12	96	0.2	2384	48	3.04	220	0.3	19	8	52	15	2	2
DS2 S-179	21	144	0.3	2477	66	5.23	308	0.9	27	10	57	24	2	2
DS2 S-180	18	198	0.4	3323	176	5.12	328	0.5	42	13	43	32	2	2
DS2 S-181	17	123	0.3	3734	73	4.79	206	0.2	28	9	46	29	2	3
DS2 S-182	20	113	0.1	4032	61	4.04	186	0.2	22	8	47	21	2	6
DS2 S-183	19	106	0.1	6359	44	3.78	251	0.2	20	9	47	15	2	2
DS2 S-184	19	131	0.2	2878	49	3.91	499	0.8	29	12	48	17	2	2
DS2 S-185	27	370	1.7	5432	47	5.68	2451	3.2	67	38	91	43	9	2
DS2 S-186	21	71	0.8	1982	20	2.51	218	0.8	15	6	56	19	4	2
DS2 S-187	36	57	1.7	3745	17	2.27	72	0.2	13	4	84	32	9	2
DS2 S-188	15	40	1.4	1698	13	1.30	32	0.2	6	2	39	13	3	2
DS2 S-189	5	13	1.0	1804	5	0.16	7	0.5	2	1	14	5	2	2
DS2 S-190	28	73	3.5	2466	27	2.29	22	0.2	10	3	73	26	4	3
DS2 S-191	23	64	7.6	7765	44	3.39	22	0.2	13	3	79	36	3	2
DS2 S-192	23	93	16.2	2446	30	4.07	128	0.2	18	6	602	67	27	2
DS2 S-193	27	266	16.6	2564	91	3.48	549	1.0	58	4	238	47	13	3
DS2 S-194	26	74	7.6	2589	27	2.49	68	0.4	14	4	224	31	9	2
DS2 S-195	14	32	7.7	2438	29	1.77	12	0.2	5	1	71	23	4	2
DS2 S-196	19	115	13.2	2778	39	3.77	45	0.3	14	3	155	31	9	2
DS2 S-197	19	79	7.2	2088	29	2.28	51	0.2	15	3	158	31	7	2
DS2 S-198	21	94	11.5	4481	40	2.07	12	0.2	18	2	99	21	6	3
DS2 S-199	17	19	2.4	2978	11	1.02	22	0.2	3	1	49	9	8	2
DS2 S-200	56	75	6.2	5955	41	8.78	62	0.2	12	7	71	190	20	2
DS2 S-201	33	128	2.1	3554	48	4.25	131	0.2	18	6	65	42	8	2
DS2 S-202	18	238	2.6	1728	43	3.71	1424	5.2	36	10	67	27	4	2
DS2 S-203	21	68	1.0	1933	22	2.39	141	0.2	12	4	58	25	4	2
DS2 S-204	23	126	1.1	8370	25	4.28	344	0.3	37	11	30	14	2	2
DS2 S-205	16	104	0.5	2840	26	3.44	186	0.2	32	11	55	17	2	2
DS2 S-206	17	83	0.3	2027	26	3.02	320	0.2	20	10	40	12	2	2
DS2 S-207	17	119	0.2	2254	36	4.38	724	0.2	24	14	43	16	2	2

ROG GRID
Soil Geochemistry

SAMPLE NUMBER	Pb ppm	Zn ppm	Ag ppm	Ba ppm	Cu ppm	Fe %	Mn ppm	Cd ppm	Ni ppm	Co ppm	V ppm	As ppm	Sb ppm	Bi ppm
DS2 S-208	16	109	1.0	2285	39	3.79	410	0.7	27	12	41	18	2	2
DS2 S-209	25	140	0.8	3364	73	4.51	385	0.2	41	11	37	22	2	2
DS2 S-210	20	126	0.6	3545	45	4.17	537	0.2	29	11	39	16	2	2
DS2 S-211	14	111	0.2	2413	33	3.21	335	0.2	25	9	37	16	2	2
DS2 S-212	23	130	0.5	3293	48	3.58	550	0.2	40	17	33	20	2	2
DS2 S-213	24	267	1.0	5322	95	3.91	2664	0.3	162	59	20	20	2	2
DS2 S-214	28	183	0.6	5299	46	4.84	275	0.4	65	20	24	15	2	2
DS2 S-215	33	203	1.2	5700	36	4.02	158	0.7	68	16	32	16	2	2
DS2 S-216	29	170	0.5	5569	43	5.02	188	0.3	59	16	26	18	2	2
DS2 S-217	19	155	1.7	8171	56	3.76	213	0.2	66	12	19	15	2	2
DS2 S-218	10	79	2.4	7284	60	3.41	31	0.2	16	5	55	28	2	2
DS2 S-219	35	95	0.5	7633	51	5.95	126	0.2	19	7	47	35	2	2
DS2 S-220	17	68	0.4	5849	56	3.32	54	0.2	12	5	59	26	2	2
DS2 S-221	27	90	0.3	5175	65	4.87	117	0.2	17	7	47	25	2	2
DS2 S-222	17	120	0.1	2440	22	2.76	280	0.5	15	4	53	16	2	2
DS2 S-223	17	125	0.1	3554	67	2.73	396	0.2	29	6	46	40	2	2
DS2 S-224	16	92	0.1	3167	53	2.72	72	0.2	22	4	46	20	2	2
DS2 S-225	25	115	0.4	2757	40	6.15	198	0.6	25	5	65	29	2	3
DS2 S-226	11	84	0.1	2362	23	2.15	106	0.2	14	4	41	18	2	2
DS2 S-227	17	70	0.6	1965	18	2.84	417	0.2	13	4	59	15	2	3
DS2 S-228	16	557	1.0	3991	58	2.55	1533	6.4	138	10	41	19	4	2
DS2 S-229	40	70	1.0	2653	20	2.48	90	0.2	13	3	74	46	12	3
DS2 S-230	12	36	1.1	1770	10	0.88	23	0.2	10	1	31	8	2	2
GS2 S-167	19	113	0.1	2929	48	4.58	488	0.2	29	12	55	21	2	2
GS2 S-168	25	142	0.2	2473	40	4.92	536	0.2	31	13	65	25	2	4
GS2 S-169	24	320	0.3	4151	128	5.41	3204	2.2	68	40	50	24	2	2
GS2 S-170	24	202	2.8	6601	136	6.47	275	0.2	68	18	33	31	2	2
GS2 S-171	19	118	0.5	2450	41	4.00	1064	0.7	23	12	54	13	2	4
GS2 S-172	27	147	0.8	3347	59	4.53	460	0.2	36	13	47	22	2	2
GS2 S-173	18	128	0.1	3041	42	4.13	512	0.2	22	11	43	19	2	3
GS2 S-174	24	100	0.3	4376	72	2.23	93	0.2	21	7	30	16	2	2
GS2 S-175	25	114	1.7	6230	24	3.34	85	0.2	8	4	87	36	23	2
GS2 S-176	20	346	2.7	5121	26	4.43	274	0.2	24	8	63	52	19	4
GS2 S-177	21	247	0.4	4788	44	4.08	226	0.2	23	8	41	26	3	2
GS2 S-178	20	164	0.7	4669	49	3.83	93	0.2	23	8	41	30	3	3

ROG GRID
Soil Geochemistry

SAMPLE NUMBER	Pb ppm	Zn ppm	Ag ppm	Ba ppm	Cu ppm	Fe %	Mn ppm	Cd ppm	Ni ppm	Co ppm	V ppm	As ppm	Sb ppm	Bi ppm
GS2 S-179	16	159	0.5	2740	35	3.09	210	0.7	35	11	35	18	2	2
GS2 S-180	25	48	1.6	4206	20	2.28	97	0.3	12	5	93	25	11	2
GS2 S-181	21	60	9.7	3549	18	5.12	91	0.2	10	6	87	62	12	2
GS2 S-182	22	26	9.5	2199	7	1.28	18	0.2	1	2	57	12	4	2
GS2 S-183	13	12	9.1	2474	7	1.43	11	0.2	1	1	67	8	6	4
GS2 S-184	34	109	7.3	2236	26	2.13	56	0.7	19	4	167	23	7	2
GS2 S-185	26	48	11.7	3434	23	1.70	18	0.6	7	2	141	13	6	2
GS2 S-186	15	12	13.5	2672	9	2.63	8	0.2	3	2	87	12	9	2
GS2 S-187	35	64	17.2	2761	26	2.54	45	1.4	9	4	535	33	25	2
GS2 S-188	40	192	6.5	2836	40	2.90	63	2.5	30	4	932	44	45	3
GS2 S-189	25	113	2.7	2299	19	0.91	31	0.7	20	2	220	9	5	2
GS2 S-190	19	345	2.0	1861	85	5.50	99	1.8	111	8	89	18	3	2
GS2 S-191	30	486	16.3	3159	171	7.45	257	0.9	94	12	69	20	2	2
GS2 S-192	30	105	3.5	2134	19	2.13	31	0.2	14	3	79	15	2	4
GS2 S-193	33	139	18.5	3118	37	3.56	67	0.4	24	3	194	54	7	2
GS2 S-194	17	120	2.8	1622	26	1.00	23	0.4	27	2	109	11	4	2
GS2 S-195	10	199	6.2	1989	45	3.26	150	2.0	34	5	102	37	2	2
GS2 S-196	18	95	1.1	1997	44	2.88	257	0.2	25	7	46	18	2	2
GS2 S-197	13	106	1.6	2394	43	2.41	246	0.3	25	7	46	32	5	2
GS2 S-198	22	116	1.3	2661	30	2.42	294	0.3	25	7	48	15	3	2
GS2 S-199	10	77	3.2	1840	32	2.20	70	0.2	16	3	82	21	3	2
GS2 S-200	9	137	2.6	1812	38	2.10	106	0.3	29	5	87	16	6	2
GS2 S-201	16	64	5.0	1566	28	1.11	19	0.5	11	1	102	13	4	2
GS2 S-202	16	93	3.3	1681	29	1.20	23	0.8	17	1	168	21	7	2
GS2 S-203	13	67	6.8	2367	23	1.16	26	0.5	12	2	165	14	10	2
GS2 S-204	19	156	0.5	3124	37	3.25	186	0.5	34	8	33	13	2	2
GS2 S-205	22	204	0.1	4523	47	3.76	281	0.3	32	10	29	21	2	2
GS2 S-206	8	34	1.8	2050	9	0.87	39	0.2	6	2	28	4	6	2
GS2 S-207	25	51	1.4	4234	18	2.61	75	0.2	10	3	58	31	4	2
GS2 S-208	33	36	2.0	5547	13	2.29	29	0.2	4	1	33	26	8	2
RH2 S-115	23	137	1.1	2838	33	3.24	237	0.7	27	9	44	22	6	2
RH2 S-116	26	260	0.9	5283	52	5.29	375	0.3	60	22	16	23	5	2
RH2 S-117	24	180	0.1	4988	43	3.10	515	1.1	41	17	14	15	2	3
RH2 S-118	28	254	0.8	5268	44	3.72	285	0.4	40	16	17	43	4	2
RH2 S-119	22	212	0.1	3768	41	4.46	707	1.3	39	18	29	23	2	2

ROG GRID
Soil Geochemistry

SAMPLE NUMBER	Pb ppm	Zn ppm	Ag ppm	Ba ppm	Cu ppm	Fe %	Mn ppm	Cd ppm	Ni ppm	Co ppm	V ppm	As ppm	Sb ppm	Bi ppm
RH2 S-120	19	138	0.1	3086	35	4.66	275	0.2	24	7	37	18	2	2
RH2 S-121	15	184	0.6	3365	51	4.09	892	0.2	31	21	35	29	2	2
RH2 S-122	17	112	0.1	2968	35	3.77	337	0.4	23	8	39	14	2	2
RH2 S-123	13	114	0.5	3899	59	3.40	342	0.4	28	12	33	18	2	2
RH2 S-124	7	117	0.4	3358	68	3.30	351	0.6	28	10	31	13	3	2
RH2 S-125	26	174	0.7	4221	66	3.31	591	0.2	60	16	43	22	2	2
RH2 S-126	11	84	0.5	3731	36	2.56	317	0.2	20	6	46	13	2	2
RH2 S-127	34	137	5.2	4893	55	5.98	554	1.0	22	5	256	113	15	2
RH2 S-128	27	153	1.4	4131	38	2.94	48	0.8	49	5	202	146	12	2
RH2 S-129	31	111	2.1	5558	51	3.13	143	0.2	29	6	100	33	8	2
RH2 S-130	18	114	1.3	3130	29	4.55	119	0.2	25	6	42	13	4	2
RH2 S-131	26	289	0.2	3693	46	6.56	162	0.2	55	12	48	18	2	2
RH2 S-132	17	158	0.3	2604	31	4.37	320	0.7	25	8	57	16	2	2
RH2 S-133	19	262	0.2	3853	42	4.10	287	0.7	45	19	28	21	3	2
RH2 S-134	21	129	0.4	4427	40	2.70	355	1.3	24	11	34	16	2	2
RH2 S-135	22	210	0.2	4502	49	3.80	676	1.6	47	19	46	23	2	2
RH2 S-136	25	701	2.0	4522	52	3.11	647	3.9	138	15	80	28	3	2
RH2 S-137	17	88	0.2	1541	27	3.88	393	0.4	20	9	50	18	2	2
RH2 S-138	26	27	0.7	2661	20	2.52	29	0.2	5	1	27	38	5	2
RH2 S-139	20	40	1.6	4678	10	1.23	41	0.2	5	1	37	13	3	2
RH2 S-140	25	31	2.8	3358	10	1.48	61	0.2	5	2	51	21	6	2
RH2 S-141	22	31	10.9	4295	36	1.62	78	0.3	6	3	93	16	12	2
RH2 S-142	31	19	14.8	3504	33	3.85	8	0.6	4	1	139	31	13	2
RH2 S-143	12	22	10.2	3487	26	2.61	15	0.4	2	1	92	25	7	2
RH2 S-144	22	38	3.2	3667	15	2.77	70	0.4	5	2	78	11	3	2
RH2 S-145	10	49	3.9	2649	15	2.27	36	0.2	7	2	61	10	2	2
RH2 S-146	6	11	4.5	1775	12	0.80	5	0.2	3	1	49	10	5	2
RH2 S-147	13	27	5.7	2167	11	1.90	10	0.2	4	1	51	22	5	2
RH2 S-148	10	23	4.6	1608	18	1.06	13	0.3	4	1	55	9	3	2
RH2 S-149	10	127	4.9	2425	55	1.62	81	1.1	26	2	124	24	4	2
RH2 S-150	8	68	6.5	2579	50	3.77	73	0.9	16	2	174	30	3	2
RH2 S-151	15	157	4.4	2400	38	1.71	45	1.9	31	2	143	23	2	2
RH2 S-152	21	141	17.4	2876	79	3.25	58	1.3	36	3	149	52	6	2
RH2 S-154	24	600	0.8	1891	104	4.39	160	0.9	88	10	94	38	5	2
RH2 S-155	12	107	5.4	1831	26	2.31	61	1.1	19	3	118	31	3	2

ROG GRID
Soil Geochemistry

SAMPLE NUMBER	Pb ppm	Zn ppm	Ag ppm	Ba ppm	Cu ppm	Fe %	Mn ppm	Cd ppm	Ni ppm	Co ppm	V ppm	As ppm	Sb ppm	Bi ppm
RH2 S-156	10	112	1.9	2064	45	2.07	171	0.8	24	4	69	25	2	2
RH2 S-157	4	532	2.3	2690	112	2.36	233	3.5	114	7	111	27	5	2
RH2 S-158	21	119	3.3	2442	30	4.38	130	0.5	22	4	139	64	2	2
RH2 S-159	18	88	8.4	3648	74	1.39	10	1.3	20	2	112	18	4	2
RH2 S-160	18	228	7.1	2840	51	1.88	42	2.7	45	3	232	18	3	2
RH2 S-161	12	1035	3.3	1911	101	3.73	158	2.9	103	7	512	59	11	2
RH2 S-162	13	518	3.5	3058	105	4.44	303	6.7	151	10	55	22	4	2
RH2 S-163	14	232	4.7	2287	52	1.62	47	3.4	45	4	152	14	4	2
RH2 S-164	40	274	0.5	2092	151	5.23	129	1.2	36	6	110	51	2	2
RH2 S-165	27	286	3.6	4016	152	2.50	679	4.6	149	7	37	14	2	2
RH2 S-166	17	246	2.1	2636	112	3.47	290	1.5	53	8	103	32	2	2
RH2 S-167	13	218	0.7	2148	56	3.27	227	0.5	36	6	86	28	2	2
RH2 S-168	16	277	0.3	2361	64	2.71	118	0.5	47	6	85	26	2	2
RH2 S-169	11	115	0.5	1799	35	3.26	264	0.4	24	7	54	15	2	2
RH2 S-170	31	244	0.3	9763	361	4.46	742	0.7	41	26	25	7	2	2
RH2 S-171	30	87	0.1	6494	43	4.92	75	0.2	18	6	24	21	2	2
RH2 S-172	36	84	0.2	3903	51	4.61	152	0.2	17	8	23	20	2	2
RH2 S-173	10	2806	1.4	1166	548	31.04	6610	63.2	293	277	12	2	23	2
RH2 S-174	20	324	0.9	3240	64	5.37	630	3.6	47	26	33	44	5	2
RH2 S-175	22	200	0.5	3154	40	4.13	311	1.0	40	17	29	19	2	2
RH2 S-176	55	80	1.1	3467	17	3.57	80	0.2	13	6	62	53	12	2
RH2 S-177	24	245	0.8	2834	31	2.97	412	3.0	41	13	63	28	8	2
RH2 S-178	15	199	1.0	3705	53	2.70	144	2.1	43	8	70	23	5	2
RH2 S-179	33	80	0.6	2095	20	3.40	240	0.6	15	8	102	35	3	5
RH2 S-180	22	120	1.3	6097	37	4.55	109	0.4	20	7	175	226	18	4
RH2 S-181	28	266	1.5	10304	116	2.15	66	4.1	86	5	96	64	9	2
RH2 S-182	41	65	0.8	2660	17	1.39	18	0.6	28	2	52	46	8	2
RH2 S-183	35	37	1.2	2310	26	1.61	21	0.7	8	2	40	51	7	2
RH2 S-184	18	25	2.5	2260	10	2.61	41	0.2	4	3	37	18	5	2
RH2 S-185	22	17	4.5	6689	6	1.03	17	0.2	1	2	111	12	7	2

ROG CLAIMS
Silt Geochemistry

SAMPLE NUMBER	Pb ppm	Zn ppm	Ag ppm	Ba ppm	Cu ppm	Fe %	Mn ppm	Cd ppm	Ni ppm	Co ppm	V ppm	As ppm	Sb ppm	Bi ppm
DS2 L-25	32	38	1.7	2974	13	1.44	45	0.2	7	1	51	21	8	2
DS2 L-26	16	563	0.4	3409	38	5.94	1228	7.3	111	37	26	19	4	2
RH2 L-039	15	172	2.7	2196	64	1.97	170	2.5	49	4	65	24	4	2
RH2 L-040	18	1133	3.2	2924	132	5.01	6030	23.4	234	26	67	47	7	2
RH2 L-041	11	4043	3.5	2209	174	8.45	3419	42.8	1076	84	144	46	11	2
RH2 L-042	21	352	0.9	7646	75	4.54	713	1.2	143	30	24	19	2	2
RH2 L-044	20	714	0.7	5904	149	3.79	1124	2.8	253	29	22	17	2	2
RH2 L-045	17	730	0.2	6902	116	4.54	1151	2.8	301	34	23	17	2	2
RH2 L-046	2	4731	0.8	1075	529	35.45	9835	123.8	507	449	5	10	31	2

ROG CLAIMS
Rock Sample Descriptions and Results

Sample No.	Location	Description	Width (cm)	Pb (ppm)	Zn (ppm)	Ag (ppm)	Ba (ppm)	Cu (ppm)	Fe (%)	Mn (ppm)	Cd (ppm)	Ni (ppm)	V (ppm)	As (ppm)
DS2 R-13		Light grey, devitrified, pumiceous lapilli tuff; adjacent fragments of amygdaloidal basalt	Grab Float	2	117	0.1	3035	10	7.22	1296	0.5	11	98	2
GS2 R-16		White, coarse, vuggy qtz vein, minor Fe stain, no sulphides; hosted in black shale.	20	8	170	0.8	1124	79	7.16	182	0.2	49	46	13
GS2 R-17		Chert w/ orange-yellow-red weathering, <5% limonite-filled vugs, trace pyrite.	50	7	11	0.9	1574	8	0.50	19	0.3	4	5	2
RH2 R-42		Light grey weathering, grey to green pyritic, cherty argillite; 2-5% dissem. py.	Grab Float	6	41	0.2	8754	17	1.05	70	0.2	23	11	2
RH2 R-43		Limonite-brown weathering variably siliceous siltstone w/ fine grained wisps & blebs of py.; interbedded recessive green shale.	Grab	11	52	0.5	594	13	1.90	48	0.2	12	13	4
RH2 R-44		As above but selective pyritic siliceous siltstone.	Grab 1500	4	65	0.5	1040	25	3.29	39	0.4	20	15	6



SAMPLE#	Mo	Cu	Pb	Zn	Ag	Ni	Co	Mn	Fe	As	U	Au	Th	Sr	Cd	Sb	Bi	V	Ca	P	La	Cr	Mg	Ba	Ti	B	Al	Na	K	W	Ba*
	ppm	ppm	ppm	ppm	ppm	ppm	ppm	ppm	%	ppm	ppm	ppm	ppm	ppm	ppm	ppm	ppm	ppm	%	%	ppm	ppm	%	ppm	%	%	%	%	%	ppm	ppm
DS2 S-151	46	684	18	3280	10.8	661	20	365	3.74	85	33	ND	3	121	55.9	32	3	297	1.03	.354	12	64	.12	624	.01	6	1.17	.01	.12	1	3204
DS2 S-152	25	52	24	316	6.9	53	6	114	3.07	60	5	ND	1	49	5.3	14	2	227	.14	.260	10	36	.06	290	.01	3	.65	.01	.10	1	2457
DS2 S-153	30	117	18	392	2.5	65	6	151	2.60	121	5	ND	1	74	3.4	16	3	89	.03	.053	15	13	.03	416	.01	2	.29	.01	.07	1	2280
DS2 S-154	4	67	18	199	1.9	42	10	207	3.27	594	5	ND	1	62	1.1	4	2	42	.02	.060	15	15	.17	228	.01	4	.17	.01	.06	1	2159
DS2 S-154A	117	161	33	122	3.8	55	11	113	10.98	128	8	ND	2	121	.7	35	2	251	.04	.283	5	23	.18	116	.02	2	2.49	.02	.93	1	18458
DS2 S-155	10	39	40	90	.5	18	6	125	3.32	35	5	ND	1	91	.2	4	4	57	.03	.096	19	17	.04	315	.01	5	.64	.01	.19	1	2481
DS2 S-156	14	21	40	43	1.8	9	4	59	2.77	20	5	ND	1	28	.2	5	2	35	.02	.038	17	10	.03	307	.01	5	.31	.01	.23	1	4027
DS2 S-157	9	20	67	44	1.0	8	5	80	4.73	19	5	ND	2	46	.2	6	2	30	.01	.045	23	9	.03	154	.01	5	.26	.01	.41	1	3663
DS2 S-158	19	39	42	96	2.9	22	8	187	3.70	28	5	ND	1	30	.2	6	5	58	.05	.054	16	21	.20	446	.02	4	.85	.01	.15	1	3821
DS2 S-159	20	38	29	26	.6	6	2	18	1.01	16	8	ND	1	42	.2	3	2	31	.01	.044	35	12	.03	623	.01	7	.36	.01	.14	1	5113
DS2 S-160	9	36	23	120	.6	28	10	367	3.25	24	5	ND	1	41	.3	2	2	57	.06	.073	16	24	.22	290	.02	4	1.25	.01	.11	1	1973
DS2 S-161	7	32	18	144	2.1	24	12	484	3.47	21	5	ND	1	26	1.1	2	4	56	.09	.101	16	29	.33	371	.03	3	1.59	.01	.10	1	1776
DS2 S-162	11	39	13	175	2.1	30	8	277	3.19	29	5	ND	1	30	2.0	3	2	74	.09	.129	16	31	.23	195	.03	4	1.37	.01	.10	1	1548
DS2 S-163	43	139	18	728	4.0	128	12	379	3.07	63	9	ND	3	72	4.2	19	3	210	.29	.159	20	37	.28	459	.04	6	.97	.01	.13	1	2588
DS2 S-164	11	37	13	250	2.4	39	11	297	3.08	37	5	ND	1	37	1.4	6	7	77	.16	.120	17	34	.39	239	.03	5	1.48	.01	.12	1	1504
DS2 S-165	12	75	13	188	3.0	35	7	190	2.65	35	8	ND	1	34	1.6	7	4	96	.15	.121	15	35	.37	272	.02	5	1.55	.01	.08	1	1435
DS2 S-166	7	33	18	154	1.7	22	8	310	2.68	21	6	ND	1	35	7.1	3	3	59	.09	.132	14	24	.12	414	.01	3	.90	.01	.11	1	1765
DS2 S-167	8	32	17	144	2.3	23	7	176	2.80	21	5	ND	1	33	3.5	4	2	53	.08	.149	12	22	.12	233	.01	6	.72	.01	.10	1	1761
DS2 S-168	17	153	20	592	8.1	126	11	201	5.30	64	11	ND	2	132	8.0	8	2	89	.23	.526	16	51	.27	601	.03	4	1.46	.01	.13	1	3117
RE DS2 S-164	10	34	12	235	2.2	36	10	276	2.93	31	5	ND	1	36	1.0	4	2	71	.15	.117	16	31	.37	221	.03	6	1.42	.01	.10	1	1570
DS2 S-169	16	96	16	265	3.7	70	7	123	2.97	39	9	ND	1	55	2.1	8	3	89	.10	.247	16	40	.20	708	.01	4	1.74	.01	.11	1	3488
DS2 S-170	13	70	13	337	4.5	54	11	271	4.13	36	7	ND	2	48	1.0	4	5	79	.15	.252	17	38	.31	294	.03	2	1.72	.01	.10	1	1644
DS2 S-171	21	68	17	205	4.2	46	9	194	4.64	56	7	ND	1	64	.9	9	4	107	.13	.284	17	41	.24	297	.02	2	1.32	.01	.14	1	1677
DS2 S-172	14	46	16	129	6.7	30	8	220	3.36	36	5	ND	1	53	.7	5	2	78	.22	.369	18	38	.26	330	.02	4	1.09	.01	.12	1	1959
DS2 S-173	3	57	23	81	.3	15	7	159	4.34	21	5	ND	3	15	.2	2	4	66	.04	.048	11	24	.18	152	.03	2	1.32	.01	.08	1	2335
DS2 S-174	2	41	19	96	.2	20	9	382	4.69	18	7	ND	2	16	.2	2	2	55	.04	.085	10	30	.24	130	.03	8	1.25	.01	.07	1	2298
DS2 S-175	2	46	21	122	.8	30	12	369	4.36	23	5	ND	3	19	.3	2	2	53	.06	.051	12	36	.43	272	.04	3	1.82	.01	.09	1	2458
DS2 S-176	3	40	28	83	.8	19	8	227	4.28	24	5	ND	2	47	.2	2	2	64	.05	.055	11	25	.20	354	.04	5	1.20	.01	.09	1	3769
DS2 S-177	7	76	20	100	3.5	20	6	103	3.54	35	7	ND	1	100	.2	2	2	48	.02	.066	10	48	.07	312	.01	3	.79	.01	.07	1	8689
DS2 S-178	2	48	12	96	.2	19	8	220	3.04	15	5	ND	3	16	.3	2	2	52	.04	.030	11	21	.15	172	.02	4	1.19	.01	.06	1	2384
DS2 S-179	3	66	21	144	.3	27	10	308	5.23	24	5	ND	2	16	.9	2	2	57	.04	.060	10	27	.20	162	.04	2	1.42	.01	.08	1	2477
DS2 S-180	2	176	18	198	.4	42	13	328	5.12	32	5	ND	3	18	.5	2	2	43	.03	.054	7	25	.20	167	.02	5	1.43	.01	.07	1	3323
DS2 S-181	3	73	17	123	.3	28	9	206	4.79	29	5	ND	3	25	.2	2	3	46	.03	.054	8	25	.19	161	.02	5	1.27	.01	.07	1	3734
DS2 S-182	3	61	20	113	.1	22	8	186	4.04	21	5	ND	2	18	.2	2	6	47	.02	.043	8	18	.08	177	.02	3	.83	.01	.07	1	4032
DS2 S-183	2	44	19	106	.1	20	9	251	3.78	15	5	ND	1	15	.2	2	2	47	.03	.061	9	19	.13	259	.02	4	.97	.01	.07	1	6359
DS2 S-184	3	49	19	131	.2	29	12	499	3.91	17	5	ND	1	23	.8	2	2	48	.06	.076	9	25	.26	327	.02	4	1.21	.01	.08	1	2878
DS2 S-185	11	47	27	370	1.7	67	38	2451	5.68	43	5	ND	1	127	3.2	9	2	91	.26	.193	8	21	.22	847	.01	7	1.12	.01	.10	1	5432
STANDARD C/CB-1200	19	62	41	131	7.3	71	32	1046	3.96	42	18	7	39	52	19.4	14	21	58	.48	.089	39	59	.89	170	.09	35	1.89	.07	.15	11	2209

STRIKE

ROG

Sample type: PULP. Samples beginning 'RE' are duplicate samples.



SAMPLE#	Mo	Cu	Pb	Zn	Ag	Ni	Co	Mn	Fe	As	U	Au	Th	Sr	Cd	Sb	Bi	V	Ca	P	La	Cr	Mg	Ba	Ti	B	Al	Na	K	W	Ba*
	ppm	ppm	ppm	ppm	ppm	ppm	ppm	ppm	%	ppm	ppm	ppm	ppm	ppm	ppm	ppm	ppm	ppm	%	%	ppm	ppm	%	ppm	%	%	%	%	%	ppm	ppm
DS2 S-186	8	20	21	71	.8	15	6	218	2.51	19	5	ND	2	32	.8	4	2	56	.03	.061	10	18	.11	143	.02	4	.59	.01	.07	1	1982
DS2 S-187	24	17	36	57	1.7	13	4	72	2.27	32	5	ND	1	51	.2	9	2	84	.05	.082	10	20	.14	443	.01	4	.76	.01	.10	1	3745
DS2 S-188	9	13	15	40	1.4	6	2	32	1.30	13	5	ND	1	25	.2	3	2	39	.02	.068	10	9	.03	184	.01	3	.34	.01	.05	1	1698
DS2 S-189	2	5	5	13	1.0	2	1	7	.16	5	5	ND	1	3	.5	2	2	14	.01	.020	19	4	.01	84	.01	3	.18	.01	.05	1	1804
DS2 S-190	16	27	28	73	3.5	10	3	22	2.29	26	5	ND	1	78	.2	4	3	73	.01	.042	18	20	.03	366	.01	5	.36	.01	.24	1	2466
DS2 S-191	9	44	23	64	7.6	13	3	22	3.39	36	5	ND	1	103	.2	3	2	79	.12	.798	16	40	.03	762	.01	5	.66	.01	.15	1	7765
DS2 S-192	68	30	23	93	16.2	18	6	128	4.07	67	5	ND	1	54	.2	27	2	602	.10	.326	18	55	.17	410	.02	7	.93	.01	.20	1	2446
DS2 S-193	35	91	27	266	16.6	58	4	549	3.48	47	10	ND	1	161	1.0	13	3	238	.08	.524	22	59	.20	414	.01	6	.80	.01	.24	1	2564
DS2 S-194	31	27	26	74	7.6	14	4	68	2.49	31	5	ND	1	74	.4	9	2	224	.06	.302	23	48	.06	416	.02	7	.57	.01	.20	1	2589
DS2 S-195	12	29	14	32	7.7	5	1	12	1.77	23	5	ND	1	49	.2	4	2	71	.02	.317	10	31	.02	381	.01	6	.28	.01	.17	1	2438
DS2 S-196	23	39	19	115	13.2	14	3	45	3.77	31	5	ND	1	116	.3	9	2	155	.09	.386	12	44	.04	171	.01	5	.47	.01	.34	1	2778
DS2 S-197	21	29	19	79	7.2	15	3	51	2.28	31	5	ND	1	65	.2	7	2	158	.05	.274	13	36	.07	333	.01	6	.45	.01	.15	1	2088
DS2 S-198	18	40	21	94	11.5	18	2	12	2.07	21	6	ND	1	47	.2	6	3	99	.02	.372	8	42	.03	357	.01	6	.45	.01	.15	1	4481
DS2 S-199	9	11	17	19	2.4	3	1	22	1.02	9	7	ND	1	13	.2	8	2	49	.01	.045	11	9	.03	174	.01	2	.25	.01	.07	1	2978
DS2 S-200	14	41	56	75	6.2	12	7	62	8.78	190	5	ND	8	162	.2	20	2	71	.02	.784	8	28	.03	58	.01	7	.57	.01	.62	1	5955
DS2 S-201	7	48	33	128	2.1	18	6	131	4.25	42	5	ND	2	113	.2	8	2	65	.03	.129	13	21	.03	417	.02	8	.58	.01	.19	1	3554
DS2 S-202	4	43	18	238	2.6	36	10	1424	3.71	27	5	ND	1	37	5.2	4	2	67	.03	.093	9	23	.06	236	.01	2	.95	.01	.07	1	1728
DS2 S-203	5	22	21	68	1.0	12	4	141	2.39	25	5	ND	1	37	.2	4	2	58	.03	.048	11	12	.04	225	.04	2	.41	.01	.09	1	1933
DS2 S-204	2	25	23	126	1.1	37	11	344	4.28	14	5	ND	2	12	.3	2	2	30	.03	.105	3	32	.23	363	.01	4	1.34	.01	.05	1	8370
DS2 S-205	4	26	16	104	.5	32	11	186	3.44	17	5	ND	1	56	.2	2	2	55	.11	.055	10	27	.30	185	.02	2	1.27	.01	.07	1	2840
DS2 S-206	2	26	17	83	.3	20	10	320	3.02	12	5	ND	1	16	.2	2	2	40	.07	.057	8	25	.22	142	.02	3	.86	.01	.06	1	2027
DS2 S-207	2	36	17	119	.2	24	14	724	4.38	16	5	ND	1	14	.2	2	2	43	.05	.219	8	39	.27	284	.01	5	1.50	.01	.08	1	2254
DS2 S-208	3	39	16	109	1.0	27	12	410	3.79	18	5	ND	1	17	.7	2	2	41	.06	.085	9	33	.36	145	.02	5	1.42	.01	.06	1	2285
DS2 S-209	3	73	25	140	.8	41	11	385	4.51	22	5	ND	1	83	.2	2	2	37	.02	.118	4	37	.28	184	.01	3	1.33	.01	.05	1	3364
RE DS2 S-206	2	27	16	85	.3	22	9	317	3.02	15	7	ND	1	18	.2	2	2	40	.07	.061	9	26	.22	142	.02	3	.87	.01	.06	1	1898
DS2 S-210	2	45	20	126	.6	29	11	537	4.17	16	5	ND	1	77	.2	2	2	39	.14	.176	5	33	.21	314	.01	2	.98	.01	.08	1	3545
DS2 S-211	2	33	14	111	.2	25	9	335	3.21	16	5	ND	1	55	.2	2	2	37	.11	.084	8	25	.32	229	.01	4	.93	.01	.08	1	2413
DS2 S-212	2	48	23	130	.5	40	17	550	3.58	20	7	ND	1	31	.2	2	2	33	.08	.068	8	31	.45	221	.02	5	1.32	.01	.07	1	3293
DS2 S-213	5	95	24	267	1.0	162	59	2664	3.91	20	5	ND	2	33	.3	2	2	20	.02	.074	3	32	.19	173	.01	3	1.41	.01	.10	1	5322
DS2 S-214	4	46	28	183	.6	65	20	275	4.84	15	5	ND	2	13	.4	2	2	24	.04	.063	2	34	.26	110	.01	4	1.35	.01	.04	1	5299
DS2 S-215	9	36	33	203	1.2	68	16	158	4.02	16	8	ND	1	25	.7	2	2	32	.07	.076	3	34	.14	304	.01	3	1.13	.01	.05	1	5700
DS2 S-216	3	43	29	170	.5	59	16	188	5.02	18	5	ND	2	21	.3	2	2	26	.06	.068	3	36	.30	291	.01	2	1.53	.01	.05	1	5569
DS2 S-217	2	56	19	155	1.7	66	12	213	3.76	15	5	ND	3	52	.2	2	2	19	.48	.092	4	32	.48	294	.01	3	1.25	.01	.05	1	8171
DS2 S-218	6	60	10	79	2.4	16	5	31	3.41	28	7	ND	1	12	.2	2	2	55	.01	.055	5	29	.02	223	.01	4	.37	.01	.04	1	7284
DS2 S-219	4	51	35	95	.5	19	7	126	5.95	35	5	ND	1	79	.2	2	2	47	.01	.107	5	16	.03	299	.01	5	.41	.01	.05	1	7633
DS2 S-220	3	56	17	68	.4	12	5	54	3.32	26	5	ND	1	18	.2	2	2	59	.01	.044	8	14	.03	219	.01	4	.69	.01	.05	1	5849
DS2 S-221	3	65	27	90	.3	17	7	117	4.87	25	6	ND	1	27	.2	2	2	47	.03	.071	7	22	.09	193	.02	5	.89	.01	.07	1	5175
STANDARD C/CB-1200	19	60	41	133	7.6	70	32	1062	3.97	42	19	7	39	53	19.2	15	21	58	.49	.091	39	59	.89	178	.09	33	1.91	.07	.15	11	2185

ROG

Sample type: PULP. Samples beginning 'RE' are duplicate samples.



ROG

STRIKE

SAMPLE#	Mo	Cu	Pb	Zn	Ag	Ni	Co	Mn	Fe	As	U	Au	Th	Sr	Cd	Sb	Bi	V	Ca	P	La	Cr	Mg	Ba	Tl	B	Al	Na	K	W	Ba*
	ppm	ppm	ppm	ppm	ppm	ppm	ppm	ppm	%	ppm	ppm	ppm	ppm	ppm	ppm	ppm	ppm	ppm	%	%	ppm	ppm	%	ppm	%	ppm	%	%	%	ppm	ppm
DS2 S-222	2	22	17	120	.1	15	4	280	2.76	16	5	ND	1	20	.5	2	2	53	.11	.065	12	17	.10	237	.03	6	.81	.01	.09	1	2440
DS2 S-223	2	67	17	125	.1	29	6	396	2.73	40	5	ND	1	18	.2	2	2	46	.03	.086	10	15	.07	231	.02	3	.95	.01	.08	1	3554
DS2 S-224	4	53	16	92	.1	22	4	72	2.72	20	5	ND	2	12	.2	2	2	46	.02	.033	10	11	.03	110	.02	4	.48	.01	.04	1	3167
DS2 S-225	4	40	25	115	.4	25	5	198	6.15	29	5	ND	3	18	.6	2	3	65	.04	.069	10	29	.21	163	.04	4	1.52	.01	.08	1	2757
DS2 S-226	2	23	11	84	.1	14	4	106	2.15	18	5	ND	1	11	.2	2	2	41	.03	.034	11	11	.04	209	.02	4	.59	.01	.04	1	2362
DS2 S-227	3	18	17	70	.6	13	4	417	2.84	15	5	ND	1	14	.2	2	3	59	.04	.061	12	17	.12	149	.03	4	.90	.01	.06	1	1965
DS2 S-228	10	58	16	557	1.0	138	10	1533	2.55	19	5	ND	1	155	6.4	4	2	41	.63	.140	7	17	.18	711	.01	4	.97	.02	.06	1	3991
DS2 S-229	33	20	40	70	1.0	13	3	90	2.48	46	5	ND	1	87	.2	12	3	74	.04	.070	9	14	.08	413	.02	5	.45	.01	.10	1	2653
DS2 S-230	8	10	12	36	1.1	10	1	23	.88	8	5	ND	1	23	.2	2	2	31	.03	.060	7	7	.03	374	.01	4	.37	.01	.04	1	1770
GS2 S-095	10	12	16	50	1.4	6	1	20	.91	11	5	ND	1	18	.2	2	2	34	.01	.033	18	7	.01	107	.01	3	.15	.01	.04	1	1634
GS2 S-096	9	14	10	61	1.4	9	1	26	.77	10	5	ND	1	7	.2	4	2	39	.02	.022	22	14	.01	106	.01	4	.19	.01	.03	1	1731
GS2 S-097	21	85	10	92	8.6	19	2	49	2.28	47	5	ND	4	92	3.8	10	2	109	.17	.445	17	44	.06	555	.01	5	.64	.01	.16	1	3085
GS2 S-098	14	33	12	96	7.9	18	2	71	2.61	48	6	ND	1	62	.8	9	2	69	.13	.391	17	29	.07	293	.01	6	.66	.01	.12	1	2479
GS2 S-099	24	52	15	120	11.0	22	4	157	3.06	53	5	ND	2	120	1.3	11	2	132	.22	.522	20	36	.13	527	.02	4	1.05	.01	.14	1	3143
GS2 S-100	35	694	20	1477	6.5	255	14	1404	9.30	189	55	ND	6	323	26.6	38	2	349	.66	.854	16	52	.06	651	.01	3	1.16	.01	.12	1	3988
GS2 S-101	20	66	15	268	3.3	53	4	155	3.51	72	5	ND	1	83	1.0	14	2	110	.14	.221	13	23	.10	203	.01	3	.65	.01	.06	1	2218
GS2 S-102	9	38	10	24	4.1	3	1	3	.56	19	5	ND	3	18	.4	5	2	17	.01	.150	30	7	.01	201	.01	5	.09	.01	.04	1	2726
GS2 S-103	109	98	28	97	16.4	21	1	42	3.01	105	9	ND	4	184	4.1	69	2	425	.27	.381	35	64	.03	221	.01	7	.38	.01	.30	2	4299
GS2 S-104	32	78	17	254	9.8	54	4	142	3.04	87	5	ND	1	143	5.3	21	3	149	.32	.441	19	37	.07	482	.01	3	.77	.01	.09	1	2561
GS2 S-105	35	155	14	211	9.2	44	3	93	3.59	85	7	ND	1	133	6.6	25	2	196	.20	.598	19	46	.07	853	.01	6	1.02	.01	.12	1	3232
GS2 S-106	35	126	17	492	7.3	106	5	197	2.37	67	5	ND	1	110	7.4	17	2	155	.34	.233	13	30	.05	518	.01	5	.48	.01	.10	1	3053
GS2 S-107	39	235	17	1149	7.2	207	9	385	2.96	72	6	ND	1	171	15.8	19	2	173	.57	.285	15	35	.04	575	.01	6	.45	.01	.13	1	4381
GS2 S-108	28	54	22	286	8.0	51	4	159	2.69	49	5	ND	1	126	4.8	22	2	141	.14	.211	16	29	.06	441	.01	4	.67	.01	.12	1	2835
GS2 S-109	17	33	14	216	3.2	38	3	86	2.53	38	5	ND	2	87	2.2	8	2	124	.09	.121	14	24	.10	344	.01	3	.82	.01	.08	1	2349
GS2 S-110	16	32	16	218	6.7	38	3	95	3.10	52	5	ND	2	123	1.4	10	2	153	.10	.180	17	29	.12	366	.01	4	.99	.01	.09	1	2513
GS2 S-111	20	51	15	335	4.7	68	4	128	3.17	49	5	ND	2	115	1.0	12	2	127	.18	.181	16	30	.16	319	.02	5	.85	.01	.08	1	2741
GS2 S-112	18	26	19	180	11.4	28	3	157	3.80	49	5	ND	2	77	1.9	9	2	140	.08	.242	17	25	.09	264	.02	5	.78	.01	.09	1	2542
GS2 S-113	12	25	18	134	3.4	25	5	157	3.53	38	5	ND	3	45	.4	7	2	69	.11	.149	15	25	.22	231	.03	5	1.14	.01	.08	1	2050
GS2 S-114	15	27	21	153	2.9	28	3	109	3.13	41	5	ND	1	53	.4	9	2	87	.12	.193	16	27	.16	245	.03	5	.82	.01	.09	1	2042
GS2 S-115	13	28	17	158	2.1	30	4	136	3.07	43	5	ND	1	47	.4	7	2	75	.09	.155	15	23	.16	182	.03	3	.75	.01	.09	1	1926
GS2 S-116	10	31	16	73	7.6	17	1	77	1.35	14	5	ND	1	43	.8	4	2	56	.16	.173	9	25	.03	439	.01	6	.35	.01	.11	1	3007
RE GS2 S-113	12	27	19	137	3.4	27	4	163	3.59	39	5	ND	3	49	.8	5	2	70	.12	.151	16	26	.23	241	.03	5	1.17	.01	.09	1	2072
GS2 S-117	6	61	12	117	3.2	26	2	43	1.32	13	5	ND	1	30	3.0	3	2	43	.13	.180	6	21	.05	753	.01	3	.49	.02	.07	1	1667
GS2 S-118	47	117	21	598	11.6	131	4	136	2.44	61	5	ND	1	295	7.8	26	2	211	.81	.168	13	41	.08	557	.01	7	.45	.02	.14	1	3609
GS2 S-119	53	413	16	1825	16.3	274	4	136	2.10	45	9	ND	1	240	47.6	28	2	215	1.61	.239	12	46	.10	1051	.01	6	.50	.02	.11	1	3830
GS2 S-120	41	289	24	792	21.9	148	3	178	4.10	60	8	ND	1	165	16.8	23	2	202	.62	.675	19	71	.04	1023	.01	7	.75	.01	.18	1	5671
GS2 S-121	45	223	16	1169	9.5	240	8	202	3.38	81	6	ND	3	170	10.5	42	2	187	.58	.335	28	45	.21	774	.02	4	.82	.01	.11	1	3204
STANDARD C/CB-1200	20	58	40	131	7.3	73	31	1044	3.92	43	18	7	37	52	18.7	16	21	56	.48	.084	38	57	.88	174	.09	35	1.85	.08	.15	11	2213

Sample type: PULP. Samples beginning 'RE' are duplicate samples.

SAMPLE#	Mo	Cu	Pb	Zn	Ag	Ni	Co	Mn	Fe	As	U	Au	Th	Sr	Cd	Sb	Bi	V	Ca	P	La	Cr	Mg	Ba	Ti	B	Al	Na	K	W	Ba*
	ppm	ppm	ppm	ppm	ppm	ppm	ppm	ppm	%	ppm	ppm	ppm	ppm	ppm	ppm	ppm	ppm	ppm	%	%	ppm	ppm	%	ppm	%	%	%	%	%	ppm	ppm
GS2 S-157	6	32	20	103	1.0	19	8	232	3.32	20	5	ND	1	39	.5	2	2	61	.05	.115	14	29	.23	264	.02	5	1.52	.01	.09	1	2034
GS2 S-158	6	74	19	186	1.7	26	8	98	3.39	53	5	ND	1	32	.2	2	2	71	.01	.063	23	18	.04	179	.02	2	.79	.01	.06	1	2608
GS2 S-159	7	85	28	208	1.4	35	9	96	3.66	20	5	ND	2	111	.2	5	2	24	.01	.059	26	7	.02	214	.01	4	.46	.01	.06	1	3584
GS2 S-160	5	54	16	161	.2	21	6	96	2.50	16	5	ND	1	16	.2	2	2	49	.02	.049	27	11	.02	100	.01	3	.38	.01	.05	1	2252
GS2 S-161	4	32	18	105	1.1	20	8	169	2.87	25	5	ND	1	11	.2	2	3	54	.02	.036	17	13	.05	118	.03	5	.71	.01	.06	1	1707
GS2 S-162	4	43	18	144	1.1	24	10	221	3.70	37	5	ND	3	15	.3	2	2	42	.02	.038	14	15	.10	114	.02	2	.86	.01	.07	1	1866
GS2 S-163	4	51	21	147	2.4	32	13	355	3.66	30	5	ND	3	16	.2	2	2	43	.04	.048	14	24	.27	150	.03	6	1.75	.01	.09	1	1890
GS2 S-164	3	55	18	155	1.3	31	14	392	3.64	23	5	ND	1	15	.2	2	2	30	.03	.062	16	17	.14	130	.01	3	.97	.01	.08	1	2179
GS2 S-165	4	54	17	139	.2	31	14	436	3.57	29	5	ND	1	18	.2	2	2	25	.03	.047	19	15	.17	128	.02	3	.77	.01	.06	1	2240
GS2 S-166	4	46	20	119	.1	25	10	247	3.60	22	5	ND	1	16	.2	2	2	49	.03	.056	22	17	.09	130	.02	3	.86	.01	.07	1	1848
GS2 S-167	4	48	19	113	.1	29	12	488	4.58	21	5	ND	1	17	.2	2	2	55	.04	.077	11	30	.20	170	.02	2	1.33	.01	.08	1	2929
GS2 S-168	3	40	25	142	.2	31	13	536	4.92	25	5	ND	1	18	.2	2	4	65	.04	.066	12	32	.27	181	.05	5	1.42	.01	.10	1	2473
GS2 S-169	2	128	24	320	.3	68	40	3204	5.41	24	5	ND	1	21	2.2	2	2	50	.05	.076	8	27	.16	503	.02	3	1.43	.01	.08	1	4151
GS2 S-170	3	136	24	202	2.8	68	18	275	6.47	31	5	ND	3	54	.2	2	2	33	.02	.083	5	24	.20	614	.01	5	1.55	.01	.05	1	6601
GS2 S-171	2	41	19	118	.5	23	12	1064	4.00	13	5	ND	1	14	.7	2	4	54	.03	.071	9	32	.18	262	.02	2	1.35	.01	.07	1	2450
GS2 S-172	3	59	27	147	.8	36	13	460	4.53	22	5	ND	2	24	.2	2	2	47	.05	.062	9	31	.39	189	.03	6	1.73	.01	.08	1	3347
GS2 S-173	2	42	18	128	.1	22	11	512	4.13	19	5	ND	1	18	.2	2	3	43	.05	.095	10	25	.20	161	.04	5	1.01	.01	.09	1	3041
GS2 S-174	1	72	24	100	.3	21	7	93	2.23	16	5	ND	1	18	.2	2	2	30	.02	.055	3	9	.02	142	.01	4	.45	.01	.07	1	4376
GS2 S-175	24	24	25	114	1.7	8	4	85	3.34	36	5	ND	1	54	.2	23	2	87	.01	.066	16	10	.03	492	.01	4	.63	.01	.08	1	6230
RE GS2 S-171	2	35	19	109	.2	18	11	1038	3.65	11	5	ND	1	13	.4	2	2	52	.03	.065	9	30	.16	236	.02	2	1.24	.01	.06	1	2504
GS2 S-176	19	26	20	346	2.7	24	8	274	4.43	52	5	ND	1	83	.2	19	4	63	.01	.083	6	7	.02	387	.01	2	.28	.01	.09	1	5121
GS2 S-177	6	44	21	247	.4	23	8	226	4.08	26	5	ND	1	32	.2	3	2	41	.02	.065	5	12	.06	317	.01	3	.65	.01	.06	1	4788
GS2 S-178	5	49	20	164	.7	23	8	93	3.83	30	5	ND	1	30	.2	3	3	41	.02	.074	5	13	.05	355	.01	2	.58	.01	.06	1	4669
GS2 S-179	5	35	16	159	.5	35	11	210	3.09	18	5	ND	1	43	.7	2	2	35	.18	.063	11	20	.32	406	.02	4	.90	.01	.07	1	2740
GS2 S-180	22	20	25	48	1.6	12	5	97	2.28	25	5	ND	1	39	.3	11	2	93	.04	.050	13	16	.14	337	.02	4	.60	.01	.12	1	4206
GS2 S-181	17	18	21	60	9.7	10	6	91	5.12	62	5	ND	1	62	.2	12	2	87	.03	.136	7	20	.07	110	.02	2	.53	.01	.32	1	3549
GS2 S-182	8	7	22	26	9.5	1	2	18	1.28	12	5	ND	2	14	.2	4	2	57	.01	.088	14	25	.02	168	.01	4	.48	.01	.07	1	2199
GS2 S-183	13	7	13	12	9.1	1	1	11	1.43	8	5	ND	1	10	.2	6	4	67	.01	.026	8	13	.02	240	.01	2	.36	.01	.08	1	2474
GS2 S-184	33	26	34	109	7.3	19	4	56	2.13	23	5	ND	1	86	.7	7	2	167	.03	.112	18	29	.06	321	.03	2	.46	.01	.15	1	2236
GS2 S-185	19	23	26	48	11.7	7	2	18	1.70	13	5	ND	1	65	.6	6	2	141	.04	.232	11	44	.04	464	.01	3	.44	.01	.16	1	3434
GS2 S-186	10	9	15	12	13.5	3	2	8	2.63	12	5	ND	1	18	.2	9	2	87	.01	.116	9	18	.02	478	.01	6	.35	.01	.20	1	2672
GS2 S-187	51	26	35	64	17.2	9	4	45	2.54	33	8	ND	1	80	1.4	25	2	535	.08	.376	17	46	.06	455	.01	7	.67	.01	.18	1	2761
GS2 S-188	122	40	40	192	6.5	30	4	63	2.90	44	5	ND	1	181	2.5	45	3	932	.05	.166	18	48	.09	592	.01	3	.85	.01	.21	1	2836
GS2 S-189	22	19	25	113	2.7	20	2	31	.91	9	5	ND	1	18	.7	5	2	220	.01	.041	19	40	.05	223	.01	5	.41	.01	.08	1	2299
GS2 S-190	10	85	19	345	2.0	111	8	99	5.50	18	5	ND	1	18	1.8	3	2	89	.01	.070	17	24	.05	113	.02	2	.72	.01	.06	1	1861
GS2 S-191	18	171	30	486	16.3	94	12	257	7.45	20	5	ND	5	39	.9	2	2	69	.01	.080	13	39	.10	244	.01	3	1.56	.01	.12	1	3159
GS2 S-192	19	19	30	105	3.5	14	3	31	2.13	15	5	ND	1	41	.2	2	4	79	.01	.065	19	18	.04	250	.01	4	.52	.01	.12	1	2134
STANDARD C/CB-1200	20	60	41	133	7.5	76	32	1069	4.00	43	21	8	40	53	18.5	15	21	59	.49	.091	40	59	.89	179	.09	36	1.91	.07	.15	11	2281

STRIKE

ROG

Sample type: PULP. Samples beginning 'RE' are duplicate samples.



ACME ANALYTICAL



ACME ANALYTICAL

SAMPLE#	Mo	Cu	Pb	Zn	Ag	Ni	Co	Mn	Fe	As	U	Au	Th	Sr	Cd	Sb	Bi	V	Ca	P	La	Cr	Mg	Ba	Ti	B	Al	Na	K	W	Ba*
	ppm	ppm	ppm	ppm	ppm	ppm	ppm	ppm	%	ppm	ppm	ppm	ppm	ppm	ppm	ppm	ppm	ppm	%	%	ppm	ppm	%	ppm	%	ppm	%	%	%	ppm	ppm
GS2 S-193	46	37	33	139	18.5	24	3	67	3.56	54	16	ND	4	233	.4	7	2	194	.04	.368	15	39	.07	305	.01	6	.88	.01	.19	1	3118
GS2 S-194	19	26	17	120	2.8	27	2	23	1.00	11	5	ND	1	57	.4	4	2	109	.03	.037	17	17	.02	190	.01	4	.29	.01	.07	1	1622
GS2 S-195	9	45	10	199	6.2	34	5	150	3.26	37	5	ND	4	74	2.0	2	2	102	.06	.137	10	29	.11	261	.01	2	1.35	.01	.08	1	1989
GS2 S-196	5	44	18	95	1.1	25	7	257	2.88	18	5	ND	3	26	.2	2	2	46	.03	.052	10	22	.17	257	.01	3	1.17	.01	.07	1	1997
GS2 S-197	4	43	13	106	1.6	25	7	246	2.41	32	5	ND	5	54	.3	5	2	46	.15	.058	11	20	.15	511	.01	5	.92	.01	.07	3	2394
GS2 S-198	6	30	22	116	1.3	25	7	294	2.42	15	6	ND	4	35	.3	3	2	48	.13	.066	9	21	.18	314	.01	4	1.01	.01	.09	1	2661
GS2 S-199	14	32	10	77	3.2	16	3	70	2.20	21	5	ND	1	59	.2	3	2	82	.04	.140	9	20	.06	241	.01	3	.54	.01	.09	1	1840
GS2 S-200	10	38	9	137	2.6	29	5	106	2.10	16	5	ND	2	54	.3	6	2	87	.12	.094	14	23	.14	217	.03	4	.82	.01	.08	1	1812
GS2 S-201	11	28	16	64	5.0	11	1	19	1.11	13	11	ND	2	27	.5	4	2	102	.01	.063	8	20	.02	177	.01	4	.39	.01	.07	1	1566
GS2 S-202	18	29	16	93	3.3	17	1	23	1.20	21	10	ND	1	42	.8	7	2	168	.01	.086	8	22	.02	212	.01	3	.34	.01	.07	1	1681
GS2 S-203	18	23	13	67	6.8	12	2	26	1.16	14	5	ND	4	52	.5	10	2	165	.01	.088	8	26	.02	288	.01	4	.41	.01	.08	2	2367
GS2 S-204	3	37	19	156	.5	34	8	186	3.25	13	5	ND	2	31	.5	2	2	33	.13	.070	11	20	.19	253	.01	2	1.02	.01	.05	1	3124
GS2 S-205	3	47	22	204	.1	32	10	281	3.76	21	14	ND	1	25	.3	2	2	29	.03	.052	5	14	.12	314	.01	2	.86	.01	.05	1	4523
GS2 S-206	7	9	8	34	1.8	6	2	39	.87	4	5	ND	2	15	.2	6	2	28	.02	.038	8	7	.02	233	.01	3	.43	.01	.02	1	2050
RE RH2 S-116	3	49	28	241	.8	56	20	353	4.98	24	8	ND	2	14	.2	2	2	15	.01	.051	5	9	.04	93	.01	3	.62	.01	.05	1	5097
GS2 S-207	8	18	25	51	1.4	10	3	75	2.61	31	5	ND	1	44	.2	4	2	58	.02	.060	12	15	.05	438	.02	2	.55	.01	.14	1	4234
GS2 S-208	6	13	33	36	2.0	4	1	29	2.29	26	5	ND	2	50	.2	8	2	33	.01	.062	22	10	.02	168	.01	4	.37	.01	.18	1	5547
RH2 S-114	82	510	25	2576	14.8	454	51	2189	7.97	166	70	ND	9	790	25.6	40	2	250	.44	.782	17	91	.03	53	.01	6	1.06	.01	.19	1	5720
RH2 S-115	6	33	23	137	1.1	27	9	237	3.24	22	5	ND	3	37	.7	6	2	44	.04	.064	12	20	.16	165	.02	4	1.16	.01	.07	1	2838
RH2 S-116	3	52	26	260	.9	60	22	375	5.29	23	5	ND	3	15	.3	5	2	16	.01	.055	5	11	.04	93	.01	4	.64	.01	.05	1	5283
RH2 S-117	1	43	24	180	.1	41	17	515	3.10	15	19	ND	1	21	1.1	2	3	14	.02	.059	4	13	.15	120	.01	2	.94	.01	.06	1	4988
RH2 S-118	1	44	28	254	.8	40	16	285	3.72	43	5	ND	4	80	.4	4	2	17	.01	.048	6	10	.06	217	.01	4	.67	.01	.07	1	5268
RH2 S-119	2	41	22	212	.1	39	18	707	4.46	23	6	ND	1	21	1.3	2	2	29	.03	.095	7	21	.11	163	.01	3	1.18	.01	.06	1	3768
RH2 S-120	2	35	19	138	.1	24	7	275	4.66	18	12	ND	1	18	.2	2	2	37	.04	.050	7	22	.15	117	.02	2	1.27	.01	.06	1	3086
RH2 S-121	2	51	15	184	.6	31	21	892	4.09	29	5	ND	2	19	.2	2	2	35	.03	.086	7	18	.11	126	.01	4	1.02	.01	.06	1	3365
RH2 S-122	2	35	17	112	.1	23	8	337	3.77	14	5	ND	1	15	.4	2	2	39	.04	.051	7	21	.15	133	.03	2	1.09	.01	.06	1	2968
RH2 S-123	2	59	13	114	.5	28	12	342	3.40	18	5	ND	2	20	.4	2	2	33	.03	.053	8	19	.12	170	.01	2	1.10	.01	.05	1	3899
RH2 S-124	1	68	7	117	.4	28	10	351	3.30	13	5	ND	3	18	.6	3	2	31	.03	.039	8	15	.09	115	.02	3	.81	.01	.03	2	3358
RH2 S-125	4	66	26	174	.7	60	16	591	3.31	22	9	ND	1	27	.2	2	2	43	.08	.098	10	27	.20	254	.02	2	1.74	.01	.09	1	4221
RH2 S-126	4	36	11	84	.5	20	6	317	2.56	13	5	ND	1	23	.2	2	2	46	.03	.051	9	18	.11	152	.01	3	.91	.01	.05	1	3731
RH2 S-127	11	55	34	137	5.2	22	5	554	5.98	113	27	ND	4	478	1.0	15	2	256	.18	1.357	7	37	.19	641	.01	4	1.92	.01	.10	1	4893
RH2 S-128	18	38	27	153	1.4	49	5	48	2.94	146	32	ND	5	1718	.8	12	2	202	.09	.900	23	35	.10	1627	.01	3	2.42	.01	.08	1	4131
RH2 S-129	14	51	31	111	2.1	29	6	143	3.13	33	10	ND	1	81	.2	8	2	100	.08	.094	9	23	.15	560	.01	3	1.17	.01	.09	1	5558
RH2 S-130	2	29	18	114	1.3	25	6	119	4.55	13	5	ND	3	16	.2	4	2	42	.02	.055	9	24	.16	94	.01	4	1.11	.01	.05	2	3130
RH2 S-131	2	46	26	289	.2	55	12	162	6.56	18	5	ND	3	14	.2	2	2	48	.01	.074	7	25	.21	98	.01	4	1.58	.01	.05	1	3693
RH2 S-132	3	31	17	158	.3	25	8	320	4.37	16	5	ND	2	21	.7	2	2	57	.07	.063	12	27	.24	271	.03	2	1.42	.01	.08	1	2604
RH2 S-133	6	42	19	262	.2	45	19	287	4.10	21	5	ND	1	22	.7	3	2	28	.02	.052	11	13	.09	229	.01	2	.74	.01	.06	1	3853
STANDARD C/CB-1200	19	62	37	132	7.6	73	31	1038	3.95	43	18	7	39	53	17.2	15	19	59	.48	.089	40	59	.88	178	.09	33	1.93	.07	.15	11	2211

ROG

STRICK

ROG
~~STRICK~~

Sample type: PULP. Samples beginning 'RE' are duplicate samples.

SAMPLE#	Mo	Cu	Pb	Zn	Ag	Ni	Co	Mn	Fe	As	U	Au	Th	Sr	Cd	Sb	Bi	V	Ca	P	La	Cr	Mg	Ba	Ti	B	Al	Na	K	W	Ba*
	ppm	ppm	ppm	ppm	ppm	ppm	ppm	ppm	%	ppm	ppm	ppm	ppm	ppm	ppm	ppm	ppm	ppm	%	%	ppm	ppm	%	ppm	%	ppm	%	%	%	ppm	ppm
RH2 S-134	7	40	21	129	.4	24	11	355	2.70	16	5	ND	1	24	1.3	2	2	34	.04	.049	10	14	.07	524	.01	3	.74	.01	.07	1	4427
RH2 S-135	7	49	22	210	.2	47	19	676	3.80	23	5	ND	1	70	1.6	2	2	46	.18	.085	7	25	.41	457	.01	2	1.27	.01	.07	1	4502
RH2 S-136	16	52	25	701	2.0	138	15	647	3.11	28	5	ND	1	94	3.9	3	2	80	.32	.203	10	29	.23	878	.01	3	1.85	.01	.11	1	4522
RH2 S-137	7	27	17	88	.2	20	9	393	3.88	18	5	ND	3	24	.4	2	2	50	.16	.122	14	33	.41	147	.04	4	1.67	.01	.07	1	1541
RH2 S-138	31	20	26	27	.7	5	1	29	2.52	38	6	ND	5	48	.2	5	2	27	.01	.046	9	7	.02	83	.01	4	.24	.01	.25	1	2661
RH2 S-139	10	10	20	40	1.6	5	1	41	1.23	13	5	ND	1	26	.2	3	2	37	.01	.042	16	8	.02	212	.01	2	.31	.01	.09	1	4678
RH2 S-140	12	10	25	31	2.8	5	2	61	1.48	21	5	ND	1	28	.2	6	2	51	.02	.047	18	11	.02	196	.01	3	.28	.01	.08	1	3358
RH2 S-141	31	36	22	31	10.9	6	3	78	1.62	16	5	ND	4	102	.3	12	2	93	.02	.134	22	25	.04	377	.01	5	.48	.01	.09	1	4295
RH2 S-142	45	33	31	19	14.8	4	1	8	3.85	31	5	ND	2	104	.6	13	2	139	.01	.309	26	51	.02	34	.01	4	.31	.01	.41	1	3504
RH2 S-143	11	26	12	22	10.2	2	1	15	2.61	25	5	ND	3	50	.4	7	2	92	.01	.073	11	44	.02	299	.01	2	.52	.01	.11	1	3487
RH2 S-144	6	15	22	38	3.2	5	2	70	2.77	11	5	ND	2	22	.4	3	2	78	.01	.040	11	12	.03	295	.01	3	.37	.01	.15	1	3667
RH2 S-145	7	15	10	49	3.9	7	2	36	2.27	10	5	ND	1	50	.2	2	2	61	.01	.047	8	11	.03	266	.01	3	.23	.01	.15	1	2649
RH2 S-146	5	12	6	11	4.5	3	1	5	.80	10	6	ND	1	18	.2	5	2	49	.01	.160	9	23	.01	238	.01	3	.19	.01	.08	1	1775
RE RH2 S-151	23	39	15	168	4.7	33	2	47	1.81	24	5	ND	1	64	2.6	2	2	147	.04	.103	12	29	.03	335	.01	3	.46	.01	.11	1	2309
RH2 S-147	10	11	13	27	5.7	4	1	10	1.90	22	6	ND	1	40	.2	5	2	51	.01	.225	7	16	.01	238	.01	3	.19	.01	.24	1	2167
RH2 S-148	7	18	10	23	4.6	4	1	13	1.06	9	5	ND	1	21	.3	3	2	55	.02	.170	10	22	.01	191	.01	4	.23	.01	.08	1	1608
RH2 S-149	24	55	10	127	4.9	26	2	81	1.62	24	5	ND	1	65	1.1	4	2	124	.04	.123	12	24	.04	306	.01	4	.40	.01	.09	1	2425
RH2 S-150	11	50	8	68	6.5	16	2	73	3.77	30	9	ND	1	68	.9	3	2	174	.13	.675	11	66	.05	400	.01	6	.64	.01	.14	1	2579
RH2 S-151	21	38	15	157	4.4	31	2	45	1.71	23	5	ND	1	59	1.9	2	2	143	.04	.096	11	28	.03	324	.01	3	.46	.01	.10	1	2400
RH2 S-152	30	79	21	141	17.4	36	3	58	3.25	52	8	ND	1	99	1.3	6	2	149	.08	.333	13	52	.05	356	.01	2	.69	.01	.16	1	2876
RH2 S-154	21	104	24	600	.8	88	10	160	4.39	38	5	ND	3	51	.9	5	2	94	.02	.101	20	20	.03	160	.01	5	.45	.01	.08	1	1891
RH2 S-155	12	26	12	107	5.4	19	3	61	2.31	31	5	ND	1	91	1.1	3	2	118	.08	.199	11	22	.06	316	.01	3	.63	.01	.08	1	1831
RH2 S-156	10	45	10	112	1.9	24	4	171	2.07	25	5	ND	1	87	.8	2	2	69	.17	.096	10	19	.11	336	.01	3	.64	.01	.07	1	2064
RH2 S-157	20	112	4	532	2.3	114	7	233	2.36	27	5	ND	1	83	3.5	5	2	111	.47	.072	18	20	.12	562	.01	3	.86	.01	.07	1	2690
RH2 S-158	9	30	21	119	3.3	22	4	130	4.38	64	7	ND	2	102	.5	2	2	139	.07	.235	14	32	.15	266	.03	3	1.03	.01	.11	1	2442
RH2 S-159	12	74	18	88	8.4	20	2	10	1.39	18	5	ND	2	83	1.3	4	2	112	.04	.062	18	22	.02	416	.01	4	.37	.01	.13	1	3648
RH2 S-160	22	51	18	228	7.1	45	3	42	1.88	18	7	ND	1	63	2.7	3	2	232	.17	.086	11	60	.07	612	.01	3	1.00	.01	.14	1	2840
RH2 S-161	61	101	12	1035	3.3	103	7	158	3.73	59	5	ND	6	29	2.9	11	2	512	.09	.049	20	27	.09	417	.01	5	1.11	.01	.14	1	1911
RH2 S-162	6	105	13	518	3.5	151	10	303	4.44	22	5	ND	4	43	6.7	4	2	55	.44	.064	8	20	.09	340	.01	5	.76	.01	.07	1	3058
RH2 S-163	12	52	14	232	4.7	45	4	47	1.62	14	5	ND	1	80	3.4	4	2	152	.79	.070	12	37	.15	768	.01	2	.99	.01	.07	1	2287
RH2 S-164	35	151	40	274	.5	36	6	129	5.23	51	7	ND	4	198	1.2	2	2	110	.23	.463	27	25	.06	329	.01	5	1.29	.01	.14	1	2092
RH2 S-165	5	152	27	286	3.6	149	7	679	2.50	14	6	ND	1	173	4.6	2	2	37	1.28	.105	14	16	.14	593	.01	4	1.20	.01	.13	1	4016
RH2 S-166	18	112	17	246	2.1	53	8	290	3.47	32	6	ND	3	119	1.5	2	2	103	.04	.083	14	25	.08	458	.01	4	.96	.01	.11	1	2636
RH2 S-167	11	56	13	218	.7	36	6	227	3.27	28	5	ND	1	47	.5	2	2	86	.04	.140	16	19	.05	180	.01	3	.62	.01	.08	1	2148
RH2 S-168	13	64	16	277	.3	47	6	118	2.71	26	5	ND	1	58	.5	2	2	85	.03	.066	18	12	.03	129	.01	3	.51	.01	.07	1	2361
RH2 S-169	4	35	11	115	.5	24	7	264	3.26	15	5	ND	4	24	.4	2	2	54	.04	.045	13	21	.12	127	.02	3	1.11	.01	.04	1	1799
RH2 S-170	4	361	31	244	.3	41	26	742	4.46	7	5	ND	4	59	.7	2	2	25	.15	.059	3	40	.35	668	.01	4	1.44	.01	.05	1	9763
STANDARD C/CB-1200	19	62	39	133	7.0	70	31	1055	4.01	43	18	7	40	53	17.0	14	19	58	.49	.091	40	58	.91	178	.09	34	1.90	.07	.15	10	2297

ROG

Sample type: PULP. Samples beginning 'RE' are duplicate samples.



ACME ANALYTICAL



ACME ANALYTICAL

SAMPLE#	Mo ppm	Cu ppm	Pb ppm	Zn ppm	Ag ppm	Ni ppm	Co ppm	Mn ppm	Fe %	As ppm	U ppm	Au ppm	Th ppm	Sr ppm	Cd ppm	Sb ppm	Bi ppm	V ppm	Ca %	P %	La ppm	Cr ppm	Mg %	Ba ppm	Ti %	B ppm	Al %	Na %	K %	W ppm	Ba* ppm
RH2 S-171	8	43	30	87	.1	18	6	75	4.92	21	5	ND	4	55	.2	2	2	24	.01	.059	3	27	.28	160	.01	2	1.21	.01	.07	1	6494
RH2 S-172	9	51	36	84	.2	17	8	152	4.61	20	5	ND	4	47	.2	2	2	23	.01	.058	3	29	.27	184	.01	2	1.16	.01	.08	1	3903
RH2 S-173	4	548	10	2806	1.4	293	277	6610	31.04	2	5	ND	2	77	63.2	23	2	12	.32	.079	4	8	.13	161	.01	10	1.04	.01	.04	1	1166
RH2 S-174	3	64	20	324	.9	47	26	630	5.37	44	5	ND	1	23	3.6	5	2	33	.05	.066	8	21	.26	122	.01	2	1.11	.01	.06	1	3240
RH2 S-175	2	40	22	200	.5	40	17	311	4.13	19	5	ND	1	24	1.0	2	2	29	.03	.059	7	22	.36	102	.01	2	1.27	.01	.06	1	3154
RH2 S-176	32	17	55	80	1.1	13	6	80	3.57	53	5	ND	1	94	.2	12	2	62	.02	.071	15	12	.06	299	.01	6	.39	.01	.22	1	3467
RH2 S-177	8	31	24	245	.8	41	13	412	2.97	28	5	ND	1	68	3.0	8	2	63	.28	.123	12	26	.41	467	.02	3	1.19	.01	.10	1	2834
RH2 S-178	8	53	15	199	1.0	43	8	144	2.70	23	5	ND	1	65	2.1	5	2	70	.22	.100	13	23	.32	489	.02	5	1.05	.01	.08	1	3705
RH2 S-179	11	20	33	80	.6	15	8	240	3.40	35	5	ND	1	35	.6	3	5	102	.05	.089	12	23	.14	129	.02	6	.80	.01	.07	1	2095
RH2 S-180	36	37	22	120	1.3	20	7	109	4.55	226	5	ND	2	165	.4	18	4	175	.05	.560	13	23	.13	744	.01	6	.85	.01	.17	1	6097
RH2 S-181	25	116	28	266	1.5	86	5	66	2.15	64	6	ND	1	204	4.1	9	2	96	.27	.392	14	89	.23	1247	.01	7	1.39	.01	.11	1	10304
RH2 S-182	17	17	41	65	.8	28	2	18	1.39	46	5	ND	1	110	.6	8	2	52	.14	.141	13	21	.07	555	.01	5	.48	.01	.06	1	2660
RH2 S-183	28	26	35	37	1.2	8	2	21	1.61	51	5	ND	3	80	.7	7	2	40	.02	.076	10	16	.01	551	.01	2	.18	.01	.15	1	2310
RE RH2 S-179	12	19	30	79	.7	11	8	203	3.40	34	5	ND	2	37	.5	4	2	106	.03	.091	11	22	.11	135	.02	2	.76	.01	.07	1	2120
RH2 S-184	6	10	18	25	2.5	4	3	41	2.61	18	5	ND	1	41	.2	5	2	37	.02	.054	11	11	.03	383	.01	3	.32	.01	.18	1	2260
RH2 S-185	19	6	22	17	4.5	1	2	17	1.03	12	5	ND	1	120	.2	7	2	111	.01	.070	11	21	.02	755	.01	3	.21	.01	.10	1	6689
STANDARD C/CB-1200	20	61	39	133	7.4	70	32	1061	3.96	43	19	7	40	53	19.2	15	21	60	.48	.089	40	58	.88	177	.09	35	1.88	.07	.15	11	2269

ROG.

Sample type: PULP. Samples beginning 'RE' are duplicate samples.



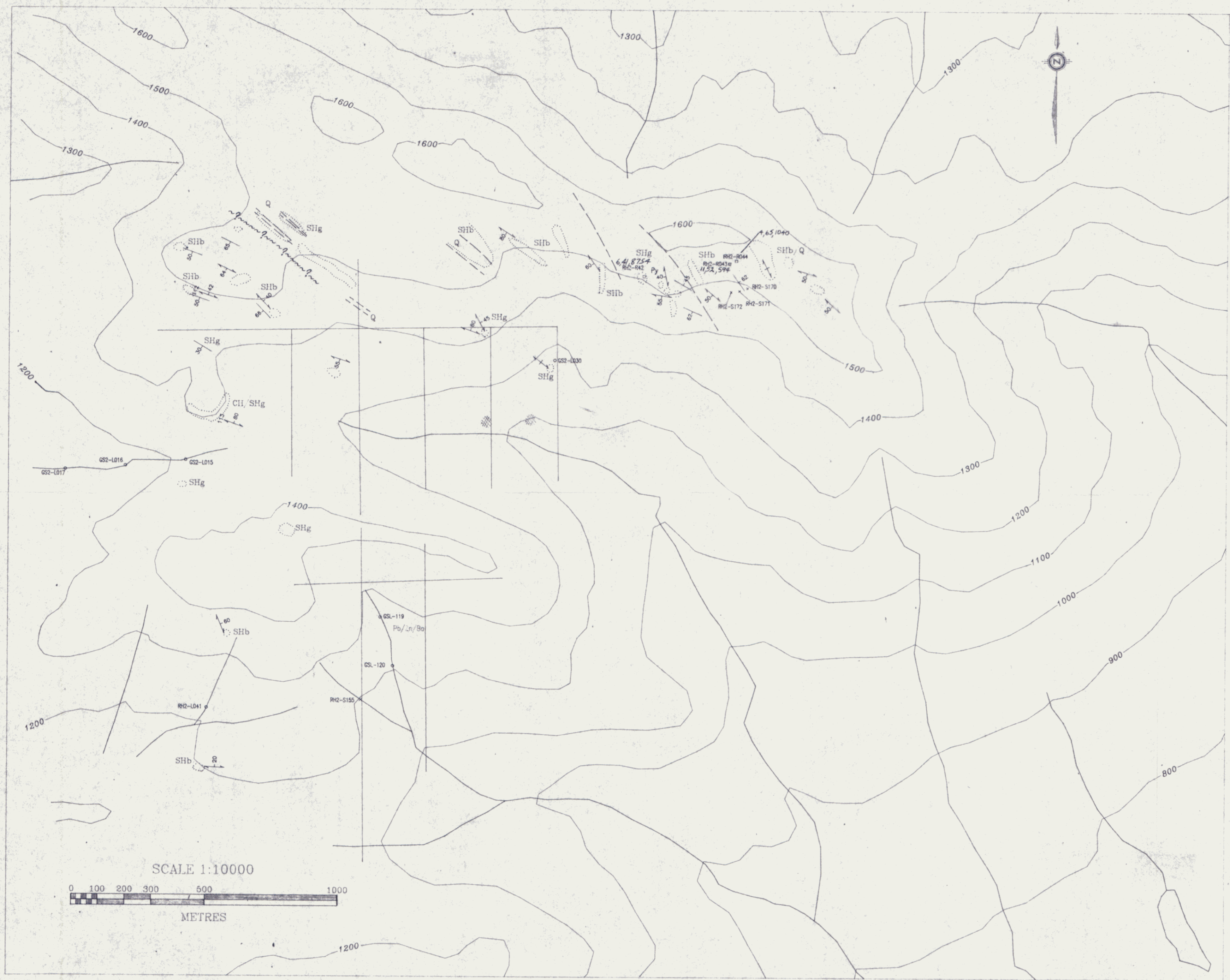
SAMPLE#	Mo ppm	Cu ppm	Pb ppm	Zn ppm	Ag ppm	Ni ppm	Co ppm	Mn ppm	Fe %	As ppm	U ppm	Au ppm	Th ppm	Sr ppm	Cd ppm	Sb ppm	Bi ppm	V ppm	Ca %	P %	La ppm	Cr ppm	Mg %	Ba ppm	Ti %	B ppm	Al %	Na %	K %	W ppm	Ba* ppm
STRIKE DS2 L-24	25	28	15	77	8.6	13	1	47	5.98	59	5	ND	1	54	.2	11	2	105	.04	.599	11	19	.03	227	.01	4	.20	.01	.08	1	2532
DS2 L-25	16	13	32	38	1.7	7	1	45	1.44	21	5	ND	1	47	.2	8	2	51	.04	.071	10	10	.06	349	.01	4	.40	.01	.07	1	2974
ROG DS2 L-26	2	38	16	563	.4	111	37	1228	5.94	19	5	ND	2	47	7.3	4	2	26	.15	.054	7	16	.28	183	.01	3	.80	.01	.05	1	3409
GS2 L-014	25	400	18	6913	4.3	848	17	661	3.58	60	16	ND	1	145	35.6	15	2	111	.77	.349	13	40	.15	338	.01	6	.73	.01	.11	1	3394
RH2 L-020	6	47	23	233	.4	97	19	987	4.38	46	5	ND	1	28	2.2	6	2	33	.14	.064	5	8	.07	1392	.01	4	.38	.01	.05	1	22600
RH2 L-021	42	81	27	106	1.1	36	2	57	1.59	37	5	ND	2	121	1.4	18	2	98	.09	.050	12	9	.06	393	.01	3	.45	.01	.12	1	21701
RH2 L-022	42	478	20	6092	5.4	803	47	1881	2.97	72	16	ND	3	185	57.6	40	2	178	.89	.194	13	34	.17	455	.01	7	1.34	.01	.16	1	13379
RH2 L-023	68	187	10	880	8.2	112	1	106	29.34	155	7	ND	7	57	7.0	15	2	536	.14	1.278	5	164	.04	67	.01	6	.35	.01	.08	3	1631
RH2 L-024	38	1730	10	6293	5.1	831	119	3208	6.35	72	80	ND	4	126	48.4	22	2	139	.49	.253	14	85	.09	194	.01	5	2.51	.01	.10	1	14341
RH2 L-025	10	79	14	438	2.0	63	9	814	3.54	39	5	ND	1	145	2.1	6	2	56	.78	.177	13	23	.32	666	.02	6	.88	.01	.09	1	2949
RH2 L-026	10	65	16	279	1.6	70	12	491	3.68	39	5	ND	1	77	1.2	9	2	52	.20	.126	15	18	.14	505	.01	3	.67	.01	.09	1	3458
RH2 L-027	8	110	24	398	1.5	94	32	1368	4.19	45	5	ND	1	69	2.1	5	2	41	.19	.127	15	16	.13	505	.01	4	1.00	.01	.09	1	3792
RH2 L-028	6	100	25	299	.6	71	18	823	5.28	52	5	ND	2	46	.8	6	2	33	.12	.109	16	16	.14	477	.01	5	.78	.01	.07	1	3093
RH2 L-029	23	390	13	6995	3.9	840	15	531	3.53	55	12	ND	1	127	33.2	14	2	106	.67	.314	14	37	.13	314	.01	7	.75	.01	.10	1	5407
RH2 L-030	19	143	14	2957	2.0	686	7	536	2.47	51	10	ND	1	96	21.4	10	3	58	.65	.124	8	16	.10	209	.01	6	.37	.01	.06	2	2108
RE RH2 L-034	3	62	25	335	1.0	144	21	514	4.18	20	5	ND	2	64	1.2	2	2	24	.37	.076	5	30	.37	287	.01	3	1.21	.01	.05	1	6889
RH2 L-031	24	2322	11	18957	4.8	2280	116	4818	4.17	56	29	ND	1	135	113.2	13	2	90	1.10	.365	21	42	.16	260	.01	10	2.25	.02	.07	2	3567
RH2 L-032	32	1092	12	1941	6.9	431	18	485	4.34	50	26	ND	4	144	27.7	27	2	114	.55	.329	17	95	.09	245	.01	8	4.44	.01	.10	5	2513
RH2 L-033	4	81	20	241	.8	52	10	795	3.43	32	5	ND	1	52	1.7	4	2	35	.19	.113	13	17	.16	844	.01	4	.94	.01	.07	1	2908
RH2 L-034	2	61	25	312	.9	132	20	512	4.09	17	5	ND	2	63	.7	2	2	23	.37	.075	4	30	.36	285	.01	3	1.20	.01	.04	1	6825
RH2 L-034 DUP.	5	65	21	158	.8	40	10	780	3.19	105	5	ND	1	49	.7	7	2	30	.11	.116	13	13	.10	631	.01	3	.70	.01	.07	1	3204
RH2 L-035	8	85	14	264	1.1	49	8	395	3.56	41	5	ND	1	73	1.5	9	2	30	.10	.092	15	11	.09	337	.01	6	.58	.01	.07	1	3354
RH2 L-036	6	146	16	350	.8	86	15	1061	2.47	53	5	ND	1	76	4.1	5	2	23	.10	.082	16	9	.07	527	.01	3	1.04	.01	.06	1	5041
RH2 L-037	5	50	16	137	.5	22	3	99	1.76	41	5	ND	2	54	.3	4	2	14	.07	.040	20	5	.04	329	.01	3	.32	.01	.04	1	4436
RH2 L-038	3	49	17	172	1.0	50	10	799	2.87	65	5	ND	1	84	1.5	3	2	26	.35	.144	11	15	.18	1003	.01	4	.75	.01	.08	1	3502
RH2 L-039	11	64	15	172	2.7	49	4	170	1.97	24	5	ND	1	91	2.5	4	2	65	.41	.127	10	23	.15	562	.01	5	.61	.01	.09	1	2196
RH2 L-040	16	132	18	1133	3.2	234	26	6030	5.01	47	24	ND	1	124	23.4	7	2	67	.80	.174	9	22	.25	794	.01	6	1.21	.01	.11	1	2924
RH2 L-041	43	174	11	4043	3.5	1076	84	3419	8.45	46	5	ND	1	120	42.8	11	2	144	.88	.226	10	26	.20	413	.01	7	.67	.01	.11	1	2209
RH2 L-042	2	75	21	352	.9	143	30	713	4.54	19	5	ND	2	99	1.2	2	2	24	.21	.076	4	27	.34	272	.01	3	1.13	.01	.05	1	7646
RH2 L-044	2	149	20	714	.7	253	29	1124	3.79	17	5	ND	2	49	2.8	2	2	22	.23	.072	5	30	.33	250	.01	3	2.01	.01	.04	1	5904
RH2 L-045	2	116	17	730	.2	301	34	1151	4.54	17	5	ND	2	39	2.8	2	2	23	.17	.062	5	29	.36	194	.01	2	1.70	.01	.03	1	6902
RH2 L-046	1	529	2	4731	.8	507	449	9835	35.45	10	5	ND	1	49	123.8	31	2	5	.17	.057	3	7	.07	201	.01	3	.99	.01	.03	6	1075
STANDARD C/CB-1200	18	59	38	132	7.3	76	31	1064	4.02	41	19	7	38	52	18.8	14	21	57	.49	.091	39	59	.89	178	.09	33	1.90	.08	.15	11	2275

Sample type: PULP. Samples beginning 'RE' are duplicate samples.

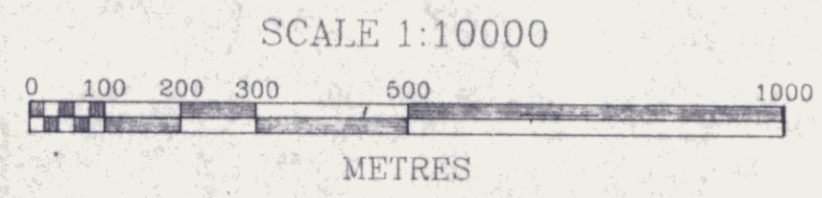


SAMPLE#	Mo ppm	Cu ppm	Pb ppm	Zn ppm	Ag ppm	Ni ppm	Co ppm	Mn ppm	Fe %	As ppm	U ppm	Au ppm	Th ppm	Sr ppm	Cd ppm	Sb ppm	Bi ppm	V ppm	Ca %	P %	La ppm	Cr ppm	Mg %	Ba ppm	Ti %	B ppm	Al %	Na %	K %	W ppm	Ba* ppm
DS2 R-11	7	62	14	66	.5	24	2	30	3.57	243	5	ND	6	157	.2	6	2	78	.02	.108	9	54	.39	652	.01	10	1.07	.01	.16	1	3926
STRIKE DS2 R-11A	4	26	6	69	1.5	9	2	26	.55	7	5	ND	1	39	.7	4	2	9	.01	.020	3	63	.01	385	.01	5	.13	.01	.06	1	1530
DS2 R-12	3	4	7	15	1.9	3	1	18	.23	5	5	ND	2	4	.3	5	2	10	.01	.001	6	86	.01	257	.01	7	.16	.01	.07	1	1726
ROG DS2 R-13	1	10	2	117	.1	11	25	1296	7.22	2	5	ND	8	554	.5	2	10	98	5.06	.210	35	14	2.75	707	.02	11	1.50	.07	.07	1	3035
GS2 R-10	83	125	7	359	3.6	101	2.	26	2.96	209	50	ND	7	313	2.2	60	2	498	.40	.552	12	183	.05	277	.01	10	.89	.01	.16	1	1996
GS2 R-11	7	45	16	315	3.5	17	1	48	.51	25	5	ND	2	14	2.6	9	2	19	.13	.012	3	98	.05	156	.01	3	.09	.01	.02	1	943
RE GS2 R-15	5	25	9	41	3.9	9	2	15	.51	7	5	ND	3	64	.9	4	2	54	.35	.149	7	57	.02	575	.01	7	.31	.01	.12	1	2599
STRIKE GS2 R-12	117	347	2	796	.1	84	4	103	17.31	1161	180	ND	44	4849	16.5	82	2	674	.80	4.374	33	275	.07	152	.01	18	3.68	.02	.53	1	2373
GS2 R-13	9	34	11	86	5.1	12	2	14	1.10	15	5	ND	4	58	.6	9	2	34	.38	.211	4	86	.02	322	.01	8	.33	.01	.12	1	2821
GS2 R-14	6	27	3	33	4.1	7	1	13	.71	6	5	ND	4	30	.4	10	2	28	.10	.056	9	42	.01	328	.01	4	.19	.01	.07	2	2547
GS2 R-15	5	25	9	39	3.8	9	2	20	.50	8	5	ND	3	61	.7	4	2	55	.34	.150	7	57	.02	554	.01	7	.30	.01	.12	1	2540
ROG GS2 R-16	4	79	8	170	.8	49	8	182	7.16	13	5	ND	6	28	.2	13	4	46	.01	.078	5	106	.38	212	.01	10	1.14	.01	.01	1	1124
GS2 R-17	3	8	7	11	.9	4	2	19	.50	2	5	ND	4	18	.3	5	2	5	.01	.005	3	84	.01	269	.01	7	.14	.01	.07	1	1574
RH2 R-025	4	21	13	120	.6	16	3	24	1.62	9	5	ND	7	27	.2	5	2	13	.01	.023	14	63	.02	378	.01	10	.28	.01	.17	1	2992
RH2 R-026	18	497	79	222	46.1	24	3	44	.71	87	6	ND	5	22	4.3	426	3	49	.05	.017	5	133	.01	770	.01	4	.14	.01	.03	1	1565
RH2 R-027	6	20	2	32	3.6	11	2	30	.85	6	5	2	4	13	.4	11	2	10	.04	.048	4	121	.01	224	.01	5	.10	.01	.04	1	2197
RH2 R-028	4	11	22	15	3.3	7	1	18	1.21	5	5	ND	2	7	.2	8	2	5	.01	.003	2	91	.01	79	.01	5	.05	.01	.03	1	1414
RH2 R-030	29	45	3	227	1.7	20	1	23	1.82	73	5	2	5	232	4.6	24	2	40	.06	.189	6	140	.01	182	.01	6	.14	.01	.07	1	807
RH2 R-031	22	104	4	326	5.0	33	4	29	.95	31	5	2	6	112	2.5	45	2	192	1.24	.580	8	128	.03	723	.01	12	.43	.01	.11	3	3301
RH2 R-032	10	91	3	436	2.4	75	4	39	.92	49	10	3	7	99	2.1	15	2	107	.43	.230	6	131	.02	968	.01	7	.42	.01	.06	3	3297
RH2 R-033	43	54	9	193	2.6	31	2	17	.52	36	5	ND	4	22	2.2	38	2	189	.15	.013	6	75	.01	228	.01	7	.17	.01	.07	2	2173
RH2 R-034	27	466	17	837	3.2	228	12	258	2.83	68	29	ND	3	100	7.4	23	2	159	.51	.432	8	71	.02	258	.01	7	.98	.01	.12	1	1560
RH2 R-035	17	206	8	779	2.5	89	2	19	1.62	93	14	ND	3	568	10.0	18	2	141	.54	.366	9	121	.03	328	.01	7	.62	.01	.10	1	1523
RH2 R-035A	3	62	3	229	.9	63	23	549	9.17	9	5	ND	5	34	.2	18	2	25	.05	.063	4	56	.02	275	.01	14	.20	.01	.09	2	1597
RH2 R-036	4	24	11	97	.6	29	10	382	1.54	12	5	ND	4	46	.9	6	2	16	.08	.034	11	84	.09	1348	.01	9	.35	.01	.10	1	9924
RH2 R-037	2	39	5	91	.8	37	13	835	3.23	14	5	ND	6	81	.6	10	2	21	.48	.053	10	57	.17	1295	.01	9	.52	.01	.13	1	81300
RH2 R-038	6	14	4	42	.9	15	5	104	1.43	78	5	ND	4	29	.4	9	2	21	.06	.026	5	113	.11	679	.01	7	.32	.01	.08	1	2927
RH2 R-039	22	24	2	29	.7	33	6	10	.71	18	5	ND	5	10	.2	14	2	114	.01	.013	7	53	.01	1832	.01	7	.65	.01	.03	1	36520
RH2 R-040	34	12	6	24	1.1	20	3	15	.54	17	5	ND	4	15	.6	10	2	212	.01	.011	7	68	.01	679	.02	3	.24	.01	.04	1	35500
RH2 R-041	5	40	10	22	1.7	16	3	24	1.62	33	5	ND	4	10	.6	8	2	25	.03	.040	4	71	.01	36	.01	7	.27	.01	.19	1	63733
RH2 R-042	2	17	6	41	.2	23	5	70	1.05	2	5	ND	2	20	.2	2	2	11	.04	.013	4	69	.19	1086	.01	10	.52	.01	.09	1	8754
ROG RH2 R-043	4	13	11	52	.5	12	3	48	1.90	4	5	ND	3	10	.2	3	2	13	.02	.028	2	76	.29	83	.01	4	.65	.01	.03	1	594
RH2 R-044	12	25	4	65	.5	20	5	39	3.29	6	5	ND	6	17	.4	3	2	15	.01	.027	3	64	.15	100	.01	10	.74	.02	.06	1	1040
STANDARD C/CB-1200	20	62	39	132	7.5	75	31	1025	3.89	42	23	7	40	53	17.3	13	20	61	.48	.090	39	63	.86	173	.09	34	1.84	.07	.15	11	2235

Sample type: PULP. Samples beginning 'RE' are duplicate samples.



- GEOLOGICAL LEGEND**
- CRETACEOUS
- SELWYN PLUTONIC SUITE
- QM Quartz monzonite; QP-quartz porphyry
- DEVONIAN-MISSISSIPPIAN
- MS Mississippian(?) clastic sediments
- EARN GROUP
- SHb Upper Earn - brown weathering shale
- SHg Lower Earn - grey to black (SHb) weathering shale
- Q Quartzite; siltstone to wacke, locally calcareous
- CH Chert - massive to banded, grey to black
- CPC Chert pebblic conglomerate
- BAM Massive to laminated barite
- BAN Chert with barite nodules
- PROTEROZOIC
- HYLAND GROUP
- HV Varicolored (green to maroon) shale
- HG Medium to coarse quartz-feldspar wacke
- Foliation, inclined, vertical.
- Bedding, inclined, vertical.
- Jointing, inclined, vertical.
- Fault.
- Scree.
- Outcrop
- Geological Contact; mapped, inferred.
- Gossan, ferricrete
- Fe Iron Oxide
- Py Pyrite
- Rock Sample Site
A, 65, 1040 Pb (ppm), Zn (ppm), Ba (ppm)
- Claim post and line
- TOPOGRAPHIC LEGEND**
- Ridge top.
- Creek.
- GEOCHEMISTRY LEGEND**
- Grid Soil Sample Site
- Soil Sample Site
- Silt Sample Site



DWG 96

Kennecott Canada Inc.
138-200 Granville St. Vancouver, B.C., V6C 1S4

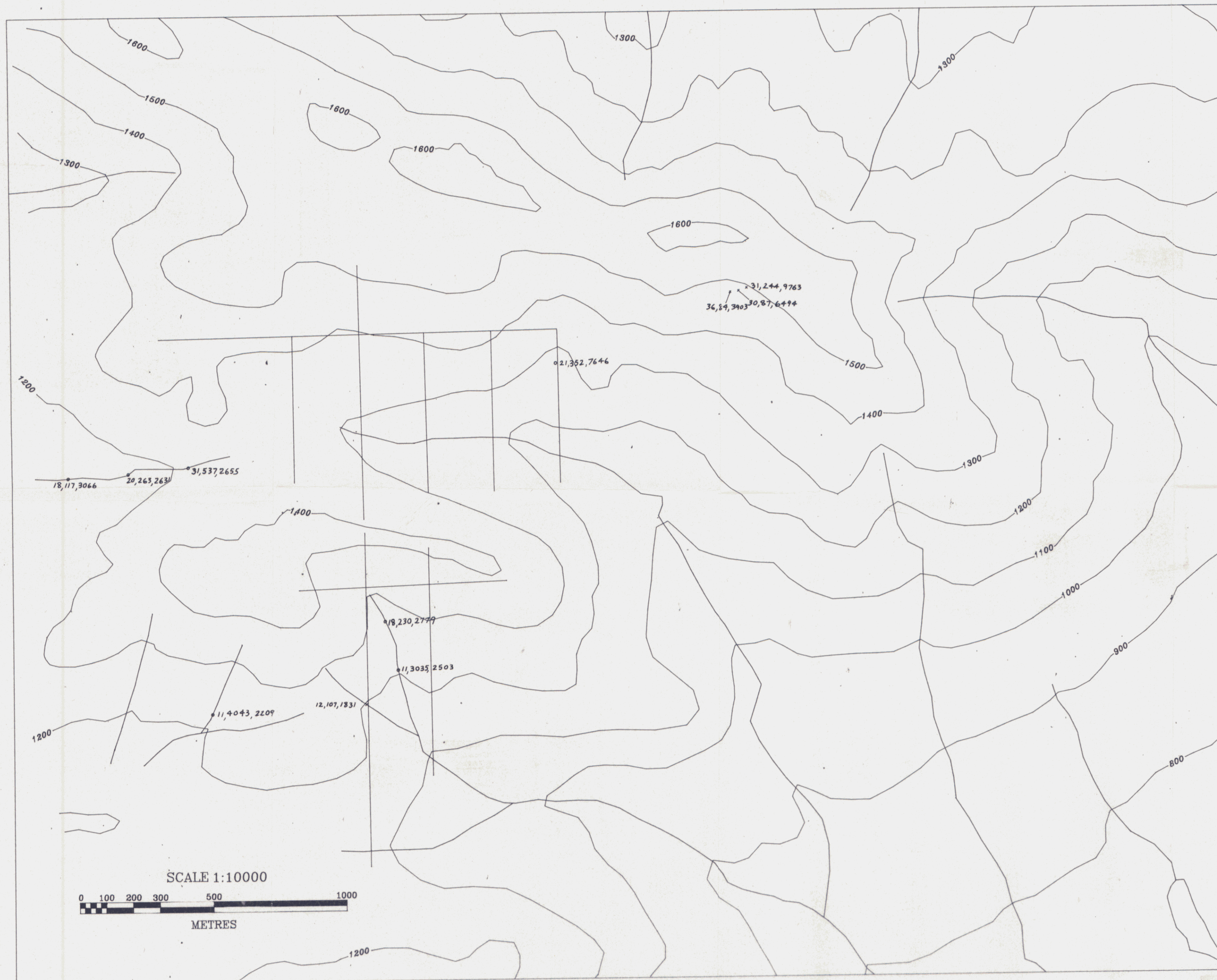
LANSING PROJECT
ROG CLAIMS 093071
MAYO M.D.

GEOLOGY and ROCK GEOCHEMISTRY
SAMPLE LOCATIONS

to accompany a report by: G. Carlson

Drawn by: KWS	NTS: .	Acad file: ROGGEO
Date: DEC 1992	Ref. No.:	Map No.:

Figure 3



TOPOGRAPHIC LEGEND

- Ridge top.
- Creek.

GEOCHEMISTRY LEGEND

- Grid Soil Sample Site
- x Soil Sample Site
- o Silt Sample Site

RESULTS

Pb(ppm), Zn(ppm), Ba(ppm)

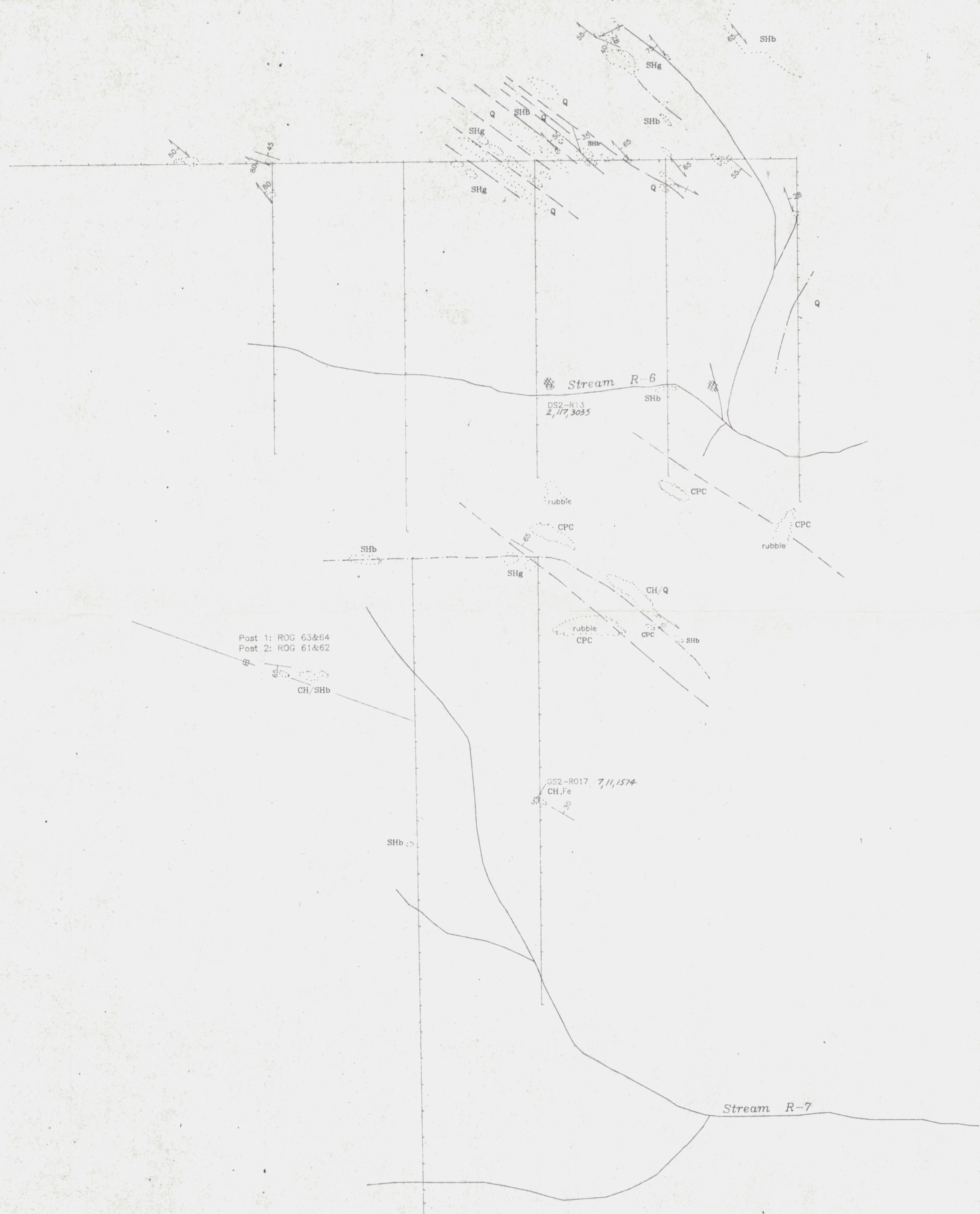
DWG 95

Kennecott Canada Inc.
138-200 Granville St, Vancouver, B.C., V8C 1S4

LANSING PROJECT
ROG CLAIMS 093071
MAYO M.D.
SOIL and SILT .GEOCHEMISTRY

to accompany a report by: G. Carlson		
Drawn by: KWS	NTS: .	Acad file: ROGCEO
Date: DEC 1992	Ref. No: .	Map No: .

Figure 4

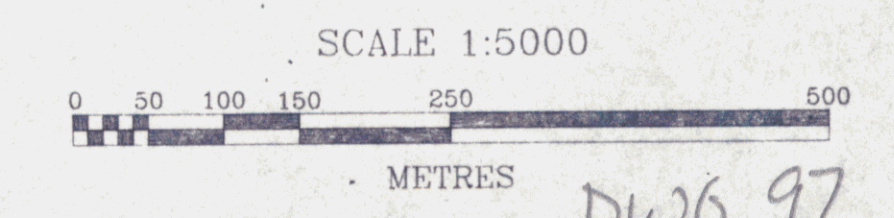


GEOLOGICAL LEGEND

- CRETACEOUS**
SELWYN PLUTONIC SUITE
 QM Quartz monzonite; QP-quartz porphyry
- DEVONIAN-MISSISSIPPIAN**
 MS Mississippian(?) clastic sediments
- EARN GROUP**
 SHb Upper Earn - brown weathering shale
 SHg Lower Earn - grey to black (SHb) weathering shale
 Q Quartzite; siltstone to wacke, locally calcareous
 CH Chert - massive to banded, grey to black
 CPC Chert pebble conglomerate
 BAm Massive to laminated barite
 BAn Chert with barite nodules
- PROTEROZOIC**
HYLAND GROUP
 HV Varicolored (green to maroon) shale
 HG Medium to coarse quartz-feldspar wacke
- Foliation, inclined, vertical.
 Bedding, inclined, vertical.
 Jointing, inclined, vertical.
 Fault.
 Scree.
 Outcrop.
 Geological Contact; mapped, inferred.
 Gosson, ferricrete
 Fe Iron Oxide
 Py Pyrite
 Rock Sample Site
 7,11,1574 Pb(ppm), Zn(ppm), Ba(ppm)
 Claim post and line

TOPOGRAPHIC LEGEND

- Ridge top.
 Creek.
 Dry Creekbed.



Kennecott Canada Inc.
 138-200 Granville St, Vancouver, B.C., V6C 1S4

LANSING PROJECT
ROG CLAIMS
 MAYO M.D.
ROG GRID 093071
GEOLOGY and
ROCK GEOCHEMISTRY
 to accompany a report by: G. Carlson

Drawn by: KWS NTS: Acad file: ROGGRID
 Date: DEC. 1992 Ref. No: Map No:

Figure 5

DWG 97



TOPOGRAPHIC LEGEND

- Ridge top.
- Creek.
- - - - - Dry Creekbed.

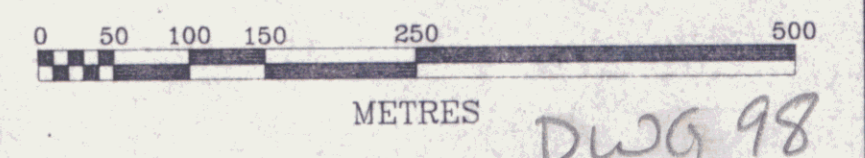
GEOCHEMISTRY LEGEND

- ⊕ Grid Soil Sample Site
- ⊕ Soil Sample Site
- ⊙ Silt Sample Site

RESULTS

Pb(ppm), Zn(ppm), Ba(ppm)

SCALE 1:5000

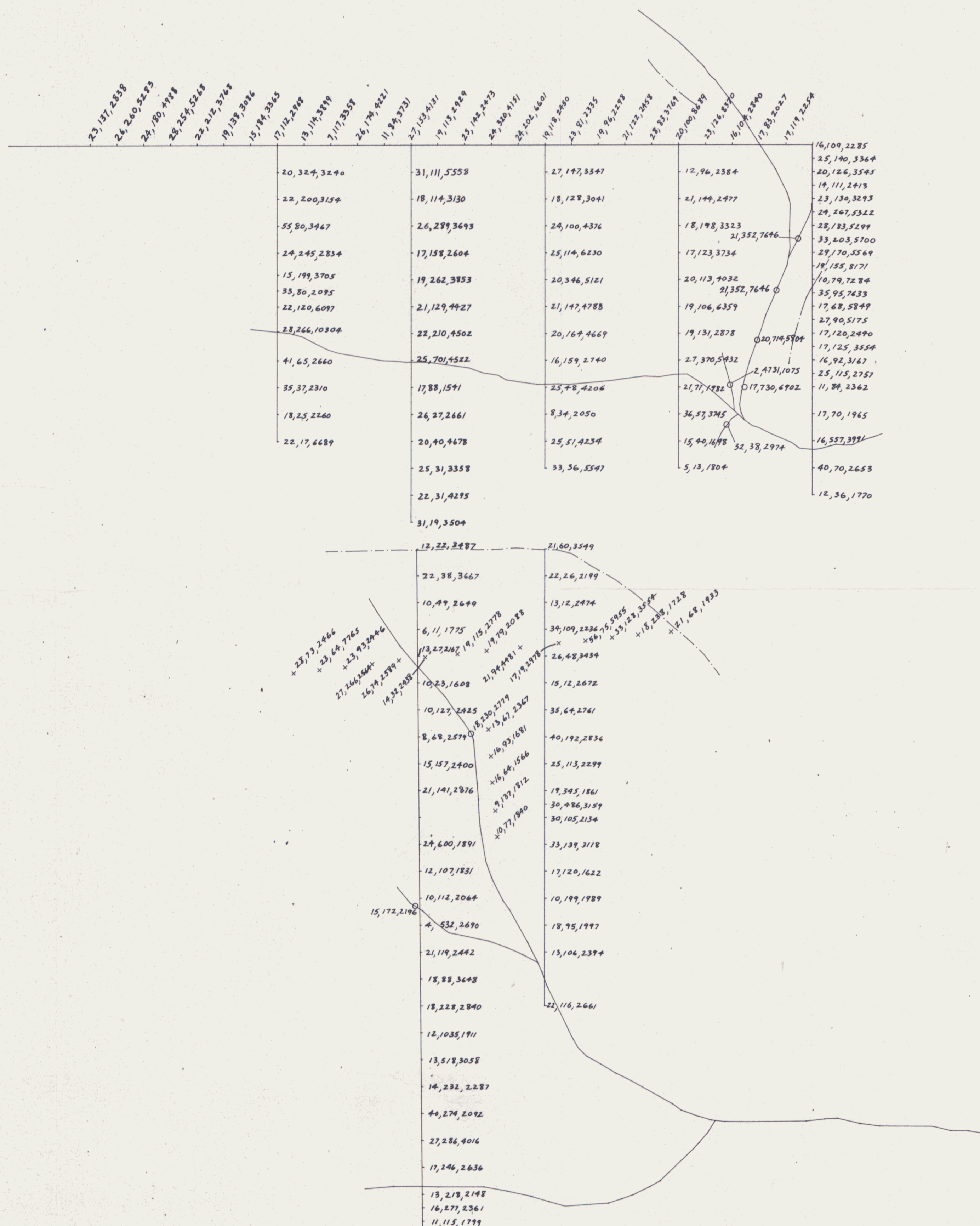


Kennecott Canada Inc.
 138-200 Granville St, Vancouver, B.C. V8C 1S4

LANSING PROJECT
ROG CLAIMS
 MAYO M.D.
ROG GRID 093071
SAMPLE LOCATIONS

to accompany a report by: G. Carlson		
Drawn by: KWS	NTS:	Acad file: ROGGRID
Date: DEC. 1992	Ref. No:	Map No:

Figure 6



TOPOGRAPHIC LEGEND

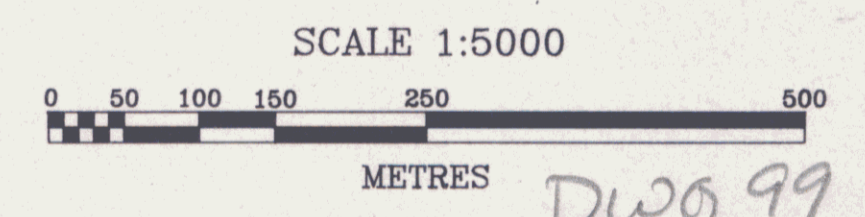
- Ridge top.
- Creek.
- Dry Creekbed.

GEOCHEMISTRY LEGEND

- ⊕ Grid Soil Sample Site
- Soil Sample Site
- Silt Sample Site

RESULTS

28, 183, 5299 - Pb(ppm), Zn(ppm), Ba(ppm)



Kennecott Canada Inc.
 138-200 Granville St, Vancouver, B.C. V6C 1S4

LANSING PROJECT
ROG CLAIMS
 MAYO M.D.
ROG GRID 093071
SOIL and SILT GEOCHEMISTRY

to accompany a report by: G. Carlson

Drawn by: KWS	NTS:	Acad file: ROGRGD
Date: DEC. 1992	Ref. No.:	Map No.:

Figure 7