



MAP NO.: **ASSESSMENT REPORT X**
115 J 9, 10 **PROSPECTUS**
CONFIDENTIAL X
OPEN FILE

DOCUMENT NO: 093064
MINING DISTRICT: WHITEHORSE
TYPE OF WORK: GEOLOGY, GEOCHEMISTRY

Your file / Votre référence

REPORT FILED UNDER: WALHALA EXPLORATIONS LTD

Our file / Notre référence

DATE PERFORMED: AUGUST 21-23, 1992

DATE FILED: JANUARY 6, 1992

LOCATION: LAT.: 62°40'N

AREA: MOUNT SHELTON

By H6 Creala/Kosim

LONG.: 138°30'W

VALUE \$: 11,100

CLAIM NAME & NO.: BAT 1-56 (YB35839-YB35894)
BAT 59-113 (YB36368-YB36422)

WORK DONE BY: R. ALLAN DOHERTY, AURUM GEOLOGICAL

WORK DONE FOR: WALHALA EXPLORATIONS LTD

DATE TO GOOD STANDING:

REMARKS: SOIL AND ROCK SAMPLING COMPLETED BY NORANDA AND PLACER DOME. (1) 1:20 000 SCALE GEOLOGY MAP INCLUDED.



**GEOLOGICAL AND GEOCHEMICAL
ASSESSMENT REPORT ON THE
BATTLE MOUNTAIN PROPERTY**

Whitehorse Mining District
August 21-23, 1992

Claims: BAT 1-56 (YB35839-YB35894)
 BAT 59-113 (YB36368-YB36422)

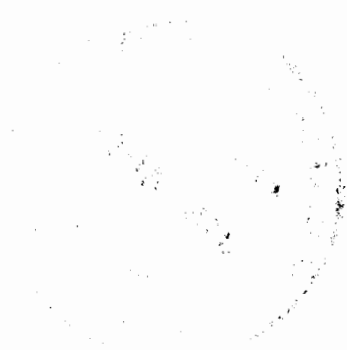
Location: 1. 125 km NW of Carmacks, Yukon
 2. NTS 115 J/9 & 10
 3. Longitude 138° 30' West
 Latitude 62° 40' North

For: WALHALA EXPLORATIONS LTD.
 5 Teak Avenue
 Whitehorse, Yukon
 Y1A 4W5

By: R. Allan Doherty, B.Sc.,
 Aurum Geological Consultants Inc.
 P.O. Box 4367
 Whitehorse, Yukon
 Y1A 3T5

093064

December 28, 1992



This report has been examined by
the Geological Evaluation Unit
under Section 53 (4) Yukon Quartz
Mining Act and is allowed as
representation work in the amount
of \$ 11100.

Donna J. Quetta
for Regional Manager, Exploration and
Geological Services for Commissioner
of Yukon Territory.

TABLE OF CONTENTS

TABLE OF CONTENTS	i
INTRODUCTION	1
LOCATION AND ACCESS	1
PROPERTY	1
PREVIOUS WORK	4
REGIONAL GEOLOGY	5
PROPERTY GEOLOGY	5
GEOCHEMISTRY	6
CONCLUSIONS AND RECOMMENDATIONS	7
REFERENCES	8
STATEMENT OF COSTS	9
STATEMENT OF QUALIFICATIONS	10
APPENDIX A GEOCHEMICAL ASSAY CERTIFICATES	
APPENDIX B PETER CHRISTOPHER REPORT	
FIGURE 1 LOCATION MAP	2
FIGURE 2 CLAIM LOCATION	3
FIGURE 3 PROPERTY GEOLOGY AND SAMPLE LOCATIONS	pocket

INTRODUCTION

This report was prepared at the request of Mr. Morley Barker, an officer of Walhala Explorations Ltd. The report summarizes field work and sampling carried out by Placer Dome Inc., and Noranda Exploration Company Limited on the BAT Claims between August 16-21, 1991. Sufficient dollars were expended by the potential optionees to cover the 1991 assessment requirements on the BAT Claims.

LOCATION AND ACCESS

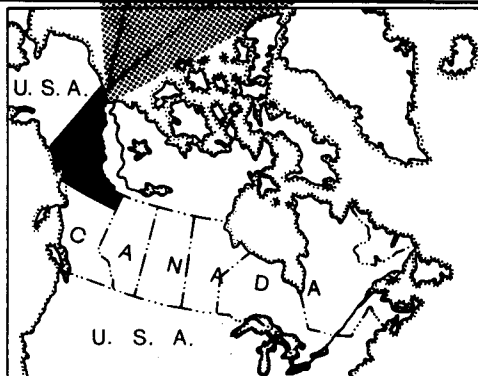
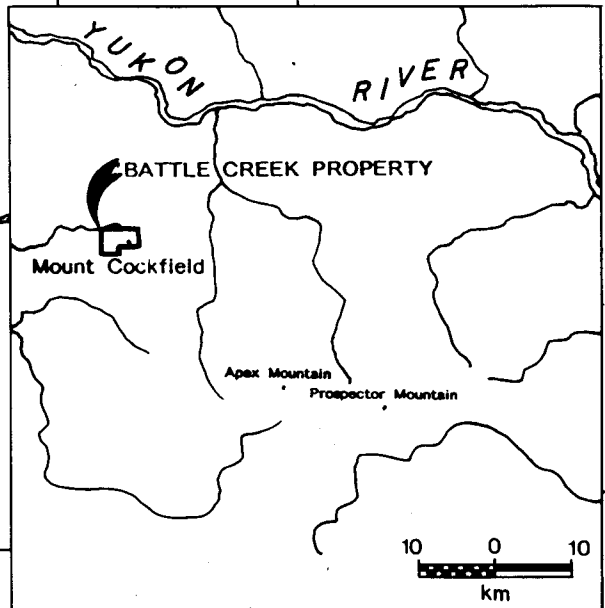
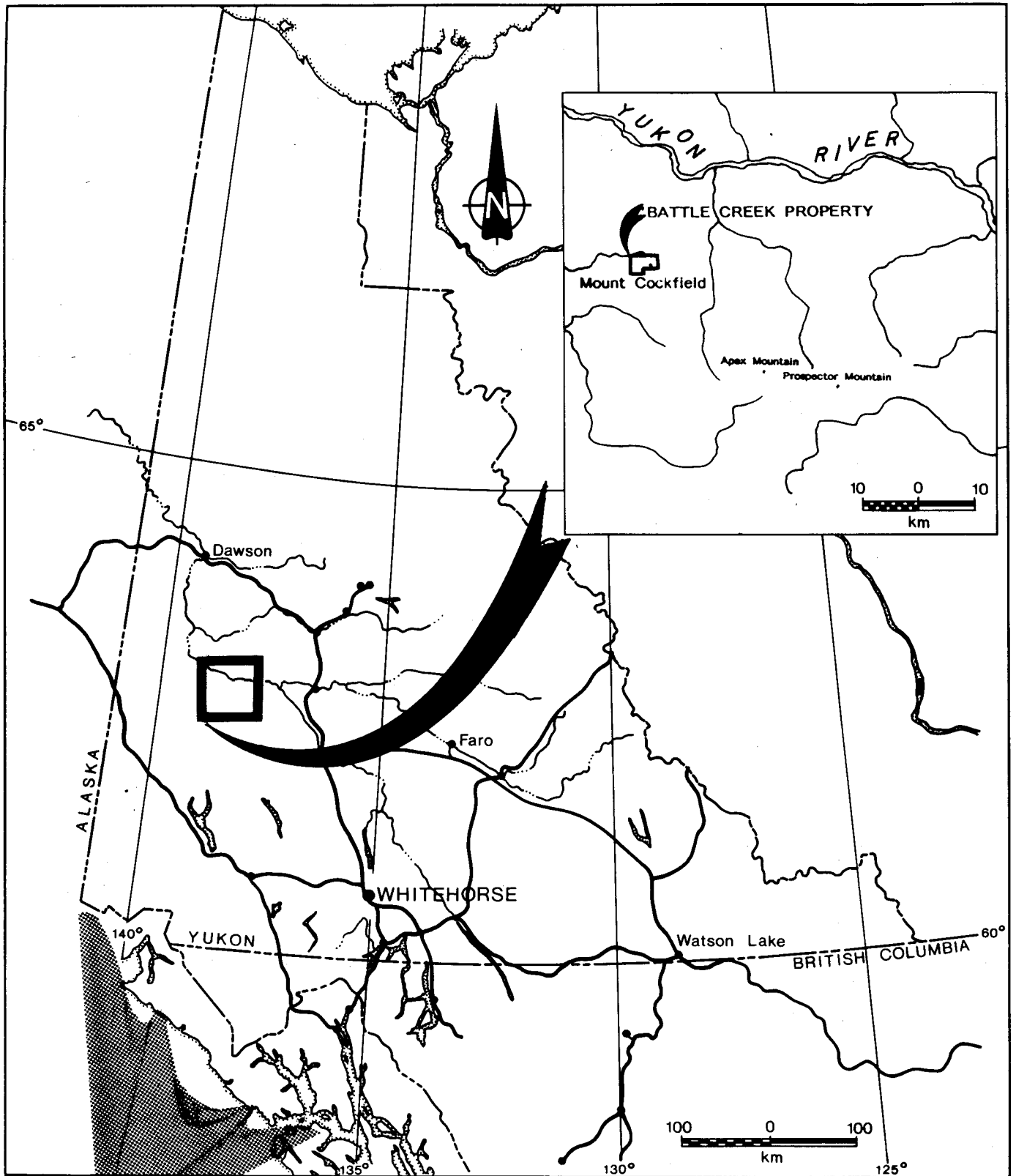
The Battle Creek Property is located within the Dawson Range (Figure 1), approximately 130 km northwest of Carmacks, Yukon. The property is equidistant from Carmacks, Stewart Crossing and Beaver Creek which form the points of a triangle with the property located in the centre of the triangle. The property is accessible by helicopter from Carmacks; or alternately, the Free Gold Road terminates at the head of Hayes Creek from which a winter road continues down Hayes Creek to the Battle Creek Property.

PROPERTY

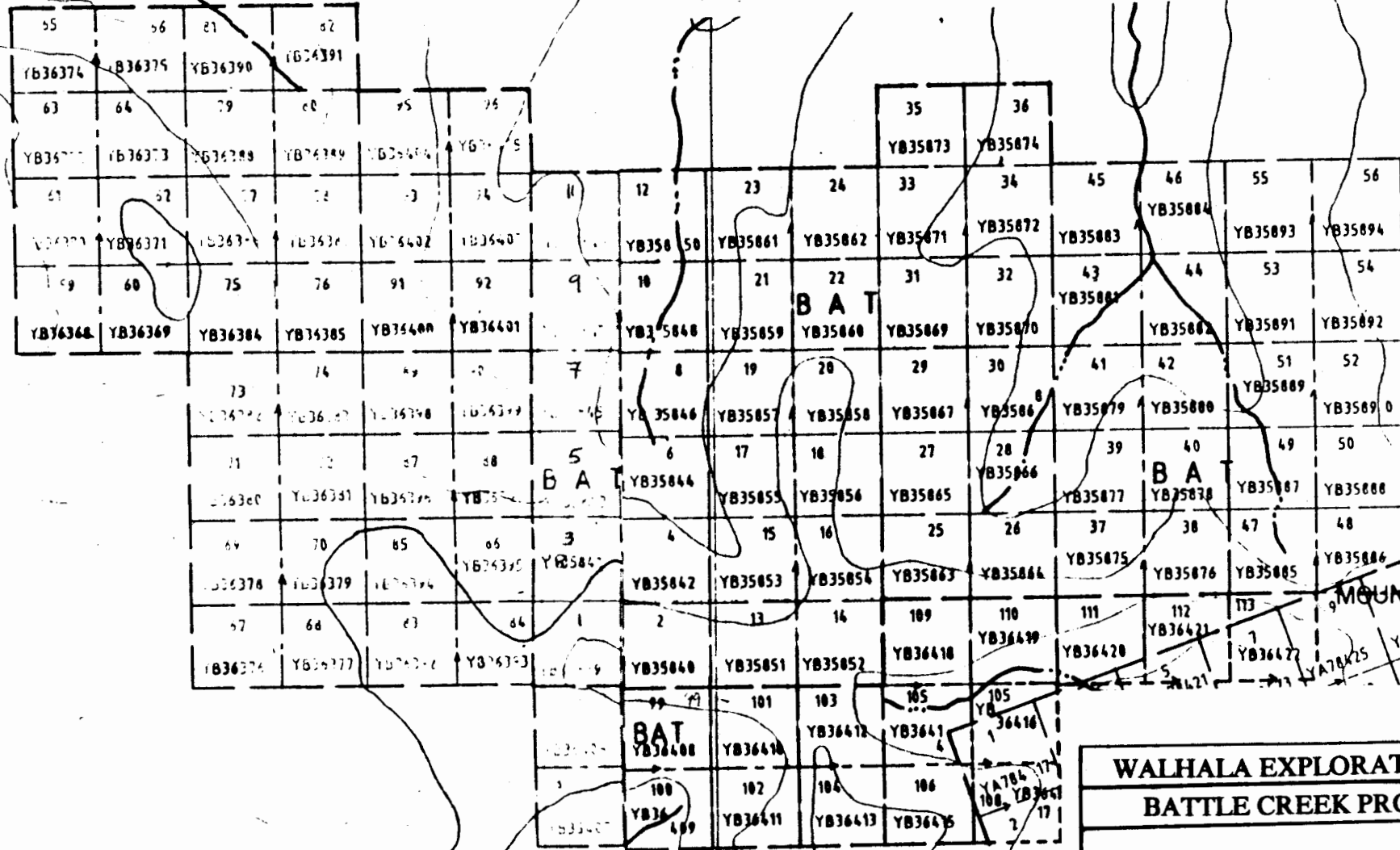
The Battle Creek property consists of 111 unsurveyed quartz claims located on NTS map areas 115 J 9, 10 (Figure 2). The centre of the claim block is located at approximately 62° 40' N Latitude and 138° 30' W Longitude. Claim data is as follows.

<u>CLAIM</u> <u>NAME</u>	<u>RECORD</u> <u>NUMBER</u>	<u>EXPIRY</u> <u>DATE</u>
BAT 1-56	YB 35839 to 894	MAY 24, 1993 *
BAT 59-113	YB 36368 to 422	AUG 21, 1993 *

*subject to approval of 1992 assessment work



WALHALA EXPLORATIONS LTD.	
BATTLE CREEK PROPERTY	
LOCATION	
Whitehorse Mining District	July, 1991
NTS 115J/9 and 115J/10	Drawn by GS Figure 1



WALHALA EXPLORATIONS LTD
BATTLE CREEK PROPERTY

CLAIM LOCATION

AURUM GEOLOGICAL CONSULTANTS INC DEC. 1992

115/J9 & 10 RAD SCALE 1:31,680 Figure 2

PREVIOUS WORK

This section of the report is partly condensed from a private report prepared by Walhala Exploration Ltd (Ridgway 1991).

Placer gold was discovered in Casino Creek in 1911 and the first placer claims were staked that year. Placer exploration and production continued through 1915 with significant pay gravels located on Rude Creek. Production from Rude Creek from 1985 to 1990 was some 3,483 crude ounces (Placer Mining Section, 1991).

In the mid 1960's, Nordex Exploration Ltd staked the RAY Claims which were located northwest of the current Battle Creek Property. In 1969, the CO Claims were staked by Newmont Exploration Company Ltd and the DR and PATSY Claims were staked for the Dawson Range Joint Venture.

Both claim groups were explored by mapping and geochemical sampling (Yukon Minfile). In 1970 the CO Group was optioned to United Keno Hill Mines Ltd who completed six widely spaced diamond drill holes for a total of 1397 metres. An arithmetic mean of all drill sample analyses was approximately 0.025 % Cu and 0.015 % Mo.

The area south of the present Battle Creek Property was staked as the Cofield Mineral Claims in August 1976 and restaked as the Kokup Claims in August 1979 in both cases by Archer, Cathro and Associates Ltd. In 1980 the area was optioned to Denison Mines Ltd., who performed geological mapping, and geochemical sampling. Cominco Ltd., performed heavy mineral sampling in the Mt. Cockfield area, and in April 1980 staked the Battle Claims to the north of the Archer, Cathro & Associates' ground and carried out mapping and geochemical sampling.

Kerr Addison Mining Limited staked the KOE Claims to the southeast of the present Battle Creek Property. Work completed in 1984 and 1985 consisted of mapping, geochemical sampling, a VLF-EM survey and some hand trenching. In 1986 Kerr Addison completed five drill holes totalling 443.6 metres.

The BAT Claims were staked in 1991 and acquired by Walhala Explorations Ltd. Placer Dome optioned the property in August 1991 and retained Peter Christopher and Associates to review the property. (Appendix B).

Noranda Exploration Company Ltd. visited the property in August 1991 and completed stream silt, soil and rock sampling. A compilation map showing property geology, geochemistry and drill hole locations was completed by Greg Smith of Aurum Geological Consultants Inc., in early 1991.

Regional Geology

The Regional Geology of the Mount Cockfield area has been mapped by Tempelman-Kluit (1974) and Payne et al. (1987).

The oldest rocks in the area consist of two distinct metamorphic assemblages which make up the Yukon Tanana terrane. The allochthonous Nisling terrane is a metamorphosed continental margin assemblage of upper Proterozoic to lower Cambrian age and is exposed in a window through a major thrust sheet of the Nisutlin Assemblage which is comprised of Upper Proterozoic to Triassic cataclastic sediments and volcanics of pericratonic Kootenay Terrane. After amalgamation of the Nisling and Nisutlan terranes, intrusions of postkinematic granitoids of latest Triassic to Early Jurassic, mid-Cretaceous, and early Tertiary age occurred.

The Battle Creek property is located within the Mount Cockfield Graben, a northwest trending fault graben with a width of approximately 4 kilometres.

Property Geology

The area is underlain by felsic and intermediate volcanic rocks of the Mount Nansen Suite, which are intruded or coeval with the Mount Cockfield Quartz monzonite stock and related dyke rocks. These rocks overlie Pre-Cambrian and Paleozoic rocks of metasedimentary or meta volcanic origin. Alteration is widespread in the volcanics and consists of sericite and pyrite. Mineralization is best developed in and around the small weakly altered quartz monzonite stock. Disseminations and veinlets of pyrite, chalcopyrite and molybdenite occur within the alteration zone, especially in areas of complex intrusive and volcanic activity. A prominent northwest trending dyke swarm within latite flows is located on the high ground above East and West Battle Creeks. A number of east west faults have been mapped at the head of West Battle Creek.

GEOCHEMISTRY

A compilation of previous geochemical results for copper and gold in soils was produced by Greg Smith of Aurum Geological in July 1991. A five kilometer by 0.5 to 1 kilometer wide copper in soil anomaly defined by the 200 ppm contour extends in a northwest-southeast direction between the headwaters of Rude Creek and Mount Cockfield. A 1 km x 0.5 km area of greater than 500 ppm copper is located approximately 1.5 km west of Mount Cockfield, (See Figure 5 Appendix B). A number of smaller areas of greater than 500 ppm copper occur on the ridge leading to the Headwaters of Rude Creek. The anomalous zones may reflect some downslope dispersion of metals from ridge top exposures. This area of high copper in soil anomalies was drilled by United Keno Hill Mines Ltd. in 1970.

1991 Work Program

Geochemical sampling was completed on the Battle Creek Property by Noranda Exploration Company Ltd., on August 22, 1991; and by Placer Dome Inc. on August 17, 1992. Although most of the sampling was carried out on BAT 1-56 Claims, sufficient prospecting and expenditures were completed to cover assessment requirements on the adjoining BAT 59-113 Claims.

In total, Noranda collected 66 soil and silt samples and 18 rock samples. Peter Christopher, on behalf of Placer Dome Inc., collected 13 rock samples from outcrop and core samples stored on the property. Both sets of sample numbers are plotted on Figure 3.

The samples returned relatively low values for gold, and values in the expected range for Copper and Molybdenum. Four of the Noranda soil samples returned > 50 ppb gold (Sample 's 54090, 092, 105, and 169). These samples were collected on soil sample lines about the flanks of Mt. Cockfield. The highest values obtained for Copper and Molybdenum were 1107 ppm Cu (sample 54092) and 163 ppm Mo (sample 54096).

One Noranda rock sample (R145860) returned 42 ppb Au, 1035 ppm Cu, and 314 ppm Mo. This sample site, approximately 1.5 kilometres west of Mt. Cockfield, is close to the high soil geochemical samples noted in the previous paragraph, and are shown on Figure 3. Geochemical reports are reproduced in Appendix A.

CONCLUSIONS AND RECOMMENDATIONS

Walhala Explorations Battle Creek Property covers a significant portion of a large copper in soil anomaly defined by surveys conducted between 1969 and 1981. Both the Battle Creek property and surrounding area has been extensively examined for copper-molybdenum porphyry mineralization.

Geochemical surveys including, stream silts and heavy mineral concentrates, soil, rock, and drill core sampling all contain anomalous copper, molybdenum. The pre 1981 geochemical surveys are deficient in that gold was rarely analyzed. Property visits by Noranda Exploration and Placer Dome Inc., in 1991 returned some weakly anomalous gold values in both soil and rock samples. The sampling also returned some bismuth anomalies which appear to be significant in the Fort Knox Style of gold porphyry deposit.

It is recommended that some additional geochemical sampling be completed to further asses the gold potential of the area.

REFERENCES

- Payne et al. 1987: Geology of Colarado Creek (115-J/10), Selwyn River (115-J/9), and Prospector Mountain (115-I/5) Map Areas. Western Dawson Range, West-Central Yukon. Indian and Northern Affairs Canada, Northern Affairs Yukon Region, Open File 1987-3
- Placer Mining Section 1991: Yukon Placer Industry 1989-1990, Mineral Resources Directorate, Yukon, Indian and Northern Affairs Canada.
- Ridgway, S., 1991: Battle Creek Property: Propery Submittal and Proposal for Exploration; Private Company Report
- Templeman-Kluit, D., 1974: Reconnaissance geology of Aishihik Lake, Snag and part of Stewart River map areas, West-Central Yukon, Gsc Paper 73-41.

STATEMENT OF COSTS

1991 Assessment Work Valuation: Battle Creek Property

Noranda Exploration Company Ltd August 21, 1991

A. Fieldwork

J. Duke, M.Sc. of Whitehorse, Yukon. August 21, 1991; 1.0 day @ \$250.00/day:	\$250.00
P. Davies, Geotechnician of Guelph, Ontario August 21, 1991; 1.0 day @ \$200.00/day:	\$200.00
E. Lilles, Assistant, of Whitehorse, Yukon August 21, 1991; 1.0 day @ \$200.00/day:	\$200.00
W. Muir, Assistant, of Vancouver, B.C. August 21, 1991; 1.0 day @ \$200.00/day:	\$200.00

B. Geochemical Analysis

79 samples @ \$15.00 ea: \$1185.00

C. Support Costs

Field Expenses:	\$300.00
Sample bags, flagging tape & thread:	\$50.00
Truck Rental:	\$100.00
Gasoline:	\$50.00
Helicopter (91212):	\$2,801.08

Placer Dome Inc Aug 16-19

A. Field Work

Peter Christopher & Ass. report.
August 16-19, 1991; \$2,811.71

B. Geochemical Analysis

13 samples @ \$15.00 ea: \$195.00

C. Support Costs

Helicopter (91212) \$2,506.67

D. Research and Report Preparation

A. Doherty, B.Sc.
2.5 days @ \$350.00/day: \$875.00

Total Valuation of 1992 Assessment Work: \$11,724.46

STATEMENT OF QUALIFICATIONS

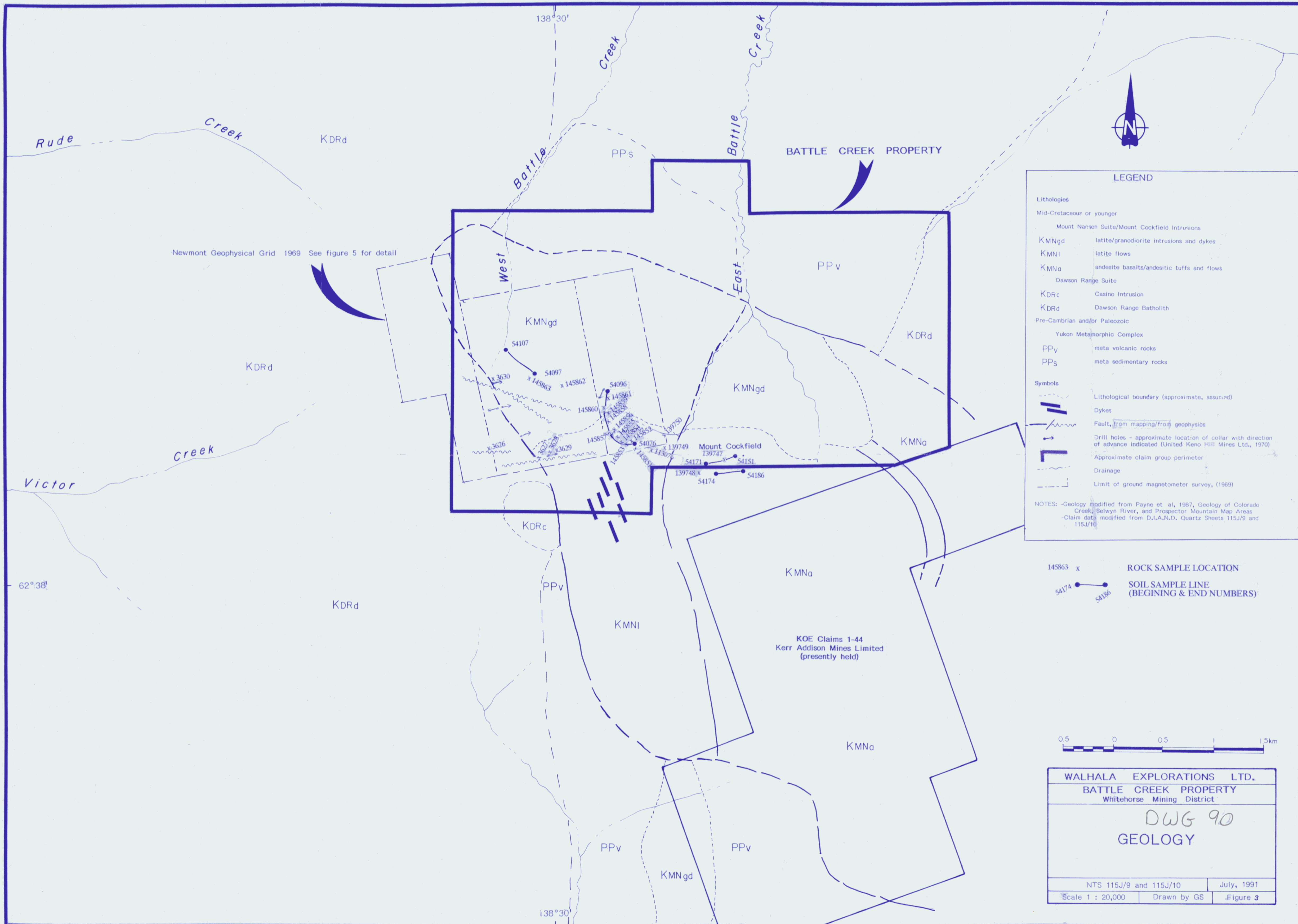
I, R. Allan Doherty, hereby certify that:

1. I am a geologist with AURUM GEOLOGICAL CONSULTANTS INC., 205 - 100 Main Street, P.O. Box 4367, Whitehorse, Yukon.
2. I am a graduate of the University of New Brunswick, with a degree in geology (Hons. B.Sc., 1977) and that I attended graduate school at Memorial University of Newfoundland, 1978-81. I have been involved in geological mapping and mineral exploration continuously since then.
3. I am a member of the Yukon Association of Professional Geoscientists and the CIMM.
4. I preparation this report based on information received from Placer Dome Inc., and Noranda Exploration Company Ltd., on the Battle Creek Property; which is based on data collected during property work on August 17, 1992 and August 22, 1992.
5. I have no direct or indirect interests in the properties or securities of Walhala Explorations Ltd.
6. I consent to the use of this report by Walhala Explorations Ltd. provided that no portion is used out of context in such a manner as to convey a meaning differing materially from that set out in the whole.



R. Allan Doherty, B.Sc.

December 28, 1992



LEGEND

Lithologies

Mid-Cretaceous or younger

Mount Nansen Suite/Mount Cockfield intrusions

KMNgd latite/granodiorite intrusions and dykes

KMNi latite flows

KMNa andesite basalts/andesitic tuffs and flows

Dawson Range Suite

KDRc Casino Intrusion

KDRd Dawson Range Batholith

Pre-Cambrian and/or Paleozoic

Yukon Metamorphic Complex

PPv meta volcanic rocks

PPd meta sedimentary rocks

Symbols

--- Lithological boundary (approximate, assumed)

== Dykes

--- Fault, from mapping/from geophysics

• Drill holes - approximate location of collar with direction of advance indicated (United Keno Hill Mines Ltd., 1970)

- - - Approximate claim group perimeter

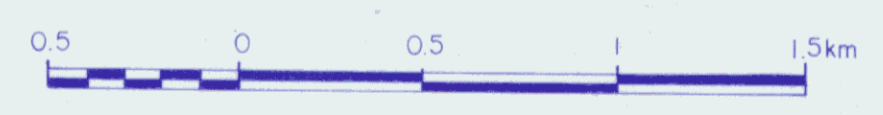
--- Drainage

--- Limit of ground magnetometer survey, (1969)

NOTES: -Geology modified from Payne et al, 1987, Geology of Colorado Creek, Selwyn River, and Prospector Mountain Map Areas
 -Claim data modified from D.I.A.N.D. Quartz Sheets 115J/9 and 115J/10

145863 x **ROCK SAMPLE LOCATION**

54174 — 54186 **SOIL SAMPLE LINE (BEGINING & END NUMBERS)**



WALHALA EXPLORATIONS LTD.		
BATTLE CREEK PROPERTY		
Whitehorse Mining District		
DWG 90		
GEOLOGY		
NTS 115J/9 and 115J/10	July, 1991	
Scale 1 : 20,000	Drawn by GS	Figure 3

093064

APPENDIX A
GEOCHEMICAL ANALYSES
REPORTS

NORANDA VANCOUVER LABORATORY

Geochemical Analysis

Project Name & No.: MOUNT COCHFIELD - 312
Material: 65 SOILS & 1 SILT
Remarks: * Sample screened @ -35 MESH (0.5 mm)

Geol.: J.D.
Sheet: 1 of 2

Date received: SEP. 05
Date completed: SEP. 20

LAB CODE: 9109-038

□ Organic, Δ Humus, S Sulfide

Au - 10.0 g sample digested with aqua-regia and determined by A.A. (D.L. 5 PPB)

ICP - 0.2 g sample digested with 3 ml HClO₄/HNO₃ (4:1) at 203 °C for 4 hours diluted to 11 ml with water. Leeman PS3000 ICP determined elemental contents.

N.B. The major oxide elements and Ba, Be, Ce, La, Li, Ga are rarely dissolved completely from geological materials with this acid dissolution method.

*Sb - Aqua Regia/Tartaric acid /AA

T.T. No.	SAMPLE No.	Au ppb	Ag ppm	Al %	As ppm	Ba ppm	Be ppm	Bi ppm	Ca %	Cd ppm	Ce ppm	Co ppm	Cr ppm	Cu ppm	Fe %	K %	La ppm	Li ppm	Mg %	Mn ppm	Mo ppm	Na %	Ni ppm	P %	Pb ppm	Sb ppm	Sr ppm	Ti %	V ppm	Zn ppm
2	54076	5	0.6	1.44	7	105	0.5	5	0.22	0.2	20	4	23	23	1.71	0.17	9	4	0.14	96	2	0.05	9	0.25	12	1	27	0.09	45	60
3	54077	5	0.6	3.94	29	257	1.7	5	0.47	4.1	67	14	32	28	3.50	0.40	28	13	0.49	656	2	0.06	22	0.12	59	4	105	0.26	71	288
4	54078	5	0.4	3.79	103	190	1.8	5	0.25	0.6	54	11	10	30	4.04	0.60	31	7	0.22	150	2	0.06	6	0.09	51	6	104	0.08	33	80
5	54079	5	0.2	2.68	13	170	1.1	5	0.41	0.2	46	8	26	41	2.80	0.28	23	11	0.41	387	2	0.07	13	0.13	30	1	81	0.14	61	82
6	54080	5	0.2	2.66	17	127	1.1	5	0.38	0.3	65	9	24	80	3.41	0.24	33	15	0.54	621	3	0.07	15	0.13	36	1	75	0.17	59	90
7	54081	5	0.2	2.99	16	192	0.7	5	0.27	0.2	44	4	22	85	2.94	0.39	23	9	0.34	279	2	0.06	7	0.12	36	1	150	0.15	66	56
8	54082	15	1.2	2.03	21	125	0.7	6	0.30	0.2	79	4	14	191	4.82	0.38	40	14	0.50	359	6	0.04	6	0.20	29	1	129	0.10	45	55
9	54083	5	0.6	2.57	28	180	0.7	6	0.39	0.2	66	7	22	58	4.46	0.47	32	14	0.56	501	7	0.09	13	0.20	36	1	132	0.13	53	73
10	54084	5	0.2	2.99	20	193	1.3	6	0.53	0.2	60	11	22	46	3.32	0.40	29	12	0.41	685	4	0.05	13	0.11	31	1	152	0.12	50	71
11	54085	10	0.2	3.04	10	197	1.2	5	0.55	0.2	65	12	37	51	3.62	0.34	34	14	0.58	521	3	0.06	20	0.09	13	1	110	0.22	85	75
12	54086	5	0.2	2.30	14	202	0.6	5	0.37	0.2	37	7	37	44	3.49	0.27	19	12	0.41	415	15	0.07	13	0.10	10	1	76	0.20	84	67
13	54087	5	0.2	3.20	7	225	1.1	5	0.36	0.2	53	7	23	71	3.69	0.46	28	14	0.52	305	12	0.08	14	0.07	5	1	91	0.18	65	46
14	54088	5	0.2	2.10	17	123	0.8	5	0.34	0.2	43	7	24	309	3.03	0.20	22	13	0.42	348	71	0.03	11	0.06	9	1	52	0.17	61	51
15	54089	10	0.6	2.56	17	167	0.8	5	0.45	0.2	55	10	35	525	3.77	0.36	29	24	0.74	313	31	0.05	19	0.07	6	1	53	0.24	93	57
16	54090	50	4.0	2.75	32	182	1.2	5	0.40	0.2	85	12	34	1003	5.69	0.73	47	37	1.22	365	117	0.11	14	0.15	11	1	106	0.25	121	78
17	54091	10	0.4	1.88	16	213	0.6	5	0.62	0.3	42	8	31	191	3.14	0.33	20	17	0.62	423	47	0.05	14	0.12	9	2	59	0.22	86	82
18	54092	55	1.2	3.04	716	87	1.8	5	0.49	0.5	68	33	12	1107	3.13	0.34	35	26	0.65	545	159	0.03	14	0.09	78	8	81	0.15	58	140
19	54093 *H	40	0.8	1.91	14	134	0.8	5	0.25	0.2	27	11	21	533	2.90	0.50	14	27	0.89	294	64	0.03	10	0.10	6	1	27	0.21	77	64
20	54094	10	0.4	1.40	13	105	0.4	5	0.27	0.2	40	6	27	125	2.99	0.36	22	15	0.67	197	34	0.06	7	0.13	6	4	22	0.22	80	44
21	54095	10	0.8	2.19	21	141	0.7	5	0.41	0.2	48	13	39	297	3.12	0.28	23	21	0.65	395	37	0.04	20	0.05	14	1	46	0.24	83	61
22	54096	20	1.4	3.26	143	140	1.7	5	0.69	0.3	78	15	26	859	3.61	0.39	41	32	0.76	341	163	0.05	18	0.12	66	1	134	0.20	83	101
23	54097 *H	5	0.8	0.86	2	112	0.3	5	0.18	0.6	18	3	20	47	0.91	0.20	8	5	0.15	197	27	0.10	5	0.12	3	1	21	0.07	30	57
24	54098 *H	10	0.8	1.24	8	163	0.5	5	0.54	0.7	35	7	19	102	2.07	0.37	16	15	0.56	500	41	0.05	8	0.09	9	1	56	0.15	64	70
25	54099	35	1.0	3.04	32	167	1.3	5	0.56	0.4	59	16	36	715	3.91	0.37	29	33	0.82	386	69	0.04	22	0.12	30	1	70	0.25	99	89
26	54100 *H	30	1.2	1.27	5	128	0.3	5	0.22	0.5	30	6	22	82	1.91	0.29	14	9	0.39	260	24	0.08	8	0.07	6	1	30	0.15	73	82
27	54101	10	1.2	3.08	9	198	1.0	5	0.48	0.2	50	10	43	187	3.70	0.32	23	34	0.55	339	22	0.05	20	0.07	13	1	63	0.25	104	71
28	54102	30	0.8	3.45	38	218	1.5	5	0.85	0.5	94	27	45	815	4.63	0.30	44	26	1.15	861	16	0.05	50	0.13	55	1	174	0.26	96	115
29	54103	10	0.2	3.27	8	216	1.0	5	0.52	0.2	54	12	44	252	3.69	0.37	25	22	0.67	429	5	0.04	21	0.09	16	1	68	0.24	102	67
30	54104	5	0.2	3.35	9	246	0.9	5	0.49	0.2	48	14	52	115	3.56	0.39	21	19	0.76	516	4	0.04	26	0.10	12	1	52	0.23	99	64
31	54105	60	0.4	2.71	34	180	1.0	5	0.60	0.2	71	13	39	661	4.10	0.41	37	28	0.74	332	55	0.05	16	0.14	12	1	79	0.26	104	70
32	54106	40	0.8	2.95	52	167	1.1	5	0.57	0.2	63	13	37	875	4.77	0.45	34	33	0.85	329	66	0.04	15	0.13	18	1	82	0.28	108	70
33	54107	25	0.8	2.78	43	183	1.1	5	0.62	0.2	60	12	37	580	4.13	0.44	32	29	0.94	311	35	0.04	18	0.12	20	1	73	0.30	102	78
34	54151	5	0.2	2.74	15	137	0.9	5	0.44	0.2	42	20	35	109	3.82	0.24	19	29	0.63	598	5	0.04	26	0.09	5	1	51	0.21	102	63
35	54152	5	0.2	2.63	13	161	0.7	11	0.38	0.2	49	10	31	166	4.57	0.49	24	14	0.76	357	1	0.07	15	0.13	2	1	105	0.21	97	80
36	54153	5	0.2	2.68	9	136	0.7	5	0.41	0.2	42	10	45	105	4.26	0.23	20	16	0.58	399	2	0.04	16	0.10	5	1	56	0.30	119	71

30-1-0-6-1-3p

T.T. No.	SAMPLE No.	Au ppb	Ag ppm	Al %	As ppm	Ba ppm	Bc ppm	Bi ppm	Ca %	Cd ppm	Ce ppm	Co ppm	Cr ppm	Cu ppm	Fe %	K %	La ppm	Li ppm	Mg %	Mn ppm	Mo ppm	Na %	Ni ppm	P %	Pb ppm	Sb ppm	Sr ppm	Ti %	V ppm	Zn ppm	0100-038 Pg. 2 of 2
37	54154	5	0.2	4.04	43	127	1.3	5	0.32	0.2	45	11	37	93	4.28	0.25	20	46	0.64	556	2	0.03	18	0.10	11	2	49	0.19	109	77	
38	54155	5	0.2	3.00	14	198	0.8	5	0.50	0.2	40	13	44	91	4.19	0.35	19	18	0.72	509	2	0.05	20	0.10	9	1	83	0.24	114	76	
39	54156	5	0.2	3.00	20	160	0.9	5	0.39	0.2	44	23	41	173	5.42	0.34	21	16	0.93	666	3	0.05	27	0.15	10	1	58	0.25	124	87	
40	54157	5	0.2	2.96	17	209	0.7	5	0.40	0.2	37	10	50	52	4.19	0.32	18	19	0.61	436	2	0.05	18	0.12	9	2	61	0.27	126	75	
41	54158	5	0.2	1.98	8	96	0.3	5	0.34	0.2	43	4	20	113	6.10	1.17	22	17	1.66	345	3	0.08	11	0.15	2	1	162	0.30	140	50	
42	54159	5	0.2	3.89	12	244	1.3	5	0.53	0.2	60	19	43	370	4.68	0.38	28	19	1.10	600	2	0.05	25	0.07	12	1	85	0.27	124	71	
43	54160	5	0.6	2.38	22	87	0.5	17	0.42	0.2	45	5	25	164	5.91	0.74	22	12	1.43	446	4	0.05	14	0.14	5	1	65	0.33	137	65	
44	54161	5	0.4	3.26	19	232	1.5	7	0.67	0.2	88	22	45	164	5.58	0.35	40	13	0.67	676	3	0.05	16	0.10	75	1	382	0.26	93	104	
45	54162	5	1.8	4.18	260	253	1.7	5	0.55	3.0	110	12	41	85	4.20	0.32	34	14	0.66	631	3	0.05	16	0.07	306	10	123	0.24	87	538	
46	54163	5	0.6	4.10	22	165	2.7	8	0.95	0.2	103	18	25	135	4.70	0.38	39	36	0.50	539	10	0.05	14	0.09	45	1	103	0.16	65	74	
47	54164	15	2.0	3.83	312	168	2.4	5	0.87	0.8	98	17	32	129	4.70	0.32	37	19	0.54	603	4	0.07	13	0.08	231	18	168	0.19	71	149	
48	54166	15	4.2	3.68	285	203	1.8	7	0.62	0.2	113	27	20	137	5.44	0.47	54	12	0.45	847	6	0.07	9	0.11	342	20	197	0.14	55	144	
49	54167	5	0.6	4.36	188	233	1.8	8	0.77	0.9	76	19	31	40	4.61	0.32	30	15	0.57	630	5	0.07	16	0.11	81	6	201	0.18	73	235	
51	54168	60	2.8	4.46	567	130	2.2	6	0.91	0.2	89	13	18	31	7.01	0.53	44	23	1.05	680	5	0.06	8	0.12	447	4	165	0.21	83	199	
52	54169	5	0.6	5.76	11	145	2.4	5	0.53	0.2	111	9	7	18	3.73	0.25	45	12	0.60	661	2	0.04	6	0.10	28	2	109	0.11	44	89	
53	54170	5	0.2	3.75	14	145	1.1	5	0.41	0.2	39	10	22	65	3.92	0.28	19	14	0.67	397	1	0.06	17	0.13	10	1	144	0.19	104	69	
54	54171	5	0.2	3.54	16	162	0.9	5	0.65	0.2	40	14	33	52	3.67	0.26	17	17	0.61	425	1	0.04	21	0.10	8	4	114	0.26	95	84	
55	54172	5	1.2	4.36	763	593	2.2	10	0.31	1.1	63	5	5	58	2.36	0.61	31	23	0.30	724	2	0.05	6	0.07	107	20	101	0.08	26	160	
56	54173	5	1.6	3.64	656	604	1.2	10	0.41	0.5	45	9	17	84	3.50	0.53	22	18	0.34	419	2	0.07	9	0.11	108	24	196	0.16	62	106	
57	54175	40	16.0	4.88	1495	448	1.9	39	0.34	1.0	76	14	14	213	6.10	0.85	39	26	0.71	791	4	0.07	15	0.14	706	48	167	0.16	77	173	
58	54176	5	1.8	5.22	59	338	1.5	5	0.20	0.2	184	3	7	17	8.16	0.87	106	12	0.36	225	3	0.34	3	0.19	189	1	854	0.08	29	74	
59	54177	5	0.4	4.76	31	228	1.8	5	0.40	0.2	100	8	22	27	4.65	0.50	51	13	0.57	595	3	0.14	13	0.16	20	1	397	0.14	56	86	
60	54178	5	0.2	4.83	24	168	1.6	5	0.28	0.2	129	17	17	32	5.05	0.38	44	18	0.77	664	4	0.08	11	0.15	46	1	109	0.13	53	86	
61	54179	5	0.2	5.65	42	361	2.1	8	0.31	0.2	87	7	15	50	7.01	1.17	48	30	0.83	210	3	0.23	5	0.17	31	1	999	0.09	53	50	
62	54180	5	0.4	2.39	37	136	0.7	22	0.32	0.2	64	6	23	107	5.56	0.74	34	14	0.93	400	2	0.09	7	0.15	11	1	164	0.27	117	56	
63	54181	15	0.2	2.65	38	157	0.7	6	0.32	0.2	68	6	22	114	5.76	0.80	37	16	1.03	415	3	0.10	8	0.16	11	1	160	0.26	120	58	
64	54182	5	0.4	1.78	15	94	0.5	10	0.24	0.2	38	5	25	53	3.50	0.40	21	9	0.74	234	2	0.07	6	0.11	4	1	52	0.20	79	54	
65	54183	5	0.2	3.18	33	99	1.2	9	0.32	0.2	60	11	31	101	5.62	0.51	33	17	1.23	489	3	0.04	11	0.13	9	1	63	0.26	119	74	
66	54184	5	0.2	3.20	13	191	1.1	9	0.61	0.2	65	20	46	159	4.32	0.30	29	14	1.02	601	1	0.05	30	0.08	8	1	135	0.32	104	71	
67	54185	5	1.0	4.74	34	215	2.4	7	0.35	0.2	94	23	37	343	5.61	0.36	51	19	0.93	764	20	0.09	22	0.14	41	1	70	0.21	120	92	
68	SILT 54186	25	1.0	3.38	209	188	1.6	13	0.44	0.5	73	22	22	155	4.61	0.50	36	17	0.67	810	2	0.04	13	0.11	68	1	127	0.19	82	116	

GEOCHEMICAL ANALYSIS CERTIFICATE

Noranda Exploration Co. Ltd. PROJECT 9109-038-312* FILE # 91-4781 Page 1

1050 Davie St., Vancouver BC V6E 1M4

SAMPLE#	Hg ppb
P 54076	205
P 54077	60
P 54078	20
P 54079	85
P 54080	40
P 54081	25
P 54082	45
P 54083	25
P 54084	50
P 54085	35
P 54086	40
RE P 54090	30
P 54087	5
P 54088	25
P 54089	40
P 54090	25
P 54091	65
P 54092	15
P 54093	90
P 54094	90
P 54095	35
P 54096	40
P 54097	100
P 54098	75
P 54099	30
P 54100	65
P 54101	90
P 54102	10
P 54103	35
P 54104	35
P 54105	40
P 54106	45
P 54107	30
P 54151	60
P 54152	35
P 54153	30
P 54154	65
STANDARD C	1650

- SAMPLE TYPE: PULP HG ANALYSIS BY FLAMELESS AA.
 Samples beginning 'RE' are duplicate samples.

DATE RECEIVED: SEP 27 1991

DATE REPORT MAILED: Oct 1/91.

SIGNED BY.....*C. King*.....D. TOYE, C. LEONG, J. WANG; CERTIFIED B.C. ASSAYERS

37

SAMPLE#	Hg ppb
P 54155	50
P 54156	25
P 54157	65
P 54158	5
P 54159	45
P 54160	20
P 54161	50
P 54162	25
P 54163	35
P 54164	35
P 54166	20
P 54167	45
P 54168	20
P 54169	55
P 54170	55
P 54171	45
P 54172	60
P 54173	55
P 54175	20
P 54176	5
P 54177	75
RE P 54172	55
P 54178	85
P 54179	20
P 54180	20
P 54181	25
P 54182	45
P 54183	25
P 54184	30
P 54185	65
P 54186	10
STANDARD C	1500

Samples beginning 'RE' are duplicate samples.



GEOCHEMICAL ANALYSIS CERTIFICATE

Mount Cookfield (JPD)

Noranda Exploration Co. Ltd. PROJECT 9109-038 312

File # 91-4181

1050 Davie St., Vancouver BC V6E 1M4



SAMPLE#	Mo	Cu	Pb	Zn	Ag	Ni	Co	Mn	Fe	As	U	Au	Th	Sr	Cd	Sb	Bi	V	Ca	P	La	Cr	Mg	Ba	Ti	B	Al	Na	K	W	Au*	Hg
	ppm	ppm	ppm	ppm	ppm	ppm	ppm	ppm	%	ppm	ppm	ppm	ppm	ppm	ppm	ppm	ppm	ppm	%	%	ppm	ppm	%	ppm	%	%	%	%	%	%	ppm	ppb
R113076	24	211	25	36	.5	4	4	385	1.92	56	8	ND	12	35	.2	2	2	12	.22	.031	14	5	.46	91	.05	2	.76	.07	.26	1	4	5
R139747	5	73	17	13	.5	5	1	86	1.61	7	7	ND	16	16	.2	2	7	21	.07	.038	13	9	.36	65	.02	2	.75	.05	.15	1	2	5
R139748	2	23	16	32	.2	3	4	206	1.96	20	8	ND	16	33	.2	2	2	11	.16	.038	10	4	.47	52	.04	2	1.03	.08	.24	1	3	10
R139749	4	6	11	14	.1	4	1	109	1.83	8	5	ND	17	25	.2	2	2	19	.03	.013	25	8	.36	177	.03	2	.89	.05	.38	1	3	10
R139750	5	500	22	19	.7	4	7	250	1.83	27	5	ND	12	22	.2	2	2	14	.15	.037	15	5	.40	59	.09	2	.80	.07	.26	1	8	5
R145851	10	19	27	56	.1	3	3	160	1.60	7	5	ND	8	71	.2	2	2	7	.49	.024	5	4	.38	26	.03	2	1.51	.22	.07	1	2	5
R145852	1	6	24	71	.1	4	1	240	1.29	9	5	ND	8	64	.2	2	2	9	.37	.038	30	3	.36	70	.04	4	1.10	.11	.18	1	1	5
R145853	1	43	32	68	.5	4	1	168	2.68	14	5	ND	25	54	.2	2	3	42	.23	.058	32	15	.68	79	.16	4	1.13	.05	.20	2	2	5
R145854	3	228	5	56	.1	16	7	258	4.22	11	5	ND	16	72	.6	2	2	73	.80	.126	30	25	1.35	52	.27	3	2.14	.14	.81	1	5	5
R145855	1	62	26	40	.4	4	7	137	2.36	7	6	ND	10	29	.2	2	2	12	.11	.019	14	4	.34	40	.03	2	1.02	.07	.11	1	1	5
R145856	1	11	27	45	.2	4	1	266	3.49	8	5	ND	9	72	.2	2	2	13	.22	.023	9	3	.57	37	.07	2	1.33	.14	.29	1	1	10
RE R145852	1	7	25	71	.1	4	1	245	1.30	9	5	ND	8	66	.2	2	2	9	.37	.036	30	3	.37	74	.04	5	1.12	.11	.19	1	2	5
R145857	2	28	23	46	.2	3	4	261	1.88	9	5	ND	15	28	.2	2	2	12	.16	.036	23	3	.39	32	.04	2	.93	.07	.14	1	2	5
R145858	36	140	12	23	.5	11	8	124	2.98	13	7	ND	26	38	.2	2	2	48	.20	.061	14	24	.77	54	.13	2	1.11	.07	.52	6	3	10
R145859	54	393	15	17	.5	3	4	128	1.90	5	5	ND	11	32	.2	2	2	13	.13	.035	14	4	.30	41	.05	2	.59	.05	.20	3	8	5
R145860	314	1035	12	22	1.2	6	9	110	2.59	5	5	ND	27	16	.2	2	2	38	.20	.060	16	16	.85	96	.19	2	.94	.07	.74	58	42	5
R145861	44	288	9	19	.5	6	5	110	2.92	6	5	ND	30	18	.2	2	2	46	.19	.062	14	16	.84	122	.22	2	.99	.07	.72	1	22	5
R145862	53	379	11	32	.4	13	11	165	2.89	4	8	ND	30	26	.7	2	2	51	.23	.063	18	18	.88	119	.24	2	1.07	.11	.88	2	1	5
R145863	40	265	16	20	.3	7	6	115	2.63	4	8	ND	19	27	.2	2	2	30	.21	.060	17	10	.50	188	.15	2	.71	.08	.50	33	11	5
STANDARD C/AU-R	18	57	36	130	7.1	70	32	1037	3.93	41	18	7	39	54	18.4	15	18	57	.48	.088	38	58	.88	175	.09	34	1.92	.06	.15	11	460	1500

ICP - .500 GRAM SAMPLE IS DIGESTED WITH 3ML 3-1-2 HCL-HNO3-H2O AT 95 DEG. C FOR ONE HOUR AND IS DILUTED TO 10 ML WITH WATER. THIS LEACH IS PARTIAL FOR MN FE SR CA P LA CR MG BA TI B W AND LIMITED FOR NA K AND AL. AU DETECTION LIMIT BY ICP IS 3 PPM. ASSAY RECOMMENDED FOR ROCK AND CORE SAMPLES IF CU PB ZN AS > 1%, AG > 30 PPM & AU > 1000 PPB
 - SAMPLE TYPE: ROCK AU* ANALYSIS BY ACID LEACH/AA FROM 10 GM SAMPLE. HG ANALYSIS BY FLAMELESS AA.
 Samples beginning 'RE' are duplicate samples.

DATE RECEIVED: SEP 5 1991 DATE REPORT MAILED: *Sept 13/91* SIGNED BY: *C. Leung* D. TOYE, C. LEONG, J. WANG; CERTIFIED B.C. ASSAYERS

PROPERTY Mount Cooke Field

N.T.S. 115 J 9/10
 DATE Aug 22 '71
 PROJECT 312

ROCK SAMPLE REPORT

SAMPLE NO.	LOCATION & DESCRIPTION	% SULPHIDES	TYPE	WIDTH	G	A	G	A	G	A	G	A	G	A	G	A	SAMPLED BY
					<input type="checkbox"/>	<input type="checkbox"/>	<input type="checkbox"/>	<input type="checkbox"/>	<input type="checkbox"/>	<input type="checkbox"/>	<input type="checkbox"/>	<input type="checkbox"/>	<input type="checkbox"/>	<input type="checkbox"/>	<input type="checkbox"/>	<input type="checkbox"/>	
145858	dk grey mafic porph 2% py		etc														
59	white fine grain talus intr. (near vein) 3% diss py (sp)		etc														
60	white coarse grain diorite with biotite diss blebs py (sp) orange rind		Talus														
61	strongly weathered exemplarily white/orange diorite		Talus														
62	as 61 with silicified patches with 1% py		Talus														
63	fine grain orange weathered near vein 1% fine diss py		Talus														

PROPERTY Mant Cockfield

N.T.S. 115 J 9/10

DATE Aug 22 '91

ROCK SAMPLE REPORT

PROJECT 312

SAMPLE NO.	LOCATION & DESCRIPTION	% SULPHIDES	TYPE	WIDTH	G	A	G	A	G	A	G	A	G	A	G	A	SAMPLED BY
					<input type="checkbox"/>	<input type="checkbox"/>	<input type="checkbox"/>	<input type="checkbox"/>	<input type="checkbox"/>	<input type="checkbox"/>	<input type="checkbox"/>	<input type="checkbox"/>	<input type="checkbox"/>	<input type="checkbox"/>	<input type="checkbox"/>	<input type="checkbox"/>	
145851	baked very fine grain felsic blebs sulphides py, cpy light grey		o/c														JPD
52	white fine grain felsic dissem py & cpy		"														
53	megacryst granodiorite with biotite & sulph.		"														
54	dk grey mafic feld porph (0.5cm porphs) 2% py dissem		"														
55	hornfelsed white felsic intr 5% dissem py cubes.		Talus														
56	small pod py cubes in grano- diorite.		"														
57	hornfelsed grey fine grain felsic intr 2% diss py		o/c														

September 5, 1991

Work Order #13349

Placer Dome Exploration Limited
 103 Platinum Road
 Whitehorse, Yukon
 Y1A 5M3

File # 13349a

BATTLE
 CREEK

Assay Certificate for Samples Provided

Sample #	Au ppm ^b	Cu ppm	Mo ppm
3626 ✓	18	823	9
3627 ✓	<5	50	6
3628 ✓	<5	137	4
3629 ✓	10	331	30
3630 ✓	16	198	253
3631	18	301	407
3632	15	1207	60
3633	19	73	76
3634	14	364	645
3635	9	178	139
3637	10	30	9
3638	12	2	17
3639	8	1	5

Certified by Chycki



APPENDIX B
REPORT ON THE BATTLE CREEK PROPERTY
MOUNT COCKFIELD AREA

BY: PETER CHRISTOPHER Phd., P. EnG.

REPORT ON THE BATTLE CREEK PROPERTY
MOUNT COCKFIELD AREA
WHITEHORSES MINING DISTRICT

LOCATION

N.T.S.: 115J/ 9 & 10
LATITUDE: 62' 40'N.
LONGITUDE: 138' 30'W.

1:50,000 MAP SHEETS SELWYN RIVER & COLORADO CREEK

OWNER

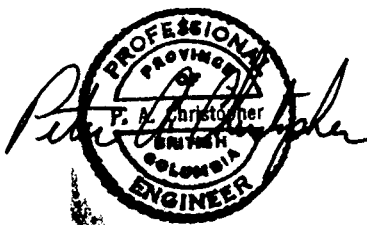
WALAHALA EXPLORATIONS LTD.
P.O. BOX 265
DAWSON CITY, YUKON Y0B 1G0

PREPARED FOR

PLACER DOME INC.
103 PLATINUM ROAD
WHITEHORSE, YUKON Y1A 5M3
PHONE (403) 668-6838
FAX (403) 668-2740

PREPARED BY

PETER A. CHRISTOPHER PhD., P.Eng.
PETER CHRISTOPHER & ASSOCIATES INC.
3707 WEST 34TH AVENUE
VANCOUVER, B.C. V6N 2K9
PHONE (604) 263-6152



AUGUST 23, 1991

TABLE OF CONTENTS

	PAGE
SUMMARY	i
INTRODUCTION	1
LOCATION AND ACCESS	1
PHYSIOGRAPHY & VEGETATION	1
PROPERTY DEFINITION	2
HISTORY	2
GENERAL GEOLOGY	2
PROPERTY GEOLOGY	3
MINERALIZATION & ALTERATION	4
GEOCHEMICAL SURVEYS	4
GEOPHYSICAL SURVEYS	5
DISCUSSION	5
CONCLUSIONS AND RECOMMENDATIONS	6
BIBLIOGRAPHY	7
CERTIFICATE	8
ROCK SAMPLE DESCRIPTIONS	APPENDIX A
DRILL HOLE SUMMARY	APPENDIX B

LIST OF ILLUSTRATIONS

	AFTER PAGE
FIGURE 1: LOCATION MAP	1
FIGURE 2: CLAIM MAP	1
FIGURE 3: REGIONAL GEOLOGY	2
FIGURE 4: PROPERTY GEOLOGY	3
FIGURE 5: COMPILATION	4
FIGURE 6: SAMPLE LOCATION PLAN	4
FIGURE 7: AIRBORNE MAGNETICS	5
FIGURE 8: FILTERED MAGNETICS (COPY)	5

SUMMARY

The Battle Creek Property, consisting of the Bat 1 to 56 covering about 2892 acres (1170 ha.), is situated in the White Mining District about 130 kilometers west-northwest and 280 kilometers northwest of Carmacks and Whitehorse, respectively. The Casino porphyry deposit is about 30 kilometers west-northwest of the Battle Creek Property (Cockfield Porphyry deposit) and the Cash and Revenue porphyry prospects are about 55 kilometers and 75 kilometers east-southeast of Mount Cockfield, respectively. The property is within the Dawson Range porphyry belt with numerous porphyry-related gold and copper deposits within a 110 kilometer west-northwest trending belt.

Access to the Battle Creek Property is via helicopter from a Trans North Air (Ph. 863-5551) base on the Yukon River at Carmacks. Heavy equipment could be barged along the Yukon River and walked into the property. Sufficient lumber remains at the campsite to reconstruct one tent frame and four of five tent frame floors. The Casino Trail is driveable to about 40 kilometers from the property and could be used as a staging area.

The Bat Claims were staked in May 1991 with Placer Dome obtaining an option to acquire the property in August 1991. The claim group was expanded to encompass the extent of the known copper in soil anomaly prior to the writer August 17, 1991 field examination. The writer examination was conducted to evaluate the geological setting, assess the described alteration, examine and evaluate old core and to assess the talus fine content of soils within the soil geochemical anomalies.

The property is underlain by the multi-phase Mt. Cockfield Stock which intrudes the Dawson Range intrusive suite and Yukon Metamorphic Complex rocks and is overlain or in fault contact with volcanics of the Mount Nansen suite. A large gossan has resulted from oxidation of ubiquitous pyrite mineralization which occurs as fracture coatings, in veinlets and as disseminations in both intrusive rocks and younger volcanics. The large alteration zone mapped by previous workers is apparently related to rusty weathering with Keno Hill's drill holes showing shallow oxidation of generally weakly altered quartz bearing monzonite. Old core from a six hole program is stored at a camp on Battle Creek but only a few buried boxes have readable footage markers. Volcanic rocks intersected in hole 5 were not sampled but may warrant some additional check assays. The property is mainly covered with felsenmeer and talus with thin soil cover expected to contain a high proportion of talus fines.

A copper-molybdenum porphyry system is apparent from examination of surface outcrops which contain both sheeted and stockworks quartz and quartz-pyrite ± molybdenite ± chalcopyrite. The mineralized system contains minor secondary biotite veinlets with strong mafic content, biotite and/or hornblende, in intrusive phases. Molybdenite occurs as paint and flakes along fractures, in veinlets and as disseminations. Chalcopyrite is generally a minor constituent of pyritic veinlets and fracture coatings. Secondary enrichment is not apparent in the tested parts of the system.

The Mount Cockfield porphyry has been demonstrated to contain a large mineralized system with low grade copper and molybdeum with average values an order of magnitude below commercial porphyry grades. Soils with a high talus fine content appear to show minor copper enrichment over primary rock grades. The system apparently has not been tested for gold content but would require indications of significant gold content to justify further extensive exploration.

INTRODUCTION

The writer was retained by John Kowalchuck to examine the Battle Creek Property and to review company and government reports on the area. An option to acquire the Battle Creek Property (Mount Cockfield porphyry prospect) was obtained because an extensive and only partially tested copper and molybdenum soil geochemical anomaly occurs on the west flank of Mount Cockfield. A field examination was conducted on August 17, 1991.

A report submitted by the owner, Walhala Resources Ltd. and prepared by prospector Simon Ridgway (1991) suggests that the Battle Creek Property compares favourably to the Casino porphyry deposit. The property was considered of interest because:

- 1.) It covered a large, strong, copper-molybdenum soil geochemical anomaly (Fig. 5);
- 2.) The copper values in soils are significantly higher than drill results;
- 3.) The property was not tested for gold;
- 4.) A large airborne magnetic anomaly is coincident with the copper in soil anomaly;
- 5.) Only magnetic lows were tested by drilling;
- 6.) Placer gold has been mined from Rude Creek (immediately to the west) and found in Battle Creek.

This report summarizes the writer's review and field examination.

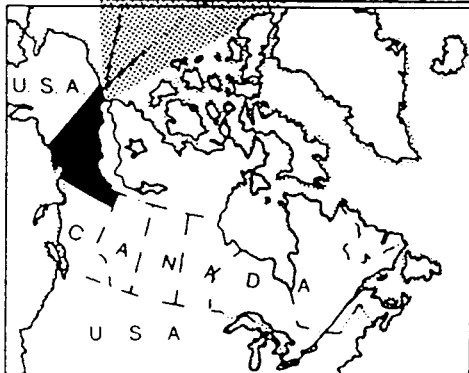
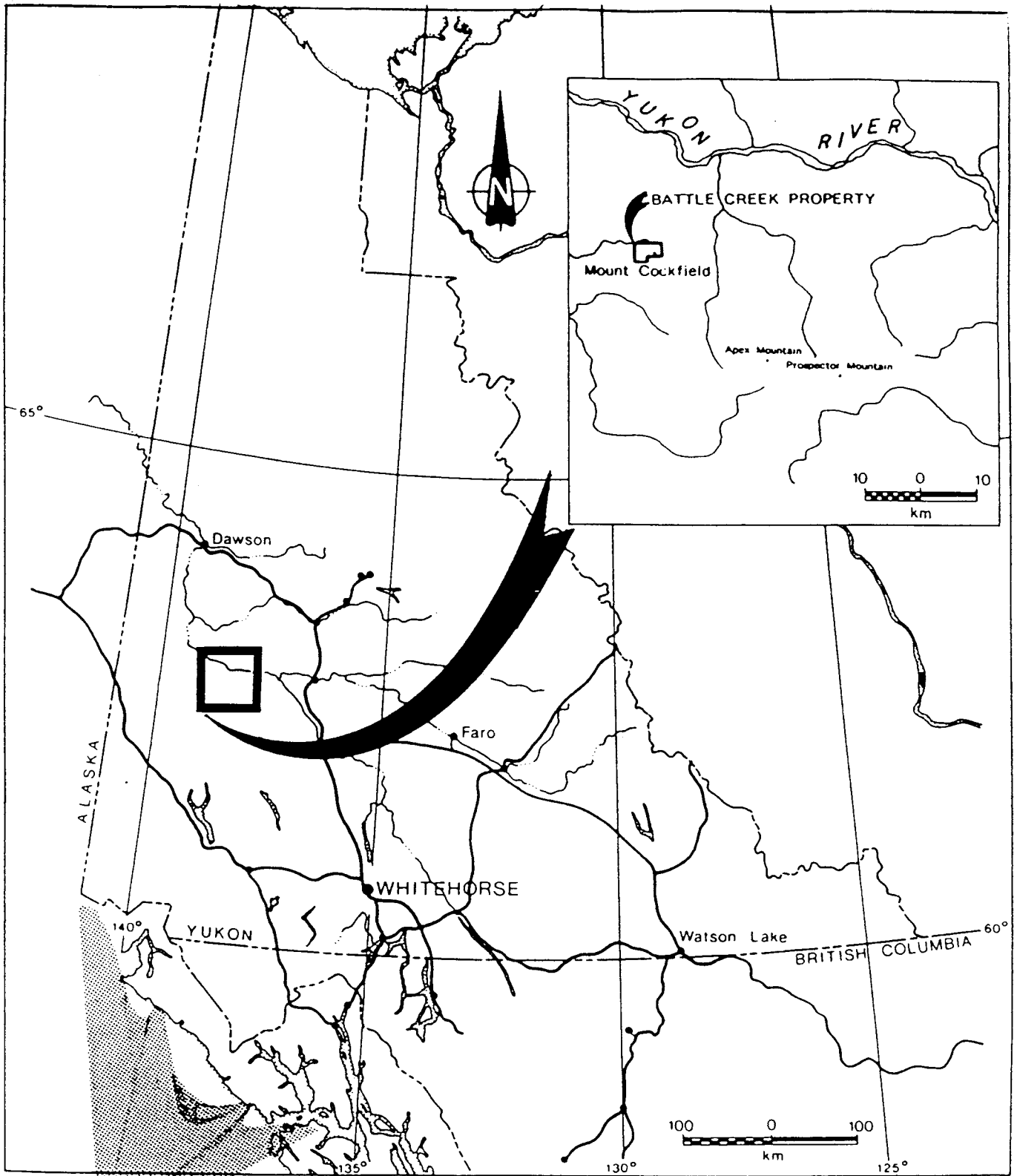
LOCATION AND ACCESS (Figures 1 & 2)

The Battle Creek Property is situated in the Whitehorse Mining Division about 130 kilometers west-northwest and 280 kilometers northwest of Carmacks and Whitehorse, respectively. The Casino porphyry deposit is about 30 kilometers west-northwest of the Battle Creek Property (Cockfield Porphyry deposit) and the Cash and Revenue porphyry prospects are about 55 kilometers and 75 kilometers east-southeast of Mount Cockfield, respectively. The property is centered at geographic coordinates 62°40'N latitude and 138°30'W longitude in 1:50,000 map sheets 115J-9 and 115J-10.

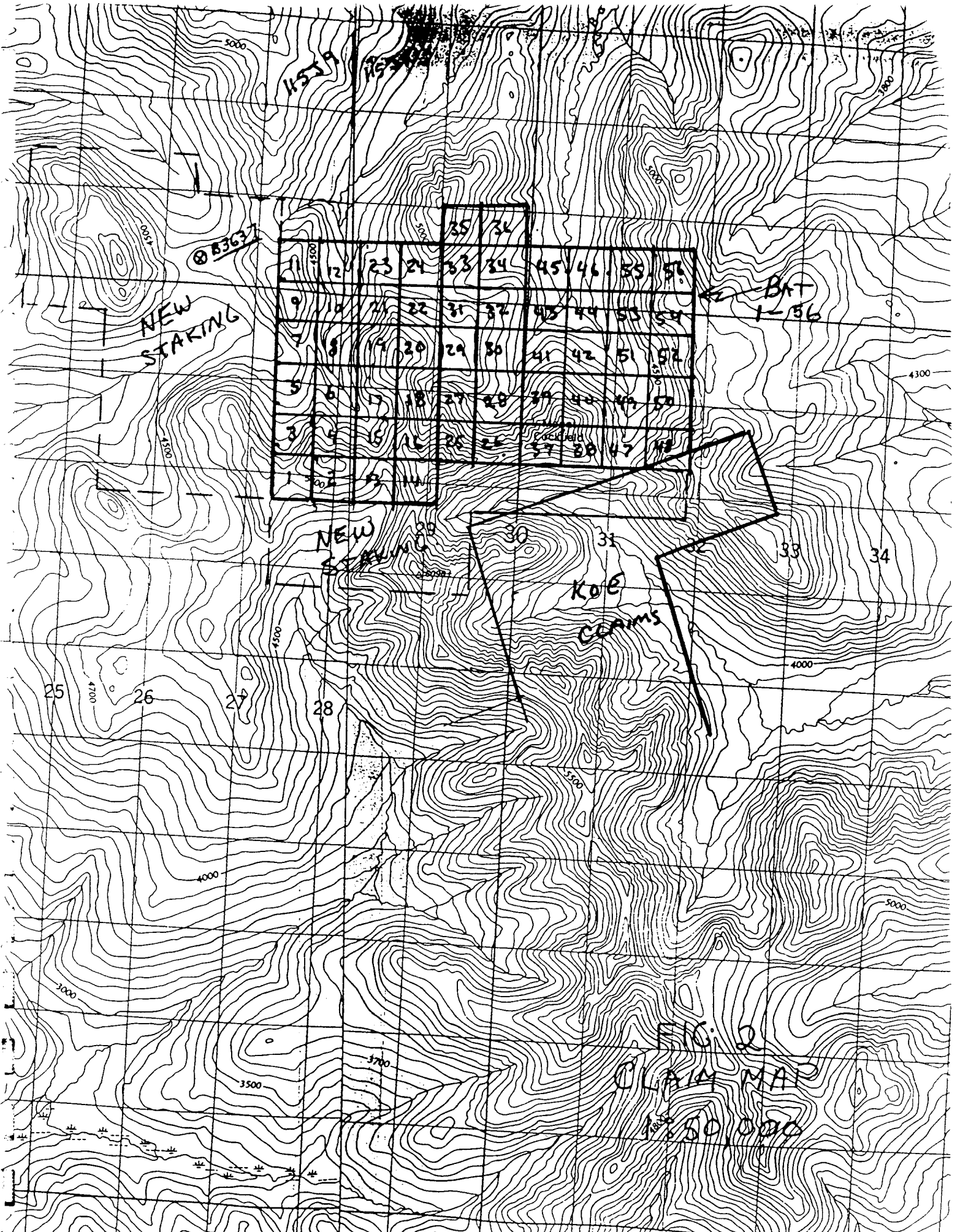
Access to the Battle Creek Property is via helicopter from a Trans North Air (Ph. 863-5551) base on the Yukon River at Carmacks. Heavy equipment could be barged along the Yukon River and walked into the property. Sufficient lumber remains at the campsite to reconstruct one tent frame and four of five tent frame floors. The Casino Trail is driveable to about 40 kilometers from the property and could be used as a staging area.

PHYSIOGRAPHY AND VEGETATION

The property is situated in the Dawson Range and covers part of Mount Cockfield and Stevenson Ridge. Elevations on the property range from about 1158 meters (3800 feet) in the valley of Battle Creek to 1856 meters (6090 feet) at a peak near the southern claim boundary. The area is over mainly above treeline which is mainly around the 1220 meter (4000 feet) elevation. Steeper areas consist of talus and felsenmeer with patches of thin soil and grass.



WALHALA EXPLORATIONS LTD.	
BATTLE CREEK PROPERTY	
LOCATION	
Whitehorse Mining District	July, 1991
NTS 115J/9 and 115J/10	Drawn by G.S. Figure 1



83632

NEW STAKING

1	2	3	4	5	6	7	8	9	10
11	12	13	14	15	16	17	18	19	20
21	22	23	24	25	26	27	28	29	30
31	32	33	34	35	36	37	38	39	40
41	42	43	44	45	46	47	48	49	50
51	52	53	54	55	56				

BAT
1-56

NEW STAKING

KOE CLAIMS

FIG. 2
CLAIM MAP
1:50,000

PROPERTY DEFINITION (Figure 2)

The Battle Creek Property, submitted by Walhala, consisted of the Bat 1 to 56 mineral claims covering about 2892 acres in the Whitehorse Mining District. Placer Dome has supported additional staking to complete coverage of the copper soil geochemical anomaly. Claim locations are summarized on Figure 2.

<u>CLAIM NAME</u>	<u>RECORD NUMBERS</u>	<u>EXPIRY DATE</u>
BAT 1 TO 56	YB 35839 TO 35894	MAY 24, 1992

HISTORY

The property was originally staked in 1966 as the Ray mineral claims by Nordex Exploration Ltd. which performed a geochemical survey in the same year. In 1969, Newmont Exploration of Canada Ltd. staked the Co claims after stream silt geochemical anomalies were detected in Battle Creek. In 1970, the Co group was optioned by United Keno Hill Exploration Ltd., which explored the property with geochemical and IP surveys before drilling 6 diamond drill holes totalling (1397 meters). In January 1970, the Hud and Barr mineral claims were tied on the the south and east by London Pride Silver Mines Ltd.

The area, mainly south of the present Battle Creek Property, was staked by Archer, Cathro & Associates as the Cofield mineral claims in August 1976 and restaked as the Kokup Claims by Archer, Cathro & Associates in August 1979. In 1980, the area was optioned to Denison Mining Ltd., which performed geological mapping and geochemical sampling. Cominco Ltd. carried out a program of heavy mineral concentrate sampling in the Mt. Cockfield area and in April 1980 staked the Battle mineral claims to the north of the Archer, Cathro & Associates ground and carried out mapping and geochemical sampling.

In September 1983, Kerr Addison Mining Ltd. staked the KOE mineral claims to the southeast of the present Battle Creek Property, and in 1984 and 1985, performed geological mapping and geochemical sampling followed by a VLF-Em survey and some hand-trenching. The VLF-Em survey detected a major northwest-trending fault zone which contained silicification and minor clay alteration. In 1986, Kerr Addison completed five diamond drill holes totalling 443.6 meters.

The Bat claims were staked in 1991 and acquired by Walhala Explorations Ltd. A property submittal report was prepared for Walhala by prospector Simon Ridgway. Placer Dome Exploration Limited acquired an option on the property in August 1991. The writer examined the property for Placer Dome on August 17, 1991.

GENERAL GEOLOGY (FIGURE 3)

The general geology of the Mount Cockfield area has been mapped by Tempelman-Kluit (1974) and Payne et al. (1987) for the Geological Survey of Canada and Indian and Northern Affairs Canada. The oldest rocks in the area, belonging to the Yukon Metamorphic Complex, were intruded by ultramafic rocks of Permian and/or Triassic age and

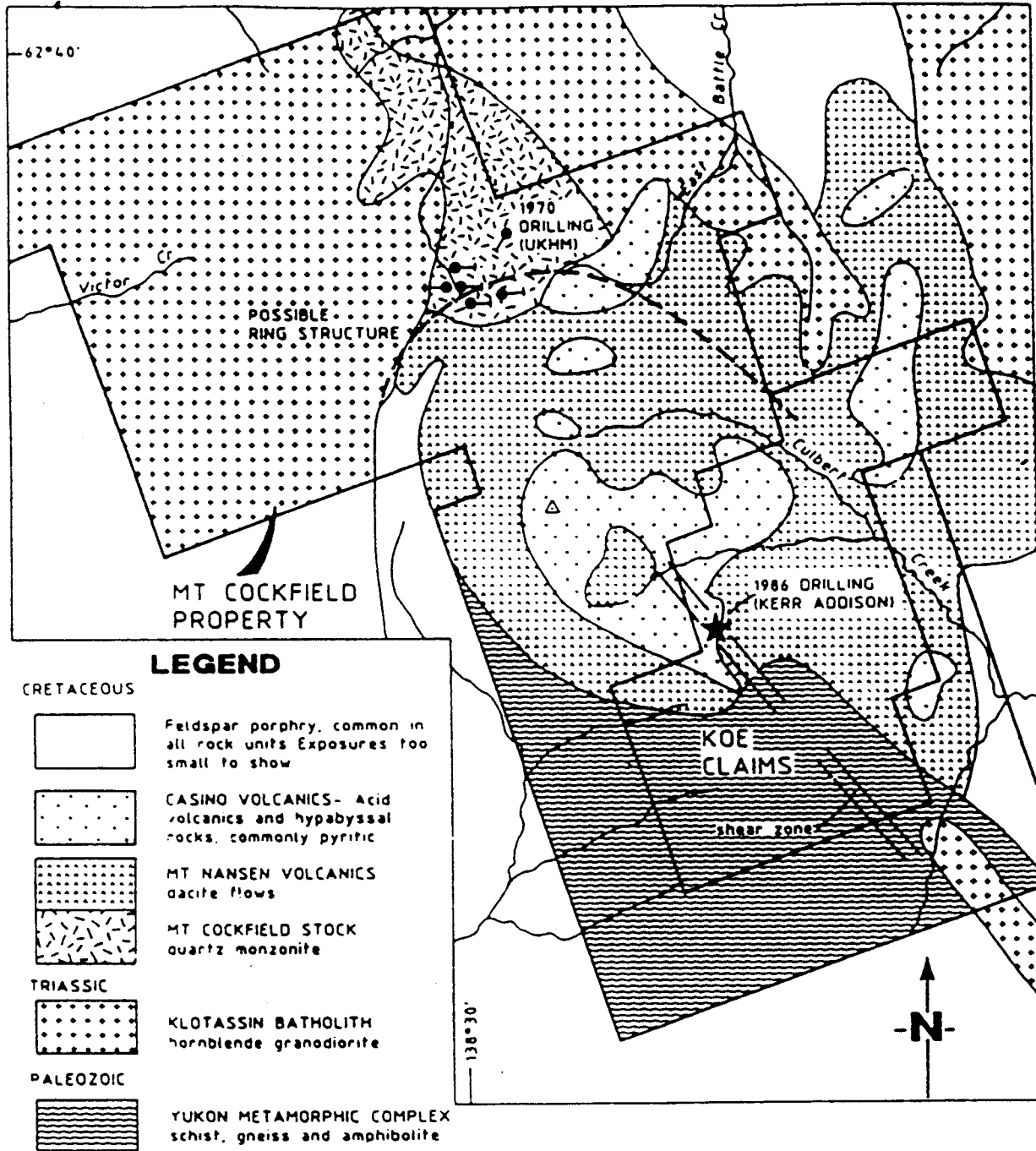
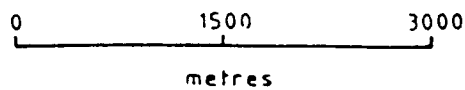


FIG.3
MT COCKFIELD PROPERTY

GENERAL GEOLOGY FROM
ASSESSMENT REPORT
091924 by
R.C. CARNE (1987)



granitic rocks of the mid-Cretaceous (?) Klotassin batholith. Metamorphic and granitic rocks are overlain by volcanic units of the Casino complex (Mount Nansen equivalent). The units have a general west-northwest trend and are broken by northeast and northwest fault structures.

The Battle Creek Property is within a northeast trending graben, the Mount Cockfield Graben which is flanked on the northwest by the Dip Creek Fault and its extension into Isaac Creek, and on the southeast by inferred magnetic linear, roughly parallel to Colorado Creek (Figures 7 and 8).

PROPERTY GEOLOGY (FIGURE 4)

The general geology of the Battle Creek property is shown on Figure 4 which is a compilation after company mapping by Payne et al. (1987) which has been modified by Ridgway (1991). The Battle Creek Property is underlain by the Mt. Cockfield Intrusions. The Mt. Cockfield Intrusions are generally quartz bearing porphyritic monzonites with strong biotite (10-15%) with some phases containing hornblende. The Mt. Cockfield suite intrudes the older Dawson Range Suite consisting of Casino type intrusives and Dawson Range Batholith. The Mesozoic Intrusions are hosted by the Yukon Metamorphic Complex in a subvolcanic setting of Mount Nansen volcanics.

A number of east-west, northeast and northwest faults have been mapped or inferred from geophysical surveys. The tributaries of Battle Creek are partly fault controlled. Dykes are also controlled by structures with a number of northerly trending dykes cutting volcanics near the southern property boundary.

Newmont mapped a 3500 foot, diameter zone of alteration within the Mt. Cockfield intrusions but field examination of core drilled by Keno Hill and surface outcrops indicate generally fresh intrusive phase with variable weathering. The alteration zone probably reflects areas of exposed gossan. Gossan formation is extensive since fracture and disseminated pyrite occurs in the southerly part of the Mt. Cockfield intrusions and adjacent Mt. Nansen volcanic suite.

Drill core contained at least four main phases of the Mt. Cockfield intrusions: fine porphyritic biotite feldspar quartz monzonite, coarse porphyritic biotite quartz monzonite, hornblende biotite quartz monzonite, and medium grained biotite quartz monzonite. The units are cut by a number of aplite and felsic dykes with minor quartz veinlets, fracture pyrite \pm cpy. \pm molybdenite and quartz. Rare magnetite, pyrrhotite and arsenopyrite (?) were seen. Galena was described in a fault breccia between 950 and 960 feet in DDH Co3 with the zone description similar to the mineralized faults on the adjacent Koe Claims.

Map patterns reflect distribution of rocks types in felsenmeer and talus which cover about 30% of the property. Outcrops are mainly restricted to ridges and steeper creek valleys.



FIG4 GEOLOGY

LEGEND

Lithologies

Mid-Cretaceous or younger

Mount Nansen Suite/Mount Cockfield Intrusions

KMNgd latite/granodiorite intrusions and dykes

KMNI latite flows

KMNa andesite basalts/andesitic tuffs and flows

Dawson Range Suite

KDRc Casino Intrusion

KDRd Dawson Range Batholith

Pre-Cambrian and/or Paleozoic

Yukon Metamorphic Complex

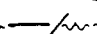
PPv meta volcanic rocks

PPs meta sedimentary rocks

Symbols

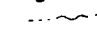
 Lithological boundary (approximate, assumed)

 Dykes

 Fault, from mapping/from geophysics

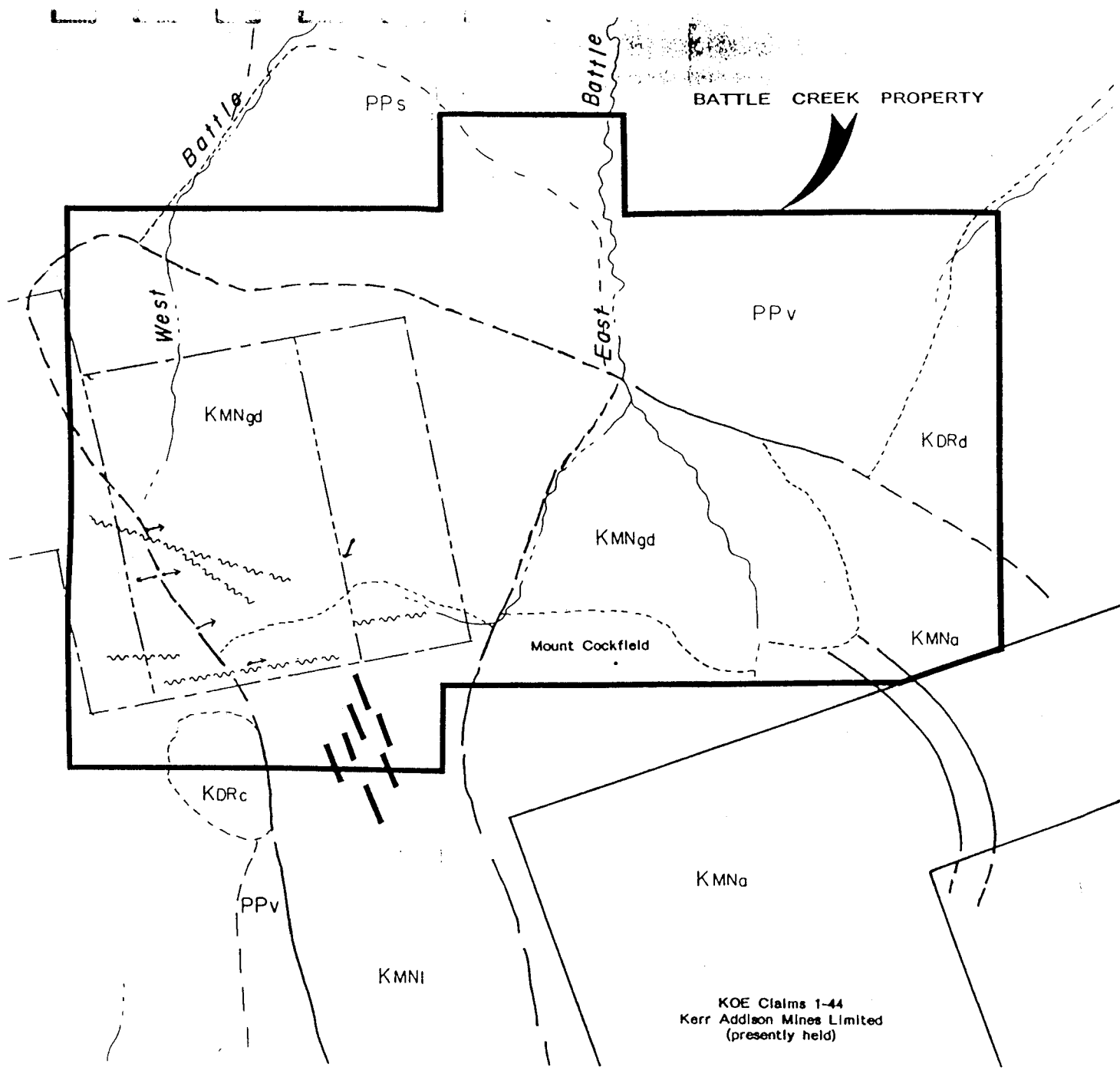
 Drill holes - approximate location of collar with of advance indicated (United Keno Hill Mines Ltd)

 Approximate claim group perimeter

 Drainage

 Limit of ground magnetometer survey, (1969)

NOTES: -Geology modified from Payne et al, 1987, Geology of Col-
Creek, Selwyn River, and Prospector Mountain Map Ar-
-Claim data modified from D.I.A.N.D. Quartz Sheets 115J/
115J/10



KOE Claims 1-44
Kerr Addison Mines Limited
(presently held)

MINERALIZATION AND ALTERATION

The Battle Creek Property contains low grade copper and molybdenum mineralizations as both disseminated and fracture or vein type mineralization. Quartz veins, up to 2.5 cm. wide, were observed as stockworks and sheeted zones within several phases of the subvolcanic Mt. Cockfield intrusives and in the overlying and surrounding Mt. Nansen volcanic suite. Brecciated veinlets with galena, arsenopyrite, chalcopyrite and molybdenite occupy narrow northerly trending fault zones which cut Mt. Nansen volcanic rocks on the adjoining Koe Claims and biotite quartz monzonite porphyry between 950 and 960 feet in Keno Hill's 1970 DDH Co3. Pyrite content is generally in the 2 to 5% range and occurs ubiquitously in the southern part of the Mt. Cockfield intrusions and in the adjoining volcanics. Minor magnetite and pyrrhotite have been reported in drill hole logs.

The weak nature of the copper and molybdenum mineralization is indicated by averages of about 0.03% copper and 0.013% molybdenum for the United Keno Hill 1970 diamond drill results. DDH Co5 was drilled in latite volcanics and contained similar mineralization to other holes but was mainly unassayed. Hole Co6 was drilled in finer grained porphyritic quartz monzonite which appeared to contain better molybdenite content but was mainly unassayed. Little data is available on precious metal content. Further testing of precious metals is warranted since placer mining has occurred on Dip Creek and placer gold has been report in Battle Creek.

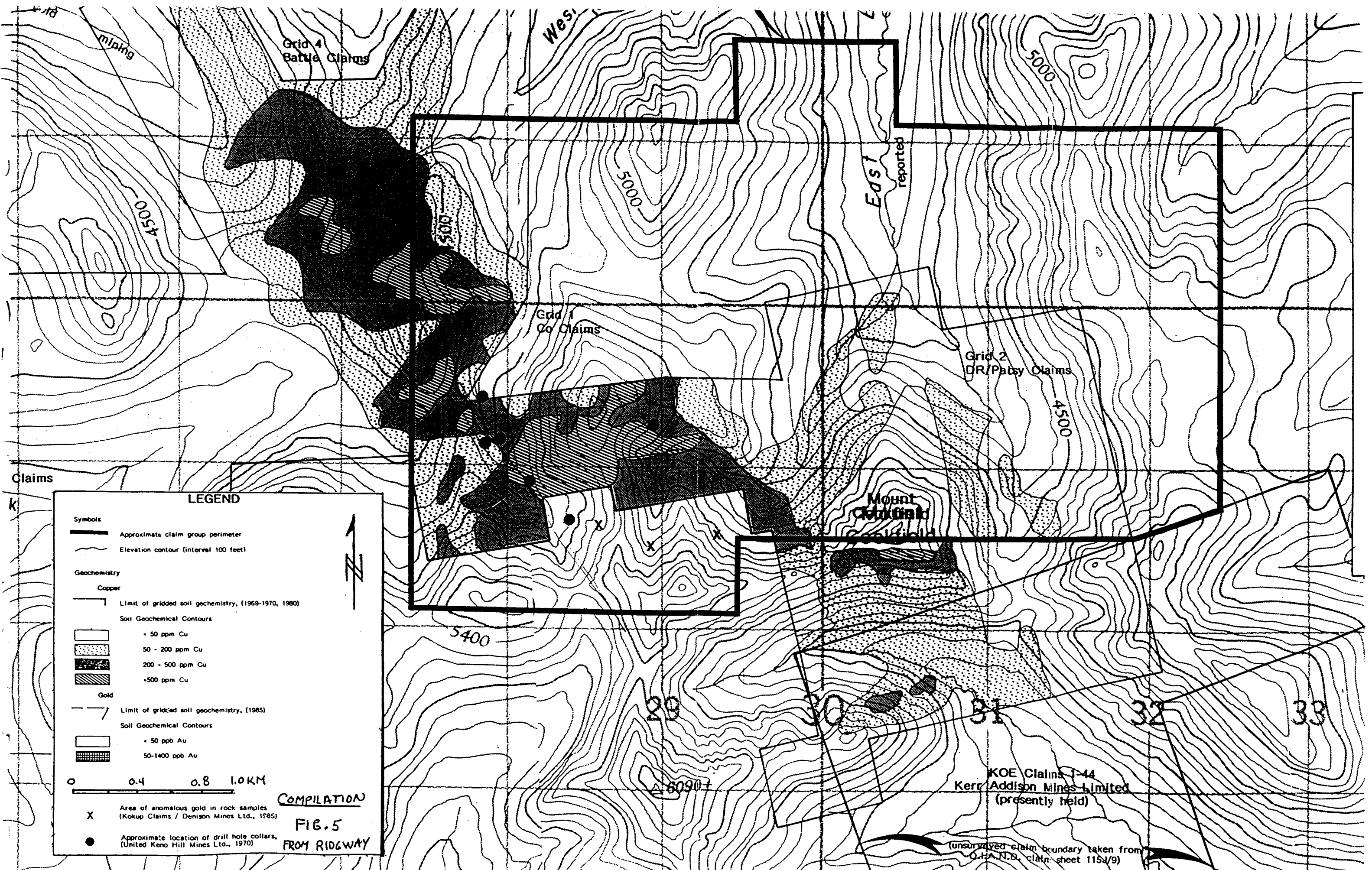
Examination of core and surface outcrops reveal only weak alteration with fractures and veinlets containing only thin alteration envelopes. The following vein types were noted:

1. Chlorite and biotite coated fractures;
2. Secondary biotite veinlets or lenses;
3. Calcite \pm chlorite;
4. Pink feldspar;
5. Quartz, calcite, ankerite;
6. Quartz, pyrite \pm chalcopyrite \pm molybdenite;
7. Magnetite stringers;
8. galena, chalcopyrite, arsenopyrite, molybdenite,

Veinlets with chalcopyrite and molybdenite mineralization are generally widely spaces, but pyritic fractures and disseminations are common with pyrite content generally in the 2 to 5% range.

GEOCHEMICAL SURVEYS (FIGURE 5)

Soil and silt geochemical surveys have been conducted over parts of the Battle Creek property for several group with the most comprehensive surveys completed by Newmont, Cominco, Denison and Kerr Addison. The survey results, as compiled by Ridgway (1991) is summarized on Figure 5. Ridgway's compilation shows a >200 ppm copper in soil anomaly which extends northwesterly from Mt. Cockfield for over 4000 meters at an average width of about 400 meters. The anomaly is based mainly on sampling by Newmont in 1969. The anomaly is open to the south toward Stevenson Ridge but was not soil sampled because the area is mainly felsenmeer. The >500 ppm copper anomaly between holes Co3 and Co4 is an area of poorly developed soil (ie.



Claims

LEGEND

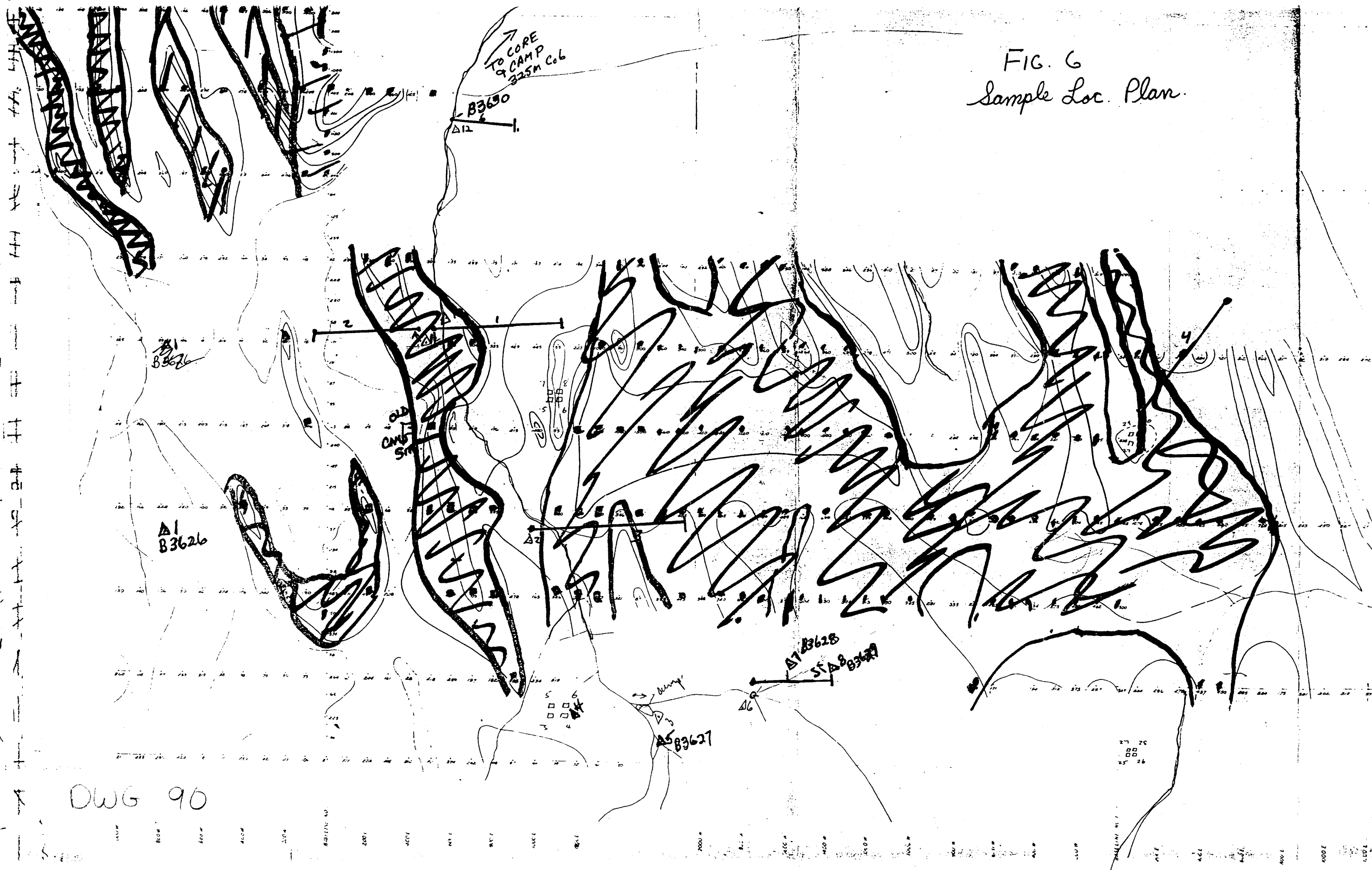
- Symbols**
- Approximate claim group perimeter
 - Elevation contour (interval 100 feet)
- Geochemistry**
- Copper**
- Limit of gridded soil geochemistry, (1969-1970, 1980)
- Soil Geochemical Contours**
- < 50 ppm Cu
 - 50 - 200 ppm Cu
 - 200 - 500 ppm Cu
 - >500 ppm Cu
- Gold**
- Limit of gridded soil geochemistry, (1985)
- Soil Geochemical Contours**
- < 50 ppb Au
 - 50-1400 ppb Au
- 0 0.4 0.8 1.0 KM
- X** Area of anomalous gold in rock samples (Kokup Claims / Denison Mines Ltd., 1985)
- Approximate location of drill hole collars, (United Keno Hill Mines Ltd., 1970)

COMPILATION
FIG. 5
FROM RIDGWAY

KOE Claims 7-44
Kerr Addison Mines Limited
(presently held)

(unsurveyed claim boundary taken from O.H.A.N.B. claim sheet 1151/9)

FIG. 6
Sample Loc. Plan.



DWG 90

high percentage of talus fines) and felsenmeer. The values obtained in holes Co3 and Co4 suggest that copper is modestly enriched in the surface material which consists of a soil and talus fine mixture.

The strength of Newmont's molybdenum anomaly is indicated by the high background value of 18 ppm and by contour interval up to 100 ppm. The strongest molybdenum in soil was 560 ppm. The molybdenum anomaly appears to be stronger near marginal, finer phases of the Mt. Cockfield intrusives.

The writer collected 11 rock geochemical samples and a number of specimens to show the character of the mineralization and to provide material for evaluating precious metal potential. Sample locations are shown on Figure 6 with descriptions presented in Appendix A. Several samples were collected from old drill core with hole summaries presented as Appendix B.

GEOPHYSICAL SURVEYS (FIGURES 7 & 8)

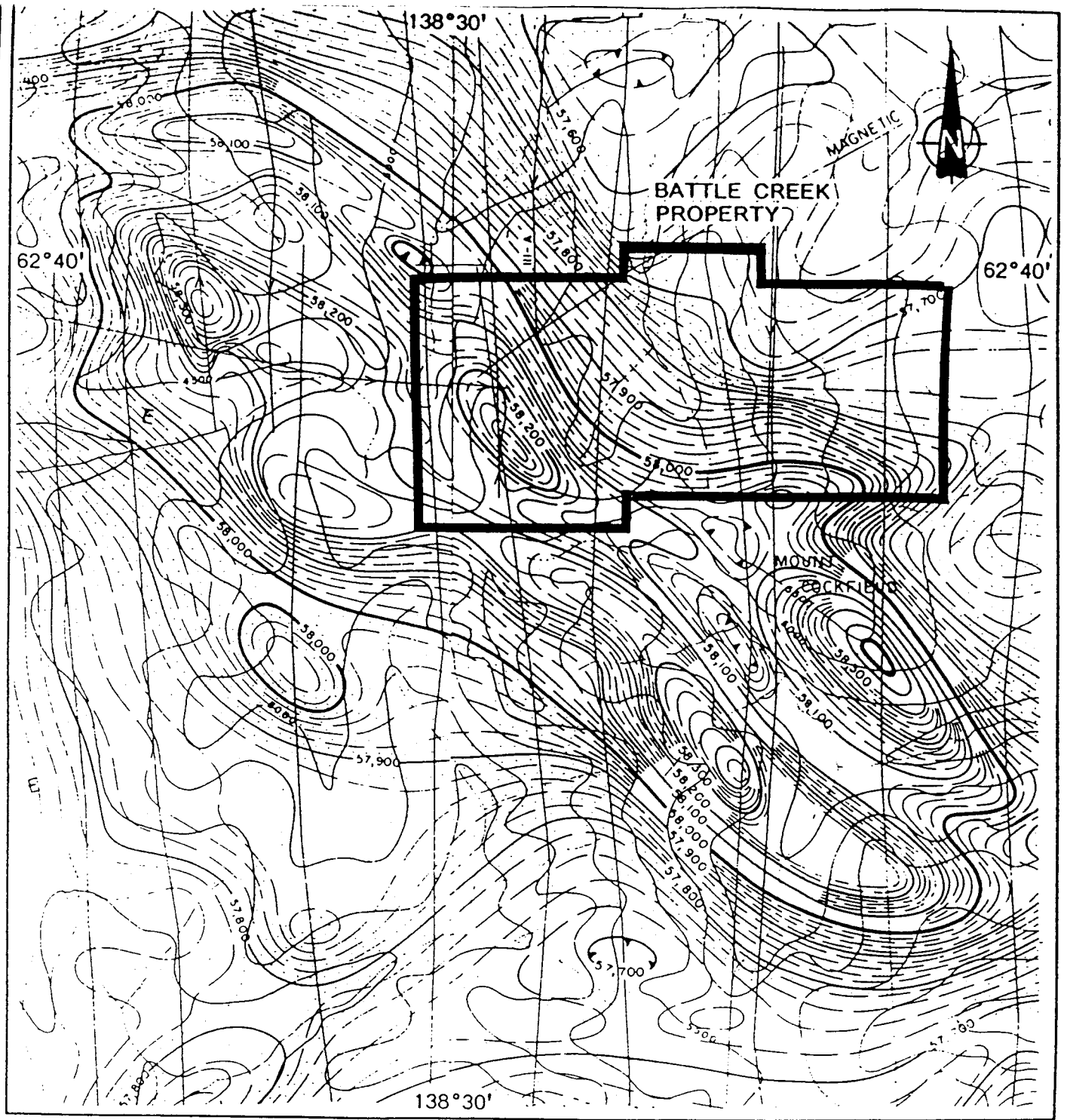
The Battle Creek Property outline is shown on the government airborne magnetic maps in Figure 7 with a filtered version of the data shown as Figure 8. The oval shaped magnetic anomaly indicated by the 58,000 gamma contour on Figure 7 is interpreted to reflect the Mt. Cockfield intrusions with the filtered data showing a similar outline and the trends of the northeast trending Dip Creek and and less distinct Colorado Creek bounding faults. The filtered data also suggests a number of northerly and northeasterly trending structures in the area of the Battle Creek Property. Newmont suggested that the ground magnetic data and the geological mapping are rarely reconcilable and that generally the magnetics reflect north-south trends which appear to have little relationship with the mapped geology.

Ridgway suggested that magnetic lows were selected for drill, but the writer feels that the Battle Creek Valley, possibly fault controlled, produced the magnetic low because of either fault controlled alteration or gravel fill. Since the Battle Creek valley cut the geochemical anomaly and contained convenient (ie. relatively flat) drill sites, holes were placed at about 1000 foot intervals along the valley.

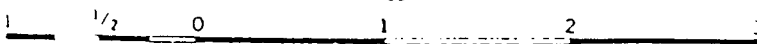
The induced polarization surveys was reported to have been employed by United Keno Hill, but the data was not available to the writer. The writer feels that ubiquitous, disseminated and fracture controlled pyrite would produce strong chargeability response but the anomaly would be too broad to help with selection of drill targets.

DISCUSSION

The Battle Creek Property contains a strong copper and molybdenum geochemical response in talus fines and poorly developed soils. The surface values appear to be modestly elevated over drill results. The writer does not believe that magnetic lows were selected for testing but feels that convenient setups were selected at regular intervals along Battle Creek.



Scale: One Inch to One Mile = $\frac{1}{63,360}$
Miles

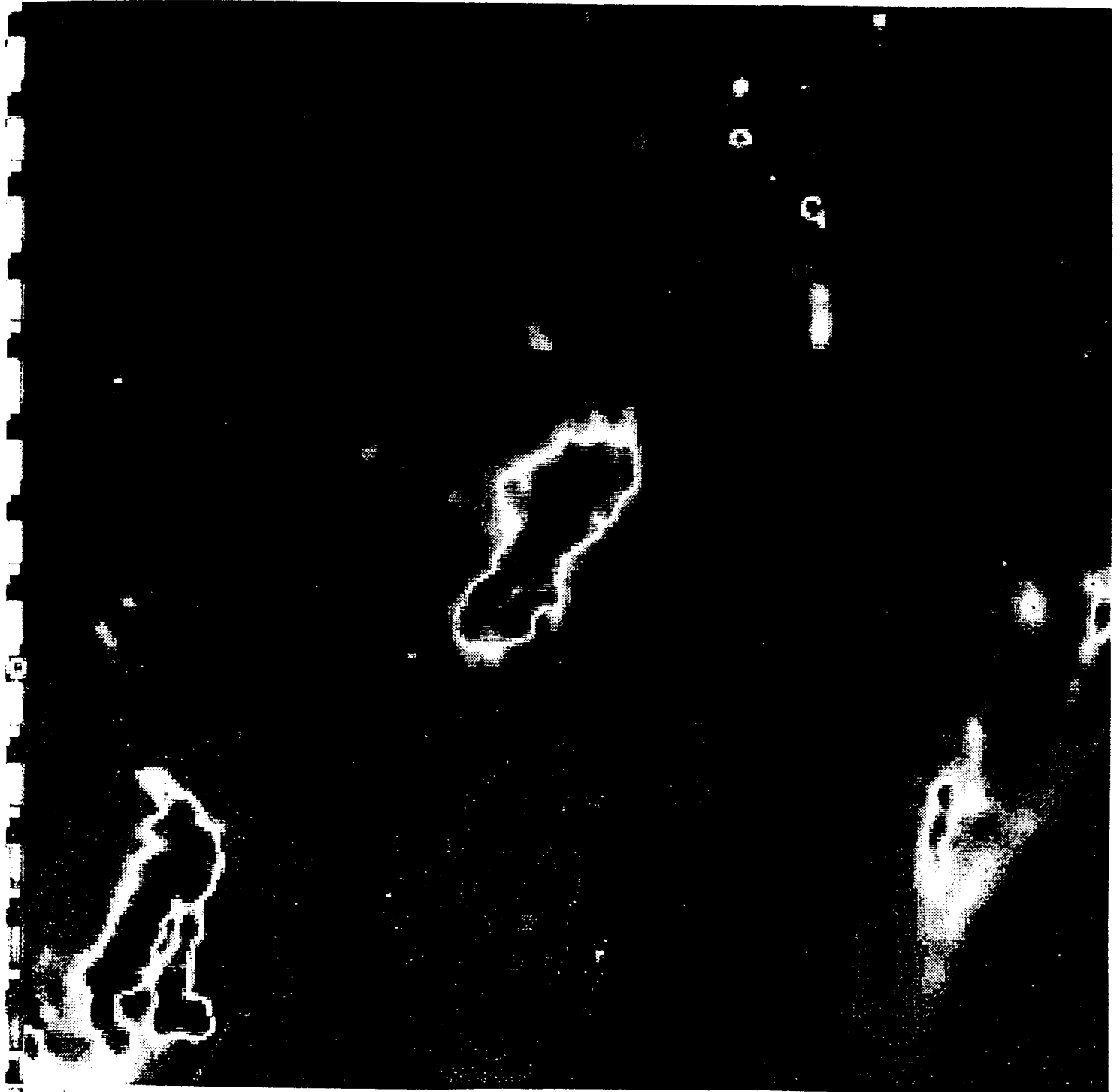


NOTE: - From Aeromagnetic Map 4318G, Colorado Creek (1967),
and Map 4332G, Selwyn River (1968)

WALHALA EXPLORATIONS LTD.	
BATTLE CREEK PROPERTY	
AEROMAGNETIC MAP	
Whitehorse Mining District	July, 1991
NTS 115J/9 and 115J/10	FIGURE 7

11A
10
11

FIG 8 FILTERED MAG



BEST ATTAINABLE IMAGE

Examination of several outcrops and drill core reveal generally sparse veining and weak alteration with porphyry copper-molybdenum features. The exposed intrusive and drill core generally indicates a hungry porphyry system, however it was noted that hole Co1 was stopped because of caving at 859 feet in 0.135% molybdeum or molybdenite, and hole Co6 was mainly unassayed but appeared to contain better molybdenum values.

The system have not been regularly checked for precious metals. The weak nature of the porphyry copper-molybdenum mineralization would require significant precious metal indications to warrant further extensive exploration.

The writer feels that values obtained in drill holes are adequate to explain the soil anomaly and only minor surface enrichment has occurred.

CONCLUSIONS AND RECOMMENDATIONS

Numerous companies have examined the gossans and recognized the presence of a low grade copper-molybdenum system in the Mount Cockfield intrusions and coeval Mt. Nansen volcanics. The writer feels that the copper-molybdenum potential has received a fair test but the precious metal content present some potential. Indications of significant precious metals values should be obtained before a commitment to an expensive exploration program is made.


BIBLIOGRAPHY

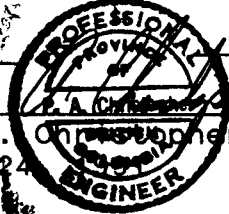
- Arscott, D.P., 1985. Assessment Report on the KOE 1 to 44 Mineral Claims located in the Dawson Range, Yukon Territory. for Kerr Addison Mines Ltd. A.R. 091725.
- Carne, R.C., 1987. Report on the Geochemical Survey, Mount Cockfield Property, Mount Cockfield, Yukon. Nordic Mining Corporation.
- Cathro, R.J., 1981. Report on Geology and Geochemistry of the Kokup 1 to 24 claims Dawson Range, Yukon Territory. for Denison Mines Ltd. by Archer, Cathro and Assoc. Ltd.
- Denton, A.S., 1980. Geological & Geochemical Report on Battle 1-64 Mineral Claims. for Cominco Ltd. dated Dec. 10, 1980, AR. 09072.
- Dolan, W.M., Costin, C.P., and Sheldon, R.F., 1969. Geophysical & Geochemical Reports on the Co Claim Group. for Newmont Mining Corp. of Canada Ltd. June - August, 1969. A.R. 060215.
- Godwin, C.I., 1976. Casino. in Part B - Porphyry Copper and Copper-Molybdenum Deposits of the Calc-Alkalic Suite. In Porphyry Deposits of the Canadian Cordillera, Spec. Vol. 15, pp. 344-354.
- Payne, J.G., Gonzalez, R.A., Akhurst, K. and Sisson, W.G., 1987. Geology of the Colorado Creek (115-J/10), Selwyn River (115-J-9) and Prospector Mountain (115-I/5) Map Areas. Indian and Northern Affairs Canada, Open File 1987-3.
- Ridgway, Simon, 1991. Battle Creek Property: Property Submittal and Proposal for Exploration. for Walhala Explorations Ltd. dated July 12, 1991.
- Szetu, S.S., 1966. Assessment Report on the Geochemical Survey Conducted on the Dip Creek Watershed, including the heads of Britania and Sunshine Creeks, north of the Stevenson Ridge and south of the Yukon River. by Cana Exploration Consultants Ltd. for Nordex Exploration Ltd.
- Taylor, C.D.N., 1966. Assessment Report on the Geochemical Survey Conducted on the Dip Creek Watershed. Nordex Exploration Ltd.
- Tempelman-Kluit, D.J., 1974. Reconnaissance Geology of Aishihik Lake, Snag and part of Stewart River map areas, West-Central Yukon. G.S.C. Paper 73-41.

CERTIFICATE

I, Peter A. Christopher, with business address at 3707 West 34th Avenue, Vancouver, British Columbia, do hereby certify that:

- 1) I am a consulting geological engineer registered with the Association of Professional Engineers of British Columbia since 1976.
- 2) I am a Fellow of the Geological Association of Canada and a member of the Society of Economic Geologists.
- 3) I hold a B.Sc. (1966) from the State University of New York at Fredonia, a M.A. (1968) from Dartmouth College and a Ph.D. (1973) from the University of British Columbia.
- 4) I have been practising my profession as a Geologist for over 25 years.
- 5) I have no direct or indirect interest, nor do I expect to receive any interest directly or indirectly in the property or securities of Walhala Explorations Ltd.
- 6) I have based this report on all available geological data on the property and adjacent mineral deposits. I conducted a field examination of the Battle Creek Property on August 17, 1991.


Peter A. Christopher Ph.D., P.Eng.
August 24, 1991



APPENDIX A. DESCRIPTION OF ROCK SAMPLES

Sample #	Type	Width	Location	Description
B3626	Chip	5m.	Sta. 1	Chips of QM & QMP in Felsenmeer; 2-3% Qtz. Vein.; malachite; QV to 3 cm. 100m east Bat 5-6IP.
B3627	Chip	5m.	Sta. 5	Chips of py. dacitic dyke or flow; 100m. south of small sump.
B3628	Chip	10m.	Sta. 7	py. dark grey, possibly biotite hornfelsed dacitic flow or dyke; otc. in Ck. 50-60m. 060' from Co5
B3629	Chip	10m.	Sta. 8	90% dacite; 10% QMP; minor Mo; 105-115m. 060' from Co5.
B3630	Chip	5m.	Sta. 12	@ Co6 Fine QM; 2-3% Q.V. to 1cm.; minor Mo & Py.
B3631	Core	5'	Main Camp	Co3?; Biotite QMP; Mo in Q.V. to 0.25cm.
B3632	Core	Select	Co5	Unsplit latite; weak stockwork of py Q.V.; tr. Mo & Cpy; Q.V. < 0.25cm.
B3633	Core	?		Bio. QM coarse xtals.; 10-15% Bio. Tr. Mo < 1/2% sulph. with mafics; sec. Bio. on fractures.
B3634	Core	8'	Co1 or Co2	Coarse QM from 602-610'; minor sec. Bio. V.; Qtz.-Py-Cpy. V.; Qtz. healed Fr.; Mo flakes;
B3635	Core	5'	"	627-632'; <1% sulph.; Tr. Cpy-Mo; along Fr.
B3636	Core		Specimen	from above (B3635-34); not for assay
B3637	Grabs	-	Sta. 14	Otc. or Felsenmeer; grab of Hbd. Bio. Q.M.; minor Q.V. & Py; weakly rusty Fr.

=====
 =====

1970 DIAMOND DRILL STATISTICS - MOUNT COCKFIELD

BS 38 DRILL - NQ CORE

BATTLE
MINE

HOLE No.	DATES		DIP/BEARING	HOLE DEPTH	OVERBURDEN DEPTH	BEDROCK DRILLED	RECOVERY	ASSAYS		Core length
	STARTED	FINISHED						Cu%	Mo%	
Co 1	July 11	July 24	-45°/n84e	859'	35'	824'	100%	.021	.014	824'
Co 2	July 25	July 31	-45°/s84w	712'	9'	703'	100%	.037	.013	703'
Co 3	Aug 1	Aug 8	-45°/n84e	1022'	9'	1013'	100%	.024	.015	1013'
Co 4	Aug 10	Aug 15	-45°/s35w	986'	9'	977'	100%	.022	.010	977'
Co 5	Aug 18	Aug 22	-45°/n84e	500'	32'	468'	95.9%	no assays		
Co 6	Aug 24	Aug 26	-45°/east	505'	11'	494'	99.5%	.029 .022	.112 .078	10' 21'
<hr/>										
6 holes	47 days			4,584'	105'	4,479'	99.5%			

001346