

MAP NO.: ASSESSMENT REPORT X
105 M 13 PROSPECTUS
106 D 4 CONFIDENTIAL X
OPEN FILE

DOCUMENT NO: 093049
MINING DISTRICT: Mayo
TYPE OF WORK: Reverse Circulation
Drilling

REPORT FILED UNDER: Amax Gold (B.C.) Ltd.

DATE PERFORMED: August 10 - 11, 1992

DATE FILED: November 26, 1992

LOCATION: LAT.: 64°02'N
LONG.: 135°51'W

AREA: Haggart Creek Area
VALUE \$: N/A

CLAIM NAME & NO.: Peso 1 - 2, YB03795 - YB03796, Peso 11 - 12, YB03797 - YB30798,
Pierre 11 - 12, YB03809 - YB30810, West 16 - 27, YB18783 - YB18794
West 40 - 51, YB18807 - YB18818, West 84, YB18851, West 86 YB18853
West 88, YB18855, West 109 - 111, YB18876 - YB18878.

WORK DONE BY: A. C. Hitchins

WORK DONE FOR: Can Pro Development Ltd./Ivanhoe Goldfields Ltd./Queenstake Resources Ltd.
Jacques Moreau.

DATE TO GOOD STANDING:

REMARKS: # 105 M and 106 D Haggart Creek Area
Amax Gold (B.C.) Ltd. carried out a large reverse circulation
drill program in the Dublin Gulch area near Mayo, Yukon. Amax filed
assessment work on two reverse circulation collared in the
Haggart Creek area. Neither hole intersected any significant
mineralization. It appears only those holes that returned little
or no mineralization were filed. The bulk of the holes drilled in
the summer of 1992 were not filed. Amax was testing for Fort
Knox style mineralization.

1992 DUBLIN GULCH REVERSE CIRCULATION
DRILLING ASSESSMENT REPORT

Author: A.C. Hitchins
Date: November 1992
Work period: June 5 - August 15, 1992
Claims: Smoky 5, Smoky 27
Location: Area - Central Yukon
Mining District - Mayo
Co-ordinates 135° 51'W Longitude
64° 02'N Latitude
NTS 105M/13, 106 D/4
Owner: Can Pro Development Limited
Ivanhoe Goldfields Ltd.
Queenstake Resources Ltd.
Jacques Moreau
Operator: Amax Gold (B.C.) Ltd.



093049

This report has been examined by
the Geological Evaluation Unit
under Section 53 (4) Yukon Quartz
Mining Act and is allowed as
representation work in the amount
of \$_____.

for. *Robert Deblak.*
Regional Manager, Exploration and
Geological Services for Commissioner
of Yukon Territory.

Approved for Content Only!

CONTENTS

General Statement	Page 1
Drill Logs for Holes DG-92-48 and 49	Appendix I
Assay Results	Appendix II
Statement of Costs	Appendix III
Statement of Qualifications	Appendix IV

FIGURES

Figure 1	Property Location Map	Scale 1" to 120mi	After pg 1
Figure 2	Claim Map	Scale 1" to ½mi	In pocket
Figure 3	Drill Hole Location Map	Scale 1:5000	After pg 1

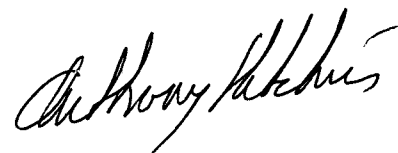
GENERAL STATEMENT

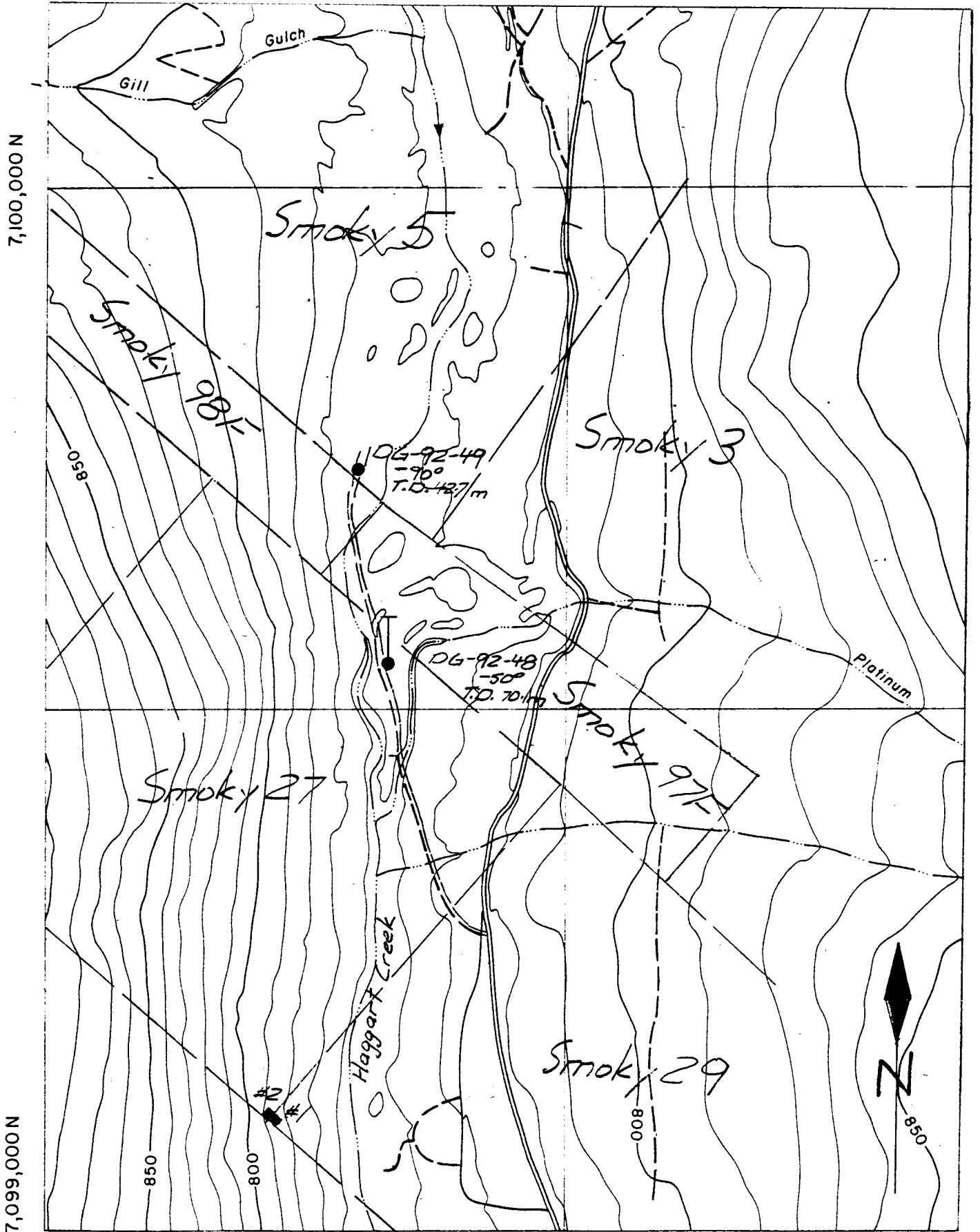
Amax Gold (B.C.) Ltd. completed two reverse-circulation drill holes in Haggart Creek on the Dublin Gulch property, located approximately 70km by road north of Mayo in central Yukon.

Tonto Drilling of Kamloops, B.C. supplied a track mounted Northspan Explorer drill rig capable of drilling with both reverse-air tricone bits and face sampling hammer bits. the drill rig was mobilized to the property on June 6 and holes DG-92-48 and 49 were drilled on August 10th and 11th respectively.

Drill cuttings passed first through a cyclone before dropping into a rotary wet splitter. A one quarter split of the sample from the rotary splitter was bagged and sent to Bondar-Clegg for gold analyses. Representative chips from the reject side of the splitter were logged on site and stored in plastic chip trays.

Drill logs and assay results are attached as Appendices I and II respectively.

A handwritten signature in cursive script, appearing to read "Anthony McKee".



458,000 E

Drill Hole Location Map
Scale 1:5000

Fig 3

APPENDIX I
DRILL LOGS

Index to Geological Terms

Rock Type

HFLS	Hornfels
GD	Granodiorite
PHYL	Phyllite
QM	Quartz monzonite
QZT	Quartzite

Wallrock Alteration

TR	Trace
W	Weak
M	Medium
S	Strong

Sulfides

PY	Pyrite
AS	Arsenopyrite
BI	Bismuthinite
TR	Trace

Oxides

GOE	Goethite
LIM	Limonite
TR	Trace

Comments

Alt	Altered
As	Arsenopyrite
Biot	Biotite
Bi	Bismuthinite
Cpy	Chalcopyrite
Diop	Diopside
Ft	Feet
Fsh	Fresh
Gd	Granodiorite
Gpm	Gallons per minute
Hfls	Hornfels
Mod	Moderately
Po	Pyrrhotite
Pot	Potassic
Prop	Propylitic
Phyl	Phyllic
Py	Pyrite
Qtz	Quartz
Rx	Rocks
Tr	Trace
SAP	Same as previous sample
Vis	Visible
Vn	Vein
Wk	Weak
Woll	Wollastonite

DUBLIN GULCH PROJECT 222
 HOLE NUMBER: DG92-48
 EASTING 458334
 NORTHING 7099543
 COLLAR ELEV. 755 M

AZIMUTH: 0
 INCLINATION: -50
 TOTAL DEPTH: 230 FEET
 DATE DRILLED: AUGUST 10-11, 1992
 DRILL TYPE: REVERSE CIRCULATION

SAMPLE NUMBER	FOOTAGE FROM	ROCK TO	TYPE	% QTZ VEIN	WALLROCK ALTERATION PROP PHY	POT ARG	% SULFIDES	SULF. OXIDES	% OXY	COMMENTS
R 96749	55	60	PHYL	1				0		0 Dark grey quartzite and graphitic phyllite
R 96750	60	65	PHYL	0				0		0 Graphitic phyllite
R 96751	65	70	PHYL	0				0		0 SAP
R 96752	70	75	QZT	0				0		0 Greenish grey quartzite
R 96753	75	80	QZT	0				0		0 Green-grey qzt and graphitic phyllite
R 96754	80	85	QZT	0				0		0 SAP
R 96755	85	90	PHYL	1			PY	2		0 SAP
R 96756	90	95	PHYL	0			PY	1		0 SAP
R 96757	95	100	PHYL	0				0		0 SAP
R 96758	100	105	QZT	0				0		0 SAP
R 96759	105	110	QZT	20			PY	TR		0 SAP
R 96760	110	115	QZT	0				0		0 SAP
R 96761	115	120	QZT	2				0		0 SAP
R 96762	120	125	QZT	2				0		0 SAP
R 96763	125	130	QZT	1			PY	TR		0 SAP
R 96764	130	135	QZT	1			PY	TR		0 SAP
R 96765	135	140	QZT	2			PY	TR		0 SAP
R 96766	140	145	QZT	1			PY	TR		0 SAP
R 96767	145	150	QZT	10			PY	1		0 SAP
R 96768	150	155	QZT	5			PY	TR		0 SAP
R 96769	155	160	QZT	1				0		0 SAP
R 96770	160	165	QZT	1				0		0 SAP
R 96771	165	170	PHYL	5			PY	TR		0 SAP
R 96772	170	175	PHYL	TR			PY	TR		0
R 96773	175	180	PHYL	TR			PY	TR		0
R 96774	180	185	PHYL	0			PY	TR		0
R 96775	185	190	PHYL				PY	TR		0
R 96776	190	195	PHYL	10			PY	TR		0
R 96777	195	200	PHYL	0			PY	TR		0

SAMPLE NUMBER	FOOTAGE		ROCK TYPE	% QTZ VEIN	WALLROCK ALTERATION			% SULFIDES		% SULF. OXIDES	% OXY	COMMENTS
	FROM	TO			PROP	PHY	POT	ARG				
R 96778	200	205	PHYL	4				PY	TR		0	
R 96779	205	210	PHYL	2					0		0	
R 96780	210	215	PHYL	10				PY	TR		0	
R 96781	215	220	PHYL	7				PY	TR		0	
R 96782	220	225	PHYL					PY	TR		0	
R 96783	225	230	PHYL	7					0		0	

EOH

DUBLIN GULCH PROJECT 222
 HOLE NUMBER: DG92-49
 EASTING 458303
 NORTHING 7099727
 COLLAR ELEV. 755 M

AZIMUTH: 0
 INCLINATION: -90
 TOTAL DEPTH: 140 FEET
 DATE DRILLED: AUGUST 11, 1992
 DRILL TYPE: REVERSE CIRCULATION

SAMPLE NUMBER	FOOTAGE		ROCK TYPE	% QTZ VEIN	WALLROCK ALTERATION			% SULFIDES		% OXIDES	% OXY	COMMENTS
	FROM	TO			PROP	PHY	POT	ARG	SULF			
R 96784	30	35	QZT							0		0 Quartzite and graphitic phyllite
R 96785	35	40	QZT	1						0		0
R 96786	40	45	QZT	3				PY	TR		LIM	10
R 96787	45	50	QZT	1				PY	TR			0
R 96788	50	55	QM		TR			PY	TR			0 Pale yellow brown sericitic quartzite
R 96789	55	60	QM	0		S		PY	TR			0 Porphyritic quartz monzonite
R 96790	60	65	QM		TR		M	PY	TR			0 SAP
R 96791	65	70	QM	0		S		PY	TR			0 SAP
R 96792	70	75	QM	0		M				0		0 SAP
R 96793	75	80	QM	0		S				0		0 SAP
R 96794	80	85	QM	5				PY,AS		2		0 SAP
R 96795	85	90	QM	1		S		PY	TR			0 Sericite-altered quartz monzonite porphyry
R 96796	90	95	QM	1		W				0		0
R 96797	95	100	QM	0		M				0		0
R 96798	100	105	QZT	40		W				0		0 Biotite qtz monzonite porphyry
R 96799	105	110	HFLS	30						0		0
R 96800	110	115	HFLS	3				PY	TR			0
R 96801	115	120	QZT	1						0		0 Greenish grey quartzite
R 96802	120	125	QZT	0						0		0 Qzt and graphitic phyllite
R 96803	125	130	QZT	0						0		0
R 96804	130	135	QZT	0						0		0
R 96805	135	140	QZT	0						0		0

EOH

APPENDIX II

ASSAY METHOD AND ANALYTICAL RESULTS



May 15, 1992

Mr. A. L. Hitchins
Amax Gold (B.C.) Ltd.
P.O. Box 12525 Oceanic Plaza
1600-1066 West Hastings Street
Vancouver, B.C. V6E 3X1

FAX: 688-8370

Dear Tony:

Please accept this quotation to cover your 1992 analytical requirements. We understand that your RVC drill program will be generating approximately 3,000-3300 RVC samples and about 400 Rock Chip samples. These samples will be between 20 and 25 lbs. The program is to start on June 1st and continue into July. We would expect between 200 and 400 samples to be produced every three or four days. The samples will be in micropore bags and are expected to be moist but not extremely wet. The samples will be shipped in one ton sacks once or twice per week.

We have a couple of shipping options by truck out of Mayo to Vancouver via Whitehorse.

Lynden Transport would be able to take the samples from Mayo to Vancouver twice a week. The samples would take 3 days from pickup in Mayo to Vancouver. Their price however is \$ 469.08 per thousand lbs!

Motorways would leave a flat deck in Mayo and bring it out once a week to arrive in Whitehorse on Thursdays, then ship the next day to arrive in Vancouver the following Wednesday. The price structure is:

From Mayo to Whitehorse;

Weight	Price
5000 lbs	\$4.15 / 100 lbs
10,000 lbs	\$3.25 / 100 lbs

From Whitehorse to Vancouver;

5,000 lbs	\$12.77 / 100 lbs
10,000 lbs	\$11.66 / 100 lbs

Another option is to take the samples into Whitehorse yourself. Motorways ships out of Whitehorse 3 times a week to Vancouver. You could have at least 2 shipments every week to Vancouver at the rates listed above.

DIVISIONS OF INCHCAPE INSPECTION & TESTING SERVICES



AMAX DUBLIN GULCH QUOTE:

3

OPTION 2:

RVC Drill Chip Samples:

This is an option that Bondar-Clegg would like to suggest. We feel that the following procedure will give you a better result for the same cost.

1. All field material submitted will be dried and reduced to -10 mesh using air to clean crusher between each sample.
2. A 5 Kg representative split of the -10 mesh material will be obtained using a Jones Riffle Splitter again air cleaning between each sample.
3. The 5 Kg split will be pulverized to 80 mesh using a ring and puck type pulverizer that will be cleaned with barren sand.
4. A 250 g representative split of the 80 mesh material will be obtained using a Jones Riffle Splitter. From 1 out of every 40 samples a second 250 g split will be taken pulverized, analyzed and reported at no extra charge to Amax Gold.
5. The 250 g split will be pulverized to -150 mesh using a ring and puck pulverizer.
6. The pulverized material will be mixed, bagged and labelled.

Drying:

No charge for drying

Overweight charges will only be applied on samples greater than 30 lbs.

Handling of Pulps and Rejects after analysis is complete:

1. All sample reject material will be stored for 60 days free of charge after which normal storage charges will apply.
2. All pulp material will be stored until the end of the year free of charge, after which routine storage charges will apply.

AMAX DUBLIN GULCH QUOTE:

4

ANALYTICAL DETERMINATIONS

Last year you used our **Geochem** Fire Assay A.A. Au analysis method. This year as per our discussion, we have quoted our **Assay** Fire Assay A.A. Au method. Because of your need for higher quality analysis, we recommend the **Assay** method for the following reasons.

- a) You receive a signed Certified Assay Certificate.
- b) We do 12% repeats and standards routinely over and above the samples in a given report as part of our Quality Control Program.
- c) We reassay with a Gravimetric finish any samples greater than 30 PPM Au.
- d) We reassay any samples that show anomalous values. (ie if several samples show trace or low values and one sample is high, we reassay the high one to confirm the result).

All this plus the 1 in 40 sample preparation repeat is included in the cost of the **Assay**.

RVC Assay Analysis

Gold Fire Assay

1. Certified Assay determination of a One Assay Ton sample using Fire Assay-Flame AAS measurement. The low level detection is 0.001 OPT Au.

2. Samples that are greater than 3 PPM Au will be rerun by fire assay gravimetric procedure. This is below our normal Quality Control cutoff and therefore would be done at further cost to Amax Gold. We would like you to consider whether this step is necessary in light of doing **Assay** method and not **Geochem**.

3. Pulp metallic Au analyses on the remainder of the 250 g pulps. This will involve screening the sample through a 150 mesh Tyler sieve, weighing each fraction, doing a 1 Assay Ton fire assay on the -150 mesh fraction and doing a total fire assay on the +150 mesh fraction and reporting all weights and analyses and the total calculated average Au of the pulp.

If you wish to do a larger sample from the 40 / 80 mesh material we would charge you \$14.00 Can for the analysis plus the sample prep charges.

Bondar-Clegg & Company Ltd.
 130 Pemberton Ave.
 North Vancouver, B.C.
 V7P 2R5
 (604) 985-0681 Telex 04-352667



Certificate
 of Analysis

A DIVISION OF INCHCAPE INSPECTION & TESTING SERVICES

REPORT: V92-01029.4 (COMPLETE)

REFERENCE: REQ. #30030/HOLE DG-92-48

CLIENT: AMAX GOLD EXPLORATION, INC.
 PROJECT: 222

SUBMITTED BY: CYRILL O.
 DATE PRINTED: 3-SEP-92

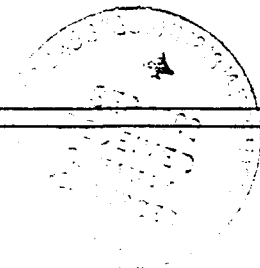
ORDER	ELEMENT	NUMBER OF ANALYSES	LOWER DETECTION LIMIT	EXTRACTION	METHOD
1	Au Gold	42	0.001 OPT		FIRE ASSAY
2	Au Gold	42	0.07 PPM		FIRE ASSAY
3	RASAWT Raw Sample Weight	40	kg		

SAMPLE TYPES	NUMBER	SIZE FRACTIONS	NUMBER	SAMPLE PREPARATIONS	NUMBER
0 OTHER DRILL TYPES	40	2 -150	40	AMAX PREP	40
P PREPARED PULP	2	4 AS RECEIVED	2	AS RECEIVED DRYING	2 40

NOTES: ‡ indicates POSSIBLE FREE GOLD

REPORT COPIES TO: MR. TONY HITCHINS
 MS. RAE BARBER
 MS. ELSIE ROWE

INVOICE TO: MR. TONY HITCHINS
 MS. RAE BARBER



Bondar-Clegg & Company Ltd.
 130 Pemberton Ave.
 North Vancouver, B.C.
 V7P 2R5
 (604) 985-0681 Telex 04-352667



Certificate
 of Analysis

A DIVISION OF INCHCAPE INSPECTION & TESTING SERVICES

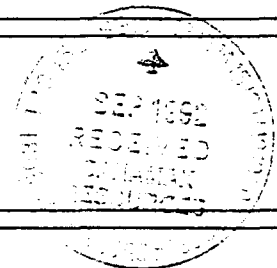
DATE PRINTED: 3-SEP-92

REPORT: V92-01029.4 (COMPLETE)

PROJECT: 222

PAGE 1

SAMPLE NUMBER	ELEMENT UNITS	Au OPT	Au PPM	RASAWT kg	SAMPLE NUMBER	ELEMENT UNITS	Au OPT	Au PPM	RASAWT kg
Q2 R96749		<0.001	<0.03	11.2	Q2 R96782		<0.001	<0.03	10.3
Q2 R96750		0.009#	0.31#	11.2	Q2 R96783		<0.001	<0.03	13.1
Q2 R96751		<0.001	<0.07	14.9					
Q2 R96752		<0.001	<0.03	15.6					
Q2 R96753		<0.001	<0.03	14.4					
Q2 R96754		<0.001	<0.03	12.9					
P4 R96754A		<0.001	<0.03						
Q2 R96755		<0.001	<0.03	14.4					
Q2 R96755G		<0.001	<0.03	6.1					
Q2 R96756		<0.001	<0.03	13.9					
Q2 R96757		<0.001	<0.03	21.0					
Q2 R96757R		<0.001	<0.03	21.5					
Q2 R96758		<0.001	<0.03	14.6					
Q2 R96759		<0.001	<0.03	16.2					
Q2 R96760		<0.001	<0.03	17.5					
Q2 R96761		<0.001	<0.03	15.6					
Q2 R96762		<0.001	<0.03	14.3					
Q2 R96763		<0.001	<0.03	14.5					
Q2 R96764		<0.001	<0.03	14.4					
Q2 R96765		<0.001	<0.03	12.0					
Q2 R96766		<0.001	<0.03	12.1					
Q2 R96767		<0.001	<0.03	10.7					
Q2 R96767G		<0.001	<0.03	4.8					
Q2 R96767R		<0.001	<0.03	12.3					
Q2 R96768		<0.001	<0.03	17.5					
Q2 R96769		<0.001	<0.03	13.0					
Q2 R96770		<0.001	<0.03	11.4					
Q2 R96771		<0.001	<0.03	12.8					
Q2 R96772		<0.001	<0.03	8.1					
Q2 R96773		<0.001	<0.03	12.7					
Q2 R96774		0.002	0.07	10.5					
P4 R96774A		0.003	0.10						
Q2 R96775		<0.001	<0.03	12.3					
Q2 R96776		<0.001	<0.03	7.0					
Q2 R96777		<0.001	<0.03	14.0					
Q2 R96777R		<0.001	<0.03	15.0					
Q2 R96778		<0.001	<0.03	10.1					
Q2 R96779		<0.001	<0.03	10.6					
Q2 R96780		<0.001	<0.03	12.4					
Q2 R96781		<0.001	<0.03	12.0					



[Signature]
 Registered Assayer, Province of British Columbia

Bondar-Clegg & Company Ltd.
 130 Pemberton Ave.
 North Vancouver, B.C.
 V7P 2R5
 (4) 985-0681 Telex 04-352667



Certificate
 of Analysis

A DIVISION OF INCHCAPE INSPECTION & TESTING SERVICES

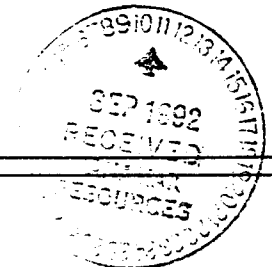
DATE PRINTED: 3-SEP-92

REPORT: V92-01029.4 (COMPLETE)

PROJECT: 222

PAGE 2

STANDARD NAME	ELEMENT UNITS	Au OPT	Au PPM	RASAWT kg	STANDARD NAME	ELEMENT UNITS	Au OPT	Au PPM	RASAWT kg
ANALYTICAL BLANK		-	-	-					
Number of Analyses		1	1	-					
Mean Value		0.0005	0.017	-					
Standard Deviation		-	-	-					
Accepted Value		0.001	-	-					
AU 0.05		0.052	1.78	-					
Number of Analyses		1	1	-					
Mean Value		0.0520	1.783	-					
Standard Deviation		-	-	-					
Accepted Value		0.050	-	-					



Bondar-Clegg & Company Ltd.
 130 Pemberton Ave.
 North Vancouver, B.C.
 V7P 2R5
 (4) 985-0681 Telex 04-352667



Certificate
 of Analysis

A DIVISION OF INCHCAPE INSPECTION & TESTING SERVICES

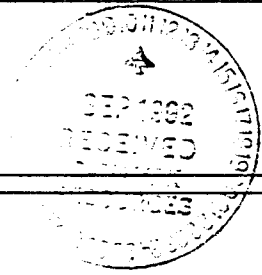
DATE PRINTED: 3-SEP-92

REPORT: V92-01029.4 (COMPLETE)

PROJECT: 222

PAGE 3

SAMPLE NUMBER	ELEMENT UNITS	Au OPT	Au PPM	RASAWT kg	SAMPLE NUMBER	ELEMENT UNITS	Au OPT	Au PPM	RASAWT kg
R96754		<0.001	<0.03	12.9					
Duplicate		<0.001	<0.03						
R96763		<0.001	<0.03	14.5					
Duplicate		<0.001	<0.03						
R96772		<0.001	<0.03	8.1					
Duplicate		<0.001	<0.03						
R96782		<0.001	<0.03	10.3					
Duplicate		<0.001	<0.03						



[Handwritten Signature]

Bondar-Clegg & Company Ltd.
 130 Pemberton Ave.
 North Vancouver, B.C.
 7P 2R5
 (4) 985-0681 Telex 04-352667



Certificate
 of Analysis

A DIVISION OF INCHCAPE INSPECTION & TESTING SERVICES

REPORT: V92-01028.4 (COMPLETE)

REFERENCE: REQ. #30031/HOLE DG-92-49

CLIENT: AMAX GOLD EXPLORATION, INC.
 PROJECT: 222

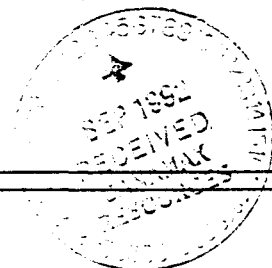
SUBMITTED BY: CYRILL O.
 DATE PRINTED: 1-SEP-92

ORDER	ELEMENT	NUMBER OF ANALYSES	LOWER DETECTION LIMIT	EXTRACTION	METHOD
1	Au Gold	26	0.001 OPT		FIRE ASSAY
2	Au Gold	26	0.07 PPM		FIRE ASSAY
3	RASANT Raw Sample Weight	25	kg		

SAMPLE TYPES	NUMBER	SIZE FRACTIONS	NUMBER	SAMPLE PREPARATIONS	NUMBER
Q OTHER DRILL TYPES	25	2 -150	25	AMAX PREP	25
P PREPARED PULP	1	4 AS RECEIVED	1	AS RECEIVED	1
				DRYING	25

REPORT COPIES TO: MR. TONY HITCHINS
 MS. RAE BARBER
 MS. ELSIE ROWE

INVOICE TO: MR. TONY HITCHINS
 MS. RAE BARBER



Bondar-Clegg & Company Ltd.
 130 Pemberton Ave.
 North Vancouver, B.C.
 V7P 2R5
 (4) 985-0681 Telex 04-352667



Certificate
 of Analysis

A DIVISION OF INCHCAPE INSPECTION & TESTING SERVICES

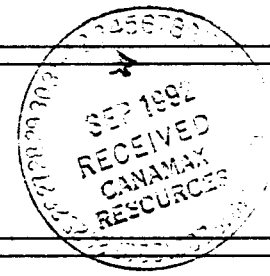
DATE PRINTED: 1-SEP-92

REPORT: V92-01028.4 (COMPLETE)

PROJECT: 222

PAGE 1

SAMPLE NUMBER	ELEMENT UNITS	Au OPT	Au PPM	RASANT kg
Q2 R96784		<0.001	<0.03	5.6
Q2 R96785		<0.001	<0.03	8.9
Q2 R96786		<0.001	<0.03	12.2
Q2 R96787		<0.001	<0.03	9.7
Q2 R96787R		<0.001	<0.03	9.8
Q2 R96788		<0.001	<0.03	5.2
Q2 R96789		<0.001	<0.03	10.0
Q2 R96790		<0.001	<0.03	10.5
Q2 R96791		<0.001	<0.03	6.9
Q2 R96792		<0.001	<0.03	12.6
Q2 R96793		<0.001	<0.03	9.7
Q2 R96794		<0.001	<0.03	11.0
Q2 R96794G		<0.001	<0.03	3.2
Q2 R96795		<0.001	<0.03	9.4
Q2 R96796		<0.001	<0.03	11.6
Q2 R96797		<0.001	<0.03	11.6
P4 R96797A		0.003	0.10	
Q2 R96797R		<0.001	<0.03	12.8
Q2 R96798		<0.001	<0.03	13.9
Q2 R96799		<0.001	<0.03	14.7
Q2 R96800		<0.001	<0.03	15.3
Q2 R96801		<0.001	<0.03	13.9
Q2 R96802		<0.001	<0.03	11.2
Q2 R96803		<0.001	<0.03	10.7
Q2 R96804		<0.001	<0.03	9.4
Q2 R96805		<0.001	<0.03	10.3



Bondar-Clegg & Company Ltd.
 130 Pemberton Ave.
 North Vancouver, B.C.
 V7P 2R5
 (04) 985-0681 Telex 04-352667



Certificate
 of Analysis

A DIVISION OF INCHCAPE INSPECTION & TESTING SERVICES

DATE PRINTED: 1-SEP-92

REPORT: V92-01028.4 (COMPLETE)

PROJECT: 222

PAGE 2

STANDARD NAME	ELEMENT UNITS	Au OPT	Au PPM	RASANT kg
AU 0.1		0.098	3.36	-
Number of Analyses		1	1	-
Mean Value		0.0980	3.360	-
Standard Deviation		-	-	-
Accepted Value		0.100	-	-
ANALYTICAL BLANK		-	-	-
Number of Analyses		1	1	-
Mean Value		0.0005	0.017	-
Standard Deviation		-	-	-
Accepted Value		0.001	-	-



[Signature]
 Registered Assayer, Province of British Columbia

Bondar-Clegg & Company Ltd.
 130 Pemberton Ave.
 North Vancouver, B.C.
 V7P 2R5
 (4) 985-0681 Telex 04-352667



Certificate
 of Analysis

A DIVISION OF INCHCAPE INSPECTION & TESTING SERVICES

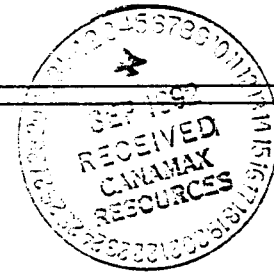
REPORT: V92-01028.4 (COMPLETE)

DATE PRINTED: 1-SEP-92

PROJECT: 222

PAGE 3

SAMPLE NUMBER	ELEMENT UNITS	Au OPT	Au PPM	RASANT kg
R96788		<0.001	<0.03	5.2
Duplicate		<0.001	<0.03	
R96797R		<0.001	<0.03	12.8
Duplicate		<0.001	<0.03	



APPENDIX III
STATEMENT OF COSTS

**APPENDIX III
STATEMENT OF COSTS
REVERSE CIRCULATION DRILLING
June 5 - Aug 15, 1992**

Drill Hole DG-92-48 drilled on Smoky 27

Drilling - Tonto Invoice #1668C		
Prorate Mob/Demob	\$27,000 x 230'/18,500'	\$ 335.68
Move to site	2 hrs @ \$205/hr	410.00
Casing	2 hrs @ \$205/hr	410.00
Tricone R/C 5" bit	7 3/4 hrs @ \$205/hr	1,588.75
Trip rods	3/4 hrs @ \$205/hr	153.75
Pull casing	1/2 hr @ \$205/hr	102.50
Assays - Bondar Clegg invoice # V093589		
42 analyses for gold		635.50
Trucking samples Mayo - Vancouver		
3D Transport Invoice #005513		<u>498.08</u>
		\$4,134.26
	+ GST	<u>289.40</u>
		<u>\$4,423.66</u>
Supervision and chip logging	1.5 days x \$175/day + 15%	301.88
Sampler	1.5 days @ \$110/day + 15%	189.75
Room and board	3 man days @ \$50/day	<u>150.00</u>
		<u>\$5,065.29</u>

Anthony McKelvie

Drill Hole DG-92-49 drilled on Smoky 5 claim

Drilling - Tonto Invoice #1668C

Prorate Mob/Demob \$27,000 x 140'/18,500'			\$ 204.32
Move to site	½ hr	@ \$205/hr	102.50
Casing	1½ hr	@ \$205/hr	307.50
Tricone R/C drilling	3½ hr	@ \$205/hr	717.50
Reverse circulation drilling	85'	@ \$11.25/ft	956.25
Trip rods	1 ¾ hr	@ \$205/hr	358.75
Pull casing	1 hr	@ \$205/hr	205.00
Move	½ hr	@ \$205/hr	102.50

Assays - Bondar Clegg Invoice #V093522

26 analyses for gold 395.25

\$3,349.57

+ GST 234.47

Supervision and chip logging 1 day @ \$175/day + 15% 201.25

Sampler 1 day @ \$110/day + 15% 126.50

Room and board 2 mandays at \$50/man day 100.00

\$4,011.79

Anthony McKis

BURNABY
TELEPHONE 299-1421
FAX (604) 294-0571
KAMLOOPS
TELEPHONE 372-9333
FAX (604) 374-6363



TONTO DRILLING
582 CHILCOTIN ROAD
KAMLOOPS, B.C.
V2H 1G5

MASTER FILE

COPY

IN ACCOUNT WITH

AMAX GOLD EXPLORATION
Suite 800
350 Indiana Street
Golden, Colorado 80401-5081

CONTRACT NO. 944
INVOICE NO. 1668C
DATE SEP 03/92

ATTN: Mr. S. Hamilton /Mr. T.Hitchins

AUG 01/92 TO AUG 15/92

PROPERTY (R.C. DRILLING CONTRACT)
- DUBLIN GULCH PROJECT, YUKON TERRITORY

PLEASE FIND ENCLOSED INVOICE # 1668C

FOR THE PERIOD AUG 01/92 TO AUG 15/92

TOTAL AMOUNT OF INVOICE (CANADIAN FUNDS)

92,890.28

Approved for payment
Vony [Signature]
1222-68



BURNABY
 TELEPHONE 299-1421
 FAX (604) 294-0571
 KAMLOOPS
 TELEPHONE 372-9333
 FAX (304) 374-6363



TONTO DRILLING
 582 CHILCOTIN ROAD
 KAMLOOPS, B.C.
 V2H 1G5

MASTER FILE

COPY

IN ACCOUNT WITH

AMAX GOLD EXPLORATION
 Suite 800
 350 Indiana Street
 Golden, Colorado 80401-5081

CONTRACT NO. 944
 INVOICE NO. 1668C
 DATE SEP 03/92

ATTN: Mr. S. Hamilton /Mr. T.Hitchins

AUG 01/92 TO AUG 15/92

PROPERTY (R.C. DRILLING CONTRACT)
 - DUBLIN GULCH PROJECT, YUKON TERRITORY

HOURLY CHARGES

HOLE	DESCRIPTION	HOURS	RATE	TOTAL	
DG92-041	Pull Casing	.50	205.00	102.50	102.50 ✓
DG92-042	Set Casing	2.50	205.00	512.50	✓
	Pull Casing	1.50	205.00	307.50	✓
	Condition Hole	1.50	205.00	307.50	✓
	Move	2.50	205.00	512.50	✓
					1,640.00 ✓
DG92-043	Set Casing	2.50	205.00	512.50	✓
	Pull Casing	1.50	205.00	307.50	✓
	Condition Hole	1.00	205.00	205.00	✓
	Rig Up	1.00	205.00	205.00	✓
	Move	3.50	205.00	717.50	✓
					1,947.50 ✓
DG92-044	Set Casing	1.50	205.00	307.50	✓
	Pull Casing	1.50	205.00	307.50	✓
	Condition Hole	.50	205.00	102.50	✓
	Recover Equipment	31.00	205.00	6,355.00	✓
	Rig Up	.50	205.00	102.50	✓
	Delays (Site Preparation)	1.50	170.00	255.00	✓
	Extra Labour-(C. Lawrence)	15.00	35.00	525.00	✓
					7,955.00 ✓
DG92-045	Set Casing	2.00	205.00	410.00	✓
	Tricone Rev. Circ.	23.50	205.00	4,817.50	✓
	Trip Rods (Tricone)	5.00	205.00	1,025.00	✓
	Pull Casing	.50	205.00	102.50	✓
	Condition Hole	.50	205.00	102.50	✓
	Rig Up	1.00	205.00	205.00	✓
	Move	2.00	205.00	410.00	✓
					7,072.50 ✓
DG92-046	Set Casing	2.00	205.00	410.00	✓
	Tricone Rev. Circ.	9.00	205.00	1,845.00	✓
	Trip Rods (Tricone)	1.50	205.00	307.50	✓
	Pull Casing	1.50	205.00	307.50	✓
	Condition Hole	.50	205.00	102.50	✓
	Move	2.00	205.00	410.00	✓
					3,382.50 ✓
DG92-047	Set Casing	2.00	205.00	410.00	✓
	Tricone Rev. Circ.	7.50	205.00	1,537.50	✓
	Trip Rods (Tricone)	.50	205.00	102.50	✓
	Pull Casing	1.00	205.00	205.00	✓
	Rig Up	1.00	205.00	205.00	✓
					2,460.00 ✓
DG92-048	Set Casing	2.00	205.00	410.00	✓
	Tricone Rev. Circ.	7.75	205.00	1,588.75	✓
	Trip Rods (Tricone)	.75	205.00	153.75	✓
	Pull Casing	.50	205.00	102.50	✓
	Move	2.00	205.00	410.00	✓

BURNABY
 TELEPHONE 299-1421
 FAX (604) 294-0571
 KAMLOOPS
 TELEPHONE 372-9333
 FAX (604) 374-6363



TONTO DRILLING
 582 CHILCOTIN ROAD
 KAMLOOPS, B.C.
 V2H 1G5

MASTER FILE

COPY

IN ACCOUNT WITH

AMAX GOLD EXPLORATION
 Suite 800
 350 Indiana Street
 Golden, Colorado 80401-5081

CONTRACT NO. 944
 INVOICE NO. 1668C
 DATE SEP 03/92

ATTN: Mr. S. Hamilton /Mr. T.Hitchine

AUG 01/92 TO AUG 15/92

PROPERTY (R.C. DRILLING CONTRACT)
 - DUBLIN GULCH PROJECT, YUKON TERRITORY

					2,665.00 ✓
DG92-049	Set Casing	1.50	205.00	307.50 ✓	
	Triloone Rev. Circ.	3.50	205.00	717.50 ✓	
	Trip Rods (Triloone)	1.75	205.00	358.75 ✓	
	Pull Casing	1.00	205.00	205.00 ✓	
	Move	.50	205.00	102.50 ✓	1,691.25 ✓
DG92-050	Set Casing	2.00	205.00	410.00 ✓	
	Pull Casing	.50	205.00	102.50 ✓	
	Rig Up	.50	205.00	102.50 ✓	
	Move	7.00	205.00	1,435.00 ✓	2,050.00 ✓
DG92-051	Set Casing	2.00	205.00	410.00 ✓	
	Pull Casing	1.50	205.00	307.50 ✓	
	Condition Hole	.50	205.00	102.50 ✓	
	Move	1.00	205.00	205.00 ✓	1,025.00 ✓
DG92-052	Set Casing	1.50	205.00	307.50 ✓	
	Triloone Rev. Circ.	6.00	205.00	1,230.00 ✓	
	Trip Rods (Triloone)	2.00	205.00	410.00 ✓	
	Pull Casing	.50	205.00	102.50 ✓	
	Condition Hole	.50	205.00	102.50 ✓	
	Rig Up	.50	205.00	102.50 ✓	
	Move	1.50	205.00	307.50 ✓	2,562.50 ✓
DG92-053	Set Casing	2.50	205.00	512.50 ✓	
	Pull Casing	1.50	205.00	307.50 ✓	
	Condition Hole	.50	205.00	102.50 ✓	
	Move	1.50	205.00	307.50 ✓	1,230.00 ✓
DG92-054	Set Casing	2.00	205.00	410.00 ✓	
	Move	1.00	205.00	205.00 ✓	615.00 ✓
					36,398.75 ✓

MATERIALS

HOLE	DESCRIPTION	QUANTITY	PRICE	%	TOTAL
DG92-045	4-7/8" Triloone # 0000	1.00	975.00	+15	1,121.25 ✓
					1,121.25
DG92-052	5" Triloone # 41831	1.00	925.00	+15	1,063.75 ✓
					1,063.75
					2,185.00

BURNABY
 TELEPHONE 299-1421
 FAX (604) 291-2701
 KAMLOOPS
 TELEPHONE 372-9333
 FAX (604) 374-6363



TONTO DRILLING
 582 CHILCOTIN ROAD
 KAMLOOPS, B.C.
 V2H 1G5

MASTER FILE

COPY

IN ACCOUNT WITH

AMAX GOLD EXPLORATION
 Suite 800
 350 Indiana Street
 Golden, Colorado 80401-5081

CONTRACT NO. 944
 INVOICE NO. 1668C
 DATE SEP 03/92

ATTN: Mr. S. Hamilton / Mr. T. Hitchins

AUG 01/92 TO AUG 15/92

PROPERTY (R.C. DRILLING CONTRACT)
 - DUBLIN GULCH PROJECT, YUKON TERRITORY

FOOTAGE DRILLED

HOLE	SIZE	FROM	TO	FOOTAGE	ANGLE	RATE	TOTAL	
DG92-041	DHRC	415.00	465.00	50.00	-50	11.25	562.50	562.50 ✓
DG92-042	ODEX*	0.00	55.00	55.00	-55	.00	.00	
	DHRC	55.00	488.00	433.00	-55	11.25	4,871.25	4,871.25 ✓
DG92-043	ODEX*	0.00	65.00	65.00	-50	.00	.00	
	DHRC	65.00	500.00	435.00	-50	11.25	4,893.75	4,893.75 ✓
DG92-044	ODEX*	0.00	45.00	45.00	-50	.00	.00	
	DHRC	45.00	235.00	190.00	-50	11.25	2,137.50	2,137.50 ✓
DG92-045	ODEX*	0.00	35.00	35.00	-70	.00	.00	
	DHRC	35.00	95.00	60.00	-70	11.25	675.00	
	TRIC*	95.00	320.00	225.00	-70	.00	.00	675.00 ✓
DG92-046	ODEX*	0.00	65.00	65.00	-50	.00	.00	
	DHRC	65.00	145.00	80.00	-50	11.25	900.00	
	TRIC*	145.00	350.00	205.00	-50	.00	.00	900.00 ✓
DG92-047	ODEX*	0.00	65.00	65.00	-50	.00	.00	
	DHRC	65.00	100.00	35.00	-50	11.25	393.75	
	TRIC*	100.00	350.00	250.00	-50	.00	.00	393.75 ✓
DG92-048	ODEX*	0.00	55.00	55.00	-50	.00	.00	
	TRIC*	55.00	230.00	175.00	-50	.00	.00	.00 ✓
DG92-049	ODEX*	0.00	30.00	30.00	-90	.00	.00	
	DHRC	30.00	115.00	85.00	-90	11.25	956.25	
	TRIC*	115.00	140.00	25.00	-90	.00	.00	956.25 ✓
DG92-050	ODEX*	0.00	25.00	25.00	-45	.00	.00	
	DHRC	25.00	500.00	475.00	-45	11.25	5,343.75	5,343.75 ✓
DG92-051	ODEX*	0.00	45.00	45.00	-45	.00	.00	
	DHRC	45.00	300.00	255.00	-45	11.25	2,868.75	2,868.75 ✓
DG92-052	ODEX*	0.00	15.00	15.00	-45	.00	.00	
	DHRC	15.00	265.00	250.00	-45	11.25	2,812.50	
	TRIC*	265.00	315.00	50.00	-45	.00	.00	2,812.50 ✓
DG92-053	ODEX*	0.00	45.00	45.00	-50	.00	.00	
	DHRC	45.00	500.00	455.00	-50	11.25	5,118.75	
	DHRC	500.00	550.00	50.00	-50	12.75	637.50	5,118.75 + 637.50 = 5,756.25 ✓

AMAX GOLD EXPLORATION, INC.
MS. RAE BARBER
350 INDIANA STREET, #800
GOLDEN, CO 80401-5081

Invoice : V093589, Page 1

Date : 8-SEP-92

Report No: V92-01029.4

Project : 222

Reference: REQ. #30030/HOLE DG
92-48

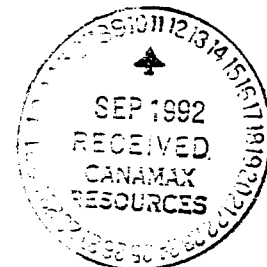
COPY

CYRILL O.

42 Analyses of Gold	at \$ 7.75	\$ 325.50	
42 Analyses of Gold	at \$ 0.00	\$ 0.00	
Subtotal		\$ 325.50	\$ 325.50
40 Analyses of Raw Sample Weight	at \$ 0.50	\$ 20.00	
Subtotal		\$ 20.00	\$ 20.00
Sample Preparation			
40 Samples of AMAX PREP	at \$ 7.25	\$ 290.00	
2 Samples of AS RECEIVED	at \$ 0.00	\$ 0.00	
40 Samples of DRYING	at \$ 0.00	\$ 0.00	
Subtotal		\$ 290.00	\$ 290.00
Miscellaneous Charges			
TAX GST #R100576693		\$ 44.49	
Subtotal		\$ 44.49	\$ 44.49
Invoice Total:			\$ 679.99 Cdn
U.S. Exchange Rate: 0.84			\$ 571.19 U.S.

COPY

Approved for payment
Pony Williams
222-69



AMAX GOLD EXPLORATION, INC.
MS. RAE BARBER
350 INDIANA STREET, #800
GOLDEN, CO 80401-5081

Invoice : V093522, Page 1

Date : 31-AUG-92

Report No: V92-01028.4

Project : 222

Reference: REQ. #30031/HOLE
DG-92-49

COPY

CYRILL O.

26 Analyses of Gold	at \$ 7.75	\$ 201.50	
26 Analyses of Gold	at \$ 0.00	\$ 0.00	
Subtotal		\$ 201.50	\$ 201.50
25 Analyses of Raw Sample Weight	at \$ 0.50	\$ 12.50	
Subtotal		\$ 12.50	\$ 12.50
Sample Preparation			
25 Samples of AMAX PREP	at \$ 7.25	\$ 181.25	
1 Sample of AS RECEIVED	at \$ 0.00	\$ 0.00	
25 Samples of DRYING	at \$ 0.00	\$ 0.00	
Subtotal		\$ 181.25	\$ 181.25
Miscellaneous Charges			
TAX GST #R100576693		\$ 27.67	
Subtotal		\$ 27.67	\$ 27.67
Invoice Total:			\$ 422.92 Cdn
U.S. Exchange Rate: 0.84			\$ 355.25 U.S.

Approved for payment
Pony [Signature]
222-69

COPY



3D TRANSPORT

15 KETZA ROAD
WHITEHORSE, YUKON
Y1A 3V3

Holes 48, 49

PHONE: (403) 667-7051
MOBILE: DAWSON YS3 9086
No 005513 JJ3 9497

STRAIGHT BILL OF LADING - ORIGINAL - NOT NEGOTIABLE

Shipper's No. _____
Carrier's No. _____

RECEIVED, subject to the classifications and tariffs in effect on the date of issue of this Original Bill of

Lading, at Mayo Y.T. Aug 14 1992
From Arax Gold (BC) Ltd Box 117 Mayo Y.T.
[Shipper] [Date]

The goods described below, in apparent good order, except as noted (contents and conditions of packages unknown), marked, consigned, and destined as shown below, which said Carrier agrees to carry and deliver to said Consignee at said destination, if on its own route otherwise to deliver to another carrier on the route to said destination. It is mutually agreed as to each carrier of all or any of said goods over all or any portion of said route to destination and as to each party at any time interested in all or any of said goods, that every service to be performed hereunder shall be subject to all the conditions, not prohibited by law, whether printed or written, herein contained, and which are hereby agreed to by the shipper and accepted for himself and his assigns.

Consigned to Bondor Clegg
Destination 130 Pemberton Ave North Vancouver
Route _____

No. Pieces	DESCRIPTION OF ARTICLES AND SPECIAL MARKS	Gross Weight Subject to Correction	Rate	Freight Charges	Circle Prepay or Collect	Prepay	Collect
2	pellets of rock samples	1900 lb				<input checked="" type="checkbox"/>	
				332.50	Storage Charge		
			GST	23.28	Connecting Carriers Charges	332.50	
				355.78	Dangerous Goods Charge		
			7.00	133.00	C.O.D. Service Charge		
				9.30	C.O.D. Amount		
				142.30	Freight Charges	133.00	
					Protective Service Charge		
					GST Valuation Charge	32.58	
					TOTAL	498.08	
DECLARED VALUE \$ _____							

Delivering Driver _____ Date _____

NOTE: - Articles will not be accepted for shipment unless properly packaged, and addressed.
- Carrier Maximum liability not to exceed \$2.00 per pound unless value declared.
- Claims must be received in writing within 7 days of delivery.

Received in Good Order _____

Shipper Arax Gold Carrier _____
Per Wally Petcher Per _____

The shipper certifies the shipment does not contain any goods identified as dangerous by the Federal Transportation of Dangerous Goods Act, except as noted above.

3D TRANSPORT

15 KETZA ROAD
 WHITEHORSE, YUKON
 Y1A 3V3

Holds 48, 49

PHONE: [403] 667-7051
 MOBILE: DAWSON YS3 9086
 № 005513 JJ3 9497

STRAIGHT BILL OF LADING - ORIGINAL - NOT NEGOTIABLE

Shipper's No. _____
 Carrier's No. _____

RECEIVED, subject to the classifications and tariffs in effect on the date of issue of this Original Bill of

Lading, at Mayo Y.T. Aug 14 19 92
 From Anax Gold (BC) Ltd Box 117 Mayo Y.T.
(Point of Origin, if other than Whitehorse, Y.T.) (Shipper) (Date)

The goods described below, in apparant good order, except as noted (contents and conditions of packages unknown), marked, consigned, and destined as shown below, which said Carrier agrees to carry and deliver to said Consignee at said destination, if on its own route otherwise to deliver to another carrier on the route to said destination. It is mutually agreed as to each carrier of all or any of said goods over all or any portion of said route to destination and as to each party at any time interested in all or any of said goods, that every service to be performed hereunder shall be subject to all the conditions not prohibited by law, whether printed or written, herein contained, and which are hereby agreed to by the shipper and accepted for himself and his assigns.

Consigned to Bondor Clegg
 Destination 130 Pemberton Ave North Vancouver
 Route _____

No. Pieces	DESCRIPTION OF ARTICLES AND SPECIAL MARKS	Gross Weight Subject to Correction	Rate	Freight Charges	Circle Prepay or Collect	Prepay	Collect
2	<i>pellets of rock samples</i>	1900 <i>kg</i>		332.50		Prepay	
				332.50			
			GST	23.28		332.50	
				355.78			
				7.00			
				133.00			
				9.30			
				142.30			
						133.00	
						32.58	
						498.08	
DECLARED VALUE \$ _____							

Delivering Driver _____ Date _____

NOTE: - Articles will not be accepted for shipment unless properly packaged, and addressed
 - Carrier Maximum liability not to exceed \$200 per pound unless value declared.
 - Claims must be received in writing within 7 days of delivery.

Received in Good Order _____

Shipper Anax Gold Carrier _____
 Per Way Petcher Per _____

The shipper certifies the shipment does not contain any goods identified as dangerous by the Federal Transportation of Dangerous Goods Act, except as noted above.

APPENDIX IV

STATEMENT OF QUALIFICATIONS

STATEMENT OF QUALIFICATIONS

Anthony Hitchins

Education

1970 B.A. Sc. in Engineering Geology from University of Toronto.

1973 M. Sc. in Exploration Geology from University of Toronto

Work Experience

1970-1976 Temporary geologist with Amax Explorations, exploration in Ontario, Nova Scotia and Yukon.

1976-1983 Staff geologist Amax Exploration , Yukon and northern B.C.

1984-1992 Staff geologist to project manager for Canamax Resources and Amax Gold. Yukon, N.W.T. and northern B.C.

STATEMENT OF QUALIFICATIONS

Joseph Bottaro

Education

1980 B. Sc. in geology, San Jose State University in California.

1987 M. Sc. in geology, San Jose State University in California.

Registered Professional Geologist in state of Wyoming.

Work Experience

1983-present Amax Exploration and Amax Gold Exploration as staff geologist.

STATEMENT OF QUALIFICATIONS

Cyrill Orssich

Education

1981 B. Sc. in Geology from Carleton University, Ottawa.

Work Experience

1976-1978 Summer employment with Geological survey of Canada.

1979-1988 Full time and temporary employment with Bema and Canamax Resources as surface exploration geologist and underground mine geologist.

1991-1992 Geologist with Canada Tungsten Mining Corporation, Canamax Resources and H6000 Holdings Ltd.

STATEMENT OF QUALIFICATIONS

Mark Steiner

Education

1986 Graduated Grade 12, LVR Senior Secondary School, Nelson, B.C.

Work Experience

1989-1991 Geological technician and soil sampler for Cordilleran Engineering, Minequest Exploration and Shangri-La Exploration

1992 Soil sampler and chip sampler on reverse circulation drill for Amax Gold (B.C.) Ltd.