

MAP NO.:
115 I 5

ASSESSMENT REPORT X
PROSPECTUS
CONFIDENTIAL X
OPEN FILE

DOCUMENT NO: 093001
MINING DISTRICT: WHITEHORSE
TYPE OF WORK: DIAMOND DRILLING

REPORT FILED UNDER: BIG CREEK RESOURCES LIMITED

DATE PERFORMED: NOVEMBER 1-20, 1991

DATE FILED: FEBRUARY 14, 1992

LOCATION: LAT.: 62°26'N

AREA: BIG CREEK

LONG.: 137°37'W

VALUE \$:N/A

CLAIM NAME & NO.: BEAR 5 Y80435, BIG 1-49 YB 35594-YB35642, BIG 50-79 YB 35650-YB35779
BIG 80-125 YB35680-YB35725, CASH 1-13 YA82667-YA82679, CASH 17-20
YA87281-YA87284, CASH 21-24 YA93672-YA93675, CASH 28-30 YA93863-YA93865
CASH 33-36 YA93868-YA93871, FOX 3 Y80425, FOX 23 Y91074,
LOTS 1-39 YB27133-YB27172, NEX 15-16 YA87297-YA87298, NEX 29 YA87307
NEX 49-50 YA87317-YA87318

WORK DONE BY: DOUG EATON ARCHER CATHRO & ASSOCIATES (1981) LIMITED

WORK DONE FOR: BIG CREEK RESOURCES LIMITED

DATE TO GOOD STANDING:

REMARKS: TWO HOLES TOTALLING 387.1 METERS WERE DRILLED ON THE CASH PROPERTY. THE TARGET IS A COPPER, MOLYBDENUM PORPHYRY AT THE CONTACT BETWEEN PALEOZOIC METASEDIMENTS AND CRET INTRUSIVES AND VOLCANICS PARALLEL TO THE BIG CREEK FAULT. THE MINERALIZATION IS ASSOCIATED WITH CRET FELDSPAR PORPHYRY DYKES AND PLUGS. BC91-2 RETURNED 0.26% CU AND 0.017% MO OVER 490 FEET (149.35 M) AND HOLE BC91-1 RETURNED 0.21% CU AND 0.014% MO OVER 277 FEET (84.43M).

ARCHER, CATHRO

& ASSOCIATES (1981) LIMITED

CONSULTING GEOLOGICAL ENGINEERS

1016-510 WEST HASTINGS STREET
VANCOUVER, B. C. V6B 1L8



(604) 688-2568

ASSESSMENT REPORT

Bear 5	Y80435
Big 1-49	YB35594-YB35642
50-79	YB35650-YB35779
80-98	YB35680-YB35798
99-121	YB35699-YB35721
122-125	YB35722-YB35725
Cash 1-13	YA82667-YA82679
17-20	YA87281-YA87284
21-24	YA93672-YA93675
28-30	YA93863-YA93865
33-36	YA93868-YA93871
Fox 3	Y80425
23	Y91074
Lotsa 1-39	YB27133-YB27172
Nex 15-16	YA87297-YA87298
29	YA87307
49-50	YA87317-YA87318

093001

WHITEHORSE MINING DISTRICT

Latitude 62°26'N; Longitude 137°37'W

NTS 115I/5

BIG CREEK RESOURCES LTD.

January, 1992

W.D. Eaton, B.A., B.Sc.

For work conducted between November 1 and 20, 1991



This report has been examined by
the Geological Evaluation Unit
under Section 53 (4) Yukon Quartz
Mining Act and is allowed as
representation work in the amount
of \$ _____.

R. J. Ouellette
for Regional Manager, Exploration and
Geological Services for Commissioner
of Yukon Territory.

TABLE OF CONTENTS

	<u>Page</u>
SUMMARY	1

LIST OF FIGURES

<u>No.</u>		<u>Location</u>
1	Drill Hole Locations.....	Follows Page 1
2	Drill Log and Section, Hole 91-1	In Pocket
3	Drill Log and Section, Hole 91-2	In Pocket

APPENDICIES

1	Statement of Qualifications
2	Certificates of Analysis

SUMMARY

The 1991 drill program at the Cash property was conducted between November 1 and 20. It consisted of two holes totalling 387.1 m. The drilling was contracted to E. Caron Diamond Drilling Ltd. of Whitehorse and was done with wire-line equipped Longyear 38 drill. The crew stayed on the property in a tent camp provided by the drill contractor. Drill moves and access road construction was done with a Caterpillar D6 bulldozer provided by the drill contractor. Both holes were collared with HQ equipment and required drill mud. Difficult ground conditions were encountered in the highly fractured and weathered, leached cap and both holes were reduced to NQ equipment (one at 36.6 m and the other at 61 m).

The core was transported to Whitehorse where it was logged by geologist Mike Phillips. All core was split and samples were taken over 3 m intervals. The samples were shipped to Chemex Labs Ltd. in North Vancouver where they were assayed for copper and gold. The remaining core is stored at the H.S. Bostock Core Library in Whitehorse.

The report consists of a claim map showing drill collar locations, drill logs and certificates of analysis.

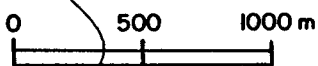
Respectfully submitted,

ARCHER, CATHRO & ASSOCIATES (1981) LIMITED


W.D. Eaton.

/mc

NTS 1151-5



137° 40' W

3000

3500

S-56
Creek

62° 25' N

Big

LOTSA

LOTSA

BIG

CASH

91-2

91-1

BIG

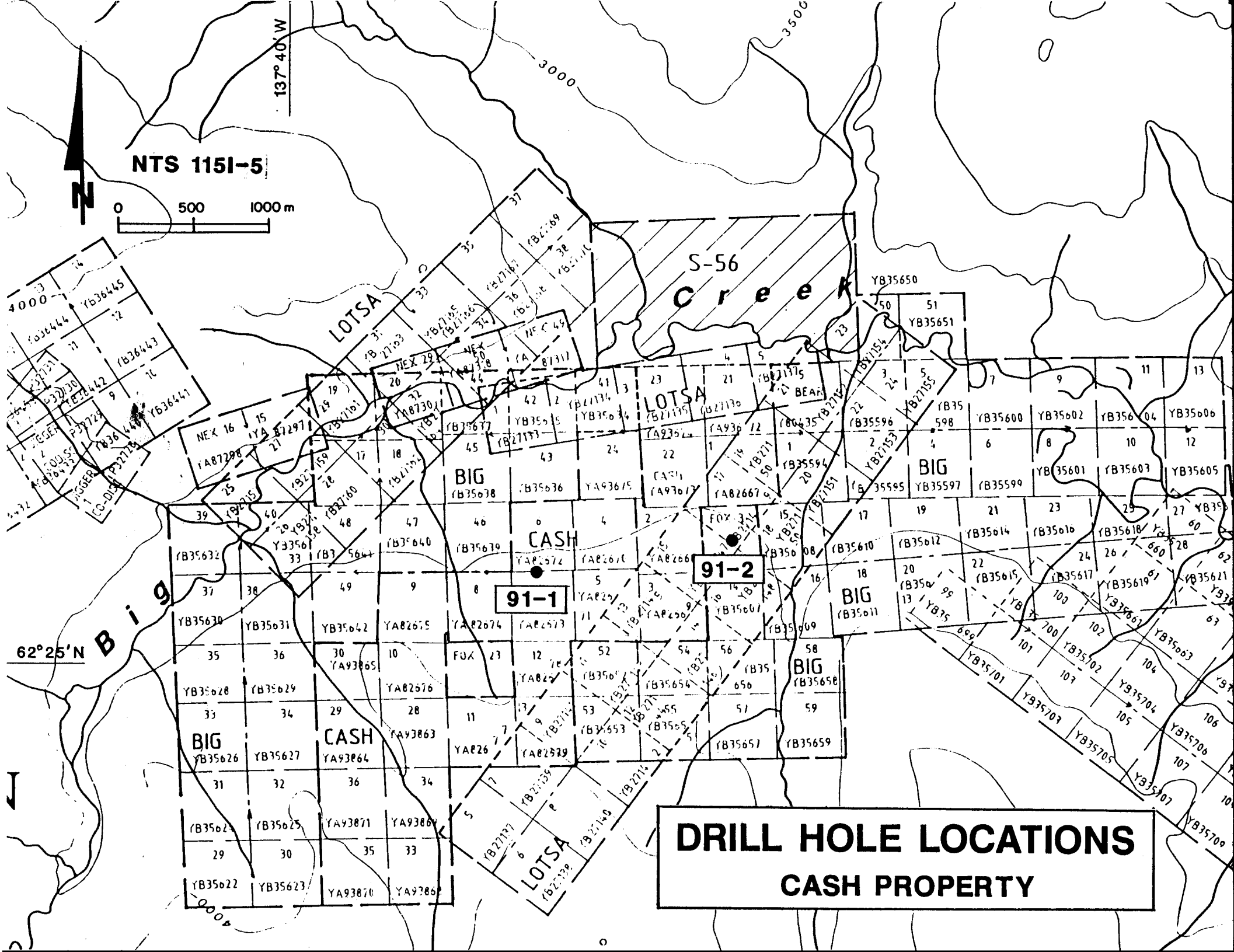
BIG

BIG

CASH

LOTSA

**DRILL HOLE LOCATIONS
CASH PROPERTY**




APPENDIX I
STATEMENT OF QUALIFICATIONS

STATEMENT OF QUALIFICATIONS

I, W. Douglas Eaton, geologist, with business addresses in Whitehorse, Yukon Territory and Vancouver, British Columbia and residential address in Deep Cove, British Columbia, do hereby declare that:

1. I graduated from the University of British Columbia in 1980 with a B.Sc. majoring in Geological Sciences.
2. From 1971 to present, I have been actively engaged in mineral exploration in British Columbia and Yukon Territory and on June 1, 1981, I became a partner in Archer, Cathro & Associates (1981) Limited.
3. I have personally participated in or supervised the field work reported herein and have interpreted all data resulting from this work.



W. Douglas Eaton, B.A., B.Sc.

APPENDIX II
CERTIFICATES OF ANALYSIS



Chemex Labs Ltd.

Analytical Chemists * Geochemists * Registered Assayers
212 Brooksbank Ave., North Vancouver
British Columbia, Canada V7J 2C1
PHONE: 604-984-0221

ARCHER CATHRO & ASSOC. (1981) LTD.

1016 - 510 W. HASTINGS ST.
VANCOUVER, BC
V6B 1L8

Project : CASH
Comments:

Page Number : 1
Total Pages : 2
Certificate Date: 17-DEC-91
Invoice No. : 19125778
P.O. Number :
Account : F

CERTIFICATE OF ANALYSIS

A9125778

SAMPLE	PREP CODE	Au oz/T	Cu %	Mo %								
S 06444	208 294	< 0.002	0.09	0.008								
S 06445	208 294	< 0.002	0.31	0.009								
S 06446	208 272	0.004	0.25	0.020								
S 06447	208 272	0.004	0.30	0.061								
S 06448	208 272	0.004	0.19	0.015								
S 06449	208 294	0.002	0.24	0.022								
S 06450	208 294	0.004	0.02	0.067								
S 06451	208 294	< 0.002	0.27	0.060								
S 06452	208 272	< 0.002	0.15	0.013								
S 06453	208 294	0.010	0.30	0.042								
S 06454	208 294	0.006	0.19	0.034								
S 06455	208 294	0.004	0.23	0.024								
S 06456	208 294	0.006	0.10	0.034								
S 06457	208 294	< 0.002	0.30	0.015								
S 06458	208 294	0.008	0.39	0.020								
S 06459	208 294	0.006	0.41	0.025								
S 06460	208 294	0.002	0.17	0.015								
S 06461	208 272	< 0.002	0.14	0.015								
S 06462	208 294	< 0.002	0.18	0.016								
S 06463	208 294	< 0.002	0.17	0.013								
S 06464	208 294	< 0.002	0.28	0.014								
S 06465	208 294	< 0.002	0.18	0.015								
S 06466	208 294	< 0.002	0.24	0.017								
S 06467	208 294	< 0.002	0.19	0.023								
S 06468	208 272	< 0.002	0.19	0.010								
S 06469	208 272	< 0.002	0.27	0.015								
S 06470	208 294	0.004	0.19	0.013								
S 06471	208 294	0.002	0.29	0.025								
S 06472	208 294	0.006	0.35	0.016								
S 06473	208 294	0.008	0.34	0.013								
S 06474	208 294	< 0.002	0.34	0.016								
S 06475	208 294	0.002	0.37	0.010								
S 06476	208 294	< 0.002	0.17	0.013								
S 06477	208 294	< 0.002	0.22	0.012								
S 06478	208 294	< 0.002	0.27	0.012								
S 06479	208 294	< 0.002	0.32	0.009								
S 06480	208 272	< 0.002	0.18	0.009								
S 06481	208 272	< 0.002	0.10	0.021								
S 06482	208 272	< 0.002	0.12	0.009								
S 06483	208 272	< 0.002	0.11	0.005								

CERTIFICATION:

Thak Vank



Chemex Labs Ltd.

Analytical Chemists * Geochemists * Registered Assayers
212 Brooksbank Ave., North Vancouver
British Columbia, Canada V7J 2C1
PHONE: 604-984-0221

C: ARCHER CATHRO & ASSOC. (1981) LTD.

1016 - 510 W. HASTINGS ST.
VANCOUVER, BC
V6B 1L8

Project : CASH
Comments:

Page Number :1
Total Pages :2
Certificate Date: 07-JAN-92
Invoice No. :19126122
P.O. Number :
Account :F

CERTIFICATE OF ANALYSIS

A9126122

SAMPLE	PREP CODE	Au oz/T	Cu %	Mo %							
S06489	208 272	0.001	0.08	0.011							
S06490	208 272	0.001	0.09	0.009							
S06491	208 272	0.003	0.10	0.011							
S06492	208 272	0.003	0.12	0.006							
S06493	208 294	0.001	0.11	0.011							
S06494	208 294	0.001	0.10	0.005							
S06495	208 272	0.001	0.09	0.010							
S06496	208 272	0.003	0.06	0.005							
S06497	208 272	0.003	0.11	0.008							
S06498	208 272	0.003	0.27	0.009							
S06499	208 272	0.004	0.17	0.006							
S06500	208 272	0.006	0.22	0.011							
S13251	208 294	0.005	0.26	0.013							
S13252	208 294	0.002	0.20	0.012							
S13253	208 294	0.004	0.24	0.008							
S13254	208 294	0.001	0.16	0.007							
S13255	208 294	0.003	0.20	0.009							
S13256	208 294	0.003	0.23	0.012							
S13257	208 294	0.002	0.19	0.011							
S13258	208 294	0.004	0.20	0.107							
S13259	208 294	0.003	0.16	0.143							
S13260	208 294	0.006	0.26	0.011							
S13391	208 294	0.003	0.23	0.005							
S13392	208 294	0.004	0.20	0.014							
S13393	208 294	0.005	0.19	0.004							
S13394	208 294	0.001	0.10	0.011							
S13395	208 294	0.002	0.23	0.010							
S13396	208 294	0.003	0.17	0.011							
S13397	208 294	0.004	0.19	0.012							
S13398	208 294	0.005	0.27	0.016							
S13399	208 294	0.008	0.32	0.019							
S13400	208 294	0.005	0.24	0.012							
S13581	208 272	0.003	0.10	0.008							
S13582	208 272	0.003	0.09	0.006							
S13583	208 272	0.006	0.27	0.014							
S13584	208 272	0.014	0.13	0.021							
S13585	208 272	0.004	0.06	0.014							
S13586	208 272	0.004	0.07	0.010							
S13587	208 272	0.004	0.09	0.011							
S13588	208 272	0.008	0.18	0.012							

CERTIFICATION:



Chemex Labs Ltd.

Analytical Chemists * Geochemists * Registered Assayers
212 Brooksbank Ave., North Vancouver
British Columbia, Canada V7J 2C1
PHONE: 604-984-0221

Client: ARCHER CATHRO & ASSOC. (1981) LTD.

1016 - 510 W. HASTINGS ST.
VANCOUVER, BC
V6B 1L8

Project: CASH
Comments:

Page Number :2
Total Pages :2
Certificate Date: 07-JAN-92
Invoice No. :19126122
P.O. Number :
Account :F

CERTIFICATE OF ANALYSIS

A9126122

SAMPLE	PREP CODE	Au oz/T	Cu %	Mo %							
S13589	208 272	0.003	0.07	0.005							
S13590	208 272	0.005	0.11	0.008							
S13591	208 272	0.005	0.06	0.006							
S13592	208 272	0.005	0.37	0.033							
S13593	208 272	0.003	0.07	0.006							
S13594	208 272	0.006	0.07	0.007							
S13595	208 272	0.005	0.08	0.014							
S13596	208 272	0.005	0.66	0.020							
S13597	208 272	0.004	0.54	0.018							
S13598	208 272	0.002	0.88	0.008							
S13599	208 272	0.003	0.68	0.006							
S13600	208 272	0.001	0.43	0.002							
S13877	208 272	0.006	0.29	0.014							
S13878	208 272	0.007	0.29	0.010							
S13879	208 272	0.004	0.16	0.009							
S13880	208 272	0.003	0.13	0.007							
S13881	208 272	0.019	0.22	0.006							
S13882	208 272	0.004	0.11	0.005							
S13883	208 272	0.010	0.31	0.010							
S13884	208 272	0.005	0.14	0.013							
S13885	208 272	0.003	0.12	0.009							
S13886	208 272	0.003	0.13	0.011							
S13887	208 272	0.004	0.18	0.015							
S13888	208 272	0.007	0.22	0.019							
S13889	208 272	0.004	0.18	0.013							
S13890	208 272	0.007	0.29	0.026							
S13891	208 272	0.004	0.15	0.011							
S13892	208 272	0.005	0.32	0.020							
S13893	208 272	0.002	0.31	0.029							
S13894	208 272	0.005	0.24	0.009							
S13895	208 272	0.004	0.22	0.016							
S13896	208 272	0.007	0.32	0.026							
S13897	208 272	0.003	0.19	0.020							
S13898	208 272	0.003	0.20	0.009							
S13899	208 272	0.005	0.33	0.031							
S13900	208 272	0.006	0.27	0.012							

CERTIFICATION:

Theresa Vornh



Chemex Labs Ltd.

Analytical Chemists * Geochemists * Registered Assayers
212 Brooksbank Ave., North Vancouver
British Columbia, Canada V7J 2C1
PHONE: 604-984-0221

TO: ARCHER CATHRO & ASSOC. (1981) LTD.

1016 - 510 W. HASTINGS ST.
VANCOUVER, BC
V6B 1L8

Project : CASH
Comments: ATTN: DOUG EATON

Page Number :1
Total Pages :2
Certificate Date: 14-JAN-92
Invoice No. :19210103
P.O. Number :NONE
Account :F

CERTIFICATE OF ANALYSIS A9210103

SAMPLE	PREP CODE	Au ppb FA+AA										
S 06444	214 ---	50										
S 06445	214 ---	130										
S 06446	214 ---	195										
S 06447	214 ---	250										
S 06448	214 ---	90										
S 06449	214 ---	150										
S 06450	214 ---	75										
S 06451	214 ---	80										
S 06452	214 ---	80										
S 06453	214 ---	320										
S 06454	214 ---	110										
S 06455	214 ---	180										
S 06456	214 ---	305										
S 06457	214 ---	175										
S 06458	214 ---	380										
S 06459	214 ---	410										
S 06460	214 ---	190										
S 06461	214 ---	130										
S 06462	214 ---	160										
S 06463	214 ---	145										
S 06464	214 ---	240										
S 06465	214 ---	100										
S 06466	214 ---	120										
S 06467	214 ---	90										
S 06468	214 ---	220										
S 06469	214 ---	170										
S 06470	214 ---	220										
S 06471	214 ---	230										
S 06472	214 ---	305										
S 06473	214 ---	275										
S 06474	214 ---	170										
S 06475	214 ---	200										
S 06476	214 ---	100										
S 06477	214 ---	185										
S 06478	214 ---	270										
S 06479	214 ---	160										
S 06480	214 ---	125										
S 06481	214 ---	45										
S 06482	214 ---	40										
S 06483	214 ---	20										

CERTIFICATION: *Theresa Vank*



Chemex Labs Ltd.

Analytical Chemists * Geochemists * Registered Assayers

212 Brooksbank Ave., North Vancouver

British Columbia, Canada V7J 2C1

PHONE: 604-984-0221

Client: ARCHER CATHRO & ASSOC. (1981) LTD.

1016 - 510 W. HASTINGS ST.

VANCOUVER, BC

V6B 1L8

Project: CASH

Comments: ATTN: DOUG EATON

Page Number: 2

Total Pages: 2

Certificate Date: 14-JAN-92

Invoice No.: 19210103

P.O. Number: NONE

Account: F

CERTIFICATE OF ANALYSIS

A9210103

SAMPLE	PREP CODE	Au ppb FA+AA									
S 06484	214 ---	50									
S 06485	214 ---	25									
S 06486	214 ---	40									
S 06487	214 ---	55									
S 06488	214 ---	30									

CERTIFICATION:

SUMMARY LOG MAP# 115 I/5 (268)
DIAMOND DRILL HOLE LOG BC 91-1

CASH PROPERTY
BIG CREEK AREA
NTS 115 I/5

093001

SCALE 1 IN = 50 FT
LOCATION: -1400E, 1500S (±15 FT NE DDH WTS-2) DIP -30°

SAMPLE NUMBER	FROM	TO	WIDTH	%CU	%MO	oz/ft AU
S 06444	22.0	30.0	8.0	0.09	0.008	0.001
S 06445	36.0	40.0	10.0	0.31	0.009	0.004
S 06446	40.0	50.0	10.0	0.25	0.020	0.006
S 06447	50.0	60.0	10.0	0.30	0.061	0.007
S 06448	60.0	70.0	10.0	0.13	0.015	0.003
S 06449	70.0	80.0	10.0	0.24	0.022	0.004
S 06450	80.0	90.0	10.0	0.02	0.067	0.002
S 06451	90.0	100.0	10.0	0.27	0.060	0.002
S 06452	100.0	110.0	10.0	0.15	0.013	0.002
S 06453	110.0	120.0	10.0	0.30	0.042	0.005
S 06454	120.0	130.0	10.0	0.13	0.034	0.003
S 06455	130.0	140.0	10.0	0.23	0.024	0.005
S 06456	140.0	150.0	10.0	0.10	0.034	0.003
S 06457	150.0	160.0	10.0	0.30	0.015	0.005
S 06458	160.0	170.0	10.0	0.33	0.020	0.011
S 06459	170.0	180.0	10.0	0.41	0.025	0.012
S 06460	180.0	190.0	10.0	0.17	0.015	0.006
S 06461	190.0	200.0	10.0	0.14	0.015	0.004
S 06462	200.0	210.0	10.0	0.18	0.016	0.005
S 06463	210.0	220.0	10.0	0.17	0.013	0.004
S 06464	220.0	230.0	10.0	0.28	0.014	0.007
S 06465	230.0	240.0	10.0	0.18	0.015	0.003
S 06466	240.0	250.0	10.0	0.24	0.017	0.004
S 06467	250.0	260.0	10.0	0.19	0.023	0.003
S 06468	260.0	270.0	10.0	0.19	0.010	0.006
S 06469	270.0	280.0	10.0	0.27	0.015	0.005
S 06470	280.0	290.0	10.0	0.19	0.013	0.006
S 06471	290.0	300.0	10.0	0.29	0.025	0.007
S 06472	300.0	310.0	10.0	0.35	0.016	0.009
S 06473	310.0	320.0	10.0	0.34	0.013	0.008
S 06474	320.0	330.0	10.0	0.34	0.016	0.005
S 06475	330.0	340.0	10.0	0.37	0.010	0.006
S 06476	340.0	350.0	10.0	0.17	0.013	0.003
S 06477	350.0	360.0	10.0	0.22	0.012	0.005
S 06478	360.0	370.0	10.0	0.27	0.012	0.008
S 06479	370.0	380.0	10.0	0.32	0.009	0.005
S 06480	380.0	390.0	10.0	0.18	0.009	0.004
S 06481	390.0	400.0	10.0	0.10	0.021	0.001
S 06482	400.0	410.0	10.0	0.12	0.009	0.001
S 06483	410.0	420.0	10.0	0.11	0.005	0.001
S 06484	420.0	430.0	10.0	0.14	0.014	0.001
S 06485	430.0	440.0	10.0	0.15	0.010	0.001
S 06486	440.0	450.0	10.0	0.12	0.007	0.001
S 06487	450.0	460.0	10.0	0.11	0.048	0.002
S 06488	460.0	470.0	7.0	0.11	0.011	0.001

0.24% CU
0.03% MO
160 FT

0.20% CU
0.015% MO
80 FT

0.28% CU
0.03% MO
110 FT

0.21% CU
0.014% MO
277 FT

0.13% CU
0.015% MO
87 FT



LEGEND

- GNEISS - UNDIFFERENTIATED QUARTZITE, FELDSPATHIC QUARTZITE, QUARTZ FELDSPAR GNEISS, QUARTZ FELDSPAR, CHLORITE GNEISS, QUARTZ FELDSPAR, BIOTITE GNEISS
- QUARTZ MONZONITE
- FELDSPAR PORPHYRY
- FAULT - VEIN
- BRECCIA
- FRACTURED - STRONG

SYMBOLS

- AZ - AZURITE
- CB - CARBONATE
- CP - CHALCOPYRITE
- CY - CLAY
- DI - DISSEMINATED
- FR - FRACTURE
- LI - LIMONITE
- MC - MALACHITE
- MG - MAGNETITE
- MO - MOLYBDENITE
- PY - PYRITE
- QS - QUARTZ SERICITE
- QZ - QUARTZ
- SS - SULFO SALT
- TE - TENNITE

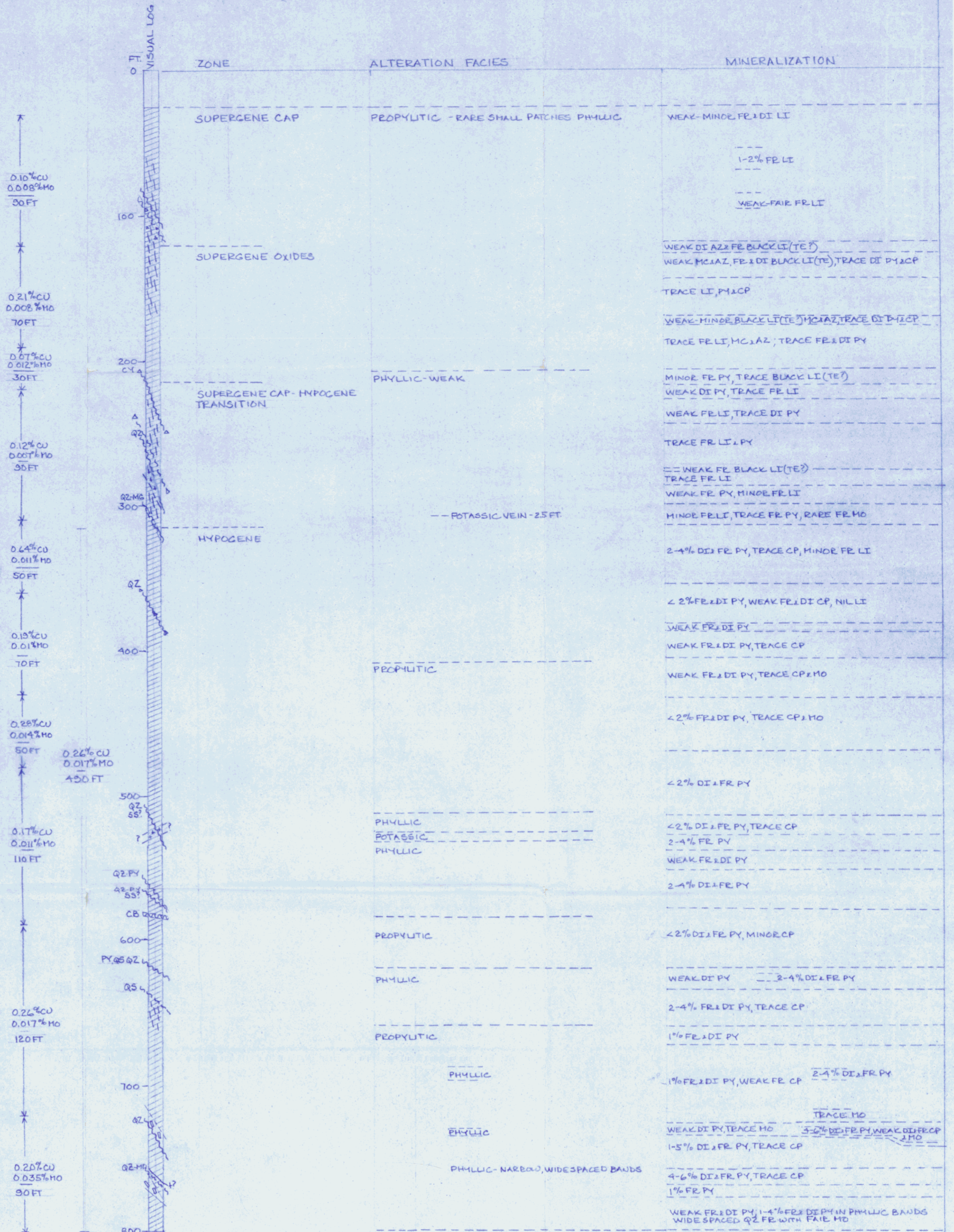
9
Feb 5/92

SUMMARY LOG MAP#1151/5
DIAMOND DRILLHOLE LOG BC 91-2 (269)

CASH PROPERTY
BIG CREEK AREA
NTS 1151/5
093001

SCALE 1 IN = 50 FT
LOCATION: 4800E 800S (± 6 FTS DDH K75-T DIP -80°)

SAMPLE NUMBER	FT		WIDTH	%CU	%MO	OZ/TAU
	FROM	TO				
S06483	30.0	40.0	10.0	0.08	0.011	0.001
S06490	40.0	50.0	10.0	0.03	0.003	0.001
S06491	50.0	60.0	10.0	0.10	0.011	0.003
S06492	60.0	70.0	10.0	0.12	0.006	0.003
S06493	70.0	80.0	10.0	0.11	0.011	0.001
S06494	80.0	90.0	10.0	0.10	0.005	0.001
S06495	90.0	100.0	10.0	0.09	0.010	0.001
S06496	100.0	110.0	10.0	0.06	0.005	0.003
S06497	110.0	120.0	10.0	0.11	0.008	0.003
S06498	120.0	130.0	10.0	0.27	0.003	0.003
S06499	120.0	140.0	10.0	0.17	0.006	0.004
S06500	140.0	150.0	10.0	0.22	0.011	0.006
S13581	150.0	160.0	10.0	0.10	0.008	0.003
S13582	160.0	170.0	10.0	0.09	0.006	0.003
S13583	170.0	180.0	10.0	0.27	0.014	0.006
S13584	180.0	190.0	10.0	0.13	0.021	0.014
S13585	190.0	200.0	10.0	0.06	0.014	0.004
S13586	200.0	210.0	10.0	0.07	0.010	0.004
S13587	210.0	220.0	10.0	0.03	0.011	0.004
S13588	220.0	230.0	10.0	0.18	0.012	0.008
S13589	230.0	250.0	20.0	0.07	0.005	0.003
S13590	250.0	260.0	10.0	0.11	0.008	0.005
S13591	260.0	270.0	10.0	0.06	0.006	0.005
S13592	270.0	280.0	10.0	0.37	0.033	0.005
S13593	280.0	290.0	10.0	0.07	0.006	0.003
S13594	290.0	300.0	10.0	0.07	0.007	0.006
S13595	300.0	310.0	10.0	0.08	0.014	0.005
S13596	310.0	320.0	10.0	0.66	0.020	0.005
S13597	320.0	330.0	10.0	0.54	0.018	0.004
S13598	330.0	340.0	10.0	0.88	0.008	0.002
S13599	340.0	350.0	10.0	0.68	0.006	0.003
S13600	350.0	360.0	10.0	0.43	0.002	0.001
S13301	360.0	370.0	10.0	0.23	0.005	0.003
S13302	370.0	380.0	10.0	0.20	0.014	0.004
S13303	380.0	390.0	10.0	0.19	0.004	0.005
S13304	390.0	400.0	10.0	0.10	0.011	0.001
S13305	400.0	410.0	10.0	0.23	0.010	0.002
S13306	410.0	420.0	10.0	0.17	0.011	0.003
S13307	420.0	430.0	10.0	0.19	0.012	0.004
S13308	430.0	440.0	10.0	0.27	0.016	0.005
S13309	440.0	450.0	10.0	0.32	0.019	0.008
S13400	450.0	460.0	10.0	0.24	0.012	0.005
S13877	460.0	470.0	10.0	0.29	0.014	0.006
S13878	470.0	480.0	10.0	0.29	0.010	0.007
S13879	480.0	490.0	10.0	0.16	0.003	0.004
S13880	490.0	500.0	10.0	0.13	0.007	0.003
S13881	500.0	510.0	10.0	0.22	0.006	0.019
S13882	510.0	520.0	10.0	0.11	0.005	0.004
S13883	520.0	530.0	10.0	0.31	0.010	0.010
S13884	530.0	540.0	10.0	0.14	0.013	0.005
S13885	540.0	550.0	10.0	0.12	0.003	0.003
S13886	550.0	560.0	10.0	0.13	0.011	0.003
S13887	560.0	570.0	10.0	0.18	0.015	0.004
S13888	570.0	580.0	10.0	0.22	0.019	0.007
S13889	580.0	590.0	10.0	0.18	0.013	0.004
S13890	590.0	600.0	10.0	0.29	0.026	0.007
S13891	600.0	610.0	10.0	0.15	0.011	0.004
S13892	610.0	620.0	10.0	0.32	0.020	0.005
S13893	620.0	630.0	10.0	0.31	0.029	0.002
S13894	630.0	640.0	10.0	0.24	0.003	0.005
S13895	640.0	650.0	10.0	0.22	0.016	0.004
S13896	650.0	660.0	10.0	0.32	0.026	0.007
S13897	660.0	670.0	10.0	0.19	0.20	0.003
S13898	670.0	680.0	10.0	0.20	0.003	0.003
S13899	680.0	690.0	10.0	0.33	0.031	0.005
S13900	690.0	700.0	10.0	0.27	0.012	0.004
S13251	700.0	710.0	10.0	0.26	0.013	0.005
S13252	710.0	720.0	10.0	0.20	0.012	0.002
S13253	720.0	730.0	10.0	0.24	0.008	0.004
S13254	730.0	740.0	10.0	0.16	0.007	0.001
S13255	740.0	750.0	10.0	0.20	0.003	0.003
S13256	750.0	760.0	10.0	0.23	0.012	0.003
S13257	760.0	770.0	10.0	0.19	0.011	0.002
S13258	770.0	780.0	10.0	0.20	0.107	0.004
S13259	780.0	790.0	10.0	0.16	0.143	0.003
S13260	790.0	800.0	10.0	0.26	0.011	0.006



LEGEND

- GNEISS - UNDIFFERENTIATED QUARTZITE, FELDSPATHIC QUARTZITE, QUARTZ FELDSPAR GNEISS, QUARTZ FELDSPAR CHLORITE GNEISS, QUARTZ FELDSPAR BIOTITE GNEISS
- QUARTZ MONZONITE
- FELDSPAR PORPHYRY
- FAULT - VEIN
- BRECCIA
- FRACTURED - STRONG

SYMBOLS

- AZ - AZURITE
- CB - CARBONATE
- CP - CHALCOPYRITE
- CY - CLAY
- DI - DISSEMINATED
- FR - FRACTURE
- LI - LIMONITE
- MC - MALACHITE
- MG - MAGNETITE
- MO - MOLYBDENITE
- PY - PYRITE
- QS - QUARTZ SERICITE
- QZ - QUARTZ
- SS - SULFOSALT
- TE - TENORITE

[Signature]
Feb 5/92