

MAP NO.: ASSESSMENT REPORT X

DOCUMENT NO: 092999

116 C /01

PROSPECTUS  
CONFIDENTIAL X  
OPEN FILE

MINING DISTRICT: Dawson

TYPE OF WORK: Geochemical and Geological  
Survey

REPORT FILED UNDER: Archer Cathro & Associates (1981) Ltd.

DATE PERFORMED: August 5, 1991

DATE FILED: January 17, 1992

LOCATION: LAT.: 64°14'N

AREA: Clinton Creek Area

LONG.: 140°25'W

VALUE \$: 1,842.02

CLAIM NAME & NO.: Cl 1 - 6 YB30541 - YB30546.

WORK DONE BY: Robert C. Carne

WORK DONE FOR: Archer Cathro & Associates (1981) Ltd.

DATE TO GOOD STANDING:

REMARKS: # 116 C

Property was staked to cover mineralized float occurrences previously discovered and explored by Cominco Ltd. in the late 1970's. Float mineralization consists of thin, stratiform bands of dark brown sphalerite and galena in quartz-muscovite phyllite as well as disseminated pyrite, sphalerite and galena in barite. Possible sedimentary exhalative or volcanogenic massive sulfide deposit.

# ARCHER, CATHRO

• ASSOCIATES (1981) LIMITED

CONSULTING GEOLOGICAL ENGINEERS

1016-510 WEST HASTINGS STREET  
VANCOUVER, B. C. V6B 1L8

yt from... (604) 688-2568

## SUMMARY REPORT

on

1991 PROSPECTING

CLI CLAIMS

Dawson Mining District

Cli 1-6 - YB30541-YB30546

Latitude 64°14' North; Longitude 140°25' West

NTS 116C/1

for

YGC RESOURCES LTD.



R.C. Carne, M.Sc.

December, 1991

Work performed on August 5, 1991



092999

This report has been examined by  
the Geological Evaluation Unit  
under Section 53 (4) Yukon Quartz  
Mining Act and is allowed as  
representation work in the amount  
of \$ 1,842.02.

*Robert Debluk*

*for* Regional Manager, Exploration and  
Geological Services for Commissioner  
of Yukon Territory.

TABLE OF CONTENTS

	<u>PAGE</u>
SUMMARY AND RECOMMENDATIONS .....	1
PROPOSED CLI PROPERTY 1992 EXPLORATION BUDGET .....	2
INTRODUCTION .....	3
PROPERTY, LOCATION AND ACCESS .....	3
HISTORY AND PREVIOUS WORK .....	4
GEOMORPHOLOGY .....	4
GEOLOGY .....	5
MINERALIZATION .....	5
GEOCHEMISTRY .....	6

APPENDICES

- I Author's Statement of Qualifications
- II List of Personnel
- III Analytical Certificates

FIGURES

<u>NO.</u>		<u>LOCATION</u>
1	Location Map .....	Following Page 3
2	Claim Location Map .....	Following Page 3
3	Sample Location Map .....	In Pocket
4	Lead Geochemistry .....	In Pocket
5	Zinc Geochemistry .....	In Pocket

SUMMARY AND RECOMMENDATIONS

The Cli property is 100% owned by YGC Resources Ltd. The claim group was staked to cover mineralized float occurrences previously discovered and explored by Cominco Ltd.

Float mineralization consists of thin, stratiform bands of dark brown sphalerite and galena in quartz-muscovite phyllite, as well as disseminated pyrite, sphalerite and galena in barite. Textures and geological setting are characteristic of sedimentary exhalative or volcanogenic massive sulphide mineralization and the Cli property contains one of four similar exploration targets which occur along a 20 km long, northwest-trending belt of Upper Devonian metasedimentary and metavolcanic rocks.

The Cli property should be enlarged along the regional structural strike direction for at least three kilometres to the north-northwest and three kilometres to the south-southeast. A grid soil sampling program, accompanied by detailed prospecting and geological mapping, should be carried out to fully evaluate the potential for base metal mineralization.

A proposed budget for 1992 exploration follows on the next page. This estimate of costs assumes that the work will be carried out in conjunction with larger programs on other nearby YGC properties.

Respectfully submitted,

ARCHER, CATHRO & ASSOCIATES (1981) LIMITED

A handwritten signature in black ink, appearing to be 'R.C. Carne', with a long horizontal line extending to the right.

R.C. Carne, M.Sc.

/mc

PROPOSED CLI PROPERTY 1992 EXPLORATION BUDGET

<u>Salaries</u> - geologist for 3 weeks; 3 labourers for 1 week; 3 days senior supervision; expediting, accounting and secretarial .....	\$15,000
<u>Assaying and Geochemical</u> .....	11,000
<u>Field Room and Board</u> - 45 mandays @ \$80/day .....	3,600
<u>Travel and Freight</u> .....	3,000
<u>Drafting and Printing</u> .....	3,000
<u>Assessment Filing</u> .....	1,500
<u>Truck Rental</u> .....	1,500
<u>Management</u> .....	<u>1,400</u>
	\$40,000
	Plus 7% GST - <u>2,800</u>
	TOTAL - <u>\$42,800</u>

INTRODUCTION

The Cli property was staked in May, 1990 by Archer, Cathro & Associates (1981) Limited and sold to YGC Resources Ltd. at cost in June. The claims were acquired to cover lead-zinc geochemical anomalies that coincide with baritic sphalerite and galena-bearing float mineralization.

The 1991 field program was funded by YGC and consisted of prospecting on August 5, 1991.

Appendix I includes the Author's Statement of Qualifications while a list of personnel who worked on the project is included as Appendix II. Analytical certificates appearing in Appendix III are for soil samples collected outside the property perimeter.

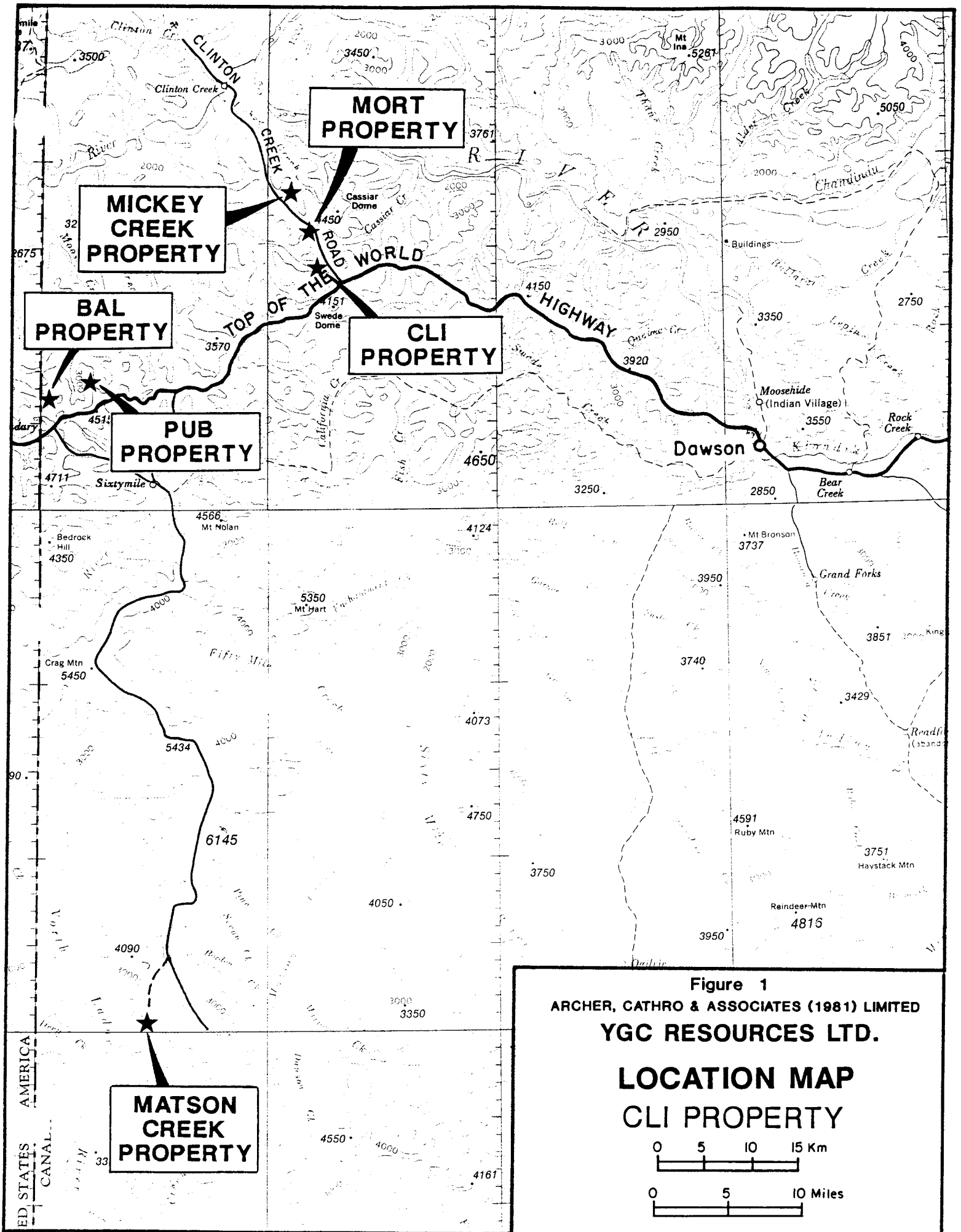
PROPERTY, LOCATION AND ACCESS

The Cli property lies in west-central Yukon, 35 km northwest of Dawson City (Figure 1). The Clinton Creek Road passes within 2 km of the property, about 3 km west of the junction with the Top of the World Highway. Coordinates for the central part of the property are 64°14' north latitude and 140°25' west longitude.

The Cli property consists of six claims registered with the Dawson Mining Recorder in the name of Archer, Cathro as follows:

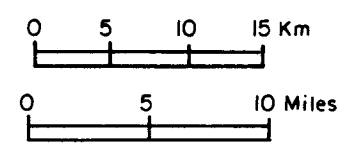
<u>Claim Name</u>	<u>Grant Numbers</u>	<u>Expiry Date</u>
Cli 1-6	YB30541-YB30546	March 4, 1992

Claim locations are shown on Figure 2.



**Figure 1**  
**ARCHER, CATHRO & ASSOCIATES (1981) LIMITED**  
**YGC RESOURCES LTD.**

**LOCATION MAP**  
**CLI PROPERTY**



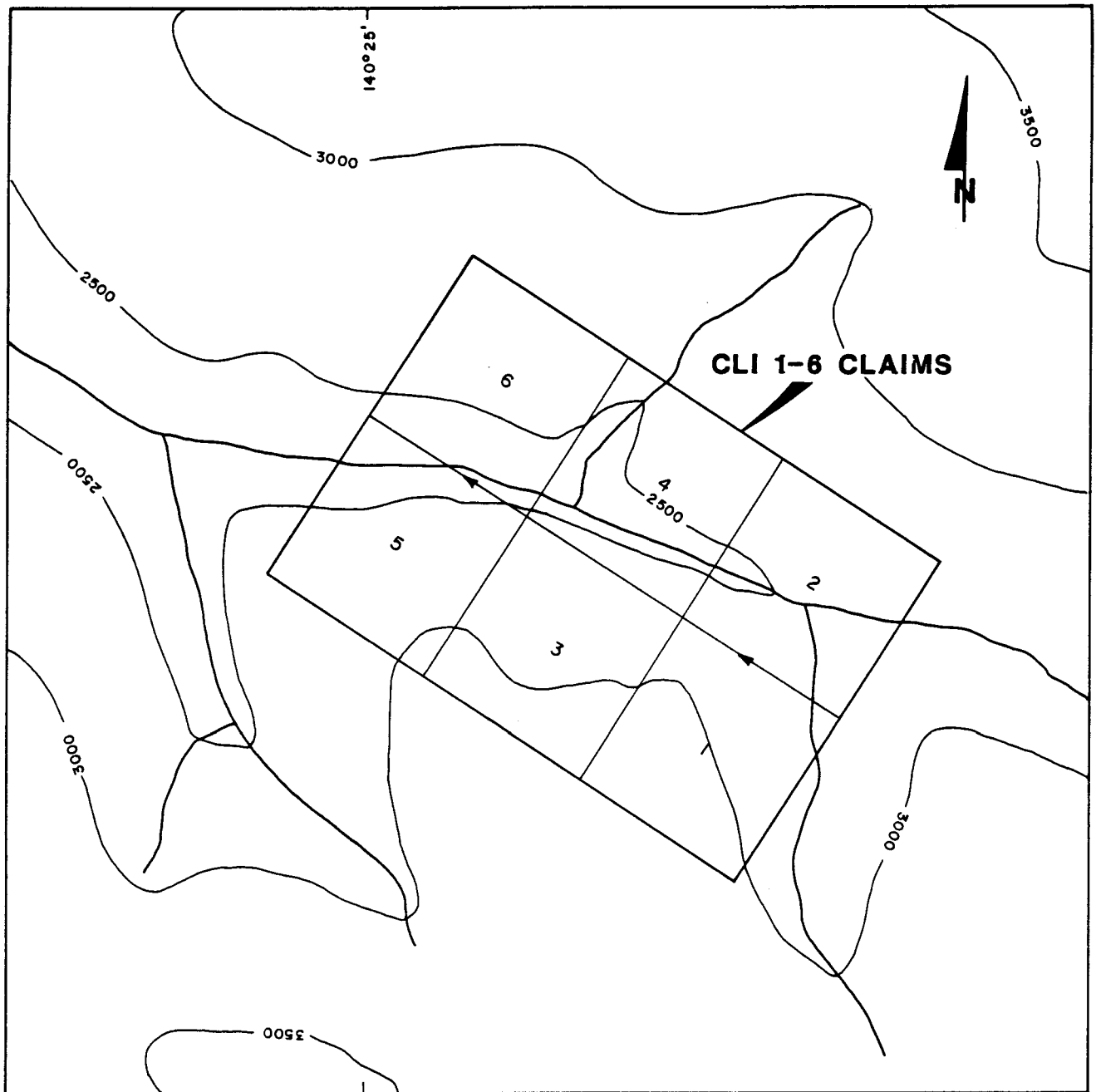
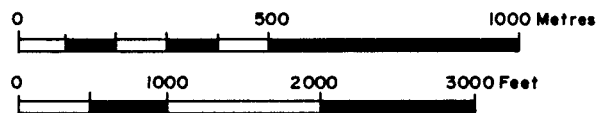


Figure 2  
 ARCHER, CATHRO & ASSOCIATES (1981) LIMITED  
**CLAIM LOCATIONS**  
 CLI PROPERTY  
 YGC RESOURCES LTD.



### HISTORY AND PREVIOUS WORK

The area was first staked in 1978 by Cominco Ltd. which explored the property with linecutting, geological mapping, prospecting and soil sampling in 1978 and 1979.

### GEOMORPHOLOGY

The Cli property lies in the headwaters of a small creek at between 700 and 975 m elevation. The area lies below treeline but a forest fire in July, 1991 reduced the vegetation cover to standing snags.

The area escaped Pleistocene glaciation and bedrock exposures are limited to isolated outcrops along the creek banks. Actual outcrop probably forms less than 1% of the area. Residual overburden cover probably exceeds several metres. Soil cover consists of a mixture of organic-rich clay and soliflucted mineral soils. Permafrost cover is probably relatively continuous.

### GEOLOGY

The Cli property area is underlain by intercalated metasedimentary and metavolcanic(?) rocks of the Devonian to Mississippian Nasina Group, including quartz-biotite phyllite, quartz-muscovite phyllite, marble and quartzite. Very little bedrock is exposed on the property and very little detailed geological mapping has been carried out to date. Examination of roadcut exposures along the Clinton Creek Road and the Top of the World Highway suggests that the sequence has been deformed by small-scale isoclinal folds although the overall orientation of compositional layering appears to be a homoclinal sequence that dips moderately to steeply southwest.

### MINERALIZATION

The Cli property covers a metamorphosed sedimentary-exhalative (sedex) or volcanogenic massive sulphide (VMS) barite-lead-zinc exploration target. Mineralization discovered to date consists of base-of-slope float occurrences including thin, stratiform bands of dark brown sphalerite and galena in quartz-muscovite phyllite as well as disseminated pyrite, sphalerite and galena in barite. This is similar to baritic zinc- and lead-bearing sedex or VMS mineralization that occurs within quartz-muscovite phyllite along strike with the Cli property at the Holly prospect, 7 km to the southeast and on the YGC Mort property, 4 km to the northwest.

GEOCHEMISTRY

Results of Cominco grid soil sampling are summarized on Figures 4 (lead geochemistry) and 5 (zinc geochemistry), as well as results of 1991 sampling by YGC off the property to the north and south.

Lead response in soils on the property ranges up to 3140 ppm and anomalous values correlate well with known areas of float mineralization. Highest zinc values, which range up to 880 ppm, also reflect float mineralization.

The mineralized float specimens have a distinctly stratiform character and, assuming they are derived from a sedex or VMS occurrence, the source of the geochemical response should trend in a north-northwest direction parallel to compositional layering in the country rock (Figure 4). This, however, is not the case since the anomalous values occur within an elongate east-west trend along the southwest creek bank. Float exposures occur along the base-of-slope, probably at the toe of soliflucted colluvial deposits. The upslope source of the float could be a conformable zone covered with overburden thick enough to mask geochemical response.

Anomalous lead (up to 300 ppm) and zinc (up to 430 ppm) values were returned from reconnaissance soil samples taken one kilometre southeast of the property. This area is along structural strike with the area of float mineralization and anomalous geochemical response on the claim block.

APPENDIX I  
AUTHOR'S STATEMENT OF QUALIFICATIONS

## STATEMENT OF QUALIFICATIONS

I, Robert C. Carne, geologist, with business addresses in Whitehorse, Yukon Territory and Vancouver, British Columbia and residential address in Burnaby, British Columbia, hereby certify that:

1. I graduated from the University of British Columbia in 1974 with a B.Sc. and in 1979 with an M.Sc. majoring in Geological Sciences.
2. I am a member of the Geological Association of Canada.
3. From 1974 to present, I have been actively engaged as a geologist in mineral exploration in British Columbia and Yukon Territory and on June 1, 1981 became a partner of Archer, Cathro & Associates (1981) Limited.
3. I have personally participated in or supervised the field work reported herein and have interpreted all data resulting from this work.



---

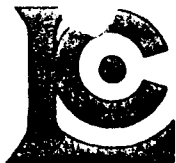
Robert C. Carne, B.Sc., M.Sc.

APPENDIX II  
LIST OF PERSONNEL

LIST OF PERSONNEL

<u>NAME</u>	<u>POSITION</u>	<u>PERIOD</u>
Tom Becker	Geologist	August 5
May Sze	Field Assistant	August 5

APPENDIX III  
GEOCHEMICAL CERTIFICATES



# Chemex Labs Ltd.

Analytical Chemists \* Geochemists \* Registered Assayers  
 212 Brooksbank Ave., North Vancouver  
 British Columbia, Canada V7J 2C1  
 PHONE: 604-984-0221

To: ARCHER CATHRO & ASSOC. (1981) LTD.

BOX 4127  
 WHITEHORSE, YT  
 Y1A 3S9

Project: YGC(CLIP)  
 Comments:

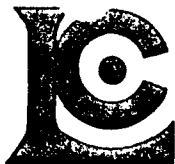
Page Number: 1-A  
 Total Pages: 2  
 Certificate Date: 23-AUG-81  
 Invoice No.: 19120026  
 P.O. Number:

## CERTIFICATE OF ANALYSIS A9120026

SAMPLE DESCRIPTION	PREP CODE	Ag ppm	Al %	As ppm	Ba ppm	Be ppm	Bi ppm	Ca %	Cd ppm	Co ppm	Cr ppm	Cu ppm	Fe %	Ga ppm	Hg ppm	K %	La ppm	Mg %	Mn ppm	Mo ppm
T32063	203 205	< 0.2	1.41	10	180	< 0.5	< 2	0.25	< 0.5	9	93	35	3.02	10	< 1	0.19	20	0.41	630	2
T32064	203 205	< 0.2	1.42	15	170	< 0.5	< 2	0.31	< 0.5	9	78	29	2.92	10	< 1	0.18	20	0.48	470	< 1
T32065	203 205	0.4	1.38	< 5	330	< 0.5	< 2	0.22	0.5	5	84	44	2.25	10	< 1	0.21	10	0.31	190	1
T32066	203 205	< 0.2	2.27	< 5	250	< 0.5	< 2	0.21	< 0.5	12	125	33	3.42	10	< 1	0.29	20	0.91	275	1
T32067	203 205	< 0.2	2.23	< 5	240	< 0.5	< 2	0.21	< 0.5	12	123	39	3.72	< 10	< 1	0.32	20	0.79	605	< 1
T32068	203 205	< 0.2	1.95	< 5	250	< 0.5	< 2	0.16	< 0.5	10	114	66	3.87	< 10	< 1	0.50	30	0.82	420	1
T32069	203 205	< 0.2	2.09	10	250	< 0.5	< 2	0.20	< 0.5	12	112	36	3.66	< 10	< 1	0.27	20	0.62	860	< 1
T32070	203 205	< 0.2	1.79	< 5	260	< 0.5	< 2	0.29	< 0.5	8	99	41	2.99	< 10	< 1	0.24	20	0.63	380	1
T32071	203 205	< 0.2	2.02	5	290	< 0.5	< 2	0.20	< 0.5	6	113	33	3.22	< 10	< 1	0.21	20	0.59	405	1
T32072	203 205	< 0.2	2.04	10	310	< 0.5	< 2	0.19	< 0.5	9	89	42	2.92	< 10	2	0.17	20	0.60	335	< 1
T32073	203 205	< 0.2	1.90	< 5	260	< 0.5	< 2	0.16	< 0.5	8	122	49	3.44	< 10	2	0.35	30	0.59	490	2
T32074	203 205	< 0.2	2.39	10	220	< 0.5	< 2	0.17	< 0.5	6	98	29	2.94	< 10	< 1	0.25	20	0.53	235	< 1
T32075	203 205	< 0.2	2.33	5	230	< 0.5	< 2	0.13	< 0.5	7	103	34	3.24	< 10	< 1	0.17	20	0.43	340	1
T32076	203 205	< 0.2	2.40	10	210	< 0.5	< 2	0.17	< 0.5	6	103	23	3.50	< 10	< 1	0.18	20	0.38	330	1
T32077	203 205	< 0.2	1.62	15	130	< 0.5	< 2	0.14	< 0.5	7	239	28	2.65	< 10	< 1	0.17	10	0.46	415	< 1
T32078	203 205	< 0.2	2.31	15	150	< 0.5	< 2	0.15	< 0.5	4	84	20	3.28	< 10	1	0.23	20	0.48	235	1
T32079	203 205	< 0.2	2.10	10	160	< 0.5	< 2	0.15	< 0.5	3	104	19	3.84	< 10	< 1	0.28	30	0.36	210	< 1
T32080	203 205	< 0.2	2.16	10	220	< 0.5	< 2	0.16	< 0.5	7	118	40	3.88	< 10	< 1	0.42	40	0.47	300	< 1
T32081	203 205	< 0.2	2.50	20	170	< 0.5	< 2	0.14	< 0.5	5	81	22	3.85	< 10	< 1	0.15	20	0.35	305	1
T32082	203 205	< 0.2	1.81	< 5	200	< 0.5	< 2	0.17	< 0.5	8	209	43	3.17	< 10	< 1	0.48	30	0.43	465	1
T32083	203 205	< 0.2	1.93	15	190	< 0.5	< 2	0.17	< 0.5	7	86	43	3.09	< 10	< 1	0.27	30	0.48	400	< 1
T32084	203 205	< 0.2	1.97	10	150	< 0.5	< 2	0.14	< 0.5	4	97	22	2.91	< 10	< 1	0.23	20	0.34	265	< 1
T32085	203 205	< 0.2	2.34	20	240	< 0.5	< 2	0.19	< 0.5	9	122	37	3.55	< 10	< 1	0.40	30	0.57	375	< 1
T32086	203 205	< 0.2	2.21	15	160	< 0.5	< 2	0.22	< 0.5	7	79	19	3.22	< 10	< 1	0.19	20	0.52	300	< 1
T32087	203 205	< 0.2	2.61	10	200	< 0.5	< 2	0.21	< 0.5	8	95	24	3.85	< 10	< 1	0.26	30	0.50	285	1
T32088	203 205	< 0.2	2.31	< 5	190	< 0.5	< 2	0.13	< 0.5	5	95	24	3.12	< 10	< 1	0.23	30	0.35	205	< 1
T32089	203 205	< 0.2	2.77	< 5	230	< 0.5	< 2	0.39	< 0.5	8	107	14	3.05	< 10	< 1	0.07	10	0.34	355	< 1
T32090	203 205	< 0.2	2.31	< 5	180	< 0.5	< 2	0.17	< 0.5	6	110	23	3.29	< 10	< 1	0.17	20	0.52	185	< 1
T32091	203 205	< 0.2	2.08	< 5	200	< 0.5	< 2	0.14	< 0.5	7	115	22	3.74	< 10	< 1	0.14	10	0.61	385	< 1
T32092	203 205	< 0.2	2.46	< 5	220	< 0.5	< 2	0.19	< 0.5	9	87	23	4.01	< 10	< 1	0.10	10	0.70	275	< 1
T32093	203 205	< 0.2	2.91	20	180	< 0.5	< 2	0.17	< 0.5	9	107	19	4.86	< 10	< 1	0.16	10	0.74	310	< 1
T32094	203 205	< 0.2	2.16	< 5	130	< 0.5	< 2	0.12	< 0.5	5	131	16	3.76	< 10	< 1	0.08	10	0.53	215	< 1
T32095	203 205	< 0.2	2.90	5	160	< 0.5	< 2	0.11	< 0.5	10	111	37	5.27	< 10	< 1	0.35	10	0.99	260	1
T32096	203 205	< 0.2	2.38	< 5	170	< 0.5	< 2	0.20	< 0.5	7	63	11	5.16	< 10	< 1	0.09	10	0.53	355	< 1
T32097	203 205	< 0.2	2.25	< 5	660	< 0.5	< 2	0.22	< 0.5	10	241	47	3.26	< 10	< 1	0.25	20	1.32	305	< 1
T32098	203 205	< 0.2	1.33	5	560	< 0.5	< 2	0.15	< 0.5	7	109	60	3.07	< 10	< 1	0.23	20	0.48	265	1
T32099	203 205	< 0.2	1.82	10	380	< 0.5	< 2	0.10	< 0.5	11	200	77	4.59	< 10	< 1	0.22	20	0.54	755	2
T32100	203 205	< 0.2	2.49	5	360	< 0.5	< 2	0.13	< 0.5	7	73	22	3.31	< 10	< 1	0.10	10	0.37	170	< 1
T32101	203 205	< 0.2	2.78	30	200	< 0.5	< 2	0.15	< 0.5	10	72	16	3.95	< 10	< 1	0.09	10	0.45	330	< 1
T32102	203 205	0.8	2.54	15	810	< 0.5	< 2	0.12	< 0.5	9	144	60	4.88	< 10	< 1	0.26	20	0.67	260	3

CERTIFICATION:

*B. Coughlin*



# Chemex Labs Ltd.

Analytical Chemists \* Geochemists \* Registered Assayers  
 212 Brooksbank Ave., North Vancouver  
 British Columbia, Canada V7J 2C1  
 PHONE: 604-984-0221

To: ARCHER CATHRO & ASSOC. (1981) LTD.

BOX 4127  
 WHITEHORSE, YT  
 Y1A 3S9

Project : YGC(CLIP)  
 Comments:

Page Number : 1-B  
 Total Pages : 2  
 Certificate Date: 23-AUG-81  
 Invoice No. : 19120026  
 P.O. Number :

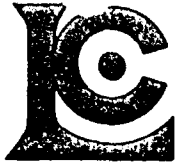
## CERTIFICATE OF ANALYSIS

### A9120026

SAMPLE DESCRIPTION	PREP CODE	Na %	Ni ppm	P ppm	Pb ppm	Sb ppm	Sc ppm	Sr ppm	Ti %	Tl ppm	U ppm	V ppm	W ppm	Zn ppm
T32063	203 205	0.02	37	910	26	< 5	4	18	0.07	< 10	< 10	53	10	106
T32064	203 205	0.02	25	920	28	< 5	4	20	0.08	< 10	< 10	58	10	118
T32065	203 205	0.01	26	1410	12	< 5	1	24	0.02	< 10	< 10	39	< 10	64
T32066	203 205	0.01	48	620	10	< 5	4	17	0.06	< 10	< 10	61	10	102
T32067	203 205	0.01	33	510	< 2	< 5	4	20	0.06	< 10	< 10	58	10	90
T32068	203 205	0.01	38	670	10	< 5	3	27	0.08	< 10	< 10	64	10	128
T32069	203 205	0.02	24	690	4	< 5	3	22	0.05	< 10	< 10	61	< 10	84
T32070	203 205	0.01	27	560	10	< 5	4	19	0.07	< 10	< 10	49	< 10	76
T32071	203 205	0.02	23	560	18	< 5	3	22	0.05	< 10	< 10	58	< 10	68
T32072	203 205	0.02	25	520	8	< 5	5	20	0.08	< 10	< 10	56	10	76
T32073	203 205	0.02	24	550	6	< 5	4	24	0.06	< 10	< 10	54	10	74
T32074	203 205	0.02	20	470	16	< 5	3	20	0.08	< 10	< 10	61	10	56
T32075	203 205	0.02	21	470	16	< 5	4	20	0.04	< 10	< 10	61	< 10	50
T32076	203 205	0.02	18	400	14	< 5	4	20	0.08	< 10	< 10	75	10	52
T32077	203 205	0.02	31	390	< 2	< 5	3	15	0.08	< 10	< 10	52	10	42
T32078	203 205	0.02	16	470	6	< 5	3	16	0.07	< 10	< 10	64	< 10	66
T32079	203 205	0.02	12	350	130	< 5	3	22	0.09	< 10	< 10	85	< 10	182
T32080	203 205	0.02	25	600	44	< 5	3	21	0.05	< 10	< 10	69	10	430
T32081	203 205	0.02	15	510	8	< 5	4	18	0.12	< 10	< 10	97	10	58
T32082	203 205	0.02	33	910	16	< 5	3	15	0.05	< 10	< 10	63	< 10	150
T32083	203 205	0.03	28	570	20	< 5	4	18	0.07	< 10	< 10	53	< 10	336
T32084	203 205	0.02	12	560	300	< 5	3	23	0.05	< 10	< 10	52	< 10	400
T32085	203 205	0.02	27	630	16	< 5	4	22	0.09	< 10	< 10	59	10	146
T32086	203 205	0.02	18	590	8	< 5	3	20	0.09	< 10	< 10	61	< 10	64
T32087	203 205	0.02	23	580	24	< 5	4	24	0.10	< 10	< 10	82	< 10	78
T32088	203 205	0.01	17	380	34	< 5	3	19	0.06	< 10	< 10	65	< 10	98
T32089	203 205	0.02	20	430	20	< 5	4	23	0.10	< 10	< 10	72	10	40
T32090	203 205	0.02	20	390	10	< 5	3	17	0.08	< 10	< 10	67	< 10	54
T32091	203 205	0.02	21	630	10	< 5	4	13	0.08	< 10	< 10	112	< 10	56
T32092	203 205	0.02	22	350	18	< 5	5	16	0.10	< 10	< 10	81	< 10	60
T32093	203 205	0.02	28	590	14	< 5	5	16	0.09	< 10	< 10	80	10	76
T32094	203 205	0.02	20	240	10	< 5	4	14	0.12	< 10	< 10	94	< 10	44
T32095	203 205	0.01	34	390	16	< 5	5	10	0.11	< 10	< 10	95	< 10	102
T32096	203 205	0.02	12	330	8	< 5	4	18	0.14	< 10	< 10	108	< 10	44
T32097	203 205	0.02	102	450	2	< 5	7	26	0.11	< 10	< 10	91	10	92
T32098	203 205	0.01	41	590	10	< 5	4	27	0.05	< 10	< 10	56	< 10	80
T32099	203 205	0.01	66	670	12	< 5	6	17	0.03	< 10	< 10	76	10	130
T32100	203 205	0.02	19	300	16	< 5	4	19	0.08	< 10	< 10	81	< 10	48
T32101	203 205	0.02	18	410	14	< 5	4	15	0.08	< 10	< 10	72	< 10	44
T32102	203 205	0.03	46	720	12	< 5	6	42	0.06	< 10	< 10	93	< 10	154

CERTIFICATION: \_\_\_\_\_

*B. Coughlin*



# Chemex Labs Ltd.

Analytical Chemists \* Geochemists \* Registered Assayers  
212 Brooksbank Ave., North Vancouver  
British Columbia, Canada V7J 2C1  
PHONE: 604-984-0221

To: ARCHER CATHRO & ASSOC. (1981) LTD.

BOX 4127  
WHITEHORSE, YT  
Y1A 3S9

Project : YGC(CLIP)  
Comments:

Page Number : 2-A  
Total Pages : 2  
Certificate Date: 23-AUG-81  
Invoice No. : 19120026  
P.O. Number :

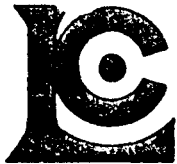
## CERTIFICATE OF ANALYSIS

### A9120026

SAMPLE DESCRIPTION	PREP CODE		Ag	Al	As	Ba	Be	Bi	Ca	Cd	Co	Cr	Cu	Fe	Ga	Hg	K	La	Mg	Mn	Mo
			ppm	%	ppm	ppm	ppm	ppm	%	ppm	ppm	ppm	ppm	%	ppm	ppm	%	ppm	%	ppm	ppm
T32103	203	205	< 0.2	1.89	5	390	< 0.5	< 2	0.16	< 0.5	7	103	28	3.02	< 10	< 1	0.13	10	0.44	290	3
T32104	203	205	< 0.2	1.77	< 5	260	< 0.5	< 2	0.19	< 0.5	7	72	25	2.82	< 10	< 1	0.12	20	0.47	280	< 1
T32105	203	205	< 0.2	2.93	20	220	< 0.5	< 2	0.11	< 0.5	12	98	31	4.83	< 10	< 1	0.15	10	0.38	480	< 1
T32106	203	205	< 0.2	1.80	20	140	< 0.5	< 2	0.09	< 0.5	5	107	20	3.29	< 10	< 1	0.10	10	0.26	220	< 1
T32107	203	205	< 0.2	3.01	10	260	< 0.5	< 2	0.16	< 0.5	11	91	24	3.70	< 10	< 1	0.13	10	0.48	340	< 1
T32108	203	205	< 0.2	1.27	< 5	220	< 0.5	< 2	0.15	< 0.5	3	81	21	2.51	< 10	< 1	0.17	30	0.29	220	< 1
T32109	203	205	< 0.2	2.13	< 5	270	< 0.5	< 2	0.16	< 0.5	5	66	24	2.88	< 10	< 1	0.15	20	0.43	225	< 1
T32110	203	205	< 0.2	2.13	5	210	< 0.5	< 2	0.18	< 0.5	5	63	19	2.86	< 10	< 1	0.13	20	0.46	215	< 1
T32111	203	205	< 0.2	1.96	< 5	200	< 0.5	< 2	0.14	< 0.5	6	64	25	2.97	< 10	< 1	0.12	20	0.49	295	< 1
T32112	203	205	< 0.2	1.74	< 5	110	< 0.5	< 2	0.12	< 0.5	6	74	21	3.32	< 10	< 1	0.15	20	0.45	285	< 1
T32113	203	205	< 0.2	2.12	25	210	< 0.5	< 2	0.17	< 0.5	9	76	28	3.47	< 10	< 1	0.12	20	0.46	360	< 1
T32114	203	205	< 0.2	2.08	< 5	160	< 0.5	< 2	0.13	< 0.5	8	77	20	2.93	< 10	< 1	0.14	20	0.38	260	< 1
T32115	203	205	< 0.2	1.98	< 5	180	< 0.5	< 2	0.14	< 0.5	10	91	38	3.55	< 10	< 1	0.23	30	0.48	240	< 1
T32116	203	205	< 0.2	1.85	< 5	150	< 0.5	< 2	0.15	< 0.5	7	96	35	3.38	< 10	< 1	0.27	30	0.42	175	< 1
T32117	203	205	< 0.2	1.40	< 5	250	< 0.5	< 2	0.16	< 0.5	8	96	36	3.86	< 10	< 1	0.31	40	0.28	245	< 1

CERTIFICATION:

*B. Coughlin*



# Chemex Labs Ltd.

Analytical Chemists \* Geochemists \* Registered Assayers  
212 Brooksbank Ave., North Vancouver  
British Columbia, Canada V7J 2C1  
PHONE: 604-984-0221

To: ARCHER CATHRO & ASSOC. (1981) LTD.

BOX 4127  
WHITEHORSE, YT  
Y1A 3S9

Project: YGC(CLIP)  
Comments:

Page number :2-B  
Total pages :2  
Certificate Date: 23-AUG-81  
Invoice No. :19120026  
P.O. Number :

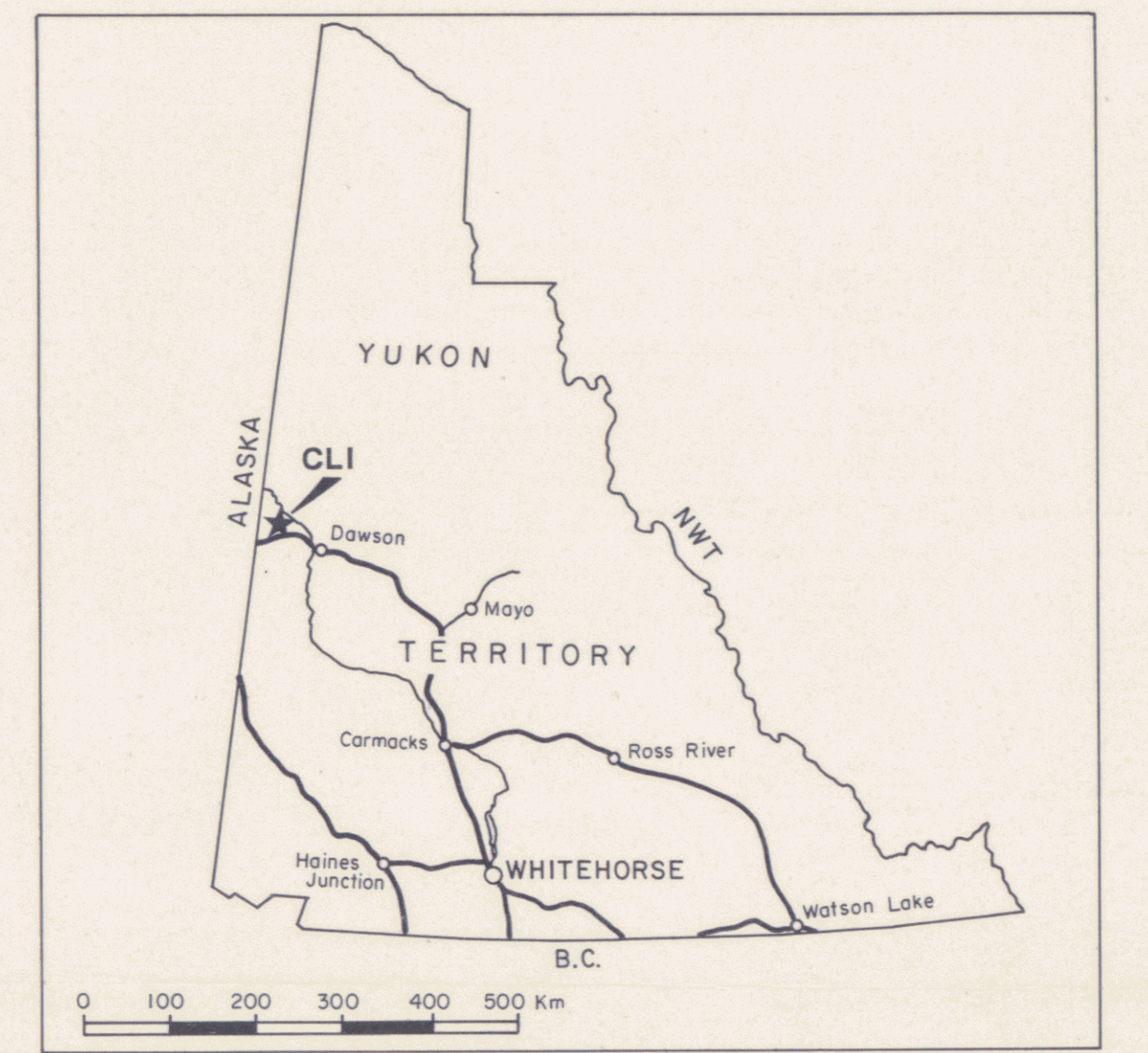
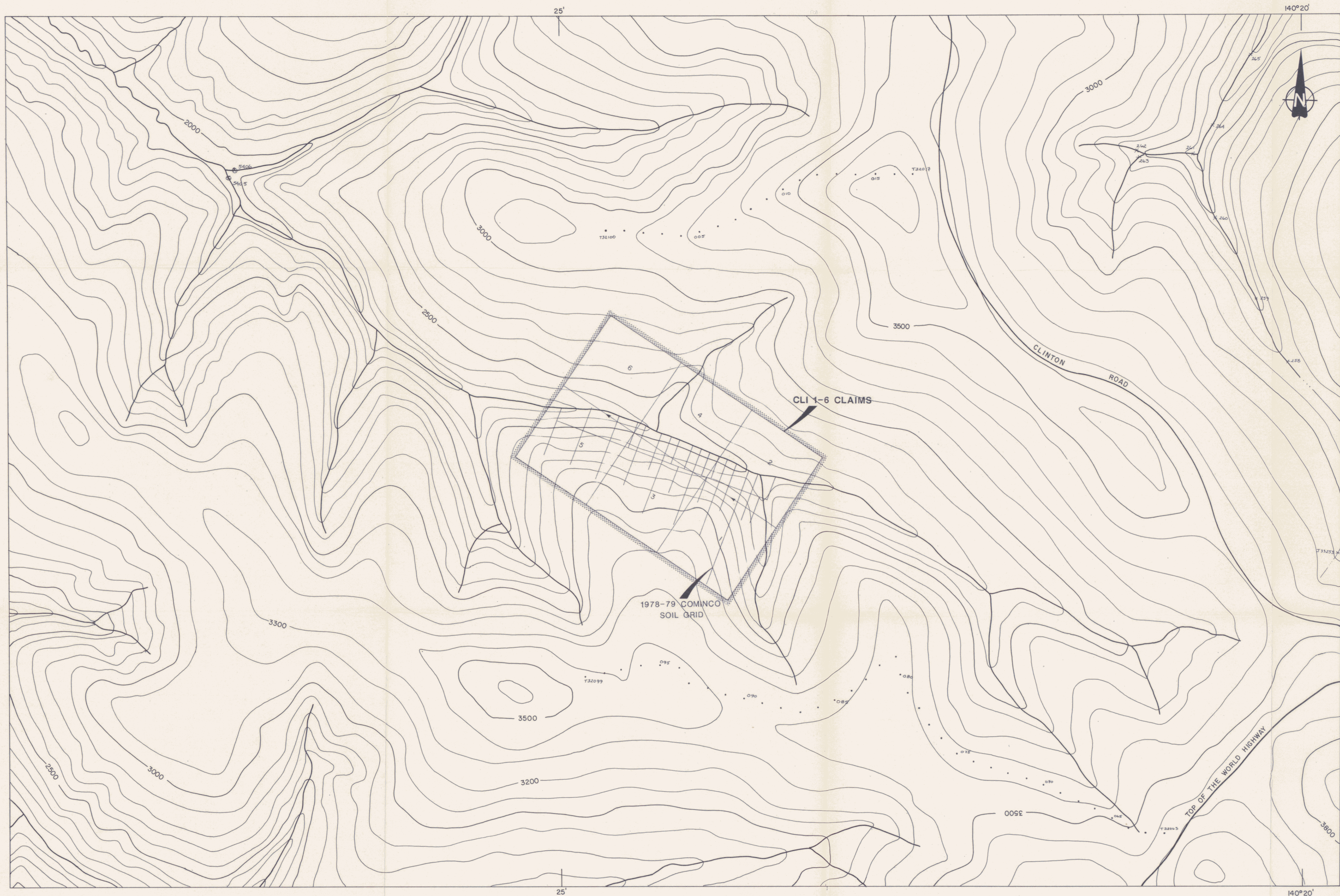
## CERTIFICATE OF ANALYSIS

A9120026

SAMPLE DESCRIPTION	PREP CODE		Na	Ni	P	Pb	Sb	Sc	Sr	Ti	Tl	U	V	W	Zn
			%	ppm	ppm	ppm	ppm	ppm	ppm	%	ppm	ppm	ppm	ppm	ppm
T32103	203	205	0.02	26	310	12	< 5	4	29	0.09	< 10	< 10	74	< 10	70
T32104	203	205	0.02	25	390	12	< 5	4	17	0.07	< 10	< 10	54	< 10	124
T32105	203	205	0.01	31	420	16	< 5	4	16	0.07	< 10	< 10	79	< 10	98
T32106	203	205	0.03	18	460	10	< 5	2	12	0.06	< 10	< 10	69	< 10	60
T32107	203	205	0.02	28	370	8	< 5	4	19	0.10	< 10	< 10	78	< 10	66
T32108	203	205	0.02	17	250	14	< 5	4	19	0.06	< 10	< 10	41	< 10	60
T32109	203	205	0.02	20	310	< 2	< 5	6	20	0.07	< 10	< 10	62	< 10	56
T32110	203	205	0.02	18	390	12	< 5	4	18	0.07	< 10	< 10	62	< 10	52
T32111	203	205	0.02	18	450	16	< 5	4	14	0.06	< 10	< 10	56	< 10	62
T32112	203	205	0.02	21	400	6	< 5	3	11	0.05	< 10	< 10	52	< 10	62
T32113	203	205	0.02	26	590	10	< 5	4	16	0.07	< 10	< 10	64	< 10	68
T32114	203	205	0.02	19	380	12	< 5	3	13	0.07	< 10	< 10	61	< 10	52
T32115	203	205	0.02	31	560	12	< 5	4	15	0.06	< 10	< 10	54	< 10	90
T32116	203	205	0.02	28	560	10	< 5	3	15	0.05	< 10	< 10	45	< 10	70
T32117	203	205	0.02	32	660	8	< 5	5	20	0.03	< 10	< 10	42	< 10	70

CERTIFICATION:

*B. Coughlin*



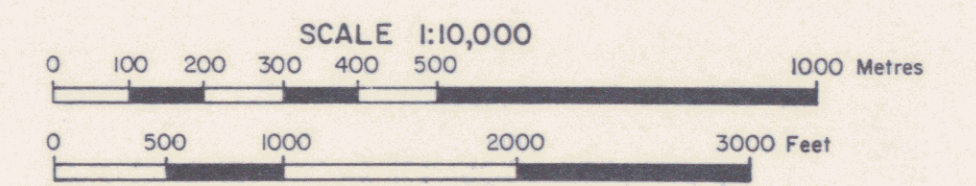
- SYMBOLS**
- 1991 soil sample
  - ⊗ GSC silt sample
  - × 1980 Archer Cathro silt sample

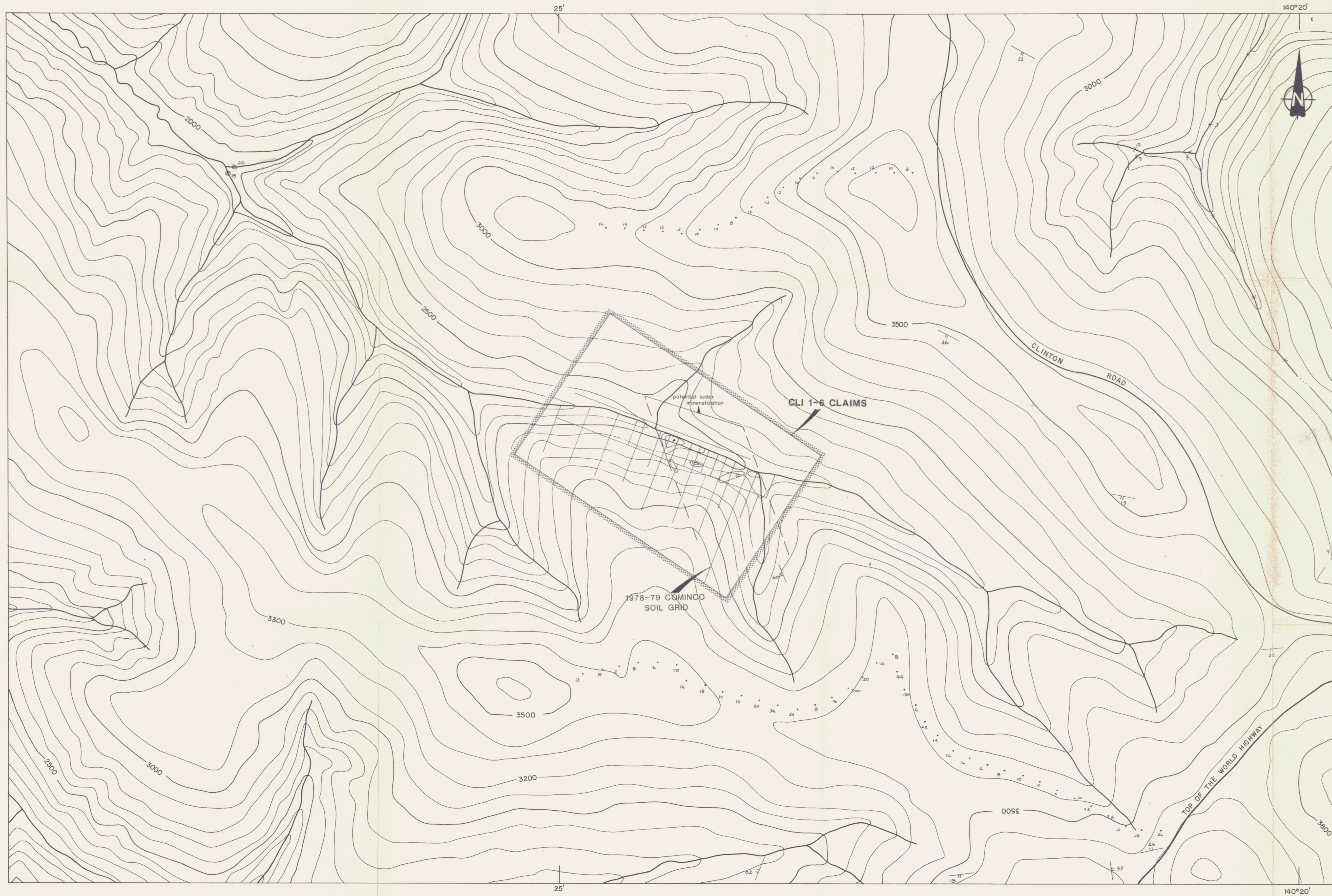
Figure 3  
 ARCHER, CATHRO & ASSOCIATES (1981) LIMITED

**SAMPLE LOCATIONS**

CLI 1-6 CLAIMS  
 YGC RESOURCES LTD.

DWG 315  
 092999





**SYMBOLS**

- 44 1991 soil sample; values in ppm Pb
- ⊖ contoured 1978-79 soil geochemical data (contour intervals at 100 and 500 ppm Pb)
- ▲ Pb-Zn bearing barite float
- △ Pb-Zn bearing quartz-muscovite phyllite float
- /— compositional layering
- ⊙ 20 GSC silt sample; values in ppm Pb
- × 12 1980 Archer Cathro silt sample; values in ppm Pb

Figure 4

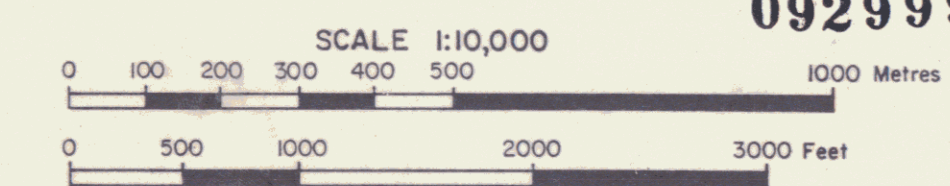
ARCHER, CATHRO & ASSOCIATES (1981) LIMITED

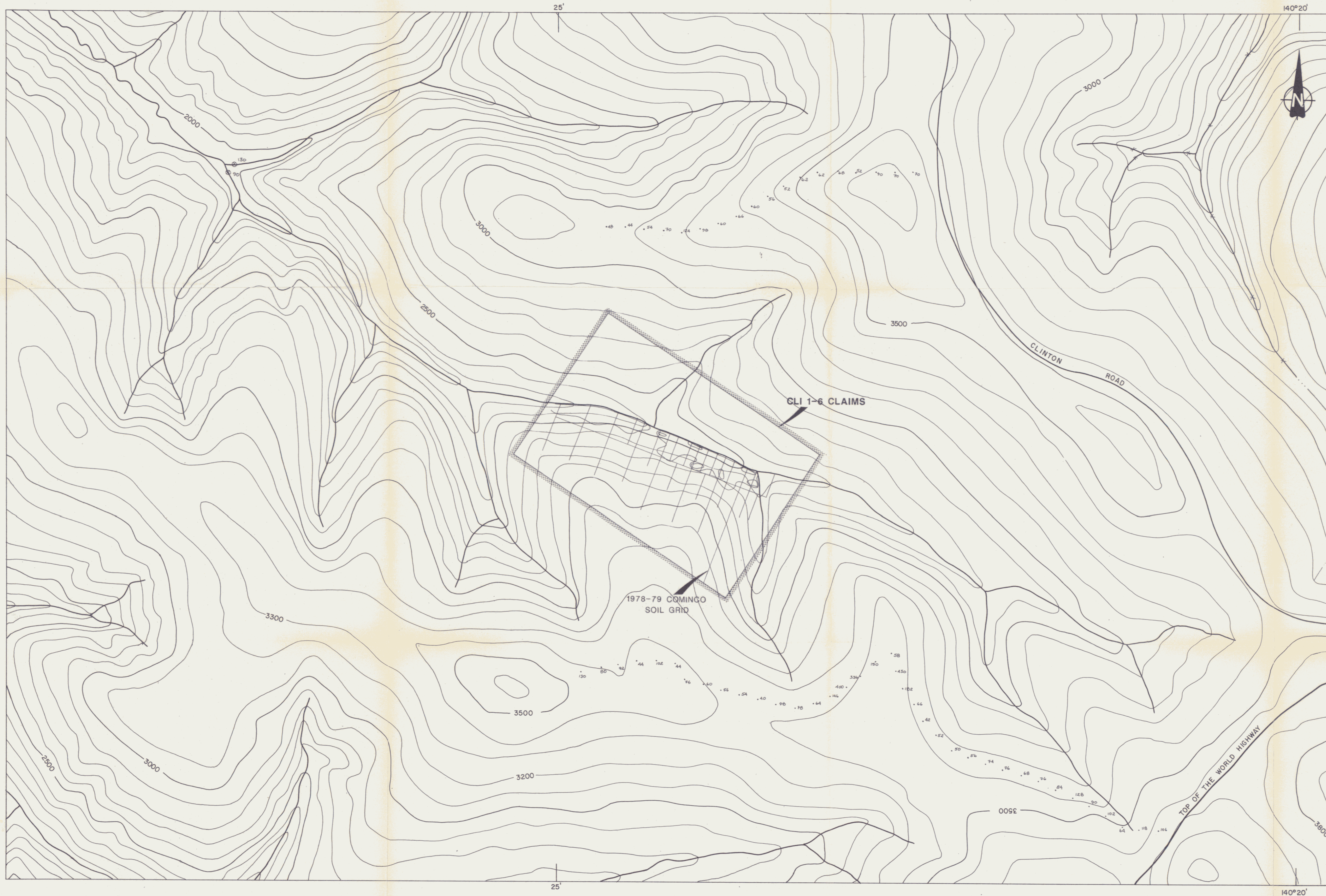
**LEAD GEOCHEMISTRY**

CLI 1-6 CLAIMS  
YGC RESOURCES LTD.

DWG 316

092999





**SYMBOLS**

- 400 1991 soil sample; values in ppm Zn
- > contoured 1978-79 soil geochemical data (contour intervals at 100 and 250 ppm Zn)
- ⊗ /30 GSC soil sample; values in ppm Zn

Figure 5

ARCHER, CATHRO & ASSOCIATES (1981) LIMITED

**ZINC GEOCHEMISTRY**

CLI 1-6 CLAIMS  
YGC RESOURCES LTD.

DWG 314

092999

