

MAP NO.: 105 0/11.12
ASSESSMENT REPORT X
PROSPECTUS
CONFIDENTIAL X
OPEN FILE

DOCUMENT NO: 092956
MINING DISTRICT: Mayo
TYPE OF WORK: Geology

REPORT FILED UNDER: Shane Ebert

DATE PERFORMED: July 8 - December 10

DATE FILED: June 26, 1991

LOCATION: LAT.: 63°33'N

ARFA: Emerald Lake

LONG.: 131°25'W

VALUE \$: 6183.50

CLAIM NAME & NO.: CHRISTINA 1-7 YB 03811- YB 03817
SCRONK 1-9 YB 03818- YB 03826

WORK DONE BY: Shane Ebert

WORK DONE FOR: Shane Ebert/Grant Couture

DATE TO GOOD STANDING:

REMARKS: #1050 - 09 EMERALD

Exploration in 1990 consisted of geological mapping, rock and stream geochemistry, thin section and x-ray diffraction analyses. Anomalous gold, silver and copper values were found throughout the property.

Summarized July 16/91
indexed July 16/91

The properties, named the Rog, Fan and Ran consist of 26 claim units overlying cretaceous-aged Tombstone Suite intrusive stocks hosted by Selwyn Basin sediments. Recently the Tombstone Suite has been the target of large exploration programs for intrusive-hosted mineralization based on the Fort Knox model.

On the Rog claims, a 900 metre long and up to 400 metre wide area within a Tombstone Suite intrusion contains disseminated and vein type chalcopyrite, arsenopyrite mineralization. Thirty-seven grab samples taken from this zone averaged 822 ppb [0.026 oz/t] gold and 6.2 ppm [0.2 oz/t] silver. A few samples also contained highly anomalous bismuth values. Elsewhere on the Rog claims, 500 metres south of the intrusive contact, is a zone of brecciated siltstone with a matrix of tourmaline and arsenopyrite cut by quartz-sulphide veins. Assays of the breccia averaged 2 g/t [0.064 oz/t] gold, with up to 1.0% Cu and 31 g/t [1.0 oz/t] silver.

The Fan claims, located 4 km northeast of the Rog claims, cover polymetallic quartz veins which follow joints and fractures within a Tombstone Suite intrusion. These veins are up to 0.5m wide and comprise from 7% to 15% of the rock. Assays of vein material returned up to 21 g/t [0.67 oz/t] gold and 416 g/t [13.4 oz/t] silver, along with occasional highly anomalous values in Pb, As, Sb, Bi, Mo and W. A set of subparallel veins extends outward from the intrusion into slate and argillite; these veins are

narrower [up to 15cm] but higher grade [up to 36 g/t gold] than the veins within the intrusion.

The Ran claims, located 2.5km north of the Rog claims, cover a stream silt sample highly anomalous in gold and silver
1.8 km long lineament in sediments
Tombstone Suite intrusion and rusty/hornfelsed contact zone

Further work consisting of geological mapping, trenching and detailed sampling will be undertaken during the 1996 field season.



092956

Assessment Report
Geological Descriptions of the Christina
and Scronk Claims.

Mayo Mining District

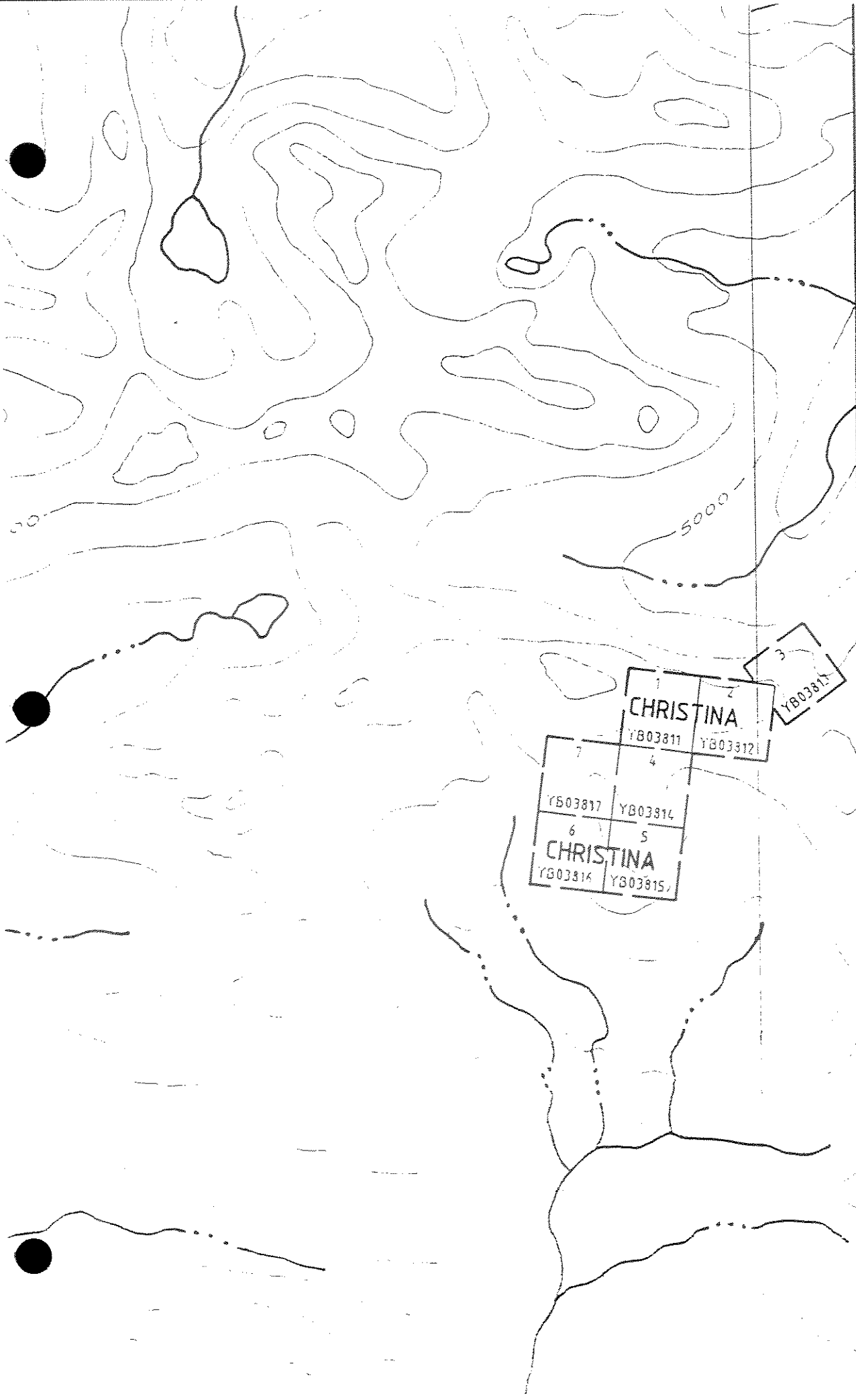
Christina Claims Latitude $63^{\circ} 33' N$ Longitude $131^{\circ} 31' W$ NTS 105-O-12
Scronk Claims Latitude $63^{\circ} 36' N$ Longitude $131^{\circ} 25' W$ NTS 105-O-11

July 8 to December 10

By S. Ebert
January 1991

This report has been examined by
The Geological Evaluation Unit
under Section 53 (1) of the Quartz
Mining Act and is also a
Representation of the amount
of \$ 6183.50

for Regional Commission and
Geological Commission
of Yukon



NTS 105-0-11

4000

6000



	6		1
	SCRONK		
YB03826	YB03823	7	YB03818
		2	
9	YB03824	YB03819	5
	8		YB03822
	YB03825	3	SCRONK
		4	YB03821

Table of Contents

	<u>Page</u>
1. Claim names and tag numbers	1
2. Introduction	2
3. Location and Access	2
4. Geology of the Christina Claims	3
5. Geology of the Scronk Claims	5
6. Proposed model for the mineralization within the Christina Claims	7
7. Proposed model for the mineralization within the Scronk Claims	8
8. Potential for further exploration	8

List of Appendices

Appendix A	Analytical Methods
Appendix B	Statement of Costs
Appendix C	Statement of Qualifications
Appendix D	Assay Results and Sample Locations

List of Maps

	<u>Page</u>	
Map 1	Location of study area	2
Map 2	Geology of the Christina Claims	3
Map 3	Geology of the Scronk Claims	5
Map 4	Alteration geochem and magnetic anomalies	9

Claim names and numbers:

The following list of claims are held by Shane Ebert and Grant Couture. We are requesting that the value of the work done for assessment purposes be divided equally between the two claim groups, and that this work is sufficient to hold the claims for three years.

Claim name Grant number

Christina 1 YB03811
Christina 2 YB03812
Christina 3 YB03813
Christina 4 YB03814
Christina 5 YB03815
Christina 6 YB03816
Christina 7 YB03817

Scronk 1 YB03818
Scronk 2 YB03819
Scronk 3 YB03820
Scronk 4 YB03821
Scronk 5 YB03822
Scronk 6 YB03823
Scronk 7 YB03824
Scronk 8 YB03825
Scronk 9 YB03826

Introduction:

During July and August 1990, a grass roots exploration program was carried out in the area west of Emerald lake, by Shane Ebert and Grant Couture. The program resulted in two areas of anomalous mineralization being staked, the Christina claims and the Scronk claims. A detailed study of the claims was performed from September to December 1990, at the University of Alberta by Shane Ebert. A summary of this study is presented here.

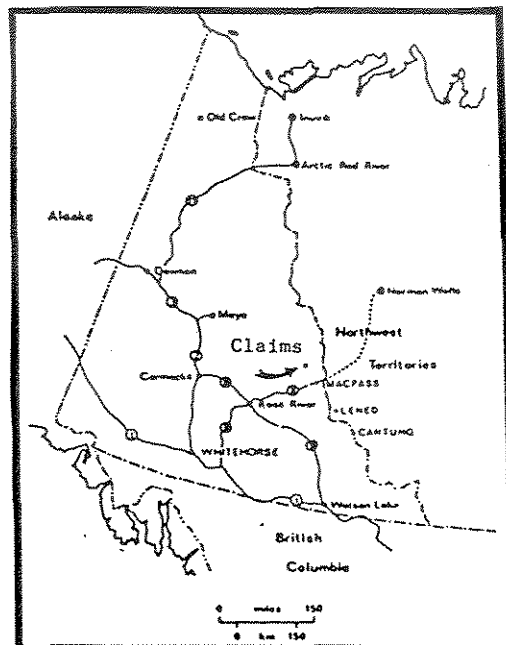
The purpose of this study is to describe the mineralization and host rocks present on the Christina and Scronk claims. Using this information a model of formation for each claim will be proposed and their potential for further exploration will be examined.

Rock samples and field data were collected in the area in which the Christina and Scronk claims were staked. Information from; field observations, rock samples, assay results, thin and polished sections, X-ray diffraction, grain mounts, and staining techniques have been used in this study.

Location of Study Area:

The location of the study area is 80 km North West of MacMillan Pass, Yukon Territory. Access to and from the area was by helicopter chartered from MacMillan Pass or from Ross River approximately 200 km to the South West. Two areas of anomalous mineralization were staked in the area, the Christina claims, situated on the edge of a large granite intrusion, and the Scronk claims approximately 4 km to the North East.

Map 1. Location of study area.

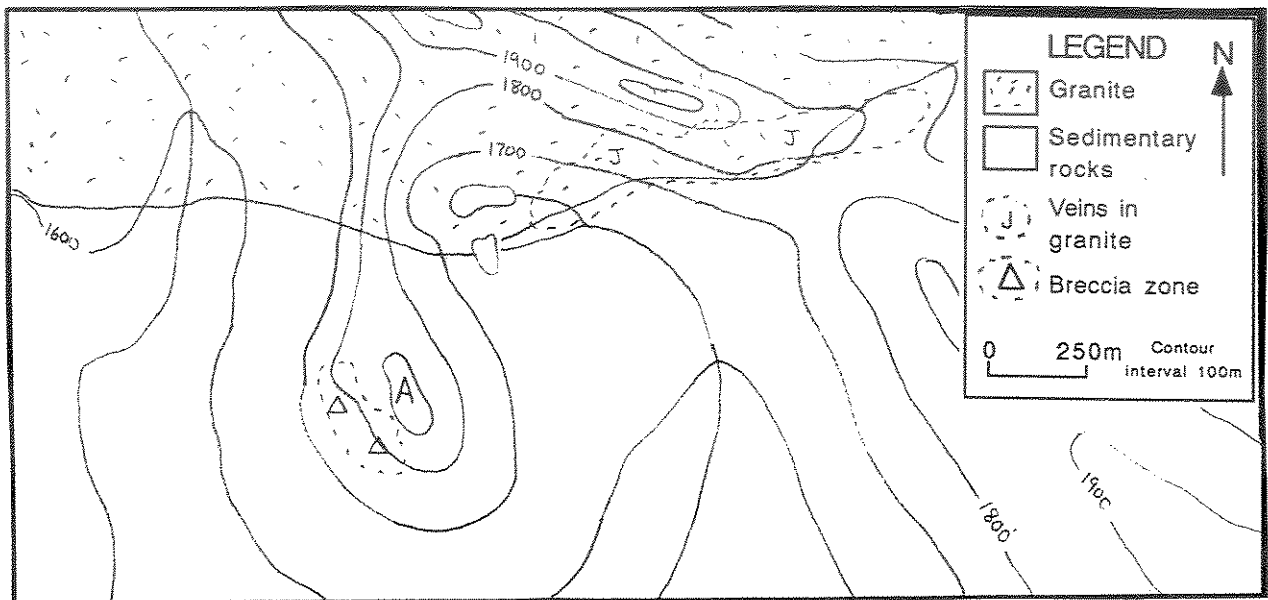


Geology Of The Christina Claims:

The Christina claim group consists of seven claims which were staked to cover an area of visible mineralization consisting of disseminated copper minerals and arsenopyrite-tourmaline-quartz veins along with a mineralized breccia.

In the area a Cretaceous biotite-hornblende granite intrudes a sequence of Devonian silicified shales, slates, and sandstones, with intercalated conglomerates and chert . A thin mafic volcanic unit was also seen within the Devonian sequence. The granite is a medium grained leucocratic rock which appears relatively unaltered in hand sample. Thin section work on the granite shows it has undergone considerable hydrous alteration. The initial constituents were probably; quartz 48%, plagioclase 20%, potassium feldspar 20%, biotite 7%, hornblende 5%, plus minor zircon and opaque phases. Most of the plagioclase has been altered to sericite and possibly some clay minerals (minor anhydrite may be present but could not be positively identified due to the fine grain size and altered state of the minerals). The potassic feldspar only shows partial alteration to sericite. Eighty percent of the primary biotite has been altered to chlorite.

Map 2. Geology of the Christina Claims.



Within the granite two types of xenoliths were observed, the first type is a fine to medium grained granodiorite to granite which is slightly darker than the granite host, and the second type is a very mafic gneissic textured rock. The granite to granodiorite xenoliths are abundant throughout the intrusion while the mafic xenoliths are less common. Some of the mafic xenoliths contain 50 to 60% biotite with 3 to 4 % visible pyrite. An assay result from a mafic xenolith showed it contained 1% Cu, 12 g/t Ag, and 1 g/t Au.

Staining of the feldspars in the granite resulted in K-feldspar turning bright yellow, but no indication of plagioclase (see appendix for staining procedure). Thin sections show remnant polysynthetic twinning in some of the feldspars but it is assumed that any plagioclase not altered to sericite has been albitized as no plagioclase was detected by staining. Pure sodic feldspar (albite) would not be stained by the staining technique used.

Within the granite intrusion mineralized tourmaline-quartz-arsenopyrite (+/- orthoclase, biotite, pyrite, and chalcopyrite) veins are found along jointing surfaces. These veins are often zoned with quartz on the outermost walls, and tourmaline and arsenopyrite in the center. The veins range in width from 2 mm to 37.5 cm, averaging about 3 cm. In areas the vein density gets up to 10% or more. The area of mineralized veins extends for at least 900m and gets up to 400m wide. Chalcopyrite, pyrite, malachite, and azurite were seen in varying amounts within the veins and as minor disseminations in the granite. The tourmaline within the veins typically occurs as either large euhedral striated or radiating crystals, or as a fine powdery mass. The tourmaline was identified as the black variety schorl, by XRD and grainmount. The arsenopyrite has proven to be auroferous giving gold values up to 14 g/t. The arsenopyrite occurs in veins, in small fractures, and as minor disseminations around veins.

Most of the veins within the granite are anomalous in Cu with values ranging from 231 ppm Cu to 5.31% Cu. Gold values from vein samples ranged from 0.02 g/t to 14 g/t, and silver values were between 1.3 g/t and 79.5 g/t. Almost all the veins have high arsenic values with a few having high Bi, Ba, and Mo. A sample of the unveined granite assayed at 202 ppm Cu, 0.52 g/t Au, and 3.7 g/t Ag.

There is an abundance of potassium feldspar and large biotite sheets within many of the veins. A layer of K-feldspar up to 2 cm thick border some veins, and some of the biotite sheets obtain widths of 1.5 cm across. An area of orthoclase-calcite (+/- quartz, tourmaline) veining was discovered along the outer margins of the North West side of the intrusion.

The Devonian sedimentary sequence which borders the intrusion is dominated by silicified slates and argillites. These meta pelitic rocks are typically black in color and have 1% pyrite which oxidizes to give them a

gossanous look. In a few areas these rocks contain 5 to 7% pyrite. A black to dark brown chert layer occurs within the sequence, this layer is resistant relative to the others and shows only a trace sulfides. No conglomerate was seen in outcrop but a few pieces from talus were collected and assayed with minimal results. Only one two meter thick bed of volcanic rock was seen in the Devonian sequence, the volcanic is dark brown and highly weathered, assay results showed no significant mineralization.

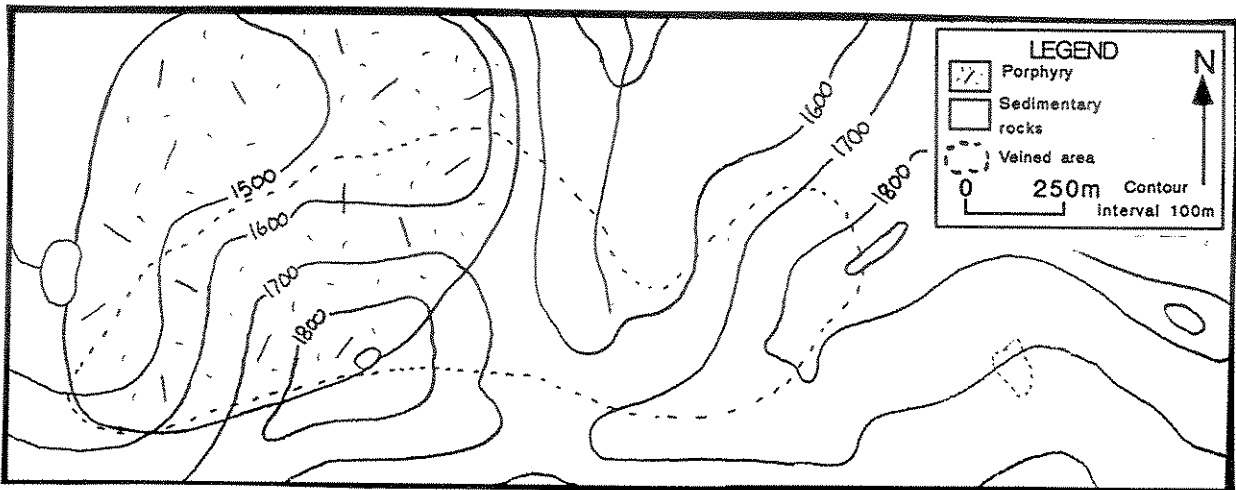
A light colored layer of quartz siltstone to fine sandstone , with a quartz-sericite matrix (determined by XRD), is exposed along the SouthWest face of the mountain labelled "A" on map #2. Much of this unit has been brecciated and fine black tourmaline and arsenopyrite have filled the spaces between the clasts. Throughout this area mineralized quartz veins up to 30 cm thick cut the breccia, these veins contain up to 25% arsenopyrite with varying amounts of pyrite pyrrhotite and chalcopyrite. Within the mineralized breccia zone much of the exposed arsenopyrite has altered to secondary light green scorodite. Assay results from this brecciated unit average 2 g/t Au, with up to 1% Cu and 31 g/t Ag.

An aplite dyke within the area cuts both the Devonian sequence and the Cretaceous intrusion. The dyke is light colored with a fine grained sugary "aplite" texture. In some areas the dyke contains up to 15% pyrite as large euhedral cubes, in other areas there are only traces of sulfides.

Geology Of The Scronk Claims:

The Scronk claims are about 4 km North East of the Christina Claims. The Scronk claims group consists of 9 claims which were staked to cover an area of mineralized veining. In the area a small outcrop of a mesocratic porphyritic syenite is surrounded by a north dipping sedimentary succession of slates, argillites, and cherts.

Map 3. Geology of the Scronk Claims.



Thin section work on the syenite porphyry indicates minor hydrous alteration, as some plagioclase shows partial alteration to sericite. The rock is composed of 20 to 50% orthoclase phenocrysts (verified by staining), ranging in size from 5 mm to 2 cm. The phenocryst size decreases from the center of the exposed intrusion toward the edges. Hornblende phenocrysts which are about half the size of the orthoclase phenocrysts make up about 10% of the rock. The matrix material varies from an aphanitic fine grained mixture, to a medium grained aggregate of quartz, hornblende, orthoclase, plagioclase, biotite, chlorite (biotite has partially altered to chlorite), and opaques. The relative proportions of the matrix minerals are; 34% quartz, 21% hornblende, 17% orthoclase, 15% plagioclase, 10% biotite, 3% chlorite, and 1% opaques.

Within the porphyry intrusion veining is abundant along jointing surfaces and filling fractures. Within these veins large euhedral quartz crystals appear to have grown from the sides of the veins into the center giving evidence for open space fillings. Overall the veins are dominantly quartz with 5 to 10% arsenopyrite although in areas many of the veins get up to 100% arsenopyrite or 100% galena or a mixture of arsenopyrite galena and quartz (with minor pyrite and pyrrhotite). These veins range in size from a few millimeters to half a meter, and have an estimated density of 7 to 15%. The arsenopyrite-quartz veins within the intrusion have high gold values ranging from 0.5 g/t to 21 g/t. The galena is very argentiferous with one sample running at 416 g/t Ag. Molybdenite in quartz veins was seen along the edges of the intrusion.

A system of subparallel veins extends Eastward from the intrusion into a sequence of slates and argillites. Polished section studies on some of the veins show that arsenopyrite is dominant, with lesser amounts of pyrite, pyrrhotite, galena, sphalerite, tetrahedrite, stibnite, chalcopyrite, and possibly some fine disseminations of gold in the wall rocks. The veins composed of almost 100% arsenopyrite have gold values between 1.5 and 5 g/t, the polymetallic veins gave higher gold values, up to 36 g/t. Much of the exposed arsenopyrite has altered to green scorodite which was often used as a guide to locating the veins in outcrop. The vein widths vary from a few millimeters up to 15 cm with an average width of around 2 cm. Due to the steep terrain and the weathered nature of the outcrops, vein density is difficult to estimate but may be as much as 10% or more. Within the shales and argillites disseminations and pods (1.5 by 0.5 cm) of pyrite, pyrrhotite, and arsenopyrite occur between and around the subparallel veins. These pods of sulfides may indicate abundant fluid activity during the mineralization event. A thick sequence of black chert exists to the North, no mineralization was found within this unit.

Proposed Model for the Mineralization Within the Christina Claims

Based on the presence of anomalous copper, gold, boron, and molybdenum values, the distinct hydrothermal alteration zones, and the presence of breccias and dykes in and around a large granitic intrusion, this study has concluded that the mineralization on the Christina Claims best fits into a porphyry Cu or porphyry Cu-Au model.

The anomalous Cu, Au, Ag, B, in the area around the claims combined with the more distal anomalies of Au, Pb, Zn, As, Sb, Mo, and Ag (the Scronk Claims), are typical of porphyry Cu deposits and porphyry Cu-Au deposits (Cox, 1987), although the Mo anomaly in the peripheral zone fits well with the porphyry Cu-Au model, the abundance of tourmaline throughout the intrusion is more characteristic of a porphyry Cu. Tourmalinization as seen throughout the Christina Claims is known to be associated with porphyries such as the Bethlehem and South Seas deposits in the Highland Valley porphyry Cu district of British Columbia, where tourmaline occurs as a matrix in breccia zones. Another strong line of evidence for a porphyry type system is the hydrothermal alteration zones which are characteristic of porphyry deposits. There are three recognizable alteration zones within the granite intrusion. A definite potassic zone, which is dominant in the southern part of the intrusion and throughout the Christina Claims. This potassic zone is characterized by abundant orthoclase and biotite in a stockwork type vein system which runs through the area. The seritization of plagioclase within the granite, and the original biotite to chlorite (as seen in thin section), may represent a phyllic overprint within the potassic zone. Finally, a zone of calcite-orthoclase-tourmaline veins observed in the North Western part of the intrusion may indicate a transition to propylitic alteration. The alteration zones appear to be centered around a magnetic anomaly located at the Southern boarder of the intrusion. The presence of this magnetic high, located near the center of the alteration zone pattern, further supports the model of a porphyry system, especially a porphyry Cu-Au system (See map 4 which shows the alteration halos with respect to the magnetic anomaly). The presence of dykes and breccia units gives evidence for a high level depositional environment, as expected for a porphyry deposit (Cox, 1986).

The abundant of granitic to granodioritic xenoliths plus the sparse mafic xenoliths indicate the parent material is likely igneous or meta igneous. This would suggest the granite is an I-type granite as these commonly have inclusions of "igneous looking" material (Barker, 1983). Many authors agree that porphyry Cu deposits are normally hosted by I-type granitoids (Evans,

1987).

Proposed Model for the Mineralization Within the Scronk Claims

Mineralization on the Scronk Claims is dominantly in the form of quartz, arsenopyrite, or polymetallic veins which appear to have developed in open space fractures or areas of high permeability such as in jointing surfaces or along bedding planes. The mineralization is likely the result of hypothermal solutions related to the adjacent porphyritic intrusion which is likely related to the larger exposed plutons in the area. The presence of arsenopyrite, galena, sphalerite, molybdenite, pyrrhotite, plus minor tourmaline along with their dominate coarse grained nature, is characteristic of a high temperature hypothermal deposit.

It is possible that these veins represent a peripheral polymetallic skarn type deposit related to the potential porphyry Cu or porphyry Cu-Au system in the intrusion to the west.

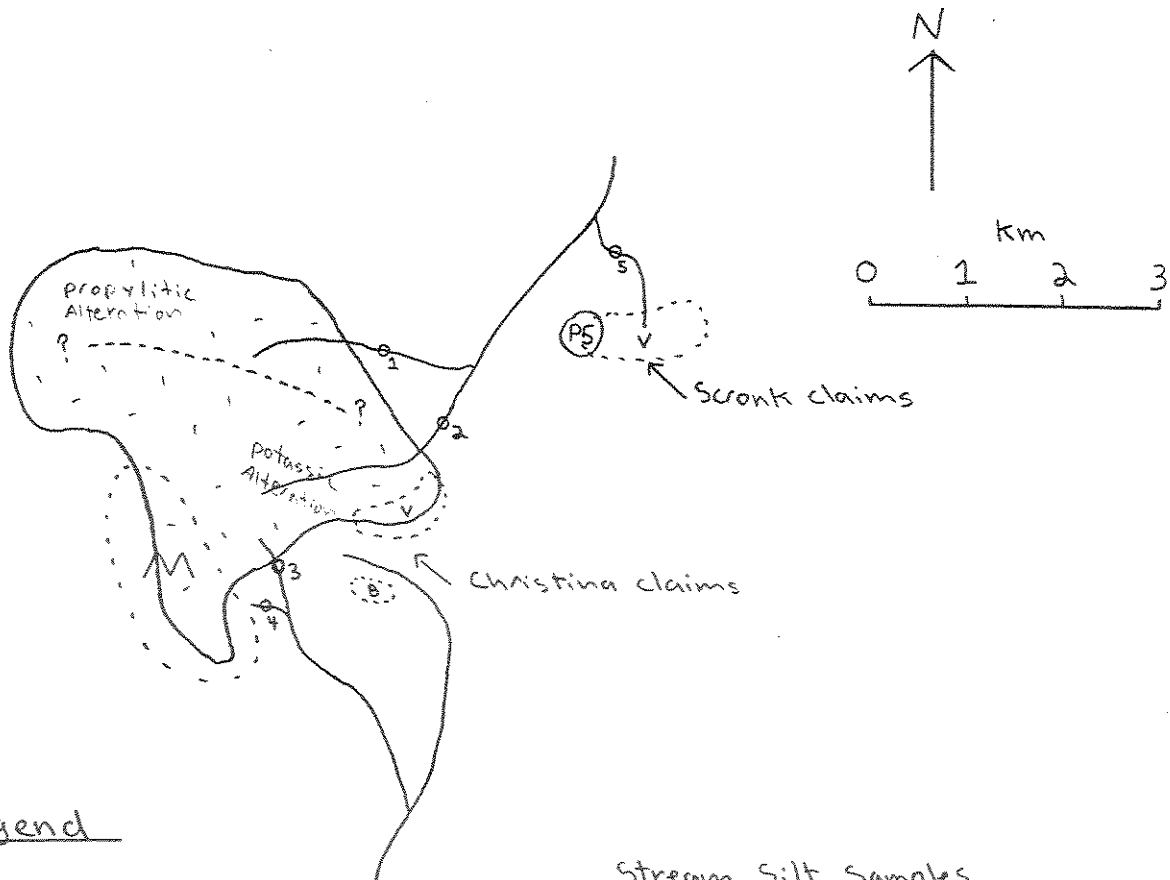
Potential for Further Exploration

Map 4 is a sketch map showing geochemical stream anomalies and a large magnetic high within and around the granite intrusion, this map will be used to discuss the exploration potential of the area. This study has concluded that a potential porphyry Cu (or porphyry Cu-Au) related system is responsible for the mineralization around the Christina Claims, and the exploration potential of the area well be focused around this premise.

Hydrothermal alteration zones characteristic of porphyry systems have been observed within the intrusion. On map 4 it can be shown that the a zone of potassic alteration (with a phyllic overprint) followed by a zone of propylitic alteration may be centered around a magnetic anomaly near the Southern tip of the pluton. These alteration zones combined with a large magnetic anomaly at the center make the mag high an excellent target for further exploration. A zone of magnetite mineralization associated with a porphyry system (especially a Porphyry Cu-Au system) could be responsible for the strong magnetism. All of the streams draining off the East portion of the intrusion are anomalous with respect to Cu, with a few anomalies in Au, Ag, Pb, and Zn (+/- Mo). The entire Southern, central, and Western portions of the granite intrusion are relatively unexplored and should be gone over in detail to verify or dismiss the possibility of large scale Cu or Cu-Au mineralization.

The tourmaline breccia zone in the Christina Claims is a potential gold target. Gold values average over 2 g/t throughout the area with silver values up

Sketch showing Plutons Geochem and
Magnetic Anomalies



Legend

- Cretaceous Granite
- PS Porphyritic Syenite
- Devonian - Silurian - Ordovician Sedimentary Sequence
- Stream
- M Magnetic high
- ₁ Silt sample location
- B Mineralized tourmaline Breccia
- V Vein Mineralization

Stream Silt Samples

Sample #	Cu	Au	Ag	Pb	Zn	Mo
1	114	141	28.1	472	232	7
2	330	<5	1.0	38	1104	10
3	169	14	0.6	27	241	6
4	112	25	0.3	26	147	2
5	143	35	1.2	62	71	19

* in ppm, except Au in ppb

to 31 g/t, and copper values up to 1%. If the zone can be extended or more mineralized breccias are located in the area, and a large enough tonnage delineated, this type of mineralization has economic potential.

The mineralized veins within the Scronk claims may be a peripheral zone of mineralization related to the adjacent porphyry or possibly to a larger igneous body at depth. The veins have proven to be anomalous in gold, and extend over a large area. There appears to be two possible exploration strategies for the area. The first would involve further exploration to try and delineate a large tonnage low grade deposit. Trenching and chip sampling would be required, as much of the surface is weathered. The second possibility would be to try and locate an area of high grade gold mineralization, possibly along a fault zone or a group of closely spaced veins.

References:

Barker, Daniel S. Igneous Rocks. Prentice Hall, 1983.

Bowen, Robert and Gunatilaka, Ananda. Copper: Its Geology and Economics. 1977.

Brown, A Sutherland. Porphyry Deposits of the Canadian Cordillera. 1976.

Cox, Dennis P. and Singer, Donald A. Mineral Deposit Models. U.S. Geological Survey Bulletin 1693. 1987.

Evans, Anthony M. An Introduction to Ore Geology Second Edition. 1987.

Friedrich, G. H. et al. Geology and Metallogeny of Copper Deposits. 1986.

Ineson, P. R. Introduction to Practical Ore Microscopy. 1989.

Appendix A : Analytical Techniques

Feldspar Staining Procedure:

A fresh cut surface of the rock was etched with hydrofluoric acid (52% HF) in a covered etching vessel for 3 minutes. The specimen was then dipped in water, and immediately dipped in a 5% Barium Chloride solution. The specimen was then rinsed in water then immersed face down for one minute in a saturated Sodium Cobaltinitrite solution. This stains the K-feldspar a bright yellow. The sample is then rinsed and the surface is covered in Rhodizonate reagent, this turns the plagioclase feldspar red.

Etching the sample in hydrofluoric acid removes the silicon at the surface and leaves behind the other elements. Residual potassium from the K-feldspar reacts with Cobaltinitrite to form yellow potassium Cobaltinitrite. The staining of the plagioclase is accomplished by replacing the calcium ion in the etched feldspar with barium, which reacts with the Rhodizonate reagent to form red insoluble barium Rhodizonate.

Pure albite (sodic plagioclase) will not be stained by the barium and Rhodizonate treatment, as the sodium is not readily replaced by barium.

Assays:

Rock and stream silt assays were done by Bondar-Clegg Ltd. 28 elements were done by ICP, gold was analysed by fire assay. The rock samples collected in the field were typically around two pounds, the samples were immediately put into plastic sample bags, labeled, described, and recorded. Silt samples collected from the streams were often fine to course sand as the extreme topography typically made silt deposition scarce.

Thin Sections, Polished Sections, and Grain Mounts:

Eight thin sections and seven polished sections were prepared by Don Resultay. The sections were studied under reflected and transmitted light using a Leitz petrographic microscope and a Carl-Zeiss reflected light microscope.

Grain mounts were prepared by collecting pure pieces of the unknown mineral under a binocular microscope. The pieces were then crushed and a portion of the grains were placed on a glass slide with an immersion oil and a cover slip (the material was not sieved).

X-Ray Diffraction:

Five mineral identifications and one matrix determination were performed by X-ray diffraction. The samples were chipped off rock specimens and the individual minerals were separated under a binocular microscope. The unknowns were then ground to a fine powder and placed in labeled vials. Diane Caird the X-ray technician then ran the samples on the X-ray diffractometer. No matches were obtained for the five mineral samples, so the d-spacings along with physical characteristics of the unknowns were used to identify the samples using the Minident computer program.

Appendix B: **Statement of Costs**

Rock sample analyses by Bondar-Clegg and Co. Ltd.	
247 rock samples at \$ 19.75 per samples	\$ 4878.25
12 stream silt samples at \$ 17.75 per sample	\$ 213.00
12 retested samples at \$13.10 per sample	\$ 157.25
8 thin sections at \$ 20.00 each	\$ 160.00
7 polished sections at \$ 25.00 each	\$ 175.00
5 X-ray diffraction identifications at \$ 20.00 each	\$ 100.00
 Labor	
S. Ebert, research, lab work etc. and report writing estimated at 50 hours (at \$ 10.00 per hour)	\$ 500.00
	 Total: \$ 6183.50

* Note Helicopter and labor expenses are not included toward assessment value as they incurred prior to registration of the claims.

Appendix C: **Statement of Qualifications**

I Shane Ebert of the city of Edmonton, in the province of Alberta, hereby certify:

That I performed the studies and made the conclusions which are included in this report while under the strict supervision of Dr. Roger Morton, professor of economic geology at the University of Alberta.

I will graduate from the University of Alberta in April 1991 with a Bachelor of Science degree with honours in geology.

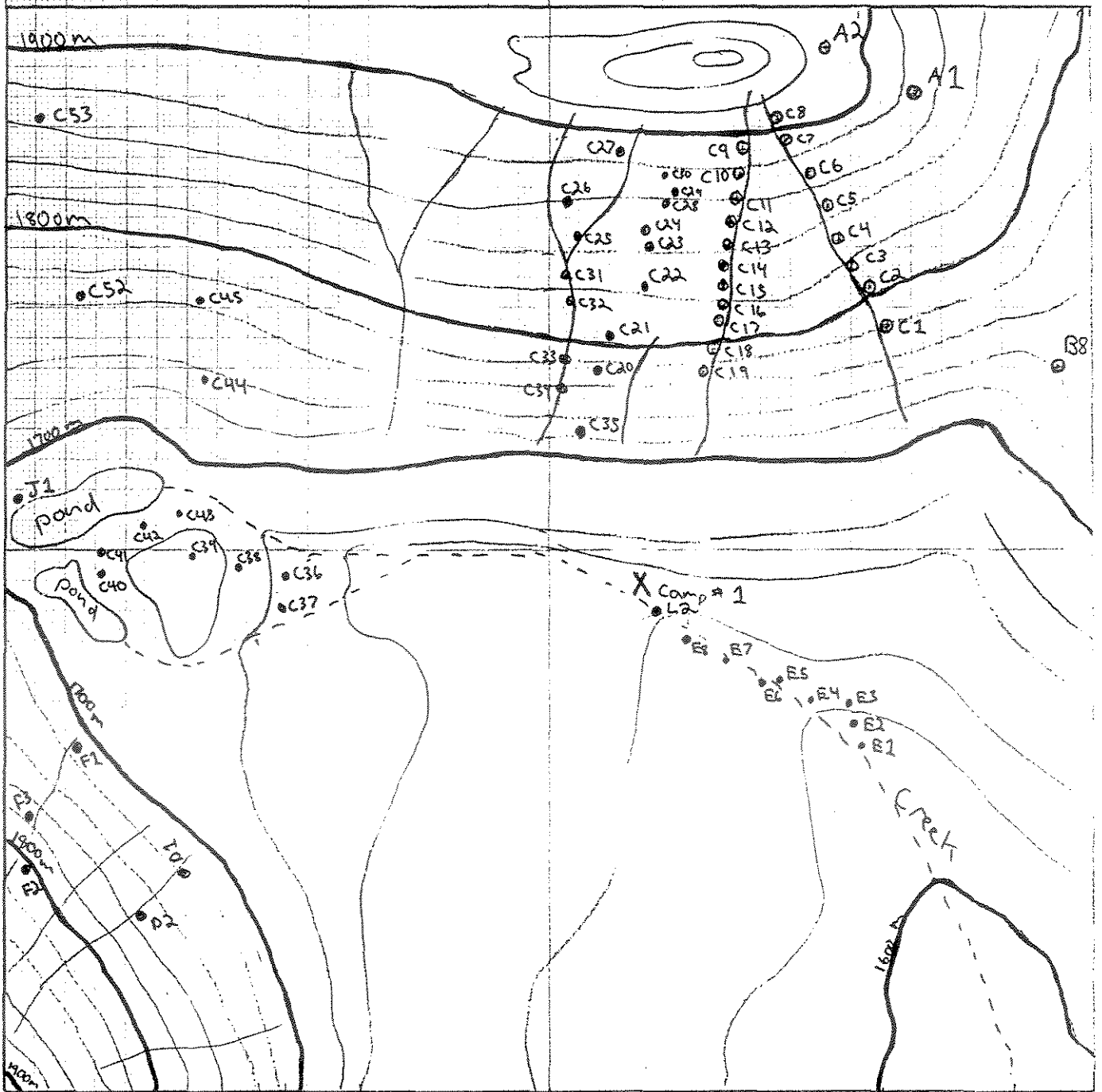
Signed at Edmonton, Alberta, this 22 day of January, 1991.


Shane Ebert

Address:
Shane Ebert
11442 76 avenue,
Edmonton AB.
T6G 0K4

Appendix D

AREA #1
 Map 105 0-12
 Center is grid ref 755495 (UTM Grid)



← 1000 meters →

C.I. = 20m

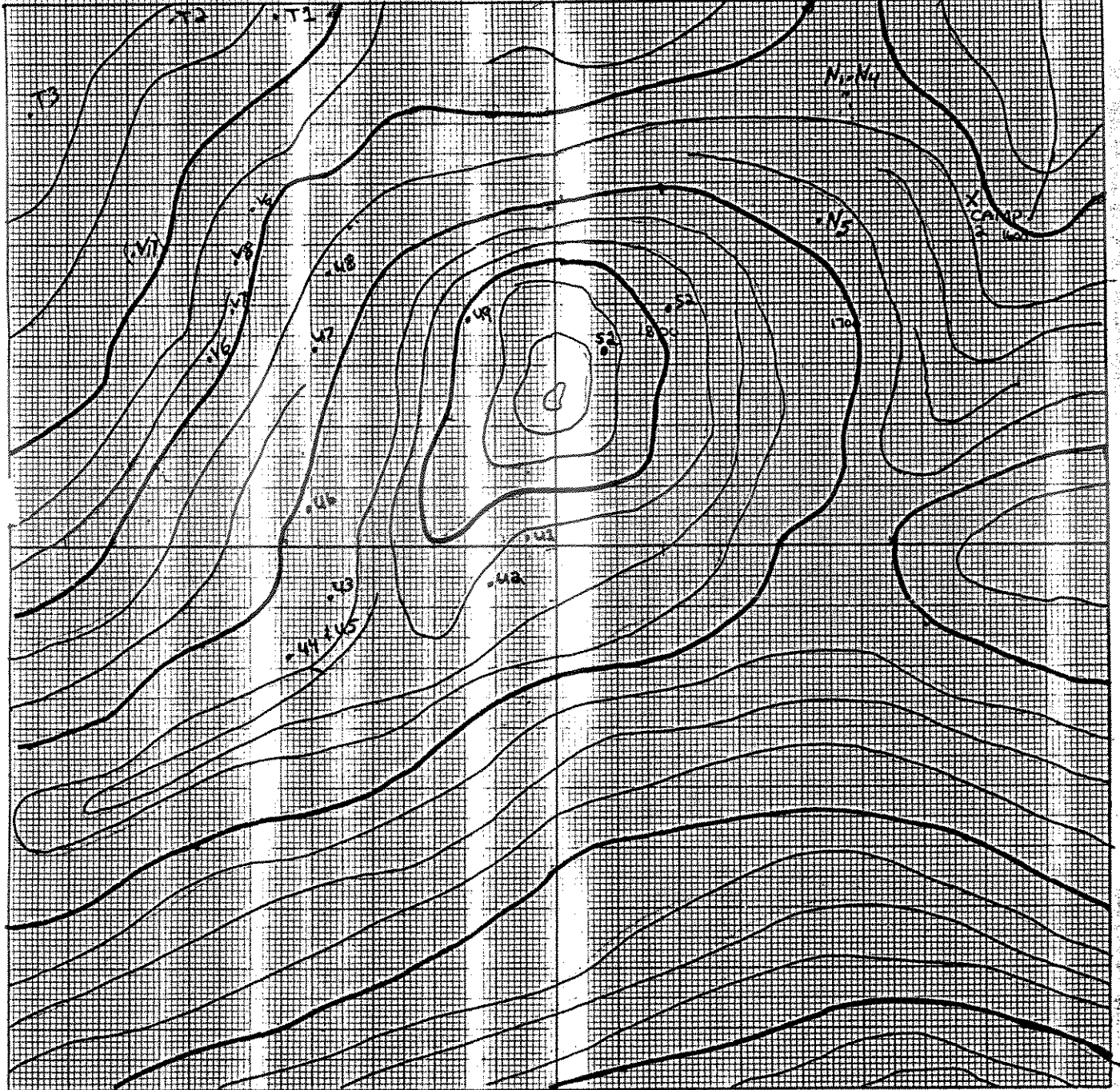
● rock sample
 - ravine

AREA #2
MAP 1050/11
GEOREF
795 535
SAMPLE LOCATIONS

SAMPLES TAKEN
2000
1000

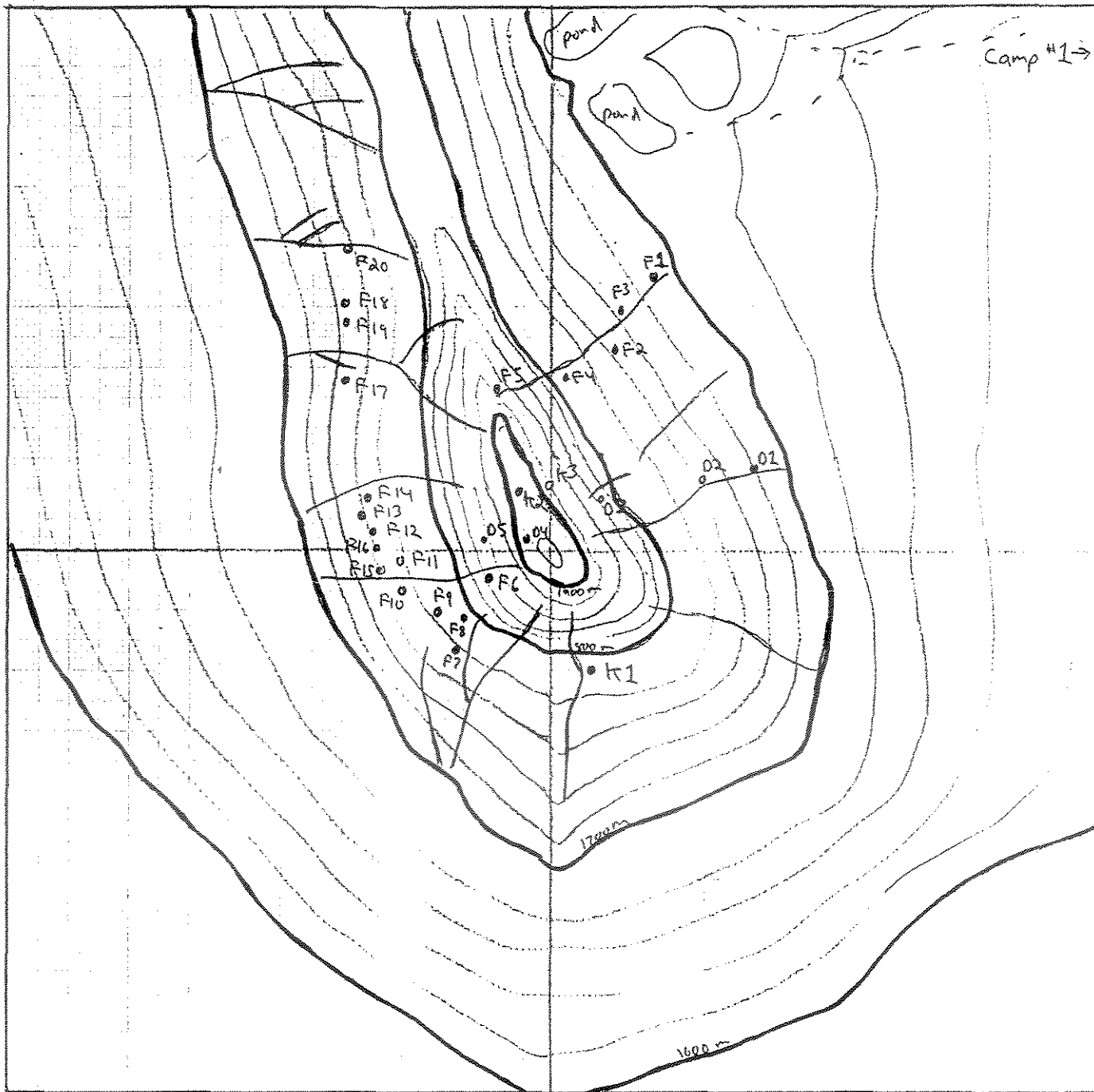
N

1000m x 1000m
0.5 cm





AREA #1
Map 109 0-12
Center of grid is ref 750490 (UTM Grid)



~ 500 m

C.I. = 20 m

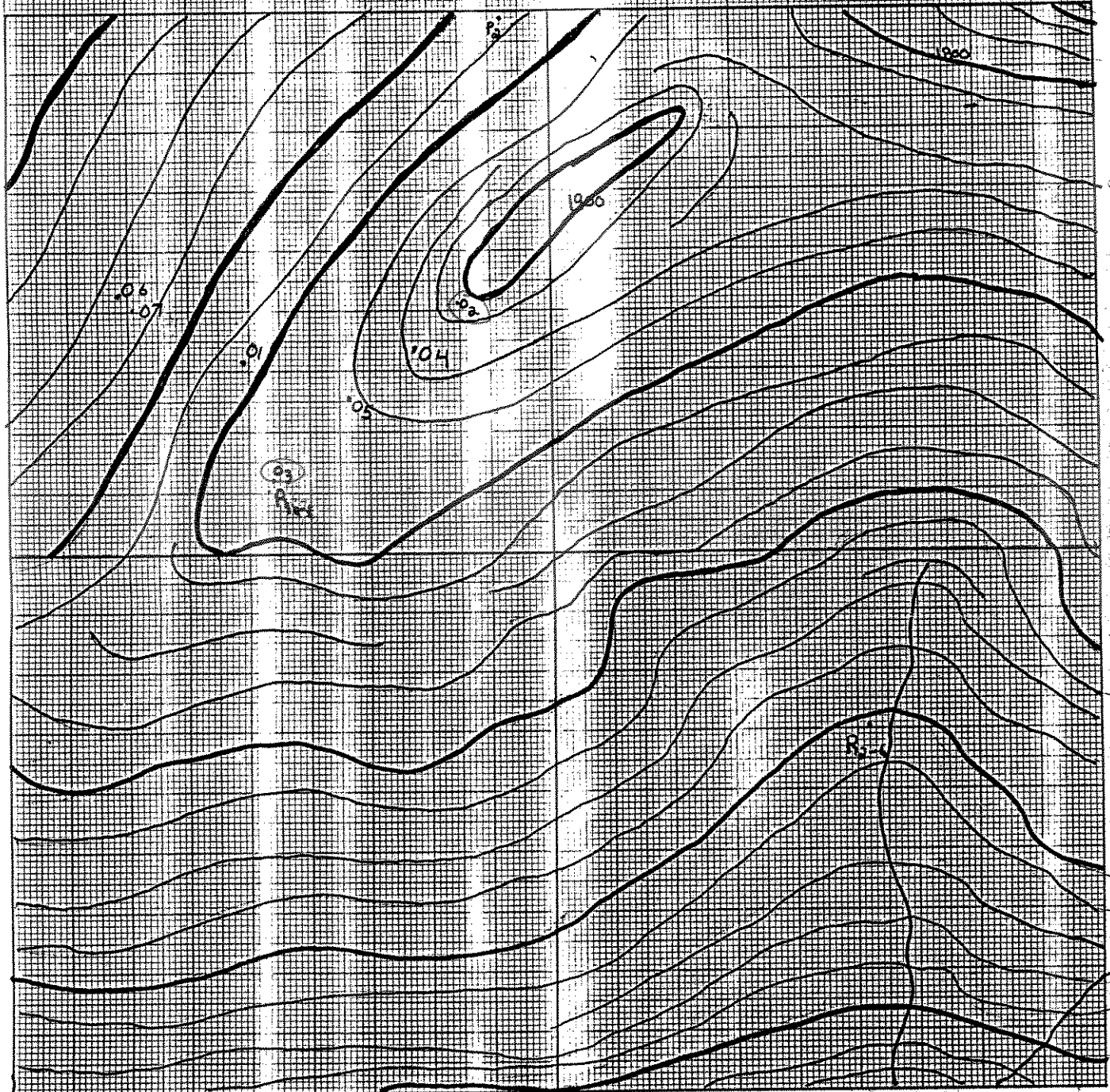
○ rock sample
--- ravine

Area #2
MAP 105 0 11
305 525 (R204)
SAMPLE LOCATIONS

SAMPLE TAKEN BY
D. E. BEE
6/10/52

N

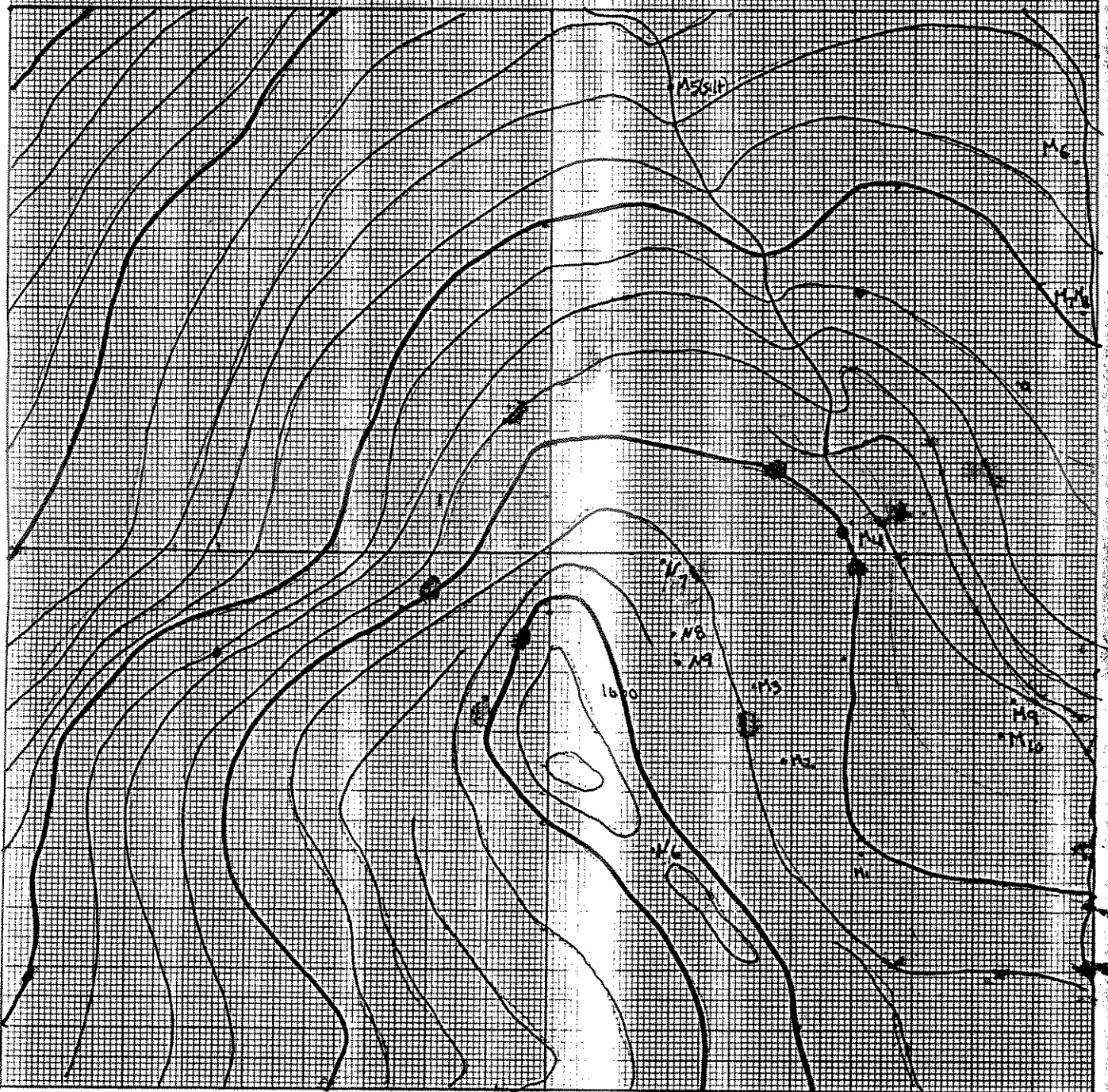
1000m x 1000m
1:50,000



AREA 42
GRID REF 795 535
MAP 105-0141
SAMPLE LOCATIONS

SAMPLE TAKEN BY
S. EBERT
A. COUTURE

1000 M & 1500 M
E. 50 M



A DIVISION OF INCHCAPE INSPECTION & TESTING SERVICES

REPORT: V90-36225.0

DATE PRINTED: 18-SEP-90

PROJECT: NONE GIVEN

PAGE 1A

SAMPLE NUMBER	ELEMENT UNITS	Au 10g PPB	Ag PPM	Cu PPM	Pb PPM	Zn PPM	Mo PPM	Ni PPM	Co PPM	Cd PPM	Bi PPM	As PPM
T1 G7		141	28.1	114	472	232	7	50	19	2	<5	87
T1 G8		<5	0.7	80	30	37	2	9	7	<1	7	71
T1 G9		<5	1.0	330	38	1104	10	213	66	7	<5	420
T1 H3		<5	<0.2	67	26	55	<1	11	10	<1	<5	75
T1 H6		25	0.3	112	26	147	2	27	17	2	9	960
T1 H9		7	0.3	70	21	80	3	16	13	<1	<5	279
T1 H10		14	0.6	169	27	241	6	32	15	2	10	597
T1 L2		8	0.5	164	23	278	4	78	26	2	7	447
T1 H5		35	1.2	143	62	71	19	38	22	<1	8	432
T1 Q5		8	1.2	201	33	572	8	265	31	4	<5	108
T1 Q6		15	2.2	216	33	685	13	127	27	3	<5	69
T1 X9		13	2.1	176	22	214	11	45	9	<1	<5	95
R2 A1		<5	39.4	55	482	25	2	6	2	<1	<5	20
R2 A2		24	>50.0	>20000	355	447	<1	38	8	<1	78	<5
R2 A3		120	>50.0	518	1810	28	2	11	4	27	9	>2000
R2 A4		1420	11.9	147	320	25	<1	20	124	<1	41	>2000
R2 A5		2241	4.0	24	269	24	<1	17	47	<1	911	>2000
R2 A6		11	4.5	98	126	98	3	9	3	1	19	1828
R2 A7		<5	13.6	219	149	198	3	41	7	1	<5	622
R2 B8		7	7.3	169	147	397	3	25	3	<1	8	315
R2 B9		<5	10.8	42	128	26	1	19	3	<1	<5	191
R2 B10		<5	8.2	12	122	325	2	17	14	2	<5	293
R2 B11		9	33.5	55	377	26	3	12	1	1	<5	200
R2 B12		<5	4.3	29	46	109	2	43	23	<1	5	50
R2 C1		9	5.3	89	65	122	4	167	19	<1	<5	106
R2 C2		<5	8.7	41	137	72	4	27	9	<1	<5	168
R2 C3		<5	5.8	43	55	61	1	23	6	<1	<5	77
R2 C4		520	3.7	202	78	64	2	17	10	2	7	1366
R2 C5		45	2.3	246	53	16	2	8	4	<1	10	236
R2 C6		<5	5.2	2985	123	137	2	11	11	<1	<5	541
R2 C7		269	8.4	3041	47	31	5	9	5	<1	145	594
R2 C8		213	7.2	1110	83	8	4	7	5	4	69	>2000
R2 C9		<5	1.9	92	50	68	<1	15	10	<1	<5	886
R2 C10		<5	1.6	154	36	70	1	6	4	<1	<5	322
R2 C11		12	1.9	14	71	42	4	9	11	4	16	>2000
R2 C12		<5	2.2	24	189	34	1	4	3	<1	<5	195
R2 C13		1256	3.8	12	158	14	3	47	105	100	444	>2000
R2 C14		7	2.6	211	55	63	2	21	16	<1	6	392
R2 C15		673	23.3	15551	40	115	6	101	69	<1	11	349
R2 C16		1993	2.7	61	68	19	1	9	61	58	827	>2000

A DIVISION OF INCHCAPE INSPECTION & TESTING SERVICES

DATE PRINTED: 18-SEP-90

REPORT: V90-36225.0

PROJECT: NONE GIVEN

PAGE 18

SAMPLE NUMBER	ELEMENT UNITS	Sb PPM	Fe PCT	Mn PCT	Te PPM	Ba PPM	Cr PPM	V PPM	Sn PPM	W PPM	La PPM	Al PCT
T1 G7		60	7.67	0.06	14	417	59	137	<20	<10	18	3.24
T1 G8		<5	1.76	0.03	<10	188	12	35	<20	<10	17	2.08
T1 G9		15	4.73	0.33	<10	518	36	75	<20	<10	32	4.26
T1 H3		5	2.79	0.04	<10	299	17	44	<20	<10	32	3.21
T1 H8		10	2.89	0.04	<10	326	19	36	<20	<10	27	3.63
T1 H9		<5	2.33	0.03	<10	352	18	41	<20	<10	27	3.80
T1 H10		<5	3.16	0.04	<10	421	23	50	<20	<10	22	3.13
T1 L2		7	3.63	0.11	<10	556	26	62	<20	<10	25	3.83
T1 M5		20	6.93	0.17	12	370	47	102	<20	<10	18	2.18
T1 Q5		10	6.30	0.47	<10	482	35	76	<20	<10	25	1.92
T1 Q6		14	>10.00	0.06	16	504	58	147	<20	<10	22	2.00
T1 X9		7	7.56	0.03	<10	581	56	136	<20	<10	17	2.82
R2 A1		32	0.64	0.01	<10	32	195	8	<20	<10	1	0.33
R2 A2		24	2.41	0.03	<10	12	58	97	<20	<10	3	3.18
R2 A3		241	3.34	<0.01	<10	149	165	5	<20	<10	12	1.28
R2 A4		253	3.78	<0.01	<10	<5	53	<1	<20	<10	<1	0.14
R2 A5		352	4.06	<0.01	<10	<5	29	<1	<20	<10	<1	0.06
R2 A6		23	2.16	0.01	<10	103	67	51	<20	<10	16	0.86
R2 A7		12	4.29	0.08	<10	100	158	42	<20	<10	4	1.68
R2 B8		15	8.46	0.09	12	29	26	30	<20	<10	<1	1.27
R2 B9		10	2.35	0.01	<10	95	178	16	<20	<10	12	0.99
R2 B10		9	5.10	0.08	<10	459	48	68	<20	<10	13	3.13
R2 B11		21	1.83	<0.01	<10	62	212	15	<20	<10	2	0.14
R2 B12		12	6.94	0.09	<10	246	38	115	<20	<10	12	6.09
R2 C1		12	4.73	0.12	<10	38	90	30	<20	<10	10	1.27
R2 C2		15	3.16	0.02	<10	293	140	70	<20	<10	17	3.20
R2 C3		<5	3.55	0.06	<10	590	141	63	<20	<10	12	3.07
R2 C4		8	4.67	0.04	<10	403	125	61	<20	<10	13	3.63
R2 C5		<5	1.08	0.01	<10	59	251	12	<20	<10	54	0.51
R2 C6		<5	6.15	0.05	<10	290	131	77	<20	<10	44	3.62
R2 C7		38	3.47	0.02	<10	158	129	35	<20	<10	15	1.44
R2 C8		39	0.97	<0.01	<10	12	279	<1	<20	<10	<1	0.03
R2 C9		7	8.70	0.13	10	100	67	63	<20	10	10	4.02
R2 C10		5	2.58	0.03	<10	68	199	16	<20	<10	39	1.23
R2 C11		10	4.58	0.04	<10	76	99	28	<20	<10	20	2.13
R2 C12		6	1.06	0.02	<10	78	173	8	<20	<10	20	0.62
R2 C13		67	>10.00	0.03	20	27	133	<1	<20	<10	14	0.74
R2 C14		9	5.59	0.04	<10	733	117	125	<20	<10	12	3.78
R2 C15		10	>10.00	0.03	28	32	94	76	<20	<10	15	1.81
R2 C16		39	5.59	0.02	<10	49	182	<1	<20	<10	30	0.33

A DIVISION OF INCHCAPE INSPECTION & TESTING SERVICES

REPORT: V90-36225.0

DATE PRINTED: 18-SEP-90

PROJECT: NONE GIVEN

PAGE 10

SAMPLE NUMBER	ELEMENT UNITS	Mg PCT	Ca PCT	Na PCT	K PCT	Sr PPM	Y PPM
T1 G7		0.76	0.32	<0.05	0.44	48	8
T1 G8		0.53	0.84	<0.05	0.18	75	6
T1 G9		1.00	0.88	0.06	0.35	105	27
T1 H3		0.80	1.15	0.05	0.26	126	9
T1 H8		0.74	1.30	0.13	0.26	154	8
T1 H9		0.71	1.14	0.07	0.25	168	6
T1 H10		0.65	0.51	0.05	0.19	53	8
T1 L2		0.89	0.81	0.06	0.30	101	11
T1 M5		0.92	0.21	<0.05	0.43	21	14
T1 Q5		0.59	0.25	<0.05	0.28	46	23
T1 Q6		0.73	0.14	<0.05	0.23	84	16
T1 X9		0.79	0.11	<0.05	0.40	93	9
R2 A1		0.09	<0.05	<0.05	0.07	6	<1
R2 A2		1.20	<0.05	<0.05	0.29	4	3
R2 A3		0.19	<0.05	<0.05	0.67	13	2
R2 A4		<0.05	<0.05	<0.05	0.06	<1	3
R2 A5		<0.05	<0.05	<0.05	<0.05	<1	3
R2 A6		0.07	<0.05	<0.05	0.11	3	6
R2 A7		0.67	0.40	0.05	0.37	56	8
R2 B8		1.90	0.20	<0.05	<0.05	4	3
R2 B9		0.64	<0.05	<0.05	0.13	10	1
R2 B10		2.24	0.93	0.05	0.10	30	15
R2 B11		<0.05	<0.05	<0.05	0.08	24	2
R2 B12		3.03	3.88	0.30	0.28	135	14
R2 C1		0.63	0.19	<0.05	0.28	7	9
R2 C2		1.13	0.10	<0.05	0.74	31	4
R2 C3		1.24	0.11	<0.05	0.80	19	5
R2 C4		1.23	0.97	0.28	1.21	75	8
R2 C5		0.29	0.07	<0.05	0.07	29	4
R2 C6		1.83	1.10	0.18	0.69	71	10
R2 C7		0.56	1.03	0.08	0.23	40	9
R2 C8		<0.05	0.08	<0.05	<0.05	6	1
R2 C9		2.09	0.35	<0.05	0.57	8	5
R2 C10		0.33	0.43	<0.05	0.27	9	7
R2 C11		0.98	2.59	0.10	0.33	75	7
R2 C12		0.11	0.77	<0.05	0.22	12	4
R2 C13		0.11	0.45	<0.05	0.27	13	6
R2 C14		1.79	1.85	0.33	0.97	111	7
R2 C15		0.99	0.65	0.11	0.44	30	5
R2 C16		<0.05	0.52	<0.05	0.16	16	4

A DIVISION OF INCHCAPE INSPECTION & TESTING SERVICES

DATE PRINTED: 18-SEP-90

PROJECT: NONE GIVEN

PAGE 2A

REPORT: V90-36225.0

SAMPLE NUMBER	ELEMENT UNITS	Au 10g PPB	Ag PPM	Cu PPM	Pb PPM	Zn PPM	Mo PPM	Ni PPM	Co PPM	Cd PPM	Bi PPM	As PPM
R2 C17		3849	2.0	41	38	17	2	17	175	177	1313	>2000
R2 C18		50	1.3	14	49	5	6	6	6	7	20	>2000
R2 C19		6073	1.3	231	36	40	1	12	1336	<1	>2000	>2000
R2 C20		1276	2.0	8	31	16	2	9	85	27	293	>2000
R2 C21		1365	<0.2	<1	22	18	7	63	468	170	277	>2000
R2 C22		22	1.4	5	24	6	<1	6	5	2	11	1692
R2 C23		15	1.8	106	22	38	3	14	9	<1	8	717
R2 C24		<5	1.0	9	39	43	2	13	7	<1	<5	153
R2 C25		29	1.0	167	19	17	1	12	67	10	70	>2000
R2 C26		19	1.5	18	37	30	1	7	26	4	49	>2000
R2 C27		<5	1.1	225	27	40	1	10	10	<1	<5	92
R2 C28		273	3.2	71	19	8	1	51	73	96	1068	>2000
R2 C29		>10000	4.5	6	169	161	<1	207	1223	134	>2000	>2000
R2 C30		185	1.9	28	18	50	1	26	88	10	74	>2000
R2 C31		53	1.1	16	17	22	1	10	11	1	16	1706
R2 C32		30	1.6	58	39	73	1	15	19	4	23	>2000
R2 C33		12	1.7	9	23	44	<1	15	8	<1	<5	145
R2 C34		12	0.9	5	19	15	<1	8	4	<1	<5	383
R2 C35		84	2.0	539	18	41	5	23	10	<1	<5	85
R2 C36		<5	0.4	4	16	10	1	2	3	<1	<5	161
R2 C37		29	0.8	9	33	18	<1	4	2	<1	<5	73
R2 C38		49	2.0	21	21	21	2	9	35	15	<5	>2000
R2 C39		10	0.9	6	27	7	2	4	1	<1	<5	118
R2 C40		<5	0.8	6	17	35	<1	3	3	<1	<5	125
R2 C41		<5	1.0	34	28	24	<1	3	1	<1	<5	702
R2 C42		298	0.3	135	27	35	<1	6	10	<1	<5	521
R2 C43		54	<0.2	13	37	24	1	7	17	3	<5	1998
R2 C44		12	<0.2	10	26	28	2	3	5	<1	<5	106
R2 C45		97	3.1	913	21	51	1	8	12	<1	8	436
R2 C46		17	0.8	147	16	96	<1	18	18	<1	<5	1087
R2 C47		12	4.6	203	25	149	10	44	5	1	<5	179
R2 C48		10	1.0	19	35	32	6	7	<1	<1	<5	388
R2 C49		35	1.4	5	18	54	7	120	227	12	9	>2000
R2 C50		176	1.1	3	14	23	1	122	1060	47	<5	>2000
R2 C51		31	4.2	78	29	31	6	11	12	1	<5	1070
R2 C52		110	8.6	3126	28	141	1	7	16	2	27	1854
R2 C53		11	0.7	1016	29	47	<1	8	14	<1	<5	161
R2 D1		54	4.7	413	28	139	3	50	22	<1	<5	268
R2 D2		22	2.1	108	19	192	1	62	10	<1	<5	50
R2 D3		<5	3.4	109	35	40	12	48	19	<1	<5	46

A DIVISION OF INCHCAPE INSPECTION & TESTING SERVICES

REPORT: V90-36225.0

DATE PRINTED: 18-SEP-90

PROJECT: NONE GIVEN

PAGE 28

SAMPLE NUMBER	ELEMENT UNITS	Sb PPM	Fe PCT	Mn PCT	Te PPM	Ba PPM	Cr PPM	V PPM	Sn PPM	W PPM	La PPM	Al PCT
R2 C17		201	2.95	<0.01	<10	9	70	<1	<20	<10	1	0.20
R2 C18		8	0.79	<0.01	<10	12	213	<1	<20	<10	11	0.16
R2 C19		66	3.14	0.01	<10	36	44	<1	<20	<10	13	1.08
R2 C20		17	3.60	0.02	<10	78	222	<1	<20	<10	8	1.11
R2 C21		143	2.30	0.01	<10	15	84	<1	<20	<10	<1	0.76
R2 C22		<5	0.69	<0.01	<10	11	261	3	<20	<10	2	0.21
R2 C23		5	6.60	0.05	11	282	98	81	<20	<10	9	2.73
R2 C24		<5	4.68	0.04	<10	44	150	41	<20	<10	61	1.87
R2 C25		8	2.26	0.01	<10	113	104	8	<20	<10	3	1.71
R2 C26		<5	1.47	0.01	<10	45	192	6	<20	<10	8	0.63
R2 C27		5	3.57	0.03	<10	391	104	58	<20	<10	31	3.12
R2 C28		89	>10.00	0.02	30	27	134	<1	<20	<10	25	0.55
R2 C29		150	2.75	<0.01	<10	10	86	<1	<20	<10	<1	0.35
R2 C30		7	7.50	0.06	<10	210	144	52	<20	<10	7	2.77
R2 C31		<5	3.16	0.02	<10	152	138	35	<20	<10	6	1.59
R2 C32		9	6.26	0.05	10	426	89	88	<20	<10	15	4.62
R2 C33		7	6.45	0.05	10	416	112	93	<20	<10	11	4.17
R2 C34		<5	1.28	0.01	<10	60	290	13	<20	<10	1	0.64
R2 C35		<5	4.79	0.04	<10	306	157	82	<20	<10	8	1.71
R2 C36		<5	0.50	<0.01	<10	44	54	4	<20	<10	12	0.44
R2 C37		<5	0.96	0.01	<10	81	157	8	<20	<10	21	0.86
R2 C38		15	4.21	0.02	<10	164	196	2	<20	<10	14	1.45
R2 C39		<5	0.58	<0.01	<10	19	149	2	<20	<10	14	0.36
R2 C40		<5	2.47	0.02	<10	137	121	21	<20	<10	16	1.84
R2 C41		<5	2.30	0.02	<10	68	121	20	<20	<10	19	1.50
R2 C42		<5	2.06	0.02	<10	94	171	15	<20	<10	43	1.08
R2 C43		6	1.41	0.02	<10	76	153	2	<20	<10	48	0.41
R2 C44		<5	2.68	0.02	<10	244	115	32	<20	<10	705	2.33
R2 C45		6	4.90	0.03	<10	146	102	47	<20	<10	24	3.04
R2 C46		<5	1.70	0.03	<10	130	124	15	<20	<10	23	1.28
R2 C47		6	1.75	<0.01	<10	251	219	110	<20	<10	17	0.79
R2 C48		<5	0.98	<0.01	<10	1250	76	9	<20	<10	25	0.80
R2 C49		16	3.86	0.02	<10	279	119	241	<20	<10	14	2.53
R2 C50		15	3.50	<0.01	12	125	41	37	<20	<10	5	0.40
R2 C51		12	4.47	<0.01	<10	85	95	44	<20	<10	11	0.47
R2 C52		13	4.61	0.02	<10	111	66	19	<20	<10	23	2.04
R2 C53		7	3.15	0.06	<10	219	61	33	<20	<10	35	1.79
R2 D1		13	>10.00	0.03	15	38	105	87	<20	<10	8	3.98
R2 D2		<5	6.46	0.03	<10	215	130	103	<20	<10	16	4.48
R2 D3		5	4.14	0.03	<10	69	86	64	<20	<10	14	2.66

A DIVISION OF INCHCAPE INSPECTION & TESTING SERVICES

DATE PRINTED: 18-SEP-90

REPORT: V90-36225.0

PROJECT: NONE GIVEN

PAGE 20

SAMPLE NUMBER	ELEMENT UNITS	Mg PCT	Ca PCT	Na PCT	K PCT	Sr PPM	Y PPM
R2 C17		<0.05	0.57	<0.05	0.10	28	6
R2 C18		<0.05	0.05	<0.05	<0.05	5	2
R2 C19		0.48	0.42	0.06	0.32	47	6
R2 C20		0.53	0.39	0.05	0.24	31	3
R2 C21		0.36	0.06	<0.05	0.09	4	4
R2 C22		0.09	0.13	<0.05	<0.05	10	3
R2 C23		2.20	1.84	<0.05	0.63	17	10
R2 C24		1.13	0.17	<0.05	0.21	4	9
R2 C25		0.61	0.79	0.16	0.11	57	5
R2 C26		0.33	0.11	<0.05	0.10	26	3
R2 C27		1.10	1.60	0.30	0.80	72	8
R2 C28		0.09	0.22	<0.05	0.18	43	8
R2 C29		<0.05	0.07	<0.05	0.17	12	4
R2 C30		1.68	1.62	<0.05	0.41	26	10
R2 C31		0.97	1.36	0.07	0.32	21	5
R2 C32		1.96	2.08	0.38	0.75	136	5
R2 C33		2.22	2.80	0.20	0.99	138	9
R2 C34		0.33	0.16	<0.05	0.10	48	<1
R2 C35		1.50	0.69	0.10	0.99	28	6
R2 C36		0.11	0.10	<0.05	0.16	10	4
R2 C37		0.19	0.30	0.11	0.29	35	5
R2 C38		0.53	0.27	0.09	0.33	28	5
R2 C39		<0.05	<0.05	0.06	0.30	9	1
R2 C40		0.66	0.44	<0.05	0.25	13	6
R2 C41		0.60	0.89	0.06	0.18	22	10
R2 C42		0.28	0.49	<0.05	0.30	15	7
R2 C43		<0.05	0.07	<0.05	0.21	5	7
R2 C44		0.74	1.37	0.30	0.68	60	14
R2 C45		1.18	0.86	0.23	0.69	54	9
R2 C46		0.30	0.68	0.06	0.27	57	7
R2 C47		0.28	<0.05	<0.05	0.17	7	6
R2 C48		0.06	<0.05	<0.05	0.14	8	4
R2 C49		3.03	4.30	<0.05	0.43	35	23
R2 C50		0.79	0.75	<0.05	<0.05	21	14
R2 C51		0.05	<0.05	<0.05	0.17	11	4
R2 C52		0.75	0.52	<0.05	0.17	30	8
R2 C53		0.66	2.43	0.06	0.40	31	10
R2 D1		2.03	<0.05	<0.05	1.08	9	3
R2 D2		2.02	0.06	<0.05	1.54	8	4
R2 D3		1.16	<0.05	<0.05	0.56	3	3

A DIVISION OF INCHCAPE INSPECTION & TESTING SERVICES

REPORT: V90-36225.0

DATE PRINTED: 18-SEP-90

PROJECT: NONE GIVEN

PAGE 3A

SAMPLE NUMBER	ELEMENT UNITS	Au 10g PPB	Ag PPM	Cu PPM	Pb PPM	Zn PPM	Mn PPM	Ni PPM	Co PPM	Cd PPM	Bi PPM	As PPM
R2 D4		21	1.9	85	28	115	5	55	9	<1	<5	64
R2 D5		10	1.5	116	20	172	3	66	14	<1	<5	66
R2 D6		49	3.0	395	26	11	7	52	51	10	<5	>2000
R2 D7		17	1.3	182	12	45	8	51	5	<1	<5	321
R2 D8		42	11.8	43	89	68	41	36	19	11	<5	>2000
R2 D9		8	1.8	99	117	29	1	4	9	12	<5	>2000
R2 D10		14	2.6	55	125	60	2	17	10	4	<5	>2000
R2 D11		8	0.7	28	21	41	<1	18	12	<1	<5	71
R2 D12		<5	0.9	23	31	18	<1	1	1	2	<5	1473
R2 D13		7	1.9	38	28	5	<1	2	<1	<1	<5	111
R2 D14		14	1.7	196	19	55	14	84	7	<1	<5	190
R2 D15		16	2.0	151	10	92	1	127	17	<1	<5	49
R2 D16		8	1.0	64	18	23	2	22	4	<1	<5	71
R2 E1		24	1.2	84	16	54	2	32	7	<1	<5	69
R2 E2		19	0.7	189	12	20	6	63	13	<1	<5	32
R2 E3		28	0.6	106	7	35	<1	39	12	<1	<5	34
R2 E4		21	1.2	80	8	63	<1	33	9	<1	<5	52
R2 E5		6	0.8	55	7	219	1	56	15	<1	<5	39
R2 E6		18	0.7	119	19	62	2	39	8	<1	<5	69
R2 E7		6	0.3	47	6	45	20	30	6	<1	<5	143
R2 E8		13	0.7	141	12	40	1	26	6	<1	<5	24
R2 F1		14	1.1	86	16	30	3	27	8	<1	<5	25
R2 F2		7	1.0	148	19	136	4	93	12	<1	<5	48
R2 F3		39	0.9	37	52	17	<1	17	7	14	<5	>2000
R2 F4		8	1.2	131	17	107	2	74	19	<1	<5	103
R2 F5		11	0.3	72	7	44	2	22	6	<1	<5	194
R2 F6		26	1.3	436	7	44	3	15	3	2	11	>2000
R2 F7		11	0.6	128	38	13	3	4	<1	<1	<5	593
R2 F8		3832	30.8	10260	17	17	7	48	352	79	50	>2000
R2 F9		1573	30.7	5321	2	8	4	17	71	69	12	>2000
R2 F10		742	19.7	4750	11	23	7	12	96	48	<5	>2000
R2 F11		1663	2.9	1398	8	8	7	67	103	59	31	>2000
R2 F12		517	1.7	2698	7	12	5	63	188	44	11	>2000
R2 F13		1474	6.6	1443	19	3	14	42	77	62	9	>2000
R2 F14		1875	2.6	2446	6	9	11	101	217	73	16	>2000
R2 F15		631	1.1	1382	11	13	15	104	187	43	5	>2000
R2 F16		2759	2.0	415	37	11	17	15	30	21	23	>2000
R2 F17		38	0.6	176	10	40	1	15	7	<1	<5	678
R2 F18		1059	0.8	90	4	23	43	316	367	36	16	>2000
R2 F19		583	0.6	51	3	19	20	133	157	24	10	>2000

A DIVISION OF INCHCAPE INSPECTION & TESTING SERVICES

DATE PRINTED: 18-SEP-90

REPORT: V90-36225.0

PROJECT: NONE GIVEN

PAGE 38

SAMPLE NUMBER	ELEMENT UNITS	Sb PPM	Fe PCT	Mn PCT	Te PPM	Ba PPM	Cr PPM	V PPM	Sn PPM	W PPM	La PPM	Al PCT
R2 D4		7	2.51	0.01	<10	192	142	164	<20	<10	14	2.17
R2 D5		<5	4.52	0.01	<10	93	68	39	<20	<10	16	2.48
R2 D6		20	8.28	<0.01	14	14	95	<1	<20	<10	1	0.04
R2 D7		9	4.52	<0.01	<10	91	77	113	<20	<10	9	3.74
R2 D8		20	2.50	<0.01	<10	82	116	147	<20	<10	7	0.64
R2 D9		24	1.47	0.02	<10	82	33	<1	<20	<10	2	0.65
R2 D10		17	4.28	0.04	<10	111	56	19	<20	<10	12	1.31
R2 D11		<5	3.00	0.02	<10	307	72	73	<20	<10	11	5.24
R2 D12		<5	0.31	0.01	<10	70	42	<1	<20	<10	2	0.44
R2 D13		<5	0.78	0.01	<10	64	38	1	<20	<10	<1	0.42
R2 D14		9	5.41	<0.01	<10	92	176	160	<20	<10	15	1.96
R2 D15		6	>10.00	0.05	13	23	39	12	<20	12	1	1.14
R2 D16		<5	2.21	<0.01	<10	129	106	42	<20	<10	7	0.83
R2 E1		5	3.56	0.02	<10	122	84	47	<20	<10	11	2.66
R2 E2		<5	2.75	<0.01	<10	110	99	139	<20	<10	8	1.87
R2 E3		6	4.77	0.01	<10	102	91	59	<20	<10	13	3.42
R2 E4		7	5.58	0.02	<10	286	126	76	<20	<10	12	4.01
R2 E5		6	4.49	0.05	<10	169	102	75	<20	<10	14	3.86
R2 E6		8	4.16	0.03	<10	250	70	49	<20	<10	23	3.09
R2 E7		<5	3.22	<0.01	<10	46	67	178	<20	<10	23	1.58
R2 E8		<5	4.45	0.02	<10	710	69	44	<20	<10	27	3.29
R2 F1		11	5.56	0.02	<10	97	63	47	<20	<10	25	2.35
R2 F2		7	3.85	0.07	<10	74	128	83	<20	<10	8	1.82
R2 F3		61	2.68	0.02	<10	148	74	<1	<20	<10	6	0.44
R2 F4		6	5.11	0.18	<10	50	98	126	<20	<10	16	2.58
R2 F5		<5	1.18	<0.01	<10	335	52	16	<20	<10	15	0.88
R2 F6		35	>10.00	<0.01	16	12	41	1	<20	14	8	0.19
R2 F7		<5	1.89	<0.01	<10	255	87	27	<20	<10	5	1.15
R2 F8		195	2.75	<0.01	<10	25	17	<1	<20	<10	<1	0.10
R2 F9		94	>10.00	<0.01	30	109	33	<1	32	<10	<1	0.07
R2 F10		76	>10.00	<0.01	27	36	63	<1	<20	<10	54	0.31
R2 F11		84	9.69	<0.01	20	134	114	<1	<20	<10	<1	0.07
R2 F12		59	6.00	<0.01	14	90	92	<1	<20	<10	2	0.13
R2 F13		136	>10.00	<0.01	28	118	99	<1	<20	<10	<1	0.04
R2 F14		183	>10.00	<0.01	27	46	73	<1	<20	<10	2	0.08
R2 F15		65	6.57	<0.01	12	77	100	<1	<20	<10	1	0.22
R2 F16		29	4.44	<0.01	11	199	76	<1	<20	<10	3	0.11
R2 F17		6	3.09	0.01	<10	573	72	27	<20	<10	21	2.47
R2 F18		56	5.94	<0.01	16	63	45	<1	<20	<10	6	0.31
R2 F19		31	3.89	<0.01	<10	54	73	<1	<20	<10	13	0.28

A DIVISION OF INCHCAPE INSPECTION & TESTING SERVICES

DATE PRINTED: 18-SEP-90

PROJECT: NONE GIVEN

PAGE 30

REPORT: V90-36225.0

SAMPLE NUMBER	ELEMENT UNITS	Mg PCT	Ca PCT	Na PCT	K PCT	Sr PPM	Y PPM
R2 D4		0.74	0.10	<0.05	0.41	9	6
R2 D5		1.21	<0.05	<0.05	0.88	5	4
R2 D6		<0.05	0.15	<0.05	<0.05	5	4
R2 D7		3.05	2.01	0.07	1.03	158	21
R2 D8		0.32	0.81	<0.05	0.16	26	11
R2 D9		0.08	2.23	<0.05	0.35	47	2
R2 D10		0.29	4.66	<0.05	0.38	74	5
R2 D11		1.13	3.79	0.40	0.42	120	5
R2 D12		<0.05	1.16	<0.05	0.26	25	2
R2 D13		<0.05	0.96	<0.05	0.29	37	1
R2 D14		1.34	<0.05	<0.05	0.69	5	7
R2 D15		3.38	0.99	<0.05	0.07	61	7
R2 D16		0.60	<0.05	<0.05	0.22	5	4
R2 E1		1.19	0.37	<0.05	0.72	12	8
R2 E2		1.01	0.25	<0.05	0.71	9	5
R2 E3		1.59	0.06	<0.05	0.96	7	3
R2 E4		2.20	0.07	<0.05	1.56	12	3
R2 E5		1.78	<0.05	<0.05	1.16	4	3
R2 E6		1.07	<0.05	<0.05	0.76	5	4
R2 E7		0.06	0.06	<0.05	<0.05	2	7
R2 E8		1.30	0.06	<0.05	0.95	9	5
R2 F1		1.27	<0.05	<0.05	0.59	9	5
R2 F2		0.97	0.58	<0.05	0.38	65	5
R2 F3		0.14	<0.05	<0.05	0.13	34	3
R2 F4		1.44	0.37	<0.05	0.84	12	13
R2 F5		0.18	<0.05	<0.05	0.32	10	6
R2 F6		<0.05	<0.05	<0.05	<0.05	4	3
R2 F7		0.58	<0.05	<0.05	0.39	4	2
R2 F8		<0.05	<0.05	<0.05	<0.05	1	2
R2 F9		<0.05	<0.05	<0.05	<0.05	<1	<1
R2 F10		<0.05	<0.05	<0.05	0.82	11	3
R2 F11		<0.05	<0.05	<0.05	0.11	3	<1
R2 F12		<0.05	<0.05	<0.05	0.06	8	<1
R2 F13		<0.05	<0.05	<0.05	<0.05	2	<1
R2 F14		<0.05	<0.05	<0.05	<0.05	2	<1
R2 F15		0.08	<0.05	<0.05	0.15	5	2
R2 F16		<0.05	<0.05	<0.05	0.08	17	1
R2 F17		0.81	<0.05	<0.05	0.70	7	4
R2 F18		<0.05	0.32	<0.05	<0.05	26	9
R2 F19		<0.05	0.37	<0.05	<0.05	21	10

A DIVISION OF INCHCAPE INSPECTION & TESTING SERVICES

DATE PRINTED: 18-SEP-90

REPORT: V90-36225.0

PROJECT: NONE GIVEN

PAGE 4A

SAMPLE NUMBER	ELEMENT UNITS	Au 10g PPB	Ag PPM	Cu PPM	Pb PPM	Zn PPM	Mo PPM	Ni PPM	Co PPM	Cd PPM	Bi PPM	As PPM
R2 F20		131	0.5	106	13	45	5	44	15	3	<5	>2000
R2 G1		486	2.1	1909	8	15	1	20	36	<1	29	1064
R2 G2		949	11.7	10337	9	53	4	30	23	<1	24	216
R2 G3		97	4.3	1877	26	69	3	11	11	<1	30	171
R2 G4		25	1.6	99	13	51	8	8	<1	<1	<5	93
R2 G5		7	2.3	24	28	7	4	3	<1	<1	<5	83
R2 G6		28	3.0	118	10	586	12	78	9	<1	<5	44
R2 H1		7	2.3	169	39	42	2	7	10	16	<5	>2000
R2 H2		37	1.9	423	90	65	<1	9	13	3	69	>2000
R2 H4		13	0.9	133	8	269	26	160	15	5	<5	156
R2 H5		18	0.5	23	10	27	1	9	10	<1	7	808
R2 H6		6	<0.2	29	6	4	3	6	2	<1	<5	79
R2 H7		24	0.3	5	36	41	<1	4	<1	2	<5	1989
R2 J1		764	0.4	26	<2	40	666	93	383	39	<5	>2000
R2 K1		1360	2.3	712	4	10	8	110	292	55	35	>2000
R2 K2		220	1.8	786	19	20	5	11	51	39	9	>2000
R2 K3		98	0.9	135	10	6	23	3	2	3	10	>2000
R2 L1		19	1.2	38	7	13	3	11	2	<1	<5	409
R2 M1		<5	1.1	167	16	61	10	88	10	<1	8	389
R2 M2		<5	0.6	115	24	14	2	9	12	<1	<5	54
R2 M4		20	1.6	194	30	53	10	82	33	<1	<5	334
R2 M6		10	1.2	155	11	173	2	84	30	<1	<5	118
R2 M7		154	0.9	196	38	30	<1	7	8	<1	<5	76
R2 M9		21	1.9	625	6	18	3	20	23	<1	<5	46
R2 M10		510	<0.2	45	126	20	<1	55	180	15	29	>2000
R2 N1		13	0.2	38	11	41	4	15	10	1	<5	1810
R2 N2		2006	2.1	17	87	18	3	13	4	30	14	>2000
R2 N3		3759	2.5	<1	286	20	<1	11	11	<1	294	>2000
R2 N4		1349	2.5	71	113	28	8	34	5	43	42	>2000
R2 N5		31	1.6	512	18	60	6	145	45	<1	<5	1685
R2 N6		102	1.1	157	328	92	29	51	16	4	<5	>2000
R2 N7		<5	1.4	147	25	96	15	67	19	<1	<5	223
R2 N8		<5	0.5	30	6	36	78	56	22	<1	<5	181
R2 N9		72	0.3	28	9	26	12	34	6	<1	10	103
R2 O1		59	0.8	17	20	17	1	20	6	17	<5	>2000
R2 O2		3255	13.4	687	1042	19	<1	54	714	14	807	>2000
R2 O3		2156	34.7	69	2683	48	69	61	50	46	1431	>2000
R2 O4		60	1.2	362	41	36	1	13	19	3	24	>2000
R2 O5		89	1.6	47	158	9	1	10	38	61	13	>2000
R2 O6		257	2.0	13	127	5	4	17	15	64	28	>2000

A DIVISION OF INCHCAPE INSPECTION & TESTING SERVICES

REPORT: V90-36225.0

DATE PRINTED: 18-SEP-90

PROJECT: NONE GIVEN

PAGE 48

SAMPLE NUMBER	ELEMENT UNITS	Sb PPH	Fe PCT	Mn PCT	Te PPM	Ba PPM	Cr PPM	V PPM	Sn PPM	W PPM	La PPM	Al PCT
R2 F20		5	2.12	0.02	<10	213	90	29	<20	<10	18	1.39
R2 G1		7	4.26	0.02	<10	26	145	34	<20	<10	15	1.42
R2 G2		8	>10.00	0.04	17	96	75	208	<20	<10	13	4.80
R2 G3		12	4.32	0.03	<10	229	113	52	<20	<10	28	1.97
R2 G4		<5	3.74	0.01	<10	623	79	54	<20	<10	30	1.08
R2 G5		<5	1.21	<0.01	<10	234	103	12	<20	<10	4	0.14
R2 G6		<5	7.05	0.01	<10	126	57	73	<20	<10	23	2.71
R2 H1		290	5.07	0.02	<10	26	77	<1	<20	<10	26	0.64
R2 H2		22	6.87	0.04	<10	151	98	63	<20	<10	18	3.18
R2 H4		<5	4.86	0.01	<10	62	109	306	<20	<10	9	1.88
R2 H5		6	2.33	0.04	<10	43	67	48	<20	<10	7	1.29
R2 H6		<5	0.42	<0.01	<10	45	162	47	<20	<10	302	0.10
R2 H7		<5	0.51	<0.01	<10	80	49	<1	<20	<10	2	0.33
R2 J1		21	3.84	0.01	<10	314	46	23	<20	<10	10	0.45
R2 K1		150	9.64	<0.01	20	34	82	<1	<20	<10	3	0.08
R2 K2		67	7.10	<0.01	12	164	55	<1	<20	<10	9	0.21
R2 K3		8	3.80	<0.01	<10	128	110	40	<20	<10	32	0.44
R2 L1		9	1.03	<0.01	<10	234	121	17	<20	<10	9	0.81
R2 M1		14	3.18	0.03	16	117	122	434	<20	<10	16	3.40
R2 M2		9	4.19	0.02	<10	57	61	19	<20	<10	50	0.69
R2 M4		13	5.78	0.05	<10	32	88	30	<20	<10	3	0.55
R2 M6		22	7.33	0.16	<10	31	75	61	<20	<10	12	2.19
R2 M7		<5	5.41	0.03	<10	56	56	26	<20	<10	10	4.37
R2 M9		<5	7.81	0.05	13	23	24	7	<20	<10	2	2.24
R2 M10		95	2.58	<0.01	<10	5	42	<1	<20	<10	<1	0.24
R2 N1		10	4.68	0.06	<10	315	58	87	<20	<10	56	2.15
R2 N2		196	>10.00	0.01	30	13	68	<1	<20	<10	1	0.34
R2 N3		307	3.04	<0.01	<10	5	43	<1	<20	<10	<1	0.36
R2 N4		186	>10.00	0.04	33	25	60	<1	<20	<10	2	0.88
R2 N5		9	>10.00	0.20	19	28	59	94	<20	15	22	2.12
R2 N6		96	5.07	0.34	<10	161	134	24	<20	<10	12	0.58
R2 N7		14	4.80	0.04	<10	33	152	187	<20	<10	10	2.23
R2 N8		<5	0.76	0.29	<10	137	108	7	<20	<10	4	0.24
R2 N9		<5	0.95	0.06	<10	26	38	66	<20	<10	13	0.82
R2 O1		34	4.92	0.02	<10	72	66	2	<20	<10	10	1.06
R2 O2		800	2.91	<0.01	18	5	32	<1	<20	<10	<1	0.12
R2 O3		1024	>10.00	0.07	98	43	111	74	<20	<10	31	1.80
R2 O4		25	6.93	0.02	13	56	31	37	<20	<10	4	3.43
R2 O5		130	>10.00	<0.01	19	44	69	<1	<20	<10	6	0.34
R2 O6		68	>10.00	0.01	17	19	73	<1	<20	<10	3	0.43

A DIVISION OF INCHCAPE INSPECTION & TESTING SERVICES

REPORT: V90-36225.0

DATE PRINTED: 18-SEP-90

PROJECT: NONE GIVEN

PAGE 40

SAMPLE NUMBER	ELEMENT UNITS	Mg PCT	Ca PCT	Na PCT	K PCT	Sr PPM	Y PPM
R2 F20		0.68	<0.05	<0.05	0.42	10	4
R2 G1		0.91	0.18	<0.05	<0.05	5	3
R2 G2		3.00	1.01	0.22	3.20	53	7
R2 G3		1.12	0.41	0.11	0.46	30	8
R2 G4		0.64	<0.05	<0.05	0.23	8	6
R2 G5		<0.05	<0.05	<0.05	<0.05	6	<1
R2 G6		0.69	<0.05	<0.05	0.17	14	8
R2 H1		<0.05	0.06	<0.05	0.26	17	8
R2 H2		1.79	1.23	0.08	0.81	30	15
R2 H4		0.54	0.11	<0.05	0.35	6	8
R2 H5		1.32	3.11	<0.05	0.15	32	12
R2 H6		<0.05	0.73	<0.05	<0.05	13	21
R2 H7		0.05	<0.05	<0.05	0.11	4	1
R2 J1		1.08	0.82	<0.05	0.06	10	6
R2 K1		<0.05	<0.05	<0.05	0.07	2	1
R2 K2		<0.05	<0.05	<0.05	0.13	76	1
R2 K3		0.39	<0.05	0.06	0.60	15	2
R2 L1		0.33	<0.05	<0.05	0.20	5	2
R2 M1		1.63	4.83	0.28	1.32	172	42
R2 M2		0.26	0.87	<0.05	0.36	149	8
R2 M4		0.42	0.10	<0.05	0.10	6	4
R2 M6		1.42	0.10	<0.05	0.66	3	5
R2 M7		0.49	3.19	0.09	<0.05	59	13
R2 M9		0.74	2.03	0.05	<0.05	77	5
R2 M10		<0.05	<0.05	<0.05	0.08	8	2
R2 N1		1.11	0.82	0.07	0.46	37	12
R2 N2		0.14	<0.05	<0.05	0.18	12	3
R2 N3		0.06	<0.05	<0.05	0.17	12	3
R2 N4		0.40	0.07	<0.05	0.53	12	5
R2 N5		1.26	0.52	0.10	1.16	22	18
R2 N6		0.36	0.14	<0.05	0.24	23	7
R2 N7		1.14	0.18	<0.05	0.44	6	7
R2 N8		<0.05	<0.05	<0.05	0.06	11	3
R2 N9		0.58	3.14	<0.05	<0.05	31	22
R2 O1		0.45	0.07	<0.05	0.62	11	3
R2 O2		<0.05	<0.05	<0.05	<0.05	2	2
R2 O3		1.95	0.60	<0.05	1.29	10	19
R2 O4		1.07	2.89	0.06	0.08	43	20
R2 O5		0.05	<0.05	<0.05	0.16	24	3
R2 O6		0.09	0.09	<0.05	0.21	5	4

A DIVISION OF INCHCAPE INSPECTION & TESTING SERVICES

DATE PRINTED: 18-SEP-90

PROJECT: NONE GIVEN

PAGE 5A

REPORT: V90-36225.0

SAMPLE NUMBER	ELEMENT UNITS	Au 10g PPM	Ag PPM	Cu PPM	Pb PPM	Zn PPM	Mo PPM	Ni PPM	Co PPM	Cd PPM	Bi PPM	As PPM
R2 07		52	1.3	33	372	22	18	6	4	5	8	>2000
R2 P1		<5	1.5	173	16	77	15	105	43	<1	6	440
R2 P2		<5	1.2	1272	290	103	97	288	101	<1	41	180
R2 P3		4673	3.1	503	2170	79	30	135	119	127	45	>2000
R2 P4		2018	<0.2	10	148	16	3	7	7	119	13	>2000
R2 Q1		82	1.8	75	55	31	2	40	12	2	10	>2000
R2 Q2		>10000	9.9	226	7953	30	<1	6	6	<1	24	>2000
R2 Q3		69	1.0	401	27	12	3	19	16	1	5	1377
R2 Q4		586	0.6	731	299	67	<1	27	24	7	37	>2000
R2 Q7		2931	0.8	245	79	12	<1	42	343	125	185	>2000
R2 Q8		89	2.5	316	27	40	2	169	45	1	<5	1948
R2 R1		3117	19.2	33	1689	41	48	71	302	128	1391	>2000
R2 R2		162	<0.2	161	106	94	25	35	16	7	71	>2000
R2 R3		>10000	22.2	463	8417	26	<1	4	6	<1	34	>2000
R2 R4		>10000	>50.0	556	>10000	>20000	21	7	5	591	55	>2000
R2 R5		5146	5.0	146	4818	339	15	183	487	160	30	>2000
R2 R6		3199	14.7	259	8534	1045	2	244	40	188	961	>2000
R2 S1		399	2.2	441	624	77	6	89	35	13	27	>2000
R2 S2		2485	4.0	35	962	90	3	11	2	8	1974	>2000
R2 T1		759	2.2	18	234	21	1	10	18	112	125	>2000
R2 T2		3879	3.8	5	525	39	1	15	220	235	922	>2000
R2 T3		2109	0.4	<1	152	22	2	5	89	252	144	>2000
R2 U1		100	2.4	270	112	44	6	7	5	9	17	>2000
R2 U2		25	1.4	102	147	154	4	102	34	5	7	>2000
R2 U3		32	0.6	98	61	25	10	26	6	2	7	1066
R2 U4		12	0.7	144	24	46	5	31	13	<1	<5	433
R2 U5		12	0.8	117	41	45	2	34	13	<1	<5	475
R2 U6		991	1.7	24	202	27	32	19	5	102	19	>2000
R2 U7		1198	44.4	68	>10000	29	10	6	3	125	291	>2000
R2 U8		60	0.8	9	298	20	3	7	2	12	<5	>2000
R2 U9		4276	>50.0	677	>10000	7004	6	33	54	334	1360	>2000
R2 V1		87	10.8	77	3478	227	3	57	26	7	42	>2000
R2 V2		35	2.7	152	670	71	5	54	23	1	12	930
R2 V3		22	3.0	205	797	128	17	29	36	<1	<5	392
R2 V4		12	0.7	85	137	74	4	23	15	<1	<5	201
R2 V5		835	4.5	615	669	184	7	128	18	28	55	>2000
R2 V6		341	2.2	18	696	63	1	7	2	3	195	1169
R2 V7		51	0.8	37	268	21	879	5	2	<1	23	381
R2 V8		426	1.4	11	170	12	8	4	32	80	51	>2000
R2 V9		1507	>50.0	42	>10000	62	6	2	3	152	262	>2000

A DIVISION OF INCHCAPE INSPECTION & TESTING SERVICES

DATE PRINTED: 18-SEP-90

REPORT: V90-36225.0

PROJECT: NONE GIVEN

PAGE 58

SAMPLE NUMBER	ELEMENT UNITS	Sb PPM	Fe PCT	Mn PCT	Te PPM	Ba PPM	Cr PPM	V PPM	Sn PPM	W PPM	La PPM	Al PCT
R2 07		43	1.96	0.08	<10	197	108	18	<20	12	6	0.84
R2 P1		5	7.40	0.57	10	26	99	77	<20	<10	10	3.15
R2 P2		36	2.38	0.03	<10	5	69	4	<20	<10	6	0.14
R2 P3		219	2.82	0.07	<10	5	61	<1	<20	<10	2	1.13
R2 P4		189	1.94	0.01	<10	10	67	<1	<20	<10	<1	0.13
R2 Q1		9	>10.00	0.04	17	67	72	64	<20	18	11	3.12
R2 Q2		1270	3.45	<0.01	<10	<5	19	<1	<20	<10	<1	0.16
R2 Q3		13	9.70	0.02	16	26	43	15	<20	11	51	0.97
R2 Q4		35	2.44	0.38	<10	5	33	13	<20	<10	3	2.31
R2 Q7		247	2.14	0.01	24	6	28	<1	<20	<10	<1	0.12
R2 Q8		12	>10.00	0.11	22	8	38	47	<20	16	13	1.80
R2 R1		529	2.18	0.06	59	14	64	<1	<20	<10	<1	1.49
R2 R2		187	3.40	0.19	<10	58	64	142	<20	<10	7	0.54
R2 R3		>2000	3.50	<0.01	<10	<5	21	<1	<20	<10	<1	0.13
R2 R4		>2000	2.25	0.02	<10	6	42	<1	<20	201	<1	0.52
R2 R5		764	2.54	<0.01	<10	7	41	<1	<20	<10	3	0.09
R2 R6		1072	3.43	<0.01	<10	<5	14	<1	<20	<10	2	0.04
R2 S1		74	8.89	0.03	15	37	107	192	<20	<10	19	4.38
R2 S2		280	0.66	0.01	92	43	85	<1	<20	<10	2	0.10
R2 T1		119	>10.00	0.02	21	23	85	<1	<20	<10	11	0.25
R2 T2		302	3.21	<0.01	<10	7	38	<1	<20	<10	<1	0.18
R2 T3		220	2.70	<0.01	<10	5	35	<1	<20	<10	<1	0.03
R2 U1		153	>10.00	<0.01	24	36	37	21	<20	20	<1	0.17
R2 U2		22	4.04	0.02	<10	45	72	28	<20	<10	18	4.07
R2 U3		10	1.62	0.03	<10	88	34	25	<20	<10	12	2.30
R2 U4		7	3.37	0.02	<10	103	73	113	<20	<10	35	3.56
R2 U5		8	3.01	0.03	<10	91	52	46	<20	<10	18	4.08
R2 U6		134	>10.00	0.02	16	31	77	31	<20	<10	3	1.33
R2 U7		>2000	>10.00	0.01	12	17	92	<1	<20	<10	<1	0.11
R2 U8		109	1.03	<0.01	<10	55	123	3	<20	<10	2	0.20
R2 U9		>2000	2.26	<0.01	<10	<5	40	<1	<20	<10	<1	0.07
R2 V1		875	8.20	0.04	14	80	176	177	<20	<10	25	6.76
R2 V2		163	6.54	0.04	10	82	143	108	<20	<10	5	5.92
R2 V3		114	>10.00	0.14	16	56	70	81	28	11	12	2.75
R2 V4		35	5.14	0.05	<10	183	71	169	<20	<10	43	2.78
R2 V5		74	3.15	<0.01	<10	<5	37	3	<20	668	<1	0.69
R2 V6		261	0.65	0.02	19	17	118	2	<20	13	1	0.08
R2 V7		72	1.17	<0.01	<10	26	148	4	<20	10	20	0.13
R2 V8		96	4.47	<0.01	11	20	112	<1	<20	<10	1	0.11
R2 V9		>2000	9.09	<0.01	18	37	66	<1	<20	<10	4	0.22

A DIVISION OF INCHCAPE INSPECTION & TESTING SERVICES

REPORT: V90-36225.0

DATE PRINTED: 18-SEP-90

PROJECT: NONE GIVEN

PAGE 50

SAMPLE NUMBER	ELEMENT UNITS	Hg PCT	Ce PCT	Na PCT	K PCT	Sr PPM	Y PPM
R2 07		0.15	0.11	<0.05	0.42	7	4
R2 P1		2.56	0.55	0.12	1.47	38	5
R2 P2		0.05	0.15	<0.05	<0.05	9	8
R2 P3		1.13	<0.05	<0.05	0.34	2	5
R2 P4		<0.05	<0.05	<0.05	0.05	9	3
R2 Q1		0.52	2.05	0.13	0.10	145	5
R2 Q2		<0.05	<0.05	<0.05	<0.05	7	2
R2 Q3		0.13	0.22	<0.05	0.45	15	12
R2 Q4		2.81	0.15	<0.05	<0.05	2	5
R2 Q7		<0.05	<0.05	<0.05	<0.05	2	2
R2 Q8		0.56	0.11	<0.05	<0.05	4	14
R2 R1		2.16	0.20	<0.05	1.29	5	9
R2 R2		0.06	<0.05	<0.05	0.30	64	10
R2 R3		<0.05	<0.05	<0.05	<0.05	3	3
R2 R4		0.12	<0.05	<0.05	0.16	15	3
R2 R5		<0.05	<0.05	<0.05	<0.05	10	4
R2 R6		<0.05	<0.05	<0.05	<0.05	6	3
R2 S1		1.33	2.85	0.11	0.72	187	17
R2 S2		<0.05	<0.05	<0.05	<0.05	8	2
R2 T1		0.10	0.88	<0.05	0.15	17	4
R2 T2		<0.05	0.08	<0.05	0.10	57	3
R2 T3		<0.05	0.08	<0.05	<0.05	2	2
R2 U1		<0.05	<0.05	<0.05	<0.05	2	3
R2 U2		0.22	4.68	0.30	0.12	234	5
R2 U3		0.49	2.92	0.06	0.11	111	11
R2 U4		1.40	4.87	0.12	0.65	214	35
R2 U5		0.79	4.58	0.12	0.29	221	17
R2 U6		1.22	0.32	<0.05	0.97	7	11
R2 U7		<0.05	<0.05	<0.05	<0.05	13	2
R2 U8		0.09	0.10	<0.05	0.11	3	4
R2 U9		<0.05	<0.05	<0.05	<0.05	11	2
R2 V1		2.84	3.23	0.26	2.22	268	9
R2 V2		2.11	2.19	0.51	1.84	148	14
R2 V3		2.53	4.11	0.06	0.28	91	8
R2 V4		1.41	1.65	0.25	1.10	108	23
R2 V5		0.17	0.18	<0.05	0.41	5	6
R2 V6		<0.05	0.69	<0.05	0.05	10	1
R2 V7		<0.05	1.02	<0.05	0.09	17	15
R2 V8		<0.05	<0.05	<0.05	0.07	5	<1
R2 V9		<0.05	<0.05	<0.05	0.11	15	1

A DIVISION OF INCHCAPE INSPECTION & TESTING SERVICES

DATE PRINTED: 18-SEP-90

REPORT: V90-36225.0

PROJECT: NONE GIVEN

PAGE 6A

SAMPLE NUMBER	ELEMENT UNITS	Au 10g PPB	Ag PPM	Cu PPM	Pb PPM	Zn PPM	Mo PPM	Ni PPM	Co PPM	Cd PPM	Bi PPM	As PPM
R2 V10		>10000	10.5	80	1980	75	<1	15	5200	337	>2000	>2000
R2 V11		255	2.4	57	1014	1007	4	19	39	21	74	>2000
R2 W1		165	6.5	33	>10000	2537	2	6	19	293	52	>2000
R2 W2		19	0.9	30	419	112	<1	21	83	<1	5	>2000
R2 W3		27	0.6	10	275	114	2	17	7	<1	8	>2000
R2 W4		884	<0.2	24	80	47	3	15	27	<1	29	>2000
R2 W5		22	20.5	8034	83	181	1	10	17	<1	29	>2000
R2 W6		52	2.9	1868	276	58	<1	6	10	<1	99	>2000
R2 W7		36	7.0	942	34	120	3	35	8	2	8	>2000
R2 W8		10	2.2	82	71	610	3	24	9	4	5	896
R2 W9		<5	6.2	3639	25	36	6	7	19	<1	151	237
R2 X1		<5	1.3	133	26	78	3	9	2	<1	<5	240
R2 X2		<5	1.5	51	74	21	1	7	2	<1	5	322
R2 X3		12	<0.2	623	40	37	<1	5	6	<1	37	13
R2 X4		<5	2.4	244	58	37	8	49	12	<1	6	184
R2 X5		<5	0.9	102	31	42	6	15	3	<1	<5	97
R2 X6		12	0.8	81	42	53	3	13	4	<1	<5	105
R2 X7		29	0.7	6	40	4	2	1	<1	<1	10	80
R2 X8		8	2.1	138	24	127	6	9	<1	<1	<5	48
R2 X10		<5	0.7	16	30	82	<1	9	7	<1	<5	95
R2 X11		<5	0.8	244	16	26	2	11	7	<1	<5	179
R2 X12		<5	<0.2	19	31	436	<1	7	5	<1	23	5
R2 X13		<5	<0.2	25	30	391	<1	7	5	<1	21	42
R2 X14		8	<0.2	<1	47	548	<1	7	6	<1	30	26
R2 X15		6	1.8	27	96	59	21	5	1	<1	20	131
R2 X16		15	2.8	155	271	117	8	58	9	<1	9	155
R2 X17		1749	3.1	151	91	16	2	11	42	132	10	>2000
R2 X18		8560	13.5	450	9038	98	11	5	6	148	522	>2000

A DIVISION OF INCHCAPE INSPECTION & TESTING SERVICES

REPORT: V90-36225.0

DATE PRINTED: 18-SEP-90

PROJECT: NONE GIVEN

PAGE 68

SAMPLE NUMBER	ELEMENT UNITS	Sb PPM	Fe PCT	Mn PCT	Te PPM	Ba PPM	Cr PPM	V PPM	Sn PPM	W PPM	La PPM	Al PCT
R2 V10		356	2.58	<0.01	88	8	33	<1	<20	858	4	0.21
R2 V11		518	4.97	0.28	<10	64	55	35	<20	22	36	0.92
R2 W1		>2000	2.17	0.02	<10	10	44	<1	<20	<10	<1	0.09
R2 W2		138	6.84	0.05	11	54	33	21	<20	<10	12	1.54
R2 W3		91	1.23	0.10	<10	27	141	<1	<20	<10	4	0.14
R2 W4		155	2.93	0.09	<10	9	20	<1	<20	<10	<1	0.92
R2 W5		17	3.80	0.03	<10	104	96	5	<20	<10	21	0.63
R2 W6		42	3.06	0.03	<10	44	49	<1	<20	<10	13	0.44
R2 W7		21	6.05	0.04	<10	62	42	49	<20	<10	4	1.33
R2 W8		13	4.75	0.04	<10	47	15	8	<20	<10	3	1.56
R2 W9		8	1.86	0.02	<10	25	82	9	<20	105	32	0.48
R2 X1		9	7.51	<0.01	<10	111	97	59	<20	13	5	0.51
R2 X2		14	1.26	<0.01	<10	150	111	13	<20	<10	2	0.07
R2 X3		20	3.59	<0.01	<10	33	30	5	<20	<10	<1	0.09
R2 X4		11	7.79	0.03	12	62	85	115	<20	16	7	0.80
R2 X5		<5	5.10	0.01	<10	336	68	82	<20	<10	5	1.40
R2 X6		9	1.92	0.01	<10	403	105	71	<20	<10	9	1.12
R2 X7		19	0.69	<0.01	<10	143	36	7	<20	<10	25	0.30
R2 X8		14	>10.00	<0.01	25	157	70	149	<20	19	6	1.14
R2 X10		<5	4.66	0.05	<10	256	38	44	<20	<10	13	5.27
R2 X11		<5	7.33	0.01	12	41	71	70	<20	<10	32	1.80
R2 X12		10	3.09	<0.01	<10	43	21	9	<20	<10	22	0.78
R2 X13		8	2.88	<0.01	<10	50	26	11	<20	<10	28	0.87
R2 X14		17	3.63	<0.01	<10	16	13	7	<20	<10	<1	0.33
R2 X15		25	9.09	<0.01	13	125	65	18	<20	10	13	0.24
R2 X16		33	>10.00	<0.01	14	28	41	11	<20	11	8	0.42
R2 X17		145	>10.00	<0.01	24	13	42	<1	<20	<10	<1	0.20
R2 X18		>2000	2.02	<0.01	<10	6	58	<1	<20	<10	<1	0.11

A DIVISION OF INCHCAPE INSPECTION & TESTING SERVICES

DATE PRINTED: 18-SEP-90

REPORT: V90-36225.0

PROJECT: NONE GIVEN

PAGE 60

SAMPLE NUMBER	ELEMENT UNITS	Mg PCT	Ca PCT	Na PCT	K PCT	Sr PPM	Y PPM
R2 V10		<0.05	0.07	<0.05	0.08	7	4
R2 V11		0.42	1.22	<0.05	0.38	58	15
R2 W1		<0.05	<0.05	<0.05	0.05	6	2
R2 W2		1.16	5.86	<0.05	0.27	74	10
R2 W3		0.08	0.15	<0.05	<0.05	4	2
R2 W4		0.89	0.06	<0.05	<0.05	41	6
R2 W5		0.12	3.20	<0.05	0.25	35	10
R2 W6		0.18	1.03	<0.05	0.12	14	7
R2 W7		1.65	0.56	<0.05	0.07	26	13
R2 W8		0.84	3.69	<0.05	<0.05	129	3
R2 W9		0.10	1.12	<0.05	0.07	10	13
R2 X1		0.24	<0.05	<0.05	0.07	4	1
R2 X2		<0.05	<0.05	<0.05	<0.05	4	<1
R2 X3		<0.05	<0.05	<0.05	<0.05	1	4
R2 X4		0.77	9.27	<0.05	<0.05	490	35
R2 X5		0.60	0.16	<0.05	0.45	77	4
R2 X6		0.50	0.10	<0.05	0.38	25	5
R2 X7		<0.05	<0.05	<0.05	0.27	5	3
R2 X8		0.39	<0.05	<0.05	0.21	22	6
R2 X10		0.86	2.14	0.65	0.86	132	6
R2 X11		1.32	0.46	<0.05	0.39	11	9
R2 X12		<0.05	<0.05	<0.05	<0.05	5	8
R2 X13		<0.05	0.05	<0.05	<0.05	5	9
R2 X14		<0.05	<0.05	<0.05	<0.05	3	4
R2 X15		<0.05	<0.05	<0.05	0.35	10	3
R2 X16		<0.05	0.27	<0.05	0.12	10	7
R2 X17		<0.05	<0.05	<0.05	0.10	9	2
R2 X18		<0.05	<0.05	<0.05	0.06	1	1

A DIVISION OF INCHCAPE INSPECTION & TESTING SERVICES

REPORT: V90-36228.0

DATE PRINTED: 18-SEP-90

PROJECT: NONE GIVEN

PAGE 1A

SAMPLE NUMBER	ELEMENT UNITS	Au 10g PPB	Ag PPM	Cu PPM	Pb PPM	Zn PPM	Mo PPM	Ni PPM	Co PPM	Cd PPM	Bi PPM	As PPM
R2 Z1		31	1.4	6	83	13	<1	4	<1	1	30	613
R2 Z2		11	0.7	46	33	104	2	39	27	<1	<5	150
R2 Z3		9	9.5	8	90	5	<1	3	3	<1	95	167
R2 Z4		6	11.2	9	188	131	2	4	3	2	37	105
R2 Z5		13	6.8	4	146	4	<1	2	<1	<1	180	78
R2 Z6		7	2.7	6	88	3	2	4	4	<1	21	140
R2 Z7		19	1.4	9	36	3	4	3	<1	<1	<5	104
R2 Z8		6	1.4	3	30	13	1	4	<1	<1	<5	98
R2 Z9		23	0.3	3	32	11	<1	4	<1	<1	<5	88
R2 Z10		401	4.8	10	21	6	<1	4	1	<1	<5	127
R2 Z11		61	6.4	251	220	63	1	38	32	<1	82	64
R2 Z12		20	0.7	15	24	13	<1	19	7	<1	<5	38
R2 Z13		9	<0.2	5	12	12	<1	10	3	<1	<5	31
R2 Z14		11	0.4	37	12	21	<1	10	2	<1	<5	14
R2 Z15		20	1.1	61	50	51	1	5	2	1	<5	1017
R2 Z16		11	<0.2	7	21	13	2	4	<1	<1	<5	60
R2 Z17		13	<0.2	7	16	46	<1	26	10	<1	<5	29
R2 Z18		11	0.7	16	119	32	<1	9	3	<1	<5	32
R2 Z19		10	3.4	5	1248	13	<1	14	3	<1	11	34
R2 Z20		7	<0.2	16	62	33	<1	32	16	<1	<5	24
R2 Z21		18	<0.2	18	36	33	2	8	2	<1	<5	86
R2 Z22		8	0.3	24	30	59	<1	12	3	<1	<5	13
R2 Z23		<5	0.5	36	25	82	<1	18	7	<1	<5	19
R2 Z24		6	0.4	47	85	92	<1	39	18	<1	<5	5
R2 Z25		4779	<0.2	23	44	17	<1	10	13	<1	18	>2000
R2 Z26		109	0.5	42	18	31	<1	15	8	<1	<5	>2000
R2 Z27		999	0.9	20	244	9	<1	11	20	10	<5	>2000
R2 Z28		28	<0.2	3	20	4	<1	6	1	<1	<5	999
R2 Z29		18	<0.2	3	18	19	<1	10	3	<1	<5	530
R2 Z30		13	0.4	4	8	90	<1	30	16	<1	<5	218
R2 Z31		7	0.4	4	13	60	<1	25	7	<1	<5	109

A DIVISION OF INCHCAPE INSPECTION & TESTING SERVICES

REPORT: V90-36228.0

DATE PRINTED: 18-SEP-90

PROJECT: NONE GIVEN

PAGE 18

SAMPLE NUMBER	ELEMENT UNITS	Sb PPM	Fe PCT	Mn PCT	Te PPM	Ba PPM	Cr PPM	V PPM	Sn PPM	W PPM	La PPM	Al PCT
R2 Z1		27	0.40	<0.01	<10	6	92	<1	<20	72	3	0.10
R2 Z2		6	6.94	0.05	<10	23	50	27	<20	<10	32	2.59
R2 Z3		8	1.08	<0.01	<10	<5	119	<1	<20	<10	<1	0.06
R2 Z4		<5	2.35	0.03	<10	11	66	<1	<20	94	2	0.19
R2 Z5		<5	0.26	<0.01	<10	<5	100	<1	<20	<10	23	0.03
R2 Z6		6	1.24	<0.01	<10	<5	103	<1	<20	<10	<1	<0.02
R2 Z7		13	2.63	<0.01	<10	9	89	2	<20	<10	25	0.18
R2 Z8		<5	0.43	0.03	<10	7	147	<1	<20	<10	1	0.02
R2 Z9		7	0.26	<0.01	<10	7	155	<1	<20	<10	3	0.05
R2 Z10		24	5.04	<0.01	<10	7	86	1	<20	<10	3	0.10
R2 Z11		<5	>10.00	0.02	24	6	68	9	<20	17	2	1.30
R2 Z12		<5	1.18	0.02	<10	100	119	2	<20	<10	7	0.17
R2 Z13		<5	0.59	<0.01	<10	15	95	2	<20	<10	22	0.15
R2 Z14		<5	3.56	<0.01	<10	12	75	10	<20	<10	8	0.25
R2 Z15		8	>10.00	<0.01	19	7	93	5	<20	16	10	0.26
R2 Z16		<5	0.99	<0.01	<10	<5	92	5	<20	<10	12	0.31
R2 Z17		<5	2.42	0.02	<10	<5	97	7	<20	<10	17	0.48
R2 Z18		<5	1.94	<0.01	<10	9	107	4	<20	<10	2	0.37
R2 Z19		<5	0.45	0.02	<10	<5	119	1	<20	<10	14	0.10
R2 Z20		<5	1.02	0.04	<10	<5	77	3	<20	<10	11	0.36
R2 Z21		<5	0.78	<0.01	<10	<5	170	2	<20	<10	3	0.15
R2 Z22		<5	5.23	0.02	<10	6	62	12	<20	<10	9	1.47
R2 Z23		<5	5.87	0.03	<10	13	77	11	<20	<10	8	1.88
R2 Z24		<5	5.87	0.03	<10	28	58	12	<20	<10	25	1.76
R2 Z25		119	2.54	<0.01	<10	<5	35	<1	<20	<10	<1	0.07
R2 Z26		<5	6.25	0.03	<10	9	100	<1	<20	<10	9	0.71
R2 Z27		27	6.87	<0.01	<10	6	87	<1	<20	<10	5	0.12
R2 Z28		<5	0.38	<0.01	<10	<5	133	<1	<20	<10	21	0.04
R2 Z29		<5	1.29	0.03	<10	<5	125	5	<20	<10	3	0.51
R2 Z30		<5	3.04	0.04	<10	<5	99	8	<20	<10	2	1.64
R2 Z31		<5	5.33	0.06	<10	15	65	14	<20	<10	29	2.08

A DIVISION OF INCHCAPE INSPECTION & TESTING SERVICES

REPORT: V90-36228.0

DATE PRINTED: 18-SEP-90

PROJECT: NONE GIVEN

PAGE 10

SAMPLE NUMBER	ELEMENT UNITS	Mg PCT	Ca PCT	Na PCT	K PCT	Sr PPM	Y PPM
R2 Z1		<0.05	<0.05	<0.05	0.06	1	2
R2 Z2		1.05	<0.05	<0.05	0.11	8	5
R2 Z3		<0.05	<0.05	<0.05	<0.05	<1	<1
R2 Z4		<0.05	0.22	<0.05	0.13	3	6
R2 Z5		<0.05	<0.05	<0.05	<0.05	2	1
R2 Z6		<0.05	<0.05	<0.05	<0.05	<1	<1
R2 Z7		<0.05	<0.05	<0.05	<0.05	12	2
R2 Z8		<0.05	0.32	<0.05	<0.05	10	<1
R2 Z9		<0.05	<0.05	<0.05	<0.05	2	<1
R2 Z10		<0.05	<0.05	<0.05	<0.05	3	<1
R2 Z11		0.53	<0.05	<0.05	0.08	5	2
R2 Z12		0.06	<0.05	<0.05	<0.05	4	1
R2 Z13		0.07	0.11	<0.05	<0.05	8	2
R2 Z14		<0.05	<0.05	<0.05	<0.05	2	<1
R2 Z15		<0.05	<0.05	<0.05	<0.05	<1	2
R2 Z16		0.13	<0.05	<0.05	<0.05	4	1
R2 Z17		0.19	<0.05	<0.05	<0.05	2	3
R2 Z18		0.24	0.15	<0.05	<0.05	6	<1
R2 Z19		<0.05	0.34	<0.05	<0.05	11	3
R2 Z20		0.12	0.06	<0.05	<0.05	4	4
R2 Z21		0.08	<0.05	<0.05	<0.05	1	<1
R2 Z22		0.73	<0.05	<0.05	<0.05	2	1
R2 Z23		1.05	0.07	<0.05	0.06	7	2
R2 Z24		0.97	0.09	<0.05	0.11	11	4
R2 Z25		<0.05	<0.05	<0.05	<0.05	<1	2
R2 Z26		0.38	<0.05	<0.05	<0.05	3	4
R2 Z27		<0.05	<0.05	<0.05	<0.05	9	<1
R2 Z28		<0.05	0.15	<0.05	<0.05	8	2
R2 Z29		0.26	<0.05	<0.05	<0.05	1	<1
R2 Z30		1.23	0.06	<0.05	<0.05	2	<1
R2 Z31		0.89	6.42	<0.05	0.07	278	12

Bondar-Clegg & Company Ltd.
130 Pemberton Ave.
North Vancouver, B.C.
V7P 2R5
(604) 985-0681 Telex 04-352667



Certificate
of Analysis

A DIVISION OF INCHCAPE INSPECTION & TESTING SERVICES

DATE PRINTED: 25-SEP-90

REPORT: V90-36225.6

PROJECT: NONE GIVEN

PAGE 1

SAMPLE NUMBER	ELEMENT UNITS	Au OPT	Ag OPT	Ag OPT	Cu PCT	Pb PCT	Zn PCT
R2 A2				2.32	5.31		
R2 A3				1.24			
R2 C29		0.418					
R2 Q2		1.000					
R2 R3		1.050					
R2 R4		0.617	2.98			11.24	4.17
R2 U7						1.83	
R2 U9				12.23		13.54	
R2 V9				3.11		3.20	
R2 V10		0.616					
R2 W1						1.63	

Bondar-Clegg & Company Ltd.
130 Pemberton Ave.
North Vancouver, B.C.
V7P 2R5
(604) 985-0681 Telex 04-352667



Certificate of Analysis

A DIVISION OF INCHCAPE INSPECTION & TESTING SERVICES

REPORT: V90-36225.6

DATE PRINTED: 25-SEP-90

PROJECT: NONE GIVEN

PAGE 2

SAMPLE NUMBER	ELEMENT UNITS	Au OPT	Ag OPT	Ag OPT	Cu PCT	Pb PCT	Zn PCT
A2				2.32	5.31		
Duplicate				2.38	5.26		
A3				1.24			
Duplicate				1.24			
R4		0.617	2.98			11.24	4.17
Duplicate						11.12	4.14
U7						1.83	
Duplicate						1.83	
U9				12.23		13.54	
Duplicate				12.02		13.63	
V9				3.11		3.20	
Duplicate						3.18	