

MAP NO.: ASSESSMENT REPORT X
105 0 1 PROSPECTUS
CONFIDENTIAL X
OPEN FILE

DOCUMENT NO: 092946
MINING DISTRICT: WATSON LAKE
TYPE OF WORK: DIAMOND DRILLING

REPORT FILED UNDER: PHELPS DODGE CORPORATION OF CANADA

DATE PERFORMED: AUGUST, 1990 DATE FILED: MARCH 8, 1991

LOCATION: LAT.: 63°10'N AREA: MACMILLAN PASS
LONG.: 130°10'W VALUE \$: 9,400

CLAIM NAME & NO.: JASON 89-92, 116-116, 124-125
JASON 135, 161-176, 177FR-188FR
JASON 192FR-197FR, MIKE 1-10
ACE 18FR-21FR, 25FR-30FR, 33FR, 39FR-40FR,

WORK DONE BY: FOX GEOLOGICAL CONSULTANTS LTD., R.S. CAMERON

WORK DONE FOR: PHELPS DODGE CORP CANADA, LTD.

DATE TO GOOD STANDING:

REMARKS: THIS REPORT DEALS WITH ONE OF TWELVE HOLES DRILLED DURING THE 1990 FIELD SEASON ON THE JASON PROPERTY. HOLE 90-90 WAS THE ONLY HOLE DRILLED IN THE WATSON LAKE M.D. PORTION OF THE PROPERTY. ALL OTHERS WERE DRILLED IN THE MAYO M.D. THE HOLE WAS DRILLED TO TEST MAG AND GRAVITY ANOMALIES IN THE AREA. THE HOLE INTERSECTED THE LOWER PORTION OF UNIT 3a, SILT BANDED ARGILLITE, WITH TRACE AMOUNTS OF PYRRIHOTITE. NO EXPLANATION FOR THE GRAVITY ANOMALY WAS FOUND.



Indian and Northern
Affairs Canada

Affaires indiennes
et du Nord Canada

March 4, 1991



340-13-3

DIRECTOR GENERAL, YUKON REGION

ATTENTION: REGIONAL MANAGER MINERAL RIGHTS

RESTRICTED

Enclosed are Diamond Drill Logs etc. submitted by Fox Geological Consultants Ltd. for assessment on the JASON, MIKE and ACE mineral claims located on 105-0-01.

Diamond Drilling was as follows:

DDH 90-90 JASON 115 166.4 metres

TOTAL 166.4 metres

Assessment Credit requested is \$9,400.00. The drill core location is not known at this time and will be forwarded when received.

Yours truly,

Patti L. McLeod
Mining Recorder
Watson Lake Mining District
Box 269
Watson Lake, Yukon
Y0A 1C0

092946

encls.

cc: Regional Manager, Geological Services

NJM

Canada

THORN AFFAIRS PROGRAM

DATE: 13 Mar 91

269

TIME: _____

WATSON LAKE, YUKON

1C0

TOTAL NO. OF PAGES 2
INCLUDING COVER PAGE

TELECOPIER COVER PAGE

FAX #403-536-7331
PHONE #403-536-7366

Geological Services

DEXED _____
RECEIVED March 13/91
Gidder

TO: P.L. MCLEOD

MINING RECORDER, WATSON LAKE MINING DISTRICT

Drill core location for logs previously submitted.

BY: RMMR

FOX GEOLOGICAL CONSULTANTS LTD.

1409 - 409 Granville Street.
Vancouver, B.C.
Canada V6C 1T8

Tel. (604) 689-5738

March 8, 1991

Patti L. McLeod
Mining Recorder
Watson Lake Mining District
P. O. Box 269
Watson Lake, Yukon
Y0A 1C0

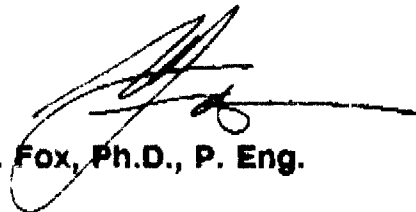
Re: Jason, Ace, Mike, 10501 - Your Letter dated March 4, 1991

Core for hole 90-90 is stored on the property at kilometre ~200 of the Canal Road.

Yours truly,

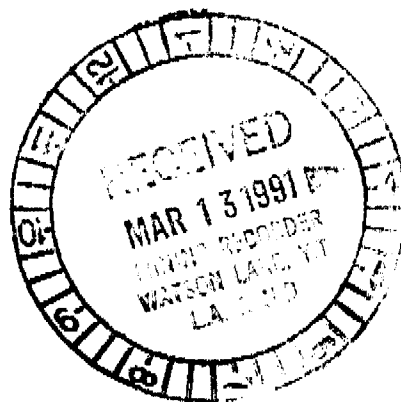
FOX GEOLOGICAL CONSULTANTS LTD.

092946



P. E. Fox, Ph.D., P. Eng.

/am



Geology

Attn: Dennis

13 March 1991

The Jason, Ace Mike Logs were sent to
Geology 16 August 1990.

We have just received the enclosed fax
from Watson Lake.

Alma.

AFFAIRS PROGRAM

DATE: _____

LAKE, YUKON

TIME: _____

CO

TOTAL NO. OF PAGES
INCLUDING COVER PAGE

TELECOPIER COVER PAGE

FAX #403-536-7331
PHONE #403-536-7366

R.M.M.R.

FROM: P.L. MCLEOD

MINING RECORDER, WATSON LAKE MINING DISTRICT

Drill core location for logs previously submitted.

Geological Services



FOX GEOLOGICAL CONSULTANTS LTD.

1409 - 409 Granville Street,
Vancouver, B.C.
Canada V6C 1T8

Tel. (604) 669-5736

March 8, 1991

Patti L. McLeod
Mining Recorder
Watson Lake Mining District
P. O. Box 269
Watson Lake, Yukon
Y0A 1C0

Re: Jason, Ace, Mike, 10501 - Your Letter dated March 4, 1991

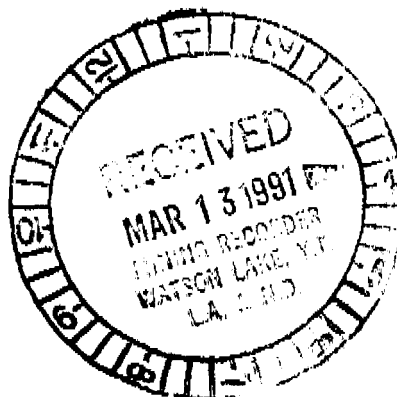
Core for hole 90-90 is stored on the property at kilometre ~200 of the Canol Road.

Yours truly,

FOX GEOLOGICAL CONSULTANTS LTD.

P. E. Fox, Ph.D., P. Eng.

/am



FOX GEOLOGICAL CONSULTANTS LTD.

**ASSESSMENT REPORT ON THE
1990 DIAMOND DRILL PROGRAM
JASON PROPERTY
MACMILLAN PASS, YUKON, CANADA
WATSON LAKE MINING DIVISION**

**63°10'N 130°10W
NTS 10501**

**Work by
Phelps Dodge Corporation of Canada, Limited
Suite 912 - 120 Adelaide Street West
Toronto, Ontario M5H 1T1
On Behalf of
MacPass Resources Limited
Suite 200 Financial Plaza
204 Lambert Street
Whitehorse, Yukon Y1A 1T4**

**R. S. Cameron, B.Sc.
Fox Geological Consultants Ltd.
1409 - 409 Granville Street
Vancouver, B.C. V6C 1T8**

February 27, 1991

Work Completed June 5th to September 14th, 1990



092946



TABLE OF CONTENTS

	Page
1.0 INTRODUCTION	1
2.0 LOCATION, ACCESS, PHYSIOGRAPHY	1
3.0 HISTORY AND PREVIOUS WORK	3
4.0 CLAIMS	5
5.0 GEOLOGY	9
5.1 Regional Geology	9
5.2 Property Geology	13
5.3 Economic Geology	19
6.0 1990 WORK PROGRAM	25
7.0 RESULTS	25
7.1 Drilling	25
8.0 CONCLUSIONS AND RECOMMENDATIONS	28
9.0 DISBURSEMENTS	29
10.0 CERTIFICATE	30
11.0 SELECTED REFERENCES	31

List of Tables

	Page
Table I - Jason Property Exploration History	4
Table II - Shale-Hosted Pb-Zn-Ag Deposits of the Selwyn Basin	11
Table III - Drill Hole Data	27

List of Figures

Figure 1 - Location Map	2
Figure 2 - Claim Outline with 1990 Drill Holes	6
Figure 3 - Claim Map	7
Figure 4 - Location of Hole 90-90	8
Figure 5 - Regional Geological Setting	10
Figure 6 - Geology of Macmillan Fold Belt	12
Figure 7 - Stratigraphic Column	14
Figure 8 - Geology of Macmillan Pass - Tom and Jason Deposits	pocket
Figure 9 - Schematic Tom-Jason Model	23
Figure 10 - Deposit Models with Regional Alteration	24
Figure 11 - 1990 Work Program	26
Figure 12 - Diamond Drill Cross Sections	pocket

Appendices

	Page
Appendix I - Drill Logs	32
Appendix II - Claim List	33
Appendix III - Filing Records	34

1.0 INTRODUCTION

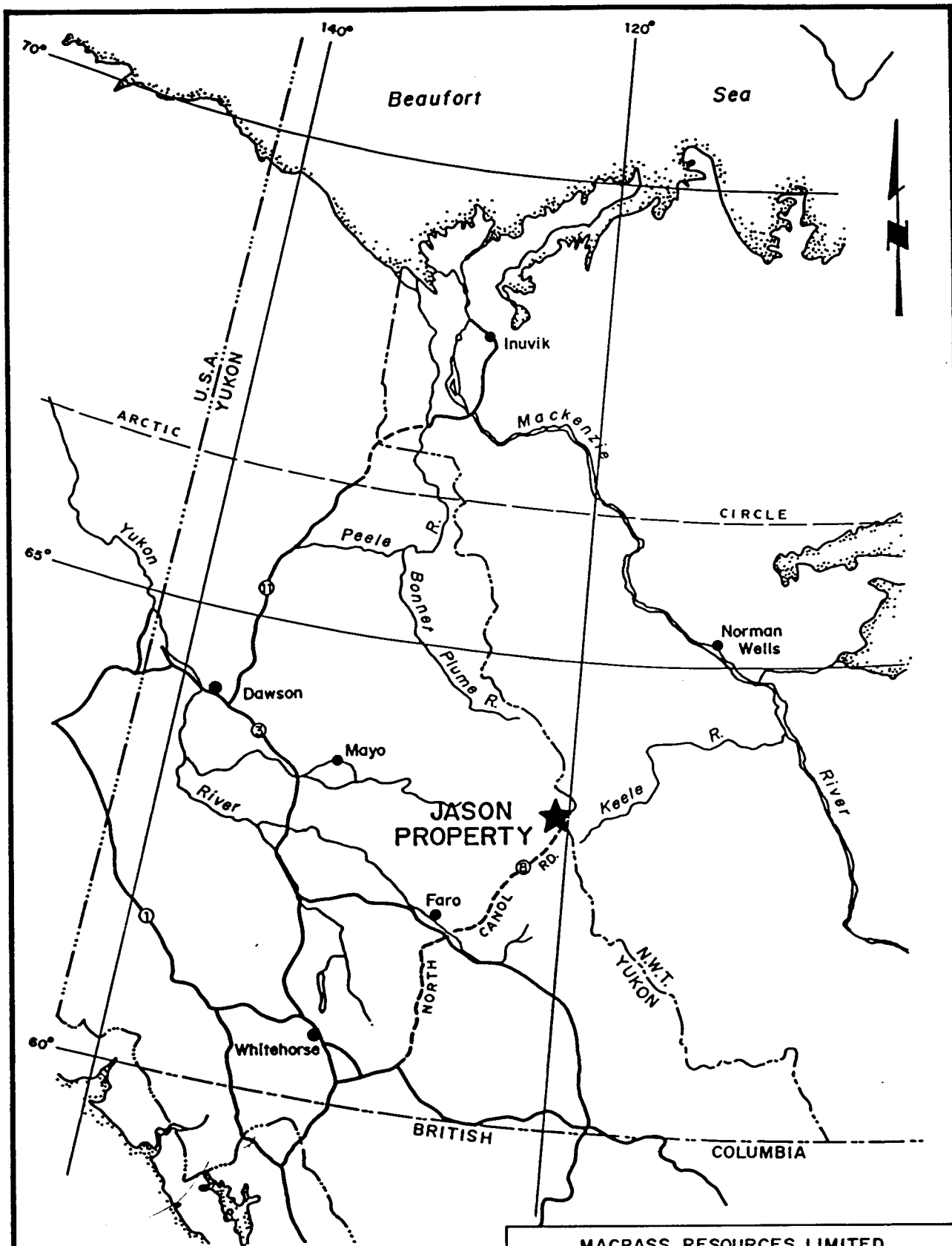
Work on the Jason property, Macmillan Pass Area, Yukon Territory, in 1990 included geological re-interpretation of previous work and diamond drill testing of ten targets with 12 drill holes. One drill hole 90-90 was completed within the Watson Lake Mining Division and the results of this hole along with the geological re-interpretation are presented in this report. The bulk of the 1990 work program was completed within the Mayo Mining Division and was not filed for assessment against those claims.

2.0 LOCATION, ACCESS, PHYSIOGRAPHY

The Jason property is located in east-central Yukon Territory at 63°10'N and 130°10'W on mapsheet 105O1 (Figure 1). The property straddles the North Canal Highway which was constructed along with a pipeline during World War II to transport oil from the Norman Wells oilfield in the Mackenzie River valley to a refinery being built in Whitehorse. The Yukon portion of the highway has been maintained as a summer travel only two-lane gravel road while the NWT portion has not been maintained. The nearest community to the Jason property is Ross River located 220 kilometres to the southwest at the junction of the North Canal road and the Robert Campbell Highway. Road distance to Whitehorse is 630 kilometres and tidewater at Skagway, Alaska is 810 kilometres. Faro is located 60 kilometres northwest of Ross River on the Robert Campbell Highway.

Ross River provides all necessary services including scheduled flights to Whitehorse, lodging and fuel and expediting services. A gravel airstrip on the Tom property located six kilometres northwest of the Jason camp can accommodate small twin engine planes.

The Jason property is located in the Mackenzie Mountains, a subdivision of the Northern Rocky Mountains. Topography is characterized by rugged mountain ranges separated by large glacial derived u-shaped valleys. Elevations on the property vary from 1,140 metres in the Macmillan River valley to 2,016 metres on Jason Mountain. Treeline is variable but generally occurs around 1,300 to 1,400 metres elevation. Vegetation in the lower levels includes stunted black spruce and alder; higher elevations include widespread moss and lichen. Permafrost is locally present, particularly near the edges of the large muskeg covered flanks of the Macmillan River. Fauna are not particularly numerous but include deer, caribou, grizzly bear, wolves and foxes as well as numerous



MACPASS RESOURCES LIMITED			
PROJECT Nº 166		JASON, Y.T.	
LOCATION MAP			
JASON PROPERTY			
SCALE			DWG Nº
1:5,840,000			1

ground squirrels and gophers. Fish life is very limited as most water courses in the area have a natural low Ph.

The weather comprises long, harsh, cold winters with moderate snowfall, up to ten feet of accumulation, and short, cool, wet summers. The effective working season is from June to the end of September.

3.0 HISTORY AND PREVIOUS WORK

Exploration of the MacMillan Pass district dates from 1951 when prospectors working for Hudson Bay Exploration and Development discovered the Tom, East and West Zone deposits. Subsequent work on the Tom property by Hudson Bay Exploration and Development included extensive diamond drilling and underground development. Cominco Ltd. optioned the Tom property in 1988 and has completed three substantial drill programs one.

In 1974 an exploration syndicate was formed comprised of private individuals, Brinco and Mitex Mines, whose purpose was to explore for lead and zinc deposits in the Ogilvie and MacKenzie mountains of the Yukon and Northwest Territories. Mapping in the vicinity of the Tom deposit traced the stratigraphy across the valley of MacMillan River to the current Jason property. Soil and silt anomalies in the area led to the staking of the original Jason claim block. At the time Hudson Bay was exploring the Tom property based on a carbonate replacement model and did not recognize the significance of the stratigraphic relationship in terms of regional exploration. Drilling by the Ogilvie Joint Venture led to the discovery of the Main zone in 1975 and subsequently the South zone in 1978.

In 1979, Pan Ocean Oil optioned the property from the Ogilvie Joint Venture and proceeded to block out the reserves on the Main and South zones. Very limited reconnaissance drilling was completed outside of the two zones. Trenching uncovered the End zone in 1980 which was drill-tested by four holes. The property lay idle from 1983 to 1989. In 1990 Phelps Dodge Corporation of Canada, Limited optioned the property from MacPass Resources Limited and completed a drill program as outlined in this report. MacPass Resources Limited was formed in 1990 as a private company owned by CSA Gold Corp. (62.1%), Western Canadian Mining Limited (22.6%) and Ogilvie Mineral Corp. (15.3%). CSA Gold Corp. acquired Abermin Corporation's interest

in the Jason property following the latter's bankruptcy. The Jason exploration history is outlined in Table II.

Table I
Jason Property Exploration History

1974	-	Mapping by Ogilvie Joint Venture traced Tom stratigraphy to southwest. Staked Jason claims and completed preliminary soil and silt geochemical survey.
1975	-	Additional staking, geochemistry and geophysics, diamond drilling of five holes, 692 metres, discovery of Main zone.
1976	-	Expansion of grid, additional diamond drilling of Main zone, 13 holes, 2,120 metres. Cominco staked Nidd claims north and west of Jason.
1977	-	An oil field right was used to attempt a deep hole in the valley bottom but was abandoned at 182-metre depth. 1,228 metres of overburden drilling completed and 1,405 metres of diamond drilling in six holes on Main zone.
1978	-	Delineation drilling of Main zone and exploratory drilling of geochemistry to the south. Discovery of South zone. 17 holes, 3,082 metres.
1979	-	The property was acquired by Pan Ocean Oil Ltd. (which subsequently become Aberford Resources then Abermin Corp.) who drilled nine holes totalling 1,935 metres.
1980	-	Extensive surface program that included gravity and mag surveys, soil geochemistry and backhoe trenching. Successful deep drilling of South zone and discovery of End zone. 18 drill holes completed (including wedged holes) totalling 4,930 metres.
1981	-	Continued deep drilling of South and Main zones, 28 holes (including wedged holes) totalling 11,146 metres.
1982	-	Five deep drill holes on the South zone.
1983-89	-	Dormant - no activity.
1990	-	Property optioned by Phelps Dodge Corporation of Canada, Limited.
	-	Completion of 12 holes totalling 2,667.7 metres, 66 km. of VLF-EM
	-	and 66 km. of magnetic survey.

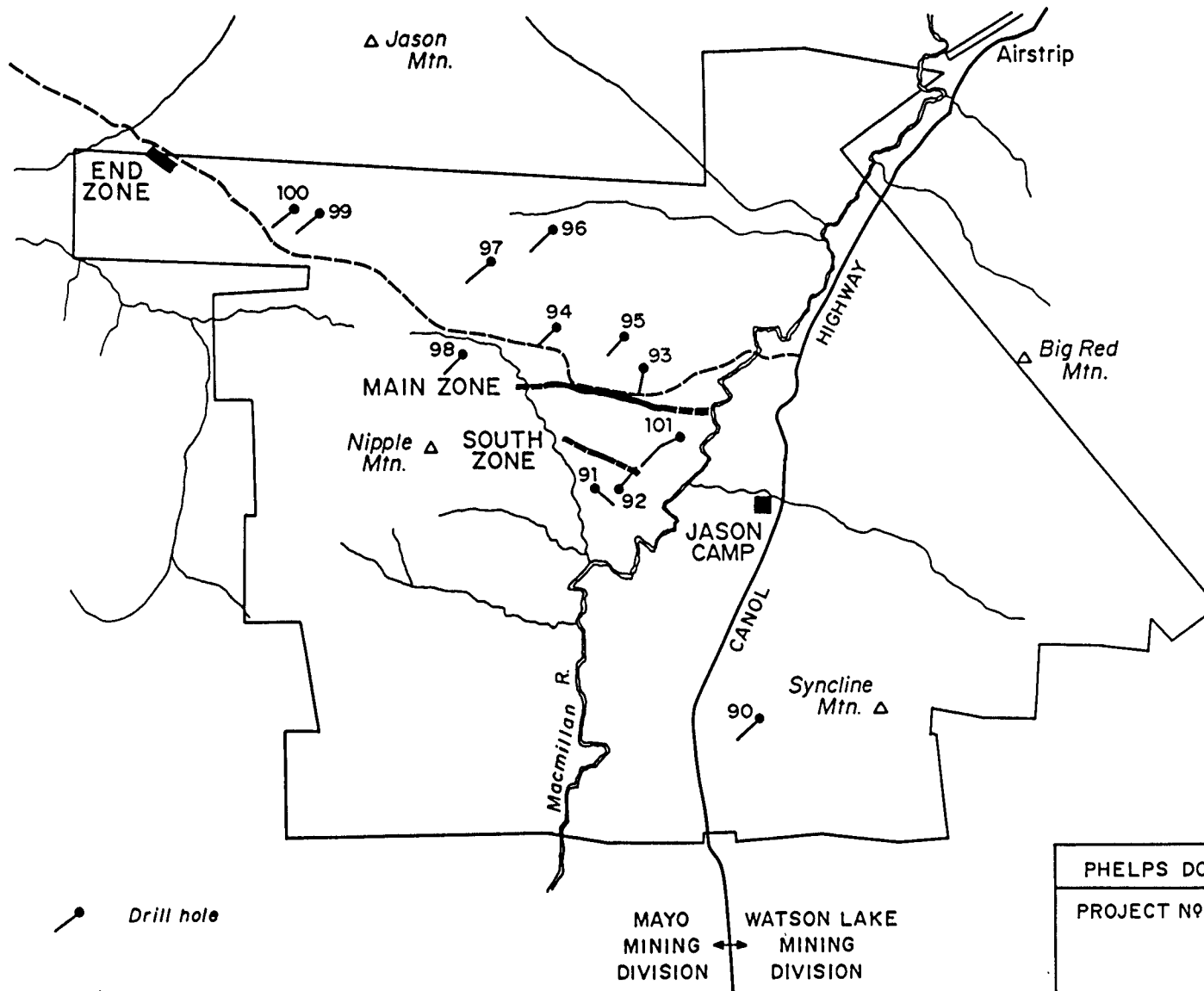
4.0 CLAIMS

The Jason property comprises 283 claims and fractional claims covering an area of 3,500 hectares. The claim block falls within two mining divisions, the Mayo mining division north of the Canol highway and the Watson Lake mining division south of the Canol highway. The reserves outlined to date in the Main, South and End zones are within the Mayo mining division. The claim boundary is outlined in Figure 2 along with 1990 drill hole locations. A claim map is presented in Figure 3 and the location of drill hole 90-90 on Figure 4.

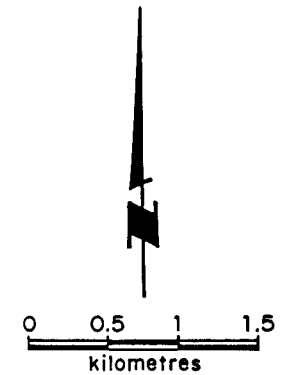
Work completed in 1990 by Phelps Dodge straddled the mining division boundary. Drill hole 90-90 completed in the Watson Lake district will be used to bring the minimum expiry date on the claims to December 31, 1992. Work completed within the Mayo district will not be filed as claims within that group are in good standing to at least the year 2000.

The Jason property is currently owned by MacPass Resources Limited, a private Yukon corporation whose sole mineral asset is the Jason claims. Phelps Dodge Corporation of Canada Limited through a wholly owned subsidiary of Phelps Dodge Corporation, Columbian Chemicals Canada Limited, has an option to earn 50% equity in MacPass Resources.

Work was filed on the following claims within the Watson Lake Mining Division on December 17, 1990. Copies of the representative documents are included in Appendix III.



COMINCO'S TOM DEPOSITS
X



● Drill hole

⎓ Property boundary

--- Minor road

MAYO MINING DIVISION ↔ WATSON LAKE MINING DIVISION

PHELPS DODGE CORPORATION OF CANADA LTD.

PROJECT N^o: 166

JASON PROJECT, Y.T.

CLAIM OUTLINE
and

1990 DRILL PROGRAMME

SCALE	DATE	NTS	DWG N ^o
As shown		105/01	2

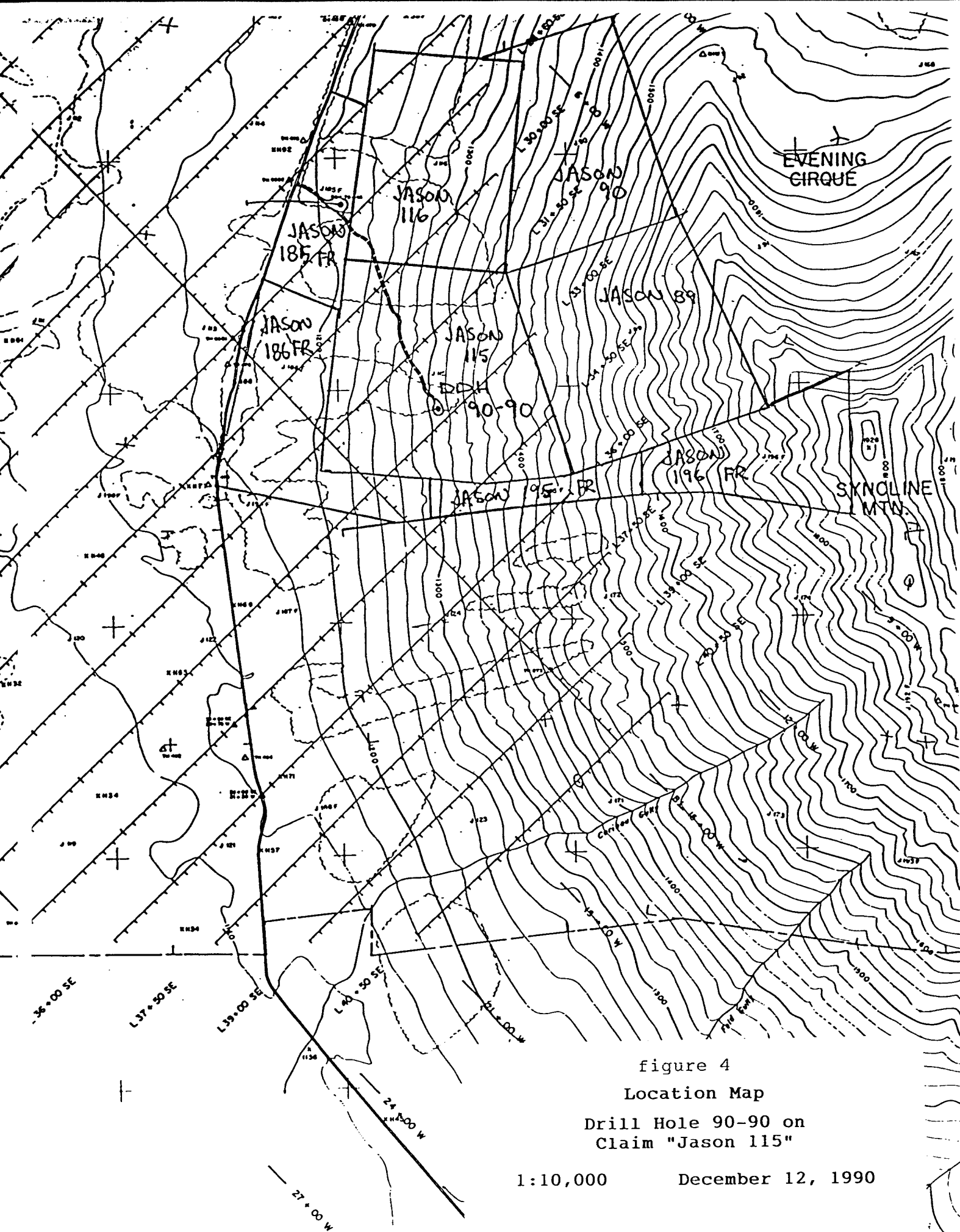


figure 4
Location Map
Drill Hole 90-90 on
Claim "Jason 115"

1:10,000 December 12, 1990

Grant Numbers	Claim Name(s)
Y84511-14, Y84515-16, Y84517-18	Jason 89-92, 115-16, 124-124
Y84571, Y93952-67, YA20135-46	Jason 135, 161-176, 177Fr.-188Fr.
YA35586-91	Jason 192Fr.-197Fr.
YA11526-29, YA11530-35	Ace 18Fr.-21Fr., 25Fr.-30Fr.
YA115536-38, YA11539-40	Ace 33Fr.-35Fr., 39Fr.-40Fr.
YA00024-25, YA00805, YA11541-47	Mike 1-10

5.0 GEOLOGY

The following section provides a description of the regional geological setting of the Jason deposits, a detailed description of the local stratigraphy and property geology together with an outline of the various facies types that comprise the Jason deposits and proposes a simplified geological exploration model. Regional descriptions are drawn from studies generated by the Geological Survey of Canada and DIAND's geological division while property descriptions are drawn largely from the results of work by previous property operators with significant re-interpretations from the current author's 1990 work.

5.1 Regional Geology

The Jason deposit lies within the Selwyn Basin, a geological domain stretching from east-central Yukon south into northern British Columbia (Figure 5). The Selwyn Basin contains strata from Late Proterozoic to Middle Devonian that were deposited in a "passive margin" style basin on the North American Miogeocline. The development of the basin was modified by rifting events, each marked by limited volcanism, deformation and abrupt changes in sedimentation. These rift events are accompanied by syn-sedimentary faulting, localized high heat flows, and formation of sediment-hosted stratiform lead-zinc-silver deposits precipitated from brines exhaled on to the sea floor. The Selwyn Basin sedimentation ended by the Late Devonian during collision with a Mesozoic island-arc. Jura-Cretaceous sediments were subsequently deposited, deformed and eroded.

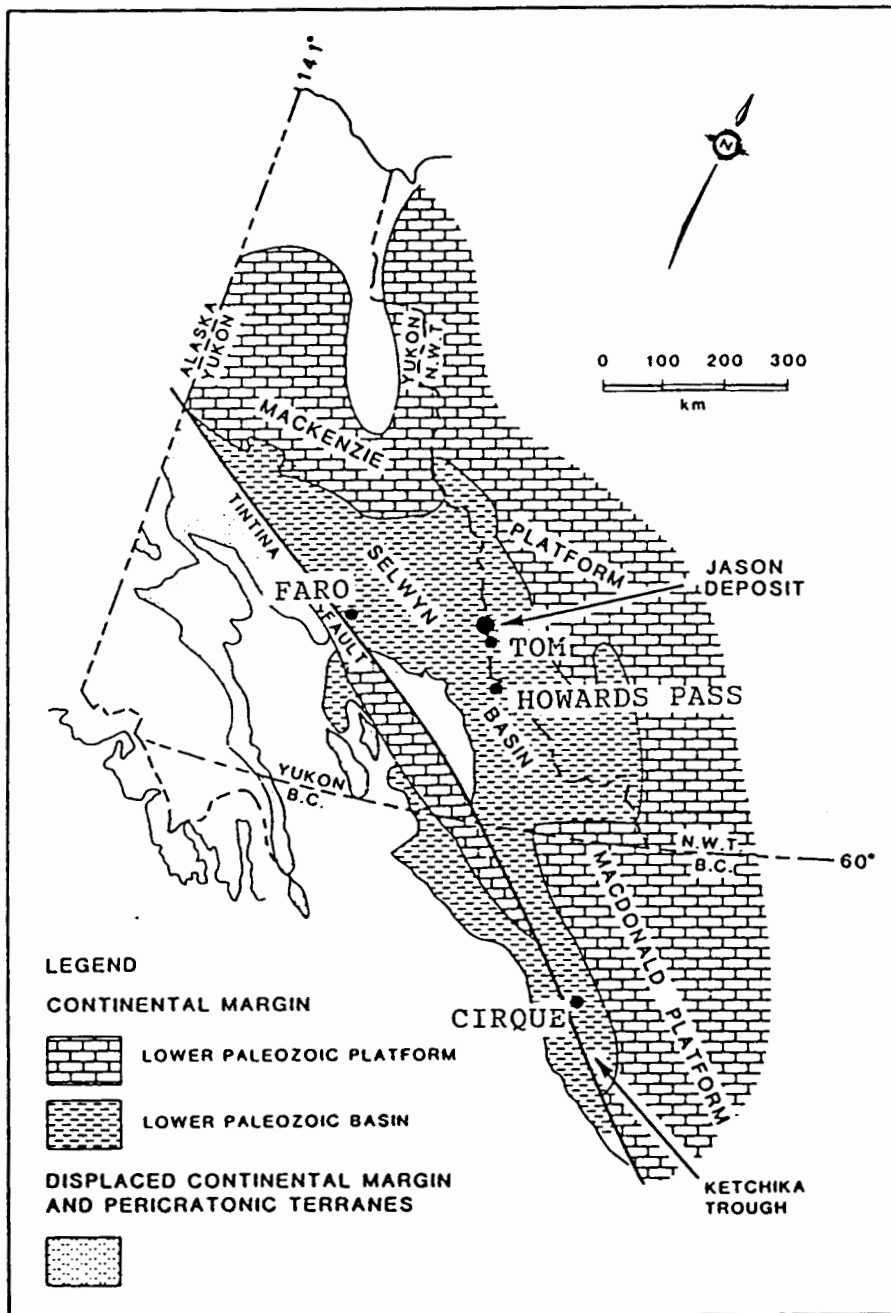


FIGURE 5 REGIONAL GEOLOGICAL SETTING

Map of northwestern Canada showing the location of Jason deposit within the context of Lower Paleozoic paleogeography of autochthonous North America (platform carbonate and basin shale-chert facies). Displaced terranes of North American affinity are also shown.

after Turner, 1990

Widespread mid-Cretaceous granite intruded the deformed strata. Skarn development was widespread where granitic intrusions encountered favourable strata.

The Selwyn Basin currently hosts one of the largest suite of sediment-hosted base metal deposits in the world. Located in four separate districts, they include the Faro deposits, the Tom-Jason deposits, the Howard's Pass deposit and the Cirque deposit (Table II, Figure 5).

Table II
Shale-Hosted Pb-Zn-Ag Deposits
of the Selwyn Basin

District	Deposit	Tonnes	Lead %	Zinc %	Silver (gpt)
Anvil	Faro Open Pit	17,500,000	3.04	4.77	38
Anvil	Faro U/G	2,000,000	4.59	7.00	61
Anvil	Vangorda	7,500,000	3.80	4.90	54
Anvil	Grum	30,600,000	3.40	5.80	57
Anvil	Dy	21,000,000	5.50	6.70	84
Anvil	Swim	4,300,000	3.80	4.70	51
Gataga	Cirque	34,500,00	2.20	7.80	47
Howard's Pass	Howard's Pass	100,000,000	1.50	6.00	?
Macmillan	Jason	10,103,600	6.50	7.40	65
Pass	Tom	15,722,500	4.61	7.00	49.1

In the Macmillan Pass area, a 30-kilometre wide by 60-kilometre belt of Late Proterozoic to Triassic strata trends west-northwest across the more northerly regional structural fabric of the Selwyn Basin. This belt, referred to as the Macmillan Fold Belt, has been divided into the North, Central and South blocks. All of the Macmillan Pass lead-zinc

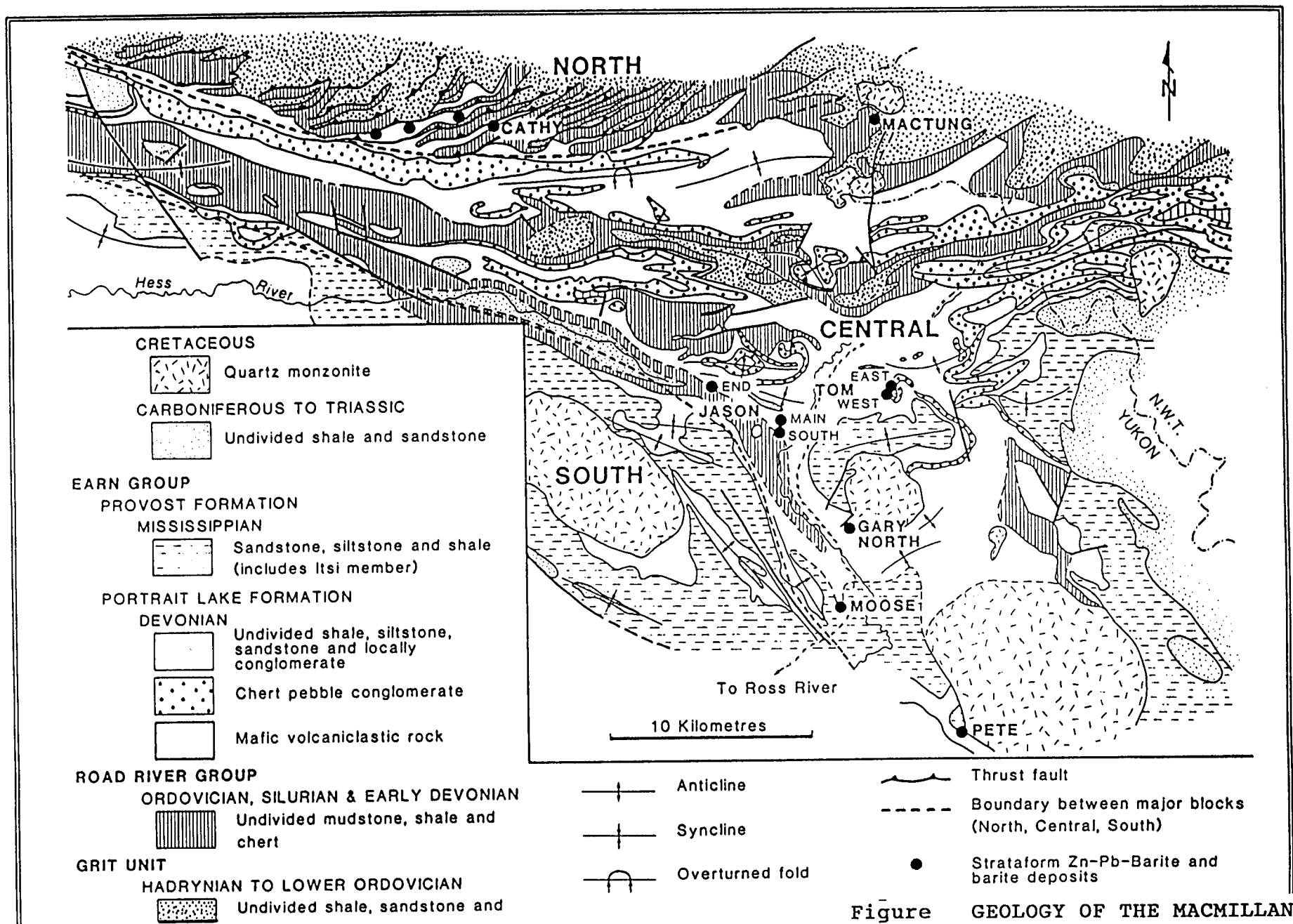


Figure 6
GEOLOGY OF THE MACMILLAN FOLD BELT
 (Abbot and Turner, 1990)

deposits fall within the Central block within the Portrait Lake Formation of the Devonian Lower Earn Group rocks (Figure 6).

The Portrait Lake Formation has been subdivided into three informal members; the lower Macmillan Pass Member, a thick sequence of coarse clastics; the Tom Member, a sequence of carbonaceous siliceous mudstones and cherts with elevated barium; and the Itsi Member, a package of brown, rusty weathering clastics. The Tom Sequence is the host to the Jason and Tom sedimentary exhalative deposits.

5.2 Property Geology

Recent geological work on the Jason property by Bob Turner of the GSC in conjunction with regional work by Grant Abbott of DIAND has defined the stratigraphy in the vicinity of the Jason and Tom deposits. The current work program by Phelps Dodge is the first to apply the newly defined units to the Jason property. Geological studies completed by previous project geologists including Bailes, Lu, Teal, Teal and Smith contributed significantly to the current understanding of the property geology.

Stratigraphy

Description of the local stratigraphy is summarized on Figure 7 and discussed below. Geology of the immediate Jason and Tom area is plotted on Figure 8.

Road River Group

The lowermost unit is strata equivalent to Early Devonian Road River Group. Rocks that comprise the Road River Group in the vicinity of the Jason South Zone include black cherts, very carbonaceous mudstones, calcareous mudstones and skeletal silty limestones. Fossil fragments include <.5 cm. brachiopods and crinoid stems. Locally an Ordovician-Devonian index fossil, "Tentaculites" is present. Units are generally massive to coarsely bedded. Farther to the north near the End Zone the Road River strata include finely bedded siltstones and mudstones with local coarse breccia bodies of unknown derivation. Coarse rugose corals are locally present. Road River strata include intensely altered mafic alkalic volcanic debris 15 kilometres farther north at the Boundary Creek deposit. Precise identification of Road River strata is difficult. Generally Road River strata

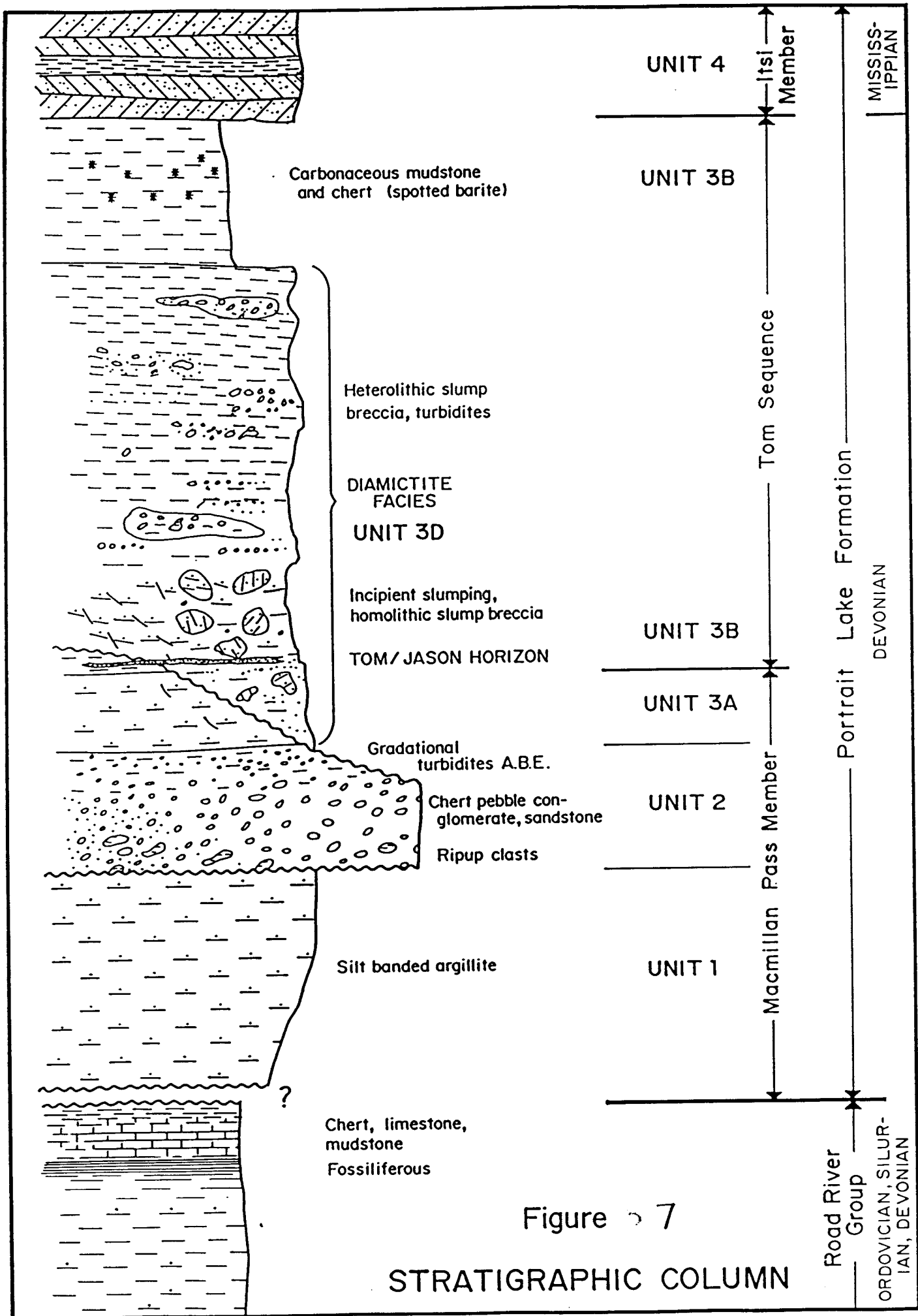


Figure 7

STRATIGRAPHIC COLUMN

is fossiliferous, calcareous and massive. Rocks higher in the stratigraphy namely Unit 3b, a black carbonaceous mudstone, can be easily confused with Road River strata. Contacts with overlying units are in all cases young faults. Locally quartz porphyritic felsic dykes fill the fault plane.

Unit 1, 2, 3a - Macmillan Pass Member

Units 1, 2 and 3a together comprise the Macmillan Pass Member of the Portrait Lake Formation and represent a rapid prograding and subsequent retrograding sequence. Unit 1 whose lower contact was not observed comprises up to 50 cm of thin rhythmically bedded silt- and sand-banded argillite. Light grey coloured silt and sand beds from 1 cm to 4 cm are interbedded with black argillite layers, the latter comprising from 50% to 100% of the rock. Coarse beds are locally ripple cross laminated. These fine and coarse couplets comprise typical BCE turbidites representative of distal, low energy turbidite environments.

Unconformably overlying Unit 1 is Unit 2, a coarse clastic unit characterized by the presence of rounded light coloured chert clasts to several centimetres in diameter. The thickness of Unit 2 is variable from 0 to 80 metres but is typically from 40 metres to 50 metres. Recently recognized sedimentary complexities within Unit 2 have led to the re-interpretation of the unit. Unit 2 underlying the Main Zone and northerly to the Jason Syncline is dominated by massive chert pebble conglomerate that grades upwards into turbidite sequences several metres thick comprised of ABE type turbidites. Unit 2 underlying the South Zone, a distance of not much more than 500 metres from the equivalent strata underlying the Main Zone, is comprised of interbedded chert grit beds and coarse sandstones interbedded with black argillite. Apparently a very abrupt facies transition occurs between the two zones. In the South Zone area the base of Unit 2 is comprised of angular rip-up clasts of argillite probably derived from the underlying Unit 1. Farther to the south on Marmot Ridge and also on Syncline Mountain a thick sequence of sand-banded argillite with isolated grit beds and chert pebbles probably marks the limits of deposition of Unit 2.

Unit 3a like Unit 1 is comprised of silt- and sand-banded argillite of varying proportions of coarse to fine bands. It is gradational from underlying Unit 2 and marks the completion of coarse sedimentation and/or subsequent rapid marine transgression. Subsidence may

have been rapid leading to slope instability as marked by local intraformational slumps very similar in character to that seen in Unit 3d.

Unit 3b - Tom Member

Unit 3b conformably overlies unit 3a and can be up to several hundred metres thick. This unit is host to the stratiform mineral bodies that comprise the Jason and Tom deposits. Unit 3b is dominantly a black, carbonaceous, siliceous shale that weathers a distinctive silver colour. In core the unit is variable from very fine cherty mudstone to a gritty radiolarian chert. Locally, flattened barite nodules to 2 mm comprise up to 30% of the rock mass and convey a spotted appearance to the rock. Spotted barite horizons are more common towards the top of the unit where they can form continuous massive barite horizons. Barite nodules are locally replaced by pyrite, probably during diagenesis. The Tom and Jason stratiform sulphide and sulphate bodies occur within the lower 50 metres of the unit.

Unit 3d - Diamictite Facies

Units 1 to 3b are a continuous succession of sedimentary units. Locally within the Tom and Jason area this simple succession is disrupted by Unit 3d a diamictite unit that represents catastrophic failure of fault scarps that formed as a result of syn-sedimentary faulting.

The word diamictite is a nongenetic term for a non-sorted heterogeneous rock with a muddy matrix. Although this term has been used extensively to describe Unit 3d it is somewhat inappropriate. The best description of the unit is given by the term olistostrome which is defined as:

A sedimentary deposit consisting of a chaotic mass of intimately mixed heterogeneous materials (such as blocks and mud) that accumulated as a semifluid body by submarine gravity sliding or slumping of unconsolidated sediments. It is a mappable, lens-like stratigraphic unit lacking true bedding but intercalated among normally bedded sequences.

Unit 3d is extremely diverse but can be generally described as a mix of heterolithic and homolithic breccias. Homolithic breccias contain centimetre to metre size blocks of silt-

and sand-banded argillite in a matrix of mud and smaller lithic fragments. Blocks are rotated and can either be framework or matrix supported. House-size blocks have been recognized in outcrops on Jason Mountain. Heterolithic breccias comprise isolated chert pebbles or blocks of chert pebble conglomerate mixed with blocks of silt-banded argillite all within a mudstone matrix. The presence of isolated chert pebbles along with blocks of chert pebble conglomerate indicate that the source rocks were partially consolidated. Blocks of chert pebble conglomerate exhibit hydrothermal alteration effects such as iron carbonate veining and sulphides and some clasts are comprised of banded massive sulphides similar to the Jason and Tom deposits. Small scale slump textures are evident in more massive silt-banded argillites adjacent to the diamictite units. A crude internal stratigraphy exists within the thicker diamictite bodies, such as those in the Jason South and Main Zones. The lowermost portions of the over-all diamictite unit are comprised of homolithic slump breccias most likely derived from Unit 3a as it became elevated on the syn-sedimentary fault scarp. As subsidence increased Unit 3a is eroded exposing more and more of Unit 2 which is reflected by the increasing proportion of chert pebbles and chert pebble conglomerate clasts in the middle of the diamictite. The increase in proportion of homolithic breccias near the top of the diamictite reflect the erosion of Unit 2 and the resultant influx of silt-banded argillite clasts derived from Unit 1 as it is eroded off the scarp.

As Unit 3d turbidites are shed off the fault scarp into the basin they can either scour and assimilate units already deposited within the basin or bury and preserve units. As this turbidite activity is taking place, normal 3b sedimentation is on-going so that intervals of 3b sediments can be interbedded within Unit 3d. The stratiform mineral bodies are also forming synchronously with the fault scarp formation so they can also be interbedded with the diamictite units. Unit 3d due to its scouring nature can have an erosional base placing its lower contact anywhere from well into Unit 2 to up into Unit 3b. Only in rare cases within the Jason South and Main Zones is the complete stratigraphic succession of Unit 2, 3a and 3b with its stratiform mineralization preserved. Stratiform bodies can occur within early diamictite units and in turn can be eroded away by latter diamictites.

Syn-Sedimentary Faults

Syn-sedimentary faults also referred to as syn-depositional faults are best described in this section as they are primary sedimentary features. The first appearance of diamictites in the sedimentary succession marks the onset of syn-sedimentary faulting. On the Tom

property, this occurs at the Unit 3a level whereas on the Jason property the onset of syn-sedimentary faulting occurs at the level of Unit 3b. At the time of faulting the sediments are in large part unconsolidated and saturated. Subsidence is accommodated by a network of listric normal syn-sedimentary faults and related reverse faults with accompanying rotation of blocks and slumping. Hydrothermal activity synchronous with the subsidence has locally cemented some of the sediments so that they remain intact during slumping while others disaggregate during slumping. Small scale syn-sedimentary structures are evident in core. Sense of displacement on these structures are difficult to measure. Rocks are foliated, often silicified and have broken, angular and rotated fragments of vein material, mostly iron carbonate fragments. In the vicinity of holes 51, 42, 43 and 30 in the South Zone area several of these structures are noted in core but they are not co-planar and probably represent parallel but separate structures.

Unit 4 - Itsi Member

Unit 4 unconformably overlies Unit 3b and is present in the southeast corner of the Jason property, on Syncline Mountain. It is a rusty weathering sand laminated micaceous siltstone and sandstone, locally cross laminated.

Intrusives

A quartz monzonite pluton is located at the headwaters of Sekwi Creek in the southeast corner of the claim block. A pyritic, rusty contact aureole extends several hundred metres into the surrounding rocks. Related quartz porphyry dykes are present throughout the property but are most numerous on Big Red Mountain. The dykes are comprised of tiny 1mm to 2mm quartz phenocrysts in a light green aphanitic groundmass. Traces of pyrite and arsenopyrite are locally present. When encountered in drill holes, the dykes appear to occupy fault zones and are usually clay-altered and fractured.

Structure

The structural style of the Jason property is characterized by open to tight polyphase flexural slip folding disrupted by later steep normal and transcurrent faulting. In most places except for the vicinity of the End Zone penetrative fabric is restricted to weakly developed axial planar cleavage. Minor folding is restricted to the more ductile mud-rich units and the laminated sulphide and sulphate beds. The latter can exhibit complex, tight

to isoclinal, folding of the laminae. This may reflect high strain or in part may be attributed to primary features resulting from slumping of sulphide mounds during formation.

The rocks encountered in the End zone exhibit much higher strain than rocks elsewhere on the property. Sand-rich layers are often attenuated and boudined and detached isoclinal, folds are locally present. Megastructures are difficult to recognize due to the paucity of outcrop control and the ambiguous stratigraphy. This zone of high internal strain may reflect proximity to the postulated Hess structural zone however no equivalent zone of deformation is recognized to the southeast along its projected trace.

The Jason Main and South Zones lie on opposite limbs of an overturned syncline. The axis of the syncline trends 120° and plunges 25° to the east. The western nose of the syncline is truncated by a later fault which places Road River strata against Units 1 through 3d. A remnant of Unit 1 near Rat Lake to the northwest may be the continuation of the syncline. This would give a right lateral sense of displacement on the fault.

A similar fold referred to as the Jason Syncline occurs just north of the Jason Main Zone. Separating the two synclines is a down-dropped block of Unit 3a. The northerly bounding fault was cored in hole 94 and can be traced from north of the Main Zone, through hole 94, through holes 99 and 100 and north of the End Zone.

5.3 Economic Geology

Jason Deposits

Reserves

The Jason property currently hosts three separate Pb, Zn, Ag deposits, the Jason Main, South and End zones. Reserves calculated by Abermin personnel total 14.1 million tonnes grading 7.09% lead, 6.57% zinc and 79.9 gpt silver. Reserves as calculated by Abermin were done by polygon methods with a minimum 8% combined lead-zinc cut-off. True widths were calculated by using the average of both (a) the bedding to core angles and (b) the drill hole attitude to over-all strike and dip.

Geology

Jason Main Zone

The Jason Main Zone has received the most drilling to date. It is a steeply dipping tabular body that has been traced for 700 metres along strike at surface and 500 metres down dip with a thickness of three to 18 metres. It is dominated by grey facies massive laminated barite, chert and sphalerite. To the west it is truncated by a late fault that passes from south of the South Zone to Rat Lake. To the east it grades into low grade black facies chert dominant rock. To depth continuity is difficult to assess but it also appears to grade into the black facies.

Jason South Zone

The South Zone is located 500 metres to the south of the Main Zone. It is a composite body comprising up to three lenses each separated by either low grade black facies or argillite or by coarse fault scarp breccias (Unit 3d). The South Zone has been traced along strike for 400 metres and down dip for 600 metres. It is dominantly grey facies type with a well developed vent facies core centred on holes 56A and 56B. Thickness varies between two metres near surface to over 50 metres at depth. The average strike and dip of the zone calculated from a set of three point problems averages 140° strike and 65° northerly dip. The vent facies is extremely well developed and high grade and includes massive pyrite and galena with sphalerite and thick intersections of galena and iron carbonate. The deposit is still open at depth but appears to be dominated by low grade black facies to the west and east. The South Zone was drilled at very oblique angles sometimes less than 10° bedding to core axis resulting in very long sub-parallel intersections. Geology is difficult to correlate between holes as most geological data has to be projected onto common planes. The South Zone and Main Zone may be the same deposit exposed on opposite limbs of a tight syncline.

Jason End Zone

The Jason End Zone is located at the extreme northwestern corner of the property in close proximity to the claim boundary. Cominco's Nidd claims adjoin the Jason claims to the north and west. The deposit was discovered in 1980 by backhoe trenching of

coincident lead geochemical, gravity and magnetic anomalies. Subsequent exploration including trenching and drilling outlined a discontinuous pod of massive pyrite, galena and sphalerite in a gangue of iron carbonate and silica. The deposit is subparallel to a major shear zone that juxtaposes highly altered Road River Strata against silt banded argillites and local chert pebble conglomerate. The precise stratigraphy is difficult to establish but the chert pebble-rich unit may be Unit 2. This places the End Zone well down in the stratigraphic sequence compared to the Jason Main and South Zones.

Deposit Model

The Tom and Jason deposits are stratiform base metal sulphide and sulphate deposits of the sedimentary exhalative class (SEDEX). Other deposits of this type include Meggan, Red Dog and McArthur River. These deposits can be informally subdivided into two types: either precipitation from hydrothermal plumes emanating from vent sites or; precipitation from bottom hugging brines similar to these documented in the Red Sea. Fluid inclusion studies indicate vent fluids most likely behaved as buoyant plumes at Jason and Tom with sulphides and barite precipitated during mixing with sea water (Goodfellow and Rhodes, 1990). Blanket deposits formed at vent sites whose morphology and zonation is controlled by vent position and shape of plume which is in turn controlled by fluid density contrasts, basinal currents and physical barriers. Seafloor bathymetry is not necessarily a control on deposit geometry other than the mechanical down slope reworking of the deposit due to slumping processes.

Permeable horizons within the local strata in particular Unit 2, the chert pebble conglomerate dominant horizon, are regionally altered with quartz, pyrite and iron carbonate flooding with local base metal concentrations. Base metal laden brines apparently pooled within these regional units. The onset of extensional tectonics and the resultant syn-sedimentary faulting resulted in the breaching of these aquifers and the rapid venting onto the seafloor. Venting sites are necessarily restricted to syn-sedimentary fault zones which are concentrated at basin margins but they can occur internally within the basins along parallel listric faults or antithetic normal faults.

Prospective areas for vent sites are along areas of syn-sedimentary faulting. These areas are indirectly inferred as syn-sedimentary faults are rarely observable. Indicators are (1) alignment of base metal stratiform deposits; (2) course fault scarp breccias, i.e. diamictite

unit; (3) pinching out of units; (4) rapid facies changes; (5) unconformities and (6) diachronous units.

Mineral Zonation, Deposit Character, Alteration

Both the Tom and Jason deposits exhibit distinct metal and deposit facies relationships zoned relative to the vent site. A typical Macmillan Pass deposit can be subdivided into four separate facies types. These are summarized on Figure 9 and discussed below. The vent facies represents the core of the hydrothermal system where the metal laden solutions vent onto the seafloor. This facies comprises massive pyrite, galena and sphalerite with associated iron carbonate. It grades downwards into the sedimentary pile into epigenetic massive iron carbonate and galena and eventually pyrite, galena, sphalerite and iron carbonate stringer zones. Trace amounts of arsenopyrite, tetrahedrite and chalcopyrite are found within this facies. This facies has the highest lead and silver contents and also contains deleterious elements including Hg, Sb and As.

The bulk of a typical deposit is represented by the grey facies. It is a light grey to buff-coloured, fine laminated massive barite rock with thin laminations of sphalerite and black to grey chert. Minor amounts of galena and pyrite are present. Grades within this zone are approximately 7% zinc with less than 1% lead. This facies can locally be extremely contorted reflecting advanced disharmonic folding of a relatively ductile horizon.

Transitional between the grey facies and the vent facies is the pink facies. It is characterized by massive to laminated barite and chert with distinctive cream to pink-coloured sphalerite and local galena. Sulphides can occur in coarse crystalline masses and cross-cutting veinlets.

The black facies is located at the outer reaches and the top of the deposit. It is generally low grade, 2% to 5% zinc, with lessor amounts of barite and distinct pyrite laminations. It reflects the waning effects of precipitation from the metal laden plume and the increased dominance of regular pelagic sedimentation.

Alteration of strata beneath the deposit is localized near the vent site but some alteration can be regional in extent. Alteration and its relationship to the base metal deposits is summarized on Figure 10. Road River Group rocks show broad regional alteration patterns. The calcareous, carbonaceous shales appear susceptible to intense quartz and

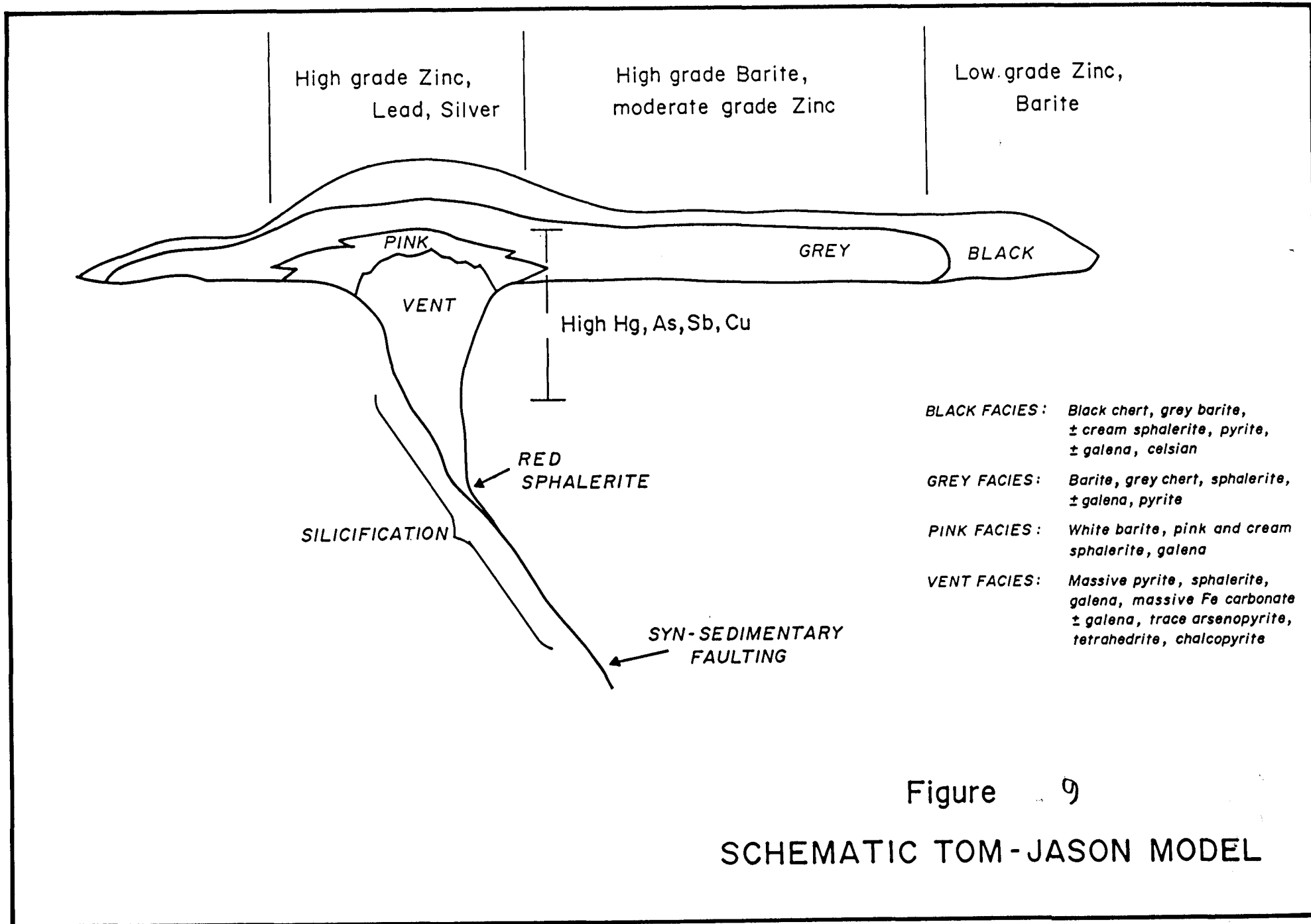
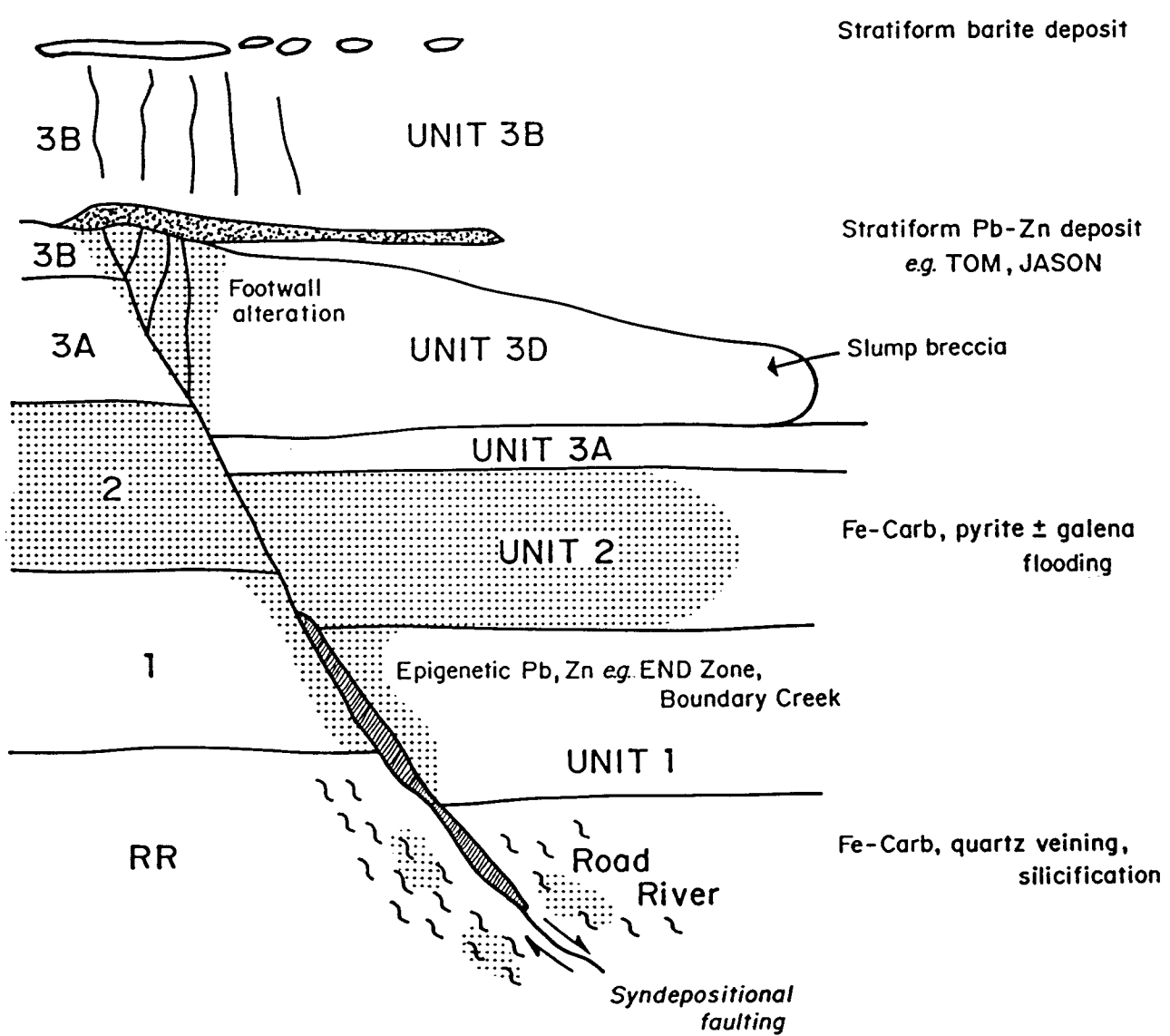


Figure 9

SCHMATIC TOM-JASON MODEL



 Silicification

Figure 10
 DEPOSIT MODELS
 with
 REGIONAL ALTERATION

iron carbonate alteration. The alteration zones around the End Zone cover areas that extend hundreds of metres away from the known deposit. Unit 1 appears to be intensely silicified proximal to vent sites. Local orange discolouration of silt and sand bands within Unit 1 may reflect iron carbonate flooding within these permeable horizons. Unit 2 is intensely silicified, iron carbonate flooded and locally pyritized. Trace amounts of galena and sphalerite are also present. The unit is variably altered throughout the property implying that Unit 2 acted as an aquifer of regional extent for the hydrothermal solutions.

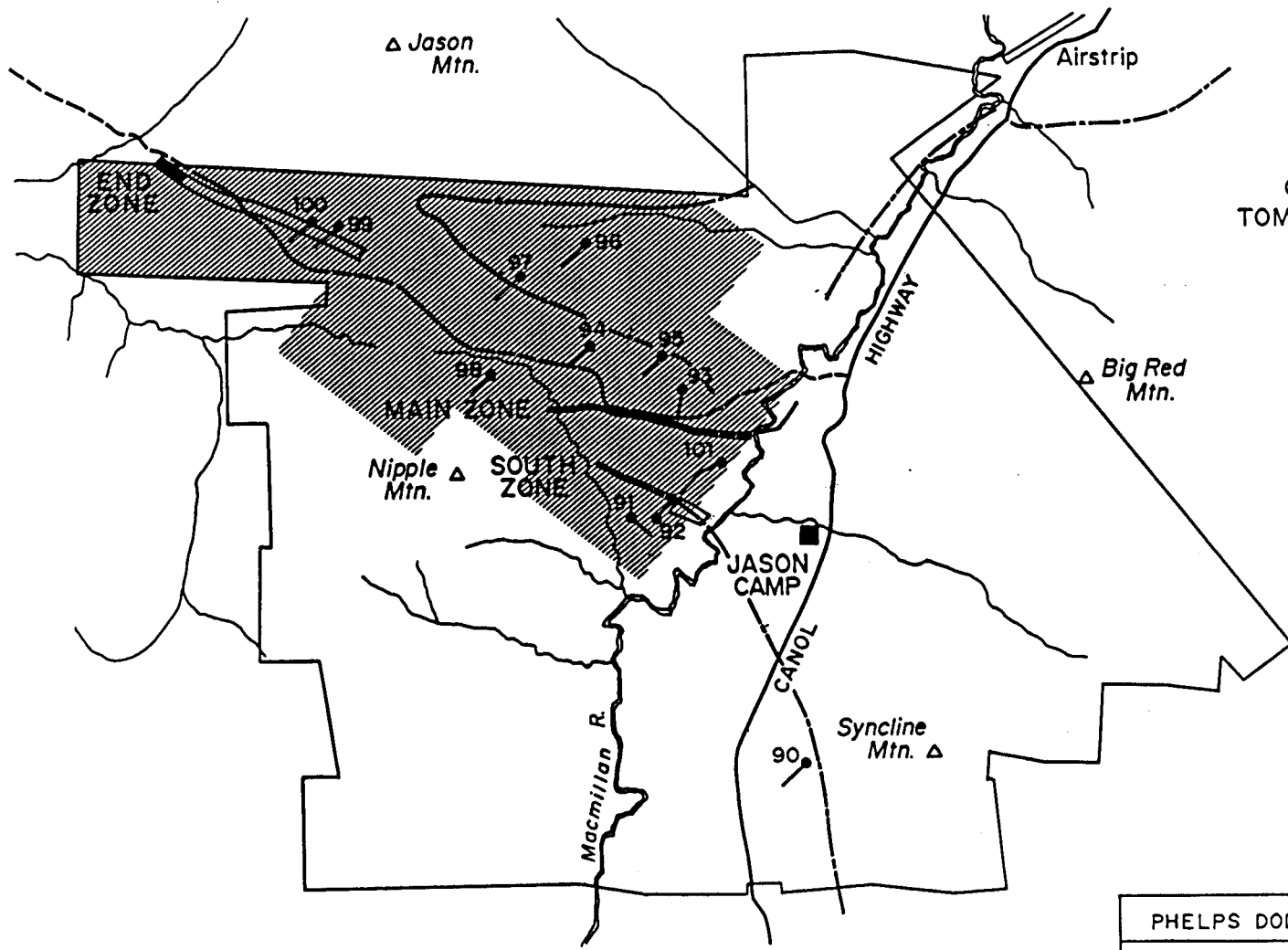
6.0 1990 WORK PROGRAM

Crews were mobilized to the Jason camp on June 5th and left on September 14th. The camp facilities were in excellent condition requiring only minor repairs. The existing camp generators were inoperable necessitating the rental of a new unit from Whitehorse. The 1990 work program is summarized on Figure 11. Hole 90-90 was the only work completed within the Watson Lake Mining Division.

7.0 RESULTS




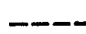

7.1 Drilling

Drilling was completed between June 27th and August 8th by J. T. Thomas Diamond Drilling Ltd. of Smithers, B.C. Twelve NQ holes were cored totalling 2,667.7 metres (8,752 feet) at an average rate of 104 feet per twelve-hour shift. Detailed drill hole locations are plotted on Figure 8 and summarized in Table III. A Longyear Super 38 skid-mounted drill and accompanying D6 Bulldozer were utilized. Water was pumped to each drill site from various sumps located on creeks on the property. Waterlines often required stage pumps to provide the needed lift for the higher drill sites.



COMINCO'S
TOM DEPOSITS



-  Drill hole
-  1990 Mag-VLF Survey
-  Property boundary
-  Minor road
-  Surface trace of stratiform Pb-Zn horizon

PHELPS DODGE CORPORATION OF CANADA LTD.				
PROJECT NO: 166		JASON PROJECT, Y.T.		
1990 WORK PROGRAMME				
SCALE	DATE		NTS	DWG NO
As shown			105/01	11

Table III
Drill Hole Data

(Drill hole locations measured by compass and chain from nearest grid location marker. Elevations taken from property topographic map.)

Hole	Collar	Location	Azimuth	Dip	Length	Start	Finish	Elevation
90	33+00SE	12+85SW	225	-60	166.4	Aug. 6	Aug. 7	(1305)
91	11+75SE	8+15W	135	-60	190.8	June 27	June 29	(1160)
92	11+70SE	7+10W	060	-60	369.7	June 30	July 4	1161
93	6+10SE	0+61E	180	-60	137.2	July 5	July 7	(1184)
94	1+52NW	1+03W	225	-60	236.5	July 9	July 12	(1360)
95	3+00SE	1+70E	225	-60	128.3	July 7	July 9	(1340)
96	7+62NW	3+42E	225	-60	181.1	July 13	July 14	(1475)
97	9+14NW	0+99W	225	-60	203.0	July 15	July 17	(1470)
98	6+10NW	5+30W	225	-60	125.6	July 17	July 19	(1305)
99	21+50NW	6+50W	225	-60	213.4	July 19	July 22	(1460)
100	23+02NW	7+50W	225	-60	145.1	July 22	July 23	(1440)
101	12+19SE	1+55W	230	-70	570.6	July 25	Aug. 5	(1155)
Total					2667.7	(8752 ft)		
					metres			

Drill site selections were based on a combination of geophysical, geochemical and geological criteria. Specific drill site locations were modified to accommodate access and topography.

Drill Hole Summary

Hole 90-90

Hole 90 was designed to test a magnetic and gravity anomaly associated with up slope lead geochemistry. Disseminated pyrrhotite encountered at the bottom of the hole appears to account for the magnetic anomaly. Gravity and lead geochemistry remain unexplained.

0-20.1m Casing
20.1-112.5 Unit 3a - massive uniform silt banded argillite.
112.5-120.2 Unit 3a - pebbly mudstone.
120.2-166.4 Unit 3a - silt banded argillite with local pyrrhotite nodules.

8.0 CONCLUSIONS AND RECOMMENDATIONS

Re-evaluation of the geology of the Jason property in light of newly recognized stratigraphic relationships has re-emphasized the relationship of the Jason deposit to their host strata. The Jason Main and South Zone and the Tom West, East and Southeast Zones all lie near the base of Unit 3b. Locally the presence of coarse diamictite units obscure this relationship. Apparently, the main base metal exhalative event occurred throughout the central Macmillan Fold Belt at essentially the same time. Epigenetic deposits such as the Jason End Zone and Cominco's Boundary Creek prospect (Nidd) may occur in lower strata. No base metal concentrations are known higher in the stratigraphic column.

The 1990 drill program comprised twelve drill holes, ten of which tested geophysical and geochemical targets outside of known zones and two of which were step-outs to the southeast of the South Zone. Hole 90-90 was the only drill hole completed within the Watson Lake Mining Division. It was designed to test a coincident magnetic and gravity anomaly within an area of up-slope lead geochemistry. It cored Unit 3a, silt-banded argillite, with local trace amounts of pyrrhotite. The pyrrhotite accounts for the magnetic anomaly but the gravity anomaly remains untested. Regardless, both geophysical anomalies are underlain by Unit 3a and thus are unrelated to any strataform lead-zinc

which would be expected to occur higher in the stratigraphy within Unit 3b. No further work is recommended in the area of hole 90-90.

9.0 DISBURSEMENTS

Project disbursements used for filing assessment work are outlined below. Entire project direct drill costs were subdivided on a prorata per foot basis. The proportion assigned to hole 90-90 was used to file work against the necessary claims within the Watson Lake Mining Division as outlined in Appendix III.

Total Diamond Drill Costs - includes mob-demob, footage, expendables.	\$ 252,884.25
Total Metreage Drilling 2,667.7 metres - cost per metre	\$ 94.80
Hole 90-90 - 166.4 metres @ \$94.80 per metre =	\$15,774.72

Prepared by:

FOX GEOLOGICAL CONSULTANTS LTD.

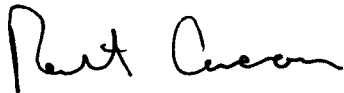


Robert S. Cameron, B.Sc.
February 27, 1991

10.0 CERTIFICATE

I, Robert S. Cameron, of the City of Vancouver, British Columbia, do hereby certify that:

1. I graduated from the Carleton University in 1981 with a Bachelor of Science degree in geology.
2. I have been practising my profession as a geologist since 1981.
3. I am a Fellow of the Geological Association of Canada.
4. I am employed by Fox Geological Consultants Ltd., 1409-409 Granville Street, Vancouver, B.C. who has been contracted by Phelps Dodge Corporation of Canada, Limited to carry out exploration work on their behalf on the Jason property.
5. That this report dated February 27, 1991 is based on my field work on the Jason property during June 5 and September 14, 1990.

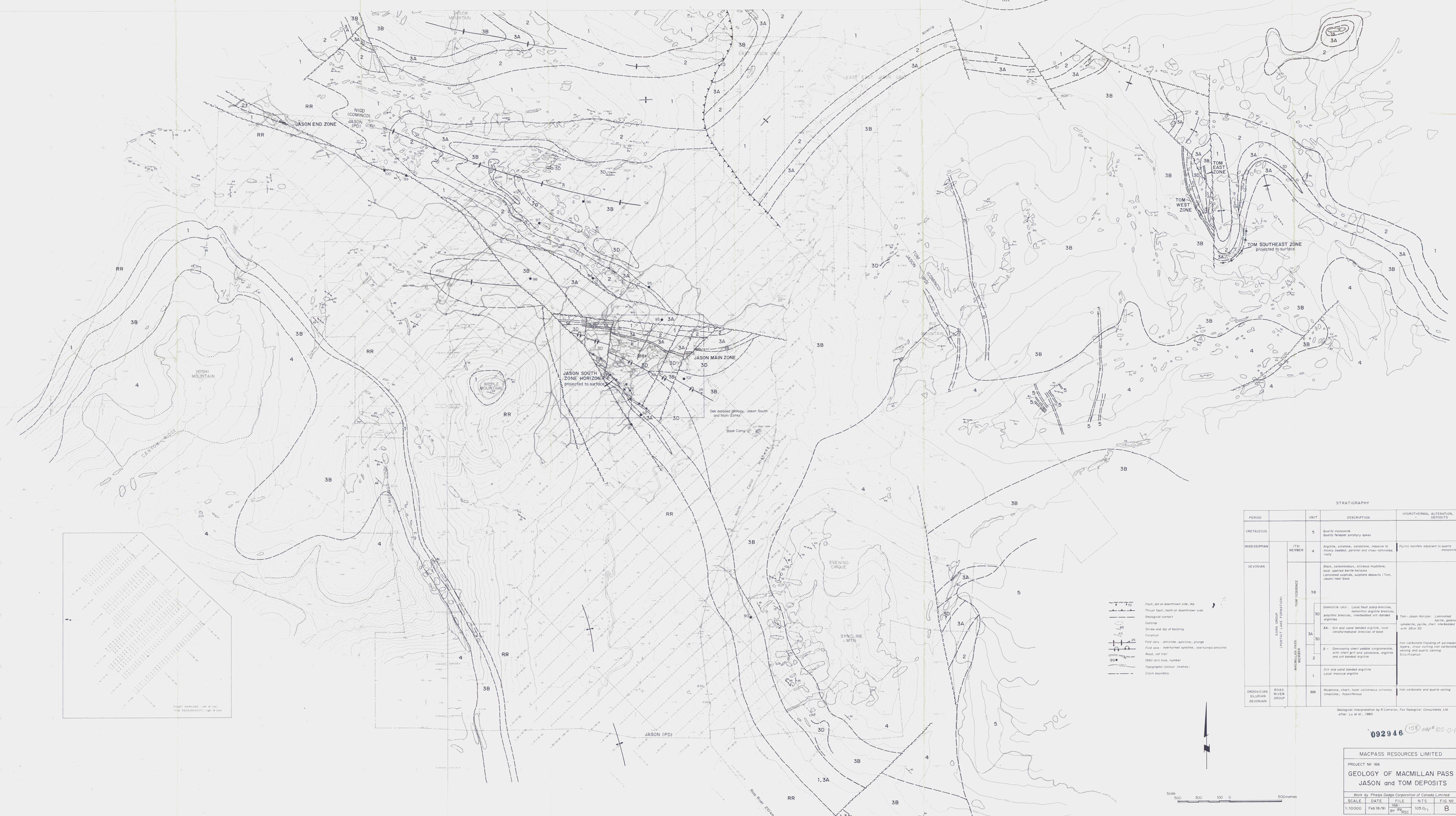


Robert S. Cameron, B.Sc.
Vancouver, B.C.
February 27, 1991

11.0 SELECTED REFERENCES

- Abbott, J. G., **1981**, Structure and Stratigraphy of the Macmillan Fold Belt: Evidence for Devonian faulting, in Yukon Geology and Exploration 1981: Dept. of Indian Affairs and Northern Development (Canada), Northern Affairs Program, Expl. and Geol. Serv. Div., Whitehorse, Yukon, p. 22-33.
- Abbott, J. G., and Turner, R. J. W., **1990**, Late Devonian tectonic setting of stratiform Zn-Pb deposits, Macmillan Fold Belt, Yukon, in Abbott, J. G. and Turner, R. J. W., eds., Mineral deposits across the northern Canadian Cordillera, Yukon-northeastern British Columbia, IAGOD Field Guide, Excursion 14.
- Bailes, R. J., Smee, B. W., Blackadar, D. W., Garner, H. D., **1986**, Geology of the Jason lead-silver-zinc deposits, Macmillan Pass, Yukon Territory, in Morin, J. A., ed. Mineral Deposits of the northern Cordillera; Canadian Institute of Mining and Metallurgy, Special Volume 37, p. 87-99.
- Gardner, H. D., **1983**, Petrologic and geochemical constraint on genesis of the Jason Pb-Zn deposits, Yukon Territory, unpub. M.Sc. thesis, University of Calgary, 212 p.
- Goodfellow, W. D., and Rhodes, D., **1990**, Geological setting, geochemistry and origin of the Tom Zn-Pb-Pb-Ag-barite deposits in Abbott, J. G. and Turner, R. J. W., eds., mineral deposits of the northern Canadian Cordillera, Yukon-northeastern British Columbia, IAGOD Field Guide, Excursion 14.
- McClay, K. R., and Bidwell, G. E., **1986**, Geology of the Tom Deposit, Macmillan Pass, Yukon, in Morin, J. A., ed., Mineral Deposits of the Northern Cordillera: Canadian Institute of Mining and Metallurgy, Special Volume 37, P. 100-114.
- Smith, C. L., **1979**, Ogilvie Joint Venture exploration results, 1978 season and summary of results 1974 through 1977; unpublished report, 46 p.
- Teal, P. R., and Teal, S. E. **1978**, Geology and sedimentary interpretation of the Macmillan Pass area (Jason and Tom properties), Yukon Territory, unpublished report for Ogilvie Joint Venture, 60 p.

- Turner, R. J. W., 1986, The genesis of stratiform lead-zinc deposits, Jason property, Macmillan pass, Yukon: unpub. Ph.D. thesis, Stanford University, Stanford, 205 p.
- Turner, R. J. W., Goodfellow, W. D., Taylor, B. E., 1989, Isotopic geochemistry of the Jason stratiform sediment-hosted zinc-lead deposit, Macmillan Pass, Yukon; in Current Research, Geological Survey of Canada, Paper 89-1E, p. 21-30.
- Turner, R. J. W. and Rhodes, Dereck, 1990, Boundary Creek zinc deposit (Nidd property), Macmillan Pass, Yukon; sub-seafloor sediment-hosted mineralization associated with volcanism along a Late Devonian syndepositional fault; in Current Research, Part E, Geological Survey of Canada, Paper 90-E1, p. 321-335.
- Turner, R. J. W. and Goodfellow, W. G., 1990, Barium carbonate bodies associated with the Walt (Cathy) stratiform barium deposit, Selwyn Basin, Yukon; a possible vent complex associated with a Middle Devonian sedimentary exhalative barite deposit; in Current Research, Part E, p. 309-319.



STRATIGRAPHY

PERIOD	UNIT	DESCRIPTION	HYDROTHERMAL ALTERATION DEPOSITS	
CRETACEOUS	5	Quartz monzonite Quartz-feldspar porphyry dykes		
MISSISSIPPIAN	ITSI MEMBER	4	Argillite, siltstone, sandstone, massive to finely bedded, parallel and cross-laminated, rusty	Pyritic nodules adjacent to quartz monzonite
		3B	Black, carbonaceous, siliceous mudstone, local argillite, argillite breccias Laminated siltstone, sulphate deposits (Tom, Jason) near base	
DEVONIAN	MACMILLAN PASS MEMBER	3B	Diamictite (Unit): Local fault scarp breccias, argillite breccias, interbedded silt-banded argillite	Tom-Jason Horizon: Laminated argillite, argillite, siltstone, pyrite, chert interbedded with 3B or 3A
		3A	Silt and sand banded argillite, local intraformational breccias at base	
		3D	Iron carbonate flooding of permeable layers, cross cutting iron carbonate veining and quartz veining	Silicification
		2	Dominantly chert pebble conglomerate, with chert grit and sandstone, argillite and silt banded argillite	
		1	Silt and sand banded argillite Local massive argillite	
ORDOVICIAN SILURIAN DEVONIAN	ROAD RIVER GROUP	Mudstone, chert, local calcareous siltstone, sandstone, fossiliferous	Iron carbonate and quartz veining	

Geological interpretation by R. Cameron, Fox Geological Consultants Ltd after Lu et al., 1980

092946 (158) MAP# 105-0-1

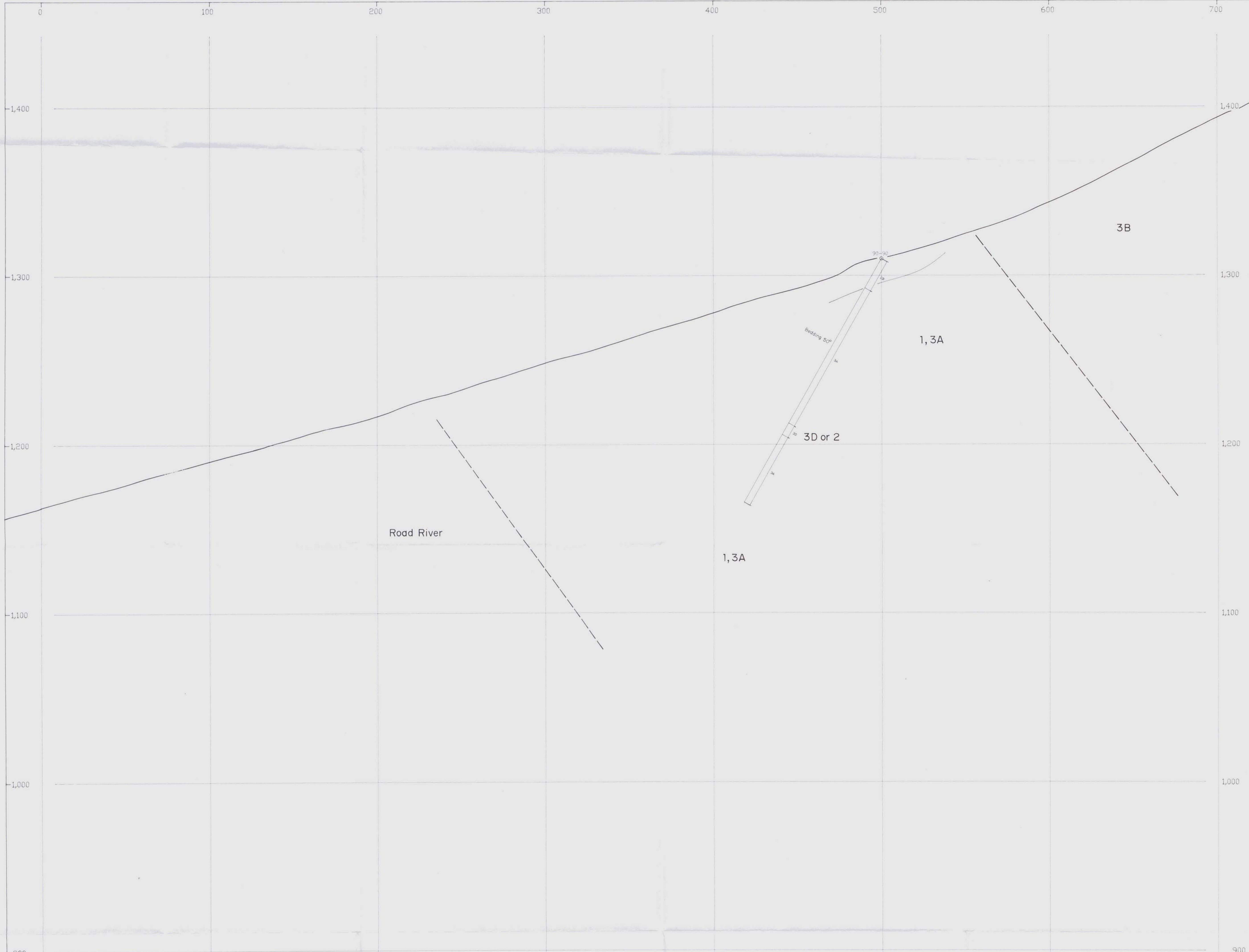
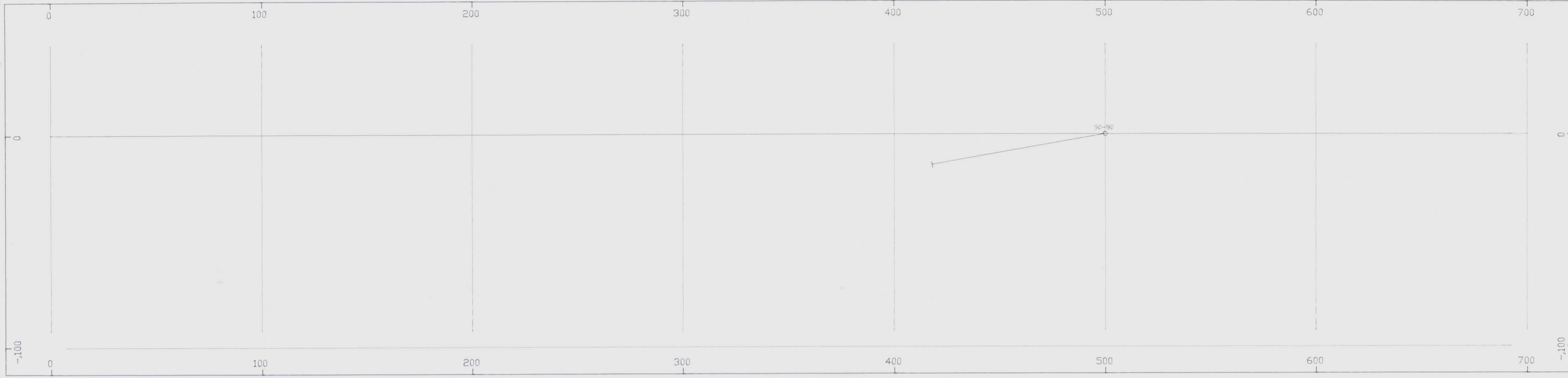
MACPASS RESOURCES LIMITED

PROJECT NO 166
**GEOLOGY OF MACMILLAN PASS
JASON and TOM DEPOSITS**

Work by Phelps Dodge Corporation of Canada Limited

SCALE	DATE	FILE	N.T.S.	FIG NO
1:10000	Feb 18/91	166	105 0-1	8
		BY: RSC		





		UNIT	DESCRIPTION
EARN GROUP (PORTRAIT LAKE FORMATION)	ITSI MEMBER	5	Quartz monzonite Quartz feldspar porphyry dykes
		4	Argillite, siltstone, sandstone, massive to thickly bedded, parallel and cross-laminated
	TOM SEQUENCE	3B	Black, carbonaceous, siliceous mudstone, local spotted barite horizons Laminated sulphide, sulphate deposits (Tom, Jason) near base
		3D	Diamictite Unit: Local fault scarp breccias, homolithic argillite breccias, polythitic breccias, interbedded silt-banded argillites
		3A	Silt- and sand-banded argillite, local intraformational breccias at base
	MACMILLAN PASS MEMBER	2	Dominantly chert pebble conglomerate, with chert grit and sandstone, argillite and silt-banded argillite
		1	Silt- and sand-banded argillite Local massive argillite
ROAD RIVER GROUP	RR	Mudstone, chert, local calcareous siltstone, limestone, fossiliferous	

092946 MAP# 105-0-1

MACPASS RESOURCES LIMITED
 PROJECT No 166 JASON PROJECT
CROSS SECTION
HOLE 90-90
 Scale 1: 1000
 February/91 NTS 10501 12a
 Work by Phelps Dodge Corporation of Canada Limited

A P P E N D I X I

Drill Log

Location: _____

Azimuth: 225

Dip: -60 Length (m): 166.4 m

Started: AUG 6 1990 9:00 P.M. Core size: N.G.W.I.

Completed: AUG 8, 1990 8:00 A.M. Dip Tests: _____

Purpose: GRAVITY, MAGNETIC ANOMALY, SOIL GEOCHEM.

DIAMOND DRILL RECORD

Elevation: _____

Date logged: AUG 12/90

Hole No: 90-90

Page 1 of 4

Property: JASON

Section: _____

Claim No: _____

Logged by: R CAMERON

From	To	Description	Rock	Sample#	To	Length										
0	20.1	CASING IN OVERBURDEN AND BROKEN BEDROCK			20.1		CASING									
20.1	117.5	UNIT 3A	3A		22.0	1.9		Z								
		UNIFORM SILT AND SAND			24	2.0		↑								
		BANDED ARGILLITE			26											
		5-20% 1m TO 3cm SAND			28											
		BANDS IN DARK ARGILLITE			30											
		SAND BANDS LOCALLY CROSS			32											
		LAMINATED, PYRITE TO			34											
		3% MOSTLY IN SAND BANDS.			36											
		SAND BANDS OXIDIZED TO			38											
		BROWN COLOUR TO 60.0m			40											
		VERY BROKEN TO 44.5m WITH			42											
		YELLOW STAINED FRACTURES.			44											
		BEDDING UNIFORM 50° TO			46											
		CORE AXIS			48											
					50			↓								
					52	2.0			Z							

DIAMOND DRILL RECORD

From	To	Description	Rock	Sample#	To	Length	Py	Po							
112.5	120.2	UNIT 3D? PGRLY MUDSTONIC		S	54		2								
		1mm TO 1cm CHERT FRAGMENTS			56										
		TO 70% IN MUDSTONE.			58										
		LOW CONTORTED SAND			60										
		BODS			62										
					64										
120.2	166.4	UNIT 3A			66										
		UNIFORM SILT AND			68										
		SAND BANDED ARGILLITE			70										
		SAND BANDS TO 4cm, 1cm			72										
		AVERAGE, COARSELY CROSS			74										
		LAMINATED, LOW BEDDING			76										
		PARALLEL PYRITE VEINS			78										
		BEDDING 80° TO CORE AXIS			80										
					82										
		PHYLLITE NODULES TO 3cm			84										
		162.5m AND 164.5m			86										
					88			2							
					90			3							
					92			2							
166.4		END OF HOLE			94										
					96										
					98										
					100			2							

DIAMOND DRILL RECORD

From	To	Description	Rock	Sample#	To	Length	P ₁	P ₀			GR	R ₁ Gals
					102	2.0	2					
					104							
					106							
					108							
					110							
					112							
					114							
					116							
					118							
					120							
					122							
					124			2				
					126			3				
					128			2				1 1
					130							
					132							
					134							
					136							
					138							
					140							
					142							
					144							
					146							
					148	2.0		2				

A P P E N D I X I I

Claim List

CLAIM NAME	RECORD NUMBER	EXPIRY DATE	MINING DIVISION
JASON 115	YB4515	12/31/91	WATSON LAKE
JASON 116	YB4516	12/31/91	WATSON LAKE
JASON 123	YB4517	12/31/91	WATSON LAKE
JASON 124	YB4518	12/31/91	WATSON LAKE
JASON 131	YB4519	12/31/92	WATSON LAKE
JASON 132	YB4520	12/31/92	WATSON LAKE
JASON 133	YB4521	12/31/92	WATSON LAKE
JASON 134	YB4522	12/31/92	WATSON LAKE
JASON 135	Y94471	12/31/91	WATSON LAKE
JASON 137	YB4525	12/31/92	WATSON LAKE
JASON 161	Y93952	12/31/91	WATSON LAKE
JASON 162	Y93953	12/31/91	WATSON LAKE
JASON 163	Y93954	12/31/91	WATSON LAKE
JASON 164	Y93955	12/31/91	WATSON LAKE
JASON 165	Y93956	12/31/90	WATSON LAKE
JASON 166	Y93957	12/31/91	WATSON LAKE
JASON 167	Y93958	12/31/91	WATSON LAKE
JASON 168	Y93959	12/31/91	WATSON LAKE
JASON 169	Y93960	12/31/91	WATSON LAKE
JASON 170	Y93961	12/31/91	WATSON LAKE
JASON 171	Y93962	12/31/91	WATSON LAKE
JASON 172	Y93963	12/31/91	WATSON LAKE
JASON 173	Y93964	12/31/91	WATSON LAKE
JASON 174	Y93965	12/31/91	WATSON LAKE
JASON 175	Y93966	12/31/91	WATSON LAKE
JASON 176	Y93967	12/31/91	WATSON LAKE
JASON 177FR	YA20135	12/31/91	WATSON LAKE
JASON 178FR	YA20136	12/31/91	WATSON LAKE
JASON 179FR	YA20137	12/31/91	WATSON LAKE
JASON 180FR	YA20138	12/31/91	WATSON LAKE
JASON 181FR	YA20139	12/31/91	WATSON LAKE
JASON 182FR	YA20140	12/31/91	WATSON LAKE
JASON 183FR	YA20141	12/31/90	WATSON LAKE
JASON 184FR	YA20142	12/31/90	WATSON LAKE
JASON 185FR	YA20143	12/31/91	WATSON LAKE
JASON 186FR	YA20144	12/31/91	WATSON LAKE
JASON 187FR	YA20145	12/31/91	WATSON LAKE
JASON 188FR	YA20146	12/31/91	WATSON LAKE
JASON 192FR	YA35586	12/31/91	WATSON LAKE
JASON 193FR	YA35587	12/31/90	WATSON LAKE
JASON 194FR	YA35588	12/31/91	WATSON LAKE
JASON 195FR	YA35589	12/31/90	WATSON LAKE
JASON 196FR	YA35590	12/31/90	WATSON LAKE
JASON 197FR	YA35591	12/31/90	WATSON LAKE

CLAIM NAME	RECORD NUMBER	EXPIRY DATE	MINING DIVISION
ACE 19FR	YA11527	12/31/90	WATSON LAKE
ACE 20FR	YA11528	12/31/90	WATSON LAKE
ACE 21FR	YA11529	12/31/90	WATSON LAKE
ACE 25FR	YA11530	12/31/90	WATSON LAKE
ACE 26FR	YA11531	12/31/91	WATSON LAKE
ACE 27FR	YA11532	12/31/91	WATSON LAKE
ACE 28FR	YA11533	12/31/90	WATSON LAKE
ACE 29FR	YA11534	12/31/91	WATSON LAKE
ACE 30FR	YA11535	12/31/90	WATSON LAKE
ACE 33FR	YA11536	12/31/90	WATSON LAKE
ACE 34FR	YA11537	12/31/90	WATSON LAKE
ACE 35FR	YA11538	12/31/90	WATSON LAKE
ACE 39FR	YA11539	12/31/90	WATSON LAKE
ACE 40FR	YA11540	12/31/90	WATSON LAKE
JASON 19	Y96210	12/31/93	WATSON LAKE
JASON 20	Y96211	12/31/93	WATSON LAKE
JASON 31	Y96222	12/31/93	WATSON LAKE
JASON 32	Y96223	12/31/93	WATSON LAKE
JASON 33	Y83274	12/31/92	WATSON LAKE
JASON 34	Y83275	12/31/92	WATSON LAKE
JASON 39	Y96228	12/31/93	WATSON LAKE
JASON 40	Y96229	12/31/93	WATSON LAKE
JASON 41	Y83276	12/31/92	WATSON LAKE
JASON 42	Y83277	12/31/92	WATSON LAKE
JASON 43	Y83278	12/31/92	WATSON LAKE
JASON 44	Y83279	12/31/92	WATSON LAKE
JASON 84	Y84530	12/31/92	WATSON LAKE
JASON 85	Y84507	12/31/92	WATSON LAKE
JASON 86	Y84508	12/31/92	WATSON LAKE
JASON 87	Y84509	12/31/92	WATSON LAKE
JASON 88	Y84510	12/31/92	WATSON LAKE
JASON 89	Y84511	12/31/91	WATSON LAKE
JASON 90	Y84512	12/31/91	WATSON LAKE
JASON 91	Y84513	12/31/91	WATSON LAKE
JASON 92	Y84514	12/31/91	WATSON LAKE

CLAIM NAME	RECORD NUMBER	EXPIRY DATE	MINING DIVISION
MIKE 1	YA00024	12/31/91	WATSON LAKE
MIKE 2	YA00025	12/31/91	WATSON LAKE
MIKE 3FR	YA00805	12/31/91	WATSON LAKE
MIKE 4	YA11541	12/31/90	WATSON LAKE
MIKE 5	YA11542	12/31/90	WATSON LAKE
MIKE 6	YA11543	12/31/90	WATSON LAKE
MIKE 7	YA11544	12/31/90	WATSON LAKE
MIKE 8	YA11545	12/31/90	WATSON LAKE
MIKE 9	YA11546	12/31/90	WATSON LAKE
MIKE 10	YA11547	12/31/90	WATSON LAKE

A P P E N D I X III

Filing Records

Group A

APPLICATION FOR A CERTIFICATE OF WORK
FORM 4 (SEC. 53)
VANCOUVER QUARTZ MINING ACT

COPY

Office Date Stamp

Form required in duplicate with sketch showing location of work.

(name) ROBERT S CAMERON, occupation GEOLOGIST

(street address) 1409-409 GRANVILLE ST VANCOUVER B.C.

make oath and say that:

I am the owner, or agent of the owner, of the mineral claim(s) to which reference is made herein.

I have done, or caused to be done, work on the following mineral claim(s):

(Here list claims on which work was actually done by number and name)

Y84515 Jason 115

located at MacMillan Pass Claim Sheet No. 105/01

in the Watson Lake Mining District, to the value of at least \$15,774.72 dollars.

since the 25th day of JUNE 19 90

I present the following mineral claims under the authority of Grouping Certificate No. GROUPING NOTICE ENCLOSED.
(Here list claims to be renewed in numerical order, by grant number and claim name, showing renewal period requested).

- Y84515 Jason 115 1 Yr Y93966 Jason 175 1 Yr
- Y84516 Jason 116 1 Yr Y93967 Jason 176 1 Yr
- Y84517 Jason 123 1 Yr YA 20144 Jason 186 Fr 1 Yr
- Y84518 Jason 124 1 Yr YA 20145 Jason 187 Fr 1 Yr
- Y93962 Jason 171 1 Yr YA 20146 Jason 188 Fr 1 Yr
- Y93963 Jason 172 1 Yr YA 35588 Jason 194 Fr 1 Yr
- Y93964 Jason 173 1 Yr YA 35591 Jason 197 Fr 2 Yrs
- Y93965 Jason 174 1 Yr

The following is a detailed statement of such work: (Set out full particulars of the work done indicating dates work commenced and ended in the twelve months in which such work is required to be done as shown by Section 53.)

DATE COMMENCED - AUGUST 6, 1990; DATE COMPLETED - AUGUST 8, 1990.

DIAMOND DRILL HOLE 90-90 ON CLAIM JASON 115
NQWL, 166.4 metres, AZ 225° DIA -60°

REPORT TO FOLLOW

Sworn before me at VANCOUVER
this 12th day of DECEMBER 19 90

Rodney Rubie
Notary Public
2800 Park Place
666 Burrard St.
Vancouver, B.C. V6C 2Z7

Robert Cameron
Owner or Authorized Agent

Canada

APPLICATION TO GROUP MINERAL CLAIMS
YUKON QUARTZ MINING ACT

Group A

Mining District

Watson Lake

Office Date Stamp

I (We) the undersigned owner(s) or agent(s) of the owner(s) of the following Mineral Claims

Grant Number(s)	Claim Name(s)	Location	Claim Sheet Number
Y 84515	Jason 115	MacMillan Pass	105/01
Y 84516	Jason 116	"	"
Y 84517	Jason 123	"	"
Y 84518	Jason 124	"	"
Y 93962	Jason 171	"	"
Y 93963	Jason 172	"	"
Y 93964	Jason 173	"	"
Y 93965	Jason 174	"	"
Y 93966	Jason 175	"	"
Y 93967	Jason 176	"	"
YA 20144	Jason 186 Fr	"	"
YA 20145	Jason 187 Fr	"	"
YA 20146	Jason 188 Fr	"	"
YA 35588	Jason 194 Fr	"	"
YA 35591	Jason 197 Fr	"	"

give notice of intention to group the said claims for the performance of work and do hereby apply under the provisions of Section 52 of the Yukon Quartz Mining Act for a certificate in Form "E"

I (We) hereby certify that the above claims are adjoining as shown on attached sketch.

Dated at VANCOUVER BC

this 12th day of DECEMBER 1990

Rout Cason

AGENT FOR MACPASS RESOURCES LTD

Owner(s) Signature

FOR OFFICE USE ONLY

Form "E" Number	Receipt Number	Date Applied
-----------------	----------------	--------------

1 Group B

COPY

Office Date Stamp

This form required in duplicate with sketch showing location of work.

Name: ROBERT SCAMORON, occupation GEOLOGIST
Postal address: 1409-409 GRANVILLE ST VANCOUVER B.C.

I, the owner, or agent of the owner, of the mineral claim(s) to which reference is made herein.

I have done, or caused to be done, work on the following mineral claim(s):
(Here list claims on which work was actually done by number and name)

Y 84515 Jason 115

Work done at MacMillan Pass Claim Sheet No. 10.5/01
in the Watson Lake Mining District, to the value of at least 15,774.72 dollars,
on the 25th day of JUNE, 1990.

I represent the following mineral claims under the authority of Grouping Certificate No. GROUPING NOTICE ENCLOSED
(Here list claims to be renewed in numerical order, by grant number and claim name, showing renewal period requested).

Y 93956	Jason 165	2 YRS	YA 11542	Mike 5	2 YRS
Y 93958	Jason 167	1 YR	YA 11543	Mike 6	2 YRS
Y 93959	Jason 169	1 YR	YA 11545	Mike 8	2 YRS
Y 74477	Jason 135	1 YR	YA 11546	Mike 9	2 YRS
YA 11533	Ace 28 Fr	2 YRS	YA 11547	Mike 10	2 YRS
YA 11534	Ace 29 Fr	1 YR			
YA 11538	Ace 35 Fr	2 YRS			
YA 11541	Mike 4	2 YRS			

The following is a detailed statement of such work: (Set out full particulars of the work done indicating dates work commenced and ended in the twelve months in which such work is required to be done as shown by Section 53.)

DATE COMMENCED - AUGUST 6, 1990; DATE COMPLETED AUGUST 8, 1990

1 AMONG DRILL HOLE 90-90 ON CLAIM JASON 115
NQLW, 166.4 metres, AZ 225° DIP -60°

REPORT TO FOLLOW

Witnessed before me at VANCOUVER BC
on the 12th day of DECEMBER, 1990.

[Signature]
Notary Public

[Signature]
Owner or Authorized Agent

RODNEY A. SNOW
2800 Park Place
666 Durrard St.
Vancouver, B.C. V6C 2Z7
Barrister & Solicitor

Canada

APPLICATION TO GROUP MINERAL CLAIMS
YUKON QUARTZ MINING ACT

Group B

Mining District

Watson Lake

Office Date Stamp

I (We) the undersigned owner(s) or agent(s) of the owner(s) of the following Mineral Claims

Grant Number(s)	Claim Name(s)	Location	Claim Sheet Number
Y 93956	Jason 165	Macmillan Pass	105/01
Y 93958	Jason 167	"	"
Y 93959	Jason 169	"	"
Y 84515	Jason 115	"	"
Y 94471	Jason 135	"	"
YA 11533	ACE 28 Fr	"	"
YA 11534	ACE 29 Fr	"	"
YA 11538	ACE 35 Fr	"	"
YA 11541	Mike 4	"	"
YA 11542	Mike 5	"	"
YA 11543	Mike 6	"	"
YA 11545	Mike 8	"	"
YA 11546	Mike 9	"	"
YA 11547	Mike 10	"	"
Y 84511	Jason 89	"	"
Y 84512	Jason 91	"	"

I give notice of intention to group the said claims for the performance of work and do hereby apply under the provisions of Section 52 of the Yukon Quartz Mining Act for a certificate in Form "E"

I (We) hereby certify that the above claims are adjoining as shown on attached sketch.

Dated at VANCOUVER B.C.

this 12th day of DECEMBER, 1990.

Rupert O'Connell

AGENT FOR MCPASS RESOURCES LTD

Owner(s) Signature

FOR OFFICE USE ONLY

Form "E" Number

Receipt Number

Date Applied

Group C

APPLICATION FOR A CERTIFICATE OF WORK
FORM 4 (SEC. 53)
YUKON QUARTZ MINING ACT

COPY

This form required in duplicate with sketch showing location of work.

Office Date Stamp

(Name) ROBERT S CAMERON, occupation ECOLOGIST
(Postal address) 1409-409 GRANVILLE ST VANCOUVER B.C.

I, the owner, or agent of the owner, of the mineral claim(s) to which reference is made herein.

I have done, or caused to be done, work on the following mineral claim(s):
(Here list claims on which work was actually done by number and name)

Y 84515. Jason 115

Worked at MacMillan Pass Claim Sheet No. 105/01
the Watson Lake Mining District, to the value of at least 15,774.72 dollars.
since the 25th day of JUNE 19 90.

I represent the following mineral claims under the authority of Grouping Certificate No. GROUPING NOTICE ENCLOSED.
(List claims to be renewed in numerical order, by grant number and claim name, showing renewal period requested).

- | | |
|------------------------|--------------------------|
| Y 84511 Jason 89 1 YR | Y 93957 Jason 166 1 YR |
| Y 4513 Jason 91 1 YR | YA 11531 Ace 26 Fr 1 YR |
| Y 93954 Jason 163 1 YR | YA 11532 Ace 27 Fr 1 YR |
| Y 13959 Jason 168 1 YR | YA 11535 Ace 30 Fr 2 YRS |
| Y 93961 Jason 170 1 YR | YA 11537 Ace 34 Fr 2 YRS |
| Y 13952 Jason 161 1 YR | YA 11544 Mike 7 2 YRS |
| Y 93953 Jason 162 1 YR | |
| Y 93955 Jason 164 1 YR | |

The following is a detailed statement of such work: (Set out full particulars of the work done indicating dates work commenced and ended in the twelve months in which such work is required to be done as shown by Section 53.)

DATE COMMENCED - AUGUST 6, 1990; DATE COMPLETED - AUGUST 8, 1990

DIAMOND DRILL HOLE 90-90 ON CLAIM JASON 115
NQWL, 166.4 metres, AZ. 225°, DIP -60°

REPORT TO FOLLOW

Subscribed before me at VANCOUVER BC
on 12th day of DECEMBER, 19 90.

Rodney A. Snow
RODNEY A. SNOW

Robert Cameron
Owner or Authorized Agent

2800 Park Place
666 Durrard St.
Vancouver, B.C. V6C 2Z7
687-9444

Canada

17/90



APPLICATION TO GROUP MINERAL CLAIMS
YUKON QUARTZ MINING ACT

Group

Mining District

Watson Lake

Office Date Stamp

I (We) the undersigned owner(s) or agent(s) of the owner(s) of the following Mineral Claims

Grant Number(s)	Claim Name(s)	Location	Claim Sheet Number
Y 84511	Jason 89	MacMillan Pass	105/01
Y 84513	Jason 91	"	"
Y 84515	Jason 115	"	"
Y 93954	Jason 163	"	"
Y 93959	Jason 168	"	"
Y 93961	Jason 170	"	"
Y 93952	Jason 161	"	"
Y 93953	Jason 162	"	"
Y 93955	Jason 164	"	"
Y 93957	Jason 166	"	"
YA 11531	ACE 26 Fr	"	"
YA 11532	ACE 27 Fr	"	"
YA 11535	ACE 30 Fr.	"	"
YA 11537	ACE 34 Fr.	"	"
YA 11544	MIKE 7 ✓	"	"

give notice of intention to group the said claims for the performance of work and do hereby apply under the provisions of Section 52 of the Yukon Quartz Min Act for a certificate in Form "E"

I (We) hereby certify that the above claims are adjoining as shown on attached sketch.

Dated at VANCOUVER BC

this 12th day of DECEMBER 19 90.

Paul Cneon

AGENT FOR MACPASS RESOURCES LTD

Owner(s) Signature

FOR OFFICE USE ONLY

Form "E" Number	Receipt Number	Date Applied
-----------------	----------------	--------------

APPLICATION FOR A CERTIFICATE OF WORK
FORM 4 (SEC. 53)
YUKON QUARTZ MINING ACT

COPY

Office Date Stamp

This form required in duplicate with sketch showing location of work.

Name: ROBERT S CAMERON, occupation GEOLOGIST

(postal address) 1409-409 GRANVILLE ST VANCOUVER B.C.

I make and say that:

I am the owner, or agent of the owner, of the mineral claim(s) to which reference is made herein.

I have done, or caused to be done, work on the following mineral claim(s):
(Here list claims on which work was actually done by number and name)

Y 89515. Jason 115

Situated at MacMillan Pass Claim Sheet No. 105/01

in the Watson Lake Mining District, to the value of at least 15,774.72 dollars.

since the 25th day of JUNE 1990.

I hereby sent the following mineral claims under the authority of Grouping Certificate No. GROUPING NOTICE ENCLOSED
Here list claims to be renewed in numerical order, by grant number and claim name, showing renewal period requested).

- | | | | | | |
|----------|-----------|-------|----------|--------------|-------|
| YA 00024 | Mike 1 | 1 YR | YA 11540 | Ace 40 Fr | 2 YRS |
| A 00025 | Mike 2 | 1 YR | YA 20191 | Jason 183 Fr | 2 YRS |
| YA 00805 | Mike 3 Fr | 1 YR | YA 20192 | Jason 184 Fr | 2 YRS |
| YA 11526 | Ace 18 Fr | 2 YRS | YA 20193 | Jason 185 Fr | 1 YR |
| YA 11527 | Ace 19 Fr | 2 YRS | YA 20190 | Jason 182 Fr | 1 YR |
| 'A 11536 | Ace 33 Fr | 2 YRS | | | |
| YA 11539 | Ace 39 Fr | 2 YRS | | | |

The following is a detailed statement of such work: (Set out full particulars of the work done indicating dates work commenced and ended in the twelve months in which such work is required to be done as shown by Section 53.)

DATE COMMENCED - AUGUST 6, 1990 ; DATE COMPLETED - AUGUST 8, 1990

DIAMOND DRILL HOLE 90-90 ON CLAIM JASON 115
NOWL, 166.4 metres, AZ. 225°, DIP -60°

REPORT TO FOLLOW

Witnessed before me at VANCOUVER BC

on the 12th day of DECEMBER 1990.

[Signature]
Notary Public

[Signature]
Owner or Authorized Agent

RODNEY A. SNOW
2800 Park Place
666 Burrard St.
Vancouver, B.C. V6C 2Z7

Canada
1990

APPLICATION TO GROUP MINERAL CLAIMS
YUKON QUARTZ MINING ACT

Group D

Mining District

Watson Lake

Office Date Stamp

I (We) the undersigned owner(s) or agent(s) of the owner(s) of the following Mineral Claims

Grant Number(s)	Claim Name(s)	Location	Claim Sheet Number
Y 84515	Jason 115	Mac Millen Pass	105/01
Y 84512	Jason 90	"	"
Y 84516	Jason 116	"	"
Y 84530	Jason 84	"	"
YA 00024	Mike 1	"	"
YA 00025	Mike 2	"	"
YA 00805	Mike 3 Fr	"	"
YA 11526	ACE 18 Fr	"	"
YA 11527	ACE 19 Fr	"	"
YA 11536	ACE 33 Fr	"	"
YA 11539	ACE 39 Fr	"	"
YA 11540	ACE 40 Fr	"	"
YA 20141	Jason 183 Fr	"	"
YA 20142	Jason 184 Fr	"	"
YA 20143	Jason 185 Fr	"	"
YA 20140	Jason 182 Fr	"	"

I give notice of intention to group the said claims for the performance of work and do hereby apply under the provisions of Section 52 of the Yukon Quartz Mining Act for a certificate in Form "E"

I (We) hereby certify that the above claims are adjoining as shown on attached sketch.

Dated at VANCOUVER B.C.

this 12th day of DECEMBER, 1990.

Ruth Cameron

MACPASS RESOURCES LTD

Owner(s) Signature

FOR OFFICE USE ONLY

Form "E" Number

Receipt Number

Date Applied

APPLICATION FOR A CERTIFICATE OF WORK
FORM 4 (SEC. 53)
YUKON QUARTZ MINING ACT

COPY

This form required in duplicate with sketch showing location of work.

Office Date Stamp

Name: ROBERT S CAMERON occupation GEOLOGIST

(postal address) 1409-409 GRANVILLE ST VANCOUVER B.C.

I declare and say that:

I am the owner, or agent of the owner, of the mineral claim(s) to which reference is made herein.

I have done, or caused to be done, work on the following mineral claim(s):
(Here list claims on which work was actually done by number and name)

Y 84515 Jason 115

Located at MacMillan Pass Claim Sheet No. 105/01

in the Watson Lake Mining District, to the value of at least 15,774.72 dollars.

since the 25th day of JUNE 19 90.

I represent the following mineral claims under the authority of Grouping Certificate No. GROUPING NOTICE ENCLOSED
These claims to be renewed in numerical order, by grant number and claim name, showing renewal period requested).

- Y 84512 Jason 90 1Yr
- Y 84514 Jason 92 1Yr
- YA 11528 Ace 20 Fr 2Yrs
- YA 11529 Ace 21 Fr 2Yrs
- YA 11530 Ace 25 Fr 2Yrs

The following is a detailed statement of such work: (Set out full particulars of the work done indicating dates work commenced and ended in the twelve months in which such work is required to be done as shown by Section 53.)

DATE COMMENCED - AUGUST 6, 1990 ; DATE COMPLETED - AUGUST 8, 1990

1 AMOND DRILL HOLE 90-90 ON CLAIM JASON 115

NOWL, 166.4 metres, AZ 225°, DIP -60°

REPORT TO FOLLOW

Witnessed before me at VANCOUVER BC

on the 12th day of DECEMBER, 19 90.

Rodney A. Snow

Notary Public
RODNEY A. SNOW

2800 Park Place
666 Durrard St.
Vancouver, B.C. V6C 2Z7
687-9444

Robert Cameron

Owner or Authorized Agent

Canada

801



APPLICATION TO GROUP MINERAL CLAIMS
YUKON QUARTZ MINING ACT

Group E

Mining District

Watson Lake

Office Date Stamp

I (We) the undersigned owner(s) or agent(s) of the owner(s) of the following Mineral Claims

Grant Number(s)	Claim Name(s)	Location	Claim Sheet Number
Y 84515	Jason 115	MacMillan Pass	105/01
Y 84507	Jason 85	"	"
Y 84508	Jason 86	"	"
Y 84512	Jason 90	"	"
Y 84514	Jason 92	"	"
Y 83276	Jason 41	"	"
Y 83279	Jason 44	"	"
YA 11528	ACE 20 FY	"	"
YA 11529	ACE 21 FY	"	"
YA 11530	ACE 25 FY	"	"

give notice of intention to group the said claims for the performance of work and do hereby apply under the provisions of Section 52 of the Yukon Quartz Mining Act for a certificate in Form "E"

I (We) hereby certify that the above claims are adjoining as shown on attached sketch.

Dated at VANCOUVER BC

this 12th day of DECEMBER 19 90

Rupert Cameron

AGENT FOR MACPASS RESOURCES LTD

Owner(s) Signature

FOR OFFICE USE ONLY

Form "E" Number	Receipt Number	Date Applied
-----------------	----------------	--------------

G, up F

APPLICATION FOR A CERTIFICATE OF WORK
FORM 4 (SEC. 53)
YUKON QUARTZ MINING ACT

COPY

Office Date Stamp

This form required in duplicate with sketch showing location of work.

(name) ROBERT SCAMERON occupation GEOLOGIST

(post address) 1409-409 GRANVILLE ST VANCOUVER ST.

I am the owner, or agent of the owner, of the mineral claim(s) to which reference is made herein.

I have done, or caused to be done, work on the following mineral claim(s):
(Here list claims on which work was actually done by number and name)

Y 89515 Jason 115

(location) MacMillan Pass Claim Sheet No. 105/01

(the) Watson Lake Mining District, to the value of at least 15,774.72 dollars.

(date) 25th day of JUNE 19 90

I represent the following mineral claims under the authority of Grouping Certificate No. GROUPING NOTICE ENCLOSED
(Here list claims to be renewed in numerical order, by grant number and claim name, showing renewal period requested).

- YA 20135 Jason 177 Fr 1Yr
- YA 20136 Jason 178 Fr 1Yr
- YA 20137 Jason 179 Fr 1Yr
- YA 20138 Jason 180 Fr 1Yr
- YA 20139 Jason 181 Fr 1Yr

The following is a detailed statement of such work: (Set out full particulars of the work done indicating dates work commenced and ended in the twelve months in which such work is required to be done as shown by Section 53.)

DATE COMMENCED - AUGUST 6, 1990 ; DATE COMPLETED - AUGUST 8, 1990
DIAMOND DRILL HOLE 90-90 ON CLAIM JASON 115
NQWL, 166.4 metres, AZ 225°, DIP -60°

REPORT TO FOLLOW

(where) store me at VANCOUVER BC

(date) 12th day of December 19 90

Robt Cameron

ROBERT CAMERON

Robt Cameron

Owner or Authorized Agent

APPLICATION TO GROUP MINERAL CLAIMS
YUKON QUARTZ MINING ACT

Group F

Mining District

Watson Lake

Office Date Stamp

(We) the undersigned owner(s) or agent(s) of the owner(s) of the following Mineral Claims

Grant Number(s)	Claim Name(s)	Location	Claim Sheet Number
Y 84515	Jason 115	MacMillan Pass	105/01
Y 84507	Jason 85	" "	"
Y 84508	Jason 86	" "	"
Y 84512	Jason 90	" "	"
Y 84514	Jason 92	" "	"
Y 96228	Jason 39	" "	"
Y 96229	Jason 40	" "	"
YA 20135	Jason 177 Fr	" "	"
YA 20136	Jason 178 Fr	" "	"
YA 20137	Jason 179 Fr	" "	"
YA 20138	Jason 180 Fr	" "	"
YA 20139	Jason 181 Fr	" "	"
YA 00025	Mike 2	" "	"

give notice of intention to group the said claims for the performance of work and do hereby apply under the provisions of Section 52 of the Yukon Quartz Mining Act for a certificate in Form "E"

(We) hereby certify that the above claims are adjoining as shown on attached sketch.

Dated at VANCOUVER B.C.

is 12th day of DECEMBER, 19 90.

Robert Cameron

AGENT FOR MACPASS RESOURCES LTD

Owner(s) Signature

FOR OFFICE USE ONLY

Form "E" Number

Receipt Number

Date Applied

Group G

APPLICATION FOR A CERTIFICATE OF WORK
FORM 4 (SEC. 53)
YUKON QUARTZ MINING ACT

COPY

Office Date Stamp

This form required in duplicate with sketch showing location of work.

(name) ROBERT S CHOROV occupation GEOLOGIST

(postal address) 1409-409 GRANVILLE ST VANCOUVER B.C.

I make and say that:

I am the owner, or agent of the owner, of the mineral claim(s) to which reference is made herein.

I have done, or caused to be done, work on the following mineral claim(s):
(He list claims on which work was actually done by number and name)

Y BASIS Jason 115

located at MacMillan Pass Claim Sheet No. 105/01

the Watson Lake Mining District, to the value of at least 15,774.72 dollars.

since the 25th day of JUNE 19 90

I represent the following mineral claims under the authority of Grouping Certificate No. GROUPING NOTICE ENCLOSED
These claims to be renewed in numerical order, by grant number and claim name, showing renewal period requested).

- YA 35586 Jason 192 Fr 1Yr
- YA 35587 Jason 193 Fr 1Yr
- YA 35588 Jason 195 Fr 2Yrs
- YA 35589 Jason 196 Fr 2Yrs

The following is a detailed statement of such work: (Set out full particulars of the work done indicating dates work commenced and ended in the twelve months in which such work is required to be done as shown by Section 53.

DATE COMMENCED - AUGUST 6, 1990 ; DATE COMPLETED - AUGUST 8, 1990
1 AMOND DRILL HOLE 90-90 ON CLAIM JASON 115
NQWL , 166.4 metres , AZ 225° , DIP -60°

REPORT TO FOLLOW

shown before me at VANCOUVER BC

on 12th day of DECEMBER 19 90

[Signature]

[Signature]

RODNEY A. SNOW

Owner or Authorized Agent

2800 Park Place
666 Burrard St.
Vancouver, B.C. V6C 2Z7
667-9444

Canada

APPLICATION TO GROUP MINERAL CLAIMS
YUKON QUARTZ MINING ACT

Group G

Mining District

Watson Lake

Office Date Stamp

I (We) the undersigned owner(s) or agent(s) of the owner(s) of the following Mineral Claims

Grant Number(s)	Claim Name(s)	Location	Claim Sheet Number
Y 84515	Jason 115	MacMillan Pass	1050/1
Y 93965	Jason 174	" "	"
YA 35586	Jason 192 Fr	" "	"
YA 35587	Jason 193 Fr	" "	"
YA 35589	Jason 195 Fr	" "	"
YA 35590	Jason 196 Fr	" "	"

give notice of intention to group the said claims for the performance of work and do hereby apply under the provisions of Section 52 of the Yukon Quartz Mining Act for a certificate in Form "E"

I (We) hereby certify that the above claims are adjoining as shown on attached sketch.

Dated at Vancouver B.C.

this 12th day of December, 19 90.

Paul Cheron

AGENT FOR MACPASS RESOURCES LTD.

Owner(s) Signature

FOR OFFICE USE ONLY

Form "E" Number

Receipt Number

Date Applied