

105-1-9

SILVER KEY MINES LIMITED

STUMP MINES LTD.

PROGRESS REPORT

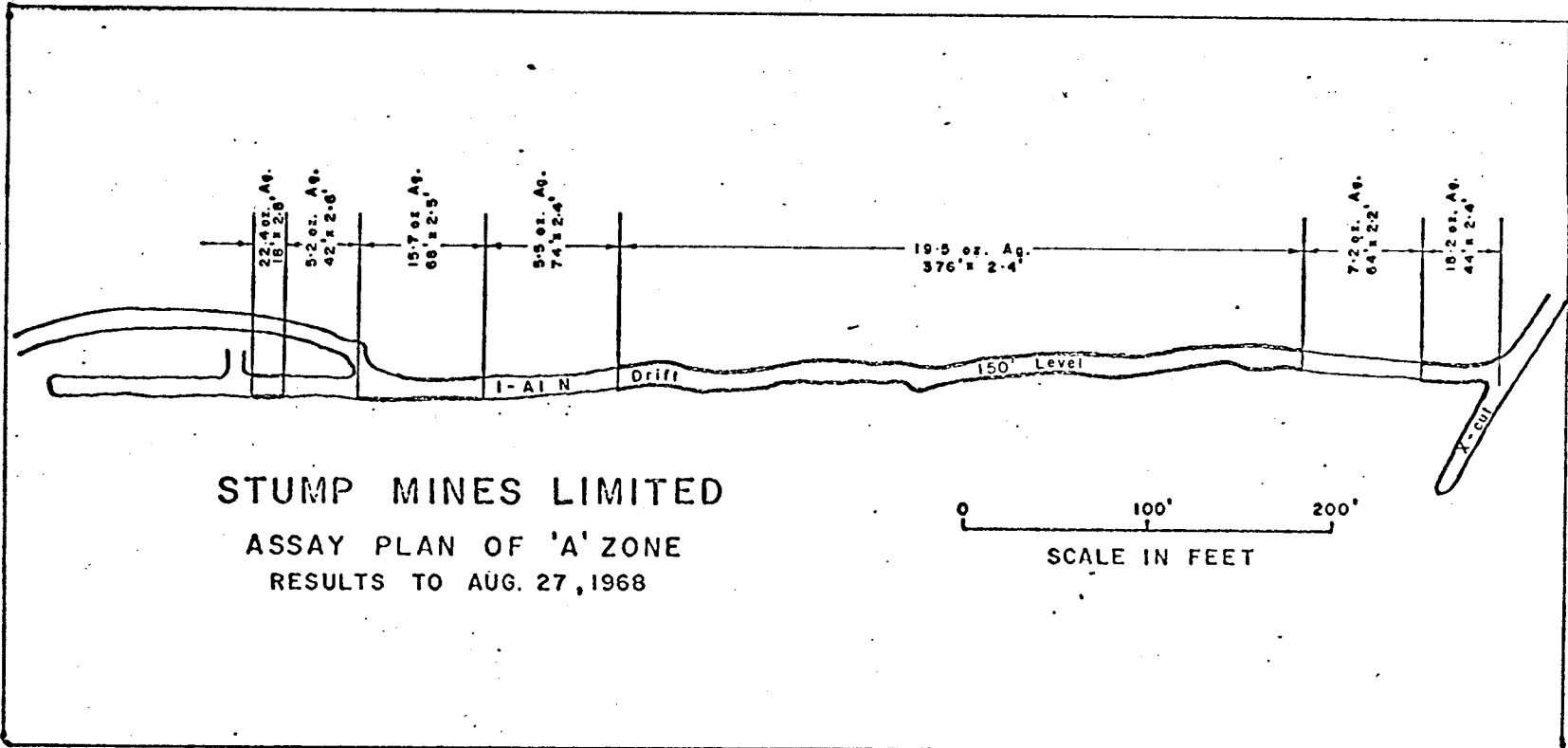
092918

JULY AND AUGUST, 1968

*Please microfilm
what ever is
reproducible*

Leon La Prairie, P. Eng.
Managing Director

SILVER KEY MINES 105-F-9



STUMP MINES LIMITED
 ASSAY PLAN OF 'A' ZONE
 RESULTS TO AUG. 27, 1968

0 100' 200'
 SCALE IN FEET

STUMP MINES LTD.

SILVER KEY MINES LTD.

PROGRESS REPORT

SUMMARY

To the end of August, 1968 underground development of the A-1 zone has outlined in the order of 20,000 tons of Silver - Lead ore above the adit which will average 19.42 oz. Silver and 10% Lead over an average width of 2.4 feet for a combined length of 506 feet. The 506 feet consist of four assayed sections of silver as follows:

44 feet by 2.4 feet assayed 18.2 oz Silver
376 feet by 2.3 feet assayed 19.5 oz Silver
68 feet by 2.5 feet assayed 15.7 oz Silver
18 feet by 2.8 feet assayed 22.4 oz Silver

The R-2 raise being mined from the adit level to the surface to provide a bulk sample for metallurgical tests and also to more completely establish ore tonnage and grade had advanced 117.0 feet to the end of August. Chipped samples taken from the initial 67 feet assayed 20.6 oz. Silver for an average width of 4.8 feet.

FIELD ACTIVITIES

A-1 ZONE (Eva Claim No. 22)

1) Work Completed

To the end of the period some 7,885 tons of ore material has been stock piled on surface from the A-1 development headings. This ore material is only marginal grade due to dilution from mining part waste rock in drift development. Eventually the material will be used for mill tune-up at which time the Silver-Lead content will be concentrated. In addition to the ore material some 3,186 tons of waste material has been stock piled for a total of about 11,071 tons mined and trammed from the A-1 zone.

The A-1 zone advancement to the end of the period is 1,600 feet of development work, which consists of X-cutting, drifting, raising and slashing.

2) Work Planned

The R-2 raise development is continuing to the surface. The raise material is being stock piled and will be bulk sampled for a mill and metallurgical test.

STUMP MINES LTD.

SILVER KEY MINES LTD.

PROGRESS REPORT

A-1 Zone (cont)

2) Work Planned

The A-1 Zone is to be tested to an additional depth by probing the 300 foot and 500 foot horizons by diamond drilling. The start of the drill program will be delayed until adequate accommodation for the extra crew is available.

LAP 10 ZONE (Lap 10 Claim)

1) Work Completed

Mining of the Lap 10 Zone was started on August 13th and the adit advanced 66.0 feet during August for a total of about 350 tons of waste trammed.

At the month's end the main Silver - Lead mineralization had not been reached, a shear with minor galena was intersected. This development is on a two shift basis.

2) Work Planned

It is planned to continue the Lap 10 X-cut for a total of 150 feet by which time the main mineralization should be intersected. Findings from the additional development will determine the next stage of this operation.

F-2 ZONE (Fairclough Option)

1) Work Completed

A portal site and an advancement of two round, about 12 feet, was completed on the F-2 zone during August. The hangwall contact and a couple of shears are mineralized on the present face.

2) Work Planned

The objective of the F-2 development is to advance about 150 feet to the area of the downward projection of the F-2 surface showing. At the 150 foot advancement the adit will be in the order of 110 feet below the surface silver-lead mineralization.

Work on this heading is scheduled to resume during September.

STUMP MINES LTD.

SILVER KEY MINES LTD.

PROGRESS REPORT

KEY 18 ZONE (Key 18 claim)

1) Work Completed:

Initial stripping by bulldozer had uncovered some mineralized float in the area of the Key 18 geochemical anomaly. By the end of the month additional stripping had located the source of the mineralization by exposing a well defined shear. Where exposed the shear is reported to be 18 feet wide with a solid core from 3 to 4 feet wide of galena and tetrahedrite. Float specimens of similar material from this area have assayed from 80 to 150 oz silver per ton.

2) Work Planned

A continuous program of stripping is being carried out to extend this zone.

CAMP:

Preparations are being made to winterize the camps. Some minor work was and is being done on the camp road.

ASSESSMENT WORK:

Assessment work is required to be recorded as soon as possible on the following claims:

Key 1 - 4, Key 19-20, Key 29-30, Key 1 fraction,
Angel 1, Rusty 7 & 8 Rusty 24-31, Rusty 32-39,
Cap 1 - 15, Don 6 & 8 Don 13 & 15.

SILVER KEY MINES LTD.

PROGRESS REPORT

Underground Development (A-1 ZONE)

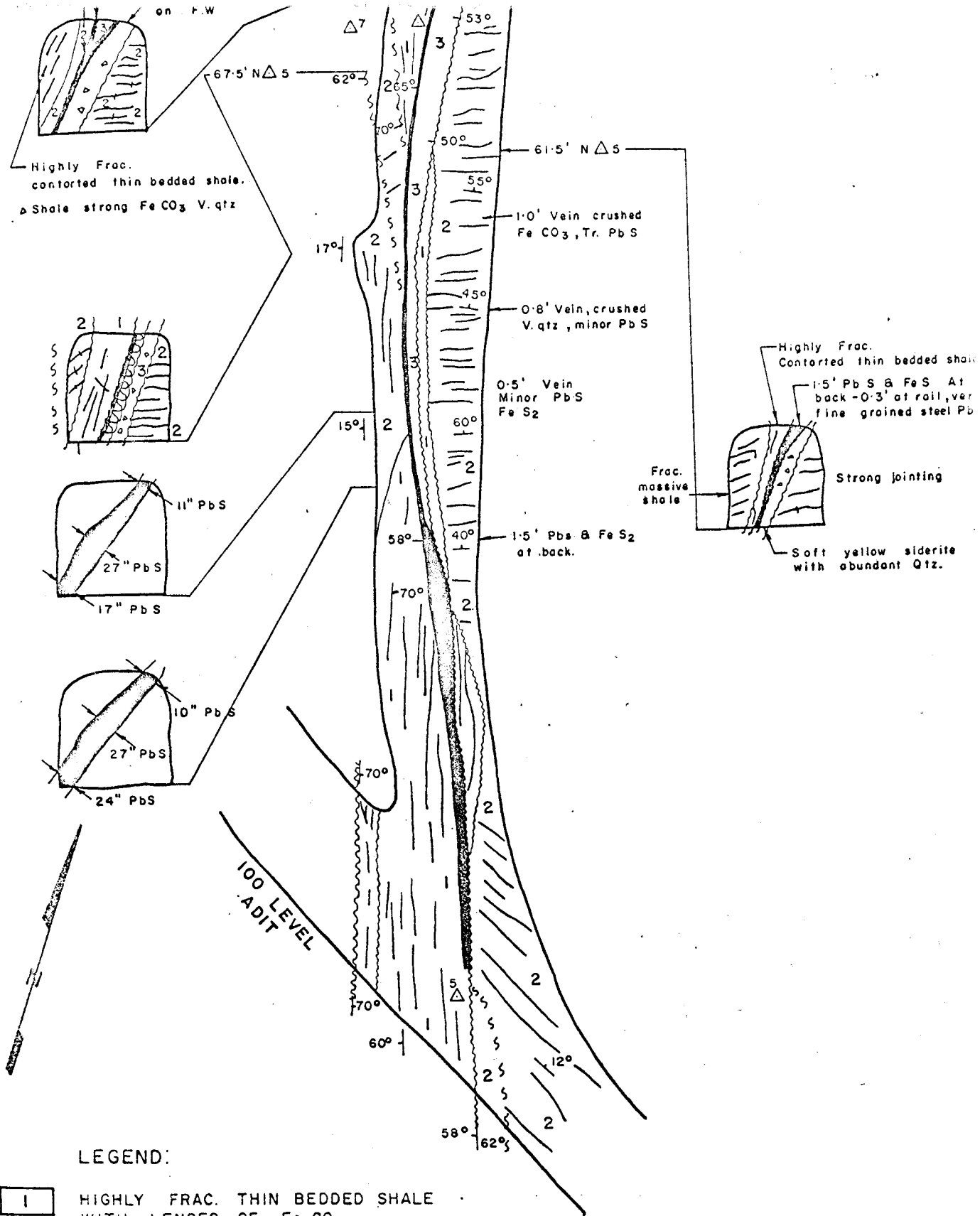
Contract Advancement

<u>Period</u>	<u>X-Cut</u>	<u>Drifting</u>	<u>Slashing</u>	<u>Timbering</u>
April 9th - 15th Invoice #2	51.0 ft	Nil	Nil	Nil
April 15th-30th Invoice #3	251.0 ft.	Nil	Nil	66 feet
May 1st-15th Invoice #4	111.6 ft.	134.4	320 cu ft	162 feet
June 1st-15th Invoice #8	Nil	164	Nil	164 feet
		<u>Raising</u>		
July 1st-15th Invoice #9	Nil	183.0	112 cu ft	138 feet
July 15th-31st	Nil	130.5	29.0	
Aug. 1st-15th Invoice #13	<u>Nil</u>	<u>69.5</u>	<u>36.0</u>	<u> </u>
TOTAL TO AUG. 15th -	413.6	1044.4	65.0 1,236	880

SUMMARY

Total Advancement	X-Cut	413.6
	Drift	<u>1,044.4</u>
		1,458.0 feet

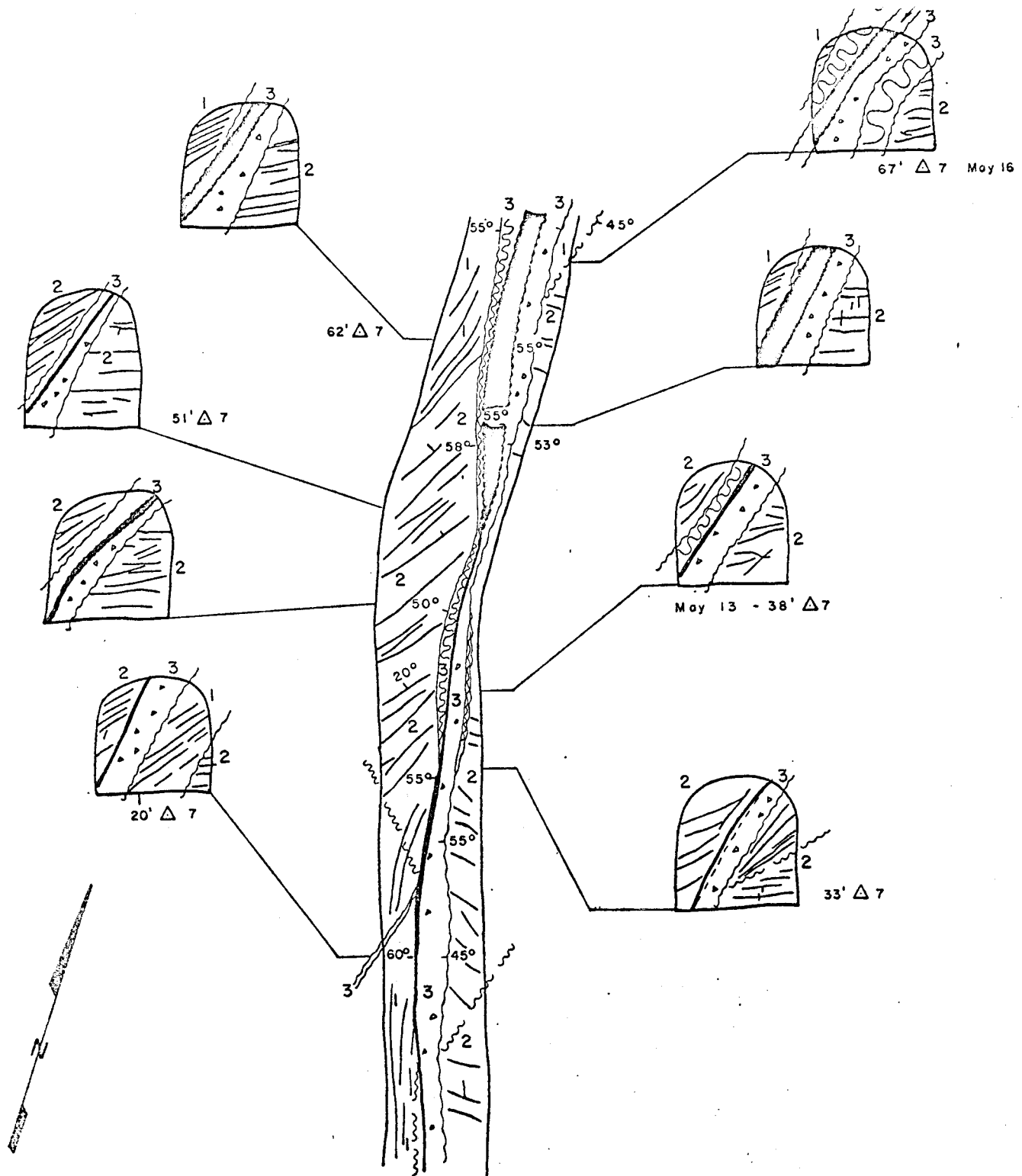
	<u>To June 31, 1968</u>	<u>From June 31st to Aug. 15th</u>	<u>To Aug. 15 1968</u>
Waste Dump (1 ton car)	2,150	1,036	3,186
Ore Dump (1 ton car)	<u>5,450</u>	<u>2,258</u>	<u>7,708</u>
	7,516 tons	3,294 tons	10,894 tons
	<u> </u>	<u> </u>	<u> </u>



LEGEND:

- 1 HIGHLY FRAC. THIN BEDDED SHALE WITH LENSES OF Fe CO₃
- 2 SIDERITE FILLED JOINTS IN MASSIVE Qtz.
- 3 SOFT Fe CO₃, MINOR Fe S₂, OCC. LENSES Pbs
- AVG. 0.3' FINE STEEL Pbs ON H.W., GOUGY SHALE ON F.W.
- WEAK Fe CO₃ FILLED FRAC., Tr. Pbs.
- FAULT

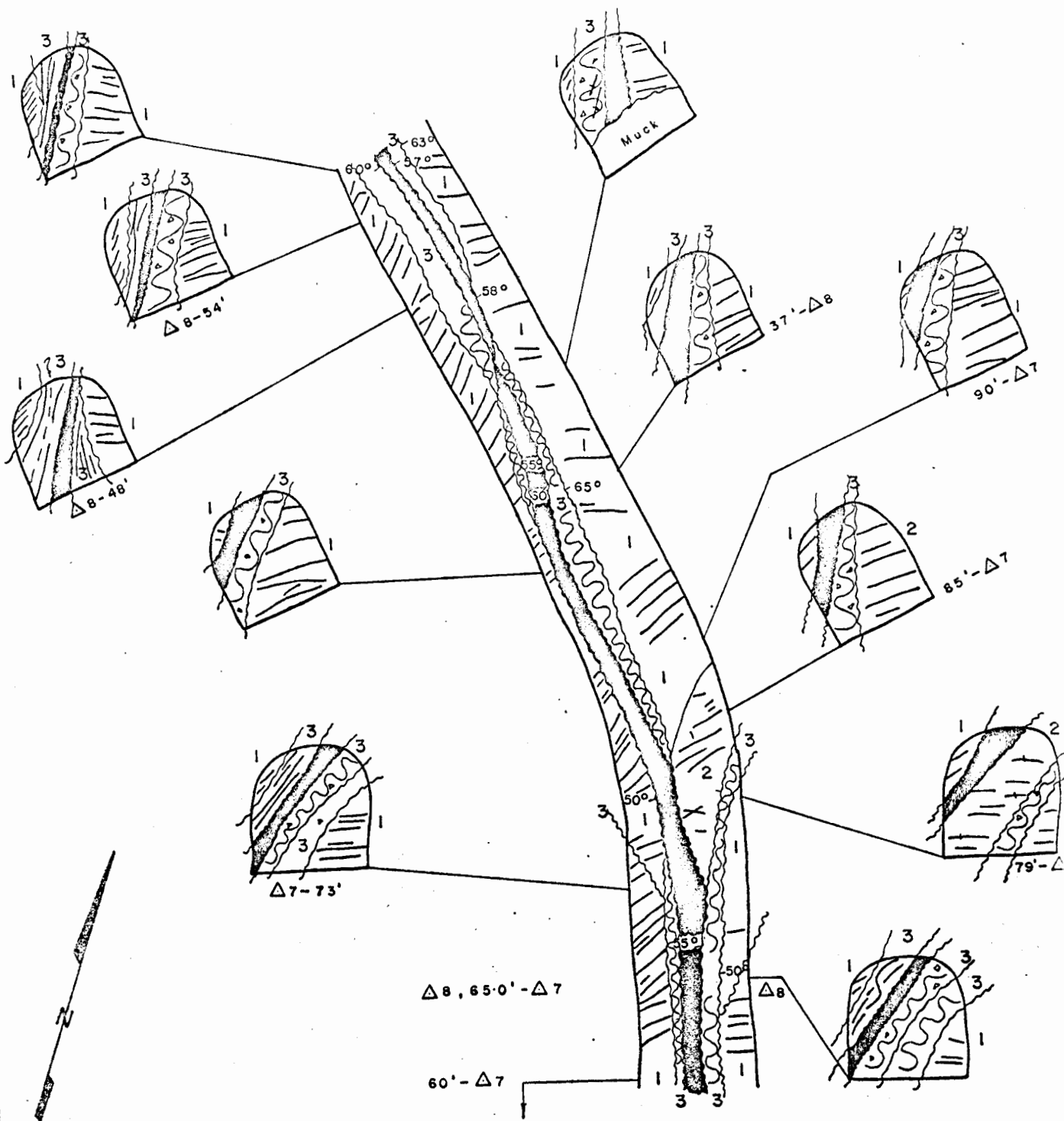
STUMP MINES LTD.		
GEOLOGY OF I-11 N. DRIVE		
1" = 10'	W.M.	MAY-68




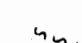

LEGEND:

- $\Delta 7$ Δ $\text{---} \perp \text{---} 71' \Delta 5$
- 1 HIGHLY FRAC. THIN BEDDED SHALE WITH LENSES OF Fe CO_3
 - 2 SIDERITE FILLED JOINTS IN MASSIVE Qtz.
 - 3 SOF: Fe CO_3 , MINOR Fe S_2 , OCC. LENSES Pbs
 - AVG. 0-3' FINE STEEL Pbs ON H.W., GOUGY SHALE ON F.W.
 - WEAK Fe CO_3 FILLED FRAC., Tr. Pbs.
 - FAULT

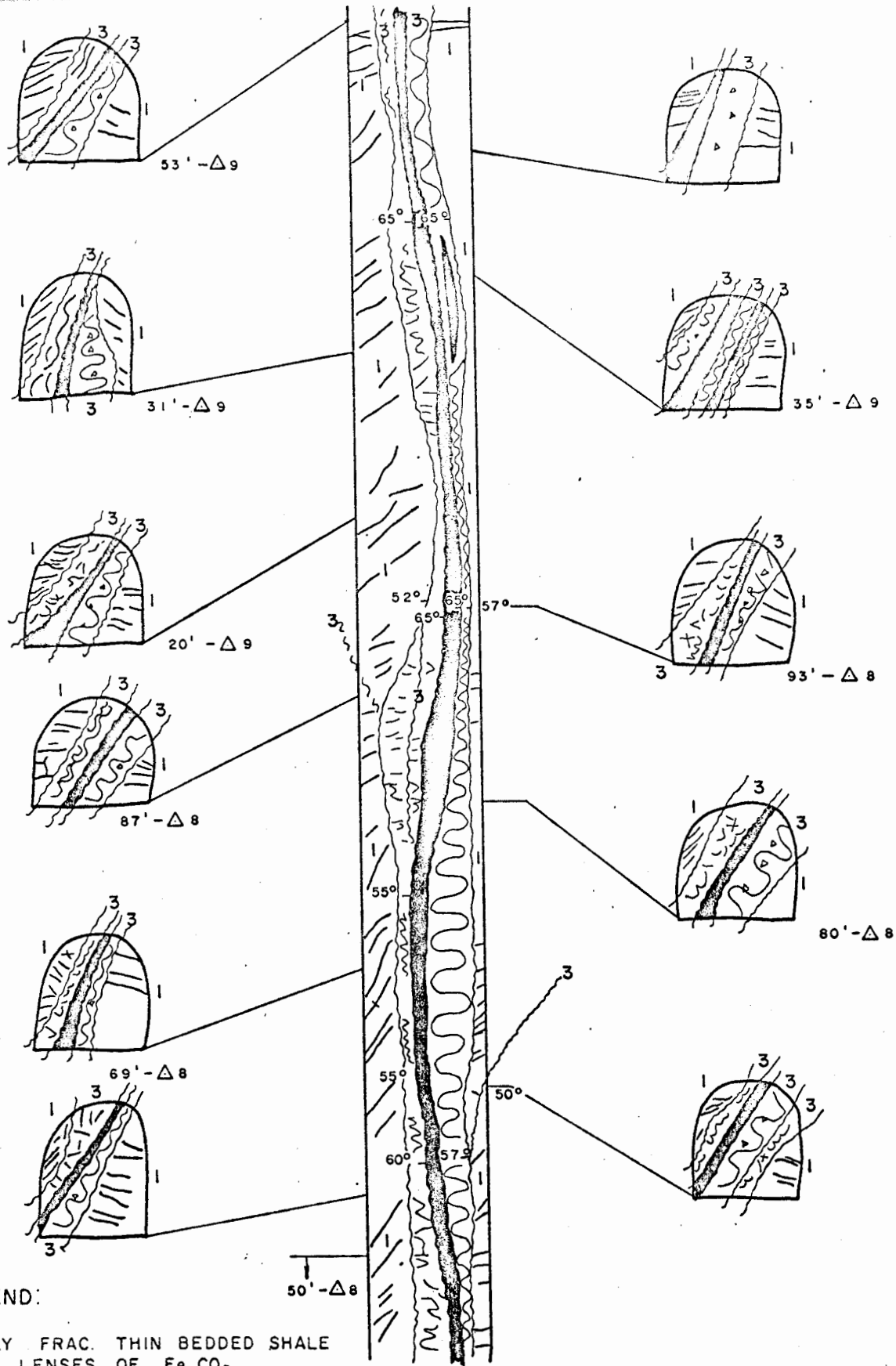
STUMP MINES LTD.		
GEOLOGY OF I-AIN DRIVE		
1" = 10'	W.M.	MAY-68



LEGEND:

- 1 HIGHLY FRAC. THIN BEDDED SHALE WITH LENSES OF $FeCO_3$
- 2 SIDERITE FILLED JOINTS IN MASSIVE Qtz.
- 3 SOFT $FeCO_3$, MINOR FeS_2 , OCC. LENSES Pbs
-  AVG. 0.3' FINE STEEL Pbs ON H.W., GOUGY SHALE ON F.W.
-  WEAK $FeCO_3$ FILLED FRAC., Tr. Pbs.
-  FAULT

STUMP MINES LTD.		
GEOLOGY OF I-AI N. DRI		
1" = 10'	W.M.	MAY-



LEGEND:

- 1 HIGHLY FRAC. THIN BEDDED SHALE WITH LENSES OF Fe CO₃
- 2 SIDERITE FILLED JOINTS IN MASSIVE Qtz.
- 3 SOFT Fe CO₃, MINOR Fe S₂, OCC. LENSES Pbs
- AVG. 0-3' FINE STEEL Pbs ON H.W., GOUGY SHALE ON F.W.
- WEAK FeCO₃ FILLED FRAC., Tr. Pbs.
- FAULT

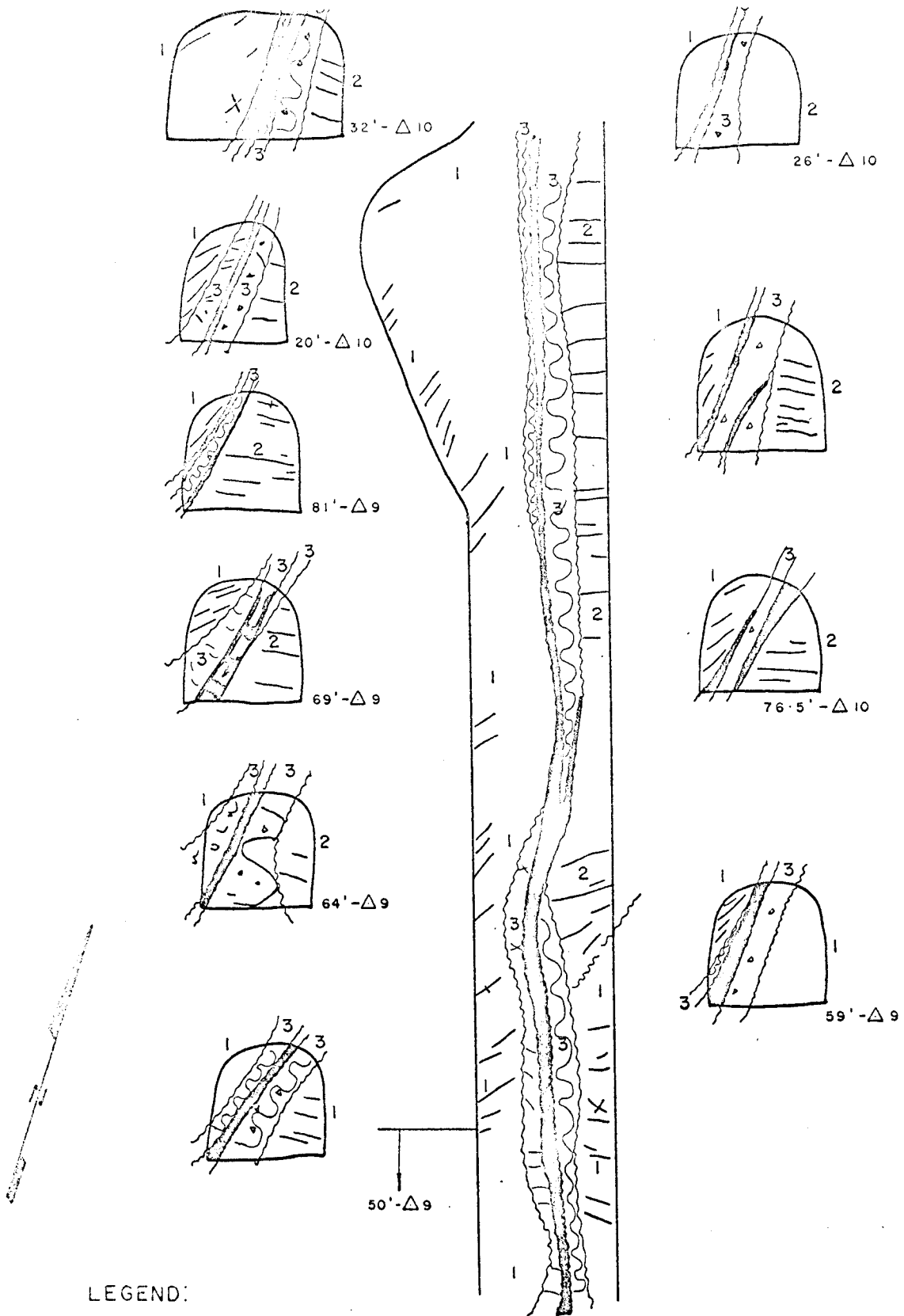
STUMP MINES LTD.

GEOLOGY OF I-AI N. DRIVE

1" = 10'

W.M.

MAY-68



LEGEND:

- 1 HIGHLY FRAC. THIN BEDDED SHALE WITH LENSES OF Fe CO₃
- 2 SIDERITE FILLED JOINTS IN MASSIVE Qtz.
- 3 SOFT Fe CO₃, MINOR Fe S₂, OCC. LENSES Pbs
- AVG. 0.3' FINE STEEL Pbs ON H.W., GOUGY SHALE ON F.W.
- WEAK Fe CO₃ FILLED FRAC., Tr. Pbs.
- FAULT

STUMP MINES LTD.		
GEOLOGY OF I-AI N. DRIVE		
1" = 10'	W.M.	MAY-68

SILVER KEY MINES LIMITED

PROGRESS REPORT

1968

SUMMARY OF MINERAL HOLDINGS:

KETZA RIVER - YUKON:

<u>CLAIMS</u>	<u>FRACTIONS</u>	<u>NO. CLAIMS</u>	<u>EXPIRY DATES</u>
KEY 1-4		4	November 28, 1968 ✓
KEY 5-18		14	November 28, 1969 ✓
KEY 19-20		2	November 28, 1968 ✓
KEY 21-28		8	November 28, 1969 ✓
KEY 29-30		2	November 28, 1968
KEY 31-37		7	November 28, 1969 ✓
JAN 1 & 2		2	November 28, 1969 ✓
	KEY 1 (1)		November 28, 1968 ✓
	KEY 2-5 (4) 4?		November 28, 1969 ✓
LAP 1-21 ✓		21 ✓	February 15, 1969 ✓
PEX 1-11 ✓		11	February 15, 1969 ✓
NORTH KEY 1-16		16	August 30, 1968
ANGEL - 1		1	October 16, 1968
	MONA 1 & 3 (2)		November 28, 1969
MONA 4-6		3	November 28, 1969
LUCKY 1-8		8	April 21, 1969 ✓
TOR 1-15		15	April 21, 1969 ✓
TOR 17-24		8	April 21, 1969 ✓
	TOR 16 (1)		

TOTAL NO. OWNED:-	<u>(3)</u>	<u>122</u>
-------------------	------------	------------

SUMMARY OF MINERAL OPTIONS:

RUSTY 7 & 8		2	December 19, 1968 ✓
RUSTY 24 - 31		8	December 19, 1968 ✓
RUSTY 32 - 39		8	December 19, 1968 ✓
CAP 1 - 15		15	December 19, 1968 ✓
DON 6 & 8		2	December 19, 1968 ✓
DON 13 & 15		2	December 19, 1968 ✓
	CAP 1 (1)		

<u>1</u>	<u>37</u>
----------	-----------

COMPANY'S TOTAL PROPERTY HOLDINGS: 9 Fractions, 159 Claims



STUMP MINES LTD.

PROGRESS REPORT

1968

SUMMARY OF MINERAL HOLDINGS:

KETZA RIVER - YUKON TERRITORY

<u>NAME</u>	<u>NO.OF CLAIMS</u>	<u>EXPIRY DATE</u>
EVA 1 to 24	24	March 10th, 1969
*TIP 1 to 15 (90% interest)	15	December 1st, 1968
*TIP 24 to 26 (90% interest)	3	December 1st, 1968
MARION 1 to 16	16	November 16th, 1969
	<hr/>	
Total:	58	
	<hr/> <hr/>	

*Silver Key has a 10% interest in these claims

PARSON COPPER - BRITISH COLUMBIA

LAPEX 2 to 9	8	October 7, 1968
--------------	---	-----------------

SILVER KEY MINES LIMITED

PROGRESS REPORT

1968

<u>COMPANY'S SHARE DATA</u>	<u>ISSUED</u>	<u>MONIES RECEIVED</u>
Directors' Shares	5	\$ 5.00
Vendor Shares	1,060,000	
Previous underwritings	1,613,500	511,755.00
1968 underwriting	100,000	<u>35,000.00</u>
		<u>\$ 546,750.00</u>

* * *

Vendor Options For Claims (expired December 15th, 1968).	400,000	
Options outstanding (from 35¢ to 60¢)	<u>900,000</u>	
Total outstanding	<u>1,300,000</u>	

* * *

SUMMARY:

CAPITALIZATION	5,000,000
UNDERWRITTEN	1,713,500
VENDOR	1,060,000
OPTIONS OUTSTANDING	1,300,000
OTHER TREASURY SHARES	926,500

STUMP MINES LTD.

PROGRESS REPORT

COMPANY'S SHARE DATA

SHARES ISSUED MONIES REC'D

Escrowed shares:

1) New Nipiron Mines	275,625	
2) Stump Mines in trust	<u>459,375</u>	735,000

Underwritings & Qualified

Davidson & Co.	600,000	1,860,905	\$ 160,000.00
Goad & Co.	1,000,000		520,000.00
New Nipiron Mines	60,900		-
Management options	200,000		85,000.00
Directors' shares	<u>5</u>		<u>5.00</u>

	<u>1,860,905</u>	<u>2,595,905</u>	<u>\$ 765,005.00</u>
--	------------------	------------------	----------------------

CAPITALIZATION	5,000,000
ESCROWED SHARES	735,000
UNDERWRITINGS	1,860,905
TREASURY SHARES	2,404,095

CANADA)

TO WIT:)

092918

I, WM. MCKENZIE

of ROSS RIVER, YUKON

do solemnly declare, -

THAT WORK TO THE VALUE OF AT LEAST
\$ 12,090.87 HAS BEEN DONE TO THE
FOLLOWING MINERAL CLAIMS :-

LAP - 10 - 89047
LAP - 12 - 89049
LAP - 14 - 89051
LAP - 16 - 89053
LAP - 18 - 89055
LAP - 19 - 89056
LAP - 20 - 89057
LAP - 21 - 89058

KEY 1 - 69101
KEY 2 - 69102
KEY 19 - 69119
KEY 20 - 69120
KEY 29 - 69129
KEY 30 - 69130
KEY 31 - ~~69131~~
KEY 1(FR) - 71076

Key claims - Silver Key + Stamp main

And I make this solemn declaration conscientiously believing it to be true and knowing that it is of the same force and effect as if made under oath and by virtue of The Canada Evidence Act.

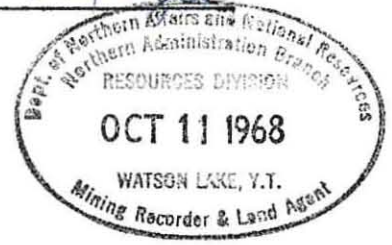
Declared before me at WATSON LAKE YT SILVER KEY CAMP

in the YT this



10TH day of OCT. 1968

[Signature]
A Commissioner for Oaths for Yukon Territory OR Notary Public for

Wm. McKenzie





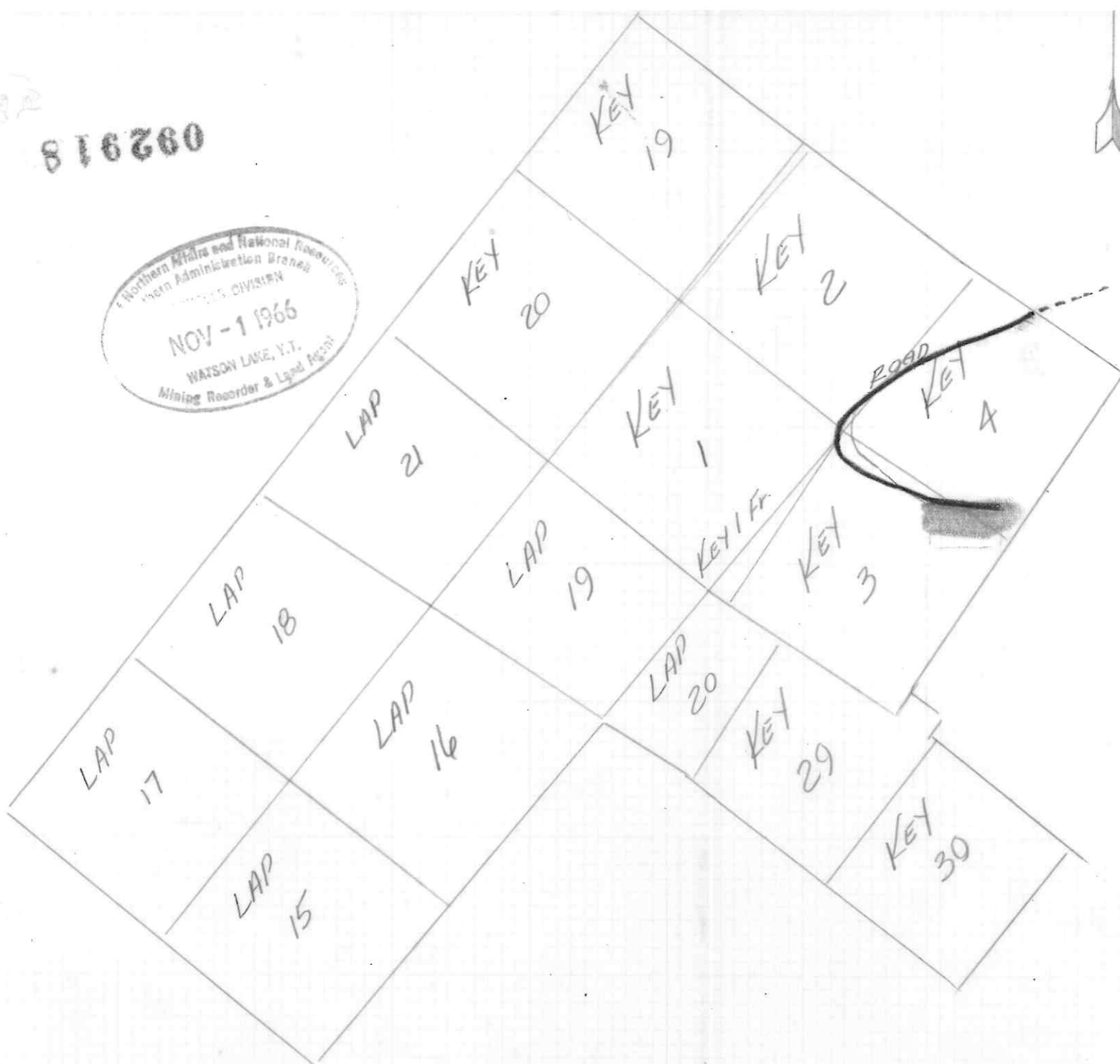
 Road Construction
 Stripping overburden



Road	9000 ft -	2400.00
Stripping overburden	5000 yds =	3650.00
		<u>\$ 6050.00</u>

085818

Silver Key Mines Ltd.
 Sketch of grouping & Assessment work
 Scale 1" = 1000'
 Oct 4, 1966
 Refer Sheet # 105 F-9
 R.J.H.

816260



	New Road	2500'	- Construction Cost	\$ 2000. ⁰⁰
	Stripping	2400 yds	@ 0.75	1800. ⁰⁰
				<u>\$ 3800.00</u>

Silver Key Mines Ltd

Sketch of grouping & assessment work.

Scale 1" = 1000'



Oct 3, 1966 Refer Sheet

R.J.H.

105F-9



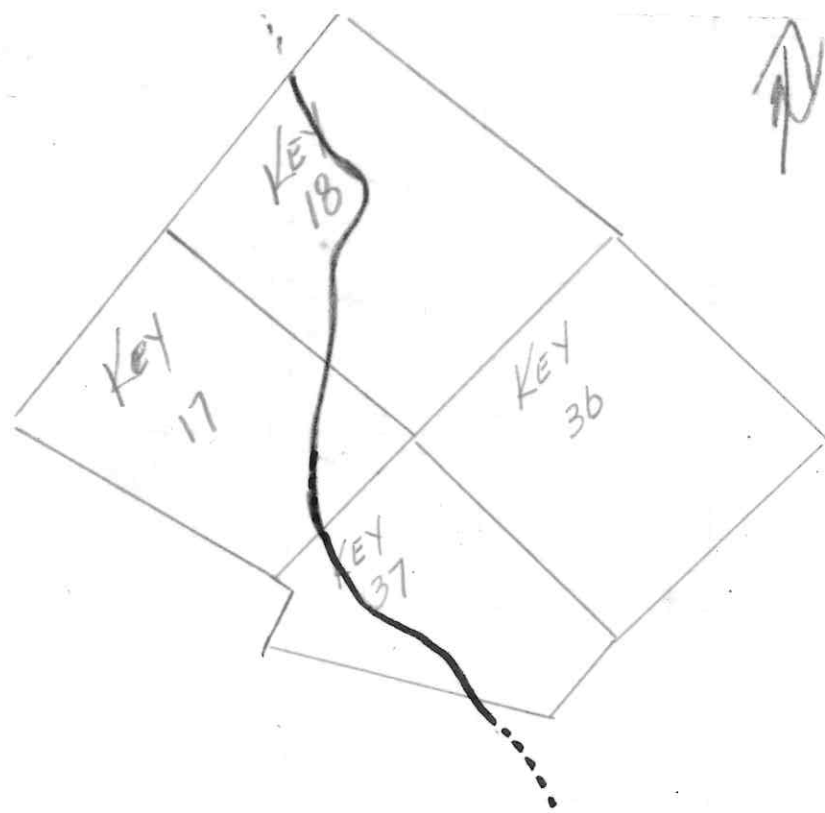
810500

 Road Construction
 Stripping overburden

NOV-1 1966
 WATSON & CO., I.I.
 Mining Recorder & Land Agent

Roads 12,000 ft = \$7,500.00
 Stripping overburden 8,000 yds 6,000.00
 \$13,500.00

Silver Key Mines Ltd.
 Sketch of grouping & assessment work
 Scale 1" = 1000'
 Refer Sheet # 105 F-9
 Oct 5, 1966
 R.J.H.



Road Construction 2600 ft. = \$2200.00

810500

Silver Key Mines Ltd

Sketch of grouping & assessment work

Scale 1" = 1000'

Refer Sheet 105 F 9

Oct 6, 1966

R.J.H.

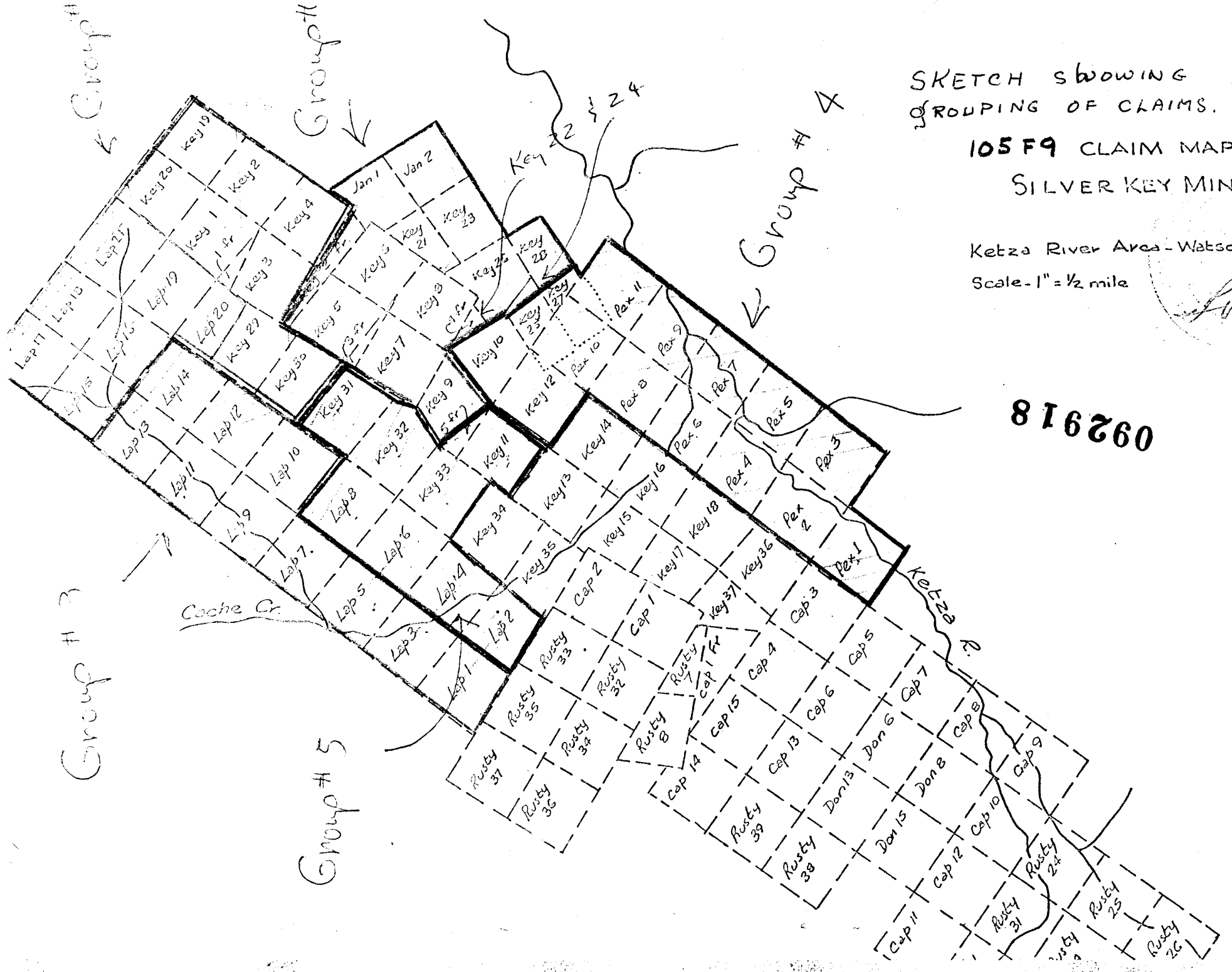
SKETCH SHOWING
GROUPING OF CLAIMS.

105 F9 CLAIM MAP
SILVER KEY MINES

Ketza River Area - Watson L. D.

Scale - 1" = 1/2 mile

816260



Group # 3

Group # 5

Group # 4

Group # 1

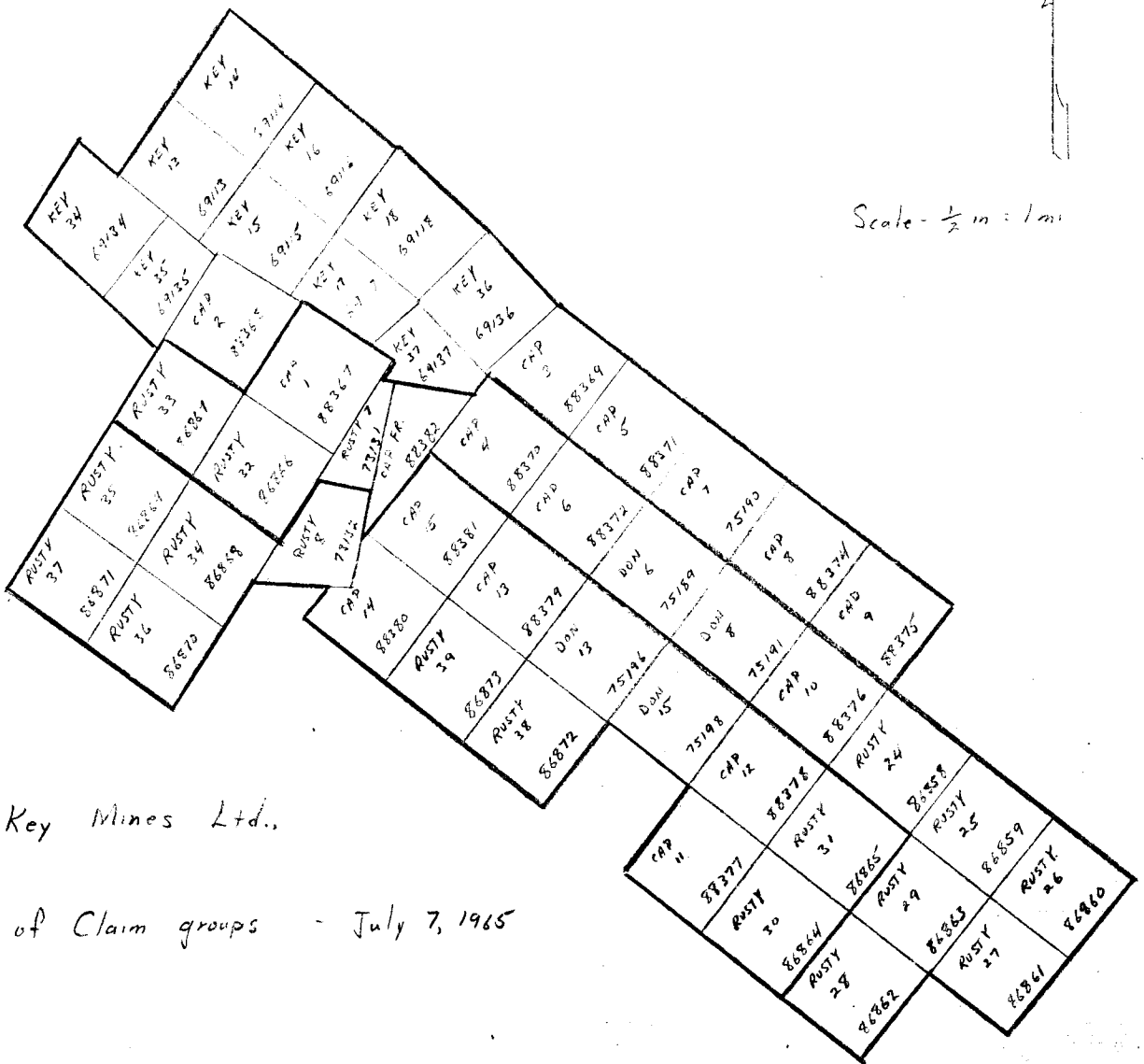
Group # 2

Cache Cr

Ketza

Lap 17, Lap 16, Lap 15, Lap 14, Lap 13, Lap 12, Lap 11, Lap 10, Lap 9, Lap 8, Lap 7, Lap 6, Lap 5, Lap 4, Lap 3, Lap 2, Lap 1
Key 19, Key 20, Key 21, Key 22, Key 23, Key 24, Key 25, Key 26, Key 27, Key 28, Key 29, Key 30, Key 31, Key 32, Key 33, Key 34, Key 35, Key 36, Key 37, Key 38, Key 39
Jan 1, Jan 2
Pex 1, Pex 2, Pex 3, Pex 4, Pex 5, Pex 6, Pex 7, Pex 8, Pex 9, Pex 10, Pex 11, Pex 12
Cap 1, Cap 2, Cap 3, Cap 4, Cap 5, Cap 6, Cap 7, Cap 8, Cap 9, Cap 10, Cap 11, Cap 12, Cap 13, Cap 14, Cap 15
Rusty 33, Rusty 34, Rusty 35, Rusty 36, Rusty 37, Rusty 38, Rusty 39, Rusty 24, Rusty 25, Rusty 26, Rusty 31
Don 13, Don 15, Don 6, Don 8
Key 22, Key 24

816260



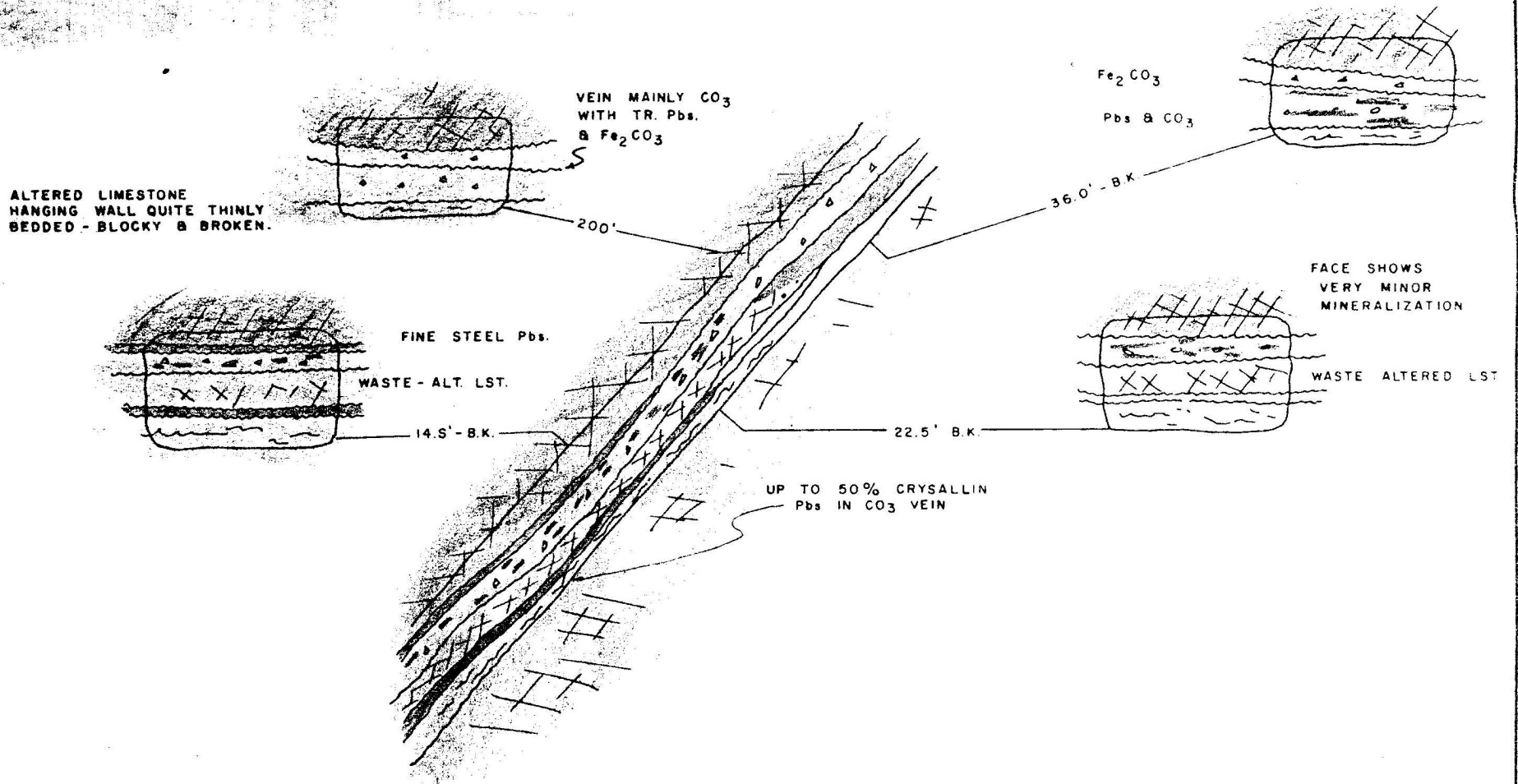
Scale - 1/2 in = 1 mi

Silver Key Mines Ltd.,

Division of Claim groups - July 7, 1965

ml ml.

Extent of No. 1 Raise
41.0' - Back of drift.



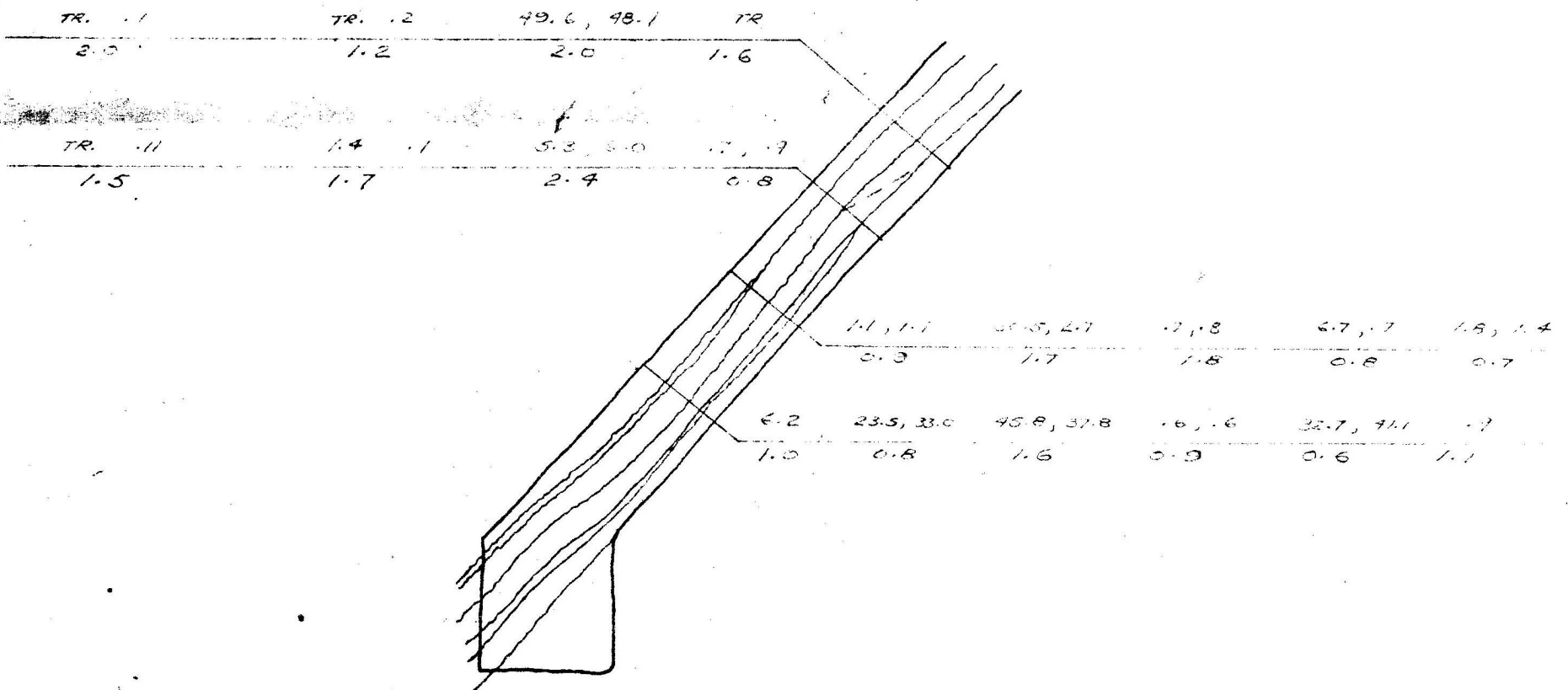
092918

GEOLOGY No. 1 Raise STUMP MINES LTD.		
ARCHER, CATHRO & ASSOC. LTD. <i>Consulting Geological Engineers</i>		
DATE	Aug. 1968	DWG. N ^o
DRAWN	W.M.	
SCALE	1" = 10'	

NOTE: ASSAYS READ FROM H.W. - F.W.
 AND READ GRADATION Ag AND
 % Pb WHERE SAMPLE IS ASSAYED
 FOR Pb

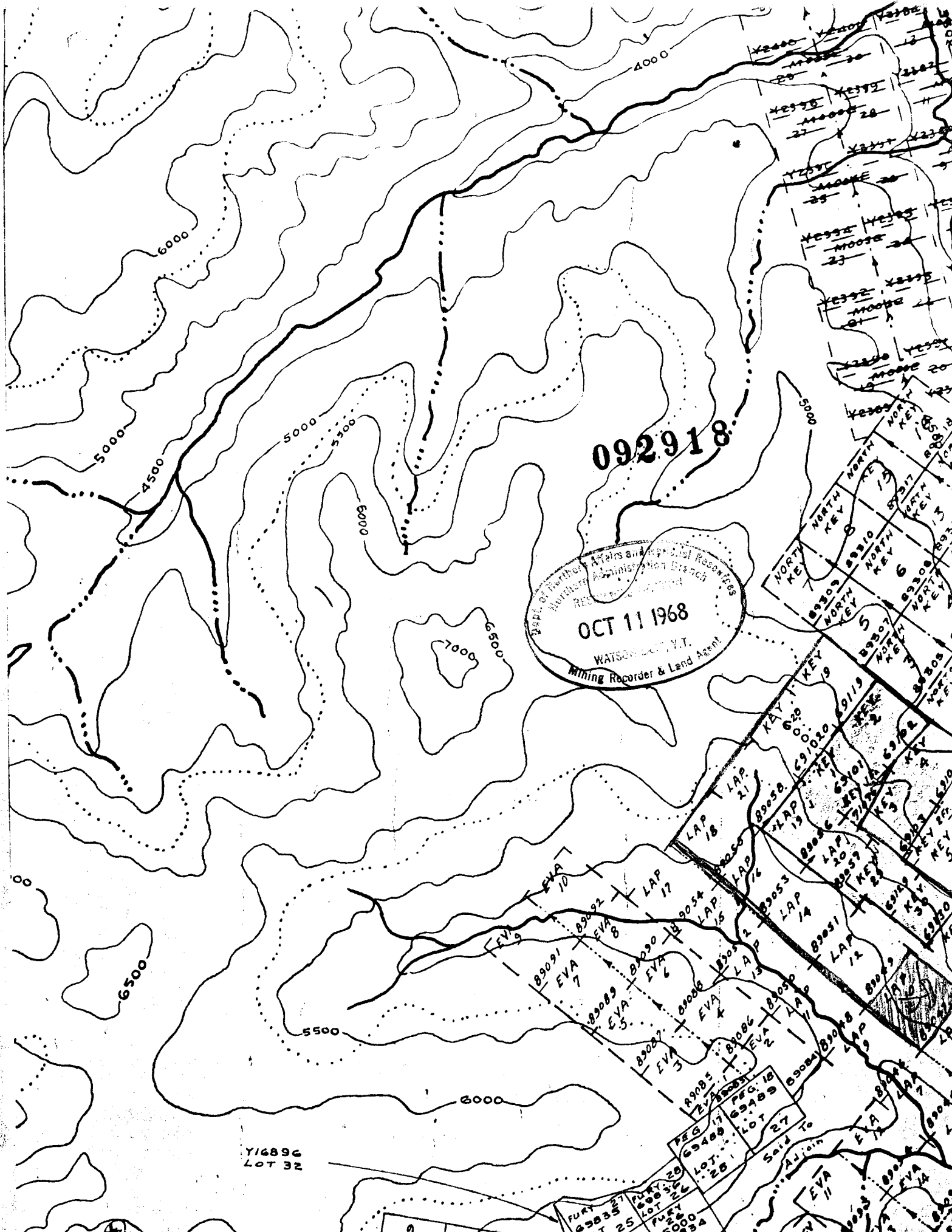
eg. $\frac{45.8, 37.8}{1.6}$ SHOWS 45.8 OZ/TON Ag & 37.8 % Pb
 OVER A SAMPLE WIDTH OF
 1.6 FEET.

092918



092918

STUMP MINES LTD
ARCHER, CATRO & ASSOC.
ASSAY PLAN
No. 1 RAISE
1" = 10' U.M. SECT. - 68



092918

Dept. of Northern Affairs and National Resources
Northern Administration Branch
REGISTRATION DIVISION
OCT 11 1968
WATSON
Mining Recorder & Land Agent

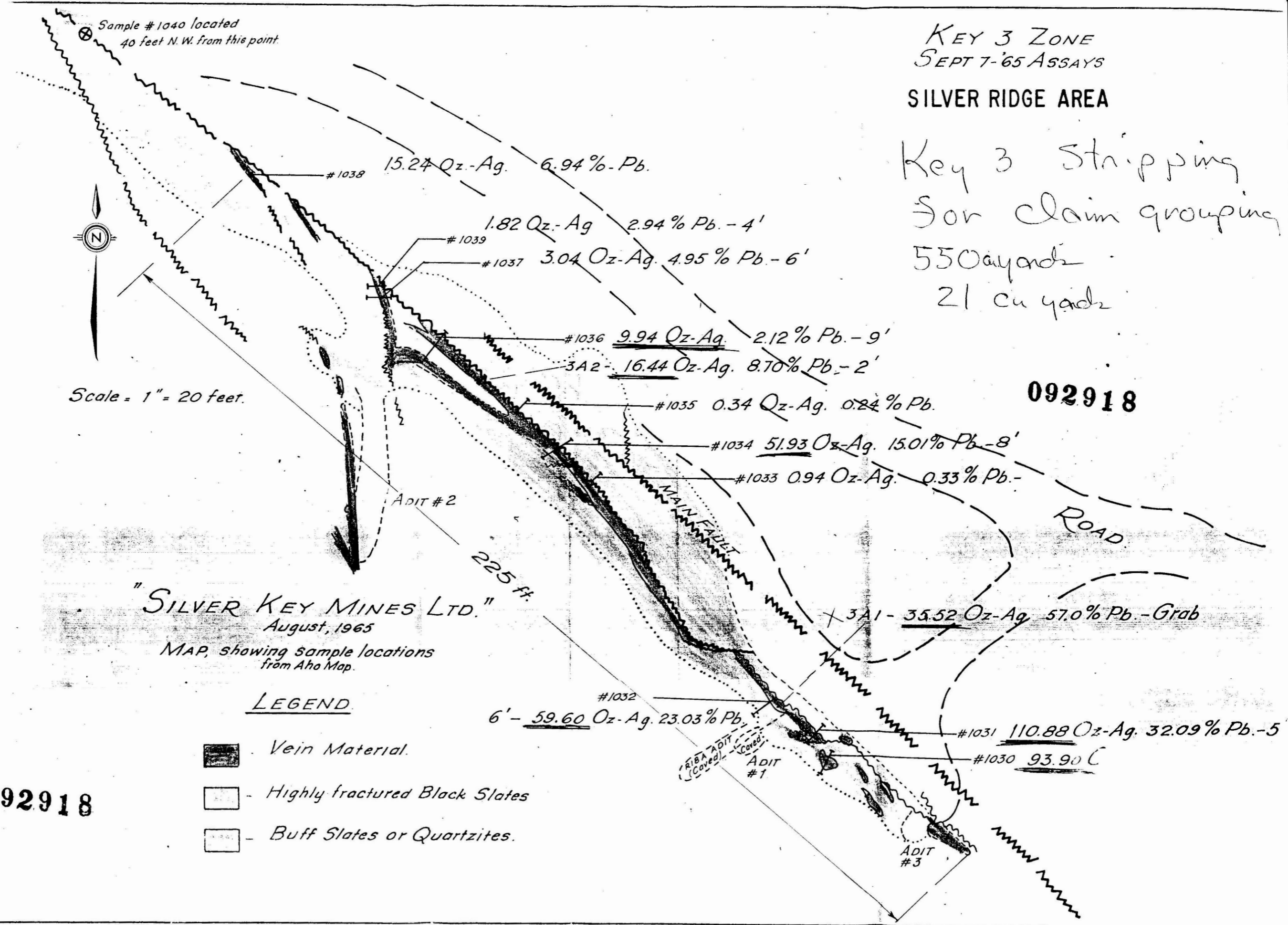
26 LOT 23
Y1689C

SOLD TO
Lot 27

FURTHER
LOT 25

KEY 3 ZONE
SEPT 7-'65 ASSAYS
SILVER RIDGE AREA

Key 3 Stripping
for claim grouping
550 yards
21 cu yards



"SILVER KEY MINES LTD."
August, 1965
MAP, showing sample locations
from Aho Map.

rock cut

E 53800

E 53900

open cut elev. 5600'
35°
Accessory Fault

57°

bolus outcrop

rock cut

rock cut

Adit #2
L-5645'

mineralized faults

adit

23°

30°

65°

48°

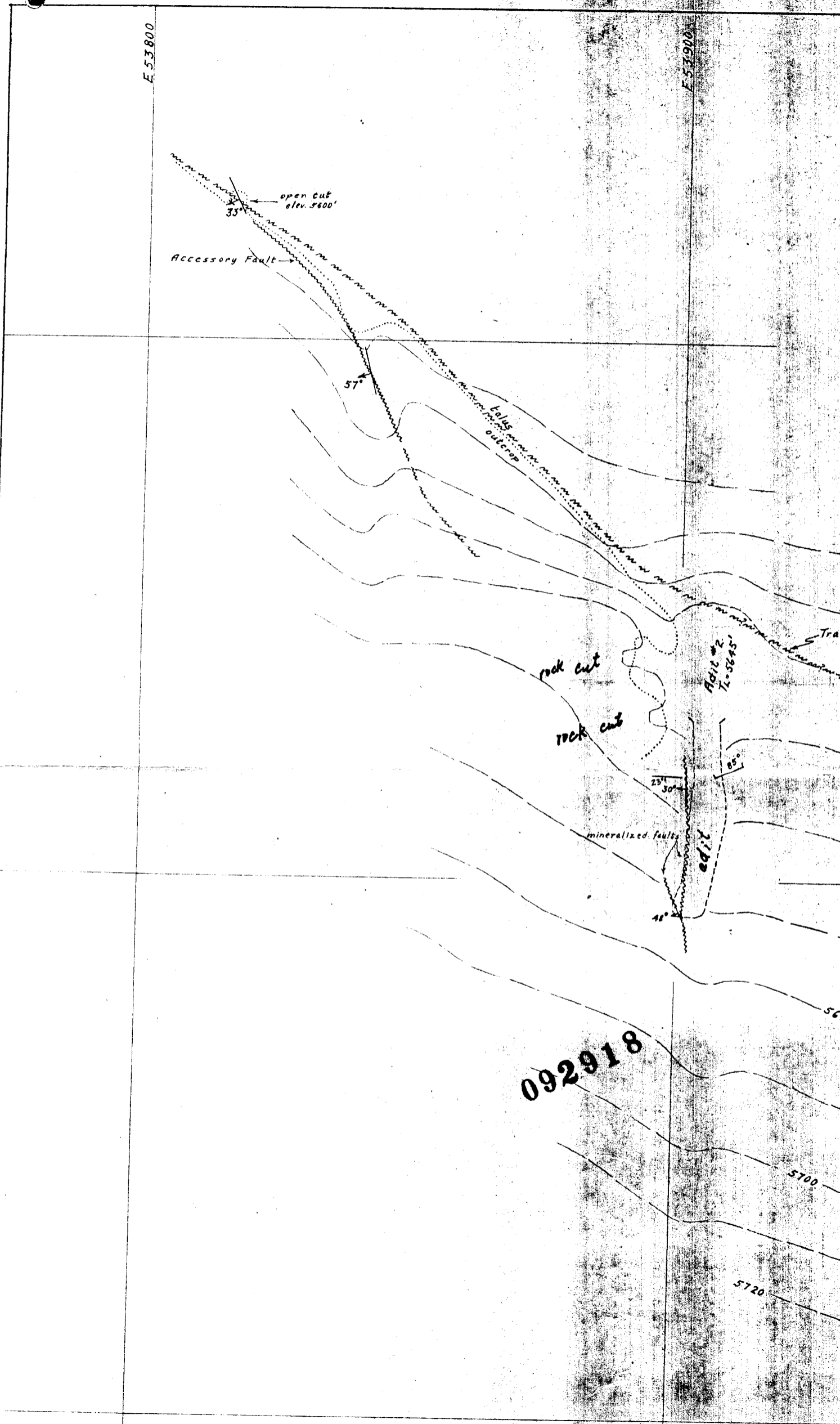
092918

5700

5720

Trac

5600



E 5400

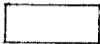
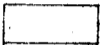
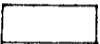
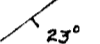
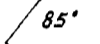

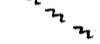

E 55100

SHOWING KEY 3A

SCALE: 1" = 20'
CONTOUR INTERVAL = 10'



LEGEND

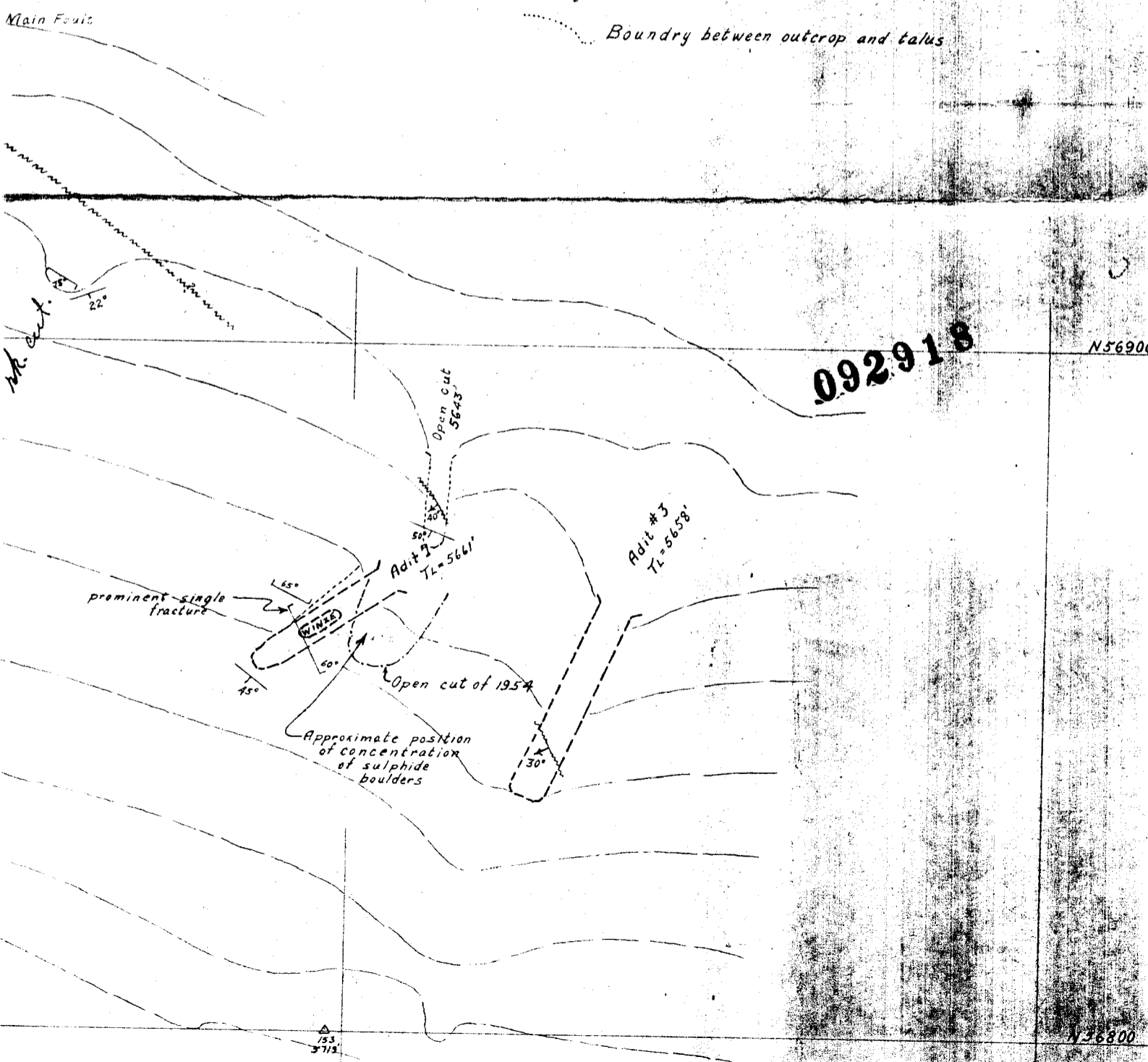
-  Highly-fractured, buff slates
-  Highly-fractured, buff or grey, cherty quartzites & argillites
-  Highly fractured black slates
-  Bedding
-  Frature Set
-  Fault trace and attitude
-  Projected fault trace
-  Boundry between outcrop and talus

Main Fault

W. cut.

092918

N 5690



53
3712

N 56800

KETZA RIVER AREA
SILVER KEY MINES
 PROPOSED NETWORK of ROADS or CUT TRAILS

SCALE



LOCATION OF AIR STRIP CONSTRUCTED.

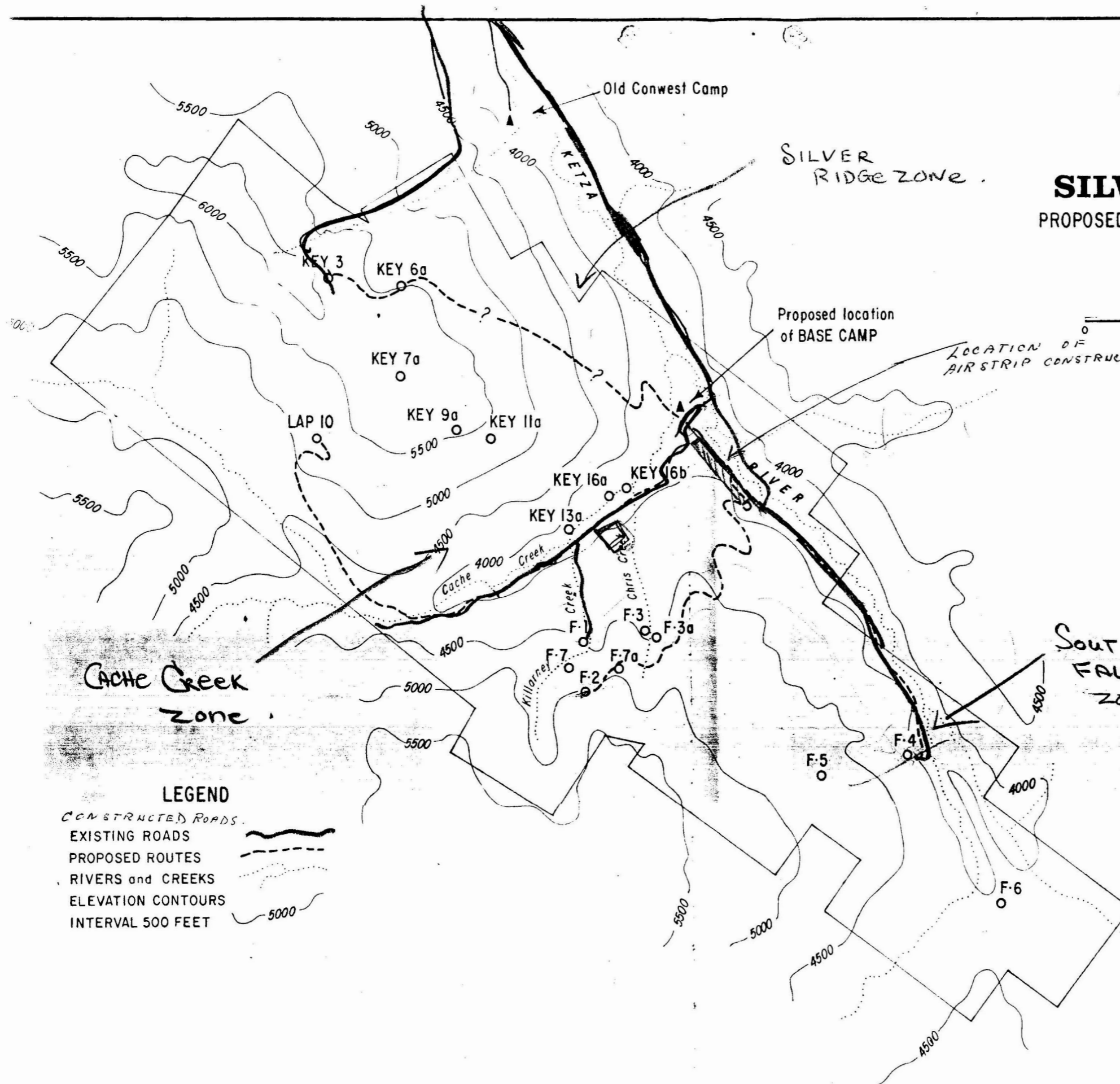


J.H. PRIEST - drafting services

092918



092918



LEGEND

- CONSTRUCTED ROADS
- EXISTING ROADS
- PROPOSED ROUTES
- RIVERS and CREEKS
- ELEVATION CONTOURS
- INTERVAL 500 FEET