

MAP NO.: ASSESSMENT REPORT X
105 D 8 PROSPECTUS
CONFIDENTIAL X
OPEN FILE

DOCUMENT NO: 092837
MINING DISTRICT: Whitehorse
TYPE OF WORK: Geophysics, Prospecting

REPORT FILED UNDER: L. Lebedoff

DATE PERFORMED: Jan 15-30, July 1 October 2, 1989 DATE FILED: May 3, 1990

LOCATION: LAT.: 60°21'N AREA: Jake's Corner
LONG.: 134°02'W VALUE \$: 4,800

CLAIM NAME & NO.: NLC 1-32
NLC 37-52

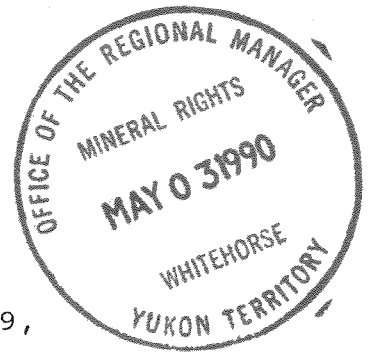
WORK DONE BY: G. S. Davidson

WORK DONE FOR: L. Lebedoff

DATE TO GOOD STANDING:

REMARKS: Magnetometer and VLF surveys conducted on cut lines resulted in several strong VLF-EM anomalies in geological environment favourable for gold mineralization. Also, ten rock samples were collected from the area producing one anomalous value of 572 ppb Au from a quartz-carbonate vein (grab).

ASSESSMENT REPORT
ON THE
NLC 1-32, 37-52 CLAIMS
(YB24538-YB24569, YB24574-YB24589,
YB25409-YB25410)
NTS 105 D-8
Whitehorse Mining District



FOR: L. Lebedoff
Site 10 Comp. 8 RR 1
Whitehorse, Y.T.
Y1A 4Z6



BY: G.S. Davidson, P. Geol.

April, 1990

DATE DUE

Regional Manager, Exploration and
Geological Services for Commissioners
of Yukon Territory.

092837

TABLE OF CONTENTS

	Page
INTRODUCTION	1
LOCATION AND ACCESS	1
PHYSIOGRAPHY	1
PROPERTY	3
REGIONAL GEOLOGY	3
HISTORY	5
PROPERTY GEOLOGY	5
EXPLORATION PROGRAM	5
INTRODUCTION	5
VLF-EM SURVEY	8
MAGNETOMETER SURVEY	8
ROCK SAMPLING	9
DISCUSSION AND CONCLUSIONS	10
RECOMMENDATIONS	11
STATEMENT OF COSTS	12
REFERENCES	13
LIST OF FIGURES	
FIGURE 1 Location Map	2
FIGURE 2 Claim Plan	4
FIGURE 3 Regional Geology	6
FIGURE 4 Property Plan	7
FIGURE 5 Contour Magnetometer Map	in pocket
FIGURE 6 VLF-EM Profile Plan	in pocket
LIST OF TABLES	
TABLE 1 Claim Data	3
TABLE 2 Rock Sample Values and Descriptions	9
APPENDIX 1 Certificates of Analysis	

INTRODUCTION

The NLC claims are located in the Whitehorse Trough near Jakes Corner's on the Alaska Highway. The area is underlain by Paleozoic and Mesozoic volcanic and metasedimentary rocks intruded by felsic porphyry dykes and mafic sills.

The claims were staked following the discovery of quartz-carbonate-pyrite alteration zones beside the Alaska Highway which returned anomalous gold values.

This report, prepared at the request of Mr. L. Lebedoff of Whitehorse, describes exploration work performed on the property between Jan. 15-30 and July 1-Oct. 2, 1989.

LOCATION AND ACCESS

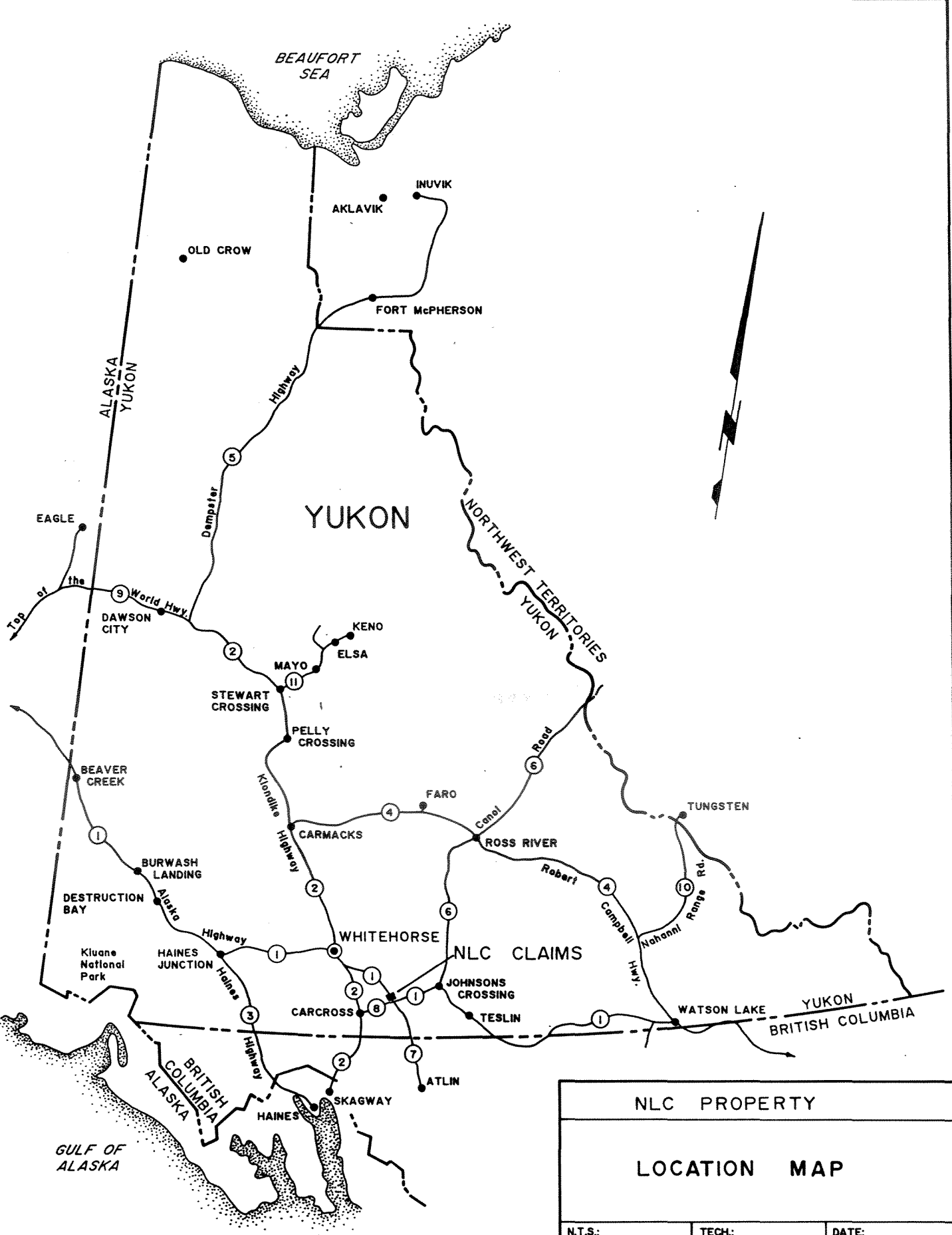
The property straddles the Alaska Highway, 80 kilometers south of Whitehorse and 3 kilometers northwest of Jakes Corners on NTS Map Sheet 105 D-8. Approximate geographical co-ordinates are 60 21' north latitude, 134 02' west longitude. Figure 1 shows the location of the claims.

PHYSIOGRAPHY

The NLC property is situated in the floor of the Whitehorse Trough where elevations average 750 m. Glacial till covers most of the area southwest of the Alaska Highway while north of the highway outcrop is exposed on numerous ridges and road cuts.

The area has a dry interior climate with yearly temperatures ranging from -45 C to 20 C. Exploration can be conducted on a year-round basis.

Vegetation in the district consists of open jackpine and spruce forest with patchy alder and poplar thickets.



NLC PROPERTY		
LOCATION MAP		
N.T.S.: 105 D-8	TECH.:	DATE:
SCALE: 1" = 12.5 mi.	DRAFTING:	FIGURE: 1

PROPERTY

The NLC claims (48) were staked in November, 1988 by L. Lebedoff and recorded in the office of the district mining recorder in Whitehorse. Figure 2 shows the claim plan and property data is listed in Table 1.

TABLE 1
PROPERTY DATA

Claim Name	Grant Numbers	Expiry date*
NLC 1-24	YB24538-YB24561	14 November, 1991
NLC 25-26	YB25409-YB25410	13 January, 1991
NLC 27-32	YB24564-YB24569	14 November, 1991
NLC 37-52	YB24574-YB24589	14 November, 1991

*(Expiry date applied for)

REGIONAL GEOLOGY

The Jakes Corner area is underlain by stratified volcanic and sedimentary units of the Whitehorse Trough and Atlin Terranes. Coast Plutonic Complex granitic rocks intrude the region.

The Whitehorse Trough features Lower to Middle Jurassic Laberge Group clastic sediments flanked by Upper Triassic Lewes River Group mafic volcanics. Atlin Terrane consists of Pennsylvanian(?) - Permian Taku Group serpentinites, metamorphosed volcanics and quartz-carbonate rock.

Structurally, the area features northwest-southeast orientated faults parallel to the axis of the Whitehorse Trough.

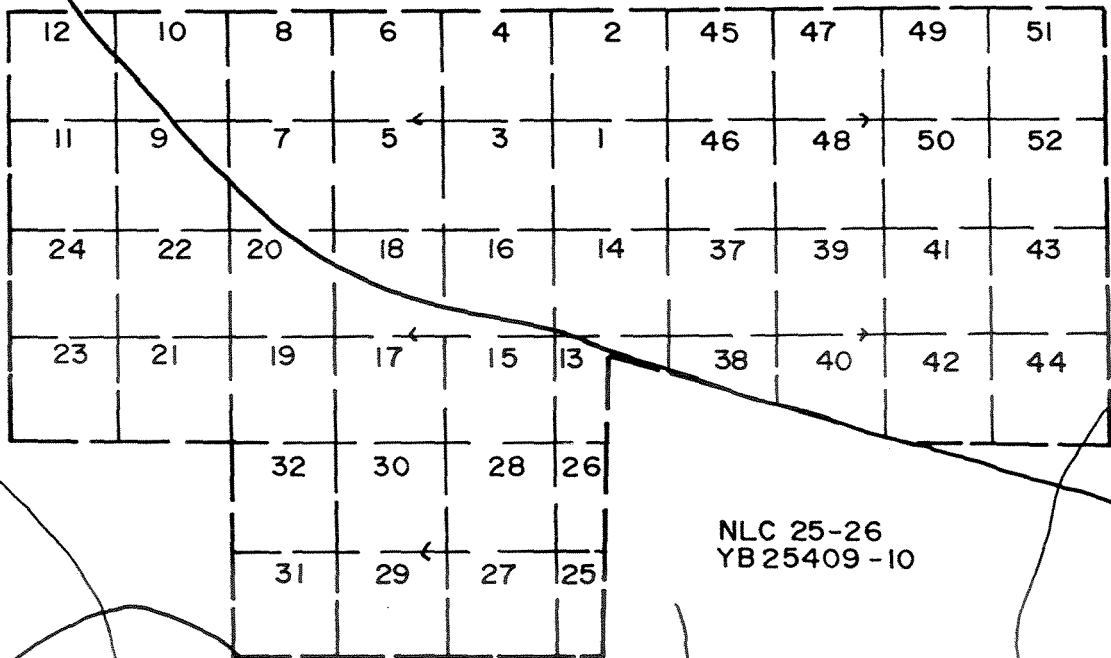
Gold mineralization in the Atlin Terrane generally occurs in quartz-carbonate alteration zones in close association with ultramafic intrusives and strong normal faults.

ALASKA HIGHWAY



NLC 1-24
YB 24538-61

NLC 37-52
YB 24574-89



NLC 25-26
YB 25409-10

NLC 27-32
YB 24564-69

TAGISH ROAD

NLC PROPERTY		
CLAIM PLAN		
NTS 105D-8	TECH GD	DATE Feb. 90
SCALE 1: 31,680		FIG 2

HISTORY

Ultramafic rocks and quartz-carbonate alteration zones around Marsh Lake were first examined in the late 1890's by prospectors en route to Dawson. Several gold prospects at the northeast and southeast ends of the lake were investigated by adits, shafts and trenches but no records of production exist.

Ultramafic rocks were examined in the 1960's and 1970's for potential asbestos mineralization. International Mine Services contracted an airborne magnetometer survey in 1967, covering a large area east of Marsh Lake, including the NLC claim area.

In the 1980's most of the historic gold prospects have been restaked, however no significant showings have been outlined.

PROPERTY GEOLOGY

The NLC claims are underlain by mafic volcanics, siltstone and chert intruded by basalt and quartz-feldspar porphyry dykes, and serpentinite sills. Alteration zones of quartz-carbonate rock occur in shear zones and around porphyry dykes. The alteration zones contain up to 5% pyrite and weather a typical orange colour.

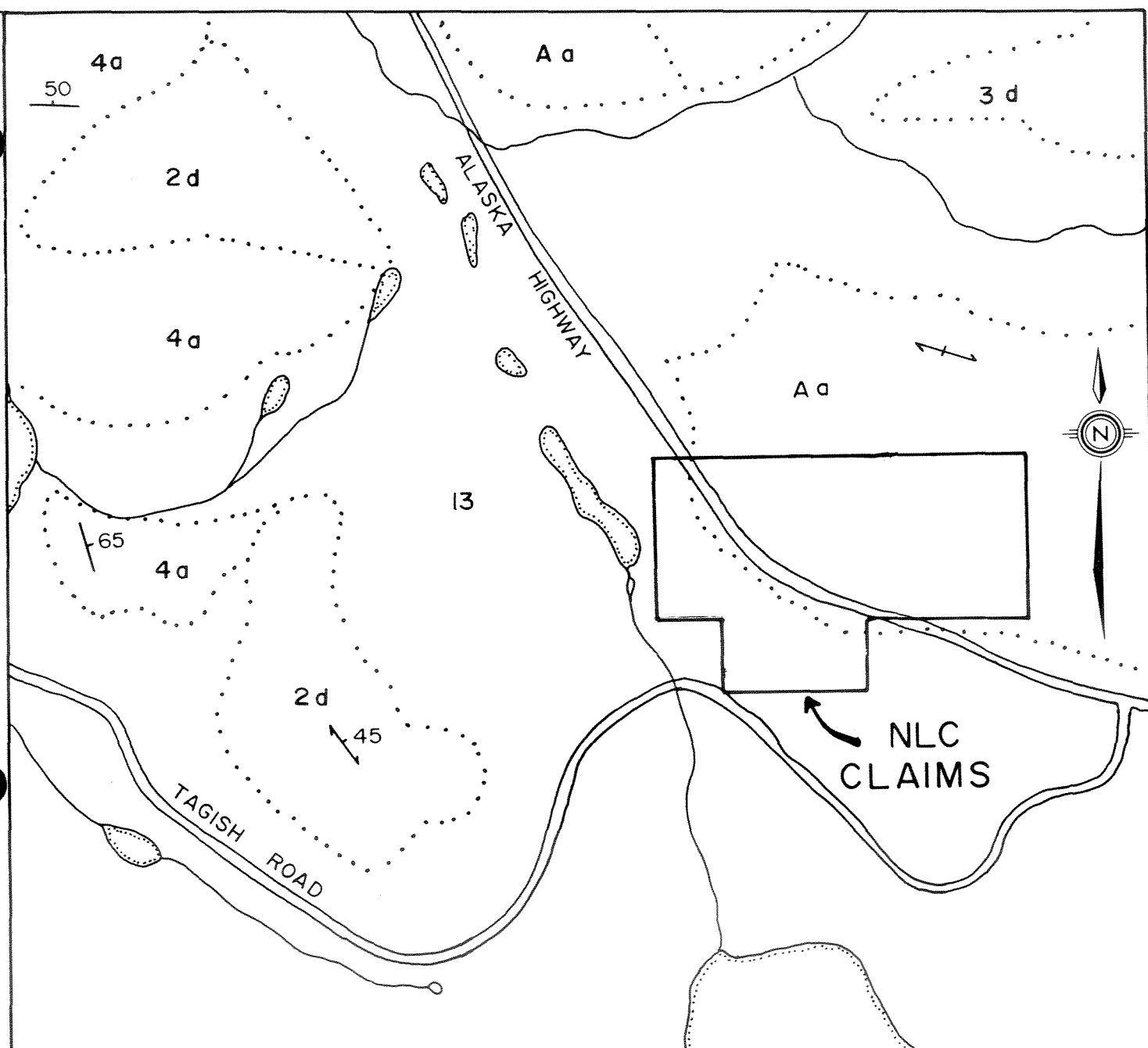
EXPLORATION PROGRAM

INTRODUCTION

The 1989 work program targeted quartz-carbonate alteration zones along the Alaska Highway. A 1.5 km north-south baseline was cut in the central area of the property with BL 10+00N located at the number one claim posts of NLC 15&16. Crosslines were run from 100 m centres between BL 8+00N and BL 17+00N. The crosslines were slashed out and stations were flagged at 25 m intervals. Figure 4 shows the grid plan.

VLF-EM and magnetometer surveys were performed over the grid area. Grid lines 8+00N-13+00N were surveyed using a Geonics EM-16 and fluxgate magnetometer while grid lines 14+00N-17+00N were surveyed using an EDA Omni Plus instrument.

A total of 11 rock samples were collected from outcrop and analyzed for Au + 10 by Bondar-Clegg and NAL in Whitehorse.



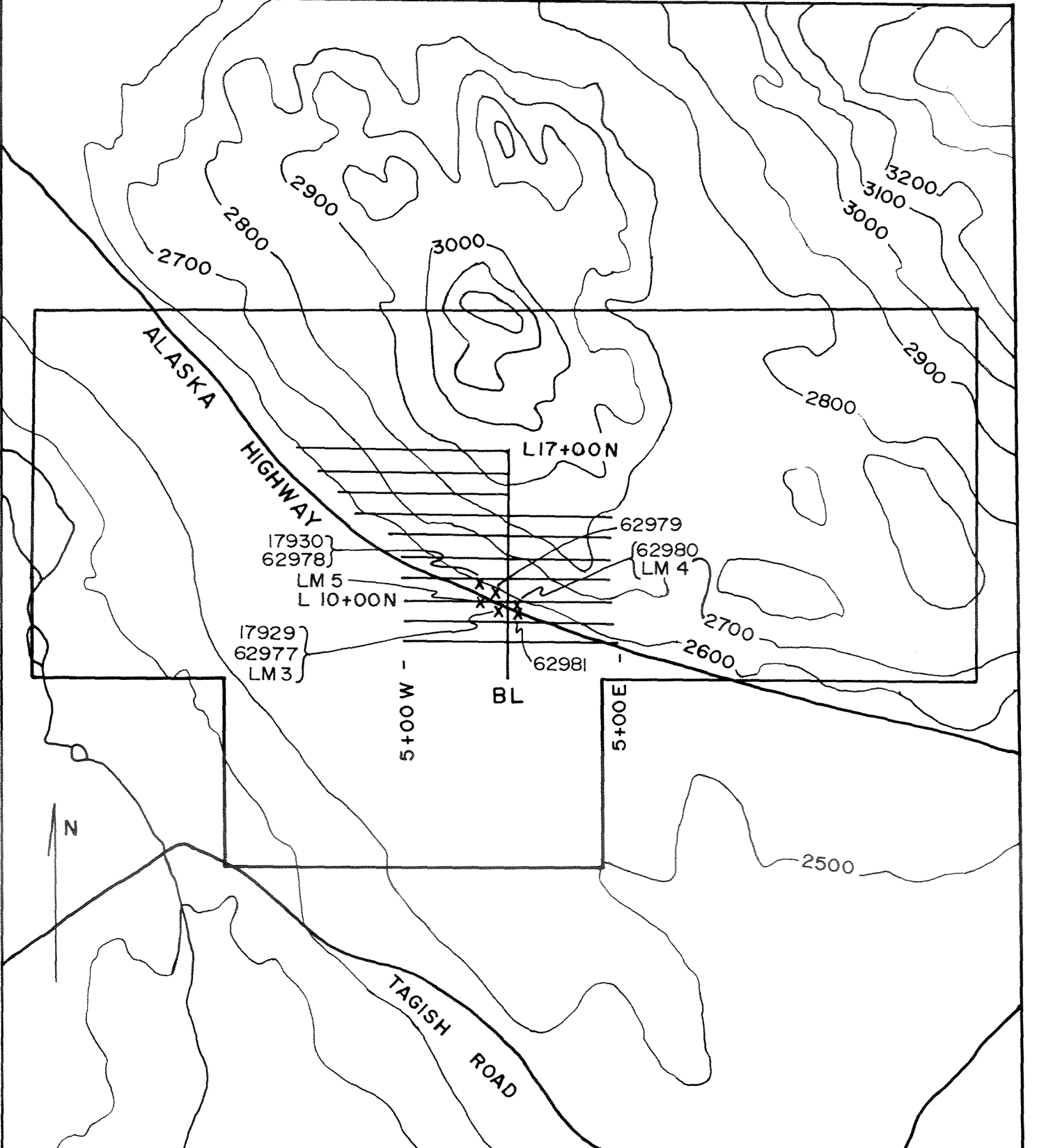
LEGEND

- 13 Alluvium, glacial deposits.
- CRETACEOUS**
- 8a Coast intrusions granodiorite.
- JURASSIC**
- 4a Laberge Group greywacke, arkose, quartzite, conglomerate, siltstone, argillite.
- TRIASSIC**
- 3 Lewes River Group
 - 3a greywacke, siltstone, argillite, conglomerate.
 - 3c limestone, limestone breccia.
 - 3d metamorphosed rocks.
- PENNSYLVANIAN (?) AND PERMIAN**
- 2d Taku Group metamorphosed volcanic rocks, serpentinite bodies.
- Aa Metamorphosed volcanic rocks of uncertain age.
- Bedding (inclined, vertical)
- Schistosity (Inclined)

LITTLE
ATLIN
LAKE

NLC
CLAIMS

NLC PROPERTY		
REGIONAL GEOLOGY		
NTS 105 D-8	TECH GD	DATE FEB. 90
SCALE 1: 63,360	DRAFT	FIG. 3



x - Sample Location

NLC PROPERTY		
PROPERTY MAP		
NTS 105 D-8	TECH. GD	DATE FEB 90
SCALE 1: 25,000	DRAFT.	FIG. 4

VLF-EM SURVEY

The Seattle VLF-EM channel (24.0KHz.) was best suited for the local geology. The survey was severely disrupted by power lines along the south side of the Alaska Highway. Figure 6 shows the profile map of the VLF-EM data.

The VLF-EM survey identified three strong northwesterly trending anomalies which probably represent faults. Several weaker anomalies appear to be caused by conductive overburden.

MAGNETOMETER SURVEY

The magnetometer survey was performed by the standard method of establishing a calibrated baseline and then proceeding along the crosslines in a loop pattern, starting and returning to the baseline stations at timed intervals. The readings are corrected for diurnal magnetic fluctuations. Figure 5 shows the contoured magnetometer plan.

The grid area has a relatively flat magnetic response, several weak highs and lows were outlined. The total field averages 57,780 gammas with a peak value of 57,873 gammas and a minimum value of 57,713 gammas. The magnetic low at L 10+00N, 0+50W corresponds with quartz-carbonate rock in outcrop. Other anomalous areas are not exposed in outcrop.

ROCK SAMPLING

Ten rock samples were collected from road cuts along the Alaska Highway. Background gold values were obtained in all but one sample, which produced a gold value of 572ppb. Sample locations are shown on Figure 4 and values and descriptions are listed in Table 2.

TABLE 2
SAMPLE DESCRIPTIONS AND VALUES

Sample Number	Type	Description	Au ppb	Ag ppm	Cu ppm	Pb ppm	Zn ppm
17929	grab	quartz-carbonate vein, minor pyrite	572	0.6			
17930	grab	grey-green chert, carbonate and pyrite veins	19	0.5			
62977	grab	quartz-carbonate rock, banded & disseminated fine gr. pyrite 5-10%	13	0.3	52	33	180
62978	grab	quartz-carbonate alt. zone, minor pyrite	<10	<0.1	35	60	249
62979	grab	same as above	<10	<0.1	41	14	63
62980	grab	quartz-feldspar	<10	<0.1	5	13	40
62981	grab	banded quartz-carb. rock from contact with porphyry	<10	0.2	20	92	371
LM3	grab	quartz-carb. alt. zone, minor pyrite	30	0.9	58	107	434
LM4	grab	feldspar porphyry	19	<0.1	47	102	168
LM5	grab	black siltstone, minor pyrite	30	0.5	170	41	112

DISCUSSION AND CONCLUSIONS

The 1989 exploration program has located quartz-carbonate alteration zones and several strong VLF-EM anomalies in a favorable geological environment for gold mineralization. Similar properties in the Atlin District cover gold bearing quartz-carbonate veins occurring in major fault zones, closely associated with ultramafic sills.

Targets for the next phase of exploration are the anomalies outlined by the VLF-EM survey and quartz-carbonate alteration zones. The grid area should be extended to the south and west to permit further definition of potential structures. Mapping, rock and soil sampling, and detailed VLF-EM surveys should be performed over anomalous areas. The following program is proposed:

Grid development	\$ 2,500
Soil geochemistry (250 samples)	5,000
Geological mapping (1:5,000)	1,500
Rock sampling (50 samples)	1,100
VLF-EM, magnetometer survey	2,500
Camp and supplies	1,500
Transportation	1,000
Report and assessment	3,500
TOTAL COSTS	\$18,600

STATEMENT OF COSTS

Period: Jan. 16,24,25,27, 1989; Oct. 2,15, 1989.

Personnel: L. Lebedoff (linecutting), 6 days	\$1200
G. Davidson (geophysics, sampling), 5 days	1500
G. Lee (linecutting), 1 day	200
SAMPLE ANALYSIS: Bondar-Clegg, NAL	210
GEOPHYSICAL: Equip. rental	200
TRANSPORTATION: Truck, 6 days	300
mileage	203
gas	175
REPORT: preparation, 2.5 days	750
drafting	750
typing, copying	95
TOTAL COSTS	\$5,583

REFERENCES

- Ballantyne, S.B. and Mackinnon, H.F., 1985: Gold in the Atlin Terrane.
- Wheeler, J.O., 1961: Whitehorse Map Area, Yukon Territory. GSC Memoir No. 312.

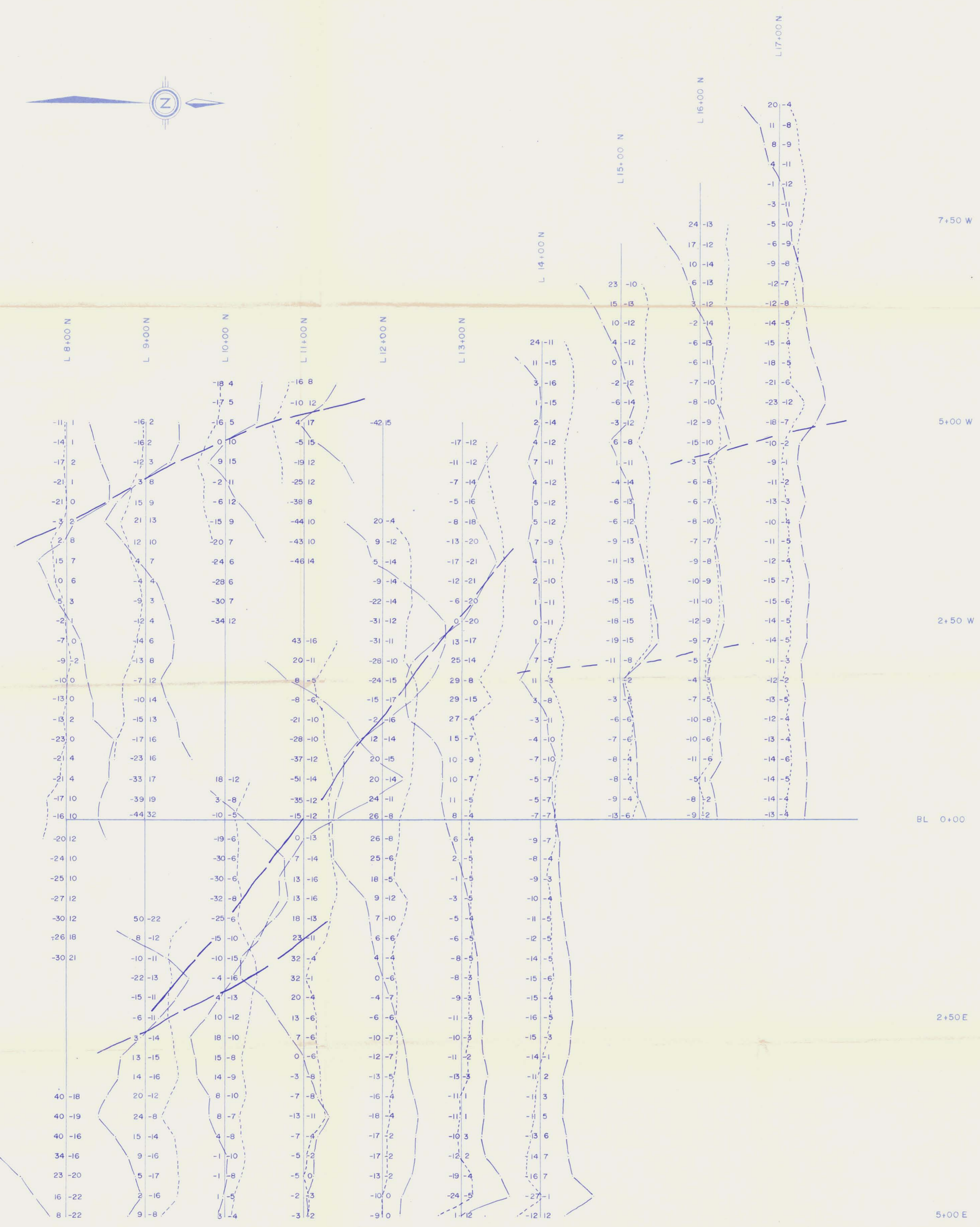


CONTOURS 750, 800, 850

MAP# 105-D-8
Doc# 092837 (124)

NLC PROPERTY		
CONTOUR MAGNETOMETER MAP		
NTS 105 D-8	TECH GD	DATE FEB, 90
SCALE 1:2,500	DRAFT	FIG 5

092837



7+50 W

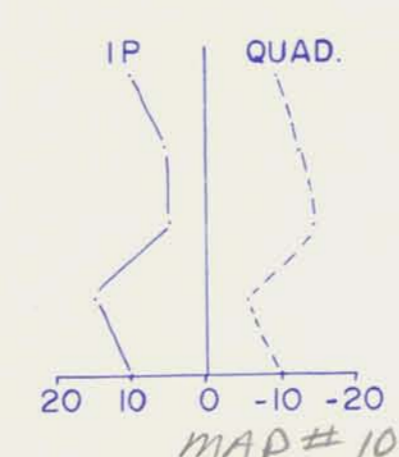
5+00 W

2+50 W

BL 0+00

2+50 E

5+00 E



MAP# 105-D-8
Doc# 092837

125

NLC PROPERTY		
VLF-EM PROFILE PLAN SEATTLE (24.0KHz)		
NTS	TECH	DATE
105 D-8	GD	FEB. 90
SCALE	DRAFT	FIG
1:2,500		6

092837

CERTIFICATE

I, GRAHAM DAVIDSON, of the City of Whitehorse, in the Yukon Territory, HEREBY CERTIFY:

1. That I am a consulting geologist and that I worked on the subject property in 1988 & 1989.
2. That I am a graduate of the University of Western Ontario (H. BSc., Geology, 1981).
3. That I am registered as a Professional Geologist by the Association of Professional Engineers, Geologists & Geophysicists of Alberta (No. 42038).
4. That I have been engaged in mineral exploration on a full time basis for nine years in the Yukon and Northwest Territories, and British Columbia.

SIGNED at Whitehorse, Yukon this 26th day of April, 1990.

G.S. DAVIDSON, P.Geol.

G. Davidson
G. Davidson
P. Geol.
42038

Bondar-Clegg & Company Ltd.
 130 Pemberton Ave.
 North Vancouver, B.C.
 V7P 2R5
 (604) 985-0681 Telex 04-352667



Geochemical
 Lab Report

REPORT: V89-01905.0 (COMPLETE)

REFERENCE INFO:

CLIENT: MR. GRAHAM DAVIDSON
 PROJECT: NLC CLAIMS

SUBMITTED BY: G. DAVIDSON
 DATE PRINTED: 17-MAY-89

ORDER	ELEMENT	NUMBER OF ANALYSES	LOWER DETECTION LIMIT	EXTRACTION	METHOD
1	Au Gold	5	10 PPB	NOT APPLICABLE	Inst. Neutron Activ.
2	Ag Silver	5	0.1 PPM	HN03-HCL HOT EXTR	Atomic Absorption
3	Cu Copper	5	1 PPM	HN03-HCL HOT EXTR	Atomic Absorption
4	Mo Molybdenum	5	1 PPM	HN03-HCL HOT EXTR	Atomic Absorption
5	Pb Lead	5	2 PPM	HN03-HCL HOT EXTR	Atomic Absorption
6	Zn Zinc	5	1 PPM	HN03-HCL HOT EXTR	Atomic Absorption
7	As Arsenic	5	2 PPM	NOT APPLICABLE	Inst. Neutron Activ.
8	Ba Barium	5	100 PPM	NOT APPLICABLE	Inst. Neutron Activ.
9	Sb Antimony	5	1 PPM	NOT APPLICABLE	Inst. Neutron Activ.
10	W Tungsten	5	2 PPM	NOT APPLICABLE	Inst. Neutron Activ.
11	Hg Mercury	5	5 PPB	HN03-HCL HOT EXTR	Cold Vapour AA

SAMPLE TYPES	NUMBER	SIZE FRACTIONS	NUMBER	SAMPLE PREPARATIONS	NUMBER
R ROCK OR BED ROCK	5	2 -150	5	CRUSH,PULVERIZE -150	5

REMARKS: Report re-transmitted with a corrected address.

REPORT COPIES TO: MR. G. DAVIDSON

INVOICE TO: MR. G. DAVIDSON

Bondar-Clegg & Company Ltd.
 130 Pemberton Ave.
 North Vancouver, B.C.
 V7P 2R5
 (604) 985-0681 Telex 04-352667



Geochemical
 Lab Report

REPORT: V89-B1905.D

PROJECT: NLC CLAIMS

PAGE 1

SAMPLE NUMBER	ELEMENT UNITS	Au PPB	Ag PPM	Cu PPM	Mo PPM	Pb PPM	Zn PPM	As PPM	Ba PPM	Sb PPM	H PPM	Hg PPB
R2 62977		13	0.3	52	3	33	180	45	260	6	3	45
R2 62978		<10	<0.1	35	5	60	249	10	330	3	<2	210
R2 62979		<10	<0.1	41	4	14	63	8	<100	3	<2	250
R2 62980		<10	<0.1	5	<1	13	40	<2	430	1	<2	20
R2 62981		<10	0.2	20	4	92	371	13	690	3	<2	85

Bondar-Clegg & Company Ltd.
130 Pemberton Ave.
North Vancouver, B.C.
V7P 2R5
(604) 985-0681 Telex 04-352667



Geochemical Lab Report

REPORT: V88-07989.0 (COMPLETE)

REFERENCE INFO:

CLIENT: HARJAY EXPLORATION
PROJECT:

SUBMITTED BY: G. DAVIDSON
DATE PRINTED: 14-NOV-88

ORDER	ELEMENT		NUMBER OF ANALYSES	LOWER DETECTION LIMIT	EXTRACTION	METHOD
1	Au	Gold - Fire Assay	5	5 PPB	FIRE-ASSAY	Fire Assay AA
2	Ag	Silver	5	0.1 PPM	HNO3-HCL HOT EXTR	Atomic Absorption

SAMPLE TYPES	NUMBER	SIZE FRACTIONS	NUMBER	SAMPLE PREPARATIONS	NUMBER
R ROCK OR BFD ROCK	5	2 -150	5	CRUSH, PULV-RIZF	-150 5

REPORT COPIES TO: HARJAY EXPLORATION

INVOICE TO: HARJAY EXPLORATION



REPORT: U88-07989.0

PROJECT:

PAGE 1

SAMPLE NUMBER	ELEMENT UNITS	Au PPB	Ag PPM
---------------	---------------	--------	--------

R2 17926

R2 17927

R2 17928

R2 17929 } NLC
 R2 17930 }

572

19

0.6

0.5

QTZ - SIDERITE VEIN 15CM. WIDE MINOR PYRITE
 LT. GREY, FINE GRAINED SILICEOUS RX. CUT BY CARBONATE (PYRITE) VEINS

March 26, 1990

Work Order # 34588

Assay Certificate For Samples Provided

Sample	ppb Au	ppm Ag	ppm Cu	ppm Pb	ppm Zn	ppm Sb	ppm As
NLC { LM3	30	0.9	58	107	434	20	63
LM4	19	<0.1	47	102	168	23	62
LM5	30	0.5	170	41	112	14	23

Au -- 15g Fire Assay/AAS
 Metals -- Aqua-regia Digestion/AAS

