

MAP NO.: ASSESSMENT REPORT X
105 K 2 PROSPECTUS
CONFIDENTIAL X
OPEN FILE

DOCUMENT NO: 092836
MINING DISTRICT: Whitehorse
TYPE OF WORK: Orthophoto Survey

REPORT FILED UNDER: Curragh Resources Inc.

DATE PERFORMED: May 15-17, 1989

DATE FILED: April 23/90

LOCATION: LAT.: 62°08'N

AREA: Swim Basin

LONG.: 132°50'W

VALUE \$: 10,500

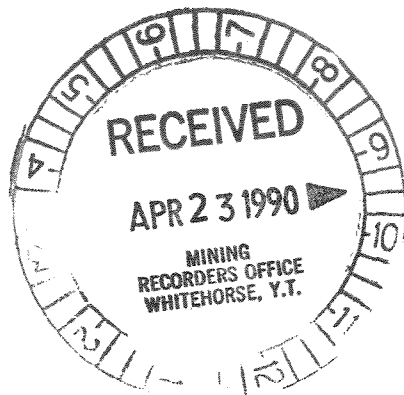
CLAIM NAME & NO.: POD 1-107

WORK DONE BY: L.C. Pigage, PhD.

WORK DONE FOR: Curragh Resources Inc.

DATE TO GOOD STANDING:

REMARKS: Anvil District Orthophoto Survey on seven sheets provide method of tying in previous and future work in area. Scale of orthophotos is 1:5,000.



1989 Orthophoto Maps for Swim Basin Area
Assessment Report for POD Claims
Whitehorse Mining District
Yukon Territory

N.T.S. 105K/2

Latitude: 62° 08'N
Longitude: 132° 50'W

By:

L.C. Pigage, PhD., FGAC
Curragh Resources Inc.

(Faint, mirrored text bleed-through from the reverse side of the page)

092836

Field Work Completed May 15-17, 1989

TABLE OF CONTENTS

	<u>Page</u>
INTRODUCTION	3
1979 ANVIL DISTRICT CONTROL SURVEY	3
1989 GROUND SURVEY CONTROL	5
1989 ORTHOPHOTO MAPS	5
STATEMENT OF QUALIFICATIONS	7
PROJECT COSTS	8

LIST OF FIGURES

1. Location Map	4
2. Claim Map with Orthophoto Location	Pocket
3. 1:5,000 Orthophoto Map H-5-1 (W 1/2) Cub Lake Pocket	
4. 1:5,000 Orthophoto Map H-5-1 (E 1/2)	Pocket
5. 1:5,000 Orthophoto Map H-5-2 (W 1/2)	Pocket
6. 1:5,000 Orthophoto Map H-6-5 (W 1/2) Moose Lake	Pocket
7. 1:5,000 Orthophoto Map H-6-5 (E 1/2)	Pocket
8. 1:5,000 Orthophoto Map H-6-3 (W 1/2) Excel Creek	Pocket
9. 1:5,000 Orthophoto Map H-6-3 (E 1/2) Orchay River	Pocket

LIST OF TABLES

1. List of Claims	1
-----------------------------	---

TABLE 1

CLAIM NAME & NUMBER	GRANT NUMBER	ANNIVERSARY DATE
POD 1	YB12391	December 01
POD 2	YB12392	December 01
POD 3	YB12393	December 01
POD 4	YB12394	December 01
POD 5	YB12395	December 01
POD 6	YB12396	December 01
POD 7	YB12397	December 01
POD 8	YB12398	December 01
POD 9	YB12399	December 01
POD 10	YB12400	December 01
POD 11	YB12401	December 01
POD 12	YB12402	December 01
POD 13	YB12403	December 01
POD 14	YB12404	December 01
POD 15	YB12405	December 01
POD 16	YB12406	December 01
POD 17	YB12407	December 01
POD 18	YB12408	December 01
POD 19	YB12409	December 01
POD 20	YB12410	December 01
POD 21	YB12411	December 01
POD 22	YB12412	December 01
POD 23	YB12413	December 01
POD 24	YB12414	December 01
POD 25	YB12415	December 01
POD 26	YB12416	December 01
POD 27	YB12417	December 01
POD 28	YB12418	December 01
POD 29	YB12419	December 01
POD 30	YB12420	December 01
POD 31	YB12421	December 01
POD 32	YB12422	December 01
POD 33	YB12423	December 01
POD 34	YB12424	December 01
POD 35	YB12425	December 01
POD 36	YB12426	December 01
POD 37	YB12427	December 01
POD 38	YB12428	December 01
POD 39	YB12429	December 01
POD 40	YB12430	December 01
POD 41	YB12431	December 01
POD 42	YB12432	December 01
POD 43	YB12433	December 01
POD 44	YB12434	December 01
POD 45	YB12435	December 01
POD 46	YB12436	December 01
POD 47	YB12437	December 01
POD 48	YB12438	December 01
POD 49	YB12439	December 01
POD 50	YB12440	December 01
POD 51	YB12441	December 01

POD	52	YB12442	December	01
POD	53	YB12443	December	01
POD	54	YB12444	December	01
POD	55	YB12445	December	01
POD	56	YB12446	December	01
POD	57	YB12447	December	01
POD	58	YB12448	December	01
POD	59	YB12449	December	01
POD	60	YB12450	December	01
POD	61	YB12451	December	01
POD	62	YB12452	December	01
POD	63	YB12453	December	01
POD	64	YB12454	December	01
POD	65	YB12455	December	01
POD	66	YB12456	December	01
POD	67	YB12457	December	01
POD	68	YB12458	December	01
POD	69	YB12459	December	01
POD	70	YB12460	December	01
POD	71	YB12461	December	01
POD	72	YB12462	December	01
POD	73	YB12463	December	01
POD	74	YB12464	December	01
POD	75	YB12465	December	01
POD	76	YB12466	December	01
POD	77	YB12467	December	01
POD	78	YB12468	December	01
POD	79	YB12469	December	01
POD	80	YB12470	December	01
POD	81	YB12471	December	01
POD	82	YB12472	December	01
POD	83	YB12473	December	01
POD	84	YB12474	December	01
POD	85	YB12475	December	01
POD	86	YB12476	December	01
POD	87	YB12477	December	01
POD	88	YB12478	December	01
POD	89	YB12479	December	01
POD	90	YB12480	December	01
POD	91	YB12481	December	01
POD	92	YB12482	December	01
POD	93	YB12483	December	01
POD	94	YB12484	December	01
POD	95	YB12485	December	01
POD	96	YB12486	December	01
POD	97	YB12487	December	01
POD	98	YB12488	December	01
POD	99	YB12489	December	01
POD	100	YB12490	December	01
POD	101	YB12491	December	01
POD	102	YB12492	December	01
POD	103	YB12493	December	01
POD	104	YB12494	December	01
POD	105	YB12495	December	01
POD	106	YB12496	December	01
POD	107	YB12497	December	01

INTRODUCTION

Swim Basin is a structural basin southeast of Blind Creek in the Anvil District, about 25 km southeast of Faro, Yukon (Figure 1).

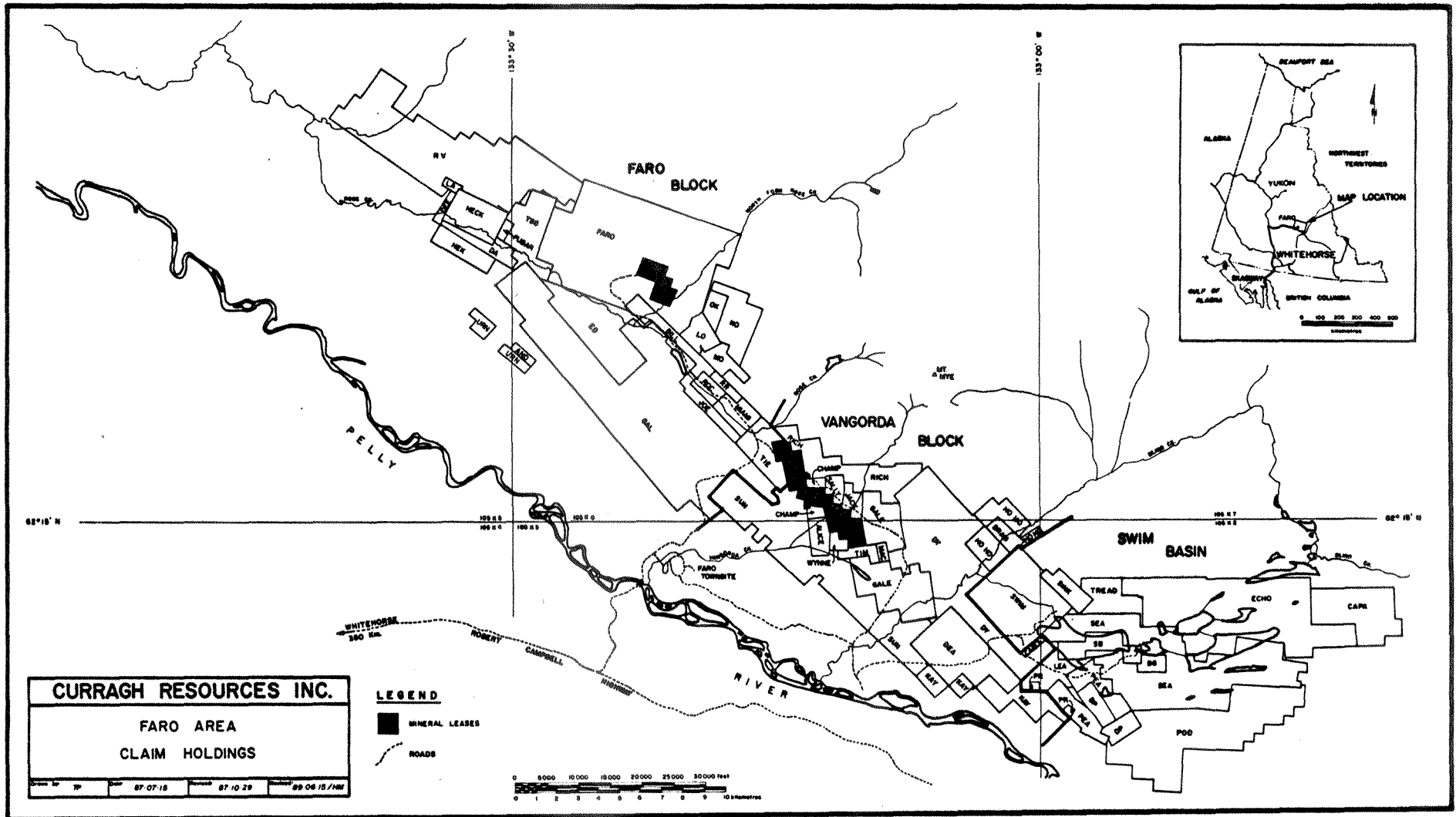
Swim Basin remains a prime exploration area for economic mineral deposits. The largest known mineral occurrence in the area is the Swim deposit, with 4.3 million tonnes of probable sulphide reserves (using a 4% Pb+Zn cut-off) with an average grade of 3.8% Pb and 4.7% Zn (Jennings and Jilson, 1986). Additional mineral occurrences are Sea and SB.

Previous work in this area has consisted of scattered geochemical and geophysical surveys, trenches, and drill holes using local coordinate grids. Precise location of previous work and future work required establishing a comprehensive and detailed orthophoto map for the area. In 1989, seven 1:5,000 orthophoto map sheets were completed in preparation for subsequent work.

Figure 2 shows the locations of the POD claims with respect to the orthophoto maps. The area has moderate to slight relief and is heavily vegetated. A network of dirt roads and cut lines allow limited access by ATV and 4 x 4 vehicles. Helicopter access is provided by Trans North Air based in Ross River, Yukon.

1979 ANVIL DISTRICT SURVEY CONTROL

In 1979, Northwest Survey Corporation (Yukon) Ltd. completed a new control survey of the Anvil District for Cyprus Anvil Mining Corporation. The survey was undertaken to provide horizontal and vertical control for detailed orthophotos, to amalgamate all previous local



control surveys to a common datum, and to provide a base for any future control surveys. All the different deposit areas were tied to a common control grid and elevation datum.

This district control survey was then tied into the international UTM (Universal Transverse Mercator) grid system using Canada Geodetic Survey control points in the Faro-Ross River areas. The locations of these CGS control points were adjusted in mid-1979 using satellite control. The adjusted coordinates were incorporated into the Anvil District control survey.

1989 GROUND SURVEY CONTROL

In May, 1989, G. Aucoin and Associates Ltd. (legal land surveyors) extended the Anvil District survey control into the southeast portion of Swim Basin. Helicopter support from Ross River was used to establish the various control points.

Only photo control points were established during this ground survey. Location of readily visible land features were surveyed using the earlier 1979 survey control points.

1989 ORTHOPHOTO MAPS

The orthophoto map was completed by North West Geomatics Ltd. based in Edmonton, Alberta. The actual aerotriangulation and mapping was subcontracted to Hugh Hamilton Ltd. in North Vancouver, British Columbia. The map consists of seven contiguous sheets (Figures 3-9). All sheets were compiled at a scale of 1:5,000 using five metre elevation contours.

Photographs for the orthophoto were obtained from August, 1978 flight lines completed for Cyprus Anvil Mining Corporation. The average scale for these photographs is 1:20,000. Portions of Swim Basin were burned over in 1980. Vegetation patterns for these areas will not correspond to the orthophotos; roads and topography will still correspond exactly to the orthophoto sheets.

Northwest Geomatic also created a digital terrain model (DTM) for each map sheet. The model consists of an irregular network of spot elevations (Northing, Easting, elevation) for each sheet. The DTM is formatted as a DXF file for importing directly into AUTOCAD (Version 10).

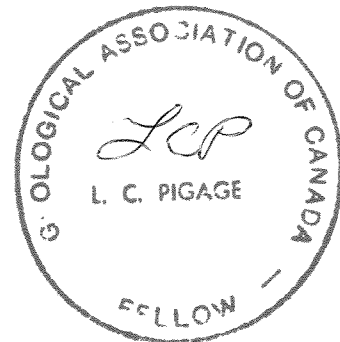
STATEMENT OF QUALIFICATIONS

I, Lee C. Pigage of Whitehorse, Yukon Territory, do hereby certify that:

1. I am a graduate of the University of Wyoming with a B.Sc. degree in Geology in 1970;
2. I am a graduate of the University of British Columbia with M.Sc. and Ph.D degrees in Geological Sciences in 1973 and 1978, respectively;
3. I have been engaged in mineral exploration and development as a Professional Geologist continuously since 1979;
4. I am a Fellow of the Geological Association of Canada; and
5. I am the author of this report describing field work supervised by myself in 1989.

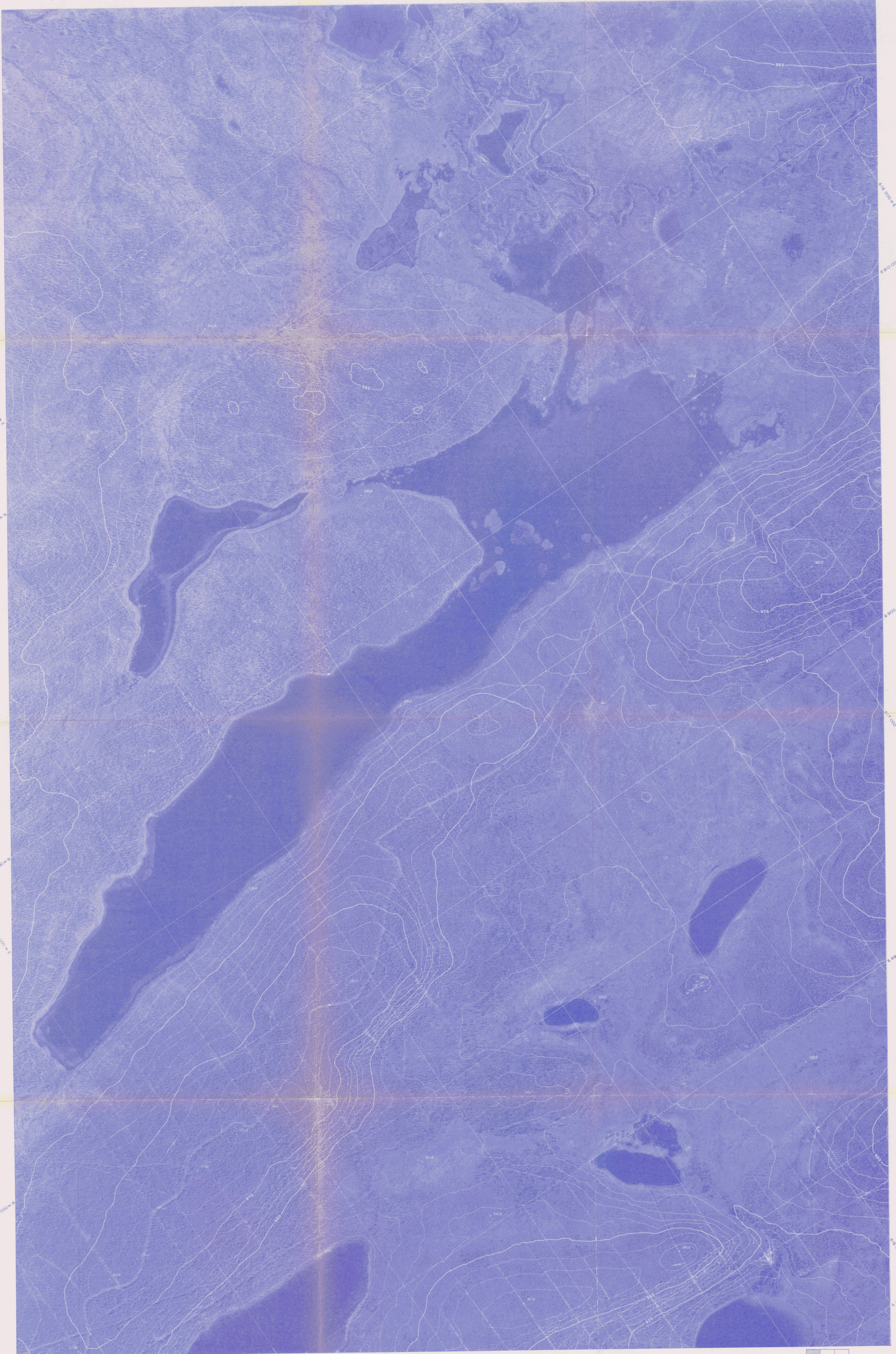
Lee C. Pigage

Lee C Pigage
Senior Geologist
Curragh Resources Inc.



PROJECT COSTS

Ground Survey Control (G. Aucoin & Associates Ltd.)	4,500.00
Helicopter Support (Trans North Air)	4,845.60
Orthophoto Mapping (NorthWest Geomatics Ltd.)	32,000.00
Geologist (3 days)	600.00
Drafting/Report Preparation	<u>450.00</u>
	<u>\$42,395.60</u>



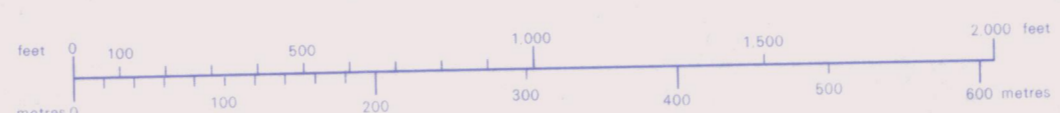
Orthophoto map compiled from aerial photography taken in August, 1979 by North West Survey Corporation International Ltd.
 Coordinates shown are U.T.M. coordinates based on Clarke's Spheroid of 1866 and are computed for Zone 8.
 Elevations shown are Geodetic elevations based on the North American Datum, 1927.
 Horizontal and vertical control survey was performed by Hosford, Impey, Welter & Associates Ltd. and North West Survey Corporation (Yukon) Ltd. in the summer of 1979 for Cyprus Anvil Mining Corporation and is included in a report of the same date.

CURRAGH RESOURCES INC.

ANVIL AREA

092836

Scale 1:5000
 Contour Interval 5 Metres

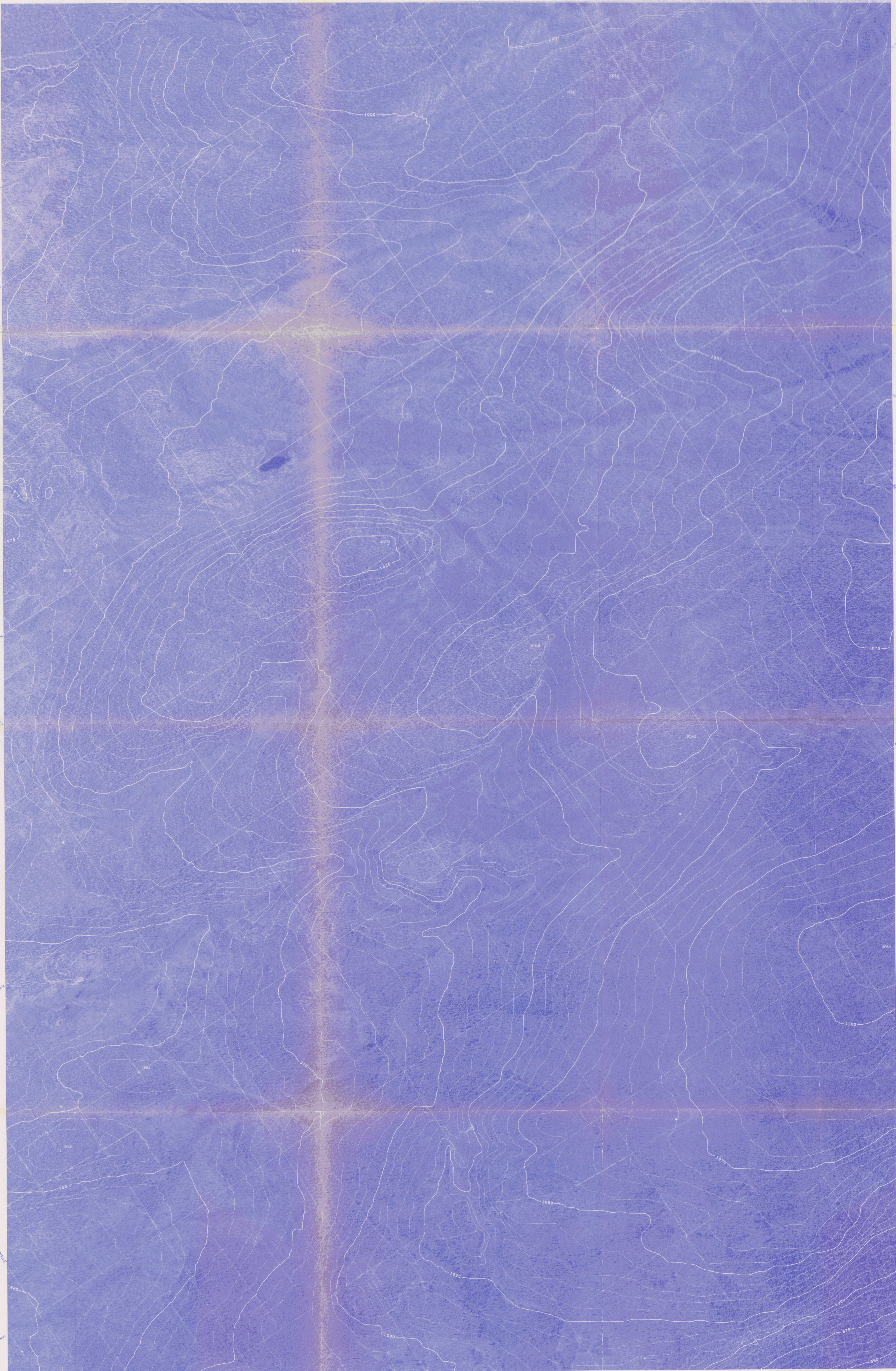


NS MAP# DC# 092836 (117)

	1	2	3
6-6-6	4	5	
6-6-4	6	7	

SHEET 1

HUGH HAMILTON LTD.
 1820 West 15th Street, North Vancouver
 British Columbia, Canada V7P 1V6
 FORESTRY CONSULTANTS AND MAPPING SERVICES



Orthophoto map compiled from aerial photography taken in August, 1979 by North West Survey Corporation International Ltd. Coordinates shown are U.T.M. coordinates based on Clarke's Spheroid of 1866 and are computed for Zone 8. Elevations shown are Geodetic elevations based on the North American Datum, 1927. Horizontal and vertical control survey was performed by Hosford, Impy, Welter & Associates Ltd. and North West Survey Corporation (Yukon) Ltd. in the summer of 1979 for Cyprus Anvil Mining Corporation and is included in a report of the same date.

CURRAGH RESOURCES INC.
ANVIL AREA

092836

Scale 1:5000
Contour Interval 5 Metres

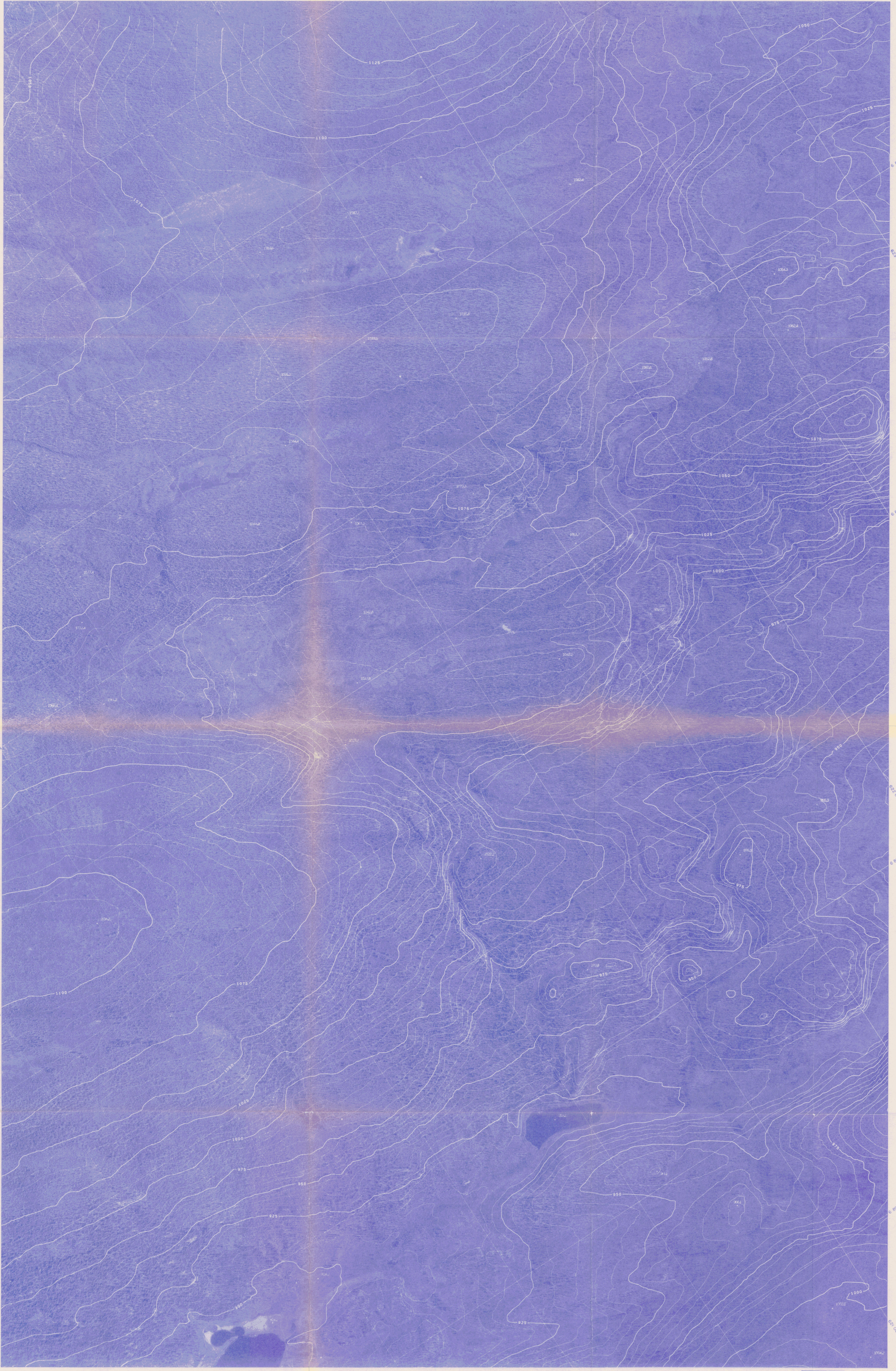


No Map# Doc# 092836 (118)

	1	2	3
G-6-6	4	5	
G-6-4	6	7	

SHEET 2

HUGH HAMILTON LTD.
880 West 15th Street, North Vancouver
British Columbia Canada V7P 1M6
FORESTRY CONSULTANTS AND MAPPING SERVICES



Orthophoto map compiled from aerial photography taken in August, 1979 by North West Survey Corporation International Ltd.
 Coordinates shown are U.T.M. coordinates based on Clarke's Spheroid of 1866 and are computed for Zone 8.
 Elevations shown are Geodetic elevations based on the North American Datum, 1927.
 Horizontal and vertical control survey was performed by Hosford, Impney, Weiler & Associates Ltd. and North West Survey Corporation (Yukon) Ltd. in the summer of 1979 for Cyprus Anvil Mining Corporation and is included in a report of the same date.

CURRAGH RESOURCES INC.
ANVIL AREA

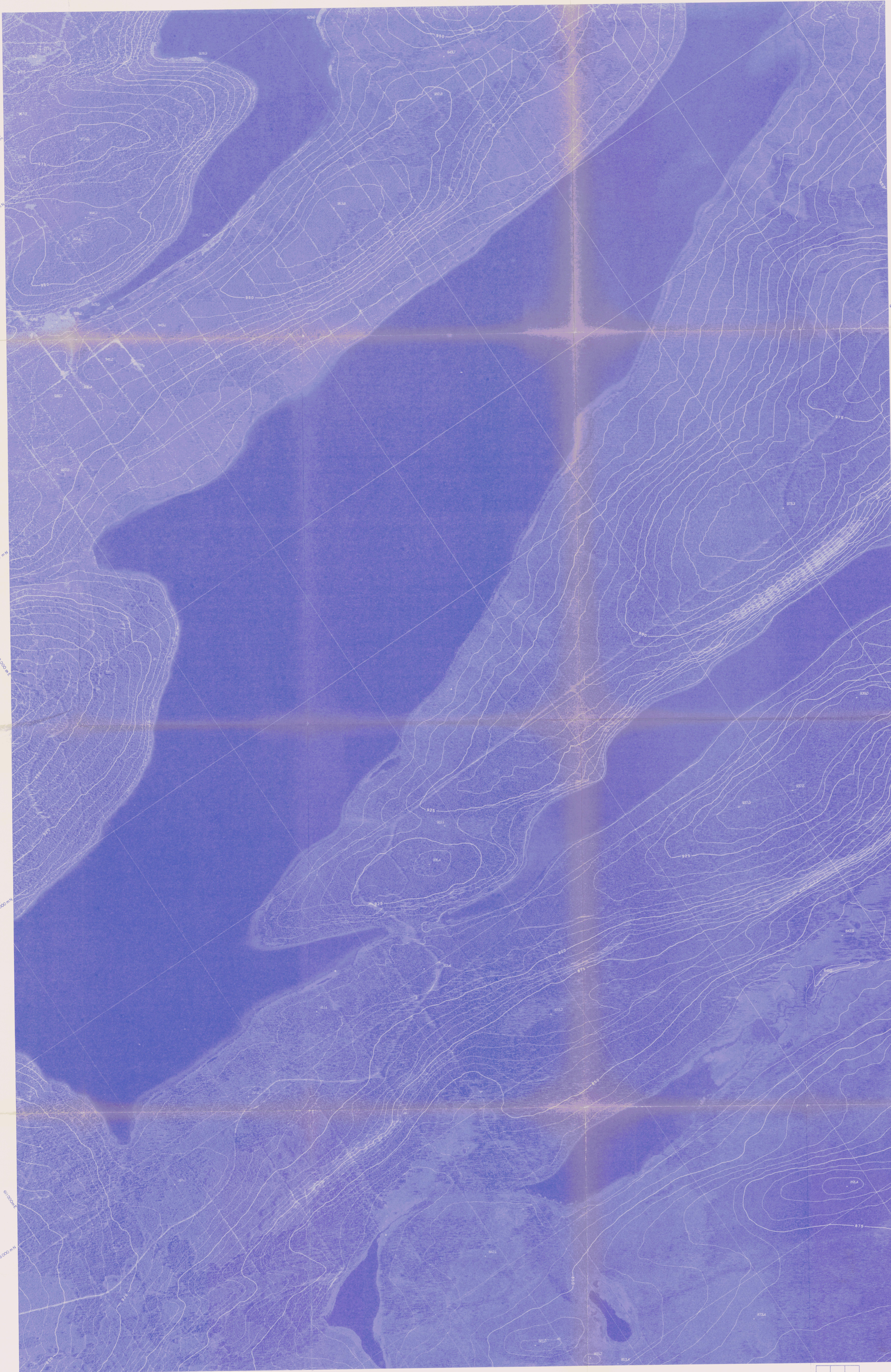
Scale 1:5000
 Contour Interval 5 Metres

092836

	1	2	3
0-6-6	4	5	
0-6-4	6	7	SHEET 3

HUGH HAMILTON LTD.
 850 West 102nd Street, North Vancouver,
 British Columbia, Canada V7P 1V8
 FORESTRY CONSULTANTS AND MAPPING SERVICES

No. MAP# Doc# 092836 (119)



Orthophoto map compiled from aerial photography taken in August, 1979 by North West Survey Corporation International Ltd. Coordinates shown are U.T.M. coordinates based on Clarke's Spheroid of 1866 and are computed for Zone 8. Elevations shown are Geodetic elevations based on the North American Datum, 1927. Horizontal and vertical control survey was performed by Hosford, Impey, Welter & Associates Ltd. and North West Survey Corporation (Yukon) Ltd. in the summer of 1979 for Cyprus Anvil Mining Corporation and is included in a report of the same date.

CURRAGH RESOURCES INC.
ANVIL AREA

Scale 1:5000
 Contour Interval 5 Metres

092836

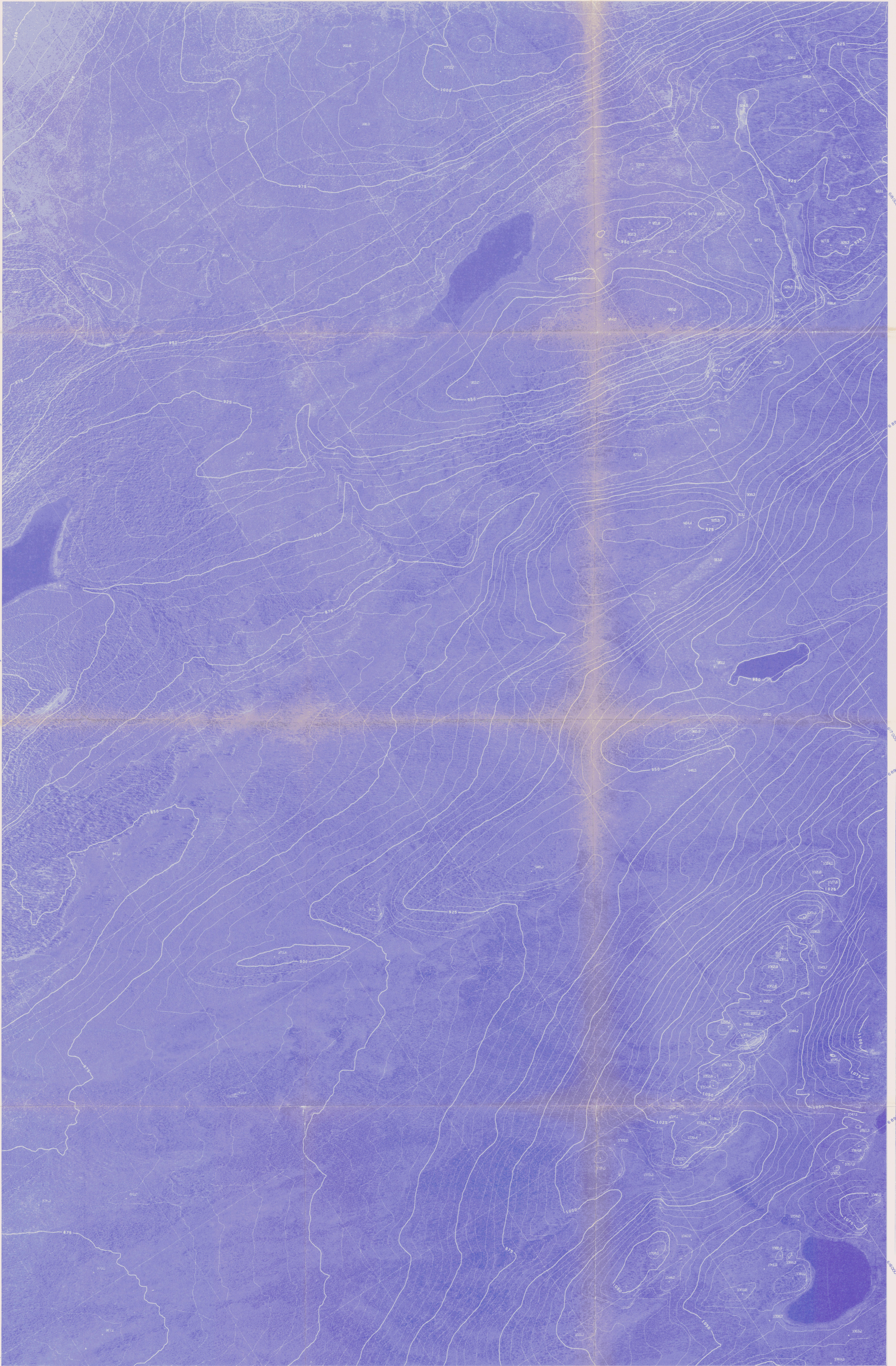


	1	2	3
0-6-6	4	5	
0-6-4	6	7	

SHEET 4

HUGH HAMILTON LTD.
 1850 West 15th Street, North Vancouver
 British Columbia, Canada V7P 1M6
 FORESTRY CONSULTANTS AND MAPPING SERVICES

No MAP# Doc# 092836 (20)



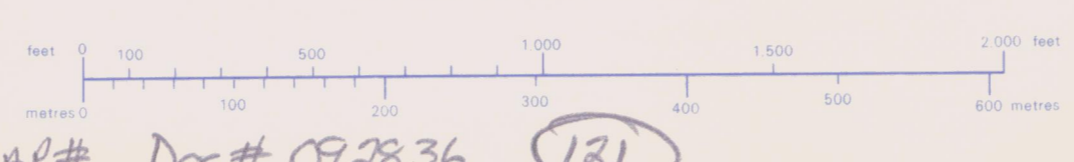
Orthophoto map compiled from aerial photography taken in August, 1979 by North West Survey Corporation International Ltd.
 Coordinates shown are U.T.M. coordinates based on Clarke's Spheroid of 1866 and are computed for Zone 8.
 Elevations shown are Geodetic elevations based on the North American Datum, 1927.
 Horizontal and vertical control survey was performed by Hosford, Impey, Welter & Associates Ltd. and North West Survey Corporation (Yukon) Ltd. in the summer of 1979 for Cyprus Anvil Mining Corporation and is included in a report of the same date.

CURRAGH RESOURCES INC.
ANVIL AREA

092336

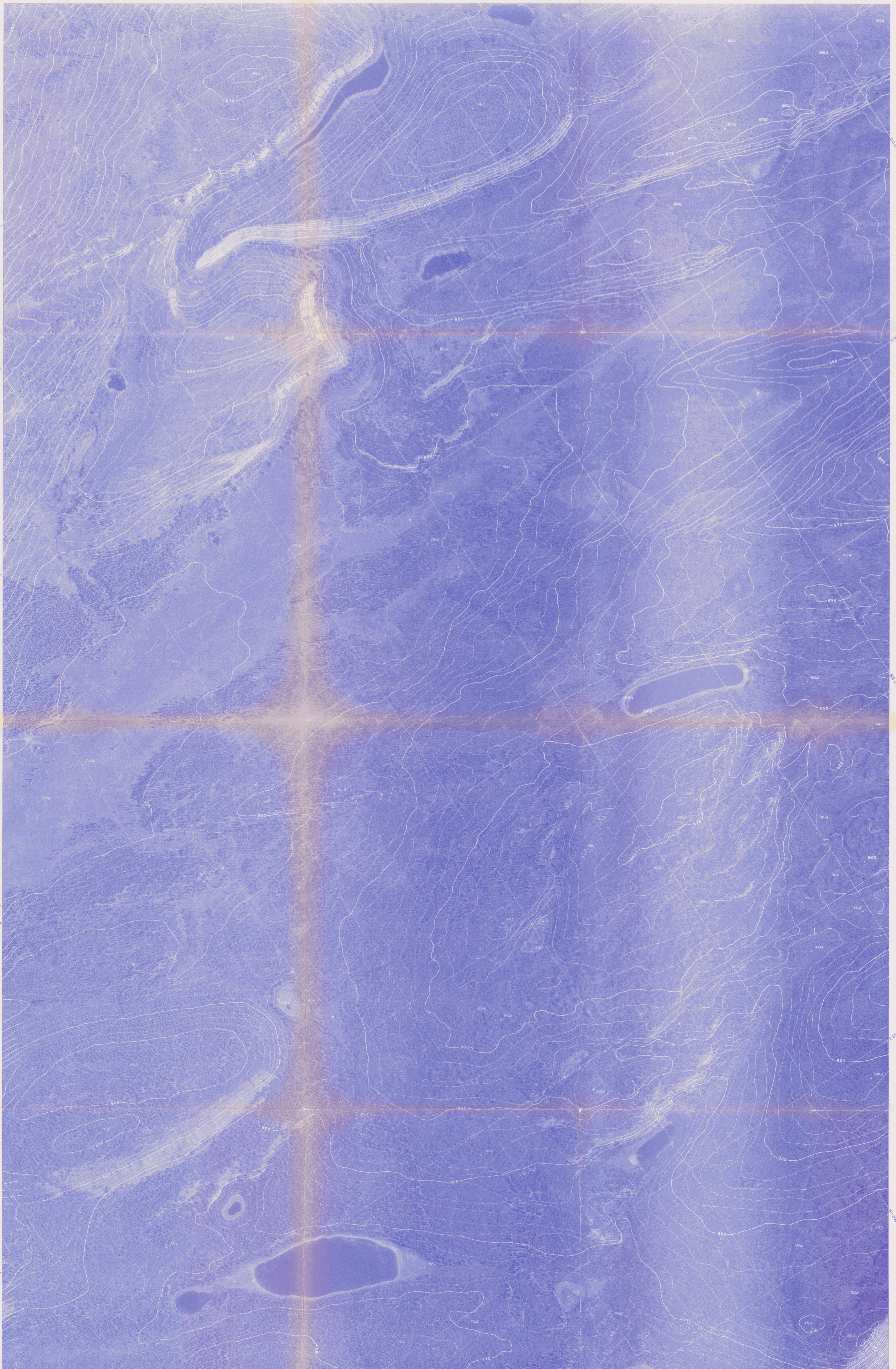
Scale 1:5000
 Contour Interval 5 Metres

	1	2	3
6-6	4	5	
6-4	6	7	SHEET 5



No. Map# Doc# 092336 (121)

HUGH HAMILTON LTD.
 650 West 12th Street, North Vancouver
 British Columbia, Canada V7P 1M6
 FORESTRY CONSULTANTS AND MAPPING SERVICES



Orthophoto map compiled from aerial photography taken in August, 1979 by North West Survey Corporation International Ltd. Coordinates shown are U.T.M. coordinates based on Clarkes Spheroid of 1866 and are computed for Zone 8. Elevations shown are Geodetic elevations based on the North American Datum, 1927. Horizontal and vertical control survey was performed by Hosford, Impney, Welter & Associates Ltd. and North West Survey Corporation (Yukon) Ltd. in the summer of 1979 for Cyprus Anvil Mining Corporation and is included in a report of the same date.

CURRAGH RESOURCES INC.

ANVIL AREA 092836

Scale 1:5000
Contour Interval 5 Metres



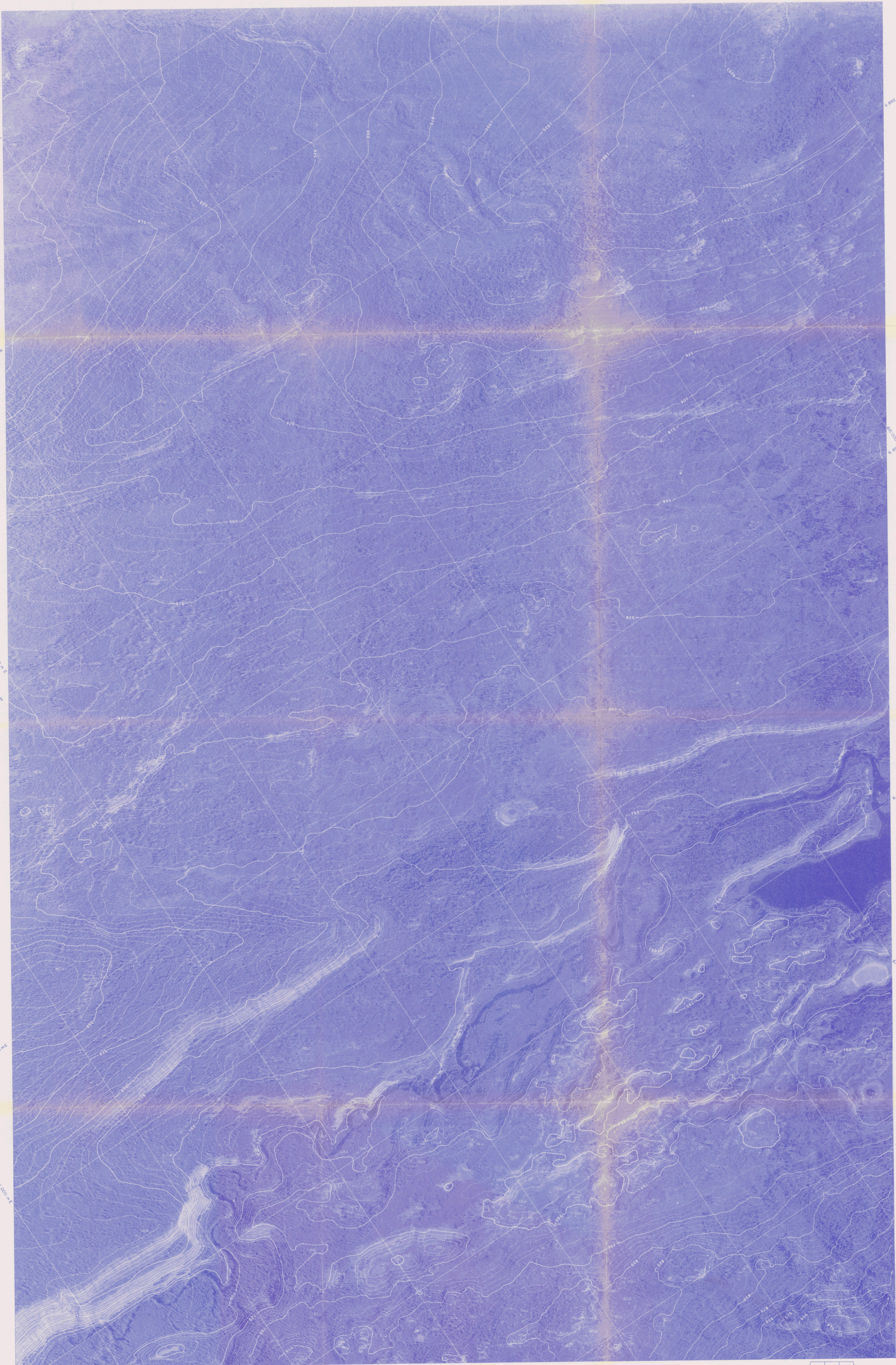
No. MAP# Doc# 092836 (132)

	1	2	3
0-6-6	4	5	
0-6-4	6	7	SHEET 6



HUGH HAMILTON LTD.
880 West 15th Street, North Vancouver
British Columbia, Canada V7P 1N6

FORESTRY CONSULTANTS AND MAPPING SERVICES



Orthophoto map compiled from aerial photography taken in August, 1979 by North West Survey Corporation International Ltd. Coordinates shown are U.T.M. coordinates based on Clarkes Spheroid of 1866 and are computed for Zone 8. Elevations shown are Geodetic elevations based on the North American Datum, 1927. Horizontal and vertical control survey was performed by Hosford, Impney, Welter & Associates Ltd. and North West Survey Corporation (Yukon) Ltd. in the summer of 1979 for Cyprus Anvil Mining Corporation and is included in a report of the same date.

CURRAGH RESOURCES INC.

ANVIL AREA

092836

Scale 1:5000

Contour Interval 5 Metres



	1	2	3
6-6	4	5	
6-4	6	7	

SHEET 7



HUGH HAMILTON LTD.
850 West 15th Street, North Vancouver
British Columbia, Canada V7P 1M6

FORESTRY CONSULTANTS AND MAPPING SERVICES