

MAP NO.: 115 A 13  
ASSESSMENT REPORT X  
PROSPECTUS  
CONFIDENTIAL X  
OPEN FILE

DOCUMENT NO: 092830  
MINING DISTRICT: Whitehorse  
TYPE OF WORK: Geochemical

REPORT FILED UNDER: R. Stack

DATE PERFORMED: 29 May-7 June, 1989      DATE FILED: 28 February, 1990

LOCATION:    LAT.: 61°00'N      AREA: Haines Junction

            LONG.: 137°36'W      VALUE \$: 4400.00

CLAIM NAME & NO.: COLTON 1-14 (YB24624-37); VAIL 1-30 (YB25501-30)

WORK DONE BY: G.S. Davidson

WORK DONE FOR: R. Stack

DATE TO GOOD STANDING:

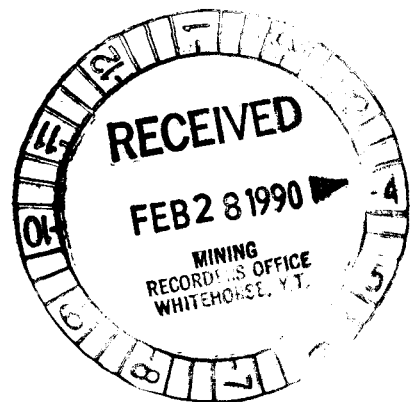
REMARKS: #26 DECOELI  
Gold occurs with pyrrhotite and chalcopyrite in a quartz-carbonate stockwork which forms the hanging wall of a gabbaro sill. The best assay was 19.7 g/t Au. Chalcopyrite-bearing greenstone boulders in a creek at the southeast end of the property contained up to 6.3% Cu.

SUMMARY REPORT  
on the

COLTON 1-14 & VAIL 1-30 CLAIMS  
NTS 115 A-13

By: G.S.DAVIDSON, P.GEOL.  
January, 1990

092830



SUMMARY REPORT

on the

COLTON 1-14, VAIL 1-30 CLAIMS  
(YB24624-YB24637, YB25501-YB25530)  
NTS 115 A-13  
Lat. 61 00'N Long. 137 36'W  
Whitehorse Mining District

FOR: R. STACK  
Whitehorse, Yukon

BY

G.S. DAVIDSON, P. Geol.

January, 1990

## TABLE OF CONTENTS

	page
INTRODUCTION	1
LOCATION AND ACCESS	1
PHYSIOGRAPHY, CLIMATE, VEGETATION	1
PROPERTY	4
HISTORY	4
REGIONAL GEOLOGY	6
RECENT EXPLORATION	6
DISCUSSION AND RECOMMENDATION	9
CERTIFICATE	16
STATEMENT OF COSTS	17
REFERENCES	18

## LIST OF FIGURES

Figure 1	Location Map	2
Figure 2	Regional Map	3
Figure 3	Claim Plan	5
Figure 4	Geology	7
Figure 5	Airborne Magnetic Survey	8
Figure 6	Property Plan	in pocket
Appendix 1- Certificates of analysis		

## INTRODUCTION

The Colton and Vail claims cover a ultramafic sill intruding Mesozoic volcanic and sedimentary rocks. Reconnaissance level exploration has located gold, nickel and copper mineralization within or in the hangingwall of the sill. This report describes prospecting traverses and rock sampling undertaken on the claims from May 29-September 13, 1989.

The property lies in the Kluane Ranges near Haines Junction, Yukon. Copper, nickel and PGE bearing ore bodies occur in similar gabbro-peridotite sills on the Wellgreen and Canalask properties to the north. These sills are important exploration targets for base and precious metals.

R. Stack of Whitehorse staked the Colton 1-14 claims in November, 1988. The Vail 1-30 claims were staked in March, 1989. The writer accompanied geologists from Noranda Exploration Ltd. and DIAND on property inspections.

## LOCATION AND ACCESS

The property is located 10 km northwest of Haines Junction in the western Yukon Territory. The property is situated 6 km west of the Alaska Highway and is accessible via gravel road which leaves the Alaska Highway at Bear Creek, across from Macintosh Lodge. This road was built to access placer claims on Sugden Creek and is presently used for access to Kluane Park. More remote areas on the claims are accessible by helicopter, which is based nearby in Haines Junction. The property location is shown in Figures 1 & 2.

## PHYSIOGRAPHY, CLIMATE, VEGETATION

The claims lie on the west side of the Shakwak Valley along the base of Mt. Archibald. Elevations range from 1200 m in the valley floor to 1875 m at a ridge crest on the south side of Mt. Archibald. The sill is exposed on the steep southeasterly face of the ridge and in several sharp gullies which incise glacial benches at lower elevations. A sharp break in slope is evident where the sill is exposed. Also, landslides are common along the length of the sill. Outcrop is abundant at higher elevations however lower areas are covered in glacial till.

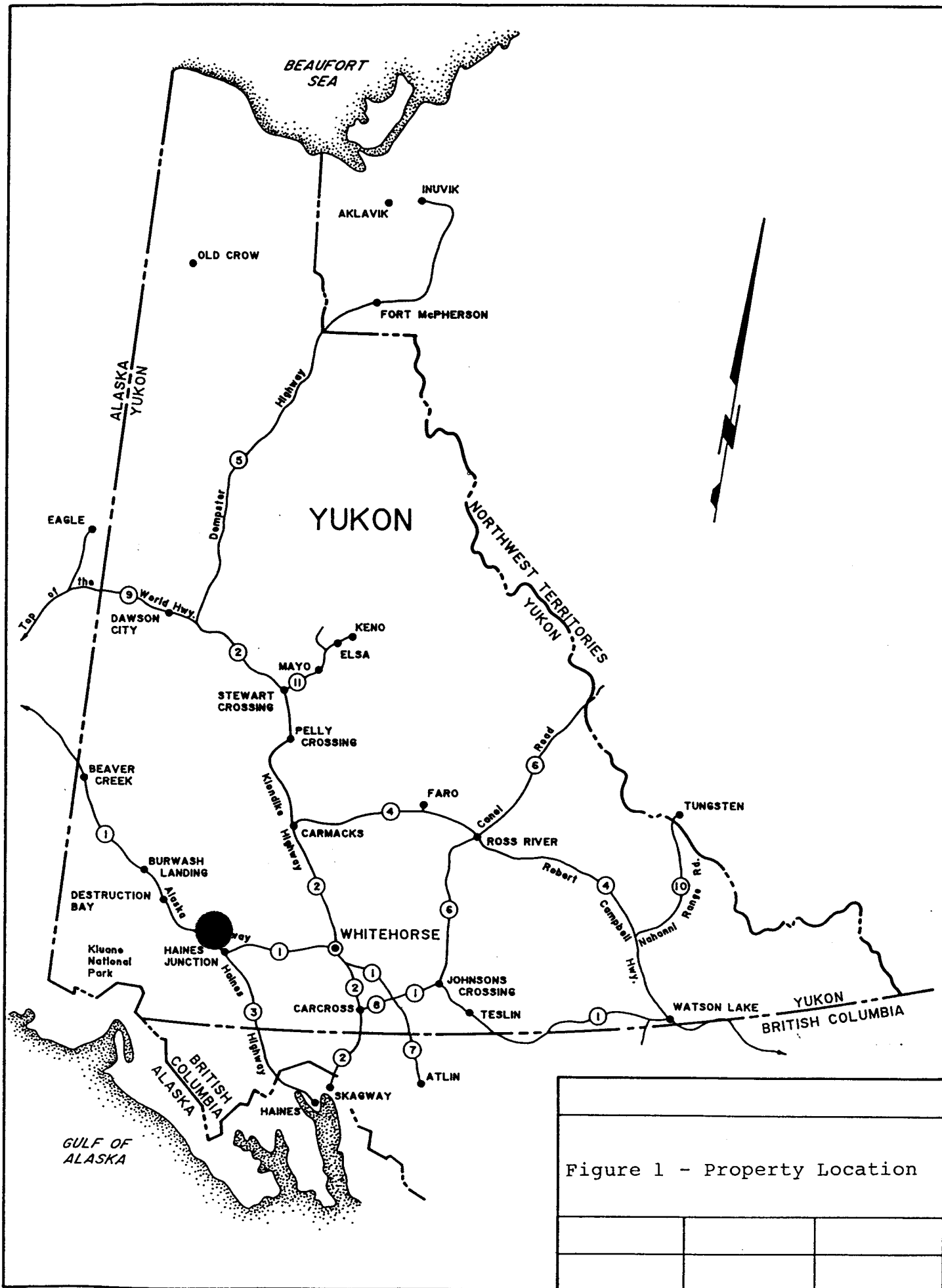


Figure 1 - Property Location


138°00' 34

35 45'

36

30'

37

15' 38

61°00'

Kluane  
16 miles  
670

675

674

673

672

671

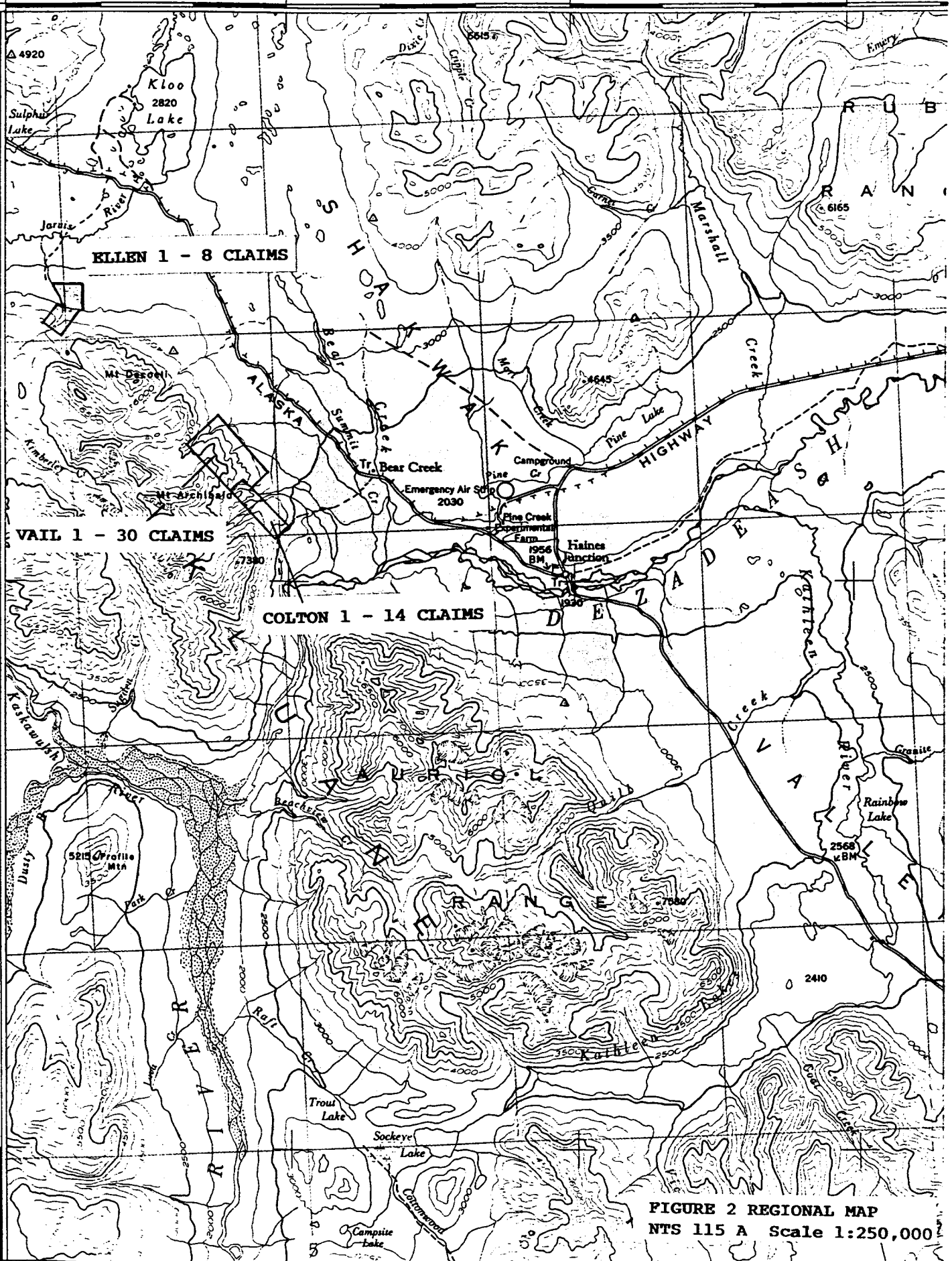


FIGURE 2 REGIONAL MAP  
NTS 115 A Scale 1:250,000

The Haines Junction area has a northern interior climate strongly influenced by the St. Elias Mountains. The area is known for high winds, which constantly blow from the mountains into the Shakwak Valley. Winter temperatures average -20 C while summers are cool and last from June to September. The exploration season lasts from mid-May to early October.

Vegetation consists of thick alder, buckbrush and patchy spruce forest at lower elevations and open grassy uplands above treeline.

#### PROPERTY

The property consists of 44 mineral claims registered with the district mining recorder in Whitehorse. Figure 3 shows the claim plan and Table 1 lists property data.

TABLE 1  
CLAIM DATA

Claim Name	Record Number	Expiry Date
Colton 1-14	YB24624-YB24637	* Dec. 9, 1990
Vail 1-30	YB25501-YB25530	* March 20, 1991

\* applied for

#### HISTORY

The Kluane Ranges were first explored around 1900 by prospectors travelling between coastal and central Alaska through the Shakwak Valley. Placer mining was active along the front range from Dalton Post to Silver City in the 1920's and 1930's.

In the 1950's the Kluane Ranges were explored for copper-nickel sulphide mineralization. Deposits were outlined on the Wellgreen and Canalask properties. The higher grade Wellgreen deposit was mined from 1972-1973.

In the Haines Junction area several copper occurrences were explored in the 1950's and 1960's, and magnetic anomalies in the Shakwak Valley received some attention in the 1960's. Diamond drilling at two locations failed to intersect significant mineralization.

The area of the property has been staked several times but no assessment records are available. Old placer mining equipment is located on one of the main creeks draining the area.

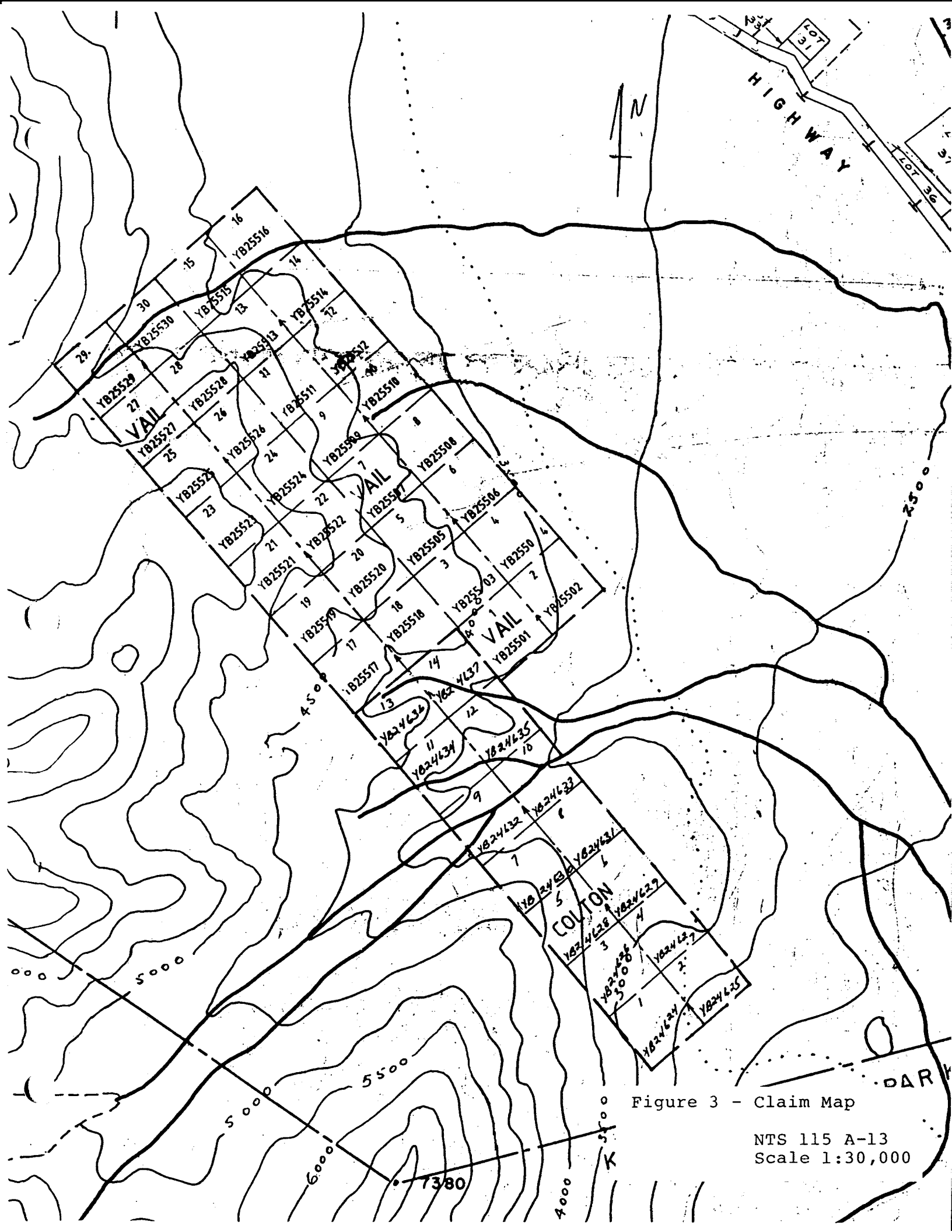


Figure 3 - Claim Map

NTS 115 A-13  
Scale 1:30,000

## REGIONAL GEOLOGY

The Colton-Vail property lies west of the Shakwak Valley near the Denali Fault, the structural division between the Coast Plutonic Belt and Wrangell Terrane in the Kluane Ranges. The area is underlain by Paleozoic and/or Mesozoic greenstone, greenschist, minor argillite, and greywacke unconformably overlain by the Upper Jurassic to Lower Cretaceous Dezadeash Group. The geology of the district was released in Open File #831 by the G.S.C.. Figure 4 shows the regional geology and Figure 5 shows the airborne magnetic data.

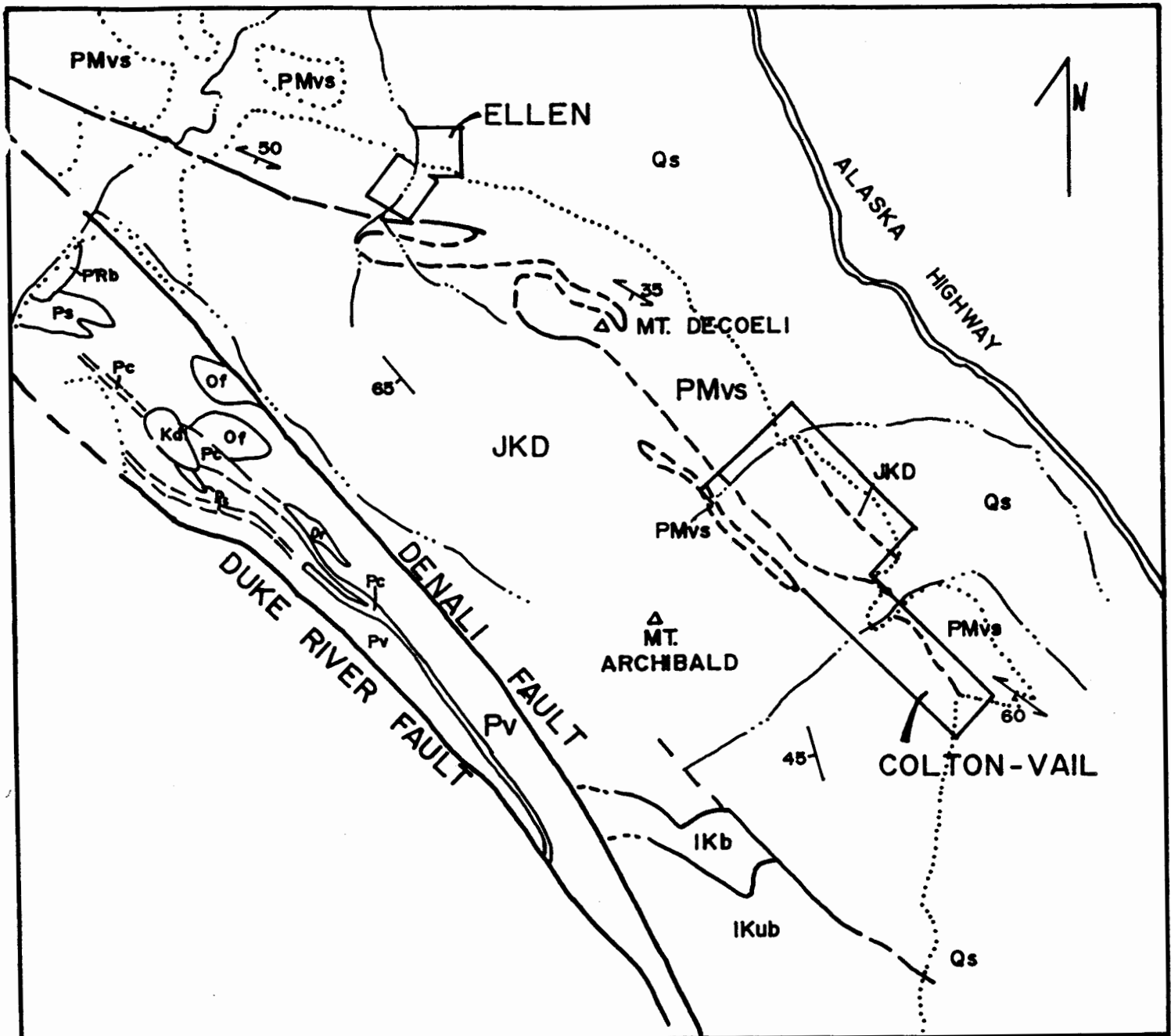
The property is underlain by slates and shales of the Dezadeash Group in contact with greenstone and mafic to ultramafic intrusive rocks. The sill consists of fine-grained peridotite and pyroxene gabbro. It averages 150 m in width and has been traced over 4 km. A highly silicified, fine grained peridotite (chill margin) outcrops along the southeastern sill margin. Sill rocks are variably serpentized, weakly to moderately magnetic and contain minor pyrrhotite. There may be two or more parallel sills in close proximity to each other. ENE trending normal faults in several of the gullies appear to offset the sill, producing a complex assemblage. Detailed mapping and a magnetometer survey should outline the sill dimensions.

Gossanous siltstones and greenstone in the hanging wall of the sill are cut by quartz-carbonate veins containing pyrrhotite, arsenopyrite and chalcopyrite.

## RECENT EXPLORATION

R. Stack, B. Harris and the writer prospected the claims in June and July, 1989. The writer accompanied geologists from Noranda Exploration Co. Ltd. and DIAND on property inspections. Thirty rock samples were collected on the property and analyzed for Au-Pt-Pd-Cu-Ni-Cr. Noranda samples were analyzed for 33 elements. Sample locations and values are shown in Figure 6. Sample descriptions and values are presented in Table 2.

Peridotite samples contain anomalous nickel and chromium values which increase towards the footwall of the sill. The nickel values ranged from 1459-2480ppm. The mean nickel value on the Wellgreen property for peridotite containing disseminated sulphides is 2000ppm (Hulbert et al, 1988).



### LEGEND

#### STRATIFIED ROCKS

##### QUATERNARY

Qs undivided surficial deposits

##### JURASSIC & CRETACEOUS

JKD Dezadeash Group  
greywacke, sandstone,  
siltstone, argillite,  
conglomerate

##### PALEOZOIC &/OR MESOZOIC

PMvs greenstone, greenschist,  
minor argillite and greywacke

##### CARBONIFEROUS TO PERMIAN

Pc Skolai Group  
Hansen Creek Fmn. limestone  
Pv Station Creek Fmn. volcanics

#### INTRUSIVE ROCKS

##### TERTIARY

Of felsite, qtz. latite  
porphyry

##### LOWER CRETACEOUS

IKb, IKub Pyroxenite Creek  
Ultramafic Complex

#### SYMBOLS

Geological boundary, defined, approx.

High angle fault, defined, approx.

Bedding, strike-dip

Foliation, cleavage, strike-dip

60

45

HARJAY EXPLORATION LTD.

### GEOLOGY

JARVIS RIVER, YUKON TERR.

NTS  
115 A 13

TECH.

DATE  
OCT. 89

SCALE  
1:125,000

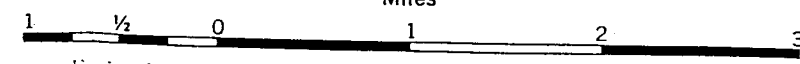
DRAFT.  
GD

FIG.  
4

# KLOO LAKE

## YUKON TERRITORY

Scale: One Inch to One Mile =  $\frac{1}{63,360}$   
Miles



ISOMAGNETIC LINES (total field):  
500 gammas . . . . .  
100 gammas . . . . .  
20 gammas . . . . .  
10 gammas . . . . .  
Magnetic depression . . . . .  
Flight lines . . . . .  
Flight altitude: nominally 1000 feet above  
ground level where terrain permitted.

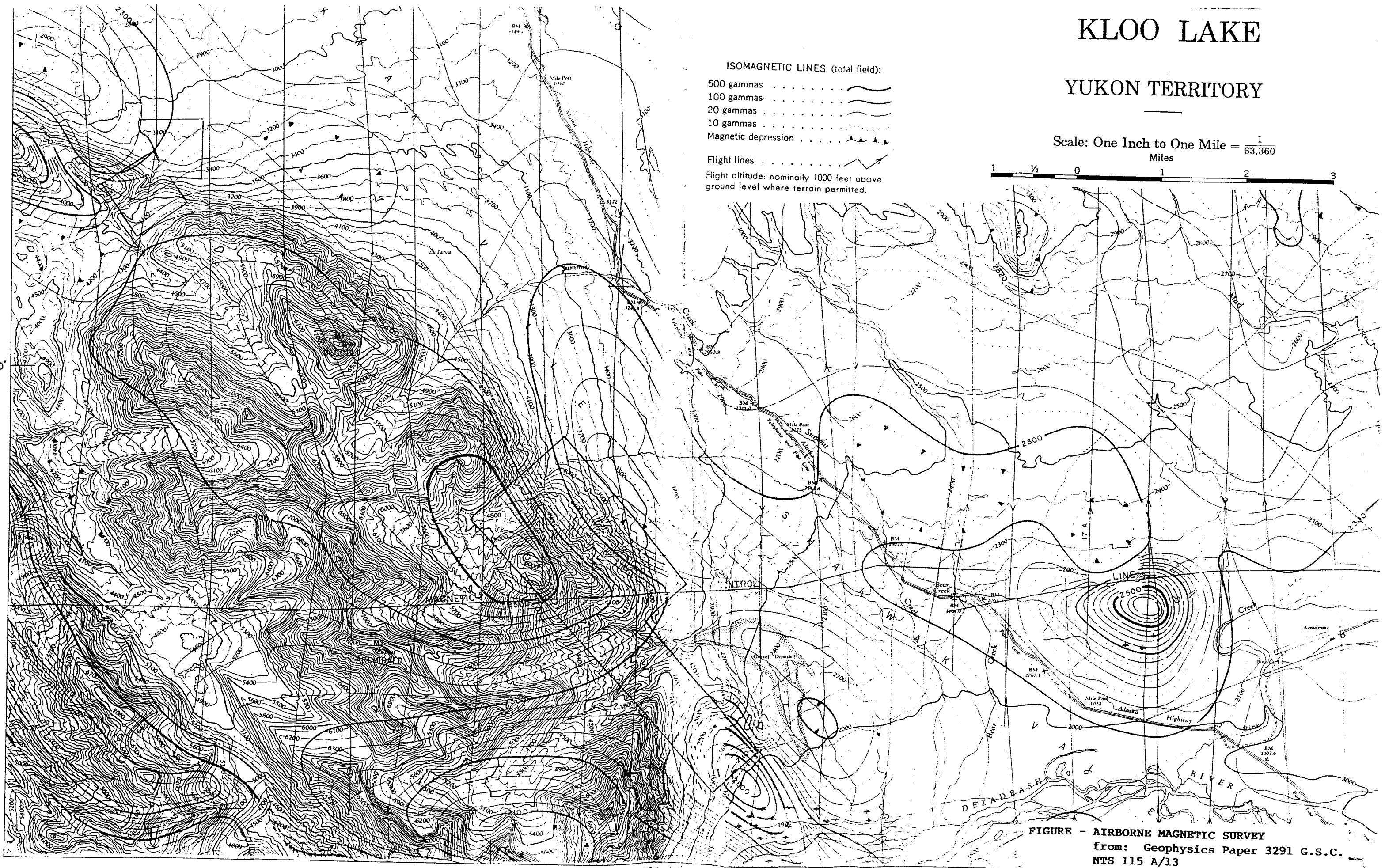


FIGURE - AIRBORNE MAGNETIC SURVEY  
from: Geophysics Paper 3291 G.S.C.  
NTS 115 A/13

60°45'  
138°00'

50

3404 G Profile Mountain"

10

Metasedimentary rocks in the hangingwall of the sill contain stockworks of quartz-carbonate veining with disseminated chalcopyrite and pyrrhotite. A quartz-sericite sample returned a gold value of 19.7ppm. A second sample containing chalcopyrite, azurite and malachite recorded a gold value of 1476ppb and copper value of 2.5%. Foliated greenstones (sample no. 84259 & 44890) containing disseminated and vein chalcopyrite recorded copper values of 6.3 & 5%.

#### DISCUSSION AND RECOMMENDATIONS

A gabbro-peridotite sill with associated nickel, copper and gold mineralization has been discovered on the Colton-Vail claims. Similar ultramafic sills on the Wellgreen and Canalask properties host Ni-Cu-PGE orebodies.

Nickel values in the peridotite are comparable to the mean nickel grade in the "peridotite with disseminated sulphides" type ore at Wellgreen.

Cross-faults and quartz-carbonate alteration zones in the hangingwall metasediments and volcanics contain up to 6.3% copper and 19.7ppm gold.

Airborne magnetic anomalies to the northwest and southeast of the known sill probably outline extensions of the ultramafic sill.

The Colton-Vail claims deserve a thorough evaluation to map and sample the sill, and associated structures and alteration zones. The following program is proposed:

Geological mapping		4,500
Grid development	50km	15,000
Geophysical surveys, MAG & VLF		7,500
Geochemistry 400 samples		10,000
Camp and support		5,000
Transportation		5,000
Report and assessment		3,000

TOTAL \$50,000

\* Descriptions from samples collected by H. Copeland

Sample No.	Sample Type	Width	Location and Description	Au PPB	Cu PPM	Ni PPM	Pt PPB	Pd PPB	Cr PPM
44876	rough chip	2m	Quartz-carbonate alt in dark green mafic meta-volcanic; pervasive and carbonate veinlets up to 3cm in width	21	249	55	7	13	69
44877	rough chip	3m	100 metres east of 876 same material, zone approximatley 5m + wide.	21	107	51	7	18	62
44878	grab		75 metres below 877 quartz rich metasediments. Po, aspy ± cpy to 10% in stringers, blebs and partially disseminated.	12	.17%	87	2	7	20
44879	grab		125 metres east of 878, mafic meta volcanic, very fine grained disseminated po and py to 5%, series of zones up to 5m wide.	6	178	32	3	10	40
44880	grab		From creek near SE end of property stingers of cpy in sericitized chlorictic volcanics tract - 10% in talus pile near creek bed probably localized source.	4	5.01%	2	1	9	1

\* Descriptions from samples collected by H. Copeland

Sample No.	Sample Type	Width	Location and Description	Au PPB	Cu PPM	Ni PPM	Pt PPB	Pd PPB	Cr PPM
44881			(84226) Ultramafic very minor sulphides po.	28	283	119	6	26	127
44882			(84267) Silicified meta-volcanic - metased? 5% sulphides; bleby and disseminated py? po aspy and minor cpy.	46	701	114	2	7	19
44883			(84268) Silicified meta-volcanic, more mafic than 44882 similar sulphides.	3	1613	86	3	9	21
44884			(84268) Mafic meta-volcanic (?) with carbonate ± quartz veining, stringers of cpy and po associated with carbonate.	2	656	51	6	18	50
44885			(84269) Mafic volcanic with stringers of py?, po and cpy 1-2%	264	287	51	9	11	77

\* Descriptions from samples collected by H. Copeland

Sample No.	Sample Type	Width	Location and Description	Au PPB	Cu PPM	Ni PPM	Pt PPB	Pd PPB	Cr PPM
R52432	comp		Rusty foliated gabbro with malachite seams and staining composite sample containing 1-2% diss. Cpy and quartz cpy only minor, small, float available. 1-2% sulphides.	327	.89%	28	21	35	78
R52433	grab		Silicified bleached gabbro with 1-2% cpy, py minor carb altin. 1-2% sulphides.	43	1.37%	33	14	30	115
R52434			Apple and dark green epidote-diop. skarn.	8	143	47	8	10	75
R52435	chanel	80cm	80cm wide gossanous thrust zone with quartz veining to 2cm and graphite seams and lenses minor drag folding.	264	287	46	2	15	34
R52436	grab		Rusty quartz-graphite in thrust zone is m(s) thick - 40m from 435	8	174	50	10	5	47
R52437	grab		Rusty weathering quartz (carb) vein with Tr - 1% cpy, malachite stained - 40 cm wide in float.	103	117	955	2	2	515

\* Descriptions from samples collected by H. Copeland

Sample No.	Sample Type	Width	Location and Description	Au PPB	Cu PPM	Ni PPM	Pt PPB	Pd PPB	Cr PPM
94984	grab float		Quartz-carbonate alteration on margin of ultramafic dyke.		304	33	11	12	19.7

TABLE 2 - SAMPLE DESCRIPTIONS AND VALUES

\* Descriptions from samples collected by G. Davidson

Sample No.	Sample Type	Location	Description	Au PPB	Cu PPM	Ni PPM	Pt PPB	Pd PPB	Cr PPM
84251	grab	See figure 6	Fine-grained serpen- tized peridotite, minor pyrrhotite.	<5	5	1993	50	10	3363
84252	grab	See figure 6	Limonitic siltstone, quartz-carbonate veining, minor pyrite.	<5	143	45	15	10	132
84253	grab	See figure 6	Medium-grained pyroxene gabbro, no visible suhpides.	<5	5	39	20	2	202
84254	grab	See figure 6	Fine-grained septentin- ized peridotite, magnet- ite, pyrrhotite.	<5	5	2480	30	<2	2865
84255	grab	See figure 6	Serpentinized peridotite, strongly magnetic, minor pyrrhotite.	<5	6	1906	<15	<2	3409
84256	grab	See figure 6	Fine-grained, silicified peridotite (chill margin), minor pyrrhotite, weakly magnetic.	<5	5	1747	15	2	3638
84257	grab	See figure 6	Fine-grained, siliceous peridotite (chill margin), minor pyrrhotite, phlogopite, moderately magnetic.	<5	5	1459	<15	<2	2978

\* Descriptions from samples collected by G. Davidson

Sample No.	Sample Type	Location	Description	Au PPB	Cu PPM	Ni PPM	Pt PPB	Pd PPB	Cr PPM
84258	grab	See figure 6	Peridotite, minor pyrrhotite and chalcopyrite, not magnetic.	310	1330	1793	20	4	2778
84259	grab	See figure 6	Foliated greenstone containing quartz and disseminated to massive chalcopyrite.	28	6.3%	49	20	10	393
84260	grab	See figure 6	Quartz-carbonate alteration zone in metasediments, disseminated chalcopyrite, malachite and azurite stain.	1476	2.3%	71	15	20	336

STATEMENT OF COSTS

Period: May 29-June 7, Sept. 13, 1989

Personnel:	R. Stack prospector, 3 days	\$ 600
	B. Harris prospector, 3 days	600
	G. Davidson geologist, 4 days	1200
	H. Copeland geologist, 1 day	
	K. Galbreth geologist, 1 day	
	Geochemical analysis, Bondar-Clegg & Acme	750
	Transportation, TNTA jet ranger	1100
	Camp, transportation and support	350
	Report, preparation, printing, drafting	1050
	TOTAL COSTS	\$ 5650

CERTIFICATE

I, GRAHAM DAVIDSON, of the City of Whitehorse, in the Yukon Territory, HEREBY CERTIFY:

1. That I am a consulting geologist and that I participated in the work program described in this report.
2. That I am a graduate of the University of Western Ontario (H. BSc., Geology, 1981).
3. That I am registered as a Professional Geologist by the Association of Professional Engineers, Geologists & Geophysicists of Alberta (No. 42038).
4. That I have been engaged in mineral exploration on a full time basis for nine years in the Yukon and Northwest Territories, and British Columbia.

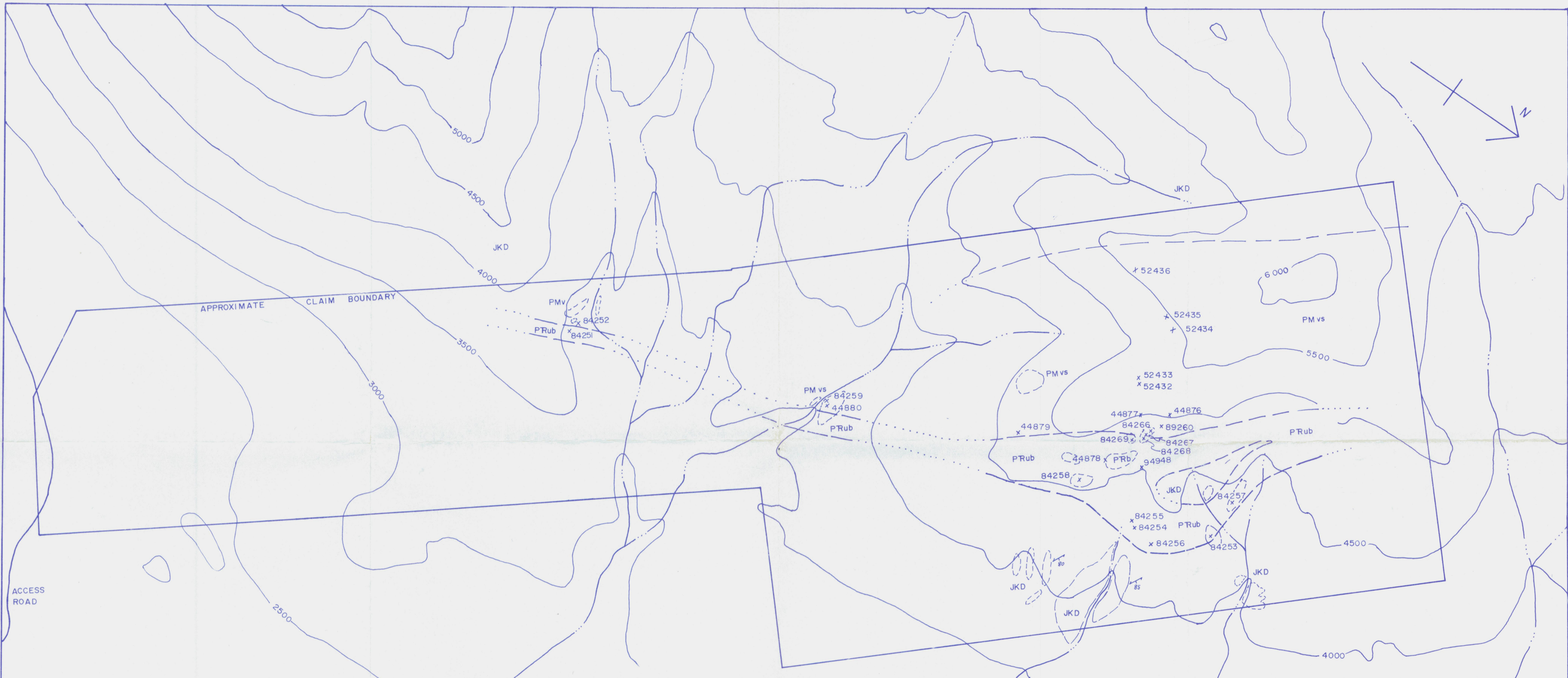
SIGNED at Whitehorse, Yukon this 18th day of January, 1990.

G.S. DAVIDSON, P.Geol.

A handwritten signature in cursive script, appearing to read "G. Davidson", is written below the typed name.

REFERENCES

- Campbell, S.W., 1976: Open File 1976-10, Nickel-Copper Sulphide Deposits in the Kluane Ranges
- Hulbert, L.J. et al, 1988: Geological Environments of the Platinum Group Elements
- Open File #831, 1984: Geology of the 115 A Map Sheet, GSC



ACCESS ROAD

APPROXIMATE CLAIM BOUNDARY

**SYMBOLS**

- Geological boundary, defined, assumed
- Foliation, cleavage, strike dip
- Sample location, number x 84256
- Outcrop

SAMPLE NUMBER	Au PPB	Cu PPM	Ni PPM	Pt PPB	Pd PPB	Cr PPM
84251	< 5	5	1993	50	10	3363
84252	< 5	143	45	15	10	132
84253	< 5	5	39	20	2	202
84254	< 5	5	2480	30	< 2	2865
84255	< 5	6	1906	< 15	< 2	3409
84256	< 5	5	1747	15	2	3638
84257	< 5	5	1459	< 15	< 2	2978
84258	310	1330	1793	20	4	2778
84259	28	6.3%	49	20	10	393
84260	1476	2.5%	71	15	20	336
52432	327	.89%	28	21	35	79
52433	43	1.37%	33	14	30	115
52434	8	143	47	8	10	75
52435	264	287	46	2	15	34
52436	8	174	50	10	5	47

SAMPLE NUMBER	Au PPB	Cu PPM	Ni PPM	Pt PPB	Pd PPB	Cr PPM
84266	28	283	119	6	26	127
84267	46	701	114	2	7	19
84268	3	1613	86	3	9	21
84268	2	656	51	2	6	50
84269	78	284	57	9	11	77
94948	19721	304	33	11	12	23
44876	21	249	55	7	13	69
44877	21	107	51	7	18	62
44878	12	1698	87	2	7	20
44879	6	178	32	3	10	40
44880	4	5.0%	2	1	9	1

**LEGEND**

- QUATERNARY
- Qs undivided surficial deposits
- JURASSIC & CRETACEOUS
- JKD Dezadeash Group  
greywacke, shale, slate, argillite
- PERMIAN &/OR TRIASSIC
- PRb, PRub gabbro, peridotite
- PALEOZOIC &/OR MESOZOIC
- PMvs greenstone, greenschist, argillite

376  
115A

<b>092830</b>		
COLTON-VAIL PROPERTY		
<b>PROPERTY MAP</b>		
MT. ARCHIBALD, YUKON TERRITORY		
N.T.S.: 115 A 13	TECH: G.D.	DATE: NOV., 1989
SCALE: 1" = 10,000'	DRAUGHTING: G.D.	FIGURE: 6

APPENDIX I

CERTIFICATES OF ANALYSES

Bondar-Clegg & Company Ltd.  
 130 Pemberton Ave.  
 North Vancouver, B.C.  
 V7P 2R5  
 (34) 985-0681 Telex 04-352667



Geochemical  
 Lab Report

DATE PRINTED: 17-JUL-89

REPORT: V89-1135113.11

PROJECT: VAIL-FLEEN

PAGE 1

SAMPLE NUMBER	ELEMENT UNITS	Pt PPR	Pd PPR	Au PPR	Cu PPM	Ni PPM	Cr PPM
R2 84251		50	10	<5	5	1993	3363
R2 84252		15	10	<5	143	45	132
R2 84253		20	2	<5	5	39	202
R2 84254		30	<2	<5	5	2480	2865
R2 84255		<15	<2	<5	6	1906	3409
R2 84256		15	2	<5	5	1747	3638
R2 84257		<15	<2	<5	5	1459	2978
R2 84258		20	4	310	1330	1793	2778
R2 84259		20	10	28	>20000	49	393
R2 84260		15	20	1476	>20000	71	336

Bondar-Clegg & Company Ltd.  
130 Pemberton Ave.  
North Vancouver, B.C.  
V7P 2R5  
(4) 985-0681 Telex 04-352667



Certificate  
of Analysis

DATE PRINTED: 20-JUL-89

REPORT: V89-113513.6

PROJECT: VAIL-EILEN

PAGE 1

SAMPLE NUMBER	ELEMENT UNITS	Cu PCT
R2 84259		6.30
R2 84260		2.47

SAMPLE#	Mo	Cu	Pb	Zn	Ag	Ni	Co	Mn	Fe	As	U	Au	Ta	Sr	Cd	Sb	Bi	V	Ca	P	Sa	Cr	Hg	Ba	Ti	B	Al	Na	K	W	Au**	Pb**	Pd**
	PPM	PPM	PPM	PPM	PPM	PPM	PPM	PPM	%	PPM	PPM	PPM	PPM	PPM	PPM	PPM	PPM	%	%	PPM	PPM	%	PPM	%	PPM	%	%	%	%	PPM	PPM	PPM	PPM
094545	4	304	47	220	1.5	32	17	245	0.75	170	5	19	1	8	13	2	3	27	1.03	0.14	2	23	.42	4	.05	2	.21	.02	.01	1	107223	11	12

Vail Claims (KG)

GEOCHEMICAL/ASSAY CERTIFICATE

ICP - .500 GRAM SAMPLE IS DIGESTED WITH 3ML 3-1-2 HCL-HNO3-H2O AT 95 DEG.C FOR ONE HOUR AND IS DILUTED TO 10 ML WITH WATER.  
 THIS LEACH IS PARTIAL FOR NH FE SR CA P LA CR MG BA TI B V AND LIMITED FOR NA K AND AL. NO DETECTION LIMIT BY ICP IS 3 PPM.  
 - SAMPLE TYPE: ROCK AU\*\* PT\*\* PD\*\* ZN\*\* BY FIRE ASSAY & ANALYSIS BY ICP/GRAPHITE FURNACE.

DATE RECEIVED: SEP 16 1988 DATE REPORT MAILED: Sept 28/88 SIGNED BY: C. Long, D. TOYE, C. LEONG, J. WANG; CERTIFIED B.C. ASSAYERS

NORANDA EXPLORATION CO. LTD. PROJECT 8908-058 312 File # 89-3731

ITEM	NO	CO	PB	CU	AG	NI	CD	MO	FE	AS	U	AU	TE	SE	SB	SI	V	CA	P	LA	CR	MG	BA	TI	B	AL	VA	K	W	AU**	PT**	PD**	ZN**	CU	
	PPM	PPM	PPM	PPM	PPM	PPM	PPM	PPM	%	PPM	PPM	PPM	PPM	PPM	PPM	PPM	%	%	PPM	PPM	%	PPM	%	PPM	%	%	%	PPM	PPB	PPB	PPB	PPB	%		
1676	1	249	2	110	4	55	36	1518	5.29	141	5	ND	1	63	2	2	155	4.21	.059	4	69	2.65	39	.01	7	.73	.01	.04	1	21	7	13	2	-	
1677	1	197	2	105	3	51	34	1040	7.99	131	5	ND	1	60	1	19	2	153	4.10	.049	4	62	2.81	28	.02	2	.66	.01	.04	1	21	7	18	2	-
1678	30	1695	2	39	9	67	33	341	6.91	42	5	ND	1	21	1	2	2	28	2.04	.156	10	20	.55	13	.03	2	.62	.02	.04	36	12	2	7	2	.17
1679	4	172	5	53	2	32	18	230	4.96	5	5	ND	1	20	1	2	2	91	.75	.117	6	40	1.61	29	.14	6	1.32	.07	.14	1	6	3	10	2	-
1680	1	50157	2	179	4.1	3	13	2664	6.88	2	5	ND	1	18	3	2	3	2.15	.001	2	1	.54	30	.01	2	.34	.01	.12	1	4	1	9	5	5.01	
1681	1	283	5	95	4	115	49	616	3.20	5	5	ND	1	63	1	2	2	84	1.50	.032	3	127	5.04	35	.95	7	3.74	.66	.20	1	28	6	26	2	-
1682	9	701	6	35	5	114	21	432	3.55	294	5	ND	1	36	1	6	2	31	2.36	.135	11	19	.62	26	.32	16	.57	.02	.08	2	46	2	7	2	.07
1683	39	1513	2	35	5	36	27	321	5.92	4	5	ND	1	23	1	2	2	29	2.19	.250	12	21	.62	38	.34	13	.70	.03	.10	65	3	3	9	2	-
1684	2	656	2	91	3	51	27	332	5.33	2	5	ND	1	37	1	2	2	135	2.09	.126	8	50	2.27	33	.21	4	2.67	.11	.32	1	2	6	18	5	-
1685	2	254	91	101	1.5	57	29	622	6.16	301	5	ND	1	173	2	2	2	101	5.08	.042	3	77	2.61	43	.06	9	2.04	.03	.40	1	73	9	11	3	-
1686	3	3388	2	262	5.4	23	21	357	4.73	35	5	ND	1	10	2	2	4	113	.90	.043	2	79	1.42	52	.16	2	1.79	.06	.13	1	327	21	35	4	.89
1687	1	12767	2	77	4.7	33	14	410	3.33	13	5	ND	1	14	2	2	2	33	1.38	.046	3	115	1.08	13	.34	4	1.24	.02	.06	1	43	14	30	2	1.37
1688	1	145	2	57	2	47	22	409	3.77	2	5	ND	1	28	1	2	2	31	1.64	.031	2	75	2.15	17	.37	3	2.33	.02	.08	1	8	8	10	2	-
1689	65	287	3	129	5	46	34	1078	3.09	2462	5	ND	1	107	1	7	2	151	4.29	.074	7	34	2.93	57	.01	6	1.42	.01	.12	1	264	2	15	2	-
1690	9	174	3	92	3	50	21	852	5.15	97	5	ND	1	54	1	2	2	70	6.01	.036	2	47	2.69	52	.01	3	1.76	.01	.12	1	8	10	5	2	-
1691	3	117	2	24	5	955	38	951	3.55	31	5	ND	1	36	2	2	1	13	3.51	.005	2	515	9.91	36	.01	14	.06	.01	.02	1	103	2	2	2	.01
1692/SA-5X	18	62	38	132	6.7	63	31	1036	3.39	43	17	7	38	47	18	15	23	57	.49	.090	38	56	.88	174	.07	32	1.95	.06	.13	12	100	97	101	20	-

Sample locations plotted on accompanying map