

MAP NO.: ASSESSMENT REPORT X
105 F 9 PROSPECTUS
CONFIDENTIAL X
OPEN FILE

DOCUMENT NO: 092822
MINING DISTRICT: Watson Lake
TYPE OF WORK: Percussion & Diamond Drilling

REPORT FILED UNDER: Canamax Resources Inc.

DATE PERFORMED: July 21-22, Aug. 7-8, 1989

DATE FILED: Dec. 5, 1989

LOCATION: LAT.: 61°34'N

AREA: Ketzal River

LONG.: 132°15'W

VALUE \$: 4,350.00

CLAIM NAME & NO.: KON 23-26, 97Fr., 93Fr., 99Fr., 100Fr., 102-104, 107-108, 113-114, 116-118, 127-128, 130 YA70934-37, YA72106-107, YA90399-400, 402-404, 407-408, 413-414, 416-418, 427-428, 430

WORK DONE BY: D.B. Fleming

WORK DONE FOR: Canamax Resources Inc.

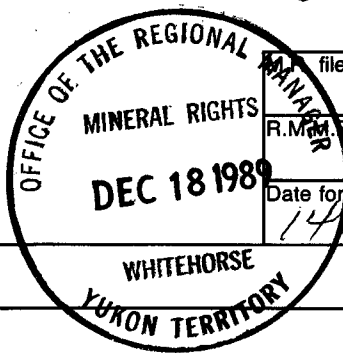
DATE TO GOOD STANDING:

REMARKS: # 17 KETZAL RIVER Seven percussion drill holes (360 ft) drilled in the Knoll Zone (KON 30) are described. Twenty diamond drill holes totalling 1353 feet were drilled in the Tarn Zone. Two those (239 ft) are described. Within the Knoll Zone, one hole intersected 7.32 m of 40.23 g/t Au, confirming and extending the zone. In the Tarn Zone, quartz-oxide-arsenopyrite veins assayed up 4.7 g/t Au over 1.3 m, and an oxide zone in dolomite assayed 5.1 g/ over 2.97 m. Massive pyrite under the limestone is barren of gold.

Work in this report is being applied to all quartz claims



TRANSMITTAL FORM

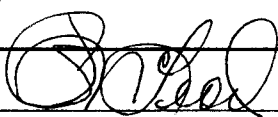


file no.
R.M.R. file no.
Date forwarded 14 Dec 89

From Mining Recorder at: WATSON LAKE

To Regional Manager, Mineral Rights at Whitehorse, Y.T.

For action are:

<input type="checkbox"/> NEW APPLICATION FOR PLACER LEASE TO PROSPECT	Name	
<input type="checkbox"/> RENEWAL APPLICATION PLACER LEASE TO PROSPECT	Name	Lease no.
<input type="checkbox"/> AFFIDAVIT OF EXPENDITURE ON PLACER LEASE	Name	Lease no.
<input type="checkbox"/> SECURITY DEPOSIT		
<input type="checkbox"/> FINANCIAL ABILITY		
ASSIGNMENT OF PLACER LEASE NO.	From	To
GROUPING APPLICATION UNDER SEC. 52(2) PLACER MINING ACT.	Owner	
DIAMOND DRILL LOGS	Claims	Claim sheet no.
QUARTZ ASSESSMENT REPORT	Claims <u>107F-108F, 113F-114F, 116F-118F, 127F-128F, 130F</u> <u>KON 23-26, 97F-100F, 102-103, 104F,</u>	Claim sheet no. <u>105-F-9</u>
	Type of report <u>Diamond Drilling</u>	Submitted by <u>Canamax Resources Inc.</u>
	Cls. work performed on <u>KON 12, 30</u>	\$ req. for ren. application <u>1300.00</u> <u>\$4350</u>
	 Signature	

PLY ACTION

Date returned

Signature

1989 DRILLING ASSESSMENT REPORT



TITLE: Ketzza River Property

CLAIMS: Kon 12, Kon 30

AUTHOR: D.B. Fleming

DATE: October, 1989

WORK PERIODS: July 21-22; August 7-8, 1989

COMMODITY: Au

LOCATION:

- Area Ketzza River Area, Central Yukon
- Mining District Watson Lake
- Co-ordinates Latitude 61°34'
Longitude 132°15'
- NTS 105 F/9

OWNER: Canamax Resources Inc.

OPERATOR: Canamax Resources Inc.

092822

CANAMAX VANCOUVER OFFICE



TABLE OF CONTENTS

	<u>Page</u>
SUMMARY.....	1
CONCLUSIONS.....	2
INTRODUCTION.....	3
Location, Access.....	3
Claims Status.....	3
PERCUSSION DRILLING.....	4
General Statement.....	4
Results.....	4
DIAMOND DRILLING.....	7
General Statement.....	7
Results.....	7

FIGURES

Figure 1	Location Map (1:2,000,000).....After Page 3
Figure 2	Drill Hole and Core Storage Location (1:50,000).....After Page 3

APPENDICES

Appendix I	Statement of Costs
Appendix II	Statements of Qualifications
Appendix III	Diamond Drill/Percussion Drill Logs

SUMMARY

This report describes percussion drilling and diamond drilling conducted in two separate areas on the Ketzka River Property during the periods July 21-22 and August 7-8, 1989. The property is located 50 kilometres south-southeast of Ross River, in the Watson Lake Mining District, Yukon Territory (Figure 1).

Two zones of oxide gold mineralization were tested. On the Kon 30 claim (Figure 2), 32 percussion drill holes were completed in 1989, of which seven, totalling 360 feet, are described in this report. The drill target was a previously identified northeasterly striking lense of oxide gold mineralization in Upper Cambrian dolomite, underlain by limestone and black graphitic phyllite (Knoll Zone). On the Kon 12 claim (Tarn Zone), 20 diamond drill holes were completed in 1989 for a total of 1,353 feet, of which 239 feet in two holes along the southern edge of the zone are described. Mineralization at the Tarn Zone consists of oxide ± sulphide veins and mantos in Lower Cambrian dolomite bounded by limestone.

CONCLUSIONS

Percussion drill testing along strike to the south of the Knoll Zone (Kon 30) in holes 89-PC-31 to 34 and 89-PC-36 failed to intersect significant mineralization. Within the Knoll Zone, hole 89-PC-35 intersected 40.23 gm/T Au over 7.32 metres confirming and extending a higher-grade portion of the zone.

Diamond drilling at the southern limit of the Tarn Zone (Kon 12) intersected quartz-oxide-arsenopyrite veins assaying up to 4.7 gm/T Au over 1.3 metres, and an oxide zone in dolomite assaying 5.1 gm/T Au over 2.97 metres in hole KR-89-371. The latter interval appears to be a narrower and lower grade southern extension of the Tarn Zone oxide mantle. Massive pyrite mineralization in underlying limestone is not gold-bearing.

INTRODUCTION

Location, Access

The Ketz River Property is located 50 kilometres south-southeast of Ross River, Yukon. Access is by a 45-kilometre all-weather gravel road which departs the Robert Campbell Highway 25 kilometres east of Ross River. Final access to the Knoll and Tarn Zones is by 4-wheel-drive road from the Ketz Mine camp and Exploration camp.

Claims Status

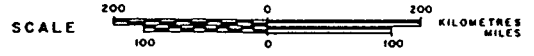
The property consists of 185 Yukon quartz claims, 29 leased claims and one surface lease. Work documented in this report is being applied to 21 quartz claims.

CANAMAX RESOURCES INC.

KETZA RIVER PROPERTIES

WATSON LAKE MINING DISTRICT — YUKON TERRITORY

LOCATION MAP



N.T.S. Ref. 105 F 9

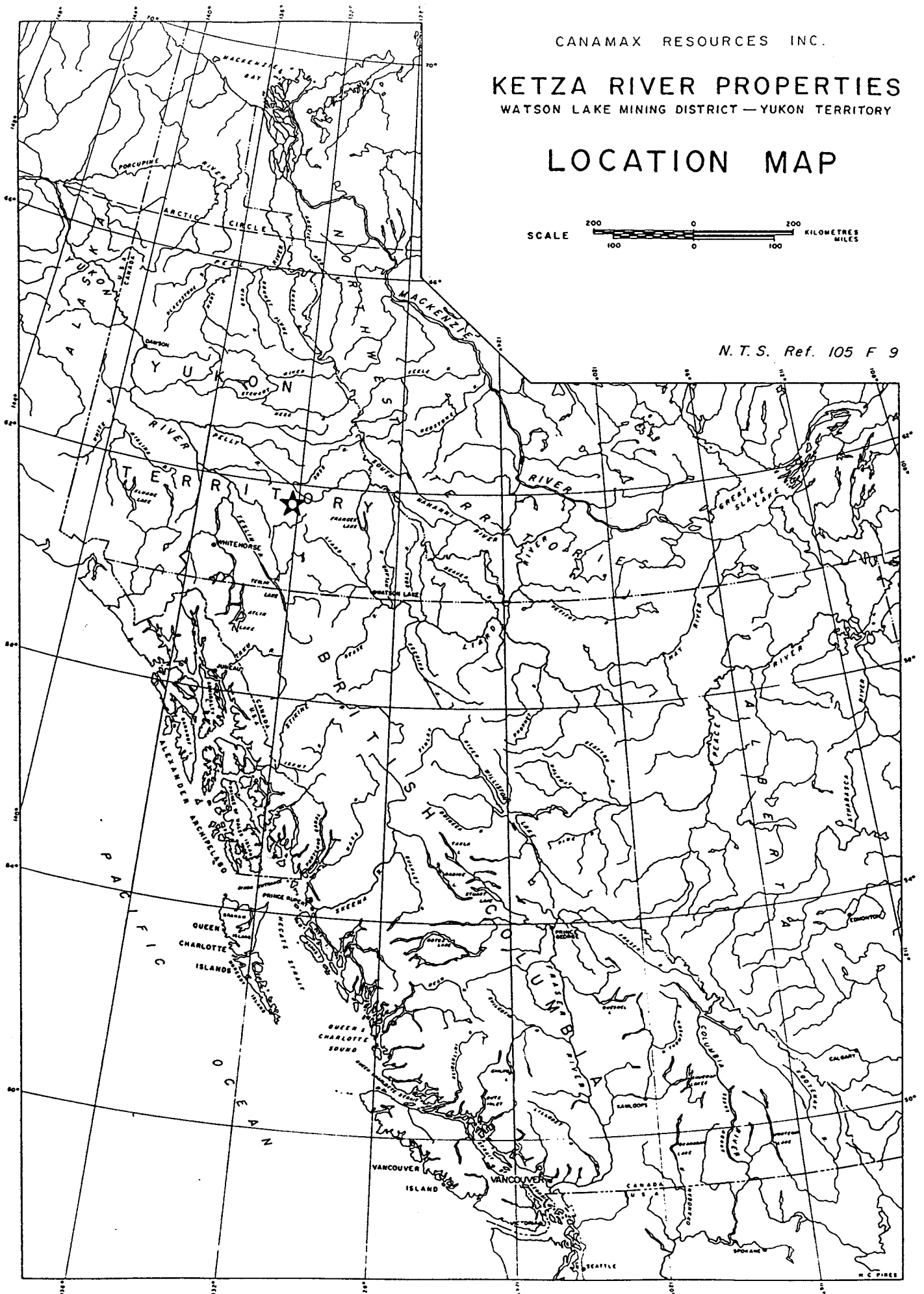
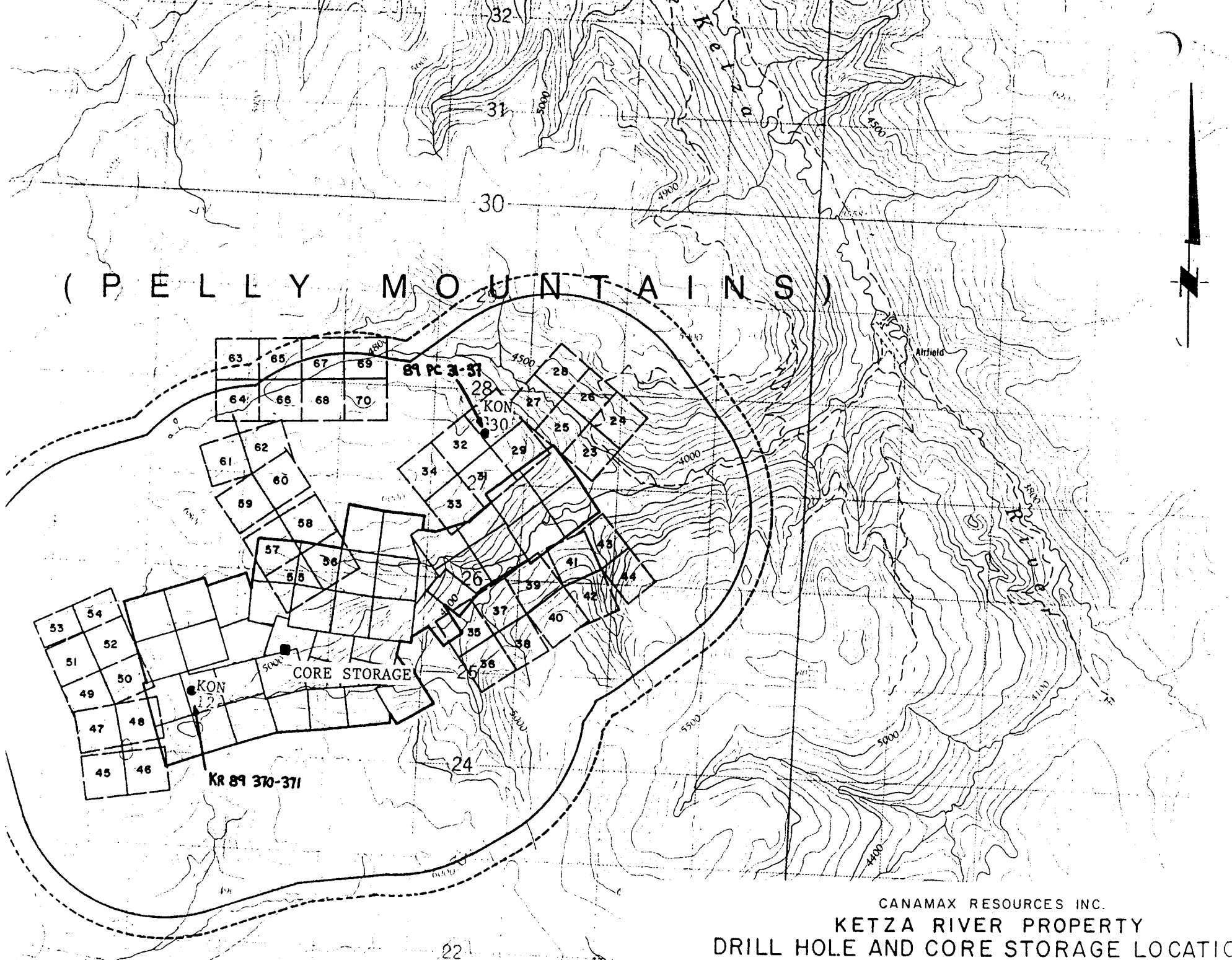


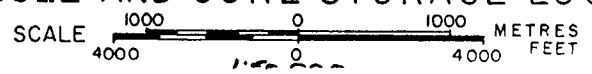
FIG. 1

(P E L L Y M O U N T A I N S)



CANAMAX RESOURCES INC.
KETZA RIVER PROPERTY
DRILL HOLE AND CORE STORAGE LOCATION

NTS 105 F/9



PERCUSSION DRILLING

General Statement

1989 Reverse circulation and diamond drilling at the Knoll Zone (Kon 30 claim) outlined a lense-shaped auriferous oxide body in Upper Cambrian dolomite. The mineralized zone trends northeast and was open to southwest, with the bulk of the reserve estimated from one high-grade intercept in hole KR-87-255. The objective of 1989 percussion drilling was to test the southern extent of mineralization and to confirm high-grade intercepts near KR-87-255.

The seven percussion drill holes described in this report were carried out utilizing a track-mounted, Atlas Copco model 712 air drill owned by Pelly Construction Ltd. of Whitehorse, Yukon. The drill was mobilized on July 21 and drilling was completed on July 22, 1989 for a total of 360 feet.

Cuttings were collected at the drill and later split and logged by Canamax geologist Tony Hitchins. One split was submitted to the Ketz Mine assay lab and analyzed for gold, one split was kept as reject, and the third was placed in N.Q. core boxes and stored at the Ketz Exploration Camp (Figure 2), on Penguin 4 claim.

Results

Drill holes 89-PC-31 to 34 and 36 tested for a southern strike extension of the Knoll Zone. No significant mineralization was encountered. Holes 35 and 37 were collared near KR-87-255 for confirmation of high grades. Hole 35 intersected good thickness and grade of mineralization. Hole 37 returned low values. Drill holes are summarized as follows:

Hole 89-PC-31, drilled vertically, intersected 84 feet of quartz-veined, phyllitic limestone. No dolomite or oxide was encountered.

Hole 89-PC-32, a vertical hole, intersected 60 feet of weakly quartz-veined, phyllitic limestone. The limestone becomes graphitic towards the bottom of the hole. One assay interval between 36 and 42 feet returned 2.9 gm/T Au.

Hole 89-PC-33 cut 30 feet of mixed tan dolomite and grey limestone in a vertical hole. The hole was stopped at 30 feet due to squeezing ground.

Hole 89-PC-34, collared 50 feet southwest of Knoll Zone oxide, intersected 40 feet of red-brown and orange dolomite, followed by grey phyllitic limestone to a depth of 48 feet in a vertical hole. Mineralization noted within the dolomite consisted of 5-10% quartz veins with traces of red oxide from 0-24 feet and traces of oxide from 30 to 36 feet. Assays from 24 to 36 feet returned 2.1 gm/T Au.

Hole 89-PC-35 was collared approximately seven metres southwest of a high-grade interval previously obtained in diamond drill hole KR-87-255. The vertical percussion hole intersected dolomite, oxides and 15-20% quartz veins from 0 to 43 feet before encountering a cavity to bottom at 48 feet. The cuttings assayed 40.23 gm/T Au from 6 to 30 feet and 3.94 gm/T Au from 30 to 42 feet.

Hole 89-PC-36, angled -40° at 134° azimuth, intersected 24 feet of orange dolomite with 5-15% quartz veins, followed by brown-orange dolomite from 24 to 48 feet. A single interval from 21 to 24 feet returned an assay of 3.4 gm/T Au.

Hole 89-PC-37, drilled vertically within the Knoll Zone between previous holes 87-RC-75 and 76, returned assays from 0.7 to 2.8 gm/T Au from 6 to 39 feet. Dolomite with 5 to 50% quartz veins and traces of oxide was encountered from 0 to 39 feet, underlain by black phyllite to bottom at 42 feet.

DIAMOND DRILLING

General Statement

Drilling at the Tarn Zone (Kon 12 claim) in 1989 has defined an oxide manto deposit within Lower Cambrian dolomite. The dolomite is altered and veined with quartz-sulphide-oxide material and bounded by limestone. This report details the results of two diamond drill holes (KR-89-370, 371) immediately south of the oxide manto, for a total of 239 feet of NQ core drilling.

Drilling was conducted in the period August 7-8, 1989, utilizing a bombardier track-mounted Boyles 25A diamond drill contracted from Connors Drilling Ltd. of Kamloops, B.C. Drill core was logged by Canamax geologist Dave Fleming. Core was split with half being assayed for gold at the Ketzka Mine assay lab. The other half is stored in core racks at the Ketzka Exploration camp on Penguin 4 claim.

Results

Hole KR-89-370 is a vertical hole that was collared in dolomite and encountered limestone and pyrite from 15.85 metres to the bottom at 36.27 metres. Two oxide ± pyrite intervals within yellow- to grey-altered dolomite returned low values. A massive pyrite zone from 15.85 to 21.2 metres returned low values, as did two other pyrite intervals within the limestone.

Hole KR-89-371 was also collared in dolomite and passed vertically through several oxide-sulphide zones before encountering massive pyrite and limestone from 17.8 metres to 36.58 metres at bottom. A quartz-oxide-arsenopyrite vein

from 7.5 to 9.1 metres returned 4.7 gm/T Au and an oxide zone in altered dolomite assayed 5.1 gm/T Au from 10.75 to 13.72 metres. This latter oxide zone could be the southern expression of the Tarn Manto. All massive pyrite mineralization in limestone is barren.

APPENDIX I
STATEMENT OF COSTS

APPENDIX I
STATEMENT OF COSTS

Summary of Work: Percussion Drilling
Diamond Drilling

Period of Work: July 21-22, 1989
August 7-8, 1989

Percussion Drilling: Pelly Construction Ltd.
Bag 2751
Whitehorse, Yukon Territory
Y1A 3V5
Invoice #282
(3 hours July 21;
9 hours July 22)
Total 12 hours x \$168.00 \$2,016.00

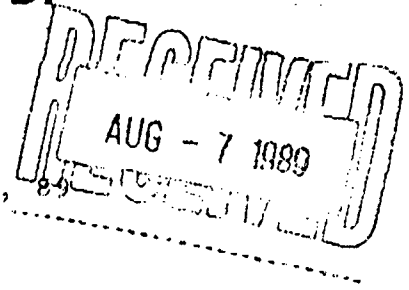
Diamond Drilling: Connors Drilling Ltd.
2007 West Trans Canada Highway
Kamloops, B.C.
V1S 1A7
Invoice #15299
370, 371 \$3,515.75

INVOICE

Nº 282

PELLY CONSTRUCTION LTD.

P.O. BAG 2751
WHITEHORSE, YUKON
Y1A 3V5 PHONE: (403) 667-6161



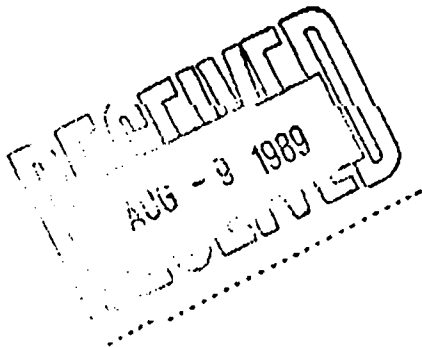
TO: Canamax Resources
143 Industrial Rd.
Whitehorse, Yukon
Y1A 3S9

DATE: Aug. 04, 89

Contract #01-89

July 16-31, 1989

ORe Delivered	5-270-405 ✓ 4956.46t @ \$18.00/t	79,303.36	\$89,216.28 ✓
2-0067-228 Equipment Rental	55 hrs @ \$158.00/hr	\$ 8,240.00 *	
Drill 712	18.5 hrs. @ \$225.00/hr	\$ 4,162.50	
DION 5-270-405		\$102,618.78	92,705.86



OK - 10% pit amount, will deduct moisture after Keith's visit mine site early Sept - moisture change still subject to moisture and Harris \$ 2,290.00 adjustment
7067 for
subject to moisture adjustment.

TOTAL

mmmm
R. McCombe P. Eng.
Mine Manager
Ketza River Mine

RM/gh

- cc J. Kahmet
- S. Abercrombie
- Z. Wyrwal

DATE July 21/89

DATE July 22/89

NAME Pelly Const.

NAME Pelly Const

CONTRACT NO. _____

CONTRACT NO. _____

EQUIPMENT NO. 712-1

EQUIPMENT NO. 712-1

LOCATION Ketsu

LOCATION Ketsu

MACHINE HOURS 10

MACHINE HOURS 9

STANDBY HOURS _____

STANDBY HOURS _____

OPERATOR'S HOURS _____

OPERATOR'S HOURS _____

REMARKS

REMARKS

TYPE OF WORK Test holes

TYPE OF WORK Test holes

NO. OF LOADS OR TRIPS _____

NO. OF LOADS OR TRIPS _____

OPERATOR'S P.R. NO. _____

OPERATOR'S P.R. NO. _____

SIGNED [Signature]

SIGNED [Signature]

Knoll Zone

Knoll

DATE July 23/89

NAME Pelly Const

CONTRACT NO. _____

EQUIPMENT NO. 712-1

LOCATION Ketsu

MACHINE HOURS 10

STANDBY HOURS _____

OPERATOR'S HOURS _____

REMARKS

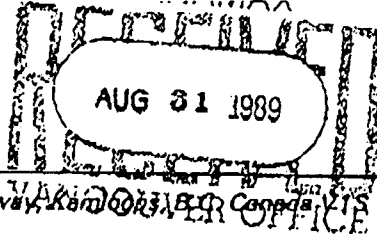
TYPE OF WORK Test holes

NO. OF LOADS OR TRIPS _____

OPERATOR'S P.R. NO. _____

SIGNED

Knoll Peg Fung



INVOICE NO: 12299
 DATE: AUGUST 30, 1989
 CONTRACT NO: 22-036

Connors Drilling Ltd. 2007 West Trans Canada Highway, Kamloops, B.C. Canada V2S 1A7 (604) 374-3366 Fax (604) 374-3367

Canamax Resources Inc.
 #601 - 535 Thurlow Street
 Vancouver, B.C.
 V6E 3L6

SURFACE DIAMOND DRILLING PROJECT
 KETZA RIVER PEROPERTY, YUKON
 AUGUST 1 - 15, 1989

DRILL # 2508

FOOTAGE FEE

HOLE #	SIZE	ANGLE	OPERATION	FROM	TO	FEET	RATE	
362	NQ	-45	CORING	23'	168'	145'	14.65	\$2,124.25 ✓
363	NW	-45	OVERBURDEN	0'	18'	18'	17.05	306.90 ✓
363	NQ	-45	CORING	18'	164'	146'	14.65	2,138.90 ✓
364	NW	-45	OVERBURDEN	0'	17'	17'	17.05	289.85 ✓
364	NQ	-45	CORING	17'	243'	226'	14.65	3,310.20 ✓
365	NW	-45	OVERBURDEN	0'	18'	18'	17.05	306.90 ✓
365	NQ	-45	CORING	18'	128'	110'	14.65	1,611.50 ✓
366	NW	-90	OVERBURDEN	0'	4'	4'	17.05	68.20 ✓
366	NQ	-90	CORING	4'	100'	96'	14.65	1,406.40 ✓
367	NW	-90	OVERBURDEN	0'	2'	2'	17.05	34.10 ✓
367	NQ	-90	CORING	2'	130'	128'	14.65	1,875.20 ✓
368	NW	-90	OVERBURDEN	0'	4'	4'	17.05	68.20 ✓
368	NQ	-90	CORING	4'	130'	126'	14.65	1,845.90 ✓
369	NQ	-90	OVERBURDEN	0'	0'	0'	17.05	102.30 ✓
369	NQ	-90	CORING	6'	100'	94'	14.65	1,377.10 ✓
370	NW	-90	OVERBURDEN	0'	2'	2'	17.05	34.10 ✓
370	NQ	-90	CORING	2'	119'	117'	14.65	1,714.05 ✓
371	NW	-90	OVERBURDEN	0'	4'	4'	17.05	68.20 ✓
371	NQ	-90	CORING	4'	120'	116'	14.65	1,699.40 ✓
372	NW	-90	OVERBURDEN	0'	2'	2'	17.05	34.10 ✓
372	NQ	-90	CORING	2'	115'	113'	14.65	1,655.45 ✓
373	NW	-90	OVERBURDEN	0'	4'	4'	17.05	68.20 ✓
373	NQ	-90	CORING	4'	69'	65'	14.65	952.25 ✓
374	NW	-45	OVERBURDEN	0'	3'	3'	17.05	51.15 ✓
374	NQ	-45	CORING	3'	100'	91'	14.65	1,421.05 ✓
375	HW	-90	OVERBURDEN	0'	5'	5'	17.05	85.25 ✓
375	HQ	-90	CORING	5'	50'	45'	17.00	765.00 ✓
376	NW	-90	OVERBURDEN	0'	5'	5'	17.05	85.25 ✓
376	NQ	-90	CORING	5'	85'	80'	14.65	1,172.00 ✓
377	NW	-90	OVERBURDEN	0'	5'	5'	17.05	85.25 ✓
377	NQ	-90	CORING	5'	60'	55'	14.65	802.15 ✓
378	NW	-90	OVERBURDEN	0'	5'	5'	17.05	85.25 ✓
378	NQ	-90	CORING	5'	35'	30'	14.65	439.50 ✓
379	NQ	-90	OVERBURDEN	0'	6'	6'	17.05	102.30 ✓

APPENDIX II
STATEMENTS OF QUALIFICATIONS

Statement of Qualifications

Name: D.B. Fleming

Address: 9071 Oakmond Avenue
Richmond, B.C. V7E 1L7

Education: B.Sc. Geology 1979
University of British Columbia

Experience: 1976-1977 Seumotech (64) Ltd.
Explosives Assistant

1978 Amax Minerals
Field Assistant

1979 Amax Minerals
Field Assistant

1980 Amax of Canada Limited
Field Assistant

1981 CSR Minerals, Sydney, Australia
Contract Geologist

1982 Amax Minerals Exploration
Senior Assistant

1983-1986 Canamax Resources Inc.
Senior Assistant

1986 Canamax Resources Inc.
Project Geologist

1987-
Present Canamax Resources Inc.
Project Geologist

Statement of Qualifications

Name: Anthony (Tony) C. Hitchins

Address: #601 - 535 Thurlow Street
Vancouver, B.C. V6E 3L6

Education: University of Toronto - B.A.Sc. 1970
University of Toronto - M.Sc. 1973

Experience: 1974-1983 Amax of Canada Limited
Staff Geologist

1983- Canamax Resources Inc.
Present Staff Geologist

APPENDIX III
DIAMOND DRILL/PERCUSSION DRILL LOGS

PROPERTY Ketza River

ZONE Tarn

D.D.H. No. KR - 89 - 370

COORDINATES 4559.1 N

SECTION August 7, 1989

3479.6 E

DATE STARTED August 8, 1989

COLLAR ELEVATION 1643.4 m

DATE COMPLETED NQ

AZIMUTH AT COLLAR -- °

CORE SIZE _____

DIP AT COLLAR 90 °

CORING METHOD Wireline

TOTAL DEPTH 36.27 m

LOGGED BY D.B. Fleming

DRILLING CONTRACTOR Connors Drilling Ltd.

COMMENTS - A229 - 241.

SURVEY DATA			
DEPTH	AZIMUTH	DIP	METHOD

SUMMARY LOG		
FROM	TO	GEOLOGY
0	.61	Casing
.61	10.3	Dolomite
10.3	11.1	Oxide
11.1	12.4	Altered dolomite
12.4	13.0	Oxide/pyrite
13.0	14.94	Altered dolomite
14.94	15.85	Dolomite
15.85	21.2	Massive pyrite
21.2	22.0	Limestone
22.0	24.3	Poddy sulphide
24.3	30.1	Limestone
30.1	31.4	Massive pyrite
31.4	36.27	Limestone
	36.27	End of hole

WEIGHTED ASSAY AVERAGES							
FROM	TO	WIDTH	TRUE WIDTH	oz/t Au	g/t Au	oz/t Ag	g/t Ag

Low Values

CANAMAX RESOURCES INC.

KETZA RIVER PROPERTY

DEPTH (m)	GRAPHIC LOG			No. of Pieces	% Recovery	NOTES	SAMPLE DATA				ASSAY DATA				
	Lith	Struct	Mineral				Sample Number	From	To	Interval	g/T Au A.A.	g/T Au F.A.	p.p.m. Pb	p.p.m. As	
						CASING		0	0.61						
						DOLOMITE		0.61	10.3						
						- Massive, medium-grained, grey to weathered orange-brown									
						- stockwork quartz-calcite veins to 2 centimetres, vuggy. Predominantly 15-25° to CA	A229	2.7	4.27	1.57	<0.1				
						- 1-2% disseminated pyrite-arsenopyrite in vein	A231	5.79	7.32	1.53	0.3				
						- intense oxidation along joints									
						- 7.7-7.8 metres, oxide	A232	7.32	8.84	1.52	0.1				
						- at 8.9 metres, trace oxide	A233	8.84	10.36	1.52	0.4				
						OXIDE		10.3	11.1						
						Dark brown and bright orange 50%; 50% yellow-orange and altered dolomite	A234	10.36	11.89	1.52	0.5				
						ALTERED DOLOMITE		11.1	12.4						
						Brown-yellow pervasive alteration									
						OXIDE/PYRITE	A235	11.89	13.41	1.52	0.5				
						40% fine-grained massive pyrite		12.4	13.0						
						ALTERED DOLOMITE		13.0	14.94						
						Brown, yellow with pyrite on fractures; trace oxide	A236	13.41	14.94	1.53	0.4				

DEPTH (m)	GRAPHIC LOG			No. of Pieces	% Recovery	NOTES	SAMPLE DATA				ASSAY DATA				
	Lith	Struct	Mineral				Sample Number	From	To	Interval	g/T Au A.A.	g/T Au F.A.	p.p.m. Pb	p.p.m. As	
						CASING		0	1.22						
						DOLomite Highly broken, 20% quartz rubble with trace pyrite-oxide		1.22	2.4						
						OXIDE-QUARTZ-ARSENOPYRITE - vein? @ 15° to CA; 70% oxide, 20% quartz, 10% arsenopyrite - lost core here	A242	2.4 2.4	4.1 4.1	1.7	2.5				
						DOLomite Weakly oxide altered, brown with pyrite veins at 15° to CA		4.1	7.5						
						OXIDE-QUARTZ-ARSENOPYRITE - vein? rubble - 40 centimetres out of 1.3 recovered. - percent as at 2.4-4.1	A243 A244	7.5 7.8	7.8 9.1	0.3 1.3	0.1 4.7				
						ALTERED DOLomite BRECCIA - <5% quartz fragments with 1-2% massive clots of pyrite in a brownish- yellow oxide - dolomite matrix	A245	9.1 9.1	10.75 10.75	1.65	0.2				
						OXIDE ZONE 40 centimetres of brick-red oxide (dolomite?)	A246 A247	10.75 12.25	12.25 13.72	1.50 1.47	6.0 4.2				

DEPTH (m)	GRAPHIC LOG			No. of Pieces	% Recovery	NOTES	SAMPLE DATA			ASSAY DATA				
	Lith	Struct	Mineral				Sample Number	From	To	Length	g/T Au A.A.	g/T Au F.A.	p.p.m. Pb	p.p.m. As
						ALTERED DOLOMITE BRECCIA - 12.25-13.5 metres, quartz fragments in oxide/dolomite matrix - 13.5-16.3 metres, light and dark grey dolomite fragments (2% quartz) in an orange-altered dolomite matrix	A248	12.25 13.72	16.3 15.24	1.52	0.2			
						QUARTZ-DOLOMITE White to yellow-grey imbricate zone-fault?; trace pyrite	A249	15.24	16.3	1.06	0.1			
						MASSIVE SULPHIDE	A250	16.3 16.3	17.8 17.8	1.5	0.8			
						LIMESTONE	A251	17.8 17.8	22.2 19.81	2.01	0.7			
						MASSIVE SULPHIDE	A252	19.81 22.2	22.2 25.7	2.39	<0.1			
						LIMESTONE	A253	25.7 25.7	29.7 27.13	1.43	<0.1			
							A254	27.13	28.65	1.52	0.1			
							A255	28.65	29.7	1.05	0.1			
						LIMESTONE		29.7	36.58					

CANAMAX RESOURCES INC.

KETZA RIVER PROPERTY

DEPTH (m)	GRAPHIC LOG			No. of Pieces	% Recovery	NOTES	SAMPLE DATA				ASSAY DATA				
	Lith	Struct	Mineral				Sample Number	From	To	Length	g/T Au A.A.	g/T Au F.A.	p.p.m. Pb	p.p.m. As	
						PODDY SULPHIDE Friable, light grey with fine pyrite in clods		17.4	18.29						
						LIMESTONE		18.29	19.6						
						MASSIVE SULPHIDE		19.6	20.4						
						LIMESTONE	A259	19.60	20.4			<0.1			
								20.4	35.05						
						LIMESTONE		20.4	35.05						
						END OF HOLE			35.05						

PROPERTY Ketza River

ZONE Tarn

D.D.H. No. KR - 89 - 374

COORDINATES 4602.7 N

SECTION _____

3475.7 E

DATE STARTED August 8, 1989

COLLAR ELEVATION 1642.8 m

DATE COMPLETED August 10, 1989

AZIMUTH AT COLLAR 090 °

CORE SIZE NQ

DIP AT COLLAR -45 °

CORING METHOD _____

TOTAL DEPTH 30.48 m

LOGGED BY D.B. Fleming

DRILLING CONTRACTOR Connors Drilling Ltd.

SURVEY DATA			
DEPTH	AZIMUTH	DIP	METHOD

COMMENTS - A271-282

SUMMARY LOG		
FROM	TO	GEOLOGY
0	.92	Casing
.92	4.5	Limestone
4.5	9.8	Dolomite (dolomitic limestone)
9.8	30.48	Oxide (poor recovery)
	30.48	End of Hole

WEIGHTED ASSAY AVERAGES							
FROM	TO	WIDTH	TRUE WIDTH	oz/t Au	g/t Au	oz/t Ag	g/t Ag
10.90	27.43	16.53	11.5m		9.85		

CANAMAX RESOURCES INC.

KETZA RIVER PROPERTY

DEPTH (m)	GRAPHIC LOG			No. of Pieces	% Recovery	NOTES	SAMPLE DATA				ASSAY DATA				
	Lith	Struct	Mineral				Sample Number	From	To	Length	g/T Au A.A.	g/T Au F.A.	p.p.m. Pb	p.p.m. As	
						CASING		0	9.2						
						LIMESTONE		.92	4.5						
						DOLOMITE (Dolomitic Limestone)		4.5	9.8						
						- at 4.9 metres, 15 centimetres oxide-altered dolomite; red/brown; earthy									
						- at 9.14 metres, trace oxide									
						OXIDE		9.8	30.48						
						- from 9.8-10.9 metres, reddish-brown, predominantly altered dolomite?	A271	9.8	10.9	1.1		1.8			
						- from 10.9-12.19 metres, poor recovery; 90% oxidized arsenopyrite vein	A272	10.9	12.19	1.29		9.4			
						- from 12.19-13.72 metres, 65% yellowish-orange-brown oxide, 35% scorodite	A273	12.19	13.72	1.53		10.4			
						- from 13.72-15.24 metres, solid core, vuggy, porous bright orange to brown-orange	A274	13.72	15.24	1.52		2.4			
						- from 15.24-16.76 metres, 40% orange-brown; 60% buff to green scorodite with 10 centimetres arsenopyrite nugget	A275	15.24	16.76	1.52		6.2			
						- from 16.76-18.29 metres, 60% scorodite; 40% brown oxide	A276	16.76	18.29	1.53		11.5			
						- from 18.29-19.81 metres, orange to dark brown boxwork to earthy (white oxidation product - sulphide?)	A277	18.29	19.81	1.52		11.9			

PROPERTY Ketza River

ZONE Tarn

D.D.H. No. KR - 89 - 375

COORDINATES 4603.2 N

SECTION _____

3488.7 E

DATE STARTED August 10, 1989

COLLAR ELEVATION 1634.7 m

DATE COMPLETED August 10, 1989

AZIMUTH AT COLLAR -- °

CORE SIZE HQ

DIP AT COLLAR 90 °

CORING METHOD _____

TOTAL DEPTH 15.24 m

LOGGED BY D.B. Fleming

DRILLING CONTRACTOR Connors Drilling Ltd.

COMMENTS - A320-324 (451-455 repeat F.A.)

SURVEY DATA			
DEPTH	AZIMUTH	DIP	METHOD

SUMMARY LOG		
FROM	TO	GEOLOGY
0	2.79	Casing
2.79	10.7	Oxide
10.7	15.24	Limestone
	15.24	End of Hole

WEIGHTED ASSAY AVERAGES							
FROM	TO	WIDTH	TRUE WIDTH	oz/t Au	g/t Au	oz/t Ag	g/t Ag
4.57	10.7	6.13			2.4 F.A.		

PROPERTY Ketza Property

COORDINATES 4602.8 N
3498.9 E

COLLAR ELEVATION 1636.2 m

AZIMUTH AT COLLAR -- °

DIP AT COLLAR -90 °

TOTAL DEPTH 25.91 m

DRILLING CONTRACTOR Connors Drilling Ltd.

ZONE Tarn

SECTION _____

DATE STARTED August 10, 1989

DATE COMPLETED August 11, 1989

CORE SIZE NQ

CORING METHOD _____

LOGGED BY D.B. Fleming

D.D.H. No. KR - 89 - 376

SURVEY DATA			
DEPTH	AZIMUTH	DIP	METHOD

COMMENTS - A325-335 (A456-463 repeat)

SUMMARY LOG		
FROM	TO	GEOLOGY
0	1.52	Casing
1.52	13.72	Oxide
13.72	15.24	(No Recovery)?
15.24	17.07	Limestone
17.07	19.7	Poddy Sulphide (leached pyrite-limestone)
19.7	21.5	Limestone
21.5	22.86	Poddy Sulphide (leached)
22.86	24.2	Oxide
24.2	25.91	Limestone
	25.91	End of Hole

WEIGHTED ASSAY AVERAGES								
FROM	TO	WIDTH	TRUE WIDTH	g/T Au	g/t Au	oz/t Ag	g/t Ag	
10.67	13.72	3.05		<u>F.A.</u> 17.3				

CANAMAX RESOURCES INC.

KETZA RIVER PROPERTY

DEPTH (m)	GRAPHIC LOG			No. of Pieces	%	NOTES	SAMPLE DATA				ASSAY DATA				
	Lith	Struct	Mineral				From	To	Length	g/T Au A.A.	g/T Au F.A.	p.p.m. Pb	p.p.m. As		
						CASING		0	1.52						
						OXIDE									
						- from 1.52-3.05 metres, no return; trace oxides	A456	1.52 3.05	13.72 4.57	1.52		(0.50)			
						- from 3.05-4.57 metres, deep orange-brown soil									
						- from 4.57-5.49 metres, orange-brown dirt with buff clay coating	A457	4.57	5.49	0.92		0.96			
						- from 5.49-6.10 metres, as above	A458	5.49	6.10	0.61		0.71			
						- from 6.10-7.62 metres, 50% as above; 50% bright orange clay with brown-orange dirt	A459	6.10	7.62	1.52		0.20			
						- from 7.62-9.14 metres, orange solid core, vuggy with shiny chocolate brown fracture coatings	A460	7.62	9.14	1.52		0.66			
						- from 9.14-10.67 metres, orange-deep brown with banded and coarse box-work texture	A461	9.14	10.67	1.53		0.67			
						- from 10.67-13.72 metres, as above with local black hisingerite network. local breccia textures and buff-coloured hisingerite (poor recovery to bottom of section)	A462	10.67	13.72	3.05		17.31			
						NO RECOVERY		13.72	15.24						
						LIMESTONE		15.24	17.07						

CANADIAN RESOURCES INC.

KETZA RIVER PROPERTY

DEPTH (m)	GRAPHIC LOG			No. of Pieces	% Recovery	NOTES	SAMPLE DATA				ASSAY DATA				
	Lith	Struct	Mineral				Sample Number	From	To	Length	g/T Au A.A.	g/T Au F.A.	p.p.m. Pb	p.p.m. As	
						LIMESTONE		15.24	17.07						
						- oxide altered (poor recovery here)									
						PODDY SULPHIDE		17.07	19.7						
						- 25% massive, very fine-grained pyrite, 30% intense fracture network breccia with disseminated pyrite (local intense oxidation)	A332	17.07	18.29	1.22	0.2				
						- limestone and sulphides intensely leached leaving cavernous, skeletal core remnant	A333	18.29	19.7	1.41	0.6				
						LIMESTONE		19.7	21.5						
						LEACHED PODDY SULPHIDE		21.5	22.86						
						Pyrite leached from limestone leaving skeletal remnant	A334	21.5	22.86	1.36	<0.1				
						OXIDE		22.86	24.2						
						- orange-brown dirt	A463	22.86	24.2	1.56	0.85				
						LIMESTONE		24.2	25.91						
						END OF HOLE			25.91						

PROPERTY Ketza River

ZONE Tern

D.D.H. No. KR - 89 - 377

COORDINATES 4601.5 N

SECTION _____

3509.0 E

DATE STARTED August 11, 1989

COLLAR ELEVATION 1636.0 m

DATE COMPLETED August 11, 1989

AZIMUTH AT COLLAR -- °

CORE SIZE NQ

DIP AT COLLAR -90 °

CORING METHOD _____

TOTAL DEPTH 18.29 m

LOGGED BY D.B. Fleming

DRILLING CONTRACTOR Connors Drilling Ltd.

SURVEY DATA			
DEPTH	AZIMUTH	DIP	METHOD

COMMENTS - A337-343 (A464-470 repeat F.A.)

SUMMARY LOG		
FROM	TO	GEOLOGY
0	3.05	Overburden
3.05	15.5	Oxide
15.5	17.9	Dolomite/Oxide
17.9	18.29	Limestone
	18.29	End of Hole

WEIGHTED ASSAY AVERAGES							
FROM	TO	WIDTH	TRUE WIDTH	oz/t Au	g/T Au	oz/t Ag	g/t Ag
7.62	15.24	7.62			<u>F.A.</u> 5.29		

CANAMAX RESOURCES INC.

KETZA RIVER PROPERTY

DEPTH (m)	GRAPHIC LOG			No. of Pieces	% Recovery	NOTES	SAMPLE DATA				ASSAY DATA				
	Lith	Struct	Mineral				Sample Number	From	To	Length	g/T Au A.A.	g/T Au F.A.	p.p.m. Pb	p.p.m. As	
						CASING		0	1.52						
						OVERBURDEN - limestone rubble	A464	1.52 3.05	3.05 6.1	3.05		0.72			
						OXIDE - from 3.05-7.62 metres, deep brown-red-brown mud; trace quartz chips. One 10 centimetres limestone piece	A465	3.05 6.1	15.5 7.62	1.52		3.23			
						- from 7.62-9.14 metres, orange-brown dirt	A466	7.62	9.14	1.52		5.00			
						- from 9.14-10.67 metres, orange-brown to bright orange dirt 70%; 30% orange solid core with deep brown lustrous fracture surface	A467	9.14	10.67	1.53		1.90			
						- from 10.67-12.19 metres, deep brown boxwork with quartz chips, bright orange clay coating. 20% hisingerite, buff and dark brown	A468	10.67	12.19	1.52		7.00			
						- from 12.19-15.5 metres, orange oxide brown hisingerite fracture network	A469	12.19	15.24	3.05		6.29			
						OXIDE/DOLOMITE - brown, strongly fractured with 25% oxide, malachite-azurite on fractures, trace	A470	15.24 15.5	17.9 17.9	1.66		0.21			
						LIMESTONE		17.9	18.29						
						END OF HOLE			18.29						

PROPERTY Ketza River

ZONE Tarn

D.D.H. No. KR - 89 - 378

COORDINATES 4603.1 N

SECTION _____

3519.6 E

DATE STARTED August 11, 1989

COLLAR ELEVATION 1635.8 m

DATE COMPLETED August 11, 1989

AZIMUTH AT COLLAR -- °

CORE SIZE NQ

DIP AT COLLAR 90 °

CORING METHOD _____

TOTAL DEPTH 10.67 m

LOGGED BY D.B. Fleming

DRILLING CONTRACTOR Connors Drilling Ltd.

COMMENTS - A245 (A471 F.A. repeat)

SURVEY DATA			
DEPTH	AZIMUTH	DIP	METHOD

SUMMARY LOG		
FROM	TO	GEOLOGY
0	1.52	Casing
1.52	3.96	Oxide
3.96	10.67	Limestone
	10.67	End of Hole

WEIGHTED ASSAY AVERAGES								
FROM	TO	WIDTH	TRUE WIDTH	g/T Au	g/T Au	oz/t Ag	g/t Ag	
				<u>F.A.</u>				
1.52	4.45	2.93		19.98	26.0			

PROPERTY Ketza River

ZONE Tarn

D.D.H. No. KR - 89 - 379

COORDINATES 4591.2 N

SECTION _____

3509.1 E

DATE STARTED August 11, 1989

COLLAR ELEVATION 1636.4 m

DATE COMPLETED August 11, 1989

AZIMUTH AT COLLAR -- °

CORE SIZE NQ

DIP AT COLLAR 90 °

CORING METHOD _____

TOTAL DEPTH 18.29 m

LOGGED BY D.B. Fleming

DRILLING CONTRACTOR Connors Drilling Ltd.

SURVEY DATA			
DEPTH	AZIMUTH	DIP	METHOD

COMMENTS -

SUMMARY LOG		
FROM	TO	GEOLOGY
0	1.83	Casing
1.83	4.8	Overburden
4.8	5.0	Altered Dolomite
5.0	10.18	Oxide
10.18	10.54	Limestone
10.54	16.46	Oxide (poor recovery, abundant cavities)
16.46	18.29	Limestone
	18.29	End of Hole

WEIGHTED ASSAY AVERAGES							
FROM	TO	WIDTH	TRUE WIDTH	oz/t Au	g/T Au	oz/t Ag	g/t Ag
4.57	7.62	3.05			F.A.		
					21.2		

CANAMAX RESOURCES INC.

KETZA RIVER PROPERTY

DEPTH (m)	GRAPHIC LOG			No. of Pieces	% Recovery	NOTES	SAMPLE DATA				ASSAY DATA				
	Lith	Struct	Mineral				Sample Number	From	To	Length	g/T Au A.A.	g/T Au F.A.	p.p.m. Pb	p.p.m. As	
						CASING		0	1.83						
						OVERBURDEN 80% red, unsorted sand with white quartz abundant. 20% yellow-brown clay-silt	A346	1.83	4.8 3.05	1.22	0.9				
						ALTERED DOLOMITE Orange-brick red, silty clay, altered		4.8	5.0						
						OXIDE - from 5.0-6.1 metres, 15% buff to dark brown hisingerite, 80% vary-coloured friable oxide with 5% bright orange clay - from 6.1-7.62 metres, 50% scorodite, arsenopyrite - from 7.62-10.18 metres, boxwork and friable black-brown oxide (poor recovery)	A347	3.05	4.57 5.0 10.18	1.52	2.99				
						LIMESTONE	A348	4.57	6.10	1.53	17.84				
							A349	6.10	6.70	0.60	17.08				
						OXIDE - from 10.54-10.67 metres, orange-brown oxide, pitted with bright orange clay - from 11.0-12.19 metres, cavity	A350	6.70	7.62	0.92	29.47				
							A351	7.62	10.18	2.56	0.5				
							A352	10.18	10.54 10.18 10.54	0.36	<0.1				
							A353	10.54	16.46 10.54 10.67	0.13	0.7				

PROPERTY Ketza River

ZONE Tarn

D.D.H. No. KR - 89 - 380

COORDINATES 4590.9 N

SECTION _____

3486.1 E

DATE STARTED August 11, 1989

COLLAR ELEVATION 1637.2 m

DATE COMPLETED August 12, 1989

AZIMUTH AT COLLAR -- °

CORE SIZE NQ

DIP AT COLLAR 90 °

CORING METHOD _____

TOTAL DEPTH 13.72 m

LOGGED BY D.B. Fleming

DRILLING CONTRACTOR Connors Drilling Ltd.

COMMENTS - A357-362

SURVEY DATA			
DEPTH	AZIMUTH	DIP	METHOD

SUMMARY LOG		
FROM	TO	GEOLOGY
0	.61	Casing
.61	3.05	Overburden (oxide mix)
3.05	10.67	Oxide (trace sulphide)
10.67	13.72	Limestone
	13.72	End of Hole

WEIGHTED ASSAY AVERAGES							
FROM	TO	WIDTH	TRUE WIDTH	oz/t Au	g/T Au	oz/t Ag	g/t Ag
1.37	10.67	9.30m			<u>F.A.</u> 9.80		

DEPTH (m)	GRAPHIC LOG			No. of Pieces	% Recovery	NOTES	SAMPLE DATA			ASSAY DATA				
	Lith	Struct	Mineral				Sample Number	From	To	Length	g/T Au A.A.	g/T Au F.A.	p.p.m. Pb	p.p.m. As
						CASING		0	.61					
						OVERBURDEN?/OXIDE Mixed sandy material, oxide chips with unsorted sand and limestone pieces	A357	.61 1.37	3.05 3.05	1.68		6.68		
						OXIDE - from 3.05-4.57 metres, pebbles of brown oxide with 15% grey-yellow - from 4.57-6.10 metres, 50% pebbles of brown oxide and green-grey clay (scorodite?); 50% solid brown oxide and 10% sulphide (pyrite) - from 6.10-7.62 metres, 70% strongly pitted brown-orange to dark brown locally banded oxide, trace hisingerite with 1% remnant pyrite, 30% pebbles of brown oxide - from 7.62-9.14 metres, boxwork orange-brown oxide with 30% orange clay (some dolomite?) - from 9.14-10.67 metres, 20% altered dolomite/limestone		3.05	10.67					
							A358	3.05	4.57	1.52		4.66		
							A359	4.57	6.10	1.53		13.69		
							A360	6.10	7.62	1.52		13.77		
						LIMESTONE	A361	7.62	9.14	1.52		7.65		
							A362	9.14	10.67	1.53		12.66		
								10.67	13.72					
						END OF HOLE			13.72					

PROPERTY Ketza River

ZONE Tern

D.D.H. No. KR - 89 - 381

COORDINATES 4590.8 N

SECTION _____

3516.4 E

DATE STARTED August 12, 1989

COLLAR ELEVATION 1636.0 m

DATE COMPLETED August 12, 1989

AZIMUTH AT COLLAR --- °

CORE SIZE NQ

DIP AT COLLAR -90 °

CORING METHOD _____

TOTAL DEPTH 15.24 m

LOGGED BY D.B. Fleming

DRILLING CONTRACTOR Connors Drilling Ltd.

COMMENTS - A363-365

SURVEY DATA			
DEPTH	AZIMUTH	DIP	METHOD

SUMMARY LOG		
FROM	TO	GEOLOGY
0	1.52	Casing
1.52	3.05	Altered Dolomite/Oxide
3.05	5.2	Oxide
5.2	15.24	Limestone
	15.24	End of Hole

WEIGHTED ASSAY AVERAGES							
FROM	TO	WIDTH	TRUE WIDTH	oz/t Au	g/T Au	oz/t Ag	g/t Ag
1.52	5.2	3.68			F.A. 6.76		

DEPTH (m)	GRAPHIC LOG			No. of Pieces	% Recovery	NOTES	SAMPLE DATA			ASSAY DATA				
	Lith	Struct	Mineral				Sample Number	From	To	Length	g/T Au A.A.	g/T Au F.A.	p.p.m. Pb	p.p.m. As
						CASING		0	1.52					
						ALTERED DOLOMITE/OXIDE Mixed oxide; predominantly black-yellow-orange silty clay with oxide pieces	A363	1.52	3.05	1.53		10.02		
						OXIDE - from 3.05-4.57 metres, broken up, soft yellow-orange oxide with dark lustrous pieces - from 4.57-5.2 metres, boxwork; orange-black-brown 50%, as above 50%		3.05	5.2					
						LIMESTONE - at 5.2 metres, coarse crystalline calcite with dark brown stockwork stringer veins - at 6.0 metres, pyrite matrix breccia vein; 20 centimetres @ 45° to CA; 5% pyrite - at 6.3 metres, as above with a further 30 centimetres of coarse crystalline calcite	A364	3.05	4.57	1.52		4.83		
							A365	4.57	5.2	0.63		3.50		
								5.2	15.24					
						END OF HOLE			15.24					

PROPERTY Ketza River

ZONE Tarn

D.D.H. No. KR - 89 - 382

COORDINATES 4591.0 N

SECTION _____

3500.1 E

DATE STARTED August 12, 1989

COLLAR ELEVATION 1636.5 m

DATE COMPLETED August 12, 1989

AZIMUTH AT COLLAR _____ °

CORE SIZE NQ

DIP AT COLLAR 90 °

CORING METHOD _____

TOTAL DEPTH 18.29 m

LOGGED BY D.B. Fleming

DRILLING CONTRACTOR Connors Drilling Ltd.

COMMENTS - A366-372

SURVEY DATA			
DEPTH	AZIMUTH	DIP	METHOD

SUMMARY LOG		
FROM	TO	GEOLOGY
0	1.22	Casing
1.22	6.2	Overburden
6.2	7.4	Altered Dolomite (reddish clay)
7.4	16.2	Oxide
16.2	18.29	Limestone
	18.29	End of Hole

WEIGHTED ASSAY AVERAGES							
FROM	TO	WIDTH	TRUE WIDTH	oz/t Au	g/t Au	oz/t Ag	g/t Ag
6.1	15.24	9.14			F.A.		
					13.19		

CANAMAX RESOURCES INC.

KETZA RIVER PROPERTY

DEPTH (m)	GRAPHIC LOG			No. of Pieces	% Recovery	NOTES	SAMPLE DATA				ASSAY DATA				
	Lith	Struct	Mineral				Sample Number	From	To	Length	g/T Au A.A.	g/T Au F.A.	p.p.m. Pb	p.p.m. As	
						CASING		0	1.22						
						OVERBURDEN Mixed limestone pieces with oxide/altered dolomite coating		1.22	6.2						
						ALTERED DOLOMITE Reddish-brown with orange, grey and black colouration, silty clay; few hard pieces	A366	6.2 6.1	7.4 7.62	1.52		3.48			
						OXIDE		7.4	16.2						
						- from 7.62-9.14 metres, 20% quartz fragments oxide breccia in brown-orange dense to weakly pitted oxide	A367	7.62	9.14	1.52		8.93			
						- from 9.14-10.67 metres, massive, orange with black lustrous broken surface, locally banded textures	A368	9.14	10.67	1.53		18.44			
						- from 10.67-12.19 metres, poor recovery, black gritty with deep red oxide, 20% orange	A369	10.67	12.19	1.52		23.89			
						- from 12.19-13.72 metres, as above, strongly pitted	A370	12.19	13.72	1.53		10.07			
						- from 13.62-15.24 metres, orange and black, pitted with bright orange clay	A371	13.72	15.24	1.52		14.33			
						- from 15.24-17.2 metres, brown-orange pitted oxide with 50% altered dolomite/limestone	A372	15.24	16.2	0.96		2.92			
						LIMESTONE Sharp contact, strongly crackle brecciated									
						END OF HOLE			18.29						

PROPERTY Ketza River

ZONE Tarn

D.D.H. No. KR - 89 - 383

COORDINATES 4583.2 N

SECTION _____

3508.8 E

DATE STARTED August 12, 1989

COLLAR ELEVATION 1637.1 m

DATE COMPLETED August 12, 1989

AZIMUTH AT COLLAR -- °

CORE SIZE NQ

DIP AT COLLAR 90 °

CORING METHOD _____

TOTAL DEPTH 21.34 m

LOGGED BY D.B. Fleming

DRILLING CONTRACTOR Connors Drilling Ltd.

COMMENTS - A373-383

SURVEY DATA			
DEPTH	AZIMUTH	DIP	METHOD

SUMMARY LOG		
FROM	TO	GEOLOGY
0	1.83	Casing
1.83	6.0	Altered Dolomite
6.0	9.14	Oxide
9.14	10.4	Limestone
10.4	12.0	Oxide
12.0	12.19	Limestone
12.19	19.81	Oxide
19.81	21.34	Limestone
	21.34	End of Hole

WEIGHTED ASSAY AVERAGES							
FROM	TO	WIDTH	TRUE WIDTH	oz/t Au	g/T Au	oz/t Ag	g/t Ag
4.57	7.62	3.05			F.A. 12.76		

DEPTH (m)	GRAPHIC LOG			No. of Pieces	% Recovery	NOTES	SAMPLE DATA			ASSAY DATA				
	Lith	Struct	Mineral				Sample Number	From	To	Length	g/T Au A.A.	g/T Au F.A.	p.p.m. Pb	p.p.m. As
						CASING		0	1.83					
						ALTERED DOLOMITE								
						- from 1.83-4.57 metres, light brown, solid pieces of sugary-textured dolomite	A373	1.83 3.05	6.0 4.57	1.52		1.99		
						- from 4.57-6.0 metres, reddish-brown clay, silty with black gritty bands	A374	4.57	6.10	1.53		15.62		
						OXIDE								
						- from 6.0-7.62 metres, orange-brown with 5% light brown, dense and 10% bright orange clay with local banded textures	A375	6.0 6.10	9.14 7.62	1.52		8.42		
						- from 7.62-9.14 metres, brown-orange pitted with some boxwork, 5% black, gritty	A376	7.62	9.14	1.52		1.89		
						LIMESTONE								
						Strongly fractured with trace oxide	A377	9.14 9.14	10.4 10.67	1.53		0.79		
						OXIDE								
						Strongly pitted, coarse boxwork	A378	10.4 10.67	12.0 12.0	1.33		1.64		
						LIMESTONE								
						OXIDE								
						- from 12.19-13.72 metres, strongly pitted, boxwork with bright orange-yellow laminae	A379	12.19	12.19 13.72	1.53		1.21		

PROPERTY Ketza River

ZONE Tern

D.D.H. No. KR - 89 - 384

COORDINATES 4613.7 N

SECTION _____

3508.3 E

DATE STARTED August 12, 1989

COLLAR ELEVATION 1635.9 m

DATE COMPLETED August 12, 1989

AZIMUTH AT COLLAR -- °

CORE SIZE NQ

DIP AT COLLAR -90 °

CORING METHOD _____

TOTAL DEPTH 21.34 m

LOGGED BY D.B. Fleming

DRILLING CONTRACTOR Connors Drilling Ltd.

COMMENTS - A384-393

SURVEY DATA			
DEPTH	AZIMUTH	DIP	METHOD

SUMMARY LOG		
FROM	TO	GEOLOGY
0	1.52	Casing
1.52	5.8	Oxide/Dolomite
5.8	9.14	Dolomite
9.14	12.5	Altered Dolomite
12.5	16.76	Oxide
16.76	17.2	Altered Dolomite/Pyrite
17.2	19.5	Geothitic Dolomite
19.5	21.34	Limestone
	21.34	End of Hole

WEIGHTED ASSAY AVERAGES							
FROM	TO	WIDTH	TRUE WIDTH	oz/t Au	g/T Au	oz/t Ag	g/t Ag
4.57	6.10	1.53			<u>F.A.</u> 4.2		
9.14	16.76	7.62			6.11		

CANAMAX RESOURCES INC.

KETZA RIVER PROPERTY

DEPTH (m)	GRAPHIC LOG			No. of Pieces	% Recovery	NOTES	SAMPLE DATA			ASSAY DATA				
	Lith	Struct	Mineral				Sample Number	From	To	Length	g/T Au A.A.	g/T Au F.A.	p.p.m. Pb	p.p.m. As
						CASING		0	1.52					
						OXIDE/DOLOMITE								
						- from 1.52-3.05 metres, poor recovery, mixed small chips with 10% limestone	A384	1.52	5.8 1.52	3.05	1.53	0.4		
						- from 3.05-4.57 metres, low recovery, 65% oxide dirt, brown-orange with 35% pieces of dolomite	A385	3.05	4.57	1.52	0.9			
						- from 4.57-5.8 metres, (only 10 centimetres of material), buff and scorodite clay; dirt with some pieces of oxide	A386	4.57	6.10	1.53		4.2		
						DOLOMITE								
						Massive, buff dolomite, calcareous with trace oxide		5.8	9.14					
						ALTERED DOLOMITE								
						Brick red silty clay and massive orange-red dolomite; 15% oxide rubble	A387	9.14	12.5 9.14	10.67	1.53		4.1	
						- from 9.14-10.67 metres, 60% brick red silty clay								
						- from 10.67-12.19 metres, orange-red dolomite	A388	10.67	12.19	1.52		3.9		
						- from 12.19-13.72 metres, limestone 30 centimetres massive orange-red	A389	12.19	13.72	1.53		1.8		
						OXIDE								
						- from 12.19-13.72 metres, limestone 30 centimetres massive orange-red altered dolomite		12.5	16.76					
						- from 13.72-15.24 metres, predominantly dense brown oxides with hisingerite, weakly pitted with trace bright orange clay	A390	13.72	15.24	1.52		7.1		

PROPERTY Ketza River

ZONE Tarn

D.D.H. No. KR - 89 - 386

COORDINATES 4613.4 N

SECTION _____

3498.7 E

DATE STARTED August 12, 1989

COLLAR ELEVATION 1636.3 m

DATE COMPLETED August 13, 1989

AZIMUTH AT COLLAR -- °

CORE SIZE NQ

DIP AT COLLAR -90 °

CORING METHOD _____

TOTAL DEPTH 22.86 m

LOGGED BY D.B. Fleming

DRILLING CONTRACTOR Connors Drilling Ltd.

COMMENTS - A399-411

SURVEY DATA			
DEPTH	AZIMUTH	DIP	METHOD

SUMMARY LOG		
FROM	TO	GEOLOGY
0	1.52	Casing
1.52	3.2	Oxide
3.2	9.7	Dolomite/Altered Dolomite
9.7	13.3	Oxide
13.3	16.6	Limestone/Oxide (65/35)
16.6	21.34	Massive Sulphide (60% Pyrite)
21.34	22.86	Limestone
	22.86	End of Hole

WEIGHTED ASSAY AVERAGES							
FROM	TO	WIDTH	TRUE WIDTH	oz/t Au	g/t Au	oz/t Ag	g/t Ag
1.52	3.05	1.53			F.A. 5.2		
9.14	12.19	3.05			7.66		

DEPTH (m)	GRAPHIC LOG			No. of Pieces	% Recovery	NOTES	SAMPLE DATA				ASSAY DATA				
	Lith	Struct	Mineral				Sample Number	From	To	Length	g/T Au A.A.	g/T Au F.A.	p.p.m. Pb	p.p.m. As	
						CASING		0	1.52						
						OXIDE									
						- from 1.52-3.05 metres, brown-orange with 25% yellow-orange dirt; traces hisingerite	A399	1.52 1.52	3.2 3.05	1.53		5.2			
						- from 3.05-4.57 metres, first 15 centimetres with hisingerite; the rest is dolomite pieces (20%) and brick red dolomite (altered)									
						DOLOMITE/ALTERED DOLOMITE									
						- with 5% oxide	A400	3.2 3.05	9.7 4.57	1.52	1.7				
						- mixed brick red silty clay and small dolomite pieces to 3 centimetres	A401	4.57 9.7	6.10 13.3	1.53	0.7				
						OXIDE									
						- from 9.14-10.67 metres, 30% brick red clay and dense orange-yellow dolomite with 10% buff hisingerite and 60% pitted with quartz chips	A402 A403	6.10 7.62	7.62 9.14	1.52 1.52		2.1 0.1			
						LIMESTONE/OXIDE (65/35)	A404	9.14 13.3	10.67 16.6	1.53		11.2			
						- highly fractured, mottled grey to orange-brown with interval of oxide to 5 centimetres at high angle to CA	A405 A406	10.67 12.19	12.19 13.72	1.52 1.53		4.1 0.4			
						- contact with yellow-green alteration and coarse white calcite	A407 A408	13.72 15.24	15.24 16.76	1.52 1.52	0.7 0.5				

CANAMAX RESOURCES INC.

KETZA RIVER PROPERTY

DEPTH (m)	GRAPHIC LOG			No. of Pieces	% Recovery	NOTES	SAMPLE DATA				ASSAY DATA				
	Lith	Struct	Mineral				Sample Number	From	To	Length	g/T Au A.A.	g/T Au F.A.	p.p.m. Pb	p.p.m. As	
						CASING		0	1.52						
						DOLOMITE	A412	1.52 1.52	1.8 3.05	1.53	1.0				
						ALTERED DOLOMITE - fractured, brown-red to brick red, silty clay		1.8	2.4						
						DOLOMITE		2.4	3.5						
						ALTERED DOLOMITE - as above	A413	3.5 3.05	4.0 4.57	1.52	1.0				
						DOLOMITE		4.0	4.7						
						ALTERED DOLOMITE - trace oxide, predominantly brick red to yellow-brown silty clay	A414	4.7 4.57	6.1 6.10	1.53	1.1				
						DOLOMITE	A415	6.1 6.10	7.62 7.62	1.52	0.6				
						ALTERED DOLOMITE - some green and yellow colours insolid core pieces	A416	7.62 7.62	9.0 9.14	1.52	2.1				

PROPERTY Ketza River

ZONE Tarn

D.D.H. No. KR - 89 - 388

COORDINATES 4613.1 N

SECTION _____

3488.9 E

DATE STARTED August 13, 1989

COLLAR ELEVATION 1636.8 m

DATE COMPLETED August 13, 1989

AZIMUTH AT COLLAR --- °

CORE SIZE NQ

DIP AT COLLAR -90 °

CORING METHOD _____

TOTAL DEPTH 10.67 m

LOGGED BY D.B. Fleming

DRILLING CONTRACTOR Connors Drilling Ltd.

COMMENTS - A418-421

SURVEY DATA			
DEPTH	AZIMUTH	DIP	METHOD

SUMMARY LOG		
FROM	TO	GEOLOGY
0	1.52	Casing
1.52	4.5	Altered Dolomite
4.5	6.1	Dolomite
6.1	10.67	Limestone
	10.67	End of Hole

WEIGHTED ASSAY AVERAGES							
FROM	TO	WIDTH	TRUE WIDTH	oz/t Au	g/T Au	oz/t Ag	g/t Ag
					<u>F.A.</u>		

PROPERTY Ketza River

ZONE Tern

D.D.H. No. KR - 89 - 389

COORDINATES 4693.5 N

SECTION _____

3517.9 E

DATE STARTED August 13, 1989

COLLAR ELEVATION 1622.4 m

DATE COMPLETED August 13, 1989

AZIMUTH AT COLLAR 122 °

CORE SIZE NQ

DIP AT COLLAR -45 °

CORING METHOD _____

TOTAL DEPTH 13.76 m

LOGGED BY D.B. Fleming

DRILLING CONTRACTOR Connors Drilling Ltd.

COMMENTS - A422-425

SURVEY DATA			
DEPTH	AZIMUTH	DIP	METHOD

SUMMARY LOG		
FROM	TO	GEOLOGY
0	1.52	Casing
	9.2	Oxide
9.2	13.76	Limestone
	13.76	End of Hole

WEIGHTED ASSAY AVERAGES							
FROM	TO	WIDTH	TRUE WIDTH	oz/t Au	g/T Au	oz/t Ag	g/t Ag
					<u>F.A.</u>		

CANAMAX RESOURCES INC.

KETZA RIVER PROPERTY

DEPTH (m)	GRAPHIC LOG			No. of Pieces	% Recovery	NOTES	SAMPLE DATA				ASSAY DATA				
	Lith	Struct	Mineral				Sample Number	From	To	Length	g/T Au A.A.	g/T Au F.A.	p.p.m. Pb	p.p.m. As	
						CASING		0	1.52						
						OVERBURDEN - limestone rubble; little recovered		1.52	3.05						
						ALTERED DOLOMITE		3.05	3.2						
						OXIDE - massive to weakly pitted brown-orange, one clast of pyrite to 3 centimetres noted, yellow dirt at top of interval = dolomite?	A422	3.2 3.05	5.8 4.57	1.52	2.3				
						SULPHIDE/CAVE FILL - grey-brown clay and 25% finely disseminated to massive pyrite in a fine rubble breccia with 10% pyrite	A423	4.57 5.8	6.10 9.2	1.53	3.0				
						LIMESTONE	A424 A425	6.10 7.62	6.70 9.20	0.60 1.58	2.2 1.9				
						END OF HOLE		9.2	13.76						
									13.76						

Hole No.: <u>89-PC-31</u>	Date: <u>July 22, 1989</u>
Zone: <u>Knoll Zone</u>	Azimuth/Dip: <u>-90°</u>
Northing: _____	Easting: _____
	Elevation: _____

GEOLOGY

Interval (f)	Description
0 - 6	Overburden
6 - 12	Grey-brown phyllitic limestone; 20% quartz vein
12 - 18	Grey-brown phyllitic limestone; 25% quartz vein
18 - 24	Grey-brown phyllitic limestone; 50% quartz vein
24 - 30	Grey-brown phyllitic limestone; 70% quartz vein
30 - 36	Grey-brown phyllitic limestone; 90% quartz vein
36 - 42	Grey-brown phyllitic limestone; 70% quartz vein
42 - 48	Grey-brown phyllitic limestone; 40% quartz vein
48 - 54	Grey-brown phyllitic limestone; 30% quartz vein
54 - 57	Grey-brown phyllitic limestone; 50% quartz vein
57 - 60	Grey-brown phyllitic limestone; 10% quartz vein
60 - 84	Grey-brown phyllitic limestone; 5% quartz vein
- 84	End of hole; hole dry to bottom

SAMPLE DATA

Sample No.	From(f)	To (f)	Length(f)	Au (FA) g/tonne	Au (AA) g/tonne	Remarks
A0283	6	12			<0.1	
A0284	12	18			<0.1	
A0285	18	24			<0.1	
A0286	24	33			<0.1	
A0287	33	36			<0.1	
A0288	36	42			<0.1	
A0289	42	48			<0.1	
A0290	48	54			<0.1	
A0291	54	60			<0.1	
A0292	60	66			<0.1	
A0293	66	72			<0.1	
A0294	72	78			<0.1	
A0295	78	84			<0.1	

AVERAGED INTERVALS

From(f)	To (f)	Length(f)	Grade g/tonne

Logged by: Tony Hitchins

Hole No.: <u> 89-PC-32 </u>	Date: <u> July 22, 1989 </u>
Zone: <u> Knoll Zone </u>	Azimuth/Dip: <u> -90° </u>
Northing: <u> </u>	Easting: <u> </u>
	Elevation: <u> </u>

GEOLOGY

Interval (f)	Description
0 - 12	No sample
12 - 18	Light to medium grey phyllitic limestone
18 - 24	Light to medium grey phyllitic limestone
24 - 30	Medium grey phyllitic limestone
30 - 36	Medium grey phyllitic limestone; 10% quartz vein
36 - 42	Medium grey phyllitic limestone
42 - 48	Medium grey phyllitic limestone; weakly graphitic
48 - 54	Medium grey phyllitic limestone; weakly graphitic
54 - 57	Medium grey phyllitic limestone; weakly graphitic; 5% quartz vein
57 - 60	Medium grey phyllitic limestone; weakly graphitic
	No chips return after 59'
- 60	End of hole

SAMPLE DATA

Sample No.	From(f)	To (f)	Length(f)	Au (FA) g/tonne	Au (AA) g/tonne	Remarks
A0296	12	18			<0.1	
A0297	18	24			<0.1	Hole collared beside 1 metre
A0298	24	30			<0.1	Wide quartz vein
A0299	30	36			<0.1	
A0300	36	42			2.9	
A0301	42	48			0.1	
A0302	48	54			<0.1	
A0303	54	59			<0.1	

AVERAGED INTERVALS

From(f)	To (f)	Length(f)	Grade g/tonne

Logged by: Tony Hitchins

Hole No.: <u>89-PC-34</u>	Date: <u>July 22, 1989</u>
Zone: <u>Knoll Zone</u>	Azimuth/Dip: <u>-90°</u>
Northing: _____	Easting: _____
	Elevation: _____

GEOLOGY

Interval (f)	Description
0 - 6	Orange-brown dolomite; 5% quartz vein
6 - 12	Orange-brown dolomite; 5% quartz vein
12 - 18	Orange-brown dolomite; 5-10% quartz vein; limy from 15-18'
18 - 21	Orange-brown dolomite; chips of red oxide, 10% quartz vein
21 - 24	Reddish-brown limy dolomite; <5% quartz vein
24 - 27	Orange-brown dolomite
27 - 30	Orange-brown dolomite
30 - 33	Reddish-brown chips of red oxide
33 - 36	Reddish-brown chips of red oxide
36 - 42	Reddish-brown; 40-foot contact with grey limestone
42 - 48	Dark grey phyllitic limestone
- 48	End of hole

SAMPLE DATA

Sample No.	From(f)	To (f)	Length(f)	Au (FA) g/tonne	Au (AA) g/tonne	Remarks
A0101	0	6			0.4	
A0102	6	9			<0.1	
A0103	9	12			<0.1	
A0104	12	15			0.2	
A0105	15	18			<0.1	
A0106	18	21			0.2	
A0107	21	24			<0.1	
A0108	24	30			2.7	
A0109	30	33			1.1	
A0110	33	36			2.0	
						42' plugged bit - fault gouge?

AVERAGED INTERVALS

From(f)	To (f)	Length(f)	Grade g/tonne

Logged by: Tony Hitchins

Hole No.: <u>89-PC-36</u>	Date: <u>July 22, 1989</u>
Zone: <u>Knoll Zone</u>	Azimuth/Dip: <u>134° -40°</u>
Northing: _____	Easting: _____
	Elevation: _____

GEOLOGY

Interval (f)	Description
0 - 3	No sample
3 - 6	Orange-brown weakly calcareous dolomite, minor reddish oxide, 15% q.v.
6 - 12	Orange-brown weakly calcareous dolomite, minor reddish oxide, 5-10% q.v.
12 - 15	Orange-brown weakly calcareous dolomite, minor reddish oxide, 5% q.v.
15 - 18	Orange-brown weakly calcareous dolomite, minor reddish oxide, 5% q.v.
18 - 21	Orange-brown weakly calcareous dolomite, minor reddish oxide, 5% q.v.
21 - 24	Orange-brown weakly calcareous dolomite, minor reddish oxide, 5-10% q.v.
24 - 27	Medium orange-brown calcareous dolomite
27 - 39	Tan calcareous dolomite, trace oxide, 5% q.v.
39 - 42	Orange-brown calcareous dolomite, minor oxide, <5% q.v.
42 - 45	Brown calcareous dolomite, minor oxide
45 - 48	Brown calcareous dolomite, minor oxide
- 48	End of hole

SAMPLE DATA

Sample No.	From(f)	To (f)	Length(f)	Au (FA) g/tonne	Au (AA) g/tonne	Remarks
A0117	3	6			1.7	
A0118	6	12			<0.1	
A0119	12	15			<0.1	
A0120	15	18			<0.1	
A0121	18	21			0.3	
A0122	21	24			3.4	
A0123	24	27			<0.1	
A0124	27	30			<0.1	
A0125	30	33			<0.1	
A0126	33	36			<0.1	
A0127	36	39			"0.1	
A0128	39	42			<0.1	
A0129	42	45			<0.1	
A0130	45	48			1.3	

AVERAGED INTERVALS

From(f)	To (f)	Length(f)	Grade g/tonne

Logged by: Tony Hitchins

Hole No.: <u>89-PC-37</u>	Date: <u>July 22, 1989</u>
Zone: <u>Knoll Zone</u>	Azimuth/Dip: <u>-90°</u>
Northing: _____	Easting: _____
	Elevation: _____

GEOLOGY (drilled between RC75 and 76)

Interval (f)	Description
0 - 6	No sample
6 - 12	Reddish-brown calcareous dolomite, minor red oxides, 5% quartz veins
12 - 15	Orange-brown weakly calcareous dolomite, minor red oxides, 5% q.v.
15 - 18	Orange-brown weakly calcareous dolomite, minor red oxides, 50% q.v.
18 - 21	Orange-brown weakly calcareous dolomite, minor red oxides, 40% q.v.
21 - 24	Orange-brown weakly calcareous dolomite, minor red oxides, 40% q.v.
24 - 27	Light to medium, very calcareous dolomite, minor red oxides, 15% q.v.
27 - 30	Light to medium, very calcareous dolomite, minor red oxides, 15% q.v.
30 - 33	Orange-brown dolomite, 5% quartz veins
33 - 36	Orange-brown dolomite, 5% quartz veins
36 - 39	Orange-brown dolomite, 10% quartz veins
39 - 42	Dark grey to black, weakly calcareous phyllite
- 42	End of hole

SAMPLE DATA

Sample No.	From(f)	To (f)	Length(f)	Au (FA) g/tonne	Au (AA) g/tonne	Remarks
A0131	6	12			1.2	
A0132	12	15			1.8	Ice or water in this interval
A0133	15	18			1.5	
A0134	18	21			1.6	
A0135	21	24			1.5	Chips of ice in sample
A0136	24	27			0.7	
A0137	27	30			2.8	
A0138	30	33			2.6	
A0139	33	36			1.2	
A0140	36	39			1.4	

AVERAGED INTERVALS

From(f)	To (f)	Length(f)	Grade g/tonne

Logged by: Tony Hitchins