

MAP NO.: ASSESSMENT REPORT X
105 F 9 PROSPECTUS
CONFIDENTIAL X
OPEN FILE

DOCUMENT NO: 092821
MINING DISTRICT: Watson Lake
TYPE OF WORK: Percussion Drilling, Road
Construction, Stripping

REPORT FILED UNDER: Canamax Resources Inc.

DATE PERFORMED: July 23, Sept. 6-28, Oct. 16-28, 1989 DATE FILED: Jan. 19, 1990

LOCATION: LAT.: 61°34'N AREA: Ketzá River
LONG.: 132°15'W VALUE \$: 81,200.00

CLAIM NAME & NO.: KON 16-18, 27-34, 45-75, 77-96, 131Fr., 133Fr., 134 Fr., 134-239, 246-24
252, 254, 256, 258, 260, 263-272, 279-282, 293 YA56488-90, YA70938-45, 56-81, YA71526-30, 32
51, YA90431, YA91388, 389, YA90825-90, YA90965-74, YA90891-920, YA99325-328, 331, 333, 335, 337
339, YB00679-688, 95, YB01574-577, 588-593
379 claims (?)

WORK DONE BY: D.B. Fleming

WORK DONE FOR: Canamax Resources Inc.

DATE TO GOOD STANDING:

REMARKS: # 17 KETZA RIVER Thirty-two percussion drill holes were completed on lines 7 m apart at 3 m spacings in the Knoll Zone (KON 30 claim). This covers a northeast-striking lens of gold-bearing oxide ore in U. Cambrian dolomite underlain by limestone and graphitic phyllite. A bulldozer prepared drill sites and construct a 10% grade haul road. Open pit mining on the Tarn Zone (KON 12) resulted in the removal of 30 046 m³ of oxide ore and waste.



TRANSMITTAL



M.R. file no.
R.M.M.R. file no.
Date forwarded <i>19 Jan 90</i>

From Mining Recorder at: *Watson Lake*

To Regional Manager, Mineral Rights at Whitehorse, Y.T.

For action are:

<input type="checkbox"/> NEW APPLICATION FOR PLACER LEASE TO PROSPECT	Name	
<input type="checkbox"/> RENEWAL APPLICATION PLACER LEASE TO PROSPECT	Name	Lease no.
<input type="checkbox"/> AFFIDAVIT OF EXPENDITURE ON PLACER LEASE	Name	Lease no.
<input type="checkbox"/> SECURITY DEPOSIT		
<input type="checkbox"/> FINANCIAL ABILITY		
<input type="checkbox"/> ASSIGNMENT OF PLACER LEASE NO.	From	To
<input type="checkbox"/> GROUPING APPLICATION UNDER SEC. 52(2) PLACER MINING ACT.	Owner	
<input checked="" type="checkbox"/> <i>PERCUSSION</i> DIAMOND DRILL LOGS	Claims <i>KON 12, 30</i>	Claim sheet no. <i>105-F-9</i>
<input type="checkbox"/> QUARTZ ASSESSMENT REPORT	Claims	Claim sheet no.
	Type of report	Submitted by
	Cls. work performed on	\$ req. for ren. application

[Handwritten Signature]

Signature

REPLY ACTION

Date returned

Signature

**1989 PERCUSSION DRILLING, ROAD CONSTRUCTION
AND OPEN PIT STRIPPING ASSESSMENT REPORT**

TITLE: Ketz River Property

CLAIMS: Kon 12, Kon 30

AUTHOR: D.B. Fleming

DATE: December, 1989



WORK PERIODS: - Drilling, Road Construction on Kon 30
Claim: July 23, September 6, 8-10,
22-28, 1989
- Open Pit Stripping on Kon 12 Claim:
September 12-24, October 16-28, 1989

COMMODITY: Au

LOCATION:

-Area Ketz River Area, Central Yukon
-Mining District Watson Lake
-Co-ordinates Latitude 61°34'
Longitude 132°15'
-NTS 105 F/9

OWNER: Canamax Resources Inc.

OPERATOR: Canamax Resources Inc.

CANAMAX VANCOUVER OFFICE

092821

TABLE OF CONTENTS

	<u>Page</u>
SUMMARY.....	1
CONCLUSIONS.....	2
INTRODUCTION.....	3
Location, Access.....	3
Claims Status.....	3
PERCUSSION DRILLING.....	4
General Statement.....	4
Results.....	5
ROAD CONSTRUCTION.....	10
OPEN PIT STRIPPING.....	11

FIGURES

Figure 1	Location Map (1:2,000,000).....After Page	3
Figure 2	Drill Hole and Core Storage Location (1:50,000).....After Page	3
Figure 3	Knoll Zone - Drill Hole Plan (1:250).....After Page	5
Figure 4	Knoll Zone - Haul Road Plan (1:10,000).....After Page	10
Figure 5	Tarn Open Pit Plan (1:2,000)....After Page	11
Figure 6	Tarn Open Pit Plan (1:500).....After Page	11

APPENDICES

Appendix I	Statements of Costs
Appendix II	Statements of Qualifications
Appendix III	Percussion Drill Logs

SUMMARY

This report describes percussion drilling and road construction on Kon 30 claims and open pit stripping on Kon 12 claims conducted over the periods July 23, September 6, 8-10, 12-28 and October 16-28, 1989.

Two zones of oxide gold mineralization were the focus of drilling and stripping. On the Kon 30 claim (Knoll Zone), 32 percussion drill holes were completed in 1989, of which 25 are described in this report. The drill target was a previously identified northeasterly striking lense of oxide gold mineralization in Upper Cambrian dolomite, underlain by limestone and black graphitic phyllite. Holes were spaced 3 metres apart on fences roughly 7 metres apart. Bulldozer work at the Knoll Zone consisted of drill site preparation and construction of a 10% grade haul road. On the Kon 12 claim (Tarn Zone), open pit mining resulted in the removal of 30,046 metres³ of oxide ore and waste.

CONCLUSIONS

Percussion drill testing at the Knoll Zone (Kon 30 claim) has further defined a northeast-striking lense of oxide mineralization 60 metres long, up to 20 metres wide and 2 to 11 metres thick. Drill cuttings from the mineralized zone consist of red to orange clay or mud (limonite, dolomite) and yellow to green clay or mud (limonite and scorodite). The better grades occur within scorodite in the central portion of the ore zone (89-PC-68, 9.13 metres @ 11.1 gm/T Au).

Road construction has linked the Knoll Zone and the Ketzá main access road with a 10%, 8-metre-wide haul road.

Open pit stripping at the Tarn Zone (Kon 12) resulted in the removal of 17,500 tonnes of oxide ore at a waste/ore ratio of 3.3:1.

INTRODUCTION

Location, Access

The Ketz River Property is located 50 kilometres south-southeast of Ross River, Yukon. Access is by a 45-kilometre all-weather gravel road which departs the Robert Campbell Highway 25 kilometres east of Ross River. Final access to the Knoll and Tarn Zones is by 4-wheel-drive road from the Ketz Mine camp and Exploration camp.

Claims Status

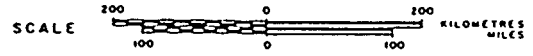
The property consists of 185 Yukon quartz claims, 29 leased claims and one surface lease. Work documented in this report is being applied to 212 quartz claims.

CANAMAX RESOURCES INC.

KETZA RIVER PROPERTIES

WATSON LAKE MINING DISTRICT — YUKON TERRITORY

LOCATION MAP



N. T. S. Ref. 105 F 9

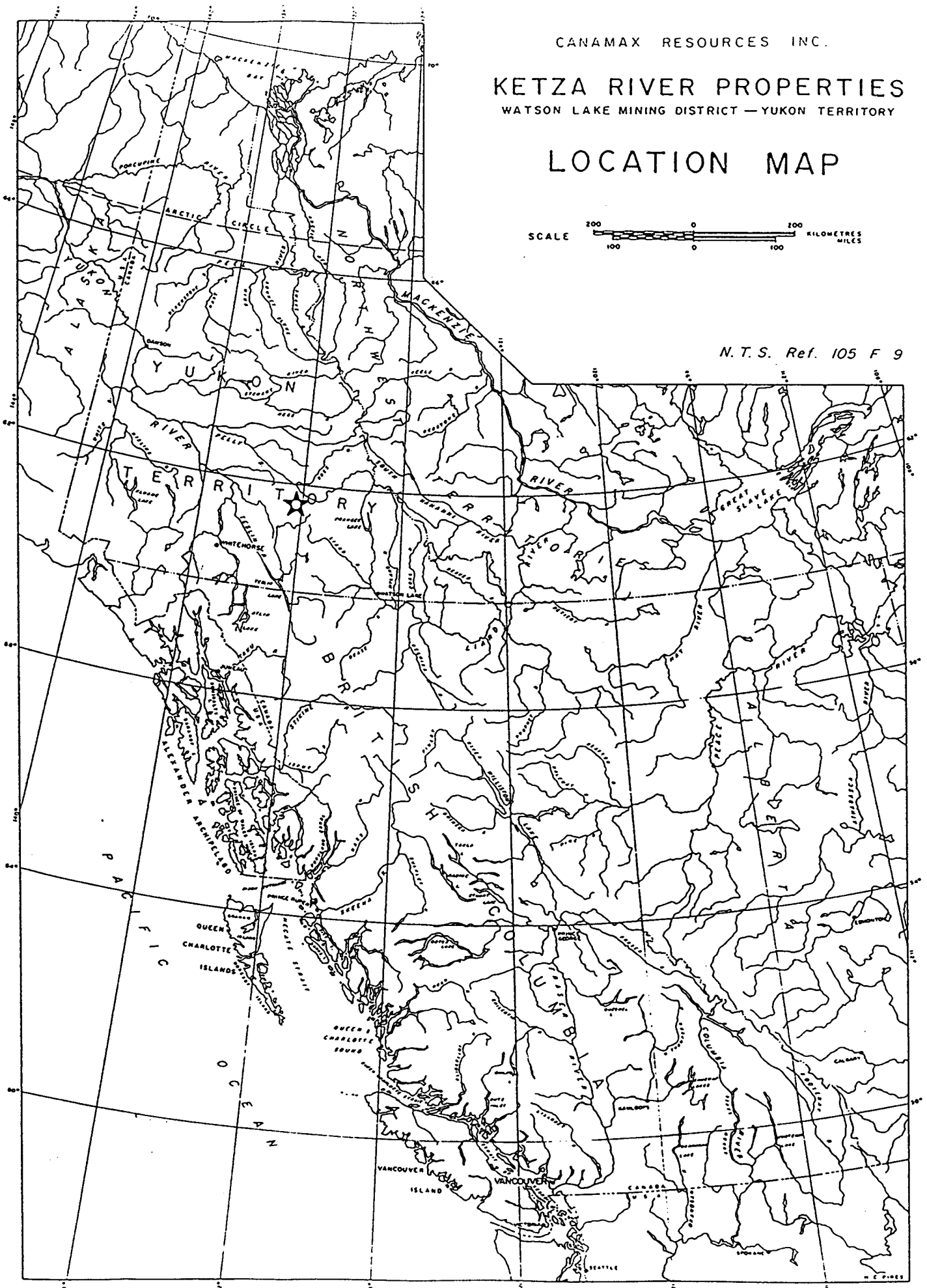


FIG. 1

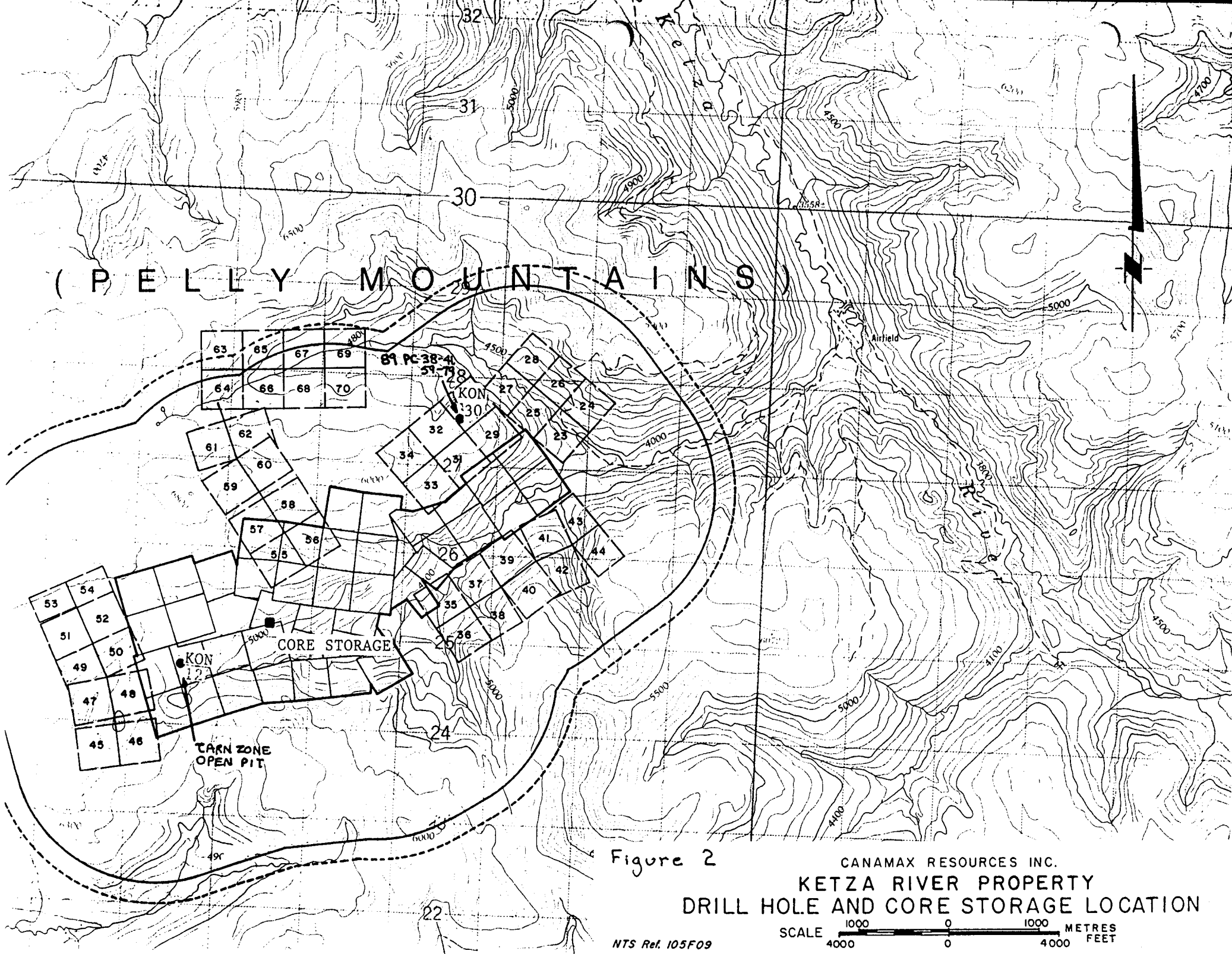
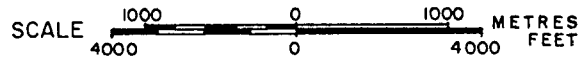


Figure 2

CANAMAX RESOURCES INC.
 KETZA RIVER PROPERTY
 DRILL HOLE AND CORE STORAGE LOCATION



PERCUSSION DRILLING

General Statement

Pre-1989 reverse circulation and diamond drilling at the Knoll Zone (Kon 30 claim) outlined a lense-shaped auriferous oxide body in Upper Cambrian dolomite. The mineralized zone trends northeast and was open to the southwest, with the bulk of the reserve estimated from one high-grade intercept in hole KR-87-255 (Figure 3). The objective of 1989 percussion drilling was to test the southern extent of mineralization and to further define the reserve with close-spaced drill holes.

The twenty-five (25) percussion drill holes described in this report were carried out utilizing a track-mounted, Atlas Copco model 712 air drill owned by Pelly Construction Ltd. of Whitehorse, Yukon. The drill was mobilized on July 21 and demobilized on July 23, 1989. Four holes (89-PC-38 to 89-PC-41) were completed for a total of 162 feet. The drill was mobilized to the Knoll Zone a second time on September 6th. A further 21 holes were completed totalling 863 feet (89-PC-59 to 89-PC-79) in the period September 8, 9 with demobilization on September 10, 1989. Drill sites were prepared with a D8 bulldozer owned by Grant Stewart Construction Ltd. of Watson Lake, Yukon on September 8, 1989.

Drill holes 89-PC-59 to 89-PC-79 are vertical and were spaced at 3-metre intervals on fences 7 metres apart. Holes 38 to 41 were inclined.

Cuttings were collected at the drill and later split and logged by Canamax geologists Tony Hitchins and Dave Fleming. One split was submitted to the Ketzal Mine assay lab and analyzed for gold, one split was kept as reject, and the third was placed in N.Q. core boxes and stored at the Ketzal Exploration Camp (Figure 2), on Penguin 4 claim.

Results (Figure 3)

Hole 89-PC-38 was inclined at -48° towards the zone and intersected orange-brown muddy dolomite(?) with traces of oxide chips and 20-30% quartz that returned 12.1 gm/T Au from 36 to 60 feet (7.32 metres). Sample return was poor. The hole ended in mineralization.

Hole 89-PC-39, inclined at -60° along the axis of the zone, returned 12 feet (3.66 metres) of orange-brown muddy dolomite (?) that assayed 4.4 gm/T Au. Mineralization occurs at the bottom of the hole from 27 to 39 feet and contains 10-20% quartz with traces of oxide chips.

Hole 89-PC-40 was inclined due west at -48° into the central portion of the zone intersecting reddish-brown dolomite with 20% quartz chips to the bottom of the hole at 36 feet (10.98 metres). No assay samples were collected as overburden contamination was suspected.

Hole 89-PC-41 was collared along the east side of the zone, inclined southwest along its axis at -50° . No air or cuttings came to surface. The hole was abandoned at 36 feet (10.98 metres).

Hole 89-PC-59 intersected 6.10 metres of red-orange dolomite (plus oxide) with 5% quartz and black graphitic phyllite from 6.10 to 7.32 metres. Assays ranged from 1.2 to 8.5 gm/T Au.

Hole 89-PC-60 intersected oxide and dolomite from 1.83 to 6.10 metres and black phyllite from 6.10 to 7.32 metres. An assay interval of 3.8 gm/T Au was obtained from 1.83 to 3.66 metres.

Hole 89-PC-61 was collared in black phyllite and intersected grey limestone and phyllite from 5.50 to 7.32 metres.

Hole 89-PC-62, collared in orange dolomite, gave no return from 0.91 to 3.66 metres, and returned brown-orange mud from 3.66 to 7.32 metres that assayed 7.8 gm/T Au. The hole ended in mineralization.

Hole 89-PC-63 intersected orange-brown dolomite to 12.80 metres, brown limestone from 12.80 to 14.63 metres and orange mud to the bottom at 15.85 metres. No significant assays were returned. The bit was plugged with black shale at 15.85 metres.

Hole 89-PC-64 returned brown-orange mud from 0 to 3.66 metres followed by dolomite and limestone to 11.89 metres, which was in turn underlain by brown-orange mud to 16.76 metres. Assays from both mud sections returned up to 3.8 gm/T Au. The hole bottomed in black phyllite at 18.29 metres.

Hole 89-PC-65 intersected brown-orange dolomite to 15.55 metres and black phyllite to 19.29 metres. No significant assays were returned.

Hole 89-PC-66 returned dolomite to 3.66 metres and brown-orange mud to 12.15 metres with traces of green scorodite clay. A mixture of mud and black phyllite was intersected from 12.15 to 15.85 metres. The mud zone assayed 7.1 gm/T Au from 7.32 to 15.85 metres.

Hole 89-PC-67 collared in red dolomite to 3.66 metres and passed through brown-orange mud to 10.36 metres before encountering black phyllite from 10.36 to 10.97 metres. No significant assays were returned.

Hole 89-PC-68 returned 11.1 gm/T Au in green to brown-orange mud and clay from 5.50 to 14.63 metres that was overlain by both mud and dolomite and includes black phyllite at the bottom from 13.4 to 14.63 metres.

Hole 89-PC-69 passed through 17.06 metres of multi-coloured mud and clay before encountering black phyllite to bottom at 18.29 metres. Two intervals carried anomalous gold; 3.66 to 7.32 metres @ 5.3 gm/T Au and 16.46 to 18.29 metres @ 5.8 gm/T Au.

Hole 89-PC-70 was collared in orange clay and mud to 3.66 metres before intersecting phyllite and dolomite to the bottom at 12.80 metres. The upper 7.32 metres assayed 4.0 gm/T Au.

Hole 89-PC-71 encountered yellow to orange-brown mud to 10.97 metres that assayed 7.9 gm/T Au. The mud zone was underlain by dolomite to 11.30 metres and black phyllite to 12.80 metres.

Hole 89-PC-72 returned dolomite to 1.83 metres and orange to brown-grey mud from 1.83 to 9.14 metres before ending in black phyllite. The lower 5.48 metres (3.66 to 9.14) assayed 6.9 gm/T Au.

Hole 89-PC-73 collared in dolomite and encountered red to brown mud and clay from 3.66 to 10.36 metres before bottoming in black phyllite from 10.36 to 10.97 metres. Within the mud/clay zone, a single interval from 5.50 to 7.32 metres assayed 4.6 gm/T Au.

Hole 89-PC-74 had poor to nil return from the collar of the hole to 7.32 metres. Orange-brown clay, that came up in the interval 7.32 to 10.97 metres, assayed 5.3 gm/T Au. The interval also contained traces of black phyllite.

Hole 89-PC-75 also had poor return down to 9.14 metres that consisted of red-brown dolomite. Brown-orange clay from 9.14 to 10.97 metres assayed 9.5 gm/T Au. Black phyllite was encountered at 11.28 metres down to bottom at 12.80 metres.

Hole 89-PC-76 passed through mixed dolomite and limestone to 6.71 metres ending in black phyllite.

Hole 89-PC-77 was drilled entirely in phyllite and limestone ending at the black phyllite contact at 12.90 metres. A weak dolomite interval from 9.75 to 10.97 metres was not gold-bearing.

Hole 89-PC-78 collared in orange mud and clay down to 3.66 metres and encountered dolomite to 16.46 metres up to a black phyllite contact. (Bit plugged at 16.46 metres.)

Hole 89-PC-79 encountered dolomite from 0 to 3.66 metres, yellow-orange-green mud and clay to 9.14 metres and brown-orange dolomite to 16.15 metres where the hole ended in black phyllite. The interval from 5.50 to 14.63 metres assayed 10.3 gm/T Au.

ROAD CONSTRUCTION

In the period September 22-28, 1989, an eight-metre-wide haul road was constructed at a grade of 10%, in anticipation of open pit mining in 1990. Work was carried out with a D8H bulldozer owned by Grant Stewart Construction Ltd. of Watson Lake, Y.T. Of the total 169.5 hours of cat time contracted to build the road, 8.0 hours were required to build that portion on the Kon 30 claim.

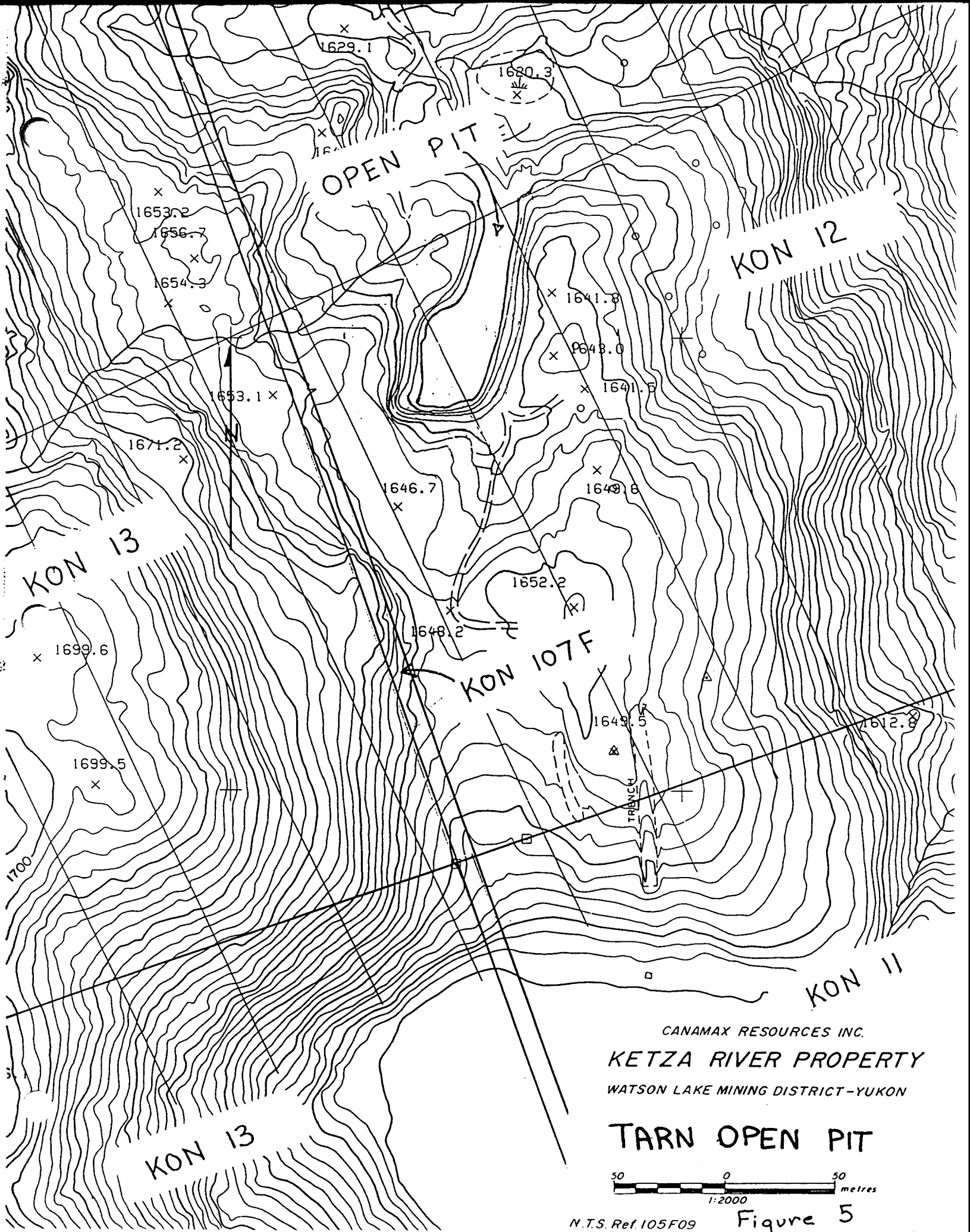
OPEN PIT STRIPPING

Open pit mining of the Tarn Zone orebody was carried out by Pelly Construction Ltd. of Watson Lake, Y.T., in the periods September 12-24 and October 16-28, 1989. The stripping and removal of both ore and waste was carried out with one D10N bulldozer, one caterpillar 235 backhoe and two caterpillar 769 rock trucks. Work was supervised by Canamax Pit Superintendent Zbigniew Wytrwal.

The total volume of both ore and waste removed was 30,046.3 metres³ (Figures 5, 6). The resultant pit is 100 metres long, up to 60 metres wide and 10 to 20 metres deep. The contract price for waste removal was \$3.16/metre³. For assessment purposes, the same price was applied to ore removal and does not include haulage to the mill. Included in the waste and ore removal unit price was haulage to waste dump sites up to 200 metres from the pit. Surveying and volume calculations were carried out by Yukon Engineering Services Ltd. of Whitehorse, Y.T.

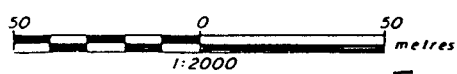
The ore consisted of boxwork orange to brown limonite and poddy light green scorodite clay (10%). Waste rock was predominantly reddish-brown dolomite and low-grade earthy limonite. Both ore and waste occurred within a "bathtub"-shaped limestone footwall. Permafrost was encountered locally within both ore and waste. A bulk density for ore was determined as 1.5 gm/cm³. The total ore removed was 17,500 tonnes.

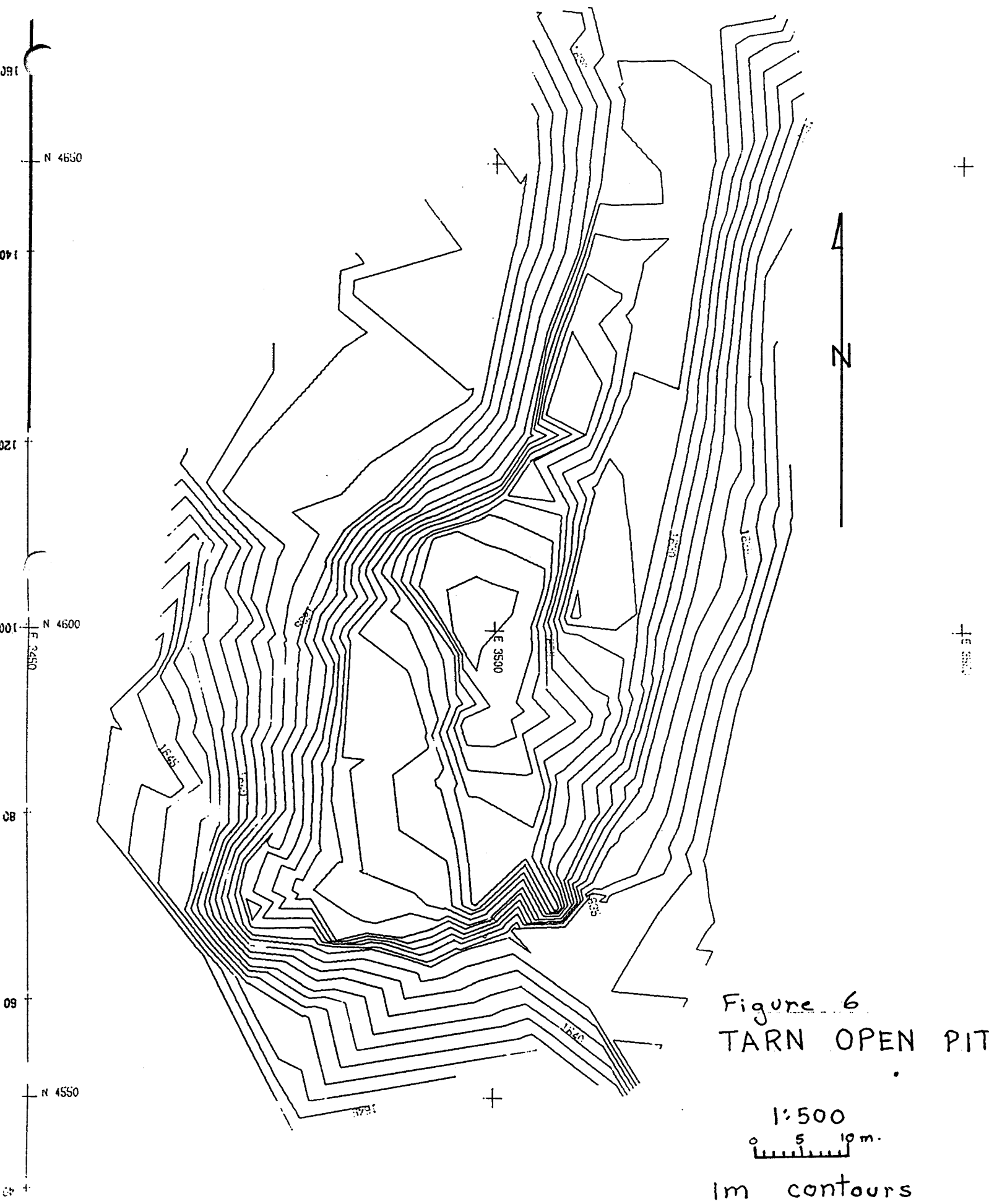
Dave Fleming



CANAMAX RESOURCES INC.
 KETZA RIVER PROPERTY
 WATSON LAKE MINING DISTRICT-YUKON

TARN OPEN PIT





APPENDIX I
STATEMENTS OF COSTS

STATEMENT OF COSTS
KON 30 - KNOLL ZONE

Work Period:	July 23, September 6, 8-10, 22-28, 1989	
Drill Site Construction:	Grant Stewart Construction Ltd. P.O. Box 410 Watson Lake, Yukon Invoice #6612: D8H Bulldozer - 8 hrs. @ \$140.00/hr.	\$ 1,120.00
Percussion Drilling:	Pelly Construction Ltd. P.O. Bag 2751 Whitehorse, Yukon Invoice #288 & #307: Atlas Copco 712 Airdrill - 33.5 hrs. @ \$168.00/hr.	5,628.00
Road Construction:	Grant Stewart Construction Ltd. P.O. Box 410 Watson Lake, Yukon Invoice #6612: D8H Bulldozer - 8 hrs. @ \$140.00/hr.	1,120.00
Fuel:	Percussion Drill - 16 litres/hr. x 0.31 x 33.5	166.00
	Hourly consumption in D8 - 34 litres/hr. x 0.31/litre x 20	211.00
Room and Board:	18 man-days @ \$18.00/day	324.00
Truck Rental:	6 days @ \$50.00/day	300.00
Supervision:	Dave Fleming 5 days @ \$198.00/day) Tony Hitchins 1 day @ \$268.34/day)	<u>1,258.34</u>
	Total	<u>\$10,127.34</u>

Dave Fleming

STATEMENT OF COSTS
KON 12 - TARN ZONE

Work Period:	September 12-24, 1989 October 16-28, 1989	
Open Pit Excavation:	Pelly Construction Ltd. P.O. Bag 2751 Whitehorse, Yukon	
	Invoices - #307 and #321: - 30,046.3 m ³ ore and waste removed @ \$3.16/m ³	94,946.31
Supervision:	Zbigniew Wytrwal, Pit Supervisor - 26 days @ \$177.15/day	4,605.90
Room and Board:	182 days @ \$20.70/day	3,949.40
Bulk Fuel:		<u>17,000.00</u>
	Total	<u>\$120,501.61</u>

Dave Fleming

GRANT STEWART CONSTRUCTION LTD.

P.O. BOX 410 - WATSON LAKE, Y.T. - Y0A 1C0

Telephone (403) 636-7472

To: Canamax Resources Inc.
 Bag Service 2717
 Whitehorse, Yukon
 Y1A 3V5

DATE: September 30, 1989

INVOICE: No 6612

CLIENT:

Accounts Due When Rendered. Service Charge On Overdue Accounts.

Date	Details	Charges	Credits	Balance
	Re: <u>Purchase Order No. 1264</u>			
Sept. '89	#56 - 966 Loader - (as per Eqpt. Daily Report) - 272½ Hours @ 90.00 per hour	\$24,525.00		
Sept. '89	Truck #69, Kenworth c/w dump box - (as per Eqpt. Daily Report) - 213½ Hours @ 60.00 per hour	\$12,810.00		
Sept. 3-13,25	#71 - 215B Hoe - (as per Eqpt. Daily Report) - 89 Hours @ 90.00 per hour	\$8,010.00		
Sept. '89	Man Hours - (as per Eqpt. Daily Report)- 11½ Hours @ 22.00 per hour	\$253.00		
Sept. 8-15, 22-30/89	#31 D8H - (as per Eqpt. Daily Report) - 169½ Hours @ 140.00 per hour	\$23,730.00		
Sept. 7/89	Operator (Jim Scharff) Travel Time - Watson Lake to Ketz - 5 Hours @ 22.00 per hour	\$110.00		
Sept. 7-15, 22-30/89	Operator's 4x4 Pickup Rental - 18 days @ 60.00 per day	\$1,080.00		\$70,518.00

INVOICE

PELLY CONSTRUCTION LTD.

N^o 288

P.O. BAG 2751
WHITEHORSE, YUKON
Y1A 3V5 PHONE: (403) 667-6161

RECEIVED

AUG 28 1989

TO: Canamax Resources
143 Industrial Road
Whitehorse, Yukon
Y1A 3S9

DATE: Aug. 17, 1989

contract #01-89

AUG. 1-15/89

✓ 0,077.55 @ ^{16.00}~~18.00~~/hr

129,240.96
~~\$145,396.08~~

5-270-405

Equipment Rentals

DION dozer	47.5 hrs @ \$225.00/hr	\$10,687.50
235 Backhoe	11 hrs @ \$145.00/hr	\$1,595.00

Total \$12,282.50

RECEIVED
AUG 30 1989
RECEIVED

TOTAL

INVOICE

Nº 307



PELLY CONSTRUCTION LTD.

P.O. BAG 2751
 WHITEHORSE, YUKON
 Y1A 3V5 PHONE: (403) 667-6161

OCT 10 1989

TO: Canamax Resources
 143 Industrial Road
 Whitehorse, Yukon

DATE: Oct. 06, 1989

Contact 01-89

Sept. 16-30/89

Ore Delivered	2,508.07t delivered @ \$3.90/m ³ (@ 2t/m ³)	4,895.74
		9,781.47
Waste Removed	16,950 m ³ @ 3 $\frac{16}{M^3}$ 16,148	53,562.00
		53,555.68
Equipment Rental	Sept. 1-30/89	18,337.50
DION Dozer	89 hrs. @ \$225.00/hr	20,025.00
712 Drill	33.5 hrs. @ \$168.00/hr	5,628.00
Paeker	8.5 hrs. @ \$85.00/hr	722.50 - 297.50
235 Hoe	66.5 hrs. @ \$145.00/hr	9,642.50
769 Koel Truck	124.5 hrs. @ \$120.00/hr	<u>14,940.00</u>
Total		\$114,301.47

28.5 @ 168.00 = 4788.00 - 067 CIVL.
 5 @ 168.00 = 840.00 - S-270-405

106,636.92 *JR*

270-405

TOTAL

22	10 1/2'	4'		5 1/2'	21'	
23	12'			12'	24'	
24	2 1/2'			5'	4'	
	89 Hrs.	32 1/2'	8 1/2'	66 1/2'	124 1/2'	

81.5

INVOICE

PELLY CONSTRUCTION LTD.

Nº 321

~~P.O. BAG 2751~~ III INDUSTRIAL RD.
WHITEHORSE, YUKON
Y1A ~~3V5~~ PHONE: (403) 667-6161
2T7

RECEIVED
NOV - 3 1989

Camamax Resources
143 Industrial Road
Whitehorse, Yukon

DATE: Nov. 2, 1989 NOV - 3 1989

Contract 01-89

Ore delivered Oct. 18-27/89			
14,407.69t @ 1.49 SG.	9669.59 @ \$3.90 ✓		\$37,711.40 ✓
Correction SG. Sept. invoice			
2,508.07t @ 1.49 SG.	1,683.27 @ \$3.90	\$6564.75	
Less previously billed		-4890.74	
		<u>1674.01</u> ✓	1,674.01 ✓
Waste removed as per Y.E.S.	30,046.3		
Previously billed	-16,948		
	<u>13,098.3</u> @ \$3.16		41,390.63 ✓
Equipment Rental			
DION 18hrs. @ \$225.00/hr.			4,050.00 ✓
235 Backhoe 1 hr. @ \$145.00/hr.			145.00 ✓
			<u>\$84,971.04</u>

5-270-405

John Brown

TOTAL

MACHINE HOURS _____	STANDBY HOURS _____
STANDBY HOURS _____	OPERATOR'S HOURS _____
OPERATOR'S HOURS _____	REMARKS <i>Road Construction</i>
REMARKS <i>in as fall</i>	TYPE OF WORK <i>Multi-travel</i>
TYPE OF WORK _____	NO. OF LOADS OR TRIPS _____
NO. OF LOADS OR TRIPS _____	OPERATOR'S P.R. NO. _____
OPERATOR'S P.R. NO. _____	SIGNED _____
SIGNED <i>John Brown</i>	

APPENDIX II
STATEMENTS OF QUALIFICATIONS

Statement of Qualifications

Name: D.B. Fleming

Address: 9071 Oakmond Avenue
Richmond, B.C. V7E 1L7

Education: B.Sc. Geology 1979
University of British Columbia

Experience: 1976-1977 Seumotech (64) Ltd.
Explosives Assistant

1978 Amax Minerals
Field Assistant

1979 Amax Minerals
Field Assistant

1980 Amax of Canada Limited
Field Assistant

1981 CSR Minerals, Sydney, Australia
Contract Geologist

1982 Amax Minerals Exploration
Senior Assistant

1983-1986 Canamax Resources Inc.
Senior Assistant

1986 Canamax Resources Inc.
Project Geologist

1987-
Present Canamax Resources Inc.
Project Geologist

Dave Fleming

Statement of Qualifications

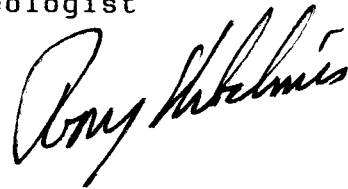
Name: Anthony (Tony) C. Hitchins

Address: #601 - 535 Thurlow Street
Vancouver, B.C. V6E 3L6

Education: University of Toronto - B.A.Sc. 1970
University of Toronto - M.Sc. 1973

Experience: 1974-1983 Amax of Canada Limited
Staff Geologist

1983- Canamax Resources Inc.
Present Staff Geologist

A handwritten signature in cursive script, reading "Tony Hitchins".

Statement of Qualifications

Name: Z.J. Wytrwal

Address: 3167 Mt. Seymour Parkway
North Vancouver, B.C. V7H 1G2

Experience: 1967-1980 Eldorado Nuclear Ltd.
Geological Technician,
Underground Grade Control,
Pit Geologist

1980-1982 Carolin Mines/David Minerals
Engineering Technician

1982-1984 Self-employed
Drafting

1984-Present Canamax Resources Inc.
Geological Technician



APPENDIX III
PERCUSSION DRILL LOGS

Hole No.: <u>89-PC-38</u>	Date: <u>July 31, 1989</u>
Zone: <u>Knoll Zone</u>	Azimuth/Dip: <u>160° -48°</u>
Northing: _____	Easting: _____
	Elevation: _____

GEOLOGY

Interval (f)	Description
0 - 6	No sample
6 - 12	Reddish brown, slightly calcareous dolomite, minor oxide
12 - 24	Reddish brown, slightly calcareous dolomite, minor oxide, 20% quartz veins
24 - 30	Reddish brown, slightly calcareous dolomite, minor oxide, 20% quartz veins
30 - 33	Reddish brown, slightly calcareous dolomite, minor oxide, 30% quartz veins
36 - 48	Orange-brown, slightly calcareous dolomite, trace oxide chips, 30% q.v.
48 - 54	Orange-brown, slightly calcareous dolomite, trace oxide chips, 25% q.v.
54 - 60	Orange-brown, slightly calcareous dolomite, trace oxide chips, 20% q.v.
- 60	End of hole
	Note: Wet hole; poor samples

SAMPLE DATA

Sample No.	From(f)	To (f)	Length(f)	Au (FA) gm/t	Au (AA) gm/t	Remarks
	6	12				Poor chip return
A0141	12	24			2.2	
A0142	24	30			1.9	
A0143	30	33			0.1	No sample
A0144	36	48		13.91	12.1	
A0145	48	54		11.15	13.0	
A0146	54	60		9.48	9.7	

AVERAGED INTERVALS

From(f)	To (f)	Length(f)	Grade gm/t
10.97	18.29	7.32	12.1

Logged by: A.C. Hitchins

Hole No.: <u> 89-PC-39 </u>	Date: <u> July 23, 1989 </u>
Zone: <u> Knoll Zone </u>	Azimuth/Dip: <u> 225° -60° </u>
Northing: _____	Easting: _____
	Elevation: _____

GEOLOGY

Interval (f)	Description
0 - 6	No sample
6 - 12	Orange-brown calcareous dolomite, trace oxide, 30% quartz veins
12 - 15	Tan calcareous dolomite, trace oxide, 15% quartz veins
15 - 18	Tan calcareous dolomite, trace oxide, 5% quartz veins
18 - 21	Orange-brown calcareous dolomite, trace oxide, 5% quartz veins
21 - 24	Orange-brown calcareous dolomite, trace oxide, 15% quartz veins
24 - 27	Orange-brown calcareous dolomite, trace oxide, 20% quartz veins
27 - 33	Reddish-brown calcareous dolomite, minor oxide, 15-20% quartz veins
33 - 36	Orange-brown calcareous dolomite, trace oxide, 5-10% quartz veins
36 - 39	Orange-brown calcareous dolomite, trace oxide, 15% quartz veins
39 - 42	Poor chip return, very muddy
- 42	End of hole

SAMPLE DATA

Sample No.	From(f)	To (f)	Length(f)	Au (FA) gm/t	Au (AA) gm/t	Remarks
A0147	6	12			<0.1	
A0148	12	15			<0.1	
A0149	15	18			<0.1	
A0150	18	21			<0.1	
11202	21	24			<0.1	
11203	24	27			<0.1	27' plugged bit
11204	27	33			2.5	32' plugged bit
11205	33	36			5.9	
11206	36	39			4.8	

AVERAGED INTERVALS

From(f)	To (f)	Length(f)	Grade gm/t
8.23	11.89	3.66	4.4

Logged by: A.C. Hitchins

Hole No.: <u> 89-PC-60 </u>	Date: <u> September 8, 1989 </u>
Zone: <u> Knoll Zone </u>	Azimuth/Dip: <u> -90° </u>
Northing: <u> </u>	Easting: <u> </u>
	Elevation: <u> </u>

GEOLOGY

Interval (m)	Description
0 - 1.83	Overburden - mixed dolomite/oxide/black phyllite
1.83 - 6.10	Red oxide/dolomite, trace quartz, weakly calcareous (3.66-6.10 poor return)
6.10 - 7.32	Black graphitic phyllite
- 7.32	End of hole

SAMPLE DATA

Sample No.	From(m)	To (m)	Length(m)	Au (FA) g/tonne	Au (AA) g/tonne	Remarks
A554	0	0.91	0.91		0.8	
A555	0.91	1.83	0.92		2.1	
A556	1.83	3.66	1.83	3.8	4.4	
A557	3.66	7.32	3.66		1.1	

AVERAGED INTERVALS

From(m)	To (m)	Length(m)	Grade g/tonne
0	7.32	7.32	1.9

Logged by: D.B. Fleming

Hole No.: <u>89-PC-62</u>	Date: <u>September 8, 1989</u>
Zone: <u>Knoll Zone</u>	Azimuth/Dip: <u>-90°</u>
Northing: _____	Easting: _____
	Elevation: _____

GEOLOGY

Interval (m)	Description
0 - 0.91	Orange dolomite, weakly calcareous, 5% quartz veins
0.91 - 3.66	No return
3.66 - 7.32	Dark brown to orange mud (poor return)
- 7.32	End of hole

SAMPLE DATA

Sample No.	From(m)	To (m)	Length(m)	Au (FA) g/tonne	Au (AA) g/tonne	Remarks
A561	0	0.91	0.91		0.8	
A562	3.66	7.32	3.66	7.8	10.8	Poor return

AVERAGED INTERVALS

From(m)	To (m)	Length(m)	Grade g/tonne
3.66	7.32	3.66	7.8

Logged by: D.B. Fleming

Hole No.: <u> 89-PC-63 </u>	Date: <u> September 8, 1989 </u>
Zone: <u> Knoll Zone </u>	Azimuth/Dip: <u> -90° </u>
Northing: <u> </u>	Easting: <u> </u>
	Elevation: <u> </u>

GEOLOGY

Interval (m)	Description
0 - 5.50	Orange dolomite, weakly calcareous
5.50- 10.97	Tan to orange, moderately calcareous
10.97- 12.80	Tan dolomite, moderately calcareous
12.80- 14.63	Brown limestone
14.63- 15.85	Orange mud, trace black shale (bit plugged in black shale @ 15.85m)
- 15.85	Black phyllite. End of hole

SAMPLE DATA

Sample No.	From(m)	To (m)	Length(m)	Au (FA) g/tonne	Au (AA) g/tonne	Remarks
A563	0	1.83	1.83		1.3	
A564	1.83	3.66	1.83		1.2	
A565	3.66	5.50	1.84		0.8	
A566	5.50	7.32	1.82		1.4	
A567	7.32	9.14	1.82		0.3	
A568	9.14	10.97	1.83		<0.1	
A569	10.97	12.80	1.83		<0.1	
A570	12.80	14.63	1.83		<0.1	
A571	14.63	15.83	1.20		<0.1	

AVERAGED INTERVALS

From(m)	To (m)	Length(m)	Grade g/tonne

Logged by: D.B. Fleming

Hole No.: <u>89-PC-64</u>	Date: <u>September 8, 1989</u>
Zone: <u>Knoll Zone</u>	Azimuth/Dip: <u>-90°</u>
Northing: _____	Easting: _____
	Elevation: _____

GEOLOGY

Interval (m)	Description
0 - 1.83	Brown mud
1.83- 3.66	Orange mud
3.66- 5.50	Red dolomite, weakly calcareous
5.50- 9.14	Brown limestone/dolomite
9.14-11.89	Brown-orange dolomite, weakly to moderately calcareous
11.89-14.63	Brown-orange mud
14.63-16.76	Brown-orange mud, trace black graphitic phyllite
16.76-18.29	Black graphitic phyllite
-18.29	End of hole

SAMPLE DATA

Sample No.	From(m)	To (m)	Length(m)	Au (FA) g/tonne	Au (AA) g/tonne	Remarks
A572	0	1.83	1.83		0.2	
A573	1.83	3.66	1.83		3.6	
A574	3.66	5.50	1.84		3.8	
A575	5.50	7.32	1.82		<0.1	
A576	7.32	9.14	1.82		<0.1	
A577	9.14	10.97	1.83		0.1	
A578	10.97	12.80	1.83		<0.1	
A579	12.80	14.63	1.83		2.2	
A580	14.63	16.76	1.83		0.5	

AVERAGED INTERVALS

From(m)	To (m)	Length(m)	Grade g/tonne

Logged by: D.B. Fleming

Hole No.: <u>89-PC-65</u>	Date: <u>September 8, 1989</u>
Zone: <u>Knoll Zone</u>	Azimuth/Dip: <u>-90°</u>
Northing: _____	Easting: _____
	Elevation: _____

GEOLOGY

Interval (m)	Description
0 - 3.66	Orange dolomite, weakly calcareous, 5% quartz
3.66- 5.50	Buff-orange dolomite, trace quartz
5.50- 8.23	Orange dolomite, weakly calcareous
8.23-15.55	Brown dolomite, weakly calcareous
15.55-18.29	Black graphitic phyllite
-18.29	End of hole

SAMPLE DATA

Sample No.	From(m)	To (m)	Length(m)	Au (FA) g/tonne	Au (AA) g/tonne	Remarks
A581	0	3.66	3.66		<0.1	
A582	3.66	5.50	1.84		<0.1	
A583	5.50	7.32	1.82		<0.1	
A584	7.32	8.23	0.91		0.1	
A585	8.23	10.97	2.74		<0.1	0.8 rerun
A586	10.97	12.80	1.83		<0.1	
A587	12.80	14.63	1.83		<0.1	
A588	14.63	16.15	1.52		0.1	

AVERAGED INTERVALS

From(m)	To (m)	Length(m)	Grade g/tonne

Logged by: D.B. Fleming

Hole No.: <u>89-PC-66</u>	Date: <u>September 8, 1989</u>
Zone: <u>Knoll Zone</u>	Azimuth/Dip: <u>-90°</u>
Northing: _____	Easting: _____
	Elevation: _____

GEOLOGY

Interval (m)	Description
0 - 1.83	Red dolomite, moderately calcareous
1.83- 3.66	Red dolomite, moderately calcareous (poor return, no reject)
3.66-10.97	Brown-orange mud, trace quartz
10.97-12.15	Brown-orange mud, trace scorodite clay
12.15-15.85	50% black phyllite, 50% red dolomite, trace quartz
-15.85	End of hole

SAMPLE DATA

Sample No.	From(m)	To (m)	Length(m)	Au (FA) g/tonne	Au (AA) g/tonne	Remarks
A589	0	1.83	1.83		<0.1	
A590	1.83	3.66	1.83		<0.1	
A591	3.66	5.50	1.84		0.2	
A592	5.50	7.32	1.82		0.7	
A593	7.32	9.14	1.82	10.5	13.6	
A594	9.14	10.97	1.83	6.7	8.0	
A595	10.97	12.15	1.18	6.8	7.8	
A596	12.15	15.85	3.70	5.7	1.4	8.1 on rerun

AVERAGED INTERVALS

From(m)	To (m)	Length(m)	Grade g/tonne
7.32	15.85	8.53	7.1

Logged by: D.B. Fleming

Hole No.: <u> 89-PC-67 </u>	Date: <u> September 8, 1989 </u>
Zone: <u> Knoll Zone </u>	Azimuth/Dip: <u> 90° </u>
Northings: _____	Easting: _____
	Elevation: _____

GEOLOGY

Interval (m)	Description
0 - 1.83	Red dolomite, moderately calcareous
1.83- 3.66	Red dolomite, moderately calcareous
3.66- 5.50	Brown mud (poor return), weakly calcareous
5.50- 7.32	Orange-brown mud, weakly calcareous
7.32- 9.14	Orange-brown mud, weakly calcareous
9.14-10.36	Brown mud
10.36-10.97	Black graphitic phyllite
-10.97	End of hole

SAMPLE DATA

Sample No.	From(m)	To (m)	Length(m)	Au (FA) g/tonne	Au (AA) g/tonne	Remarks
A597	0	1.83	1.83		0.1	
A598	1.83	3.66	1.83		0.8	
A599	3.66	5.50	1.84		1.4	Poor return
A600	5.50	7.32	1.82		0.2	
A601	7.32	9.14	1.82		0.6	
A602	9.14	10.97	1.83		0.4	

AVERAGED INTERVALS

From(m)	To (m)	Length(m)	Grade g/tonne

Logged by: D.B. Fleming

Hole No.: <u>89-PC-68</u>	Date: <u>September 8, 1989</u>
Zone: <u>Knoll Zone</u>	Azimuth/Dip: <u>-90°</u>
Northing: _____	Easting: _____
	Elevation: _____

GEOLOGY

Interval (m)	Description
0 - 1.83	Red-brown dolomite mud, weakly calcareous
1.83- 3.66	Brown mud, weakly calcareous
3.66- 5.50	Brown-orange mud with 10% green mud/clay
5.50- 9.14	Green-brown-orange clay/mud
9.14-10.97	Green clay/mud
10.97-12.80	Green-brown mud
12.80-13.40	Poor return
13.40-14.63	Black graphitic phyllite
-14.63	End of hole

SAMPLE DATA

Sample No.	From(m)	To (m)	Length(m)	Au (FA) g/tonne	Au (AA) g/tonne	Remarks
A603	0	1.83	1.83		1.4	
A604	1.83	3.66	1.83		0.9	
A605	3.66	5.50	1.84		0.9	
A606	5.50	7.32	1.82	10.8	14.3	
A607	7.32	9.14	1.82	11.55	9.9	
A608	9.14	10.97	1.83	11.2	12.1	
A609	10.97	12.80	1.83	9.2	8.0	
A610	12.80	14.63	1.83	12.5	12.5	Poor return 12.80-13.4

AVERAGED INTERVALS

From(m)	To (m)	Length(m)	Grade g/tonne
5.50	14.63	9.13	11.1

Logged by: D.B. Fleming

Hole No.: <u>89-PC-69</u>	Date: <u>September 9, 1989</u>
Zone: <u>Knoll Zone</u>	Azimuth/Dip: <u>-90°</u>
Northing: _____	Easting: _____
	Elevation: _____

GEOLOGY

Interval (m)	Description
0 - 5.50	Orange-brown mud, 5% quartz, weakly calcareous
5.50- 7.32	Red-brown mud, trace quartz
7.32-12.80	Red-brown clay (dolomite?), weakly calcareous
12.80-16.46	Brown-orange mud, trace scorodite clay, trace quartz
16.46-17.06	Orange-brown mud
17.06-18.29	Black graphitic phyllite
-18.29	End of hole

SAMPLE DATA

Sample No.	From(m)	To (m)	Length(m)	Au (FA) g/tonne	Au (AA) g/tonne	Remarks
A611	0	1.83	1.83		3.1	
A612	1.83	3.66	1.83		0.6	
A613	3.66	5.50	1.84	6.4	7.5	
A614	5.50	7.32	1.82	4.1	4.4	
A615	7.32	9.14	1.82		2.1	1.9 rerun
A616	9.14	10.97	1.83		1.1	1.1 rerun
A617	10.97	12.80	1.83		0.9	
A618	12.80	14.63	1.83		1.4	
A619	14.63	16.46	1.83		1.7	
A620	16.46	18.29	1.83	5.8	6.8	

AVERAGED INTERVALS

From(m)	To (m)	Length(m)	Grade g/tonne
3.66	7.32	5.25	5.3
16.46	18.29	1.83	5.8

Logged by: D.B. Fleming

Hole No.: <u>89-PC-70</u>	Date: <u>September 9, 1989</u>
Zone: <u>Knoll Zone</u>	Azimuth/Dip: <u>-90°</u>
Northing: _____	Easting: _____
	Elevation: _____

GEOLOGY

Interval (m)	Description
0 - 3.66	Tan to orange clay/mud
3.66- 5.50	Brown, weakly calcareous phyllite
5.50- 7.32	Brown phyllite/red-brown dolomite, weakly calcareous
7.32-12.80	Brown dolomite, strongly calcareous
-12.80	End of hole

SAMPLE DATA

Sample No.	From(m)	To (m)	Length(m)	Au (FA) g/tonne	Au (AA) g/tonne	Remarks
A621	0	1.83	1.83		2.2	
A622	1.83	3.66	1.83	8.3	7.2	
A623	3.66	5.50	1.84		<0.1	0.5 rerun
A624	5.50	7.32	1.82		4.9	
A625	7.32	9.14	1.82		<0.1	
A626	9.14	10.97	1.83		<0.1	
A627	10.97	12.80	1.83		2.4	

AVERAGED INTERVALS

From(m)	To (m)	Length(m)	Grade g/tonne
0	7.32	7.32	4.0

Logged by: D.B. Fleming

Hole No.:	<u> 89-PC-71 </u>	Date:	<u> September 9, 1989 </u>
Zone:	<u> Knoll Zone </u>	Azimuth/Dip:	<u> -90° </u>
Northing:	<u> </u>	Easting:	<u> </u>
		Elevation:	<u> </u>

GEOLOGY

Interval (m)	Description
0 - 3.66	Yellow-brown mud
3.66- 5.50	Orange-brown mud
5.50-10.97	Brown mud with phyllite chips, weakly calcareous (7.32-9.14 poor recovery)
10.97-11.30	Brown dolomite
11.30-12.80	Black graphitic phyllite
-12.80	End of hole

SAMPLE DATA

Sample No.	From(m)	To (m)	Length(m)	Au (FA) g/tonne	Au (AA) g/tonne	Remarks
A628	0	1.83	1.83	7.3	6.7	
A629	1.83	3.66	1.83	11.2	13.6	
A630	3.66	5.50	1.84	4.9	6.0	
A631	5.50	7.32	1.82	5.3	5.9	
A632	7.32	9.14	1.82	4.9	6.0	
A633	9.14	10.97	1.83	8.2	9.3	

AVERAGED INTERVALS

From(m)	To (m)	Length(m)	Grade g/tonne
0	10.97	10.97	7.9

Logged by: D.B. Fleming

Hole No.: <u>89-PC-75</u>	Date: <u>September 9, 1989</u>
Zone: <u>Knoll Zone</u>	Azimuth/Dip: <u>-90°</u>
Northing: _____	Easting: _____
	Elevation: _____

GEOLOGY

Interval (m)	Description
0 - 1.83	Red dolomite, 5% quartz, moderately calcareous (no reject) (poor return)
1.83- 9.14	Brown dolomite, moderately calcareous (poor return)
9.14-10.97	Brown-orange clay
10.97-11.28	Orange clay
11.28-12.80	Black graphitic phyllite
-12.80	End of hole

SAMPLE DATA

Sample No.	From(m)	To (m)	Length(m)	Au (FA) g/tonne	Au (AA) g/tonne	Remarks
A648	0	1.83	1.83		<0.1	
A649	1.83	3.66	1.83		<0.1	
A650	3.66	5.50	1.84		<0.1	
A651	5.50	7.32	1.82		0.2	
A652	7.32	9.14	1.82		0.4	
A653	9.14	10.97	1.83	9.5	12.9	
A654	10.97	12.80	1.83	1.3	3.6	

AVERAGED INTERVALS

From(m)	To (m)	Length(m)	Grade g/tonne
9.14	12.8	3.66	5.4

Logged by: D.B. Fleming

Hole No.: <u> 89-PC-78 </u>	Date: <u> September 9, 1989 </u>
Zone: <u> Knoll Zone </u>	Azimuth/Dip: <u> -90° </u>
Northing: <u> </u>	Easting: <u> </u>
	Elevation: <u> </u>

GEOLOGY

Interval (m)	Description
0 - 1.83	Orange mud (good recovery)
1.83- 3.66	Orange clay
3.66- 5.50	Orange dolomite, 5% quartz, strongly calcareous
5.50- 7.32	Orange dolomite, 10% quartz
7.32- 9.14	Brown-orange dolomite, trace quartz
9.14-10.97	Orange dolomite, 5% quartz
10.97-16.46	Brown dolomite, strongly calcareous
-16.46	Black graphitic phyllite (bit plugged)
-16.46	End of hole

SAMPLE DATA

Sample No.	From(m)	To (m)	Length(m)	Au (FA) g/tonne	Au (AA) g/tonne	Remarks
A658	0	1.83	1.83		3.3	
A659	1.83	3.66	1.83		0.1	
A660	3.66	5.50	1.84		0.2	
A661	5.50	7.32	1.82		1.5	
A662	7.32	9.14	1.82		<0.1	
A663	9.14	10.97	1.83		0.2	
A664	10.97	12.80	1.83		0.3	
A665	12.80	14.63	1.83		0.4	
A666	14.63	16.46	1.83		<0.1	

AVERAGED INTERVALS

From(m)	To (m)	Length(m)	Grade g/tonne

Logged by: D.B. Fleming

Hole No.: <u> 89-PC-79 </u>	Date: <u> September 9, 1989 </u>
Zone: <u> Knoll Zone </u>	Azimuth/Dip: <u> -90° </u>
Northing: _____	Easting: _____
	Elevation: _____

GEOLOGY

Interval (m)	Description
0 - 1.82	Brown dolomite, moderately calcareous
1.82- 3.66	Brown mud
3.66- 7.32	Yellow to light green mud
7.32- 9.14	Orange-yellow clay
9.14-10.97	Brown-orange dolomite, weakly calcareous
10.97-14.63	Orange dolomite
14.63-16.15	Brown-grey dolomite, moderately calcareous
-16.15	Black graphitic phyllite (bit plugged)
-16.15	End of hole

SAMPLE DATA

Sample No.	From(m)	To (m)	Length(m)	Au (FA) g/tonne	Au (AA) g/tonne	Remarks
A667	0	1.83	1.83		<0.1	
A668	1.83	3.66	1.83		0.2	
A669	3.66	5.50	1.84	1.8	3.5	
A670	5.50	7.32	1.82	15.1	19.0	
A671	7.32	9.14	1.82	7.8	6.6	
A672	9.14	10.97	1.83	2.2	4.1	
A673	10.97	12.80	1.83	7.2	4.5	
A674	12.80	14.63	1.83	19.2	19.8	
A675	14.63	16.15	1.82		2.8	

AVERAGED INTERVALS

From(m)	To (m)	Length(m)	Grade g/tonne
5.50	14.63	9.13	10.3

Logged by: D.B. Fleming

Revised

STATEMENT OF COSTS
KON 30 - KNOLL ZONE

Work Period:	July 23, September 6, 8-10, 22-28, 1989	
Drill Site Construction:	Grant Stewart Construction Ltd. P.O. Box 410 Watson Lake, Yukon Invoice #6612: D8H Bulldozer - 8 hrs. @ \$140.00/hr.	\$ 1,120.00
Percussion Drilling:	Pelly Construction Ltd. P.O. Bag 2751 Whitehorse, Yukon Invoice #288 & #307: Atlas Copco 712 Airdrill - 33.5 hrs. @ \$168.00/hr.	5,628.00
Road Construction:	Grant Stewart Construction Ltd. P.O. Box 410 Watson Lake, Yukon Invoice #6612: D8H Bulldozer - 8 hrs. @ \$140.00/hr.	1,120.00
Fuel:	Percussion Drill - 16 litres/hr. x 0.31 x 33.5	166.00
	Hourly consumption in D8 - 34 litres/hr. x 0.31/litre x 20	211.00
Room and Board:	18 man-days @ \$18.00/day	324.00
Truck Rental:	6 days @ \$50.00/day	300.00
Supervision:	Dave Fleming 5 days @ \$198.00/day) Tony Hitchins 1 day @ \$268.34/day)	<u>1,258.34</u>
	Total	<u><u>\$10,127.34</u></u>

