

MAP NO.: 116 A/4&5
ASSESSMENT REPORT X
PROSPECTUS
CONFIDENTIAL X
OPEN FILE

DOCUMENT NO: 092817
MINING DISTRICT: Dawson
TYPE OF WORK: Geological and Geochemical

REPORT FILED UNDER: Aurum Geological Consultants Inc.

DATE PERFORMED: August 8-11, 1989

DATE FILED: March 2, 1990

LOCATION: LAT.: 64°16'N

AREA: Mike Lake

LONG.: 137°53'W

VALUE \$: 6617.11

CLAIM NAME & NO.: LORRIE 1-4 (YB17448-451); LORRIE 5-8 (YB17909-912); LORRIE 9-16 (YB05584-591); LORRIE 17-23 (YB17913-919); LORRIE 24-56 (YB23265-297); LORRIE 80-81 (YB23299-300); JAMIE 1-4 (YB17905-908)

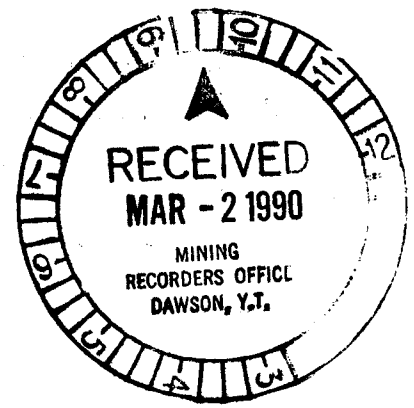
WORK DONE BY: R. Allan Doherty

WORK DONE FOR: Walhala Explorations Ltd.

DATE TO GOOD STANDING:

REMARKS: #11 Gold

The quartz-arsenopyrite veins contain material which has returned values of 1.2oz/ton Ag, 1.53oz/ton Au, 2.99% Cu, and anomalous values of As, Ba, Sb, W, Hg.



092817

**GEOLOGICAL MAPPING
AND
GEOCHEMICAL SAMPLING
on the
LORRIE CLAIMS**

DAWSON MINING DISTRICT

August 8-11, 1989

Claims: LORRIE 1-4 (YB17448-451)
LORRIE 5-8 (YB17909-912)
LORRIE 9-16 (YB05584-591)
LORRIE 17-23 (YB17913-919)
LORRIE 24-56 (YB23265-297)
LORRIE 80-81 (YB23299-300)
JAMMIE 1-4 (YB17905-908)

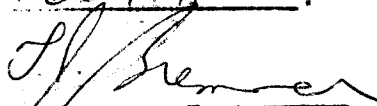
Location: 1. 77 km northeast of Dawson City
2. NTS 116 A/4,5
3. Latitude 64° 16'
Longitude 137° 53'

For: WALHALA EXPORTATIONS LTD.
5 Teak Avenue
Whitehorse, Yukon
Y1A 4W4

By: R. Allan Doherty, B.Sc.,
AURUM GEOLOGICAL CONSULTANTS INC.
P.O. Box 5179
Whitehorse, Yukon
Y1A 4S3

February 20, 1990

This report has been examined by
the Geological Evaluation Unit
under Section 53 (4) Yukon Quartz
Mill Act and is allowed as
reproduction work in the amount
of 6617.11.



for

Regional Manager, Exploration and
Geological Services for Commissioner
of Yukon Territory.

TABLE OF CONTENTS

TABLE OF CONTENTS	i
INTRODUCTION	1
LOCATION AND ACCESS	1
PHYSIOGRAPHY, CLIMATE, AND VEGETATION	1
PROPERTY	3
HISTORY	3
GEOLOGY	6
REGIONAL GEOLOGY	6
PROPERTY GEOLOGY	6
GEOCHEMISTRY	7
CONCLUSIONS AND RECOMMENDATIONS	8
REFERENCES	9

LIST OF FIGURES

FIGURE 1. LOCATION MAP	2
FIGURE 2. CLAIM LOCATION MAP	4
FIGURE 3. PROPERTY GEOLOGY AND GEOCHEMISTRY	IN POCKET

APPENDICES

APPENDIX A	STATEMENT OF COSTS
APPENDIX B	STATEMENT OF QUALIFICATIONS
APPENDIX C	ANALYTICAL RESULTS
APPENDIX D	SAMPLE DESCRIPTIONS

INTRODUCTION

This report was prepared at the request of Mr. Simon Ridgway of Walhala Explorations Ltd. It describes exploration work carried out during the period August 8-11, 1989 on the LORRIE and JAMMIE Claims, located in the Dawson Mining District. The work program consisted of geological mapping and geochemical sampling in the area surrounding Mike Lake (NTS 116 A/5).

Location and Access

The LORRIE and JAMMIE claims are located within the Dawson Mining District within map areas 116 A/4 & 5, (Figure 1). More specifically the claim block covers an area of the Ogilvie Mountains at the head of a westerly draining tributary of Brewery Creek. The centre of the property is at approximately $64^{\circ} 16'$ north longitude and $137^{\circ} 53'$ west latitude.

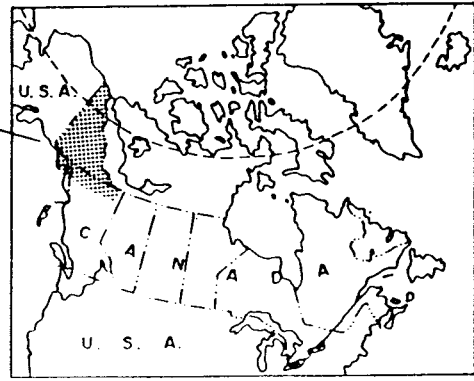
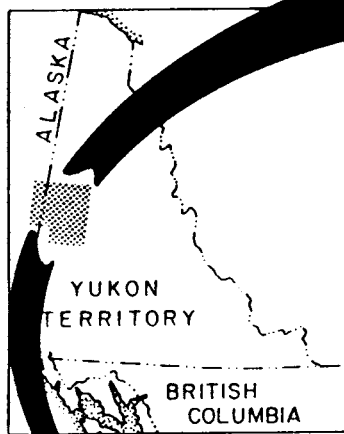
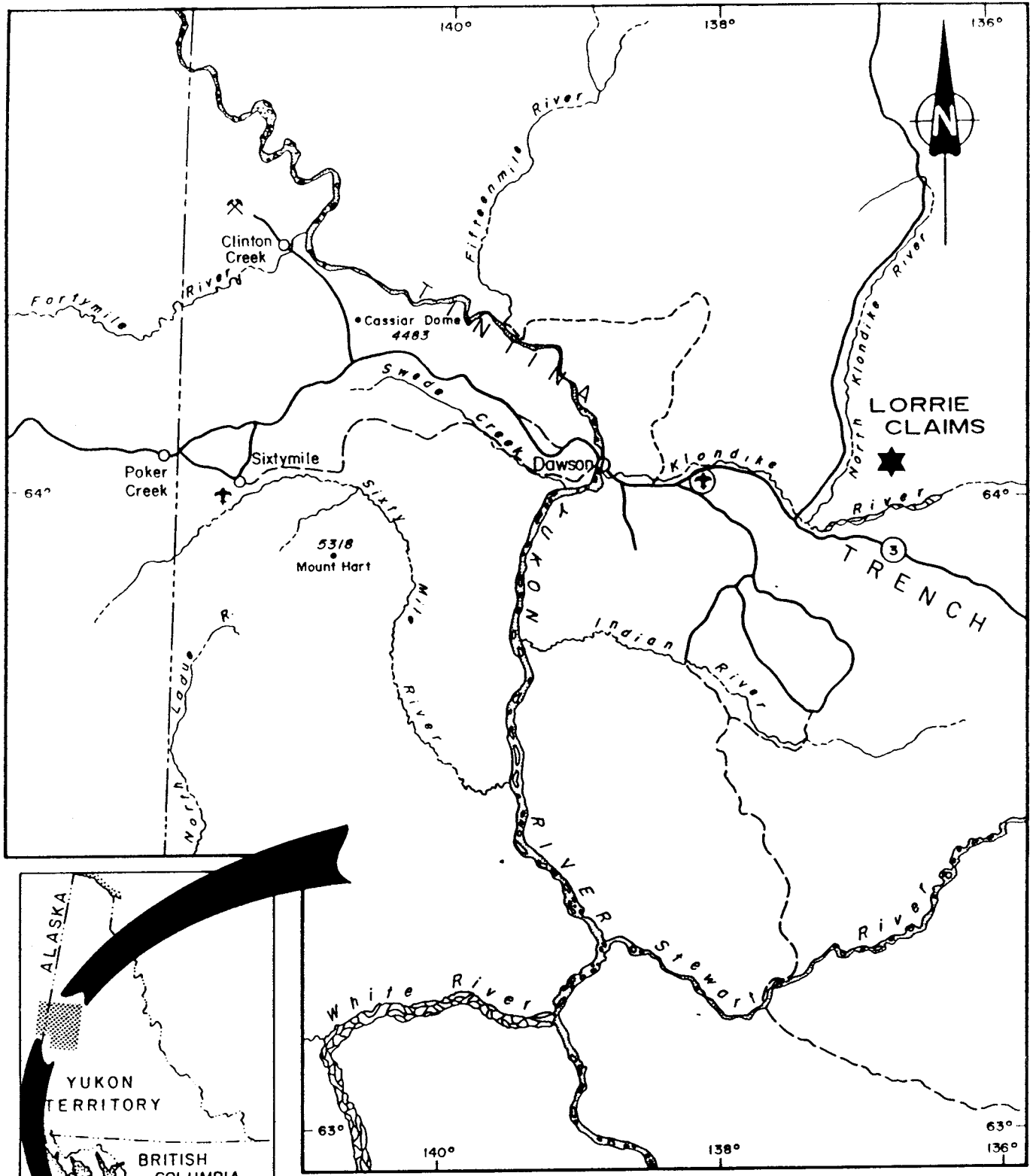
Access to the property is by helicopter from the Dempster highway 25 km to the east, but more practically from that point where the Dempster highway leaves the Klondike highway approximately 50 km southwest of the property.

Physiography, Climate, and Vegetation

This area is part of the east trending Southern Ogilvie Ranges that lie north of the Yukon and Klondike rivers on the northeast side of the Tintina trench. The entire property is above treeline and steep razor backed ridges and granite faces with steep talus aprons are common. Small alpine glaciers and permanent snow fields remain in north facing cirques. Valleys are narrow and display U-shaped profiles from alpine glaciation.

The climate in this area of the Yukon is marked by long cold winters and warm summers. Precipitation during the summer averages less than 2.5 inches per month.

Vegetation is limited to alpine shrubs and grasses. Treeline in the area is at approximately 4000 feet.



WALHALA EXPLORATIONS LTD.			
LORRIE PROPERTY			
LOCATION			
Aurum Geological Consultants Inc.		DATE: FEB. 1990	
NTS 116A4&5	DRAWN BY NH	SCALE: 1:100,000	FIGURE : 1

PROPERTY

The property consists of 61 contiguous unsurveyed two post quartz claims covering approximately 1275 hectares, staked in accordance with the Yukon Quartz Mining Act (Figure 2). The LORRIE Claims share a common northern boundary with the AINE 1-24 Claims (YA55689-712) which are up for renewal on July 7, 1990 and are currently owned by Gunner Gold Mining Corp. The LORRIE Claims were staked by Walhala Explorations Ltd in July and August 1988. Claim data is as follows:

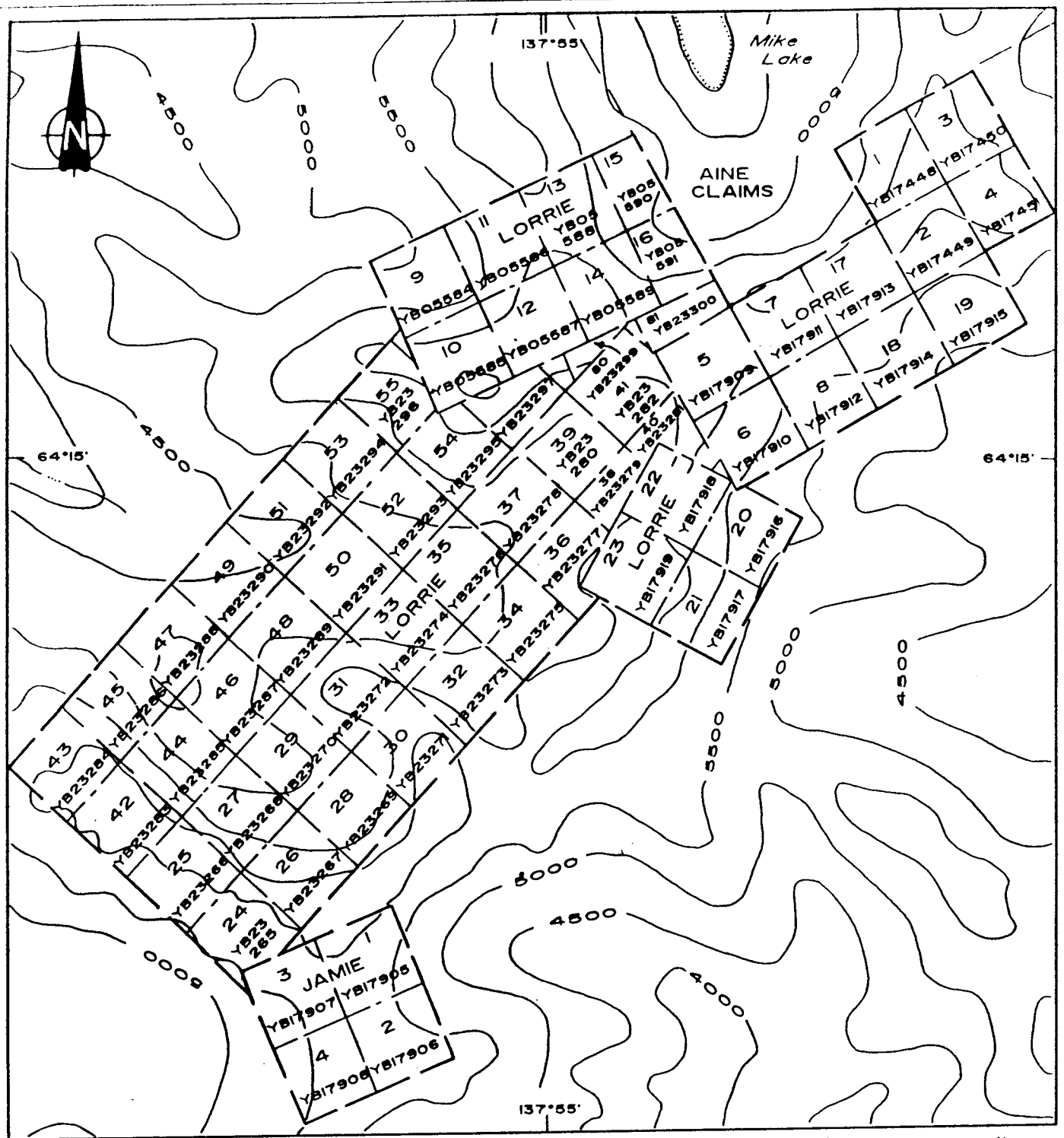
CLAIM NAME	GRANT #'s	EXPIRY DATE
LORRIE 1-4	YB17448-451	OCT 18/90
LORRIE 5-8	YB17909-912	SEP 12/90
LORRIE 9-16	YB05584-591	OCT 18/90
LORRIE 17-23	YB17913-919	SEP 12/90
LORRIE 24-56	YB23265-297	OCT 18/90
LORRIE 80-81	YB23299-300	OCT 18/90
JAMMIE 1-4	YB17905-908	SEP 12/90

* Subject to acceptance of this assessment report.

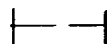



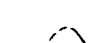
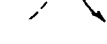
HISTORY

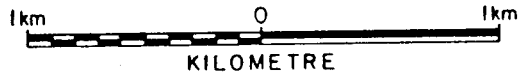
The first claims located near Mike Lake were the Gold Claims staked by Hart River Mines Ltd in the mid 1960's. Limited trenching and sampling were conducted and the claims were allowed to lapse. The area was restaked in the mid 1970's by Canalta resources as the Mike 1-24 claims. Trenching and diamond drilling were completed in 1975 with encouraging results as reported by Holcapeck (1975).

Three of four diamond drill holes intersected a mineralized quartz-arsenopyrite-tourmaline vein hosted within the syenite intrusion at the south end of Mike Lake (See Figure 3). Drill hole DDH75-1 intersected 4'6" of 0.128 oz/ton Au, and DDH75-3 intersected 4'2" of 0.715 oz/ton Au.



LEGEND

-  claim boundary
-  claim number
-  tag number
-  staking direction
-  creek
-  3500 elevation contour; interval 500 ft.



WALHALA EXPLORATIONS LTD.	
LORRIE PROPERTY	
CLAIM MAP	
Aurum Geological Consultants Inc.	DATE: FEB. 1990
NTS 116A4&5	DRAWN BY NH SCALE 1:31,680
FIGURE : 2	

Note: adopted from D.I.A.N.D. map sheet

The Mike claims were allowed to lapse and were restaked in 1980 as the AINE 1-24 Claims by a local prospector Seamus Young. A report was prepared on the property by D.P. Taylor P. Eng.(Assessment report # 091446) and the ground was optioned to Gallagher Explorations Ltd, a VSE listed company. Gallagher Exploration Ltd. conducted geological and geochemical work which was filed as assessment report #062204 in 1985. Gallagher Explorations Ltd was taken over by Gunner Gold Mining Corp in 1987. The property has been inactive since the option to Gunner Gold Mining Corp and the claims are due to expire on July 7, 1990.

The Lorrie and Jammie Claims were tied on to the Aine 1-24 claims by Walhala Exploration Ltd in 1988. Work carried out by Walhala Exploration is reported here.

GEOLOGY

Regional Geology

The Regional Geology of the Southern Ogilvie Ranges was reported on by Green (1972) as part of Operation Ogilvie. This area east of the Tintina Trench is part of Ancestral North America (Wheeler and McFeely 1987) which is comprised of stabilized craton overlain by passive and displaced passive continental margin sediments. The sediments range in age from Proterozoic to Devonian and Jurassic. Lithologies are dominantly fine grained clastics and minor limestone and chert.

A suite of granite to syenite intrusive igneous rocks forming large discrete bodies and small stocks intrudes the Proterozoic sediments along a northwest-southeast trending belt that extends for over 80 km from Alder creek northwest of Tombstone Mountain to Hamilton Creek which is just southeast of the Lorrie claims.

Two significant north verging regional thrust faults; the Robert Service and Dawson thrust faults displace the Proterozoic passive continental sediments over younger Devonian and Jurassic sediments.

Property Geology

The Lorrie claims are located over a syenite intrusion that has cut Proterozoic "Grit Unit" consisting of fine grained quartzites, argillite and cherts. A number of east west structures host auriferous quartz and arsenopyrite veins which are the primary exploration target on the property. The sediments are hornfelsed at the intrusive contact and are commonly gossanous due to the formation of pyrite and pyrrhotite in the metamorphic aureole.

The iron rich contact metamorphic aureoles have a strong magnetic signature and all intrusives along the belt are contained within areas of high magnetic relief. The larger intrusions have a low magnetic signature surrounded by the high magnetic relief related to the contact metamorphic halo.

Structures hosting the quartz-arsenopyrite veins commonly trend 100° and dip steeply to the southwest. The main structure drilled in 1975 can be traced for approximately 300 m before it disappears under glacial moraine on both its western and eastern ends. Other veins on the property are exposed on ridge tops and disappear under talus cover off the ridges.

GEOCHEMISTRY

A total of six soil and 19 rock samples were collected during the work reported here. Samples were analyzed by Bondar Clegg and Company for Au, Ag, Cu, Mo, Pb, Zn, As, Ba, Sb, W, and Hg.

Seven of the samples were collected just outside the claim boundary. Sample locations are plotted on the property map (Figure 3) and the geochemical results are listed in Appendix C. Rock sample descriptions and selected geochemical results are listed in Appendix D.

The quartz-arsenopyrite veins contain ore grade material which returned values for gold up to 1.2 oz/ton, silver up to 1.53 oz/ton, copper up to 2.99%, and highly anomalous values for arsenic (> 30000 ppm), barium (5000 ppm), antimony (11200 ppm), and to a lesser extent for tungsten (6840 ppm) and mercury (2950 ppb).

Six grab samples collected in 1988 from hornfelsed and gossanous sedimentary rocks on the Lorrie 10 claim returned anomalous values for gold, arsenic, copper and zinc. One sample (62859) assayed 6.2% zinc.

Anomalous results were obtained from samples collected in both quartz-arsenopyrite veins hosted within the syenite intrusion and from samples of the sedimentary rocks in the contact metamorphic aureole.

CONCLUSIONS & RECOMMENDATIONS

The LORRIE Property hosts gold bearing quartz-arsenopyrite veins spatially and temporally related to mid Cretaceous syenite intrusions which cut Proterozoic and Cambrian sedimentary rocks of the "Grit Unit". Anomalous gold values also occur in fine grained quartzites within the metamorphic aureole surrounding the syenite stock.

The mineral occurrences contain anomalous Au, Ag, Cu, As, Ba, Sb, and locally anomalous Zn, Hg, and W.

The property warrants further work to locate and define areas of mineralization both within the intrusion as veins or disseminations and in the surrounding contact metamorphic aureole. Work on the property should consist of further soil and rock geochemistry, prospecting and trenching.

REFERENCES

- Green, L. H., 1972: Geology of Nash Creek, Larsen Creek, and Dawson Map-Areas, Yukon Territory; GSC Mem. 364**
- Holcapek, F., 1975: Assessment report on Mike lake Area, Yukon for Canalta Resources Ass. Rept # 090124**
- Taylor, D.P., 1982: Mike Lake Area Yukon, Assessment Report for Mr. Seamus Young; Ass. Rept # 091446**
- Wheeler, J.O., and McFeely, P., 1987: Tectonic Assemblage map of the Canadian Cordillera and parts of the united states of America; GSC O.F. 1565**

APPENDIX A
Statement of Costs

STATEMENT OF COSTS

1. Field Work

R. Allan Doherty 4 Days @ \$300	1200.00
S. Ridgway 5 days @ \$250	1250.00

2. Transportation

Airfare Whitehorse to Dawson	108.00
Truck rental	300.00
Helicopter Charter	1358.00

3. Camp supplies

propane	\$ 36.00	
groceries	\$ 106.47	
gasoline	240.31	
meals	8.78	
camp supplies	28.70	
Total camp supplies		420.26

4. Analytical costs

25 analyses "Gold + 10"	552.85
8 gold, 1 copper, 1 gold/silver assay	97.50

5. Report writing & Reprographics

R. A. Doherty 1.5 days @ \$300	450.00
S. Ridgway 1 day @ \$200.00	200.00
Drafting 15 hrs @ \$25/hr	375.00
Reprographics	300.00
Maps	<u>5.50</u>

Total 1989 Assessment Value on Lorrie Claims **\$6,617.11**

APPENDIX B
Statement of Qualifications

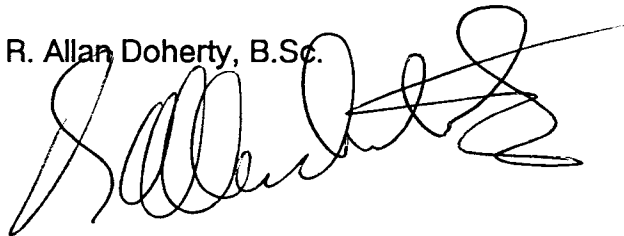
STATEMENT OF QUALIFICATIONS

I, R. Allan Doherty, hereby certify that:

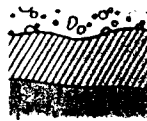
1. I am a geologist with AURUM GEOLOGICAL CONSULTANTS INC., P.O. Box 5179, Whitehorse, Yukon.
2. I am a graduate of the University of New Brunswick, with a degree in geology (Hons. B.Sc., 1977) and that I attended graduate school at Memorial University of Newfoundland, 1978-81. I have been involved in geological mapping and mineral exploration continuously since then.
3. I am a member of the Yukon Association of Professional Geoscientists and the CIMM.
4. I have no direct or indirect interests in the properties of Walhala Explorations Ltd.
5. I supervised the work program and the preparation of this report on the Lorrie property, which is based on data collected during property work and property visits between August 8-11 1989, and on the basis of information supplied by Mr. Simon Ridgway of Walhala Explorations Ltd.

February 20, 1990

R. Allan Doherty, B.Sc.

A handwritten signature in black ink, appearing to read 'R. Allan Doherty', written over the typed name.

APPENDIX C
Analytical Results



RECEIVED OCT 10 1980

PROJECT: W-50-10 (COMPLETE)

REFERENCE INFO:

ANALYSIS: GEOCHEMICAL CONSULTANTS INC.

SUBMITTED BY: R. DOHERIS

DATE PRINTED: 5-OCT-80

ORDER	ELEMENT	NUMBER OF ANALYSES	LOWER DETECTION LIMIT	EXTRACTION	METHOD
1	AU GOLD	25	10 PFB	NOT APPLICABLE	INST. NEUTRON ACTIV.
2	AG SILVER	25	0.1 PFM	HNO3-HCL HOT-EXTR	ATOMIC ABSORPTION
3	CU COPPER	25	1 PPM	HNO3-HCL HOT EXTR	ATOMIC ABSORPTION
4	MO MOLYBDENUM	25	1 PPM	HNO3-HCL HOT EXTR	ATOMIC ABSORPTION
5	PB LEAD	25	2 PPM	HNO3-HCL HOT EXTR	ATOMIC ABSORPTION
6	ZN ZINC	25	1 PPM	HNO3-HCL HOT EXTR	ATOMIC ABSORPTION
7	AS ARSENIC	25	2 PPM	NOT APPLICABLE	INST. NEUTRON ACTIV.
8	BA BARIUM	25	100 PPM	NOT APPLICABLE	INST. NEUTRON ACTIV.
9	SB ANTIMONY	25	1 PPM	NOT APPLICABLE	INST. NEUTRON ACTIV.
10	W TUNGSTEN	25	2 PPM	NOT APPLICABLE	INST. NEUTRON ACTIV.
11	HG MERCURY	25	5 PFB	HNO3-HCL-SMSO4	COLD VAPOR AA

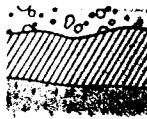
SAMPLE TYPES	NUMBER	SIZE FRACTIONS	NUMBER	SAMPLE PREPARATIONS	NUMBER
3 SOILS	6	1 -80	6	DRY, SIEVE -80	6
8 ROCK OR BED ROCK	19	2 -150	19	CRUSH+PULVERIZE -150	19

REMARKS: EXTREMELY ELEVATED DETECTION LIMITS DUE TO HIGH AS AND SB CONTENTS. THESE SAMPLES ARE OF "ORE GRADE" RATHER THAN GEOCHEMICAL SAMPLES.

REPORT COPIES TO: P.O. BOX 5179

INVOICE TO: P.O. BOX 5179

WALHALLA EXPLORATION LTD.



RECEIVED OCT 10 1989

DATE PRINTED: 5-OCT-89

PROJECT: 28

PAGE 1

REF: V-40-40-0

ANALYSE	ELEMENT UNITS	AR PPM	AG PPM	CU PPM	MO PPM	PR PPM	ZN PPM	AS PPM	BA PPM	SR PPM	W PPM	BC PPM
S1 9100		85	0.9	504	7	64	88	2450	2100	23	33	15
S1 9400E		75	0.7	276	16	85	73	749	1100	17	9	30
S1 5:0425F		72	2.5	520	7	111	105	2410	820	53	17	35
S1 5:0425		140	2.2	567	5	98	81	3110	1100	50	9	45
R1 LB95-1		130	0.2	78	<1	58	36	21700	1100	14	<9	660
S1 LB-89-2		260	34.1	2284	24	110	169	7960	1700	75	77	1500
R2 LB9-1		7910	15.1	32	4	2037	77	>30000	<2200	110	<22	25
R2 LB9-2		32	3.4	73	4	467	85	1230	1700	11	<2	35
R2 LB9-3		49	1.6	14	2	208	125	311	<100	21	4	<5
R2 LB9-4		46	4.9	3794	<1	109	159	874	<230	8	<2	5
R1 LB9-5		13300	>50.0	19020	43	57	275	>30000	5000	11200	418	2950
R2 LB9-6		5620	12.2	18843	20	66	147	24000	<850	77	87	450
R2 LB9-7		27800	5.1	4798	122	54	83	>30000	<2200	157	81	370
R1 LB9-8		10700	1.5	265	22	73	24	>30000	<3200	167	536	65
R2 LB9-9		230	2.3	199	4	185	81	10100	1600	57	60	800
R1 LB9-10		>30000	13.3	>20000	20	77	134	>30000	<3400	290	389	130
R1 LB9-11		>30000	3.6	320	16	74	23	>30000	<2900	295	<33	35
R2 LB9-12		>30000	6.1	3000	354	146	40	>30000	<4300	275	110	35
R2 LB9-13		10400	19.1	2284	85	903	555	>30000	<2800	567	6840	950
R1 LB9-14		250	0.9	486	10	48	68	2080	3600	7	26	5
R2 LB9-15		580	1.7	937	18	55	54	10400	2000	12	34	15
TRANCH #3-1		1530	2.7	256	2	25	17	25700	<820	61	79	10
TR#2		32	<0.1	34	2	23	19	991	<100	8	<2	<5
R2 T5-1		2410	0.8	111	2	23	28	>30000	<1700	55	<20	5
R2 RB9-20		33	0.3	65	<1	99	25	299	220	23	9	55



Certificate of Analysis

ANALYSIS OF CHEMICAL AND METALLURGICAL SERVICES

REPORT: U82 06309.6 (COMPLETE)

REFERENCE INFO:

CLIENT: ALPHAM GEOLOGICAL CONSULTANTS INC.
PROJECT: 28

SUBMITTED BY: R. DOHERTY
DATE PRINTED: 13-OCT-89

ORDER	ELEMENT	NUMBER OF ANALYSES	LOWER DETECTION LIMIT	EXTRACTION	METHOD
1	Au Gold	9	0.0002 OPT		Fire Assay
2	Ag Silver	1	0.02 OPT		Fire Assay
3	Cu Copper	1	0.01 PCT		Atomic Absorption

SAMPLE TYPES	NUMBER	SIZE FRACTIONS	NUMBER	SAMPLE PREPARATIONS	NUMBER
R ROCK OR BED ROCK	9	2 = 150	9	AS RECEIVED, NO SP	9

REPORT COPIES TO: P.O. BOX 5179
WAIHALLA EXPLORATION LTD.

INVOICE TO: P.O. BOX 5179



A DIVISION OF INCHCAPE INSPECTION & TESTING SERVICES

DATE PRINTED: 13-OCT-89

PROJECT: 28

PAGE 1

REPORT: V89-06409.6

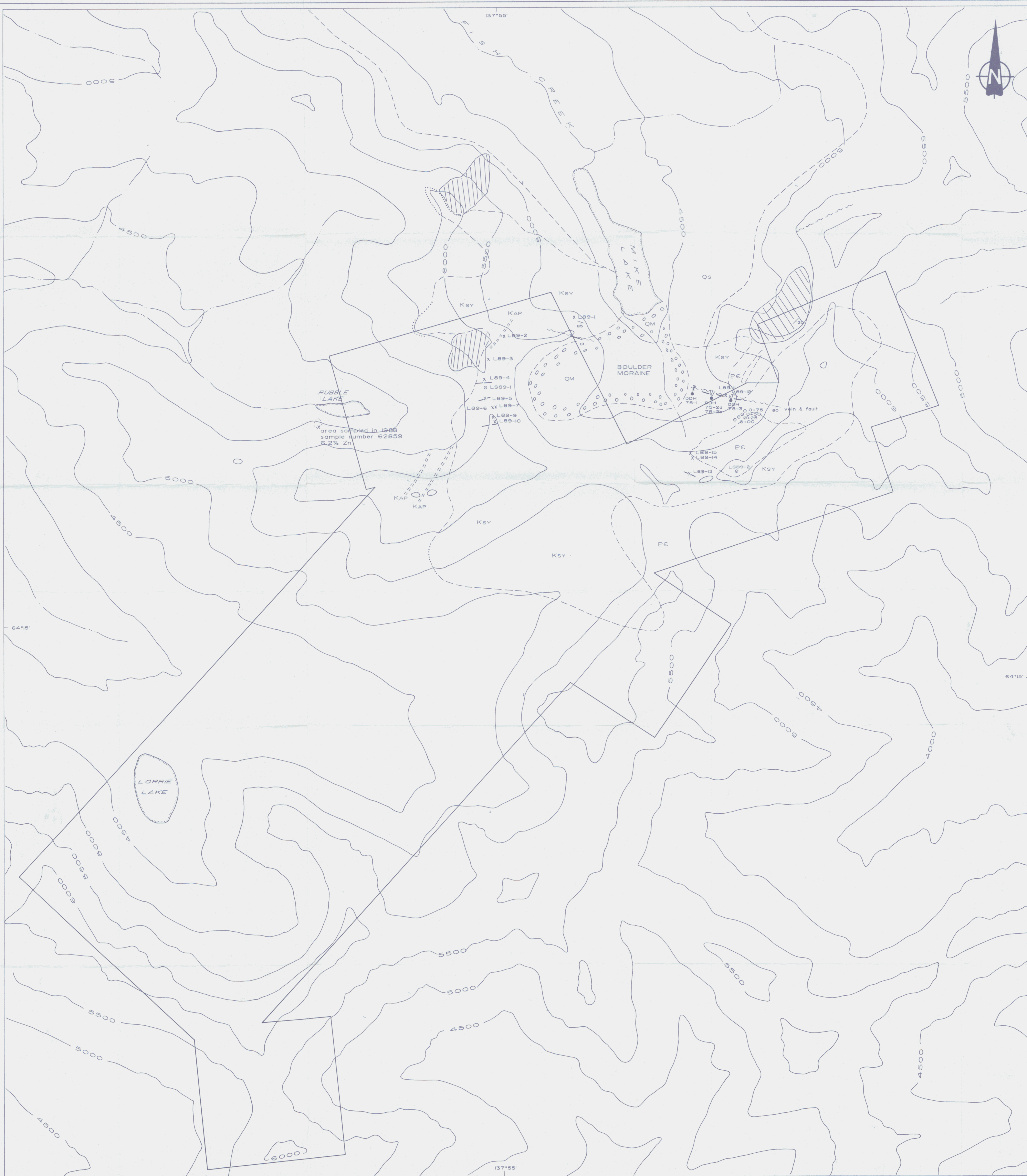
SAMPLE NUMBER	ELEMENT UNITS	Au OPT	Ag OPT	Cu PCT
R2 L89-1		0.163		
R2 L89-5		0.321	1.53	
R2 L89-6		0.145		
R2 L89-7		0.604		
R2 L89-8		0.220		
R2 L89-10		0.960		2.99
R2 L89-11		1.060		
R2 L89-12		1.226		
R2 L89-13		0.216		

APPENDIX D
Sample Descriptions

AURUM GEOLOGICAL CONSULTANTS INC.
LORRIE CLAIMS NTS: 116A/4,5

SAMPLERS: RAD/SR AUG 8-11, 1989
WALHALA EXPLORATION LTD

SAMPLE NUMBER	LOCATION	SAMPLE DESCRIPTION	ATTITUDE	WIDTH	AU PPB(OZ/TON)	AG PPM(oz/ton)	CU PPM (%)
L89-1	LORRIE 15	Dog tooth qtz vn with 30% apy in blebs to 5mm	105/85s	3-8 cm	(0.163) oz/ton	15.1	32
L89-2	LORRIE 15	Fine gr. syenite with 5% diss. apy & py			32	3.4	73
L89-3	LORRIE 13	fine gr green siliceous sediment. minor sericite			49	1.6	14
L89-4	LORRIE 13	siliceous rusty weathering f.g. black & green sediment (skara) with diss. cpy, minor malachite, azurite, py, apy			46	4.9	3749
L89-5	LORRIE 13	vein of massive apy and qtz in megacrystic syenite, diss. py in syenite	085/90	2-8 cm	(0.321) oz/ton	(1.53)	19020
L89-6	LORRIE 14	Qtz vn with massive Apy, Cpy, py. minor f.g. tourmaline			(0.145) oz/ton	12.2	10843
L89-7	LORRIE 14	Vein qtz and Apy, py and minor malachite			(0.604) oz/ton	5.1	4798
L89-8	LORRIE 14	Massive apy, tourmaline in qtz vein, minor cpy			(0.220) oz/ton	1.5	265
L89-9	LORRIE 14	Crumbly limonite stained syenite with patchy Apy, diss. cpy		0.5 m	230	2.3	199
L89-10	LORRIE 14	Qtz vn. with apy bands, heavy scorodite stain, limonite		0.1 m	(0.960) oz/ton	13.3	(2.99%)
L89-11	AINE 9	Qtz vn with patchy Apy	100/80S	0.1 m	(1.060) oz/ton	3.6	320
L89-12		Boulder of massive Apy	grab		(1.266) oz/ton	6.1	3000
L89-13	LORRIE 9	Qtz vein with massive Apy, unidentified fine black metallic mineral	114/85S	0.4 m	(0.216)	19.1	2284
L89-14	LORRIE 17	Sulphide rich f.g. quartzite 1-2% py		1.5 m	250	0.9	486
L89-15	LORRIE 17	Sulphide rich f.g. quartzite 1-2% py		3.0 m	580	1.7	937



LEGEND

- LITHOLOGIES
- QUATERNARY
- Qs Unconsolidated glacial deposits
 - QM Glacial moraine
- CRETACEOUS
- Ksy Hornblende-biotite syenite
 - KAp Aplite dykes
- PRECAMBRIAN/CAMBRIAN
- PC Quartzite, Argillite, Chert, Limestone

SYMBOLS

- - - geological contact (defined, approximate, assumed)
- ~ fault
- || trench
- diamond drill hole
- ┌ claim boundary
- x (L89-1) rock sample (sample number)
- o (LS89-1) soil sample (sample number)
- quartz & arsenopyrite vein
- ▨ gossan
- ↗ 35 strike & dip: bedding, compositional layering, vein



333

092817

WALHALA EXPLORATIONS LTD.
LORRIE PROPERTY

PROPERTY GEOLOGY
AND
GEOCHEMISTRY