

MAP NO.: 105 D 6
ASSESSMENT REPORT X
PROSPECTUS X
CONFIDENTIAL X
OPEN FILE

DOCUMENT NO: 092804
MINING DISTRICT: Whitehorse
TYPE OF WORK: Geochemical

REPORT FILED UNDER: Skukum Gold Inc.

DATE PERFORMED: 1-2 October, 1989

DATE FILED: 26 January, 1990

LOCATION: LAT.: 60°18'N

AREA: Hodnett Lakes

LONG.: 135°16'W

VALUE \$: 13 100.00

CLAIM NAME & NO.: NET 1-78(YD06231-308); VIN 3-109,112-115(YB07319-429)

WORK DONE BY: H.F. MacKinnon

WORK DONE FOR: Skukum Gold Inc.

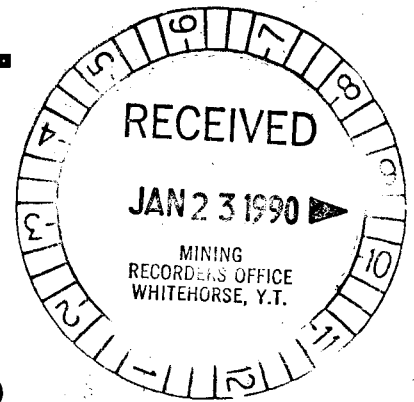
DATE TO GOOD STANDING:

REMARKS: #~~258~~ ~~VEIN~~ 110 HODNETT

Visible gold occurs in quartz veins in the VG zone on the VIN claims. 540 soil samples were collected in 1989. Four anomalous areas were outlined including the VG zone. The VG#2 zone covers an area of 800 x 150 m and included gold values up to 188 ppb Au. The VG#3 zone trends NW and covers a 1 300 x 175 m area, and also returns anomalous gold values. South of the VG zones, the VIN zone is anomalous in As, Zn and Cu and covers a 1 000 x 750 m area.



SKUKUM GOLD INC.



GEOCHEMICAL REPORT

ON THE

NET 1-78 (YB06231-YB06308)
VIN 3-109 (YB07319-YB07429)
&
VIN 112-115 (YB07426-YB07429)

Mineral Claims

Mt. Hodnett and Summit Creek Pass Area

WHITEHORSE MINING DISTRICT
YUKON TERRITORY

N.T.S. : 105D/6

LATITUDE: 60 Degrees 18 Minutes North
LONGITUDE: 135 Degrees 16 Minutes West

OCTOBER 1,2 1989

By

HUGH F. MacKINNON B.Sc.

JANUARY 10, 1990

For

Skukum Gold Inc.
990 - 840 Howe St.
Vancouver, B.C.
V6Z 2L2



092804

092804

This report has been examined by
the Geological Evaluation Unit
under Section 53 (4) Yukon Quartz
Mining Act and is allowed as
representation work in the amount

of \$13,100.00.



for
Regional Manager, Exploration and
Geological Services for Commissioner
of Yukon Territory.

SUMMARY

This report describes the exploration work conducted by Skukum Gold Inc. on the NET and VIN claims in 1989. The property consists of 189 contiguous mineral claims located in the Summit Creek Pass and Hodnett Lakes area of the southern Yukon Territory. Access is provided by helicopter from bases in Whitehorse, Y.T., or the Wheaton River Valley.

The property is underlain by Late Triassic to mid Cretaceous granitoid rocks of the Coast Plutonic Complex. Metavolcanic rocks of the Tally Ho shear zone outcrop in the NET claims. Northeast trending Eocene Mt. Skukum Group rhyolitic to dacitic dyke swarms cut the older units. Visible gold bearing quartz veins which returned up to 2.076 oz/ton gold over small widths were found in the VG zone on the VIN claims in 1988. A large gold talus fines anomaly is associated with the mineralization in the VG zone. Additional epithermal to mesothermal mineralized veins and faults occur throughout the Wheaton River area.

Gridded geochemical sampling was the focus of the exploration program carried out during the late fall of 1989. A total of 540 soil samples were collected during this program.

Four anomalous zones were outlined including the VG zone. The VG #2 zone is an area of anomalous gold, lead and zinc values measuring roughly 800 meters by 150 meters. Gold values of up to 188 ppb occur in this zone. The VG #2 zone is believed to be an extension of the VG zone. Zone VG #3 is a northwest trending 1,300 meter by 175 meter zone of anomalous gold value. This zone may also be related to the VG zone based on the similarity in VG #3 zone trend to the veins and dykes in the VG zone. The gold values in this zone may also be related to a buried structure. To the south of the VG zones is the 1,000 meter by 750 meter northwest trending VIN zone which is anomalous in arsenic \pm zinc \pm copper.

A preliminary hypothetical model is proposed which has the VIN arsenic + basemetal zone at the core of an hydrothermal system with a zonation outward from arsenic + gold to gold rich stringers (bonanza ?) in the VG zones. Similar zonation is seen in some high tonnage high grade gold deposits around the world.

No ore shoots have been outlined as yet but more work is warranted. A program of in-fill and detailed geochemical sampling, geophysical surveying and prospecting is recommended for 1990.

TABLE OF CONTENTS

page

SUMMARY

1. INTRODUCTION	
1.1 Location and Access	1
1.2 Climate, Topography and Vegetation	1
1.3 Property and Claim Status	1
1.4 Previous Work History	5
1.5 1989 Exploration Program	5
2. GEOLOGY	
2.1 Regional Geology	6
2.2 Property Geology	6
3. GEOCHEMISTRY	
3.1 Introduction	8
3.2 Sample Preparation and Analytical Procedures ..	8
3.3 Treatment and Presentation of Results	9
3.4 Grid 89-VG Geochemistry	9
4. DISCUSSION	10
5. CONCLUSIONS AND RECOMMENDATIONS	11
6. REFERENCES	13
7. STATEMENT OF EXPENDITURES	14
8. STATEMENT OF QUALIFICATIONS	15

LIST OF FIGURES

Fig. 1 - Location map.....	1:250,000 scale	2
Fig. 2a - NET Claim map.....	1:30,000 scale	3
Fig. 2b - VIN Claim map.....	1:30,000 scale	4
Fig. 3 - Summary of Grid Area Geology.....	1:30,000 scale	7

LIST OF TABLES

Table 1 - Claim Status 1
Table 2 - Statistical Summary of Results 9

LIST OF MAPS

Map 1 - Grid 89-VG: Au, Ag, As Geochemistry In pocket
Map 2 - Grid 89-VG: Cu, Pb, Zn Geochemistry In pocket
Map 3 - Grid 89-VG: Compilation Map In pocket

APPENDICES

In back of report

APPENDIX - 1 : Analytical results

APPENDIX - 2 : Statistical Analysis

1. INTRODUCTION

1.1 LOCATION & ACCESS

The NET and VIN claims are located south of the Watson River and extend from Mt. Hodnett west over Summit creek pass, at 60 degrees 18 minutes north latitude and 135 degrees 16 minutes west longitude (NTS:105D/6) (Figure 1). The property is accessible by helicopter, with the nearest permanent base being Whitehorse, Yukon Territory.

1.2 CLIMATE, TOPOGRAPHY AND VEGETATION

The climate in this area of the Yukon is variable with hot summers, enhanced by 18-20 hours of daylight, and long cold winters. Precipitation is moderate (80 centimeters annually) with about half falling as rain. The northern slopes and many of the gullies are snow covered till the end of June. Creeks and lakes are open from early May to mid October.

The western half of the property consists of a felsenmeer, moraine and outwash covered alpine pass and gentle mountainside, dissected by creek gullies. The eastern half consists of fairly rugged mountainsides, with moraine covered plateaus, and a broad glacial-lacustrine valley. Maximum relief in the properties area is approximately 1069 meters (3501 feet) with valley floors of 913 meters (3000 feet) and the higher slopes at 1982 meters (6501 feet).

Eighty five percent of the property is above treeline, with alpine grasses and wildflowers at the higher elevations; mixed stunted spruce, poplar, alder and 'buckbrush' in the subalpine areas; and mixed spruce, pine, alder and poplar forests at lower elevations.

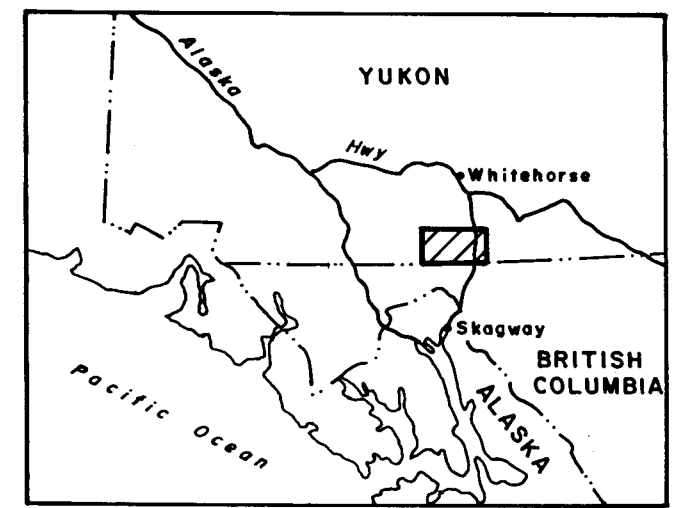
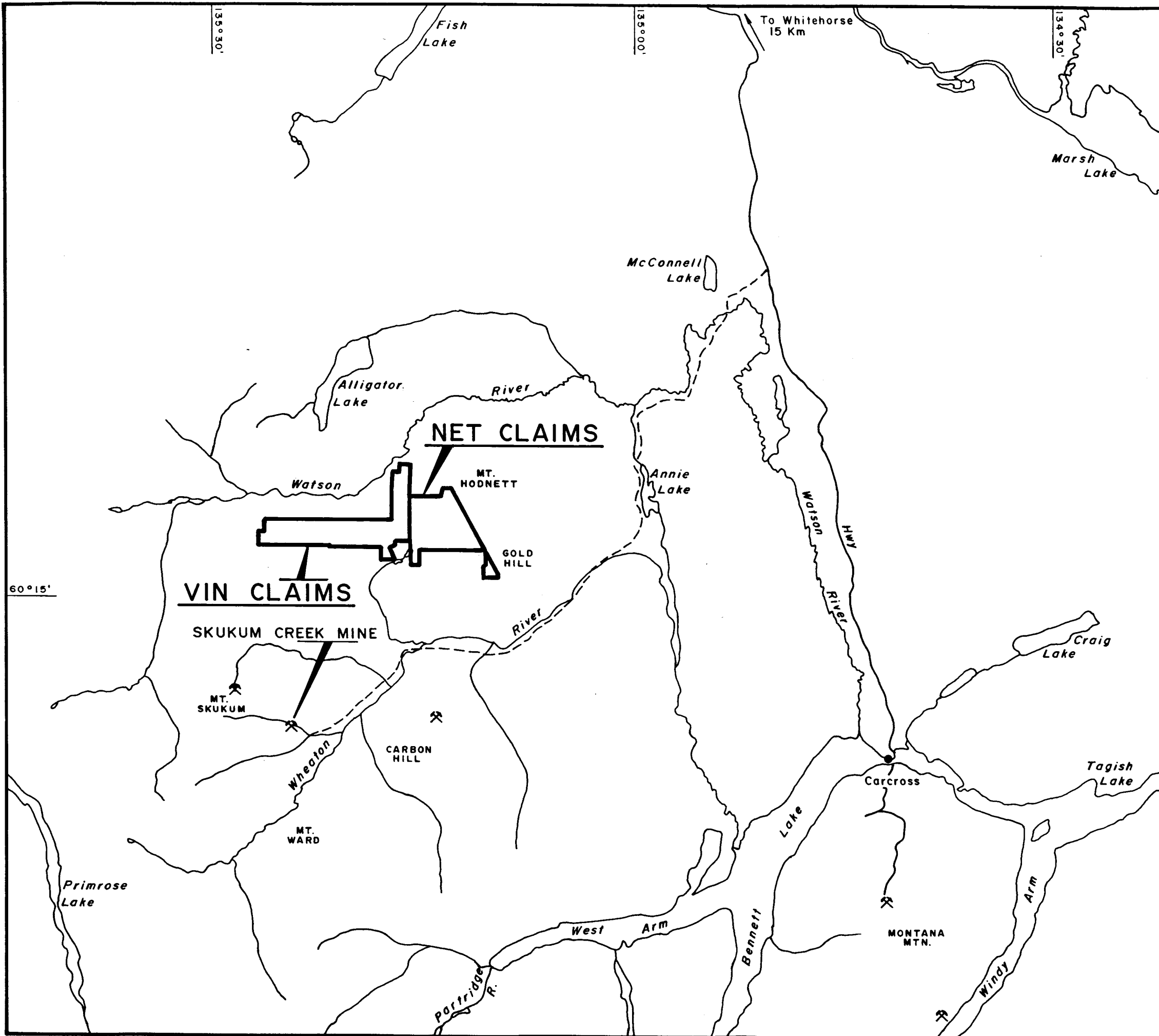
1.3 PROPERTY & CLAIM STATUS

The NET and VIN properties consist of 189 contiguous 2 post claims located within the Whitehorse Mining District and staked under the provisions of the Yukon Quartz Mining Act (Figures 2 and 3). The claim status is listed in table 1 below.

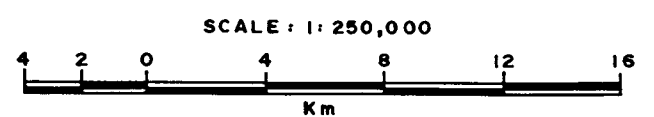
Table 1: Claim Status

Claim Name	Grant Numbers	Recording Date	Renewal Period*	Total Claims
NET 1-78	YB06231-308	July 23,1987	Oct.23,1990	78
VIN 3-109	YB07319-429	Aug. 20,1987	Nov.20,1990	107
VIN 112-115	YB07426-429	Aug. 20,1987	Nov.20,1990	4

* Pending acceptance of assessment report.



LOCATION MAP



SKUKUM GOLD INC.
 - VIN & NET CLAIMS
 WHITEHORSE MINING DIVISION - YUKON TERRITORY

LOCATION MAP

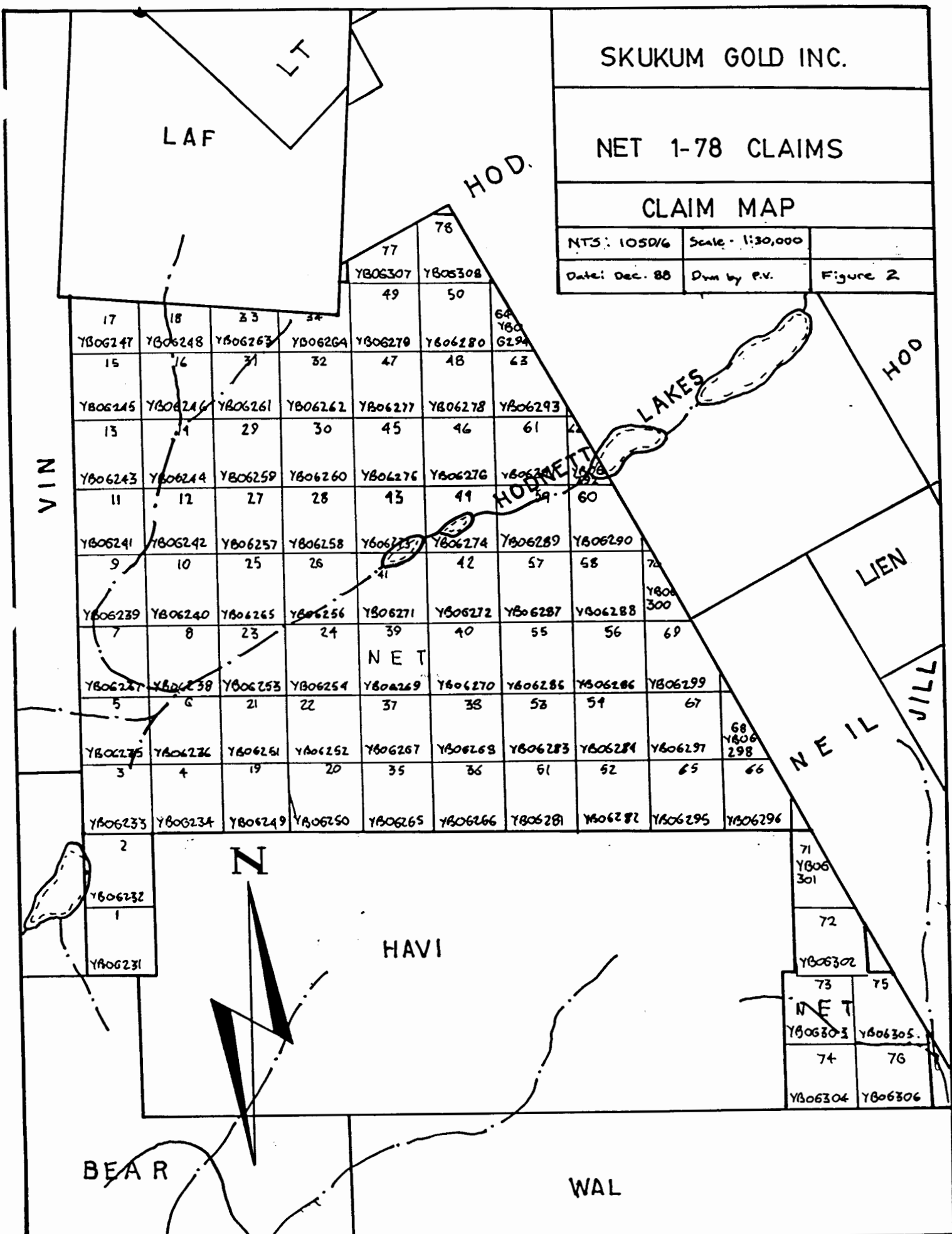
N.T.S. 105D3	FIGURE No. 1
DRAWN BY: A.L.W., H.F.M., T.M.	DATE: NOV. 1988

SKUKUM GOLD INC.

NET 1-78 CLAIMS

CLAIM MAP

NTS: 1:50,000	Scale: 1:30,000	
Date: Dec. 88	Drawn by P.V.	Figure 2



Skukum Gold Inc.

VIN Claim Map

NTS: 105D-6 Scale: 1:30,000

Date: Sept/88 Drawn by: TWW Fig: 3



Watson River

VIN

MAY

BOT

WAT

STONE

LAF

NET

HAVI

108	106	104	102	100	98	96	94	92	90	88	86	84	82	80	78	112	31	32	7	8	
Y807424	Y807422	Y807420	Y807418	Y807416	Y807414	Y807412	Y807410	Y807408	Y807406	Y807404	Y807402	Y807400	Y807398	Y807396	Y807394	Y807392	Y807390	Y807388	Y807386	Y807384	
109	107	105	103	101	99	97	95	93	91	89	87	85	83	81	79	113	29	30	5	6	
Y807425	Y807423	Y807421	Y807419	Y807417	Y807415	Y807413	Y807411	Y807409	Y807407	Y807405	Y807403	Y807401	Y807399	Y807397	Y807395	Y807393	Y807391	Y807389	Y807387	Y807385	
76	74	72	70	68	66	64	62	60	58	56	54	52	50	48	46	44	114	27	28	3	4
Y807392	Y807390	Y807388	Y807386	Y807384	Y807382	Y807380	Y807378	Y807376	Y807374	Y807372	Y807370	Y807368	Y807366	Y807364	Y807362	Y807360	Y807358	Y807356	Y807354	Y807352	Y807350
77	75	73	71	69	67	65	63	61	59	57	55	53	51	49	47	45	115	25	26		
Y807393	Y807391	Y807389	Y807387	Y807385	Y807383	Y807381	Y807379	Y807377	Y807375	Y807373	Y807371	Y807369	Y807367	Y807365	Y807363	Y807361	Y807359	Y807357			

23	24	
Y807339	Y807340	
39	21	22
Y807355	Y807337	Y807338
39	19	20
Y807354	Y807335	Y807336
37	17	18
Y807353	Y807333	Y807334
36	15	16
Y807352	Y807331	Y807332
35	13	14
Y807351	Y807329	Y807330
34	11	12
Y807350	Y807327	Y807328
33	9	10
Y807349	Y807325	Y807326
32	7	8
Y807348	Y807323	Y807324
31	5	6
Y807347	Y807321	Y807322
30	3	4
Y807346	Y807319	Y807320
29		
Y807345		
28		
Y807344		
27		
Y807343		
26		
Y807342		
25		
Y807341		
24		
Y807340		
42	40	
Y807358	Y807356	
43	41	
Y807357	Y807357	

The NET and VIN claims are 100% owned by Skukum Gold Inc. of 990-840 Howe St., Vancouver, B.C..

1.4 PREVIOUS WORK HISTORY

Skukum Gold conducted a reconnaissance exploration program on the properties in 1988 (MacKinnon and Wilkins, 1988). Eight anomalous zones and four mineralized showings were discovered; of these the VG Zone is the most significant. This zone consists of a 2.7 km by 1.25 km area of anomalous talus fines gold geochemistry, and float and outcrop quartz veins (with visible gold) which returned up to 2.076 oz/ton gold. The TEN showing, four kilometers to the southeast of the VG zone, returned 2.93% copper, 29.04 oz/ton silver and 0.158 oz/ton gold from small quartz veins.

The Geological Survey of Canada conducted a regional geochemical stream sediment survey in the area in 1985 (G.S.C., 1985). Several creeks draining the property were sampled and returned slightly anomalous values in gold and silver.

No other work has been recorded for the area. However several showings are present northwest of the properties and have undergone sporadic exploration since the early 1900's (Doherty and Hart, 1988).

1.5 1989 EXPLORATION PROGRAM

The 1989 work program was carried out, on October 1 and 2, 1989, by a contract geochemical sampling crew from Coureur des Bois Ltd. of Whitehorse, Yukon Territory. Work was conducted out of the Skukum Gold - Omni Resources base camp at Skukum Creek, using a Bell 206 helicopter for access.

The exploration was conducted by the following personnel:

Hugh MacKinnon B.Sc., Skukum Gold Inc., Project Geologist

Denis Jacob, Supervisor, sampler

David Sufady, sampler

Diane Brent, B.Sc., sampler

Peter Kemper, sampler

Pat Titus, sampler

Kelly Suit, sampler

Andre Jobin, sampler

Paul Jacob, sampler

Gordon Hayes, sampler

Steven Dibbs, sampler

2. GEOLOGY

2.1 REGIONAL GEOLOGY

The NET and VIN claims lie on the border between the Nisling Terrane to the west and the Whitehorse Trough to the east. The Nisling Terrane is composed of rocks of the Proterozoic to Permian Yukon Crystalline Terrane and the Triassic to Tertiary Coast Plutonic Complex. The Whitehorse Trough consists of folded Mesozoic volcanic and sedimentary rocks. The Tally Ho Shear Zone separates the two terranes and consists of mafic volcanic and volcanoclastic rocks, augite porphyry, marble, and ultramafic intrusions variably metamorphosed to upper greenschist facies with a penetrative fabric indicative of semi-ductile to brittle deformation. Hart and Pelletier (1989) report that the Tally Ho Shear Zone represents the northern extension of the Llewellynn fault; a major fault undergoing extensive exploration to the south in British Columbia.

Lower Tertiary volcanics of the Skukum Group unconformably overlies and intrude the rocks of the Nisling Terrane. The Skukum Group, of Eocene age, is the northernmost part of the Sloko volcanic province and outcrops in two distinct areas. The Mount Skukum Complex is the more northerly of the two complexes and consists of predominantly felsic to andesitic tuffs and flows and related epiclastics. Rhyolite dykes and stocks cross cut all the above units and are believed to be the last phase of Eocene volcanism.

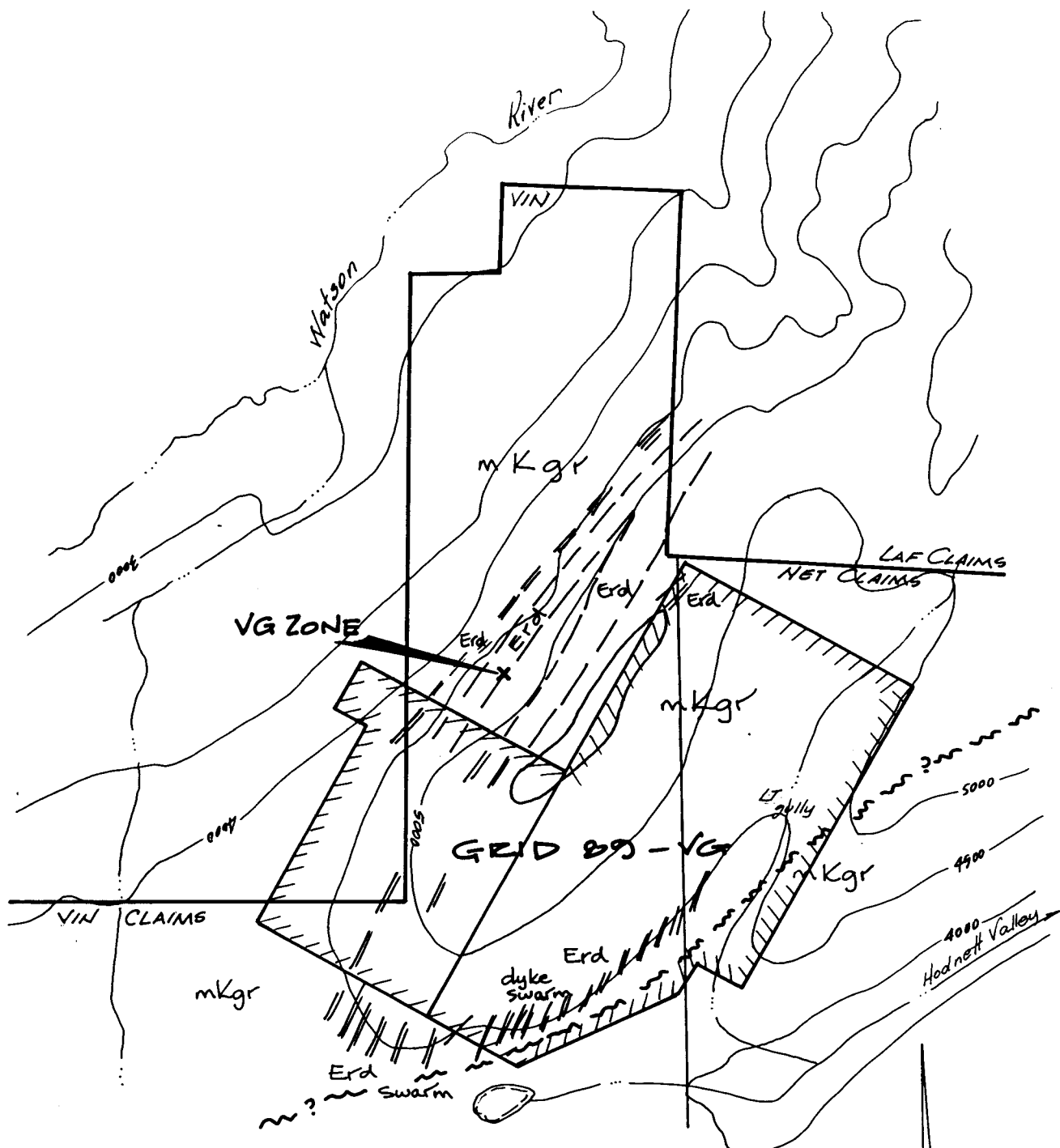
Precious metal and base metal mineralized epithermal to mesothermal veins and faults occur throughout the Wheaton District. Mineralization is predominantly related to the Eocene volcanism.

2.2 PROPERTY GEOLOGY

The property is underlain by Late Triassic to mid Cretaceous granitoid rocks of the Coast Plutonic Complex (figure 3). Meta-volcanic rocks of the Tally Ho shear zone outcrop in the northeastern corner of the NET claims. These units are intruded by northeast trending felsic to basic dyke swarms related to the Eocene Mt. Skukum volcanic complex.

The northwest trending Tally Ho shear zone is the major structural feature of the region. This zone is offset by a northeast trending sinistral fault in the Hodnett Lakes valley. Small shear zones occur throughout the granitic rocks.

Visible gold occurs in small bull quartz veins within granitic rocks in the VG zone. Propylitic alteration haloes surround these veins. In the TEN showing chalcopyrite -



LEGEND ~

EOCENE - SIKUKUM GROUP

Erd - Rhyolitic to dacitic dyke swarms (minor basaltic dykes)

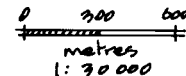
LATE TRIASSIC and MID CRETACEOUS

mKgr - Hornblende granodiorite to granite

--- Fault

--- Contact

— Claim boundary



SIKUKUM GOLD INC.
NET-VIN CLAIMS
WHITEHORSE MINING DISTRICT
SUMMARY OF GRID
AREA GEOLOGY

Drawn by: HM/vh Date: 1/90 FIGURE-
NTS: 105/DG Scale: 1:30000 3

pyrite and sulphosalt (?) bearing quartz veins up to 30 centimeters wide occur in chlorite altered granitic rocks. Both of these showings and the two other smaller showings on the property are spatially related to felsic dyke swarms.

A more detailed description of the property geology is given in MacKinnon and Wilkins (1988) and Doherty and Hart (1988).

3. GEOCHEMISTRY

3.1 INTRODUCTION

Reconnaissance sampling in 1988 showed that talus fines/soil sampling is a viable tool for determining anomalous areas on the properties. The upper peneplain plateau on the VIN and NET claims was only partially sampled in 1988 and based on its topography and limited outcrop is ideally suited for a gridded survey. This area has similar geology to the VG zone and is rimmed by the VG to the north, the LT gully to the east and anomalous and mineralized samples to the south.

Grid 89-VG was established by a slope corrected, hip chain, and compass survey. The baseline and crosslines were picketed and flagged at 100 meter line intervals with 50 meter stations along lines. Samples were collected, using a mattock, from the C horizon or B-C horizon interface some 1 to 10 centimeters below the surface. Most of the soils or talus fines had poorly developed horizons composed of residual accumulations of weathered talus, glacial till, felsenmeer, and or bedrock. Since visible gold bearing quartz vein float was found on the upper plateau it was hoped that an auriferous zone, drift or hydromorphic train could be established by Grid 89-VG.

A total of 540 soil and talus fines samples were collected in 1989. All sample locations are shown on Maps 1 and 2. Analytical results for all samples are included in appendix 1. An additional 40 samples (estimated) were collected but left out in the field due to bad weather.

3.2 SAMPLE PREPARATION AND ANALYTICAL PROCEDURES

Soil samples were collected in KRAFT gusseted paper bags and sent to ACME ANALYTICAL LABS of Vancouver, B.C.. At ACME, samples were oven dried at approximately 60 degrees Celsius and sieved to minus 80 mesh. A 0.5 gram sample of the minus 80 fraction of all samples was digested in hot, dilute aqua regia in a boiling water bath and then diluted to 10 ml. with distilled water. Samples were analyzed for silver, copper, lead, zinc and arsenic using the Induced Coupled Plasma (ICP) technique. In addition gold was analyzed from a 10 gm. fraction by the conventional Atomic Absorption (AA)

technique.

3.3 TREATMENT AND PRESENTATION OF RESULTS

All 1989 grid 89-VG sample results were combined with the Skukum Gold 1988 NET and VIN results to provide a larger population for statistical analysis. Statistical analysis was performed by ACME ANALYTICAL LABORATORIES using graphical and numerical means to separate background from anomalous samples. In order to prevent a biasing of the data by extremely high sample values the following limits were placed on the data analyzed:

Au	<250	ppb
Ag	< 33	ppm
As	<400	ppm
Cu	<150	ppm
Zn	<500	ppm
Pb	<150	ppm

Threshold, anomalous and strongly anomalous values were determined as the mean plus two standard deviations ($x+2s$), the mean plus three standard deviations ($x+3s$) and the mean plus four standard deviations ($x+4s$) respectively. A possibly anomalous category was created for gold, based on experience in other areas of the Wheaton River valley, and was used to aid in distinguishing overall trends. Anomalous sample divisions are presented in table 2 below. Statistical summaries and histograms are presented in appendix 2.

Table 2 : Statistical Summary of Results

Mean (x)	Possibly Anomalous	Threshold $x+2s$	Anomalous $x+3s$	Strongly Anomalous $x+4s$
Cu 15 (ppm)	-	37-47	48-58	59+
Pb 18 (ppm)	-	44-56	57-69	70+
Zn 77 (ppm)	-	145-178	179-212	213+
As 4 (ppm)	-	20-27	28-35	36+
Ag 0.3 (ppm)	-	1.1-1.4	1.5-1.8	1.9+
Au 7 (ppb)	15-42	43-60	61-78	79+

3.4 GRID 89-VG GEOCHEMISTRY

Gold is the most strongly anomalous element in the grid area. Strongly anomalous gold spot anomalies generally coincide with possibly anomalous to anomalous gold zones. The highest gold value, 188 ppb, occurs at L8S/10W and is situated within a roughly 900 meter long zone of possibly anomalous to strongly anomalous gold values. Within this same area is a smaller zone of strongly anomalous to threshold values for lead and zinc \pm copper. Over the grid area the gold

anomalies trend roughly north northeast. Silver is not strongly anomalous in the grid area except for a cluster of samples at L2N/7+50E. This cluster does not correspond with any other element anomalies. Strong arsenic anomalies are clustered in an area of limited sampling between L14S and 19S from the baseline east to 8+50E. If these anomalies are related they have a general northwest trend and cover a 0.5 sq.km. area. Several threshold to anomalous copper and or zinc anomalies are associated with the arsenic anomaly. With the exception of those base metal anomalies already mentioned and several spot anomalies base metal values are not elevated in the grid area.

4. DISCUSSION

Four principal anomalous zones have now been defined in the grid area (map 3). The first zone is the VG #1 zone, as defined by MacKinnon and Wilkins (1988), and consists of an extensive and strong gold anomaly associated with visible gold bearing quartz veins in outcrop and float within altered granitic rocks. The second zone is the VG #2 zone which is probably an extension of the #1 zone. Zone VG #2 covers an area of roughly 800 meters x 150 meters or 0.12 sq.km.. The #2 zone differs from the #1 zone in that in addition to gold it is anomalous in lead, zinc and copper. The base metal anomalies are generally separate from the gold anomalies. This may be due either to elemental dispersion or a base metal source different (unrelated?) from the gold source.

Zone VG #3 consists of a series of parallel to subparallel gold anomalies occurring in a 1,300 meter x 175 meter (0.23 sq.km) northwest trending belt. The trend of the zone matches that of the dyke swarm in the area and therefore is believed to be related to this swarm. Since gold is not associated with any other anomalies in this zone the source of the anomalies is probably free gold bearing veins similar to those in the VG #1 zone. The anomaly trend matches that of veins in the VG #1 zone suggesting that the two are related. The concentration of gold along this belt may indicate some structural control to the mineralization.

A fourth anomalous zone occurs south of the VG zones. This zone, the VIN zone, is anomalous in arsenic and has smaller zones of copper and or zinc anomalies within it. Gold is not significantly anomalous in this zone. Interpretation of this area is limited owing to the lack of sampling this area. However, preliminary results suggest that the zone trends northwest and is at least 1000 meters long and up to 750 meters wide. Since the zone is not parallel to the dyke swarm and not anomalous in gold it may represent a different hydrothermal system from the VG zone or, more likely, a zonation within the same system.

Mineralization around L15S/7+50E, discovered in 1988, was

strongly anomalous in gold and arsenic so maybe the arsenic + base metal zone (VIN zone) grades into a gold + arsenic then gold zone (VG zone). Similar zonation has been recorded in numerous mesothermal deposits around the world and in Canada. If this model can be applied here then the VIN zone may be the core of a large system with the small quartz veins, seen in the VG #1 zone, a peripheral stockwork or stringer zone associated with the system.

Apparent gold:silver ratios on the property are quite high and there is a general lack of correlation between gold and silver values. MacKinnon and Wilkins (1988) suggested this, in conjunction with the free gold in the VG #1 zone, may indicate a bonanza zone of a hydrothermal system.

The spotty nature of the gold anomalies may be a function of glacial dispersal or reflect the style of mineralization in the veins.

The high concentration of dykes suggests that the zone is proximal to a subvolcanic center. This hypothetical center (stock) would have acted as an excellent hydrothermal system driving mechanism. Since the development of the center occurred late in the evolution of the Eocene Skukum Caldera (MacKinnon and Wilkins, 1988) it represents a period of activity in which many of the major gold deposits of the world were formed in other volcanic complexes.

5. CONCLUSIONS AND RECOMMENDATIONS

Four anomalous zones have been identified in the grid 89-VG area. The VG #1 zone was defined in 1988 on the basis of strongly anomalous gold talus fines geochemistry and quartz veins, in situ and in float, which returned up to 2.076 oz/ton gold. Zone VG #2 occurs to the southwest of the VG #1 zone and is believed to be related to the VG #1 zone but has elevated base metal values in addition to the gold values. To the east of these zones is a 1,300 meter by 175 meter wide northeast trending belt of anomalous gold values called zone VG #3. This zone has a trend similar to the dyke swarm and quartz veins in VG #1 zone and is believed to be caused by a mineralized source like that in the VG #1 zone. The VIN zone is situated to the south of these zones and covers a 1,000 meter by 750 meter northwest trending area which is strongly anomalous in arsenic but not gold. Smaller copper and zinc anomalies are present in this zone.

Although data is limited a zoned hydrothermal system model may be proposed to explain the anomalies and showings. The system has an arsenic + base metal rich VIN zone core 'grading' into an arsenic + gold then gold rich stockwork or stringer (bonanza ?) VG zones margin. Similar zonation has been observed in many high tonnage and high grade gold

deposits in Canada. However, the gridded soil gold anomaly values are all less than 200 ppb so no ore shoots have as yet been defined.

Recommendations are as follows:

1) Follow up prospecting and sampling of all strongly anomalous zones outlined in the 1988 program.

2) In-fill gridded geochemical sampling and detailed (25m x 50m) geochemical sampling over all anomalous zones. Those samples left in the field in 1989 should be recovered if possible.

3) Geophysical magnetometer and EM surveying of the grid area with minimum 25 meter separation between stations. This survey should provided structural data to help with follow up on the geochemical data.

4) Follow up prospecting and or mapping of the grid anomalies.

5) Trenching contingent on the results of the above work.

6) Reconnaissance talus fines/soil sampling and prospecting of the western VIN claims.

7) Restaking of the VIN claims adjacent to the VG zone.

6. REFERENCES

Doherty, R.A., & Hart, C.J.R., 1988 Preliminary Geology of Fenwick Creek (105D/3) and Alligator Lake (105D/6) Map Areas; Department of Indian and Northern Affairs Canada; Open File 1988-2, 80pp. With 1:50,000 scale maps.

G.S.C., 1985 Stream Sediment and Water Geochemical Survey Southern Yukon Territory. G.S.C. Open File 1218.

MacKinnon, H.F., & Wilkins, A.L., 1988 Geological and Geochemical Report on the NET and VIN Mineral Claims; Skukum Gold Inc. unpublished assessment report.

7. STATEMENT OF EXPENDITURES

Labour Costs:

Coureur des Bois Ltd., October 1 & 2, 1989
15 man days at \$250.00 per day.....\$3750.00
Invoice number 084

Hugh MacKinnon, 4 days report preparation,
project supervision at \$220.00 per day..... \$ 880.00

Total Labour Costs \$4,630.00

Analytical Costs:

Talus Fines/Soils: 540 at \$9.85 per sample ... \$5319.00
Sample Shipping: 236 lbs\$ 129.40

Total Analytical Costs \$5,448.40

Camp & Transportation Costs:

Truck Costs: 2 days at \$60.00 per day \$120.00
Helicopter Costs: 2.75 hours at \$610 per hour
+ fuel at \$57 per hour \$1834.25
Room & Board: 18 days at an estimated
\$40.00 per day \$720.00

Total Camp & Transportation Costs \$2,674.25

Report & Miscellaneous Costs:

Field Supplies (flagging, sample bags, pickets) \$ 200.00
Drafting: Estimated \$ 400.00
Photocopying, binding, map copying; estimated
30.00 per report..... \$ 180.00

Total Report & Miscellaneous Costs \$ 780.00

**Total 1989 exploration expenditures for assessment
on the NET and VIN claims:**


\$13,532.65

8. STATEMENT OF QUALIFICATIONS

I, Hugh Francis MacKinnon of P.O. Box 1785, Rossland, B.C., hereby certify that:

- 1) I graduated with a Bachelor of Science Degree with Honours in Geology from Carleton University, Ottawa, Ontario, in 1986.
- 2) I have been engaged in mineral exploration since 1980 in Ontario, Saskatchewan, The Northwest Territories, British Columbia, Nova Scotia and The Yukon Territory.
- 3) I was the project geologist for Skukum Gold's regional claims program.
- 4) I directed the work performed on the NET and VIN claims in the summer of 1989 and am the author of this report.

Dated this tenth day of January, 1990



Hugh F. MacKinnon, B.Sc.

APPENDIX 1

ANALYTICAL RESULTS

ACME ANALYTICAL LABORATORIES LTD.
 852 E. HASTINGS ST. VANCOUVER B.C. V6A 1R6
 PHONE (604) 253-3158 FAX (604) 253-1716

DATE RECEIVED: OCT 17 1989

DATE REPORT MAILED:

Oct 23/89

GEOCHEMICAL ANALYSIS CERTIFICATE

ICP - .500 GRAM SAMPLE IS DIGESTED WITH 3ML 3-1-2 HCL-HNO3-H2O AT 95 DEG. C FOR ONE HOUR AND IS DILUTED TO 10 ML WITH WATER. THIS LEACH IS PARTIAL FOR MN FE SR CA P LA CR MG BA TI B W AND LIMITED FOR NA K AND AL. AU DETECTION LIMIT BY ICP IS 3 PPM.
 - SAMPLE TYPE: SOIL AU* ANALYSIS BY ACID LEACH/AA FROM 10 GM SAMPLE. P - pulverized, -20 mesh.

SIGNED BY *[Signature]* D. TOYE, C. LEONG, J. WANG; CERTIFIED B.C. ASSAYERS

Skukum Gold Inc. PROJECT BC, 5D-NET & VIN FILE # 89-4325 Page 1

SAMPLE#	Cu PPM	Pb PPM	Zn PPM	Ag PPM	As PPM	Au* PPB
89-VG L3N 0+00	10	20	72	.1	4	1
89-VG L3N 0+50E	12	15	72	.1	2	5
89-VG L3N 1+00E	13	25	81	.1	4	1
89-VG L3N 1+50E	10	11	61	.1	2	4
89-VG L3N 2+00E	9	11	59	.1	2	1
89-VG L3N 2+50E	12	12	64	.1	2	2
89-VG L3N 3+00E	10	8	67	.1	2	1
89-VG L3N 3+50E	8	9	61	.1	2	2
89-VG L3N 4+00E	9	15	51	.1	2	3
89-VG L3N 4+50E	7	9	54	.1	5	1
89-VG L3N 5+00E	6	8	43	.1	2	3
89-VG L3N 5+50E	8	12	56	.1	2	1
89-VG L3N 6+00E	9	13	58	.2	2	3
89-VG L3N 6+50E	17	11	68	.5	2	1
89-VG L3N 7+00E	22	14	91	.5	2	7
89-VG L3N 7+50E	16	10	80	.1	2	4
89-VG L3N 8+00E	10	10	51	.1	2	1
89-VG L3N 8+50E	8	8	52	.1	2	1
89-VG L3N 9+00E	20	16	108	.6	4	3
89-VG L3N 9+50E	37	25	124	1.0	3	1
89-VG L3N 10+00E	13	14	78	.1	2	1
89-VG L3N 10+50E	27	18	129	.1	3	1
89-VG L3N 11+00E	10	13	55	.2	2	1
89-VG L3N 11+50E	10	10	61	.1	2	5
89-VG L3N 12+00E	7	9	49	.1	2	1
89-VG L3N 12+50E	12	17	75	.3	2	1
89-VG L2N 0+00	10	17	54	.4	4	1
89-VG L2N 0+50E	12	14	78	.2	3	5
89-VG L2N 1+00E	10	13	59	.2	3	1
89-VG L2N 1+50E	10	19	75	.2	4	3
89-VG L2N 2+00E	8	12	57	.1	2	2
89-VG L2N 2+50E	8	9	61	.2	2	1
89-VG L2N 3+00E	9	15	63	.3	2	3
89-VG L2N 3+50E	7	9	56	.1	2	8
89-VG L2N 4+00E	7	12	50	.2	4	4
89-VG L2N 4+50E	8	13	47	.2	4	15
STD C/AU-S	40	36	132	7.1	37	52

SAMPLE#	Cu PPM	Pb PPM	Zn PPM	Ag PPM	As PPM	Au* PPB
89-VG L2N 5+00E	10	7	45	.1	2	13
89-VG L2N 5+50E	16	24	65	.1	2	6
89-VG L2N 6+00E	9	5	33	.1	2	4
89-VG L2N 6+50E	11	16	50	.1	2	11
89-VG L2N 7+00E	22	10	90	1.7	2	4
89-VG L2N 7+50E	33	22	113	2.8	2	11
89-VG L2N 8+00E	38	19	128	2.2	2	8
89-VG L2N 8+50E	16	14	95	.1	2	5
89-VG L2N 9+00E	15	10	87	.1	2	4
89-VG L2N 9+50E	10	8	64	.3	2	8
89-VG L2N 10+00E	19	13	74	.2	2	2
89-VG L2N 10+50E	11	7	47	.1	2	3
89-VG L2N 11+00E	31	22	140	.4	2	7
89-VG L2N 11+50E	10	9	67	.1	2	3
89-VG L2N 12+00E	9	8	46	.1	2	1
89-VG L2N 12+50E	20	10	85	.5	2	3
89-VG L1N 0+00	9	7	44	.2	2	8
89-VG L1N 0+50E	12	12	54	.1	3	42
89-VG L1N 1+00E	11	14	107	.2	2	2
89-VG L1N 1+50E	10	10	57	.1	2	18
89-VG L1N 2+00E	10	10	77	.2	2	13
89-VG L1N 2+50E	9	9	52	.4	4	27
89-VG L1N 3+00E	10	11	76	.1	2	6
89-VG L1N 3+50E	9	10	51	.1	2	6
89-VG L1N 4+00E	9	9	57	.1	3	18
89-VG L1N 4+50E	9	13	44	.2	2	6
89-VG L1N 5+00E	9	7	40	.1	3	10
89-VG L1N 5+50E	10	8	77	.2	3	1
89-VG L1N 6+00E	8	9	48	.3	4	35
89-VG L1N 6+50E	16	15	48	.2	3	5
89-VG L1N 7+00E	11	14	49	.2	2	7
89-VG L1N 7+50E	33	17	90	1.3	2	8
89-VG L1N 8+00E	33	19	119	3.2	2	8
89-VG L1N 8+50E	32	20	144	.4	2	1
89-VG L1N 9+00E	18	12	81	.2	2	3
89-VG L1N 9+50E	12	11	57	.1	2	1
STD C/AU-S	60	37	132	7.1	38	51

SAMPLE#	Cu PPM	Pb PPM	Zn PPM	Ag PPM	As PPM	Au* PPB
89-VG L1N 10+00E	12	13	55	.3	2	3
89-VG L1N 10+50E	17	17	80	.2	2	5
89-VG L1N 11+00E	11	8	46	.2	2	3
89-VG L1N 11+50E	11	6	59	.1	2	4
89-VG L1N 12+00E	10	10	52	.2	2	3
89-VG L1N 12+50E	22	19	76	.4	2	7
89-VG L0 0+00	10	11	62	.2	2	1
89-VG L0 0+50E	9	17	60	.1	2	31
89-VG L0 1+00E	11	10	68	.1	2	9
89-VG L0 1+50E	9	11	69	.1	2	2
89-VG L0 2+00E	9	8	72	.1	2	3
89-VG L0 2+50E	8	12	64	.2	2	6
89-VG L0 3+00E	11	6	65	.1	2	2
89-VG L0 3+50E	8	7	62	.1	2	4
89-VG L0 4+00E	8	8	41	.1	2	2
89-VG L0 4+50E	9	12	43	.2	3	1
89-VG L0 5+00E	11	14	60	.2	3	1
89-VG L0 5+50E	11	12	39	.2	2	21
89-VG L0 6+00E	10	8	40	.1	2	3
89-VG L0 6+50E	12	12	53	.1	2	12
89-VG L0 7+00E	12	9	70	.3	2	1
89-VG L0 7+50E	11	6	55	.1	2	3
89-VG L0 8+00E	29	17	112	1.4	2	1
89-VG L0 8+50E	10	11	47	.2	2	2
89-VG L0 9+00E	12	10	61	.1	2	2
89-VG L0 9+50E	7	6	23	.2	2	1
89-VG L0 10+00E	10	10	61	.1	2	5
89-VG L0 10+50E	12	12	65	.1	2	2
89-VG L0 11+00E	12	11	72	.1	2	1
89-VG L0 11+50E	13	13	71	.1	2	1
89-VG L0 12+00E	56	14	136	.9	4	1
89-VG L0 12+50E	16	14	82	.2	2	1
89-VG L1S 0+00	12	9	52	.1	2	1
89-VG L1S 0+50E	11	9	58	.1	2	1
89-VG L1S 1+00E	11	12	55	.1	4	1
89-VG L1S 1+50E	10	8	48	.1	2	14
STD C/AU-S	62	36	132	7.1	38	47

SAMPLE#	Cu PPM	Pb PPM	Zn PPM	Ag PPM	As PPM	Au* PPB
89-VG L1S 2+00E	9	11	52	.4	2	4
89-VG L1S 2+50E	7	7	51	.1	2	1
89-VG L1S 3+00E	8	8	54	.1	4	3
89-VG L1S 3+50E	7	13	49	.1	2	3
89-VG L1S 4+00E	9	8	64	.1	3	2
89-VG L1S 4+50E	8	12	49	.1	2	1
89-VG L1S 5+00E	7	7	46	.1	2	1
89-VG L1S 5+50E	7	10	55	.1	2	1
89-VG L1S 6+00E	24	26	131	.3	2	3
89-VG L1S 6+50E	9	4	74	.1	2	1
89-VG L1S 7+00E	14	18	103	.2	2	1
89-VG L1S 7+50E	22	20	110	.2	2	1
89-VG L1S 8+00E	20	13	87	.1	3	1
89-VG L1S 8+50E	13	11	73	.2	2	1
89-VG L1S 9+00E	10	10	76	.1	2	2
89-VG L1S 9+50E	10	21	70	.2	4	1
89-VG L1S 10+00E	10	22	73	.1	3	3
89-VG L1S 10+50E	12	17	79	.1	2	1
89-VG L1S 11+00E	12	10	80	.1	3	1
89-VG L1S 11+50E	16	15	91	.2	3	3
89-VG L1S 12+00E	11	8	76	.1	3	6
89-VG L1S 12+50E	8	12	47	.1	2	4
89-VG L2S 0+00	11	9	76	.2	2	3
89-VG L2S 0+50E	9	7	60	.1	2	1
89-VG L2S 1+00E	16	25	110	.1	2	1
89-VG L2S 1+50E	10	4	70	.1	4	34
89-VG L2S 2+00E	9	12	86	.2	2	6
89-VG L2S 2+50E	9	11	64	.1	2	5
89-VG L2S 3+00E	11	16	72	.2	3	17
89-VG L2S 3+50E	9	11	55	.1	2	5
89-VG L2S 4+00E	11	15	68	.1	2	123
89-VG L2S 4+50E	9	8	58	.1	2	6
89-VG L2S 5+00E	8	13	41	.1	3	21
89-VG L2S 5+50E	16	14	40	.2	2	8
89-VG L2S 6+00E	10	10	78	.1	3	1
89-VG L2S 6+50E	8	4	52	.1	2	13
STD C/AU-S	60	38	132	7.1	41	47

SAMPLE#	Cu PPM	Pb PPM	Zn PPM	Ag PPM	As PPM	Au* PPB
89-VG L2S 7+00E	9	12	94	.1	3	3
89-VG L2S 7+50E	11	13	57	.1	2	1
89-VG L2S 8+00E	19	12	64	1.3	2	1
89-VG L2S 8+50E	18	16	113	.4	3	18
89-VG L2S 9+00E	13	12	71	.1	3	1
89-VG L2S 9+50E	30	20	132	1.4	2	3
89-VG L2S 10+00E	29	17	82	1.3	3	4
89-VG L2S 10+50E	20	41	80	.3	3	1
89-VG L2S 11+00E	13	13	72	.3	4	1
89-VG L2S 11+50E	15	15	65	.4	5	2
89-VG L2S 12+00E	13	10	75	.1	2	3
89-VG L2S 12+50E	13	11	60	.1	2	6
89-VG L3S 0+00	15	11	66	.1	2	1
89-VG L3S 0+50E	11	14	62	.1	2	2
89-VG L3S 1+00E	14	10	53	.1	2	7
89-VG L3S 1+50E	13	12	61	.1	2	1
89-VG L3S 2+00E	10	11	62	.3	3	1
89-VG L3S 2+50E	10	10	61	.3	3	13
89-VG L3S 3+00E	10	11	64	.1	2	9
89-VG L3S 3+50E	10	8	56	.1	2	1
89-VG L3S 4+00E	14	39	53	.3	2	1
89-VG L3S 4+50E	10	9	49	.2	2	1
89-VG L3S 5+00E	12	11	41	.1	2	4
89-VG L3S 5+50E	14	13	57	.2	2	7
89-VG L3S 6+00E	13	11	51	.3	2	1
89-VG L3S 6+50E	16	11	79	.3	2	6
89-VG L3S 7+00E	11	11	64	.2	4	5
89-VG L3S 7+50E	18	10	84	.4	2	2
89-VG L3S 8+00E	11	12	60	.2	2	6
89-VG L3S 8+50E	17	12	84	.2	3	62
89-VG L3S 9+00E	15	12	93	.3	2	1
89-VG L3S 9+50E	13	11	62	.2	2	1
89-VG L3S 10+00E	12	8	58	.2	2	1
89-VG L3S 10+50E	11	14	58	.1	3	100
89-VG L3S 11+00E	11	10	59	.2	2	10
89-VG L3S 11+50E	16	15	56	.4	4	2
STD C/AU-S	61	38	132	7.1	40	48

SAMPLE#	Cu PPM	Pb PPM	Zn PPM	Ag PPM	As PPM	Au* PPB
89-VG L3S 12+00E	13	18	72	.2	2	4
89-VG L3S 12+50E	16	16	69	.1	4	6
89-VG L4S 0+00	13	13	56	.1	2	7
89-VG L4S 0+50E	14	9	73	.1	3	3
89-VG L4S 1+00E	12	12	62	.2	2	5
89-VG L4S 1+50E	11	15	65	.1	3	6
89-VG L4S 2+00E	11	16	83	.2	5	2
89-VG L4S 2+50E	9	15	84	.3	2	112
89-VG L4S 3+00E	9	13	67	.3	5	5
89-VG L4S 3+50E	11	13	64	.1	2	4
89-VG L4S 4+00E	14	18	97	.2	5	2
89-VG L4S 4+50E	11	14	73	.1	4	1
89-VG L4S 5+00E	16	19	73	.1	2	4
89-VG L4S 5+50E	11	9	52	.1	2	7
89-VG L4S 6+00E	11	15	57	.1	4	3
89-VG L4S 6+50E	15	17	71	.1	4	11
89-VG L4S 7+00E	13	12	74	.1	8	5
89-VG L4S 7+50E	12	12	76	.3	3	5
89-VG L4S 8+00E	12	11	70	.1	2	9
89-VG L4S 8+50E	17	32	153	.2	4	4
89-VG L4S 9+00E	12	14	58	.1	2	5
89-VG L4S 9+50E	12	19	71	.2	3	2
89-VG L4S 10+00E	14	11	70	.1	2	2
89-VG L4S 10+50E	15	11	63	.1	3	1
89-VG L4S 11+00E	10	15	68	.1	2	2
89-VG L4S 11+50E	10	13	76	.3	3	2
89-VG L4S 12+00E	9	9	70	.2	2	3
89-VG L4S 12+50E	10	13	72	.1	2	6
89-VG L5S 0+00	10	14	52	.1	4	64
89-VG L5S 0+50E	10	20	58	.2	2	6
89-VG L5S 1+00E	9	14	76	.2	4	1
89-VG L5S 1+50E	10	14	64	.1	2	4
89-VG L5S 2+00E	11	15	77	.1	2	3
89-VG L5S 2+50E	8	12	55	.1	4	44
89-VG L5S 3+00E	9	11	94	.1	4	3
89-VG L5S 3+50E	10	17	66	.2	2	3
STD C/AU-S	58	39	132	7.1	40	52

SAMPLE#	Cu PPM	Pb PPM	Zn PPM	Ag PPM	As PPM	Au* PPB
89-VG L5S 4+00E	11	11	72	.2	2	3
89-VG L5S 4+50E	9	10	53	.2	2	4
89-VG L5S 5+00E	6	12	52	.1	4	1
89-VG L5S 5+50E	9	9	53	.1	2	4
89-VG L5S 6+00E	10	12	59	.2	2	3
89-VG L5S 6+50E	9	9	45	.1	2	5
89-VG L5S 7+00E	11	12	52	.1	2	13
89-VG L5S 7+50E	15	14	86	.1	2	3
89-VG L5S 8+00E	11	6	75	.1	2	1
89-VG L5S 8+50E	28	30	169	1.0	3	7
89-VG L5S 9+00E	11	12	76	.1	2	12
89-VG L5S 9+50E	14	12	61	.2	2	24
89-VG L5S 10+00E	16	14	76	.2	2	5
89-VG L5S 10+50E	13	8	78	.1	2	2
89-VG L5S 11+00E	11	6	94	.2	2	1
89-VG L5S 11+50E	33	35	111	1.5	5	5
89-VG L5S 12+00E	11	7	24	.4	5	2
89-VG L5S 12+50E	13	7	34	.6	2	3
89-VG L6S 0+00	8	10	42	.1	2	6
89-VG L6S 0+50E	10	15	56	.2	2	7
89-VG L6S 1+00E	18	27	98	.1	3	4
89-VG L6S 1+50E	8	12	54	.1	2	18
89-VG L6S 2+00E	10	12	77	.2	2	3
89-VG L6S 2+50E	9	10	78	.1	4	4
89-VG L6S 3+00E	11	15	68	.2	2	1
89-VG L6S 3+50E	11	11	79	.2	3	5
89-VG L6S 4+00E	13	8	65	.4	2	3
89-VG L6S 4+50E	12	16	91	.1	2	4
89-VG L6S 5+00E	10	18	74	.1	6	2
89-VG L6S 5+50E	11	11	64	.2	2	8
89-VG L6S 6+00E	11	8	62	.1	2	6
89-VG L6S 6+50E	9	8	53	.1	2	14
89-VG L6S 7+00E	17	11	59	.2	2	1
89-VG L6S 7+50E	15	16	92	.3	3	3
89-VG L6S 8+00E	8	5	58	.1	2	3
89-VG L6S 8+50E	12	11	87	.3	3	2
STD C/AU-S	60	39	132	7.1	38	49

SAMPLE#	Cu PPM	Pb PPM	Zn PPM	Ag PPM	As PPM	Au* PPB
89-VG L6S 9+00E P	10	16	60	.1	2	3
89-VG L6S 9+50E	11	12	75	.1	2	3
89-VG L6S 10+00E	13	15	64	.1	2	6
89-VG L6S 10+50E	14	8	96	.1	2	28
89-VG L6S 11+00E	20	9	147	.1	2	5
89-VG L6S 11+50E P	13	63	116	.5	2	1
89-VG L6S 12+00E	9	13	67	.1	2	5
89-VG L6S 12+50E	11	18	73	.1	2	2
89-VG L7S 12+00W	12	15	74	.3	2	14
89-VG L7S 11+50W	15	34	83	.1	2	25
89-VG L7S 11+00W	12	22	69	.2	3	24
89-VG L7S 9+50W	25	68	166	.2	2	13
89-VG L7S 9+00W P	19	48	143	.2	2	10
89-VG L7S 8+50W P	20	33	96	.3	2	29
89-VG L7S 8+00W	28	42	131	.2	2	26
89-VG L7S 7+50W P	41	21	86	.2	2	7
89-VG L7S 6+50W P	16	32	91	.1	2	27
89-VG L7S 6+00W P	17	38	106	.2	2	25
89-VG L7S 5+50W	17	109	180	.3	4	49
89-VG L7S 4+50W P	8	31	101	.1	2	18
89-VG L7S 4+00W	16	44	105	.2	2	8
89-VG L7S 3+50W	15	67	152	.1	2	5
89-VG L7S 3+00W P	9	36	128	.1	2	6
89-VG L7S 2+50W P	9	25	91	.1	2	4
89-VG L7S 2+00W	14	15	59	.1	3	25
89-VG L7S 1+50W	11	11	58	.1	3	4
89-VG L7S 1+00W	14	14	67	.1	3	19
89-VG L7S 0+50W	12	12	59	.1	2	12
89-VG L7S 0+00	10	12	56	.2	2	15
89-VG L7S 0+50E	11	9	59	.1	2	5
89-VG L7S 1+00E	10	16	58	.3	2	3
89-VG L7S 1+50E	8	10	55	.1	2	5
89-VG L7S 2+00E	9	13	68	.1	2	5
89-VG L7S 2+50E	10	9	72	.1	3	8
89-VG L7S 3+00E	14	21	75	.1	2	127
89-VG L7S 3+50E	8	8	65	.1	2	54
STD C/AU-S	60	37	132	6.6	38	47

SAMPLE#	Cu PPM	Pb PPM	Zn PPM	Ag PPM	As PPM	Au* PPB
89-VG L7S 4+00E	19	16	77	.1	2	6
89-VG L7S 4+50E	12	14	59	.1	3	1
89-VG L7S 5+00E	12	12	50	.1	3	4
89-VG L7S 5+50E	12	15	53	.1	5	1
89-VG L7S 6+00E	15	11	60	.1	2	3
89-VG L7S 6+50E	13	8	53	.1	3	1
89-VG L7S 7+00E	12	11	63	.1	2	1
89-VG L7S 7+50E	12	11	55	.1	3	2
89-VG L7S 8+00E	13	10	59	.1	3	2
89-VG L7S 8+50E	12	15	64	.2	2	4
89-VG L7S 9+00E	11	12	76	.1	2	1
89-VG L7S 9+50E	12	13	63	.1	2	1
89-VG L7S 10+00E	13	11	74	.1	2	18
89-VG L7S 10+50E	11	11	66	.1	2	3
89-VG L7S 11+00E	13	13	108	.3	3	2
89-VG L7S 11+50E	11	8	66	.1	2	3
89-VG L7S 12+00E	11	14	61	.1	2	3
89-VG L7S 12+50E	13	12	61	.2	3	4
89-VG L8S 12+00W	17	12	58	.1	4	7
89-VG L8S 11+50W	11	15	72	.1	6	9
89-VG L8S 11+00W	13	14	83	.1	4	32
89-VG L8S 10+50W	15	18	67	.1	4	24
89-VG L8S 10+00W	13	13	74	.2	4	188
89-VG L8S 9+50W	17	21	84	.1	3	145
89-VG L8S 9+00W	27	37	135	.1	6	62
89-VG L8S 8+50W	16	25	106	.3	3	18
89-VG L8S 8+00W	30	54	114	.3	4	19
89-VG L8S 7+50W	51	88	349	.8	5	17
89-VG L8S 7+00W	26	47	117	.3	5	16
89-VG L8S 6+50W	28	104	173	.5	4	35
89-VG L8S 6+00W	41	174	348	.6	8	17
89-VG L8S 5+50W	51	61	158	.1	3	13
89-VG L8S 5+00W	43	55	116	1.3	3	125
89-VG L8S 4+50W	40	46	116	1.1	3	109
89-VG L8S 4+00W	19	50	129	.2	2	16
89-VG L8S 3+50W	10	20	52	.1	5	92
STD C/AU-S	62	42	132	7.1	41	53

SAMPLE#	Cu PPM	Pb PPM	Zn PPM	Ag PPM	As PPM	Au* PPB
89-VG L8S 3+00W	12	16	58	.1	3	36
89-VG L8S 2+50W	11	13	51	.1	2	64
89-VG L8S 2+00W	12	20	73	.1	4	5
89-VG L8S 1+50W	12	12	57	.2	2	13
89-VG L8S 1+00W	12	10	53	.1	2	7
89-VG L8S 0+50W	12	18	71	.1	4	6
89-VG L8S 0+00	12	15	61	.1	2	14
89-VG L8S 0+50E	18	12	84	.1	2	4
89-VG L8S 1+00E	11	12	58	.3	2	1
89-VG L8S 1+50E	11	11	52	.1	2	6
89-VG L8S 2+00E	10	6	49	.1	2	10
89-VG L8S 2+50E	11	16	102	.2	2	2
89-VG L8S 3+00E	12	8	67	.1	2	1
89-VG L8S 3+50E	12	10	74	.1	2	13
89-VG L8S 4+00E	14	10	64	.1	3	7
89-VG L8S 4+50E	12	11	53	.1	2	1
89-VG L8S 5+00E	12	13	60	.1	4	2
89-VG L8S 5+50E	12	11	54	.2	4	3
89-VG L8S 6+00E	12	12	52	.1	4	4
89-VG L8S 6+50E	13	11	58	.1	3	1
89-VG L8S 7+00E	14	15	91	.2	4	6
89-VG L8S 7+50E	14	17	87	.1	4	2
89-VG L8S 8+00E	14	12	70	.1	6	4
89-VG L8S 8+50E	18	14	108	.2	2	1
89-VG L8S 9+00E	9	13	100	.1	2	2
89-VG L8S 9+50E	11	15	63	.1	2	3
89-VG L8S 10+00E	11	12	81	.1	2	3
89-VG L8S 10+50E	13	12	54	.2	5	37
89-VG L8S 11+00E	13	11	68	.2	2	5
89-VG L8S 11+50E	14	14	80	.5	2	2
89-VG L8S 12+00E	13	12	94	.1	2	7
89-VG L8S 12+50E	13	10	60	.1	2	5
89-VG L9S 9+00W	14	17	74	.2	3	53
89-VG L9S 8+50W	16	17	64	.1	2	98
89-VG L9S 8+00W	16	19	75	.1	2	83
89-VG L9S 7+50W	14	20	72	.3	3	18
STD C/AU-S	63	36	132	7.1	42	51

SAMPLE#	Cu PPM	Pb PPM	Zn PPM	Ag PPM	As PPM	Au* PPB
89-VG L9S 7+00W	12	22	65	.3	2	7
89-VG L9S 6+50W	8	19	60	.1	2	7
89-VG L9S 6+00W	8	20	59	.1	2	6
89-VG L9S 5+50W	12	24	75	.2	2	11
89-VG L9S 5+00W	11	20	53	.1	2	8
89-VG L9S 4+50W	13	29	91	.2	4	14
89-VG L9S 4+00W	13	20	63	.1	2	12
89-VG L9S 3+50W	11	19	67	.1	2	10
89-VG L9S 3+00W	10	12	66	.1	4	26
89-VG L9S 2+50W	8	9	46	.2	2	36
89-VG L9S 2+00W	10	13	59	.2	5	44
89-VG L9S 1+50W	17	26	119	.3	3	9
89-VG L9S 1+00W	12	13	73	.1	5	3
89-VG L9S 0+50W	15	20	89	.1	3	8
89-VG L9S 0+00	10	15	72	.3	2	12
89-VG L9S 0+50E	13	15	81	.2	4	17
89-VG L9S 1+00E	13	21	85	.1	2	7
89-VG L9S 1+50E	10	13	73	.2	3	7
89-VG L9S 2+00E	10	13	65	.1	2	4
89-VG L9S 2+50E	10	12	60	.1	4	8
89-VG L9S 3+00E	13	20	80	.1	6	10
89-VG L9S 3+50E	13	7	52	.3	5	3
89-VG L9S 4+00E	11	8	45	.2	2	9
89-VG L9S 4+50E	9	8	45	.2	3	6
89-VG L9S 5+00E	11	8	50	.2	2	5
89-VG L9S 5+50E	11	9	52	.1	3	3
89-VG L9S 6+00E	14	16	69	.3	3	1
89-VG L9S 6+50E	13	10	62	.1	2	1
89-VG L9S 7+00E	8	8	48	.1	2	3
89-VG L9S 7+50E	12	20	101	.1	2	1
89-VG L9S 8+00E	12	10	65	.3	4	2
89-VG L9S 8+50E	13	10	152	.1	4	1
89-VG L9S 9+00E	14	17	92	.2	6	1
89-VG L9S 9+50E	10	12	56	.1	2	3
89-VG L9S 10+00E	14	11	68	.2	2	3
89-VG L9S 10+50E	17	12	70	.3	3	5
STD C/AU-S	60	38	132	7.1	41	51

SAMPLE#	Cu PPM	Pb PPM	Zn PPM	Ag PPM	As PPM	Au* PPB
89-VG L9S 11+50E	10	11	66	.1	2	1
89-VG L9S 12+00E	14	11	71	.1	2	1
89-VG L9S 12+50E	11	10	58	.2	2	3
89-VG L10S 0+00	9	11	61	.1	2	14
89-VG L10S 0+50E	15	16	82	.1	3	29
89-VG L10S 1+00E	11	16	60	.1	4	36
89-VG L10S 1+50E	9	9	63	.1	2	8
89-VG L10S 2+00E	8	15	53	.1	2	13
89-VG L10S 2+50E	12	14	71	.1	5	100
89-VG L10S 3+00E	10	13	72	.2	4	10
89-VG L10S 3+50E	10	9	51	.1	3	8
89-VG L10S 4+00E	10	12	55	.1	2	35
89-VG L10S 4+50E	10	13	63	.1	2	3
89-VG L10S 5+00E	14	9	73	.1	4	1
89-VG L10S 5+50E	11	9	69	.1	2	7
89-VG L10S 6+00E	7	10	87	.1	5	19
89-VG L10S 6+50E	10	12	77	.3	2	1
89-VG L10S 7+00E	7	12	78	.1	4	1
89-VG L10S 7+50E	7	13	69	.1	2	1
89-VG L10S 8+00E	9	9	51	.1	2	5
89-VG L10S 8+50E	11	10	52	.1	2	1
89-VG L10S 9+00E	18	19	65	.1	4	4
89-VG L10S 9+50E	13	11	69	.1	2	1
89-VG L10S 10+00E	18	15	71	.4	2	1
89-VG L10S 10+50E	15	11	87	.1	4	32
89-VG L10S 11+00E	13	12	68	.2	3	10
89-VG L10S 11+50E	17	15	69	.1	4	1
89-VG L10S 12+00E	14	12	78	.1	2	1
89-VG L10S 12+50E	24	20	94	.3	3	3
89-VG L12S 0+00	12	16	61	.1	3	8
89-VG L12S 0+50E	10	12	48	.1	2	3
89-VG L12S 1+00E	10	12	56	.1	4	12
89-VG L12S 1+50E	13	9	62	.1	3	14
89-VG L12S 2+00E	9	9	70	.1	2	53
89-VG L12S 2+50E	13	12	72	.1	2	13
89-VG L12S 3+00E	11	6	63	.1	5	10
STD C/AU-S	60	37	132	7.1	43	47

SAMPLE#	Cu PPM	Pb PPM	Zn PPM	Ag PPM	As PPM	Au* PPB
89-VG L12S 3+50E	9	15	58	.2	2	22
89-VG L12S 4+00E	9	10	53	.1	2	3
89-VG L12S 4+50E	10	11	46	.1	2	6
89-VG L12S 5+00E	9	13	46	.1	3	6
89-VG L12S 5+50E	11	7	57	.1	2	2
89-VG L12S 6+00E	12	15	60	.2	2	13
89-VG L12S 6+50E	16	16	88	.3	3	2
89-VG L12S 7+00E	11	10	83	.1	2	2
89-VG L12S 7+50E	9	17	92	.2	4	1
89-VG L12S 8+00E	10	12	105	.1	2	8
89-VG L12S 8+50E	12	15	93	.2	3	4
89-VG L13S 0+00W	42	28	96	.3	94	5
89-VG L13S 0+00	13	21	57	.1	3	42
89-VG L13S 0+50E	12	20	68	.1	2	16
89-VG L13S 1+00E	18	25	86	.1	2	6
89-VG L13S 1+50E	12	16	65	.2	3	21
89-VG L13S 2+00E	14	20	85	.2	2	39
89-VG L13S 2+50E	10	14	82	.1	2	12
89-VG L13S 3+00E	19	23	94	.4	2	121
89-VG L13S 3+50E	31	52	168	.3	2	8
89-VG L13S 4+00E	10	13	69	.2	3	42
89-VG L13S 4+50E	10	11	69	.1	2	10
89-VG L13S 5+00E	13	15	64	.1	4	8
89-VG L13S 5+50E	12	11	63	.1	3	8
89-VG L13S 6+00E	13	8	55	.1	2	1
89-VG L13S 6+50E	13	15	91	.1	5	6
89-VG L13S 7+00E	28	26	128	.4	2	6
89-VG L13S 7+50E	16	13	91	.4	4	11
89-VG L14S 0+00	12	18	70	.1	5	2
89-VG L13S 0+00E	39	17	89	.3	84	4
89-VG L13S 0+50E	10	19	63	.2	7	4
89-VG L13S 1+00E	9	19	61	.1	4	3
89-VG L13S 1+50E	21	36	104	.4	3	6
89-VG L13S 2+00E	12	21	101	.2	2	3
89-VG L13S 2+50E	23	27	90	.2	5	7
89-VG L13S 3+00E	12	17	136	.1	2	8
STD C/AU-S	58	39	132	7.1	39	51

SAMPLE#	Cu PPM	Pb PPM	Zn PPM	Ag PPM	As PPM	Au* PPB
89-VG L14S 3+50E	11	15	66	.1	2	8
89-VG L14S 4+00E	9	15	100	.1	3	18
89-VG L14S 4+50E	14	15	104	.1	3	2
89-VG L14S 5+00E	55	47	130	.9	4	13
89-VG L14S 5+50E	57	31	110	1.3	5	2
89-VG L14S 6+00E	15	10	89	.1	3	9
89-VG L14S 6+50E	11	14	45	.8	2	1
89-VG L14S 7+00E	16	15	90	.1	2	7
89-VG L14S 7+50E	19	16	75	.2	4	1
89-VG L15S 0+25W	54	28	121	.1	86	7
89-VG L17S 0+00W	31	20	92	.1	43	3
89-VG L17S 4+00E	27	12	74	.2	36	3
89-VG L17S 7+00E	62	14	165	.5	75	4
89-VG L17S 7+50E	58	13	156	.3	73	2
89-VG L17S 8+00E	74	16	208	.6	100	3
89-VG L17S 8+50E	76	10	235	.5	74	3
89-VG L19S 2+50W	12	15	68	.2	4	1
89-VG L19S 2+00W	10	29	187	.4	2	1
89-VG L19S 1+50W	11	33	94	.2	3	1
89-VG L19S 1+00W	12	25	112	.2	5	2
89-VG L19S 0+50W	23	39	206	.5	6	1
89-VG L19S 0+00W	59	35	137	.4	219	15
89-VG L19S 0+00	48	34	111	1.2	6	3
89-VG L20S 10+00W	14	17	60	.1	5	83
89-VG L20S 9+50W	13	17	60	.1	4	5
89-VG L20S 9+00W	13	17	52	.1	4	2
89-VG L20S 8+50W	10	13	61	.1	2	7
89-VG L20S 8+00W	18	14	82	.2	6	2
89-VG L20S 7+50W	39	21	76	1.3	2	2
89-VG L20S 7+00W	9	12	95	.1	3	2
89-VG L20S 6+50W	11	17	81	.1	4	1
89-VG L20S 6+00W	54	35	125	3.0	2	6
89-VG L20S 5+50W	12	31	80	.1	2	1
89-VG L20S 5+00W	10	18	170	.1	3	1
89-VG L20S 4+50W	16	19	144	.2	2	1
89-VG L20S 4+00W	4	7	33	.1	3	1
STD C/AU-S	62	43	132	7.1	38	50

SAMPLE#	Cu PPM	Pb PPM	Zn PPM	Ag PPM	As PPM	Au* PPB
89-VG L20S 3+50W	21	45	105	.3	5	9
89-VG L20S 3+00W P	5	4	42	.1	4	5
89-VG L20S 2+50W P	17	33	67	.1	3	5
89-VG L20S 2+00W	18	20	94	.2	5	5
89-VG L20S 1+50W	14	68	88	.4	6	9
89-VG L20S 1+00W	8	7	17	.1	2	1
89-VG L20S 0+50W	8	14	81	.1	3	2
89-VG L20S 0+00W	11	15	75	.2	5	8
89-VG L20S 0+50E P	12	19	128	.1	5	6
89-VG L20S 1+00E	23	50	96	.3	2	4
89-VG L20S 1+50E	14	29	100	.1	3	7
89-VG L20S 2+00E	14	14	78	.1	2	31
89-VG L21S 10+00W	8	14	63	.1	4	3
89-VG L21S 9+50W	12	18	61	.2	5	1
89-VG L21S 9+00W	30	13	42	2.2	3	4
89-VG L21S 8+50W	32	18	74	.6	2	10
89-VG L21S 8+00W	39	18	83	.7	6	5
89-VG L21S 7+50W	15	28	68	.4	5	1
89-VG L21S 7+00W	16	22	103	.1	3	2
89-VG L21S 6+50W	23	19	100	.3	2	2
89-VG L21S 6+00W	10	17	125	.1	2	1
89-VG L21S 5+50W	12	27	91	.1	3	5
89-VG L21S 5+20W	12	18	68	.2	4	2
89-VG L21S 4+50W	10	13	56	.1	3	1
89-VG L21S 4+00W	10	21	70	.1	3	5
89-VG L21S 3+50W	21	34	95	.4	2	2
89-VG L21S 3+00W	8	22	69	.2	5	2
89-VG L21S 2+50W	10	13	46	.2	6	4
89-VG L21S 2+00W	7	9	40	.2	4	2
89-VG L21S 1+50W	9	10	50	.2	4	1
89-VG L21S 1+00W	11	13	61	.1	2	2
89-VG L21S 0+50W	11	13	58	.1	2	3
89-VG L21S 0+00	16	13	105	.2	19	4
89-VG L21S 0+50E	16	29	93	.2	5	1
89-VG L21S 0+84E	12	16	58	.1	4	1
89-VG L21S 1+50E	14	21	87	.1	3	3
STD C/AU-S	61	39	132	7.1	39	48

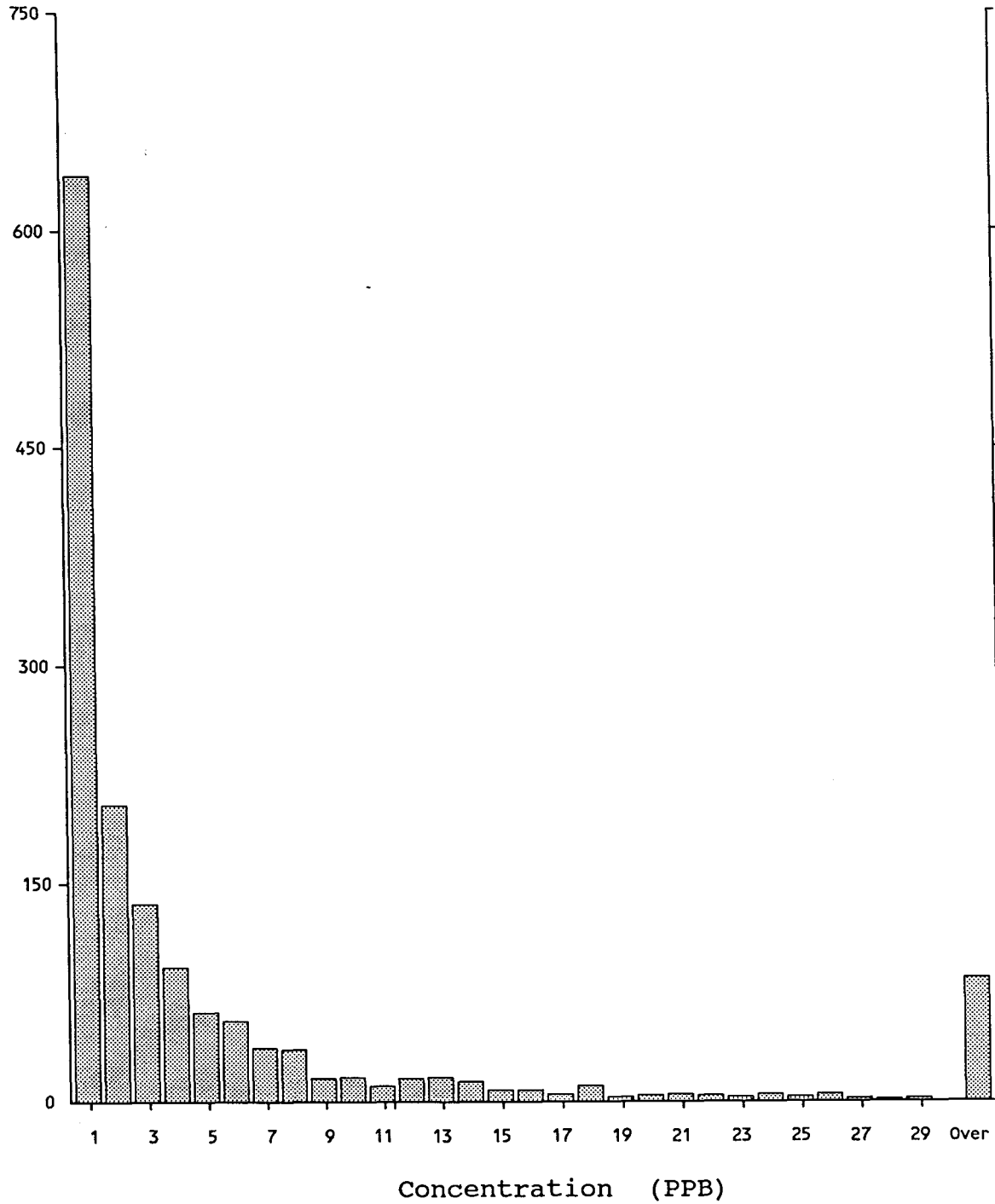
APPENDIX 2

STATISTICAL SUMMARY

SKUKUM GOLD - NET, VIN

Au*

Number of
Samples



1507 Samples

Maximum: 250

Minimum: 1

Mean: 7

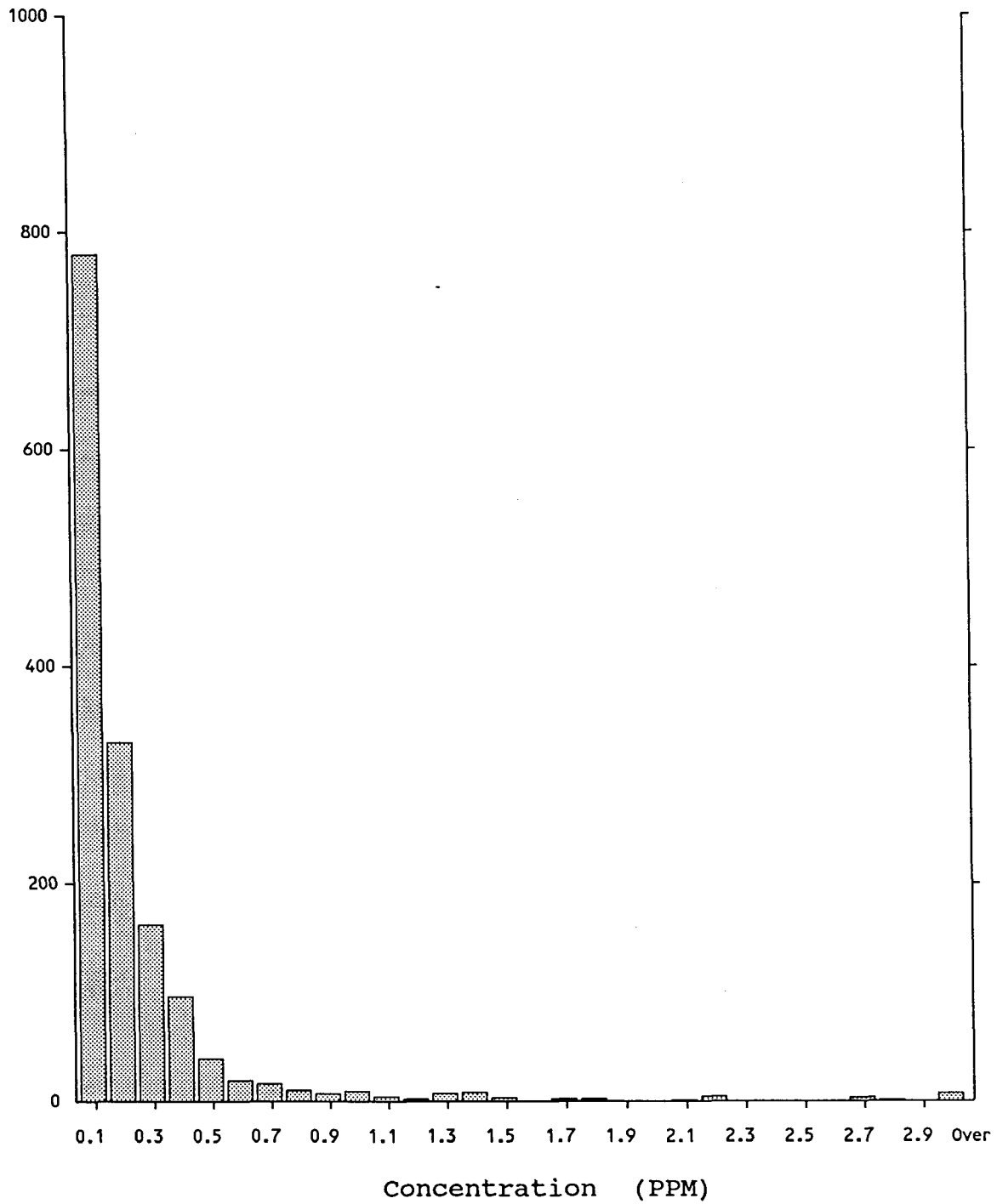
Median: 2

Standard Deviation: 18

SKUKUM GOLD - NET, VIN

Ag

Number of
Samples



1511 Samples

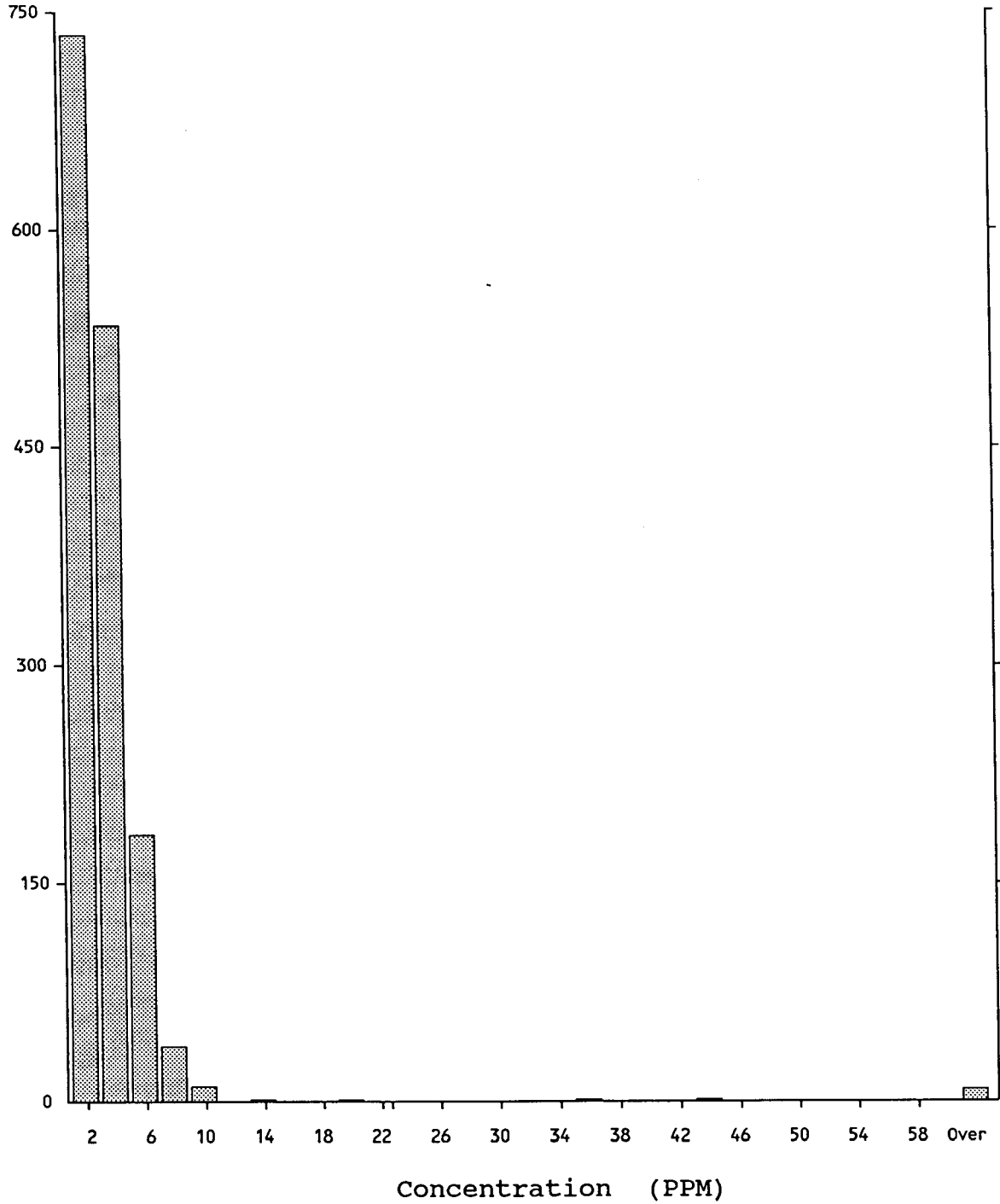
Maximum: 9.6
Minimum: 0.1

Mean: 0.3
Median: 0.1
Standard Deviation: 0.4

SKUKUM GOLD - NET, VIN

As

Number of
Samples



1511 Samples

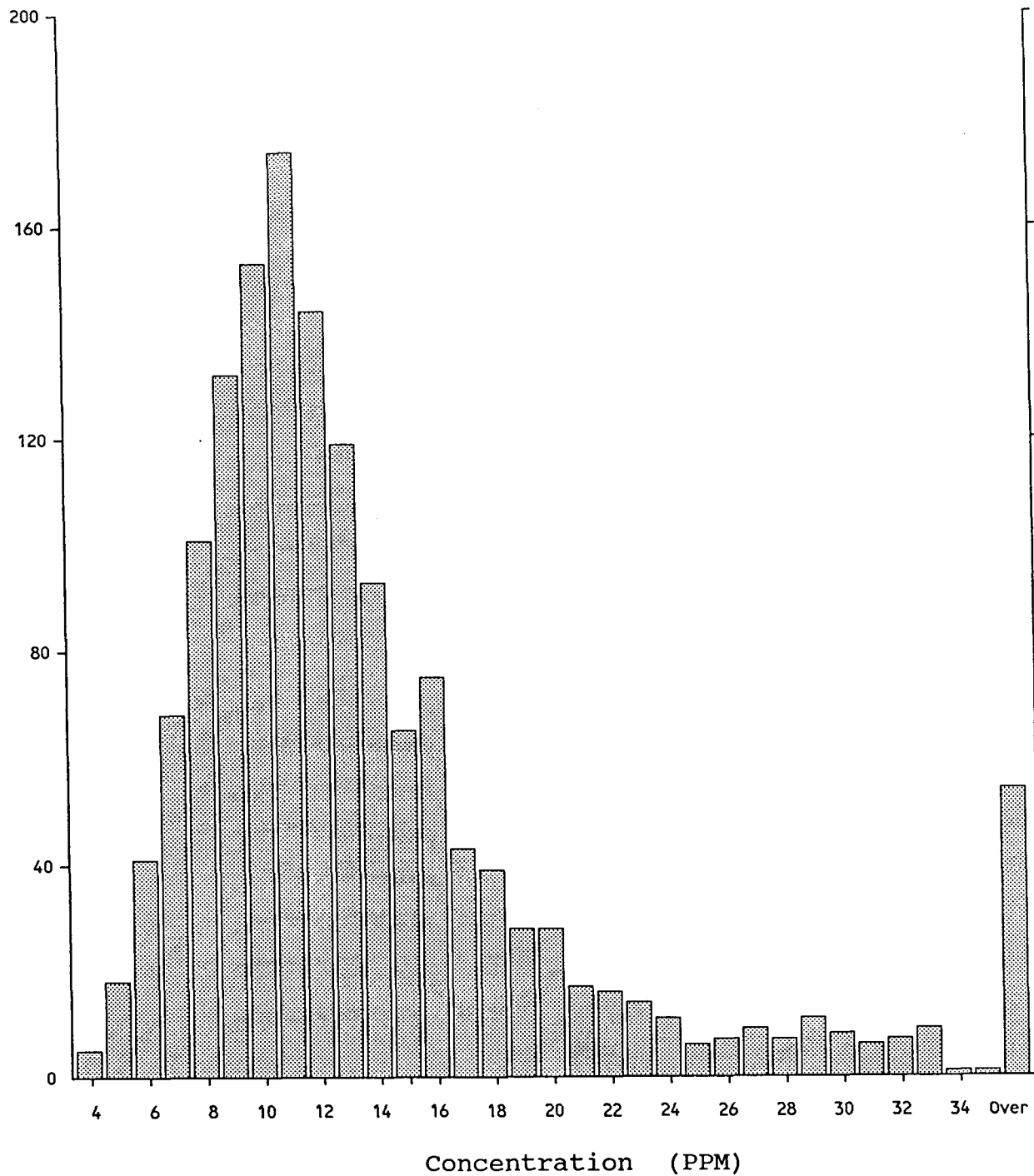
Maximum: 219
Minimum: 2

Mean: 4
Median: 3
Standard Deviation: 8

SKUKUM GOLD - NET, VIN

Cu

Number of
Samples



1510 Samples

Maximum: 148

Minimum: 4

Mean: 15

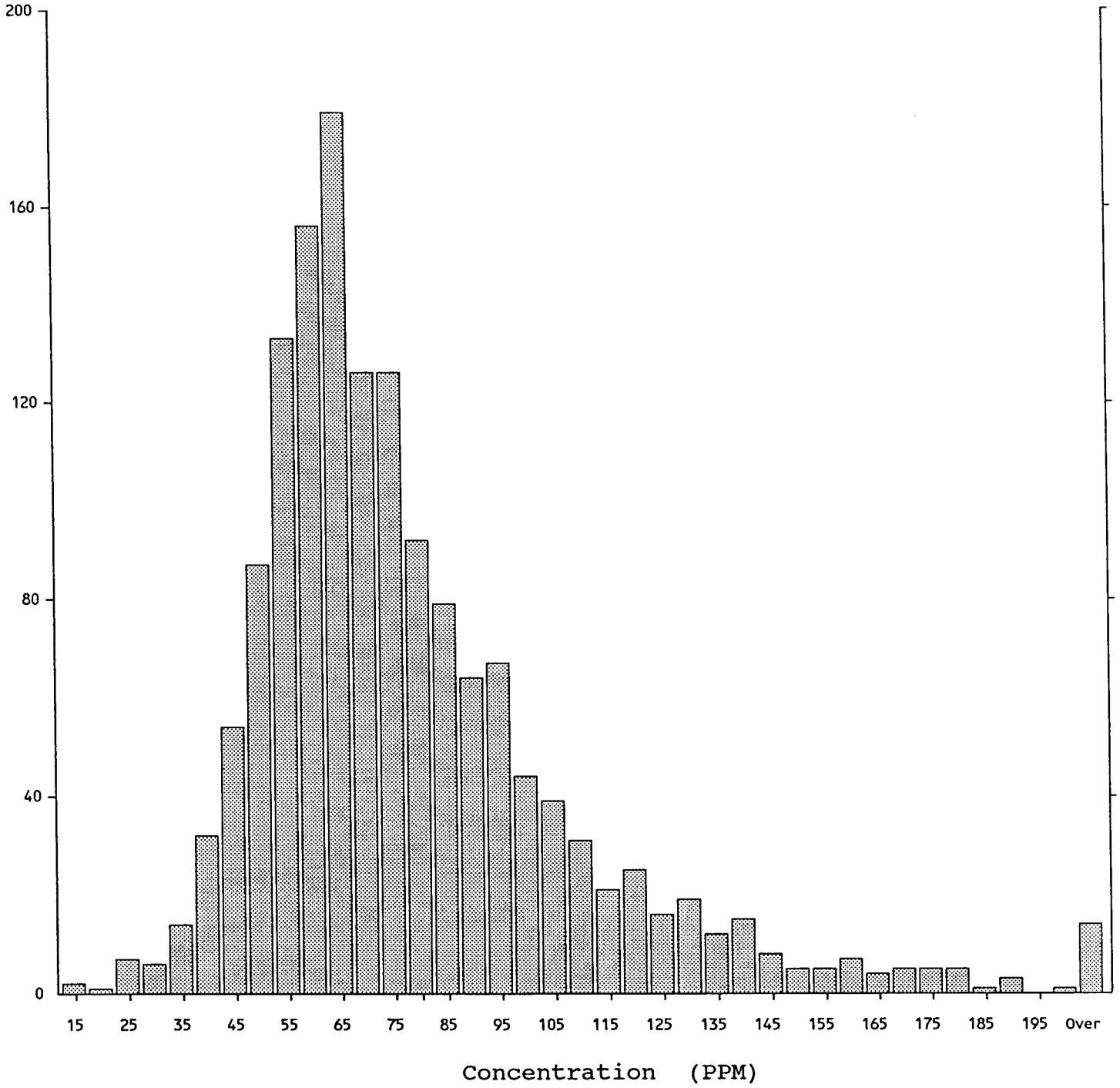
Median: 12

Standard Deviation: 11

SKUKUM GOLD - NET, VIN

Zn

Number of
Samples



1510 Samples

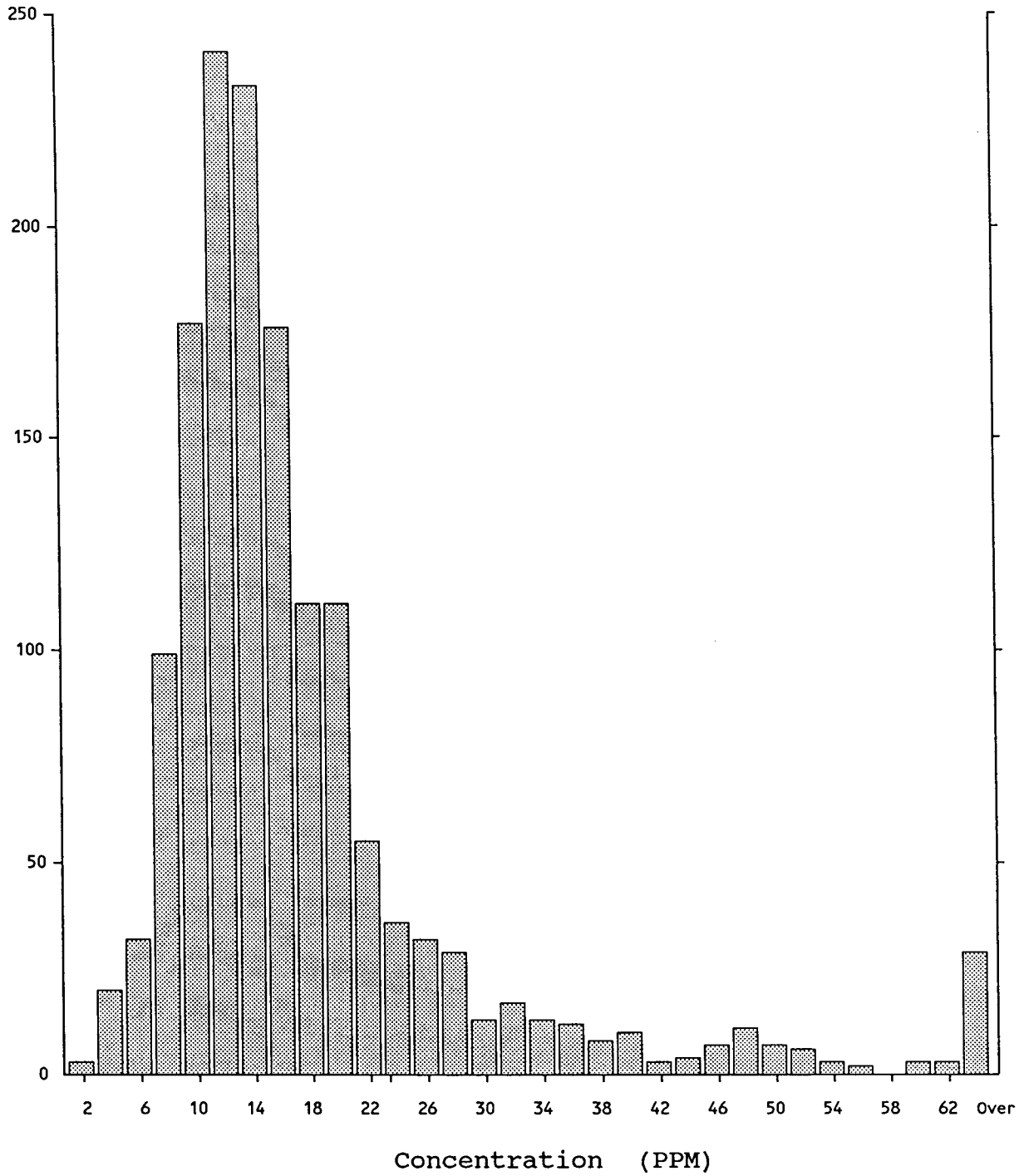
Maximum: 459
Minimum: 12

Mean: 77
Median: 69
Standard Deviation: 34

SKUKUM GOLD - NET, VIN

Pb

Number of
Samples



1506 Samples

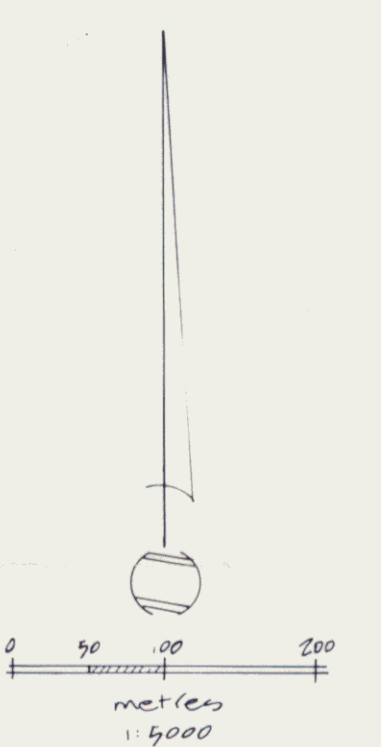
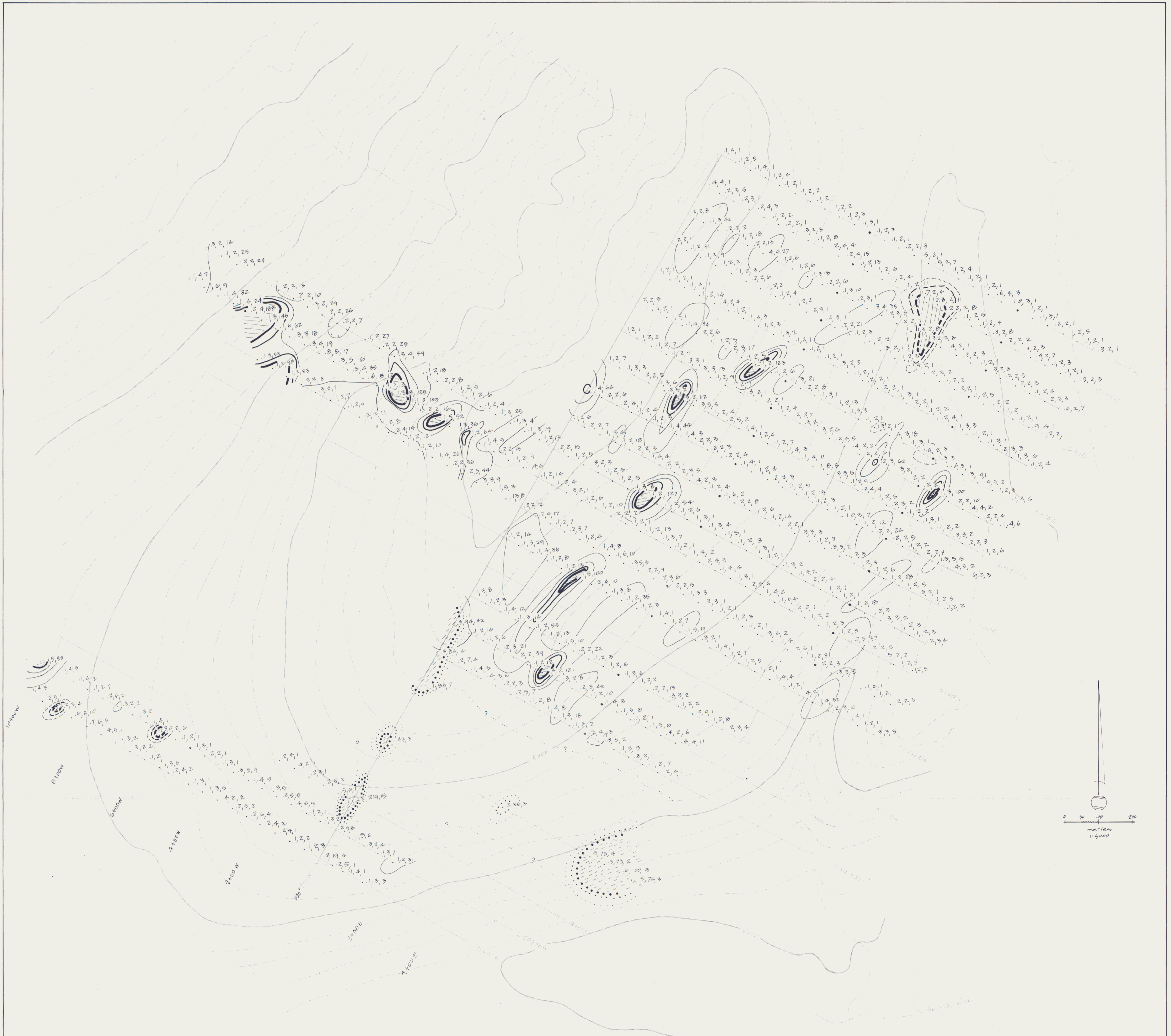
Maximum: 135

Mean: 18

Minimum: 2

Median: 14

Standard Deviation: 13



Ag(ppm), As(ppm), Au(ppb)					
	1.5 ppm Ag		36 ppm As		75 ppb Au
	1.5 ppm Ag		28 ppm As		61 ppb Au
	1.1 ppm Ag		20 ppm As		43 ppb Au
	Strongly anomalous zone		Strongly anomalous zone		15 ppb Au
			Strongly anomalous zone		Strongly anomalous zone

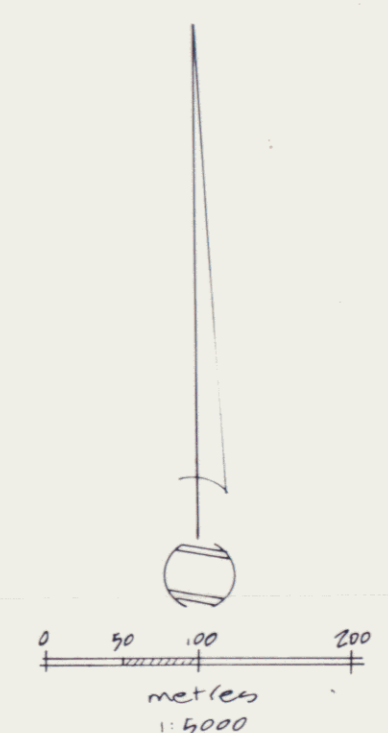
214

SKUKUM GOLD INC.
VIN-NET CLAIMS
 WHITEHORSE MINING DISTRICT
GRID 05 - VG
 Ag(ppm) As(ppm) Au(ppb)

Drawn by HM/vh Date: Dec 89
 NTS 109/06 Scale: 1:5000



Cu (ppm), Pb (ppm), Zn (ppm)					
~	59 ppm Cu	70 ppm Pb	---	213 ppm Zn
~	48 ppm Cu	57 ppm Pb	---	179 ppm Zn
~	37 ppm Cu	44 ppm Pb	---	145 ppm Zn
⊗	Strongly anomalous zone		Strongly anomalous zone	≡	Strongly anomalous zone

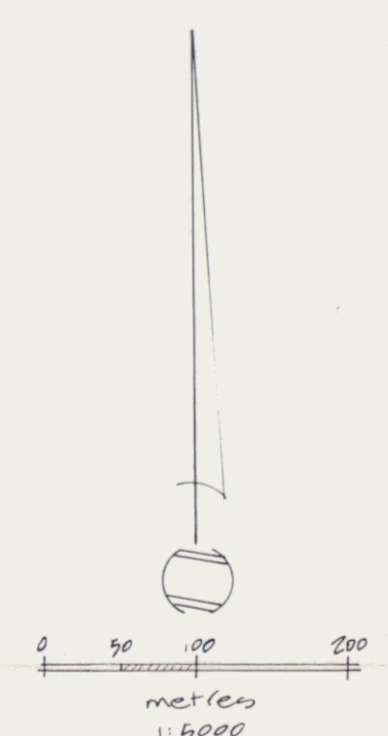


215

SKUKUM GOLD INC.
VIN NET CLAIMS
WHITEHORSE MINING DISTRICT
GRID 89 - VG

Cu (ppm) Pb (ppm) Zn (ppm)

Drawn by HM/vh Date: Dec. 89 MAP No. NTS 109/pa Scale: 1:5000 2



- 40 ppm Cu
- 57 ppm Pb
- 79 ppm Zn
- 1.5 ppm Ag
- xxxxxxx 20 ppm As
- 43 ppb Au (Threshold)

216
 SKUKUM GOLD INC.
 VG CLAIMS
 WHITEHORSE MINING DISTRICT
 GRID 80. VG
 ANOMALOUS ZONES
 SUMMARY
 Drawn by HM/vk Date: Dec. 80
 NTG: 109/08 Scale: 1:5000 3