

MAP NO.: ASSESSMENT REPORT X
115 P 14 PROSPECTUS X
CONFIDENTIAL X
OPEN FILE

DOCUMENT NO: 092752
MINING DISTRICT: Dawson
TYPE OF WORK: Diamond Drilling

REPORT FILED UNDER: J.C. Stephen Exploration Ltd.

DATE PERFORMED: June 16 - June 25, 1989

DATE FILED: October 12, 1989

LOCATION: LAT.: 63° 50'N

AREA: Left Clear Creek

LONG.: 137° 20'W

VALUE \$: 28 300.00

CLAIM NAME & NO.: RAIN 1-16 YA 31503 - YA 31517, YA 31525 WIND 2,4,6,8,10 YA 31855,57,59,61,63
RAIN 25-28 YA 31522, YA 31523, YA 31530, YA 31531 SLEET 7-12 YB 04262-267 SLEET 13-24 YB 04268-
YB 04279 SLEET 33-59 YB 04280 - YB 04306 SLEET 61 YB 04307 SLEET 63-68 YB 04308 - YB 04313 SLEET
69-84 YB 04414 - YB 04429 SLEET 87-110 YB 04430 - YB 04453 SLEET 111-144 YB 04314 - YB 04347

WORK DONE BY: J.C. Stephen Exploration Ltd.

WORK DONE FOR: Nelson Harper/Blackstone Placer/Cambridge Resources Ltd.

DATE TO GOOD STANDING:

REMARKS: #61 SLEET

-----+-----
-----+-----
-----+-----



INITIAL DIAMOND DRILLING REPORT

092752

on the

RAIN, WIND, SLEET CLAIMS

Left Clear Creek, Yukon

NTS 115P/14E

Latitude 63° 50'N

Longitude 137° 20'W

Drilling Done: June 16 - June 25, 1989

by

S. Feulgen, J.C. Stephen
J.C. Stephen Explorations Ltd.

for

CAMBRIDGE RESOURCES LTD.

July 14, 1989

092 52



This report has been examined by
the Geological Evaluation Unit under
Section 41 Yukon Placer Mining Act
and is recommended as allowable
representation work in the amount
of \$

Chief Geologist, Exploration and
Geological Services Division, Northern
Affairs Program for Commissioner of
Yukon Territory.

This report has been examined by
the Geological Evaluation Unit
under Section 53 (4) Yukon Quartz
Mining Act and is allowed as
representation work in the amount
of \$ 28,300.00.

W. LeBarge
Regional Manager, Exploration and
Geological Services for Commissioner
of Yukon Territory.

TABLE OF CONTENTS

	Page
SUMMARY	
LOCATION AND ACCESS	2
PROPERTY DEFINITION AND CLAIM STATUS	2
HISTORY AND WORK SUMMARY	5-6
PROPERTY GEOLOGY	6-7
GEOPHYSICAL SURVEYS	7-8
DIAMOND DRILL PROGRAM	8
Drill Hole Summaries	10-17
Rock Types	18
Mineralization	19
GEOPHYSICAL CORRELATION	21
CONCLUSIONS AND RECOMMENDATIONS	22
COST STATEMENT	24
STATEMENT OF QUALIFICATIONS S. Feulgen	25
REFERENCES	26
APPENDICES	
Appendix I Diamond Drill Logs RWS89-1; -2; -3; -4	
Appendix II Petrographic Report RWS 89-4 239'	
Appendix III YORK - A Proterozoic Shale Hosted Gold System in Montana Summary and Location Map	

LIST OF ILLUSTRATIONS

Figure	Title	Page
1	LOCATION MAP	1
2	CLAIM MAP	3
3	VERTICAL SECTION 55+00E DDH RWS 89-1	11
4	VERTICAL SECTION 54+00E DDH RWS 89-2	13
5	VERTICAL SECTION 52+00E DDH RWS 89-3	15
6	VERTICAL SECTION 54+50E DDH RWS 89-4	17
7	IP PSEUDOSECTION 52+00E	27
8	IP PSEUDOSECTION 54+00E	28
9	IP PSEUDOSECTION 55+00E	29

PHOTOS

1	Drill Hole RWS 89-1 On Section 55+00E Showing Typical Boulder Strewn Gravel Overburden	9
2	Typical Broken Drill Core as Recovered From RWS 89-1	9
3	Pyrite Mineralization RWS 89-1, From Fault Zone Section 41.57-42.06 Metres, Assaying 0.546 Oz/T. Gold	19
4	Split Face of Core Shown in Photo 3	19

MAPS

I	Diamond Drill Holes and Topography	In Pocket
II	IP Chargeability Contours n-2	In Pocket

SUMMARY

The Rain, Wind, Sleet property is located on Left Clear Creek in an area underlain by Yukon Group schist, quartzite, phyllite and limestone intruded by Jurassic or Cretaceous granodiorite and monzonite.

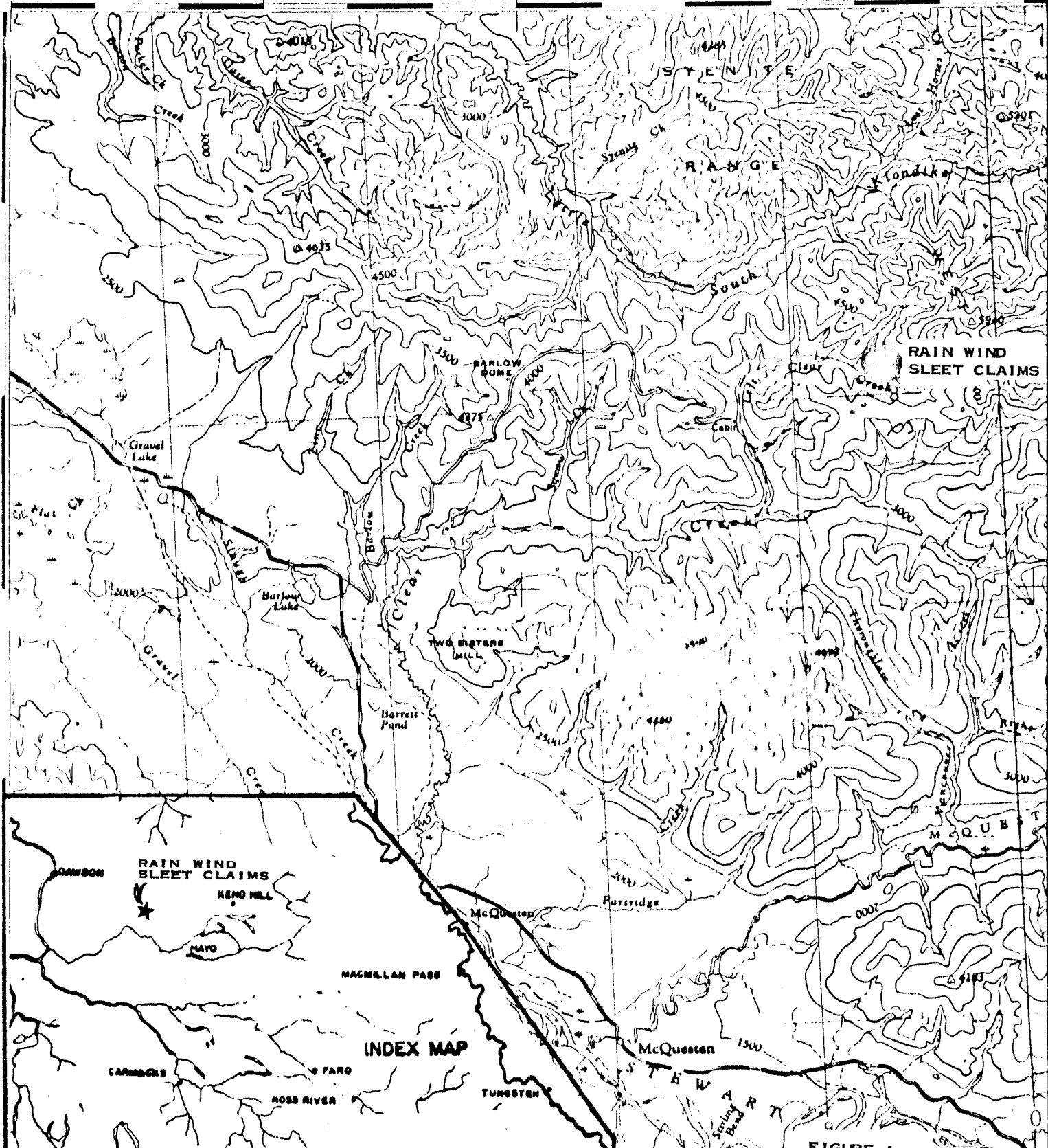
Geochemical surveys conducted for Canada Tungsten Minerals Corp. in 1980-81 and for Secret Pass Minerals Corp. in 1987-88 have indicated areas of gold, arsenic anomalies associated with intrusive rocks on the Rhosgobel Grid and with altered sediments in the south east portion of the Harper Grid

Prospecting resulted in discovery of pyrite mineralized float rock which carried high gold values. A possible source for this type of float was discovered in 1987 where placer operations encountered pyrite mineralization in narrow strataform zones on either side of a strong east trending fault structure.

Subsequent geophysical surveys outlined a large, intense IP anomaly in the vicinity of the pyrite mineralization.

During June 1989 Cambridge Resources Ltd. carried out a four hole diamond drill program to test the IP anomaly. An intersection of 0.546 ounces gold per ton over 0.49 metres was encountered in the fault zone but the IP anomaly was found to be due to graphite and to pyrite films on bedding and shear planes in altered sediments.

No further diamond drill exploration is recommended at this time as the tonnage potential is deemed to be limited and market conditions do not presently warrant such expensive exploration.



RAIN WIND SLEET CLAIMS

RAIN WIND SLEET CLAIMS

INDEX MAP

FIGURE 1.

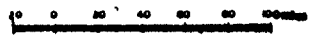
CAMBRIDGE RESOURCES LTD.

RAIN WIND SLEET CLAIMS

INDEX AND LOCATION MAP

1 250,000

JULY 1989



RANCHERS WATSON LAKE

LOCATION AND ACCESS

The Rain, Wind, and Sleet claims are located approximately 45 miles (72 km) west of Mayo, Yukon in the upper Left Clear Creek valley and extend easterly to near the height of land, at the headwaters of that drainage. Figure 1.

Access to the property, from the Klondike Highway at Barlow Lake, is via a narrow, well maintained gravel and dirt road for 22 miles (36 km) to Left Clear Creek and 5 miles (8 km) of gravel track, from that point, to the property. This latter portion of the road fords the creek drainage at several points but is generally passable except during extreme high water periods.

The Barlow Lake turn off to Left Clear Creek is located in a gravel pit on the north side of the Klondike Highway, 43 miles (72 km) west of Stewart Crossing. The distance from Whitehorse to Barlow Lake, by paved highway, is 260 miles (432 km).

The portion of the road from Barlow Lake to Left Clear Creek crosses Barlow Creek about 2 miles (3 km) north of the highway and climbs to the height of land for most its course. The slopes and switchbacks down to the valley of Left Clear Creek are relatively sharp, narrow, and steep. Under slippery conditions the road becomes passable with some difficulty.

PROPERTY DEFINITION AND CLAIM STATUS

Cambridge Resources Ltd. holds an option to earn a 50% interest in the claims held by Secret Pass Minerals Corp. Secret Pass Minerals Corp., in turn, holds an option agreement with Blackstone Placer Mining Company of Whitehorse, Yukon to earn 100% interest in the following claims subject to a royalty interest. Figure 2 illustrates the claim group and surrounding property. Table I, Claim Status, lists the claims with their current expiry dates.



FIGURE 2

TABLE I

CLAIM STATUS

<u>Claim</u>	<u>Record Numbers</u>	<u>Current Expiry Date</u>	<u>Registered Owner</u>
Rain 1, 3	YA 31503, 504	Sept. 5, 1990	Nelson Harper
Rain 2, 4	YA 31510, 511	Sept. 5, 1990	" "
Rain 5, 7, 9, 11, 13	YA 31505 - 509	Sept. 5, 1989	" "
Rain 6, 8, 10, 12, 14, 15	YA 31512 - 517	Sept. 5, 1989	" "
Rain 16	YA 31525	Sept. 5, 1989	" "
Rain 25, 27	YA 31522, 523	Sept. 5, 1989	" "
Rain 26, 28	YA 31530, 531	Sept. 5, 1989	" "
Wind 2, 4, 6, 8, 10	YA 31855, 57, 59, 61, 63	Oct. 24, 1990	Nelson Harper
Sleet 7-12	YB 04262-267	Oct. 7, 1989	Blackstone Placer Mining Ltd.
Sleet 13-16	YB 04268-271	Oct. 7, 1990	"
17, 18	YB 04272, 273	Oct. 7, 1989	"
19-24	YB 04274-279	Oct. 7, 1991	"
33-43	YB 04280-290	Oct. 7, 1989	"
44	YB 04291	Oct. 7, 1991	"
45	YB 04292	Oct. 7, 1989	"
46-51	YB 04293 - 298	Oct. 7, 1991	"
52, 54, 56, 58	YB 04299, 301, 303, 305	Oct. 7, 1990	"
53, 55, 57	YB 04300, 302, 304	Oct. 7, 1991	"
59, 61	YB 04306, 307	Oct. 7, 1989	"
63-68	YB 04308 - 313	Oct. 7, 1990	"
69-72	YB 04414 - 417	Oct. 16, 1990	Nelson Harper
73, 74	YB 04418, 419	Oct. 16, 1991	" "
75, 77, 79	YB 04420, 422, 424	Oct. 16, 1990	" "
76, 78	YB 04421, 423	Oct. 16, 1991	" "
80-84	YB 04425 - 429	Oct. 16, 1990	" "
87-96	YB 04430 - 439	Oct. 16, 1990	" "
97-108	YB 04440 - 451	Oct. 16, 1991	" "
109, 110	YB 04452, 453	Oct. 16, 1990	" "
111, 112	YB 04314, 315	Oct. 7, 1989	Blackstone Placer Mining Ltd.
113-117	YB 04316 - 320	Oct. 7, 1990	"
118-128	YB 04321 - 331	Oct. 7, 1991	"
129, 130	YB 04332, 333	Oct. 7, 1990	"
131-144	YB 04334 - 347	Oct. 7, 1991	"

HISTORY AND WORK SUMMARY

Placer gold mining (since 1898), and prospecting of silver, gold, antimony, copper, tungsten, and tin occurrences, has been pursued in this district for many years with added impetus being given on publication of geological maps by Bostock in 1942 and development of improved roads up to the present. Several successful placer mining operations continue today on the upper portion of Left Clear Creek.

In 1980-81, Canada Tungsten Mining Corporation Ltd. acquired large blocks of claims in the Dublin Gulch and Clear Creek areas and carried out extensive programs in search of tungsten and, to a much lesser extent, tin and gold. On Left Clear Creek, Canada Tungsten did extensive mapping and geochemical surveys and some trenching and sampling on tungsten bearing skarns. No further work was done to follow up on geochemical gold anomalies and the claims were abandoned in 1982. The original claim group was gradually reduced to the Rain and Wind claims located as several non-contiguous claims covering various mineral showings and anomalies.

In late 1986, Scottie Thom (prospector) discovered massive pyrite floats on the south side of Left Clear Creek, which returned high assay values in gold. During June 1987, placer operations conducted by Blackstone Placer Mining Ltd. encountered sulphide mineralization in a deep trench cutting into bedrock. Presence of heavy sulphide mineral fragments in the gravel prevented the continuation of placer mining. At the bottom face of the north side of the channel, then being placer mined, two occurrences of apparently strata bound pyrite mineralization were uncovered, cut or offset by a strong, steeply dipping fault zone. This mineralization contained significant gold values and was similar to the samples previously assayed by Mr. Thom, although not as massive in nature. These assay results, coupled with the documented occurrence of gold bearing quartz vein stockworks elsewhere on the property justified option of the property by Secret Pass Minerals Corp.

During September and October 1987, Secret Pass conducted a program of line cutting, geophysical surveying (VLF-EM and IP) and rock sampling which confirmed the presence of gold mineralization and partially outlined several geophysical targets. The most prominent of these was an intense IP anomaly on the vicinity of the pyrite-gold mineralization discovered by Blackstone Placer. After listing on the Vancouver Stock Exchange, Secret Pass conducted an exploration program which included rehabilitation and extension of the survey grids, detailed IP surveying, limited additional VLF-EM surveying, soil sampling, geological mapping and a detailed topographic survey of the

placer workings in the area of the main IP anomaly. This information, together with other ancillary work and compilation of property data indicated three zones which justified additional exploration. Of these zones, the area of the IP anomaly spatially associated with the pyrite-gold mineralization discovered in 1987, was considered the most important.

As a result of this data, Cambridge Resources Ltd. entered into an option agreement with Secret Pass Minerals Corp. and carried out a program of tractor and backhoe trenching. Three transverse tractor trenches along the south margin of the main IP anomaly failed to locate mineralization sufficient to explain the anomaly and four drill sites were selected for diamond drill exploration of this anomaly. The results of the diamond drill program are described in this report.

PROPERTY GEOLOGY

Along the road from the Klondike Highway to Left Clear Creek, extensive quartzite outcrops occur, occasionally with masses of white bull quartz. On the downgrade to Left Clear Creek, occurrences of black argillite were noted.

In the vicinity of the Wind claims, gently dipping quartzites are essentially the only outcrops and the main placer channel has been cut into these formations to depths of up to 14 feet (4.3 m), where they are highly fractured along a major fault in the bed of Left Clear Creek. Similar quartzites are observed up the creek, towards the Rhosgobel grid, to the contact of the granitic intrusives.

Minor granitic dykes occur and granitic intrusives have been mapped in the Rhosgobel grid area on the Rain claims. Skarns developed within the quartzite sequence indicate calcareous horizons and these were mapped and explored for tungsten by Canada Tungsten in 1981.

Work conducted by Secret Pass and Cambridge during 1987 and 1988 has provided additional information on the property geology which confirms the overall preponderance of varied quartzite rocks on the Blackstone placer area. These rocks are variously altered to quartz sericite and to sericite schist. Well defined beds of finely schistose, often crenulated, black argillaceous rock are interbedded with the quartzites. The regional north dip varies from about 20° to approximately 45° with local small scale recumbent folding. Barren white quartz veins cut the quartzites at various angles in some places are concordant with the bedding. These veins are apparently barren of gold mineralization.

In the Rhosgobel grid area, a coarse grained grey feldspar porphyritic monzonite and more equigranular quartz monzonite to granodiorite stock intrudes gneissic and schistose sediments derived from the regional quartzite formations. Locally, phases of aplite and granite cut the gneissic rocks some distance from the intrusive stock work. Limited rock exposure exhibits multiple, east striking, near vertical white quartz veins varying in width from narrow stringers up to approximately 60 cm. Sampling of these veins in the Rain 6 area failed to locate significant gold values.

Tractor trenching the VLF-EM, gold geochemical anomaly located a rock breccia zone at 59E, 34+50N. This breccia contains fragments of quartzite, thinly bedded, intensely folded schist, biotite hornfels, quartz, and equigranular intrusive rock. This rock rubble suggests the presence of a possible diatreme or breccia pipe.

GEOPHYSICAL SURVEYS

Regional Aeromagnetic Pattern

From the regional aeromagnetic map (Scale 1":4 miles), magnetic variation over the Rain, Wind, and Sleet claims area is observed to range from 2,860 to 2,920 gammas. Due to this very low magnetic variation and the non-magnetic character of both pyrite and quartz stockwork gold hosts, no ground magnetic survey was done.

VLF-EM Survey

The dip angle profiles of the 1987 VLF-EM survey showed only weak broad crossovers which are generally of little value in locating targets. In the vicinity of the pyrite mineralization uncovered by Blackstone Placer, no significant results were noted. Crossovers occurred in some lines at the south limit of the survey near the ridge top. The "Fraser Filter" results located a weak positive anomaly at 50+00E, 49+25N which coincided in a general manner with the strongest chargeability results obtained by the IP survey (1987). Several other zones of similar low intensity "Fraser Filter" results were observed to occur within the area covered by the IP survey (1987) but there was no strong correlation between the two, and the VLF-EM results did not prove useful in outlining the extent of the relatively flat lying, pyrite mineralization.

On lines 58E to 61E Fraser filtering of the VLF-EM data indicated two sub-parallel anomalies lying northwest and southeast of a tributary creek. These anomalies have been partially investigated by soil sampling and by limited trenching. No bed rock has been located but anomalous values in gold and arsenic have been obtained from soil and rock fragment.

IP Survey

The gradient array induced polarization survey conducted in 1987 detected a local gradient in both the chargeability and resistivity data. The gradient had a north-south orientation with high chargeability and conductivity on BL 50+00N, decreasing to the south. The anomalous zone was observed as trending east-west and following the creek bed. This zone includes the mineralized showing found by Blackstone Placer and appears to extend past the north bank of the creek, as BL 50+00N was the northern limit of the gradient array survey.

A more detailed IP survey was carried out in 1988 using the pole-dipole array system. A zone of low resistivity and high chargeability was detected in an east-west trend 500m in strike length and 200m wide. Some areas showed a concentration of very high chargeability values which extended from the location of pyrite mineralization in the placer trench westerly north of the base line. The trend of the IP anomaly diverged from the apparent strike of the main fault in the placer trench. Figures 7,8,9 for lines 52+00E, 54+00E and 55+00E illustrate the IP effects being tested by diamond drilling. These sections follow the report text. Map II shows the pattern of the chargeability results for n=2 within this drill target area.

DIAMOND DRILL PROGRAM

A total of four NQ diamond drill holes were completed on the claim group. Holes were designated RWS 89 for Rain Wind Sleet and 1989. Holes RWS 1 and 4 are located on claim Wind 8, hole 2 is on Wind 6 and hole 3 is on Sleet 97. Grouping of claims for assessment work purposes can be done based on these three claims.

Hole depths vary from 46.0 to 91.4 metres and inclinations from -47° to -55° . Overburden is indicated to average 9 metres and consists of boulder strewn gravel deposits. The upper portion of the quartzite bedrock is generally badly broken and water return during drilling was intermittent. Core recovery varied widely, being as low as 10% in highly fractured or faulted zones and up to 100% principally in the footwall of the main fault where the rock is much less fractured. Recovery averaged between 60% and 85%. In hole RWS 89-1 the drillers placed only 10 feet of casing and successfully completed the hole using mud to hold the overburden. On hole RWS 89-2 this method was tried again but the hole was lost at 189 feet. On hole RWS 89-3 casing was set at 20 feet initially and extended to 60 feet after solid bedrock was found. Similarly in RWS 89-4 casing was set at 60 feet into solid rock. Photos 1 and 2 illustrate location of drill hole RWS 89-1 in boulder strewn gravel and typical broken core recovery.



PHOTO 1. DRILL HOLE RWS 89-1 ON SECTION 55+00E SHOWING TYPICAL BOULDER STREWN GRAVEL OVERBURDEN.



PHOTO 2. TYPICAL BROKEN DRILL CORE AS RECOVERED FROM RWS 89-1.

Figures 3,4,5,6 are vertical sections of the individual drill holes. Hole RWS 89-1 was located to explore the supposed down dip projection of the pyrite mineralization previously sampled in the placer trench. At 27 metres RWS 89-1 cut oxidized quartzite with sericitic alteration and graphite with evidence of faulting. This was the area where the pyrite mineralized beds had been expected if the mineralization were strata form. No significant mineralization was found.

At 41.6 metres crystalline pyrite with sericite, clay and quartz was encountered near the footwall of the main fault zone. This mineralization was generally similar to that encountered in the placer trench but completely lacked any evidence of bedding.

Drill Hole Summary RWS 89-1

RWS-89-1

2.95	9.75 m	overburden
9.75	32.31	quartzite interbedded with argillite; minor pyrite mineralization on bedding and fracture planes (small faults at 16.56 m, 27.53m, 29.36 m, 30.38m)
32.31	41.45	fault zone series of small faults and some large faults (1.08m and 3.35 m); fragmented rocks and gouge.
41.45	42.06	major mineralized zone quartzite with pyrite infilling small fractures; massive pyrite mineralization in a fractured white clay, quartz, sericitic type rock
42.06	64.52	quartzite interbedded with argillite; minor pyrite
64.52	91.44	graphitic quartzite schist; minor pyrite

Assays

Sample No.	From	To	Width	Gold oz/T.	Silver oz/T.
0418T	17.79	18.75	0.96	<.002	<.01
0419T	40.84	41.57	0.73	0.010	0.03
0420T	41.57	42.06	0.49	0.546	0.07
0421T	42.06	42.98	0.92	0.008	0.20

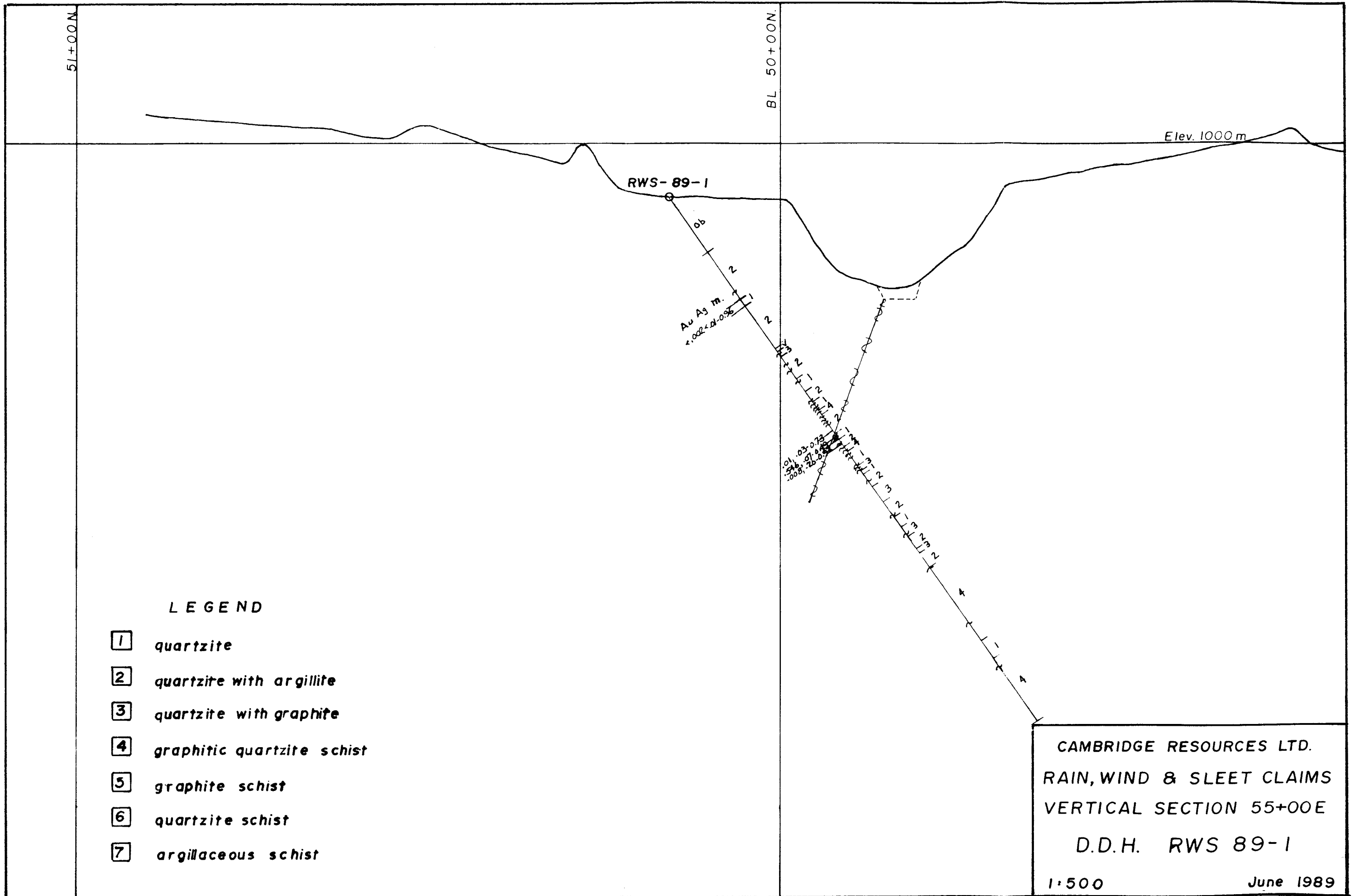


FIGURE 3

Drill hole RWS 89-2 was positioned farther north than had been planned. Steep gravel slopes made it impractical to place the hole closer to the placer trench. The hole was drilled at -47° to investigate the IP anomaly as it diverged from the main fault. The hole was lost at 189 feet (57.6 metres) before fully investigating the zone. Zones of graphitic schist and of graphite interbedded with argillitic quartzite contain thin films of pyrite along shear and bedding planes which account for high IP chargeability readings.

Drill Hole Summary RWS 89-2

0.00	12.19m	overburden
12.19	34.27	quartzite schist with minor argillitic bedding and quartz and carbonate veining; slightly schistose; very minor graphite; minor pyrite
34.27	50.18	graphitic schist with quartzite bedding
50.18	57.61	quartzite schist with minor argillitic bedding (faults at 16.73m, 19.20m, 42.14m, 45.76m, 51.08m, 53.46m)

Assays

Sample No	From	To	Width	Gold Oz/T	Silver Oz/T
0422T	45.13	46.60	1.47	<.002	<.01
0426T	52.00	54.30	2.30	<.002	<.01
0425T	54.30	55.13	0.83	<.002	<.01
0424T	55.13	56.56	1.43	<.002	<.01
0423T	56.56	57.46	0.90	<.002	<.01

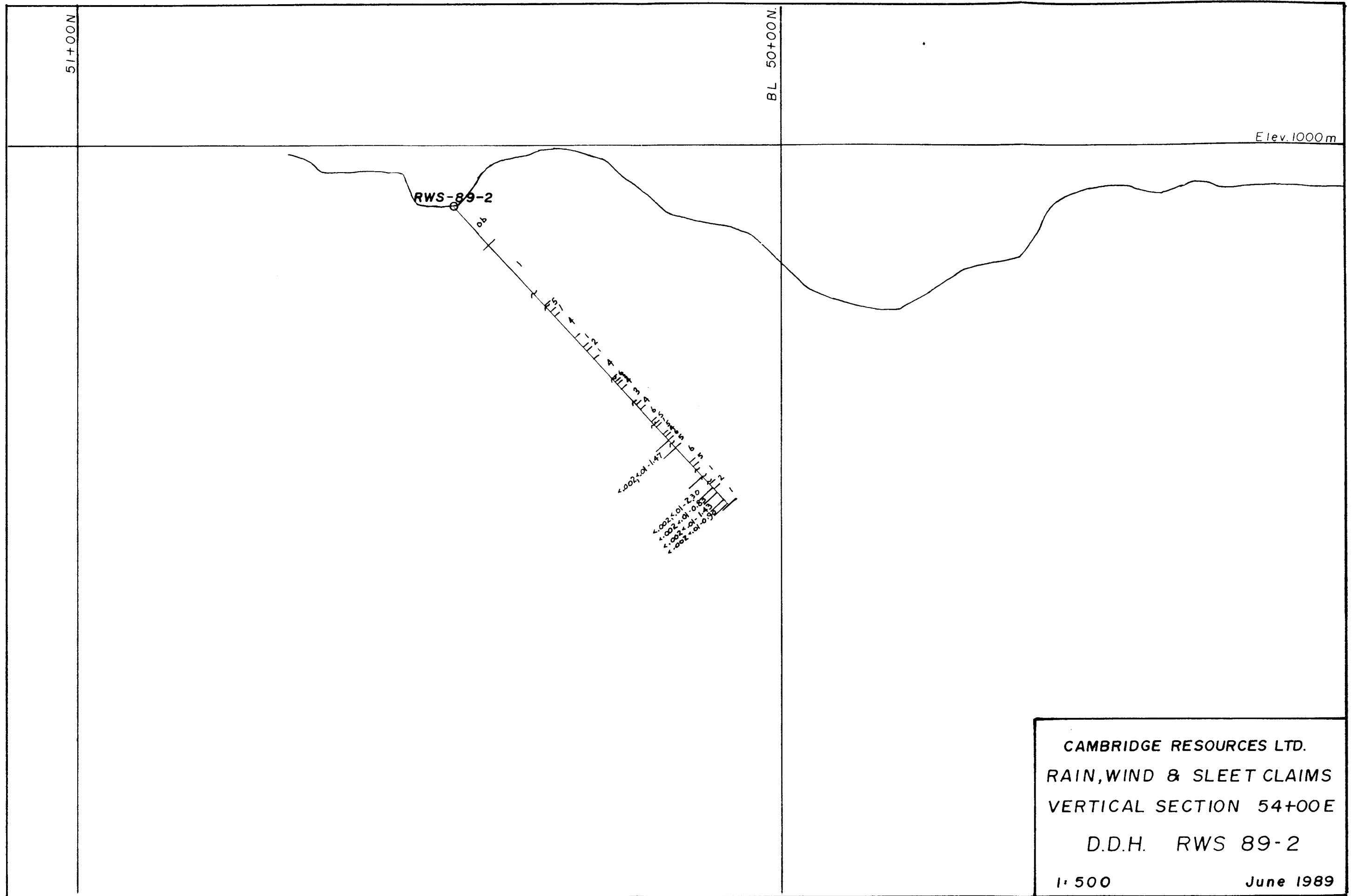


FIGURE 4

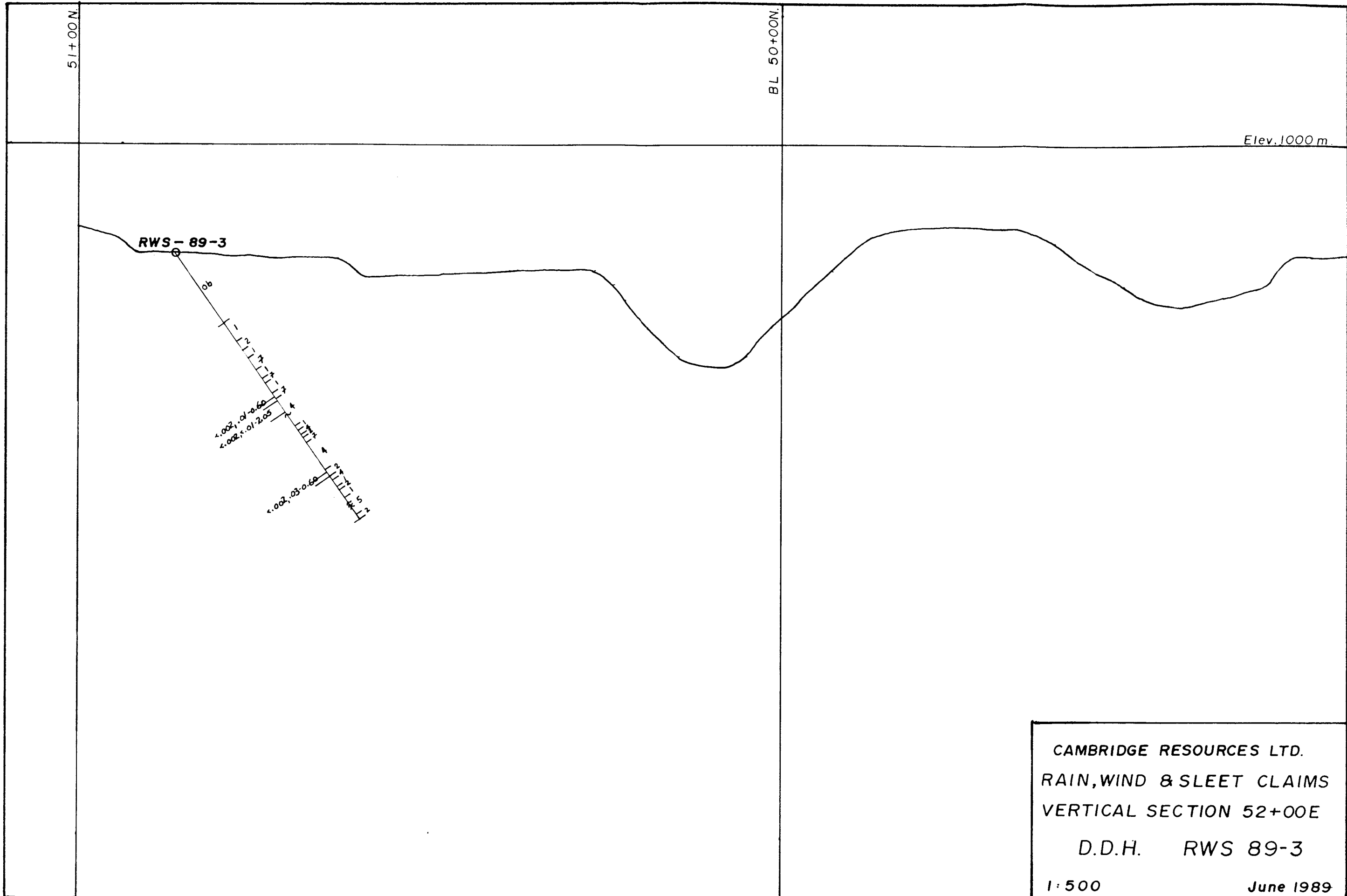
Drill hole RWS 89-3 was drilled on Section 52+00E at -55° to test the extension of the IP anomaly. The pseudo section of IP results on Section 53+00E was very similar to that on 54+00E tested by RWS 89-2 and the move was made to Section 52+00E where the IP pattern was somewhat different. When this drill hole reached 150 feet (45.7 metres) it was stopped since the rock types encountered were again graphitic sediments with numerous films of pyrite on shear and bedding planes. Drill footage was conserved for an additional test of the main fault structure in the vicinity of RWS 89-1 which had encountered the only significant mineralization to date.

Drill Hole Summary RWS 89-3

3.82	12.45m	overburden
12.45	25.55	quartzite interbedded with argillite and argillaceous schist; minor pyrite; quartz and carbonate veining
25.55	39.53	graphitic quartzite schist interbedded with argillite, graphite schist, and argillaceous schist; minor pyrite
39.53	46.02	quartzite interbedded with argillite; minor graphite; minor pyrite (faults at 28.15m, 43.40m) (1 cm of pyrite with arsenopyrite in quartz at 25.55m) (at 38.20, galena with pyrite in quartz vein)

Assays

Sample No.	From	To	Width	Gold Oz/T	Silver Oz/T
0427T	24.99	25.59	0.60	<.002	0.01
0428T	25.59	27.64	2.05	<.002	<.01
0429T	38.15	38.75	0.60	<.002	0.03



CAMBRIDGE RESOURCES LTD.
 RAIN, WIND & SLEET CLAIMS
 VERTICAL SECTION 52+00E
 D.D.H. RWS 89-3
 1:500
 June 1989

FIGURE 5

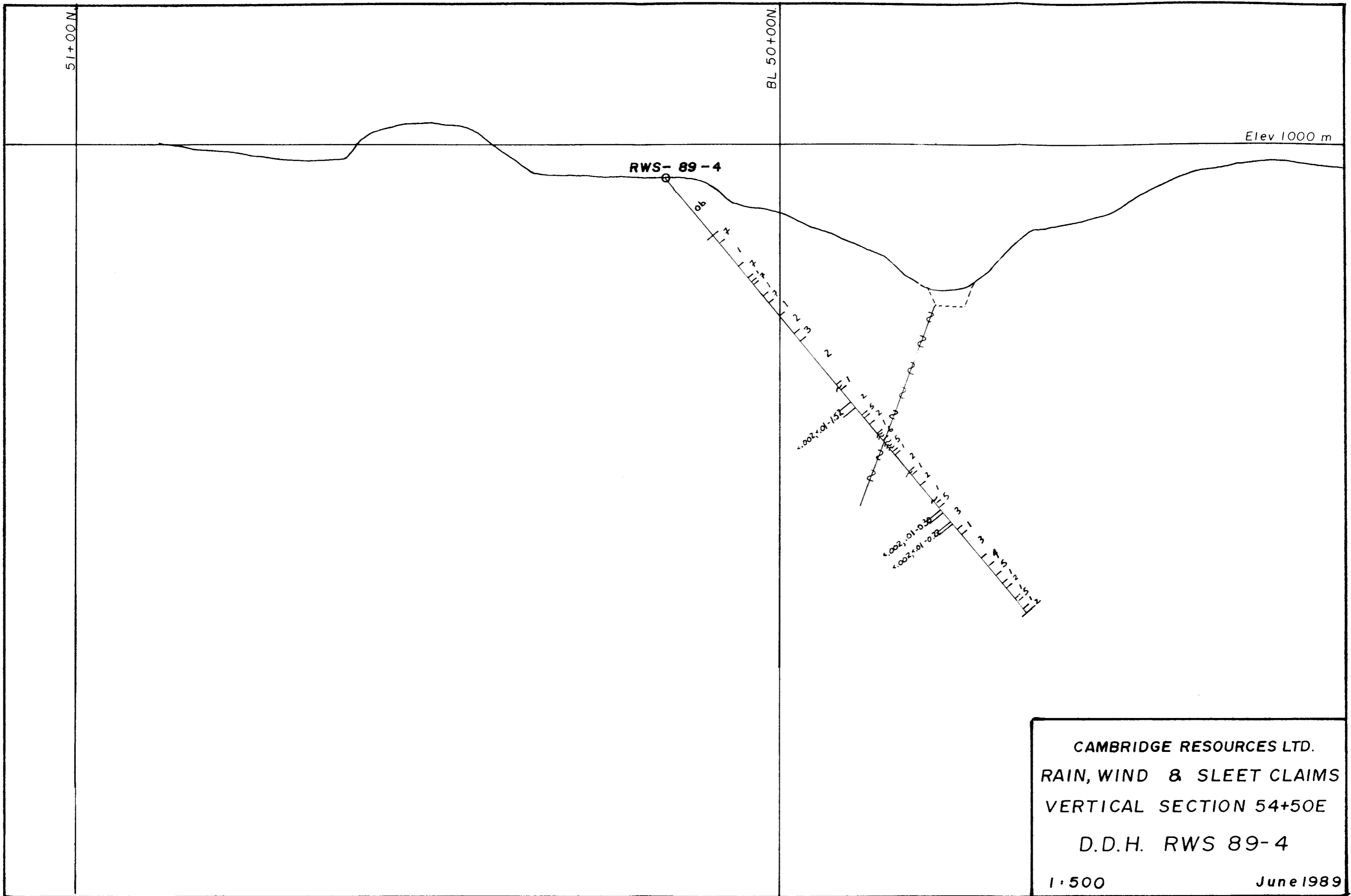
Drill hole RWS 89-4 was drilled on Section 54+50E at a point fifty metres west of RWS 89-1. The hole was intended to test the main fault zone for pyrite mineralization similar to that in RWS 89-1. No significant mineralization was found. Footwall rocks in this hole are distinctly less fractured than are the hanging wall rocks. Narrow zones of pyrite mineralization with carbonate and quartz veining ten metres or more in the footwall did not carry gold values.

Drill Hole Summary RWS 89-4

0.00	10.67m	overburden
10.67	44.00	quartzite and argillaceous schist beds; minor graphite; minor pyrite; quartz and carbonate veining
44.00	50.90	quartzite with argillitic bedding and graphitic schist; minor pyrite (fault zones at 47.40m and 49.38m for ~1.5m)
50.90	60.42	quartzite with argillitic bedding
60.42	73.70	graphitic schist with minor quartzite and argillite; minor pyrite
73.70	80.77	quartzite with minor argillitic bedding; minor graphite; minor pyrite (faults at 39.10m, 54.80m, 60.00m)

Assays

Sample No.	From	To	Width	Gold Oz/T	Silver Oz/T
0430T	41.15	42.67	1.52	<.002	<.01
0431T	61.95	62.25	0.30	<.002	0.01
0432T	64.00	64.22	0.22	<.002	<.01



CAMBRIDGE RESOURCES LTD.
 RAIN, WIND & SLEET CLAIMS
 VERTICAL SECTION 54+50E
 D.D.H. RWS 89-4
 1:500 June 1989

FIGURE 6

ROCK TYPES

The four drill holes contain basically the same types of rocks with minor variations in thickness of bedding. They are described as:

1. siliceous quartzite with minor chloritic banding
2. quartzite interbedded with argillite; minor quartz veining
3. quartzite interbedded with graphite
4. graphitic quartzite schist
5. graphite schist
6. quartzite schist
7. argillaceous schist

Most of the above rock units, with the exception of graphite schist, have quartz veins and stringers. These run parallel to, and crosscutting, bedding planes. Some minor bands of biotite schist and garnet were observed with the quartzite and interbedded argillite. Carbonate minerals, as coatings and stringers, seem to be preferentially observed in the quartzite beds and quartz veins. All rock types appear to have sericitic alteration. A thin section report (Appendix II) from RWS 89-4 suggests hydrothermal alteration may have occurred as grains of altered K-feldspar are superimposed on schistosity of the rock.

MINERALIZATION

Pyrite is the dominant sulphide mineral in all four drill holes. It is seen most commonly as laminae on bedding and shear planes and occasionally infilling small fractures in all the rock types described. The laminae type of pyrite appears to occur preferentially in the argillaceous beds. Pyrite also occurs as disseminated small cubic crystals in crumbly, white sericitic, quartz clay rock associated with faulting in hole RWS 89-1. This latter type of mineralization is the only one which carries gold values. The appearance of the mineralization in RWS 89-1 differs from that originally sampled (1987) in the bottom of the deep placer trench. In hole RWS 89-1 the mineralization occurs as heavy dissemination of cubic pyrite crystals in altered crushed looking material probably forming part of the fault zone. Material sampled in 1987 consisted of heavy disseminations to nearly massive pyrite in beds conformable with the quartzite stratigraphy. The mineralization was cut by the main fault at the east end of the trench and the resulting crushed and altered fault gouge was similar to the material in RWS 89-1. Photos 3 and 4 below illustrate the material drilled.

Pyrite cubes were found infilling quartz vugs in a few places and pyrite was found with carbonate minerals infilling fractures.

Other sulphide minerals observed were arsenopyrite, galena and pyrrhotite. All of these occurrences were very minor and in all cases the sulphides were found associated with pyrite in quartz veins. The identification of arsenopyrite in RWS 89-3 serves to indicate a probable source for anomalous arsenic values obtained in the limited soil sampling carried out north of the placer channel.



PHOTO 3. PYRITE MINERALIZATION RWS 89-1, FROM FAULT ZONE SECTION
41.57 - 42.06 METRES, ASSAYING 0.546 OZ/T GOLD



PHOTO 4. SPLIT FACE OF CORE SHOWN IN PHOTO 3.

GEOPHYSICAL CORRELATION

The fault underlying Left Clear Creek was not detected by the earlier VLF-EM surveys.

The 1987 and 1988 IP surveys outlined an IP anomaly extending approximately east/west and intersecting the fault zone at about 54E to 55E in the area of pyrite mineralization. It indicated a stronger gradient dipping to the north on the north side of the creek (fault location) and a weaker gradient possibly dipping to the south on the south side of the creek. The anomaly appeared open to the west and east.

The northern dip of the anomaly on the north side of the creek correlates to the geological dip of the bedding. But if the pyrite bed located in the Blackstone Placer trench is really stratabound, then the anomaly should have remained strong on the south side of the creek unless the bed has thinned or pinched out. Mapping of the south side of the creek did not locate outcropping beds with pyrite mineralization.

The four drill holes did not show any large sulphide zones which could readily explain the impressively high chargeability anomaly outlined by the 1987 and 1988 IP surveys. Observation of the core logged from these four holes indicates several factors which may have caused the high IP results.

- 1) The overburden, averaging 9m in vertical depth, consists of glacial till. It is very gravelly and contains large boulders, making it very porous. Groundwater is discharged at various levels along the banks of the creek suggesting that water is flowing throughout the overburden at various depths which may affect the IP anomaly positively.
- 2) Evidence of graphite is seen throughout the core as small zones of highly graphitic schist and quartzite with minor graphitic bedding. Graphite is known to have a high chargeability.
- 3) Since pyrite is seen as thin laminae on many of the bedding, shear and fracture planes throughout the rock, it is suggested that this platy characteristic of the pyrite combined with the graphite may be the main cause of the IP anomaly.
- 4) The rocks have undergone low grade metamorphism and have many small faults which may have affected the IP anomaly.

CONCLUSIONS AND RECOMMENDATIONS

The four drill holes completed on the Rain Wind Sleet claim group by Cambridge Resources Ltd. were intended to investigate the strong IP anomaly for possible stratabound gold bearing pyrite mineralization similar to that encountered in the placer trench and sampled in 1987.

No evidence of stratabound gold bearing mineralization was recognized in the diamond drill core. Sheared, platy, films of pyrite occur in the altered sediments, often with graphite. This barren mineralization is the probable cause of the IP anomaly and is of such volume and widespread occurrence as to mask any direct geophysical response from the gold bearing pyrite mineralization in the placer trench and in drill hole RWS 89-1.

The gold bearing pyrite mineralization in drill hole RWS 89-1 appears to be fault controlled. No similar mineralization occurred in RWS 89-4 drilled through the same fault structure 50 metres to the west.

The gold bearing pyrite is generally of a fresh fine grained cubic nature with little evidence of fracturing or shearing. The barren pyrite, associated with graphite in the drilled sections of sedimentary rock, is smeared on bedding and shear planes as a result of metamorphic and tectonic forces and is probably a metamorphic product of originally shaley horizons. Two distinct ages and types of pyrite mineralization are, therefore, indicated.

With regard to the gold bearing pyrite it is not clear whether this mineralization is in fact stratabound in limited areas of favourable beds with redistribution of mineralization along the main fault where these beds have been intersected by the fault or whether the gold bearing pyrite is late stage, fault controlled, and has replaced local favourable beds in close proximity to the fault plane.

As a result of the drilling done it is concluded that the tonnage potential of the mineralization encountered, whether it be in discrete stratabound lenses or whether it be fault controlled, is relatively small. Close spaced drilling could further explore the zone between holes RWS 89-1 and 89-4 as well as the probable extensions to the east and down dip. Due to the perceived small tonnage potential and the high cost of such close spaced drilling this exploration is not recommended at this time.

The geochemical gold anomaly on the Rhosgobel grid was tested to a limited extent by trenching in 1988 and gold values were obtained from quartz and altered intrusive fragments cut by black tourmaline coated. No bedrock was exposed and no systematic rock sampling has been possible to date. This area warrants further exploration if gold prices increase.

Soil samples anomalous for gold and arsenic were obtained over VLF-EM anomalies on lines 56E to 61E and later trenching encountered rock fragments with anomalous gold content. Trenching also exposed large fragments of breccia possibly related to a breccia pipe or diatreme near the top of the ridge on line 59E. This unusual, late stage, structure with the spatially associated geochemistry is worthy of further exploration.

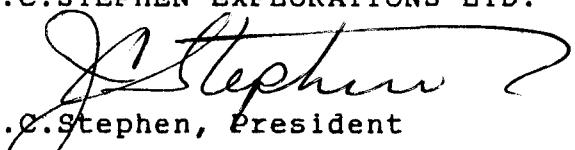
In conclusion, diamond drill results have been disappointing although good gold values over a narrow width were encountered in one drill hole. The property remains an attractive one for further exploration should the general gold market and stock market situation improve.

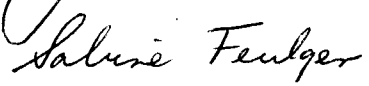
Additional diamond drill exploration is not recommended at this time due to the perceived small tonnage potential of the gold bearing pyrite mineralization in the Harper Placer area.

It is recommended that work credits for the diamond drilling program be filed as assessment work to maintain the claims as required by the underlying option agreements and for a significant period of time thereafter pending possible further exploration should markets improve or in light of re interpretation of the results to date.

Respectfully submitted,

J.C.STEPHEN EXPLORATIONS LTD.


J.C. Stephen, President


S. Feulgen, Geologist

COST STATEMENT

<u>ITEM</u>	<u>QUANTITY</u>	<u>UNIT PRICE</u>	<u>COST</u>
MOBILIZATION & DEMOB.		Fixed price	\$6,600.00
DIAMOND DRILL CASING	152'	\$30/ft	4,560.00
DIAMOND DRILL CORING	745'	\$30/ft	22,350.00
DRILL CONSUMABLES, REAMING, MUD			1,445.94
DRILL MOVES ONTO AND OFF SITE			780.00
TRACTOR RENTAL			277.50
CAMP COSTS			2,980.00
CORE SPLITTER RENTAL			50.00
THIN SECTION PREPARATION			10.00
ASSAYING			287.06
VEHICLE RENTAL AND MILEAGE			946.37
VEHICLE OPERATION (GAS, ETC)			421.79
TRAVEL EXPENSES, HOTEL, MEALS			832.67
TRAILER RENTAL ON SITE			100.00
GEOLOGIST S. FEULGEN June 15 days; July 7.5 days			
Charged at bid price	20 days	\$175/d	3,500.00
SUPERVISION J.C. STEPHEN June 13.3 days; July 4.7 days			
Charged at bid price	15 days	\$250/d	3,750.00
TOTAL PROJECT COST			<hr/> \$48,891.33

Actual drill footage including casing 904'; 275.54 metres.

Overall cost per foot \$54.083; per metre \$177.43

STATEMENT OF QUALIFICATIONS

I, Sabine Feulgen, of the City of Vancouver in the Province of British Columbia, do hereby certify:

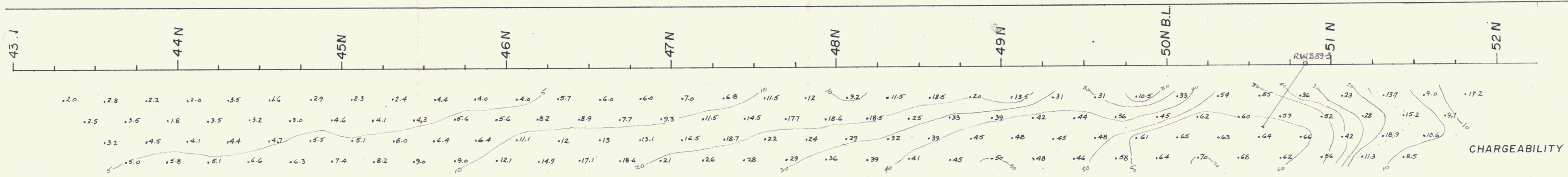
1. I am a Consulting Geologist for the firm of J.C. Stephen Exploration Ltd., based at 746 Regal Cres., North Vancouver, B.C. V7K 2X8
2. I am a graduate of the University of Western Ontario (1985) and hold a Bachelor of Science (Honours) degree in Geology.
3. Since graduation, I have worked in petroleum and mineral exploration in Alberta and British Columbia.
4. This report is based on diamond drilling done on the property supervised by the author and J.C. Stephen, during June 1989.
5. I have no direct or indirect interest in the property, or in any securities of Cambridge Resources Ltd., nor do I expect to receive any.
6. This report may be utilized by Cambridge Resources Ltd. for inclusion in a Prospectus or Statement of Material Facts.

Sabine Feulgen

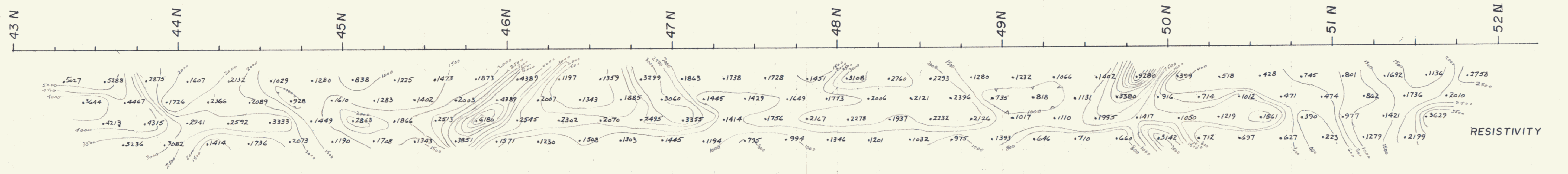
Sabine Feulgen
Geologist

REFERENCES

- Bostock H.S. 1964 Geology, McQuesten, Yukon Territory, Geol. Surv. Can. Map 1143A.
- Heminsley G. 1987 Geophysical Report on an Induced Polarization Survey on the Sleet Property for Secret Pass Minerals Corp. by White Geophysical Inc.
- Rainbird R.H. 1981 Geological and Geochemical Assessment Report on the C.c. 1-860, Sluggo 1-20, Rain 1-30 and Bee 1-14 Claim Groups for Canada Tungsten Mining Corporation by Bema Industries Ltd.
- Stephen J.C. 1987 Report on Examination, Sampling and Geophysical Survey of the Rain, Wind and Sleet Claims for Secret Pass Minerals Corporation.
1988 Progress Report on Geophysics, Geochemistry and Mapping on the Rain, Wind and Sleet Claims for Secret Pass Minerals Corp.
1988 Report on Tractor Trenching on the Rain, Wind and Sleet Claims for Cambridge Resources Ltd.
- Visser S.J. 1988 Induced Polarization Survey on the Scottie Thom Project Rain, Wind and Sleet Claims for Secret Pass Minerals Corporation by S.J.V. Consultants Ltd.



CHARGEABILITY



RESISTIVITY

SECRET PASS RESOURCES LTD.
LEFT CLEAR CREEK, YUKON
115P/14

RAIN, WIND, SLEET CLAIMS

INDUCED POLARIZATION

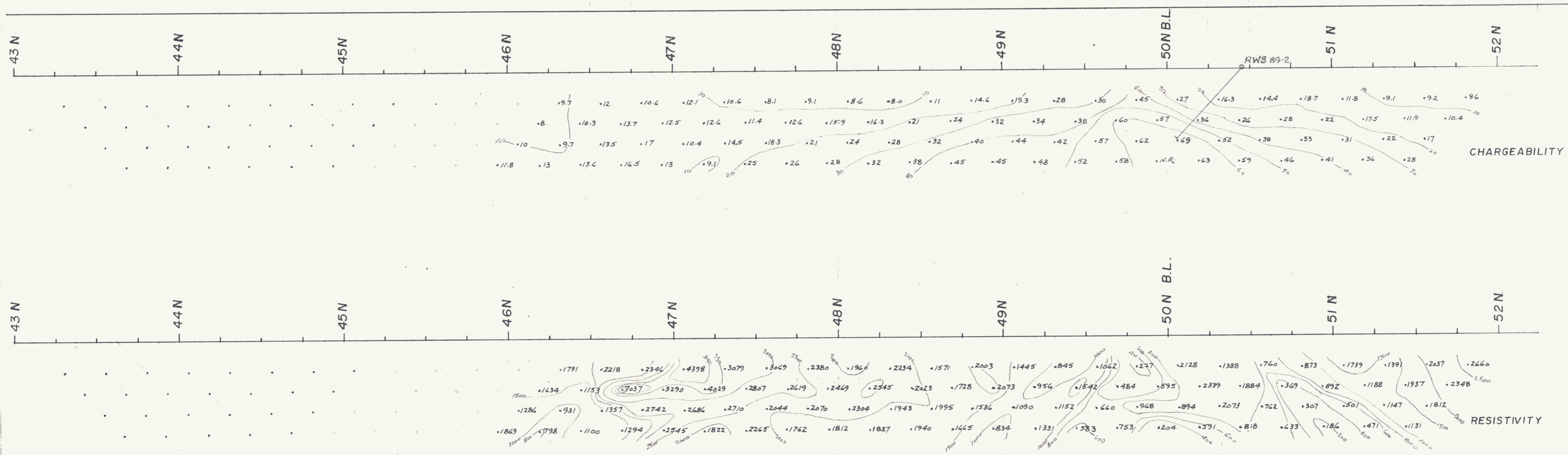
POLE DIPOLE ARRAY

SCALE 1:1250

JULY 1988

LINE 52+00 E

FIGURE 7



SECRET PASS RESOURCES LTD.
LEFT CLEAR CREEK, YUKON
115P/14

RAIN, WIND, SLEET CLAIMS

INDUCED POLARIZATION

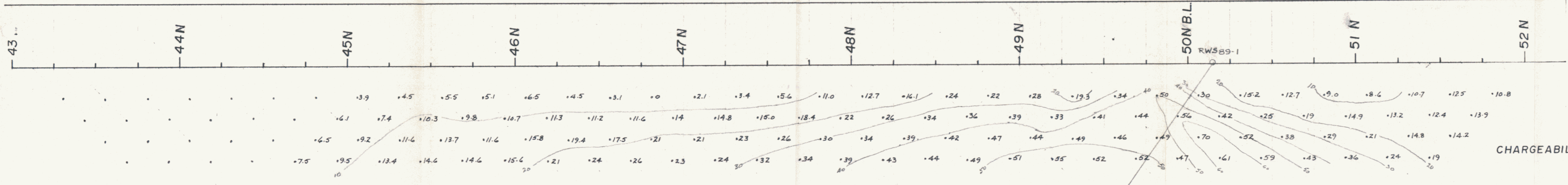
POLE DIPOLE ARRAY

SCALE 1:1250

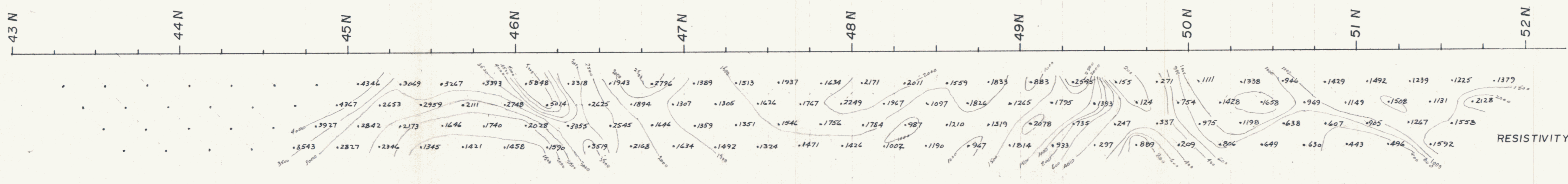
JULY 1988

LINE 54+00 E

FIGURE 8



CHARGEABILITY



RESISTIVITY

SECRET PASS RESOURCES LTD.
LEFT CLEAR CREEK, YUKON
115P/14

RAIN, WIND, SLEET CLAIMS

INDUCED POLARIZATION

POLE DIPOLE ARRAY

SCALE 1:1250

JULY 1988

LINE 55+00 E

FIGURE 9

A P P E N D I X I

DIAMOND DRILL LOGS

RWS89-1; -2; -3; -4

CAMBRIDGE RESOURCES LTD.

DIAMOND DRILL RECORD

Length 91.44m
 Bearing Grid South
 Dip -55°
 Lat. 50 + 15N
 Dep. 55 + 00E
 Elev. 992.4m
 O.B. Thickness 9.75m

Contractor Kluane Drilling Ltd.
 Core Size NQ Casing 3.05 m
 Started 12:00 noon, June 17/89
 Completed 1:00 p.m., June 19/89
 Logged by S. Feulgen, J.C. Stephen
 Stored on site

Hole No. RWS 89-1
 Project Rain, Wind, Sleet Claims
 NTS Map 115 P/14
 Claim Wind 8
 Page 1 of 10
 Purpose For: To test IP anomaly

Footage (m)		DESCRIPTION	Sample No.	From	To	Length	Assay	
From	To						Au	Ag
0.00	9.75	overburden (glacial till; gravelly with many large boulders) (2.45-9.75) - core box contains drill recovered fragments						
9.75	17.79	quartzite with minor argillitic bedding, minor quartz veins and eyes, beds dipping at 85° relative to axis of core (10.20-11.85) -highly fractured and oxidized (at 13.67) -oxidized for 5 cm (at 13.72) -7 cm quartz vein, broken fragments (50% recovery) (at 15.05) -oxidized for 50 cm (at 16.56) -6 cm fault dipping 70° relative to axis of core (gouge) (at 16.95) -4 cm quartz vein (coating of pyrite on fracture running parallel to axis of core)						
17.79	18.75	highly altered and fractured fragments of quartzite; sericitic alteration, oxidized small fractures parallel to axis of core filled with pyrite; some pyrite coating on fracture planes	0418T	17.79	18.75	0.96	<.002	<.01

CAMBRIDGE RESOURCES LTD.

DIAMOND DRILL RECORD

Footage (m)		DESCRIPTION	No.	Sample		Length	Assay	
From	To			From	To		Au	Ag
18.75	27.06	quartzite with minor argillitic bedding (19.37-19.55) - fragmented, oxidized (21.60-22.25) - highly fractured, oxidized fragments (at 23.77) - quite siliceous fragmented quartzite for 14 cm (at 25.28) -fragmented quartz for 20 cms pyrite coating (26.53-27.04) - vein of carbonate material, some argillitic bedding, presence of unidentified green mineral, minor pyrite coating						
27.06	27.96	highly oxidized quartzite, some sericitic alteration, slightly graphitic (at 27.53) - fault for 4 cm (gouge) (fault zone could extend back for 30 cm ~ fragmented)						
27.96	31.75	quartzite with minor argillitic bedding (at 28.36) -quartz vein for 20 cm, fragmented; pyrite coating, some intergrowths of unidentified green mineral (at 29.17) - quartz vein with pyrite coating for 5 cm (at 29.36) - fault zone for 8 cm (gouge) (29.44 -29.78) - fractured quartz vein mixed with quartzite, argillite beds, green mineralization (unidentified) in places, some pyrite coating (29.80-30.01) - series of quartz veins (1 cm in width) with pyrite coating (at 30.06) - carbonate vein for 5 cm (at 30.38) - fault for 12 cm (gouge) (at 30.95) - quartz vein for 5 cm, pyrite coating; some pyrite coating observed in surrounding quartzite and infilling fractures in quartzite along with quartz						

CAMBRIDGE RESOURCES LTD.

DIAMOND DRILL RECORD

Footage (m)		DESCRIPTION	No.	Sample		Length	Assay	
From	To			From	To		Au	Ag
31.75	32.23	highly altered quartzite with sericitic alteration, slightly schistose, some pyrite observed infilling fractures and as coating						
32.23	32.31	quartz vein with pyrite coating and infilling fractures, minor oxidation						
32.31	41.45	Fault Zone- highly fractured fragments of quartzite with stringers and veins of quartz, some minor pyrite coating minor oxidation (at 32.31) - fault for 8 cm (32.54-32.92) - quartzite (at 32.92) - fault zone for 1.08 m (50% recovery); highly oxidized; unidentified green material; some pyrite coating on quartz vein fragments (34.00-35.62) - quartzite with minor argillitic beds (at 34.05) - quartz stringer for 0.5 cm cut by dark black (graphitic?) vein, pyrite on boundary of this intersection (34.53-34.80) - increase in sericitic alteration of quartzite, more fragmented, increase in pyrite mineralization (at 35.06) - more siliceous quartzite (light greenish-white in colour) for 4 cm, minor pyrite coating) (at 35.43) - fractured, fragmented sericitized quartzite for 3 cm, minor pyrite coating (at 35.62) - fault for 10 cm (gouge) (35.72-36.18)- quartzite with milky yellow coloured carbonate veins (narrow ~0.50 cm) running parallel to each other, cutting						

CAMBRIDGE RESOURCES LTD.

DIAMOND DRILL RECORD

Footage (m)		DESCRIPTION	No.	Sample		Length	Assay	
From	To			From	To		Au	Ag
		quartzite beds at 45° relative to axis of the core; no mineralization observed; quartzite slightly oxidized, slightly graphitic						
		(36.18-36.32) - fault (gouge); stringers of carbonate cutting quartzite and argillitic beds, pyrite mineralization increasing, pyrite coating appears to predominate on argillitic beds						
		(36.32-36.52) - quartzite; increase in pyrite mineralization observed						
		(36.52-39.87) - major fault zone; primarily gouge material with some quartzite core intermixed						
		(at 37.21) - quartzite with argillitic beds dipping at 40° relative to the axis of the core for 30 cm; quartzite very graphitic and schistose						
		(39.92-41.19) - fractured quartzite with quartz stringers, much less argillaceous (50% recovery); minor pyrite as coating on fracture planes and infilling fractures						
		(41.19- 41.45) - fractured quartzite, much more argillaceous; quartz veins running parallel to each other and dipping at ~80° relative to core	0419T	40.84	41.57	0.73	0.01	0.03
41.45	42.06	Major Mineralized zone	0420T	41.57	42.06	0.49	0.546	0.07
		(41.45-41.63) quartzite with pyrite infilling small fractures; fractures following beds; minor sericitic alteration observed on boundary with 1 cm fault (gouge)						

CAMBRIDGE RESOURCES LTD.

DIAMOND DRILL RECORD

Footage (m)		DESCRIPTION	No.	Sample		Length	Assay	
From	To			From	To		Au	Ag
		(41.63-42.06) heavy disseminated pyrite mineralization						
		(41.64-41.84) quartzite highly fractured, fragmented						
42.06	42.22	fault; slightly graphitic material	0421T	42.06	42.98	0.92	0.008	0.20
42.22	42.81	quartzite with minor argillitic bedding; (at 42.32) fragmented quartz vein for 1 cm						
		(42.33-42.73) quartzite; minor argillitic bedding; contains large quartz eyes						
		(at 42.73) fault for 3 cm						
42.81	43.18	fractured, fragmented, sericitized quartzite						
		(43.01-43.07) series of small 1-2 cm quartz veins containing green alteration? mineral						
43.18	43.52	argillaceous quartzite; with quartz veins running parallel to argillite beds (2 mm to 1 cm in width); carbonate stringers cutting quartzite and quartz veins; minor pyrite along fracture planes						
43.52	43.74	fault (gouge); fragmented quartzite; highly altered-sericitic; beds distorted; very graphitic						
43.74	44.20	fractured quartzite fragmented, unidentified green alteration? mineral; minor pyrite						
		(at 44.08) quartz vein for ~ 0.5 cm						
		(at 44.12) carbonate vein for 6 cm, unidentified light green mineral						
44.20	44.36	fault; highly altered sericitic quartzite; somewhat graphitic						

CAMBRIDGE RESOURCES LTD.

DIAMOND DRILL RECORD

Footage (m)		DESCRIPTION	No.	Sample		Length	Assay	
From	To			From	To		Au	Ag
44.36	49.67	quartzite with small quartz veins, unidentified light green mineral throughout this section; small faults apparent within core; some stringers of carbonate material; some stress joints evident, pyrite coating observed						
44.67	44.92	fault; altered quartzite						
44.92	46.94	light greenish fractured chloritic quartzite with quartz eyes; some pyrite mineralization observed as coating along fracture planes (45.28-45.41) - quartzite becoming more argillaceous; slight oxidation (45.91-45.67) fault; highly altered quartzite (45.67-46.94) - siliceous quartzite, fragmented in parts with stress joints; series of small faults in core filled with carbonate material (at 46.19) - series of quartz veins (0.2-0.5 cm) parallel to bedding.						
46.94	47.65	fault zone (60% recovery), pyrite mineralization appears to increase with argillitic content; somewhat graphitic						
47.65	48.15	quartzite with quartz veins running the length of the core and parallel to the bedding; quartz veins have series of small black minerals (unidentified) contained within; pyrite mineralization infilling fractures and as coating along fracture planes; some alteration evident (at 48.05) fragmented for 10 cm						

CAMBRIDGE RESOURCES LTD.

DIAMOND DRILL RECORD

Footage (m)		DESCRIPTION	No.	Sample		Length	Assay	
From	To			From	To		Au	Ag
48.15	48.27	blocky, fragmented quartz vein in greenish, siliceous quartzite, light green mineralization on contact between quartz vein and quartzite; some carbonate stringers, very slight oxidation						
48.27	50.46	quartzite with argillitic beds; lenses of green unidentified mineral and quartz veins; sericitic alteration ; minor pyrite (48.94-49.07) fractured, fragmented (at 49.07) quartz vein for 3 cm with minor pyrite coating (at 49.60) fractured, fragmented, highly sericitic quartzite for 10 cm (fault?) (50.29-50.96) quartz veins intermixed with quartzite						
50.46	53.15	more siliceous, less argillitic quartzite with thin quartz veins ; becoming more chloritic; slight oxidation; very little sericitic alteration; somewhat graphitic; very few quartz veins; very little pyrite mineralization- mostly as coating on fracture planes (51.76-51.92) - quartz vein intermixed with quartzite and unidentified green mineral (51.92-52.35) - highly fractured, highly sericitized quartzite fragments (52.35-53.15)- minor quartz veins cutting bedding at 10° or parallel; very little observable pyrite mineralization						

CAMBRIDGE RESOURCES LTD.

DIAMOND DRILL RECORD

Footage (m)		DESCRIPTION	Sample No.	From	To	Length	Assay	
From	To						Au	Ag
53.15	55.65	argillaceous quartzite with some quartz veins (0.5- 1 cm in width); altered and fractured somewhat; slightly graphitic; some carbonate stringers; minor pyrite mineralization- primarily as coating on fracture planes (55.65-55.80) fault (gouge) (at 55.75) apparent fault contact; distorted argillaceous quartzite beds bounded by fractured quartz vein						
55.80	59.15	very siliceous, greenish chloritic quartzite; large network of quartz veins crosscutting bedding and branching out into fractures parallel to bedding; presence of veins and stringers of carbonate mineral and unidentified light green mineral; in some sections, perfect pyrite crystallization observed (cubes) (57.45-57.60) quartzite fractured, fragmented, graphitic (58.70-59.15) fault (gouge)						
59.15	64.52	more argillaceous quartzite, very little pyrite mineralization (61.26-62.00) very fragmented, more graphitic quartzite, carbonate veins cutting quartzite						
64.52	81.55	graphitic quartzite schist; quartz veins mostly along bedding planes; slump features evident; pyrite mineralization present as coating on fracture planes and infilling fractures in quartzite schist; some carbonate with pyrite infilling fractures observed (at 64.52) fault for 30 cm (at 67.15) quartz vein for 5 cm (at 70.45) small fault, dip of bedding						

CAMBRIDGE RESOURCES LTD.

DIAMOND DRILL RECORD

Footage (m)		DESCRIPTION	No.	Sample		Length	Assay	
From	To			From	To		Au	Ag
		appears steeper after this						
		(at 70.90) quartz vein mixed with graphitic material; carbonate, unidentified green mineral (chlorite ?) for 15 cm						
		(at 73.03) quartz vein for 5 cm						
		(at 74.33) fault for 20 cm, ~ 45° relative to the axis of the core						
		(at 74.55) series of quartz veins (0.5 cm-5cm)						
		(at 76.10) quartz vein for 10 cm with green mineralized vein (unidentified) cutting it and carbonate material infilling fractures						
		(77.27-78.60) fragmented quartzite and quartz vein material, some green mineralization, some schist fragments						
		(78.60-79.41) siliceous quartzite						
		(at 79.41) quartz veins (2-3 cm) parallel to bedding planes						
		(79.45-80.34) fractured, fragmented quartzite and quartz vein						
		(80.34-81.55) fragments of fractured graphitic schist, slightly quartzose, carbonate stringers (70% recovery)						
		(at 81.55) fault - 45° to horizontal axis at core						
81.55	91.44	less graphitic, more siliceous quartzite schist alternating with argillaceous graphitic schist; distorted slumped beds						
		(at 83.42)- fragmented material						
		(at 84.00)- series of quartz veins (1 cm in						

CAMBRIDGE RESOURCES LTD.

DIAMOND DRILL RECORD

Footage (m)		DESCRIPTION	No.	Sample		Length	Assay	
From	To			From	To		Au	Ag
		width) and carbonate stringers parallel to bedding planes (at 85.50) - some pyrite coating in fractures (at 87.02)- graphitic schist with pyrite mineralization as coating along bedding planes and as perfect crystals (88.50-91.30) - series of narrow (1.5 cm) quartz veins. E.O.H.						

CAMBRIDGE RESOURCES LTD

DIAMOND DRILL RECORD

Length	57.61m	Contractor	Kluane Drilling Ltd.	Hole No.	RWS 89-2
Bearing		Core Size	NQ Casing 3.05 m	Project	Rain, Wind, Sleet Claims
Dip	-47°	Started	8:00 p.m., June 19/89	NTS Map	115 P/14
Lat.	50 + 47N	Completed	lost hole 1:30 am June 21/89	Claim	Wind 6
Dep.	54 + 00E	Logged by	S. Feulgen, J.C. Stephen	Page	1 of 8
Elev.	991.5m	Stored	on site	Purpose For:	To test IP anomaly
O.B. Thickness	12.19m				

Footage (m)		DESCRIPTION	Sample No.	Sample		Assay	
From	To			From	To	Length	Au
0	12.19	overburden (glacial till; big boulders; fragments of bedrock material) (0-12.19)- core box contains drill recovered fragments (<50% recovery)					
12.19	19.32	highly oxidized, fractured altered quartzite, very fragmented in parts, beds dipping 20° (at 16.73) fault (at 17.25) fractured, oxidized large quartz stringer (19.20-19.26) fault (gouge)					
19.32	21.04	argillaceous, graphitic schist with sericitic alteration, slight oxidation (19.60-19.75) narrow quartz veins parallel to bedding (at 20.12) fragmented, oxidized for 30 cm (20.42-21.03) quartzite (at 21.03) graphitic schist, fragmented					
21.04	23.20	quartzite alternating with schist, graphitic fragments (at 22.71) very schistose, pyrite coating for					

CAMBRIDGE RESOURCES LTD.

DIAMOND DRILL RECORD

Footage (m)		DESCRIPTION	No.	Sample		Length	Assay	
From	To			From	To		Au	Ag
		40 cm						
		(at 23.01) slight oxidation						
		(at 23.16) quartzite very schistose, fragmented						
23.2	25.00	quartzite; fragmented, oxidized, slightly schistose						
		(at 24.96) quartz-vein (2.5 cm) cutting beds; quartzite cutting quartz vein						
25.0	26.2	quartzite and argillitic schist; contorted						
		(at 25.15) series of quartz veins (1.5 cm)						
26.2	27.10	quartzite						
		(at 26.97) - highly oxidized for 20 cm						
27.10	28.20	more argillaceous, schisty quartzite						
		(at 27.19)- argillaceous for 60 cm						
		(27.83-28.41) - quartz veins (~ 2 cm)						
29.6	33.32	graphitic quartzite and argillitic schist						
33.32	33.93	highly fragmented, schisty quartzite with pyrite coating on bedding planes						
		(at 33.40) highly oxidized for 5 cm						
		(at 33.70) small fault for 1 cm						
		(at 33.80) quartz veins and stringers intermixed with quartzite						
		(at 33.85) oxidized and fragmented schisty quartzite with distorted bedding for 8 cm						
33.93	34.27	argillaceous quartzite						
		(at 34.00) siliceous quartzite, oxidized (for 7 cm)						
		(at 34.24) sericitic alteration for 3 cm						
34.27	35.31	oxidized schisty quartzite with argillitic						

CAMBRIDGE RESOURCES LTD.

DIAMOND DRILL RECORD

Footage (m)		DESCRIPTION	No.	Sample		Length	Assay	
From	To			From	To		Au	Ag
35.31	38.10	beds; slightly graphitic (at 35.25) 6 cm quartz vein interbedded with argillite zone of major slumping and distortion of quartzite beds alternating with argillitic schistose beds; quartz veins also present-appear to follow bedding, some pyrite mineralization observed as coating on bedding planes (fractured); graphitic						
38.10	38.40	fractured rock fragments of above described material; quartz veins have coatings of pyrite, evidence of carbonate mineral on fracture planes						
38.40	38.64	graphitic, sericitic, chloritic ? schist, fragmented, slumped beds; some quartz pods evident, carbonate mineral and pyrite observed as coatings on bedding planes and infilling fractures						
38.64	42.14	less graphitic, sericitic chlorite schist (more siliceous), garnet? bearing, pyrite mineralization as coating along bedding planes, light green carbonate mineral coating on bedding, planes (at 38.84) more siliceous, few graphite beds, garnet bearing for 7 cm (at 38.91) more graphitic, more sericitic alteration for 3 cm (at 38.94) more siliceous, heavy pyrite coating on some bedding planes, some fractionation (for 25 cm)						

CAMBRIDGE RESOURCES LTD.

DIAMOND DRILL RECORD

Footage (m)		DESCRIPTION	Sample No.	From	To	Length	Assay	
From	To						Au	Ag
		(at 39.20) more graphitic, pyrite forming as perfect crystals and as coating (for 2 cm)						
		(at 39.22) more siliceous schist with bands of quartz, chlorite, graphite; some pyrite and carbonate coating (for 70 cm)						
		(at 39.96) more garnet rich siliceous schist, very little graphite-pyrite; sericitic alteration (for 25 cm)						
		(at 40.19) 2 cm quartz vein with cavity filled with minor pyrite						
		(at 40.21) somewhat graphitic, sericitized, slightly oxidized, quite fractured siliceous schist with chlorite beds (for 50 cm); minor pyrite as coating, infilling fractures						
		(at 40.75) very siliceous schist, lightly sericitized, minor oxidation, specks of greenish black material in quartz pods (for 55 cm)						
		(at 41.30) fragmented siliceous schist for 35 cm						
		(at 41.65) fragmented, graphitic schist; somewhat sericitized, very little pyrite; some chlorite beds for 50 cm						
42.14	42.54	fragmented, brecciated (appears cemented), oxidized, somewhat sericitized fault zone, carbonate and quartz veins- stringers, very little pyrite						
42.54	44.16	graphitic, sericitized schist with beds of quartzite, chlorite						

CAMBRIDGE RESOURCES LTD.

DIAMOND DRILL RECORD

Footage (m)		DESCRIPTION	No.	Sample		Length	Assay	
From	To			From	To		Au	Ag
		(at 42.74) siliceous schist for 5 cm						
		(at 43.95) pyrite mineralization observed on contact boundary between small quartz vein and graphite bed (unidentified green mineral intergrown with quartz)						
44.16	44.41	(at 44.12) quartz vein for 4 cm; pyrite and carbonate coating on quartz, slight oxidation slightly graphitic quartzite schist, sericitized, carbonate stringers, some pyrite coating						
44.41	45.13	siliceous quartzite schist with chlorite bands, slightly oxidized, quartz veins parallel to the axis of the core, some minor pyrite infilling fractures, coating fracture planes						
		(at 44.50) quartz vein for 15 cm with pyrite along contact between schist and quartz vein and infilling vugs in quartz vein						
		(44.82-44.96) pyrite filling fracture in quartz vein						
		(at 45.04) convoluted graphitic schist for 1 cm						
45.13	46.60	(at 45.13) end of quartzite, distinct break graphitic schist with argillitic beds, some chlorite bands, bedding very convoluted, distorted quartz veins, pyrite with carbonate infilling fractures, pyrite coating, sericitic alteration	0422T	45.13	46.60	1.47	<.001	<.01
		(at 45.76) fault?						

CAMBRIDGE RESOURCES LTD.

DIAMOND DRILL RECORD

Footage (m)		DESCRIPTION	Sample No.	Sample		Length	Assay	
From	To			From	To		Au	Ag
46.60	49.16	chloritic, sericitized quartzite, schistose, carbonate stringers and coatings on fracture planes (at 47.04) graphitic argillaceous beds for 4 cm, somewhat convoluted (at 47.27) quartzite slumped and folded between 2 argillitic beds, pyrite appears preferentially deposited on quartzite fracture face (at 47.96) 0.2 cm fracture filled with pyrite running 45° to the axis of the core (at 48.09) 2 cm quartz vein with minor fractures infilled with carbonate mineral and pyrite (at 48.25) 4 cm quartz vein with vug encrusted with pyrite (at 48.40) 5 cm quartz vein mixed with surrounding material (at 48.78) 1.5 cm quartz vein, pyrite coating and infilling small fractures, slight oxidation in surrounding rock (at 49.03) 2 cm quartz vein						
49.16	49.51	quartz vein, quite fractured, small amount of pyrite observed in fractures, vugs, (perfect crystallization), carbonate mineral (whiteish-yellow) on fracture faces						
49.51	50.18	argillaceous graphitic schist with some small quartz veins (1 cm) carrying pyrite crystals, pyrite also seen infilling small fractures in						

CAMBRIDGE RESOURCES LTD.

DIAMOND DRILL RECORD

Footage (m)		DESCRIPTION	Sample No.	From	To	Length	Assay	
From	To						Au	Ag
50.18	57.61	<p>schist and as coating on bedding planes, some carbonate stringers</p> <p>quite siliceous quartzite with very little to no graphite; sericitized; somewhat schistose at times; a few small veins of quartz; some minor argillitic (graphitic) bedding; pyrite mineralization on bedding planes and infilling fractures; carbonate mineral observed as stringers and coating on fracture faces; pyrite filled fractures are parallel to bedding; carbonate stringers appear to run parallel to the axis of the core</p> <p>(at 50.46) sericitized, argillaceous graphitic schist for 4 cm</p> <p>(at 50.50) large fracture filled with pyrite in argillaceous schist (for 3 cm)</p> <p>(51.08-51.35) fault zone? fragmented quartzite, with sericitized, graphitic, argillaceous and chloritic beds, bedding convoluted, some pyrite on bedding/fracture planes</p> <p>(at 51.62) quartz vein for 5 cm intermixed with quartzite beds and intergrown with unidentified green mineral</p> <p>(at 52.18) quartz vein for 5 cm</p> <p>(at 52.27) fragmented quartz, quartzite, slightly graphitic schist for 10 cm</p> <p>(53.46-53.75) fault zone? fragmented and convoluted quartz, quartzite and schist</p>	0426T	52.00	54.30	2.30	<.002	<.01

CAMBRIDGE RESOURCES LTD.

DIAMOND DRILL RECORD

Footage (m)		DESCRIPTION	No.	Sample		Length	Assay	
From	To			From	To		Au	Ag
		(slightly graphitic), appears cemented (53.75-54.53) argillaceous bedding predominant, slightly graphitic, sericitic alteration, schisty, carbonate stringers (at 54.53) quartz vein for 20 cm, fractured; slightly oxidized on fractures, intermixed with quartzite, appears cemented	0425T	54.30	55.13	0.83	<.002	<.01
		(at 54.94) quartz vein for 10 cm, slightly oxidated fragmented	0424T	55.13	56.56	1.43	<.002	<.01
		(at 56.34) fragmented quartz vein for 3 cm (at 56.37) graphitic, argillaceous schist for 10 cm	0423T	56.56	57.46	0.90	<.002	<.01
		(at 57.30) quartz vein for 15 cm E.O.H. (went off hole while changing drill bit)						

CAMBRIDGE RESOURCES LTD

DIAMOND DRILL RECORD

Length 46.02m
 Bearing
 Dip -55°
 Lat. 50 + 86N
 Dep. 52 + 00E
 Elev. 985.4m
 O.B. Thickness 12.45m

Contractor Kluane Drilling Ltd.
 Core Size NQ Casing 21.34m
 Started 2:00 p.m., June 21/89
 Completed 9:00 p.m., June 22/89
 Logged by S. Feulgen, J.C. Stephen
 Stored on site

Hole No. RWS 89-3
 Project Rain, Wind, Sleet Claims
 NTS Map 115 P/14
 Claim Sleet 97
 Page 1 of 5
 Purpose For: To test IP anomaly

Footage (m)		DESCRIPTION	Sample		Assay	
From	To		No.	Length	Au	Ag
0	12.45	overburden (glacial till; big boulders, fragments of bedrock material) (3.82-12.45)- core box contains drill recovered fragments (large boulders, schist, quartzite); fragments oxidized				
12.45	15.54	highly oxidized, fragmented quartzite and fractured quartz (<10% recovery)				
15.54	17.15	highly oxidized, slightly sericitized quartzite fragments, intermixed with argillaceous schist fragments; some fractures, fragmented quartz (<50% recovery)				
17.15	18.59	oxidized quartzite				
18.59	20.58	argillaceous schist (20% recovery) with sericitized bands of chlorite; small fragmented quartz veins present; minor pyrite on fracture planes and bedding planes; slight oxidation				
20.58	21.64	quartz vein; fragmented, altered, oxidized; intermixed with chlorite beds				
21.64	22.45	fine grained chloritic quartzite, fragmented in places				

CAMBRIDGE RESOURCES LTD.

DIAMOND DRILL RECORD

Footage (m)		DESCRIPTION	No.	Sample		Length	Assay	
From	To			From	To		Au	Ag
		(at 21.95) quartz vein for 2 cm; fractured (21.97-22.25) oxidized, slightly sericitic, some minor graphitic horizons and argillite; beds pyrite coating on argillitic fracture planes and infilling fractures						
22.45	22.75	fragmented, oxidized, sericitic argillitic schist (<50% recovery)						
22.75	24.69	fragmented, highly oxidized quartzite (23.77-24.69) fragmented, highly oxidized quartz and quartzite (<30% recovery)						
24.69	37.72	interbedded argillite, quartzite and chlorite schist; sericitized (micaceous) with bands of graphitic bedding; pyrite coating on fractures and infilling fractures running parallel to bedding; argillitic bedding predominates; minor biotite bands observed						
		(24.69-25.55) very fragmented argillitic schist (<50% recovery) with altered quartz particles; sericitic alteration; quartz particles and fragments have pyrite coating	0427T	24.99	25.59	0.60	<.002	0.01
		(at 25.55) 1 cm of pyrite-arsenopyrite in association with quartz						
		(25.91-26.30) quite oxidized on fracture planes	0428T	25.59	27.64	2.05	<.002	<.01
		(28.15-28.25) severely fragmented, slightly oxidized graphitic schist (argillaceous); some minor pyrite coating; fault?						
		(28.72-28.95) argillaceous, sericitized schist (graphitic); convoluted bedding; pyrite						

CAMBRIDGE RESOURCES LTD.

DIAMOND DRILL RECORD

Footage (m)		DESCRIPTION	Sample No.	Sample From To	Length	Assay	
From	To					Au	Ag
		coating					
	(28.95-28.96)	}					
	(29.00-29.04)	} more siliceous quartzite					
	(29.04-29.42)	argillaceous sericitized schist (graphitic); convoluted bedding; pyrite coating; some minor quartz veining (associated with unidentified green mineral)					
	(29.47-29.66)	fine grained quartzite schist; oxidized; minor carbonate coating					
	(29.66-29.87)	convoluted bedding; quartzite/argillite/graphite schist					
	(29.87-29.90)	fine grained quartzite schist					
	(29.90-30.13)	very argillaceous schist with graphite beds; some quartz infilling fractures; pyrite mineralization observed on contact between schist and quartz					
	(30.13-30.95)	slightly sericitic quartzite with some chlorite banding; minor pyrite on fracture planes					
	(31.65-32.09)	quartzite with argillaceous beds; slightly perforated;(at 31.88) 2 cm perforated quartz with pyrite infilling fractures and coating fracture planes					
	(32.09-33.04)	sericitic, argillitic schist with series of quartz eyes and veins (32.18- 32.31); pyrite infilling fractures leading to quartz eyes; quartz veins appear to be perforated (vuggy) preferentially					
	(34.62-34.76)	fine grained quartzite with					

CAMBRIDGE RESOURCES LTD.

DIAMOND DRILL RECORD

Footage (m)		DESCRIPTION	No.	Sample		Length	Assay	
From	To			From	To		Au	Ag
		chlorite bands; some pyrite coating fracture planes and infilling fractures parallel to bedding						
		(34.87-34.91) very dark argillaceous bedding with greenish-yellow coating on fracture plane; minor pyrite coating						
		(35.36-35.69) fragmented, sericitized graphitic schist						
		(at 36.46) argillaceous quartzite						
		(at 36.28) argillaceous schist						
		(37.30-37.50) fractured quartz vein with minor pyrite infillings bounded by quartzite						
37.72	38.75	chloritic quartzite with minor argillitic banding	0429T	38.15	38.75	0.60	<.002	0.03
		(at 38.20) galena with pyrite in quartz vein						
38.75	39.53	sericitized, quartzite schist with argillitic and chlorite banding						
		(at 38.95) quartz vein for 2 cm with minor pyrite infilling fractures						
		(38.97-39.04)- argillaceous graphitic schist, pyrite in fractures and along bedding planes						
39.53	40.30	slightly oxidized, fractured quartzite with quartz veins and chloritic bedding, minor pyrite and carbonate coating; altered zone						
		fine grained, slightly chloritic, sericitized quartzite						
		(at 40.49) argillitic schist with quartz vein for 7 cm; minor pyrite						
40.30	42.42	(at 40.66) convoluted bedding, mixture of						

CAMBRIDGE RESOURCES LTD.

DIAMOND DRILL RECORD

Footage (m)		DESCRIPTION	No.	Sample		Length	Assay	
From	To			From	To		Au	Ag
		argillite, chlorite, quartzite, and quartz vein; slightly sericitic ; pyrite infilling fractures (for 40 cm)						
		(at 41.04) quartz vein with argillite beds for 10 cm						
		(at 41.30) quartz vein for 4 cm; carbonate with pyrite in fractures						
42.20	42.50	slightly altered zone; minor graphitic bedding in quartzite; small quartz veins with carbonate coating and infilling fractures						
42.50	43.40	fragmented, graphitic, argillite schist (43.20) quartzite for 10 cm; minor pyrite (43.30) fractured quartz vein for 10 cm; minor pyrite coating						
43.40	44.20	fault zone; graphitic with minor pyrite						
44.20	44.56	slightly sericitized quartzite with carbonate stringers						
44.56	45.60	argillitic, slightly graphitic, schist; minor pyrite						
45.60	46.02	fragmented quartzite with minor quartz veining and argillite beds; minor pyrite-some pyrite coating on quartz vein						
		E.O.H.						

CAMBRIDGE RESOURCES LTD.

DIAMOND DRILL RECORD

Length 80.77m
 Bearing
 Dip -50°
 Lat. 50 + 16N
 Dep. 54 + 50E
 Elev. 995.5m
 O.B. Thickness 10.67m

Contractor Kluane Drilling Ltd.
 Core Size NQ Casing 18.29m
 Started 2:00 a.m., June 23/89
 Completed 6:30 p.m., June 24/89
 Logged by S. Feulgen, J.C. Stephen
 Stored on site

Hole No. RWS 89-4
 Project Rain, Wind, Sleet Claims
 NTS Map 115 P/14
 Claim Wind 8
 Page 1 of 6
 Purpose For: To test IP anomaly

Footage (m)		DESCRIPTION	Sample		Assay	
From	To		No.	From To	Length	Au Ag
0	10.67	overburden (glacial till; gravelly with big boulders) (0-10.67) core box contains drill recovered fragments				
10.67	12.19	argillaceous schist }				
12.19	16.46	quartzite }				
16.46	18.59	argillaceous schist } highly fragmented ,				
18.59	19.20	quartzite } oxidized				
19.20	19.66	argillaceous schist }				
19.66	21.95	siliceous quartzite }				
21.95	23.16	argillaceous schist				
23.16	25.60	siliceous quartzite				
25.60	28.96	quartzite interbedded with argillite, slightly schisty, sericitic alteration				
28.96	30.35	fractured zone, fragmented with small unfragmented core sections; primarily quartzite with interbedded argillite and biotite schist sections; slightly sericitized; minor graphite and pyrite				
30.35	30.56	altered quartz vein with chlorite and				

CAMBRIDGE RESOURCES LTD.

DIAMOND DRILL RECORD

Footage (m)		DESCRIPTION	No.	Sample		Assay	
From	To			From	To	Length	Au
30.56	34.45	argillite bedding; slightly fractured; some pyrite coating siliceous quartzite with minor chloritic and argillitic bedding (30.80-31.20) oxidized, fragmented quartzite (31.20-32.12) argillite and quartzite interbedded; somewhat oxidized and sericitized; pyrite coating (32.30-32.50) interbedded argillite and quartzite; schisty, sericitized; convoluted bedding; pyrite coating (at 32.50) biotite schist band for 2 cm (32.56-33.70) argillite and quartzite interbedded; schisty; sericitized (at 32.76) fragmented for 20 cm; some quartz with pyrite coating (at 33.70) minor biotite schist bands for 70 cm					
34.45	38.57	interbedded argillite and quartzite; slightly sericitized; convoluted bedding; some minor quartz veins; lots of pyrite coating on fracture planes (34.90-35.20) extremely convoluted bedding (at 36.90) fragmented quartzite (<50% recovery). for 15 cm; sericitized; pyrite coating minor					
38.57	39.10	convoluted siliceous quartzite with quartz veins; sericitized; somewhat fragmented					
39.10	39.40	fault (gouge)					

CAMBRIDGE RESOURCES LTD.

DIAMOND DRILL RECORD

Footage (m)		DESCRIPTION	Sample No.	Sample		Length	Assay	
From	To			From	To		Au	Ag
39.40	39.48	interbedded argillite and quartzite						
39.48	40.20	fragmented quartzite with quartz veins; minor argillite bedding; convoluted; pyrite coating						
40.20	44.00	interbedded argillite and quartzite (at 41.00) altered zone; quartzite with quartz veins; minor argillite bedding; convoluted; pyrite coating	0430T	41.15	42.67	1.52	<.002	<.01
								(10% recovery)
44.00	44.30	fragmented, graphitic schist						
44.30	45.70	interbedded quartzite, argillite and chlorite						
45.70	45.80	fractured quartz vein with minor pyrite						
45.80	47.40	fractured chloritic quartzite; slightly sericitized; carbonate infilling fractures; minor quartz veining intergrown with unidentified light green mineral; nearing fault-more fractured with pyrite mineralization in fractures						
47.40	48.80	fault zone (50% recovery); fragmented quartz; quartzite schist (at 48.30) quartzite and quartz veins for 20 cm (48.50) fragmented quartz and quartzite, some oxidation (50% recovery)						
48.80	49.38	mainly fragmented, graphitic argillaceous schist						
49.38	50.90	fault zone? (<50% recovery)						
50.90	53.15	quartzite with quartz veins and carbonate stringers; fragmented in areas (these areas have green mineralization-unidentified); quartz veins ~2 cm; some chlorite bedding						

CAMBRIDGE RESOURCES LTD.

DIAMOND DRILL RECORD

Footage (m)		DESCRIPTION	No.	Sample		Length	Assay	
From	To			From	To		Au	Ag
		(51.35-52.55) fragmented, convoluted beds of argillite, quartzite, and quartz veining; unidentified green mineral and minor pyrite present						
53.15	54.50	interbedded argillite and quartzite, less siliceous						
54.50	54.80	siliceous quartzite with carbonate stringers, slightly sericitic						
54.80	55.00	fault (gouge)						
55.00	56.10	interbedded argillite and quartzite (at 55.16) quartz vein intermixed with quartzite and argillite with quartzite predominant (for 50 cm); slightly sericitic						
56.10	57.10	altered zone; quartzite, argillite, quartz veins, chlorite interbedded; convoluted bedding, dip >20°; distorted band of red-brown mineralization with carbonate and pyrite infilling fractures						
57.10	60.00	fine grained siliceous quartzite with some minor argillite bedding; slightly schistose; some sericitic alteration; thin stringers of carbonate; small quartz veins and eyes; minor pyrite on fracture planes						
60.00	60.42	fault zone (gouge) within quartzite; quartzite appears altered; heavy carbonate mineralization infilling fractures and as coating, section appears mushy (recemented)						
60.42	61.09	argillaceous graphitic schist with some quartzite bedding; minor carbonate infilling						

CAMBRIDGE RESOURCES LTD.

DIAMOND DRILL RECORD

Footage (m)		DESCRIPTION	No.	Sample			Assay	
From	To			From	To	Length	Au	Ag
61.09	65.30	of fractures; sericitic alteration fine grained quartzite interbedded with argillite, alternating; slightly sericitic; some quartz veining and minor graphitic bands; very minor carbonate coating on fracture planes (at 62.00) altered quartz vein for 20 cm with carbonate and pyrite; heavy pyrite mineralization surrounding carbonate filled fracture pod (at 64.00) as above but pyrite mineralization less intense	0431T	61.95	62.25	0.30	<.002	0.01
65.30	66.25	more siliceous, fine grained quartzite with chloritic beds; little sericitic alteration, some carbonate stringers and occasional small quartz veins, very minor pyrite	0432T	64.00	64.22	0.22	<.002	<.01
66.25	70.47	more argillaceous quartzite with some bands at chlorite, biotite, and graphite; bedding slightly convoluted; some quartz veining; minor pyrite coating (at 68.60) white rhombohedral unidentified mineral (relic?) in argillitic /graphitic beds						
70.47	72.10	more argillaceous, very slightly graphitic quartzite schist; fine grained, slightly sericitic; some minor pyrite coating; beds occasionally convoluted for 30 cm intervals						
72.10	73.70	very argillaceous, slightly graphitic schist (at 72.27) distinct bedding dip change, 20°						

CAMBRIDGE RESOURCES LTD.

DIAMOND DRILL RECORD

Footage (m)		DESCRIPTION	No.	Sample		Assay		
From	To			From	To	Length	Au	Ag
		relative to the axis of the core relic white mineral remains evident (thin section - Appendix II) (at 72.71) quartz vein for 2 cm with pyrrhotite mineralization						
73.70	75.20	siliceous quartzite						
75.20	76.00	more siliceous quartzite alternating with argillitic bedding (at 75.60) heavy carbonate coating, some pyrite for 15 cm						
76.00	80.00	very fine grained, chloritic, very siliceous quartzite with some carbonate stringers and convoluted minor quartz veining; some argillitic bands; slightly sericitized; pyrite and carbonate coating on fracture planes (at 78.00) graphitic, argillaceous schist for 30 cm; some carbonate in fractures						
80.00	80.77	interbedded quartzite and argillite schist; some minor graphite; sericitic alteration; carbonate mineral evident as stringers and infilling fractures; minor pyrite E.O.H.						

A P P E N D I X I I

PETROGRAPHIC REPORT

RWS 89-4 239'

PETROGRAPHIC REPORT

by S. Feulgen _____

For: Cambridge Resources Ltd.
Project: Left Clear Creek
Sample: RWS-89-4 (239')

Location: Left Clear Creek, Yukon
Collector: S. Feulgen
Date Analyzed: July 10, 1989

ROCK CLASSIFICATION: altered argillaceous schist

HAND SPECIMEN DESCRIPTION: Black metamorphosed rock with sericitic alteration. Very minor quartz veining. Whiteish rhombohedral shaped grains present.

MICROSCOPIC ANALYSIS IN THIN SECTION

Mineral	%	Description
sericite	80	Along planes of schistosity; micro folding evident.
biotite	10	As grains parallel and imposed on schistosity.
K-feldspar	<1	Idioblastic grains, lightly fractured. Slight alteration to sericite and biotite.
quartz	10	Infilling fractures and along planes of schistosity.
opaques	<1	Disseminated and infilling fractures (graphite?)

Rock textures/structures: The rock is composed of biotite-quartz-sericite layers with grains of idioblastic K-feldspar superimposed on the schistosity.

Alteration/mineralization: Sericite, biotite, and quartz possibly due to hydrothermal alteration.

Conditions of formation: Regional or deep seated dislocation metamorphism of pelitic sediments.

A P P E N D I X I I I .

YORK - A PROTEROZOIC SHALE HOSTED

GOLD SYSTEM IN MONTANA

(with reference to K-feldspar/gold association)

COPY

Paper #18

York - A Proterozoic Shale Hosted Gold System in Montana

by
Hart W. Baitis
Manager - Exploration
Northwest U.S.
WestGold

Northwest Mining Association
94th Annual Meeting
December, 1988

YORK - A PROTEROZOIC SHALE HOSTED GOLD SYSTEM IN MONTANA

Susan M. Hall, Roger L. Howell, and Hart W. Baitis
Western Gold Exploration and Mining Company, Limited Partnership

SUMMARY

York is a gold exploration joint venture between WestGold (operator) and Corona Gold; Noranda Exploration Inc. retains a 20% net profits interest in the project. The York property lies about twenty miles northeast of Helena, in the Big Belt Mountains of central Montana (Figure 1).

Gold mineralization at York occurs in numerous, large, stratabound bodies within the Proterozoic-age Greyson Formation. The stratabound bodies, termed reefs, are hosted in an anomalous wedge of illitic, Mg/Fe-carbonate rich mudstones and black shales. Sedimentary rocks above and below the mudstones consist of siltites and quartzites more typical of the Greyson. Individual reefs measure from less than an inch to over 200 feet in thickness, and extend for miles on strike. They consist largely of K-feldspar, with silica, Mg/Fe-carbonate, and pyrite, and carry gold in concentrations averaging .01 to .015 opt. Locally reefs contain an order of magnitude greater enrichment in gold, and samples of quartz veins cross-cutting reef have yielded in excess of 5.0 opt Au.

Exploration under the auspices of Noranda (1983-84), Lacana (1985), and Inspiration-WestGold (1986-88) has included geologic mapping, soil sampling, underground rehabilitation, and the drilling of 103 diamond-core and reverse-circulation holes. Drilling to date indicates two "reserve" areas, in Bar Gulch, and on Cabin Ridge (Figure 2). "Minable reserve" estimates total 2,013,000 tons grading .045 opt Au (with 10% dilution and an aggregate strip ratio of 7.3 to 1). Standard bottle-roll tests of drill cuttings show a 60% recovery of gold by cyanide leach.

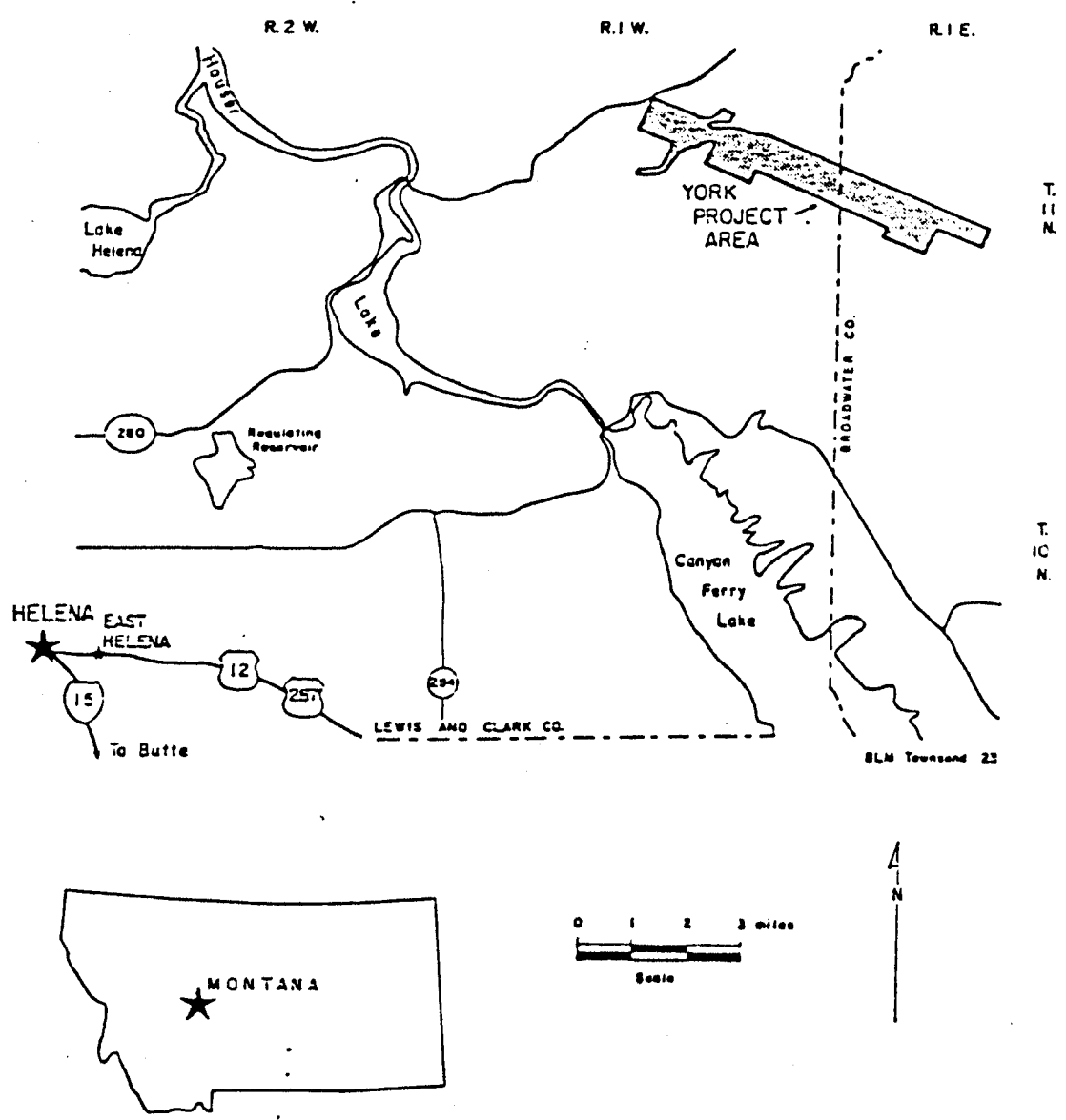
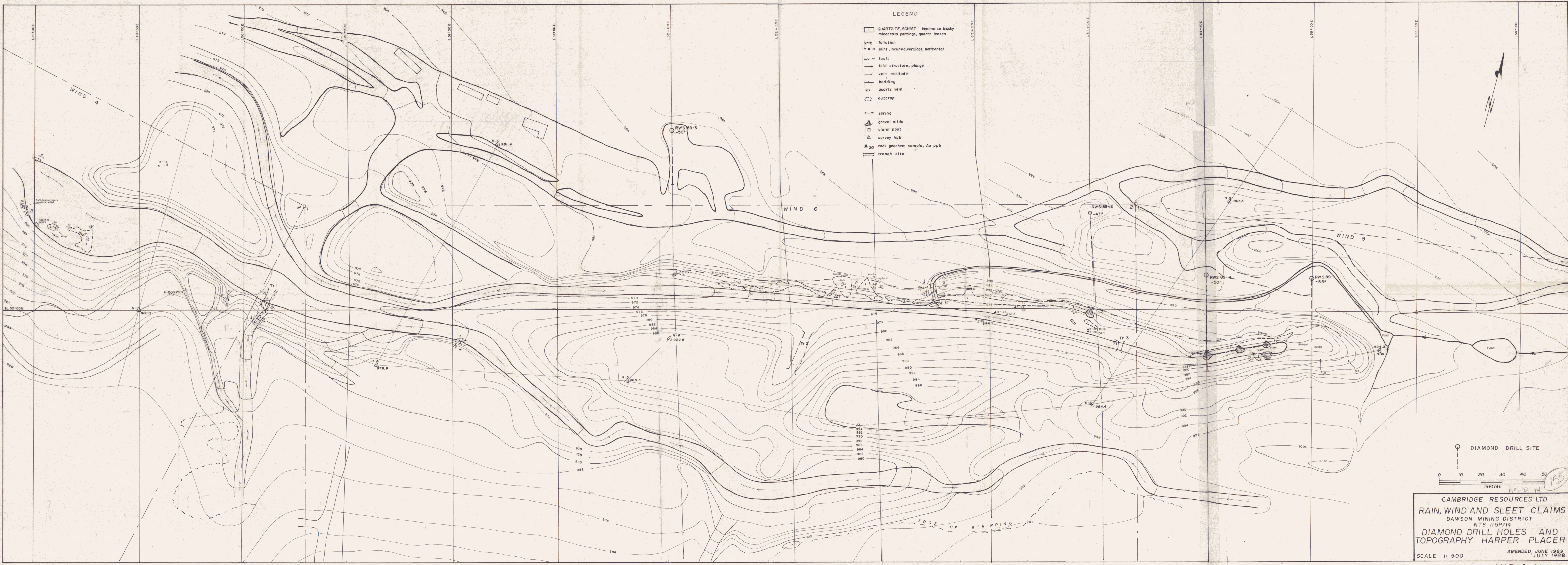
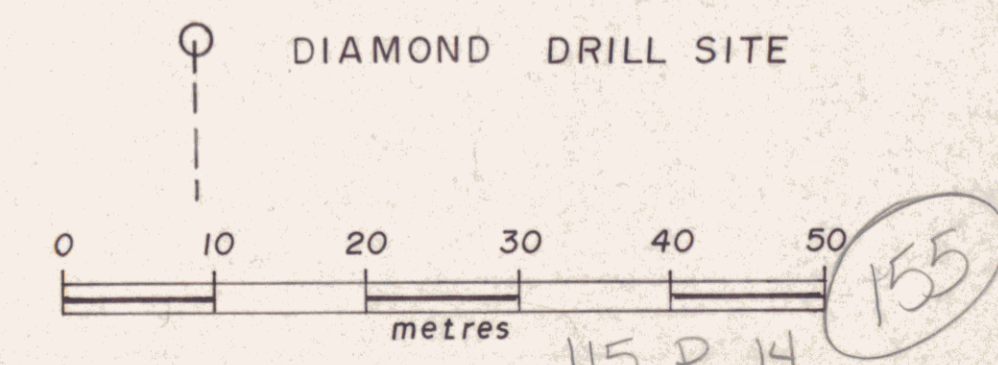


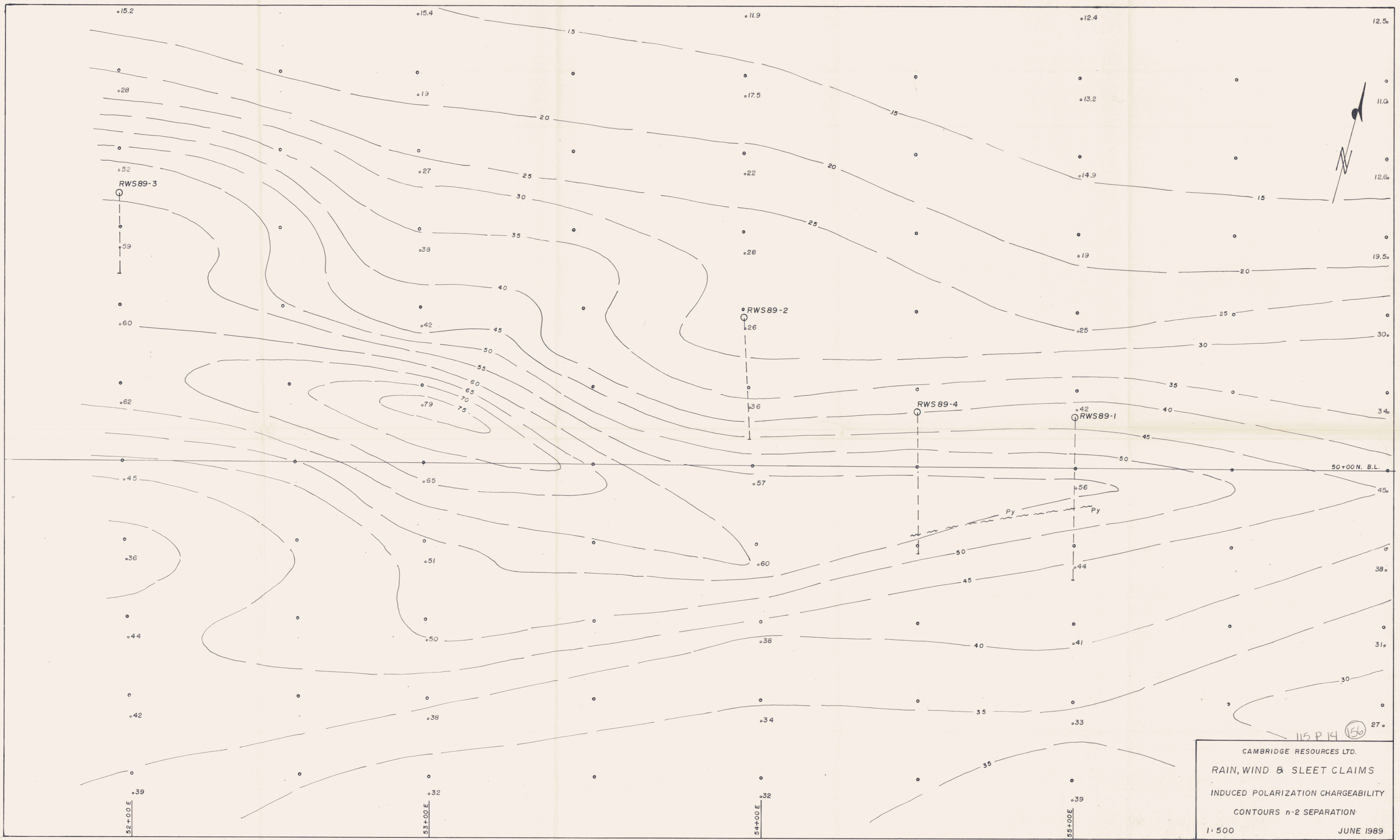
Figure 1: Location of the York project area.



- LEGEND**
- QUARTZITE, SCHIST laminar to blocky micaceous partings, quartz lenses
 - foliation
 - joint, inclined, vertical, horizontal
 - ~ fault
 - ↘ fold structure, plunge
 - vein attitude
 - bedding
 - qv quartz vein
 - outcrop
 - spring
 - ▲ gravel slide
 - claim post
 - △ survey hub
 - ▲ rock geochem sample, Au ppb
 - trench site



CAMBRIDGE RESOURCES LTD.
 RAIN, WIND AND SLEET CLAIMS
 DAWSON MINING DISTRICT
 NTS 115P/14
 DIAMOND DRILL HOLES AND
 TOPOGRAPHY HARPER PLACER
 AMENDED, JUNE 1989
 JULY 1988
 SCALE 1:500
MAP I 092752



CAMBRIDGE RESOURCES LTD.
 RAIN, WIND & SLEET CLAIMS
 INDUCED POLARIZATION CHARGEABILITY
 CONTOURS n-2 SEPARATION
 1:500
 JUNE 1989

115 P 14 (56)