

MAP NO.	ASSESSMENT REPORT	X	DOCUMENT NO.:	092653
	PROSPECTUS		MINING DISTRICT:	WATSON LAKE
	CONFIDENTIAL	X	TYPE OF WORK:	GEOPHYSICAL, RECONNAISSANCE
105 G 12	OPEN FILE			GEOLOGICAL and GEOCHEMICAL

REPORT FILED UNDER: Welcome North Mines Ltd.

DATE PERFORMED: April 23-27, June 10-27, 1988 DATE FILED: December 16, 1988

LOCATION: LAT.: 61°35'N AREA: Hoole River

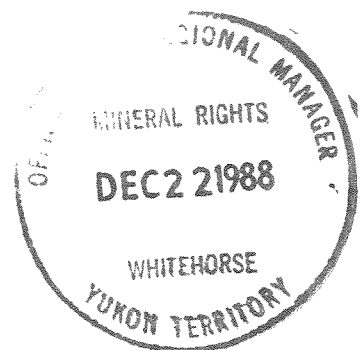
 LONG.: 130°45'W VALUE \$: 16,000.00

CLAIM NAME & NO.: HOOLE 1-200 YB10424-623

WORK DONE BY: R.G. Potter

WORK DONE FOR: Welcome North Mines Ltd.

DATE TO GOOD STANDING	REMARKS:
	#74 HOOLE Helicopter-borne magnetic, electromagnetic and VLF-EM surveys outlined east-trending magnetic anomalies along Hoole River. Follow-up reconnaissance geology and geo-chemistry revealed only weak scattered anomalous gold, silver and arsenic. One EM anomaly has a weak coincident gold-in soil anomaly.



EXPLORATION REPORT
ON THE
HOOLE CLAIMS

N.T.S. 105G/12

LATITUDE: 61°35'N
LONGITUDE: 130°45'W

WATSON LAKE MINING DISTRICT



FOR

WELCOME NORTH MINES LTD.
15th FL., 675 W. HASTINGS STREET
VANCOUVER, B.C.
CANADA
V6B 1N2

BY

R.G. Potter, P.Eng.

NOVEMBER, 1988

(WORK DONE DURING APRIL 23 TO 27 AND JUNE 10 TO 27, 1988)

092653

This report has been examined by
the Geological Evaluation Unit
under Section 53 (4) Yukon Quartz
Mining Act and is allowed as
representation work in the amount
of \$ 16,000.00.

for *R. A. Emmond*
Regional Manager, Exploration and
Geological Services for Commissioner
of Yukon Territory.

TABLE OF CONTENTS

	<u>PAGE</u>
I SUMMARY AND RECOMMENDATIONS	1
II INTRODUCTION	4
III PROPERTY, LOCATION AND ACCESS	4
IV HISTORY	5
V GEOLOGICAL SETTING	6
VI 1988 PROGRAM	8
VII PROPERTY GEOLOGY	9
VIII GEOCHEMISTRY	10
IX GEOPHYSICS	11

APPENDICES

I SAMPLE PREPARATION AND ANALYTICAL PROCEDURES	
II ANALYTICAL CERTIFICATES	
III SUMMARY OF EXPENDITURES	
IV ENGINEER'S CERTIFICATE	
V REFERENCES	
VI PERSONNEL	

ILLUSTRATIONS

FIGURES

1 COMPILATION MAP	2
2 LOCATION & CLAIMS MAP	3
3 REGIONAL GEOLOGY	7
4 GEOLOGY AND GEOCHEMISTRY 1:10,000	In Pocket
5 TOTAL FIELD MAGNETICS	12

I. SUMMARY AND RECOMMENDATIONS

The Hoole claims lie along the Tintina Trench 85 kilometers southeast of Grew Creek. The area is prospective for Tertiary-age felsic volcanic rocks of the type which hosts epithermal gold mineralization at Grew Creek.

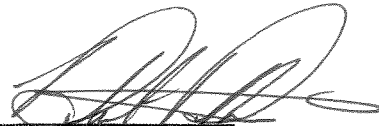
The 1988 program on Hoole consisted of a helicopter-borne magnetic-electromagnetic and VLF-EM survey followed-up by reconnaissance geology and geochemistry.

The area south of Hoole River is largely underlain by schist and gneiss. A distinctive coarse grained granite has been mapped at the south edge of the property adjacent to the postulated trace of the Tintina Fault. North of Hoole River at the western end of the claims rhyolitic ash flows are found. No evidence has been found of silicification, late quartz veining or mineralization in any area of the property.

Soil sampling on a 400 x 50 meter grid has revealed only weak scattered anomalous values in gold, silver and arsenic.

Airborne geophysics suggests that rocks of high susceptibility (volcanics) may be present in easterly trending structures along and north of Hoole River. An area of EM activity along Hoole River is coincident with a weak gold soil anomaly. This area could be investigated by reverse circulation drilling.

Respectfully submitted,



Robert G. Potter, P.Eng.

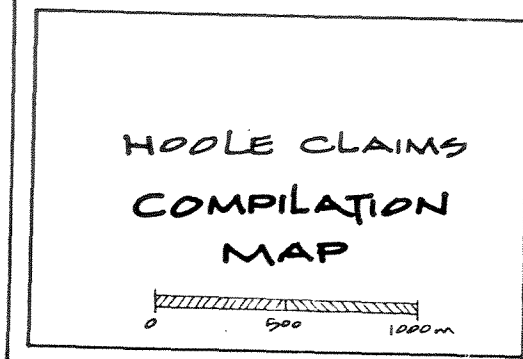
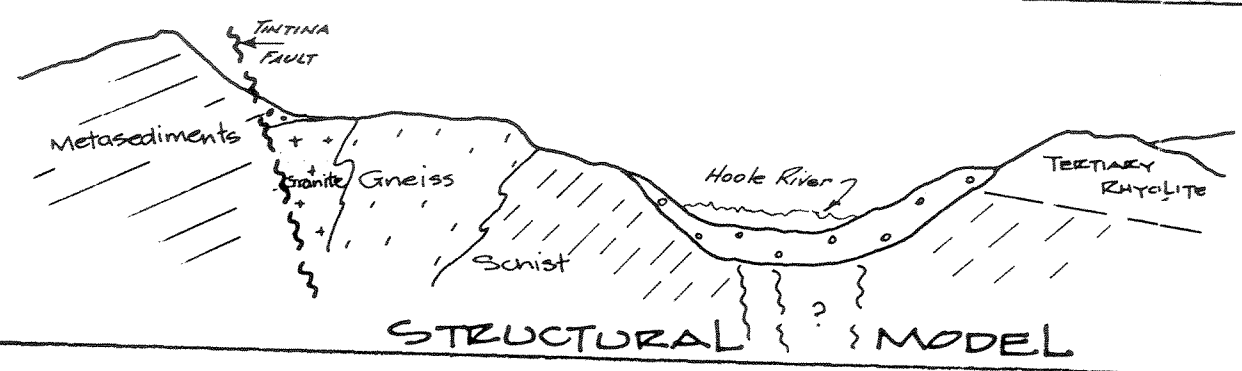
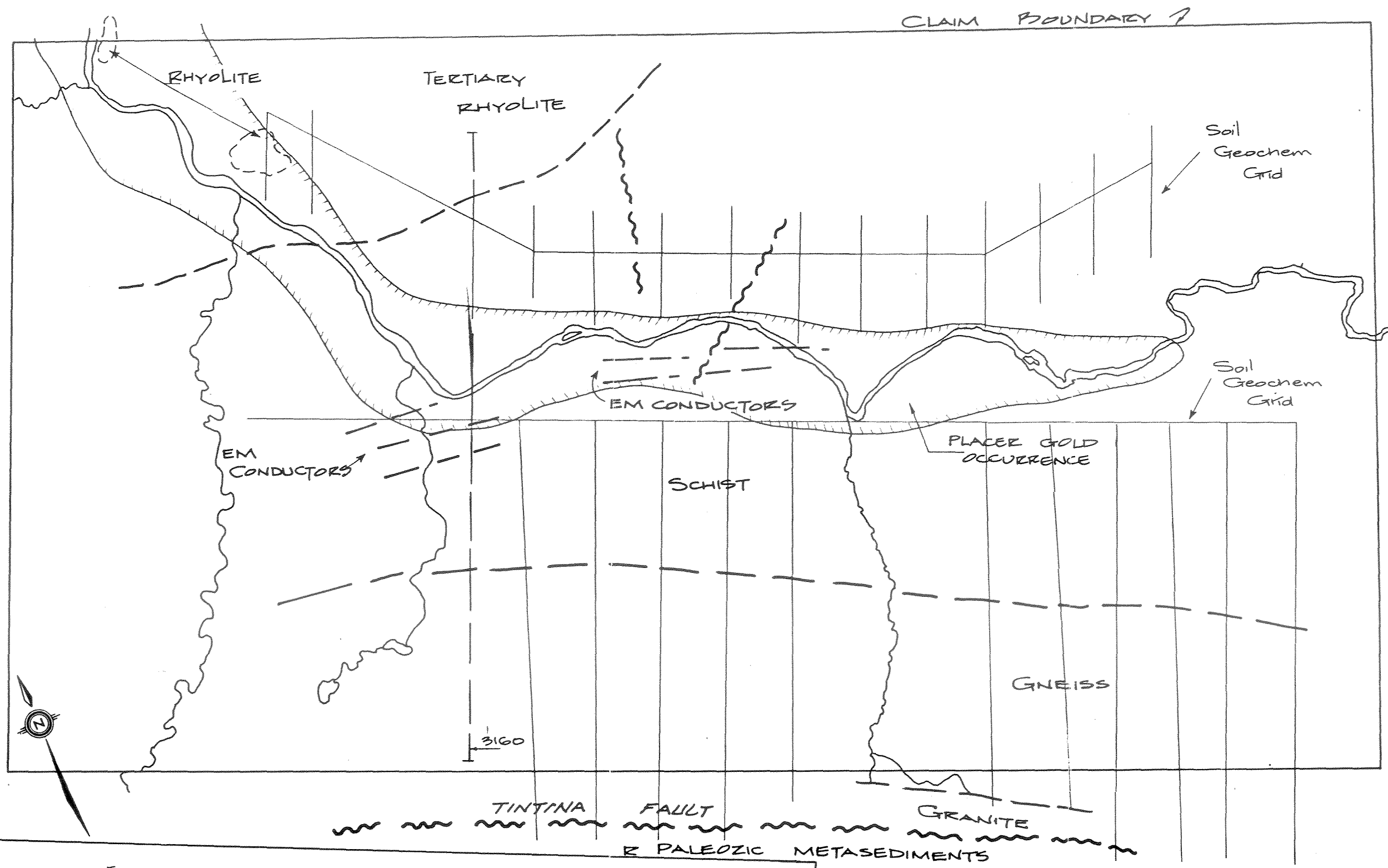
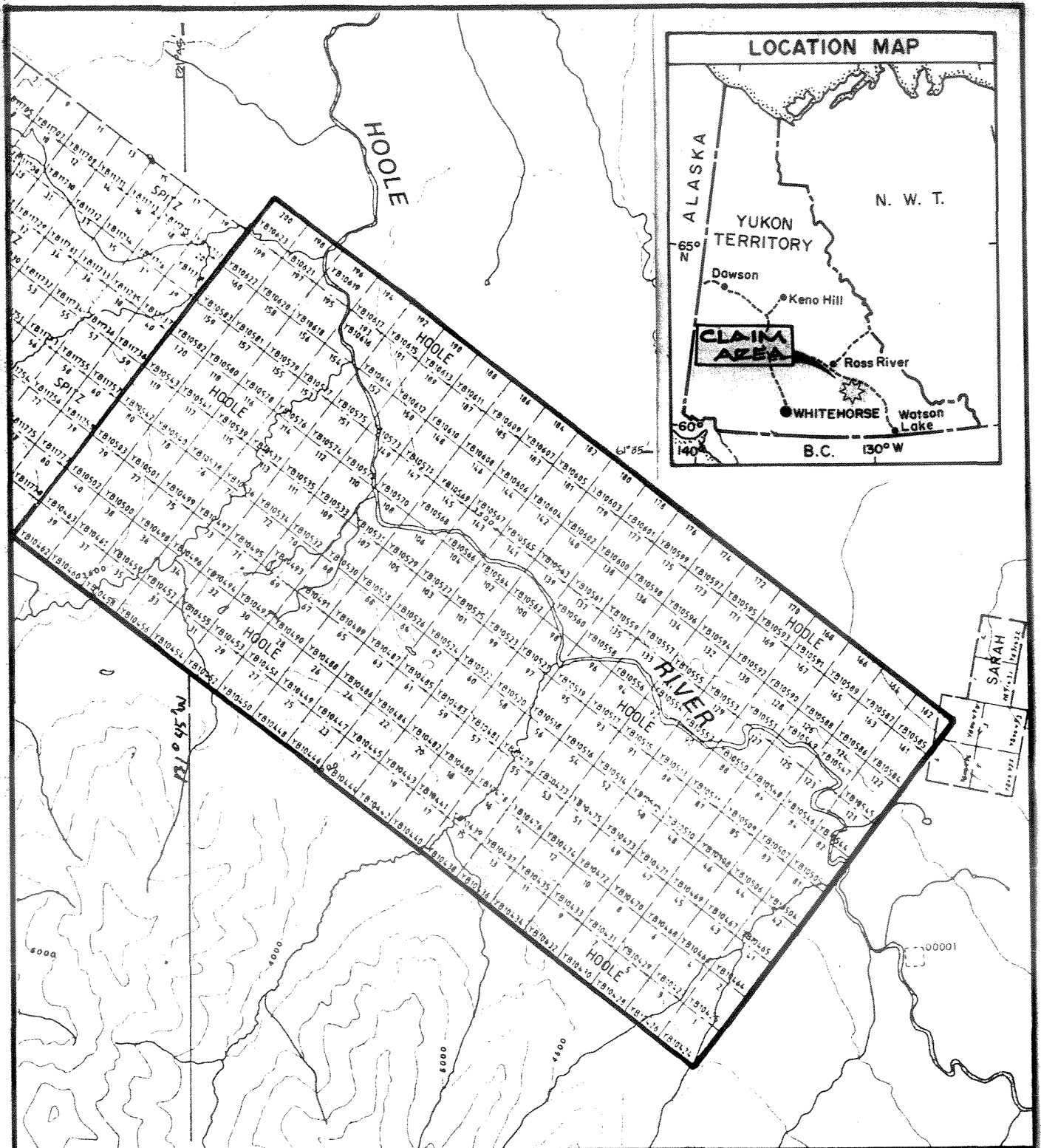


FIG 1



WELCOME NORTH MINES LTD.
VANCOUVER, BRITISH COLUMBIA

HOOLE CLAIMS

FIG 2

LOCATION MAP

YUKON TERRITORY

Work by : Robert Potter	N.T.S. : 1:25 G/12
Drawn by: Valri Hutchings	Scale
Date : Sept 1980	Figure :

II. INTRODUCTION

In April, 1988, Welcome North Mines Ltd. commissioned a helicopter-borne magnetic, electromagnetic, and VLF survey to cover a section of the Tintina Trench between Lapie and Hoole Rivers. The Hoole claims lie within this area.

The airborne program was followed up by surface work including reconnaissance geology, soil geochemistry and prospecting. The ground program was carried out by a crew consisting of one geologist/project manager, one prospector and five soil samplers. A total of 709 soil samples and 18 rock samples were collected for analysis by Min-En Laboratories of North Vancouver for gold, silver and arsenic.

Details of the results of the geophysical survey are described in a report by R.J. de Carle, consulting geophysicist dated August 31, 1988. A discussion of the results of the airborne work is included herein, but the principal focus of the present report is a description of the surface exploration program.

III. PROPERTY, ACCESS AND LOCATION (Figure 2)

The Hoole property consists of 200 full-sized mineral claims. All claims are currently registered in the name of Welcome North Mines Ltd. in the Watson Lake Mining District as follows:

<u>Claim Name</u>	<u>Grant No.</u>	<u>Record Date</u>
HOOLE 1-200	YB10424-YB10623	December 03, 1987

The property is located on the south side of the Tintina Trench, 60 kilometers southeast of Ross River (N.T.S. 105G/12) and 85 kilometers southeast of Noranda's Grew Creek epithermal gold discovery.

Access to the property is by helicopter from Ross River. Mobilization from Ross River can be effected in part via the Robert Campbell Highway which lies 20 kilometers north of Hoole. Ross River is reached by all weather road from Whitehorse via Carmacks and is also served by a daily scheduled flight from Whitehorse.

The claims lie along the broad open valley of Hoole River (elevation 3000 feet). To the south of the river the claim area rises in a series of terraces to a height of 4500 feet along the Pelly Mountain front. North of the Hoole the property covers

the edge of an undulating plateau which extends to the Robert Campbell Highway and the valley of Pelly River.

Hoole claims are covered by a mixed growth of spruce and fir with open areas covered by dwarf birch.

IV. HISTORY

Placer gold occurrences have been known along the Hoole River since early in the century. Hardrock interest in the area was initiated in 1955, when mineralized float was found immediately to the east of what is now the Hoole claim block. The Hoo claims were staked in 1966 by Northlake Mining Ltd. which carried out an airborne magnetic and electromagnetic survey as well as soil sampling followed by the drilling of 4 holes (1596 feet). Drilling was carried out to investigate an EM conductor south of Hoole River which was found to be caused by graphitic schist with minor pyrrhotite and pyrite with a trace of chalcopyrite.

The area was restaked in 1972 by the South Yukon Joint Venture (Chevron et al). Work in 1972 located the source of the 1955 lead-zinc float. Soil grid sampling outlined 6 large coincident lead and zinc anomalies within an area 12,000 x 3000 feet. Trenching and drilling in 1973 (8 holes, 2500 feet) showed that mineralization was confined to clastic horizons associated with limestone lenses. Best assays were of the order of 3 to 5% zinc over about 4 meters.

With the recent discovery of epithermal gold mineralization at Grew Creek a staking rush has occurred along the trend of the Tintina Fault zone. Of special interest have been areas with known occurrences of placer gold. The ground covered by the Hoole claims is one of these locations.

V. GEOLOGICAL SETTING (Fig. 3)

The subject property is located along the Tintina Trench. This major northwest trending feature is the locus of about 450 kilometers of dextral offset which occurred during the Mid and Late Cretaceous (Roddick 1967, Templeman-Kluit 1979).

The area northeast of Tintina is that of the Selwyn Fold Belt which comprises a diverse assemblage of clastic, carbonate, volcanic, ultramafic, and granitic rocks of Hadrynian to Tertiary-age. superimposed on this terrain are remnants of pre-Mid Cretaceous thrust sheets which include basic volcanics and ultramafics (Anvil Allochthon).

To the southwest of Tintina lies the Pelly-Cassiar Platform which comprises thrust wedges of Lower Paleozoic clastic and carbonate metasediments.

Basalts, rhyolites, and derived sediments of Eocene-age occur in structural basins along the Tintina Trench. At Grew Creek felsic volcanic and volcanoclastic rocks are preserved in a northwesterly trending graben. Epithermal gold mineralization is found here associated with silicic and acid sulphate alteration of the host rocks. Mineralized zones are also anomalous in arsenic and silver.



- LEGEND**
- CESTACEOUS & TERTIARY**
- QTvb Basalt
 - PPk3 Rhyolite tuffs & breccia
- CARBONIFEROUS & PERMIAN**
(Anvil-Campbell Allochthon)
- CPk3 Dunite, peridotite & serpentine
 - OSL Slate, quartzite limestone
- AGE UNKNOWN - KLONDIKE SCHIST**
- PPk1 Schist, Phyllite, Gneiss
- TINTINA FAULT

WELCOME NORTH MINES LTD.
VANCOUVER, BRITISH COLUMBIA

HOOLE CLAIMS

FIG 3
REGIONAL GEOLOGY

Work by : Robert Patter	N.T.S. : 105G12
Drawn by : Robert Patter	Scale 1 : 250,000
Date : Sept 1980	

VI. 1988 PROGRAM

The 1988 exploration program on Hoole was structured to assess its potential for "Grew Creek type" mineralization or that related to subsidiary structures of the Tintina Fault system. In April, 1988, Aerodat Limited of Toronto conducted a helicopter-borne magnetic, electromagnetic and VLF-EM survey of three blocks of ground southeast of Ross River. Included in the areas covered were the Hoole claims. Flights were made between April 23 and April 27, 1988, along lines oriented at an azimuth of 045-225° at a nominal line spacing of 200 meters and mean terrain clearance of 60 meters. Equipment operated included a three frequency electromagnetic system, a cesium vapor magnetometer, a 2-frequency VLF-EM system, a film tracking camera, a radar positioning system and an altimeter.

Ground follow-up to the airborne survey consisted of reconnaissance geology, soil geochemistry, and prospecting. Fieldwork was carried out by a nine man crew supervised by the writer during the period June 10 to June 17, 1988. Personnel and field equipment for the program were mobilized from Ross River with a Trans North Ltd. Bell 206B helicopter. Supplies and expediting services were provided by Ross River Service Centre Ltd.

Control for the surveys was established by compass and "hip chain" on lines laid out at azimuth 040° from a base line along the Hoole River. Line spacing was a nominal 400 meters. Flagged sample stations were set at 50 meter intervals on cross lines. A total of 49.2 kilometers of cross lines and 15.5 kilometers of base and tie lines were established on the property.

VII. PROPERTY GEOLOGY (Fig. 4)

Over 90% of the property is covered by a veneer of talus, glacial debris, and alluvium. Most rock exposure is found in the southeast corner of the claims. Scattered outcrop occurs along terraces south of the Hoole River. North of the river, outcrop is limited to exposures along the river bluffs at the northwest corner of the claims.

The main Tintina Fault trace probably lies to the south of the claim block at the base of the Pelly Mountain front. Rocks of the front are dominantly graphitic slates of Ordovician and Silurian-age (OSsl). Concordant quartz lenses are common here.

The area between the fault trace and Hoole valley is underlain by crystalline metamorphic rocks of the Omineca Crystalline Belt. Included are conspicuous grey weathering, biotite, muscovite, feldspar augen gneiss (Pn) and grey weathering biotite, muscovite, quartz schists (Psc). Sparse outcrop suggests an interfingering of these lithologies with gneiss predominating under the high southern area, and schist being most common toward the river valley. Foliation within these rocks is aligned along the northwesterly regional trend.

Between lines 68 east and 84 east at about latitude 3 north a rusty weathering, salmon pink granite is relatively well exposed. This appears to occupy a space between the Ordovician/Silurian metasediments and the crystalline rocks. Textures are uniformly very coarse grained. No volcanic textures, quartz veining, or mineralization were observed within this unit. It appears to be a product of deep emplacement affiliated with the local crystalline metamorphic sequence rather than with the felsic volcanic rocks which occur in a similar setting some kilometers to the northwest (Starr Creek rhyolite). A notable anomaly at this locale is an aplite dyke which cuts the granite near the western end of its exposed surface. Here the granite host is moderately argillized. The aplite shows a weak gold anomaly (Sample No. 3132; 67 ppb Au).

Quartz veins and lenses are common within the crystalline metamorphics, but no mineralization has been seen here.

Toward the western end of the claims, north of the Hoole River rhyolitic ash flows and lahars have been mapped along the river bluffs. These are remnants of a sheet of Tertiary felsic volcanoclastic rocks which extends from a probable source near Starr Creek to the west. The local exposures show no evidence of hydrothermal alteration or quartz veining.

VIII. GEOCHEMISTRY

A total of 18 rock samples and 709 B horizon soil samples were collected. Soils were packed in high wet strength kraft envelopes and field dried. All samples were shipped to Min-En Laboratories, North Vancouver, B.C., for preparation and analyses as per procedures described in Appendix I.

The highest gold value returned from a rock sample was 67 ppb. This was from the above mentioned aplite dyke which cuts argillized granite at grid location 2+50N, 70E. Gold values from other rock samples all fall within a background population ranging from 1 to 6 ppb.

Sampling was hampered to some degree by frozen ground conditions. The results of gold, arsenic and silver analyses are presented in Figure 4 which is a property wide 1:10,000 scale geological and geochemical map. Fifteen samples returned gold values at or above a 20 ppb threshold. The highest of these, 85 ppb, is from grid location 29N, 34E near the Hoole River. This sample is weakly supported by a 35 ppb result 150 meters to the south. The remainder of the low order anomalous gold results are scattered throughout the grid area. None of these are from the southern granite area or the northwestern rhyolite.

A scattering of low level single station silver anomalies are concentrated toward the eastern side of the grid. No clear anomalous areas are defined. Silver and gold anomalies appear to be mutually exclusive.

Arsenic shows a few single station highs with a concentration of these are lines 64 and 68 east. These are not supported by silver or gold values.

IX. GEOPHYSICS (see de Carle report and maps)

The total field magnetic map (4-J8843) shows a broad central area of intermediate magnetic response flanked by high magnetic ridges. The southern area of the claims display a subdued magnetic picture which falls off toward the south.

The positive magnetic feature south of Hoole River lies approximately along the break between schist and gneiss. No volcanic rocks are known here, but could be present in this area of sparse exposure. North of Hoole River several easterly striking magnetic ridges are evident. The area is at least in part underlain by rhyolite. The magnetics indicate that these and other volcanic rocks (basalts) are localized along easterly trending structures.

Numerous distinctive EM conductors have been mapped along the area immediately south of Hoole River. These appear to be related to structures suggested by local magnetic features. A weak gold soil anomaly has been detailed here.

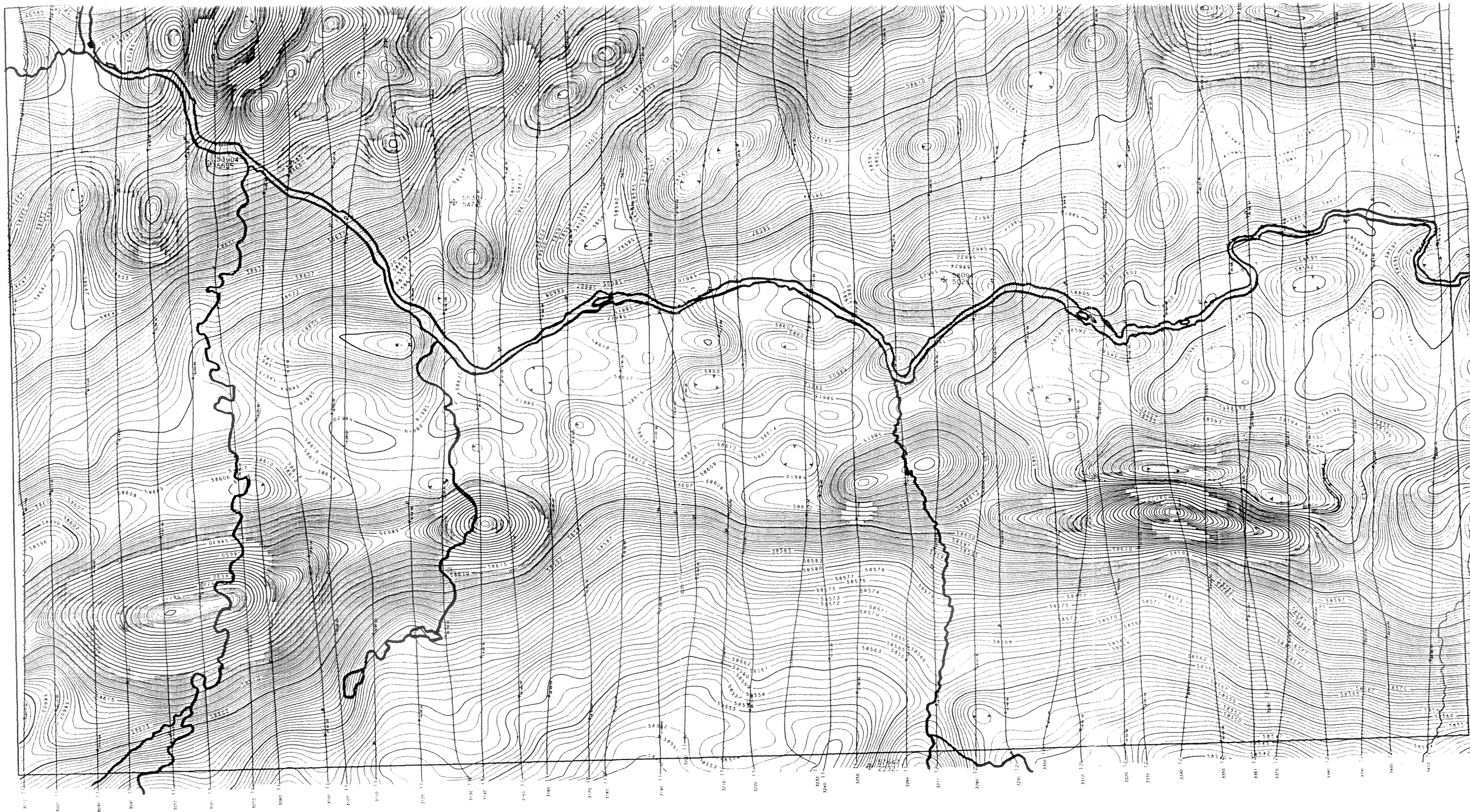


FIG 5

Flight Path

Navigation and recovery using Motorola Mini-Ranger (MRS III) radar navigation system.
Average terrain clearance 60m
Average line spacing 200m

Magnetic

Total Field Magnetic Intensity Contours in nT.
Cesium high sensitivity magnetometer.
Sensor elevation 45m

Map contours are multiples of those listed below

- 1 nT
- 5 nT
- 20 nT
- 100 nT
- 500 nT



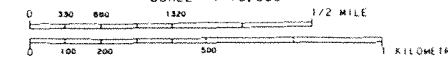
WELCOME NORTH MINES LTD.

TOTAL FIELD MAGNETIC CONTOURS

HOOLE RIVER

YUKON TERRITORY

SCALE 1:10,000



DATE: APRIL 1988

AERODAT LIMITED

NTS No: 105 G/12



LEGEND

QUATERNARY
 Q Alluvium

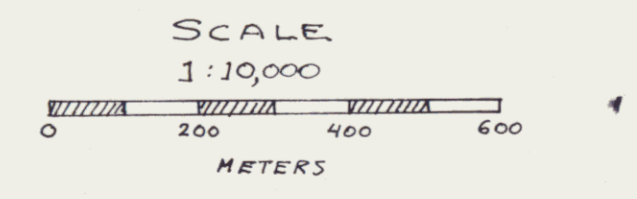
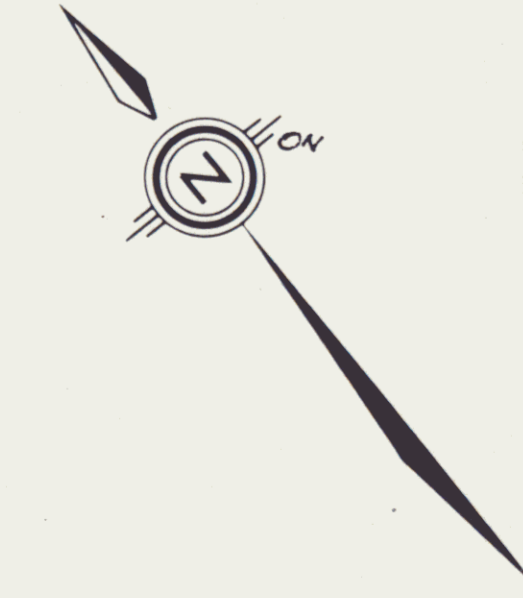
TERTIARY
 Tr Buff to rusty weathering rhyolite lapilli tuff
 Tbx Green weathering andesitic flow breccia

UNKNOWN AGE
 Gc Rusty weathering coarse grained gneiss or granular granite

PROTEROZOIC ?
 Psc Grey weathering biotite, muscovite, quartz, schist
 Pn Blocky, grey weathering biotite, muscovite, feldspar, augen gneiss

Foliation
 x Rock sample (with analyses)
 35 15.0.3 Soil Sample location As(ppm) Au(ppb) Ag(ppm)
 --- Claim line

APPROXIMATE LIMIT
 CLAIM BLOCK



ROCK GEOCHEMISTRY

SP	W	As	Au	Ag	
3124	5	Rusty gneiss	3	3	0.3
3125	3	Granite or contact	2	1	0.7
3126	1	Chlorite vein in granite	3	1	0.5
3127	2x2	Granite	3	6	0.4
3128	1	Gouge zone in granite	2	2	0.3
3129	2x3	Granite	3	1	0.7
3130	.5	Spineliferous granite or aplite	3	3	0.4
3131	1x1	Granite or aplite dyke	4	2	0.4
3132	1x1	Aplite dike, successively rusty	3	69	0.3
3133	1x1	Granite, rocky	2	4	0.4
3134	3x4				

	As	Au	Ag		
3119	Granite, iron staining	3	2	0.4	
3120	3x7	Granite	1	1	0.3
3121	2x3	Granite	1	3	0.4
3122	.03	3 cm gneiss vein, quartzite	6	2	0.6
3123		Granite	3	3	0.8

To accompany report by R. Potter P.E.T.S.

WELCOME NORTH MINES LTD.
 15th Floor, 675 W. Hastings Street, Vancouver, B.C., Canada V6B 1N2
 Facsimile (604) 687-2419 • Telephone (604) 687-1658

HOOLE CLAIMS

FIG 4 092853
GEOLOGY & GEOCHEMISTRY

26

Work by: Robert Potter N.T.S.: 100 G
 Drawn by: Robert Potter Scale: 1:10,000
 Date: Sept 1980

APPENDIX I

ANALYTICAL PROCEDURES

MIN-EN Laboratories Ltd.

Specialists in Mineral Environments

Corner 15th Street and Bewicke
705 WEST 15TH STREET
NORTH VANCOUVER, B.C.
CANADA V7M 1T2

GOLD GEOCHEMICAL ANALYSIS BY MIN-EN
LABORATORIES LTD.

Geochemical samples for Gold processed by Min-En Laboratories Ltd., at 705 W. 15th St., North Vancouver Laboratory employing the following procedures.

After drying the samples at 95°C soil and stream sediment samples are screened by 80 mesh sieve to obtain the minus 80 mesh fraction for analysis. The rock samples are crushed and pulverized by ceramic plated pulverizer.

A suitable sample weight 5.0 or 10.0 grams are pretreated with HNO_3 and HClO_4 mixture.

After pretreatments the samples are digested with Acqua Regia solution, and after digestion the samples are taken up with 25% HCl to suitable volume.

Further oxidation and treatment of at least 75% of the original sample solutions are made suitable for extraction of gold with Methyl Iso-Butyl Ketone.

With a set of suitable standard solution gold is analysed by Atomic Absorption instruments. The obtained detection limit is 0.005 ppm (5ppb).

PHONE 980-5814

MIN-EN Laboratories Ltd.

Specialists in Mineral Environments

Corner 15th Street and Bewicke
705 WEST 15th STREET
NORTH VANCOUVER, B.C.
CANADA

ANALYTICAL PROCEDURE REPORTS FOR ASSESSMENT WORK.

PROCEDURES FOR, Cu, Mo, Cd, Pb, Mn, Ni, Ag, Zn.

Samples are processed by Min-En Laboratories Ltd. at 705 W. 15th St., North Vancouver Laboratory employing the following procedures.

After drying the samples at 95°C soil and stream sediment samples are screened by 80 mesh sieve to obtain the minus 80 mesh fraction for analysis. The rock samples are crushed by jaw crusher and pulverized by ceramic plated pulverizer.

1.0 gram of the samples are digested for 6 hours with HNO_3 and HClO_4 mixture.

After cooling samples are diluted to standard volume. The solutions are analysed by Atomic Absorption Spectrophotometers.

Copper, lead, zinc, silver, cadmium, cobalt, nickel and manganese are analysed using the CH_2H_2 -Air flame combination but the molybdenum determination is carried out by C_2H_2 - N_2O gas mixture directly or indirectly (depending on the sensitivity and detection limit required) on these sample solutions.

Background corrections for Pb, Ag, Cd upon request are completed.

MIN-EN Laboratories Ltd.

Specialists in Mineral Environments

Corner 15th Street and Bewicke
705 WEST 15TH STREET
NORTH VANCOUVER, B.C.
CANADA V7M 1T2

Analytical Procedure Report for Assessment Work

31 Element ICP

Ag, Al, As, B, Ba, Be, Bi, Ca, Cd, Co, Cu, Fe, K, Li,
Mg, Mn, Mo, Na, Ni, P, Pb, Sb, Sr, Th, U, V, Zn, Ga, Sn, W,
Cr

Samples are processed by Min-En Laboratories Ltd., at 705 West 15th Street, North Vancouver, employing the following procedures.

After drying the samples at 95°C soil and stream sediment samples are screened by 80 mesh sieve to obtain the minus 80 mesh fraction for analysis. The rock samples are crushed by a jaw crusher and pulverized by ceramic plated pulverizer or ring mill pulverizer.

1.0 gram of the sample is digested for 4 hours with an aqua regia HClO₄ mixture.

After cooling samples are diluted to standard volume. The solutions are analysed by computer operated Jarrall Ash 9000 ICAP or Jobin Yvon 70 Type II Inductively Coupled Plasma Spectrometers. Reports are formatted and printed using a dot-matrix printer.

MIN-EN Laboratories Ltd.

Specialists in Mineral Environments

Corner 15th Street and Bewicke
705 WEST 15TH STREET
NORTH VANCOUVER, B.C.
CANADA V7M 1T2

ANALYTICAL PROCEDURE REPORT FOR ASSESSMENT WORK

PROCEDURE FOR ARSENIC:

Samples are processed by Min-En Laboratories Ltd., at 705 West 15th St., North Vancouver Laboratory employing the following procedures.

After drying the samples at 95°C soil and stream sediment samples are screened by 80 mesh sieve to obtain the minus 80 mesh fraction for analysis. The rock samples are crushed by a jaw crusher and pulverized by ceramic plated pulverizer.

1.0 gram of the samples are digested for 6 hours with HNO₃ and HClO₄ mixture.

After cooling samples are diluted to standard volume. A suitable aliquote is taken from the above 1 gram sample solution and the test is carried out by Gutzeit method using Ag CS₂N (C₂H₅)₂ as a reagent. The detection limit obtained is 1. ppm.

MIN-EN Laboratories Ltd.

Specialists in Mineral Environments

Corner 15th Street and Bewicke
705 WEST 15TH STREET
NORTH VANCOUVER, B.C.
CANADA V7M 1T2

ASSESSMENT REPORT FOR:

HEAVY MINERAL SAMPLING AND CONCENTRATIONS

A large sample is collected from stream sediments or soils big enough to yield a minimum of 0.5 kg of the desired minus fraction. After sieving through any of the sieve mesh sizes they are adapted for the survey. After sieving the samples, the minus fraction is grinded to -80 mesh.

Then 0.4 kg of sample is weighed into a suitable centrifuge containers. The prepared concentrations of liquids are added to obtain a 3.1 specific gravity flotation.

The heavy fractions are then washed cleaned and dried. After drying the samples they are separated. The sink float Heavy Minerals are separated into Magnetic and Non Magnetic fractions and both fractions are weighed. The percent of the Magnetic and non Magnetic fractions are calculated and reported with the analytical data.

The analysis are than carried out in the usual analytical manner by I.C.P. or A.A. method.

MIN-EN Laboratories Ltd.

Specialists in Mineral Environments

Corner 15th Street and Bewicke
705 WEST 15TH STREET
NORTH VANCOUVER, B.C.
CANADA V7M 1T2

FIRE GOLD GEOCHEMICAL ANALYSIS BY MIN-EN LABORATORIES LTD.

Geochemical samples for Fire Gold processed by Min-En Laboratories Ltd., at 705 W. 15th St., North Vancouver Laboratory employing the following procedures.

After drying the samples at 95°C soil and stream sediment samples are screened by 80 mesh sieve to obtain the minus 80 mesh fraction for analysis. The rock samples are crushed and pulverized by ceramic plated pulverizer.

A suitable sample weight 15.00 or 30.00 grams are fire assay preconcentrated.

After pretreatments the samples are digested with Aqua Regia solution, and after digestion the samples are taken up with 25% HCl to suitable volume.

Further oxidation and treatment of at least 75% of the original sample solutions are made suitable for extraction of gold with Methyl Iso-Butyl Ketone.

With a set of suitable standard solution gold is analysed by Atomic Absorption instruments. The obtained detection limit is 1 ppb.

APPENDIX II

ANALYTICAL CERTIFICATES

MIN-EN LABORATORIES LTD.

Specialists in Mineral Environments

705 West 15th Street North Vancouver, B.C. Canada V7M 1T2

PHONE: (604) 980-5814 OR (604) 988-4524

TELEX: VIA USA 7601067 UC

Certificate of Geochem

Company: WELCOME NORTH MINES
 Project: ROSS RIVER 6 *STAR/HOLE*
 Attention: JONH BROCK

File: 8-759/P9
 Date: JUNE 25/88
 Type: SOIL GEOCHEM

We hereby certify the following results for samples submitted.

Sample Number	AG PPM	AS PPM	AU-WET PPB
LS144E 2600N	0.6	16	5
LS144E 2650N	0.3	6	5
LS144E 2950N	0.4	14	10
LS144E 3050N	1.4	32	5
LS144E 3150N	0.2	21	5
LS144E 3200N	0.2	26	5
LS144E 3250N	0.4	25	5
LS144E 3300N	0.6	18	5
LS144E 3350N	0.4	15	10
LS144E 3450N	0.3	14	5
LS144E 3500N	0.3	20	5
LS144E 3900N	0.4	25	5
LS112E 2050N	0.2	8	5
LS112E 2100N	0.2	12	5
LS112E 3400N	0.2	10	5
LS92E BL2000N	0.2	8	15
LS92E 2050N	0.4	19	5
LS92E 2100N	0.4	10	10
LS92E 2200N	0.9	17	5
LS92E 2250N	0.3	14	5
LS92E 2350N	0.2	10	5
LS92E 2400N	0.2	19	10
LS92E 2700N	0.4	18	5
LS92E 2800N	0.3	11	5
LS92E 3550N	0.4	13	5
LS92E 3600N	0.9	18	5
LS92E 3900N	0.4	11	10
LH48E 0050N	0.4	17	5
LH48E 0100N	0.2	23	5
LH48E 0150N	0.5	18	5

Certified by 

MIN-EN LABORATORIES LTD.

MIN-EN LABORATORIES LTD.

Specialists in Mineral Environments

705 West 15th Street North Vancouver, B.C. Canada V7M 1T2

PHONE: (604)980-5814 OR (604)988-4524

TELEX: VIA USA 7601067 UR

Certificate of Geochem


Company: WELCOME NORTH MINES
 Project: ROSS RIVER 6 HOLE
 Attention: JONH BROCK

File: 8-759/P10
 Date: JUNE 25/88
 Type: SOIL GEOCHEM

We hereby certify the following results for samples submitted.

Sample Number	AG PPM	AS PPM	AU-WET PPB
LH48E 0200N	0.4	16	5
LH48E 0250N	0.2	15	5
LH48E 0300N	0.4	22	5
LH48E 0400N	0.3	15	5
LH48E 0500N	0.2	9	5
LH48E 0550N	0.4	16	5
LH48E 0600N	0.3	13	10
LH48E 0650N	0.4	16	5
LH48E 0700N	0.2	19	5
LH48E 0750N	0.2	9	5
LH48E 0850N	0.3	14	10
LH48E 0900N	0.2	11	10
LH48E 1100N	0.3	20	5
LH48E 1150N	0.4	17	5
LH48E 1350N	0.2	17	5
LH48E 1650N	0.4	12	5
LH48E 1700N	0.3	15	5
LH48E 1850N	0.4	14	5
LH48E 2150N	0.3	9	5
LH48E 2200N	0.2	11	5
LH48E 2400N	0.4	16	5
LH48E 2450N	0.2	12	5
LH48E 2500N	0.4	10	10
LH48E 2550N	0.3	19	5
LH48E 2600N	0.3	8	5
LH48E 2650N	0.4	15	5
LH48E 2700N	0.2	16	5
LH48E 2750N	0.3	9	5
LH48E 2850N	0.8	18	5
LH76E 0250N	0.6	33	5

Certified by


 MIN-EN LABORATORIES LTD.

MIN-EN LABORATORIES LTD.

Specialists in Mineral Environments

705 West 15th Street North Vancouver, B.C. Canada V7M 1T2

PHONE: (604) 980-5814 OR (604) 988-4524

TELEX: VIA USA 7601067 UC

Certificate of Geochem

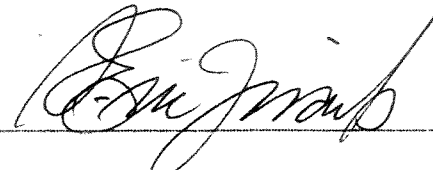
Company: WELCOME NORTH MINES
Project: ROSS RIVER 6 *HooLE*
Attention: JONH BROCK

File: 8-759/P11
Date: JUNE 24/88
Type: SOIL GEOCHEM

We hereby certify the following results for samples submitted.

Sample Number	AG PPM	AS PPM	AU-WET PPB
LH76E 0450N	0.3	14	5
LH76E 0500N	0.2	13	5
LH76E 0550N	0.3	18	5
LH76E 0600N	0.4	14	10
LH76E 0650N	0.4	16	5
LH76E 0700N	0.2	24	5
LH76E 0800N	0.6	20	5
LH76E 0850N	0.3	16	5
LH76E 0900N	0.5	14	5
LH76E 0950N	0.9	24	10
LH76E 1050N	0.3	22	5
LH76E 1150N	0.2	21	10
LH76E 1200N	0.4	19	5
LH76E 1300N	0.2	23	5
LH76E 1350N	0.2	16	5
LH76E 1400N	0.6	19	5
LH76E 1450N	0.2	20	5
LH76E 1550N	0.3	16	5
LH76E 1650N	0.3	19	5
LH68E 0300N	0.8	32	10
LH68E 0350N	0.4	6	5
LH68E 0500N	0.2	23	5
LH68E 0600N	0.2	17	5
LH68E 0650N	0.3	21	5
LH68E 0700N	0.3	19	5
LH68E 0750N	0.6	22	5
LH68E 0800N	0.4	7	5
LH68E 0850N	0.7	12	5
LH68E 1150N	0.3	22	5
LH68E 1250N	0.4	20	5

Certified by



MIN-EN LABORATORIES LTD.

MIN-EN LABORATORIES LTD.

Specialists in Mineral Environments

705 West 15th Street North Vancouver, B.C. Canada V7M 1T2

PHONE: (604) 980-5814 OR (604) 988-4524

TELEX: VIA USA 7601067 UC

Certificate of Geochem

Company: WELCOME NORTH MINES
 Project: ROSS RIVER & HOOLE
 Attention: JONH BROCK

File: 8-759/P12
 Date: JUNE 25/88
 Type: SOIL GEOCHEM

We hereby certify the following results for samples submitted.

Sample Number	AG PPM	AS PPM	AU-WET PPB
LH68E 1350N	0.4	12	5
LH68E 1450N	0.3	15	5
LH68E 1500N	0.3	19	5
LH68E 1550N	0.2	23	5
LH80E 0000N	0.3	7	5
LH80E 0050N	0.3	18	10
LH80E 0100N	0.2	12	5
LH80E 0150N	0.3	21	5
LH80E 0200N	0.4	19	5
LH80E 0250N	0.2	21	5
LH80E 0300N	0.2	25	5
LH80E 0350N	0.2	20	5
LH80E 0400N	0.3	15	5
LH80E 0450N	0.2	17	5
LH80E 0500N	0.4	18	5
LH80E 0550N	0.3	20	5
LH80E 0600N	0.4	14	5
LH80E 0650N	0.6	5	5
LH80E 0700N	0.3	10	5
LH80E 0750N	0.5	29	5
LH80E 0800N	0.2	24	5
LH80E 0850N	0.4	24	5
LH80E 0900N	0.2	14	5
LH80E 0950N	0.7	18	5
LH80E 1000N	0.4	8	5
LH68E 1600N	0.3	11	5
LH68E 1700N	0.3	14	5
LH68E 1750N	1.1	15	5
LH68E 1800N	0.6	18	5
LH68E 1900N	0.9	23	5

Certified by

MIN-EN LABORATORIES LTD.

MIN-EN LABORATORIES LTD.

Specialists in Mineral Environments

705 West 15th Street North Vancouver, B.C. Canada V7M 1T2

PHONE: (604)980-5814 OR (604)988-4524

TELEX: VIA USA 7601067 UC

Certificate of Geochem

Company: WELCOME NORTH MINES
 Project: ROSS RIVER 6 *HOOLE*
 Attention: JONH BROCK

File: 8-759/P13
 Date: JUNE 25/88
 Type: SOIL GEOCHEM

We hereby certify the following results for samples submitted.

Sample Number	AG PPM	AS PPM	AU-WET PPB
LH68E 1950N	0.6	25	5
LH68E 2050N	0.3	33	10
LH68E 2100N	0.2	26	5
LH68E 2150N	0.5	60	5
LH68E 2200N	0.3	47	5
LH68E 2250N	0.4	118	5
LH68E 2350N	0.3	44	5
LH68E 2400N	0.2	22	5
LH68E 2450N	0.2	27	5
LH68E 2500N	0.3	26	10
LH68E 2550N	0.6	32	5
LH68E 2600N	0.3	16	5
LH68E 2650N	0.4	18	5
LH68E 2700N	0.3	12	5
LH68E 2750N	0.2	20	5
LH68E 2800N	0.4	38	5
BH68E 2850N	0.3	18	5
LH68E 2900N	0.3	20	10
LH68E 2950N	0.6	22	5
LH68E 3000N N/S			
LH44E 0000N	0.3	17	5
LH44E 0050N	0.3	16	5
LH44E 0100N	0.2	13	5
LH44E 0150N	0.2	21	5
LH44E 0200N	0.4	16	5
LH44E 0250N	0.3	22	5
LH44E 0300N	0.5	26	10
LH44E 0350N	0.6	20	5
LH44E 0400N	0.3	17	5
LH44E 0450N	0.5	26	10

Certified by

MIN-EN LABORATORIES LTD.

MIN-EN LABORATORIES LTD.

Specialists in Mineral Environments

705 West 15th Street North Vancouver, B.C. Canada V7M 1T2

PHONE: (604)980-5814 DR (604)988-4524

TELEX: VIA USA 7601067 UI

Certificate of Geochem

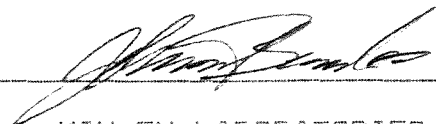
Company: WELCOME NORTH MINES
Project: (ROSS RIVER 6) STAR II - HOOLE
Attention: JONH BROCK

File: 8-759/P15
Date: JUNE 25/88
Type: SOIL GEOCHEM

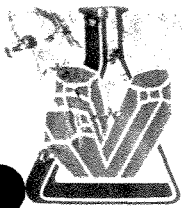
We hereby certify the following results for samples submitted.

Sample Number	AG PPM	AS PPM	AU-WET PPB
LH72E 2550N	0.5	18	5
LH72E 2550N DUF } HOOLE	0.6	30	10
LS134E 1800N	0.4	12	5
LS134E 1850N	0.5	18	5
LS134E 1900N } STAR	0.7	17	5
LS134E 1950N	0.4	12	5
H44E 1050 } HOOLE	0.2	15	10
BL30N 6800E } HOOLE	0.4	22	5

Certified by



MIN-EN LABORATORIES LTD.



MIN-EN LABORATORIES LTD.
ENVIRONMENTAL

SPECIALISTS IN MINERAL ENVIRONMENTS
 CHEMISTS • ASSAYERS • ANALYSTS • GEOCHEMISTS

VANCOUVER OFFICE:
 705 WEST 15TH STREET
 NORTH VANCOUVER, B.C. CANADA V7M 1T2
 TELEPHONE (604) 980-5814 OR (604) 988-4524
 TELEX: VIA U.S.A. 7601067 • FAX (604) 980-9621

TIMMINS OFFICE:
 33 EAST IROQUOIS ROAD
 P.O. BOX 867
 TIMMINS, ONTARIO CANADA P4N 7G7
 TELEPHONE: (705) 264-9996

Certificate of GEOCHEM

Company: WELCOME NORTH MINES
 Project: ROSS RIVER 6
 Attention: J BROCK /R POTTER

TINTINA

File: 8-759/P1
 Date: JUNE 23/88
 Type: ROCK GEOCHEM

We hereby certify the following results for samples submitted.

Sample Number	AU-FIRE PPB	AS PPM	AG PPM
3039	2	5	0.6
3040	3	2	0.4
3041	6	4	0.5
3042	2	10	0.6
3043	1	7	0.3
3044	4	8	0.3
3045	2	3	0.7
3046	3	3	0.4
3047	1	3	0.6
3048	2	3	0.2
3049	5	3	0.9
3050	1	2	0.5
3051	3	2	0.5
3052	8	5	0.3
3053	4	5	0.4
3054	2	5	0.4
3055	2	3	0.7
3056	1	2	0.8
3057	6	16	0.3
3058	3	9	1.2
3059	2	6	0.3
3060	5	6	0.7
3061	2	6	0.5
3074	1	13	0.7
3075	1	21	2.2
3076	3	60	1.0
3077	2	18	1.1
3078	2	10	1.4
3079	1	7	1.3
3080	3	7	0.9

Certified by

MIN-EN LABORATORIES LTD.



**MINERAL
ENVIRONMENTAL
LABORATORIES LTD.**

SPECIALISTS IN MINERAL ENVIRONMENTS
CHEMISTS • ASSAYERS • ANALYSTS • GEOCHEMISTS

VANCOUVER OFFICE:
705 WEST 15TH STREET
RTH VANCOUVER, B.C. CANADA V7M 1T2
TELEPHONE (604) 980-5814 OR (604) 988-4524
TELEX: VIA U.S.A. 7601067 • FAX (604) 980-9621

TIMMINS OFFICE:
33 EAST IROQUOIS ROAD
P.O. BOX 867
TIMMINS, ONTARIO CANADA P4N 7G7
TELEPHONE: (705) 264-9996

Certificate of Geochem

Company: WELCOME NORTH MINES
Project: ROSS RIVER 6
Attention: J BROCK /R POTTER

File: 8-759/P2
Date: JUNE 23/88
Type: ROCK GEOCHEM

We hereby certify the following results for samples submitted.

Sample Number		AU-FIRE FPB	AS PPM	AG PPM
3081	HOOLE	2	3	0.7
3082	"	1	8	1.7
3083	"	2	28	1.9
3101	STAR	4	4	0.6
3102	"	2	3	0.6
3103	"	1	12	0.4
3104	"	3	3	0.3
3105	"	2	3	0.6
3106	"	1	4	0.7
3107	"	2	5	0.5
3108	"	2	3	0.7
3109	"	5	5	0.9
3110	"	4	3	0.5
3122	HOOLE	2	6	0.6
3123	"	3	3	0.8
3124	"	3	3	0.3
3125	"	1	2	0.3
3126	"	1	3	0.5
3127	"	6	3	0.4
3128	"	2	2	0.3
3129	"	1	3	0.7
3130	"	3	3	0.4
3131	"	2	4	0.4
3132	"	67	3	0.3
3133	"	4	2	0.4

Certified by

MIN-EN LABORATORIES LTD.

MIN-EN LABORATORIES LTD.

Specialists in Mineral Environments

705 West 15th Street North Vancouver, B.C. Canada V7M 1T2

PHONE: (604)980-5814 OR (604)988-4524

TELEX: VIA USA 7601067 UG

Certificate of GEOCHEM

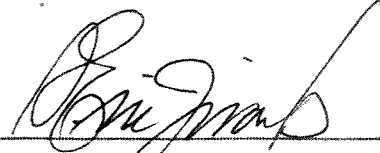
Company: WELCOME NORTH MINES
Project: RR-6-5
Attention: J. BROCK

File: 8-761/P1
Date: JUNE 23/88
Type: ROCK GEOCHEM

We hereby certify the following results for samples submitted.

Sample Number	AG PPM	AS PPM	AU-FIRE PPB
3111 STAR	1.2	4	29
3112	0.4	2	3
3113	0.6	2	2
3115	0.2	3	3
3116	0.3	2	10
3062	0.4	3	4

Certified by



MIN-EN LABORATORIES LTD.

MIN-EN LABORATORIES LTD.

Specialists in Mineral Environments

705 West 15th Street North Vancouver, B.C. Canada V7M 1T2

PHONE: (604) 980-5814 OR (604) 988-4524

TELEX: VIA USA 7601067 UC

Certificate of GEOCHEM

Company: WELCOME NORTH MINES
Project: RR-6-H *HOOLE*
Attention: J. BROCK

File: 8-762/P1
Date: JUNE 23/88
Type: ROCK GEOCHEM

We hereby certify the following results for samples submitted.

Sample Number	AG PPM	AS PPM	AU-FIRE PPB
3117	0.3	5	2
3118	0.7	3	1
3067	1.3	18	26
3068	0.2	3	4
3069	0.6	38	18
3070	0.6	12	7
3071	0.9	4	5
3072	0.5	2	12
3073	0.6	40	3
3119	0.4	3	2
3120	0.3	1	1
3121	0.4	1	3

Certified by



MIN-EN LABORATORIES LTD.



**MINERAL
ENVIRONMENTAL
LABORATORIES LTD.**

SPECIALISTS IN MINERAL ENVIRONMENTS
CHEMISTS • ASSAYERS • ANALYSTS • GEOCHEMISTS

VANCOUVER OFFICE:
705 WEST 15TH STREET
NORTH VANCOUVER, B.C. CANADA V7M 1T2
TELEPHONE (604) 980-5814 OR (604) 988-4524
TELEX: VIA U.S.A. 7801067 • FAX (604) 980-9621

TIMMINS OFFICE:
33 EAST IROQUOIS ROAD
P.O. BOX 867
TIMMINS, ONTARIO CANADA P4N 7G7
TELEPHONE: (705) 264-9996

Certificate of GEOCHEM

Company: WELCOME NORTH MINES
Project: RR-6-H00LE
Attention: J. BROCK

File: B-788/P1
Date: JUNE 29/88
Type: SOIL GEOCHEM

We hereby certify the following results for samples submitted.

Sample Number	AU-WET PPB	AG PPM	AS PPM
H48E 3600N	5	0.3	19
H48E 3650N	5	0.2	22
H48E 3700N	10	0.4	20
H48E 3750N	10	0.7	16
H48E 3800N	5	0.2	16
H48E 3850N	5	0.4	19
H48E 3900N	35	0.5	21
H48E 3950N	10	0.3	28
H48E 4000N	10	0.4	18
H48E 4050N	5	0.3	18
H48E 4100N	5	0.5	26
H48E 4150N	5	0.4	15
H48E 4200N	5	0.3	17
H52E 3700N	10	0.4	24
H52E 3750N	5	0.9	22
H52E 3800N	5	0.3	28
H52E 3850N	10	0.5	20
H52E 3900N	5	0.3	17
H52E 3950N	20	0.3	27
H52E 4000N	5	0.4	21
H52E 4050N	5	0.2	22
H52E 4100N	10	0.3	18
H52E 4150N	5	0.4	18
H52E 4200N	5	0.3	20
H64E 0650N	10	0.4	21
H64E 0700N	5	0.3	15
H64E 0750N	10	0.5	13
H64E 0800N	15	0.7	15
H64E 0850N	10	0.4	20
H64E 0900N	5	0.6	17

Certified by _____

MIN-EN LABORATORIES LTD.



**MINERAL
ENVIRONMENTAL
LABORATORIES LTD.**

SPECIALISTS IN MINERAL ENVIRONMENTS
CHEMISTS • ASSAYERS • ANALYSTS • GEOCHEMISTS

VANCOUVER OFFICE:
705 WEST 15TH STREET
NORTH VANCOUVER, B.C. CANADA V7M 1T2
TELEPHONE (604) 980-5814 OR (604) 988-4524
TELEX: VIA U.S.A. 7601067 • FAX (604) 980-9621

TIMMINS OFFICE:
33 EAST IROQUOIS ROAD
P.O. BOX 887
TIMMINS, ONTARIO CANADA P4N 7G7
TELEPHONE: (705) 264-9996

Certificate of Geochem

Company: WELCOME NORTH MINES
Project: RR-6-H
Attention: J. BROCK

File: B-788/P2
Date: JUNE 28/88
Type: SOIL GEOCHEM

We hereby certify the following results for samples submitted.

Sample Number	AU-WET PPB	AG PPM	AS PPM
H64E 0950N	5	0.5	15
H64E 1000N	5	0.3	18
H64E 1050N	5	0.4	25
H64E 1100N	10	0.6	22
H64E 1150N	5	0.5	27

H64E 1200N	5	0.3	19
H64E 1250N	5	0.3	15
H64E 1300N	10	0.4	22
H64E 1350N	5	0.3	22
H64E 1400N	5	0.4	19

H64E 1450N	5	0.4	17
H64E 1500N	10	0.9	22
H64E 1550N	20	0.3	14
H64E 1600N	5	0.4	11
H64E 1650N	5	0.2	13

H64E 1700N	5	0.5	19
H64E 1750N	10	0.3	12
H64E 1800N	5	0.4	19
H64E 1850N	5	2.7	27
H64E 1900N	10	0.6	15

H64E 1950N	20	0.3	25
H64E 2000N	5	0.2	19
H56E 0750N	5	0.4	18
H56E 0800N	10	0.3	18
H56E 0900N	5	0.2	20

H56E 0950N	5	0.6	12
H56E 1050N	5	0.5	21
H56E 1150N	20	0.4	25
H56E 1200N	5	0.4	17
H56E 1250N	5	0.5	26

Certified by _____

MIN-EN LABORATORIES LTD.



**MINERAL
ENVIRONMENTAL
LABORATORIES LTD.**

SPECIALISTS IN MINERAL ENVIRONMENTS
CHEMISTS • ASSAYERS • ANALYSTS • GEOCHEMISTS

VANCOUVER OFFICE:
705 WEST 15TH STREET
NORTH VANCOUVER, B.C. CANADA V7M 1T2
TELEPHONE (604) 980-5814 OR (604) 988-4524
TELEX: VIA U.S.A. 7801067 • FAX (604) 980-9621

TIMMINS OFFICE:
33 EAST IROQUOIS ROAD
P.O. BOX 867
TIMMINS, ONTARIO CANADA P4N 7G7
TELEPHONE: (705) 264-9996

Certificate of Geochem

Company: WELCOME NORTH MINES
Project: RR-6-H
Attention: J. BROCK

File: 8-788/P3
Date: JUNE 28/88
Type: SOIL GEOCHEM

We hereby certify the following results for samples submitted.

Sample Number	ALI-WET PPB	AB PPM	AS PPM
H56E 1300N	5	0.3	12
H56E 1350N	5	0.4	15
H56E 1400N	10	0.2	17
H56E 1750N	5	0.3	18
H56E 2200N	5	0.9	18
H56E 2250N	5	0.6	21
H56E 2300N	5	0.3	24
H56E 2500N	5	0.2	18
H56E 2550N	5	0.2	12
H56E 2650N	10	0.4	18
H56E 2750N	5	0.3	6
H56E 2800N	5	0.5	18
H56E 2900N	5	0.7	27
H56E 3000N	5	0.2	26
H56E 3050N	5	0.8	40
L84E 0000N	5	0.3	24
L84E 0050N	10	0.2	23
L84E 0100N	5	0.3	23
L84E 0150N	5	0.4	33
L84E 0200N	5	0.8	22
L84E 0250N	5	0.6	26
L84E 0300N	5	0.4	15
L84E 0350N	5	0.3	16
L84E 0400N	10	0.5	29
L84E 0450N	5	0.4	23
L84E 0500N	5	0.3	24
L84E 0550N	5	0.3	22
L84E 0600N	5	0.7	20
L84E 0650N	5	0.3	30
L84E 0700N	5	0.5	11

Certified by

MIN-EN LABORATORIES LTD.



**MINERAL
ENVIRONMENTAL
LABORATORIES LTD.**

SPECIALISTS IN MINERAL ENVIRONMENTS
CHEMISTS • ASSAYERS • ANALYSTS • GEOCHEMISTS

VANCOUVER OFFICE:
705 WEST 15TH STREET
NORTH VANCOUVER, B.C. CANADA V7M 1T2
TELEPHONE (604) 980-5814 OR (604) 988-4524
TELEX: VIA U.S.A. 7601067 • FAX (604) 980-9621

TIMMINS OFFICE:
33 EAST IROQUOIS ROAD
P.O. BOX 867
TIMMINS, ONTARIO CANADA P4N 7G7
TELEPHONE: (705) 264-9996

Certificate of Geochem

Company: WELCOME NORTH MINES
Project: RR-6-H
Attention: J. BROCK/R. POTTER

File: B-78B/P4
Date: JUNE 29/88
Type: SDIL GEOCHEM

We hereby certify the following results for samples submitted.

Sample Number	AU-WET FPB	AG PPM	AS PPM
L84E 0750N	25	.6	12
L84E 0800N	10	.5	25
L84E 0850N	20	.3	10
L84E 0900N	10	.3	11
L84E 0950N	5	.5	13
L84E 1000N	5	.3	15
L84E 1050N	5	.4	23
L84E 1100N	5	.6	25
L84E 1150N	10	.2	15
L84E 1200N	5	.4	22
L84E 1250N	5	.5	15
L84E 1300N	5	.3	14
L84E 1350N	5	.4	35
L84E 1400N	10	.5	34
L84E 1450N	5	.7	21
L84E 1500N	5	.4	18
L84E 1550N	5	.2	16
L84E 1600N	10	.6	7
L84E 1650N	5	.3	16
L84E 1700N	5	1.8	24
L84E 1750N	5	.7	11
L84E 1800N	5	.6	12
L84E 1850N	5	.3	21
L84E 1900N	5	1.0	19
L84E 1950N	5	1.1	15
L84E 2050N	5	.7	32
L84E 2100N	10	.8	118
L84E 2150N	5	.6	42
L84E 2200N	5	.4	36
L84E 2250N	10	.7	106

Certified by

MIN-EM LABORATORIES LTD.



**MINERAL
ENVIRONMENTAL
LABORATORIES LTD.**

SPECIALISTS IN MINERAL ENVIRONMENTS
CHEMISTS • ASSAYERS • ANALYSTS • GEOCHEMISTS

VANCOUVER OFFICE:
705 WEST 15TH STREET
NORTH VANCOUVER, B.C. CANADA V7M 1T2
TELEPHONE (604) 980-5814 OR (604) 988-4524
TELEX: VIA U.S.A. 7601067 • FAX (604) 980-9621

TIMMINS OFFICE:
33 EAST IROQUOIS ROAD
P.O. BOX 867
TIMMINS, ONTARIO CANADA P4N 7G7
TELEPHONE: (705) 264-9996

Certificate of Geochem

Company: WELCOME NORTH MINES
Project: RR-6-H
Attention: J BROCK/R. POTTER

File: 8-788/P5
Date: JUNE 29/88
Type: SOIL GEOCHEM

We hereby certify the following results for samples submitted.

Sample Number	AU-WET PPE	AG FPM	AS PPM
LB8E 0100N	5	.2	21
LB8E 0150N	5	.5	23
LB8E 0200N	10	.2	16
LB8E 0250N	20	.2	16
LB8E 0300N	10	.4	13
LB8E 0350N	5	.4	18
LB8E 0400N	5	.5	12
LB8E 0450N	5	.4	16
LB8E 0500N	10	.2	20
LB8E 0550N	5	.3	16
LB8E 0600N	5	.4	12
LB8E 0650N	5	.4	13
LB8E 0700N	5	.5	17
LB8E 0750N	5	.2	11
LB8E 0800N	5	.3	24
LB8E 0850N	5	.4	16
LB8E 0900N	5	.4	11
LB8E 0950N	5	.2	16
LB8E 1000N	5	.4	17
LB8E 1050N	5	.4	13
LB8E 1150N	5	.5	21
LB8E 1200N	5	.3	23
LB8E 1250N	5	.6	14
LB8E 1300N	5	.2	16
LB8E 1350N	5	.3	14
LB8E 1400N	10	.7	20
LB8E 1450N	5	.6	19
LB8E 1500N	5	.4	16
L40E 3800N	10	.3	15
L40E 3850N	5	.3	16

Certified by

MIN-EN LABORATORIES LTD.



**MINERAL
• ENVIRONMENTAL
LABORATORIES LTD.**

SPECIALISTS IN MINERAL ENVIRONMENTS
CHEMISTS • ASSAYERS • ANALYSTS • GEOCHEMISTS

VANCOUVER OFFICE:
705 WEST 15TH STREET
NORTH VANCOUVER, B.C. CANADA V7M 1T2
TELEPHONE (604) 980-5814 OR (604) 988-4524
TELEX: VIA U.S.A. 7601067 • FAX (604) 980-9621

TIMMINS OFFICE:
33 EAST IROQUOIS ROAD
P.O. BOX 867
TIMMINS, ONTARIO CANADA P4N 7G7
TELEPHONE: (705) 264-9996

Certificate of Geochem

Company: WELCOME NORTH MINES
Project: RR-6-H
Attention: J BROCK/R. POTTER

File: 8-788/P6
Date: JUNE 29/88
Type: SOIL GEOCHEM

We hereby certify the following results for samples submitted.

Sample Number	AU-WET PPB	AG FPM	AS PFM
L40E 3900N	5	.7	24
L40E 3950N	10	.8	24
L40E 4000N	5	.4	17
L40E 4050N	5	.6	22
L40E 4100N	5	.3	20
L40E 4150N	5	.3	27
L40E 4200N	5	.4	19
L36E 0000N	5	.9	30
L36E 0050N	5	.7	15
L36E 0100N	10	.6	14
L36E 0150N	5	.8	21
L36E 0200N	10	.5	17
L36E 0250N	5	.3	19
L36E 0300N	5	.7	18
L36E 0350N	10	.4	15
L36E 0400N	5	.5	17
L36E 0450N	5	.5	21
L36E 0500N	5	.6	22
L36E 0550N	5	.3	18
L36E 0600N	5	.2	23
L36E 0650N	10	.6	21
L36E 0700N	5	.2	14
L36E 0750N	5	.3	19
L36E 0800N	10	.5	12
L36E 0850N	5	.4	14
L36E 0900N	5	.3	12
L36E 0950N	10	.3	21
L36E 1000N	5	.3	15
L36E 1050N	5	.6	17
L36E 1100N	5	.3	22

Certified by _____

MIN-EM LABORATORIES LTD.



**MINERAL
ENVIRONMENTAL
LABORATORIES LTD.**

SPECIALISTS IN MINERAL ENVIRONMENTS
CHEMISTS • ASSAYERS • ANALYSTS • GEOCHEMISTS

VANCOUVER OFFICE:
705 WEST 15TH STREET
NORTH VANCOUVER, B.C. CANADA V7M 1T2
TELEPHONE (604) 980-5814 OR (604) 988-4524
TELEX: VIA U.S.A. 7601067 • FAX (604) 980-9621

TIMMINS OFFICE:
33 EAST IROQUOIS ROAD
P.O. BOX 867
TIMMINS, ONTARIO CANADA P4N 7G7
TELEPHONE: (705) 264-9996

Certificate of Geochem

Company: WELCOME NORTH MINES
Project: RR-6-H
Attention: J BROCK/R. POTTER

File: 8-788/P7
Date: JUNE 29/88
Type: SOIL GEOCHEM

We hereby certify the following results for samples submitted.

Sample Number	AU-WET PPB	AG PPM	AS PPM
L36E 1150N	5	.4	10
L36E 1200N	5	.3	8
L36E 1250N	5	.6	26
L36E 1300N	5	1.1	19
L36E 1350N	5	.5	18
L36E 1400N	5	.2	9
L36E 1500N	5	2.7	16
L36E 1550N	5	.8	18
L36E 1600N	10	.3	15
L36E 1650N	5	.2	5
L36E 1700N	5	.6	18
L36E 1750N	5	.3	14
L36E 1800N	5	.3	17
L36E 1850N	5	.3	19
L36E 1950N	5	.4	16
L32E 0000N	5	1.0	18
L32E 0050N	10	.6	15
L32E 0100N	5	.6	16
L32E 0150N	5	.5	15
L32E 0200N	5	.3	14
L32E 0250N	5	.5	18
L32E 0300N	5	.4	20
L32E 0350N	5	.9	21
L32E 0400N	10	.4	16
L32E 0500N	10	.3	18
L32E 0550N	5	.6	17
L32E 0600N	5	1.3	21
L32E 0650N	5	.4	18
L32E 0700N	10	.3	10
L32E 0750N	5	.3	23

Certified by

MIN-EN LABORATORIES LTD.



**MINERAL
ENVIRONMENTAL
LABORATORIES LTD.**

SPECIALISTS IN MINERAL ENVIRONMENTS
CHEMISTS • ASSAYERS • ANALYSTS • GEOCHEMISTS

VANCOUVER OFFICE:
705 WEST 15TH STREET
NORTH VANCOUVER, B.C. CANADA V7M 1T2
TELEPHONE (604) 980-5814 OR (604) 988-4524
TELEX: VIA U.S.A. 7601067 • FAX (604) 980-9621

TIMMINS OFFICE:
33 EAST IROQUOIS ROAD
P.O. BOX 867
TIMMINS, ONTARIO CANADA P4N 7G7
TELEPHONE: (705) 264-9996

Certificate of Geochem

Company: WELCOME NORTH MINES
Project: RR-6-H
Attention: J. BROCK

File: 8-788/P8
Date: JUNE 30/88
Type: SOIL GEOCHEM

We hereby certify the following results for samples submitted.

Sample Number	AU-WET PPB	AG PPM	AS PPM
L32E 0800N	5	0.6	10
L32E 0850N	5	0.4	15
L32E 0900N	10	0.4	17
L32E 0950N	5	0.2	8
L32E 1000N	5	0.4	12
L32E 1050N	5	0.3	12
L32E 1100N	5	0.4	10
L36E 3550N	5	0.6	16
L36E 3600N	10	1.0	19
L36E 3650N	5	0.6	18
L36E 3700N	10	0.4	12
L36E 3750N	5	0.5	17
L36E 3800N	5	0.4	12
L36E 3850N	5	0.4	14
L36E 3900N	5	0.3	13
L36E 3950N	5	0.4	12
L36E 4000N	5	0.4	10
L36E 4050N	5	0.4	18
L36E 4100N	5	0.3	15
L36E 4150N	5	0.3	11
L36E 4200N	5	0.5	13
L36E 4250N	10	0.4	10
L36E 4300N	5	0.3	15
L36E 4350N	5	0.4	13
L36E 4400N	5	0.3	10
L80E 3950N	10	0.4	16
L80E 4000N	5	0.4	15
L80E 4050N	5	0.5	14
L80E 4100N	10	0.4	17
L80E 4150N	5	0.4	19

Certified by

MIN-EN LABORATORIES LTD.



**MINERAL
ENVIRONMENTAL
LABORATORIES LTD.**

SPECIALISTS IN MINERAL ENVIRONMENTS
CHEMISTS • ASSAYERS • ANALYSTS • GEOCHEMISTS

VANCOUVER OFFICE:
705 WEST 15TH STREET
NORTH VANCOUVER, B.C. CANADA V7M 1T2
TELEPHONE (604) 980-5814 OR (604) 988-4524
TELEX: VIA U.S.A. 7601067 • FAX (604) 980-9621

TIMMINS OFFICE:
33 EAST IROQUOIS ROAD
P.O. BOX 867
TIMMINS, ONTARIO CANADA P4N 7G7
TELEPHONE: (705) 264-9996

Certificate of Geochem

Company: WELCOME NORTH MINES
Project: RR-6-H
Attention: J. BROCK

File: 8-788/P9
Date: JUNE 30/88
Type: SOIL GEOCHEM

We hereby certify the following results for samples submitted.

Sample Number	AU-WET PPB	AG PPM	AS PPM
L80E 4200N	5	0.3	20
L80E 4250N	5	0.6	20
L80E 4300N	10	0.4	16
L80E 4350N	5	0.2	17
L80E 4400N	5	0.4	18
L80E 4450N	5	0.5	14
L80E 4500N	5	0.4	19
L80E 4550N	5	0.3	22
L80E 4600N	5	0.2	16
L80E 4650N	5	0.2	18
L80E 4700N	5	0.4	20
L80E 4750N	10	0.4	24
L80E 4800N	5	0.3	21
L44E 3550N	5	0.2	9
L44E 3600N	5	0.6	12
L44E 3650N	5	0.5	18
L44E 3700N	5	0.5	23
L44E 3750N	5	0.4	20
L44E 3800N	5	0.6	22
L44E 3850N	5	0.4	18
L44E 3900N	5	0.4	18
L44E 3950N	10	0.4	17
L44E 4000N	5	0.3	17
L44E 4050N	5	0.4	22
L44E 4100N	5	0.5	19
L44E 4150N	5	0.4	19
L40E 0900N	10	0.4	9
L40E 0950N	5	0.3	7
L40E 1000N	5	0.3	8
L40E 1050N	5	0.4	8

Certified by

MIN-EN LABORATORIES LTD.



**MINERAL
• ENVIRONMENTAL
LABORATORIES LTD.**

SPECIALISTS IN MINERAL ENVIRONMENTS
CHEMISTS • ASSAYERS • ANALYSTS • GEOCHEMISTS

VANCOUVER OFFICE:
705 WEST 15TH STREET
NORTH VANCOUVER, B.C. CANADA V7M 1T2
TELEPHONE (604) 980-5814 OR (604) 988-4524
TELEX: VIA U.S.A. 7601067 • FAX (604) 980-9621

TIMMINS OFFICE:
33 EAST IROQUOIS ROAD
P.O. BOX 867
TIMMINS, ONTARIO CANADA P4N 7G7
TELEPHONE: (705) 264-9996

Certificate of Geochem

Company: WELCOME NORTH MINES
Project: RR-6-H
Attention: J. BROCK

File: 8-788/P10
Date: JUNE 30/88
Type: SOIL GEOCHEM

We hereby certify the following results for samples submitted.

Sample Number	AU-WET PPB	AG PPM	AS PPM
L40E 1100N	5	0.6	8
L40E 1150N	5	0.4	10
L40E 1200N	5	0.5	10
L40E 1250N	5	0.4	13
L40E 1300N	5	0.3	7
L40E 1350N	5	0.6	8
L40E 1400N	10	0.4	14
L40E 1450N	5	0.4	11
L40E 1500N	5	0.4	15
L40E 1550N	5	0.3	14
L40E 1600N	5	0.4	11
L40E 1650N	5	0.4	12
L40E 1700N	5	0.3	14
L40E 1750N	5	0.4	15
L40E 1800N	5	0.8	13
L40E 1900N	5	0.5	15
L40E 1950N	5	0.4	13
L40E 2000N	10	0.7	13
L40E 2050N	5	0.4	18
L40E 2100N	5	0.6	15
L40E 2150N	5	0.4	14
L40E 2200N	5	0.5	12
L40E 2250N	10	0.6	19
L40E 2300N	5	0.4	23
L40E 2350N	5	0.3	18
L40E 2400N	10	0.2	21
L40E 2500N	5	0.2	7
L40E 2550N	5	0.2	14
L40E 2600N	5	0.6	14
L40E 2650N	10	0.5	16

Certified by _____

MIN-EN LABORATORIES LTD.



**MINERAL
ENVIRONMENTS
LABORATORIES LTD.**

SPECIALISTS IN MINERAL ENVIRONMENTS
CHEMISTS • ASSAYERS • ANALYSTS • GEOCHEMISTS

VANCOUVER OFFICE:
705 WEST 15TH STREET
NORTH VANCOUVER, B.C. CANADA V7M 1T2
TELEPHONE (604) 980-5814 OR (604) 988-4524
TELEX: VIA U.S.A. 7601067 • FAX (604) 980-9621

TIMMINS OFFICE:
33 EAST IROQUOIS ROAD
P.O. BOX 867
TIMMINS, ONTARIO CANADA P4N 7G7
TELEPHONE: (705) 264-9996

Certificate of Geochem

Company: WELCOME NORTH MINES
Project: RR-6-H
Attention: J. BROCK

File: 8-789/P11
Date: JULY 1/888
Type: SOIL GEOCHEM

We hereby certify the following results for samples submitted.

Sample Number	AU-WET PPB	AG PPM	AS PPM	
L40E 2700N	5	0.8	20	
L40E 2750N	35	0.5	32	
L40E 2900N	85	0.6	21	
L40E 2950N	10	1.0	32	
L40E 3000N	5	0.6	24	
<hr/>				
L76E 0000N	5	0.4	6	
L76E 0050N	10	0.6	5	
L76E 0100N	5	0.4	11	
L76E 0150N	5	0.3	13	
L76E 0200N	10	0.2	4	40MESH
<hr/>				
L76E 0250N	5	0.5	19	40MESH
L76E 0350N	5	0.4	9	40MESH
L76E 0400N	10	0.9	8	
L76E 0750N	5	0.2	12	
L76E 1250N	5	0.4	9	
<hr/>				
L56E 1000N	5	0.4	7	
L56E 1450N	10	0.4	10	
L56E 1500N	5	0.4	5	
L56E 1550N	5	0.3	6	40MESH
L56E 1600N	10	0.4	15	
<hr/>				
L56E 1650N	5	0.5	15	
L56E 1700N	5	0.4	2	40MESH
L56E 1800N	10	0.3	5	
L56E 1850N	5	0.6	6	
L56E 1900N	5	0.2	4	
<hr/>				
L56E 1950N	5	0.5	14	
L56E 2000N	15	0.5	12	
L56E 2050N	10	0.4	7	
L56E 2100N	5	0.6	8	
L56E 2150N	5	0.4	10	

Certified by _____

MIN-EN LABORATORIES LTD.



**MINERAL
ENVIRONMENTAL
LABORATORIES LTD.**

SPECIALISTS IN MINERAL ENVIRONMENTS
CHEMISTS • ASSAYERS • ANALYSTS • GEOCHEMISTS

VANCOUVER OFFICE:
705 WEST 15TH STREET
NORTH VANCOUVER, B.C. CANADA V7M 1T2
TELEPHONE (604) 980-5814 OR (604) 988-4524
TELEX: VIA U.S.A. 7801067 • FAX (604) 980-9621

TIMMINS OFFICE:
33 EAST IROQUOIS ROAD
P.O. BOX 867
TIMMINS, ONTARIO CANADA P4N 7G7
TELEPHONE: (705) 264-9996

Certificate of Geochem

Company: WELCOME NORTH MINES
Project: RR-6-H
Attention: J BROCK/R. POTTER

File: 8-788/P12
Date: JUNE 29/88
Type: SOIL GEOCHEM

We hereby certify the following results for samples submitted.

Sample Number	AU-WET PFB	AG PPM	AS PPM
L56E 2350N	5	.4	19
L56E 2400N	5	.2	7
L56E 2450N	5	.4	9
L56E 2600N	5	.2	15
L56E 2850N	5	.2	20

L56E 2950N	10	.5	22
L64E 2000N	5	.4	26
L64E 2050N	5	.5	21
L64E 2100N	5	.3	57
L64E 2150N	5	.4	30

L64E 2200N	5	.4	26
L64E 2250N	5	.6	19
L64E 2300N	5	.5	20
L64E 2350N	10	.6	15
L64E 2400N	5	.4	13

L64E 2450N	5	.5	41
L64E 2500N	5	.4	95
L64E 2550N	5	.6	33
L64E 2600N	5	.3	37
L64E 2650N	5	.4	30

L64E 2700N	5	.4	40
L64E 2750N	5	.4	23
L64E 2800N	5	.3	22
L64E 2850N	5	.4	21
L64E 2900N	5	.7	29

L64E 2950N	5	.6	27
L64E 3000N	5	.8	18
L24E 4200N	5	.4	23
L24E 4250N	5	.5	17
L24E 4300N	10	.6	16

Certified by _____

MIN-EN LABORATORIES LTD.



**MINERAL
ENVIRONMENTAL
LABORATORIES LTD.**

SPECIALISTS IN MINERAL ENVIRONMENTS
CHEMISTS • ASSAYERS • ANALYSTS • GEOCHEMISTS

VANCOUVER OFFICE:
705 WEST 15TH STREET
NORTH VANCOUVER, B.C. CANADA V7M 1T2
TELEPHONE (604) 980-5814 OR (604) 988-4524
TELEX: VIA U.S.A. 7601067 • FAX (604) 980-9621

TIMMINS OFFICE:
33 EAST IROQUOIS ROAD
P.O. BOX 867
TIMMINS, ONTARIO CANADA P4N 7G7
TELEPHONE: (705) 264-9996

Certificate of Geochem

Company: WELCOME NORTH MINES
Project: RR-6-H
Attention: J. BROCK

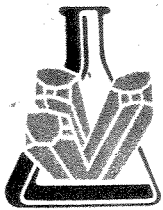
File: B-788/P13
Date: JULY 1/888
Type: SOIL GEOCHEM

We hereby certify the following results for samples submitted.

Sample Number	AU-WET PPB	AB PPM	AS PPM	
L24E 4350N	5	0.4	13	
L24E 4450N	5	0.2	22	
L24E 4500N	5	0.2	12	
L24E 4550N	5	0.2	24	
L24E 4600N	5	0.3	18	
L24E 4650N	5	0.5	15	
L24E 4800N	5	0.4	12	
L56E 3500N	5	0.4	22	
L56E 3550N	5	0.4	9	
L56E 3600N	10	0.3	23	
L56E 3650N	5	0.2	17	
L56E 3700N	5	0.4	16	
L56E 3800N	5	0.4	15	
L56E 3850N	25	0.3	9	
L56E 3950N	10	0.2	7	
L56E 4000N	5	0.3	12	
L56E 4050N	5	0.1	1	
L56E 4100N	5	0.4	16	
L56E 4150N	10	0.4	10	
L44E 1950N	5	0.3	14	
L44E 2000N	5	0.4	11	
L44E 2050N	5	0.2	13	
L44E 2050N B	5	0.4	10	
L44E 2100N	5	0.4	8	
L44E 2150N	10	0.5	7	40MESH
L44E 2200N	5	0.4	10	
L44E 2250N	5	0.4	19	
L44E 2300N	5	0.4	17	
L44E 2350N	5	0.3	15	
L44E 2400N	5	0.5	23	

Certified by

MIN-EN LABORATORIES LTD.



**MINERAL
ENVIRONMENTAL
LABORATORIES LTD.**

SPECIALISTS IN MINERAL ENVIRONMENTS
CHEMISTS • ASSAYERS • ANALYSTS • GEOCHEMISTS

VANCOUVER OFFICE:
705 WEST 15TH STREET
NORTH VANCOUVER, B.C. CANADA V7M 1T2
TELEPHONE (604) 980-5814 OR (604) 988-4524
TELEX: VIA U.S.A. 7601067 • FAX (604) 980-9621

TIMMINS OFFICE:
33 EAST IROQUOIS ROAD
P.O. BOX 867
TIMMINS, ONTARIO CANADA P4N 7G7
TELEPHONE: (705) 264-9996

Certificate of Geochem

Company: WELCOME NORTH MINES
Project: RR-6-H
Attention: J. BROCK

File: 8-788/P14
Date: JUNE 30/88
Type: SOIL GEOCHEM

We hereby certify the following results for samples submitted.

Sample Number	AU-WET PPR	AG PPM	AS PPM
L44E 2450N	5	0.6	14
L44E 2550N	5	0.7	11
L44E 2600N	5	0.5	8
L44E 2650N	5	0.6	21
L44E 2700N	5	0.3	9
L44E 2750N	10	0.5	16
L44E 2800N	5	0.4	11
L44E 2850N	15	0.6	7
L44E 2900N	10	0.9	23
L44E 3000N	5	0.7	26
L60E 3650N	10	0.3	13
L60E 3700N	5	0.4	7
L60E 3750N	5	0.2	15
L60E 3800N	5	0.3	9
L60E 3850N	10	0.6	18
L60E 3900N	5	0.5	9
L60E 3950N	5	0.4	12
L60E 4000N	10	0.3	5
L60E 4050N	5	0.4	5
L68E 3700N	5	0.7	13
L68E 3750N	10	0.5	15
L68E 3800N	20	0.3	15
L68E 3850N	5	0.2	14
L68E 3900N	10	0.6	22
L68E 3950N	5	0.3	19
L68E 4000N	5	0.4	12
L68E 4100N	5	0.4	6
L68E 4150N	5	0.5	12
L28E 3800N	5	1.2	19
L28E 3850N	10	0.4	12

Certified by

MIN-EN LABORATORIES LTD.



**MINERAL
• ENVIRONMENTAL
LABORATORIES LTD.**

SPECIALISTS IN MINERAL ENVIRONMENTS
CHEMISTS • ASSAYERS • ANALYSTS • GEOCHEMISTS

VANCOUVER OFFICE:
705 WEST 15TH STREET
NORTH VANCOUVER, B.C. CANADA V7M 1T2
TELEPHONE (604) 980-5814 OR (604) 988-4524
TELEX: VIA U.S.A. 7601067 • FAX (604) 980-9621

TIMMINS OFFICE:
33 EAST IROQUOIS ROAD
P.O. BOX 867
TIMMINS, ONTARIO CANADA P4N 7G7
TELEPHONE: (705) 264-9996

Certificate of Geochem

Company: WELCOME NORTH MINES
Project: RR-6-H
Attention: J. BROCK

File: 8-788/P15
Date: JUNE 30/88
Type: SOIL GEOCHEM

We hereby certify the following results for samples submitted.

Sample Number	AU-WET PPB	AG PPM	AS PPM
L28E 3900N	5	0.6	14
L28E 3950N	10	0.7	13
L28E 4000N	5	0.6	12
L28E 4050N	5	0.5	24
L28E 4100N	5	0.3	16

L28E 4150N	5	0.4	15
L28E 4200N	5	0.3	16
L28E 4250N	5	0.3	12
L28E 4300N	5	0.5	20
L28E 4350N	5	0.4	17

L28E 4450N	NO SAMPLE		
L28E 4500N	5	0.6	6
L28E 4600N	5	1.0	8
L72E 2050N	5	0.5	16
L72E 2200N	10	1.3	27

L72E 2250N	10	0.3	26
L72E 2300N	5	0.9	22
L72E 2350N	5	0.4	24
L72E 2400N	5	0.5	34
L72E 2450N	5	1.1	12

L72E 2500N	5	0.7	16
L72E 2550N	10	1.3	20
L72E 2600N	5	1.9	24
L72E 2650N	10	0.6	19
L72E 2700N	5	0.5	30

L72E 2750N	5	0.4	28
L72E 2800N	5	0.3	26
L72E 2850N	5	0.7	18
L72E 2900N	5	0.4	15
L72E 2950N	5	0.5	13

Certified by _____

MIN-EN LABORATORIES LTD.



**MINERAL
ENVIRONMENTAL
LABORATORIES LTD.**

SPECIALISTS IN MINERAL ENVIRONMENTS
CHEMISTS • ASSAYERS • ANALYSTS • GEOCHEMISTS

VANCOUVER OFFICE:
705 WEST 15TH STREET
NORTH VANCOUVER, B.C. CANADA V7M 1T2
TELEPHONE (604) 980-5814 OR (604) 988-4524
TELEX: VIA U.S.A. 7601087 • FAX (604) 980-9621

TIMMINS OFFICE:
33 EAST IROQUOIS ROAD
P.O. BOX 867
TIMMINS, ONTARIO CANADA P4N 7G7
TELEPHONE: (705) 264-9996

Certificate of Geochem

Company: WELCOME NORTH MINES
Project: RR-6-H
Attention: J. BROCK

File: 8-788/P16
Date: JULY 1/88
Type: SOIL GEOCHEM

We hereby certify the following results for samples submitted.

Sample Number	AU-WET PPB	AG PPM	AS PPM
L72E 3000N	5	0.3	22
L72E 3800N	5	0.6	23
L72E 3850N	5	0.8	26
L72E 3900N	10	0.5	28
L72E 3950N	10	0.3	19
L72E 4000N	5	0.3	28
L72E 4050N	5	0.4	17
L72E 4100N	5	0.4	18
L72E 4150N	10	0.3	22
L72E 4200N	NO SAMPLE		
L72E 4250N	10	0.5	16
L72E 4400N	10	0.4	15
L76E 3900N	5	0.4	19
L76E 3950N	5	0.6	25
L76E 4000N	10	0.5	23
L76E 4050N	5	0.9	24
L76E 4100N	5	0.8	22
L76E 4150N	20	0.5	23
L76E 4200N	5	0.7	14
L76E 4250N	5	0.4	16
L76E 4300N	5	0.5	19
L76E 4350N	5	0.3	5
L76E 4400N	5	0.4	14
L76E 4450N	10	0.3	18
L76E 4500N	5	0.3	13
L76E 4550N	5	0.6	16
L76E 4600N	10	0.4	15
L72E 0600N	5	0.5	24
L72E 0650N	5	0.3	18
L72E 0700N	5	0.3	22

Certified by

MIN-EN LABORATORIES LTD.



**MINERAL
ENVIRONMENTAL
LABORATORIES LTD.**

SPECIALISTS IN MINERAL ENVIRONMENTS
CHEMISTS • ASSAYERS • ANALYSTS • GEOCHEMISTS

VANCOUVER OFFICE:
705 WEST 15TH STREET
NORTH VANCOUVER, B.C. CANADA V7M 1T2
TELEPHONE (604) 980-5814 OR (604) 988-4524
TELEX: VIA U.S.A. 7801067 • FAX (604) 980-9621

TIMMINS OFFICE:
33 EAST IROQUOIS ROAD
P.O. BOX 867
TIMMINS, ONTARIO CANADA P4N 7G7
TELEPHONE: (705) 264-9996

Certificate of Geochem

Company: WELCOME NORTH MINES
Project: RR-6-H
Attention: J. BROCK

File: 8-788/P17
Date: JULY 1/88
Type: SOIL GEOCHEM

We hereby certify the following results for samples submitted.

Sample Number	AU-WET PPB	AS PPM	AS PPM
L72E 0750N	5	0.3	14
L72E 0800N	5	0.4	16
L72E 0850N	5	1.1	32
L72E 0900N	5	0.4	17
L72E 0950N	10	0.5	18
L72E 1000N	5	0.9	36
L72E 1050N	5	0.8	18
L72E 1100N	5	0.7	19
L72E 1150N	5	0.3	15
L72E 1200N	5	0.3	13
L72E 1250N	5	0.4	12
L72E 1300N	5	0.2	25
L72E 1350N	5	0.5	35
L72E 1400N	10	0.7	15
L72E 1450N	5	0.4	17
L72E 1500N	5	0.7	18
L72E 1550N	5	0.4	23
L72E 1600N	5	0.3	16
L72E 1650N	5	0.5	8
L72E 1700N	10	0.3	8
L72E 1750N	5	0.4	18
L72E 1800N	20	0.6	21
L72E 1850N	10	0.5	38
L72E 1900N	10	0.3	32
L72E 1950N	5	0.3	30
L72E 2000N	5	0.4	35
L64E 3600N	5	0.3	21
L64E 3650N	5	0.5	19
L64E 3700N	5	0.4	20
L64E 3750N	10	0.8	14

Certified by

MIN-EN LABORATORIES LTD.



**MINERAL
ENVIRONMENTAL
LABORATORIES LTD.**

SPECIALISTS IN MINERAL ENVIRONMENTS
CHEMISTS • ASSAYERS • ANALYSTS • GEOCHEMISTS

VANCOUVER OFFICE:
705 WEST 15TH STREET
NORTH VANCOUVER, B.C. CANADA V7M 1T2
TELEPHONE (604) 980-5814 OR (604) 988-4524
TELEX: VIA U.S.A. 7601067 • FAX (604) 980-9621

TIMMINS OFFICE:
33 EAST IROQUOIS ROAD
P.O. BOX 867
TIMMINS, ONTARIO CANADA P4N 7G7
TELEPHONE: (705) 264-9996

Certificate of Geochem


Company: WELCOME NORTH MINES
Project: RR-6-H
Attention: J. BROCK

File: 8-788/P18
Date: JULY 1/88
Type: SOIL GEOCHEM

We hereby certify the following results for samples submitted.

Sample Number	AU-WET PPB	AG PPM	AS PPM
L64E 3800N	5	0.4	18
L64E 3850N	10	0.7	22
L64E 3900N	5	0.6	16
L64E 4000N	5	0.8	12
L64E 4050N	5	0.3	14
L64E 4100N	10	1.1	11
L64E 4150N	5	0.3	11
L64E 4200N	5	0.6	15
L52E 1000N	5	0.6	19
L52E 1100N	5	0.4	12
L52E 1150N	20	0.3	4
L52E 1200N	10	0.3	17
L52E 1250N	5	0.2	13
L52E 1300N	5	0.3	14
L52E 1350N	5	0.3	8
L52E 1400N	10	0.4	11
L52E 1450N	5	0.3	6
L52E 1500N	5	0.3	10
L52E 1550N	10	0.3	16
L52E 1600N	5	0.2	5
L52E 1650N	10	0.2	16
L52E 1700N	5	0.4	18
L52E 1750N	5	0.3	8
L52E 1800N	10	0.4	13
L52E 1850N	5	0.6	12
L52E 1900N	5	0.2	12
L52E 1950N	5	0.4	18
L52E 2000N	5	0.5	12
L52E 2050N	20	0.3	13
L52E 2100N	10	0.4	16

Certified by


MIN-EN LABORATORIES LTD.



**MINERAL
ENVIRONMENTAL
LABORATORIES LTD.**

SPECIALISTS IN MINERAL ENVIRONMENTS
CHEMISTS • ASSAYERS • ANALYSTS • GEOCHEMISTS

VANCOUVER OFFICE:
705 WEST 15TH STREET
NORTH VANCOUVER, B.C. CANADA V7M 1T2
TELEPHONE (604) 980-5814 OR (604) 988-4524
TELEX: VIA U.S.A. 7801067 • FAX (604) 980-9621

TIMMINS OFFICE:
33 EAST IROQUOIS ROAD
P.O. BOX 867
TIMMINS, ONTARIO CANADA P4N 7G7
TELEPHONE: (705) 264-9996

Certificate of Geochem

Company: WELCOME NORTH MINES
Project: RR-6-H
Attention: J. BROCK

File: 8-788/P19
Date: JULY 1/88
Type: SOIL GEOCHEM

We hereby certify the following results for samples submitted.

Sample Number	AU-WET PFB	AG PPM	AS PPM
L52E 2150N	5	0.6	27
L52E 2200N	5	0.4	13
L52E 2250N	10	0.3	24
L52E 2300N	5	0.6	20
L52E 2350N	5	0.7	26
L52E 2400N	10	0.6	19
L52E 2450N	5	0.4	23
L52E 2500N	5	0.5	29
L52E 2550N	5	0.4	14
L52E 2600N	5	0.6	22
L52E 2650N	5	0.3	20
L52E 2700N	5	0.3	17
L52E 2750N	5	0.4	18
L52E 2800N	5	0.6	18
L52E 0000N	10	0.7	19
L52E 0150N	5	0.4	20
L52E 0200N	5	0.5	24
L52E 0250N	5	0.4	15
L52E 0350N	5	0.4	19
L52E 0450N	5	0.5	37
L52E 0500N	5	0.3	40
L52E 0550N	5	0.4	17
L52E 0750N	10	0.3	18
L52E 0850N	5	0.5	16
L52E 0900N	5	0.4	18
L52E 3000N	5	0.6	19
L72E 4300N	5	0.4	13
L32E 1025N	5	0.7	13
L24E 4400N	10	0.8	18
L28E 4550N	5	0.6	10

Certified by _____

MIN-EN LABORATORIES LTD.



**MINERAL
ENVIRONMENTAL
LABORATORIES LTD.**

SPECIALISTS IN MINERAL ENVIRONMENTS
CHEMISTS • ASSAYERS • ANALYSTS • GEOCHEMISTS

VANCOUVER OFFICE:
705 WEST 15TH STREET
NORTH VANCOUVER, B.C. CANADA V7M 1T2
TELEPHONE (604) 980-5814 OR (604) 988-4524
TELEX: VIA U.S.A. 7601067 • FAX (604) 980-9621

TIMMINS OFFICE:
33 EAST IROQUOIS ROAD
P.O. BOX 867
TIMMINS, ONTARIO CANADA P4N 7G7
TELEPHONE: (705) 264-9996

Certificate of GEOCHEM

Company: WELCOME NORTH MINES
Project: RR-6-H
Attention: JOHN BROCK

File: 8-788/P1
Date: JUNE 27/88
Type: ROCK GEOCHEM

We hereby certify the following results for samples submitted.

Sample Number	AG PPM	AS PPM	AU-FIRE PPB
3084	0.7	7	1
3085	0.8	11	2
3086	0.6	5	2
3134	0.9	4	1
3161	0.7	8	2
3173	0.8	2	3

Certified by _____

MIN-EN LABORATORIES LTD.



**MINERAL
ENVIRONMENTAL
LABORATORIES LTD.**

SPECIALISTS IN MINERAL ENVIRONMENTS
CHEMISTS • ASSAYERS • ANALYSTS • GEOCHEMISTS

VANCOUVER OFFICE:
705 WEST 15TH STREET
NORTH VANCOUVER, B.C. CANADA V7M 1T2
TELEPHONE (604) 980-5814 OR (604) 988-4524
TELEX: VIA U.S.A. 7601067 • FAX (604) 980-9621

TIMMINS OFFICE:
33 EAST IROQUOIS ROAD
P.O. BOX 867
TIMMINS, ONTARIO CANADA P4N 7G7
TELEPHONE: (705) 264-9996

Certificate of GEOCHEM

Company: WELCOME NORTH MINES
Project: RR6H
Attention: JOHN BROCK

File: B-788/P1
Date: JUNE 28/88
Type: PAN CONC

We hereby certify the following results for samples submitted.

Sample Number	AG PPM	AS PPM	AU-FIRE PPB
3162	0.9	34	5
3163	0.6	28	3
3164	1.2	27	3
3165	1.3	32	32
3166	1.0	29	4
3167	0.8	35	4
3170	0.7	33	5
3171	0.9	20	3
3172	0.8	23	7
H BEAVER	1.1	22	2
H CARIBOU	0.6	26	1
H ARROWHEAD	0.4	7	3

Certified by _____

[Signature]
MIN-EN LABORATORIES LTD.

APPENDIX III
SUMMARY OF EXPENDITURES

HOOLE

1988 STATEMENT OF COSTS

	\$
Salaries and Wages	6,216
Geological Consulting	1,200
Camp Costs - 62 man days @ \$40/day	2,480
Field Supplies - flagging, thread, sample bags, etc.	537
Mobilization	720
Vehicle	552
Helicopter - 10 hr. @ \$475/hr.	4,750
- fuel 1000 litres @ \$0.63/litre	<u>630</u>
	5,380
Geophysics - Airborne (Aerodat) 200/756 x 55,500	14,683
Analyses - Min-En Laboratories	
- Soils - 709 samples @ \$12.00 ea.	8,508
- Rocks - 18 samples @ \$16.50 ea.	<u>297</u>
	8,805
Project Management	
- Planning, field management, reporting	<u>2,080</u>
Total:	<u>42,653</u>

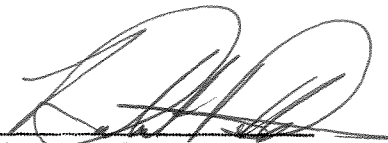
APPENDIX IV

ENGINEER'S CERTIFICATE

I, Robert G. Potter of 150 Andrew Place, Fulford Harbour, in the Province of British Columbia, Canada, DO HEREBY CERTIFY that:

1. I am a consulting Geological Engineer.
2. I am a graduate of the University of British Columbia (B.A.Sc. 1961) and of McGill University (M.Sc. Applied 1972).
3. I am a member in good standing of the Association of Professional Engineers of British Columbia.
4. This report is based on the results of work carried out under my direct supervision and on available published data.
5. I have no interest in the Hoole claims or in other properties or securities of Welcome North Mines Ltd. nor do I expect to receive any.

Dated at Vancouver, British Columbia this 9th day of December, 1988.



Robert G. Potter, P.Eng.

APPENDIX V

REFERENCES

- Archer Cathro and Associates: Northern Cordilleran Mineral Inventory.
- Boyle, R.W., 1979: The Geochemistry of Gold and Its Deposits. G.S.C. Bull. 280.
- Buisson, G., and LeBlanc, M., 1986: Gold-bearing Listwaenites (carbonatized ultramafic rocks) in Ophiolite Complexes, in Metallogeny of basic and ultrabasic rocks: London Institute Mining Metallurgy, p. 121-132.
- Duke, J.L., and Godwin, C.I., 1986: Geology and Alteration of the Grew epithermal gold-silver prospect, south-central Yukon, in Yukon Geology Vol. I, D.I.A.N.D.
- Fisher, R.V., and Schmincke, H., 1984: Pyroclastic Rocks: Springer - Verlag.
- Jackson, L.E., et al 1986: Bimodal Paleogene Volcanics near Tintina Fault, East-central Yukon and Their Possible Relationship to Placer Gold, in Yukon Geology Vol. I, D.I.A.N.D.
- Templeman-Kluit, D., et al, 1977: Compilation of the Geology of Quiet Lake (105F) and Finlayson Lake (105G). G.S.C. Open File 486.

APPENDIX VI

LIST OF PERSONNEL

(HOOLE CLAIMS)

Ron Etzel (Soil Sampler), General Delivery, Ross River, B.C.
Period Worked: June 10 to 17, 1988

Jeff Franke (Soil Sampler), 320 - 192 Street, Surrey, B.C.
Period Worked: June 10 to 17, 1988

Mike Heino (Prospector), 43 Jean Street, Sudbury, Ontario.
Period Worked: June 10 to 17, 1988

Don Lang (Soil Sampler), 91 Machleary Street, Nanaimo, B.C.
Period Worked: June 10 to 15, 1988

Naomi Potter (Cook), R.R. 1, Fulford Harbour, B.C.
Period Worked: June 10 to 17, 1988

Robert Potter (Geologist & Proj. Mgr.), R.R. 1, Fulford Harbour,
B.C. Period Worked: June 11, 13, 14, and 16, 1988

Jack Speed (Soil Sampler), Box 1033, Ganges, B.C.
Period Worked: June 10 to 17, 1988

Burce Williams (Prospector), R.R. 1, Fulford Harbour, B.C.
Period Worked: June 10 to 17, 1988