

MAP NO.	ASSESSMENT REPORT	X	DOCUMENT NO.:	092651
	PROSPECTUS		MINING DISTRICT:	WATSON LAKE
105 G 12	CONFIDENTIAL	X	TYPE OF WORK:	GEOPHYSICAL, RECONNAISSANCE
105 F 9	OPEN FILE			GEOCHEMICAL and GEOLOGICAL

REPORT FILED UNDER: Welcome North Mines Ltd.

DATE PERFORMED: April 23-27, May 27-28, 1988

DATE FILED: December 16, 1988

LOCATION: LAT.: 61°43'N

AREA: Ketzka River

LONG.: 132°03'W

VALUE \$: 10,200.00

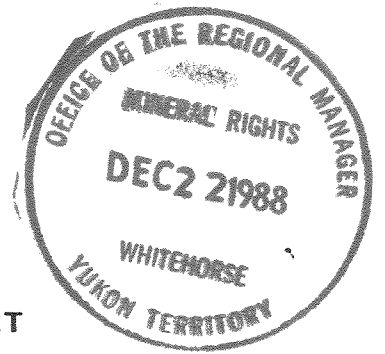
CLAIM NAME & NO.: STAR 41-54, 95-108, 149-162, 203-216; KEPI 1-86, 249-258 YB10248-61, 302-315, 356-369, 410-423, YB11118-203, 366-375

WORK DONE BY: R.G. Potter

WORK DONE FOR: Welcome North Mines Ltd.

DATE TO GOOD STANDING

REMARKS: #141 STAR Helicopter-borne magnetic, electromagnetic, and VLF-EM surveys outlined high-resistivity areas, possibly thinly covered felsic volcanic rocks. Follow-up reconnaissance geology and geochemistry found no gold, silver, nor arsenic anomalies.



SURFACE EXPLORATION REPORT
ON THE
STAR I CLAIMS

N.T.S. 105F/9, G/12

LATITUDE: 61°43'N
LONGITUDE: 132°03'W

STAR: 41 TO 54
95 TO 108
149 TO 162
203 TO 216

KEPI: 1 TO 85
249 TO 258



WATSON LAKE MINING DISTRICT

FOR

WELCOME NORTH MINES LTD.
15th FL., 675 W. HASTINGS STREET
VANCOUVER, B.C.
CANADA
V6B 1N2

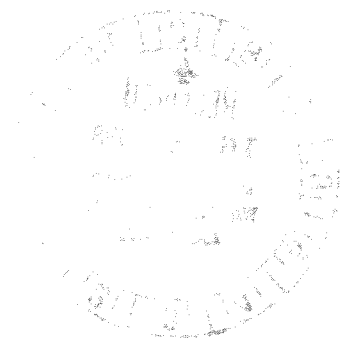
BY

R.G. Potter, P.Eng.

NOVEMBER, 1988

(WORK DONE DURING APRIL 23 TO 27, MAY 27 TO 28, JULY 6, 1988)

092651



This report has been examined by
the Geological Evaluation Unit
under Section 53 (4) Yukon Quartz
Mining Act and is allowed as
representation work in the amount
of \$ 10,200.00.

for

D. S. Emmond

Regional Manager, Exploration and
Geological Services for Commissioner
of Yukon Territory.

TABLE OF CONTENTS

	<u>PAGE</u>
I SUMMARY AND RECOMMENDATIONS	1
II INTRODUCTION	4
III PROPERTY, LOCATION AND ACCESS	4
IV HISTORY	5
V GEOLOGICAL SETTING	5
VI 1988 PROGRAM	7
VII PROPERTY GEOLOGY	8
VIII GEOCHEMISTRY	8
IX GEOPHYSICS	9

APPENDICES

I ANALYTICAL PROCEDURES
II ANALYTICAL CERTIFICATES
III SUMMARY OF EXPENDITURES
IV ENGINEER'S CERTIFICATE
V REFERENCES
VI PERSONNEL

ILLUSTRATIONS

FIGURES

1 COMPILATION MAP	2
2 LOCATION AND CLAIMS	3
3 REGIONAL GEOLOGY	6
4 GEOLOGY AND ROCK GEOCHEMISTRY 1:10,000	In Pocket
5 TOTAL FIELD MAGNETIC CONTOURS	10

I. SUMMARY AND RECOMMENDATIONS

The Star I claims lie along the Tintina Trench 60 kilometers southeast of Grew Creek. The area is prospective for Tertiary-age felsic volcanic rocks of the type which hosts epithermal gold mineralization at Grew Creek.

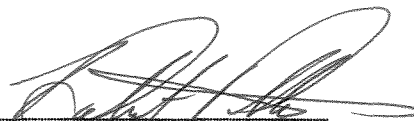
The 1988 program on Star I consisted of a helicopter-borne magnetic, electromagnetic and VLF-EM survey followed-up by reconnaissance geology and geochemistry.

Paleozoic metasediments are well exposed on the high area along the Pelly Mountain front. These include slates, phyllites and quartzites. No other areas of outcrop are known on the property.

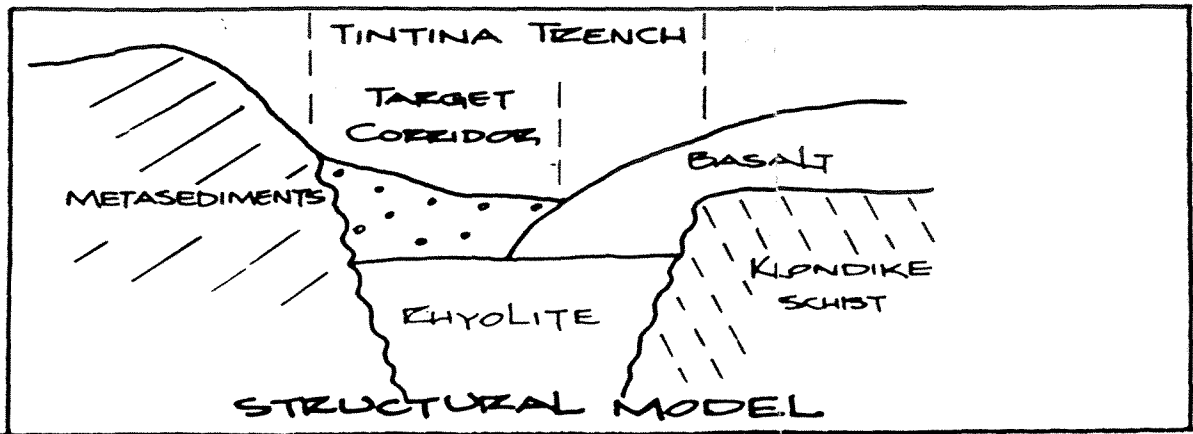
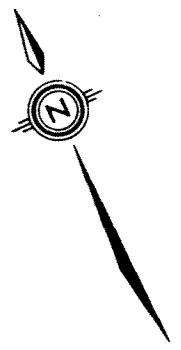
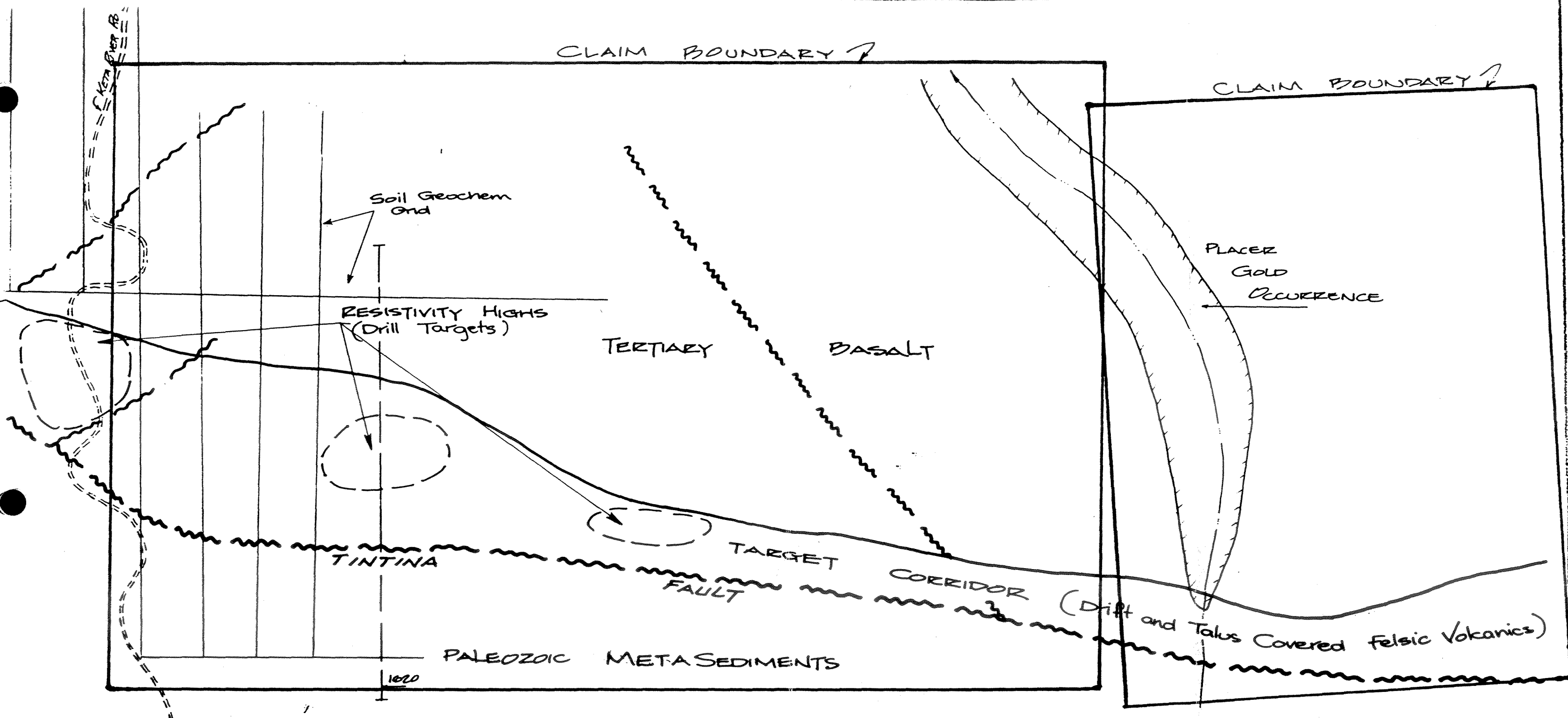
Several lines of soil geochemistry were run across the property at its western end. Stream sediments and rock samples were collected along the postulated trace of the Tintina Fault. No anomalies in gold, silver, or arsenic were detected.

Airborne surveys have defined a corridor between Paleozoic rocks (numerous EM linears, low magnetic response) and Tertiary basalts (strong magnetic response). East of Star I, rhyolitic terrain of high resistivity is found within this corridor. Other areas of high resistivity along the corridor, including those of the Star I claims are interpreted as being thinly covered felsic volcanic rocks. These targets should be investigated by reverse circulation drilling.

Respectfully submitted,



Robert G. Potter, P.Eng.



STAR. I CLAIMS
COMPILATION
MAP

0 500 1000m

FIG 1

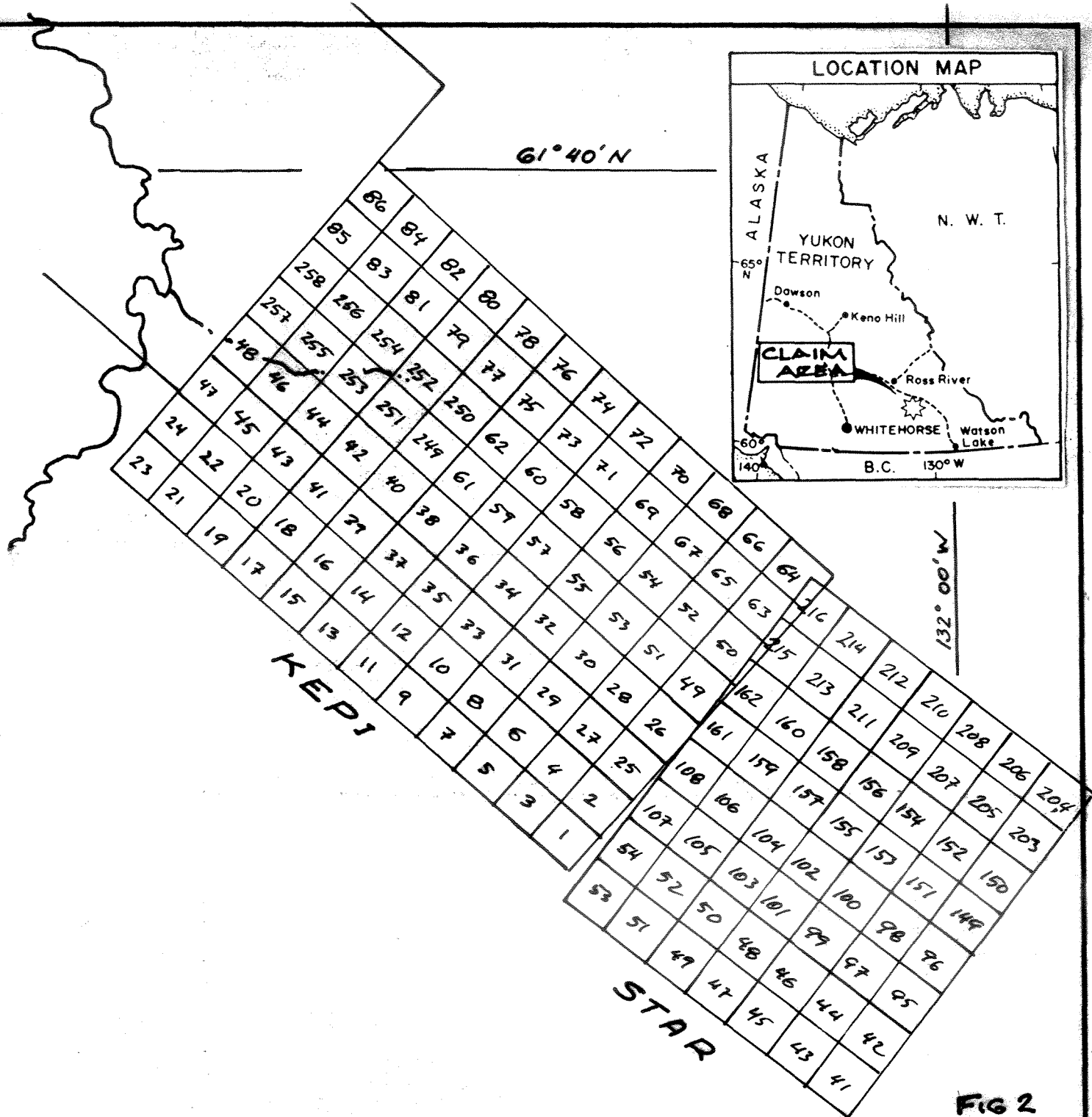



FIG 2

 WELCOME NORTH MINES LTD. VANCOUVER, BRITISH COLUMBIA	
STAR I CLAIMS	
LOCATION MAP	
YUKON TERRITORY	
Work by : Robert Potter	N.T.S. : 105 G
Drawn by : Robert Potter	Scale : 50,000
Date : Sept 1988	

II. INTRODUCTION

In April, 1988, Welcome North Mines Ltd. commissioned a helicopter-borne magnetic, electromagnetic, and VLF-EM survey to cover a sector of the Tintina Trench between Lapie and Hoole Rivers. The Star I claims lie within this area.

The airborne program was followed up by surface work including reconnaissance geology, soil geochemistry and prospecting. The ground program was carried out by a crew consisting of one geologist, one prospector and two soil samplers. Frozen ground conditions made it impossible to proceed with the planned property-wide gridding and soil sampling. The program was therefore reduced to one of a few reconnaissance traverses, plus prospecting.

Details of the results of the geophysical survey are described in a report by R.J. de Carle, consulting geophysicist dated August 31, 1988. A discussion of the results of the airborne work is included herein as is a description of the reduced surface program. De Carle's complete report is submitted in support of assessment claims for Star I and other Welcome North properties along the Tintina Trench.

III. PROPERTY, ACCESS AND LOCATION (Figure 2)

The Star I property consists of 152 full-sized mineral claims. All claims are currently registered in the name of Welcome North Mines Ltd. in the Watson Lake Mining District as follows:

<u>Claim Name</u>	<u>Grant No.</u>	<u>Record Date</u>
STAR 41 to 54	YB10248 to YB10261	December 03, 1987
STAR 95 to 108	YB10302 to YB10315	"
STAR 149 to 162	YB10356 to YB10369	"
STAR 203 to 216	YB10410 to YB10423	"
KEPI 1 to 86	YB11118 to YB11203	January 04, 1988
KEPI 249 to 258	YB11366 to YB11375	"

The property is located on the south side of the Tintina Trench, 35 kilometers southeast of Ross River and 60 kilometers southeast of Noranda's Grew Creek epithermal gold discovery. Geographic coordinates are: latitude 61°43'N, longitude 132°03'W. N.T.S. 105F/9. Access is by helicopter from Ross River or via the Robert Campbell Highway and Ketza River road. Ross River is reached by all-weather road from Whitehorse via Carmacks and is also served by daily scheduled flights from Whitehorse.

The claims cover the steep Pelly Mountain front and extend to the northeast across low relatively flat terrain. Elevations range from 3000 to 5000 feet ASL. Drainage is to the north by several small branches of Horton Creek and by Ketzka River, both are tributaries of the Pelly River. Star I claims are covered to an elevation of 4500 feet by a mixed growth of spruce and fir.

IV. HISTORY

An area of the west end of the Star I claims was staked as Joe I (89852) in January, 1966. Bulldozer trending was reportedly carried out in that year. No documentation is available on this work.

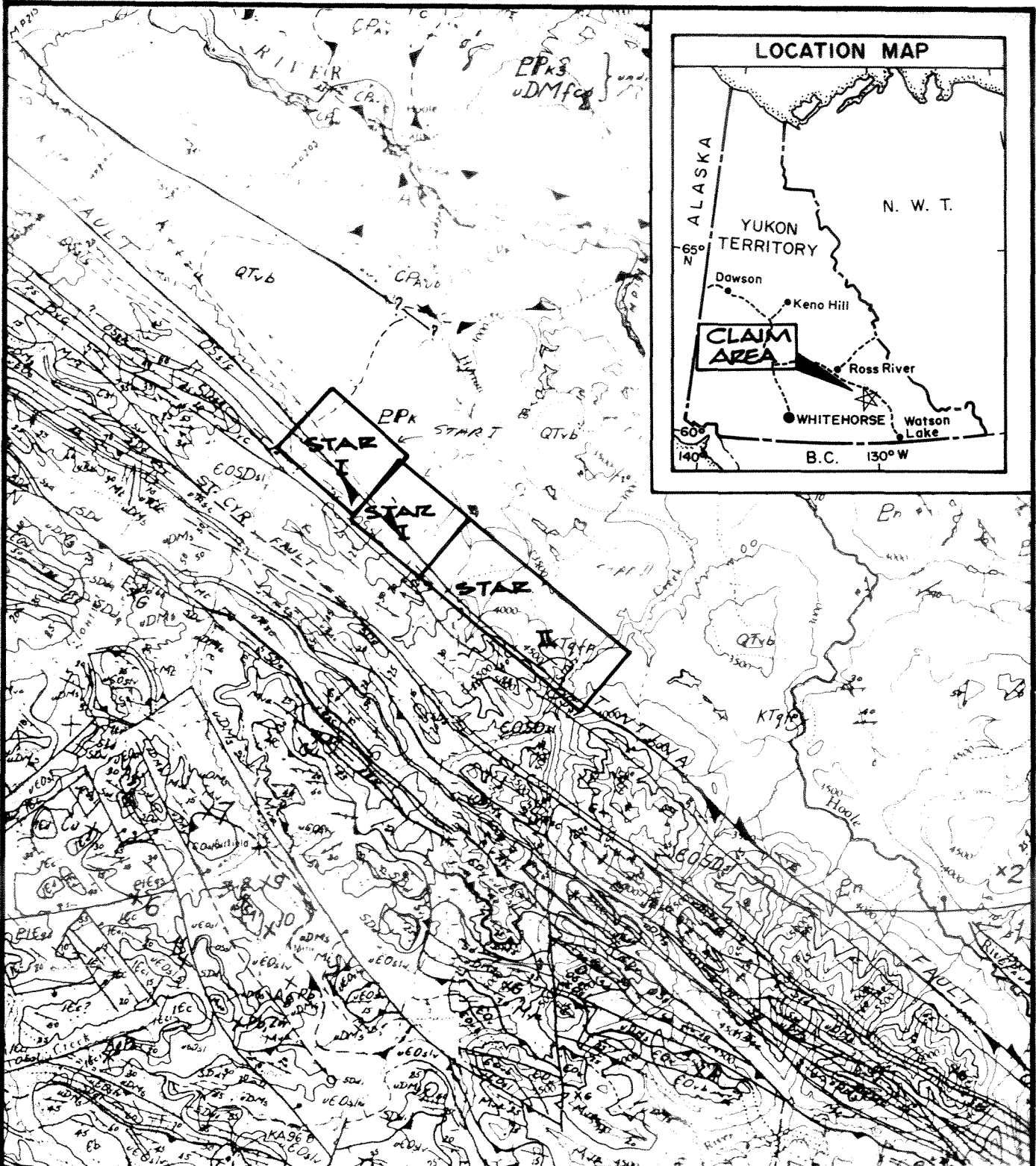
The Pelly Mountain area of the claims is part of a broad area investigated by Welcome North et al under the Woodside Project during the period 1977 to 1979. This work was directed toward evaluation of the base metal potential of the Lower Paleozoic metasediments south of the Tintina Trench.

V. GEOLOGICAL SETTING (Fig. 3)

The subject property is located along the Tintina Trench. This major northwest trending feature is the locus of about 450 kilometers of dextral offset which occurred during the Mid and Late Cretaceous (Roddick 1967, Templeman-Kluit 1979).

The area northeast of Tintina is that of the Selwyn Fold Belt which comprises a diverse assemblage of clastic, carbonate, volcanic, ultramafic, and granitic rocks of Hadrynian to Tertiary-age. Superimposed on this terrain are remnants of pre-Mid Cretaceous thrust sheets which include basic volcanics and ultramafics (Anvil Allochthon).

Basalts, rhyolites and derived sediments of Eocene age occur in structural basins along the Tintina Trench. At Grew Creek felsic volcanic and volcanoclastic rocks are preserved in a northwesterly trending graben related to the Tintina Fault system. Epithermal gold mineralization is found here associated with silicic and acid sulphate alteration of the host rocks. Mineralized zones are also anomalous in arsenic and silver.



LEGEND

- CRETACEOUS & TERTIARY**
- QTz6 Basalt
 - EPk3 Rhyolite tuffs & breccia
- CARBONIFEROUS & PERMIAN**
(Anvil-Campbell Allochthon)
- DMfca Dunite, peridotite & serpentine
 - OSsl Slate, quartzite limestone
- AGE UNKNOWN - KLONDIKE SCHIST**
- EPk3 Schist, Phyllite, Gneiss
- TINTINA FAULT

FIG. 3



WELCOME NORTH MINES LTD.
VANCOUVER, BRITISH COLUMBIA

STAR CLAIMS

REGIONAL GEOLOGY

YUKON TERRITORY

Work by : Robert Potter	N.T.S. : 105 G
Drawn by : Valr. Hutchings	Scale 1:250,000
Date : Sept. 1988	Figure :

VI. 1988 PROGRAM

The 1988 exploration program on Star I was structured to assess its potential for "Grew Creek type" mineralization or that related to subsidiary structures of the Tintina Fault system. In April, 1988, Aerodat Limited of Toronto conducted a helicopter-borne magnetic, electromagnetic and VLF-EM survey of three blocks of ground southeast of Ross River. Included in the areas covered were the Star I claims. Flights were made between April 23 and April 27, 1988, along lines oriented at an azimuth of 045-225° at a nominal line spacing of 200 meters and mean terrain clearance of 60 meters. Equipment operated included a three frequency electromagnetic system, a cesium vapor magnetometer, a 2-frequency VLF-EM system, a film tracking camera, a radar positioning system, and an altimeter.

Ground follow-up to the airborne survey was to have included soil sampling on a property wide grid at 400 meter line spacing. This program was reduced to reconnaissance geological traverses and prospecting when widespread frozen ground conditions were encountered. Field work was carried out by one geologist, one prospector and two soil samplers on May 27 and 28, and on July 6. The program was mobilized from Ross River via the Ketzka River Road and by a Trans North Ltd. Bell 206-B helicopter.

Initial work consisted of establishing base lines by compass and hip chain along the trench (30N) and along the first Pelly Mountain ridge (5N) which extend east from the Ketzka River at azimuth 130°. Five cross lines were run and attempts made to collect soils at 50 meter stations. Frozen ground conditions in May forced a reduction of the program to prospecting traverses. A second attempt at soil sampling on July 6 (line 124E) was more successful along the southern, high end of the lines, but the heavily moss covered valley floor was still frozen and in fact is probably an area of permafrost.

Helicopter reconnaissance of the property revealed no rock exposures downslope from the Pelly Mountain front. Prospecting traverses were therefore directed toward the base of the front along the postulated trace of the Tintina Fault.

VII. PROPERTY GEOLOGY (Fig.4)

Air and ground reconnaissance north of the mountain front have revealed no exposures of bedrock. Along the front, Ordovician and Silurian metasediments (OS₁) include siliceous black slates, siltstones and sandstones. The slates locally carry fine disseminated pyrite. Massive quartz lenses are common.

The geology of the prospective area north of the front can best be modeled by reference to exposed areas east and west of the Star I claims in conjunction with an interpretation of the airborne geophysics. The northern part of the property appears to be underlain by basaltic volcanics. Between the basalts and the mountain front, Tertiary felsic volcanic rocks are postulated to lie beneath talus and glacial debris.

VIII. GEOCHEMISTRY (Fig. 4)

A total of 80 soil samples, 6 silts, and 5 rock samples were shipped to Min-En Laboratories, North Vancouver, B.C., for preparation and analyses as per procedures outlined in Appendix I. Soils collected in May were run for gold, arsenic and silver. Silts, rocks, and soils collected in July were run for gold and arsenic.

Results of soil analyses from very limited coverage shows relative arsenic highs (+30 ppm) over the Paleozoic front and a one line anomaly (112E) over interpreted basalt. The central low area where felsic volcanics could be expected shows only one arsenic value over 30 ppm. No gold or silver anomalies have been detected.

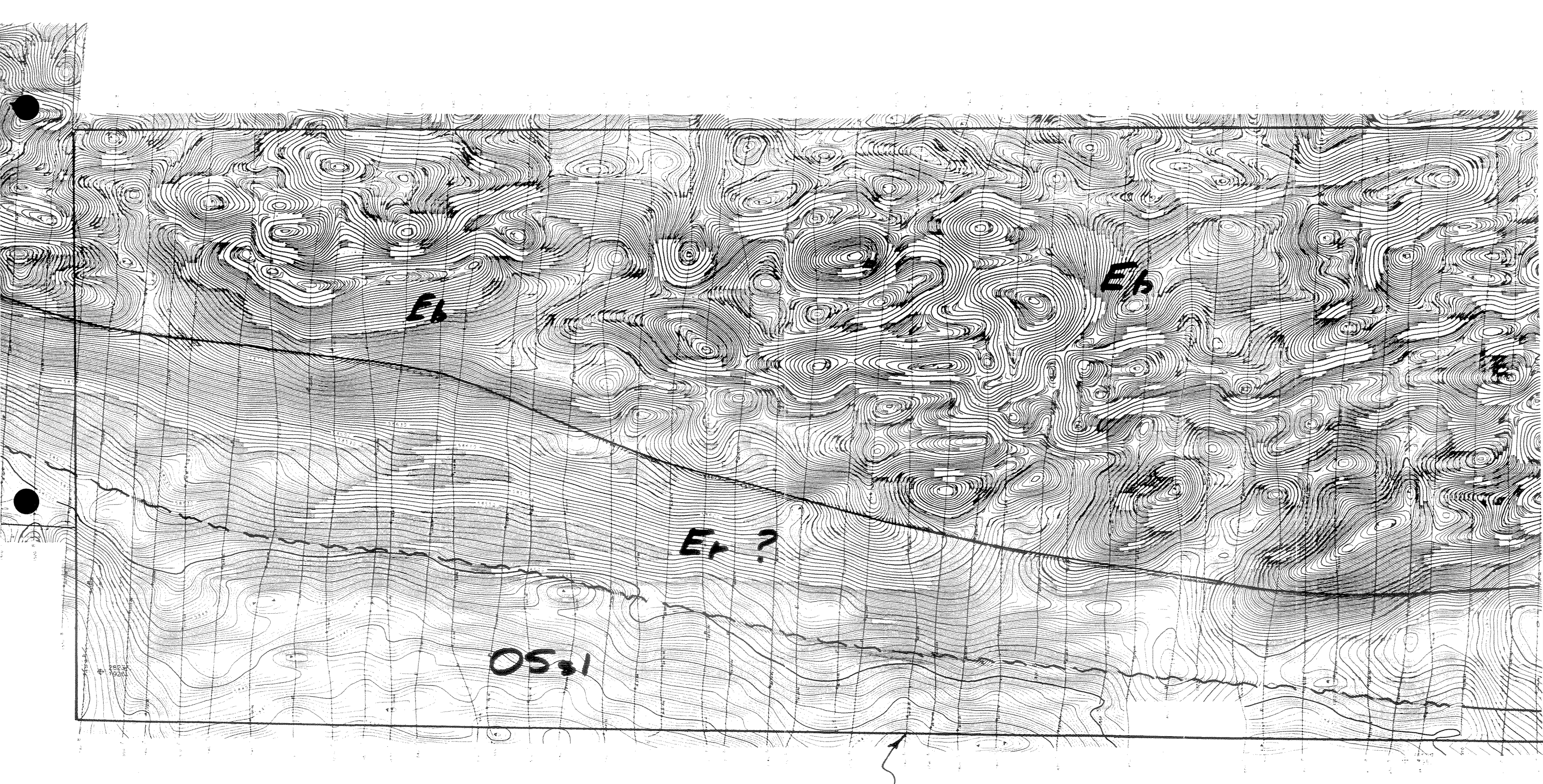
Silt samples from streams draining the mountain front east of the Ketz River show no anomalies in gold or arsenic. Rock samples collected from pyritic black slate exposures in the canyon 4 kilometers east of the Ketz reveal only negative results in gold, silver and arsenic.

IX. GEOPHYSICS (see de Carle Report)

The total field magnetic map (4-J8843-2) shows the northern area of the claims to be magnetically complex. This very broken magnetic terrain is identical to that part of the Kepi claims to the west which are known to be underlain by Tertiary basalts. The southern edge of the basalts is interpreted as the line of abrupt smoothing of the magnetics at about 58,750 gammas.

The Paleozoic rocks of the Pelly Mountain front have a low magnetic signature. Their northern edge coincides approximately with the 58,500 gamma line which is also roughly coincident with the trace of the Tintina Fault. The electromagnetic signature of this area is one of numerous, narrow northwest striking conductors which is consistent with a thick sequence of carbonaceous and locally pyritic metasediments (Map 3-J8843-2).

Between the Paleozoic front (Tintina Fault) and the southern edge of the basalts lies a corridor of smooth magnetic signature and low EM response. To the east above Starr Creek, Tertiary rhyolites occur within this interval. It is therefore possible that rhyolite may occur along this feature on Star I claims. At Starr Creek the rhyolite outcrop areas show up as highs on the resistivity map (6-J8843-3). Resistivity highs along the Star I corridor could therefore be interpreted as near surface rhyolite.



APPROXIMATE LIMIT OF STAR 1 CLAIMS

Flight Path

Navigation and recovery using
Orion Mini-Ranger (MRS III)
star navigation system.
Average terrain clearance 60m
Track line spacing 200m

Magnetics

Total Field Magnetic Intensity
Contours in mG.
Cesium high sensitivity
magnetometer.
Sensor elevation 45m

Map contours are multiples of
those listed below

- 1 mG
- 5 mG
- 20 mG
- 100 mG
- 500 mG

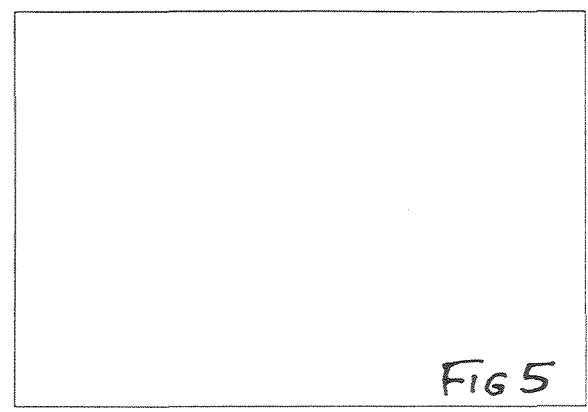


FIG 5

WELCOME NORTH MINES LTD.

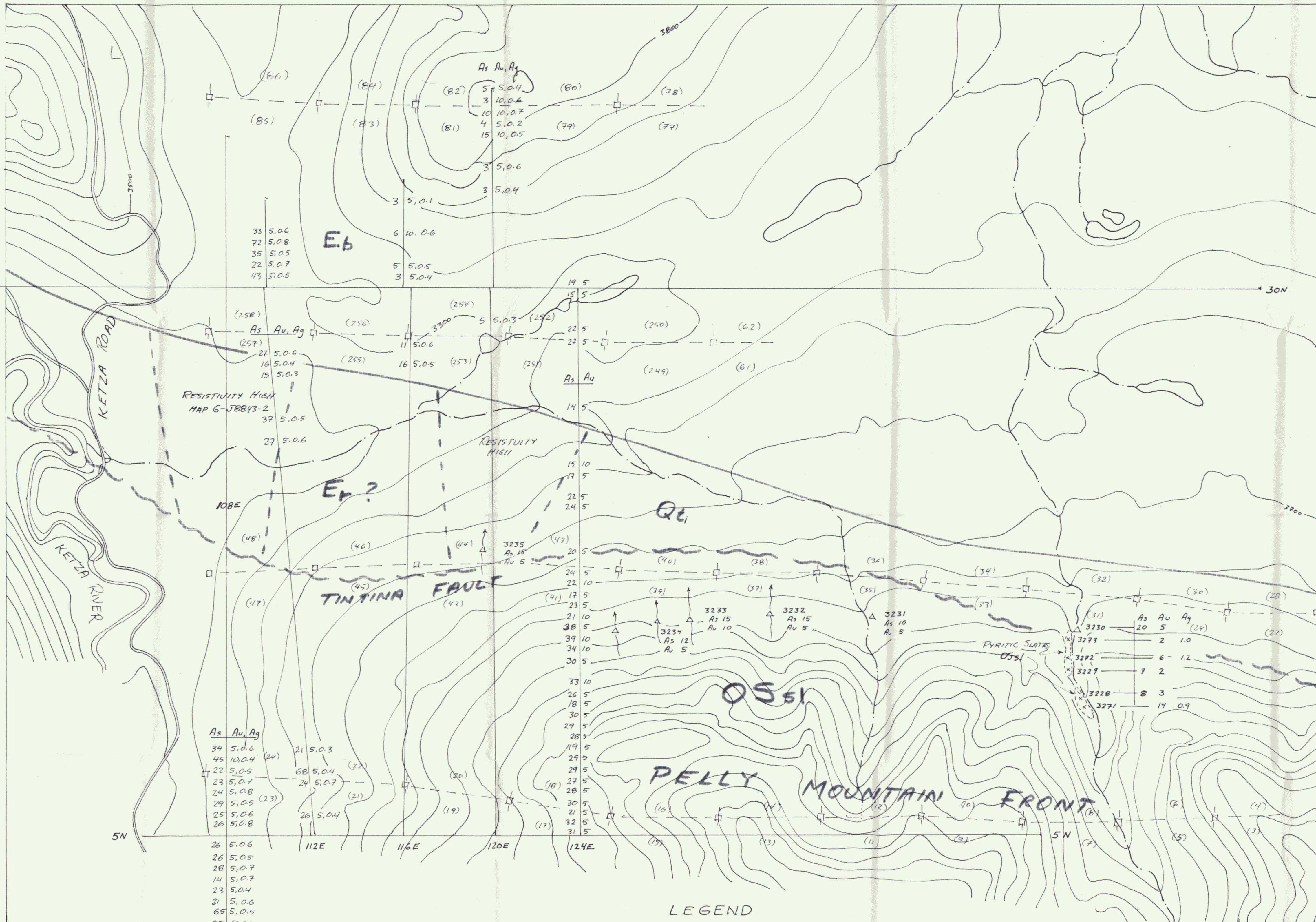
TOTAL FIELD MAGNETIC CONTOURS

STAR 1
YUKON TERRITORY

SCALE 1:100,000
1 100 200 300 400 500 METRE
1 100 200 300 400 500 MILE

DATE: APRIL 1988
N.T.S. No: 105 F/9 - G/12
MAP No: 4 J8843-2

AERODAT LIMITED



5N

As Au Ag
 34 5.0.6
 45 10.0.4 (24)
 22 5.0.5
 23 5.0.7
 24 5.0.8
 29 5.0.5 (23)
 25 5.0.6
 26 5.0.8
 26 5.0.6
 26 5.0.5
 28 5.0.7
 14 5.0.7
 23 5.0.4
 21 5.0.6
 65 5.0.5
 25 5.0.5
 28 5.0.6
 25 10.0.7
 108E

RESISTIVITY HIGH
 MAP G-JBB43-2

RESISTIVITY HIGH

LEGEND

- QUATERNARY
 - Qat, t, c Alluvium, till, talus
- TERTIARY
 - Eb Olivine basalt
 - Er Rhyolite
- ORDOVICIAN & SILURIAN
 - OSsl slate, phyllite, siltstone
- AGE UNKNOWN
 - PRkz Klondike Schist

- x Rock sample site
- 34|10.0.6 Soil Sample Site As(ppm) Au(ppb) Ag(ppm)
- Δ Stream sediment sample (panned concentrate)
- 88|86
87|85 Claim line, posts, claim numbers

* ACCOMPANYING REPORT BY
 R. POTTER PENA NOV 88

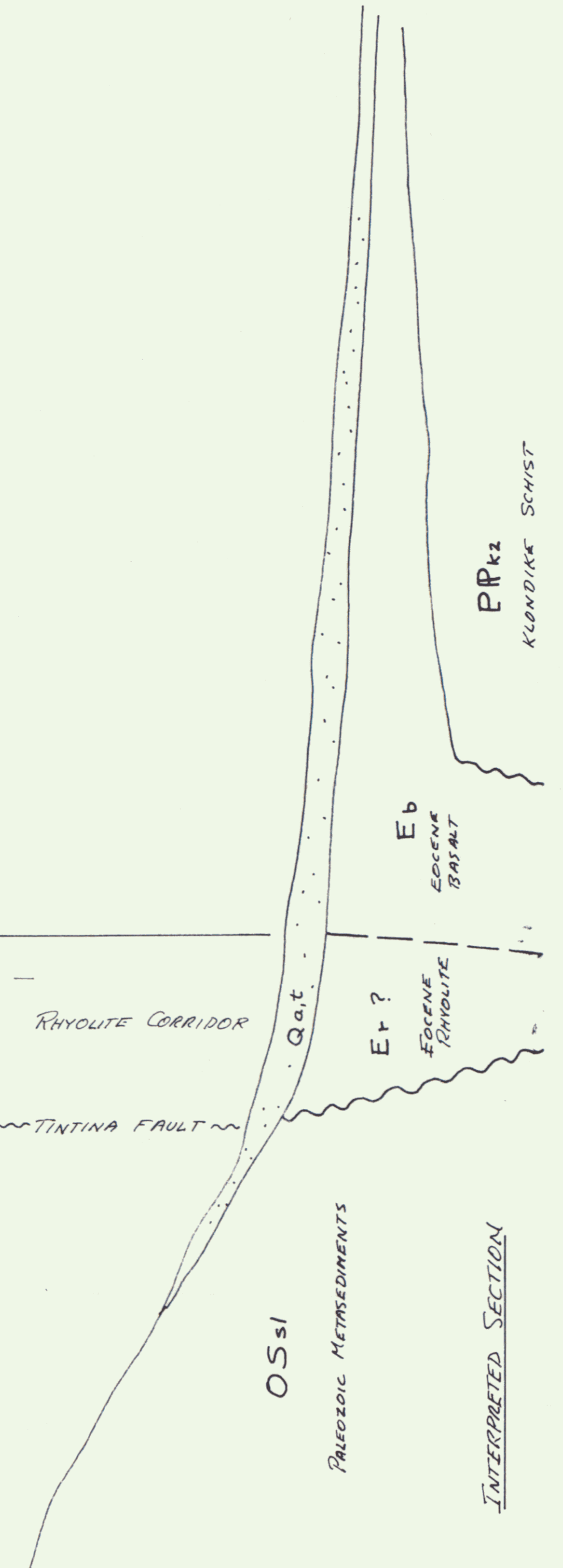


FIG. 4

WELCOME NORTH MINES LTD	
STAR I CLAIMS 092651	
GEOLOGY & GEOCHEMISTRY	
Work by : Robert Potter	Date : Nov, 1988
Drawn by : Robert Potter	NTS :
Scale : 1:10,000	

APPENDIX I

ANALYTICAL PROCEDURES

MIN-EN Laboratories Ltd.

Specialists in Mineral Environments

Corner 15th Street and Bewicke
705 WEST 15TH STREET
NORTH VANCOUVER, B.C.
CANADA V7M 1T2

GOLD GEOCHEMICAL ANALYSIS BY MIN-EN
LABORATORIES LTD.

Geochemical samples for Gold processed by Min-En Laboratories Ltd., at 705 W. 15th St., North Vancouver Laboratory employing the following procedures.

After drying the samples at 95°C soil and stream sediment samples are screened by 80 mesh sieve to obtain the minus 80 mesh fraction for analysis. The rock samples are crushed and pulverized by ceramic plated pulverizer.

A suitable sample weight 5.0 or 10.0 grams are pretreated with HNO_3 and HClO_4 mixture.

After pretreatments the samples are digested with Acqua Regia solution, and after digestion the samples are taken up with 25% HCl to suitable volume.

Further oxidation and treatment of at least 75% of the original sample solutions are made suitable for extraction of gold with Methyl Iso-Butyl Ketone.

With a set of suitable standard solution gold is analysed by Atomic Absorption instruments. The obtained detection limit is 0.005 ppm (5ppb).

PHONE 980-5814

MIN-EN Laboratories Ltd.

Specialists in Mineral Environments

Corner 15th Street and Bewicke
705 WEST 15th STREET
NORTH VANCOUVER, B.C.
CANADA

ANALYTICAL PROCEDURE REPORTS FOR ASSESSMENT WORK.

PROCEDURES FOR, Cu, Mo, Cd, Pb, Mn, Ni, Ag, Zn.

Samples are processed by Min-En Laboratories Ltd. at 705 W. 15th St., North Vancouver Laboratory employing the following procedures.

After drying the samples at 95°C soil and stream sediment samples are screened by 80 mesh sieve to obtain the minus 80 mesh fraction for analysis. The rock samples are crushed by jaw crusher and pulverized by ceramic plated pulverizer.

1.0 gram of the samples are digested for 6 hours with HNO_3 and HClO_4 mixture.

After cooling samples are diluted to standard volume. The solutions are analysed by Atomic Absorption Spectrophotometers.

Copper, lead, zinc, silver, cadmium, cobalt, nickel and manganese are analysed using the CH_2H_2 -Air flame combination but the molybdenum determination is carried out by C_2H_2 - N_2O gas mixture directly or indirectly (depending on the sensitivity and detection limit required) on these sample solutions.

Background corrections for Pb, Ag, Cd upon request are completed.

MIN-EN Laboratories Ltd.

Specialists in Mineral Environments

Corner 15th Street and Bewicke
705 WEST 15TH STREET
NORTH VANCOUVER, B.C.
CANADA V7M 1T2

Analytical Procedure Report for Assessment Work

31 Element ICP

Ag, Al, As, B, Ba, Be, Bi, Ca, Cd, Co, Cu, Fe, K, Li,
Mg, Mn, Mo, Na, Ni, P, Pb, Sb, Sr, Th, U, V, Zn, Ga, Sn, W,
Cr

Samples are processed by Min-En Laboratories Ltd., at
705 West 15th Street, North Vancouver, employing the
following procedures.

After drying the samples at 95°C soil and stream sediment
samples are screened by 80 mesh sieve to obtain the minus
80 mesh fraction for analysis. The rock samples are
crushed by a jaw crusher and pulverized by ceramic
plated pulverizer or ring mill pulverizer.

1.0 gram of the sample is digested for 4 hours with an
aqua regia HClO₄ mixture.

After cooling samples are diluted to standard volume.
The solutions are analysed by computer operated Jarrall
Ash 9000 ICAP or Jobin Yvon 70 Type II Inductively
Coupled Plasma Spectrometers. Reports are formatted and
printed using a dot-matrix printer.

MIN-EN Laboratories Ltd.

Specialists in Mineral Environments

Corner 15th Street and Bewicke
705 WEST 15TH STREET
NORTH VANCOUVER, B.C.
CANADA V7M 1T2

ANALYTICAL PROCEDURE REPORT FOR ASSESSMENT WORK

PROCEDURE FOR ARSENIC:

Samples are processed by Min-En Laboratories Ltd., at 705 West 15th St., North Vancouver Laboratory employing the following procedures.

After drying the samples at 95°C soil and stream sediment samples are screened by 80 mesh sieve to obtain the minus 80 mesh fraction for analysis. The rock samples are crushed by a jaw crusher and pulverized by ceramic plated pulverizer.

1.0 gram of the samples are digested for 6 hours with HNO₃ and HClO₄ mixture.

After cooling samples are diluted to standard volume. A suitable aliquote is taken from the above 1 gram sample solution and the test is carried out by Gutzeit method using Ag CS₂N (C₂H₅)₂ as a reagent. The detection limit obtained is 1. ppm.

MIN-EN Laboratories Ltd.

Specialists in Mineral Environments

Corner 15th Street and Bewicke
705 WEST 15TH STREET
NORTH VANCOUVER, B.C.
CANADA V7M 1T2

ASSESSMENT REPORT FOR:

HEAVY MINERAL SAMPLING AND CONCENTRATIONS.

A large sample is collected from stream sediments or soils big enough to yield a minimum of 0.5 kg of the desired minus fraction. After sieving through any of the sieve mesh sizes they are adapted for the survey. After sieving the samples, the minus fraction is grinded to -80 mesh.

Then 0.4 kg of sample is weighed into a suitable centrifuge containers. The prepared concentrations of liquids are added to obtain a 3.1 specific gravity flotation.

The heavy fractions are then washed cleaned and dried. After drying the samples they are separated. The sink float Heavy Minerals are separated into Magnetic and Non Magnetic fractions and both fractions are weighed. The percent of the Magnetic and non Magnetic fractions are calculated and reported with the analytical data.

The analysis are than carried out in the usual analytical manner by I.C.P. or A.A. method.

MIN-EN Laboratories Ltd.

Specialists in Mineral Environments

Corner 15th Street and Bewicke
705 WEST 15TH STREET
NORTH VANCOUVER, B.C.
CANADA V7M 1T2

FIRE GOLD GEOCHEMICAL ANALYSIS BY MIN-EN LABORATORIES LTD.

Geochemical samples for Fire Gold processed by Min-En Laboratories Ltd., at 705 W. 15th St., North Vancouver Laboratory employing the following procedures.

After drying the samples at 95°C soil and stream sediment samples are screened by 80 mesh sieve to obtain the minus 80 mesh fraction for analysis. The rock samples are crushed and pulverized by ceramic plated pulverizer.

A suitable sample weight 15.00 or 30.00 grams are fire assay preconcentrated.

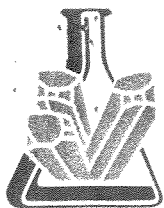
After pretreatments the samples are digested with Aqua Regia solution, and after digestion the samples are taken up with 25% HCl to suitable volume.

Further oxidation and treatment of at least 75% of the original sample solutions are made suitable for extraction of gold with Methyl Iso-Butyl Ketone.

With a set of suitable standard solution gold is analysed by Atomic Absorption instruments. The obtained detection limit is 1 ppb.

APPENDIX II

ANALYTICAL CERTIFICATES



**MINERAL
• ENVIRONMENTAL
LABORATORIES LTD.**

SPECIALISTS IN MINERAL ENVIRONMENTS
CHEMISTS • ASSAYERS • ANALYSTS • GEOCHEMISTS

VANCOUVER OFFICE:
705 WEST 15TH STREET
NORTH VANCOUVER, B.C. CANADA V7M 1T2
TELEPHONE (604) 980-5814 OR (604) 988-4524
TELEX: VIA U.S.A. 7601067 • FAX (604) 980-9621

TIMMINS OFFICE:
33 EAST IROQUOIS ROAD
P.O. BOX 867
TIMMINS, ONTARIO CANADA P4N 7G7
TELEPHONE: (705) 264-9996

Certificate of Geochem

Company: WELCOME NORTH MINES
Project: (ROSS RIVER - 6) STARI-KEPI
Attention: JOHN BROCK

File: 8-630/P8
Date: JUNE 8/88
Type: SOIL GEOCHEM

We hereby certify the following results for samples submitted.

Sample Number	AG PPM	AS PPM	AU-WET PPB
K108E 3+00N	0.7	14	5
K108W 2+00N	0.6	21	5
K108W 2+50N	0.4	23	5
K108W 3+00N	0.8	23	10
K108W 3+50N	0.7	28	5

K108W 4+00N	0.5	26	5
K108W 4+50N	0.6	26	5
K108W 5+50N	0.8	26	5
K108W 6+00N	0.6	25	5
K108W 6+50N	0.5	29	5

K108W 7+00N	0.8	24	5
K108W 7+50N	0.7	23	5
K108W 8+00N	0.5	22	5
K108W 8+50N	0.4	45	10
K108W 9+00N	0.6	34	5

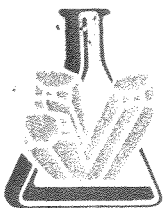
K112E 6+00N	0.4	26	5
K112E 7+50N	0.7	24	5
K112E 8+00N	0.4	58	5
K112E 9+00N	0.3	21	5
K112E 23+00N	0.6	27	5

K112E 24+00N	0.5	37	5
K112E 26+00N	0.3	15	5
K112E 26+50N	0.4	16	5
K112E 27+00N	0.6	27	5
K112E 30+50N	0.5	43	5

K112E 31+00N	0.7	22	5
K112E 31+50N	0.5	35	5
K112E 32+00N	0.8	72	5
K112E 32+50N	0.6	33	5
K116E 26+50N	0.5	16	5

Certified by

MIN-EN LABORATORIES LTD.



**MIN-EN
LABORATORIES LTD.**

SPECIALISTS IN MINERAL ENVIRONMENTS
CHEMISTS • ASSAYERS • ANALYSTS • GEOCHEMISTS

VANCOUVER OFFICE:
705 WEST 15TH STREET
NORTH VANCOUVER, B.C. CANADA V7M 1T2
TELEPHONE (604) 980-5814 OR (604) 988-4524
TELEX: VIA U.S.A. 7601067 • FAX (604) 980-9621

TIMMINS OFFICE:
33 EAST IROQUOIS ROAD
P.O. BOX 867
TIMMINS, ONTARIO CANADA P4N 7G7
TELEPHONE: (705) 264-9996

Certificate of Geochem

Company: WELCOME NORTH MINES
Project: ROSS RIVER - 6
Attention: JOHN BROCK

KEPI

File: 8-630/P9
Date: JUNE 8/88
Type: SOIL GEOCHEM

We hereby certify the following results for samples submitted.

Sample Number	AG PPM	AS PPM	AU-WET PPB
K116E 27+50N	0.6	11	5
K116E 30+50N	0.4	3	5
K116E 31+00N	0.5	5	5
K116E 32+50N	0.6	6	10
K116E 34+00N	0.1	3	5

K120E 28+50N	0.3	5	5
K120E 34+50N	0.4	3	5
K120E 35+50N	0.6	3	5
K120E 37+00N	0.5	15	10
K120E 37+50N	0.2	4	5

K120E 38+00N	0.7	10	10
K120E 38+50N	0.6	3	10
K120E 39+00N	0.4	5	5
K68E 36+50N	0.5	23	5
K68E 37+00N	0.4	22	5

K68E 37+50N	0.6	18	5
K68E 38+00N	0.5	21	5
K68E 38+50N	0.4	17	10
K68E 39+00N	0.6	17	5
K68E 39+50N	0.7	9	5

K68E 40+00N	0.5	15	5
K68E 40+50N	0.6	16	5
K68E 41+00N	0.8	19	10
K68E 41+50N	0.7	15	5
K68E 42+00N	0.7	17	5

K68E 42+50N	0.6	14	5
K68E 43+00N	0.5	7	10
K68E 43+50N	0.7	13	5
K68E 44+00N	0.4	6	5
K68E 44+50N	0.6	7	10

K68E 45+00N	0.8	13	10

Certified by

Eric J. [Signature]



**MINERAL
• ENVIRONMENTS
LABORATORIES LTD.**

SPECIALISTS IN MINERAL ENVIRONMENTS
CHEMISTS • ASSAYERS • ANALYSTS • GEOCHEMISTS

VANCOUVER OFFICE:
705 WEST 15TH STREET
NORTH VANCOUVER, B.C. CANADA V7M 1T2
TELEPHONE (604) 980-5814 OR (604) 988-4524
TELEX: VIA U.S.A. 7601067 • FAX (604) 980-9621

TIMMINS OFFICE:
33 EAST IROQUOIS ROAD
P.O. BOX 867
TIMMINS, ONTARIO CANADA P4N 7G7
TELEPHONE: (705) 264-9996

Certificate of GEOCHEM

Company: WELCOME NORTH MINES
Project: RR 6K Q&W
Attention: J. BROCK/R. POTTER

File: 8-1009/P1
Date: JULY 22/88
Type: ROCK GEOCHEM

We hereby certify the following results for samples submitted.

Sample Number	AS PPM	AU-FIRE PPB
3225	22	2
3226	450	27
3227	10	3
3228	8	3
3229	7	2

3238	4	5
3242	22	3
3243	4	4
3244	7	3

Certified by

MIN-EN LABORATORIES LTD.



**MINERAL
ENVIRONMENTS
LABORATORIES LTD.**

AUG 9 1988

SPECIALISTS IN MINERAL ENVIRONMENTS
CHEMISTS • ASSAYERS • ANALYSTS • GEOCHEMISTS

VANCOUVER OFFICE:
705 WEST 15TH STREET
NORTH VANCOUVER, B.C. CANADA V7M 1T2
TELEPHONE (604) 980-5814 OR (604) 988-4524
TELEX: VIA U.S.A. 7601067 • FAX (604) 980-9621

TIMMINS OFFICE:
33 EAST IROQUOIS ROAD
P.O. BOX 867
TIMMINS, ONTARIO CANADA P4N 7G7
TELEPHONE: (705) 264-9996

Certificate of GEOCHEM

Company: WELCOME NORTH MINES
Project: RR 6 K Q W *STARI*
Attention: J. BROCK/R. PUTTER

File: B-1009/P1
Date: AUGUST 2/88
Type: SOIL GEOCHEM

We hereby certify the following results for samples submitted.

Sample Number	AS PPM	AJ-WET PFB
K 124E 05+00N	31	5
K 124E 05+50N	32	5
K 124E 06+00N	21	5
K 124E 06+50N	30	5
K 124E 07+00N	28	5

K 124E 07+50N	27	5
K 124E 08+00N	29	5
K 124E 08+50N	29	5
K 124E 09+00N	19	5
K 124E 09+50N	28	5

K 124E 10+00N	29	5
K 124E 10+50N	30	5
K 124E 11+00N	18	5
K 124E 11+50N	26	5
K 124E 12+00N	32	10

K 124E 12+50N	NO SAMPLE	
K 124E 13+00N	30	5
K 124E 13+50N	34	10
K 124E 14+00N	39	10
K 124E 14+50N	38	5

K 124E 15+00N	21	10
K 124E 15+50N	23	5
K 124E 16+00N	19	5
K 124E 16+50N	22	10
K 124E 17+00N	24	5

K 124E 18+00N	20	5
K 124E 20+00N	24	5
K 124E 20+50N	22	5
K 124E 21+00N	17	5
K 124E 22+00N	15	10

Certified by

MIN-EM LABORATORIES LTD.



**MINERAL
ENVIRONMENTS
LABORATORIES LTD.**

SPECIALISTS IN MINERAL ENVIRONMENTS
CHEMISTS • ASSAYERS • ANALYSTS • GEOCHEMISTS

VANCOUVER OFFICE:
705 WEST 15TH STREET
NORTH VANCOUVER, B.C. CANADA V7M 1T2
TELEPHONE (604) 980-5814 OR (604) 988-4524
TELEX: VIA U.S.A. 7601067 • FAX (604) 980-9621

TIMMINS OFFICE:
33 EAST IROQUOIS ROAD
P.O. BOX 867
TIMMINS, ONTARIO CANADA P4N 7G7
TELEPHONE: (705) 264-9996

Certificate of Geochem

Company: WELCOME NORTH MINES
Project: (RR 6 K Q) *KEPI/STARJ*
Attention: J. BROCK/R. POTTER

File: 8-1009/P2
Date: JULY 30/88
Type: SOIL GEOCHEM

We hereby certify the following results for samples submitted.

Sample Number	AS PPM	AU-WET PPB
K 124E 24+50N	14	5
K 124E 27+50N	27	5
K 124E 28+00N	22	5
K 124E 29+50N	15	5
K 124E 30+00N	19	5

K 99+50E 44+00N	9	5
K 99+50E 44+25N	4	5
K 99+50E 44+50N	12	5
K 99+50E 44+75N	11	10
K 99+50E 45+00N	13	5

K 100E 44+00N	4	5
K 100E 44+25N	7	10
K 100E 44+50N	9	10
K 100E 44+75N	12	5
K 100E 45+00N	4	5

K 100+50E 44+00N	13	5
K 100+50E 44+25N	9	10
K 100+50E 44+50N	12	10
K 100+50E 44+75N	16	5
K 100+50E 45+00N	11	5

K 100E 40+20N	6	5
K 100E 41+40N	15	10

Certified by


MIN-EN LABORATORIES LTD.



**MINERAL
• ENVIRONMENTS
LABORATORIES LTD.**

SPECIALISTS IN MINERAL ENVIRONMENTS
CHEMISTS • ASSAYERS • ANALYSTS • GEOCHEMISTS

VANCOUVER OFFICE:
705 WEST 15TH STREET
NORTH VANCOUVER, B.C. CANADA V7M 1T2
TELEPHONE (604) 980-5814 OR (604) 988-4524
TELEX: VIA U.S.A. 7601067 • FAX (604) 980-9621

TIMMINS OFFICE:
33 EAST IROQUOIS ROAD
P.O. BOX 867
TIMMINS, ONTARIO CANADA P4N 7G7
TELEPHONE: (705) 264-9996

Certificate of GEOCHEM

Company: WELCOME NORTH MINES
Project: RR 6K Q&W **STAR I**
Attention: J. BROCK/R. POTTER

File: B-1009/P3
Date: AUG 4/88
Type: PAN CONS

We hereby certify the following results for samples submitted.

Sample Number	AS PPM	AU-WET FPB
3230	20	5
3231	10	5
3232	16	5
3233	12	10
3234	12	5
3235	15	5
3236	17	5
3237	22	20
3239	16	10
3240	17	5
3241	16	10

Certified by _____

MIN-EN LABORATORIES LTD.

APPENDIX III

SUMMARY OF EXPENDITURES

STAR 1

1988 STATEMENT OF COSTS

	\$
Salaries and Wages	1,676
Geological Consulting	300
Camp Costs - 15 man days @ \$40/day	600
Field Supplies - flagging, thread, sample bags, etc.	276
Mobilization	200
Vehicle	200
Helicopter - 1 hr. @ \$475/hr.	475
- fuel 1000 litres @ \$0.63/litres	<u>63</u>
	538
Geophysics - Airborne (Aerodat) 160/756 x 55,500	11,746
Analyses - Min-En Laboratories	
- Soils - 46 (Au/As/Ag) @ \$12.00/sample	552
- 34 (Au/As) @ \$ 9.50/sample	323
- Silts - 6 (Au/As) @ \$ 9.50/sample	57
- Rocks - 3 (Au/Ag) @ \$12.75/sample est.	38
- 2 (Au/As) @ \$14.00/sample	<u>28</u>
	998
Project Management	
- Planning, field management, reporting	<u>500</u>
Total:	<u><u>17,034</u></u>

APPENDIX IV

ENGINEER'S CERTIFICATE

I, Robert G. Potter of 150 Andrew Place, Fulford Harbour, in the Province of British Columbia, Canada, DO HEREBY CERTIFY that:

1. I am a consulting Geological Engineer.
2. I am a graduate of the University of British Columbia (B.A.Sc. 1961) and of McGill University (M.Sc. Applied 1972).
3. I am a member in good standing of the Association of Professional Engineers of British Columbia.
4. This report is based on the results of work carried on under my direct supervision and on available published data.
5. I have no interest in the Star I property or in other properties or securities of Welcome North Mines Ltd. nor do I expect to receive any.

Dated at Vancouver, British Columbia this *27th* day of December, 1988.



Robert G. Potter, P.Eng.

APPENDIX V

REFERENCES

- Archer Cathro and Associates: Northern Cordilleran Mineral Inventory.
- Boyle, R.W., 1979: The Geochemistry of Gold and Its Deposits. G.S.C. Bull. 280.
- Buisson, G., and LeBlanc, M., 1986: Gold-bearing Listwaenites (carbonatized ultramafic rocks) in Ophiolite Complexes, in Metallogeny of basic and ultrabasic rocks: London Institute Mining Metallurgy, p. 121-132.
- Duke, J.L., and Godwin, C.I., 1986: Geology and Alteration of the Grew epithermal gold-silver prospect, south-central Yukon, in Yukon Geology Vol. I, D.I.A.N.D.
- Fisher, R.V., and Schmincke, H., 1984: Pyroclastic Rocks: Springer - Verlag.
- Jackson, L.E., et al 1986: Bimodal Paleogene Volcanics near Tintina Fault, East-central Yukon and Their Possible Relationship to Placer Gold, in Yukon Geology Vol. I, D.I.A.N.D.
- Templeman-Kluit, D., et al, 1977: Compilation of the Geology of Quiet Lake (105F) and Finlayson Lake (105G). G.S.C. Open File 486.

APPENDIX VI

LIST OF PERSONNEL

(STAR I PROPERTY)

Robert Etzel (Prospector), General Delivery, Ross River, Yukon
Period Worked: May 27, 1988

Jeff Franke (Soil Sampler), #320-192 Street, Surrey, B.C.
Period Worked: May 24 and 27, 1988
July 6, 1988

Mike Heino (Prospector), 43 Jean Street, Sudbury, Ontario
Period Worked: July 6, 1988

Naomi Potter (Cook), R.R. 1, Fulford Harbour, B.C.
Period Worked: May 27 and 28, 1988

Robert Potter (Geologist & Proj. Mgr.), R.R. 1, Fulford Harbour,
B.C.
Period Worked: July 5 and 6, 1988

Bruce Williams (Prospector), R.R. 1, Fulford Harbour, B.C.
Period Worked: May 27 and 28, 1988