

MAP NO.	ASSESSMENT REPORT	X	DOCUMENT NO.:	092650
	PROSPECTUS		MINING DISTRICT:	WATSON LAKE
	CONFIDENTIAL	X	TYPE OF WORK:	GEOPHYSICAL, RECONNAISSANCE
105 F 9, 16	OPEN FILE			GEOCHEMICAL and GEOLOGICAL

REPORT FILED UNDER: Welcome North Mines Ltd.

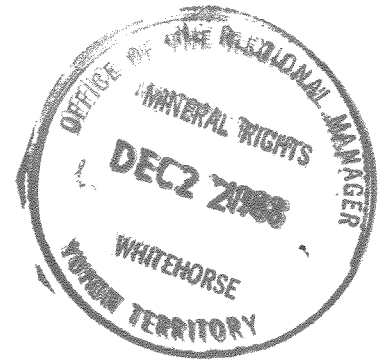
DATE PERFORMED:	April 23-27, May 21-28, 1988	DATE FILED:	December 16, 1988
LOCATION:	LAT.: 61°47'N	AREA:	Ketza River
	LONG.: 132°10'W	VALUE \$:	14,500.00

CLAIM NAME & NO.: KEPI 87-~~280~~²⁴⁸, 259-280 YB11204-365, 376-397

WORK DONE BY: R.G. Potter

WORK DONE FOR: Welcome North Mines Ltd.

DATE TO GOOD STANDING	REMARKS: #146 KEPI Helicopter borne magnetic, electromagnetic
	and VLF-EM surveys were followed up by reconnaissance geology
	and geochemistry. Geophysics indicate several resistivity highs
	which may be thinly covered felsic volcanic rocks. Only one
	gold anomaly (500 ppb - one sample).



**SURFACE EXPLORATION REPORT
ON THE
KEPI CLAIMS**

N.T.S. 105F/9, 16

**LATITUDE: 61°47'N
LONGITUDE: 132°10'W**

**KEPI 87 TO 248 & 259 TO 280
WATSON LAKE MINING DISTRICT**

FOR

**WELCOME NORTH MINES LTD.
15th FL., 675 W. HASTINGS STREET
VANCOUVER, B.C.
CANADA
V6B 1N2**

BY

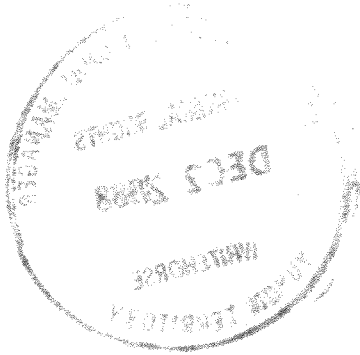
R.G. Potter, P.Eng.



NOVEMBER, 1988

(WORK DONE DURING APRIL 23 TO 27, MAY 21 TO 28, 1988)

092650



This report has been examined by
the Geological Evaluation Unit
under Section 53 (4) Yukon Quartz
Mining Act and is allowed as
representation work in the amount
of \$ 14,500.00.

R.D. Emmond
Regional Manager, Exploration and
Geological Services for Commissioner
of Yukon Territory.

TABLE OF CONTENTS

	<u>PAGE</u>
I SUMMARY AND RECOMMENDATIONS	1
II INTRODUCTION	4
III PROPERTY, LOCATION AND ACCESS	4
IV HISTORY	5
V GEOLOGICAL SETTING	5
VI 1988 PROGRAM	7
VII PROPERTY GEOLOGY	8
VIII GEOCHEMISTRY	9
IX GEOPHYSICS	9

APPENDICES

I ANALYTICAL PROCEDURES
II ANALYTICAL CERTIFICATES
III SUMMARY OF EXPENDITURES
IV ENGINEER'S CERTIFICATE
V REFERENCES
VI PERSONNEL

ILLUSTRATIONS

FIGURES

1 COMPILATION MAP	2
2 CLAIMS AND LOCATION	3
3 REGIONAL GEOLOGY	6
4 GEOLOGY AND GEOCHEMISTRY 1:10,000	In Pocket
5 TOTAL FIELD MAGNETIC COUNTOURS	10

I. SUMMARY AND RECOMMENDATIONS (Fig. 1)

The Kepi claims lie along the Tintina Trench 50 kilometers southeast of Grew Creek. The area is prospective for Tertiary-age felsic volcanic rocks of the type which hosts epithermal gold mineralization at Grew Creek.

The 1988 program on the Kepi consisted of a helicopter-borne magnetic, electromagnetic, and VLF-EM survey followed up by reconnaissance geology and geochemistry.

Paleozoic metasediments are well exposed on the high area south of the Ketzra River. These include slates, phyllites and quartzites. Elsewhere on the property rock exposure is rare. Scattered outcrops of Tertiary basalt are found on the hillside north of the Ketzra River. One small area of argillized rhyolite was noted. This rock shows no silicification or quartz veining.

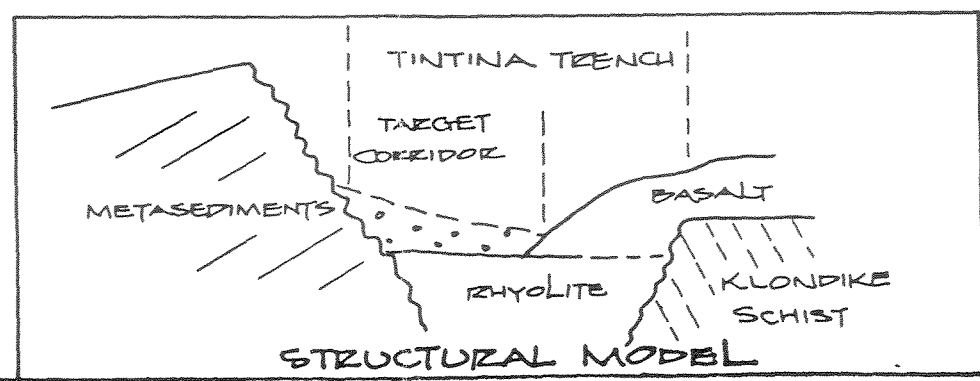
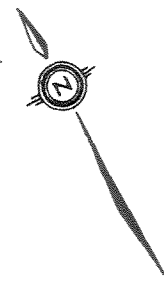
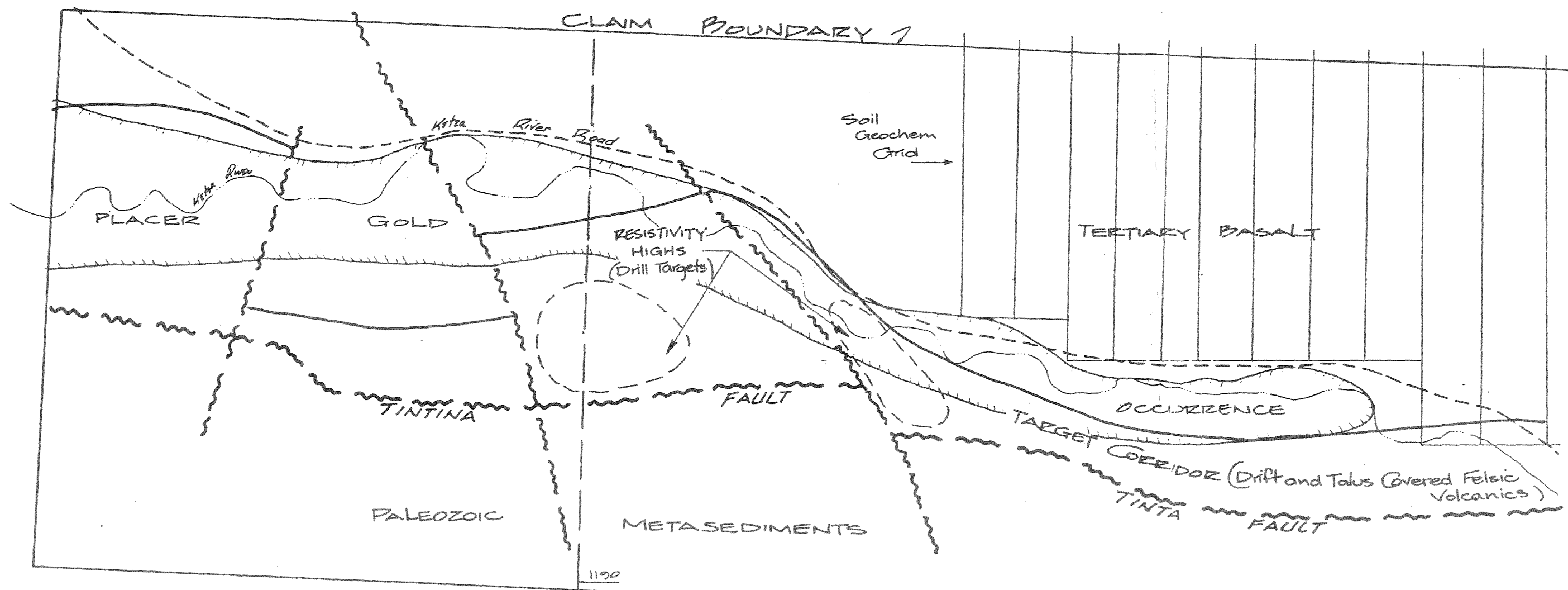
Reconnaissance soil sampling (400 x 50 meter grid) was carried out over the eastern sector of the claims; an area underlain by Tertiary basalts and rhyolites. Samples were analyzed for gold, silver and arsenic, but no anomalous areas were detected. One single station gold high was found (500 ppb).

Airborne surveys have defined a corridor between Paleozoic metasediments (numerous EM linears, low magnetic response) and Tertiary basalts (strong magnetic response). East of Kepi rhyolitic terrain of high resistivity is found within this corridor. Other areas of high resistivity along the corridor, including those of the Kepi claims, are interpreted as being thinly covered felsic volcanic rocks. These targets should be investigated by reverse circulation drilling.

Respectfully submitted,



Robert G. Potter, P.Eng.



KEPI CLAIM
COMPILATION
MAP

FIG 1

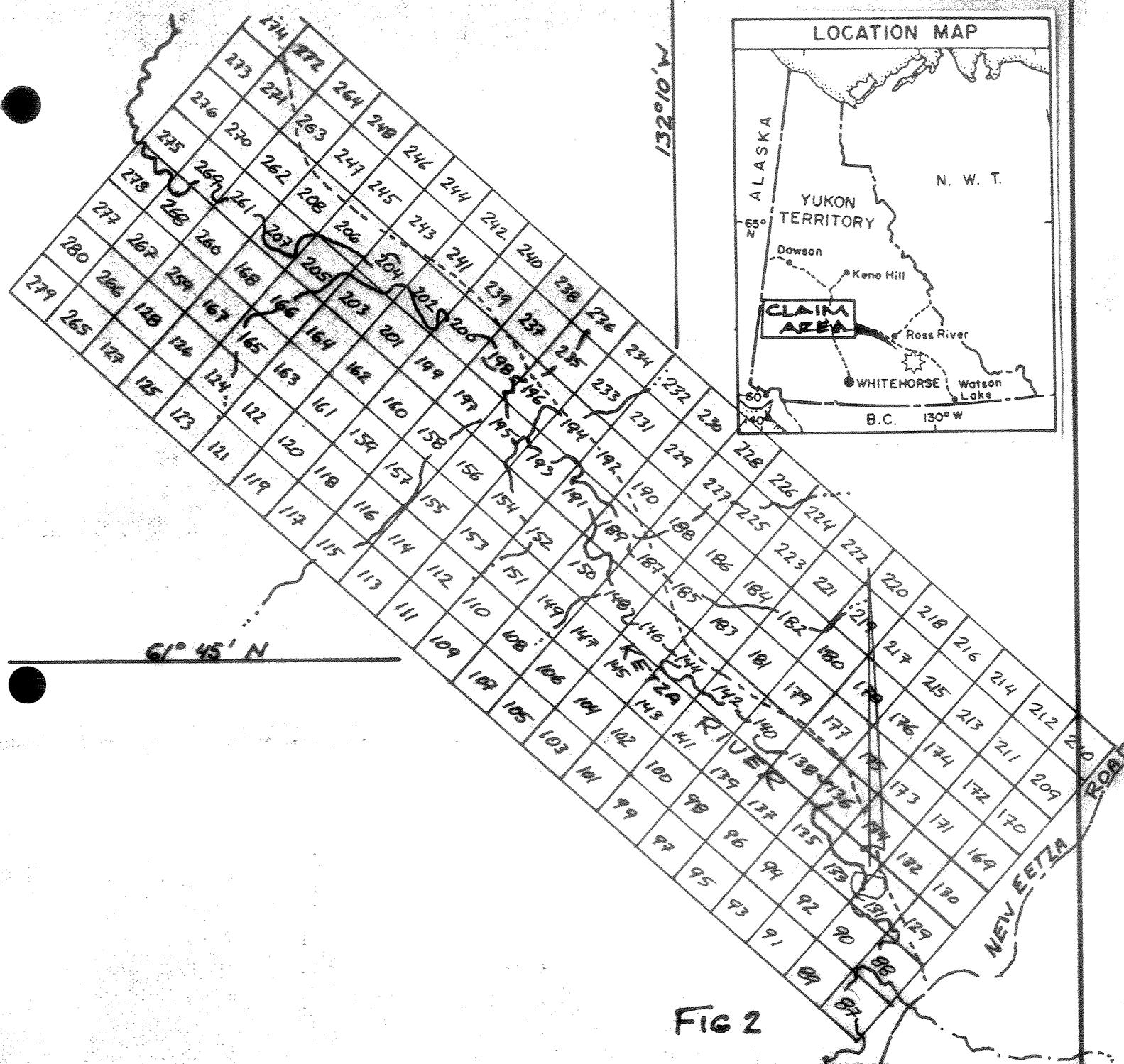



FIG 2

 WELCOME NORTH MINES LTD. VANCOUVER, BRITISH COLUMBIA	
KEPI CLAIMS	
LOCATION MAP YUKON TERRITORY	
Work by : Rober Potter	N.T.S. : 105 G
Drawn by: Robert Potter	Scale 1: 90,000
Date : Sept. 1980	

II. INTRODUCTION

In April, 1988, Welcome North Mines Ltd. commissioned a helicopter-borne magnetic, electromagnetic, and VLF-EM survey to cover a section of the Tintina Trench between Lapie and Hoole Rivers. The Kepi claims lie within this area.

The airborne program was followed up by surface work including reconnaissance geology, soil geochemistry and prospecting. The ground program was carried out by a crew consisting of one geologist/project manager, one prospector and five soil samplers. The planned property-wide grid coverage was reduced to areas of thawed ground on south aspect slopes north of the Ketzka River.

Details of the results of the geophysical survey are described in a report by R.J. de Carle, consulting geophysicist dated August 31, 1988. A discussion of the results of the airborne work is included herein as is a description of the reduced surface program. De Carle's complete report is submitted in support of assessment claims for the Kepi and other Welcome North properties along the Tintina Trench.

III. PROPERTY, LOCATION AND ACCESS (Figure 2)

The Kepi property consists of 176 full-sized mineral claims. All claims are currently registered in the name of Welcome North Mines Ltd. in the Watson Lake Mining District as follows:

<u>Claim Name</u>	<u>Grant No.</u>	<u>Record Date</u>
KEPI 87 to ²⁴⁸ 280	YB11204 to YB11365	January 04, 1988
KEPI 259 to 280	YB11376 to YB11397	"

The property is located on the south side of the Tintina Trench, 25 kilometers southeast of Ross River and 50 kilometers southeast of Noranda's Grew Creek epithermal gold discovery (NTS 105F9 & 16). Access is via the Robert Campbell Highway and the Ketzka River Road or by helicopter from Ross River. Ross River is reached by all weather road from Whitehorse via Carmacks and is also served by a daily scheduled flights from Whitehorse.

The property lies along the Ketzka River valley. It also covers the steep Pelly Mountain front and the southern flank of a range of hills north of the Ketzka River. Elevations range from about 2800 to 4500 feet ASL. The Ketzka River at this location is a meandering stream of moderate gradient. Its valley is covered by a healthy mixed spruce and poplar growth. The hills to the north have a sparse new growth of fir, spruce

and poplar on an old burn. Fir and slide alder cover the mountain front to about 4500 feet.

IV. HISTORY

Trace occurrences of placer gold have been recognized along the Ketz River since early in the century.

An area at the east end of the Kepi claims was staked as the Joe cl (89852) in January, 1966. Bulldozer trenching was reportedly carried out late in that year. No documentation is available on this work. Ref. Northern Cordillera Mineral Inventory N.T.S. 105F #51.

Geology and mineralization of the Pelly Mountains in the area of the Kepi claims was investigated by Welcome North Mines as part of the Woodside Project (1977-1979). This project was structured to assess the base metal potential of that area.

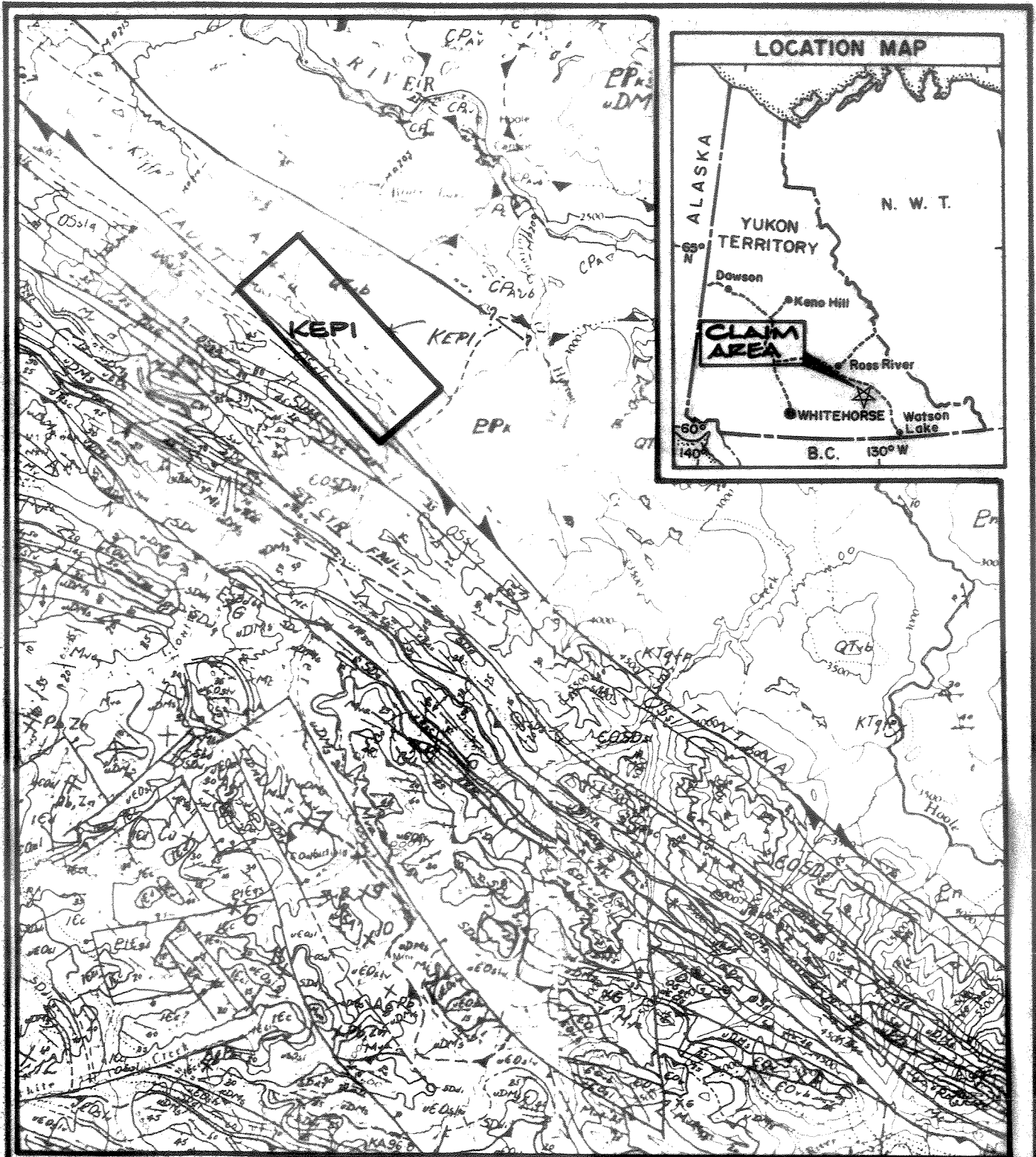
V. GEOLOGICAL SETTING (Fig. 3)

The subject property is located along the Tintina Trench. This major northwest trending feature is the locus of about 450 kilometers of dextral offset which occurred during the Mid and Late Cretaceous (Roddick 1967, Templeman-Kluit 1979).

The area northeast of Tintina is that of the Selwyn Fold Belt which comprises a diverse assemblage of clastic, carbonate, volcanic, ultramafic, and granitic rocks of Hadrynian to Tertiary age. Superimposed on this terrain are remnants of pre-Mid Cretaceous thrust sheets which include basic volcanics and ultramafics (Anvil Allochthon).

To the southwest of Tintina lies the Pelly-Cassiar Platform which comprises thrust wedges of Lower Paleozoic clastic and carbonate metasediments.

Basalts, rhyolites, and derived sediments of Eocene-age occur in structural basins along the Tintina Trench. At Grew Creek felsic volcanic and volcanoclastic rocks are preserved in a northwesterly trending graben. Epithermal gold mineralization is found here associated with silicic and acid sulphate alteration of the host rocks. Mineralized zones are also anomalous in arsenic and silver.



- LEGEND**
- CRETACEOUS & TERTIARY**
- DAg Rhyolite tuffs & breccia
 - EPK2 Dunite, peridotite & serpentine
- CARBONIFEROUS & PERMIAN**
(Anvil - Campbell Allochthon)
- OS51 Slate, quartzite limestone
- AGE UNKNOWN - KLONDIKE SCHIST**
- EPK2 Shist, Phyllite, Gneiss
- TINTINA FAULT

FIG 3



WELCOME NORTH MINES LTD.
VANCOUVER, BRITISH COLUMBIA

KEPI CLAIMS

REGIONAL GEOLOGY
YUKON TERRITORY

Work by : Robert Potter	N.T.S. : 105 G
Drawn by : Valri Hutchings	Scale : 250,000
Date : Sept. 1988	Figure :

VI. 1988 PROGRAM

The 1988 exploration program on the Kepi was structured to assess its potential for "Grew Creek type" mineralization or that related to subsidiary structures of the Tintina Fault system. In April of 1988, Aerodat Limited of Toronto conducted a helicopter-borne magnetic, electromagnetic and VLF-EM survey of three blocks of ground southeast of Ross River. Included in the areas covered were Kepi claims.

Flights were made between April 23 and April 27, 1988, along lines oriented at an azimuth of 045-225° at a nominal line spacing of 200 meters and mean terrain clearance of 60 meters. Equipment operated included a three frequency electromagnetic system, a cesium vapor magnetometer, a 2-frequency VLF-EM system, a film tracking camera, a radar positioning system, and an altimeter.

Ground follow-up to the airborne survey was to have included a property wide grid at 400 meter line spacing. Frozen ground conditions forced a reduction in the program to areas of south aspect slope north of Ketzka River. Ground work on the Kepi was carried out by a crew of one geologist, one prospector and five soil samplers during the period May 21 to 28. The program was mobilized by truck from Ross River via the Ketzka River Road.

Initial work consisted of establishing a base-line, by compass and "hip-chain", along the north side of the Ketzka River at an azimuth of 310°. Cross lines were laid out at 400 meter spacing at 040° azimuth. Sample locations are spaced at 50 meters along cross lines. A total of 376 B horizon soil samples were collected from 30.4 kilometers of cross lines on a base line of 7.2 kilometers.

VII. PROPERTY GEOLOGY (Fig. 4)

The southern third of the Kepi claims is underlain by Lower Paleozoic metasediments exposed along the Pelly Mountain front. Rocks here are of Ordovician and Silurian-age, and include black slates, siltstones, and sandstones (OSsl). The main Tintina Fault trace is postulated to lie beneath talus along the base of the mountain front.

Outcrop on the hills north of the Ketzä River is limited to rare outcrops and roadcuts in Tertiary olivine basalt. One small area of rhyolite tuff was located at grid station 37+30N, 32+70E. The rock here is bleached and slightly argillized. No evidence of silicification or quartz veining was found. A sample of this material (S#3277) ran 9 ppm arsenic, 3 ppb gold and 0.6 ppm silver.

No outcrops are known in the valley of the Ketzä River. Tertiary volcanic rocks may occur here between the Tintina Fault and the basalt edge which are masked by a cover of talus and fluvial sediments.

VIII. GEOCHEMISTRY (Fig. 4)

Soil Samples were packed in kraft envelopes and field dried prior to shipping to Min-En Laboratories, North Vancouver, B.C. Preparation and analyses for gold, silver and arsenic were according to procedures outlined in Appendix I.

Only discontinuous, low level anomalies were detected in the three elements considered. The highest arsenic value is 43 ppm at 36N on line 68E. There is no support here from gold or silver. The silver high is 1.4 ppm at 42N on line 52E. Again no coincident highs in the other two elements. The highest gold value of 500 ppb was from a sample taken at 44+50N, 100E. Follow-up sampling at this site on a 50 x 25 meter grid surrounding the high value neither extended the anomaly nor repeated the earlier result.

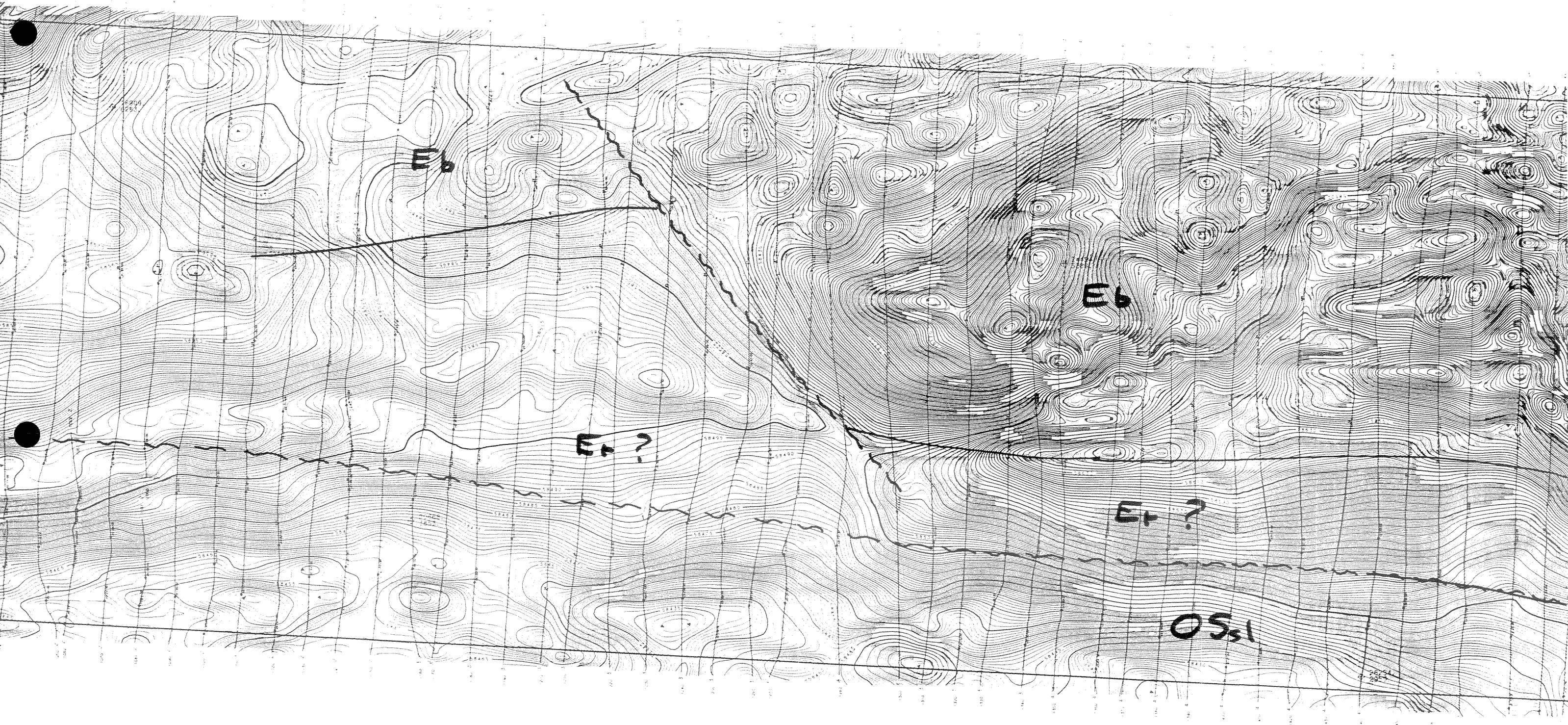
One area of possible significance is that covering the north ends of lines 76, 80, 84 and 88 east. Several "high" silvers (+1.0 ppm), two golds (+20 ppb), and one arsenic (+30 ppm) are located here.

IX. GEOPHYSICS (See de Carle Report)

The total field magnetic map (4-J8843-1) shows much of the northern area of the claims to be magnetically complex. This very broken magnetic terrain is at least in part underlain by Tertiary basalt. The southern edge of the basalt is interpreted as the line of abrupt smoothing of the magnetic terrain. The basalts appear to be offset by a northerly striking fault about midway along the claims, with the western block down faulted.

The Paleozoic rocks of the Pelly Mountain front have a low magnetic signature. The electromagnetic response of this area is one of numerous narrow northwest striking conductors which is consistent with a thick sequence of bedded carbonaceous and locally pyritic metasediments (Map 3 J8843-1). The northern edge of high electromagnetic activity coincides approximately with the foot of the mountain front and is interpreted trace of the Tintina Fault.

Between the Paleozoic front (Tintina Fault) and the southern edge of the basalts lies a corridor of smooth magnetic signature and low electromagnetic response. To the east above Starr Creek, Tertiary rhyolite occurs within this interval. It is therefore possible that rhyolite may occur along this feature on Kevi claims. At Starr Creek the rhyolite is characterized by high resistivity (6J8843-3). Resistivity highs along the Kevi corridor could therefore be interpreted as near surface rhyolite.



Flight Path

Navigation and recovery using
Orion Mini Ranger (MRS III)
air navigation system.
Track in clearance 60m
spacing 200m

Magnetics

Total Field Magnetic intensity
contours in nT.
Custom high sensitivity
magnetometer.
Sensor elevation 45m

Map contours are multiples of
those listed below

- 1 nT
- 5 nT
- 10 nT
- 20 nT
- 50 nT

FIG 5

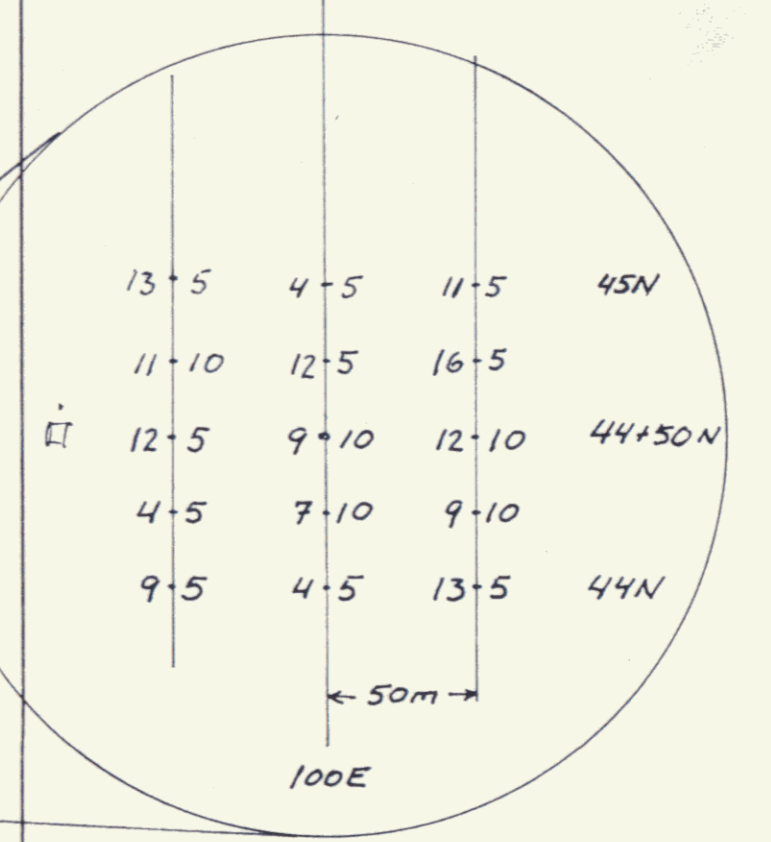
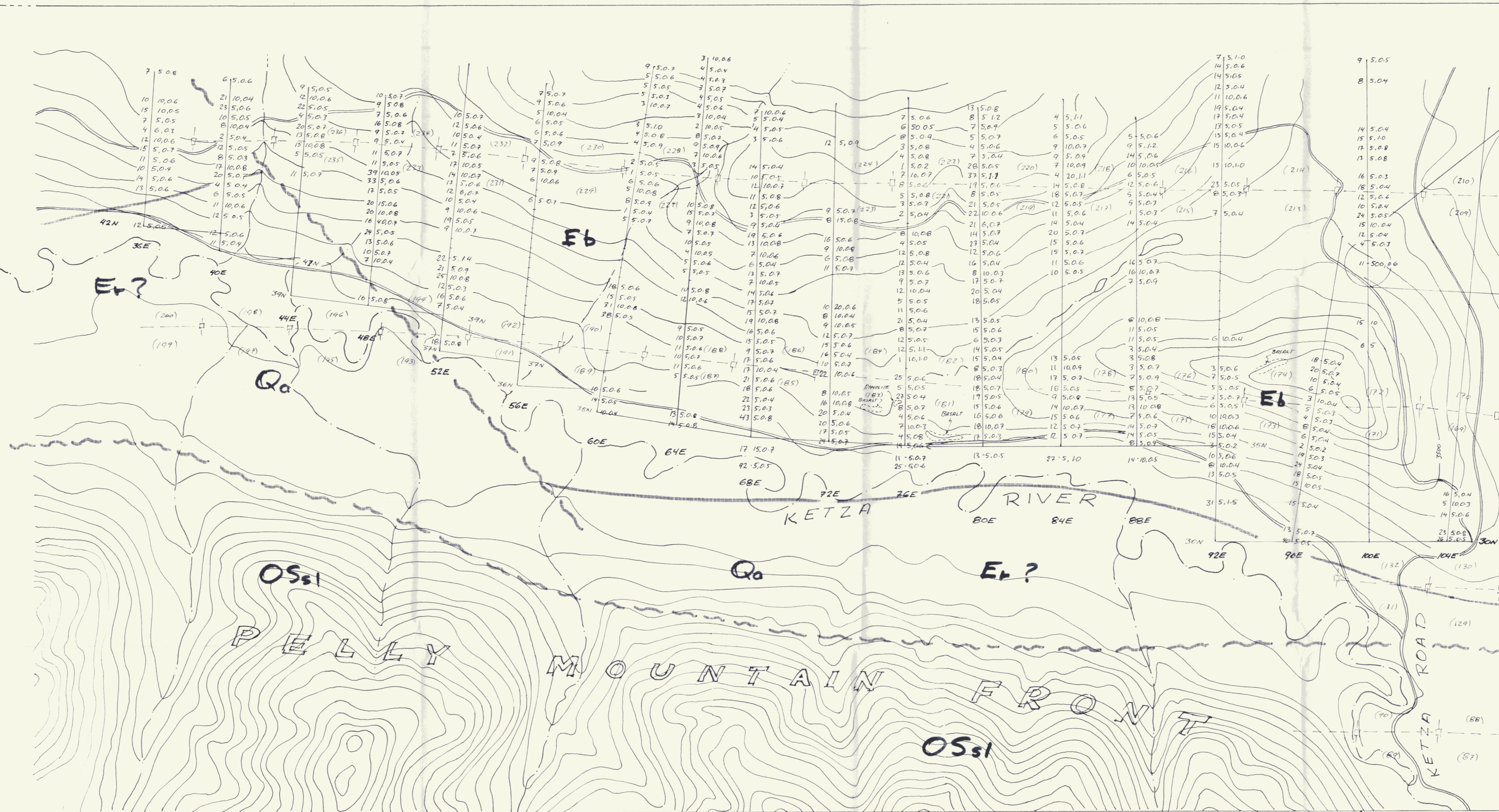
WELCOME NORTH MINES LTD.

TOTAL FIELD MAGNETIC CONTOURS

KEPI CLAIMS
YUKON TERRITORY



AERODAT LIMITED DATE: APRIL 1988
 NTS No: 105 F/9 - /16
 MAP No: 4 J8843-1



DETAIL FOLLOW-UP

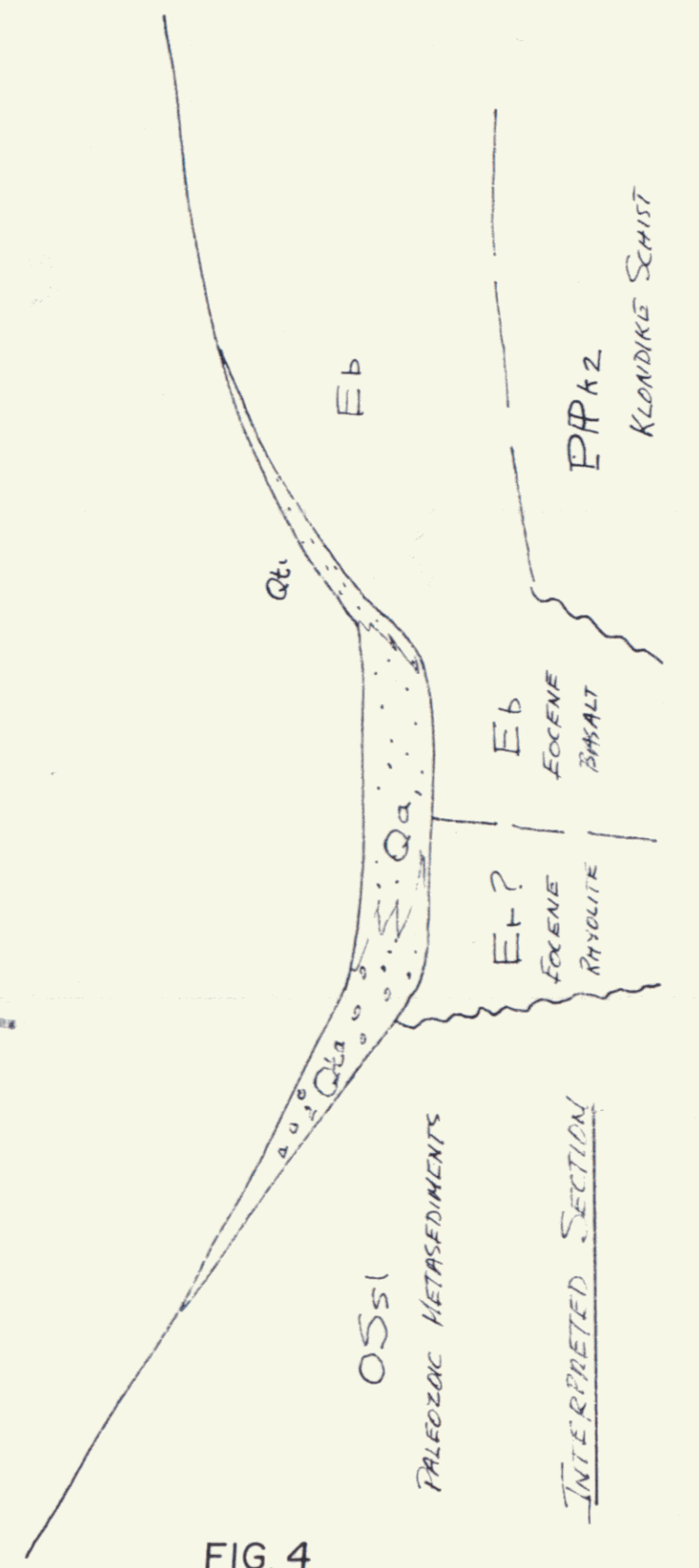
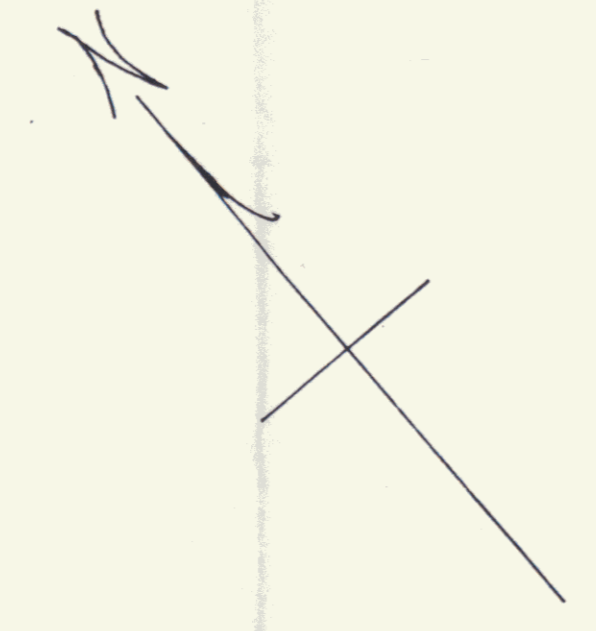


FIG. 4



- QUATERNARY
 - Q_o, t_o Alluvium, till, talus
 - TERTIARY
 - Eocene
 - E_b Olivine Basalt
 - E_r Rhyolite
 - ORDOVICIAN & SILURIAN
 - OSsl Slate, phyllite, siltstone
 - AGE UNKNOWN
 - EPlkz Klondike Schist
- x Rock sample site
 - 34-10.016 Soil Sample Site A₁(ppm) A₂(ppm) A₃(ppm)
 - Δ Stream sediment sample (panned concentrate)
 - (E_b)(E_r) Claim line, posts, claim numbers
 - (B₁)(B₂)

APPROXIMATE LIMIT OF CLAIM BLOCK

16 ACCOMPANY REPORT BY
R. POTTER P. ENG. No. 68

WELCOME NORTH MINES LTD	
KEPI CLAIMS	
GEOLOGY & GEOCHEMISTRY	
(30) 092650	
Work by : R. Potter	Date : Nov., 1988
Drawn by : R. Potter	NTS :
Scale : 1:10,000	

APPENDIX I

ANALYTICAL PROCEDURES

MIN-EN Laboratories Ltd.

Specialists in Mineral Environments

Corner 15th Street and Bewicke
705 WEST 15TH STREET
NORTH VANCOUVER, B.C.
CANADA V7M 1T2

GOLD GEOCHEMICAL ANALYSIS BY MIN-EN LABORATORIES LTD.

Geochemical samples for Gold processed by Min-En Laboratories Ltd., at 705 W. 15th St., North Vancouver Laboratory employing the following procedures.

After drying the samples at 95°C soil and stream sediment samples are screened by 80 mesh sieve to obtain the minus 80 mesh fraction for analysis. The rock samples are crushed and pulverized by ceramic plated pulverizer.

A suitable sample weight 5.0 or 10.0 grams are pretreated with HNO_3 and HClO_4 mixture.

After pretreatments the samples are digested with Acqua Regia solution, and after digestion the samples are taken up with 25% HCl to suitable volume.

Further oxidation and treatment of at least 75% of the original sample solutions are made suitable for extraction of gold with Methyl Iso-Butyl Ketone.

With a set of suitable standard solution gold is analysed by Atomic Absorption instruments. The obtained detection limit is 0.005 ppm (5ppb).

PHONE 980-5814

MIN-EN Laboratories Ltd.

Specialists in Mineral Environments

Corner 15th Street and Bewicke
705 WEST 15th STREET
NORTH VANCOUVER, B.C.
CANADA

ANALYTICAL PROCEDURE REPORTS FOR ASSESSMENT WORK.

PROCEDURES FOR, Cu, Mo, Cd, Pb, Mn, Ni, Ag, Zn.

Samples are processed by Min-En Laboratories Ltd. at 705 W. 15th St., North Vancouver Laboratory employing the following procedures.

After drying the samples at 95°C soil and stream sediment samples are screened by 80 mesh sieve to obtain the minus 80 mesh fraction for analysis. The rock samples are crushed by jaw crusher and pulverized by ceramic plated pulverizer.

1.0 gram of the samples are digested for 6 hours with HNO_3 and HClO_4 mixture.

After cooling samples are diluted to standard volume. The solutions are analysed by Atomic Absorption Spectrophotometers.

Copper, lead, zinc, silver, cadmium, cobalt, nickel and manganese are analysed using the CH_2H_2 -Air flame combination but the molybdenum determination is carried out by C_2H_2 - N_2O gas mixture directly or indirectly (depending on the sensitivity and detection limit required) on these sample solutions.

Background corrections for Pb, Ag, Cd upon request are completed.

MIN-EN Laboratories Ltd.

Specialists in Mineral Environments

Corner 15th Street and Bewicke
705 WEST 15TH STREET
NORTH VANCOUVER, B.C.
CANADA V7M 1T2

Analytical Procedure Report for Assessment Work

31 Element ICP

Ag, Al, As, B, Ba, Be, Bi, Ca, Cd, Co, Cu, Fe, K, Li,
Mg, Mn, Mo, Na, Ni, P, Pb, Sb, Sr, Th, U, V, Zn, Ga, Sn, W,
Cr

Samples are processed by Min-En Laboratories Ltd., at
705 West 15th Street, North Vancouver, employing the
following procedures.

After drying the samples at 95°C soil and stream sediment
samples are screened by 80 mesh sieve to obtain the minus
80 mesh fraction for analysis. The rock samples are
crushed by a jaw crusher and pulverized by ceramic
plated pulverizer or ring mill pulverizer.

1.0 gram of the sample is digested for 4 hours with an
aqua regia HClO₄ mixture.

After cooling samples are diluted to standard volume.
The solutions are analysed by computer operated Jarrall
Ash 9000 ICAP or Jobin Yvon 70 Type II Inductively
Coupled Plasma Spectrometers. Reports are formatted and
printed using a dot-matrix printer.

MIN-EN Laboratories Ltd.

Specialists in Mineral Environments

Corner 15th Street and Bewicke
705 WEST 15TH STREET
NORTH VANCOUVER, B.C.
CANADA V7M 1T2

ANALYTICAL PROCEDURE REPORT FOR ASSESSMENT WORK

PROCEDURE FOR ARSENIC:

Samples are processed by Min-En Laboratories Ltd., at 705 West 15th St., North Vancouver Laboratory employing the following procedures.

After drying the samples at 95°C soil and stream sediment samples are screened by 80 mesh sieve to obtain the minus 80 mesh fraction for analysis. The rock samples are crushed by a jaw crusher and pulverized by ceramic plated pulverizer.

1.0 gram of the samples are digested for 6 hours with HN03 and HCL04 mixture.

After cooling samples are diluted to standard volume. A suitable aliquote is taken from the above 1 gram sample solution and the test is carried out by Gutzeit method using Ag CS₂N (C₂H₅)₂ as a reagent. The detection limit obtained is 1. ppm.

MIN-EN Laboratories Ltd.

Specialists in Mineral Environments

Corner 15th Street and Bewicke
705 WEST 15TH STREET
NORTH VANCOUVER, B.C.
CANADA V7M 1T2

ASSESSMENT REPORT FOR:

HEAVY MINERAL SAMPLING AND CONCENTRATIONS.

A large sample is collected from stream sediments or soils big enough to yield a minimum of 0.5 kg of the desired minus fraction. After sieving through any of the sieve mesh sizes they are adapted for the survey. After sieving the samples, the minus fraction is grinded to -80 mesh.

Then 0.4 kg of sample is weighed into a suitable centrifuge containers. The prepared concentrations of liquids are added to obtain a 3.1 specific gravity flotation.

The heavy fractions are then washed cleaned and dried. After drying the samples they are separated. The sink float Heavy Minerals are separated into Magnetic and Non Magnetic fractions and both fractions are weighed. The percent of the Magnetic and non Magnetic fractions are calculated and reported with the analytical data.

The analysis are than carried out in the ususal analytical manner by I.C.P. or A.A. method.

MIN-EN Laboratories Ltd.

Specialists in Mineral Environments

Corner 15th Street and Bewicke
705 WEST 15TH STREET
NORTH VANCOUVER, B.C.
CANADA V7M 1T2

FIRE GOLD GEOCHEMICAL ANALYSIS BY MIN-EN LABORATORIES LTD.

Geochemical samples for Fire Gold processed by Min-En Laboratories Ltd., at 705 W. 15th St., North Vancouver Laboratory employing the following procedures.

After drying the samples at 95°C soil and stream sediment samples are screened by 80 mesh sieve to obtain the minus 80 mesh fraction for analysis. The rock samples are crushed and pulverized by ceramic plated pulverizer.

A suitable sample weight 15.00 or 30.00 grams are fire assay preconcentrated.

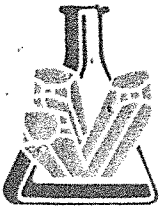
After pretreatments the samples are digested with Aqua Regia solution, and after digestion the samples are taken up with 25% HCl to suitable volume.

Further oxidation and treatment of at least 75% of the original sample solutions are made suitable for extraction of gold with Methyl Iso-Butyl Ketone.

With a set of suitable standard solution gold is analysed by Atomic Absorption instruments. The obtained detection limit is 1 ppb.

APPENDIX II

ANALYTICAL CERTIFICATES



**MINERAL
• ENVIRONMENTAL
LABORATORIES LTD.**

SPECIALISTS IN MINERAL ENVIRONMENTS
CHEMISTS • ASSAYERS • ANALYSTS • GEOCHEMISTS

VANCOUVER OFFICE:
35 WEST 15TH STREET
NORTH VANCOUVER, B.C. CANADA V7M 1T2
TELEPHONE (604) 980-5814 OR (604) 988-4524
TELEX: VIA U.S.A. 7601067 • FAX (604) 980-9621

TIMMINS OFFICE:
33 EAST IROQUOIS ROAD
P.O. BOX 867
TIMMINS, ONTARIO CANADA P4N 7G7
TELEPHONE: (705) 264-9996

Certificate of GEOCHEM

Company: WELDCOME NORTH MINES
Project: ROSS RIVER - 6 *KEPI (TINTINA)*
Attention: J. BROCK/R. POTTER

File: 8-588/P26
Date: MAY 28/88
Type: SOIL GEOCHEM

We hereby certify the following results for samples submitted.

Sample Number	AG PPM	AS PPM	AU-WET PPB
LK-100E 44+50N	0.6	11	500
LK-100E 45+50N	0.3	4	5
LK-100E 46+00N	0.4	12	5
LK-100E 46+50N	0.4	15	10
LK-100E 47+00N	0.5	24	5

LK-100E 47+50N	0.4	10	5
LK-100E 48+00N	0.6	12	5
LK-100E 48+50N	0.4	18	15
LK-100E 49+00N	0.3	16	5
LK-100E 50+00N	0.8	13	5

LK-100E 50+50N	0.8	17	5
LK-100E 51+00N	1.0	15	5
LK-100E 51+50N	0.4	14	5
LK-100E 54+00N	0.4	8	5
LK-100E 55+00N	0.6	9	5

LK-104E 30+00N	0.5	26	5
LK-104E 30+50N	0.8	23	5
LK-104E 31+50N	0.6	14	5
LK-104E 32+00N	0.3	5	10
LK-104E 32+50N	0.4	16	5

Certified by

MIN-EN LABORATORIES LTD.



**MINERAL
• ENVIRONMENTAL
LABORATORIES LTD.**

SPECIALISTS IN MINERAL ENVIRONMENTS
CHEMISTS • ASSAYERS • ANALYSTS • GEOCHEMISTS

VANCOUVER OFFICE:
705 WEST 15TH STREET
NORTH VANCOUVER, B.C. CANADA V7M 1T2
TELEPHONE (604) 980-5814 OR (604) 988-4524
TELEX: VIA U.S.A. 7601067 • FAX (604) 980-9621

TIMMINS OFFICE:
33 EAST IROQUOIS ROAD
P.O. BOX 867
TIMMINS, ONTARIO CANADA P4N 7G7
TELEPHONE: (705) 264-9996

Certificate of GEOCHEM

Company: WELCOME NORTH MINES
Project: ROSS RIVER-6 *KCP1*
Attention: J. BROCK/R. POTTER

File: 8-610/P1
Date: JUNE 7/88
Type: SOIL GEOCHEM

We hereby certify the following results for samples submitted.

Sample Number	AG PPM	AS PPM	AU-WET PPF
LKBOE 3450N	0.5	13	5
LKBOE 3550N	0.5	17	5
LKBOE 3600N	0.7	18	10
LKBOE 3650N	0.8	16	5
LKBOE 3700N	0.6	15	5
LKBOE 3750N	0.5	19	5
LKBOE 3800N	0.7	18	5
LKBOE 3850N	0.4	18	5
LKBOE 3900N	0.3	8	5
LKBOE 3950N	0.4	15	5
LKBOE 4000N	0.5	14	5
LKBOE 4050N	0.3	6	5
LKBOE 4100N	0.6	15	5
LKBOE 4150N	0.5	13	5
LKBOE 4250N	0.5	18	5
LKBOE 4300N	0.4	20	5
LKBOE 4350N	0.7	17	5
LKBOE 4400N	0.3	8	10
LKBOE 4450N	0.4	16	5
LKBOE 4500N	0.6	12	5
LKBOE 4550N	0.4	23	5
LKBOE 4600N	0.7	14	5
LKBOE 4650N	0.5	21	5
LKBOE 4700N	0.6	22	10
LKBOE 4750N	0.5	21	5
LKBOE 4800N	0.5	8	5
LKBOE 4850N	0.6	19	5
LKBOE 4900N	1.1	37	5
LKBOE 4950N	0.5	28	5
LKBOE 5000N	0.4	7	5

Certified by _____

MIN-EN LABORATORIES LTD.



**MINERAL
ENVIRONMENTAL
LABORATORIES LTD.**

SPECIALISTS IN MINERAL ENVIRONMENTS
CHEMISTS • ASSAYERS • ANALYSTS • GEOCHEMISTS

VANCOUVER OFFICE:
705 WEST 15TH STREET
NORTH VANCOUVER, B.C. CANADA V7M 1T2
TELEPHONE (604) 980-5814 OR (604) 988-4524
TELEX: VIA U.S.A. 7601067 • FAX (604) 980-9621

TIMMINS OFFICE:
33 EAST IROQUOIS ROAD
P.O. BOX 867
TIMMINS, ONTARIO CANADA P4N 7G7
TELEPHONE: (705) 264-9996

Certificate of Geochem

Company: WELCOME NORTH MINES
Project: ROSS RIVER-6 *KEPI*
Attention: J. BROCK/R. POTTER

File: 8-610/P2
Date: JUNE 7/88
Type: SOIL GEOCHEM

We hereby certify the following results for samples submitted.

Sample Number	AG PPM	AS PPM	AI-WET PPB
LK80E 5050N	0.6	4	5
LK80E 5100N	0.7	5	5
LK80E 5150N	0.9	7	5
LK80E 5200N	1.2	8	10
LK80E 5250N	0.8	13	5
LK84E 3450N	1.0	27	5
LK84E 3550N	0.7	12	5
LK84E 3600N	0.9	12	5
LK84E 3650N	0.6	15	5
LK84E 3700N	0.7	14	10
LK84E 3750N	0.8	9	5
LK84E 3800N	0.6	18	5
LK84E 3850N	0.7	17	5
LK84E 3900N	0.9	11	10
LK84E 3950N	0.5	13	5
LK84E 4400N	0.5	10	5
LK84E 4450N	0.6	11	5
LK84E 4500N	0.7	15	5
LK84E 4550N	0.6	15	5
LK84E 4600N	0.7	20	5
LK84E 4650N	0.4	14	5
LK84E 4700N	0.6	11	5
LK84E 4750N	0.5	12	5
LK84E 4800N	0.7	18	5
LK84E 4850N	0.8	14	5
LK84E 4900N	1.1	4	20
LK84E 4950N	0.9	7	10
LK84E 5000N	0.9	9	5
LK84E 5050N	0.7	9	10
LK84E 5100N	0.5	6	5

Certified by _____

MIN-EN LABORATORIES LTD.



**MINERAL
• ENVIRONMENTAL
LABORATORIES LTD.**

SPECIALISTS IN MINERAL ENVIRONMENTS
CHEMISTS • ASSAYERS • ANALYSTS • GEOCHEMISTS

VANCOUVER OFFICE:
705 WEST 15TH STREET
NORTH VANCOUVER, B.C. CANADA V7M 1T2
TELEPHONE (604) 980-5814 OR (604) 988-4524
TELEX: VIA U.S.A. 7601067 • FAX (604) 980-9621

TIMMINS OFFICE:
33 EAST IROQUOIS ROAD
P.O. BOX 867
TIMMINS, ONTARIO CANADA P4N 7G7
TELEPHONE: (705) 264-9996

Certificate of Geochem

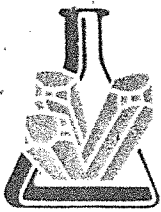
Company: WELCOME NORTH MINES
Project: ROSS RIVER-6 *KEPI*
Attention: JOHN BROCK

File: 8-610/P3
Date: JUNE 7/88
Type: SOIL GEOCHEM

We hereby certify the following results for samples submitted.

Sample Number	AB PPM	AS PPM	AI-WET PFB
LK84E 5150N	0.6	5	5
LK84E 5200N	1.1	4	5
LK88E 3450N	0.5	14	10
LK88E 3500N	0.9	6	5
LK88E 3550N	0.5	4	5
LK88E 3600N	0.7	14	5
LK88E 3650N	0.6	7	5
LK88E 3700N	0.8	13	10
LK88E 3750N	0.5	13	5
LK88E 3800N	0.7	8	5
LK88E 3850N	0.9	7	5
LK88E 3900N	0.7	3	5
LK88E 3950N	0.8	3	5
LK88E 4000N	0.4	3	5
LK88E 4050N	0.5	11	5
LK88E 4100N	0.5	11	5
LK88E 4150N	0.8	8	10
LK88E 4400N	0.9	7	5
LK88E 4450N	0.7	16	10
LK88E 4500N	0.7	16	5
LK88E 4700N	0.5	14	5
LK88E 4700N (DUP.)	0.8	12	5
LK88E 4750N	0.3	1	5
LK88E 4800N	0.3	5	5
LK88E 4850N	0.4	5	5
LK88E 4900N	0.6	12	5
LK88E 4950N	0.5	6	5
LK88E 5000N	0.5	10	10
LK88E 5050N	0.6	14	5
LK88E 5100N	1.2	9	5

Certified by



**MINERAL
• ENVIRONMENTAL
LABORATORIES LTD.**

SPECIALISTS IN MINERAL ENVIRONMENTS
CHEMISTS • ASSAYERS • ANALYSTS • GEOCHEMISTS

VANCOUVER OFFICE:
705 WEST 15TH STREET
NORTH VANCOUVER, B.C. CANADA V7M 1T2
TELEPHONE (604) 980-5814 OR (604) 988-4524
TELEX: VIA U.S.A. 7601067 • FAX (604) 980-9621

TIMMINS OFFICE:
33 EAST IROQUOIS ROAD
P.O. BOX 867
TIMMINS, ONTARIO CANADA P4N 7G7
TELEPHONE: (705) 264-9996

Certificate of Geochem

Company: WELCOME NORTH MINES
Project: ROSS RIVER--6 *KEPI*
Attention: J. BROCK/R. POTTER

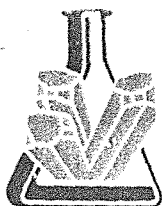
File: 8-610/P4
Date: JUNE 7/88
Type: SOIL GEOCHEM

We hereby certify the following results for samples submitted.

Sample Number	AG PPM	AS PPM	AU-WET PPB
LK88E 5150N	0.6	5	5
LK92E 3200N	1.5	31	5
LK92E 3350N	0.5	13	5
LK92E 3400N	0.4	8	10
LK92E 3450N	0.6	10	5
LK92E 3500N	0.2	3	5
LK92E 3550N	0.4	15	5
LK92E 3600N	0.6	18	10
LK92E 3650N	0.3	10	10
LK92E 3700N	0.5	6	5
LK92E 3750N	0.7	3	5
LK92E 3800N	0.5	5	5
LK92E 3850N	0.9	7	5
LK92E 3900N	0.6	3	5
LK92E 4050N	0.4	6	10
LK92E 4800N	0.4	7	5
LK92E 4850N	0.3	8	5
LK92E 4900N	0.5	23	5
LK92E 4950N	1.0	15	10
LK92E 5050N	0.6	15	10
LK92E 5100N	0.4	15	5
LK92E 5150N	0.5	13	5
LK92E 5200N	0.4	17	5
LK92E 5250N	0.4	19	5
LK92E 5300N	0.6	11	10
LK92E 5350N	0.4	12	5
LK92E 5400N	0.5	14	5
LK92E 5450N	0.6	14	5
LK92E 5500N	1.0	7	5
LK96E 3000N	0.5	40	5

Certified by

MIN-EN LABORATORIES LTD.



**MINERAL
ENVIRONMENTAL
LABORATORIES LTD.**

SPECIALISTS IN MINERAL ENVIRONMENTS
CHEMISTS • ASSAYERS • ANALYSTS • GEOCHEMISTS

VANCOUVER OFFICE:
705 WEST 15TH STREET
NORTH VANCOUVER, B.C. CANADA V7M 1T2
TELEPHONE (604) 980-5814 OR (604) 988-4524
TELEX: VIA U.S.A. 7601067 • FAX (604) 980-9621

TIMMINS OFFICE:
33 EAST IROQUOIS ROAD
P.O. BOX 867
TIMMINS, ONTARIO CANADA P4N 7G7
TELEPHONE: (705) 264-9996

Certificate of Geochem

Company: WELCOME NORTH MINES
Project: ROSS RIVER-6 KEPI
Attention: J. BROCK/R. POTTER

File: 8-610/P5
Date: JUNE 7/88
Type: SOIL GEOCHEM

We hereby certify the following results for samples submitted.

Sample Number	AG PPM	AS PPM	AU-WET PPB
LK96E 3050N	0.7	13	5
LK96E 3200N	0.4	15	5
LK96E 3300N	0.5	15	10
LK96E 3350N	0.5	18	5
LK96E 3400N	0.4	24	5
LK96E 3450N	0.3	19	5
LK96E 3500N	0.2	2	5
LK96E 3550N	0.4	6	5
LK96E 3600N	0.4	8	5
LK96E 3650N	0.3	4	5
LK96E 3700N	0.6	5	5
LK96E 3750N	0.4	3	10
LK96E 3800N	0.5	6	5
LK96E 3850N	0.4	10	5
LK96E 3900N	0.7	20	5
LK96E 3950N	0.4	18	5
LK96E 4550N	0.3	16	10
LK96E 4700N	0.4	5	5
LK96E 4750N	1.0	20	5
LK96E 4900N	0.5	15	10
LK96E 5000N	0.4	10	5
LK96E 5050N	0.8	13	5
LK96E 5100N	0.3	8	5
LK96E 5150N	0.7	6	5
LK96E 5200N	0.2	2	5
LK96E 5250N	0.4	14	10
LK96E 5300N	0.4	19	5
LK96E 5350N	0.5	11	5
LK96E 5400N	0.4	17	5
LK96E 5450N	0.3	2	5

Certified by



**MIN-EN
LABORATORIES LTD.**

SPECIALISTS IN MINERAL ENVIRONMENTS
CHEMISTS • ASSAYERS • ANALYSTS • GEOCHEMISTS

VANCOUVER OFFICE:
705 WEST 15TH STREET
NORTH VANCOUVER, B.C. CANADA V7M 1T2
TELEPHONE (604) 980-5814 OR (604) 988-4524
TELEX: VIA U.S.A. 7601067 • FAX (604) 980-9621

TIMMINS OFFICE:
33 EAST IROQUOIS ROAD
P.O. BOX 867
TIMMINS, ONTARIO CANADA P4N 7G7
TELEPHONE: (705) 264-9996

Certificate of GEOCHEM

Company: WELCOME NORTH MINES
Project: ROSS RIVER - 6) KEPI
Attention: JOHN BROCK

File: B-630/P10
Date: JUNE 9/88
Type: SOIL GEOCHEM

We hereby certify the following results for samples submitted.

Sample Number	AG PPM	AS PPM	AU-WET PPB
K68E 4550N	0.6	19	5
K68E 4600N	0.4	9	5
K68E 4650N	0.5	3	5
K68E 4700N	0.6	12	5
K68E 4750N	0.8	11	5

K68E 4800N	0.7	12	10
K68E 4850N	0.5	10	5
K36E 44+00N	0.6	13	5

Certified by _____

MIN-EN LABORATORIES LTD.



**MINERAL
ENVIRONMENTAL
LABORATORIES LTD.**

SPECIALISTS IN MINERAL ENVIRONMENTS
CHEMISTS • ASSAYERS • ANALYSTS • GEOCHEMISTS

VANCOUVER OFFICE:
705 WEST 15TH STREET
NORTH VANCOUVER, B.C. CANADA V7M 1T2
TELEPHONE (604) 980-5814 OR (604) 988-4524
TELEX: VIA U.S.A. 7601067 • FAX (604) 980-9621

TIMMINS OFFICE:
33 EAST IROQUOIS ROAD
P.O. BOX 867
TIMMINS, ONTARIO CANADA P4N 7G7
TELEPHONE: (705) 264-9996

Certificate of Geochem

Company: WELCOME NORTH MINES
Project: (RR 6 K Q) **KEPI**
Attention: J. BROCK/R. POTTER

File: B-1009/P2
Date: JULY 30/88
Type: SOIL GEOCHEM

We hereby certify the following results for samples submitted.

Sample Number	AS PPM	AU-WET PPB
K 124E 24+50N	14	5
K 124E 27+50N	27	5
K 124E 28+00N	22	5
K 124E 29+50N	15	5
K 124E 30+00N	19	5

K 99+50E 44+00N	9	5
K 99+50E 44+25N	4	5
K 99+50E 44+50N	12	5
K 99+50E 44+75N	11	10
K 99+50E 45+00N	13	5

K 100E 44+00N	4	5
K 100E 44+25N	7	10
K 100E 44+50N	9	10
K 100E 44+75N	12	5
K 100E 45+00N	4	5

K 100+50E 44+00N	13	5
K 100+50E 44+25N	9	10
K 100+50E 44+50N	12	10
K 100+50E 44+75N	16	5
K 100+50E 45+00N	11	5

K 100E 40+20N	6	5
K 100E 41+40N	15	10

Certified by _____

MIN-EN LABORATORIES LTD.

APPENDIX III

SUMMARY OF EXPENDITURES

KEPI

1988 STATEMENT OF COSTS

	\$
Salaries and Wages	3,874
Geological Consulting	300
Camp Costs - 43 man days @ \$40/day	1,720
Field Supplies - flagging, thread, sample bags, etc.	500
Mobilization	840
Vehicle	676
Geophysics - Airborne (Aerodat) 176/756 x 55,500	12,921
Analyses - Min-En Laboratories - Soils - 376 (Au/Ag/As) @ \$12.00/sample	4,512
Project Management - Planning, field management, reporting	<u>2,711</u>
Total:	<u><u>28,054</u></u>

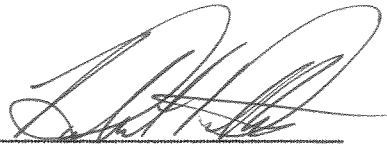
APPENDIX IV

ENGINEER'S CERTIFICATE

I, Robert G. Potter of 150 Andrew Place, Fulford Harbour, in the Province of British Columbia, Canada, DO HEREBY CERTIFY that:

1. I am a consulting Geological Engineer.
2. I am a graduate of the University of British Columbia (B.A.Sc. 1961) and of McGill University (M.Sc. Applied 1972).
3. I am a member in good standing of the Association of Professional Engineers of British Columbia.
4. This report is based on the results of work carried on under my direct supervision and on available published data.
5. I have no interest in the Kepi property or in other properties or securities of Welcome North Mines Ltd. nor do I expect to receive any.

Dated at Vancouver, British Columbia this 9th day of December, 1988.



Robert G. Potter, P.Eng.

APPENDIX V

REFERENCES

- Archer Cathro and Associates: Northern Cordilleran Mineral Inventory.
- Boyle, R.W., 1979: The Geochemistry of Gold and Its Deposits. G.S.C. Bull. 280.
- Buisson, G., and LeBlanc, M., 1986: Gold-bearing Listwaenites (carbonatized ultramafic rocks) in Ophiolite Complexes, in Metallogeny of basic and ultrabasic rocks: London Institute Mining Metallurgy, p. 121-132.
- Duke, J.L., and Godwin, C.I., 1986: Geology and Alteration of the Grew epithermal gold-silver prospect, south-central Yukon, in Yukon Geology Vol. I, D.I.A.N.D.
- Fisher, R.V., and Schmincke, H., 1984: Pyroclastic Rocks: Springer - Verlag.
- Jackson, L.E., et al 1986: Bimodal Paleogene Volcanics near Tintina Fault, East-central Yukon and Their Possible Relationship to Placer Gold, in Yukon Geology Vol. I, D.I.A.N.D.
- Templeman-Kluit, D., et al, 1977: Compilation of the Geology of Quiet Lake (105F) and Finlayson Lake (105G). G.S.C. Open File 486.

APPENDIX VI

LIST OF PERSONNEL

(KEPI CLAIMS)

Robert Etzel (Prospector), General Delivery Ross River, Yukon
Period Worked: May 23 to 26, 1988

Ron Etzel (Soil Sampler), General Delivery, Ross River, Yukon
Period Worked: May 22 to 28, 1988

Jeff Franke (Soil Sampler), 320-192 Street, Surrey, B.C.
Period Worked: May 21, 22, 23, 25, 1988
July 5, 8, 9, 1988

Mike Heino (Prospector), 43 Jean Street, Sudbury, Ontario
Period Worked: July 5, 1988

Don Lang (Soil Sampler), 91 Machleary Street, Nanimo, B.C.
Period Worked: May 24, 25, 27, 1988

Naomi Potter (Cook), R.R. 1, Fulford Harbour, B.C.
Period Worked: May 22 to 26, 1988

Robert Potter (Geologist & Proj. Mgr.), R.R. 1, Fulford Harbour,
B.C.
Period Worked: May 27, 28, 1988

Jack Speed (Soil Sampler), Box 1033, Ganges, B.C.
Period Worked: May 22 to 29, 1988

Bruce Williams (Prospector), R.R. 1, Fulford Harbour, B.C.
Period Worked: May 22 to 26, 1988