

MAP NO. ASSESSMENT REPORT X DOCUMENT NO.: 092630
PROSPECTUS MINING DISTRICT: Whitehorse
CONFIDENTIAL X TYPE OF WORK: Geochemical
105 D 3 OPEN FILE

REPORT FILED UNDER: Ezee Golds Ltd

DATE PERFORMED: 17, 18, 24, 25 September, 1988 DATE FILED: 19 December, 1988

LOCATION: LAT.: 62 05'N AREA: Faro

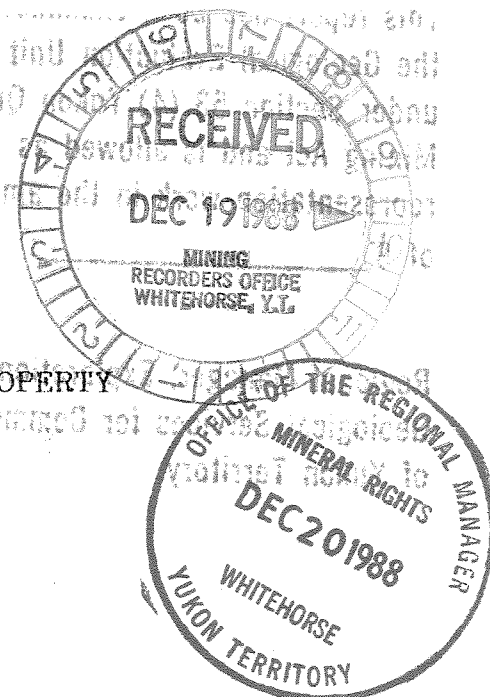
LONG.: 133 08'W VALUE \$: 2400.00

CLAIM NAME & NO.: CES 3-28 (YB08374-99)

WORK DONE BY: S.B. Cheeseman

WORK DONE FOR: Ezee Golds Ltd

DATE TO GOOD STANDING	REMARKS:
	Adjoins #73 SIR JOHN A
	In 1988, 67 soil samples were taken for ICP analysis. Anom-
	alous values up to 70 ppb Hg, 219 ppm Pb, 2212 ppm Zn and 1.1
	ppm Ag were clustered in the northeast corner of the claim
	block.



GEOCHEMICAL REPORT ON THE CES PROPERTY
Whitehorse Mining District
Yukon Territory

N.T.S. 105K-3

Latitude: 62° 05'
Longitude: 133° 08'

Field work completed September 1988

For: Ezee Golds Ltd.
General Delivery
Ross River, Yukon
Y0B 1S0

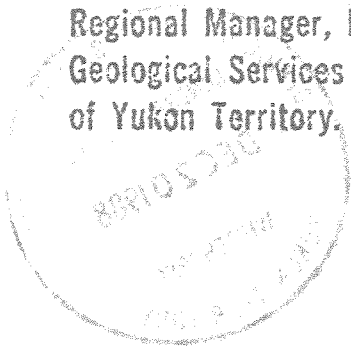
By: Stephen B. Cheeseman

Date: December 1988

09 2630

THIS report has been submitted to
the Geological Evaluation Unit
under Section 53 (4) Yukon Quartz
Mining Act and is allowed as
representation work in the amount
of \$ _____.

Regional Manager, Exploration and
Geological Services for Commissioner
of Yukon Territory.



CONTENTS

INTRODUCTION.....	1
LOCATION AND ACCESS.....	1
PHYSIOGRAPHY.....	1
PROPERTY DEFINITION.....	3
PREVIOUS WORK.....	3
PERSONNEL.....	7
GEOLOGY.....	8
Regional Geology.....	8
Local Geology.....	9
Structure and Mineralization.....	11
GEOCHEMISTRY.....	12
Procedure.....	12
Results.....	12
Analysis.....	17
SUMMARY AND RECOMMENDATION.....	18
STATEMENT OF COST.....	19
REFERENCES.....	20
STATEMENT OF QUALIFICATIONS.....	21
APPENDIX I.....	22
APPENDIX II.....	30

LIST OF FIGURES

Figure 1	Location of CES property.....	2
Figure 2	Geology map of Faro, Ross River trend with showings.....	4
Figure 3	Claim map showing geochemical lines.....	6
Figure 4	Stratigraphic section.....	10

LIST OF TABLES

Table I	Geochemical assay data.....	13
Table II	Geochemical assay data for mercury.....	15
Table III	Statistical data for seven selected elements...	16

APPENDICES

Appendix I	Contoured maps of data set.....	22
Appendix II	Log-normal probability plots of the data set...	30

INTRODUCTION

In October 1987, the CES claims were staked adjacent to the Lan-Dar claims, following news of high grade silver veins located on the latter claims. Work on the CES claims commenced in September 1988, consisting of a geochemical soil sampling program over a portion of the property. This report outlines the results of the program which was conducted over an area underlain by favourable geology.

LOCATION AND ACCESS

The CES claims are located within the Whitehorse Mining District (Fig. 1), NTS 105K-3 (Latitude 62° 05', Longitude 133° 08'). Access is by foot, either from the Robert Campbell highway - the closest point being 4.8 km (3 mi) northeast of the claims, or by following an exploration road in from the highway along side Elenor Lake to the Dominion Exploration camp, near the Lyn showing (No. 6) and walking southeast 7.2 km (4.5 mi) along the ridge toward the claims. For this project, access was attained by foot from the Dominion Exploration camp.

PHYSIOGRAPHY

The claims are situated on the southwest side of the Tintina Trench on rounded uplands that form a northwest-southeast trend, synchronous to that of the Tintina Trench. These rolling mountains exhibit broad valleys with elevation varying from 2,400 to 5,200 feet. Relief at the subject property varies from 3,400 to 5,200 feet.

Vegetation varies from spruce, jackpine and thick buckbrush along the ridges to spruce, willow trees and thin undergrowth in the valleys. Poorly drained areas have thick undergrowth with willows. North-facing slopes have deep moss and tend to be poorly drained and exposed. The treeline varies from 4,500 to 5,000 feet elevation, depending on exposure. Vegetation above the treeline consists primarily of buckbrush and lichen.

The climate is moderate to extreme with temperatures ranging from +30°C to -60°C. Annual precipitation is approximately 11 inches (28 cm), although higher levels have been recorded in the last three years. Field season may extend from May through October.

Outcrop is scarce, with most exposures limited to higher elevations and northeasterly facing ridges.

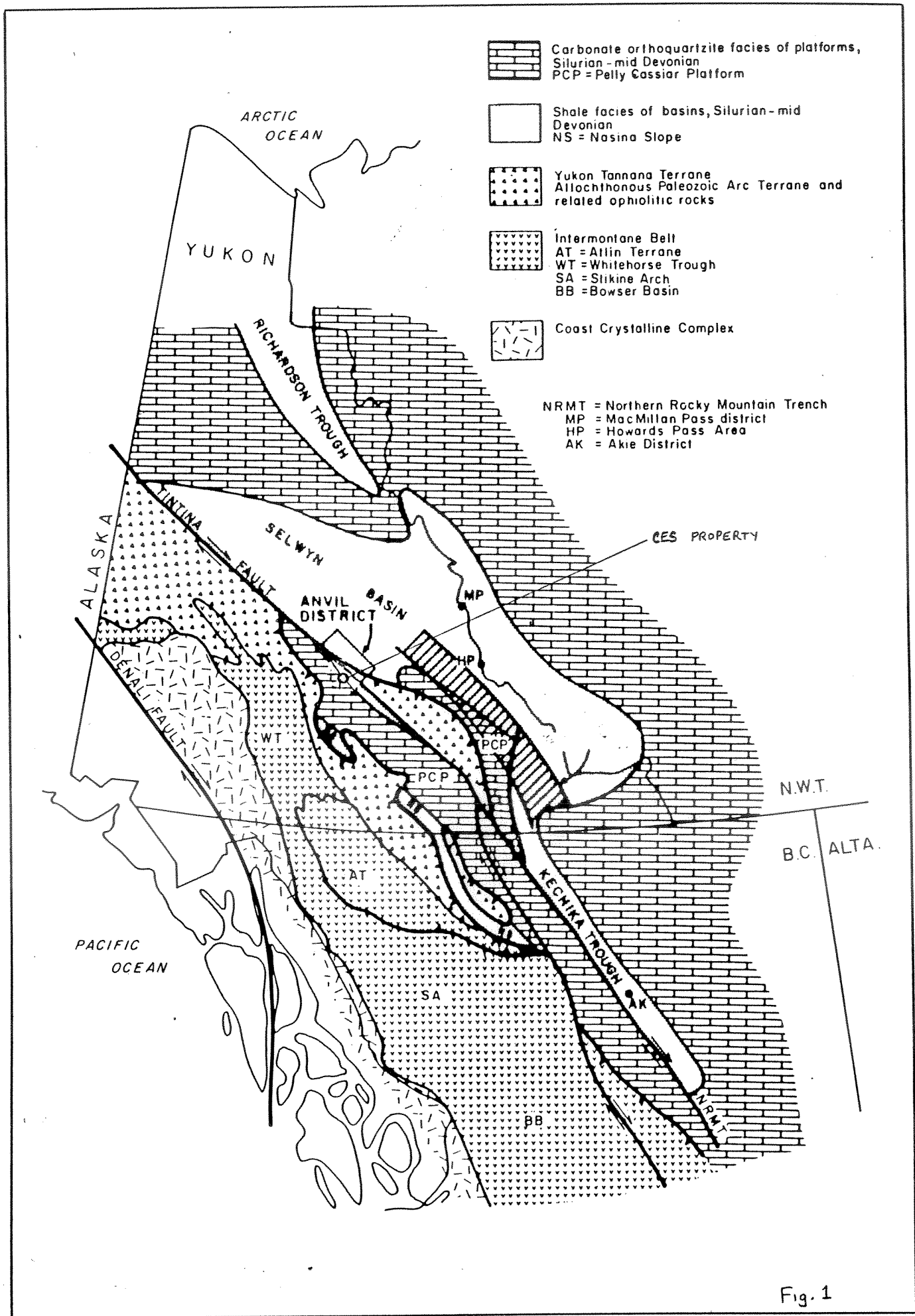


Fig. 1

PROPERTY DEFINITION

The CES property consists of 24 mineral claims:

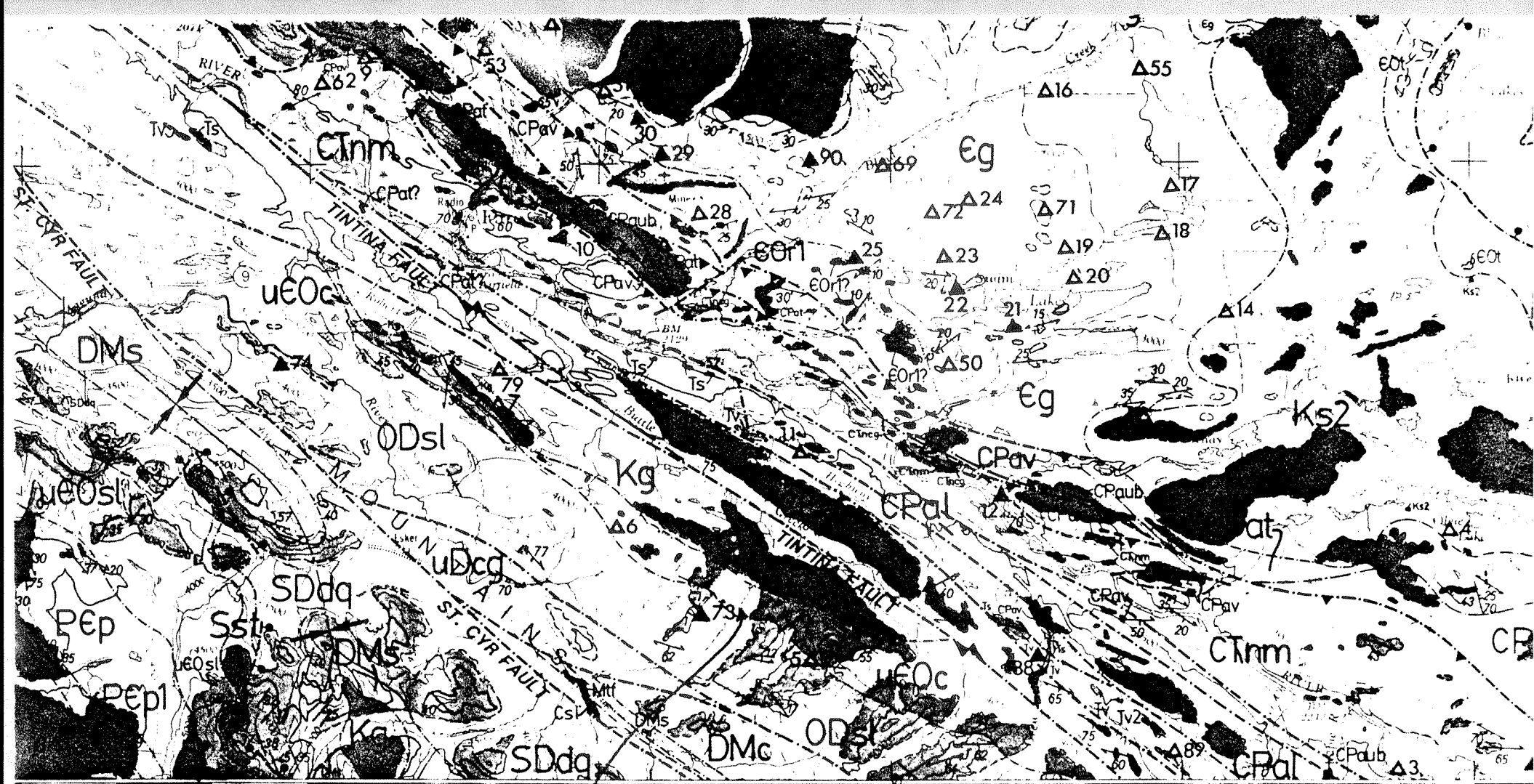
Claim	Tag #
CES 3	YB08374
CES 4	YB08375
CES 5	YB08376
CES 6	YB08377
CES 7	YB08378
CES 8	YB08379
CES 9	YB08380
CES 10	YB08381
CES 11	YB08382
CES 12	YB08383
CES 13	YB08384
CES 14	YB08385
CES 15	YB08386
CES 16	YB08387
CES 17	YB08388
CES 18	YB08389
CES 21	YB08392
CES 22	YB08393
CES 23	YB08394
CES 24	YB08395
CES 25	YB08396
CES 26	YB08397
CES 27	YB08398
CES 28	YB08399

All claims remain in good standing.

PREVIOUS WORK

The subject area, southwest of the Tintina Trench, has received sporadic attention from the 1960's to present day. Mineral occurrences of silver-lead-zinc and precious metals are shown in Figure 2. These showings consist of the Fargo, Lyn and Sir John A. The Fargo and Lyn showings reside southeast and northwest of the subject property, respectively. The CES claims encompass the Sir John A showing.

The Fargo showing was staked in 1966. Ensuing work consisted of geophysical surveys and trenching. In 1977, Getty and Welcome North completed mapping, geochemical soil sampling, EM and mag surveys, 6



CES PROPERTY

MAP 19-1987
 SHEET 2 OF 3
 GEOLOGY

TAY RIVER MAP AREA

YUKON TERRITORY

Scale 1:250 000 - Échelle 1/250 000



x-ray holes and 2 BQ holes. More geophysical surveys were carried out in 1978. The Fargo, lead-zinc-silver showing, was found to occur in two east-trending steeply north-dipping parallel fault zones approximately 25 feet apart in Lower Cambrian phyllites. Massive bands of galena and sphalerite were also identified in the overlying correlatable Road River Formation (Ordovician-Silurian age). Both vein-type and skarn mineralization was recorded. The best vein assayed at 30.7% Pb, 0.1% Zn and 4.6 oz/ton Ag across 40 inches (Archer, Cathro & Associates Ltd., 1987).

The Lyn showing was first staked in 1969. Subsequent work consisted of geochemical and gravity surveys and 3 holes in 1971. Additional geochemical surveys were completed in 1978-79 by Getty and Welcome North. A gravity survey conducted by Sunexco Energy Corp. was performed in 1981. The area was then restaked in 1986-87 by Lan-Dar Mining Corp. who later agreed to an option to purchase agreement by Dominion Explorers Inc. A combined geological, geochemical and geophysical survey, trenching and diamond drilling program was planned for 1988. Mineralization is seen to cut moderately- to steeply-dipping silicate gneiss/chloritic schist in veins (Archer, Cathro & Associates Ltd., 1987). High silver-lead values in veins striking north-south appear to be receiving most attention. It is estimated that eight of these veins averaging 1 foot across have been uncovered by recent trenching (Jim Murnion, pers. comm., 1987).

The Sir John A showing resides at the north-western end of the CES property (see Fig. 2). This area was staked in 1977 by Getty and Welcome North. Mapping, geochemical soil sampling, magnetics and EM surveys were carried out with 5 x-ray holes in 1977-78. Geologists found sphalerite and minor pyrrhotite occurrences as laminations and disseminations within bands up to 2 inches thick at three separate stratigraphic horizons. Sphalerite and galena laminations were found in Lower Cambrian impure marble and calcareous phyllite and biotite-garnet schist. A second occurrence at 200 feet higher in the stratigraphic interval, shows minor sphalerite-galena in siderite-pyrrhotite-magnetite-garnet-actinolite skarns developed in calcareous beds within a graphitic biotite schist. The third showing occurs in the Road River sooty limestone and calcareous phyllite. Mineralization is said to be disseminated stratiform. The most encouraging trenched sample assays returned values of only 0.2% Pb and 2.9% Zn across 5 feet (Archer, Cathro & Associates Ltd., 1987).

PERSONNEL

Property work was completed by the following people on the dates indicated:

September 17, 1988:	S. Cheeseman (Geologist) K. Wagantall (Assistant)
September 18, 1988:	S. Cheeseman (Geologist) K. Wagantall (Assistant)
September 24, 1988:	S. Cheeseman (Geologist) K. Wagantall (Assistant)
September 25, 1988:	S. Cheeseman (Geologist) K. Wagantall (Assistant)
December 1, 1988:	S. Cheeseman (Geologist)
December 2, 1988:	S. Cheeseman (Geologist)
December 3, 1988:	S. Cheeseman (Geologist)
December 4, 1988:	S. Cheeseman (Geologist)

GEOLOGY

Regional Geology

The area of interest resides southwest of a geographic and geologic lineament, the Tintina Trench, when from late Cretaceous or early Tertiary time, right lateral movement juxtaposed Cambrian and Ordovician meta-sediments of the Pelly-Cassiar Platform terrane, to the southwest, against rocks of the Selwyn Basin and Anvil Allochthon, to the northeast (Tempelman-Kluit, 1972).

The Anvil District is located at the southwest portion of the Selwyn Basin, northeast of the Tintina Fault (Fig. 1). The District's five ore deposits formed in deep water shales near the ancient continental margin of North America during the Paleozoic. The host rocks have subsequently been subjected to many periods of deformation and metamorphism. Late granitic uplifting and local plutonic emplacement may have assisted in the economic recrystallization of the Anvil ores.

The District is underlain by a thick (2 km) sequence varying from non-calcareous, biotite-muscovite schist to non-calcareous, weakly carbonaceous, muscovite-chlorite phyllites constituting the Mt. Mye Formation. The overlying Vangorda Formation hosts calcareous, weakly carbonaceous quartz±calcite±dolomitic siltstone, interbanded non-calcareous graphitic phyllite, metabasite, phyllitic limestone and muscovite-chlorite pelites. The unit ranges in thickness from 0.5km to 2km. Intercalated and overlying the Vangorda Formation is the Menzie Creek Formation. This unit (0-1.5km in thickness) consists of a basaltic metavolcanic suite of pillowed and massive flows, interbanded with siltstones, slates and phyllites containing lower Ordovician to lower Silurian graptolite fauna, suggesting correlation with the widespread Road River Formation (black shale and chert) to the northeast (Tempelman-Kluit, 1972).

The five district stratiform pyritic zinc-lead-silver-barite deposits straddle the boundary between the My. Mye and Vangorda Formations in a 150 metre interval, associated with anomalous thicknesses of graphitic phyllites. The five deposits, the Faro (No. 34), Grum (No. 30), Vangorda (No. 29), Dy (just located southeast of No. 28 - not at No. 90 as S.P. Gordey's Tay River map indicates), and Swim (No. 25), had a pre-mining geological reserves of 120 million tonnes at 3.7% Pb, 5.6% Zn and approximately 45-50 g/t Ag. In plan, they follow a curvilinear trend on the south flank of the Anvil Batholith. The emplacement of the batholith is believed to have occurred during the collision of the Yukon Tanana Terrane with the North American continental margin (Jennings and Jilson, 1986). Bounded by the Tintina fault to the southwest and the Vangorda fault to the northeast, the Yukon Tanana Terrane lies between the Pelly-Cassiar Terrane and the Anvil District respectively.

Southwest of the Tintina Fault, sedimentary rocks of the Pelly-Cassiar Terrane dominate. These Cambro-Ordovician to Devonian rocks are characterized by shallow water limestone, dolomite and quartz sandstone that have been locally metamorphosed to slate, biotite, sericitic and chloritic schists, phyllites and garnet-bearing gneisses. The degree of metamorphism varies, as in the Anvil District, with facies changes related to the proximity of intrusives. Such mid-Cretaceous intrusives consist of stocks, dykes, sills and plugs that weather grey, are locally foliated and range in composition from granite, granodiorite, to biotite ± hornblende diorite.

Of interest is a mid-Eocene felsic tuff, interbedded coarse clastic sediments, basaltic flows and basaltic volcanoclastic rocks that form a graben structure between the Danger Creek and Grew Creek Faults. The Grew Creek epithermal gold prospect (No. 88) shows gold, electrum, pyrite and silver selenide to be related to silicic, argillic, limonitic and hematitic alteration in a felsic tuff (Duke and Godwin, 1984). A mineralized zone has been discovered at depth, but reserves have not yet been confirmed.

Local Geology

The CES claims are largely underlain by thinly-laminated Cambro-Ordovician calcareous shales and silty limestones (uEOc). These rocks appear grey on fresh surfaces but weather orange to orange-brown in colour. This assemblage is the dominant rock-type that hosts the Lyn showing (No. 6).

Overlying the calcareous shales and limestones is a siliceous, graphitic, pyritic slate (ODsl). This Ordovician to Devonian unit may be 1km thick and can be seen in contact with the Cambro-Ordovician shales and limestones at the southwest portion of the CES claims. This contact generally strikes northwest-southeast, parallel to the Tintina Fault. The Sir John A showing (No. 73) is located at the southwest end of the CES property (Lat: 62° 05', Long: 133° 09') in Cambro-Ordovician black shales.

Stratigraphically above this unit is an assemblage of medium to dark grey limestone (DMc) with minor intercalations of calcareous shale. A limestone conglomerate (uDcg) resides further to the west, but it is uncertain as to its stratigraphic significance (Gordey, 1987). This Devonian to Mississippian package is approximately 400 metres thick and crops-out some 5km southwest of the CES claims.

To the north of the property and in contact with the Cambro-Ordovician shales and limestones is mid-Cretaceous biotite ± hornblende diorite, granodiorite, and granite (Kg). These intrusives weather grey and are locally foliated. This late, post-metamorphic intrusive, is adjacent to the Tintina Fault, suggesting that its emplacement was structurally controlled. A list of stratigraphic units is provided in Fig. 4.

SOUTHWEST OF TINTINA FAULT

MID-CRETACEOUS

Kg resistant, grey weathering, locally foliated, biotite ± hornblende diorite, granodiorite, and granite

Between St.Cyr and Tintina Faults

TERTIARY

Tv undivided; Tv1, small stocks and necks of white weathering, flow-banded, rhyolitic, quartz-sanidine porphyry; Tv2, laminated rhyolitic ash-flow tuffs and flows; Tv3, dark grey weathering, locally amygdaloidal, dark grey-green basalt necks and flows

Ts recessive, thick bedded to massive, pebble to boulder chert-quartz conglomerate, chert sandstone and thin bedded, dark brown siltstone and shale

CARBONIFEROUS

Csl recessive, dark grey weathering, thin bedded, interlaminated, buff-yellow siltstone and brown argillite; strongly bioturbated

MISSISSIPPIAN

Mtf resistant, rusty orange weathering, thin bedded, apple green and dark grey chert and cherty tuff

DEVONIAN AND MISSISSIPPIAN

Dms recessive, black weathering with rusty streaks, thin bedded, black siliceous slate and minor interbedded, chert wacke and chert-granule grit

Dmc light grey weathering, thin bedded, fetid, platy, medium to dark grey, crinoidal limestone and buff weathering, thick bedded, medium grey, coarsely crystalline, fetid limestone; minor calcareous slate

uDcg resistant, grey-orange weathering, massive, limestone conglomerate (not shown on stratigraphic cross-section; relations to other map units uncertain)

ORDOVICIAN TO DEVONIAN

ODsl moderately resistant, black weathering, siliceous, graphitic, black siliceous and pyritic slate

CAMBRO-ORDOVICIAN

uEOc buff, orange and orange-brown weathering, thinly interlaminated calcareous shale and silty limestone

(Gordey, 1987)

Fig. 4

Structure and Mineralization

The CES property straddles the contact between Cambro-Ordovician calcareous shales and limestone and Ordovician to Devonian calcareous shales, limestones with intercalated siliceous, graphitic, pyritic slate. Although this contact is not regionally well defined, it is believed to be dipping south-southwest. Both units show slaty cleavage to be moderately- to steeply-dipping towards the south. Undulations in the cleavage orientation may be attributable to moderate open folding.

Local mineralization may be classified into two types. The Pelly-Ridge property (immediately northeast of the Lyn showing) has recently revealed very high grade silver-lead rich veins with minor associated zinc. These veins range in width from a few inches to tens of inches and appear to follow vertical structures that cross-cut the moderate- to steeply-dipping schists and phyllites. The second type is that of the Sir John A showing (No. 73), where sphalerite and minor pyrrhotite occur as laminations and disseminations in bands up to 2 inches thick. Such mineralization is stratigraphically controlled over a 300 foot interval at three separate horizons.

GEOCHEMISTRY

Procedure

A total of 67 samples were collected on the southeastern portion of the CES claims in September, 1988. Each sample was collected by means of a hand auger at 100 metre intervals on 200 metre spaced lines. All samples were taken from below the organic and regionally pervasive volcanic ash layer. At some sites, sample collection was inhibited by deep moss and organics where below a three foot depth, frozen ground was encountered.

Each sample was carefully placed in a paper envelope. Each envelope was marked with a number for identification and a length of flagging tape was secured to a tree at the sample site.

All samples were packaged and shipped to Vangeochem Laboratory Ltd. in Vancouver for analysis. All samples were prepared and analyzed by ICAP for a spectrum of 29 elements.

Results

A multi-element analysis of 67 geochemical samples is presented in Table I. Because of the occurrence of silver in the field at nearby showings, an additional analysis for mercury was requested to evaluate possible silver-mercury correlation and the use of mercury as a pathfinder element for silver-lead veins similar to that of the Pelly-Ridge property to the northwest and along strike with the subject property. These mercury values are listed in Table II.

Visual analysis of this data allowed the selection of geochemically anomalous elements and elements with 'interesting' values. For the purposes of visual and statistical analysis, Ag, Hg, Cu, Fe, Mn, Pb, and Zn were selected. These elements represent the data set for analysis because of the type of parent mineralization that may exist. Discrete metal abundances and inter-correlations may be derived from either vein-type Ag-Pb or Stratiform Zn-Pb mineralization. All other elemental data were not analyzed further.

The data set was plotted by element and contoured. The results are shown in Appendix I. Statistical analyses were performed on all seven elements to evaluate anomalous values and multiple populations. Histograms were produced but not included in this report. The statistical data from these histograms are recorded in Table III. Probability plots were prepared for each element to evaluate the nature of log-normal distributions in the data. These plots are located in Appendix II and are assigned figure numbers for easy reference.

Table I
VANGEOCHEM LAB LIMITED

MAIN OFFICE: 1988 TRIUMPH STREET, VANCOUVER B.C. V5L 1K5 PH: (604)251-5656 TELEX: 04-352578
 BRANCH OFFICE: 1630 PANDORA STREET, VANCOUVER B.C. V5L 1L6 PH: (604)251-7282 FAX: (604)254-5717

ICAP GEOCHEMICAL ANALYSIS

A .5 GRAM SAMPLE IS DIGESTED WITH 5 ML OF 3:1:3 HCL TO HNO3 TO H2O AT 95 DEG. C FOR 90 MINUTES AND IS DILUTED TO 10 ML WITH WATER.
 THIS LEACH IS PARTIAL FOR SN,MM,FE,CA,P,CR,HG,BA,PD,AL,NA,K,U,PT AND SR. AU AND PD DETECTION IS 3 PPM.
 IS= INSUFFICIENT SAMPLE, ND= NOT DETECTED, -= NOT ANALYZED

COMPANY: EZEE GOLDS LTD
 ATTENTION: E WAGANTALL
 PROJECT: CES

REPORT#: 881650 PA
 JOB#: 881650
 INVOICE#: 881650 NA

DATE RECEIVED: 88/10/13
 DATE COMPLETED: 88/11/01
 COPY SENT TO:

ANALYST *Wag*

PAGE 1 OF 2

SAMPLE NAME	AG PPM	AL %	AS PPM	AU PPM	BA PPM	BI PPM	CA %	CD PPM	CO PPM	CR PPM	CU PPM	FE %	K %	HG %	MM PPM	MO PPM	NA %	NI PPM	P %	PB PPM	PD PPM	PT PPM	SB PPM	SM PPM	SR PPM	U PPM	V PPM	ZN PPM
A1	.1	1.84	ND	ND	218	ND	1.07	.7	10	22	33	2.27	.22	.93	466	2	.03	23	.08	59	ND	ND	ND	1	45	ND	ND	269
A2	.1	1.92	ND	ND	207	ND	1.36	.6	10	22	44	2.36	.26	1.14	674	1	.02	25	.09	46	ND	ND	ND	2	49	ND	ND	151
A3	.1	1.67	ND	ND	201	ND	.58	.1	9	19	28	2.07	.15	.83	338	1	.02	21	.04	40	ND	ND	ND	1	37	ND	ND	116
A4	.1	1.71	ND	ND	179	ND	.95	.7	9	22	67	2.14	.20	.74	272	1	.02	26	.07	44	ND	ND	ND	1	44	ND	ND	160
A5	.2	2.37	ND	ND	246	ND	.79	.7	11	30	42	2.49	.19	1.16	347	2	.03	26	.07	48	ND	ND	ND	1	42	ND	ND	147
A6	.2	2.64	ND	ND	300	ND	.88	1.4	12	34	43	2.64	.21	1.50	519	2	.03	33	.09	55	ND	ND	ND	2	54	ND	ND	240
A7	.1	1.82	ND	ND	266	ND	.95	1.5	11	27	64	2.15	.20	.92	274	1	.03	34	.10	44	ND	ND	ND	1	47	ND	ND	182
A8	.2	2.59	ND	ND	349	ND	.75	1.1	13	32	37	2.51	.19	1.40	499	2	.03	33	.10	52	ND	ND	ND	2	46	ND	ND	175
A9	.1	2.34	ND	ND	352	ND	.67	1.2	12	29	45	2.06	.16	1.19	226	2	.02	36	.10	52	ND	ND	ND	1	41	ND	ND	240
A10	.1	2.66	ND	ND	309	ND	.32	.7	9	30	27	2.39	.13	1.09	181	2	.02	26	.04	50	ND	ND	ND	1	20	ND	ND	132
A11	.2	2.48	ND	ND	377	ND	1.32	1.4	12	29	38	2.40	.26	1.41	369	2	.03	34	.11	51	ND	ND	ND	1	64	ND	ND	223
A13	.2	2.32	ND	ND	256	ND	.52	.8	15	30	32	2.48	.16	1.39	495	3	.03	32	.13	57	ND	ND	ND	2	40	ND	ND	192
B1	.1	1.48	ND	ND	204	ND	1.84	1.5	10	23	34	3.07	.35	.72	1279	2	.03	27	.07	63	ND	ND	ND	ND	69	ND	ND	274
(B) 1	.2	2.25	ND	ND	216	ND	.65	.7	11	28	30	2.77	.18	1.02	448	2	.03	23	.11	59	ND	ND	ND	1	37	ND	ND	172
B2	.1	2.14	ND	ND	221	ND	1.31	1.2	10	24	56	2.38	.26	.96	439	1	.03	28	.07	77	ND	ND	ND	1	51	ND	ND	389
(B) 2	.1	2.44	ND	ND	294	ND	.57	.8	11	28	33	2.73	.17	1.14	724	2	.03	29	.10	66	ND	ND	ND	1	35	ND	ND	192
B3	.1	2.36	ND	ND	200	ND	.87	.7	12	31	46	2.53	.20	1.15	516	1	.02	27	.04	62	ND	ND	ND	2	39	ND	ND	131
(B) 3	.1	1.77	ND	ND	210	ND	.55	.8	11	17	23	2.65	.17	.76	572	2	.03	18	.12	50	ND	ND	ND	1	29	ND	ND	178
B4	.1	2.35	ND	ND	232	ND	.93	.6	11	28	31	2.35	.21	1.10	358	2	.03	20	.10	52	ND	ND	ND	1	50	ND	ND	167
(B) 4	.1	1.35	ND	ND	117	ND	.95	.2	10	12	38	1.93	.19	.56	296	1	.02	35	.09	33	ND	ND	ND	1	33	ND	ND	156
B5	.2	1.77	ND	ND	206	ND	.55	.2	9	20	21	2.26	.15	.89	442	1	.03	23	.11	48	ND	ND	ND	2	33	ND	ND	128
B6	.1	2.27	6	ND	244	ND	.77	1.4	13	27	48	3.22	.22	1.14	459	3	.03	29	.12	61	ND	ND	ND	2	40	ND	ND	288
B7	.1	2.08	11	ND	233	ND	.56	1.7	11	25	40	2.80	.17	1.04	469	3	.03	28	.11	53	ND	ND	ND	1	37	ND	ND	221
B8	.2	3.03	ND	ND	393	ND	1.39	1.4	14	38	46	3.01	.29	1.71	620	2	.03	38	.11	73	ND	ND	ND	2	60	ND	ND	268
B9	.7	3.30	ND	ND	321	ND	1.23	1.7	14	36	57	3.04	.27	1.71	625	2	.03	34	.08	56	ND	ND	ND	2	72	ND	ND	330
B10	.1	2.05	ND	ND	281	ND	1.02	.6	9	22	31	2.16	.21	.97	491	1	.02	23	.09	50	ND	ND	ND	1	48	ND	ND	152
B11	.1	1.74	ND	ND	280	ND	1.19	.5	8	19	31	1.94	.23	.79	592	1	.02	24	.10	41	ND	ND	ND	1	59	ND	ND	183
B12	.1	2.37	ND	ND	222	ND	1.54	.2	10	23	38	1.98	.27	1.01	278	1	.02	25	.05	35	ND	ND	ND	1	63	ND	ND	111
C1	.1	1.93	ND	ND	221	ND	.82	.6	11	24	48	2.26	.19	1.09	654	2	.02	29	.09	52	ND	ND	ND	1	35	ND	ND	138
(C) 1	.7	2.09	9	ND	132	ND	1.28	12.3	14	22	89	1.81	.23	.86	614	3	.07	36	.10	219	ND	ND	ND	1	56	ND	ND	1857
C2	.1	2.38	ND	ND	141	ND	1.69	.7	13	30	117	2.22	.30	1.36	628	1	.03	42	.08	50	ND	ND	ND	1	67	ND	ND	135
(C) 2	1.1	3.63	32	ND	359	4	1.32	10.8	19	49	104	2.90	.28	2.91	667	4	.08	47	.08	88	ND	ND	ND	2	70	ND	ND	2212
C3	.1	2.78	ND	ND	328	ND	1.88	1.1	11	30	54	2.03	.32	1.71	404	1	.03	27	.08	50	ND	ND	ND	ND	120	ND	ND	146
(C)3	1.1	4.00	ND	ND	173	3	1.58	.8	16	51	39	3.15	.33	2.59	391	2	.04	25	.11	53	ND	ND	ND	3	148	ND	ND	132
C4	.7	3.45	ND	ND	372	3	.96	2.2	16	44	45	3.01	.23	2.25	578	3	.04	36	.09	106	ND	ND	ND	2	60	ND	ND	349
(C)4	.1	2.18	ND	ND	147	ND	1.04	.3	14	15	20	2.40	.22	1.22	458	1	.02	25	.06	39	ND	ND	ND	1	32	ND	ND	131
C5	.1	2.36	ND	ND	293	ND	.78	.7	11	27	26	2.39	.19	1.21	514	1	.03	20	.06	63	ND	ND	ND	1	46	ND	ND	202
C6	.1	2.31	ND	ND	267	ND	.72	.7	10	27	31	2.34	.18	1.11	413	1	.03	23	.07	58	ND	ND	ND	1	37	ND	ND	170
C7	.2	2.45	8	ND	278	ND	.68	.7	11	29	27	2.61	.18	1.39	458	2	.03	25	.09	62	ND	ND	ND	2	47	ND	ND	192
DETECTION LIMIT	.1	.01	3	3	1	3	.01	.1	1	1	1	.01	.01	.01	1	1	.01	1	.01	2	3	5	2	2	1	5	3	1

SAMPLE NAME	AG PPH	AL %	AS PPH	AU PPH	BA PPH	BI PPH	CA %	CD PPH	CO PPH	CR PPH	CU PPH	FE %	K %	MG %	MN PPH	MO PPH	NA %	NI PPH	P %	PB PPH	PD PPH	PT PPH	SB PPH	SM PPH	SR PPH	U PPH	W PPH	ZH PPH
CB	.1	1.80	5	ND	308	ND	.76	.7	11	22	36	2.11	.17	.85	927	3	.02	25	.10	41	ND	ND	ND	1	42	ND	ND	171
C9	.2	2.14	5	ND	269	ND	.65	.8	10	27	26	2.33	.17	1.18	551	2	.02	24	.10	53	ND	ND	ND	1	42	ND	ND	176
C10	.1	2.15	8	ND	311	ND	.81	1.1	11	25	25	2.41	.19	1.25	545	2	.02	24	.09	47	ND	ND	ND	1	49	ND	ND	206
C11	.1	1.95	3	ND	299	ND	1.08	.8	10	23	32	2.13	.21	.99	566	1	.02	26	.09	43	ND	ND	ND	1	53	ND	ND	183
C12	.2	2.45	4	ND	285	ND	.90	1.7	11	29	40	2.40	.20	1.33	861	3	.02	32	.10	49	ND	ND	ND	1	53	ND	ND	278
C13	.1	2.89	ND	ND	224	3	.94	1.1	14	32	42	2.83	.22	1.55	319	2	.02	34	.08	47	ND	ND	ND	2	45	ND	ND	178
D1	.1	2.05	ND	ND	246	ND	.89	.8	11	26	30	2.48	.20	1.05	697	2	.03	24	.10	158	ND	ND	ND	1	44	ND	ND	306
(D) 1	.2	3.27	ND	ND	279	5	1.12	1.2	17	39	45	3.01	.25	2.94	1018	3	.02	33	.06	46	ND	ND	ND	2	37	ND	ND	112
D2	.1	2.84	ND	ND	172	4	.29	.8	11	31	20	2.75	.13	1.61	276	2	.02	23	.03	57	ND	ND	ND	1	23	ND	ND	166
(D) 2	.7	4.60	ND	ND	468	6	1.27	3.3	14	51	55	3.00	.27	3.46	1066	2	.03	30	.07	72	ND	ND	ND	2	93	ND	ND	322
D3	.7	4.39	ND	ND	253	6	.65	1.2	15	48	33	2.85	.18	2.36	388	2	.03	30	.03	75	ND	ND	ND	2	52	ND	ND	146
(D) 3	.5	2.81	4	ND	214	3	1.69	1.5	13	42	46	2.46	.31	1.66	530	2	.03	34	.08	46	ND	ND	ND	2	113	ND	ND	188
D4	.3	2.39	4	ND	265	ND	1.09	1.2	12	29	39	2.80	.24	1.38	675	2	.03	34	.13	115	ND	ND	ND	2	52	ND	ND	276
(D) 4	.1	1.47	4	ND	146	ND	.99	.5	13	32	38	2.39	.21	.81	1018	2	.02	30	.05	57	ND	ND	ND	1	43	ND	ND	177
D5	.2	2.40	3	ND	285	ND	.90	1.4	12	31	66	2.61	.21	1.32	664	2	.03	36	.12	73	ND	ND	ND	1	47	ND	ND	241
D6	.2	3.01	ND	ND	434	3	2.49	1.2	14	34	53	2.83	.42	2.36	469	2	.03	36	.08	61	ND	ND	ND	1	75	ND	ND	190
D7	.3	2.69	ND	ND	301	ND	.76	.8	11	33	42	2.59	.19	1.40	379	2	.03	28	.07	76	ND	ND	ND	1	45	ND	ND	217
D8	.5	2.83	3	ND	235	ND	.84	2.7	12	31	40	2.29	.19	1.58	492	2	.03	33	.06	69	ND	ND	ND	2	63	ND	ND	610
D9	.3	2.39	4	ND	235	ND	.74	2.1	12	28	48	2.24	.17	1.26	468	3	.02	31	.08	48	ND	ND	ND	2	48	ND	ND	210
D10	.2	2.66	ND	ND	263	ND	1.34	1.2	12	31	59	2.44	.26	1.56	649	1	.02	29	.07	57	ND	ND	ND	1	70	ND	ND	171
D11	.2	2.49	ND	ND	264	3	.78	1.5	11	31	40	2.29	.18	1.40	463	3	.03	38	.09	51	ND	ND	ND	1	53	ND	ND	257
D12	.2	2.68	6	ND	273	ND	.93	.7	12	32	41	2.43	.21	1.40	508	3	.02	34	.07	53	ND	ND	ND	1	54	ND	ND	187
D13	1.1	2.72	4	ND	280	3	.81	1.1	11	31	36	2.47	.19	1.50	318	2	.03	31	.09	57	ND	ND	ND	1	54	ND	ND	242
E1	.2	2.59	ND	ND	363	ND	.83	1.9	12	35	38	2.68	.20	1.80	533	2	.03	28	.06	67	ND	ND	ND	2	44	ND	ND	402
E3	.2	2.96	3	ND	221	ND	.98	1.4	13	31	49	2.49	.22	1.75	540	2	.02	35	.06	49	ND	ND	ND	2	49	ND	ND	307
(E) 3	.7	2.10	ND	ND	372	ND	1.11	3.5	15	46	113	2.90	.25	1.32	821	3	.05	62	.07	67	ND	ND	ND	1	51	ND	ND	397
E4	.1	2.68	8	ND	264	ND	1.29	1.1	11	30	65	2.35	.25	1.67	476	2	.02	28	.09	45	ND	ND	ND	1	58	ND	ND	263
(E) 4	.1	1.75	ND	ND	367	3	1.38	1.7	15	45	107	3.15	.29	1.29	1776	4	.03	48	.14	54	ND	ND	ND	1	52	ND	ND	226
DETECTION LIMIT	.1	.01	3	3	1	3	.01	.1	1	1	1	.01	.01	.01	1	1	.01	1	.01	2	3	5	2	2	1	5	3	1

Table II

REPORT NUMBER: 881650 6A		JOB NUMBER: 881650		EZEE GOLD		PAGE 1 OF 1	
SAMPLE #	Hg ppb	SAMPLE #	Hg ppb				
A1	40	C8	65				
A2	50	C9	50				
A3	25	C10	35				
A4	55	C11	50				
A5	50	C12	55				
A6	45	C13	45				
A7	60	D1	30				
A8	45	(D)1	30				
A9	60	D2	25				
A10	40	(D)2	35				
A11	50	D3	45				
A13	30	(D)3	30				
B1	40	D4	30				
(B)1	40	(D)4	40				
B2	40	D5	45				
(B)2	35	D6	55				
B3	45	D7	60				
(B)3	50	D8	30				
B4	50	D9	30				
(B)4	40	D10	60				
B5	30	D11	40				
B6	55	D12	50				
B7	50	D13	30				
B8	50	E1	30				
B9	50	E3	35				
B10	40	(E)3	40				
B11	55	E4	40				
B12	30	(E)4	40				
C1	55						
(C)1	40						
C2	40						
(C)2	70						
C3	50						
(C)3	30						
C4	40						
(C)4	40						
C5	40						
C6	40						
C7	30						

DETECTION LIMIT

5

nd = none detected

-- = not analysed

is = insufficient sample

Table III

Element	No. of Samples	Class Interval	Mean	Standard Deviation
Zn	67	89.6	287.4	347.7
Pb	67	10.4	60.4	27.1
Ag	67	0.05	0.24	0.25
Fe	67	0.15	2.5	0.33
Cu	67	7.18	44.8	20.6
Mn	67	115.6	552.8	253.7
Hg	67	4.37	42.9	10.3

Values expressed in ppm except Fe which is expressed in % and Hg which is expressed in ppb.

Analysis

The calculated mean values shown in Table III were used as a guide for the lower contour limit in construction of the contour maps. This was done to isolate the higher values in each data element and represents an arbitrary choice such that all values below the mean will be considered as background for that element. Upon visual inspection it is noticed that all seven elements have characteristic highs and that most of the highs are focused in the northeast portion of the sampled area.

Because of the acknowledgement of two different types of mineral occurrences (vein-type and stratiform) in the area, it inherently becomes essential to evaluate the data in terms of possible overlapping of geochemical populations. Analysis of the log-normal probability plots indicates obvious unimodal distributions for Mn, Fe and Hg. For the purposes of illustration, an arbitrary threshold was selected at the 5th and 95th percentile. As discussed later, the choice of a threshold has a significant effect on the interpretation of populations for Pb and Zn.

Analysis of the Ag and Cu probability plot indicates two definite log-normal populations with threshold values of B and A populations at 0.195 ppm and 0.68 ppm respectively for Ag and at 42 ppm and 95 ppm respectively for Cu. It must be noted that although the Ag data set shows a better defined multimodal distribution than the Cu data set, this may not be the true situation because of poor analytical precision of the Ag data values. The Cu values, however, are well above the detection limit for that element. If outliers are removed from the Cu data set (outside the 5th and 95th percentile) then one may feel confident in interpreting only a unimodal (straight line) in fig.7. This reasoning may be applied to the Zn and Pb log-normal probability plots as well. Note that two populations exist when a threshold percentile of 1 and 99 are used. If the 5th and 95th percentiles were chosen, a unimodal distribution may be evident. But because of a small sample set (67), these high values may represent true anomalous values that exist outside the established threshold. A small number of samples implies that greater weight is placed on individual values for each element. Certain error is likely to occur, especially without the preliminary administration of an orientation survey. Cross-sample contamination and analytical drift may have a significant affect on the assayed results.

It should also be mentioned that bivariate statistics were performed on the data set. Poor correlation existed for most element pairs. Only Pb and Zn showed moderate correlation with a correlation coefficient of 0.55.

SUMMARY AND RECOMMENDATION

Clearly, an anomalous area has been outlined. These anomalous samples may be prioritized for follow-up, based on concentration of parent mineral or other anomalous elements. Preliminary follow-up should consist of checking for outcrop mineralization in the field near the anomalous zone. Geographically, this zone has a moderate- to steeply-dipping slope, but outcrop may be scarce.

Another sampling grid should be established over the anomalous zone at a greater sample density with geochemical lines running at 90° to the previous gridlines. If funding permits, a preliminary orientation survey is highly recommended to determine if surficial processes have acted to change the anomalous chemical associations due to different element mobility.

Seven elements were statistically evaluated. Although poor analytical precision existed on a few elements, Hg, Fe and Mn were found to have unimodal distributions which implies single populations. Pb, Zn, Ag, and Cu showed multimodal distributions. This may be a result of different types of mineralization that could exist which have different geochemical signatures. Of the two types of mineralization known in the area (vein-type and stratiform), it may be worthwhile to direct orientation surveys over known showings to determine characteristic geochemical signatures. If the existence of a mobile pathfinder element is identified, then a background characterization approach outlined by Stanley and Sinclair (1987), may prove successful. This technique is a modification of the multiple regression method of Matysek et al. (1982).

The character of anomalous Zn and Pb outlined in this report is possibly related to stratiform mineralization similar to that of the Sir John A showing. Different sample data will have to be analyzed and field inspection must ensue to determine if parent mineralization exists.

STATEMENT OF COST

Wages

1 Geologist, 4 mandays (Sept. 17/18/24/25, 1988) @ \$200/day	\$800.00
1 Geologist, 4 mandays (Sept. 17/18/24/25, 1988) @ \$80/day	\$320.00

Supplies for Camp

Food for 4 days @ \$25/day-person * 2 people	\$200.00
Sample bags, flaging tape, blackmarkers	\$ 30.00

Transportation

Gas from Ross River to hiking point * 2 trips @ \$30/trip	\$ 60.00
Gas from Faro to hiking point * 2 trips @ \$15/trip	\$ 30.00
Rental of ATV @ \$20/day * 4 days	\$ 80.00

Analytical Services

Sample preparation @ \$1.00 ea * 67 samples	\$ 67.00
Hg analysis by ICAP @ \$3.50 ea * 67 samples	\$234.50
ICAP Multi-element analysis @ \$6.50 ea * 67 samples	\$435.50
Shipping	\$ 47.15

Report Preparation

Research and compilation: 1 Geologist @ \$200/day * 4 days	\$800.00
Drafting: 1 day @ \$100/day	\$100.00
Typing: 1 day @ \$70/day	\$ 70.00

Total Cost	=====
	\$3,174.15

REFERENCES

- Archer, Cathro & Associates Ltd, 1987: Northern Cordillera Mineral Inventory.
- Gordey, S.P. and Irwin, S.E.B., 1987: Geology, Sheldon Lake and Tay River map areas, Yukon Territory; Geol. Surv. Can., Map 19-1987, scale 1:250,000.
- Jennings, D.S. and Jilson, G.A., 1986: Geology and sulphide deposits of Anvil Range, Yukon; C.I.M.M. Special Volume 37, pp. 319-361.
- Matysek, P., Sinclair, A.J. and Fletcher, W.K., 1982: Rapid anomaly recognition and ranking for multi-element regional stream sediment surveys. Geological Fieldwork - 1981, B.C. Min. Energy, Mines, and Pet. Resour., Victoria, B.C., pp. 176-186.
- Stanley, C.R. and Sinclair, A.J., 1987: Anomaly Recognition For Multi-Element Geochemical Data - A Background Characterization Approach; Journ. Geochem. Explor., 29, pp. 333-353.
- Templeman-Kluit, D.J., 1972: Geology and Origin of the Faro, Vangorda, and Swim Concordant Zinc-Lead Deposits, Central Yukon Territory; Geol. Surv. Can., Bull. 208, 73p.

STATEMENT OF QUALIFICATIONS

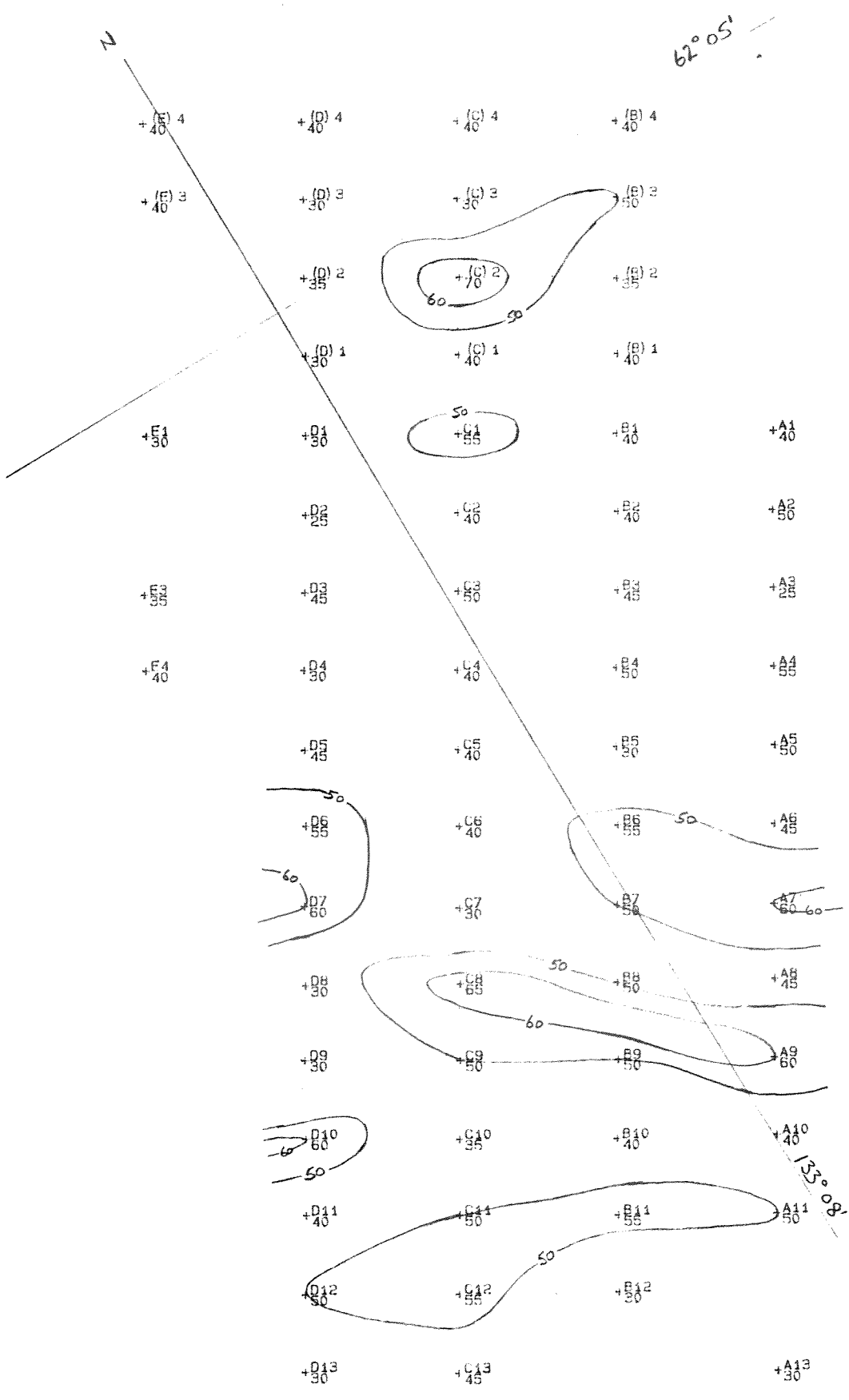
I, Stephen B. Cheeseman hereby certify that:

1. I am a resident of Faro, Yukon Territory.
2. I am a graduate of Queen's University (1985) and hold a BSc.(Hons) in the Geological Sciences.
3. I have been practising my profession for the past three years in Yukon Territory.
4. The information contained in this report was obtained by a literature review and fieldwork conducted by the author from September to December, 1988 on behalf of Ezee Golds Ltd.



Stephen B. Cheeseman
December 1988

APPENDIX I

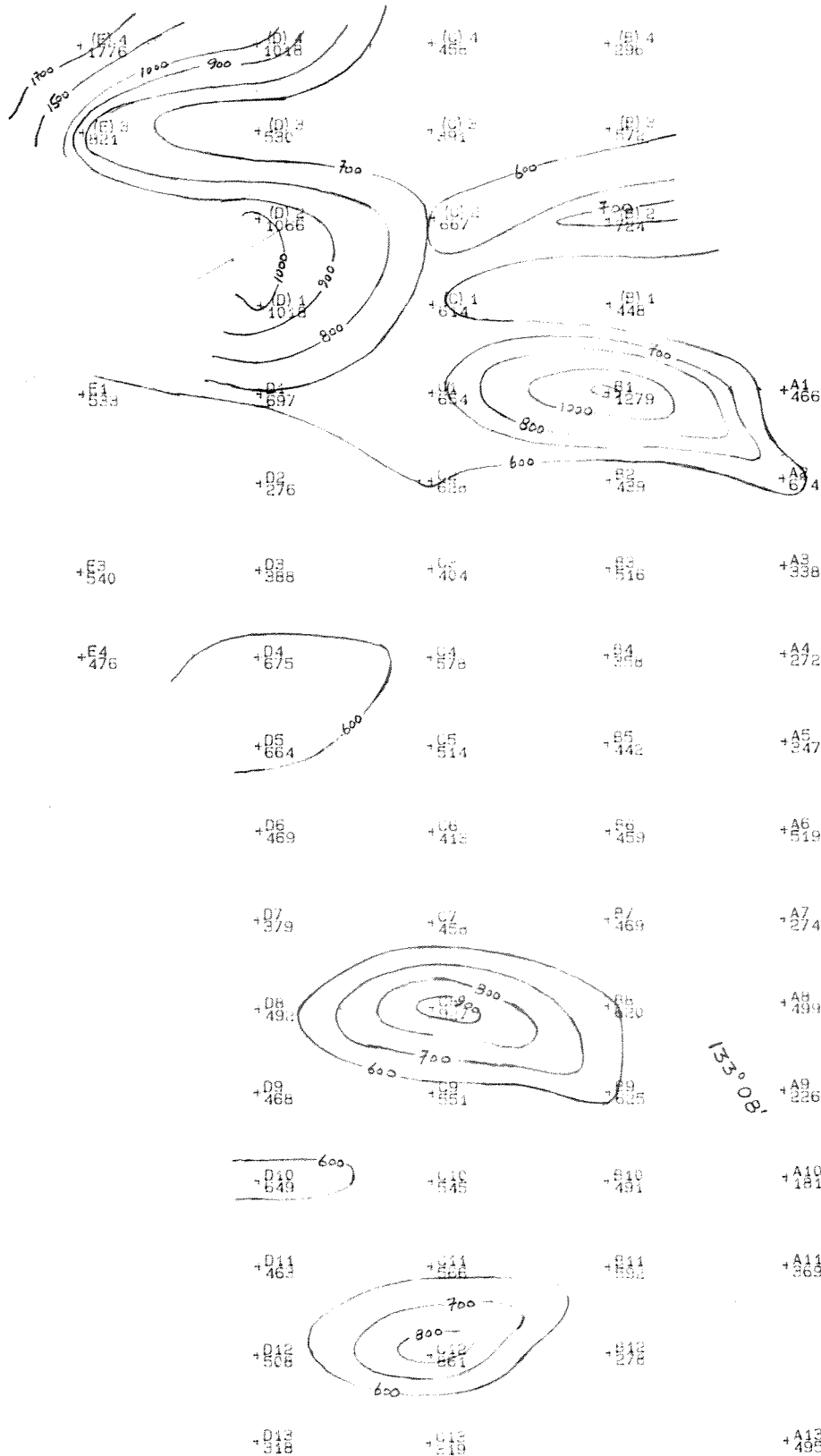


Hg ppb

1:2400

N

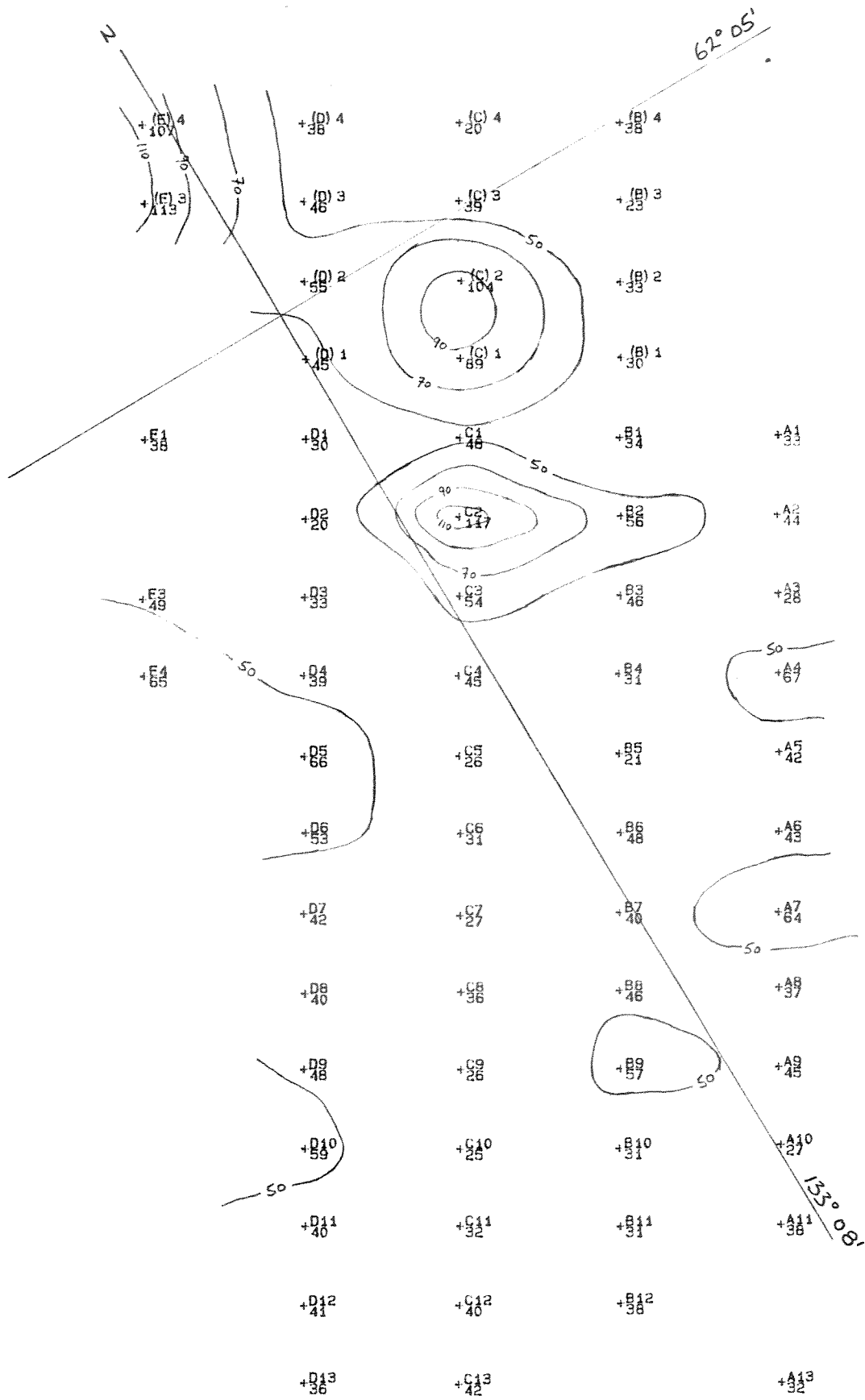
62° 05'



Mn ppm

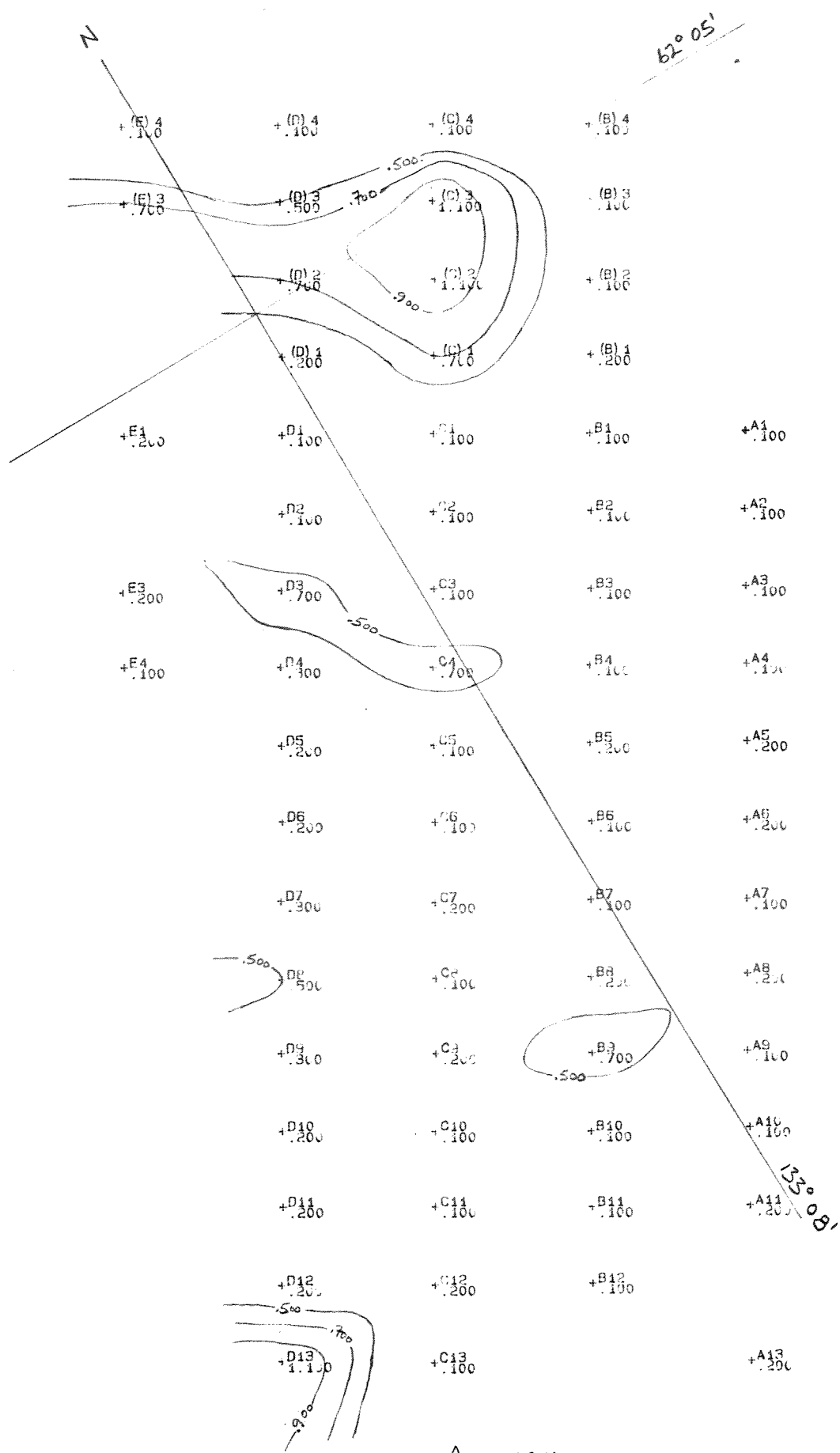
1:2400

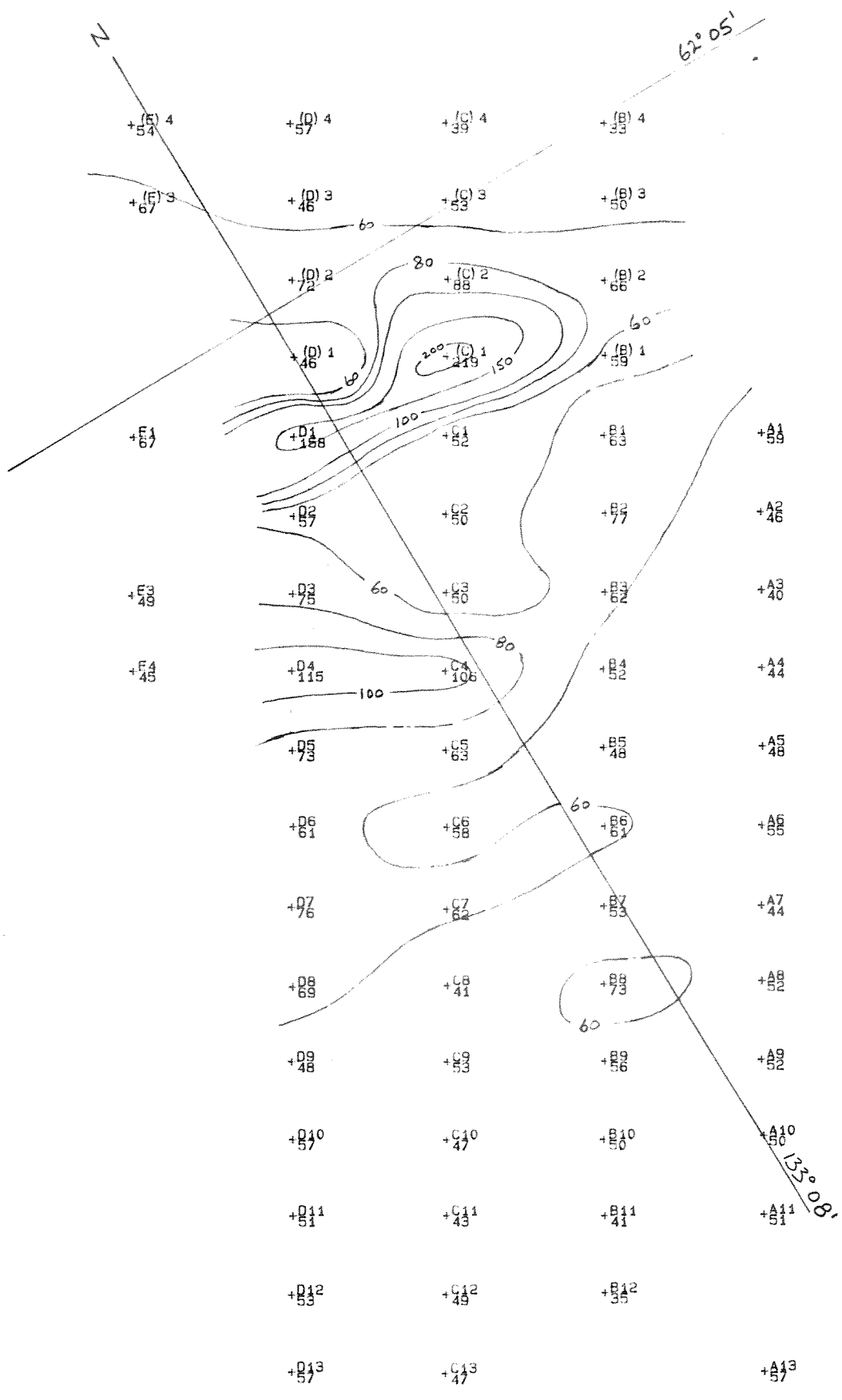
MA



Cu ppm

1:2400





Pb PPM

1:2400

62° 05'

N

+E1 4
+226

+D1 4
+177

+C1 4
+131

+B1 4
+156

+E1 3
+397

+D1 3
+188

+C1 3
+132

+B1 3
+178

+D1 2
+322

+C1 2
+221

+B1 2
+192

+D1 1
+112

+C1 1
+187

+B1 1
+172

+E1
+402

+D1
+306

+C1
+138

+B1
+274

+A1
+269

+D2
+166

+C2
+1355

+B2
+389

+A2
+151

+E3
+307

+D3
+146

+C3
+146

+B3
+131

+A3
+116

+E4
+263

+D4
+276

+C4
+349

+B4
+167

+A4
+160

+D5
+241

+C5
+202

+B5
+128

+A5
+147

+D6
+190

+C6
+170

+B6
+288

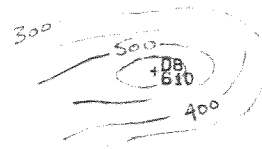
+A6
+240

+D7
+217

+C7
+192

+B7
+221

+A7
+182



+D8
+810

+C8
+171

+B8
+268

+A8
+175

+D9
+210

+C9
+176

+B9
+330

+A9
+240

+D10
+171

+C10
+206

+B10
+132

+A10
+132

+D11
+257

+C11
+183

+B11
+183

+A11
+223

+D12
+187

+C12
+278

+B12
+111

+D13
+242

+C13
+178

+A13
+192

133° 08'

Zn ppm

1:2400

APPENDIX II

99.99 99.9 99.8 99.5 99 98 95 90 80 70 60 50 40 30 20 10 5 2 1 0.5 0.2 0.1 0.05 0.01

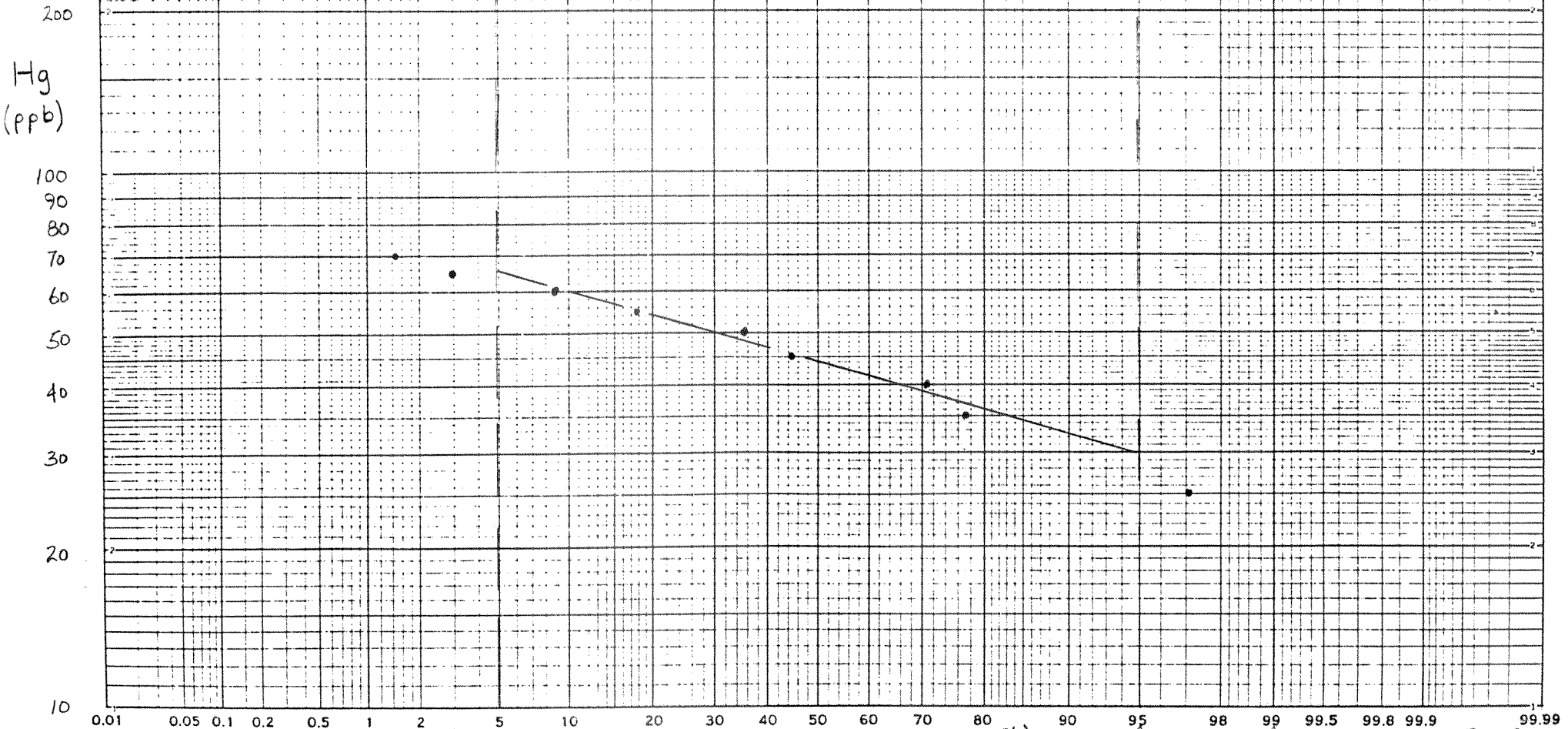
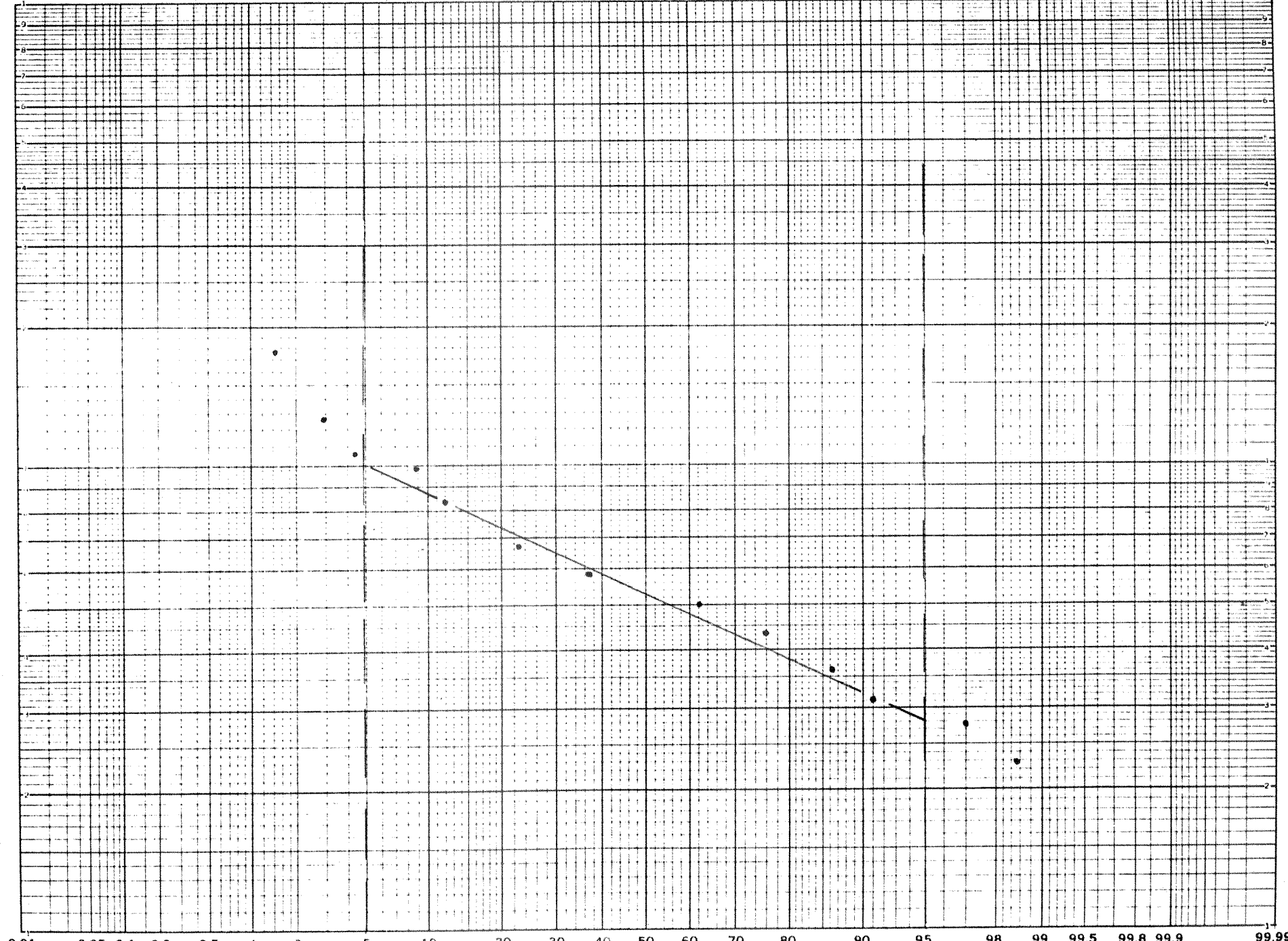


Fig. A

99.99 99.9 99.8 99.5 99 98 95 90 80 70 60 50 40 30 20 10 5 2 1 0.5 0.2 0.1 0.05 0.01

Mn
(ppm)
3000
2000
1000
900
800
700
600
500
400
300
200
100



PROBABILITY (Cum. Freq %)

Fig. 5

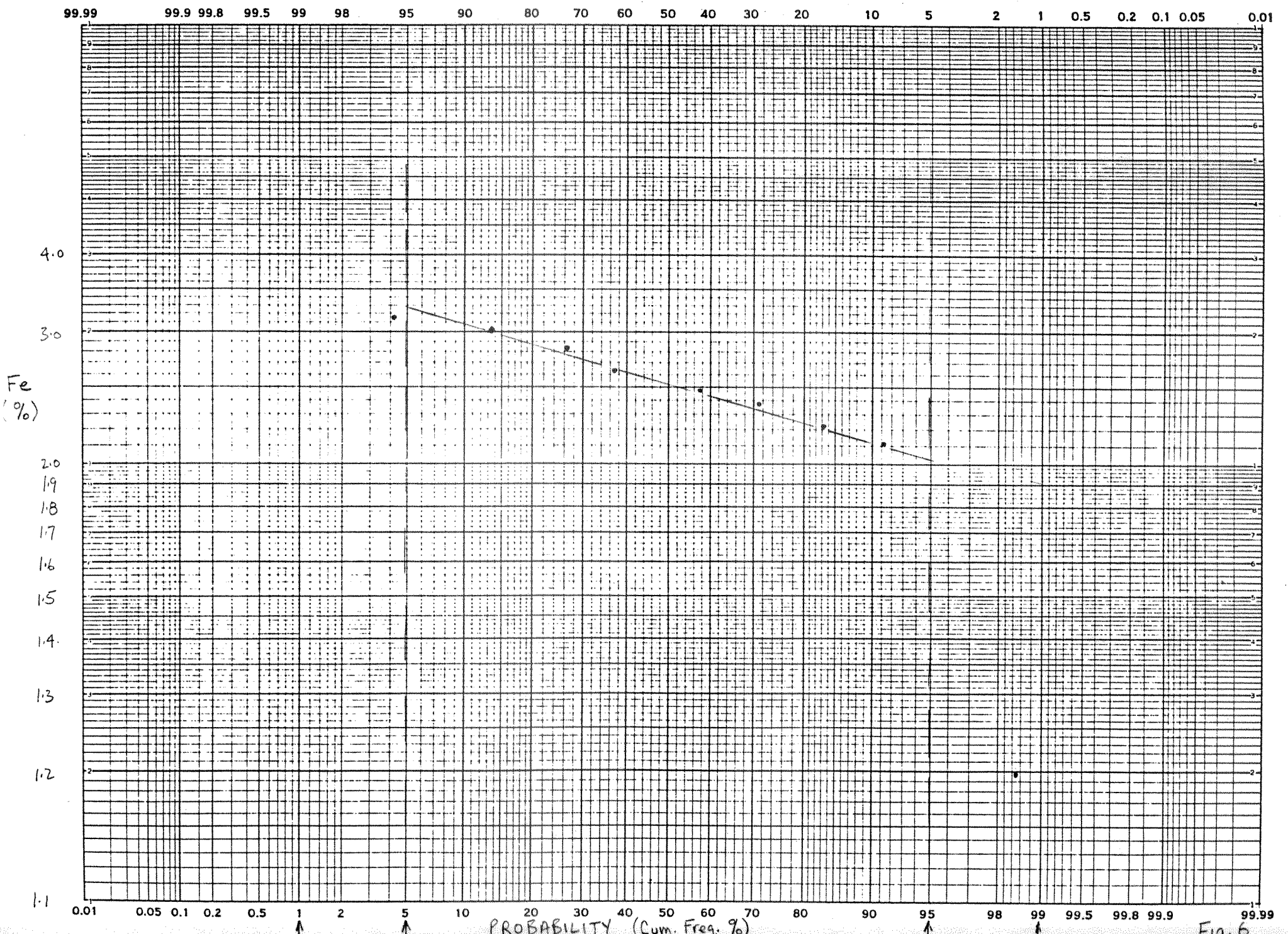
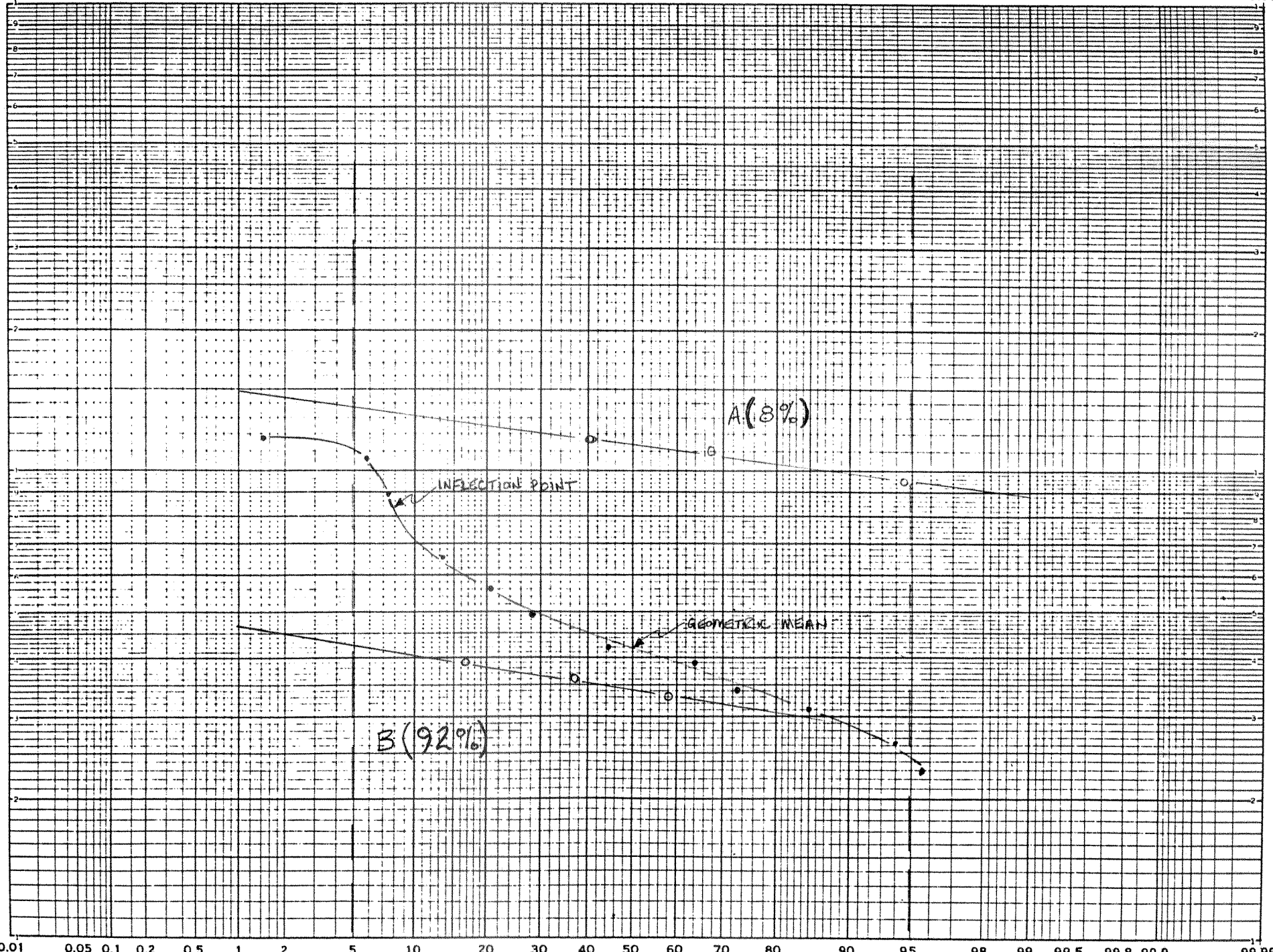


Fig. 6

99.99 99.9 99.8 99.5 99 98 95 90 80 70 60 50 40 30 20 10 5 2 1 0.5 0.2 0.1 0.05 0.01

200
Cu
ppm
100
90
80
70
60
50
40
30
20
10



A(8%)
INFLECTION POINT
GEOMETRIC MEAN
B(92%)

PROBABILITY (Cum. Freq. %)

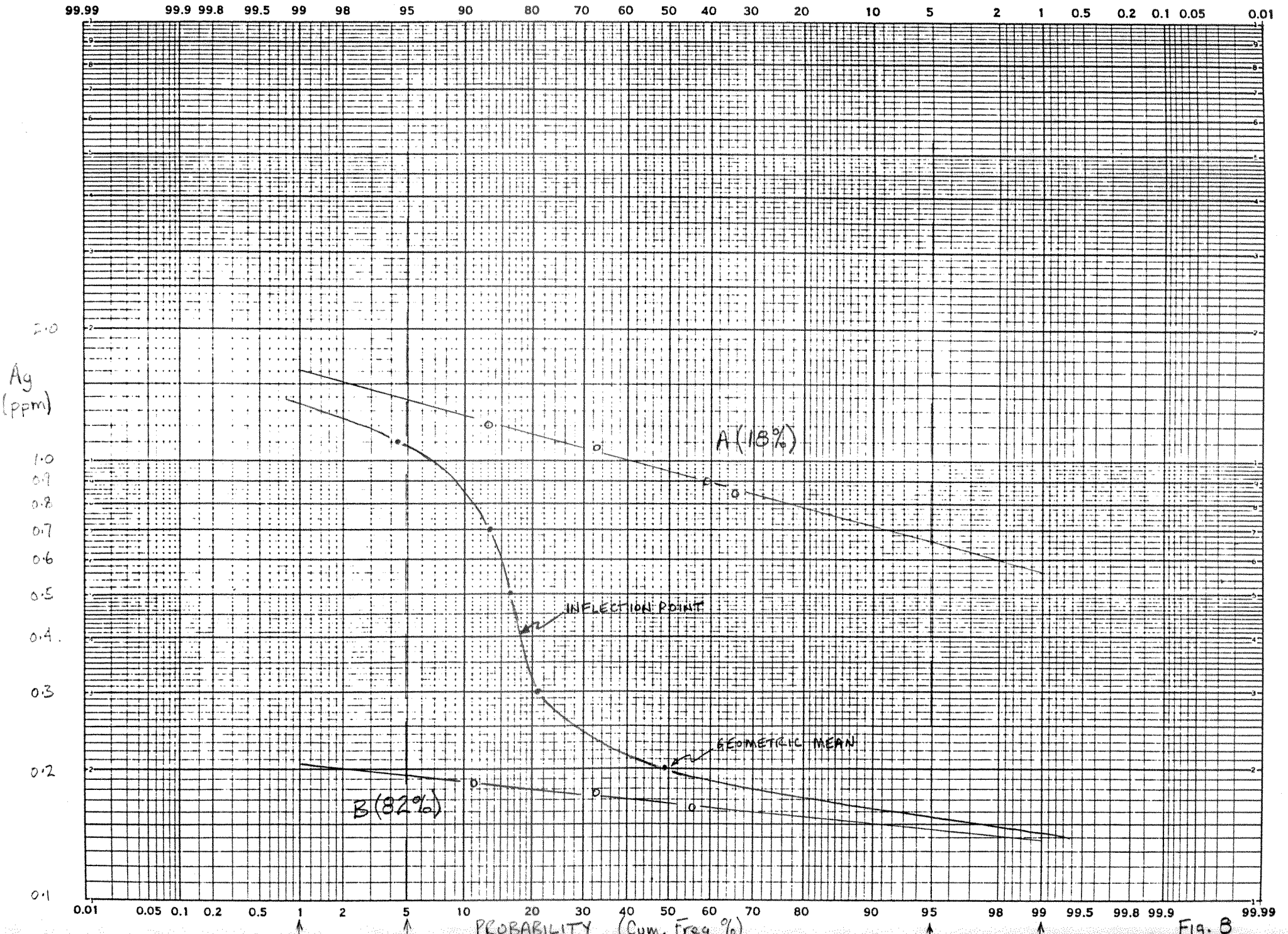


Fig. 8

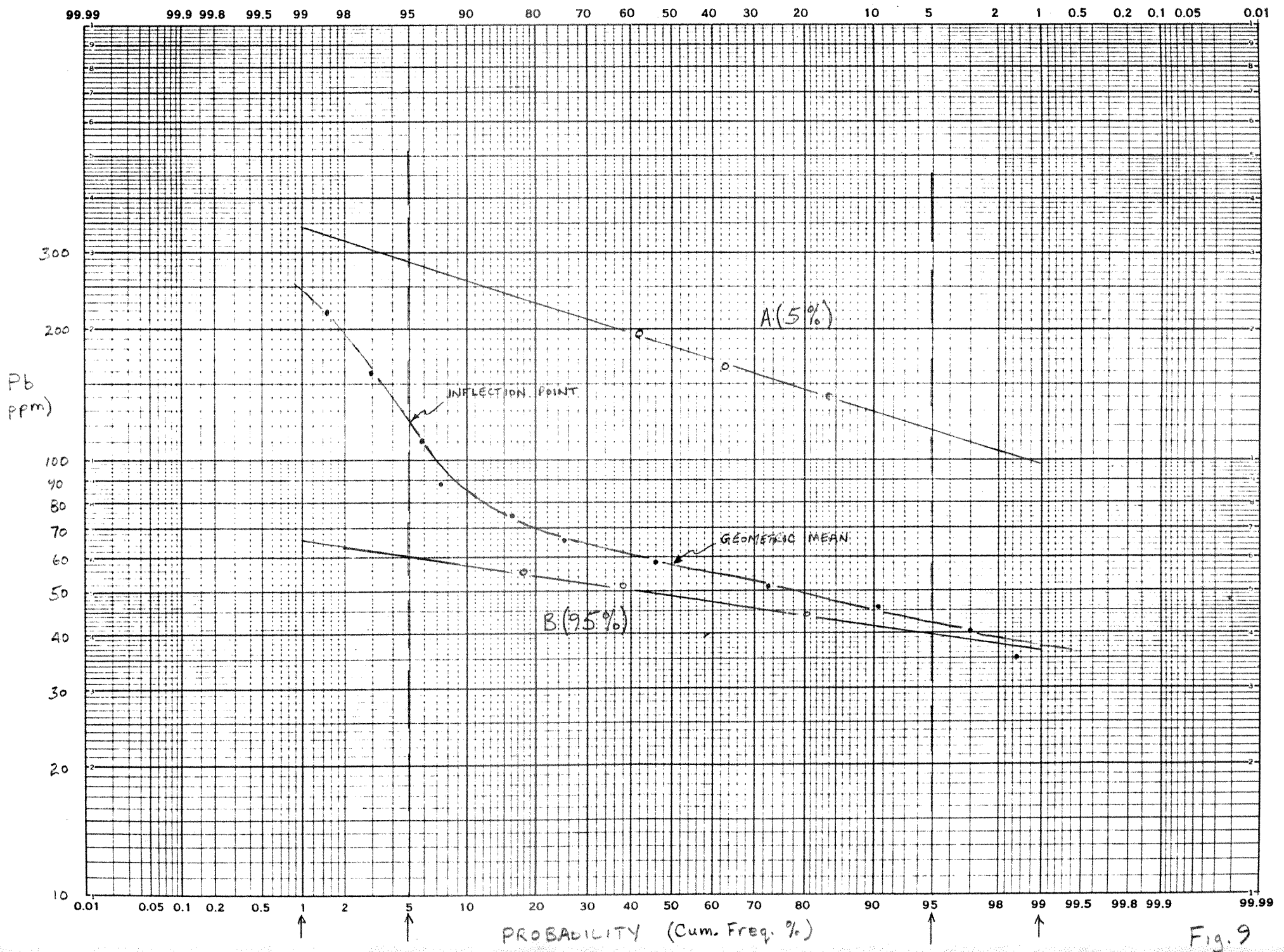


Fig. 9

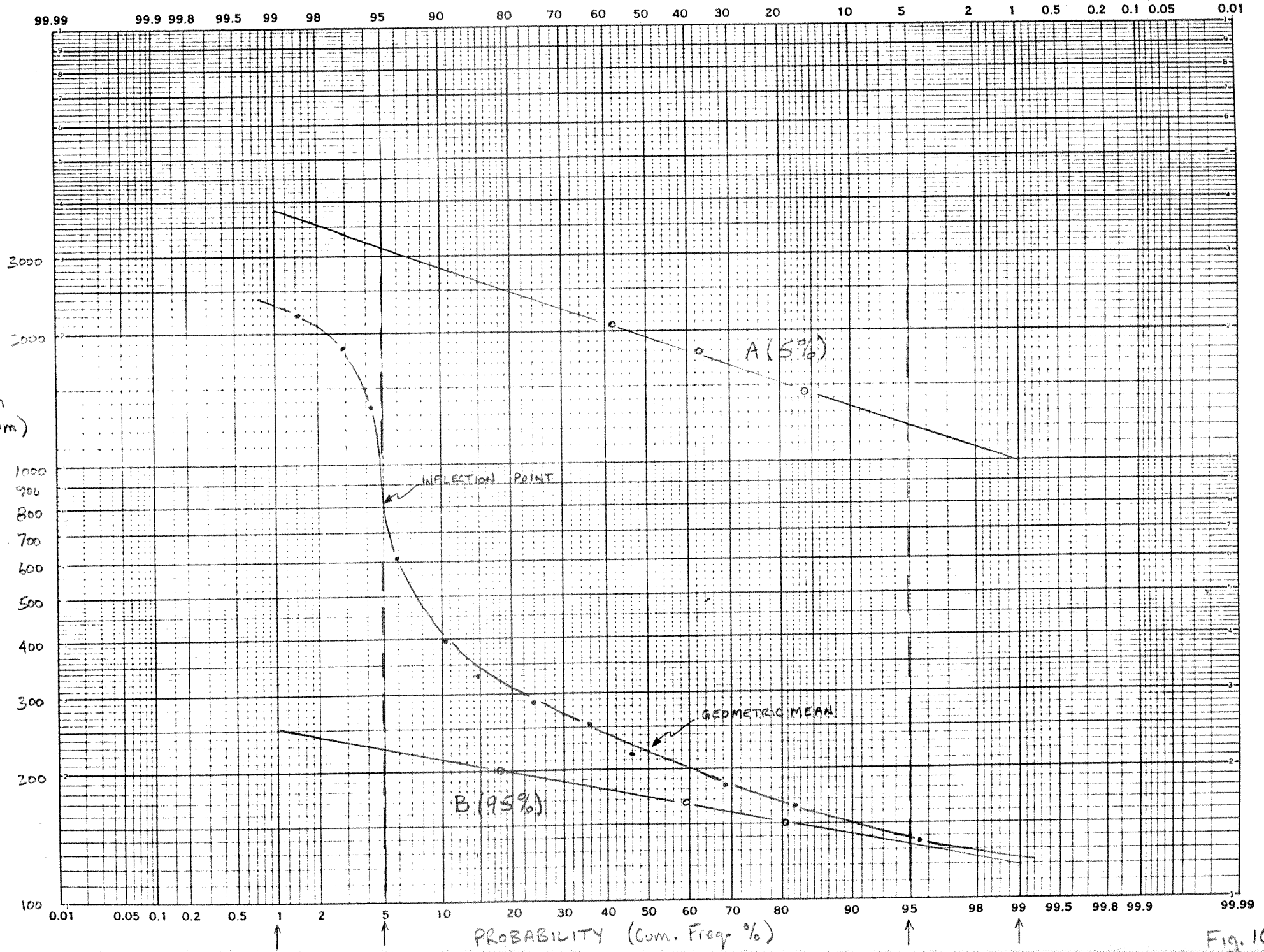


Fig. 10