

MAP NO.: ASSESSMENT REPORT X
105 D 3 PROSPECTUS
CONFIDENTIAL X
OPEN FILE

DOCUMENT NO: 092573
MINING DISTRICT: Whitehorse
TYPE OF WORK: GEOLOGICAL, GEOCHEMICAL

REPORT FILED UNDER: Aurum Geological Consultants Inc.

DATE PERFORMED: May 28 - July 1, 1988

DATE FILED: October 27, 1988

LOCATION: LAT.: 60°14'N

AREA: Wheaton River

LONG.: 135°12'W

VALUE \$: 6,100.00

CLAIM NAME & NO.: WIND 1-18 (YA93448-465)
RAIN 1-43 (YA93406-447)

WORK DONE BY: H.J. Keyser

WORK DONE FOR: Aquiline Resources Inc.

DATE TO GOOD STANDING:

REMARKS: # 156 CHARLIE

In 1988, 611 soil samples were collected from a grid in the northeast corner of the property, on trend with high-grade gold veins on the adjoining WAL claims. A magnetometer survey was also carried out on the geochemical grid. Weak gold, silver and barium soil anomalies occur in the area downslope of the known gold-bearing veins. Values ranged up to 280 ppb Au, 1.0 ppm Ag and 897 ppm Ba. Results of the magnetometer survey were inconclusive.

58 pp.
By Don...
...
...
...
...

...
...
...

092573

**GEOLOGICAL AND GEOCHEMICAL
ASSESSMENT REPORT
ON THE WIND AND RAIN CLAIMS**

Whitehorse M.D., Yukon
May 28-July 1, 1988

092573

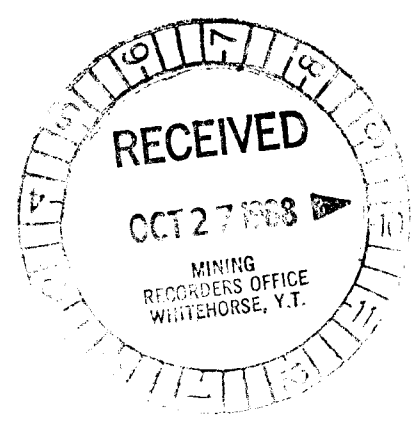
Claims: Wind 1-18 (YA 93448-465)
Rain 1-43 (YA 93406-447)

Location: 1. 55 km S of Whitehorse, Yukon
2. NTS Sheet 105 D/3
3. Latitude 60° 14'N
Longitude 135° 12'W

For: Aquiline Resources Inc.
305-850 West Hastings Street
Vancouver, B.C.
V6C 1E1

By: Harmen J. Keyser, B.Sc., FGAC
Aurum Geological Consultants Inc.
604-675 West Hastings Street
Vancouver, B.C.
V6B 1N2

October 21, 1988



This report has been examined by
the Geological Evaluation Unit
under Section 53 (4) Yukon Quartz
Mining Act and is allowed as
representation work in the amount
of \$ 6100.00.

J. J. Bremer
Regional Manager, Exploration and
Geological Services for Commissioner
of Yukon Territory.

CTCS

CTCS

SUMMARY

The Wind and Rain claims consist of 61 contiguous mineral claims in two groups centered on the Wheaton River, Yukon. They are accessible by road from Whitehorse. The ground became an attractive exploration target in 1981 when AGIP Canada Ltd. discovered a high grade gold ore body 15 kilometers to the west. A number of other successful exploration programs are being carried out in the area.

Post-Pleistocene alluvium underlies most of the property. Bedrock below the gravels is thought to be largely Cretaceous granodiorite which has been cut and overlain by Eocene rhyolite and andesite.

The current work program has consisted of geochemical sampling and geophysical surveying to explore for the strike extensions of previously discovered vein-type gold mineralization at the northern claim group boundary. Results of the work have shown broad low-order gold, silver, lead, and barium anomalies downslope of the known mineralization. The anomalies are considered to reflect downslope dispersion of near-surface ore grade precious metal mineralization exposed nearby on the adjoining claim group.

Based on these results, a limited program of claim surveying, and additional geological mapping and geochemical sampling are recommended.

TABLE OF CONTENTS

SUMMARY	i
TABLE OF CONTENTS	ii
INTRODUCTION	1
LOCATION AND ACCESS	2
HISTORY	4
PROPERTY	5
CLIMATE, TOPOGRAPHY AND VEGETATION	7
GEOLOGY	8
GEOCHEMISTRY	10
GEOPHYSICS	11
CONCLUSIONS AND RECOMMENDATIONS	12
REFERENCES	14
STATEMENT OF QUALIFICATIONS	15
STATEMENT OF COSTS	16

List Of Figures

Figure 1; Location Map, 1:1,000,000:	3
Figure 2; Claim Map, 1:50,000:	6
Figure 3; Geology, 1:23,000:	9
Figure 4; Statistical Analyses:	in pocket
Figure 5; Gold Geochemistry, 1:5,000:	in pocket
Figure 6; Silver Geochemistry, 1:5,000:	in pocket
Figure 7; Antimony Geochemistry, 1:5,000:	in pocket
Figure 8; Arsenic Geochemistry, 1:5,000:	in pocket
Figure 9; Barium Geochemistry, 1:5,000:	in pocket
Figure 10; Lead Geochemistry, 1:5,000:	in pocket
Figure 11; Magnetometer Survey, 1:5,000:	in pocket

List of Tables

Table 1; Table of Formations:	11
-------------------------------	----

Appendix

Analytical Results

INTRODUCTION

This report was prepared at the request of Mr. M.S. Elson, president of Aquiline Resources Inc. Its purpose is to satisfy assessment requirements of the Yukon Quartz Mining Act through a description of exploration work completed in 1988 on the Wind 1-18 and Rain 1-43 mineral claims.

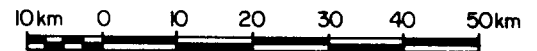
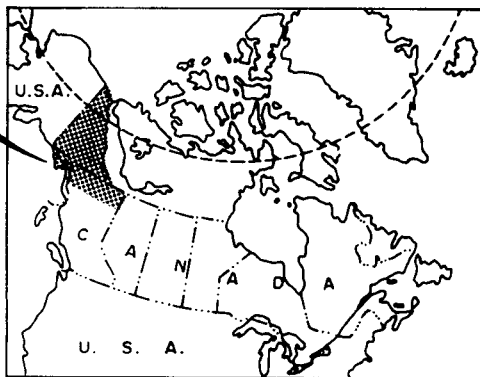
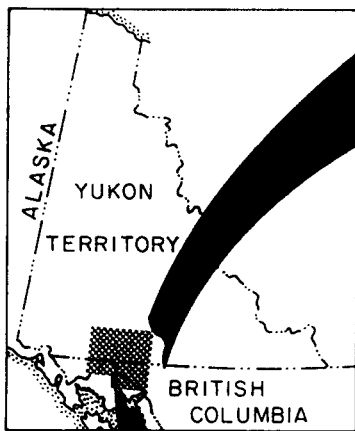
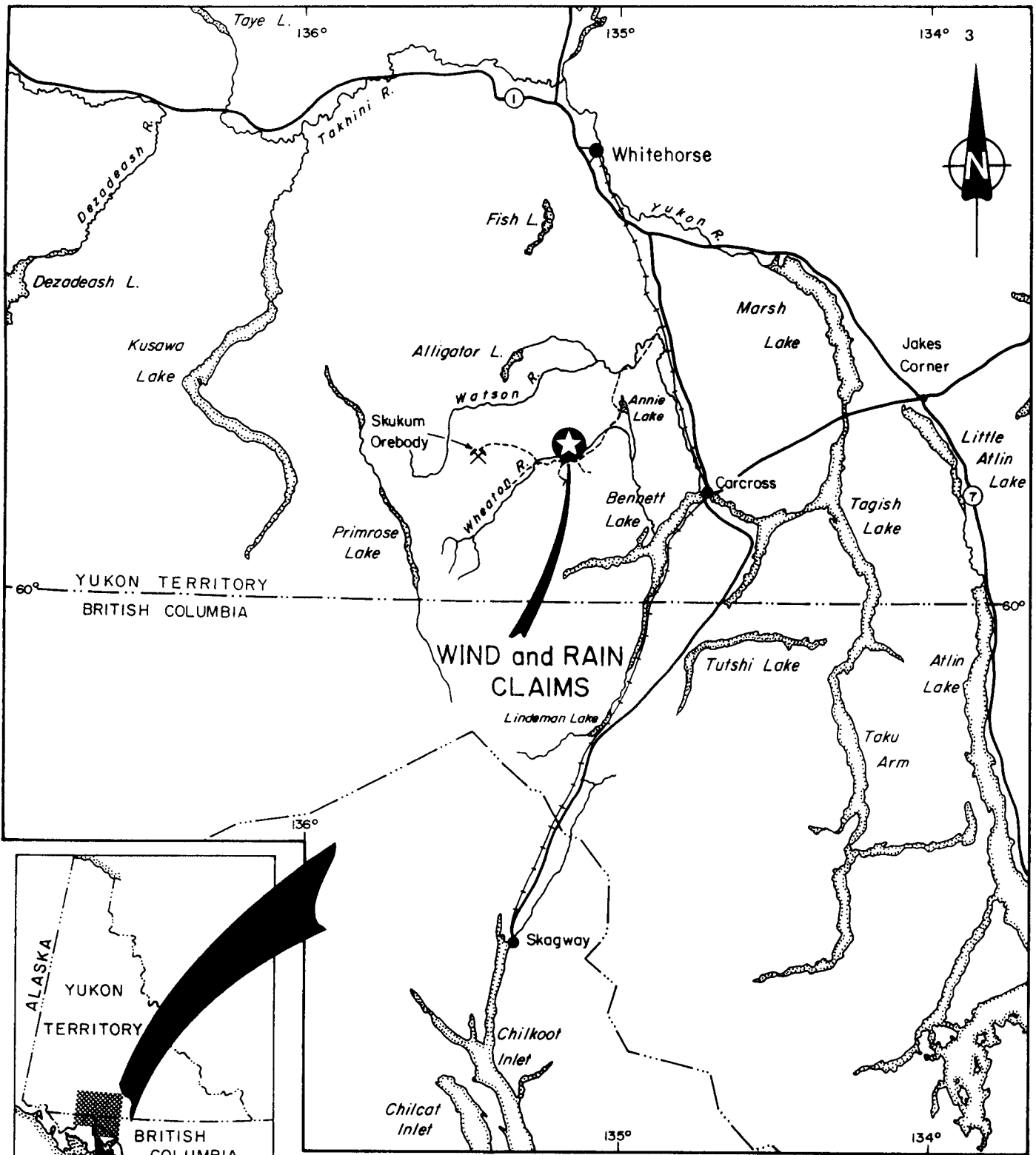
The claims are located about 55 kilometers south of Whitehorse, Yukon and are accessible by road.

Exploration work completed in 1988 consisted of gridded soil geochemistry and prospecting by Northern Natural Resource Services Ltd. during the period May 28 to July 1, 1988. A geophysical survey was carried out by Aurum Geological Consultants Inc. during the period June 10 to June 19, 1988.

LOCATION AND ACCESS

The claims are located in southwestern Yukon, about 55 kilometers south of Whitehorse (Figure 1). The approximate geographic coordinates of a point in the center of the property are 60° 14' North and 135° 12' West.

Access is by a well-maintained gravel road leading from the paved Whitehorse-Carcross highway to the Mount Skukum minesite. The road distance from Whitehorse to the property is about 75 kilometers.



AQUILINE RESOURCES INC.	
WIND AND RAIN CLAIMS	
LOCATION	
Aurum Geological Consultants Inc.	OCT., 1988
Drawn by N.H.	Checked by H.K. Scale: 1:1,000,000
FIGURE 1	

HISTORY

Considerable prospecting was carried out in the Wheaton River area starting in the late 1800's, culminating in the discovery of numerous gold and silver (and related metals) occurrences. Gold-silver mineralization has been previously located in the vicinity of the Wind and Rain claims at Mt. Anderson (3 km south), Tally-Ho Mountain (6 km east), Gold Hill (8 km northeast), Vesuvius Hill (6 km northwest), and the Wal claims (1 km north). A copper bearing skarn-type deposit has been located 1 km south (Doherty et al 1988).

In 1981 AGIP Canada Ltd. discovered a high grade gold orebody at Mount Skukum, 15 kilometers west of the Wind and Rain claims. This deposit is currently producing some 5000 ounces of gold per month since production started in March 1986. Published pre-production proven reserves stand at 235,000 tonnes (259,000 tons) grading 20 g/t (0.58 opt) gold. Total proven, probable, and possible reserves exceed 450,000 tonnes (496,000 tons) (Doherty 1983).

A second potential gold-silver orebody was discovered in 1985 by Omni Resources Inc. at Skukum Creek, 14 kilometers southwest of the Wind and Rain claims. Reserves are reported at 744,800 tonnes (821,000 tons) grading 7.7 g/t (0.225 opt) gold and 170 g/t (4.95 opt) silver (Canadian Mines Handbook 1988-89).

The Wind and Rain claims were acquired by staking in September 1985 for Northern Natural Resource Services Ltd. by MBW Surveys Ltd. of Whitehorse and were subsequently transferred to Aquiline Resources Inc. A reconnaissance program of prospecting, geological mapping, and geochemical sampling was carried out by Aurum Geological Consultants Inc. in 1986 which identified two vein-type structures and identified geochemically anomalous areas (Keyser 1987).

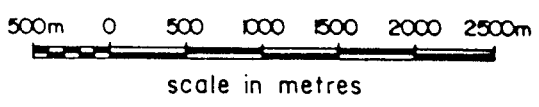
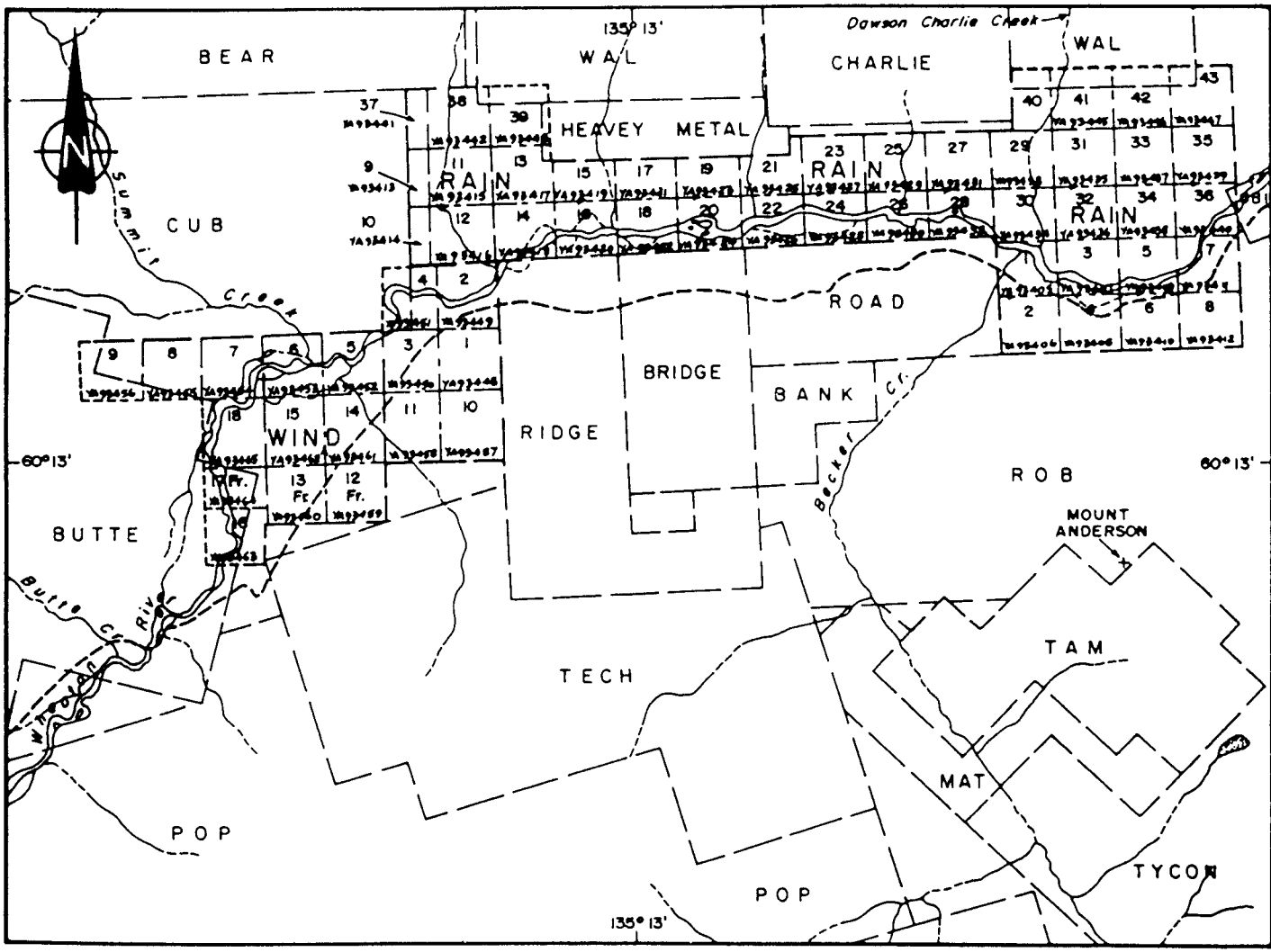
PROPERTY

The property consists of 58 unsurveyed mineral claims and 3 fractional claims (Figure 2) staked according to the Yukon Quartz Mining Act and covering approximately 1250 hectares (4000 acres). Claim data are as follows:

Claim Name	Grant No.'s	Recording Date	Expiry Date *
Rain 1-43	YA 93405-447	Sept. 10/85	Sept. 10/89
Wind 1-11	YA 93448-458	Sept. 10/85	Sept. 10/89
Wind 12,13 fr.	YA 93459-460	Sept. 10/85	Sept. 10/89
Wind 14-16	YA 93461-463	Sept. 10/85	Sept. 10/89
Wind 17 fr.	YA 93464	Sept. 10/85	Sept. 10/89
Wind 18	YA 93465	Sept. 10/85	Sept. 10/89

* pending approval of 1988 assessment work.

The claims are owned 100% by Aquiline Resources Inc. They are shown on Yukon Quartz and Placer Sheet 105 D-3 and are known collectively as the Wind and Rain claims.



LEGEND

- claim boundary
- claim number
- tag number
- road
- creeks
- lake

NOTE - ADAPTED FROM D.I.A.N.D. CLAIM MAP SHEET 106D-3

AQUILINE RESOURCES INC.	
WIND & RAIN CLAIMS	
CLAIM MAP	
Aurum Geological Consultants Inc.	OCT., 1988
NTS 105D/3	Drawn by NH Scale 1:50,000
FIGURE 2	

CLIMATE, TOPOGRAPHY AND VEGETATION

The climate in the area of the Wind and Rain claims is variable with hot summers and long cold winters. Precipitation is light, averaging about 50 cm (20") annually with heavy snowfalls occurring during the winter months.

Situated at the eastern flank of the Coast Mountains, topography in the area is rugged. Pleistocene glaciation has greatly modified the area, and such glacial features as U-shaped valleys, aretes and cirques are common. The Wind and Rain claims are centered approximately on the broad, relatively flat, glacially-derived Wheaton River valley. Elevations on the property range from 900 m (3000 ft) at the Wheaton River to about 1100 m (3600 ft) at the valley flanks on the edges of the property.

Vegetation consists of stunted spruce and poplar typical of lower elevations in southwestern Yukon. Active flood plains of the Wheaton River are devoid of vegetation.

GEOLOGY

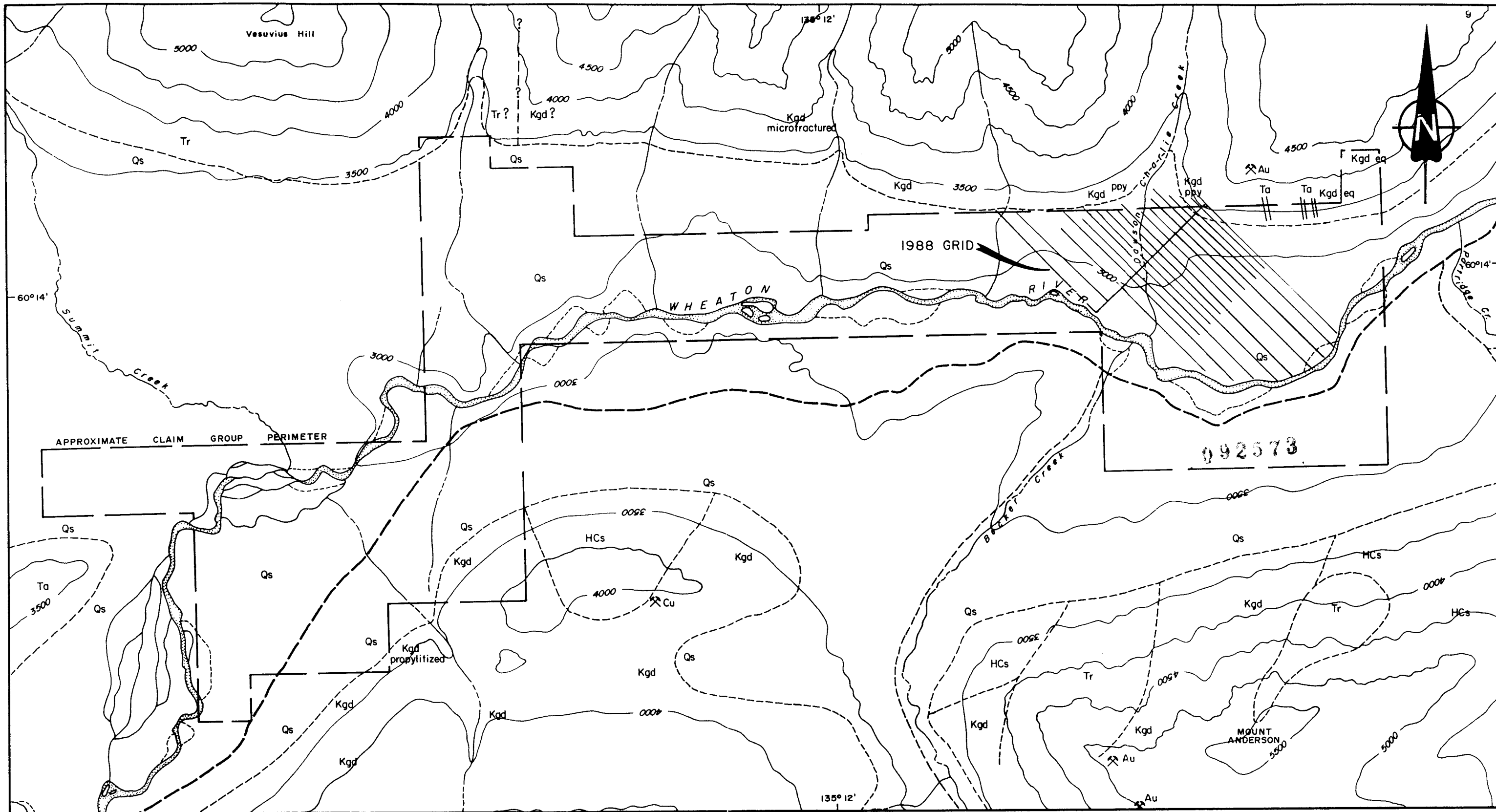
The Wind and Rain claims are situated at the eastern flank of the Coast Plutonic Belt. Cairnes (1912), Wheeler (1961), and Doherty et al (1988) have adequately described the regional geology. Property geology and mineralization were previously described by Keyser (1987a).

The Coast Plutonic Belt is composed of foliated and non-foliated granitoid rocks of Cretaceous (?) age flanked by older metamorphosed and unmetamorphosed sedimentary and volcanic strata. Granodiorite, granite and quartz diorite are characteristic of the composite plutons. Gabbro and syenite are rare. Irregular belts of lower Mesozoic to Paleozoic (and possibly older) metasedimentary and metavolcanic rocks occur as roof pendants.

Of particular interest is the location of the Wind and Rain claims on the eastern margin of the Mt. Skukum volcanic complex, in part an Eocene (Pride and Clark 1985) cauldron.

Faulting, lithologic attitudes and other regional trends are generally northwest, with some younger northeast structures. Most structurally controlled mineral deposits in the area are associated with northeast trending fault zones. Gold mineralization discovered in 1986 at the northern border of the Wind and Rain claims (Keyser 1987a and 1987b) follows discrete northeast trending fault zones.

The Wind and Rain claims are centered on the broad alluvium-filled Wheaton River valley, and outcrops are restricted to valley flanks. A compilation of geological data on the Wind and Rain claims is shown in Figure 3.



LEGEND

LITHOLOGIES

QUATERNARY

Qs unconsolidated surficial debris

TERTIARY

Tr rhyolite, minor dacite, andesite

Ta andesite

CRETACEOUS

Kgd granodiorite

CAMBRIAN (?)

HCs gneiss, schist, marble

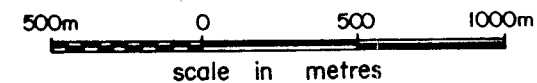
SYMBOLS

- approximate lithologic contact
- dike; not necessarily to scale
- river
- creek
- elevation contour; interval 500ft.
- road

Abbreviations

- Cu - copper
- Au - gold
- ppy - porphyry
- eq - equigranular
- mineral occurrence

Notes - all locations subject to survey
 - geology modified from Cairnes 1912, Keyser 1987, and Doherty et al 1988



AQUILINE RESOURCES INC.

WIND & RAIN CLAIMS

PROPERTY GEOLOGY

GEOCHEMISTRY

A total of 611 soil samples were collected in 1988 from a grid centered on Dawson Charlie Creek, at the northeastern part of the claim group. The grid was located and oriented to cover the southeastern strike projections of vein-type structures found near the property boundary in 1986 which ranged up to 175 ppb gold from float on the Wind and Rain claims (Keyser 1987a) and up to 113,000 ppb from outcrop on the adjoining Wal claims (Keyser 1987b). All samples were analyzed for total gold, silver, antimony, arsenic, lead, and barium content by Acme Analytical Laboratories Ltd. of Vancouver, B.C. A statistical analysis was performed for each element relative to the total samples taken from the Wind and Rain claims, shown on Figure 4.

Gold is shown on Figure 5. Results range from 1 to 280 ppb. Anomalous values are clustered at the northern part of the grid near the property boundary. Erratic values are also located in the southern part of the grid.

Silver (Figure 6) ranges from 0.1 to 1.0 ppm. Possibly anomalous values are restricted to the northern part of the sampled area.

Results for antimony (Figure 7) range from 2 to 9 ppm. No anomalous values were outlined by the 1988 sampling.

Arsenic values range from 2 to 21 ppm (Figure 8). No anomalous values were outlined by the 1988 program, though some slightly elevated values are found in the northern part of the grid.

Figure 9 shows a plot of lead values, with results ranging from 4 to 37 ppm. Slightly elevated but subanomalous values are clustered at the northern part of the grid, and also at the edges of the sampled area at low elevations.

Barium (Figure 10) ranges from 53 to 897 ppm. A distinct concentration of barium anomalies was outlined at the northern and northeastern parts of the grid.

GEOPHYSICS

A total of 13.3 line kilometers of total field magnetic surveying were carried out on the 1988 geochemical grid using an EDA Omni IV proton precession magnetometer. An identical instrument was used as a base station to correct for diurnal drift. Sensitivity is 0.1 gammas. The survey was carried out on lines spaced at 50 meters with readings at 10 meters.

Results of the survey are shown in profile form on Figure 11. Total magnetic relief in the surveyed area is 908 gammas. Magnetic variations within the surveyed area are attributable to changes in bedrock magnetic susceptibilities, and also the distance to bedrock. Responses at the northern part of the surveyed area show high amplitude and high frequency. Several magnetic highs and lows are inconclusively traceable on a northeast trend for a distance of up to 200 meters. A complex structural environment is indicated. The southern part of the grid shows a very low amplitude response reflecting a uniform distribution of magnetic minerals in bedrock and/or a greater distance to bedrock in the overburden-filled river valley.

CONCLUSIONS AND RECOMMENDATIONS

Bedrock underlying the Wind and Rain claims is presumed to be mostly Cretaceous granodiorite, which has been cut and overlain by felsic to intermediate volcanics of the Tertiary Skukum Group. The geological setting is interpreted to be suitable for hosting precious metal vein-type deposits as are found elsewhere in the Wheaton River area. Thick accumulations of glacial and lacustrine sediments blanket bedrock in all areas except the northern and southern property boundaries, making lode mineral exploration difficult.

The property is an epithermal gold-silver prospect. Mineralization located during the 1986 work program consisted of quartz-chalcedony breccia float found in two separate and distinct northeast-trending gullies east of Dawson-Charlie Creek. Float found in gullies on the Wind and Rain claims has returned up to 175 ppb gold. Veins exposed nearby on the adjoining Wal claims have returned up to 113,000 ppb gold. The gullies are interpreted to be underlain by recessive-weathering shear zones hosting potential gold-silver vein-type mineralization near the common claim boundary between the Wind and Rain claims and the adjoining Wal claims.

Soil geochemistry carried out in 1988 shows that low-order anomalies in gold, silver, lead and barium are present in the area immediately downslope of the known vein-type mineralization. Metal values are present over an area much larger than the known mineralization, possibly indicating that their source(s) is located at some distance upslope; possibly off the Wind and Rain claims. Anomalies indicative of near-surface ore grade precious metal mineralization on the Wind and rain claims were not identified. Gold is also present in low but anomalous amounts in river transported sediments. Lead anomalies at low elevations close to the Wheaton River probably reflect lead adsorbed with organic materials.

The magnetic surveying has clearly identified the lower limits of bedrock exposures at the edge of the river valley, and also shows some indistinct northeast-trending magnetic

highs and lows. The area of low magnetic relief is thought to be underlain by thick alluvium as indicated by the erratic geochemical results and flat magnetic response.

Based on these results and the claims' strategic location with respect to high grade gold mineralization found on the adjoining Wal claims, further work is warranted on the Wind and Rain claims. The following is recommended:

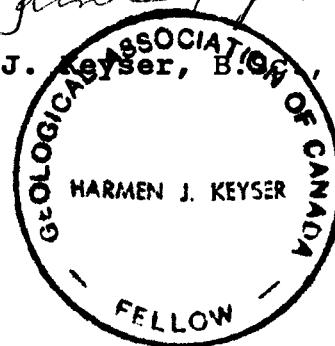
1. Because all located mineral targets are very close to the property boundary, legal surveying should be completed before initiating any other work.
2. Continue the geochemical survey to the north and northeast. Gold, silver, lead, and barium appear to be the main elements of interest.
3. Carry out more detailed mapping and sampling east of Dawson-Charlie Creek to address the possibility of vein-type gold mineralization associated with the northeast trending fracture systems.
4. Any further work (trenching, drilling etc.) is dependant on results of the above work, and on results of exploration work currently being carried out on adjoining properties.

Respectfully submitted,



October 21, 1988

Harmen J. Keyser, B.Sc., FGAC



REFERENCES

- Doherty, R.A., 1983:
Mt. Skukum; Assessment Report No.'s 091462 and 091474. In D.I.A.N.D. Exploration and Geology, 1983. pp. 162-164.
- Doherty, R.A., C. Hart, J. Wegenast, and J. Hunt, 1988:
Preliminary Geological Maps of Fenwick Creek and Alligator Lake Map-Areas. D.I.A.N.D. Open File 1988-2 by Aurum Geological Consultants Inc.
- Keyser, H.J., 1987a:
Geological and Geochemical Assessment Report on the Wind and Rain Claims. Assessment report for Northern Natural Resource Services Ltd. by Aurum Geological Consultants Inc., In D.I.A.N.D. Exploration and Geology, 1986.
- Keyser, H.J., 1987b:
Report on the Geology and Geochemistry of the Wal Claims. Assessment report 091912 for Walhala Exploration Ltd. by Aurum Geological Consultants Inc., In D.I.A.N.D. Exploration and Geology, 1986.
- Pride, M.J. and G.S. Clark, 1985:
An Eocene Rb-Sr Isochron for Rhyolite Plugs, Skukum Area, Yukon Territory. Canadian Journal of Earth Sciences vol. 22, pp. 1747-1753.
- Wheeler, J.O., 1961:
Whitehorse Map-Area, Yukon Territory. 105D. Geological Survey of Canada, Memoir 312.

STATEMENT OF QUALIFICATIONS

I, HARMEN J. KEYSER, hereby certify that:

1. I am a geologist with AURUM GEOLOGICAL CONSULTANTS INC., 604-675 West Hastings Street, Vancouver, British Columbia.
2. I am a graduate of Saint Mary's University, Halifax, with a degree in geology (B.Sc., 1981) and have been involved in geology and mineral exploration continuously since 1978.
3. I am a fellow of the Geological Association of Canada (F3759).
4. I have no direct or indirect interest in the properties or securities of Aquiline Resources Inc.
5. I am the author of this report on the Wind and Rain claims, Whitehorse Mining District, Yukon, which is based on my personal examination of the property at various times in 1985, 1986, 1987, and on June 19, 1988, and on referenced sources.
6. This report is intended to satisfy assessment requirements only.

October 21, 1988

Harmen J. Keyser
Harmen J. Keyser, B.Sc.



STATEMENT OF COSTS

1988 Assessment Work Valuation on the Wind 1-18 and Rain 1-43 claims.

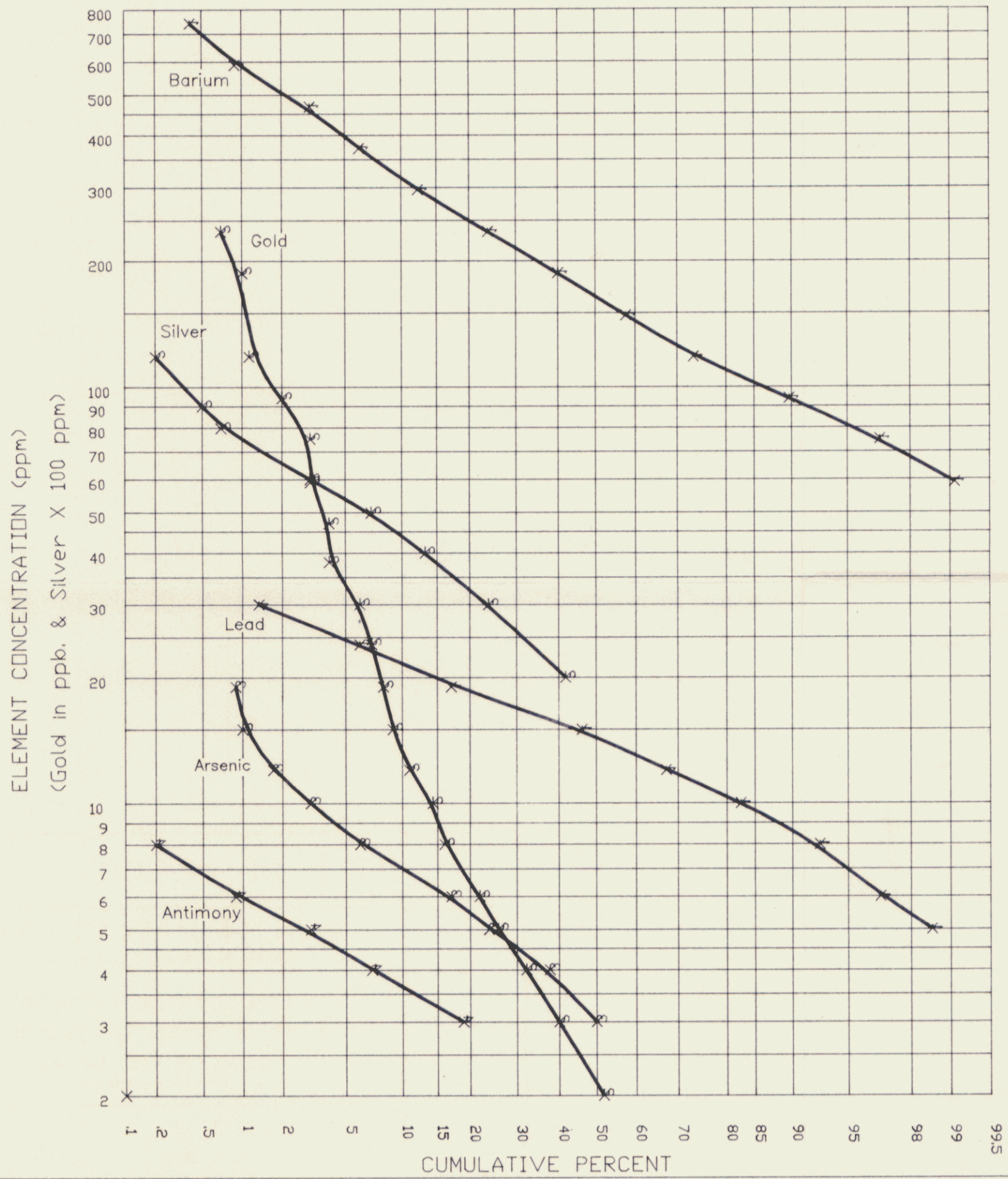
A. Northern Natural Resource Services Ltd. work program carried out May 28 to July 1, 1988.

M. Elson of Vancouver, B.C. 30 days @ 250/day:	\$ 7,500.00
J. Bergvinson of Aldergrove, B.C. 30 days @ 250/day:	7,500.00
H. Wright of Vancouver, B.C. 30 days @ 250/day:	7,500.00
M. Ryan of Smithers, B.C. 30 days @ 150/day:	4,500.00
D. Pugh of Vancouver, B.C. 15 days @ 150/day:	2,250.00
Truck Rental, 30 days @ 50/day x 2:	3,000.00
Camp Equipment and Boat Rental:	3,000.00
Groceries and Camp Supplies:	3,485.00
Analytical Costs:	<u>6,934.85</u>
 Subtotal:	 \$ 45,669.85

B. Aurum Geological Consultants Inc. work program carried out June 10 to 19, 1988.

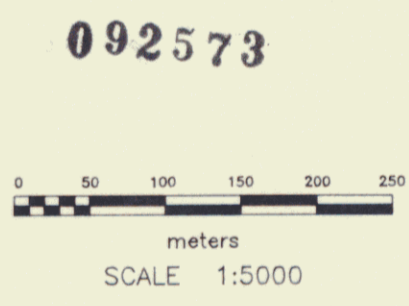
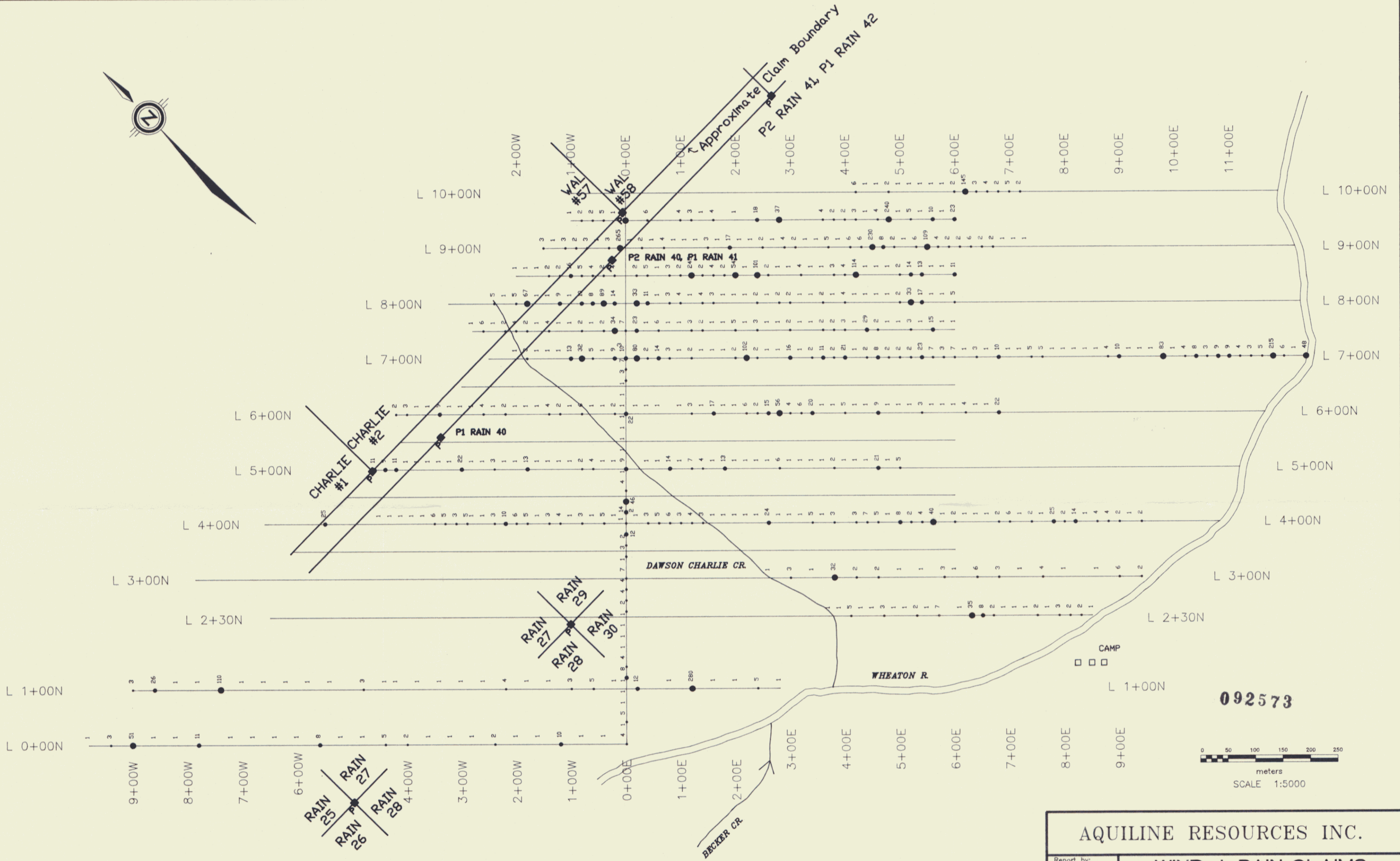
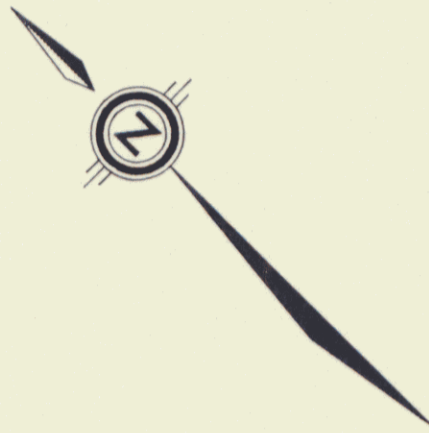
T. Ballantyne, B.Sc., Geophysicist of Vancouver, B.C. 5.5 days @ 150/day:	825.00
H. Keyser, B.Sc., of Vancouver, B.C. 1 day @ 250/day:	250.00
EDA Omni IV Magnetometer System rental 5.5 days @ 200/day:	1,100.00
Truck Rental and Gas:	99.51
Meals and Accommodations:	<u>427.50</u>
 Subtotal:	 \$ 2,702.01

Total 1988 Assessment Value on Wind/Rain claims: \$ 48,371.86



092573

AQUILINE RESOURCES INC.	
Report by: H. KEYSER	WIND + RAIN CLAIMS Whitehorse Mining Division, Yukon
Date: July, 1988	
Soil Geochemical Compilation Log - Probability Diagram	
Pb - Ag - As - Sb - Ba - Au N = 611 samples	
AURUM GEOLOGICAL CONSULTANTS INC.	
graph prepared with: Mapper-CAD Software	
Figure:	4



LEGEND

- Soil Sample Location & Value
- Possibly Anomalous $x \geq 30$ ppb
 - Upper Background $8 \leq x < 30$ ppb
 - Background $2 \leq x < 8$ ppb
 - No Symbol Below Background $x < 2$ ppb
- Claim Post

AQUILINE RESOURCES INC.

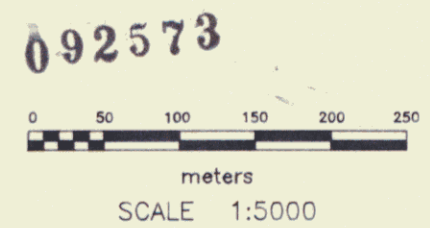
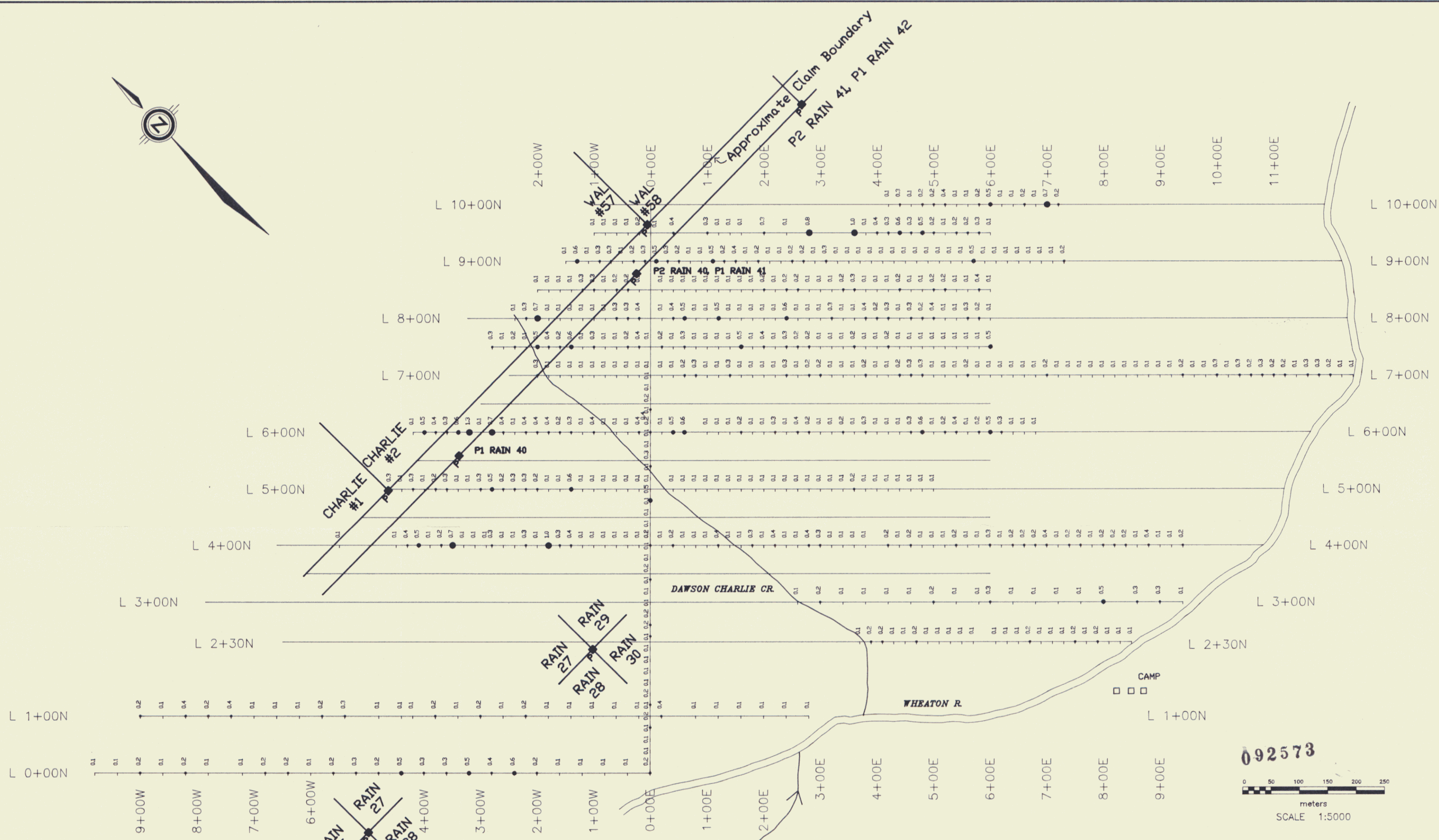
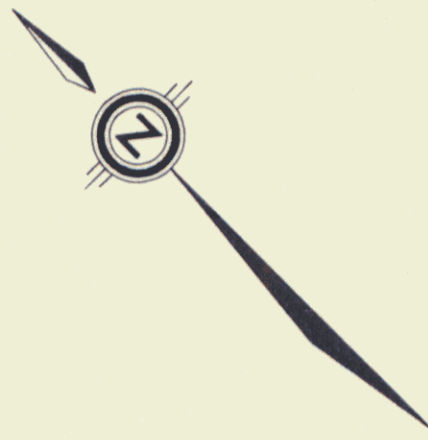
Report by:
H. KEYSER
Date:
July, 1988
Scale:
1:5000

WIND + RAIN CLAIMS
Whitehorse Mining Division, Yukon
Soil Geochemical Compilation
Gold (ppb)

n = 611 samples

476

AURUM GEOLOGICAL CONSULTANTS INC.
map prepared with: Mapper-CAD Software



LEGEND

- Soil Sample Location & Value
- Possibly Anomalous $x \geq 0.7$ ppm
- Upper Background $0.5 \leq x < 0.7$ ppm
- Background $0.2 \leq x < 0.5$ ppm
- No Symbol Below Background $x < 0.2$ ppm
- ◆ Claim Post

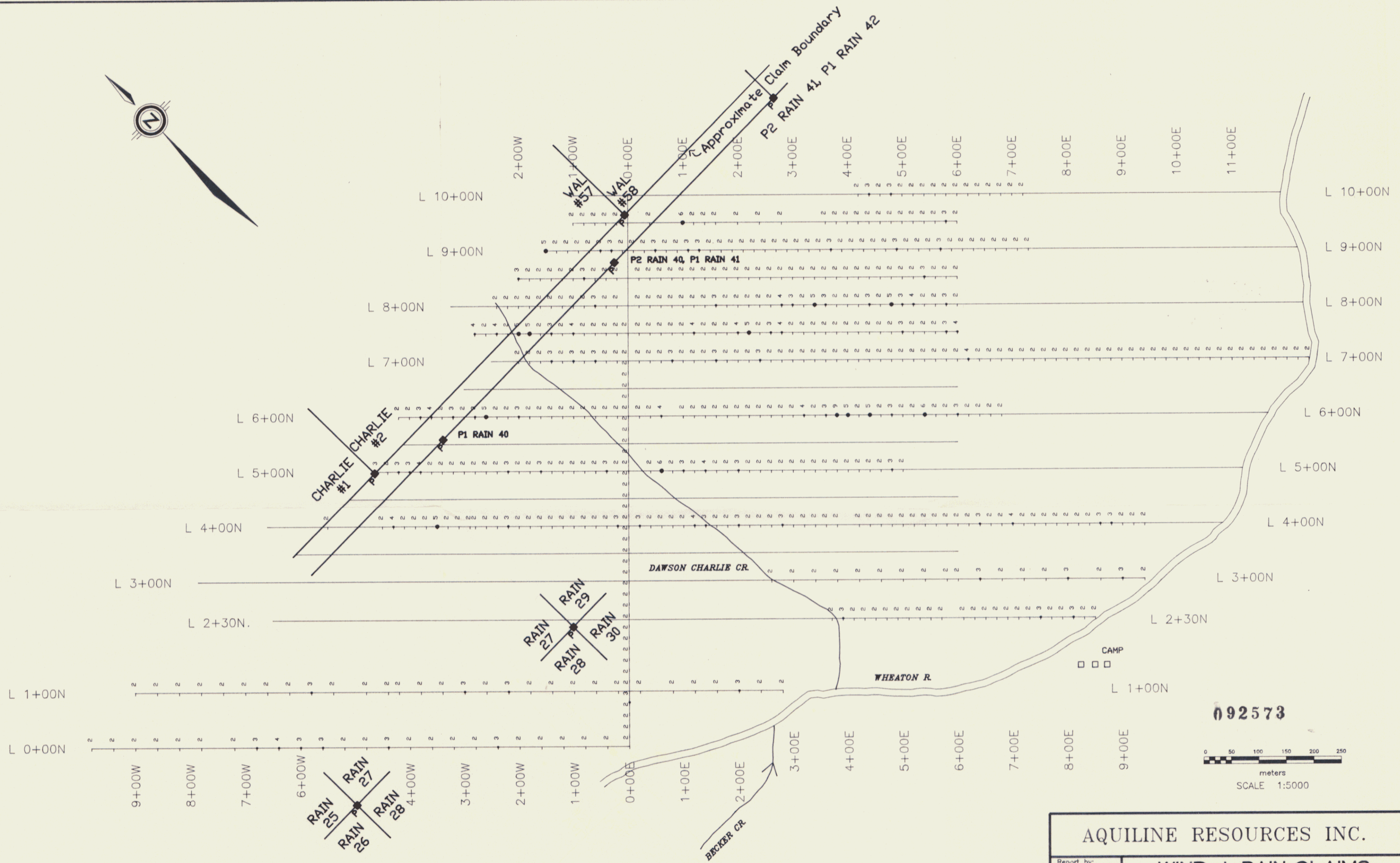
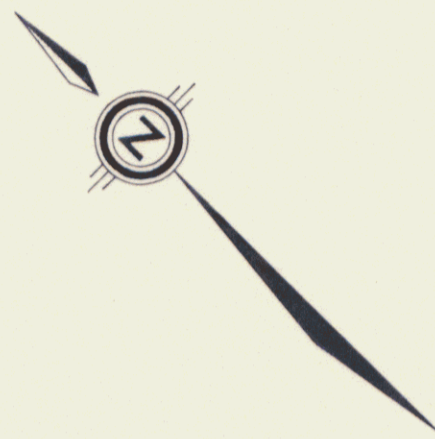
AQUILINE RESOURCES INC.

Report by:
H. KEYSER
Date:
July, 1988
Scale:
1:5000

WIND + RAIN CLAIMS
Whitehorse Mining Division, Yukon
Soil Geochemical Compilation
Silver (ppm)
n = 611 samples

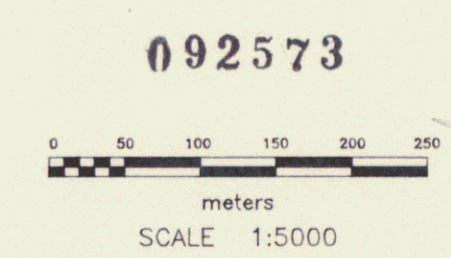
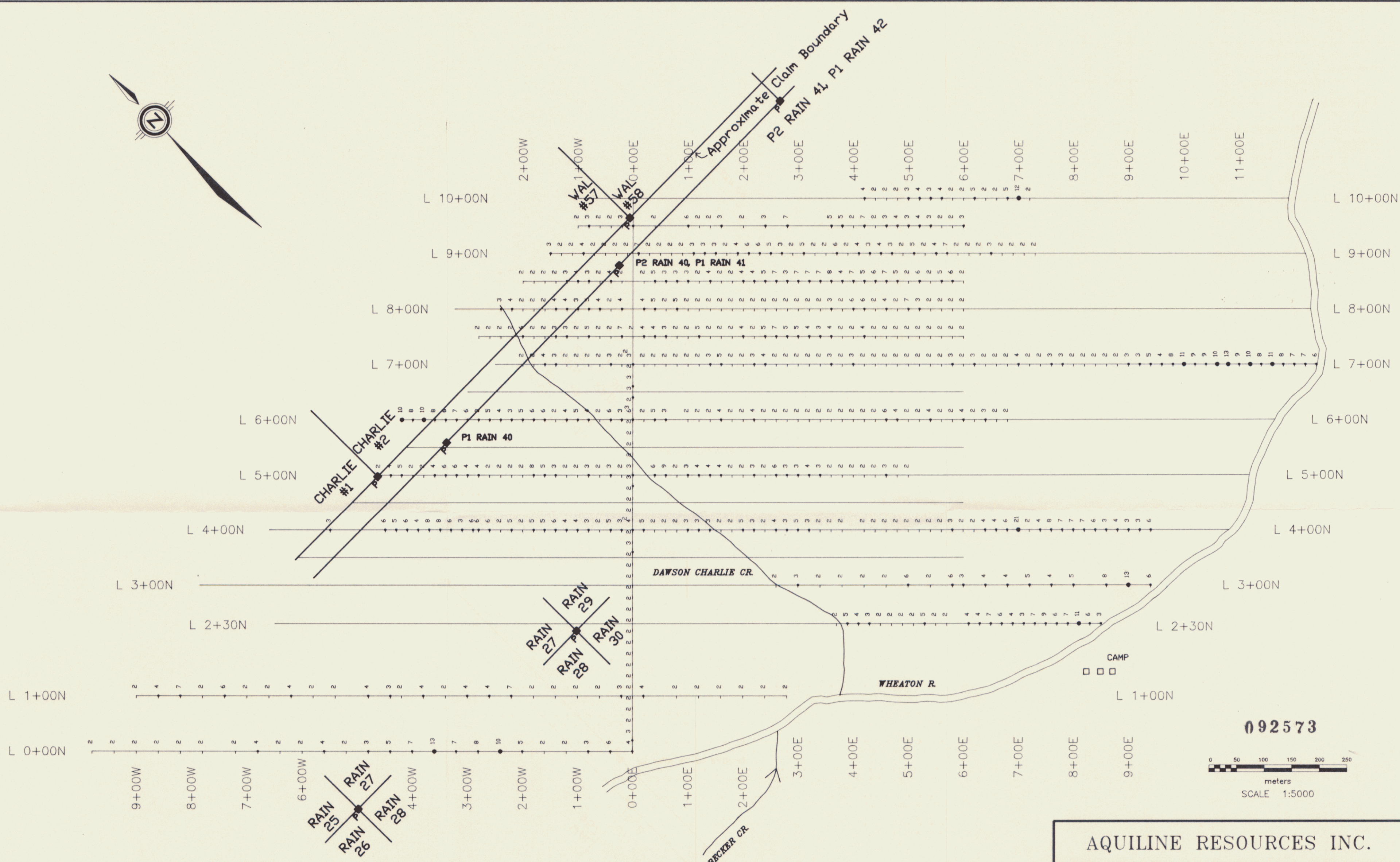
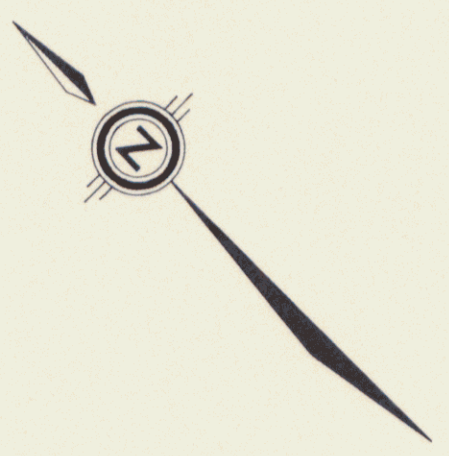
AURUM GEOLOGICAL CONSULTANTS INC.
map prepared with: Mapper-CAD Software

Figure:
477
6



- Soil Sample Location & Value
- Upper Background $x \geq 5$ ppm
 - Background $3 \leq x < 5$ ppm
 - Below Background $x < 3$ ppm
- Claim Post

AQUILINE RESOURCES INC.	
Report by: H. KEYSER	WIND + RAIN CLAIMS Whitehorse Mining Division, Yukon Soil Geochemical Compilation Antimony (ppm) n = 611 samples 478
Date: July, 1988	
Scale: 1:5000	
AURUM GEOLOGICAL CONSULTANTS INC.	
map prepared with: Mapper-CAD Software	
Figure: 7	



092573

LEGEND

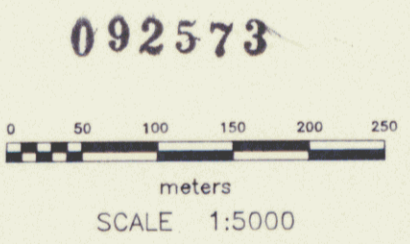
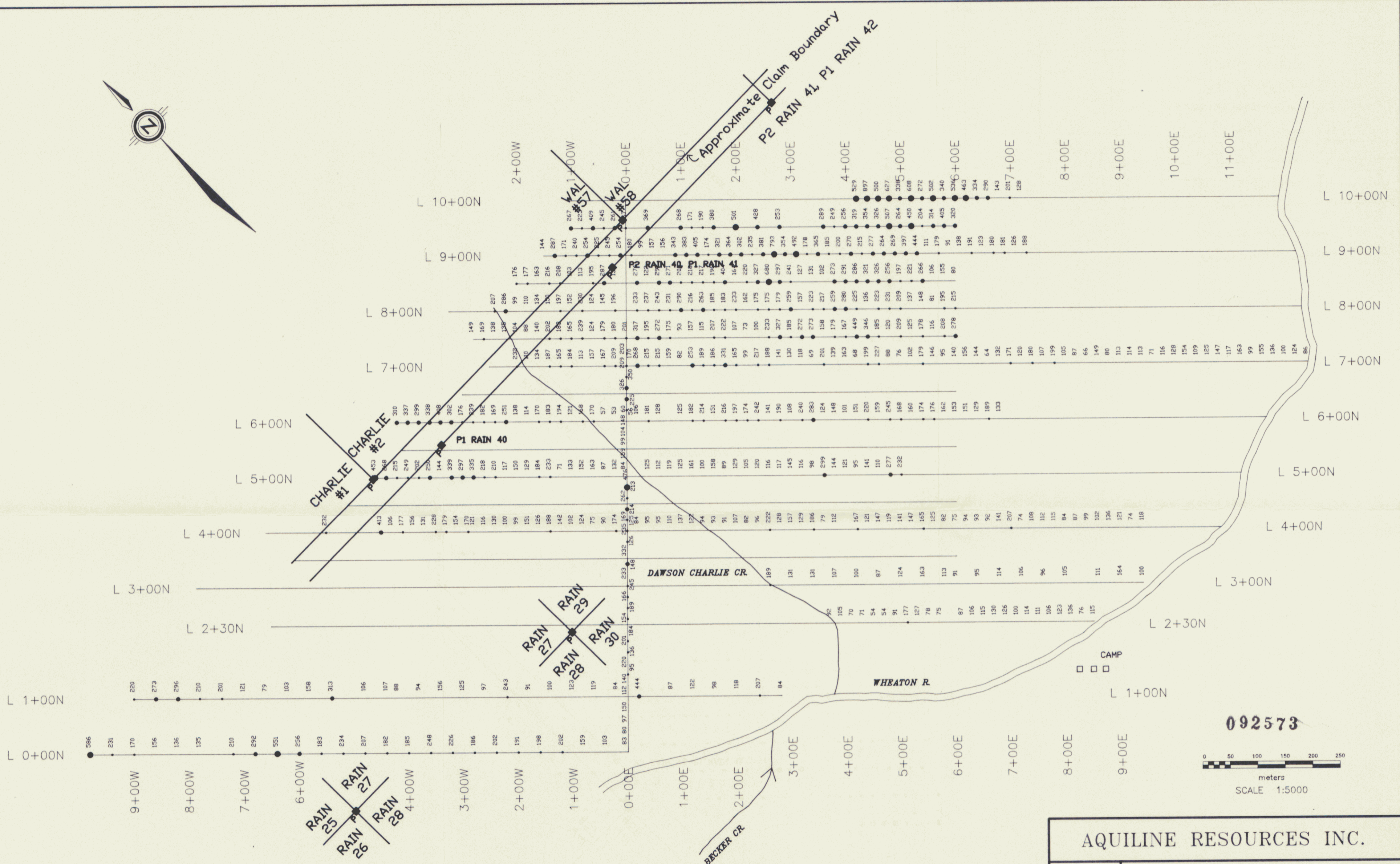
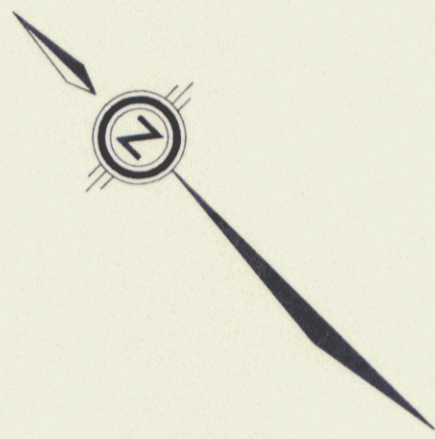
Soil Sample Location & Value

379
208
181

◆ Claim Post

- Arsenic (ppm)
- Upper Background $x \geq 10$ ppm
 - Background $3 \leq x < 10$ ppm
 - No Symbol Below Background $x < 3$ ppm

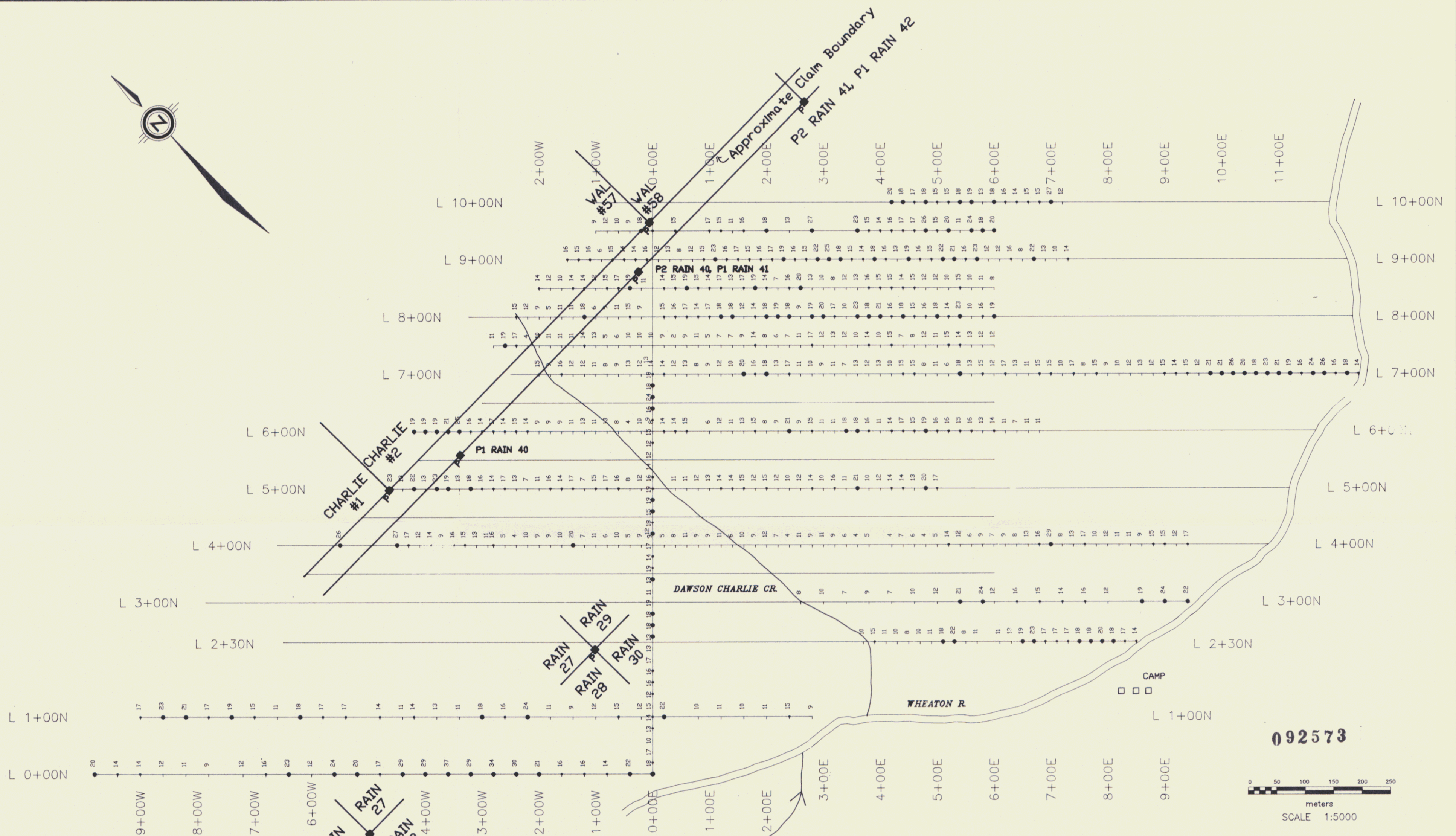
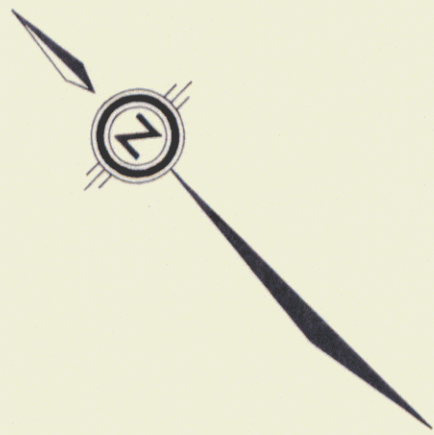
AQUILINE RESOURCES INC.	
Report by: H. KEYSER	WIND + RAIN CLAIMS Whitehorse Mining Division, Yukon
Date: July, 1988	
Scale: 1:5000	Soil Geochemical Compilation Arsenic (ppm)
	n = 611 samples
	AURUM GEOLOGICAL CONSULTANTS INC. map prepared with: Mapper-CAD Software
	Figure: 479 8



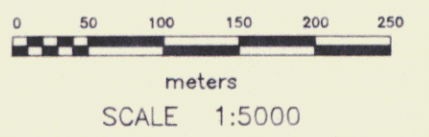
092573

- LEGEND**
- Soil Sample Location & Value
 - Claim Post
 - Barium (ppm)
 - Possibly Anomalous $x \geq 450$ ppm
 - Upper Background $250 \leq x < 450$ ppm
 - Background $165 \leq x < 250$ ppm
 - No Symbol Below Background $x < 165$ ppm

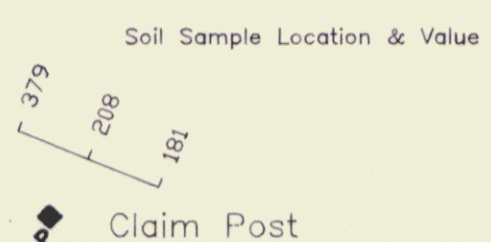
AQUILINE RESOURCES INC.	
Report by: H. KEYSER	WIND + RAIN CLAIMS Whitehorse Mining Division, Yukon
Date: July, 1988	
Scale: 1:5000	Soil Geochemical Compilation Barium (ppm)
	n = 611 samples 480
AURUM GEOLOGICAL CONSULTANTS INC. Figure: 9	
map prepared with: Mapper-CAD Software	



092573



LEGEND



- Lead (ppm)
- Upper Background $x \geq 18$ ppm
 - Background $14 \leq x < 18$ ppm
 - No Symbol Below Background $x < 14$ ppm

AQUILINE RESOURCES INC.

Report by:
H. KEYSER
Date:
July, 1988

WIND + RAIN CLAIMS
Whitehorse Mining Division, Yukon

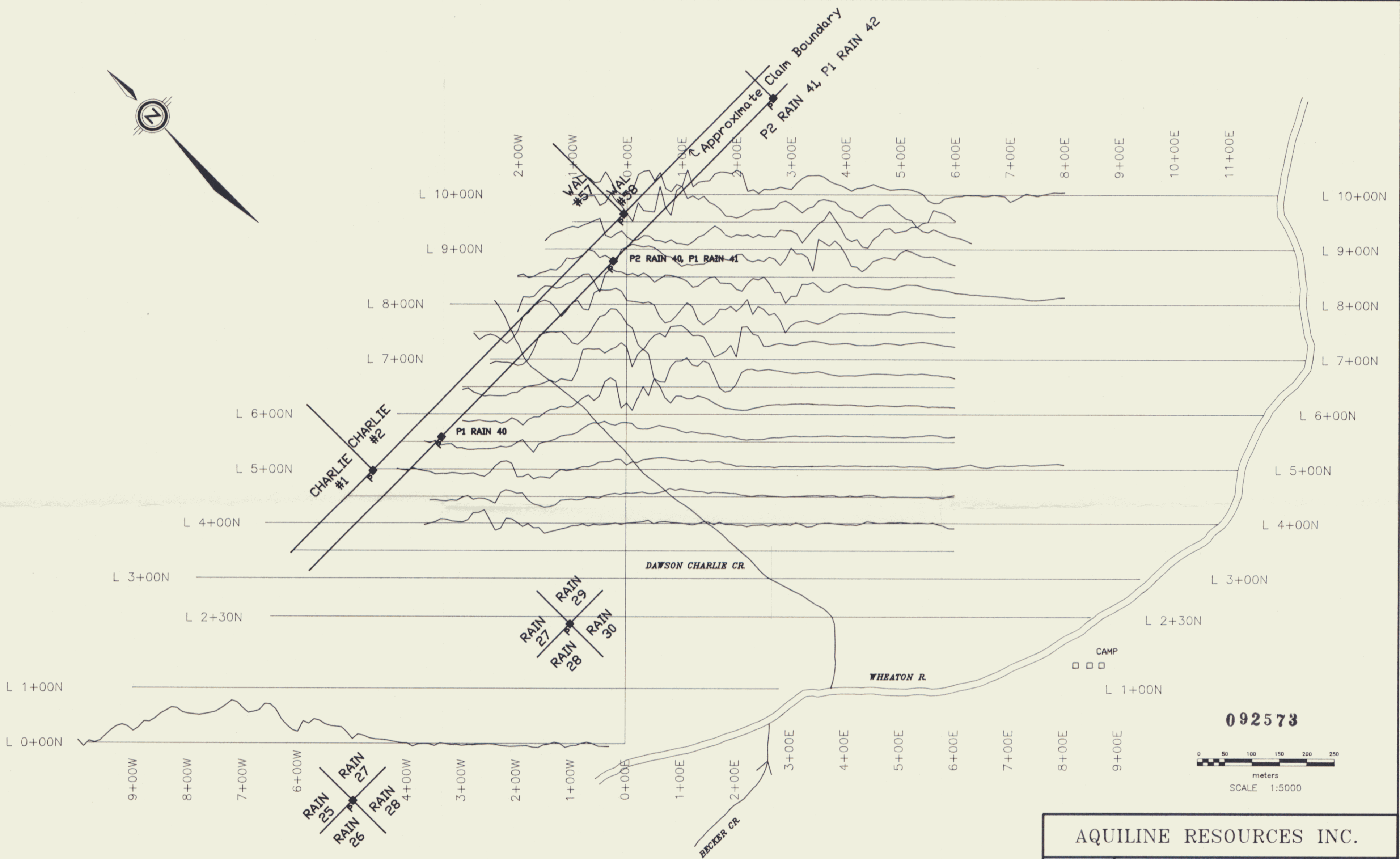
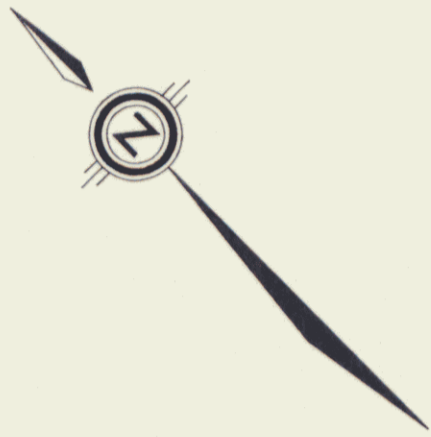
Soil Geochemical Compilation
Lead (ppm)

n = 611 samples

Scale:
1:5000

AURUM GEOLOGICAL CONSULTANTS INC.
map prepared with: Mapper-CAD Software

Figure:
10



Vertical Scale 1cm = 400 gammas
 Base line value = 58,000 gammas

◆ Claim Post

AQUILINE RESOURCES INC.	
Report by: H. KEYSER	WIND + RAIN CLAIMS Whitehorse Mining Division, Yukon EDA Magnetometer Profiles
Date: July, 1988	
Scale: 1:5000	
AURUM GEOLOGICAL CONSULTANTS INC.	
map prepared with: Mapper-CAD Software	
Figure: 11	

482

092573

APPENDIX

ACME ANALYTICAL LABORATORIES LTD.
 852 E. HASTINGS ST. VANCOUVER B.C. V6A 1R6
 PHONE(604)253-3158 FAX(604)253-1716

DATE RECEIVED: JUN 20 1988

DATE REPORT MAILED: *July 2/88*

GEOCHEMICAL ANALYSIS CERTIFICATE

ICP - .500 GRAM SAMPLE IS DIGESTED WITH 3ML 3-1-2 HCL-HNO3-H2O AT 95 DEG. C FOR ONE HOUR AND IS DILUTED TO 10 ML WITH WATER.
 THIS LEACH IS PARTIAL FOR MN FE CA P LA CR NG BA TI B W AND LIMITED FOR NA K AND AL. AU DETECTION LIMIT BY ICP IS 3 PPM.
 - SAMPLE TYPE: P1-P17 SOIL P18 SILT AU* ANALYSIS BY ACID LEACH/AA FROM 10 GM SAMPLE.

ASSAYER: *C. Leong* D.TOYE OR C.LEONG, CERTIFIED B.C. ASSAYERS

AQUILINE RESOURCES File # 88-2141 Page 1

SAMPLE#	Pb PPM	Ag PPM	As PPM	Sb PPM	Ba PPM	Au* PPB
L10N 4+20E	20	.1	4	2	529	6
L10N 4+40E	18	.3	2	3	897	1
L10N 4+60E	17	.1	2	2	500	1
L10N 4+80E	18	.2	2	3	627	2
L10N 5+00E	15	.2	3	2	338	1
L10N 5+20E	15	.4	4	2	608	1
L10N 5+40E	18	.1	3	2	272	1
L10N 5+60E	19	.1	4	2	502	1
L10N 5+80E	13	.2	2	2	340	1
L10N 6+00E	18	.5	2	2	536	2
L10N 6+20E	16	.1	5	2	463	145
L10N 6+40E	14	.1	2	2	334	3
L10N 6+60E	15	.2	2	2	290	4
L10N 6+80E	15	.1	5	2	143	2
L10N 7+00E	27	.7	12	2	201	5
L10N 7+20E	12	.2	2	2	128	2
L9+50N 1+00W	9	.1	2	2	267	1
L9+50N 0+80W	12	.1	3	2	223	2
L9+50N 0+60W	10	.1	2	2	409	2
L9+50N 0+40W	9	.1	2	2	245	5
L9+50N 0+20W	18	.2	3	2	261	1
L9+50N 0+00W	14	.1	3	2	167	91
L9+50N 0+40E	15	.4	2	2	369	6
L9+50N 1+00E	17	.3	6	6	268	4
L9+50N 1+20E	15	.1	2	2	171	3
L9+50N 1+40E	11	.1	2	2	190	1
L9+50N 1+60E	16	.1	3	2	380	4
L9+50N 2+00E	18	.3	2	2	501	1
L9+50N 2+40E	13	.1	3	2	428	18
L9+50N 2+80E	27	.8	7	2	253	37
L9+50N 3+60E	23	1.0	5	2	289	4
L9+50N 3+80E	15	.1	5	2	249	2
L9+50N 4+00E	14	.4	2	2	256	2
L9+50N 4+20E	16	.3	7	2	319	3
L9+50N 4+40E	17	.6	2	2	354	1
L9+50N 4+60E	17	.3	3	2	326	4
STD C/AU-S	39	6.8	42	17	180	52

092573

AQUILINE RESOURCES

FILE # 88-2141

Page 2

SAMPLE#	Pb PPM	Ag PPM	As PPM	Sb PPM	Ba PPM	Au* PPB
L9+50N 4+80E	26	.5	4	2	507	240
L9+50N 5+00E	15	.2	3	2	264	1
L9+50N 5+20E	20	.1	4	2	450	5
L9+50N 5+40E	11	.2	3	2	204	1
L9+50N 5+60E	24	.2	2	2	314	10
L9+50N 5+80E	18	.3	2	3	405	1
L9+50N 6+00E	20	.1	3	2	320	23
L9N 1+50W	16	.1	3	5	144	3
L9N 1+30W	15	.6	2	2	287	1
L9N 1+10W	16	.1	2	2	171	3
L9N 0+90W	6	.3	4	2	240	2
L9N 0+70W	15	.3	2	2	254	3
L9N 0+50W	14	.1	2	3	225	1
L9N 0+30W	14	.2	2	3	245	3
L9N 0+10W	16	.3	2	2	254	265
L9N 0+10E	12	.5	7	2	180	1
L9N 0+30E	13	.3	2	2	99	2
L9N 0+50E	8	.2	2	3	157	1
L9N 0+70E	12	.1	2	2	156	4
L9N 0+90E	15	.1	2	2	343	1
L9N 1+10E	23	.5	3	3	383	1
L9N 1+30E	16	.2	3	3	405	1
L9N 1+50E	17	.4	3	2	174	3
L9N 1+70E	15	.1	2	2	321	1
L9N 1+90E	16	.2	4	2	364	17
L9N 2+10E	17	.1	6	2	302	1
L9N 2+30E	19	.1	6	2	235	1
L9N 2+50E	16	.2	5	2	381	2
L9N 2+70E	15	.2	3	2	793	1
L9N 2+90E	22	.1	2	2	354	4
L9N 3+10E	25	.3	5	2	492	2
L9N 3+30E	18	.1	2	2	178	1
L9N 3+50E	15	.1	2	2	365	1
L9N 3+70E	14	.1	6	3	185	5
L9N 3+90E	18	.1	2	2	200	1
L9N 4+10E	16	.1	4	2	270	6
STD C/AU-S	41	6.6	41	17	179	49

AQUILINE RESOURCES

FILE # 88-2141

Page 3

SAMPLE#	Pb PPM	Ag PPM	As PPM	Sb PPM	Ba PPM	Au* PPB
L9N 4+30E	13	.1	3	2	215	6
L9N 4+50E	19	.1	4	2	277	230
L9N 4+70E	16	.1	3	2	264	8
L9N 4+90E	15	.1	2	3	269	2
L9N 5+10E	22	.1	5	2	397	1
L9N 5+30E	21	.1	2	2	444	6
L9N 5+50E	16	.1	4	2	111	109
L9N 5+70E	23	.5	7	3	179	4
L9N 5+90E	12	.1	2	2	91	2
L9N 6+10E	12	.1	2	2	138	2
L9N 6+30E	16	.1	2	2	191	6
L9N 6+50E	8	.1	3	2	123	2
L9N 6+70E	22	.1	2	2	180	2
L9N 6+90E	13	.1	2	2	181	1
L9N 7+10E	10	.1	2	2	126	1
L9N 7+30E	14	.2	2	2	188	1
L8+50N 2+00W	14	.1	2	3	176	1
L8+50N 1+80W	12	.1	2	2	177	1
L8+50N 1+60W	10	.1	2	2	163	1
L8+50N 1+40W	14	.1	2	2	216	2
L8+50N 1+20W	14	.3	3	2	208	2
L8+50N 1+00W	12	.3	4	2	103	16
L8+50N 0+80W	15	.1	3	3	113	5
L8+50N 0+60W	17	.2	2	2	195	4
L8+50N 0+40W	19	.2	4	2	287	2
L8+50N 0+20W	11	.1	2	2	152	4
L8+50N 0+20E	14	.1	2	2	276	2
L8+50N 0+40E	15	.1	5	2	122	5
L8+50N 0+60E	19	.1	3	2	292	1
L8+50N 0+80E	15	.1	3	2	271	3
L8+50N 1+00E	14	.1	3	2	208	2
L8+50N 1+20E	17	.1	2	2	218	245
L8+50N 1+40E	13	.1	4	2	217	2
L8+50N 1+60E	17	.1	2	2	196	4
L8+50N 1+80E	19	.1	2	2	404	2
L8+50N 2+00E	14	.2	4	2	164	54
STD C/AU-S	41	7.1	42	16	173	49

AQUILINE RESOURCES

FILE # 88-2141

Page 4

SAMPLE#	Pb PPM	Ag PPM	As PPM	Sb PPM	Ba PPM	Au* PPB
L8+50N 2+20E	7	.1	4	2	220	1
L8+50N 2+40E	16	.2	5	2	327	101
L8+50N 2+60E	20	.2	7	2	680	2
L8+50N 2+80E	13	.1	3	2	297	1
L8+50N 3+00E	10	.1	7	2	241	1
L8+50N 3+20E	8	.1	7	2	127	4
L8+50N 3+40E	12	.2	7	2	131	1
L8+50N 3+60E	13	.3	8	2	102	1
L8+50N 3+80E	16	.1	4	2	273	3
L8+50N 4+00E	15	.1	7	2	291	4
L8+50N 4+20E	15	.1	5	2	286	114
L8+50N 4+40E	14	.2	6	2	321	1
L8+50N 4+60E	15	.1	7	2	326	1
L8+50N 4+80E	12	.1	5	2	256	1
L8+50N 5+00E	12	.2	2	2	197	2
L8+50N 5+20E	10	.2	6	2	221	14
L8+50N 5+40E	15	.1	2	3	266	13
L8+50N 5+60E	10	.1	5	2	106	1
L8+50N 5+80E	11	.4	6	2	155	1
L8+50N 6+00E	8	.1	2	2	80	11
L8N 2+40W	15	.1	3	2	207	5
L8N 2+20W	12	.3	4	2	286	1
L8N 2+00W	9	.7	2	2	99	5
L8N 1+80W	5	.1	2	2	110	67
L8N 1+60W	11	.1	2	2	134	1
L8N 1+40W	11	.1	4	2	150	1
L8N 1+20W	18	.1	4	2	197	9
L8N 1+00W	6	.1	3	2	152	1
L8N 0+80W	9	.1	5	2	230	10
L8N 0+60W	11	.3	4	3	124	8
L8N 0+40W	15	.3	2	2	145	89
L8N 0+20W	9	.4	4	2	196	14
L8N 0+20E	15	.1	4	2	233	33
L8N 0+40E	16	.4	5	2	237	11
L8N 0+60E	17	.5	2	2	243	1
L8N 0+80E	14	.1	5	2	231	3
STD C/AU-S	43	6.7	43	16	180	49

AQUILINE RESOURCES

FILE # 88-2141

Page 5

SAMPLE#	Pb PPM	Ag PPM	As PPM	Sb PPM	Ba PPM	Au* PPB
L8N 1+00E	17	.1	2	2	290	4
L8N 1+20E	18	.5	2	2	216	1
L8N 1+40E	18	.1	2	2	263	4
L8N 1+60E	12	.1	2	3	185	3
L8N 1+80E	14	.1	2	2	183	1
L8N 2+00E	18	.1	2	2	233	1
L8N 2+20E	19	.1	2	2	162	1
L8N 2+40E	18	.6	2	2	175	2
L8N 2+60E	9	.1	2	2	175	1
L8N 2+80E	19	.1	2	4	179	2
L8N 3+00E	20	.1	2	3	259	2
L8N 3+20E	17	.3	2	2	157	1
L8N 3+40E	10	.1	2	5	223	1
L8N 3+60E	23	.1	3	3	217	2
L8N 3+80E	18	.4	2	2	259	1
L8N 4+00E	21	.2	6	2	280	4
L8N 4+20E	16	.3	6	2	225	1
L8N 4+40E	18	.1	2	3	136	1
L8N 4+60E	15	.3	4	2	223	1
L8N 4+80E	16	.2	2	5	231	1
L8N 5+00E	18	.4	7	3	209	2
L8N 5+20E	14	.1	3	4	137	33
L8N 5+40E	23	.1	2	2	148	17
L8N 5+60E	10	.3	2	2	81	1
L8N 5+80E	16	.2	2	3	195	1
L8N 6+00E	19	.1	2	2	215	5
L7+50N 2+80W	11	.3	2	4	149	1
L7+50N 2+60W	19	.1	2	2	169	6
L7+50N 2+40W	17	.2	2	4	138	1
L7+50N 2+20W	4	.1	2	2	135	2
L7+50N 2+00W	10	.5	6	5	104	4
L7+50N 1+80W	11	.4	2	5	88	2
L7+50N 1+60W	11	.2	2	2	140	1
L7+50N 1+40W	11	.6	3	3	202	4
L7+50N 1+20W	14	.1	3	2	183	1
L7+50N 1+00W	13	.3	2	4	165	1
STD C/AU-S	42	7.4	41	17	175	49

AQUILINE RESOURCES

FILE # 88-2141

Page 6

SAMPLE#	Pb PPM	Ag PPM	As PPM	Sb PPM	Ba PPM	Au* PPB
L7+50N 0+80W	5	.1	5	2	239	2
L7+50N 0+60W	6	.1	2	2	124	1
L7+50N 0+40W	10	.2	2	2	179	2
L7+50N 0+20W	10	.4	7	2	180	34
L7+50N 0+00W	10	.1	2	2	201	7
L7+50N 0+20E	9	.2	4	2	317	23
L7+50N 0+40E	2	.1	4	2	195	1
L7+50N 0+60E	9	.3	3	2	272	6
L7+50N 0+80E	11	.1	2	2	175	1
L7+50N 1+00E	5	.1	2	2	93	1
L7+50N 1+20E	7	.1	5	4	157	3
L7+50N 1+40E	7	.1	2	2	115	2
L7+50N 1+60E	9	.5	2	2	207	1
L7+50N 1+80E	14	.1	2	2	222	1
L7+50N 2+00E	8	.4	4	4	107	5
L7+50N 2+20E	6	.1	2	5	73	1
L7+50N 2+40E	7	.3	5	2	100	3
L7+50N 2+60E	11	.2	7	3	233	1
L7+50N 2+80E	17	.2	5	4	327	1
L7+50N 3+00E	12	.1	5	2	185	2
L7+50N 3+20E	13	.1	4	2	272	1
L7+50N 3+40E	12	.1	3	2	273	1
L7+50N 3+60E	10	.2	4	2	158	2
L7+50N 3+80E	14	.1	2	2	179	2
L7+50N 4+00E	10	.1	2	2	167	3
L7+50N 4+20E	15	.2	4	2	449	1
L7+50N 4+40E	7	.1	2	2	346	29
L7+50N 4+60E	8	.1	2	2	185	2
L7+50N 4+80E	12	.1	2	2	120	1
L7+50N 5+00E	11	.1	2	3	209	1
L7+50N 5+20E	15	.1	2	2	125	3
L7+50N 5+40E	14	.1	2	2	178	1
L7+50N 5+60E	13	.1	2	2	116	15
L7+50N 5+80E	12	.1	2	3	208	1
L7+50N 6+00E	12	.5	2	4	278	1
L7N 2+00W	15	.3	2	2	232	1
STD C/AU-S	40	7.1	43	16	180	47

SAMPLE#	Pb PPM	Ag PPM	As PPM	Sb PPM	Ba PPM	Au* PPB
L7N 1+80W	9	.1	2	2	110	3
L7N 1+60W	16	.1	4	2	134	1
L7N 1+40W	12	.1	3	3	187	1
L7N 1+20W	12	.1	2	2	165	1
L7N 1+00W	11	.1	2	3	184	13
L7N 0+80W	8	.1	2	2	113	32
L7N 0+60W	9	.1	2	3	157	5
L7N 0+40W	13	.1	3	2	167	1
L7N 0+20W	12	.1	2	2	209	9
L7N 0+00W	14	.1	3	2	170	10
L7N 0+20E	14	.1	2	2	268	80
L7N 0+40E	12	.1	2	2	215	2
L7N 0+60E	13	.2	2	2	215	14
L7N 0+80E	8	.3	2	3	159	3
L7N 1+00E	9	.1	2	2	82	1
L7N 1+20E	12	.1	2	2	253	2
L7N 1+40E	10	.3	3	2	189	1
L7N 1+60E	20	.1	5	3	186	1
L7N 1+80E	16	.1	2	2	331	1
L7N 2+00E	18	.1	2	2	165	2
L7N 2+20E	13	.1	3	2	99	102
L7N 2+40E	17	.3	4	3	217	2
L7N 2+60E	11	.1	2	2	188	1
L7N 2+80E	10	.2	2	2	141	1
L7N 3+00E	9	.2	2	2	130	16
L7N 3+20E	11	.1	2	2	118	1
L7N 3+40E	7	.1	2	2	69	2
L7N 3+60E	13	.1	3	2	201	11
L7N 3+80E	12	.2	2	2	139	2
L7N 4+00E	13	.1	3	2	163	21
L7N 4+20E	10	.1	2	2	68	1
L7N 4+40E	15	.2	2	2	199	2
L7N 4+60E	15	.3	2	2	227	8
L7N 4+80E	8	.3	2	2	88	2
L7N 5+00E	11	.1	2	2	76	2
L7N 5+20E	6	.1	2	2	102	2
STD C/AU-S	38	7.2	40	15	177	52

AQUILINE RESOURCES

FILE # 88-2141

Page 8

SAMPLE#	Pb PPM	Ag PPM	As PPM	Sb PPM	Ba PPM	Au* PPB
L7N 5+40E	18	.1	2	2	179	23
L7N 5+60E	13	.2	2	2	146	7
L7N 5+80E	15	.1	3	2	95	3
L7N 6+00E	12	.1	2	2	140	7
L7N 6+20E	17	.1	3	4	156	1
L7N 6+40E	13	.1	2	2	144	3
L7N 6+60E	11	.1	2	2	64	1
L7N 6+80E	15	.1	2	2	132	10
L7N 7+00E	15	.2	4	2	171	1
L7N 7+20E	10	.1	2	2	120	1
L7N 7+40E	17	.1	2	2	180	5
L7N 7+60E	8	.1	3	2	107	5
L7N 7+80E	15	.1	3	2	199	1
L7N 8+00E	9	.1	2	2	105	1
L7N 8+20E	10	.1	2	2	87	1
L7N 8+40E	12	.1	2	2	66	1
L7N 8+60E	13	.1	2	2	149	1
L7N 8+80E	12	.1	2	2	80	4
L7N 9+00E	15	.1	3	2	113	10
L7N 9+20E	14	.1	3	2	114	1
L7N 9+40E	15	.2	5	2	113	1
L7N 9+60E	12	.1	4	2	71	1
L7N 9+80E	21	.1	8	2	116	83
L7N 10+00E	21	.3	11	2	128	1
L7N 10+20E	26	.1	9	2	154	4
L7N 10+40E	20	.3	9	2	109	8
L7N 10+60E	18	.2	10	2	125	3
L7N 10+80E	23	.3	13	2	147	9
L7N 11+00E	21	.2	9	2	117	9
L7N 11+20E	19	.2	10	2	163	4
L7N 11+40E	16	.1	8	2	99	3
L7N 11+60E	24	.3	11	2	155	5
L7N 11+80E	26	.3	8	2	136	215
L7N 12+00E	16	.2	7	2	100	6
L7N 12+20E	18	.1	7	2	124	1
L7N 12+40E	14	.1	6	2	86	48
STD C/AU-S	44	6.5	43	16	177	52

SAMPLE#	Pb PPM	Ag PPM	As PPM	Sb PPM	Ba PPM	Au* PPB
L6N 4+20W	19	.1	10	2	310	2
L6N 4+00W	19	.5	8	2	337	3
L6N 3+80W	19	.4	10	3	299	1
L6N 3+60W	21	.3	8	4	338	1
L6N 3+40W	25	.6	6	2	408	9
L6N 3+20W	16	1.3	7	3	302	1
L6N 3+00W	14	.1	6	2	176	1
L6N 2+80W	17	.7	3	3	239	1
L6N 2+60W	14	.4	5	5	182	4
L6N 2+40W	15	.1	4	2	169	1
L6N 2+20W	14	.4	3	2	251	2
L6N 2+00W	9	.4	5	3	138	1
L6N 1+80W	9	.4	6	2	114	1
L6N 1+60W	9	.2	6	2	170	1
L6N 1+40W	11	.3	2	2	183	4
L6N 1+20W	13	.1	4	2	194	2
L6N 1+00W	11	.4	5	2	121	1
L6N 0+80W	13	.1	4	2	168	6
L6N 0+60W	8	.1	2	2	170	1
L6N 0+40W	4	.1	6	2	57	1
L6N 0+20W	10	.4	3	2	53	2
L6N 0+00W	8	.4	6	2	56	1
L6N 0+20E	14	.1	2	2	106	1
L6N 0+40E	14	.5	5	2	181	1
L6N 0+60E	15	.6	3	4	128	1
L6N 1+00E	6	.1	2	2	125	1
L6N 1+20E	12	.1	2	2	182	3
L6N 1+40E	11	.1	2	2	214	1
L6N 1+60E	13	.2	4	2	151	17
L6N 1+80E	15	.1	2	2	216	1
L6N 2+00E	8	.1	2	2	197	1
L6N 2+20E	9	.3	4	2	174	6
L6N 2+40E	21	.1	2	2	242	2
L6N 2+60E	9	.4	2	2	141	15
L6N 2+80E	15	.2	2	2	190	56
L6N 3+00E	11	.1	2	2	108	4
STD C/AU-S	39	6.6	43	16	180	48

AQUILINE RESOURCES

FILE # 88-2141

Page 10

SAMPLE#	Pb PPM	Ag PPM	As PPM	Sb PPM	Ba PPM	Au* PPB
L6N 3+20E	11	.1	2	4	240	6
L6N 3+40E	18	.2	2	2	283	20
L6N 3+60E	18	.1	2	3	124	1
L6N 3+80E	16	.3	2	9	148	1
L6N 4+00E	11	.1	2	5	101	5
L6N 4+20E	14	.1	2	2	151	1
L6N 4+40E	17	.1	2	5	220	1
L6N 4+60E	15	.3	6	2	159	9
L6N 4+80E	19	.6	4	3	245	1
L6N 5+00E	16	.1	2	2	168	1
L6N 5+20E	16	.2	2	2	160	1
L6N 5+40E	15	.4	4	6	174	3
L6N 5+60E	16	.1	2	2	176	1
L6N 5+80E	13	.2	2	2	162	1
L6N 6+00E	14	.5	4	3	153	1
L6N 6+20E	11	.3	2	2	151	4
L6N 6+40E	7	.1	3	2	129	1
L6N 6+60E	11	.1	2	2	189	1
L6N 6+80E	11	.1	2	2	133	22
L5N 4+60W	23	.3	2	3	453	11
L5N 4+40W	13	.1	4	2	268	9
L5N 4+20W	22	.3	5	3	215	11
L5N 4+00W	13	.1	2	3	249	1
L5N 3+80W	23	.2	2	4	202	1
L5N 3+60W	19	.3	4	2	250	1
L5N 3+40W	13	.1	6	2	144	1
L5N 3+20W	18	.1	6	2	339	1
L5N 3+00W	16	.3	4	2	297	22
L5N 2+80W	14	.5	4	2	335	1
L5N 2+60W	17	.2	2	2	218	1
L5N 2+40W	13	.3	2	2	210	3
L5N 2+20W	7	.3	2	3	117	1
L5N 2+00W	11	.2	2	2	150	1
L5N 1+80W	16	.1	8	2	129	13
L5N 1+60W	14	.1	5	3	184	1
L5N 1+40W	17	.6	3	2	233	1
STD C/AU-S	39	6.6	42	16	183	52

AQUILINE RESOURCES

FILE # 88-2141

Page 11

SAMPLE#	Pb PPM	Ag PPM	As PPM	Sb PPM	Ba PPM	Au* PPB
L5N 1+20W	7	.1	2	2	71	1
L5N 1+00W	15	.1	2	2	133	1
L5N 0+80W	17	.1	3	2	152	2
L5N 0+60W	16	.1	2	2	163	4
L5N 0+40W	8	.1	3	3	87	1
L5N 0+20W	12	.1	2	2	132	1
L5N 0+40E	11	.1	6	2	125	1
L5N 0+60E	11	.1	9	6	112	1
L5N 0+80E	12	.1	2	2	119	14
L5N 1+00E	13	.1	3	3	125	1
L5N 1+20E	14	.1	4	2	161	7
L5N 1+40E	14	.1	4	4	100	4
L5N 1+60E	15	.1	4	2	158	1
L5N 1+80E	12	.1	2	2	89	13
L5N 2+00E	15	.1	2	3	129	1
L5N 2+20E	12	.1	3	2	105	1
L5N 2+40E	10	.1	2	2	120	1
L5N 2+60E	12	.1	6	2	116	1
L5N 2+80E	14	.1	3	2	117	6
L5N 3+00E	10	.1	3	2	145	1
L5N 3+20E	16	.1	4	2	116	1
L5N 3+40E	11	.1	3	2	98	1
L5N 3+60E	21	.2	2	2	299	1
L5N 3+80E	10	.1	2	2	144	2
L5N 4+00E	12	.1	2	2	121	1
L5N 4+20E	14	.1	2	2	95	1
L5N 4+40E	14	.1	2	2	141	1
L5N 4+60E	13	.1	3	2	110	21
L5N 4+80E	20	.1	2	3	277	1
L5N 5+00E	17	.1	2	2	232	5
L4N 5+50W	26	.1	3	2	232	25
L4N 4+50W	27	.1	6	2	413	1
L4N 4+30W	17	.4	5	4	106	1
L4N 4+10W	12	.5	6	2	177	1
L4N 3+90W	14	.1	4	2	156	1
L4N 3+70W	9	.2	8	2	131	1
STD C/AU-S	40	7.1	41	16	183	47

SAMPLE#	Pb PPM	Ag PPM	As PPM	Sb PPM	Ba PPM	Au* PPB
L4N 3+50W	16	.7	8	5	228	6
L4N 3+30W	15	.1	6	2	179	5
L4N 3+10W	13	.1	3	2	154	3
L4N 2+90W	11	.1	6	2	170	5
L4N 2+80W	16	.3	6	2	121	1
L4N 2+60W	5	.1	6	2	116	1
L4N 2+40W	4	.1	2	2	130	3
L4N 2+20W	10	.3	5	3	100	10
L4N 2+00W	9	.1	2	2	99	6
L4N 1+80W	9	1.0	5	2	151	5
L4N 1+60W	10	.3	5	2	126	1
L4N 1+40W	20	.4	6	2	188	3
L4N 1+20W	7	.1	4	2	142	4
L4N 1+00W	11	.1	4	2	102	1
L4N 0+80W	6	.1	3	2	124	3
L4N 0+60W	10	.1	2	2	75	1
L4N 0+40W	5	.1	5	2	90	5
L4N 0+20W	9	.1	3	3	174	1
L4N 0+00W	9	.1	4	2	125	1
L4N 0+20E	5	.1	5	3	84	1
L4N 0+40E	8	.2	2	2	95	3
L4N 0+60E	11	.1	2	2	95	5
L4N 0+80E	9	.1	2	2	110	6
L4N 1+00E	9	.1	3	2	137	3
L4N 1+20E	11	.4	3	4	122	4
L4N 1+40E	6	.1	3	3	94	3
L4N 1+60E	10	.1	2	2	93	1
L4N 1+80E	9	.3	2	2	91	1
L4N 2+00E	12	.1	5	3	107	1
L4N 2+20E	7	.4	3	2	82	1
L4N 2+40E	4	.1	2	2	96	1
L4N 2+60E	11	.1	4	2	222	24
L4N 2+80E	9	.4	3	3	128	1
L4N 3+00E	11	.3	5	2	157	1
L4N 3+20E	9	.1	3	2	129	1
L4N 3+40E	6	.1	2	2	186	5
STD C/AU-S	42	7.1	39	16	178	51

AQUILINE RESOURCES

FILE # 88-2141

Page 13

SAMPLE#	Pb PPM	Ag PPM	As PPM	Sb PPM	Ba PPM	Au* PPB
L4N 3+60E	4	.1	2	2	79	1
L4N 3+80E	5	.1	2	2	112	3
L4N 4+20E	4	.2	2	2	167	3
L4N 4+40E	7	.1	2	2	121	7
L4N 4+60E	6	.2	2	2	147	5
L4N 4+80E	4	.1	2	2	119	1
L4N 5+00E	5	.1	2	2	141	8
L4N 5+20E	14	.1	2	2	147	2
L4N 5+40E	12	.2	2	2	165	4
L4N 5+60E	6	.1	2	2	125	40
L4N 5+80E	9	.1	3	2	82	1
L4N 6+00E	7	.3	2	2	75	2
L4N 6+20E	9	.1	2	2	94	1
L4N 6+40E	8	.2	4	3	93	1
L4N 6+60E	13	.2	4	2	92	1
L4N 6+80E	16	.2	6	2	141	2
L4N 7+00E	29	.4	21	4	207	6
L4N 7+20E	8	.1	2	2	74	1
L4N 7+40E	13	.2	4	2	108	2
L4N 7+60E	17	.2	8	2	112	1
L4N 7+80E	10	.1	7	2	115	25
L4N 8+00E	12	.2	7	2	84	2
L4N 8+20E	11	.2	7	2	87	14
L4N 8+40E	11	.2	6	2	99	1
L4N 8+60E	9	.1	3	3	102	4
L4N 8+80E	15	.4	4	3	136	4
L4N 9+00E	15	.1	3	2	121	2
L4N 9+20E	12	.1	3	2	74	1
L4N 9+40E	17	.2	6	2	118	2
L3N 2+60E	8	.1	2	2	189	1
L3N 3+00E	10	.2	3	2	131	3
L3N 3+40E	7	.1	2	2	131	1
L3N 3+80E	9	.1	2	2	107	32
L3N 4+20E	7	.1	2	2	100	2
L3N 4+60E	10	.1	2	2	87	2
L3N 5+00E	12	.2	6	2	124	1
STD C/AU-S	38	6.6	40	16	178	47

AQUILINE RESOURCES

FILE # 88-2141

Page 14

SAMPLE#	Pb PPM	Ag PPM	As PPM	Sb PPM	Ba PPM	Au* PPB
L3N 5+40E	21	.1	2	2	163	1
L3N 5+80E	24	.1	6	2	113	3
L3N 6+00E	12	.3	3	2	91	1
L3N 6+40E	16	.1	4	3	95	6
L3N 6+80E	15	.1	4	2	114	3
L3N 7+20E	14	.1	5	2	106	1
L3N 7+60E	16	.1	4	2	96	4
L3N 8+00E	12	.5	5	3	105	1
L3N 8+60E	19	.3	8	2	111	1
L3N 9+00E	24	.3	13	3	164	6
L3N 9+40E	22	.1	6	2	100	2
L2+30N 3+70E	10	.1	2	2	92	1
L2+30N 3+90E	15	.2	5	3	105	1
L2+30N 4+10E	11	.2	4	2	70	5
L2+30N 4+30E	10	.1	3	2	71	1
L2+30N 4+50E	8	.1	2	2	54	1
L2+30N 4+70E	10	.2	2	2	54	3
L2+30N 4+90E	11	.1	2	2	91	1
L2+30N 5+10E	18	.1	2	2	177	1
L2+30N 5+30E	22	.1	5	2	127	2
L2+30N 5+50E	8	.1	2	2	78	1
L2+30N 5+70E	11	.1	2	2	75	7
L2+30N 6+10E	11	.1	4	2	87	1
L2+30N 6+30E	13	.1	4	2	106	35
L2+30N 6+50E	19	.1	7	2	115	8
L2+30N 6+70E	23	.2	6	2	130	2
L2+30N 6+90E	17	.1	4	2	126	1
L2+30N 7+10E	17	.1	3	2	100	1
L2+30N 7+30E	17	.1	7	2	114	1
L2+30N 7+50E	18	.2	9	3	111	2
L2+30N 7+70E	18	.1	6	2	106	1
L2+30N 7+90E	20	.2	7	2	123	3
L2+30N 8+10E	18	.1	11	3	136	2
L2+30N 8+30E	17	.1	6	2	76	2
L2+30N 8+50E	14	.1	3	2	115	1
L1N 9+00W	17	.2	2	2	220	3
STD C/AU-S	39	7.1	40	16	177	50

AQUILINE RESOURCES

FILE # 88-2141

Page 15

SAMPLE#	Pb PPM	Ag PPM	As PPM	Sb PPM	Ba PPM	Au* PPB
L1N 8+60W	23	.1	4	2	273	26
L1N 8+20W	21	.4	7	2	296	1
L1N 7+80W	17	.2	2	2	210	1
L1N 7+40W	19	.4	6	2	201	110
L1N 7+00W	15	.1	2	2	121	1
L1N 6+60W	11	.1	2	2	79	1
L1N 6+20W	18	.1	4	2	103	1
L1N 5+80W	17	.2	2	3	158	1
L1N 5+40W	17	.3	2	2	313	1
L1N 4+80W	14	.1	4	2	106	3
L1N 4+40W	11	.1	3	2	107	1
L1N 4+20W	14	.1	2	2	88	1
L1N 3+80W	13	.2	4	2	94	1
L1N 3+40W	11	.1	2	2	156	1
L1N 3+00W	18	.2	4	3	125	1
L1N 2+60W	16	.1	4	2	97	1
L1N 2+20W	24	.2	7	3	243	4
L1N 1+80W	11	.1	2	2	91	1
L1N 1+40W	9	.1	2	2	100	1
L1N 1+00W	12	.1	2	2	123	3
L1N 0+60W	15	.1	2	2	119	5
L1N 0+20W	12	.1	3	2	84	1
L1N 0+20E	22	.4	4	2	444	12
L1N 0+80E	10	.1	2	2	87	1
L1N 1+20E	11	.1	2	2	122	280
L1N 1+60E	10	.1	2	2	98	1
L1N 2+00E	11	.1	2	3	118	1
L1N 2+40E	15	.1	2	2	207	5
L1N 2+80E	9	.1	2	2	84	1
LO 9+80W	20	.1	2	2	586	1
LO 9+40W	14	.1	2	2	231	3
LO 9+00W	14	.2	2	2	170	51
LO 8+60W	12	.1	2	2	156	1
LO 8+20W	11	.2	2	2	136	1
LO 7+80W	9	.1	2	2	135	11
LO 7+20W	12	.1	2	2	210	1
STD C/AU-S	43	6.6	43	17	179	52

SAMPLE#	Pb PPM	Ag PPM	As PPM	Sb PPM	Ba PPM	Au* PPB
LO 6+80W	16	.2	4	3	292	1
LO 6+40W	23	.2	2	4	551	1
LO 6+00W	12	.1	2	3	256	1
LO 5+60W	24	.2	4	3	183	8
LO 5+20W	20	.3	2	2	234	1
LO 4+80W	17	.2	3	2	207	1
LO 4+40W	29	.5	5	3	182	5
LO 4+00W	29	.3	7	2	185	2
LO 3+60W	37	.3	13	2	248	1
LO 3+20W	29	.5	7	2	226	1
LO 2+80W	34	.4	8	2	186	1
LO 2+40W	30	.6	10	3	202	2
LO 2+00W	21	.2	5	2	191	1
LO 1+60W	16	.1	2	2	198	1
LO 1+20W	16	.1	2	2	202	10
LO 0+80W	14	.1	3	2	159	1
LO 0+40W	22	.1	6	2	103	1
EBL 7+00N	13	.1	2	2	203	3
EBL 6+80N	18	.1	2	2	209	7
EBL 6+60N	18	.1	3	2	350	3
EBL 6+40N	24	.2	3	2	326	1
EBL 6+20N	16	.1	2	2	225	1
EBL 6+00N	9	.2	3	2	60	22
EBL 5+80N	15	.1	2	2	148	1
EBL 5+60N	12	.1	2	2	104	1
EBL 5+40N	12	.3	2	2	99	1
EBL 5+20N	14	.1	2	2	159	1
EBL 5+00N	16	.1	3	2	84	9
EBL 4+80N	19	.5	3	2	476	1
EBL 4+60N	19	.1	2	2	213	4
EBL 4+40N	15	.1	2	2	262	46
EBL 4+20N	18	.1	2	2	214	14
EBL 4+00N	12	.2	2	2	169	2
EBL 3+80N	17	.1	2	2	235	12
EBL 3+60N	14	.1	3	2	126	2
EBL 3+40N	19	.2	2	2	332	3
STD C/AU-S	42	7.2	41	16	176	47

092573