

MAP NO.: ASSESSMENT REPORT X  
105 K 2 PROSPECTUS  
CONFIDENTIAL X  
OPEN FILE

DOCUMENT NO: 092572  
MINING DISTRICT: Whitehorse  
TYPE OF WORK: GEOLOGICAL, GEOCHEMICAL

REPORT FILED UNDER: Dynasty Exploration Ltd

DATE PERFORMED: May 17 - June 3, 1971

DATE FILED: December 12, 1971

LOCATION: LAT.: 62°07'N

AREA: Tay River

LONG.: 132°47'W

VALUE \$: 9,042.66

CLAIM NAME & NO.: ACME 5-28 (Y60693-716)

WORK DONE BY: P. Dean

WORK DONE FOR: Dynasty Exploration Ltd

DATE TO GOOD STANDING:

REMARKS: # 13 SOCK

Magnetometer, EM and gravity surveys were done over the property in 1971, and 50 soil samples were collected in areas underlain by phyllite and slate. A thin quartz vein in gabbro contained abundant chalcopyrite.

GEOLOGICAL AND GEOPHYSICAL  
INVESTIGATIONS OF THE  
ACME MINERAL CLAIMS

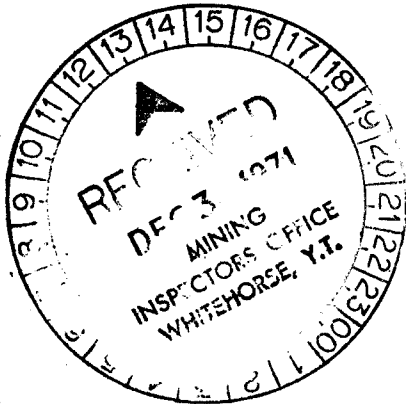


N.T.S. 105-K-2

May 17 - June 3, 1971

Latitude : 62°07'N

Longitude: 132°47'W



BY:

PETER DEAN

This report has been examined by the Geological Evaluation Unit and is recommended to the Commissioner to be considered as representation work in the amount of

\$2042.66

Resident Geologist or  
Resident Mining Engineer

Considered as representation work under  
Section 53 (4) Yukon Quartz Mining Act.

Commissioner of Yukon Territory

DYNASTY EXPLORATIONS LIMITED

July 22, 1971

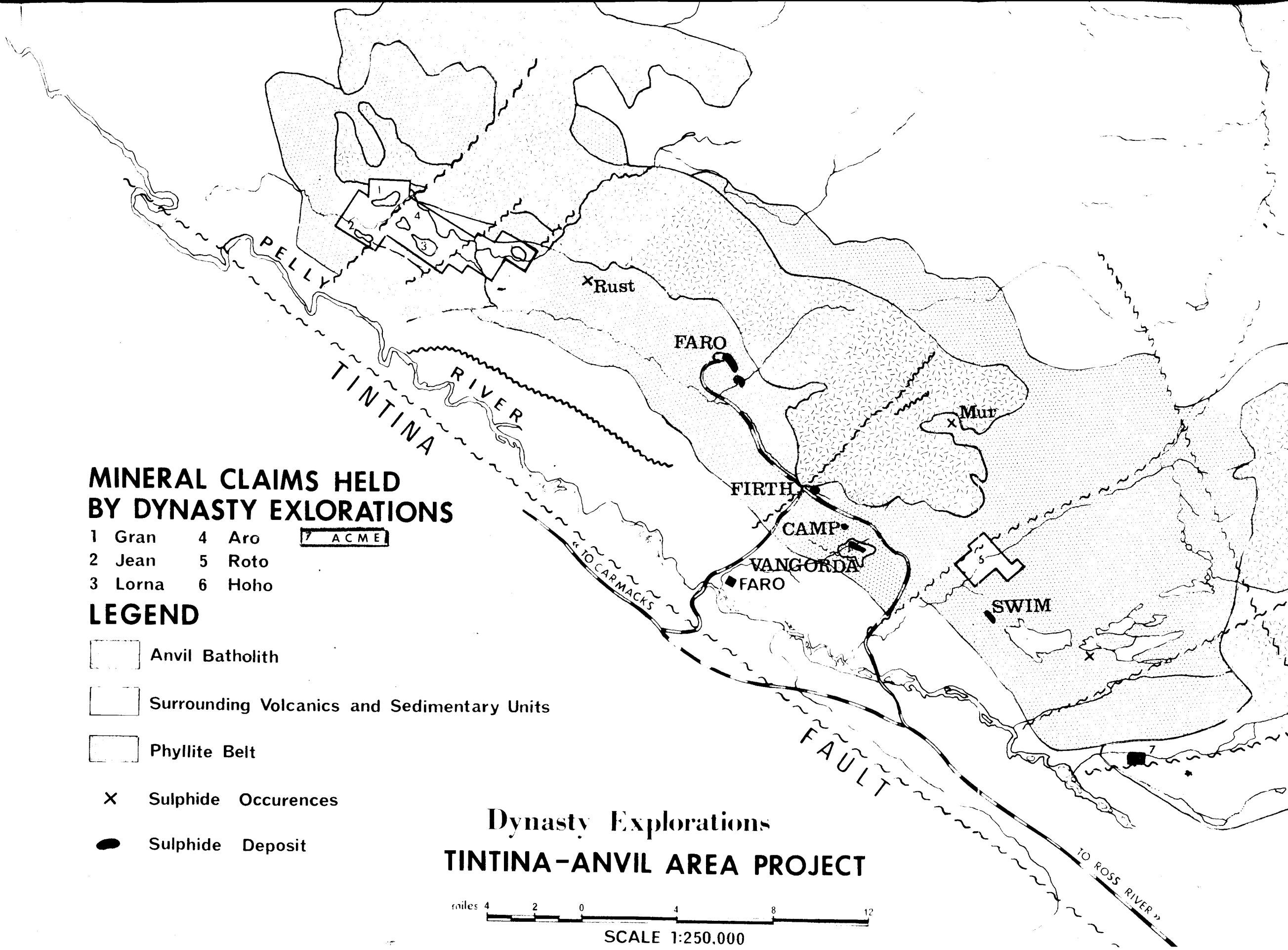
TABLE OF CONTENTS

KEY MAP

LIST OF CLAIMS

INTRODUCTION .....	1
GEOLOGY .....	1
GEOPHYSICS.....	5
GEOCHEMISTRY .....	6
GRAVITY SURVEY .....	6

Appendix	I	Regional Geology S.E. 105-K-2 1:1320
Appendix	II	Geology - Acme Claims 1:400
Appendix	III	Geochemical Survey - Soil Sampling Analysis
Appendix	IV	Residual Gravity
Appendix	V	Ground Magnetometer Survey - Magnetic Contours
Appendix	VI	Ground Magnetometer Survey - Gamma Values
Appendix	VII	Electromagnetic Survey - 1800 cps Resultant Dip Angles
Appendix	VIII	Electromagnetic Survey - Contoured 1800 cps R.D.A.
Appendix	IX	Compilation - Acme Claims
Appendix	X	Summary of Costs
Appendix	XI	Affidavit Supporting Summary of Costs
Appendix	XII	Vouchers & Invoices Supporting Summary of Costs
Appendix	XIII	List of Personnel



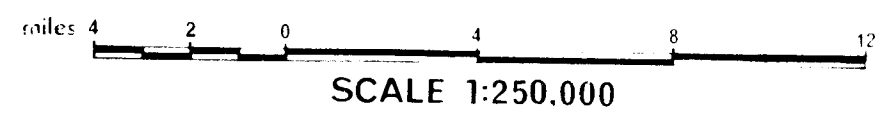
**MINERAL CLAIMS HELD BY DYNASTY EXPLORATIONS**

- |         |        |  |
|---------|--------|--|
| 1 Gran  | 4 Aro  | <span style="border: 1px solid black; padding: 2px;">7 ACME</span> |
| 2 Jean  | 5 Roto |  |
| 3 Lorna | 6 Hoho |  |

**LEGEND**

- Anvil Batholith
- Surrounding Volcanics and Sedimentary Units
- Phyllite Belt
- Sulphide Occurences
- Sulphide Deposit

**Dynasty Explorations  
TINTINA-ANVIL AREA PROJECT**



LIST OF CLAIMS

<u>Claim Number</u>	<u>Grant Number</u>	<u>Recording Date</u>
ACME 5-8	Y60693-Y60696	June 4, 1971
9-16	Y60709-Y60716	June 4, 1971
17-24	Y60701-Y60708	June 4, 1971
25-28	Y60697-Y60700	June 4, 1971

## DYNASTY EXPLORATIONS LIMITED

330 MARINE BUILDING  
355 BURRARD STREET  
VANCOUVER 1, B.C.

### GEOLOGICAL<sup>L</sup> AND GEOPHYSICAL INVESTIGATIONS OF THE ACME MINERAL CLAIMS

#### INTRODUCTION

The Acme Group of 24 claims is located immediately south of the Orchard River, 2 miles west of Orchard Lakes, N.T.S. 105-K-2. Access to the property may be made by helicopter or float-plane to a small unnamed lake on the claim group. The area covered by the claims includes parts of the former Lees, Come, Pal and Let Claim groups, all of which lapsed prior to 1971.

Previous work in this area included helicopter-borne A.E.M. and aeromagnetic surveys flown by Lockwood Survey Corporation in 1966. This work revealed coincident conductor-magnetic anomalies within the area now encompassed by the Acme Claims. A picket line grid covers all of the Acme claims and extends for a considerable distance beyond the claims to the S.E. and N.W. The cross-lines have an approximate bearing of  $325^{\circ}$  and seem to be of 1000 ft. line spacing. No previous records of earlier work performed on this grid are available.

#### GEOLOGY

Abundant outcrop occurs only on the southern half of the claim group on a 3000 ft. ridge of prominent cliffs of good rock exposure. The northern half of the claim group, from the base of this ridge north to the Orchard River, is covered by deposits of glacial alluvium that appear to be in excess of one hundred feet in depth.

(a) Rock Units

Rock units occurring on the claim group are listed below: (Rock types and unit numbers after Templeman-Kluit, G.S.C. 1968).

Unit 2: Consists mainly of dark, laminated slate and phyllite more or less altered to a hard, light gray and black banded hornfels. In some locations, not on the claim group, this unit consists of a distinctive purple and pale green banded skarn; lenses of amphibolite were observed in one part of the unit, and lenses of light gray, coarsely crystalline limestone up to about 20 ft. thick occur near the stratigraphic top of the unit a few hundred feet southeast of the claim group. This unit is intruded by granodiorite of the Anvil Batholith east of the claim group. The upper contact of the unit is not exposed on the claims, but a mile and a half to the southwest, Unit 2 is overlain by a graphite rich phyllite. This unit (3g?) could occur under overburden on the Acme claims. Unit 2 has been strongly deformed and contains many small isoclinal folds up to a few inches in dimension, with axial planes parallel to the composition layering and foliation of the rock.

Unit 8a: Varies from well-bedded impure chert with alternating silica and argillaceous layers, to a tuffaceous, massive chert. Mn-oxide stain is found on most fracture surfaces, as well as minor limonite staining throughout. Outcrops have a buff to rusty colour. The more massive, tuffaceous material occurs higher in the section, close to the contact with Unit 8b.

Unit 8b: A partially metamorphosed, dark green to buff or gray coloured volcanic rock, probably of basaltic composition. Occasional tuffaceous lenses show poor bedding, however, the rock is mainly massive, with strong jointing. Networks of fine quartz veins of quartz or quartz and epidote occasionally occur in joint fractures. In places this rock unit contains abundant disseminated pyrrhotite. Unit 8b conformably overlies Unit 8a, into which it grades through a few tens of feet of pyroclastic breccia and tuff.

The volcanic rocks resist erosion and form the prominent ridge on the southwestern portion of the claim group. The underlying chert outcrops along the lower slopes of the ridge.

Unit 9: Consists of a pyroxene-plagioclase gabbro which grades into dense, massive serpentine containing abundant magnetite. The pyroxene of the gabbro in most samples appears to have been altered to amphibole or chlorite and antigorite. All contacts of Unit 9 seen on the claim group are faulted. The serpentine and gabbro appear to have been intruded along the Vangorda Creek Fault, a strong southeast trending system of shears which crosses the southern portion of the claim group.

Unit 11: Biotite granodiorite of the Anvil Batholith intrudes Unit 2, 2000 feet east of the claim group. Small dikes of medium grained gray granodiorite are found intruding Unit 8b at two locations on the claim group.

(b) Structure

All bedded rock units within the area of the claims dip moderately to steeply to the south and southwest, that is,

away from the Anvil Batholith. The Acme claims therefore would appear to lie on the southern limb of a large anticline which dominates the Anvil Range. Close to the Anvil Batholith Unit 8b directly overlies Unit 2 unconformably, with the underlying chert unit absent. The main fault crossing the claim group is the southeast trending sub-parallel to the Tintina Trench. Smaller N.W. trending cross faults with horizontal movement of up to 600 feet have displaced the Vangorda Fault where it crosses the ridge of volcanics on the southern portion of the claim group.

(c) Mineral Occurrences

Two mineralized showings of minor significance were found in the vicinity of the claims.

- (1) A quartz vein about 4 inches wide and a few feet long in a shear zone in gabbro contained abundant chalcopyrite as well as occasional grains of bornite, along with much malachite staining. No other quartz veins were seen in the vicinity, nor were any other occurrences of chalcopyrite seen in the gabbro itself (Sample #24).
- (2) An area of the volcanic rock (Unit 8b) a few tens of feet wide occurring along the contact of a rhyolite dike was found to be very heavily impregnated with pyrrhotite. This showing is located 8000 ft. S.E. of the claim group, about 1000 ft. from the nearest outcrop of the Anvil Batholith (Sample #30).

The grid area geology has been mapped and plotted on a scale of 1:400. In addition, the regional geology in the vicinity of the claim group has been mapped using an enlarged photo mosaic as a base map of scale 1:1320.

## GEOPHYSICS

Approximately 12 miles of new line was cut on the Acme claims. Lines were spaced at 800 ft. over most of the claim area, with 400 ft. line spacing over the area of the largest aeromag/A.E.M. anomaly. Magnetometer and E.M. surveys were done over these grid lines.

### Magnetic Survey

A Scintrex MF-2 fluxgate magnetometer was used for the magnetic survey. This instrument is hand-held and measures the vertical component of the magnetic field. Cross lines on the grid were 'looped' and readings were corrected for diurnal drift by re-reading established base stations. The corrected gamma values were plotted on a 1:400 ft. scale map and contoured. Strongest anomalies occurred over areas of serpentine, containing abundant magnetite. A weak, diffuse anomaly occurs over limonite stained cherts on the western part of the claim group. This magnetic high corresponds generally with the location of the aeromagnetic anomaly.

### Electromagnetic Survey

An E.M. survey was carried out over most of the grid area with a Crone C.E.M. instrument. A horizontal loop configuration was used with a coil separation of 400 feet. Resultant dip angles from the 1800 cps frequency were plotted on a base scale of 1:400 ft. and were profiled and contoured. A large, intense anomaly was revealed in the area of the A.E.M. anomaly over the western area of the grid area coincident with the weak ground magnetic anomaly. The anomaly strikes in a northwesterly direction from the lower slopes of the south ridge into an area of deep overburden. The portion of the anomaly on the ridge contains abundant chert outcrops (Unit 8a). In fact, the conductor is practically coincident with the area of the claim

group underlain by chert. Conductive response drops off sharply over the contact between chert and Unit 8b. It would appear that the main conductor occurs in the vicinity of the chert, yet samples taken of this unit are not of good conductivity. The chert contains minor disseminations of iron sulphides and is not graphitic in content.

Another weaker conductor occurs on the southeast corner of the claims. This anomaly coincides with some boggy depressions and appears to be the result of conductive overburden. The A.E.M. anomaly on this part of the claims (not coincident with the above anomaly) was caused by a large ridge of sheared serpentine rocks. This serpentine ridge was not covered by the ground C.E.M. survey.

#### GEOCHEMISTRY

Soil samples were collected at approximately 200 ft. spacings over the favourable Unit 2 outcrops on the southeast corner of the claims and in the vicinity of the C.E.M. anomaly on the western part of the claim group.

Fifty samples in all were collected. In addition, five rock chip samples of Unit 2 and Unit 8a were collected.

Geochemical values from soils and rock chips collected are not considered to be anomalous. Values observed over areas of conductive response are from soils taken over areas of thicker glacial overburden deposits.

#### GRAVITY SURVEY

Gravimetric readings were taken over most grid lines covering zones of conductivity. Magnetic anomalies were not covered completely because of steep terrain within their vicinity. All gravity survey work was performed under contract by Airborne Gravity and Seismic Services Ltd. of Calgary.

Interpretation of the residual gravity data is summarized below:

1. At the intersection of 16W and the baseline, a weak 0.25 mgal. anomaly is outlined. Maximum depth is 150 ft. to the causative mass which looks suspiciously like an overburden effect.
2. The long trend from 16W to 32W also has a maximum relief of 0.25 mgal. Maximum depth is 130 ft. Its linearity and the possibility that more relief may exist to the west make this target more interesting. It could represent a near vertical vein or system of veinlets of sulphides or other heavy material.
3. The most promising anomaly peaks at about 12S on line 28W. Amplitude is over 0.4 mgal, and computed maximum depth is 190 ft. It is open to the west.
4. The higher topography to the south is underlain by rocks of greater density than 2.7. Therefore, a sulphide deposit within these rocks would have a lesser contrast than the 0.9 normally expected and anomaly amplitude would be smaller for a given sized deposit than usually seen. Therefore, a 0.4 mgal positive - such as that at 12S on line 28W - has greater significance here than in most areas of the Yukon.

#### SUMMARY AND CONCLUSIONS

The Acme Mineral Claims are located in the Anvil Area within proximity to the same environment that hosts the Faro, Vangorda and Swim Deposits. Certain geologic and geophysical characteristics of the Acme property indicate the possibility of discovery of base metal sulphide mineralization.

The northern half of the property is overlain by glacial alluvial deposits which probably mask the phyllite units striking southeast of the Faro, Vangorda and Swim sulphide deposits. Throughout the southwest limb of the Anvil Range, the phyllites are either immediately north or adjacent to the Vangorda Creek fault and younger volcanic sequences.

The conductors outlined with the C.E.M. electromagnetic survey probably represent graphitic zones within the phyllite. Graphitic phyllite comprises the footwall zones of the Vangorda and Swim deposits.

Magnetic and gravimetric anomalies within areas of conductivity are considered as diamond drill targets holding good potential for massive sulphide intersections in the Anvil area.

Reliable geochemical response indicating sulphide mineralization under thick glacial alluvium cannot be expected.

#### RECOMMENDATIONS

A limited program of diamond drilling should be carried out in the Acme Claims.

Diamond drill holes are proposed at:

- |            |               |   |   |
|------------|---------------|---|---|
| D.D.H. A-1 | Line 28W, 13S | - | .4 mg. gravity anomaly flanking 300 gamma magnetic anomaly within area of conductivity. Phyllite presumed to underly Unit 8a. |
| D.D.H. A-2 | Line 24W, 5S  | - | .25 mg. gravity anomaly coincident with 150 gamma magnetic anomaly and strong NW striking conductor axis.                     |
| D.D.H. A-3 | Line 24E, 32S | - | 500 gamma magnetic anomaly coincident with strong conductor axis.   |

All holes should be drilled with a Longear 34 BQ wireline set-up. All holes would be drilled to a 400 ft. minimum depth.

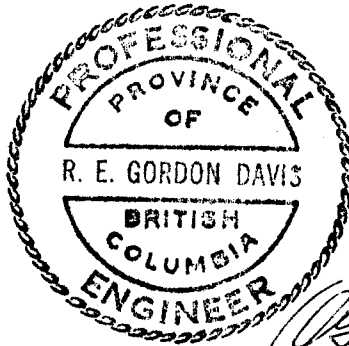
All inclusive cost of \$18/ft. of contract drilling would entail an expenditure of \$19,200 for the recommended follow-up program on the Acme Group.

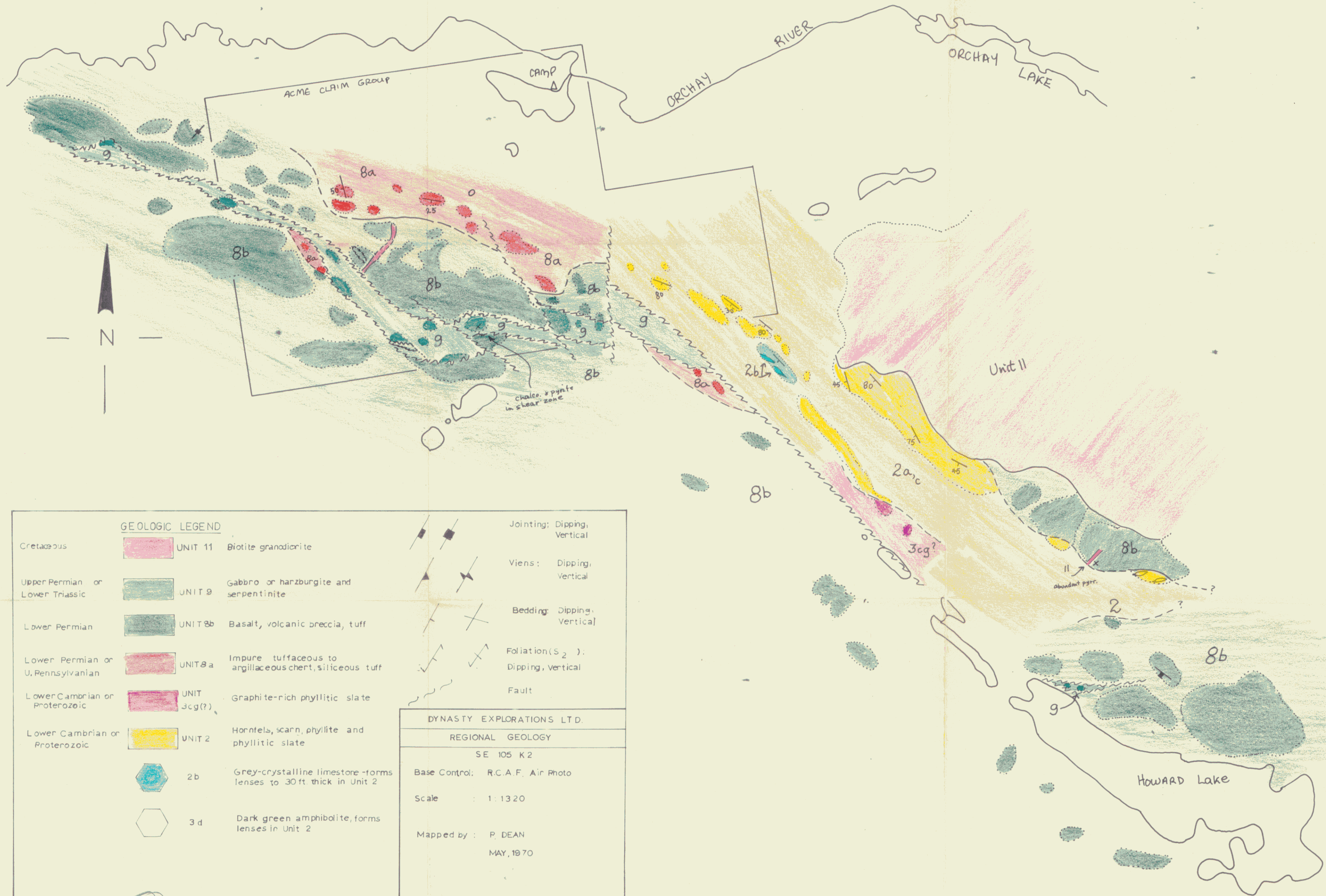
Respectfully submitted,



Peter Dean






Aug. 20, 1971





**GEOLOGIC LEGEND**

- |                                   |   |            |  |
|-----------------------------------|---|------------|--|
| Cretaceous                        |  | UNIT 11    | Biotite granodiorite   |
| Upper Permian or Lower Triassic   |  | UNIT 9     | Gabbro or harzburgite and serpentinite                             |
| Lower Permian                     |  | UNIT 8b    | Basalt, volcanic breccia, tuff                                     |
| Lower Permian or U. Pennsylvanian |  | UNIT 8a    | Impure tuffaceous to argillaceous chert, siliceous tuff            |
| Lower Cambrian or Proterozoic     |  | UNIT 3c(?) | Graphite-rich phyllitic slate                                      |
| Lower Cambrian or Proterozoic     |  | UNIT 2     | Hornfels, scarn, phyllite and phyllitic slate                      |
|                                   |  | 2b         | Grey-crystalline limestone - forms lenses to 30 ft thick in Unit 2 |
|                                   |  | 3d         | Dark green amphibolite, forms lenses in Unit 2                     |

- |  |  |
|--|--|
|  | Jointing: Dipping, Vertical                    |
|  | Veins: Dipping, Vertical                       |
|  | Bedding: Dipping, Vertical                     |
|  | Foliation (S <sub>2</sub> ): Dipping, Vertical |
|  | Fault  |

DYNASTY EXPLORATIONS LTD.

REGIONAL GEOLOGY

SE 105 K 2

Base Control: R.C.A.F. Air Photo

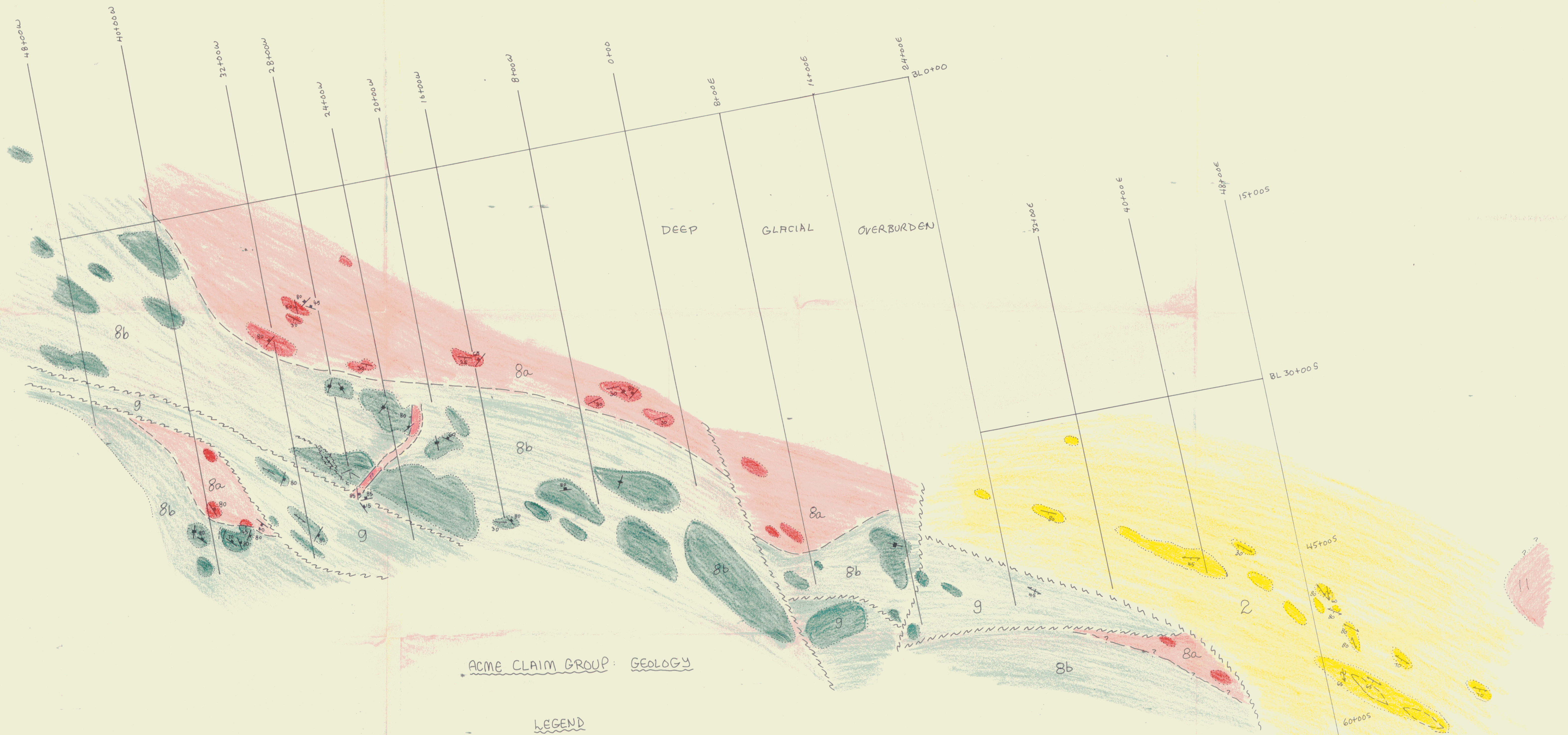
Scale : 1:1320

Mapped by : P. DEAN

MAY, 1970

504

092572



ACME CLAIM GROUP: GEOLOGY

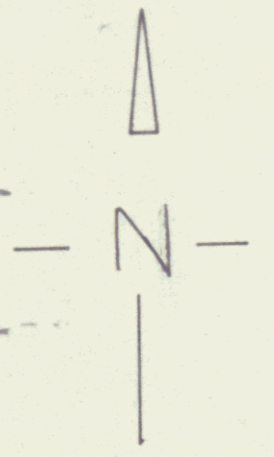
LEGEND

Cretaceous	929	Unit 11	: Biotite granodiorite
Upper Permian or lower Triassic	907	Unit 9	: Gabbro or harzburgite and serpentinite
Lower Permian	908	Unit 8b	: Basalt, volcanic breccia, tuff.
L. Permian or U. Pennsylvanian	925	Unit 8a	: Impure buffaceous to argillaceous chert, siliceous tuff
L. Cambrian or Proterozoic	930	Unit 3c (?)	: Graphite-rich phyllitic slate
L. Cambrian or Proterozoic	916	Unit 2	: Hornfels, scarn, phyllite & phyllitic slate
	2b		: Grey crystalline limestone - Forms lenses to 30 FT thick in Unit 2.
	3d		: Dark green amphibolite, Forms lenses in Unit 2.

- ♦—♦— Jointing: Dipping, Vertical
- ♦—♦— Veins: Dipping, Vertical
- X—X— Bedding: Dipping, Vertical
- <—>— Foliation (S<sub>2</sub>): Dipping, Vertical
- ~~~~~ Fault

May 1971  
P. DEAN

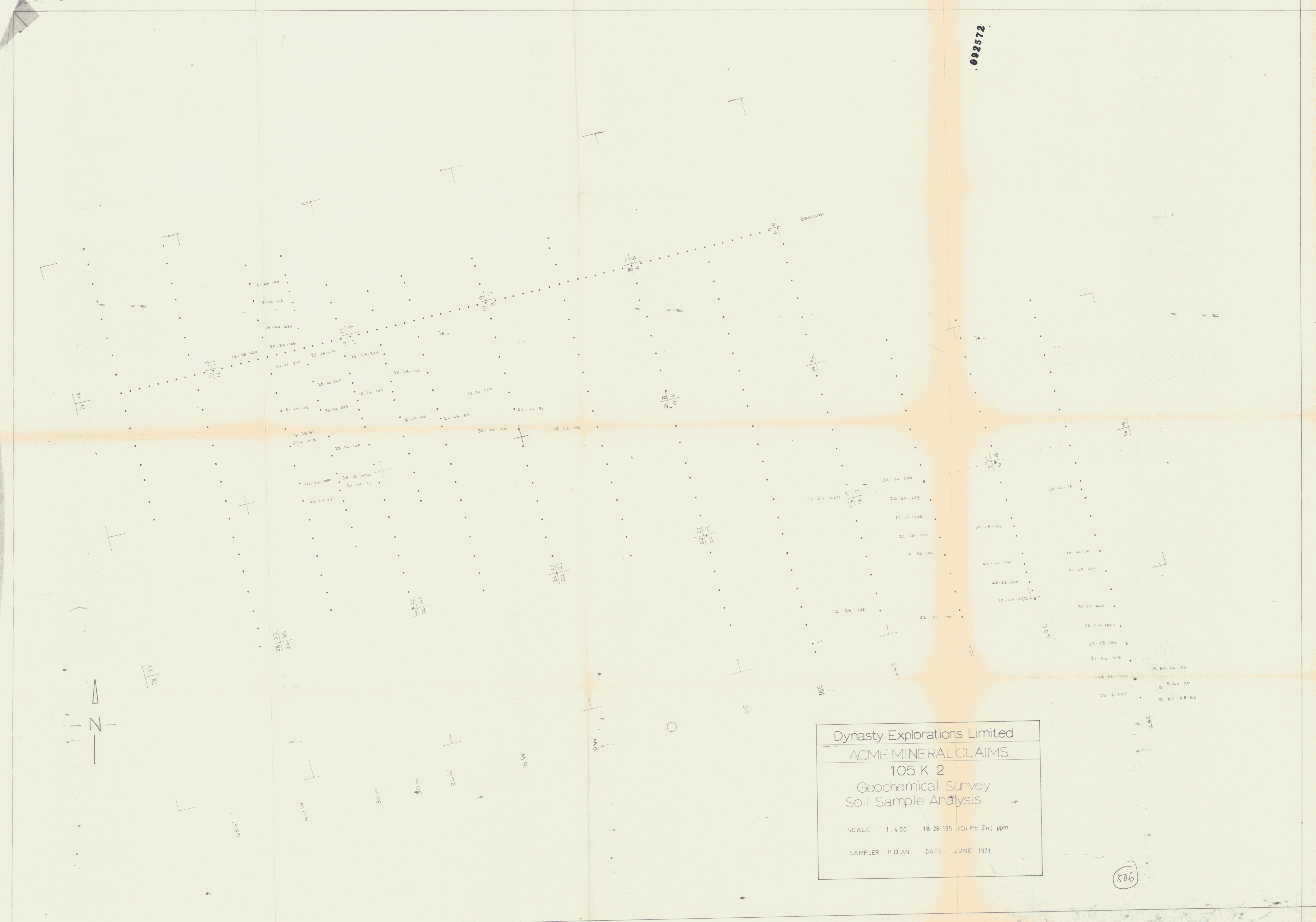
002572

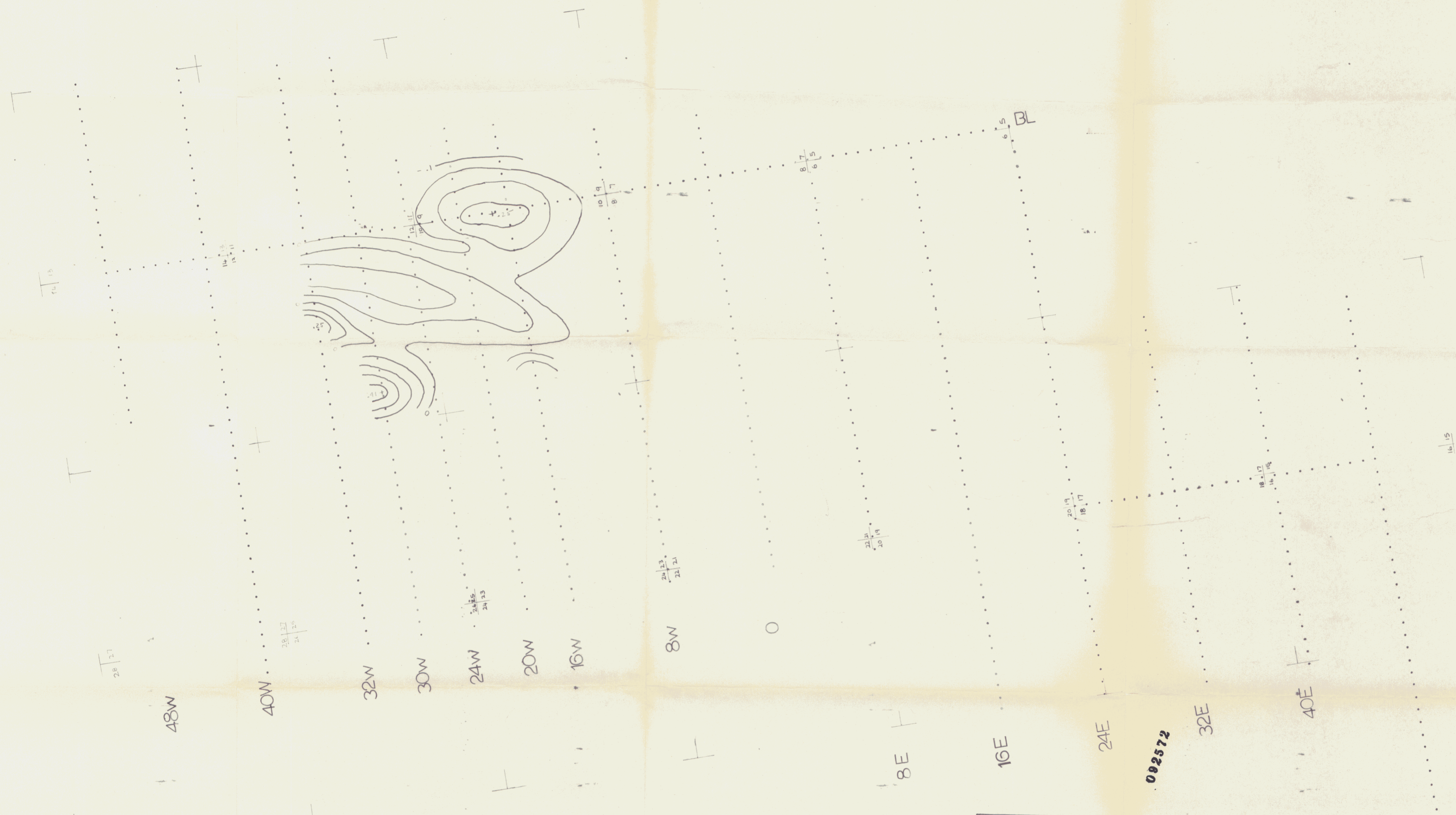


Dynasty Explorations Limited  
 ACME MINERAL CLAIMS  
 105 K 2  
 Geochemical Survey  
 Soil Sample Analysis

SCALE : 1:4 00 18-26-195 (Cu Pb Zn) ppm  
 SAMPLER : P. DEAN DATE : JUNE 1971

506





Dynasty Explorations Limited  
Acme Claims  
Residual Gravity

CONTOUR INT. 0.1 mgl.      SCALE: 1:400  
Contract Survey by:  
AIRBORNE GRAVITY LTD.  
Survey Date: JUNE, 1971

50



DYNASTY EXPLORATIONS LTD.  
 ACME MINERAL CLAIMS 105 K 2  
 GROUND MAGNETOMETER SURVEY MAGNETIC CONTOURS  
 SCALE: 1:400 INST. MF2  
 CONTOUR INT. 100  $\gamma$  DATE: MAY, 1971  
 OPERATOR: P. DEAN

508

002572

02572



Dynasty Explorations Limited  
 ACME MINERAL CLAIMS  
 105 K2  
 GROUND MAGNETIC SURVEY  
 GAMMA VALUES  
 SCALE : 1:400      • 560 - GAMMA VALUES  
                              INST - MF 2  
 OPERATOR : P. DEAN      DATE - MAY 1971

509



DYNASTY EXPLORATIONS LTD.  
 Acme Mineral Claims  
 105 K2  
 Electromagnetic Survey  
 1800 cps Resultant Dip Angle  
 SCALE : 1 : 400 INST. CRONE C.E.M.  
 .56 = Resultant Dip Angles (1800 cps)  
 Operators : Britton Coil sep. 400 FT.  
 Yoachim  
 DATE OF SURVEY : MAY - JUNE 1971

510



Dynasty Explorations Limited  
Acme Mineral Claims  
CEM Electromagnetic Survey

SURVEY DATE: JUNE, 1971	PLAN SHOWS CONTOURS
OPERATORS: BRITTON YOACHIM	1800 cps Resultant Dip Angles
INSTRUMENT: CRONE CEM HORIZ. LOOP COIL SEP. 400 ft. "Shootback Method"	SCALE 1:400

115

00579



Acme Group Compilation  
and proposed drill sites

- MAGNETIC ANOMALY
- GRAVITY ANOMALY
- CONDUCTIVE ZONE
- PROPOSED DIAMOND DRILL SITE

ACME CLAIM GROUP: GEOLOGY

LEGEND

Cretaceous	929	Unit 11	Biotite granodiorite
Upper Permian or Lower Triassic	907	Unit 9	Gabbro or harzburgite and serpentinite
Lower Permian	908	Unit 8b	Basalt, volcanic breccia, tuff
L. Permian or U. Pennsylvanian	925	Unit 8a	Impure buffaceous to argillaceous chert, siliceous tuff
L. Cambrian or Proterozoic	930	Unit 3c g (?)	Graphite-rich phyllitic slate
L. Cambrian or Proterozoic	91b	Unit 2	Hornfels, scarn, phyllite x phyllitic slate
		2b	Grey crystalline limestone - Forms lenses to 30FT thick in Unit 2.
		3d	Dark green amphibolite, Forms lenses in Unit 2.

- Jointing: Dipping, Vertical
- Veins: Dipping, Vertical
- Bedding: Dipping, Vertical
- Foliation (S<sub>2</sub>): Dipping, Vertical
- Fault

May 1971  
P. DEAN

002372

572

ACME CLAIMS  
SUMMARY OF COSTS

	<u>Schedule</u>	<u>Total</u>	<u>Pros- pecting</u>	<u>Line- cutting</u>	<u>Geology</u>	<u>Geophy.</u>	<u>Geochem</u>	<u>Camp Costs</u>	<u>Transport- ation</u>
Wages-General	"A"	\$ 2,568.47	\$187.12	\$475.18	\$424.79	\$ 913.50	\$ 21.60	\$ 546.48	\$
Contracts	"C"	542.55				542.55			
Assays	"D"	111.50					111.50		
Rotary Wing	"E"	1,114.00							1,114.00
Fixed Wing	"E"	263.50							263.50
Field Costs	"E"	2,330.93						2,330.93	
Base Camp Support (.502108 x wages)	"F"	1,289.65	93.95	238.59	213.29	458.58	10.85	274.39	
		<u>8,220.60</u>	<u>\$281.07</u>	<u>\$713.77</u>	<u>\$638.08</u>	<u>\$1,914.43</u>	<u>\$143.95</u>	<u>\$3,151.80</u>	<u>\$1,377.50</u>
Administration Charge 10%		822.06	28.11	71.38	63.81	191.44	14.39	315.18	137.75
TOTAL EXPENDITURE		\$ <u>9,042.66</u>	<u>\$309.18</u>	<u>\$785.15</u>	<u>\$701.89</u>	<u>\$2,105.87</u>	<u>\$158.34</u>	<u>\$3,466.98</u>	<u>\$1,515.25</u>

# DYNASTY EXPLORATIONS LIMITED

330 MARINE BUILDING  
355 BURRARD STREET  
VANCOUVER 1, B.C.

## AFFIDAVIT SUPPORTING SUMMARY OF COSTS

I, PETER DEAN, Geologist, Dynasty Explorations Limited, of Vancouver, British Columbia, do hereby state that, to the best of my knowledge and belief, the statement of cost presented in this report (Geological and Geophysical Investigations of the Acme Mineral Claims) is both correct and true.

*P. Dean*

\_\_\_\_\_  
Peter Dean

*Nov 29/71*

\_\_\_\_\_  
Date

*J. S. Brock*

\_\_\_\_\_  
Notary Public in and for  
Yukon Territory

ACME WAGE COST SUMMARY

SCHEDULE "A"

PROSPECTING STAKEING LINE CUTTING GEOLOGY GEOPHYSICS GAO-CHEM CAMP.

NAME	TOTAL	21	31	51	61	71	81	211
JIM BRITTON	(23) 421 59		(1) 18 33 (2)	146 64		(20) 256 62		
J. S. BROCK	(3) 107 64					(3) 107 64		
P. DEAN.	(24) 781 39		(1) 33 33 (4)	133 34 (2)	393 33 (7)	221 39		
D. PASTRO	(25) 506 00							(21) 506 00
T. SKONSENG	(5) 173 26 (8)	173 26						
T. YOACHIM	(21) 460 00		(1) 10 00 (6)	160 00		(12) 260 00 (1)	20 00	
<hr/>								
	2449 88	173 26	71 66	439 98	393 33	845 65	20 00	506 00
LESS STAKEING COSTS	<u>71 66</u>		<u>71 66</u>					
	2378 22		- 0 -					
NON WAGE LABOUR COSTS								
AT 8%	190 25	13 86		35 20	31 46	67 65	16 00	40 48
	<hr/>							
	2568 47	187 12	- 0 -	475 18	424 79	913 30	21 60	546 48

N. E. JIM BRITTON  
 TYPE OF WORK FIELD ASSISTANT  
 RATE OF PAY 530 per month

FOR THE MONTH OF MAY 19 71

DATE	WORK	OFF	FLD. BNS.	CODING	EXPLANATIONS
1					
3					
6					
9					
11	✓				
12	✓				
13	✓				
14	✓				
15	✓				
16	✓				
17	✓				
18	✓				
19	✓				
20	✓				
21	✓				
22	✓				
23	✓				
24	✓				
25	✓				
26	✓				
27	✓				
28	✓				
29	✓				
30	✓				
31	✓				

PAYROLL DEPT. USE ONLY			
22	@	18.33	403.26
	@		
	@		
GROSS BEFORE BOARD			403.26
22	BOARD	2.50	55.00
GROSS EARNINGS			458.26
DEDUCTIONS			
1)	CANADA PENSION	7.26	
2)			
3)	INCOME TAX	72.60	
4)	GROUP		
5)	M.S.A.		
6)	ACCTS. REC.		
7)			
8)	BOARD	55.00	
9)			
10)			
11)	MID MONTH ADVANCE		134.86
NET PAY			323.40

TOTAL 22

- LABOUR CODING**
- 01 PROPERTY EXAMINATION
  - 02 PROSPECTING
  - 03 STAKING
  - 04 AIRBORN SURVEYS
  - 05 LINE CUTTING
  - 06 GEOLOGY
  - 07 GEOPHYSICS
  - 08 GEOCHEMISTRY
  - 09 DIAMOND DRILLING
  - 10 PHYSICAL WORK
  - 11 ACCESS ROADS
  - 21 CAMP OPERATIONS
  - 01 VANC. OFFICE - ADMIN.
  - 2-01 VANC. EXPLORATION OFFICE
  - 93-01 WHITE HORSE BASE
  - 94-01 ROSS RIVER BASE
  - 3-01 GEOCHEM. LAB.
  - 4-01 BULLDOZER

PROJECT	DAYS	GROSS BEFORE BOARD	FIELD BONUS
847-61	1	201.63	
847-71	11	201.63	201.63
-31	1		18.33
-51	8		146.64
809-71			
-61			
211	2		36.66
	<u>22</u>	<u>403.26</u>	<u>403.26</u>

*Revised*  
FIELD BONUS

EMPLOYEE \_\_\_\_\_

APPROVED P. Deon

ATLAS EXPLORATIONS LIMITED

TIME SHEET

NAME: J. BRITTON  
 TYPE OF WORK: FIELD ASST  
 RATE OF PAY: 550/month

FOR THE MONTH OF JUNE 19 71

DATE	WORK	OFF	FLD. BNS.	CODING	EXPLANATIONS
	✓			847-071	
	✓			"	
3	✓			"	
	✓			845-071	
5	✓			211	
6	✓			071	
	✓			071	
8	✓			031	
9	✓			071	
11	✓			031	
11	✓			071	
12	✓			071	
13	✓			071	
14	✓			071	
15	✓			031	
16	✓			051	
17	✓			071	
18	✓			051	
19	✓			071	
20	✓			071	
21	✓			081	
22	✓			809-211	
23	✓			051	
24	✓			081	
25	✓			081	
26	✓			051	
27	✓			081	
28	✓			081	
29	✓			081	
30	✓			051	
31					
3					
TOTAL	30				

PAYROLL DEPT. USE ONLY		
1 mo @ 550.		550.-
@		
@		
GROSS BEFORE BOARD		550.-
30 @ 2.50 BOARD		75.-
GROSS EARNINGS		625.-
DEDUCTIONS		
1) CANADA PENSION	10.35	
2)		
3) INCOME TAX	119.95	
4) GROUP		
5) M.S.A.		
6) ACCTS. REC.		
7)		
8) BOARD	75.-	
9)		
10)		
11) MID MONTH ADVANCE		205.30
NET PAY		419.70

**PAID**

- LABOUR CODING**
- 01 PROPERTY EXAMINATION
  - 02 PROSPECTING
  - 03 STAKING
  - 04 AIRBORN SURVEYS
  - 05 LINE CUTTING
  - 06 GEOLOGY
  - 07 GEOPHYSICS
  - 08 GEOCHEMISTRY
  - 09 DIAMOND DRILLING
  - 10 PHYSICAL WORK
  - 11 ACCESS ROADS
  - 21 CAMP OPERATIONS
  - 01 VANC. OFFICE - ADMIN.
  - 01 VANC. EXPLORATION OFFICE
  - 93-01 WHITE HORSE BASE
  - 01-01 ROSS RIVER BASE
  - 01 GEOCHEM. LAB.
  - 01 BULLDOZER

PROJECT	DAYS	GROSS BEFORE BOARD	FIELD BONUS
809-051	3	54.99	
809-081	5	91.75	
809-211	1	18.33	
845-031	3	54.99	
845-051	2	36.66	
845-071	11	201.63	
845-081	1	18.33	
845-211	1	18.33	
847-071	3	54.99	
	30		

18.33

EMPLOYEE \_\_\_\_\_

APPROVED P. Deane



**A LAS EXPLORATIONS LIMITED**

**TIME SHEET**

NAME JOHN BROCK  
 TYPE OF WORK EXPLORATION MNB.  
 RATE OF PAY 1100/mo

FOR THE MONTH OF JUNE 19 71

DATE	WORK	OFF	FLD. BNS.	CODING	EXPLANATIONS
7	✓				ANVIL
8	✓				"
9	✓			-07	ACME CLAIMS
10	✓			06	BRAM
11	✓				ANVIL
12	✓			ADMIN	DYNASTY - ROSS RIVER BASE
13	✓				ANVIL
14	✓				"
15	✓				"
16	✓				"
17	✓				"
18	✓				"
19	✓				"
20	✓				"
21	✓				"
22	✓				"
23	✓				"
24	✓				"
25	✓				"
26	✓				"
27	✓				"
28	✓				"
29	✓				"
30	✓				"
31	✓				"
1	✓				"
2	✓				"
3	✓				"
4	✓				"
5	✓				"
6	✓				"
7	✓				"
8	✓				"
9	✓				"
10	✓				"
11	✓				"
12	✓				"
13	✓				"
14	✓				"
15	✓				"
16	✓				"
17	✓				"
18	✓				"
19	✓				"
20	✓				"
21	✓				"
22	✓				"
23	✓				"
24	✓				"
25	✓				"
26	✓				"
27	✓				"
28	✓				"
29	✓				"
30	✓				"
31	✓				"
1	✓				"
2	✓				"
3	✓				"
4	✓				"
5	✓				"
6	✓				"
7	✓				"
8	✓				"
9	✓				"
10	✓				"
11	✓				"
12	✓				"
13	✓				"
14	✓				"
15	✓				"
16	✓				"
17	✓				"
18	✓				"
19	✓				"
20	✓				"
21	✓				"
22	✓				"
23	✓				"
24	✓				"
25	✓				"
26	✓				"
27	✓				"
28	✓				"
29	✓				"
30	✓				"
31	✓				"
1	✓				"
2	✓				"
3	✓				"
4	✓				"
5	✓				"
6	✓				"
7	✓				"
8	✓				"
9	✓				"
10	✓				"
11	✓				"
12	✓				"
13	✓				"
14	✓				"
15	✓				"
16	✓				"
17	✓				"
18	✓				"
19	✓				"
20	✓				"
21	✓				"
22	✓				"
23	✓				"
24	✓				"
25	✓				"
26	✓				"
27	✓				"
28	✓				"
29	✓				"
30	✓				"
31	✓				"
1	✓				"
2	✓				"
3	✓				"
4	✓				"
5	✓				"
6	✓				"
7	✓				"
8	✓				"
9	✓				"
10	✓				"
11	✓				"
12	✓				"
13	✓				"
14	✓				"
15	✓				"
16	✓				"
17	✓				"
18	✓				"
19	✓				"
20	✓				"
21	✓				"
22	✓				"
23	✓				"
24	✓				"
25	✓				"
26	✓				"
27	✓				"
28	✓				"
29	✓				"
30	✓				"
31	✓				"
1	✓				"
2	✓				"
3	✓				"
4	✓				"
5	✓				"
6	✓				"
7	✓				"
8	✓				"
9	✓				"
10	✓				"
11	✓				"
12	✓				"
13	✓				"
14	✓				"
15	✓				"
16	✓				"
17	✓				"
18	✓				"
19	✓				"
20	✓				"
21	✓				"
22	✓				"
23	✓				"
24	✓				"
25	✓				"
26	✓				"
27	✓				"
28	✓				"
29	✓				"
30	✓				"
31	✓				"
1	✓				"
2	✓				"
3	✓				"
4	✓				"
5	✓				"
6	✓				"
7	✓				"
8	✓				"
9	✓				"
10	✓				"
11	✓				"
12	✓				"
13	✓				"
14	✓				"
15	✓				"
16	✓				"
17	✓				"
18	✓				"
19	✓				"
20	✓				"
21	✓				"
22	✓				"
23	✓				"
24	✓				"
25	✓				"
26	✓				"
27	✓				"
28	✓				"
29	✓				"
30	✓				"
31	✓				"
1	✓				"
2	✓				"
3	✓				"
4	✓				"
5	✓				"
6	✓				"
7	✓				"
8	✓				"
9	✓				"
10	✓				"
11	✓				"
12	✓				"
13	✓				"
14	✓				"
15	✓				"
16	✓				"
17	✓				"
18	✓				"
19	✓				"
20	✓				"
21	✓				"
22	✓				"
23	✓				"
24	✓				"
25	✓				"
26	✓				"
27	✓				"
28	✓				"
29	✓				"
30	✓				"
31	✓				"
1	✓				"
2	✓				"
3	✓				"
4	✓				"
5	✓				"
6	✓				"
7	✓				"
8	✓				"
9	✓				"
10	✓				"
11	✓				"
12	✓				"
13	✓				"
14	✓				"
15	✓				"
16	✓				"
17	✓				"
18	✓				"
19	✓				"
20	✓				"
21	✓				"
22	✓				"
23	✓				"
24	✓				"
25	✓				"
26	✓				"
27	✓				"
28	✓				"
29	✓				"
30	✓				"
31	✓				"
1	✓				"
2	✓				"
3	✓				"
4	✓				"
5	✓				"
6	✓				"
7	✓				"
8	✓				"
9	✓				"
10	✓				"
11	✓				"
12	✓				"
13	✓				"
14	✓				"
15	✓				"
16	✓				"
17	✓				"
18	✓				"
19	✓				"
20	✓				"
21	✓				"
22	✓				"
23	✓				"
24	✓				"
25	✓				"
26	✓				"
27	✓				"
28	✓				"
29	✓				"
30	✓				"
31	✓				"
1	✓				"
2	✓				"
3	✓				"
4	✓				"
5	✓				"
6	✓				"
7	✓				"
8	✓				"
9	✓				"
10	✓				"
11	✓				"
12	✓				"
13	✓				"
14	✓				"
15	✓				"
16	✓				"
17	✓				"
18	✓				"
19	✓				"
20	✓				"
21	✓				"
22	✓				"
23	✓				"
24	✓				"
25	✓				"
26	✓				"
27	✓				"
28	✓				"
29	✓				"
30	✓				"
31	✓				"
1	✓				"
2	✓				"
3	✓				"
4	✓				"
5	✓				"
6	✓				"
7	✓				"
8	✓				"
9	✓				"
10	✓				"
11	✓				"
12	✓</				

**A LAS EXPLORATIONS LIMITED**

**TIME SHEET**

NAME P. DEAN  
 TYPE OF WORK GEOLOGIST  
 R. E. OF PAY 900 per month

FOR THE MONTH OF MAY 19 71

DATE	WORK	OFF	FLD. BNS.	CODING	EXPLANATIONS
2					
3	✓				
4	✓				
5	✓				
6	✓				
7	✓				
8					
9					
10	✓				
11	✓				
12	✓				
13	✓				
14	✓				
15	✓				
16	✓				
17	✓				
18	✓				
19	✓				
20	✓				
21	✓				
22	✓				
23	✓				
24	✓				
25	✓				
26	✓				
27	✓				
28	✓				
29	✓				
30	✓				
31	✓				
TOTAL	27				

PAYROLL DEPT. USE ONLY		
	@ 900.00	900.00
	@	
	@	
GROSS BEFORE BOARD		900.00
22 BOARD 250		55.00
GROSS EARNINGS		955.00
DEDUCTIONS		
1) CANADA PENSION	16.29	
2)		
3) INCOME TAX	223.10	
4) GROUP		
5) M.S.A.		
6) ACCTS. REC.		
7)		
8) BOARD	55.00	
9)		
10)		
11) MID MONTH ADVANCE		294.39
NET PAY		660.61

- LABOUR CODING**
- 01 PROPERTY EXAMINATION
  - 02 PROSPECTING
  - 03 STAKING
  - 04 AIRBORN SURVEYS
  - 05 LINE CUTTING
  - 06 GEOLOGY
  - 07 GEOPHYSICS
  - 08 GEOCHEMISTRY
  - 09 DIAMOND DRILLING
  - 10 PHYSICAL WORK
  - 11 ACCESS ROADS
  - 12 CAMP OPERATIONS
  - 01 VANC. OFFICE - ADMIN.
  - 92-01 VANC. EXPLORATION OFFICE
  - 93-01 WHITE HORSE BASE
  - 01 ROSS RIVER BASE
  - 01 GEOCHEM. LAB.
  - 01 BULLDOZER

PROJECT	DAYS	GROSS BEFORE BOARD	FIELD BONUS
847-31	10		33.33 /
847-57	4		133.34 / ✓
847-61	10	500.00 ✓	333.33 ✓
847-71	4	400.00 ✓	133.33 x
809-71	2		66.67
-61	3		100.00
-211	3		100.00
	27	900.00	900.00

EMPLOYEE P. DEAN

APPROVED \_\_\_\_\_

NAME P DEAN  
 TYPE OF WORK GEOLOGIST  
 RATE OF PAY 900 / month

DATE	WORK	OFF	FLD. BNS.	CODING	EXPLANATIONS
1	✓			847 061	
2	✓			071	
3	✓			061	
4	✓			845-061	
5	✓			211	
6	✓			051	
7	✓			031	
8	✓			061	
9	✓			11	
10	✓			11	
11	✓			11	
12	✓			211	
13	✓			061	
14	✓			11	
15	✓			11	
16	✓			11	
17	✓			11	
18	✓			11	
19	✓			11	
20	✓			809-061	
21	✓			061	
22	✓			211	
23	✓			051	
24	✓			061	
25	✓			061	
26	✓			061	
27	✓			061	
28	✓			061	
29	✓			061	
30	✓			061	
31	✓			061	

PAYROLL DEPT. USE ONLY		
1 mo @	900.-	900.-
	@	
	@	
GROSS BEFORE BOARD		900.-
30 day 2 <sup>nd</sup> BOARD		75.-
GROSS EARNINGS		975.-
DEDUCTIONS		
1) CANADA PENSION	16.65	
2)		
3) INCOME TAX	230.30	
4) GROUP	-	
5) M.S.A.	-	
6) ACCTS. REC.	-	
7)		
8) BOARD	75.-	
9)		
10)	-	
11) MID MONTH ADVANCE		321.95
NET PAY		653.05

**PAID**

TOTAL

PAYROLL DEPT. USE ONLY

PROJECT	DAYS	GROSS BEFORE BOARD	FIELD BONUS
809-051	1	30.00	
809-061	8	240.00	
809-081	1	30.00	
809-211	1	30.00	
845-061	12	360.00	
845-031	1	30.00	
845-051	1	30.00	
845-211	2	60.00	
847-061	2	60.00	
847-071	1	30.00	
<b>30</b>		<b>900.00</b>	

LABOUR CODING

- 01 PROPERTY EXAMINATION
- 02 PROSPECTING
- 03 STAKING
- 04 AIRBORN SURVEYS
- 05 LINE CUTTING
- 06 GEOLOGY
- 07 GEOPHYSICS
- 08 GEOCHEMISTRY
- 09 DIAMOND DRILLING
- 10 PHYSICAL WORK
- 11 ACCESS ROADS
- 21 CAMP OPERATIONS
- 01 VANC. EXPLORATION - ADMIN.
- 92-01 VANC. EXPLORATION OFFICE
- 93-01 WHITE HORSE BASE
- 1-01 ROSS RIVER BASE
- 3-01 GEOCHEM. LAB.
- 55-01 BULLDOZER

EMPLOYEE P. Dean

APPROVED \_\_\_\_\_

NAME P DEAN  
 TYPE OF WORK geologist  
 RATE OF PAY 900 per month

DATE	WORK	OFF	FLD. BNS.	CODING	EXPLANATIONS
	✓			809-061 ✓	
	✓			809-061 ✓	
3	✓			809-061 ✓	
	✓			809-061 ✓	
	✓			809-061 ✓	
6	✓			809-061 ✓	
	✓			809-061 ✓	
	✓			809-061 ✓	
9	✓			809-061 ✓	
10	✓			809-061 ✓	
11	✓			847-071 ✓	
12	✓			847-071 ✓	
13	✓			809-061 ✓	
14	✓			809-061 ✓	
15	✓			809-061 ✓	
16	✓			809-061 ✓	
17	✓			848-061 ✓	
18	✓			-061 ✓	CAPA CLAIM GROUP
19	✓			-061 ✓	
20	✓			849-061 ✓	DELTA
21	✓			849-061 ✓	
22	✓			-061 ✓	
23	✓			809-061 ✓	
24	✓			849-061 ✓	
25	✓			849-061 ✓	651
26	✓			848-061 ✓	
27	✓			849-061 ✓	
28	✓			809-061 ✓	
29	✓			849-061 ✓	
30	✓			848-061 ✓	
31	✓			809-061 ✓	

PAYROLL DEPT. USE ONLY		
1 mo	@ 900.00	900.00
	@	
	@	
	<u>29.03</u>	
GROSS BEFORE BOARD		900.00
31 @ <u>2.50</u> BOARD		77.50
GROSS EARNINGS		<u>977.50</u>
DEDUCTIONS		
1) CANADA PENSION	<u>16.70</u>	
2)		
3) INCOME TAX	<u>230.30</u>	
4) GROUP	<u>-</u>	
5) M.S.A.	<u>-</u>	
6) ACCTS. REC.	<u>-</u>	
7)		
8) BOARD	<u>77.50</u>	
9)		
10)		
11) MID MONTH ADVANCE	<u>-</u>	<u>324.50</u>
NET PAY		<u><u>653.00</u></u>

LABOUR CODING	PAYROLL DEPT. USE ONLY		
	PROJECT	DAYS	GROSS BEFORE BOARD
-01 PROPERTY EXAMINATION	61-809	12	348.36
-02 PROSPECTING	51-809	1	29.03
-03 STAKING	211-809	3	87.09
-04 AIRBORN SURVEYS	71-845	1	29.03
-05 LINE CUTTING	71-847	2	58.06 ✓
-06 GEOLOGY	61-848	5	145.15
-07 GEOPHYSICS	31-849	1	29.03
-08 GEOCHEMISTRY	61-849	5	145.15
-09 DIAMOND DRILLING	51-849	1	29.03
-10 PHYSICAL WORK			
-11 ACCESS ROADS			
-21 CAMP OPERATIONS			
9 -01 VANC. OFFICE - ADMIN.			
9 -01 VANC. EXPLORATION OFFICE			
93-01 WHITE HORSE BASE			
94-01 ROSS RIVER BASE			
9 -01 GEOCHEM. LAB.			
9 -01 BULLDOZER			
		<u>31</u>	<u>900.00</u>

- 01 PROPERTY EXAMINATION
- 02 PROSPECTING
- 03 STAKING
- 04 AIRBORN SURVEYS
- 05 LINE CUTTING
- 06 GEOLOGY
- 07 GEOPHYSICS
- 08 GEOCHEMISTRY
- 09 DIAMOND DRILLING
- 10 PHYSICAL WORK
- 11 ACCESS ROADS
- 21 CAMP OPERATIONS
- 9 -01 VANC. OFFICE - ADMIN.
- 9 -01 VANC. EXPLORATION OFFICE
- 93-01 WHITE HORSE BASE
- 94-01 ROSS RIVER BASE
- 9 -01 GEOCHEM. LAB.
- 9 -01 BULLDOZER

EMPLOYEE P. Dean

APPROVED \_\_\_\_\_

NAME OF WORK DANNY PASTRO  
COOK  
 RATE OF PAY 22 \$ per day

FOR THE MONTH OF MAY 19 71

DATE	WORK	OFF	FLD. BNS.	CODING	EXPLANATIONS
2					
3					
5					
6					
8					
9					
11					
12	✓				
13	✓				
14	✓				
15	✓				
16	✓				
17	✓				
18	✓				
19	✓				
20	✓				
21	✓				
22	✓				
23	✓				
24	✓				
25	✓				
26	✓				
27	✓				
28	✓				
29	✓				
30	✓				
31	✓				

PAYROLL DEPT. USE ONLY	
<u>20 days @ 22/day</u>	<u>440.00</u>
_____ @ _____	_____
_____ @ _____	_____
GROSS BEFORE BOARD	<u>440.00</u>
BOARD @ 2.50	<u>50.00</u>
GROSS EARNINGS	<u>490.00</u>
DEDUCTIONS	
1) CANADA PENSION	<u>8.00</u>
2) _____	_____
3) INCOME TAX	<u>93.00</u>
4) GROUP _____	_____
5) M.S.A. _____	_____
6) ACCTS. REC.	<u>5.75</u> <i>calc. bypt. of 2.50 advance from</i>
7) _____	_____
8) BOARD	<u>50.00</u>
9) _____	_____
10) UIC	<u>4.20</u> <i>3 weeks</i>
11) MID MONTH ADVANCE	<u>220.95</u>
NET PAY	<u>269.05</u>

TOTAL 20

- LABOUR CODING
- 01 PROPERTY EXAMINATION
  - 02 PROSPECTING
  - 03 STAKING
  - 04 AIRBORN SURVEYS
  - 05 LINE CUTTING
  - 06 GEOLOGY
  - 07 GEOPHYSICS
  - 08 GEOCHEMISTRY
  - 09 DIAMOND DRILLING
  - 10 PHYSICAL WORK
  - 11 ACCESS ROADS
  - 21 CAMP OPERATIONS
  - 01 VANC. OFFICE - ADMIN.
  - 92-01 VANC. EXPLORATION OFFICE
  - 93-01 WHITE HORSE BASE
  - 1-01 ROSS RIVER BASE
  - 3-01 GEOCHEM. LAB.
  - 5-01 BULLDOZER

PROJECT	DAYS	GROSS BEFORE BOARD	FIELD BONUS
<u>847-211</u>	<u>20</u>	<u>440.00</u> ✓	_____
_____	_____	_____	_____
_____	_____	_____	_____
_____	_____	_____	_____
_____	_____	_____	_____
_____	_____	_____	_____
_____	_____	_____	_____
_____	_____	_____	_____
_____	_____	_____	_____
_____	_____	_____	_____

EMPLOYEE \_\_\_\_\_

APPROVED P Deon





A LAS EXPLORATIONS LIMITED

TIME SHEET

NAME TED SKUNSENG  
 TYPE OF WORK PROSPECTOR  
 R. E OF PAY # 650 per month.

FOR THE MONTH OF JUNE 1971

DATE	WORK	OFF	FLD. BNS.	CODING	EXPLANATIONS
	✓			847-021	
2	✓			"	3
	✓			"	
	✓			845 021	1
5	✓			211	1
	✓			021	
	✓			"	
8	✓			"	16
	✓			"	
11	✓			"	
12	✓			211	
13	✓			211	2
14	✓			021	
15	✓			"	
16	✓			"	
17	✓			"	8
18	✓			"	
19	✓			"	
20	✓			"	
21	✓			"	
22	✓			809-021	
23	✓			"	
24	✓			"	
25	✓			"	
26	✓			"	9
27	✓			"	
28	✓			"	
29	✓			"	
30	✓			"	
31					
TOTAL	30				

PAYROLL DEPT. USE ONLY		
1 mo @ 650.-		650.-
@		
@		
GROSS BEFORE BOARD		650.-
30 e 2 <sup>50</sup> BOARD		75.-
GROSS EARNINGS		725.-
DEDUCTIONS		
1) CANADA PENSION	10.80	
2)		
3) INCOME TAX	133.60	
4) GROUP		
5) M.S.A.		
6) ACCTS. REC.		
7)		
8) BOARD	75.-	
9)		
10) V.I.C.	6.06	
11) MID MONTH ADVANCE		225.46
NET PAY		499.54

**PAID**

- LABOUR CODING**
- 01 PROPERTY EXAMINATION
  - 02 PROSPECTING
  - 03 STAKING
  - 04 AIRBORN SURVEYS
  - 05 LINE CUTTING
  - 06 GEOLOGY
  - 07 GEOPHYSICS
  - 08 GEOCHEMISTRY
  - 09 DIAMOND DRILLING
  - 10 PHYSICAL WORK
  - 11 ACCESS ROADS
  - 21 CAMP OPERATIONS
  - 01 VANC. OFFICE - ADMIN.
  - 92-01 VANC. EXPLORATION OFFICE
  - 93-01 WHITE HORSE BASE
  - 01 ROSS RIVER BASE
  - 01 GEOCHEM. LAB.
  - 90-01 BULLDOZER

PROJECT	DAYS	GROSS BEFORE BOARD	FIELD BONUS
809-021	9	195.03	
845-021	15	325.05	
845-211	3	65.01	
847-021	3	64.91	
	30	650.-	

1 208 21.67

EMPLOYEE \_\_\_\_\_

APPROVED F. Debn

ATLAS EXPLORATIONS LIMITED

TIME SHEET

FOR THE MONTH OF MAY 19 71

EMPLOYEE TERRY YOACHIM  
 TYPE OF WORK GEO PHYSICAL OPERATOR  
 RATE OF PAY 600 per month

DATE	WORK	OFF	FLD. BNS.	CODING	EXPLANATIONS
1					
2					
3					
4					
5					
6					
7					
8					
9					
10	✓				
11	✓				
12	✓				
13	✓				
14	✓				
15	✓				
16	✓				
17	✓				
18	✓				
19	✓				
20	✓				
21	✓				
22	✓				
23	✓				
24	✓				
25	✓				
26	✓				
27	✓				
28	✓				
29	✓				
30	✓				
31	✓				
TOTAL	22				

PAYROLL DEPT. USE ONLY	
22 days @ 20.00	440.00
_____ @ _____	_____
_____ @ _____	_____
GROSS BEFORE BOARD	440.00
22 BOARD 250	55.00
GROSS EARNINGS	495.00
DEDUCTIONS	
1) CANADA PENSION	7.92
2)	_____
3) INCOME TAX	89.10
4) GROUP	_____
5) M.S.A.	_____
6) ACCTS. REC.	_____
7)	_____
8) BOARD	55.00
9)	_____
10)	_____
11) MID MONTH ADVANCE	152.02
NET PAY	342.98

LABOUR CODING	
-01	PROPERTY EXAMINATION
-02	PROSPECTING
-03	STAKING
-04	AIRBORN SURVEYS
-05	LINE CUTTING
-06	GEOLOGY
-07	GEOPHYSICS
-08	GEOCHEMISTRY
-09	DIAMOND DRILLING
-10	PHYSICAL WORK
-11	ACCESS ROADS
-21	CAMP OPERATIONS
31-01	VANC. OFFICE - ADMIN.
32-01	VANC. EXPLORATION OFFICE
93-01	WHITE HORSE BASE
94-01	ROSS RIVER BASE
95-01	GEOCHEM. LAB.
96-01	BULLDOZER

PROJECT	DAYS	GROSS BEFORE BOARD	FIELD BONUS
-31	1		20.00
847-61	11	220.00 ✓	
847-71	11	220.00 ✓	200.00
847-51	8		160.00
847-81	1		20.00
809-211	2		40.00
	22	440.00	440.00

*Revised*

EMPLOYEE \_\_\_\_\_

APPROVED P. Deane

JANIE

TYPE OF WORK

RAT OF PAY

T. YOACHIM  
GEO PHYSICAL OPER.  
\$ 600 / month

FOR THE MONTH OF

JUNE 71

DATE	WORK	OFF	FLD. BNS.	CODING	EXPLANATIONS
1	✓			847 071	
2	✓			071	
3	✓			071	
4	✓			845 071	
5	✓			211	
6	✓			071	
7	✓			071	
8	✓			071	
9	✓			071	
10	✓			031	
11	✓			071	
12	✓			071	
13	✓			071	
14	✓			031	
15	✓			081	
16	✓			051	
17	✓			081	
18	✓			051	
19	✓			071	
20	✓			071	
21	✓			081	
22	✓			809 081	
23	✓			211 051	
24	✓			051 081	
25	✓			081	
26	✓			081	
27	✓			051	
28	✓			081	
29	✓			081	
30	✓			051	
31					
TAL	30				

PAYROLL DEPT. USE ONLY		
1 mo	@ 600	600
	@	
	@	
GROSS BEFORE BOARD		600.00
30 @ 2.50 BOARD		75.00
GROSS EARNINGS		675.00
DEDUCTIONS		
1) CANADA PENSION	11.25	
2)		
3) INCOME TAX	138.95	
4) GROUP		
5) M.S.A.		
6) ACCTS. REC.	59.31	
7)		
8) BOARD	75.00	
9)		
10) V.I.C.		
11) MID MONTH ADVANCE		284.51
NET PAY		390.49

PAID

TAL	30
-----	----

PAYROLL DEPT. USE ONLY

PROJECT	DAYS	GROSS BEFORE BOARD	FIELD BONUS
809-051	3	60	
809-081	5	100	
809-211	1	20	
845-031	2	40	
845-051	2	40	
845-071	10	200	
845-081	3	60	
845-211	1	20	
847-071	3	60	
	30	600	

- LABOUR CODING
- 01 PROPERTY EXAMINATION
  - 02 PROSPECTING
  - 03 STAKING
  - 04 AIRBORN SURVEYS
  - 05 LINE CUTTING
  - 06 GEOLOGY
  - 07 GEOPHYSICS
  - 08 GEOCHEMISTRY
  - 09 DIAMOND DRILLING
  - 10 PHYSICAL WORK
  - 11 ACCESS ROADS
  - 21 CAMP OPERATIONS
  - 91 01 VANC. OFFICE - ADMIN.
  - 92-01 VANC. EXPLORATION OFFICE
  - 93-01 WHITE HORSE BASE
  - 94 01 ROSS RIVER BASE
  - 95 01 GEOCHEM. LAB.
  - 96-01 BULLDOZER

T. Yoachim  
Commissionary  
1 car plus  
3 bonus points  
(bill enclosed with D. Pastor)

EMPLOYEE \_\_\_\_\_

APPROVED P. Dean

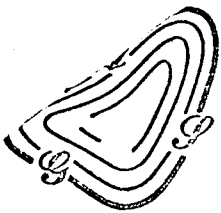
CONTRACT CHARGES

SCHEDULE "C"

AIRBORNE GRAVITY & SEISMIC SERVICES LTD.

GEOPHYSICS

542.55



Airborne Gravity & Seismic Services Ltd.

Calgary

Alberta

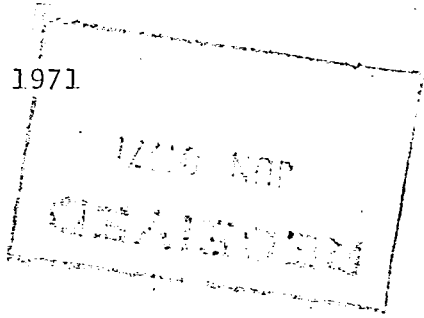
#311, 330 - 9TH AVE. S.W.

CALGARY 2, ALBERTA

PHONE 403 - 264-3434

June 7th, 1971

Dynasty Exploration Ltd.,  
330 - Burrard St.,  
Vancouver, B.C.



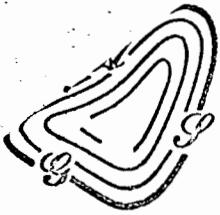
Attached is a breakdown of costs for the recent gravity surveys in the Yukon.

Your share ..... \$ 542.55

APPROVED BY:
<i>[Signature]</i>
A/C
No. <i>ACME</i>

*GEOPIH*

PAID



*Airborne Gravity & Seismic Services Ltd.*

Calgary

Alberta

#311, 330 - 9TH AVE. S.W.

CALGARY 2, ALBERTA

PHONE 403 - 264-3434

June 7th, 1971

Kerr-Addison Mines Ltd.,  
Anvil Mining  
Dynasty Exploration

For Gravity surveying in Yukon Territory:

May 17 - June 6, inc. (21 days @ \$200./day	\$ 4200.00
Mileage on pickup: Calgary to Faro & return - 3300 miles @ 15¢/mile	525.00
One air fare Calgary-Whitehorse and return	340.00
Travelling expenses:	
2 men x 5.5 days @ \$13.50/man/day	175.50
1 man x 2 days @ \$13.50/man/day	<u>27.00</u>
Total	\$ 5267.50

Divided on basis of days spent on each project  
while in the Yukon:

Kerr - Addison	7 days	$7/14.5 \times 5267.50 =$	2544.20
Anvil	6 days	$6/14.5 \times 5267.50 =$	2190.75
Dynasty	1½ days	$1.5/14.5 \times 5267.50 =$	542.55

Anvil and Dynasty provided accommodation for  
Airborne personnel while on their own projects. Airborne  
costs for food for the Kerr-Addison project have not  
been included in the above figures.

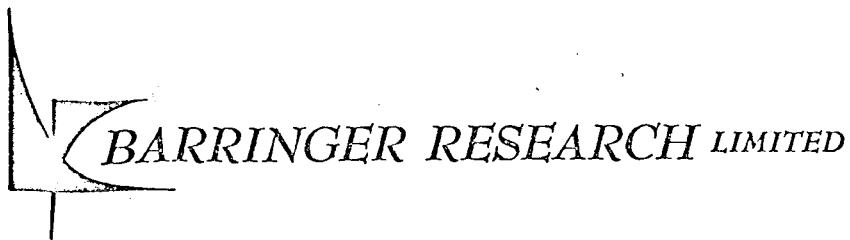
ASSAYS.

SCHEDULE "D"

BARRINGER RESEARCH LTD.

GEOCHEMICAL

111.50



304 CARLINGVIEW DRIVE  
 REXDALE, ONTARIO, CANADA  
 PHONE: 416-677-2491  
 CABLE: BARESEARCH

ADVANCED TECHNIQUES AND INSTRUMENTATION FOR THE EARTH SCIENCES

DATE: June 16, 1971

PROJECT: 119.33

- Dynasty Explorations Limited  
 355 Burrard Street
- Vancouver, B. C.

PERIOD COVERED:

PROGRESS BILLING:

SHIPPING REPORT:

WORK REPORT: 8-A

FED. SALES TAX: N/A

ONT. SALES TAX: N/A

TERMS: NET

AUTHORITY: J. S. Brock

TO: Geochemical Analysis

50 samples analysed for HClO <sub>4</sub> copper	@ 1.00 each	50.00
50 samples analysed for HClO <sub>4</sub> lead	@ 0.50 each	25.00
50 samples analysed for HClO <sub>4</sub> zinc	@ 0.50 each	25.00
45 soil sample preparation	@ 0.20 each	9.00
5 rock sample preparation	@ 0.50 each	2.50

111.50

APPROVED BY:  
*[Signature]*  
 PIC  
 No. ACME GEOCHEM.

INVOICE N<sup>o</sup> 8881

ACME FIELD EXPENSE SUMMARY

SCHEDULE "E"

SUPPLIER	TOTAL	CAMP COSTS		ROTARY WINDS	FIXED WINDS	
		GROCERIES	SUPPLIES			
APRX EQUIPMENT	5253		5253			
J. S. BROCK EXP. ACCT	470	470				
BURNS FOODS.	12684	12684				
CAPITAL HOTEL	4800			4800		
CRONE GEOPHYSICS	33300		33300			
P. DEAN EXPENSES	14330		3660	10670		
ED'S DEPT MANT STORIE	21494	16378	5116			
DUECK GENERAL COMMUNICATION	4270			4270		
HOLIDAY TRAVEL	2600		2600			
	41500			41500		
HOUBENS	1630		1630			
IMPERIAL OIL	4871		3340	1531		
MINERAL LOUNGE	14140			14140		
SEIGEL ASSOCIATES	3000		3000			
TAYLOR + DRURY	65484	64296	1188			
TERR-AIR	26350				26350	
T. N. T. A.	111400			111400		
YUKON BUS LINES	1600			1600		
YUKON FREIGHT	1667			1667		
	<u>370843</u>	<u>93828</u>	<u>59087</u>	<u>80178</u>	<u>111400</u>	<u>26350</u>
			<u>2,330.93</u>			

# EQUIPMENT COMPANY B.C. LIMITED

1784 WEST GEORGIA STREET, VANCOUVER 5, B.C.

688-4586

June 22, 1971

OUR ORDER	
NO.	BC16806
YOUR ORDER	
NO.	1138
OUR INVOICE	
NO.	BC13050

Sold to  
 Dynasty Explorations Ltd.  
 330 - 355 Burrard Street,  
 Vancouver 1, B.C.

Freight - Faro Y.T.

TERMS: NET 30 DAYS

	UNIT PRICE	AMOUNT	TOTAL
To charge you prepaid freight:			
Re: Our BC16802			
Airbill No. 018-15621911			8.36
Vancouver Airline Cartage			1.65
Service charge			1.00
			<u>11.01</u>

PAID

214 - 847

Interest at 1½ % per Month Charged on All Overdue Accounts


PROJECT \_\_\_\_\_ END USE (EXPENSE CODE) \_\_\_\_\_

TO: \_\_\_\_\_ ATTENTION \_\_\_\_\_

NATI \_\_\_\_\_ F.O.B. \_\_\_\_\_

CARRIER \_\_\_\_\_  PREPAY AND CHARGE ON INVOICE  
 ATTACH ORIGINAL BILL FOR FREIGHT CHARGES  
 FREIGHT COLLECT CARRIER TO CHARGE COMPANY

PAID BY \_\_\_\_\_  
 DATE \_\_\_\_\_

RECORD OF PAYMENT			CHEQUE	
DATE	INVOICE	AMOUNT	NO.	DATE

# EQUIPMENT COMPANY B.C. LIMITED

1784 WEST GEORGIA STREET, VANCOUVER 5, B.C. June 10, 1971 688-4586

OUR ORDER NO. BC16802
YOUR ORDER NO. 1138
OUR INVOICE NO. BC12924

Sold to

Dynasty Exploration Ltd.  
330 - 355 Burrard Street,  
Vancouver, B.C.

Freight - Faro Y.T.

TERMS: NET 30 DAYS

pay & chg 7-6-71

10 days

		UNIT PRICE	AMOUNT	TOTAL
1 only	#731 eveready batteries  B.C. SALES TAX NOT APPLICABLE SHIPPED OUT OF PROVINCE  Prepaid freight charged on BC16806	each	3.46	41.52

RECEIVED  
JUN 11 1971

PAID

214-847

Interest at 1½ % per Month Charged on All Overdue Accounts


MATERIAL TO PROJECT \_\_\_\_\_ END USE (EXPENSE CODE) \_\_\_\_\_  
 BELONGS TO \_\_\_\_\_

SHIP TO: \_\_\_\_\_ ATTENTION \_\_\_\_\_

DESTINATION \_\_\_\_\_ F.O.B. \_\_\_\_\_

VIA: \_\_\_\_\_  
 CARRIER \_\_\_\_\_

- PREPAY AND CHARGE ON INVOICE
- ATTACH ORIGINAL BILL FOR FREIGHT CHARGES
- FREIGHT COLLECT CARRIER TO CHARGE COMPANY

PROV FOR \_\_\_\_\_  
 BY: \_\_\_\_\_

REC'D. \_\_\_\_\_  
 D. \_\_\_\_\_

RECORD OF PAYMENT			CHEQUE	
DATE	INVOICE	AMOUNT	NO.	DATE

May 31, 1971

Expense Account: John S. Brock,  
Dynasty Explorations Limited,  
Period- May 1971

May 10th		Taxi, home to office	4.10	
14th	Faro	CIMM dinner	10.00	} 21.60
		Bus, Faro to Ross River	3.00	
		P.O. Box rental	7.00	
		Postage stamps	1.60	
15th	ROSS	Meals	10.00	
16th	Ross	Meals	10.00	
		Gasoline	9.25	
17th	Whitehorse	Meals	6.00	
18th	Whitehorse	Meals	7.00	
19th	Faro	Meals	2.50	
20th	Ross	Meals	2.50	
		Gasoline	10.10	
	Faro	Ent. - Big Indian Drilling	5.80	
26th	Ross	Meals	4.70	Acme Claims
27th	Ross	Ent- Liquor to Carson's in payment for meals	8.60	

\$ 103.15  
102.15

Cash advances rec'd	May 14	\$ 50.00
	17	50.00
	22	<u>50.00</u>
		\$ 150.00

PAID

8-603	25.70		
2-603	52.40	Cash on hand, May 31st	\$ <u>47.85</u>
2-12-847	- 4.70		\$ <u>46.85</u>
6-603	- 19.35		
	<u>102.15</u>		

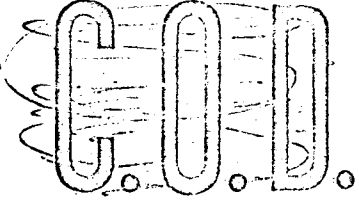


SCALED BY		GROSS CK.
PRICES O.K.	EXT.	DRIVER

SOLD TO : DYNASTY EXPLORATIONS  
WHITEHORSE, Y.T.

ACCT. NO.

INVOICE NO. **AG-3041**



HOW SHIP :  
P TO :  
CALLING TOMORROW MORNING 8:30

DATE : MAY 11/71

QUANTITY	DESCRIPTION	NO. PKGS.	SHIPPING WT.	COOE	NET WEIGHT	PRICE	U/M	AMOUNT						
2-10#	BEEF ROASTS <i>ROUND</i>				26 <sup>8</sup>	137		36	31					
1-10#	PORK ROAST <i>Pork Leg</i>				16 -	79		12	64					
20#	T BONE STEAK				21 <sup>8</sup>	189		40	64					
10#	STEW MEAT				10 -	91		9	10					
10#	PORK CHOPS				13 <sup>13</sup>	88		12	15					
10#	HAMBURGER				10 -	66		6	60					
2	SLABS SIDE BACON				13 <sup>10</sup>	69		9	40					
<i>P Deon</i>														
		212	-	847										
<small>NO CLAIMS WILL BE ENTERTAINED AFTER 3 DAYS FROM DATE OF RECEIPT OF SHIP- MENT. ALL CLAIMS FOR SHORTAGE OR DAMAGE MUST BE VERIFIED BY CARRIERS' AGENT AND SUPPORTED BY NOTATION ON THE FREIGHT RECEIPT.</small>								PIECES	GROSS WEIGHT	TARE	NET WEIGHT	TOTALS	126	84

WHEN WRITING ABOUT THIS SHIPMENT PLEASE QUOTE INVOICE NO. AND AMOUNT

2565

# Capital Hotel

P.O. BOX 398

☆ WHITEHORSE, YUKON

May 31st. 1971

☆ DYNASTY EXPLORATIONS,  
330 - 355 BURRARD STREET,

Invoice # 1938

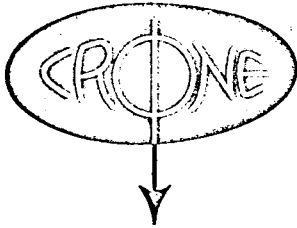
☆ VANCOUVER, B.C.

<u>ROOM ACCOMODATION</u>					
May-	I0-I2	T. Yoachim-J.Britton (shared)	2 Days @	I4.00	28.00 8-7
"	I0-I2	P.M. Dean	2 " "	I0.00	20.00 8-7
"	I7	J. Brock	I " "	I0.00	I0.00 8-9
"	I8	J.Brock-W.Roberts (shared)	I " "	I4.00	I4.00 8-9
					<u>72.00</u>
<u>TELEPHONE</u>					
May	I7	J.Brock to Vancouver		I2.00	
"	I7	" " "		II.55	
"	I0	P.M.Dean " Faro		<u>I.05</u>	
					<u>24.60</u> 8-9
					217
					<b>\$96.60</b>

24.60  
 JUN 4 1971

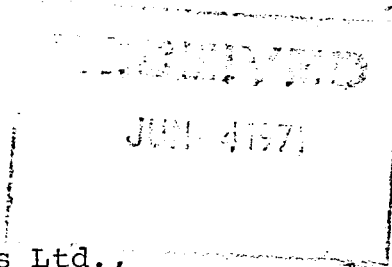
☆ STARLITE LOUNGE ☆

# CRONE GEOPHYSICS LIMITED



3607 WOLFEDALE ROAD  
MISSISSAUGA, ONTARIO  
CANADA

PHONE (416) 270-0096



May 31, 1971.

Dynasty Explorations Ltd.,  
330 Marine Bldg.,  
355 Burrard Street,  
Vancouver, B. C.

## I N V O I C E # 1861

To charge for rental of CEM #72-73 for  
period May 22, 1971 to June 22, 1971 \$ 210.00

Equipment shipped to Faro, Y.T.

To charge for purchase of 3 Walkie Talkies  
3 MA 105 Transcievers 105.00

To charge for 1 box 6 volt batteries 18.00

---

\$ 333.00

---

# PAID

APPROVED BY:	<i>[Signature]</i>
A/C	<i>[Signature]</i>
No.	<i>[Signature]</i>

Terms: Net 30 days

Interest charged at the rate of 1% per month or part thereof  
on overdue accounts.



EXPENSE ACCOUNT: (FOR MAY)

10 May: ① cab to airport 7.95 } 222  
 ② excess baggage 6.00 }  
 ③ meals (no receipts) 18.00 222  
     ↳ For Dean, Britten, Yeachim

11 May: ① GSC topo maps 3.50 214  
 ② claim maps 5.00 214  
 ③ lunch for D, B, Y 3.65 } 222  
 ④ breakfast " " " " 4.45 }  
 ⑤ 2 tubes speedsew 1.78 214  
 ⑥ 50-6¢ stamps (no receipt) 3.00 214  
 ⑦ 6 cans Dublin 2.34 214  
 ⑧ bus ticket (Pasto to Ross R.) 15.00 222  
     (no receipt)  
 ⑨ C-size batteries for MF-2 mag (18 alkaline cells) + roll of tape 18.18 214  
 ⑩ 6 pen-light batteries (for EM-16) 2.80 214  
 ⑪ dinner for D, B, Y - 7.95 222  
~~12~~ 99.60  
 ⑫ Advance tickets to Pasto 60.00

Do Not Mark or Stamp in This Area.

May:

- ① breakfast for D, B, Y - 5.45
- ② lunch " " " " " - 5.55
- ③ gasoline 7.60
- ④ dinners " " " " " - 10.50
- ⑤ dinner for Pastro - 1.80

272

13 May:

- ① lunch for D, B, Y - 3.90
- ② dinner " " " " " 9.00

43.70

43.70  
 99.60  
 60.00

203.40

less 200.00 received  
as expense account advance

200.00

\$ 3.40

122-122 - 60.00  
 214-847 36.60  
 222-847 106.70









008088

# U'S DEPARTMENT STORE

GROCERIES, HARDWARE, DRYGOODS

— CAMP OUTFITTERS —

TRAILER COURT

PHONE 11

ROSS RIVER, YUKON May 26 1971

NAME Deputy Inspectors

ADDRESS ACME CANINE - J. J. ...

QUAN.	DESCRIPTION	PRICE	AMOUNT
3	ply ...	41	123
12	can ...	89	1068
12	ply ... 5/63, 7/63, 4/65, 1/79		800
8	... 1/65, 5/67, 1/69		534
15	... 2/69	79	1185
6	... 2/63, 4/69		412
1	... 1180		540
6	... 2/39		117
2 1/2	...	1.1	137
1 1/2	...	37	231
2	...	79	177
10 1/2	...	33	338
1	...	56	56
	TAX		

RECEIVED ABOVE IN GOOD ORDER

0132691500

R00657498

COMMERCIAL PRINTERS, WHITEHORSE, Y.T. - 44349

212 - 847





PHONES OPEN DAY & NIGHT  
 DIRECT PARTS LINE 736-0444-5-6-7-8  
 SWITCHBOARD LINE 731-7716 or 7717

137 D  
 NUMBER ON ALL AND PACKAGES.

G.M. Wholesale Parts Distributors

YOUR BEST SUPPLY SOURCE FOR ALL G.M. CAR AND TRUCK PARTS

ORDER TO: *Dynasty Explorations*  
*355 Burrard* MAY 22 1971

QTY	PART NO.	DESCRIPTION	LIST	TRADE	NET AMOUNT	AMOUNT
1	6049-CAS	<i>Cyl Head</i>	6265		5540	
<p>COPIES REQ'D <u>3</u></p> <p>MA 50</p> <p><i>Philly</i></p> <p><i>Ship to Dynasty Explorations</i>  <i>40 Whitehorse Esplanade</i>  <i>White Horse, N.J.</i>  <i>Ship. Exp. A. Freight</i></p>						
				4270	225-845	
				4270	225-847	
DATE 1971			YOUR ORDER NO. 1137D		CLERK	ROUTE
WHEN RETURNING GOODS PLEASE GIVE INVOICE NUMBER AND DATE			TOTAL			

MA TERIAL TO BE USED FOR PROJECT \_\_\_\_\_ END USE (EXPENSE CODE) \_\_\_\_\_

SHIP TO: \_\_\_\_\_ ATTENTION: \_\_\_\_\_

DE: NATION \_\_\_\_\_ F.O.B. \_\_\_\_\_

VIA: CARRIER \_\_\_\_\_  PREPAY AND CHARGE ON INVOICE  
 ATTACH ORIGINAL BILL FOR FREIGHT CHARGES  
 FREIGHT COLLECT CARRIER TO CHARGE COMPANY

PPR AYN	ED FOR IT BY:	RECORD OF PAYMENT			CHEQUE	
		DATE	INVOICE	AMOUNT	NO.	DATE

DYNASTY EXHIBIT  
 330-355 BARRARD  
 VANCOUVER 1, B.C.

07700

QUAN.	PART NO.	DESCRIPTION	AMT. PARTS
1	fuse		1.50
1	Washer		1.00
			10.50

M. ATLAS (DYNASTY) DATE 11/17/11  
 EXPIRATION

ADDRESS	MILEAGE	SERIAL NO.	LICENSE	PROMISED
1111		1111		
DESCRIPTION OF WORK			AMOUNT	
checked for checked				
loosening & replaced head				
checked down and				
torque balance				
SIGNATURE <u>[Signature]</u>				
I HEREBY AUTHORIZE THE ABOVE WORK TO BE DONE TOGETHER WITH NECESSARY MATERIALS. 13 X 14				TOTAL LABOUR 24.50
SIGNATURE				TOTAL PARTS 10.50
I HEREBY ACKNOWLEDGE MY INDEBTEDNESS IN THE AMOUNT OF				TAX
S. BEING THE TOTAL AMOUNT OWING, OR BALANCE OWING, AS SHOWN HEREON.				TOTAL 26.00

ACME  
 CAMP CO'S.

FOR LABOUR ONLY. MATERIALS ADDITIONAL. THIS ASSUME ANY RESPONSIBILITY WHATEVER FOR UNITS OR AGE OR OTHER PURPOSES. OR FOR ARTICLES DRIVEN BY OUR EMPLOYEES AT OWNER'S RISK.  
 DISSET REPAIR ORDER MOORE BUSINESS FORMS LTD.

1.50

PHONE  
681-9152

*Holiday Travel*

PHONE  
681-9152

CONSULTANTS LTD.

#103 - 1200 WEST PENDER STREET  
VANCOUVER 1, B.C.

June 11 1971

ATLAS EXPLORATIONS LTD.

#330 - 355 BURNARD ST.

VANCOUVER B.C.

AIR FARE: VANCOUVER TO WHITEHORSE RETURN

Dr A.E. Hancock

166.00

Mr R.E.G. Davis

166.00

222-845 166-

222-847 166-

CPA TICKET #118930 998645/6

*OK [Signature]*  
**PAID**

CREDIT	CASH	CHARGE	CHEQUE	ON ACCT.	PAID OUT	TOTAL
		<input checked="" type="checkbox"/>				<u>332.00</u>

INTEREST AT 1% PER MONTH CHARGED ON PAST DUE ACCOUNTS

A 3398

RECEIVED BY \_\_\_\_\_


*Holiday Travel Consultants Ltd.*

9152

# Holiday Travel

PHONE  
681-9152

CONSULTANTS LTD.  
#103 - 1200 WEST PENDER STREET  
VANCOUVER 1, B.C.

MAY 6 1971

DYNASTY RELATIONS LTD

# 33 - 355 BILKARD ST

VANCOUVER, B.C.

AIR FARE: VANCOUVER TO WATERLOO, ONT

Travel/Transportation

CP 215/230/1978/1564

CP 215/230/1978/1564

166.00

166.00

**PAID**

CP 215/230/1978/1564

CP 215/230/1978/1564

166.00

222-841 249

CP 215/230/1978/1564

222-847 249

CP 215/230/1978/1564

166.00

DYNASTY RELATIONS

166.00

CREDIT	CASH	CHARGE	CHEQUE	ON ACCT.	PAID OUT	TOTAL	
						578	00

INTEREST AT 1% PER MONTH CHARGED ON PAST DUE ACCOUNTS

RECEIVED BY Elbowler

A 2686











**SEIGEL ASSOCIATES LIMITED**  
GEOPHYSICAL CONSULTANTS & CONTRACTORS  
A DIVISION OF SCINTREX LIMITED

April 27, 1971

Invoice No. BC 10409

Dynasty Explorations Limited  
330 - 355 Burrard Street  
Vancouver, B. C.

Attention: Mr. J. S. Brock

TO MOSAIC:

Proposed Turair - Pelly River area

72 Photos @ \$2.50 each	\$180.00
Plus 10%	<u>18.00</u>
Total Amount Due	\$198.00

PAYED

APPROVED BY: <i>W. Roberts</i>
A/C
No.

(136, 138, 139, 141, 145, 146, 147) - 07-2

Terms: Due when rendered. Any amounts outstanding after 30 days will bear interest at the rate of 1% per month.

E. & O. E.

71/12/95  
16 S  
30  
750 - 800 WEST PENDER STREET

VANCOUVER 1, BRITISH COLUMBIA

TELEPHONE 682-7701 AREA CODE (604)









ROSS RIVER  
YUKON  
CANADA

TERR-AIR LTD.  
(TERRITORIAL AIRWAYS)

Phone 969-0040

Nº 00027

CHARTER  
TICKET

A/C BEAVER FH2

DATE JUNE 3, 1971

NAME ATLAS EXPLORATIONS

ADDRESS 330 - 335 BARRARD ST. VAN BC.

From	Miles	Hours	Cargo	Passenger/Remarks
Ross R				
To ORCHAI LK	30			DOOG?
Ross R LK	30		1000	PETE DEAN
ORCHAI LK	30		MT	
Ross R	30		1000	T. SKONSEN
ORCHAI LK	30			
Ross R	30			PETE DEAN
(may) ORCHAI LK	30			" " ICE)
Ross R	30		1000	J. BRITTON

Special Instructions

@ Per Hour

240 @ .90 Per Mile

\$ 216.00

Waiting Time Per Hour

Extra Landings Per Landing

Other

TOTAL CHARGES

ACME CLAIMS.  
- CAMP MOVE  
- GRAVITY CREW  
MOB-DEMOB.

216.00 224-847

J. Britton  
Pilot's Signature

Ross R  
Base

J. Britton  
Charterer's Authorization

T

**TRANS NORTH TURBO AIR LTD.**



BOX 1977      PHONE 668-2177  
WHITEHORSE, YUKON

TO: [

Dynasty Explorations Ltd.  
330 Marine Building  
355 Burrard Street  
VANCOUVER, B.C.

RECEIVED

JUN 3 1971

L

]

]

DATE May 31, 1971

INVOICE NO. 187-71

P.O. NO.

**TO:** Charge you with the charter of Bell 47G-3B-1  
Helicopter CF-UFC  
Crew: Vandenbos and Phillips

**FLYING:** May 14, 15, 26 and 27, 1971  
Daily Flight Report Nos. 7871, 7873,  
7875, 7877

✓ 4.4 hours at \$155.00 per hour \$682.00  
(rate when carrier supplies fuel)

**PLUS:** Excess cost of fuel at Anvil  
Charterer assessed with cost  
of fuel over 60¢ per gallon

70 gallons at 54¢ per gallon 37.80

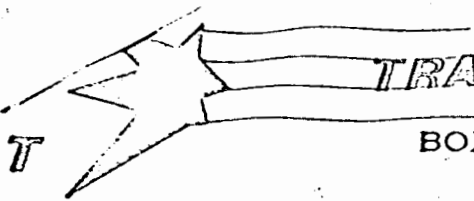
INVOICE TOTAL \$719.80 + 4¢

= 16359

**TERMS:** One per cent interest per month will be  
charged on all invoices not paid within  
30 days of date issued.

223 847

FA



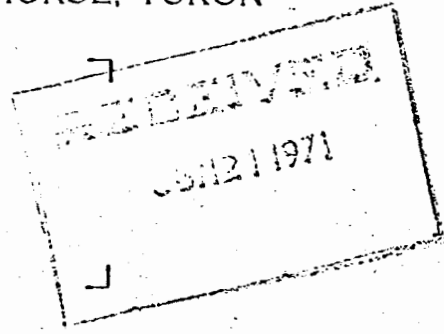
# TRANS NORTH TURBO AIR LTD.



BOX 1977      PHONE 668-2177  
WHITEHORSE, YUKON

TO: Γ

Dynasty Explorations Ltd.  
330 Marine Building  
355 Burrard Street  
VANCOUVER 1, B.C.



DATE June 14, 1971

INVOICE NO. 238-71

P.O. NO.

TO: Charge you with the following helicopter charters:

Bell 47G-3B-1 Helicopter CF-UFC  
Crew: Vandenbos and Phillips

FLYING: June 3, 4 and 7, 1971  
Daily Flight Report Nos. 7881, 7883, 7887

3.8 hours at \$155.00 per hour      \$ 589.00 (1)  
(rate when carrier supplies fuel)

18.4 hours at \$144.00 per hour      2,649.60 (2)  
(rate when charterer supplies fuel)

Bell 47G-3B-2 Helicopter CF-QJW  
Crew: Kipke and McKnight

FLYING: June 7 and 8, 1971  
Daily Flight Report Nos. 8522, 8523

4.9 hours at \$144.00 per hour      705.60 (3)  
(rate when charterer supplies fuel)

INVOICE TOTAL

\$3,944.20

# PAIL

TERMS: One per cent interest per month will be charged on all invoices not paid within 30 days of date issued.

	(1)	(2)	(3)	TOTAL
223-836	310.00	2145.60	705.60	3,161.20
223-845		388.80		388.80
223-847	279.00	115.20		394.20
	<u>589.00</u>	<u>2,649.60</u>	<u>705.60</u>	<u>3,944.20</u>



ATTN

DESTINATION STATION

*Yukon Bus Lines Ltd.*

CC 3877

The Carrier agrees to carry and deliver the package upon the terms and conditions prescribed by the province or state in which this shipment originates, the tariff of the Carrier which is open for inspection at the principal office of the Carrier and at the terminal over which the Carrier is licensed to operate and to which per agrees by accepting this receipt.

CONSIGNEE		CHG. ACCT. <input type="checkbox"/>	CHG. ACCT. NO.	FWDG. AGENT	
STREET ADDRESS		PHONE		DATE	TIME A.M. P.M.
NO. OF PIECES	EXG. <input type="checkbox"/> BOX <input type="checkbox"/> B.V. <input type="checkbox"/> BACK <input type="checkbox"/>	DECLARED VALUE \$	WEIGHT LBS.	[NOT NEGOTIABLE] EXPRESS RECEIPT	
CONTENTS	PAGE <input type="checkbox"/> CIN <input type="checkbox"/> OTHER <input type="checkbox"/>	COMPANY	TO	EXPRESS CHARGES	
SHIPPER'S NAME	<i>ACME</i> <i>BRAM</i> <i>ASNA</i> <i>RSTC</i>	RECEIVED BY <i>[Signature]</i>		CHARGES ADVANCED	
STREET ADDRESS		DATE		VALUE CHARGES	
ORIGIN CITY		X	<i>[Signature]</i>	TOTAL TO COLLECT	

5. BILLING ABSTRACT TO CONSIGNEE IF CASH. TO H.O. WITH No. 4 IF CHARGED

10  
11  
12  
13  
14  
15  
16  
17  
18  
19  
20  
21  
22  
23  
24  
25  
26  
27  
28  
29  
30  
31  
32  
33  
34  
35  
36  
37  
38  
39  
40  
41  
42  
43  
44  
45  
46  
47  
48  
49  
50

# YUKON FREIGHT LINES LTD.

HEAD OFFICE: BOX 2900, WHITEHORSE, YUKON

ORIGINAL COPY

DATE	UNIT NO.	PRO. NUMBER
MAY 11 71		39174

CONSIGNEE: DYNASTY EXPLORATIONS      DESTINATION: WHITEHORSE  
 SHIPPER: DYNASTY EXPLORATIONS      ORIGIN: VANCOUVER      SHIPPER'S NOS. :

No. PKGS.	DESCRIPTION OF ARTICLES	WEIGHT	RATE	C.O.D.	CHARGES
3 1	METAL BX CTN  221-847	210	7 94	PREPAID	16 67

Y.F.L. REV.      ADVANCE OR BEYOND      DELIVERING DRIVER      DELIVERY DATE      RECEIVED IN GOOD CONDITION EXCEPT AS NOTED  
 NO CLAIMS WILL BE ALLOWED AFTER 30 DAYS OF RECEIPT OF GOODS

PLEASE RETURN TO: 2900 WHITEHORSE, YUKON

EDITH VANCOUVER LTD.  
 FULL SIGNATURE REQUIRED  
 7/15/71

PRO. NUMBER	39081
SHIPPER'S NOS. :	
C.O.D.	CHARGES
Collect	9 90
AMOUNT	9.90

CUSTOMER'S COPY 3

YUKON EXPEDITING BASE

SCHEDULE "F"

	OCT 31/71	NOV + DEC EST.	TOTAL
SALARIES AND WAGES	4,462.61		4,462.61
GROCERIES	935.73		935.73
TRAVEL & ACCOMMODATION	1,861.74		1,861.74
VEHICLE OPER. & MAINT.	1255.34		1,255.34
BUILDING OPERAT & MAINT.	1747.78		1,747.78
INSURANCE	780.33	3269.33	4,049.66
OTHER EXPENSES	489.91		489.91
RECOVERIES - STAFFHOUSE	(567.08)		(567.08)
DEPRECIATION	1959.54	1666.67 379.58	3,985.79
	<u>12,905.90</u>	<u>5315.58</u>	<u>18,221.48</u>

<u>DISTRIBUTION</u>	OCT 31/71	ADJUST.	TOTAL	<u>ALLOCATION</u>
TINTINA OEX	20,938.17		20,938.17	10,513.24
BRAM.	4,144.82	83.61	4,228.43	2,123.13
ACME	2,729.47	(83.61)	2,645.86	1,328.51
CAPA	1,470.63		1,470.63	738.42
DELTA	1,836.15		1,836.15	921.95
ECHO	5,170.66		5,170.66	2,596.23
	<u>36,289.90</u>		<u>36,289.90</u>	<u>18,221.48</u>

FACTOR .502108 x WAGES

LIST OF PERSONNEL

P. Dean	Party Chief	Vancouver, B.C.
T. Yoachim	Geophysical Operator	Victoria, B.C.
J. Britton	Geophysical Operator	Vancouver, B.C.
T. Skonseng	Prospector	Ross River, Y.T.
D. Pastro	Cook	New Westminster, B.C.
Contract Gravity Crew	Airborne Geophysics Limited	Calgary, Alberta