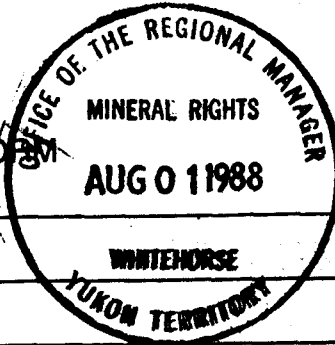




TRANSMITTAL FORM



M.R. file no.	<i>Quartz Pending</i>
R.M.M.R. file no.	
Date forwarded	<i>29 JUL 88</i>

From Mining Recorder at: *Dawson*

To Regional Manager, Mineral Rights at Whitehorse, Y.T.

For action are:

<input checked="" type="checkbox"/> NEW APPLICATION FOR PLACER LEASE TO PROSPECT	Name	
<input type="checkbox"/> RENEWAL APPLICATION PLACER LEASE TO PROSPECT	Name	Lease no.
<input type="checkbox"/> AFFIDAVIT OF EXPENDITURE ON PLACER LEASE	Name	Lease no.
<input type="checkbox"/> SECURITY DEPOSIT		
<input type="checkbox"/> FINANCIAL ABILITY		
<input type="checkbox"/> ASSIGNMENT OF PLACER LEASE NO.	From	To
<input type="checkbox"/> GROUPING APPLICATION UNDER SEC. 52(2) PLACER MINING ACT.	Owner	
<input type="checkbox"/> DIAMOND DRILL LOGS	Claims	Claim sheet no.
<input checked="" type="checkbox"/> QUARTZ ASSESSMENT REPORT	Claims <i>DELIA - WENDY - COJO</i>	Claim sheet no. <i>115 N15</i>
	Type of report <i>Geological, Geophysical</i>	Submitted by <i>Kanuk Gold Mining Corporation</i>
	Clis. work performed on <i>YA87688-93, 88114-22, 89385-87, 89388</i>	\$ req. for ren. application <i>8,000</i>

Signature *[Signature]*

092513

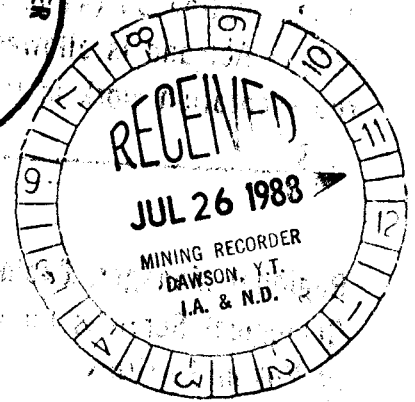
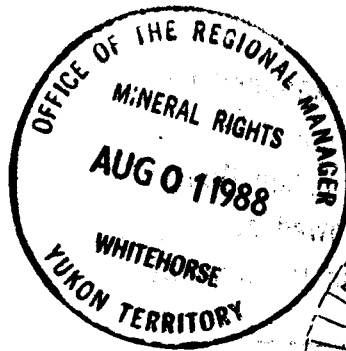
Date returned	<i>10 August 88</i>
---------------	---------------------

REPLY ACTION

Approved for amount required

Signature *[Signature]*

092513



REPORT ON THE GOLD-SILVER-PROPERTY
DELIA-WENDY
SIXTYMILE RIVER AREA,
YUKON TERRITORY, CANADA

(Geological and Geophysical Report)

by
DIPL. GEOL. U. GLASMACHER
DIPL. GEOL. H.P. THOMINSKI

092513

Prepared for:
Klondike Goldmining Corporation
Keiln House
210 New Kings Road
London SW6 4NZ

May 1988

This report has been examined by
the Geological Evaluation Unit
under Section 53 (4) Yukon Quartz
Mining Act and is allowed as
representation work in the amount
of \$ 8000.00

J. Bremner
for Regional Manager, Exploration and
Geological Services for Commissioner
of Yukon Territory.

110800

CONTENTS

	Page
1. INTRODUCTION	3
2. PROPERTY, LOCATION AND ACCESS	4
3. REGIONAL GEOLOGY	7
4. MAGNETIC SURVEY	17
4.1 Introduction	17
4.2 Instrument	18
4.3 Field work	18
4.4 Calculation of Anomaly	18
4.5 Presentation of Data	22
5. INTERPRETATION	27
5.1 Introduction	27
5.2 Contour map	28
5.3 Magnetic profiles	30
5.4 Aeromagnetic map	31
6. REFERENCES	33

APPENDIX

MAPS

Fig. 2: Claim map of the gold-silver property Delia-Wendy with location of geological map Fig. 4

Fig. 10: Magnetic traverse lines in the Sixtymile River area

Fig. 11: Sixtymile River area ΔT isanomaly contour map. Contour intervalls 100 nT (partly 50 nT). Location of magnetic profiles 1 - 6 are indicated

1. INTRODUCTION

Following an invitation by Klondike Goldmining Corporation, a 15 day visit from 09. March 1988 to 23 March 1988, was made to Canada with 12 days spend on the placer property Alma mine and hardrock gold-silver property Delia-Wendy.

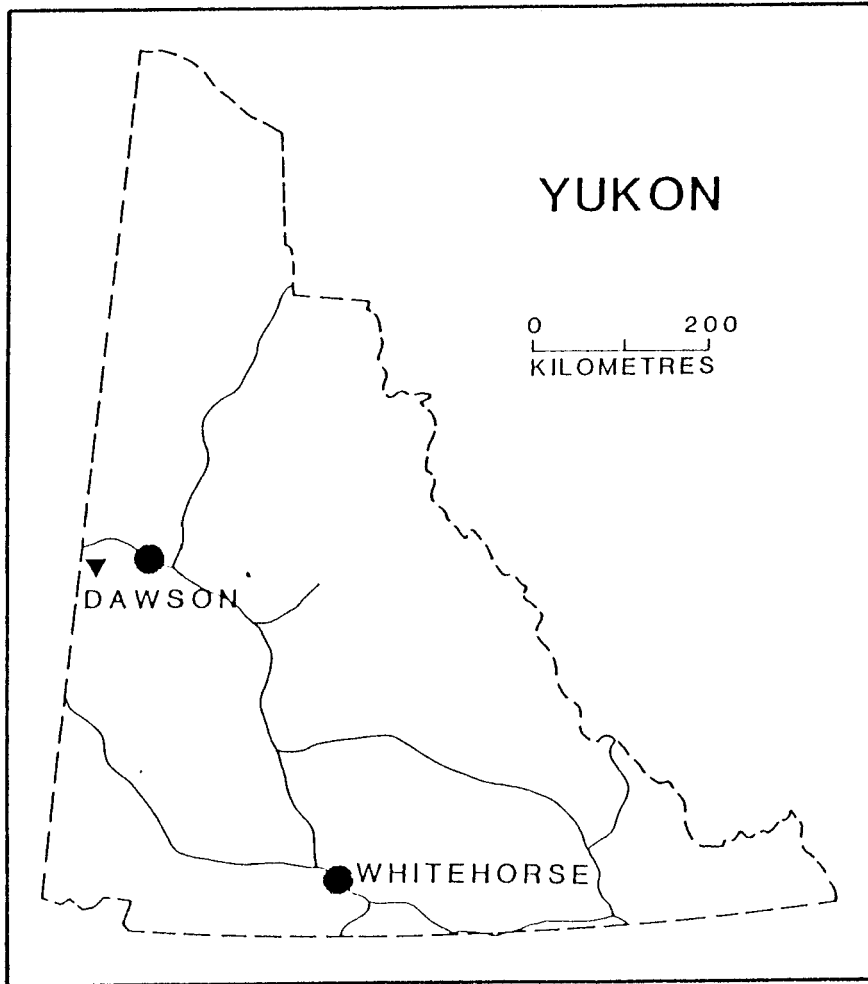
The main purpose of the visit was to carry out a ground magnetometer survey and a VLF-survey as well as to establish a local survey grid on the hardrock property.

Because of transportation damage to the VLF-equipment the VLF-survey has not been carried out and will be done during the first few days in July.

0888.8

2. PROPERTY, LOCATION AND ACCESS

The gold-silver property Delia-Wendy is located in the Sixtymile River area 80 miles west of Dawson City (Fig. 1). The claimgroups Delia and Wendy cover an area in Sixtymile River valley at the confluence of Miller Creek (Fig. 2).



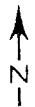
092510

Fig. 1: Location of the Sixtymile River Area (▼).

141° 49'

46° 30''

64° 00'



63° 59'



Fig. 2: Claim map of the gold-silver property Delia-Wendy (A = location of geologic map Fig. 4)

The gold-silver property Delia-Wendy consists of 15 contiguous claims crosscutting the Sixtymile River valley in northeast direction at the confluence of Miller Creek (Tab. 1; Fig. 2). Claims are registered in the name of Erwin Kraeft (1985; 1986), Whitehorse in the Dawson Mining District.

Table 1: Hardrock claim groups

Property (Claim Map)	Claim Name	No. of Claims	Grant Number
Delia-Wendy (115-N-15, 116-C-2)	Delia 1 - 6	6	YA87688-YA87693
	Wendy 1 - 9	9	YA88114-YA88122

The Delia-Wendy block is centered at the latitude 63°59'30"N and longitude 140°46'30"W on claim sheet 116-C-2 and 115-N-15.

During the spring, summer and fall access from Dawson City is via the Top of the World Highway and the Sixtymile River Road. During the winter time access to the property is given by helicopter transportation from Dawson City.

115-N-15

3. REGIONAL GEOLOGY

The Sixtymile River area is underlain by precambrian to paleozoic meta-sediments, metavolcanics and orthogneisses, which are intruded by an Upper Cretaceous biotitegranite as well as andesitic dykes and overlain by calcalkaline volcanic rocks (andesites, pyroclastica) and terrestrial sediments of Upper Cretaceous age (Fig. 3, Tab. 2, GLASMACHER et al. 1987). Serpentinized ultramafic rocks are developed along thrust faults (p.c. Dr. J. MORTENSEN). Northeast - southwest striking pegmatites and aplites of unknown age occur in Miller and Glacier Creek. The Quaternary evolution is characterized by the intrusion of an alkaline-olivine-basalt dyke and the development of fluvial sediments intercalated with debris flows (HUGHES et al. 1986).

Table 2: Stratigraphic units in the Sixtymile River area

AREA	FORMATION	LITHOLOGIE northwest area	LITHOLOGIE southeast area
QUARTER- NARY	Selkirk Group	alluv. sediments alkaline-olivine basalt	alluv. sediments
TERTIARY - UP. CRETA- CEOUS		andesites - dacites, pyroclastica, fluviale sedimentary rocks and dacitic dikes	andesitic - dacitic dikes
?	?		biotitegranite
?	?	pegmatitic and aplitic dikes	
PALAEZOIC - PRECAMBRIAN	Yukon Group	ultramafic rocks orthogneiss paragneiss, quartzites, quartzmicaschists, micaschists, graphitic schists, marble lenses	quartzites, quartz- micaschists, mica- schists
	Pelly Gneiss		augengneiss, garnet- micaschist gneiss

08/25/13

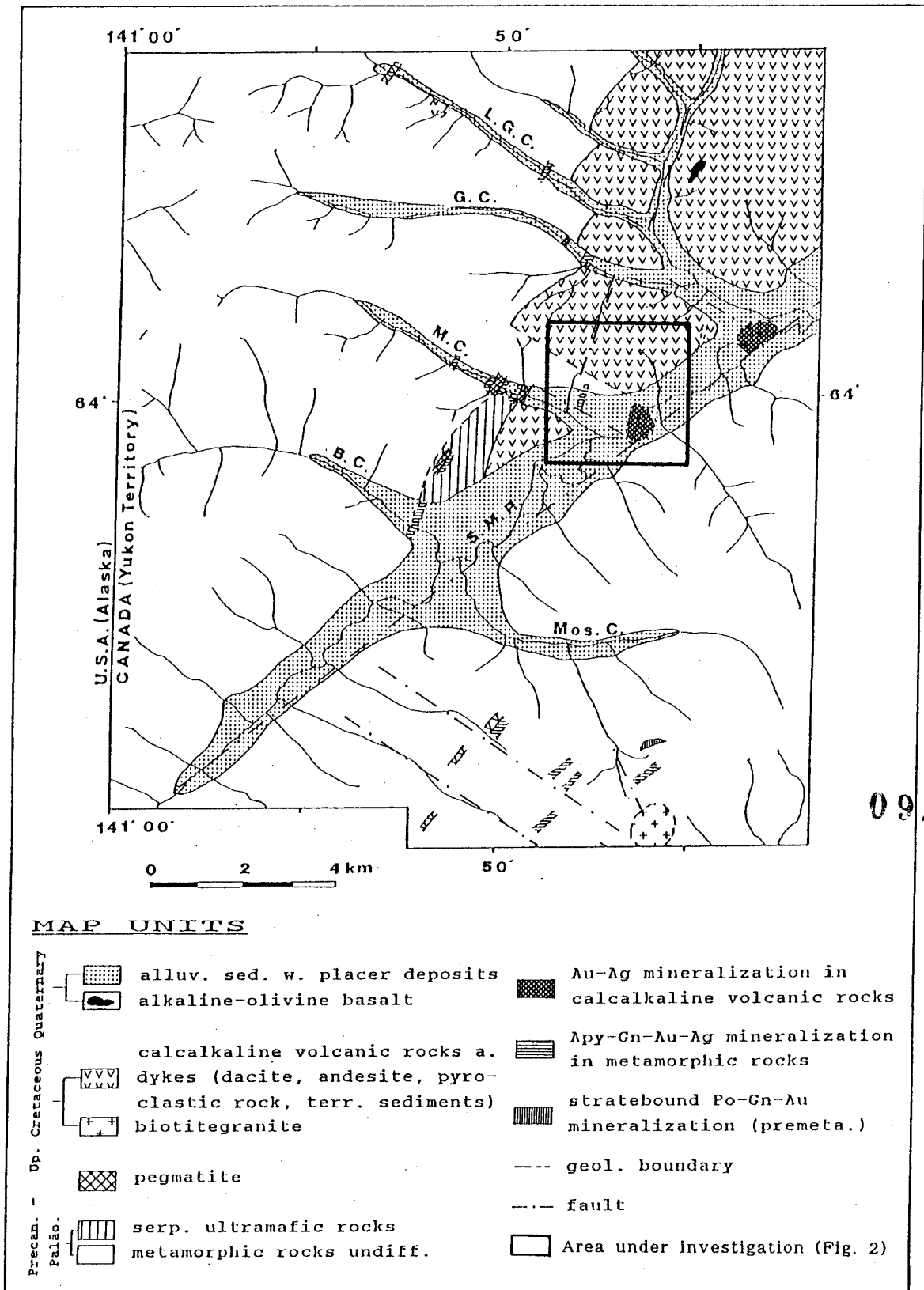


Fig. 3: Geological map of the Sixtymile River area (GLASMACHER et al. 1987)

The major lineament which divides the Sixtymile River area by geological means in a northern and a southern part is the northeast-southwest trending Sixtymile River Fault. Two other main fault systems are developed: a northnortheast-southsouthwest trending system and a northwest-southeast trending system.

The gold-silver property Delia-Wendy is underlain by Upper Cretaceous calkalkaline andesites and pyroclastica (Fig. 3; Fig. 4; GLASMACHER et al. 1987). Mineralization mainly consists of stockwork and disseminated pyrite-gold enrichments as well as northnortheast-southsouthwest trending gold-pyrite-arsenopyrite and silver-base metal veins (cm - m) and veinlets (cm). The mineralized area is normally overlain by goldbearing quaternary alluvial sediments with an average thickness of 2.50 m (8 feet)

Gold-pyrite-arsenopyrite and silver-base metal mineralization at the property is generally accompanied by an inner quartz-phengite alteration zone, with a gradual transition into a kaolinite-carbonate-quartz zone (Fig. 3). Propylitic alteration marks the outer zone. Instead of phengite adularia is developed in the inner zone adjacent to the silver-base metal veining.

092513

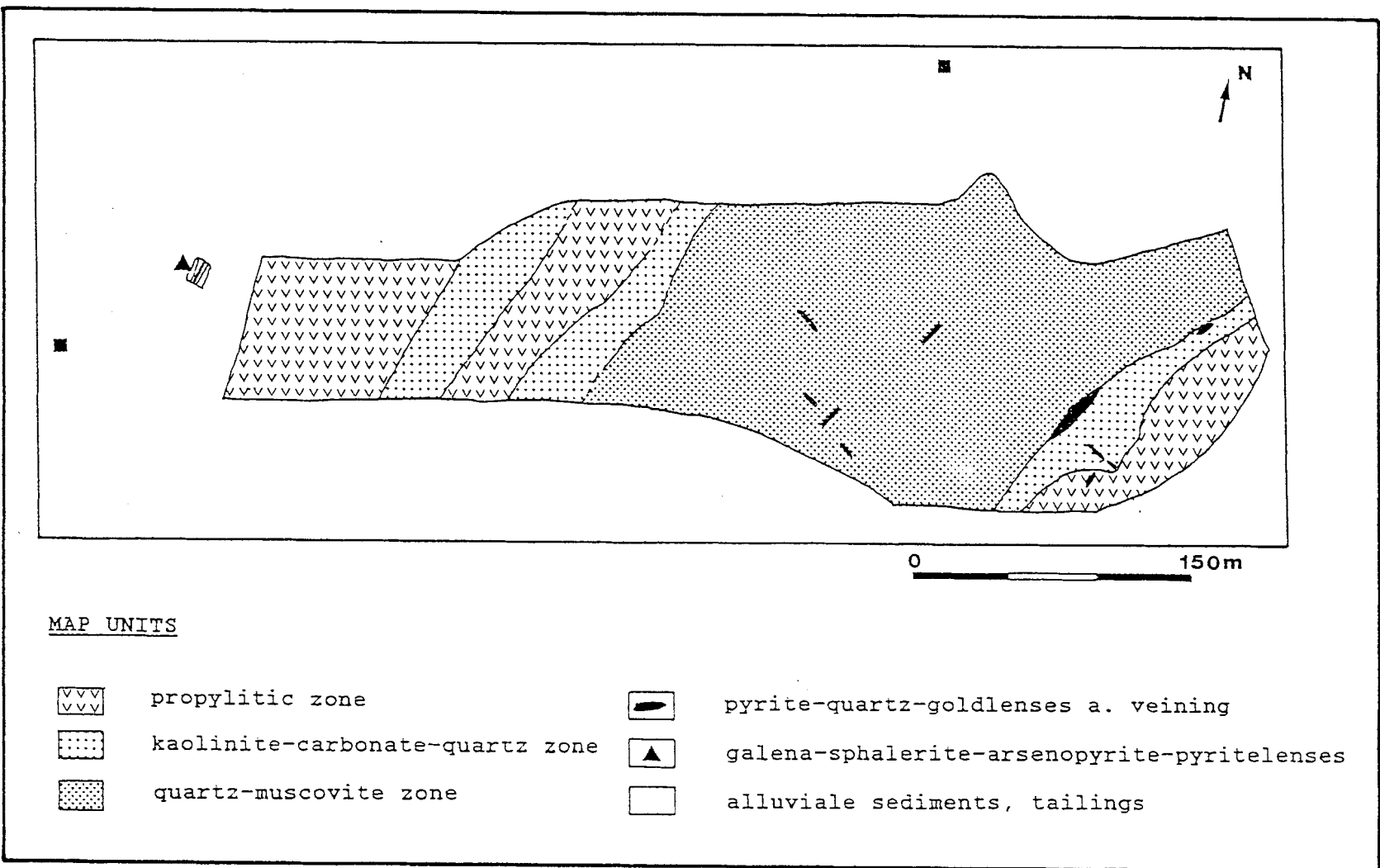
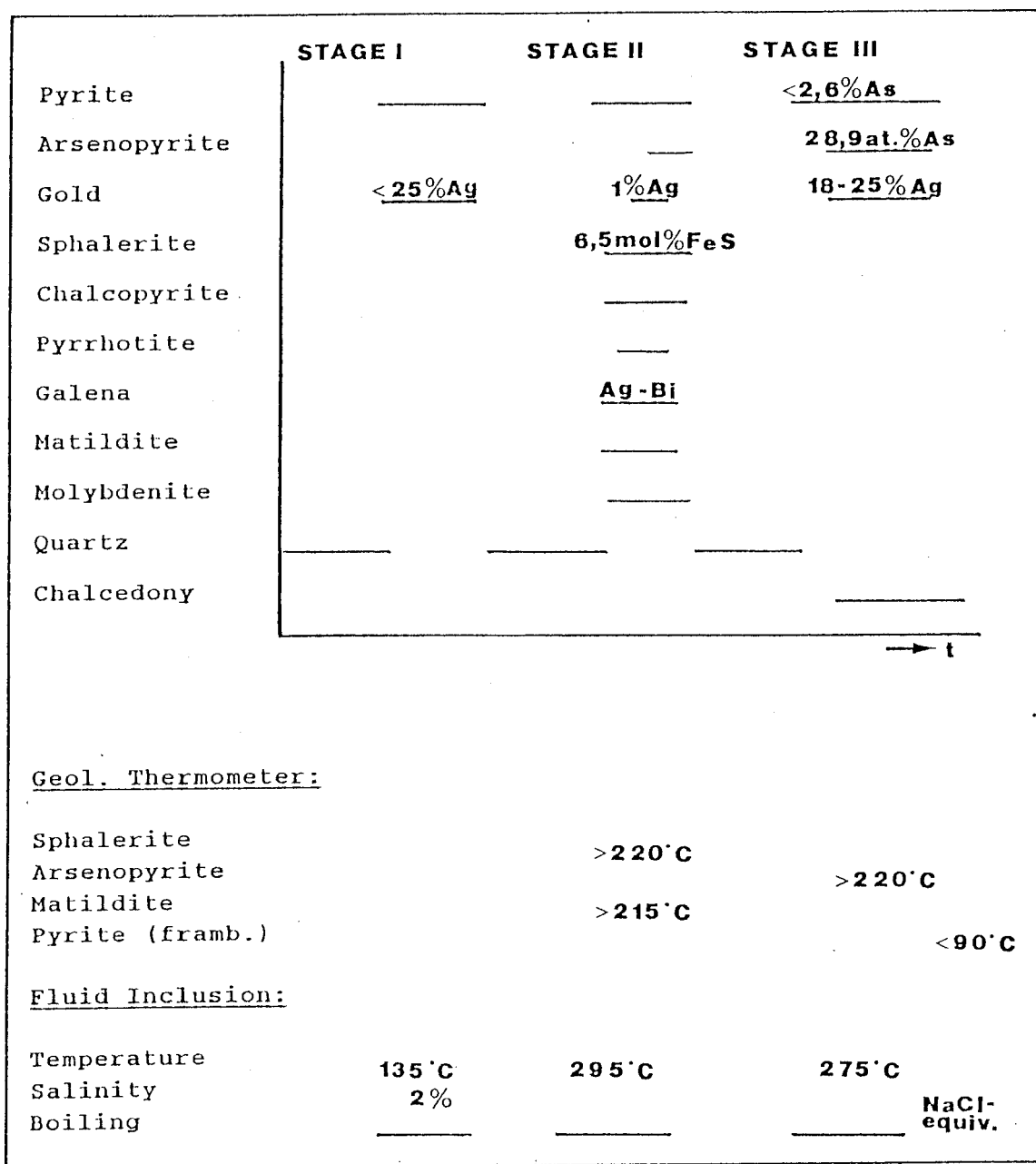


Fig. 4: Geological map of part of the gold-silver property Della-Wendy
(GLASMACHER et al. 1987; ■ Claimpost)

Three distinctive stages have been observed in gold-pyrite-arsenopyrite veins and veinlets (Fig. 5). Stage I is characterized by a trapping temperature of 135 °C, a salinity of 2 % NaCl equiv. and pyrite with gold inclusions as the prevalent mineral. Stage II shows a trapping temperature of 295 °C, high salinity (trapped salt, hematite and sphalerite crystals) and pyrite with base metal- and minor amounts of gold inclusions (Fig. 6). A trapping temperature of 275 °C as well as arsenopyrite and gold inclusions in pyrite characterize stage III (Fig. 6). Boiling occurred at all stages and is the main process which caused deposition of gold at the property.

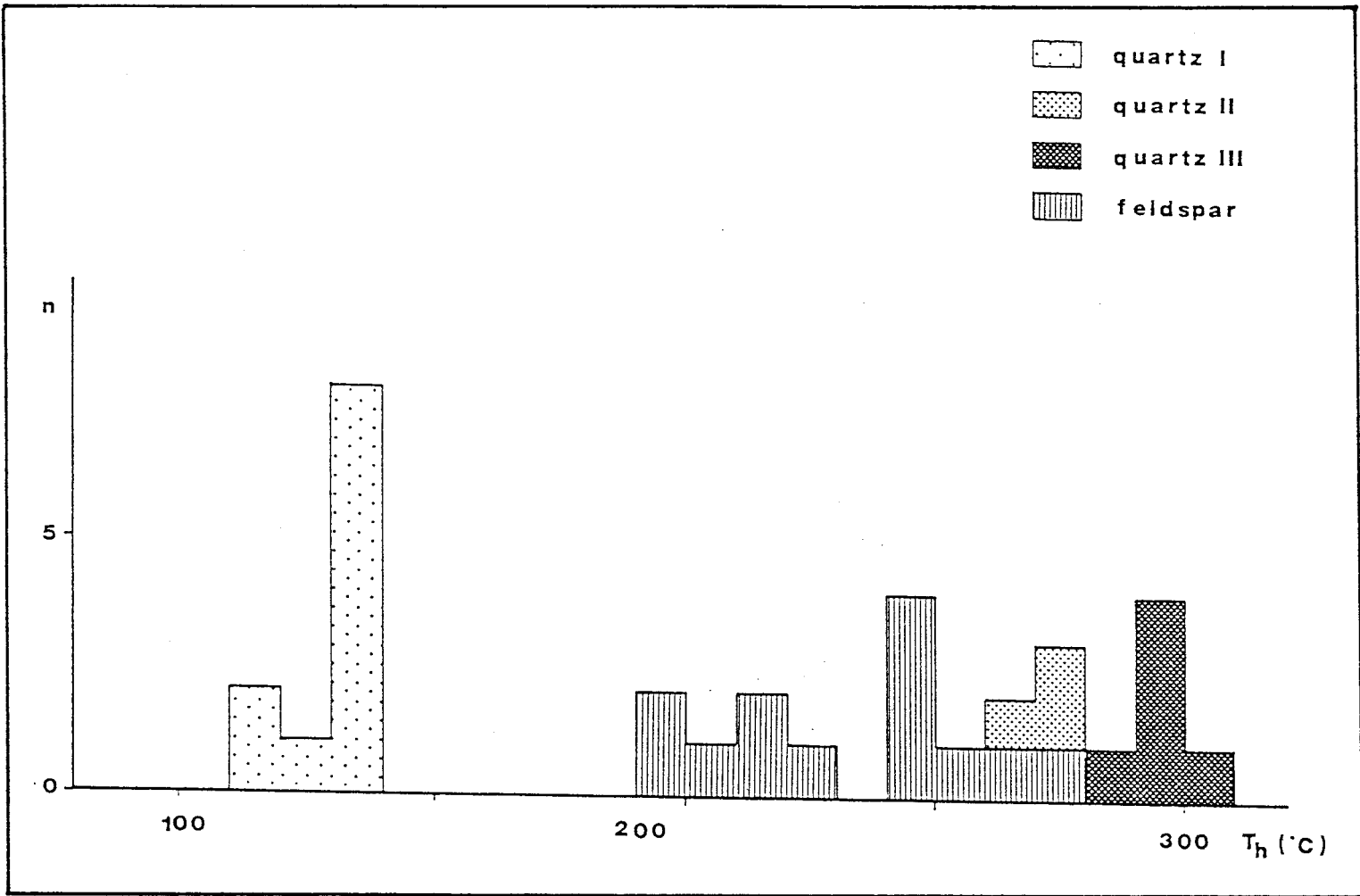
048518



092513

Fig. 5: Paragenetic sequence of Au-pyrite-arsenopyrite mineralization in volcanic rocks

Fig. 6: Histogram of homogenization temperature for different stages



092513

Main silver enrichment has been developed in silver-base metal mineralization during Stage III (Fig. 7). Fluid inclusion measurements on zoned sphalerites (Fig. 8) of stage III point to a homogenization temperature of 185 °C. Exsolution textures of matildite in galena (Stage II) point to a minimum formation temperature of 215 °C (Fig. 8).

030018

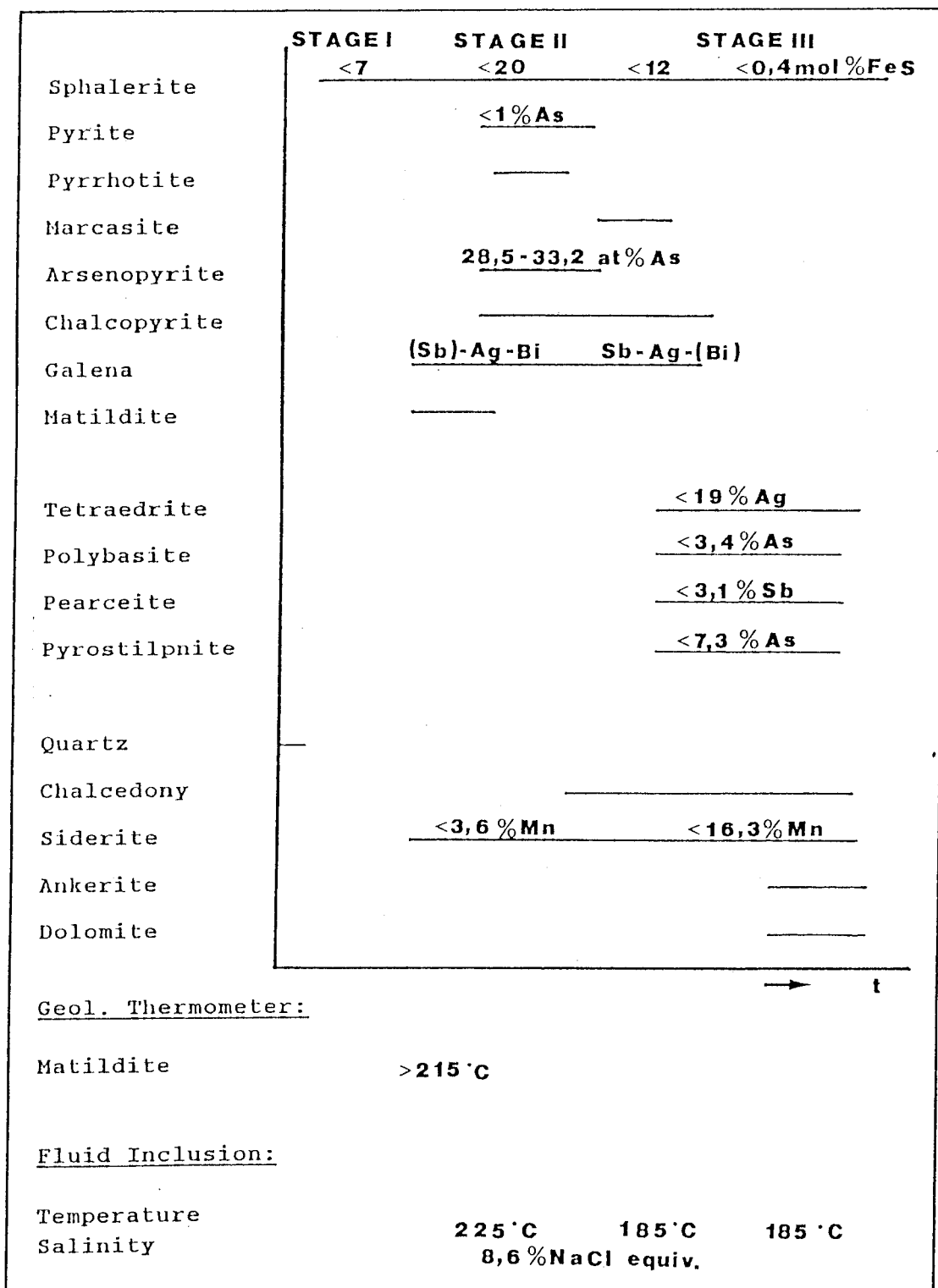
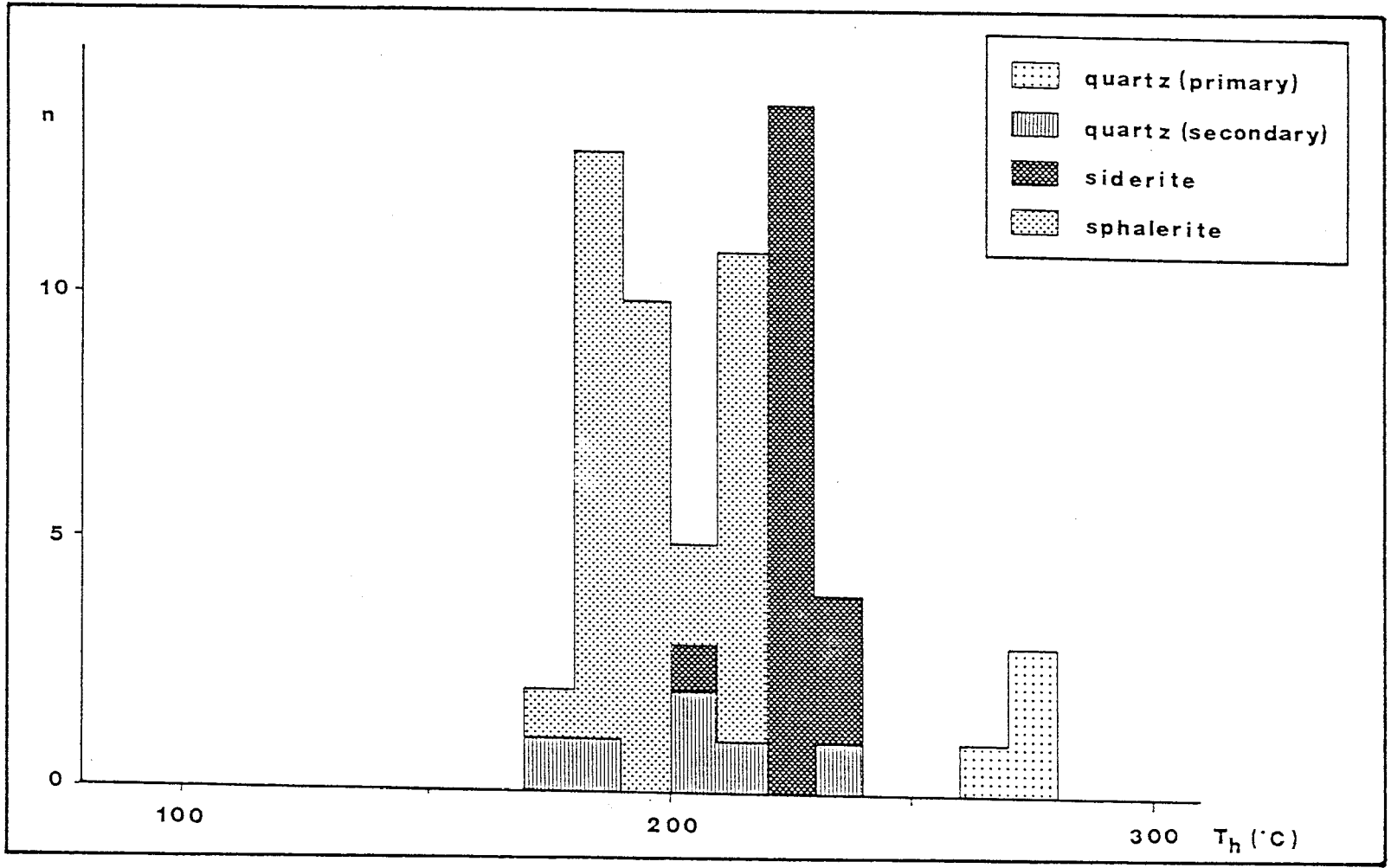


Fig. 7: Paragenetic sequence of sphalerite-galena-silver enrichment in volcanic rocks

Fig. 8: Histogram of homogenization temperature in different mineralization stages



092512

092513

4. MAGNETIC SURVEY

4.1 Introduction

The application of magnetic and electromagnetic measurements for defining gold-silver deposits is well known and used in different gold areas in the world. For example, BABONE (1986) and HOHENSTEIN (1986) defined gold-silver deposits in volcanic terranes in New Zealand. In the Canadian Shield region magnetic surveying is an effective method for identifying volcanogenic gold deposits which occur within greenstone belts (GRANT 1984/85). Also the close association of gold and magnetite in sediments is often used to locate placer gold deposits (JOESTING 1945).

Magnetic techniques are generally used in the search for magnetic minerals such as iron ores rich in magnetite, as a tracer technique when magnetic minerals are associated with valuable nonmagnetic minerals or to determine the depth, size and shape of a mineralized zone.

The object of this geophysical study was to investigate the geological setting of the property and to outline significant structural features relevant for gold exploration. During gold mineralization the hydrothermal fluids cause replacement of magnetite and titanomagnetite by pyrite. Therefore mineralized volcanic rocks are characterized by magnetic lows in opposite to unmineralized volcanic rocks.

In order to investigate the geological setting of the property a combined ground magnetic and electromagnetic (Very Low Frequency = VLF) survey was planned. Due to ambiguous readings (transportation damage) the VLF-survey will be redone during the first few days in July.

In compensation an underground magnetometer survey for exploration purpose has been done at the Alma Mine.

4.2 Instrument

All magnetic measurements were made with a proton precession magnetometer Model G - 826 GeoMetrics. This instrument measures the total intensity of the earth's magnetic field and displays the measurements in form of an unambiguous digital readings. The total intensity is the magnitude of the earth's magnetic field vector which is independent of its direction. Sensitivity of the magnetometer is ± 1 nano Tesla (nT).

4.3 Field work

Measurements have been taken along profile lines which have been surveyed into the topographic map. In regions with steep magnetic gradients every 10 m and in regions with low to moderate magnetic gradients every 20 m up to three readings of the total intensity of the earth's magnetic field have been taken and averaged to avoid artificial disturbance. In order to correct the measurements for diurnal variation of the earth's magnetic field repeated measurements have been taken at profile base stations every half hour. Additionally a main base station was measured several times a day to obtain a datum level. This main base station was marked in field for further magnetic surveys in these area.

00513

4.4 Calculation of Anomaly

Definition of a magnetic anomaly depends on the model which is used as the 'normal magnetic field'. The model which has been chosen for the 'normal magnetic field' in the Sixtymile River area has been adapted to the questions of investigation (e.g. required precision in relation to strength of anomaly) and the width of the investigated area. Thus a constant magnetic field value of $T_b = 57550$ nT has been chosen for all measurements as the local base level.

Anomaly ΔT is calculated by using the following equation:

$$\Delta T = T_b - T_m$$

Before the anomaly ΔT can be calculated corrections are required. The most important correction depends on the diurnal variation of the earth's

magnetic field. These variations are not predictable and are normally in the range of 10 - 100 nT. The precision for removal of diurnal variations from field data depends on the strength of the anomaly.

The simplest method of correcting for time variations involves repeated readings of the magnetic field in the same orientation at the same station at different times during the survey. If a smooth curve is drawn through these readings which are plotted as a function of time, these values can be used to subtract from all other readings provided that each reading also includes the time at which it was observed.

A typical diurnal variation curve for March 12 in the Sixtymile River area (Fig. 9) shows that the diurnal variation during the study was in the range of 10 - 40 nT.

In comparison with the observed ΔT intensity range of -100 to +300 nT the diurnal variation is rather small and therefore a correction using the repeated reading at base stations is sufficient in precision. The repeated readings were done at the main base station H and at additional local base stations on the various magnetic traverse (Fig. 10) using time intervals of about half an hour.

The data are not corrected for topographic effects because this correction involves very complex computer modeling techniques and detailed susceptibility measurements on the rock formations. Also no correction for the vertical gradient of the total field were taken into account because this influence is rather small (less than 3 nT per 100 m elevation).

Finally the anomaly was calculated by using the following equation:

$$\Delta T = T_m - T_b - T_d$$

092515

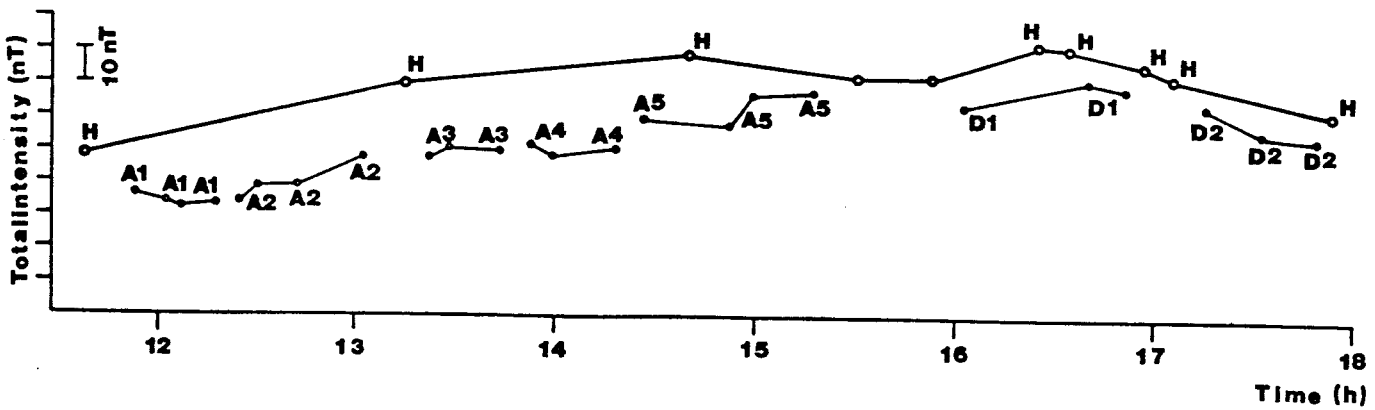
ΔT = local anomaly of total intensity of the earth's magnetic field

T_b = constant value of an assumed 'normal magnetic field'

T_d = value of diurnal variation, obtained by repeated base readings

The calculation error is assumed as less than ± 15 nT.

**DIURNAL VARIATION
MARCH.12,1988**



092513

Fig. 9: Typical range of diurnal variation of the total magnetic intensity in the Sixtymile River area, March 1988
H: repeated measurements at the main base station
A1-A4, D1, D2: repeated measurements at magnetic traverse line base stations

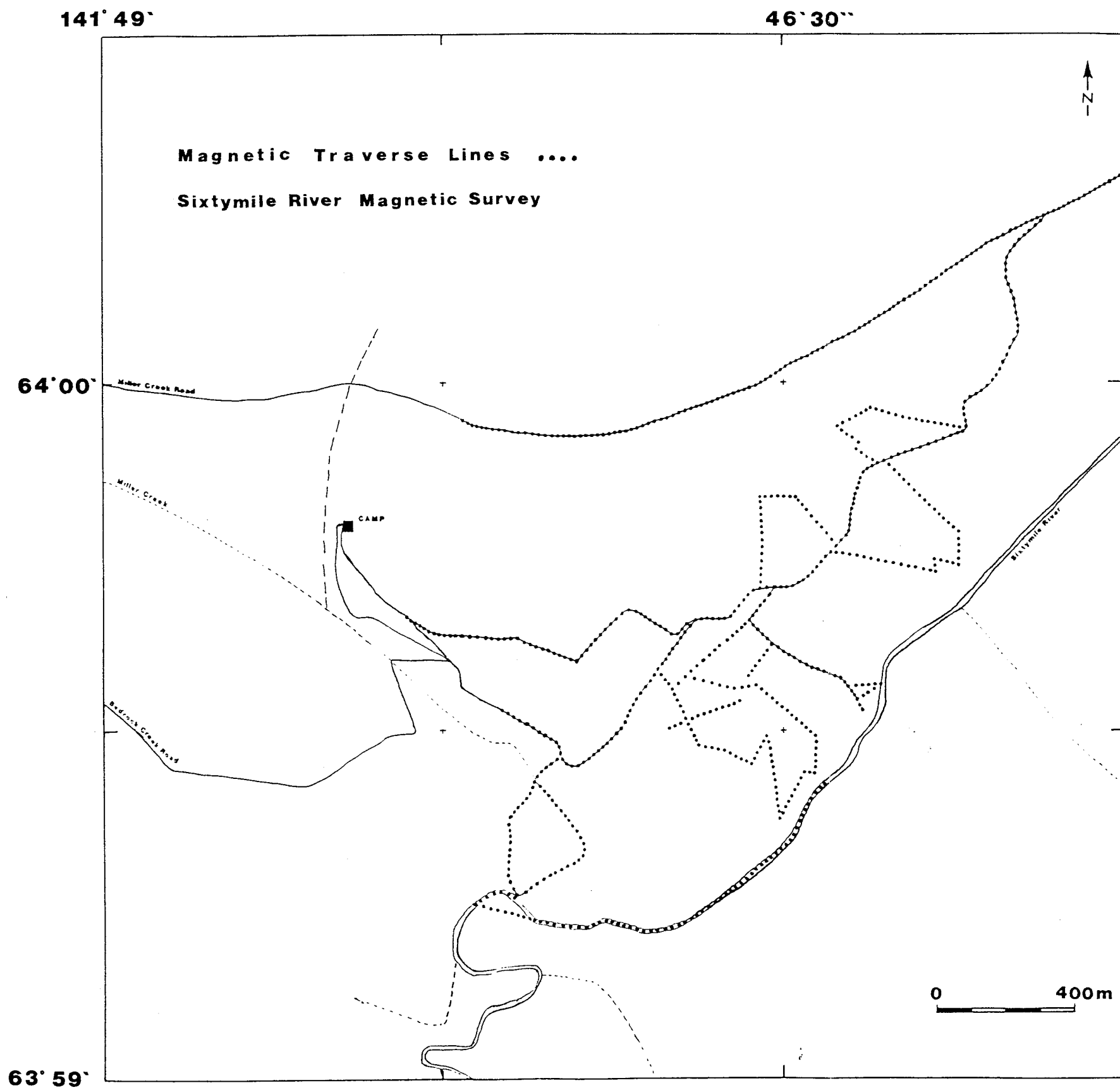


Fig. 10: Magnetic traverse lines in the Sixtymile River area

4.5 Presentation of Data

Magnetic data are presented as contour maps (Fig. 11, Fig. 12) and magnetic profiles (Fig. 13, Fig. 14). The contour maps connect measured and interpolated points of equal total intensity, called contour lines or T-Isanomales. The location of the magnetic traverses in the studied area are shown in figure 11. For regions between these lines the total intensity values are interpolated to construct the contour map.

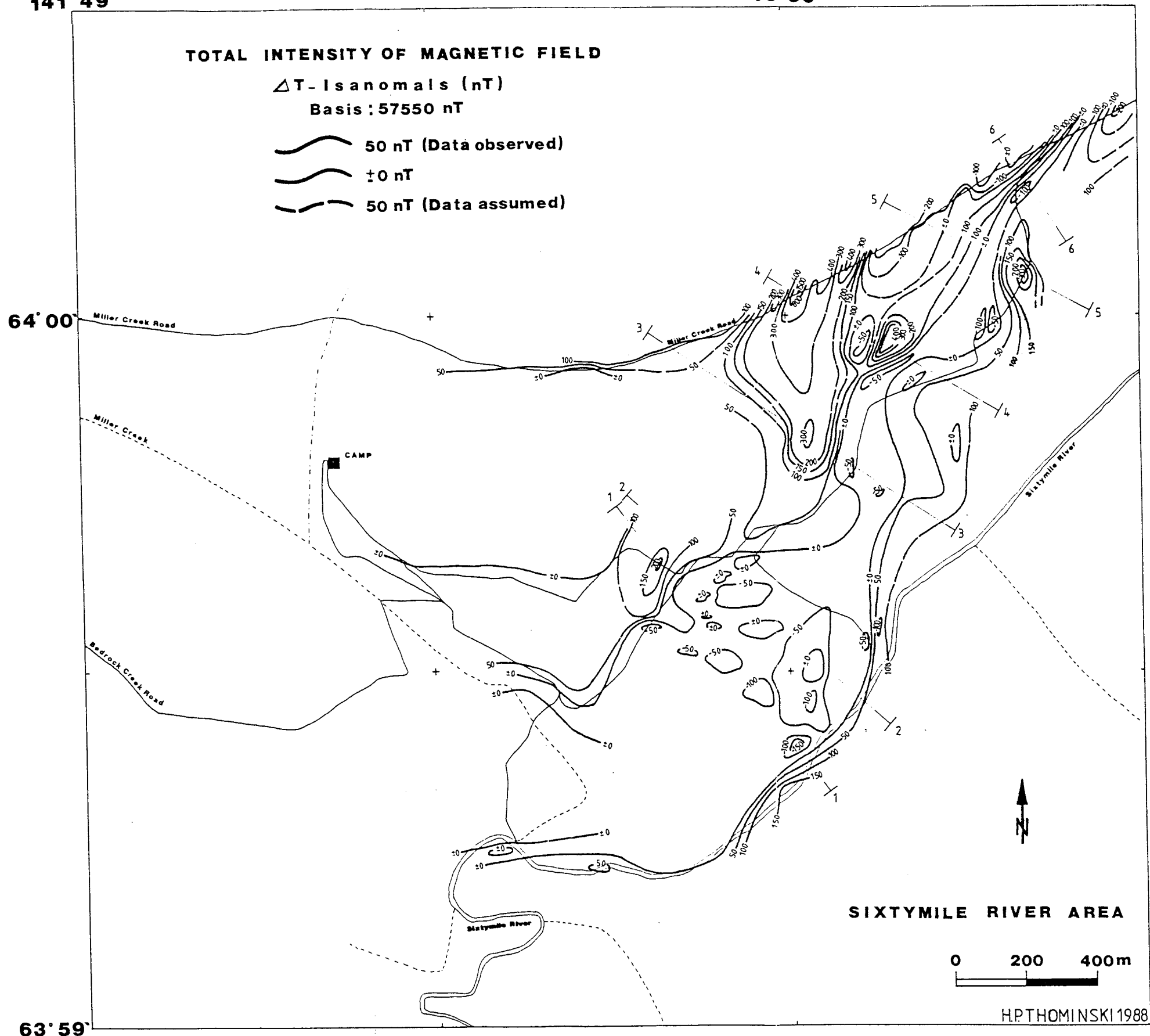
Contour intervall is generally 100 nT or in important areas 50 nT. Additionally areas with the same total intensity range are shaded (Fig. 12)

For interpretation purpose magnetic profiles have been constructed (Fig. 13, Fig. 14). These profiles are drawn perpendicular to the T-Isanomale. The location of the magnetic profiles is marked on the contour map (Fig 11).

032515

141° 49'

46° 30''



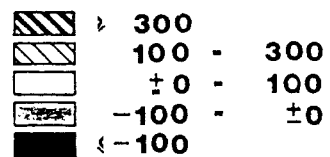
63° 59'

Fig. 11: Sixtymile River area ΔT isanomaly contour map. Contour intervals 100 nT (partly 50 nT). Location of magnetic profiles 1 - 6 are indicated.

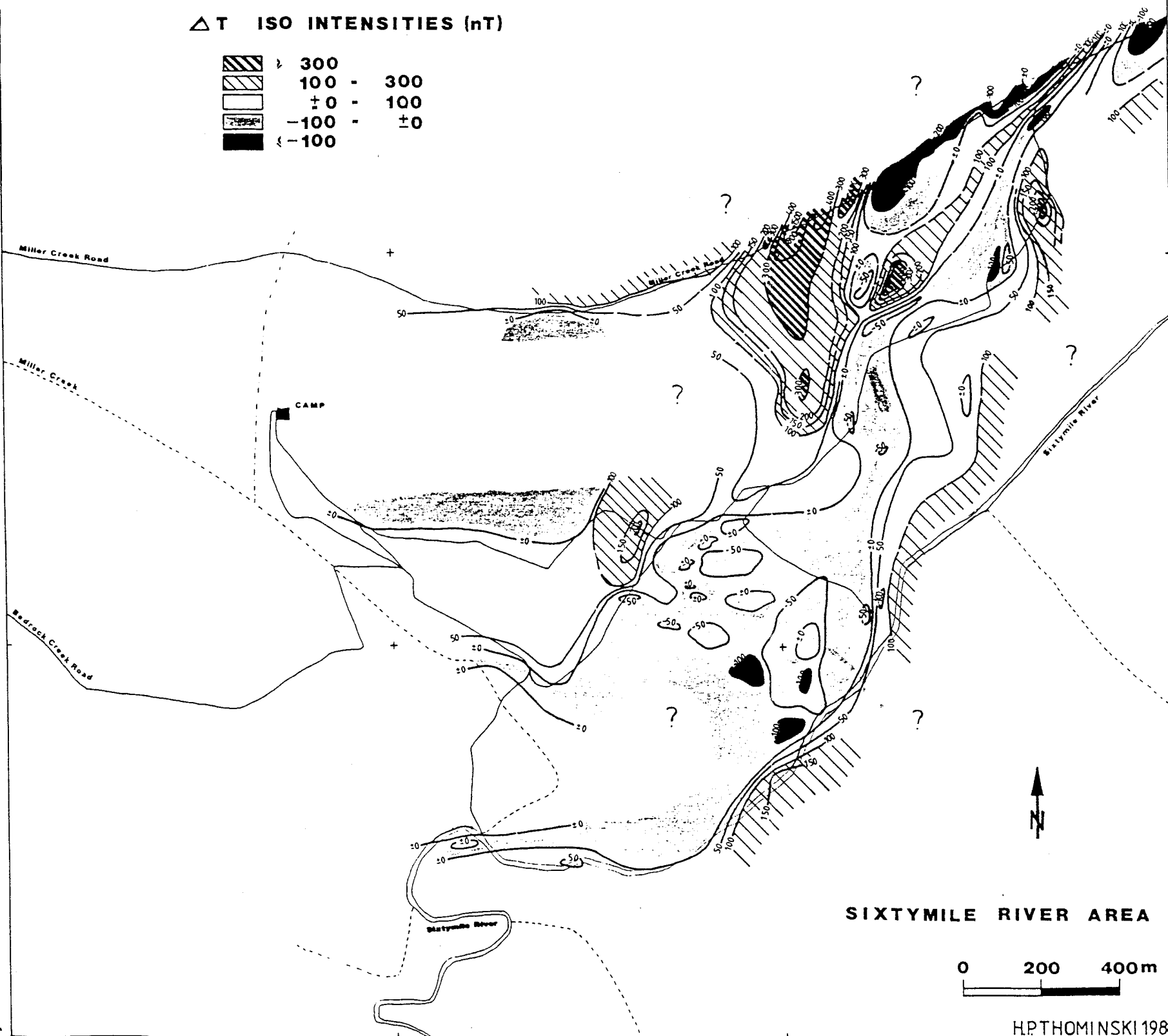
141° 49'

46° 30'

TOTAL INTENSITY OF MAGNETIC FIELD

 ΔT ISO INTENSITIES (nT)

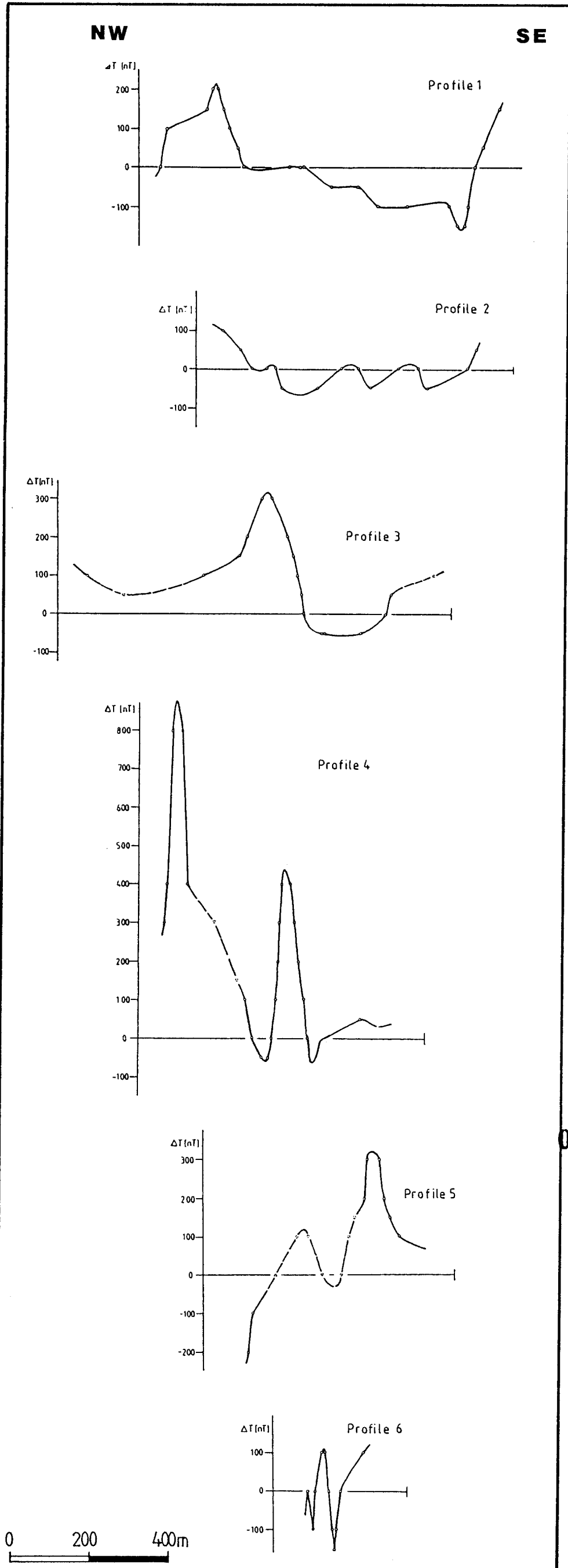
64° 00'



63° 59'

HP THOMINSKI 1988

Fig. 12: Sixty Mile River ΔT contour map; areas with the same total intensity are shown. Sign "?" for areas where measurements haven't been taken



092513

Fig. 13: Magnetic profiles for the Sixtymile River area ΔT anomaly

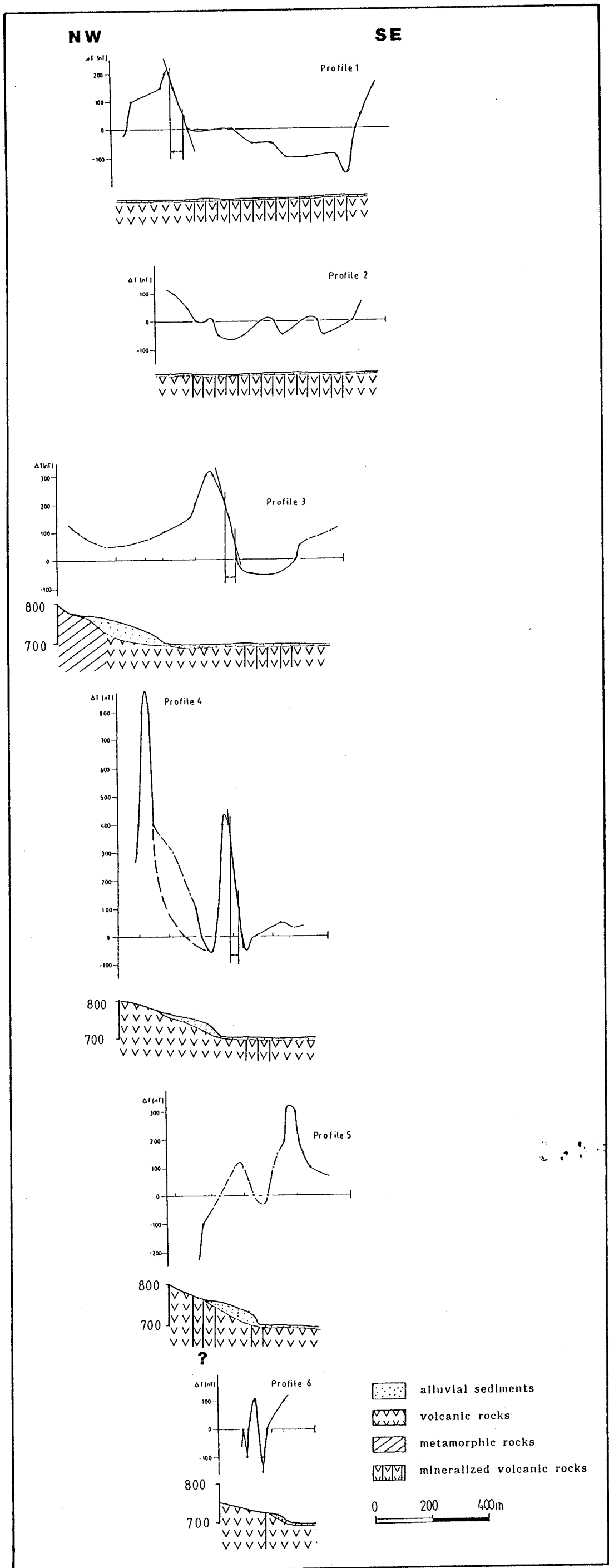


Fig. 14: Interpretation of magnetic profiles in Sixtymile River area

5. Interpretation

5.1 Introduction

Magnetization of rocks is partly due to induction by the magnetization force associated with the earth's magnetic field and partly to their remanent (permanent) magnetization. The induced magnetic intensity depends primarily upon the magnetic susceptibility of the rock formation as well as the strength of the magnetizing force. Permanent magnetic intensity depends on the geological history of the rock.

Magnetic susceptibility of rocks is almost entirely controlled by the amount of ferromagnetic minerals, their grain size and their mode of distribution. Important magnetic minerals are magnetite, titanomagnetite, haematite and pyrrhotite. Magnetite shows by far the highest values in susceptibility and is therefore the most important component.

The intensity of magnetization (M_i) induced into minerals and therefore rocks due to the magnetization force (H) by the earth's magnetic field can be written as:

$$M_i = KH$$

K = susceptibility

0 3 5 1 3

Remanent magnetization is not related to earth's present magnetic field but is governed by the earth's magnetic field that has been existed when the rock was formed. Remanent magnetization (M_r) can reach 10 times greater values than induced magnetization.

Observed magnetic anomalies express only the net effect of the induced and remanent magnetization which usually have different directions and intensities of magnetization. Therefore a quantitative interpretation of magnetic anomalies is only possible if the remanent magnetization as well as the susceptibility of the studied rock formation is known. The practice has shown that a valuable interpretation can be often done without knowing the remanent magnetization. Therefore magnetic anomalies are interpreted as though induced magnetization were the total source.

The object of magnetic data interpretation usually is to locate the anomalous magnetic material, its depth, dimension and magnetization.

5.2 Contour map

Regions where metamorphic and igneous rocks predominate, are usually characterized by complex magnetic variations as it is seen in the Sixty-mile River area.

Generally two major trends are developed:

- a northeast-southwest trend in areas where volcanic rocks are the underlying rock formation with an irregular magnetic field pattern seen at the northeast part of the studied area and
- a east-west trend where metamorphic rocks occur with a more quiet field pattern seen at the west end of the Miller Creek Road (west of profile 3) and in the underground mine

Beside these major trends there are two areas: a northeast area (between magnetic profile 3 and 6) with an irregular magnetic field pattern and a southwest area (around profile 1 and 2) with a quiet field pattern. Whereas the northeast area is mainly underlain by unmineralized and unaltered volcanic rocks of andesitic composition the southwest area consists of moderate to strongly altered and mineralized andesites with gold-arsenopyrite-pyrite and silver-galena-sphalerite veins and veinlets, stockwork type and disseminated pyrite distribution.

The Cretaceous volcanic rock formation in the Sixty-mile River area is carrying magnetite and titanomagnetite as the main magnetic minerals (GLASMACHER 1984). In the course of the fluid - wallrock interaction during the hydrothermal stage magnetite and titanomagnetite are converted to pyrite (GLASMACHER 1987). Therefore if the mineralized area is wide and deep enough it is to expect that these areas are characterized by broad magnetic lows.

Southwest (upstream Sixty-mile River) of the area which is characterized by the major magnetic anomaly low metamorphic rocks could underlay the quaternary sediments.

Therefore the continuation of the magnetic low to the southwest could have been caused by the occurrence of metamorphic rocks.

The ΔT isomagnetic contour map (Fig. 10) shows strong positive and negative anomalies in the northeast part of the property along the Miller Creek Road. Along this road Cretaceous andesites are exposed. Such anomalies (small and irregular) are typical for similar rocks in other

areas (MAC INTYRE 1970). Close to profile 6 at the northeast end of the property a geochemical arsenic and mercury soil anomaly has been detected during a reconnaissance survey last fall. Similar anomalies have been located in soil samples above small pyrite-arsenopyrite-gold veins (cm to m) which occur in volcanic rocks in various parts of the Sixtymile River area. Therefore some of the magnetic lows around the north end of profile 6 could have their reason in similar occurrences. Between profile 3 and 4 at the Miller Creek Road a strong change in the magnetic field occurs. This change is due to a fault contact between metamorphic rocks to the west and volcanic rocks to the east.

Interpretation of a small positive anomaly at the northwest end of magnetic profile 1 requires more detail studies around these location.

092513

5.3 Magnetic profiles

In order to follow up the magnetic low to the northeast part of the studied area and to interpret the possible depth of the anomaly source six magnetic profiles (Fig. 14) have been drawn perpendicular to the main northeast-southwest trend.

An area with low magnetic values to the southeast is developed in nearly all profiles. Knowing from profile 1 and 2 the geological situation with a northeast-southwest striking direction of the main mineralized zone these northeast striking zone of low values could have been caused by the continuation of the gold and silver bearing mineralized structure. To quantify these interpretation a narrow detailed survey has to be done during the summer season.

The trend to high magnetic values to the southeast in profile 1 and 2 probably points to the southeast boundary of the mineralized area, or to an rock formation with different susceptibility and/or different amount on magnetic minerals. The high amplitude, short-wavelength anomalies of profile 4 and 6 are typical for basic volcanics. The northeast peak in profile 4 is correlated with the exposure of volcanic rocks along Miller Creek Road.

Using the 'half slope' method (BREINER 1973) the possible depth of the source which is responsible for the anomalies of profile 1, profile 3 and profile 4 (see Fig. 14) could be:

profile 1 = 50 m; profile 3 = 40 m and profile 4 = 40 m

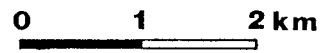
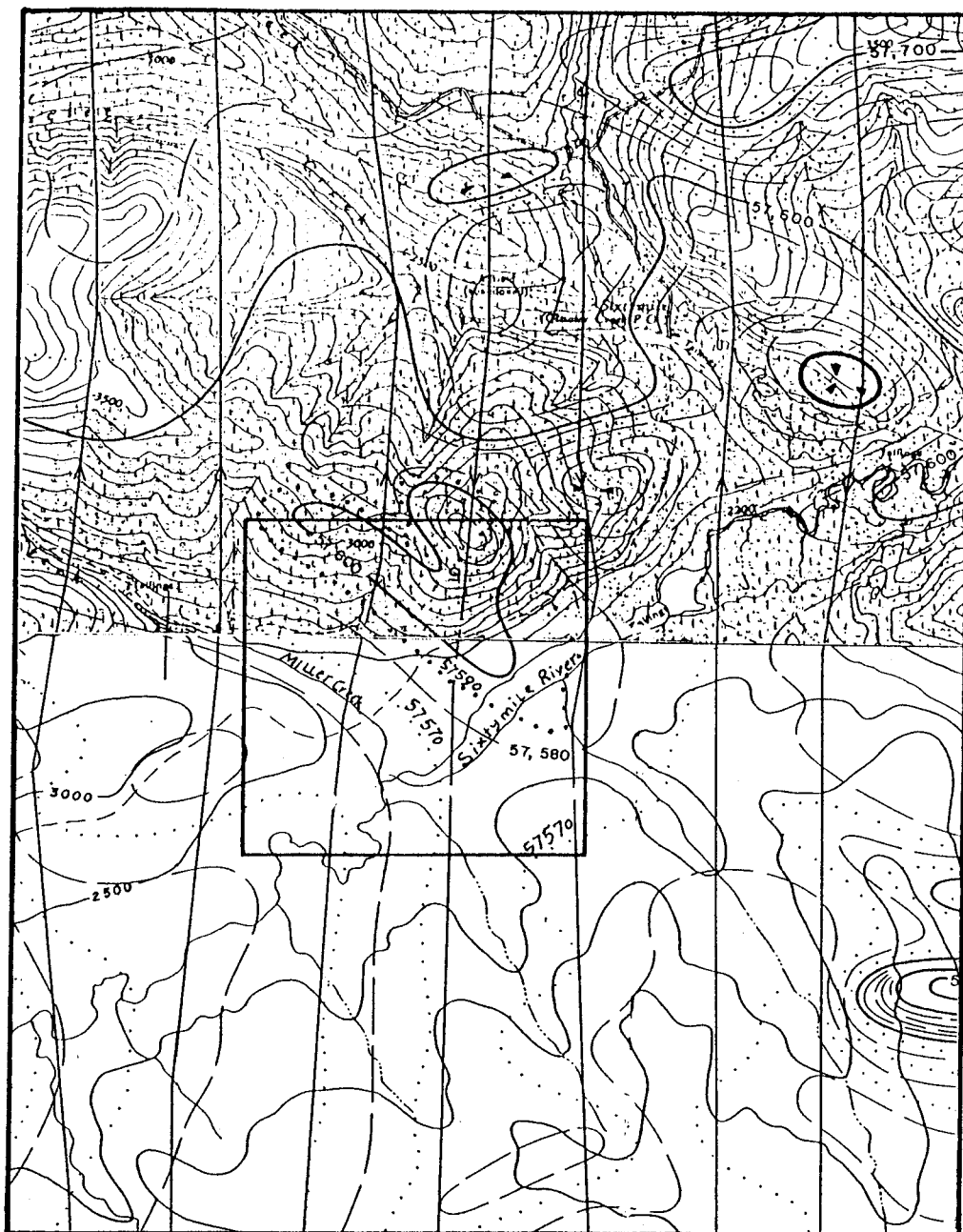
0.00013

5.4 Aeromagnetic map

The resolution of individual anomalies from separate buried sources depends on the height of observation above the level of the source. Deep seated magnetic bodies produce broad anomalies which are better recognizable by aeromagnetics than groundmagnetics. Near surface seated bodies generally produces small and strong anomalies, mostly not observable by aeromagnetics but well by groundmagnetics.

Taking these features into consideration the aeromagnetic map (Fig. 15) is generally in agreement with the contour map produced by the groundmagnetic survey. A rather strong positive anomaly and a north-south magnetic trend in areas with volcanic rocks (northwest part) as well as broad and quiet field in areas were metamorphic rocks are the main rock formation.

000000




ISOMAGNETIC LINES (absolute total field)

- 500 gammas
- 100 gammas
- 20 gammas
- 10 gammas
- Magnetic depression

Flight lines

Flight altitude: nominally 1000 feet above ground level where terrain permitted.

 Area under Investigation (Fig. 2)

032513

Fig. 15: Part of the aeromagnetic maps sheet 115 N/15 and sheet 116 C/2 (Geological Survey of Canada 1966)

References

- BABONE S.D.C. 1986: Airborne magnetics, Coromandel, Tour C1, IAVCEI Volcanological Congres New Zealand, 8 p.,
- BREINER, S. 1973: Applications manual for portable magnetometers. - Geometrics, Palo Alto/Calif.
- GLASMACHER U. 1984: Geology, petrography and mineralization in the Sixtymile River area, Yukon Territorium, Canada; (unpubl. MSc thesis), 242 p., Institute of Mineralogy and Economic Geology, Aachen; Germany,
- GLASMACHER U.,; FRIEDRICH G. 1987: Sixtymile River area, an example of gold and silver mineralization in Yukon-Tanana Terrane, Y.T., Canada - Poster at an meeting in Whitehorse
- GRANT, F.S. 1984/85: Aeromagnetics, Geology and ore enviroments, II. Magnetite and ore enviroments. - Geoexploration, 23, 335-362,
- HOHENSTEIN M.P 1986: Geophysics, Alexandra Volcanics, Tour C1, IAVCEI Volcanological Congres New Zealand, 5 p.,
- HUGHES R.L.; MORISON S.R. and HEIN F.J. 1986: Placer Gravels of Miller Creek, Sixtymile River area, 116 B.C. - Yukon Geology, vol. 1, p. 50-55, Whitehorse,
- JOESTING, H.R. 1945: Magnetometer and direct-current-resistivity studies in Alaska. - Trans. Am. Inst. Min. Met. Eng., 64, Geophysics 1945, 67-87,
- Mac INTYRE, D.G. 1970: Geology, Areomagnetics and Magnetic Susceptibility of Igneous and meatmorphic rocks of the Klondike Plateau and Dawson Range areas, Yukon Territory. - MSc Thesis U.B.C. Vancouver, 152 p.

APPENDIX I - STATEMENT OF QUALIFICATIONS

092513

STATEMENT OF QUALIFICATIONS

I, Ulrich Glasmacher, geologist, with business address in Aachen, Federal Republic of Germany, do hereby declare:

1. I graduated at the Technical University Aachen in 1985 with a Diploma degree in Geological Sciences. Emphasis was given to economic geology (mineral deposits - placer and ore deposits).

2. Currently I am enrolled in a Ph.D. program majoring in Economic Geology (Volcanogenetic Gold-Silver deposits) and employed at the Geological Institute (RWTH Aachen).

3. From 1983 to the present, I have been actively engaged in mineral exploration in British Columbia and Yukon Territory.

4. I am a member of the Professional Association of German Geologists (BDG, Bonn) and thereby associated to the European Federation of Geologists (EFG/FEG).

5. Since 1985 I am a member of the British Columbia & Yukon Chamber of Mines (Vancouver) and of the Association of Geoscientists for International Development (Bangkok).

092513

U. Glasmacher

(Dipl.-Geol. Ulrich Glasmacher)

STATEMENT OF QUALIFICATIONS

I, Hans Peter Thominski, geologist, with business address in Aachen, Federal Republic of Germany, do hereby declare:

1. I graduated at the Technical University Aachen in 1985 with a Diploma degree in Geological Sciences. Emphasis was given to geophysics (magnetic).
2. Currently I am enrolled in a Ph.D. program majoring in geophysics (palaeomagnetic) and employed at the Department of Applied Geophysics (RWTH Aachen).

H. P. Thominski

(Dipl.-Geol. Hans Peter Thominski)

092513

Financial Statement

These financial statement covers all the expenses to fulfill the contract between Klondike Goldmining Corporation and myself, Ulrich Glasmacher.

This amount of money has been paid by the company at the end of March.

1. Travel expenses for two Persons (Geologist and Geophysicist)

1.1. Europe - Vancouver and return	3,000. can \$
1.2. Vancouver - Whitehorse and return (by plane)	1,000 can \$
1.3. Whitehorse - Dawson City and return (by plane)	960 can \$
1.4. Dawson City - Miller Creek and return (by Helicopter)	1,200 can \$

2. Daily fees for two person (300 can \$/d for 15 days) 4,500 can \$

3. Geophysical - and survey equipment (Magnetometer, VLF)
Tachymeter
for 15 days 2,000 can \$

4. Final report on the Hardrock property Delia - Wendy 2,000 can \$

14,660 can \$

received at 23rd. March 1988

Ul. Glasmacher

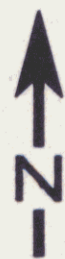
092513

141° 49'

47° 42''

46° 30''

45° 18''



64° 00' Miller Creek Road

Miller Creek

CAMP

6 DELIA

Sixtymile River

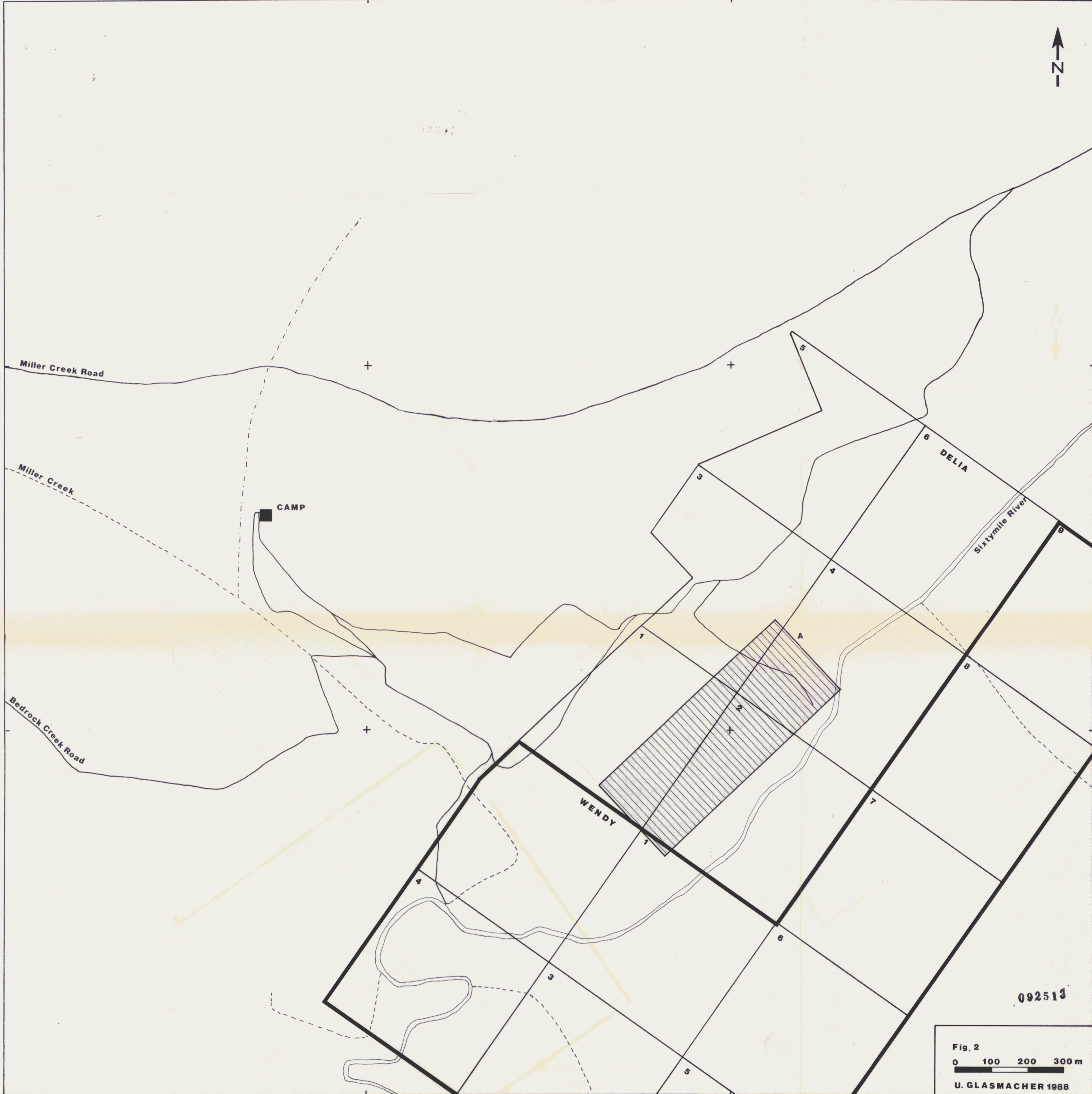
63° 59' 30'' Bedrock Creek Road

WENDY

092513

Fig. 2
0 100 200 300 m
U. GLASMACHER 1988

(213)



141° 49'

47° 42''

46° 30''

45° 18''



64° 00' Miller Creek Road

Miller Creek

CAMP

Sixtymile River

63° 59' 30''

Bedrock Creek Road

092519

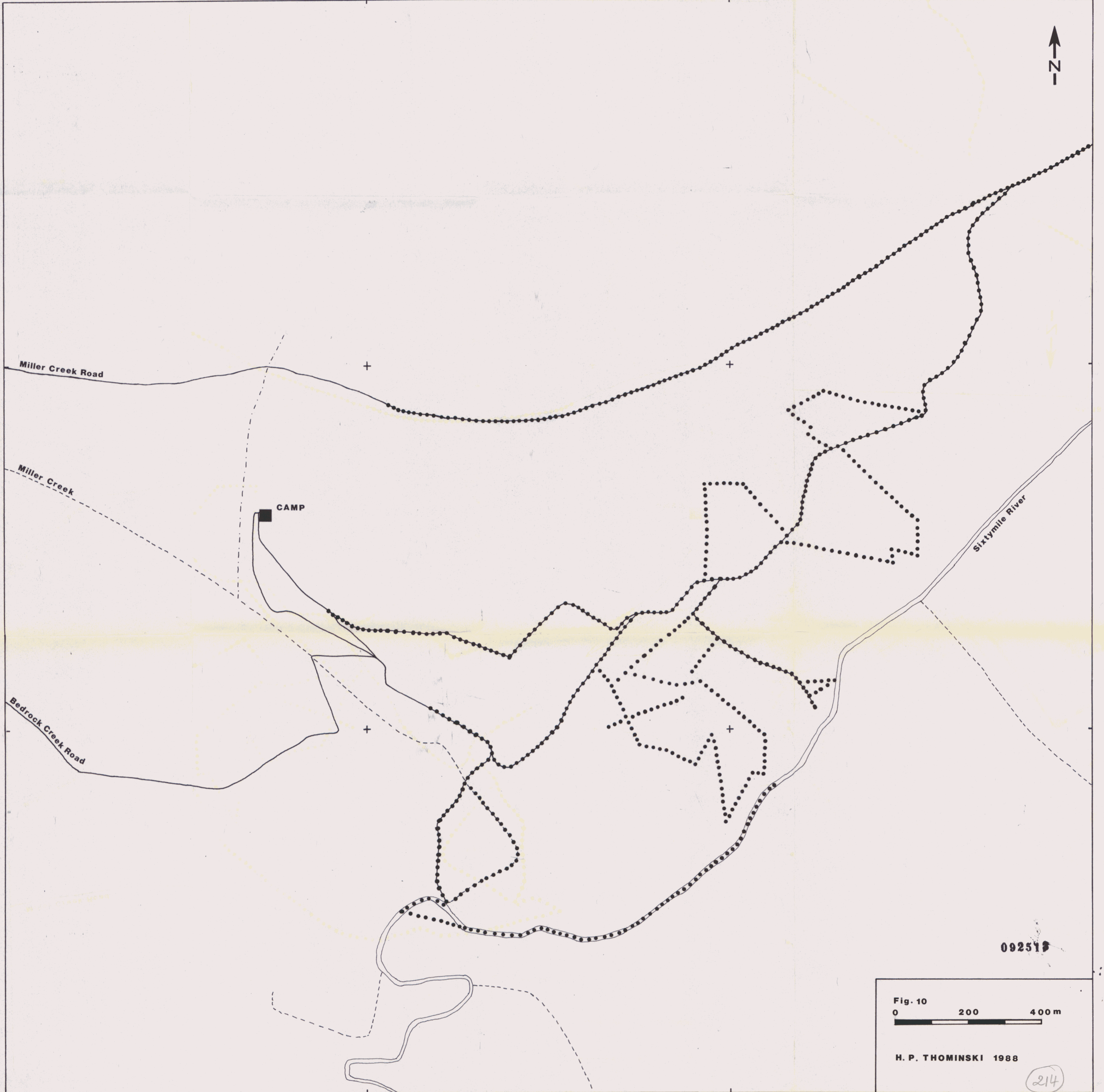
Fig. 10

0 200 400 m

H. P. THOMINSKI 1988

214

63° 59'



141° 49'

47° 42''

46° 30''

45° 18''



092513

Magnetic Contour Map

2 cm : 100 m 2 : 10 000
Fig. 11 1 : 5 000

0 100 200 300

H. P. THOMINSKI 1988

215

63° 59'

63° 59' 30"

64° 00'