

Introduction

The Little Salmon property comprises a group of 49 claims which are located approximately 7 1/2 miles ENE of the eastern end of Little Salmon Lake in the Whitehorse District of the Yukon Territory. The original group of 8 claims was optioned in 1954 from Kulan and Law and an additional 8 claims were staked that same year by Prospectors Airways. The likelihood of a strike fault traversing the NE portion of this claim group became evident early during the course of this season's work and it was therefore considered advisable to stake an additional 31 claims and extend the previously staked area to the SW and NE along the strike of this inferred fault zone. These claims staked in July of 1955, brought the total number of claims staked in the area to 49.

The purpose of this season's work was to further evaluate the ground held and complete the required amount of assessment work which was due in August of this year. For this purpose an extensive program was initiated on the 29th of June which included geophysical and geological work, diamond drilling, trenching and sampling. The program which extended over a period of 36 days was completed by August 3rd. The following personnel participated:

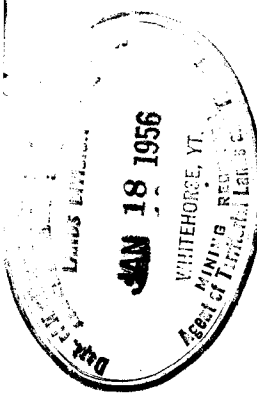
- | | |
|---------------------------|-------------------|
| Geologist | - L. J. D'Aigle |
| Engineer | - W. Sydoryk |
| Magnetometer Operator | - R. P. Bourverie |
| Packsack Drill Runner | - L. McBurney |
| 4 Linecutters and 1 Cook. | |

Control Lines

To establish control for mapping and the geophysical surveys approximately 10 1/2 miles of picket lines were cut across the area of the main showings. These lines extend in a north-south direction over a distance of 2,000 feet and are set off at 200-foot intervals across the area for a length of 4,400 feet.

Two base lines are established in an approximate east-west direction and run parallel for a distance of 4,400 feet. The north baseline nearly traverses the "Lake Showing" on claim 63145 and extends westerly along the base of a steep escarpment. The south baseline is parallel and 1500 feet south of the north baseline.

CONFIDENTIAL



Section lines are turned off from both the north and south baselines at 200-foot intervals and stations marked off along these at 100-foot intervals. From the north baseline these lines are chained north for 500 feet and south to the face of the escarpment. The section lines off the south baseline are chained north to the face of this escarpment which nearly bisects the surveyed area diagonally. Continuous chaining between the baselines was done only where the steep escarpment could be traversed without too great difficulty. Where this was possible the pickets were marked in such a manner as to indicate from which baseline the chaining was done--the letters N (north) indicating the line was chained from the south baseline and the letter S (south) indicating the line was chained from the north baseline.

Magnetometer Survey

The magnetometer survey of the Little Salmon property which was conducted by R. P. Bouverie during July of this year was completed over an area 4,400 feet long by 2,000 feet wide. This surveyed zone is nearly contained by 3 of the original claims optioned from Kulan and Law, namely, claims number 63145, 63147 and 63148.

Bouverie has prepared a contoured map on a scale of 100 feet to 1 inch on which the corrected Askania readings are plotted. The readings were taken at intervals of 100 feet on all section lines. An Askania instrument with a sensitivity of approximately 22 gammas per scale division was used.

Four anomalous zones are recorded on the map area. The zone of highest gamma intensity (which has been designated the Base Line Zone) extends along the north baseline over a distance of 1800 feet and lies between 4 plus OOE and 14 plus OOW. Along this zone a high of 16,000 gammas was recorded against a low of minus 10,000 gammas. The second highest anomalous zone lies north of the north baseline along 10 plus OOE and has been labelled the Ten East Zone. This zone which is approximately 2,000 gammas above background for the area, strikes north for 600 feet to the north

boundary of the surveyed area. Two magnetic anomalies occur in the SE portion of the map area. as these zones are barely 200 gammas above the normal average background of 800 gammas, they are considered to be of minor importance. It is of significance to note, however, that the more easterly zone, between 14 plus OOE and 22 plus OOE, lies nearly exactly along the projected tuffaceous chert-feldspar porphyry contact (refer geological sheet). The other small anomaly near the south boundary on 10 plus OOE is known to be caused by the presence of a minor amount of sulphide and magnetite mineralization in that area and therefore is not considered to be of any economic importance.

The average normal reading over the tuffaceous chert is in the neighbourhood of 700 to 800 gammas while that over the porphyry is a little lower at around 600 to 700 gammas. To arrive at a figure for the average magnetic intensity over the contact zone between the tuffaceous chert and feldspar porphyry a broader generalization is necessary; for it is seen that the Baseline Zone which lies along this contact contains several local magnetic highs ranging between 6,000 to 16,000 gamma intensities; an average magnetic intensity of between 2,000 to 3,000 gammas is indicated however, if these abnormal highs are not weighted into the average.

The eastern portion of the Baseline anomaly was explored with a number of short Facksack drill holes; several trenches were also put down here and some channel sampling was done. On the average values in lead and zinc obtained in this section are low, intermittent in occurrence, and across narrow widths--in both the drill holes and trenches, magnetite and pyrrhotite mineralization is by far in excess of lead and zinc sulphide mineralization.

Hole No. 16, collared centrally over a high magnetic-local sector of the Base Line anomaly was unsuccessful in reaching bedrock because of the heavy covering of talus and overburden.

Hole No. 18, which was collared on 12 plus OOW over a magnetic high on the western extension of the Baseline Zone intersected 19.0 feet of massive magnetite and pyrite mineralization containing scattered low values in lead, zinc and copper.

Electro-Magnetic Survey

The Electro-Magnetic Survey of the Little Salmon property was conducted by Sydoryk and Bouverie with the Sharpe SE-100 electro-magnetic unit. The area surveyed is identical to that described under the Magnetometer Survey with the single exception that a small area in the southwest portion of the sheet was not completed because of a mechanical failure in the instrument. Clinometer readings which were taken along section lines at 100 foot intervals have been plotted on a map to a scale of 100 feet to 1 inch.

The Baseline Zone has the property of a fairly strong conductor as is indicated by the moderately intense crossovers obtained over this magnetic zone; massive sulphides are therefore present--this fact is brought out more conclusively by the occurrence of massive sulphides at the Lake showing on the eastern sector of the zone. Reverse crossovers and abnormally high dip readings, which are consecutive, but do not finalize as complete crossovers are believed to be the result of an interference of some kind, caused by the steep escarpment which closely parallels the zone across its entire length.

No crossovers were obtained over the Ten East Zone. The reason for this is apparent from an examination of the magnetometer survey data; this survey indicates a north-south strike for the anomaly, which is certainly an exceptional one considering the general strike of the other anomalies in the area. As this fact was not known at the time the Electro-Magnetic Survey was conducted, the zone was traversed parallel to strike rather than at right angles to it, with the result that no crossovers or anomalous conditions were recorded. It will be necessary to re-survey the zone to ascertain whether it has the properties of a conductor or not by erecting picket lines which can be traversed with an electro-magnetic instrument across the strike. For this purpose the small "Junior" portable transmitter and receiver unit is recommended.

No conductors of significance were located elsewhere on the map area.

Geochemical Survey

Chisholm's method of soil and water testing employed in this

survey is a modification and simplification of a method devised by the U.S.G.S. Geochemical Branch. (See Memorandum - Soil and Water Testing by E. O. Chisholm). The purpose of the survey was to determine the extent of soluble heavy metal concentrations contained in the soil overlying the anomalous zones which had been located by the electrical and magnetometer methods previously described. In this respect the survey was limited to the testing of a much smaller area than had been covered by the other methods and again by the type and amount of overburden overlying these zones. The tests were made by W. Sydoryk.

Because of heavy talus and overburden overlying the greater part of the Baseline Zone the tests were taken mainly in the vicinity of the Lake Showing which is relatively free of talus covering. The results of these tests, which were carried out along section lines 9 plus 00 and 2 plus 00E between the baseline and 1 plus 00S exceed 300 p.p.m. soluble heavy metals. The face value of these were to a great extent nullified by the fact that mineralized surface exposures in the vicinity already furnished proof of the presence of heavy metals; nevertheless a testing out of the method was achieved, which proved it to be a successful means of further evaluating the merits of an anomalous zone, which had been discovered by the magnetic and electrical methods.

Several positive tests were obtained over the small anomaly on 10 plus 00E near the S Baseline, but here again the nature and extent of the mineralization is known from surface exposures and the anomaly is therefore not considered to be of any economic importance.

The Ten East Zone and the larger anomaly at the southeast section of the map sheet are overlain by a considerable depth of overburden; for this reason no tests were taken in these areas.

Geological Survey

Topography: A steep sloped valley crosses the mapped area nearly centrally in an approximate east-west direction. Towards the east, the valley floor widens out, from dried up stream beds and low muskeg ground, to flatter dipping slopes; westerly the narrow valley floor is occupied by a small rapid flowing creek which drains west from a shallow spring-fed lake located nearly centrally on the property. In the

west the north slope rises steeply from the creek bed but gradually flattens out towards the northeast. On the south side a vertical faced escarpment strikes parallel to the stream bed over the length of the Baseline Zone and then veers off gradually in a southeasterly direction. A steep slope covered with talus and overburden occupies the area between the base of this escarpment and the valley floor. Approximately 85 percent of the area is covered with a sandy clay overburden which supports a thinly-scattered growth of spruce and pine.

Geology: The southern part of the mapped area is underlain by a strongly banded tuffaceous chert (or cherty limestone) formation which is intruded by quartz-feldspar porphyry. The attitude of the porphyry has not been definitely determined; only a small sector of the south contact between this intrusive and the tuffaceous-chert is exposed and the north contact appears to be everywhere covered with overburden. However, for reasons which will appear later, the intrusive is believed to be primarily a dike structure which conforms only locally at one place with the dip of the tuffaceous chert formation—here it might reasonably be described as a sill intrusive.

Between the tuffaceous-chert (cherty limestone) and feldspar porphyry is a metamorphosed contact zone. The metamorphism consists principally of silication of the invaded cherty limestone. There is a rude zoning with the silicates nearer to the porphyry intrusive. The porphyry itself grades into more siliceous facies towards the chert formation; this extremely fine-grained transitional phase is mapped as felsite porphyry (or rhyolite porphyry). The oxides and sulphides occur in a massive siliceous replacement zone which is composed of a very hard, dense, pale oliver green rock with a sugary texture. The minerals occurring in and near this zone are coarse calcite, vesuvianite, magnetite, galena, pyrrhotite, pyrite, sphalerite and fluorite. A rude order of deposition of some of these minerals is suggested by their relationship and associations - it is as follows: (1) magnetite; (2) silicates - silicification; (3) chalcopyrite sphalerite and galena.

The northern half of the map area or north slope of the valley is largely covered with overburden; there is, however, one fairly continuous belt of rocks exposed along a small step like escarpment towards the top of the slope. These exposures are all composed of a light and dark grey limestone which in some places is interbedded with whitish and pale pinkish colored limestone strata. Where these thin light colored laminations occur the formation has a strongly banded appearance but is otherwise massive. The dip of the formation is to the northwest at around 40 degrees.

Description of Rock Types

The following is a brief description of the various rock types named above and is based on a megascopic field examination.

Cherty Limestone (Tuffaceous Chert): Moderately hard; pale to dark green in color; mainly intensely banded; occasionally with buff and white colored laminae; in places an orange-red weathered surface--where unaltered weathered surface is buff or pale green and in some places grey; fractured parallel to strike at 130 degrees and also at 075 degrees; in places grooved as a result of differential weathering in a direction parallel to strike; in places rusty weathered surfaces due to decomposed disseminated pyrite; freshly broken surfaces pale green and greysih white.

Quartz Feldspar Porphyry - Pink Facies: Phenocrysts of quartz and light pink feldspar - 20 percent feldspar phenocrysts, 20 per cent quartz phenocrysts and 60 per cent light grey and light greenish aphanitic groundmass; sparsely disseminated pyrite; quartz phenocrysts half size of peas and smaller appear as cubes (pseudomorphous after feldspar)--very likely hexagonal but not discernible; groundmass siliceous; occasionally with hard pale olive green mineral occurring as cubes and rectangular plates; fine grained facies with phenocrysts barely visible; varies in composition between facies, largely composed of feldspar phenocrysts; gradational contact to very siliceous metamorphosed zone--this change accompanied by a change in color of groundmass to dark grey and greenish grey and by the inclusion of smaller and fewer phenocrysts; rusty spotting characteristic in places; occasionally weathered surfaces orange-brown in color and pocked with small cavities caused by the weathering out of feldspar; feldspar phenocrysts generally cream colored; average dip and strike 144°/55° southwest; occasionally nearly strike in places with an orange stained weathered surface and also pitted with iron hematite stains.

Feldspar Porphyry (Green Facies - Felsite Porphyry or Rhyolite Porphyry):

Feldspathic aphanitic groundmass; fewer phenocrysts of quartz and feldspar than in pink variety; part of transitional zone into metamorphosed sediments -- lies immediately above pink facies, groundmass light grey but mainly pale green in color; nearly void of phenocrysts close to metamorphosed zone; pale yellowish green weathered surface; a pale pink variety (felsite) has a rhyolitic texture with few phenocrysts that are barely visible and grades into more coarsely grained facies.

Metamorphosed Contact - This zone is composed of a dense green siliceous rock which has a sugary texture, weathered surface patchy grey and in places brownish and brownish black color, possibly a siliceous replacement of cherty limestone; in places has a network of quartz threads and stringers; some fractured surfaces have a silvery grey sheen; varies with the amount of silica present--where less the rock is deep green in color and has a noticeable high specific gravity, probably containing a high percentage of one of the rarer amphiboles (actinolite, tremolite).

Dark Grey or Buff Colored Limestone: Coarsely crystalline; soft, dark grey color; mainly massive with very indistinct banding (except where interbedded with thin white limestone laminae); jointing nearly at right angles to strike; not strongly fractured; occasionally interbedded with white and pink limestone strata--white variety more common than the pink; in places a fine grained texture, strike 083T and dip northwest between 40 - 60 degrees.

Structural Geology: The tuffaceous chert formation is exposed at the Cliff Showing and extends along the face of this escarpment to the southeast with an average dip of 40 degrees to the southwest; westerly from this showing and nearly to the north Baseline the chert dips at an average angle of 20 degrees to the southwest; from near the north Baseline to the west boundary there is a complete reversal of dip to the northwest at a very shallow angle. The discordance in dip of this sedimentary formation exposed along the escarpment might be explained as follows.

The steeper dip to the southeast is attributable to a more intense uplift along this section by the porphyry intrusive which has a dip (also 40 degrees southwest) and strike conformable with that of the sediments; it is along this section that the porphyry very nearly has the attitude of a sill intrusive.

The central sector between the Cliff showing and nearly to the north Baseline is not so steeply tilted--this is possibly due to a lessening in the initial force of uplift along this section caused by the veering away of the porphyry intrusive with a more northerly strike around a folded segment of this cherty sedimentary sequence.

The reversal of dip to the northwest along the base line sector of this sedimentary sequence is thought to be the result of a faulting movement which dragged these beds down. If a downward movement of the sediments on the north side is assumed the downward drag of these along the fault plane would also have a tendency to tilt the formation on this side slightly to the north. (It is assumed that the sediments had a shallow dip to begin with). This assumption appears to be in agreement with the facts observed. The dips and strikes observed along the inferred fault zone can be readily explained if a clockwise direction of movement to the southwest is assumed. The location and direction of movement of this inferred fault is shown on the accompanying sketch. The horizontal displacement appears to be approximately 1200 feet to the southwest, as is indicated by the offset porphyry dike.

The following factors seem to add some support to this assumption.

(1) The geophysical surveys outline the most intense and larger anomalous zone at a location which is nearly centrally located across the strike of this assumed fault and furthermore the intensity and dimensions of this anomalous condition decreases in several directions away from this centre. This, of course, is the logical outcome, if this break is thought of, as the channel way along which mineralizing solutions travelled.

(2) The reversal of dip of the chert formation at the north Baseline where it comes into close contact with this assumed fault structure is readily explained by this assumption, i.e., assuming a down throw on the north side (or footwall side).

(3) There seems to be a better basis for explaining the disposition of the porphyry exposures on the mapped area by assuming a fault structure rather than an intensely folded structure-- the rock exposures examined in the area do not show features characteristic of intensely folded strata.

Diamond Drilling

The diamond drilling on the Little Salmon property was done by means of a Packsack diamond drill. The drill which was mounted on a packboard is a portable unit weighing only 55 lbs. The water pump assembly weighs 65 lbs. and was also mounted on a packboard. The rods were carried by hand, each man in the party carrying one whenever a long move was made. Both the drill and water pump units worked very satisfactorily without any major breakdowns. Spare parts were also on hand for the usual minor repair jobs.

A description of the rock type intersected in these holes is contained in the geological report.

Under more favourable conditions such as shallower depth of overburden and more conveniently located water sources, it would have been possible to obtain more information about the mineralized zones and explore the Baseline Zone more thoroughly.

The following table gives the data relating to the holes drilled on the property. The location of the holes is shown on the geological map which accompanies this report.

TABLE NO. 1.

Hole	Location	Azimuth	Dip	Length of Hole	Remarks
1	0 plus 82W 0 plus 18N	169°	77°S	15.0'	Explored Lake Showing; no mineralization.
2	0 plus 73W 0 plus 65S	169°	70°S	61.0'	All in overburden; low assays returned.
3	0 plus 86S 0 plus 66W	259°	65°N	19.0	All in overburden; no core recovered.
4	0 plus 49W 0 plus 60S	259°	80°N	55.5'	Explored Lake Showing; low assays returned,
5	0 plus 85E 0 plus 60S	259°	80°N	20.0'	No core recovered.
6	0 plus 90E 0 plus 67S	259°	70°N	30.0'	No core recovered.
7	0 plus 96E 1 plus 08	169°	45°S	21.0	No core recovered.
8	1 plus 37E 1 plus 35S	169°	45°S	15.0	No core recovered.
9	1 plus 65E 1 plus 55S	169°	70°S	18.0	No core recovered.
10	1 plus 63E 1 plus 45S		Vert.	16.0	No core recovered.
11	0 plus 35W 0 plus 65W		Vert.	18.0	No core recovered.
12	0 plus 47W 0 plus 70S	169°	70°S	55.0	Explored Lake showing; low assays returned
13	0 plus 00 1 plus 92N		Vert.	24.0	No core recovered.
14	0 plus 00 2 plus 78N		Vert.	19.0	No core recovered.
15	2 plus 15W 1 plus 82N		Vert.	22.0	No core recovered.
16	8 plus 00W 1 plus 32N		Vert.	26.0	No core recovered.
17	8 plus 18 W 9 plus 90N		Vert.	28.0	No core recovered.
18	12 plus 00W 0 plus 68N		Vert.	51.5	Explored western sector of Baseline Zone; Returned 2.06% Cu over 1.5'; remaining assays low.
19	11 plus 09W 0 plus 68N		Vert.	15.0	Talus; no core recovered.
20	10 plus 95W 0 plus 81N		Vert.	18.0	All in overburden; no core recovered.

Location - Latitude relative to North Baseline.

Azimuth - Relative to section lines as true north.

TOTAL FOOTAGE - 549.0'

Trenching and Sampling

Four trenches were put down on the property; three of these are over the Lake showing and one is over the small anomaly near the south Baseline on 10 plus OOE. A total of 39.1 cubic yards of material was removed from these trenches.

The location of three of the trenches is shown on the Geological Plan of the Lake showing and another on the smaller scale geological plan. A sampling plan, which accompanies this report, gives the locations and results of the sampling which was done at these four trenches.

Some stripping was done at the Cliff showing to expose the vein for sampling. A sampling plan for this showing is also attached giving the location and results of the channel samples taken across this zone.

General

Staking: During the early stages of the surveys it became apparent that a fault zone might traverse the property in a E.N.E. direction. For this reason an additional 31 claims were staked in July adjoining the original group to the northeast and southwest. The following table summarizes the staking data.

Table 2

<u>Claim No.</u> <u>Inclusive</u>	<u>Staked by</u>	<u>Staking</u> <u>Date</u>	<u>Recording</u> <u>Date</u>	<u>Date Assess-</u> <u>ment Work Filed</u>	<u>Standing</u>
Al 1-8	Lomer D'Aigle	8 Jul 1955	18 Aug 1955	18 Aug 1955	2 yrs. app. " "
Wall 1-2	Walter Sydoryk	8 Jul 1955	15 Jul 1955	18 Aug 1955	" "
Hades 1-8	Reuben Bouverie	9 Jul 1955	15 Jul 1955	18 Aug 1955	" "
Karl 1-4	Karl Meyer	11 Jul 1955	15 Jul 1955	18 Aug 1955	" "
Jean 1-6	Walter Sydoryk	8 Jul 1955	15 Jul 1955	18 Aug 1955	" "
George 1-3	George Walters	18 Jul 1955	19 Jul 1955	18 Aug 1955	" "

Total number claims - 31

Compass Line Survey

After the staking had been completed a compass line survey of the entire property was run by R. Bouverie. The information has been plotted on a map to a scale of 1" = 400'. It shows the disposition of all claim groups.

Contouring

For the purpose of more accurate contouring of the geological plan and for future drilling purposes profiling of all section lines was done by Sydoryk on a scale of 100 feet to 1 inch. For this work altitude readings were taken along the section lines at 100 foot intervals with a Taylor Aneroid Barometer.

The instrument which compensates for temperature fluctuations has an altitude sensitivity of approximately 5 feet. All the altitude readings are relative to the altitude at 0 plus 00 on the north Baseline,--this was done by making frequent periodic checks at this point and readjusting the instrument.

All the section line profiles are contained on a half roll of graph paper.

Conclusions and Recommendations

There are distinctly two different types of deposits to be considered in attempting to evaluate the mineral potential of the property. The one at the Lake showing is unquestionably a contact metamorphic type of deposit while the one at the Cliff showing is a hydrothermal type of fissure filling. The dissimilarities in the structural characteristics of these two zones at once points to the conclusion that they cannot be correlated as a continuous zone of mineralization across the overburden area which separates them; this view of course is supported by the results of the magnetometer & electromagnetic surveys.

The results of the sampling and trenching over these zones did not reveal in either case anything of economic value; they are of significance only in pointing out the fact that economic minerals do occur to some extent on the property. Also the hydrothermal type of deposit at the Cliff showing indicates that mineralizing solutions may have travelled by different channel ways other than the contact one, between the buffaceous chert and feldspar porphyry. There is



the possibility that the assumed fault zone may have been the original channel way common to both zones. If such was the case the Baseline Zone is not exclusively a contact metamorphic type of deposit but only that portion of it where mineralizing solutions entered along the contact between the tuffaceous chert and feldspar porphyry.

The most important development on the property was the discovery of the Baseline Zone anomaly by the electrical and magnetometer methods. The sampling and trenching which was done over this zone at the Lake showing is by no means representative of its total potential. Because of a 99 per cent covering of talus and overburden it cannot be properly explored without recourse to diamond drilling. One thousand feet of drilling is therefore proposed to test the central portion of the Baseline Zone which lies across the assumed fault structure. The location of these holes will be the subject of a special memorandum.

December 30th, 1955

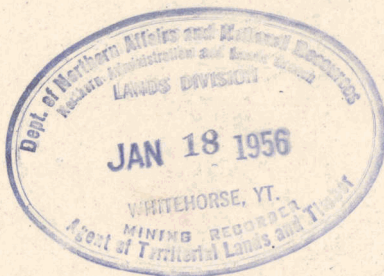
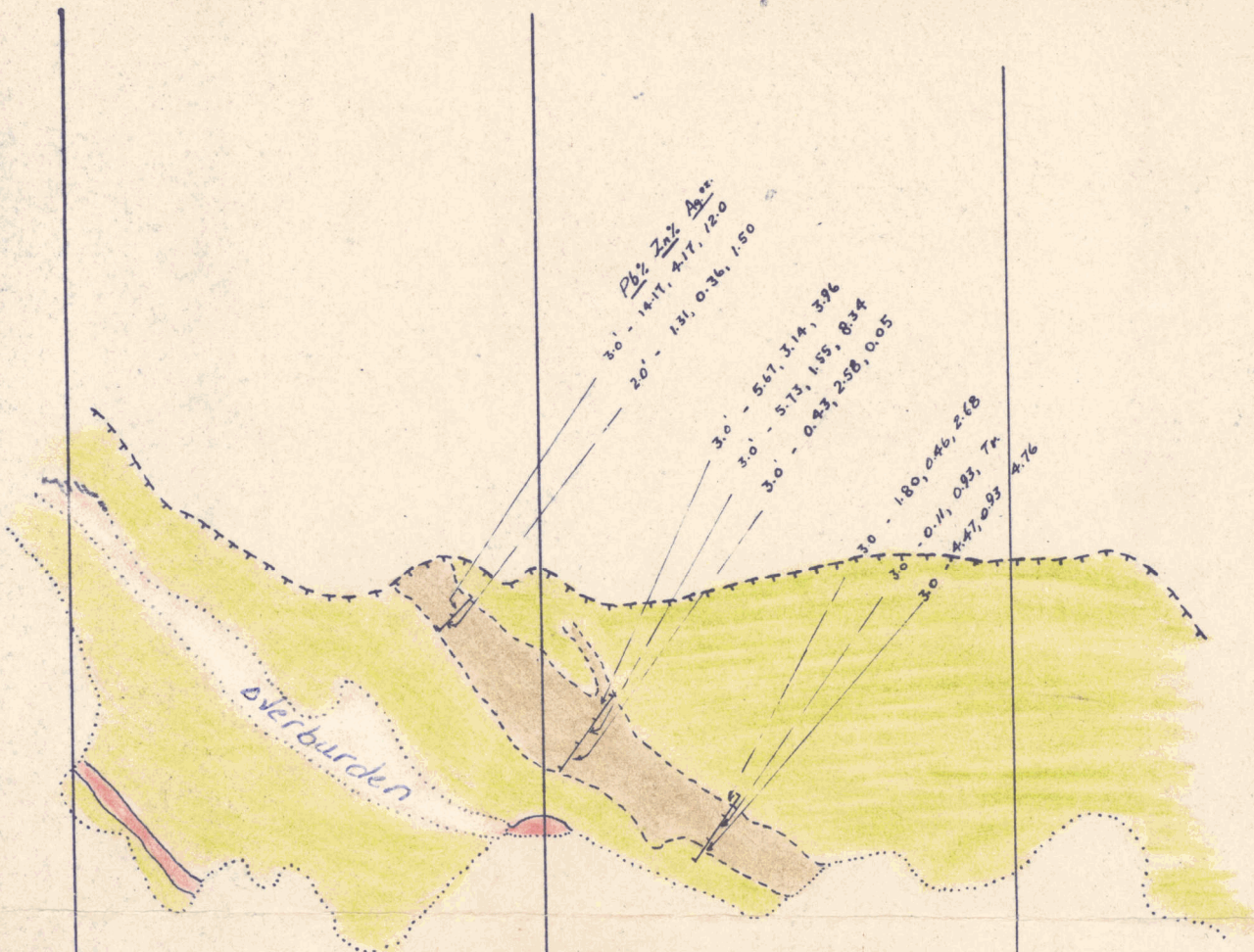
LOMER D'AIGLE,

Footnote:

The following plans are included with this report:

Geological Plan	Scale 1" - 100'
Geological Plan of Cliff Showing	Scale 1" - 20'
Geological Plan of Lake Showing	Scale 1" - 40'
Geomagnetic Survey Sheet	Scale 1" - 100'
Electro Magnetic Survey Sheet	Scale 1" - 100'
Compass Line Survey Sheet (49 Claims)	Scale 1" - 400'
Sample Plan of Cliff Showing	Scale 1" - 20'
Sample Plan of Trenches	Scale 1" - 10'
Composite Plan of Baseline Zone	Scale 1" - 100'

CONFIDENTIAL



"g"

LEGEND

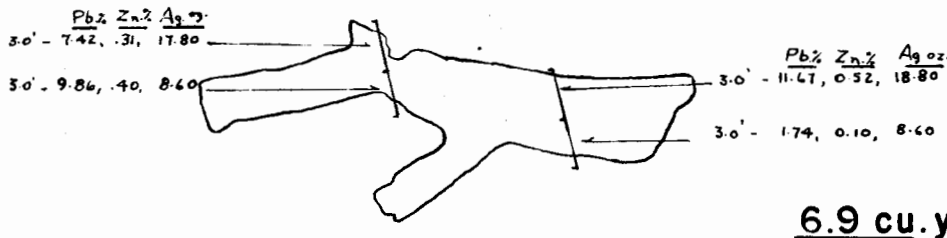
- GOSSAN ZONE
- FELDSPAR PORPHYRY
- TUFFACEOUS CHERT

C2235-K

PROSPECTORS AIRWAYS CO. LTD.
 LITTLE SALMON PROPERTY
 CLIFF SHOWING
 SAMPLING PLAN
 SCALE 1" = 20'

002055

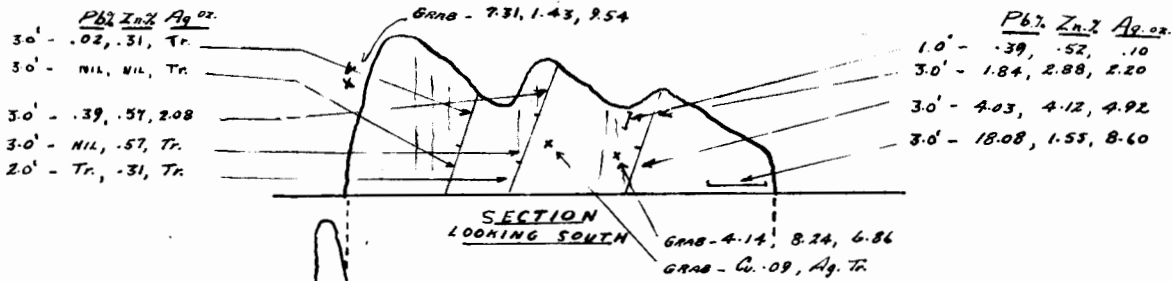
JULY, 1955



PLAN

6.9 cu. yds.

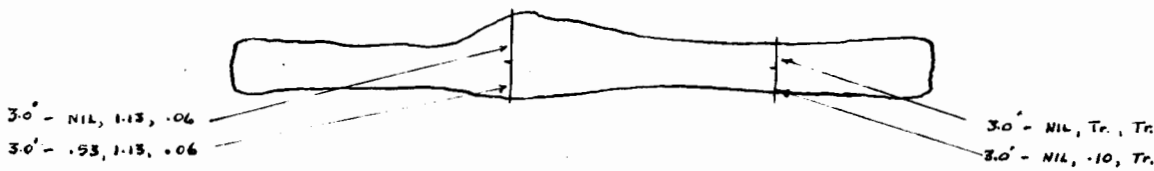
TRENCH "A"



PLAN

10.3 cu. yds.

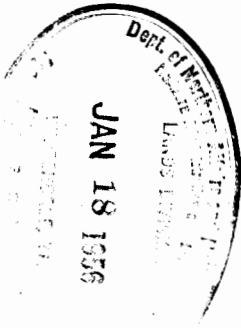
TRENCH "E"



PLAN

9.5 cu. yds.

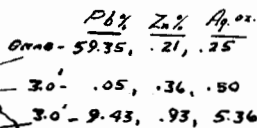
TRENCH "D"



PLAN

TRENCH "C"

6.9 cu. yds.



CONFIDENTIAL

092000 "h"
 C2235-K
 130006
PROSPECTORS AIRWAYS
LITTLE SALMON PROPERTY
SAMPLING PLAN
TRENCHES - A, C, D & E
SCALE 1" = 10'
 JULY 1955



LEGEND

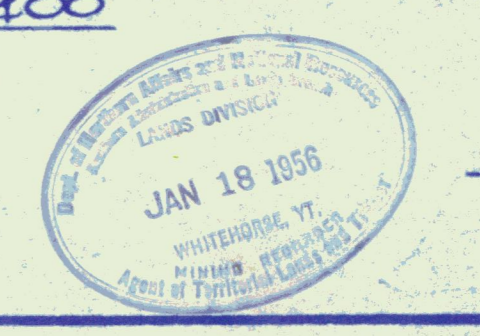
- Centre line
- Claim boundary
- - - Overlap
- ⊙ Claim post
- Approx. boundary of slope
- - - Escarpment
- ⊙ Rock exposure
- Swamp
- ▲ Talus
- ⊗ Mineral showing
- Camp
- P. A. Boundary

- GROUP #1 █
- GROUP #2 █
- GROUP #3 █

CONFIDENTIAL

PROSPECTORS AIRWAYS CO. LTD.
COMPASS LINE SURVEY OF
LITTLE SALMON PROPERTY, Y.T.

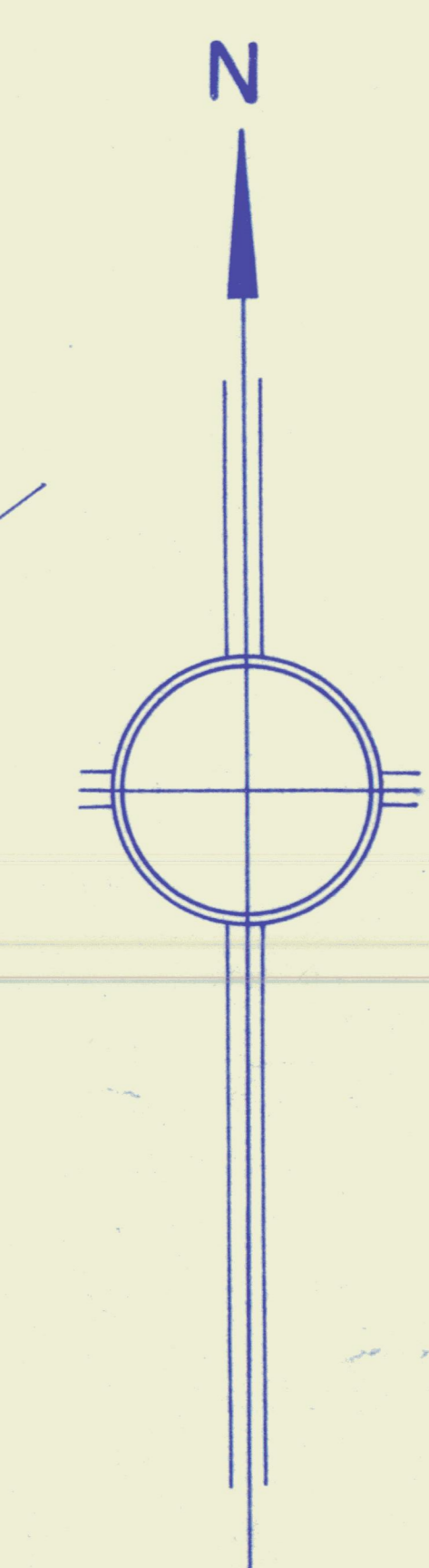
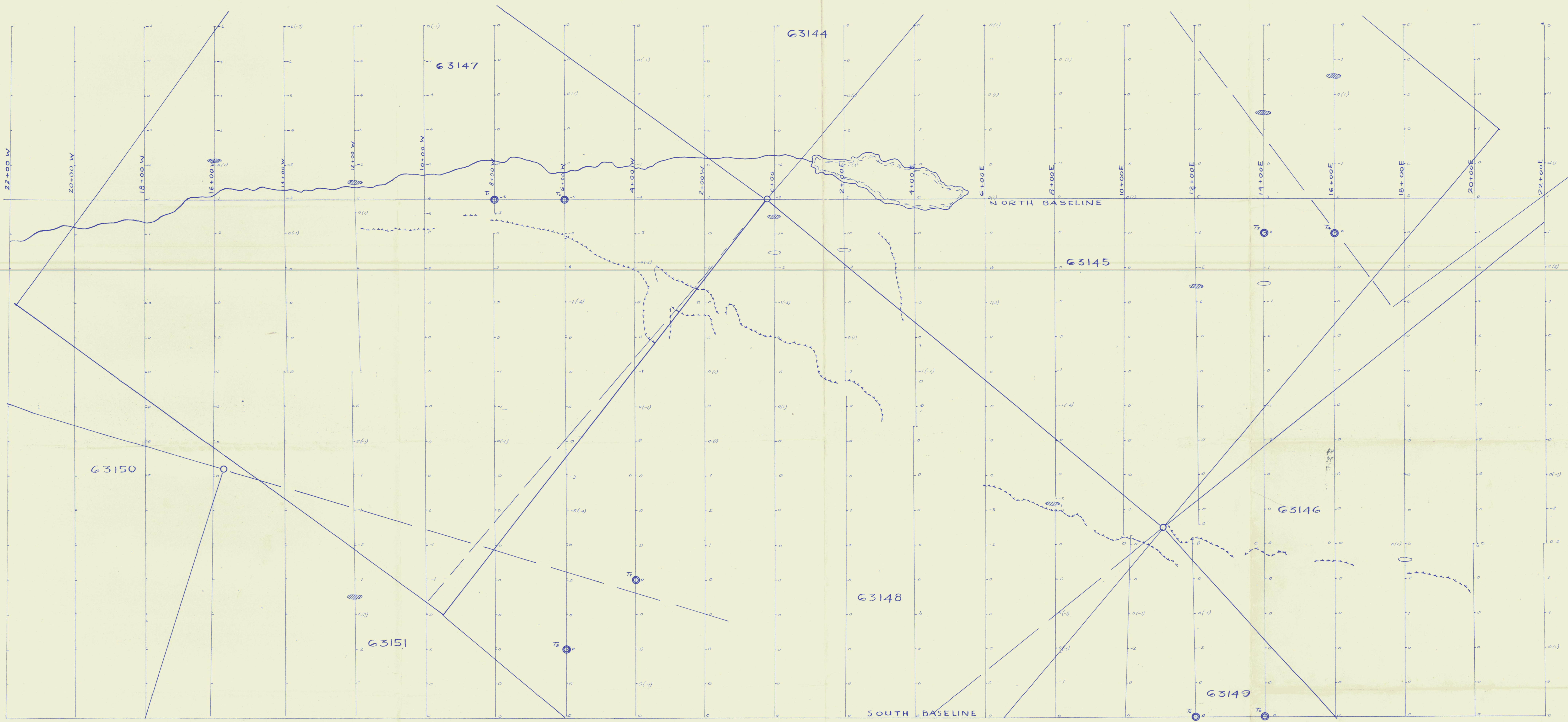
SCALE: 1" = 400'



by E. P. Bourcier

092055

C2235-K



LEGEND

- $T \circ$ Transmitter location
- - - High escarpment
- ▨ Crossover
- Reverse crossover
(Note: minus sign indicates north dip, plus sign indicates south dip.)

PROSPECTORS AIRWAYS CO. LTD.

LITTLE SALMON PROPERTY, YUKON TERRITORY.

ELECTRO-MAGNETIC SURVEY

SCALE - 1 inch to 100 feet

JULY 1955

092055

CONFIDENTIAL

Q2235-K



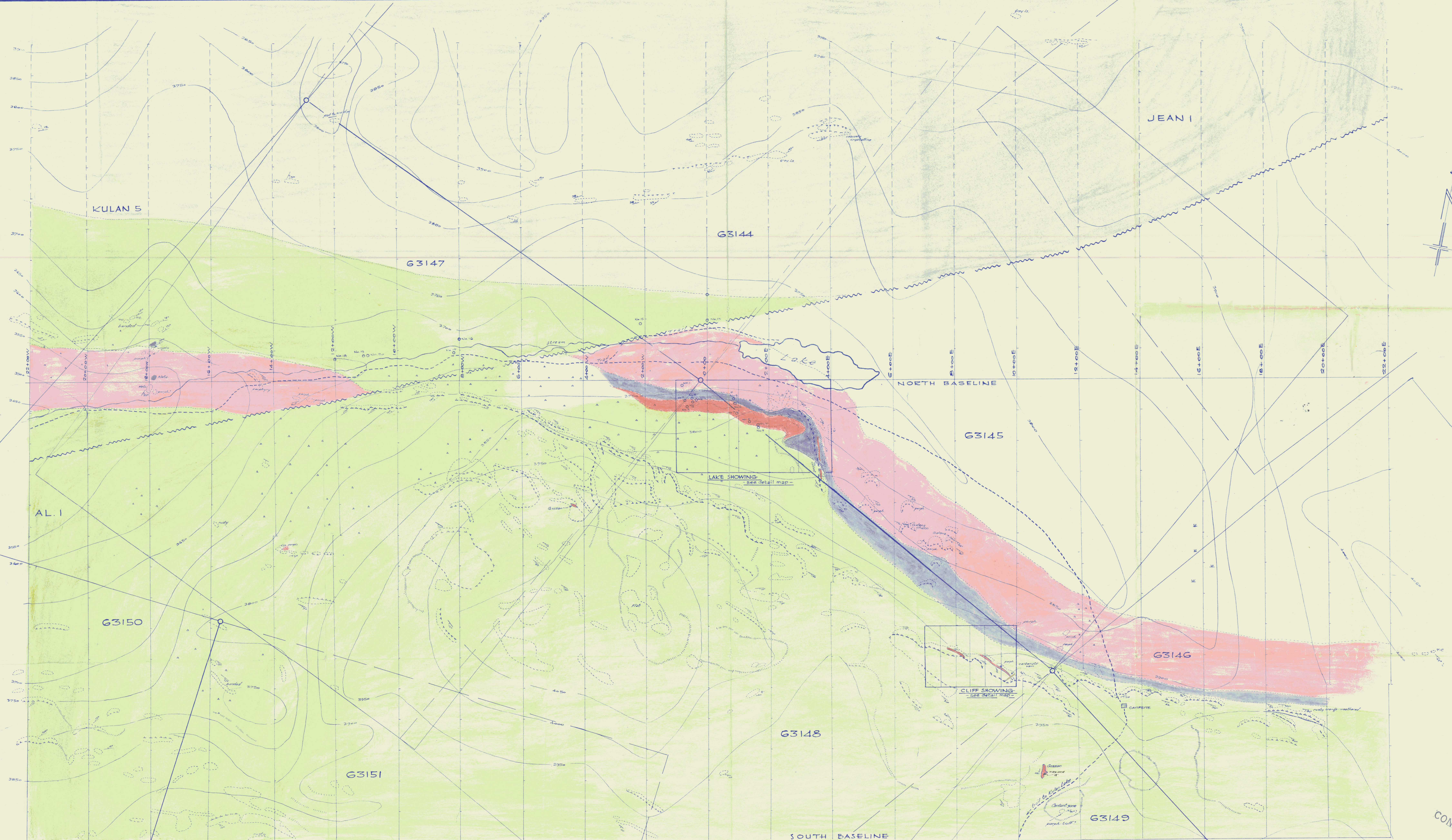
LEGEND

- Gossan
- Metamorphosed contact
- Quartz feldspar porphyry
- Tuffaceous chert
- Dark grey and buff-colored limestone
- Elevation contour - 50 interval
- Trail
- Picket line
- Projected picket lines
- Escarpment
- Slope boundary
- Assumed fault (Blocked-off areas have been mapped in detail. Lake showing as 1" = 20' and Cliff showing as 1" = 20')
- Strike and dip of formation
- Tilted slopes
- D.D.H. (post sock drill)

PROSPECTORS AIRWAYS CO. LTD
 LITTLE SALMON PROPERTY - Y. T.
 GEOLOGICAL PLAN

SCALE: 1" = 100'
 JULY 1955, L. J. D.

D.D. Plan
 9140-9183



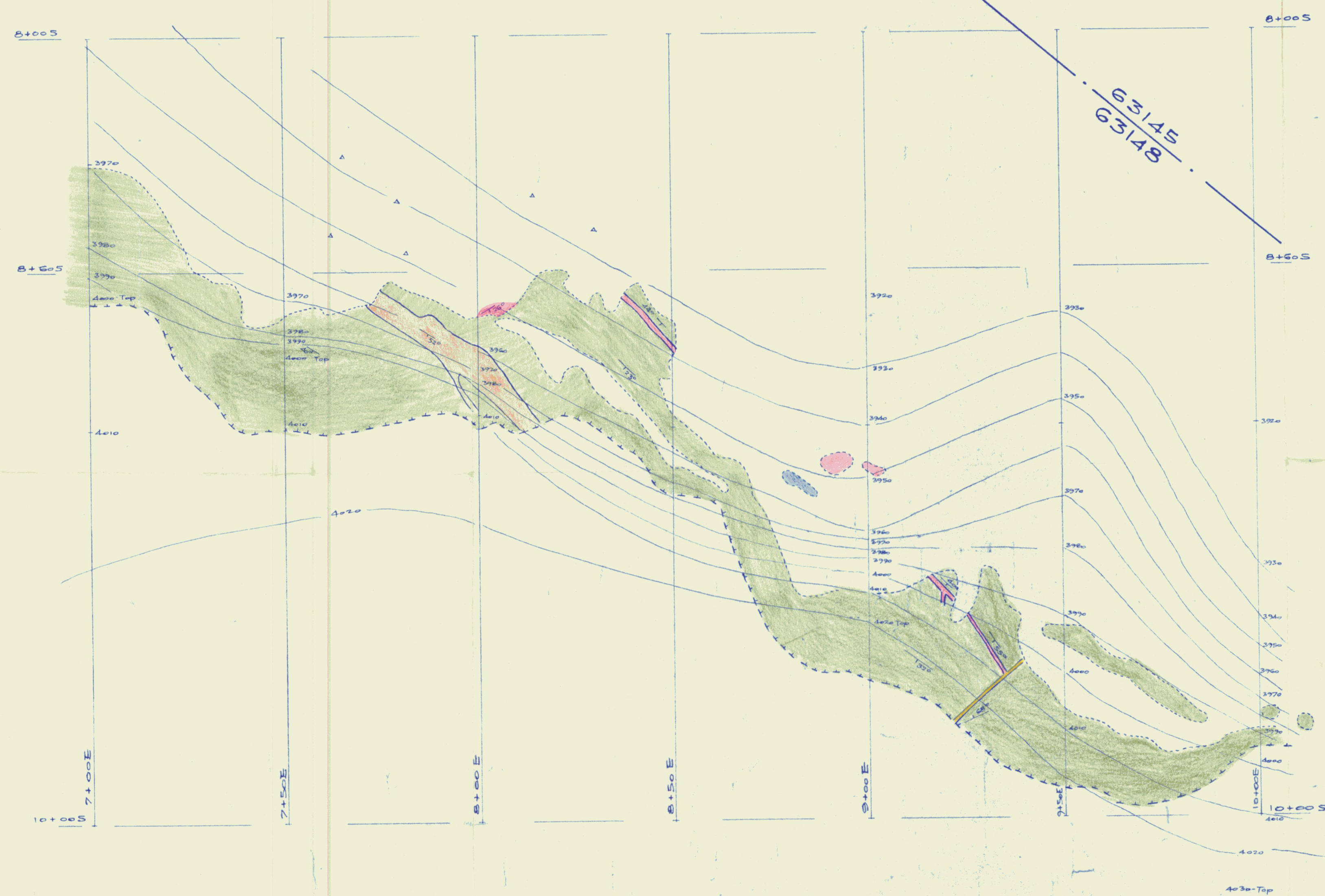
LEGEND

- | | | | | | |
|--|--------------------------------------|--|-------------------------------|--|---|
| | Gossan | | Elevation contour—50 interval | | Assumed Fault (Blocked-off areas have been mapped in detail—Lake showing at 1"=50' and Cliff showing at 1"=25') |
| | Metamorphosed contact | | Trail | | Strike and dip of formation |
| | Quartz feldspar porphyry | | Picket line | | Talus slopes |
| | Tuffaceous chert | | Projected picket lines | | Escarpment |
| | Dark gray and buff-colored limestone | | Slope boundary | | D.D.H. (pack sock drill) |

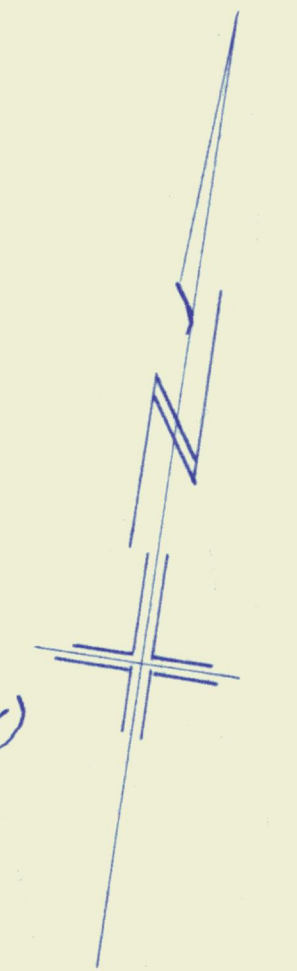
PROSPECTORS AIRWAYS CO. LTD
 LITTLE SALMON PROPERTY—Y.T.
 GEOLOGICAL PLAN

SCALE: 1"=100'
 JULY 1955, L.V.D.

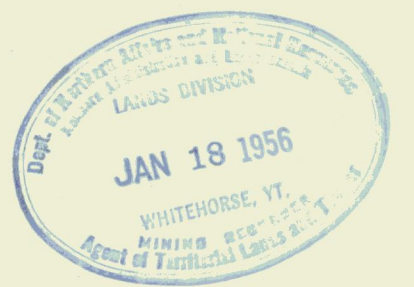
CONFIDENTIAL
 2 (a)
 02235-K
 092055



- LEGEND**
- Calcite vein
 - Gossan
 - Felsite porphyry (rhyolite porphyry)
 - Quartz-feldspar porphyry
 - Tuffaceous chert
 - Elev. contour - 10' interval
 - Escarpment



CONFIDENTIAL



"b"

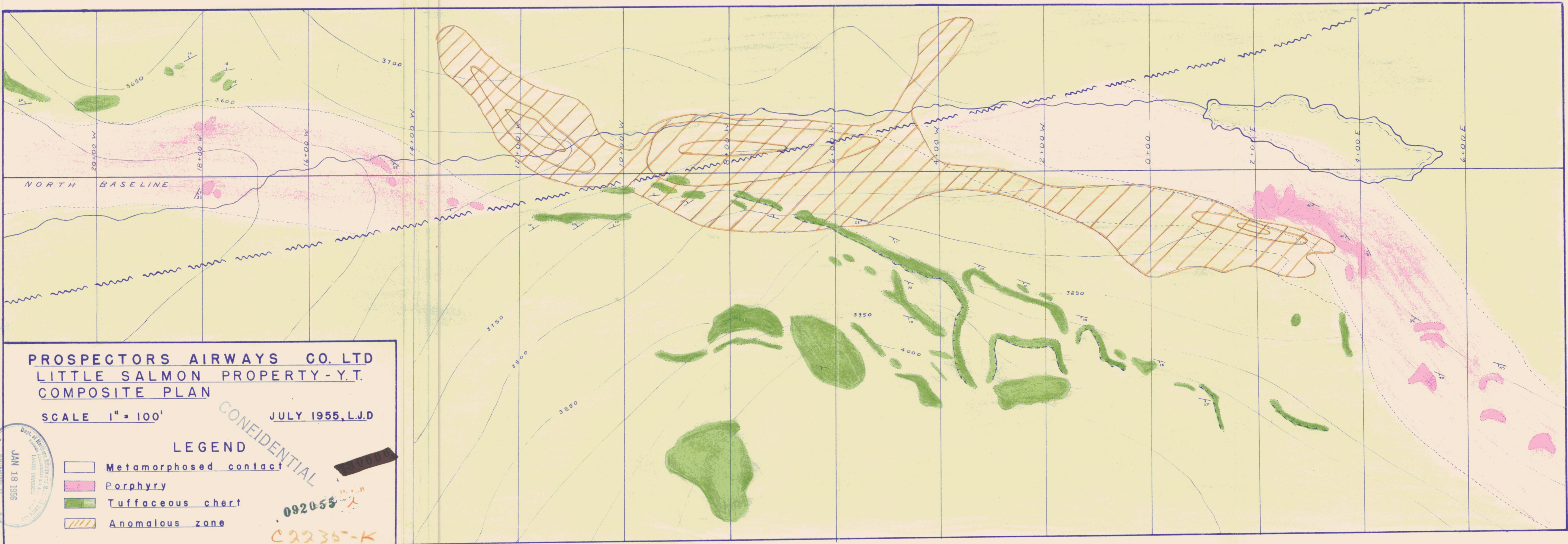
PROSPECTORS AIRWAYS CO. LTD.
 GEOLOGICAL PLAN
 CLIFF SHOWING
 LITTLE SALMON PROPERTY - Y.T.

SCALE: 1" = 20'

JULY-1955

092055

C2235-K



**PROSPECTORS AIRWAYS CO. LTD
LITTLE SALMON PROPERTY - Y.T.
COMPOSITE PLAN**

SCALE 1" = 100'

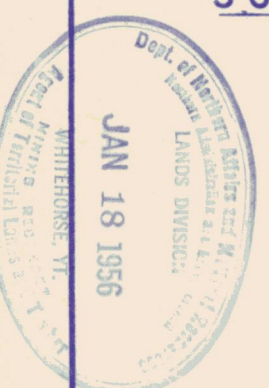
JULY 1955, L.J.D

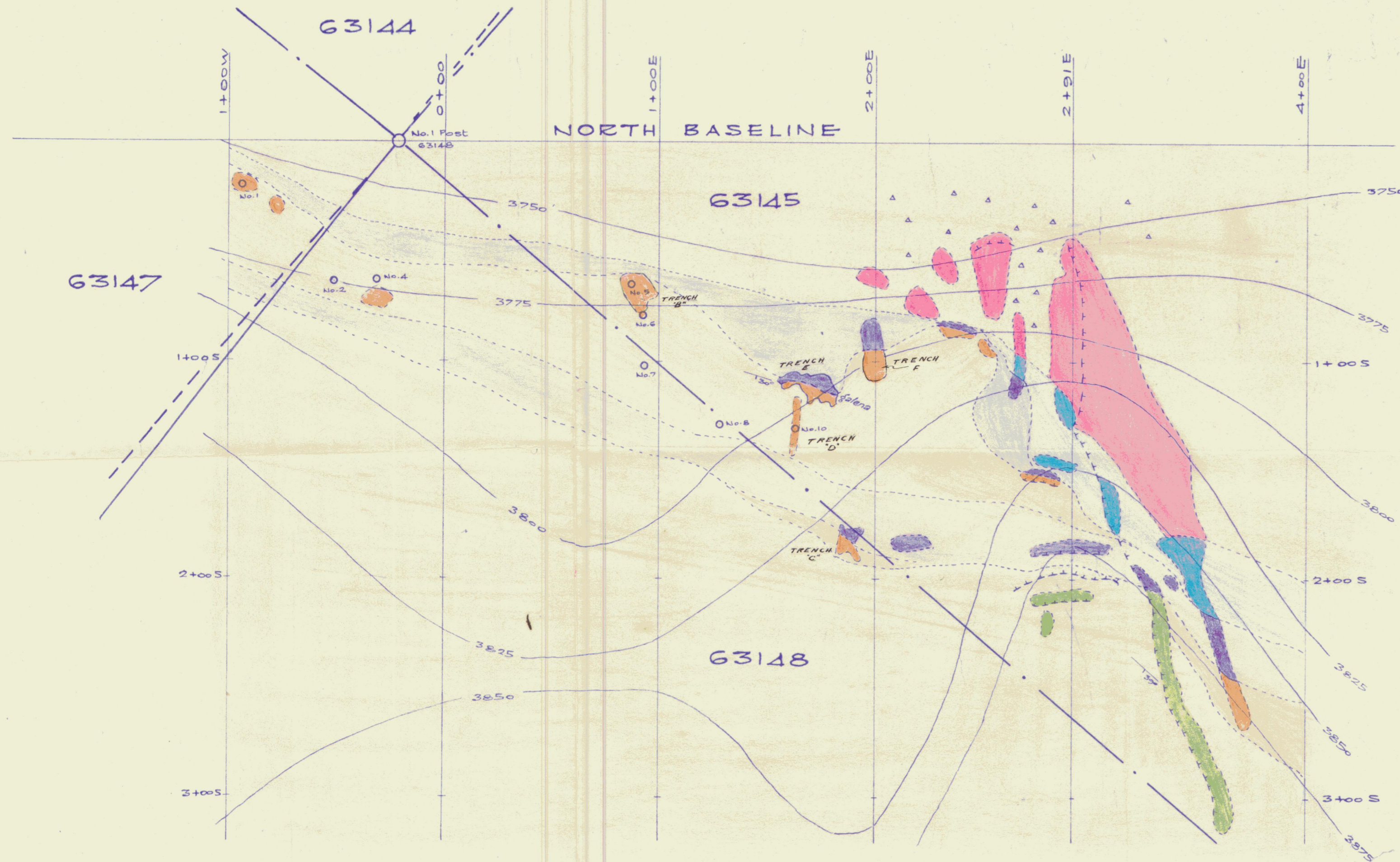
LEGEND

- Metamorphosed contact
- Porphyry
- Tuffaceous chert
- Anomalous zone

CONFIDENTIAL

092055
C2235-K





LEGEND

- Gossan
- Metamorphosed contact zone
- Felsite porphyry (rhyolite porphyry)
- Quartz-feldspar porphyry
- Tuffaceous chert
- Elev. contours - 25' interval
- Escarpment
- D.D.H's (Packsack drill)



CONFIDENTIAL 2(c)
C 2235-K

PROSPECTORS AIRWAYS CO. LTD.

GEOLOGICAL PLAN
LAKE SHOWING
LITTLE SALMON PROPERTY-Y.T.

SCALE: 1" = 40'

JULY-1955




092055

KULAN 5

JEAN I



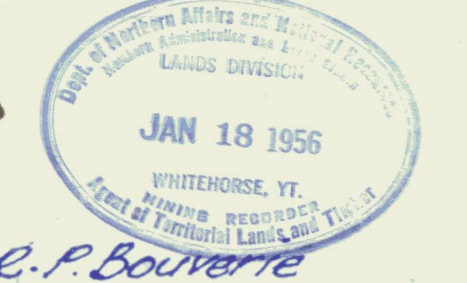
LEGEND

-  2000 Iso-dynamic line (100-gamma interval)
-  400 Iso-dynamic line (100-gamma interval)
-  Negative magnetic reading

PROSPECTORS AIRWAYS CO. LTD.
 LITTLE SALMON PROPERTY - Y. T.
 GEOMAGNETIC SURVEY

SCALE: 1" = 100'

092055
 Magnetometer operator: R. F. Bouverie
 Contoured by: R. F. Bouverie



CONFIDENTIAL

"d"

C 2235 - K