

PRODUCT

ZINC

PROVINCE OR
TERRITORY

YUKON

N.T.S. AREA 105 0/1

REF. Zn 1

NAME OF PROPERTY

TQM GROUP

LOCATION

Lat. 63°10' Long. 130°09'

Mining Division Watson Lake District

County Township or Parish

Lot Concession or Range

Sec. Tp. R.

OWNER OR OPERATOR AND ADDRESS

Hudson Bay Exploration and Development Company Limited.

DESCRIPTION OF DEPOSIT

"Two principal mineralized zones occur on the property. The discovery (West) zone lies at an elevation of about 5,500 feet on the northeast side of a cirque valley containing a small northwest-flowing tributary of South Macmillan River. The showing outcrops discontinuously along a steep scree-slope for about 200 feet. It consists of a buff to rust coloured, well laminated, barite rich carbonate bed containing disseminated sphalerite and galena along bedding planes and as replacement assemblages in the rock. The carbonate zone is contained within a thick sequence of finely-banded argillite and cherty argillite." The West zone has been traced discontinuously by drilling for a strike length of about 5,000 feet, but only the southern part of the zone appears to contain ore-grade mineralization. The width of the zone varies from 50 to 125 feet. The second mineralized zone is located up hill and about 800 feet northeast of the West zone. This zone has been traced for about 800 feet, and although thinner than the West zone total sulphide mineralization is locally heavier and the lead and silver content higher. Sulphide mineralization varies from massive, very fine-grained, galena-sphalerite lenses to cherty argillite zones containing frequent thin galena-sphalerite laminations. Commonly pyrite forms massive bands or lenses within galena-sphalerite sections, and in all ore zones and in the host rock adjacent to mineralized zones fine-grained pyrite is prominent. The rock units containing the sulphide bodies are considered to be Mississippian.

Associated minerals or products of value - Lead, silver.

HISTORY OF EXPLORATION AND DEVELOPMENT

The property consists of a group of 144 claims located southeast of the Canol Road, about 6 miles southwest of the Northwest Territories-Yukon boundary. The property is accessible by a 2-mile road that leads from the Canol Road to the property.

The original zinc showing here was discovered in 1951, and during the next 2 years surface exploration and diamond drilling (17,834 feet, in 39 holes) delineated a zone containing about 10,470,000 tons averaging about 5% zinc. Subsequently the property was idle until 1966 when some geological mapping and prospecting was carried out in the area. Extensive surface diamond drilling in 1967-68 indicated reserves of about 5.1 million tons averaging 8% zinc, 8% lead and 2.73 oz./ton silver, in 2 zones. Rehabilitation of the Canol Road as far as Macmillan Pass was completed in 1969, mining equipment moved to the property in preparation for underground development, and an adit was collared late in the season.

In 1970 the adit was driven south into the mountain for 591 feet at elevation 4,750 feet. The West ore zone and the East ore zone were drifted, and 7,753 feet of underground diamond drilling were completed. The higher grade portions of these two zones are estimated to contain 8,645,000 tons grading 2.75 oz./ton Ag, 8.4% Zn, and 8.1% Pb.

Mineral Resources Branch, Department of Energy, Mines and Resources, Ottawa.

092053



-LEGEND-

CLAIM NUMBER SHOWN THUS 71

CLAIM TAG NUMBER SHOWN THUS 63539

CLAIM POST NUMBER SHOWN THUS 1, 2

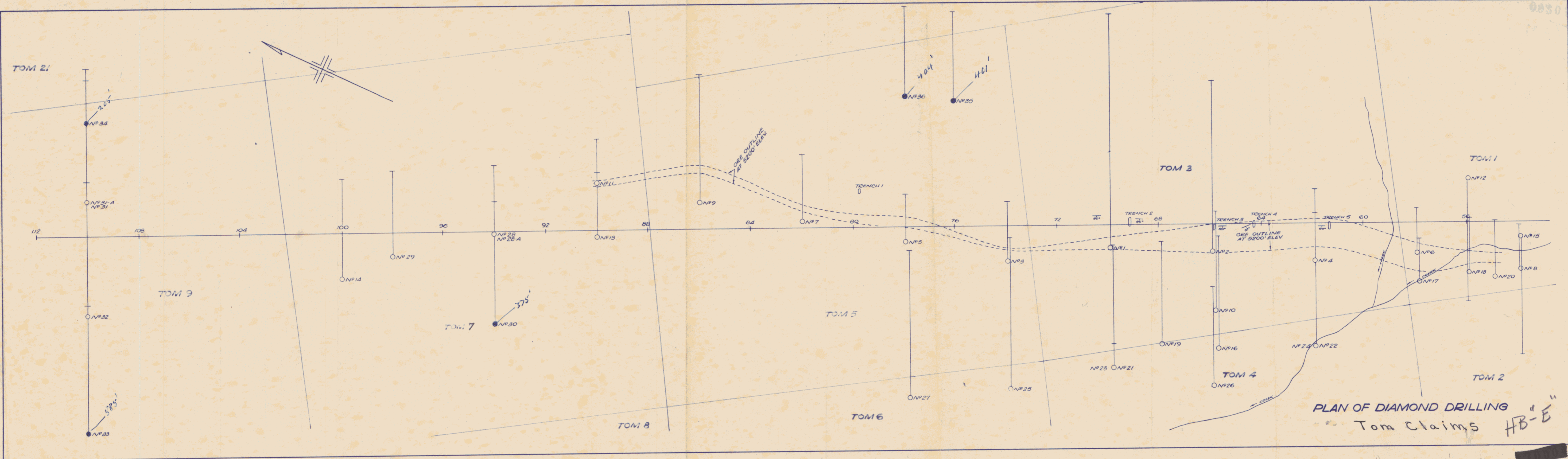
DIAMOND DRILL HOLE SHOWN THUS #1

TOM MINERAL CLAIMS

DECLINATION N 35° E

SCALE: 1" = 500' A.S.C. MARCH 2 1933

130004



PLAN OF DIAMOND DRILLING
Tom Claims HB-E

