

MAP NO.

ASSESSMENT REPORT X

DOCUMENT NO.: 092004

PROSPECTUS

MINING DISTRICT: WHITEHORSE

CONFIDENTIAL X

TYPE OF WORK: Geochem. Sampling

105 D 3

OPEN FILE

REPORT FILED UNDER: Sirius Resource Corporation

DATE PERFORMED: June 10, 11 & July 9-12, 1987

DATE FILED: January 14, 1988

LOCATION: LAT.: 60°01'N

AREA: Boudette Creek

LONG.: 135°25'W

VALUE \$: 8400.00

CLAIM NAME & NO.: BOUD 1-28 YA96269-96296

WORK DONE BY: A.W. Gourlay

WORK DONE FOR: Sirius Resource Corporation

DATE TO GOOD STANDING	REMARKS:
	#91 PART

MineQuest Report #175
Ref. No. RM4301



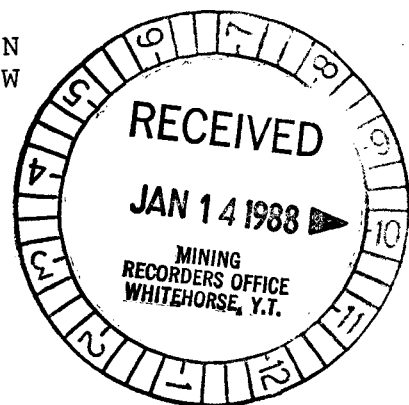
BOUD CLAIMS

Boudette Creek
Southwest Yukon

Whitehorse Mining Division

N.T.S. 105 D/3

Latitude 60° 01' N
Longitude 135° 25' W



by

A.W. Gourlay

of

MineQuest Exploration Associates Ltd.

for

Sirius Resource Corporation

<u>Claims</u>	<u>Tag Number</u>	<u>Date Recorded</u>
Boud 1 - 28	YA96269 - 96296	September 11, 1986

Vancouver, B.C.

December 1987

092004

This report has been examined by
the Geological Evaluation Unit
under Section 53 (4) Yukon Quartz
Mining Act and is allowed as
representation work in the amount
of \$ 8400.00.

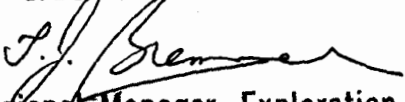
for 
Regional Manager, Exploration and
Geological Services for Commissioner
of Yukon Territory.

TABLE OF CONTENTS

	<u>Page</u>
1.0 INTRODUCTION	1
2.0 LOCATION, TOPOGRAPHY AND ACCESS	2
3.0 OWNERSHIP AND CLAIM STATUS	3
4.0 HISTORY AND PREVIOUS WORK	4
5.0 REGIONAL GEOLOGY	5
6.0 WORK CARRIED OUT IN 1987	6
7.0 RESULT OF THE 1987 PROGRAM	7
7.1 Property Geology	7
7.2 Mineralization	8
7.2.1 Creek Area	8
7.2.2 Les Showing	9
7.2.3 Angel-Wing Area	9
8.0 DISCUSSION AND PRELIMINARY CONCLUSIONS	11
9.0 RECOMMENDATIONS	13
10.0 REFERENCES	15

LIST OF ILLUSTRATIONS

<u>Figure</u>		<u>After Page</u>
1	Location Map	2
2	Claim Map	3
3	Showings Location Map	8
4	Preliminary Geology (Plan 1033)	in pocket
5	Rock Geochemistry: Sample Locations and Results (Plan 1034)	in pocket

LIST OF APPENDICES

Appendix I	Names and Addresses of Persons Performing Work Described in this Report
Appendix II	Laboratory Methods and Laboratory Reports
Appendix III	Cost Statement
Appendix IV	Statement of Qualifications
Appendix V	Application for a Certificate of Work and Application to Group Mineral Claims

1.0

INTRODUCTION

The BOUD claims cover quartz veins found near the head of Boudette Creek, a tributary of the Wheaton River, Yukon Territory. The ground was staked in 1986 by R. Bilquist as a result of preliminary reconnaissance of the Bennett Lake caldera. The claims fall within the area of interest clause of an option agreement held by Eaglet Mines Ltd. on the PART claims, twelve kilometres to the east. In 1987 Sirius Resource Corporation assumed Eaglet Mines Ltd.'s obligations. This report describes a prospecting and preliminary geological mapping program carried out during June and July, 1987.

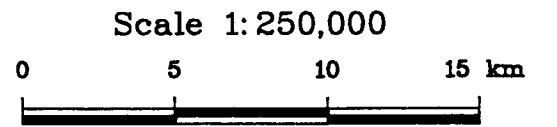
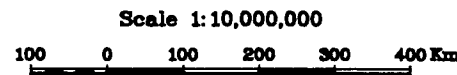
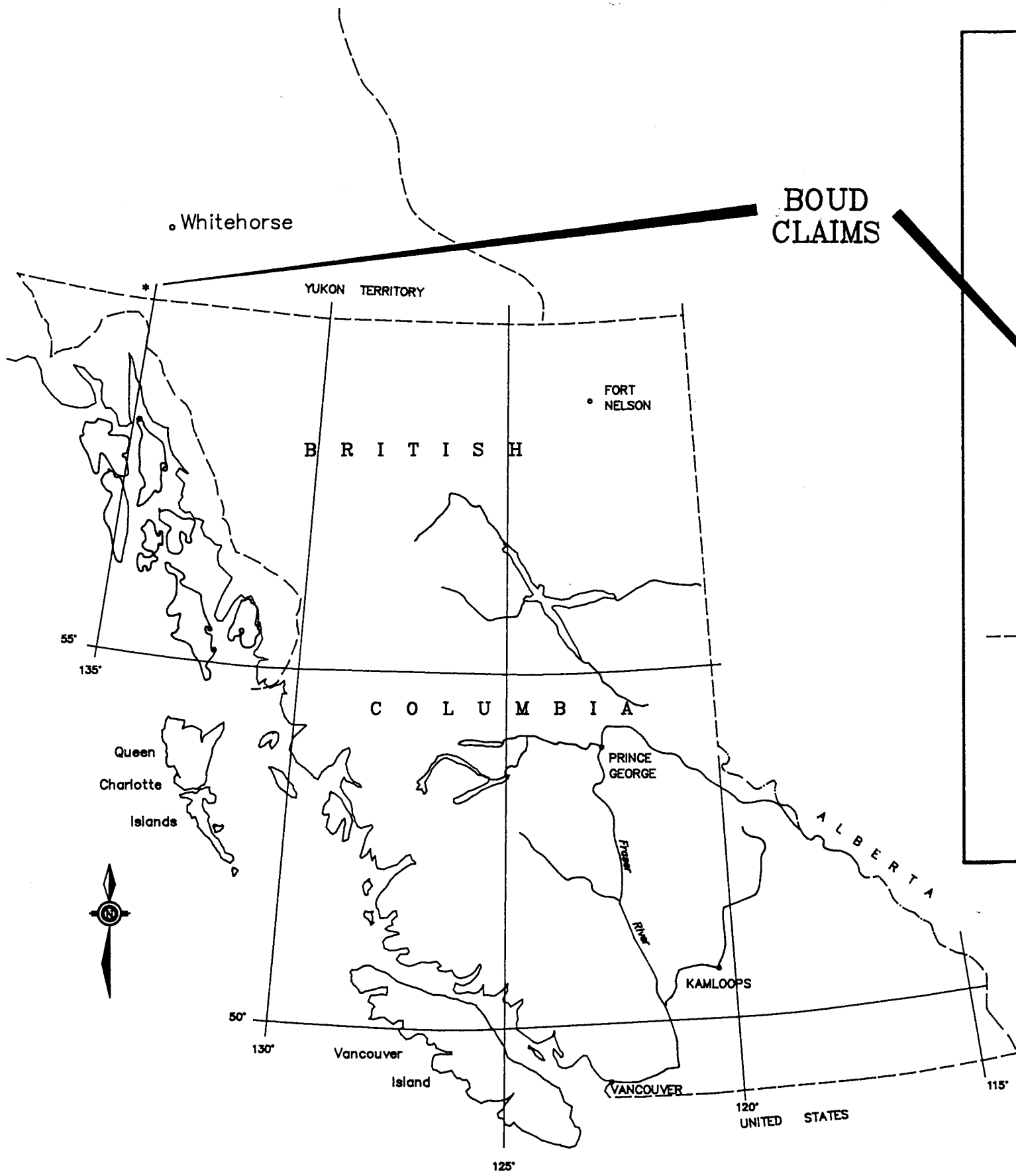
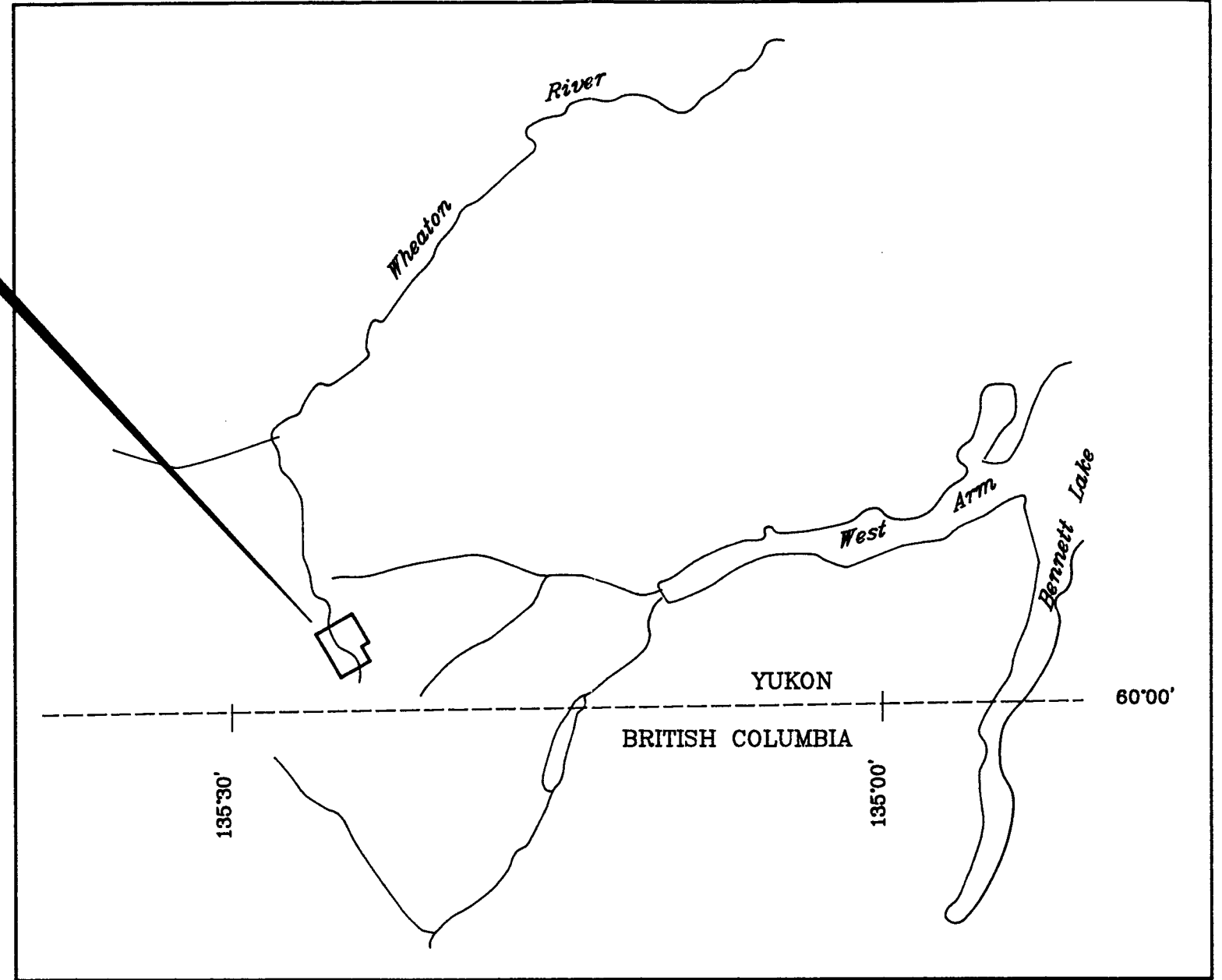
2.0

LOCATION, TOPOGRAPHY AND ACCESS

The BOUD claims straddle the upper reaches of Boudette Creek, southern Yukon, some two kilometres north of the British Columbia boundary and 80 kilometres south-southwest of Whitehorse.

The claims cover the subdued topography of the headwaters of Boudette Creek and flanking slopes. Elevation ranges from 1300 metres in the valley to 1825 metres on ridges at the western claim boundary. Higher elevations are bare outcrop and talus while the valley floor is covered by alluvium and sparse alder.

Although a well established pack trail crosses the claims, access is by helicopter from the Frontier Helicopter Ltd. base at Mt. Skukum, 20 kilometres to the north.



SIRIUS RESOURCE CORPORATION			
BOUD CLAIMS			
LOCATION MAP			
PLAN No.	DRAWN BY: GEO-COMP	DATE Oct'87	FIGURE
Originator: AWG		N.T.S. 105 D	1
MINEQUEST EXPLORATION ASSOCIATES LTD.			

3.0

OWNERSHIP AND CLAIM STATUS

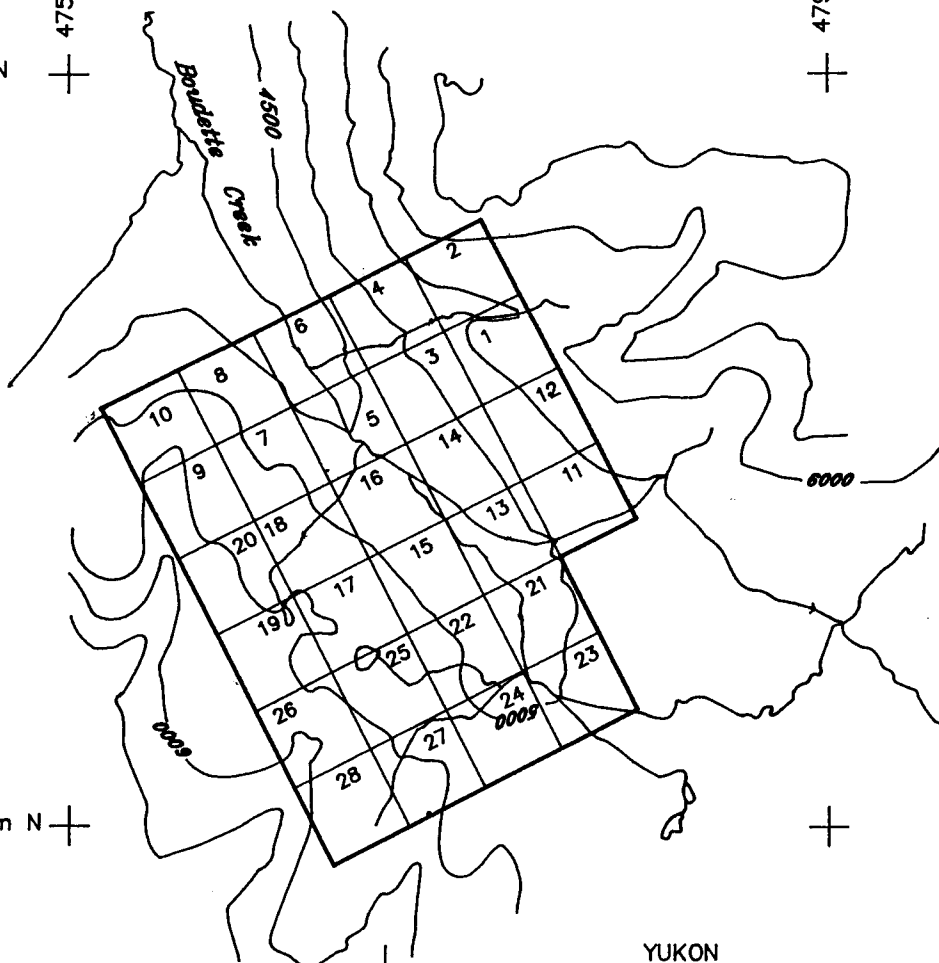
The claims consist of the following:

<u>Claim</u>	<u>Tag Number</u>	<u>Date Recorded</u>	<u>Recorded Owner</u>
BOUD 1	YA 96269	September 22, 1986	R.J. Bilquist
BOUD 2	YA 96270	September 22, 1986	R.J. Bilquist
BOUD 3	YA 96271	September 22, 1986	R.J. Bilquist
BOUD 4	YA 96272	September 22, 1986	R.J. Bilquist
BOUD 5	YA 96273	September 22, 1986	R.J. Bilquist
BOUD 6	YA 96274	September 22, 1986	R.J. Bilquist
BOUD 7	YA 96275	September 22, 1986	R.J. Bilquist
BOUD 8	YA 96276	September 22, 1986	R.J. Bilquist
BOUD 9	YA 96277	September 22, 1986	R.J. Bilquist
BOUD 10	YA 96278	September 22, 1986	R.J. Bilquist
BOUD 11	YA 96279	September 22, 1986	R.J. Bilquist
BOUD 12	YA 96280	September 22, 1986	R.J. Bilquist
BOUD 13	YA 96281	September 22, 1986	R.J. Bilquist
BOUD 14	YA 96282	September 22, 1986	R.J. Bilquist
BOUD 15	YA 96283	September 22, 1986	R.J. Bilquist
BOUD 16	YA 96284	September 22, 1986	R.J. Bilquist
BOUD 17	YA 96285	September 22, 1986	R.J. Bilquist
BOUD 18	YA 96286	September 22, 1986	R.J. Bilquist
BOUD 19	YA 96287	September 22, 1986	R.J. Bilquist
BOUD 20	YA 96288	September 22, 1986	R.J. Bilquist
BOUD 21	YA 96289	September 22, 1986	R.J. Bilquist
BOUD 22	YA 96290	September 22, 1986	R.J. Bilquist
BOUD 23	YA 96291	September 22, 1986	R.J. Bilquist
BOUD 24	YA 96292	September 22, 1986	R.J. Bilquist
BOUD 25	YA 96293	September 22, 1986	R.J. Bilquist
BOUD 26	YA 96294	September 22, 1986	R.J. Bilquist
BOUD 27	YA 96295	September 22, 1986	R.J. Bilquist
BOUD 28	YA 96296	September 22, 1986	R.J. Bilquist



6656000m N
+ 475000m E

479000m E
+

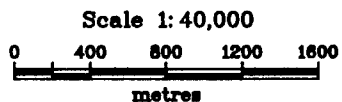


6652000m N
+

+

YUKON
BRITISH COLUMBIA 60° 00'

135° 25'



SIRIUS RESOURCE CORPORATION

BOUD CLAIMS

CLAIM MAP

DATE: Oct'87 | N.T.S.: 105D/3 | FIGURE: 2

MINEQUEST EXPLORATION ASSOCIATES LTD.

Geo-Comp Drawing File: boud\claim

4.0

HISTORY AND PREVIOUS WORK

The Bennett Lake caldera has been the focus of exploration for copper, molybdenum, silver, and uranium at various times during the last 15 years.

No work has been recorded on the ground covered by the BOUD claims, although other claims in the upper Boudette Creek area were staked to cover occurrences of lead, silver and uranium.

The BOUD claims were staked to cover large quartz veins found on the east and west sides of the valley. These vein systems were examined by two experienced prospectors during a one day traverse in 1986, and sampling returned geochemically anomalous quantities of silver and gold.

5.0

REGIONAL GEOLOGY

The Bennett Lake caldera and volcanic complex, described by Lambert (1974), straddles the boundary between British Columbia and Yukon Territory. A twin, the Skukum Caldera, lies 12 miles to the north. The Bennett Lake volcanic rocks contain more fragmental material than found in the Skukum Caldera.

Lambert describes the Bennett Lake caldera as a caldera subsidence complex filled by a succession of predominantly volcanoclastic units, each representing a separate volcanic event. Each unit consists of tuffs, ignimbrites or lava with, in some cases, subordinate sediments. In general the base of each unit is less welded than the overlying parts of the same unit.

The volcanic units are predominantly silicic in composition. Ash flow tuffs, ignimbrites and breccias are more abundant than lavas. Intrusive rhyolites, in particular a large ring dyke circumscribing the complex, are also present.

The BOUD claims cover intrusive rocks of the Coast Plutonic Complex, just outside the western margin of the Bennett Lake caldera. Lambert describes the plutonic rocks as granodiorite, quartz monzonite, and leucocratic granite.

6.0

WORK CARRIED OUT IN 1987

K.A. Bilquist, R.J. Bilquist and A.W. Gourlay spent June 10 and 11, and July 9 through 12, 1987 prospecting, rock chip sampling, and preparing a preliminary geological map of the BOUD claims. A total of 121 grab samples were collected and analysed for gold and silver. Thirty-eight of these samples were then analysed for a 30-element suite in addition to gold and mercury.

7.0

RESULTS OF 1987 PROGRAM7.1 Property Geology

The BOUD claims lie outside the western margin of the Bennett Lake caldera. The claims cover weakly altered, medium grained quartz monzonite of the Coast Plutonic Complex. The quartz monzonite is composed of 50% subhedral white feldspar grains, 1 to 4 mm size, with distinct to indistinct grain boundaries. The interstices are filled with grey, glassy quartz that makes up 40% of the rock. Anhedral mafic minerals, up to 10% of the rock, are altered to chlorite. Disseminated sulphides are rare.

Outcrop is found along Boudette Creek, tributary creeks, and on ridges and cliffs on the west side of the claim block. On the east side of the claims outcrop is restricted to a break in slope associated with a large quartz vein. Extensive subcrop and rubble cover east facing slopes.

The intrusive rocks are cut by andesite dikes up to several metres wide. The andesite is massive, fine grained, with rare indistinct phenocrysts. The dikes are apple green with weak epidote alteration as irregular stringers.

Quartz veins, associated with andesite, range from several centimetres in thickness to well banded veins or a series of parallel vein systems up to 15 metres in width. West of Boudette Creek, near "Lesser Angel Wing" Lake, intensely silicified andesite dikes or dacite dikes are found closely associated with quartz displaying a distinct "angel-wing" texture.

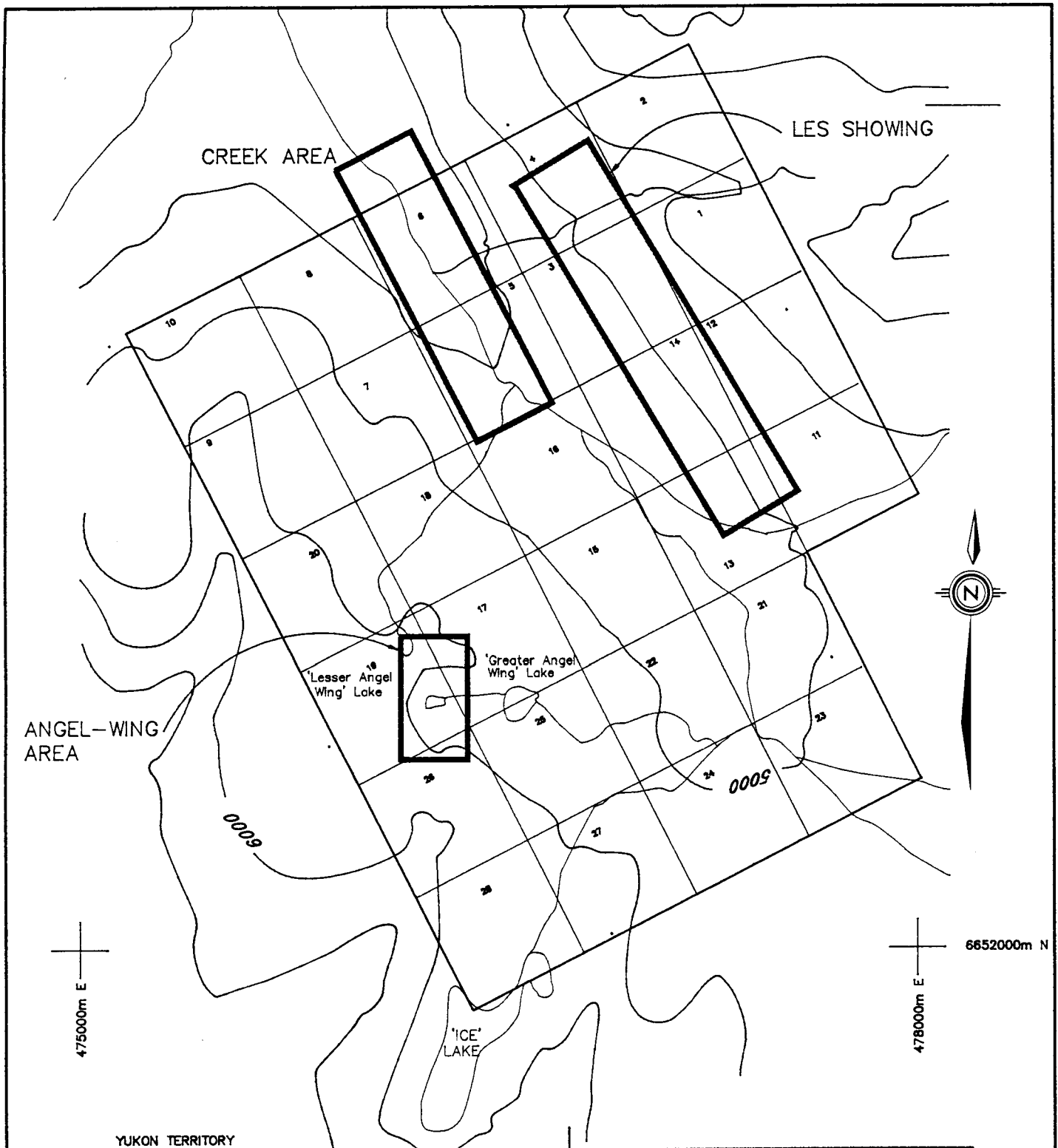
7.2 Mineralization

Three areas have returned geochemically anomalous gold and silver values from rock samples. At the Les Showing, east of Boudette Creek, and the Creek Area in Boudette Creek, the values are associated with quartz veins, while at the Angel-Wing Area on the west side of the claims, the gold and silver is found in an area of silicification and distinct quartz replacement textures (See Figure 3).

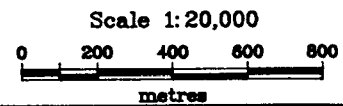
7.2.1 Creek Area

Discontinuous outcrop is exposed along Boudette Creek between 1250 metres and 1350 metres elevation. Medium-grained, massive quartz monzonite is cross-cut by numerous andesite dikes up to two metres wide. Contacts are sharp with occasional thin, irregular lenses of subangular to subrounded quartz monzonite clasts, 3 to 15 mm size, supported by aphanitic green andesite matrix. Dominant dike trend is 160° or 200° with some variation in between. The dikes dip to the east from 45° to 90°. The 160° trending dikes are parallel to other dikes and to quartz veining upslope to the east at the Les Showing, and the 200° trending dikes are parallel to gullies at the Angel-Wing Area.

Veins of grey to white quartz up to 1.2 metres thick are associated with zones of more frequent diking. Quartz veins carry up to 1% pyrite and traces of galena. Silver values reach a high of 3.68 oz/ton with several in the 12 to 45 ppm range. Gold values are uniformly low.



YUKON TERRITORY
BRITISH COLUMBIA



SIRIUS RESOURCE CORP.		
BOUD CLAIMS		
SHOWINGS LOCATION MAP		
DATE: Nov.'87	N.T.S.: 105D/3	FIGURE: 3
MINEQUEST EXPLORATION ASSOCIATES LTD.		

7.2.2 Les Showing

The Les Showing is a strong, persistent quartz vein system that outcrops on BOUD 3, 4, 13, and 14 claims at about 1450 metres elevation. The vein system trends at 160° and is a prominent airphoto feature that can be traced for at least 1400 metres of strike length. The system is a series of parallel veins up to 15 metres in width, with individual veins ranging from 0.6 to 5 metres. The quartz occasionally displays centimetre scale banding parallel to vein contacts. The veins are commonly in contact with, and interfingered with, porphyritic andesite dikes. All the vein contacts at the Les Showing are sharp.

The veins vary from massive to sucrosic, grey to glassy quartz. Pyrite is rare but where the quartz is intensely iron stained there is up to 1% galena as irregular blebs, 1 to 20 mm size. Druze lined vugs, 1 to 5 mm, size are rare. Andesite dikes are weakly porphyritic with indistinct subhedral feldspar phenocrysts set in an aphanitic groundmass. Locally the andesite is intensely silicified and in rare instances 2 to 3% well developed boxwork is preserved.

Silver values up to 6.30 oz./ton are associated with galena bearing grab samples. Gold values are uniformly low, and lead values reach a high of 2.3% with several in the 1 to 2% range.

7.2.3 Angel-Wing Area

The Angel-Wing Area has returned the highest gold value, 2900 ppb, on the claims. The gold and silver values are associated with a distinct angel-wing texture of quartz pseudomorphing finely laminated

tabular calcite crystals. Angel-wing quartz subcrops around "Lesser Angel-Wing" Lake and can be traced in subcrop and float along a linear feature to the north and south. The quartz is associated with silicified andesite and dacite.

The quartz is massive chalcedony with traces of pyrite and galena, and is weakly iron stained. The angel-wing textures have abundant druze-lined open spaces up to 4 cm size. The quartz, silicified andesite, and dacite subcrop and float is found in a gully that trends at 160° both north and south from "Lesser Angel-Wing" Lake. The gully is part of an airphoto lineament that can be traced up to 500 metres to the north and south. Quartz vein material has been found in float in the vicinity of the lineament.

8.0

DISCUSSION AND PRELIMINARY CONCLUSIONS

The BOUD claims cover a zone of geochemically anomalous silver values associated with quartz vein system east of Boudette Creek, and an area of geochemically anomalous gold and silver values associated with a style of quartz deposition characteristic of the boiling zone of an epithermal system, west of the creek.

At the Mt. Skukum Mine, 22 kilometres to the north, the ore deposits are found in quartz veins associated with older andesite and rhyolite dikes. The andesite dikes were feeders for the andesite porphyry of the Skukum caldera and controlled the emplacement of parallel rhyolite dikes during late stages of the caldera. Post-caldera quartz veins, and the gold deposits, were emplaced parallel to, and cross cutting, both the rhyolite and andesite dikes. The faults controlling the andesite and rhyolite dikes mark the margins of a graben structure within the Skukum caldera.

On the BOUD claims the quartz systems are associated with andesite dikes and possibly dacite dikes. The andesite dikes are ring structures parallel to the margins of the Bennett Lake caldera and are probably emplaced along faults. The fault zones then controlled the emplacement of dacite dikes, and the post-caldera deposition of quartz veins and geochemically anomalous amounts of precious metals.

The angel-wing textured silica found on the west side of the claims is characteristic of boiling within an epithermal system. This texture is commonly found above ore shoots at the Mt. Skukum Mine (G. Gossum, pers. communication) and above ore bearing quartz veins at Blackdome Mountain. The presence of geochemically anomalous gold values, up to 2900 ppb, found in the Angel-Wing Area is most encouraging and presents a target that must be pursued.

The obvious strike length, and apparent width of the vein system at both the Les Showing and the Angel-Wing Areas suggest a strong epithermal system. Both of the vein systems are roughly parallel to the western margin of the Bennett Lake caldera. These structures are parallel to Boudette Creek, an arcuate fracture that is probably controlled by faulting peripheral to the caldera.

The similarity of the structural setting, and the quartz textures on the BOUD claims, especially at the Angel-Wing Area with those of the Mt. Skukum Mine are very encouraging. Anomalous silver values east of Boudette Creek, and geochemically anomalous gold values at the Angel-Wing Area are indicative of a precious metal bearing epithermal system. Both of these areas require a thorough follow up program.

9.0

RECOMMENDATIONS

The Les Showing and Angel-Wing Area require detailed follow up as described below:

1. Les Showing

The vein system at the Les Showing should be geologically mapped and sampled in detail. A baseline parallel to the vein system and short wing lines at 50 metre spacings will provide control for mapping and sampling. Prospecting to the north and south, along strike, may discover extensions to the veins.

2. Angel-Wing Area

The area should be geologically mapped and sampled in detail. A baseline parallel to the silicious subcrop with short wing lines at 25 metre spacing will provide control for mapping. Composite rock samples, consisting of chips of quartz bearing rocks within a given area, say 10 or 25 metres square, should be collected over the length of the structure. An orientation survey of soil samples collected at 5 metre intervals along wing lines, and VLF-EM and magnetometry may prove effective tools in outlining anomalous areas covered by overburden and talus.

3. Additional claims should be staked north and south from the BOUD claims, along the projected strike of the structures at Les Showing and Angel-Wing area. In particular, the headwaters of Boudette Creek, south of the British Columbia - Yukon Territory border should be acquired.

The follow up program described above will be about three weeks in length and cost approximately \$60,000.00. A start up date of the first week of July will ensure that snow cover is minimal.

Contingent of the success of 1 and 2 above, a drill program with a minimum 750 metres of coring is recommended in a series of holes to test structures at depth.

10.0

REFERENCES

GOURLAY, A.W., 1986,
Bennett Lake Regional - Final Report, Unpublished
Report for Eaglet Mines Ltd., MineQuest
Exploration Associates Ltd., Report No. 141

LAMBERT, M.B., 1974
The Bennett Lake Cauldron Subsidence Complex,
British Columbia and Yukon Territory, GSC
Bulletin 227



6656000m N



Boudette Creek

4500

Dykes of 2.
160 - 200/50E

Numerous dykes of 2
160/90

1.2m QV

148/60W

175/54W

043/60N

152/43W

143/90

continuous angular subcrop

5000

6000

'ICE LAKE'

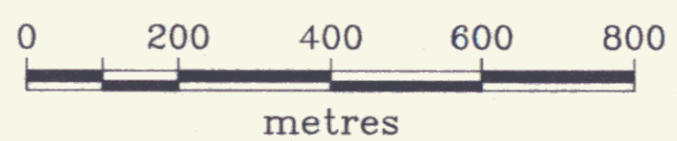
6652000m N

475000m E



479000m E

Scale 1:10,000



60° 00'

YUKON TERRITORY
BRITISH COLUMBIA

60° 00'

LEGEND

- Outcrop Area
- Subcrop
- Fracture: Strike/dip
- Vein: Strike/dip
- Fault
- Airphoto Lineament
- 23 Claim Number
- Andesite
- Quartz Monzonite

SIRIUS RESOURCE CORPORATION
BOUD CLAIMS

PRELIMINARY GEOLOGY

Original	Revision	Revision	Originator	Drawn	Date	PLAN No.	FIGURE
			AWG	Geo-Comp	Oct'87	1033	4
						N.T.S. 105D/3	

MINEQUEST EXPLORATION ASSOCIATES LTD.

092004

HIGHLIGHTS OF RESULTS

Note: Complete results tabulated in Appendix II

SAMPLE NUMBER	Ag PPM	Au PPB	Ag OPT	SAMPLE NUMBER	Ag PPM	Au PPB	Ag OPT	SAMPLE NUMBER	Ag PPM	Au PPB	Ag OPT
8087001	45.0	<5		8087609	15.0	<5		8087242	15.0	<5	
87003	>50.0	<5	3.66	87610	>50.0	<5	1.40	87244	45.0	<5	
87004	>50.0	<5	1.34	87611	34.0	<5		87245	>50.0	<5	2.05
87005	>50.0	<5	2.33	87612	42.0	<5		87247	>50.0	<5	3.68
87006	22.0	<5	<5	87613	17.0	<5		87250	23.0	<5	
87008	50.0	<5	3.61	87614	>50.0	<5	1.31	87240	47.0	<5	
87009	35.0	<5	<5	87012	19.0	20		87620	>50.0	20	3.69
87010	>50.0	<5	1.39	87014	40.0	5		87626	0.6	10	
87011	0.9	10		87016	0.8	25		87627	0.5	45	
87202	10.0	<5	<5	87018	0.3	10		87636	8.1	20	
87204	>50.0	<5	1.36	87215	30.0	5		87637	38.0	<5	
87205	>50.0	<5	1.25	87218	33.0	<5		87640	49.0	<5	
87207	11.0	<5	<5	87219	29.0	<5		87641	12.0	<5	
87208	>50.0	<5	1.52	87220	42.0	<5					
87209	>50.0	<5	1.68	87222	16.0	<5					
87210	11.0	<5	<5	87223	26.0	5					
87211	>50.0	<5	1.27	87224	48.0	5					
87212	21.0	<5	<5	87226	45.0	2900					
87602	>50.0	<5	1.09	87229	9.3	220					
87604	26.0	<5	<5	87230	4.0	180					
87605	32.0	<5	<5	87234	21.0	<5					
87606	>50.0	<5	6.30	87237	3.8	40					
87607	15.0	<5	<5								



6656000m N

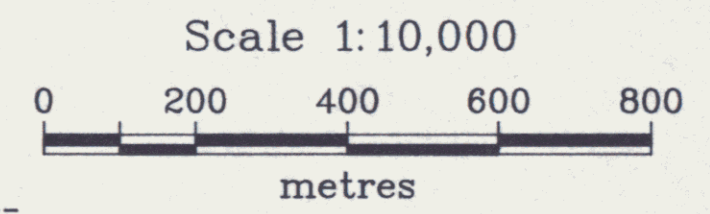
+



6652000m N

475000m E

+



60° 00'

135° 25'

Note: All samples prefixed by '80U87'

SIRIUS RESOURCE CORPORATION					
BOUD CLAIMS (1127)					
ROCK GEOCHEMISTRY					
SAMPLE LOCATIONS & RESULTS					
Original	Originator	Drawn	Date	PLAN No.	FIGURE
Revision	AWG	Geo-Comp	Oct'87	1034	5
Revision				N.T.S.	
				105D/3	
MINEQUEST EXPLORATION ASSOCIATES LTD.					

APPENDIX I

Names and Addresses of Persons Performing Work
Described in this Report

APPENDIX I

Names and Addresses of Persons Performing
Work Described in this Report

K.A. Bilquist
Box 81
Gabriola Island, B.C.
V0R 1X0

R.J. Bilquist
Box 81
Gabriola Island, B.C.
V0R 1X0

A.W. Gourlay
9188 - 122B Street
Surrey., B.C.
V3V 7M1

APPENDIX II

Laboratory Methods
and
Laboratory Reports

APPENDIX II

Laboratory Methods

All samples were sent to Bondar-Clegg and Co., Whitehorse, Yukon for preparation. Pulps were shipped to Bondar-Clegg and Co., North Vancouver, B.C. for analysis.

All samples were processed as follows. The entire sample was put through a primary jaw crusher followed by a secondary cone crusher, which reduced the sample to 80% minus 10 mesh. A representative split of approximately 250 grams was obtained by passing the entire crushed sample through a Jones Riffle splitter. This split was then pulverized for 2.5 minutes in a ring and puck grinder which reduced the particle size to 99% minus 150 mesh.

The samples were analysed as follows:

Gold: two thirds of an assay ton by fire assay extraction and atomic absorption determination

Silver: Lefort aqua regia extraction, atomic absorption determination

Formal assays for silver were carried out by fire assay collection, followed by gravimetric determination.

Thirty-eight of the prepared rock samples were then shipped to Acme Analytical Laboratories Ltd., of Vancouver, B.C., where they were subjected to a 30-element ICP (inductively coupled plasma) analytical technique, after digestions for one hour at 95°C in 3:1:2-HCL:HNO₃:H₂O. In addition, gold contents were determined by fire assay extraction followed by atomic absorption analysis. It is important to note that for the ICP technique the extraction is only partial for several of the elements reported.

Bondar-Clegg & Company Ltd.
 130 Pemberton Ave.
 North Vancouver, B.C.
 Canada V7P 2R5
 Phone: (604) 983-0681
 Telex: 04-352667



AWG ✓
 Geochemical
 Lab Report

REPORT: 127-3562 (COMPLETE)

REFERENCE INFO:

CLIENT: MINEQUEST EXPLORATION ASSOCIATES LTD.
 PROJECT: BLR

SUBMITTED BY: UNKNOWN
 DATE PRINTED: 2-JUL-87

ORDER	ELEMENT	NUMBER OF ANALYSES	LOWER DETECTION LIMIT	EXTRACTION	METHOD
1	Ag Silver	63	0.1 PPM	HNO3-HCL HOT EXTR	Atomic Absorption
2	Au Gold - Fire Assay	63	5 PPB	FIRE-ASSAY	Fire Assay AA

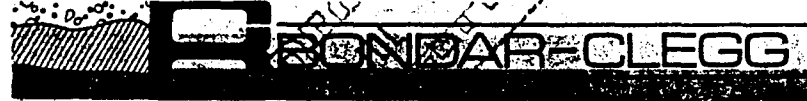
SAMPLE TYPES	NUMBER	SIZE FRACTIONS	NUMBER	SAMPLE PREPARATIONS	NUMBER
R ROCK OR BED ROCK	63	2 -150	63	CRUSH,PULVERIZE -150	63

REMARKS: ASSAY OF HIGH Ag TO FOLLOW ON 627-3562.

REPORT COPIES TO: MR. A. GOURLAY

INVOICE TO: MR. A. GOURLAY

Clegg & Company Ltd.
 7 Pemberton Ave.
 North Vancouver, B.C.
 Canada V7P 2R5
 Phone: (604) 983-0681
 Telex: 04-352667



Copy to: RVL → file
 u n : AWG

Geochemical
 Lab Report

REPORT: 127-3562

PROJECT: BLR

PAGE 1

SAMPLE NUMBER	ELEMENT UNITS	Ag PPM	Au PPB	SAMPLE NUMBER	ELEMENT UNITS	Ag PPM	Au PPB
R2 AUL 87001		6.8	<5	R2 BOU 87205		>50.0	<5
R2 AUL 87002		0.6	<5	R2 BOU 87206		2.9	<5
R2 AUL 87003		0.1	<5	R2 BOU 87207		11.0	<5
R2 AUL 87004		38.0	<5	R2 BOU 87208		>50.0	<5
R2 AUL 87201		1.0	15	R2 BOU 87209		>50.0	<5
R2 AUL 87202		7.1	5	R2 BOU 87210		11.0	<5
R2 AUL 87203		0.1	<5	R2 BOU 87211		>50.0	<5
R2 AUL 87204		>50.0	<5	R2 BOU 87212		21.0	<5
R2 AUL 87205		0.3	<5	R2 BOU 87601		4.3	5
R2 AUL 87206		14.0	<5	R2 BOU 87602		>50.0	5
R2 AUL 87207		3.6	<5	R2 BOU 87603		1.7	5
R2 AUL 87208		25.0	10	R2 BOU 87604		26.0	<5
R2 AUL 87209		2.9	<5	R2 BOU 87605		32.0	5
R2 AUL 87210		4.2	<5	R2 BOU 87606		>50.0	15
R2 AUL 87211		17.0	190	R2 BOU 87607		15.0	<5
R2 AUL 87212		>50.0	15	R2 BOU 87608		8.0	<5
R2 AUL 87213		>50.0	5	R2 BOU 87609		15.0	<5
R2 AUL 87214		12.0	220	R2 BOU 87610		>50.0	<5
R2 AUL 87601		5.5	<5	R2 BOU 87611		34.0	<5
R2 AUL 87602		0.3	<5	R2 BOU 87612		42.0	<5
R2 AUL 87603		0.2	<5	R2 BOU 87613		17.0	<5
R2 AUL 87604		42.0	<5	R2 BOU 87614		>50.0	<5
R2 AUL 87605		25.0	55	R2 BOU 87615		0.5	<5
R2 AUL 87606		10.0	5				
R2 AUL 87607		1.5	10				
R2 BOU 87001		45.0	<5				
R2 BOU 87002		0.2	<5				
R2 BOU 87003		>50.0	<5				
R2 BOU 87004		>50.0	5				
R2 BOU 87005		>50.0	<5				
R2 BOU 87006		22.0	<5				
R2 BOU 87007		1.8	<5				
R2 BOU 87008		>50.0	<5				
R2 BOU 87009		35.0	<5				
R2 BOU 87010		>50.0	<5				
R2 BOU 87011		0.9	10				
R2 BOU 87201		1.3	<5				
R2 BOU 87202		10.0	<5				
R2 BOU 87203		8.0	<5				
R2 BOU 87204		>50.0	<5				

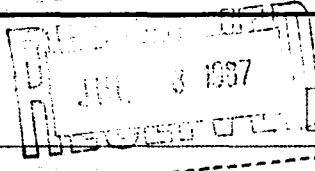
N/A
 this
 report

Bondar-Clegg & Company Ltd.
 130 Pemberton Ave.
 North Vancouver, B.C.
 Canada V7P 2R5
 Phone: (604) 985-0681
 Telex: 04-352667



Copy to: RVL → file BLG
 u n AWG

Certificate
 of Analysis



REPORT: 627-3562 (COMPLETE) REFERENCE INFO:

CLIENT: MINEQUEST EXPLORATION ASSOCIATES LTD. SUBMITTED BY: UNKNOWN
 PROJECT: BLR DATE PRINTED: 8-JUL-87

ORDER	ELEMENT	NUMBER OF ANALYSES	LOWER DETECTION LIMIT	EXTRACTION	METHOD
1	Ag Silver	17	0.01	OPT	

SAMPLE TYPES	NUMBER	SIZE FRACTIONS	NUMBER	SAMPLE PREPARATIONS	NUMBER
R ROCK OR BED ROCK	17	2 -150	17	AS RECEIVED, NO SP	17

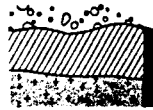
REPORT COPIES TO: MR. A. GOURLAY

INVOICE TO: MR. A. GOURLAY

Multiple empty rectangular boxes for additional data or notes.

Copy

Bondar-Clegg & Company Ltd.
130 Pemberton Ave.
North Vancouver, B.C.
Canada V7P 2R5
Phone: (604) 983-0681
Telex: 04-352667



BONDAR-CLEGG

Certificate
of Analysis

REPORT: 627-3562

PROJECT: BLR

PAGE 1

SAMPLE NUMBER	ELEMENT UNITS	Ag OPT
---------------	---------------	--------

R2 AUL 87204		2.44
R2 AUL 87212		9.88
R2 AUL 87213		2.20
R2 BOU 87003		3.66
R2 BOU 87004		1.34

} N/A this report

R2 BOU 87005		2.33
R2 BOU 87008		3.61
R2 BOU 87010		1.39
R2 BOU 87204		1.36
R2 BOU 87205		1.25

R2 BOU 87208		1.52
R2 BOU 87209		1.68
R2 BOU 87211		1.27
R2 BOU 87602		1.09
R2 BOU 87606		6.30

R2 BOU 87610		1.40
R2 BOU 87614		1.31

--	--	--

--	--	--

--	--	--

--	--	--

[Signature]
Registered Assayer, Province of British Columbia

GEOCHEMICAL ICP ANALYSIS B

.500 GRAM SAMPLE IS DIGESTED WITH 3ML 3-1-2 HCL-HNO₃-H₂O AT 95 DEG.C FOR ONE HOUR AND IS DILUTED TO 10 ML WITH WATER.
THIS LEACH IS PARTIAL FOR NM FE CA P LA CR NG BA TI B M AND LIMITED FOR NA AND K. AU DETECTION LIMIT BY ICP IS 3 PPM.
- SAMPLE TYPE: Pulp AU ANALYSIS BY AA FROM 10 GRAM SAMPLE. HG ANALYSIS BY FLAMELESS AA.

DATE RECEIVED: AUG 3 1987

DATE REPORT MAILED: Aug 12/87

ASSAYER: D. J. DEAN TOYE, CERTIFIED B.C. ASSAYER

MINEQUEST EXPLORATION PROJECT-BOUD File # 87-2937 Page 1

SAMPLE#	MO	CU	PB	ZN	AG	NI	CO	MN	FE	AS	U	AU	TH	SR	CD	SB	BI	V	CA	P	LA	CR	MG	BA	TI	B	AL	NA	K	M	AU#	HG
	PPM	PPM	PPM	PPM	PPM	PPM	PPM	PPM	%	PPM	PPM	PPM	PPM	PPM	PPM	PPM	PPM	PPM	%	%	PPM	%	%	%	%	PPM	%	%	%	PPM	PPB	PPB
BOU-87001	4	38	3792	30	36.7	1	1	147	.86	3	5	ND	7	14	1	2	94	4	.24	.016	5	59	.10	6	.03	2	.31	.05	.01	1	4	5
BOU-87002	4	13	11	33	.2	1	1	330	2.07	2	5	ND	4	14	1	2	2	4	.29	.029	9	20	.25	39	.11	4	.90	.05	.06	1	3	5
BOU-87003	20	35	10207	59	159.3	1	1	72	.86	46	6	ND	1	2	3	2	389	2	.01	.001	2	147	.03	42	.01	2	.16	.01	.01	1	3	5
BOU-87004	26	11	1511	25	63.9	3	1	56	.45	20	5	ND	1	1	1	2	132	1	.01	.001	2	137	.02	12	.01	31	.10	.01	.01	1	9	5
BOU-87005	3	24	12104	12	107.8	3	1	163	.80	4	5	ND	1	7	6	2	530	1	.42	.002	2	145	.02	8	.01	3	.16	.01	.01	3	5	5
BOU-87006	3	9	2698	14	19.2	1	1	119	.45	5	5	ND	1	11	1	2	53	1	.17	.002	2	106	.01	42	.01	2	.09	.01	.01	1	2	5
BOU-87007	3	6	188	10	2.3	2	1	86	.35	2	5	ND	1	1	1	2	2	1	.01	.001	2	165	.05	2	.01	2	.06	.01	.01	1	1	5
BOU-87008	3	28	12912	59	164.8	11	1	68	1.00	41	5	ND	1	3	5	4	1224	4	.68	.002	2	108	.11	11	.01	2	.07	.01	.01	1	9	5
BOU-87009	9	32	3608	95	29.3	2	1	20	.92	12	5	ND	1	2	1	2	77	1	.14	.001	2	110	.07	5	.01	2	.10	.01	.01	1	3	5
BOU-87010	7	40	13370	22	70.0	3	1	33	1.34	49	5	ND	1	5	6	2	181	1	.03	.012	2	154	.02	58	.01	2	.21	.01	.02	1	3	5
BOU-87011	4	8	97	91	.7	4	3	692	3.69	119	5	ND	7	34	1	2	2	1	.51	.030	20	47	.20	65	.05	3	.83	.05	.09	1	17	5
BOU-87201	2	6	248	17	1.6	1	1	75	.39	5	5	ND	2	4	1	2	6	3	.06	.006	2	115	.05	5	.01	2	.09	.02	.01	1	1	5
BOU-87202	6	13	1209	4	10.3	3	1	34	.48	5	5	ND	1	2	1	2	33	1	.03	.004	2	136	.03	7	.01	2	.08	.01	.01	1	3	5
BOU-87203	3	3	482	4	8.4	1	1	38	.24	3	5	ND	1	1	1	2	15	1	.02	.004	2	152	.01	1	.01	4	.02	.01	.01	1	2	5
BOU-87204	4	32	7446	227	62.5	3	4	380	1.04	11	5	ND	1	32	15	2	177	2	1.18	.014	2	119	.16	29	.01	2	.38	.01	.01	1	3	5
BOU-87205	15	42	6227	18	57.1	2	6	127	2.10	3	5	ND	1	3	1	2	84	1	.02	.001	2	139	.01	7	.01	2	.09	.01	.01	1	7	5
BOU-87206	2	21	175	7	3.1	3	1	26	.73	6	5	ND	1	3	1	2	10	1	.04	.004	2	128	.02	3	.01	2	.08	.01	.01	1	2	5
BOU-87207	6	24	1111	28	11.5	2	1	26	.69	15	5	ND	1	2	1	2	45	1	.03	.001	2	151	.01	5	.01	3	.08	.01	.01	1	4	5
BOU-87208	14	36	12357	9	69.3	3	3	78	.72	9	5	ND	1	8	2	2	140	3	.07	.002	2	135	.07	17	.01	2	.19	.01	.01	1	2	5
BOU-87209	7	102	10084	48	74.5	1	3	50	2.17	19	5	ND	1	2	1	2	245	1	.01	.006	2	110	.01	132	.01	2	.26	.01	.04	1	2	5
BOU-87210	3	9	1091	9	11.6	2	1	76	.47	5	5	ND	1	4	1	2	26	1	.04	.001	2	130	.03	3	.01	2	.10	.01	.01	1	3	5
BOU-87211	9	45	8788	19	59.3	1	2	91	2.10	20	5	ND	1	2	1	2	127	2	.01	.002	2	130	.03	8	.01	4	.18	.01	.01	1	3	5
BOU-87212	28	161	695	110	20.9	3	3	165	.95	5	5	ND	1	16	1	2	49	6	.57	.005	2	113	.01	5	.01	2	.06	.01	.01	1	5	5
BOU-87601	1	10	204	130	4.7	2	1	186	.85	2	5	ND	4	15	1	2	13	3	.19	.009	2	141	.09	17	.01	2	.27	.03	.01	1	3	5
BOU-87602	11	55	3243	64	53.1	4	2	113	.89	3	5	ND	2	10	1	2	162	3	.12	.005	2	136	.07	21	.01	15	.20	.02	.01	1	2	5
BOU-87603	3	7	125	8	1.7	1	1	25	.33	5	5	ND	1	1	1	2	2	1	.01	.001	2	150	.01	4	.01	4	.01	.01	.01	1	3	5
BOU-87604	38	42	2036	238	22.9	4	2	114	.56	3	5	ND	1	6	5	2	53	2	.19	.003	2	134	.09	25	.01	2	.14	.01	.01	1	3	5
BOU-87605	21	37	735	126	28.5	3	1	111	.48	3	5	ND	1	1	1	2	51	1	.02	.001	2	160	.02	2	.01	11	.07	.01	.01	1	8	5
BOU-87606	25	154	22986	30	256.3	3	9	100	4.12	3	5	ND	1	5	2	2	404	2	.01	.003	2	125	.01	12	.01	2	.12	.01	.01	6	39	5
BOU-87607	4	12	713	14	14.3	2	1	315	.58	2	5	ND	1	4	1	2	54	8	.52	.002	2	121	.03	6	.01	2	.19	.01	.01	12	5	5
BOU-87608	6	19	2024	15	8.5	3	1	13	.73	8	5	ND	1	2	1	2	31	2	.01	.002	2	160	.01	14	.01	3	.05	.01	.01	1	2	5
BOU-87609	22	49	2799	53	15.6	3	2	25	1.57	50	5	ND	1	1	1	2	49	1	.01	.002	2	165	.01	20	.01	2	.14	.01	.02	1	1	5
BOU-87610	5	68	5754	4	64.3	2	2	37	1.08	204	5	ND	1	1	1	2	164	3	.01	.001	2	152	.01	6	.01	2	.10	.01	.01	1	6	5
BOU-87611	13	28	5399	22	30.5	3	2	85	.87	29	5	ND	1	4	2	2	124	4	.07	.001	2	142	.03	19	.01	19	.08	.01	.01	1	2	5
BOU-87612	8	29	7279	418	36.8	2	1	66	.61	12	5	ND	1	6	15	2	80	1	.03	.001	2	180	.01	10	.01	11	.03	.01	.01	1	1	5
BOU-87613	3	21	4751	4	18.4	2	1	29	.98	91	5	ND	1	1	1	2	63	1	.01	.001	2	157	.01	1	.01	2	.03	.01	.01	1	4	5
STD C/AU-R	19	60	41	133	7.1	67	28	921	3.96	38	22	8	38	50	18	17	19	57	.48	.085	38	60	.88	179	.08	39	1.88	.06	.14	13	515	1200

ASSAY REQUIRED FOR Pb > 10,000 PPM

MINEQUEST EXPLORATION PROJ. I-BOUD FILE # 87-2937

Page 2

SAMPLE#	NO	CU	PB	ZN	AG	NI	CO	MN	FE	AS	U	AU	TH	SR	CD	SB	BI	V	CA	P	LA	CR	MG	BA	TI	B	AL	NA	K	M	AU#	HG
	PPH	PPH	PPH	PPH	PPH	PPH	PPH	PPH	%	PPH	PPH	PPH	PPH	PPH	PPH	PPH	PPH	PPH	%	%	PPH	PPH	%	PPH	%	%	%	%	%	PPH	PPB	PPB
BDU-614	5	66	10940	22	64.9	5	2	57	1.61	28	5	ND	1	2	2	2	152	1	.01	.001	2	196	.03	4	.01	13	.23	.01	.01	1	2	5
BDU-615	4	17	68	4	.5	5	1	24	.53	7	5	ND	1	1	1	2	2	1	.01	.001	2	236	.01	1	.01	41	.02	.01	.01	1	2	5

Bondar Clegg & Company Ltd.
 130 Pemberton Ave.
 North Vancouver, B.C.
 Canada V7P 2R5
 Phone: (604) 985-0681
 Telex: 04-352667



Geochemical
 Lab Report

copy to AVC -> file BLG
 AWG
 RATA

REPORT: 127-4974 (COMPLETE)

REFERENCE INFO:

CLIENT: MINEQUEST EXPLORATION ASSOCIATES LTD.
 PROJECT: NONE GIVEN **CRO/BOU**

SUBMITTED BY: AWG
 DATE PRINTED: 5-AUG-87

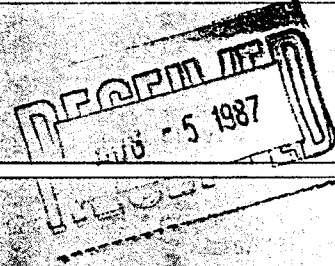
ORDER	ELEMENT	NUMBER OF ANALYSES	LOWER DETECTION LIMIT	EXTRACTION	METHOD
1	Ag Silver	121	0.1 PPM	HN03-HCL HOT EXTR	Atomic Absorption
2	Au Gold - Fire Assay	121	5 PPB	FIRE-ASSAY	Fire Assay AA

SAMPLE TYPES	NUMBER	SIZE FRACTIONS	NUMBER	SAMPLE PREPARATIONS	NUMBER
R ROCK OR BED ROCK	121	2 -150	121	CRUSH,PULVERIZE -150	121

REMARKS: ASSAY OF HIGH Ag TO FOLLOW ON 627-4974.

REPORT COPIES TO: MR. R. V. LONGE
 MINEQUEST EXPLORATIONS
 MR. A. GOURLAY

INVOICE TO: MINEQUEST EXPLORATIONS



[Large empty rectangular area for additional notes or data.]



REPORT: 127-4974

PROJECT: NONE GIVEN

PAGE 1

SAMPLE NUMBER	ELEMENT UNITS	Ag PPM	Au PPB	SAMPLE NUMBER	ELEMENT UNITS	Ag PPM	Au PPB
R2 BOU 87012		19.0	20	R2 BOU 87241		6.6	<5
R2 BOU 87013		1.8	5	R2 BOU 87242		15.0	<5
R2 BOU 87014		40.0	5	R2 BOU 87243		1.0	<5
R2 BOU 87015		1.1	<5	R2 BOU 87244		45.0	<5
R2 BOU 87016		0.8	25	R2 BOU 87245		>50.0	<5
R2 BOU 87017		1.4	<5	R2 BOU 87246		1.8	<5
R2 BOU 87018		0.3	10	R2 BOU 87247		>50.0	<5
R2 BOU 87019		0.3	<5	R2 BOU 87248		9.7	<5
R2 BOU 87020		1.7	<5	R2 BOU 87249		7.6	<5
R2 BOU 87021		1.6	<5	R2 BOU 87250		23.0	<5
R2 BOU 87022		0.4	<5	R2 BOU 87251		47.0	<5
R2 BOU 87023		1.7	<5	R2 BOU 87616		9.4	<5
R2 BOU 87024		0.4	<5	R2 BOU 87617		7.0	<5
R2 BOU 87214		0.5	<5	R2 BOU 87618		2.6	<5
R2 BOU 87215		30.0	5	R2 BOU 87619		4.6	<5
R2 BOU 87216		9.5	<5	R2 BOU 87620		>50.0	20
R2 BOU 87217		8.0	<5	R2 BOU 87621		5.4	<5
R2 BOU 87218		33.0	<5	R2 BOU 87622		1.9	<5
R2 BOU 87219		29.0	<5	R2 BOU 87623		9.3	<5
R2 BOU 87220		42.0	<5	R2 BOU 87624		3.6	<5
R2 BOU 87221		3.3	<5	R2 BOU 87625		0.6	<5
R2 BOU 87222		16.0	<5	R2 BOU 87626		0.6	10
R2 BOU 87223		26.0	5	R2 BOU 87627		0.5	45
R2 BOU 87224		48.0	5	R2 BOU 87628		1.1	<5
R2 BOU 87225		1.2	<5	R2 BOU 87629		0.5	<5
R2 BOU 87226		45.0	2900	R2 BOU 87630		0.8	<5
R2 BOU 87227		1.7	<5	R2 BOU 87631		4.9	<5
R2 BOU 87228		1.0	<5	R2 BOU 87632		3.1	<5
R2 BOU 87229		9.3	220	R2 BOU 87633		5.5	<5
R2 BOU 87230		4.0	180	R2 BOU 87634		2.0	<5
R2 BOU 87231		0.9	<5	R2 BOU 87635		0.8	5
R2 BOU 87232		2.0	<5	R2 BOU 87636		8.1	20
R2 BOU 87233		2.6	<5	R2 BOU 87637		38.0	<5
R2 BOU 87234		21.0	<5	R2 BOU 87638		2.4	<5
R2 BOU 87235		1.6	<5	R2 BOU 87639		0.8	<5
R2 BOU 87236		1.3	<5	R2 BOU 87640		49.0	<5
R2 BOU 87237		3.8	40	R2 BOU 87641		12.0	<5
R2 BOU 87238		0.5	<5	R2 BOU 87642		1.7	<5
R2 BOU 87239		0.5	<5	R2 BOU 87643		2.8	<5
R2 BOU 87240		1.1	<5	R2 BOU 87644		6.0	<5



REPORT: 127-4974

PROJECT: NONE GIVEN PAGE 2

SAMPLE NUMBER	ELEMENT UNITS	Ag PPM	Au PPB	SAMPLE NUMBER	ELEMENT UNITS	Ag PPM	Au PPB
R2 BOU 87645		4.3	<5	R2 CRO 87613		0.3	<5
R2 BOU 87646		1.1	<5				
R2 CRO 87001		0.8	<5				
R2 CRO 87002		0.9	<5				
R2 CRO 87003		42.0	300				
R2 CRO 87004		19.0	10				
R2 CRO 87005		3.4	<5				
R2 CRO 87006		5.9	45				
R2 CRO 87007		15.0	40				
R2 CRO 87008		>50.0	180				
R2 CRO 87201		1.1	<5				
R2 CRO 87202		1.0	20				
R2 CRO 87203		0.2	<5				
R2 CRO 87204		1.5	<5				
R2 CRO 87205		2.1	<5				
R2 CRO 87206		4.4	<5				
R2 CRO 87207		30.0	45				
R2 CRO 87208		0.8	<5				
R2 CRO 87209		0.6	<5				
R2 CRO 87210		6.0	<5				
R2 CRO 87211		0.5	<5				
R2 CRO 87212		0.8	<5				
R2 CRO 87213		0.6	55				
R2 CRO 87214		0.5	<5				
R2 CRO 87215		15.0	110				
R2 CRO 87216		3.3	20				
R2 CRO 87217		37.0	110				
R2 CRO 87218		9.4	10				
R2 CRO 87601		4.3	25				
R2 CRO 87602		0.3	<5				
R2 CRO 87603		20.0	55				
R2 CRO 87604		2.1	10				
R2 CRO 87605		26.0	<5				
R2 CRO 87606		43.0	100				
R2 CRO 87607		0.7	<5				
R2 CRO 87608		0.3	<5				
R2 CRO 87609		0.2	10				
R2 CRO 87610		0.6	<5				
R2 CRO 87611		0.5	<5				
R2 CRO 87612		0.8	<5				

N/A this report

Bondar-Clegg & Company Ltd.
 130 Pemberton Ave.
 North Vancouver, B.C.
 Canada V7P 2R3
 Phone: (604) 983-0681
 Telex: 04-352667



Copy to RVC → file BLK.
 AWG ✓
 Certificate of Analysis

RECEIVED
 AUG 17 1987

REPORT: 627-4974 (COMPLETE) REFERENCE INFO:

CLIENT: MINEQUEST EXPLORATION ASSOCIATES LTD.
 PROJECT: NONE GIVEN *BLK. BDU/CRO* SUBMITTED BY: AWG
 DATE PRINTED: 17-AUG-87

ORDER	ELEMENT	NUMBER OF ANALYSES	LOWER DETECTION LIMIT	EXTRACTION	METHOD
1	Ag Silver	4	0.01 OPT		

SAMPLE TYPES	NUMBER	SIZE FRACTIONS	NUMBER	SAMPLE PREPARATIONS	NUMBER
R ROCK OR BED ROCK	4	2 -150	4	AS RECEIVED, NO SP	4

REPORT COPIES TO: MR. R. V. LONGE
 MINEQUEST EXPLORATIONS
 MR. A. GOURLAY

INVOICE TO: MINEQUEST EXPLORATIONS

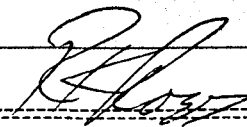
[Empty space for additional report details or notes]

REPORT: 627-4974

PROJECT: NONE GIVEN

PAGE 1

SAMPLE NUMBER	ELEMENT UNITS	Ag OPT
R2 BOU 87245		2.05
R2 BOU 87247		3.68
R2 BOU 87620		3.69
R2 CRO 87008		1.12-N/A this report



Registered Assayer, Province of British Columbia

APPENDIX III

Cost Statement

COST STATEMENT
MAY 15 - OCT 31, 1987

Fees

A.W. Gourlay	5.0 days at \$385.00	\$ 1,925.00	
A.W. Gourlay	20.0 hrs. at \$ 64.00	1,280.00	
		<hr/>	\$ 3,205.00

Temporary Staff

Kelly Bilquist	6.5 days at \$135.00	877.50	
Ron Bilquist	6.5 days at \$185.00	1,202.50	
		<hr/>	2,080.00

Disbursements

Air fares	1,288.35	
Rental vehicle	46.12	
Fuels & lubricants	5.96	
Charter helicopter	2,614.78	
Taxis, fares	44.60	
Freight	196.68	
MQ field equipment charges	104.00	
MQ camp equipment charges	130.00	
Groceries	565.14	
Food & accommodation	263.19	
General supplies	126.13	
Analyses	1,907.20	
Claim recording and renewal	430.00	
Courier, postage	52.82	
Drafting	700.00	
Reprographics, in house	3.50	
Reprographics	3.56	
Photocopies in house	14.15	
Maps	.33	
Report, Word processing	97.50	
Miscellaneous	8.66	
Communications	151.95	
Program management	905.46	
	<hr/>	9,660.08
		<hr/>
		14,945.08

APPENDIX IV

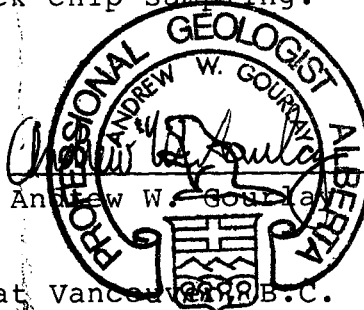
Statement of Qualifications

STATEMENT OF QUALIFICATIONS

I, Andrew Gourlay, hereby certify that:

1. I am presently employed by MineQuest Exploration Associates Ltd. as Senior Geologist
2. I am a graduate of the University of British Columbia (B.Sc. Hons., 1977, in geology).
3. I am a Professional Geologist in good standing with the Association of Professional Engineers, Geologists and Geophysicists of Alberta, and a Fellow of the Geological Association of Canada.
4. I have practised my profession as geologist for ten years.
5. The information used in this report is based on personal execution of the geological mapping and supervision of the rock chip sampling.

Signed



Andrew W. Gourlay

Dated at Vancouver B.C.
this 31st day of December, 1987

APPENDIX V

Application for a Certificate of Work
and
Application to Group Mineral Claims



DEPARTMENT OF INDIAN AFFAIRS AND NORTHERN DEVELOPMENT
YUKON QUARTZ MINING ACT
FORM "C" - APPLICATION FOR A CERTIFICATE OF WORK

(This form required in duplicate with sketch showing location of work.)

I (Name)	S. Eng	Occupation	Claims Manager	OFFICE DATE STAMP
(Postal Address)	Minequest Exploration 500-164 Water St V6B 1B5			

MAKE OATH AND SAY, THAT:

- I am the owner, or agent of the owner, of the mineral claim(s) to which reference is made herein.
- I have done, or caused to be done, work on the following mineral claim(s):

(Here list claims on which work was actually done by number and name)

BOUD 7	YA 96275	BOUD 17	YA 96285	BOUD 25	YA 96293
BOUD 8	YA 96276	BOUD 18	YA 96286	BOUD 26	YA 96294
BOUD 9	YA 96277	BOUD 19	YA 96287	BOUD 27	YA 96295
BOUD 10	YA 96278	BOUD 20	YA 96288	BOUD 28	YA 96296

situated at Boudette Creek Claim Sheet No. 105D/3
in the Whitehorse Mining District, to the value of at least _____
dollars, since the 1ST day of June 19 87.

to represent the following mineral claims under the authority of Grouping Certificate No. _____

(Here list claims to be renewed in numerical order, by grant number and claim name, showing renewal period requested).

Three years renewal
is requested for the
following claims.

Boud 1987 West Group

BOUD 7	YA 96275	BOUD 20	YA 96288
BOUD 8	YA 96276	BOUD 22	YA 96290
BOUD 9	YA 96277	BOUD 24	YA 96292
BOUD 10	YA 96278	BOUD 25	YA 96293
BOUD 15	YA 96283	BOUD 26	YA 96294
BOUD 17	YA 96285	BOUD 27	YA 96295
BOUD 18	YA 96286	BOUD 28	YA 96296
BOUD 19	YA 96287		

3. The following is a detailed statement of such work: (Set out full particulars of the work done indicating dates work commenced and ended in the twelve months in which such work is required to be done as shown by Section 53.)

June 9-12; R. Bilquist, K. Bilquist, A. Gourlay carried out prospecting, rock chip sampling, preliminary geological mapping on Boud 3,4,5,6,13,14, 16 claims.

July 10-12; R. Bilquist, K. Bilquist, A. Gourlay carried out prospecting, rock chip sampling and preliminary geological mapping on Boud 7,8,9,10, 17,18,19,20,25,26,27,28 claims.

Sworn before me at Vancouver, British Columbia
this 16th day of September 19 87

Brian E. Abraham
Notary Public For British Columbia

S. Eng
Owner or Authorized Agent

BRIAN E. ABRAHAM
Barrister & Solicitor
2500 - 595 BARRARD STREET
P.O. BOX 49200
VANCOUVER, B.C. V7X 1L1

YUKON QUARTZ MINING ACT
APPLICATION TO GROUP MINERAL CLAIMS
Boud 1987 West Group

MINING DISTRICT Whitehorse

OFFICE DATE STAMP

I (We) the undersigned owner(s) or agent(s) of the owner(s) of the following Mineral Claims

GRANT NUMBER(S)	CLAIM NAME(S)	LOCATION	CLAIM SHEET NO.
YA 96275	BOUD 7	Boudette Creek	105D/3
YA 96276	BOUD 8		
YA 96277	BOUD 9		
YA 96278	BOUD 10		
YA 96283	BOUD 15		
YA 96285	BOUD 17		
YA 96286	BOUD 18		
YA 96287	BOUD 19		
YA 96288	BOUD 20		
YA 96290	BOUD 22		
YA 96292	BOUD 24		
YA 96293	BOUD 25		
YA 96294	BOUD 26		
YA 96295	BOUD 27		
YA 96296	BOUD 28		

Give notice of intention to group the said claims for the performance of work and do hereby apply under the provisions of Section 52 of the Yukon Quartz Mining Act for a certificate in Form "E"

I (We) hereby certify that the above claims are adjoining as shown on attached sketch

DATED AT Vancouver

THIS 11TH DAY OF September 19 87



S. Eng

for Ronald J. Bilquist

and for Leslie O. Allen

owner(s) signature

FOR OFFICE USE ONLY	
FORM "E" NO.	
RECEIPT NO.	
DATE APPLIED	



DEPARTMENT OF INDIAN AFFAIRS AND NORTHERN DEVELOPMENT
YUKON QUARTZ MINING ACT
FORM "C" - APPLICATION FOR A CERTIFICATE OF WORK

(This form required in duplicate with sketch showing location of work.)

(Name)	S. Eng	Occupation	Claims Manager
(Postal Address)	Linequest Exploration 500-164 Water ST. V6B 1B5		OFFICE DATE STAMP

MAKE OATH AND SAY, THAT:

- I am the owner, or agent of the owner, of the mineral claim(s) to which reference is made herein.
- I have done, or caused to be done, work on the following mineral claim(s):
(Here list claims on which work was actually done by number and name)

BOUD 3	YA 96271	BOUD 16	YA 96284
BOUD 4	YA 96272		
BOUD 5	YA 96273		
BOUD 6	YA 96274		
BOUD 13	YA 96281		
BOUD 14	YA 96282		

situated at Boudette Creek Claim Sheet No. 105D/3
in the Whitehorse Mining District, to the value of at least _____
dollars, since the 1ST day of June 19 87

to represent the following mineral claims under the authority of Grouping Certificate No. _____
(Here list claims to be renewed in numerical order, by grant number and claim name, showing renewal period requested).

Three years renewal
is requested for the
following claims.

Boud 1987 East Group

BOUD 1	YA 96269	BOUD 21	YA 96289
BOUD 2	YA 96270	BOUD 23	YA 96291
BOUD 3	YA 96271		
BOUD 4	YA 96272		
BOUD 5	YA 96273		
BOUD 6	YA 96274		
BOUD 11	YA 96279		
BOUD 12	YA 96280		
BOUD 13	YA 96281		
BOUD 14	YA 96282		
BOUD 16	YA 96284		

- The following is a detailed statement of such work: (Set out full particulars of the work done indicating dates work commenced and ended in the twelve months in which such work is required to be done as shown by Section 53.)

June 9-12; R. Bilquist, K. Bilquist, A. Gourlay carried out prospecting, rock chip sampling, and preliminary geological mapping on Boud 3, 4, 5, 6, 13, 14, 16 claims.

July 10-12; R. Bilquist, K. Bilquist, A. Gourlay carried out prospecting, rock chip sampling, and preliminary geological mapping on Boud 7, 8, 9, 10, 17, 18, 19, 20, 25, 26, 27, 28 claims.

Sworn before me at Vancouver British Columbia
this 16th day of September 19 87

Brian E. Abraham
Notary Public For British Columbia

S. Eng
Owner or Authorized Agent

BRIAN E. ABRAHAM
Barrister & Solicitor
2500 - 595 BURRARD STREET
P.O. BOX 49200
VANCOUVER, B.C. V7X 1L1

YUKON QUARTZ MINING ACT
APPLICATION TO GROUP MINERAL CLAIMS
Boud 1987 Est Group

MINING DISTRICT Whitehorse

I (We) the undersigned owner(s) or agent(s) of the owner(s) of the following Mineral Claims

OFFICE DATE STAMP

GRANT NUMBER(S)	CLAIM NAME(S)	LOCATION	CLAIM SHEET NO.
YA 96269	BOUD 1	Boudette Creek	105D/3
YA 96270	BOUD 2		
YA 96271	BOUD 3		
YA 96272	BOUD 4		
YA 96273	BOUD 5		
YA 96274	BOUD 6		
YA 96279	BOUD 11		
YA 96280	BOUD 12		
YA 96281	BOUD 13		
YA 96282	BOUD 14		
YA 96284	BOUD 16		
YA 96289	BOUD 21		
YA 96291	BOUD 23		

Give notice of intention to group the said claims for the performance of work and do hereby apply under the provisions of Section 52 of the Yukon Quartz Mining Act for a certificate in Form "E"

I (We) hereby certify that the above claims are adjoining as shown on attached sketch

DATED AT Vancouver

THIS 11th DAY OF September 19 87

S. Eng
 S. Eng
 for Ronald J. Bilquist
 and for Leslie O. Allen

owner(s) signature

<p>FOR OFFICE USE ONLY</p> <p>FORM "E" NO.</p> <p>RECEIPT NO.</p> <p>DATE APPLIED</p>
