



United Keno Hill Mines Ltd.

Geological and Geochemical Report

on the

RUBY 13-28 claims

by

L. Walton - Geologist

N.T.S. 115H/4
Latitude $61^{\circ}08'$
Longitude $137^{\circ}40'$
Date: July 25 to July 30, 1987

092000

This report has been examined by
the Geological Evaluation Unit
under Section 53 (4) Yukon Quartz
Mining Act and is allowed as
representation work in the amount
of \$ 4800.00.


for 
Regional Manager, Exploration and
Geological Services for Commissioner
of Yukon Territory.

Table of Contents

	Page No.
1. Summary and Conclusions	3
2. Recommendations	4
3. Introduction	5
4. Location and Access	5
5. History	5
6. Property	5
7. Physiography	6
8. Regional Geology	6
a. Tectonic Setting	6
b. General Description	6
9. Detailed Geology	7
a. Rock Units	7
b. Mineralization	8
10. Geochemical Survey	9
a. General	9
b. Interpretation of Results	9
References	10
APPENDIX A: Project Costs	
APPENDIX B: Personnel and Contractors Employed	
APPENDIX C: Rock Descriptions and Assays	
APPENDIX D: Chemex Rock/Soil Sheets	

1. Summary and Conclusions

The RUBY 13-28 claims were staked in August, 1986 after a government open file release showed anomalous gold values from sediments in streams draining the RUBY 13-28 ridge.

The property is underlain by Paleozoic(?) hornfels schist.

A three person crew camped on the property from July 25 to July 30, 1987. Six rock samples and 171 soil samples were collected and sent to Chemex for analysis for 33 elements.

Two Au-As anomalous zones and several Au and As spot anomalies were outlined.

2. Recommendations

A baseline for a soil grid should be put in along the claim line, with stations every 50 m. Samples on the crosslines should be taken every 25 m. More detailed soil grids should be established over the Au-As anomalies.

3. Introduction

On July 25 to July 30, 1987, D. Ouellette, J. Bain and D. Davies camped on the Ruby 13-28 claims. The property was prospected and soil/rock samples were collected on a reconnaissance scale. Two small soil geochemistry grids were established over geologically interesting areas. Rock and soil samples were analyzed for 33 elements.

4. Location and Access

The RUBY 13-28 claims are located 45 km by air northwest of Haines Junction on N.T.S. map 115H/4 at latitude 61°08 and longitude 137°40. The claims are situated on a ridge directly east of Killermun Lake (Figure 1). Access to the property was by Trans North Turbo Air Jet Ranger 206 helicopter from Haines Junction.

5. History

The RUBY claims are located in the Aishihik Lake map area (115H). Reconnaissance geology of the Aishihik Lake area was first described by Cockfield (1928), and more recently by Tempelman-Kluit (1974). The RUBY claims were staked by United Keno Hill Mines Ltd. after a government open-file release in 1986 showed anomalous gold values in silt samples from streams which drain the RUBY claims ridges.

There is no record of the RUBY claims being previously staked. No trenches, flagging, claim posts, pickets or other signs of previous activity were noted during 1987 fieldwork.

There are no known mineral occurrences in the vicinity of the claims. Two creeks in the area, Ruby Creek and Twelfth of July Creek, have placer claims on them. Twelfth of July Creek is a tributary of Fourth of July Creek (N.T.S. 115G/1). Fourth of July Creek has been mined intermittently since 1903. From 1978 to 1984, Fourth of July Creek produced 6,210 oz. of gold (Debicki and Gilbert, 1986).

6. Property

The location of the RUBY 13-28 claims is shown in Figure 2.

Claim Name	Record Number	Location Date	Recording Date	Assessment work req. by
Ruby 1-6	YA95666 to YA95671	Aug. 6/86	Aug. 8/86	Aug. 8/87



Figure 1

UNITED KENO HILL MINES LTD.
EXPLORATION DEPARTMENT
WHITEHORSE — YUKON

RUBY CLAIMS
LOCATION MAP

Mining District
N.T.S. Sheet No.
Scale 1:2,500,000

Drawn by

Date

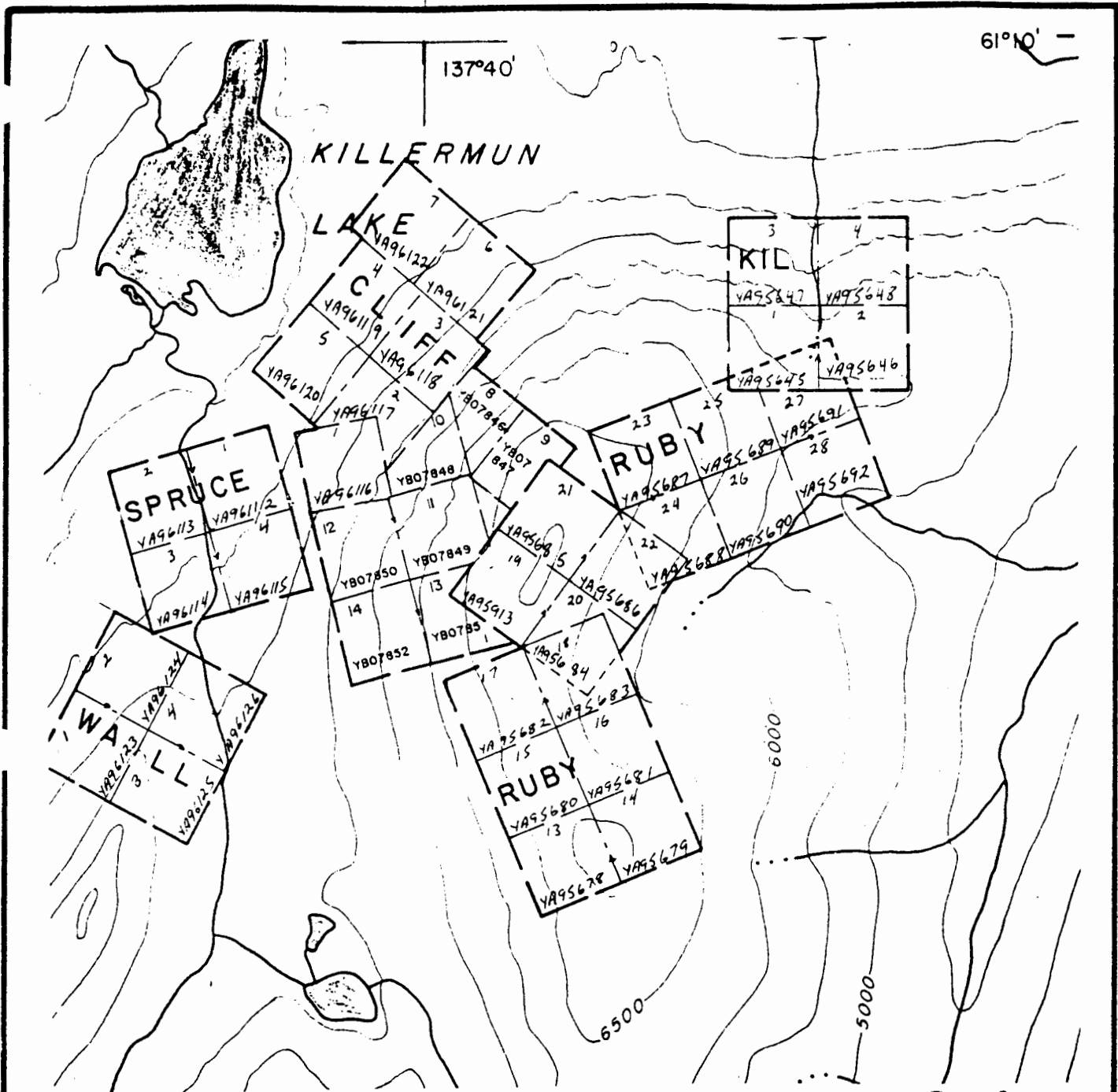


Figure 2

UNITED KENO HILL MINES LTD. EXPLORATION DEPARTMENT WHITEHORSE — YUKON	
RUBY 13-28	
CLAIM LOCATION MAP	
<i>Mining District</i> Whitehorse <i>N.T.S. Sheet No.</i> 115H/4 <i>Scale</i> 1:31,680	
<i>Drawn by</i> L.W.	<i>Date</i> 87/11/15

Ruby 7-12	YA95672 to YA95677	Aug. 6/86	Aug. 8/86	Aug. 8/87
Ruby 13-18	YA95678 to YA95683	Aug. 6/86	Aug. 8/86	Aug. 8/87
Ruby 19	YA95913	Aug. 8/86	Aug. 15/86	Aug. 15/87
Ruby 20-25	YA95684 to YA95689	Aug. 8/86	Aug. 8/86	Aug. 15/87
Ruby 26-28	YA95690 to YA95692	Aug. 6/86	Aug. 8/86	Aug. 15/87

7. Physiography

The Ruby Range physiographic province was defined by Bostock (1938). The RUBY claims are situated on a series of north-south trending ridges between West Aishihik River and Jarvis River. The ridges are separated by broad north-south to northeast-southwest trending tributaries of West Aishihik River, McKinley Creek and Lake Creek. The floors of the stream valleys are 900 m above sea level. The ridges range in elevation from 2010 m (Ruby 1-6) to 2160 m (Ruby 29-34). Ruby 13-28 and Ruby 29-34 are bordered by steep cliffs on at least one side of the claim block. The area has been glaciated and is situated near the northern limit of the St. Elias ice sheet.

The Ruby claims are situated above treeline. Vegetation consists solely of moss, lichen and alpine flowers. Dall sheep and caribou are abundant.

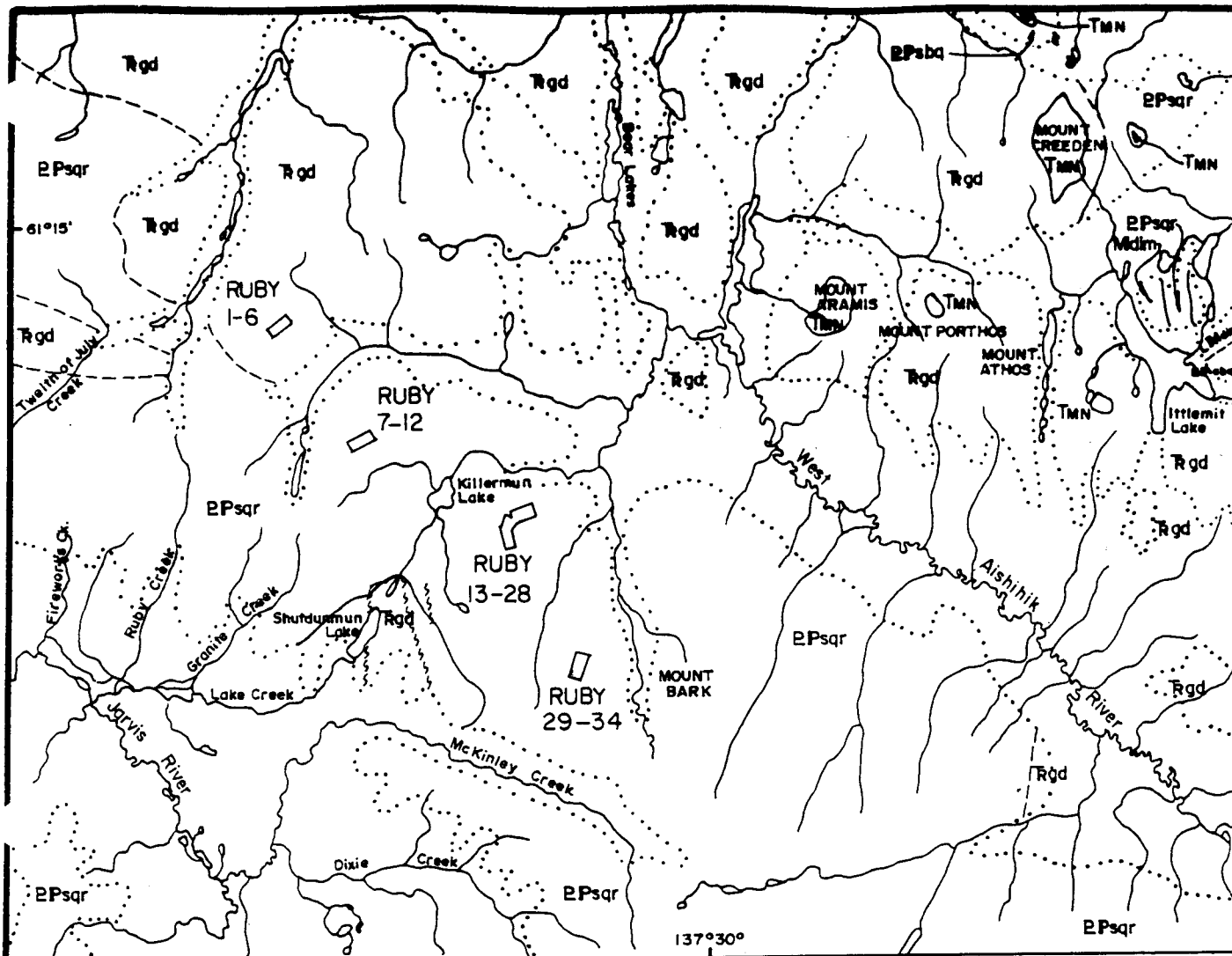
8. Regional Geology

a. Tectonic Setting

The Ruby claims are situated in the Coast Plutonic Complex (Figure 3). The Coast Plutonic Complex is one of four discrete entities that formed as part of a Mesozoic arc on a foreign continental fragment now accreted to North America.

b. General Description

Ruby 1-6 claims are underlain by the Triassic Ruby Range Batholith. The other Ruby claims (7 to 34) are underlain by Paleozoic (?) hornfels schist. The contact between the hornfels schist and the Ruby Range granodiorite is slightly south of the



LEGEND

EOCENE

TMN Mount Nansen Group volcanic rocks

CRETACEOUS

L.Mdn Hornblende Diorite

TRIASSIC

Rgd Ruby Range Granodiorite

PALEOZOIC

EPsqr Hornfelsed Schist

EPsba Biotite Schist

Figure 3

UNITED KENO HILL MINES LTD.
EXPLORATION DEPARTMENT
WHITEHORSE - YUKON

REGIONAL GEOLOGY
RUBY PROJECT

Mining District **WHITEHORSE**
N.T.S. Sheet No. 115-H/4
Scale 1:250,000

Drawn by H.D.P.

Date 87/10/26

From Tempelman-Kluit (1974)

RUBY 1-6 claims. The Paleozoic schist has been intruded and metamorphosed by the Ruby Range Batholith.

Tempelman-Kluit (1974) describes the hornfels schist as a remarkably homogeneous rock that has been overprinted on a regional scale. The schist consists of quartz, biotite, muscovite, plagioclase, chlorite, graphite and tourmaline + cordierite, staurolite and pink andalusite. The schist dips gently to the northeast.

The Ruby Range Batholith consists of heterogeneous medium-grained, equigranular hornblende and biotite granodiorite.

9. Detailed Geology

The RUBY 13-28 claims are underlain by hornfels schist (Unit 3). The geology and sample locations are shown in Figure 4. A description of all rock types on the RUBY claims is given below:

a. Rock Units

Unit 1-Gray green metasedimentary (?) rock

This unit occurs as small blocks at the south end of the Ruby 1-6 group. The rock weathers brown, brownish-red or greenish brown. The fresh surface is light grayish green with minor very small disseminated dark blebs (smoky quartz, biotite). The rock is very fine grained and homogeneous. The fresh surface is scratched easily with a knife and is mildly to moderately calcareous. The rock contains fine grained pyrite (<1mm). Slickensides and abundant white carbonate were noted in one sample.

Unit 2-Mafic Dyke

Unit 2 was described in the field as mafic dyke material. It is found on Ruby 13-28 and Ruby 29-34 in talus or in rubble patches. The mafic dyke appears to crosscut the host schist unit (Unit 3). The dyke rock is distinguished from the schist by its medium to dark orange-rust weathering. It fractures into irregular to blocky slabs. The fresh surface is medium to dark grayish green and is fine grained. The rock contains abundant lathe-shaped amphibole crystals and disseminated, fine grained pyrite up to 1 mm wide. The rock is weakly magnetic and non-calcareous.

Unit 3-Hornfels Schist

Hornfels schist underlies the Ruby 7-12, Ruby 13-28 and Ruby 29-34 claim groups. The schist is light to dark rust weathering, fine to medium grained and contains visible quartz, biotite and hornblende. When quartz is abundant, the rock is composed of light and dark layers. The quartz bands are 1-5 mm wide and are interbanded with bands of aligned biotite and hornblende. The

rock is non-calcareous. When there are more mafic minerals, the rock is more homogeneous and weathers a darker rust than the quartz rich rocks.

Unit 4-Ruby Range Granodiorite

Ruby Range granodiorite was found on RUBY 1-6, in minor amounts. The granodiorite is leucocratic and phaneritic, with medium grain size (1-5 mm). Quartz comprises 5-10% of the rocks and is typically light gray to clear and 1-5 mm in size. Biotite comprises 5-15% of the rock and is 1-5 mm in size. Plagioclase (?) feldspar comprises 85% of the rock.

Unit 4a-Diorite

Diorite underlies most of RUBY 1-6. Diorite is often found in the marginal portions of large batholiths: RUBY 1-6 is situated on the southern edge of the RUBY range batholith. The diorite is fine grained. Quartz comprises <5% of the rock, plagioclase 40-50% and amphibole (hornblende) 40-50%, with trace biotite. Hornblende crystals up to 2 cm long were noted.

Unit 4b-Felsic Dyke

Felsic dykes were noted on RUBY 7-12 and RUBY 13-28. The dykes intrude the hornfels schist unit. On RUBY 7-12 the felsic dykes are granitic and fine grained equigranular. The rock consists of 1% biotite, 20-30% muscovite, 50-60% quartz and 20-30% feldspar.

Quartz Veins

Bull quartz veins occur occasionally as outcrop or as float on all the RUBY claim groups. The float fragments weather white and are easily spotted. The quartz veins appear to follow the schistosity. Most of the veins are barren and contain only transparent to milky massive quartz. Andalusite was found in some of the quartz fragments and in quartz vein outcrop. The crystals are pink, 1 cm or less wide and up to 3 cm long, and display typical square cross-sections. One larger (3 cm) subhedral crystal was noted.

Staurolite occurs as reddish brown euhedral crystals in bull quartz. The crystals are up to 2 cm long and show characteristic prismatic shape. Interpenetration twinning was noted in some samples.

Green muscovite occurs with staurolite in the bull quartz veins. It is especially common at the quartz vein-wallrock boundary. It occurs in aggregate masses or in micaceous hexagonal shaped "books" up to 3 cm long.

b. Mineralization

Fine grained disseminated pyrite was found in Unit 2 (Mafic dyke); however, geochemical values (Appendix C) for all elements were low.

10. Geochemical Survey

a. General

Reconnaissance soil samples (Figure 4) were collected along hill contours. Soil sample locations were marked with orange flagging tied to rocks. Two soil grids were established over geologically interesting areas. Soil samples from the grids were taken on a 20 m x 20 m spacing.

b. Interpretation of Results

Results of soil sample analysis are listed in Appendix D. The values for Au and As from reconnaissance soil samples are plotted and contoured on Figure 5 and Figure 6.

Reconnaissance soil sampling outlined a linear anomaly on the west side of the claims (see Figure 5, 6). Several Au values of over 100 ppb Au and over 100 ppm As occur in a zone 175 m long. The anomaly is situated 500 m down-slope from the top of the west side of the RUBY 13-28 ridge. A small Au-As spot anomaly occurs on the north end of the claim block. Both anomalous zones are slightly elevated in Bi.

Large Soil Grid

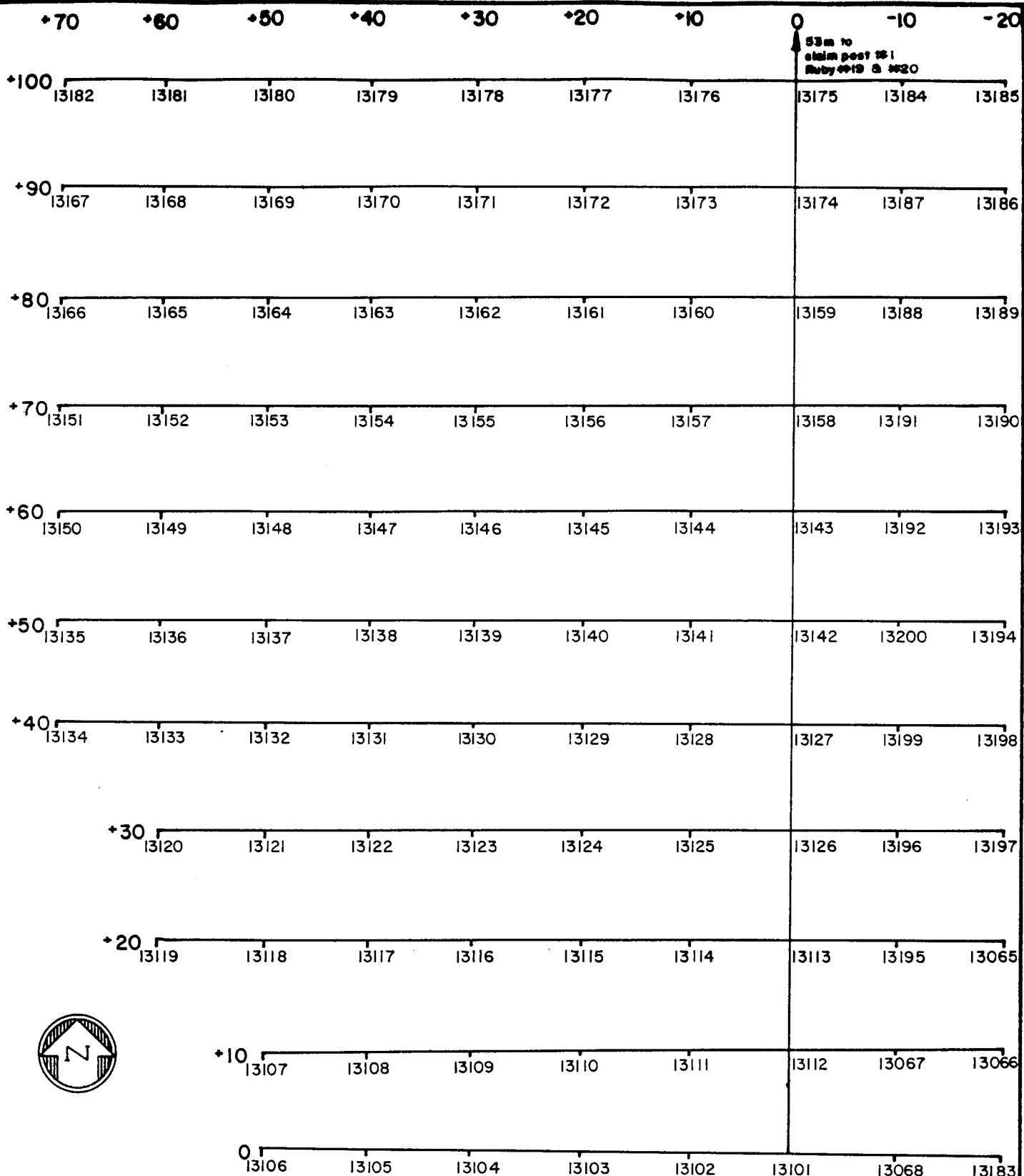
The location of the large soil grid is shown in Figure 4. Sample numbers and locations are shown in Figure 7, and Au and As values are plotted on Figure 8 and Figure 9.

The northeast part of the grid shows only background values for Au and As. Three samples had values >100 ppb Au, but these are spot anomalies. There is an As anomaly in the southwest corner of the grid. Sample 13113 within this anomalous zone is also high in Au.

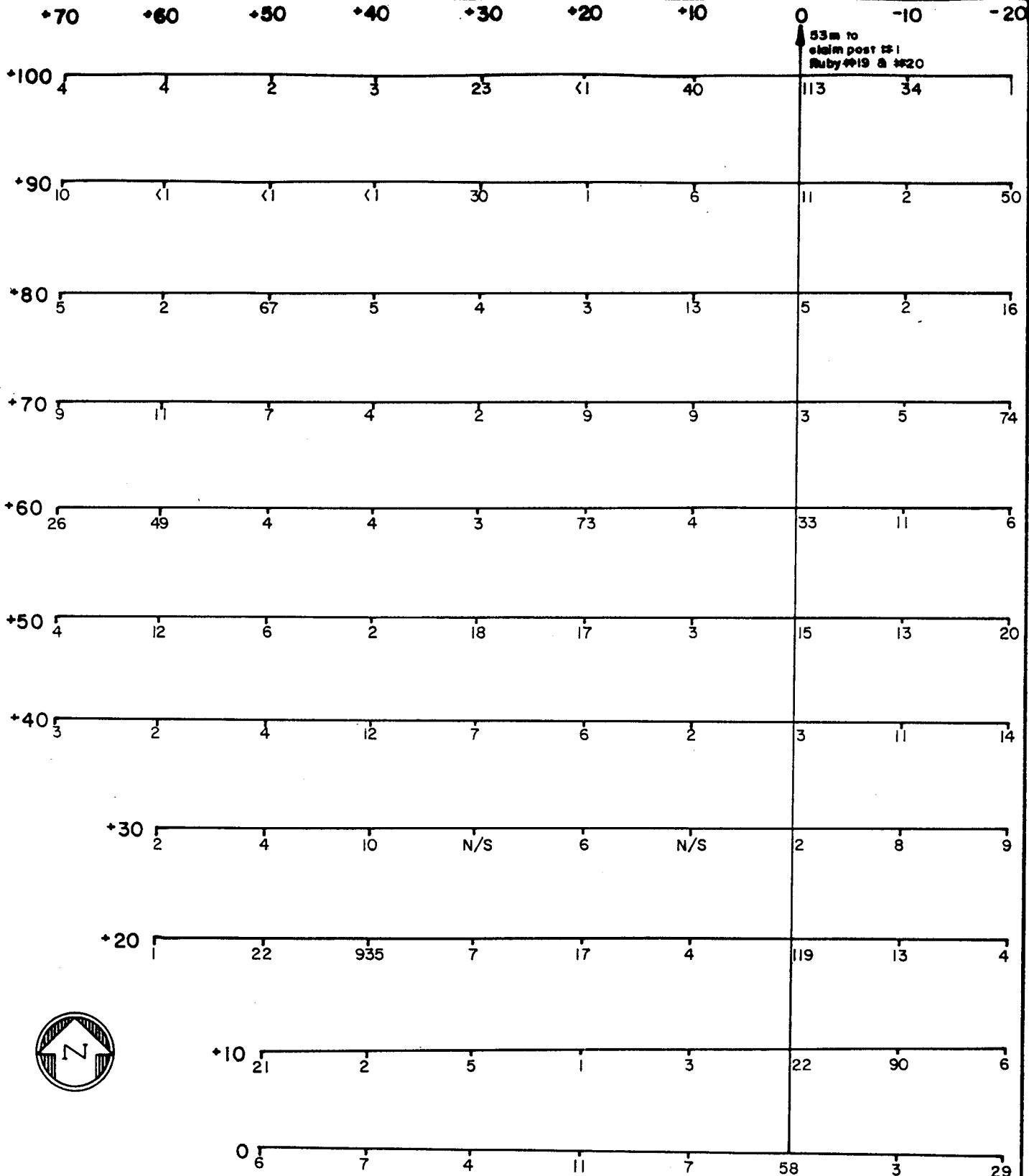
Small Soil Grid

The location of the small soil grid is shown on Figure 4. Sample numbers and locations are shown in Figure 10, and the values for Au and As are plotted on Figure 11 and Figure 12.

There are no significant anomalies outlined on the small soil grid.



UNITED KENO HILL MINES LTD.	
RUBY 13-28 Large Grid	
Figure 7	
SOIL SAMPLE LOCATION MAP	
<i>Mining District</i> WHITEHORSE	<i>N.T.S. Sheet No.</i> 115-H/15
<i>Drawn by</i> H.D.P.	<i>Date</i> 87/11/09

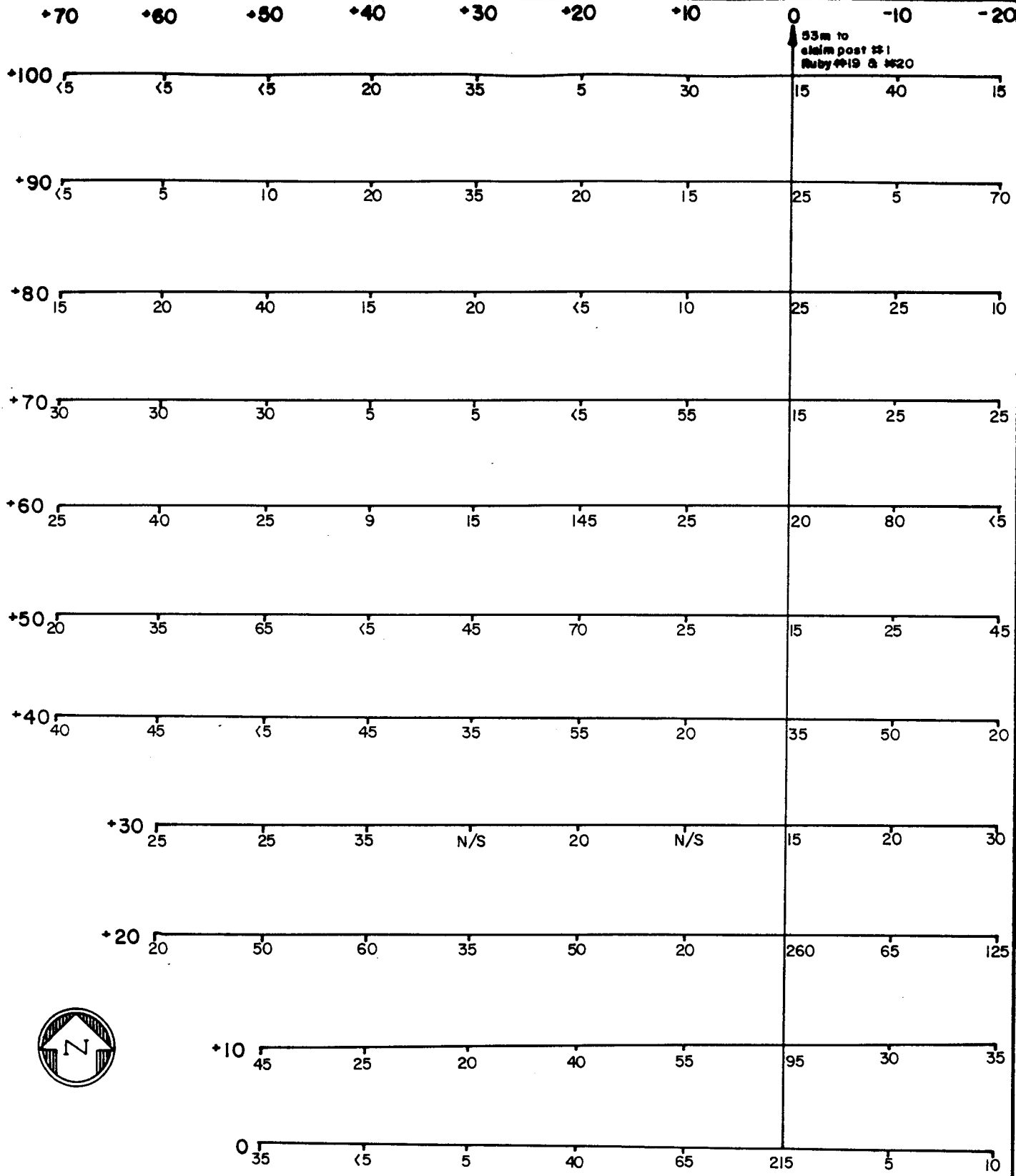


53 m to claim post #1 Ruby #19 & #20



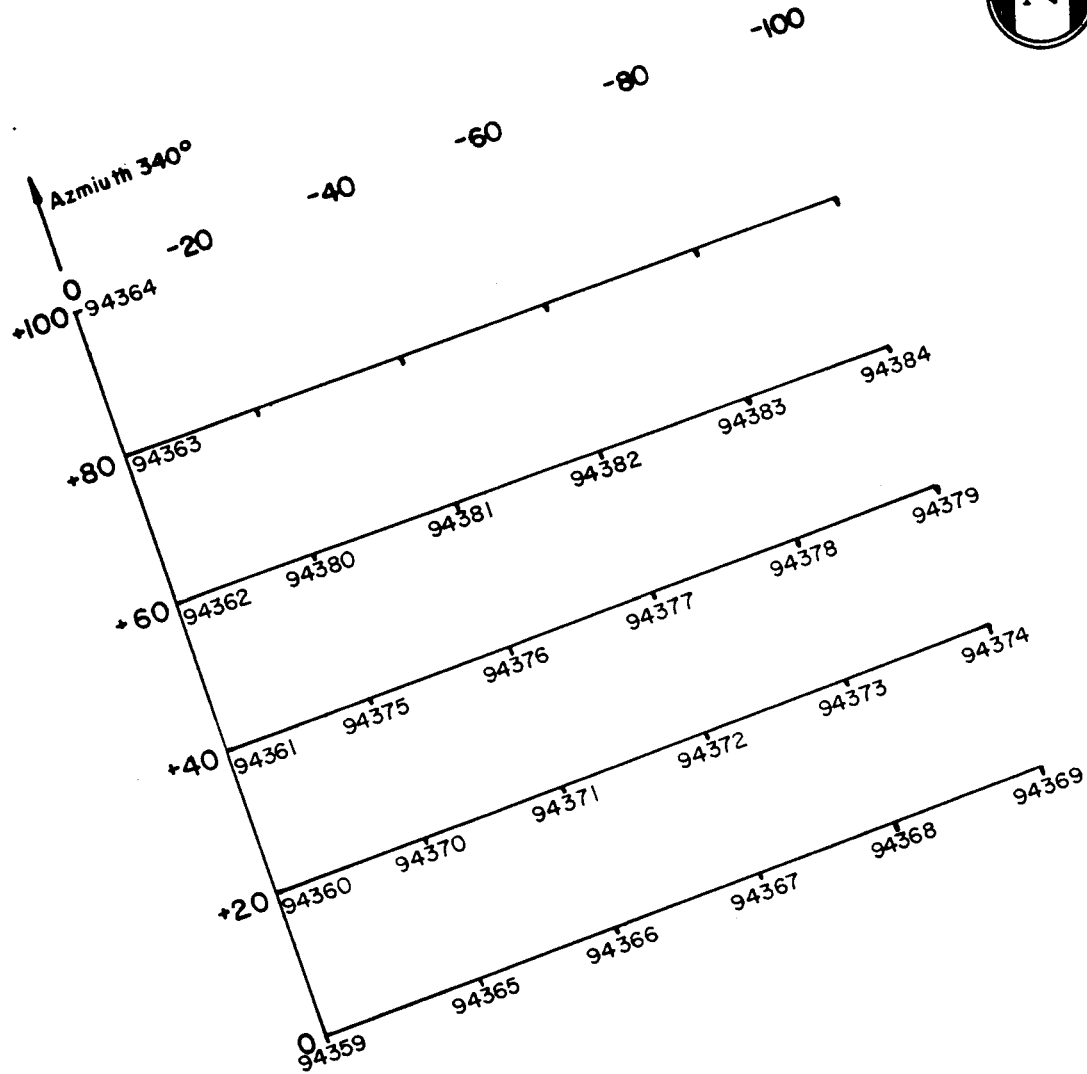
- <10 ppb.
- 10-49 ppb.
- 50-99 ppb.
- 100-199 ppb.
- >200 ppb.

UNITED KENO HILL MINES LTD.	
RUBY 13-28 Figure 8 Large Grid SOIL GEOCHEMISTRY - GOLD	
Mining District WHITEHORSE	N.T.S. Sheet No. 115-H/15
Drawn by H.D.P.	Date 87/11/09

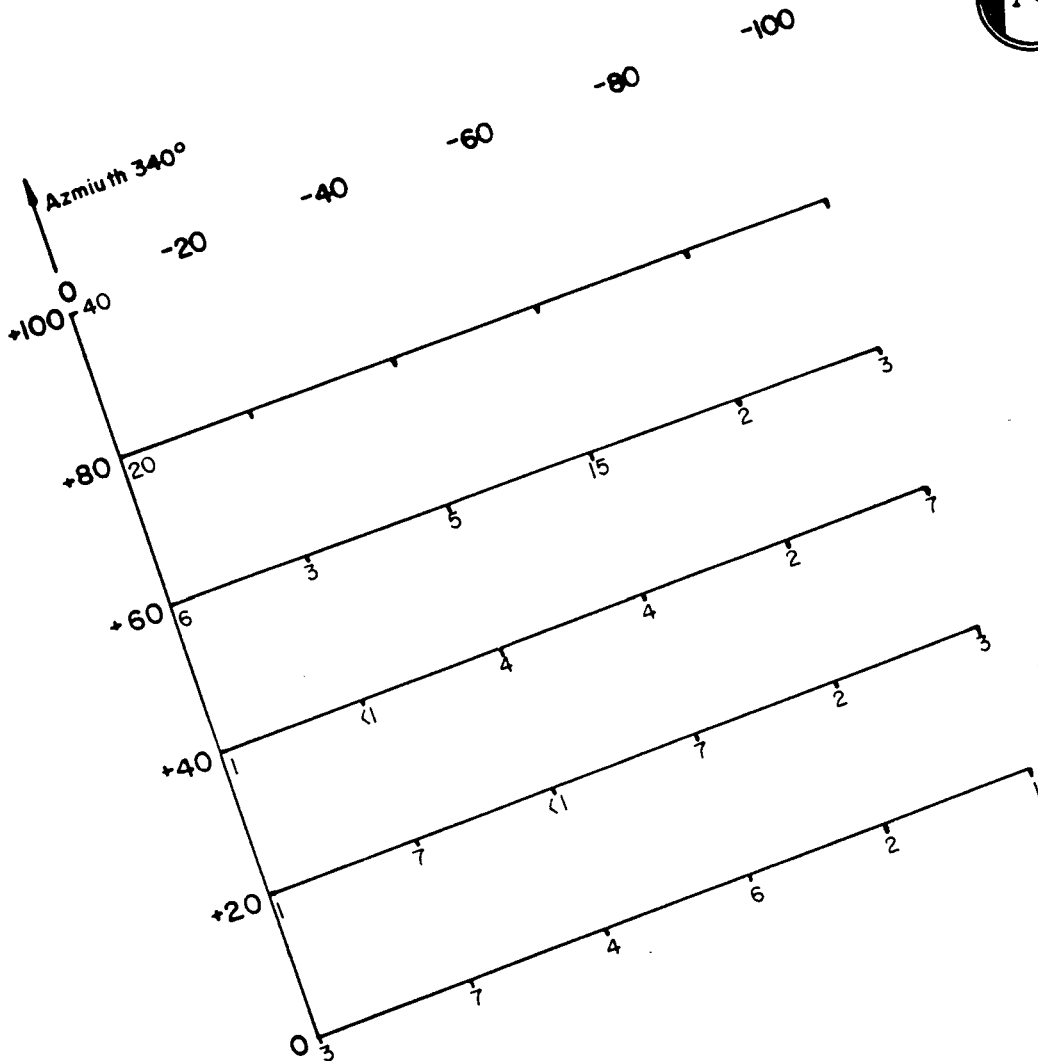


- <10 p.p.m.
- 11-49 p.p.m.
- 50-99 p.p.m.
- 100-199 p.p.m.
- >200 p.p.m.

UNITED KENO HILL MINES LTD.	
RUBY 13-28 Figure 9	
Large Grid	
SOIL GEOCHEMISTRY-ARSENIC	
Mining District WHITEHORSE	N.T.S. Sheet No. 115-H/15
Drawn by H.D.P.	Date 87/11/09



UNITED KENO HILL MINES LTD. EXPLORATION DEPARTMENT WHITEHORSE - YUKON	
RUBY 13-28	Figure 10
SMALL GRID - Sample Location Map	
Mining District WHITEHORSE	
N.T.S. Sheet No. 115 - H/15	
Scale 1:100 1cm = 10m	
Drawn by H.D.P.	Date 87/11/11



- <10 p.p.b.
- 10-49 p.p.b.
- 50-99 p.p.b.
- 100-199 p.p.b.
- >200 p.p.b.



UNITED KENO HILL MINES LTD.
EXPLORATION DEPARTMENT
WHITEHORSE - YUKON

RUBY 13-28
 Small Grid

Figure 11

SOIL GEOCHEMISTRY- Gold

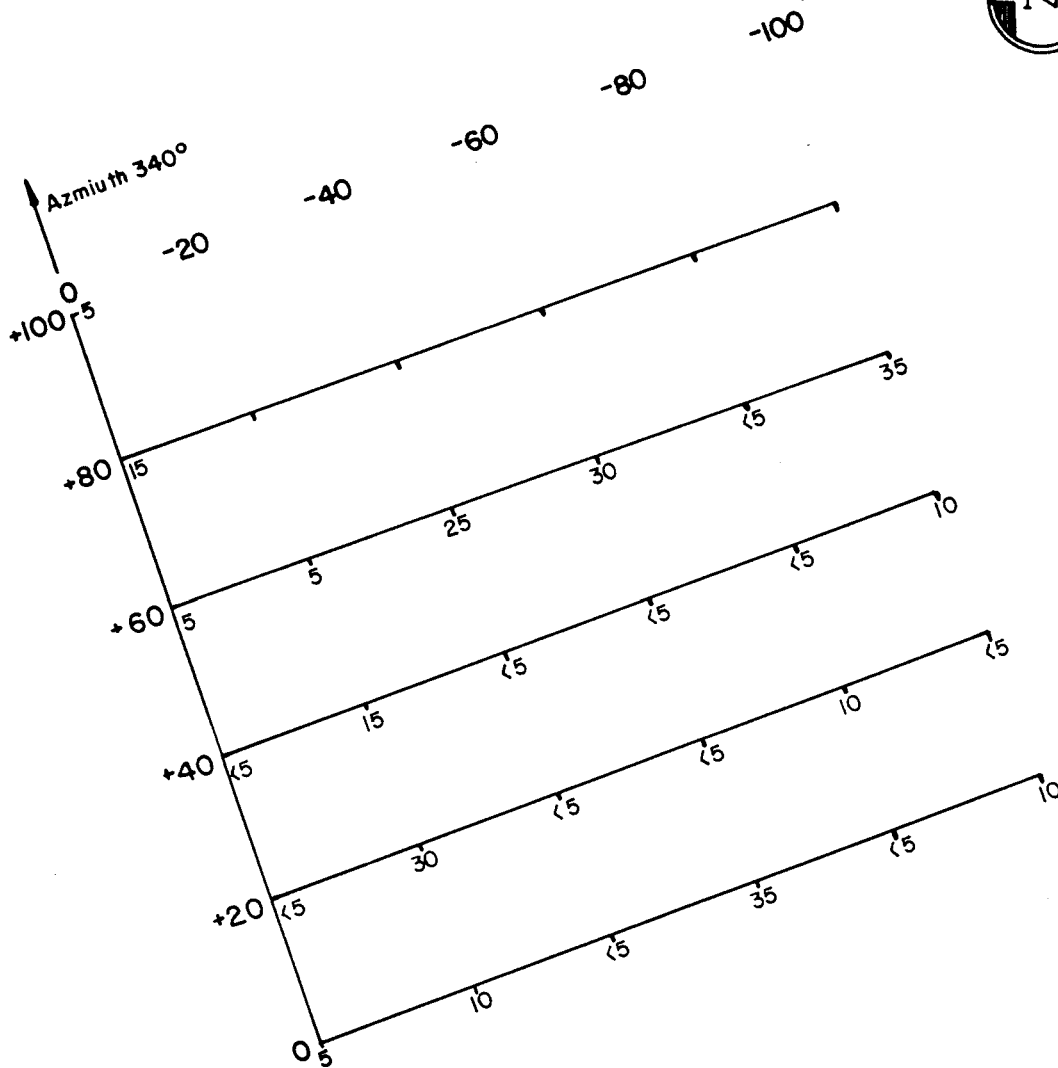
Mining District **WHITEHORSE**

N.T.S. Sheet No. **115 - H/15**

Scale **1:100** **1cm = 10m**

Drawn by **H.D.P.**

Date **87/11/11**



- <10 p.p.m.
- 11-49 p.p.m.
- 50-99 p.p.m.
- 100-199 p.p.m.
- >200 p.p.m.



UNITED KENO HILL MINES LTD.
EXPLORATION DEPARTMENT
WHITEHORSE — YUKON

RUBY 13-28
Small Grid

Figure 12

SOIL GEOCHEMISTRY-Arsenic

Mining District **WHITEHORSE**

N.T.S. Sheet No. **115-H/15**

Scale **1:100** **1cm = 10m**

Drawn by **H.D.P.**

Date **87/11/11**

References

Bostock, H.S., 1948, Physiography of the Canadian Cordillera with special reference to the area north of the 55th parallel: Geological Survey of Canada, Memoir 247.

Cockfield, W.E., 1927, Aishihik Lake District, Yukon: Canada Department of Mines, Summary Report, 1926, Part A.

Debicki, R.L. and Gilbert, G.W., 1986, Yukon Placer Mining Industry 1983-1984: Placer Mining Section and Mining Engineering Division, D.I.A.N.D., Yukon, p. 7-17.

Tempelman-Kluit, D.J., 1974, Reconnaissance geology of Aishihik Lake, Snag and part of Stewart River map-areas, west-central Yukon: Geological Survey of Canada Paper 73-41.

CERTIFICATE OF QUALIFICATIONS

I, Dennis R. Prince with business address of:

United Keno Hill Mines Limited
409 Black Street
Whitehorse, Yukon
Y1A 2N2

and residential address:

13 Koidern Avenue
Whitehorse, Yukon
Y1A 3N7
Tel: 403-667-4720

do hereby certify that:

1. I am a practicing geologist.
2. I hold a Bachelor of Science (Honours) Degree (1970) in Geology from Memorial University of Newfoundland.
3. I am a Fellow of the Geological Association of Canada.
4. I am a member of the Professional Geoscientists Society of Yukon.
5. I have been practicing my profession for 17 years. I was employed by Falconbridge Limited as an Exploration Geologist from 1970 to 1981 and am now employed by United Keno Hill Mines Limited in the capacity of Exploration Manager.
6. This report entitled "Geological and Geochemical Report on RUBY 13-28 claims" and dated "July 25 to July 30, 1987" is based on work supervised by me as an employee of United Keno Hill Mines Limited.
7. I have not received nor do I expect to receive any interest, either directly or indirectly, in the property concerned in this report or in United Keno Hill Mines Limited.

Respectfully submitted,



Dennis R. Prince,
B.Sc. (Hon.), FGAC

CERTIFICATE OF QUALIFICATIONS

I, Lori A. Walton with business address:

United Keno Hill Mines Limited
409 Black Street
Whitehorse, Yukon
Y1A 2N2

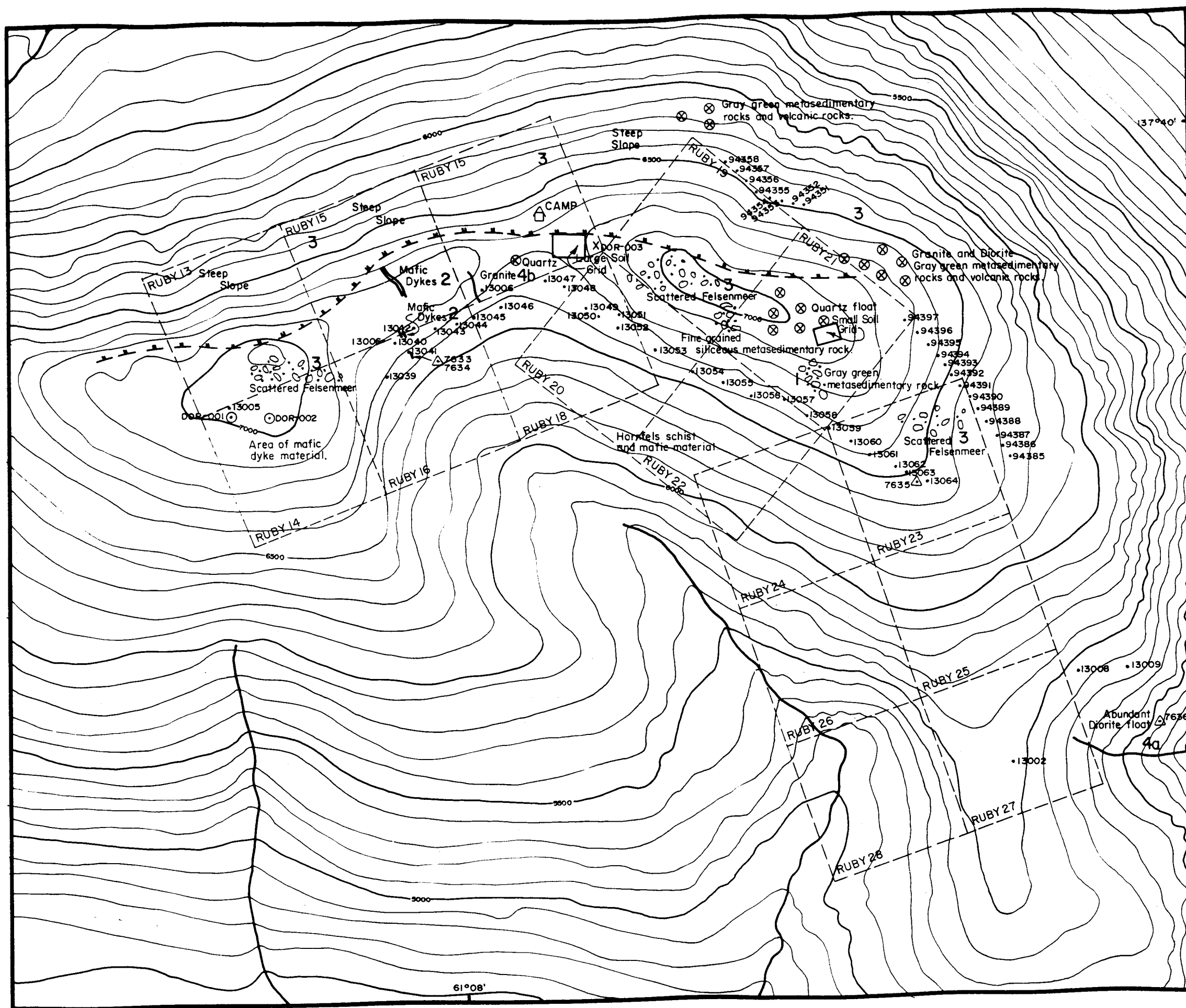
do hereby certify that:

1. I am a practicing geologist.
2. I hold a Bachelor of Science (Specialization) Degree (1982) in Geology from the University of Alberta.
3. I hold a Graduate Gemologist Degree (1983) from the Gemological Institute of America in California, U.S.A.
4. I hold a Master of Science Degree (1987) in Economic Geology from the University of Alberta.
5. I have been working in the field of mineral exploration since May of 1980.
6. This report entitled "Geological and Geochemical Report on the RUBY 13-28 claims" is based on work done on the property from July 25 to July 30, 1987.
7. I have not received nor do I expect to receive any interest, either directly or indirectly, in the property concerned in this report.

Respectfully submitted,



Lori A. Walton,
M.Sc., G.G.



LEGEND

TRIASSIC

- ④ Ruby Range Granodiorite
- ④a Diorite
- ④b Felsic Dyke

PALEOZOIC

- ③ Hornfelsed Schist

UNKNOWN AGE

- ② Mafic Dyke
- ① Gray-green Metasediment

- Dyke
- ⊗ Float
- ⊙ Rubble
- ⊙ Geology Point
- Soil Sample
- △ Rock Sample
- ▬ Cliff Bluff
- ⊠ Camp

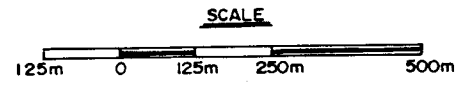


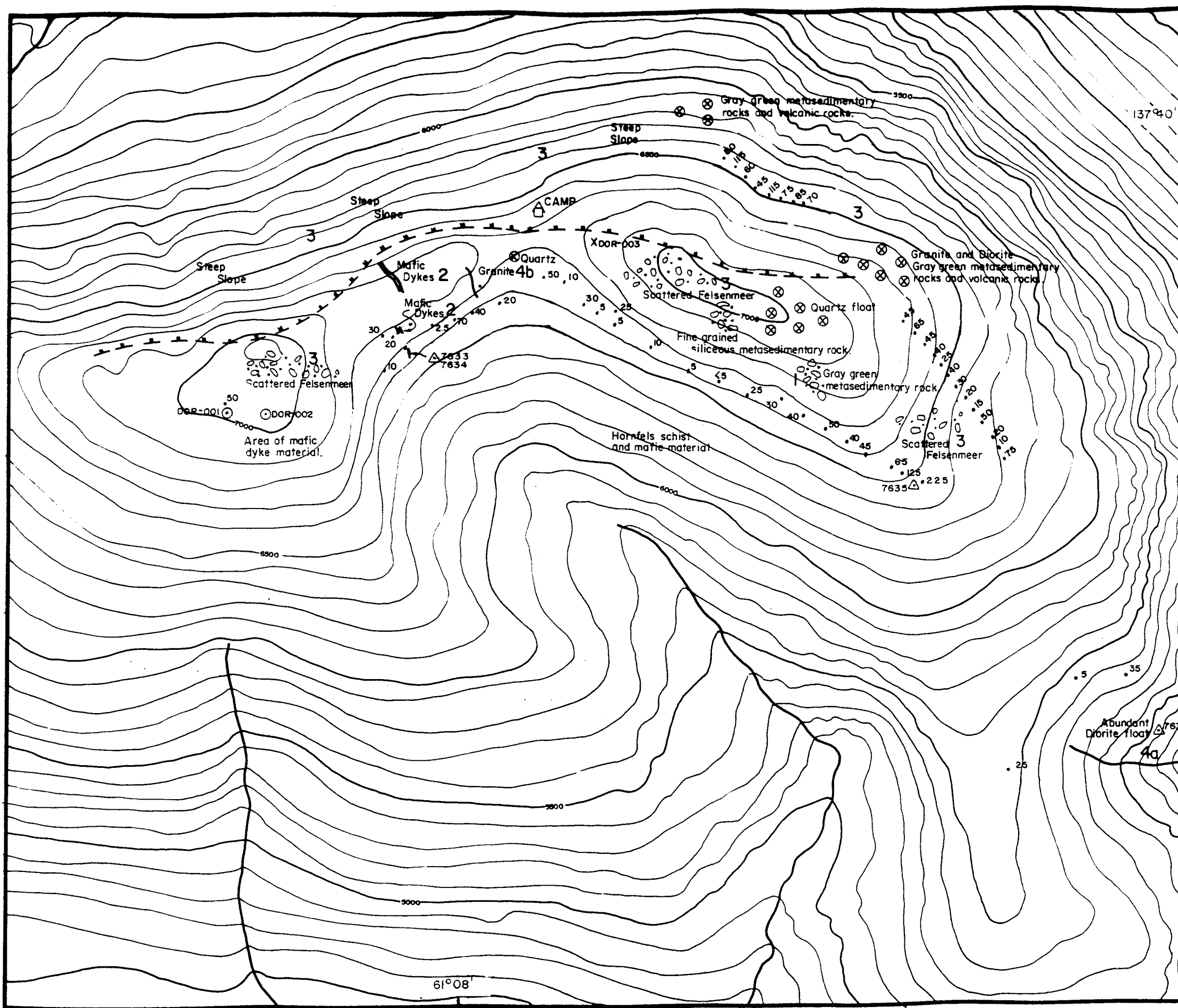
Figure 4

UNITED KENO HILL MINES LTD.
EXPLORATION DEPARTMENT
WHITEHORSE — YUKON

RUBY 13-27
GEOLOGY AND SAMPLE LOCATION MAP

Mining District WHITEHORSE
N.T.S. Sheet No. 115-H/4
Scale 1:12,500 1cm = 125m

Drawn by H.D.P. Date 87/09/30



LEGEND

- TRIASSIC**
- 4 Ruby Range Granodiorite
 - 4b Diorite
 - 4c Felsic Dyke
- PALEOZOIC**
- 3 Hornfelsed Schist
- UNKNOWN AGE**
- 2 Mafic Dyke
 - 1 Gray-green Metasediment

- Dyke
- ⊗ Float
- ☉ Rubble
- Geology Point
- Soil Sample, arsenic value (ppm)
- △ Rock Sample
- ▬ Cliff Bluff
- ⊞ Camp

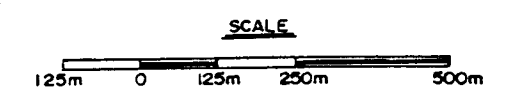


Figure 6

UNITED KENO HILL MINES LTD.
 EXPLORATION DEPARTMENT
 WHITEHORSE — YUKON

RUBY 13-27
 SOIL GEOCHEMISTRY-ARSENIC

Mining District WHITEHORSE
 N.T.S. Sheet No. 115-H/4
 Scale 1:12,500 1cm = 125m

Drawn by H.D.P.

Date 87/09/30

APPENDIX A

Project Costs

Salaries	\$6206.59
Hiring Expenses	150.16
Office Expenses	409.23
Geological Equipment	40.56
Camp Operation	
Equipment	289.33
Food	957.26
Fuel	10.66
Transport/Freight	12.52
Lodging	540.94
Assaying	2482.47
Transport	132.68
Aircraft	
Helicopter	3996.23
Vehicles	13.18
Air Photography	
Contract Labor	35.29
Company Equipment	17.00
Total	\$15301.16

APPENDIX B

Personnel and Contractors Employed

Geologist

Dennis Ouellette
409 Black Street
Whitehorse, Yukon
Y1A 2N2

Assistant

Jeff Bain
60 Woodland Avenue
Kitchener, Ontario
N2M 3G7

Assistant

Doug Davis
Box 2 site 2 R.R.3
Red Deer, Alberta
T4N 5E3

Helicopter Support

Trans North Turbo Air
Haines Junction, Yukon

Geochemical Analysis

Chemex Labs Ltd.
212 Brooksbank Ave.
North Vancouver, B.C.
Canada
V7J 2C1



Chemex Labs Ltd.

Analytical Chemists • Geochemists • Registered Assayers
212 BROOKSBANK AVE., NORTH VANCOUVER,
BRITISH COLUMBIA, CANADA V7J-2C1
PHONE (604) 984-0221

UNITED KENO HILL MINES LIMITED

409 BLACK ST.
WHITEHORSE, YUKON
Y1A 2N2

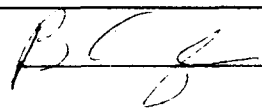
Project : RUB3/REC/R/G
Comments:

Page No. -A
Tot. Pages. 1
Date : 3-SEP-87
Invoice # : I-8719653
P.O. # : NONE

RUBY 13-28 Rock Samples

CERTIFICATE OF ANALYSIS A8719653

SAMPLE DESCRIPTION	PREP CODE	Au NAA ppb	Al %	Ag ppm	As ppm	Ba ppm	Be ppm	Bi ppm	Ca %	Cd ppm	Co ppm	Cr ppm	Cu ppm	Fe %	Ga ppm	Hg ppm	K %	La ppm	Mg %	Mn ppm
Rock Samples	205 238	< 1	4.45	< 0.2	< 5	510	< 0.5	2	2.03	< 0.5	20	123	13	2.62	10	< 1	0.95	10	1.67	242
	205 238	56	1.37	0.6	< 5	130	< 0.5	< 2	0.56	0.5	6	45	88	2.24	10	< 1	0.06	10	0.71	312
	205 238	< 1	2.62	< 0.2	< 5	100	< 0.5	2	1.03	< 0.5	18	47	23	4.73	10	< 1	0.02	< 10	1.31	517
	205 238	19	2.50	< 0.2	30	230	< 0.5	< 2	0.39	< 0.5	15	177	131	3.57	< 10	< 1	1.09	10	1.09	341
	205 238	< 1	0.81	< 0.2	5	10	< 0.5	< 2	0.03	< 0.5	1	118	< 1	0.85	< 10	< 1	0.02	< 10	0.35	233

CERTIFICATION : 



Chemex Labs Ltd.

Analytical Chemists • Geochemists • Registered Assayers
212 BROOKSBANK AVE., NORTH VANCOUVER,
BRITISH COLUMBIA, CANADA V7J-2C1
PHONE (604) 984-0221

UNITED KENO HILL MINES LIMITED

409 BLACK ST.
WHITEHORSE, YUKON
Y1A 2N2

Project : RUB3/REC/R/G
Comments:

Page No. -B
Tot. Pages 1
Date : 3-SEP-87
Invoice # : I-8719653
P.O. # : NONE

RUBY 13-28 Rock Samples

CERTIFICATE OF ANALYSIS A8719653

SAMPLE DESCRIPTION	PREP CODE		Mo	Na	Ni	P	Pb	Sb	Se	Sr	Ti	Tl	U	V	W	Zn
			ppm	%	ppm	ppm	ppm	ppm	ppm	ppm	%	ppm	ppm	ppm	ppm	ppm
Rock Samples	205	238	< 1	0.52	55	1150	< 2	< 5	10	326	0.17	10	< 10	84	< 5	43
	205	238	2	0.04	7	740	20	< 5	< 10	69	0.09	< 10	< 10	24	< 5	60
	205	238	< 1	0.01	7	580	16	< 5	< 10	183	0.39	< 10	< 10	97	< 5	87
	205	238	< 1	0.07	34	1160	< 2	< 5	< 10	45	0.18	10	< 10	58	< 5	54
	205	238	< 1	< 0.01	6	< 10	2	< 5	< 10	4	< 0.01	< 10	< 10	1	< 5	13

CERTIFICATION :



Chemex Labs Ltd.

Analytical Chemists * Geochemists * Registered Assayers

212 BROOKSBANK AVE., NORTH VANCOUVER,
BRITISH COLUMBIA, CANADA V7J-2C1

PHONE (604) 984-0221

TUNITED KENO HILL MINES LIMITED

409 BLACK ST.
WHITEHORSE, YUKON
Y1A 2N2

Project : RUB3/GRID/R/G

Comments:

Page No. -A

Tot. Pages: 1

Date : 3-SEP-87

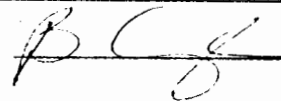
Invoice # : I-8719654

P.O. # : NONE

RUBY 13-28 Rock Sample

CERTIFICATE OF ANALYSIS A8719654

SAMPLE DESCRIPTION	PREP CODE		Au NAA	Al	Ag	As	Ba	Be	Bi	Ca	Cd	Co	Cr	Cu	Fe	Ga	Hg	K	La	Mg	Mn
			ppb	%	ppm	ppm	ppm	ppm	ppm	ppm	%	ppm	ppm	ppm	ppm	ppm	ppm	ppm	%	ppm	%
7637	205	238	3	5.49	0.2	< 5	410	< 0.5	2	3.25	< 0.5	27	124	92	2.89	20	< 1	0.57	< 10	1.14	211

CERTIFICATION : 



Chemex Labs Ltd.

Analytical Chemists • Geochemists • Registered Assayers
212 BROOKSBANK AVE., NORTH VANCOUVER,
BRITISH COLUMBIA, CANADA V7J-2C1
PHONE (604) 984-0221

UNITED KENO HILL MINES LIMITED

409 BLACK ST.
WHITEHORSE, YUKON
Y1A 2N2

Project : RUB3/GRID/R/G
Comments :

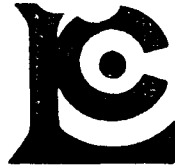
Page No. -B
Tot. Pages. 1
Date : 3-SEP-87
Invoice # : I-8719654
P.O. # : NONE

RUBY 13-28 Rock Sample

CERTIFICATE OF ANALYSIS A8719654

SAMPLE DESCRIPTION	PREP CODE		Mo	Na	Ni	P	Pb	Sb	Se	Sr	Ti	Tl	U	V	W	Zn
			ppm	%	ppm	ppm	ppm	ppm	ppm	ppm	%	ppm	ppm	ppm	ppm	ppm
7637	205	238	< 1	0.70	22	1140	12	< 5	< 10	541	0.14	< 10	< 10	85	< 5	28

CERTIFICATION :



Chemex Labs Ltd.

Analytical Chemists • Geochemists • Registered Assayers
 212 BROOKSBANK AVE., NORTH VANCOUVER,
 BRITISH COLUMBIA, CANADA V7J-2C1
 PHONE (604) 984-0221

1 JITED KENO HILL MINES LIMITED

409 BLACK ST.
 WHITEHORSE, YUKON
 Y1A 2N2

Project: RUB3/REC/S/G
 Comments:

Page No. -A
 Tot. Pages 2
 Date: 3-SEP-87
 Invoice #: I-8719645
 P.O. #: NONE

RUBY 13-28 Contour
 Soil Samples

CERTIFICATE OF ANALYSIS A8719645

SAMPLE DESCRIPTION	PREP CODE		Au NAA	Al	Ag	As	Ba	Be	Bi	Ca	Cd	Co	Cr	Cu	Fe	Ga	Hg	K	La	Mg	Mn
			ppb	%	ppm	ppm	ppm	ppm	ppm	%	ppm	ppm	ppm	ppm	%	ppm	ppm	%	ppm	%	ppm
13039	201	238	5	2.39	< 0.2	10	210	< 0.5	< 2	0.39	0.5	22	58	64	3.72	< 10	< 1	0.50	10	1.00	464
13040	201	238	4	2.58	< 0.2	20	310	< 0.5	4	0.60	< 0.5	21	83	51	3.84	< 10	< 1	0.50	10	1.37	524
13041	201	238	45	2.45	< 0.2	25	260	< 0.5	< 2	0.62	< 0.5	22	82	55	3.77	10	< 1	0.47	10	1.32	491
13042	201	238	80	2.38	< 0.2	50	220	< 0.5	4	0.50	< 0.5	22	66	63	3.72	< 10	< 1	0.40	10	1.08	450
13043	201	238	7	2.40	< 0.2	25	170	< 0.5	2	0.39	< 0.5	20	69	61	3.75	< 10	< 1	0.26	10	1.07	476
13044	201	238	12	2.29	< 0.2	70	180	< 0.5	2	0.30	< 0.5	17	59	56	3.83	< 10	< 1	0.24	10	0.95	400
13045	201	238	3	2.65	< 0.2	40	250	< 0.5	< 2	0.31	< 0.5	19	66	65	4.08	< 10	1	0.47	10	1.04	458
13046	201	238	5	2.64	< 0.2	20	320	< 0.5	< 2	0.35	< 0.5	18	67	54	3.90	< 10	< 1	0.60	10	1.05	463
13047	201	238	6	3.12	< 0.2	50	310	0.5	2	0.41	< 0.5	24	73	69	4.64	< 10	1	0.41	10	1.12	735
13048	201	238	17	2.57	< 0.2	10	280	0.5	< 2	0.42	< 0.5	19	65	58	3.91	< 10	< 1	0.47	10	0.99	481
13049	201	238	5	3.16	< 0.2	30	280	0.5	< 2	0.30	< 0.5	23	79	81	4.60	< 10	1	0.54	10	1.24	560
13050	201	238	5	2.39	< 0.2	5	290	0.5	< 2	0.33	< 0.5	19	66	55	3.67	< 10	< 1	0.45	10	0.99	478
13051	201	238	3	2.96	< 0.2	25	270	0.5	2	0.39	< 0.5	21	83	73	4.45	< 10	< 1	0.36	10	1.22	552
13052	201	238	4	2.96	< 0.2	< 5	280	0.5	2	0.40	0.5	26	83	72	4.62	< 10	< 1	0.43	10	1.21	684
13053	201	238	< 1	2.34	< 0.2	10	190	< 0.5	< 2	0.24	< 0.5	16	61	55	3.72	< 10	< 1	0.45	10	0.95	439
13054	201	238	18	2.35	< 0.2	5	200	< 0.5	2	0.29	0.5	17	61	53	3.60	< 10	1	0.40	10	0.95	460
13055	201	238	3	3.02	< 0.2	< 5	230	0.5	< 2	0.32	1.0	24	78	69	4.68	10	1	0.47	10	1.21	679
13056	201	238	25	2.81	< 0.2	25	210	0.5	2	0.38	0.5	22	72	71	4.45	< 10	1	0.43	10	1.12	611
13057	201	238	10	2.19	< 0.2	30	240	< 0.5	2	0.43	0.5	19	62	49	3.97	< 10	< 1	0.32	10	0.88	629
13058	201	238	5	2.22	< 0.2	40	180	< 0.5	2	0.37	< 0.5	20	61	50	3.79	< 10	< 1	0.23	10	0.89	633
13059	201	238	6	2.81	< 0.2	50	270	0.5	< 2	0.35	0.5	26	72	79	4.42	< 10	1	0.50	10	1.12	652
13060	201	238	3	2.53	< 0.2	40	250	< 0.5	2	0.30	< 0.5	19	66	56	4.16	< 10	< 1	0.46	10	1.01	492
13061	201	238	7	2.56	< 0.2	45	190	0.5	< 2	0.31	< 0.5	25	66	68	3.92	< 10	< 1	0.44	10	1.02	596
13062	201	238	9	2.92	< 0.2	65	220	< 0.5	8	0.54	0.5	34	78	89	4.52	< 10	< 1	0.27	10	1.21	710
13063	201	238	827	2.89	< 0.2	125	220	< 0.5	4	0.39	< 0.5	34	84	80	4.43	< 10	< 1	0.42	10	1.19	616
13064	201	238	40	2.61	< 0.2	225	170	< 0.5	2	0.21	0.5	29	61	67	4.22	< 10	< 1	0.47	10	0.94	489
94351	201	238	10	3.11	< 0.2	70	350	< 0.5	2	0.43	< 0.5	30	79	89	4.98	< 10	< 1	0.64	10	1.23	775
94352	201	238	479	3.08	< 0.2	85	280	< 0.5	6	0.31	< 0.5	30	84	92	4.86	< 10	< 1	0.63	10	1.23	668
94353	201	238	64	2.93	< 0.2	75	310	< 0.5	2	0.42	< 0.5	29	79	91	4.70	< 10	< 1	0.66	10	1.19	670
94354	201	238	425	3.23	< 0.2	115	330	0.5	10	0.36	< 0.5	30	86	93	4.71	< 10	< 1	0.61	10	1.27	660
94355	201	238	6	2.75	< 0.2	45	300	< 0.5	2	0.30	< 0.5	20	72	62	4.26	< 10	< 1	0.57	10	1.14	547
94356	201	238	21	2.68	< 0.2	60	330	< 0.5	6	0.35	0.5	21	69	63	4.05	10	< 1	0.63	10	1.12	551
94357	201	238	32	2.76	< 0.2	115	320	< 0.5	< 2	0.35	0.5	24	72	67	4.25	< 10	< 1	0.66	10	1.11	561
94358	201	238	136	2.45	< 0.2	80	230	< 0.5	2	0.39	< 0.5	24	64	82	4.05	< 10	< 1	0.52	10	1.03	514
94385	201	238	15	3.07	< 0.2	75	250	0.5	2	0.27	< 0.5	23	72	68	4.58	< 10	< 1	0.54	10	1.07	677
94386	201	238	5	2.78	< 0.2	10	270	< 0.5	2	0.32	< 0.5	17	69	51	4.07	< 10	< 1	0.48	10	1.05	497
94387	201	238	3	2.89	< 0.2	20	300	< 0.5	< 2	0.38	< 0.5	21	72	53	4.01	< 10	< 1	0.54	10	1.05	608
94388	201	238	11	3.17	< 0.2	50	290	< 0.5	4	0.37	< 0.5	23	73	62	4.51	< 10	< 1	0.61	10	1.13	624
94389	201	238	2	2.70	< 0.2	15	260	< 0.5	< 2	0.29	< 0.5	20	66	53	3.99	< 10	< 1	0.52	10	1.02	565
94390	201	238	2	2.30	< 0.2	20	270	< 0.5	< 2	0.47	< 0.5	17	57	49	3.72	< 10	< 1	0.34	10	0.84	524

CERTIFICATION :



Chemex Labs Ltd.

Analytical Chemists * Geochemists * Registered Assayers

112 BROOKSBANK AVE., NORTH VANCOUVER,
BRITISH COLUMBIA, CANADA V7J-2C1

PHONE (604) 984-0221

T. UNITED KENO HILL MINES LIMITED

409 BLACK ST.
WHITEHORSE, YUKON
Y1A 2N2

Project : RUB3/REC/S/G

Comments:

Page No. -B

Tot. Page 2

Date : 3-SEP-87

Invoice # : I-8719645

P.O. # : NONE

RUBY 13-28 Contour Soil

Samples

CERTIFICATE OF ANALYSIS A8719645

SAMPLE DESCRIPTION	PREP CODE	Mo ppm	Na %	Ni ppm	P ppm	Pb ppm	Sb ppm	Se ppm	Sr ppm	Ti %	Tl ppm	U ppm	V ppm	W ppm	Zn ppm
13039	201 238	< 1	0.02	52	1080	8	< 5	< 10	29	0.17	< 10	< 10	99	< 5	90
13040	201 238	< 1	0.05	61	1250	6	< 5	< 10	50	0.21	< 10	< 10	99	< 5	94
13041	201 238	< 1	0.05	60	1310	2	5	< 10	50	0.19	< 10	< 10	95	< 5	92
13042	201 238	< 1	0.04	58	1220	6	5	< 10	40	0.18	< 10	< 10	95	< 5	93
13043	201 238	2	0.03	53	1070	8	5	< 10	35	0.17	< 10	< 10	92	< 5	96
13044	201 238	1	0.02	45	920	2	< 5	< 10	28	0.16	< 10	< 10	105	< 5	90
13045	201 238	2	0.02	48	1180	< 2	< 5	< 10	33	0.17	< 10	< 10	112	< 5	91
13046	201 238	< 1	0.02	48	970	< 2	< 5	< 10	34	0.18	< 10	< 10	114	< 5	81
13047	201 238	2	0.02	50	1350	12	5	< 10	43	0.18	< 10	< 10	132	< 5	84
13048	201 238	< 1	0.02	47	1210	< 2	5	< 10	40	0.17	< 10	< 10	114	< 5	74
13049	201 238	1	0.03	70	720	2	5	< 10	33	0.21	< 10	< 10	125	< 5	81
13050	201 238	< 1	0.02	47	880	< 2	< 5	< 10	30	0.17	< 10	< 10	110	< 5	70
13051	201 238	1	0.02	55	1210	< 2	5	< 10	41	0.19	< 10	< 10	124	< 5	86
13052	201 238	< 1	0.02	57	1080	2	< 5	< 10	37	0.20	< 10	< 10	130	< 5	94
13053	201 238	< 1	0.02	42	600	8	5	< 10	25	0.18	< 10	< 10	106	< 5	70
13054	201 238	< 1	0.02	45	670	6	5	< 10	28	0.18	< 10	< 10	101	< 5	69
13055	201 238	< 1	0.02	51	940	10	< 5	< 10	35	0.22	< 10	< 10	132	< 5	94
13056	201 238	< 1	0.02	51	1180	10	5	< 10	37	0.20	< 10	< 10	127	< 5	96
13057	201 238	< 1	0.02	40	1250	< 2	< 5	< 10	42	0.17	< 10	< 10	118	< 5	79
13058	201 238	1	0.02	40	1310	2	< 5	< 10	38	0.16	< 10	< 10	107	< 5	81
13059	201 238	< 1	0.02	59	1050	< 2	5	< 10	37	0.19	< 10	< 10	125	< 5	101
13060	201 238	1	0.02	46	980	8	10	< 10	31	0.18	< 10	< 10	118	< 5	86
13061	201 238	1	0.02	58	740	2	5	< 10	34	0.18	< 10	< 10	104	< 5	86
13062	201 238	< 1	0.03	67	1330	< 2	5	< 10	56	0.15	< 10	< 10	109	< 5	110
13063	201 238	1	0.04	78	900	18	5	< 10	51	0.17	< 10	< 10	99	< 5	106
13064	201 238	1	0.01	55	530	2	5	< 10	35	0.18	< 10	< 10	107	< 5	91
94351	201 238	< 1	0.02	66	1170	4	5	< 10	38	0.21	< 10	< 10	137	< 5	101
94352	201 238	< 1	0.02	78	790	4	< 5	< 10	29	0.20	< 10	< 10	135	< 5	93
94353	201 238	2	0.02	75	1170	8	< 5	< 10	31	0.18	< 10	< 10	130	< 5	94
94354	201 238	< 1	0.02	83	860	< 2	< 5	< 10	38	0.20	< 10	< 10	131	< 5	89
94355	201 238	< 1	0.02	54	720	8	5	< 10	28	0.21	< 10	< 10	125	< 5	91
94356	201 238	< 1	0.02	50	990	4	< 5	< 10	29	0.19	< 10	< 10	116	< 5	93
94357	201 238	< 1	0.02	56	1010	10	< 5	< 10	29	0.20	< 10	< 10	122	< 5	90
94358	201 238	< 1	0.02	64	1350	8	5	< 10	32	0.16	< 10	< 10	104	< 5	90
94385	201 238	1	0.02	51	830	14	5	< 10	30	0.21	< 10	< 10	128	< 5	91
94386	201 238	1	0.02	48	670	< 2	5	< 10	31	0.22	< 10	< 10	118	< 5	83
94387	201 238	1	0.02	52	810	< 2	< 5	< 10	32	0.24	< 10	< 10	118	< 5	88
94388	201 238	< 1	0.02	51	930	12	< 5	< 10	37	0.23	< 10	< 10	130	< 5	91
94389	201 238	< 1	0.02	47	510	< 2	< 5	< 10	29	0.23	< 10	< 10	115	< 5	83
94390	201 238	< 1	0.02	39	1050	4	5	< 10	44	0.18	< 10	< 10	107	< 5	75

CERTIFICATION :

BCG



Chemex Labs Ltd.

Analytical Chemists • Geochemists • Registered Assayers
212 BROOKSBANK AVE., NORTH VANCOUVER,
BRITISH COLUMBIA, CANADA V7J-2C1
PHONE (604) 984-0221

TITATED KENO HILL MINES LIMITED

409 BLACK ST.
WHITEHORSE, YUKON
Y1A 2N2

Project : RUB3/REC/S/G
Comments :

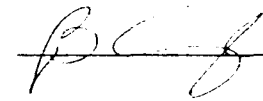
Page No. -A
Tot. Pages 4
Date : 3-SEP-87
Invoice # : I-8719645
P.O. # : NONE

RUBY 13-28 Contour Soil

Samples

CERTIFICATE OF ANALYSIS A8719645

SAMPLE DESCRIPTION	PREP CODE		Au NAA	Al	Ag	As	Ba	Be	Bi	Ca	Cd	Co	Cr	Cu	Fe	Ga	Hg	K	La	Mg	Mn
			ppb	%	ppm	ppm	ppm	ppm	ppm	%	ppm	ppm	ppm	ppm	%	ppm	ppm	%	ppm	%	ppm
Contour Soil Samples	201	238	5	2.64	< 0.2	30	230	< 0.5	4	0.30	< 0.5	18	65	52	3.96	< 10	< 1	0.37	10	0.97	461
	201	238	3	2.32	< 0.2	40	190	< 0.5	< 2	0.30	< 0.5	17	59	43	3.47	< 10	< 1	0.34	10	0.91	448
	201	238	5	2.42	< 0.2	25	200	< 0.5	4	0.27	< 0.5	16	55	53	3.82	< 10	< 1	0.30	10	0.90	435
	201	238	9	2.68	< 0.2	40	210	< 0.5	4	0.28	< 0.5	18	63	61	4.07	< 10	< 1	0.29	10	1.02	483
	201	238	6	2.52	< 0.2	45	210	< 0.5	4	0.37	< 0.5	19	63	55	4.08	< 10	< 1	0.34	10	1.01	510
	201	238	7	2.82	< 0.2	65	250	< 0.5	4	0.40	< 0.5	23	67	64	4.21	< 10	< 1	0.36	10	1.08	610
94397	201	238	9	2.39	< 0.2	45	260	< 0.5	< 2	0.49	< 0.5	19	55	52	3.65	< 10	< 1	0.41	10	0.95	486

CERTIFICATION : 



Chemex Labs Ltd.

Analytical Chemists • Geochemists • Registered Assayers
212 BROOKSBANK AVE., NORTH VANCOUVER,
BRITISH COLUMBIA, CANADA V7J-2C1
PHONE (604) 984-0221

T UNITED KENO HILL MINES LIMITED

409 BLACK ST.
WHITEHORSE, YUKON
Y1A 2N2

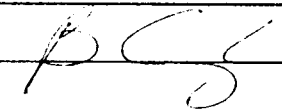
Project : RUB3/REC/S/G
Comments:

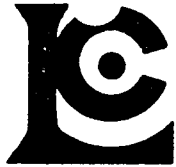
Page No -B
Tot. Page. 2
Date : 3-SEP-87
Invoice # : I-8719645
P.O. # : NONE

RUBY 13-28 Contour Soil
Samples

CERTIFICATE OF ANALYSIS A8719645

SAMPLE DESCRIPTION	PREP CODE		Mb	Na	Ni	P	Pb	Sb	Se	Sr	Ti	Tl	U	V	W	Zn
			ppm	%	ppm	ppm	ppm	ppm	ppm	ppm	%	ppm	ppm	ppm	ppm	ppm
Contour Soil Samples	201	238	< 1	0.01	43	920	14	5	< 10	30	0.18	< 10	< 10	111	< 5	83
	201	238	< 1	0.01	41	830	8	5	< 10	25	0.17	< 10	< 10	96	< 5	76
	201	238	< 1	0.01	42	900	8	< 5	< 10	28	0.17	< 10	< 10	104	< 5	83
	201	238	< 1	0.01	48	930	6	10	< 10	29	0.19	< 10	< 10	112	< 5	88
	201	238	< 1	0.02	45	940	8	< 5	< 10	33	0.19	< 10	< 10	114	< 5	89
94396	201	238	< 1	0.02	52	1130	8	< 5	< 10	38	0.21	< 10	< 10	120	< 5	92
94397	201	238	< 1	0.02	48	1200	10	5	< 10	40	0.20	< 10	< 10	103	< 5	85

CERTIFICATION : 



Chemex Labs Ltd.

Analytical Chemists • Geochemists • Registered Assayers
 212 BROOKSBANK AVE., NORTH VANCOUVER,
 BRITISH COLUMBIA, CANADA V7J-2C1
 PHONE (604) 984-0221

T NITED KENO HILL MINES LIMITED

409 BLACK ST.
 WHITEHORSE, YUKON
 Y1A 2N2

Project : RUB3/GRID/S/E
 Comments :

Page No. -A
 Tot. Pages 4
 Date : 3-SEP-87
 Invoice # : I-8719643
 P.O. # : NONE

RUBY 13-28 Soil Samples

CERTIFICATE OF ANALYSIS A8719643

SAMPLE DESCRIPTION	PREP CODE	Au NAA ppb	Al %	Ag ppm	As ppm	Ba ppm	Be ppm	Bi ppm	Ca %	Cd ppm	Co ppm	Cr ppm	Cu ppm	Fe %	Ga ppm	Hg ppm	K %	La ppm	Mg %	Mn ppm
13101	201 238	58	3.08	< 0.2	215	230	0.5	< 2	0.41	< 0.5	28	88	88	4.70	< 10	< 1	0.60	10	1.18	497
13102	201 238	7	3.14	< 0.2	65	260	1.0	< 2	0.31	< 0.5	29	86	94	4.73	< 10	< 1	0.62	10	1.20	601
13103	201 238	11	2.82	< 0.2	40	230	0.5	< 2	0.40	< 0.5	23	84	74	4.37	< 10	< 1	0.49	10	1.14	554
13104	201 238	4	2.36	< 0.2	5	190	0.5	< 2	0.41	< 0.5	19	66	61	3.71	< 10	< 1	0.49	10	1.06	432
13105	201 238	7	2.43	< 0.2	< 5	250	< 0.5	< 2	0.39	0.5	19	65	61	4.07	< 10	< 1	0.50	10	1.04	465
13106	201 238	6	2.56	< 0.2	35	270	0.5	< 2	0.48	< 0.5	25	64	85	4.22	< 10	< 1	0.58	10	1.07	521
13107	201 238	21	2.49	< 0.2	45	190	0.5	< 2	0.28	< 0.5	18	69	51	3.86	< 10	< 1	0.38	10	1.04	444
13108	201 238	2	2.49	< 0.2	25	270	< 0.5	< 2	0.31	< 0.5	19	77	59	3.98	< 10	< 1	0.58	10	1.17	452
13109	201 238	5	3.00	< 0.2	20	320	0.5	< 2	0.48	< 0.5	24	82	89	4.62	< 10	< 1	0.65	10	1.29	570
13110	201 238	1	2.70	< 0.2	40	240	0.5	< 2	0.38	< 0.5	22	75	61	4.23	< 10	< 1	0.39	10	1.08	538
13111	201 238	3	3.43	< 0.2	55	310	1.0	< 2	0.27	< 0.5	34	102	90	5.02	< 10	< 1	0.71	10	1.28	641
13112	201 238	22	2.94	< 0.2	95	260	0.5	< 2	0.32	< 0.5	27	80	76	4.36	< 10	< 1	0.57	10	1.13	530
13113	201 238	119	2.86	< 0.2	260	250	0.5	< 2	0.47	< 0.5	30	85	102	4.75	< 10	< 1	0.59	10	1.16	525
13114	201 238	4	2.98	< 0.2	20	240	< 0.5	< 2	0.36	0.5	29	88	74	4.56	< 10	< 1	0.30	10	1.15	704
13115	201 238	17	2.91	< 0.2	50	260	1.0	< 2	0.49	< 0.5	34	103	96	4.61	< 10	< 1	0.57	10	1.33	597
13116	201 238	7	2.88	< 0.2	35	300	< 0.5	2	0.40	< 0.5	19	77	50	4.32	< 10	< 1	0.38	10	1.14	541
13117	201 238	935	2.48	< 0.2	60	230	0.5	< 2	0.58	< 0.5	24	64	86	4.21	< 10	< 1	0.50	20	1.02	551
13118	201 238	22	2.60	< 0.2	50	220	< 0.5	< 2	0.40	< 0.5	20	65	57	4.04	< 10	< 1	0.43	20	1.04	521
13119	201 238	1	2.91	< 0.2	25	260	0.5	< 2	0.36	< 0.5	23	75	64	4.22	< 10	< 1	0.48	10	1.14	471
13120	201 238	2	2.48	< 0.2	25	230	0.5	< 2	0.33	< 0.5	17	70	57	4.21	< 10	< 1	0.28	10	0.96	439
13121	201 238	4	3.02	< 0.2	25	320	1.0	< 2	0.44	< 0.5	25	77	104	4.81	< 10	< 1	0.58	10	1.22	558
13122	201 238	10	2.73	< 0.2	35	260	0.5	< 2	0.43	< 0.5	25	73	70	4.35	< 10	< 1	0.48	10	1.07	584
13124	201 238	6	2.77	< 0.2	20	270	0.5	< 2	0.43	< 0.5	22	72	68	4.29	< 10	< 1	0.46	10	1.08	575
13126	201 238	2	2.76	< 0.2	15	260	0.5	< 2	0.37	< 0.5	21	74	56	4.17	< 10	< 1	0.39	10	1.07	510
13127	201 238	3	2.83	< 0.2	35	280	0.5	< 2	0.34	< 0.5	20	73	52	4.22	< 10	< 1	0.51	10	1.12	580
13128	201 238	2	2.75	< 0.2	20	240	0.5	< 2	0.35	< 0.5	20	71	55	4.13	< 10	< 1	0.53	10	1.06	552
13129	201 238	6	2.95	< 0.2	55	270	1.5	< 2	0.26	< 0.5	29	75	94	4.75	< 10	< 1	0.58	10	1.08	531
13130	201 238	7	2.23	< 0.2	35	200	0.5	< 2	0.37	< 0.5	25	63	52	4.08	< 10	< 1	0.23	10	0.89	788
13131	201 238	12	2.60	< 0.2	45	270	0.5	< 2	0.31	0.5	20	72	65	4.36	< 10	< 1	0.38	10	1.05	553
13132	201 238	< 1	3.23	< 0.2	< 5	410	0.5	< 2	0.19	0.5	27	144	80	4.90	< 10	< 1	1.21	10	1.87	457
13133	201 238	2	3.30	< 0.2	45	310	1.5	2	0.38	< 0.5	32	85	102	5.23	< 10	< 1	0.63	10	1.20	622
13134	201 238	3	3.27	< 0.2	40	320	1.0	< 2	0.36	< 0.5	29	92	86	4.72	< 10	< 1	0.57	10	1.20	551
13135	201 238	4	2.62	< 0.2	20	270	0.5	< 2	0.37	< 0.5	19	72	56	4.14	< 10	< 1	0.50	10	1.05	525
13136	201 238	12	3.10	< 0.2	35	270	0.5	< 2	0.28	0.5	31	78	97	4.52	< 10	< 1	0.55	10	1.09	575
13137	201 238	6	3.18	< 0.2	65	360	1.5	< 2	0.47	< 0.5	27	85	108	5.16	< 10	< 1	0.72	10	1.22	590
13138	201 238	2	2.91	< 0.2	< 5	370	< 0.5	< 2	0.35	0.5	21	85	57	4.62	< 10	< 1	0.41	10	1.18	554
13139	201 238	18	2.59	< 0.2	45	230	0.5	< 2	0.36	< 0.5	21	66	73	4.24	< 10	< 1	0.52	10	1.03	485
13140	201 238	17	2.17	< 0.2	70	180	0.5	< 2	0.47	< 0.5	21	55	56	3.59	< 10	< 1	0.41	10	0.91	456
13141	201 238	3	2.54	0.2	25	240	< 0.5	< 2	0.31	< 0.5	16	64	56	4.15	< 10	< 1	0.51	10	0.99	485
13142	201 238	15	2.59	0.4	15	310	< 0.5	< 2	0.41	< 0.5	20	64	63	4.44	< 10	< 1	0.49	10	0.96	591

CERTIFICATION :



Chemex Labs Ltd.

Analytical Chemists • Geochemists • Registered Assayers
 212 BROOKSBANK AVE. NORTH VANCOUVER,
 BRITISH COLUMBIA, CANADA V7J-2C1
 PHONE (604) 984-0221

T NITED KENO HILL MINES LIMITED

409 BLACK ST.
 WHITEHORSE, YUKON
 Y1A 2N2

Project : RUB3/GRID/S/E
 Comments :

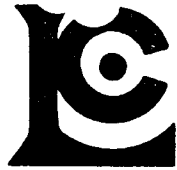
Page No. -B
 Tot. Pages 4
 Date : 3-SEP-87
 Invoice # : 1-8719643
 P.O. # : NONE

RUBY 13-28 Soil Samples

CERTIFICATE OF ANALYSIS A8719643

SAMPLE DESCRIPTION	PREP CODE	Mo ppm	Na %	Ni ppm	P ppm	Pb ppm	Sb ppm	Se ppm	Sr ppm	Ti %	Tl ppm	U ppm	V ppm	W ppm	Zn ppm
13101	201 238	< 1	0.03	74	720	14	< 5	10	45	0.20	< 10	< 10	126	10	85
13102	201 238	< 1	0.02	74	630	16	< 5	< 10	31	0.22	< 10	< 10	131	< 5	77
13103	201 238	< 1	0.02	60	820	12	< 5	< 10	37	0.21	< 10	< 10	122	< 5	74
13104	201 238	< 1	0.02	53	650	12	< 5	< 10	34	0.20	< 10	< 10	106	< 5	69
13105	201 238	< 1	0.02	44	880	10	< 5	10	31	0.20	< 10	< 10	114	5	78
13106	201 238	< 1	0.02	59	1150	6	< 5	10	35	0.20	< 10	< 10	114	< 5	84
13107	201 238	< 1	0.01	46	670	2	< 5	< 10	28	0.18	< 10	< 10	112	5	78
13108	201 238	< 1	0.02	46	800	12	< 5	< 10	26	0.19	< 10	< 10	122	< 5	86
13109	201 238	< 1	0.02	66	1220	8	< 5	10	37	0.23	< 10	< 10	128	5	99
13110	201 238	< 1	0.02	51	720	4	< 5	< 10	35	0.21	< 10	< 10	121	< 5	78
13111	201 238	< 1	0.02	93	610	4	< 5	< 10	29	0.21	< 10	< 10	139	10	89
13112	201 238	< 1	0.02	64	740	< 2	< 5	< 10	34	0.20	< 10	< 10	121	< 5	77
13113	201 238	< 1	0.03	73	1110	< 2	< 5	< 10	64	0.18	< 10	< 10	116	< 5	85
13114	201 238	< 1	0.02	63	1150	10	< 5	< 10	37	0.18	< 10	< 10	126	5	77
13115	201 238	< 1	0.03	101	990	8	< 5	< 10	41	0.21	< 10	< 10	112	5	79
13116	201 238	< 1	0.02	40	780	6	< 5	< 10	33	0.23	< 10	< 10	130	< 5	78
13117	201 238	< 1	0.02	60	1350	10	< 5	< 10	43	0.19	< 10	< 10	113	< 5	89
13118	201 238	< 1	0.02	44	580	< 2	< 5	< 10	35	0.22	< 10	< 10	116	< 5	74
13119	201 238	< 1	0.03	63	570	8	< 5	< 10	36	0.21	< 10	< 10	121	< 5	79
13120	201 238	< 1	0.02	41	1020	4	< 5	< 10	30	0.18	< 10	< 10	121	< 5	69
13121	201 238	< 1	0.02	59	1080	4	< 5	< 10	38	0.23	< 10	< 10	133	< 5	95
13122	201 238	< 1	0.02	50	890	10	< 5	< 10	38	0.20	< 10	< 10	121	< 5	78
13124	201 238	< 1	0.02	49	1000	4	< 5	< 10	37	0.20	< 10	< 10	120	5	81
13126	201 238	< 1	0.02	43	930	6	< 5	< 10	32	0.19	< 10	< 10	122	< 5	86
13127	201 238	< 1	0.01	46	830	6	< 5	< 10	29	0.20	< 10	< 10	127	5	84
13128	201 238	< 1	0.02	45	720	10	< 5	< 10	30	0.20	< 10	< 10	120	5	76
13129	201 238	< 1	0.01	72	550	< 2	< 5	< 10	28	0.20	< 10	< 10	126	< 5	79
13130	201 238	< 1	0.01	33	1140	< 2	< 5	< 10	33	0.16	< 10	< 10	111	< 5	73
13131	201 238	< 1	0.02	41	770	14	< 5	< 10	29	0.19	< 10	< 10	121	5	77
13132	201 238	< 1	0.02	41	510	4	< 5	< 10	39	0.22	< 10	< 10	175	5	115
13133	201 238	< 1	0.03	72	980	4	< 5	< 10	39	0.20	< 10	< 10	137	5	85
13134	201 238	< 1	0.02	67	840	< 2	< 5	< 10	35	0.18	< 10	< 10	137	< 5	85
13135	201 238	< 1	0.02	48	1050	4	< 5	< 10	33	0.19	< 10	< 10	121	< 5	79
13136	201 238	< 1	0.02	78	630	18	< 5	< 10	30	0.18	< 10	< 10	121	< 5	77
13137	201 238	< 1	0.03	75	1210	4	< 5	< 10	42	0.21	< 10	< 10	137	5	87
13138	201 238	< 1	0.02	43	630	6	< 5	< 10	31	0.24	< 10	< 10	141	< 5	74
13139	201 238	< 1	0.02	54	760	6	< 5	< 10	31	0.20	< 10	< 10	117	10	77
13140	201 238	< 1	0.02	45	900	6	< 5	< 10	35	0.18	< 10	< 10	101	< 5	69
13141	201 238	< 1	0.02	42	840	6	< 5	10	30	0.19	< 10	< 10	115	< 5	72
13142	201 238	< 1	0.02	47	1240	4	< 5	20	37	0.17	< 10	< 10	115	< 5	74

CERTIFICATION :



Chemex Labs Ltd.

Analytical Chemists * Geochemists * Registered Assayers
 212 BROOKSBANK AVE., NORTH VANCOUVER,
 BRITISH COLUMBIA, CANADA V7J-2C1
 PHONE (604) 984-0221

UNITED KENO HILL MINES LIMITED

409 BLACK ST.
 WHITEHORSE, YUKON
 Y1A 2N2

Project : RUB3/GRID/S/E
 Comments :

Page No. -A
 Tot. Pages 4
 Date : 3-SEP-87
 Invoice # : I-8719643
 P.O. # : NONE

RUBY 13-28 Soil Samples

CERTIFICATE OF ANALYSIS A8719643

SAMPLE DESCRIPTION	PREP CODE	Au NAA ppb	Al %	Ag ppm	As ppm	Ba ppm	Be ppm	Bi ppm	Ca %	Cd ppm	Co ppm	Cr ppm	Cu ppm	Fe %	Ga ppm	Hg ppm	K %	La ppm	Mg %	Mn ppm
13143	201 238	33	3.04	0.4	20	330	< 0.5	< 2	0.43	< 0.5	25	88	88	4.56	< 10	< 1	0.61	10	1.16	529
13144	201 238	4	2.52	0.2	25	250	< 0.5	< 2	0.32	< 0.5	20	62	59	3.98	< 10	< 1	0.50	10	0.95	474
13145	201 238	73	2.31	0.4	145	190	< 0.5	< 2	0.30	< 0.5	23	55	68	3.92	< 10	< 1	0.42	10	0.89	454
13146	201 238	3	2.18	0.4	15	190	< 0.5	< 2	0.41	< 0.5	16	52	45	3.70	< 10	< 1	0.39	10	0.89	431
13147	201 238	4	2.32	0.4	5	210	< 0.5	< 2	0.35	< 0.5	14	59	43	4.35	< 10	< 1	0.26	10	0.90	564
13148	201 238	4	3.10	0.4	25	300	< 0.5	< 2	0.51	< 0.5	22	75	68	4.25	< 10	< 1	0.47	10	1.12	566
13149	201 238	49	2.69	0.4	40	260	< 0.5	2	0.44	< 0.5	26	66	93	4.66	< 10	< 1	0.61	10	1.01	467
13150	201 238	26	2.99	0.2	25	270	< 0.5	2	0.33	< 0.5	26	73	80	4.78	< 10	< 1	0.53	10	1.13	611
13151	201 238	9	2.75	0.2	30	300	< 0.5	4	0.41	< 0.5	19	67	61	4.10	< 10	< 1	0.50	10	1.05	473
13152	201 238	11	2.80	0.6	30	300	< 0.5	2	0.42	< 0.5	19	71	56	4.34	< 10	< 1	0.57	10	1.10	516
13153	201 238	7	2.83	0.4	30	290	< 0.5	< 2	0.43	< 0.5	19	69	57	4.31	< 10	< 1	0.46	10	1.07	555
13154	201 238	4	2.63	0.2	5	260	< 0.5	< 2	0.34	< 0.5	16	66	48	4.26	< 10	< 1	0.49	10	1.03	502
13155	201 238	2	2.39	< 0.2	5	190	< 0.5	< 2	0.34	< 0.5	19	64	39	4.03	< 10	2	0.39	10	1.01	636
13156	201 238	9	2.23	< 0.2	< 5	180	0.5	< 2	0.37	< 0.5	19	56	43	3.53	< 10	< 1	0.40	10	0.92	477
13157	201 238	9	3.22	< 0.2	55	330	1.5	< 2	0.30	< 0.5	25	84	89	4.34	< 10	4	0.89	10	1.10	578
13158	201 238	3	3.14	< 0.2	15	270	1.0	< 2	0.56	< 0.5	26	93	59	3.63	< 10	< 1	0.52	10	1.21	474
13159	201 238	5	3.27	< 0.2	25	310	1.5	< 2	0.56	< 0.5	25	95	85	4.14	< 10	< 1	0.65	10	1.25	514
13160	201 238	13	2.65	< 0.2	10	220	0.5	< 2	0.37	< 0.5	22	74	50	3.87	< 10	< 1	0.52	10	1.08	493
13161	201 238	3	2.41	< 0.2	< 5	220	0.5	< 2	0.33	< 0.5	17	64	42	3.69	< 10	1	0.50	10	1.00	411
13162	201 238	4	2.96	< 0.2	20	300	1.0	< 2	0.38	< 0.5	21	70	55	3.82	< 10	3	0.59	10	1.05	463
13163	201 238	5	2.46	0.2	15	240	< 0.5	< 2	0.51	< 0.5	20	68	56	3.54	< 10	1	0.58	10	1.03	424
13164	201 238	67	2.75	< 0.2	40	280	0.5	< 2	0.34	< 0.5	22	73	60	3.91	< 10	< 1	0.65	10	1.07	459
13165	201 238	2	2.67	< 0.2	20	320	0.5	< 2	0.37	< 0.5	22	74	67	3.86	< 10	2	0.87	10	1.04	446
13166	201 238	5	2.93	0.2	15	290	0.5	< 2	0.45	< 0.5	25	76	90	4.57	< 10	< 1	0.52	10	1.21	646
13167	201 238	10	2.25	0.2	< 5	190	0.5	< 2	0.46	< 0.5	20	60	53	3.56	< 10	1	0.41	10	0.97	413
13168	201 238	< 1	2.72	< 0.2	5	290	0.5	< 2	0.37	< 0.5	25	79	67	4.31	< 10	1	0.49	10	1.15	564
13169	201 238	2	2.68	< 0.2	10	330	< 0.5	< 2	0.38	< 0.5	25	75	69	4.21	< 10	1	0.69	10	1.09	565
13170	201 238	8	2.52	0.2	20	270	0.5	< 2	0.34	< 0.5	24	65	65	4.02	< 10	1	0.66	10	1.01	455
13171	201 238	30	2.84	< 0.2	35	280	0.5	< 2	0.25	< 0.5	22	75	59	4.11	< 10	2	0.66	10	1.10	491
13172	201 238	1	2.60	< 0.2	20	330	< 0.5	< 2	0.34	< 0.5	21	79	50	3.79	< 10	< 1	0.61	10	1.02	490
13173	201 238	6	2.76	< 0.2	15	250	< 0.5	< 2	0.30	< 0.5	21	73	47	4.22	< 10	< 1	0.56	10	1.09	574
13174	201 238	11	2.82	0.2	25	290	< 0.5	< 2	0.26	< 0.5	25	81	67	4.30	< 10	< 1	0.67	10	1.06	522
13175	201 238	113	2.69	0.2	15	300	0.5	< 2	0.34	< 0.5	23	85	63	3.99	< 10	< 1	0.79	10	1.14	441
13176	201 238	40	2.62	< 0.2	30	260	< 0.5	< 2	0.27	< 0.5	22	84	55	3.88	< 10	2	0.68	10	1.09	408
13177	201 238	< 1	2.59	< 0.2	5	290	< 0.5	< 2	0.41	< 0.5	19	69	46	3.99	< 10	< 1	0.53	10	1.06	546
13178	201 238	23	3.01	0.2	35	310	< 0.5	< 2	0.37	< 0.5	24	81	65	4.39	< 10	< 1	0.67	10	1.19	546
13179	201 238	3	2.56	< 0.2	20	270	< 0.5	< 2	0.44	< 0.5	23	67	62	4.21	< 10	3	0.49	10	1.04	580
13180	201 238	2	2.08	< 0.2	< 5	250	< 0.5	< 2	0.43	< 0.5	20	58	41	3.78	< 10	1	0.47	< 10	0.90	643
13181	201 238	4	1.95	< 0.2	< 5	260	< 0.5	< 2	0.42	< 0.5	25	55	61	3.62	< 10	< 1	0.35	< 10	0.88	509
13182	201 238	< 1	2.34	< 0.2	< 5	260	< 0.5	< 2	0.52	< 0.5	23	71	57	3.48	< 10	< 1	0.40	10	1.07	502

CERTIFICATION :



Chemex Labs Ltd.

Analytical Chemists • Geochemists • Registered Assayers

212 BROOKSBANK AVE., NORTH VANCOUVER,
BRITISH COLUMBIA, CANADA V7J-2C1

PHONE (604) 984-0221

UNITED KENO HILL MINES LIMITED

409 BLACK ST.
WHITEHORSE, YUKON
Y1A 2N2

Project : RUB3/GRID/S/E

Comments:

Page No -B
Tot. Pages 4
Date : 3-SEP-87
Invoice # : I-8719643
P.O. # : NONE

RUBY 13-28 Soil Samples

CERTIFICATE OF ANALYSIS A8719643

SAMPLE DESCRIPTION	PREP CODE	Mo ppm	Na %	Ni ppm	P ppm	Pb ppm	Sb ppm	Se ppm	Sr ppm	Ti %	Tl ppm	U ppm	V ppm	W ppm	Zn ppm
13143	201 238	< 1	0.03	61	1160	12	< 5	< 10	39	0.20	< 10	< 10	126	< 5	85
13144	201 238	< 1	0.02	52	510	6	< 5	< 10	29	0.20	< 10	< 10	112	< 5	66
13145	201 238	< 1	0.02	54	630	4	< 5	< 10	31	0.17	< 10	< 10	97	< 5	75
13146	201 238	< 1	0.02	39	680	10	< 5	< 10	32	0.20	< 10	< 10	99	< 5	65
13147	201 238	1	0.02	35	1310	10	< 5	< 10	36	0.17	< 10	< 10	115	< 5	77
13148	201 238	< 1	0.04	55	1070	10	< 5	< 10	43	0.19	< 10	< 10	118	< 5	80
13149	201 238	< 1	0.02	69	1220	18	< 5	< 10	40	0.18	< 10	< 10	116	< 5	77
13150	201 238	< 1	0.02	59	850	14	< 5	< 10	32	0.17	< 10	< 10	123	< 5	91
13151	201 238	< 1	0.03	45	770	12	< 5	< 10	37	0.19	< 10	< 10	115	< 5	76
13152	201 238	1	0.02	48	780	12	< 5	< 10	35	0.22	< 10	< 10	122	< 5	81
13153	201 238	< 1	0.03	46	880	4	< 5	< 10	39	0.20	< 10	< 10	121	< 5	81
13154	201 238	< 1	0.02	42	890	10	< 5	< 10	31	0.20	< 10	< 10	118	< 5	80
13155	201 238	< 1	0.01	33	1080	10	< 5	< 10	33	0.17	< 10	< 10	115	10	80
13156	201 238	< 1	0.02	38	620	8	< 5	< 10	31	0.18	< 10	< 10	102	5	64
13157	201 238	< 1	0.02	74	780	4	< 5	< 10	30	0.19	< 10	< 10	134	5	66
13158	201 238	< 1	0.08	61	690	8	< 5	< 10	59	0.19	< 10	< 10	108	5	61
13159	201 238	< 1	0.07	68	900	4	< 5	< 10	65	0.19	< 10	< 10	123	5	70
13160	201 238	< 1	0.03	46	700	4	< 5	< 10	37	0.18	< 10	< 10	115	5	73
13161	201 238	< 1	0.02	40	560	8	< 5	< 10	30	0.19	< 10	< 10	112	5	64
13162	201 238	< 1	0.03	50	610	12	< 5	< 10	34	0.19	< 10	< 10	117	< 5	67
13163	201 238	< 1	0.03	49	980	12	< 5	< 10	40	0.18	< 10	< 10	108	5	67
13164	201 238	< 1	0.02	54	660	10	< 5	< 10	29	0.19	< 10	< 10	118	< 5	68
13165	201 238	< 1	0.02	60	1130	4	< 5	< 10	23	0.19	< 10	< 10	123	5	62
13166	201 238	< 1	0.03	66	1170	8	5	< 10	40	0.20	< 10	< 10	130	5	93
13167	201 238	< 1	0.03	43	850	6	< 5	< 10	37	0.19	< 10	< 10	105	5	67
13168	201 238	< 1	0.02	58	750	< 2	< 5	< 10	33	0.21	< 10	< 10	129	10	79
13169	201 238	< 1	0.02	58	1120	4	< 5	< 10	30	0.19	< 10	< 10	125	5	76
13170	201 238	< 1	0.02	56	780	6	< 5	< 10	28	0.18	< 10	< 10	116	5	65
13171	201 238	< 1	0.02	53	590	8	< 5	< 10	24	0.18	< 10	< 10	122	5	74
13172	201 238	< 1	0.02	49	970	8	< 5	< 10	27	0.15	< 10	< 10	115	5	69
13173	201 238	< 1	0.02	45	860	8	< 5	< 10	29	0.19	< 10	< 10	124	5	78
13174	201 238	< 1	0.02	62	630	6	< 5	< 10	24	0.19	< 10	< 10	126	5	71
13175	201 238	< 1	0.02	57	860	6	< 5	< 10	23	0.19	< 10	< 10	124	< 5	77
13176	201 238	< 1	0.02	54	610	6	< 5	< 10	24	0.18	< 10	< 10	121	5	77
13177	201 238	< 1	0.02	41	990	8	< 5	< 10	34	0.18	< 10	< 10	120	5	73
13178	201 238	< 1	0.02	59	810	10	< 5	< 10	31	0.20	< 10	< 10	130	5	85
13179	201 238	< 1	0.03	48	1160	6	< 5	< 10	35	0.18	< 10	< 10	124	5	78
13180	201 238	< 1	0.02	32	1560	2	< 5	< 10	35	0.15	< 10	< 10	107	5	94
13181	201 238	< 1	0.02	44	1080	4	< 5	< 10	34	0.16	< 10	< 10	104	5	76
13182	201 238	< 1	0.05	46	890	10	< 5	< 10	49	0.18	< 10	< 10	101	5	72

CERTIFICATION :



Chemex Labs Ltd.

Analytical Chemists • Geochemists • Registered Assayers

212 BROOKSBANK AVE., NORTH VANCOUVER,
BRITISH COLUMBIA, CANADA V7J-2C1

PHONE (604) 984-0221

1 NITED KENO HILL MINES LIMITED

409 BLACK ST.
WHITEHORSE, YUKON
Y1A 2N2

Project: RUB3/GRID/S/E
Comments:

Page No -A
Tot. Pages 4
Date: 3-SEP-87
Invoice #: I-8719643
P.O. #: NONE

RUBY 13-28 Soil Samples

CERTIFICATE OF ANALYSIS A8719643

SAMPLE DESCRIPTION	PREP CODE	Au NAA ppb	Al %	Ag ppm	As ppm	Ba ppm	Be ppm	Bi ppm	Ca %	Cd ppm	Co ppm	Cr ppm	Cu ppm	Fe %	Ga ppm	Hg ppm	K %	La ppm	Mg %	Mn ppm	
Large Grid	13183	201 238	29	2.45	< 0.2	10	200	< 0.5	< 2	0.34	< 0.5	19	62	52	3.70	< 10	1	0.41	10	0.97	446
	13184	201 238	34	2.60	0.2	40	250	< 0.5	< 2	0.50	< 0.5	25	89	69	3.91	< 10	1	0.55	10	1.22	499
	13185	201 238	1	2.45	0.2	15	250	< 0.5	< 2	0.41	< 0.5	20	66	60	3.91	< 10	2	0.44	10	1.04	504
	13186	201 238	50	2.47	< 0.2	70	220	< 0.5	< 2	0.24	< 0.5	25	76	59	4.04	< 10	< 1	0.36	10	0.95	427
	13187	201 238	2	2.43	< 0.2	5	230	< 0.5	< 2	0.39	< 0.5	19	71	45	3.90	< 10	1	0.39	< 10	1.02	467
	13188	201 238	2	2.40	< 0.2	25	230	< 0.5	< 2	0.39	< 0.5	20	73	57	3.68	< 10	< 1	0.56	10	1.06	431
	13189	201 238	16	2.22	< 0.2	10	210	< 0.5	< 2	0.38	< 0.5	19	59	51	3.60	< 10	< 1	0.44	10	0.94	467
	13190	201 238	74	2.42	< 0.2	55	190	0.5	< 2	0.32	< 0.5	26	59	74	4.00	< 10	< 1	0.38	10	0.96	505
	13191	201 238	5	2.67	< 0.2	5	280	< 0.5	< 2	0.39	< 0.5	22	74	49	3.89	< 10	< 1	0.44	10	1.09	551
	13192	201 238	11	3.41	0.2	80	270	< 0.5	< 2	0.62	< 0.5	35	89	80	3.82	< 10	< 1	0.39	10	1.22	533
Large Grid	13193	201 238	6	2.42	< 0.2	< 5	200	< 0.5	< 2	0.28	< 0.5	19	64	49	3.69	< 10	< 1	0.42	10	0.99	413
	13194	201 238	20	2.36	< 0.2	45	190	< 0.5	< 2	0.38	< 0.5	26	63	69	3.73	< 10	< 1	0.46	10	0.96	479
	13195	201 238	13	2.35	< 0.2	65	220	< 0.5	< 2	0.40	< 0.5	30	64	101	4.17	< 10	< 1	0.57	10	0.96	523
	13196	201 238	8	2.58	< 0.2	20	240	< 0.5	< 2	0.36	< 0.5	24	72	65	3.86	< 10	1	0.45	10	1.03	517
	13197	201 238	9	2.80	< 0.2	30	300	< 0.5	< 2	0.36	< 0.5	24	76	74	4.36	< 10	< 1	0.41	10	1.15	643
Large Grid	13198	201 238	14	2.64	< 0.2	20	230	< 0.5	< 2	0.32	< 0.5	25	69	59	3.85	< 10	1	0.43	10	1.04	481
	13199	201 238	11	2.54	0.2	50	220	< 0.5	< 2	0.45	< 0.5	26	79	80	3.80	< 10	< 1	0.49	10	1.09	437
	13200	201 238	13	3.37	< 0.2	25	310	< 0.5	< 2	0.68	< 0.5	24	111	47	3.02	< 10	2	0.30	< 10	1.22	359
Large Grid	94359	201 238	3	2.34	< 0.2	5	230	< 0.5	< 2	0.46	< 0.5	20	58	52	3.87	< 10	1	0.45	10	1.01	524
	94360	201 238	1	2.56	< 0.2	< 5	220	< 0.5	< 2	0.70	< 0.5	26	165	57	3.46	< 10	< 1	0.51	10	1.75	565
Large Grid	94361	201 238	1	2.42	< 0.2	< 5	220	< 0.5	< 2	0.34	< 0.5	21	62	61	4.00	< 10	< 1	0.44	10	1.01	451
	94362	201 238	6	2.45	0.2	5	410	< 0.5	< 2	0.72	< 0.5	22	61	53	4.18	< 10	< 1	0.65	10	1.20	572
	94363	201 238	20	2.37	0.4	15	240	< 0.5	< 2	0.57	< 0.5	24	70	64	3.79	< 10	< 1	0.53	10	1.06	451
	94364	201 238	40	2.79	< 0.2	5	280	< 0.5	< 2	0.44	< 0.5	24	70	74	4.46	< 10	1	0.60	10	1.10	563
	94365	201 238	7	2.08	< 0.2	10	220	< 0.5	< 2	0.49	< 0.5	18	58	44	3.84	< 10	< 1	0.41	10	0.97	576
Large Grid	94366	201 238	4	2.29	< 0.2	< 5	200	< 0.5	< 2	0.32	< 0.5	19	56	43	3.82	< 10	2	0.43	10	0.97	531
	94367	201 238	6	2.18	< 0.2	35	200	< 0.5	< 2	0.37	< 0.5	21	54	50	3.83	< 10	< 1	0.38	20	0.90	464
	94368	201 238	2	2.28	< 0.2	< 5	250	< 0.5	< 2	0.29	< 0.5	17	63	36	3.62	< 10	1	0.51	< 10	0.99	447
	94369	201 238	1	2.33	< 0.2	10	260	< 0.5	< 2	0.43	< 0.5	19	60	45	3.71	< 10	< 1	0.53	10	1.02	537
	94370	201 238	7	2.63	0.2	30	270	< 0.5	< 2	0.44	< 0.5	24	64	94	4.73	< 10	1	0.59	10	1.07	541
Small Grid	94371	201 238	< 1	2.21	< 0.2	< 5	230	< 0.5	< 2	0.39	< 0.5	20	59	45	4.06	< 10	2	0.45	10	1.00	657
	94372	201 238	7	2.57	< 0.2	< 5	300	< 0.5	< 2	0.43	< 0.5	18	55	41	3.64	< 10	1	0.42	10	1.00	511
	94373	201 238	2	2.23	0.2	10	270	< 0.5	< 2	0.48	< 0.5	21	60	49	3.58	< 10	< 1	0.64	20	0.96	433
	94374	201 238	3	2.61	< 0.2	< 5	290	< 0.5	< 2	0.42	< 0.5	21	64	48	4.10	< 10	< 1	0.48	10	1.08	668
	94375	201 238	< 1	3.09	< 0.2	15	1190	< 0.5	< 2	2.57	< 0.5	33	61	61	6.01	20	< 1	1.65	60	3.06	1070
Small Grid	94376	201 238	4	2.47	< 0.2	< 5	230	< 0.5	< 2	0.40	< 0.5	20	58	50	3.92	< 10	< 1	0.49	10	1.00	605
	94377	201 238	4	2.06	< 0.2	< 5	200	< 0.5	< 2	0.43	< 0.5	18	53	43	4.02	< 10	< 1	0.42	10	0.94	707
	94378	201 238	2	2.35	< 0.2	< 5	250	< 0.5	< 2	0.55	< 0.5	21	59	56	3.98	< 10	< 1	0.40	10	1.00	606
	94379	201 238	7	2.56	< 0.2	10	250	< 0.5	< 2	0.37	< 0.5	21	64	49	4.21	< 10	< 1	0.43	10	1.04	633
	94380	201 238	3	4.30	< 0.2	5	510	1.0	< 2	0.69	0.5	28	73	82	4.51	< 10	< 1	0.78	20	1.46	617

CERTIFICATION :



Chemex Labs Ltd.

Analytical Chemists • Geochemists • Registered Assayers
 212 BROOKSBANK AVE., NORTH VANCOUVER,
 BRITISH COLUMBIA, CANADA V7J-2C1
 PHONE (604) 984-0221

UNITED KENO HILL MINES LIMITED

409 BLACK ST.
 WHITEHORSE, YUKON
 Y1A 2N2

Project : RUB3/GRID/S/E
 Comments :

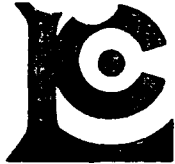
Page No -B
 Tot. Pages 4
 Date : 3-SEP-87
 Invoice # : I-8719643
 P.O. # : NONE

RUBY 13-28 Soil Samples

CERTIFICATE OF ANALYSIS A8719643

SAMPLE DESCRIPTION	PREP CODE	Mo ppm	Na %	Ni ppm	P ppm	Pb ppm	Sb ppm	Se ppm	Sr ppm	Ti %	Tl ppm	U ppm	V ppm	W ppm	Zn ppm
13183	201 238	< 1	0.02	46	530	4	< 5	< 10	31	0.19	< 10	< 10	110	< 5	62
13184	201 238	< 1	0.04	78	1100	4	< 5	< 10	43	0.19	< 10	< 10	109	5	75
13185	201 238	< 1	0.02	50	720	2	< 5	< 10	34	0.20	< 10	< 10	113	5	70
13186	201 238	< 1	0.01	70	870	12	< 5	< 10	22	0.15	< 10	< 10	112	5	74
13187	201 238	< 1	0.01	41	930	8	< 5	< 10	32	0.17	< 10	< 10	116	5	72
13188	201 238	< 1	0.02	54	1040	6	< 5	< 10	31	0.17	< 10	< 10	107	5	64
13189	201 238	< 1	0.02	47	760	6	< 5	< 10	30	0.17	< 10	< 10	105	< 5	62
13190	201 238	< 1	0.02	63	740	6	< 5	< 10	35	0.16	< 10	< 10	110	< 5	71
13191	201 238	< 1	0.03	49	750	10	< 5	< 10	36	0.20	< 10	< 10	119	5	73
13192	201 238	< 1	0.08	71	660	2	< 5	< 10	65	0.17	< 10	< 10	106	5	63
13193	201 238	< 1	0.01	43	470	8	< 5	< 10	25	0.19	< 10	< 10	112	< 5	62
13194	201 238	< 1	0.02	60	690	2	< 5	< 10	35	0.17	< 10	< 10	103	5	64
13195	201 238	< 1	0.02	71	1240	4	< 5	< 10	35	0.15	< 10	< 10	106	< 5	68
13196	201 238	< 1	0.03	54	690	6	< 5	< 10	34	0.18	< 10	< 10	112	5	66
13197	201 238	< 1	0.02	50	970	14	< 5	< 10	35	0.19	< 10	< 10	129	5	88
13198	201 238	< 1	0.03	55	520	6	< 5	< 10	33	0.19	< 10	< 10	110	5	65
13199	201 238	< 1	0.03	69	980	4	< 5	< 10	39	0.17	< 10	< 10	105	< 5	65
13200	201 238	< 1	0.10	49	410	4	< 5	< 10	80	0.17	< 10	< 10	90	5	53
94359	201 238	< 1	0.02	45	950	10	< 5	< 10	37	0.19	< 10	< 10	108	5	74
94360	201 238	< 1	0.07	71	1050	10	< 5	< 10	73	0.20	< 10	< 10	97	5	69
94361	201 238	< 1	0.02	48	690	10	< 5	< 10	30	0.21	< 10	< 10	114	5	76
94362	201 238	< 1	0.02	45	1990	4	< 5	< 10	89	0.20	< 10	< 10	116	5	81
94363	201 238	< 1	0.03	53	1300	12	< 5	< 10	52	0.19	< 10	< 10	106	5	74
94364	201 238	< 1	0.02	55	1160	8	< 5	< 10	43	0.22	< 10	< 10	126	5	86
94365	201 238	< 1	0.02	35	1220	4	< 5	< 10	43	0.16	< 10	< 10	104	< 5	77
94366	201 238	< 1	0.02	35	750	2	< 5	< 10	33	0.18	< 10	< 10	107	< 5	73
94367	201 238	< 1	0.02	43	670	10	< 5	< 10	35	0.20	< 10	< 10	106	< 5	68
94368	201 238	< 1	0.02	31	850	6	< 5	< 10	32	0.18	< 10	< 10	110	< 5	65
94369	201 238	< 1	0.02	40	990	4	< 5	< 10	43	0.18	< 10	< 10	108	5	72
94370	201 238	< 1	0.02	54	1400	8	< 5	< 10	51	0.20	< 10	< 10	121	5	92
94371	201 238	< 1	0.02	36	1310	8	< 5	< 10	42	0.17	< 10	< 10	112	5	79
94372	201 238	< 1	0.04	41	890	8	< 5	< 10	62	0.17	< 10	< 10	107	5	67
94373	201 238	< 1	0.02	48	1000	8	< 5	< 10	37	0.20	< 10	< 10	112	5	63
94374	201 238	< 1	0.02	43	850	6	< 5	< 10	36	0.21	< 10	< 10	117	< 5	83
94375	201 238	< 1	0.03	48	6080	10	5	< 10	431	0.09	30	< 10	150	< 5	134
94376	201 238	< 1	0.01	41	960	12	< 5	< 10	37	0.20	< 10	< 10	108	< 5	76
94377	201 238	< 1	0.01	34	1270	6	< 5	< 10	42	0.17	< 10	< 10	101	< 5	79
94378	201 238	< 1	0.02	43	1040	12	< 5	< 10	43	0.20	< 10	< 10	109	< 5	82
94379	201 238	< 1	0.01	42	1030	10	< 5	10	38	0.20	< 10	< 10	115	< 5	83
94380	201 238	< 1	0.06	73	1060	6	< 5	10	122	0.24	< 10	< 10	147	< 5	89

CERTIFICATION :



Chemex Labs Ltd.

Analytical Chemists • Geochemists • Registered Assayers
 212 BROOKSBANK AVE. NORTH VANCOUVER,
 BRITISH COLUMBIA, CANADA V7J-2C1
 PHONE (604) 984-0221

UNITED KENO HILL MINES LIMITED

409 BLACK ST.
 WHITEHORSE, YUKON
 Y1A 2N2

Project : RUB3/GRID/S/E
 Comments :

Page No. -B
 Tot. Pages 4
 Date : 13-SEP-87
 Invoice # : I-8719643
 P.O. # : NONE

RUBY 13-28 Soil Samples

CERTIFICATE OF ANALYSIS A8719643

SAMPLE DESCRIPTION	PREP CODE		Mo	Na	Ni	P	Pb	Sb	Se	Sr	Ti	Tl	U	V	W	Zn	
			ppm	%	ppm	ppm	ppm	ppm	ppm	ppm	ppm	%	ppm	ppm	ppm	ppm	ppm
94381	201	238	< 1	0.02	59	1100	8	< 5	< 10	43	0.20	< 10	< 10	106	< 5	81	
94382	201	238	< 1	0.02	50	620	10	< 5	< 10	41	0.23	< 10	< 10	103	< 5	75	
94383	201	238	< 1	0.02	36	580	8	< 5	< 10	36	0.20	< 10	< 10	95	< 5	67	
94384	201	238	< 1	0.02	52	900	18	< 5	< 10	40	0.20	< 10	< 10	111	< 5	81	
13065	201	238	< 1	0.02	72	1070	< 2	< 5	< 10	35	0.17	< 10	< 10	117	< 5	86	
13066	Large Grid	201	238	< 1	0.02	54	710	18	< 5	< 10	28	0.18	< 10	< 10	112	5	69
13067		201	238	1	0.01	43	1220	24	< 5	< 10	33	0.16	< 10	< 10	111	< 5	74
13068		201	238	< 1	0.01	48	800	< 2	< 5	< 10	28	0.21	< 10	< 10	129	< 5	83

CERTIFICATION :