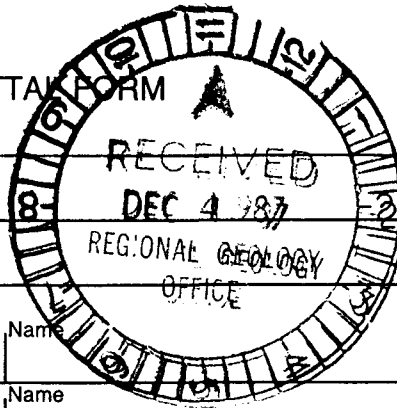




M.R. file no.
R.M.M.R. file no.
Date forwarded

TRANSMITTAL FORM



From Mining Recorder at: Whitehorse

To Regional Manager, Mineral Rights at Whitehorse, Y.T.

For action are:

NEW APPLICATION FOR PLACER LEASE TO PROSPECT Name _____

RENEWAL APPLICATION PLACER LEASE TO PROSPECT Name _____ Lease no. _____

AFFIDAVIT OF EXPENDITURE ON PLACER LEASE Name _____ Lease no. _____

SECURITY DEPOSIT

FINANCIAL ABILITY

ASSIGNMENT OF PLACER LEASE NO. From _____ To _____

GROUPING APPLICATION UNDER SEC. 52(2) PLACER MINING ACT. Owner _____

DIAMOND DRILL LOGS Claims _____ Claim sheet no. _____

QUARTZ ASSESSMENT REPORT Claims Ben, Son, Was, Too, Mac Claim sheet no. 108-0-4/C-13/D-6

Type of report Geology / Geochemistry Submitted by Aurum Geological for Archer, Culture

Cls. work performed on Ben, Son, Was, Too, Mac \$ req. for ren. application \$24,450.00

J. Southwick
Signature

Date returned

REPLY ACTION

Cost breakdown:

MAC	\$ 4 550
Too	\$ 3 250
BEN	\$ 10 350
Was	\$ 2 400
Son	\$ 3 750

091974

Signature

**GEOLOGY and GEOCHEMISTRY
of the
SON CLAIMS**

Whitehorse Mining District

Location: 1. Watson River
2. 105D/4
3. Latitude: 60 11'N
Longitude: 135 35°W

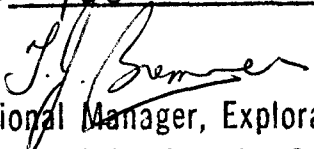
For:
ALL-NORTH RESOURCES LTD.
c/o Archer, Cathro and Associates (1981) Ltd.
Box 4127, 3125 Third Avenue
Whitehorse, Yukon
Y1A 3S9

By:
TOM GARAGAN; B.Sc, FGAC
AURUM GEOLOGICAL CONSULTANTS INC.
604-675 West Hastings Street,
Vancouver, B.C., V6B 4W3

November 20, 1987

091974

This report has been examined by
the Geological Evaluation Unit
under Section 53 (4) Yukon Quartz
Mining Act and is allowed as
representation work in the amount
of \$ 3750.

for 
Regional Manager, Exploration and
Geological Services for Commissioner
of Yukon Territory.

SUMMARY

The SON 1-10 claims, owned 100% by All-North Resources Ltd. are located near the headwaters of the Watson River approximately 65 kilometers southwest of Whitehorse. The property is located 6 kilometers southwest of AGIP & Total Erickson's Mt. Skukum gold-silver deposit. Access to the area is via helicopter. A poor 4 by 4 tote road ends 2.5 kilometers east of the claims.

The property is underlain by Yukon Group metasediments which are intruded by a Cretaceous Coast Plutonic Complex granodiorite. Several metamorphic quartz veins occur within the claims.

Talus fine and stream sampling has located two areas of anomalous values. A stream sediment sample and several talus fines taken in a small cirque on the east side of the claims contain anomalous values up to 46 ppb gold, 8 ppm silver, 195 ppm arsenic, 437 ppm copper, 457 ppm nickel and 1015 ppm zinc. These samples also contain anomalous barium, chromium and cobalt. Two soil samples taken within the central cirque contain anomalous gold values of 424 and 62 ppb. The source of the anomalies has not been found.

The results of the geochemical sampling warrant a short followup program of mapping, prospecting and rock sampling to determine the nature of the anomaly and to determine if a larger followup program is warranted.

TABLE OF CONTENTS

	Page #
SUMMARY	i
TABLE of CONTENTS	ii
INTRODUCTION	1
LOCATION and ACCESS	1
CLIMATE, TOPOGRAPHY and VEGETATION	1
CLAIM STATUS	3
HISTORY	3
REGIONAL GEOLOGY	3
GEOLOGY of the SON CLAIMS	5
GEOCHEMISTRY	5
CONCLUSIONS and RECOMMENDATIONS	6
REFERENCES	8

List of Figures

	<u>Scale</u>	
Figure 1. Location Map	1:1,000,000	2
Figure 2. Claim Distribution	1:30,000	4
Figure 3. SON 1-10 claims Geology and Geochemistry	1:10,000	in pocket

List of Appendices

Appendix A: Analytical Results
Appendix B: Rock Sample Descriptions and Results
Appendix C: Statement of Qualifications

INTRODUCTION

This report was prepared at the request of R.J.Cathro of Archer, Cathro and Associates (1981) Limited and All-North Resources of Whitehorse and describes the exploration performed by Aurum Geological Consultants Inc. on the SON claims on June 30 and July 1, 1987. Exploration consisted of geological mapping and stream sediment, soil and rock sampling.

LOCATION and ACCESS

The SON claims are located near the headwaters of the Watson River approximately 65 kilometers southwest of Whitehorse, Yukon Territory. The property is located in the Wheaton River district 6 kilometers southwest of the Mt. Skukum gold-silver deposit and 9 kilometers west of the Omni's Skukum creek gold-silver prospect at 60 11'N latitude and 135 35'W longitude (figure 1).

Access to the Wheaton River is by an all weather (Annie Lake Road) leading from the Klondike highway to the Mt. Skukum mill and to Omni's Skukum Creek property. A poor 4 by 4 tote road up Berney Creek from the Skukum Creek property to Island Mining's Charleston property passes within 2.5 kilometers east of the claims.

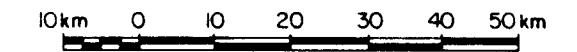
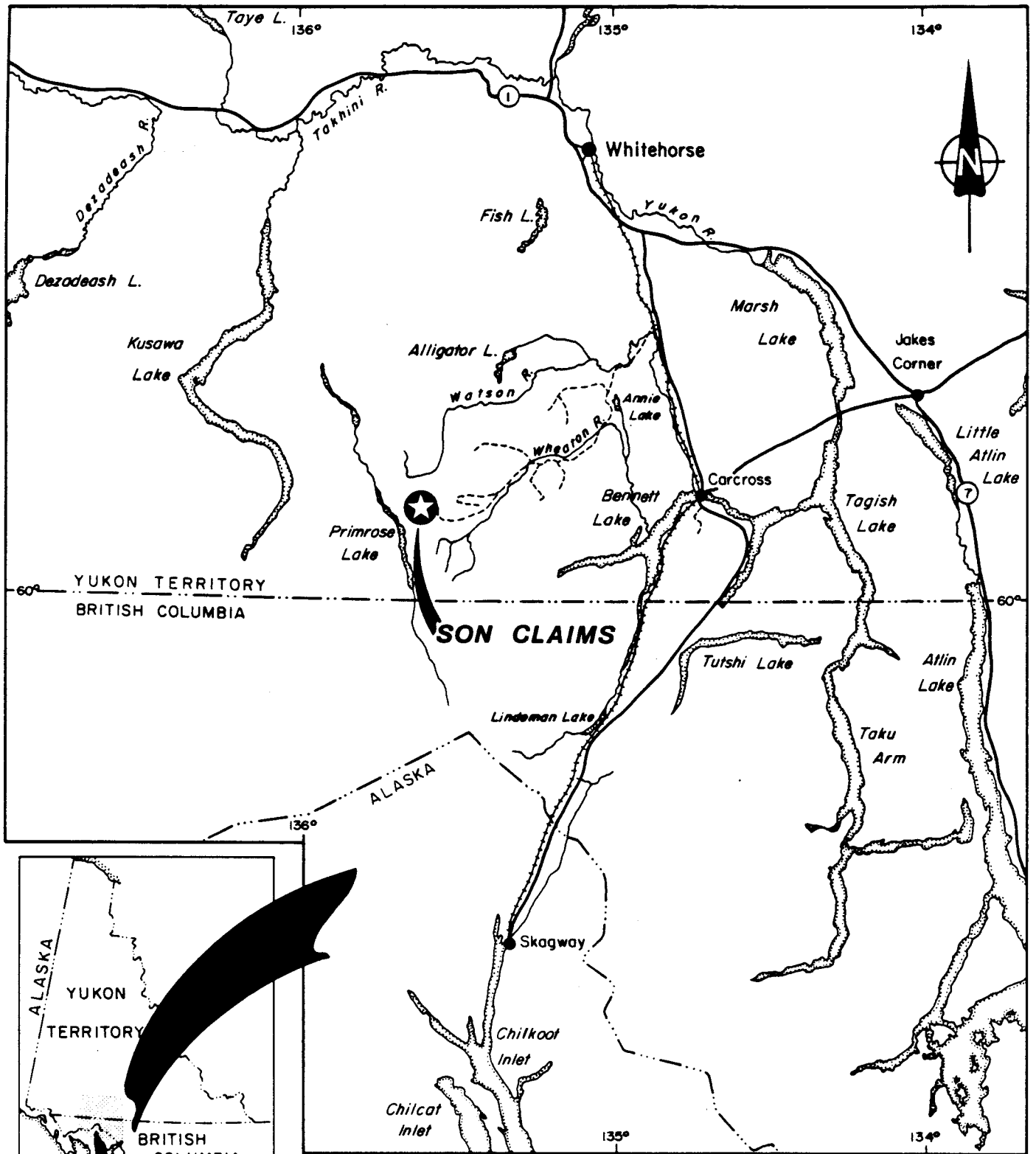
Alternate access is via helicopter from Whitehorse or a seasonal base at the Mt. Skukum camp site (15 kilometers east of the claims).

CLIMATE, TOPOGRAPHY and VEGETATION

The climate in the southwestern Yukon is variable with short cool summers and long cold winters. The annual precipitation is light (40 cm) with moderate snow falls during the winter. Moist Pacific systems rising over the coast mountains give rise to periods of high winds throughout the year. The exploration season in the area of the SON claims extends from mid June to mid September.

The topography of the SON claims is steep with elevations varying between 1525 meters to 2070 meters (figure 2). The property topography consists of a centrally located north-south trending alpine meadow and stream occurring between 2 mountains. The north-south creek drains into the Watson River. The sides of the mountain facing away from the meadow consists of steep cliffs and talus covered slopes.

The property occurs above treeline and the vegetation consists of alpine grasses and shrubs.



SON CLAIMS			
LOCATION			
<i>Aurum Geological Consultants Inc.</i>		OCTOBER, 1987	
Drawn by NH	Scale: 1:1,000,000	FIGURE : 1	

CLAIM STATUS

The SON claims consist of 10 contiguous mineral claims staked in 105D-4 of the Whitehorse Mining District. The property is 100% owned by All-North Resources Ltd. of Vancouver, B.C.

The claim status is tabulated below.

<u>Claim Name</u>	<u>Grant Number</u>	<u>Recording Date</u>	<u>Expiry Date</u>
SON 1-10	YA95275-284	July 28, 1987	April 28, 1991

The claim distribution is shown in figure 2.

HISTORY

Exploration in the area of the SON claims commenced in 1907 with the discovery of the Charleston vein, located 2.5 kilometers east of the SON claims. Adits were driven into the Charleston vein in 1921 (Cockfield, 1922). Exploration continued sporadically until the 1980-83 discovery of the Mt. Skukum gold deposit by AGIP Canada. Several claims have been staked in the Wheaton River area since.

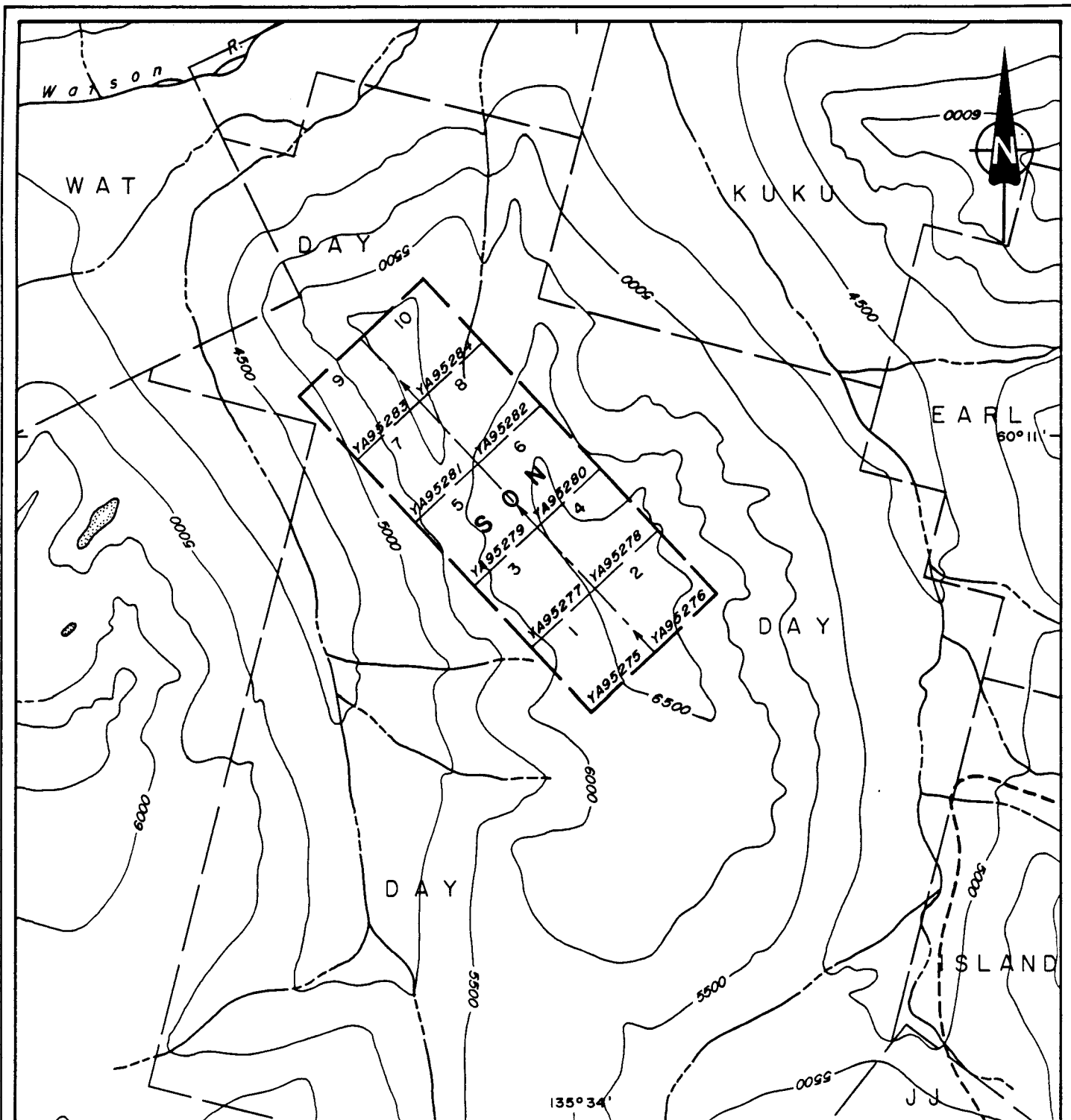
The SON 1-10 claims were staked on July 23, 1986 to cover the headwaters of 2 creeks with a 46 ppb gold, 35 ppm arsenic, 54 ppm cobalt, 230 ppm copper and 630 ppm zinc silt anomaly from a government regional silt geochemical survey (G.S.C. open file 1218). The results of this survey were released on July 23, 1986. No evidence of previous exploration on the property was observed.

REGIONAL GEOLOGY

The SON claims are located near the eastern margin of the Coast Plutonic Complex. The regional geology has been described in detail by Cairnes, 1912; Wheeler, 1961; and Lambert, 1974 and will only be summarized in this report.

The Coast Plutonic Complex consists of foliated and non-foliated Cretaceous granitoid rocks which intrude and underlie low grade metamorphosed sediments and volcanics of the Mesozoic Whitehorse-Nechako Trough and quartzites, schists and gneisses of the late PreCambrian Early Paleozoic Yukon group.

Tertiary subaerial andesite and rhyolite flows and pyroclastics of the Mt. Skukum group, unconformably overlie earlier units in 2 isolated areas in the region. The 2 isolated



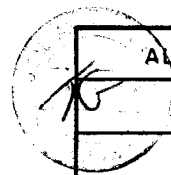
LEGEND

- claim boundary
- claim number
- tag number
- 4WD trail
- creek, lake
- elevation contour; interval 500 ft.

Note: adapted from D.I.A.N.D. map sheet
105 D-4

500m 0 500 1000 1500m

SCALE IN METRES



ALL - NORTH RESOURCES LTD.

SON CLAIMS

CLAIM MAP

Aurum Geological Consultants Inc. OCTOBER, 1987

NTS 105D/4 DRAWN BY NH SCALE 1:30,000 FIGURE 2

areas, Mt. Skukum and Bennett Lake, have been interpreted to represent paleovolcanic centers (Lambert, 1974, Doherty pers comm, 1982 and Pride, 1985). Late stage rhyolite and andesite dykes and plugs cut the surrounding rocks.

The regional structural trend is northwest which is cut by late Cretaceous and Tertiary structures.

GEOLOGY of the SON CLAIMS

The SON claims are underlain by northwesterly trending PreCambrian and early Paleozoic Yukon group metasediments which are intruded by the Cretaceous Coast Plutonic Complex (figure 3).

The Coast Plutonic Complex is comprised of a medium grained biotite granodiorite which outcrops in the west side of the property. It intrudes and hornfels the metasediments.

Most of the property is underlain by dark grey and rusty weathering Yukon Group metasediments. The metasediments consist of interlayered garnet-quartz-biotite schist to phyllite, micaceous quartzite, feldspar-chlorite schist and marble. The metasediments are tightly to isoclinally folded with fold axis, bedding and foliation trending northwest to westerly with dips varying between 30 and 65 north.

Several discontinuous bull quartz and fine grained sugary veins up to 2 meters wide occur parallel to the foliation throughout the metasediments. The veins probably formed as a result of regional metamorphism and deformation.

GEOCHEMISTRY

A total of 5 stream sediment, 85 soil and 10 rock samples were collected on the property. The samples were analysed for Au FA+AA and 32 element ICP by CHEMEX LABS of North Vancouver. Sample locations and gold and silver results are shown in figure 3. The rock sample descriptions and all the geochemical results are given in Appendix A & B.

Stream sediments were collected from the large north-south creek draining the central part of the claims and from a small north east flowing creek on the east side of the claims. One sample taken in the small northeast flowing creek contains anomalous gold (46 ppb), arsenic (100 ppm), cadmium (11.5ppm), cobalt (117 ppm), chromium (115 ppm), copper (437 ppm), nickel (457 ppm) and zinc (1015 ppm). The source of this anomaly is not known, but maybe related to the talus fine anomaly occurring in the same cirque (see below).

Talus fine and soil samples were collected at 50 to 100 meter intervals along most of the slopes on the property. A soil sample taken near the ridge at the northern corner of the property contains 424 ppb gold. A second sample taken on the eastern side of the same cirque contain 62 ppb gold and 1410 ppm barium. Six consecutive talus fine samples collected on the south side of the small eastern cirque (with the small northeast trending creek) contain slightly anomalous gold and anomalous values in silver, arsenic, barium, chromium, copper, nickel, lead and zinc. Geochemical values are up to 34 ppb gold, 8 ppm silver, 195 ppm arsenic, 4670 ppm barium, 121 ppm chromium, 323 ppm copper, 192 ppm nickel, 100 ppm lead and 861 ppm zinc. The source of this anomaly is not known.

Rock samples of several quartz veins on the property are all at or near background levels.

CONCLUSION and RECOMMENDATIONS

The SON claims are underlain by Yukon Group metasediments intruded by a Cretaceous granodiorite. Several unmineralized metamorphic quartz veins occur parallel to the foliation within the metasediments.

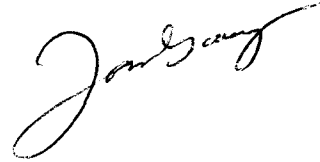
The claims were staked to cover the potential source area of a government gold, cobalt, arsenic, copper and zinc stream sediment anomaly. Stream sediment and talus sampling on the east side of the property has confirmed the presence of a multi-element anomaly with anomalous values up to 34 ppb gold, 8 ppm silver, 195 ppm arsenic, 4670 ppm barium, 121 ppm chromium, 323 ppm copper, 192 ppm nickel, 100 ppm lead and 861 ppm zinc. The source of this anomaly is not known, but the multi-element nature of the anomaly suggests a possible stratabound source within the metasediments or contact metamorphic style mineralization.

Two soil samples within the central valley contain anomalous gold values of 424 and 62 ppb gold. The source of these anomalies are not known.

Although no mineralization has been found on the claims, the geochemical results warrant a short 1 or 2 day followup program of prospecting and soil sampling to determine the source of the geochemical anomalies. Further exploration on the property would depend on the results of this program.

The following budget is anticipated for this program:

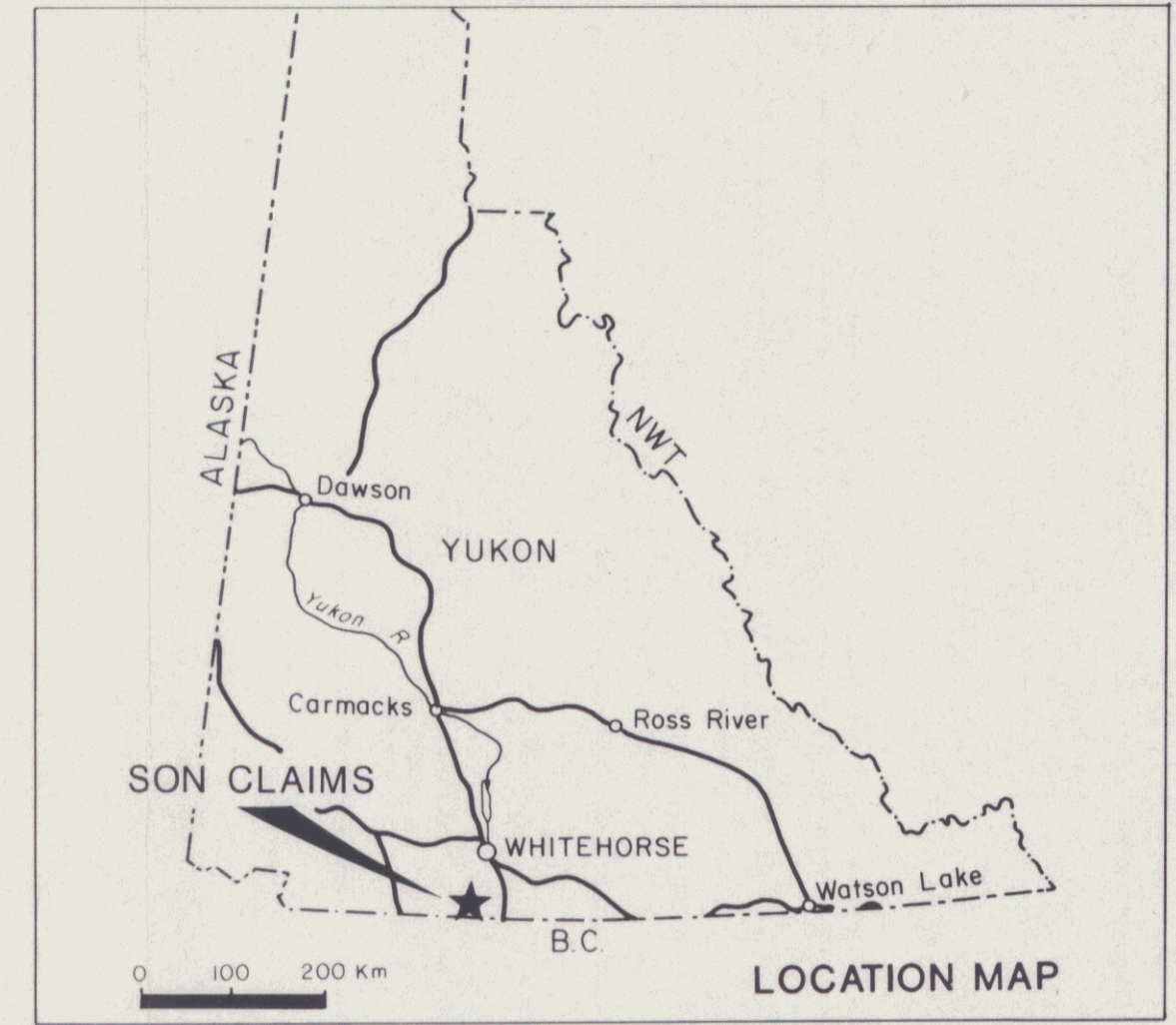
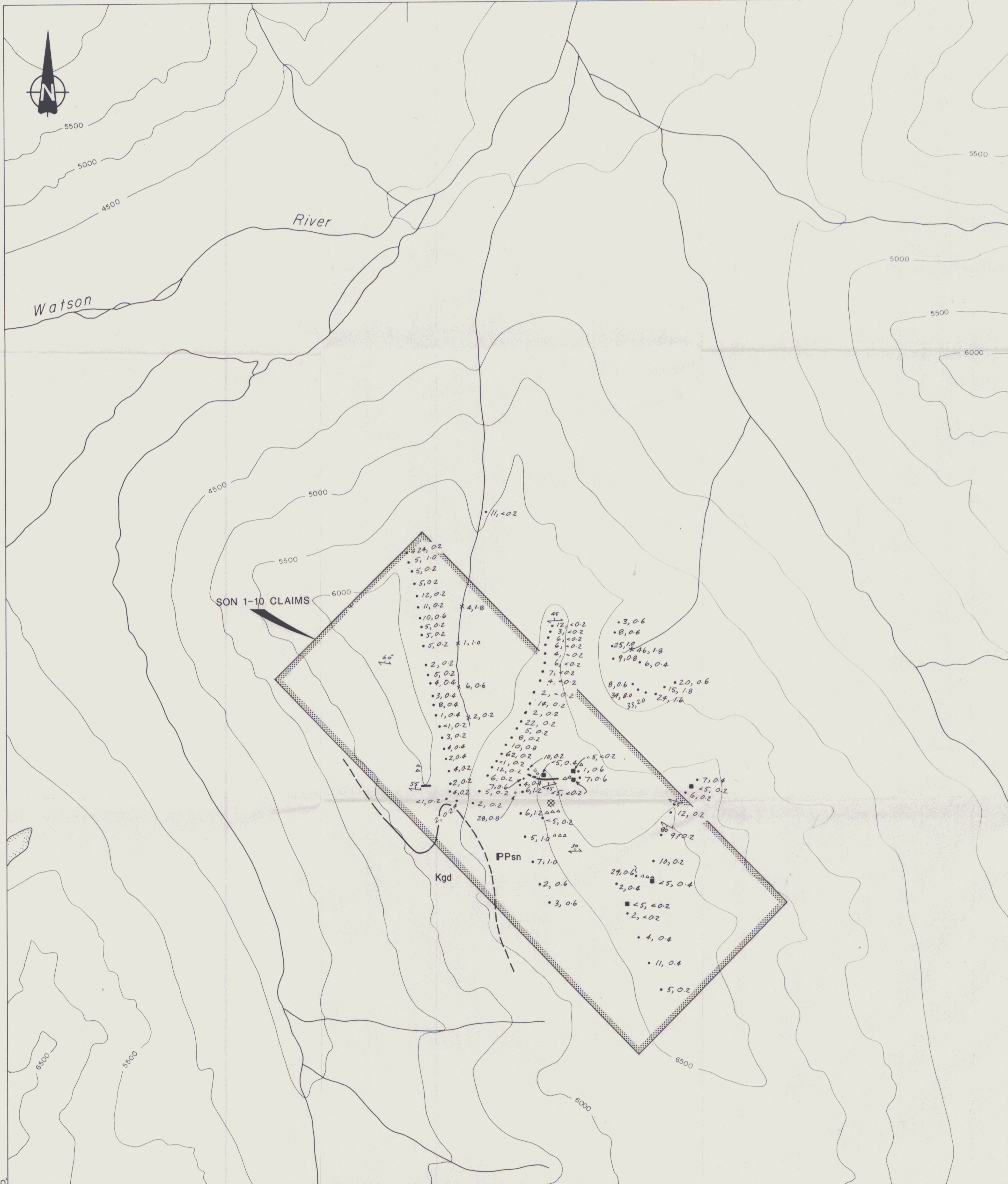
Geology	\$ 1,200
Geochemistry	2,000
Helicopter	2,000
Camp Costs	<u>400</u>
Subtotal	5,600
Contingency 10%	<u>600</u>
Total Budget	\$ 6,200



REFERENCES

- Cairnes, D.D., 1912: Wheaton District, Yukon Territory, G.S.C. Memoir 31.
- Cockfield, W.E., 1922: Exploration Southern Yukon, in Yukon Territory, Selected field reports of the G.S.C. 1898 to 1932, Bostock Ed., Memoir 284.
- Lambert, M.B., 1974: The Bennett Lake Cauldron Subsidence Complex, British Columbia and Yukon Territory, G.S.C. Bulletin 227.
- Pride, M.G., 1985: Preliminary Geological Map of the Mt. Skukum Volcanic complex, 105D 2,3,4,5,6. Exploration and Geological Services Division, Yukon, Indian and Northern Affairs Canada, open file, 1:25,000 scale map.
- Wheeler, J.O., 1961: Whitehorse Map Area, Yukon Territory, 105D Memoir 312.

135°35'



LEGEND

CRETACEOUS

Kgd Biotite granodiorite

LATE PRECAMBRIAN, CAMBRIAN

PPsn Yukon Group metasediments

--- Geological contact - defined, assumed

S Foliation - inclined

— Quartz vein

▲▲▲ Quartz float

⊕ Claim posts

x 5,0.2 Silt sample location - Au (ppb), Ag (ppm)

• 5,0.2 Soil sample location - Au (ppb), Ag (ppm)

■ 5,0.2 Rock sample location - Au (ppb), Ag (ppm)



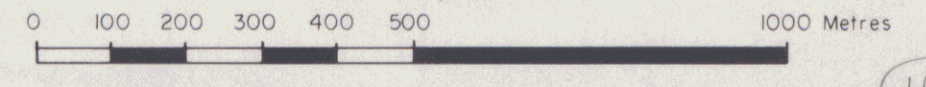
Figure 3
GEOLOGICAL CONSULTANTS INC.

**GEOLOGY AND
Au, Ag GEOCHEMISTRY**

SON CLAIMS
ALL-NORTH RESOURCES LTD.

NTS 105D/5

SCALE 1:10,000



Map prepared by ARCHER, CATHRO & ASSOCIATES (1981) LIMITED

To accompany report dated Nov. 20/87

091974

1184

60°10'

**APPENDIX A
ANALYTICAL RESULTS**



Chemex Labs Ltd.

Analytical Chemists * Geochemists * Registered Assayers
 212 BROOKSBANK AVE., NORTH VANCOUVER,
 BRITISH COLUMBIA, CANADA V7J-2C1
 PHONE (604) 984-0221

To: ARCHER CATHRO & ASSOC. (1981) LTD.
 BOX 4127
 3125 THIRD AVE.
 WHITEHORSE, YT
 Y1A 3S9
 Project: SON CLAIMS
 Comments: CC: T. GARAGAN

Page No. : 1-A
 Tot. Pages: 3
 Date : 3-AUG-87
 Invoice #: I-8717500
 P.O. #: NONE

CERTIFICATE OF ANALYSIS A8717500

SAMPLE DESCRIPTION	PREP CODE		Au NAA	Al	Ag	As	Ba	Be	Bi	Ca	Cd	Co	Cr	Cu	Fe	Ga	Hg	K	La	Mg	Mn
			ppb	%	ppm	ppm	ppm	ppm	ppm	%	ppm	ppm	ppm	ppm	%	ppm	ppm	%	ppm	%	ppm
7-560037	201	238	424	1.73	0.2	40	240	< 0.5	< 2	0.18	< 0.5	12	37	58	3.30	< 10	< 1	0.22	30	0.68	534
7-560038	201	238	5	1.61	0.2	10	360	< 0.5	< 2	0.15	< 0.5	9	42	55	2.91	< 10	< 1	0.14	20	0.49	414
7-560039	201	238	1	1.46	0.2	10	290	0.5	4	0.20	0.5	12	42	49	3.13	< 10	< 1	0.15	20	0.48	576
7-560040	201	238	5	1.68	0.2	40	270	0.5	< 2	0.23	< 0.5	11	49	55	3.47	< 10	< 1	0.20	20	0.68	493
7-560041	201	238	12	2.16	0.2	15	370	0.5	< 2	0.25	< 0.5	18	52	68	3.78	< 10	< 1	0.23	30	0.78	686
7-560042	201	238	11	2.07	0.2	10	320	0.5	< 2	0.18	0.5	22	53	73	3.80	< 10	< 1	0.19	30	0.73	913
7-560043	201	238	10	1.79	0.6	5	230	< 0.5	< 2	0.19	< 0.5	12	46	60	3.28	< 10	< 1	0.19	20	0.66	548
7-560044	201	238	5	2.13	0.2	15	280	0.5	2	0.22	< 0.5	15	56	70	3.56	< 10	< 1	0.19	30	0.76	575
7-560045	201	238	5	2.64	0.2	5	390	0.5	2	0.43	< 0.5	21	79	80	4.09	10	5	0.23	30	1.09	633
7-560046	201	238	5	3.54	0.2	< 5	510	0.5	2	0.43	1.0	26	109	103	5.13	10	< 1	0.34	30	1.41	743
7-560048	201	238	2	2.58	0.2	< 5	520	< 0.5	2	0.37	0.5	26	98	107	3.92	10	< 1	0.12	20	1.23	636
7-560049	201	238	5	2.61	0.2	< 5	420	< 0.5	< 2	0.56	1.0	23	93	125	3.97	< 10	< 1	0.12	20	1.24	614
7-560050	201	238	4	2.14	0.4	< 5	350	< 0.5	< 2	0.24	1.0	20	63	88	3.64	< 10	< 1	0.22	30	0.98	661
7-560051	201	238	3	2.58	0.4	< 5	880	< 0.5	< 2	0.30	0.5	21	126	123	4.69	10	< 1	0.40	20	1.57	809
7-560052	201	238	8	2.66	0.4	< 5	420	< 0.5	2	0.25	0.5	24	91	103	4.08	< 10	< 1	0.32	20	1.41	999
7-560053	201	238	1	2.39	0.4	5	270	0.5	4	0.21	< 0.5	19	81	92	3.33	< 10	3	0.14	20	1.27	879
7-560054	201	238	< 1	2.33	0.2	< 5	720	< 0.5	2	0.70	0.5	36	110	78	4.01	< 10	< 1	0.37	20	1.15	953
7-560055	201	238	3	2.22	0.2	< 5	270	0.5	4	0.30	0.5	19	69	74	3.43	< 10	< 1	0.17	20	1.23	738
7-560056	201	238	4	2.81	0.4	10	310	< 0.5	2	0.46	< 0.5	20	111	102	4.50	< 10	< 1	0.18	30	1.52	845
7-560057	201	238	2	1.96	0.4	< 5	230	< 0.5	2	0.30	0.5	25	61	80	3.34	< 10	< 1	0.12	20	1.07	1030
7-560058	201	238	4	2.83	0.2	< 5	290	< 0.5	2	0.30	0.5	25	79	118	4.58	10	< 1	0.31	30	1.48	1055
7-560059	201	238	2	1.93	0.2	10	300	< 0.5	< 2	0.35	< 0.5	19	61	71	3.44	< 10	< 1	0.20	20	1.06	620
7-560060	201	238	4	2.54	0.2	< 5	200	0.5	2	0.27	1.0	26	65	112	4.54	< 10	< 1	0.13	30	1.53	907
7-560061	201	238	< 1	1.65	0.2	5	470	< 0.5	< 2	0.97	3.5	26	47	81	3.22	< 10	< 1	0.31	20	0.95	1270
7-560062	201	238	2	1.76	0.2	10	430	< 0.5	< 2	0.20	< 0.5	12	44	75	2.89	< 10	< 1	0.16	20	0.93	583
7-560063	201	238	2	1.77	0.2	< 5	300	< 0.5	4	0.35	0.5	12	51	54	2.84	< 10	< 1	0.14	20	0.91	512
7-560064	201	238	5	2.88	0.2	5	310	0.5	4	0.77	< 0.5	24	67	94	4.41	10	< 1	0.14	30	1.77	814
7-560066	201	238	6	2.58	0.2	5	450	0.5	< 2	0.53	0.5	24	66	129	4.33	< 10	< 1	0.33	30	1.40	1645
7-560067	201	238	12	2.04	0.2	< 5	310	< 0.5	2	0.32	1.5	21	46	131	3.51	< 10	< 1	0.25	30	1.07	861
7-560068	201	238	< 1	2.75	0.2	< 5	1000	< 0.5	4	0.44	1.0	22	111	113	4.21	< 10	1	0.75	30	1.73	736
7-560069	201	238	62	2.40	0.2	20	1410	< 0.5	< 2	0.27	< 0.5	24	102	106	4.11	< 10	< 1	0.46	20	1.40	712
7-560070	201	238	10	2.85	0.8	45	1850	< 0.5	< 2	0.52	1.0	29	160	125	5.02	10	< 1	0.53	20	1.86	858
7-560071	201	238	8	1.83	0.2	10	610	< 0.5	< 2	0.47	< 0.5	23	64	89	3.70	< 10	< 1	0.17	20	0.83	857
7-560072	201	238	5	1.91	0.2	50	510	< 0.5	2	0.44	0.5	23	48	71	3.51	< 10	< 1	0.25	30	0.82	588
7-560073	201	238	22	2.38	0.2	< 5	390	< 0.5	4	0.31	0.5	22	47	62	3.97	< 10	< 1	0.31	30	0.90	676
7-560074	201	238	2	2.46	0.2	85	480	< 0.5	4	0.38	1.0	27	74	93	4.45	< 10	1	0.26	30	1.04	563
7-560075	201	238	14	2.87	0.2	5	370	< 0.5	2	0.51	0.5	27	68	111	4.29	< 10	3	0.16	20	0.99	564
7-560076	201	238	2	3.15	0.2	10	900	< 0.5	< 2	0.58	< 0.5	33	135	109	4.95	10	< 1	0.27	30	1.53	645
7-560077	201	238	4	2.58	0.2	10	590	< 0.5	< 2	0.63	0.5	27	99	94	4.26	< 10	< 1	0.28	30	1.34	565
7-560078	201	238	7	3.08	0.2	10	360	< 0.5	2	0.36	< 0.5	26	72	96	4.98	< 10	< 1	0.47	40	1.15	550

CERTIFICATION : 



Chemex Labs Ltd.

Analytical Chemists • Geochemists • Registered Assayers

212 BROOKSBANK AVE., NORTH VANCOUVER,
BRITISH COLUMBIA, CANADA V7J-2C1

PHONE (604) 984-0221

To: ARCHER CATHRO & ASSOC. (1981) LTD.
BOX 4127
3125 THIRD AVE.
WHITEHORSE, YT
Y1A 3S9

Project: SON CLAIMS
Comments: CC: T. GARAGAN

Page No.: 1-B
Tot. Pages: 3
Date: 3-AUG-87
Invoice #: I-8717500
P.O. #: NONE

CERTIFICATE OF ANALYSIS A8717500

SAMPLE DESCRIPTION	PREP CODE	Mo ppm	Na %	Ni ppm	P ppm	Pb ppm	Sb ppm	Se ppm	Sr ppm	Ti %	Tl ppm	U ppm	V ppm	W ppm	Zn ppm
7-560037	201 238	1	0.01	45	550	14	< 5	< 10	18	0.10	< 10	< 10	61	< 5	124
7-560038	201 238	2	0.01	37	1440	12	< 5	10	20	0.06	< 10	< 10	72	< 5	124
7-560039	201 238	1	0.01	34	1180	6	< 5	< 10	25	0.08	< 10	< 10	77	< 5	118
7-560040	201 238	1	0.01	40	780	12	< 5	< 10	22	0.11	< 10	< 10	83	< 5	108
7-560041	201 238	1	0.01	51	960	12	< 5	< 10	23	0.11	< 10	< 10	86	< 5	133
7-560042	201 238	2	0.01	51	1160	18	< 5	< 10	22	0.10	< 10	< 10	87	< 5	139
7-560043	201 238	1	0.01	43	940	8	< 5	< 10	21	0.10	< 10	< 10	75	< 5	122
7-560044	201 238	< 1	0.02	50	1050	12	< 5	< 10	21	0.12	< 10	< 10	87	< 5	151
7-560045	201 238	< 1	0.03	62	1210	4	< 5	< 10	26	0.17	< 10	< 10	115	< 5	159
7-560046	201 238	2	0.03	89	1510	16	< 5	< 10	36	0.18	< 10	< 10	138	< 5	229
7-560048	201 238	1	0.02	80	1290	10	< 5	< 10	24	0.16	< 10	< 10	120	< 5	192
7-560049	201 238	3	0.04	87	1320	4	< 5	< 10	36	0.16	< 10	< 10	117	< 5	216
7-560050	201 238	2	0.02	68	1080	6	< 5	10	25	0.11	< 10	< 10	85	< 5	194
7-560051	201 238	2	0.02	79	1200	14	< 5	< 10	38	0.22	< 10	< 10	136	< 5	235
7-560052	201 238	2	0.01	76	1110	2	< 5	< 10	31	0.19	< 10	< 10	130	< 5	243
7-560053	201 238	4	0.01	65	920	8	< 5	< 10	25	0.18	< 10	< 10	168	< 5	315
7-560054	201 238	2	0.04	87	1300	6	< 5	< 10	40	0.27	< 10	< 10	118	< 5	192
7-560055	201 238	2	0.02	63	810	4	< 5	10	25	0.19	< 10	< 10	119	< 5	210
7-560056	201 238	2	0.03	94	1260	8	< 5	< 10	42	0.25	< 10	< 10	138	< 5	185
7-560057	201 238	3	0.01	65	1020	6	< 5	< 10	29	0.15	< 10	< 10	124	< 5	247
7-560058	201 238	4	0.02	82	1130	6	< 5	< 10	33	0.24	< 10	< 10	149	< 5	241
7-560059	201 238	4	0.02	54	1160	12	< 5	10	34	0.16	< 10	< 10	114	< 5	171
7-560060	201 238	7	0.01	89	1170	24	< 5	< 10	34	0.15	< 10	< 10	177	< 5	343
7-560061	201 238	2	0.02	65	1730	10	< 5	< 10	63	0.11	< 10	< 10	92	< 5	314
7-560062	201 238	4	0.01	48	1090	14	< 5	< 10	26	0.12	< 10	< 10	97	< 5	153
7-560063	201 238	2	0.01	41	1140	2	< 5	10	27	0.11	< 10	< 10	95	< 5	100
7-560064	201 238	3	0.03	79	870	10	< 5	10	55	0.19	< 10	< 10	134	< 5	236
7-560066	201 238	2	0.03	90	960	2	< 5	10	50	0.15	< 10	< 10	125	< 5	157
7-560067	201 238	4	0.02	73	920	6	< 5	10	38	0.11	< 10	< 10	109	< 5	277
7-560068	201 238	3	0.04	87	1130	16	< 5	10	45	0.24	< 10	< 10	123	< 5	213
7-560069	201 238	3	0.02	91	990	6	< 5	10	43	0.21	< 10	< 10	128	< 5	191
7-560070	201 238	2	0.02	129	1250	10	< 5	< 10	47	0.26	< 10	< 10	154	< 5	200
7-560071	201 238	1	0.02	64	1130	18	< 5	< 10	33	0.13	< 10	< 10	85	< 5	108
7-560072	201 238	< 1	0.02	58	1070	12	< 5	< 10	36	0.15	< 10	< 10	73	< 5	119
7-560073	201 238	< 1	0.01	46	980	14	< 5	< 10	28	0.14	< 10	< 10	82	< 5	150
7-560074	201 238	< 1	0.02	77	800	8	< 5	< 10	46	0.20	< 10	< 10	114	< 5	126
7-560075	201 238	< 1	0.03	68	1230	18	< 5	< 10	85	0.19	< 10	< 10	113	< 5	103
7-560076	201 238	1	0.03	111	1350	12	< 5	10	46	0.25	< 10	< 10	173	< 5	135
7-560077	201 238	< 1	0.04	114	1050	2	< 5	< 10	35	0.20	< 10	< 10	128	< 5	166
7-560078	201 238	< 1	0.02	76	1190	20	< 5	10	32	0.19	< 10	< 10	105	< 5	186

CERTIFICATION :



Chemex Labs Ltd.

Analytical Chemists • Geochemists • Registered Assayers
 212 BROOKSBANK AVE., NORTH VANCOUVER,
 BRITISH COLUMBIA, CANADA V7J-2C1
 PHONE (604) 984-0221

To: ARCHER CATHRO & ASSOC. (1981) LTD.
 BOX 4127
 3125 THIRD AVE.
 WHITEHORSE, YT
 Y1A 3S9
 Project: SON CLAIMS
 Comments: CC: T. GARAGAN

Page No. : 2-A
 Tot. Pages: 3
 Date : 3-AUG-87
 Invoice #: I-8717500
 P.O. #: NONE

CERTIFICATE OF ANALYSIS A8717500

SAMPLE DESCRIPTION	PREP CODE	Au NAA ppb	Al %	Ag ppm	As ppm	Ba ppm	Be ppm	Bi ppm	Ca %	Cd ppm	Co ppm	Cr ppm	Cu ppm	Fe %	Ga ppm	Hg ppm	K %	La ppm	Mg %	Mn ppm
7-560079	201 238	6	2.40	< 0.2	10	310	< 0.5	2	0.23	< 0.5	21	52	71	4.00	< 10	< 1	0.31	30	0.89	452
7-560080	201 238	4	1.94	< 0.2	5	230	< 0.5	< 2	0.19	< 0.5	11	44	56	3.45	< 10	< 1	0.20	20	0.65	403
7-560081	201 238	6	2.14	< 0.2	< 5	270	< 0.5	< 2	0.59	< 0.5	27	53	82	4.63	< 10	< 1	0.47	20	1.14	609
7-560082	201 238	6	1.94	< 0.2	< 5	220	< 0.5	< 2	0.96	< 0.5	29	61	93	3.43	< 10	2	0.17	20	0.96	561
7-560083	201 238	3	2.04	< 0.2	< 5	250	< 0.5	< 2	0.33	< 0.5	19	45	52	3.28	< 10	< 1	0.21	20	0.83	378
7-560084	201 238	12	1.73	< 0.2	< 5	230	< 0.5	< 2	0.23	< 0.5	12	38	50	3.08	< 10	< 1	0.25	20	0.64	333
7-560085	201 238	4	1.89	< 0.2	5	200	< 0.5	4	0.24	< 0.5	18	35	62	3.08	< 10	< 1	0.20	30	0.68	355
7-560086	201 238	4	1.88	0.2	10	330	< 0.5	< 2	0.17	< 0.5	11	42	71	3.94	< 10	< 1	0.23	20	0.67	456
7-660055	201 238	29	1.69	0.6	345	360	< 0.5	< 2	0.40	6.5	43	25	149	4.85	< 10	< 1	0.27	30	0.74	5820
7-660056	201 238	5	2.09	0.2	45	270	< 0.5	2	0.25	1.0	11	54	83	3.15	< 10	< 1	0.29	20	1.06	895
7-660057	201 238	11	2.57	0.4	20	350	< 0.5	< 2	0.32	0.5	21	89	106	3.55	< 10	< 1	0.34	20	1.23	900
7-660058	201 238	4	2.25	0.4	< 5	380	< 0.5	< 2	0.26	0.5	24	86	91	3.28	< 10	< 1	0.47	20	1.17	1095
7-660059	201 238	2	1.81	< 0.2	< 5	210	< 0.5	< 2	0.23	0.5	11	52	50	2.41	< 10	< 1	0.20	20	0.83	509
7-660060	201 238	2	2.68	0.4	< 5	280	< 0.5	2	0.22	0.5	19	68	79	3.26	10	1	0.38	20	1.50	1045
7-660061	201 238	7	2.59	0.4	< 5	290	< 0.5	< 2	0.07	< 0.5	8	66	94	4.75	10	< 1	0.91	30	1.50	1060
7-660062	201 238	6	2.36	0.2	< 5	740	< 0.5	< 2	0.23	1.0	21	157	199	5.41	10	< 1	1.22	20	1.73	378
7-660063	201 238	12	2.79	0.2	5	530	< 0.5	< 2	0.23	1.0	41	40	177	5.59	< 10	< 1	0.77	20	1.39	1035
7-660064	201 238	9	2.54	0.2	10	300	< 0.5	< 2	0.23	0.5	34	59	186	4.83	10	< 1	0.93	20	1.55	1355
7-660065	201 238	10	2.33	0.2	5	560	< 0.5	2	0.21	0.5	21	86	169	4.59	10	1	0.96	20	1.48	931
7-660066	201 238	3	3.89	0.6	< 5	520	< 0.5	< 2	1.05	< 0.5	46	172	135	6.74	10	3	0.70	40	2.14	784
7-660067	201 238	2	2.95	0.6	< 5	400	< 0.5	< 2	0.71	0.5	26	80	122	4.63	10	< 1	0.55	40	1.28	970
7-660068	201 238	7	3.62	1.0	5	950	< 0.5	< 2	0.60	0.5	29	103	151	5.10	10	< 1	0.46	40	1.52	1450
7-660069	201 238	5	2.53	1.0	5	280	< 0.5	< 2	0.44	0.5	26	54	103	5.35	< 10	< 1	0.29	50	1.20	902
7-660070	201 238	6	2.83	1.2	< 5	590	< 0.5	2	0.60	1.0	25	87	122	4.09	10	< 1	0.40	30	1.63	943
7-660071	201 238	6	2.75	1.2	5	440	< 0.5	4	0.42	< 0.5	26	74	179	4.96	10	4	0.78	30	1.82	2250
7-660072	201 238	9	2.72	1.0	10	320	< 0.5	2	0.30	1.0	25	68	164	4.04	< 10	< 1	0.35	30	1.39	1205
7-660073	201 238	5	3.41	0.8	< 5	210	< 0.5	4	0.76	1.0	26	89	125	3.78	10	< 1	0.61	30	2.06	1425
7-750010	201 238	6	3.02	0.6	< 5	980	< 0.5	4	0.33	1.0	17	131	117	4.03	10	< 1	0.62	20	1.74	573
7-750011	201 238	1	2.13	1.0	< 5	490	< 0.5	< 2	0.31	0.5	12	56	65	2.72	< 10	< 1	0.16	20	0.85	531
7-750012	201 238	4	2.90	1.8	15	610	< 0.5	< 2	0.39	1.0	20	67	82	3.60	< 10	< 1	0.23	30	1.05	651
7-750013	201 238	6	2.34	0.4	10	1610	< 0.5	< 2	0.32	1.5	28	91	136	4.56	< 10	1	0.34	20	1.30	1845
7-750014	201 238	46	3.44	1.8	100	1080	< 0.5	< 2	0.83	11.5	117	151	437	8.94	10	< 1	0.56	40	2.04	3460
7-760098	201 238	11	2.03	< 0.2	5	250	< 0.5	4	0.21	0.5	29	38	85	4.06	< 10	1	0.26	30	0.84	729
7-760099	201 238	33	2.28	2.0	70	2150	< 0.5	4	0.49	0.5	22	98	213	7.99	< 10	< 1	0.40	10	1.28	547
7-760100	201 238	24	2.01	1.6	5	1550	< 0.5	4	0.32	1.0	21	63	250	6.74	< 10	< 1	0.31	10	1.03	636
7-760101	201 238	15	2.29	1.8	35	1360	< 0.5	< 2	0.33	2.0	26	66	323	5.96	< 10	< 1	0.17	40	0.92	1375
7-760102	201 238	20	2.02	0.6	30	910	< 0.5	2	0.28	1.0	27	50	133	4.03	< 10	< 1	0.19	20	0.78	695
7-760103	201 238	34	1.98	0.6	195	4670	< 0.5	8	0.57	7.0	35	121	268	7.13	< 10	< 1	0.46	20	1.39	843
7-760104	201 238	8	2.07	0.6	< 5	1840	< 0.5	< 2	0.47	2.5	42	78	181	4.79	< 10	< 1	0.56	20	1.67	1170
7-760105	201 238	9	2.23	0.8	< 5	590	< 0.5	2	0.42	2.0	31	92	171	4.45	< 10	< 1	0.49	20	1.62	896

CERTIFICATION :

[Signature]



Chemex Labs Ltd.

Analytical Chemists * Geochemists * Registered Assayers

212 BROOKSBANK AVE., NORTH VANCOUVER,
BRITISH COLUMBIA, CANADA V7J-1C1

PHONE (604) 984-0221

To: ARCHER CATHRO & ASSOC. (1981) LTD.
BOX 4127
3125 THIRD AVE.
WHITEHORSE, YT
Y1A 3S9

Project: SON CLAIMS
Comments: CC: T. GARAGAN

Page No. : 2-B
Tot. Pages: 3
Date : 3-AUG-87
Invoice #: I-8717500
P.O. #: NONE

CERTIFICATE OF ANALYSIS A8717500

SAMPLE DESCRIPTION	PREP CODE		Mo	Na	Ni	P	Pb	Sb	Se	Sr	Ti	Tl	U	V	W	Zn
			ppm	%	ppm	ppm	ppm	ppm	ppm	ppm	%	ppm	ppm	ppm	ppm	ppm
7-560079	201	238	1	0.02	55	720	10	< 5	< 10	23	0.14	< 10	< 10	88	< 5	136
7-560080	201	238	< 1	0.01	39	1020	16	< 5	< 10	21	0.11	< 10	< 10	82	< 5	112
7-560081	201	238	< 1	0.02	53	1430	6	< 5	< 10	25	0.18	< 10	< 10	118	< 5	129
7-560082	201	238	< 1	0.05	74	1360	6	< 5	10	41	0.18	< 10	< 10	97	< 5	79
7-560083	201	238	< 1	0.02	45	970	12	< 5	< 10	21	0.13	< 10	< 10	79	< 5	93
7-560084	201	238	< 1	0.01	36	970	8	< 5	10	20	0.10	< 10	< 10	71	< 5	95
7-560085	201	238	1	0.01	52	770	8	< 5	< 10	19	0.13	< 10	< 10	64	< 5	129
7-560086	201	238	2	0.01	44	1220	8	< 5	10	33	0.09	< 10	< 10	83	< 5	143
7-660055	201	238	1	0.01	127	900	4	< 5	< 10	42	0.02	< 10	< 10	77	< 5	143
7-660056	201	238	< 1	0.01	61	810	2	< 5	10	28	0.14	< 10	< 10	97	< 5	196
7-660057	201	238	2	0.02	77	630	16	< 5	< 10	35	0.23	< 10	< 10	120	< 5	141
7-660058	201	238	1	0.01	92	570	8	< 5	10	24	0.22	< 10	< 10	109	< 5	168
7-660059	201	238	1	0.01	46	420	6	< 5	< 10	21	0.17	< 10	< 10	89	< 5	103
7-660060	201	238	1	0.02	69	530	4	< 5	< 10	26	0.19	< 10	< 10	125	< 5	161
7-660061	201	238	9	0.05	41	920	6	< 5	< 10	39	0.19	< 10	< 10	175	< 5	129
7-660062	201	238	< 1	0.03	66	1330	< 2	< 5	< 10	38	0.34	< 10	< 10	151	< 5	186
7-660063	201	238	6	0.05	82	1160	10	< 5	< 10	103	0.22	< 10	< 10	141	< 5	400
7-660064	201	238	8	0.06	63	1590	10	< 5	< 10	84	0.18	< 10	< 10	157	< 5	158
7-660065	201	238	3	0.04	67	900	6	< 5	< 10	33	0.20	< 10	< 10	123	< 5	164
7-660066	201	238	1	0.11	156	2120	< 2	5	< 10	88	0.36	< 10	< 10	121	< 5	140
7-660067	201	238	1	0.07	94	1670	2	< 5	< 10	66	0.25	< 10	< 10	110	< 5	149
7-660068	201	238	2	0.03	100	1620	< 2	< 5	< 10	68	0.21	< 10	< 10	160	< 5	178
7-660069	201	238	2	0.01	74	1060	24	< 5	< 10	25	0.06	< 10	< 10	91	< 5	219
7-660070	201	238	3	0.05	89	750	2	< 5	10	54	0.23	< 10	< 10	145	< 5	293
7-660071	201	238	4	0.04	152	530	10	< 5	10	61	0.21	< 10	< 10	192	< 5	154
7-660072	201	238	5	0.05	89	1030	< 2	< 5	< 10	52	0.16	< 10	< 10	150	< 5	278
7-660073	201	238	4	0.09	90	890	< 2	< 5	< 10	69	0.23	< 10	< 10	169	< 5	206
7-750010	201	238	3	0.03	93	1080	4	< 5	< 10	43	0.24	< 10	< 10	146	< 5	223
7-750011	201	238	2	0.01	50	1130	6	< 5	< 10	27	0.12	< 10	< 10	90	< 5	138
7-750012	201	238	1	0.01	71	1280	4	5	< 10	31	0.14	< 10	< 10	108	< 5	199
7-750013	201	238	4	0.02	98	1110	18	< 5	< 10	31	0.15	< 10	< 10	113	< 5	273
7-750014	201	238	6	0.03	157	1390	30	< 5	< 10	77	0.21	< 10	< 10	164	< 5	1015
7-760098	201	238	< 1	0.01	62	810	4	< 5	10	24	0.10	< 10	< 10	75	< 5	158
7-760099	201	238	1	0.04	78	1540	16	< 5	< 10	52	0.18	< 10	< 10	115	< 5	352
7-760100	201	238	5	0.02	81	1490	18	< 5	< 10	68	0.13	< 10	< 10	143	< 5	215
7-760101	201	238	6	0.02	69	1160	44	< 5	< 10	51	0.13	< 10	< 10	96	< 5	483
7-760102	201	238	2	0.01	66	870	18	< 5	< 10	32	0.14	< 10	< 10	76	< 5	306
7-760103	201	238	4	0.03	115	2000	400	< 5	< 10	80	0.15	< 10	< 10	132	< 5	861
7-760104	201	238	4	0.03	192	1110	< 2	< 5	10	85	0.15	< 10	< 10	129	< 5	339
7-760105	201	238	3	0.03	132	910	2	< 5	< 10	47	0.17	< 10	< 10	108	< 5	319

CERTIFICATION :

[Handwritten signature]



Chemex Labs Ltd.

Analytical Chemists • Geochemists • Registered Assayers

212 BROOKSBANK AVE., NORTH VANCOUVER,
BRITISH COLUMBIA, CANADA V7J-2C1

PHONE (604) 984-0221

To: ARCHER CATHRO & ASSOC. (1981) LTD.
BOX 4127
3125 THIRD AVE.
WHITEHORSE, YT
Y1A 3S9

Project: SON CLAIMS

Comments: CC: T. GARAGAN

Page No.: 3-A
Tot. Pages: 3
Date: 3-AUG-87
Invoice #: I-8717500
P.O. #: NONE

CERTIFICATE OF ANALYSIS A8717500

SAMPLE DESCRIPTION	PREP CODE	Au NAA ppb	Al %	Ag ppm	As ppm	Ba ppm	Be ppm	Bi ppm	Ca %	Cd ppm	Co ppm	Cr ppm	Cu ppm	Fe %	Ga ppm	Hg ppm	K %	La ppm	Mg %	Mn ppm
7-760106	201 238	25	2.52	1.0	45	1020	< 0.5	2	0.86	2.0	39	88	162	5.30	< 10	2	0.62	30	1.36	1535
7-760107	201 238	8	1.90	0.6	50	700	< 0.5	2	0.94	1.5	30	80	81	3.68	< 10	2	0.13	20	1.02	1130
7-760108	201 238	3	2.69	0.6	15	1080	< 0.5	< 2	1.85	2.0	38	106	125	4.41	< 10	1	0.64	20	1.25	1130
7-760109	201 238	8	2.67	0.6	40	700	< 0.5	< 2	0.92	1.5	33	96	122	6.01	< 10	< 1	0.44	30	1.29	870
7-960033	201 238	7	3.02	0.6	< 5	440	< 0.5	4	0.20	< 0.5	25	81	153	4.29	10	< 1	0.71	20	1.63	1115
7-960034	201 238	1	3.23	0.6	< 5	410	< 0.5	2	0.22	0.5	26	102	152	4.45	10	1	0.72	20	1.76	1240
7-960035	201 238	28	2.21	0.8	< 5	370	< 0.5	2	0.50	0.5	12	60	87	3.11	< 10	1	0.15	20	1.05	669
7-960036	201 238	4	2.96	0.4	< 5	460	< 0.5	< 2	0.59	< 0.5	20	74	103	3.95	< 10	1	0.32	30	1.73	1275
7-960037	201 238	7	2.63	0.6	< 5	580	< 0.5	2	0.31	1.0	22	68	144	3.89	< 10	< 1	0.29	30	1.27	1415
7-960038	201 238	10	2.55	0.2	< 5	450	< 0.5	< 2	0.48	1.5	21	92	95	3.67	10	< 1	0.62	20	1.54	879

Plot 1

CERTIFICATION :



Chemex Labs Ltd.

Analytical Chemists • Geochemists • Registered Assayers

212 BROOKSBANK AVE., NORTH VANCOUVER,
BRITISH COLUMBIA, CANADA V7J-2C1

PHONE (604) 984-0221


To: ARCHER CATHRO & ASSOC. (1981) LTD.
BOX 4127
3125 THIRD AVE.
WHITEHORSE, YT
Y1A 3S9

Project: SON CLAIMS
Comments: CC: T. GARAGAN

Page No.: 3-B
Tot. Pages: 3
Date: 3-AUG-87
Invoice #: I-8717500
P.O. #: NONE

CERTIFICATE OF ANALYSIS A8717500

SAMPLE DESCRIPTION	PREP CODE		Mo	Na	Ni	P	Pb	Sb	Se	Sr	Tl	Tl	U	V	W	Zn
			ppm	%	ppm	ppm	ppm	ppm	ppm	ppm	%	ppm	ppm	ppm	ppm	ppm
7-760106	201	238	1	0.07	108	1660	12	< 5	< 10	53	0.16	< 10	< 10	118	< 5	254
7-760107	201	238	1	0.03	60	1470	14	< 5	< 10	53	0.11	< 10	< 10	104	< 5	194
7-760108	201	238	1	0.12	97	1660	8	5	< 10	71	0.18	< 10	< 10	126	< 5	190
7-760109	201	238	< 1	0.07	105	1790	< 2	5	< 10	48	0.17	< 10	< 10	139	< 5	236
7-960033	201	238	3	0.03	81	600	< 2	< 5	< 10	55	0.23	< 10	< 10	136	< 5	129
7-960034	201	238	3	0.03	90	840	2	< 5	< 10	54	0.25	< 10	< 10	146	< 5	173
7-960035	201	238	2	0.01	49	1370	< 2	< 5	< 10	40	0.11	< 10	< 10	120	< 5	133
7-960036	201	238	2	0.02	70	930	< 2	5	< 10	46	0.16	< 10	< 10	126	< 5	127
7-960037	201	238	6	0.03	88	1100	2	< 5	< 10	43	0.14	< 10	< 10	163	< 5	227
7-960038	201	238	2	0.04	71	890	< 2	< 5	< 10	45	0.23	< 10	< 10	119	< 5	179

CERTIFICATION : 

APPENDIX B
ROCK SAMPLE DESCRIPTIONS AND RESULTS

Date: June 30, 1987 Project: SON Claims Area: Watson River Page 1 of 1

Sample No.	Location	Description	Attitude	Width	Analytical Results		
					Au ppb	Ag ppm	Pb ppm
7-910011	cp#2 SON 3+4 cp#1 SON 5+6	white sugary qtz, composite grab	070/45N	grab 0.2m	<5	0.2	
7-910012	30m N of above	a.a w/ some oxidized zones		2m	<5	0.4	
7-910013	50m E of cp's	composite chip of sugary qtz white to oxidized qtz vein	105/55N	1.5 chip	<5	0.2	
7-920012	as above	a.a composite grab		boulders 10cm by 10cm to 1m by 1m	<5	<0.2	
7-920013	as above	as above		boulders 1m by 1m 0.75m	<5	<0.2	
7-610022	S along ridge	white sugary qtz	090/30N	1m chip; 10cm vein	<5	<0.2	
7-610023	along E ridge	a.a.	100/80N	1m chip; 20cm vein	<5	0.2	
7-620009	150m S of #7-910011	a.a.		composite grab	<5	<0.2	
7-620010	S up to peak	large blocks of white sugary qtz		grab, boulders 50 by 100cm	<5	0.4	
7-620011	along E ridge	a.a.			<5	<0.2	

**APPENDIX C
STATEMENT OF QUALIFICATIONS**

STATEMENT OF QUALIFICATIONS

I, THOMAS GARAGAN, hereby certify that:

1. I am a geologist with Aurum Geological Consultants Inc. of 604 675 West Hastings Street, Vancouver, B.C. and I caused to be performed the work described in this report.
2. I obtained a Bachelor of Science degree with Honours in Geology from the University of Ottawa, Ontario, in 1980.
3. I am a fellow of the Geological Association of Canada (F3819) and a member of the Mineralogical Association of Canada and the Yukon Professional Geoscientists Society.
4. I have been engaged in mineral exploration and geological survey mapping on a full and part time basis for 9 years, of which 6 have been spent on mineral exploration programs in the Yukon Territory.
5. I have no interest in the claims or securities of All-North Resources Ltd. nor do I expect to obtain any.
6. I consent to the use of this report in a company report or statement, provided that no portion is used out of context in such a manner as to convey a meaning differing materially from that set out in the whole.

DATED at Calgary, Alta., this 26th day of November 1987.



Thomas Garagan, B.Sc., FGAC