

MAP NO.

ASSESSMENT REPORT X
PROSPECTUS
CONFIDENTIAL
OPEN FILE

DOCUMENT NO.: 091972
MINING DISTRICT: Whitehorse
TYPE OF WORK: Geochemistry, Trenching

115 I 3

REPORT FILED UNDER: Big Creek Joint Venture

DATE PERFORMED: July - September 1987

DATE FILED: Dec. 4, 1987

LOCATION: LAT.: 62°14'N

AREA: Stoddart Creek

LONG.: 137°57'W

VALUE \$: 1,200.00

CLAIM NAME & NO.: FIELD 1-30

WORK DONE BY: C.A. Main (Archer, Cathro and Associates (1981) Ltd.

WORK DONE FOR:

DATE TO GOOD STANDING | REMARKS: #109 FIELD

ARCHER, CATIRO

• ASSOCIATES (1981) LIMITED

CONSULTING GEOLOGICAL ENGINEERS

1016 - 510 WEST HASTINGS STREET
VANCOUVER, B. C. V6B 1L8

(604) 688-2568

GEOLOGICAL, GEOCHEMICAL AND TRENCHING PROGRAM

on the

FIELD PROPERTY

Field 1-8 (YA95914-YA95921)

and Field 9-30 (YA96233-YA96254)

MT. FREEGOLD, YUKON

Whitehorse Mining District

NTS 115I/6

Latitude 62°14'; Longitude 137°57'

By

ARCHER, CATIRO & ASSOCIATES (1981) LIMITED

November, 1987

Work done between July 7 to September 12, 1987

091972

TABLE OF CONTENTS

	<u>PAGE</u>
INTRODUCTION	1
PROPERTY, LOCATION AND ACCESS	1
PHYSIOGRAPHY AND GEOMORPHOLOGY	2
GEOLOGY	2
MINERALIZATION	2
GEOCHEMISTRY	3
TRENCHING	3
DISCUSSION AND CONCLUSIONS	4

<u>NO.</u>	<u>FIGURES</u>	<u>LOCATION</u>
F-1	Compilation Map - Geology, Gold Geochemistry	Following Page 3

APPENDIX I

Statement of Author's Qualifications

INTRODUCTION

The Field property was staked in August and September of 1986 by Freegold Venture, a project funded by Chevron Minerals Ltd. The property was positioned to cover the source of a gold/arsenic geochemical silt anomaly discovered by the Geological Survey of Canada (GSC). In April 1987, the property was optioned to Big Creek Resources Ltd. (formerly Nordac Mining Corporation) on behalf of Big Creek Joint Venture (BCJV) which consists of Big Creek Resources (66.7%) and Rexford Minerals Ltd. (33.3%). The 1987 program was managed by Archer, Cathro & Associates (1981) Limited with C.A. Main as Project Manager. Field personnel included J.L. Duke, F. Andersen and G. MacIntosh.

PROPERTY, LOCATION AND ACCESS

The Field property consists of thirty contiguous claims registered in the name of Archer, Cathro & Associates (1981) Limited with the Whitehorse Mining Recorder as follows:

<u>Claim Name</u>	<u>Grant Numbers</u>	<u>Expiry Date</u>
Field 1-8	YA95914-YA95921	February 15, 1989
Field 9-30	YA96233-YA96254	February 15, 1989

The claims are located 40 km northwest of Carmacks on NTS map sheet 115I/2 at latitude 62°14' and longitude 137°57'. Direct road access is available across the property using a poorly maintained road branching off the Freegold Road which is maintained by the Yukon Territorial Government.

PHYSIOGRAPHY AND GEOMORPHOLOGY

The property lies between 1,050 and 1,300 m above sea level on a ridge from which small creeks drain south to Seymour Creek and north to Stoddart Creek. Relief is subdued with little outcrop other than at ridge crests. The south-facing slope is vegetated with spruce and poplar while the north-facing slopes are thickly covered with moss, buckbrush and stunted fir trees.

GEOLOGY

The property is underlain by the Triassic Granite Mountain Batholith which consists of foliated hornblende-biotite granodiorite. Although Paleozoic(?) Yukon Group biotite-quartz-feldspar schists and feldspar augen gneiss with minor marble and quartzite are mapped just off the property to the south, none of these rocks were seen on the property. The property is located immediately north of the junction between the Big Creek and Miller Creek Faults. A recessive linear depression occurs at the head of the drainage which produced the anomalous GSC sample. This linear was bulldozer trenched but the exposed bedrock was fresh with no indication of alteration.

MINERALIZATION

There is no record of mineralization found on the property and none was found by this survey.

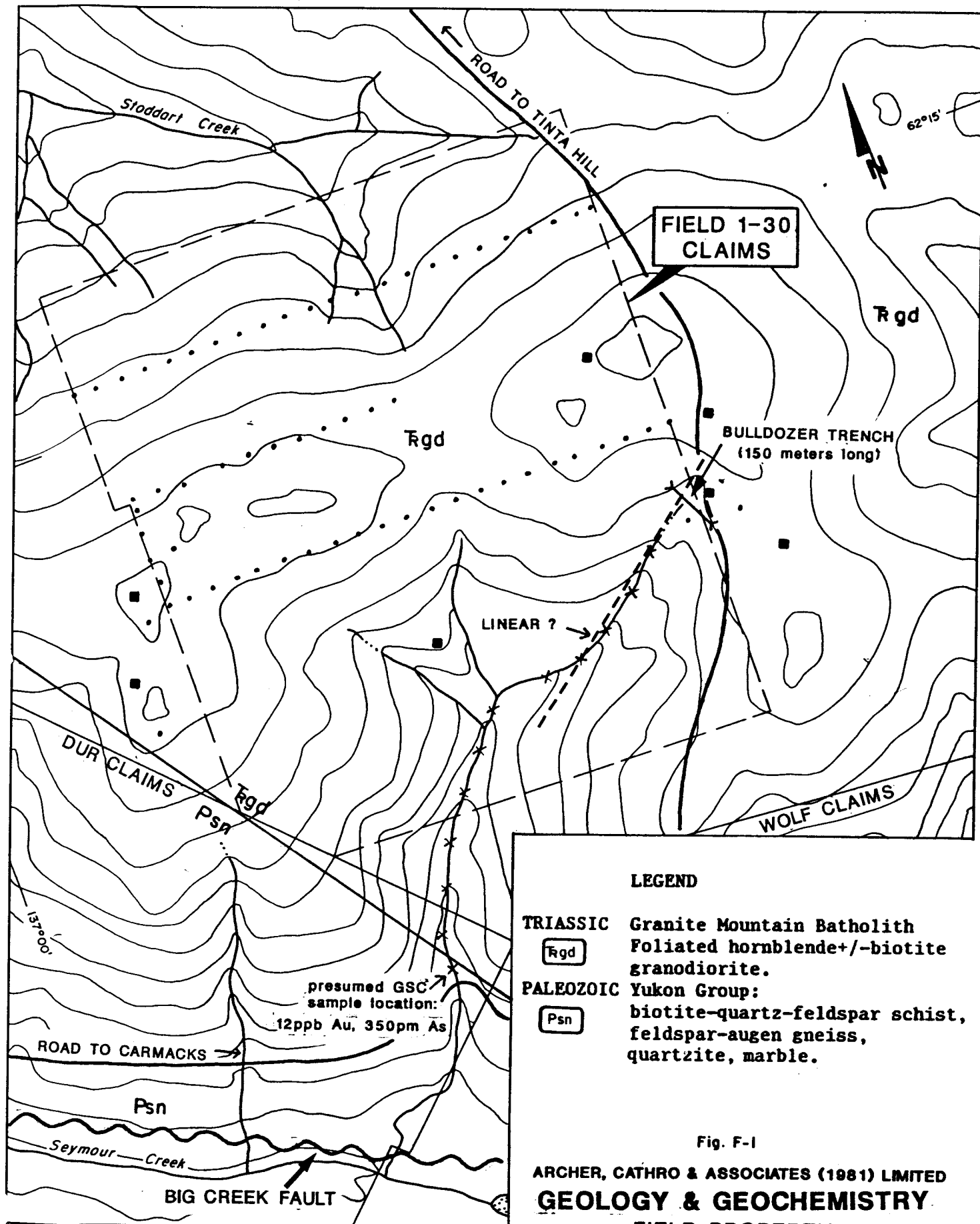
GEOCHEMISTRY

The GSC silt sample taken from the mouth of the main stream which drains south across the Field property returned weakly anomalous gold values (12 ppb Au from two separate analyses) and intensely anomalous arsenic (350 ppm As) - GSC Open File 1220. Twelve silt samples were taken along the anomalous drainage, including a sample from the supposed GSC sample site, as shown on Figure F-1 on the following page. The assays for these samples were all < 5 ppb Au. Sixty-three soil samples were taken at 100 m intervals along prospecting and geological traverses which crossed the property and the assays for these samples were also < 5 ppb Au.

All geochemical samples were collected in numbered kraft bags and analyzed for gold at Chemex Labs Ltd., North Vancouver, B.C. by fire assay followed by atomic absorption measurement for gold content. The samples were not analyzed for any other metal.

TRENCHING

A 150 m long trench was cut by bulldozer to expose a linear depression at the head of the anomalous creek. The bedrock exposed was fresh granodiorite and there was no indication of a vein.



- Soil sample site
 - × Silt sample site
 - Rock sample site
- All samples contained <5ppb gold

LEGEND

- TRIASSIC** Granite Mountain Batholith
 Foliated hornblende+/-biotite
 granodiorite.
- PALEOZOIC** Yukon Group:
 biotite-quartz-feldspar schist,
 feldspar-augen gneiss,
 quartzite, marble.

Fig. F-1

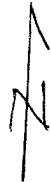
ARCHER, CATHRO & ASSOCIATES (1981) LIMITED
GEOLOGY & GEOCHEMISTRY
 FIELD PROPERTY

1151/2,7
 BIG CREEK JOINT VENTURE
 1:20,000
 0 200 400 600 800 1000 m

NOTICE

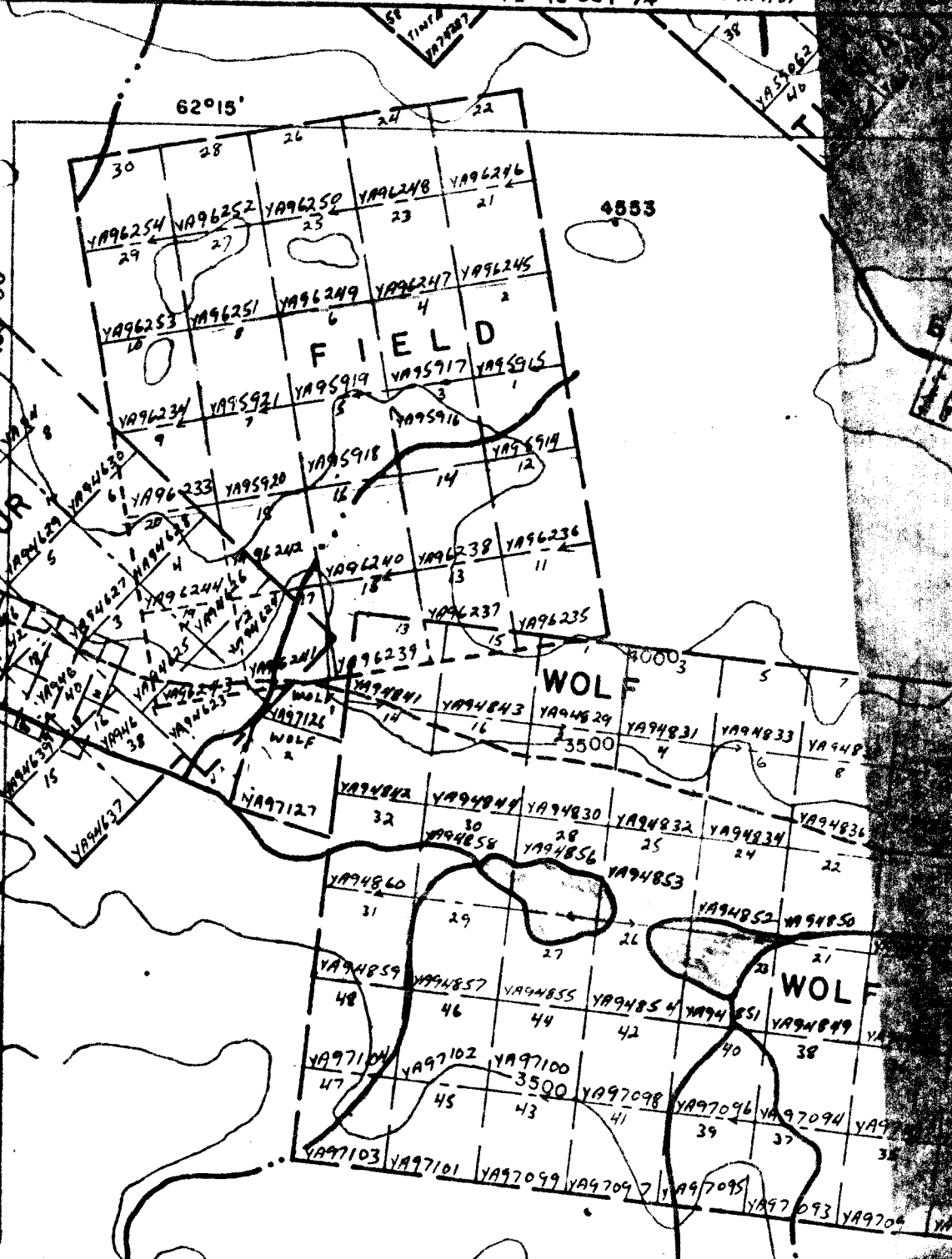
MAP IS ISSUED AS A PRELIMINARY GUIDE WHICH THE DEPARTMENT OF NORTHERN RESOURCES AND NATIONAL RESOURCES WILL ACCEPT WITH NO RESPONSIBILITY FOR ANY ERRORS, OMISSIONS OR OMISSIONS WHATSOEVER ON THE PART OF THE DEPARTMENT BEFORE ADEQUATE SURVEYS HAVE BEEN MADE

115 I 2



24 JAN. 1972
HORSE 12 MAY 1965

7 NOV 60
22 MAR 60
30 DEC 76
12 NOV 76
13 NOV 75
6 OCT 72
16 OCT 74
2 DEC 61
23 JULY 67
30 APR 61



DISCUSSION AND CONCLUSIONS

The Field property was staked to cover the apparent up-drainage source of a gold/arsenic silt anomaly discovered during a regional survey conducted by the GSC. Resampling of silt from the anomalous drainage was unsuccessful in reproducing the anomaly. Prospecting, geological and soil sampling surveys which crossed the property were unsuccessful in locating any indications of gold mineralization. A bulldozer trench that was cut to explore a linear depression, which may have indicated a vein, was unsuccessful in locating such a structure.

This property does not warrant any further work.

Respectfully submitted,

ARCHER, CATHRO & ASSOCIATES (1981) LIMITED


C.A. Main, B.Sc.

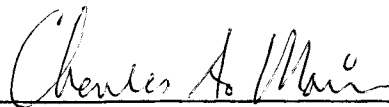
/mc

APPENDIX I
AUTHOR'S STATEMENT OF QUALIFICATIONS

STATEMENT OF QUALIFICATIONS

I, Charles A. Main, geologist, with business addresses in Whitehorse, Yukon Territory and Vancouver, British Columbia and residential address in Vancouver, British Columbia, hereby certify that:

1. I graduated from the University of British Columbia in 1971 with a B.Sc. majoring in Geological Sciences and Chemistry.
2. I have been actively engaged as a geologist in mineral exploration since 1971 and as a partner of Archer, Cathro & Associates (1981) Limited since June 1, 1981.
3. I have personally participated in or supervised the field work reported herein.



Charles A. Main, B.Sc.

ARCHER, CATHRO

& ASSOCIATES (1981) LIMITED

CONSULTING GEOLOGICAL ENGINEERS

Box 4127, 3125 THIRD AVENUE
WHITEHORSE, Y. T. Y1A 3S9

(403) 667-4415

July 24, 1988

Mr. Trevor Bremner
Geology Department
Department of Indian Affairs and
Northern Development
200 Range Road
Whitehorse, YUKON

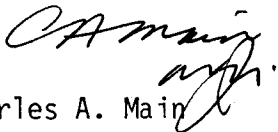
Dear Trevor:

In reply to your request concerning the Toast and Field claim groups, we attach updated figures for the reports on both properties. These reports were dated November 1987. The updated figures show the sample numbers for each of the samples taken from the property. I also attach the assay certificates showing the values received from each sample.

I hope this clarifies the situation. We had not included this data in the original report since the results were uniformly low and in our judgment, the properties warranted no further interest.

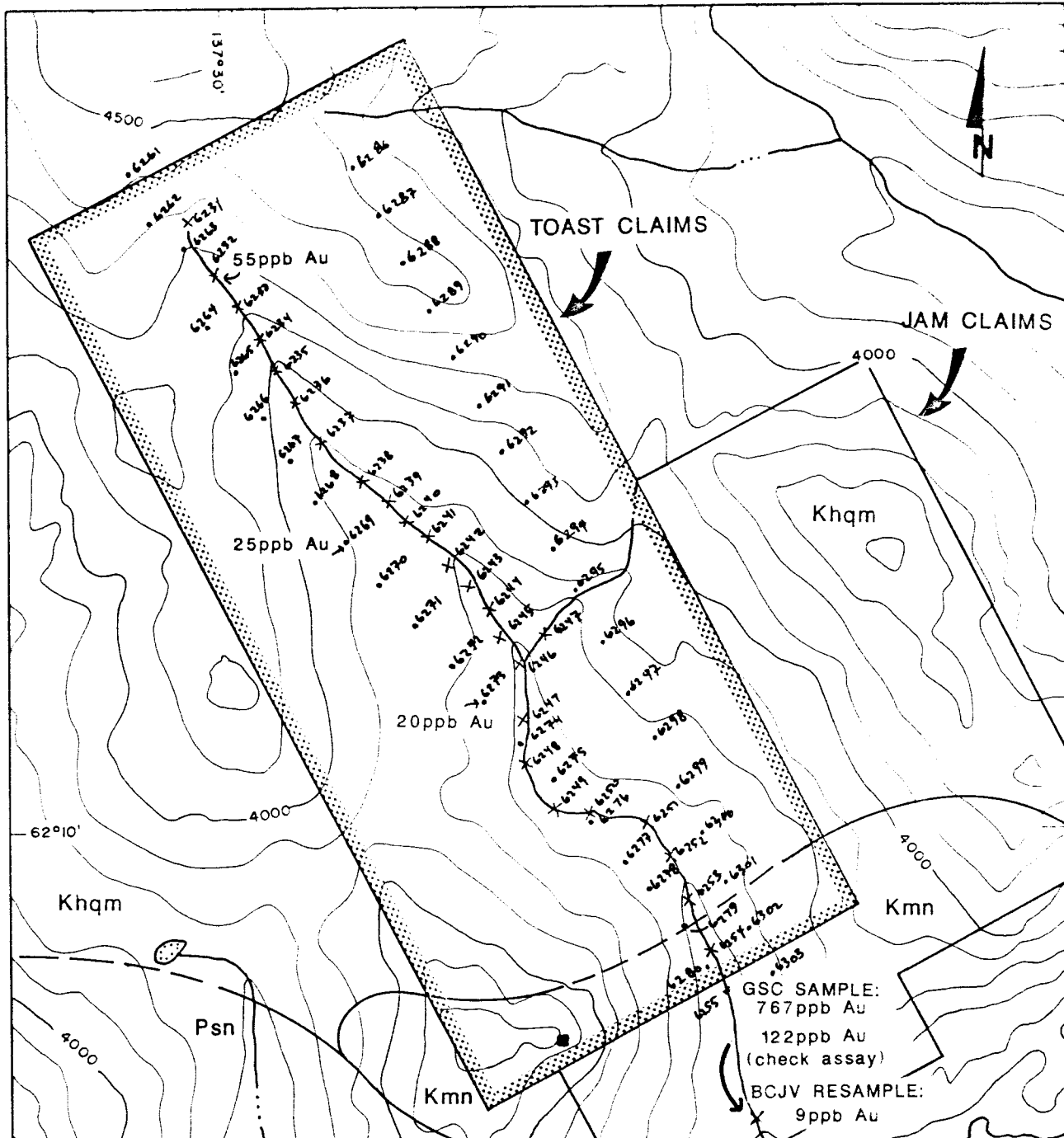
Yours truly,

ARCHER, CATHRO & ASSOCIATES (1981) LIMITED


Charles A. Main

CAM/rtb
encls.

091970



LEGEND

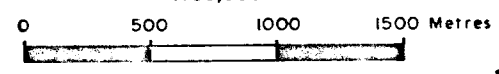
- CRETACEOUS**
- Kmn Mount Nansen Volcanics: andesite flows and flow breccias and dykes
 - Khqm Dawson Range Batholith: hornblende-quartz monzonite
- PALEOZOIC**
- Psn Yukon Metamorphic Complex: metasedimentary and metavolcanic rocks

Fig. T-1

ARCHER, CATHRO & ASSOCIATES (1981) LIMITED
GEOLOGY & GEOCHEMISTRY

TOAST PROPERTY
 115 I/3

BIG CREEK JOINT VENTURE
 1:30,000



- Soil sample site
- x Silt sample site
- Rock sample site

Values below 5ppb Au are not shown.

091972



Chemex Labs Ltd.

Analytical Chemists • Geochemists • Registered Assayers

111 BROOKBANK AVE., NORTH VANCOUVER,
BRITISH COLUMBIA, CANADA V7J-1C1

PHONE (604) 984-0221

THE HER CATHRO & ASSOC. (1981) LTD.

4127

3125 THIRD AVE.
WHITEHORSE, YT
Y1A 3S0

Project: BCJV

Comments:

Page No -A

Tot. Pag

Date 10-AUG-87

Invoice # 1-A718772

P.O. # NUNH

CERTIFICATE OF ANALYSIS A8718772

SAMPLE DESCRIPTION	PREP CODE	Au ppb FA-AA	Al %	Ag ppm	As ppm	Ba ppm	Be ppm	Bi ppm	Ca %	Cd ppm	Co ppm	Cr ppm	Cu ppm	Fe %	Ga ppm	Hg ppm	K %	La ppm	Mg %	Mn ppm
6061	203 238	15	1.08	< 0.2	25	190	< 0.5	< 2	0.27	< 0.5	6	19	9	1.65	< 10	< 1	0.07	< 10	0.28	202
6062	203 238	< 5	1.76	< 0.2	5	260	0.5	< 2	0.38	< 0.5	12	44	14	2.53	< 10	< 1	0.09	10	0.59	509
6063	203 238	< 5	1.24	< 0.2	< 5	380	< 0.5	< 2	0.42	< 0.5	8	32	9	2.14	< 10	< 1	0.06	10	0.54	267
6065	203 238	< 5	1.42	< 0.2	15	130	< 0.5	< 2	0.32	< 0.5	8	35	12	2.08	< 10	< 1	0.07	10	0.46	349
6066	203 238	< 5	1.27	< 0.2	10	130	< 0.5	< 2	0.32	< 0.5	8	42	12	2.19	< 10	1	0.06	10	0.49	266
6067	203 238	< 5	1.57	< 0.2	20	260	< 0.5	< 2	0.29	< 0.5	5	35	13	1.81	< 10	< 1	0.10	10	0.37	161
6068	203 238	< 5	2.04	< 0.2	25	260	0.5	< 2	0.36	< 0.5	11	43	18	2.85	< 10	< 1	0.10	10	0.65	312
6069	203 238	< 5	2.08	< 0.2	5	150	0.5	< 2	0.25	< 0.5	10	47	13	2.79	< 10	< 1	0.11	10	0.55	297
6070	203 238	< 5	1.44	< 0.2	5	280	0.5	< 2	0.30	< 0.5	9	41	14	2.24	< 10	< 1	0.11	10	0.39	383
6071	203 238	< 5	1.04	< 0.2	< 5	120	< 0.5	< 2	0.28	< 0.5	7	32	13	2.12	< 10	< 1	0.05	10	0.31	194
6072	203 238	< 5	1.15	< 0.2	< 5	100	< 0.5	< 2	0.35	< 0.5	6	32	9	1.79	< 10	< 1	0.07	10	0.41	184
6114	203 238	< 5	1.04	< 0.2	120	280	< 0.5	< 2	0.53	< 0.5	7	39	11	2.00	< 10	< 1	0.11	20	0.38	313
6231	203 238	< 5	1.95	< 0.2	5	220	0.5	< 2	0.59	< 0.5	10	38	18	2.77	< 10	< 1	0.11	30	0.52	443
6232	203 238	55	2.37	< 0.2	< 5	290	0.5	< 2	0.56	< 0.5	11	55	27	2.92	< 10	1	0.13	40	0.49	540
6233	203 238	< 5	1.15	< 0.2	< 5	200	< 0.5	< 2	0.51	< 0.5	10	35	11	1.96	< 10	< 1	0.10	20	0.40	468
6234	203 238	< 5	0.57	< 0.2	< 5	110	< 0.5	< 2	0.42	< 0.5	4	47	6	1.04	< 10	< 1	0.08	10	0.21	161
6235	203 238	< 5	1.38	< 0.2	< 5	250	0.5	< 2	0.83	0.5	10	52	23	2.92	< 10	< 1	0.12	20	0.50	318
6236	203 238	< 5	0.96	< 0.2	5	170	< 0.5	< 2	0.43	< 0.5	6	52	12	1.55	< 10	< 1	0.10	10	0.37	198
6237	203 238	< 5	0.96	< 0.2	5	190	< 0.5	< 2	0.48	< 0.5	6	38	12	1.56	< 10	< 1	0.06	10	0.33	129
6238	203 238	< 5	0.76	< 0.2	< 5	130	< 0.5	< 2	0.44	< 0.5	6	29	9	1.34	< 10	< 1	0.08	10	0.33	247
6239	203 238	< 5	0.61	< 0.2	< 5	130	< 0.5	< 2	0.33	< 0.5	4	63	6	1.56	< 10	< 1	0.06	10	0.26	156
6240	203 238	< 5	0.66	< 0.2	5	290	< 0.5	< 2	0.49	< 0.5	10	50	8	2.55	< 10	1	0.06	10	0.26	1375
6241	203 238	< 5	0.75	< 0.2	5	160	< 0.5	< 2	0.51	< 0.5	6	29	8	1.32	< 10	< 1	0.06	20	0.31	286
6242	203 238	< 5	0.59	< 0.2	< 5	140	< 0.5	< 2	0.36	< 0.5	4	32	5	1.07	< 10	< 1	0.06	10	0.23	208
6243	203 238	< 5	0.67	< 0.2	5	110	< 0.5	< 2	0.34	< 0.5	4	30	7	1.08	< 10	< 1	0.06	10	0.21	168
6244	203 238	< 5	1.36	< 0.2	5	300	< 0.5	< 2	0.73	0.5	10	85	24	2.37	< 10	1	0.10	20	0.50	352
6245	203 238	< 5	0.53	< 0.2	5	120	< 0.5	< 2	0.36	< 0.5	5	47	4	1.69	< 10	< 1	0.06	10	0.19	182
6246	203 238	< 5	0.43	< 0.2	< 5	60	< 0.5	< 2	0.27	< 0.5	3	40	4	0.74	< 10	< 1	0.04	< 10	0.19	116
6247	203 238	< 5	0.62	< 0.2	5	130	< 0.5	< 2	0.54	< 0.5	5	31	21	1.32	< 10	< 1	0.02	< 10	0.17	216
6248	203 238	< 5	0.53	< 0.2	< 5	120	< 0.5	< 2	0.36	< 0.5	4	32	6	1.17	< 10	< 1	0.06	10	0.19	189
6249	203 238	< 5	0.74	< 0.2	10	170	< 0.5	< 2	0.41	< 0.5	7	44	19	1.59	< 10	< 1	0.11	10	0.31	289
6250	203 238	< 5	0.61	< 0.2	5	130	< 0.5	< 2	0.35	< 0.5	5	51	11	1.18	< 10	< 1	0.08	10	0.24	251
6251	203 238	< 5	0.76	< 0.2	< 5	140	< 0.5	< 2	0.41	< 0.5	6	33	15	1.34	< 10	< 1	0.10	10	0.29	288
6252	203 238	< 5	0.56	< 0.2	< 5	120	< 0.5	< 2	0.31	< 0.5	4	61	6	1.02	< 10	< 1	0.08	10	0.20	185
6253	203 238	< 5	0.51	< 0.2	5	120	< 0.5	< 2	0.28	< 0.5	3	58	5	0.96	< 10	< 1	0.07	< 10	0.19	217
6254	203 238	< 5	0.72	< 0.2	< 5	200	< 0.5	< 2	0.38	< 0.5	5	41	13	1.09	< 10	< 1	0.06	10	0.25	182
6255	203 238	< 5	1.08	< 0.2	< 5	120	< 0.5	< 2	0.37	< 0.5	7	56	9	2.26	< 10	< 1	0.07	10	0.28	210
6256	203 238	< 5	2.00	< 0.2	< 5	570	< 0.5	< 2	0.91	1.0	14	62	60	3.01	< 10	< 1	0.13	30	0.63	893
6257	203 238	< 5	2.12	< 0.2	< 5	210	< 0.5	< 2	0.28	< 0.5	10	54	19	2.81	< 10	< 1	0.09	10	0.48	581
6258	203 238	< 5	1.65	< 0.2	10	190	< 0.5	< 2	0.58	< 0.5	10	47	26	2.69	< 10	< 1	0.10	30	0.52	369

25

good

silt

form

TOAST

CERTIFICATION :

BCJ



Chemex Labs Ltd.

Analytical Chemists * Geochemists * Registered Assayers

212 BROOKSBANK AVE., NORTH VANCOUVER,
BRITISH COLUMBIA, CANADA V7J-2C1

PHONE (604) 984-0221

THE FURBER CATHRO & ASSOC. (1981) LTD.

4127

3125 THIRD AVE.
WHITEHORSE, YT
Y1A 3S9

Project : BCJV

Comments :

Page No. : A

Total Pages

Date : -AUG-87

Invoice # : I-8718772

P.O. # : NONE

CERTIFICATE OF ANALYSIS A8718772

SAMPLE DESCRIPTION	PREP CODE	Au ppb FA+AA	Al %	Ag ppm	As ppm	Ba ppm	Be ppm	Bi ppm	Ca %	Cd ppm	Co ppm	Cr ppm	Cu ppm	Fe %	Ga ppm	Hg ppm	K %	La ppm	Mg %	Mn ppm
6264	203 238	< 5	1.26	< 0.2	< 5	120	< 0.5	< 2	0.49	< 0.5	9	77	17	2.45	< 10	< 1	0.10	10	0.43	451
6265	203 238	< 5	1.00	< 0.2	< 5	80	< 0.5	< 2	0.41	< 0.5	4	34	18	1.04	< 10	< 1	0.10	30	0.25	158
6266	203 238	< 5	1.00	< 0.2	< 5	210	< 0.5	< 2	0.60	< 0.5	8	35	18	1.99	< 10	< 1	0.12	20	0.36	551
6268	203 238	< 5	1.62	< 0.2	< 5	290	< 0.5	< 2	0.57	< 0.5	9	73	22	2.35	< 10	< 1	0.24	40	0.65	271
6269	203 238	< 5	0.78	< 0.2	< 5	140	< 0.5	< 2	0.38	< 0.5	4	42	10	1.10	< 10	< 1	0.05	10	0.23	156
6270	203 238	25	0.96	< 0.2	< 5	90	< 0.5	< 2	0.27	< 0.5	5	32	10	1.66	< 10	< 1	0.08	10	0.28	164
6271	203 238	< 5	0.96	< 0.2	< 5	160	< 0.5	< 2	0.31	< 0.5	5	40	13	1.30	< 10	< 1	0.07	10	0.27	129
6272	203 238	< 5	1.75	< 0.2	10	230	< 0.5	2	0.24	< 0.5	8	53	37	2.28	< 10	< 1	0.12	10	0.37	200
6273	203 238	< 5	0.86	< 0.2	< 5	150	< 0.5	< 2	0.28	< 0.5	5	30	28	1.96	< 10	< 1	0.06	10	0.20	205
6274	203 238	20	1.06	< 0.2	10	240	< 0.5	< 2	0.39	< 0.5	10	49	23	1.94	< 10	< 1	0.08	10	0.31	548
6275	203 238	< 5	0.22	< 0.2	< 5	30	< 0.5	< 2	0.29	< 0.5	2	18	8	0.31	< 10	< 1	0.02	< 10	0.14	71
6276	203 238	< 5	0.81	< 0.2	< 5	150	< 0.5	< 2	0.38	< 0.5	6	35	10	1.18	< 10	< 1	0.06	10	0.30	144
6277	203 238	< 5	0.21	< 0.2	< 5	30	< 0.5	< 2	0.21	< 0.5	1	11	4	0.62	< 10	< 1	0.03	< 10	0.09	60
6278	203 238	< 5	0.41	< 0.2	< 5	170	< 0.5	< 2	0.48	< 0.5	4	17	13	1.17	< 10	< 1	0.05	< 10	0.15	433
6279	203 238	< 5	0.25	< 0.2	< 5	40	< 0.5	< 2	0.30	< 0.5	4	10	6	1.23	< 10	< 1	0.02	< 10	0.11	212
6280	203 238	< 5	0.28	< 0.2	< 5	20	< 0.5	< 2	0.37	< 0.5	4	15	4	1.13	< 10	< 1	0.02	< 10	0.17	145
6286	203 238	< 5	1.90	< 0.2	< 5	130	< 0.5	< 2	0.31	< 0.5	10	57	17	3.35	< 10	< 1	0.10	10	0.62	317
6287	203 238	< 5	1.24	< 0.2	< 5	160	< 0.5	< 2	0.49	< 0.5	8	39	11	2.06	< 10	< 1	0.08	10	0.43	328
6288	203 238	< 5	1.25	< 0.2	< 5	190	< 0.5	< 2	0.47	< 0.5	8	47	8	1.84	< 10	< 1	0.10	10	0.46	230
6289	203 238	< 5	1.63	< 0.2	< 5	110	< 0.5	< 2	0.35	< 0.5	10	47	11	3.09	< 10	< 1	0.13	10	0.61	299
6290	203 238	< 5	1.97	< 0.2	< 5	210	< 0.5	2	0.65	< 0.5	15	68	30	3.48	< 10	< 1	0.17	40	0.79	458
6291	203 238	< 5	2.72	< 0.2	10	130	< 0.5	< 2	0.25	< 0.5	14	48	22	3.19	< 10	< 1	0.08	10	0.76	377
6292	203 238	< 5	3.74	0.2	< 5	110	< 0.5	< 2	0.40	< 0.5	21	83	20	4.74	< 10	< 1	0.08	10	1.69	725
6293	203 238	< 5	2.04	< 0.2	< 5	150	< 0.5	< 2	0.32	< 0.5	14	51	17	3.72	< 10	2	0.09	10	0.78	424
6294	203 238	< 5	1.72	< 0.2	10	170	< 0.5	< 2	0.67	< 0.5	11	61	27	2.80	< 10	1	0.07	20	0.81	310
6295	203 238	< 5	2.35	< 0.2	< 5	220	< 0.5	< 2	0.70	< 0.5	19	68	19	4.18	< 10	1	0.20	20	1.17	658
6296	203 238	< 5	1.52	< 0.2	< 5	180	< 0.5	< 2	0.75	< 0.5	10	58	15	2.37	< 10	1	0.06	10	0.66	262
6297	203 238	< 5	1.66	< 0.2	< 5	170	< 0.5	< 2	0.62	< 0.5	12	63	22	3.02	< 10	< 1	0.09	20	0.70	364
6298	203 238	< 5	1.50	< 0.2	10	150	< 0.5	< 2	0.46	< 0.5	10	50	20	2.46	< 10	< 1	0.11	10	0.42	451
6299	203 238	< 5	1.04	< 0.2	< 5	110	< 0.5	< 2	0.55	< 0.5	8	34	14	2.08	< 10	< 1	0.06	10	0.36	618
6300	203 238	< 5	1.68	< 0.2	< 5	150	< 0.5	< 2	0.75	< 0.5	13	68	18	2.87	< 10	< 1	0.10	10	0.66	1100
6301	203 238	< 5	1.56	< 0.2	10	170	< 0.5	2	0.23	< 0.5	8	46	27	3.10	< 10	< 1	0.10	10	0.41	227
6302	203 238	< 5	1.63	< 0.2	15	130	< 0.5	2	0.21	< 0.5	8	73	28	2.76	< 10	< 1	0.11	10	0.36	232
6303	203 238	< 5	1.31	< 0.2	< 5	120	< 0.5	2	0.36	< 0.5	10	45	13	2.26	< 10	< 1	0.11	10	0.50	317

19

18

626160

TOAST

CERTIFICATION :