

MAP No.

ASSESSMENT REPORT
PROSPECTUS
CONFIDENTIAL
OPEN FILE



DOCUMENT NO.: 091926
MINING DISTRICT: WHITEHORSE
TYPE OF WORK: GEOLOGICAL, GEOCHEMICAL, GEOPHYSICS

105 D 3 East

REPORT FILED UNDER: Eaglet Mines Ltd.

DATE PERFORMED: June, July, Sept. & Oct. 1986 DATE FILED: March 18, 1987

LOCATION	LAT.	60°01'N
	LONG.	135°13'W

AREA:

CLAIM NAME & NO.	PART	1-27	YA86430-86456
	PART	28-35	YA95043-95050
	PART	36-46	YA95231-95241
	PART	48-50	YA96338-96341

VALUE \$ 15,000.00

WORK DONE BY: A.W. Gourlay

WORK DONE FOR: MineQuest Exploration Associates Ltd.

DATE TO GOOD STANDING	

REMARKS: #91 PART

MineQuest Report #150
Ref. No. RM3702



PART CLAIMS

FINAL REPORT

Geology, Geochemistry and Geophysics
 June, July, September, and October 1986

Partridge Lake

Southwest Yukon

Whitehorse Mining Division

N.T.S. 105D/3E

Latitude 60°01'N
 Longitude 135°13'W



by
 A.W. Gourlay
 of
 MineQuest Exploration Associates Ltd.

for
 Eaglet Mines Limited

Work Performed on Claims:

<u>Claims</u>	<u>Tag Numbers</u>	<u>Date Recorded</u>
Part 1-27	YA86430 to 86456	March 11, 1985
Part 28-35	YA95043 to 95050	June 30, 1986
Part 36-46	YA95231 to 95241	July 25, 1986
Part 48-50	YA96338 to 96341	Sept 22, 1986

March, 1987

This report has been examined by
the Geological Evaluation Unit
under Section 53 (4) Yukon Quartz
Mining Act and is allowed as
representation work in the amount
of \$ 15,000.00.

DAEdmond

for Regional Manager, Exploration and
Geological Services for Commissioner
of Yukon Territory.

TABLE OF CONTENTS

	<u>Page</u>
1.0 INTRODUCTION	1
2.0 LOCATION, TOPOGRAPHY, ACCESS	2
3.0 OWNERSHIP AND CLAIM STATUS	3
4.0 HISTORY AND PREVIOUS WORK	5
5.0 WORK CARRIED OUT IN 1986	6
5.1 Introduction	6
5.2 June and July	6
5.3 September	7
5.4 October	8
5.5 Personnel	8
6.0 RESULTS OF THE 1986 PROGRAM	9
6.1 Regional Geology	9
6.2 Property Geology	10
6.3 Rock Chip Sampling	13
6.4 Soil Sampling	15
6.5 Geophysics	15
6.6 Diamond Drilling	16
7.0 DISCUSSION	17
8.0 SUMMARY AND CONCLUSIONS	19
9.0 RECOMMENDATIONS	20
10.0 BIBLIOGRAPHY	21

LIST OF ILLUSTRATIONS

<u>Figure</u>	<u>After page</u>
1. Location Map (Plan 879)	2
2. Claim Map	4
3. Regional Geology (after Lambert, 1974)	9
4. Property Geology (Plan 904.1)	in pocket
5. Geochemistry-Rock Sample Locations and Results (Plan 906)	"
6. Geochemistry-Soil Sample Locations (Plan 934.1)	"
7. Magnetic Contour Map - Total Field (Plan 913)	"
8. Magnetic Contour Map - Vertical Gradient (Plan 914)	"
9. Fraser Filtered VLF - Contour Map (Plan 915.1)	"
10. Quadrature VLF - Contour Map (Plan 916.1)	"
11. Tilt Angle VLF - Contour Map (Plan 917.1)	"
12. Section DDH PRT 86-001 (Plan 951)	"
13. Section DDH PRT 86-002 (Plan 952)	"
14. Section DDH PRT 86-003 (Plan 953)	"
15. Geochemistry - PART SOUTH: Rock Sample Locations and Results	14

LIST OF APPENDICES

- Appendix I Analytical Techniques
- Appendix II Laboratory Reports
- Appendix III Drill Logs
- Appendix IV Geophysical Techniques
- Appendix V Statements of Qualifications
- Appendix VI Cost Statement
- Appendix VII Names and Addresses of Persons
Performing Work Described in this Report
- Appendix VIII Application for a Certificate of Work
and Application to Group Mineral Claims

1.0

INTRODUCTION

The PART claims cover ground formerly staked in 1978 and drilled for uranium. At that time the precious metal potential of the claims was not thought to be high, uranium values were low, and the claims were dropped.

The ground was restaked for gold and silver in 1985 by L.O. Allen and R.J. Bilquist in co-operation with MineQuest Exploration Associates Ltd. Preliminary sampling carried out in June 1985 returned values up to 1.69 oz/ton gold and 100.4 oz/ton silver. In February 1986 the claims were optioned to Eaglet Mines Ltd., for whom MineQuest Exploration Associates conducted a program of geological mapping, geochemistry, geophysical surveys, and diamond drilling.

This report describes the work carried out during June, July, September, and October, 1986.

2.0

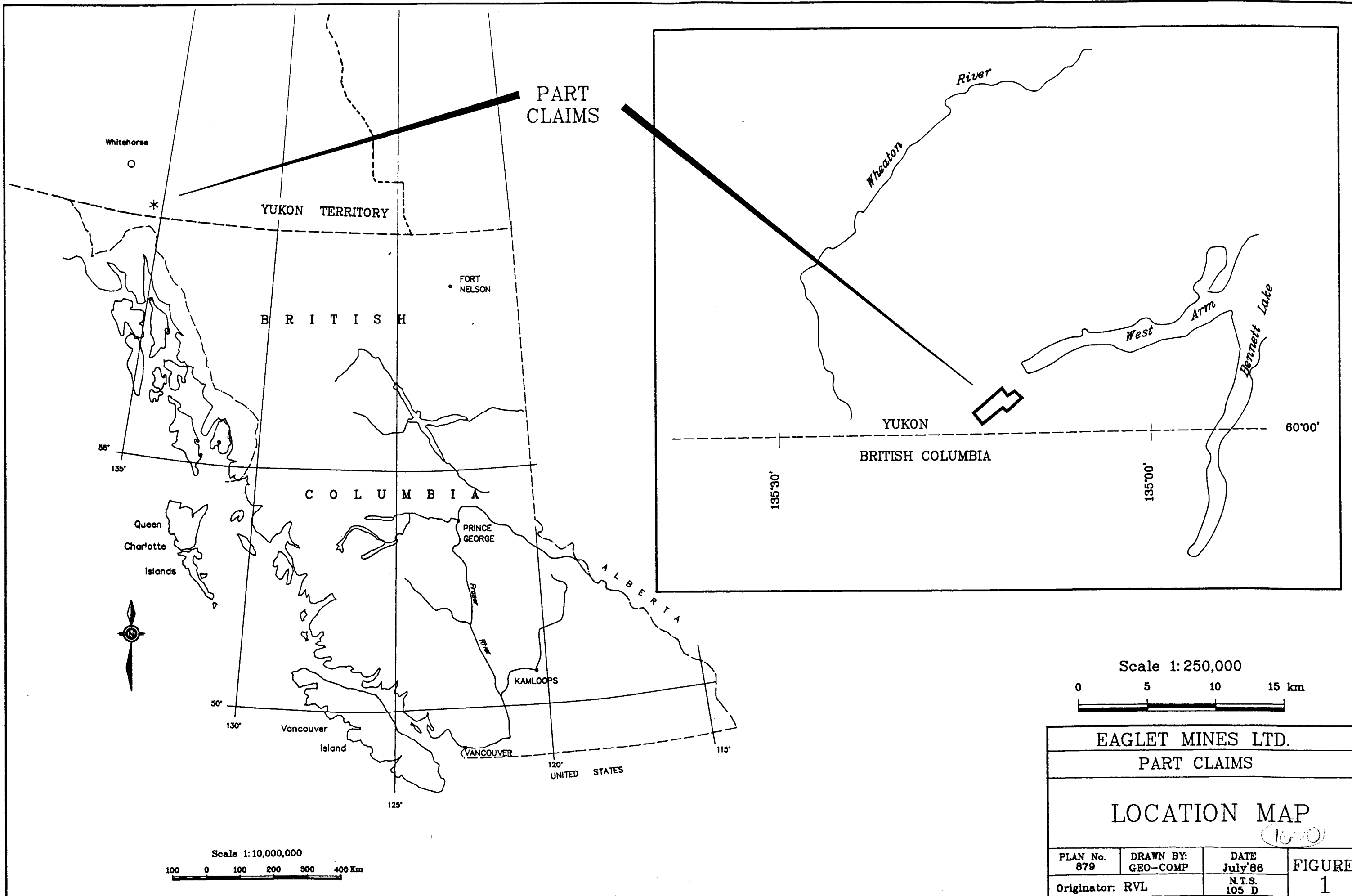
LOCATION, TOPOGRAPHY, ACCESS

The claims cover ground straddling the Partridge River in southern Yukon some two kilometres north of the British Columbia boundary, and south-west of the West Arm of Bennett Lake (see Figure 1).

Although much of the ground on either side of the Partridge River valley is mountainous, the claims, which occupy the valley floor, cover subdued terrain.

During the summer of 1986 access was by a convenient 10 minute helicopter flight from the Frontier Helicopters Ltd base at the Wheaton River strip. Any substantial exploration program on the claims could be more economically serviced by boat from Carcross.

The greater part of the claim area consists of rocky knolls with a sparse covering of scrub pine. Lakes, swamps, and alluvium cover some 50% of the property.



PART CLAIMS

Whitehorse

YUKON TERRITORY

FORT NELSON

B R I T I S H

C O L U M B I A

Queen Charlotte Islands

PRINCE GEORGE

A L B E R T A

KAMLOOPS

Vancouver Island

VANCOUVER

UNITED STATES

River

Wheaton

YUKON

BRITISH COLUMBIA

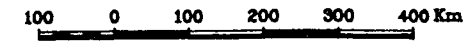
West Arm

Bennett Lake

Scale 1:250,000



Scale 1:10,000,000



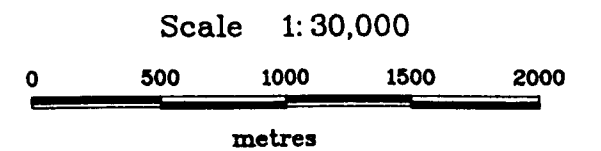
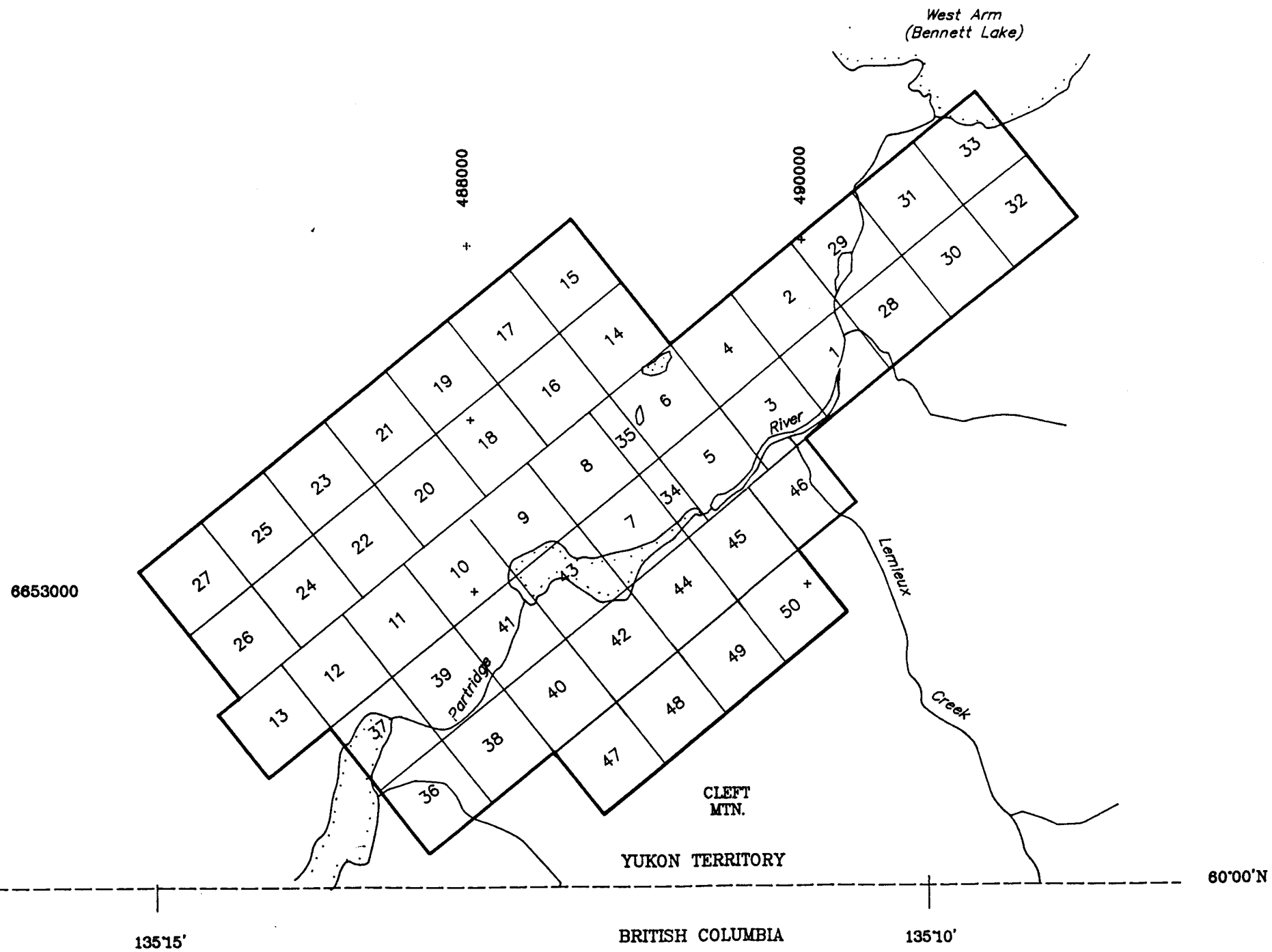
3.0

OWNERSHIP AND CLAIM STATUS

The claims consist of the following:

<u>Claim</u>	<u>Tag Number</u>	<u>Date Recorded</u>	<u>Recorded Owner</u>
Part 1	86430	March 11, 1985	L.O. Allen
Part 2	86431	"	"
Part 3	86432	"	"
Part 4	86433	"	"
Part 5	86434	"	"
Part 6	86435	"	"
Part 7	86436	"	"
Part 8	86437	"	"
Part 9	86438	"	"
Part 10	86439	March 11, 1985	R.J. Bilquist
Part 11	86440	"	"
Part 12	86441	"	"
Part 13	86442	"	"
Part 14	86443	"	"
Part 15	86444	"	"
Part 16	86445	"	"
Part 17	86446	"	"
Part 18	86447	"	"
Part 19	86448	"	"
Part 20	86449	"	"
Part 21	86450	"	"
Part 22	86451	"	"
Part 23	86452	"	"
Part 24	86453	"	"
Part 25	86454	"	"
Part 26	86455	"	"
Part 27	86456	"	"
Part 28	95043	June 30, 1986	L.O. Allen
Part 29	95044	"	"
Part 30	95045	"	"
Part 31	95046	"	"
Part 32	95047	"	"
Part 33	95048	"	"
Part 34	95049	"	"
Part 35	95050	"	"
Part 36	95231	July 25, 1986	R.J. Bilquist
Part 37	95232	"	"

<u>Claim</u>	<u>Tag Number</u>	<u>Date Recorded</u>	<u>Recorded Owner</u>
Part 38	95233	"	"
Part 39	95234	"	"
Part 40	95235	"	"
Part 41	95236	"	"
Part 42	95237	"	"
Part 43	95238	"	"
Part 44	95239	"	"
Part 45	95240	"	"
Part 46	95241	"	"
Part 47	96338	Sep. 22, 1986	R.J. Bilquist
Part 48	96339	"	"
Part 49	96340	"	"
Part 50	96341	"	"



EAGLET MINES LTD.

PART CLAIMS

CLAIM MAP

1001

PLAN No. 905	DRAWN BY: GEO-COMP	DATE Dec. '86	FIGURE 2
Originator: AWG		N.T.S. 105D/3	
MINEQUEST EXPLORATION ASSOCIATES LTD.			

4.0

HISTORY AND PREVIOUS WORK

The Bennett Lake Caldera has been the scene of exploration for copper, molybdenum, uranium and silver at various times during the last 15 years.

In 1962 Kennecott Exploration carried out a silt sediment sampling program which led to the acquisition of claims near the centre of the caldera.

In 1978 D.J. Leighton & Associates, operating on behalf of E&B Explorations Ltd., carried out geological and geochemical surveys for uranium on the ground now covered by the PART claims. Four diamond holes were drilled, none of them in zones prospective for precious metals.

The potential of the claims for silver and gold was first recognized by R.J. Bilquist and L.O. Allen, who were responsible for initiating the staking and sampling of the claims in 1985. In June 1985, Messrs. Bilquist, Allen, and R.V. Longe conducted a preliminary rock chip sampling survey, from which encouraging values of gold and silver were returned. (MineQuest Exploration Associates Ltd. Report No. 111).

5.0

WORK CARRIED OUT IN 1986

5.1

Introduction

The 1986 work program was carried out in three stages between June and October. The work consisted of soil sampling, rock chip sampling, prospecting, geophysical surveys, geological mapping and diamond drilling.

5.2

June and July

Grid: A grid was established to cover the central part of the claims including the Discovery and Elbow Creek showings. The baseline extends 300 metres both north and south of the Discovery showing. Wing-lines, 50 metres apart, extend 400 metres to the west and 300 metres to the east. The southernmost lines were extended a further 500 metres east to cover the Old Camp showings.

Geological Mapping: The area covered by the grid was geologically mapped at a scale of 1:1,000. Approximately 60% of the grid is outcrop that has been rounded and smoothed by glacial scouring. The area beyond the grid was traversed quickly to confirm major rock types.

Prospecting and Rock Chip Sampling: A total of 22 man days were spent prospecting and sampling the grid and surrounding area. A total of 94 rock chip samples were collected and analysed for gold and silver.

Geophysics: The entire grid, 10.1 line kilometres, was covered by VLF-EM and both total field and vertical gradient magnetometry surveys.

Soil Sampling: A total of 728 soil samples were collected at 10 metre intervals along the grid lines. A test survey of 122 samples collected around the Discovery and Elbow Creek showings area were the subject of both gold and multi-element analyses.

5.3 September

Grid: The grid was extended 900 metres to the south, across Partridge River, to the Part South showing. Wing-lines, 50 metres apart, extend 300 metres to the east and from 120 to 900 metres to the west.

Geological Mapping: The extension of the grid was mapped at a scale of 1:2,000. North of Partridge River approximately 60% of the total gridded area is outcrop; near the river and to the south there is extensive glacial cover and less than 5% outcrop. The geological map of the entire grid area is presented in Figure 4.

Prospecting and Rock Chip Sampling: A total of five man days were spent prospecting the grid extension and surrounding area. Sixteen samples were collected and seven were analyzed for gold and silver. Sample locations and results are presented in Figure 15.

Geophysics: The grid extension, totalling 10.1 line kilometres, was covered by VLF-EM. Magnetic storms at the time of the survey precluded the collection of meaningful magnetic data. The VLF-EM survey data were integrated into the previous survey, and the results of the geophysical surveys are presented in Figures 7 through 11.

Soil Sampling: A total of 746 soil samples were collected at 10 metre intervals along the grid lines. None of these samples were analysed.

5.4 October

Three BQ diamond drill holes were drilled using a light weight drill rig of Drilcor Industries Ltd. Hole depths were 63.4 metres (208 feet), 68.6 metres (225 feet) and 112.8 metres (370 feet).

5.5 Personnel

Soil sampling was carried out by L.O. Allen, R.J. Bilquist, R.D. Gourlay, and A.R. Zuk. Prospecting and rock chip sampling was done by L.O. Allen, R.J. Bilquist and A.W. Gourlay. The geophysical surveys were conducted by R.J. Bilquist and A.W. Gourlay. Geological mapping, drill sampling and drill core logging was carried out by A.W. Gourlay. The program was carried out under the direction of R.V. Longe.

6.0

RESULTS OF THE 1986 PROGRAM

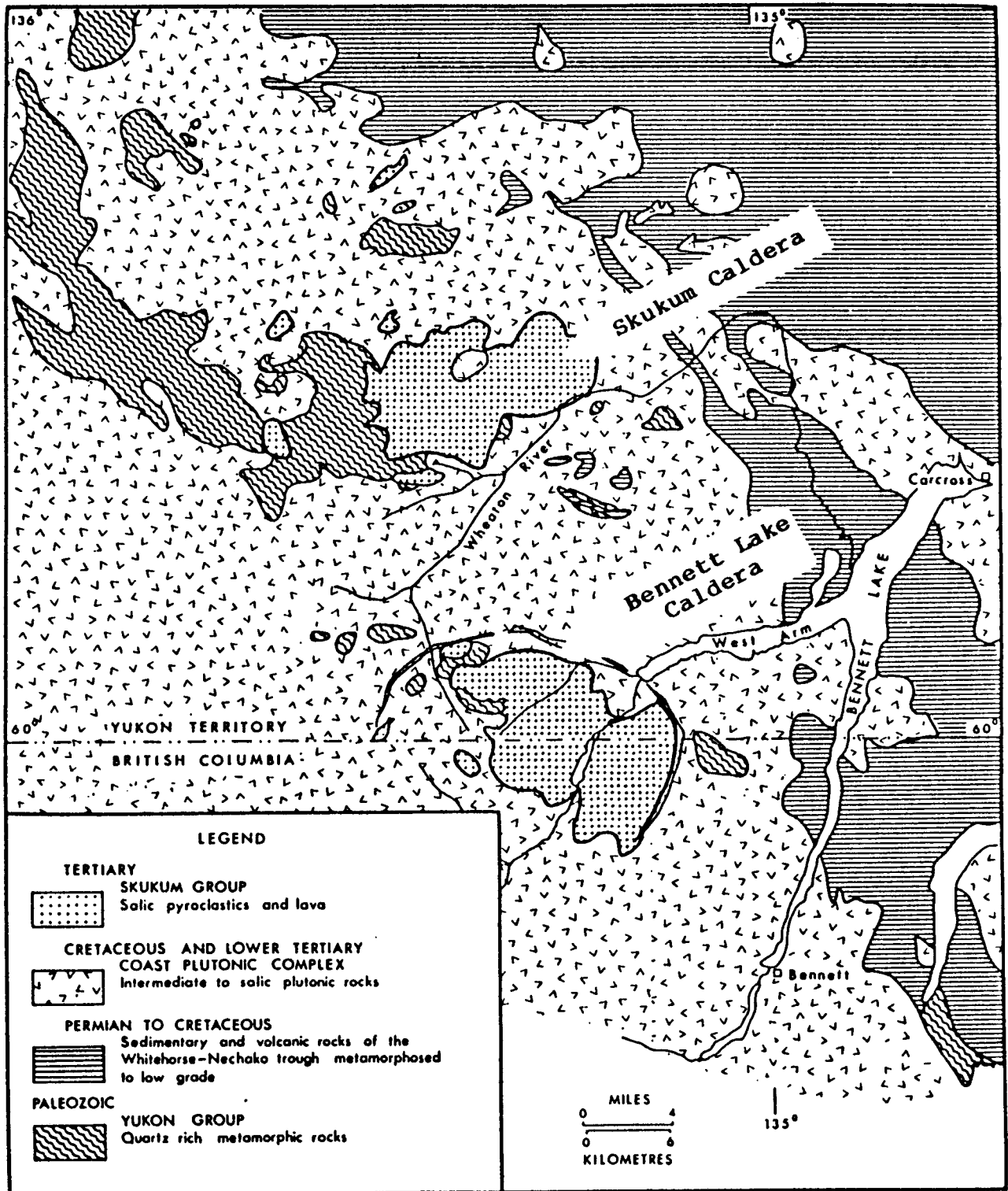
6.1

Regional Geology

The geology of the Bennett Lake caldera is described in Lambert (1974). The complex, of Eocene age, straddles the boundary between British Columbia and Yukon and is a twin of the Skukum Caldera 12 miles to the north (Figure 3). The Bennett Lake volcanic rocks include more fragmental units than are found in the Skukum Group, a feature which adds to the potential of the Bennett Lake area for disseminated types of gold deposits.

Lambert described the Bennett Lake caldera as a subsidence complex filled by a succession of predominantly volcanoclastic units, each representing a separate volcanic event. Each unit consists of tuff, ignimbrite or lava with, in some cases, subordinate sediments. In general the base of each unit is less welded than the overlying parts of the same unit.

The volcanic units are predominantly silicic in composition. Ash flow tuffs, ignimbrites and breccias are more abundant than lavas. Intrusive rhyolites, in particular a large ring dyke circumscribing the complex, are also present.



Regional geology in the vicinity of Bennett Lake, British Columbia and Yukon Territory. Geology modified after Christie (1957) and Wheeler (1961). Reproduced from Lambert (1974).

Figure 3

6.2 Property Geology

The grid area of the PART claims covers the contact between basement plutonic rocks and overlying sedimentary rocks, lithic tuffs, and ignimbrite.

Unit 1 (the Basement rock) is a fine to medium grained quartz monzonite of Upper Cretaceous or Lower Tertiary age. The quartz monzonite is composed of subhedral quartz and feldspar, with 15% mafics, mostly hornblende, now replaced by chlorite. The quartz monzonite weathers grey and is pinkish-green on a fresh surface. The basement is cut by massive, fine-grained, sucrosic, aplite dykes comprising less than 5% of outcrop. Much less common are massive, green, chloritic basalt dykes. The aplite dykes are coeval with the basement rocks while the basalt dykes are related to the waning stages of volcanism in the caldera.

Unit 2 is a Sedimentary Unit restricted to paleotopographic lows on the quartz monzonite basement. It is composed of three distinct sub units: quartz pebble conglomerate, quartz monzonite pebble conglomerate, and quartz monzonite breccia.

Quartz monzonite breccia is the most common of the three sub units found in the sedimentary package. It is made up of unsorted, angular quartz monzonite fragments supported in a massive, medium grained chloritic matrix. Fragments range in size up to three centimetres. In outcrop, the angular fragments are highlighted by differential weathering of the matrix. The quartz monzonite breccia was probably formed by avalanches sluffing off fault escarpments during collapse of the caldera complex.

Quartz pebble conglomerate is composed of white quartz pebbles up to three centimetres in diameter, supported by a fine to medium grained matrix. Quartz pebbles are well rounded but have low sphericity. The matrix is poorly sorted subrounded to angular quartz grains. Quartz pebbles make up as much as 50% of the rock, and the unit varies over short distances from conglomerate to grit. The quartz pebble conglomerate weathers grey, on a fresh surface is light grey with weak iron staining, and in outcrop displays distinct "pimples" formed by large white quartz pebbles.

The quartz monzonite pebble conglomerate is massive in outcrop. Subrounded quartz monzonite pebbles up to four centimetres size are supported by an unsorted medium grained sandy grit.

Unit 3 is a Lithic Tuff that unconformably overlies both the quartz monzonite basement and the sedimentary unit. In outcrop the lithic tuff is a massive, grey weathering rock that is pale grey to buff coloured on a fresh surface. The tuff is predominantly a very fine-grained matrix supporting 10 to 20% angular to subrounded fragments and shards. Fragments are grey, aphanitic and siliceous with size ranging from one to six millimetres. Shards are rare in the lower section of the lithic tuff, and increase in frequency up section as the fragment content decreases. The lithic tuff includes thin interbeds of green tuff composed of devitrified shards, spherulitic beds, and distinct quartz-eye rhyolites. The area of lithic tuff outcrop between 5100E and 5300E from 4050N to 5100N is locally brecciated with drusy quartz cementing angular fragments.

Drilling has revealed more of the stratigraphy of Unit 3 than is apparent at surface. In drill core, the volcanic section found at surface is interbedded with waterlain lithic tuff or a "grit" equivalent, and an avalanche breccia. Contacts are gradational over as little as 10 cm. The "grit" sections are compositionally very similar to the lithic tuff. The "grit" is a grey-green colour and occasionally displays layered beds of rapidly varying grain size. A medium to fine-grained matrix supports up to 40% sub-rounded to angular clasts. Clast composition is 50% grey to white, aphanitic siliceous fragments, 25% black siliceous fragments, and 25% lithic tuff fragments. Well rounded clasts of quartz monzonite are extremely rare. Clast size ranges up to four centimetres.

The avalanche breccia is a distinct lithology characterized by angular fragments of lithic tuff supported by an aphanitic maroon matrix. The lithic tuff fragments are light grey and are often well banded. The fragments may carry minor disseminated pyrite, 1 to 2mm size, commonly associated with subhedral, pale green inclusions within the lithic tuff fragments. Fragments are commonly four to five centimetres in size, and range up to a maximum of eight centimetres.

On a gross scale the lower section of the lithic tuff is an unaltered, fragment-dominated tuff that grades upwards into lapilli tuff, which in turn becomes increasingly welded up section.

Unit 3a is a transitional unit between units 3 and 4. It is a welded tuff that displays some of the features of both the vitric lapilli tuff and the ignimbrite. It lacks the lapilli feature of unit 3 and the massive black character of unit 4.

Unit 4 is a densely welded tuff or ignimbrite. The rock, which is grey weathering and black on a fresh surface, is massive in outcrop and locally eutaxitic texture is well developed. This unit hosts the fracture controlled mineralization found at the Discovery, Elbow Creek, and West Bank showings.

6.3 Rock Chip Sampling

Prospecting and rock chip sampling have confirmed and extended the mineralized zone at the Discovery showing. Mineralization found to occur some 25 metres to the west, on the west bank of Elbow Creek (Figure 5) is a new showing now known as West Bank. The highest values from grab sampling are 409 ppm Ag and 2500 ppb Au (sample PRT86208). Mineralization has also been found 30 metres to the south of West Bank, and at a number of locations between the Discovery and West Bank showings.

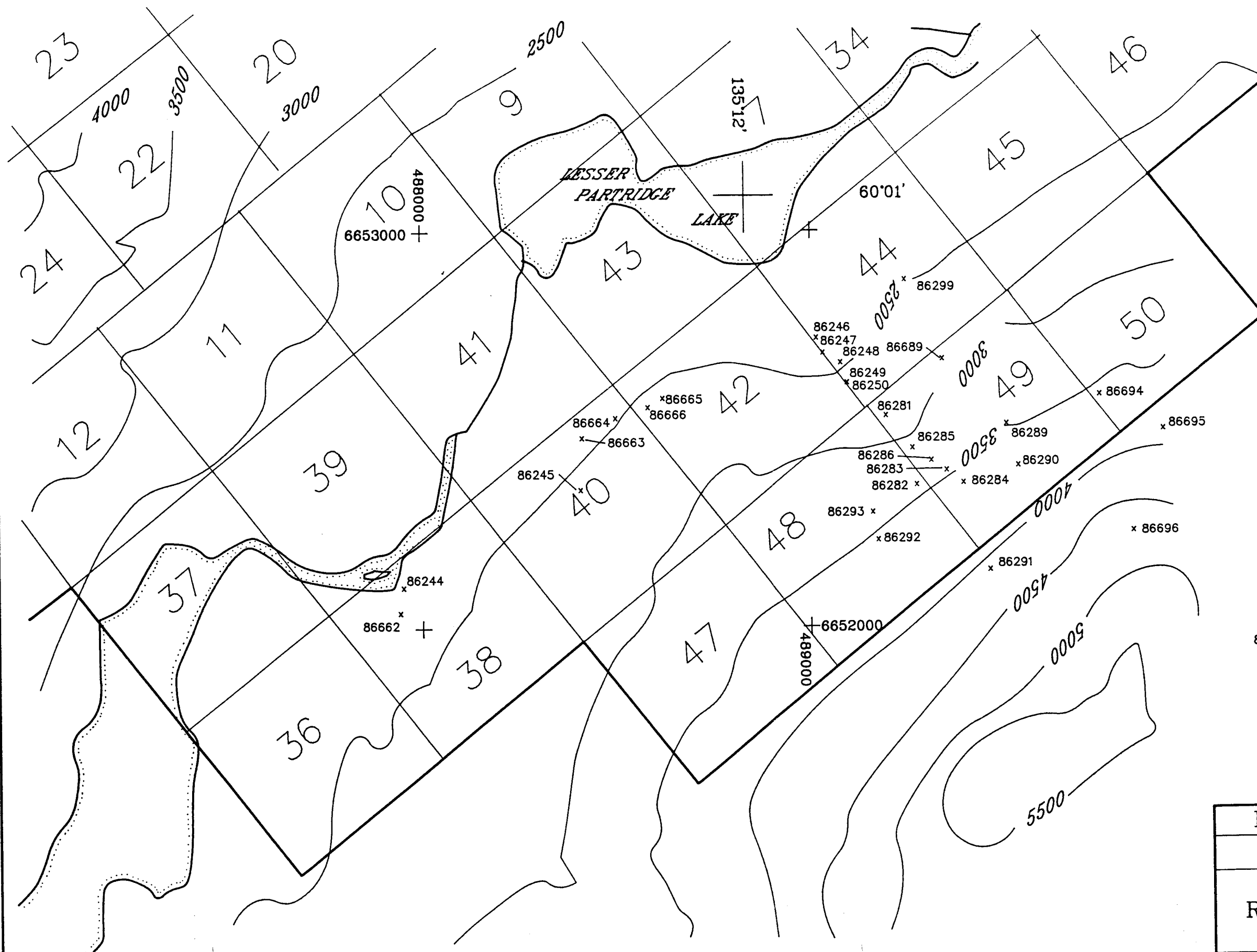
Northwest of the Discovery showing, a similar occurrence with weak geochemical silver (up to 4.6 ppm) has been found. This is now known as the Pond showing.

An area of weak to moderately welded tuff 200 metres east of the Discovery and Elbow Creek showings (known as Ralph) has been brecciated and cemented with drusy quartz. A silver value of 52.4 ppm (sample PRT86203) and weak geochemical gold values of 10 to 45 ppb have been returned from an area of silicified breccia.

Further to the east, where a fault juxtaposes quartz monzonite and ignimbrite, a value of 50.6 ppm silver was returned (sample PRT86210). This was a grab sample of a rusty fracture with chalcopyrite, galena, malachite and azurite. Gold values are consistently low.

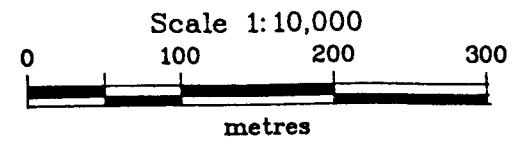
To the west, a sample (PRT86202) of altered tuff carrying pyrite returned 55 ppb Au and 43 ppm Ag. Two samples from altered ignimbrite collected adjacent to a fracture inferred from geophysical data returned very low values (Ag <1 ppm, Au <5 ppm).

At the Part South showing, the geochemically anomalous gold and silver-bearing float samples of breccia were traced to vertical, north-south trending fractures located in cliffs to the south of Partridge River. These brecciated fractures are found near the base of the next volcanic sequence, stratigraphically above the rocks hosting the Discovery/West Bank showings. The fractures are hosted by tuff breccia that is weakly altered with little silicification. These mineralized fractures appear to be the top of the mineralizing system. Although these samples are only geochemically anomalous, they are indicative of the strength of the system that effected the Discovery/West Bank showings and are from fractures some 100 metres stratigraphically above the Discovery Zone.



SAMPLE NUMBER	Ag ppm	As ppm	Hg ppb	Au ppb	Sb ppm
PRT 86244	1.2			-5	
86245	0.4			-5	
86246	25.0			130	
86247	16.0			40	
86248	49.0			90	
86249	N/A			N/A	
86250	27.0			5	
86281	1.2	3	<5	10	<2
86282	15.0	24	20	20	<2
86283	40.0	4	<5	15	<2
86284	6.2	4	30	15	3
86285	5.2	22	25	10	<2
86286	14.0	32	100	15	<2
86662	0.5			10	
86663	0.7			-5	
86664	0.2			-5	
86665	0.7			5	
86666	0.9			-5	
86689	0.8	5	<5	10	<2

LEGEND
 x Rock Sample Location
 86662 Sample No.'s preceded by "PRT"



EAGLET MINES LIMITED			
PART CLAIMS			
GEOCHEMISTRY - PART SOUTH			
ROCK SAMPLE LOCATIONS AND RESULTS			
PLAN No.	DRAWN BY: GEO-COMP	DATE Dec. '86	FIGURE
Originator: AWG		N.T.S. 105 D 3	15
MINEQUEST EXPLORATION ASSOCIATES LTD.			

6.4 Soil Sampling

An orientation run of 119 soil samples collected in the vicinity of Discovery, Elbow Creek and West Bank showings, between 4900N and 5250N, from 4900E to 5100E, were selected to test soil geochemistry as an exploration tool. Analysis for gold has not proved effective; known mineral occurrences in rocks were not reflected by soil sampling, and only a few samples returned values above the detection, the highest being 20 ppb Au. Multi-element analyses by ICP mass spectrometry were not successful in outlining the known mineralization with any of the nineteen elements determined. However, this analytical method does not include the base and common elements determined by the common thirty element ICP package offered by Acme Labs Ltd. Most values were at the detection limit of the mass spectrometer, and the weakly enriched values that were returned appear to be related to swamp areas, reflecting the poor soil development in the grid area.

6.5 Geophysics

Interpretation of the magnetometry data by R.F. Sheldrake has shown five distinct north-south trending fractures crosscutting a strong northwest-trending magnetic feature. One of these fractures cuts through the Discovery, West Bank and Elbow Creek showings; another appears to be related to the altered volcanic rocks and weak gold anomaly at the Ralph showing. To the northwest the Pond showing was located by intense prospecting of similar geophysical terrain. The Fraser filtered VLF data confirm the presence of north-south trending fractures.

6.6 Diamond Drilling

Three diamond drill holes tested the projected down dip extension of the high grade values found at the Discovery showing. Core size was BQ, with a diameter of 3.6 cm. Core recovery was very good, averaging from 90 to 100%. Samples were split manually, half was bagged for shipment, and the other half was returned to the core box for reference. Sample intervals varied from 0.5 to 1.6 metres.

All three holes intersected mineralized quartz veins that dip steeply to the west. The veins, which rarely exceed a thickness of 5 mm, and which carry pyrite and galena, form a sheeted system. The frequency of the veins increases to a maximum of approximately 20 per metre in the most intensely veined zones. Here the larger veins may be almost entirely sulphides, with numerous subparallel quartz stringers. The intensely veined sections are up to one to two metres wide, with the frequency of veining decreasing to zero within three to five metres laterally. The veins are hosted by Unit 3, and are consistent in all three holes. Unit 4 is a tight, dense rock and the high grade samples found at the Discovery Zone appears to be exceptional. Although the high grade values found at surface were not encountered at depth, there is persistent sulphide mineralization and geochemically anomalous gold values in all three holes.

None of the holes reached Unit 1 (basement) or Unit 2 (the sedimentary unit). Hole PRT 86-002 bottomed in Unit 3, an interbedded sequence of lithic tuff and a sedimentary equivalent. The sedimentary sections are unaltered and unmineralized. This hole did not encounter a lithology or alteration that would account for the strong magnetic responses noted in this area.

7.0

DISCUSSION

The PART claims cover a high grade silver and gold discovery located in an area of subdued topography within the Bennett Lake caldera. Detailed prospecting and mapping have enlarged the area of known mineralization and resulted in the discovery of new occurrences, both within the ignimbrite and unaltered tuffs and grits south of the original claims.

The mineralized fractures are unobtrusive and nondescript. The ignimbrite is a massive, tight rock that does not appear to be an attractive host. Mineralizing solutions have moved along north-south trending fractures that dip steeply to the west. These fractures controlled the deposition of mineralized quartz veins that cross-cut ignimbrite, lithic tuff, and presumably the underlying sedimentary unit. Geophysical surveys have confirmed the presence of strong north-south fractures, of which only a very small portion has been tested.

Strong persistent quartz veining and consistent mineralization has been shown to reach economic grades, albeit over narrow widths, at the Discovery showing. The presence of anomalous silver and gold values in north-south fractures at Part South showing is most encouraging. These occurrences, that are some 100 metres stratigraphically above and 1500 metres to the south of Discovery/West Bank mineral occurrences are indicative of the strength of the mineralizing event. Mineralizing solutions that encountered dilation zones and permeable

lithologies along this structure would be a preferred site for mineral deposition. Rocks encountered in drilling, Units 4, 3A, and 3 are dense, massive and only locally fractured, making them less than favourable deposition sites.

The quartz veining and mineralization at depth and the untested strike length of the fractures present two attractive targets. The mineralized fractures should be tested along strike for increased widths and grades. The presence of a sedimentary unit resting on basement provides a permeable host and where it has been cross-cut by quartz veins offers a permeable deposition site. North of the present drill holes, towards the contact with the basement is a prime target to test for disseminated mineralization. The strong northwest trending magnetic feature has not been explained by the drilling to date. A deep drill hole in the vicinity of the present drilling is required to resolve this question.

8.0

SUMMARY AND CONCLUSIONS

1. The PART claims cover an area of quartz monzonite overlain unconformably by quartz pebble conglomerate, quartz monzonite pebble conglomerate, and quartz monzonite breccia. These rocks are overlain by lithic tuffs that grade upwards into vitric lithic tuffs, which in turn grade into ignimbrites.
2. Mineralization occurs as fracture-controlled galena, pyrite, and chalcopyrite within the ignimbrite unit. In addition to the high grade values found in 1985, geochemically anomalous gold values and some silver values were found in three new areas of brecciated and silicified tuffs.
3. Mineral occurrences are controlled by north-south fractures, the presence of which has been confirmed by geophysical surveys. Most mineralization is found near a strong northwest-southeast trending magnetic feature.
4. Soil geochemistry by ICP mass spectrometry has been shown to be an ineffective tool for outlining areas of precious metal mineralization. No data is available for the base metals or common elements determined by a 30 element ICP package.
5. Drilling has tested the mineralized fractures to a depth of 55 metres. Geochemically anomalous gold and silver values have been returned from all three holes, with an increase in sulphide content and precious metal values with depth.

9.0

RECOMMENDATIONS

1. Hand trenching, using a plugger and blasting, across the geophysical structure, north and south of Discovery Showing. Trenches will also be cut across other geophysical targets; the north-south fractures.

Objective: to find mineralized fractures, which are not obvious at surface, and gather more data on trends, dips, widths, etc.

2. Contingent on 1 above, short drill holes using a Winkie-type drill, to a vertical depth of 50' (15m) in a series of -45° to -60° holes. Maximum of 300m of drilling.

Objective: to establish continuity of fractures at depth; and provide near surface samples.

3. Contingent on 1 and 2 above, a diamond drill program of at least 750 metres of BQ core is required to test the strike and width of the mineralized structures. At each set-up a fan of holes should be drilled at an azimuth of 065 and with dips of -45° and -70°. One hole should test for the sedimentary unit on basement. A test of the magnetic feature is a low priority.

Objective: to develop economic grades of mineralization over mining widths.

4. In addition a limited trial survey of soil samples should be analysed by 30 element ICP to determine if any of the base metals or common elements are suitable pathfinders in the survey area. Fluid inclusion studies on vein quartz might suggest the temperature of deposition and position in the hydrothermal system.

10.0

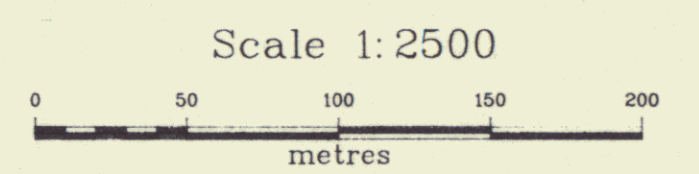
BIBLIOGRAPHY

- Bilquist, R., 1985.
Part Claims - Partridge Lake Area near Bennett Lake, southwest Yukon; Recollections from Work Carried out between 1977 and 1979.
- Culbert, R.R., 1979.
Geological and Geochemical Report on the Part 1-32 Mineral Claims - Partridge Lake, Yukon Territory
Assessment Report submitted to Mining Recorders Office Whitehorse, Yukon Territory.
- Gourlay, A.W., 1986.
Part Claims - Preliminary Report
Unpublished report for Eaglet Mines Ltd. by MineQuest Exploration Associates Ltd. (Report Number 122).
- Lambert, M.B. 1974.
The Bennett Lake Cauldron Subsidence Complex, British Columbia and Yukon Territory
GSC Bulletin 227.
- Longe, R.V., 1985.
Part Claims - Partridge Lake - Southwest Yukon
MineQuest Exploration Associates Ltd.
Report Number 111 (submitted as Assessment Report).

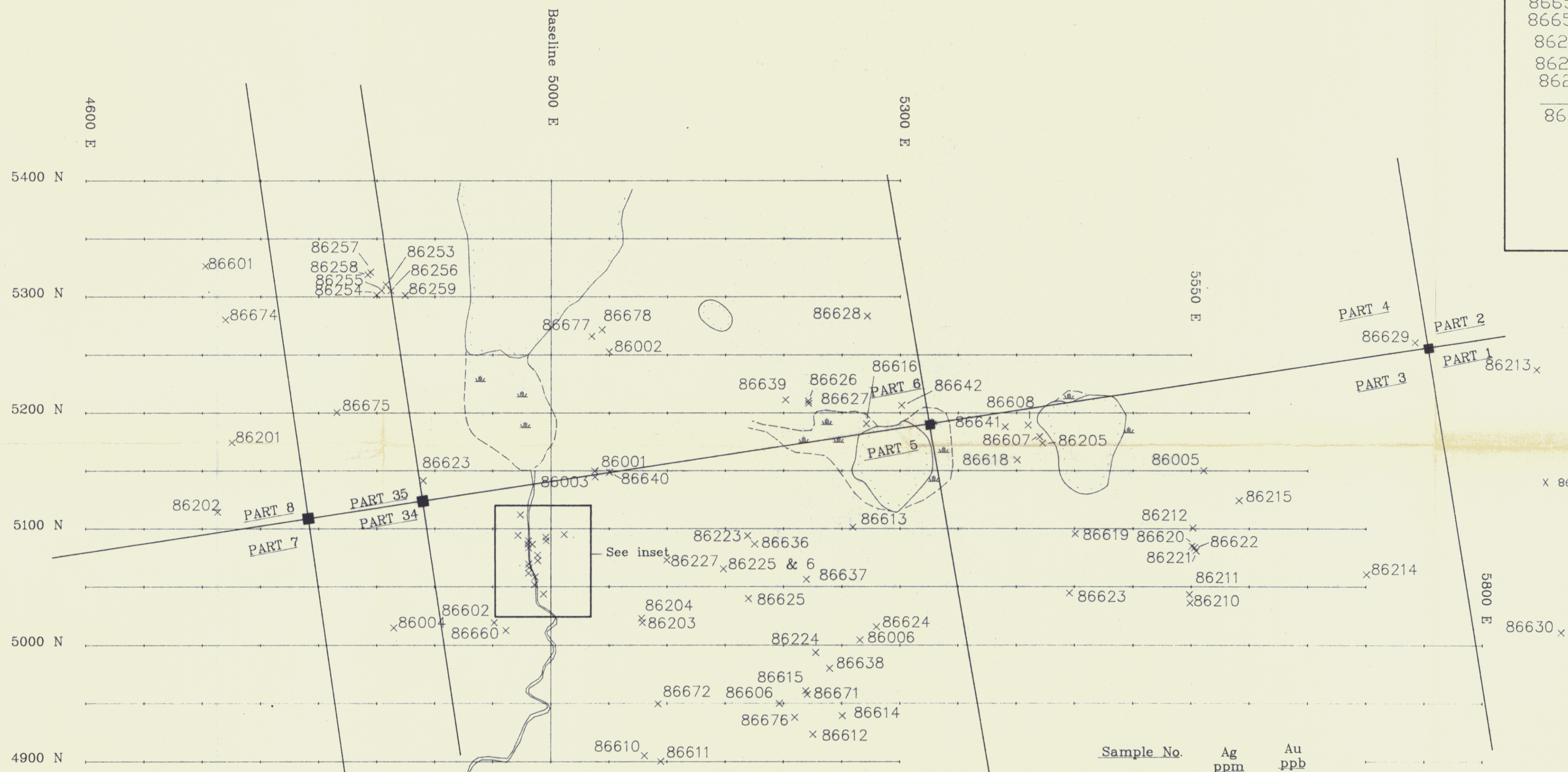


LEGEND

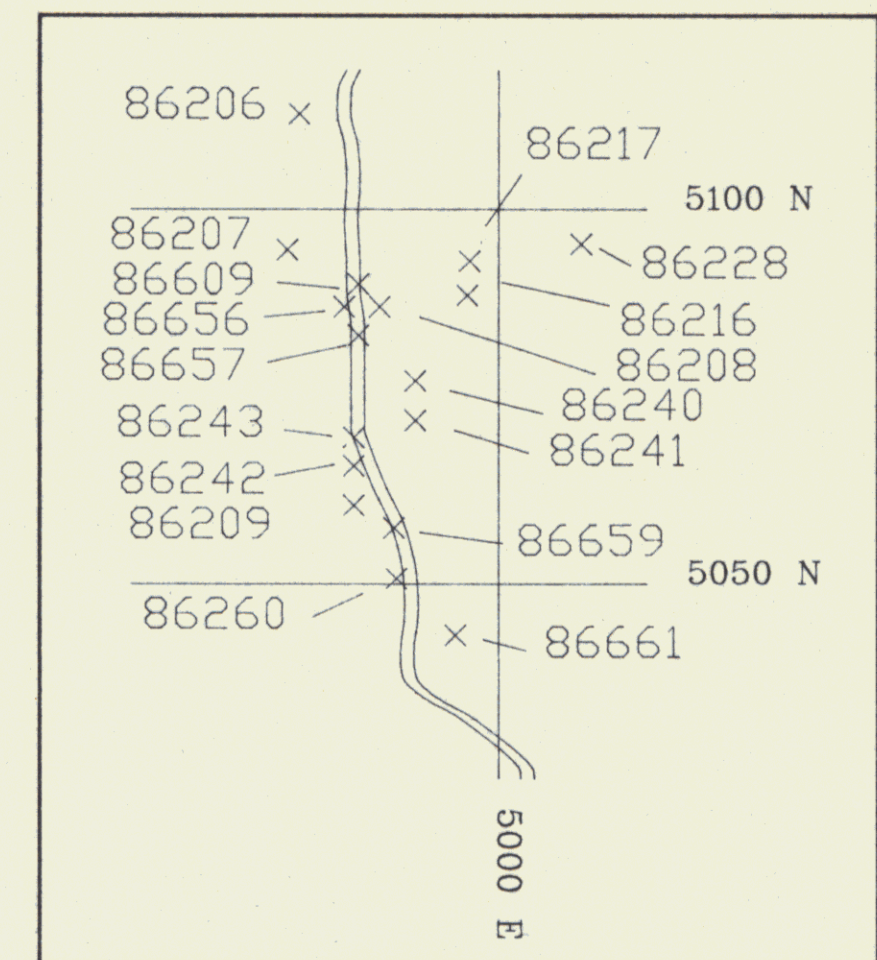
- Strik/dip, bedding or eutaxitic layering
 - Strike/dip, fracture
 - Strike/dip, vein
 - Outcrop
 - Escarpment
 - ▲ Swamp
 - Geological Contact known, approximate, inferred
 - ~ Fault
 - Lake
 - ✕ Mineral Showing
- Tertiary
 - 4 Ignimbrite
 - 3a Undifferentiated welded lithic tuff and ignimbrite
 - 3 Lithic Tuff
 - 2 Lower Sedimentary unit: quartz monzonite pebble conglomerate, quartz pebble conglomerate, quartz monzonite breccia
 - 1 Upper Cretaceous or Lower Tertiary Medium to fine grained quartz monzonite



EAGLET MINES LTD.				
PART CLAIMS				
GEOLOGY				
Originator	Drawn	Date	PLAN No.	FIGURE
Original	AWG	Geo-Comp	Dec '86	904.1
Revision			N.T.S.	4
Revision			105D/3	
MINEQUEST EXPLORATION ASSOCIATES LTD.				



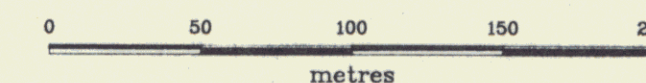
INSET



LEGEND

x 86402 - Sample Location & Sample No.
Sample Nos. preceded by "PRT"

Scale 1:2,500



RESULTS

Sample No.	Ag ppm	Au ppb	Ag opt
86001	0.4	-5	
86002	0.5	-5	
86003	0.9	-5	
86004	0.4	-5	
86201	1.2	-5	
86202	43.0	55	
86203	>50.0	15	1.53
86204	0.8	-5	
86205	0.4	5	
86206	38.0	260	
86207	0.4	-5	
86208	>50.0	2500	11.98
86209	5.6	-5	
86210	>50.0	-5	1.48
86601	0.6	-5	

note: all sample nos. have prefix PRT

Sample No.	Ag ppm	Au ppb
86602	0.6	5
86603	1.6	-5
86604	0.7	-5
86605	0.8	-5
86606	0.2	-5
86607	0.5	-5
86608	0.3	-5
86609	12.0	980
86610	0.4	5
86611	0.5	-5
86612	0.4	-5
86613	0.7	-5
86614	-0.2	15
86615	1.0	35
86616	-0.2	-5
86617	0.3	-5

Sample No.	Ag ppm	Au ppb
86252	4.6	-5
86253	1.2	-5
86254	1.6	-5
86255	1.0	5
86256	1.0	-5
86257	0.2	-5
86258	0.3	-5
86259	0.4	-5
85260	8.2	5
86671	0.5	45
86672	0.2	-5
86674	0.2	-5
86675	0.3	-5
86676	0.3	-5
86677	0.3	-5

Sample No.	Ag ppm	Au ppb	Ag opt
86678	0.3	-5	
86240	33.0	30	
86241	20.0	10	
86242	>50.0	35	4.70
86243	20.0	15	
86656	13.0	220	
86657	6.8	20	
86658	0.9	-5	
86659	28.0	40	
86660	0.4	-5	
86661	47.0	240	
86223	0.6	-5	
86224	1.2	35	
86225	1.8	15	
86226	0.3	-5	
86227	0.8	-5	
86228	0.2	-5	
86636	0.7	40	
86637	0.3	20	
86638	0.4	-5	
86639	0.3	-5	
86640	0.4	-5	
86641	0.3	-5	
86642	0.4	-5	

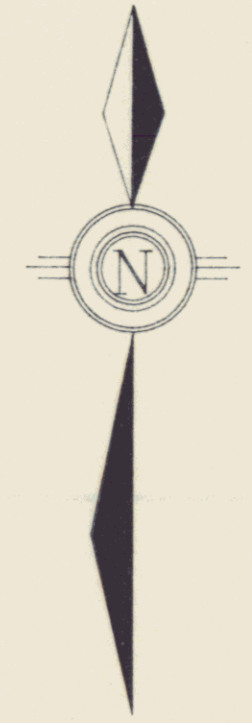
EAGLET MINES LTD.

PART CLAIMS

GEOCHEMISTRY 1033
ROCK SAMPLE
LOCATIONS & RESULTS

Original	Originator	Drawn	Date	PLAN No.	FIGURE
Original	AWG	Geo-Comp	July '86	906	5
Revision				N.T.S.	
Revision				105 D/3	

MINEQUEST EXPLORATION ASSOCIATES LTD.

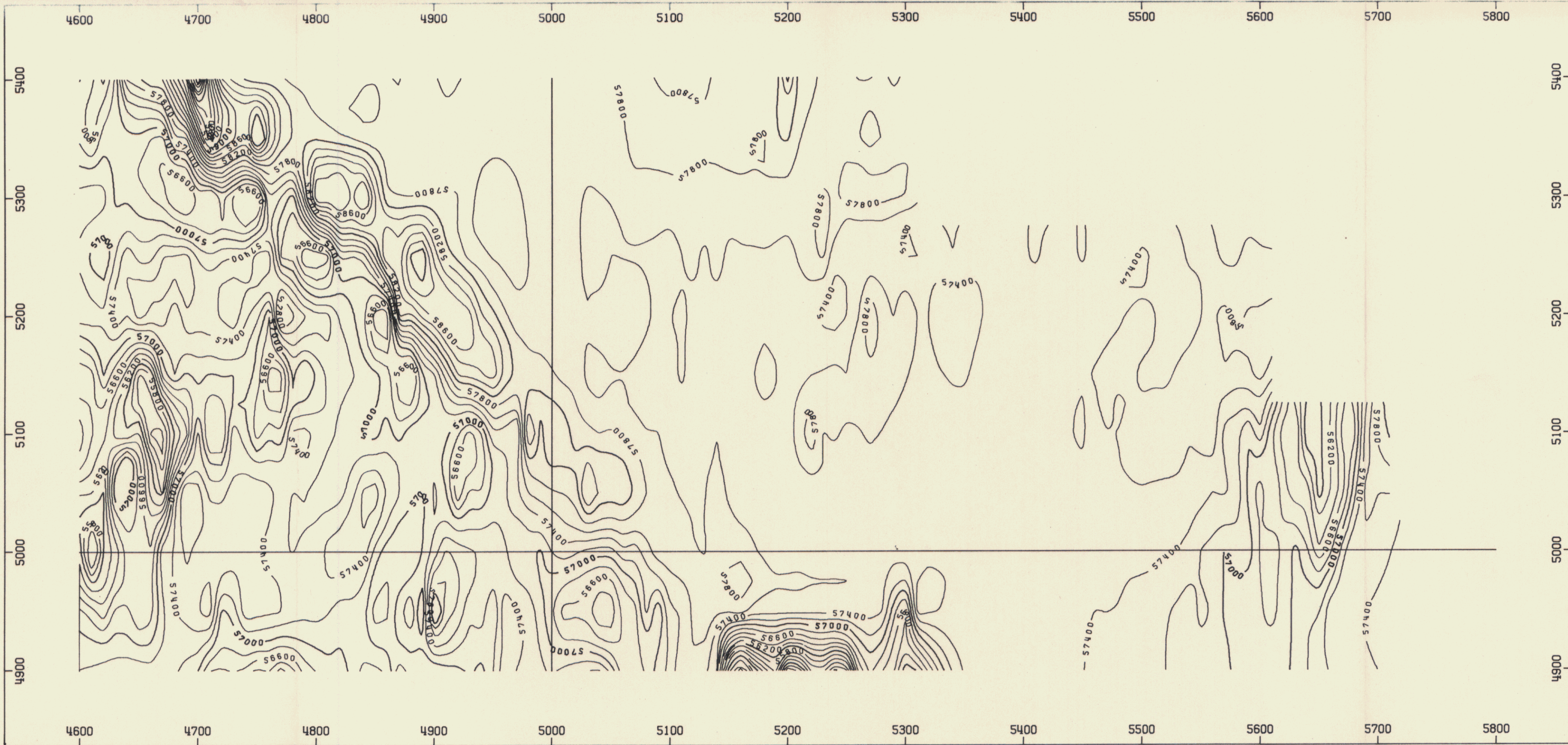


LEGEND

- + 7031 Soil sample location and sample number
All sample nos. have prefix "PRT"
- ▲ Swamp
- Lake

Scale 1:2500
0 50 100 150 200
metres

EAGLET MINES LTD.				
PART CLAIMS				
GEOCHEMISTRY ¹⁰²⁴				
SOIL SAMPLE LOCATIONS				
Originator	Drawn	Date	PLAN No.	FIGURE
Original	AWG	Geo-Comp	Dec. 86	934.1
Revision				N.T.S.
Revision				105D/3
MINEQUEST EXPLORATION ASSOCIATES LTD.				

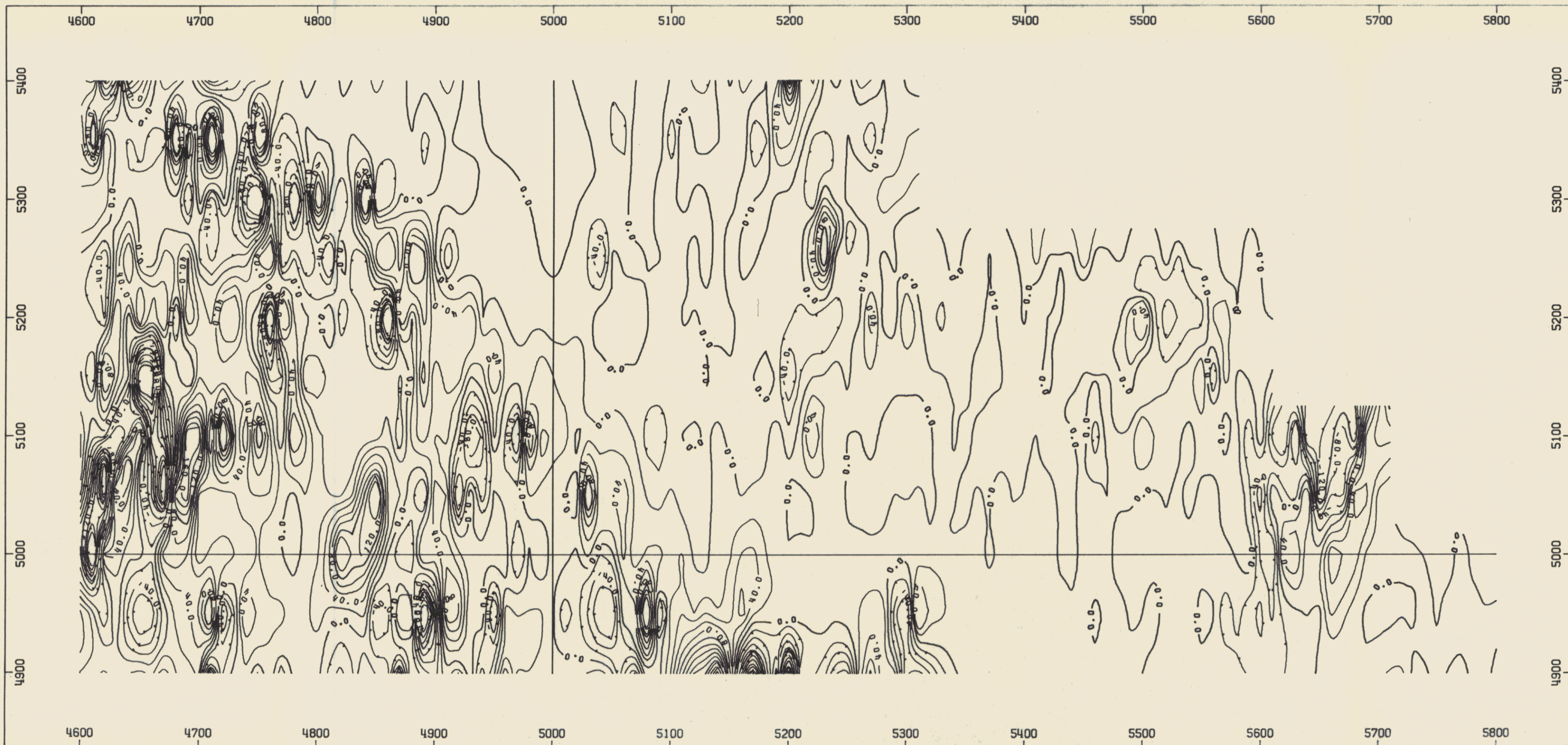


EAGLET MINES LTD.
 MAGNETIC CONTOUR MAP
 TOTAL FIELD (GAMMAS)
 PART CLAIMS 1025
 SCALE 1: 2500.0

0 50 100 150 200 M

DATE: JULY 1986	PLAN NO. 913	FIGURE 7.
-----------------	--------------	-----------

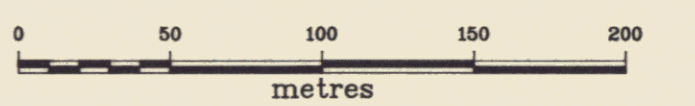
APEX AIRBORNE SURVEYS LTD.



<p>EAGLET MINES LTD.</p> <p>VERTICAL GRAD. MAGNETIC CONTOUR MAP</p> <p>UNIT (GAMMAS/METRE)</p> <p>PART CLAIMS</p> <p>SCALE 1: 2500.0</p> <p style="text-align: right;">1027</p>			
<table border="1" style="width: 100%; border-collapse: collapse;"> <tr> <td style="width: 33%;">DATE: JULY 1986</td> <td style="width: 33%;">PLAN NO. 914</td> <td style="width: 33%;">FIGURE 8.</td> </tr> </table>	DATE: JULY 1986	PLAN NO. 914	FIGURE 8.
DATE: JULY 1986	PLAN NO. 914	FIGURE 8.	
<p>APEX AIRBORNE SURVEYS LTD.</p>			



Scale 1:2500



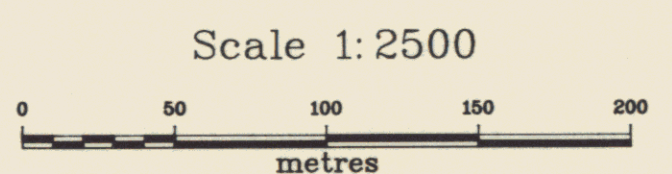
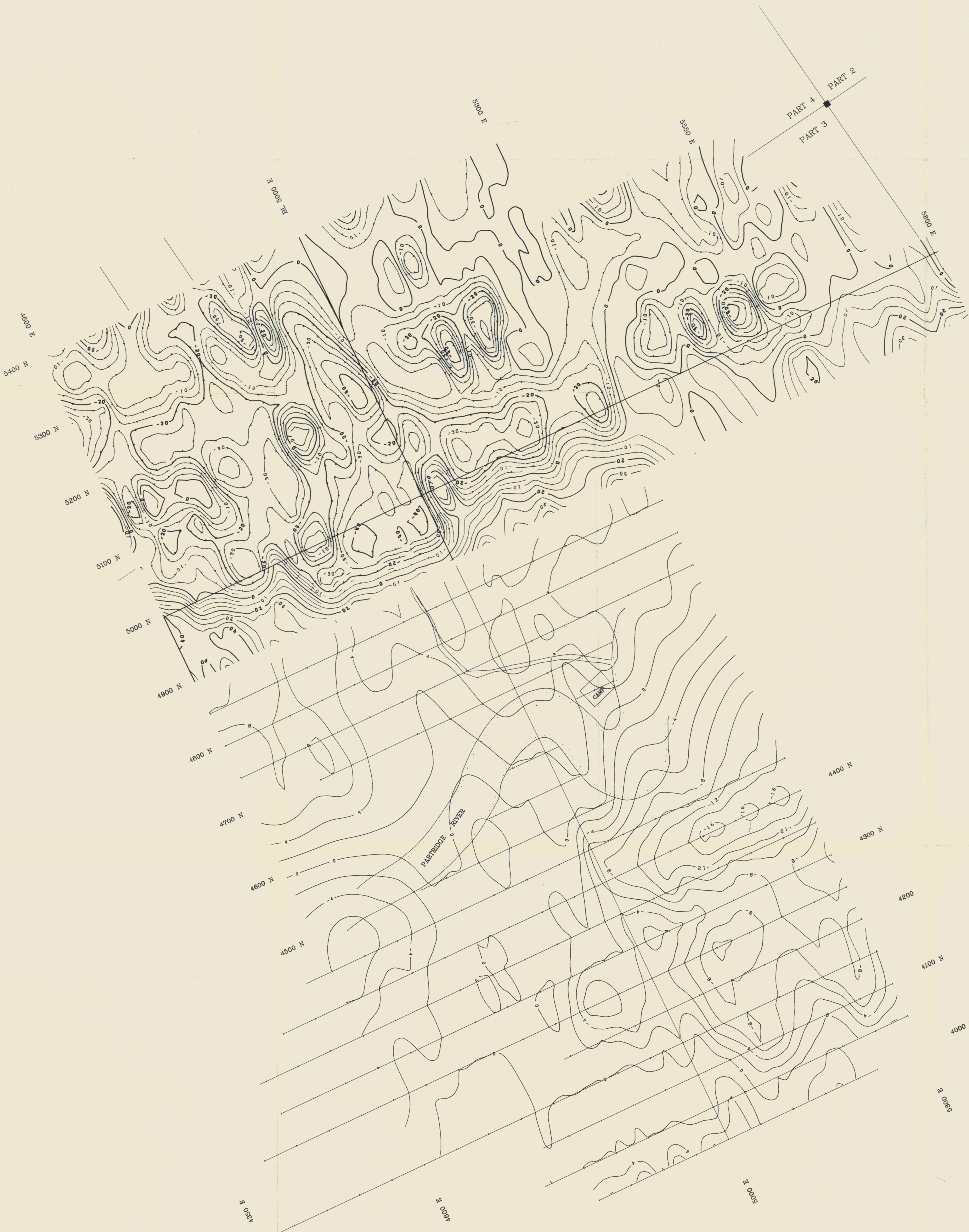
EAGLET MINES LTD.

PART CLAIMS

FRASER FILTERED VLF
CONTOUR MAP

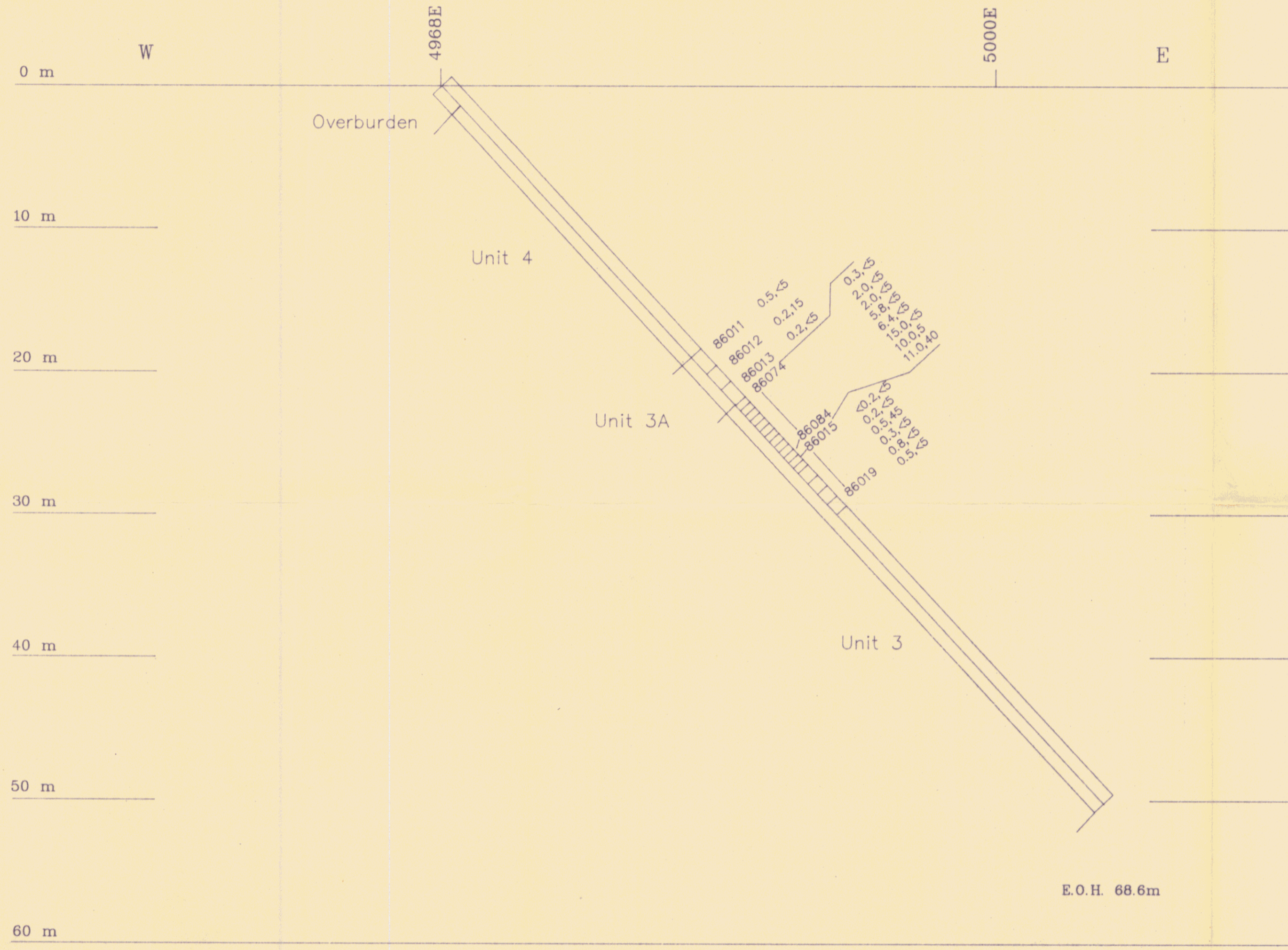
	Originator	Drawn	Date	PLAN No.	FIGURE
Original	AWG	Geo-Comp	Dec '86	915.1	9
Revision				N.T.S.	
Revision				105D/3	

MINEQUEST EXPLORATION ASSOCIATES LTD.

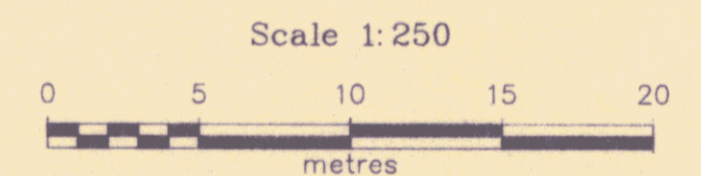


EAGLET MINES LTD.				
PART CLAIMS				
QUADRATURE VLF				
CONTOUR MAP				
	Originator	Drawn	Date	PLAN No.
Original	AWG	Geo-Comp	Dec. '86	916.1
Revision				N.T.S.
Revision				105D/3
MINEQUEST EXPLORATION ASSOCIATES LTD.				FIGURE
				10

HOLE: DDH-PRT 86-001
 Dip: -47°
 Azm: 100°
 Coordinate: 5100 N
 4968 E
 Elevation:
 Section at 065°, looking North



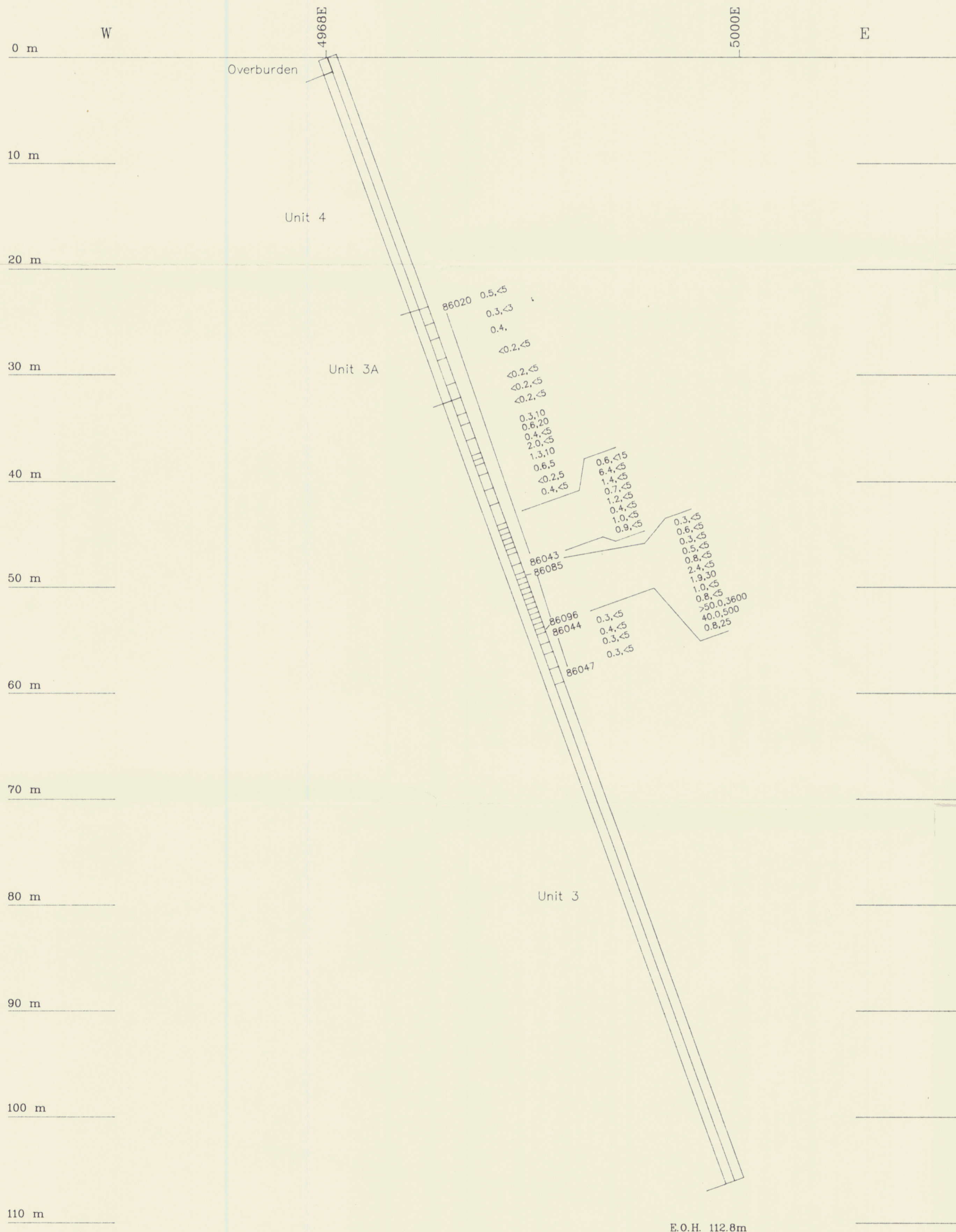
- LEGEND**
- Ag (ppm) 0.6, Au (ppb) <5
 86048 - Sample number (all samples have prefix PRT)
- Tertiary
- 4 Ignimbrite
 - 3a Undifferentiated welded lithic tuff and ignimbrite
 - 3 Lithic Tuff
 - 2 Lower Sedimentary unit: quartz monzonite pebble conglomerate, quartz pebble conglomerate, quartz monzonite breccia
 - 1 Upper Cretaceous or Lower Tertiary medium to fine grained quartz monzonite



EAGLET MINES LTD.				
PART CLAIMS				
SECTION: DDH-PRT 86-001				
(1030)				
	Originator	Drawn	Date	PLAN No.
Original	AWG	Geo-Comp	DEC. '86	951
Revision				N.T.S.
Revision				105D/3
FIGURE 12				
MINEQUEST EXPLORATION ASSOCIATES LTD.				

091928

HOLE: DDH-PRT 86-002
 Dip: -70°
 Azm: 065°
 Coordinate: 5100 N
 4968 E
 Elevation:
 Section at 065°, looking North

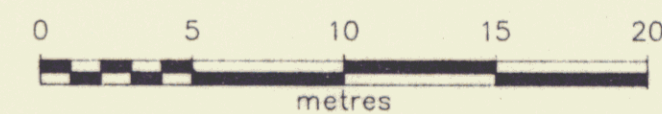


LEGEND

Ag (ppm) Au (ppb)
 0.6, <math><5</math>
 86048 - Sample number (all samples have prefix PRT)

- Tertiary
- 4 Ignimbrite
- 3a Undifferentiated welded lithic tuff and ignimbrite
- 3 Lithic Tuff
- 2 Lower Sedimentary unit: quartz monzonite pebble conglomerate, quartz pebble conglomerate, quartz monzonite breccia
- Upper Cretaceous or Lower Tertiary
- 1 medium to fine grained quartz monzonite

Scale 1:250



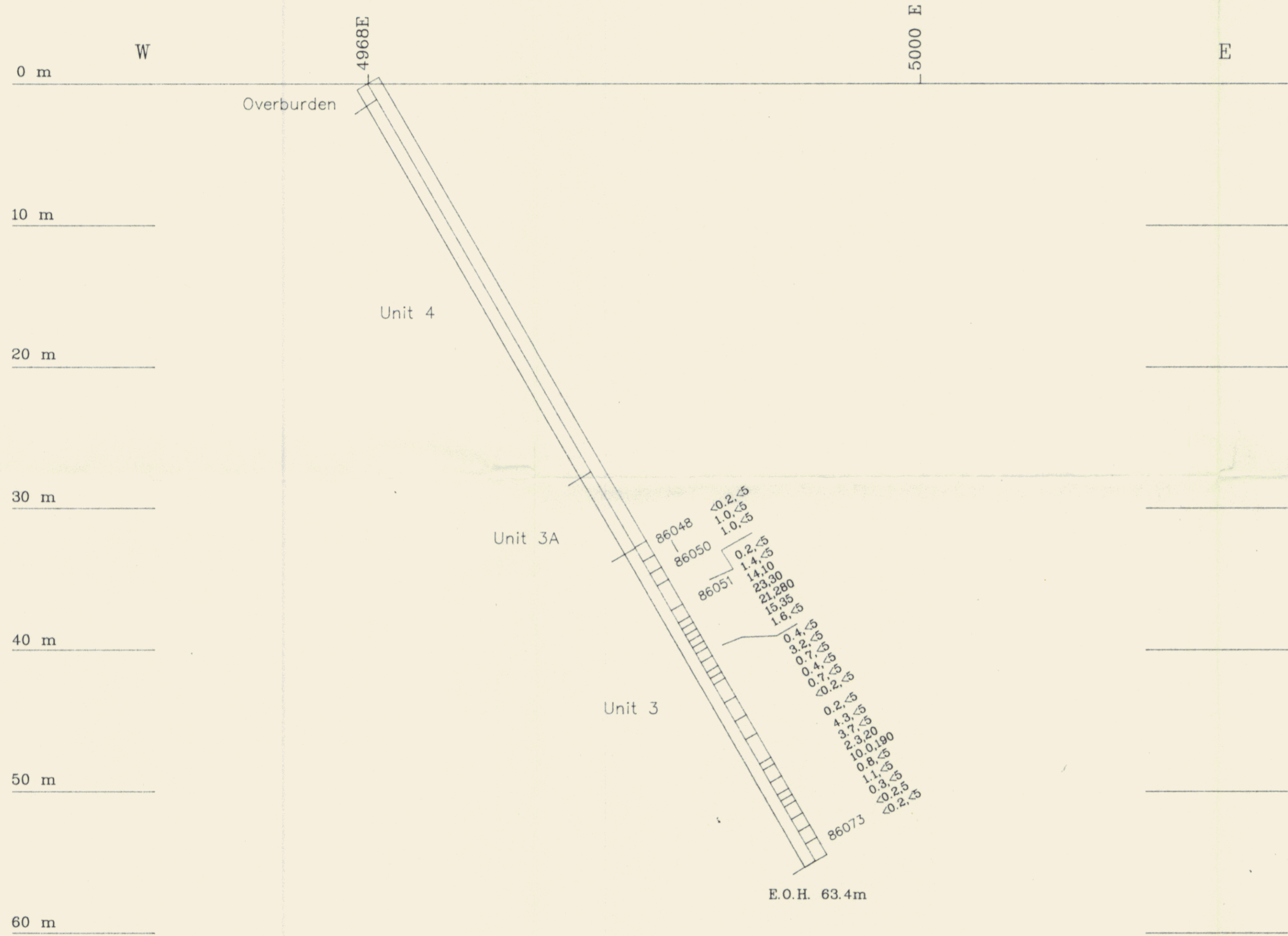
EAGLET MINES LTD.
 PART CLAIMS

SECTION: DDH-PRT 86-002

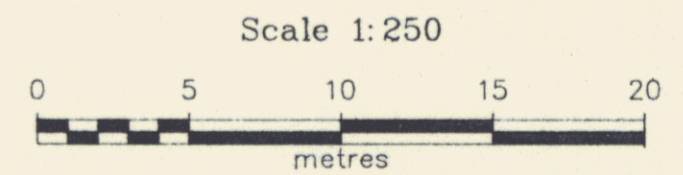
Original	Revision	Revision	Originator	Drawn	Date	PLAN No.	FIGURE
			AWG	Geo-Comp	DEC. '86	952	13
						N.T.S.	
						105D/3	

MINEQUEST EXPLORATION ASSOCIATES LTD.

HOLE: DDH-PRT 86-003
 Dip: -60°
 Azm: 100°
 Coordinate: 5100 N
 4968 E
 Elevation:
 Section at 100°, looking North



- LEGEND**
- Ag (ppm) Au (ppb)
0.6, <5
- 86048 - Sample number (all samples have prefix PRT)
- Tertiary
- 4 Ignimbrite
 - 3a Undifferentiated welded lithic tuff and ignimbrite
 - 3 Lithic Tuff
 - 2 Lower Sedimentary unit: quartz monzonite pebble conglomerate, quartz pebble conglomerate, quartz monzonite breccia
 - 1 Upper Cretaceous or Lower Tertiary medium to fine grained quartz monzonite



EAGLET MINES LTD.					
PART CLAIMS					
SECTION: DDH-PRT 86-003					
1032					
	Originator	Drawn	Date	PLAN No.	FIGURE
Original	AWG	Geo-Comp	DEC. '86	953	14
Revision				N.T.S.	
Revision				105D/3	
MINEQUEST EXPLORATION ASSOCIATES LTD.					

APPENDIX I

Analytical Techniques

APPENDIX I

Analytical Techniques

All samples were sent to Bondar-Clegg and Co. Ltd., Whitehorse, Yukon for preparation.

Rock samples were processed as follows. The sample was put through a primary jaw crusher followed by a secondary cone crusher, which reduced the sample to 80% less than 10 mesh. A representative split of approximately 250 grams was obtained by passing the entire crushed sample through a Jones Riffle splitter. This split was then pulverized for 2.5 minutes in a ring and puck grinder which reduced the particle size to 99% less than 100 mesh.

Soil samples were collected wherever a soil profile had been developed. Bondar-Clegg and Co. Ltd. dried and sieved the soil samples to minus 80 mesh.

Pulps of rock and soil samples were then shipped to Bondar-Clegg and Co. Ltd., North Vancouver, B.C. for analysis.

The rock samples were analysed as follows:

Gold: Two thirds of an assay ton by fire assay extraction and atomic absorption determination,

Silver: Lefort aqua regia extraction, atomic absorption determination, and

Platinum and Palladium:
Preconcentration by fire assay to produce bead that is dissolved in aqua regia, determination by atomic absorption.

Formal assays for silver were carried out by fire assay collection, followed by gravimetric determination.

The soil samples were analysed for gold by fire assay extraction and atomic absorption determination.

Soil sample pulps were then shipped to Acme Analytical Laboratories Ltd., Vancouver, B.C. for multi-element analyses. A 0.5 gram of each sample was digested in hot dilute aqua regia in a boiling water bath and diluted to 10 ml with demineralized water. Extracted metals were determined by inductively coupled argon plasma and mass spectrometry.

APPENDIX II

Laboratory Reports



REPORT: 126-2286

PROJECT: NONE GIVEN

PAGE 1

SAMPLE NUMBER	ELEMENT UNITS	Ag PPM	Au PPB
R2 PRT 86001		0.4	<5
R2 PRT 86002		0.5	<5
R2 PRT 86003		0.9	<5
R2 PRT 86004		0.4	<5
R2 PRT 86201		1.2	<5
R2 PRT 86202		43.0	55
R2 PRT 86203		>50.0	15
R2 PRT 86204		0.8	<5
R2 PRT 86205		0.4	5
R2 PRT 86206		38.0	260
R2 PRT 86207		0.4	<5
R2 PRT 86208		>50.0	2500
R2 PRT 86209		5.6	<5
R2 PRT 86210		>50.0	<5
R2 PRT 86601		0.6	<5
R2 PRT 86602		0.6	5
R2 PRT 86603		1.6	<5
R2 PRT 86604		0.7	<5
R2 PRT 86605		0.8	<5
R2 PRT 86606		0.2	<5
R2 PRT 86607		0.5	<5
R2 PRT 86608		0.3	<5
R2 PRT 86609		12.0	980
R2 PRT 86610		0.4	5
R2 PRT 86611		0.5	<5
R2 PRT 86612		0.4	<5
R2 PRT 86613		0.7	<5
R2 PRT 86614		<0.2	15
R2 PRT 86615		1.0	35
R2 PRT 86616		<0.2	<5
R2 PRT 86617		0.3	<5

Company Ltd.
n Ave.
ouver, B.C.
7P 2R5
(604) 985-0681
.04-352667



Geochemical
Lab Report

REPORT: 326-2286

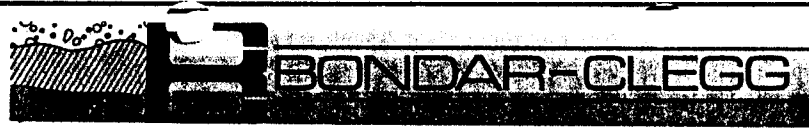
PROJECT: PRT

PAGE 1

SAMPLE NUMBER	ELEMENT UNITS	Au PPB
P4 PRT 86203		30
P4 PRT 86208		3000
P4 PRT 86210		<5

SAMPLE TYPE	GRADE	DATE SAMPLED	ANALYST

M. UNRAY



REPORT: 226-2286

PROJECT: NONE GIVEN

PAGE 1

SAMPLE NUMBER	ELEMENT UNITS	AU PPB	SAMPLE NUMBER	ELEMENT UNITS	AU PPB
S1 PRT 1001		<5	S1 PRT 1041		<5
S1 PRT 1002		<5	S1 PRT 1042		10
S1 PRT 1003		<5	S1 PRT 1043		5
S1 PRT 1004		<5	S1 PRT 1044		20
S1 PRT 1005		<5	S1 PRT 1045		<5
S1 PRT 1006		<5	S1 PRT 1046		<5
S1 PRT 1007		<5	S1 PRT 1047		<5
S1 PRT 1008		<5	S1 PRT 1048		<5
S1 PRT 1009		<5	S1 PRT 1049		<5
S1 PRT 1010		<5	S1 PRT 1050		<5
S1 PRT 1011		<5	S1 PRT 1051		5
S1 PRT 1012		<5	S1 PRT 1052		<5
S1 PRT 1013		<5	S1 PRT 1053		<5
S1 PRT 1014		<5	S1 PRT 1054		<5
S1 PRT 1015		<5	S1 PRT 1055		<5
S1 PRT 1016		<5	S1 PRT 1056		<5
S1 PRT 1017		<5	S1 PRT 1057		<5
S1 PRT 1018		<5	S1 PRT 1058		<5
S1 PRT 1019		<5	S1 PRT 1059		<5
S1 PRT 1020		<5	S1 PRT 1060		<5
S1 PRT 1021		<5	S1 PRT 1061		<5
S1 PRT 1022		<5	S1 PRT 1062		<5
S1 PRT 1023		<5	S1 PRT 1063		<5
S1 PRT 1024		<5	S1 PRT 1064		<5
S1 PRT 1025		<5	S1 PRT 1065		<5
S1 PRT 1026		<5	S1 PRT 1066		<5
S1 PRT 1027		<5	S1 PRT 1067		<5
S1 PRT 1028		<5	S1 PRT 1068		<5
S1 PRT 1029		<5	S1 PRT 1069		<5
S1 PRT 1030		<5	S1 PRT 1070		5
S1 PRT 1031		5	S1 PRT 1071		<5
S1 PRT 1032		<5	S1 PRT 1072		<5
S1 PRT 1033		<5	S1 PRT 1073		<5
S1 PRT 1034		<5	S1 PRT 1074		<5
S1 PRT 1035		10	S1 PRT 1075		<5
S1 PRT 1036		<5	S1 PRT 1076		<5
S1 PRT 1037		<5	S1 PRT 1077		<5
S1 PRT 1038		<5	S1 PRT 1078		<5
S1 PRT 1039		5	S1 PRT 1079		<5
S1 PRT 1040		10			

REPORT: 126-2501

PROJECT: PRT

PAGE 1

SAMPLE NUMBER	ELEMENT UNITS	Au PPB	SAMPLE NUMBER	ELEMENT UNITS	Au PPB
S1 PRT 1150		5	S1 PRT 1727		<5
S1 PRT 1151		<5	S1 PRT 1728		<5
S1 PRT 1192		<5	S1 PRT 1729		<5
S1 PRT 1193		<5			
S1 PRT 1194		<5			
S1 PRT 1195		<5			
S1 PRT 1196		<5			
S1 PRT 1197		<5			
S1 PRT 1309		<5			
S1 PRT 1310		15			
S1 PRT 1311		<5			
S1 PRT 1312		<5			
S1 PRT 1313		<5			
S1 PRT 1314		5			
S1 PRT 1315		<5			
S1 PRT 1316		<5			
S1 PRT 1317		<5			
S1 PRT 1318		<5			
S1 PRT 1395		<5			
S1 PRT 1396		<5			
S1 PRT 1397		<5			
S1 PRT 1398		<5			
S1 PRT 1399		<5			
S1 PRT 1400		<5			
S1 PRT 1443		<5			
S1 PRT 1444		<5			
S1 PRT 1445		<5			
S1 PRT 1446		<5			
S1 PRT 1447		<5			
S1 PRT 1448		<5			
S1 PRT 1629		<5			
S1 PRT 1630		<5			
S1 PRT 1631		<5			
S1 PRT 1632		<5			
S1 PRT 1633		<5			
S1 PRT 1634		<5			
S1 PRT 1635		<5			
S1 PRT 1636		<5			
S1 PRT 1637		<5			
S1 PRT 1638		<5			

Bondar-Clegg & Company Ltd.
 130 Pemberton Ave.
 North Vancouver, B.C.
 Canada V7P 2R5
 Phone: (604) 985-0681
 Telex: 04-352667



Partridge #12

Geochemical
 Lab Report

REPORT: 126-5687 (COMPLETE)

REFERENCE INFO:

CLIENT: MINEQUEST EXPLORATION ASSOCIATES LTD.
 PROJECT: PARTRIDGE

SUBMITTED BY: A GOURLAY
 DATE PRINTED: 24-OCT-86

ORDER	ELEMENT	NUMBER OF ANALYSES	LOWER DETECTION LIMIT	EXTRACTION	METHOD
1	Ag Silver	64	0.2 PPM	HNO3-HCL HOT EXTR	Atomic Absorption
2	Au Gold - Fire Assay	63	5 PPB	FIRE-ASSAY	Fire Assay AA

SAMPLE TYPES	NUMBER	SIZE FRACTIONS	NUMBER	SAMPLE PREPARATIONS	NUMBER
D DRILL CORE	64	2 -150	64	CRUSH, PULVERIZE -150	64

REMARKS: RPT 86022 Au RESULT TO FOLLOW

REPORT COPIES TO: MINEQUEST EXPLORATIONS
 MR. A. GOURLAY

INVOICE TO: MINEQUEST EXPLORATIONS

RECEIVED
 OCT 24 1986
 MINEQUEST

REPORT: 126-5687

PROJECT: PARTRIDGE

PAGE 1

SAMPLE NUMBER	ELEMENT UNITS	Ag PPM	Au PPB	SAMPLE NUMBER	ELEMENT UNITS	Ag PPM	Au PPB
D2 PRT 86011		0.5	<5	D2 PRT 86051		0.2	<5
D2 PRT 86012		0.2	15	D2 PRT 86052		1.4	<5
D2 PRT 86013		0.2	<5	D2 PRT 86059		3.2	<5
D2 PRT 86014		<0.2	<5	D2 PRT 86060		0.7	<5
D2 PRT 86015		0.2	<5	D2 PRT 86061		0.4	<5
D2 PRT 86016		0.2	45	D2 PRT 86062		0.7	<5
D2 PRT 86017		0.3	<5	D2 PRT 86063		<0.2	<5
D2 PRT 86018		0.8	<5	D2 PRT 86064		0.2	<5
D2 PRT 86019		<0.2	<5	D2 PRT 86065		4.3	<5
D2 PRT 86020		0.5	<5	D2 PRT 86066		3.7	<5
D2 PRT 86021		0.3	<5	D2 PRT 86067		2.3	20
D2 PRT 86022		0.4	<5	D2 PRT 86068		10.0	190
D2 PRT 86023		<0.2	<5	D2 PRT 86069		0.8	<5
D2 PRT 86024		<0.2	<5	D2 PRT 86070		1.1	<5
D2 PRT 86025		<0.2	<5	D2 PRT 86071		0.3	<5
D2 PRT 86026		<0.2	<5	D2 PRT 86072		<0.2	5
D2 PRT 86027		0.3	10	D2 PRT 86073		<0.2	<5
D2 PRT 86028		0.6	20	D2 PRT 86074		0.3	<5
D2 PRT 86029		0.4	<5	D2 PRT 86075		2.0	<5
D2 PRT 86030		2.0	<5	D2 PRT 86083		0.4	<5
D2 PRT 86031		1.3	10	D2 PRT 86084		1.1	<5
D2 PRT 86032		0.6	5	D2 PRT 86085		0.3	<5
D2 PRT 86033		<0.2	5	D2 PRT 86087		0.3	<5
D2 PRT 86034		<0.2	<5	D2 PRT 86088		0.5	<5
D2 PRT 86035		0.4	<5				
D2 PRT 86036		0.6	<5				
D2 PRT 86037		6.4	<5				
D2 PRT 86038		1.4	<5				
D2 PRT 86039		0.7	<5				
D2 PRT 86040		1.2	<5				
D2 PRT 86041		0.4	<5				
D2 PRT 86042		1.0	<5				
D2 PRT 86043		0.9	<5				
D2 PRT 86044		0.3	<5				
D2 PRT 86045		0.4	<5				
D2 PRT 86046		0.3	<5				
D2 PRT 86047		0.4	<5				
D2 PRT 86048		<0.2	<5				
D2 PRT 86049		1.0	<5				
D2 PRT 86050		1.0	<5				

10/27/88
 10/27/88
 10/27/88

REPORT: 126-5688

PROJECT: PARTRIDGE

PAGE 1

SAMPLE NUMBER	ELEMENT UNITS	Ag PPM	Au PPB
D2 PRT 86053		14.0	10
D2 PRT 86054		23.0	30
D2 PRT 86055		21.0	280
D2 PRT 86056		15.0	35
D2 PRT 86057		1.6	<5
D2 PRT 86058		0.4	<5
D2 PRT 86076		5.8	<5
D2 PRT 86077		6.4	<5
D2 PRT 86078		4.8	<5
D2 PRT 86079		1.6	<5
D2 PRT 86080		15.0	<5
D2 PRT 86081		10.0	5
D2 PRT 86082		11.0	40
D2 PRT 86086		0.6	<5
D2 PRT 86089		0.8	<5
D2 PRT 86090		2.4	<5
D2 PRT 86091		1.9	30
D2 PRT 86092		1.0	<5
D2 PRT 86093		0.8	<5
D2 PRT 86094		>50.0	3600
D2 PRT 86095		40.0	500
D2 PRT 86096		0.8	25

RECEIVED
MAY 27 1986
BONDAR-CLEGG LTD.

Bondar-Clegg & Company Ltd.
 130 Pemberton Ave.
 North Vancouver, B.C.
 Canada V7P 2R5
 Phone: (604) 985-0681
 Telex: 04-352667



Geochemical
 Lab Report

REPORT: 226-5688 (COMPLETE)

REFERENCE INFO:

CLIENT: MINEQUEST EXPLORATION ASSOCIATES LTD.
 PROJECT: NONE GIVEN

SUBMITTED BY: UNKNOWN
 DATE PRINTED: 28-OCT-86

ORDER	ELEMENT	NUMBER OF ANALYSES	LOWER DETECTION LIMIT	EXTRACTION	METHOD
1	Pt Platinum	1	15 PPB	FIRE-ASSAY	Fire Assay AA
2	Pd Palladium	1	2 PPB	FIRE-ASSAY	Fire Assay AA

SAMPLE TYPES	NUMBER	SIZE FRACTIONS	NUMBER	SAMPLE PREPARATIONS	NUMBER
P PREPARED PULP	1	4 AS REC'D	1	AS RECEIVED, NO SP	1

REPORT COPIES TO: MINEQUEST EXPLORATIONS

INVOICE TO: MINEQUEST EXPLORATIONS

RECEIVED
 OCT 28 1986
 BONDAR-CLEGG

Bondar-Clegg & Company Ltd.
130 Pemberton Ave.
North Vancouver, B.C.
Canada V7P 2R5
Phone: (604) 985-0681
Telex: 04-352667

file copy 1
Certificate
of Analysis

REPORT: 626-5688 (COMPLETE)

REFERENCE INFO:

CLIENT: MINEQUEST EXPLORATION ASSOCIATES LTD.
PROJECT: PARTRIDGE

SUBMITTED BY: A GOURLAY
DATE PRINTED: 28-OCT-86

ORDER	ELEMENT	NUMBER OF ANALYSES	LOWER DETECTION LIMIT	EXTRACTION	METHOD
1	Ag Silver	1	0.01 OPT		

SAMPLE TYPES	NUMBER	SIZE FRACTIONS	NUMBER	SAMPLE PREPARATIONS	NUMBER
D DRILL CORE	1	2 -150	1	AS RECEIVED, NO SP	1

REPORT COPIES TO: MINEQUEST EXPLORATIONS
MR. A. GOURLAY

INVOICE TO: MINEQUEST EXPLORATIONS

Copy 1

REPORT: 126-4485 (COMPLETE)

REFERENCE INFO:

CLIENT: MINEQUEST EXPLORATION ASSOCIATES LTD.
 PROJECT: PART

SUBMITTED BY: A GOURLAY
 DATE PRINTED: 18-SEP-86

ORDER	ELEMENT	NUMBER OF ANALYSES	LOWER DETECTION LIMIT	EXTRACTION	METHOD
1	Ag Silver	32	0.2 PPM	HNO3-HCL HOT EXTR	Atomic Absorption
2	As Arsenic	32	2 PPM	NITRIC PERCHLOR DIG	Colourimetric
3	Hg Mercury	32	5 PPB	HNO3-HCL HOT EXTR	Cold Vapour AA
4	Au Gold - Fire Assay	32	5 PPB	FIRE-ASSAY	Fire Assay AA
5	Sb Antimony	32	2 PPM		X-RAY Fluorescence

SAMPLE TYPES	NUMBER	SIZE FRACTIONS	NUMBER	SAMPLE PREPARATIONS	NUMBER
ROCK OR BED ROCK	32	2 -150	32	CRUSH,PULVERIZE -150	32

REMARKS: ASSAY OF HIGH Ag TO FOLLOW ON #626-4485

REPORT COPIES TO: MR. A. GOURLAY
 MINEQUEST EXPLORATIONS

INVOICE TO: MINEQUEST EXPLORATIONS

SEP 19 1986
 RECEIVED



REPORT: 126-4485

PROJECT: PART

PAGE 1

SAMPLE NUMBER	ELEMENT UNITS	Ag PPM	As PPM	Hg PPB	Au PPB	Sb PPM
R2 PRT 86265		11.0	14	35	20	16
R2 PRT 86266		7.4	6	5	50	10
R2 PRT 86267		2.0	7	<5	15	<2
R2 PRT 86268		5.0	3	<5	25	6
R2 PRT 86269		9.4	2	<5	30	<2
R2 PRT 86270		1.2	16	<5	15	<2
R2 PRT 86271		3.2	12	<5	20	5
R2 PRT 86272		45.0	6	355	20	3
R2 PRT 86273		9.0	2	5	150	4
R2 PRT 86274		>50.0	2	<5	15	<2
R2 PRT 86275		13.0	3	<5	<5	<2
R2 PRT 86276		1.6	4	5	5	<2
R2 PRT 86277		11.0	3	5	5	<2
R2 PRT 86278		0.6	5	<5	5	<2
R2 PRT 86279		0.6	5	<5	15	<2
R2 PRT 86280		1.4	150	<5	95	<2
R2 PRT 86281		1.2	3	<5	10	<2
R2 PRT 86282		15.0	24	20	20	<2
R2 PRT 86283		40.0	4	<5	15	<2
R2 PRT 86284		6.2	4	30	15	3
R2 PRT 86285		5.2	22	25	10	<2
R2 PRT 86286		14.0	32	100	15	<2
R2 PRT 86680		0.4	5	<5	5	2
R2 PRT 86681		0.6	13	<5	10	<2
R2 PRT 86682		0.4	4	<5	10	8
R2 PRT 86683		30.0	3	<5	10	2
R2 PRT 86684		45.0	4	<5	15	<2
R2 PRT 86685		30.0	3	<5	10	3
R2 PRT 86686		0.9	2	<5	15	4
R2 PRT 86687		30.0	4	<5	5	<2
R2 PRT 86688		>50.0	22	<5	10	3
R2 PRT 86689		0.8	5	<5	10	<2

REPORT: 126-2633

PROJECT: PRT

PAGE 1

SAMPLE NUMBER	ELEMENT UNITS	Ag PPM	Au PPR
R2 PRT 86236		7.2	20
R2 PRT 86237		24.0	20
R2 PRT 86238		0.8	<5
R2 PRT 86239		0.8	5
R2 PRT 86240		33.0	30
R2 PRT 86241		20.0	10
R2 PRT 86242		>50.0	35
R2 PRT 86243		20.0	15
R2 PRT 86244		1.2	<5
R2 PRT 86245		0.4	<5
R2 PRT 86246		25.0	130
R2 PRT 86247		16.0	40
R2 PRT 86248		49.0	90
R2 PRT 86250		27.0	5
R2 PRT 86647		0.6	5
R2 PRT 86648		0.4	5
R2 PRT 86649		0.3	10
R2 PRT 86650		0.2	10
R2 PRT 86651		2.4	<5
R2 PRT 86652		1.2	45
R2 PRT 86653		6.9	45
R2 PRT 86654		1.6	10
R2 PRT 86655		0.4	<5
R2 PRT 86656		13.0	220
R2 PRT 86657		6.8	20
R2 PRT 86658		0.9	<5
R2 PRT 86659		28.0	40
R2 PRT 86660		0.4	<5
R2 PRT 86661		47.0	240
R2 PRT 86662		0.5	10
R2 PRT 86663		0.7	<5
R2 PRT 86664		0.2	<5
R2 PRT 86665		0.7	5
R2 PRT 86666		0.9	<5

REPORT: 126-2627

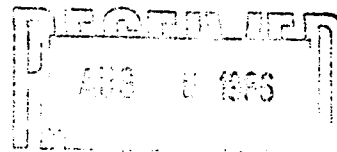
PROJECT: PRT

PAGE 1

SAMPLE NUMBER	ELEMENT UNITS	Ag PPM	Au PPB
R2 PRT 86217		5.0	15
R2 PRT 86218		0.9	15
R2 PRT 86219		0.8	<5
R2 PRT 86221		16.0	60
R2 PRT 86222		0.5	<5
R2 PRT 86223		0.6	<5
R2 PRT 86224		1.2	35
R2 PRT 86225		1.8	15
R2 PRT 86226		0.3	<5
R2 PRT 86227		0.8	<5
R2 PRT 86228		0.2	<5
R2 PRT 86229		18.0	15
R2 PRT 86230		3.9	<5
R2 PRT 86231		1.0	<5
R2 PRT 86232		2.8	<5
R2 PRT 86233		1.6	<5
R2 PRT 86631		0.6	<5
R2 PRT 86632		0.3	<5
R2 PRT 86633		0.2	<5
R2 PRT 86634		1.1	5
R2 PRT 86635		0.3	<5
R2 PRT 86636		0.7	40
R2 PRT 86637		0.3	20
R2 PRT 86638		0.4	<5
R2 PRT 86639		0.3	<5
R2 PRT 86640		0.4	<5
R2 PRT 86641		0.3	<5
R2 PRT 86642		0.4	<5
R2 PRT 86643		>50.0	460
R2 PRT 86644		1.8	5
R2 PRT 86646		2.0	<5

GEOCHEMICAL ICP ANALYSIS

.500 GRAM SAMPLE IS DIGESTED WITH 3ML 3-1-2 HCL-MNO3-H2O AT 95 DEG. C FOR ONE HOUR AND IS DILUTED TO 10 ML WITH WATER.
THIS LEACH IS PARTIAL FOR MN.FE.CA.P.CR.MG.BA.TI.B.AL.NA.K,W.SI.ZR.CE.SN.Y.NB AND TA. AU DETECTION LIMIT BY ICP IS 3 PPM.
- SAMPLE TYPE: PULP HG ANALYSIS BY FLAMELESS AA.



DATE RECEIVED: JULY 28 1986

DATE REPORT MAILED: July 31/86

ASSAYER: D. J. ... DEAN TOYE. CERTIFIED B.C. ASSAYER.

MINEQUEST EXPLORATION PROJECT - PARTRIDGE FILE # 86-1689

PAGE 1

SAMPLE#	Mo	Cu	Pb	Zn	Ag	Ni	Co	Mn	Fe	As	U	Au	Th	Sr	Cd	Sb	Bi	V	Ca	P	La	Cr	Mg	Ba	Ti	B	Al	Na	K	W	Hg
	PPM	PPM	PPM	PPM	PPM	PPM	PPM	PPM	PPM	PPM	PPM	PPM	PPM	PPM	PPM	PPM	PPM	PPM	PPM	PPM	PPM	PPM	PPM	PPM	PPM	PPM	PPM	PPM	PPM	PPM	PPM
86201	1	20	50	62	1.3	1	2	667	1.40	3	6	ND	8	38	1	4	2	8	2.42	.013	22	40	.14	127	.07	4	1.78	.41	.59	1	50
86202	29	552	2061	946	46.9	1	2	744	1.72	5	5	ND	9	23	2	2	2	7	1.29	.014	32	80	.19	44	.05	2	1.05	.17	.18	1	70
86203	144	999	2628	1407	58.3	1	6	1284	3.36	2	5	ND	10	12	8	2	5	12	.35	.042	37	28	.43	76	.01	5	1.35	.06	.15	1	100
86206	4	45	657	613	40.5	1	3	818	1.52	3	5	ND	11	3	1	2	2	3	.10	.008	29	68	.12	37	.01	5	.63	.03	.18	1	40
86208	12	289	4221	476	455.5	1	10	719	2.00	7	5	2	11	4	1	6	2	3	.07	.010	20	59	.12	28	.04	6	.73	.03	.18	1	780
86209	6	36	402	570	4.3	1	4	2104	3.77	9	5	ND	14	9	1	2	2	5	.35	.010	24	25	.26	46	.01	4	1.50	.02	.20	1	10
86210	15	790	502	1179	71.6	1	2	112	2.29	7	5	ND	6	2	1	2	36	2	.02	.027	12	69	.01	70	.01	3	.31	.01	.22	1	130
86217	5	6	1530	68	5.1	3	1	48	.98	24	5	ND	13	3	1	3	2	2	.09	.004	3	98	.02	34	.01	3	.24	.05	.14	1	110
86218	1	97	63	113	1.5	26	24	1131	5.34	40	5	ND	4	73	1	2	2	168	3.77	.069	2	110	3.59	54	.11	3	2.82	.04	.30	1	20
86221	38	195	76	38	17.6	65	53	84	6.44	298	5	ND	2	4	1	7	2	11	.04	.015	2	108	.05	11	.01	4	.27	.01	.02	1	10
86224	15	3	37	36	1.4	3	1	32	.91	55	5	ND	5	4	1	3	2	1	.01	.007	17	54	.01	201	.01	5	.23	.01	.17	2	20
86225	3	5	67	90	2.0	4	1	333	.64	22	5	ND	8	3	1	2	4	1	.09	.009	26	67	.03	73	.01	2	.34	.02	.17	1	10
86229	2	9171	128	92	465.6	1	7	408	1.74	6	5	ND	2	64	3	2	2	3	1.03	.035	11	63	.32	28	.08	3	1.09	.05	.18	1	430
86230	52	20	57	23	3.7	1	4	71	.58	43	5	ND	4	23	1	2	2	7	7.71	.008	5	35	.04	37	.01	122	2.66	.02	.51	2	30
86232	95	203	237	59	4.0	2	10	403	1.26	8	5	ND	1	43	1	2	3	6	1.58	.009	3	100	.09	15	.01	4	.54	.03	.02	1	10
86233	17	49	33	19	2.6	1	2	99	.43	4	5	ND	1	11	1	2	2	5	2.12	.003	5	101	.02	94	.01	22	.67	.02	.40	1	5
86236	9	35	3307	1034	8.3	5	3	147	.44	550	5	ND	1	6	1	26	2	1	.10	.003	2	163	.08	8	.01	2	.05	.01	.01	1	20
86237	224	47	3953	954	27.6	4	4	81	1.07	87	5	ND	1	2	7	100	71	1	.04	.003	2	134	.03	15	.01	3	.08	.01	.02	1	5
86240	6	218	3112	1192	35.4	1	9	614	1.44	15	5	ND	9	4	4	2	2	3	.10	.009	25	96	.11	20	.03	2	.50	.03	.13	1	5
86241	6	119	1227	1342	23.0	1	6	1054	1.68	25	5	ND	10	6	3	8	2	3	.27	.011	33	81	.17	35	.01	2	.70	.04	.14	1	5
86243	58	185	4132	993	22.8	1	8	1121	1.49	41	5	ND	11	6	1	2	2	12	.06	.009	33	72	.11	31	.01	2	.44	.03	.16	1	5
86244	1	20	94	101	1.6	16	9	497	3.07	30	5	ND	11	27	1	3	2	52	.60	.053	25	106	.47	121	.17	3	1.72	.13	.85	1	5
86246	3	243	711	637	25.8	8	15	1624	2.78	9558	5	ND	5	127	5	4	2	14	6.33	.028	18	29	1.66	95	.01	2	.30	.01	.18	1	70
86247	5	693	762	466	16.3	24	18	631	3.30	190	5	ND	4	181	5	3	2	29	4.38	.061	17	39	1.00	595	.01	5	.39	.01	.18	1	10
86248	8	1388	70	109	50.1	11	10	1772	3.17	44	5	ND	7	323	1	3	2	16	13.81	.061	13	17	2.25	332	.01	6	.55	.01	.17	1	30
86250	4	2085	82	2688	30.6	2	4	526	1.48	13	5	ND	10	7	41	3	2	1	.08	.006	55	89	.03	61	.01	4	.54	.05	.25	1	20
86251	5	7	2534	149	7.5	1	2	48	.73	104	5	ND	9	7	1	2	2	7	.05	.014	13	77	.02	54	.01	2	.23	.01	.09	6	10
86252	1	13	1504	118	5.6	2	2	427	1.17	160	5	ND	7	9	1	2	3	4	.27	.012	14	105	.10	28	.04	2	.41	.05	.07	3	5
86253	1	9	343	56	1.7	4	1	329	.50	22	5	ND	4	10	1	2	2	2	.63	.012	7	80	.03	14	.04	2	.26	.04	.02	2	5
86254	3	14	309	93	2.3	3	2	465	1.59	30	5	ND	9	6	1	2	3	5	.18	.014	18	73	.10	27	.05	4	.56	.05	.12	1	5
86255	2	12	207	88	1.5	2	3	414	1.76	19	5	ND	8	14	1	2	2	8	.22	.030	15	43	.21	52	.04	3	1.12	.07	.24	1	5
86256	3	6	111	69	.8	4	3	322	1.24	13	5	ND	20	4	1	2	2	5	.05	.019	34	39	.03	30	.01	2	.46	.05	.09	1	5
86260	8	94	783	1231	9.3	2	4	722	1.78	19	5	ND	10	3	5	2	2	2	.07	.007	38	63	.07	29	.01	2	.56	.02	.16	1	5
86403	30	13	22	273	.1	1	1	817	2.32	2	5	ND	1	4	1	2	17	1	.06	.010	34	31	.10	63	.01	2	.75	.02	.16	1	5
86409	3	80	701	826	13.0	2	5	809	1.65	4	6	ND	11	3	3	4	2	3	.06	.012	26	59	.12	25	.03	5	.57	.03	.13	1	5
86614	5	6	16	16	.3	1	1	68	1.17	54	5	ND	8	5	1	2	2	1	.01	.008	7	61	.01	103	.01	3	.21	.03	.16	1	10
STD C	20	57	41	134	6.8	68	30	1073	3.94	39	20	8	33	47	17	16	19	61	.48	.099	38	59	.88	173	.08	36	1.72	.06	.13	13	1300

MINEQUEST EXPLORATION PROJECT - PARTRIDGE FILE # 86-1689

PAGE 2

SAMPLED	Mo PPM	Cu PPM	Pb PPM	Zn PPM	Ag PPM	Ni PPM	Co PPM	Mn PPM	Fe %	As PPM	U PPM	Au PPM	Th PPM	Sr PPM	Cd PPM	Sb PPM	Bi PPM	V PPM	Ca %	P %	La PPM	Cr PPM	Mg %	Ba PPM	Ti %	B PPM	Al %	Na %	K %	W PPM	Hg PPB
86615	7	7	8	22	.9	4	1	77	1.00	52	5	ND	7	3	1	2	2	1	.01	.008	27	36	.01	320	.01	4	.32	.01	.23	1	350
86634	1	49	16	59	1.0	29	8	695	2.22	14	5	ND	2	4	1	2	3	73	.20	.085	4	116	.71	177	.02	2	.95	.01	.07	1	5
86636	9	4	11	9	.4	1	1	78	1.44	85	5	ND	7	7	1	4	2	1	.02	.008	8	43	.02	174	.01	2	.25	.02	.24	1	400
86637	3	5	24	53	.3	2	1	268	1.26	14	5	ND	8	8	1	2	3	2	.12	.011	14	30	.09	44	.03	4	.86	.07	.20	1	10
86644	11	125	83	36	1.8	2	4	401	.40	16	5	ND	2	48	1	2	2	1	1.30	.002	15	53	.01	10	.01	2	.21	.01	.08	1	5
86646	2	15	20	74	2.2	9	3	274	1.35	6	5	ND	4	7	1	2	3	19	.77	.030	17	80	.39	17	.01	2	1.00	.02	.25	1	5
86649	2	7	59	105	.5	7	4	789	3.51	12	5	ND	3	30	1	3	2	10	1.01	.048	20	48	.46	133	.06	4	1.23	.06	.29	1	5
86650	3	17	25	104	.3	6	3	749	3.02	9	5	ND	2	24	1	2	2	10	1.18	.027	15	96	.25	86	.10	2	.62	.08	.25	1	5
86651	14	9	283	153	2.4	5	1	76	.36	3	5	ND	1	2	5	2	5	1	.14	.002	2	132	.01	10	.01	3	.02	.01	.01	1	5
86652	64	15	46	116	1.1	3	2	471	1.11	144	5	ND	1	9	3	3	2	6	.37	.021	4	119	.03	81	.01	4	.62	.01	.10	1	5
86653	15	42	68	80	7.2	5	2	292	1.12	21	5	ND	8	4	1	2	8	1	.07	.007	34	82	.02	35	.01	3	.40	.01	.07	1	5
86654	8	11	116	63	1.7	4	1	225	.39	10	5	ND	15	8	1	2	2	2	.32	.001	59	99	.01	74	.01	2	.36	.18	.19	1	5
86656	4	80	595	745	14.2	1	3	709	1.46	5	5	ND	11	3	3	3	2	2	.04	.009	26	79	.09	28	.04	2	.54	.03	.15	1	5
86657	4	54	450	707	6.9	4	3	1019	1.52	6	5	ND	11	5	2	2	2	3	.05	.011	26	94	.11	49	.04	2	.60	.05	.19	1	5
86658	1	12	39	171	.7	4	1	512	1.20	2	5	ND	8	8	1	2	2	3	.95	.009	30	104	.16	31	.02	2	.49	.06	.11	1	5
86659	4	88	2070	197	29.1	1	4	743	2.14	6	5	ND	10	3	1	5	2	2	.05	.009	17	60	.12	25	.02	2	.79	.04	.17	1	5
86661	9	172	1279	363	44.1	2	7	1375	1.82	9	5	ND	11	4	1	5	2	2	.05	.009	25	68	.09	46	.03	3	.67	.03	.20	1	20
86662	1	7	41	90	.8	2	2	523	1.99	6	5	ND	8	9	1	2	2	15	.28	.039	19	60	.17	41	.09	2	.89	.06	.27	1	5
86667	4	23	118	99	1.9	3	1	229	.88	6	5	ND	10	3	1	2	3	1	.03	.003	24	46	.01	17	.01	3	.21	.04	.04	1	5
86668	84	75	387	387	5.4	2	3	371	.99	38	5	ND	9	5	7	2	2	2	.33	.007	30	68	.01	8	.01	2	.36	.14	.05	1	5
86669	2	41	59	85	1.2	4	2	143	.26	17	5	ND	7	1	1	2	2	1	.21	.003	3	86	.01	3	.01	2	.25	.13	.02	1	5
86670	37	176	3151	2080	8.9	2	7	2015	2.63	486	5	ND	5	2	19	2	2	3	.16	.011	10	63	.02	33	.01	2	.51	.01	.26	1	20
86671	8	4	51	23	.6	1	1	29	.51	328	5	ND	8	3	1	2	2	1	.01	.008	26	39	.01	144	.01	2	.18	.01	.15	1	40
STD C	20	58	39	134	6.8	71	28	1064	3.92	39	17	7	32	47	16	15	19	61	.48	.098	38	59	.88	172	.08	38	1.72	.06	.13	13	1300

— Assay required for correct result for Ag > 34 ppm

APPENDIX III

Drill Logs

APPENDIX IV

Geophysical Techniques

APPENDIX IV

Geophysical Techniques

The VLF-EM survey was carried out using a Geonics EM-16 unit using Seattle, Washington as the transmitter. Readings were taken at 25 metre intervals, facing southwest, along grid lines. Calculations and derivations used standard formulae.

The magnetometry survey employed a Scintrex IGC-2 integrated portable geophysical system. A base station measured the magnetic field at 10 second intervals while field surveys were taking place. Field measurements were recorded at 10 metre intervals along grid lines. Sensors were spaced at two and three metre heights on an aluminum staff. On board computer programs calculated diurnal variation and provided corrected data for both total field and vertical gradient measurements.

The VLF-EM survey carried out in September used a Scintrex IGC-2 integrated portable geophysical system. Seattle, Washington was employed as the transmitter. Readings were taken at 25 metre intervals along grid lines. Calculations and derivations used standard formulae.

APPENDIX V

Statements of Qualifications

A.W. Gourlay	Geologist
L.O. Allen	Prospector
R.J. Bilquist	Prospector

STATEMENT OF QUALIFICATIONS

I, Andrew W. Gourlay, hereby certify that:

1. I am presently employed by MineQuest Exploration Associates Ltd. as Senior Geologist
2. I am a graduate of the University of British Columbia (B.Sc. Hons., 1977, in geology).
3. I am a Professional Geologist in good standing with the Association of Professional Engineers, Geologists and Geophysicists of Alberta, and a Fellow of the Geological Association of Canada.
4. I have practised my profession as geologist for 9 years.
5. The information used in this report is based on personal execution of the geological mapping and personal supervision of the soil sampling, prospecting, geophysical surveys and drilling.

Signed

A circular professional seal for Andrew W. Gourlay, a Professional Geologist. The seal features a central crest with a mountain and a river, surrounded by the text "PROFESSIONAL GEOLOGIST" and "ANDREW W. GOURLAY".
Andrew W. Gourlay

Dated at Vancouver, B.C.
this 9th day of March, 1987

STATEMENT OF QUALIFICATIONS

I have worked in the mining exploration business for a total of 12 years. During this period I have been employed by numerous companies on both salary and contract basis. My duties have included prospecting, trenching (cobra drilling and blasting), claim staking, linecutting, geochemical surveys, geophysical surveys, diamond drilling, drill supervision and placer project supervision.

I have completed the B.C. Dept. of Mines Prospecting class at Castlegar (Selkirk College) in 1978.

Signed Signature on file
at MineQuest Offices
Leslie O. Allen

dated at Vancouver, B.C.
this 9th day of March, 1987

STATEMENT OF QUALIFICATIONS

I have worked in the mining exploration business for a period of 16 years. During this period I have been employed by numerous companies on both salary and contract basis. My duties have included prospecting, trenching (cobra drilling and blasting), claim staking, linecutting, geochemical surveys, geophysical surveys, diamond drilling and diamond drill supervision.

I have written an exam to qualify for the Prospectors Assistance Grants. This took place at the Department of Mines & Petroleum Resources office at Nanaimo in 1975 and was supervised by W.C. Robinson, P.Eng.

Signed Signature on file
at MineQuest offices
Ronald J. Bilquist

dated at Vancouver, B.C.
this 9th day of March, 1987

APPENDIX VI

Cost Statement

APPENDIX VI

Cost Statement

Fees and Wages

L.O. Allen	52 days at \$185/day	\$ 9,620.00	
R.J. Bilquist	52 days at \$185/day	9,620.00	
K.V. Campbell	1.5 hours at \$80/hr	120.00	
A.W. Gourlay	75.9 days at \$385/day	29,221.50	
R.D. Gourlay	8 days at \$135/day	1,080.00	
R.V. Longe	72.25 hours at \$80/hr	5,780.00	
G.R. Peatfield	3.5 hours at \$80/hr	280.00	
A.R. Zuk	14 days at \$135/day	<u>1,890.00</u>	\$ 57,611.50

Casual Staff 549.60

External Consultants 696.00

Disbursements

Airfares	6,151.90	
Rental Vehicles	836.50	
Fuels and Lubricants - Vehicles	27.20	
Charter Helicopter	28,514.00	
Charter Aircraft FXOWING	384.90	
Taxis, Parking, Fares	234.15	
Meds, Accommodations; Exp. Account	1,029.33	
Freight	2,028.12	
Drilling	36,468.40	
MQ Equipment Charges - Field	1,346.00	
MQ Equipment Charges - Camp	1,310.00	
Equipment Rentals	7,223.83	
Fuels and Lubricants - Camp	33.96	
Groceries Kitchen Supplies	2,486.51	
Food & Accommodation - in held	199.65	
General Supplies	1,635.52	
Analyses	9,373.30	
Claim Reordering & Renewal	1,060.00	
Telephone	917.10	
Expeditior	4,872.23	
Courier, Postage	573.85	
Drafting	4,500.00	
Reprographics	593.43	
Photocopies	593.43	
Maps	111.00	
Computer Services	1,100.00	
Word Processing	400.00	
Entertainment	236.75	
	<u>114,241.06</u>	
Plus over-ride at 10%	<u>11,424.11</u>	125,665.17

\$184,522.27

APPENDIX VII

Names and Addresses of Persons Performing
Work Described in this Report

APPENDIX VII

Names and Addresses of Persons Performing
Work Described in this Report

Leslie O. Allen
P.O. Box 128
Gabriola Island, B.C.
V0R 1X0

Ronald J. Bilquist
P.O. Box 81
Gabriola Island, B.C.
V0R 1X0

Andrew W. Gourlay
9188 - 122B Street
Surrey, B.C.
V8V 7M1

Ross D. Gourlay
4086 West 8th Avenue
Vancouver, B.C.
V6R 1Z6

Allan R. Zuk
899 Nicoloni Drive
Kamloops, B.C.
V2B 8C6

APPENDIX VIII

Application for Certificate of Work
and
Application to Group Mineral Claims

DEPARTMENT OF INDIAN AFFAIRS AND NORTHERN DEVELOPMENT

YUKON QUARTZ MINING ACT

APPLICATION TO GROUP MINERAL CLAIMS

CLEFT 1987 GROUP

MINING DISTRICT WHITEHORSE

OFFICE DATE STAMP

I (We) the undersigned owner(s) or agent(s) of the owner(s) of the following Mineral Claims

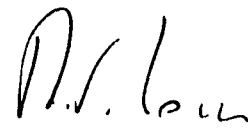
GRANT NUMBER(S)	CLAIM NAME(S)	LOCATION	CLAIM SHEET NO.
YA 95233	PART 38	Partridge Lake	105 D/3
YA 95235	PART 40	Partridge Lake	105 D/3
YA 95237	PART 42	Partridge Lake	105 D/3
YA 95239	PART 44	Partridge Lake	105 D/3
YA 95240	PART 45	Partridge Lake	105 D/3
YA 95241	PART 46	Partridge Lake	105 D/3
YA 96338	PART 47	Partridge Lake	105 D/3
YA 96339	PART 48	Partridge Lake	105 D/3
YA 96340	PART 49	Partridge Lake	105 D/3
YA 96341	PART 50	Partridge Lake	105 D/3

Give notice of intention to group the said claims for the performance of work and do hereby apply under the provisions of Section 52 of the Yukon Quartz Mining Act for a certificate in Form "E"

I (We) hereby certify that the above claims are adjoining as shown on attached sketch

DATED AT Vancouver

THIS 5th DAY OF March 19 87



 R.V. Longe

 for Ronald J. Bilquist

 and for Leslie O. Allen

FOR OFFICE USE ONLY

FORM "E" NO.

RECEIPT NO.

DATE APPLIED

owner(s) signature



DEPARTMENT OF INDIAN AFFAIRS AND NORTHERN DEVELOPMENT
YUKON QUARTZ MINING ACT
FORM "C" - APPLICATION FOR A CERTIFICATE OF WORK

(This form required in duplicate with sketch showing location of work.)

I (Name)	R. V. Longe	Occupation	Geologist
(Postal Address)	MineQuest Exploration Associates Ltd. 201-311 Water Street, Vancouver, B.C. V6B 1B8		

OFFICE DATE STAMP

MAKE OATH AND SAY, THAT:

- I am the owner, or agent of the owner, of the mineral claim(s) to which reference is made herein.
- I have done, or caused to be done, work on the following mineral claim(s):

(Here list claims on which work was actually done by number and name)

Part 44	YA 95239
Part 45	YA 95240
Part 46	YA 95241
Part 48	YA 96340
Part 50	YA 96341

situated at Partridge Lake Claim Sheet No. 105 D/3
in the Whitehorse Mining District, to the value of at least _____
dollars, since the 1st day of May 19 86

to represent the following mineral claims under the authority of Grouping Certificate No. _____

(Here list claims to be renewed in numerical order, by grant number and claim name, showing renewal period requested).

Three years renewal is requested for the following claims:	<u>CLEFT 1987 GROUP</u>
	Part 38 YA 95233
	Part 40 YA 95235
	Part 42 YA 95237
	Part 44 YA 95239
	Part 45 YA 95240
	Part 46 YA 95241
	Part 47 YA 96338
	Part 48 YA 96339
	Part 49 YA 96340
	Part 50 YA 96341

3. The following is a detailed statement of such work: (Set out full particulars of the work done indicating dates work commenced and ended in the twelve months in which such work is required to be done as shown by Section 53.)

- June 9-30, July 2-5; L.Allen & R.Bilquist undertook linecutting, prospecting, geophysical survey and soil sampling on PART 1,3,4,5,6,7,8,34,35 claims, prospecting PART claims to north and ground south of PART claims. June 16-30; A.W.Gourlay carried at geological mapping, rock chip sampling, geophysical surveys on PART 1-8, 34,35 claims.
- Sept. 3-20; R.Bilquist carried out prospecting and linecutting. Sept. 3-18; L.Allen carried out prospecting, linecutting, soil sampling. Sept. 6-20; A.Zuk carried out linecutting and soil sampling. Sept.6-13; R.Gourlay linecutting. Sept.6-18; A.Gourlay geological mapping and geophysics. All work on PART 5,7,35,44,45,46,49,50 claims. (cont. over page)

Sworn before me at Vancouver, British Columbia
this 9th day of March 19 87

Brian E. Abraham.
Notary Public for British Columbia

R. V. Longe
Owner or Authorized Agent

BRIAN E. ABRAHAM
Barrister & Solicitor
2500 - 595 BARRARD STREET
P.O. BOX 49209
VANCOUVER, B.C. V7X 1L1

(cont. from over leaf)

- 3) Sept.30-Oct.15; A.Gourlay supervised 803' of BQ diamond drilling in three holes, on PART 5 claim. (5 man drill crew including cook.)

Samples analysed in June, July, September, October and November, and the report written later in the year.

JSL *AN*

DEPARTMENT OF INDIAN AFFAIRS AND NORTHERN DEVELOPMENT

YUKON QUARTZ MINING ACT

APPLICATION TO GROUP MINERAL CLAIMS

LEMIEUX 1987 GROUP

MINING DISTRICT WHITEHORSE

I (We) the undersigned owner(s) or agent(s) of the owner(s) of the following Mineral Claims

OFFICE DATE STAMP

GRANT NUMBER(S)	CLAIM NAME(S)	LOCATION	CLAIM SHEET NO.
YA 86430	PART 1	Partridge Lake	105 D/3
YA 86431	PART 2	Partridge Lake	105 D/3
YA 86432	PART 3	Partridge Lake	105 D/3
YA 86434	PART 5	Partridge Lake	105 D/3
YA 95043	PART 28	Partridge Lake	105 D/3
YA 95044	PART 29	Partridge Lake	105 D/3
YA 95045	PART 30	Partridge Lake	105 D/3
YA 95046	PART 31	Partridge Lake	105 D/3
YA 95047	PART 32	Partridge Lake	105 D/3
YA 95048	PART 33	Partridge Lake	105 D/3

Give notice of intention to group the said claims for the performance of work and do hereby apply under the provisions of Section 52 of the Yukon Quartz Mining Act for a certificate in Form "E"

I (We) hereby certify that the above claims are adjoining as shown on attached sketch

DATED AT Vancouver

R.V. Longe

THIS 5th DAY OF March 19 87

for Ronald J. Bilquist

and for Leslie D. Allen

FOR OFFICE USE ONLY

FORM "E" NO.

RECEIPT NO.

DATE APPLIED

owner(s) signature



DEPARTMENT OF INDIAN AFFAIRS AND NORTHERN DEVELOPMENT
YUKON QUARTZ MINING ACT
FORM "C" - APPLICATION FOR A CERTIFICATE OF WORK

(This form required in duplicate with sketch showing location of work.)

(Name)	R. V. Longe	Occupation	Geologist
(Postal Address)	MineQuest Exploration Associates Ltd. 201-311 Water Street, Vancouver, B.C. V6B 1B8		OFFICE DATE STAMP

MAKE OATH AND SAY, THAT:

- I am the owner, or agent of the owner, of the mineral claim(s) to which reference is made herein.
- I have done, or caused to be done, work on the following mineral claim(s):

(Here list claims on which work was actually done by number and name)

Part 1	YA 86430
Part 2	YA 86431
Part 3	YA 86432
Part 5	YA 86434

situated at Partridge Lake Claim Sheet No. 105 D/3
in the Whitehorse Mining District, to the value of at least _____
dollars, since the 1st day of May 19 86

to represent the following mineral claims under the authority of Grouping Certificate No. _____

(Here list claims to be renewed in numerical order, by grant number and claim name, showing renewal period requested).

Three years renewal
is requested for the
following claims:

LEMIEUX 1987 GROUP

PART 1	YA 86430
PART 2	YA 86431
PART 3	YA 86432
PART 5	YA 86434
PART 28	YA 95043
PART 29	YA 95044
PART 30	YA 95045
PART 31	YA 95046
PART 32	YA 95047
PART 33	YA 95048

3. The following is a detailed statement of such work: (Set out full particulars of the work done indicating dates work commenced and ended in the twelve months in which such work is required to be done as shown by Section 53.)

- June 9-30, July 2-5; L.Allen & R.Bilquist undertook linecutting, prospecting, geophysical survey and soil sampling on PART 1,3,4,5,6,7,8,34,35 claims, prospecting PART claims to north and ground south of PART claims. June 16-30; A.W.Gourlay carried at geological mapping, rock chip sampling, geophysical surveys on PART 1-8, 34,35 claims.
- Sept. 3-20; R.Bilquist carried out prospecting and linecutting. Sept. 3-18; L.Allen carried out prospecting, linecutting, soil sampling. Sept. 6-20; A.Zuk carried out linecutting and soil sampling. Sept.6-13; R.Gourlay linecutting. Sept.6-18; A.Gourlay geological mapping and geophysics. All work on PART 5,7,35,44,45,46,49,50 claims. (cont. over page)

Sworn before me at Vancouver British Columbia
this 9th day of March 19 87

Brian E. Abraham
Notary Public For British Columbia

R. V. Longe
Owner or Authorized Agent

BRIAN E. ABRAHAM
Barrister & Solicitor
2500 - 595 BUREAU STREET
P.O. BOX 4120
VANCOUVER, B.C. V6X 1H1

YUKON QUARTZ MINING ACT
APPLICATION TO GROUP MINERAL CLAIMS
PART 1987 GROUP

MINING DISTRICT	WHITEHORSE
------------------------	-------------------

OFFICE DATE STAMP

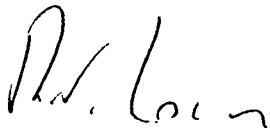
I (We) the undersigned owner(s) or agent(s) of the owner(s) of the following Mineral Claims

GRANT NUMBER(S)	CLAIM NAME(S)	LOCATION	CLAIM SHEET NO.
YA 86436	PART 7	Partridge Lake	105 D/3
YA 86440	PART 11	Partridge Lake	105 D/3
YA 86441	PART 12	Partridge Lake	105 D/3
YA 86442	PART 13	Partridge Lake	105 D/3
YA 95049	PART 34	Partridge Lake	105 D/3
YA 95231	PART 36	Partridge Lake	105 D/3
YA 95232	PART 37	Partridge Lake	105 D/3
YA 95234	PART 39	Partridge Lake	105 D/3
YA 95236	PART 41	Partridge Lake	105 D/3
YA 95238	PART 43	Partridge Lake	105 D/3

Give notice of intention to group the said claims for the performance of work and do hereby apply under the provisions of Section 52 of the Yukon Quartz Mining Act for a certificate in Form "E"

I (We) hereby certify that the above claims are adjoining as shown on attached sketch

DATED AT Vancouver



R.V. Longe

THIS 5th **DAY OF** March 19 87

for Ronald J. Bilquist

and for Leslie D. Allen

FOR OFFICE USE ONLY
FORM "E" NO.
RECEIPT NO.
DATE APPLIED

owner(s) signature



DEPARTMENT OF INDIAN AFFAIRS AND NORTHERN DEVELOPMENT
YUKON QUARTZ MINING ACT
FORM "C" - APPLICATION FOR A CERTIFICATE OF WORK

(This form required in duplicate with sketch showing location of work.)

I (Name)	R. V. Longe	Occupation	Geologist
(Postal Address)	MineQuest Exploration Associates Ltd. 201-311 Water Street, Vancouver, B.C.		OFFICE DATE STAMP
V6B 1B8			

MAKE OATH AND SAY, THAT:

- I am the owner, or agent of the owner, of the mineral claim(s) to which reference is made herein.
- I have done, or caused to be done, work on the following mineral claim(s):

(Here list claims on which work was actually done by number and name)

PART 7 YA 86436
PART 34 YA 95049
PART 43 YA 95238

situated at Partridge Lake Claim Sheet No. 105 D/3
in the Whitehorse Mining District, to the value of at least _____
dollars, since the 1st day of May 19 86

to represent the following mineral claims under the authority of Grouping Certificate No. _____

(Here list claims to be renewed in numerical order, by grant number and claim name, showing renewal period requested).

Three years renewal
is requested for the
following claims:

PART 1987 GROUP

PART 7 YA 86436
PART 11 YA 86440
PART 12 YA 86441
PART 13 YA 86442
PART 34 YA 95049
PART 36 YA 95231
PART 37 YA 95232
PART 39 YA 95234
PART 41 YA 95236
PART 43 YA 95238

3. The following is a detailed statement of such work: (Set out full particulars of the work done indicating dates work commenced and ended in the twelve months in which such work is required to be done as shown by Section 63.)

- June 9-30, July 2-5; L.Allen & R.Bilquist undertook linecutting, prospecting, geophysical survey and soil sampling on PART 1,3,4,5,6,7,8,34,35 claims, prospecting PART claims to north and ground south of PART claims. June 16-30; A.W.Gourlay carried at geological mapping, rock chip sampling, geophysical surveys on PART 1-8, 34,35 claims.
- Sept. 3-20; R.Bilquist carried out prospecting and linecutting. Sept. 3-18; L.Allen carried out prospecting, linecutting, soil sampling. Sept. 6-20; A.Zuk carried out linecutting and soil sampling. Sept.6-13; R.Gourlay linecutting. Sept.6-18; A.Gourlay geological mapping and geophysics. All work on PART 5,7,35,44,45,46,49,50 claims. (cont. over page)

Sworn before me at Vancouver, British Columbia
this 9th day of March 19 87

Brian E. Abraham
Notary Public For British Columbia

R. V. Longe
Owner or Authorized Agent

BRIAN E. ABRAHAM
Barrister & Solicitor
2500 - 595 BURRAHD STREET
P.O. BOX 49200
VANCOUVER, B.C. V7X 1L1

(cont. from over leaf)

- 3) Sept.30-Oct.15; A.Gourlay supervised 803' of BQ diamond drilling in three holes, on PART 5 claim. (5 man drill crew including cook.)

Samples analysed in June, July, September, October and November, and the report written later in the year.

Bill

M

DEPARTMENT OF INDIAN AFFAIRS AND NORTHERN DEVELOPMENT

YUKON QUARTZ MINING ACT

APPLICATION TO GROUP MINERAL CLAIMS

NORTH 1987 GROUP

MINING DISTRICT WHITEHORSE

OFFICE DATE STAMP

I (We) the undersigned owner(s) or agent(s) of the owner(s) of the following Mineral Claims

GRANT NUMBER(S)	CLAIM NAME(S)	LOCATION	CLAIM SHEET NO.
YA 86433	PART 4	Partridge Lake	105 D/3
YA 86435	PART 6	Partridge Lake	105 D/3
YA 86443	PART 14	Partridge Lake	105 D/3
YA 86444	PART 15	Partridge Lake	105 D/3
YA 86446	PART 17	Partridge Lake	105 D/3
YA 86448	PART 19	Partridge Lake	105 D/3
YA 86450	PART 21	Partridge Lake	105 D/3
YA 86452	PART 23	Partridge Lake	105 D/3
YA 86454	PART 25	Partridge Lake	105 D/3
YA 86456	PART 27	Partridge Lake	105 D/3

Give notice of intention to group the said claims for the performance of work and do hereby apply under the provisions of Section 52 of the Yukon Quartz Mining Act for a certificate in Form "E"

I (We) hereby certify that the above claims are adjoining as shown on attached sketch

DATED AT Vancouver

R.V. Longe

THIS 5th DAY OF March 19 87

for Ronald J. Bilquist

and for Leslie D. Allen

FOR OFFICE USE ONLY

FORM "E" NO.

RECEIPT NO.

DATE APPLIED

owner(s) signature



DEPARTMENT OF INDIAN AFFAIRS AND NORTHERN DEVELOPMENT
YUKON QUARTZ MINING ACT
FORM "C" - APPLICATION FOR A CERTIFICATE OF WORK

(This form required in duplicate with sketch showing location of work.)

I (Name)	R. V. Longe	Occupation	Geologist
(Postal Address)	MineQuest Exploration Associates Ltd. 201-311 Water Street, Vancouver, B.C. V6B 1B8		

OFFICE DATE STAMP

MAKE OATH AND SAY, THAT:

- I am the owner, or agent of the owner, of the mineral claim(s) to which reference is made herein.
- I have done, or caused to be done, work on the following mineral claim(s):

(Here list claims on which work was actually done by number and name)

PART 4	YA 86433
PART 6	YA 86435
PART 14	YA 86443

situated at Partridge Lake Claim Sheet No. 105 D/3
in the Whitehorse Mining District, to the value of at least _____
dollars, since the 1st day of May 19 86

to represent the following mineral claims under the authority of Grouping Certificate No. _____

(Here list claims to be renewed in numerical order, by grant number and claim name, showing renewal period requested).

Three years requested
is requested for the
following claims:

NORTH 1987 GROUP

PART 4	YA 86433
PART 6	YA 86435
PART 14	YA 86443
PART 15	YA 86444
PART 17	YA 86446
PART 19	YA 86448
PART 21	YA 86450
PART 23	YA 86452
PART 25	YA 86454
PART 27	YA 86456

3. The following is a detailed statement of such work: (Set out full particulars of the work done indicating dates work commenced and ended in the twelve months in which such work is required to be done as shown by Section 53.)

- June 9-30, July 2-5; L.Allen & R.Bilquist undertook linecutting, prospecting, geophysical survey and soil sampling on PART 1,3,4,5,6,7,8,34,35 claims, prospecting PART claims to north and ground south of PART claims. June 16-30; A.W.Gourlay carried at geological mapping, rock chip sampling, geophysical surveys on PART 1-8, 34,35 claims.
- Sept. 3-20; R.Bilquist carried out prospecting and linecutting. Sept. 3-18; L.Allen carried out prospecting, linecutting, soil sampling. Sept. 6-20; A.Zuk carried out linecutting and soil sampling. Sept.6-13; R.Gourlay linecutting. Sept.6-18; A.Gourlay geological mapping and geophysics. All work on PART 5,7,35,44,45,46,49,50 claims. (cont. over page)

Sworn before me at Vancouver British Columbia
this 9th day of March 19 87

Brian E. Abraham
Notary Public For British Columbia

R. V. Longe
Owner or Authorized Agent

BRIAN E. ABRAHAM
Barrister & Solicitor
2500 - 595 BARRARD STREET
P.O. BOX 49200
VANCOUVER, B.C. V7X 1L1

(cont. from over leaf)

- 3) Sept.30-Oct.15; A.Gourlay supervised 803' of BQ diamond drilling in three holes, on PART 5 claim. (5 man drill crew including cook.)

Samples analysed in June, July, September, October and November, and the report written later in the year.

JBA

M

DEPARTMENT OF INDIAN AFFAIRS AND NORTHERN DEVELOPMENT

YUKON QUARTZ MINING ACT

APPLICATION TO GROUP MINERAL CLAIMS

WEST 1987 GROUP

MINING DISTRICT WHITEHORSE

OFFICE DATE STAMP

I (We) the undersigned owner(s) or agent(s) of the owner(s) of the following Mineral Claims

GRANT NUMBER(S)	CLAIM NAME(S)	LOCATION	CLAIM SHEET NO.
YA 86437	PART 8	Partridge Lake	105 D/3
YA 86438	PART 9	Partridge Lake	105 D/3
YA 86439	PART 10	Partridge Lake	105 D/3
YA 86445	PART 16	Partridge Lake	105 D/3
YA 86447	PART 18	Partridge Lake	105 D/3
YA 86449	PART 20	Partridge Lake	105 D/3
YA 86451	PART 22	Partridge Lake	105 D/3
YA 86453	PART 24	Partridge Lake	105 D/3
YA 86455	PART 26	Partridge Lake	105 D/3
YA 95050	PART 35	Partridge Lake	105 D/3

Give notice of intention to group the said claims for the performance of work and do hereby apply under the provisions of Section 52 of the Yukon Quartz Mining Act for a certificate in Form "E"

I (We) hereby certify that the above claims are adjoining as shown on attached sketch

DATED AT Vancouver

R.V. Longe

THIS 5th DAY OF March 19 87

for Ronald J. Bilquist

and for Leslie D. Allen

FOR OFFICE USE ONLY

FORM "E" NO.

RECEIPT NO.

DATE APPLIED

owner(s) signature



DEPARTMENT OF INDIAN AFFAIRS AND NORTHERN DEVELOPMENT
YUKON QUARTZ MINING ACT
FORM "C" - APPLICATION FOR A CERTIFICATE OF WORK

(Name) R. V. Longe

(This form required in duplicate with sketch showing location of work.)

(Name)	R. V. Longe	Occupation	Geologist
(Postal Address)	MineQuest Exploration Associates Ltd. 201-311 Water Street, Vancouver, B.C. V6B 1B8		

OFFICE DATE STAMP

MAKE OATH AND SAY, THAT:

- I am the owner, or agent of the owner, of the mineral claim(s) to which reference is made herein.
- I have done, or caused to be done, work on the following mineral claim(s):

(Here list claims on which work was actually done by number and name)

PART	8	YA	86437
PART	9	YA	86438
PART	16	YA	86445
PART	35	YA	95050

situated at Partridge Lake Claim Sheet No. 105 D/3

in the Whitehorse Mining District, to the value of at least _____

dollars, since the 1st day of May 19 86

to represent the following mineral claims under the authority of Grouping Certificate No. _____

(Here list claims to be renewed in numerical order, by grant number and claim name, showing renewal period requested).

Three years renewal
is requested for the
following claim:

WEST 1987 GROUP

PART	8	YA	86437
PART	9	YA	86438
PART	10	YA	86439
PART	16	YA	86445
PART	18	YA	86447
PART	20	YA	86449
PART	22	YA	86451
PART	24	YA	86453
PART	26	YA	86455
PART	35	YA	95050

3. The following is a detailed statement of such work: (Set out full particulars of the work done indicating dates work commenced and ended in the twelve months in which such work is required to be done as shown by Section 53.)

- June 9-30, July 2-5; L.Allen & R.Bilquist undertook linecutting, prospecting, geophysical survey and soil sampling on PART 1,3,4,5,6,7,8,34,35 claims, prospecting PART claims to north and ground south of PART claims. June 16-30; A.W.Gourlay carried at geological mapping, rock chip sampling, geophysical surveys on PART 1-8, 34,35 claims.
- Sept. 3-20; R.Bilquist carried out prospecting and linecutting. Sept. 3-18; L.Allen carried out prospecting, linecutting, soil sampling. Sept. 6-20; A.Zuk carried out linecutting and soil sampling. Sept.6-13; R.Gourlay linecutting. Sept.6-18; A.Gourlay geological mapping and geophysics. All work on PART 5,7,35,44,45,46,49,50 claims. (cont. over page)

Sworn before me at Vancouver British Columbia
this 9th day of March 19 87

Brian E. Abraham
Notary Public For British Columbia

R. Longe
Owner or Authorized Agent

BRIAN E. ABRAHAM
Barrister & Solicitor
2509 - 595 BARRARD STREET
P.O. BOX 49209
VANCOUVER, B.C. V7X 1L1

(cont. from over leaf)

- 3) Sept.30-Oct.15; A.Gourlay supervised 803' of BQ diamond drilling in three holes, on PART 5 claim. (5 man drill crew including cook.)

Samples analysed in June, July, September, October and November, and the report written later in the year.

TBA

Ph

0 5 7 1 0 6