

DIAMOND DRILLING REPORT ON THE

KUKU 250-253, KUKU 282-285
AND
PUP 39FR, PUP 41-51FR, PUP 60FR, PUP 61FR CLAIMS

Mount Skukum Mine
Whitehorse Mining District
Yukon Territories

WORK DONE ON: KUKU 17 AND KUKU 19 CLAIMS

OWNER/OPTIONER: AGIP CANADA, LTD./ TOTAL ERICKSON RESOURCES, LTD.

OPERATOR: TOTAL ERICKSON RESOURCES, LTD.

WORK PERFORMED: AUGUST 21 - AUGUST 30, 1986

LOCATED: NTS MAP SHEET 105D
CLAIM MAP SHEET 105D-3
LATITUDE: 60 12' North
LONGITUDE: 135 25' East

BY: ERIC DUSSELL, M.Sc., under the direction
of R. SOMERVILLE, P.Eng.

DATE: 25 FEBRUARY 1987

091920

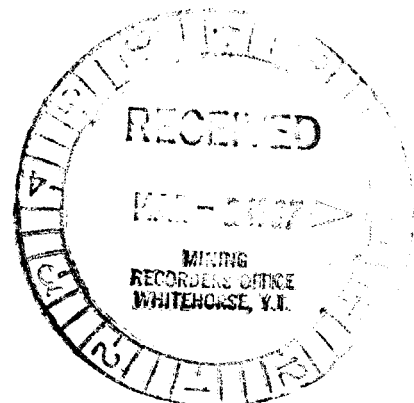


TABLE OF CONTENTS

1.0	CLAIM RECORD	PAGE	3
2.0	INTRODUCTION		4
3.0	LOCATION		4
4.0	PROPERTY HISTORY		4
5.0	REGIONAL GEOLOGY		5
6.0	PROPERTY GEOLOGY		5
7.0	WORK DESCRIPTION		6
8.0	RESULTS		6
9.0	COST STATEMENT		7
10.0	STATEMENT OF QUALIFICATIONS		8
11.0	APPENDICES		9

Appendix A - Copies of drill logs
Appendix B - Copies of fire assay results

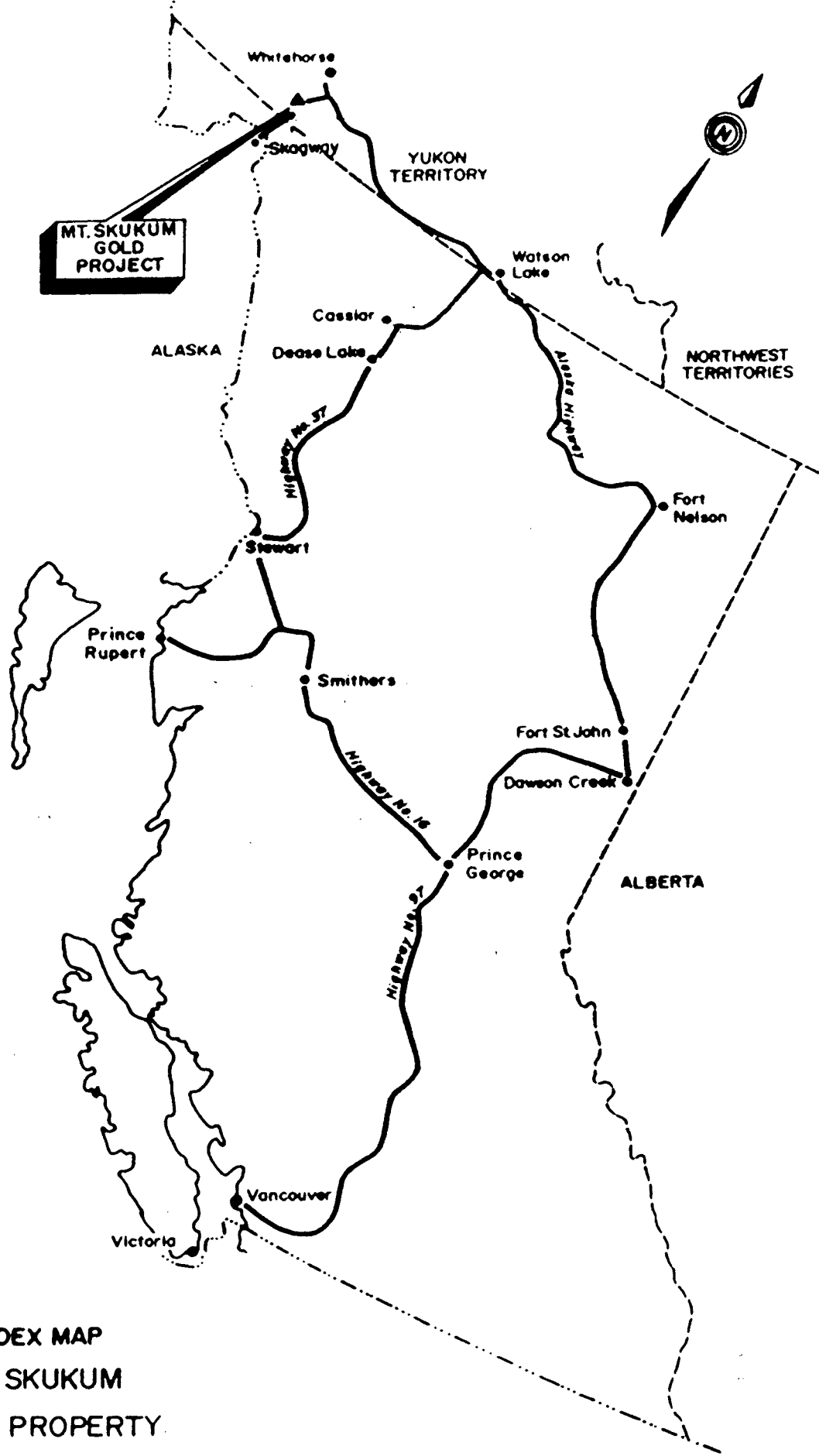
LIST OF FIGURES

FIGURE 1	PROPERTY LOCATION	Scale 1:1750000	1
FIGURE 2	CLAIM LOCATION MAP	Scale 1:30,000	2

LIST OF MAPS

Drill Collar Location	Scale 1:1000	Map Area No.	OH
Claim Location	1:10000		0,1,7,8
Claim Location	1:10000		5,6,18,19
Claim Location	1:10000		4,15,16,17
Claim Location	1:10000		2,3,13,14

**MT. SKUKUM
GOLD
PROJECT**



**INDEX MAP
MT. SKUKUM
GOLD PROPERTY**

100 50 0 100 200 km

SCALE 1:7,500,000

FIGURE 1

1.0 Claim Record:

<u>Claim Name</u>	<u>Tag Nbr.</u>	<u>Record Date</u>	<u>Exp Date</u>	<u>Own/Opr</u>
Kuku 250	YA61824	29 July 81	1 Jan 97	AGIP/TERL*
Kuku 251	YA61825	29 July 81	1 Jan 97	AGIP/TERL
Kuku 252	YA61826	29 July 81	1 Jan 96	AGIP/TERL
Kuku 253	YA61827	29 July 81	1 Jan 96	AGIP/TERL
Kuku 282	YA61856	29 July 81	1 Jan 97	AGIP/TERL
Kuku 283	YA61857	29 July 81	1 Jan 97	AGIP/TERL
Kuku 284	YA61858	29 July 81	1 Jan 96	AGIP/TERL
Kuku 285	YA61859	29 July 81	1 Jan 96	AGIP/TERL
Pup 39FR	YA78344	30 Aug 83	1 Jan 93	AGIP/TERL
Pup 41FR	YA78346	30 Aug 83	1 Jan 93	AGIP/TERL
Pup 42FR	YA78347	30 Aug 83	1 Jan 93	AGIP/TERL
Pup 43FR	YA78348	30 Aug 83	1 Jan 93	AGIP/TERL
Pup 44FR	YA78349	30 Aug 83	1 Jan 93	AGIP/TERL
Pup 45FR	YA78350	30 Aug 83	1 Jan 93	AGIP/TERL
Pup 46FR	YA78351	30 Aug 83	1 Jan 93	AGIP/TERL
Pup 47FR	YA78352	30 Aug 83	1 Jan 93	AGIP/TERL
Pup 48FR	YA78353	30 Aug 83	1 Jan 93	AGIP/TERL
Pup 49FR	YA78354	30 Aug 83	1 Jan 93	AGIP/TERL
Pup 50FR	YA78355	30 Aug 83	1 Jan 93	AGIP/TERL
Pup 51FR	YA78356	30 Aug 83	1 Jan 93	AGIP/TERL
Pup 60FR	YA78365	30 Aug 83	1 Jan 93	AGIP/TERL
Pup 61FR	YA78366	30 Aug 83	1 Jan 93	AGIP/TERL

* Total Erickson Resources, Ltd. (TERL)

2.0 Introduction

This report describes the work and results of a programme of diamond drilling conducted on the Kuku 17 and Kuku 19 claims, Mount Skukum property by Total Erickson Resources, Ltd. during the 1986 field season. During the period Aug 21-30 1986, DDH's 86-181 through 86-184 were diamond drilled on the Main Cirque Vein, the current source of ore at Mount Skukum Mine. The purpose of this drilling was to determine the optimum locales for proposed crown pillars and test the economic limits of the orebody above the 1710 meter elevation.

3.0 Location and Access

The Mount Skukum minesite is located 65 air-kilometers southwest of the town of Whitehorse in southwest Yukon Territory at 60 degrees, 12 minutes North Latitude and 135 degrees, 25 minutes West Longitude (NTS map sheet 105D). The mine is accessed from Whitehorse via 80 kilometers of good road. From Whitehorse, the Alaska Highway is followed southeast for approximately 17 kilometers to the Carcross Highway junction. The Carcross Highway is followed southward for 18.5 kilometers where it is intersected by the Annie Lake (gravel) road. The newly upgraded Annie Lake road continues southward for 40 kilometers terminating at the minesite.

4.0 Property History

During a regional reconnaissance-level programme of stream sediment sampling in 1980, Agip Canada Ltd. (AGIP) of Calgary, Alberta located a strong gold anomaly at the head of Butte Creek within the heart of the Skukum (volcanic) Complex. Returning the area the following year, Agip delineated five significant gold soil anomalies in what was subsequently termed the "Main Cirque Zone". Diamond drilling during the following two years located what was estimated at 164,000 tons of high grade gold ore within an epithermal quartz-carbonate vein structure called the Main Cirque Vein. Following an agreement with AGIP for the development of the mine and mill, Erickson Gold Mines Ltd. drove a horizontal adit from surface which intersected the vein in December 1984. As of August 31, 1986, the mill at Mount Skukum has processed over 50,000 tons of ore at an average head grade of 0.432 oz Au/t.

5.0 Regional Geology

Geological elements of southwest Yukon consist of allocthonous, fault bounded terranes accreted to the western edge of the North American craton during plate subduction. These tectonic elements extend eastward to the Tintina fault which marks the western edge of the stabilized craton.

Following emplacement of these elements, a series of felsic to intermediate volcanics were extruded during a period of crustal extension and block faulting beginning in the Late Cretaceous. Emplacement of these volcanics was coeval with evolution and uplift of the Coast Plutonic Complex. Volcanic rocks of the Sloko Province are preserved in a northwesterly trending belt, as erosional remnants. The Skukum volcanic complex, an elliptical erosional remnant of Eocene volcanics covering an area of 140 square kilometers, is one of several centers of continental volcanism within the Sloko Province.

Skukum volcanics lie unconformably over a basement consisting of metamorphosed Late Precambrian schist and marble intruded by granitic rocks of the Coast Plutonic Complex.

6.0 Property Geology

The rocks of the Skukum volcanic complex consist of felsic to intermediate volcanic flows and pyroclastics, epiclastics and debris flows. Stratigraphy is generally flat-lying to gently dipping and highly dissected by normal faulting. Four distinct formations representing eruptive cycles are currently recognized. A major north-trending fault separates an interlayered sedimentary-volcanic sequence comprised of Formations I and II, from altered felsic pyroclastics, epiclastics and flows of Formation IV to the east. The complex is cut by numerous felsic dykes and a large porphyritic rhyolite stock north of Butte Creek.

The Skukum volcanic complex hosts numerous gold-bearing veins of the epithermal type. Gold and silver is won from ore shoots within sulfide-poor, quartz-calcite veins and vein-stockworks within up to 30 meter wide fault zones. The veins appear to have been emplaced within radial and/or ring fractures resulting from cauldron collapse and occur in association with felsic dykes and extensive zones of fault gouge. Gold and silver occurs mainly as electrum. Regional propylitic alteration with restricted zones of silicification, phyllic and argillic alteration is characteristic.

7.0 Work Description:

During the period 21-30 August 1986, DDH's 86-181 through 86-184 (inclusive) were diamond drilled on the Main Cirque Vein at Mount Skukum Mine. The purpose of this drilling was to determine the optimum locales for proposed crown pillars and check the economic limits of the orebody above the 1710 meter elevation. A total of 154.6 meters of NQ diameter core was diamond drilled, logged by a geologist and stored in a permanent storage facility at the minesite. Copies of drill logs are located in Appendix A, copies of assay results are located in Appendix B, and topographic plans showing drill collar locations in relation to claim boundaries are located in the back pocket.

8.0 Results:

Drill hole 86-181 intersected 9.9 meters of quartz-calcite vein material and stockwork cut by two small rhyolite dykes which, taken together, assayed 0.31 oz Au/t (0.16 oz Au/t cut). Within this intersection, a moderately higher grade section 5.9 meters in thickness assayed 0.45 oz Au/t. Approximately 5.7 meters of quartz-calcite vein and vein stockwork was intersected by DDH 86-182 assaying 1.78 oz Au/t (0.7 oz Au/t cut). Drill Hole 86-183 intersected 12.5 meters of quartz-calcite vein and stockwork which assayed 0.208 oz Au/t. DDH 86-184 intersected 5.2 meters of vein material which ran 3.06 oz Au/t (1.39 oz Au/t cut).

9.0 Cost Statement:

Four NQ diameter holes totalling 154.6 meters were diamond drilled on the Kuku 17 and Kuku 19 claims between August 21 and August 30, 1986.

DDH 86-181	12'-77' = 65' @ 17.25	1121.25
casing	0-12' = 12' @ 18.50	222.00
DDH 86-182	20'-118' = 98' @ 17.25	1690.50
casing	0-20' = 20' @ 18.50	370.00
DDH 86-183	20'-159' = 139' @ 17.25	2397.75
casing	0-20' = 20' @ 18.50	370.00
DDH 86-184	10'-153' = 143' @ 17.25	2466.75
casing	0-10' = 10' @ 18.50	<u>185.00</u>
	Subtotal	8823.25
Acid Tests:	1 Acid Test @ 40.00	40.00
Consumables:	4 bags drilling mud @ 16.50	66.00
	1 pail liquid mud @ 166.00	166.00
Labour:	42 man days @ 25.00	1050.00
Core logging:	2 days @ 165.00	330.00
Room and Board:	44 man days @ 50.00	2200.00
Fire Assay for gold:	68 samples @ 14.00	952.00
D-6 Cat:	48 hours @ 55.00	2640.00
Drafting:	2 days @ 165.00	330.00
Report Writing:	2 days @ 165.00	<u>330.00</u>
	Subtotal	8104.00
TOTAL COSTS		\$ 16,927.25

10.0 Statement of Qualifications

I. I, Eric Dussell, of 809-1415 St. Georges Ave, North Vancouver, British Columbia, do hereby certify that:

II. I hold a B.Sc. degree in Geology from the University of Washington, Seattle and an M.Sc. degree in Geology from Western Washington University, Bellingham, Washington. I am a member of the Geological Association of Canada.

III. I have practiced my profession as geologist for the past 7 years.

IV. I am the author of this report which is based upon work conducted under the supervision of R. Somerville, P. Eng. during the 1986 field season at Mount Skukum Mine, Yukon Territories.



Eric Dussell

Eric Dussell, M.Sc.

R. Somerville

R. Somerville, P. Eng.

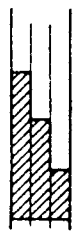
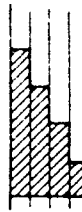
APPENDIX A

Diamond Drill Logs

MOUNT SKUKUM GOLD MINING CORP.

MINERALS SECTION

DRILL LOG

PROJECT SKUKUM	GROUND ELEV. 1731.7									
HOLE No. 86-181	BEARING 305° 28' 09"									
LOCATION CIRQUE ZONE 4645.2 N 4258.6 E	DIP 54° 18' 27"									
	TOTAL LENGTH 23.5 m (77')									
LOGGED BY PG	HORIZONTAL PROJECT 13.71									
DATE AUGUST 23/86	VERTICAL PROJECT 19.1									
CONTRACTOR D.J. Drilling	ALTERATION SCALE  <ul style="list-style-type: none"> absent slight moderate intense 									
CORE SIZE NQ										
DATE STARTED AUGUST 21, 1986	TOTAL SULPHIDE SCALE  <ul style="list-style-type: none"> traces only < 1% 1% - 3% 3% - 10% > 10% 									
DATE COMPLETED AUGUST 22, 1986										
DIP TESTS NO TESTS										
COMMENTS	LEGEND									
<table style="width: 100%; border: none;"> <tr> <td></td> <td style="text-align: center;"><u>HORZ</u></td> <td style="text-align: center;"><u>VERT</u></td> </tr> <tr> <td>0-77' (23.5m)</td> <td style="text-align: center;">54.31</td> <td style="text-align: center;">13.71</td> </tr> <tr> <td></td> <td></td> <td style="text-align: center;">19.1</td> </tr> </table> <p>check $[(13.71)^2 + (19.1)^2]^{1/2} = 23.5m$ ✓</p>		<u>HORZ</u>	<u>VERT</u>	0-77' (23.5m)	54.31	13.71			19.1	
	<u>HORZ</u>	<u>VERT</u>								
0-77' (23.5m)	54.31	13.71								
		19.1								

DEPT' (METR.)	% Core Recy	LITHOLOGY	STRUCTURE	GEOLOGICAL DESCRIPTION	ALTERATION					FRACT INTENSITY	V ₂	V ₁
					Si A	Phy B	Prop C	D	Arg E			
0				0-4.27 OVERBURDEN								
		OB										
				4.27-6.2 ATLP:								
				Occasional ash beds 55°C IA, usually silicified								
		ATLP		Relatively unaltered, minor supergene alt from fractures, disseminated sulphides.	///							
				5.45-5.6 qtz flooding of matrix around fragments, sulphides (py) occurring along contact of fragments	///		///					
10		ATBK										
				6.2-8.5 ATBK:								
				patchy silicification, disseminated sulphides prebrn. py.	///							
		Ry/d										
		SKQC	AAA	8.5-9.8 ATLP:	///							
		65% Ry/d		disseminated sulphides	///							
		VNQC										
				9.8-11.2 ATBK:	///							
				intensely silicified, qtz flooding of matrix with Ca, sericite present in minor amounts. Minor Qtz Ca veinlets 25°-50° CIA 1-2 mm wide	///							
20		VNQC										
				11.2-13.5 Ry/d:	///							
				distinct though conchoidal contact 45° CIA chl at contact (dk green) flowbanding 40°C/A	///							
				13.1-13.5 increasing silicification ^{alt} to a brecciated Rhy	///							
				13.5-13.9 SKQC	///							
				Qtz Ca vein, and vein breccia, frag of host rx, veining 0° to 90° CIA.	///							
30				13.9-14.85 Ry/d:	///							
				intensely altered to clays — chl, very soft friable, minor disse. py, lost core	///							
				14.85-15.8 VNQC:	///							
				Massive Qtz/Ca vein material, 55° CIA H/w contact; 30° CIA F/w contact. minor supergene alt from fractures.	///							
				15.7 brecciation with vein and host rx fragments	///							
				15.8-23.5 SKQC:	///							
40				Qtz, Ca stockwork with frags	///							

MINERALIZATION DESCRIPTION	TOTAL SULPHIDE	INTERVAL	WIDTH	ASSAY NUMBER	%		COMPOSITE ASSAYS
					Au	Ag	
mineralized vein zone 13.6 - 15.8 m @ 1.24 g/t 1.4 w TT @ 2.26 g/t							
13.1-13.6 H/w .5 m silicified with few 20% thin Qtz Ca veinlets 10°-90° CIA.			.5	0901	.03	4.1	
13.6-15.8 VNQC ZONE 13.6-13.9 SKQC brecciated + silicified host rx, Qtz 60%, Ca 40% minor disseminated sulphides			.3	0902	10.32	10.50	13.1-19.0 5.9m @ 45 g/t
13.9-14.85 Rylid actual core sampled .3m due to lost core, intensely clay altered (chl) minor dis. py.			.95	0903	1.89	1.82	
14.85-15.4 VNQC; massive Qtz Ca veining, Qtz 50% Ca 50% minor disseminated sulphides (py) minor supergene alt from fractures			.55	0904	.13	.86	
15.4-15.8 VNQC as above except last 0.1m brecciated vein and host rx.			.40	0905	.012	4.1	used 9.9m @ .31 oz/ton
15.8-23.5 SKQC Zone 15.8-16.05 Intensely alt. host rx, minor qtz flooding and silicification,			.25	0906	Tr	Tr	cut 9.9m @ 16 g/t
16.05-16.9 SKQC, Qtz 50% Ca 50% with intensely clay host rx patchy silicification, minor disseminated sulphides, frags of vein and host rx.			.85	0907	.01	.11	
16.9-17.5 SKQC intensely alt host rx, veining as in 16.05 patchy silicification			.6	0908	.006	.14	
17.5-18.05: alt. Rylid, alt.			.55	0909	Tr	.42	

DEPTH (METRES)	% Core Recy	LITHOLOGY	STRUCTURE	GEOLOGICAL DESCRIPTION	ALTERATION					FRACT INTENSITY	V ₂	V ₁
					Sil A	Phy B	Prop C	D	Arg E			

of intensely clay altered? Rhy/d.
 Qtz 50% Ca 50% though varies
 throughout rest of hole. Host r
 intensely alt with finely disseminated
 sulphides (py). Patchy silicification.
 Veins 0°-90° C/A. Zones of Rv/d with
 30% Qtz/Ca veining. - Rhy/d clay
 altered with patchy silicification
 Qtz Ca veins 0°-90° C/A. with
 disseminated sulphides mainly py within
 vein and dyke

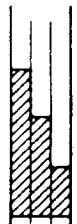
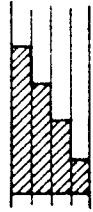
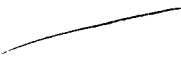
23.5 m EOH

MINERALIZATION DESCRIPTION	TOTAL SULPHIDE	INTERVAL	WIDTH	ASSAY NUMBER	% Au Ag				COMPOSITE ASSAYS
					Au	Ag			
Qtz / Ca veinlets <1cm wide 0-90° CIA.									
18.05-18.2 SKQC, coarse Ca crystals, Qtz 65% Ca 35% no distinct contacts.			.15	0910	.18	.33			
18.2-19.0 R/d silkified altered with Qtz/Ca veins 35°-58° CIA, minor brecciation due to Qtz flooding			.80	0911	.28	.45			
19.0-19.55 UNQC			.55	0912	Tr	.23			
Qtz 85% Ca 15% minor supergene alt from fractures. minor alt host rx frags, tr disseminated sulphides			.65	0913	.012	.51			
19.55-20.1 Rhy/d with Qtz/Ca veins ~ 5cm max 10°-85° CIA								9.9m @ 0.362/ton Au	
20.1-21.0 SKQC, Qtz 80% Ca 20% angular host rx frags. tr disseminated sulphides 10°-85° CIA			.9	0914	.07	.44			
21.0-21.7 SKQC, same as previous sample			.7	0915	Tr	Tr			
21.7-22.3 SKQC same as previous sample			.6	0916	.08	.32			
22.3-22.8 UNQC massive Qtz Ca with few frags of host rx Qtz 80% Ca 20%			.5	0917	.012	.32			
22.8-23.5 SKQC, Qtz 80% Ca 20% tr disseminated sulphides brecciated with vein and host rx frags.			.7	0918	.006	.30			

MOUNT SKUKUM GOLD MINING CORP.

MINERALS SECTION

DRILL LOG

PROJECT SKUKUM		GROUND ELEV. 1734.1	
HOLE No. 86-182		BEARING 303° 17' 45"	
LOCATION CIRQUE ZONE 4675.626 N 4280.317 E		DIP 55° 03' 55"	
		TOTAL LENGTH 36.0 m (118.1)	
LOGGED BY PG		HORIZONTAL PROJECT 20.65 m	
DATE AUGUST 30, 1986		VERTICAL PROJECT 29.5 m	
CONTRACTOR D J. DRILLING		ALTERATION SCALE 	
CORE SIZE NQ		TOTAL SULPHIDE SCALE 	
DATE STARTED AUGUST 24, 1986			
DATE COMPLETED AUGUST 25, 1986			
DIP TESTS 			
COMMENTS		HOR.	VERT
0 - 36.0 55°		20.65 m	29.5 m
check. $[(20.65)^2 + (29.5)^2]^{1/2} = 36.0 \text{ m}$			
x-sections 1+255 , 1+505			
		LEGEND	

DEPTH (METR.)	% Core Recy	LITHOLOGY	STRUCTURE	GEOLOGICAL DESCRIPTION	ALTERATION					FRACT INTENSITY
					Si A	Phy B	Dro C	D	Py E	
0-6.9				OVERBURDEN						
6.9-9.1		O/B		ATLP:						
6.9-9.1				minor disseminated sulphides (py), occasional Qtz/Ca veinlets 1 to 5mm @ 10-50° CIA						
9.1-9.45	100%	ATLP		ATBK:						
9.45-11.15		ATBK		ATLP:						
10-11.15	33%	ATLP	~ ~ ~	Bleached (?) to weak phylc, rare chrome mineral (bright green colour) minor disseminated sulphides						///
10.4-11.0	100%	ATLP	~ ~ ~	blocky broken fractured core possible small fault zone minor Qtz veining @ 20° CIA. Supergene alt along fractures						///
11.15-11.5	50%	Ry/d		UNQC:						
11.5-14.65	100%	ATLP		Solid Qtz/Ca vein, brecciation on H/W side with host rv frags. Vein @ 5° CIA H/W contact @ 50° CIA F/W side.						///
11.5-14.65	35%	SHQC		ATLP:						
14.65-17.75	100%		~ ~ ~	as in 9.45-11.15m, occasional U ₂ veining @ 5°-90° CIA.						///
14.65-17.75	30%	Ry/d	~ ~ ~	Ry/d:						
17.75-18.7		VIXK	~ ~ ~	Sharp contact 40° CIA, fractured broken core, lost core @ 14.9m, 17.5m minor disseminated sulphides						
17.75-18.7		SHQC	~ ~ ~	VNQC ZONE						
18.7-19.85	100%	ATLP		Solid Qtz/Ca vein material, no contact present due to lost and blocky core to disseminated sulphides						
18.7-19.85		Ry/d		ATLP						
19.85-22.4		ATLP		Minor U ₂ veining 1-3cm wide randomly orientated. Intensely altered masking primary textures						
19.85-22.4				SHQC:						
19.85-22.4				Qtz Ca veining and vein breccia with host rv and vein fragments, 50° CIA.						

MINERALIZATION DESCRIPTION	TOTAL SULPHIDE	INTERVAL	WIDTH	ASSAY NUMBER	%				COMPOSITE ASSAYS		
					Au	Ag					
10.4-11.1 H/W fault zone with fractured broken core supergene alt along fractures, Qtz veinlet 20°C IA			.7	0935	Tr	Tr	} 1.6	.03 Au			
11.1-11.5 VNQC .4m Solid Qtz Ca vein, Qtz 65% Ca 35% H/W contact 25°C IA; brecciation on H/W side of vein			.4	0936	.07	<.1					
11.5-12.0 F/W Few 1 to 5cm wide Qtz/Ca veinlets 50°-80°C IA			.5	0937	.024	<.1					
13.95-14.15 VNQC 5cm wide Qtz/Ca vein Qtz 65% Ca 35%, 15°C IA			.2	0938	.018	<.1					
17.2-17.75 H/W Rv/d			.55	0939	Tr	Tr	} 5.65m	@ 178 uncut			
17.75-18.7 VNQC .95m Solid Qtz Ca vein, Qtz 65% Ca 35% blocky fractured core, finely disseminated sulphides; @ 60°C IA			.95	0940	.97	1.41					
18.7-19.25 ATCP, altered with minor V ₂ veining 1-3cm wide randomly orientated			.55	0941	Tr	.18				@ 0.7 cut	
19.25-19.85 ATCP as above			.6	0942	Tr	Tr					
19.85-20.75 SKQC ZONE 2.55m 19.85-20.75 SKQC, Qtz/Ca stockwork and breccia Qtz 55% Ca 45% Host rx and vein fragments finely disseminated py			.9	0943	3.45	2.91					
20.75-21.0 ATCP altered as in 18.7-19.25			.25	0944	.04	.33					
21.0-21.55 SKQC as in 19.85-20.75			.55	0945	5.05	4.33					


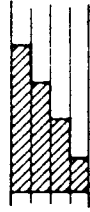
DEPTH (METRES)	% Core Recy	LITHOLOGY	STRUCTURE	GEOLOGICAL DESCRIPTION	ALTERATION					FRACT INTENSITY	
					Sil A	Phy B	Pro C	D	Arg E		
22.4-26.85				Ry/d: intensely bleached, finely disseminated sulphides							
23.55-26.85				intensely fractured, blocky lost core probable fault zone.							
26.85-27.5				UNQC: as described previously							
27.5-29.6				SKQC: 1/2 veins randomly orientated altered host rx ATCP							
29.6-34.35				ATLP: variable alt., ash beds 35°C/A							
34.35-34.7				Ry/d: Amygdules filled with Qtz and Ca, H/W contact 45°C/A, lower contact diffuse. Sulphide stringers occurring throughout and coating outside of Amygdules, minor chromite							
34.7-36.0				ATLP: irregular shaped Ry frags. with amygdules random 1/2 veins @ 20°-55° C/A							

MINERALIZATION DESCRIPTION	TOTAL SULPHIDE	INTERVAL	WIDTH	ASSAY NUMBER	%	%	%	COMPOSITE ASSAYS
					Au	Ag		
21.55-22.4 SKQC and vein breccia; V ₂ and host rx frags in Qtz Ca matrix			.85	0946	8.61	7.91		
22.4-23.4 F/W Rxd intensely bleached			1.0	0947	.020	<.1		
26.85-27.5 VNQC ZONE: NO H/W sample as 23.55-26.85 lost CORE; VNQC as previously described			.65	0948	.024	.18		
27.5-29.6 SKQC ZONE 2.1m 27.5-28.5 SKQC SK and breccia with alt host rx frags Highly silicified, veins randomly orientated.			1.0	0949	.008	<.1		3.55m .01 Au
28.5-29.4 SKQC as above			.9	0950	Tr	Tr		
29.4-30.4 : F/W			1.0	1054	.012	.07		

MOUNT SKUKUM GOLD MINING CORP.

MINERALS SECTION

DRILL LOG

PROJECT <p style="text-align: center;">SKUKUM</p>	GROUND ELEV. <p style="text-align: center;">1734.5m</p>
HOLE No. <p style="text-align: center;">86-183</p>	BEARING <p style="text-align: center;">304° 11' 37"</p>
LOCATION <p style="text-align: center;">CIRQUE ZONE 4694.1 N 4287.5 E</p>	DIP <p style="text-align: center;">-53° 05' 27"</p>
	TOTAL LENGTH <p style="text-align: center;">48.5</p>
LOGGED BY <p style="text-align: center;">PG</p>	HORIZONTAL PROJECT <p style="text-align: center;">29.19m</p>
DATE <p style="text-align: center;">Sept 1 /86</p>	VERTICAL PROJECT <p style="text-align: center;">38.73m</p>
CONTRACTOR <p style="text-align: center;">D.J. DRILLING</p>	<p style="text-align: center;">ALTERATION SCALE</p>  <p style="margin-left: 20px;">absent slight moderate intense</p>
CORE SIZE <p style="text-align: center;">NQ</p>	
DATE STARTED <p style="text-align: center;">Aug 26 /86</p>	<p style="text-align: center;">TOTAL SULPHIDE SCALE</p>  <p style="margin-left: 20px;">traces only < 1% 1% - 3% 3% - 10% > 10%</p>
DATE COMPLETED <p style="text-align: center;">AUGUST 29, 1986</p>	
DIP TESTS <p style="text-align: center;">/</p>	
COMMENTS <p style="text-align: center;">HOR VERT</p> <p>0-48.5m @ 53° 29.19m 38.73m</p> <p>check $[(29.19)^2 + (38.73)^2]^{1/2} = 48.5m$</p> <p>X-SECTIONS 1+00S 1+25S</p>	LEGEND

MINERALIZATION DESCRIPTION	TOTAL SULPHIDE	INTERVAL	WIDTH	ASSAY NUMBER	% Au	% Ag	%	COMPOSITE ASSAYS
18.6-26.65 VNQC ZONE								
18.6-19.1: VNQC, massive ± 60% Ca 40% min material, visible gold @ 18.81 * H/W lost in fault zone			.5	1073	.95	.82		
19.1-20.1 SKQC brecciated, host rx frags			1.0	1074	Tr	Tr		
20.1-21.1 SKQC			1.0	1075	.018	<.1		
21.1-22.1 ATCP altered minor v2 veining			1.0	1076	.06	.22	(18.6-31.1 m) 12.5m @ .208 oz Au	
22.1-23.1 ATCP altered minor v2 veining			1.0	1077	.11	.22	or	
23.1-24.1 SKQC brecciation			1.0	1078	.38	.47		
24.1-25.1 SKQC as above			1.0	1079	.18	.18		
25.1-26.1 SKQC as above			1.0	1080	.90	.83	8.5m @ .24 oz Au	
26.1-27.1 SKQC as above			1.0	1081	.55	.67		
27.1-28.1 ATCP altered			1.0	1082	Tr	.30		
28.1-29.1 ATCP altered			1.0	1083	Tr	.22		
29.1-30.1 ATCP altered			1.0	1084	.03	.11		
30.1-31.1 SKQC			1.0	1085	Tr	.14		

DEPTH (METRES)	% Core Recy	LITHOLOGY	STRUCTURE	GEOLOGICAL DESCRIPTION	ALTERATION					FRACT INTENSITY	
					Sil A	Phy B	Pro C	D	Ag E		
40		ATLP		ass with H/W contact; sericite and ? Chrome? mineral present as alt of frags.							
		Ry/d		SKQC:							
	100	ATLP		as in 23.5-26.65							
		ATLP		31.6-37.0 ATLP:							
				as described in 19.9-23.5, rare - chrome mineral							
		ATLP		37.0-37.8 UNQC:							
				Intensely sheared and fractured Qtz Ca vein, finely disseminated py							
				37.8-41.3 ATLP:							
				Intensely altered, patchy silicification presence of minor amounts ? chrome mineral							
				41.9-42.1 Ry/d							
				Intensely Fractured, amygdules filled with Ca present, minor Qtz veins present with open space development of Qtz x'stals							
				finely disseminated py throughout. lower contact difficult to locate due to brecciation and shearing							
				42.1-47.36 ATLP:							
				42.1-43.1 brecciated with minor shearing, minor Qtz Ca veining occurring as thin stringers, Qtz x'stals							
				44.2-44.3 clay sparse							
				Mottled texture due to minor bleaching + alt masking general textures							
				47.36-47.8 An/d:							
				Fg por feld phenos, slightly magnetic, Contact 70°C/A.							
				47.8-48.5 ATLP:							
				Intense alt masking textures							
				48.5 EOH							

MOUNT SKUKUM GOLD MINING CORP.

MINERALS SECTION

DRILL LOG

PROJECT MT SKUKUM	GROUND ELEV. 1730.8m
HOLE No. 86-184	BEARING 305° 58'
LOCATION 4709.5 N 4295.5E CIRQUE VEIN	DIP -53° 48'
	TOTAL LENGTH 47.2m
LOGGED BY S. WALKER	HORIZONTAL PROJECT 27.9m
DATE Sept 4/86	VERTICAL PROJECT 38.1 m
CONTRACTOR DJ DRILLING	<p>ALTERATION SCALE</p> <p>absent slight moderate intense</p>
CORE SIZE NQ	
DATE STARTED Aug 29	<p>TOTAL SULPHIDE SCALE</p> <p>traces only < 1% 1% - 3% 3% - 10% > 10%</p>
DATE COMPLETED Aug 30	
DIP TESTS none	<p>LEGEND</p>
COMMENTS drilled through EAST & WEST VEINS in CIRQUE ZONE, also hypolite dyke	

DEPTH (METF)	% Core Recy	LITHOLOGY	STRUCTURE	GEOLOGICAL DESCRIPTION	ALTERATION					FRACT INTENSITY
					A	B	C	D	E	
0				0-4.6 OVERBURDEN 4.6-7.1 ANDESITE - ATLP Hanging wall of East vein, few Ostingers-irreg, mod bkn, alt patchy, some fresh ppam						
10				7.1-7.55 VNQC - EAST CIRQUE contact @ 55° to CA 7.55-9.1 VNBX -possible An electron in str low angle fit @ 20° to CA, several relict watercourses (pitted, rusty)						
15				9.1-12.6 VNQC - EAST VN @ 11m watercourse, also @ 10.5m 90% gtz + 10% calcite 12.6-18.6 R/D very bkn core, rubble, poor recy						
25				18.6-20.9 VNQC - WEST VN (CIRQUE -solid g-c, minor fcs @ 70° to CA 20.9-27.4 VNBX few watercourses, @ 23.8 - 2m of v. bkn core						
35				27.4-29.3 VNQC 29.3-29.9 FLT GOUGE - CLAY ZONE 29.9-30.3 int bkn rock 29.9-35.8 SKQC + VNBX @ 32.9-33.2 int bkn core @ 33.9-34.9 gtz frags in clay gouge						
35				35.8-47.2 ATLP ALTERED ANDESITE						

MINERALIZATION DESCRIPTION	TOTAL SULPHIDE	INTERVAL	WIDTH	ASSAY NUMBER	% Au	% Ag	%	COMPOSITE ASSAYS
7.1-8.1 VNQC (0.4m) + VNBX (0.6m)			1.0	3701	1.10	99		EAST VEIN 5.2m @ uncut 3.06 Au cut 1.39 Au (200)
8.1-9.1 VNBX			1.0	3702	1.30	1.33		
9.1-10.1 VNQC (EAST VN)			1.0	3703	.16	.46		
10.1-11.1 VNQC "			1.0	3704	8.87	7.70		
11.1-12.3 VNQC "			1.0	3705	3.23	2.70		
18.6-19.6 VNQC - WEST VN			1.0	3706	.012	<.1		
19.6-20.9 VNQC (1.0m recvd - but solid core)			1.0	3707	0.04	<.1		
20.9-21.9 VNBX (30% qc)			1.0	3708	Tr	<.1		
21.9-22.9 VNBX (60% qc)			1.0	3709	.22	.12		
22.9-23.9 VNBX (30% qc)			1.0	3710	.03	<.1		
23.9-24.9 VNBX (<10% qc)			1.0	3711	.08	<.1	WEST VEIN 16.7m @ 0.053	
24.9-25.8 VNBX/SKQC (10% qc)			0.9	3712	.27	<.1		
25.8-26.8 VNBX (10% qc)			1.0	3713	.03	<.1		
26.8-27.4 VNBX (20% qc)			0.6	3714	.12	.17		
27.4-28.4 VNQC (90% qc)			1.0	3715	.08	.16		
28.4-29.3 VNQC (90% qc)			0.9	3716	.08	.22		
30.3-31.3 SKQC (30% qc)			1.0	3717	.05	<.1		
31.3-32.3 VNBX + SKQC			1.0	3718	Tr	Tr		
32.3-32.9 SKQC			0.6	3719	.012	.11		
33.9-34.9 gr frags in clay gouge - fl zone			1.0	3720	.02	<.1		

DEPTH (METRE)	% Core Recy	LITHOLOGY	STRUCTURE	GEOLOGICAL DESCRIPTION	ALTERATION					FRACT INTENSITY
					A	B	C	D	E	

-bleached, lgn, occas. to frag
g-c vults, 0-5% fa diss Ryp
mod alt along fr's, mod blk

@43.8-44.2 gouge zone

44.2 COX

44

APPENDIX B
Assay Returns

MT. SKUKUM GOLD MINING CORP.

ASSAY SHEET

CHIP

DATE Sept 2/86

MUCK

SENT TO P. DUNA

Exploration

FIRE

No.	LOCATION	WIDTH	Au	Ag	COMMENT
1073	Cirque Zone 86-183	18.6-19.1	.5	.95	.82
1074	"	19.1-20.1	1.0	TR	TR
1075	"	20.1-21.1	1.0	.018	2.1
1076	"	21.1-22.1	1.0	.06	.22
1077	"	22.1-23.1	1.0	.11	.22
1078	"	23.1-24.1	1.0	.38	.47
1079	"	24.1-25.1	1.0	.18	.18
1080	"	25.1-26.1	1.0	.90	.83
1081	"	26.1-27.1	1.0	.55	.67
1082	"	27.1-28.1	1.0	TR	.30
1083	"	28.1-29.1	1.0	TR	.22
1084	"	29.1-30.1	1.0	.03	.11
1085	"	30.1-31.1	1.0	TR	.14
1086	"	37.0-37.8	.8	TR	.12
943				3.45	2.41 & 3.38
945	ASSAY CHECK			5.83	
946				8.95	
	w. avg	12.5m (18.6-31.1m)	@	0.208 oz/ton	Au

MT. SKUKUM GOLD MINING CORP.

ASSAY SHEET

CHIP

DATE Sept 4/86.

MUCK

SENT TO F. DUNA

FIRE

No.	LOCATION	WIDTH	Au	Ag	COMMENTS
3701	Cirque vein 86-184. 7.1 - 8.1	1.0	1.10	.99	CK Au 1.10
3702	Cirque vein 86-184. 8.1 - 9.1	1.0	1.30	1.33	1.34
3703	Cirque vein 86-184. 9.1 - 10.1	1.0	.16	.46	
3704	Cirque vein 86-184. 10.1 - 11.1	1.0	8.87	7.70	9.02
3705	Cirque vein 86-184. 11.1 - 12.3	1.2	3.23	2.70	3.24
wt avg 7.1-12.3m 5.2m @ 3.06 Au unsm.					
					@ 1.39 Au cut to 202.

MT. SKUKUM GOLD MINING CORP.

ASSAY SHEET

CHIP

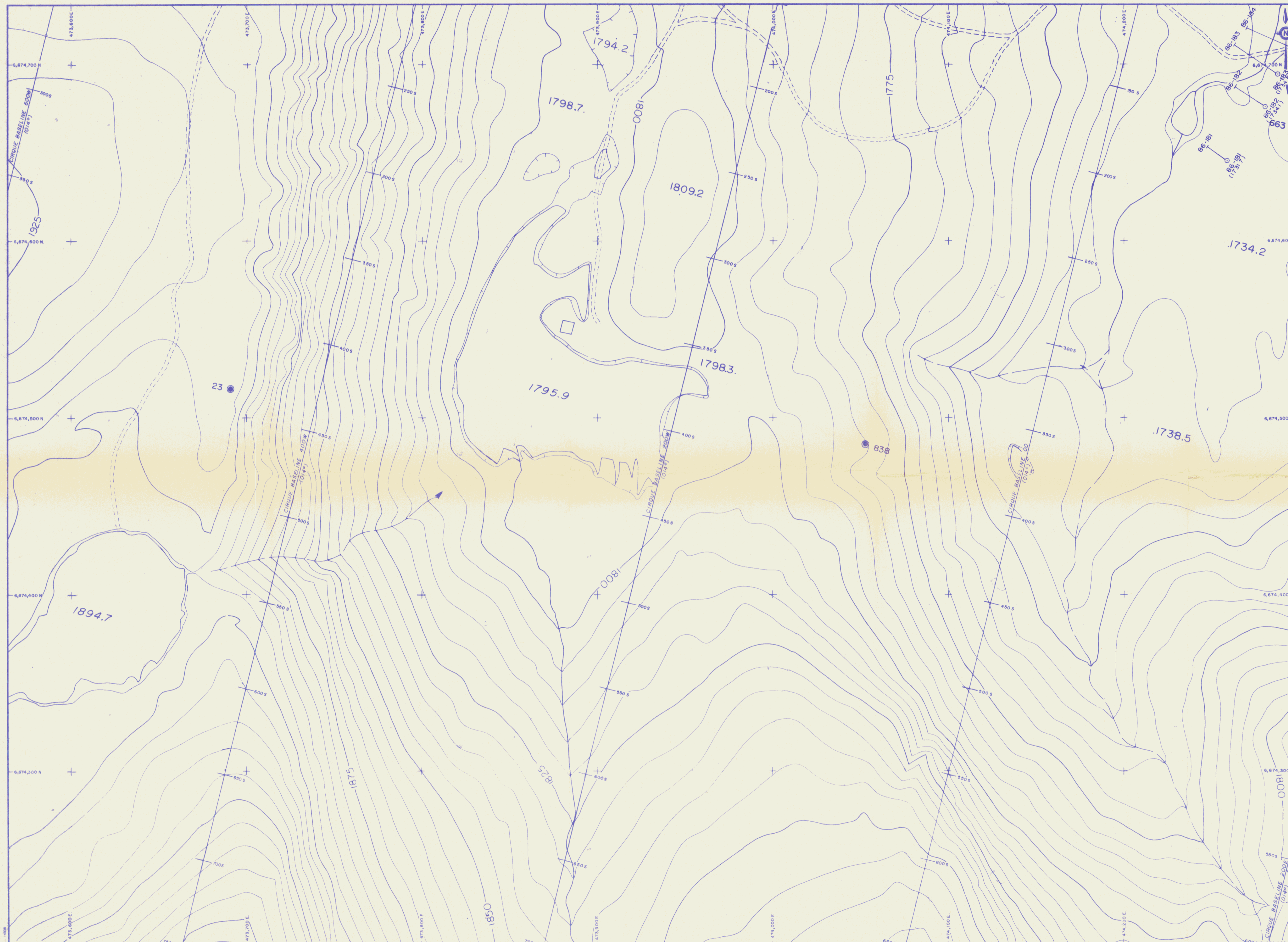
DATE Sept 5/86

MUCK

SENT TO F. DUNA

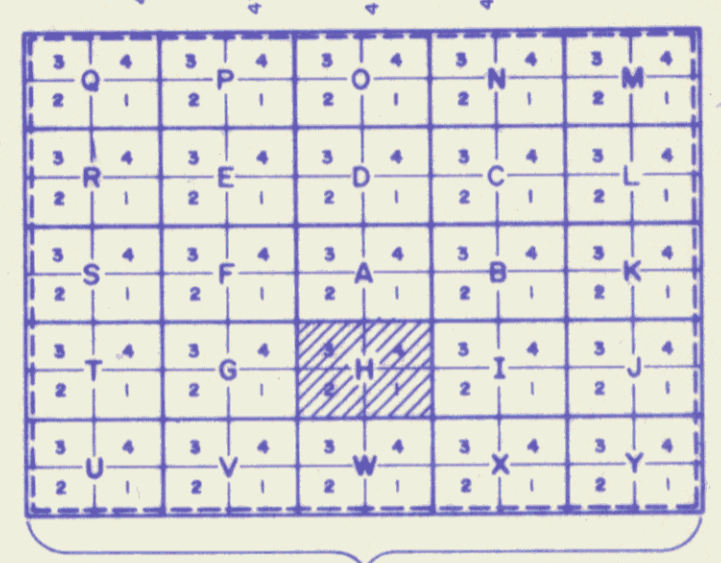
FIRE

No.	LOCATION	WIDTH	Au	Ag	COMMENT
3706	86-184	18.6-19.6	.012	4.1	
3707		19.6-20.9	.04	4.1	
3708		20.9-21.9	TR	4.1	
3709		21.9-22.9	.22	.12	
3710		22.9-23.9	.03	4.1	
3711		23.9-24.9	.08	4.1	
3712		24.9-25.8	.27	4.1	
3713		25.8-26.8	.03	4.1	
3714		26.8-27.4	.12	.17	
3715		27.4-28.4	.08	.16	
3716		28.4-29.3	.08	.22	
3717		30.3-31.3	.05	4.1	
3718		31.3-32.3	TR	TR	
3719		32.3-32.9	.012	.11	
3720		33.9-34.9	.02	4.1	



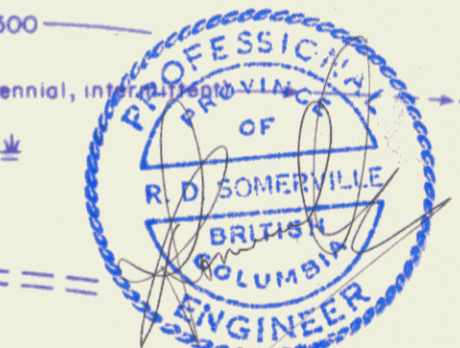
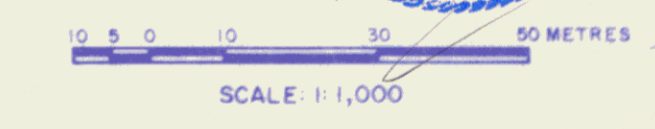
AREA INDEX

19	18	17	6,681,200 N
6	5	4	6,678,700 N
7	0	3	6,676,200 N
8	1	2	6,673,700 N
			6,671,200 N



ENLARGEMENT OF AREA 0

- SYMBOLS**
- Rock outcrop, area of outcrop, float
 - Geological boundary (defined, inferred)
 - Bedding (horizontal, inclined, vertical, overturned, dip unknown)
 - Schistosity, gneissosity, cleavage, foliation (horizontal, inclined, vertical, dip unknown)
 - Lineation, axis of minor folds (horizontal, inclined, vertical)
 - Drag-fold (arrow indicates plunge)
 - Fault (defined, interpreted)
 - Fault (inclined, vertical, relative movement)
 - Surface joint (horiz, inclined, vert., dip unknown)
 - U/G joint (horiz, inclined, vert., dip unknown)
 - Syncline (defined, approximate)
 - Anticline (defined, approximate)
 - Anticline and syncline (overturned)
 - Intensity (weak, moderate, strong)
 - Vein (inclined, vertical, dip unknown)
 - Zone of alteration
 - Rock sample, X 0.324, 0.15
Assay: Au, Ag ounce/ton
 - Trench
 - Adit or tunnel
 - Rock dump or tailings
 - Shaft, raise, winze
 - Diamond drill hole
 - (entering section, leaving section)
(on section / plan)
 - Contours 2500
 - Stream or creek (perennial, intermittent)
 - Marsh
 - Lake
 - Road



MOUNT SKUKUM GOLD MINING CORP.

091920
DRILL COLLAR
LOCATION MAP

Project Name: MT. SKUKUM Project No. 1020
 Latitude: _____ Longitude: _____
 Mining Division: WHITEHORSE, N.T.S. 105 D/3
 To accompany a report by: _____
 Alpha No. _____ Drawing No. _____
 Date: FEB 25 1987 Map No. 0-H



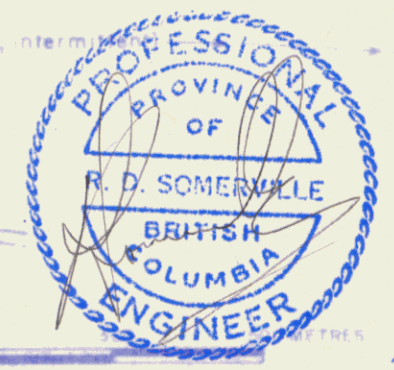
AREA INDEX

19	18	17	6 667 000 N
6	5	4	6 670 000 N
7	0	3	6 673 000 N
8	1	2	6 676 000 N

ENLARGEMENT OF AREA

Q	P	O	N	M
R	E	D	C	L
S	F	A	B	K
T	G	H	I	J
U	V	W	X	Y

- SYMBOLS
- Rock outcrop, area of outcrop, float
 - Geological boundary (defined, inferred)
 - Bedding (horizontal, inclined, vertical, overturned, dip unknown)
 - Schistosity, gneissosity, cleavage, foliation (horizontal, inclined, vertical, dip unknown)
 - Lineration, axis of minor folds (horizontal, inclined, vertical)
 - Drag fold (arrow indicates plunge)
 - Fault (defined, interpreted)
 - Fault (inclined, vertical, relative movement)
 - Surface joint (horiz. inclined, vert. dip unknown)
 - Joint (horiz. inclined, vert. dip unknown)
 - Syncline (defined, approximate)
 - Anticline (defined, approximate)
 - Anticline and syncline (interturning)
 - Intensity (weak, moderate, strong)
 - Vein (inclined, vertical, dip unknown)
 - Zone of alteration
 - Rock sample (x 0.324, 0.15 Assay Au, Ag ounce/ton)
 - Trench
 - Adit or tunnel
 - Rock dump or tailings
 - Shaft, raise, winze
 - Diamond drill hole (entering section, leaving section) (on section / plan)
 - Contours - 2500
 - Stream or creek (perennial, intermittent)
 - Marsh
 - Lake
 - Road

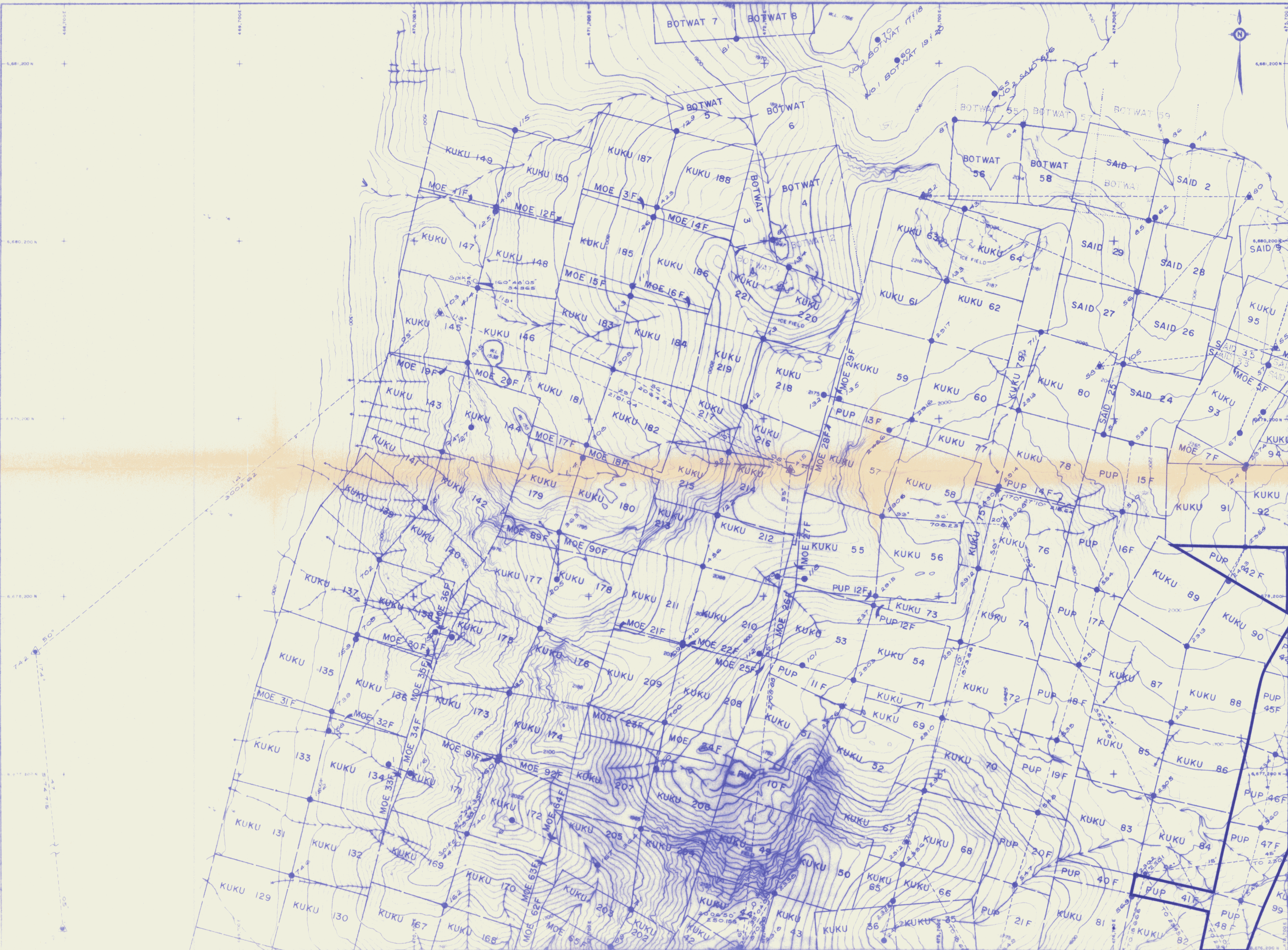


MOUNT SKUKUM GOLD MINING CORP.

CLAIM LOCATION

Project Name: MT SKUKUM Project No. 1020
 Latitude: _____ Longitude: _____
 Mining Division: WHITEHORSE N.T.S. 105 0/3
 To accompany report by _____
 Date: DECEMBER 1986 Vol. No. 01, 7, 8

FEB 25 1987



AREA INDEX

15	16	17	5,681,200 N
6	5	4	5,678,700 N
7	0	3	5,676,200 N
8	1	2	5,673,700 N
468,700 E	477,000 E	475,700 E	470,000 E

ENLARGEMENT OF AREA

S	Q	P	O	N	M
R	E	D	C	L	A
S	F	A	B	K	A
T	G	H	I	J	K
U	V	W	X	Y	Z

- SYMBOLS
- Rock outcrop, area of outcrop, float
 - Geological boundary (defined, inferred)
 - Bedding (horizontal, inclined, vertical, overturned, dip unknown)
 - Schistosity, gneissosity, cleavage, foliation (horizontal, inclined, vertical, dip unknown)
 - Axis of minor folds (horizontal, inclined, vertical)
 - Dip - fold (arrow indicates plunge)
 - Fault (defined, interpreted)
 - Fault (inclined, vertical, relative movement)
 - Surface joint (horiz, inclined, vert, dip unknown)
 - U/G joint (horiz, inclined, vert, dip unknown)
 - Syncline (defined, approximate)
 - Anticline (defined, approximate)
 - Anticline and syncline (overturned)
 - Intensity (weak, moderate, strong)
 - Vein (inclined, vertical, dip unknown)
 - Zone of alteration
 - Rock sample, x 0.384, 0.15 Assay Au, Ag ounce/ton
 - Trench
 - Adit or tunnel
 - Rock dump or tailings
 - Shaft, raise, winze
 - Diamond drill hole (entering section, leaving section) (on section / plan)
 - Contours
 - Stream or creek (perennial, intermittent)
 - Marsh
 - Lake
 - Road

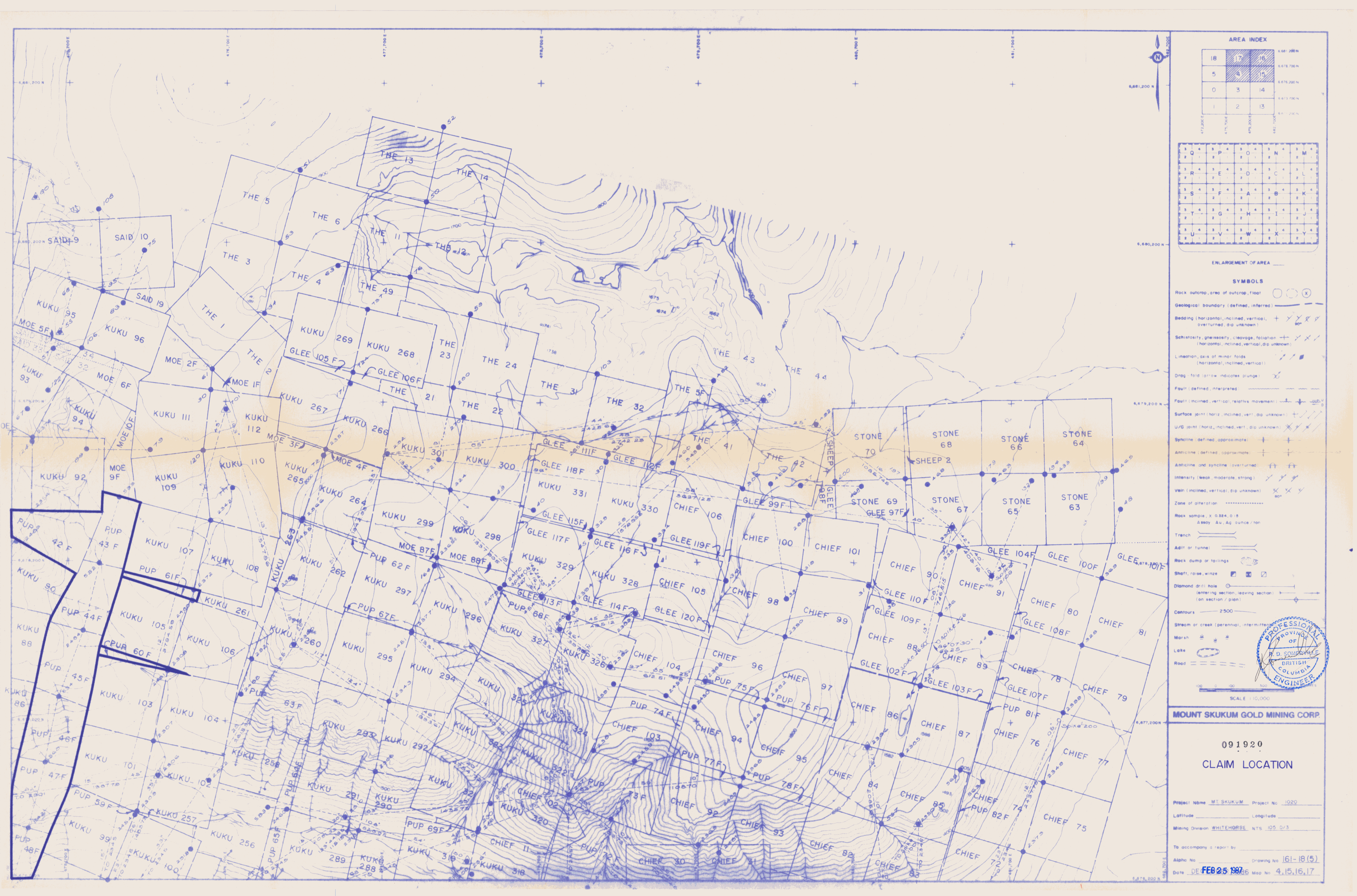


SCALE 1:10,000

MOUNT SKUKUM GOLD MINING CORP.

091920
CLAIM LOCATION

Project Name MT. SKUKUM Project No. 1020
 Latitude _____ Longitude _____
 Mining Division WHITEHORSE NTS 102 D/3
 To accompany a report by _____
 Alpha No. _____ Drawing No. 161-18(4)
 Date FEB 25 1976 Map No. 5,618,19



AREA INDEX

18	17	16	6,681,200 N
5	4	3	6,678,700 N
0	3	14	6,675,200 N
1	2	13	6,671,700 N
47,200 E	47,700 E	48,200 E	48,700 E

ENLARGEMENT OF AREA

Q	P	O	N	M
R	E	D	C	L
S	F	A	B	K
T	G	H	I	J
U	V	W	X	Y

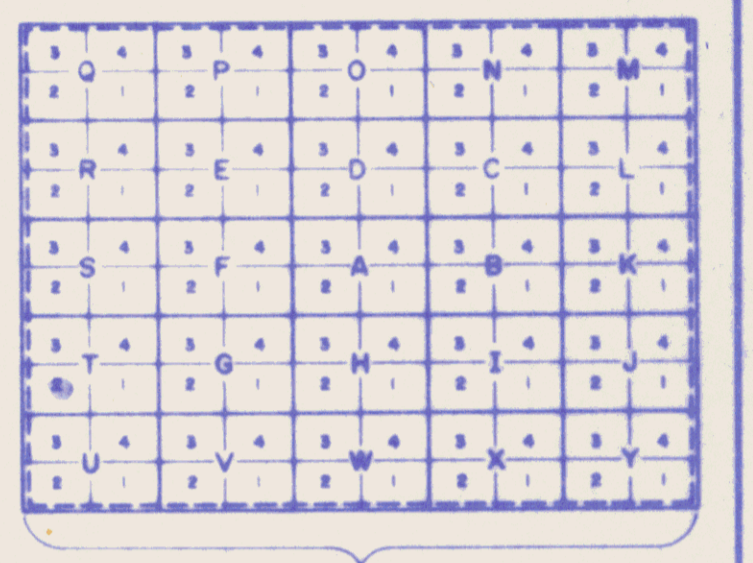
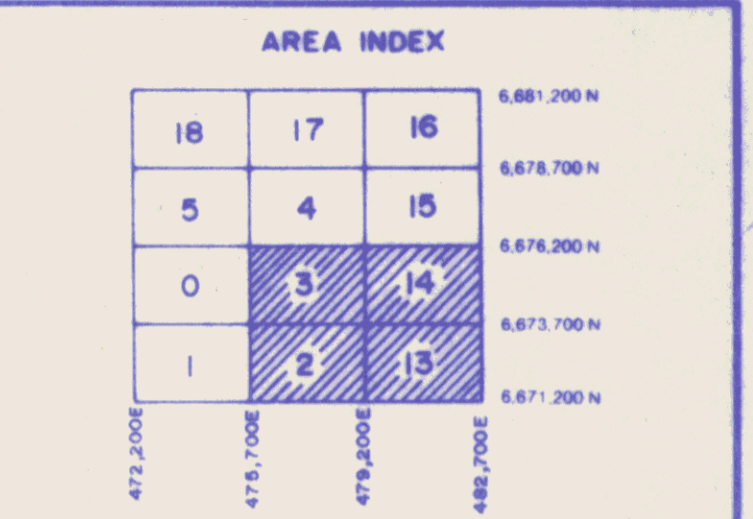
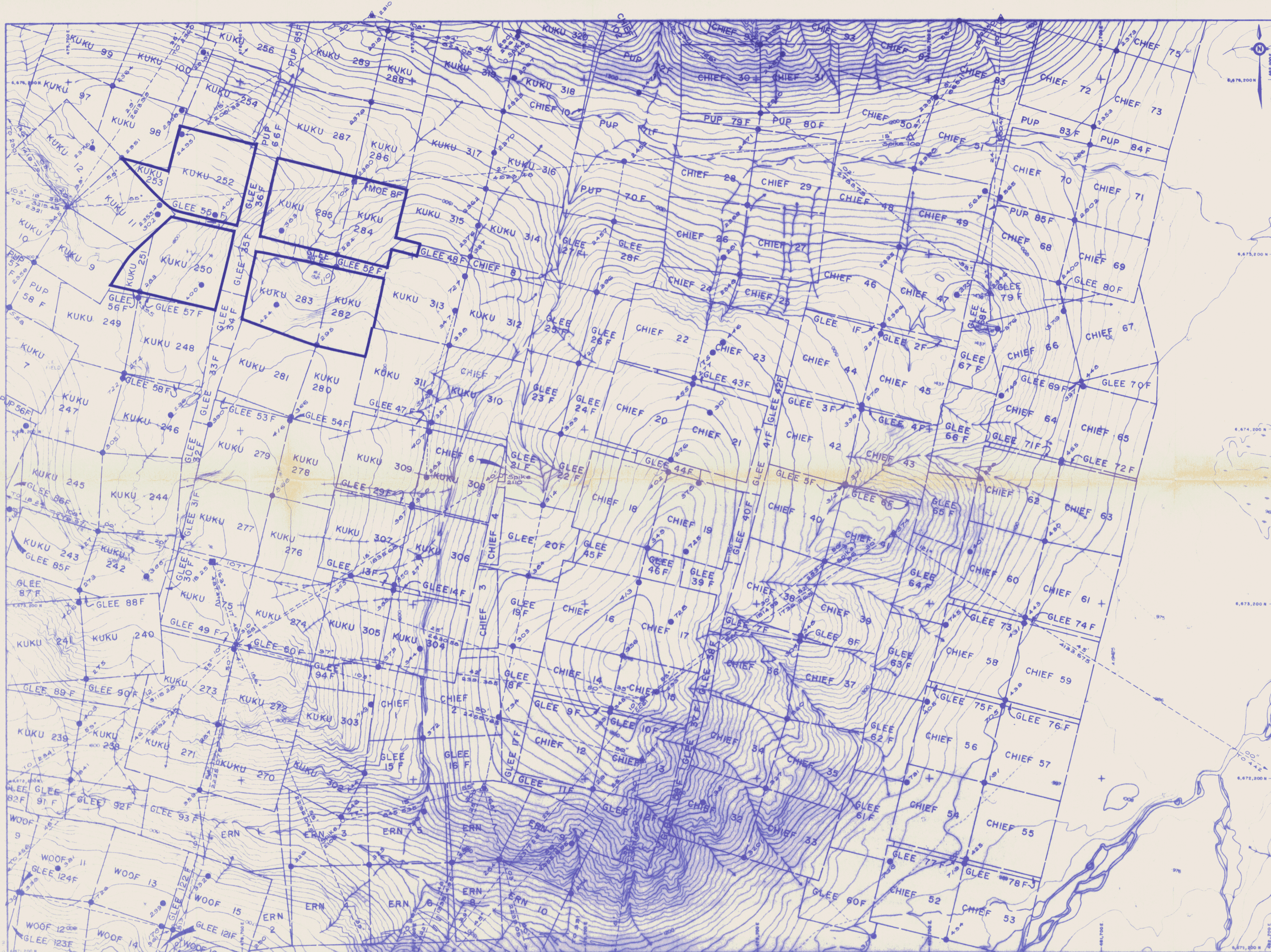
- SYMBOLS**
- Rock outcrop, area of outcrop, float
 - Geological boundary (defined, inferred)
 - Bedding (horizontal, inclined, vertical, overturned, dip unknown)
 - Schistosity, gneissosity, cleavage, foliation (horizontal, inclined, vertical, dip unknown)
 - Lineation, axis of minor folds (horizontal, inclined, vertical)
 - Drag fold (arrow indicates plunge)
 - Fault (defined, interpreted)
 - Fault (inclined, vertical, relative movement)
 - Surface joint (horiz. inclined, vert. dip unknown)
 - U/V joint (horiz. inclined, vert. dip unknown)
 - Syncline (defined, approximate)
 - Anticline (defined, approximate)
 - Anticline and syncline (overturned)
 - Intensity (weak, moderate, strong)
 - Vein (inclined, vertical, dip unknown)
 - Zone of alteration
 - Rock sample, x 0.384, 0.19 Assay Au, Ag ounce / ton
 - Trench
 - Adit or tunnel
 - Rock dump or tailings
 - Shaft, raise, winze
 - Diamond drill hole (entering section, leaving section) (on section / plan)
 - Contours - 2500
 - Stream or creek (perennial, intermittent)
 - Marsh
 - Lake
 - Road



MOUNT SKUKUM GOLD MINING CORP.

**091920
CLAIM LOCATION**

Project Name MT. SKUKUM Project No. 1020
 Latitude _____ Longitude _____
 Mining Division WHITEHORSE N.T.S. 105 D/3
 To accompany a report by _____
 Alpha No. _____ Drawing No. 161-18 (5)
 Date DE FEB 25 1987 Map No. 4.15.16.17



- SYMBOLS**
- Rock outcrop, area of outcrop, float
 - Geological boundary (defined, inferred)
 - Bedding (horizontal, inclined, vertical, overturned, dip unknown)
 - Schistosity, gneissosity, cleavage, foliation (horizontal, inclined, vertical, dip unknown)
 - Litiation, axis of minor folds (horizontal, inclined, vertical)
 - Drag-fold (arrow indicates plunge)
 - Fault (defined, interpreted)
 - Fault (inclined, vertical, relative movement)
 - Surface joint (horiz, inclined, vert, dip unknown)
 - U/G joint (horiz, inclined, vert, dip unknown)
 - Syncline (defined, approximate)
 - Anticline (defined, approximate)
 - Anticline and syncline (overturned)
 - Intensity (weak, moderate, strong)
 - Vein (inclined, vertical, dip unknown)
 - Zone of alteration
 - Rock sample, 0.884, 0.18 Assay Au, Ag ounce/ton
 - Trench
 - Adit or tunnel
 - Rock dump or fallings
 - Shaft, raise, winze
 - Diamond drill hole (entering section, leaving section) (on section / plan)
 - Contours 2500
 - Stream or creek (perennial, intermittent)
 - Marsh
 - Lake
 - Road



MOUNT SKUKUM GOLD MINING CORP.

091920
CLAIM LOCATION

Project Name MT SKUKUM Project No. 1020
 Latitude _____ Longitude _____
 Mining Division WHITEHORSE NTS 105 D/3
 To accompany a report by _____
 Alpha No. _____ Drawing No. 161-18(6)
 Date FEB 25 1986 Map No. 2,3,13,14