

DIC 1-63 CLAIMS
WHITEHORSE MINING DISTRICT
N.T.S. 115 I/3

ASSESSMENT REPORT
On Geological, Geochemical
and Geophysical Surveys



Date: November 1986
Owner: Kerr Addison Mines Limited
Operator: Kerr Addison Mines Limited
Author: K. Heberlein

091915

This report has been examined by
the Geological Evaluation Unit
under Section 53 (4) Yukon Quartz
Mining Act and is allowed as
representation work in the amount
of \$ 6300.00 .

D. B. Emmond

for

Regional Manager, Exploration and
Geological Services for Commissioner,
of Yukon Territory.

TABLE OF CONTENTS

	Page
1. INTRODUCTION	1
1.1 Summary	1
1.2 Location and Access	5
1.3 Physiography	5
1.4 Claims Description and History	5
1.5 Work in 1986	6
2. GEOLOGY	
2.1 Regional Geology	6
2.2 Property Geology	8
2.3 Economic Geology, Alteration and Mineralization	10
3. GEOCHEMISTRY	
3.1 Field and Analytical Methods	12
3.2 Geochemical Results	13
3.2a Rock Geochemistry	13
3.2b Soil Geochemical Results	13
4. GEOPHYSICS	
4.1 Magnetometer Survey	14
4.2 VLF-EM Survey	15
5. CONCLUSIONS and RECOMMENDATIONS	16

LIST OF FIGURES

Figure	Page
1. DIC Claims Location	2
2. DIC Claim	3
3. Regional Geology - Mount Nansen Area	7
4. Property Geology	Pocket
5. Rock Sample Locations and Results	"
5b. Soil Survey - Au-Ag	"
5c. Soil Survey - As-Sb	"
6a. Magnetometer Survey - TFV	"
6b. Magnetometer Survey - Gradient	"
7. VLF-EM Survey East Grid	"
8. VLF-EM Survey, Profiles	"

APPENDIX I. Rock Sample descriptions

APPENDIX II. Geochemical and Assay Results

APPENDIX III. Statement of Costs

DIC CLAIMS

YUKON

NTS 115 I/3

1. INTRODUCTION

1.1 Summary

The DIC 1-63 claims are located approximately 70 km due west of Carmacks, in the unglaciated Dawson Ranges of the Yukon Territory. The claims cover the north slope of the Mt. Nansen at the headwaters of the west flowing Klaza River. Access is good via a 4WD road from Carmacks followed by a short helicopter flight.

Topography ranges from steep at upper elevations to gently sloping alpine meadows towards the Klaza River. The rock is exposed mainly as felsenmeer and limited outcrop on the ridge tops.

The DIC 1-51 claims were staked in September 1985 to cover As-Sb anomalous silt samples in creeks draining the north slope of Mt. Nansen. These claims are located a kilometre away from the VIC claims and so are part of the Dickson Agreement. The DIC 52F-63 claims were staked in July 1986 to cover As-Sb anomalous soils on the east arm of Mt. Nansen ridge. The claims were grouped in September 1986.

The DIC claims are situated in the Yukon Cataclastic Terrane. G.S.C. regional mapping shows the area to be underlain by Proterozoic to PreCambrian schists and gneisses intruded by Jurassic to Triassic granitic intrusives. These are intruded and overlain by basic to felsic dykes, flows and pyroclastics of the Cretaceous Mt. Nansen and overlying Carmacks Groups. Structure in the area is characterized by high angle oblique-slip faults, predominantly striking 000o, 055o, 120o and 160o .

The Mount Nansen Mine, located 9 km south of the DIC claims, is a series of NNW to N trending Au-Ag-bearing quartz veins and alteration zones. Proven-probable reserves are given as 252701 metric tons of 13.84 g/t Au and 305.51 g/t Ag.

The TAWA claims adjoin the DIC claims to the east. Here the Esensee Ag-Au-Pb showing is reported to consist of several NW trending, steep SW dipping quartz veins in a granitic host. A placer deposit is located on Ex Creek, which drains the eastmost portion of the DIC claims.

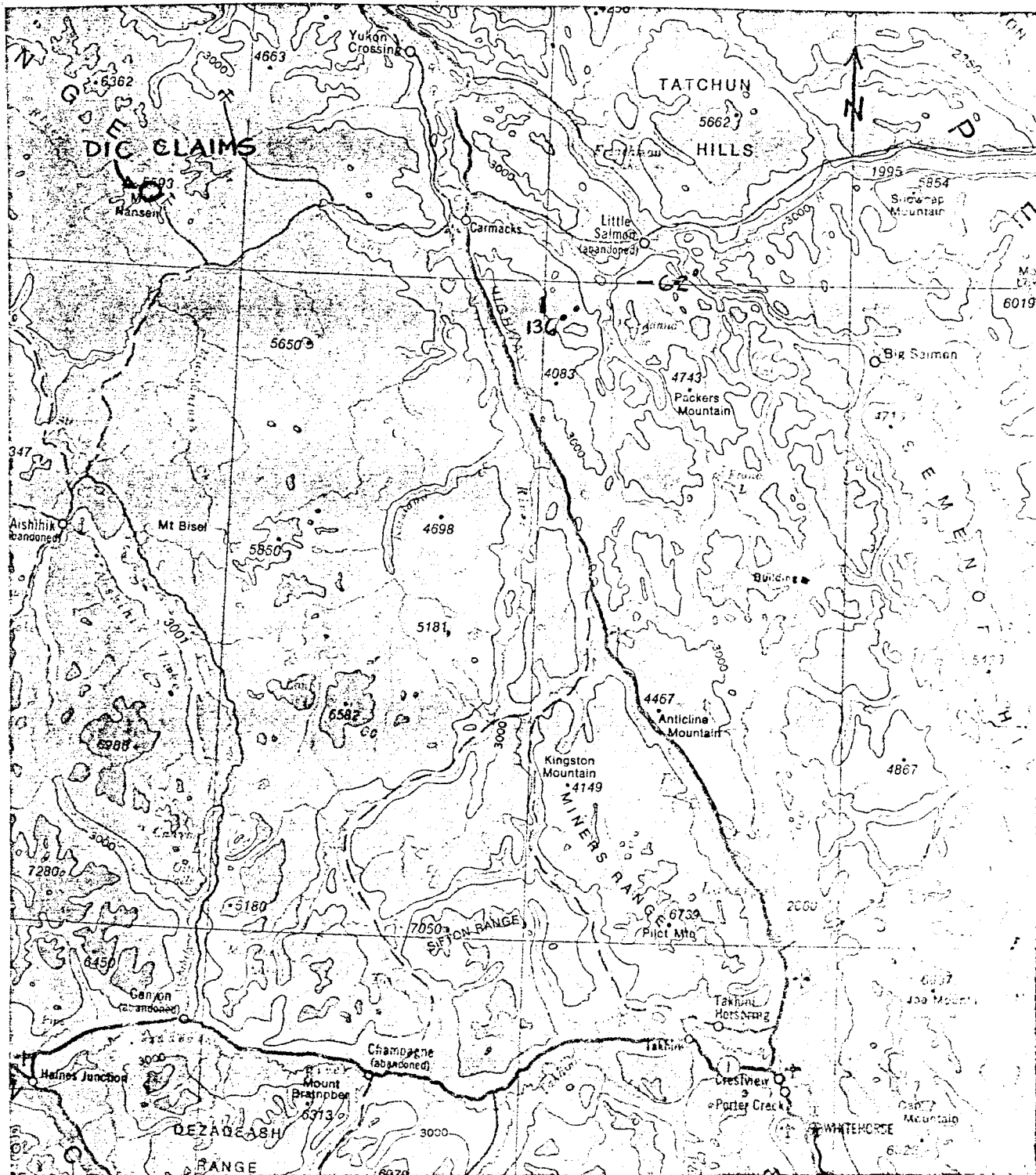


FIG. 1

KERR ADDISON MINES LTD	
DIC CLAIMS	
LOCATION MAP	
SCALE - 1:1,000,000	DATE - DEC., 1986
DRAWN BY - P.H., K.H.	DATA - K.H.
NTS - 115 I/3	REVISED -

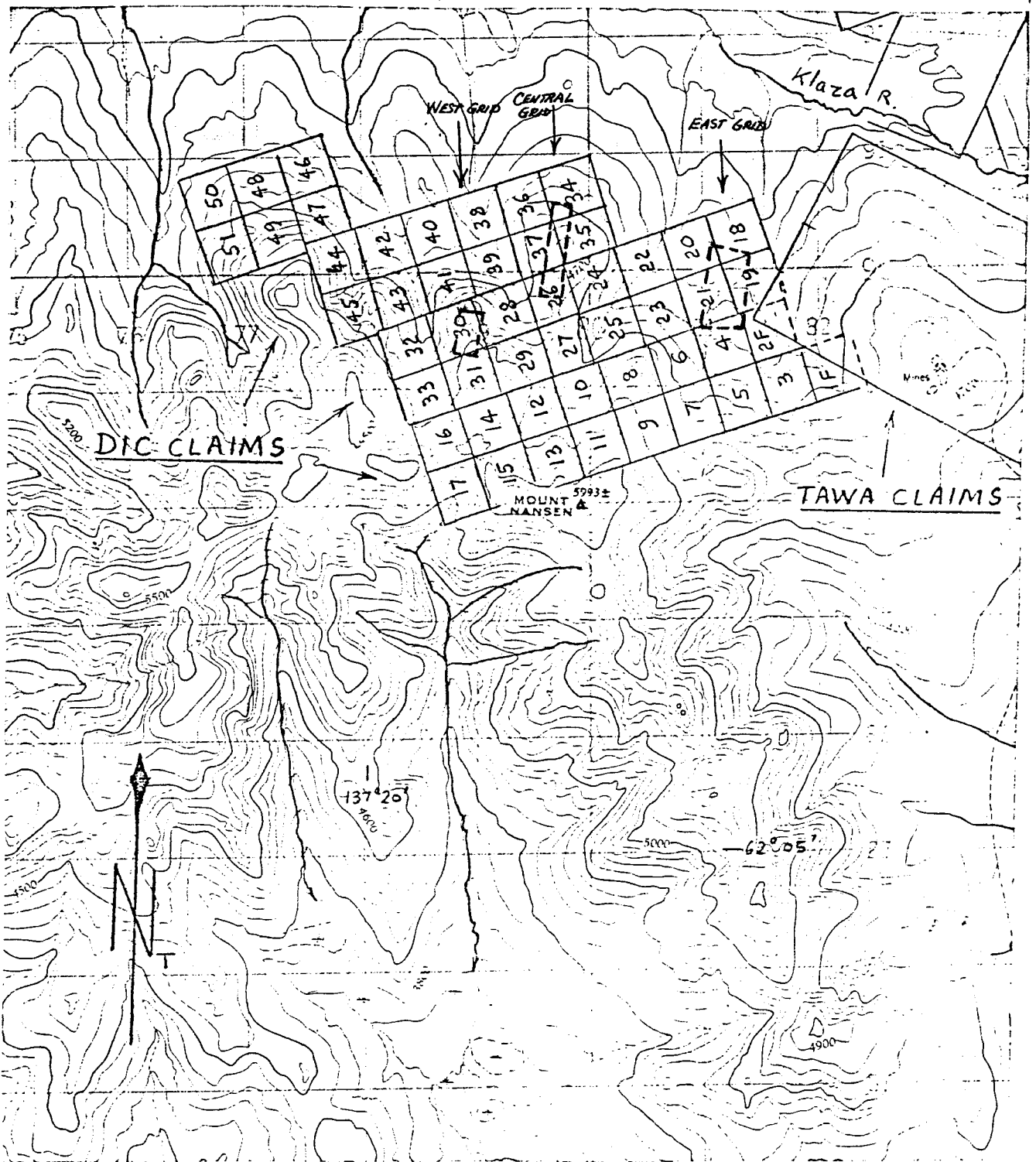


FIG. 2

KERR ADDISON MINES LTD	
DIC CLAIMS	
CLAIM MAP	
SHOWING LOCATIONS OF GRIDS	
SCALE - 1: 50 000	DATE - DEC., 1986
DRAWN BY - K.H., P.H.	DATA - K.H.
NTS - 115 I/3	REVISED -

Geological mapping identified a hb-b1 Granodiorite to Alaskite intrusive body in the north part of the property. This is overlain by flat-lying Andesite to rhyolite tuffs and flows of the Mt. Nansen Group. Rhyolitic quartz-feldspar porphyry dykes and minor Andesite and Granitic dykes crosscut all units.

Work on the DIC claims in 1986 was limited to 3 mini-grids, located to cover possible sources of As-Sb anomalies found in 1985. A total of 8.925 line-km of grid was done, on which 216 soil and 45 rock samples were taken and analyzed for Ag, Au, As and Sb. 4.0 line-km of magnetic and 2.8 line-km of VLF-EM survey were done on the East and West grids.

1986 prospecting found a quartz-carbonate-sericite alteration zone extending up to 500m along Ex Creek, on the contact between Granodiorite intrusive and Mt. Nansen Volcanics and associated with rhyolite dykes. Au-Ag-As-Sb bearing quartz sulphide vein float is associated with the alteration zone.

Soil sampling over this zone showed a concentration of anomalous values 100 m downstream, from the quartz-sulphide vein float. A few sporadic anomalies occur uphill to the east and west. Soils were not anomalous in the vicinity of the quartz-sulphide vein float.

No anomalous soil samples were found on the central grid. The source of the 1985 anomalous rock sample (123.4 g/t Ag, 1000 ppm Sb) was not located.

Soil sampling on the West grid found a lone As anomaly downhill from a weakly silicified and clay-altered Rhyolite dyke. Samples of the altered Rhyolite, quartz vein and quartz breccia float here returned weak Au, Ag and Sb anomalies.

Geophysics surveys were run on the East and West grids only.

The magnetic survey on the East grid showed broad NW-SE trending patterns. The VLF-EM survey showed a similar NW-SE to E-W trend. No clearcut correlations could be made with the known geology.

The magnetic survey on the West grid showed the NNE trends of the mapped dykes at an acute angle to the grid lines.

1.2 Location and Access

The DIC 1-63 claims are located approximately 70 km due west of Carmacks in the mostly unglaciated Dawson Ranges of the Yukon Territory. The claims cover the north slopes of Mt. Nansen at the headwaters of the west flowing Klaza River. Access is good via a 4WD road from Carmacks to the edge of the property followed by a short helicopter flight. The eastern half of the claims are accessible on foot from the road. (see Figures 1 and 2).

1.3 Physiography

The DIC claims cover the peak and north slopes of Mount Nansen. Creeks on the claims flow north to northwest into the westerly draining Klaza River headwaters. Elevations range from 1219 m (~4000') in the northeast claims, to 1827 m (5993') on the Mount Nansen Peak. Upper slopes are steep and generally rugged. The lower slopes to the north are moderately to gently sloping alpine meadows with some areas of dense buckbrush and alders. Treeline is at about 1219 m (~4000'). Rock is exposed mainly as felsenmeer and limited outcrop on ridgetops.

The DIC claims are near the edge of Pleistocene glaciation and show little evidence of having been glaciated; however a fine, clean sandy horizon in the soil profile on the lower slopes may be a glacial outwash deposit. Climate at present is cold and dry with temperature extremes of -45o to 30oC, and 30cm of precipitation. Permafrost is found as little as 25cm below surface.

1.4 Claims Description and History

The DIC 1-51 claims were staked in September 1985 to cover As-Sb anomalous silt samples taken from creeks draining north from Mt. Nansen. The DIC 52F-63 claims were staked in July 1986 to cover As-Sb anomalous soil samples on the east arm of the Mt. Nansen ridge.

Claims are as follows:

<u>Claim Name - No.</u>	<u>Record No.</u>	<u>Date Recorded</u>
DIC 1-2 Fr.	YA 93470-93471	Sept. 11, 1985
DIC 3-51	YA 93472-93520	Sept. 11, 1985
DIC 52 Fr.	YA 95110	July 11, 1986.
DIC 53-63	YA 95111 -95121	July 11, 1986

The claims were grouped on September 12th 1986 as follows;

- a) DIC 1F, 2F, 3, 5, 7, 19, 52F, 53 to 61.
- b) DIC 4, 6, 8-17, 21, 23, 62, 63
- c) DIC 18, 20, 22, 24-29, 31, 33-38
- d) DIC 30, 32, 39-51

Group numbers have not as yet been received.

The DIC 1-63 claims are located within 3 kilometres of the VIC claims and so fall under the Dickson Agreement.

1.5 Work in 1986

Work on the DIC claims in 1986 was limited by time and weather to 3 mini-grids located to cover possible sources of As-Sb anomalies found in 1985. A total of 8.925 line-km of picketed grid was done (base line at 1100) on which 216 soil and 46 rock samples were taken. A total of 4.0 line-km of magnetic and 2.8 line-km of VLF-EM surveys were done on the East and West grids.

2. GEOLOGY

2.1 Regional Geology

Government regional mapping of the Mount Nansen area has been done by Bostock (G.S.C. Memoir 189, 1938) and D. Tempelman-Kluit (O.F. 200, 1101, 1984).

The DIC claims are located within the Yukon Cataclastic terrane. Rocks are divided into 4 main units:

Upper Cretaceous - Carmacks Group

- basalt to andesitic flows and tuffs, minor rhyodacite tuffs and breccias and minor conglomerate.

This overlies

Cretaceous Mount Nansen Group

- andesitic to rhyolitic flows, pyroclastics and associated subvolcanic intrusives.

This overlies

Jurassic to Triassic Granitic Intrusives

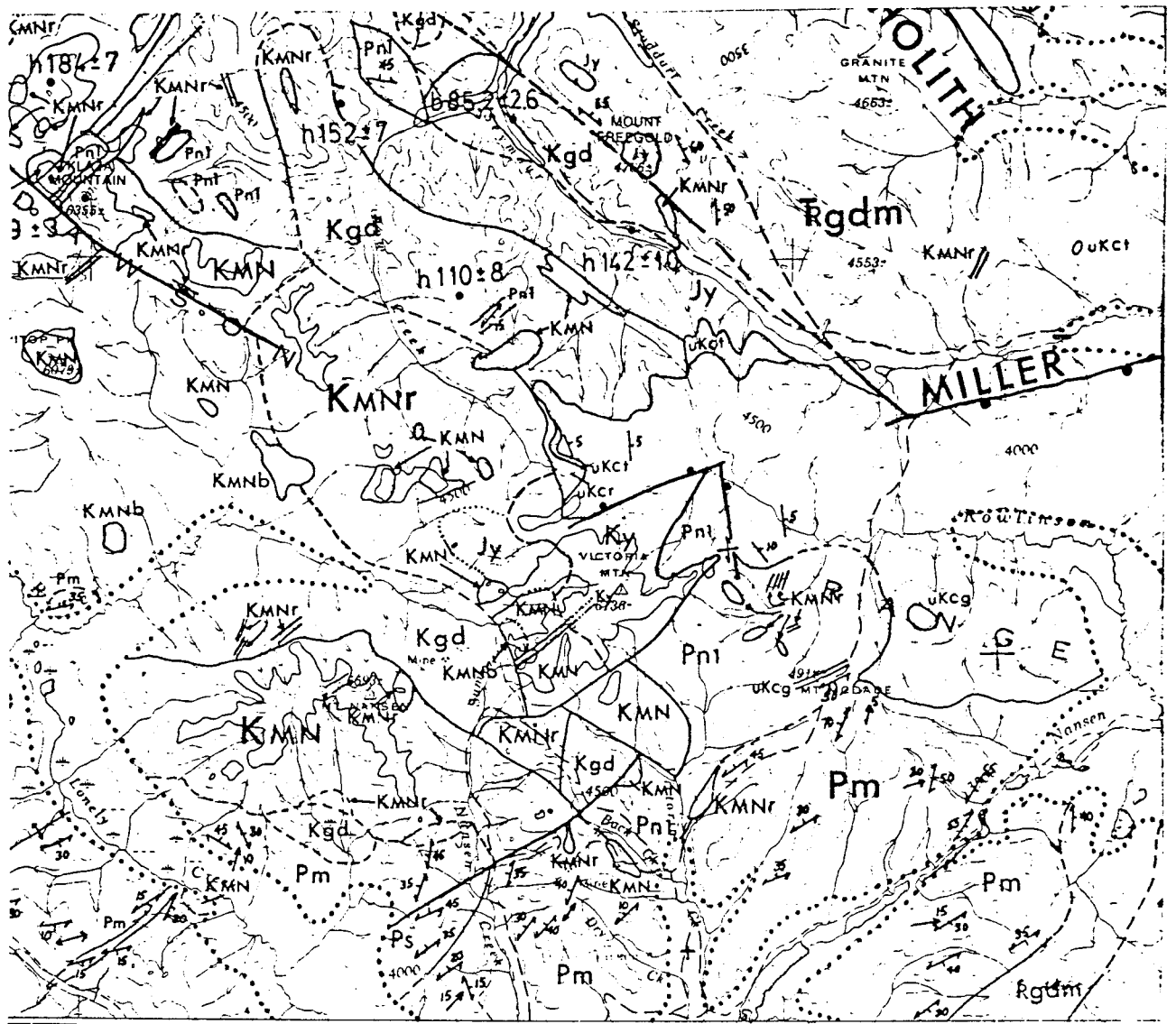
- compositions ranging from Alaskite to Syenite to granodiorite.

This overlies

Precambrian to Paleozoic? Yukon Group (Basement Rocks)

- biotite-hornblende gneiss, quartz-mica schist, amphibolite, granodiorite gneiss, leucogranite, marble, minor serpentinite.

All units are intruded by younger felsic to intermediate dykes. The structural style of the area is described as NW-NE block faulting contemporaneous with porphyry intrusion. (see Figure 3.)



LEGEND

Upper Cretaceous Carmacks Gp.

- uKcb Basalt flows
- uKct Interbedded sandy tuff & andesitic basalt flows
- uKcr Flow banded rhyolite to dacite, felsic breccia & welded tuff

Mid Cretaceous Mount Nansen Gp.

- Kmn Andesite plagioclase porphyry, andesite breccia
- Kmnb Andesite breccia, minor porphyry
- Kmnr Rhyolite to dacite quartz feldspar porphyry

Casino Granodiorite

- Kgd Biotite hornblende granodiorite

Coffee Creek Granite

- Ky Hornblende syenite to granodiorite, fine grained

Jurassic Big Creek Syenite

- Jy Hornblende syenite, coarse to very coarse, porphyritic

Upper Triassic Granite Mountain Batholith

- TRgdm Biotite hornblende granodiorite, foliated, medium to coarse grained

Paleozoic? - Devonian? Pelly Gneiss

- Pnl Biotite or hornblende gneiss
- Ps Quartz mica schist
- Pm Amphibolite, amphibolitic gneiss, biotite-amphibolite granodiorite gneiss

137°00'

45°



KERR ADDISON MINES LTD.

**REGIONAL GEOLOGY
Mt. Nansen Area**

Scale: 1:250,000

Date: Oct. 1986

Drawn by:

Data: GSC O.F. 1101

N.T.S. 115 1/3

Revised:

FIG. 3

2.2 Property Geology

Outcrop on the DIC claims is <5%. Mapping is based mainly on float/subcrop and felsenmeer.

Mapping in 1985 and 1986 identified a hornblende-biotite granodiorite to alaskite intrusive body on the northern part of the property, possibly related to Cretaceous Casino Granodiorite. This is overlain to the south by approximately flat-lying to shallow

(40o?) east dipping andesite to rhyolite tuffs and flows of the Mount Nansen Group. Rhyolitic quartz-feldspar porphyry dykes and minor andesite porphyry and granitic dykes crosscut the volcanic rocks. (see Figure 4). The contact between the rhyolite quartz-feldspar porphyry dykes and the granodiorite body in the northeast of the claims appears gradational, suggesting that the granodiorite body is the source of these dykes.

The andesite porphyry and granitic dykes "outcrop" in the west of the 1986 mapping area, where they intrude massive to spherulitic rhyolite flows. Strike of these dykes appears to be N to NNE.

Due to the lack of good outcrop, structure was difficult to determine, and almost all contacts are approximate or assumed. Strong cleavage in Ex Creek, in the east of the claims strikes approximately 105o and dips steep north to vertical (?). The "Notmy" Fault was not traced this year.

ROCK DESCRIPTIONS:

Rhyolite - cream, pale green to brown gray; weathers brown-yellow to pale brown and grey banded.
Aphanitic to fine-grained.
Massive to banded (bands range from 0.5 to 7mm)
Feldspar, ragged vague crystals to 3mm, offwhite.
~5-7% (judged from pocking on weathered surface).
Seem to be roughly aligned with banding. Weakly clay altered. Quartz, rounded light gray crystals to 1mm, <5%.
Noncalcareous. Nonmagnetic.
Pyrite (?dark limonitic cubes) to 0.5 mm, 1-3%.

Rhyolite, spherulitic - light-medium gray to orange splotchy on weathered and fresh surfaces.
Spherules up to 70% of rock, vary from irregular blobs to well formed radiating spheres to 1.5cm, averaging 6mm.
Matrix is siliceous and aphanitic.
Feldspars are vague, yellowish-white crystals to 2mm, moderately clay altered. Form between 0-5% of rock.
Mafics are undifferentiable minute black specks disseminated in the matrix.
Nonmagnetic. Noncalcareous.
Fractures around spherules are commonly light limonitic coated.
Pyrite is very fine-grained and disseminated. None, to trace amounts.

Rhyolite breccia - Pale green gray to off-white; weathers pale gray to light limonitic.
Very fine to fine grained.
?Feldspars <5% vague yellowish splotches to 0.5mm.
Numerous gray silica healed fractures to stringers to 1mm maximum. Crackle breccia?
Angular fragments to 1cm are locally surrounded by earthy limonitic fractures, some with sugary to drusy quartz making a maximum of 15% quartz.

Dacite-Andesite tuff(?) - Medium dark green grey; weathers med. limonitic to dark gray.
Very fine to fine grained.
Massive.
Noncalcareous. Moderately magnetic.

Dacite-Andesite feldspar porphyry- Medium dark green grey; weathers medium limonitic to dark grey.
Very fine to fine grained.
Feldspar-white, visible mainly on weathered surface. 1-2mm (maximum 5mm) 20-40%. Plagioclase?
Some broken.
Hornblende (?) to 3mm, 3%; very fine disseminated mafics ~5-7% total.
No visible quartz.
Noncalcareous. Weakly to moderately magnetic.

Rhyodacite-feldspar +/-quartz porphyry-

Pale to medium grey-brown, light grey, weathers yellowish to medium orange-brown.
Very fine to medium grained.
Feldspars (visible mainly on weathered surface)-off-white to yellowish to pale green subhedral crystals, some broken, and pinkish-orange splotches to 3mm (average ~0.5mm) 7-15% (30% locally)
Quartz- white to light gray crystals, subhedral to rounded. Range from <0.5mm to 2mm. 3-10%.
Mafics- irregular black-green splotches to 2mm, ~2-7%, possibly chlorite?
Weakly to non-calcareous. Weakly to moderately magnetic.
Weak to moderate Mn dendrites on fractures.
Pyrite-trace very finely disseminated to 1mm euhedral cubes. Rare patches pyrrhotite.

Hornblende+/- biotite Alaskite to Granodiorite

Medium grey to weakly limonitic weathered, pocked. Sub-equigranular, grain size 1-3mm. Ranges locally to rhyodacite porphyry, as described above.
Quartz - clear light grey, subhedral, to 3mm. ~20-30%
Feldspar - White to pale green to yellowish, sub to euhedral 1-3mm (KF+plag?) ~40-60%.
Hornblende - ragged to sub to euhedral, 3-5mm. 10 - 15%.
Biotite - minute specks to 4mm felted masses, rare subhedral crystals. <1-10%.
Noncalcareous. Non to moderately magnetic.
Pyrite - None to patchily disseminated very fine grain concentrated on fractures to 2mm euhedral cubes. On fractures, may reach 40%. Overall ~3-5%.

2.3 Economic Geology, Mineralization and Alteration

The DIC claims are on the northern periphery of the Mount Nansen Gold Camp, located 9 km to the south, where a series of NNW to N trending Au-Ag bearing quartz veins are associated with clay alteration fault zones. Pyrite, arsenopyrite and minor galena chalcopryrite and sphalerite are present. The Mount Nansen Mine operated in 1968-69 and 1976 before closing due to recovery problems and low metal prices. Proven-probable reserves are given as 252 701 tonnes of 13.84 g/t Au and 305.51 g/t Ag.

The TAWA claims adjoin the DIC claims to the east. Here, the Esanssee Ag-Au-Pb showing is reported to consist of several NW trending, steep SW dipping quartz veins with associated clay alteration and bleaching in a granitic host. Channel sampling has returned a best value of 32.45 g/t Au and 1928.57 g/t Ag over 1.8m. A grab sample returned 13.47 g/t Au, 431.63 g/t Ag, 44.7% Pb and 1.3% Zn.

The Lonely and Rusk Cu-Mo Porphyry showings are located approximately 2km south, on the south trending arms of Mt. Nansen. The sub-economic Mount Nansen Cu-Mo porphyry is located approximately 7 km to the southeast of Mount Nansen.

A placer deposit is located on Ex Creek, which drains the eastmost portion of the DIC claims and the TAWA claims. This deposit is currently being worked.

Alteration varies in type and intensity over the property. The intermediate rocks and granitic intrusive are pervasively weakly to moderately propylitically altered.

A quartz-carbonate-sericite alteration zone, extending up to 500 m along Ex Creek, coincides with the granitic-volcanic contact and with rhyolite-quartz feldspar porphyry dyking. Alteration varies from intense sericite-carbonate to strong silica-sericite +/- clay. Banded quartz-carbonate sulphide vein float is found within this altered zone, near the south end of the East Grid. Maximum width seen of this vein material was 21 cm. Banding is lency, with up to 15% fine to coarsely crystalline carbonate, and up to 10% coarse white crystals to 7mm in open spaces tentatively crystals identified as barite. Quartz is massive to fine grained and sugary, white to clear gray. Rare open spaces to 25cm are limonitic and coated with fine carbonate and drusy quartz. Very fine to medium grained sulphides make up to 65% of the vein, of which, 7-10% is identifiable as sphalerite, 1-5% as pyrite, 1-3% as galena and chalcopyrite is present in trace amounts. An unidentified mineral (silvery gray, gray streak, very soft) could be a silver mineral as the vein carried high Ag values. The style of mineralization is similar to that on the TAWA claims.

There was no interesting alteration, mineralization or quartz veining seen on the Central Grid. The source of the 1985 anomalous rock sample (123.4 g/t Ag, 1000 ppm Sb) has not yet been located.

On the West Grid and on the ridges immediately north of Mt. Nansen Peak, weak sericitization, weak to strong clay alteration and moderate to strong silicification is associated with rhyolite dykes and flows(?). This includes 2 target areas of silicification and brecciation from the 1985 program. Quartz veining here is white to yellowish or pale green, light limonitic washed and moderately to well fractured. Maximum widths seen (in talus) ranged from 3-30cm. The quartz is massive to fine-grained and sugary and rarely, chalcedonic. Limonitic masses to 3mm x 1cm and angular irregular open spaces are seen. Sulphide content varies from nil to 2-5% anhedral pyrite and black sulphide masses to 2cm².

The siliceous breccia seen here is of 3 types -

- 1) a silicified rhyolite "Crackle " breccia;
- 2) angular to rounded quartz fragments to 5mm in a greyer quartz matrix (matrix to 30%); and
- 3) light grey to grey brown clear quartz in an earthy limonitic matrix, with minor drusy quartz.

3. GEOCHEMISTRY

3.1 Field and Analytical Methods

A total of 216 soil and 44 rock samples were taken on the DIC claims in 1986. Soils were taken at 25m spacing on 3 small grids with 100m line spacing, and from the east bank of Ex Creek. Soil development is poor. Lower slopes are covered with thick organics underlain by a sandy (?) glacial outwash) and an ashy horizon. Where possible samples were taken from "B" horizon below these horizons. Upper slopes are felsensmeer covered. Soil sample depth was from 5 to 35cm. Permafrost is encountered at as little as 25cm depth.

Soil samples were collected in kraft gusset bags and dried before shipping.

Soil and rock samples were shipped to Chemex Labs of North Vancouver. Rocks are dried, crushed and pulverized to -140 mesh for geochemical analysis and assay. Soils were dried, sieved through -80 mesh with the +80 mesh fraction saved.

All samples were analyzed for Ag, Au, As and Sb by atomic absorption after digestion by nitric-aqua regia. Five rock samples were fire assayed for Au.

3.2 Geochemical Results

3.2a Rock geochemistry

Rock sample locations and results are shown on Figure 5, and anomalous samples are listed in Table 1. Of 45 samples taken, 5 are anomalous in Ag-Au-Sb-As; 3 are anomalous in Ag +/- Sb +/- As; 7 are anomalous in Sb +/- As; 4 are anomalous in Au; 3 are anomalous in Ag. No samples of altered granite were anomalous, and only 1 rhyolite porphyry sample was weakly anomalous in Ag. Samples of all other altered rock types and quartz veins carried some anomalous values. Best Au-Ag values came from quartz-sulphide vein samples (YD 19R, YD 20R, YD 30R), on the East Grid.

Samples from the West Grid carried anomalous Sb and Ag, but no As. Au anomalies here were weak (to 75 ppb). No rock samples were taken from the Central Grid.

Ranges of values were:

Au - <5 ppb to 0.48 g/t
Ag - 0.1 ppm to 88.0 g/t
As - 1 ppm to 1600 ppm
Sb - 0.2 ppm to 180.0 ppm

Arithmetic Mean
(25 samples <5ppb)
5.5 ppm
117 ppm
24.5 ppm

The widespread distribution of anomalous values is encouraging, though the lack of outcrop makes the defining of targets difficult. While the best values of Au-Ag are associated with quartz veining, mineralization also extends into clay +/- sericite-carbonate-silica altered rocks.

3.2b Soil Geochemical Results

Soil sample locations and results are shown on Figures 5b and 5c. Soil sampling on the East Grid, over the Ex Creek alteration zone, showed a concentration of anomalous As-Sb-Ag-Au values located ~100 m downstream of the quartz-sulphide vein float. (2250W-2300W, 175-2175N). Sporadic anomalies occur uphill to the east and west of this area. Soils were not anomalous in the immediate area of the quartz-sulphide vein float. It is possible that the soil anomalies are caused by seeps draining from quartz-sulphide veining uphill. There is also the possibility that there is another mineralized area downhill from the quartz-sulphide vein float.

Sampling was not extensive enough to draw conclusions regarding possible trends.

No anomalous soils were found on the Central Grid.

Soil sampling on the West Grid found a lone As anomaly on the NE edge of the grid. This is downhill from a weakly silicified and clay altered rhyolite porphyry dyke. Samples of altered rhyolite, quartz vein and breccia talus here returned anomalous Sb and Ag values, but no As.

Samples taken from saddles on the east arm of Mount Nansen ridge earlier in the year returned anomalous As-Sb-(Au) values, resulting in the staking of DIC 52F to 63.

	Ranges of Values were:	<u>Arithmetic Mean</u>
Ag	0.1 ppm to 27.0 ppm	0.33 ppm
As	1 ppm to 2000 ppm	34.84 ppm
Sb	0.2 ppm to 46.0 ppm	1.97 ppm
Au	<5 ppb to 400 ppb	5.49 ppb (excludes values <5 ppb Au)

4. GEOPHYSICAL SURVEYS

4.1 Magnetometer Survey

A magnetometer survey was run over the East and West grids, reading being taken at 12.5 m spacing along the grid lines. Instrument used was the EDA field magnetometer. All corrections for drift are made by the Magnetometer itself.

The surveys' purpose was to determine the usefulness of a magnetic survey in tracing possible alteration zones. Results for the total field value and gradient were plotted and contoured. (Figures 6a and 6b).

The magnetic survey on the East Grid showed broad NW-SE trending patterns. No clearcut correlations could be made with known geology. It is possible that the broad trends in the surveys are related to variations in alteration not noticeable on the ground, or to dyking.

The magnetic survey on the West Grid showed the NNE trends of the dykes at an acute angle to the grid. Highest magnetic values appear to correlate with andesitic dykes.

Overall, the extent of the geophysics surveys was too limited to draw any significant conclusions.

4.2 VLF-EM Survey

The VLF-EM survey was run on the East Grid only. Readings were taken at stations 12.5 m apart on the grid lines. A Geonics EM-16 unit was used. The station used was Annapolis and all readings were taken facing north. Readings were Fraser filtered and results were profiled and plotted on a plan map and contoured. (Figures 7, 8).

A VLF-EM survey was used on the TAWA claims to the east to locate a series of NW trending en echelon conductors. Trenching of some of these conductors located mineralized shear/alteration zones.

The VLF-EM survey on the East Grid shows a series of EW to NW-SE conductors. The general direction of the pattern is similar to that on the magnetometer survey. No clearcut correlations could be made with known geology. There are no good conductors corresponding with the area of quartz-sulphide vein float, though there is a small local high 50m uphill to the east of the float. The assumed boundaries of alteration on Ex Creek don't appear to correlate with the VLF-EM, suggesting that either the survey is not picking up alteration, or (more likely) the survey is showing striping of alteration in the bedrock. The general trend of the VLF-EM conductors is sub-parallel with strong cleavage seen in Ex Creek.

The extent of the VLF-EM survey is too limited to draw useful conclusions.

5. CONCLUSIONS and RECOMMENDATIONS

Work on the DIC claims in 1986 was limited by time and weather, and was insufficient to determine the potential of the DIC claims. Only two of the 1985 targets were followed up.

Potential exists for epithermal Au-Ag associated with NW trending shear/alteration zones and a 0700 trending structure (the Notmy fault). At present, anomalous values found in rocks and soils are mainly As-Sb-Ag with weak Au.

Soil sampling was limited in extent and was inconclusive. VLF-EM and magnetometer surveys on the East Grid were also limited in extent and not easily correlatable with the little known geology.

The magnetometer survey on the West Grid appeared to correspond well with known geology.



DIC ROCK ANALYSIS				
Sample No.	As (ppm)	Sb (ppm)	Ag (ppm)	Au (ppb)
6 D 1 R	110	16.0	4.0	175
6 D 2 R	3	1.2	0.1	<5
6 D 3 R	1	1.2	0.1	<5
6 D 4 R	12	8.4	1.8	<5
6 D 5 R	53	1.4	0.3	<5
6 D 6 R	1	0.1	0.1	<5
6 D 7 R	2	1.4	0.1	<5
6 D 8 R	38	21.0	0.2	<5
6 D 9 R	1	0.6	0.4	<5
6 D 10 R	3	1.7	0.3	<5
6 D 11 R	1	1.3	0.1	<5
6 D 12 R	9	4.2	0.3	<5
6 D 13 R	15	13.0	2.0	<5
6 D 14 R	6	8.4	0.5	<5
6 D 15 R	840	27.0	1.8	30
6 D 16 R	100	19.6	5.4	10
6 D 17 R	300	76.0	20.0	20
6 D 18 R	41	3.4	2.5	5
6 D 19 R	150	180.0	88.0	0.21 *
6 D 20 R	220	120.0	60.0	0.21 *
6 D 21 R	190	12.4	4.6	50
6 D 22 R	2	0.2	0.1	<5
6 D 23 R	280	20.0	1.0	<5
6 D 24 R	4	0.9	0.2	<5
6 D 25 R	50	8.0	2.3	<0.07 *
6 D 26 R	22	93.0	9.3	0.07 *
6 D 27 R	190	15.0	4.9	45
6 D 28 R	90	6.2	1.9	10
6 D 29 R	12	3.0	0.1	<5
6 D 30 R	1600	39.0	16.8	0.48 *
6 D 31 R	10	2.6	0.1	<5
6 D 32 R	3	1.6	0.1	<5
6 D 33 R	7	1.7	0.3	<5
6 D 34 R	36	1.5	0.3	75
6 D 35 R	11	0.9	0.2	50
6 D 36 R	65	19.0	1.0	30
6 D 37 R	12	5.8	1.8	10
6 D 38 R	6	6.8	0.4	<5
6 D 39 R	36	57.0	0.5	<5
6 D 40 R	80	18.4	0.3	<5
6 D 41 R	61	4.8	0.6	65
6 D 42 R	24	4.2	0.2	<5
6 K 1 R	23	1.2	0.1	370
6 K 2 R	130	10.6	0.6	<5
6 K 3 R	300	180.0	5.9	5

1985 ANOMALOUS ROCKS				
5 J 2 R		17.2		
5 J 3 R		19.0		
5 J 4 R		42.0		
5 J 7 R		6.2		
5 J 9 R		30.0	5.5	
5 J 11 R	3300	50.0		100
5 J 12 R		1000.0	123.4	
5 J 13 R		15.5		
5 J 14 R		33.0		
5 J 18 R				15
5 G 2 R		450.0	102.1	35
5 G 3 R	230	14.4		
5 G 5 R	120	12.6		
5 G 8 R		10.8	2.6	40
5 G 9 R	200	76.0	9.0	
5 G 10 R		27.0		
5 G 14 R	81	140.0	12.6	
5 C 2 R		30.0	9.6	



FIG. 5a



KERR ADDISON MINES LTD

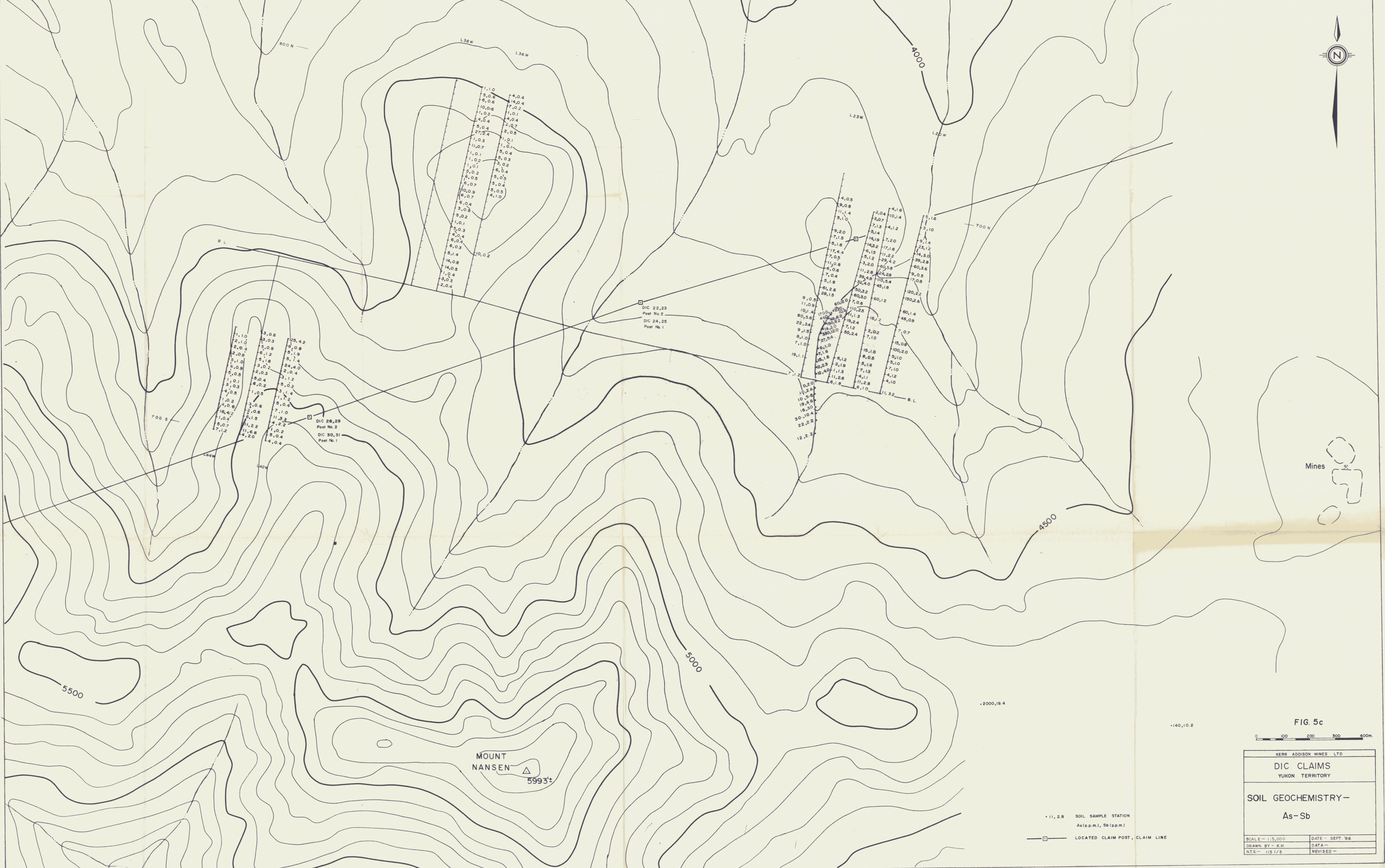
DIC CLAIMS
YUKON TERRITORY

ROCK SAMPLES

LOCATIONS AND RESULTS

SCALE - 1:5,000	DATE - SEPT. '86
DRAWN BY - K.H. P.H.	DATA - K.H.
NTS - 1/3	REVISED -

1091915



11.10	14.04
5.06	19.04
6.06	7.02
10.06	1.01
1.02	4.04
4.04	2.07
5.04	2.05
27.24	2.05
1.03	1.01
11.07	1.01
1.01	5.04
1.02	5.03
1.01	3.02
5.02	6.04
6.05	5.03
5.07	5.04
10.09	5.05
6.07	4.10
5.04	
3.03	
5.02	
1.01	
5.03	
4.04	
6.03	
6.03	
5.14	
14.08	
14.08	
1.04	
3.03	
2.04	

11.10	3.06	25.42
2.10	5.03	19.06
2.04	6.12	5.19
2.02	5.18	5.14
5.10	3.02	24.40
5.08	2.03	2.04
5.05	2.03	5.12
1.01	8.04	5.02
3.03	6.02	5.02
4.05	1.05	3.14
1.02	3.06	1.72
7.06	2.06	5.04
16.42	7.10	7.10
1.04	6.15	11.32
5.07	11.22	4.22
17.12	11.66	1.02
	4.20	5.04
		4.04

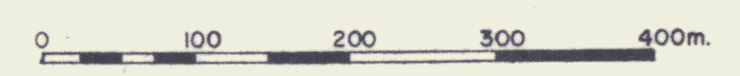
4.05	4.16
9.08	10.14
11.14	3.07
5.10	7.13
5.14	4.12
9.20	14.19
7.15	7.20
5.16	14.32
17.44	6.18
7.05	5.12
11.08	3.20
6.06	11.28
7.04	39.48
5.18	35.40
61.26	45.18
29.15	60.32
11.09	60.30
10.14	7.06
80.36	11.13
22.34	19.24
9.13	7.12
6.10	20.24
7.10	7.10
19.11	15.10
7.10	15.10
15.16	8.05
42.23	5.18
12.40	7.13
6.18	4.12
6.18	4.10
5.10	11.32
11.32	
0.20	
10.56	
19.56	
16.30	
30.104	
22.22	
12.22	

DIC 28,29
Post No. 2
DIC 30,31
Post No. 1

DIC 22,23
Post No. 2
DIC 24,25
Post No. 1

MOUNT NANSEN
5993'

FIG. 5c



KERR ADDISON MINES LTD	
DIC CLAIMS	
YUKON TERRITORY	
SOIL GEOCHEMISTRY -	
As - Sb	
SCALE - 1:5,000	DATE - SEPT. '86
DRAWN BY - K.H.	DATA -
NTS - 115/1/3	REVISED -

• 11,28 SOIL SAMPLE STATION
As (p.p.m.), Sb (p.p.m.)
— □ — LOCATED CLAIM POST, CLAIM LINE

091015



FIG. 6a

Contour intervals: 1400, 1600, 1800, 2000 Gammas.
Reference field: 56957.8 at camp.
Datum subtracted: 57500.0

KERR ADDISON MINES LTD	
DIC CLAIMS	
YUKON TERRITORY	
MAGNETOMETER SURVEY	
TOTAL FIELD VALUE	
SCALE - 1:5,000	DATE - SEPT. '86
DRAWN BY - K.H., P.H.	DATA -
N.T.S. - 115 1/3	REVISED -

001015



FIG. 6b

0 100 200 300 400m

KERR ADDISON MINES LTD	
DIC CLAIMS	
YUKON TERRITORY	
MAGNETOMETER SURVEY	
- GRADIENT -	
SCALE - 1:25,000	DATE - SEPT. '86
DRAWN BY - K.H., P.H.	DATA - K.H.
NTS - 1/3	REVISED -

Contour intervals at 0.5 Gammas.

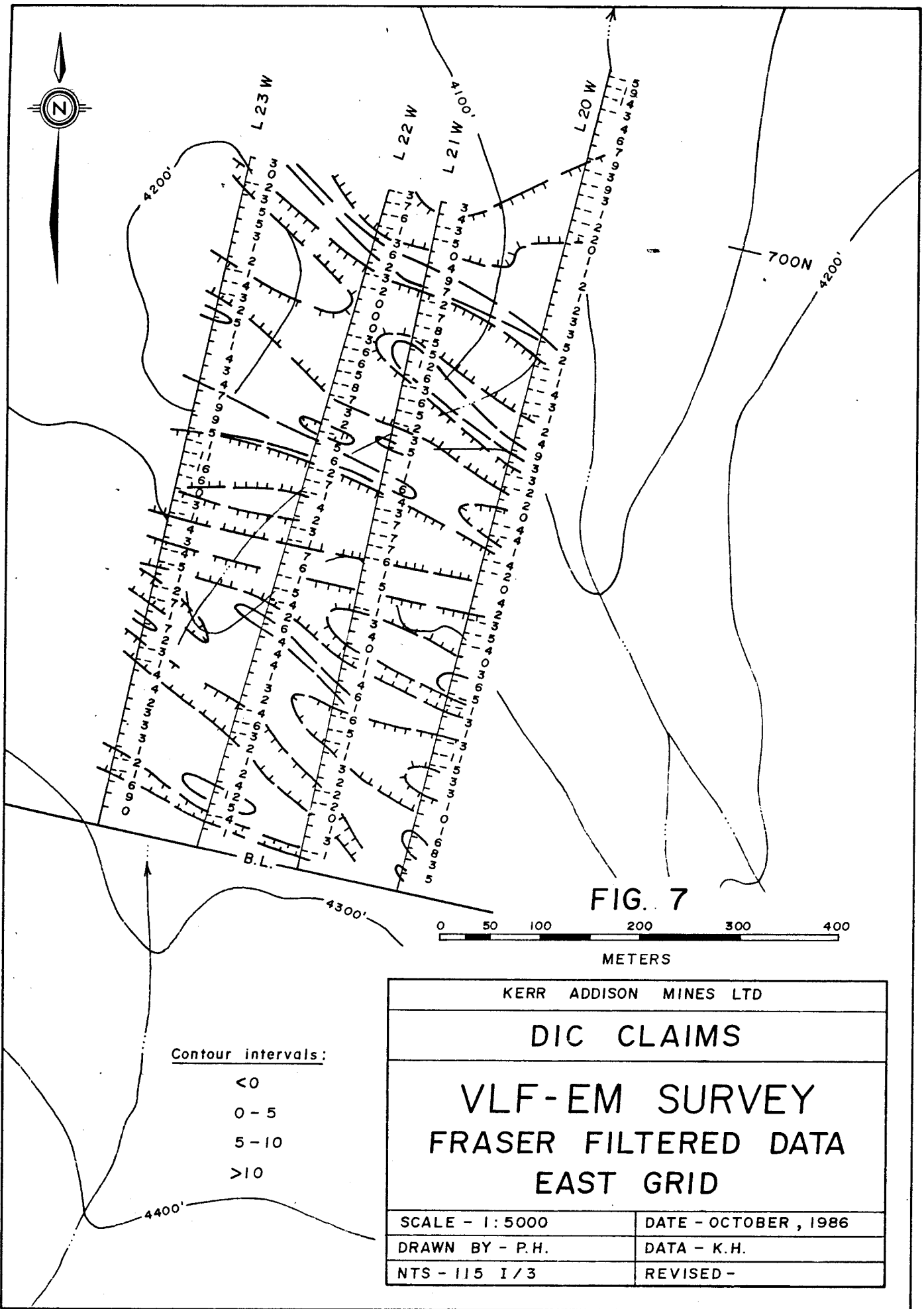


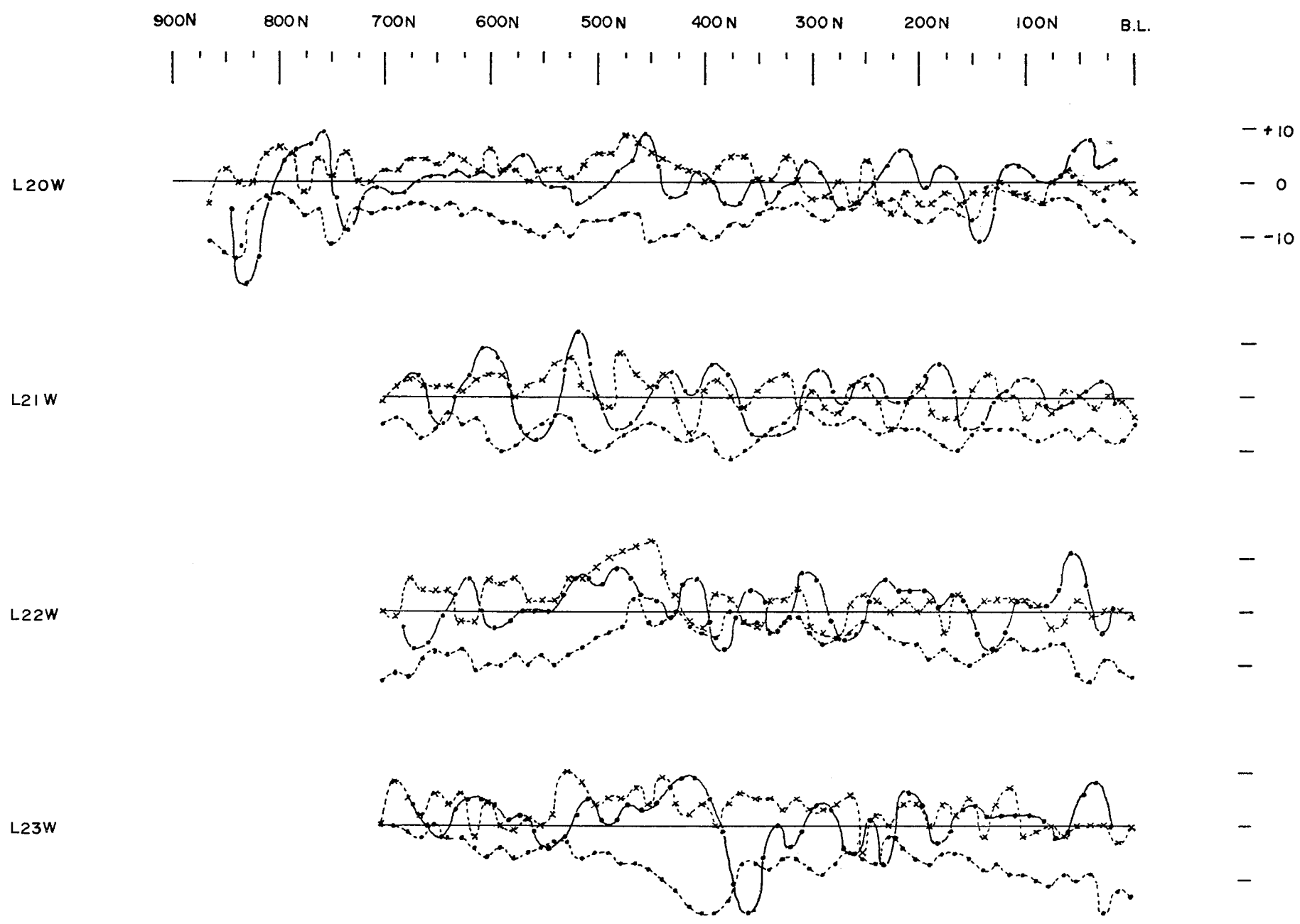
FIG. 7

0 50 100 200 300 400
METERS

Contour intervals:

- < 0
- 0 - 5
- 5 - 10
- > 10

KERR ADDISON MINES LTD	
DIC CLAIMS	
VLF-EM SURVEY FRASER FILTERED DATA EAST GRID	
SCALE - 1:5000	DATE - OCTOBER, 1986
DRAWN BY - P.H.	DATA - K.H.
NTS - 115 I/3	REVISED -



- - - - - IN PHASE
 - - x - - QUADRATURE
 - - - - - FRASER FILTER

Transmitting station used: Annapolis
 All readings taken facing North

FIG. 8

KERR ADDISON MINES	
DIC CLAIMS YUKON TERRITORY	
VLF-EM SURVEY PROFILES EAST GRID	
SCALE: 1:5000 (horiz.) 1:2500 (vert.)	DATE: Aug. 86
DRAWN BY: KH	REVISED:
NTS. 115 1/3	

APPENDIX I
Rock Sample Description

ROCK SAMPLES

PROJECT: DIC

DATE: AUG. 86

SAMPLE No.	LOCATION	TYPE	DESCRIPTION - REMARKS	RESULTS			
				Ag ppm	As ppm	Sb ppm	Au ppb
YD-6D1R			<p>QV - wh-off wh-yell^{sh}-pale gn mottled. V.f-fgr^d, partly sugary qz. Weath^d → 11 lim. wash. Mod. well fract^d, yell-bn stained. Mod. CO₃⁼ coating on fract^s, m-s ser. conc^d around fract^s, m-s Mn coating + dendrites. Rare angular vugs on fract^s. Few x-cutting fgr^d → sugary qz str^s → 1mm. Drusy qz on one exposed fract. No vis. su. Largest piece 3x5x10cm.</p>	4.0	110	16.0	175
		select for qz.					
YD-6D2R	L22W 30-40 (CR)	float.	<p>QV - Mass. wh. V. wk ser. Areas of gy-wh^{subparallel f-cse} banding, cut by lt. yell. str^s → 1mm @ ~60°, w/ rare vugs + drusy lining. No vis. su. Non-calc. (No duplicate) Largest piece 7x6x3cm.</p>	0.1	3	1.2	<5
YD-6D3R	L22W 30-40 (1)	float.	<p>s. alt^d Intrusive (? GRAN) Weath^d, med. lim. bn. No good fresh sfc, all lt yell-bn → lim. w/ clear/gy qz grains, subhed-anhed, → 2mm max, 20%. Looks rex³ll^d. ? wh. Mosc.?, smwt rusty on clvgs → 5mm max, avge 2mm, 20%. m-6 ser. thruout. Nonmag. Cut by</p>	0.1	1	1.2	<5

ROCK SAMPLES

PROJECT: DIC

DATE: AUG. 86

SAMPLE No.	LOCATION	TYPE	DESCRIPTION - REMARKS	RESULTS			
				Ag ppm	As ppm	Sb ppm	Au ppb
			mod. numerous calc frags. Tr. v.f. gr ^d irreg. diss ^d patches of PY, anhed. ? Med. gr ^d equigran GRAN?				
4D-6D4R	L73W 360N (CK)	flat	QV. ^{CO₃²⁻} Mass, wh-off wh, well fract ^d w/ lt. lim. wash. m-s. ser, w. Mn, w. chl, m CO ₃ ⁼ conc ^d on + around frags. Overall Ser-CO ₃ ⁼ -chl ~ 10%. No vis. su. Largest piece 7x5x5 cm.	1.8	12	8.4	<5
4D-6D5R	L77W 360N (CK)	flat	All ^d Intrusive - Med. lim-or-br thru't, v. soft. m-s ser. all ⁿ thru't. Gy-wh anh qz grains → 2mm max ~ 20%. Fs xls vaguely outlined. DK bn masses → 3mm, <5%, maybe remnant mafics. In part highly calc, w/ gy-bk silica heated frags → 1mm, sub//, w/ few ^{open} angular spaces, + qz-CO ₃ ⁼ filled spaces → 2mm (<1%). Some qz-CO ₃ ⁼ str ^s → 1mm, lensy/braided. w Mn (dendrites + coating). Rare speck v.f. gr ^d PY. Poss. a GRAN?	0.3	53	1.4	<5
4D-6D6R	L73W 360N		All ^d Intrusive. lt. lim bn thru't. gy. anhed qz → 2mm, 20%, v. irreg. outlines. s. ser. all ⁿ . plus masses of fine.	0.1	1	0.1	<5

ROCK SAMPLES

PROJECT: DIC

DATE: AUG 86

SAMPLE No.	LOCATION	TYPE	DESCRIPTION - REMARKS	RESULTS			
				Ag ppm	As ppm	Sb ppm	Au ppb
			chl + CO ₃ ⁼ , + CO ₃ ⁼ frags thruout, ~7-10%. Bi xls → 2mm, bk-bn, 'flaky', 5-7%. w Mn, dendrites. w. magnetic. Pd ~5-10% patchy, as anh. fgr ^d grains → v f. 'webbed' masses. ? Alt ^d med. gr ^d bi GRAN?				
YD-6D7R	2230W 290N	fil.	QV - Mass. to fgr ^d /sugary. Yell ^{sh} wh to gy/clear. Cut by mod. nō slightly darker yell ^{sh} frags. w. ser. Noncalc. No vis. su. One or-bn lim. earthy mass to 1cm x 3mm w/ w. yell-gn ser. Has slightly rxll ^{3d} look.	0.1	2	1.4	<5
YD-6D8R	BL 2250W	float	(CO ₃ ⁼) QV Mass. wh. qz, w/ numerous x-cutting, irreg, yell-med. b. stained frags. Weath ^d s ^{fcc} med. or. bn. Frags - s. CO ₃ ⁼ + seric. w-m ser in qz. Ser. ~5-7%? CO ₃ ⁼ ~3-5% No vis. su. Largest piece 20x10x2cm. w. Mn.	0.2 38	30 21.0	21.0	<5
YD-6D9R	2210W 125°	float 4cm.	QV Mass. wh. → clear gy. w/ lt. yell ^{sh} fract. (mod-well fract ^d). w. ser. conc ^d on frags. Few vague gy silica healed frags → 1mm. No vis. su. Noncalc. Largest 5x10x20mm.	0.4	1	0.6	<5

ROCK SAMPLES

PROJECT: DIC 4-11

DATE: Aug 86

SAMPLE No.	LOCATION	TYPE	DESCRIPTION - REMARKS	RESULTS			
				Ag ppm	As ppm	Sb ppm	Au ppb
YD-6D10R	222-0105		S. alt ^d Rqfp. Weath ^d dk-med. or-bn. lim. Fresh sfce mottled bn-or-wh. Least alt ^d bit shows pale bn-gn sfce, m. sil. r. fgr ^d w/ pale gn fs → 2mm, ~7% ; 2-3% gy qz grains to 1mm, round. Otherwise - w. ser, m-i CO ₃ ⁼ , w-m Mn dendrites on fract ^s → 1cm into rock. Looks bk ^d in part (small frags → 1cm), disguised by a. No vis. su. Nonmagn. V. minor gy mass. qz bands → 3mm wide.	0.3	3	1.7	<5
YD-6D11R	222-01 565 ^o ck		S.a. rock (?R) lt. lim. yell-bn weath ^d + fresh, to mottled off wh-bk-bn. 'fresh'. i. ser, some quite coarse; m-s CO ₃ ⁼ , m-s Mn dendr. thr'out, w. sil. ^{→ 1cm from fract^s.} PY ~3-4%, f.gr ^d diss ^d → 0.5mm max. Rock v. f-f.gr ^d . No relict text. vis.	0.1	1	1.3	<5
YD-6D12R	222-01 122 ^o		m.a. Rqfp - Med-or-bn-lt. bn weath ^d . Fresh sfce mottled pale bn-med. bn-lt. gy-off-wh. F.gr ^d . quite silic. w. ser. a. Mainly noncalc except for rare microfract. Wet sfce shows vague wh. fs. xls → 1x4mm, ~7%?, w. of a. Lt. gy round qz → 1mm, 5%. PY-anh-subhed, v. f.gr ^d masses to 2mm ~3-4%. BK. ragged chl. masses = relict mafics (?? bi) ~5-7%. (2x1mm). Nonmagn. w. Mn.	0.3	9	4.2	<5

ROCK SAMPLES

PROJECT: DIC Y-11

DATE: Aug. 86

SAMPLE No.	LOCATION	TYPE	DESCRIPTION - REMARKS	RESULTS			
				Ag ppm	As ppm	Sb ppm	Au ppb
YD-6D13R	2105 1350	qz	m-s. a. Rqfp - lt. lim. bn. gy weath ^d . 'Fresh' sfce lt. gy - pale gn - pale bn. Clear gy qz grains, round \rightarrow 2mm, <5% ^{vaguely visible} Off-wh. fs, w. cy. a, avege 2mm (4mm max), ~15%, in lt. gy-gn f.gr ^d mx. m-s seric. (cse in few places), w. sil. patches. Noncalc. Nonmagn. Diss ^d euh - subhed. PY cubes single xls + clumped, ^(to 3mm across) \rightarrow 1mm, avege 0.5mm, ~5%. Few m. lim. frags, w-m Mn dendr. Few qz str ^s , from med. gy silic. healed frags <0.5mm to 3mm off-wh f.gr ^d qz. Alt ^d v. variable thro'out.	2.0	15	13.0	<5
YD-6D14R	2205 1325	qz	s.a. rock/QV - Med. lim. bn - lt. gy. weath ^d . 'Fresh' sfce lt. gy - yell. bn to v. pale gn. s. ser. thro'out, patchy s. silic. - mainly yell ^{sh} - lt. gy f.gr ^d v. f.gr ^d qz w/ large pods of clear gy. mass. qz on lim. frags, \rightarrow 2cm across, + few drusy linings of same frags. \rightarrow 3mm. Noncalc. v.w. Mn dendr. m. lim. frags. Rare v. f.gr ^d PY specks. Wet sfce shows m. abund lt. gy. silic. str ^s \rightarrow 1mm, lensy + irreg. with . DK. bn. ang. bxwk \rightarrow 1mm, ~1%.	0.5	6	8.4	<5
YD-6D15R	2205 1325	qz	s.a. rock (?R) - Weath ^d med. lim. bn. Fresh sfce pale gn-gy, v. f.gr ^d s. sil, w mod. n ₅ dk-med gy lensy str ^s \rightarrow 0.5mm (-k sets) m. ser	1.8	840	27.0	30

ROCK SAMPLES


PROJECT: DIC Y-11

DATE: Aug 86

SAMPLE No.	LOCATION	TYPE	DESCRIPTION - REMARKS	RESULTS			
				Ag ppm	As ppm	Sb ppm	Au ppb
(YD-6D15R cont)			Noncalc. Large open sp. → 1 x 2.5 cm, lined w/ cse clear wh xls → 7mm ? BA (~10%). Some drusy qz. PY- irreg. anhcd. masses → 1.5 x 1cm (~80% v.f.gr ^d PY + bk. su), plus trace v.f.gr ^d diss ^d specks, 4-5% total. One small gn. speck ~ 0.5mm = ? malposite. In less alt ^d parts, vague outlines of ?fs → 2mm, w-m cy. a. Prob. same as previous G3R.				
YD-6D16R	Same as 53		Q-BA-CA v _n - weath ^d lt. lim + wh. Irreg. patches of lt. gy. f.gr ^d qz + mass. wh. ?BA. (rock heavy). Mod. abund. lim-fract ^s . Ang. med .. or-bn lim. bxwks → 5mm = CO ₃ ⁼ (ank?). Few lt. gy. sil. str ^s → 0.5mm. Q ₃ ~ 20%, CO ₃ ⁼ ~ 15%. No vis. su. 1 piece only, rounded.	5.4	100	19.6	10
YD-6D17R			s. alt ^d rock (?R) - Med. lim. bn-gy weath ^d . 'Fresh' s ^{fc} patchy lt gy + lt bn due to s. sil. flooding. m-s. ser. m. CO ₃ ⁼ (conc ^d on fract ^s), w. cy (patchy), w-m lim fract ^s , v. w. Mn. Q ₃ is lt-gy-wh, v.f.gr ^d -mass, plus few clear gy silic. str ^s , lensy + irreg → 0.5 mm. Irreg. blebs of cse CA → 5mm wide x 2cm. Rare speck anh. PY, v.f.gr ^d (< 0.25mm). ?Rock appears to have been originally f.gr ^d + poss. silic + lt. coloured? Nonmagn. Bcm.	20.0	300	76.0	2.0

ROCK SAMPLES

DICKY AUG 86.

SAMPLE No	LOCATION	TYPE	DESCRIPTIONS	RESULTS			
				Ag	As	Sb	Au
1D-6D18R	2765W 035A		Q-CA Vn - Weath ^d banded dk.or.-bn-bk-wh, fresh sfc lt.gy-wh-bk cslly ribboned/braided from \leftarrow 1mm \rightarrow 5mm wide. of wh. cslly xl ⁿ -mass, CA + lt.gy-wh. mass. -f.gr ^d qz, Ca bands \rightarrow lim. + bk (poss. Mn?) Total width = 12cm. Mod. well fract ^d // + ~ <u>1</u> bndg. Numerous open sp. (\rightarrow CA?) No vis. su. w. ser. Rare x-c. qz-ca str \rightarrow 2mm. 12 cm, but similar less banded pieces go to 30cm across.	2.5	41	3.4	5
1D-6D19R	2765W 130K	chip (21cm)	Q-(CO ₃) ⁼ -Su Vn - Weath ^d dusty lt.bn-gy. Fresh sfc mottled to v. poorly + cslly banded off.wh-lt.gy-bk. Mainly f.gr ^d wh.gy qz. w/ few pods lt.gy clear qz \rightarrow 2mm. Mod. abund. CO ₃ ⁼ mainly on lim fract ^d // bndg + microfract. m-s. ser, thr'out. w. Mn dendr. large clots of unid. min'l, v.f-f.gr ^d masses \rightarrow 1.5cm across, bluey-gy, v. shiny, ? 1 pft clvg on some. Some look square, but most are 'circular' shape  . xls \leftarrow 0.25mm. v. soft, smears to gy stk. Looks similar to SPH except for streak. ~10% total. Also ~1% v.f.gr ^d diss ^d subh-evh. PY.	88.0 4.6 91T	150 130	180.0 12.4	0.21 50 91T
1D-6D20R	"	Chip (13cm)	Q-Ba-CO ₃ ⁼ -Su Vn - Bands to 1cm of wh-gy f.gr ^d \rightarrow mass clear qz; wh. ? BA; w. CO ₃ ⁼ (bn. weath ^d bands); bk. f.gr ^d su. Bands are lensy, \rightarrow 7mm across, many thin lenses // bndg \rightarrow 1cm long. Overall SPH ~7%, GA <1%, PY 1-2%. Few x-c fract ^d , some have offset the su ~ 2cm. Ba seems conc ^d on 1 side of su, then mainly su, then mainly qz. Ba ~ 35%, Ca <5%. No duplicate taken.	60.0 0.1 91T	220 2	20.0 0.2	0.21 45 91T
1D-6D21R	2260W 165N	Chip (33cm)	s.a. rock/bx - Fresh + weath ^d mottled dusty gy.-or.bn-bk. F-med.gr ^d rock?? L ser a, s-l CO ₃ ⁼ ; qz forms pale gy-gn irreg. pods \rightarrow 5mm, + dk.bn lim. drusy fract. linings \rightarrow 2mm. Irreg. cslly bndg w/ CO ₃ ⁼ /qz rich sections. PY v.f.-med.gr ^d diss ^d subhed. grains. w. Mn. gn. spot looks like ? Mariposite. In part looks like rndd gy qz frags \rightarrow 5mm (80%) in dk.gy, f.gr ^d soft mx \rightarrow some bx ^d .	4.6	190	12.4	50
1D-6D22R	225W 165N		QV - Mass. wh. qz, w/ v. fine alternating wh + pale gy 'lams' \rightarrow 2mm max, ~sub//. v. clean, semitransp. qz. v. few w. lim. fract ^d . w. ser. No vis. su. Noncalc. Some irridesc. sfc. 1 pcc only, 7cm.	0.1	2	0.2	<5
1D-6D23R	"		m.a. R? - DK. lim. bn weath ^d . Fresh sfc pale gy-yell.bn, v.f.-f.gr ^d . v. silic, cut by mod. abund. v. dk. lim. fract ^d thr'out. Wet sfc. show numerous v.f. gy silic. str \leftarrow 0.25-1mm, x-c. + irreg. Some open. sp. on lim. fract ^d . Silica ² is patchy. w. Mn. w. ser. Noncalc. Some pale bn-gy chalced. lenses \rightarrow 1cm across. Rare lim. bxwk \rightarrow 0.5mm. 1 pcc only 7cm Rounded rock.	1.0	230	20.0	<5

ROCK SAMPLES

DIC (Y-11) AUG. 86

(2)

SAMPLE N ^o	LOCATION	TYPE	DESCRIPTIONS	RESULTS			
				Ag	As	Sb	Au
YD-6D24R	2140N 400N		W-m. Prop G-QM - Med. gr ^d equigran &. Weath ^d med rusty-bn-med.gy. Fresh sfc mottled lt. gn.gy. Gr. size avge 1mm (→3mm). w. ser. a of fs, → pale yell-pale gn, to 3mm. max. Mainly KF? Lt. gy. q3, subhed. gr ^s to 2mm, 10-15%. Mafics totally alt ^d to chl + CO ₃ ⁼ ± ep flaky masses to 2mm around q3 + fs, ~15%. w-m. fract ^d , w/ lim + mass. X ¹⁰ CA. on fw. Nonmagn. No vis. su.	0.2	4	0.9	<5
YD-6D25R	TEST PIT 1775N 200		QV - Weath ^d med. lim. bn. Fresh sfc off wh-wh-bn w/ mod. abund med. or. bn. lim fract ^s , xc sets @ -70 to 90°. Some open sp. q3 is f. gr ^d . Noncalc. No vis. su. Lt. lim. sq. bxwk (single) to 0.5mm max avge <0.25mm, ~3-4%, diss ^d throuT. m. Mn coating. 1 pce only, 5cm.	2.3 9IT	2.0 50	8.0	0.07 9IT
YD-6D26R	TEST PIT 200 1775N		QV wh-yell ^{sh} wh. v.f. - f. gr ^d vuggy q3, mod. well fract ^d (angular), w/ w-m. lim fract ^s w/ fine drusy lining, + vugs ~5%, weath ^d mod. lim. or. to med. gy. Noncalc. Tr. v.f. gr ^d patchy diss ^d anh. Py.	9.3 9IT	22	93.0	0.07 9IT
27R.			? What was it?	4.9	190	15.0	45

SAMPLE NO	LOCATION	TYPE	ROCK SAMPLES DESCRIPTIONS	RESUL. S			
				Ag	As	Sb	Au
YD-6D28R	2250W 215A		s. a. rock (?R). Weath ^d med. rusty bn, fresh sfce off-wh → yell. bn. V. sil. thro'out, w. ser, s. CO ₃ = thro'out + on fract ^s + as cs xls pods → 1x2cm + as str ^s → 1mm. CO ₃ = ~20%? F. gr ^d mass. rock? Cut by mod nō med. bn lim. fract ^s . w. Mn coating. No vis. su. Nonmag.	1.9	90	6.2	10
YD-6D29R	2250W 050N		s. sil. ?R/Q-CO ₃ = Vn - DK lim. weath ^d . Fresh sfce med. gy, x-c by numerous or-bn fract ^s /str ^s → 4mm (± sets). Q ₃ is lt. clear gy, rounded frags w/ CO ₃ = fgr ^d mx. Cut by CO ₃ = str ^s w/ anh. masses of PY irreg. diss ^d thro'out, patches → 2x2cm (→ 70% PY), v.f.gr ^d w/ bk. su; overall PY 2-3%. w. ser. a. Seems to be attached to pale gy-gn f.gr ^d m. silic. rock w. ser. a. → ?R. Nonmag.	0.1	12	3.0	<5
YD-6D30R	Same as D30	chip (13cm)	Q-ser-su Vn - Lt. lim-gy weath ^d . Fresh sfce bleached wh/pale gn/dk gy-bk, poorly cslly striped. Looks smwt bxd. in wh-gy q ₃ bands, see bits of ang. wh. q ₃ . All mass-f.gr ^d . Few x-c wh. str ^s of q ₃ → 1mm. Few large grains of clear gy q ₃ (→ 3mm) lim. fract (outside edge of vn?). Lenses + bands of dk gy/bk su → <0.5mm, v. wispy, and pods → 3x3cm of f. med. gr ^d su (xls → 1mm max). SPH 3%, GA 1%, PY 3-4% (includes v.f.gr ^d diss ^d PY specks thro'out) + Tr CPY. PY smplaces segregated w/ poss. CPY, v.f.gr ^d . Su mainly along fract ^s + assoc ^d w/ irreg. dk. or. bn weath ^d pods → 2x2cm w/ cse? BA xls → 7mm (<2% overall) w/ w. CO ₃ =. Wh. soft sections of rock may be baritic?	16.8 g/t	1600	39.0	0.48 g/t
YD-6D31R	L43W 5755		QV/s. silic ^d rock - Weath ^d med bn-pale bn. gy. Fresh sfce pale bn. gy-med. bn-dk gy. mottled. v.f.gr ^d silic rock. Mod-well fract ^d . Chalced. in part. Noncalc, but dk. bn stained ang. open sp (now full of q ₃ y network) may have held CA. Some fine drusy q ₃ on fract ^s . w. ser. m. lim. w-m Mn coating, some dendrites. No vis. su. Nonmagnetic.	0.1	10	2.6	<5
YD-6D32R	L43W 5755		sil. Rqp - Weath ^d lt. rusty yell. to bn. Fresh sfce pale bn-gy. v.f.gr ^d R mainly pale bn but on wet sfces see yell ^{sh} more serie. lensy sub)) 'lams' → 0.5mm. Could be flow banding or silic. shards, now broken. m. silic ^d thro'out. Q ₃ grains lt. gy, rnd → subhed to 2mm, avge 1mm, ~7%. V. small rare off wh subhed fs xls to 0.5mm vis. On wet sfce see many tiny gy round q ₃ xls → 0.5mm max, 10-15%? Noncalc. Nonmagn. No vis. su. DK. bn lim. specks to 0.5mm - could be remnant mafics? m. fract ^d w/ w. lim. wash.	0.1	3	1.6	<5

		ROCK SAMPLES		DIC Aug. 86		(10)	
LOCATION NUMBER	LOCATION	TYPE	DESCRIPTIONS	RESULTS			
				Ag	As	S6	Au
YD-6D33R			<u>QV/SILIC^d Rock</u> - Lt. lim. washed. Fresh sfce pale gy:bn, f.gr ^d silic. rock, m.ser, w.cy(a)(patchy) a. Noncalc. Nonmagn. Poss. R? No vis. su. w. Mn coating on w. lim. fract ^s . Cut by q3 str ^s → 3mm, wh. sugary, f.gr ^d q3; 2cm QV wh. f.gr ^d q3 w/ drusy q3 in open sp. (Similar to 5J17R?)	0.3	7	1.7	<5
YD-6D34R			<u>m.cy.a?R</u> - Med. bn. lim. weath ^d . Fresh sfce ltgy → bn w/wh. speckles (cy. patches - ?fs). patchy mod. cy. a. v.f-f.gr ^d , poss. R? No mafics. vis. Noncalc, Nonmagnetic. Some s. lim. fract ^s w/ rare dk bn-or lim. bxwk → 2x3mm, w. Mn dendrites, some thin open sp. DK. bn. lim. cubes/sq. holes = PY?, to .5mm, avge < 0.25mm; ~3% patchy diss ^d .	0.3	36	1.5	(75)
YD-6D35R			<u>QV/SILIC^d Rock</u> - Med. lim. bn weath ^d . Fresh sfce pale bn-gy sugary v.f-f.gr ^d rock, i.sil. w/ dk. bn. lim. boxes to 1mm, 3% v.w. cy. a. Rare v.f. PY cubes. QV-2cm-wh. f.gr ^d , smwt sugary. Some drusy lined fract ^s ; some v. lim. xls → 2mm on open sp. (1x2.5cm). Noncalc. Nonmagn. Sample select. for q3.	0.2	11	0.9	(50)
YD-6D36R	Talus.		<u>cy-q3. a. Bx?R</u> - Lt. lim. thro'out. w/ dk bn. lim. fract ^s ~abund. Frags. of s-l cy. a(?) f.gr ^d rock → 1.5cm in dkr goeth/lim cy. a. mx. Sugary f.gr ^d q3 is conc ^d on dk. lim. fract ^s in lenses → 3mm + vugs. Frags dng → rnd. Noncalc. Nonmagn. w. Mn coating (fract ^s). Lim. boxes → 0.25mm, ~5% in less a. sections. Frags ~80% of rock, q3 ~10-15%. No vis. su. (10cm zone?)	1.0	65	(90)	30
YD-6D37R			<u>w-m^{-sil} cy^a R</u> - Med-dk lim. bn weath ^d . Fresh sfce pale gy-wh. v.f-f.gr ^d ?R. m. silic ^d patchy. w-m. cy. a. Silic ^d areas are gy, sugary w/ or. lim bxwk to 1mm, avge < 0.5mm, <3%. Few lt.gy. silic. str ^s → 0.5mm. Cut by lim. fract ^s + or. bn lim. fract ^s w/ open sp. → 1mm. No vis. su. Noncalc. Nonmagn.	1.6	12	5.8	10
YD-6D38R	Talus		<u>s. sil + bx^d?R</u> - Weath ^d + fresh sfc ^s med. gy - lt. bn. gy, plus off-wh. on fresh, v. mottled. Ang. sil. frags to 1cm in s. sil. mx/qv. v. well fract ^d thro'out, m. lim, m. ser, w. cy. a. w. Mn. Mod. abund. open sp. along fract ^s → 3mm x 2cm w/ v. fine drusy q3 lining. Noncalc. Nonmagn. No vis. su. On q3, str. exposed in fract, see numerous sub// yell. lt. gy. 'lams' → 0.25mm	0.4	6	6.8	<5

NUMBER	LOCATION	TYPE	ROCK SAMPLES	DIC Aug. 86 (11)			
				Ag	AS	Sb	Au
(YD-6D38R CONT'D)			? sericitic. qtz str ^s → 2mm x-c main trend of fract ^s @ ~70°. Some sugary, most f. gr ^d qz. Rare speck PY.				
YD-6D39R			i. cy. lim a rock / bx ^d QV — Med-dk. bn. lim. weath ^d thru' out. i. cy. a, dk lim. fract ^s abund, some open sp. <1mm. Gives impression might be a med. gr ^d intrusive from colour variations. QV sub// w/ lim. fract ^s , v. knobblly weath ^d f gr ^d qz, bx ^d — wet sfc shows wh. ang. qz frags in slightly gyr qz mx. Frags 2mm-5mm. Cat ^{ali} ? Noncalc. Nonmagn. w. m. Mn coating + dendr. qz ~30% of rock, No vis. su. From major topo. lineation. (Poss. same as 5LIR?)	0.5	38	57.0	<5
YD-6D40R	Talus		s. cy. m-s qv ^d ?R — Med dusty lim bn-wh thru' out, no fresh? v. soft cy. a rock, noncalc, v. f gr ^d . Nonmagn. Small area relatively unalt ^d is lt gy. ?R. Mod well fract ^d s. lim, w/ sub// qz str ^s , gy. mass. → 7mm max. Wh. specks → 1mm, → 15% in less a. area = fs? Few irreg. vugs, ~2%, 1mm, w/ poor drusy lining. 1 vn, 1.5cm, qz xls → 2mm, v. lim. No vis. su. qz ~ 10%. 12 cm bldr.	0.3	30	12.4	<5
YD-6D41R	Talus		m-s. cyrsil. a ?D — Med-lt. lim. weath ^d . Fresh sfc bn-gy to wh, speckled → cy. a. fs → 1mm, most < .5mm, ~15% in v. f. gr ^d mx. Small mafic specks → .5mm, poss. hb?? Cut by few q. str ^s -vnlts → 1cm, med. gy. mass qz (avg ~2mm). W. lim. fract ^s . No vis. su, but ~2% dk bn lim. boxes → 1mm. Noncalc. Nonmagn. Bx zone?	0.6	61	4.8	65
YD-6D42R	Talus		Sheared s. cy. a-silic ^d equigran. intrusive (?G) — Med-dk. lim. weath ^d jarositic? in part. s. sil., cut by numerous x-c/branded qz str ^s → 3mm, all lim. std. All v. a, s. cy, s. lim. In part, rounded frags → 3mm in lim. mx. Least alt ^d section looks like med. gr ^d equigran. intrusive. m. calc, patchy. No vis. su. Nonmagnetic.	0.2	24	4.2	<5

ROCK SAMPLES			DIC (4-11) Aug. 86.		(12)		
NUMBER	LOCATION	TYPE	DESCRIPTIONS	RESOL	IS		
				Ag	As	Sb	Au
YD-6K2R		FLOAT	Q-Bx - lt. gy-gy bn. v f-fgr ^d qz w/ numerous interconnecting dk. or. bn → bk. bn. earthy lim, masses, ~15-20%. S. ? goeth. Noncalc. W. ser. a. Nonmagn. Nonmagn. ~20x6x5cm.	0.6	130	10.6	25
YD-6K3R			SILIC ^P BX (R?) - Weath ^d lim. bn. Fresh ifca pale gn. gy v.f.gr ^d s. sil. rock, faint suggestion of wh. fs → 0.5mm in patches. Well fract ^d / Knobbly, cut by mod. abund. - abund. lim + qz (med. gy) STRS to 1mm. No vis. su. Noncalc. Shear zone material?	59	300	180.0	5
YD-6K1R	Trench Below RNDP		Q-Su m-cse py, anh masses to xls, 2-3%, to 3mm. in a. hb? QM equigran. W. sil. W. ser.	0.1	23	1.2	370

APPENDIX II
Geochemical and Assay Results



Chemex Labs Ltd.

212 Brookbank Ave.
North Vancouver, B.C.
Canada V7J 2C1

JUN 27 1986

Analytical Chemists • Geochemists • Registered Assayers

Phone: (604) 983-5221
Telex: 043-52597

CERTIFICATE OF ANALYSIS

TO : KERR ADDISON MINES LTD.
(ATTN: RAY DUJARDIN)
703 - 1112 W. PENDER ST.
VANCOUVER, B.C.
V6E 2S1

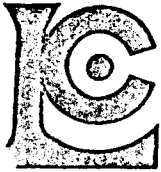
**FILE
COPY
DO NOT
REMOVE**

CERT. # : A8613878-001-A
INVOICE # : I8613878
DATE : 26-JUN-86
P.C. # : NONE
Y-11

CC: K. HEBERLEIN

Sample description	Prep code	Ag ppm Aqua R	AS ppm	Sb ppm	Au ppb FA+AA		
YD-6K1R	207	0.1	23	1.2	370	--	--
YV-6K1R	207	0.1	6	0.8	460	--	--
YV-6K2R	207	0.1	9	1.2	140	--	--

Certified by Hart Bickler



Chemex Labs Ltd.

Analytical Chemists • Geochemists • Registered Assayers

RECEIVED
JUN 2 1986
KERR ADDISON MINES LTD.
223 Brookbank Ave.
North Vancouver, B.C.
Canada V7J 2C1
Phone (604) 884-0221
Telex: 043-52597

CERTIFICATE OF ANALYSIS

TO : KERR ADDISON MINES LTD.
(ATTN: RAY DUJARDIN)
703 - 1112 W. PENDER ST.
VANCOUVER, B.C.
V6E 2S1

COPY
DO NOT
REMOVE

CERT. # : A8613877-001-A
INVOICE # : I8613877
DATE : 25-JUN-86
P.O. # : NONE
Y-11

CC: K. HERBERLEIN

Sample description	Prep code	Ag ppm Aqua R	AS ppm	Sb ppm	Au ppb FA+AA		
YD-6K1S	201	0.5	140	10.2	35	--	--
YD-6K2S	201	0.3	2000	19.4	30	--	--
YV-6K1T	201	0.2	27	0.8	45	--	--
YV-6K2T	201	0.1	10	0.6	45	--	--

Certified by Hart Bichler



Chemex Labs Ltd.

Analytical Chemists • Geochemists • Registered Assayers

212 Brooksbank Ave.
North Vancouver, B.C.
Canada V7J 2C1
SEPT 5 1986
Phone: (604) 984-0221
Telex: 043-52597

CERTIFICATE OF ANALYSIS

TO : KERR ADDISON MINES LTD.
(ATTN: RAY DUJARDIN)
703 - 1112 W. PENDER ST.
VANCOUVER, B.C.
V6E 2S1

**FILE
COPY
DO NOT
REMOVE**

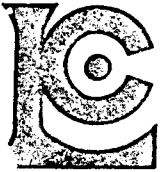
CERT. # : A8617445-001-A
INVOICE # : I8617445
DATE : 14-SEP-86
P.O. # : NONE
Y11 (DIC)

CC: K. HEBERLEIN

Sample description	Prep code	Ag ppm Aqua R	AS ppm	Sb ppm	Au ppb FA+AA		
YD-6D01R	205	4.0	110	16.0	175	--	--
YD-6D02R	205	0.1	3	1.2	<5	--	--
YD-6D03R	205	0.1	1	1.2	<5	--	--
YD-6D04R	205	1.8	12	8.4	<5	--	--
YD-6D05R	205	0.3	53	1.4	<5	--	--
YD-6D06R	205	0.1	1	0.1	<5	--	--
YD-6D07R	205	0.1	2	1.4	<5	--	--
YD-6D08R	205	0.2	38	21.0	<5	--	--
YD-6D09R	205	0.4	1	0.6	<5	--	--
YD-6D10R	205	0.3	3	1.7	<5	--	--
YD-6D11R	205	0.1	1	1.3	<5	--	--
YD-6D12R	205	0.3	9	4.2	<5	--	--
YD-6D13R	205	2.0	15	13.0	<5	--	--
YD-6D14R	205	0.5	6	8.4	<5	--	--
YD-6D15R	205	1.8	840	27.0	30	--	--
YD-6D16R	205	5.4	100	19.6	10	--	--
YD-6D17R	205	20.0	300	76.0	20	--	--
YD-6D18R	205	2.5	41	3.4	5	--	--
YD-6D21R	205	4.6	190	12.4	50	--	--
YD-6D22R	205	0.1	2	0.2	<5	--	--
YD-6D23R	205	1.0	280	20.0	<5	--	--
YD-6D24R	205	0.2	4	0.9	<5	--	--
YD-6D27R	205	4.9	190	15.0	45	--	--
YD-6D28R	205	1.9	90	6.2	10	--	--
YD-6D29R	205	0.1	12	3.0	<5	--	--
YD-6D31R	205	0.1	10	2.6	<5	--	--
YD-6D32R	205	0.1	3	1.6	<5	--	--
YD-6D33R	205	0.3	7	1.7	<5	--	--
YD-6D34R	205	0.3	36	1.5	75	--	--
YD-6D35R	205	0.2	11	0.9	50	--	--
YD-6D36R	205	1.0	65	19.0	30	--	--
YD-6D37R	205	1.6	12	5.8	10	--	--
YD-6D38R	205	0.4	6	6.8	<5	--	--
YD-6D39R	205	0.5	38	57.0	<5	--	--
YD-6D40R	205	0.3	80	18.4	<5	--	--
YD-6D41R	205	0.6	61	4.8	65	--	--
YD-6D42R	205	0.2	24	4.2	<5	--	--
YD-6K02R	205	0.6	130	10.6	<5	--	--
YD-6K03R	205	5.9	300	180.0	5	--	--

VOI rev. 4/85

Certified by H. Bichler



Chemex Labs Ltd.

RECEIVED

1212 Brooksbank Ave.
North Vancouver, B.C.
Canada V7J 2C1

Analytical Chemists • Geochemists • Registered Assayers

SEP 11 1986

Phone: (604) 984-0221
KERR ADDISON MINES LTD. 043-52597

CERTIFICATE OF ANALYSIS

TO : KERR ADDISON MINES LTD.
(ATTN: RAY DUJARDIN)
703 - 1112 W. PENDER ST.
VANCOUVER, B.C.
V6E 2S1

CERT. # : A8617446-001-A
INVOICE # : 18617446
DATE : 11-SEP-86
P.C. # : NONE
Y11 (DIC)

CC: K. HEBERLEIN

Sample description	Prep code	AS ppr	Sb ppm				
YD-6D19R	207	150	180.0	--	--	--	--
YD-6D20R	207	220	120.0	--	--	--	--
YD-6D25R	207	50	8.0	--	--	--	--
YD-6D26R	207	22	93.0	--	--	--	--
YD-6D30R	207	1600	39.0	--	--	--	--

Certified by



Chemex Labs Ltd.

Analytical Chemists • Geochemists • Registered Assayers

212 Brooksbank Ave.
North Vancouver, B.C.
V7J 2C1

SEP 11 1986

Phone: (604) 984-0221
Telex: 043-52597

CERTIFICATE OF ASSAY

TO : KERR ADDISON MINES LTD.
(ATTN: RAY DUJARDIN)
703 - 1112 W. PENDER ST.
VANCOUVER, B.C.
V6E 2S1

**FILE
COPY
DO NOT
REMOVE**

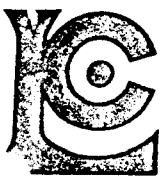
CERT. # : A8617446-001-A
INVOICE # : I8617446
DATE : 11-SEP-86
P.C. # : NGNE
Y11 (DIC)

CC: K. HEBERLEIN

Sample description	Prep code	Ag FA g/tonne	Au g/tonne				
YD-6D19R	207	38.0	0.21	--	--	--	--
YD-6D20R	207	60.0	0.21	--	--	--	--
YD-6D25R	207	2.3	<0.07	--	--	--	--
YD-6D26R	207	9.3	0.07	--	--	--	--
YD-6D30R	207	16.8	0.48	--	--	--	--

VOI rev. 4/85

.....
Registered Assayer, Province of British Columbia



Chemex Labs Ltd.

212 Brooksbank Ave.
North Vancouver, B.C.
Canada V7J 2C1

SEP 1 1986

Analytical Chemists • Geochemists • Registered Assayers

Phone: (604) 984-0221
Telex: 043-52597

CERTIFICATE OF ANALYSIS

TO : KERR ADDISON MINES LTD.
(ATTN: RAY DUJARDIN)
703 - 1112 W. PENDER ST.
VANCOUVER, B.C.
V6E 2S1

**FILE
COPY
DO NOT
REMOVE**

CERT. # : A8617442-001-A
INVOICE # : 18617442
DATE : 10-SEP-86
P.O. # : NONE
Y11A (DIC)

ATTN: K. HEBERLIEN

Sample description	Prep code	Ag ppm Aqua R	AS ppm	Sb ppm	Au ppb FA+AA		
8L 20W	201	0.1	11	3.2	<5	--	--
L20W 0+50N	201	0.1	4	1.0	<5	--	--
L20W 0+75N	201	0.3	4	1.2	<5	--	--
L20W 1+00N	201	0.1	7	1.0	<5	--	--
L20W 1+25N	201	0.1	5	1.0	10	--	--
L20W 1+50N	201	0.1	5	1.0	<5	--	--
L20W 1+75N	201	0.1	100	2.0	35	--	--
L20W 2+00N	201	0.1	15	0.8	<5	--	--
L20W 2+50N	201	0.1	7	0.7	<5	--	--
L20W 3+00N	201	0.1	48	0.9	<5	--	--
L20W 3+25N	201	0.1	60	1.4	5	--	--
L20W 3+75N	201	2.6	150	2.6	150	--	--
L20W 4+00N	201	0.2	120	2.2	20	--	--
L20W 4+50N	201	0.1	17	0.8	<5	--	--
L20W 4+75N	201	0.1	9	0.5	<5	--	--
L20W 5+00N	201	0.9	60	3.6	15	--	--
L20W 5+25N	201	0.5	39	2.8	10	--	--
L20W 5+50N	201	0.5	14	3.0	<5	--	--
L20W 5+75N	201	0.1	23	1.2	<5	--	--
L20W 6+00N	201	0.1	9	1.4	<5	--	--
L20W 6+50N	201	0.1	3	1.0	<5	--	--
L20W 7+00N	201	0.1	5	1.6	<5	--	--
3L 21W	201	0.1	6	1.0	<5	--	--
L21W 0+25N	201	0.1	11	2.8	5	--	--
L21W 0+50N	201	0.1	4	1.1	<5	--	--
L21W 0+75N	201	0.1	7	1.3	<5	--	--
L21W 1+00N	201	0.7	5	1.4	<5	--	--
L21W 1+25N	201	0.1	6	0.5	<5	--	--
L21W 1+50N	201	0.1	15	1.0	10	--	--
L21W 2+00N	201	0.1	7	1.0	<5	--	--
L21W 2+25N	201	0.2	2	0.2	<5	--	--
L21W 2+75N	201	0.1	16	1.2	<5	--	--
L21W 3+50N	201	0.1	60	1.2	<5	--	--
L21W 4+00N	201	0.1	45	1.8	<5	--	--
L21W 4+25N	201	0.6	110	5.4	10	--	--
L21W 4+50N	201	0.4	24	2.8	5	--	--
L21W 4+75N	201	0.1	60	5.3	<5	--	--
L21W 5+00N	201	0.6	29	4.2	<5	--	--
L21W 5+25N	201	0.1	11	2.2	<5	--	--
L21W 5+50N	201	0.1	17	1.6	<5	--	--

VOI rev. 4/85

Certified by Hart Bichler



Chemex Labs Ltd.

212 Brooksbank Ave.
 North Vancouver, B.C.
 Canada V7J 2C1
 Phone: (604) 984-0221
 Telex: 043-52597

Analytical Chemists • Geochemists • Registered Assayers

CERTIFICATE OF ANALYSIS

TO : KERR ADDISON MINES LTD.
 (ATTN: RAY DUJARDIN)
 703 - 1112 W. PENDER ST.
 VANCOUVER, B.C.
 V6E 2S1

CERT. # : A8617442-002-A
 INVOICE # : I8617442
 DATE : 10-SEP-86
 P.O. # : NONE
 Y11A (DIC)

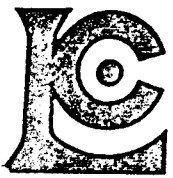
**COPY
 DO NOT
 REMOVE**

ATTN: K. HEBERLIEN

Sample description	Prep code	Ag ppm Aqua R	AS ppm	Sb ppm	Au ppb FA+AA		
L21W 5+75N	201	0.1	7	2.0	<5	--	--
L21W 6+25N	201	0.1	4	1.2	10	--	--
L21W 6+75N	201	0.1	10	1.4	5	--	--
L21W 7+00N	201	0.1	4	1.6	<5	--	--
BL 22W	201	0.1	6	1.8	<5	--	--
L22W 0+25N	201	0.1	11	2.6	<5	--	--
L22W 0+50N	201	0.2	1	1.3	<5	--	--
L22W 0+75N	201	0.1	2	1.9	10	--	--
L22W 1+00N	201	0.1	6	1.2	<5	--	--
L22W 2+00N	201	0.1	50	2.4	20	--	--
L22W 2+25N	201	0.1	7	1.2	<5	--	--
L22W 2+50N	201	0.1	19	2.4	<5	--	--
L22W 2+75N	201	0.1	11	1.3	<5	--	--
L22W 3+00N	201	0.1	110	2.5	15	--	--
L22W 3+25N	201	0.1	7	0.6	<5	--	--
L22W 3+50N	201	0.1	60	3.0	10	--	--
L22W 3+75N	201	0.3	50	3.2	5	--	--
L22W 4+00N	203	0.1	32	4.0	<5	--	--
L22W 4+25N	201	0.5	39	4.8	15	--	--
L22W 4+50N	201	0.5	11	2.8	5	--	--
L22W 4+75N	201	0.3	3	2.0	<5	--	--
L22W 5+00N	201	0.1	5	1.2	<5	--	--
L22W 5+25N	201	0.2	6	1.5	<5	--	--
L22W 5+50N	201	0.1	14	3.2	<5	--	--
L22W 5+75N	201	0.1	14	1.9	<5	--	--
L22W 6+00N	201	0.2	5	1.4	<5	--	--
L22W 6+25N	201	0.1	7	1.3	<5	--	--
L22W 6+50N	201	0.1	3	0.7	<5	--	--
L22W 6+75N	201	0.1	2	0.4	<5	--	--
BL 23W	201	0.1	7	1.2	<5	--	--
L23W 0+75N	201	0.3	19	1.1	<5	--	--
L23W 1+25N	201	0.1	7	1.0	<5	--	--
L23W 1+50N	201	0.1	6	1.0	<5	--	--
L23W 1+75N	201	0.6	9	1.3	<5	--	--
L23W 2+00N	201	0.2	22	3.4	<5	--	--
L23W 2+25N	201	0.4	80	5.6	40	--	--
L23W 2+50N	201	0.1	10	1.4	5	--	--
L23W 2+75N	201	0.1	11	0.9	35	--	--
L23W 3+00N	201	0.1	9	0.5	15	--	--
L23W 3+25N	201	0.1	29	1.5	15	--	--

VOI rev. 4/85

Certified by Hart Buchler



Chemex Labs Ltd.

212 Brooksbank Ave.
North Vancouver, B.C.
Canada V7J 2C1

SEP 11 1986

Analytical Chemists • Geochemists • Registered Assayers
PER

KERR ADDISON MINES LTD.
Phone: (604) 984-0221
Telex: 043-52597

CERTIFICATE OF ANALYSIS

FILE

TO : KERR ADDISON MINES LTD.
(ATTN: RAY DUJARDIN)
703 - 1112 W. PENDER ST.
VANCOUVER, B.C.
V6E 2S1

**COPY
DO NOT
REMOVE**

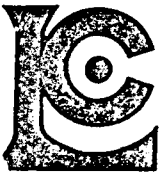
CERT. # : A8617442-003-A
INVOICE # : I8617442
DATE : 10-SEP-86
P.O. # : NONE
Y11A (DIC)

ATTN: K. HEBERLIEN

Sample description	Prep code	Ag ppm Aqua R	AS ppm	Sb ppm	Au ppb FA+AA		
L23W 3+50N	201	0.1	61	2.6	<5	--	--
L23W 3+75N	201	0.1	5	1.8	<5	--	--
L23W 4+00N	201	0.1	7	0.4	<5	--	--
L23W 4+25N	201	0.1	6	0.6	<5	--	--
L23W 4+50N	201	0.1	11	0.8	<5	--	--
L23W 4+75N	201	0.1	7	0.5	<5	--	--
L23W 5+00N	201	0.1	17	4.4	<5	--	--
L23W 5+25N	201	0.4	5	1.6	<5	--	--
L23W 5+50N	201	0.1	7	1.5	5	--	--
L23W 5+75N	201	0.1	9	2.0	<5	--	--
L23W 6+25N	201	0.1	5	1.0	<5	--	--
L23W 6+50N	201	0.1	11	1.4	<5	--	--
L23W 6+75N	201	0.1	9	0.8	<5	--	--
L23W 7+00N	201	0.1	4	0.5	<5	--	--
L36W 1+75N	201	0.1	10	0.2	<5	--	--
L36W 4+00N	201	0.1	4	1.0	<5	--	--
L36W 4+25N	201	0.1	5	0.5	<5	--	--
L36W 4+50N	201	0.1	5	0.4	<5	--	--
L36W 4+75N	201	0.1	5	0.5	<5	--	--
L36W 5+00N	201	0.1	6	0.4	5	--	--
L36W 5+25N	201	0.1	3	0.2	<5	--	--
L36W 5+50N	201	0.1	5	0.3	5	--	--
L36W 5+75N	201	0.1	5	0.4	<5	--	--
L36W 6+00N	201	0.1	1	0.1	<5	--	--
L36W 6+25N	201	0.1	1	0.1	<5	--	--
L36W 6+50N	201	0.1	2	0.5	<5	--	--
L36W 6+75N	201	0.1	2	0.7	<5	--	--
L36W 7+00N	201	0.1	4	0.4	<5	--	--
L36W 7+25N	201	0.1	1	0.1	<5	--	--
L36W 7+50N	201	0.1	7	0.2	5	--	--
L36W 7+75N	201	0.1	14	0.4	<5	--	--
L36W 8+00N	201	0.1	4	0.4	<5	--	--
YD-6D03S	201	0.1	12	2.2	<5	--	--
YD-6D04S	201	0.1	22	2.2	<5	--	--
YD-6D05S	201	0.1	30	10.4	5	--	--
YD-6D06S	201	0.1	16	3.0	<5	--	--
YD-6D07S	201	0.2	19	6.6	<5	--	--
YD-6D08S	201	0.1	10	5.5	<5	--	--
YD-6D09S	201	0.1	10	2.6	<5	--	--
YD-6D10S	201	0.1	10	2.0	<5	--	--

VOI rev. 4/85

Certified by Hart Bichler



Chemex Labs Ltd.

RECEIVED

2112 Brooksbank Ave.
North Vancouver, B.C.
Canada V7J 2C1

SEP 1 1986

Analytical Chemists • Geochemists • Registered Assayers

KERR ADDISON MINES LTD. (604) 984-0221
Telex: 043-52597

PER. **CERTIFICATE OF ANALYSIS**

TO : KERR ADDISON MINES LTD.
(ATTN: RAY DUJARDIN)
703 - 1112 W. PENDER ST.
VANCOUVER, B.C.
V6E 2S1

CERT. # : A8617442-004-A
INVOICE # : I8617442
DATE : 10-SEP-86
P.O. # : NONE
Y11A (DIC)

ATTN: K. HEBERLIEN

Sample description	Prep code	Ag ppm Aqua R	AS ppm	Sb ppm	Au ppb FA+AA		
YD-6D11S	201	0.1	12	4.0	<5	--	--
YD-6D12S	201	0.1	12	2.3	<5	--	--
YD-6D13S	201	0.1	15	1.6	<5	--	--
YD-6D14S	201	0.1	7	1.6	10	--	--
YD-6D15S	201	0.1	6	1.0	<5	--	--
YD-6D16S	201	0.2	27	5.4	<5	--	--
YD-6D17S	201	1.5	330	12.0	40	--	--
YD-6D18S	201	0.7	14	2.0	5	--	--
YD-6D19S	201	0.2	150	8.2	15	--	--
YD-6D20S	201	0.7	48	6.2	25	--	--
YD-6D21S	201	27.0	1700	46.0	400	--	--
YD-6D22S	201	3.0	220	10.4	35	--	--
YD-6D23S	201	0.2	60	12.0	15	--	--

Certified by Hart Bichler



Chemex Labs Ltd. SEP 11 1986

212 Brooksbank Ave.
North Vancouver, B.C.
Canada V7J 2C1

Analytical Chemists • Geochemists • Registered Assayers

Phone: (604) 984-0221
Telex: 043-52597

CERTIFICATE OF ANALYSIS

**FILE
COPY
DO NOT
REMOVE**

TO : KERR ADDISON MINES LTD.
(ATTN: RAY DUJARDIN)
703 - 1112 W. PENDER ST.
VANCOUVER, B.C.
V6E 2S1

CERT. # : A8617443-001-A
INVOICE # : I8617443
DATE : 10-SEP-86
P.O. # : NONE
Y11 (DIC)

ATTN: K. HEBERLEIN

Sample description	Prep code	Ag ppm Aqua R	AS ppm	Sb ppm	Au ppb FA+AA		
L37W 0+25N	201	0.1	2	0.4	<5	--	--
L37W 0+50N	201	0.1	3	0.3	<5	--	--
L37W 0+75N	201	0.1	1	0.4	<5	--	--
L37W 1+00N	201	0.1	14	0.5	<5	--	--
L37W 1+25N	201	0.1	14	0.8	<5	--	--
L37W 1+50N	201	0.2	5	1.4	<5	--	--
L37W 1+75N	201	0.2	6	0.3	<5	--	--
L37W 2+00N	201	0.1	6	0.4	<5	--	--
L37W 2+25N	201	0.1	4	0.4	<5	--	--
L37W 2+50N	201	0.1	5	0.3	<5	--	--
L37W 2+75N	201	0.1	1	0.1	<5	--	--
L37W 3+00N	201	0.1	5	0.2	<5	--	--
L37W 3+25N	201	0.1	3	0.8	<5	--	--
L37W 3+50N	201	0.1	6	0.4	<5	--	--
L37W 3+75N	201	0.2	6	0.7	<5	--	--
L37W 4+00N	201	0.2	10	0.9	<5	--	--
L37W 4+25N	201	0.1	6	0.7	<5	--	--
L37W 4+50N	201	0.1	6	0.5	<5	--	--
L37W 4+75N	201	0.1	5	0.2	15	--	--
L37W 5+00N	201	0.1	1	0.1	<5	--	--
L37W 5+25N	201	0.1	1	0.2	<5	--	--
L37W 5+50N	201	0.1	1	0.1	<5	--	--
L37W 5+75N	201	0.1	11	0.7	<5	--	--
L37W 6+00N	201	0.1	1	0.3	<5	--	--
L37W 6+25N	201	0.1	27	2.4	<5	--	--
L37W 6+50N	201	0.1	5	0.4	15	--	--
L37W 6+75N	201	0.1	4	0.4	<5	--	--
L37W 7+00N	201	0.1	1	0.2	<5	--	--
L37W 7+25N	201	0.1	10	0.6	<5	--	--
L37W 7+50N	201	0.1	6	0.6	<5	--	--
L37W 7+75N	201	0.1	5	0.6	<5	--	--
L37W 8+00N	201	0.2	1	1.0	<5	--	--
L42W 3+00S	201	0.1	125	4.2	<5	--	--
L42W 3+25S	201	0.1	9	0.8	<5	--	--
L42W 3+50S	201	0.2	5	1.9	<5	--	--
L42W 3+75S	201	0.1	5	1.4	<5	--	--
L42W 4+00S	201	0.1	24	4.0	<5	--	--
L42W 4+25S	201	0.1	2	0.4	<5	--	--
L42W 4+50S	201	0.1	3	1.2	<5	--	--
L42W 4+75S	201	0.1	5	0.2	<5	--	--

VOI rev. 4/85

Certified by Hart Bichler



Chemex Labs Ltd.

212 Brooksbank Ave.
North Vancouver, B.C.
Canada V7J 2C1

SEP 11 1986

Analytical Chemists • Geochemists • Registered Assayers

Phone: (604) 984-0221
Telex: 043-52597

CERTIFICATE OF ANALYSIS

TO : KERR ADDISON MINES LTD.
(ATTN: RAY DUJARDIN)
703 - 1112 W. PENDER ST.
VANCOUVER, B.C.
V6E 2S1

CERT. # : A8617443-002-A
INVOICE # : I8617443
DATE : 10-SEP-86
P.O. # : NONE
Y11 (DIC)

FILE
COPY
DO NOT
REMOVE

ATTN: K. HEBERLEIN

Sample description	Prep code	Ag ppm Aqua R	AS ppm	Sb ppm	Au ppb FA+AA		
L42W 5+00S	201	0.1	3	1.4	10	--	--
L42W 5+25S	201	0.1	1	1.2	<5	--	--
L42W 5+50S	201	0.1	5	0.4	<5	--	--
L42W 5+75S	201	0.1	7	1.0	<5	--	--
L42W 6+00S	201	0.1	11	3.2	<5	--	--
L42W 6+25S	201	0.1	4	2.2	<5	--	--
L42W 6+50S	201	0.1	1	0.2	<5	--	--
L42W 6+75S	201	0.1	5	0.4	<5	--	--
L42W 7+00S	201	0.1	4	0.4	<5	--	--
L43W 3+00S	201	0.1	3	0.6	<5	--	--
L43W 3+25S	201	0.1	3	0.3	15	--	--
L43W 3+50S	201	0.1	5	0.8	<5	--	--
L43W 3+75S	201	0.1	6	1.2	<5	--	--
L43W 4+00S	201	0.1	5	1.8	<5	--	--
L43W 4+25S	201	0.1	3	0.2	<5	--	--
L43W 4+50S	201	0.1	2	0.3	<5	--	--
L43W 4+75S	201	0.1	5	0.4	<5	--	--
L43W 5+00S	201	0.1	6	0.2	<5	--	--
L43W 5+25S	201	0.1	1	0.5	<5	--	--
L43W 5+75S	201	0.1	3	0.6	<5	--	--
L43W 6+00S	201	0.1	2	0.6	<5	--	--
L43W 6+25S	201	0.1	6	1.5	<5	--	--
L43W 6+50S	201	0.1	11	2.2	<5	--	--
L43W 6+75S	201	0.1	11	6.6	10	--	--
L43W 7+00S	201	0.1	4	2.0	5	--	--
L44W 3+25S	201	0.1	1	1.0	<5	--	--
L44W 3+50S	201	0.1	2	1.0	<5	--	--
L44W 3+75S	201	0.1	2	0.4	<5	--	--
L44W 4+00S	201	0.2	2	0.9	<5	--	--
L44W 4+25S	201	0.1	5	1.0	<5	--	--
L44W 4+50S	201	0.1	6	0.9	<5	--	--
L44W 4+75S	201	0.1	5	0.5	<5	--	--
L44W 5+00S	201	0.1	1	0.1	<5	--	--
L44W 5+25S	201	0.1	3	0.3	<5	--	--
L44W 5+50S	201	0.1	4	0.5	<5	--	--
L44W 5+75S	201	0.1	1	0.2	<5	--	--
L44W 6+00S	201	0.1	4	0.6	<5	--	--
L44W 6+25S	201	0.1	16	4.2	<5	--	--
L44W 6+50S	201	0.1	1	0.4	<5	--	--
L44W 6+75S	201	0.1	5	0.7	<5	--	--

VOI rev. 4/85

Certified by Hart Bechler



Chemex Labs Ltd.

Analytical Chemists • Geochemists • Registered Assayers

SEP 1 1986

212 Brookbank Ave.
North Vancouver, B.C.
Canada V7J 2C1
KERR ADDISON MINES LTD.
Phone: (604) 984-0221
Telex: 043-52597

CERTIFICATE OF ANALYSIS

TO : KERR ADDISON MINES LTD.
(ATTN: RAY DUJARDIN)
703 - 1112 W. PENDER ST.
VANCOUVER, B.C.
V6E 2S1

**COPY
DO NOT
REMOVE**

CERT. # : A8617443-003-A
INVOICE # : I8617443
DATE : 10-SEP-86
P.O. # : NONE
Y11 (DIC)

ATTN: K. HEBERLEIN

Sample description	Prep code	Ag ppm Aqua R	. AS ppm	Sb ppm	Au ppb FA+AA		
L44W 7+00S	201	0.1	7	1.2	<5	--	--

VOI rev. 4/85

Certified by Hart Bichler

APPENDIX III
Statement of Costs

APPENDIX III

Statement of Costs

DIC CLAIMS

<u>Labour Costs</u>	Travel	Field	Office	Total
D. Arscott, Project Geologist 2275 W. 20th Ave. Vancouver, B.C.	1½	4	2	7½
K. Heberlein, Geologist 821 Pinemont Ave. Port Coquitlam, B.C.	1½	7	3	11½
M. Allen, Assistant G.D., Whitehorse, Y.T.	1½	4	0	5½
	<u>4½</u>	<u>15</u>	<u>5</u>	<u>24½</u>
Total Labour (\$115/m.d. equivalent)				\$2817.00
<u>Expenses</u>				
Food	19½ days @ \$18/day			351.00
Truck	6 days @ \$50/day			300.00
Camp Supplies	12 days @ \$15/day			180.00
Grid supplies	12 days @ \$15/day			180.00
Soil Samples(Au, Ag, As, Sb)	211 @ \$17/sample			3507.00
Rock Samples	43 @ \$20.40/sample			815.00
Shipping				300.00
Helicopter	Mob/demob			930.00
Expeditor				150.00
Aerial photography, Vic & Dic Claims				
	13th Sept., 1985. Pro-rated @ 1/5 x \$3,000.			600.00
Magnetometer + EM equipment, effective rental				<u>400.00</u>
	Total Program Cost			\$10,610.

STATEMENT OF QUALIFICATIONS

I, Kim Heberlein, certify that:

1. I am a geologist residing at 821 Pinemont Avenue, Port Coquitlam, B.C.
2. I graduated from the University of British Columbia in 1979 with a B.Sc. in geology.
3. I have worked in geological exploration since 1976.
4. I have no direct or indirect interest in the said property.

Signed: K Heberlein

Date: 6th Feb 1987