

1986 DIAMOND DRILLING & PHYSICAL REPORT

on the MID CLAIM GROUP

Watson Lake Mining District, Y.T., NTS: 105/B-1  
Latitude 60°02'N; Longitude 130°12'W

December, 1986

**YUKON 1986 ASSESSMENT**

**091891**



**091891**

1 9 8 6  
DIAMOND DRILLING & PHYSICAL REPORT  
ON THE  
MID CLAIM GROUP

WATSON LAKE MINING DISTRICT, YUKON TERRITORY  
NTS: 105/B-1  
Latitude 60°02'N, Longitude 130°12'W

OWNER/OPERATOR: REGIONAL RESOURCES LTD.

By

J. J. Hylands, P.Eng.

CORDILLERAN ENGINEERING  
1980-1055 West Hastings Street  
Vancouver, B.C. V6E 2E9

091891

DECEMBER, 1986

---

Claims: Mid 1-128; Grant No's YA 56975-YA57102  
Mid 129-160; Grant No's YA 57155-YA57186  
Mid 161-225; Grant No's YA 58936-YA59000  
Mid 226-240; Grant No's YA 65801-YA65815  
Mid 241Fr-  
272Fr; Grant No's YA 70110-YA70141

LOCATION: S. of Rancheria River, approximately 85 km  
west of Watson Lake, Yukon Territory

WORK PERIOD: June 13 - September 4, 1986

## TABLE OF CONTENTS

<u>Section</u>		<u>Page</u>
1	SUMMARY AND CONCLUSIONS .....	1
2	INTRODUCTION .....	2
	2.1 Location and Access .....	2
	2.2 Claim Status .....	2
	2.3 History .....	6
	2.4 1986 Program .....	6
3	GEOLOGY .....	7
	3.1 Regional Geology .....	7
	3.2 Property Geology .....	7
4	PHYSICAL WORK .....	12
5	DIAMOND DRILLING .....	13
	5.1 Survey Creek .....	13
	5.2 Spider Swamp .....	14
6	COST STATEMENT .....	15
	6.1 Physical Work .....	15
	6.2 Diamond Drilling .....	16
	6.3 Cost Summary .....	18
7	GROUPING AND COST ALLOCATIONS .....	19
8	BIBLIOGRAPHY .....	22
9	STATEMENT OF QUALIFICATIONS .....	23

### Tables

Table 1	Status of Claims .....	5
Table 2	Summary of Diamond Drilling, Y.T., 1986 .....	14
Table 3	Summary of Diamond Drilling Costs, Y.T., 1986 .....	18
Table 4	Claim Groups, Y.T., 1986 .....	19
Table 5	Allocation of 1986 Exploration Costs to Y.T. Claim Groups .....	21

Table of Contents

Page

Figures

Figure 1	Location Map .....	3
Figure 2	Claim Map, 1986 .....	4
Figure 3	Generalized Stratigraphy .....	8
Figure 4	Grouping Map, 1986 .....	20

Plates

Plate 1	Survey Mountain North Geology .....	in pocket
Plate 2	Survey Mountain South Geology .....	in pocket

Appendices

APPENDIX "A"	Diamond Drill Core Logging Format
APPENDIX "B"	Logs of MW 86-273, 277 and 278
APPENDIX "C"	Assay and Analysis Record Sheets
APPENDIX "D"	Caron Diamond Drilling Invoices



## 2.0

INTRODUCTION

## 2.1

## LOCATION AND ACCESS

The Mid claim group of the Midway property lies south of the Rancheria River approximately 85 km west of Watson Lake, Y.T. Road access to the claims is via the two-wheel drive Tootsee River road, beginning at km 1128 on the Alaska Highway, which crosses the west side of the group. Access to the east side of the group is provided by a four-wheel drive road which begins at km 18.8 on the Tootsee River road (Figure 1).

The claims cover moderately rolling mountainous terrain with broad valleys. Vegetation is predominantly black spruce. Overburden consists typically of till with a high gravel component; north facing slopes are underlain by permafrost.

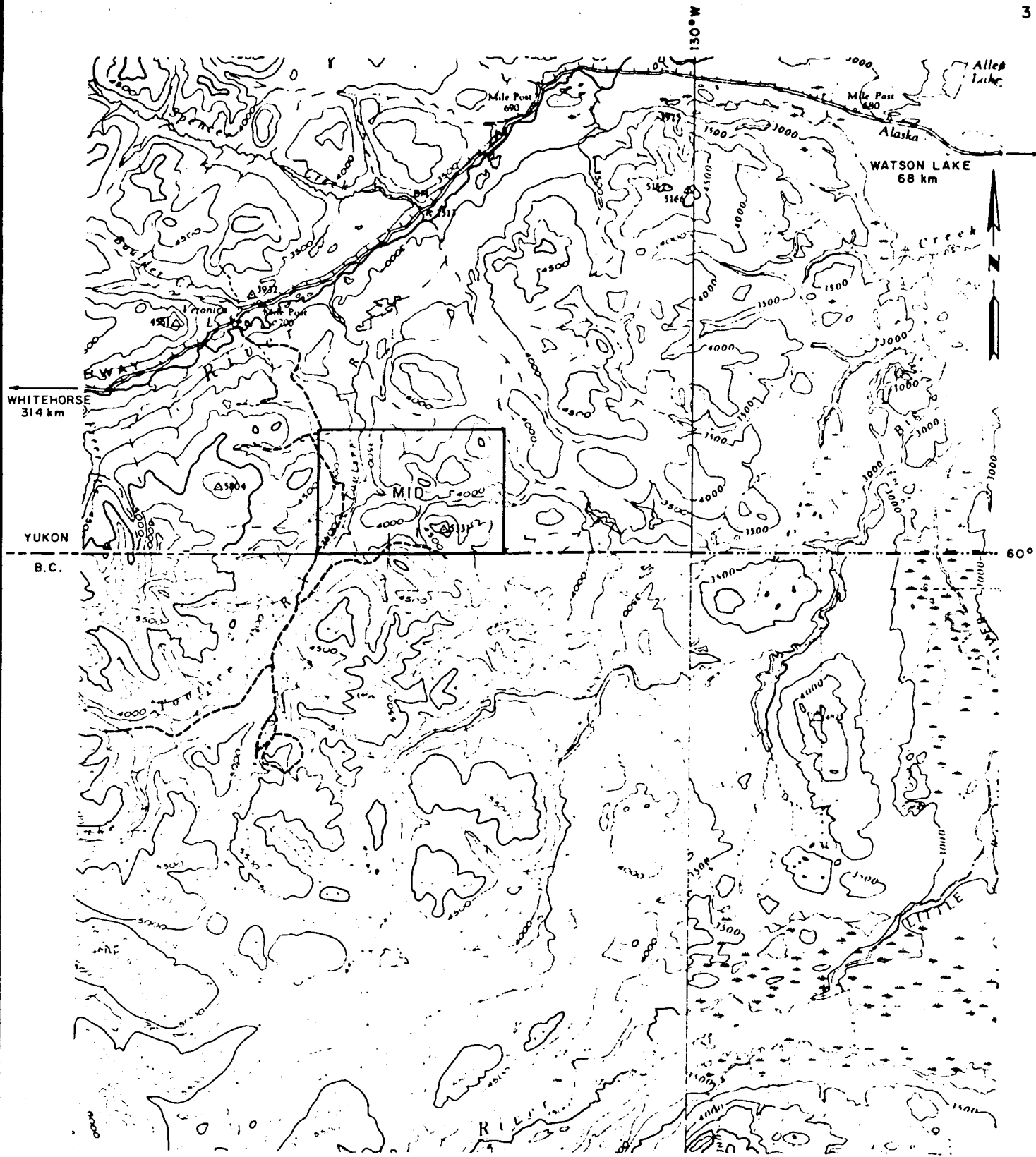
## 2.2

## CLAIM STATUS

The claim group consists of the Mid 1 to 272 two-post claims and fractions staked in 1980, 1981 and 1983 by Cordilleran Engineering on behalf of Regional Resources Ltd., Amax of Canada Limited and Canamax Resources Inc. (Figure 2).

The locations of the claims on Figure 2 are based on an aerial triangulation survey flown in 1982 of targets placed at three places on each location line.

Individual claims have not been surveyed. The status of the claims is given in Table 1.

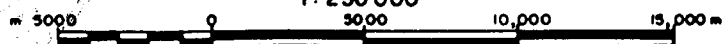
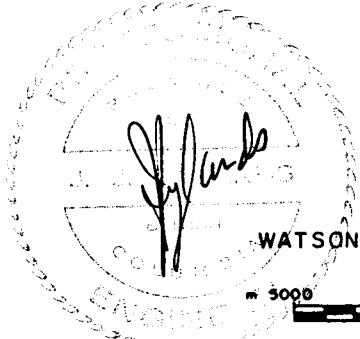


REGIONAL RESOURCES LTD.  
MIDWAY PROPERTY

# MID CLAIMS

WATSON LAKE MINING DISTRICT, YUKON TERRITORY

1: 250 000



BY  
CORDERAN ENGINEERING

FIGURE 1

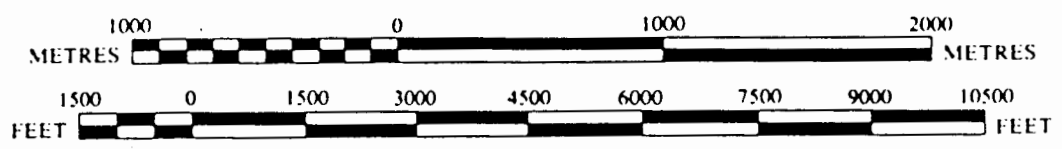


20'

130°15'

10'

SCALE 1:30,000



105 B/1

MIDWAY PROPERTY Y.T.

CLAIM MAP, 1986

Figure 2

Table 1

## MIDWAY PROPERTY - YUKON TERRITORY CLAIMS

272 Claims, Watson Lake Mining District; NTS: 105/B-1; Reg.Owner: Regional Resources Ltd.

CLAIM	GRANT No(s)	EXPIRY DATE(s) '86	CLAIM	GRANT NO(s)	EXPIRY DATE(s) '86
Mid 1-2	YA 56975-56976	31 Dec. 1989 -93	Mid 141	YA 57167	31 Dec. 1989
Mid 3	YA 56977	31 Dec. 1989	Mid 142	YA 57168	31 Dec. 1988 -92
Mid 4-8	YA 56978-56982	31 Dec. 1989 -93	Mid 143-160	YA 57169-57186	31 Dec. 1989
Mid 9	YA 56983	31 Dec. 1986 -91	Mid 161-174	YA 58936-58949	31 Dec. 1989
Mid 10	YA 56984	31 Dec. 1989 -93	Mid 175	YA 58950	31 Dec. 1988-CIL 89
Mid 11-16	YA 56985-56990	31 Dec. 1987 -91	Mid 176-181	YA 58951-58956	31 Dec. 1989
Mid 17-26	YA 56991-57000	31 Dec. 1989 -93	Mid 182	YA 58957	31 Dec. 1988 -92
Mid 27-32	YA 57001-57006	31 Dec. 1987 -91	Mid 183	YA 58958	31 Dec. 1989
Mid 33-42	YA 57007-57016	31 Dec. 1989 -93	Mid 184	YA 58959	31 Dec. 1988 -92
Mid 43	YA 57017	31 Dec. 1987 -91	Mid 185-189	YA 58960-58964	31 Dec. 1989
Mid 44	YA 57018	31 Dec. 1988 -92	Mid 190	YA 58965	31 Dec. 1987 -91
Mid 45-48	YA 57019-57022	31 Dec. 1987 -91	Mid 191	YA 58966	31 Dec. 1989 -93
Mid 49-58	YA 57023-57032	31 Dec. 1989 -93	Mid 192	YA 58967	31 Dec. 1988 -92
Mid 59-60	YA 57033-57034	31 Dec. 1988 -92	Mid 193-196	YA 58968-58971	31 Dec. 1986 -91
Mid 61-64	YA 57035-57038	31 Dec. 1987 -91	Mid 197	YA 58972	31 Dec. 1989
Mid 65-74	YA 57039-57048	31 Dec. 1989 -93	Mid 198	YA 58973	31 Dec. 1986 -91
Mid 75-79	YA 57049-57053	31 Dec. 1988 -92	Mid 199	YA 58974	31 Dec. 1989 -93
Mid 80	YA 57054	31 Dec. 1987 -91	Mid 200	YA 58975	31 Dec. 1988 -92
Mid 81-84	YA 57055-57058	31 Dec. 1989 -93	Mid 201-206	YA 58976-58981	31 Dec. 1986 -91
Mid 85-86	YA 57059-57060	31 Dec. 1990 -94	Mid 207-208	YA 58982-58983	31 Dec. 1988 -92
Mid 87	YA 57061	31 Dec. 1989 -93	Mid 209-214	YA 58984-58989	31 Dec. 1986 -91
Mid 88	YA 57062	31 Dec. 1990 -94	Mid 215-216	YA 58990-58991	31 Dec. 1988 -92
Mid 89	YA 57063	31 Dec. 1988 -92	Mid 217	YA 58992	31 Dec. 1986 -91
Mid 90	YA 57064	31 Dec. 1989 -93	Mid 218	YA 58993	31 Dec. 1988 -92
Mid 91-93	YA 57065-57067	31 Dec. 1988 -92	Mid 219-222	YA 58994-58997	31 Dec. 1986 -91
Mid 94	YA 57068	31 Dec. 1989 -93	Mid 223-224	YA 58998-58999	31 Dec. 1988 -92
Mid 95	YA 57069	31 Dec. 1988 -92	Mid 225	YA 59000	31 Dec. 1987 -91
Mid 96-100	YA 57070-57074	31 Dec. 1989 -93	Mid 226-227	YA 65801-65802	31 Dec. 1987 -91
Mid 101	YA 57075	31 Dec. 1992	Mid 228	YA 65803	31 Dec. 1988 -92
Mid 102	YA 57076	31 Dec. 1991	Mid 229	YA 65804	31 Dec. 1986 -91
Mid 103	YA 57077	31 Dec. 1989 -93	Mid 230	YA 65805	31 Dec. 1988 -92
Mid 104	YA 57078	31 Dec. 1991	Mid 231-232	YA 65806-65807	31 Dec. 1990 -94
Mid 105	YA 57079	31 Dec. 1989 -93	Mid 233	YA 65808	31 Dec. 1988 -92
Mid 106	YA 57080	31 Dec. 1991	Mid 234	YA 65809	31 Dec. 1992
Mid 107	YA 57081	31 Dec. 1989 -93	Mid 235	YA 65810	31 Dec. 1988 -92
Mid 108	YA 57082	31 Dec. 1991	Mid 236	YA 65811	31 Dec. 1990 -94
Mid 109	YA 57083	31 Dec. 1989 -93	Mid 237	YA 65812	31 Dec. 1988 -92
Mid 110	YA 57084	31 Dec. 1991	Mid 238-240	YA 65813-65815	31 Dec. 1990 -94
Mid 111	YA 57085	31 Dec. 1989 -93	Mid 241F-253F	YA 70110-70122	31 Dec. 1989
Mid 112	YA 57086	31 Dec. 1991	Mid 254F-257F	YA 70123-70126	31 Dec. 1988 -93
Mid 113-120	YA 57087-57094	31 Dec. 1989	Mid 258F	YA 70127	31 Dec. 1988 -92
Mid 121-128	YA 57095-57102	31 Dec. 1987 -91	Mid 259F-261F	YA 71028-70130	31 Dec. 1987 -91
Mid 129-130	YA 57155-57156	31 Dec. 1989	Mid 262F-263F	YA 70131-70132	31 Dec. 1989
Mid 131-137	YA 57157-57163	31 Dec. 1989	Mid 264F-266F	YA 70133-70135	31 Dec. 1989 -93
Mid 138	YA 57164	31 Dec. 1987 -91	Mid 267F	YA 70136	31 Dec. 1988 -92
Mid 139	YA 57165	31 Dec. 1989	Mid 268F-272F	YA 70137-70141	31 Dec. 1987 -91
Mid 140	YA 57166	31 Dec. 1987 -91			

## RECAP OF MID CLAIMS BY EXPIRY DATE (at October 31, 1986)

1989: Mid 3,113-120,129-137,139,141,143-174,176-181,183,185-189,197,241F-253F

1991: Mid 9,11-16,27-32,43,45-48,61-64,80,102,104,106,108,110,112,121-128,138,140,190,193-196,198,201-206,209-214,217,219-222,225-227,229,259F-261F,268F-272F

1992: Mid 44,59-60,75-79,89,91-93,95,101,142,182,184,192,200,207-208,215-216,218,223-224,228,230,233-235,237,258F,267F

1993: Mid 1-2,4-8,10,17-26,33-42,49-58,65-74,81-84,87,90,94,96-100,103,105,107,109,111,191,199,254F-257F,264F-266F

1994: Mid 85-86,88,231-232,236,238-240

## 2.3

## HISTORY

The Mid 1 to 160 claims were staked in late 1980 because of encouraging results for Ag, Pb, Zn and Ba returned by stream sediment samples taken in the area. The Mid 161 to 240 claims were added in June 1981 to cover sedimentary rocks which were known to host massive sulphide deposits south of the B.C./Y.T. border.

During the 1981 field season the Mid claims were geologically mapped at 1:5000 scale, 10.5 km of cut baseline and 126.4 km of blazed and flagged cross-and-tie-line were established, and 2,546 soil samples were collected and analyzed for Ag, Pb, Zn and Ba. Three lines (3.9 km) of Pulse EM and gravity surveys were conducted over one geochemically anomalous area.

The 1982 program on these claims involved cutting two grid (14.1 km) as control for an expanded Pulse EM survey over the Big Swamp area. In addition, the Midway property was aerially photographed at 1:20,000 and 1:40,000 scales, and orthophoto maps produced at 1:10,000 scale.

A four-wheel drive road was built during 1984 from the Tootsee River to the Big Swamp Barite (Y.T.) and Ewen Barite (B.C.) showings. Local area were remapped and soil sampled as a result of knowledge gained by extensive diamond drilling in correlative stratigraphy located 13 km to the southwest. A four-wheel drive road was constructed by Canamax Resources Inc. in 1985 from the Ewen Barite showing north across the east side of the claim block.

## 2.4

## 1986 PROGRAM

After assessment of the results obtained from the geological, geochemical and geophysical surveys undertaken on the Mid claims in previous years and correlation with the results obtained during the extensive surface and underground exploration programs on the Midway carbonate-hosted deposits to the southwest, it was concluded that three areas on the Mid claims had the potential to host similar mineralization. After additional geological, geochemical and geophysical surveys were conducted, three diamond drill targets were defined. 6.8 km of access roads were constructed, and a total of 447.63 m of HQ core obtained from three holes.

\*\*\*

## 3.0

GEOLOGY

## 3.1

## REGIONAL GEOLOGY

The Mid claims are underlain by Lower and Middle Paleozoic sediments intruded on the west by the Cassiar Batholith of Late Cretaceous age. The sedimentary succession has been assigned, from oldest to youngest, to the Kechika, Sandpile, McDame and Sylvester Groups (Gabrielse, 1969).

The Cambrian to Lower Silurian Kechika Group consists of siltstone, phyllite and limestone, altered to hornfels and skarns near the Batholith contact. The Silurian to Middle Devonian Sandpile and McDame Groups consist of quartzite, dolostone and limestone. These Lower Paleozoic sediments were deposited in shallow water and on tidal flats of the Cassiar Platform. The Upper Devonian to Mississippian Lower Sylvester Group consists of a thick section of argillite, sandstone, and local conglomerate beds. These clastic rocks were deposited by turbidity currents in an offshore basin or trough, which probably developed by subsidence of fault-bounded blocks, possibly associated with a rifting center. The Mississippian to ?Permian Upper Sylvester Group consists of phyllite, chert, local calcarenite beds, volcanic flows and tuffs and ultramafics. This unit is part of the allochthon which was thrust over the Cassiar Platform (Gordey, et al, 1982).

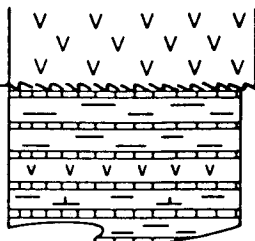
## 3.2

## PROPERTY GEOLOGY

As diamond drilling progressed in the Discovery area of the Midway property, the Lower Sylvester and McDame stratigraphy packages were subdivided into various recognizable units and subunits. These are summarized on Figure 3. The general stratigraphy found in the area and the units intersected in the diamond drill holes on the Mid claims are described in more detail, in descending order, below.

UPPER SYLVESTER GROUP USY

UNIT 4 300m+ Volcanic Flows, Tuffs + Intermediate to ultramafic Intrusives, Serpentinites and Metasediments.  
Possible Thrust Fault  
UNIT 3 700m+ Argillite, Chert, local Calcareenite + Volcanic Flows.



Mississippian - ? Permian

Possible Thrust Fault

UNIT 2B 150 - 200 m Sandstone, Conglomerate, Siltstone

locally transitional through Unit 2BA

UNIT 2A 400 - 640 m Mudstone, Siltstone, Sandstone, Argillite.

LOWER SYLVESTER GROUP LSY

Latest Devonian Mississippian

Exhalites - Silica, Barite, local Ag, Pb, Zn, Fe

UNIT 1B 40 - 290 m Sandstone, Conglomerate, Siltstone, Mudstone

UNIT 1A 5 - 45 m. Argillite, Siltstone

Unconformity

LOWER ZONE Massive Sulphides 0 - 15 m. Ag, Pb, Zn, Fe

McDAME GROUP M

Middle to Late Devonian

UNIT MLS 260 m + Limestone, minor Dolostone, local strong brecciation.

UNIT MDS 113m+ Dolostone

SANDPILE GROUP S

Silurian to Early Devonian

UNIT Su Up to 150 m Silty - Sandy Dolomite

UNIT Sq Up to 150 m Dolomite, Quartz Arenite

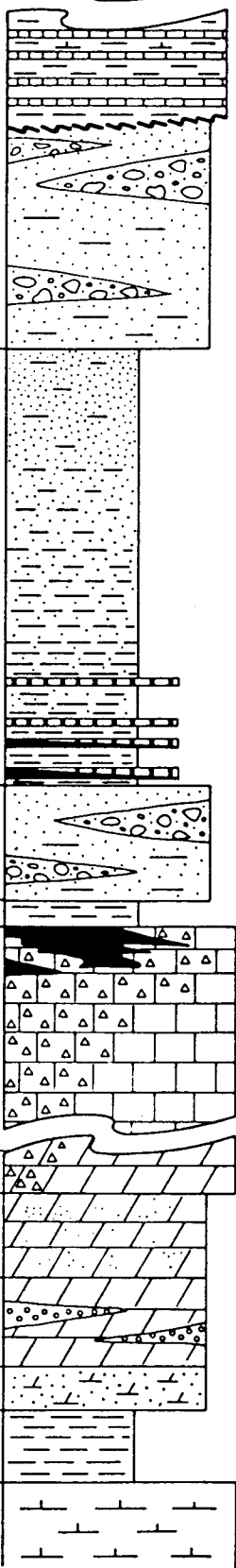
UNIT Si Up to 50m Dolomitic Siltstone

KECHIKA GROUP K

Cambrian to Early Silurian

UNIT Ku 300m+ Carbonaceous calcareous Siltstone, Mudstone

UNIT Ki 50 m Silty Argillaceous Limestone



1 : 5000



REGIONAL RESOURCES LTD.  
MIDWAY PROPERTY

GENERALIZED STRATIGRAPHY

N.T.S. 104-0, 105-B  
WATSON LAKE MINING DISTRICT, YUKON TERRITORY  
LIARD MINING DIVISION, BRITISH COLUMBIA

SCALE AS SHOWN

BY  
CORDILLERAN ENGINEERING  
1980 - 1055 W. HASTINGS STREET  
VANCOUVER, B.C. V6E 2E9

DECEMBER 1984

FIGURE 3

**LOWER SYLVESTER GROUP** Latest Devonian Mississippian (Units 1A,1B,2A,2B)

General

The Sylvester Group was defined in the Cassiar region by Gabrielse, 1963. It originally included the siliciclastic sequence immediately overlying the McDame, together with a package of sedimentary, volcanic and igneous rocks of "oceanic" affinity which has recently been defined as "Sylvester Allochthon" (Gordey et al., 1982a). The autochthonous siliciclastic succession is informally named here as the "Lower Sylvester Group". Sedimentologic and stratigraphic characteristics, however, suggest that this succession most likely correlates with the Upper Earn Group, which has been defined in east-central Yukon by Gordey et al., 1982b, and is recognized and mapped to the south, in the Gataga district of northeastern British Columbia.

Occurrence

The Lower Sylvester is the Group best represented areally on the property. The considerable thickness relative to the adjacent region suggests that the formal stratigraphic reference-section for this Group should be established in the Midway area.

Lithostratigraphy

The following units, from top to bottom have been defined in drill-cores and outcrop in the Midway area:

Unit 2B: 150-200m

Sandstone, light grey, moderately siliceous, massive and laminated, minor interbedded siltstone and conglomerate. Graded bedding is common, but a coarsening-upward trend characterizes the unit. Fossil wood casts and finely disseminated pyrite occur locally in sandstone.

Unit 2A: 400-640m

Siltstone, weakly to moderately carbonaceous, slightly siliceous, grey, laminated; interbedded with lesser sandstone, grey-brown, thin to medium bedded, parallel- and cross-laminated. Soft-sediment structures are common in the upper three quarters of the unit. Sandstone content increases upwards, grading into Unit 2B. At the base: argillite, highly siliceous, dark grey; minor calcarenite interbeds. (This basal section, 60-100m thick, hosts several siliceous horizons, "exhalites", locally with barite, pyrite, sphalerite and galena.)

Unit 1B: 40-290m

Sandstone, moderately siliceous, light grey to grey, massive and laminated; minor interbedded siltstone and conglomerate. Sandstones and conglomerates are commonly graded, often associated with parallel and cross-laminated sandstones and with thin siltstones, and organized into recognizable Bouma sequences. Disseminated pyrite is locally abundant in sandstone. The contact with Unit 2A is sharp, whereas the contact with Unit 1A is usually gradational (Subunit 1BA).

Unit 1A: 4-45 m

Argillite and siltstone, pyritic, grey to dark grey, moderately to highly carbonaceous, weakly to highly siliceous (Subunit 1AA); locally calcareous (Subunit 1AC); massive to faintly laminated, minor sandstone interbeds.

## Property Geology

**McDAME GROUP** Middle to Late Devonian (Units MDS, MLS)General

This Group broadly corresponds to the carbonate succession first named and mapped by Gabrielse, 1963, in the Cassiar area.

Occurrence

The McDame carbonates are represented over the entire property, forming, together with the underlying Sandpile, the bulk of the resistant, cliff-forming morphologies in the area.

Lithostratigraphy

On the broader scale of the general Midway property area, the following units can be recognized in descending stratigraphic order:

- MLS: (Upper Part, Subunits ML1 to ML7) 260m+  
Fossiliferous limestone (mainly Amphipora, stromatoporoid and coral-bearing packstone, and locally stromatoporoid-boundstone), grey, medium to thick bedded; and limestone, sparsely fossiliferous (Amphipora wackestone and mudstone, finely crystalline mudstone), darker grey, medium to thick bedded.
- MDS: (Lower Part, Subunit ML8) 113m+  
Limestone, sparsely fossiliferous to barren (Amphipora-or bioclastic-wackestone and mudstone to finely crystalline mudstone), grey, locally laminated in alternating medium-thick beds; local brachiopod concentrations; minor Amphipora packstone. This unit is not uncommonly (particularly at the base) neomorphosed to: dolomite, medium to coarsely crystalline, neomorphic, dark grey, commonly fetid and with conspicuous inter-crystalline porosity, and ghosts of fossil remains.

Recrystallization, brecciation, and staining and replacement by oxides are common in the McDame over the area, and locally obliterate diagnostic features. On a finer scale, the McDame carbonate succession studied in drill-cores from the Midway deposit area was subdivided into eight bio- and litho-facies units.

**SANDPILE GROUP** Silurian to Early Devonian (Units Si, Sq, Su)General

The Group was first defined by Gabrielse, 1954, in the Cassiar district. It corresponds with the unnamed Unit 4 of Gabrielse, 1969, in the Midway area.

Occurrence:

The Sandpile is well represented over the Midway property area, particularly in the Survey Mountain and southwestern regions.

Lithostratigraphy

The following units have been recognized in descending stratigraphic order:

- Su: (Upper Transitional Sandpile) Up to 150 m  
Dolomite, light grey, silty-sandy, mechanically or cryptalgally laminated, locally bioturbated; and interbedded calcareous/dolomitic mudstone, darker/lighter grey, relatively featureless; thick-bedded.

Sandpile Group:

Lithostratigraphy cont'd:

- Sq: (Middle Sandpile) Up to 150m  
Dolomite, finely crystalline, light grey to buff, mechanically to cryptalgally laminated; locally fine evaporite-crystal pseudomorphs, dolomite flat-pebble conglomerates, and, possibly, displacive diapiric structures document incipient/vanished evaporite association; lesser sandstone (quartz-arenite), light grey, fine to medium grained; traction-current structures locally conspicuous; thick-bedded to massive.
- Si: (Lower Transitional Sandpile) Up to 50m  
Dolomitic siltstone, grey, weathers light brown, bioturbated; minor current laminations; medium to thick bedded.

**KECHIKA GROUP** Cambrian to Early Silurian (Units Ki, Ku)

General

The definition of the Kechika Group here adopted is still consistent with the original work in the area (Gabrielse, 1969). However, more recent stratigraphic usage would assign only the lower part of the succession (Ki) to the Kechika Group, whereas the upper part (Ku) would be correlated with the Road River Group (Gordey, et al., 1982b). Limited outcrops and lack of biostratigraphic documentation suggests retaining the original definition.

Occurrence

Lithologies assigned to the Kechika Group occur in the northeastern part (Survey Mountain) and in the Southern Property area (Figure 4).

Lithostratigraphy

The following units have been recognized in descending order:

- Ku: (Upper Part) 300m+  
Siltstone, calcareous, grey, weathers reddish brown, platy and laminated, thin to medium bedded; and calcareous argillite to argillaceous limestone, locally carbonaceous, buff to dark grey-brown; bedding indistinct to medium.
- Ki: (Lower Part) 50m  
Limestone, silty, argillaceous, wavy banded and nodular, grey thin-bedded.

PHYSICAL WORK

Of the three drill targets chosen, one was in the Survey Creek area and two were near Spider Swamp. Drill and crew access to Survey Creek was provided by a 1.6 km four-wheel drive road (Plate 1) constructed with a Caterpillar D-6C crawler tractor rented from E. Caron Diamond Drilling Ltd. of Whitehorse. The road started at the Ewen Barite showings.

A 6.2 km road was constructed with the D-6C to give access to the Spider Swamp drill sites (Plates 1 and 2). An interval of 600 m of melting permafrost precluded the use of wheeled vehicles for crew and material transfer, but was not an impediment to skidding the diamond drill and rod sloop into the drill area.

Both roads are a minimum of 4m in width. With the exception of the permafrost section they were located in well drained material. A 60cm x 6m culvert was installed in the creek crossing in Utopia Valley. All downed trees were bucked and slashed. The permafrost section was ditched on the uphill side to control drainage in anticipation of future use.

## 5.0

DIAMOND DRILLING

All drilling on the Mid claims during 1986 was performed by E. Caron Diamond Drilling Limited of Whitehorse using a modified Longyear 38 diamond drill and HWL rods. Sumps were constructed at each site and return drilling fluids directed into them. Site cleanup after each hole was completed was excellent.

Major logistical and water problems were encountered while drilling the last two holes. The first was caused by the permafrost on the access road to Spider Swamp: a Bell 206B helicopter leased from Frontier Helicopters was required to move drill crews, supplies and core. The second was due to the lack of water near the drill sites. Initially, three stages of pumping were required along the 1600m water line, and later mobile water tankers were rented to haul and store water after freezing conditions were encountered.

## 5.1

## SURVEY CREEK

Survey Creek occupies a broad, till-covered valley between Survey Mountain and Sand Hill (Plate 1). Large, second order soil geochemical anomalies in Ag, Pb and Zn were defined in 1981. A reinterpretation of previous Pulse EM survey results led to an expanded survey in 1986. Detailed geological mapping on Survey Mountain and Sand Hill resulted in a revised structural picture. Combining geological, geochemical and geophysical results, a drill site was established at UTM coordinates 6,652,700 N, 433,685 E, elevation 1280 m. The target was carbonate-hosted massive sulphides capped by shale at a depth of 100m to 150 m.

Diamond drill hole MW 86-273 was collared at -90 degrees on July 29, 1986, and completed at a depth of 177.7m on August 5. There were two intersections of fault-bounded McDame dolostone in the core; Lower Sylvester Unit 1AA siltstones were intersected above, between and below the dolostones. No sulphides were found. It was concluded that the structure of the area was much more complex than had been interpreted.

## 5.2

## SPIDER SWAMP

Silver-bearing galena veins were found in a Lower McDame dolostone exposure northeast of Spider Swamp in 1984. The 1981 soil sampling grid was expanded and Pulse EM and magnetometer surveys conducted. Interpretation of the geological, geochemical and geophysical results indicated a possible buried conductor west of the Spider Swamp showing, in an area where Lower Sylvester siltstone was believed to overlie Lower McDame carbonate. Two targets were selected, one each north and south of Spider Swamp.

DDH MW 86-277 was collared at -90 degrees at UTM coordinates 6,656,361 North and 433,632 East, and drilled to a depth of 156.1 metres. The hole intersected altered, iron oxide stained, structurally disturbed Lower Sylvester siltstone. No carbonate or sulphides were intersected. The bottom 36m of the hole appeared to be in a gouge, red to reddish-orange in colour. The hole was terminated because the rods were binding.

The core from 34m to 156.1m was sampled and analyzed geochemically for Ag, Pb, Zn, Cu, As, Ba, Au and Fe. All samples between 126.1m and 153.6m were moderately to strongly anomalous in all elements except Ag. The source of these anomalous levels has not been determined.

The second hole, MW 86-278, was collared south of Spider Swamp (6,655,768 North, 433,631 East), and drilled to a depth of 143.9m at -90 degrees. This hole was terminated because of drilling problems.

A Lower Sylvester stratigraphic package consisting of Units 1B, 1BA, (1A) was repeated a number of times due to high angle faulting. The sandstones and siltstones were neither altered nor iron stained. There was a 0.5m intercept of possible McDame carbonate at 117m, but no sulphides were found.

Copies of the diamond drill logging format, diamond drill records, and drill hole logs are appended. The Certificates of Analysis for DDH MW 86-277 are in Appendix "C". The drilling is summarized in Table 2.

Table 2 SUMMARY OF DIAMOND DRILLING, Y.T., 1986

DDH	AREA	CLAIM	COORDINATES		ELEV. m	AZIMUTH	DIP	DEPTH m
			Northing	Easting				
273	Survey Creek	Mid 69	6,652,700	433,685	1280	0°	-90°	177.70
277	Spider Swamp	Mid 221	6,656,361	433,632	1306	0°	-90°	156.06
278	Spider Swamp	Mid 219	6,655,768	433,631	1375	0°	-90°	<u>143.87</u> 477.63

\*\*\*

6.0

COST STATEMENT

The following costs were incurred during construction of access roads and diamond drilling of three holes on the Mid claims, Y.T., during 1986. The drilling contractors invoices are appended.

6.1

## PHYSICAL WORK

<u>Rental of D-6C Caterpillar tractor</u>	= \$75.00/hr	
<u>Fuel Cost:</u> 4.5 gals/hour x \$1.932/gal	= <u>8.69/hr</u>	<b>\$83.69/hr</b>
	83.69/hr	

<u>SURVEY CREEK</u> (DDH 273; Mid 69) Construction of access road and drill site preparation:	46 hours x 83.69/hr	= \$ 3,849.74
---	---------------------	---------------

<u>SPIDER SWAMP</u> (DDH 277,278; Mid 221,219) Construction of access roads and drill site preparation:	121.5 hrs x 83.69/hr	= 10,168.34
Operator travel:	59 hrs x 29.00/hr	= <u>1,711.00</u>
		\$11,879.34

<u>Bell 206B Helicopter:</u> Operator-transportation (including fuel):		<b>\$509.80/hr</b>
--	--	--------------------

<u>SURVEY CREEK</u> (DDH 273; Mid 69)	1.9 hrs x \$509.80/hr	= \$968.62
---------------------------------------	-----------------------	------------

<u>SPIDER SWAMP</u> (DDH 277,278; Mid 221,219)	6.6 hrs x \$509.80/hr	= \$3,364.68
--	-----------------------	--------------

6.2

DIAMOND DRILLING

SURVEY CREEK (DDH 273; Mid 69)

<u>Mobilization:</u>	68	man	hrs x \$29.00/hr =	\$1,932.00	
D-6:	11		hrs x 83.69/hr =	920.59	
Mack Truck:	11		hrs x 75.00/hr =	<u>825.00</u>	\$3,717.59
<u>Travelling Time:</u>	25.5	man	hrs x 29.00/hr =		739.50
<u>Reaming casing:</u>	13	man	hrs x 29.00/hr =	377.00	
	5.5	drill	hrs x 20.00/hr =	<u>110.00</u>	487.00
<u>Reaming cave:</u>	21	man	hrs x 29.00/hr =	609.00	
	10.5	drill	hrs x 20.00/hr =	<u>210.00</u>	819.00
<u>Conditioning hole:</u>	35	man	hrs x 29.00/hr =	1,044.00	
	18	drill	hrs x 20.00/hr =	<u>360.00</u>	1,404.00
<u>Casing:</u>	0.0 m-	8.23m =	8.23m x 70.00/m =	576.10	
<u>Coring:</u>	8.23m-	177.70m =	169.47m x 66.25/m =	<u>11,227.39</u>	11,803.49
<u>Demobilization:</u>					
Mack Truck:	1	trip	=	800.00	
:	6		hrs x 55.00/hr =	330.00	
:	17		hrs x 75.00/hr =	1,275.00	
D-6:	14		hrs x 93.69/hr =	<u>1,171.66</u>	3,576.66
				<b>Total</b>	<b>\$22,547.24</b>

SPIDER SWAMP (DDH 227, mid 221)

<u>Mobilization:</u>	88.5	man	hrs x \$29.00/hr =	\$2,566.50	
D-6:	21.5		hrs x 83.69/hr =	1,799.34	
Mack Truck:	21.5		hrs x 85.00/hr =	<u>1,827.50</u>	6,193.34
<u>Travelling Time:</u>	2.5	man	hrs x 29.00/hr =		72.50
<u>Waterline</u>					
<u>Maintenance:</u>	261	man	hrs x 29.00/hr =		7,569.00
<u>Water not available:</u>	4	man	hrs x 29.00/hr =	116.00	
	2	drill	hrs x 20.00/hr =	<u>40.00</u>	156.00
<u>Testing:</u>	2	man	hrs x 29.00/hr =	58.00	
	1	drill	hr x 20.00/hr =	<u>20.00</u>	78.00
<u>Repair Time:</u>	21.5	man	hrs x 29.00/hr =		623.50
<u>Stand by:</u>	6	man	hrs x 29.00/hr =		174.00
<u>Installing plastic pipe:</u>	4	man	hrs x 29.00/hr =	116.00	
	2	drill	hrs x 20.00/hr =	<u>40.00</u>	156.00
				<b>Sub Total Forward</b>	<b>15,022.34</b>

				Sub Total Forward	\$15,022.34
<u>Casing:</u>	0.0 - 7.01m =	7.01m x \$70.00/m =		490.70	
<u>Coring:</u>	7.01m-156.06m =	149.05m x 66.25/m =		<u>9,874.56</u>	10,365.26
<u>Service trips:</u>	Pump, propane	3 x 230 mi x \$1.00/mi =		690.00	
<u>Materials cost:</u>	propane	35 x \$46.00 x 0.5 =		805.00	
<u>Cost of equipment dropped by helicopter</u>				<u>1,645.00</u>	<u>8,140.00</u>
				<b>Total</b>	<b>\$28,527.60</b>

SPIDER SWAMP (DDH 278, Mid 219)

<u>Moving:</u>	3.8 man	hrs x \$29.00/hr =		\$1,102.00	
D-6:	8	hrs x 83.69/hr =		<u>669.52</u>	1,771.52
<u>Travelling:</u>	4.5 man	hrs x 29.00/hr =			130.50
<u>Reaming casing:</u>	12 man	hrs x 29.00/hr =		348.00	
	6 drill	hrs x 20.00/hr =		<u>120.00</u>	468.00
<u>Conditioning hole:</u>	26 man	hrs x 29.00/hr =		754.00	
	13 man	hrs x 20.00/hr =		<u>260.00</u>	1,014.00
<u>Waterline Maintenance:</u>	93 man	hrs x 29.00/hr =			2,697.00
<u>Casing:</u>	0.0 m- 2.43m =	1.43m x 70.00/m =		170.10	
<u>Coring:</u>	2.43m-143.87m =	141.44m x 66.25/m =		<u>9,370.40</u>	9,540.50
<u>Demobilization:</u>	108.5 man	hrs x 29.00/hr =		3,146.50	
D-6:	48	hrs x 83.69/hr =		4,017.12	
Mack Truck:	29	hrs x 85.00/hr =		<u>2,465.00</u>	9,628.62

Water supply problems: (DDH 278)

Rental and use of 1500 gal. tank on Nodwell Trailer (Midnight Sun Drilling)					
- Mobilization & demobilization from					
Whitehorse to Midway		=		1,227.50	
- Mobilization and demobilization from					
Midway to Spider Swamp: D-6, 19 hrs x	83.69/hr =			1,590.11	
- Tire repairs		=		756.45	
- Chain and boomer rental		=		50.00	
- Hauling water:	D-6, 19 hrs x	83.69/hr =		1,590.11	
- Rental:	6 days x	100.00/day =		<u>600.00</u>	5,814.17
Rental and use of 3000 gal. tank on wheels (Peters Construction)					
- Mobilization & demobilization from					
Watson Lake to Midway		=		1,267.00	
- Mobilization:					
Midway to Spider Swamp: D-6, 2 hrs x	83.69/hr =			167.38	
- Dolly rental		=		200.00	
- Tank rental:	2 weeks x	250.00/wk =		<u>500.00</u>	<u>2,134.38</u>
				<b>Total</b>	<b>\$33,198.69</b>

Transportation of drill crews, equipment fuel and core by Bell 206B Helicopter

DDH 273:	1.1	hrs x 509.80/hr =		\$ 560.78	
DDH 277:	14.3	hrs x 509.80/hr =		7,290.14	
DDH 278:	14.1	hrs x 509.80/hr =		<u>7,188.16</u>	\$15,039.08

6.3

COST SUMMARY

The incurred costs applicable to each drill hole and claim are summarized in Table 3.

Table 3 SUMMARY OF DIAMOND DRILL COSTS, Y.T., 1986

<u>CLAIM</u>	<u>DDH #</u>	<u>PHYSICAL WORK</u>		<u>DRILLING</u>		<u>TOTAL</u>
		<u>D-6</u>	<u>206B</u>	<u>Contractors</u>	<u>206B</u>	
Mid 69	273	\$ 3,849.74	\$ 968.62	\$22,547.24	\$ 560.78	\$ 27,926.38
Mid 219	278	5,939.67	1,682.34	33,198.69	7,188.16	48,008.86
Mid 221	277	5,939.67	1,682.34	28,527.60	7,290.14	43,439.75
		<u>\$15,729.08</u>	<u>\$4,333.30</u>	<u>\$84,273.53</u>	<u>\$15,039.08</u>	<u>\$119,374.99</u>



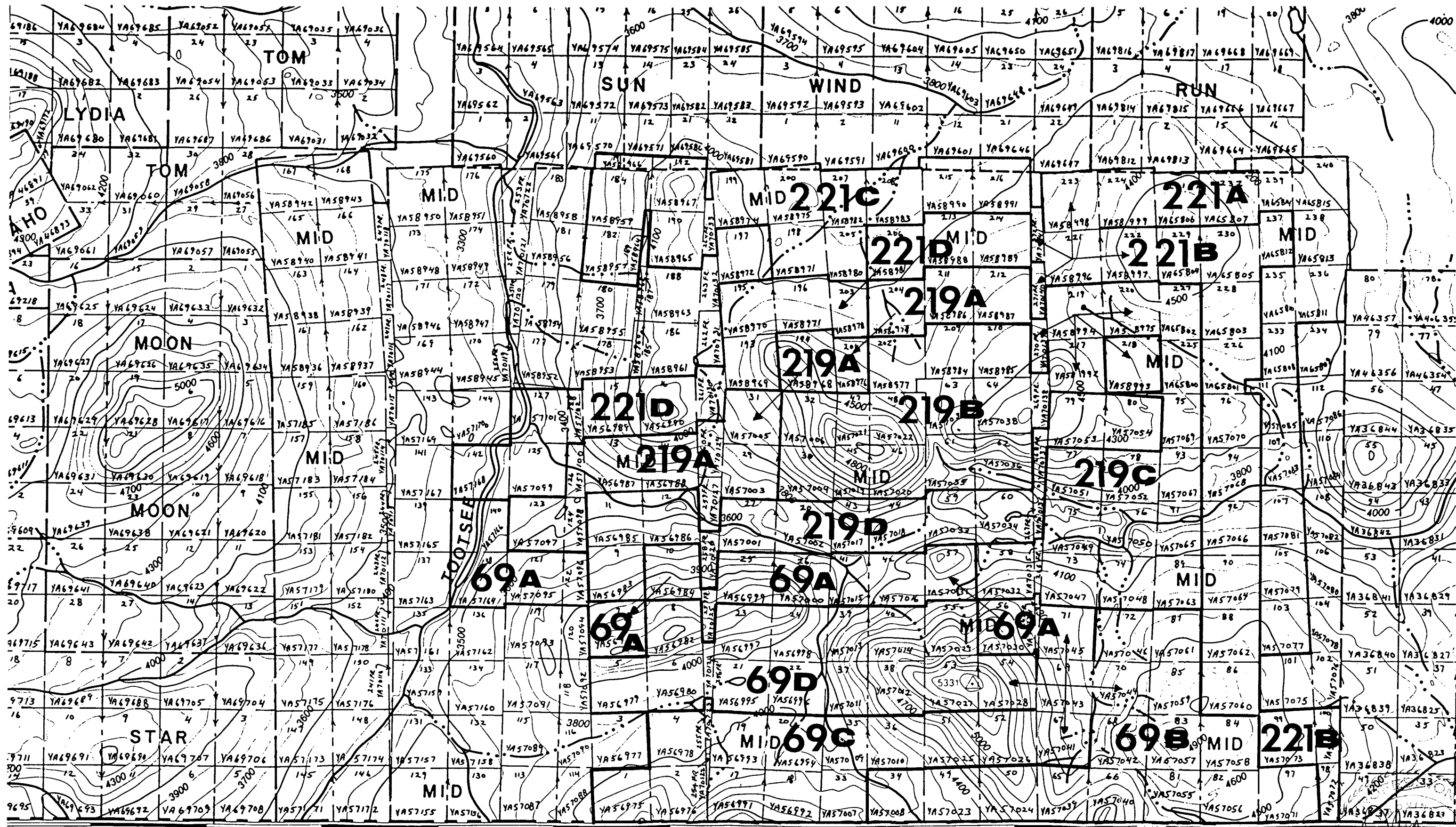
\*\*\*

## GROUPING AND COST ALLOCATIONS

For the purpose of allocating exploration costs incurred on the Mid 69, 219 and 221 mineral claims during 1986, twelve claim groups have been defined. These are illustrated on Figure 4, and listed in Table 4. The costs to be allocated to each group are listed in Table 5.

Table 4 CLAIM GROUPS, Y.T., 1986

<u>GROUP</u>	<u>Mid Claims</u>
69A	7, 10, 25, 26, 41, 42, 56, 57, 69, 71, 121, 122, 138, 140, 257Fr, 265Fr.
69B	34, 49, 50, 65, 66, 68, 69, 70, 72, 81, 82, 83, 84, 85, 87, 97
69C	1, 2, 4, 17, 18, 19, 20, 33, 35, 36, 51, 52, 67, 69, 254Fr, 255Fr
69D	5, 6, 8, 21, 22, 23, 24, 37, 38, 39, 40, 53, 54, 55, 69, 256Fr
219A	13, 14, 29, 31, 123, 124, 126, 194, 201, 204, 211, 212, 219, 259Fr, 260Fr, 270Fr
219B	30, 32, 45, 46, 47, 48, 61, 62, 63, 64, 202, 209, 210, 217, 219, 269Fr
219C	58, 73, 74, 75, 76, 77, 78, 89, 91, 93, 95, 219, 220, 225, 227, 266Fr
219D	9, 11, 12, 27, 28, 43, 44, 59, 60, 79, 80, 218, 219, 258Fr, 267Fr, 268Fr
221A	103, 105, 107, 109, 111, 221, 223, 224, 231, 232, 233, 235, 236, 238, 239, 240
221B	86, 88, 90, 92, 94, 96, 98, 99, 100, 221, 222, 226, 228, 229, 230, 237
221C	182, 184, 190, 191, 192, 198, 199, 200, 205, 207, 208, 215, 216, 221, 264Fr, 272Fr
221D	15, 16, 125, 127, 128, 142, 193, 195, 196, 203, 206, 213, 214, 221, 261Fr, 271Fr

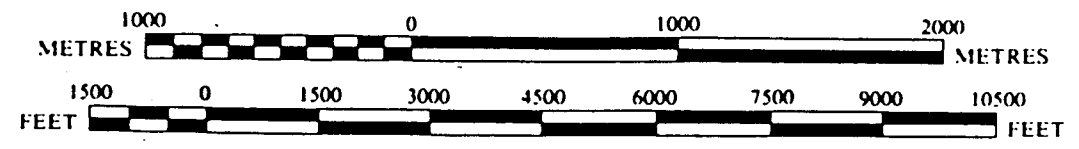


20'

130°15'

10'

SCALE 1:30,000



# 105 B/1

## MIDWAY PROPERTY YIT

GROUPING MAP, 1986

Figure 4

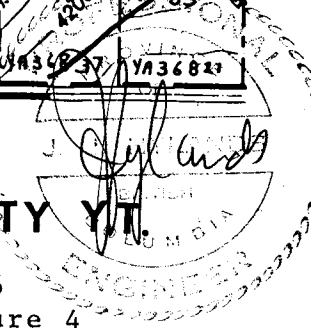


Table 5 ALLOCATION OF 1986 EXPLORATION COSTS TO Y.T. CLAIM GROUPS

(All claims have a common expiry date of December 31)

Group	No. of Claims	Expenditures On		4 years @ \$400/claim	5 years @ \$500/claim	0 years	Amount Applied
		Claim	\$				
69 A	16	Mid 69	\$ 6,981.60	Mid 7,10,25,26,41,42,56,57,69,71,121,138,140, 257Fr,265 Fr	Mid 122		6,500
69 B	16	Mid 69	6,981.60	Mid 34,49,50,65,66,68,70,72,81,82,83,84,85,87,97		Mid 69	6,000
69 C	16	Mid 69	6,981.59	Mid 1,2,4,17,18,19,20,33,35,36,51,52,67,254Fr,255 Fr		Mid 69	6,000
69 D	16	Mid 69	6,981.59	Mid 5,6,8,21,22,23,24,37,38,39,40,53,54,55,256Fr		Mid 69	6,000
219 A	16	Mid 219	12,002.21	Mid 13,14,29,31,123,124,126,259Fr,260Fr	Mid 194,201,204,211,212,219,270Fr		7,100
219 B	16	Mid 219	12,002.21	Mid 30,32,45,46,47,48,61,62,63,64,269Fr	Mid 202,209,210,217	Mid 219	6,400
219 C	16	Mid 219	12,002.22	Mid 58,73,74,75,76,77,78,89,91,93,95,225,227,266Fr	Mid 220	Mid 219	6,100
219 D	16	Mid 219	12,002.22	Mid 11,12,27,28,43,44,59,60,79,80,218,258Fr,267Fr,268Fr	Mid 9	Mid 219	6,100
221 A	16	Mid 221	10,859.94	Mid 103,105,107,109,111,223,224,231,232,233,235,236,238,239,240	Mid 221		6,500
221 B	16	Mid 221	10,859.94	Mid 86,88,90,92,94,96,98,99,100,226,228,230,237	Mid 222,229	Mid 221	6,200
221 C	16	Mid 22	10,859.94	Mid 182,184,190,191,192,199,200,207,208,215,216,264Fr,272 fr	Mid 198,205	Mid 221	6,200
221 D	16	Mid 221	10,859.93	Mid 15,16,125,127,128,142,261Fr,271Fr	Mid 193,195,196,203,206,213,214	Mid 221	6,700
			<b>\$119,374.99</b>	<b>157 claims @ \$400/claim = \$62,800</b>	<b>26 claims @ \$500/claim = \$13,000</b>		<b>\$75,800</b>

## 8.0

BIBLIOGRAPHYCORDILLERAN ENGINEERING:

- 1981 Geological and Geochemical Report on the Mid Claim Group, Watson Lake Mining District, Y.T. Assessment Report submitted to the Mining Recorder, Watson Lake, November, 1981.
- 1982 Geophysical and Surveying Report on the Mid Claim Group, Watson Lake Mining District, Y.T. Assessment Report submitted to the Mining Recorder, Watson Lake, December, 1982.
- 1984 Physical Report on the Mid Claim Group, Watson Lake Mining District, Y.T. Assessment Report submitted to the Mining Recorder, Watson Lake, December, 1984.
- 1985 Physical Report on the Mid Claim Group, Watson Lake Mining District, Y.T. Assessment Report submitted to the Mining Recorder, Watson Lake, December, 1985.

GABRIELSE, H.:

- 1954 McDame, British Columbia, Geol. Survey Canada, Paper 54-10.
- 1963 McDame Map Area, Cassiar District, British Columbia, Geological Survey of Canada, Memoir 319. XII+ 138 pp.
- 1969 Geology of Jennings Map-area, British Columbia (104-0). Geol. Survey of Canada, Paper 68-55.

GORDEY, S.P., GABRIELSE, H., and ORCHARD, M.J., 1982a:

Stratigraphy and structure of Sylvester Allochthon, southwest McDame Map area, northeastern British Columbia. In: Current Research, part B, Geol. Survey of Canada, Paper 82-1B, 101-106.

GORDEY, S.P., ABBOTT, J.G. and ORCHARD, M.J., 1982b:

Devono-Mississippian (Earn Group) and younger strata in east-central Yukon. In Current Research, part B. Geological Survey of Canada, Paper 82-1B, pp. 93-100.

# CORDILLERAN ENGINEERING

1980 GUINNESS TOWER, 1055 WEST HASTINGS STREET, VANCOUVER, B.C. V6E 2E9 TEL: (604) 681-8381

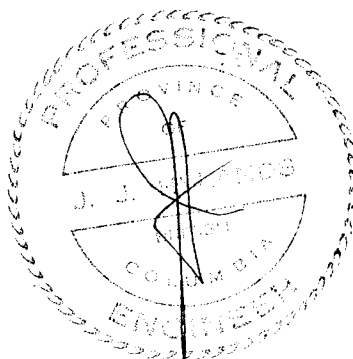
9.0

## STATEMENT OF QUALIFICATIONS

I, J. J. Hylands, hereby certify that:

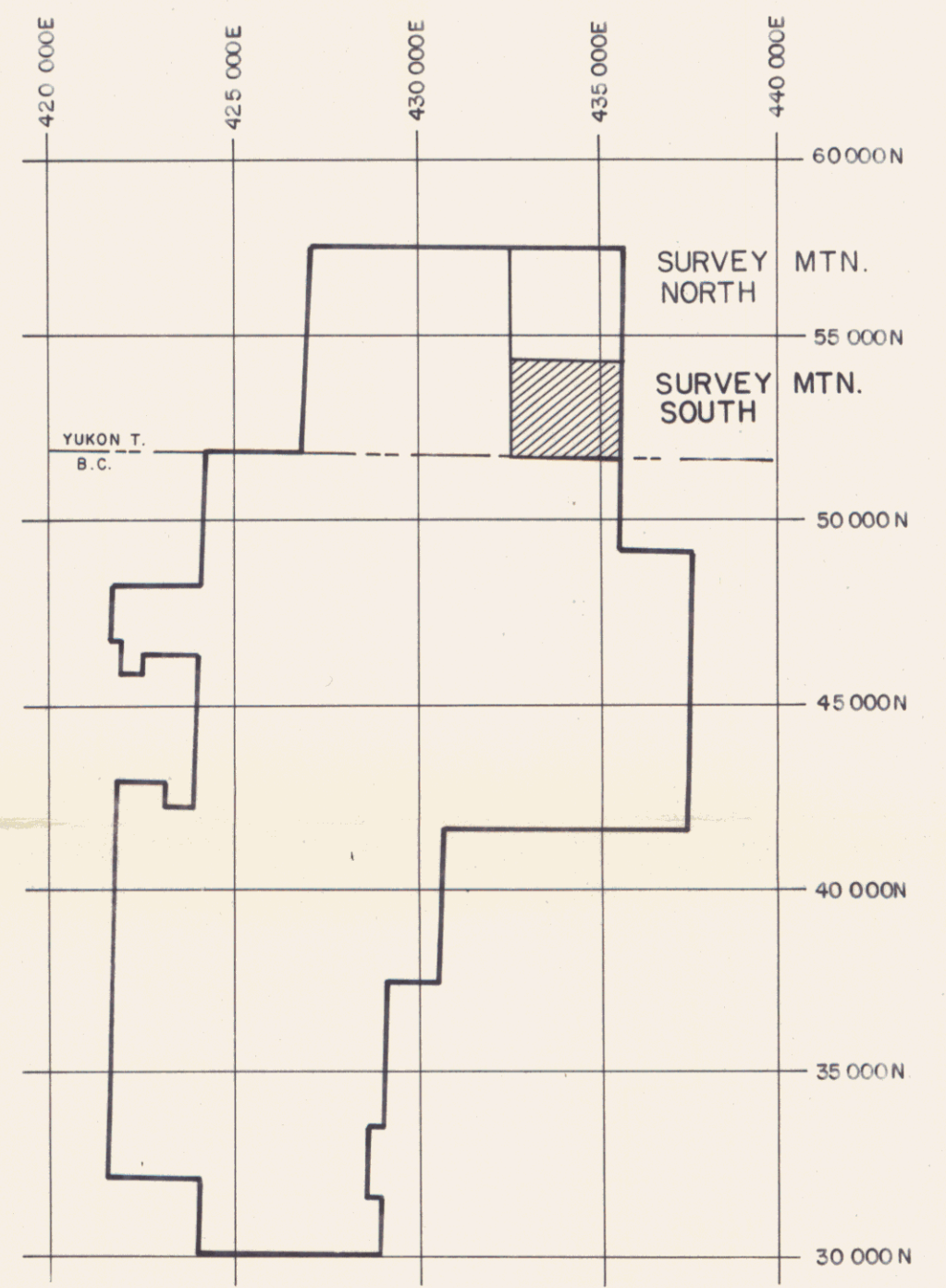
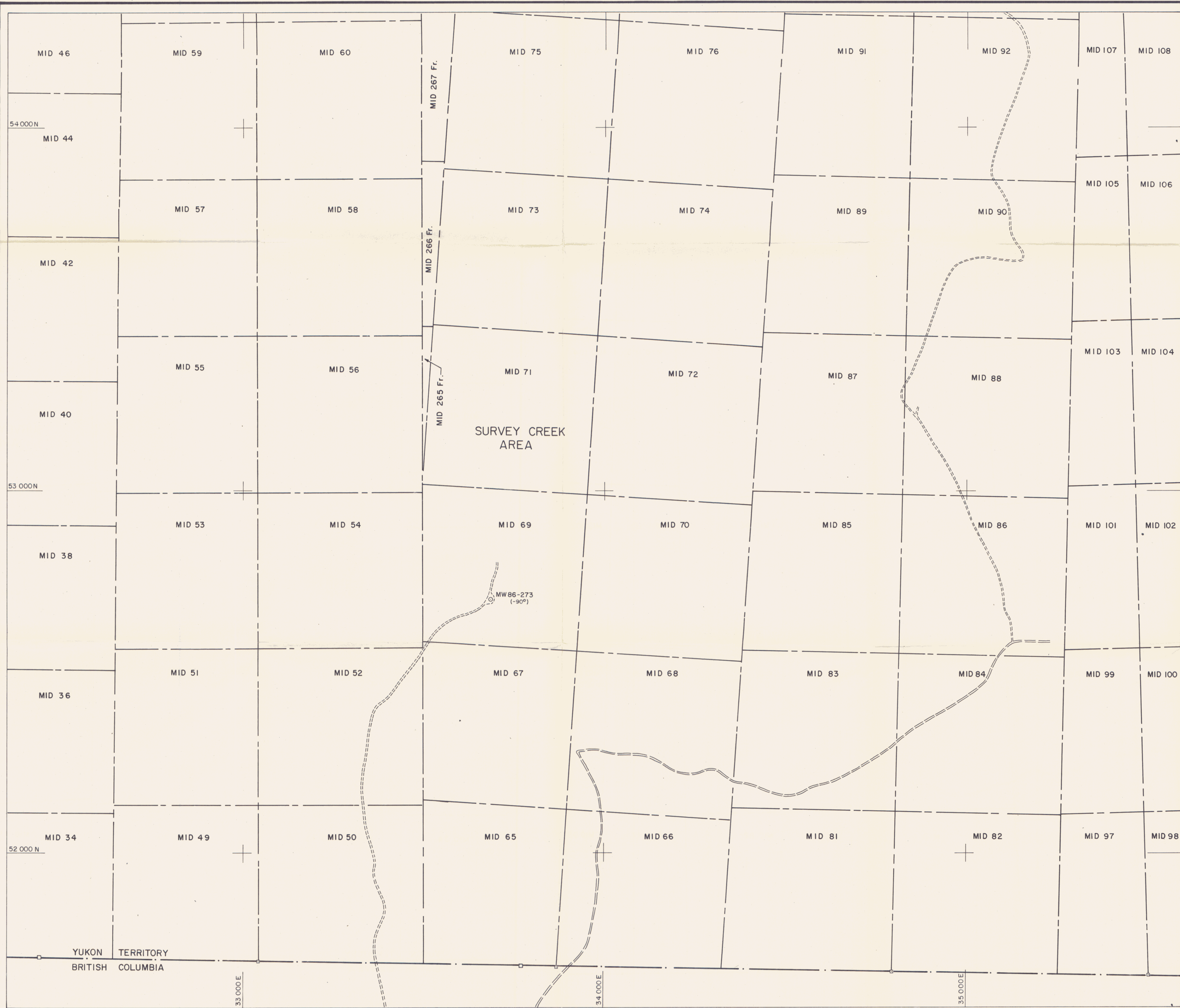
1. I am a geologist employed by Cordilleran Engineering, of 1980-1055 West Hastings Street, Vancouver, B.C. V6E 2E9.
2. I am a graduate of the University of British Columbia (B.A.Sc., Geological Engineering, 1966).
3. I have engaged in the study and practice of mineral exploration since 1956, in Canada, the United States and the Philippines.
4. I am the author of this report and the supervisor of the field work conducted on the Mid claims during the period June 13 to September 4, 1986.
5. I am a Professional Engineer registered in the Province of British Columbia.
6. I have no beneficial interest in the claims covered by this report or in Regional Resources Ltd.

CORDILLEAN ENGINEERING



J. J. Hylands, P.Eng.





**LEGEND**

- Road built in 1986
- Previously built road
- 1986 D.D.H. collar location

*[Handwritten signature]*

No.	DATE	REVISION							
<b>091891</b>									
<b>REGIONAL RESOURCES LTD.</b>									
PROJECT <b>MIDWAY PROJECT</b> WATSON LAKE MINING DISTRICT, YUKON TERRITORY									
TITLE <b>SURVEY MOUNTAIN SOUTH 1986 DIAMOND DRILLING &amp; ROAD CONSTRUCTION</b>									
SCALE 0 50 100 200 300m								DATE 1986-11-26	
1:5000									
DESIGNED	H.T.	DRAWN	E.S.	APPROVAL					
<b>STRATHCONA MINERAL SERVICES LIMITED</b> 12th Floor, 20 Toronto Street, Toronto, Ontario, Canada M5C 2B8									
PROJECT No.	DRAWING No.								REVISION
11802-11									2   10

YUKON TERRITORY  
BRITISH COLUMBIA

APPENDIX "A"

## DIAMOND DRILL CORE LOGGING FORMAT

### INTRODUCTION

All the diamond drill core from the Regional Resources Ltd. - Canamax Resources Inc. Midway Property has been logged using coded logging forms to aid in the rapid recording and retrieval of information. The following is a short guide to the coding format.

### "DIAMOND DRILL RECORD" (Form DDR-82-1)

The first page of each drill hole log is a summary page and is generally self-explanatory.

- Survey Co-ordinates: UTM co-ordinates tied to the Universal Transverse Mercator (UTM) grid.
- Elevation: In metres above sea level.
- Stick Up: Height of casing above ground.
- Scale: Of Diamond Drill Record graphic logs.
- Symmetry Statement: Refers to the recording of structural information.
  
- GEOLOGY:
  - Unit As per the mineralization and major rock unit codes explained below.
  - Int. Drill core length of intercept.
  - T.W. Thickness of unit corrected for plunge of drill hole and dip of regional stratigraphy.

## THE MAJOR STRATIGRAPHIC SUBDIVISIONS

### LOWER SYLVESTER GROUP: Upper Devonian-Mississippian

<u>UNIT</u>		
<u>2B</u>	<u>SANDSTONE</u>	- Light grey, medium to coarse grained, massive to bedded.
	<u>CONGLOMERATE</u>	- Light grey, fine to medium grained, massive - generally Bouma A and lesser B sequences.
<u>2A</u>	<u>SUBDIVIDED BELOW</u>	
<u>2AP</u>	<u>SLUMP BRECCIA</u>	- Light grey sandstone clasts in a dark grey siltstone/sandstone matrix.
<u>2AS</u>	<u>SILTSTONE</u>	- Dark to medium grey, variably carbonaceous, variably <u>siliceous</u> , variably pyritic, non-calcareous.
	<u>CALCARENITE</u>	- Light grey, laminated to massive; present toward top of unit.
<u>2AC</u>	<u>SILTSTONE</u>	- Dark to medium grey, slightly to moderately <u>carbonaceous</u> , non-siliceous, slightly to moderately pyritic, generally non-calcareous.
	<u>CALCARENITE</u>	- Light grey, laminated to massive.
	<u>SANDSTONE</u>	- Light grey, laminated to massive; only locally present.
<u>2AA</u>	<u>SILTSTONE</u>	- Dark grey to black, moderately to very <u>carbonaceous</u> , non-siliceous, locally pyritic, non-calcareous; may contain abundant chert and/or calcareous nodules.
<u>1B</u>	<u>SANDSTONE</u>	- Light grey, laminated to massive
	<u>SILTSTONE</u>	- Dark to medium grey, slightly to moderately carbonaceous, non-siliceous, slightly pyritic, non-calcareous.
	<u>CONGLOMERATE</u>	- Light grey, fine to locally medium grained, massive. - Coarser grained Bouma A and B sequences generally occur toward the upper portion of the unit while finer grained Bouma D sequences occur toward the lower portion of the unit.
<u>1BA</u>		- This is the basal transition zone of unit 1B dominated by siltstones with 5-25% sandstone.

**THE MAJOR STRATIGRAPHIC SUBDIVISIONS**

**LOWER SYLVESTER GROUP: Upper Devonian-Mississippian (cont'd)**

**UNIT**

- 1A** This unit is transitional with the 1BA unit above and is defined as containing <5% sandstone beds.
- 1AA** SILTSTONE - Dark grey to black, moderately to very carbonaceous, locally siliceous, locally pyritic, generally non-calcareous.
- 1AC** CALCAREOUS SILTSTONE/CALCARENITE - Medium to dark grey, usually non-carbonaceous, non-siliceous, non-pyritic, moderately to very calcareous. This is a local calcareous "wash" occasionally immediately overlying the McDame Group carbonates.

**ALTERATION**

In the Lower Sylvester Group there are zones of siltstone and/or sandstone and/or calcarenite which have been altered to phyllite (Ph) and/or siliceous chert-like rocks with or without pyrrhotite ± pyrite ± chalcopyrite. These altered rocks are placed in the Lower Sylvester Group under their respective unit names with a precursor letter "A", (e.g., A1B is altered Unit 1B).

**MCDAME GROUP: Middle Devonian**

**McDame Lithostratigraphic Units**

UNIT	Subunit	Thickness	Major Components		Lesser Components	Minor Components	Notes
			Facies	Lithologies	Facies	Facies	
ML-1	A	28+	Dense	Packstone to Mudstone		Massive Stromatoporoid	
			A $\nabla$ hipora	Rudstone to Floatstone			
	B	5.4	Tha $\nabla$ nopora	Rudstone & Floatstone	Massive Stromatoporoid	A $\nabla$ hipora	
	C	16.8	Dense	Packstone to Mudstone			Upper
			A $\nabla$ hipora	Rudstone & Floatstone			
		Massive Stromatoporoid	Rudstone & Floatstone		Stromatoporoid & Dense	Lower	
D	2.5 - 4.3	Crinoidal	Packstone & Wackestone				
E	4 - 10	A $\nabla$ hipora	Floatstone			Massive Stromatoporoid	
		Dense	Bioclastic-peloidal Packstone to Mudstone				
M-2		up to 23	Massive Stromatoporoid	Rudstone to Floatstone, local chert, Frame- stone	Mixed A $\nabla$ hipora & Stromatoporoid	Rugosan Eurya $\nabla$ hipora Tha $\nabla$ nopora	

THE MAJOR STRATIGRAPHIC SUBDIVISIONS  
McDame Group: Middle Devonian (cont'd)

McDame Lithostratigraphic Units

UNIT	Subunit	Thickness	Major Components		Lesser Components	Minor Components	Notes
			Facies	Lithologies	Facies	Facies	
ML-3		18 - 31	Dense (top)	Bioclastic Packstone & Wackestone			Upper
			Amphipora	Rudstone to (Wackestone)			
			Massive Stromatoporoid	Rudstone to (Floatstone)	Amphipora & Thamnopora		Middle
			Amphipora	Rudstone to (Floatstone)		Dense	Lower
ML-4		1.5 - 4.0	Euryamphipora	Rudstone to Floatstone	Massive & Mixed Stromatoporoid	Amphipora	
ML-5		60 - 113	Amphipora	Rudstone to Floatstone	Massive & Mixed Stromatoporoid	Thin shelled Brachiopods	
			Dense	Bioclastic Packstone & Wackestone			
ML-6		up to 14	Amphipora	Floatstone	Euryamphipora (thin)	Massive Stromatoporoid	Upper
			Dense	Bioclastic-peloidal Packstone to Mudstone			
			Massive Stromatoporoid	Rudstone & Floatstone	Mixed "Stachyodes" & Stromatoporoid	Amphipora	Middle
			Thamnopora	Rudstone & Floatstone	Stromatoporoid		Lower
ML-7		up to 25	Amphipora	Floatstone		Brachiopod (Thamnopora)	
			Dense	Bioclastic-peloidal Packstone to Wackestone			
ML-8		up to 113	Dense	Bioclastic-peloidal Wackestone, Mudstone (Packstone)	Amphipora & Brachiopod	"Stachyodes" & Gastropods	Transitional to Xlline Dolomite

INTRUSIVE ROCKS

UNIT

YBR DIKES AND ALTERED ROCKS  
OF UNCERTAIN PARENTAGE

- Greenstone dikes are found mainly in the McDame Group but also occur locally in the Lower Sylvester Group.
- Variably altered rocks are usually associated with the dikes but are much more extensive than the greenstones themselves. The altered rocks probably represent, for the most part, highly altered dikes.

THE MAJOR STRATIGRAPHIC SUBDIVISIONS (cont'd)MINERALIZATION"EXHALITES"

These are light brown to light grey cherty units found in Unit 2A of the Lower Sylvester Group. They are generally composed of quartz, sericite, and pyrite but locally grade to massive sulphides (pyrite-sphalerite-galena). Different "exhalite" horizons have been given letter designations to distinguish them.

e.g., FZ = F-Zone "exhalite"

FZP = F-Zone "exhalite" package - usually used when thin "exhalites" believed to be related are interbedded with other lithologies.

The major rock type designation (e.g., XQ (siliceous exhalite) is used in the unit column when the identification of the "exhalite" horizon is uncertain.

LOWER ZONE MINERALIZATION

The carbonate-hosted Lower Zones have been designated LZ1, LZ2, LZ 3, etc., as they were encountered down the drillhole.

OTHER SYMBOLS USED

OB	-	Overburden
NR	-	No recovery
GM	-	Gouge Zone

APPENDIX "B"



# REGIONAL RESOURCES LTD.

# DIAMOND DRILL RECORD

PROPERTY: MIDWAY D.D.H.MW 86 - 277 - PAGE 1 OF 2  
 AREA: SPIDER SWAMP DIP: -90 ° AZIMUTH (I): 0 ° DEPTH: 156.06m  
 CLAIM: MID 221 NORTHING: 6656361 DATE STARTED: AUGUST 17N 1986  
 SECTION: 56361 N EASTING: 433632 DATE FINISHED: AUGUST 26 1986  
 CORE SIZE: HQ ELEVATION: 1306 m CONTRACTOR: CARON DIAMOND DRILLING LTD.  
 CORE RECOVERY: S- 79 x M- 0 x CORE STORED AT: RACK 10 BAYS D E LOGGED BY: W. JAKUBOWSKI  
 COMMENTS: HOLE DRILLED TO TEST WEAK CHANNEL 5 PEM ANOMALY. NO SIGNIFICANT MINERALIZATION INTERSECTED. GOUGE AT BOTTOM OF HOLE IS SLIGHTLY CONDUCTIVE  
20-40 K OHMS. FE STAINING COMMON THROUGHOUT ALTERED ZONES. HOLE LOCATED ON GRID COORDINATES 24400N 13487E.

SURVEY DATA			GEOLOGY AND ASSAY RECORD														
Depth	Dip	Az (I)	From (m)	To (m)	Int. (m)	T.W. (m)	Geology	Sample No.	Rec. %	S.G.	Ag oz/t	Pb %	Zn %	Au oz/t	Fe %	Ag gm/MT	Au gm/MT
0.00	-90.00°	0.00°	0.00	1.90	1.90		NR										
			1.90	27.00	25.10		OB										
			27.00	34.00	7.00		1A?										
			34.00	35.30	1.30		A1A?										
			35.30	37.10	1.80		1A										
			37.10	44.70	7.60		A1A										
			44.70	46.30	1.60		1A										
			46.30	52.10	5.80		A1A										
			52.10	65.50	13.40		1A										
			65.50	66.50	1.00		A1A										
			66.50	68.00	1.50		1A?										
			68.00	73.70	5.70		GOUGE										
			73.70	93.60	19.90		1BA?										
			93.60	98.30	4.70		A1BA?										
			98.30	110.60	12.30		1A										
			110.60	114.20	3.60		GOUGE										
			114.20	119.80	5.60		1A?										
			119.80	156.06	36.26		GOUGE										
ASSAYS																	
			34.00	35.30	1.30		A1A	13702	100			0 E	0 E		0 E		
			37.50	42.00	4.50		A1A	13703	93			0 E	0 E		0 E		
			43.60	44.70	1.10		A1A	13704	100			0 E	0 E		0 E		
			46.70	52.20	5.50		A1A	13705	93			0 E	0 E		0 E		
			65.50	66.45	0.95		A1A	13706	70			0 E	0 E		0 E		
			66.45	68.28	1.83		A1A	13707	86			0 E	0 E		0 E		
			68.28	72.24	3.96		GOUGE	13708	48			0 E	0 E		0 E		
			72.24	75.59	3.35		1BAGM	13709	35			0 E	0 E		0 E		
CONTINUED																	





APPENDIX "C"



REPORT: 126-3891

PROJECT: MIDWAY

PAGE 1

SAMPLE NUMBER	ELEMENT UNITS	Cu PPM	Pb PPM	Zn PPM	Ag PPM	Fe PCT	As PPM	Au PPB	Ba PPM
D2 277-13702		55	46	274	<0.2	5.60	70	5	3300
D2 277-13703		62	24	410	<0.2	7.30	72	<5	6500
D2 277-13704		21	4	118	<0.2	2.40	21	<5	1100
D2 277-13705		39	29	152	<0.2	3.10	23	<5	4200
D2 277-13706		123	47	152	<0.2	4.60	26	<5	12000



DDN 86-277

REPORT: 126-4015

PROJECT: MIDWAY

PAGE 1

SAMPLE NUMBER	ELEMENT UNITS	Cu PPM	Pb PPM	Zn PPM	Ag PPM	Fe PCT	As PPM	Au PPB	Ba PPM	Ba PCT
D2 13707		51	22	60	0.2	2.25	21	5	4200	
D2 13708		84	52	170	<0.2	4.00	38	<5	2700	
D2 13709		52	41	132	0.2	3.70	17	<5	3100	
D2 13710		36	22	124	<0.2	3.45	18	<5	4100	
D2 13711		45	16	142	<0.2	4.00	25	<5	2200	
D2 13712		136	16	200	0.2	5.50	24	<5	1600	
D2 13713		115	5	119	<0.2	4.90	11	<5	1400	
D2 13714		218	10	370	<0.2	8.40	18	<5	960	
D2 13715		160	8	323	<0.2	6.40	13	<5	430	
D2 13716		187	23	320	<0.2	4.40	21	<5	1800	
D2 13717		215	24	350	<0.2	5.00	28	<5	2500	
D2 13718		388	95	6000	0.6	>10.00	3	<5	3500=	
D2 13719		296	63	1490	0.9	7.40	12	<5	>20000	2.5
D2 13720		336	104	3500	1.3	>10.00	3	<5	>20000	3.5
D2 13721		300	360	3200	1.7	>10.00	3	<5	>20000	3.7
D2 13722		352	800	3200	2.5	>10.00	2	25	15000=	



REPORT: 126-4346

PROJECT: MIDWAY

PAGE 1

SAMPLE NUMBER	ELEMENT UNITS	Cu PPM	Pb PPM	Zn PPM	Ag PPM	Fe PCT	As PPM	Au PPB	Sb PPM	Ba PPM	Ba PCT
D2 277-13723		540	1425	4600	1.9	>10.00	400	120	<2=	>20000=	3.3
D2 277-13724		520	835	4500	0.6	>10.00	110	80	<2	6200=	
D2 277-13725		440	1350	4600	0.7	>10.00	110	15	<2=	>20000	5.2
D2 277-13726		280	1320	7000	0.6	>10.00	250	40	10=	1900=	
D2 277-13727		41	9	60	<0.2	2.70	80	40	11	120	



E. CARON DIAMOND DRILLING LTD.

7 Roundel Road Whitehorse, Yukon Y1A 3H3

Phone (403) 668-2424 Telex 036-8-337

AUG 11 1986

July 31, 1986

Invoice #-1934

In Account With;

Regional Resources Ltd.,  
c/o Strathcona Minerals Services Ltd.,  
12th Floor - 20 Toronto Street,  
Toronto, Ontario  
M5C 2B8

Drilling And Tractor Charges July 22 to 31, 1986: (Midway Project)

Hole: 86-273/90/HWL

Travelling Time

33.5 man hrs. @ \$29.00 per hr. = \$ 971.50

Moving Drill

68 man hrs. @ \$29.00 per hr. = \$1,972.00

Reaming Casing

2 man hrs. @ \$29.00 per hr. = \$ 58.00

1 machine hr. @ \$20.00 per hr. = \$ 20.00 \$ 78.00

Reaming Cave

7 man hrs. @ \$29.00 per hr. = \$ 203.00

3½ machine hrs. @ \$20.00 per hr. = \$ 70.00 \$ 273.00

Conditioning Hole (Dirty Hole)

25 man hrs. @ \$29.00 per hr. = \$ 725.00

12½ machine hrs. @ \$20.00 per hr. = \$ 250.00 \$ 975.00

Tractor Time

103 machine hrs. @ \$75.00 per hr. = \$7,725.00

Mack Truck

11 truck hrs. @ \$75.00 per hr. = \$ 825.00

Casing

0 - 8.23 = 8.23 m @ \$70.00 per m = \$ 576.10

Coring

8.23 - 74.68 = 66.45 m @ \$66.25 per m = \$4,402.31 \$17,797.91

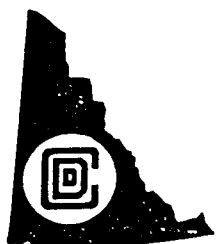
ENTERED JUL 31 1986  
Total Invoice 1986

\$17,797.91

ENTERED JUL 31 1986

DATE	ACCOUNT #	AMOUNT
31/7/86		
P.O. #	R733 YT	8,876.00
D.M. #	R256 YT	8,921.91
VENDOR #		
INVOICE #	1934	
QUANTITIES	CHEQUE # 0072	
PRICES/EXTENSIONS 6 #5	APPROVED HT	

SM as attached





August 15, 1986

Invoice #-1948

IN ACCOUNT WITH:

Regional Resources Ltd.,  
c/o Strathcona Minerals Services Ltd.,  
12th Floor - 20 Toronto Street,  
Toronto, Ontario  
M5C 2B8

Drilling Charges August 1 to 15, 1986:

(Midway Project)

Hole: 86-273/90/HWL

Operations Pulling Casing &  
Rods & Trying to Install  
Plastic Pipe

75 man hrs.	@ \$29.00 per hr.	= \$2,175.00	
37½ machine hrs.	@ \$20.00 per hr.	= \$ 750.00	\$ 2,925.00
<u>Reaming Casing in Bedrock</u>			
9 man hrs.	@ \$29.00 per hr.	= \$ 261.00	
4½ machine hrs.	@ \$20.00 per hr.	= \$ 90.00	\$ 351.00
<u>Reaming Cave (Dirty Hole)</u>			
14 man hrs.	@ \$29.00 per hr.	= \$ 406.00	
7 machine hrs.	@ \$20.00 per hr.	= \$ 140.00	\$ 546.00
<u>Trying to Condition Hole</u>			
11 man hrs.	@ \$29.00 per hr.	= \$ 319.00	
5½ machine hrs.	@ \$20.00 per hr.	= \$ 110.00	\$ 429.00
<u>Travelling Time</u>			
30 man hrs.	@ \$29.00 per hr.	=	\$ 870.00
<u>Coring</u>			
74.68 - 177.70 = 103.02 m	@ \$66.25 per m	=	\$ 6,825.08 \$11,946.08

Hole: 86-274/90/HWL

Moving

22½ man hrs. @ \$29.00 per hr. = \$ 652.50

Reaming Casing

2 man hrs. @ \$29.00 per hr. = \$ 58.00

1 machine hr. @ \$20.00 per hr. = \$ 20.00 \$ 78.00

Reaming Cave

6 man hrs. @ \$29.00 per hr. = \$ 174.00

3 machine hrs. @ \$20.00 per hr. = \$ 60.00 \$ 234.00

Waterline

5 man hrs. @ \$29.00 per hr. = \$ 145.00





E. CARON DIAMOND DRILLING LTD.

7 Roundel Road Whitehorse, Yukon Y1A 3H3

Phone (403) 668-2424 Telex 036-8-337

Casing

0 - 12.19 = 12.19 m @ \$70.00 per m = \$ 853.30

Coring

12.19 - 37.19 = 25m @ \$66.25 per m = \$ 1,656.25 \$ 4,603.55

Tractor Hours

128.5 machine hrs. @ \$75.00 per hr. = \$ 9,637.50

Trip for Mack to Move Drill

1 Trip @ \$800.00 = \$ 800.00

17 truck hrs. @ \$75.00 per hr. = \$1,275.00 \$ 2,075.00

Standby for Mack

6 truck hrs. @ \$55.00 per hr. = \$ 330.00 \$ 2,405.00

Items Consumed due to Bad Hole Conditions

Hole: 273/90/HWL

1 HWL Rod @ \$177.00 each = \$ 177.00

1 HWL Shoe @ \$422.00 each = \$ 422.00

34 2 ft. HW casing @ \$110.40 per 2 ft/1 = \$3,753.60

Hole: 86-274

2 2 ft. HW casing @ \$110.40 per 2 ft/1 = \$ 220.80

1 HWL shoe @ \$422.00 each = \$ 422.00

Hole: 86-276

4 2 ft. HW casing @ \$110.40 per 2 ft/1 = \$ 441.60

1 HWL shoe @ \$422.00 each = \$ 422.00 \$ 5,859.00

Total Invoice \$56,223.60

RECEIVED AUG 31 1986  
ENTERED AUG 31 1986

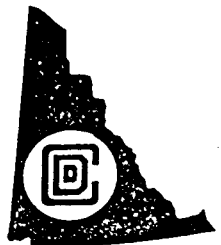
ENTERED AUG 31 1986

DATE <u>7/5/86</u>	ACCOUNT # <u>A733</u>	AMOUNT <u>8,362.50</u>
P.O. # _____	<u>R733</u>	<u>1,275.00</u>
D.M. # _____	<u>Z514</u>	<u>681.50</u>
VENDOR # _____	<u>A256</u>	<u>32,135.47</u>
INVOICE # <u>1948</u>		
QUANTITIES _____	CHEQUE # <u>6072</u>	
PRICES EXTENSIONS <u>18 #8.</u>	APPROVED <u>HI</u>	

2614 (48.25)  
2256 13,817.38

SM as attached.

ENTERED AUG 31 1986





August 31, 1986

Invoice #-1965

IN ACCOUNT WITH:

Regional Resources Ltd.,  
c/o Strathcona Minerals Services Ltd.,  
12th Floor - 20 Toronto Street,  
Toronto, Ontario  
M5C 2B8

Drilling Charges August 16 to 31, 1986:

(Midway Project)

Hole: 86-275/90/HWLWaterline

2 man hrs. @ \$29.00 per hr. = \$ 58.00

Sealing Hole

7 man hrs. @ \$29.00 per hr. = \$ 203.00

3½ machine hrs. @ \$20.00 per hr. = \$ 70.00 \$ 273.00

Circulating Mud to Loosen Casing

3 man hrs. @ \$29.00 per hr. = \$ 87.00

1½ machine hrs. @ \$20.00 per hr. = \$ 30.00 \$ 117.00

Installing Plastic Pipe

4 man hrs. @ \$29.00 per hr. = \$ 116.00

2 machine hrs. @ \$20.00 per hr. = \$ 40.00 \$ 156.00

Testing

2 man hrs. @ \$29.00 per hr. = \$ 58.00

1 machine hrs. @ \$20.00 per hr. = \$ 20.00 \$ 78.00

Coring

37.19 - 102.11 = 64.92 m @ \$66.25 per m = \$4,300.95 \$ 4,982.95

Hole: 86-277/90/HWLMoving

86 man hrs. @ \$29.00 per hr. = \$2,494.00

Waterline Maintenance (no water)

232½ man hrs. @ \$29.00 per hr. = \$6,742.50

Washing Sand Out of Hole Due toNon-availability of Water

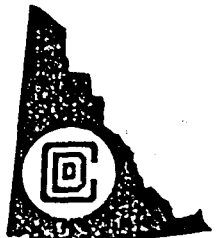
4 man hrs. @ \$29.00 per hr. = \$ 116.00

2 machine hrs. @ \$20.00 per hr. = \$ 40.00 \$ 156.00

Testing

2 man hrs. @ \$29.00 per hr. = \$ 58.00

1 machine hrs. @ \$20.00 per hr. = \$ 20.00 \$ 78.00



Repairs Due to Helicopter Dropping Pump.

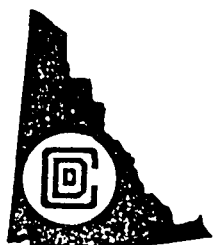
10 man hrs.	@ \$29.00 per hr.	=	\$ 290.00	
<u>Travelling Time/Contract</u>				
9 man hrs.	@ \$29.00 per hr.	=	\$ 261.00	
<u>Standby Copper/weather</u>				
6 man hrs.	@ \$29.00 per hr.	=	\$ 174.00	
<u>Installing Plastic Pipe</u>				
4 man hrs.	@ \$29.00 per hr.	=	\$ 116.00	
2 machine hrs.	@ \$20.00 per hr.	=	\$ 40.00	\$ 156.00
<u>Tractor Hours</u>				
15 machine hrs.	@ \$75.00 per hr.	=	\$1,125.00	
<u>Casing</u>				
0 - 7.01 = 7.01 m	@ \$70.00 per m	=	\$ 490.70	
<u>Coring</u>				
7.01 - 156.06 = 149.05 m	@ \$66.25 per m	=	\$9,874.56	\$21,841.76

Hole: 86-278/90/HWL

<u>Moving</u>				
38 man hrs.	@ \$29.00 per hr.	=	\$1,102.00	
<u>Reaming Casing</u>				
12 man hrs.	@ \$29.00 per hr.	=	\$ 348.00	
6 machine hrs.	@ \$20.00 per hr.	=	\$ 120.00	\$ 468.00
<u>Waterline</u>				
77 man hrs.	@ \$29.00 per hr.	=	\$2,233.00	
<u>Conditioning Hole due to Hole Standby (no water)</u>				
14 man hrs.	@ \$29.00 per hr.	=	\$ 406.00	
7 machine hrs.	@ \$20.00 per hr.	=	\$ 140.00	\$ 546.00
<u>Travelling Time</u>				
8 man hrs.	@ \$29.00 per hr.	=	\$ 232.00	
<u>Casing</u>				
0 - 2.43 = 2.43 m	@ \$70.00 per m	=	\$ 170.10	
<u>Coring</u>				
2.43 - 74.98 = 72.55 m	@ \$66.25 per m	=	\$4,806.44	\$ 9,557.54

Additional Charges for Cat's Skinner, Waterline Maintenance Due to No Water

<u>Moving</u>				
3½ man hrs.	@ \$29.00 per hr.	=	\$ 101.50	
<u>Waterline Maintenance</u>				
39½ man hrs.	@ \$29.00 per hr.	=	\$1,145.50	
<u>Repairs on Nodwell &amp; Brown's Cat</u>				
11½ man hrs.	@ \$29.00 per hr.	=	\$ 333.50	
<u>Tractor Time</u>				
103½ machine hrs.	@ \$75.00 per hr.	=	\$7,762.50	



Travelling Time for Cat Skinner

59 man hrs. @ \$29.00 per hr. = \$1,711.00

Truck3 trips due to Company Chopper  
dropping Contractor's Equipment

3 trips x 230 miles x \$1.00 per mile = \$ 690.00

Rental on Dolly

Moving 3000 gal. tank = \$ 200.00

Operator On Brown's Tractor

7 man hrs. @ \$29.00 per hr. = \$ 203.00

Mack Time Moving Drill to  
Spider Swamp

21.5 machine hrs. @ \$85.00 per hr. = \$1,827.50

Split Trip from Whse to Midway

Mack Truck = \$ 300.00 \$14,274.50

Items Consumed & Chargeable Hole: #-275Mud

1 bag Kwik Seal @ \$45.00 per bag = \$ 45.00

Propane

Aug/14 12 refills

/22 10 refills

Sept/5 13 refills

35 refills

@ \$46.00 per refill = \$ 1,610.00

Items Dropped from Chopper

3 propane bottles @ \$165.00 each = \$ 495.00

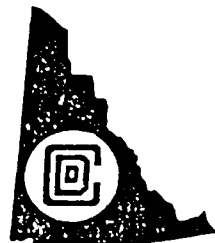
1 Water heater @ \$1,000 each = \$1,000.00

3 man hrs. to fix shack from  
pump drop Welding @ \$50.00 per hr. = \$ 150.00 \$ 1,645.00Tarp for Sump

Shipped in Aug 19/86 = \$ 75.00

Rental on Boomers & Chains for

Tieing down 2 1500 gal tans on Nodwell = \$ 50.00

Total Invoice \$54,081.75



September 15, 1986

Invoice #-1978

Drill: #-6

IN ACCOUNT WITH:

Regional Resources Ltd.,  
c/o Strathcona Minerals Services Ltd.,  
12th Floor - 20 Toronto Street,  
Toronto, Ontario  
M5C 2B8

Drilling Charges September 1 to 15, 1986:

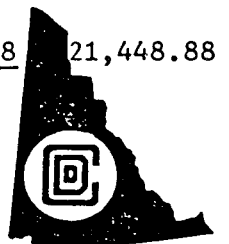
(Midway Project)

Hole: 86-278/90/HWL  
Waterline-Catskinner

16 man hrs.	@ \$29.00 per hr.	=	\$	464.00
<u>Conditioning Hole</u>				
12 man hrs.	@ \$29.00 per hr.	=	\$	348.00
6 machine hrs.	@ \$20.00 per hr.	=	\$	<u>120.00</u>
<u>Travelling Time</u>				
2 man hrs.	@ \$29.00 per hr.	=	\$	58.00
<u>Coring</u>				
74.98 - 143.87 = 68.89 m	@ \$66.25 per m	=	\$	<u>4,563.96</u>
				\$ 5,553.96

Hole: 86-279/70/HWL  
Moving (Drilling Areas)

108½ man hrs.	@ \$29.00 per hr.	=	\$	3,146.50
<u>Plastic Pipe</u>				
6 man hrs.	@ \$29.00 per hr.	=	\$	174.00
3 machine hrs.	@ \$20.00 per hr.	=	\$	<u>60.00</u>
<u>Reaming Casing</u>				
14 man hrs.	@ \$29.00 per hr.	=	\$	406.00
7 machine hrs.	@ \$20.00 per hr.	=	\$	<u>140.00</u>
<u>Waterline</u>				
4 man hrs.	@ \$29.00 per hr.	=	\$	116.00
<u>Testing</u>				
6 man hrs.	@ \$29.00 per hr.	=	\$	174.00
3 machine hrs.	@ \$20.00 per hr.	=	\$	<u>60.00</u>
<u>Travelling Time</u>				
18 man hrs.	@ \$29.00 per hr.	=	\$	522.00
<u>Casing</u>				
0 - 13.72 = 13.72 m	@ \$70.00 per m	=	\$	960.40
<u>Coring</u>				
13.72 - 250.55 = 236.83 m	@ \$66.25 per m	=	\$	<u>15,689.98</u>
				21,448.88



Mack Truck  
29 trucks hrs.

@ \$85.00 per hr. =

\$ 2,465.00

Tractor Time  
129 machine hrs.

@ \$75.00 per hr. =

\$ 9,675.00

Total Invoice

\$39,142.84

