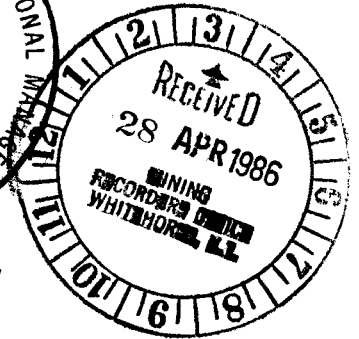
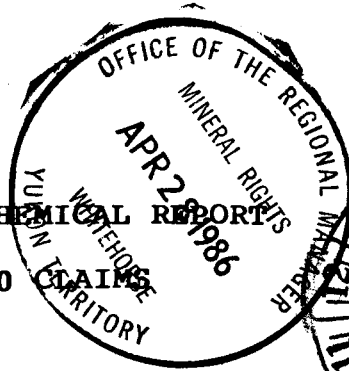


GEOLOGICAL AND GEOCHEMICAL REPORTS  
ON THE JL 1-80 CLAIMS



Whitehorse Mining District, Y.T.  
NTS 105D/2  
(60°13'N, 134°58'W)

for

ISLAND MINING & EXPLORATIONS CO. LTD.  
706 - 595 Howe Street  
Vancouver, B.C. V6C 2T5  
(604) 684-4814

091844

by

Carl G. Verley, B.Sc., Geologist  
AMERLIN EXPLORATION SERVICES LTD.  
422 - 470 Granville Street  
Vancouver, B.C. V6C 1V5  
(604) 689-1966

February 1986

CLAIMS: JL-1-80 inclusive  
LOCATION: 46 miles (74 km) by road south of Whitehorse, YT  
DATE: August 7 to September 10, 1985

091844

This report has been examined by  
the Geological Evaluation Unit  
under Section 53 (4) Yukon Quartz  
Mining Act and is allowed as  
representation work in the amount  
of \$ 20,400.00 .

*D. D. Emmond*

*for* Regional Manager, Exploration and  
Geological Services for Commissioner  
of Yukon Territory.

## TABLE OF CONTENTS

	Page
SUMMARY AND CONCLUSIONS . . . . .	3
INTRODUCTION . . . . .	5
Location . . . . .	5
Access . . . . .	6
Previous Work . . . . .	6
PROPERTY . . . . .	7
GEOLOGY . . . . .	9
Lithologies . . . . .	10
Structure . . . . .	13
Mineralization . . . . .	14
GEOCHEMISTRY . . . . .	17
Soils . . . . .	17
Rocks . . . . .	23
Streams . . . . .	24
RECOMMENDATIONS . . . . .	26
REFERENCES . . . . .	28
APPENDICES:	
A. Analytical Data	
B. Statutory Declaration	
C. Personnel	
D. Writer's Certificate	

### Figures

Figure 1.	Photo: View Northwest Across JL claims	1
2.	Location Map . . . . .	2
3.	Claim Location Map . . . . .	8
4.	Probability graph of Au, Ag in soils .	19
5.	Probability graph of Pb, Zn in soils .	20
6.	Probability graph of As, Sb in soils .	21

### Tables

Table 1.	Claims . . . . .	7
2.	Interpretation of Soil Sample Data . .	18

### Plates

Plate 1.	Geology, Rock and Stream Geochemistry	In Pocket
2.	Au, Ag Soil Geochemistry . . . . .	"
3.	Pb, Zn Soil Geochemistry . . . . .	"
4.	As, Sb Soil Geochemistry . . . . .	"



Figure 1: View northwest across JL claims.

FIGURE 2

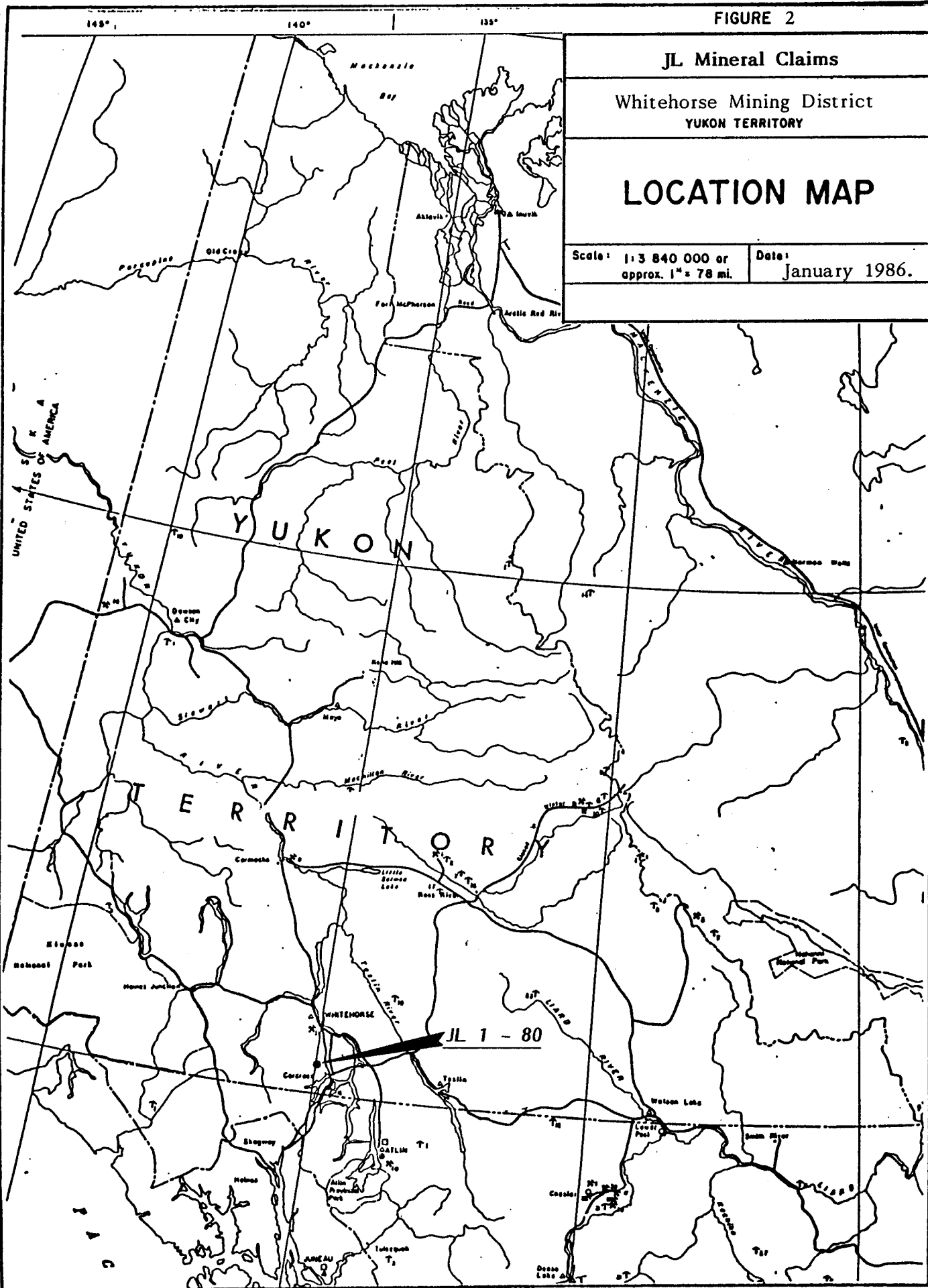
JL Mineral Claims

Whitehorse Mining District  
YUKON TERRITORY

LOCATION MAP

Scale: 1:3 840 000 or  
approx. 1" = 78 mi.

Date: January 1986.



## S U M M A R Y   A N D   C O N C L U S I O N S

The JL 1-80 mineral claims are situated in the Wheaton River area, Whitehorse Mining District (NTS 105D/2), Yukon Territory. Access is provided by road from Whitehorse, a distance of 74 kilometres.

The property is underlain by a succession of Precambrian or later(?) mafic volcanics and Upper Triassic volcanics, pyroclastics and sediments. These rocks are intruded by a dyke-like body of Late Cretaceous-Early Tertiary quartz diorite and a swarm of Eocene rhyolitic dykes, lesser feldspar porphyries and diabasic dykes.

During the 1985 field season, a program of geological mapping and detailed soil and rock sampling was conducted on the JL claims at a total cost of \$25,082.07.

Results of this work indicate that mineralization has several habits. Gold and silver values are found in narrow zones of anastomosing quartz veins in the margins of rhyolites. Silver and gold are associated with galena-bearing quartz veins in quartz diorite. Galena-sphalerite-pyrite fracture fillings in quartz diorite are a third mode of occurrence for gold and silver values.

Soil sampling indicates that gold anomalies are erratic, in areas underlain by dykes. A cluster of strong gold anomalies occurs in an area underlain by Upper Triassic mafic volcanics. Furthermore, two anomalous multi-metal (Au, Ag, Zn, Pb) clusters are underlain by quartz diorite. It is probable that these anomalies represent the extension of similar mineralization found in Midnite Gulch. Arsenic anomalies occur in two clusters, isolated from anomalies in other elements, in areas underlain by a felsic sequence of Upper Triassic Lewes River Group. Antimony is anomalous in one sample, the significance of which is unknown.

In view of the results, a program of further soil geochemistry, geophysics and diamond drilling is recommended to further evaluate the anomalous areas located during 1985. The estimated cost of such a program is \$140,000.

## I N T R O D U C T I O N

This report describes the results of an evaluation of the JL 1-80 mineral claims. The object of this work was to locate and examine mineral showings on the claims as well as to map in detail the geology of the property. Detailed soil and rock sampling was conducted as a part of the program.

### LOCATION

The claims are located 56 kilometres (35 miles) south of Whitehorse in the Whitehorse Mining District, Y.T. (NTS 105D/2). Centered at latitude  $60^{\circ}13'N$  and longitude  $134^{\circ}58'W$ , the ground covers the west side of Wheaton River Valley. Physiographically, the property is situated on steep, brush covered valley walls which, at lower elevations, give way to relatively flat, timbered and swampy valley bottom. Elevations range from 2300' to 5100' above sea level.

**ACCESS**

Excellent access is provided by an all-weather road that leads up the Wheaton River valley to the Mt. Skukum gold mine. At Partridge Creek, a four-wheel drive road leads off the Wheaton River road and up to ground immediately adjacent to the central part of the claims. However, helicopter support greatly facilitates access to the northern and southern parts of the property. Road distance from Whitehorse is approximately 74 kilometres.

**PREVIOUS WORK**

The area has a mineral exploration history going back to 1906 when the first claims were staked on "Midnite Gulch". Considerable work was conducted by successive owners of claims in the area. The result of which was to trace out and trench a northwesterly trending swarm of rhyolitic dykes that lead on to adjoining claims.

**P R O P E R T Y**

Island Mining & Explorations Co. Ltd. own the JL claims. The property, located in the Whitehorse Mining District (NTS 105D/2), consists of 80 full sized, contiguous mineral claims.

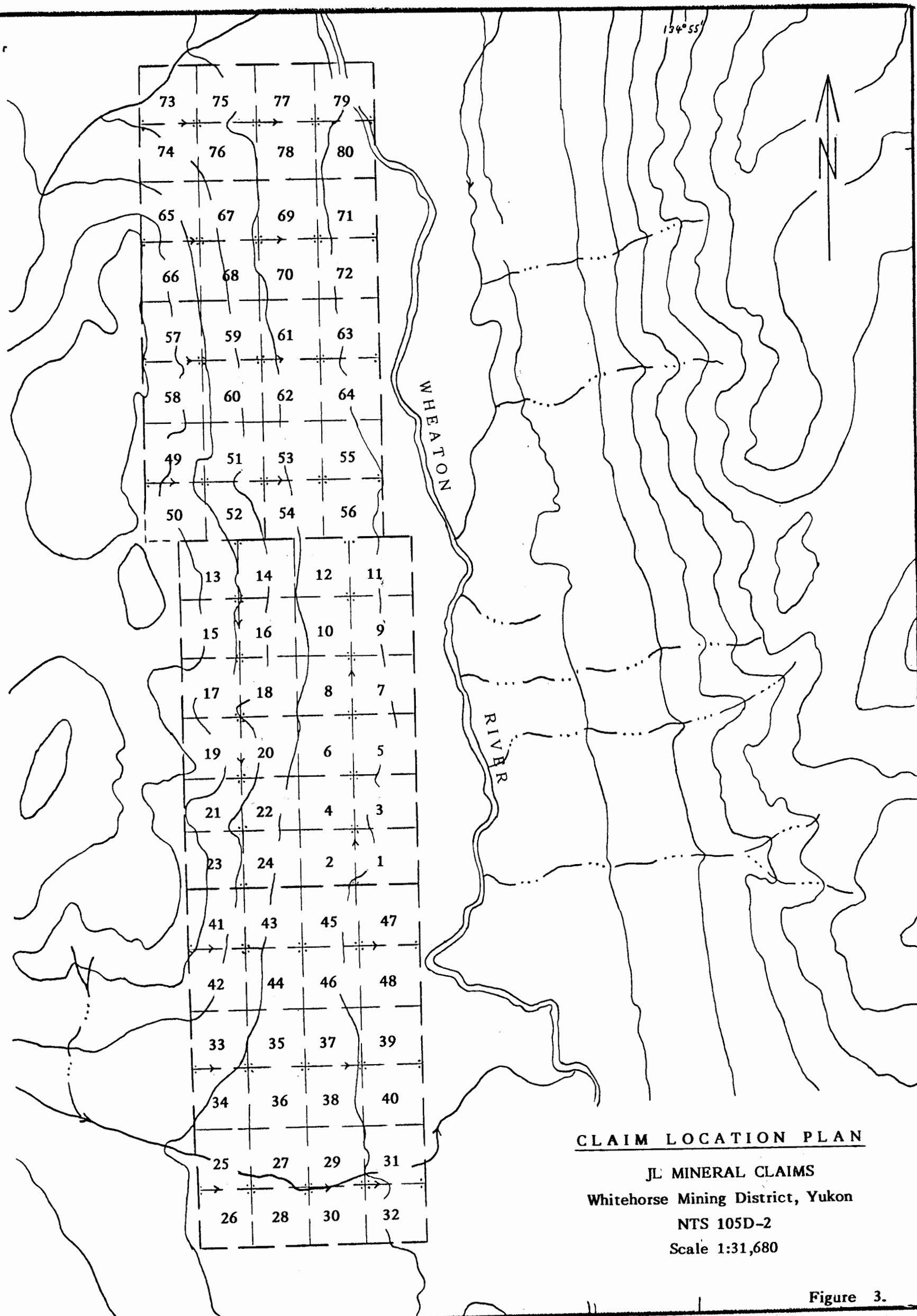
**Table 1**

<b>Claims</b>	<b>Grant Number</b>	<b>Expiry Date*</b>
JL 1-3	YA59033-35	October 21, 1988
JL 4	YA59036	October 21, 1989
JL 5	YA59037	October 21, 1988
JL 6	YA59038	October 21, 1989
JL 7	YA59039	October 21, 1988
JL 8	YA59040	October 21, 1989
JL 9	YA59041	October 21, 1988
JL 10	YA59042	October 21, 1989
JL 11, 12	YA59043-44	October 21, 1988
JL 13-24	YA59045-56	October 21, 1989
JL 25-80	YA85597-652	October 21, 1988

\*Pending acceptance of current work by Mining Recorder.

60° 15'

134° 55'



**CLAIM LOCATION PLAN**

**JL MINERAL CLAIMS**  
Whitehorse Mining District, Yukon  
NTS 105D-2  
Scale 1:31,680

Figure 3.

## G E O L O G Y

The JL claims are located in the northern part of the Coast Range Plutonic Complex, a tectonic element that has been a prolific gold producer in the Canadian Cordillera.

Regionally, the area is underlain by volcanics of uncertain age and Upper Triassic Lewes River group volcanics, pyroclastics and sediments. This succession is intruded by quartz diorite of Late Cretaceous-Early Tertiary age. A swarm of northwesterly trending Eocene dykes intrudes mainly the Upper Triassic succession on the property.

Detailed geological mapping at a scale of 1:5,000 was carried out over most of the claim area. The distribution of lithologies (Plate 2), age and formational nomenclature was supplemented by information contained in G.S.C. Memoir 312 (Wheeler, 1961). Bedrock exposures on the claims are less than 5 percent of the surface area.

**LITHOLOGIES****Precambrian or Later(?)****Mafic volcanics**

A succession of foliated, dark green, fine-grained amphibolitic rocks underlies the northern quarter of the claims. It was presumably derived from mafic volcanics. The sequence forms relatively resistant cliffs. It is in contact with quartz diorite to the south. Northern contacts with other lithologies were not observed. This unit probably represents a wedge of basement rock in the Wheaton River area.

**Upper Triassic: Lewes River Group****Mafic Volcanics**

A sequence of massive, typically structureless pyroxene porphyries underlies approximately 60 percent of the property. The porphyries are dark brown weathering,

dark green coloured. Rare pyroxenite lenses occur within the sequence. This unit becomes strongly foliated as the contact with the quartz diorite is approached.

### **Pyroclastics and sediments**

A succession of intercalated chlorite to muscovite schists underlies the northeastern part of the claims. It is interpreted that these rocks were derived from interbedded lapilli-tuffs, fine-grained tuffs, fine to coarse clastics and volcanics. Tuffs vary from light grey to grey and maroon coloured chloritic schists. Sediments consist of metapelites, metapsammites and rare pebble conglomerate lenses. A sequence of light coloured muscovite schist, presumably a derivative of felsic volcanics, occurs within the succession.

### **Late Cretaceous - Early Tertiary**

#### **Quartz Diorite**

A mass of quartz diorite intrudes Upper Triassic lithologies in the central part of the claims. In

general, this unit is well fractured and recessive. It consists of a grey weathering, medium-grained hornblende-biotite quartz diorite. Mafic minerals are typically partially altered to chlorite. Thermal contact effects of the quartz diorite on surrounding lithologies appears to be minimal. Galena, sphalerite and pyrite occur in fracture fillings in this unit at Midnite Gulch.

## **Eocene**

### **Dyke rocks**

Northwesterly trending, steep to moderately dipping dykes intrude the central part of the claims. The swarm is approximately 500 metres in width. Dykes consist predominantly of orange weathering leucocratic, fine-grained to aphanitic rhyolite. Locally microlitic, dykes in general have a relatively equal granular texture, however, subhedral feldspar and anhedral quartz phenocrysts occur in some. Rhyolites are commonly shattered. Fine-grained pyrite is ubiquitous as disseminations or as paint or fracture surfaces. Dykes range from 0.3 to 7 metres in width, averaging 3 metres. Quartz veins occur

in anastomosing zones within the borders of some rhyolites. Locally, particularly in moderately dipping dykes, the veining is intense and the margins of the dykes appear to be brecciated and silicified. Sericite is associated with the stringers as is pyrite, pyrrhotite, galena and minor sphalerite. Some rhyolites exhibit well developed chilled, flow-banded contacts 5 to 7 centimetres wide. Rocks surrounding the dykes are typically shattered and sheared suggesting that the dykes are emplaced in shears parallel to the metamorphic fabric. Wallrocks are locally rusty weathering and slightly bleached. Several medium grey, feldspar porphyries occur in the dyke swarm. As well, two mafic dykes intrude the quartz diorite. Age of the rhyolites is believed to be Eocene (Pride, 1985).

## **STRUCTURE**

The prominent structural feature on the JL claims is a well developed northwesterly trending steeply dipping foliation in the Upper Triassic sediments and pyroclastics. The foliation is also developed in the pyroxene porphyries adjacent to the quartz diorite. The north contact of the quartz

diorite is inferred to be in fault contact with Upper Triassic units. A carbonatized, northwesterly trending shear zone occurs in mafic volcanics in the drainage south of the Midnite Gulch.

### **MINERALIZATION**

There are three styles of mineralization on the JL claims:

- i) Gold-silver bearing quartz veins in rhyolite dykes.
- ii) Galena bearing quartz veins in quartz diorite which have high silver and gold values.
- iii) Galena-sphalerite-pyrite fracture fillings in quartz diorite.

Gold and silver bearing quartz veins, occurring in the margins of rhyolite dykes, are similar to those found on the adjoining Ton claims (Verley, 1986). In Midnite Gulch, an easterly flowing tributary of the Wheaton River, two adits and

several trenches were drifted into rhyolites during the 1920's or '30's. These occurrences were remapped, prospected and sampled during the course of the current program. The highest analysis was 125 ppb Au over a 2 metre width of rhyolite. A third adit in rhyolite is situated at 4350' elevation, 400 meters north of Midnite Gulch. There, a chip sample of vein rubble on the dump by the adit contained 395 ppb Au.

Galena-bearing quartz veins are, in general, narrow (3 to 10 m) and restricted to an area underlain by quartz diorite near the northern part of the claim block. A selected grab sample of a piece of galena-bearing vein float from this area assayed 14.18 oz/ton Ag, 0.652 oz/ton Au, 0.99% Pb. The veins may be related to similar veins located to the west on Mt. Stevens. Because of limited surface expression, it is believed the veins are of little economic potential.

Galena-sphalerite-pyrite fracture fillings in diorite are also located in Midnite Gulch. Quartz diorite is slightly altered in these zones with mafic minerals being chloritized. A selected chip sample across a narrow (4 cm) mineralized fracture zone assayed 0.22 oz/ton Ag, 0.04 oz/ton Au, 0.48% Pb and 0.63% Zn. It is speculated that, during emplacement of rhyolite dykes, the quartz diorite was shattered

and, to some extent, mineralization percolated into fracture zones. The full extent of mineralization has not been evaluated thoroughly at present. Furthermore, it is conceivable that gold mineralization could occur in the quartz diorite in fractures or stockworks in a manner similar to that found on the RIN claims of Abo Oil-Kerr Addison at Harrison Lake, B.C. Soil geochemical anomalies, to the southwest of Midnite Gulch, in areas underlain by quartz diorite, suggest that mineralization may be more extensive than observed. Further work is recommended to fully evaluate this area.

## G E O C H E M I S T R Y

Soil sampling on the JL claims was conducted over a total of 30.2 kilometres of grid (Plates 2 - 4) covering most of the property. A total of 608 samples were collected at 50 metre intervals on picketed lines and flagged contour lines, spaced 50 and 100 metres apart. Rock sampling of all lithologies was also undertaken, as well as stream sampling (Plate 1). All samples were placed in numbered bags and shipped to Acme Analytical Laboratories Ltd. in Vancouver, B.C. These samples were dried and sieved (or crushed in the case of rocks) and analysed for Au, Ag, As, Pb, and Zn, as per method and extraction techniques outlined on data sheets (Appendix A).

### SOILS

Where possible, soil samples were collected from the B-horizon. This horizon is moderately well developed over

most of the property under a thin, but variable layer of pale grey volcanic ash. Soils in general consist of thin residual soils. However, in the valley bottoms thick alluvium is found.

Probability graphs of soil data are found in Figures 4 to 6. The distributions suggest that data for Ag, Pb, and Zn represents two mixed populations. It is believed that, for each element, one of the populations is related to mineralization and is regarded as an anomalous population. In the case of Au and As, the linearity of the distribution suggest a simple lognormal population, however the large standard deviation in the case of gold suggests that there is mixing of data from an anomalous population. Further sampling may better define the parameters of the two groups. With the exception of one erratic high value, Sb data is not anomalous.

Table 2

**INTERPRETATION OF SOIL SAMPLE DATA**

	<u>Range</u>	<u>Background</u>	<u>Possibly Anomalous</u>	<u>Anomalous</u>
Au	1- 810 ppb	1- 99 ppb	100-299 ppb	300+ ppb
Ag	0.1- 8.3 ppm	0.1-0.7 ppm	1.8-3.0 ppm	3.1+ ppm
Pb	2-3010 ppm	2-199 ppm	200-399 ppm	400+ ppm
Zn	29-1143 ppm	29-349 ppm	350-499 ppm	500+ ppm
As	2- 113 ppm	2- 49 ppm	50- 79 ppm	80+ ppm
Sb	2- 590 ppm	2- 19 ppm	20- 99 ppm	100+ ppm

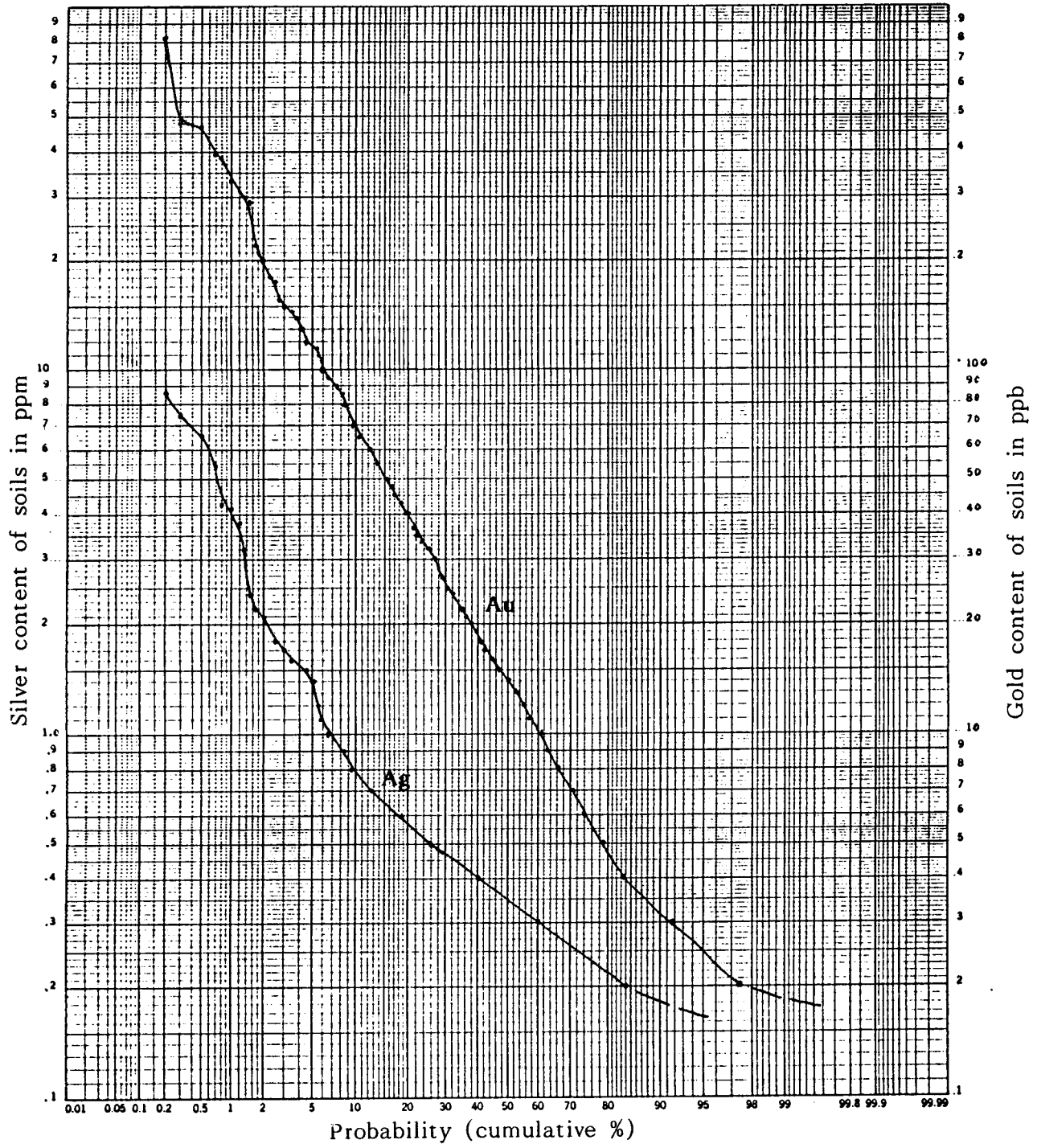


FIGURE 4

Probability Graph - Gold and Silver in Soils

JL 1 - 80 Claims

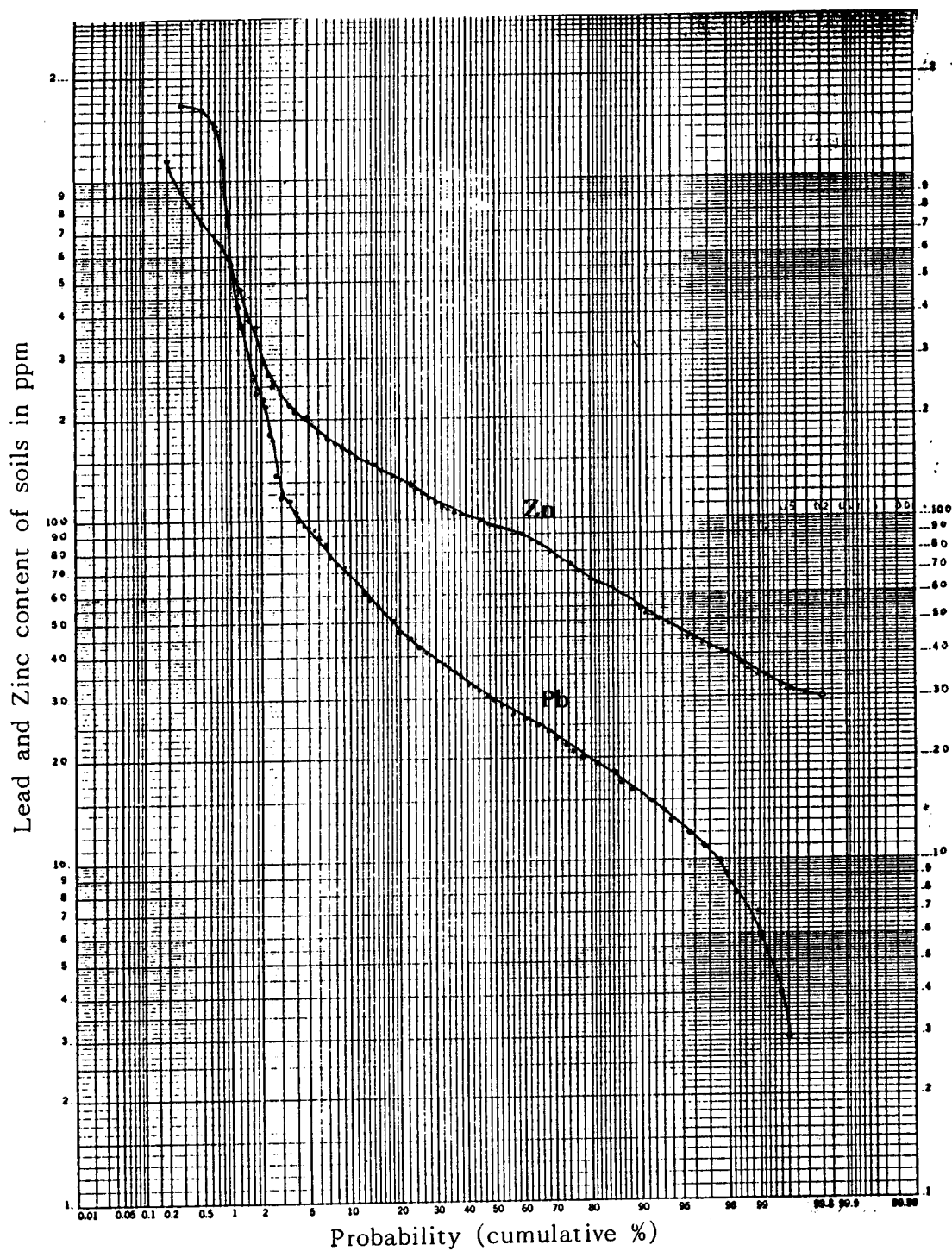


FIGURE 5

Probability Graph - Lead and Zinc in Soils

JL 1 - 80 Claims

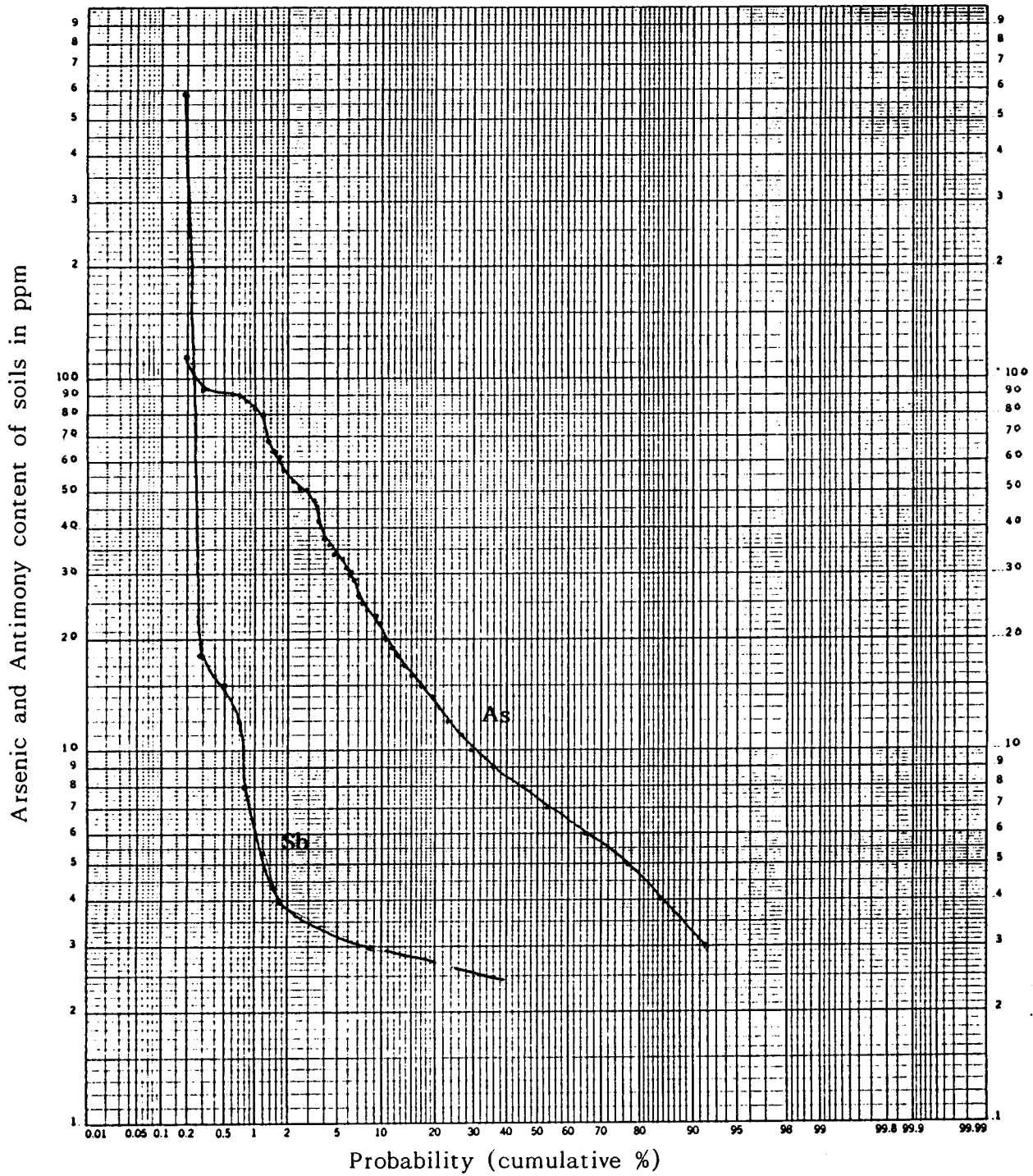


FIGURE 6

Probability Graph - Arsenic and Antimony in Soils

JL 1 - 80 Claims

Results of the sampling indicate that gold anomalies occur in three isolated samples (300, 395, 310 ppb) at 700N, 2550E; 600N, 2450E and 400N, 2650E respectively. As well, possibly anomalous values are scattered throughout the grid area and probably reflect mineralization associated with dykes. An isolated 495 ppb Au anomaly at 50N, 2300E is associated with Ag anomalies at ON, 2350E, 2400E and 386060 in an area underlain by quartz diorite. This area corresponds in part to anomalies located by previous workers (Holcapek, 1981). Other areas anomalous in gold are outlined by samples taken along contour lines south of the grid area. A cluster of anomalies with the highest Au values (810 ppb) occurs from samples 386011 to 15, 376009 to 12 and 386042. Relatively high Ag values (up to 4.1 ppm) are associated with gold. The area is underlain by Upper Triassic mafic volcanics.

Strong silver anomalies (8.3, 7.7 and 4.2 ppm) from a cluster (samples 376066, 67 and 386065) that has very high Pb (to 3010 ppm) as well as high Zn (to 672) ppm). The source for this anomalous area has yet to be explained. It is possible that galena and sphalerite-bearing veins are associated with dykes in this area or mineralization may be related to felsic metavolcanics in the Upper Triassic succession at this locality. Another area anomalous in Ag occurs at samples 386059; ON, 2350E,

2400E. This cluster has possibly anomalous Au values (155, 115 ppb) as well as anomalous Pb (to 1686 ppm) and Zn (to 1143 ppm). A vein source is the probable cause of this anomaly, further work is warranted to locate and evaluate the source of these values. a small multi-metal (Au, Ag, Zn) grouping occurs at sample 386054, 55, 376056-58. Gold values are up to 295 ppb, Ag to 3.2 ppm and Zn to 910 ppm. This area is underlain by quartz diorite.

Anomalous arsenic values (to 91 ppm) form two groups of samples that are isolated from anomalies of other metals. The significance of these clusters is not understood. One erratic antimony anomaly (590 ppm) occurs as an isolated value.

## ROCKS

Samples consisted of 1 to 2 kilograms of rock chips taken across surface exposures. A total of 28 rock samples were taken for analysis of the different lithologies on the property. Of these, 9 were in rhyolite. Gold values range from 2 to 395 ppb in rhyolite, average 90 ppb. A grab sample of galena-bearing quartz vein float contained 325 ppb Au, 13.4 ppm Ag. However, the source for this mineralization was not located during the course of the program. A chip sample from a large

xenolith of carbonatized mafic volcanic in quartz diorite contained 110 ppb Au. Samples from a northwesterly trending shear zone running down the gully south of Midnite Gulch are slightly elevated in Au (to 15 ppb), As (to 59 ppm) and Ag (5.8 ppm). Furthermore, this drainage has the highest response for stream silts on the property (230 ppb Au) suggesting that more Au mineralization may occur in the drainage area than located to date. Further work is strongly recommended. Particular attention should be paid to detailed sampling of the shear zone as well as prospecting and sampling the whole drainage basin. Ground to the west of the JL, covering the headwaters of this drainage, should be acquired if available. The shear zone has potential for hosting significant gold mineralization and should be thoroughly evaluated.

#### **STREAMS**

A series of 14 stream samples were collected from creeks draining the property as well as from material in dry gulches or intermittent streams. Values for Au range from 4 to 230 ppb. Highest values occur in the drainage immediately south of Midnite Gulch, where values range from 51 to 230 ppb Au. In Midnite Gulch a silt sample taken downstream from the old

workings contained 120 ppb Au. The difference in values between Midnite Gulch, where known mineralization exists, and the drainage to the south, where stream silts contain more gold, suggests that mineralization exists within the drainage basin.

## R E C O M M E N D A T I O N S

For the 1986 field season, a two stage success-contingent exploration program is recommended to further evaluate the JL claims.

<b>Stage I:</b>	Further soil sampling, detailed geological mapping, prospecting and geophysical surveying.	
	- Soil sampling, grid preparation 20 km grid @ \$150/km	\$ 9,000
	- Analytical costs 600 samples @ \$12/sample	7,200
	- Induced polarization survey 10 km @ \$600/km	6,000
	- Mapping, rock sampling, report	10,000
	- Helicopter support 10 hrs @ \$550/hr	5,500
	- Field support	<u>6,000</u>
		37,700
	- Contingency	2,300
		<u>          </u>
	<b>Total Stage I</b>	<b>\$ 40,000</b>

<b>Stage II</b>	Diamond drilling to test anomalies generated by Stage I.	
	- 2000 feet NQWL @ \$24/ft.	\$ 48,000
	- Support costs	<u>43,000</u>
		91,000
	- Contingency	<u>9,000</u>
	<b>Total Stage II</b>	<b>\$100,000</b>

**Grand Total Stages I & II    \$140,000**

Respectfully submitted,

**AMERLIN EXPLORATION SERVICES LTD.**

*Carl G. Verley.*

**Carl G. Verley, F.G.A.C.**

Vancouver, B.C.

February 14, 1986

## R E F E R E N C E S

- Holcapek, F. 1981: Evaluation Report on the JL 1-24 Mineral Claims, Midnite Gulch. Private company report.
- Pride, M.J. and G.S. Clark, 1985: An Eocene Rb-Sr isochrone for rhyolite plugs, Skukum area, Y.T. Canadian Journal of Earth Sciences, vol.22, No. 11, pp 1747-1753.
- Wheeler, J.O., 1961: Whitehorse Map-Area, Y.T., Geological Survey of Canada, Memoir 312.
- Verley, C.G., 1986: Geological and Geochemical Report on the Ton 1-16 Claims. Private company report.

**APPENDIX A**  
**ANALYTICAL DATA**

## ASSAY AND ANALYTICAL DATA

### ROCK SAMPLE DESCRIPTIONS

#### ASSAYS:

Sample	Description
7565	Chips across a 4 cm wide fracture zone in quartz diorite. Zone is altered (carbonatized?) and contains pyrite, galena, sphalerite.
7566	Chips across 1.5 m face of quartz diorite. Sample interval contains mineralized fracture of 7665.
7570	Chips from 10 cm x 10 cm quartz diorite boulder with galena bearing quartz veins.
7571	Chips of malachite stained, quartz vein rubble. Host to veins is greenstone.

#### ANALYSES:

351002	Chips of shattered and weathered rhyolite dyke. Limonitic contains up to 1 percent pyrite.
351003	Chips across 2 m width of rhyolite dyke. Shattered, cut by quartz veinlets - limonitic.
351004	Chips across rhyolite dyke: shattered, pyritic with quartz veinlets.
351005	Chips across 1 m wide rhyolite
351064	Chips across 2 m face of medium grey, trachytoid feldspar porphyry.
351065	Chips of chloritic, fractured quartz diorite.

Sample	Description
351068	Chips of shattered slightly sheared chloritic quartz diorite with limonitic fracture surfaces.
351069	Chips across 2 m face of shattered, rusty weathering quartz diorite.
351071	Chips of pyritic (1-3% pyrite) quartz diorite.
351072	Chips of pyritic altered and sheared rock (quartz diorite?).
351073	Continuous chip across 42 cm wide shear in greenstone at contact with rhyolite dyke.
351074	Chips across 2 m face of rhyolite dyke in old trench.
351075	Chips across 3 m face of rhyolite dyke - dyke is cut by several quartz stringers.
351076	Chips across rubble pile of rhyolite at upper adit (4350').
351094	Chips across 41 cm quartz-carbonate vein.
351095	Chips of altered greenstone wallrock to quartz-carbonate vein (351094).
351096	Chips across rusty 37 cm sheared zone.
351097	Chips across 43 cm wide rusty weathering, fine-grained siliceous zone with limonitic boxworks. Minor malachite and manganese stain occur on zone.
351098	Chips across 42 cm wide section contain multiple quartz-carbonate veinlets.
351099	Chips of altered wall rock to 351098
351100	Chips of small quartz vein (1 cm) in alteration envelope adjacent to feldspar porphyry dyke.

Sample	Description
351101	Chips across 2 m of rusty weathering feldspar porphyry dyke.
351102	Chips of unaltered, mineralized greenstone. Rare malachite occurs on fractures.
351104	Chips of carbonatized greenstone.
351105	Chips of galena and pyrite-bearing vein float.
351106	Chips across 17 cm zone containing 3 cm wide quartz-carbonate vein and alteration envelope consisting of bleached greenstone.
351115	Chips across 30 cm wide rhyolite dyke.
351116	Chips across 20 cm of mottled, pale-coloured, fine-grained siliceous wallrock to rhyolite dyke of sample 351115.

ACME ANALYTICAL LABORATORIES LTD.  
852 E. HASTINGS, VANCOUVER B.C.  
PH: (604)253-3158 COMPUTER LINE:251-1011

DATE RECEIVED AUG 23 1985  
DATE REPORTS MAILED Sept. 1/85

### ASSAY CERTIFICATE

SAMPLE TYPE : ROCK - CRUSHED AND PULVERIZED TO -100 MESH.

ASSAYER: T. Saundry DEAN TOYE OR TOM SAUNDY, CERTIFIED B.C. ASSAYER

ISLAND MINING & EXPLORATIONS PROJECT JL FILE# 85-2020A PAGE# 1

SAMPLE	Pb %	Zn %	Ag oz/t	Au oz/t
7565	.48	.63	.22	.040
7566	.14	.12	.06	.001
7570	.99	.01	14.18	.652

ACME ANALYTICAL LABORATORIES LTD.  
 352 E. HASTINGS ST. VANCOUVER B.C. V6A 1R6  
 PHONE 253-3158 DATA LINE 251-1011

DATE RECEIVED: AUG 26 1985

DATE REPORT MAILED: *Aug 30/85*

**GEOCHEMICAL ICP ANALYSIS**

.500 GRAM SAMPLE IS DIGESTED WITH 3ML 3-1-2 HCL-HNO3-H2O AT 95 DEG. C FOR ONE HOUR AND IS DILUTED TO 10 ML WITH WATER.  
 THIS LEACH IS PARTIAL FOR MN.FE.CA.P.CR.MG.BA.TI.B.AL.NA.K.W.SI.ZR.CE.SN.Y.NB AND TA. AU DETECTION LIMIT BY ICP IS 3 PPM.

- SAMPLE TYPE: SOILS -80 MESH AU\* ANALYSIS BY AA FROM 10 GRAM SAMPLE.

*Pb - ROCKS*

ASSAYER: *T. Saundry* DEAN TOYE OR TOM SAUNDRY. CERTIFIED B.C. ASSAYER

ISLAND MINES PROJECT - JL FILE # 85-2051 PAGE 1

SAMPLE#	Pb PPM	Zn PPM	Ag PPM	As PPM	Sb PPM	Au* PPB
2400E 900N	23	96	.1	13	2	55
2400E 850N	41	128	.6	91	2	32
2400E 800N	30	70	.1	8	2	140
2400E 700N	43	116	.2	5	2	22
2400E 600N	54	131	.1	5	2	3
2400E 550N	41	165	.2	7	2	12
2400E 500N	37	103	.1	3	2	60
2400E 450N	33	107	.3	20	2	37
2400E 350N	28	105	.3	5	2	25
2400E 300N	32	97	.6	5	2	80
2400E 250N	52	115	.6	10	2	60
2450E 1000N	32	74	.3	8	2	50
2450E 950N	26	97	.4	9	2	50
2450E 900N	30	75	.3	17	2	60
2450E 850N	46	158	.2	52	2	11
2450E 800N	37	151	.1	44	2	2
2450E 750N	41	166	.1	54	2	9
2450E 700N	45	109	.1	7	2	26
2450E 600N	38	85	.3	3	2	395
2450E 550N	21	62	.3	6	2	21
2450E 500N	33	79	.2	2	2	16
2450E 450N	58	118	.2	8	2	150
2450E 400N	37	146	.3	5	2	20
2450E 300N	60	105	.3	5	2	23
2450E 250N	30	94	.7	8	2	60
2450E 200N	42	95	.3	11	2	50
2450E 150N	34	143	.7	11	2	50
2450E 100N	27	78	.2	5	2	13
2450E 50N	283	275	.4	21	4	12
2450E 0N	73	90	.6	9	4	10
2500E 1000N	31	64	.5	12	2	115
STD C/AU 0.5	40	135	6.9	38	15	51

SAMPLE#	Pb PPM	Zn PPM	Ag PPM	As PPM	Sb PPM	Au* PPB
2500E 950N	47	167	.1	8	2	4
2500E 900N	20	53	.2	12	2	16
2500E 850N	39	152	.2	13	2	2
2500E 750N	33	137	.3	7	3	12
2500E 700N	37	138	.1	3	2	12
2500E 650N	36	188	.5	5	2	5
2500E 600N	29	86	.2	4	3	27
2500E 550N	39	103	.4	7	2	32
2500E 500N	49	270	.1	2	2	5
2500E 450N	72	209	.1	2	2	13
2500E 400N	15	127	.1	2	2	3
2500E 350N	35	139	.1	2	2	5
2500E 300N	8	52	.1	2	2	2
2500E 250N	30	98	.6	3	2	32
2500E 200N	23	96	.1	8	3	7
2500E 150N	38	75	.9	6	2	13
2500E 100N	27	123	.1	4	2	5
2500E 50N	41	118	.4	3	2	15
2500E 0N	18	73	.1	6	3	10
2550E 1000N	29	76	.4	6	2	140
2550E 950N	57	94	.8	12	2	14
2550E 900N	27	102	.3	5	2	7
2550E 850N	22	151	.3	2	2	3
2550E 800N	24	104	.3	6	3	28
2550E 750N	37	140	.2	5	2	175
2550E 700N	30	88	.2	11	2	300
2550E 650N	39	119	.5	4	2	15
2550E 600N	26	127	.6	2	2	4
2550E 550N	30	126	.2	5	2	220
2550E 500N	34	66	.1	6	3	55
2550E 450N	56	161	.3	2	2	33
2550E 400N	16	64	.2	7	3	17
2550E 350N	19	51	.1	6	3	90
2550E 300N	35	75	.1	4	2	32
2550E 250N	24	84	.6	9	2	60
2550E 200N	41	134	.7	8	2	36
STD C/AU-0.5	40	138	7.2	39	15	495

SAMPLE#	Pb PPM	Zn PPM	Ag PPM	As PPM	Sb PPM	Au* PPB
2550E 150N	35	65	.2	9	2	60
2550E 100N	29	57	.2	7	2	24
2550E 50N	21	129	.2	7	2	51
2550E 0N	48	239	.2	8	2	4
2600E 1000N	20	66	.3	16	2	49
2600E 950N	25	81	.1	9	2	12
2600E 900N	25	75	.2	15	2	23
2600E 850N	18	57	.3	7	2	90
2600E 800N	24	59	.2	5	2	20
2600E 750N	26	84	.2	6	2	17
2600E 700N	26	108	.2	6	2	14
2600E 650N	36	122	.4	6	2	20
2600E 600N	23	64	.3	5	2	17
2600E 550N	33	95	.2	8	2	14
2600E 500N	25	96	.3	3	2	28
2600E 450N	18	78	.3	4	2	39
2600E 400N	19	97	.2	2	2	70
2600E 350N	26	43	.2	8	2	38
2600E 300N	20	48	.3	6	2	15
2600E 250N	28	70	.5	8	2	54
2600E 200N	36	103	.5	12	3	25
2600E 150N	22	80	.4	2	3	9
2600E 100N	19	41	.3	8	2	34
2600E 50N	15	34	.3	9	3	43
2600E 0N	25	130	.5	6	2	21
2650E 1000N	25	91	.2	10	2	16
2650E 950N	21	101	.2	5	3	24
2650E 900N	16	79	.1	4	2	21
2650E 850N	46	105	.7	34	3	12
2650E 800N	13	36	.3	3	2	48
2650E 750N	19	29	.3	5	2	12
2650E 700N	21	58	.4	2	2	41
2650E 650N	21	40	.3	5	2	35
2650E 600N	22	51	.4	3	2	10
2650E 550N	20	68	.2	2	2	15
2650E 500N	18	64	.3	2	2	4
STD C/AU-0.5	41	137	7.0	40	16	480

SAMPLE#	Pb PPM	Zn PPM	Ag PPM	As PPM	Sb PPM	Au* PPB
2650E 450N	15	55	.4	5	2	130
2650E 400N	18	49	.4	8	2	310
2650E 350N	18	40	.1	7	2	43
2650E 300N	35	96	.4	11	2	155
2650E 250N	25	103	.4	7	2	20
2650E 200N	14	49	.2	9	2	19
2650E 150N	17	56	.1	10	2	120
2650E 100N	14	69	.2	5	2	30
2650E 50N	34	104	.1	11	2	24
2650E 0N	18	101	.1	7	2	12
2700E 1000N	12	62	.1	7	2	60
2700E 950N	31	63	.4	12	2	42
2700E 900N	30	107	.3	30	2	26
2700E 850N	27	135	.1	17	2	31
2700E 800N	24	138	.3	8	2	14
2700E 750N	18	89	.1	6	2	14
2700E 700N	15	44	.1	8	2	40
2700E 650N	12	46	.2	6	2	20
2700E 600N	19	38	.3	8	2	110
2700E 550N	12	35	.2	9	2	33
2700E 500N	21	81	.1	5	2	23
2700E 450N	218	242	.3	14	2	90
2700E 400N	12	83	.2	4	2	200
2700E 350N	20	58	.2	8	2	33
2700E 300N	14	42	.2	11	2	58
2700E 250N	24	64	.4	8	2	28
2700E 200N	29	103	.6	10	2	54
2700E 150N	13	49	.2	9	2	24
2700E 100N	11	41	.3	9	2	17
2700E 50N	15	139	.2	7	2	3
2700E 0N	24	96	.1	10	2	90
2750E 1000N	18	49	.2	9	2	26
2750E 950N	19	46	.2	10	2	65
2750E 900N	19	96	.2	7	2	49
2750E 850N	13	109	.3	5	2	55
2750E 800N	43	87	.4	5	2	22
2750E 750N	17	210	.4	6	2	51
STD C/AU-0.5	38	137	7.0	38	15	495

SAMPLE#	Pb PPM	Zn PPM	Ag PPM	As PPM	Sb PPM	Au* PPB
2750E 700N	2	40	.2	7	2	45
2750E 650N	14	72	.2	9	2	55
2750E 600N	15	81	.3	6	2	18
2750E 550N	2	30	.3	8	2	44
2750E 500N	22	138	.5	5	2	7
2750E 450N	7	72	.4	6	2	13
2750E 400N	7	58	.4	4	2	8
2750E 350N	6	35	.3	8	2	27
2750E 300N	19	72	.3	6	2	9
2750E 250N	12	42	.4	9	2	180
2750E 200N	14	69	.2	7	2	37
2750E 150N	12	57	.4	7	2	15
2750E 100N	15	91	.5	7	2	30
2750E 50N	22	141	.5	5	2	25
2750E 0N	16	68	.3	10	2	22
2800E 1000N	6	49	.5	7	2	12
2800E 950N	10	36	.3	6	3	15
2800E 900N	11	49	.4	5	2	25
2800E 850N	3	63	.3	4	2	23
2800E 800N	4	48	.2	7	2	85
2800E 750N	16	48	.4	5	590	55
2800E 700N	2	56	.2	4	2	21
2800E 650N	9	91	.4	2	3	13
2800E 600N	20	54	.3	8	2	65
2800E 550N	4	47	.3	2	2	16
2800E 500N	14	69	.4	3	2	55
2800E 400N	13	31	.4	2	2	5
2800E 350N	10	66	.3	3	2	14
2800E 300N	11	41	.3	6	2	60
2800E 250N	23	86	.6	11	2	30
2800E 200N	7	53	.3	3	2	14
2800E 150N	15	95	.7	8	3	20
2800E 100N	18	71	.3	5	3	9
2800E 50N	25	57	.2	2	2	9
2800E 0N	12	58	.3	5	2	55
355070 SILT	140	132	2.0	9	2	90
355071 SILT	38	125	.6	4	2	8
STD C/AU 0.5	40	132	7.1	38	15	480

SAMPLE#	Pb PPM	Zn PPM	Ag PPM	As PPM	Sb PPM	Au* PPB
351067	32	6	.5	5	2	2
351068	15	52	.1	3	2	1
351069	15	70	.2	2	2	1
351071	25	30	.2	2	2	2
351072	178	240	.3	16	2	3
351073	27	64	.1	2	2	4
351074	109	119	.6	2	2	130
351075	131	49	.8	7	2	10
351076	327	60	2.5	31	2	395
STD C	40	140	7.1	38	16	-

ACME ANALYTICAL LABORATORIES LTD.  
 852 E. HASTINGS ST. VANCOUVER B.C. V6A 1R6  
 PHONE 253-3158 DATA LINE 251-1011

DATE RECEIVED: AUG 23 1985

DATE REPORT MAILED: *Sept. 1/85*

**GEOCHEMICAL ICP ANALYSIS**

.500 GRAM SAMPLE IS DIGESTED WITH 3ML 3-1-2 HCL-HNO3-H2O AT 95 DEG. C FOR ONE HOUR AND IS DILUTED TO 10 ML WITH WATER.  
 THIS LEACH IS PARTIAL FOR MN.FE.CA.P.CR.MG.BA.TI.B.AL.NA.K.W.SI.ZR.CE.SN.Y.NB AND TA. AU DETECTION LIMIT BY ICP IS 3 PPM.  
 - SAMPLE TYPE: P1-2 SOILS -80 MESH P3 ROCKS AU\* ANALYSIS BY AA FROM 10 GRAM SAMPLE.

ASSAYER: *T. Saundry* DEAN TOYE OR TOM SAUNDRY. CERTIFIED B.C. ASSAYER

ISLAND MINING PROJECT - JL FILE # 85-2020 PAGE 1

SAMPLE#	Pb PPM	Zn PPM	Ag PPM	As PPM	Sb PPM	Au* PPB
JLT-1-1	69	112	.4	5	2	10
JLT-1-2	67	110	.4	8	2	12
JLT-1-3	52	121	1.8	4	2	41
JLT-1-4	64	143	1.8	5	2	60
JLT-1-5	56	96	.2	3	2	4
JLT-1-6	45	120	.4	2	2	11
JLT-1-7	45	91	.2	5	2	3
JLT-1-8	18	108	.1	3	2	5
JLT-1-9	31	79	.2	14	2	16
JLT-1-10	56	105	.9	7	2	15
JLT-1-11	62	93	.4	6	2	32
JLT-1-12	60	111	.4	6	2	12
JLT-1-13	230	90	1.6	16	2	44
JLT-1-14	71	91	.4	14	2	16
JLT-1-15	66	91	.4	3	2	7
JLT-1-16	61	96	1.1	4	2	42
JLT-1-17	239	180	1.2	5	2	35
JLT-1-18	577	214	.6	3	4	30
JLT-1-19	109	131	.6	5	2	9
JLT-1-20	85	199	.5	4	2	10
JLT-1-21	27	96	.1	12	2	7
JLT-1-22	41	84	.1	6	2	10
JLT-1-23	45	112	.2	51	2	13
JLT-1-24	31	101	.2	8	2	9
JLT-1-25	26	86	.2	6	2	8
JLT-1-26	30	99	.2	12	2	10
JLT-1-27	17	94	.2	12	2	17
JLT-1-28	28	121	.1	16	2	8
2300E 1000N	30	85	.2	24	2	7
2300E 950N	51	101	.5	33	2	32
2300E 900N	11	62	.1	16	2	4
2300E 850N	15	46	.1	6	2	15
2300E 800N	22	68	.3	6	2	17
2300E 750N	25	95	.1	22	2	14
2300E 700N	27	69	.2	8	2	35
2300E 650N	35	113	.1	12	3	3
STD C/AU-0.5	41	136	7.0	37	16	500

## ISLAND MINING

PROJECT - JL

FILE # 85-2020

PAGE 2

SAMPLE#	Pb PPM	Zn PPM	Ag PPM	As PPM	Sb PPM	Au* PPB
2300E 550N	24	102	.1	2	2	17
2300E 500N	36	122	.1	2	2	9
2300E 450N	30	61	.4	9	2	30
2300E 400N	21	97	.3	2	2	115
2300E 350N	18	96	.2	4	2	27
2300E 300N	31	96	.4	3	2	80
2300E 250N	37	88	.5	7	2	30
2300E 200N	24	93	.5	4	2	44
2300E 150N	34	93	.2	7	2	32
2300E 100N	27	75	.5	3	2	25
2300E 50N	25	96	.2	2	2	495
2300E 0N	25	98	.1	3	2	31
2350E 950N	72	118	1.5	34	2	43
2350E 900N	58	90	.2	41	3	9
2350E 850N	25	91	.2	19	2	24
2350E 800N	55	119	.5	84	3	25
2350E 750N	43	130	.1	54	2	10
2350E 700N	37	117	.1	4	2	11
2350E 650N	50	175	.1	4	2	14
2350E 500N	38	185	.2	5	3	11
2350E 450N	16	75	.1	3	2	5
2350E 400N	21	116	.3	4	2	125
2350E 350N	49	90	.4	5	2	34
2350E 300N	35	96	.4	4	2	32
2350E 250N	36	94	.5	7	2	26
2350E 200N	38	108	.9	6	2	70
2350E 150N	26	97	.2	8	2	42
2350E 100N	32	86	.5	7	2	75
2350E 50N	39	157	.4	2	2	25
2350E 0N	1686	1143	6.5	28	18	115
2400E 200N	38	98	.2	8	2	80
2400E 150N	28	80	.2	4	2	42
2400E 100N	28	128	.1	4	2	20
2400E 50N	91	104	1.2	8	4	43
2400E 0N	422	748	3.8	15	12	36
355062 SILT	25	74	.4	14	2	35
STD C/AU-0.5	40	138	7.0	36	16	480

SAMPLE#	Pb PPM	Zn PPM	Ag PPM	As PPM	Sb PPM	Au* PPB
351002	1264	164	3.0	13	2	43
351003	43	73	.5	11	2	125
351004	168	263	.9	10	2	90
351005	9	15	.3	11	2	9
351064	15	67	.1	4	2	5
351065	13	81	.1	4	4	1

ACME ANALYTICAL LABORATORIES LTD.  
 852 E. HASTINGS ST. VANCOUVER B.C. V6A 1R6  
 PHONE 253-3158 DATA LINE 251-1011

DATE RECEIVED: SEPT 10 1985

DATE REPORT MAILED: *Sept. 17/85*

**GEOCHEMICAL ICP ANALYSIS**

.500 GRAM SAMPLE IS DIGESTED WITH 3ML 3-1-2 HCL-HNO3-H2O AT 95 DEG. C FOR ONE HOUR AND IS DILUTED TO 10 ML WITH WATER.  
 THIS LEACH IS PARTIAL FOR MN.FE.CA.P.CR.MG.BA.TI.B.AL.NA.K.W.SI.ZR.CE.SN.Y.NB AND TA. AU DETECTION LIMIT BY ICP IS 3 PPM.  
 - SAMPLE TYPE: P1-7 SOILS PB-ROCKS AU: ANALYSIS BY AA FROM 10 GRAM SAMPLE.

ASSAYER: *T. Saundry* DEAN TOYE OR TOM SAUNDRY. CERTIFIED B.C. ASSAYER

ISLAND MINING PROJECT-JL FILE # 85-2310 PAGE 1

SAMPLE#	Pb PPM	Zn PPM	Ag PPM	As PPM	Sb PPM	Au* PPB
376001	31	176	.2	15	2	7
376002	30	116	.4	6	2	6
376003	15	93	.1	3	2	3
376004	12	60	.2	2	2	1
376005	32	123	.1	7	2	3
376006	24	93	.5	8	2	4
376007	36	127	.9	11	4	12
376008	23	76	1.4	27	2	34
376009	36	88	1.5	17	2	385
376010	45	127	.9	16	2	85
376011	98	142	1.4	37	2	115
376012	78	138	2.2	21	2	130
376013	173	135	.3	19	2	30
376014	89	235	1.6	16	2	19
376015	29	62	.7	8	2	15
376016	27	75	.1	8	2	10
376017	46	236	.6	10	2	27
376018	35	145	.8	8	2	75
376019	26	98	.3	9	2	26
376020	42	155	.2	9	2	15
376021	26	95	.6	7	2	19
376022	32	103	.1	12	2	15
376023	40	101	.3	7	2	7
376024	27	98	.2	9	2	16
376025	26	103	.7	15	2	18
376026	18	150	.1	4	2	4
376027	25	117	.3	9	2	21
376029	8	41	.1	2	2	2
376030	21	98	.2	6	2	11
376031	15	71	.2	5	2	4
376032	22	131	.3	5	2	5
376033	19	87	.4	6	3	8
376034	15	224	.2	2	2	2
376035	18	102	.1	4	2	6
376036	20	125	.1	3	2	2
376037	17	94	.2	6	2	6
STD C/AU-0.5	40	133	7.0	39	15	505

SAMPLE#	Pb PPM	Zn PPM	Ag PPM	As PPM	Sb PPM	Au* PPB
376038	16	88	.4	3	2	13
376039	11	68	.3	2	2	3
376040	15	100	.3	2	2	9
376041	12	58	.5	4	2	4
376042	22	84	.4	5	2	10
376043	26	107	.4	5	2	51
376044	29	164	.5	5	2	75
376045	19	62	.4	3	2	20
376046	46	93	.8	11	2	90
376047	26	78	.3	8	2	48
376048	16	44	.3	11	2	105
376049	32	386	1.0	3	2	3
376050	38	153	.6	7	2	2
376051	34	108	.7	8	2	10
376052	30	158	.6	3	2	23
376053	40	174	.1	3	2	18
376054	39	200	.8	5	2	8
376055	97	139	.6	18	2	150
376056	75	380	.9	7	2	100
376057	83	910	2.4	9	2	12
376058	38	166	.6	6	2	3
376059	15	104	.5	2	2	2
376060	41	209	.6	3	2	6
376061	9	575	.5	2	2	2
376062	19	112	.2	2	2	65
376063	10	166	.2	2	2	1
376064	28	88	.2	29	2	13
376065	32	90	.3	51	2	7
376066	1611	467	7.7	15	3	47
376067	1179	394	4.2	17	8	27
376068	96	142	.5	80	2	44
376069	72	108	.2	86	2	16
376070	33	82	.2	64	2	23
376071	86	161	.5	34	2	16
376072	70	93	.5	16	2	7
376073	32	89	.1	14	2	17
STD C/AU-0.5	41	129	7.3	38	16	480

SAMPLE#	Pb PPM	Zn PPM	Ag PPM	As PPM	Sb PPM	Au* PPB
376074	34	102	.1	15	2	31
376076	20	107	.2	11	2	5
376077	66	119	.1	50	2	7
376078	53	100	.2	20	2	3
376079	45	126	.8	33	2	7
376080	76	181	.2	57	2	3
376081	97	120	.3	113	2	10
376082	45	103	.3	26	2	105
376083	34	95	.2	21	2	13
376084	371	222	.7	8	2	10
376085	73	102	.5	5	2	9
376088	62	106	.1	4	2	2
376089	103	201	.3	3	2	5
376090	98	125	.1	4	2	6
376091	47	94	.1	8	2	3
376092	49	99	.9	6	2	5
376093	91	111	.2	6	2	8
376094	118	82	.4	2	2	10
376096	115	132	.9	4	2	16
376097	50	94	.1	4	2	8
376098	37	83	.1	8	2	22
376100	37	75	.3	12	2	5
376101	36	102	.1	13	2	3
376102	20	96	.1	13	2	4
376103	31	133	.1	9	2	3
376104	24	87	.1	7	2	3
376105	21	75	.1	9	2	21
376106	25	69	.1	6	2	5
376107	23	135	.1	8	2	3
376108	25	150	.1	14	2	2
376109	31	87	.2	11	2	17
376110	22	102	.2	14	2	5
376111	20	69	.2	6	2	14
376112	8	71	.1	2	2	7
376113	27	66	.1	6	2	4
376114	57	152	.5	17	2	31
STD C/AU-0.5	38	134	7.1	39	15	500

SAMPLE#	Pb PPM	Zn PPM	Ag PPM	As PPM	Sb PPM	Au* PPB
376116	32	144	.4	19	2	8
376117	24	105	.4	6	2	3
376118	25	90	.3	4	2	3
376119	32	90	.2	9	3	5
376120	19	97	.2	3	2	3
376121	25	94	.2	5	2	8
376122	26	64	.1	8	2	16
376123	27	78	.1	7	2	16
376124	19	45	.2	5	2	85
376125	16	51	.5	4	2	13
376126	23	60	.2	6	2	8
376127	27	62	.4	6	2	6
376128	24	69	.2	2	2	23
376129	22	54	.2	4	2	10
386001	34	139	.3	5	2	15
386002	54	174	.3	7	2	7
386003	40	122	.3	7	2	7
386004	32	93	.1	7	2	4
386005	39	148	.4	8	2	3
386006	49	147	.2	6	2	6
386007	53	162	.1	5	2	3
386008	54	164	.2	4	2	4
386009	43	171	.4	5	2	6
386010	32	80	.5	7	2	10
386011	31	111	1.2	9	2	330
386012	94	146	1.6	13	2	150
386013	180	291	1.7	20	2	130
386015	55	152	4.1	38	2	810
386016	39	85	.2	6	2	10
386017	36	123	.1	3	2	6
386018	30	98	.2	3	2	7
386019	112	201	.4	8	2	210
386020	38	109	.3	7	3	12
386021	45	127	.5	10	2	28
386023	33	95	.2	6	2	115
386024	76	145	1.5	30	2	475
STD C/AU-0.5	41	131	7.2	39	15	520

SAMPLE#	Pb PPM	Zn PPM	Ag PPM	As PPM	Sb PPM	Au* PPB
386025	78	150	.9	8	2	24
386026	71	182	.5	10	2	7
386027	46	180	.6	8	2	25
386029	136	648	.8	14	2	23
386030	30	157	.6	5	3	27
386032	27	82	.5	3	2	16
386033	14	107	.4	2	2	8
386034	14	94	.2	6	2	45
386035	15	70	.3	9	2	23
386036	23	71	.2	2	2	3
386037	11	102	.2	7	2	18
386038	16	114	.3	7	2	6
386039	22	206	.4	2	2	10
386040	20	186	.4	7	2	30
386041	12	57	.3	2	2	2
386042	26	132	.5	6	2	105
386043	30	163	.6	7	2	20
386044	35	91	1.0	11	2	42
386045	75	180	2.1	26	3	55
386046	35	77	.6	11	2	65
386047	36	80	.6	12	2	19
386048	42	121	.5	15	2	24
386049	38	130	.6	6	2	3
386050	87	157	.5	10	2	60
386051	100	122	1.4	18	2	34
386052	175	119	.8	19	2	45
386053	53	121	.3	11	2	55
386054	63	116	2.1	17	2	295
386055	283	460	3.2	47	2	145
386056	41	179	1.0	6	2	18
386057	75	123	1.8	13	2	75
386058	46	155	1.0	14	2	31
386059	29	132	1.5	5	2	37
386060	58	122	5.4	10	2	155
386061	51	131	.6	8	2	40
386062	46	128	.6	10	2	16
STD C/AU-0.5	38	132	7.3	39	15	500

SAMPLE#	Pb PPM	Zn PPM	Ag PPM	As PPM	Sb PPM	Au* PPB
386063	24	76	.3	10	2	11
386064	98	135	.3	62	2	3
386065	3010	672	8.3	16	15	90
386067	99	52	.4	16	2	1
386068	115	122	.2	90	2	5
386069	88	156	.6	90	4	6
386070	19	118	.2	3	2	1
386071	41	114	.2	18	2	2
386072	60	118	.3	38	2	3
386074	45	81	1.0	25	2	4
386075	91	95	.6	33	2	22
386076	46	86	.4	15	2	2
386077	67	117	1.7	31	2	9
386078	28	124	.4	11	2	1
386079	56	128	.7	7	2	4
386080	62	89	.2	11	2	8
386081	23	66	.4	12	2	13
386082	42	98	.5	22	2	19
386083	39	104	.7	21	2	18
386084	35	134	.1	9	2	5
386085	32	91	.6	29	2	16
386086	33	90	.4	30	2	11
386087	26	96	.2	5	2	3
386088	1445	251	.9	4	2	7
386089	52	102	.4	14	2	5
386090	33	67	.3	11	2	7
386091	43	76	.4	9	2	5
386092	38	74	.3	14	2	9
386096	56	92	.3	7	2	15
386097	41	95	.3	4	2	7
386098	69	112	.3	4	2	18
386099	40	86	.2	5	2	4
386100	47	153	.4	4	2	3
386101	41	79	.2	2	2	1
386102	42	78	.4	3	2	14
386103	29	85	.3	5	2	70
STD C/AU-0.5	39	130	6.9	39	16	500

SAMPLE#	Pb PPM	Zn PPM	Ag PPM	As PPM	Sb PPM	Au* PPB
386104	29	91	.3	3	2	3
386105	50	115	.2	6	2	5
386106	32	80	.1	6	2	15
386108	29	128	.4	9	2	2
386109	30	119	.1	18	2	2
386110	36	106	.6	6	2	9
386111	19	70	.1	6	2	6
386112	37	64	.3	5	2	4
386113	24	52	.2	4	2	3
386114	27	59	.2	4	2	14
386115	40	94	.3	9	2	5
386116	25	64	.2	5	2	22
386118	53	172	1.6	8	2	36
386119	44	121	.6	6	2	7
386120	36	130	.4	36	2	6
386121	56	129	.4	3	2	4
386122	26	99	.3	6	2	3
386123	26	63	.2	4	2	4
386124	24	63	.3	6	2	6
386125	26	69	.4	6	2	2
386126	34	73	.2	12	2	9
386127	33	64	.2	6	2	12
386128	19	64	.4	6	2	3
386129	23	64	.4	5	2	4
386130	24	47	.1	7	2	5
386131	19	51	.4	6	2	4
355077	170	233	2.4	37	4	185
355078	132	196	2.6	39	5	230
355105	99	176	1.7	25	2	160
355107	37	118	.6	9	2	51
355108	22	72	.5	7	2	120
356103	17	23	.5	19	2	36
356109	29	108	.2	6	2	4
356110	42	90	.5	11	2	6
356111	31	94	.2	19	2	4
356112	45	106	.4	6	2	37
356113	58	108	.4	9	2	10
356114	70	127	.6	3	2	18
STD C/AU-0.5	40	132	7.3	37	15	490

SAMPLE#	Pb PPM	Zn PPM	Ag PPM	As PPM	Sb PPM	Au* PPB
351094	7	64	.1	10	7	5
351095	22	153	.3	8	13	15
351096	15	58	.2	54	5	6
351097	48	71	5.8	59	2	13
351098	14	62	.2	7	2	3
351099	13	44	.1	3	2	1
351100	13	28	.1	3	2	2
351101	11	61	.1	3	2	5
351102	5	39	.1	7	2	4
351104	11	91	.1	8	2	110
351105	92	9	13.4	2	2	325
351106	315	167	.8	16	2	5
351115	84	7	.7	3	2	5
351116	94	5	1.0	3	2	4

ACME ANALYTICAL LABORATORIES LTD.  
 852 E. HASTINGS ST. VANCOUVER B.C. V6A 1R6  
 PHONE 253-3158 DATA LINE 251-1011

DATE RECEIVED: SEPT 13 1985

DATE REPORT MAILED: *Sept. 17/85*

### GEOCHEMICAL ICP ANALYSIS

.500 GRAM SAMPLE IS DIGESTED WITH 3ML 3-1-2 HCL-HNO3-H2O AT 95 DEG. C FOR ONE HOUR AND IS DILUTED TO 10 ML WITH WATER.  
 THIS LEACH IS PARTIAL FOR MN.FE.CA.P.CR.MG.BA.TI.B.AL.NA.K.W.SI.ZR.CE.SN.Y.NB AND TA. AU DETECTION LIMIT BY ICP IS 3 PPM.  
 - SAMPLE TYPE: SOILS -80 MESH AU ANALYSIS BY AA FROM 10 GRAM SAMPLE.

ASSAYER: *T. Saundry* DEAN TOYE OR TOM SAUNDY. CERTIFIED B.C. ASSAYER

ISLAND MINING

PROJECT - JL FILE # 85-2361

PAGE 1

SAMPLE#	Pb PPM	Zn PPM	Ag PPM	As PPM	Sb PPM	Au* PPB
376130	22	82	.4	5	2	20
376131	25	103	.2	6	2	35
376133	26	61	.3	18	2	50
376134	26	128	.2	9	2	8
376135	40	72	.4	20	2	23
376136	41	91	.3	24	2	10
376137	19	102	.3	5	2	7
376138	18	107	.4	4	2	65
376139	24	165	.4	11	2	20
376140	15	120	.2	8	2	15
376141	22	93	.4	7	2	19
376142	33	80	.3	52	2	12
376143	57	117	.1	15	2	26
376144	51	147	.1	8	2	6
376145	40	121	.7	23	2	8
376146	40	121	.7	23	2	11
376147	41	140	.3	34	2	12
376148	52	155	1.5	20	2	29
376149	10	32	.2	3	2	2
376150	31	86	.4	11	2	11
376151	39	105	.4	14	2	14
376152	22	75	.6	15	2	35
376153	26	57	.3	13	2	20
376154	44	160	.6	3	2	3
376155	35	121	.5	6	2	5
376156	41	59	1.7	5	2	24
376161	30	96	.3	2	2	6
376162	32	109	.2	2	2	2
376163	68	137	.4	5	2	1
376164	27	88	.1	3	2	2
376165	18	77	.2	3	2	9
376166	34	91	.6	6	2	2
376167	32	71	.3	3	2	3
376168	49	83	.7	2	2	5
376169	17	53	.5	5	2	3
376170	16	48	.3	2	2	7
STD C/AU-0.5	39	130	6.9	38	15	500

SAMPLE#	Pb PPM	Zn PPM	Ag PPM	As PPM	Sb PPM	Au* PPB
376171	29	80	.4	7	2	95
376172	73	97	.7	9	2	14
376174	23	62	1.4	3	2	50
376175	24	47	.2	3	3	3
376176	23	74	.2	5	2	1
376177	27	78	.1	9	2	1
376178	23	94	.1	5	2	3
376179	26	101	.2	8	2	4
376180	24	108	.2	8	2	2
376181	22	118	.3	11	2	13
376182	31	106	.2	18	2	3
376183	14	51	.3	2	2	1
376184	32	102	.2	5	2	2
376185	18	89	.3	5	2	1
376186	31	91	.4	10	2	8
376187	14	130	.2	2	2	2
376188	26	133	.3	5	2	4
376189	15	40	.1	4	3	3
376190	10	59	.3	2	2	3
376191	18	68	.3	4	2	4
376192	17	52	.1	6	2	20
376193	25	61	.2	5	2	6
376194	27	72	.3	6	2	3
376195	23	44	.4	5	2	7
376196	22	61	.2	7	2	5
376197	19	43	.2	2	2	3
386132	20	76	.1	6	3	10
386133	13	69	.2	2	2	3
386134	72	187	.7	9	2	8
386136	58	209	.5	20	2	5
386137	32	77	.2	30	3	6
386138	119	91	.5	22	2	13
386139	24	88	.2	15	2	85
386140	25	83	.2	13	2	10
386141	29	123	.2	8	3	19
386142	28	99	.2	17	2	3
STD C/AU-0.5	38	138	7.1	39	15	490

SAMPLE#	Pb PPM	Zn PPM	Ag PPM	As PPM	Sb PPM	Au* PPB
386143	45	98	.4	25	2	4
386144	24	75	.2	15	2	15
386145	20	83	.3	12	2	17
386146	71	139	.4	10	2	2
386147	27	119	.1	10	2	4
386148	26	88	.4	6	2	1
386150	36	132	.3	68	2	2
386151	41	126	.7	24	2	15
386153	22	69	.3	20	2	18
386154	16	67	.3	16	2	90
386155	61	116	.7	8	2	12
386156	21	57	.1	15	2	17
386157	37	94	.6	8	2	8
386158	22	68	.3	11	2	5
386159	23	84	.3	9	2	4
386160	39	101	.3	9	3	5
386161	33	113	.2	7	2	3
386162	52	111	.8	5	2	6
386163	51	100	.3	6	2	45
386164	40	167	.4	4	2	2
386166	42	145	.2	4	2	2
386167	17	107	.4	2	2	16
386168	15	54	.2	7	3	3
386169	22	55	.2	5	3	15
386170	31	71	.3	5	2	2
386171	23	61	.5	9	2	7
386172	25	68	.3	6	2	3
386173	27	73	.9	7	2	5
386174	31	71	.5	6	2	1
386175	25	56	.4	6	2	7
386176	17	30	.4	3	2	8
386178	19	73	.2	10	2	1
386182	31	105	.2	5	3	2
386183	25	86	.1	7	2	4
386184	20	70	.1	9	2	2
386185	23	102	.2	7	2	2
STD C/AU-0.5	39	136	7.0	39	16	485

SAMPLE#	Pb PPM	Zn PPM	Ag PPM	As PPM	Sb PPM	Au* PPB
386186	31	105	.5	13	2	13
386187	19	94	.3	5	2	1
386188	20	87	.3	9	2	2
386189	39	149	.5	8	2	12
386190	21	88	.4	10	2	4
386191	18	48	.3	5	2	1
386192	16	53	.2	9	3	6
386193	18	47	.7	10	3	33
386194	25	62	.4	6	2	8
386195	17	73	.1	4	3	2
386196	19	49	.2	5	2	2
386197	14	42	.3	8	2	1
STD C/AU-0.5	38	138	7.0	40	15	500

**APPENDIX B**  
**STATUTORY DECLARATION**

STATUTORY DECLARATION

CANADA )  
          ) In the matter of a geological and geochemical report  
          ) on behalf of Island Mining and Explorations Co. Ltd.  
TO WIT· )

I, Carl G. Verley, agent for Amerlin Exploration Services Ltd.  
of 422-470 Granville Street, Vancouver. B.C. V6C 1V5

do solemnly declare - that geological mapping and geochemical sampling were conducted on the JL 1 to 80 mineral claims. Whitehorse Mining District, Yukon, during the period August 7 to September 10, 1985. Expenditures for this work include:

Salaries, management fees, consulting . . . . .	\$4.000.00
Helicopter support . . . . .	6.558.75
Assay and analytical . . . . .	5.351.12
Grid preparation. sampling and surveying . . . . .	8.200.00
Lodging . . . . .	41.89
Fuel . . . . .	43.45
Telephone . . . . .	6.86
Report Preparation: drafting . . . . .	750.00
photocopying . . . . .	30.00
Word processing . . . . .	<u>100.00</u>
TOTAL	\$25.082.07

And I make this solemn declaration conscientiously believing it to be true and knowing that it is of the same force and effect as if made under oath and by virtue of The Canada Evidence Act.

Declared before me at VANCOUVER )  
in the Province of B.C. this ) Carl G. Verley  
21<sup>st</sup> day of October 1985. )

Wendy Lee  
Notary Public for B.C.

**APPENDIX C**

**PERSONNEL**

P E R S O N N E L

Mr. C. G. Verley 301 - 1867 West 3rd Avenue Vancouver, B.C. V6J 1K9	Geologist
Mr. Morley Barker 5 Teak Avenue Whitehorse, Y.T. Y1A 4W5	Surveyor
Mr. Mike Woods 5 Teak Avenue Whitehorse, Y.T. Y1A 4W5	Field Assistant
Mr. Tony Mrozinski 5 Teak Avenue Whitehorse, Y.T. Y1A 4W5	Field Assistant
Mr. Andre Jobin 5 Teak Avenue Whitehorse, Y.T. Y1A 4W5	Field Assistant
Mr. Jacques Jobin 5 Teak Avenue Whitehorse, Y.T. Y1A 4W5	Field Assistant
Mr. Michel Langlois 5 Teak Avenue Whitehorse, Y.T. Y1A 4W5	Field Assistant

**APPENDIX D**  
**WRITER'S CERTIFICATE**

# AMERLIN EXPLORATION SERVICES LTD.

422-470 Granville Street, Vancouver, B.C., Canada V6C 1V5

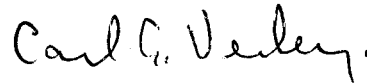
Phone (604) 689-1966

## WRITER'S CERTIFICATE

I, Carl G. Verley of Vancouver, British Columbia hereby certify that:

1. I am a geologist residing at 301 - 1867 West 3rd Avenue, Vancouver, B.C. and principal of Amerlin Exploration Services Ltd. 422 - 470 Granville Street, Vancouver, B.C. V6C 1V5.
2. I am a graduate of the University of British Columbia, B.Sc., in 1974, and have practised my profession since that time.
3. I am a Fellow of the Geological Association of Canada.
4. I am the author of this report which is based on work conducted by me on the JL 1 to 80 mineral claims during the period August 7 to September 10, 1985.

Amerlin Exploration Services Ltd.



Carl G. Verley, F.G.A.C.

February 14, 1986.  
Vancouver, B.C.



**LEGEND**

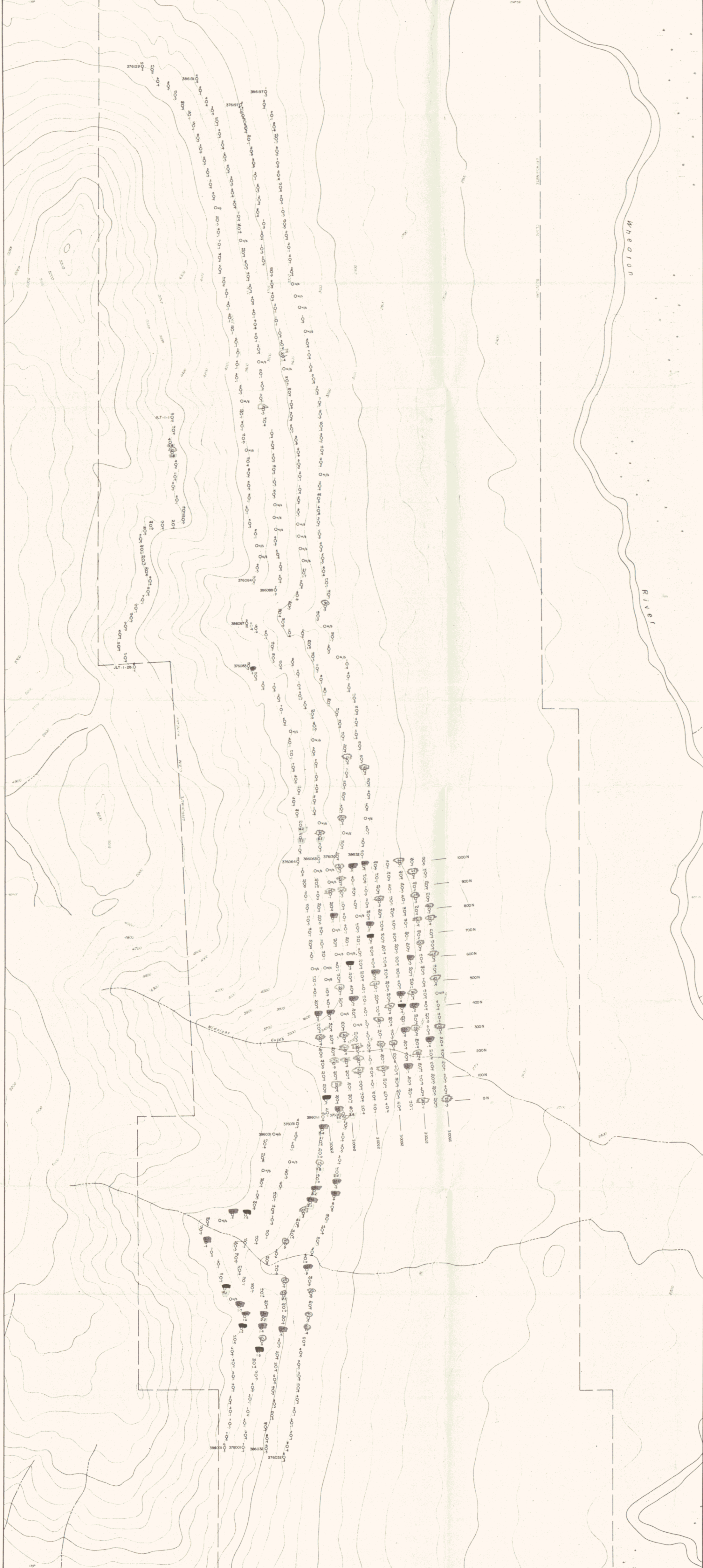
- EOCENE**  
 dyke rocks: undifferentiated, predominately orange weathering, fine-grained rhyolites, felsic porphyries and diabase dykes. Gold is associated with gossium-bearing quartz veins in the margins of some rhyolites.
- LATE CRETACEOUS - EARLY TERTIARY**  
 Kqd: coast intrusions: quartz diorite-grey weathering recessive, medium-grained hornblende-biotite bearing.
- UPPER TRIASSIC**  
 URL: LEWES RIVER GROUP: dark brown weathering, dark green massive pyroxene porphyry basalt flows (URLv). Mixed succession of lignite turf, fine-grained turf, fine to coarse clastics, felsic volcanics and mafic flows (URLs), pebble conglomerate (URLc).
- PRECAMBRIAN or later (?)**  
 PIGv: mafic volcanics: dark green, foliated, basaltic flows.

- outcrop distribution
- talus cover
- lithologic contact: definite, inferred
- foliation
- fractures
- shear zone: definite, inferred
- fault: definite, inferred
- trench
- adit
- road

- Sample Site**
- rock analysis sample number: gold in ppb, silver in ppm
  - rock assay sample number: gold in ppb, silver in ppm
  - stream silt analysis number: gold in ppb, silver in ppm

**Note** - Refer to Appendix A for As, Sb, Pb and Zn values.  
 - Topography from Dept of Energy, Mines and Resources:  
 - 50,000 scale map 105 D / 2, 3.  
 - Contour interval 100 feet  
 - magnetic declination 30° E (1985)

ISLAND MINING & EXPLORATION CO. LTD.  
 GEOLOGY  
 ROCK AND STREAM GEOCHEMISTRY  
 JL MINERAL CLAIMS  
 CARCROSS MAP SHEET, 105 D/2  
 WHITEHORSE MINING DISTRICT, YUKON TERRITORY  
 SCALE 1:5,000  
 by  
 AMERLIN EXPLORATION SERVICES LTD.  
 422-470 Granville Street, Vancouver, BC V6C 1V5



EXPLANATION

Soil Sample Site - gold in ppb, silver in ppm

Range	Background	Possibly Anomalous	Anomalous
Au 1 - 80	1 - 99	100 - 299	300 +
Ag 0.1 - 8.3	0.1 - 1.7	1.8 - 3.0	3.1 +

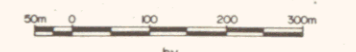
ISLAND MINING & EXPLORATION CO. LTD.

Au, Ag SOIL GEOCHEMISTRY

JL MINERAL CLAIMS

CARDROSS MAP SHEET, 105 D/2  
WHITEHORSE MINING DISTRICT, YUKON TERRITORY

SCALE 1:5,000

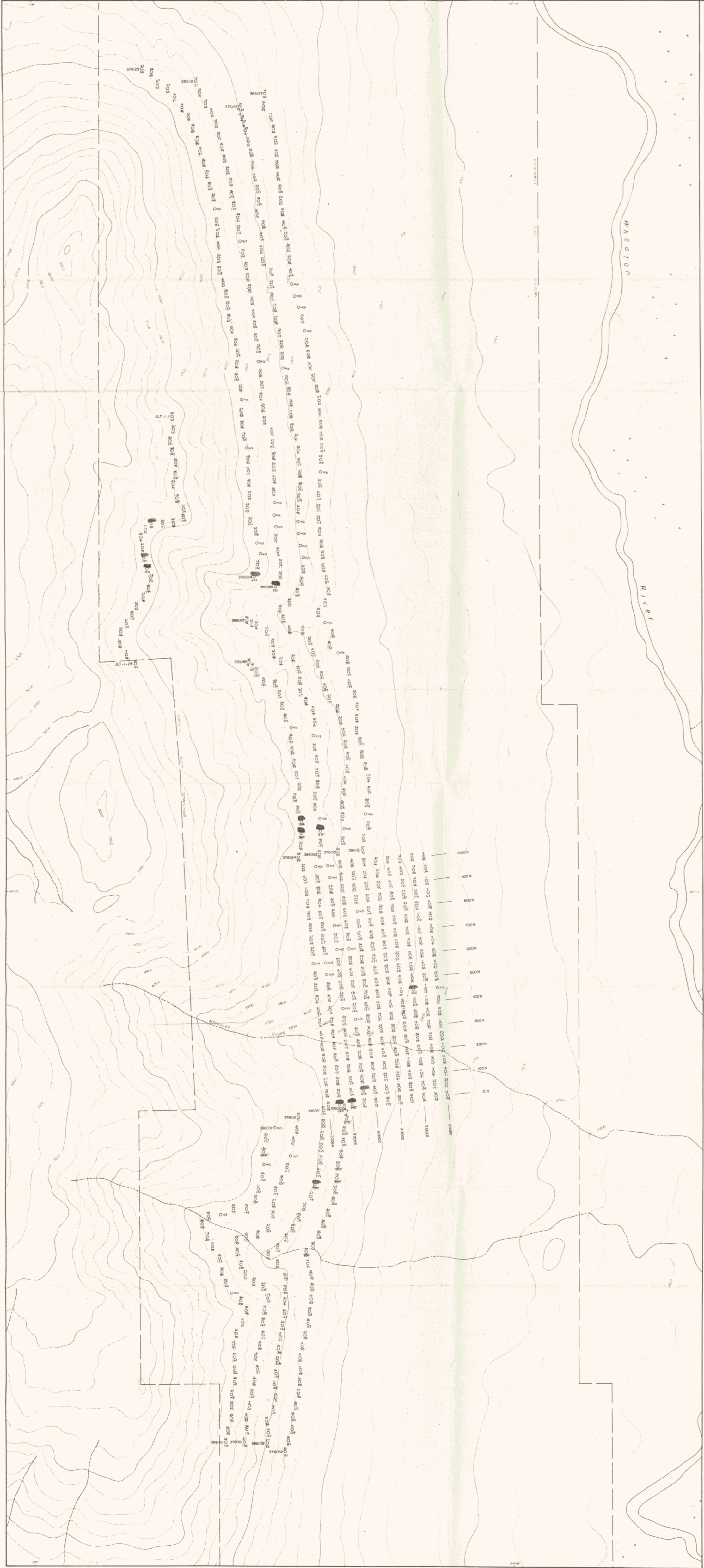


by  
AMERLIN EXPLORATION SERVICES LTD.  
422-470 Granville Street, Vancouver, B.C. V6C 1K3

091844

NOVEMBER, 1985

PLATE 2



**EXPLANATION**

Range	Background	Possibly Anomalous	Anomalous
Pb 2 - 300	[White box]	[Light grey box]	[Dark grey box]
Zn 25 - 143	[White box]	[Light grey box]	[Dark grey box]

509 Soil Sample Site - lead and zinc in ppm

ISLAND MINING & EXPLORATION CO. LTD.

**Pb, Zn SOIL GEOCHEMISTRY**

JL MINERAL CLAIMS

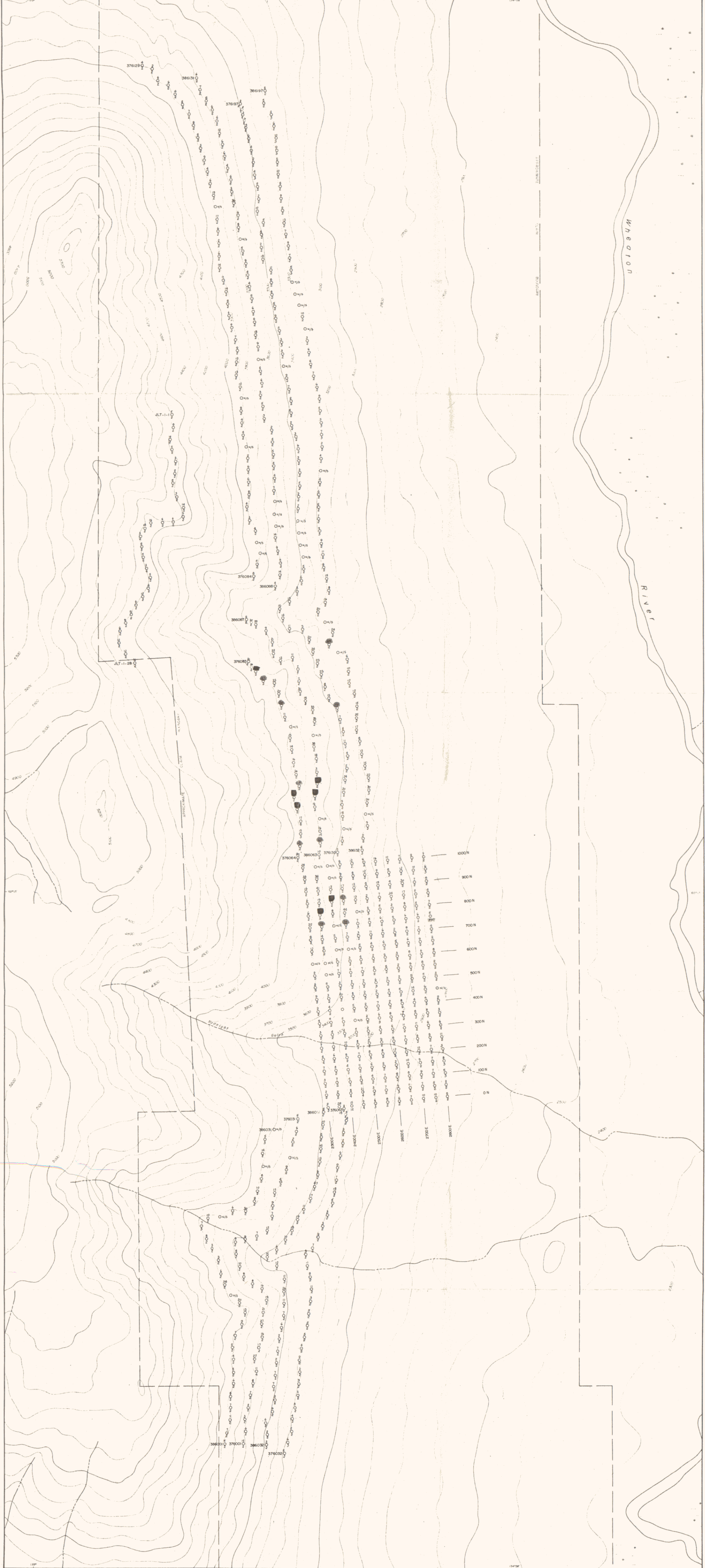
CARROSS MAP SHEET, 105 D/2  
WHITEHORSE MINING DISTRICT, YUKON TERRITORY

SCALE 1:5,000

by  
AMERLIN EXPLORATION SERVICES LTD.  
422-470 Granville Street, Vancouver, B.C. V6C 1V5

NOVEMBER, 1985

**091844**



**EXPLANATION**

Soil Sample Site - arsenic and antimony in ppm

Range	Background	Possibly Anomalous	Anomalous
As 2 - 113	2 - 49	50 - 75	80 +
Sb 2 - 590	2 - 19	20 - 99	100 +

ISLAND MINING & EXPLORATION CO. LTD.

As, Sb SOIL GEOCHEMISTRY

JL MINERAL CLAIMS

CARIBOOS MAP SHEET, 105 D/12  
WHITEHORSE MINING DISTRICT, YUKON TERRITORY

SCALE 1:5,000



by

AMERLIN EXPLORATION SERVICES LTD.  
422 - 470 Granville Street, Vancouver, B.C. V5C 1V5

**091844**

NOVEMBER, 1985

PLATE 4