

**GEOLOGICAL AND GEOCHEMICAL REPORT  
ON THE TON 1-16 CLAIMS**

Whitehorse Mining District, Y.T.  
NTS 105D/2,3  
(60°13'N, 135°00'W)



for

**ISLAND MINING & EXPLORATIONS CO. LTD.**

706 - 595 Howe Street  
Vancouver, B.C. V6C 2T5  
(604) 684-4814

**091841**

by

**Carl G. Verley, B.Sc., Geologist  
AMERLIN EXPLORATION SERVICES LTD.**

422 - 470 Granville Street  
Vancouver, B.C. V6C 1V5  
(604) 689-1966

January 1986

CLAIMS: TON-1-16 inclusive  
LOCATION: 46 miles (74 km) by road south of Whitehorse, YT  
DATE: August 7 to September 12, 1985

**091841**

This report has been examined by  
the Geological Evaluation Unit  
under Section 53 (4) Yukon Quartz  
Mining Act and is allowed as  
representation work in the amount  
of \$ 6000.00.

*D. Demond*

*for* Regional Manager, Exploration and  
Geological Services for Commissioner  
of Yukon Territory.

## TABLE OF CONTENTS

	Page
SUMMARY AND CONCLUSIONS . . . . .	3
INTRODUCTION . . . . .	5
Location . . . . .	5
Access . . . . .	6
Previous Work . . . . .	6
PROPERTY . . . . .	7
GEOLOGY . . . . .	8
Lithologies . . . . .	9
Structure . . . . .	12
Mineralization . . . . .	12
GEOCHEMISTRY . . . . .	15
Soils . . . . .	15
Rocks . . . . .	23
RECOMMENDATIONS . . . . .	25
REFERENCES . . . . .	26
APPENDICES:	
A. Analytical Data	
B. Statutory Declaration	
C. Personnel	
D. Writer's Certificate	

### Figures

Figure 1.	Photo: View north across TON claims . .	1
2.	Location Map . . . . .	2
3.	Probability graph of Au, Ag in soils . .	17
4.	Probability graph of Pb, Zn in soils . .	18
5.	Probability graph of As, Sb in soils . .	19
4.	Probability graph of Cu, Mo in soils . .	20

### Tables

Table 1.	Claims . . . . .	7
2.	Interpretation of Soil Sample Data . .	16

### Plates

Plate 1.	Claim Map . . . . .	In Pocket
2.	Geology . . . . .	"
3.	Rock Geochemistry	"
4.	Au, Ag Soil Geochemistry . . . . .	"
5.	Pb, Zn Soil Geochemistry . . . . .	"
6.	As, Sb Soil Geochemistry . . . . .	"
7.	Cu, Mo Soil Geochemistry . . . . .	"



Figure 1: View north across TON claims.

FIGURE 2

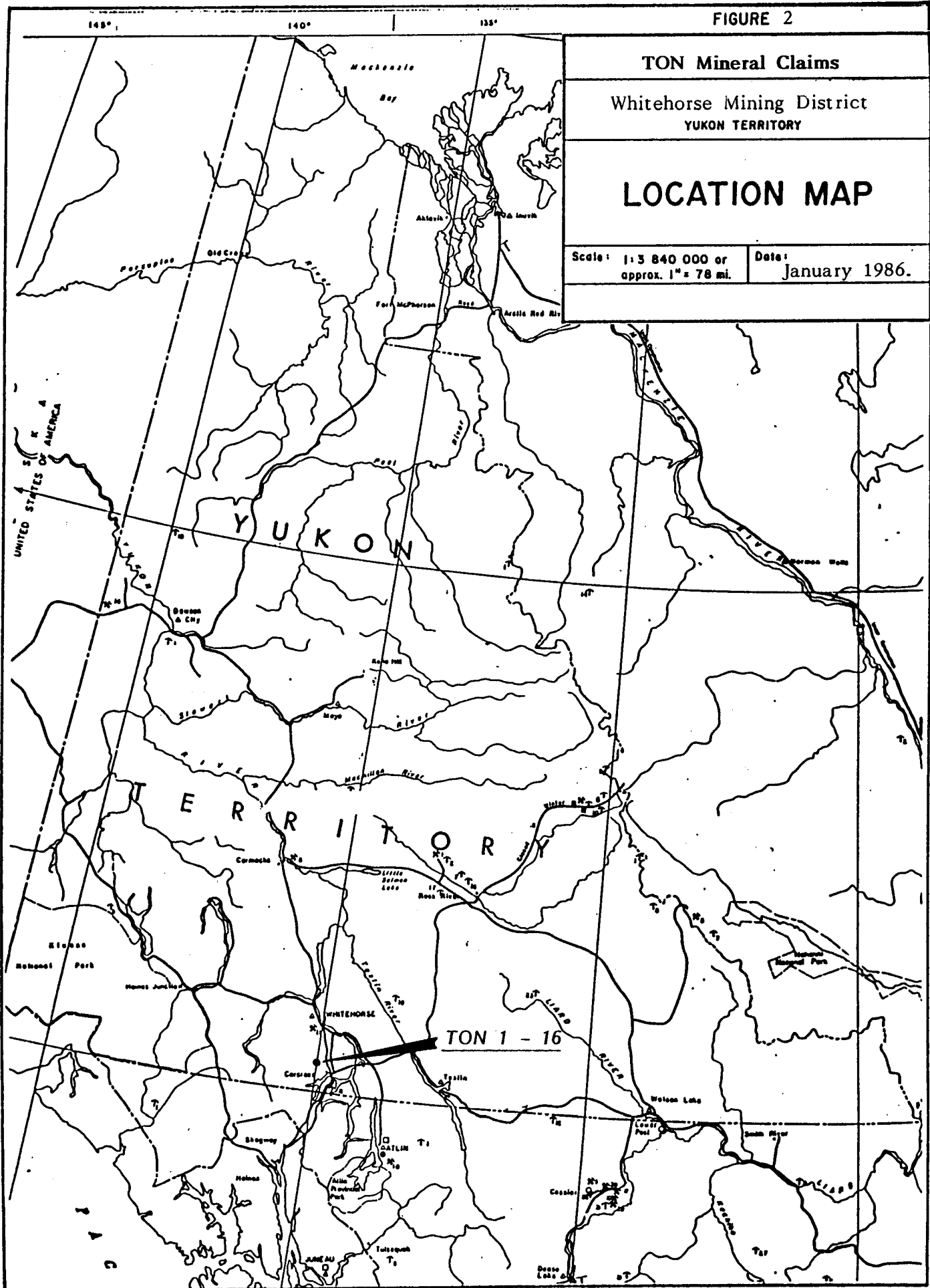
TON Mineral Claims

Whitehorse Mining District  
YUKON TERRITORY

LOCATION MAP

Scale: 1:3 840 000 or  
approx. 1" = 78 mi.

Date: January 1986.



## S U M M A R Y   A N D   C O N C L U S I O N S

The Ton 1-16 mineral claims are situated in the Wheaton River area, Whitehorse Mining District (NTS 105D/2,3), Yukon Territory. Access is provided by road from Whitehorse, a distance of 74 kilometres. Currently, the claims are under option to Island Mining and Explorations Co. Ltd. from Canadian Nickel Company Limited.

Upper Triassic Lewes River group mafic volcanics, tuffs and sediments underlie the property. These rocks are intruded by a dyke-like body of Late Cretaceous-Early Tertiary quartz diorite and a swarm of Eocene rhyolitic dykes, lesser feldspar porphyries and diabasic dykes.

During the 1985 field season, a program of geological mapping and detailed soil and rock sampling was conducted on the Ton claims at a total cost of \$51,452.50.

Results of this work indicate that gold mineralization is associated with narrow zones of anastomosing quartz veins occurring in the margins of rhyolites. Soil sampling indicates that gold anomalies are erratic, but are associated with areas underlain by dykes and greenstone adjacent to quartz diorite. Lead, and to a lesser extent, silver and zinc have a similar distribution to gold. Arsenic and antimony are not anomalous in the area surveyed.

In view of the results, no further work is recommended on the claims for 1986. However, should significant gold-silver mineralization be discovered on adjoining properties, a program of geophysical testing (IP) to further evaluate the ground is recommended. The estimated cost of such a program is \$20,000.

## I N T R O D U C T I O N

This report describes the results of an evaluation of the Ton 1-16 mineral claims. The object of this work was to locate and examine mineral showings on the claims as well as to map in detail the geology of the property. Detailed soil and rock sampling was conducted as a part of the program.

### LOCATION

The claims are located 56 kilometres (35 miles) south of Whitehorse in the Whitehorse Mining District, Y.T. (NTS 105D/2,3). Centered at latitude  $60^{\circ}13'N$  and longitude  $135^{\circ}00'W$ , the ground covers the headwaters of Stevens Creek. Physiographically, the property lies on predominantly grass covered alpine ground, although lower elevations are treed and brush covered. Terrain is gentle on the upland parts, but

steepens considerably toward the eastern claim boundary. Elevations range from 4000' to 5400' above sea level. Water sources on or near the property may prove inadequate for diamond drilling without extensive waterlines.

#### **ACCESS**

Excellent access is provided by an all-weather road that leads up the Wheaton River valley to the Mt. Skukum gold mine. At Partridge Creek, a four-wheel drive road leads off the Wheaton River road and up to the claims. Road distance from Whitehorse is approximately 74 kilometres.

#### **PREVIOUS WORK**

The area has a mineral exploration history going back to 1906 when the first claims were staked on "Midnite Gulch". Considerable work was conducted by successive owners of claims in the area. The result of which was to trace out and trench a northwesterly trending swarm of rhyolitic dykes that lead on to the Ton claims.

**P R O P E R T Y**

The Ton claims (Plate 1) were acquired for Canadian Nickel Company Limited in 1983. Two fractional claims (Island 1,2) were staked between the Ton claims during the 1985 season. All claims are currently under option to Island Mining & Explorations Co. Ltd. The property, located in the Whitehorse Mining District (NTS 105D/2,3), consists of a total of 16 full sized and 2 fractional mineral claims:

**Table 1**

	<b>Grant Number</b>	<b>Expiry Date*</b>
Ton 1	YA78181	August 10, 1986
Ton 2	YA78182	August 10, 1987
Ton 3	YA78183	August 10, 1986
Ton 4	YA78184	August 10, 1987
Ton 5	YA78185	August 10, 1986
Ton 6	YA78186	August 10, 1987
Ton 7	YA78187	August 10, 1986
Ton 8-16	YA78188-YA78196	August 10, 1987
Island 1,2 Fr	YA93380-YA93381	September 3, 1986

## G E O L O G Y

The Ton claims are located in the northern part of the Coast Range Plutonic Complex, a tectonic element that has been a prolific gold producer in the Canadian Cordillera.

Regionally, the area is underlain by volcanics of uncertain age and Upper Triassic Lewes River group volcanics, pyroclastics and sediments. This succession is intruded by quartz diorite of Late Cretaceous-Early Tertiary age. A swarm of northwesterly trending Eocene dykes intrudes mainly the Upper Triassic succession on the property.

Detailed geological mapping at a scale of 1:5,000 was carried out over most of the claim area. The distribution of lithologies (Plate 2), age and formational nomenclature was supplemented by information contained in G.S.C. Memoir 312 (Wheeler, 1961). Bedrock exposures on the claims are less than 5 percent of the surface area.

## LITHOLOGIES

### Upper Triassic: Lewes River Group

#### Mafic Volcanics

A sequence of massive, typically structureless pyroxene porphyries underlies approximately 60 percent of the property. The porphyries are dark brown weathering, dark green coloured. Rare pyroxenite lenses occur within the sequence. This unit becomes strongly foliated as the contact with the quartz diorite is approached.

#### Pyroclastics and sediments

A succession of intercalated chlorite to muscovite schists underlies the northeastern part of the claims. It is interpreted that these rocks were derived from interbedded lapilli-tuffs, fine-grained tuffs, fine to coarse clastics and volcanics. Tuffs vary from light grey to grey and maroon coloured chloritic schists. Sediments consist of metapelites, metapsammites and rare pebble conglomerate lenses. A sequence of light coloured

muscovite schist, presumably a derivative of felsic volcanics, occurs within the succession.

## **Late Cretaceous - Early Tertiary**

### **Quartz Diorite**

A dyke-like mass of quartz diorite approximately 300 metres wide, trending to the northwest, cuts diagonally across the property. In general, this unit is well fractured and recessive. It consists of a grey weathering, medium-grained hornblende-biotite quartz diorite. Mafic minerals are typically partially altered to chlorite. Thermal contact effects of the quartz diorite on surrounding lithologies appear to be minimal.

## **Eocene**

### **Dyke rocks**

In excess of 14 northwesterly trending, steep to moderately dipping dykes intrude the northeastern half of

the claims. The swarm is approximately 500 metres in width. Dykes consist predominantly of orange weathering leucocratic, fine-grained to aphanitic rhyolite. Locally miarolitic, dykes in general have a relatively equal granular texture, however, subhedral feldspar and anhedral quartz phenocrysts occur in some. Rhyolites are commonly shattered. Fine-grained pyrite is ubiquitous as disseminations or as paint or fracture surfaces. Dykes range from 0.3 to 7 metres in width, averaging 3 metres. Quartz veins occur in anastomosing zones within the borders of some rhyolites. Locally, particularly in moderately dipping dykes, the veining is intense and the margins of the dykes appear to be brecciated and silicified. Sericite is associated with the stringers as is pyrite, pyrrhotite, galena and minor sphalerite. Some rhyolites exhibit well developed chilled, flow-banded contacts 5 to 7 centimetres wide. Rocks surrounding the dykes are typically shattered and sheared suggesting that the dykes are emplaced in shears parallel to the metamorphic fabric. Wallrocks are locally rusty weathering and slightly bleached. Several medium grey, feldspar porphyries occur in the dyke swarm. As well, two mafic dykes intrude the quartz diorite. Age of the rhyolites is believed to be Eocene (Pride, 1985).

## **STRUCTURE**

The prominent structural feature on the Ton claims is a well developed northwesterly trending steeply dipping foliation in the Upper Triassic sediments and pyroclastics. The foliation is also developed in the pyroxene porphyries adjacent to the quartz diorite. The north contact of the quartz diorite is inferred to be in fault contact with Upper Triassic units. Patches of quartz-carbonate rubble on the southern part of the claims are inferred to be related to a northwesterly trending shear zone.

## **MINERALIZATION**

Gold mineralization on the Ton claims appears to be restricted to quartz vein networks in the borders of rhyolite dykes. Veining is best developed in the southernmost rhyolite (the one cut by a series of trenches). There anastomosing milky white quartz stringers form zones up to 2 metres in width. Individual stringers range from 1 to 20 millimetres in thickness. The intensity of veining in some areas gives the impression the dykes are brecciated (crackle breccia). In the most intensely veined areas, the dyke rock adjacent to stringers

appears to be silicified. Muscovite is associated with the stringers as a poorly defined selvage. Pyrite, pyrrhotite, galena and rare sphalerite occur disseminated in veinlets, but not abundantly. Stringer development appears to be best developed where the dip of rhyolites is moderate ( $45^{\circ}$  -  $65^{\circ}$ ) as opposed to steep ( $75^{\circ}$ ). Veining or silicification of the wallrocks is virtually absent. In other exposures of rhyolite, stringers are absent, poorly developed, or restricted to narrow intervals.

The highest gold value obtained on the property (2.6 oz/ton, assay #7568) is from a selected grab sample of galena-bearing quartz vein chips from a stockpile. The stockpile is located beside a trench cutting rhyolite. The trench was presumably cut in the 1930's. The chips sampled consisted of a medium to coarse-grained milky quartz. Coarse clots of galena are scattered erratically throughout the material, averaging less than one percent rock volume. A continuous chip sample from 1.1 metres of veined rhyolite in the trench beside the stockpile assayed 0.024 oz/ton Au (#7576). High rock geochemical values (920 and 1350 ppb Au) were obtained in rhyolites in two other areas. Continuous chip samples at these sites returned values of 0.002 (7578, 1.2 m) and 0.046 oz/ton Au (7572, 1 m), respectively.

The areal extent of stringer zones is small (several square metres). Indications that these structures open up at depth are lacking, although the possibility exists and has never really been tested. It is the writer's opinion that the stringer zones are small volumetrically (less than 100 tons). It is inferred that veins formed at flexure points in the dykes where chilled or partially congealed dyke cracked and allowed volatiles from the interior of the dykes to collect and precipitate. Flexures in the dykes are believed to be controlled by pre-existing warps in the foliation of the wallrocks. These warps in general are small and rare, as the foliation is quite uniform across the property. It is speculated that vein development occurred either synchronously with dyke emplacement or at an early stage of dyke consolidation.

## G E O C H E M I S T R Y

Soil sampling on the Ton claims was conducted over a total of 50.4 kilometres of grid (Plates 4 - 7) covering the entire property. A total of 1042 samples were collected at 50 metre intervals on picketed lines, spaced 50 and 100 metres apart. Rock sampling of all lithologies was also undertaken (Plate 3). All samples were placed in numbered bags and shipped to Acme Analytical Laboratories Ltd. in Vancouver, B.C. These samples were dried and sieved (or crushed in the case of rocks) and analysed for Au, Ag, As, Pb, Zn, Cu and Mo as per method and extraction techniques outlined on data sheets (Appendix A).

### SOILS

Where possible, soil samples were collected from the B-horizon. This horizon is moderately well developed over

most of the property under a thin, but variable layer of pale grey volcanic ash. Soils in general consist of thin residual soils with some mixed glacial debris on the hills. However, in the area of low relief in the centre of the claim block and extending to the west side, a relatively thick blanket of glacial outwash covers bedrock.

Probability graphs of soil data are found in Figures 3 to 6. The distributions suggest that data for Au, Ag, Pb, Cu and Mo represents two mixed populations. It is believed that, for each element, one of the populations is related to mineralization and is regarded as an anomalous population. In the case of As, Sb and Zn, there is some doubt as to whether an anomalous population exists in the sample data. An interpretation of the data in terms of background and anomalous categories is tabulated below.

Table 2

## INTERPRETATION OF SOIL SAMPLE DATA

	<u>Range</u>	<u>Background</u>	<u>Possibly Anomalous</u>	<u>Anomalous</u>
Au	1-1450 ppb	1- 99 ppb	100-299 ppb	300+ ppb
Ag	0.1- 5.8 ppm	0.1-0.9 ppm	1.0-1.6 ppm	1.7+ ppm
Pb	2- 536 ppm	2- 39 ppm	40-149 ppm	150+ ppm
Zn	23- 358 ppm	23-129 ppm	130+ ppm	-
As	2- 69 ppm	2- 19 ppm	20+ ppm	-
Sb	2- 20 ppm	2- 9 ppm	10+ ppm	-
Cu	11- 810 ppm	11-199 ppm	200-299 ppm	300+ ppm
Mo	1- 47 ppm	1- 9 ppm	10- 15 ppm	16+ ppm

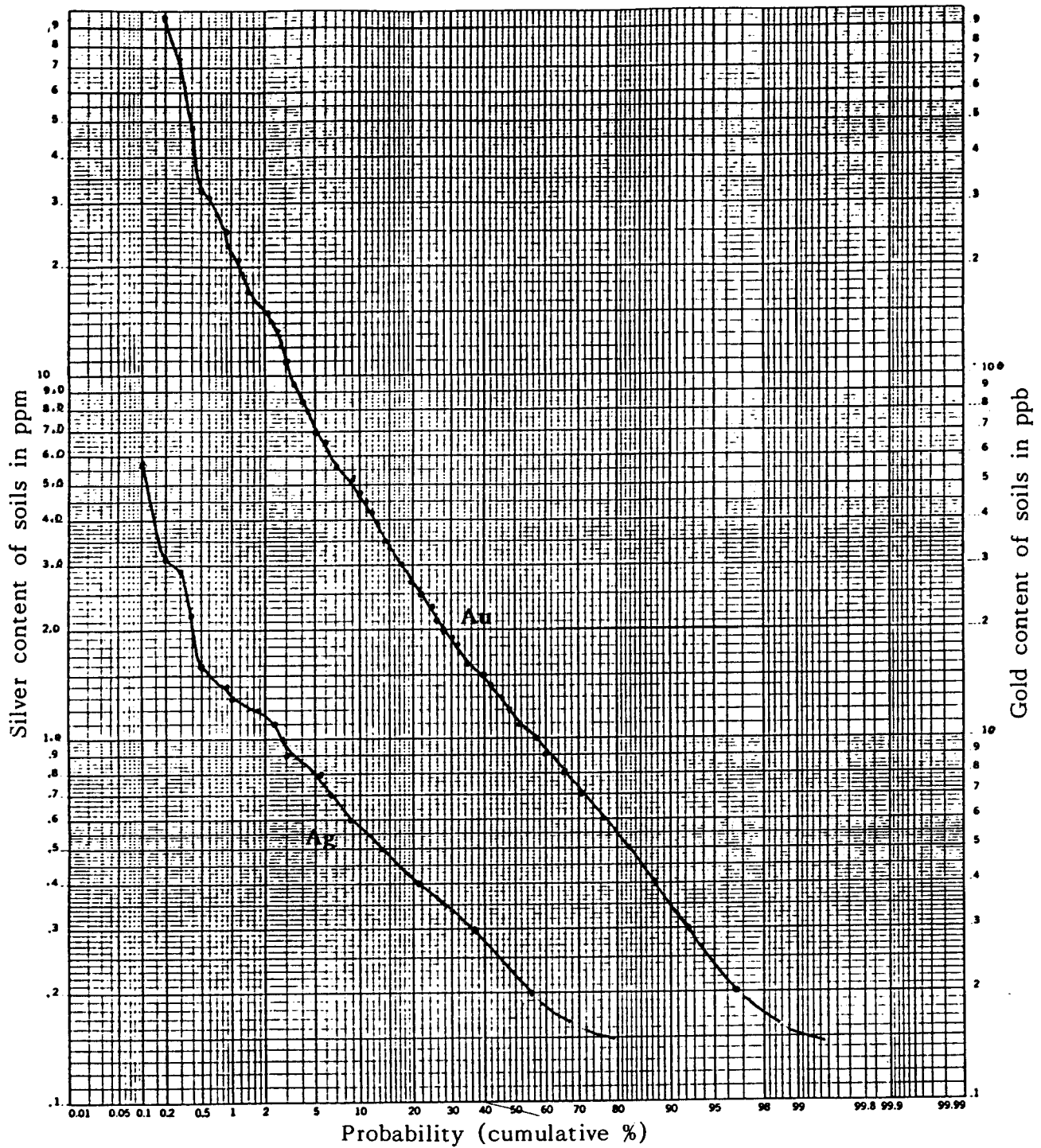


FIGURE 3

Probability Graph - Gold and Silver in Soils

TON 1 - 16 Claims

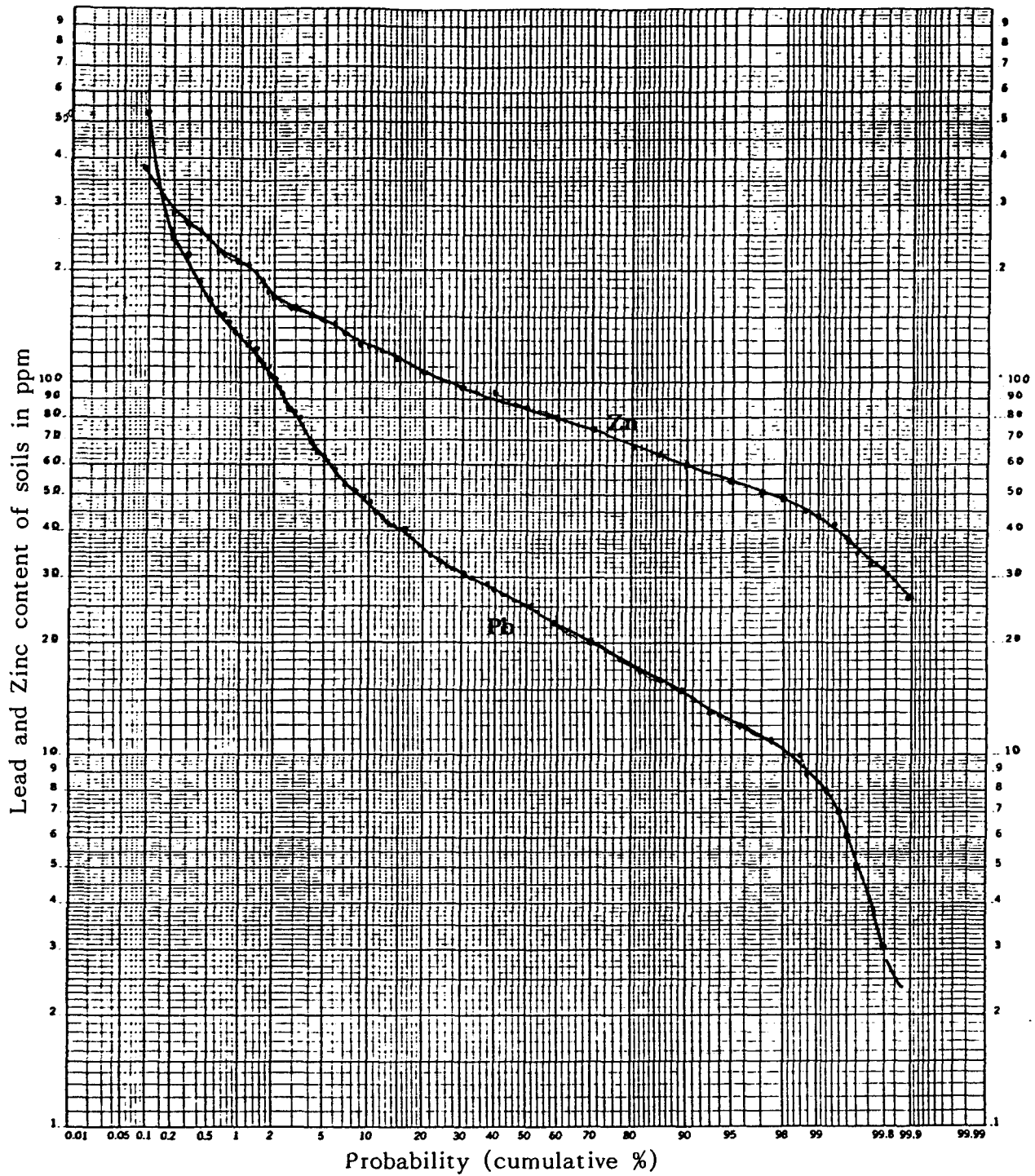


FIGURE 4

Probability Graph - Lead and Zinc in Soils

TON 1 - 16 Claims

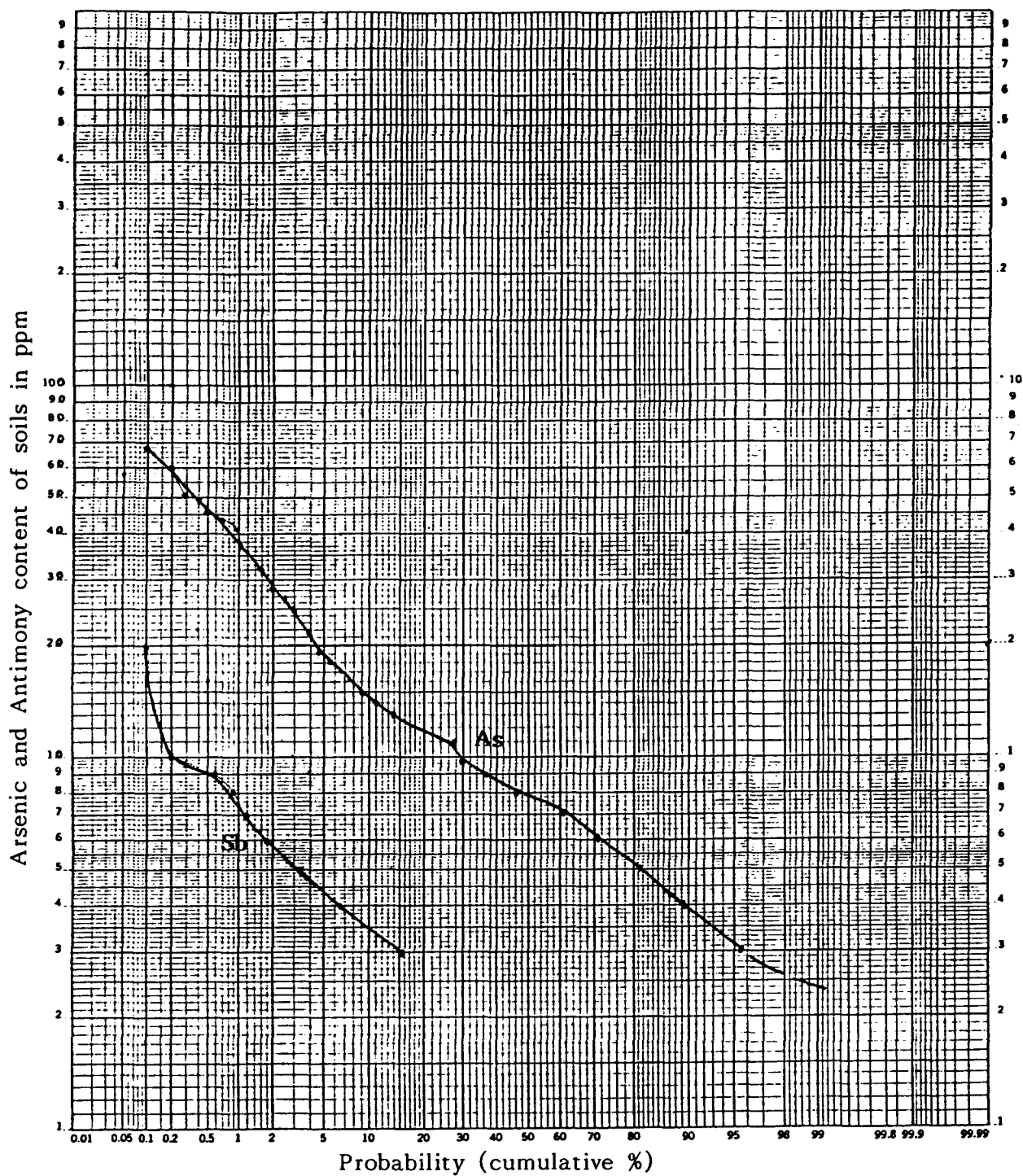


FIGURE 5

Probability Graph - Arsenic and Antimony in Soils

TON 1 - 16 Claims

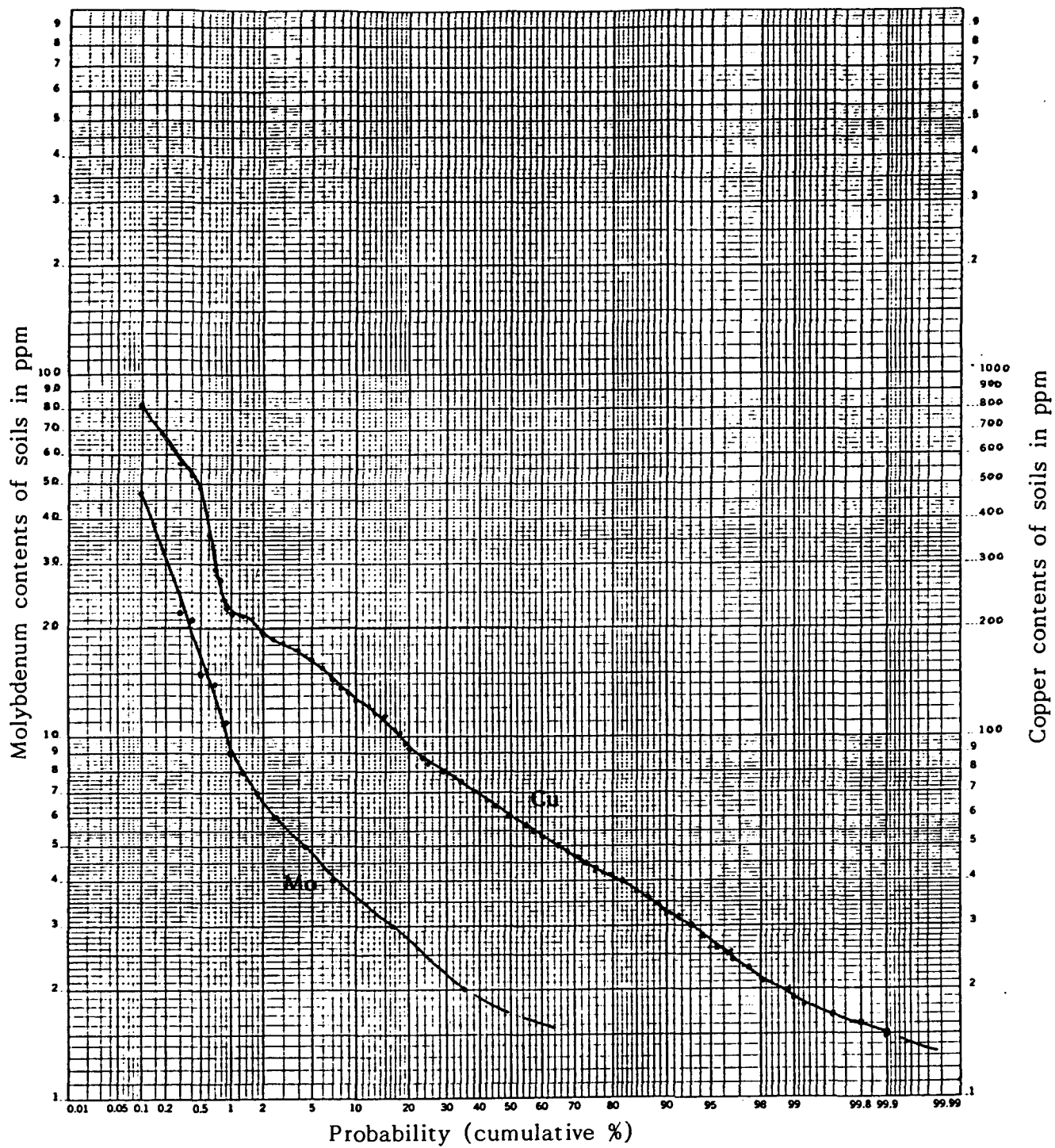


FIGURE 6

Probability Graph - Copper and Molybdenum in Soils

TON 1 - 16 Claims

Results of the sampling indicate that two anomalous gold values are related to stockpiled quartz material beside an old trench (800N, 1600E - 715 ppb; 750N, 1600E - 475 ppb). Other gold anomalies are isolated. Resampling of high values did not confirm anomalies, suggesting that they are erratic and not related to either widespread mineralization or a strongly mineralized source area. Possibly anomalous samples are also scattered erratically across the grid, some occurring within the area underlain by the dyke swarm, but by no means restricted to it. A series of possibly anomalous samples are clustered in pyroxene porphyry near the south contact of the quartz diorite. Close examination, sampling and resampling in this area failed to locate mineralization and turned significantly lower values for the previously possibly anomalous samples.

High silver values (5.8, 3.1, 2.9 and 2.2 ppm) are either related to known mineralization or are situated close to the intrusive contact.

Several lead anomalies (154 to 536 ppm) occur in areas at or near the dykes where known mineralization occurs. Possibly anomalous values are scattered along the southern contact of the quartz diorite as well as in areas underlain by dykes, metasediments and tuffs.

High zinc values (to 358 ppm) are, in general, associated with high lead values, however, zinc is not considered anomalous.

Arsenic and antimony values are low (to 69 and 20 ppm, respectively). None are believed to be anomalous. A slight increase in arsenic in the northeast part of the claims (1400N to 1800N, 1600E to 1800E) occurs in an area underlain by metasediments and tuffs.

Copper anomalies are erratically distributed within the quartz diorite (459 ppm) and along the contact to the quartz diorite and pyroxene porphyry (810, 512 ppm) or within pyroxene porphyry (558 ppm). Copper mineralization occurs along fractures (chalcopyrite, malachite) in pyroxene porphyry near the contact of the intrusive on the JL, southeast of the Ton.

High molybdenum values (47 ppm) are associated with dykes and the quartz diorite, but are not believed to be significant.

## ROCKS

Samples consisted of 1 to 2 kilograms of rock chips taken across surface exposures. A total of 61 rock samples were taken for analysis of the different lithologies on the property. Of these, 28 were in rhyolite. Gold values range from 1 to 1350 ppb in rhyolite. The average of 26 samples less than 100 ppb is 21 ppb. Two samples were greater than 100 ppb: at 920 and 1350 ppb. Samples of wallrocks to dykes (16) ranged from 1 to 11 ppb Au, averaging 2 ppb. High Pb (to 621 ppm), Ag (to 2.4 ppm) and relatively high As (to 54 ppm) are found in dyke rocks. The high Pb appears erratically distributed through the rhyolites. The highest Pb values do not coincide with the highest Au.

It is concluded that rhyolites are enriched in gold, lead and slightly in silver and arsenic. Furthermore, it is speculated that the dykes acted as conduits for the volatiles from the parent magma of the dykes. The bulk of the gold associated with the volatiles is believed to have escaped via the dykes to higher levels - possibly to be deposited in now eroded epithermal deposits. Fluid inclusion work (Manson, 1984) indicates the dykes formed in a mesothermal environment and attests to the notion that mineralization now associated with

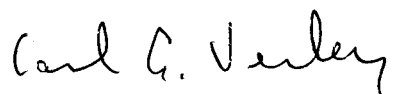
the dykes represents the roots of a precious metal system rather than the upper parts. It is therefore believed that the probability of finding an economic gold deposit associated with rhyolite dykes on the Ton is low.

**R E C O M M E N D A T I O N S**

No further work is recommended on the Ton claims for 1986. However, should information from work conducted on adjoining properties prove that significant Au-Ag mineralization is associated with the dykes at depth, then further work will be warranted on the Ton. In such a case, a program of geophysical testing (IP) of the rhyolites as a further technique to evaluate the claims is recommended. The estimated cost of such a program is \$20,000.

Respectfully submitted,

**AMERLIN EXPLORATION SERVICES LTD.**



**Carl G. Verley, F.G.A.C.**

Vancouver, B.C.

January 24, 1986

## R E F E R E N C E S

- Manson, W., 1984: Geological and Geochemical Report Ton Claims. Private company report for Canadian Nickel Company Limited.
- Pride, M.J. and G.S. Clark, 1985: An Eocene Rb-Sr isochron for rhyolite plugs, Skukum area, Y.T. Canadian Journal of Earth Sciences, vol.22, No. 11, pp 1747-1753.
- Wheeler, J.O., 1961: Whitehorse Map-Area, Y.T., Geological Survey of Canada, Memoir 312.

**APPENDIX A**  
**ANALYTICAL DATA**

# ASSAY AND ANALYTICAL DATA

## ROCK SAMPLE DESCRIPTIONS

Sample	Description
7567	Selected chips of blocks (up to 40 cm in diameter) of milky white quartz vein float contains minor pyrite, pyrrhotite, galena and sphalerite.
7568	Selected chips of galena-bearing white quartz vein material from dump beside trench.
7569	Chips of white quartz vein float at 1810E, 825N.
7572	Continuous chip sample over 1 metre, north margin of rhyolite dyke; resample of 651038.
7573	Continuous chip sample over 1 metre continuous with, but south of 7572. In rhyolite dyke; resample of 651038.
7574	Continuous chip sample in rhyolite, continuous with, but south of 7573; resample of 651038.
7575	Continuous chip sample in rhyolite, continuous with, but south of 7574; resample of 651038.
7576	Continuous chip sample across 1.1 metres of rhyolite dyke from hanging wall into dyke. Quartz veins are abundant in sample interval constituting approximately 35% of rock. This sample is in the trench beside dump from which 7568 was taken.

Sample	Description
7577	Continuous chip sample over 1.1 metres in rhyolite continuous with, but below 7576.
7578	Continuous chip sample across 1.2 metres of rhyolite dyke; resample of 651027.
651006	Chips over a half square metre of rhyolite dyke.
651007	Chips across 2 metres of rhyolite dyke.
651008	Chips of rusty fractured greenstone.
651009	Chips across 1.5 square metre face of rusty weathering, sheared tuff(?). Rock is slightly bleached to a pale grey, shattered and contains thin carbonate stringers.
651010	Chips across 1 metre of fine-grained, pinkish coloured, shattered, quartz-feldspar porphyry.
651011	Chips across 1 metre of altered (slightly bleached) hanging wall pyroclastics to 651010.
651012	Chips across 3 metre width of margin of 13 metre wide rhyolite dyke.
651013	Chips across 9 metre face of shattered, slightly bleached tuff.
651014	As 651013, but across 3 metre face and footwall to dyke at sample 651012.
651015	As 651014, but across 4 metre face and south of sample 651014.
651016	Chips over 6 metre face of altered tuff (slightly bleached, contains trace pyrite, shattered and locally silicified(?)) - hanging wall dyke at sample 651017.
651017	Chips across 4 metre wide rhyolite dyke. Dyke has distinct aphanitic chilled contacts.
651018	Chips across 4 metre wide zone of hanging wall tuffs to rhyolite dyke (651019).

Sample	Description
651019	Chips across 1 metre wide rhyolite dyke.
651020	Chips across 3 metre face of rusty, siliceous tuff(?) contains trace pyrite and quartz stringers.
651021	Chips across 12 metre face 2 metres south of 651020. Rock is feldspar porphyry.
651022	Chips across 4 metre face of sheeted, rusty hornfelsed tuff. Contains trace pyrite.
651023	Chips across 2 metres of rusty weathering, banded carbonate-quartz-muscovite alteration zone at dyke contact (652024).
652024	Chips of rhyolite dyke rubble at 1000N, 1500E.
651025	Chips across 2 metres of rhyolite dyke: has some dark coloured, coarser-grained, porphyritic phases.
651026	Chips across 2 metres of rhyolite dyke from old trench.
651027	Chips across 1 metre of quartz vein rich margin (hanging wall side) of rhyolite dyke in old trench.
651028	Chips across 12 metre of footwall margin of rhyolite dyke.
651029	Chips across 2.5 metres of rhyolite dyke in old trench.
651030	Chips across 30 cm wide fine-grained quartz-carbonate vein, contains trace pyrite, hosted by tuffs.
652031	Chips from a 1 square metre rubble zone of altered (quartz-carbonate) greenstone.
651032	Chips across 2 metres in quartz-carbonate alteration zone in greenstone.
651033	Chips of quartz diorite.
651034	Chips over 1 square metre area of bleached and shattered quartz diorite.

Sample	Description
651035	Chips across 1 metre of rhyolite dyke.
651036	Chips across 4 metres of trenched rhyolite dyke.
651037	Chips across 3 metres (total width) of trenched rhyolite dyke.
651038	Chips across 5 metre wide rhyolite dyke.
651039	Chips across 7 metre wide rhyolite dyke.
651040	Chips across 4 metre hanging wall face to rhyolite dyke (651039). Rock consists of shattered, limonitic dark grey slightly calcareous tuff or argillite?
651041	Chips across 1.3 metre wide rhyolite dyke.
651042	Chips across 2.6 metre wide rhyolite dyke.
651043	Chips across 3.5 metre across rhyolite dyke.
651044	Chips over 3 metre wide rhyolite.
651045	Chips across 4 metre face of rhyolite.
651046	Chips across 40 cm wide rhyolite.
651047	Chips across 3 metre wide rhyolite.
651048	Chips across 7 metre exposed face of rhyolite.
651049	Chips across 1 metre exposed face of rhyolite.
651050	Chips across 1.5 metre width of felsic tuff.
651051	Chips across 2 metres of pale green, phyllitic rock - tuff(?).
651052	Chips across 7 metre face of rhyolite.
651053	Chips across 1.6 metre face of rusty shattered tuff(?).
651054	Chips across 3 metre face of medium-grey, fine-grained feldspar porphyry.

Sample	Description
651055	Chips across 9 metre face of 7 metre wide rhyolite.
651056	Chips over 2 metre face at footwall of rhyolite (651055) in green tuff.
651057	Chips of quartz-carbonate rubble.
651058	Chips across 1 metre exposed face of pale cream coloured quartz-carbonate rock (or dyke?).
651059	As 651058, but over 3.5 metre face.
651060	Chips across 2 metre face of bleached and shattered quartz diorite.
651061	Chips across 2 metre face of rhyolite.
651066	Chips of pyroxene porphyry.
651135	Chips of greenstone at 1150E, 550N.
651136	Chips of greenstone 7 metres west of 1100E, 350N.
651137	Chips of greenstone 7 meters south of 1100E, 350N.
651138	Chips of quartz-carbonate rubble 27 metres west of 1000E, 350N.

ACME ANALYTICAL LABORATORIES LTD.  
152 E. HASTINGS ST. VANCOUVER B.C. V6A 1R6  
PHONE 253-3158 TELEX 04-53124

DATE RECEIVED: AUG 13 1985  
DATE REPORT MAILED: *Aug 16/85*

**ASSAY CERTIFICATE**

SAMPLE TYPE: ROCK CHIPS AU# 10 GRAM REGULAR ASSAY

ASSAYER: *T. Laundry* DEAN TOYE OR TOM SAUNDRY. CERTIFIED B.C. ASSAYER

AMERLIN EXPLORATION PROJECT - TON FILE # 85-1848A PAGE 1

SAMPLE#	Pb %	Zn %	Ag OZ/T	Au OZ/T
7567	.35	.01	1.09	.003

ACME ANALYTICAL LABORATORIES LTD.  
852 E. HASTINGS ST. VANCOUVER B.C. V6A 1R6  
PHONE 253-3158 TELEX 04-53124

DATE RECEIVED: AUG 16 1985

DATE REPORT MAILED: .....

*Aug 22/85*

### ASSAY CERTIFICATE

SAMPLE TYPE: ROCK CHIPS AU: 10 GRAM REGULAR ASSAY

ASSAYER: *V. Saundry* DEAN TOYE OR TOM SAUNDY. CERTIFIED B.C. ASSAYER

AMERLIN EXPLORATION

PROJECT - TON FILE # 85-1909A

PAGE 1

SAMPLE#	Cu %	Pb %	Zn %	Ag OZ/T	Au OZ/T
7568	.01	.36	.01	1.01	2.600
7569	.01	.01	.01	.05	.005

ACME ANALYTICAL LABORATORIES LTD.  
852 E. HASTINGS, VANCOUVER B.C.  
PH: (604)253-3158 COMPUTER LINE:251-1011

DATE RECEIVED SEPT 10 1985  
DATE REPORTS MAILED Sept 18/85

### ASSAY CERTIFICATE

SAMPLE TYPE : ROCK - CRUSHED AND PULVERIZED TO -100 MESH.

ASSAYER D. Saundry DEAN TOYE OR TOM SAUNDRY, CERTIFIED B.C. ASSAYER

ISLAND MINING PROJECT TON FILE# 85-2301A PAGE# 1

SAMPLE	Ag oz/t	Au oz/t
7572	.04	.046
7573	.02	.003
7574	.01	.001
7575	.02	.003
7576	.01	.024
7577	.01	.001
7578	.01	.002

ACME ANALYTICAL LABORATORIES LTD.  
 652 E. HASTINGS ST. VANCOUVER B.C. V6A 1R6  
 PHONE 253-3158 DATA LINE 251-1011

DATE RECEIVED: AUG 13 1985

DATE REPORT MAILED: *Aug 16/85*

**GEOCHEMICAL ICP ANALYSIS**

.500 GRAM SAMPLE IS DIGESTED WITH 3ML 3-1-2 HCL-HNO3-H2O AT 95 DEG. C FOR ONE HOUR AND IS DILUTED TO 10 ML WITH WATER.  
 THIS LEACH IS PARTIAL FOR MN, FE, CA, P, CR, MG, BA, TI, B, AL, NA, K, W, SI, ZR, CE, SN, Y, NB AND TA. AU DETECTION LIMIT BY ICP IS 3 PPM.  
 - SAMPLE TYPE: P1-6 SOILS -80 MESH P7-ROCKS AU\*\* ANALYSIS BY FA+AA FROM 10 GRAM SAMPLE.

ASSAYER: *T. Saundry* DEAN TOYE OR TOM SAUNDY. CERTIFIED B.C. ASSAYER

AMERLIN EXPLORATION PROJECT - TON FILE # 85-1848 PAGE 1

SAMPLE#	Mo PPM	Cu PPM	Pb PPM	Zn PPM	Ag PPM	As PPM	Sb PPM	Au** PPM
1050E 1900N	1	36	10	45	.1	2	2	7
1050E 1850N	2	46	23	68	.1	9	2	12
1050E 1800N	1	56	24	77	.1	10	2	25
1050E 1750N	1	46	15	74	.3	5	2	10
1050E 1700N	1	44	20	72	.2	6	2	5
1050E 1650N	1	57	25	85	.2	8	2	11
1050E 1600N	2	43	15	95	.1	7	2	3
1050E 1550N	2	45	29	95	.2	7	2	15
1050E 1500N	2	64	32	86	.1	9	2	29
1050E 1450N	1	45	21	76	.1	5	2	17
1050E 1400N	1	34	23	72	.1	9	2	15
1050E 1350N	1	48	17	52	.1	6	2	32
1050E 1300N	1	68	12	57	.2	5	2	5
1050E 1250N	1	54	12	60	.1	3	2	13
1050E 1200N	1	58	20	72	.3	5	2	6
1050E 1150N	1	93	23	73	.1	8	2	8
1050E 1100N	1	28	13	51	.1	8	6	6
1050E 1050N	1	26	11	38	.1	3	2	5
1050E 1000N	1	34	12	53	.1	3	2	2
1050E 950N	1	44	16	57	.1	5	2	10
1050E 900N	1	63	18	65	.1	6	2	19
1050E 850N	1	58	20	68	.1	8	2	5
1050E 800N	1	37	29	53	.1	7	4	5
1050E 750N	1	512	12	52	.3	2	2	2
1050E 700N	1	58	15	64	.2	4	2	11
1050E 650N	1	66	27	82	.1	7	2	14
1050E 600N	1	17	14	53	.3	6	2	2
1050E 550N	1	69	26	61	.6	8	3	10
1050E 500N	1	162	49	114	.6	13	2	22
1050E 450N	1	106	44	88	.1	12	2	75
1050E 400N	1	59	25	44	.1	6	4	3
1050E 350N	1	128	31	78	.1	5	2	165
1050E 300N	1	56	25	87	.1	5	7	7
1050E 250N	1	32	17	93	.1	4	2	11
1050E 200N	1	48	23	66	.1	6	2	3
1050E 150N	1	42	14	79	.1	6	7	4
STD C/FA-AU	21	60	39	133	7.2	37	15	51

SAMPLE#	Mo PPM	Cu PPM	Pb PPM	Zn PPM	Ag PPM	As PPM	Sb PPM	Au** PPB
1050E 100N	1	48	16	83	.4	7	2	105
1100E 1900N	1	51	24	82	.1	11	2	4
1100E 1850N	1	62	31	90	.1	9	3	8
1100E 1800N	1	55	25	83	.1	4	2	7
1100E 1750N	1	62	29	94	.1	9	2	11
1100E 1700N	1	44	26	86	.2	5	2	4
1100E 1650N	1	55	28	90	.1	8	2	37
1100E 1600N	1	42	28	88	.1	11	2	12
1100E 1550N	1	43	26	91	.1	5	2	7
1100E 1500N	1	33	17	99	.1	2	2	4
1100E 1450N	1	84	34	88	.1	4	2	16
1100E 1400N	1	75	53	85	.1	4	2	35
1100E 1350N	1	34	29	69	.1	3	2	5
1100E 1300N	1	75	30	71	.3	8	2	27
1100E 1250N	1	95	26	89	.1	4	2	6
1100E 1225N	1	115	26	86	.2	5	2	10
1100E 1150N	1	74	26	75	.1	10	4	12
1100E 1100N	1	84	23	78	.3	11	2	75
1100E 1050N	1	42	21	67	.1	2	2	25
1100E 1000N	1	46	19	68	.1	5	2	3
1150E 1900N	1	54	23	85	.3	11	2	14
1150E 1850N	1	57	28	109	.1	13	2	4
1150E 1800N	1	55	20	90	.1	11	5	5
1150E 1750N	1	69	25	92	.1	7	2	7
1150E 1700N	1	58	27	87	.1	5	3	3
1150E 1650N	1	50	24	90	.1	9	2	3
1150E 1600N	1	50	28	91	.3	3	2	170
1150E 1550N	1	39	28	92	.1	5	2	55
1150E 1500N	1	33	17	71	.2	7	2	6
1150E 1450N	1	67	43	89	.1	8	2	18
1150E 1400N	1	43	26	64	.4	4	2	20
1150E 1350N	1	50	31	70	.2	7	2	13
1150E 1300N	1	52	34	73	.1	5	2	10
1150E 1250N	1	71	28	81	.1	5	2	5
1150E 1200N	1	123	24	92	.1	5	2	13
1150E 1150N	1	81	20	72	.1	7	2	7
STD C/FA-AU	18	58	41	136	6.9	38	17	48

SAMPLE#	Mo PPM	Cu PPM	Pb PPM	Zn PPM	Ag PPM	As PPM	Sb PPM	Au** PPB
1150E 1100N	1	157	25	94	.1	7	2	27
1150E 1050N	1	68	16	62	.1	7	3	8
1150E 1000N	1	62	24	70	.2	4	2	34
1150E 950N	1	78	21	76	.1	7	2	7
1150E 900N	1	59	26	73	.1	3	3	4
1150E 850N	1	83	29	71	.1	5	2	13
1150E 800N	1	79	24	70	.1	6	2	5
1150E 750N	1	96	13	26	.6	2	2	3
1150E 700N	1	233	12	23	1.0	2	2	2
1150E 650N	1	71	22	64	.1	5	2	14
1150E 600N	1	810	19	68	.9	5	2	55
1150E 550N	1	112	34	82	.2	5	2	325
1150E 500N	1	77	49	89	.1	9	3	20
1150E 450N	1	60	22	54	.1	5	2	5
1150E 400N	1	74	67	112	.1	5	2	9
1150E 350N	1	126	40	94	.1	15	3	14
1150E 300N	1	142	30	80	.1	5	2	150
1150E 250N	1	144	38	103	.1	9	8	19
1150E 200N	1	101	48	109	1.0	9	2	110
1150E 150N	1	71	20	88	.1	8	2	8
1150E 100N	1	54	24	123	.1	6	2	7
1200E 1900N	1	57	25	95	.1	14	2	5
1200E 1850N	1	35	17	65	.2	6	2	4
1200E 1800N	1	64	24	88	.1	8	2	6
1200E 1750N	1	48	23	82	.2	6	2	10
1200E 1700N	1	41	19	77	.1	5	2	7
1200E 1650N	1	38	18	65	.1	4	2	7
1200E 1600N	1	25	20	51	.1	4	2	3
1200E 1550N	1	34	22	65	.1	9	2	2
1200E 1500N	1	45	25	90	.5	9	2	6
1200E 1450N	1	18	14	52	.1	3	2	4
1200E 1400N	1	17	12	63	.1	3	2	30
1200E 1350N	1	26	34	80	.1	5	5	1
1200E 1300N	1	33	25	97	.1	5	2	8
1200E 1250N	1	33	38	65	.1	4	2	16
1200E 1200N	1	34	16	57	.1	6	2	5
STD C/FA-AU	20	61	58	132	6.9	38	16	49

SAMPLE#	Mo PPM	Cu PPM	Pb PPM	Zn PPM	Ag PPM	As PPM	Sb PPM	Au** PPB
1200E 1150N	1	83	19	86	.3	7	2	18
1200E 1100N	1	95	19	75	.1	6	2	12
1200E 1050N	1	56	27	105	.3	7	3	4
1200E 1000N	1	65	23	72	.1	7	2	41
1200E 950N	1	32	18	53	.1	8	2	7
1200E 900N	1	34	18	58	.1	6	3	8
1200E 850N	1	36	14	57	.1	5	2	13
1200E 800N	1	43	19	57	.3	10	2	55
1200E 750N	1	68	15	78	.1	6	2	7
1200E 700N	1	78	30	74	.1	9	2	16
1200E 650N	1	66	22	52	.2	7	2	30
1200E 600N	1	32	11	75	.1	3	2	17
1200E 550N	1	59	30	69	.1	9	5	55
1200E 500N	1	77	22	81	.1	10	2	10
1200E 450N	1	60	42	104	.1	5	2	14
1200E 400N	1	59	38	103	.1	7	2	33
1200E 350N	1	57	28	102	.1	11	2	9
1200E 300N	1	167	51	114	1.2	20	2	50
1200E 250N	1	101	40	91	.5	11	2	34
1200E 200N	1	35	13	57	.4	6	2	11
1200E 150N	1	81	32	175	.6	9	4	10
1200E 100N	1	30	11	68	.1	4	2	9
1250E 1900N	1	109	17	104	.3	11	3	5
1250E 1850N	1	53	17	78	.1	9	2	5
1250E 1800N	1	66	23	70	.1	9	6	14
1250E 1750N	1	66	24	95	.1	12	4	8
1250E 1700N	1	49	20	82	.1	8	2	7
1250E 1650N	1	51	17	75	.1	6	2	50
1250E 1600N	1	49	17	66	.1	8	4	48
1250E 1550N	1	33	13	50	.3	6	2	7
1250E 1500N	1	56	22	64	.3	8	3	15
1250E 1450N	1	34	21	67	.1	4	4	5
1250E 1400N	1	32	27	66	.1	5	5	11
1250E 1350N	1	33	25	69	.2	5	2	14
1250E 1300N	1	29	33	102	.2	7	7	150
1250E 1250N	1	60	53	129	.8	4	3	5
STD C/FA AU	20	62	41	132	7.0	38	16	48

SAMPLE#	Mo PPM	Cu PPM	Pb PPM	Zn PPM	Ag PPM	As PPM	Sb PPM	Au** PPB
1250E 1200N	6	177	32	99	.4	6	3	50
1250E 1150N	1	81	20	72	.3	8	3	75
1250E 1100N	1	85	26	65	.3	4	2	26
1250E 1050N	1	48	18	59	.1	2	2	11
1250E 1000N	1	90	19	81	.3	4	5	8
1250E 900N	1	23	12	48	.3	4	2	35
1250E 850N	1	25	15	53	.2	2	2	6
1250E 800N	1	40	21	54	.3	6	2	4
1250E 750N	1	40	29	116	.4	7	2	5
1250E 700N	1	73	29	87	.4	6	2	30
1250E 650N	1	52	23	56	.4	2	2	27
1250E 600N	1	74	21	67	.6	5	2	39
1250E 550N	1	26	16	49	.3	9	3	4
1250E 500N	1	45	25	100	.4	8	2	35
1250E 450N	1	181	23	132	.5	7	2	13
1250E 400N	1	54	43	91	.4	12	2	18
1250E 350N	1	131	60	106	.5	9	2	20
1250E 300N	1	89	53	86	.6	9	2	17
1250E 250N	1	49	26	83	.4	8	2	12
1250E 200N	1	157	68	127	1.2	28	2	75
1250E 150N	1	55	26	77	.4	8	2	60
1300E 1900N	1	45	35	94	.5	13	4	7
1300E 1850N	1	46	22	109	.3	9	2	8
1300E 1800N	1	55	17	98	.2	10	3	14
1300E 1750N	2	37	15	63	.4	4	2	2
1300E 1700N	1	43	24	97	.2	9	3	9
1300E 1650N	1	26	14	56	.3	7	2	1
1300E 1600N	1	36	10	68	.3	7	6	10
1300E 1550N	1	42	21	93	.1	6	2	13
1300E 1500N	1	45	16	69	.6	5	2	10
1300E 1450N	1	20	6	54	.4	4	2	16
1300E 1400N	1	31	19	67	.5	6	2	7
1300E 1350N	1	11	25	82	.1	2	2	4
1300E 1300N	2	19	18	61	.4	6	2	2
1300E 1250N	3	28	60	118	.4	9	2	8
1300E 1200N	1	39	26	76	.3	6	2	12
STD C/FA-AU	20	60	39	137	7.1	37	15	52

SAMPLE#	Mo PPM	Cu PPM	Pb PPM	Zn PPM	Ag PPM	As PPM	Sb PPM	Au** PPB
1300E 1150N	2	23	31	74	.1	4	3	3
1300E 1100N	1	92	19	93	.2	5	2	16
1300E 1050N	1	80	11	79	.1	6	4	190
1300E 1000N	1	118	10	100	.3	3	3	6
1300E 950N	1	22	9	42	.1	5	4	1
1300E 900N	1	40	16	57	.1	5	2	2
1300E 850N	1	20	9	45	.1	2	2	11
1300E 800N	1	30	21	63	.1	2	4	47
1300E 750N	1	58	27	85	.4	6	2	4
1300E 700N	3	21	18	74	.1	2	3	7
1300E 650N	21	50	29	75	.3	7	5	250
1300E 600N	1	51	13	59	.2	3	2	3
1300E 550N	1	47	21	100	.4	2	5	25
1300E 500N	1	83	28	91	.3	5	2	16
1300E 450N	1	66	30	114	.1	8	2	15
1300E 400N	1	189	51	86	.8	7	2	13
1300E 350N	1	88	34	103	.6	12	4	30
1300E 300N	1	51	23	67	.1	6	3	16
1300E 250N	1	45	18	128	.1	12	2	15
1300E 200N	1	40	45	86	2.9	8	2	13
1300E 150N	1	65	33	124	.3	13	2	14
1300E 100N	1	74	24	103	.4	9	2	34
1350E 1300N	3	31	58	99	.1	6	2	11
1350E 1250N	1	39	18	99	.1	4	2	2
1350E 1200N	1	34	21	84	.2	2	2	2
1350E 1150N	1	39	21	79	.1	7	2	10
1350E 1100N	1	42	31	77	.1	4	4	12
1350E 1050N	1	45	12	69	.1	2	2	4
1350E 1000N	1	93	13	75	.1	8	4	21
355001 SILT	1	75	23	74	.3	7	2	95
STD C/FA-AU	19	58	41	137	6.8	37	15	51

SAMPLE#	Mg PPM	Cu PPM	Pb PPM	Zn PPM	Ag PPM	As PPM	Sb PPM	Au** PPB
651006	10	11	6	5	.4	3	2	1
651007	4	11	17	4	.5	8	3	5
651008	1	17	19	70	.4	2	2	1
651009	1	24	11	89	.3	2	2	1
651010	2	8	39	34	.7	3	2	2
651011	1	24	9	50	.3	5	2	2
651012	3	13	222	41	1.5	15	2	26
651013	2	11	9	48	.2	2	2	1
651014	1	5	8	50	.4	2	2	1
651015	1	2	10	50	.1	2	2	3
651016	1	5	6	47	.1	4	2	2
651017	5	5	167	31	1.3	27	3	13
651018	1	3	9	47	.1	5	2	1
651019	4	7	77	37	.7	8	2	70
651020	2	11	9	28	.3	2	2	2
651021	1	2	3	9	.1	2	2	2
651022	1	5	2	34	.1	3	2	1
651023	1	24	13	40	.5	7	5	4
651025	1	5	66	61	.4	4	2	3
651026	1	6	9	11	.5	8	2	28
651027	1	7	217	11	.8	2	2	920
651028	3	12	17	7	.6	9	2	7
651029	1	12	19	18	.3	2	2	90
651030	1	40	2	8	.2	3	3	1
652024	1	4	8	20	.2	2	2	1
652031	1	12	11	79	.3	4	2	2
STD C/FA-AU	20	61	40	129	7.2	38	15	50

ACME ANALYTICAL LABORATORIES LTD.  
 852 E. HASTINGS ST. VANCOUVER B.C. V6A 1R6  
 PHONE 253-3158 DATA LINE 251-1011

DATE RECEIVED: AUG 15 1985

DATE REPORT MAILED: *Aug. 22/85*

**GEOCHEMICAL ICP ANALYSIS**

.500 GRAM SAMPLE IS DIGESTED WITH JML 3-1-2 HCL-HNO3-H2O AT 95 DEG. C FOR ONE HOUR AND IS DILUTED TO 10 ML WITH WATER.  
 THIS LEACH IS PARTIAL FOR MN.FE.CA.P.CR.MG.BA.TI.B.AL.NA.K.W.SI.ZR.CE.SN.Y.NB AND TA. AU DETECTION LIMIT BY ICP IS 3 PPM.  
 - SAMPLE TYPE: SOILS - BOMESH AU\*\* ANALYSIS BY FA+AA FROM 10 GRAM SAMPLE.

ASSAYER: *V. Saundry*. DEAN TOYE OR TOM SAUNDY. CERTIFIED B.C. ASSAYER

AMERLIN EXPLORATION PROJECT -TON FILE # 85-1895 PAGE 1

SAMPLE#	Mo PPM	Cu PPM	Pb PPM	Zn PPM	Ag PPM	As PPM	Sb PPM	Au** PPB
L1000E 1900N	2	50	30	83	.3	12	2	8
L1000E 1850N	1	59	31	79	.1	15	2	6
L1000E 1800N	2	26	17	58	.5	2	5	3
L1000E 1750N	1	48	26	100	.1	6	2	15
L1000E 1700N	1	40	36	120	.4	7	2	3
L1000E 1650N	1	48	27	98	.2	7	2	225
L1000E 1600N	1	50	31	103	.2	6	2	8
L1000E 1550N	2	28	39	170	.1	10	2	4
L1000E 1500N	1	47	17	69	.2	2	2	12
L1000E 1450N	1	49	29	68	.1	13	10	4
L1000E 1400N	1	43	17	72	.5	5	2	8
L1000E 1350N	1	67	27	71	.1	7	2	9
L1000E 1300N	2	58	17	68	.1	14	2	3
L1000E 1250N	1	67	19	78	.1	3	2	47
L1000E 1200N	1	54	16	76	.1	9	3	6
L1000E 1150N	1	28	18	56	.4	2	2	4
L1000E 1100N	1	37	24	70	.2	4	2	7
L1000E 1050N	1	38	32	63	.1	3	2	2
L1000E 1000N	1	45	26	67	.2	3	2	3
L1100E 950N	1	21	8	54	.3	3	5	1
L1100E 900N	1	41	24	59	.2	7	2	6
L1100E 850N	1	57	32	71	.1	6	2	7
L1100E 800N	1	43	23	65	.4	2	2	2
L1100E 750N	1	164	23	82	.1	3	2	34
L1100E 700N	1	79	22	90	.1	10	8	29
L1100E 650N	1	49	29	66	.1	7	2	6
L1100E 600N	1	90	34	108	.3	13	2	6
L1100E 550N	1	129	25	126	.4	8	9	3
L1100E 500N	1	68	28	66	.7	2	2	4
L1100E 450N	1	241	68	115	.5	11	2	6
L1100E 400N	1	82	45	107	.4	7	2	11
L1100E 350N	1	160	43	123	.5	14	2	65
L1100E 300N	1	60	37	88	.3	4	3	8
L1100E 250N	1	136	25	109	.3	5	2	23
L1100E 200N	1	93	39	125	.5	9	5	11
L1100E 150N	1	42	34	95	.4	3	2	6
STD C/FA-AU	20	59	41	138	7.0	39	15	49

SAMPLE#	Mo PPM	Cu PPM	Pb PPM	Zn PPM	Ag PPM	As PPM	Sb PPM	Au** PPB
L1100E 100N	1	45	32	90	.1	7	2	5
L1150E 1050N	1	114	19	70	.1	7	2	42
L1250E 950N	1	68	15	65	.1	15	2	70
L1350E 1900N	1	37	3	52	.2	3	2	4
L1350E 1850N	2	68	40	94	1.2	7	2	5
L1350E 1800N	1	46	18	83	.1	3	2	220
L1350E 1750N	1	52	19	75	.1	5	2	11
L1350E 1700N	1	92	19	80	.1	13	2	8
L1350E 1650N	1	52	15	60	.1	13	2	4
L1350E 1600N	1	50	12	70	.1	4	2	5
L1350E 1550N	1	40	21	86	.1	9	2	13
L1350E 1500N	1	46	26	69	.1	5	2	20
L1350E 1450N	1	60	19	75	.2	10	5	10
L1350E 1400N	1	36	11	59	.1	8	2	15
L1350E 1350N	1	30	28	57	.1	10	2	38
L1350E 950N	1	107	17	75	.1	11	2	3
L1350E 900N	1	58	15	66	.1	10	2	7
L1350E 850N	1	54	13	63	.1	11	2	10
L1350E 800N	1	50	17	62	.1	6	2	18
L1350E 750N	1	53	13	50	.1	3	2	60
L1350E 700N	1	78	20	58	.2	2	2	18
L1350E 650N	3	48	18	66	.1	2	2	5
L1350E 600N	1	65	12	57	.1	2	2	5
L1350E 550N	7	179	14	75	.4	2	2	25
L1350E 500N	1	59	11	87	.1	7	2	10
L1350E 450N	1	62	16	62	.3	5	3	8
L1350E 400N	1	35	22	75	.1	3	2	10
L1350E 350N	1	106	42	97	.1	9	2	29
L1350E 300N	1	81	42	112	.1	11	3	15
L1350E 250N	1	116	49	106	1.2	12	2	21
L1350E 200N	1	67	18	79	.5	3	3	19
L1350E 150N	1	69	23	103	.1	6	2	2
L1350E 100N	1	81	29	105	.1	9	4	4
L1400E 1900N	1	54	23	73	.1	3	2	6
L1400E 1850N	1	45	19	91	.1	13	2	3
L1400E 1800N	1	59	12	82	.1	7	4	30
STD C/FA AU	20	61	40	128	7.1	41	15	52

SAMPLE#	Mo PPM	Cu PPM	Pb PPM	Zn PPM	Ag PPM	As PPM	Sb PPM	Au** PPB
L1400E 1750N	2	41	15	73	.2	13	7	9
L1400E 1700N	1	70	33	99	.1	22	2	95
L1400E 1650N	1	40	29	90	.3	11	2	5
L1400E 1600N	1	36	22	73	.5	12	2	8
L1400E 1550N	1	59	38	101	.3	24	2	15
L1400E 1500N	2	57	41	78	.2	9	5	55
L1400E 1450N	2	65	29	87	.1	14	2	25
L1400E 1400N	2	44	31	82	.3	18	9	15
L1400E 1350N	1	49	61	82	.5	18	3	10
L1400E 1300N	1	44	36	98	.5	9	3	15
L1400E 1250N	2	33	31	76	.1	10	3	10
L1400E 1200N	2	45	31	77	.1	12	2	10
L1400E 1150N	1	55	50	92	.3	9	2	25
L1400E 1100N	1	40	40	95	.4	15	2	250
L1400E 1050N	1	38	44	77	.3	11	2	20
L1400E 1000N	1	66	20	64	.2	11	8	12
L1400E 950N	1	105	15	80	.1	14	9	65
L1400E 900N	1	135	20	101	.4	12	2	8
L1400E 850N	2	254	34	82	.9	25	4	80
L1400E 800N	1	75	20	87	.3	18	5	8
L1400E 750N	1	70	21	70	.1	7	2	10
L1400E 700N	1	25	17	61	.5	9	2	6
L1400E 650N	1	23	17	57	.1	14	2	3
L1400E 600N	8	31	30	115	.1	16	2	20
L1400E 550N	3	28	38	56	.7	5	2	8
L1400E 500N	1	126	16	73	.2	13	5	16
L1400E 450N	1	122	12	46	.8	7	2	10
L1400E 400N	1	48	32	85	.1	10	2	12
L1400E 350N	1	96	35	100	.2	16	2	9
L1400E 300N	1	149	70	114	.5	15	2	23
L1400E 250N	1	48	61	86	.2	15	2	15
L1400E 200N	1	233	129	94	.2	17	2	13
L1400E 150N	1	91	68	130	.4	20	2	25
L1400E 100N	1	47	48	79	.7	13	2	12
L1450E 1900N	1	113	31	104	.3	19	4	20
L1450E 1850N	1	30	27	48	.2	10	2	5
STD C/FA-AU	20	58	38	137	6.9	38	15	50

SAMPLE#	Mo PPM	Cu PPM	Pb PPM	Zn PPM	Ag PPM	As PPM	Sb PPM	Au** PPB
L1450E 1800N	1	25	17	61	.2	7	2	4
L1450E 1750N	1	44	21	84	.3	13	2	15
L1450E 1700N	1	40	17	72	.1	10	2	8
L1450E 1650N	1	26	13	46	.5	6	2	5
L1450E 1600N	1	38	35	98	.2	9	2	17
L1450E 1550N	1	90	34	96	.5	16	2	48
L1450E 1500N	1	55	29	79	.1	13	5	15
L1450E 1450N	1	64	23	77	.3	12	4	14
L1450E 1400N	1	64	22	78	.2	8	2	10
L1450E 1350N	1	52	25	85	.1	5	2	9
L1450E 1300N	3	52	31	87	.1	8	6	8
L1450E 1250N	1	54	15	68	.4	5	2	5
L1450E 1200N	1	45	37	82	.3	11	2	16
L1450E 1150N	1	40	16	77	.1	10	3	9
L1450E 1100N	1	76	43	91	.1	8	2	14
L1450E 1050N	1	49	20	70	.2	10	2	22
L1500E 1900N	1	109	34	127	.2	16	2	10
L1500E 1850N	1	47	12	99	.1	11	2	7
L1500E 1800N	1	50	15	89	.1	5	2	6
L1500E 1750N	1	49	20	87	.1	11	2	7
L1500E 1700N	2	59	29	97	.2	15	2	12
L1500E 1650N	1	36	25	82	.1	12	3	8
L1500E 1600N	1	24	42	60	.2	7	2	8
L1500E 1550N	1	45	41	81	.1	9	2	15
L1500E 1500N	1	47	35	76	.1	10	4	12
L1500E 1450N	1	56	27	83	.2	20	2	35
L1500E 1400N	1	40	31	75	.2	11	2	11
L1500E 1350N	1	45	35	83	.1	11	2	31
L1500E 1300N	2	47	35	102	.1	11	2	6
L1500E 1250N	1	66	66	101	.8	9	2	40
L1500E 1200N	2	60	56	141	.1	9	2	17
L1500E 1150N	2	41	49	136	.2	10	2	7
L1500E 1100N	1	42	15	90	.2	6	2	6
L1500E 1050N	1	49	38	152	.1	5	2	7
L1500E 1000N	1	20	20	94	.1	5	2	4
L1500E 950N	1	48	30	59	.2	9	2	13
STD C/FA-AU	20	60	40	139	7.1	38	15	52

SAMPLE#	Mo PPM	Cu PPM	Pb PPM	Zn PPM	Ag PPM	As PPM	Sb PPM	Au** PPB
L1500E 900N	1	68	19	64	.2	3	6	6
L1500E 850N	1	29	15	76	.1	2	2	2
L1500E 800N	1	174	17	98	.2	2	2	9
L1500E 750N	1	95	16	94	.1	2	2	3
L1500E 700N	1	41	34	97	.2	5	2	3
L1500E 650N	1	16	17	57	.1	2	2	1
L1500E 600N	2	42	19	79	.1	5	2	29
L1500E 550N	1	81	25	88	.1	4	4	17
L1500E 500N	1	99	33	103	.5	6	2	40
L1500E 450N	3	459	23	73	.4	8	2	38
L1500E 400N	2	118	20	74	.2	3	2	23
L1500E 350N	4	258	24	118	.9	5	2	48
L1500E 300N	2	131	15	126	.2	11	4	14
L1500E 250N	1	132	63	226	.9	8	2	18
L1500E 200N	1	79	69	142	.4	5	2	12
L1500E 150N	1	73	106	151	.1	8	2	35
L1500E 100N	1	44	28	68	.2	7	2	17
L1550E 1900N	2	123	30	103	.2	13	2	30
L1550E 1850N	1	36	19	92	.1	7	4	11
L1550E 1800N	1	94	20	95	.1	11	2	7
L1550E 1750N	1	78	26	98	.3	10	4	105
L1550E 1700N	2	67	29	99	.2	10	2	29
L1550E 1650N	2	69	26	101	.1	11	2	24
L1550E 1600N	1	62	27	97	.1	10	2	13
L1550E 1550N	2	62	26	97	.1	10	2	10
L1550E 1500N	1	67	28	100	.4	11	2	16
L1550E 1450N	1	79	36	94	.2	14	2	24
L1550E 1400N	5	68	35	120	.4	6	2	10
L1550E 1350N	9	44	44	106	.3	3	3	13
L1550E 1300N	6	86	39	129	.1	2	2	15
L1550E 1250N	4	52	22	107	.1	4	2	6
L1550E 1200N	2	29	23	134	.2	2	2	2
L1550E 1150N	2	47	33	113	.2	5	2	13
L1550E 1100N	3	101	81	123	.9	9	2	140
L1550E 1050N	2	34	38	63	.2	4	2	16
L1550E 1000N	2	73	29	93	.1	7	2	17
STD C/FA AU	21	60	40	141	6.9	35	15	50

SAMPLE#	Mo PPM	Cu PPM	Pb PPM	Zn PPM	Ag PPM	As PPM	Sb PPM	Au** PPB
L1550E 950N	1	73	21	87	.1	10	2	15
L1550E 900N	3	87	16	111	.3	6	2	10
L1550E 850N	2	17	47	86	.1	8	2	3
L1550E 800N	1	131	19	94	.2	4	2	4
L1550E 750N	2	84	15	72	.3	6	2	60
L1550E 700N	1	160	15	136	.2	7	2	7
L1550E 650N	1	43	21	83	.1	4	2	3
L1550E 600N	2	32	30	76	.1	5	3	2
L1550E 550N	1	22	11	50	.1	3	2	2
L1550E 500N	3	63	68	123	1.1	4	5	50
L1550E 450N	2	68	80	143	1.1	6	2	60
L1550E 400N	2	35	30	104	.1	3	2	3
L1550E 350N	4	72	40	155	.1	5	2	55
L1550E 300N	2	125	11	91	.1	4	2	24
L1550E 250N	2	110	30	94	.5	8	2	26
L1550E 200N	22	148	24	72	.8	3	3	31
L1550E 150N	1	175	46	74	.9	5	2	9
L1600E 1900N	1	109	16	83	.2	9	3	20
L1600E 1850N	1	116	15	80	.3	12	2	11
L1600E 1800N	3	78	23	101	.1	9	5	7
L1600E 1750N	2	55	31	88	.1	9	5	30
L1600E 1700N	2	77	31	95	.4	13	3	10
L1600E 1650N	3	126	41	110	.3	32	4	12
L1600E 1600N	1	57	38	95	.2	10	2	21
L1600E 1550N	6	109	113	150	1.1	34	6	60
L1600E 1500N	7	161	135	255	1.0	25	2	33
L1600E 1450N	3	122	45	130	.6	28	2	45
L1600E 1400N	2	62	30	101	.1	11	2	19
L1600E 1350N	6	32	25	86	.1	9	2	7
L1600E 1300N	1	63	48	96	.3	7	2	65
L1600E 1250N	1	57	37	87	.1	7	2	31
L1600E 1200N	1	46	23	74	.1	5	2	16
L1600E 1150N	1	36	23	66	.1	6	2	15
L1600E 1100N	1	23	25	49	.4	5	2	15
L1600E 1050N	1	44	38	85	.4	8	2	6
L1600E 1000N	2	77	58	107	.2	8	2	23
STD C/FA-AU	20	59	41	137	7.0	39	15	52

SAMPLE#	Mo PPM	Cu PPM	Pb PPM	Zn PPM	Ag PPM	As PPM	Sb PPM	Au** PPB
L1600E 950N	1	87	21	86	.1	10	4	8
L1600E 900N	1	65	28	83	.2	15	2	17
L1600E 850N	2	50	10	46	.5	2	5	8
L1600E 800N	47	51	536	358	2.2	46	3	715
L1600E 750N	7	113	183	224	1.4	16	2	475
L1600E 700N	1	174	29	104	.5	12	2	50
L1600E 650N	1	168	28	139	.1	9	2	8
L1600E 600N	1	88	60	146	.1	11	2	3
L1600E 550N	1	115	36	104	.1	16	2	5
L1600E 500N	1	77	220	284	1.4	7	2	210
L1600E 450N	1	64	41	102	.3	8	2	6
L1600E 400N	1	34	31	64	.1	4	2	28
L1600E 350N	5	56	72	83	.3	7	2	75
L1600E 300N	3	65	57	115	.2	11	3	35
L1600E 250N	1	62	28	110	.2	7	2	20
L1600E 200N	1	85	38	147	.4	11	2	15
L1600E 150N	1	177	44	100	.4	12	2	22
L1600E 100N	1	182	44	121	.6	17	2	17
STD C/FA AU	19	59	39	138	6.9	43	17	48

ACME ANALYTICAL LABORATORIES LTD.  
 852 E. HASTINGS ST. VANCOUVER B.C. V6A 1R6  
 PHONE 253-3158 DATA LINE 251-1011

DATE RECEIVED: AUG 16 1985

DATE REPORT MAILED: *Aug 22/85*

**GEOCHEMICAL ICP ANALYSIS**

.500 GRAM SAMPLE IS DIGESTED WITH 3ML 3-1-2 HCL-HNO3-H2O AT 95 DEG. C FOR ONE HOUR AND IS DILUTED TO 10 ML WITH WATER.  
 THIS LEACH IS PARTIAL FOR MN.FE.CA.P.CR.MG.BA.TI.B.AL.NA.K.W.SI.ZR.CE.SN.Y.NB AND TA. AU DETECTION LIMIT BY ICP IS 3 PPM.  
 - SAMPLE TYPE: SOILS -80 MESH AU\*\* ANALYSIS BY FA+AA FROM 10 GRAM SAMPLE.

ASSAYER: *P. 10 - Rect. J. Saundry* DEAN TOYE OR TOM SAUNDRY. CERTIFIED B.C. ASSAYER

AMERLIN EXPLORATION PROJECT - TON FILE # 85-1909 PAGE 1

SAMPLE#	Mn PPM	Cu PPM	Pb PPM	Zn PPM	Ag PPM	As PPM	Sb PPM	Au** PPM
700E 1900N	5	49	38	82	.1	12	3	8
700E 1850N	5	55	64	91	.6	11	2	13
700E 1800N	5	41	71	82	.3	10	2	52
700E 1750N	6	177	30	118	3.1	14	3	17
700E 1700N	4	118	31	118	.8	7	3	6
700E 1650N	4	44	32	89	.1	5	2	7
700E 1600N	3	27	11	46	.2	3	2	26
700E 1550N	4	43	23	89	.1	6	2	13
700E 1500N	4	61	19	80	.2	8	3	6
700E 1450N	5	82	25	75	.1	9	3	12
700E 1400N	3	54	21	67	.1	6	2	29
700E 1350N	3	50	24	72	.1	7	2	6
700E 1300N	3	58	16	73	.3	9	3	15
700E 1250N	3	57	17	66	.1	10	2	3
700E 1200N	3	66	31	67	.1	6	2	7
700E 1150N	3	84	25	87	.2	11	2	5
700E 1100N	2	72	23	63	.1	8	2	12
700E 1050N	3	70	31	64	.1	7	2	19
700E 1000N	3	90	35	80	.1	7	2	10
700E 950N	3	78	32	71	.1	8	2	22
700E 900N	3	91	33	83	.3	11	2	20
700E 850N	3	136	49	124	.1	11	2	26
700E 800N	2	52	18	60	.1	6	2	10
700E 750N	1	72	21	57	.6	5	2	14
700E 700N	2	97	43	74	.5	10	3	18
700E 650N	3	121	33	83	.2	8	2	15
700E 600N	3	228	125	220	1.1	47	2	42
700E 550N	2	230	48	97	1.2	10	2	23
700E 500N	3	96	29	48	.1	17	2	2
700E 450N	3	125	10	82	.2	31	3	4
700E 400N	3	558	13	84	.1	14	2	3
700E 350N	1	139	34	103	.1	5	2	8
700E 300N	2	149	21	117	.3	5	3	9
700E 250N	1	66	18	80	.1	4	2	4
700E 200N	1	22	3	44	.1	3	2	2
700E 150N	1	53	26	87	.1	5	2	4
700E 100N	1	38	22	72	.1	9	2	55
STD C/FA-AU	20	59	39	133	7.0	37	15	51

SAMPLE#	Mo PPM	Cu PPM	Pb PPM	Zn PPM	Ag PPM	As PPM	Sb PPM	Au** PPB
800E 1900N	2	39	33	68	.3	7	2	10
800E 1850N	1	48	34	87	.5	5	2	135
800E 1800N	2	39	38	104	.3	2	2	3
800E 1750N	2	48	30	81	.3	6	2	14
800E 1700N	2	52	12	133	.4	5	2	4
800E 1650N	2	77	21	124	.3	6	2	6
800E 1600N	2	42	23	94	.2	6	2	2
800E 1550N	2	39	29	116	.3	4	2	6
800E 1500N	2	76	48	101	1.2	11	2	13
800E 1450N	1	67	13	76	.2	4	2	15
800E 1400N	2	38	12	54	.1	4	2	5
800E 1350N	1	79	26	78	.3	5	2	11
800E 1300N	1	43	36	75	.1	7	2	10
800E 1250N	1	44	16	65	.1	6	2	14
800E 1200N	1	52	20	69	.1	6	2	3
800E 1150N	1	58	18	70	.3	7	2	6
800E 1100N	1	95	31	90	.4	9	3	7
800E 1050N	1	73	18	63	.1	7	2	5
800E 1000N	1	113	28	77	.5	6	2	60
800E 950N	1	180	12	104	.3	3	2	8
800E 900N	1	97	25	73	.1	4	2	15
800E 850N	1	124	23	84	.4	6	2	50
800E 800N	1	118	30	88	.5	8	2	19
800E 750N	1	81	2	33	.5	3	2	5
800E 700N	1	109	54	96	.4	12	2	55
800E 650N	1	88	43	69	.2	11	2	50
800E 600N	1	132	93	90	.3	11	2	17
800E 550N	1	139	95	92	.5	12	3	19
800E 500N	1	34	15	73	.1	6	2	12
800E 450N	1	103	49	80	.1	13	2	210
800E 400N	1	51	20	84	.1	7	2	5
800E 350N	1	72	30	78	.1	9	2	4
800E 300N	1	91	20	75	.1	12	2	5
800E 250N	1	43	21	78	.1	4	2	9
800E 200N	1	33	15	69	.1	3	2	5
800E 150N	1	41	25	71	.1	5	2	5
800E 100N	1	31	17	65	.1	7	2	3
STD C/FA-AU	19	59	40	134	7.2	39	15	51

SAMPLE#	Mo PPM	Cu PPM	Pb PPM	Zn PPM	Ag PPM	As PPM	Sb PPM	Au** PPB
900E 1900N	2	44	51	95	.3	8	2	10
900E 1850N	2	47	35	77	.3	12	2	3
900E 1800N	2	81	34	105	.4	13	2	32
900E 1750N	2	40	32	80	.1	10	2	7
900E 1700N	2	30	13	89	.4	4	2	5
900E 1650N	2	51	33	94	.2	11	2	30
900E 1600N	6	26	17	125	.1	5	2	8
900E 1550N	3	39	34	173	.2	5	2	9
900E 1500N	2	76	24	115	.1	6	2	6
900E 1450N	2	68	22	77	.1	9	2	6
900E 1400N	2	71	16	79	.1	9	2	10
900E 1350N	2	127	21	87	.3	9	2	10
900E 1300N	2	79	25	83	.1	7	2	11
900E 1250N	1	35	17	59	.3	6	3	8
900E 1200N	1	63	16	67	.2	8	4	11
900E 1150N	1	47	17	53	.2	6	2	8
900E 1100N	1	23	18	42	.2	5	2	5
900E 1050N	1	46	24	60	.2	9	2	13
900E 1000N	1	48	17	68	.1	8	2	18
900E 950N	1	51	21	84	.2	9	2	20
900E 900N	1	59	23	74	.1	7	2	4
900E 850N	1	69	25	70	.1	9	2	25
900E 800N	1	76	19	80	.1	8	2	6
900E 750N	1	58	21	63	.1	7	2	2
900E 700N	1	84	26	81	.1	7	2	16
900E 650N	1	78	24	76	.1	10	2	18
900E 600NA	1	157	86	123	.8	9	2	4
900E 600N	1	60	17	44	.2	4	2	6
900E 550N	1	132	46	94	.3	13	2	110
900E 500N	1	117	43	81	.2	14	2	15
900E 450N	1	50	20	64	.4	5	3	7
900E 400N	1	41	18	58	.1	7	2	35
900E 350N	1	45	20	79	.1	6	2	5
900E 300N	1	76	16	75	.1	12	2	10
900E 250N	1	45	15	72	.1	5	2	4
900E 200N	1	54	32	87	.1	13	2	18
900E 150N	1	46	23	78	.1	13	2	13
STD C/FA-AU	20	61	37	139	6.9	37	15	48

SAMPLE#	Mo PPM	Cu PPM	Pb PPM	Zn PPM	Ag PPM	As PPM	Sb PPM	Au** PPB
950E 1900N	2	23	22	55	.8	5	3	1
950E 1850N	2	42	20	61	.2	4	2	1
950E 1800N	3	26	25	65	.1	3	2	1
950E 1750N	2	47	24	82	.2	5	2	2
950E 1700N	2	36	35	96	.2	5	3	25
950E 1650N	2	35	27	105	.1	8	2	14
950E 1600N	2	39	22	71	.2	3	2	4
950E 1550N	5	32	31	160	.2	4	2	5
950E 1500N	3	42	34	93	.1	7	2	34
950E 1450N	4	31	22	48	.2	4	2	1
950E 1400N	2	36	16	60	.1	4	2	6
950E 1350N	2	44	17	54	.1	4	2	19
950E 1300N	1	86	22	82	.1	5	2	6
950E 1250N	2	89	26	95	.3	8	2	8
950E 1200N	1	42	24	56	.1	9	2	43
950E 1150N	2	49	20	60	.1	5	2	8
950E 1100N	2	51	14	57	.1	7	2	140
950E 1050N	1	67	26	64	.2	8	2	50
950E 1000N	1	82	22	86	.2	8	2	19
950E 950N	2	84	22	68	.1	9	2	51
950E 900N	1	23	19	53	.1	3	2	2
950E 850N	1	170	11	126	.1	5	2	6
950E 800N	1	42	26	60	.1	7	2	15
950E 750N	1	122	35	83	.2	7	2	55
950E 700N	1	119	13	104	.1	3	2	8
950E 650N	1	104	16	85	.2	9	2	3
950E 600N	1	122	36	102	.3	12	2	8
950E 550N	1	200	102	112	1.3	14	2	29
950E 500N	1	210	44	99	.9	15	2	44
950E 450N	2	127	39	81	.3	12	2	15
950E 400N	2	137	32	93	.2	11	2	20
950E 350N	1	25	14	64	.1	6	2	2
950E 300N	1	18	11	32	.3	2	2	1
950E 250N	2	24	14	35	.3	2	20	1
950E 200N	2	93	23	87	.1	15	2	25
950E 150N	2	53	16	69	.1	11	5	9
950E 100N	1	58	22	83	.1	17	2	9
STD C/FA-AU	20	60	40	132	7.2	39	15	51

SAMPLE#	Mo PPM	Cu PPM	Pb PPM	Zn PPM	Ag PPM	As PPM	Sb PPM	Au** PPB
1000E 950N	1	89	26	86	.1	8	2	8
1000E 900N	1	69	14	69	.4	6	2	2
1000E 850N	1	32	12	56	.3	6	2	16
1000E 800N	1	85	11	69	.2	6	2	9
1000E 750N	1	92	25	71	.6	4	2	5
1000E 700N	1	117	26	92	.3	12	2	9
1000E 650N	1	85	20	65	.3	8	2	6
1000E 600N	1	186	26	78	1.2	10	2	5
1000E 550N	1	89	30	83	.1	6	2	2
1000E 500N	1	190	58	169	.9	12	2	110
1000E 450N	1	124	42	123	.2	12	2	32
1000E 400N	1	137	34	79	.4	13	2	120
1000E 350N	2	83	28	107	.3	6	2	51
1000E 300N	1	165	22	108	.2	15	2	18
1000E 250N	1	164	51	101	.4	10	2	24
1000E 200N	1	45	16	89	.3	4	2	7
1000E 150N	1	68	19	109	.1	8	2	3
1000E 100N	1	27	12	70	.2	9	2	1
1450E 950N	1	101	15	79	.3	13	2	48
1450E 900N	2	111	17	84	.4	13	2	23
1450E 850N	3	184	24	124	.9	13	2	16
1450E 800N	1	86	16	82	.1	3	2	3
1450E 750N	2	134	27	118	.2	11	4	3
1450E 700N	1	15	18	65	.1	3	2	1
1450E 650N	1	35	25	85	.1	7	2	2
1450E 600N	3	42	19	71	.1	2	2	9
1450E 550N	3	71	40	59	.3	2	2	31
1450E 500N	2	107	21	84	.2	4	2	15
1450E 450N	1	66	10	63	.2	2	2	4
1450E 400N	1	125	31	90	.2	13	2	25
1450E 350N	3	68	43	118	.3	5	2	5
1450E 300N	1	80	45	103	.3	11	2	11
1450E 250N	1	104	80	244	.6	11	2	14
1450E 200N	1	41	48	79	.3	7	2	5
1450E 150N	1	42	56	90	.2	9	2	50
1450E 100N	1	68	45	92	.2	10	2	160
STD C/FA-AU	21	59	39	136	7.1	38	15	49

SAMPLE#	Mo PPM	Cu PPM	Pb PPM	Zn PPM	Ag PPM	As PPM	Sb PPM	Au** PPB
1650E 1900N	2	81	25	121	.1	8	2	4
1650E 1850N	2	60	19	97	.2	11	2	15
1650E 1800N	1	61	32	106	.2	14	2	8
1650E 1750N	2	57	32	105	.3	10	2	13
1650E 1700N	3	141	47	147	.5	43	2	5
1650E 1650N	2	63	27	106	.2	15	2	21
1650E 1600N	2	105	29	158	.2	27	2	10
1650E 1550N	14	149	138	223	1.2	69	2	34
1650E 1500N	4	160	103	195	.9	60	2	32
1650E 1450N	2	63	39	99	.3	7	2	65
1650E 1400N	1	72	39	107	.4	8	2	25
1650E 1350N	2	42	48	85	.4	8	2	17
1650E 1300N	1	37	38	67	.4	6	2	19
1650E 1250N	1	41	28	71	.6	9	2	46
1650E 1200N	1	54	24	71	.4	10	2	10
1650E 1150N	1	44	44	78	.6	10	2	24
1650E 1100N	1	41	24	71	.4	8	2	105
1650E 1050N	3	32	41	81	.2	6	2	14
1650E 1000N	2	42	56	87	.3	10	2	20
1650E 950N	1	65	34	107	.3	12	3	18
1650E 900N	2	66	30	110	.2	11	2	13
1650E 850N	1	103	26	96	.3	9	2	15
1650E 800N	7	27	94	257	.4	17	2	27
1650E 750N	3	41	51	126	.3	4	2	4
1650E 700N	5	194	20	107	.3	4	2	3
1650E 650N	1	103	18	101	.1	4	2	6
1650E 600N	2	92	32	132	.3	3	2	3
1650E 550N	1	65	14	100	.2	4	2	15
1650E 500N	1	68	19	99	.3	4	2	7
1650E 450N	1	36	19	84	.2	5	2	13
1650E 400N	2	51	27	93	.2	5	3	55
1650E 350N	1	78	35	109	.4	6	2	5
1650E 300N	1	70	33	122	.4	4	2	11
1650E 250N	1	137	31	125	.5	7	2	23
1650E 200N	1	134	31	127	.4	8	2	18
1650E 150N	1	148	21	119	.4	7	2	20
1650E 100N	1	192	24	82	.4	7	2	14
STD C/FA-AU	19	60	42	139	7.2	38	15	53

SAMPLE#	Mo PPM	Cu PPM	Pb PPM	Zn PPM	Ag PPM	As PPM	Sb PPM	Au** PPB
1700E 1900N	2	75	27	122	.1	15	2	7
1700E 1850N	2	73	28	108	.1	12	2	19
1700E 1800N	2	66	21	102	.1	15	2	14
1700E 1750N	2	75	30	114	.1	15	2	4
1700E 1700N	2	73	28	96	.3	16	2	18
1700E 1650N	3	79	35	111	.3	15	2	6
1700E 1600N	6	124	72	143	.5	51	2	51
1700E 1550N	4	138	86	179	.2	45	2	24
1700E 1500N	3	80	44	120	.2	17	2	15
1700E 1450N	3	57	32	96	.6	11	2	13
1700E 1400N	3	60	43	118	.1	21	2	8
1700E 1350N	2	67	75	131	.1	12	2	21
1700E 1300N	2	25	31	76	.1	6	2	7
1700E 1250N	2	39	50	116	.1	6	2	9
1700E 1200N	11	119	86	149	1.1	37	2	32
1700E 1150N	2	50	22	85	.3	5	2	4
1700E 1100N	3	63	43	161	.1	10	2	65
1700E 1050N	2	56	42	113	.1	12	2	30
1700E 1000N	2	53	44	107	.2	11	2	36
1700E 950N	3	42	112	158	.8	26	2	90
1700E 900N	3	39	128	176	.8	14	2	46
1700E 850N	5	78	28	103	.1	11	2	18
1700E 800N	4	79	57	134	.3	9	2	7
1700E 750N	15	42	82	123	.9	15	2	26
1700E 700N	11	85	131	120	.2	27	2	12
1700E 650N	4	97	34	86	.3	3	2	15
1700E 600N	4	83	38	93	.4	12	2	310
1700E 550N	4	65	65	153	.1	7	2	4
1700E 500N	2	65	27	103	.1	6	2	2
1700E 450N	2	83	27	98	.2	9	2	11
1700E 400N	2	78	20	97	.1	8	2	20
1700E 350N	1	51	20	103	.1	8	2	5
1700E 300N	1	59	35	94	.1	12	2	24
1700E 250N	2	118	29	83	.5	10	2	55
1700E 200N	2	176	27	95	.2	8	2	17
1700E 150N	2	188	50	140	5.8	11	9	55
1700E 100N	1	122	26	88	.7	10	2	21
STD C/FA-AU	21	59	41	136	7.2	39	16	52

SAMPLE#	Mo PPM	Cu PPM	Pb PPM	Zn PPM	Ag PPM	As PPM	Sb PPM	Au** PPB
1750E 1900N	3	66	23	119	.2	17	2	18
1750E 1850N	3	57	32	91	.3	14	2	39
1750E 1800N	3	58	29	106	.2	17	2	40
1750E 1750N	3	83	27	109	.5	12	2	13
1750E 1700N	3	62	29	121	.3	16	2	39
1750E 1650N	4	76	40	129	.3	24	2	11
1750E 1600N	4	86	78	130	.7	18	2	18
1750E 1550N	4	115	65	158	1.0	35	2	25
1750E 1500N	4	93	53	156	.6	14	2	5
1750E 1450N	5	144	53	151	.9	36	2	11
1750E 1400N	3	84	31	82	.3	24	3	6
1750E 1350N	3	53	29	105	.1	10	2	10
1750E 1300N	3	60	34	114	.1	9	2	4
1750E 1250N	3	46	35	84	.2	3	2	14
1750E 1200N	3	53	40	105	.1	3	2	9
1750E 1150N	2	24	13	55	.2	3	2	3
1750E 1100N	4	40	23	74	.2	4	2	4
1750E 1050N	2	32	27	63	.1	4	2	9
1750E 950N	2	41	36	81	.1	5	4	15
1750E 900N	2	36	30	81	.1	6	3	6
1750E 800N	3	30	50	105	.1	2	2	1
1750E 750N	4	90	88	124	.8	2	2	35
1750E 700N	4	39	48	170	.2	3	2	1
1750E 650N	8	51	79	147	.3	8	2	15
1750E 600N	2	160	26	108	.5	3	2	5
1750E 550N	3	247	13	101	.4	3	2	8
1750E 500N	2	111	12	88	.2	4	2	1
1750E 450N	2	142	35	84	.6	6	2	46
1750E 400N	3	57	29	188	.3	5	2	9
1750E 350N	2	34	20	62	.2	3	2	6
1750E 300N	2	126	28	89	.5	7	2	60
1750E 250N	2	149	29	93	.7	8	2	30
1750E 200N	2	88	18	75	.3	6	2	17
1750E 100N	2	124	24	81	.1	4	2	1
STD C/FA AU	21	60	41	133	6.9	35	16	53

SAMPLE#	Mg PPM	Cu PPM	Pb PPM	Zn PPM	Ag PPM	As PPM	Sb PPM	Au** PPB
1800E 1900N	3	84	27	88	.2	32	3	19
1800E 1850N	2	55	27	104	.1	16	2	29
1800E 1800N	2	58	26	106	.1	21	2	18
1800E 1750N	3	67	26	111	.2	21	2	24
1800E 1700N	3	124	44	131	.6	37	2	16
1800E 1650N	2	93	31	129	.3	26	2	5
1800E 1600N	3	71	25	113	.1	23	2	13
1800E 1550N	3	59	17	99	.1	26	2	6
1800E 1500N	3	68	30	112	.1	29	2	5
1800E 1450N	3	74	27	108	.3	30	2	1
1800E 1400N	2	79	24	119	.4	18	3	10
1800E 1350N	2	53	23	109	.1	30	2	7
1800E 1300N	2	83	28	138	.4	22	2	5
1800E 1250N	2	56	34	105	.1	13	3	37
1800E 1200N	2	47	33	103	.2	6	2	33
1800E 1150N	1	52	23	102	.1	7	3	1
1800E 1100N	1	47	22	96	.2	10	3	2
1800E 1050N	2	62	21	151	.1	2	2	1
1800E 1000N	2	73	24	145	.1	2	2	1
1800E 950N	2	65	25	87	.1	8	2	10
1800E 900N	1	69	23	82	.1	5	2	11
1800E 850N	2	66	29	114	.1	6	2	2
1800E 800N	1	44	23	131	.1	3	2	1
1800E 750N	1	61	41	110	.3	9	2	16
1800E 700N	1	53	34	105	.2	7	3	17
1800E 650N	2	21	48	113	.1	3	2	1
1800E 600N	5	52	169	189	.3	9	2	42
1800E 550N	3	55	154	211	.2	7	2	17
1800E 500N	3	81	156	150	.5	8	2	31
1800E 450N	3	75	129	141	.5	8	2	22
1800E 400N	3	60	53	177	.1	6	2	9
1800E 350N	3	78	80	133	.3	7	2	34
1800E 300N	3	80	43	125	.4	7	2	45
1800E 250N	1	56	16	100	.1	7	2	23
1800E 200N	1	88	22	106	.1	8	2	15
1800E 150N	2	110	18	75	.5	5	2	26
1800E 100N	4	141	25	88	.8	6	2	25
STD C/FA-AU	20	61	41	139	7.1	39	15	48

SAMPLE#	Mo PPM	Cu PPM	Pb PPM	Zn PPM	Ag PPM	As PPM	Sb PPM	Au** PPB
651032	5	27	10	51	.1	7	2	10
651033	2	58	3	31	.2	2	2	9
651034	3	8	9	199	.1	3	2	1
651035	1	3	621	26	1.5	3	2	1
651036	2	8	44	43	.6	7	2	9
651037	1	13	31	42	.5	7	2	28
651038	3	17	201	98	1.3	21	2	1350
651039	3	14	383	79	2.4	54	2	41
651040	1	5	7	76	.1	7	2	1
651041	1	3	15	10	.3	3	2	8
651042	1	3	23	30	.1	2	2	1
651043	3	3	51	20	.3	16	2	11
651044	7	8	27	26	.8	4	2	7
651045	2	15	160	37	1.0	17	2	75
651046	5	8	80	137	.3	9	2	13
651047	1	8	102	14	.8	5	2	20
651048	4	3	9	4	.3	10	2	47
651049	2	12	101	70	.6	35	2	25
651050	1	22	18	64	.2	9	2	2
651051	1	46	13	125	.2	16	2	5
651052	3	7	5	6	.4	9	2	3
651053	1	49	12	90	.3	3	2	3
651054	1	3	10	51	.1	3	2	1
651055	3	7	15	11	.2	6	2	16
651056	2	3	9	59	.1	2	2	11
STD C/FA-AU	21	59	41	133	7.1	40	15	54

ACME ANALYTICAL LABORATORIES LTD.  
 852 E. HASTINGS ST. VANCOUVER B.C. V6A 1R6  
 PHONE 253-3158 DATA LINE 251-1011

DATE RECEIVED: AUG 23 1985

DATE REPORT MAILED: *Aug 28/85*

**GEOCHEMICAL ICP ANALYSIS**

.500 GRAM SAMPLE IS DIGESTED WITH 3ML 3-1-2 HCL-HNO3-H2O AT 95 DEG. C FOR ONE HOUR AND IS DILUTED TO 10 ML WITH WATER.  
 THIS LEACH IS PARTIAL FOR MN.FE.CA.P.CR.MG.BA.TI.B.AL.NA.K.W.SI.ZR.CE.SN.Y.NB AND TA. AU DETECTION LIMIT BY ICP IS 3 PPM.  
 - SAMPLE TYPE: SOILS -80 MESH AU ANALYSIS BY AA FROM 10 GRAM SAMPLE.

ASSAYER: *P9 - Rocks* *T. Saundry* DEAN TOYE OR TOM SAUNDY. CERTIFIED B.C. ASSAYER

ISLAND MINING

PROJECT-TON FILE # 85-2034

PAGE 1

SAMPLE#	Pb PPM	Zn PPM	Ag PPM	As PPM	Sb PPM	Au* PPB
OE 1900N	14	79	.4	7	2	11
OE 1850N	22	76	.1	8	2	9
OE 1800N	13	67	.1	6	2	7
OE 1750N	8	84	.1	5	2	42
OE 1700N	14	93	.1	6	2	3
OE 1650N	15	93	.1	10	2	24
OE 1600N	25	89	.1	8	2	15
OE 1550N	17	119	.2	7	2	6
OE 1500N	5	41	.1	3	2	3
OE 1450N	13	84	.2	5	2	4
OE 1400N	19	76	.1	6	2	8
OE 1350N	18	103	.1	9	2	7
OE 1300N	21	134	.3	6	2	21
OE 1250N	26	89	.1	11	2	12
OE 1200N	24	62	.1	7	2	41
OE 1150N	42	104	.4	15	2	65
OE 1100N	24	87	.1	4	2	17
OE 1050N	15	94	.3	13	2	7
OE 1000N	20	87	.1	6	2	3
OE 950N	10	83	.2	8	2	2
OE 900N	11	94	.3	8	3	9
OE 850N	25	131	.1	14	2	2
OE 800N	10	81	.2	7	2	3
OE 750N	19	75	.1	7	2	7
OE 700N	23	92	.1	7	2	5
OE 650N	29	167	.4	9	2	10
OE 600N	31	100	.1	14	2	75
OE 550N	29	135	.2	6	2	22
OE 500N	28	94	.1	11	2	2
OE 450N	19	89	.3	13	2	10
OE 400N	23	59	.2	12	3	3
OE 350N	27	91	.3	18	2	4
OE 300N	44	114	.4	29	2	11
OE 250N	29	93	1.1	14	2	12
OE 200N	31	95	.2	11	2	16
OE 150N	34	103	.4	7	2	7
OE 100N	48	96	.2	9	2	19
STD C/AU-0.5	40	136	7.2	36	15	510

SAMPLE#	Pb PPM	Zn PPM	Ag PPM	As PPM	Sb PPM	Au* PPB
100E 1900N	12	84	.1	7	2	90
100E 1850N	16	106	.2	6	3	6
100E 1800N	14	72	.1	9	2	11
100E 1750N	24	72	.1	9	2	22
100E 1700N	24	71	.1	10	2	75
100E 1650N	17	77	.3	8	2	25
100E 1600N	17	90	.1	10	2	20
100E 1550N	14	70	.1	4	3	15
100E 1500N	26	70	.1	6	2	6
100E 1450N	10	77	.1	6	2	20
100E 1400N	11	85	.1	4	2	15
100E 1350N	34	154	.3	9	2	4
100E 1300N	34	149	.2	8	2	6
100E 1250N	34	146	.3	8	2	1
100E 1200N	34	148	.3	9	2	1
100E 1150N	34	147	.2	8	2	1
100E 1100N	35	144	.3	6	2	1
100E 1050N	36	142	.1	8	2	4
100E 1000N	13	53	.1	4	2	2
100E 950N	15	42	.1	4	2	1
100E 900N	28	101	.3	9	3	2
100E 850N	25	72	.4	4	2	9
100E 800N	25	79	.2	6	2	20
100E 750N	27	73	.1	10	2	10
100E 700N	23	60	.1	6	3	7
100E 650N	28	142	.1	6	2	10
100E 600N	23	103	.1	8	2	36
100E 550N	29	97	.1	7	2	7
100E 500N	31	108	.1	9	2	12
100E 450N	28	92	.2	14	2	8
100E 400N	63	173	.3	41	3	10
100E 350N	35	103	.3	12	3	30
100E 300N	29	100	.1	15	2	60
100E 250N	17	64	.1	5	3	6
100E 200N	33	91	.3	17	4	8
100E 150N	36	103	.1	20	2	8
100E 100N	31	93	.1	12	3	11
STD C/AU-0.5	41	133	7.1	38	15	500

SAMPLE#	Pb PPM	Zn PPM	Ag PPM	As PPM	Sb PPM	Au* PPB
200E 1900N	17	67	.1	8	2	150
200E 1850N	10	53	.1	7	3	2
200E 1800N	23	77	.1	7	2	56
200E 1750N	11	62	.1	9	3	210
200E 1700N	12	61	.1	8	2	18
200E 1650N	24	89	.1	7	2	12
200E 1600N	18	80	.1	6	2	14
200E 1550N	13	67	.2	8	2	150
200E 1500N	22	74	.2	7	2	7
200E 1450N	14	87	.2	8	2	9
200E 1400N	18	86	.1	7	2	18
200E 1350N	12	95	.1	6	2	2
200E 1300N	15	99	.1	7	2	1
200E 1250N	18	102	.1	9	2	24
200E 1200N	14	102	.1	8	2	8
200E 1150N	23	103	.2	6	2	3
200E 1100N	15	74	.1	9	2	1450
200E 1050N	30	100	.1	10	2	23
200E 1000N	29	90	.1	13	2	14
200E 950N	38	128	.8	12	2	14
200E 900N	52	141	.1	16	2	105
200E 850N	33	101	.5	10	2	90
200E 800N	71	128	.3	18	2	37
200E 750N	30	137	.2	10	2	22
200E 700N	25	123	.1	8	2	12
200E 650N	24	87	.4	8	2	6
200E 600N	16	74	.2	7	2	8
200E 550N	18	79	.1	5	2	8
200E 500N	20	71	.1	11	2	15
200E 450N	14	79	.1	8	2	24
200E 400N	19	91	.3	8	2	10
200E 350N	22	81	.2	5	2	5
200E 300N	14	87	.1	7	2	11
200E 250N	21	116	.3	8	2	4
200E 200N	20	76	1.6	4	2	1
200E 150N	20	91	.1	14	2	1
200E 100N	13	55	.1	6	2	2
STD C/AU-0.5	40	137	7.0	38	15	500

SAMPLE#	Pb PPM	Zn PPM	Ag PPM	As PPM	Sb PPM	Au* PPB
300E 1900N	45	108	.1	16	2	8
300E 1850N	19	59	.4	5	2	11
300E 1800N	2	53	.1	5	2	9
300E 1750N	10	59	.4	6	2	4
300E 1700N	18	59	.1	8	2	26
300E 1650N	25	86	.1	10	2	13
300E 1600N	25	68	.2	8	2	120
300E 1550N	20	75	.1	7	2	11
300E 1500N	26	82	.2	7	2	14
300E 1450N	30	79	.5	7	2	10
300E 1400N	25	82	.3	10	2	17
300E 1350N	13	72	.3	7	2	13
300E 1300N	17	71	.1	6	2	7
300E 1250N	20	92	.1	7	2	41
300E 1200N	24	101	.4	10	2	18
300E 1150N	21	88	.1	10	2	29
300E 1100N	31	91	.3	8	2	27
300E 1050N	19	56	.1	7	2	15
300E 1000N	28	85	.2	8	2	23
300E 950N	37	139	.6	10	2	50
300E 900N	53	147	.5	10	2	31
300E 850N	19	87	.4	10	2	29
300E 800N	39	100	.6	11	2	925
300E 750N	146	186	.8	24	2	105
300E 700N	31	107	.1	18	2	35
300E 650N	36	102	.1	12	2	65
300E 600N	20	78	.1	11	2	26
300E 550N	23	70	.2	11	2	19
300E 500N	16	60	.1	8	2	24
300E 450N	26	90	.2	10	2	41
300E 400N	21	88	.3	8	2	15
300E 350N	21	72	.2	4	2	55
300E 300N	17	71	.1	5	2	34
300E 250N	17	110	.2	12	2	11
300E 200N	23	94	.1	8	3	12
300E 150N	18	98	.1	11	2	15
300E 100N	13	70	.1	6	2	7
STD C/AU 0.5	41	137	7.4	40	16	495

SAMPLE#	Pb PPM	Zn PPM	Ag PPM	As PPM	Sb PPM	Au* PPB
400E 1900N	33	79	.1	5	2	3
400E 1850N	35	98	.1	3	2	2
400E 1800N	17	58	.1	7	2	45
400E 1750N	32	109	.3	6	2	10
400E 1700N	22	100	.1	5	2	85
400E 1650N	38	102	.1	9	2	1
400E 1600N	22	112	.3	7	2	2
400E 1550N	7	77	.1	9	2	3
400E 1500N	20	74	.2	7	2	8
400E 1450N	21	85	.1	8	2	55
400E 1400N	11	52	.1	8	2	3
400E 1350N	19	84	.3	8	2	16
400E 1300N	12	53	.3	7	3	5
400E 1250N	10	97	.1	9	3	8
400E 1200N	13	102	.1	7	4	2
400E 1150N	7	60	.1	6	2	10
400E 1100N	27	102	.2	7	2	10
400E 1050N	18	66	.1	3	2	10
400E 1000N	24	94	.2	10	2	9
400E 950N	26	96	.1	7	2	6
400E 900N	51	167	.1	12	2	10
400E 850N	26	86	.1	7	3	3
400E 800N	21	111	.3	8	2	4
400E 750N	16	101	.1	6	3	7
400E 700N	43	105	.3	10	2	26
400E 650N	39	99	.1	13	2	42
400E 600N	35	89	.1	12	4	90
400E 550N	18	65	.1	6	2	23
400E 500N	27	46	.2	32	2	25
400E 450N	18	76	.2	4	2	11
400E 400N	18	74	.1	5	3	13
400E 350N	8	45	.1	2	2	30
400E 300N	18	59	.1	4	2	16
400E 250N	16	88	.1	3	2	5
400E 200N	17	87	.1	6	2	2
400E 150N	18	77	.1	5	2	5
400E 100N	16	66	.3	8	3	3
STD C/AU-0.5	41	138	6.9	39	15	490

SAMPLE#	Pb PPM	Zn PPM	Ag PPM	As PPM	Sb PPM	Au* PPB
500E 1900N	51	89	.9	5	2	13
500E 1850N	56	123	.8	6	3	9
500E 1800N	23	44	.2	3	3	1
500E 1750N	25	63	.3	4	2	8
500E 1700N	18	58	.3	4	3	14
500E 1650N	28	77	.1	2	2	25
500E 1600N	31	102	.1	6	2	13
500E 1550N	16	84	.1	4	2	24
500E 1500N	17	73	.2	2	2	20
500E 1450N	16	61	.1	2	2	18
500E 1400N	12	58	.1	4	2	70
500E 1350N	20	53	.1	4	2	2
500E 1300N	15	123	.1	3	2	2
500E 1250N	19	73	.2	7	2	9
500E 1200N	17	82	.1	8	2	4
500E 1150N	26	68	.3	5	2	7
500E 1100N	26	75	.3	6	2	2
500E 1050N	17	53	.3	4	2	5
500E 1000N	17	66	.2	5	2	18
500E 950N	16	79	.1	4	2	1
500E 900N	25	74	.2	9	2	8
500E 850N	44	133	.6	8	2	170
500E 800N	14	52	.5	4	2	4
500E 750N	41	115	.7	12	2	20
500E 700N	39	94	1.0	9	2	65
500E 650N	24	78	.1	7	2	8
500E 600N	35	95	.3	10	2	6
500E 550N	28	89	.1	8	2	7
500E 500N	8	64	.2	14	2	4
500E 450N	12	69	.1	3	2	4
500E 400N	18	63	.1	4	3	30
500E 350N	18	75	.2	2	2	6
500E 300N	11	79	.2	12	2	3
500E 250N	19	66	.3	2	2	2
500E 200N	13	60	.2	3	2	8
500E 150N	47	101	.5	4	2	14
500E 100N	18	86	.1	8	3	20
STD C/AU-0.5	39	135	7.2	37	15	490

SAMPLE#	Pb PPM	Zn PPM	Ag PPM	As PPM	Sb PPM	Au* PPB
600E 1900N	55	108	.8	4	2	12
600E 1850N	31	210	1.4	6	2	10
600E 1800N	27	209	1.4	7	2	11
600E 1750N	19	79	.6	6	2	6
600E 1700N	31	64	.2	4	2	60
600E 1650N	17	87	.1	3	2	5
600E 1600N	24	90	.3	8	2	8
600E 1550N	21	92	.3	8	3	6
600E 1500N	23	90	.5	7	2	40
600E 1450N	17	69	.1	6	3	5
600E 1400N	15	74	.2	8	2	45
600E 1350N	20	70	.3	5	2	14
600E 1300N	19	74	.2	4	2	10
600E 1250N	29	72	.1	6	2	45
600E 1200N	21	58	.1	3	2	45
600E 1150N	17	56	.3	8	2	7
600E 1100N	16	63	.1	7	2	8
600E 1050N	17	63	.3	7	2	22
600E 1000N	28	101	.2	6	2	10
600E 950N	20	83	.2	6	2	16
600E 900N	49	91	.3	6	2	15
600E 850N	29	79	.3	7	2	90
600E 800N	37	97	.6	9	2	44
600E 750N	55	107	.7	12	2	65
600E 700N	24	74	.3	6	2	9
600E 650N	119	115	.4	18	2	60
600E 600N	104	168	.5	11	2	28
600E 550N	16	69	.4	21	2	2
600E 500N	12	67	.1	12	2	1
600E 450N	18	102	.4	8	2	7
600E 400N	17	115	.3	7	2	5
600E 350N	26	92	.3	5	2	8
600E 300N	29	89	.2	7	2	10
600E 250N	17	63	.1	2	2	6
600E 200N	15	74	.2	5	2	9
600E 150N	20	88	.2	6	2	9
600E 100N	9	64	.1	3	3	10
STD C/AU-0.5	39	138	6.9	39	16	480

SAMPLE#	Pb PPM	Zn PPM	Ag PPM	As PPM	Sb PPM	Au* PPB
1750E 1000N	29	66	.3	4	2	20
1750E 850N	243	196	.6	18	2	26
1000N 50E	39	147	.4	7	2	10
1000N 150E	32	93	.5	9	2	15
1000N 250E	55	97	.3	11	2	27
1000N 350E	26	81	.5	9	2	30
1000N 450E	20	77	.3	7	2	10
1000N 550E	25	77	.2	8	2	18
1000N 650E	25	62	.1	7	2	10
1000N 750E	23	60	.2	7	2	17
1000N 850E	23	67	.3	7	2	15
655067 SILT	24	80	.2	3	2	8
STD C/AU-0.5	39	132	7.0	39	15	480

SAMPLE#	Pb PPM	Zn PPM	Ag PPM	As PPM	Sb PPM	Au* PPB
651058	8	25	.1	9	2	1
651059	12	23	.2	8	2	1
651060	9	23	.2	2	2	1
651061	29	62	.8	2	2	2
651066	7	53	.2	11	2	1
652057	2	49	.3	30	2	1
652063	11	18	.1	3	2	1
STD C/AU-0.5	39	139	6.9	38	15	490

CME ANALYTICAL LABORATORIES LTD.  
852 E. HASTINGS ST. VANCOUVER B.C. V6A 1R6  
PHONE 253-3158 DATA LINE 251-1011

DATE RECEIVED: SEPT 10 1985

DATE REPORT MAILED: *Sept. 18/85*

### GEOCHEMICAL ICP ANALYSIS

.500 GRAM SAMPLE IS DIGESTED WITH 3ML 3-1-2 HCL-HNO3-H2O AT 95 DEG. C FOR ONE HOUR AND IS DILUTED TO 10 ML WITH WATER.  
THIS LEACH IS PARTIAL FOR MN.FE.CA.P.CR.MG.BA.TI.B.AL.NA.K.W.SI.ZR.CE.SM.Y.NB AND TA. AU DETECTION LIMIT BY ICP IS 3 PPM.  
- SAMPLE TYPE: P1-SOILS -80 MESH P2-ROCKS AU ANALYSIS BY AA FROM 10 GRAM SAMPLE.

ASSAYER: *T. Saundry* DEAN TOYE OR TOM SAUNDRY. CERTIFIED B.C. ASSAYER

ISLAND MINING

PROJECT - TON FILE # 85-2301

PAGE 1

SAMPLE#	Pb PPM	Zn PPM	Ag PPM	As PPM	Sb PPM	Au* PPB
1000E 401N	48	97	.6	16	2	170
1000E 351N	41	127	.4	10	2	15
1050E 351N	62	104	.3	18	2	29
1100E 351N	33	102	.2	11	2	15
1100E 301N	56	93	.5	12	2	23
1150E 551N	36	143	.3	10	2	21
1200E 301N	57	131	1.1	21	2	65
1400E 1101N	28	74	.1	8	2	14
STD C/AU-0.5	40	137	7.1	40	15	480

SAMPLE#	Pb PPM	Zn PPM	Ag PPM	As PPM	Sb PPM	Au* PPB
651135	4	44	.2	6	2	3
651136	12	49	.2	4	2	1
651137	23	39	.1	6	2	4
652138	9	53	.4	11	2	1
STD C/AU-0.5	41	136	7.0	37	15	500

ACME ANALYTICAL LABORATORIES LTD.  
852 E. HASTINGS ST. VANCOUVER B.C. V6A 1R6  
PHONE 253-3158 DATA LINE 251-1011

DATE RECEIVED: SEPT 16 1985

DATE REPORT MAILED: *Sept. 19/85*

### GEOCHEMICAL ICP ANALYSIS

.500 GRAM SAMPLE IS DIGESTED WITH 3ML 3-1-2 HCL-HNO3-H2O AT 95 DEG. C FOR ONE HOUR AND IS DILUTED TO 10 ML WITH WATER.  
THIS LEACH IS PARTIAL FOR MN.FE.CA.P.CR.MG.BA.TI.B.AL.NA.K.W.SI.ZR.CE.SN.Y.NB AND TA. AU DETECTION LIMIT BY ICP IS 3 PPM.  
- SAMPLE TYPE: SOILS -80 MESH AU\* ANALYSIS BY AA FROM 10 GRAM SAMPLE.

ASSAYER: *V. Saundry*. DEAN TOYE OR TOM SAUNDRY. CERTIFIED B.C. ASSAYER

ISLAND MINING PROJECT - TON FILE # 85-2381 PAGE 1

SAMPLE#	Pb PPM	Zn PPM	Ag PPM	As PPM	Sb PPM	Au* PPB
200E 1150N	20	89	.3	4	2	4
200E 1125N	34	119	.6	10	2	13
200E 1100N	33	77	.2	7	2	8
200E 1075N	19	82	.3	8	2	33
200E 1050N	18	74	.2	5	2	60
300E 825N	29	129	.6	9	2	25
300E 801N	35	118	.8	11	2	15
300E 775N	38	117	.9	8	2	41
1000E 651N	28	77	.2	8	2	23
1300E 651N	30	69	.1	4	2	50
1350E 1801N	31	108	.4	9	2	16
STD C/AU-0.5	39	135	7.2	39	15	490

**APPENDIX B**  
**STATUTORY DECLARATION**

STATUTORY DECLARATION

CANADA )  
          ) In the matter of a geological and geochemical report  
          ) on behalf of Island Mining & Explorations Co. Ltd.  
TO WIT )

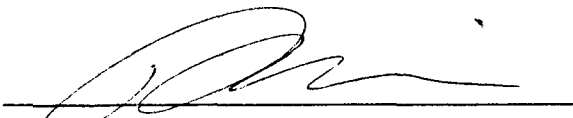
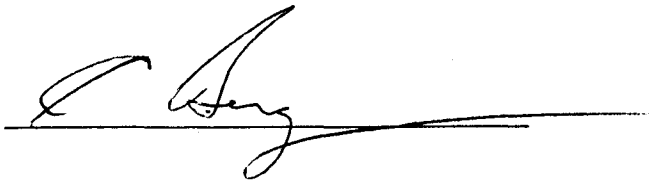
I, Ernie Bergvinson, president of and agent for Island Mining & Explorations Co. Ltd. of 706 - 595 Howe St., Vancouver, B. C.

do solemnly declare - that geological mapping, geochemical sampling and air photography were conducted on the TON 1 - 16 mineral claims, Whitehorse Mining District, Yukon, during the period August 7 to September 12, 1985. Expenditures for this work include:

Geological consultants. . . . .	\$9,355.00
Grid preparation, soil sampling and surveying. . . . .	9,520.00
Assay and analytical costs. . . . .	10,710.73
Air photography. . . . .	5,540.00
Camp equipment. . . . .	4,624.67
Camp support and expediting. . . . .	3,369.42
Equipment rental. . . . .	2,378.08
Freight. . . . .	1,008.60
Fuel. . . . .	963.34
Material and supplies . . . . .	1,419.94
Travel and accomodation . . . . .	<u>2,562.72</u>
TOTAL. . . . .	\$51,452.50

And I make this solemn declaration conscientiously believing it to be true and knowing that it is of the same force and effect as if made under oath and by virtue of The Canada Evidence Act.

Declared before me at VANCOUVER)  
in the Province of B.C. this )  
4 day of Feb. 1986.)

  
A Notary Public for B.C.

**APPENDIX C**

**PERSONNEL**

P E R S O N N E L

Mr. C. G. Verley  
301 - 1867 West 3rd Avenue  
Vancouver, B.C. V6J 1K9

Geologist

Mr. Morley Barker  
5 Teak Avenue  
Whitehorse, Y.T. Y1A 4W5

Surveyor

Mr. Mike Woods  
5 Teak Avenue  
Whitehorse, Y.T. Y1A 4W5

Field Assistant

Mr. Tony Mrozinski  
5 Teak Avenue  
Whitehorse, Y.T. Y1A 4W5

Field Assistant

Mr. Andre Jobin  
5 Teak Avenue  
Whitehorse, Y.T. Y1A 4W5

Field Assistant

Mr. Jacques Jobin  
5 Teak Avenue  
Whitehorse, Y.T. Y1A 4W5

Field Assistant

Mr. Michel Langlois  
5 Teak Avenue  
Whitehorse, Y.T. Y1A 4W5

Field Assistant

**APPENDIX D**  
**WRITER'S CERTIFICATE**

# AMERLIN EXPLORATION SERVICES LTD.

422-470 Granville Street, Vancouver, B.C., Canada V6C 1V5

Phone (604) 689-1966

## WRITER'S CERTIFICATE

I, Carl G. Verley of Vancouver, British Columbia hereby certify  
that:

1. I am a geologist residing at 301 - 1867 West 3rd Avenue, Vancouver, B.C. and principal of Amerlin Exploration Services Ltd. 422 - 470 Granville Street, Vancouver, B.C. V6C 1V5.
2. I am a graduate of the University of British Columbia, B.Sc., in 1974, and have practised my profession since that time.
3. I am a Fellow of the Geological Association of Canada.
4. I am the author of this report which is based on work conducted by me on the TON 1 to 16 mineral claims during the period August 7 to September 12, 1985.

Amerlin Exploration Services Ltd.

*Carl G. Verley.*

Carl G. Verley, F.G.A.C.

January 23, 1986.  
Vancouver, B.C.



Note: - surveyed by MBW Surveys Ltd.  
 - CC 43, 44 government survey monuments  
 - Topography from Dept. of Energy, Mines and Resources 1:50,000 scale map 105D/2,3  
 - contour interval 100 feet  
 - magnetic declination: 30°E (1985)

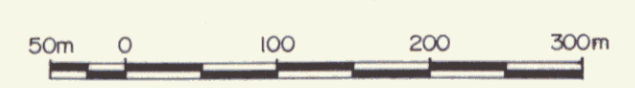
ISLAND MINING & EXPLORATION CO. LTD.

**CLAIM MAP**

**TON 1 - 16 MINERAL CLAIMS**

WHEATON RIVER - CARCROSS MAP SHEETS, NTS 105D/2,3  
 WHITEHORSE MINING DISTRICT, YUKON TERRITORY

SCALE 1:5,000



by

AMERLIN EXPLORATION SERVICES LTD.  
 422 - 470 Granville Street, Vancouver, B.C. V6C 1V5

NOVEMBER, 1985

**091841**

PLATE 1



**LEGEND**

- EOCENE**
- Ed** **dyke rocks** : undifferentiated, predominately orange weathering fine-grained rhyolites, feldspar porphyries and diabasic dykes. Gold is associated with galena-bearing quartz veins in the margins of some rhyolites.
- LATE CRETACEOUS-EARLY TERTIARY**
- Kqd** **coast intrusions** : quartz diorite - grey weathering, recessive, medium-grained hornblende - biotite quartz diorite.
- UPPER TRIASSIC**
- uRLv** **LEWES RIVER GROUP** : mafic volcanics - dark brown weathering, dark green massive pyroxene porphyry basalt flows. Contains rare ultramafic lenses. Sequence becomes strongly foliated as contacts with Kqd are approached.
  - uRLts** **pyroclastics, sediments** : mixed succession of foliated lapilli tuff and fine-grained tuffs, fine to coarse clastics, a light coloured felsic volcanic unit, as well as rare mafic flows.
- outcrop distribution
  - talus
  - lithologic contact : definite, inferred
  - foliation
  - fractures
  - shear zone : definite, inferred
  - fault : definite, inferred
  - trench
  - adit
  - road
- Note : - topography from Dept. of Energy, Mines and Resources 1:50,000 scale map 105 D/2, 3.  
 - contour interval: 100 feet  
 - magnetic declination : 30°E (1985)

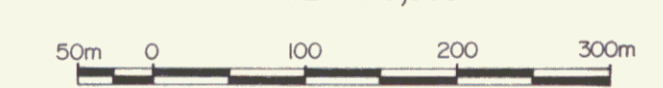
ISLAND MINING & EXPLORATION CO. LTD.

**GEOLOGY**

**TON 1-16 MINERAL CLAIMS**

WHEATON RIVER-CARCROSS MAP SHEETS, NTS 105 D/2, 3  
 WHITEHORSE MINING DISTRICT, YUKON TERRITORY

SCALE 1:5,000



by

AMERLIN EXPLORATION SERVICES LTD.  
 422-470 Granville Street, Vancouver, B.C. V6C 1V5

NOVEMBER, 1985

PLATE 2

091841



### EXPLANATION

Sample Site

x 47 : 20 ; 0.6 analysis sample number : gold in ppb ;  
silver in ppm

x 7568 : 2.6 ; 1.01 assay sample number : gold in oz /ton ;  
silver in oz /ton

Note : - Refer to Appendix A for Mo, Cu, Pb, Zn, As and Sb values  
- Refer to Plate 2 for Geology Legend  
- Analysis sample numbers : last digits of 651000 series.

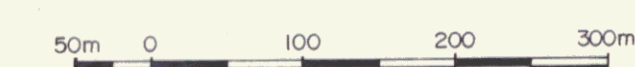
ISLAND MINING & EXPLORATION CO. LTD.

### ROCK GEOCHEMISTRY

#### TON 1 - 16 MINERAL CLAIMS

WHEATON RIVER - CARCROSS MAP SHEETS, NTS 105 D / 2, 3  
WHITEHORSE MINING DISTRICT, YUKON TERRITORY

SCALE 1:5,000



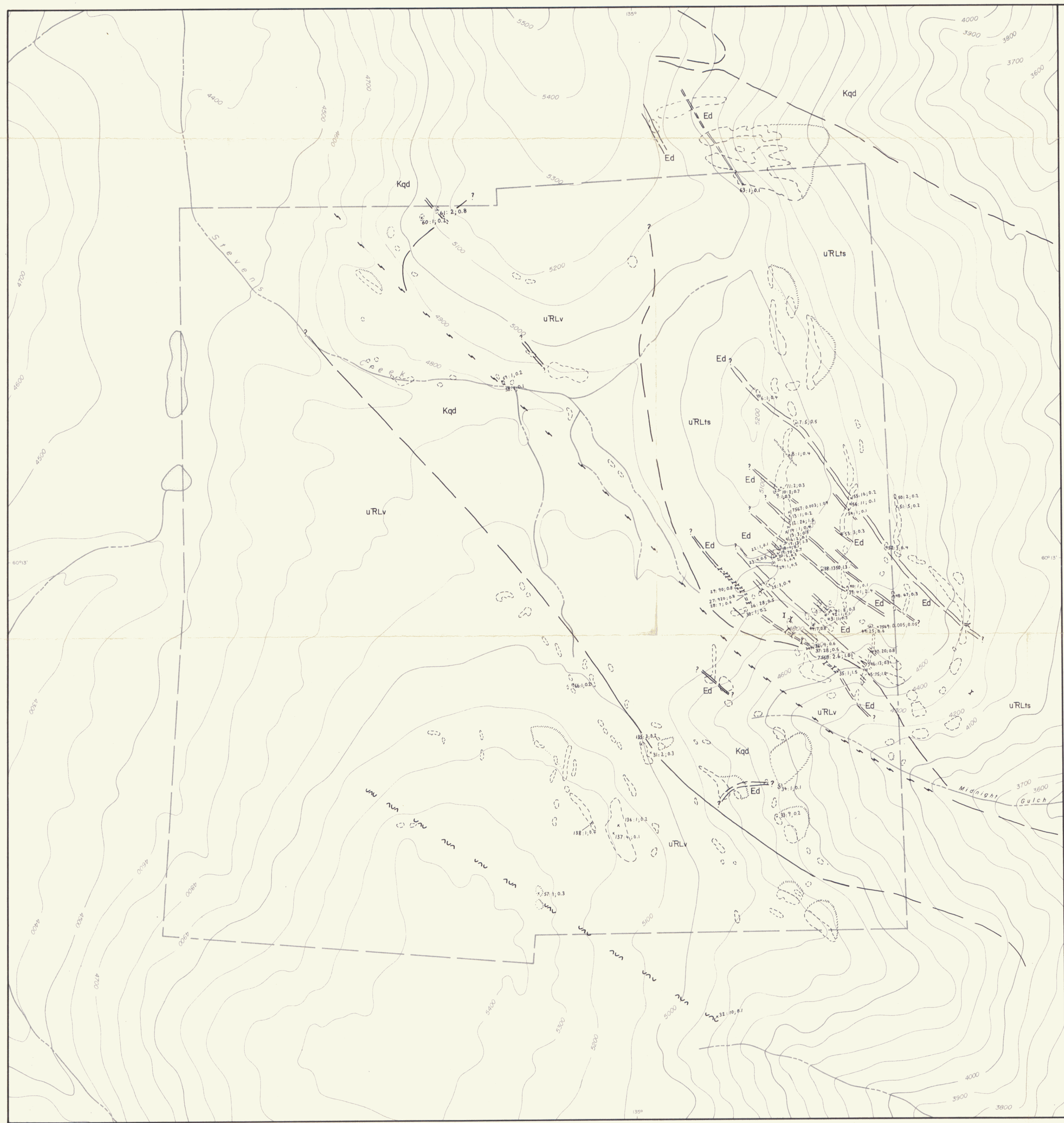
by

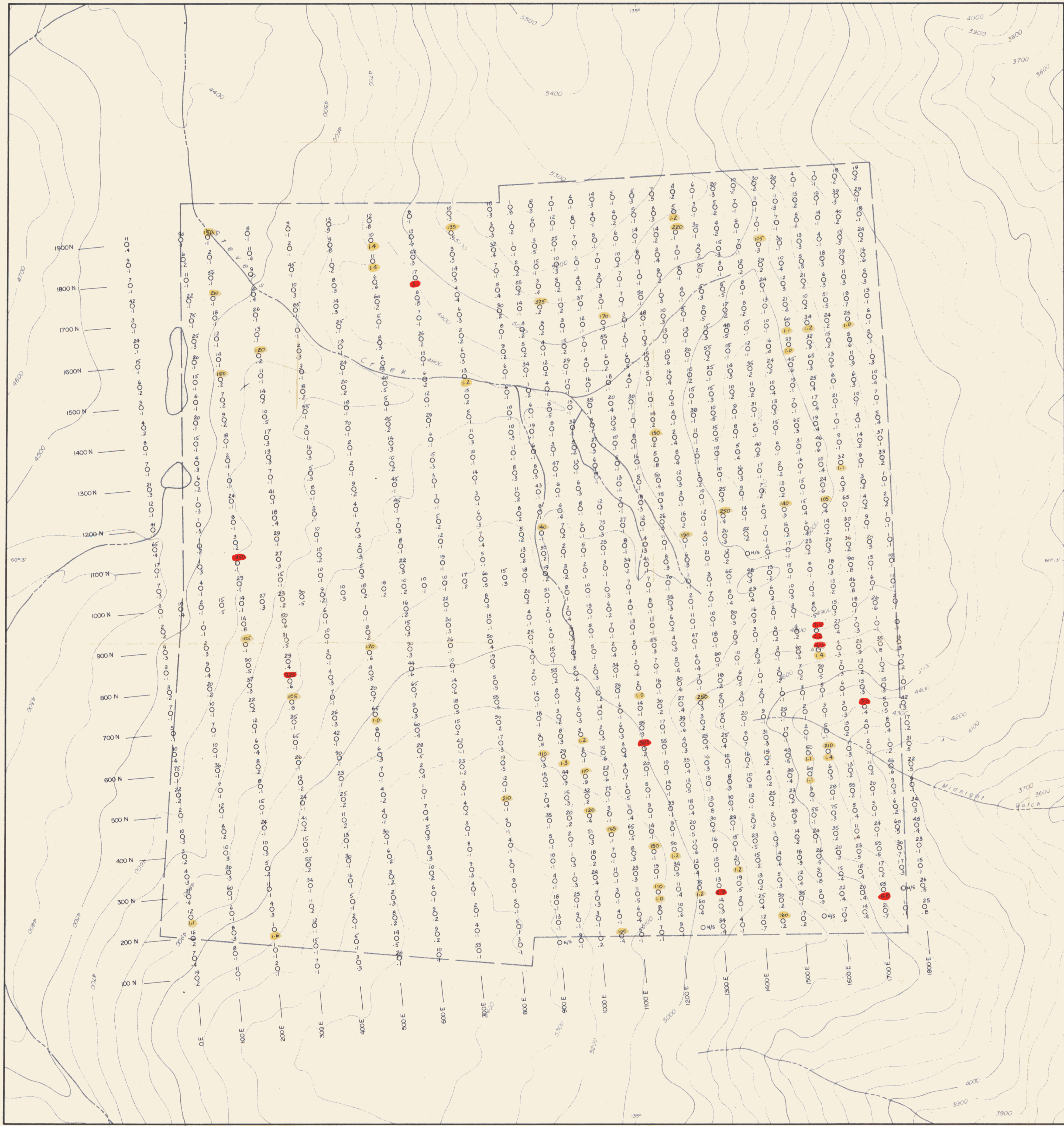
AMERLIN EXPLORATION SERVICES LTD.  
422 - 470 Granville Street, Vancouver, B.C. V6C 1V5

NOVEMBER, 1985

PLATE 3

091841





**EXPLANATION**

Soil Sample Site : Au in ppb, Ag in ppm	Background	Possibly Anomalous	Anomalous
Au	1 to 99	100 to 299	300 +
Ag	0.1 to 0.9	1.0 to 1.6	1.7 +

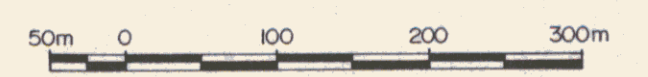
ISLAND MINING & EXPLORATION CO. LTD.

**Au, Ag SOIL GEOCHEMISTRY**

**TON 1 - 16 MINERAL CLAIMS**

WHEATON RIVER - CARCROSS MAP SHEETS, NTS 105 D / 2, 3  
WHITEHORSE MINING DISTRICT, YUKON TERRITORY

SCALE 1:5,000



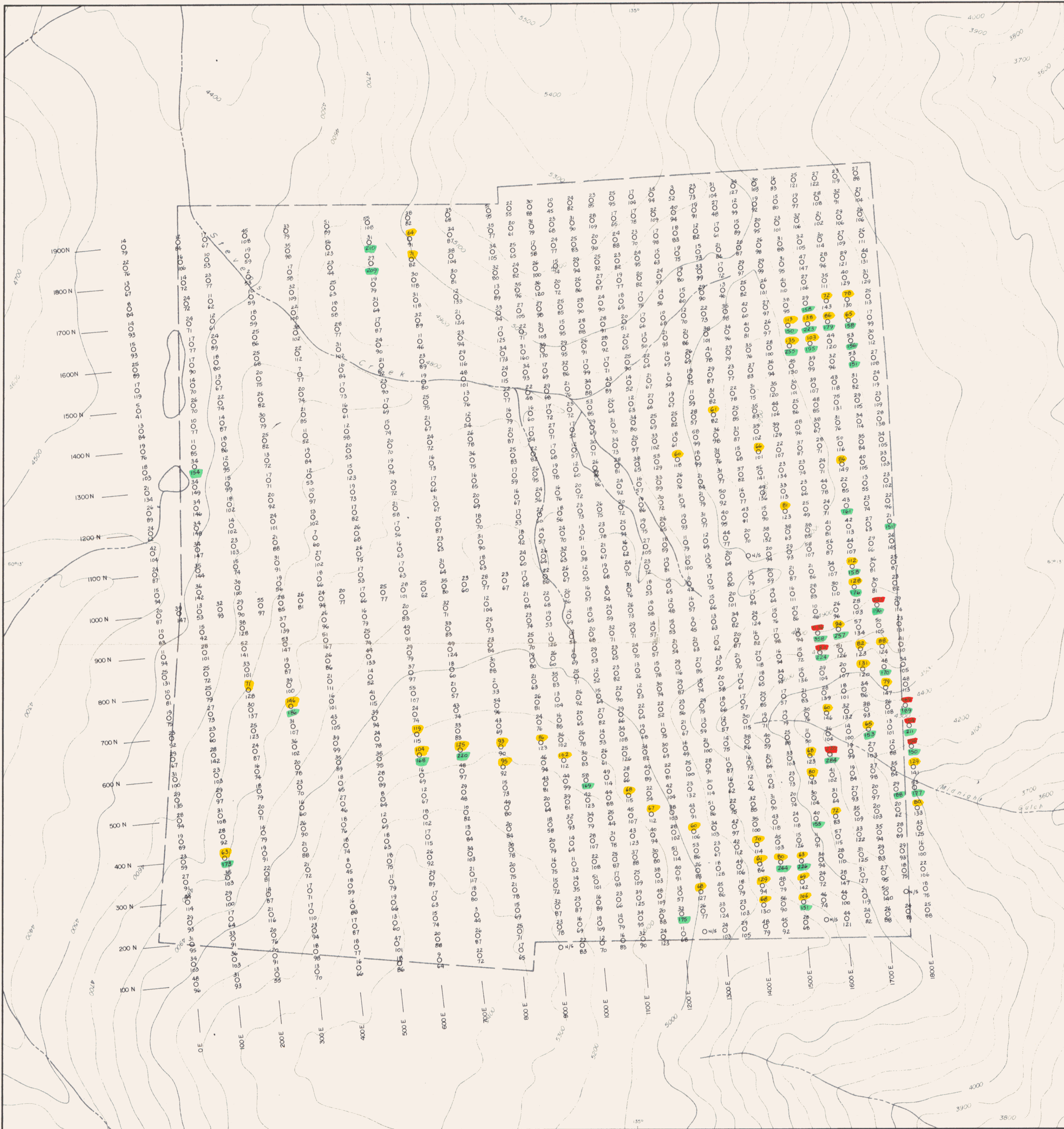
by

AMERLIN EXPLORATION SERVICES LTD.  
422 - 470 Granville Street, Vancouver, B.C. V6C 1V5

NOVEMBER, 1985

PLATE 4

091841



**EXPLANATION**

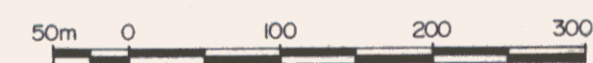
	Background	Possibly Anomalous	Anomalous
Pb	2 to 536	60 to 149	150 +
Zn	23 to 149	150 +	

ISLAND MINING & EXPLORATION CO. LTD.

**Pb, Zn SOIL GEOCHEMISTRY**

**TON 1-16 MINERAL CLAIMS**  
 WHEATON RIVER - CARCROSS MAP SHEETS, NTS 105 D / 2, 3  
 WHITEHORSE MINING DISTRICT, YUKON TERRITORY

SCALE 1:5,000

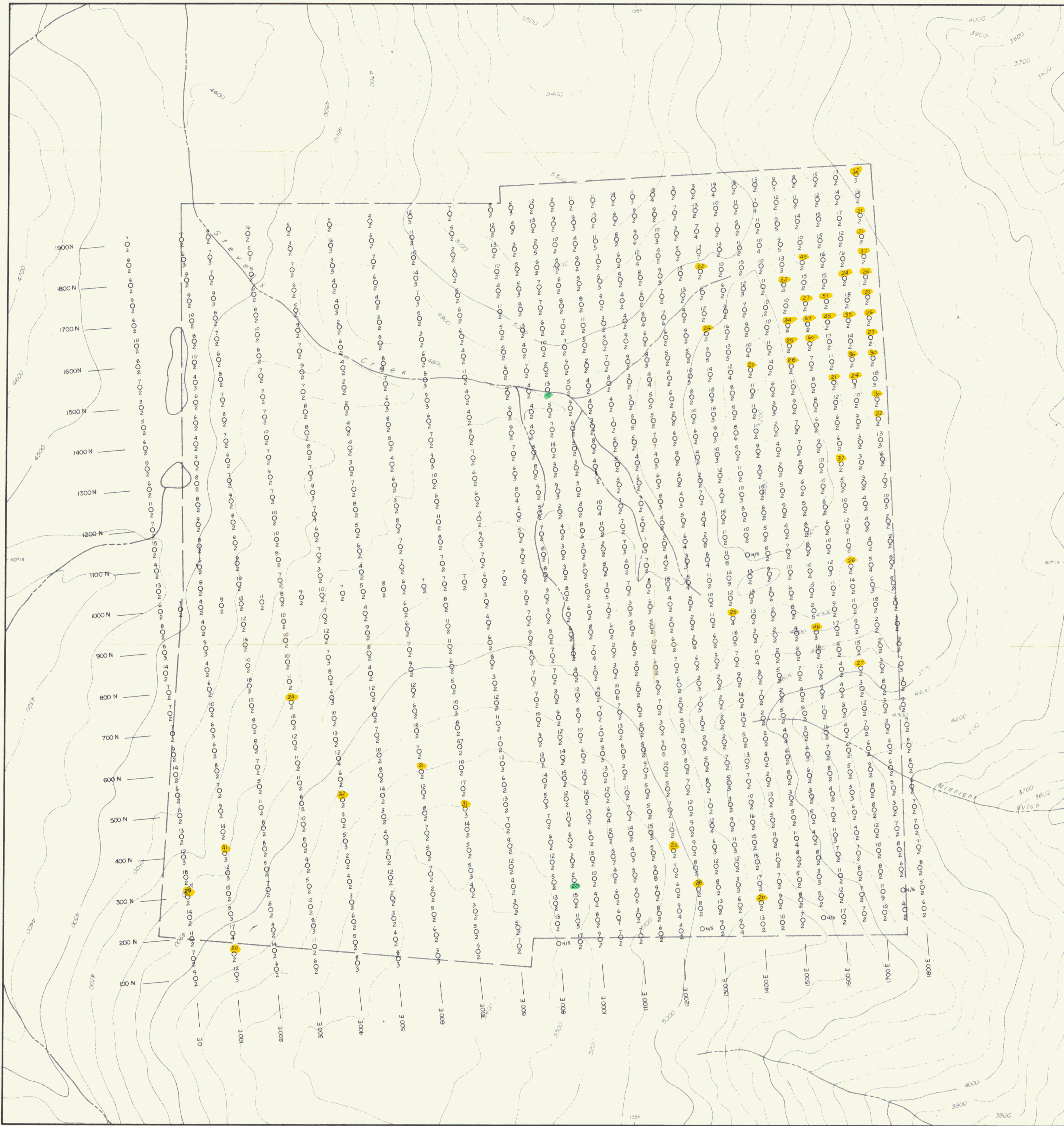


by

AMERLIN EXPLORATION SERVICES LTD.  
 422-470 Granville Street, Vancouver, B.C. V6C 1V5

NOVEMBER, 1985

PLATE 5



**EXPLANATION**

		Soil Sample Site : As, Sb in ppm		
	Range	Background	Possibly Anomalous	Anomalous
As	2 to 69	2 to 19	20+	-
Sb	2 to 20	2 to 9	10+	-

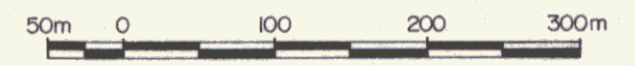
ISLAND MINING & EXPLORATION CO. LTD.

As, Sb SOIL GEOCHEMISTRY

TON 1 - 16 MINERAL CLAIMS

WHEATON RIVER - CARCROSS MAP SHEETS, NTS 105D / 2,3  
WHITEHORSE MINING DISTRICT, YUKON TERRITORY

SCALE 1:5,000



by

AMERLIN EXPLORATION SERVICES LTD.  
422 - 470 Granville Street, Vancouver, B.C. V6C 1V5

NOVEMBER, 1985

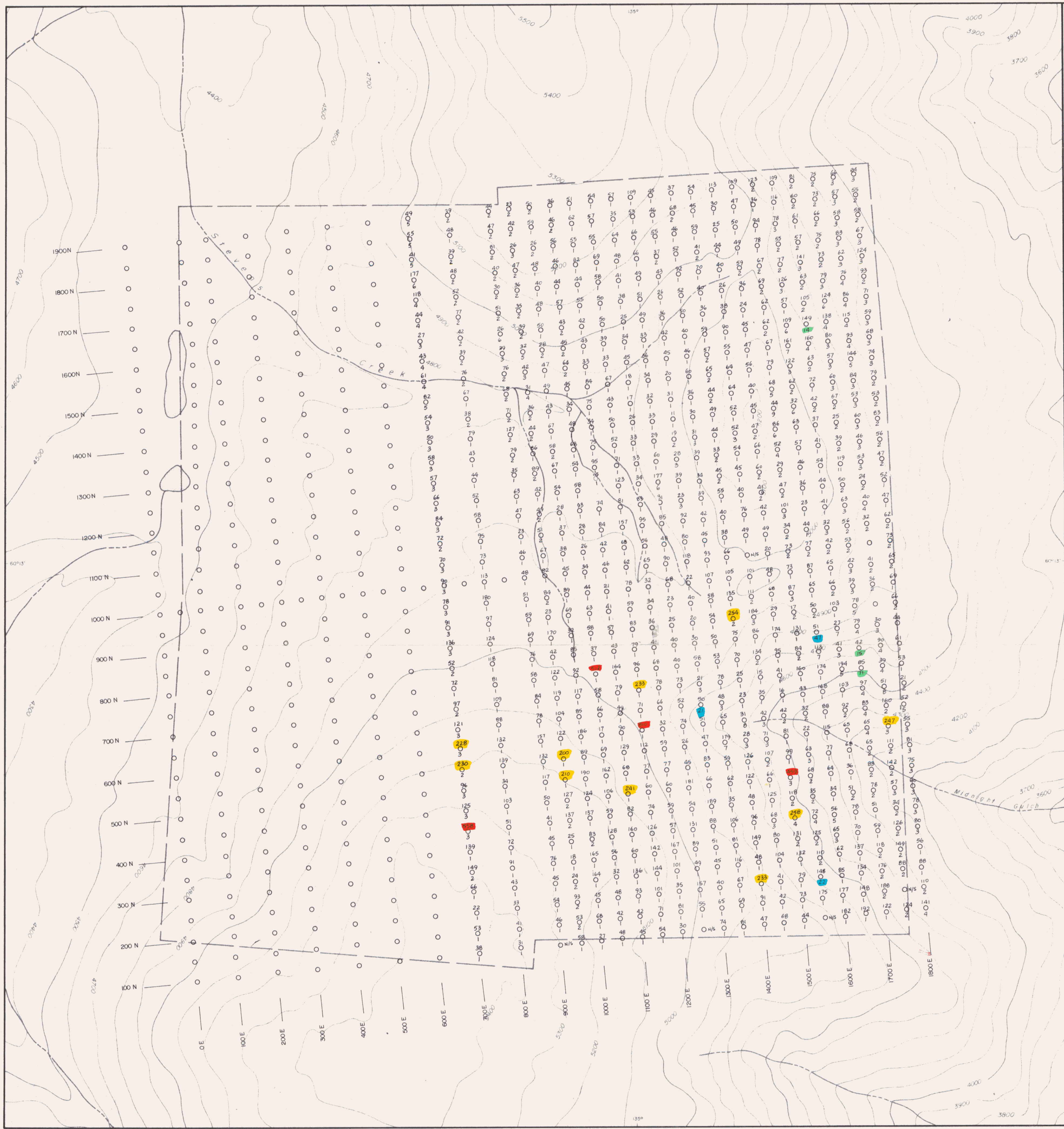
PLATE 6

091841



### EXPLANATION

	Soil Sample Site: Cu, Mo in ppm	Range	Background	Possibly Anomalous	Anomalous
Cu		11 to 80	11 to 199	200 to 299	300 +
Mo		1 to 47	1 to 9	10 to 15	16 +



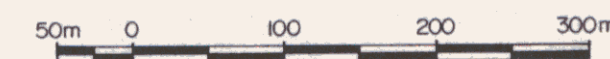
ISLAND MINING & EXPLORATION CO. LTD.

### Cu, Mo SOIL GEOCHEMISTRY

#### TON 1-16 MINERAL CLAIMS

WHEATON RIVER - CARCROSS MAP SHEETS, NTS 105 D / 2, 3  
WHITEHORSE MINING DISTRICT, YUKON TERRITORY

SCALE 1:5,000



by

AMERLIN EXPLORATION SERVICES LTD.  
422-470 Granville Street, Vancouver, B.C. V6C 1V5

NOVEMBER, 1985

PLATE 7

091841