

(Assessment and In House Report)

GEOLOGICAL and GEOCHEMICAL REPORT

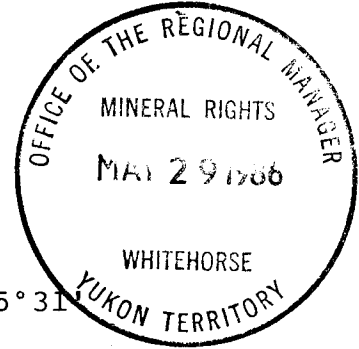
On The
EARL CLAIMS

N.T.S. : 105 D/3,4

Latitude: 60°11' Longitude: 135°31'

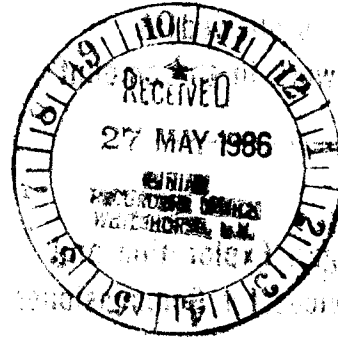
Whitehorse Mining District

July 25 to August 3, 1985



Owner: AGIP Canada Ltd.
3000, 350 - 7th Ave., S.W.
Calgary, Alberta.
T2P 3N9

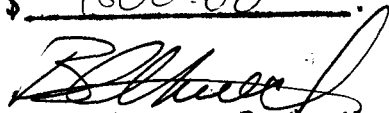
Operator:
Kerr Addison Mines Limited
703 - 1112 W. Pender St.,
Vancouver, B.C.
V6E 2S1



091824

J. Pautler
November, 1985.

This report has been examined by
the Geological Evaluation Unit
under Section 53 (4) Yukon Quartz
Mining Act and is allowed as
representation work in the amount
of \$ 4600.00.



Regional Manager, Exploration and
Geological Services for Commissioner
of Yukon Territory.

468100

TABLE OF CONTENTS

	<u>Page</u>
SUMMARY	1
LOCATION and ACCESS	3
LEGAL DESCRIPTION	3
TOPOGRAPHY and VEGETATION	4
HISTORY	4
 1985 PROGRAM	
GEOLOGY	
Regional	5
Property	5
Structure	7
Mineralization and Alteration	7
 GEOCHEMISTRY	
Procedure	11
Results	11
 CONCLUSIONS and RECOMMENDATIONS	16
 APPENDICES: I Selected References	
II Statement of Expenses	
III Statement of Qualifications	
 FIGURES:	
Figure 1: Location Map 1:500,000	3a
Figure 2: Claim Map 1:50,000	3b
Figure 3: Geology and Geochemistry Highlights 1:25,000	6a
Figure 4: Property Geology 1:10,000	Pocket
Figure 5: Schematic of the Twist Zone 1:100	8a
Figure 6: Schematic of the Rumba Zone 1:50	9a
Figure 7: Sample Locations 1:10,000	Pocket
Figure 8: Geochemistry 1:10,000	Pocket

TABLE OF CONTENTS

	<u>Page</u>
TABLES:	
Table 1: Description and geochemical results of the Twist Zone.	12
Table 2: Description and geochemical results of the Rumba Zone.	14
PHOTOS:	
Photo 1: View looking southeast from Twist Zone towards Charleston Crown Grant.	4a
Photo 2: South end of Twist Zone showing Veins 1 and 2. View is from the northwest.	7a
Photo 3: View of the south end of the Twist Zone from the southsoutheast.	7a
Photo 4: View of Rumba Zone from the northwest.	9b

SUMMARY

The EARL Claims were optioned from AGIP Canada Ltd. in 1984 because of their proximity to the Mt. Skukum Gold Deposit, 2 km to the northeast.

The EARL property is underlain by Yukon Group metamorphic rocks which are cut by a Cretaceous hornblende granodiorite intrusion, these lying along the western edge of the Eocene Skukum Volcanic Complex. Rhyolite, diorite, dacite porphyry and andesite dykes cut the above units.

Investigation during the 1985 season included geological mapping at a 1:10,000 scale with concurrent geochemical sampling. Three main zones of interest were delineated, (the TWIST, RUMBA and SKARN Zones), based on the presence of quartz veining and anomalous precious metal values.

The Twist Zone consists of three northwest trending quartz veins, (or sweats), with resilicified and brecciated hanging wall margins and adjacent quartz stringer stockwork zones hosted by phyllite with minor calc-silicate and limestone. The quartz stringer zones yielded Au values up to 3650 ppb. Values of 1400 ppb Au and 29.0 ppm Ag were returned from a galena bearing section of the resilicified and brecciated vein margin. Pyritic quartz vein material yielded 330 ppb Au, 11.0 ppm Ag. The major two veins are one and two metres wide respectively with probable lengths of greater than 100m. Similar quartz veining with low anomalous Au values also occur outside of the Twist Zone.

The Rumba Zone exhibits similarities to mineralization on the Charleston Crown Grant, (Shakwak Exploration Company Limited), located at the southeast corner of the EARL property. Au and Ag mineralization on the Charleston ranges up to 12.65 oz/ton Au, 149.0 oz/ton Ag and is confined to a northwest trending shear-hosted quartz vein within hornblende granodiorite. Pyrite occurs with some galena and occasional malachite. The Rumba Zone contains similar type quartz veining, shear zones and altered zones hosted by the hornblende granodiorite with occasional pyrite, chalcopyrite and pyrrhotite. Grab sample values up to 400 pb Au and 42.0 ppm Ag were obtained from this zone.

The Skarn Zone covers a 100m x 30m wide area and consists of a magnetite skarn, carrying Au values of 60 and 190 ppb, with quartz veins that returned 45 and 60 ppb Au.

A nine day program with an estimated cost of \$20,000 is proposed for the 1986 season and would involve trenching and the establishment of a detailed grid, (to facilitate mapping and soil sampling), in the area of the Twist Zone. Further detailed prospecting is recommended in the other zones of interest.

LOCATION and ACCESS

The EARL mineral claims, (N.T.S. Map Sheet 105 D/3,4), are located in southwestern Yukon approximately 65 km southwest of Whitehorse and 2 km southwest of the Mt. Skukum Gold Deposit, (Figure 1). Latitude and longitude of property centre are 60°11'; 135°31'.

Helicopter access is available from Whitehorse and constitutes a 1.1 hour round trip. However, during the 1985 field season a temporary Frontier Helicopter Ltd. base was situated on the Wheaton River at Becker Creek, 18 km eastnortheast of the claims. The base was located 1½ hours from Whitehorse via the Alaska Highway and the Carcross and Annie Lake roads.

LEGAL DESCRIPTION

The EARL property consists of 32 contiguous claims with record numbers YA 77893 to YA 77924 (Figures 2). The claims were recorded on July 28, 1983 and are located in the Whitehorse Mining Division.

The property is bounded on the north by the KUKU Claims, (on which the Mt. Skukum Deposit is located), on the east by the WOOF Claims, (AGIP Canada Ltd.), and on the south the HO Claims, (Shakwak Exploration Co. Ltd.). The Charleston Crown Grant, owned by Shakwak, is located at the southeast corner of the EARL. (Figure 2).

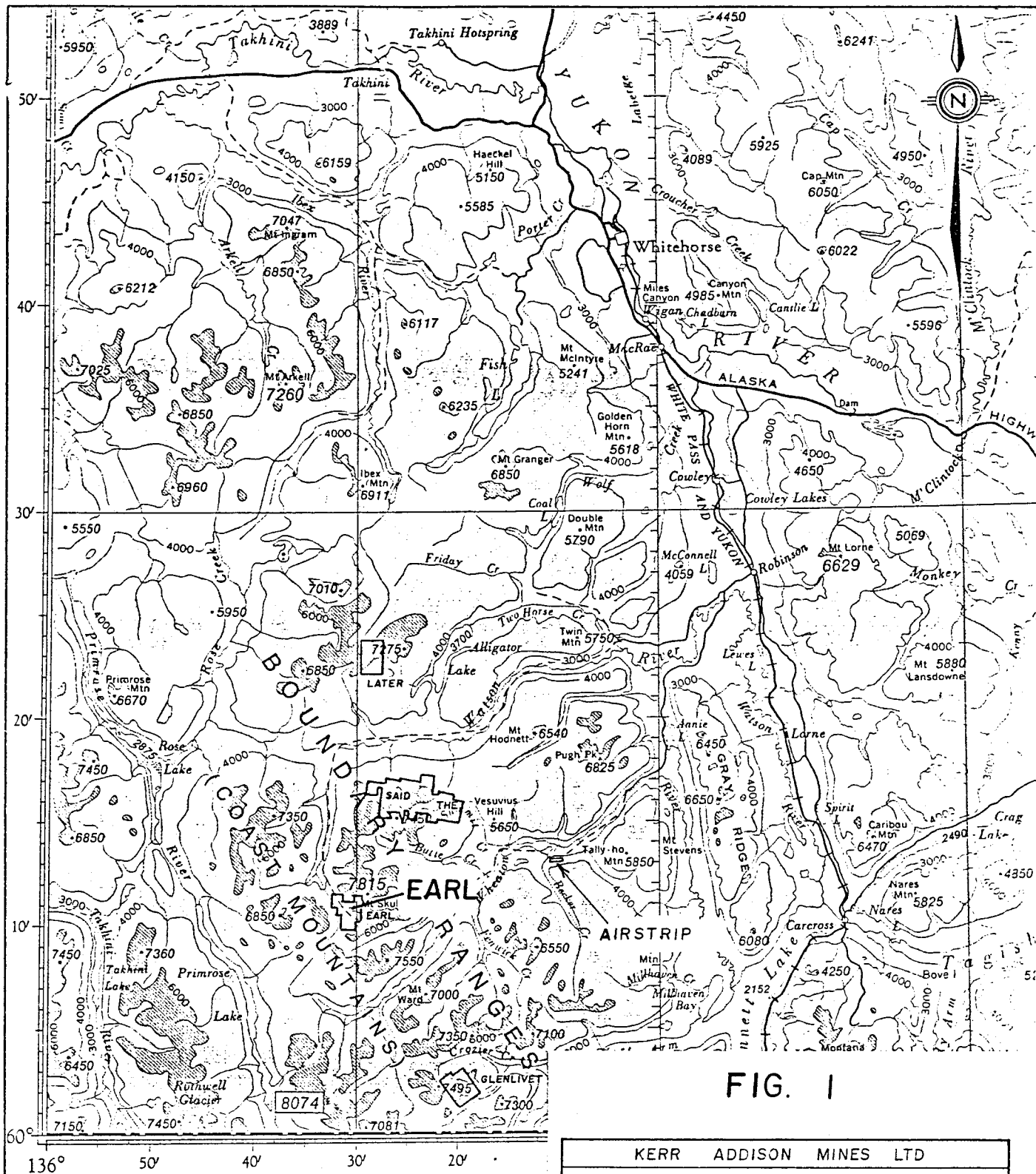
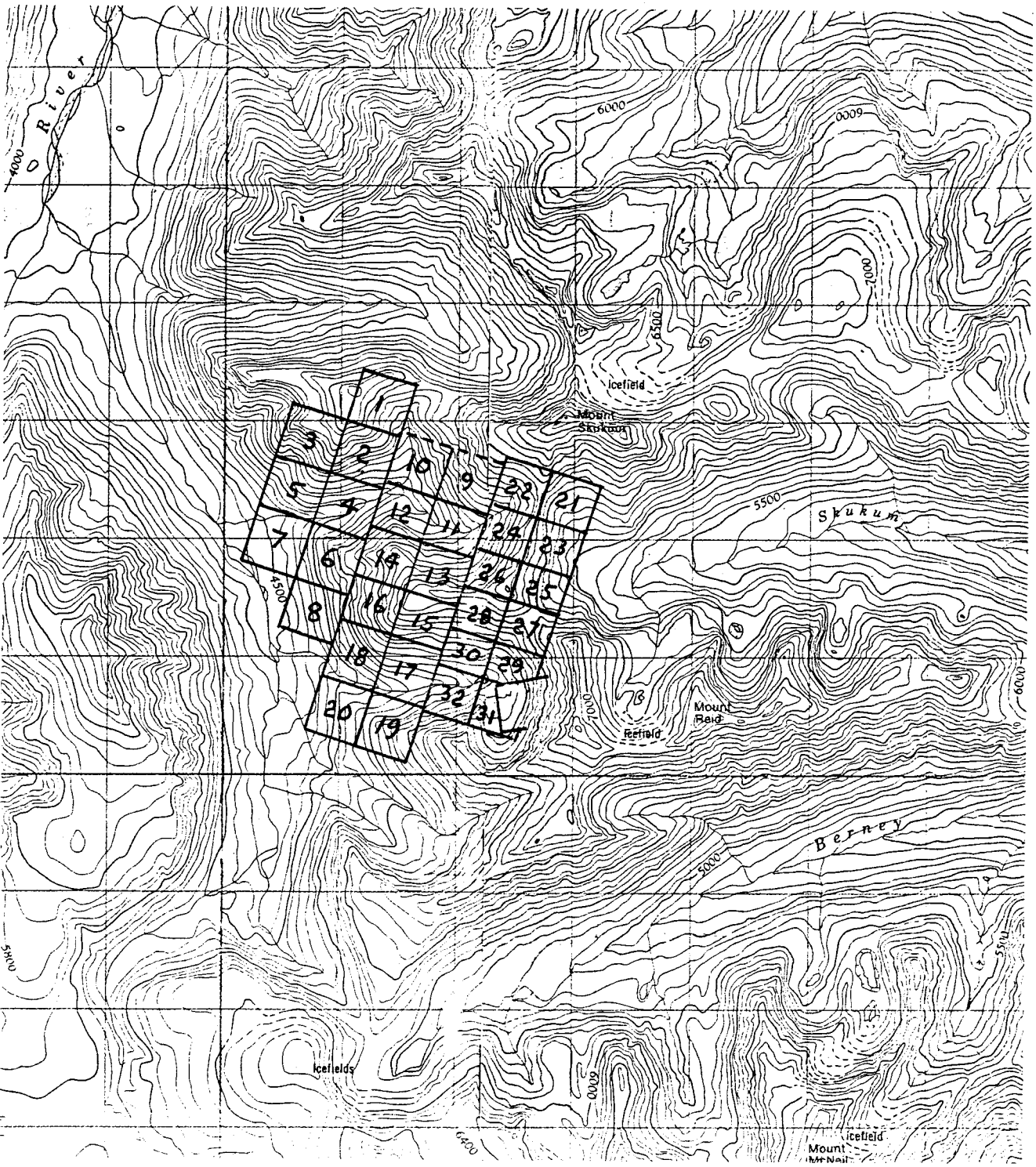


FIG. 1

KERR ADDISON MINES LTD	
EARL CLAIMS	
LOCATION MAP	
SCALE - 1:500 000	DATE - OCT., 1985
DRAWN BY: P.H.	DATA - J.P., L.G.
NTS - 105 D	REVISED -



KERR ADDISON MINES LTD	
EARL CLAIMS	
Fig. 2	
SCALE - 1:50 000	DATE - SEPT., 1985
NTS - 105 D 3W, 6W	REVISED -

The registered owner of the EARL property is AGIP Canada Ltd. of Calgary, Alberta. Work undertaken in 1985 was by Kerr Addison Mines Limited, Vancouver, B.C. pursuant to an option agreement with AGIP.

The expiry date of the property is July 28, 1986. Only the work undertaken after July 28, 1985 will be applied to the assessment costs.

TOPOGRAPHY and VEGETATION

The EARL property lies within the Coast Mountains in southwestern Yukon. The topography includes both steep and rugged as well as rounded ridges with two west facing valleys, the latter of which contains a prominent talus tongue within a glacial cirque.(Photo 1). Elevations range from 7,000' on the slopes of Mt. Skukum to 4450' in the extreme western corner of the claims.

The property lies above treeline and consists of outcrop and felsenmeer with grass and moss covering the lower and less rugged slopes. Only the lowest areas are covered with willow and alder brushes.

HISTORY

The EARL Claims were staked in July, 1983 by AGIP Canada Ltd. probably due to its proximity to the Mt. Skukum Deposit and the Charleston Au occurrence. Work on the Charleston, which indents the southeast corner of the EARL, predates 1907 and includes exploration by adits, trenches and diamond drill holes. (Photo 1).

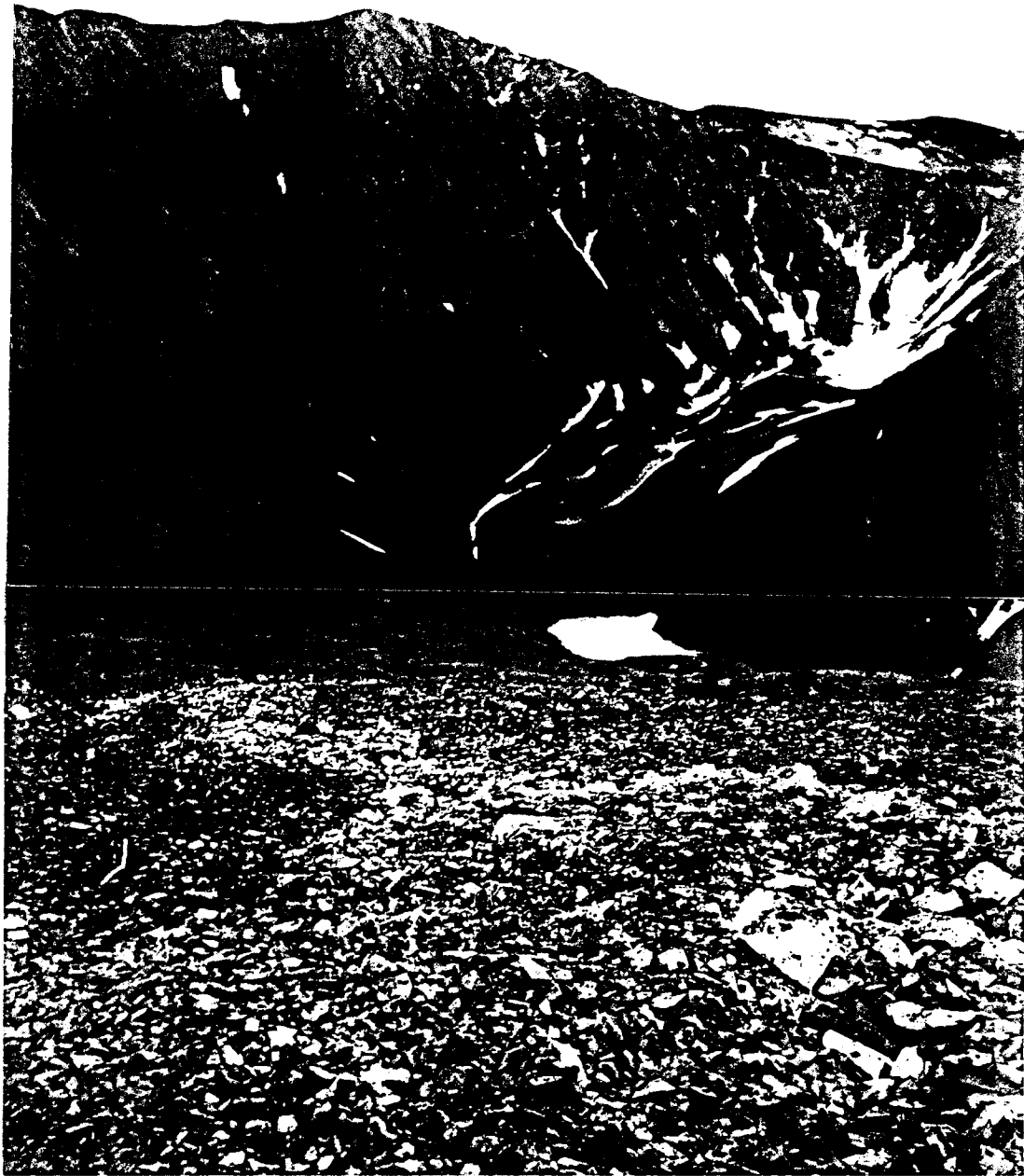


PHOTO 1: View looking southeast from Twist Zone
towards Charleston Crown Grant.
(Charleston adit is circled).

Although no previous work has been conducted on the EARL by AGIP, the ground was previously staked by Armco and Chevron in 1980 and explored by geochemical surveys.

In late 1984, Kerr Addison Mines optioned several Mt. Skukum area properties from AGIP which included the EARL.

GEOLOGY

REGIONAL

The EARL property is underlain by Paleozoic or Proterozoic Yukon Group metamorphic rocks and a Cretaceous (?) granodiorite intrusion, these lying along the western edge of the Eocene Skukum Volcanic Complex. For a more thorough description refer to Wheeler, 1961.

PROPERTY

The metamorphic rocks consist of quartzite, phyllite and gneiss with minor limestone, calc-silicate and skarn and very minor amphibolite and greenstone. The quartzite varies from fairly pure to more commonly micaceous, argillaceous, feldspathic and graphitic. Consequently the colour varies from very light to grey to black, (in the graphitic varieties). The feldspathic quartzites are typically clay altered and buff in colour. The phyllites and gneisses contain quartz, feldspar and biotite ± garnet. Amphibolite gneisses are also present. Grey to black limestone occurs as beds within the quartzite. In a few areas calc-silicate, skarn and a hornblende-calcite hornfels has developed. A diopside skarn was observed in the northwest part of the property and a garnet tremolite magnetite skarn is exposed in the Skarn Zone, (Figure 3). The greenstone occurs as beds and dykes within the metamorphic complex.

The metamorphic package is intruded by a Cretaceous hornblende granodiorite body which is exposed in the southern portion of the property and on the Charleston Crown Grant. The intrusion is equigranular and generally contains 70% quartz, 20% hornblende and 10% feldspar with more hornblende rich autoliths. The hornblende content locally varies up to 80%. Trace pyrrhotite is occasionally present. The intrusion contains blocks of the metamorphic basement, (quartzite, gneiss and greenstone), and also occurs as dykes cutting the metamorphic complex.

The metamorphic basement rocks and the intrusion are overlain by the Mt. Skukum Volcanic Complex of which only the lowermost formation is exposed on the property. This formation consists of a conglomeratic unit which appears to correlate with Fm. 1 of Pride (1985). The conglomerate contains subrounded to subangular clasts of the underlying metamorphic basement within a dark green gritty matrix.

The conglomerate is overlain by an intermediate lapilli tuff which was observed on the neighbouring KUKU Claims. The unit may cut across the northeast corner of the EARL.

Numerous northwest trending rhyolite and rhyolite (quartz) feldspar porphyry dykes cut all of the units exposed on the property. They are light grey in colour, aphanitic and weather a light orange to buff to white colour. The more porphyritic varieties display a crumbled appearance. Weak clay alteration is common which gives the rhyolites a white colour. Fine, disseminated pyrite also occurs.

Andesite, dacite feldspar porphyry and diorite dykes cut both the metamorphic and intrusive basement rocks.

A generalized geology map is shown in Figure 3 and a detailed outcrop map at a scale of 1:10,000 is plotted on Figure 4.

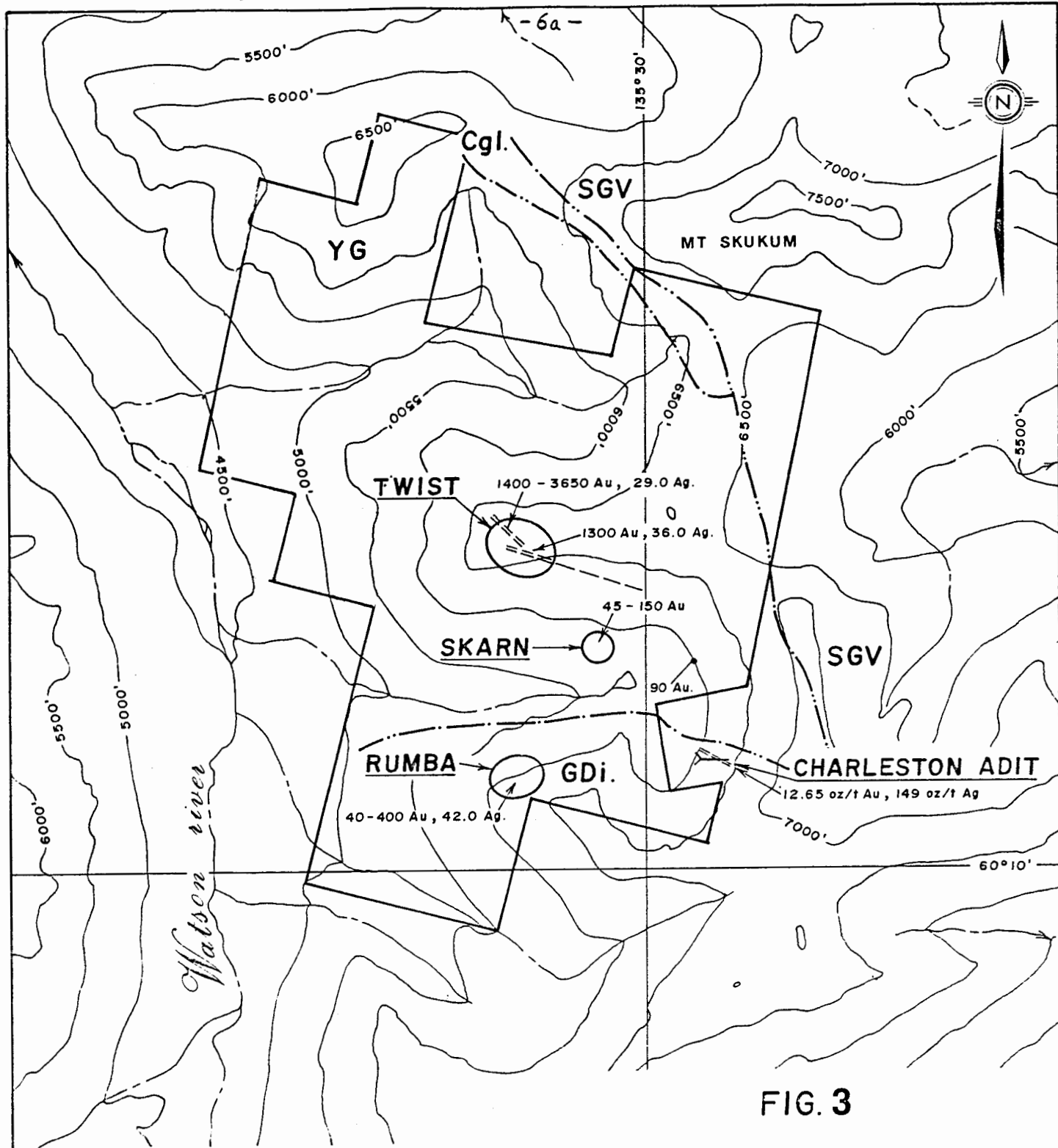


FIG. 3

TERTIARY	SGV	Skukum Group Volcanic rocks.
	Cgl.	Conglomerate
MESOZOIC	GDi.	Granodiorite
PALEOZOIC	YG.	Yukon Group Metamorphic rocks.
	---	Contact (approx., inferred).
	○	Zones of interest.
	====	Veins
	----	Lineament
		Au (ppb), Ag (ppm)

KERR ADDISON MINES LTD	
EARL CLAIMS	
GEOLOGY & GEOCHEMISTRY HIGHLIGHTS	
SCALE - 1: 25 000	DATE - OCT., 1985
DRAWN BY - PH., J.P.	DATA - J.P.
NTS - 105 D	REVISED -

STRUCTURAL

The EARL property lies along the southwestern margin of the Mt. Skukum Volcanic Complex. Pride indicates that the complex is fault bounded in this locality. Although no direct evidence for this was observed in the field, the air photos show several short lineations along it's indicated extent.

MINERALIZATION

Three zones of interest have been delineated on the EARL Claims, (the Twist, Rumba and Skarn Zones - Refer to Figure 3). Each of these zones contains quartz veining and at least weakly anomalous Au ± Ag values.

The Twist Zone, (Photos 1, 2 and 3), consists of three northwest trending quartz veins, (or sweats), with quartz stringer stockwork zones within the hanging wall of each. One vein trends 313°, is at least 1 m wide and 100 m long, and is hosted predominantly by phyllite with minor quartzite, calc-silicate and limestone. The vein is, for the most part, massive though drusy and vuggy quartz is also present, especially along the hanging wall. Local weak concentrations of pyrite, galena and sphalerite occur within the vein, along its silicified and brecciated hanging wall margin and in the hanging wall itself. Local strong concentrations of limonite also occur and the galena bearing sections exhibit a yellow stained surface. The brecciated vein margin exhibits secondary quartz stringers and also contains calcite. Sericite alteration is evident within the quartz stringered host rocks.

line-
ament

Vein 1



Vein 2

PHOTO 2: South end of Twist Zone showing Veins 1 and 2. View is from the northwest.



PHOTO 3: View of the south end of the Twist Zone from the southsoutheast.

A 345° trending air photo lineation is evident on the cliffs to the north of Vein 1. The lineation appears to be coincident with the vein and would extend it an additional 500 m in this direction.

The second vein is massive, trends 290° to 300° and transects the southeastern end of the first, (Photo 2). The width of the vein itself is 2 m with a 1 m wide stringer stockwork zone within the graphitic phyllite hanging wall along the northeast side of the vein. The exposed length of the vein is 20 m but it coincides with a 100 m long topographic lineation along the northeast side of the vein, (Photos 2 and 3). A schematic of Veins 1 and 2 is shown in Figure 5.

The third vein lies 60 m east of the first but is much smaller, (10 - 15cm wide). The margins are weakly brecciated and numerous quartz stringers, ± drusy, cut the limy phyllite host on the hanging wall side.

It is difficult to distinguish quartz sweats within the metamorphic gneisses and phyllites from quartz veins that trend parallel to the regional foliation. The veins in the TWIST ZONE resemble sweats by their granular and massive nature but their probable length suggests veins. Even if the veins are actually sweats, a later silicifying event is necessary to explain the silicified and brecciated margins and the quartz stringer stockworks along the hanging wall.

Three other occurrences of the quartz stringer stockwork material occur outside of the Twist Zone, one hosted by gneiss (G4OR), the others by phyllite of the metamorphic basement complex, (J43R, J29R).

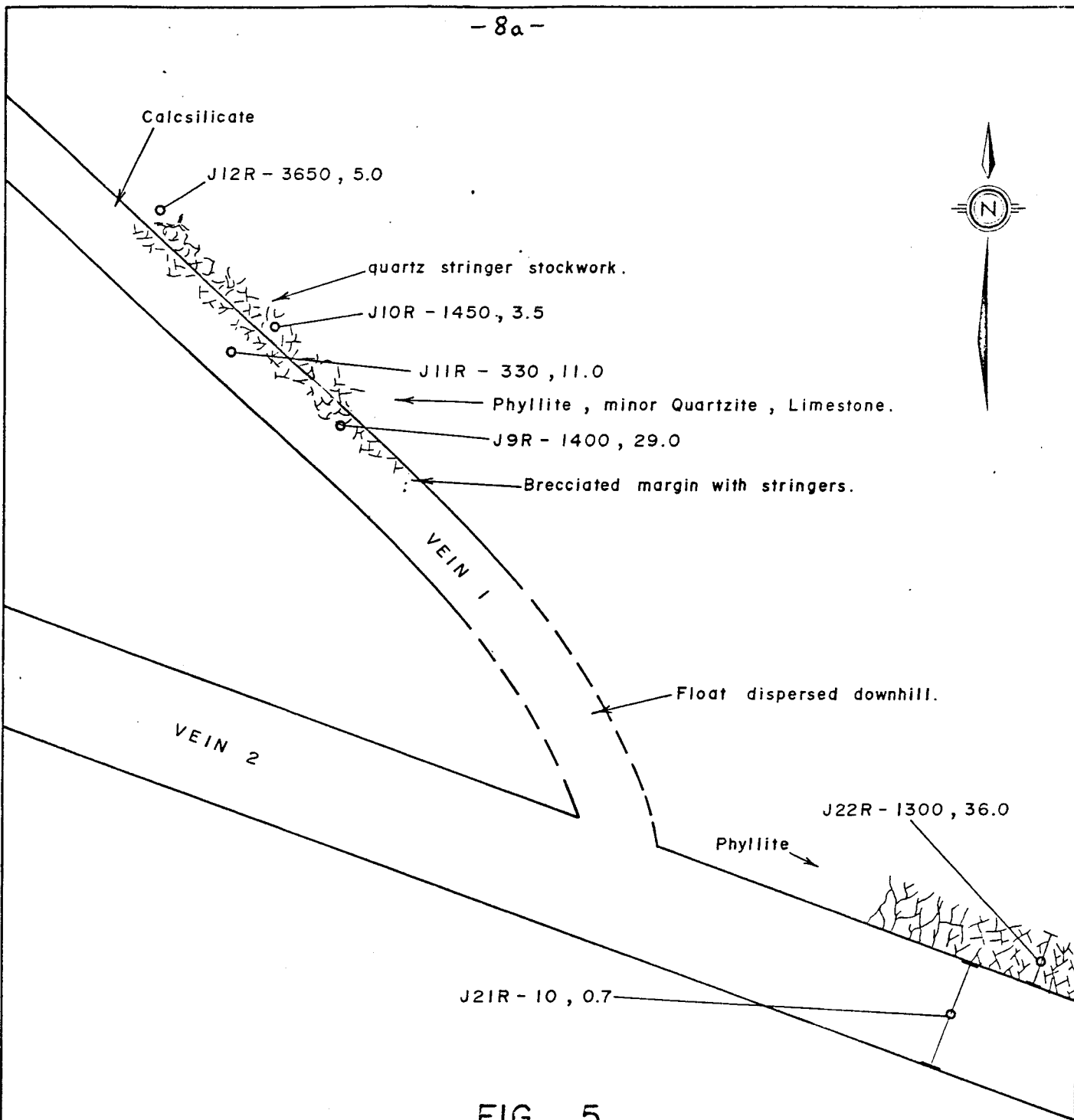


FIG. 5

EARL PROPERTY

TWIST ZONE

SCHEMATIC PLAN SECTION

1 : 10

In the Rumba Zone, (Photo 4), near vertical shear zones and related fracture controlled quartz veins and rusty altered zones are hosted by the hornblende granodiorite intrusion. The shear zones generally exhibit strong rusting, are hornblende rich and contain pyrrhotite, manganese, ± chalcopyrite, ± pyrite. The shears themselves average 30 - 40cm in width within rusty, fractured zones a few metres wide. Smaller shear zones occur off of and subperpendicular to the main vertical shears. Northwest trending quartz veins up to 10cm wide occur along penetrative fractures that are parallel to the smaller shear zones. The veins occur discontinuously along the fractures but individual vein lengths of 50 m were observed. Minor pyrite and chalcopyrite are occasionally present and chlorite occurs along vein margins. A schematic of this zone is shown in Figure 6.

The abundant shearing in the Rumba Zone may be related to the same easterly fault that hosts the OMNI Au-Ag occurrence, 6.5 km to the east. This fault is shown by Pride, (1985), to form the southern boundary of the Skukum Complex. Although there is no evidence for the fault extending into the basement complex, its projection could very well be marked by related shears and fractures.

Similar shear and rusty altered zones occur just northwest of the Rumba Zone and approximately 700 m to the south. The southern occurrence also contains a Rumba-type quartz vein, (G46R).

The mineralization and alteration in the Rumba Zone closely resembles that exposed on the Charleston Crown Grant. Au and Ag mineralization on the Charleston is reportedly confined to a northwest trending shear-hosted quartz vein within hornblende granodiorite. Chlorite occurs along vein margins

- 9a -

Shear zone (hornblende rich , po. , ± cp. , ± py. , rusty)

G24R - 40 , 0.3	+	+	+	+	+	+	+	+	+	+	+	+	+	+	+
G25R - 400 , 22.0	+	+	+	+	+	+	+	+	+	+	+	+	+	+	+
G26R - 35 , 0.9	+	+	+	+	+	+	+	+	+	+	+	+	+	+	+
G46R - 125 , 0.1	+	+	+	+	+	+	+	+	+	+	+	+	+	+	+

G23R - 40 , 0.2 / G28R - 200 , 42.0

Quartz veins

Penetrative fractures

G48R - <5 , 4.2

G27R - 50 , 11.6

Minor shear

Au (ppb) , Ag (ppm)

Granodiorite + +


Shear 

FIG. 6

EARL PROPERTY

RUMBA ZONE

SCHEMATIC VERTICAL SECTION

APPROX. SCALE 1 : 30

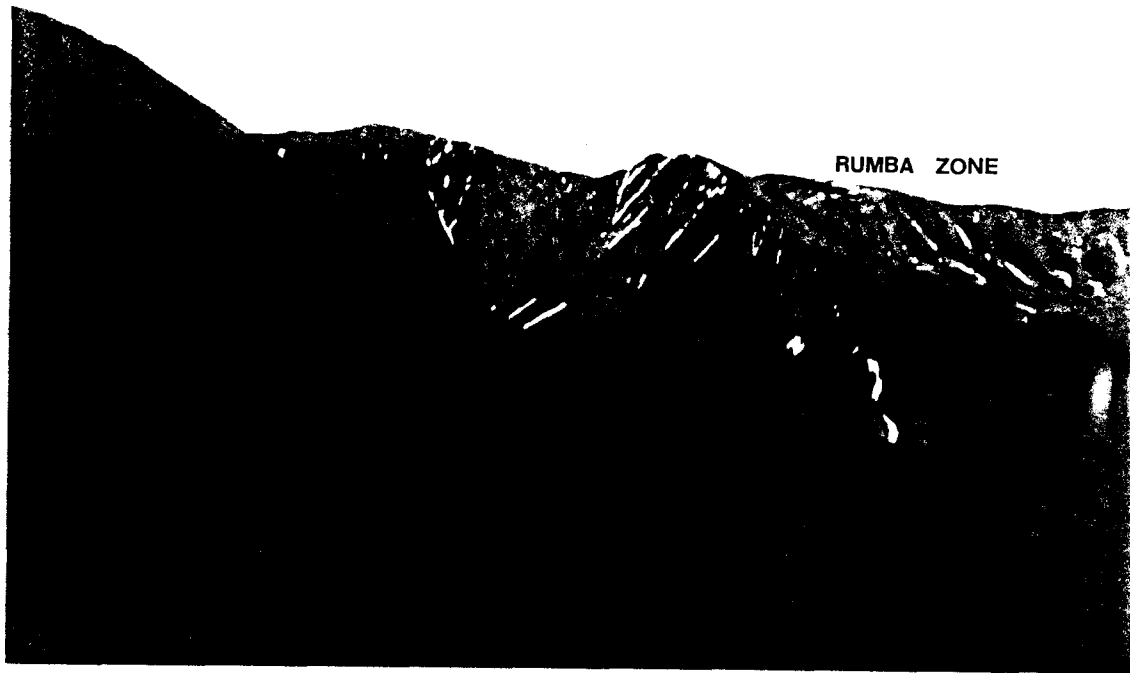


PHOTO 4: View of Rumba Zone from the northwest.

and the vein itself contains pyrite with some galena and occasional malachite, (Northern Cordillera Mineral Inventory).

The Skarn Zone encompasses a garnet tremolite magnetite skarn exposed over a 100m x 30m wide area. A few northwesterly and one westerly trending quartz veins cut the Skarn Zone and range in width from a few cms to 1 m.

A 35cm wide, westerly trending diopside skarn with trace pyrite and pyrrhotite, (G33R), occurs in the northwest part of the property. It appears to be associated with a calcite, hornblende hornfels and contains a quartz stringer zone with malachite and azurite, (G32R), in the stringers and in the skarn host.

Other isolated veins ± pyrite were noted across the property. Many trend northwesterly and are, therefore, difficult to differentiate from quartz vein material. A few veins trend northeasterly to easterly. Vein widths range up to 1 m but average around 10cm.

The clay altered rhyolite porphyry dykes ± pyrite on the property were also sampled since Au values are associated with these dykes on the Charleston Group of claims, (Osler, Wills, Bickle News Release, 1985).

GEOCHEMISTRY

Procedure:

A total of 96 rocks and 4 soil samples were collected from the EARL property between July 28 and August 3, 1985. All samples were analyzed for Au, Ag, As and Sb with selected samples also being analyzed for Cu, Pb and Zn. The sample locations and geochemical results are plotted on Figures 7 and 8.

The rock samples were of the grab type except where chip samples of vein material could be gathered. The soil samples were collected from the B or top C horizon.

All samples were sent to Chemex Labs Ltd., North Vancouver, for preparation and analyses using standard atomic absorption procedures, Au being first preconcentrated by fire assay.

Results:

The Twist Zone contained the highest Au values on the property. The results and their relationships to the individual quartz veins is shown in Table 1 below and in Figure 5.

TABLE 1: Description and Geochemical Results of the Twist Zone.

Sample Number	Vein Number	Width	Length	Trend	Other Minerals	Results Au(ppb); Ag (ppm)		
						Vein	Brecciated Margin	Stringer Zone
YE-5J11R YE-5J9R YE-5J10R YE 5J12R	1	1 m	100 m+	313°	py, (cal) ga py, cal sp, cal(ga)	330;11	1400;29	1450;3.5 3650;5
YE 5J21R	2	2 m	20m + 100 m lineation	290 -300°	-	10,0.1		
YE 5J22R								1300,36
YE 5J13R	3*	10-15cm	10 m?	NW				80,1.5

The stringer zones, found in the hanging walls of the veins, contain the higher Au values, though the Ag is spread throughout. A direct relationship also occurs between Sb and Ag. Generally the higher the Ag results, the higher are the Sb values.

The two occurrences of quartz stringer stockwork material that occur outside of the Twist Zone were weakly anomalous. The gneiss hosted sample ran 80 ppb Au, (G40R), and was associated with 4.4 ppm Ag and 69 ppm As. The phyllite hosted sample yielded 280 ppm As, (J43R). Another phyllite hosted sample, (J292R), with quartz, (\pm drusy), and quartz-calcite veins, up to 2cm wide, and quartz fragments contained 220 ppm As. This sample is located in an area of pyritic, clay altered rhyolite feldspar porphyry dykes. A sample of the dyke material, (J30R), also carried 220 ppm As.

Immediately east of Vein 3 in the Twist Zone, a sample of silicified limestone returned a value of 30 ppb Au, (J23R), and 35 ppb was contained in a sample of pyritic quartzite 100 m further to the east, (J24R). Pyritic, As stained and weakly sericitized quartzite 350 m westsouthwest of the Twist Zone yielded 320 ppm As. A soil sample, (J1S), from the 7000' knoll 700 m east of the Twist Zone and in an area of quartzite cut by quartz stringers returned 73 ppm As and 8.4 ppm Sb.

Pyritic quartz vein material also occurs north of the Charleston Crown Grant. A northwest trending 7cm wide rusty and Mn stained quartz breccia vein, (J33R), yielded 90 ppb Au. A second similar vein 15 m to the east ran 8.3 ppm Ag and 69 ppm As, (J47R).

Significant Ag results, (including one of 42.0 ppm), and values up to 400 ppb Au were obtained from the Rumba Zone. The sample descriptions and results are shown in Table 2 below and in Figure 6. No anomalous Sb and As values are associated with this zone except for a 470 ppm As value from the G23R quartz vein.

TABLE 2: Description and Geochemical Results of the Rumba Zone.

Sample Number	Description	Width	Trend	Remarks	Au(ppb)	Ag(ppm)
YE-5G23R	quartz vein	3cm	348°/42NE	Chlorite along margins	40	0.2
YE-5G24R	shear zone			parallel to G23R and in vertical shears, rusty, hornblende rich, po, magnetic.	40	0.3
YE-5G25R	shear zone	10-15cm		rusty, Mn stained hornblende rich.	400	22.0
YE-5G26R	shear?zone			rusty, altered, Mn stained po, cp.	35	0.9
YE-5G27R	quartz pod	max 5cm		rusty, 5 m long	50	11.6
YE-5G28R	2 quartz veins	1) 10cm 2) 10cm	133°/ 42SW	rusty, po, cp rusty	200	42.0
YE-5G48R	quartz vein	max 3cm	093°/20S	rusty, chloritic host	5	4.2
Similar vein to the south:						
YE-5G46R	quartz vein	4cm		rusty, chlorite + py. along margins	125	0.1

Quartz vein hosted mineralization on the Charleston Crown Grant is reported to range up to 12.65 oz/ton Au and 149.0 oz/ton Ag, (Northern Cordillera Mineral Inventory), with an average grade of 0.3 oz/ton Au, 8.5 oz/ton Ag from the main zone which now exceeds 600 m in length, (Osler, Wills, Bickle New Release, 1985). The Rumba Zone displays many similar characteristics to the Charleston, as discussed under Mineralization.

Not only does the hornblende granodiorite display a susceptibility towards mineralization but also apparently related hornblende granodiorite dykes are associated with weakly anomalous values. Immediately northwest of the Rumba Zone, a sample of rusty biotite quartz schist with chloritic zones yielded 55 ppb Au, 3.7 ppm Ag, (G43R). The schist exhibits strongly granitized sections and is proximal to pyrrhotite ± pyrite bearing hornblende granodiorite dykes.

At the northern end of the property, quartz-calcite veins up to 1cm wide and hosted by an altered, pyritic diorite dyke adjacent to a hornblende granodiorite dyke yielded 30 ppb Au, (J34R).

A soil sample, (J2S) collected near a rusty hornblende granodiorite dyke containing pyrrhotite and calcite veins, returned values of 35 ppb Au, 1600 ppm As and 5.8 ppm Sb. However, these values may be related to a clay altered rhyolite feldspar porphyry dyke although other similar dykes sampled were either not anomalous or only contained up to 220 ppm As.

The diopside skarn from the northwest part of the property contained 50 ppb Au and 1750 ppm Cu, (G33R). Quartz stringers from this zone have a combined width of 15cm and returned 25 ppb Au, 950 ppm Cu, (G32R).

CONCLUSIONS and RECOMMENDATIONS

Au-Ag mineralization on the EARL Claims appears to be concentrated along the northwest trending regional foliation in the area as evidenced by the anomalous behavior of those quartz veins that trend northwesterly in contrast to those trending northeast to easterly.

Sulfide mineralization is evident in the majority of the anomalous samples which suggests a deeper level of emplacement for these veins than on the sulfide poor SKUKUM and SAID-THE properties.

It is difficult to determine whether the veins are of the epithermal or mesothermal type. The massive nature of the veins and lack of argillic wall rock alteration suggests a mesothermal environment. However, open space filling and quartz breccias are evident in the secondary silicification (as noted in the Twist Zone and north of the Charleston). Thus quartz vein material and/or mesothermal veins may have undergone a later epithermal event which appears to have better concentrated the Au and Ag. The Skukum Volcanic Complex lies less than 1 km east of the Twist Zone and similar type occurrences. Thus epithermal mineralization in these zones may be related to that Complex.

The Rumba and Skarn Zones appear to exhibit more mesothermal characteristics.

The basement metamorphic rocks may represent the source of mineralization which has been concentrated by later solutions which resulted in silicification, brecciation and sulfide deposition.

Significant Au and Ag results, (up to 3650 ppb Au and 36.0 ppm Ag), have been obtained from the Twist Zone. These values are related to quartz stringers within the hanging wall and hanging wall margins of northwest trending quartz veins. Pyritic quartz vein material from the Twist Zone and north of the Charleston also contained anomalous Au.

A hand trenching program on the Twist Zone is proposed for 1986 in order to determine the structure of the veins which are currently exposed as local float. Five line km of grid is also recommended in this area to facilitate detailed mapping and soil sampling in order to determine the extent of the veins and mineralization, (especially along the 100 m topographic lineation that extends south eastwards from Vein 2). Detailed prospecting along the cliffs to the north of the Twist Zone is also necessary to determine the extent of the veins and mineralization in this direction. (A 500 m long air photo lineation is evident in this area).

Detailed prospecting and mapping is warranted (1) along the cliffs north of the Charleston to investigate pyritic quartz veins in this vicinity,

AND (2) on the northeastern EARL Claims to investigate quartz stringer stockwork zones similar to the TWIST ZONE and to cover ground which was not investigated during 1985.

Northwest trending quartz veins and related shear zones in the Rumba Zone contain Ag and Au values up to 42.0 ppm and 400 ppb respectively. The environment is similar to mineralization at the Charleston occurrence and may lie along the projected extent of the westerly fault zone that hosts the OMNI Au, Ag occurrence. The Rumba Zone therefore, warrants further detailed prospecting and mapping in the hopes of finding similar mineralization.

The two skarns on the property have a limited extent and display only weakly anomalous Au values. The Skarn Zone has the best potential of the two and should be further investigated in order to properly delineate and evaluate it.

The recommended 1986 program for the EARL Claims is outlined below:

1. Twist Zone:

a) trenching	
7 days @ \$700/day (contracted)	\$4900.
b) 5 line km of grid	
4 man days	500.
c) detailed mapping and soil sampling along grid.	
5 man days, 200 samples	3750.
d) detailed prospecting along cliffs to north	
2 man days, 15 samples	600.

2. Rumba Zone (similar to Charleston)

- detailed mapping and prospecting	
2 man days, 15 samples	600.

3.	Delineation of Skarn Zone	
	1 man day, 7 samples	300.
4.	Detailed prospecting and mapping along cliffs north of Charleston	
	2 man days, 15 samples	600.
5.	Detailed prospecting and sampling on north- eastern EARL Claims	
	1 man day, 7 samples	300.
	Access from Whitehorse	
	8 man days, helicopter, truck	5,700.
	Assessment Fees	500.
	Prefield preparation	750.
	Report and Drafting	1,000.
	Other	500.
	Total Recommend Work:	\$20,000.

See part 1.

LEGEND

R	Rhyolite
A	Andesite
D	Dacite
Di.	Diorite
Cgl.	Conglomerate
GDI.	Granodiorite
Qte.	Quartzite
Phy.	Phyllite
Gn.	Gneiss
Sh.	Schist
L	Limestone
Calcsil.	Calcsilicate
Amphib.	Amphibolite
Arg.	Argillite
Gst.	Greenstone

q.	Quartz	ga.	Galena	lap.t.	Lapilli tuff
f.	Feldspar	sp.	Sphalerite	agg.	Agglomerate
bio.	Biotite	cp.	Chalcopyrite	bx.	Tectonic breccia
hb.	Hornblende	po.	Pyrrhotite	r.	Rusty
cal.	Calcite	gf.	Graphite	dy.	Dyke(s)
chl.	Chlorite	a.	Altered	vn.	Vein
gnt.	Garnet	sil.	Silicified	str.	Stringers
cl.	Clay	pegm.	Pegmatite	tr.	Trace
ser.	Sericite	p	Porphyritic	w.	Weak
py	Pyrite	t.	Tuff	m.	Medium
				s	Strong
				i.	Intense

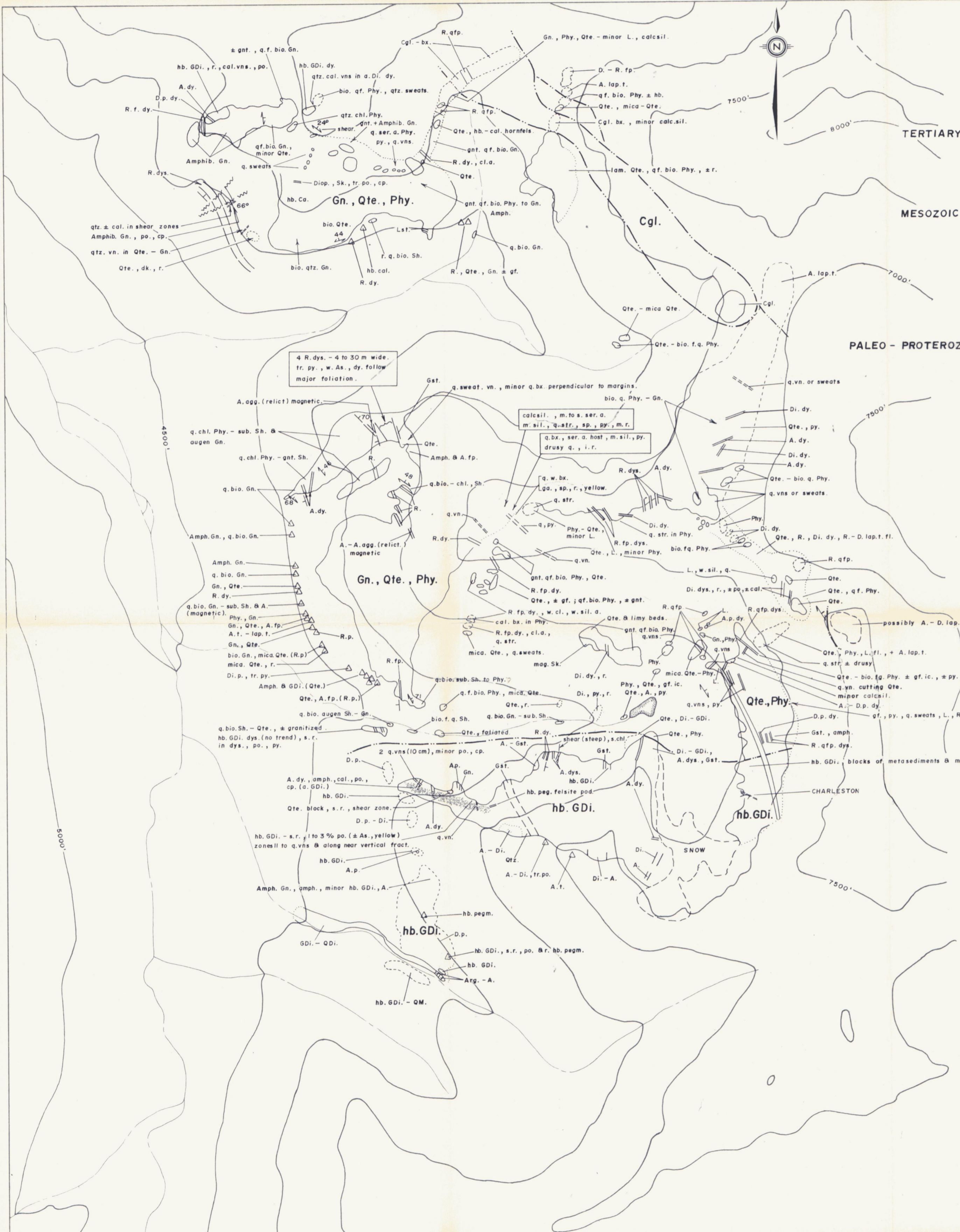
====	Vein	---	Contact (approx., intrpr.)
○	Outcrop/subcrop		Fault
○	Subcrop/talus	— —	Bedding
△	Float	— —	Foliation
			Strong rusty zones

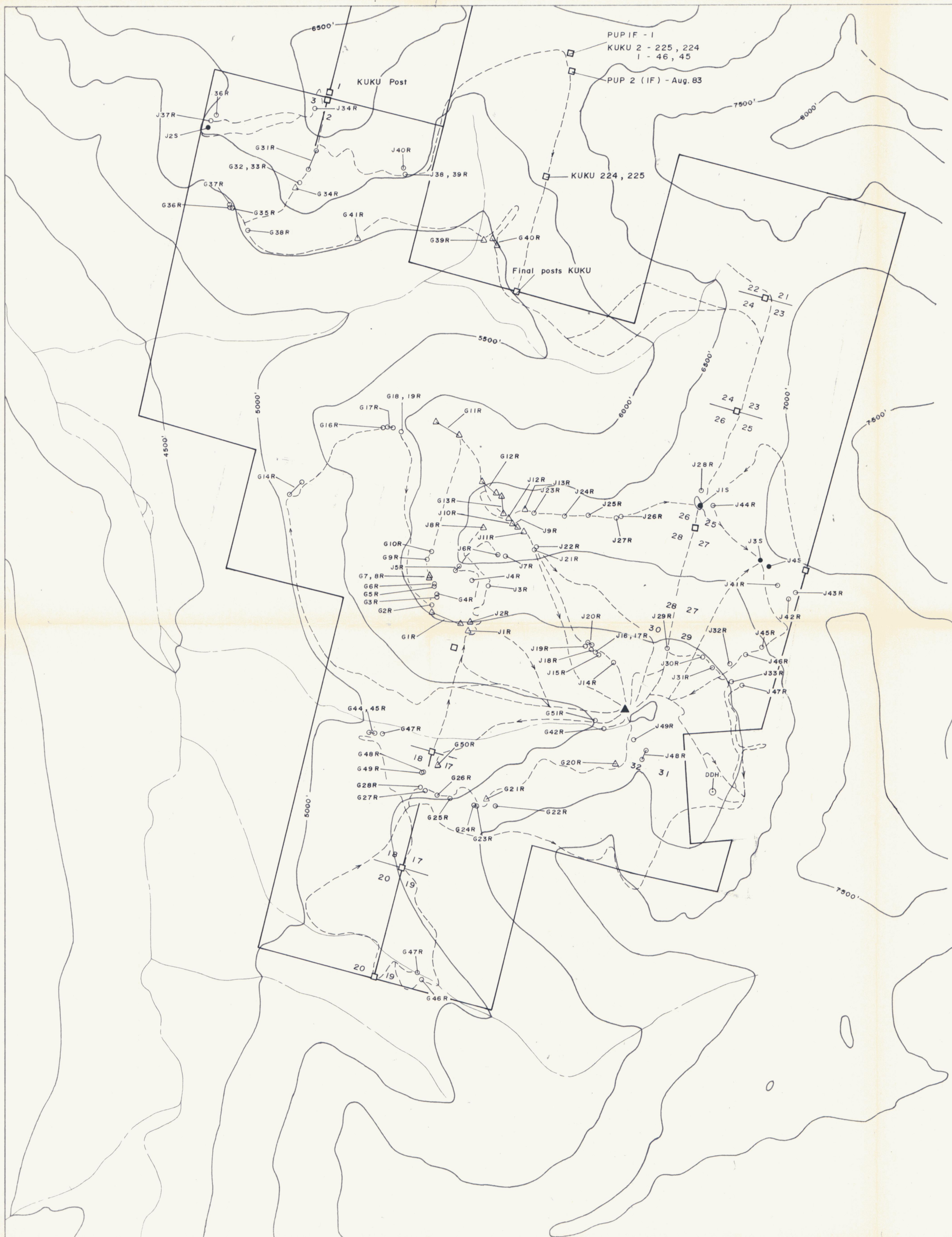
FIG. 4



KERR ADDISON MINES LTD	
EARL PROPERTY	
GEOLOGY	
SCALE - 1:10000	DATE - NOV., 1985
DRAWN BY - P HAILLOT	DATA - J.P., L.G.
NTS - 105 D 3, 4	REVISED -

091824





LEGEND

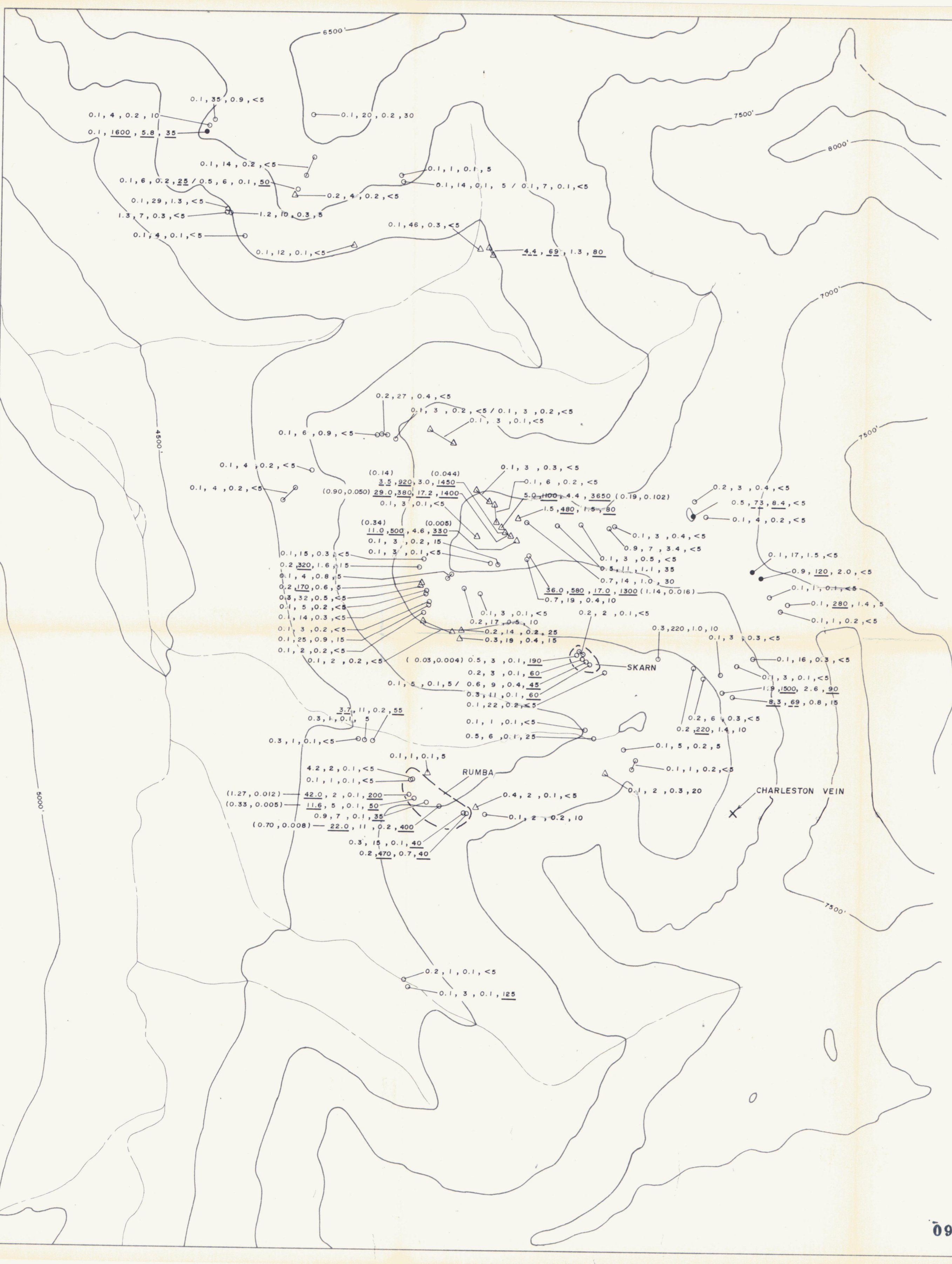
- , △ Rock samples: outcrop, float.
- Soil sample
- Composite sample.
- Claim post.

FIG. 7



KERR ADDISON MINES LTD	
EARL PROPERTY	
CLAIM &	
SAMPLE LOCATIONS	
SCALE - 1:10000	DATE - NOV, 1985
DRAWN BY - P.HAILLOT	DATA - J.P., L.G.
NTS - 105 D 3, 4	REVISED -

091824



LEGEND

- , △ Rock sample : outcrop , float.
- Soil sample.
- Composite sample.
- Ag - ppm , As - ppm , Sb - ppm , Au - ppb (Ag - oz/t , Au - oz/t).
- ⋯ Zone of interest.

FIG. 8



KERR ADDISON MINES LTD	
EARL PROPERTY	
GEOCHEMISTRY	
Ag , As , Sb , Au	
SCALE - 1 : 10000	DATE - NOV , 1985
DRAWN BY - P.HAILLOT	DATA - J.P., L.G.
NTS - 105 D 3, 4	REVISED -

091824

APPENDIX I

Selected References:

- Pride, Monica J., 1985; Preliminary geological map of
(Mount Skukum Volcanic Complex)
105 D/2,3,4,5; 1:25,000 scale map:
D.I.A.N.D. Open File.
- Wheeler, J.O., 1961; Whitehorse Map Area, Yukon
Territory, 105 D; G.S.C. Mem. 312.

APPENDIX II

Statement of Expenses

<u>Wages:</u>		Dates worked [*]	Field	Post Field	Travel
Name:	Address:	in Field			
J. Pautler	4912 62nd St. Ladner, B.C.	July 28-Aug.2	6	4	1
L. Grexton	1761-16th Ave. Vancouver, B.C.	July 28-30, Aug. 1	4	0	1
16 man days @ \$97.50 + 10%/man day					\$1716.00
<u>Food:</u>					
12 man days @ \$16/man day					192.00
<u>Equipment:</u>					
Radio: 6 @ \$7/day (\$200/mo)					42.00
Truck: 6 @ \$40/day(\$1000/mo)					240.00
<u>Supplies:</u>					
Field: 10 man days @ \$12/man day (flagging, toposil, rock bags, etc)					120.00
Camp: 10 man days @ \$15/man day					150.00
<u>Geochemical analyses:</u>					
96 rocks @ \$17.32 each = \$1662.72					
4 soils @ \$14.60 each = 58.40					
10 Cu, 5 Pb, 2 Zn analyses = 26.30					
9 Assays for Au, Ag = 94.50					
					\$1851.90
Shipping: 97 @ \$1.50 each = 145.50					1987.00
					Total Geochemical
<u>Air Charter</u>					
Frontier Helicopters Ltd.					
1.96 hours @ \$517/hour					1013.00
					<hr/>
Total Expenditure:					\$5460.00

* Time spent after anniversary date only.

Jean Pautler

APPENDIX III

STATEMENT OF QUALIFICATIONS

I, Jean Marie Pautler, graduated from Laurentian University, Sudbury, Ontario, in May, 1980 with an Honours Bachelor of Science degree in geology.

Since that time I have worked every season as a geologist in the Canadian Cordillera.

I was actively involved in the 1985 field program on the EARL Property.

Jean Pautler

Jean Pautler
Geologist