

MAP NO. ASSESSMENT REPORT X
PROSPECTUS
CONFIDENTIAL X
OPEN FILE

1-S.N. 134643
DOCUMENT NO.: 091755
MINING DISTRICT: WHITEHORSE
TYPE OF WORK: GEOLOGICAL, GEOCHEMICAL
GEOPHYSICAL

105 K 3

REPORT FILED UNDER: Prospectors Airways Co. Ltd.

DATE PERFORMED: 1954-1955

DATE FILED: December 29, 1955

LOCATION: LAT.: 62°15'N

AREA: Vangorda Creek

LONG.: 133°12'W

VALUE \$:

CLAIM NAME & NO.: TONY, VAN, HODGE groups

WORK DONE BY: R.W. Baker, V.S. Papezik

WORK DONE FOR: Prospectors Airways Company Limited

DATE TO GOOD STANDING | REMARKS: #29 VANGORDA

|

|

|

DEPARTMENT OF MINES AND TECHNICAL SURVEYS

MEMO TO:

Mr. W. E. Claiborne, Mining Inspector

DATE:

Jan 27/56

SUBJECT:

Astoria Magnesian Survey of the Tanagera Creek Group, Jackson Territory of Prospectors Bearings by R. W. Baker.

This work appears to be of good professional quality. I do not believe, however, that it has contributed to the geological information as to the location of commercial ore bodies beyond the limits of the groups surveyed.

R. V. Campbell, M. E.

Report on the Geological and
Geochemical Survey, Vangorda Creek.

CONFIDENTIAL

Introduction.

In the summer season of 1954, V. Papezik and W. D. Andrews made a geological and geochemical survey of the Vangorda Creek property, Yukon Territory. In the absence of a detailed topographic map, claim-posts were used as control. Position of outcrops and soil samples was determined by 1500' long traverses (pace and compass), run every 500' approximately at right angles to the claimline, with samples collected at 500' intervals. In view of the obvious limitations of this method, the mapped locations of outcrops and soil samples are only approximate.

Topography.

The Vangorda Creek property extends from the base of Mt. Mye in the north to Shrimp Lake in the south in a succession of broad ridges and swampy valleys, for the greater part covered with moss and thick underbrush with large burnt-out areas. Outcrops are fairly numerous on the northern and eastern fringes of the property, becoming scarce in the central group and lacking almost entirely in parts of the south.

Most of the area is covered by a mantle of glacial drift of variable thickness. Alluvial terraces were observed on the Ralph and Mike claims in the valley of Vangorda Creek, and long twisting ridges of gravel, probably eskers and parts of a terminal moraine, cover the ground close to the base of Mt. Mye adjacent to the creek between the Jack and Art claim groups. A layer of volcanic ash about 3" thick lies on top of the

glacial drift over the whole area, directly below the vegetation.

Geology.

a) Metamorphic rocks.

Almost three quarters of the area are underlain by a broad belt of metamorphic rocks, mainly sericite and graphite schists. The sericite schist is light to dark grey, strongly fissile, with a glossy lustre, grading in places into the black graphitic schist. Both are minutely crumpled and strongly folded. Planes of schistosity cut across the folds, striking generally northwest and dipping about 30 degrees SW, with local variations due probably to plunging. These rocks seem to be a series of strongly metamorphosed sediments with possibly some interbedded volcanics, similar to the schists of the Yukon group described by J. R. Johnston (GSC Mem. 200).

On Art No.7 and 8 claims there is a much smaller schistose belt of a different type, characterized by large crystals of staurolite. Outside the property boundaries towards the north this belt changes to garnet schist and in part to skarn. This may be a local metamorphic effect. The staurolite schist contains numerous small pagmatite veins with quartz, muscovite and some pink tourmaline.

Part of the Rose Creek valley in the northwest is underlain by a broad area of reddish brown biotite gneiss, in places striking NW and dipping NE. Two lenses of crystalline limestone were found in the gneiss conformable to the general strike, suggesting that this is another zone of strongly metamorphosed sediments.

b) Igneous rocks

The northern edge of the property is underlain by a mass of granitic rocks, intruding the schist. The intrusive ranges probably from granite to granodiorite. Within the property boundaries it is fine to medium-grained, grayish to brownish in color, consisting of quartz, feldspar, biotite and hornblende. Locally, especially in the vicinity of Rose Creek, it contains a large amount of biotite, which may be due to partial assimilation of the adjacent biotite gneiss. Parts of the contact zone are characterized by hornfelses. On the Firth claims in the northwest section of the property the contact zone contains a mineralized belt, which was described in a separate report earlier in the season.

Extending diagonally across the property from the Van - Hodge group in the northwest to the winter group in the south east, a belt of intermediate to basic rocks intrudes the schists. It consists of coarse-grained plugs of diorite and locally gabbro, forming distinct knob-like hills, connected by fine-grained basic dykes, strongly altered to greenstone. These rocks are greenish grey to black in appearance, containing plagioclase feldspar with abundant hornblende strongly altered to chlorite. The greenstones are in places slightly mineralized with pyrrhotite. Narrow zones of hornfelses are scattered along the contact. The intrusive belt probably increases in extent towards the east where large areas are underlain by coarse-grained diorites and gabbros, and towards the south where it forms the bulk of the mountain south of Shrimp Lake. A small part of this area is included in the Tony claims in the southwest corner of the property.

Since the difference between diorite and gabbro are probably

due to local differentiation rather than separate intrusions, and both types appear to be genetically associated with the connecting dykes, these rocks have been mapped as a unit.

Small lenses of quartz-feldspar porphyry appear along the northern edge in the central part of the intrusive belt, increasing in thickness and extent toward the east, where they reach their maximum development on the Insurance group. This rock is light buff in appearance, with prominent phenocrysts of feldspar and quartz in a fine groundmass. The age relation between the porphyry and the adjacent intermediate intrusives could not be determined accurately, but similar porphyritic rocks are considered by Johnston (GSC Mem.200) to be of Tertiary age. In this case their emplacement could have been guided by zones of weakness along the contact of the intrusives and the schists. Though in the east they contain a few rusty spots, their connection with mineralization, if any, could not be discovered.

In the western part of the property, covering almost entirely the Ralph claims group, lies a wide zone of andesitic lava. This rock is light green, fresh looking, with numerous small amygdules often filled with calcite and possibly zeolites. On Ralph No. 5 claim two large quartz veins cut the andesite. They are about 10' thick and several hundred feet long, being possibly parts of the same vein. In places they contain some scattered tetrahedrite and chalcopyrite. A grab sample of the mineralized quartz was sent for assay for Au and Ag, but no important economic values have been reported.

c) Sedimentary rocks

In the vicinity of the dioritic belt in the south and southeast

a group of sedimentary rocks occurs in narrow zones and disconnected erosion remnants. It is characterized by greenish grey banded argillites, silicified and thermally metamorphosed on contact with the intrusives. Their banding is varve-like in nature. Associated with the argillite there are a few outcrops of massive dark grey limestone along the southern boundary of the property and in an isolated area on the Hull claims in the west. On Slim No. 7 claim the limestone grades into black limy shale and partly to phyllite.

The belts and patches of sedimentary rocks often include outcrops of light greyish green schistose rock of probably volcanic origin, mapped originally as greenstone schist. Its structural relations to the sedimentary series were not definitely determined from the isolated outcrops; but the whole series resembles so strongly Johnstons Lower Paleozoic group that it was mapped as a unit. The schistose greenstones may then represent either altered tuffs or sills and lava flows interbedded with the sedimentary rocks. However, their classification remains doubtful.

The whole group is folded, but to a lesser extent than the graphite and sericite schists. The fold axes, where determined, trend NW. Thermal metamorphic effects show that the diorites and gabbros intrude the older sediments which probably overlie the Yukon schists.

On the north bank of Vangorda Creek about 1000' west of the main showing, and 1500' southeast of the camp, there are two small areas where a rusty conglomerate outcrops on the surface. It consists of fragments of schist and boulders of granitic rock with some mineralized pebbles, cemented by iron oxide. This may represent

old stream gravels and surface detritus cemented by limonite derived from the erosion of or bodies exposed before or during glaciation. This conglomerate, the youngest consolidated rock in the area, was not seen anywhere else on the property.

Geochemistry.

Geochemical survey of the area was done in connection with the geological mapping. Soil samples were collected from the layer below the volcanic ash wherever possible; but a thick moss cover in places prevented this, which may account for some of the negative results.

Almost all chemical tests were ably done by W. D. Andrews. The soil-sample was first shaken with water for 30 seconds to break up the colloids and dissolve part of the contained metals. After the heavy particles and mud had been allowed to settle, the clear top layer of water was decanted and tested with an acetic solution of dithizone. This test was done under the optimum conditions for zinc (pH 5.5), but a positive may also mean the presence of copper and/or lead. Although most of the samples tested yielded negative results, a sufficient number of positive and neutral results was obtained to prove the efficiency of this method for a large-scale reconnaissance. The systematic soil - sampling was supplemented by direct testing of water in creeks and swamps wherever thought useful.

A majority of the positive and neutrals can be grouped into four areas of geochemical anomalies. These lie mostly in the broad belt of sericite schist, trending NW - SE.

The first anomaly is situated on the Firth claim group in the north-west part of the property, close to the contact of schist and granite.

A mineralized fault-zone and a possible extension of mineralization along the contact was described in a previous report.

A second positive area lies between the Grum and Champ claim-groups, northwest of the main showing. This part of the property is covered with moss and underbrush with almost no outcrops. No traces of mineralization were seen on the surface, but a presence of a base metal concentration below the overburden is indicated.

The third, largest anomaly occurs around the main showing on Vangorda Creek. Its elongation toward the west is probably due to the prevalent westerly direction of drainage in this area. The presence of ore in this region has been proven by drilling.

The fourth concentration of positives lies on the Rocky and Insurance claim groups. The anomaly extends from the schists into the quartz feldspar porphyry, characterized there by rusty zones without visible mineralization. The western part may then mean a continuation of the main mineralized belt while the eastern fringe may be a local effect due to the porphyry, or the whole anomaly may be caused by mineralization along a single structural feature.

Only 5 out of a total of 33 positives lie outside the four main anomalous areas. These may be due to slight amounts of contact metamorphic mineralization (such as occurs on Winter No. 1 claim north of Shrimp Lake, where small areas of copper stain were seen on the contact of argillite and a narrow basic dyke), or to other local effects, and probably have no economic significance.

Conclusions.

The geochemical as well as the magnetic anomalies found so far indicate that economic deposits are restricted to the north-west trending belt of sericite and graphite schist. On a regional scale, the trend of these anomalies lines up remarkably with the prominent valley of Rose Creek and the recently staked mineralized area on Green Eagle Creek to the NW, suggesting a long regional fault or zone of faulting which may have guided the ore deposition.

Although the final evaluation of the claims will depend on a magnetometric survey, the geology of the area indicates that the southwest corner of the property (the Tony group), the Van and Hodge claim-groups in the northwest and the claims on the northern fringe, underlain by granitic intrusives, are less likely to contain economic mineralization than the remaining claims. The rest of the property shows an excellent promise.

Vangorda Creek, Y. T.

September 8, 1954

(signed) V. S. Papezik

COPY

5 cc

September 21, 1954.

091755

CONFIDENTIAL

PROSPECTORS AIRWAYS COMPANY LIMITED

REPORT

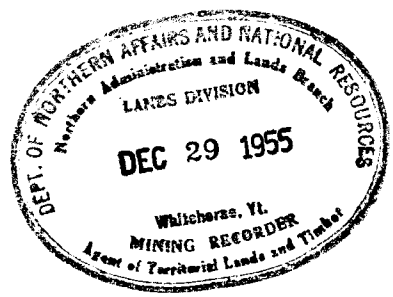
ON

ASKANIA MAGNETOMETER SURVEY OF THE VANGORDA CREEK GROUP

YUKON TERRITORY

BY

R. W. BAKER



091755

Plans separate - in box. *bank*

PROSPECTORS AIRWAYS COMPANY LIMITED

REPORT ON ASKANIA MAGNETOMETER SURVEY OF VANGORDA CREEK GROUP Y.T.

BY R.W.BAKER

Introduction

Askania magnetometer survey work was resumed on the property on April 27, 1955. The survey was carried out by D.R.S.Doal, operator, and W.Charest, assistant. Subsequent to Sheets 1 to 4 inclusive, which were done in 1954, the survey was expanded in 1955 to another seven map sheets, Sheets 5 to 11 inclusive.

Linecutters were hired locally, at Ross River Y.T. On becoming familiar with the requirements of the work, these men proved to be able linecutters, and were able to keep good direction with their line pickets.

A tabulation of the line cut and chained, and the stations read during the 1955 season, is as follows:

<u>SHEET</u>	<u>FOOTAGE CUT</u>	<u>STATIONS READ</u>
No.5	93,400	934
No.6	108,600	1,020
No.7	97,900	857
No.8	118,600	1,116
No.9	127,700	1,200
No.10	138,100	1,227
No.11	45,300	435
	<hr/>	<hr/>
	729,600	6,789
	(138 miles)	

Lines were cut at two hundred-foot intervals from base control lines. All cross-lines were closed with tie-lines for purposes of survey control accuracy. Stations were read with the magnetometer at one hundred-foot intervals, throughout.

091755

ASKANIA MAGNETOMETER SURVEY, VANGORDA CREEKINSTRUMENT

The instrument used in the survey is askania-type, magnetic field balance, manufactured by the firm which pioneered this type of instrument,- Askania Werke, Berlin, Germany. Many prototypes have been manufactured by other firms in Europe and North America, but the true askania still furnishes the greatest degree of accuracy, when properly operated, as was the case on the Vangorda Creek property.

The instrument is a vertical field balance. The latitude screw of the Schimdt balance, or magnet system, was set so that a value of twenty-five gammas per scale division was obtained, for the Vangorda Creek area. A Helmholtz-type coil was used to calibrate the instrument, and periodic checks were made throughout the season to ensure that the proper scale constant was being used, in reducing the scale readings to gamma values.

No severe magnetic storms were encountered during the survey season, although such conditions are known to occur, especially in the fall and winter periods. A series of base control stations were established by the operator, as the survey progressed, so that proper compensation was made for minor fluctuations caused by weather and diurnal effects. The scale constant of 25 was deemed the best possible, for the magnetic quality of the rock types encountered in the Vangorda Creek area.

INTERPRETATIONSSheet No.5

Sheet No.5 is fairly flat, magnetically, and the background gamma value is in the range of 1400 gammas. An interesting series of ring-like anomalies, which rise in intensity to 2000 gammas in some cases, occur in the central part of the sheet. These are anomalies 58, 59, 60, 61, 62 and 63. The reason or reasons for these anomalies are as yet unknown, as there are no rock outcrops in the vicinity.

091755

ASKANIA MAGNETOMETER SURVEY, VANGORDA CREEKSheet No.6

The background gamma value on this sheet is slightly stronger than those obtained in other parts of the property. This regularity is broken by the small sharp anomaly, No.73, on Line 72W which rises to 2000 gammas. No outcrop occurs in proximity to this one.

Anomalies 67, 68, 69 and 70, in the top, right-hand portion of the sheet, have an NW-SE axial trend, suggesting that the more magnetic substance has been introduced by structural control.

The fairly large anomalous condition which occurs in the lower, right-hand portion of the sheet, reaches a peak of 2050 gammas, and extends on to Sheet 9. The wider spacing of the contours of this anomaly indicates that the cause may be buried under an overburden/schist capping.

Sheet No.7

On this sheet, one magnetic anomaly stands out prominently. It occurs on lines 128W, 130W, and 132W, and is numbered 75. Pyrrhotite is visible in the weathered schist outcroppings which lie within the anomaly, but it is not determinable from available evidence whether this pyrrhotite is solely responsible for the anomaly.

The remainder of the sheet has a fairly regular background of about 1525 gammas; small local rises occur toward the right side of the sheet, and are of weak magnetic significance.

Sheet No.8

A background of about 1550 gammas is fairly constant throughout this sheet. Localized rises to 1700 gammas, and negative depressions to 1350 gammas might be attributed to the development of magnetite to a small degree in the biotite schist, through alteration effects of the neighbouring granite.

The granite outcropping in the top left portion of the sheet has a very uniform, moderate magnetic quality.

ASKANIA MAGNETOMETER SURVEY, VANGORDA CREEKSheet No.9

The area covered by this map sheet is characterized by very flat magnetic conditions. The background is in the order of 1525 gammas in the left portion of the sheet; it falls off to about 1425 gammas toward the right half of the sheet.

A dome-like, areal rise, in the top right corner of the sheet, extends on the Sheet No.6, as previously noted. As no outcrop occurs in the vicinity of this anomalous condition, interpretation is not clear, although the condition may be a halo from a more magnetic mass, at depth under a schist capping; the gradual, more-widely spaced contours point to this interpretation.

Sheet No.10

The sheet has a gamma background of about 1275, fairly low for the property, in the left-hand portion of the area. This background climbs gradually to an area containing rocks of stronger magnetic susceptibility, toward the top right-hand portion of the sheet, so that an eventual peak of 1900 gammas is reached; no outcrop is present in this relatively-large area.

In the lower, right-hand portion of the sheet there are several, irregular magnetic highs. Although diorite and feldspar porphyry outcrop in proximity to the anomalies, there are no outcroppings directly over or within them to explain the cause of the magnetic conditions.

Sheet No.11

The map sheet covering this portion of the property shows a fairly uniform magnetic background of about 1350 gammas. A localized rise to 1878 gammas on line 82E can be attributed to diorite which outcrops adjacent to the reading stations. On lines 106 and 108E, on a steep slope leading down to Scimitar Lake, an anomalous area is present, with a high of 2528 gammas; the cause of this one is open to speculation as the

ASKANIA MAGNETOMETER SURVEY, VANGORDA CREEK

ground is overburden-covered throughout.

Toronto, Ontario,

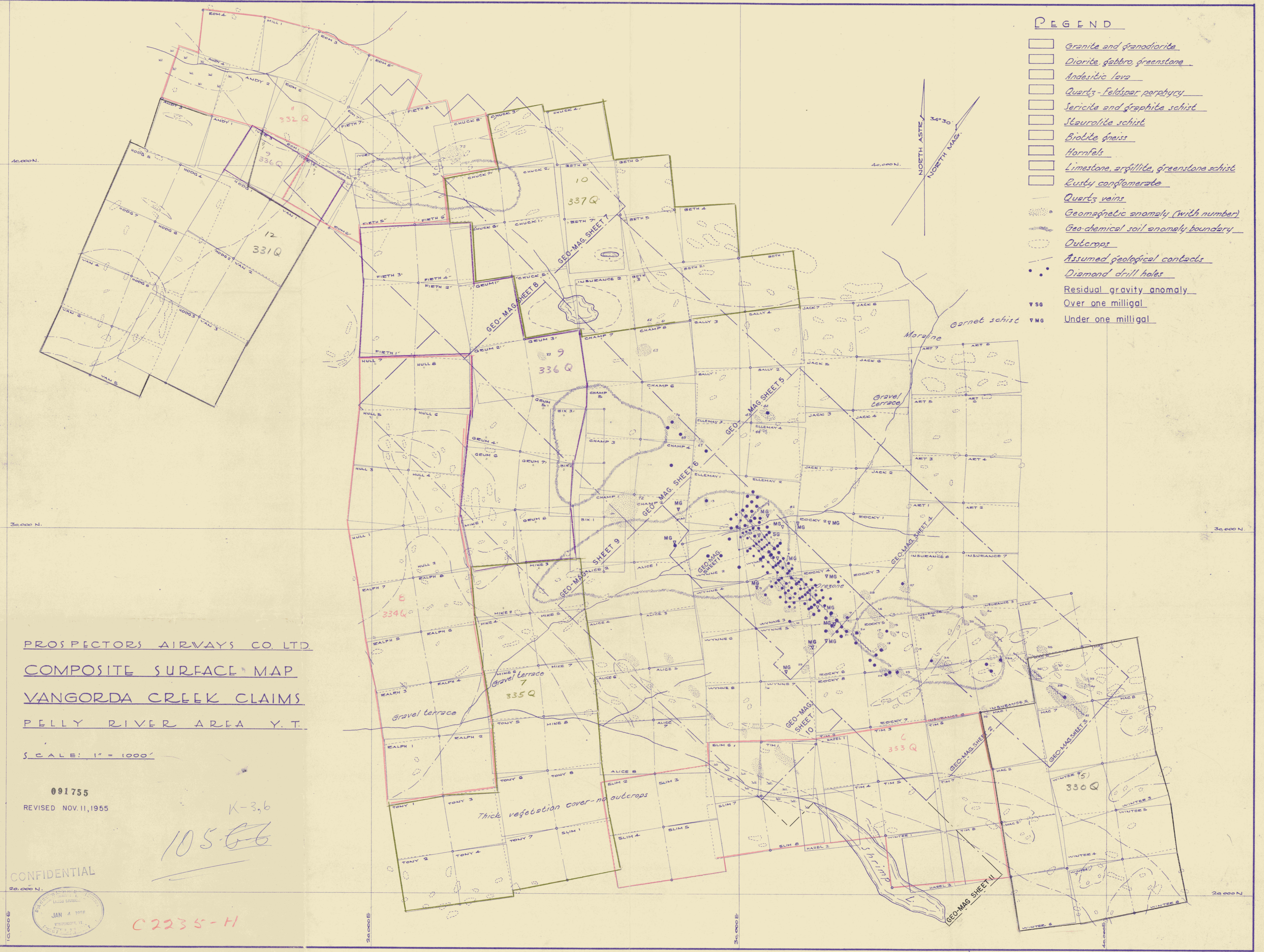
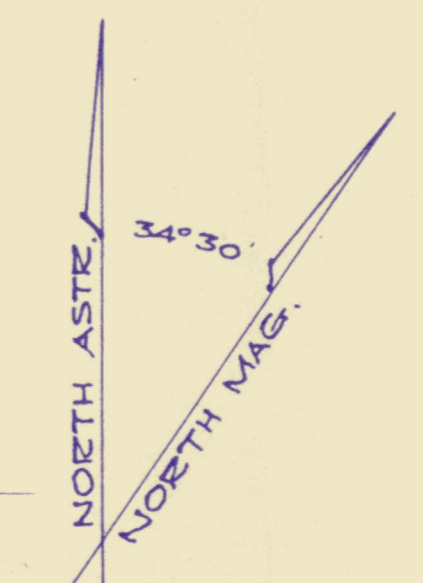
December 8, 1955.

A handwritten signature in cursive script, appearing to read "R.W. Baker", is written above a horizontal dotted line.

R.W. Baker

LEGEND

- Granite and granodiorite
- Diorite, gabbro, greenstone
- Andesitic lava
- Quartz-feldspar porphyry
- Sericite and graphite schist
- Staurolite schist
- Biotite gneiss
- Hornfels
- Limestone, argillite, greenstone schist
- Rusty conglomerate
- Quartz veins
- Geomagnetic anomaly (with number)
- Geo-chemical soil anomaly boundary
- Outcrops
- Assumed geological contacts
- Diamond drill holes
- Residual gravity anomaly
- VS6 Over one milligal
- VM6 Under one milligal



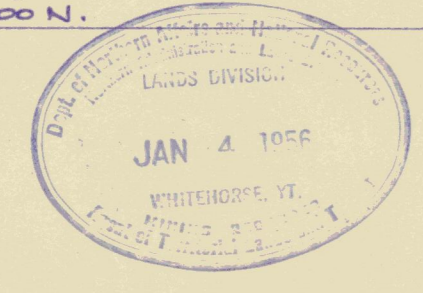
PROSPECTORS AIRWAYS CO. LTD.
 COMPOSITE SURFACE MAP
 VANGORDA CREEK CLAIMS
 PELLY RIVER AREA Y.T.

SCALE: 1" = 1000'

091755
 REVISED NOV. 11, 1955

K-3,6
 105-66

CONFIDENTIAL



C2235-H

Geological map
of the VANGORDA CREEK property, Y.T.

Scale: 1" = 1000'
Date: September 9, 1954.
Geology by V. Papezik.

(A)

CONFIDENTIAL



LEGEND

- Granite and granodiorite
- Diorite, gabbro, greenstone
- Andesitic lava
- Quartz - feldspar porphyry
- Sericite and graphite schist
- Staurolite schist
- Biotite gneiss
- Hornfels
- Limestone, argillite, greenstone schist
- Crystalline limestone
- Rusty conglomerate

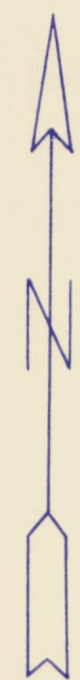
- Schistosity
- Bedding
- Prominent quartz veins

CONFIDENTIAL

Geology of the Northwest section,
VANGORDA CREEK property,
Yukon Territory.

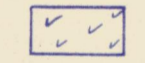
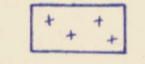
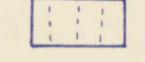
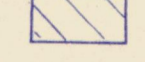
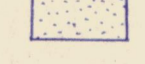
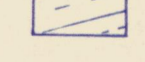
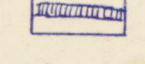
091755

Scale: 1" = 1000'. By V. Papezik.



- Claims mapped:
- VAN No. 1-6
 - HODG No. 1-8
 - ANDY No. 1-4
 - ROM No. 1-8
 - MILL No. 1.
 - FIRTH No. 1-8
 - CHUCK No. 1-8
 - BETH No. 1-8
 - GRUM No. 1.
 - INSURANCE No. 2.

LEGEND:

-  Granodiorite
-  Gabbro
-  Greenstone
-  Sericite schist, in part grading into graphitic schist
-  Hornfels
-  Biotite gneiss
-  Crystalline limestone

CONFIDENTIAL

PROSPECTORS AIRWAYS CO. LTD.

Geochemical map
of the VANGORDA CREEK property, Y.T.
Chemical tests by W.D. Andrews.
Drawn by V. Papezik.

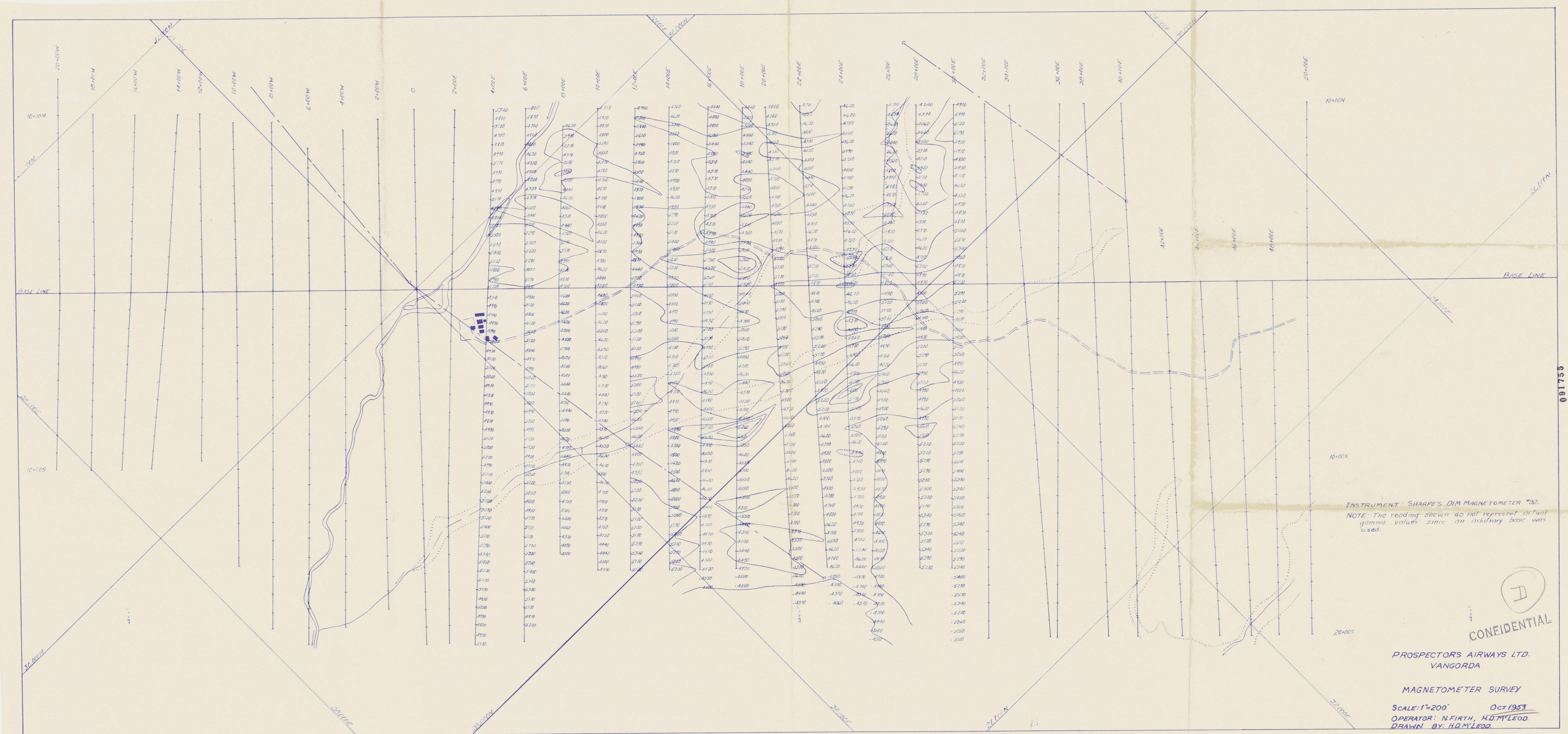
Scale: 1" = 1000' September 6, 1954.



NOTES:

- Positive soil test
(strong concentration of base metal ions)
- Neutral soil test
(weak concentration of base metal ions)

Negative soil tests omitted.
Samples taken at 500' intervals.



INSTRUMENT: SHARPE'S DIM MAGNETOMETER #32.
 NOTE: The reading shown do not represent actual gamma values since an arbitrary base was used.

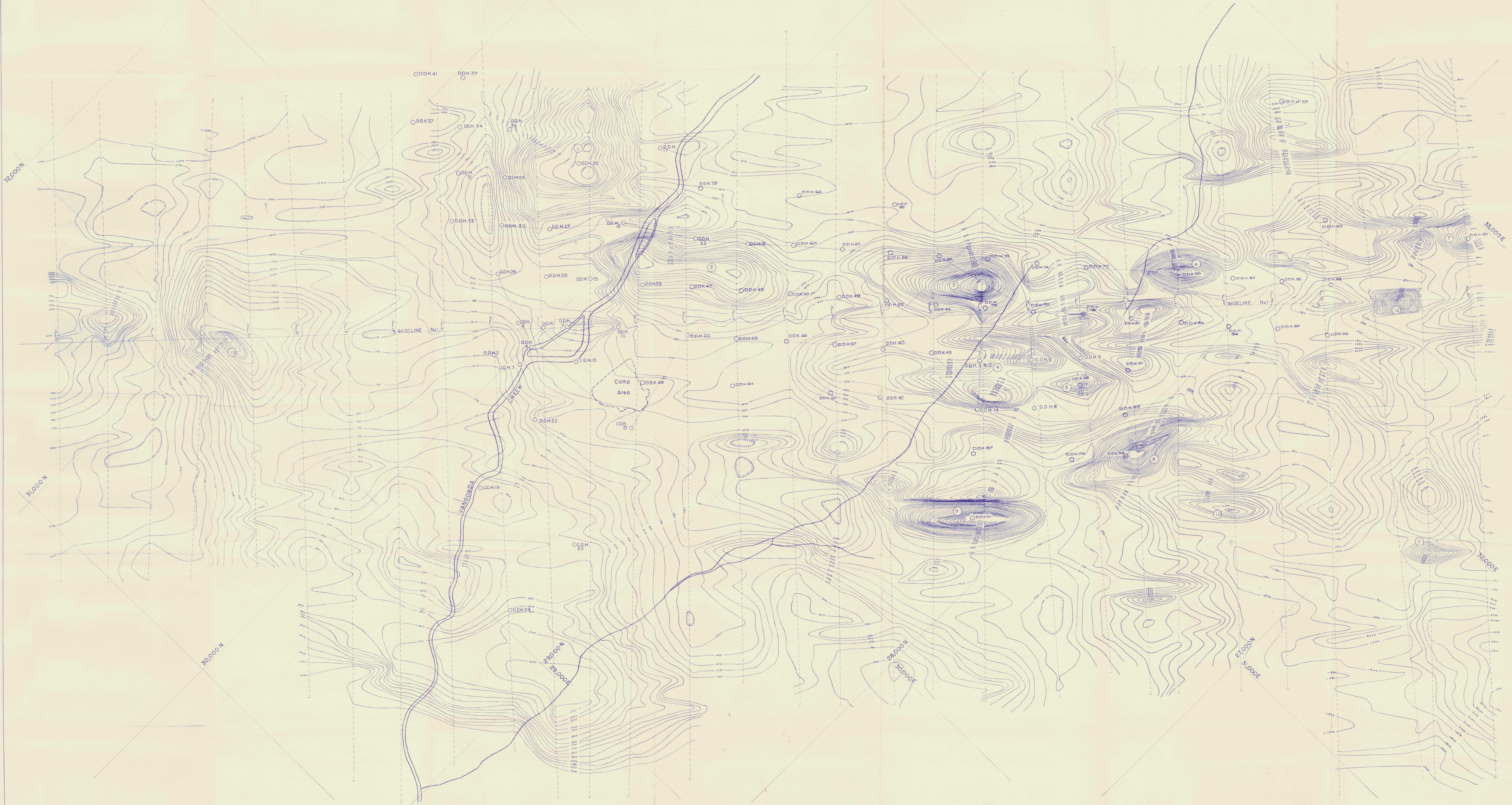
CONFIDENTIAL

PROSPECTORS AIRWAYS LTD.
 VANGORDA

MAGNETOMETER SURVEY

SCALE: 1"=200' Oct 1953
 OPERATOR: N.FIRTH, H.D.M. LEOD.
 DRAWN BY: H.D.M. LEOD.

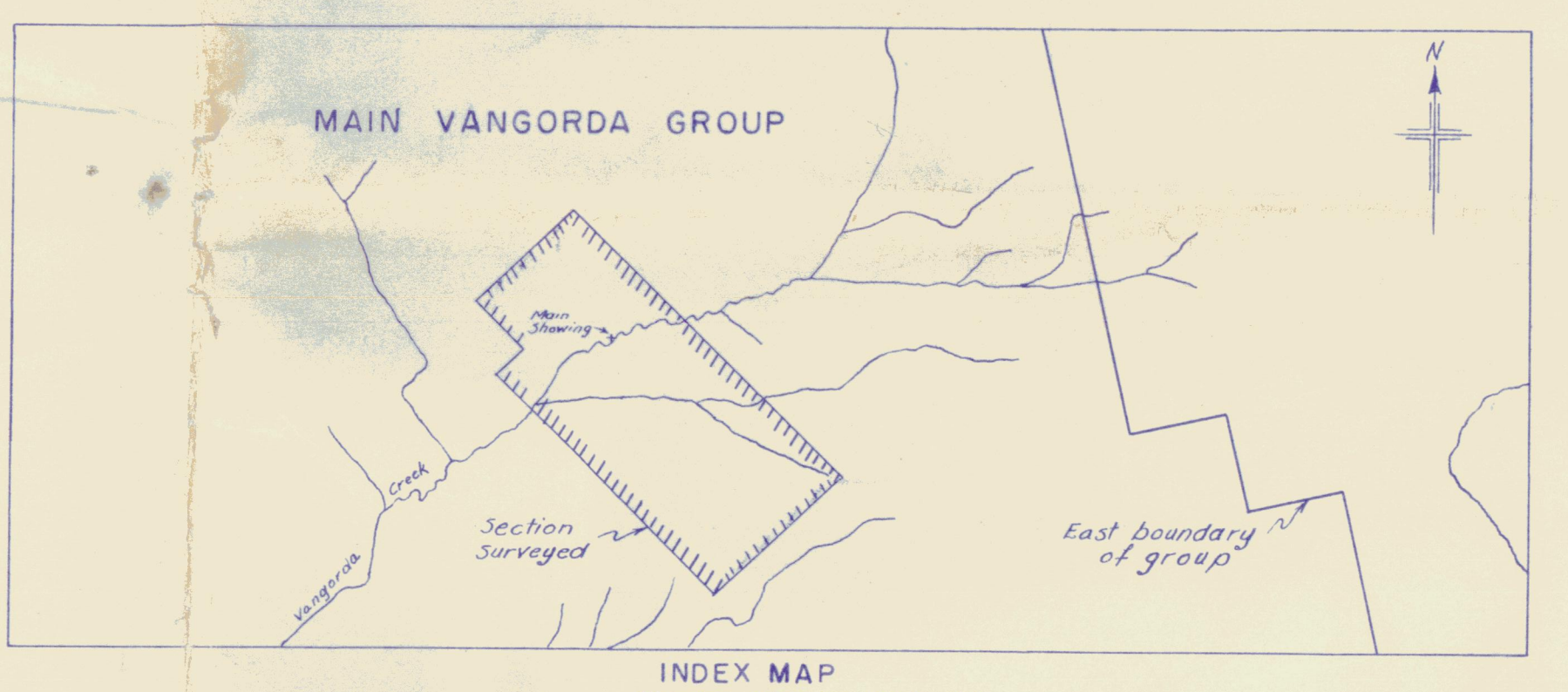
091755



AREA USED IN ORE CALCULATIONS

SYMBOLS

- Anomaly depression
- Anomaly number
- Picket line



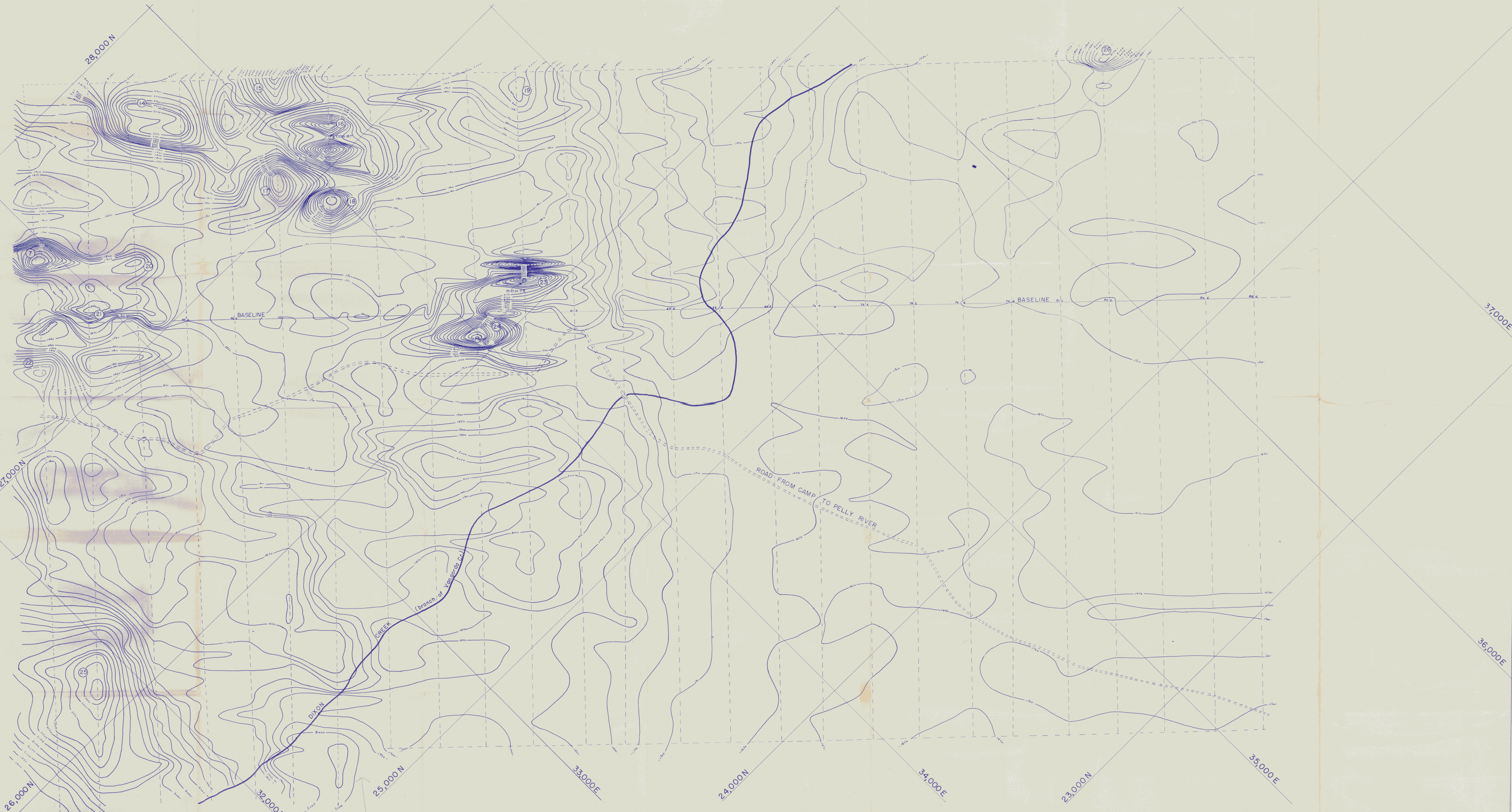
091755
PROSPECTORS AIRWAYS CO. LTD.
VANGORDA CREEK Y.T. CONFIDENTIAL

GEOMAGNETIC MAP
 OF PART OF THE PROPERTY IN THE VICINITY OF
 THE MAIN SHOWINGS
 Scale 1 in. to 100 ft. June 12, 1954
 Magnetometer operator - D.R.S. Doal
 Plotted and contoured by D.R.S. Doal

Askania Instrument No. 89802 Sensitivity: 25.6 gammas per scale division
 Contour Interval: 50 gammas

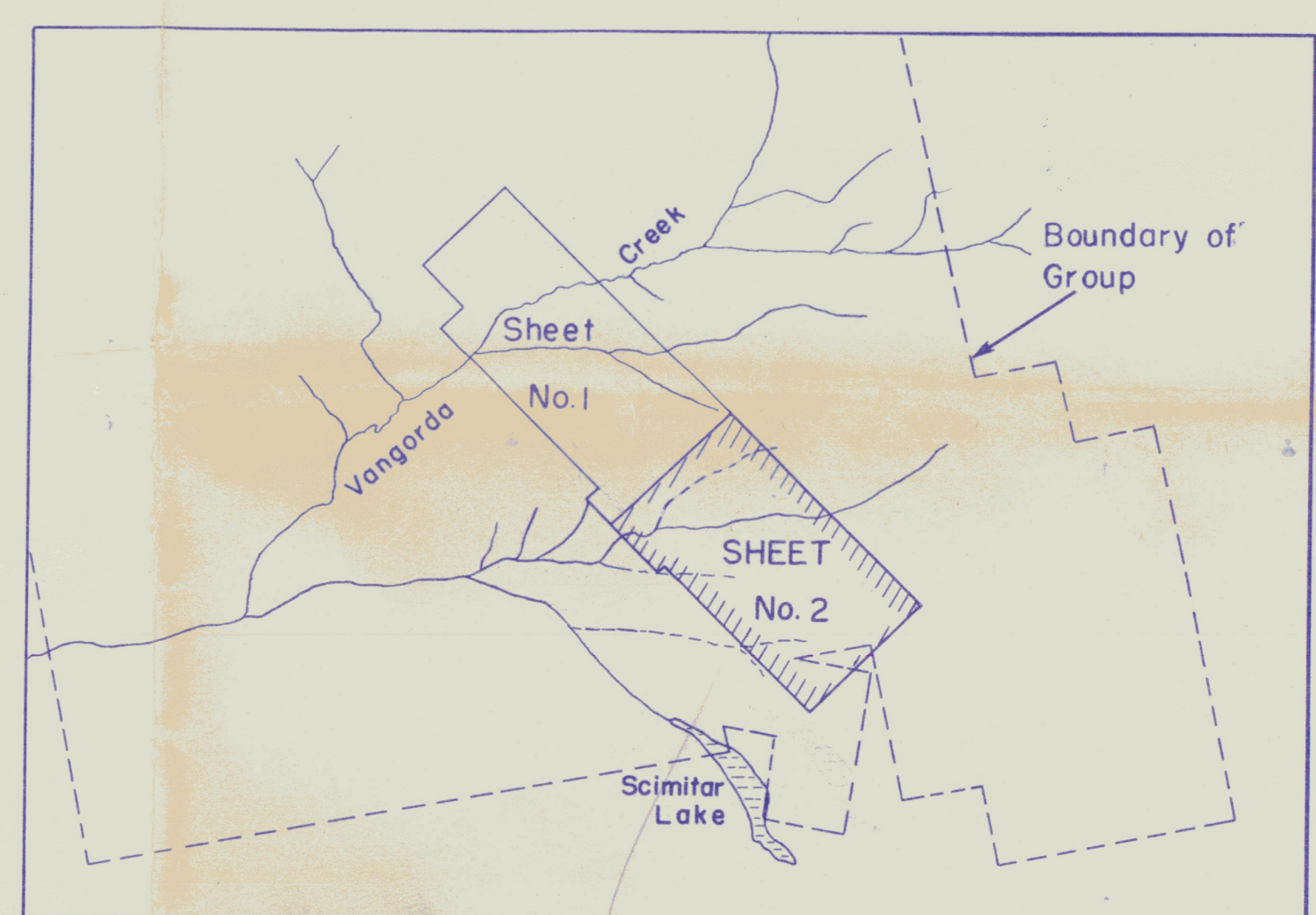


NOTES



LEGEND

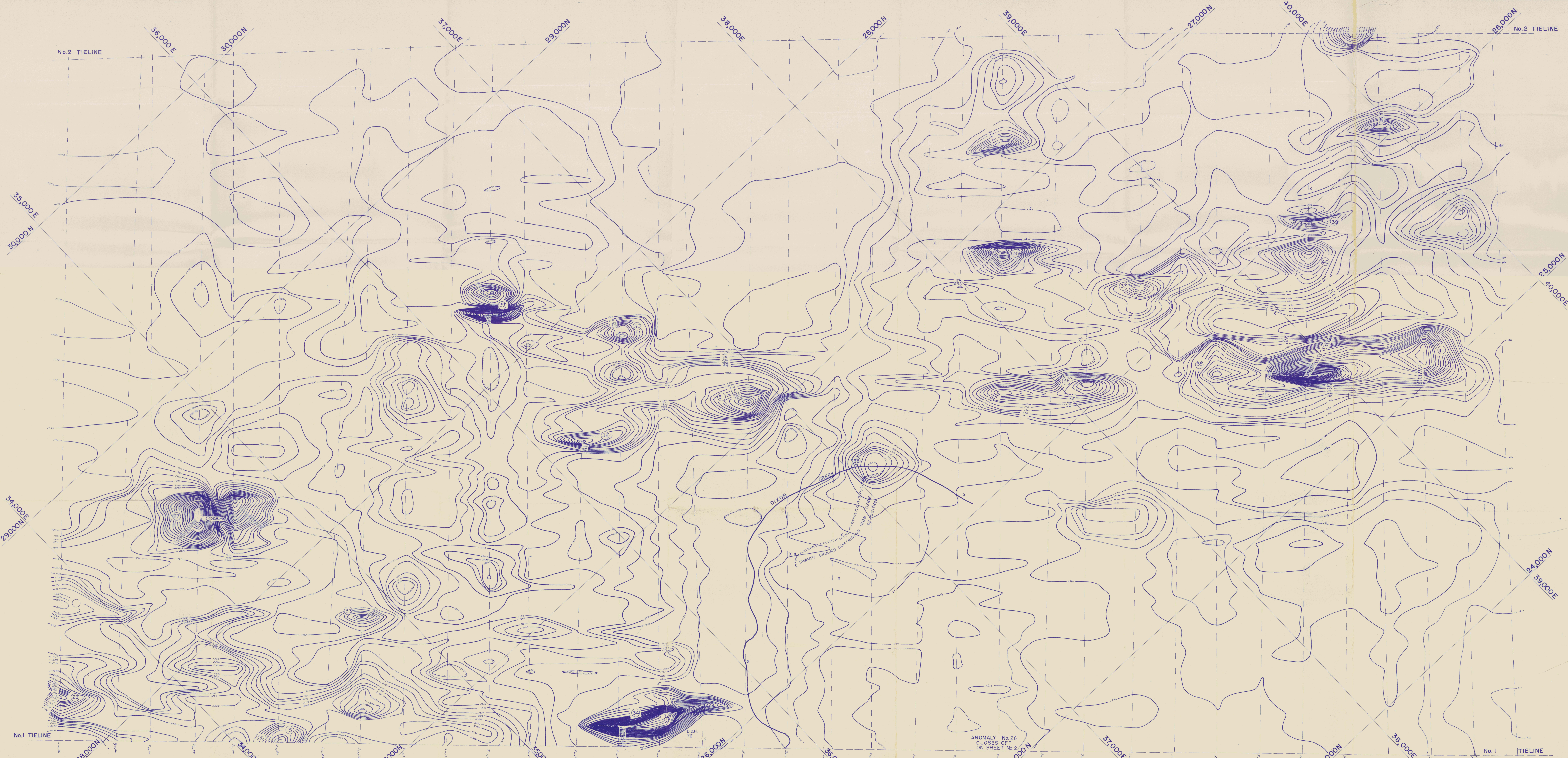
- Isogonic line
- Anomaly depression
- Anomaly number
- Picket line
- Tractor road from Pelly River to camp



INDEX MAP
Scale: 1" to 1/2 mi. 091755

PROSPECTORS AIRWAYS CO. LTD.
VANGORDA CREEK Y.T.
 GEOMAGNETIC MAP
 SHEET No. 2
 ADJOINING SHEET No. 1 ON THE SOUTH-EAST
 Scale: 1 in. to 100 ft. Aug. 1st, 1954
 Magnetometer operator - D.R.S. Doal
 Plotted and contoured by D.R.S. Doal
 Askania Instrument No. 89802 Sensitivity: 25.6 gammas per scale division
 Contour Interval: 50 gammas

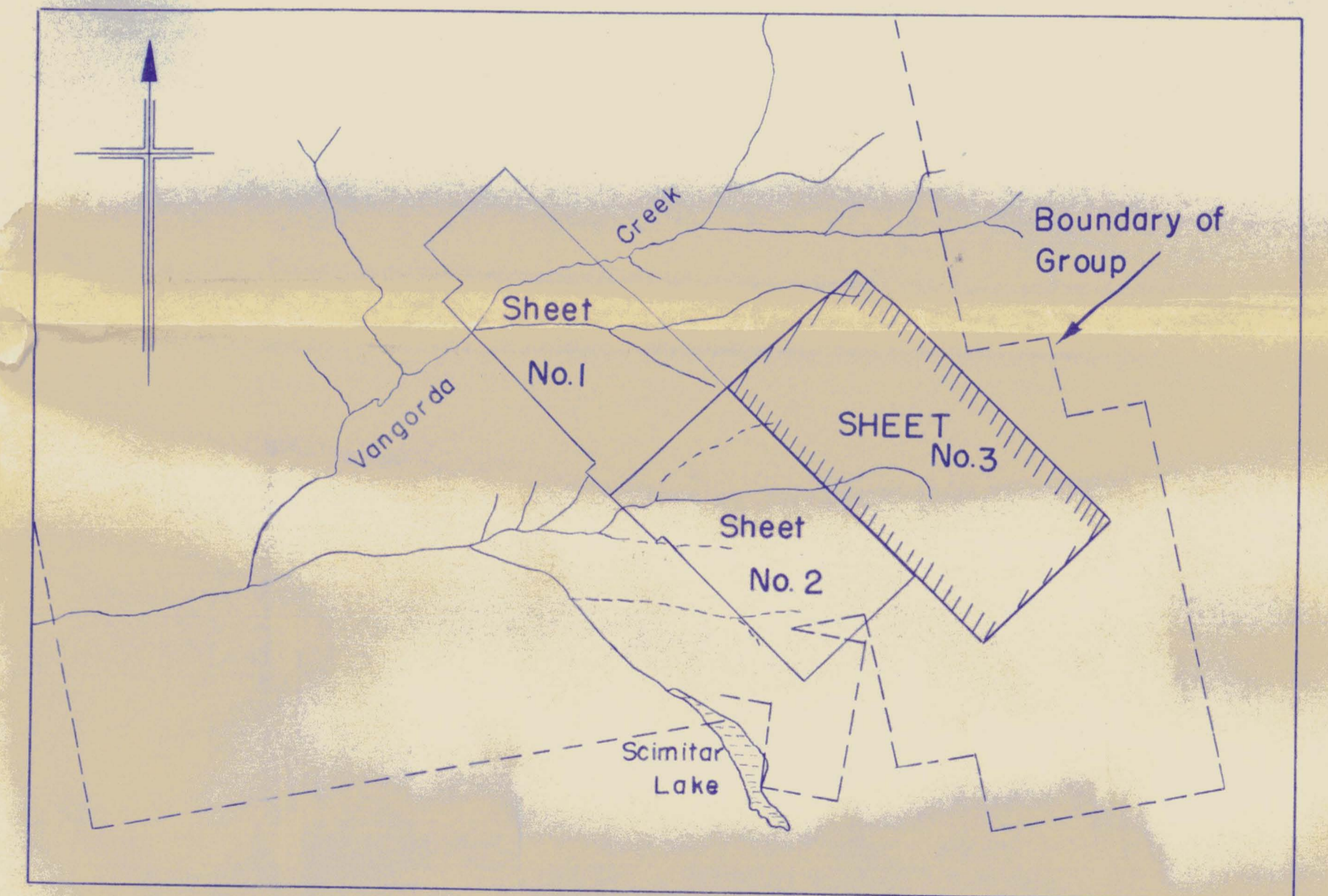
CONFIDENTIAL



NOTES

LEGEND

- Isodynamic contour
- Anomaly depression
- Anomaly number
- Picket line
- Area of iron oxide deposition



PROSPECTORS AIRWAYS CO. LTD.
 VANGORDA CREEK Y.T.

GEOMAGNETIC MAP
 SHEET No. 2

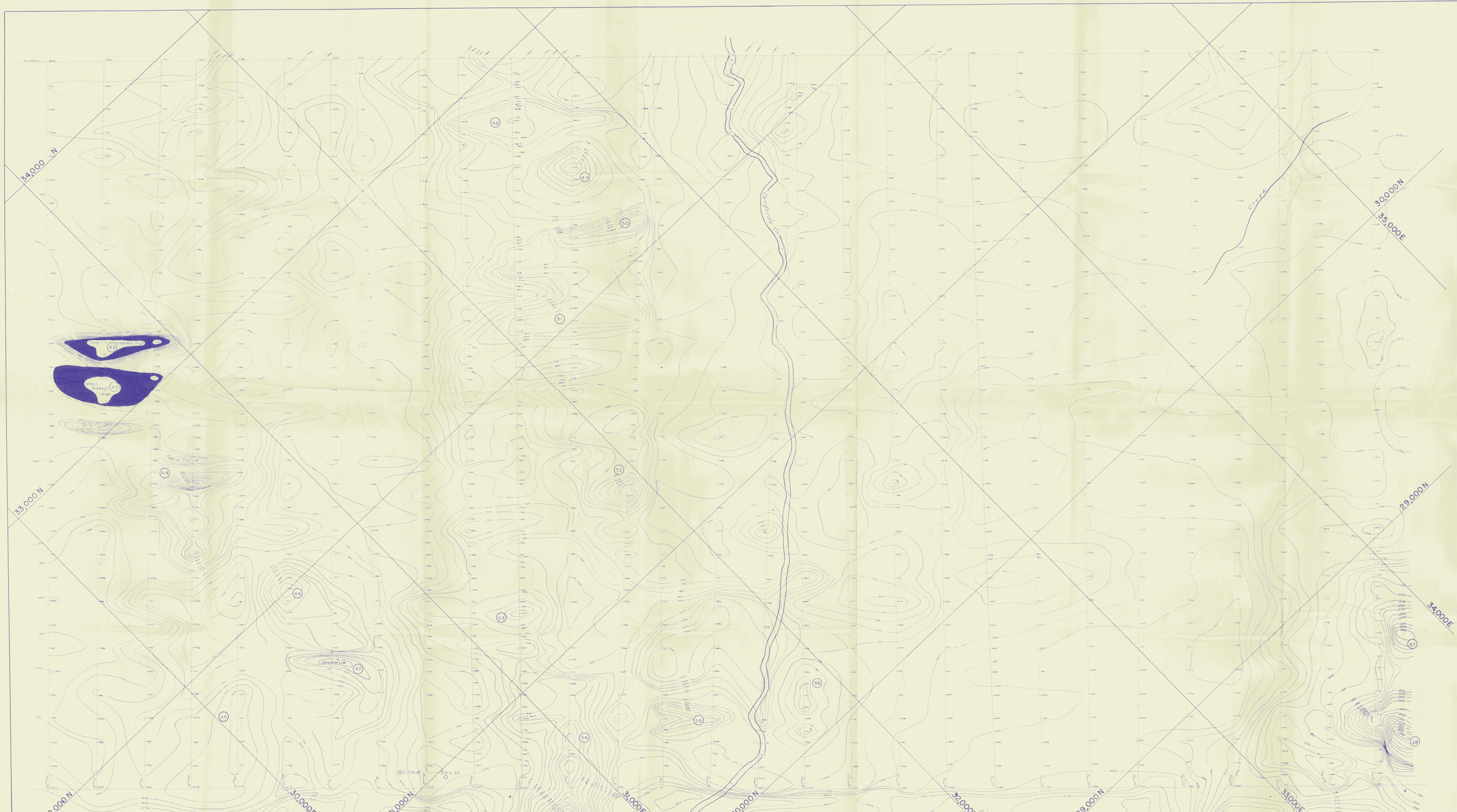
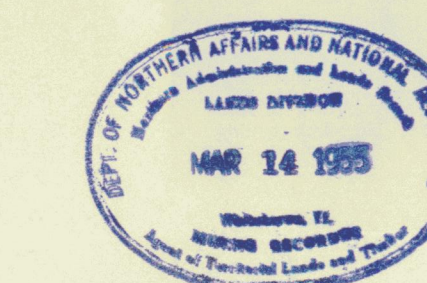
ADJOINING SHEET No. 2 ON THE NORTH - EAST
 Scale 1 in. to 100 ft. Sept. 10, 1954

Magnetometer operator - D. R. S. Doal
 Plotted and contoured by - D. R. S. Doal

091755
 Askania Instrument No. 89802 Sensitivity 2.56 gammas per scale division

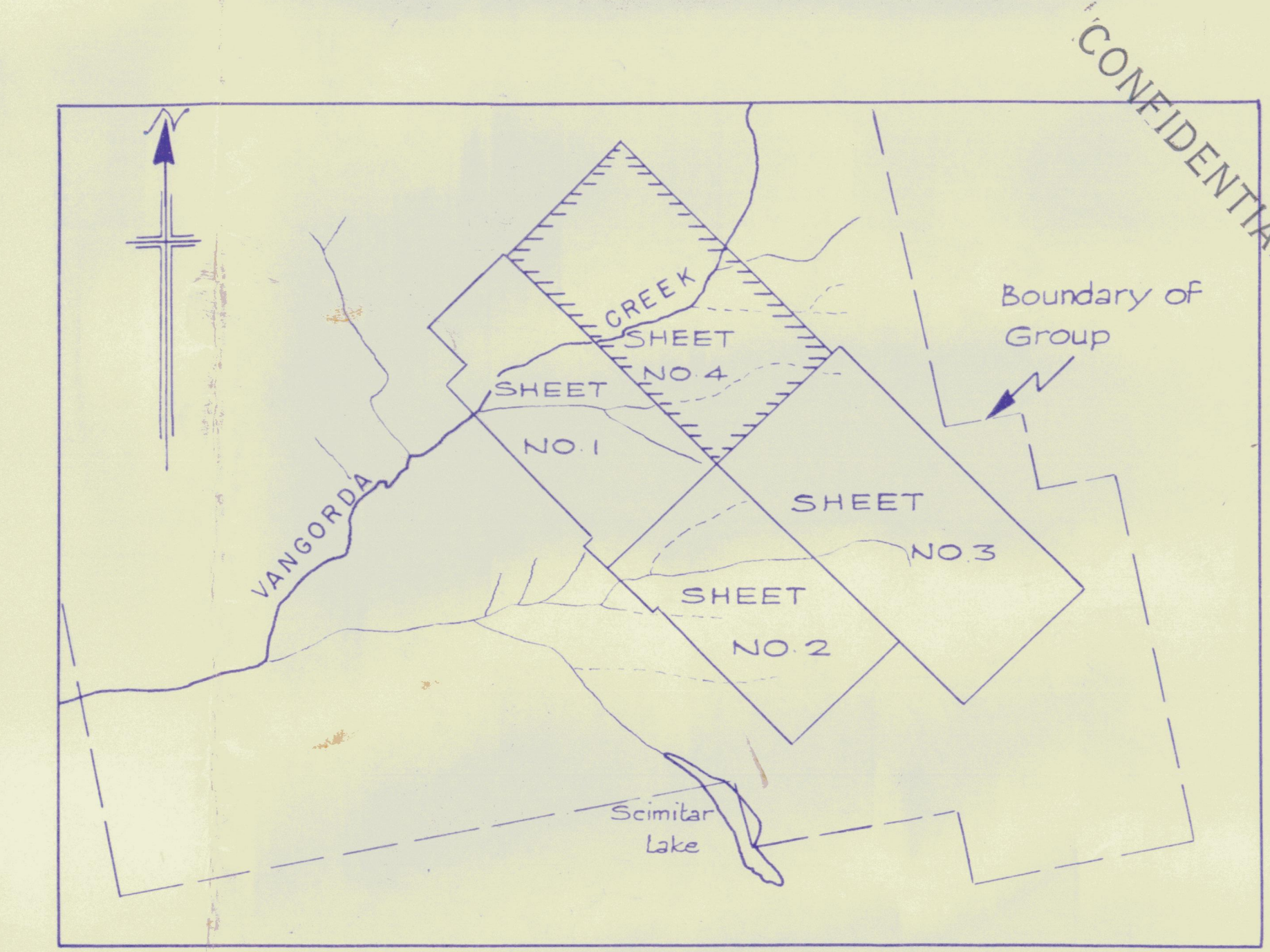
Contour Interval - 50 gammas

CONFIDENTIAL



LEGEND

- Isodynamic contour
- Anomaly depression
- Anomaly number
- Pic.
- Area of iron oxide deposition



PROSPECTORS AIRWAYS CO. LTD.
VANGORDA CREEK, Y.T.

GEOMAGNETIC MAP
SHEET NO. 4

ADJOINING SHEET NO. 1 ON THE NORTH-EAST
Scale: 1" to 100' Sept. Oct. '54

Magnetometer operator - D. E. S. Doal
Plotted and contoured by D. E. S. Doal

Askania Instrument No 89802 Sensitivity 25 G gammas per scale division
Contour Interval: 50 gammas 091755

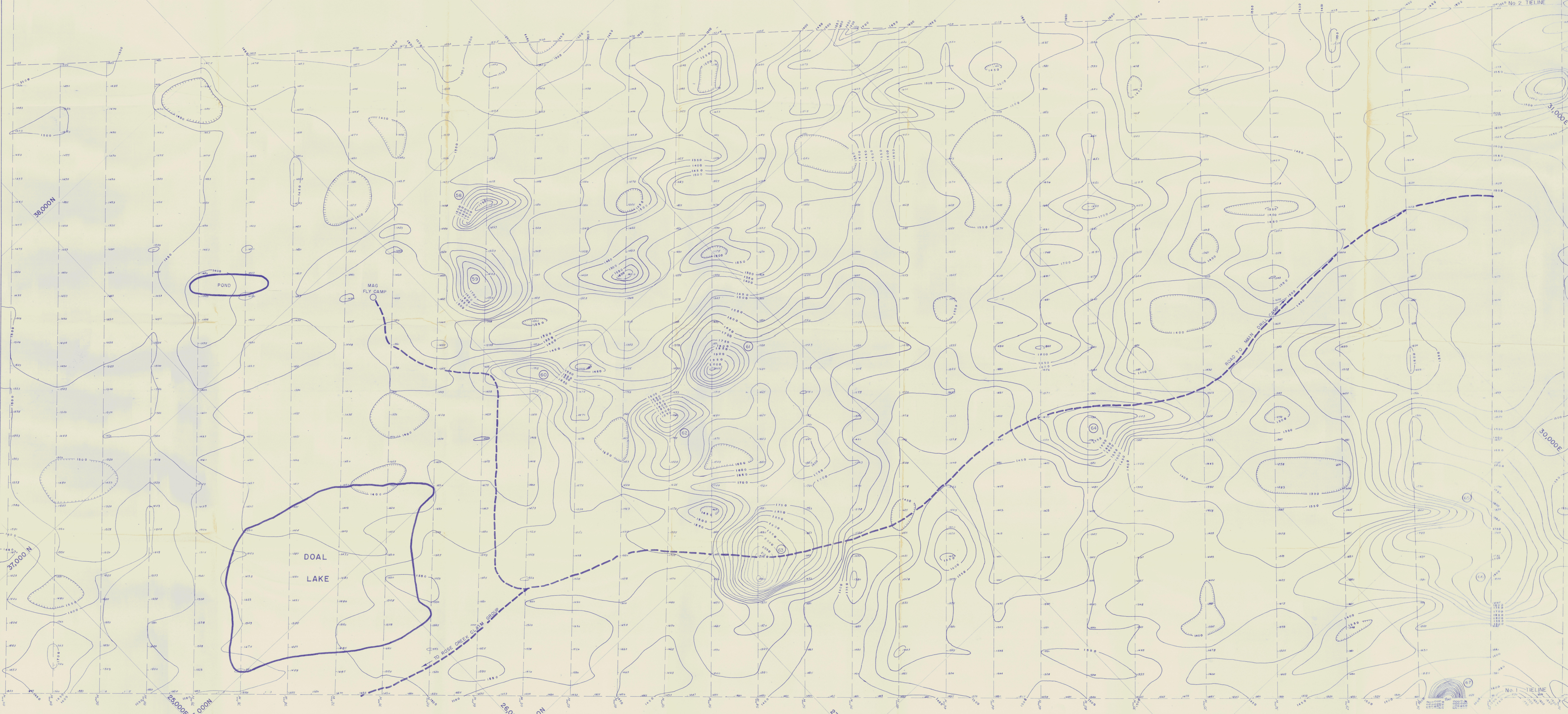
CONFIDENTIAL

CONFIDENTIAL

North Tieline
For Sheet No. 7

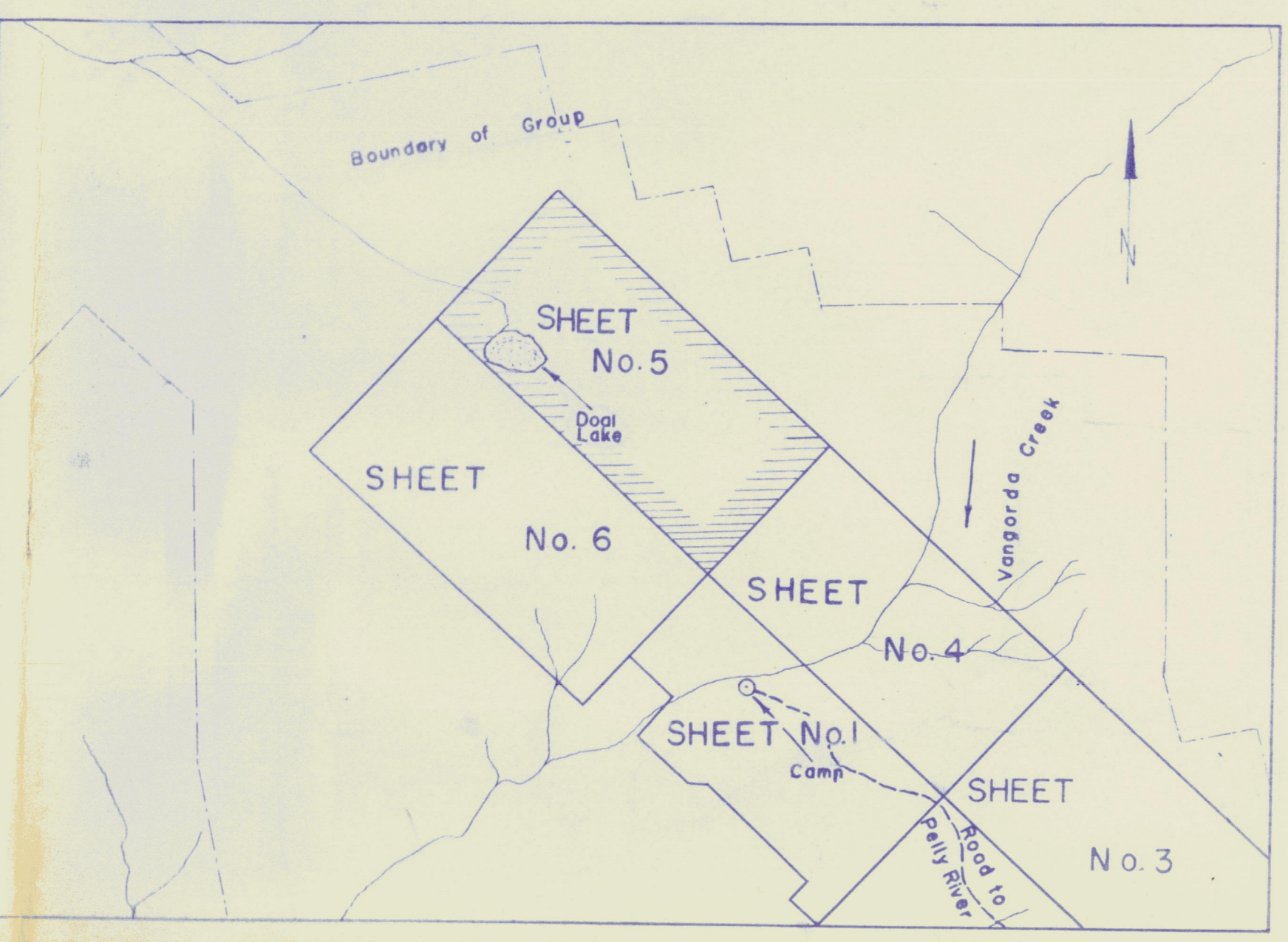
North Tieline
For Sheet No. 4

NOTES



LEGEND

- Isodynamic contour
- Anomaly depression
- Anomaly number
- Picket line
- Area of iron oxide deposition
- Magnetometer reading



INDEX MAP
Scale 1" = 1/2 mi.

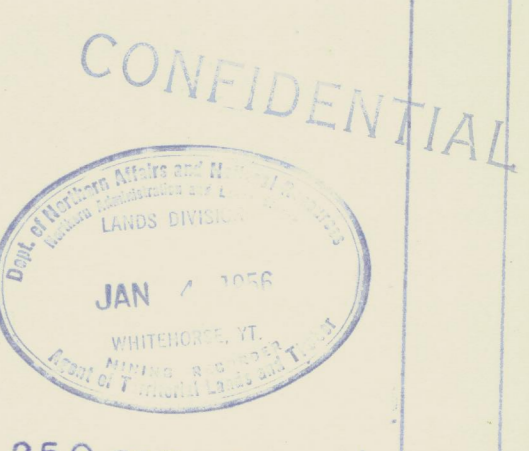
PROSPECTORS AIRWAYS CO. LTD.
VANGORDA CREEK Y. T.

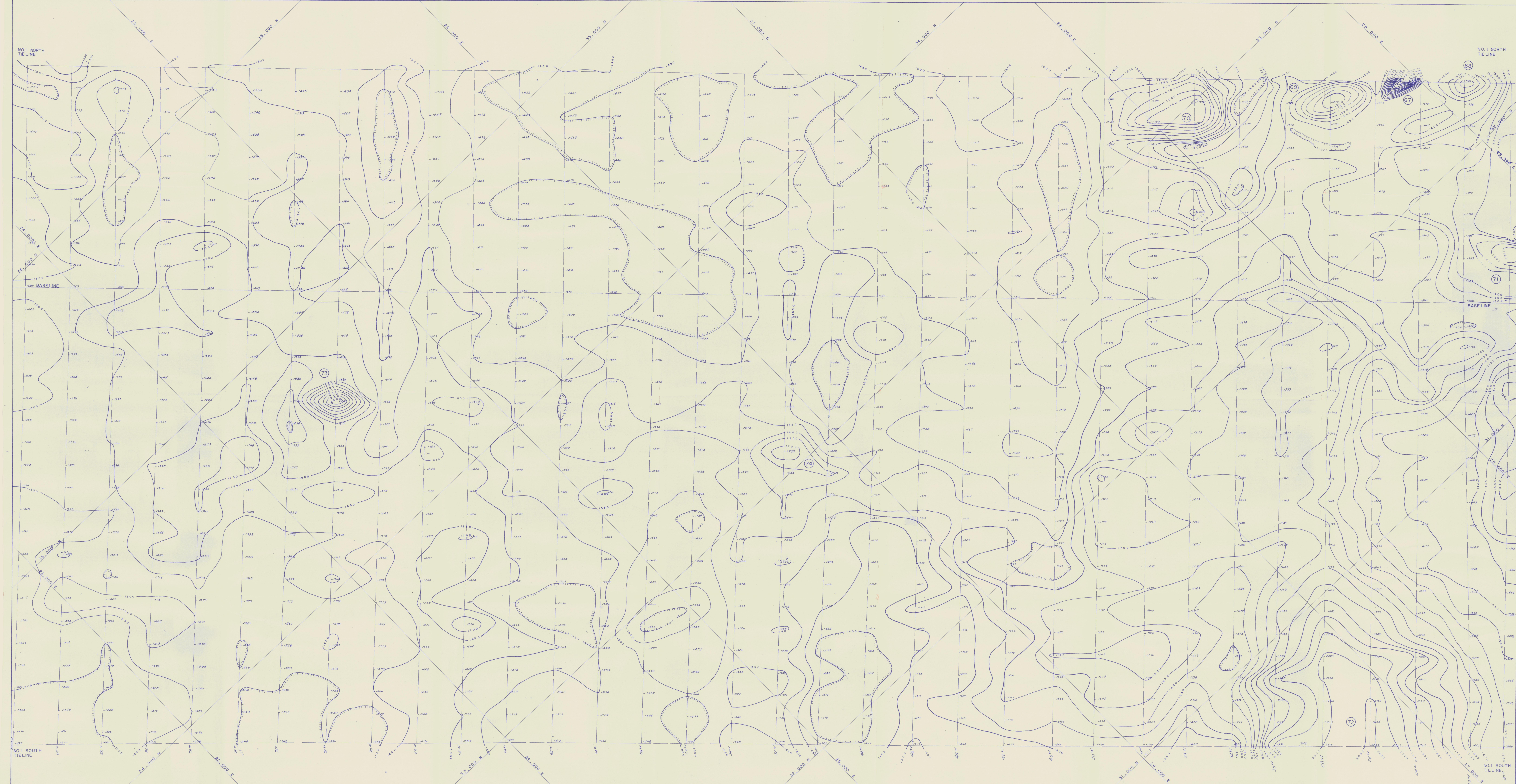
GEOMAGNETIC MAP
SHEET No. 5

Scale 1 in to 100 ft. **091755**
Magnetometer operator - D.R.S. Doal
Plotted and contoured by D.R.S. Doal
Traced by R.W. Baker and G. Novak

Askania Instrument No. 89802 Sensitivity 250 gammas p.p.d.
Contour interval 50 gammas

June 5, 1955
C2235-H

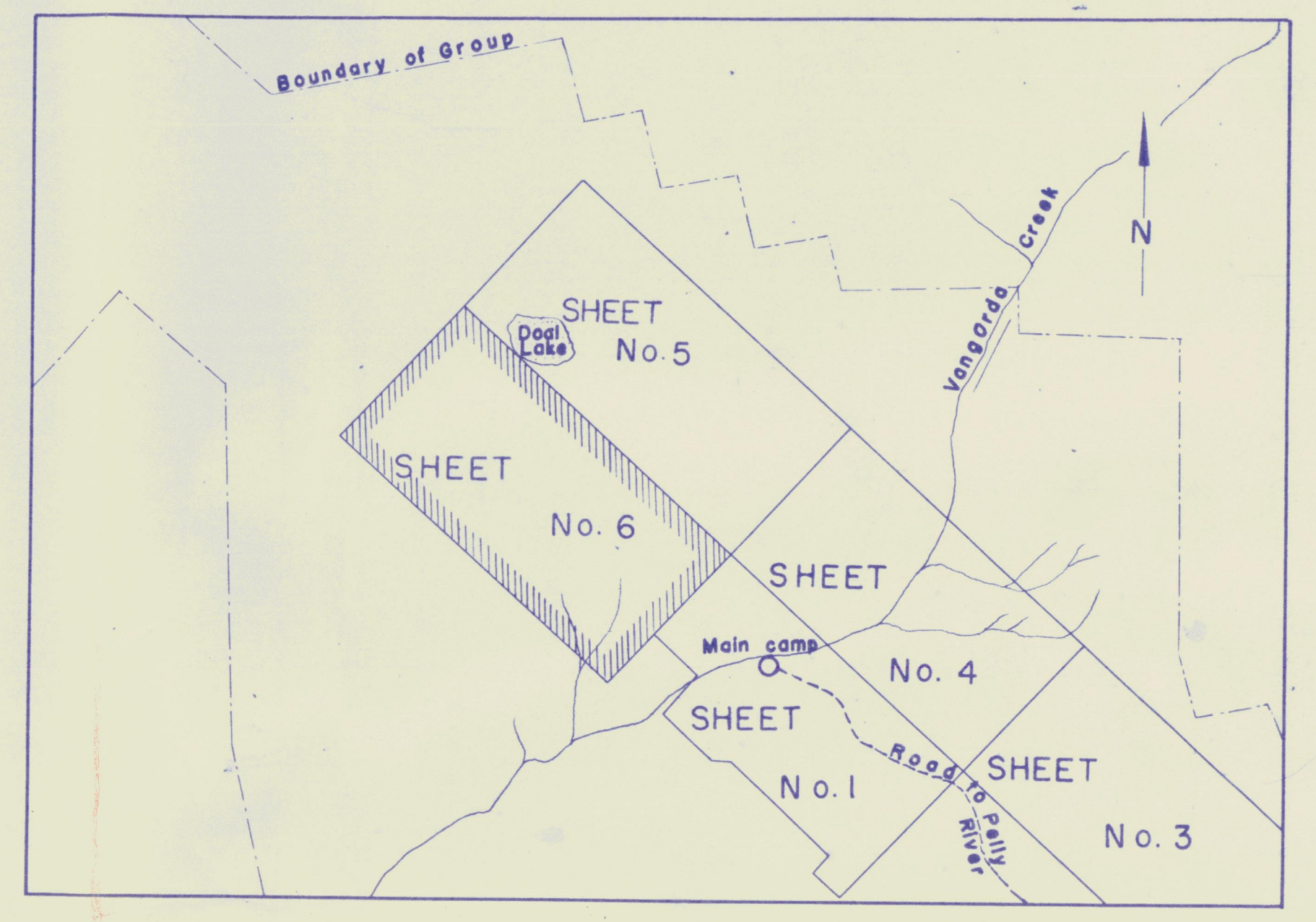




NOTES

LEGEND

- Isodynamic contour 1700
- Anomaly depression
- Anomaly number 72
- Picket line
- Magnetometer reading 1453



PROSPECTORS AIRWAYS CO. LTD.
VANGORDA CREEK Y. T.

GEOMAGNETIC MAP
 SHEET No. 6

Scale: 1 in. to 100 ft. **001755**
 Magnetometer operator - D.R.S. Doal
 Plotted and contoured by D.R.S. Doal
 Traced by R.W. Baker and G. Novak

Askania Instrument No. 89802 Sensitivity: 250 gammas ps.d.
 Contour Interval: 50 gammas

Jan 4 1958
 July 6, 1955

C 2235-H



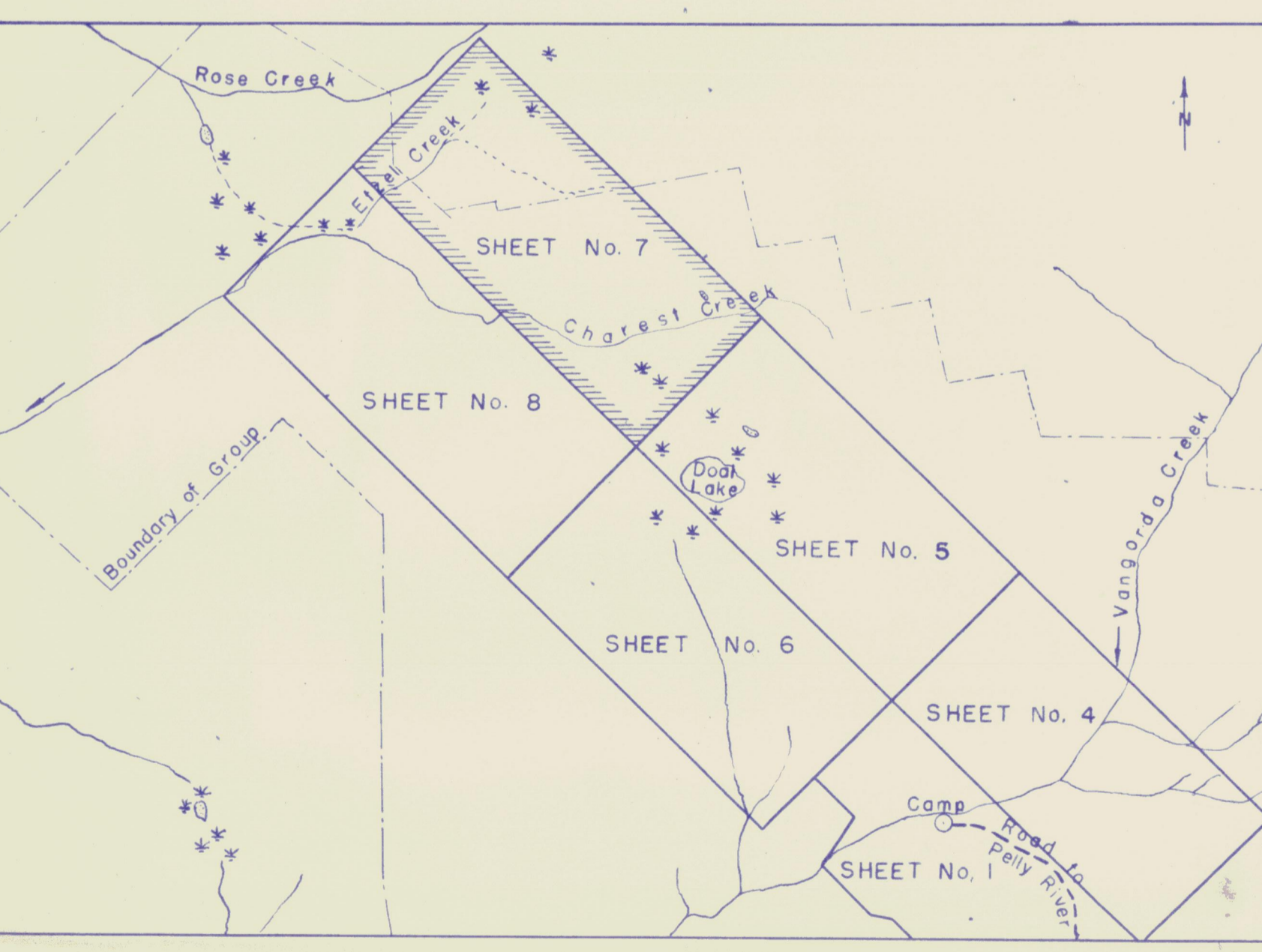
LEGEND

SYMBOLS

- Isodynamic contour 1750
- Anomaly depression
- Anomaly number 70
- Picket line
- Magnetometer reading (gammas) 1423

GEOLOGY (at northwest end, for purposes of establishing the edge of the granite).

- Granite and allied granodiorite



INDEX MAP
Scale: 1" to 1/2 mi

PROSPECTORS AIRWAYS CO. LTD.
VANGORDA CREEK Y. T.

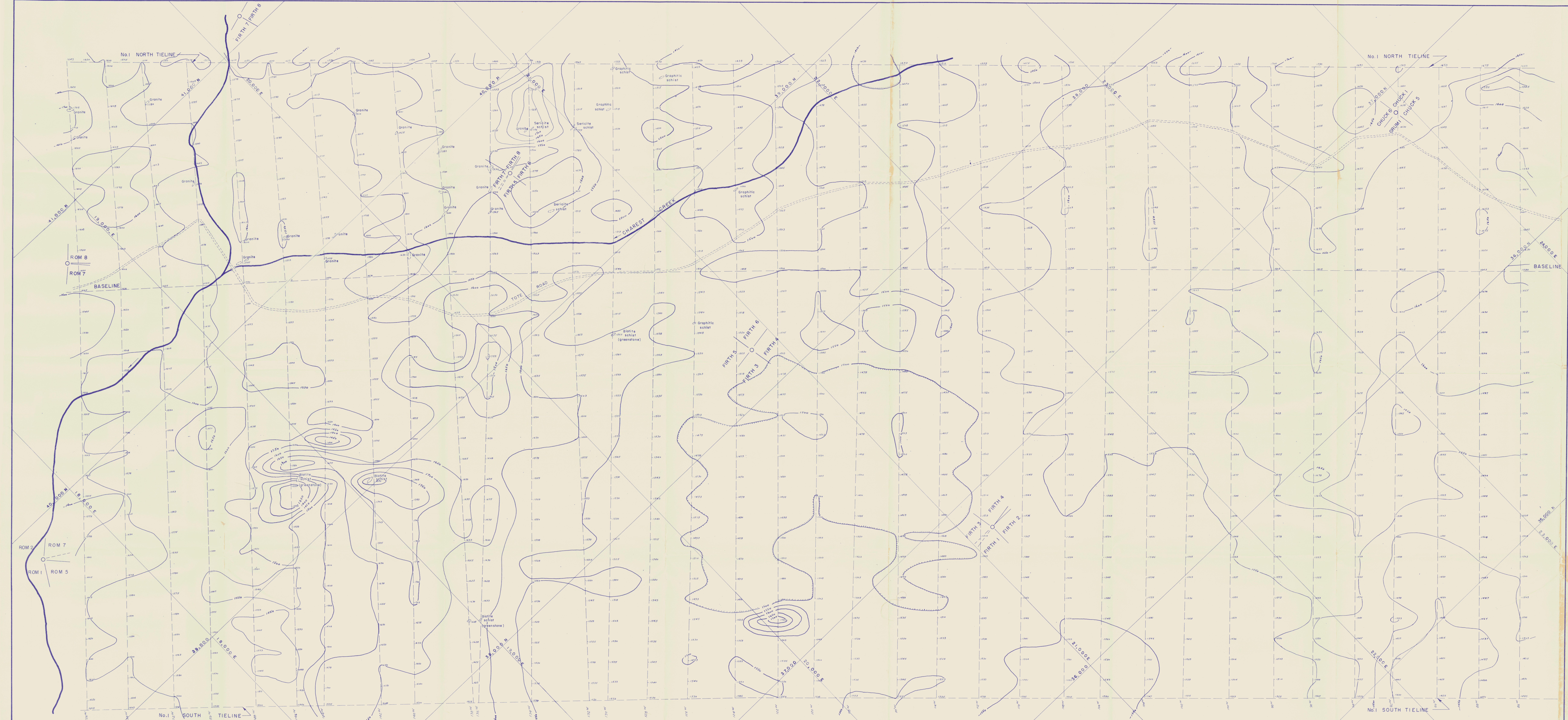
GEOMAGNETIC MAP
SHEET No. 7

Scale: 1 in. to 100 ft **091755**
Magnetometer operator - D.R.S. Doal
Plotted and contoured by D.R.S. Doal
Traced by R.W. Baker and G. Novak

Askania instrument No. 89802 Sensitivity 25 gammas p.s.d.
Contour interval 50 gammas July 21, 1955

CONFIDENTIAL

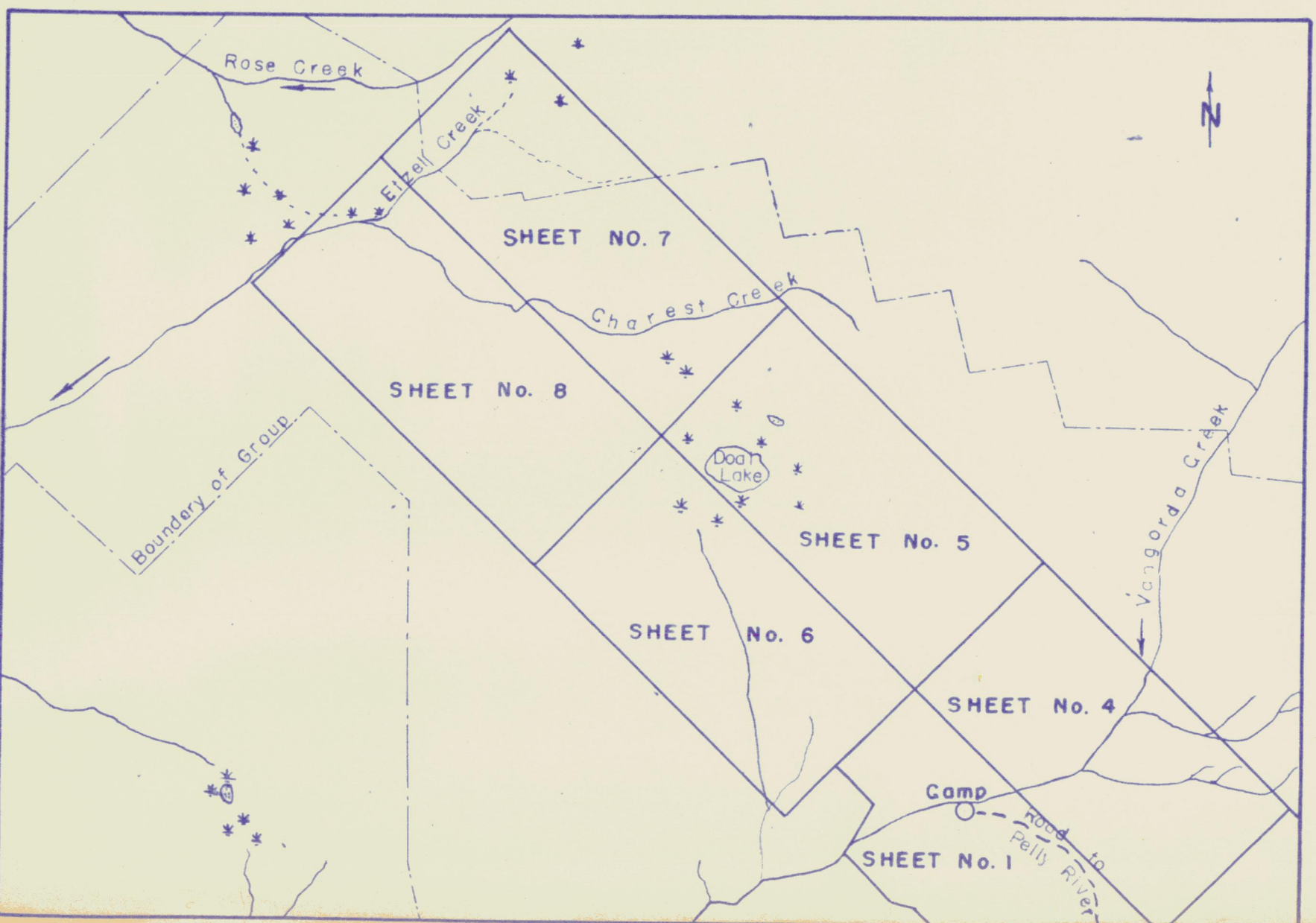
C 2235-H



NOTES

LEGEND

- SYMBOLS
- Isodynamic contour
- Anomaly depression
- Anomaly number
- Picket line
- Magnetometer reading (gammas)



INDEX MAP
Scale: 1" to 1/2 mile

PROSPECTORS AIRWAYS CO. LTD.
VANGORDA CREEK Y. T.

GEOMAGNETIC MAP
SHEET No. 8

Scale: 1 in. to 100ft. **091755**

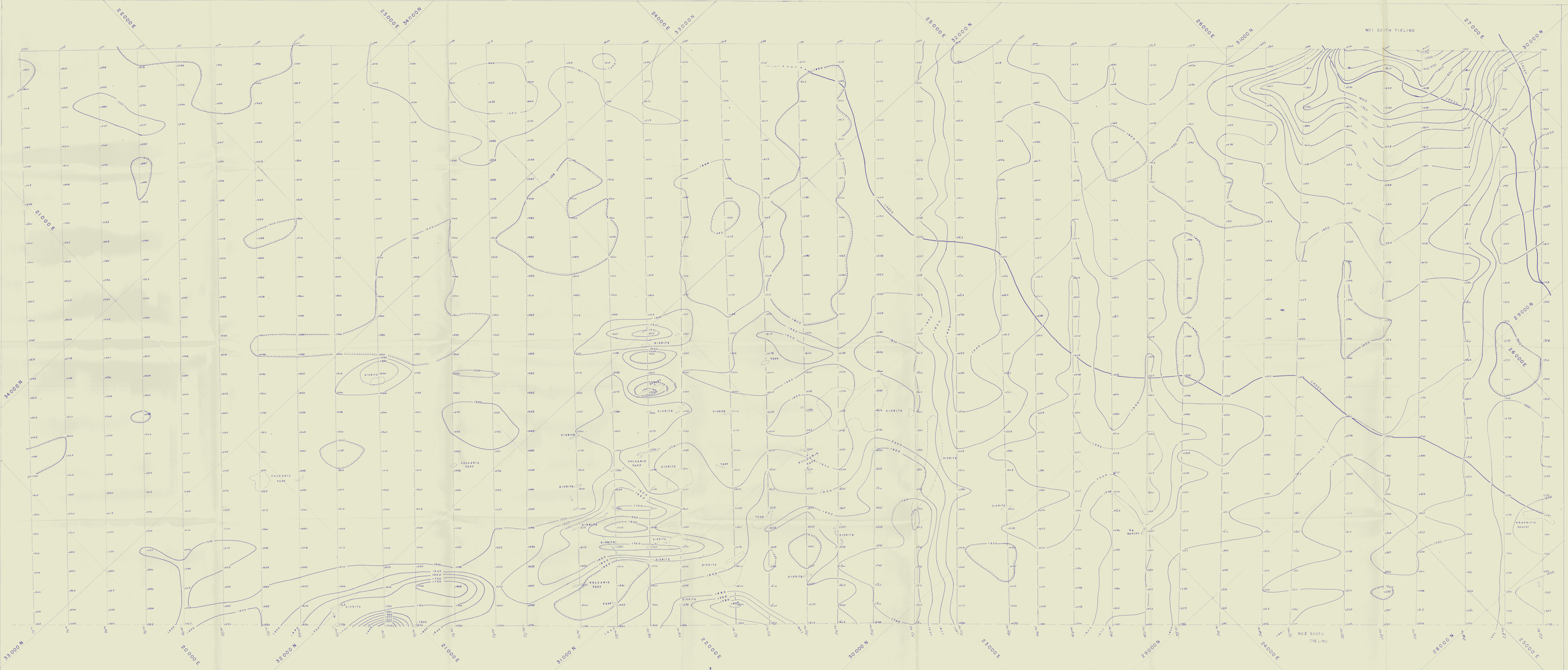
Magnetometer operator - D.R.S. Doal
Plotted and contoured by D.R.S. Doal
Traced by R.W. Baker and G. Navak

Askania Instrument No. 89802 Sensitivity 25 gammas psd

Contour interval: 50 gammas

CONFIDENTIAL

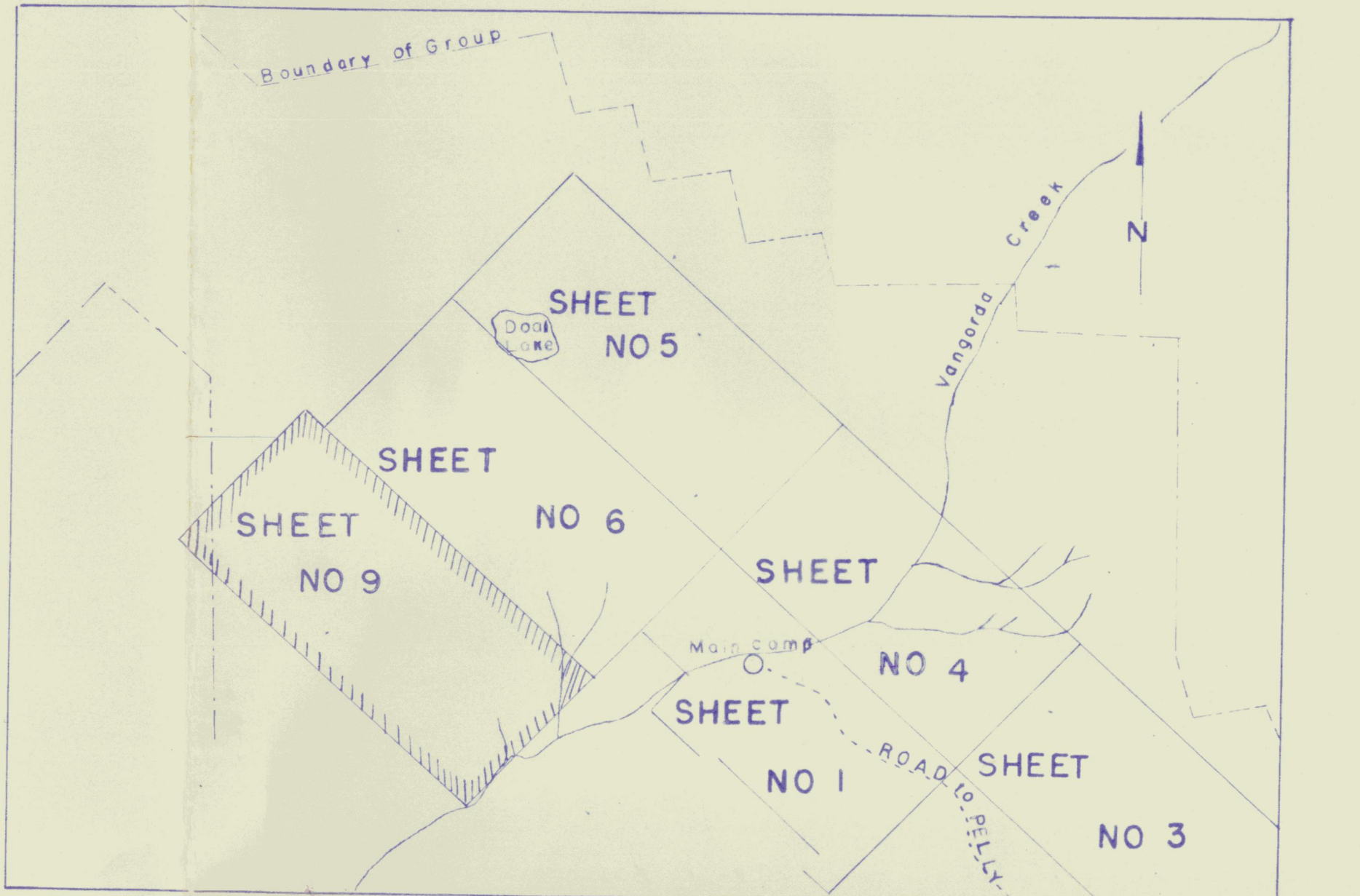
02235-H



NOTES

LEGEND

- iso dynamic contour
- Anomaly depression
- Anomaly number
- Picket line
- Magnetometer reading



PROSPECTORS AIRWAYS CO. LTD.
VANGORDA CREEK Y. T.
 GEOMAGNETIC MAP
 SHEET No 9
 Scale: 1 in. to 100 ft. 091755
 Magnetometer operator D.R.S. Deal
 Plotted and contoured by R.S. Deal
 Askania Instrument No. 89802 Sensitivity 2.50 gammas p.d.
 Contour Interval 50 gammas
 sept 15, 1955
 C2235-H

CONFIDENTIAL



LEGEND

- Isogonic line
- Anomaly depression
- Anomaly number 001735
- Picket line

INDEX MAP
Scale 1" to 1/2 mi

PROSPECTORS AIRWAYS CO. LTD
VANGORDA CREEK Y.T.
GEOMAGNETIC MAP
SHEET No 10

SCALE 1 in to 100 ft
Magnetometer operator: D.R.S. Dool
Plotted and Contoured by D.R.S. Dool

ASKANI Instrument No. 69802 Sensitivity 25.0 gammas per scale division
Contour interval 50 gammas

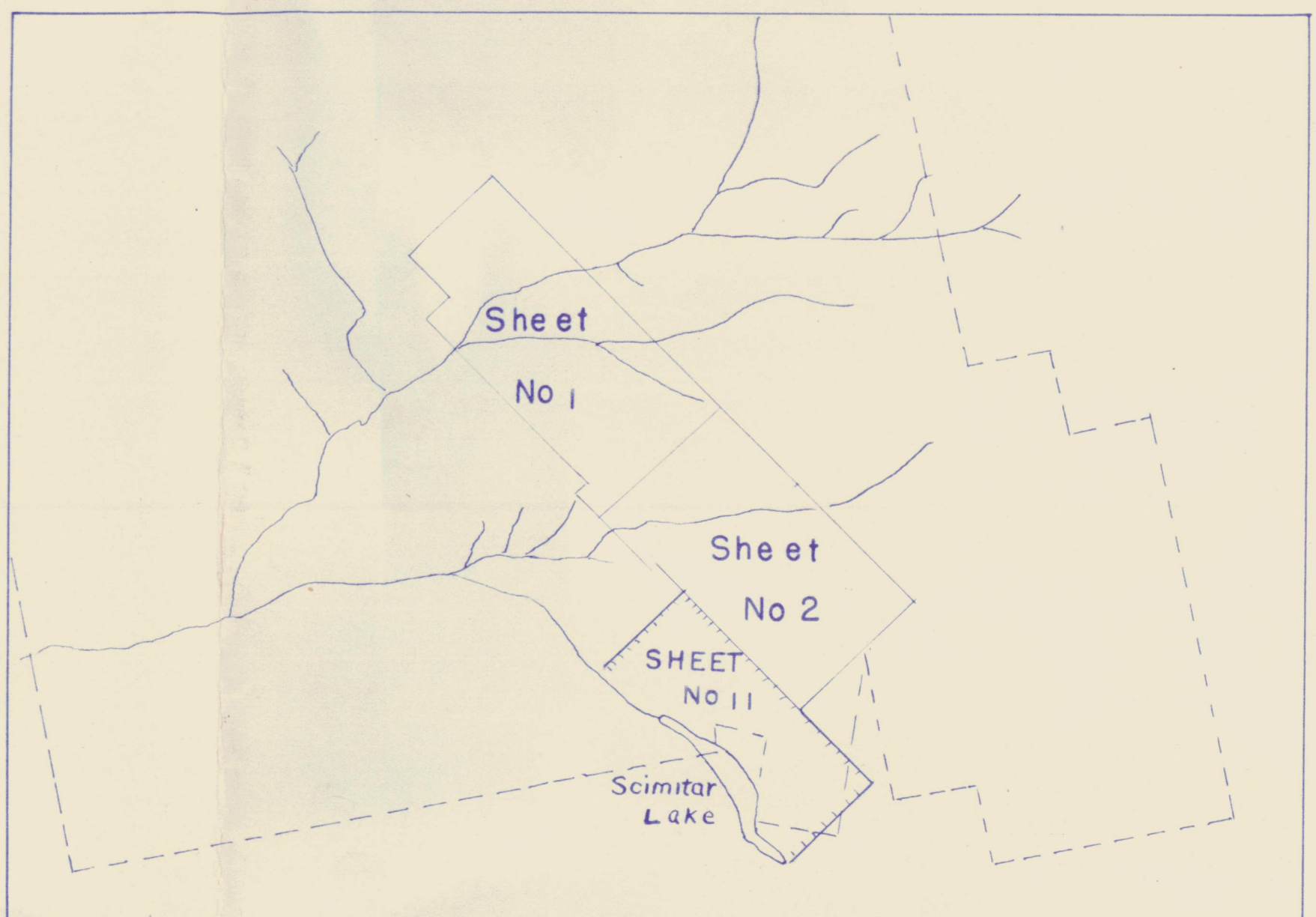
OCT. 1st, 1955

02235-H



LEGEND

- isodynamic line
- Anomaly depression
- Anomaly number
- Picket line
- Tractor road



PROSPECTORS AIRWAYS CO. LTD.
VANGORDA CREEK Y.T.

GEOMAGNETIC MAP
SHEET No 1

Scale: 1" to 100 ft. **091755**
Magnetometer Operator D.R.S. DOAL
Plotted and contoured by D.R.S. DOAL

ASKANIA Instrument No. 89802 sensitivity 250 gammas per scale division
Contour Interval 50 gammas

CONFIDENTIAL

JAN 4 1958

02235-H