

MAP No.

115 I 6

ASSESSMENT REPORT
PROSPECTUS
CONFIDENTIAL
OPEN FILE

DOCUMENT NO.: 091742
MINING DISTRICT: WHITEHORSE
TYPE OF WORK: GEOPHYSICAL, GEOCHEMICAL

REPORT FILED UNDER: NORANDA EXPLORATION CO. LTD.

DATE PERFORMED: July 16,22/Oct. 8-15/86 DATE FILED: September 11, 1987

LOCATION	LAT.	62°18'N	AREA:	MT. FREEGOLD
	LONG.	137°11'W		

CLAIM NAME & NO.	ELEPHANT	1-14	YA86794-807
	ELEPHANT	15-20	YA96413-418

VALUE \$	8,000.00
WORK DONE BY:	C.J.R. Hart
WORK DONE FOR:	NORANDA EXPLORATION COMPANY, LTD.
DATE TO GOOD STANDING	

REMARKS: ~~#87~~
~~#86~~ PINESOL

GEOPHYSICAL & GEOCHEMICAL REPORT

on the

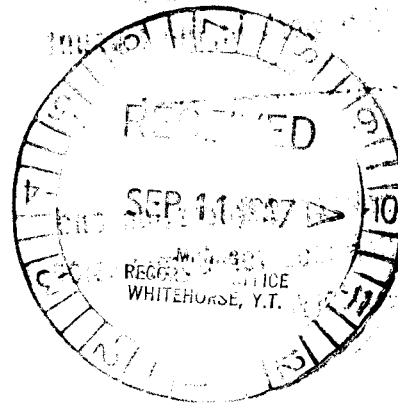
ELEPHANT 1-20 CLAIMS

Whitehorse Mining District

N.T.S. 115°1/6

Latitude 62°18' N

Longitude 137°11' W



Craig J.R. Hart

June. 1987

09 17 42

This report has been examined by
the Geological Evaluation Unit
under Section 53 (4) Yukon Quartz
Mining Act and is allowed as
representation work in the amount
of \$ 8000.00 .

for *RBGmond*
Regional Manager, Exploration and
Geological Services for Commissioner
of Yukon Territory.

2 3 5 1 0 0

TABLE OF CONTENTS

SUMMARY		Page
CHAPTER ONE:	INTRODUCTION	
1-1:	Introductory Statement	1
1-2:	Location & Access	2
1-3:	Physiography & Vegetation	2
1-4:	History	5
1-5:	Work Program	7
CHAPTER TWO:	GEOLOGY	
2-1:	Regional Geology	8
2-2:	Property Geology & Mineralization	9
2-3:	Placer Gold	10
CHAPTER THREE:	GEOCHEMISTRY	
3-1:	Soil Geochemistry	13
3-2:	Rock Geochemistry	14
CHAPTER FOUR:	GEOPHYSICS	15
CHAPTER FIVE:	CONCLUSIONS AND RECOMMENDATIONS	17
	Statement of Qualifications	
	Statement of Costs	
	Bibliography	

LIST OF TABLES

Table 1: Table of Formation	11
-----------------------------	----

LIST OF FIGURES

FIGURE 1: Location Map	3
FIGURE 2: Claim Map	4
FIGURE 3: Soil Geochem Results (Sht.1) (Cu, Zn, Pb)	in pocket
FIGURE 4: Soil Geochem Results (Sht.1) (Ag, As, Au)	in pocket
FIGURE 5: Soil Geochem Results (Sht.2) (Cu, Zn, Pb)	in pocket
FIGURE 6: Soil Geochem Results (Sht.2) (Ag, As, Au)	in pocket
FIGURE 7: Magnetometer Survey	in pocket
FIGURE 8: VLF Survey (Maine)	in pocket
FIGURE 9: VLF Survey (Hawaii)	in pocket
FIGURE 10: Grid Map (Recce Geochem & Geophysical)	in pocket

LIST OF APPENDICES

APPENDIX 1: Soil Sample Geochemical Results

CHAPTER ONE: INTRODUCTION1-1: INTRODUCTORY STATEMENT

The ELEPHANT 1 - 20 claims are located on the west flank of Mt. Freegold in the unglaciated Dawson Range of the Yukon Territory.

The ELEPHANT 1 - 14 were initially staked to cover the ground surrounding a placer operation on Guder Creek by the placer operator. Increased activity and competition in the Mt. Freegold area led Noranda to realize the potential of such claims.

Preliminary investigations encouraged the optioning of the claims and the staking of the ELEPHANT 15 - 20. Once an option agreement had been reached, a program of grid soil sampling and magnetometer and VLF surveys were undertaken.

Results are encouraging and additional work is planned.

The property shows potential to host gold in either an epithermal or magnetite skarn setting.

1-2: LOCATION AND ACCESS

The claims are located on map - sheet 115I/6 at a latitude of 62 18' N and a longitude of 137 11' W. The nearest community is Carmacks, located 53 air kilometers to the south - east. A good 2 WD road connects Carmacks to the Mt. Freegold area. Its distance is approximately 80 km. From Guder Junction a one kilometer 4 WD road to the claims is accessible once fording Seymore Creek.

The ELEPHANT 15 - 18 claims are accessed by crossing the Bow Creek bridge and traveling north along a road for approximately 1 km.

1-3: PHYSIOGRAPHY AND VEGETATION

The local relief of the claims is 1200' with the lowest point in Seymore Creek at 2300'. Guder Creek forms a nearly straight "V"-shaped valley with a moderate gradient. The north - facing slope is covered with thick moss and sparse stands of stunted black spruce. The slopes are typically in permafrost all season and have poor, if any, soil development.

South - facing slopes are dry and well - forested with only moderate underbrush. Soil development is good, with depth to bedrock increasing from a few centimetres to two metres further downslope. Permafrost is sporadic.

Outcrops are rare and exist only on the south - facing slopes, in road cut and placer pits.

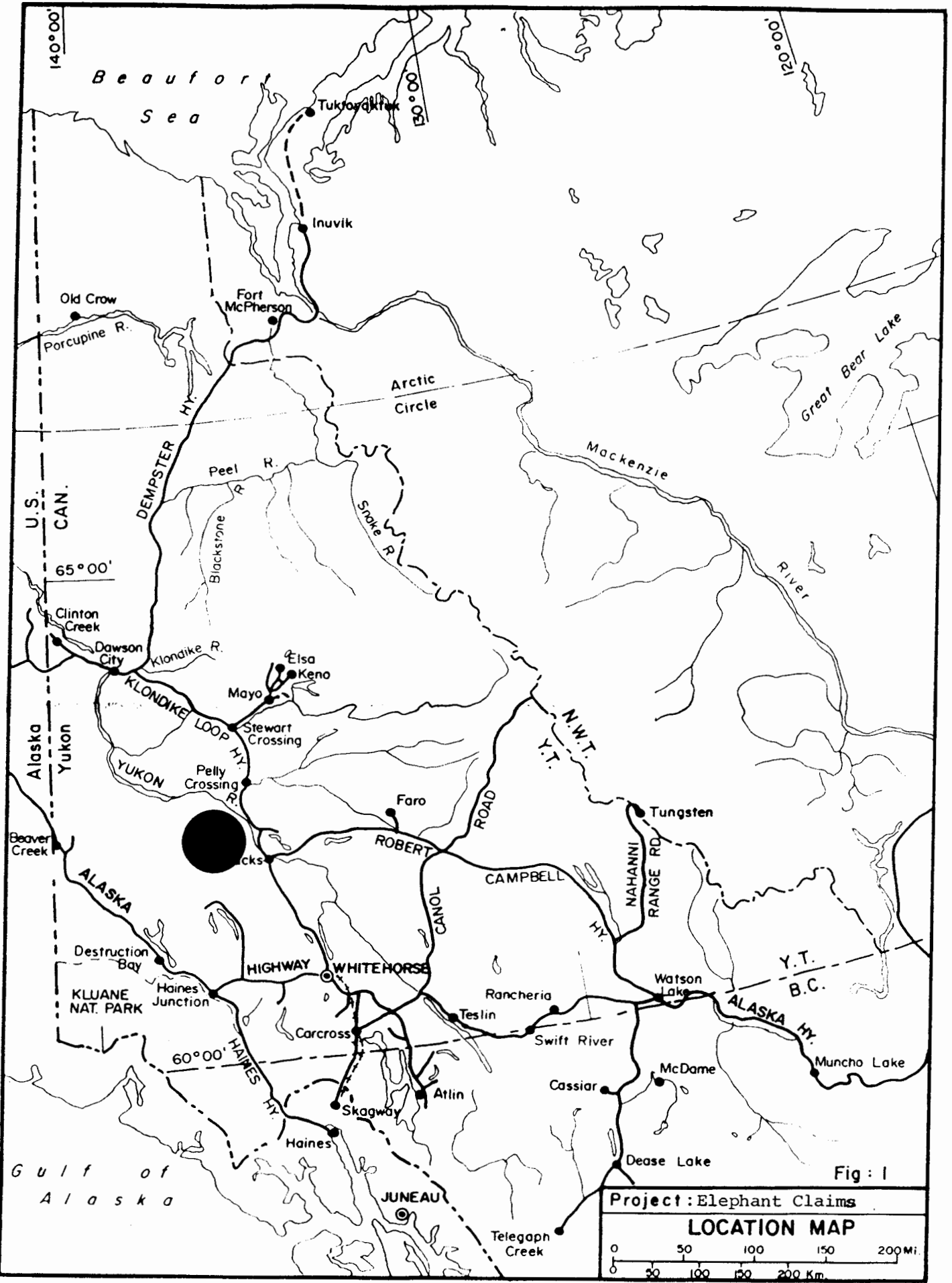


Fig: 1

VAN CAL 1192

1-4: HISTORY

The area has been prospected with varying intensity since F.F. Guder found free gold in magnetite boulders in the Augusta showing in 1930. Considerable activity took place in the area during the mid - late 1930's, just after the second World War and again in the 1960's. The copper - moly rush of early 1970's and the increased price of gold in 1980 were responsible for the two most recent booms in activity. Since a drastic drop in activity in 1982, there has been increasing interest, activity and surface work afforded to the Mt. Freegold / Revenue area.

Although no known showings exist on the claims, "During the winter (of 1936) a discovery was made at the extreme west end of Freegold Mountain near the mouth of Guder Creek and an assay of \$31.00 in gold (gold at \$35.00 /ounce) is reported, (Bostock, 1936).

The location of this find has never been documented unless it refers to what is now The Stoddart showing which is now covered by the RAG claims. Alternatively, it may be located in an area above the placer camp where two old trenches were found.

The ELEPHANT 1 - 14 claims were staked on 22 May 1985 by Larry Lebidott then transferred to the placer operator, Gary C. Lee on 05 June 1985. The claims are in good standing until 22 May 1990.

The ELEPHANT 15 - 18 were added on 27 September 1986 and the ELEPHANT 19 - 20 were staked 13 Oct. 1986.

In the autumn of 1986 Noranda Exploration Company Ltd., (No Personal Liability) optioned the ELEPHANT 1 - 20 from Gary C. Lee.

Upon acceptance of this report good status of the claims will be retained as follows:

ELEPHANT 1 - 14	YA86794 - YA86807	22 MAY 1994
ELEPHANT 15 - 18	YA96415 - YA96418	27 SEPT. 1990
ELEPHANT 19 - 20	YA96413 - YA96414	13 OCT. 1990

1-5: WORK PROGRAM

Noranda personnel conducted a property visit on July 16, 1986. Sampling and a visual examination of the placer concentrate, the bedrock beneath the gravels and material brought to the surface from shafting was undertaken.

The program continued on 22 July 1986 with one day of reconnaissance soil sampling of the south-facing slope above the placer operation.

Upon finalization of the option agreement between Noranda and Gary C. Lee, a week-long program of grid soil sampling and VLF and magnetometer surveys was undertaken. In addition one day was dedicated to examination of a newly opened placer cut.

DATE	PERSONNEL	POSITION	WORK	MAN DAYS
16 July 86	Wayne Reid	Sr. Project Geologist	Examination	2
	Craig Hart	Project Geologist	Sampling	
22 July 86	Craig Hart	Project Geologist	Recce soil &	2
	Rob Copeland	Field Assistant	rock sampling	
	Steve McKay	Geologist		
	Jorg Hofer	Field Assistant		
08 Oct. 86	Craig Hart	Project Geologist	Mapping & Sampling	1
08-15 Oct. 86	Gary Lee	Sr. Assistant	Grid Mag., VLF &	7
	Gordon Clark	Field Assistant	Sampling	7
			Total Man Days	19

A total of 353 soil samples and 15 rock samples were taken along 18km of grid. In addition 10.7km of VLF and 11.7km of magnetometer survey were performed.

CHAPTER TWO: GEOLOGY2-1: REGIONAL GEOLOGY

The regional geology has been well-mapped at 1:250,000 by Tempelman - Kluit (1985). More recently Carlson (1987) has produced a 1:50,000 scale map of the area. Essentially the area consists of Paleozoic Pelly and Selwyn Gneisses - both members of the Yukon Group Metamorphic Complex. These in turn have been intruded, faulted, intruded again with two stages of volcanism and faulted again. This leaves a terrain of metamorphic rocks swamped in large discordant batholiths which often have faulted contacts. Erosional remnants of Mt. Nansen and Carmacks Group volcanics unconformably overlie the crystalline rocks.

The major structure in the area is the Big Creek Fault which juxtaposes Yukon Group metamorphic rocks against the Freegold granodiorite.

2-2: PROPERTY GEOLOGY AND MINERALIZATION

Controversy exists between Tempelman-Kluit (pers-comm 1986) and Carlson (pers-comm 1986) as to whether the Big Creek Fault runs through Mt. Freegold or not.

Guder Creek essentially forms the contact between the Freegold granodiorite on the south and Pelly gneiss on the north.

The Pelly gneiss is a biotite rich - qtz. - feldspar medium grained gneiss. Its contact with the Freegold granodiorite is uncertain as it appears neither hornfelsed nor brecciated. Buff orange - weathering, brittle felsite dikes with minor qtz eyes cross-cut the granodiorite. The dikes are approx. 1m. wide, north-east-trending and parallel. Often they are brecciated with blue chacedonic quartz agates acting as a matrix.

Grey-blue siliceous rhyolite boulders with a few percent of disseminated pyrite were retrieved from the bottom of a shaft sunk to bedrock. Boulders similar to those described above were also found on the ridge behind the placer camp (per-comm. Carlson 1986).

If the Big Creek Fault does continue along Guder Creek into Mt. Freegold it would certainly provide both a conduit and/or a host for mineralization. If the fault does not continue along Guder Creek, then certainly the contact between the gneiss and marbles with the granodiorite could provide an environment favourable for mineralization.

In addition, the presence of two types of acid dikes, probably Tertiary in age adds increases potential for mineralization. Most samples of either the felsite or rhyolite dikes returned values containing some gold. McInnes (per-comm. 1987) is suggesting that the young dikes contain elevated gold values throughout Mt. Freegold and play a large role in mineralization found elsewhere in the area.

2-3: PLACER GOLD

Guder Creek is known to contain placer gold in economic proportions. Examination of the concentrate can aid in identifying the source of the gold.

The gold is typically coarse, that is reater than 2mm and often between 5 and 10mm. On occasions crystalline leafs of gold have been uncovered. The largest nugget taken was approx. 1.75cm. long with a weight of approx. 50 grams.

Gold ruggets have been found with inclusions of quartz and magnetite as well as sphalerite and barite (Granger 1986).

Magnetite is by far the most common mineral found in the concentrate and magnetite nuggets up to 20cm. across have been uncovered.

The examination of the gold and the concentrate suggests the following;

- 1) the gold is coarse or crystalline and has not travelled a significant distance
- 2) The affiliation with magnetite and the large quantity of magnetite cobbles suggests the source of the gold may be related to a magnetite skain (ie. Augusta)
- 3) the affiliation of gold with quartz and/or sphalerite suggests a vein source for the gold (ie. Red Fox)
- 4) the affiliation of gold with barite crystals suggests an epithermal origin (ie. Emmons Hill)

TABLE 1TABLE OF FORMATIONSQUATERNARYSelkirk Group:

- basalt, andesite

TERTIARYCarmacks Group:

- andesite, basalt, conglomerate, sandstone,

Mount Nansen Group:

- acid-intermediate tuff, breccia

JURASSIC & CRETACEOUSDezadeash Group:

- argillite, greywacke, volcanic rocks

TANTALUS FM:

- conglomerate, siltstone, arkose, coal

JURASSICLaberge Group:

- greywacke, arkose, conglomerate

UPPER TRIASSICLewes River Group:

- limestone

MESOZOIC (undivided)

- quartz monzonite, granodiorite, foliated granodiorite

PALEOZOIC (undivided)Pelly Gneiss:

- foliated to gneissic granodiorite

CARBONIFEROUS & PERMIANBig Salmon Metamorphic Complex:

- schist, gneiss

HADRYNIAN & CAMBRIAN

- schist, gneiss, quartzite

CHAPTER THREE: GEOCHEMISTRY3-1: SOIL GEOCHEMISTRY

Grid soil sampling took place on lines spaced approx. 200m apart with sample spacings at 50m. Samples were taken at a depth of approximately 0.5m using bladed augers.

Five zones of anomalous gold, often with coincident Ag and As anomalies were delineated.

Because the area is unglaciated, a deep regolith has been developed and it is felt that considerable leaching of elements from the top 1m has taken place. This is typified by a zone of higher concentration of gold in soil anomalies taken along the roadcut where samples were obtained just above bedrock.

The result of this thinking is two-fold;

- 1) surface samples retaining values of 20ppb Au should be considered anomalous
- 2) samples should be taken at the greatest depth possible

Gold anomalies have a good relationship with As anomalies and occasionally Zn anomalies. The Ag:Au ratio is variable. Lead values are typically flat.

Gold's relationship with arsenic suggests some form of epithermal activity. Its affiliation with Zn could be a result of residual Zn associated with the magnetite (skarn?) or a vein-type deposit. Copper values are anomalous on claims 15 - 18 and higher up in Guder Creek.

3-2: ROCK GEOCHEMISTRY

Fifteen rock samples were taken on the claims during 1986. Ten returned with anomalous gold values when geochemically analysed. The best value was a massive magnetite boulder found in the creek which gave a value of 710,000ppb Au and 24.8ppm Ag. Other magnetite boulders have returned readings with low or non-anomalous gold values.

Grab samples of rhyolite retrieve from the bottom of a shaft sunk to bedrock had values of between 70 and 540ppb Au with low Cu and Ag values but elevated arsenic values. Similar, though lower results, were found in rhyolite and qtz. feldspar porphyry boulders found as float in the creek-bed.

Sheared and a altered samples of granodiorite containing disseminated or fractures pyrite filled gave gold values of 25 and 35ppb respectively.

It appears that gold is available in a variety of host rocks and isolating the source of soil geochemical anomalies may be difficult.

CHAPTER FOUR: GEOPHYSICS4-1: GEOPHYSICSMAGNETOMETER SURVEY:

Due to the wide line spacing only a very generalized description of the magnetic data can be given with no specific features identified.

North west of TL 10400E the magnetic picture shows the area underlain for the most part by a relatively low and uniformly distributed magnetic susceptibility. The recorded variation is typically within an 200 gamma envelope.

To the south east the magnetic susceptibility is higher and exhibits some variability. A large magnetic high tongues in from the north east along a central axis at TL 10800E. A secondary magnetic high is seen encroaching on the extreme south corner of the grid. While the true magnetic character of this mag high is not revealed due to the sparse data it is representative of a major geological unit (intrusive ?).

VLF-EM SURVEY:

Two stations (Hawaii & Cutler) of VLF-EM were recorded on this recon grid. Readings were taken at a nominal distance of 50 meters with detailing in selected areas at 12.5 and 25 meter intervals. Unfortunately the 50 meter interval data is of little use due to the fact that for a narrow, near surface target the VLF-EM response has a wavelength of 10 to 30 meters which cannot be defined by readings with a greater separation. For the most part the 50 meter data set is showing the response due to topography.

Of those areas with adequate coverage there are a few responses that appear to be sourced by bedrock conductivity. They are located on Line 9800E at stations 10312.5N and 10387.5E with no continuity seen on adjacent lines. A third response although of low amplitude and may be sourced by noise has characteristics that look good is located at L 10000N/9912.5E. All of these responses are recorded from the data from one station only thus there is no 'back up' from the secondary station data set.


CONCLUSIONS:

The data has recorded some gross magnetic changes of which the most prominent is the large magnetic high located on the NE section of the grid. The VLF-EM survey has recorded three anomalous 'cross overs' which are suspected to be legitimate responses due to conductivity.

If additional surveying is planned then a regular grid should be established and additional magnetics and VLF-EM completed employing a 12.5 meter station reading interval.

CONCLUSIONS & RECOMMENDATIONS

Work performed to date has indicated several target areas for future exploration. Bulldozer trenching is recommended over the best soil geochem/geophysical anomalies. The trenching will serve both geological mapping and chip sampling functions. Detail geological mapping paying particular attention to structural trends should also be conducted.

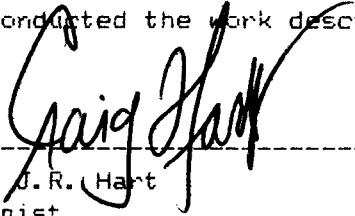


Craig J. R. Hart

STATEMENT OF QUALIFICATIONS

I, Craig J.R. Hart of Whitehorse, Yukon, do hereby certify that:

1. I am a geologist employed at the time of the preparation of this report by Noranda Exploration Company, Limited (No Personal Liability) in Whitehorse, Y.T..
2. I am a graduate of McMaster University, Hamilton, Ontario with a Major B.Sc. in Geology (1986).
4. I am an Associate of the Geological Association of Canada, a member of the C.I.M.M., the B.C. and Yukon Chamber of Mines and the Prospectors and Developers Association.
5. I was a geologist on the crew which conducted the work described in this report.



Craig J.R. Hart
Geologist

ASSESSMENT COST STATEMENT

GUDER CREEK

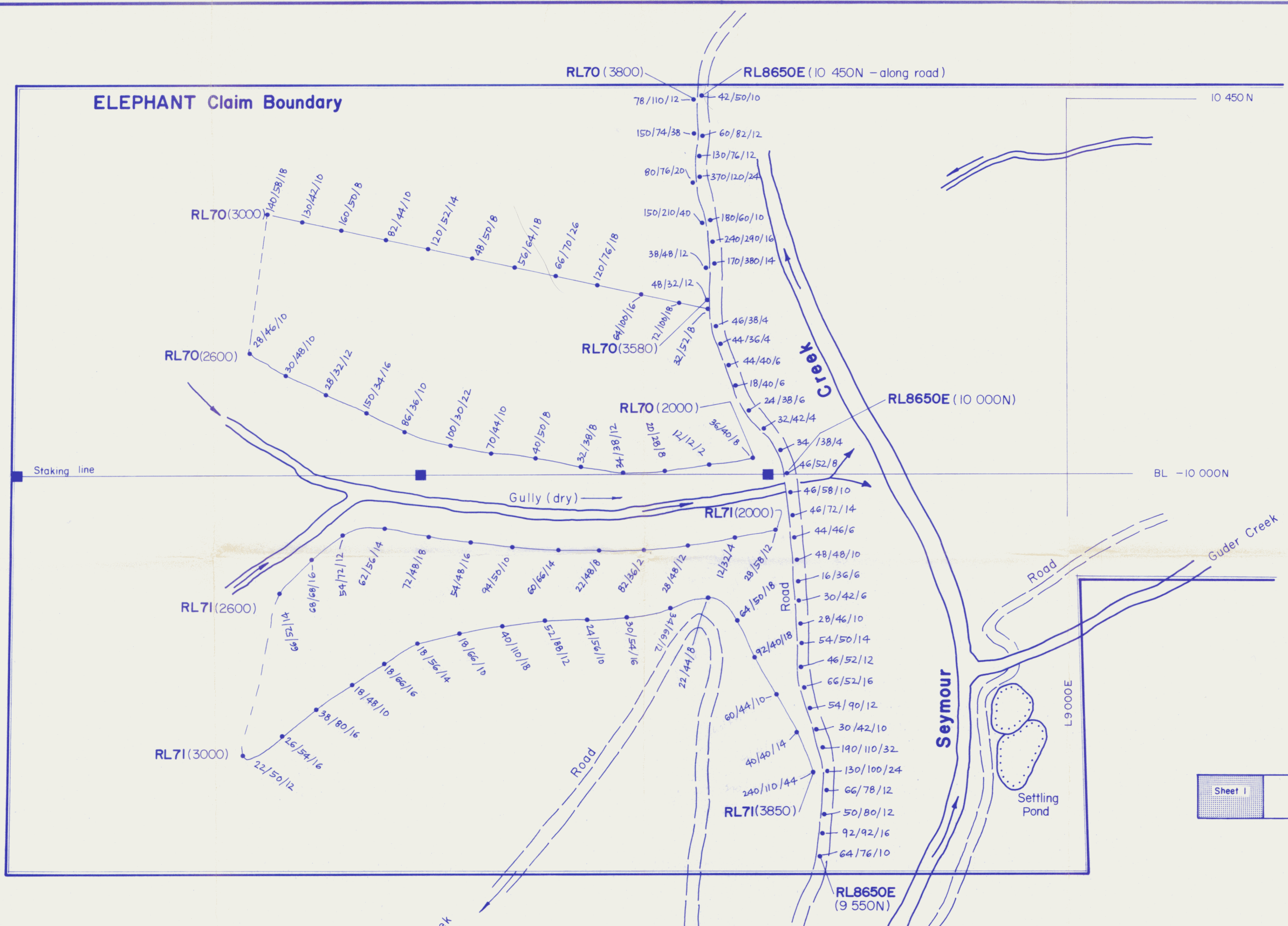
SALARY:	19 man days @ \$120.00	\$2280.00
FOOD:	19 @ \$23.00	437.00
SAMPLES:	368 X \$10.00	3680.00
TRUCK & GAS:		450.00
SAMPLE SHIPMENT:		120.00
REPORT WRITING:		400.00
DRAFTING:		700.00
CAMP SUPPLIES:		123.00
GEOPHYSICAL INSTRUMENT RENTAL:		275.00
GEOPHYSICAL INTERPRETATION:		250.00

		\$8721.00

REFERENCES

Tempelman-Kluit, D.J., 1981. Geology and Mineral Deposits of Southern Yukon in Yukon Geology and Exploration, 1979-80, D.I.A.N.D. publication, pp. 7-31.

Tempelman-Kluit, D.J., 1985. Geological Map of Carmacks Map Sheet. G.S.C. Open File 1101.



NOTE : Chaining approximate.

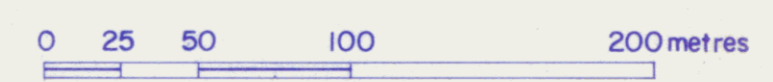
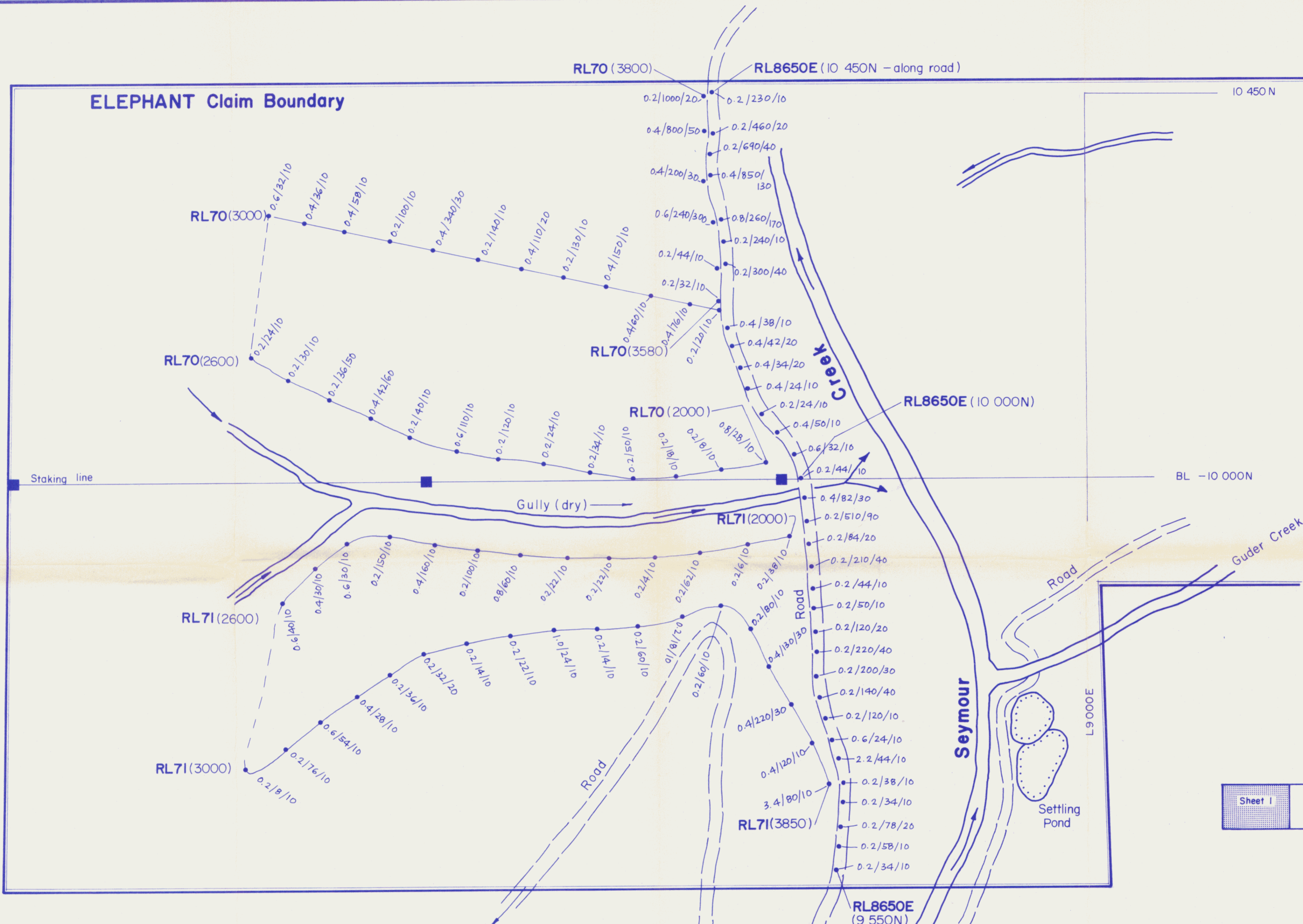


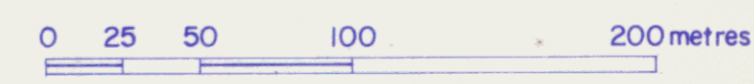
Fig. : 3

REVISED	Mt. Freegold - Guder Creek	
	ELEPHANT CLAIMS	
	Soil Geochem Results	
	(Cu / Zn / Pb) in ppm 1443	
PROJ. No. 29 15	SURVEY BY	DATE JAN 87
NTS 1:51.6	DRAWN BY AI	SCALE 1:2500
DWG No	NORANDA EXPLORATION	
	OFFICE Whitehorse	

091742



NOTE : Chaining approximate.



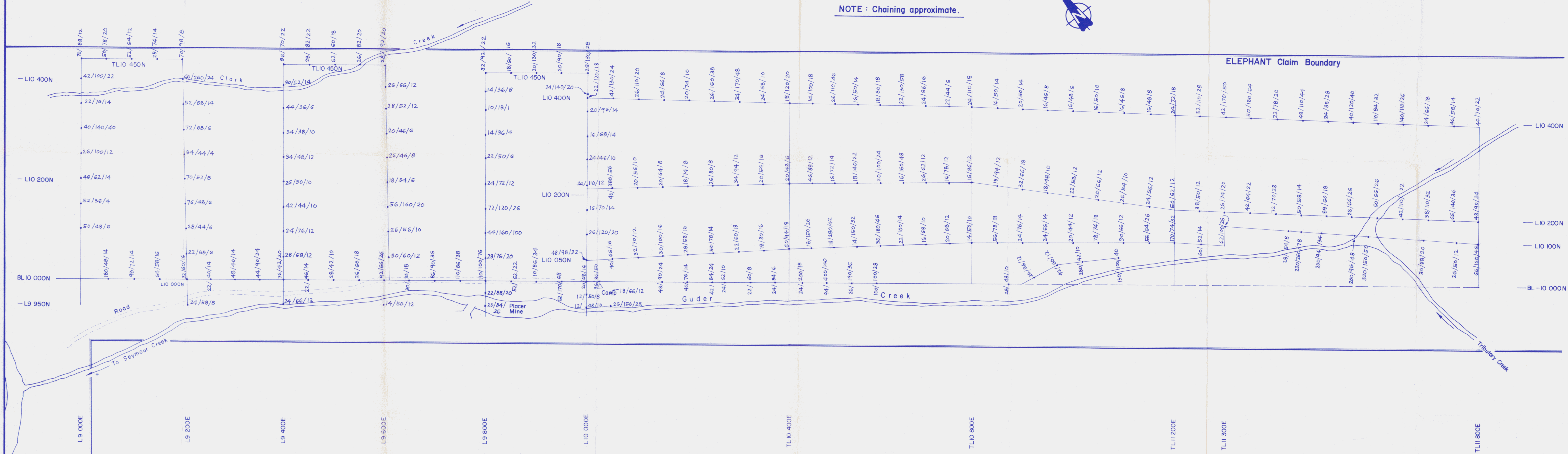
Sheet 1 Sheet 2

Fig : 4

REVISED	Mt. Freegold - Guder Creek	
	ELEPHANT CLAIMS	
	Soil Geochem Results	
	(Ag / As / Au) in ppm, Au in ppb	
PROJ. No. 295	SURVEY BY: AI	DATE: JAN 87
N.T.S. 1:516	DRAWN BY: AI	SCALE: 1:2500
DWG. No.	NORANDA EXPLORATION	
	OFFICE: Whitehorse	

091742

NOTE : Chaining approximate.



REVISED	Mt. Freegold - Guder Creek	
	ELEPHANT CLAIMS	
	Soil Geochem Results	
	(Cu / Zn / Pb) in ppm	
PROJ. No. 29	SURVEY BY: AI	DATE: JAN 87
N.T.S. 1:5	DRAWN BY: AI	SCALE: 1:2500
DWG. No.	NORANDA EXPLORATION	
	OFFICE: Whitehorse	

Fig. 5

091742

NOTE : Chaining approximate.



Sheet 1 Sheet 2



REVISED	Mt. Freegold - Guder Creek	
	ELEPHANT CLAIMS (1446)	
	Soil Geochem Results	
	(Ag / As / Au) in ppm, Au in ppb	
PROJ. No. 29	SURVEY BY: AI	DATE: JAN 87
N.T.S. 1:516	DRAWN BY: AI	SCALE: 1:2500
DWG. No.	NORANDA EXPLORATION	
	OFFICE: Whitehorse	

Fig. : 6

091742

NOTE : Chaining approximate.

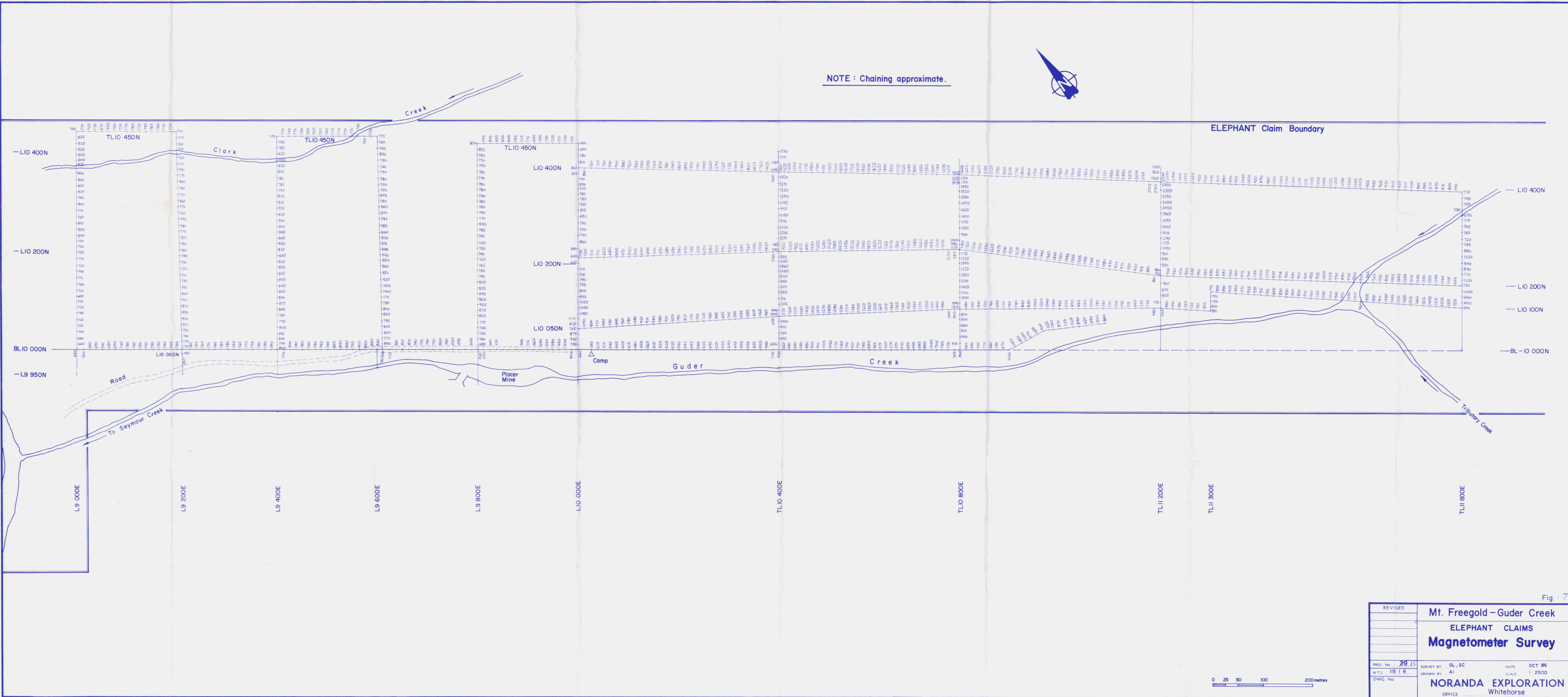


Fig. 7

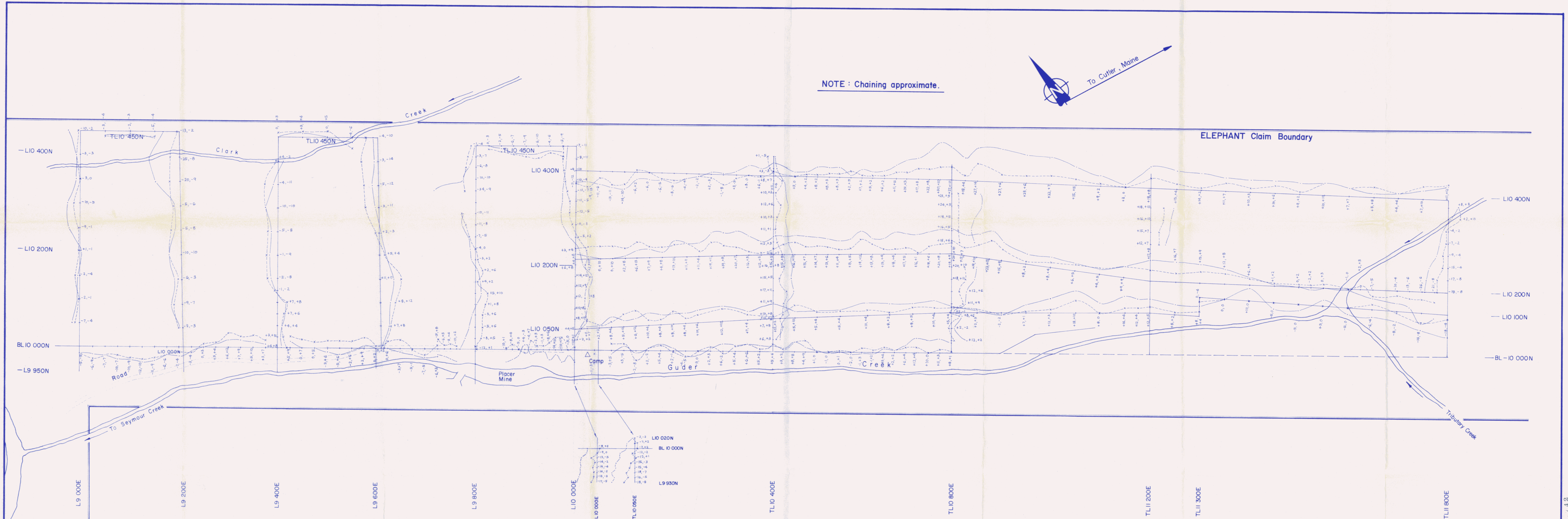
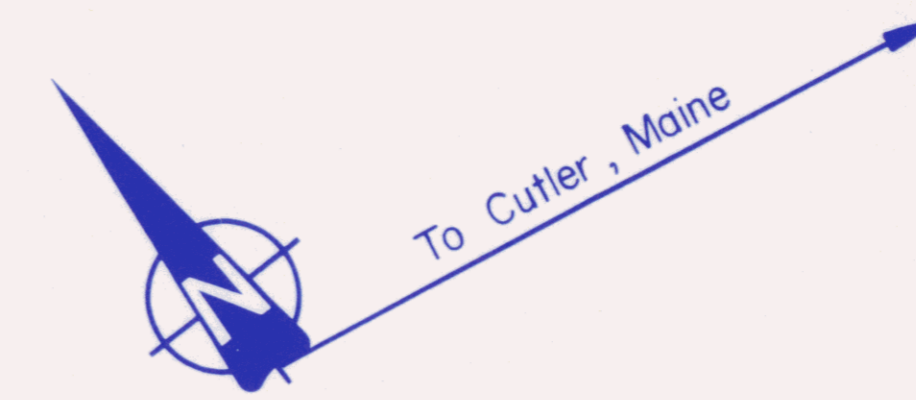
REVISED	Mt. Freegold - Guder Creek	
	ELEPHANT CLAIMS	
	Magnetometer Survey	
PROJ. No. 2815	SURVEY BY: GL, GC	DATE: OCT 86
N.T.S. 1:5 1:6	DRAWN BY: AI	SCALE: 1:2500
DWG. No.	NORANDA EXPLORATION OFFICE Whitehorse	



091742

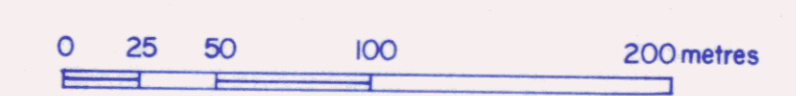
1447

NOTE : Chaining approximate.



Legend

- Instrument GEONICS EM 16
- Operators GL, GC
- Date surveyed OCT 86
- Profile scale 1cm = 10%
- DIP ANGLE IN %
- X - - - - X QUADRATURE
- Transmitting station CUTLER, MAINE
- Frequency 17.8 KHz.

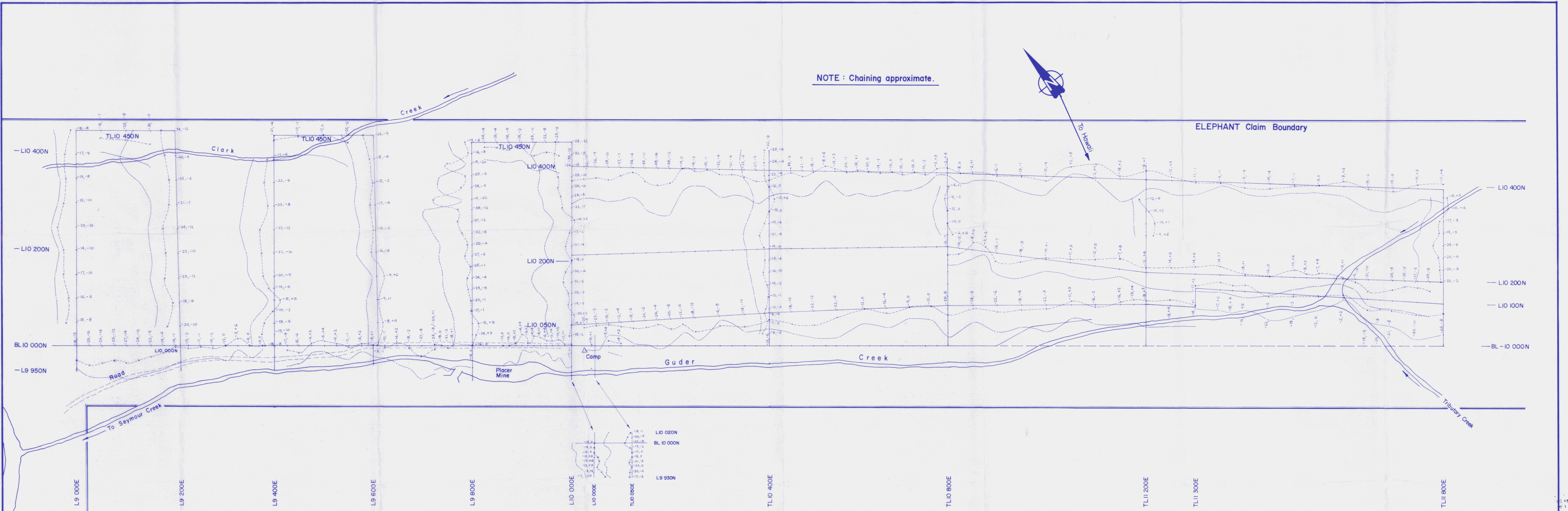
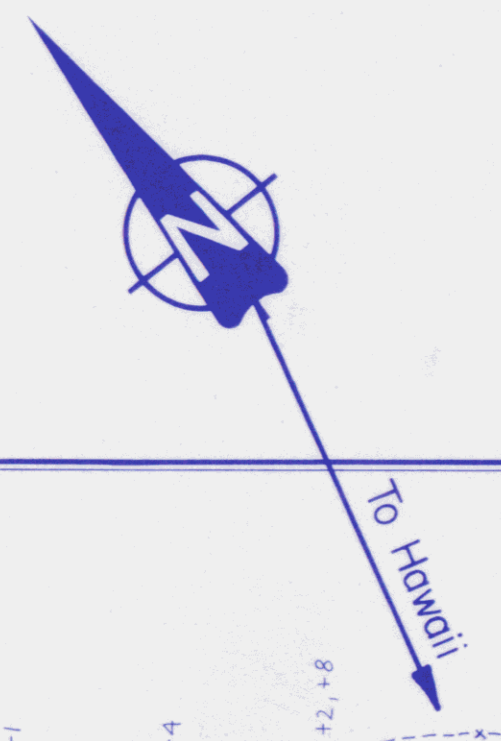


REVISED	Mt. Freegold - Guder Creek	
	ELEPHANT CLAIMS	
	VLF Survey	
	(Raw Data Profile - Maine)	
PROJ. No. 29 LS	SURVEY BY	DATE JAN 87
N.T.S. 1:5 1:6	DRAWN BY AI	SCALE 1:2500
DWG. No.	NORANDA EXPLORATION	
	OFFICE Whitehorse	

Fig. 8

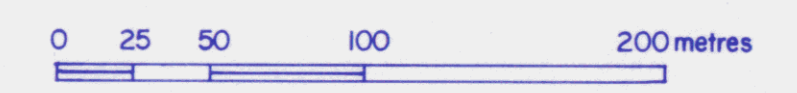
U.S. 42

NOTE : Chaining approximate.



Legend

- Instrument GEONICS EM16
- Operators GL, GC
- Date surveyed OCT 86
- Profile scale 1cm = 10%
- DIP ANGLE IN %
- x---x QUADRATURE
- Transmitting station LUALALEI, HAWAII
- Frequency 23.4 KHz.



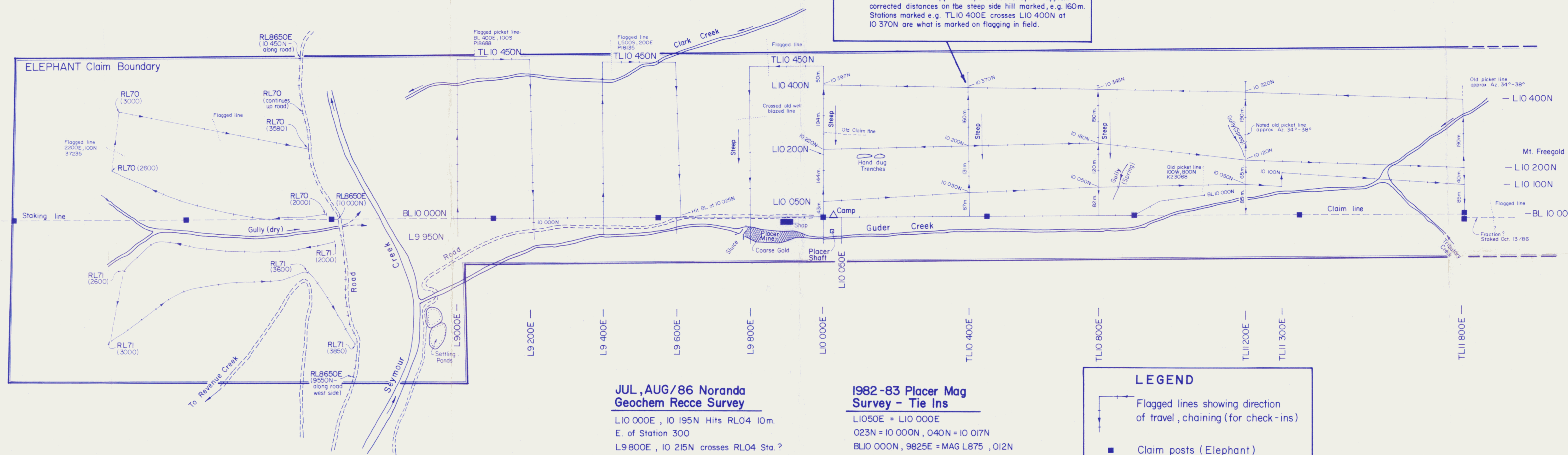
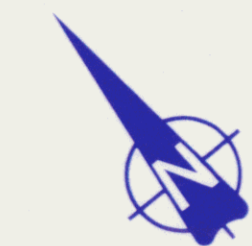
REVISED	Mt. Freegold - Guder Creek	
	ELEPHANT CLAIMS	
	VLF Survey (1449)	
	(Raw Data Profile - Hawaii)	
PROJ. No. 29	SURVEY BY:	DATE: JAN 87
N.T.S. 1:5	DRAWN BY: AI	SCALE: 1:2500
DWG. No.	NORANDA EXPLORATION	
	OFFICE: Whitehorse	

Fig. 9

001713
001712
001711

RECCE GEOCHEM & GEOPHYSICAL SURVEY

NOTE: Lines, Geochem, sample, chained and flagged at the same time. No slope corrections in field. However, plan is scaled down to allow for approx. slope corrections, with approx. corrected distances on the steep side hill marked, e.g. 160m. Stations marked e.g. TL10 400E crosses L10 400N at IO 370N are what is marked on flagging in field.



**JUL, AUG/86 Noranda
Geochem Recce Survey**
 L10 000E, IO 195N Hits RLO4 10m.
 E. of Station 300
 L9 800E, IO 215N crosses RLO4 Sta.?
 BL10 000N, IO 005E = RLO3 050N
 BL10 000N, 9 950E = RLO3 150N

**1982-83 Placer Mag
Survey - Tie Ins**
 L1050E = L10 000E
 023N = IO 000N, 040N = IO 017N
 BL10 000N, 9825E = MAG L875, 012N
 BL10 000N, 9920E = L975E, 010-012N

LEGEND

- Flagged lines showing direction of travel, chaining (for check-ins)
- Claim posts (Elephant)

BL 10 000N, 9850E
Felsic dyke (Bottom Mining Cut)

CLAIM POSTS
 BL10 000N - IO 000E
 Post 1 YA 86800
 Post 1 YA 86801
 Post 2 YA 86799
 Post 2 YA 86798

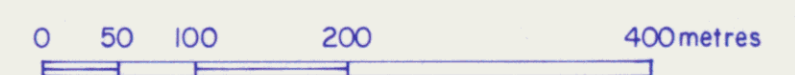


Fig. 10

REVISED	Mt. Freegold - Guder Creek	
	ELEPHANT CLAIMS	
	Grid Map (1450)	
	Recce Geochem & Geophysical Survey	
PROJ. No. 15	SURVEY BY: GL, GC	DATE: OCT 86
N.T.S. 1:5 000	DRAWN BY: AI	SCALE: 1:5 000
DWG. No.	NORANDA EXPLORATION Whitehorse	
	OFFICE:	

APPENDIX 1

Soil Sample Geochemical Report

NORANDA VANCOUVER LABORATORY

PROPERTY/LOCATION: MT. FREEBORN *GUOER CT*

CODE : 8611-029

Project No. : 329
 Material : SOIL
 Remarks :

Sheet: 1 of 6
 Geol.: C. H.

Date rec'd: NOV. 10
 Date compl: NOV. 26

Values in PPM, except where noted.

T. T. No.	SAMPLE No.	Cu	Zn	Pb	Ag	As	PPR Au
97	8650E-9550N	64	76	10	0.2	34	10
98	9575	92	92	16	0.2	58	10
99	9600	50	80	12	0.2	76	20
100	CHECK NL-5	24	68	72	1.6	60	-
101	9625	66	78	12	0.2	34	10
102	9650	130	100	24	0.2	38	10
103	9675	190	110	32	2.2	44	10
104	9700	30	42	10	0.6	24	10
105	9725	54	90	12	0.2	120	10
106	9750	66	52	16	0.2	140	40
107	9775	46	52	12	0.2	200	30
108	9800	54	50	14	0.2	220	40
109	9825	28	46	10	0.2	120	20
110	9850	30	42	6	0.2	50	10
111	9875	16	36	6	0.2	44	10
112	9900	48	48	10	0.2	210	40
113	9925	44	46	6	0.2	84	20
114	9950	46	72	14	0.2	510	90
115	9975	46	58	10	0.4	82	30
116	10000	46	52	8	0.2	44	10
117	10025	34	38	4	0.6	32	10
118	10050	32	42	4	0.4	50	10
119	10075	24	38	6	0.2	24	10
120	10100	18	40	6	0.4	24	10
121	10125	44	40	6	0.4	34	20
122	10150	44	36	4	0.4	42	20
123	10175	46	38	4	0.4	38	10
124	10250	170	380	14	0.2	300	40
125	10275	240	290	16	0.2	240	10
126	10300	180	60	10	0.8	260	170
127	10350	370	120	24	0.4	850	130
128	10375	130	76	12	0.2	690	40
129	10400	60	82	12	0.2	460	20
130	8650E-10450N	42	50	10	0.2	230	10
131	9000E-10100N	50	48	6	0.4	46	10
132	10150	52	36	4	0.4	56	10
133	10200	46	62	14	0.4	80	10
134	10250	26	100	12	0.2	90	10
135	10300	40	140	40	0.4	120	30
136	10350	22	76	14	0.6	140	10
137	10400	42	100	22	0.8	200	10
138	9000E-10450N	70	88	12	0.4	250	10
139	9200E-9950N	24	58	8	0.2	46	10
140	10050	22	68	6	0.4	6	10
141	10100	28	44	6	0.4	18	10
142	10150	76	48	6	0.4	78	20
143	10200	70	52	8	0.2	110	20
144	9200E-10250N	34	44	4	0.4	190	70

T. T. No.	SAMPLE No.	Cu	Zn	Pb	Ag	As	PPB Au
145	9200E-10300N	72	68	6	0.4	230	30
146	10350	52	88	14	0.2	130	10
147	10400	60	260	24	1.0	200	10
148	9200E-10450N	70	98	8	0.2	160	10
149	9400E-9950N	24	66	12	0.2	32	10
2	10050	28	68	12	0.2	140	10
3	10100	24	76	12	0.2	90	10
4	10150	42	44	10	0.8	80	10
5	10200	26	50	10	0.2	230	40
6	10250	34	48	12	0.2	260	10
7	10300	34	38	10	0.2	200	10
8	10350	44	36	6	0.2	260	10
9	10400	30	52	14	0.2	320	10
10	9400E-10450N	86	70	22	0.6	520	10
11	9600E-9950N	14	50	12	0.2	38	10
12	10050	30	60	12	0.2	150	10
13	10100	26	56	10	0.2	66	10
14	10150	56	160	20	0.2	290	10
15	10200	18	34	6	0.2	56	10
16	10250	26	46	8	0.2	70	10
17	10300	20	46	6	0.2	68	10
18	10350	28	52	12	0.2	140	10
19	10400	26	66	12	0.4	200	50
20	9600E-10450N	28	92	20	0.4	110	10
21	9800E-9925N	22	88	20	0.4	48	10
22	9950	20	84	26	0.4	68	10
23	10050	28	76	20	0.4	210	10
24	10100	44	160	100	1.0	240	10
25	10150	72	120	26	0.8	1400	240
26	10200	24	72	12	0.2	200	10
27	10250	22	50	6	0.2	28	10
28	10300	14	36	4	0.2	16	10
29	10350	10	18	1	0.2	8	10
30	10400	14	36	8	0.4	68	10
31	9800E-10450N	32	92	22	0.4	210	10
32	10000E-9925N	12	50	8	0.2	20	10
33	9950	12	48	10	0.2	22	10
34	10050	48	98	32	0.2	360	10
35	10100	26	120	20	0.4	100	10
36	10150	16	70	14	0.2	60	10
37	10200	24	110	12	0.4	160	10
38	10250	24	46	10	0.4	150	10
39	10300	16	68	14	0.2	76	10
40	10350	20	96	14	0.2	42	10
41	10400	24	140	20	0.4	130	10
42	10000E-10450N	28	130	28	0.8	74	10
43	10050E-9925N	18	66	12	0.4	22	10
44	10050E-9950N	26	150	28	0.4	80	10
45	10050N-10050E	40	66	16	0.2	86	10
46	10100	32	70	12	0.4	370	10
47	10150	30	100	16	0.4	160	10
48	10200	28	58	16	0.4	88	10
49	10250	50	78	14	0.8	68	10
50	10300	22	60	18	0.2	14	10
51	10350	18	80	16	0.2	20	10
52	10400	60	94	12	0.4	68	10
53	10050N-10450E	18	150	26	0.4	18	10

T.T.	SAMPLE No.	Cu	Zn	Pb	Ag	As	PPB Au
54	10050N-10500E	18	280	42	0.4	32	10
55	10530	14	150	32	0.4	24	10
56	10600	30	180	46	0.4	24	10
57	10650	22	100	14	0.2	10	10
58	10700	16	68	10	0.2	20	10
59	10750	20	68	12	0.2	16	10
60	10800	14	50	10	0.2	12	10
61	10850	56	78	18	2.4	36	10
62	10900	24	76	14	0.4	38	10
63	10950	24	66	14	0.4	44	10
64	11000	20	44	12	0.2	14	10
65	11050	78	74	18	0.6	28	10
66	11100	90	66	12	0.4	22	10
67	11150	56	64	26	0.4	110	10
68	11200	170	74	32	1.4	38	10
69	10050N-11250E	60	52	14	0.6	14	10
70	10100N-11300E	62	100	26	1.2	68	10
71	11425	28	54	8	0.6	24	10
72	11450	230	260	78	2.2	160	80
73	11485	200	96	34	0.8	92	20
74	11550	200	96	48	1.4	72	10
75	11575	320	150	50	3.0	120	10
76	11680	30	88	20	0.2	58	10
77	11750	26	50	12	0.4	24	10
78	10100N-11800E	66	160	46	0.6	82	10
79	10200N-10050E	40	380	56	0.8	170	10
80	10100	20	52	10	0.2	26	10
81	10150	20	64	8	0.2	28	10
82	10200	18	74	8	0.2	38	10
83	10250	26	60	8	0.2	48	10
84	10300	34	94	12	0.4	36	10
85	10350	20	54	16	0.2	4	10
86	10400	20	48	6	0.2	10	10
87	10450	46	88	12	0.4	6	10
88	10500	16	72	14	0.2	2	10
89	10550	18	140	22	0.4	4	10
90	10600	20	100	24	0.2	6	10
91	10650	16	160	48	0.2	10	10
92	10700	26	62	12	0.2	1	10
93	10750	16	78	12	0.2	10	10
94	10800	16	86	12	0.2	8	10
95	10850	18	94	12	0.2	6	10
96	10900	32	66	18	1.0	30	10
97	10950	18	48	10	0.2	14	10
98	11000	22	58	12	0.2	18	10
99	11050	20	66	12	0.2	12	10
00	CHECK NL-5	28	64	72	1.8	66	-
01	11100	26	54	10	0.2	10	10
02	11150	24	56	12	0.4	20	10
03	11200	50	62	12	0.8	8	10
04	11250	38	50	12	0.2	16	10
05	11300	26	74	20	0.2	16	10
06	11350	42	64	22	0.4	60	20
07	11400	72	70	28	1.0	80	20
08	11450	50	58	14	0.6	8	10
09	11500	88	60	18	2.8	14	10
10	10200N-11550E	28	66	26	0.2	4	10

T. No.	SAMPLE No.	Cu	Zn	Pb	Ag	As	PPB Au
111	10200N-11600E	60	66	26	0.4	14	10
112	11650	42	110	22	0.6	100	10
113	11700	38	110	32	0.4	54	10
114	11750	66	140	36	1.0	56	10
115	10200N-11800E	48	90	24	0.2	40	10
116	10400N-10000E	22	120	18	0.2	110	10
117	10050	42	130	24	0.8	160	50
118	10100	26	110	20	0.6	70	10
119	10150	24	66	8	0.2	20	10
120	10200	20	74	10	0.2	44	10
121	10250	26	160	38	0.2	32	10
122	10300	24	170	48	0.4	130	10
123	10350	24	68	10	0.2	18	10
124	10400	18	120	20	0.2	16	10
125	10450	14	100	18	0.2	16	10
126	10500	26	110	46	0.6	16	10
127	10550	16	50	14	0.2	6	10
128	10600	18	80	18	0.2	4	10
129	10650	22	130	58	0.4	20	10
130	10700	24	86	16	0.2	6	10
131	10750	22	44	6	0.2	4	10
132	10800	24	110	18	0.2	16	10
133	10850	16	50	14	0.2	6	10
134	10900	20	50	14	0.8	12	10
135	10950	16	46	8	0.2	8	10
136	11000	16	48	6	0.4	10	10
137	11050	16	50	10	0.6	10	10
138	11100	16	46	8	0.2	16	10
139	11150	16	48	8	0.2	18	10
140	11200	24	72	18	0.6	18	10
141	11250	32	110	28	0.8	20	10
142	11300	42	170	50	1.4	30	10
143	11350	50	180	64	1.4	22	10
144	11400	22	78	20	0.6	10	10
145	11450	48	110	44	2.0	6	10
146	11500	24	88	28	1.2	16	10
147	11550	40	120	40	1.0	24	10
148	11600	110	84	32	0.6	20	10
149	11650	140	110	26	1.4	14	10
2	11700	24	66	18	0.6	8	10
3	11750	46	58	14	0.6	12	10
4	10400N-11800E	46	76	22	0.8	10	10
5	10000N-10000E	20	68	16	0.4	62	10
6	10025	36	86	50	0.6	180	20
7	10150	48	90	24	0.8	160	10
8	10200	40	76	14	0.6	66	10
9	10250	42	84	24	1.2	120	10
10	10275	24	62	10	0.2	18	10
11	10325	22	60	8	0.2	12	10
12	10375	24	84	6	0.2	54	10
13	10425	24	200	18	0.6	30	10
14	10475	94	400	140	2.2	600	110
15	10525	26	190	36	0.6	80	10
16	10575	100	100	28	0.4	32	10
17	10875	28	48	10	0.4	16	10
18	10925	26	55	12	0.2	50	10
19	10000N-10975E	42	60	12	0.4	46	10

T. T. No.	SAMPLE No.						PPB	8611-029
		Cu	Zn	Pb	Ag	As	Au	Pg. 5 of 6
20	10000N-11050E	280	42	10	1.0	10	10	
21	10000N-11090E	130	100	40	0.6	34	10	
22	10450N-9050E	50	78	20	0.4	180	10	
23	9100	52	64	12	0.2	120	10	
24	9150	28	74	14	0.2	440	10	
25	9850	18	60	16	0.6	70	10	
26	9900	20	130	32	0.4	110	10	
27	9950	20	90	18	0.4	42	10	
28	9450	28	82	22	0.6	390	10	
29	9500	62	60	18	0.4	610	10	
30	10450N-9550E	26	82	20	0.4	160	30	
31	RL 70 - 2000	26	40	8	0.8	28	10	
32	2050	12	12	2	0.2	8	10	
33	2100	20	28	8	0.2	18	10	
34	2150	34	38	12	0.2	50	10	
35	2200	32	38	8	0.2	34	10	
36	2250	40	50	8	0.2	24	10	
37	2300	70	44	10	0.2	120	10	
38	2350	100	30	22	0.6	110	10	
39	2400	86	36	10	0.2	40	10	
40	2450	150	34	16	0.4	42	60	
41	2500	28	32	12	0.2	36	50	
42	2550	30	48	10	0.2	30	10	
43	2600	28	46	10	0.2	24	10	
44	3000	140	58	18	0.6	32	10	
45	3050	130	42	10	0.4	36	10	
46	3100	160	50	8	0.4	58	10	
47	3150	82	44	10	0.2	100	10	
48	3200	120	52	14	0.4	340	30	
49	3250	48	50	8	0.2	140	10	
50	3300	56	64	18	0.4	110	20	
51	3350	66	70	26	0.2	130	10	
52	3400	120	76	18	0.4	150	10	
53	3450	64	100	16	0.4	60	10	
54	3500	72	100	18	0.4	76	10	
55	3550	32	52	8	0.2	20	10	
56	3600	38	48	12	0.2	44	10	
57	3650	150	210	40	0.6	240	300	
58	3700	80	76	20	0.4	200	30	
59	3750	150	74	38	0.4	800	50	
60	3800	78	110	12	0.2	1000	20	
61	RL 70 - 3580	48	32	12	0.2	32	10	
62	RL 71 - 2000	28	58	12	0.2	38	10	
63	2050	12	32	4	0.2	6	10	
64	2100	28	48	12	0.2	62	10	
65	2150	82	36	2	0.2	4	10	
66	2200	22	48	8	0.2	22	10	
67	2260	60	66	14	0.2	22	10	
68	2300	94	50	10	0.8	60	10	
69	2350	54	48	16	0.2	100	10	
70	2400	72	48	18	0.4	160	10	
71	2450	62	56	14	0.2	150	10	
72	2500	54	72	12	0.6	30	10	
73	2550	68	68	16	0.4	30	10	
74	2600	66	52	14	0.6	40	10	
75	3000	22	50	12	0.2	8	10	
76	RL 71 - 3050	26	54	16	0.2	76	10	

T. T. No.	SAMPLE No.	Cu	Zn	Pb	Ag	As	PPB Au	8611-029 Pg. 6 of 6
77	RL 71 - 3100	38	80	16	0.6	54	10	
78	3150	18	48	10	0.4	28	10	
79	3200	18	66	16	0.2	36	10	
80	3250	18	56	14	0.2	32	20	
81	3300	18	66	10	0.2	14	10	
82	3350	40	110	18	0.2	22	10	
83	3400	52	88	12	1.0	24	10	
84	3450	24	56	10	0.2	14	10	
85	3500	30	54	26	0.2	60	10	
86	3550	34	66	12	0.2	18	10	
87	3600	22	44	8	0.2	60	10	
88	3650	64	50	18	0.2	80	10	
89	3700	92	40	18	0.4	130	30	
90	3750	60	44	10	0.4	220	30	
91	3800	40	40	14	0.4	120	10	
92	RL 71 - 3850	240	110	44	3.4	80	10	
93	10000N-9050E	180	48	14	1.0	310	20	
94	9100	98	72	14	0.4	210	20	
95	9150	64	58	16	0.4	50	10	
96	9200	32	60	16	0.2	10	10	
97	9250	22	40	14	0.2	14	10	
98	9300	48	40	14	0.2	26	10	
99	9350	44	90	24	0.4	210	10	
00	CHECK NL-5	26	70	72	1.4	62	-	
01	9400	76	42	20	0.2	370	<u>120</u>	
02	9450	22	46	14	0.2	80	10	
03	9500	28	42	10	0.2	52	10	
04	9550	26	60	18	0.4	140	10	
05	9600	92	66	26	0.4	520	<u>170</u>	
06	9650	30	74	18	0.4	300	10	
07	9700	86	90	36	0.6	870	20	
08	9750	110	86	38	0.8	1200	60	
09	9800	110	100	76	1.2	420	70	
10	9850	52	62	22	0.4	220	10	
11	9900	110	86	34	1.0	600	<u>110</u>	
12	10000N-9950E	62	170	68	0.8	260	<u>20</u>	